

The NCAA News



Official Publication of the National Collegiate Athletic Association

October 10, 1994, Volume 31, Number 36

Survey: Confusion surrounds SWA role

By Vikki K. Watson
THE NCAA NEWS STAFF

A recent survey to review the roles of senior woman administrators has confirmed the concerns of the NCAA Committee on Women's Athletics.

Specifically, the survey reveals the confusion that exists among member institutions regarding who the SWA should be and what the SWA should do.

And, most notably, the survey highlights two glaring concerns.

- One hundred ninety-eight schools do not have an SWA
- Men say they serve as SWAs at some schools

The survey was one of two developed with input from the Committee on Women's Athletics and from the National Association of Collegiate Women Athletic Administrators

■ Institutions without an SWA, list of Division I SWAs and their titles **Pages 14, 15**

(NACWAA) 1993 Fall Forum. The first survey was sent to senior woman administrators at member institutions, the second went to athletics administrators at member institutions that did not have a designated SWA.

Administrators agree that although the survey's findings are interesting, its value will be determined by the amount of discussion and action that results.

Specifically, should the SWA position be better defined? Should the position be mandated? Should the SWA focus on women's-only issues? Is the title "senior woman administrator" appropriate?

The answers won't come immediately, administrators say. "You're not going to solve this in five minutes at a meeting," Justus said. "All of these questions are things the Committee on Women's Athletics is going to talk about."

Listing of names

As a result of the survey and at the direction of the NCAA Gender-Equity Task Force, the Committee on Women's Athletics has developed a list of schools that do not have an SWA, that list (for Division I members) appears on page 14. The committee also has developed a list of schools that do have an SWA (along with the SWA's name and position within the athletics department), that list (for Division I) is on

See **Survey**, page 14 ►

Coaches make another pitch on initial-eligibility standards

Many issues discussed at NABC Issues Summit

By Ronald D. Mott
THE NCAA NEWS STAFF

HOUSTON—The core of the message was the same, but the packaging was somewhat different.

The second annual National Association of Basketball Coaches Issues Summit, held October 4-5, amplified many of the same concerns expressed last year, most notably the desire of men's basketball coaches to have increased and continued involvement in the legislation that governs their game.

But unlike the 1993 summit in Charlotte, North Carolina, this year's meeting was attended by a number of black coaches. Together, all of the coaches reaffirmed their concerns about prospective NCAA initial-eligibility standards and how legislative proposals to be considered at the 1995 NCAA Convention may adversely affect the welfare of student-athletes.

"A year ago, the black coaches decided not to attend the issues summit so that some attention could be brought to the problems

facing intercollegiate athletics," said Mike Jarvis, men's basketball coach at George Washington University. "This year the black coaches are here. We are here to continue the fight."

The coaches have drawn their battle line on initial eligibility, arguing that the Association should delay the effective date of 1992 Convention Proposal No. 16, scheduled to go into effect next August, so that more time can be devoted

See **NABC**, page 13 ►

Division II certification plan strives for simplicity, less cost

A special committee charged with developing an athletics-certification plan for Division II likely will recommend a program that is substantially different from what is now in place in Division I.

In particular, the Special Committee on Division II Athletics Certification, which met for the first

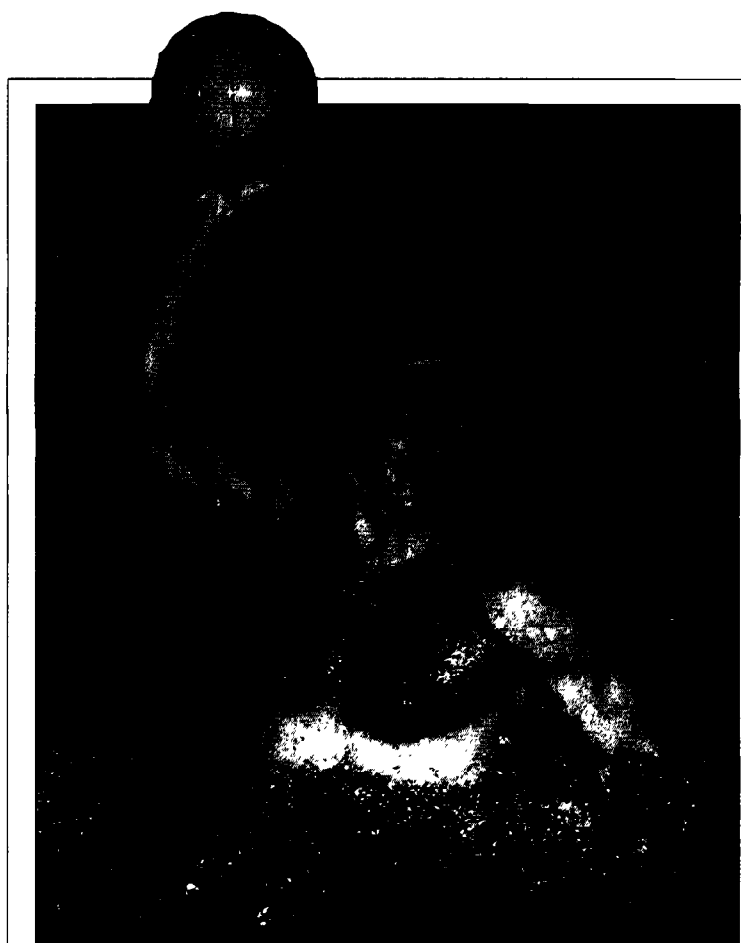
time October 4-5 in Cincinnati, hopes to build a version that is simpler and less expensive than its Division I counterpart.

The special committee will pick up the work of a joint subcommittee of the NCAA Council and NCAA Presidents' Commission, which already had created a work-

ing document as a basis for discussion.

The working document specifically mentioned cost, stating, "The joint subcommittee noted that the establishment of any athletics-certification program should be effective

See **Certification**, page 16 ►



Jet Commercial Photographers Inc. photo

Taking his best shot

Julian Alexander, a junior on the Harvard University water polo team, has been making the most of his opportunities, both in and out of the pool. Alexander, who fled communist-ruled Bulgaria, asks for only one thing out of life: a chance. See story, page 5.

■ In the News

News Digest	Page 2
Briefly	3
Comment	4
Football notes	6
Administrative	
Committee minutes	12
NCAA Record	17
The Market	18
Legislative assistance	20



Delany

■ Elizabeth L. Fahey Albright says the NCAA Student-Athlete Advisory Committee has grown from a novelty into one of the Association's key committees in its brief life span. **Page 4.**

■ Big Ten Conference Commissioner James E. Delany says restructuring is a logical progression. **Page 4.**

■ The sport of volleyball turns 100 and the NCAA Men's Volleyball Committee is planning a birthday celebration to honor it. **Page 12.**

■ On deck

October 10-12	Council, Kansas City, Missouri
October 11-13	Men's and Women's Swimming Committee, Kansas City, Missouri
October 19-20	Presidents Commission Committee on Sportsmanship and Ethical Conduct in Intercollegiate Athletics, Boston
October 23-25	Division I Women's Basketball Committee, Minneapolis
October 25	Honors Committee, Kansas City, Missouri

The NCAA News



DIGEST

A weekly summary of major activities within the Association

Initial eligibility

Coaches support delay in implementation of index

Coaches attending the National Association of Basketball Coaches Issues Summit in Houston October 4-5 supported a delay in the implementation of an initial-eligibility index in Division I and indicated that in the long term, they want to examine the possibility of freshman ineligibility.

The coaches, the NCAA Council and the NCAA Presidents Commission all support a delay in the implementation of the initial-eligibility index that currently is scheduled to go into effect in August 1995. However, the coaches said they want to use the delay to further modify the index, which uses standardized-test scores and high-school grade-point averages, or to completely change the standards. The proposals of the Council and Presidents Commission both would put indexes into effect in August 1996.

At the Issues Summit, the coaches heard a presentation on the presidents' recent proposal to alter the definition of a partial qualifier to an individual who scores less than 700 on the SAT or 17 on the ACT but who has a grade-point average of more than 2.500 in 13 core courses. The NABC did not state a formal position on that proposal, although coaches did object to a provision that partial qualifiers would be permitted only three years of athletics eligibility.

The Commission's definition of a partial qualifier was offered as a substitute for an earlier Commission proposal that would have required a standardized test score of 600 to 690 on the SAT and a GPA of 2.500 to 2.750 to be a partial qualifier. The earlier definition also would have allowed partial qualifiers to earn a fourth year of eligibility.

The Commission will ask the NCAA Council to cosponsor the new proposal. The Council will meet October 10-12.

For more information, see page 1.

Staff contact: Francis M. Canavan.

Legislation

Amendment-to-amendment deadline is November 1

Members have until 5 p.m. (Central time) November 1 to submit amendments-to-amendments for the 1995 NCAA Convention to the national office.

From now until November 1, the Council, Presidents Commission or any eight active member institutions may submit amendments to a proposal for the 1995 Convention.

Schedule of key dates for October and November 1994

October						
						1
2	3	4	5	6	7	8
9	10	11	12	13	14	15
16	17	18	19	20	21	22
23/30	24/31	25	26	27	28	29

November						
		1	2	3	4	5
6	7	8	9	10	11	12
13	14	15	16	17	18	19
20	21	22	23	24	25	26
27	28	29	30			

OCTOBER RECRUITING

Men's Division I basketball

1-20 Quiet period.
21-31: Quiet period, except for 20 days between October 21, 1994, and March 15, 1995, chosen at the discretion of the institution as an evaluation period; institutional staff members shall not visit a prospect's educational institution on more than one calendar day during this period. (Effective in 1994-95 only, as a result of a September 6 action by the NCAA Administrative Committee.)

Women's Division I basketball

1-7 Contact period.
8-31: Quiet period, except for 20 days between October 8, 1994, and February 28, 1995, chosen at the discretion of the institution as an evaluation period; institutional staff members shall not visit a prospect's educational institution on more than one calendar day during this period.

Men's Division II basketball

1-14 Contact period.
October 15 until the date of the prospect's initial high-school or two-year college contest: Quiet period.
Period between initial and final high-school or two-year college contest: Evaluation period.

Women's Division II basketball

1-14 Contact period.
October 15 until the date of the prospect's initial high-school or two-year college contest: Quiet period.
Period between initial and final high-school or two-year college contest: Evaluation period.

Division I football

1-31: Quiet period, except nine days during October and November selected at the discretion of the institution (an authorized off-campus recruiter may visit a particular high school only once during this evaluation period).

Division II football

June 1 through beginning of the prospect's high-school or two-year college football season: Quiet period.
During the prospect's high-school or two-year college football season: Evaluation period.

NOVEMBER RECRUITING

Men's Division I basketball

1-30: Quiet period, except for 20 days between October 21, 1994, and March 15, 1995, chosen at the discretion of the institution as an evaluation period; institutional staff members shall not visit a prospect's educational institution on more than one calendar day during this period. (Effective in 1994-95 only, as a result of a September 6 action by the NCAA Administrative Committee.)

uation period; institutional staff members shall not visit a prospect's educational institution on more than one calendar day during this period. (Effective in 1994-95 only, as a result of a September 6 action by the NCAA Administrative Committee.) Also:

Women's Division I basketball

1-30: Quiet period, except for 20 days between October 8, 1994, and February 28, 1995, chosen at the discretion of the institution as an evaluation period; institutional staff members shall not visit a prospect's educational institution on more than one calendar day during this period. Also:

Men's Division II basketball

7 (8 a.m.)-9 (8 a.m.) Dead period.
Otherwise: October 15 until the date of the prospect's initial high-school or two-year college contest: Quiet period. Period between initial and final high-school or two-year college contest: Evaluation period.

Women's Division II basketball

7 (8 a.m.)-9 (8 a.m.) Dead period.
Otherwise: October 15 until the date of the prospect's initial high-school or two-year college contest: Quiet period. Period between initial and final high-school or two-year college contest: Evaluation period.

Division I football

1-30: Quiet period, except nine days during October and November selected at the discretion of the institution (an authorized off-campus recruiter may visit a particular high school only once during this evaluation period).

Division II football

1-30 Evaluation period.

MAILING

15 — Official Notice of the Convention to be mailed.

DEADLINES

1 — Deadline for all amendments-to-amendments to be received in the national office. No amendments-to-amendments may be submitted after this date, including at the Convention itself, except that the Council is authorized to submit further amendments-to-amendments at the Convention if it deems such action necessary.

*See pages 122-123 of the 1994-95 NCAA Manual for exceptions. Also, see pages 126-127 for dead periods in other Divisions I and II sports.

forth in the circularized proposal.

No amendments-to-amendments may be submitted after 5 p.m. November 1, except that the Council has the authority to submit amendments-to-amendments at the Convention, if deemed necessary.

Staff contact: Nancy L. Mitchell.

Convention

Flat \$100 fee to be used for delegates to '95 event

A flat registration fee of \$100 per person will be charged at the 1995 Convention in San Diego.

The only exception will be for individuals representing commercial enterprises, in which case a \$200 fee will be charged.

The registration fee covers delegate entertainment costs, such as the delegates reception, luncheons and the honors dinner.

Chief executive officers are reminded that NCAA Bylaw 5.1.3.1 stipulates that institutions or conferences that designate both a male and a female as voting or alternate delegates on the appointment-of-delegates form will be allowed to appoint four accredited delegates. In all other circumstances, institutions will be limited to not more than three delegates. They may have any number of visiting (nonvoting) delegates.

The dates of the Convention are January 7-11, 1995.

Staff contact: Louis J. Spry.

SWA survey

Study reveals confusion over role of SWA position

A recent survey reveals the confusion that exists among member institutions regarding who the senior woman administrator at each institution should be and what the SWA's responsibilities are.

The survey, commissioned by the NCAA Committee on Women's Athletics, revealed two special concerns:

■ One hundred ninety-eight schools do not have an SWA.

■ Men say they serve as SWAs at some schools.

The presence of some men as SWAs has been brought about because of an administrative error on a form that makes it appear that a male could be appointed to the SWA position if a woman was the athletics director for the entire program.

For more information, see page 1.

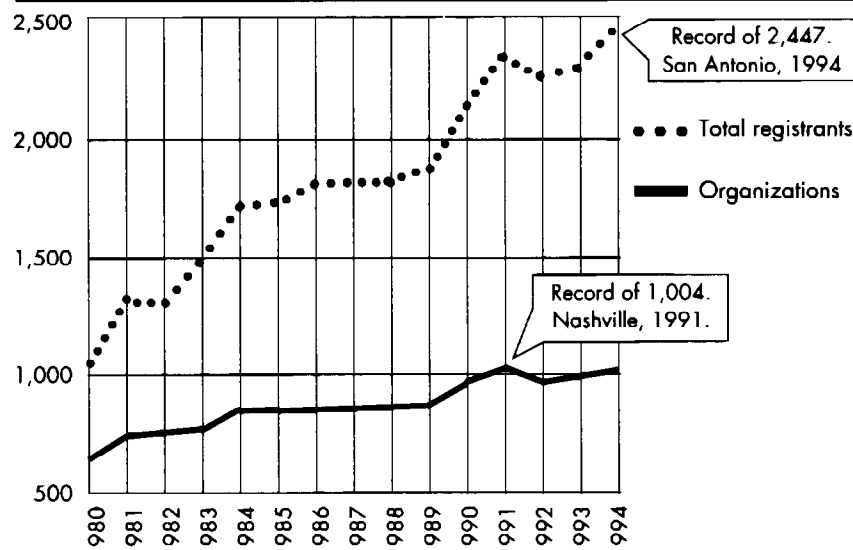
Staff contact: Janet M. Justus.

NCAA Convention attendance

Analysis of 1994 Convention

	DIVISION I			DIVISION II			DIVISION III			TOTALS		
	No.	Inst.	Del.	No.	Inst.	Del.	No.	Inst.	Del.	No.	Orgn.	Del.
District 1	18	17	67	18	16	30	61	46	65	97	79	162
District 2	57	57	189	44	33	66	113	86	138	214	176	393
District 3	80	80	313	79	63	131	49	33	49	208	176	493
District 4	43	43	183	28	25	60	87	68	104	158	136	347
District 5	21	21	84	27	27	89	18	16	23	66	64	196
District 6	33	33	135	12	11	32	5	4	11	50	48	178
District 7	20	20	85	15	15	33	1	1	3	36	36	121
District 8	29	29	105	22	22	52	12	10	20	63	61	177
Conference	48	37	90	24	20	27	38	28	28	110	85	145
TOTALS	349	337	1251	269	232	520	384	292	441	1002	861	2212
Attendance Pct.	.966			.862			.760			.859		
Others										98	139	235
GRAND TOTALS										1100	1000	2447

NCAA annual Convention attendance, 1980-1994



Briefly in the News

Soccer goals can be hazardous

The sport of soccer generally receives high marks when it comes to safety standards set during competitive play, but an alarming number of serious injuries that have occurred when teams are not even on the field has a Federal agency concerned.

The U.S. Consumer Product Safety Commission in Washington, D.C., said 18 deaths and 60 serious injuries have been reported since 1979. Most of the accidents involve moveable soccer goals falling on children and young adults.

Though none of the incidents has occurred during competition, the commission nonetheless is alerting soccer organizations and athletics directors at NCAA member institutions of dangers relating to soccer-goal misuse.

In most cases, injuries have resulted from goals being improperly anchored or carelessly stored. Several children, including 11 under the age of 10, have suffered fatal injuries while either climbing or hanging on poorly anchored goals.

The commission has worked in the past several years with the Coalition to Promote Soccer Goal Safety and the Soccer Industry Council of America in an effort to make moveable soccer goals more stable. The commission and the coalition strongly recommend that soccer coaches, school officials and soccer field-maintenance personnel help prevent goals from falling over by anchoring them to the ground using stakes or augers. In addition, goals should be chained to a fence or other permanent structure when not in use.

"We're doing whatever we can to communicate to coaches and administrators the potential dangers," said J. A. DeMarco, the commission's project officer. "While the last thing the commission wants to do is change soccer rules, we're nonetheless developing guidelines for safe storage and use of soccer goals."

More information can be obtained by writing to the U.S. Consumer Product Safety Commission, Office of Public Affairs, Washington, D.C. 20207.

Coach nabs an Emmy

The curtain call was made — a John Curtin call, that is.

The Emory University cross country and track and field coach won an Emmy Award this summer for his work as an analyst on a live local television broadcast of the annual Peachtree Road Race, a 10,000-meter race



Kirk Williamson photo

Speaking from experience

Derek Sanderson, a former ice hockey player with the Boston Bruins, addresses students at Salem State College on the dangers of substance abuse. Sanderson, a self-described "alcoholic and drug addict," told how he went from being the highest paid professional athlete in the world to a bum in Central Park to a recovering alcoholic and drug addict. Sanderson now works as a color commentator for Bruins' television broadcasts.

in Atlanta that is billed as the world's largest. Along with staffers from Atlanta's WAGA-TV, Curtin nabbed a Southern Regional Emmy for "Outstanding Achievement in Live Sports Programming."

Curtin became a commentator for the road race in 1992. While he said he initially thought himself unqualified to do live television, Curtin said others helped clear any reservations he had about his ability.

"Everyone showed great confidence in me," he said. "They never let me get a doubt in my mind that I couldn't do it. They were excellent coaches. They did nothing but build up my confidence."

"I did a few prepared pieces prior to the race to get some experience talking in front of a camera. But nothing can prepare you for the feeling when they count down. 'Three, Two, One' and you're on. It's like the feeling you get before you compete. I felt like I was getting ready to run a race."

Academic forum held

Initial-eligibility standards for student-athletes was the topic of discussion recently at a forum sponsored by the University of Rhode Island's Institute for International Sport. The forum — "Academic Standards

for Intercollegiate Athletics: A Discussion of Propositions 48, 42 and 16" — was held September 28 at Rhode Island.

A panel of basketball coaches, college administrators and former college and professional athletes included John Calipari, men's basketball coach at the University of Massachusetts, Amherst; Robert L. Carothers, president at Rhode Island; Brian Holloway, a former academic all-American at Stanford University and a member of the New England Patriots; Betty F. Jaynes, executive director of the Women's Basketball Coaches Association; Al Skinner, men's basketball coach at Rhode Island; Vivian Stringer, women's basketball coach at the University of Iowa; and Ursula R. Walsh, NCAA director of research.

The panelists articulated varying views on initial eligibility, but each stressed the importance of providing opportunities for young people without compromising collegiate admissions standards.

"The challenge is finding a balance between increased performance of students and access to education for disenfranchised individuals," Carothers said. "We expect more out of our students today, including athletes. That needs to continue and be supported."

News quiz

Answers to the following questions appeared in September issues of The NCAA News. How many can you answer?

- 1 True or false: Approximately 80,000 patches commemorating the 125th anniversary of college football are being worn by football players in all NCAA divisions.
- 2 How many times has the University of Arkansas, Fayetteville — a frequent cross country champion — hosted the Division I Men's and Women's Cross Country Championships? (a) zero, (b) one; (c) two, (c) three
- 3 Which Division I women's volleyball program set an NCAA record in early September for consecutive home victories? (a) Stanford University, (b) University of Nebraska, Lincoln, (c) Pennsylvania State University, (d) University of Florida
- 4 True or false: Division I institutions received a supplemental distribution totaling \$6,999,717 — resulting from a surplus in the 1992-93 Association budget — as part of the 1994 revenue distribution plan.
- 5 Which sport is most represented by the 10 finalists for the 1994 NCAA Woman of the Year award? (a) basketball; (b) track and field, (c) golf; (d) field hockey.
- 6 True or false: The NCAA Youth Education through Sports (YES) program is entering its ninth year of clinics.
- 7 How many 1995 NCAA Convention proposals (including items in an eligibility deregulation package) are included in this year's Second Publication of Proposed Legislation? (a) 142, (b) 149, (c) 155, (d) 158

Answers on page 20.

Fact file

The total number of NCAA Division I member conferences sponsoring men's and/or women's competition decreased from 52 in 1987-88 to 45 in 1992-93, before rebounding to 48 in 1993-94. However, the number of Division I conferences offering competition for both men and women increased from 28 in 1987-88 to 35 in 1993-94.

Source: Staff report to the NCAA Committee on Review and Planning

Congress passes gender-equity disclosure legislation

The U.S. Senate and House of Representatives, acting October 5 and September 30, respectively, passed legislation to reauthorize the Elementary and Secondary Education Act, known as the "Improving America's Schools Act."

One provision of that legislation will require colleges and universities to collect and disclose information concerning gender equity in their intercollegiate athletics programs.

Sen. Carol Moseley-Braun, D-Illinois, offered her "Equity in Athletics Disclosure Act" as an amendment to the Improving America's Schools

Act during Senate consideration of the measure in late July. Rep. Cardiss Collins, D-Illinois, had introduced a companion measure in the House, but that bill had not been added to the Improving America's Schools Act in the House.

As revised, the legislation requires coeducational colleges and universities that participate in Federal student-aid programs and sponsor intercollegiate athletics programs to make available an annual report that pro-

See Legislation, page 16 ►

Committee notices

COMMITTEE CHANGES

The following changes, corrections and additions have been made to information in the 1994 Committee Handbook (appointments are effective immediately unless otherwise noted).

Council

Vivian L. Fuller, Northeastern Illinois University, appointed to replace Deborah A. Yow, no longer at a Division I-AAA institution.

Sports committees

Men's Basketball Rules: Clint Bryant, Augusta College, appointed to replace Robert E. Hanson, no longer at an NCAA institution.

Tom Bryant, Centre College, appointed to replace William M. Scanlon, term expired.

Division I Women's Basketball: Charlene Johnson, South Carolina State University, declined appointment to committee.

See Committee notices, page 16 ►



The NCAA News

[ISSN 0027-6170]

Published weekly, except biweekly in the summer, by the National Collegiate Athletic Association, 6201 College Boulevard, Overland Park, Kansas 66211-2422. Phone 913/339-1906. Subscription rate: \$24 annually prepaid, \$15 annually prepaid for junior college and high-school faculty members and students, \$12 annually prepaid for students and faculty at NCAA member institutions, \$74 annually for foreign subscriptions. For first-class upgrade, forward an additional \$50 (except foreign orders). No refunds on subscriptions. Second-class postage paid at Shawnee Mission, Kansas. Address corrections requested. Postmaster: send address changes to NCAA Publishing, 6201 College Boulevard, Overland Park, Kansas 66211-2422.

■ Comment



The NCAA News

Editor-in-chief
P. David Pickle
Managing editor
Jack L. Copeland
Assistant editor
Vikki K. Watson
**Editorial and
advertising assistant**
Ronald D. Mott

The Comment section of The NCAA News is offered as a page of opinion. The views do not necessarily represent a consensus of the NCAA membership.

□ Student-athlete view

Beginning with this issue, The NCAA News will provide student-athlete views monthly in the space where the guest editorial usually appears. Members of the NCAA Student-Athlete Advisory Committee are coordinating the articles, but any student-athlete who wishes to express an opinion about a relevant topic may submit a manuscript.

Five years old and going strong

By Elizabeth L. Fahey Albright
PENNSYLVANIA STATE UNIVERSITY

When I joined the NCAA Student-Athlete Advisory Committee in August 1990, my first experience was more of a counseling session than a meeting. It was only the third meeting of the SAAC, and we were still trying to define the SAAC's objectives and purpose.

We discussed topics such as student-athlete life in the different membership divisions, the similarities and the differences, our coaches and administrators, time constraints, sacrifices, and pride in being a collegiate student-athlete.

But we were struggling with a mission for ourselves. We had feelings of ineffectiveness because no one knew of our existence. We knew our biggest and most meaningful task would be to network nationally to try to consolidate the student voice into a powerful force. This was difficult with only three meetings a year, sporadic attendance from the 16 SAAC members who represented about 300,000 student-athletes and resistance from some of the membership.

At the 1991 NCAA Convention, legislation was passed that allowed our committee to speak at the Convention for the first time. When we first addressed the Convention, there was surprise among the membership, often followed by polite applause. We were a novelty. We wanted to be more!

Over the next three years, we continued to define ourselves and to become accepted. With the support of the NCAA, we began to develop order. We elected a student chair to run the meetings in conjunction with the Council representative chair; we invited members of other committees to talk to us on issues of interest; we printed a newsletter called the Student-Athlete Voice; we networked with other campus and conference SAACs; our appointments were extended to a second term for the sake of continuity; our committee size increased from 16 to 24

See SAAC, page 5 ►

Goals of restructuring misunderstood

While I certainly agree that no restructuring should occur without due consideration being given to all relevant concerns and issues, I do not share the views of Gary Roberts (The NCAA News, September 19) as to the perceived goals of any possible restructuring or, for that matter, consequences that will logically result from a restructuring.

In his article, Roberts describes the consideration being given to restructuring as a "movement to rid major programs of the nuisance of having to deal with smaller schools," thereby allowing the "big-time programs" to act "without having to listen to or accommodate the views of the truly amateur programs." Unfortunately, those arguments suggest that Roberts has already adopted the surprisingly cynical view of athletics that he predicts will become widespread if a restructuring were to occur.

As he points out, that cynical view is best exemplified by Judge Flaum as the dissenting judge in *Banks v. NCAA*. He wrote that "[t]he NCAA continues to purvey...an outmoded image of intercollegiate sports that no longer jibes with reality [C]ollege football is a terrific American institution...but it is also a vast commercial venture that yields substantial profits for college."

In that regard, the overriding concern appears to be that, if left to their own devices, the major athletics programs in the country will free themselves of any concerns relating to student-athletes or higher education generally and will focus only on the pursuit of dollars.

I do not believe that such a concern is well-founded, nor do I believe that Mr. Roberts actually shares Judge Flaum's cynicism. I do believe that Mr. Roberts is among those involved in intercollegiate sports who are unwilling to compromise the values and standards of intercollegiate athletics in pursuit of dollars. No restructuring can alter the commitment of those individuals to maintain the integrity of higher education or to change the view that institutions have a responsibility to their student-athletes.

□ Letters

The focus of any restructuring should be on the need for an overall simplification and accountability within the governance process. Under the NCAA Constitution, a legislation process has developed over the years that is both arcane and, even worse, incomprehensible. Assuming that the development of the legislative process was both logical and reasoned, it no longer is possible to discern either the logic or rationale for that process.

Any restructuring of Division I-A would be founded on the same principles that led to the creation of Divisions I, II and III in the first instance. It is natural for the academic institutions that are similarly situated and, more importantly, that share similar issues and concerns, to desire a greater voice in those issues peculiar to them.

In that same regard, those similar institutions should be solely responsible for the decisions made collectively by the group. It is difficult to understand how the existing division of the NCAA membership is appropriate but that any further division would be inherently unwise.

There is no denying that revenue is a significant aspect of college sports. For instance, in the case of the Big Ten Conference, the revenues generated by 30 sports are expected to support the costs of an aggregate of 242 sports. Our conference is continually considering ways to increase revenues and contain costs.

But neither our conference members nor, I believe, the vast majority of NCAA members are prepared to sacrifice the amateurism principles that have been maintained for so many years. In particular, the Big Ten Conference advocates, and will continue to advocate at the conference and national levels, principles of gender equity, cost containment and higher academic standards.

Mr. Roberts' fears that the sports revenues would become taxable after a

restructuring also can be allayed by the fact that few, if any, schools have athletics departments that generate profits. Indeed, the expenses of athletics programs typically exceed revenues generated by "big-time" sports so that even if the revenues were to be taxable, no tax would be due. Also, I find it difficult to understand why a restructuring of the NCAA, if it were to occur, would necessarily result in successful challenges of the NCAA on antitrust grounds.

Again, there have been no suggestions that the overriding principles of the NCAA would be changed. The history of Division I-A has been and will continue to be generous in revenue sharing, supportive of Divisions I, II and III championships subsidies, and supportive of NCAA national office functions.

I believe that the legal consequences that Mr. Roberts suggests might occur if a restructuring were pursued are unlikely. More importantly, I cannot agree that a restructuring will be based on only commercial motives and will result in a world in which institutions are focused only on revenues and the abolition of long-standing intercollegiate principles.

Any restructuring would be based solely on the need to create a structure that better serves the interests and needs of NCAA members as we go forward.

James E. Delany
Commissioner
Big Ten Conference

Bracket expansion ill-advised

I disagree with the decision to expand the NCAA Division III Women's Basketball Championship to 64 teams because it diminishes the prestige of the event.

Not only are we now responsible for the first-round expenses, but there are not enough quality teams to fill the bracket. According to the information presented to the Division III coaches at

See Letters, page 5 ►

□ Opinions

Alcohol shouldn't mix with recruiting visits

Tom Osborne, head football coach
University of Nebraska, Lincoln
College Sports magazine

Reacting to a report that 51 percent of players polled in a magazine survey said they drank alcohol during their official recruiting visits:

"Well, that's disturbing. The biggest thing in terms of drugs that is a problem at the schools in this country is alcohol. People tend to worry about crack, hashish, marijuana, but the highest percentage of students use an excessive amount of alcohol. We try to convince our players not to do that. But sometimes recruits gravitate toward parties. If a student wants to drink, he may be able to do it. I would rather that this wasn't the case."

Dropping men's sports

Donna A. Lopiano, executive director
Women's Sports Foundation
Boston Globe

"Dropping of men's sports is blamed on women. But the real reason is they don't want to cut the standard of living of the big sports. The football lobby is so strong, they won't allow reductions. And that's a crime."

Compensation

Bill Benner, columnist
Indianapolis Star

"In my view, a college scholarship is more than just com-

pensation for being 'used.' And it has value that goes far beyond the dollar amount attached to it.

"Yet, as is evidenced by the baseball strike, many athletes develop a skewed perspective. Special, preferential treatment and insulation from the real world makes them quickly forget there is one.

"Yes, football players at big-time colleges are used. My suggestion, however, is to use back. Take full advantage of that college education. Earn a degree. Exploit your opportunity for all it's worth.

"It's one most college students are paying for, and for which they are demanding nothing in return."

Women as athletics directors

Kay Yow, women's basketball coach
North Carolina State University
The Sporting News

Discussing the appointment of her sister Debbie as athletics director at the University of Maryland, College Park:

"In some ways, I was surprised the ACC hired a woman as athletics director — not surprised that Debbie was hired. I think that she is highly qualified. I just didn't know that a school in the ACC was ready to hire a woman if the person was the most qualified candidate. Women are still just finding a place in the sports world."

OPPORTUNITY KNOCKS

Harvard student-athlete makes most of life after fleeing Bulgaria

By Stephen R. Hogwell
THE NCAA NEWS STAFF

Julian Alexander asks for only one thing in life: an opportunity.

Given that, Alexander believes he can do anything he sets his mind to.

Opportunity is something Alexander hasn't always had.

As a child growing up in communist-

ruled Bulgaria, Alexander longed for what many might take for granted: control of his own destiny.

"There weren't any opportunities (in Bulgaria)...there was no place to go," Alexander said. "I can't begin to describe how life was. It's so oppressive to live there. You always live in fear."

Those days are past. Alexander now has plenty of opportunities. And he's more than making the most of them.

How far has Alexander come? Consider that he currently is a junior majoring in government (3.260 grade-point average on a

4.000 scale) at Harvard University. Also consider that he is competing as a member of the Crimson men's water polo team. One of the squad's top scorers, he has registered 65-plus goals in less than two seasons.

"Julian's got a fiery competitiveness about him," said Don Benson, men's water polo coach at Harvard. "He's got a great work ethic. He accepts nothing less than 100 percent, in whatever he does. He takes nothing for granted and is always trying to improve."

That Alexander is attending Harvard is nothing short of remarkable.

Dreamed about future

An only child, Alexander grew up in Sofia, Bulgaria. Like most children, Alexander dreamed often about his future. Unlike most, however, Alexander didn't focus on wealth or material items.

"I remember thinking about the U.S. It's what I dreamed about," Alexander said. "I envied the people who were born here. I remember watching a Clint Eastwood movie when I was eight or 10. I thought to myself, 'It is amazing to be born in that country.' I wanted to be one of those people."

Alexander got the opportunity "to be one of those people"—courtesy of his mother, Alex Alexandrov.

"One day my mom told me we were going on a trip," he recalled. "She told me she wanted to defect and asked me how I felt. I was very excited. It was like an adventure."

Leaving everything they had known, Alexander and his mother began their adventure by requesting and receiving permission from the government to travel to Hungary, Czechoslovakia and Yugoslavia. Their plan included defecting across the Yugoslavia-Italy border.

"The hardest part was that I couldn't tell my grandparents or friends," he said.

Uncertain of what lay ahead, Alexander and his mother simply got off the train after arriving in Yugoslavia and began walking toward what they believed to be the Italian border.

"We really didn't know anything at all," Alexander said. "We started walking down a road. We were both really scared. A car stopped beside us, and a man asked us what we were doing. We said we were lost and that we just got off the train and were visiting."

Friendly advice

Moments later, the man invited the pair into his car and guided them to a clearing in a wooded area not far from the Italian border. He

instructed them to wait until evening and, if they still wanted to defect, to attempt it.

"We sat in the bushes all day and watched the guards," Alexander said. "We timed how long it took them to walk up and down the border. My mom was really scared. At one point, she said we shouldn't do it and to turn around and go back. That's when the boyish side of me took over. It was more of an adventure to me. I was really into it."

Several hours later, carrying nothing more than a backpack each, Alexander and his mother made a successful run for freedom. After running through fields that Alexander described as "endless," they arrived in Italy. Turning themselves into authorities, they were sent to an immigration camp for refugees, where they spent the next six months.

On September 24, 1986, Alexander got the opportunity he dreamed about: relocation to Phoenix, Arizona, USA.

After a short stay in Phoenix, Alexander and his mother moved to the Los Angeles area. Although he was elated to be living in the United States, Alexander admits the transition was difficult.

"Not knowing English, it hadn't occurred to me how hard it would

be once we got here," Alexander said. "It was really hard being here and not knowing what was happening to my grandparents. It was extremely difficult for my mother."

Making the adjustment

The passing of time made the adjustment easier, especially for Julian, who soon was competing in several sports, including water polo.

Despite having never played water polo, Alexander excelled. As a high-school sophomore, he earned a starting spot and was selected to play with the U.S. National Junior team. A two-time first-team all-state and two-time all-America selection, Alexander was recruited by several top-notch California programs. He opted instead for Harvard.

"My mom felt very strongly about me applying at Harvard and Yale. She had heard about Harvard in Bulgaria," he said. "It's something she dreamed about."

Alexander was a bit overwhelmed upon his arrival, but he made a smooth transition to college life. After posting a 2.880 GPA as a freshman, Alexander turned in a 3.620 GPA as a sophomore.

As for water polo, Alexander continues to reach new heights. The

See Opportunity, page 6 ▶

Letters

▶ Continued from page 4

the Final Four this past March, only about 12 teams beyond the 40 selected were considered for the 1994 championship. Where is the committee going to find the necessary 12 or so teams to fill the new bracket?

If seeding is accurate and not influenced by transportation costs, then first-round scores of the 1995 championship could be embarrassing.

The Northeast region is likely to be an exception to the committee's difficult task of finding quality teams to fill the 64-team bracket. There are more than enough quality teams to fill the eight spots in our region. But that brings up a major flaw in how the 64 teams will be selected.

Allowing eight teams from each region into the championship would

be unfair. Regional selection should be proportional to current NCAA membership. As of this past summer, the membership by region and the chance of receiving a bid would be as follows:

Region	No. teams	Chance (8/No. members)
Northeast	58	13.8%
Mid-Atlantic	50	16.0%
East	48	16.7%
Atlantic	37	21.6%
South	43	18.6%
Central	40	20.0%
Great Lakes	28	28.6%
West	27	29.6%

An additional concern is the presence of the three largest regions in one-half of the championship bracket. Thus, we have 58.3 percent (193 of 331) of the eligible teams in our half of the bracket while the other half has only 41.7 percent (138 of

331).

It is clear that we have rushed into this without enough thought. Is this an example of gender equity actually hurting the women's game? I hope that in three years we can look back and say rushing into this new format was the right thing to do. In the meantime, we all have to work on eliminating the flaws that come with the 64-team play-in.

Tim Shea
Women's Basketball Coach
Salem State College

Rita Wiggs of Methodist College, chair of the Division III Women's Basketball Committee, responds.

During its review of the 64-team play-in system, the Division III Women's Basketball Committee did address the issues of quality and quantity of teams within each region.

While it is true that approximately 52 teams were considered when selecting 1994 championship participants, I am not sure this is a true indication of the quality of teams. The committee did not delve deeper simply because the number of berths was limited. Additional teams would most assuredly have been considered if 64 berths had been available instead of 40. With more than 300 teams playing Division III women's basketball, the committee believes the quality is improving each year and that the depth is there for 64 teams.

With regard to the quantity of teams, the committee has had to accept the fact that due to the inequitable distribution of teams across the country, it is impossible to assign an equal number of teams to each region. I suspect this is a prob-

lem faced by many Division III sports committees. And although the percentage of teams selected from each region never will be equal, with the play-in system, each region is guaranteed eight berths. Under the old 40-team bracket, each region was guaranteed only three berths. In addition, while some regions may have fewer teams overall, they possess a greater number of strong teams. The committee had to consider this as well.

Finally, the committee continues to monitor the number and strength of teams within each region with an eye toward realigning the regions in as equitable a fashion as current constraints allow. As with any change, there will be challenges with the new format, but I assure you the committee will strive to make this championship as flawless as possible.

SAAC

▶ Continued from page 4

members to better serve a cross-sectional student-athlete view, we began to look at legislation during the proposal stage rather than the week of the Convention, and most importantly, we were appointed to other NCAA committees as student-athlete representatives. All of those components gave us exposure, experience and more clearly defined our direction. We believe our most public task is to address specific legislation at the Conventions.

At the 1994 Convention, we finally came into our own. We spoke forcibly and eloquently on specific

legislation and even influenced some of the outcomes. Now, when the membership applauded, it was with true support, excitement and sometimes even admiration. In an unprecedented move, we were publicly solicited to give our position on Proposal No. 170. Ahhhh...acceptance!

Now the next step is being taken, a step from reactivity to proactivity. The SAAC for the first time proposed legislation and asked the Council to sponsor it on our behalf. The SAAC also has recommended that members of other committees join it as consultants. We are working on a student-athlete handbook

that would assist new student-athletes in making the transition into intercollegiate athletics.

We also are developing a list of questions for prospective student-athletes to ask during recruiting to better enable them to make the right decision. From the NCAA Special Committee on Student-Athlete Access, Welfare and Equity, there is a proposal for the 1995 Convention that would make SAACs mandatory on all NCAA campuses. If passed, it will lay the groundwork for a national network of student-athletes that is so desperately needed. In anticipation of this, the SAAC also is working on

compiling information to help member institutions form their own SAACs.

With the upcoming Convention in many ways being the "Year of the Student-Athlete," I feel nostalgic that my tenure is complete just months before the final recognition, but I am proud I helped contribute to the positive evolution of the SAAC. I also delight in the knowledge that I can step back and let the new members shape the SAAC through their experiences, personalities, strengths and wisdom. They are all capable, focused, determined and sagacious. With the guidance and leadership of Coun-

cil members, other committee members, university administrators and the NCAA staff, this partnership will continue to evolve into an auspicious adventure.

To me, the SAAC represents cooperation, struggle, perseverance, change, frustration, evolution, friendship, excitement and, most of all, hope for continued collaboration and the achievement of the proverbial "level playing field" for all involved.

Elizabeth L. Fahey Albright completed her term on the NCAA Student-Athlete Advisory Committee in September.

SEC once again looks to be best against the rest

By Gary K. Johnson
NCAA STATISTICS COORDINATOR

For the ninth time in the past 11 years, the Southeastern Conference is the best in the nation when playing Division I-A football opponents outside its conference.

With three wins this past weekend, teams in the SEC now have won 14 games outside their conference this season while losing only five, which comes out to a .737 winning percentage. The 12-team conference features four teams that are 2-0 in games against other I-A opposition: Alabama, Georgia, Mississippi State and Vanderbilt.

With 22 wins, the Big Ten Conference has the most victories against nonconference I-A competitors and is second among I-A conferences with a .682 winning percentage. Three of the league's 10 nonconference losses have come against Notre Dame, with Michigan being the only Big Ten school to defeat the Fighting Irish, 26-24. Indiana and newest member Penn State, both 3-0, are Big Ten teams that are undefeated against outside competitors.

Only the Big Ten and the Southwest (14-14) Conferences have played I-A teams exclusively in non-conference competition.

Before this past weekend, the nine-team Atlantic Coast Conference had an outstanding 10-2 mark and .833 winning percentage in

nonconference I-A games. However, Clemson lost to Georgia, Florida State fell to Miami (Florida) and North Carolina State was beaten by Louisville, and the conference fell to 10-5. The .667 winning percentage dropped the ACC from first to third place. Sixty percent of the conference's 10 nonconference wins are by two of its teams: Duke and North Carolina, both at 3-0.

Out of 10 I-A conferences, eight have a remarkable .500 winning percentage or better in nonconference competition against I-A teams. Rounding out the .500-or-better records are the Big Eight (.655 winning percentage), the Western Athletic (.600), the Big East (.560), Pacific-10 (.537) and Southwest (.500).

Previous SEC streak

The SEC had a five-year title streak end in 1988 when the Pac-10 compiled a remarkable .794 (27-7) winning percentage — highest in the 1980s. The SEC was on top again in 1989, but not in 1990, when the ACC broke through to take the honors. The past three seasons again have seen the SEC as the leader.

Last season, the SEC took the title with a .779 (26-7-1) winning percentage and the Pac-10 took second as the only other conference at .700 or above (.700, 21-9). The Big Ten finished third with a .688 winning percentage and 22-10 record.

Other conferences besides those three that had winning records a year ago were the Big East (.683), the Big Eight (.603) and the Atlantic Coast (.600). All I-A independents were 27-40 for a .403 winning percentage, while this season they have taken a big drop to 12-33-1 (.272).

Some conferences have many nonconference games left, while others are almost finished with outside games. Here are the standings through October 8:

1994 I-A Conference Records vs. Div. I-A Nonconference Foes*				
Conference	W	L	T	Pct.
Southeastern	14	5	0	.737
Big Ten	22	10	1	.682
Atlantic Coast	10	5	0	.667
Big Eight	19	10	0	.655
Western Athletic	15	10	0	.600
Big East	14	11	0	.560
Pacific-10	14	12	1	.537
Southwest	14	14	0	.500
All independents	12	33	1	.272
Mid-American	4	13	1	.250
Big West	5	20	0	.200

*Games against Division I-AA and nonmajor opponents are deleted.

Although some upsets of I-AA teams by I-AA teams do happen and are publicized widely, the I-AA teams this season are dominating their I-AA counterparts. The I-AA teams have a record of 22-4 for a winning percentage of .846 against I-AA opponents. This high winning percentage and the wide variation in the number of such games among conferences are the reasons these games are deleted when comparing

the I-A conferences.

Big hopes for Big Sky

The Big Sky Conference is looking to take its second consecutive title as the nonconference champion in Division I-AA. The Big Sky has a 10-1 mark for a remarkable .909 winning percentage while playing I-AA football opponents outside its conference.

The Ivy Group has a 15-3-1 record and an .816 winning percentage, a mark that usually is good enough to win the nonconference title during most seasons.

Next comes the Southland Conference, which has compiled a 12-6-1 record and .658 winning percentage.

The independents, a group of 19 teams, have played 44 games against I-AA teams this season and have won 27 and tied one for a winning percentage of .625.

Other I-AA conferences with a winning percentage above .500 are the Yankee (.563) and Southern (.556). The Mid-Eastern (.8-8) and the Southwestern Athletic Conferences are right at .500 against I-AA nonconference opponents.

While the SEC has been dominating the I-A nonconference title over the years, a revolving door has been installed in the I-AA conference. Three years ago, the Gateway won by a landslide with an .810 winning percentage (15-2-2), while in

1992 the Yankee (.700) just edged the Southern Conference (.688). Last year, the Big Sky ran away with the title with a 15-2 record and .882 winning percentage.

Games against Division I-AA opponents are deleted because some I-AA conferences play several such games, some play few and still others none. Games against teams in Divisions II and III or the NAIA also are deleted for the same reasons.

Here are the standings through October 8.

Vs. Div. I-AA Foes:				
I-AA Conference	W	L	T	Pct.
Big Sky	10	1	0	.909
Ivy	15	3	1	.816
Southland	12	6	1	.658
All independents	27	16	1	.625
Yankee	9	7	0	.563
Southern	5	4	0	.556
Mid-Eastern	8	8	0	.500
Southwestern	6	6	0	.500
Ohio Valley	5	11	0	.313
Pioneer	1	3	0	.250
Patriot	5	20	1	.212
Metro Atlantic	1	6	0	.143
American West	1	7	0	.125
Gateway	0	7	0	.000

Besides the Big Sky, the other conferences with winning records a year ago were the Yankee (.650), Metro Atlantic (.545) and Ivy (.542). The Mid-Eastern Athletic finished .500 at 10-10. All I-AA independents last year were 47-21-2 for a .686 winning percentage.

Albright team aids children

Albright College football player Kevin Burns (right) is tackled during a recent wheelchair football game at the Shriners Hospital for Crippled Children in Philadelphia while Wyomissing (Pennsylvania) High School graduate Chad Eisenhower (left) looks on. On October 8, the Lions hosted Fairleigh Dickinson University, Madison, in the 44th annual Pretzel Bowl, with proceeds benefiting crippled and burned children. For almost half a century, Albright has dedicated money from one football game each season to assist needy children.



Dan Deane photo

Opportunity

► Continued from page 5

Crimson's third-leading scorer in 1993 (45 goals, 20 assists), Alexander is the squad's top goal scorer in 1994, registering 19 goals through seven games.

"Julian has the potential to be one of the top players on the East coast," Benson said. "He's only a

junior, but already he's recognized as a team leader. He's definitely one of the players we look to if we need a goal at a crucial moment."

"The great thing about playing water polo is that everyone on the team is given an opportunity to score. Everyone is given a chance to play with the ball," said Alexander, who plays the two-meter posi-

tion, similar to basketball's center.

Hard to believe

While more people continually become aware of his athletics and academic exploits, few are aware of his struggle for freedom.

"When I heard the story, I struggled to believe it," Benson said. "It's hard to believe (Julian) didn't grow

up in the U.S. He's articulate, he's got a great vocabulary and a good sense of humor. He seems like any 20-year-old American. I couldn't believe he didn't spend his whole life here."

What does Alexander's future hold? Maybe law school or a career on Wall Street. For now, however, Alexander is making the most of an

opportunity he dreamed about.

"My childhood dream of being an American has become reality," Alexander said. "I never quite pictured life being this good. I love the U.S. with all my heart for all it has given me and my mother. More than anything else, I'm proud to be an American and take part in this great nation."

■ Division I-A leaders

Through October 8



RUSHING										
	CL	G	CAR	YDS	AVG	TD	YDSPG			
Napoleon Kaufman, Washington	Sr	5	145	924	6.4	6	184.80			
Rashaan Salaam, Colorado	Jr	5	135	893	6.6	12	178.60			
Lawrence Phillips, Nebraska	So	6	131	1006	7.7	10	167.67			
Alex Smith, Indiana	Fr	6	149	883	5.9	7	147.17			
Brian Pruitt, Central Mich	Sr	6	138	878	6.4	8	146.33			
Chris Darkins, Minnesota	Jr	6	132	876	5.8	6	146.00			
Ontwaun Carter, Arizona	Sr	5	131	706	5.4	4	141.20			
Robert Baldwin, Duke	Sr	5	144	701	4.9	11	140.20			
Brent Moss, Wisconsin	Sr	5	110	675	6.1	7	135.00			
Ryan Christopherson, Wyoming	Sr	6	157	800	5.1	6	133.33			
Eddie George, Ohio St.	Jr	6	141	759	5.4	7	126.50			
Torriano Singleton, UTEP	Jr	6	165	755	4.6	8	125.83			
Andre Davis, Texas Christian	Jr	5	107	622	5.8	2	124.40			
Billy West, Pittsburgh	So	6	126	738	5.9	3	123.00			
Ki-Jana Carter, Penn St.	Jr	5	72	601	8.3	9	120.20			
Terrell Fletcher, Wisconsin	Sr	5	74	572	7.7	8	114.40			
Sherman Williams, Alabama	Sr	6	135	674	5.0	2	112.33			
Anthony Shelman, Louisville	Sr	5	119	561	4.7	8	112.20			
Junior Smith, East Caro.	Sr	5	111	556	5.0	4	111.20			
Mike Alstott, Purdue	Jr	5	86	548	6.4	9	109.60			

SCORING										
	CL	G	TD	XP	FG	PTS	PTPG			
Rashaan Salaam, Colorado	Jr	5	12	0	0	72	14.40			
Robert Baldwin, Duke	Sr	5	11	0	0	66	13.20			
Mike Alstott, Purdue	Jr	5	9	2	0	56	11.20			
Ki-Jana Carter, Penn St.	Jr	5	9	0	0	54	10.80			
Steve McLaughlin, Arizona	Sr	5	0	14	13	53	10.60			
Kirby Dar Dar, Syracuse	Sr	6	10	0	0	60	10.00			
Lawrence Phillips, Nebraska	So	6	10	0	0	60	10.00			
Judd Davis, Florida	Sr	5	0	32	6	50	10.00			
Corey Rogers, Purdue	Sr	5	8	0	0	48	9.60			
Anthony Shelman, Louisville	Sr	5	8	0	0	48	9.60			
Remy Hamilton, Michigan	So	5	0	9	13	48	9.60			
Jack Jackson, Florida	Jr	5	8	0	0	48	9.60			
James Stewart, Miami (Fla.)	Jr	5	8	0	0	48	9.60			
Terrell Fletcher, Wisconsin	Sr	5	8	0	0	48	9.60			
Brian Leaver, Bowling Green	Sr	6	0	24	11	57	9.50			
Jamal Willis, Brigham Young	Sr	6	9	0	0	54	9.00			
Mike Chaberg, Minnesota	Jr	5	0	12	11	45	9.00			
Phil Dawson, Texas	Fr	5	0	14	10	44	8.80			
Ryan Williams, Virginia Tech	Sr	5	0	13	10	43	8.60			
Ronnie Gordon, Vanderbilt	So	5	7	0	0	42	8.40			
Zack Crockett, Florida St.	Sr	5	7	0	0	42	8.40			
Eric Young, New Mexico	Fr	5	0	15	9	42	8.40			
Kyle Bryant, Texas A&M	Fr	5	7	0	0	42	8.40			
Brent Moss, Wisconsin	Sr	5	7	0	0	42	8.40			
Rodney Thomas, Texas A&M	Sr	5	7	0	0	42	8.40			

PASSING EFFICIENCY												
				CMP		INT		YDS/		TD	RATING	
(Min. 15 attempts per game)	CL	G	ATT	CMP	PCT	INT	PCT	YDS	ATT	TD	PCTS	
Kerry Collins, Penn St.	Sr	5	98	68	69.39	3	3.06	1220	12.45	11	11.22	204.96
Terry Dean, Florida	Jr	5	148	92	62.16	5	3.38	1284	8.68	18	12.16	168.45
Kordell Stewart, Colorado	Sr	5	112	73	65.18	2	1.79	1097	9.79	7	6.25	164.45
Mike McCoy, Utah	Sr	5	168	110	65.48	4	2.38	1378	8.20	14	8.33	157.19
Ryan Henry, Bowling Green	So	6	138	85	61.59	3	2.17	1055	7.64	14	10.14	154.06
Todd Collins, Michigan	Sr	5	123	84	68.29	1	.81	1083	8.80	5	4.07	154.08
Eric Zeier, Georgia	Sr	6	223	142	63.68	4	1.79	1898	8.51	15	6.73	153.88
Jay Barker, Alabama	Sr	6	111	72	64.86	0	.00	935	8.42	6	5.41	153.52
Mike Groh, Virginia	Jr	5	77	52	67.53	4	5.19	566	7.35	8	10.38	153.26
Steve Stenstrom, Stanford	Sr	5	194	130	67.01	2	1.03	1573	8.11	8	4.12	145.72
Jeff Watson, Baylor	Fr	6	93	49	52.69	3	3.23	834	8.97	7	7.53	146.46
Chad May, Kansas St.	Sr	4	128	83	64.84	0	.00	953	7.45	7	5.47	145.44
Kevin Mason, Syracuse	Sr	6	102	57	55.88	4	3.92	940	9.22	6	5.88	144.99
Tony Banks, Michigan St.	Sr	5	100	60	60.00	2	2.00	892	8.92	4	4.00	144.11
John Walsh, Brigham Young	Jr	6	224	133	59.38	6	2.68	1808	8.07	14	6.25	142.44
Johnny Johnson, Illinois	Jr	5	121	76	62.81	0	.00	934	7.72	5	4.13	141.31
Asheiki Preston, Kansas	Sr	4	65	41	63.08	2	3.08	526	8.09	3	4.62	140.15
Stoney Case, New Mexico	Sr	6	227	135	59.47	10	4.41	1744	7.68	16	7.05	138.55
Rob Johnson, Southern Cal	Sr	4	122	83	68.03	2	1.64	951	7.80	3	2.46	138.33
Anthony Hill, Colorado St.	Sr	6	165	94	56.97	7	4.24	1464	8.87	7	4.24	137.03

TOTAL OFFENSE										
	CAR	GAIN	LOSS	NET	ATT	YDS	PLS	YDS	YDS/PL	TD*
Stoney Case, New Mexico	66	313	93	220	227	1744	293	1964	6.70	19
Eric Zeier, Georgia	14	68	25	43	223	1898	237	1941	8.19	15
Steve Stenstrom, Stanford	36	76	148	-72	194	1573	230	1501	6.53	10
Mike McCoy, Utah	31	151	93	58	168	1378	199	1436	7.22	14
Mike McWhorter, Nevada	15	14	41	-27	242	1750	257	1723	6.70	11
Kordell Stewart, Colorado	43	383	67	316	112	1087	166	1413	8.51	9
John Walsh, Brigham Young	43	52	172	-120	224	1808	267	1688	6.32	14
Terry Dean, Florida	62	360	158	202	186	1350	248	1552	6.26	14
Danny Kanell, Florida St.	19	48	44	4	148	1284	167	1288	7.71	19
Tim Gulari, San Diego St.	13	0	76	-76	219	1575	232	1499	6.46	11
Craig Whelihan, Pacific (Cal.)	19	54	61	-7	196	1255	215	1248	5.80	9
Anthony Hill, Colorado St.	62	157	135	22	165	1464	227	1486	6.55	11
Marcus Crandell, East Caro.	35	80	56	24	172	1214	207	1238	5.98	9
Kerry Collins, Penn St.	3	0	19	-19	98	1220	101	1201	11.89	11

*Touchdowns responsible for are TDs scored and passed for.

NCAA statistics are available on the Collegiate Sports Network.

■ Division I-A team

Through October 8

PASSING OFFENSE										
	G	ATT	CMP	INT	PCT	YDS	YDS/ATT	TD	YDS/PT	
Georgia	6	234	146	4	62.4	2017	8.6	15	336.2	
Florida St.	5	218	135	11	61.9	1644	7.5	13	328.8	
Stanford	5	196	132	2	67.3	1594	8.1	8	318.8	
Brigham Young	5	235	136	6	57.9	1851	7.9	14	308.5	
Florida	5	184	113	7	61.4	1533	8.3	21	306.6	
Nevada	6	243	141	10	58.0	1782	7.3	11	297.0	
Nevada-Las Vegas	6	271	144	7	53.1	1780	6.6	14	296.7	
San Diego St.	6	253	159	10	62.8	1777	7.0	12	296.2	
New Mexico	6	227	135	10	59.5	1744	7.7	16	290.7	
Penn St.	5	124	80	3	64.5	1397	11.3	12	279.4	
Utah	5	173	111	4	64.2	1394	8.1	14	278.8	
East Caro.	5	175	93	7	53.1	1289	7.4	11	257.8	
Georgia Tech	5	179	100	6	55.9	1279	7.1	11	255.8	
Pacific (Cal.)	5	199	92	7	46.2	1266	6.4	10	253.2	
Miami (Fla.)	5	166	89	9	53.6	1251	7.5	10	250.2	
Southern Cal	5	158	103	2	65.2	1238	7.8	5	247.6	
Maryland	5	183	114	8	62.3	1230	6.7	7	246.0	
Colorado St.	6	165	94	7	57.0	1464	8.9	7	244.0	
California	5	161	107	5	66.5	1213	7.5	6	242.6	

PASS EFFICIENCY DEFENSE										
	G	ATT	CMP	PCT	INT	PCT	YDS	YDS/ATT	TD	RATING
Virginia Tech	6	191	78	40.84	11	5.76	797	4.17	3	69.55
Miami (Fla.)	5	136	64	47.06	9	6.62	685	5.04	1	74.78
Washington St.	5	158	68	43.04	4	2.53	728	4.61	1	63.78
Southwestern La.	6	159	66	41.51	8	5.03	863	5.43	2	126.81
Georgia Tech	5	120	56	46.67	7	5.83	643	5.36	1	83.82
Utah	5	177	86	48.59	10	5.65	890	5.03	3	169.85
Memphis	5	151	68	45.03	4	2.65	701	4.64	3	199.85
Kansas St.	4	94	45	47.87	5	5.32	514	5.47	1	106.86
Texas Tech	6	160	70	43.75	10	6.25	910	5.69	5	313.89
Texas A&M	5	159	72	45.28	6	3.77	878	5.52	4	252.92
Boston College	4	109	52	47.71	5	4.59	585	5.37	3	275.92
Wyoming	6	170	69	40.59	7	4.12	956	5.62	7	412.93
North Caro. St.	5	164	81	49.39	6	3.66	861	5.25	4	244.94
Mississippi	5	140	66	47.14	12	8.57	798	5.70	7	500.94
Bowling Green	6	159	81	50.94	12	7.55	1030	8.48	2	126.94
Western Mich.	6	172	84	48.84	11	6.40	1041	6.05	4	233.96
Illinois	5	105	55	52.38	5	4.76	617	5.88	1	95.95
Virginia	5	200	106	53.00	11	5.50	1117	5.58	4	200.95
Florida St.	5	187	95	50.80	5	2.67	932	4.98	6	321.97

TURNOVER MARGIN										
	FUM	INT	TOTAL	FUM	INT	TOTAL	MARGIN			
East Caro.	7	14	21	3	7	10	2.20			
Clemson	10	8	18	1	7	8	2.00			
Bowling Green	4	12	16	1	3	4	2.00			
South Caro.	9	10	19	2	5	7	2.00			
Kansas St.	4	5	9	2	0	2	1.75			
Alabama	4	10	14	4	0	4	1.67			
Duke	4	9	13	1	4	5	1.80			
Utah	8	10	18	6	4	10	1.60			
Southern Cal	5	9	14	4	2	6	1.60			
Michigan	11	3	14	5	1	6	1.60			

Division I-AA leaders Through October 8



RUSHING

	CL	G	CAR	YDS	AVG	TD	YDSPG
Arnold Mickens, Butler	Jr	6	235	1401	6.0	11	233.50
Rene Ingoglia, Massachusetts	Jr	5	122	837	6.9	5	167.40
Don Wilkerson, Southwest Tex. St.	Sr	6	170	967	5.7	5	161.17
Jermaine Rucker, San Diego	So	6	126	914	7.3	9	152.33
Rich Lemon, Bucknell	So	5	130	730	5.6	6	146.00
Chad Levitt, Cornell	So	4	105	570	5.4	6	142.50
K. C. Adams, Boise St.	Jr	6	143	820	5.7	7	136.67
Steve Iorio, Georgetown	Fr	4	91	516	5.7	5	129.00
Kippy Bayless, Middle Tenn. St.	Sr	5	120	635	5.3	4	127.00
Sheriden May, Idaho	Sr	5	105	620	5.9	6	124.00
Hayward Cromartie, Hofstra	Jr	5	99	611	6.2	3	122.20
Meivin Williams, Southern B.R.	Fr	5	135	602	4.5	6	120.40
Troy Keen, William & Mary	Jr	6	132	709	5.4	8	118.17
Pete Oberle, Dartmouth	Jr	4	113	471	4.2	3	117.75
Antwan Floyd, Western Ky.	So	6	128	700	5.5	3	116.67
Marvin Marshall, South Caro. St.	Sr	6	85	693	8.2	7	115.50
Thomas Haskins, Va. Military	So	5	100	577	5.8	5	115.40
Michael Penix, Tennessee Tech	Jr	6	115	683	5.9	6	113.83
Darron Davis, Tennessee St.	Sr	6	133	678	5.1	6	113.00
Corey Thomas, Nicholls St.	So	5	63	564	9.0	3	112.80
Tim Hall, Robert Morris	Jr	5	72	554	7.7	3	110.80

SCORING

	CL	G	TD	XP	FG	PTS	PTPG
Brian Klingerman, Lehigh	Jr	5	10	2	0	62	12.40
Curtis Ceaser, Grambling	Sr	5	10	0	0	60	12.00
Ryan Woolverton, Idaho	Jr	5	0	30	9	57	11.40
K. C. Adams, Boise St.	Jr	6	11	2	0	68	11.33
Arnold Mickens, Butler	Jr	6	11	0	0	66	11.00
Bobby Appar, Rhode Island	So	6	10	0	0	60	10.00
Jermaine Rucker, San Diego	So	6	10	0	0	60	10.00
Jeremy Rowell, Troy St.	Jr	5	8	0	0	48	9.60
Sheriden May, Idaho	Sr	5	8	0	0	48	9.60
Gilad Landau, Grambling	Sr	5	0	35	4	47	9.40
Chris Parker, Marshall	Jr	6	9	0	0	54	9.00
Wayne Chrebet, Hofstra	Sr	6	9	0	0	54	9.00
Freddie Solomon, South Caro. St.	Sr	6	9	0	0	54	9.00
Keith Price, Yale	Sr	4	6	0	0	36	9.00
Chad Levitt, Cornell	So	4	6	0	0	36	9.00
Mike Cavanaugh, Columbia	Jr	4	6	0	0	36	9.00
Terrance Rivers, Citadel	Sr	5	7	0	0	42	8.40
Norman Bradford, Grambling	Sr	5	7	0	0	42	8.40
Alfredo Anderson, Idaho St.	So	5	7	0	0	42	8.40
Brian McCarty, Towson St.	Sr	5	7	0	0	42	8.40
Mark Orlando, Towson St.	Sr	5	7	0	0	42	8.40
Garth Petrilli, Middle Tenn. St.	Jr	5	0	12	10	42	8.40
Robert Frazier, Robert Morris	Jr	5	7	0	0	42	8.40

PASSING EFFICIENCY

	CL	G	ATT	CMP	PCT	INT	PCT	YDS	ATT	TD	PCT	PTS
(Min. 15 attempts per game)												
Kendrick Nord, Grambling	Jr	5	132	68	51.52	9	6.82	1485	11.25	19	14.39	179.9
Dave Dickenson, Montana	Jr	6	198	135	68.18	1	5.1	1907	9.63	16	8.08	174.7
Eric Hisaw, Idaho	Jr	5	117	67	57.26	1	8.5	1185	10.13	12	10.26	174.5
Todd Donnan, Marshall	So	6	136	87	63.97	5	3.68	1223	8.99	14	10.29	166.1
Mitch Maher, North Texas	Sr	5	140	89	63.57	6	4.29	1313	9.38	13	9.29	164.4
Shawn Knight, William & Mary	Sr	5	79	51	64.56	1	1.27	725	9.18	5	6.33	160.0
Bob Aylsworth, Lehigh	Jr	5	177	118	66.67	9	5.08	1572	8.88	15	8.47	159.1
Bryan Martin, Weber St.	Jr	6	157	90	57.32	3	1.91	1381	8.80	13	8.28	154.7
Steve McNair, Alcorn St.	Sr	6	260	150	57.69	10	3.85	2317	8.91	23	8.85	154.0
Marvin Marshall, South Caro. St.	Sr	6	114	63	55.26	6	5.26	1043	9.15	11	9.65	153.4
Robert Dougherty, Boston U.	Sr	5	174	109	62.64	4	2.30	1542	8.66	11	6.32	153.3
Mark DeRosa, Pennsylvania	So	3	71	48	67.61	0	.00	528	7.44	5	7.04	153.3
Rob Gius, Bucknell	Sr	5	93	53	56.99	3	3.23	745	8.01	10	10.75	153.3
Dan Crowley, Towson St.	Sr	5	170	95	55.88	5	2.94	1451	8.54	14	8.24	148.9
Darin Hinshaw, Central Fla.	Sr	6	173	98	56.65	8	4.62	1414	8.17	17	9.83	148.5
Carlos Garay, Hofstra	Sr	5	115	63	54.78	1	8.7	897	7.80	10	8.70	147.3
Joe Garofalo, Cal St. Sacramento	Sr	5	108	61	56.48	2	1.85	937	8.68	7	6.48	147.0

TOTAL OFFENSE

	RUSHING				PASSING		TOTAL OFFENSE				
	CAR	GAIN	LOSS	NET	ATT	YDS	PLS	YDS	YDPL	TDR*	YDSPG
Steve McNair, Alcorn St.	64	642	77	565	260	2317	324	2882	8.90	26	480.33
Tom Proudian, Iona	42	98	158	-60	201	1426	243	1366	5.62	10	341.50
Dave Dickenson, Montana	54	208	171	37	198	1907	252	1944	7.71	18	324.00
Jeff Lewis, Northern Ariz.	55	167	183	-16	244	1857	299	1841	6.16	15	306.83
Robert Dougherty, Boston U.	41	135	144	-9	174	1542	215	1533	7.13	13	306.60
Bob Aylsworth, Lehigh	14	14	72	-58	177	1572	191	1514	7.93	15	302.80
Kendrick Nord, Grambling	34	134	128	6	132	1485	166	1491	8.98	19	298.20
Todd Bennett, Eastern Wash.	20	17	107	-90	209	1567	229	1477	6.45	10	295.40
Dan Crowley, Towson St.	12	26	24	2	170	1451	182	1453	7.98	16	290.60
Marvin Marshall, South Caro. St.	85	757	64	693	114	1043	199	1736	8.72	18	289.33
Mitch Maher, North Texas	42	180	76	104	140	1313	182	1417	7.79	15	283.40
Darrell Asberry, Jackson St.	97	531	158	373	164	1301	261	1674	6.41	13	279.00
Eric Hisaw, Idaho	37	248	68	180	117	1185	154	1565	8.86	13	273.00
Antwan Chiles, Liberty	23	40	62	-22	196	1359	219	1337	6.11	9	267.40
Mike Cawley, James Madison	66	370	70	300	128	984	194	1284	6.62	12	256.80
J. J. O'Laughlin, Cal St. Northridge	17	42	58	-16	158	1278	175	1262	7.21	11	252.40
J. J. Jewell, Western Ky.	98	485	105	380	117	1134	215	1514	7.04	14	252.33
Darin Hinshaw, Central Fla.	30	86	56	30	173	1414	203	1444	7.11	18	249.67
Tony Hilde, Boise St.	61	234	152	82	188	1357	249	1439	5.78	15	239.83
Chad Greene, Western Caro.	54	292	66	226	177	1196	231	1422	6.16	8	237.00

*Touchdowns responsible for are TDs scored and passed for.

I-AA single-game highs

PLAYER

Rushing and passing yards: 647, Steve McNair, Alcorn St. vs. Tenn.-Chatt., Sept. 10.

Rushing and passing plays: 82, Tom Proudian, Iona vs. Siena, Oct. 1.

Rushing yards: 313, Rene Ingoglia, Massachusetts vs. Rhode Island, Oct. 1.

Rushing plays: 56, Arnold Mickens, Butler vs. Valparaiso, Oct. 8.

Passes completed: 36, Tom Proudian, Iona vs. Siena, Oct. 1.

Passes attempted: 67, Tom Proudian, Iona vs. Siena, Oct. 1.

Passing yards: 534, Steve McNair, Alcorn St. vs. Grambling, Sept. 3.

Passes caught: 16, Jeff Johnson, East Tenn. St. vs. Va. Military, Sept. 17; Kobie Jenkins, Alcorn St. vs. Sam Houston St., Sept. 24.

Receiving yards: 316, Marcus Hinton, Alcorn St. vs. Tenn.-Chatt., Sept. 10.

Punt return yards: 200, Aaron Fix, Canisius vs. Siena, Sept. 24.

Kickoff return yards: 220, Akili Johnson, Grambling vs. Alcorn St., Sept. 3.

TEAM

Points scored: 87, Grambling vs. Morgan St., Sept. 17.

Rushing and passing yards: 756, Alcorn St. vs. Grambling, Sept. 3.

Rushing yards: 674, Austin Peay vs. Ky. Wesleyan,

Sept. 1.

Passing yards: 534, Alcorn St. vs. Grambling, Sept. 3.

Fewest rushing and passing yards allowed: 63, Liberty vs. Concord, Sept. 3.

Fewest rushing yards allowed: 41, Texas Southern vs. Prairie View, Sept. 3.

Last week's bests

PLAYER

Rushing and passing yards: 439, Bob Aylsworth, Lehigh vs. Yale, Oct. 8.

Rushing yards: 295, Arnold Mickens, Butler vs. Valparaiso, Oct. 8.

Passing yards: 454, Bob Aylsworth, Lehigh vs. Yale, Oct. 8.

Passes caught: 10, five tied, Oct. 8.

Receiving yards: 246, Carnell Henderson, Boston U. vs. Rhode Island, Oct. 8.

TEAM

Points scored: 62, Hofstra vs. Central Conn. St., Oct. 8.

Rushing and passing yards: 598, Pennsylvania vs. Holy Cross, Oct. 8.

Rushing yards: 400, Ga. Southern vs. Western Caro., Oct. 8.

Passing yards: 454, Lehigh vs. Yale, Oct. 8.



Henderson



Hinton

RECEPTIONS PER GAME

	CL	G	CT	YDS	TD	CTPG
Ray Marshall, St. Peter's	Sr	4	38	496	4	9.50
Brian Klingerman, Lehigh	Jr	5	39	700	10	7.80
Derrick Ingram, Ala. Birmingham	Sr	6	44	668	6	7.33
Jason Anderson, Eastern Wash.	Sr	5	36	651	5	7.20
Bobby Appar, Rhode Island	So	6	42	680	10	7.00
Kyle Gary, Idaho	Sr	5	35	603	6	7.00
Miles Mack, Pennsylvania	Jr	3	21	229	3	7.00
Dan Green, Iona	Sr	4	27	278	2	6.75
Heston Suttman, Central Conn. St.	Sr	5	32	484	5	6.40
Tim Silo, Iona	Sr	4	25	417	4	6.25
Eric Spezio, Iona	Fr	4	25	358	3	6.25

FIELD GOALS

	C	G	FGA	FG	PCT	FGPG
Garth Petrilli, Middle Tenn. St.	Sr	5	13	10	.769	2.00
Jim Richter, Furman	Jr	5	12	9	.750	1.80
Ryan Woolverton, Idaho	Jr	5	12	9	.750	1.80
Bob Warden, Brown	Sr	4	8	7	.875	1.75
Andy Glickner, Pennsylvania	Sr	3	7	5	.714	1.67
Matt Waller, Northern Iowa	So	6	15	10	.667	1.67
John Coursey, James Madison	So	5	12	8	.667	1.60
Tom Allison, Indiana St.	Jr	6	14	9	.643	1.50
Tim Duvic, Dayton	Sr	5	10	7	.700	1.40

ALL PURPOSE RUNNERS

	CL	G	RUSH	REC	P
Arnold Mickens, Butler	Jr	6	1401	0	
Ray Marshall, St. Peter's	Sr	4	8	496	3
K C. Adams, Boise St.	Jr	6	820	219	172
Anthony Jordan, Samford	Sr	5	395	200	0
Don Wilkerson, Southwest Tex. St.	Sr	6	967	100	21
Jason Anderson, Eastern Wash.	Sr	5	-17	651	0
Alfredo Anderson, Idaho St.	So	5	441	116	86
Rene Ingoglia, Massachusetts	Jr	5	837	69	0
Freddie Solomon, South Caro. St.	Sr	6	0	594	131
Brian Klingerman, Lehigh	Jr	5	10	700	9
Ozzie Young, Valparaiso	Jr	4	163	150	66
Jermaine Rucker, San Diego	So	6	914	82	0
Cy Butler, Rhode Island	So	6	7	384	86
Thomas Haskins, Va. Military	So	5	577	0	
Tim Hall, Robert Morris	Jr	5	554	256	
Mark Orlando, Towson St.	Sr	5	0	659	14
James Cunningham, Howard	Sr	5	2	321	14
Rich Lemon, Bucknell	So	5	730	43	
Tim Silo, Iowa	Sr	4	0	417	

Division III leaders Through October 1



RUSHING									
	CL	G	CAR	YDS	TD	YDSPG			
Kevin Gladney, Millsaps	SR	5	145	923	8	184.6			
Carey Bender, Coe	SR	4	88	674	6	168.5			
Chris Hughes, Dickinson	JR	4	117	663	6	165.8			
Rob Marchitello, Maine Maritime	JR	3	101	489	7	163.0			
Jim Callahan, Salve Regina	SO	4	99	637	9	159.3			
Steve Harris, Carroll (Wis.)	SR	4	96	635	8	158.8			
Jeff Robinson, Albion	SR	4	104	630	7	157.5			
Mark Kacmarzynski, Central (Iowa)	JR	4	85	596	7	149.0			
Josh Mason, Amherst	SO	2	48	296	1	148.0			
Darren MacLellan, La Verne	SR	3	70	444	5	148.0			
Tim Lightfoot, Westfield St.	JR	4	116	576	4	144.0			
Terrence Thomas, Cal Lutheran	SR	3	73	429	5	143.0			
Carlton Carter, Thomas More	JR	4	78	538	8	134.5			
Thomas Lee, Anderson	SR	4	112	537	6	134.3			
Anthony Jones, Redlands	JR	3	77	390	2	130.0			
Steve Gabriel, Norwich	SR	3	72	385	4	128.3			
John Lutz, Colorado Col.	SR	4	101	510	1	127.5			
Elijah Powell, Wilkes	FR	4	88	509	1	127.3			
Jason Regan, Simpson	SR	4	82	501	3	125.3			
Matt Malmberg, St. John's (Minn.)	SR	4	79	495	4	123.8			
Kevin Matarelli, Monmouth (Ill.)	SR	4	79	487	2	121.8			
Shannon Forsythe, Gettysburg	JR	4	76	480	5	120.0			
Bill Casey, Mass.-Dartmouth	JR	4	72	477	6	119.3			
Jay Kafoglis, Trinity (Tex.)	JR	4	96	477	2	119.3			
Andre Evans, Wm. Paterson	JR	4	86	476	5	119.0			
Gary Fitch, St. John Fisher	JR	3	56	357	3	119.0			
Robert Thompson, Hampden-Sydney	SR	4	87	475	5	118.8			
Chris French, Carleton	JR	4	99	464	7	116.0			
Mike Martinez, Waynesburg	JR	4	79	463	5	115.8			
Ryan Reynolds, Thomas More	SR	5	110	578	1	115.6			
Ben Burk, Alma	SR	4	61	462	4	115.5			
A. J. Wilkerson, Rose-Hulman	SO	4	54	455	4	113.8			
Cleveland Cooper, Rochester	FR	4	69	454	4	113.5			
Ryan Jenkins, Beloit	SR	4	86	454	4	113.5			
J. D. Davis, Emory & Henry	JR	4	80	449	3	112.3			

PASSING EFFICIENCY									
	CL	G	ATT	CMP	PCT	INT	YDS	TD	RATING
(Min. 15 att per game)									
Paul Bell, Allegheny	SR	4	75	50	66.7	0	792	8	190.6
Craig Kusick, Wis.-La Crosse	JR	5	116	72	62.0	3	1210	16	190.0
Ryan Campuzano, La Verne	JR	3	57	37	64.9	2	657	6	189.5
Bill Borchert, Mount Union	FR	4	95	51	53.6	1	920	12	174.8
Gilbert Telleria, Frostburg St.	SR	4	61	33	54.1	3	734	5	172.4
Ken Pletcher, St. John's (Minn.)	SR	3	75	52	69.3	2	735	5	168.3
Troy Dougherty, Grinnell	FR	4	103	66	64.0	1	957	8	165.8
Mike Magistrelli, Coe	SO	4	92	50	54.3	4	994	7	161.5
Mark Thompson, Earlham	SO	4	88	57	64.7	3	832	6	159.8
Jim Connolly, Wesley	SR	5	132	94	71.2	7	1156	9	156.7
Mike Elijah, Wartburg	SR	4	71	40	56.3	0	584	6	153.4
Brian Clark, Merchant Marine	SR	4	75	41	54.6	6	667	9	153.0
Joel Perry, Plymouth St.	JR	3	59	31	52.5	1	491	6	152.6
Vic Amey, Widener	JR	4	69	42	60.8	6	654	6	151.8
P. J. Insana, John Carroll	JR	4	109	64	58.7	3	878	9	148.2

TOTAL OFFENSE									
	CL	G	PLAYS	YDS	YDSPG				
Steve Mikuls, Trinity (Conn.)	SR	2	90	592	296.0				
John Shipp, Claremont-M-S	SR	3	157	875	291.7				
Brian Vandusen, Western Md.	JR	4	209	1136	284.0				
Mark Thompson, Earlham	SO	4	125	1066	266.5				
Chris Esterley, St. Thomas (Minn.)	SO	4	149	1033	258.3				
Bill Borchert, Mount Union	FR	4	136	1015	253.8				
Mike Magistrelli, Coe	SO	4	118	1010	252.5				
Eric Noble, Wilmington (Ohio)	JR	4	160	1009	252.3				
Terry Peebles, Hanover	JR	4	170	1003	250.8				
Ken Pletcher, St. John's (Minn.)	SR	3	114	752	250.7				
Jason Schneider, FDU-Madison	JR	4	152	1001	250.3				
Ryan Campuzano, La Verne	JR	3	79	747	249.0				
P. J. Insana, John Carroll	SR	4	142	985	246.3				
Jeff Brown, Wheaton (Ill.)	JR	3	107	725	241.7				
Troy Dougherty, Grinnell	FR	4	234	964	241.0				
Craig Kusick, Wis.-La Crosse	JR	5	133	1195	239.0				
Darrin Fox, Bluffton	SO	4	156	955	238.8				
Lon Erickson, Ill. Wesleyan	SO	3	102	715	238.3				

ALL-PURPOSE RUNNERS									
	CL	G	RUSH	REC	PR	KR	INT	YDS	YDSPG
Jerome Drumgoole, Occidental	JR	3	264	45	137	209	0	655	218.33
Carey Bender, Coe	SR	4	674	148	7	0	0	829	207.25
Kevin Gladney, Millsaps	SR	5	923	112	0	0	0	1035	207.00
Rob Marchitello, Maine Maritime	JR	3	489	69	0	0	0	558	186.00
Andy Ehrsman, Cornell College	JR	4	214	219	38	267	0	738	184.50
Chris Hughes, Dickinson	JR	4	663	9	57	0	0	729	182.25
Ryan Reynolds, Thomas More	SR	5	578	191	0	130	0	899	179.80
Steve Gabriel, Norwich	SR	3	385	54	0	83	0	522	174.00
Jason Martin, Coe	SR	4	37	325	4	327	0	693	173.25
Jeff Robinson, Albion	SR	4	630	45	0	0	0	675	168.75
Steve Harris, Carroll (Wis.)	SR	4	635	40	0	0	0	675	168.75
Vic Monaco, FDU-Madison	SR	4	0	399	59	208	0	666	166.50
Cleveland Cooper, Rochester	FR	4	454	0	127	77	0	658	164.50
Jim Callahan, Salve Regina	SO	4	637	18	0	0	0	655	163.75
Anthony Rice, La Verne	SO	3	6	475	0	7	0	488	162.67
Brian Brekke, Gust. Adolphus	SR	4	280	65	54	240	0	639	159.75
Tim Lightfoot, Westfield St.	JR	4	576	51	0	0	0	627	156.75
Darren MacLellan, La Verne	SR	3	444	19	7	0	0	470	156.67
Todd Sandagato, Ithaca	SR	4	7	362	61	196	0	626	156.50
Steve Peters, Muhlenberg	JR	4	195	211	0	215	0	621	155.25
Sam Williams, Defiance	SR	5	0	482	49	237	0	768	153.60
Terrence Thomas, Cal Lutheran	SR	3	429	2	0	25	0	456	152.00

Division III team Through October 1

PASSING OFFENSE									
	G	ATT	CMP	PCT	INT	YDS	YDSPG		
Western Md.	4	154	93	60.4	6	1214	303.5		
Trinity (Conn.)	2	81	39	48.1	3	582	291.0		
St. John's (Minn.)	4	126	82	65.1	4	1150	287.5		
Claremont-M-S	3	108	61	56.5	8	821	273.7		
Wilmington (Ohio)	4	175	98	56.0	8	1091	272.8		
Hanover	4	177	85	48.0	8	1088	272.0		
Grinnell	4	120	77	64.2	2	1077	269.3		
Ill. Wesleyan	3	93	56	60.2	2	791	263.7		
St. Thomas (Minn.)	4	132	78	59.1	0	1042	260.5		
FDU-Madison	4	140	71	50.7	9	1041	260.3		
John Carroll	4	132	76	57.6	5	1041	260.3		
Wis.-La Crosse	5	131	80	61.1	5	1297	259.4		
Mount Union	4	114	61	53.5	2	1029	257.3		
Wheaton (Ill.)	3	103	59	57.3	6	765	255.0		
Coe	4	98	51	52.0	6	1018	254.5		
Allegheny	4	109	60	55.0	0	1003	250.8		
Alma	4	158	93	58.9	8	986	246.5		
Chicago	4	131	69	52.7	7	979	244.8		
La Verne	3	62	40	64.5	2	734	244.7		
Ursinus	4	154	77	50.0	3	956	239.0		

PASS EFFICIENCY DEFENSE									
	G	ATT	CMP	PCT	INT	YDS	TD	RATING	POINTS
Gust. Adolphus	4	69	26	37.6	9	252	0	42.3	
Plymouth St.	3	43	10	23.2	4	164	1	44.4	
Millikin	3	79	29	36.7	5	274	1	57.4	
Central (Iowa)	4	91	36	39.5	4	286	1	60.8	
Susquehanna	4	88	32	36.3	6	322	2	61.0	
N. western (Wis.)	4	78	26	33.3	9	374	3	63.2	
Illinois Col.	4	117	48	41.0	18	522	5	65.2	
Salve Regina	4	118	50	42.4	13	557	2	67.2	
Maine Maritime	3	58	23	39.6	7	278	2	68.7	
Amherst	2	48	22	45.8	3	202	0	68.7	
Baldwin-Wallace	4	157	61	38.8	6	627	3	71.0	
Fitchburg St.	4	46	18	39.1	4	236	1	72.0	
Westfield St.	4	79	26	32.9	9	430	4	72.5	
Worcester St.	4	109	47	43.1	7	514	1	73.0	
FDU-Madison	5	81	32	39.5	0	258	2	74.5	
Wesley	4	110	42	38.1	5	494	3	75.8	
Buffalo St.	4	110	42	38.1	5	494	3	75.8	

TURNOVER MARGIN									
	G	FUM	INT	GAIN	FUM	INT	LOSS	MARGIN	
Albion	4	4	12	16	2	2	4	3.00	
Wis.-Whitewater	4	8	9	17	1	4	5	3.00	
Mount Union	4	3	11	14	1	2	3	2.75	
Illinois Col.	4	6	16	22	5	6	11	2.75	
Dickinson	4	6	11	17	3	4	7	2.50	
Grinnell	4	10	5	15	3	2	5	2.50	
Worcester St.	4	8	9	17	5	3	8	2.25	
Johns Hopkins	4	5	8	13	0	4	4	2.25	
Gust. Adolphus	4	5	9	14	2	4	6	2.00	
Wis.-River Falls	4	6	5	11	3	0	3	2.00	
Maine Maritime	3	5	7	12	4	2	6	2.00	
Thomas More	5	7	11	18	6	2	8	2.00	
Montclair St.	4	8	6	14	1	6	7	1.75	
Wartburg	4	6	7	13	4	2	6	1.75	

PUNT RETURNS				
(Min 1.2 per game)	CL	NO	YDS	AVG
Damon Adams, Tufts	JR	5	125	25.0
Wallace Thompson, Salisbury St	SO	5	106	21.2
James Spriggs, Sewanee	JR	6	122	20.3
LaVant King, Ohio Northern	SR	8	147	18.4
Jerome Drumgoole, Occidental	JR	8	137	17.1
Mike Aubin, Curry	JR	10	169	16.9
Remondo Williams, Waynesburg	SR	8	132	16.5
Brian Simpson, Merchant Marine	SR	11	175	15.9
Keith Rogers, Lakeland	FR	7	111	15.9
Cliff Hall, Howard Payne	FR	6	95	15.8
Tony Bradley, Marietta	FR	8	124	15.5
Darnell Rubin, Chapman	JR	7	107	15.3
Shaun Dann, Fitchburg St	SR	8	122	15.3

Division I women's volleyball leaders

KILLS					DIGS				
(Min. 4.35 per game)	CL	GMS	NO	AVG	(Min. 3.75 per game)	CL	GMS	NO	AVG
1. Paola Paz-Soldan, San Jose St.	JR	35	208	5.94	1. Stacy Humphries, Towson St.	JR	55	300	5.45
2. Dominique Benton-Bozman, Pacific (Cal.)	SR	40	236	5.90	2. Ashley Wacholder, Duke	SR	38	201	5.29
3. Priscilla Pacheco, Georgia	SR	54	298	5.52	3. Stephanie McCannon, Iowa St.	JR	50	255	5.10
4. Tzvetelina Yanchulova, Idaho	JR	61	334	5.48	4. Kathy Shaw, Delaware	SR	62	309	4.98
5. Stefanie Francis, Geo. Washington	SR	54	284	5.26	5. Natasha Sylvain, American	SR	71	348	4.90
6. Robin Kibben, Clemson	SR	48	251	5.23	6. Jennifer Borton, Akron	JR	64	310	4.84
7. Nina Foster, Alabama	FR	72	373	5.18	7. Stacy Stanton, Indiana St.	SR	54	243	4.50
8. Annett Buckner, UCLA	SR	50	259	5.18	8. Karrie Downey Larsen, Colorado	SR	42	185	4.40
9. Kiba Kemp, Eastern Mich.	SR	38	196	5.16	9. Karen Sadler, Eastern Ill.	SR	63	275	4.37
10. Mindy Rice, Idaho	SR	62	316	5.10	10. Heather Collins, UC Santa Barb.	SR	42	176	4.19
11. Ashley Wacholder, Duke	SR	38	193	5.08	11. Keelyn Krill, Marquette	SO	61	255	4.18
12. Ginger Ernest, San Diego St.	SO	50	248	4.96	12. Rachel Sky, Massachusetts	JR	37	154	4.16
13. Joanna Grotenhuis, Wisconsin	SR	46	228	4.96	13. Maureen Reindl, Duke	FR	36	149	4.14
14. Alicia Robertson, Tulane	SR	63	306	4.86	14. Liu Li, Geo. Washington	SR	40	165	4.13
15. Heather Collins, UC Santa Barb.	SR	42	203	4.83	15. Luiza Ramos, Florida St.	SR	52	212	4.08
16. Lilly Denoon Chester, Houston	SR	34	164	4.82	16. Zvezdana Sirola, Oral Roberts	JR	65	263	4.05
17. Nita Kiggundu, Southwestern La.	SO	53	255	4.81	17. Katie Galloway, North Caro.	SR	53	214	4.04
18. Barbara Bell, Arizona	SO	36	171	4.75	18. Lareina Woods, Oregon	SR	43	173	4.02
19. Christy Peters, Notre Dame	SR	51	242	4.75	19. Dee Singleton, Louisville	SR	55	220	4.00
20. Kirstin Hugdahl, Iowa St.	JR	50	235	4.70	19. Cissi Lennartsson, Tennessee	SR	51	204	4.00
					19. Brandy Ossian, Southern Ill.	SO	36	144	4.00

ASSISTS					HITTING PERCENTAGE											
(Min. 11.5 per game)	CL	GMS	NO	AVG	(Min. .350/3 attacks per game)	CL	GMS	KILLS	ERR	ATT	PCT					
1. Lynne Hyland, Idaho	SO	63	922	14.63	1. Erica Berggren, South Fla.	SO	70	268	35	448	520					
2. Christy Johnson, Nebraska	JR	44	638	14.50	2. Amy Ford, Rider	JR	28	103	17	174	494					
3. Laura Davis, Ohio St.	SR	36	504	14.00	3. Stacy Evans, Villanova	FR	62	265	53	475	446					
4. Chrissy Boehle, UC Santa Barb.	SR	42	570	13.57	4. Jennifer Moore, Wright St.	SR	62	165	34	300	437					
5. Melizza Benitez, San Jose St.	JR	35	471	13.46	5. Angelica Ljungquist, Hawaii	SO	40	114	28	205	420					
6. Laura Bartsch, Arizona	JR	36	482	13.39	6. Kristin Folki, Stanford	FR	30	139	36	248	419					
7. Eden Kroeger, Maryland	FR	52	696	13.38	7. Kim Setter, Central Conn. St.	JR	52	128	22	258	411					
8. Kristen Campbell, Duke	FR	35	466	13.31	8. Adrian Nicol, Duke	SR	39	118	20	240	408					
9. Sarah Runka, South Fla.	FR	69	909	13.17	9. Kim Newman, McNeese St.	SR	47	129	27	252	405					
10. Julie Franzen, Sam Houston St.	SR	59	776	13.15	10. Virag Domokos, George Mason	SO	55	193	37	388	402					
11. Laura Abbinate, Wisconsin	SO	51	668	13.10	11. Kara Galer, Northern Iowa	JR	45	80	9	177	401					
12. Monika Cavaliere, Southern Cal.	JR	39	506	12.97	12. Baiba Lake, Seton Hall	SR	59	264	55	530	394					
13. Brenda Gregersen, Fresno St.	JR	62	803	12.95	13. Kelly Aspegren, Nebraska	SR	44	151	39	286	392					
14. Kelly Hanson, Drake	SO	36	465	12.92	14. Susie Checkett, Xavier (Ohio)	SO	67	93	12	207	391					
15. Tiffanie Johnson-Gates, Arizona St.	SR	45	576	12.80	15. Tate Medley, Loyola Marymount	SO	33	85	20	167	389					
16. Missy Aggert, Florida	JR	47	599	12.74	16. Robin Kibben, Clemson	SR	48	251	56	505	386					
17. Charlene Johnson, Brigham Young	SR	48	610	12.71	17. C. Dadducci, Central Conn. St.	JR	48	162	33	336	384					
18. Sacha Caldemeyer, Pacific (Cal.)	SO	36	457	12.69	18. Liu Li, Geo. Washington	SR	40	172	41	344	381					
19. Heidi Miller, Oral Roberts	SO	65	819	12.60	19. Julie Meshberger, Indiana St.	JR	56	198	52	384	380					
20. Suzie Severyn, Cal St. Sacramento	JR	59	737	12.49	20. Nikki Nicholson, Georgia	JR	55	251	64	492	380					

SERVICE ACES					BLOCKS						
(Min. 0.60 per game)	CL	GMS	NO	AVG	(Min. 1.50 per game)	CL	GMS	SOLO	AST	TOT	AVG
1. Erica Smith, Mississippi Val.	FR	51	50	0.98	1. Carla Ellis, Howard	SO	72	44	119	163	2.26
2. Carol Fester, Central Conn. St.	FR	47	43	0.91	2. Deena Francis, Southern-B.R.	JR	47	45	56	101	2.15
3. Kathleen Fraser, St. Francis (N.Y.)	JR	36	32	0.89	3. Karen Weyer, Montana St.	FR	52	19	88	107	2.06
4. Nicole Nemeth, FDU-Teaneck	SR	63	53	0.84	4. Tara Randle, Alcorn St.	SO	56	38	75	113	2.02
5. Zvezdana Sirola, Oral Roberts	JR	65	54	0.83	5. Lauri Yust, Southern Cal	SR	38	27	44	71	1.87
6. Amy Ford, Rider	JR	29	24	0.83	6. Nina Foster, Alabama	FR	72	51	81	132	1.83
7. Tara Randle, Alcorn St.	SO	56	45	0.80	7. Sarah Chase, Hawaii	JR	39	11	60	71	1.82
8. Cori Bown, Austin Peay	SO	63	49	0.78	8. Josephine Carter, Delaware St.	SR	57	52	49	101	1.77
9. Lynne Mazza, Campbell	SR	54	41	0.76	9. Carrie Shurt, Northern Iowa	SR	45	16	62	78	1.73
10. Kim King, Xavier (Ohio)	SR	63	46	0.73	10. Cynthia Ruelas, UTEP	SO	51	30	58	88	1.73
11. Jennifer Shea, Fordham	SR	48	34	0.71	11. Angelica Ljungquist, Hawaii	SO	40	13	56	69	1.73
12. Molly Maloney, Northwestern	SR	47	33	0.70	12. Liz Cuthren, Ball St.	FR	47	21	59	80	1.70
13. Natina Saitta, Wagner	JR	40	28	0.70	13. Lori Federmann, Eastern Ky.	SR	55	35	58	93	1.69
14. Kerri Huffman, Indiana St.	SR	44	30	0.68	14. Heather Dodaro, Wisconsin	FR	45	2	74	76	1.69
15. Kristi Hagel, Troy St.	JR	56	38	0.68	15. Kim Krull, UCLA	SO	53	14	75	89	1.68
16. Brandi Charleston, Florida A&M	SO	65	44	0.68	16. Andrea Sanders, Wright St.	SO	55	19	71	90	1.64
17. Nancy Ringrose, Central Conn. St.	SR	46	31	0.67	17. Raquan Washington, Howard	SR	71	34	80	114	1.61
18. Perette Arrington, Seton Hall	SR	59	39	0.66	18. Tanya Lila, Oregon St.	SR	51	32	49	81	1.59
19. Susie Diaz, Iona	SO	34	22	0.65	19. Hope McCormick, Lafayette	FR	45	39	31	70	1.56
20. Susie Teitsworth, Bucknell	SO	59	38	0.64	20. Alyson Randick, UCLA	SR	50	8	69	77	1.54

Division II women's volleyball leaders

KILLS					DIGS				
(Min. 3.50 per game)	CL	GMS	NO	AVG	(Min. 3.50 per game)	CL	GMS	NO	AVG
1. Pavla Melicharova, Northwood	SO	67	380	5.67	1. Kevin Campbell, Nebraska-Omaha	SR	67	426	6.36
2. Nicole Smith, Armstrong St.	SR	62	341	5.50	2. Jody Lindstrom, Millersville	SR	49	263	5.37
3. Christy Wieneke, Cal St. Bakersfield	JR	65	356	5.48	3. Tara Gaudet, Carson-Newman	SR	49	262	5.35
4. Shelly Lowery, Mo. Western St.	JR	79	404	5.11	4. Claudine Snyder, Eastern N. Mex.	SR	43	221	5.14
5. Jill Burness, Ky. Wesleyan	SO	60	300	5.00	5. Vicki Joyce, Minn.-Duluth	SR	58	296	5.10
6. Kim Crawford, Fla. Southern	SR	45	222	4.93	6. Andrea Cox, Coker	FR	49	248	5.06
7. Maria Bras, Bryant	SR	59	280	4.75	7. Stephanie Rieder, Winona St.	SR	43	207	4.81
8. Wendy Balut, North Fla.	JR	34	161	4.74	8. Kerry Lewin, Northern Ky.	JR	60	288	4.80
9. Kim Hoppes, Michigan Tech	SR	49	225	4.59	9. Louella Lovely, Air Force	SO	69	330	4.78
10. Korina Kemp, Cal St. Los Angeles	SR	52	237	4.56	10. Tracey Milliman, St. Andrews	JR	62	294	4.74
11. Neely Forbes, Northeast Mo. St.	SR	49	223	4.55	11. Erin Booth, Presbyterian	FR	54	255	4.72
12. Pauline Schuette, Northern Mich.	JR	47	213	4.53	12. Carey Brouillette, Fort Hays St.	SR	71	335	4.72
13. Candy Tefertiles, Mount Olive	JR	52	232	4.46	13. Misty Brevier, Texas Woman's	JR	49	229	4.67
14. Kerri Camuso, Springfield	SO	42	182	4.33	14. Maureen McSwiggin, American Int'l	SO	50	232	4.64
15. Tanya Fuamatu, Hawaii-Hilo	JR	39	167	4.28	15. Paige Karno, Southwest St.	JR	83	384	4.63
16. Watoma Williams, Presbyterian	SO	54	227	4.20	16. Meghan Kelly, Clarion	SR	41	188	4.59
17. Crissy Canada, Metropolitan St.	SR	78	327	4.19	17. Rosa Torres, Hawaii-Hilo	JR	39	178	4.56
18. Mickisha Hurley, Barry	JR	39	162	4.15	18. Tara Gray, Coker	FR	33	149	4.52
19. Sheri Richardson, Western N. Mex.	SO	53	220	4.15	19. Amy Miller, Mesa St.	SR	65	291	4.48
20. Christie Hackmann, Northeast Mo. St.	JR	49	201	4.10	20. Jennifer Owens, Adams St.	SR	64	285	4.45

ASSISTS					HITTING PERCENTAGE						
(Min. 9.00 per game)	CL	GMS	NO	AVG	(Min. .350/3 attacks per game)	CL	GMS	KILLS	ERR	ATT	PCT
1. Jennifer Streltsoff, Cal St. Bakersfield	SR	45	606	13.47	1. Sherrell Carter, Clark Atlanta	FR	26	64	12	97	536
2. Krista Valdivia, Michigan Tech	SO	48	603	12.56	2. Jennifer Jones, S.C. Spartanburg	SR	52	169	27	306	464
3. Liu Jun, Northern Mich	SO	49	613	12.51	3. Shaia Asallita, New Haven	SR	42	116	12	228	456
4. Rosie Weisenseel, Edinboro	JR	54	664	12.30	4. Kristi Pratt, Miles	SO	25	88	24	141	454
5. Sarah Steinmetz, Texas Woman's	SO	49	591	12.06	5. Kerri Camuso, Springfield	SO	42	182	34	327	453
6. Pam Kelly, Stonehill	FR	20	240	12.00	6. Lanita Madden, Alabama A&M	SO	59	272	77	452	431
7. Michelle Ohren, Augustana (S.D.)	SR	63	749	11.89	7. Filen Migasi, Cal Poly Pomona	FR	42	93	18	174	431
8. Heather Modean, St. Cloud St.	SO	68	798	11.74	8. Jayme Hodges, S.C. Aiken	FR	56	131	23	257	420
9. Michelle Buckner, Portland St.	JR	70	817	11.67	9. Mickisha Hurley, Barry	JR	39	162	33	311	415
10. Carleen Roy, St. Michael's	JR	37	426	11.51	10. Keri Forrest, St. Michael's	SO	29	78	16	150	413
11. Kirsten Bernthal, Northeast Mo. St.	SO	49	564	11.51	11. Kim Crawford, Fla. Southern	SR	45	222	59	408	400
12. Danielle Shum, Neb - Kearney	SO	85	978	11.51	12. Jane Salkowski, Central Mo. St.	SR	68	160	32	321	399
13. Rachel Gatewood, Central Mo. St.	JR	69	783	11.35	13. Nicole Smith, Armstrong St.	SR	62	341	82	653	397
14. Kate Ankrum, Morningside	FR	58	657	11.33	14. Jess Allan, St. Michael's	SR	34	124	31	237	392
15. Krista Naughton, Minn.-Duluth	SO	58	654	11.28	15. Pavla Melicharova, Northwood	SO	67	380	91	741	390
16. Roxanna Rivera, S.C. Aiken	FR	62	699	11.27	16. Lana Taylor, N. M. Highlands	SR	38	136	28	277	390
17. Tandy Dunavin, Colo. Christian	JR	67	750	11.19	17. Pam Glenn, Mesa St.	JR	65	173	37	349	390
18. Shannon Keit, Northwood	JR	67	749	11.18	18. Laura Schneeweiss, Lewis	SO	46	95	19	196	388
19. Pam Stencil, North Dak. St.	SO	64	715	11.17	19. Kim Merrill, S.C. Aiken	FR	59	156	32	320	388
20. Heather Peterson, Seattle Pacific	SO	49	545	11.12	20. Dawn Cdebaca, N. M. Highlands	SR	42	130	20	291	378

SERVICE ACES					BLOCKS						
(Min. 0.50 per game)	CL	GMS	NO	AVG	(Min. 1.25 per game)	CL	GMS	SOLO	AST	TOT	AVG
1. Kerry Lewin, Northern Ky.	JR	60	77	1.28	1. Bobbie Simpson, Clarion	JR	41	46	48	94	2.29
2. Toni Willis, Barton	FR	44	53	1.20	2. Meghan Standish, St. Rose	SO	39	39	48	88	2.26
3. Cecilia Nix, Fort Valley St.	JR	41	47	1.15	3. Jennifer Christy, Queens (N.C.)	SR	56	90	30	120	2.14
4. Lori Pharr, Mississippi Women	JR	48	54	1.13	4. Marcie Miller, Wingate	JR	82	62	113	175	2.13
5. Kathy Wevedau, West Chester	JR	34	32	0.94	5. Sarah Bolling, American Int'l	SR	49	25	77	102	2.08
6. Rebecca Hostmeyer, St. Francis (Ill.)	JR	33	31	0.94	6. Misty Davis, Oakland City	SO	39	35	45	80	2.05
7. Jaldia Powell, Alabama A&M	JR	57	52	0.91	7. Karen Sinkewicz, American Int'l	SR	52	17	87	104	2.00
8. Denise Shipples, Le Moyne	SR	42	37	0.88	8. Carrie Lundy, Lincoln Memorial	SO	33	30	34	64	1.94
9. Laura Barnes, Shepherd	SR	51	43	0.84	9. Angie Schmitz, Colorado Mines	SO	31	18	42	60	1.94
10. Nicole Indri, Quinnipiac	SR	48	40	0.83	10. Amber Poole, Oakland City	SR	45	47	40	87	1.93
11. Shala Asadita, New Haven	JR	42	35	0.83	11. Carla Nicholson, Wingate	SR	63	21	98	119	1.89
12. Alex Louis, Mississippi Col.	SR	48	39	0.81	12. Rosa Montejano, Henderson St.	JR	59	76	29	105	1.78
13. Tara Dever, LIU-C W. Post	SO	90	72	0.80	13. Jennifer Vines, Denver	SO	73	48	80	128	1.75
14. Jennifer Rakers, S.C.-Spartanburg	SR	52	41	0.79	14. Trisia Tomanelli, St. Rose	JR	39	40	25	65	1.67
15. Kelli Kuch, Neb.-Kearney	SR	67	68	0.78	14. Dale Sherman, Colorado Mines	SO	30	18	32	50	1.67
16. Tammi Edwards, Pfeiffer	JR	41	32	0.78	16. Lori Pharr, Mississippi Women	JR	48	19	60	79	1.65
17. Julie Frahm, Springfield	SR	43	33	0.77	17. Jackie Miller, Mississippi Women	JR	46	24	50	74	1.61
18. Karen Molina, Charleston (W Va.)	SR	60	46	0.77	18. Tina Styles, Northern St.	SR	47	39	36	75	1.60
19. Kristan Schuster, Fairbanks Tech	JR	46	35	0.76	19. Kim Merrill, S.C.-Aiken	FR	59	47	46	93	1.58
20. Robyn Metzler, Alas. Fairbanks	SO	56	42	0.75	20. Shala Asadita, New Haven	SR	42	25	40	65	1.55
20. Suzanne Scaramuchik, Dowling	SO	56	42	0.75							
20. Jana Kapoukakis, Stonehill	JR	24	18	0.75							

Certification peer-reviewer pool continues to grow

More individuals have been added to the pool of peer reviewers for the NCAA Division I athletics certification program.

The individuals listed below have been notified by the NCAA Committee on Athletics Certification of their selection. The new peer reviewers join pool members who were reported in the January 26, April 13 and August 17 issues of The NCAA News.

The certification committee continues to accept nominations for peer reviewers on an ongoing basis.

Peer reviewers recently added to the pool are listed below with title and institution.

A

■ Ned R. Alger; Salt Lake City
■ Dorothy J. Alston; special assistant to the chancellor; North Carolina A&T State University

B

■ David L. Baker; special assistant to the president; University of Wyoming
■ Allen R. Bohl; director of athletics; University of Toledo
■ Mary A. Boudreaux; counselor; Louisiana State University
■ Joyce H. Burleson; director, internal audit; East Tennessee State University

C

■ Richard G. Cardillo; associate athletics director/student services; University of Colorado, Boulder
■ Mary Miller Carson; Wellesley, Massachusetts
■ Paul B. Cook; Bowling Green, Kentucky
■ W. James Copeland Jr.; director of athletics; University of Virginia
■ Lawrence R. Cunningham; assistant athletics director and business manager; University of Notre Dame

D

■ Deanna D'abbraccio; compliance coordinator; University of Wisconsin, Milwaukee
■ Jerald W. Dallam; university registrar; University of Iowa
■ Greig W. Denny; associate athletics director; Radford University
■ Ashok K. Dhingra; vice-president for administration and finance; University of Nevada
■ Vincent J. Dooley; director of athletics; University of Georgia
■ Donnie Duncan; director of athletics; University of Oklahoma

E

■ Susan H. Ehringhaus; senior university counsel; University of North Carolina, Chapel Hill
■ Linda K. Estes; associate director of athletics; University of New Mexico
■ J. Handel Evans; president; San Jose State University

F

■ Richard D. Finn; assistant to athletics director, compliance; Ohio State University

G

■ Ferdinand A. Geiger; director of athletics; Ohio State University

H

■ Sally A. Hattig; academic counselor; Pennsylvania State University
■ Sheryl A. Houston; financial aid coordinator; University of Minnesota, Twin Cities

J

■ George L. Jacobson Jr.; professor, botany and quaternary; University of Maine
■ Paula M. Jeffries; assistant vice-chancellor for business; North Carolina A&T State University

L

■ Robert D. Leahy; Cedar Falls, Iowa

■ E. Joseph Lee; vice-president for student life; Manhattan College

M

■ William C. Marolt; director of athletics; University of Colorado, Boulder
■ Dino Mattessich; associate director of athletics; Towson State University
■ Christopher May; assistant athletics director; University of Colorado, Boulder
■ Joan K. McCarty; academic counselor; Georgia Institute of Technology
■ Harold N. McElhaney; director of athletics; Ohio University
■ Michael B. McGee; director of athletics; University of South Carolina, Columbia
■ William M. Miller Jr.; director, audit and management services; University of Tennessee at Chattanooga
■ Danny W. Montgomery; university registrar; University of Southern Mississippi
■ M. Dianne Murphy; assistant athletics director; University of Iowa
■ James E. Murphy; associate athletics director and chief financial officer; Georgia Institute of Technology
■ James O. Murphy Jr.; director of intramural, club and recreation; George Mason University

N

■ Robert Gary Ness; associate professor; University of New Mexico
■ Sandra Niedergall; athletics admissions coordinator; Eastern Michigan University

P

■ Kelly Patton-Woodward; associate director of athletics; Northern Arizona University
■ Patricia C. Perry; West Olive, Michigan
■ Thomas F. Perry; academic counselor; University of Arizona
■ Terry D. Phillips; senior associate athletics director; University of Arkansas, Fayetteville
■ Deborah M. Polca; associate director of ath-

letics; St. Francis College (Pennsylvania)
■ David L. Potter; director, compliance and academic advisement; Wagner College

Q

■ William R. Quigley; director, internal audit; West Virginia University

R

■ Kim S. Record; associate director of athletics; University of Virginia
■ Barbara B. Riggs; associate director/records and registration; University of Maryland, College Park
■ Merle M. Ryan; assistant dean of students; University of Massachusetts, Amherst
■ Michael R. Ryan; department of history; Eastern Illinois University

S

■ H. Scott Scheifele; assistant athletics director, Development; University of Colorado, Boulder
■ James W. Schmidt; associate director of athletics; University of Illinois, Chicago
■ Bernard W. Sullivan; associate director of admissions; Long Island University-Brooklyn Campus

T

■ Suzanne J. Tyler; senior associate director of athletics; University of Maryland, College Park

U

■ Max F. Urlick; director of athletics; Kansas State University

W

■ Paul Winters; compliance coordinator; University of Wisconsin, Madison

Y

■ Pamela L. Young; athletics ticket director; University of Miami (Florida)

International eligibility guide should be used in 1995-96, consultants say

After Convention, another guide will reflect changes for 1996-97

The NCAA Foreign Student Records Consultants determined that member institutions should use the 1994 Guide to International Academic Standards for Athletics Eligibility for the 1995-96 academic year.

The consultants met October 1-2 in Kansas City, Missouri.

An addendum with minor changes to the 1994 guide will be mailed later this fall to directors of athletics, senior woman administrators, faculty athletics representatives and international undergraduate admissions officers at Divisions I and II institutions. The addendum also will be sent to Divisions I and II conference commissioners.

Another guide that will reflect changes in the initial-eligibility

Other highlights

In other actions during its October 1-2 meeting in Kansas City, Missouri, the Foreign Student Records Consultants:

■ Revised foreign grading scales for the 1996 Guide to International Academic Standards for Athletics Eligibility to reflect the initial-eligibility index.

■ Reviewed potential changes in grading scales in other countries based upon recent information received from ministries of education in those countries.

index will be published after the 1995 NCAA Convention, pending the membership's consideration of the issue of freshman eligibility. That guide will be effective for the 1996-97 academic year.

The consultants were joined by Calvin Symons, manager of the

NCAA Initial-Eligibility Clearinghouse, and Deb Westfall, certification specialist for Foreign Student Records, who advised the consultants on changes in the guide based upon questions they had received during the clearinghouse process.

Men's volleyball reviews plans to commemorate sport's 100th anniversary

The NCAA Men's Volleyball Committee discussed preparations for the 1995 National Collegiate Men's Volleyball Championship, which will help commemorate the sport of volleyball's 100th anniversary.

The committee met October 2-4 at Hilton Head Island, South Carolina.

The committee is working in conjunction with the Volleyball Hall of Fame to promote this year's championship, which will be played in Springfield, Massachusetts — the eastern most site in the 26-year history of the tournament.

The committee also heard presentations from groups representing Columbus, Ohio, and New Orleans, both of which are

bidding to host the 1997 championship. The 1996 championship will be at the University of California, Los Angeles.

In addition, the committee reviewed sponsorship numbers, which stand at 63 institutions for the 1995 season. The committee discussed ways of encouraging institutions to add men's volleyball and formed preliminary plans for a six- or eight-team championship bracket should an increase in sponsorship warrant such expansion.

In other championship-related matters, the committee refined selection criteria, specifically language regarding strength-of-schedule, for the one at-large berth in the current four-team championship field.

Administrative Committee minutes

Conference No. 18 September 27, 1994

1. Acting for the NCAA Council, the Administrative Committee:

a. Approved requests from three member institutions for permission to appeal to the Council in writing decisions of the Council Subcommittee on Initial-Eligibility Waivers.

b. Appointed Vivian L. Fuller, Northeastern Illinois University, and Richard

A. Rosenthal, University of Notre Dame, to the Council's Personnel Limitations Subcommittee, replacing Deborah Yow and Warner Alford, resigned from the Council.

2. Report of actions taken by the executive director per NCAA Constitution 4.3.2.

a. Acting for the Executive Committee:

(1) Appointed Peggy Bradley-Doppes, University of Michigan, to replace John Kasser, University of California, Berkeley, as one of the Association's repre-

sentatives on the U.S. Volleyball Association board of directors.

(2) Approved a recommendation by the NCAA Division II Men's Golf Subcommittee that Fort Hays State University and the University of Nebraska at Kearney be realigned from District 5 to District 7.

(3) Approved a recommendation by the NCAA Division I Wrestling Committee that Georgia State University and Marquette University serve as host institutions for the East and West regionals, respectively, of the 1995 NCAA Division I Wrestling Championships.

USOC's Walker to headline 2nd annual Temple seminars

LeRoy T. Walker, president of the U.S. Olympic Committee (USOC), is scheduled to be the featured speaker October 14-15 at the second annual Edward S. Temple seminars, developed in honor of Tennessee State University's legendary former women's track and field coach.

Walker, who is the first black president in USOC's history, has a distinguished track and field coaching career himself, with 77 all-Americans, 40 national champions and eight Olympians having competed

under his tutelage.

Wilma Rudolph, a three-time Olympic gold medalist and a former track star at Tennessee State, will serve as honorary chair of this year's event.

The seminars are designed for teachers, youth counselors, coaches, athletes, scholars, students and the general public. This year's theme is "Sportsmanship and Youth: Issues of Equity, Wellness and Personal Development."

NABC

Basketball coaches want initial-eligibility index delayed, interested in freshman ineligibility

► Continued from page 1

to modifying the initial-eligibility index or until an entirely new standard is created.

Commission proposal

The coaches heard a presentation from the NCAA Presidents Commission's new proposal on initial-eligibility standards that was announced after its September 27-28 meeting. James A. Haney, executive director of the NABC, said the association purposely withheld announcing its position on the presidents' proposal until after the NCAA Council meets October 10-12.

"We're sort of waiting to see what the Council will do," Haney said. "At the summit, we tried to identify elements we thought were important. We want to see what the options are after this next week."

Under the Commission's proposal, the implementation of the initial-eligibility index contained in Proposal No. 16 would be delayed until August 1996, although the 13 core-course requirement would proceed as scheduled in 1995.

The Commission also proposed that a partial qualifier be defined as an individual who scores less than 700 on the SAT or a 17 on the ACT but who has a grade-point average of more than 2.500 (4.000 scale) in 13 core courses. The Commission's plan would allow partial qualifiers to practice (but not

compete) and receive athletically related aid as freshmen, but would grant them only three years of eligibility.

Haney has been invited by NCAA Executive Director Cedric W. Dempsey to join NCAA President Joseph N. Crowley and Presidents Commission Chair Judith E. N. Albino October 11 to discuss the NABC's specific concerns regarding the initial-eligibility proposals. Haney said a resolution about a freshman-ineligibility rule might be developed.

"Oftentimes, legislation is proposed and not looked at from a sport in particular, but across the board," Haney said. "We see freshman ineligibility as a possible solution to a lot of concerns. From our standpoint, there is a smorgasbord of things out there. Paramount to us is a delay (in Proposal No. 16)."

Partial qualifiers

Also of considerable concern to the NABC, Haney and others say, is the reinstatement of a fourth year of eligibility for partial qualifiers.

"We continue to tie the fourth year with initial eligibility," said Laurence C. Keating Jr., athletics director at Seton Hall University. "Let the student-athletes have their last year of eligibility back if they are meeting the standards. The way we have constructed our academic progress is that you can't get to your fifth year and not be reasonably in good shape to graduate. Let's separate the two issues and make this the real target for this Convention."

Dempsey led a trio of NCAA staff members in explaining to coaches six initial-eligibility proposals that currently are on the agenda for the 1995 Convention.

Ursula R. Walsh, NCAA director of research, presented the results of the NCAA Academic Performance Study, and Stephen R. Morgan, NCAA group executive director for membership services, highlighted piece-by-piece

the impending proposals with regard to the position taken by the Presidents Commission and Council. Dempsey acknowledged that

See NABC, page 20 ►

Coaches question sportsmanship policy

HOUSTON — In response to the Ohio Valley Conference's new get-tough policy on sportsmanship, many men's basketball coaches who attended the second annual National Association of Basketball Coaches Issue Summit October 4-5 voiced displeasure about key components of the code-of-conduct measure.

Several coaches challenged the fairness of the league's statement, which was adopted in June. Specifically, some coaches said the policy's mandate that penalizes coaches for the actions of their players under certain circumstances places an unreasonable amount of responsibility for player behavior upon coaches.

In addition, coaches say the Ohio Valley's stand on player behavior with regard to taunting and baiting of the opposition and its statement on squelching certain fan behavior also may prove to be unreasonable. The coaches argue that basketball is often emotional and that the Ohio Valley's policy ultimately may result in a less passionate game.

"We have a very emotional game," Duke University men's basketball coach Mike Krzyzewski said. "That's good. Sometimes people go to an extreme."

Syracuse University men's basketball coach Jim Boeheim described an incident in a game last year in which one of his players exclaimed "Yes!" and pumped his fists after making a dunk shot. For his

outburst, the player was whistled with a technical foul, Boeheim said. That kind of tightening of the game is risky, he said.

"The problem is in defining," he said. "It's where you draw the lines that we're concerned about."

R. Daniel Beebe, commissioner of the Ohio Valley Conference, said his conference is confident that the policy will help to reduce the increasing incidents of unsportsmanlike behavior evident in athletics competition. He said the conference believed it is important to create a different atmosphere at its athletics events.

"We need to have a foundation there," he said. "We've instructed our officials not to give warnings. We are instructing them (that)... there needs to be an immediate consequence to a situation."

"There's always a continuum between taunting and baiting and spontaneity. There is a fine line."

Beebe also discussed the fans' treatment of visiting teams. He said he believed for many years that the hostile atmosphere was just part of the game. Now, he says, he finds much of the hostility inappropriate.

"Our main interest was to dispel the notion that we wanted to create hostile environments," he said. "The (public-address) announcer is going to have to announce the game in a more even-handed manner. We recognize the success of this is going to take time, but we felt a start needed to be made with this issue."

— Ronald D. Mott

NABC Issues Summit notes

■ During its Coaches Tribute dinner October 3, the NABC recognized coaches of the 1994 Final Four teams—**Lon Kruger** of the University of Florida, **Mike Krzyzewski** of Duke University, **Lute Olsen** of the University of Arizona, and **Nolan Richardson** of the University of Arkansas, Fayetteville.

Also, three former coaches with ties to the Southwest were honored for their contributions to coaching: Former University of Texas at Austin, University of Texas, Pan American, and Oklahoma City University coach **Abe Lemons**; former University of Houston coach **Guy V. Lewis**; and former Alcorn State University and Texas Southern University coach **Davey Whitney**. Also at the dinner, a representative of the American Cancer Society, which became a partner of the NABC at last year's summit to form "Coaches Against Cancer," predicted the program will raise nearly \$5 million in the coming year for cancer research. Richardson, who lost a teenage daughter to cancer, spoke about his personal commitment to helping raise money to find a cure for the disease.

■ **Donald F. Behrend**, chancellor at the University of Alaska Anchorage, a member of the NCAA Presidents Commission and chair of the Special NCAA Committee to Review Student-Athlete Welfare, Access and Equity, led a panel discussion on legislation regarding student-athlete welfare. He was joined by **William M. Sangster**, director of international programs and faculty athletics representative at Georgia Institute of Technology and a member of the NCAA Council, and **Ronald J. Maestri**, athletics director at the University of New Orleans and chair of the NCAA Professional Sports Liaison Committee.

Behrend highlighted the actions taken by the special committee, including its recommendation to create a standing committee devoted to student-athlete welfare, access and equity. That recommendation, however, was pulled by the committee, Behrend said, because the NCAA Student-Athlete Advisory Committee did not support the measure as it was written. Sangster said the Council is withholding its position on NCAA Convention Proposal No. 2-47 (freshman ineligibility) until it has received reaction from several NCAA committees.

■ **Robert A. Oliver**, NCAA director of legislative services, presented a session on the NCAA Initial-Eligibility Clearinghouse and the difficulties the program has faced in its first year. Oliver said that for the clearinghouse to become as effective and trouble-free as possible, four groups of people would have to share responsibility for the program's success: institutional personnel, high-school guidance counselors, prospective student-athletes and the clearinghouse staff.

■ **Ned Fowler**, men's basketball coach at Tulane University in the early '80s, spoke briefly to coaches about the increasing dangers that gambling has on the integrity of college basketball and intercollegiate athletics.

Fowler described the point-shaving scandal that involved members of his team and the absence of any clues that players were shaving points. "Point shaving or altering the outcome of a game almost is impossible to detect," he said.

"In a daily routine I had with my guys was discussion about sportsmanship, going to class, etc. Not one time did I ever discuss point shaving. It never entered my mind." Fowler encouraged coaches to begin stressing regularly to their players to stay clear of anyone offering them money to alter games.

While he said the scandal was a personal and professional strain, Fowler managed to joke about it. "I don't know who the coach of the year was, but it should have been me," he said. "Even with my players trying to lose games on purpose, we still finished with a winning record."

On a related note, **Robert E. Frederick**, athletics director at the University of Kansas and chair of the NCAA Division I Men's Basketball Committee, announced that the committee has sought the advice of NCAA counsel with regard to a recommendation it forwarded to the Council to deny credentials to the 1995 NCAA Division I Men's Basketball Championship to print media outlets that publish gambling lines.

■ **James E. Delany**, commissioner of the Big Ten Conference, presented a session on the Collegiate Commissioner Association's recommendations regarding an overhaul of the collegiate basketball officiating

system.

Delany said the commissioners group is seeking to obtain more consistency nationally with certain fundamental rules violations, such as traveling and hand-checking.

"I don't think there is a great deal of growth under the current system," he said. "There are 35 conferences (in Division I), and I'm not sure you can get a national consensus. We are suggesting that when we teach (officiating) clinics in November that we arrive at some consistency."

Jim Harrick, men's basketball coach at the University of California, Los Angeles, said he would like to see conferences do away with the notion of "owned" officials. "I think we need to take the label off officials," he said. "Quit calling them Pac-10 or ACC (officials). Just call them officials. They're not my officials. I don't want them to be my officials....I know coaches are paranoid about this. Some teams won't play another team because they say their officials aren't good."

Delany added that he is skeptical about officiating becoming more consistent in all parts of the country until fundamental calls such as traveling are whistled consistently.

"A walk is a walk is a walk," he said. "I think that has to be called. If you want to make a statement that you do not want to call a walk, then let's do that. But unless there is a commitment to change how the game is approached with respect to advantage-disadvantage, I don't think you'll get change."

■ The Division I Men's Basketball Committee presented to coaches its agenda for selection week and how the committee ultimately arrives at determining the 35 at-large participants and how they are seeded along with the 29 automatic qualifiers. The committee outlined the process it undertakes in researching teams, including some discussion on the Rating Percentage Index (RPI) computer program that was created in 1981 and updated last year. The committee also reviewed its mission statement and the process it uses to select and assign officials.

— Ronald D. Mott

Survey

SWAs' roles and responsibilities inconsistent among schools and from division to division

► Continued from page 1

pages 14-16.

Similar lists for Divisions II and III will appear in the October 17 and 24 issues of The NCAA News, respectively.

"There is confusion about the SWA position," said Janet M. Justus, NCAA director of education resources and coordinator of women's issues. "This survey reveals that. Most believe there is a need for this position and that it is beneficial to the athletics community. It's more about who the person is and what she does on campus."

Who the person *shouldn't* be is a male, Committee on Women's Athletics members contend, although institutional-information Form 91-8 (designation of institutional representatives) does provide a place for schools with a female athletics director to name a senior man in athletics administration. Twenty-four schools do just that, thus not designating anyone as their SWA.

The Council Subcommittee to Review the NCAA Official Information and Sports Sponsorship Form, which revised the institutional-information form, intended to allow those schools with female athletics directors the chance to designate another administrator for the purpose of receiving mailings, said Patty Viverito, commissioner of the Gateway Football Conference/senior associate commissioner of the Missouri Valley Conference and chair of the Committee on Women's Athletics. It never intended that person, if male, to serve as the school's SWA.

The Committee on Women's Athletics has discussed asking the NCAA Administrative Committee to change the form's language.

"Unfortunately, there's wording that implies there can be a male SWA," Viverito said. "John isn't a senior woman administrator."

But most disturbing, administrators agree, is the remaining schools that do not have an SWA. Forty-two percent of them indicated that they did not have plans to designate anyone to the position.

"The finding that gave us most pause is the large number of institutions that haven't appointed an SWA," Viverito said. "That finding warrants the most attention."

Although disturbing, the survey results weren't totally unexpected, according to Marilyn McNeil, athletics director at

An education process

Officials note that because the survey spotlights the confusion, and even disagreement, that exists among schools regarding the SWA's role, groups such as NACWAA and the Committee on Women's Athletics must take an aggressive role in better defining the role and purpose of the SWA.

"It's an education process more than anything," McNeil said. "We're starting to get a very clear picture."

The survey reveals, for example, that some schools interpret the definition of the SWA differently. According to NCAA Constitution 4.02.3, the senior woman administrator is defined as "the highest-ranking female administrator involved with the conduct of a member institution's intercollegiate athletics program." Yet some schools with a female athletics director — the University of California, San Diego, for example, where former NCAA President Judith M. Sweet is athletics director — list another woman as the SWA.

Again, Viverito notes, this action is designed to get more women involved in the administrative process and not to disagree with the intent of the SWA definition. Because of that, the Committee on Women's Athletics intends to take a close look at the SWA definition to see if it needs to be modified. If so, the committee could sponsor legislation for the 1996 NCAA Convention to change the definition, and possibly, to mandate the position.

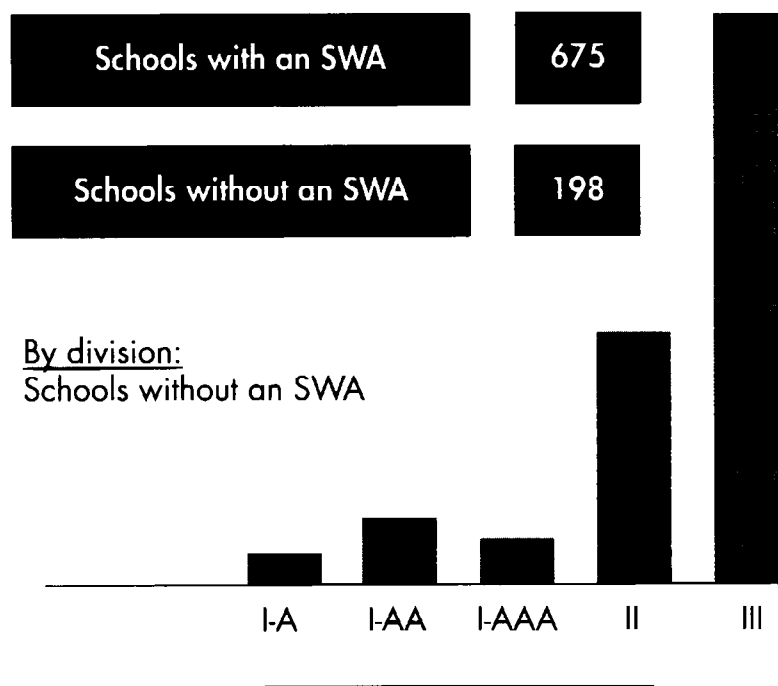
"The definition in the NCAA Manual is not doing a great service to women or the NCAA," Viverito said. "And that definition seems to vary across divisions. In Division I, the role seems to be more defined."

Viverito acknowledges, however, that further definition might prove to be restrictive in some cases.

"Further definition may pigeon-hole women's roles," she said. "We're trying to find solutions to promoting the acceptance of SWAs and further defining their roles in meaningful ways."

See Survey, page 16 ►

Survey says ...



Monmouth College (New Jersey) and past president of NACWAA.

"I don't think anyone was surprised by this," McNeil said. "There are some schools that flat out refuse to recognize women (as decision-makers)."

■ Institutions without a senior woman administrator

Division I-A

Arizona State University
Louisiana State University
Temple University
U.S. Air Force Academy

Division I-AA

Alabama State University
State University of New York at Buffalo
The Citadel
Cornell University
Howard University
Marshall University
McNeese State University
Morehead State University
Southern University-Baton Rouge
Tennessee State University
University of Tennessee at Chattanooga
Virginia Military Institute

Division I-AAA

Gonzaga University
Jacksonville University
Mercer University
University of Missouri, Kansas City
University of North Carolina, Charlotte
Radford University
University of South Alabama
Southeastern Louisiana University
University of Texas, Pan American

Division II

Adams State College*
Alderson-Broaddus College
Ashland University
Barry University*
California Polytechnic State University,
San Luis Obispo*
California State University, Los Angeles*
University of Central Oklahoma
Colorado School of Mines

Concord College
Dowling College
Edinboro University of Pennsylvania
Elon College
Fairmont State College
Florida Institute of Technology
Gannon University
Glenville State University
University of Hawaii at Hilo
High Point University
Indiana University-Purdue University,
Fort Wayne
Keene State College
Kentucky State University
Kentucky Wesleyan College
LeMayne-Owen College
Lees McRae College
Lincoln University (Missouri)
Lock Haven University of Pennsylvania*
Longwood College
Mansfield University of Pennsylvania
Mars Hill College
Mercy College
Mercyhurst College
University of Minnesota, Morris
Mississippi University for Women
Molloy College
Montana State University-Billings
Moorhead State University
Morehouse College
Mount Olive College
New York Institute of Technology
Northeast Missouri State University
College of Notre Dame (California)
Oakland University
Paine College
Philadelphia College of Textiles & Science
Rollins College
College of St. Rose*
Shepherd College
Southampton Campus of Long Island
University*
Sonoma State University
College of St. Francis (Illinois)

Texas Woman's University
West Liberty State College
West Virginia Institute of Technology
West Virginia Wesleyan College
University of Wisconsin, Parkside*

Division III

Agnes Scott College
Albertus Magnus College
Albright College*
Alvernia College
American University of Puerto Rico
Bates College*
Beaver College
Cabrini College
Castleton State College
Cedar Crest College
Chestnut Hill College
Clark University (Massachusetts)
Coe College
Colby College
Colby-Sawyer College*
Cornell College*
University of Dallas*
University of Dubuque*
Eastern Mennonite College
Elmhurst College
Elmira College
Emerson College-Massachusetts College
of Art
Emmanuel College
Fisk University
Fitchburg State College
Fontbonne College
State University College at Fredonia
Greensboro College
Grinnell College
Guilford College*
Gwynedd-Mercy College
Hampden-Sydney College
Hardin-Simmons University
Hilbert College
Hiram College

Hollins College
Hood College
Howard Payne University
Hunter College*
Illinois Benedictine College
Immaculata College
John Jay College
Johnson State College
Keuka College
University of La Verne
Lake Forest College
Lawrence University
Lincoln University (Pennsylvania)
Maine Maritime Academy
State University of New York Maritime
College
Mary Baldwin College
Mary Washington College
Maryville College (Tennessee)
Marywood College
Massachusetts Maritime Academy
Medgar Evers College
Meredith College*
Methodist College*
Milwaukee School of Engineering
Monmouth College (Illinois)
Mount Saint Mary College (New York)
Nazareth College (New York)
Neumann College
College of New Rochelle
City College of New York
North Adams State College
North Carolina Wesleyan College
North Park College
Northwestern College (Wisconsin)
Norwich University
College of Notre Dame (Maryland)
Oberlin College
Olivet College
Parks College of St. Louis University
Pennsylvania State University-Behrend
College
Pine Manor College
State University College at Potsdam

Ramapo College*
Regis College
Rhode Island College*
Rose-Hulman Institute of Technology
Rosemont College
Rowan College of New Jersey*
Rust College
Salem State College
Savannah College of Art & Design
Simmons College
University of Southern Maine
College of St. Benedict
College of St. Catherine
College of St. Elizabeth
St. John's University (Minnesota)
St. Joseph's College (Maine)
St. Mary's College (Indiana)
St. Mary's College (Maryland)
St. Norbert College
Salve Regina University*
Sweet Briar College
U.S. Merchant Marine Academy*
Upper Iowa University
Upsala College
State University of New York Institute
of Technology at Utica/Rome
Virginia Wesleyan College
Washington & Jefferson College
Wells College
Wesley College
Wesleyan College
Western New England College
Wheaton College (Illinois)
Wiley College*
University of Wisconsin, Oshkosh
University of Wisconsin, Platteville
University of Wisconsin, Superior
University of Wisconsin, Stout*
Worcester Polytechnic Institute
Worcester State College*
Yeshiva University
York College (New York)

*One of 26 schools with female athletics directors that designated a senior man in administration on the Designation of Institutional Representatives form. To update or correct information on this list, please contact Shirley D. Comes at the NCAA national office, 913/339-1906.

Division I senior woman administrators*

(Name of SWA, school and SWA's title)

Division I-A

A-B

Dawn Rogers, University of Akron, assistant athletics director, Sarah Patterson, University of Alabama, Tuscaloosa, associate director of athletics, Kathleen La Rose, University of Arizona, associate director of athletics; Gina Bowman, Arkansas State University, assistant director of athletics/SID, Barbara L. Camp, Auburn University, associate director of athletics, Jeanne Nowlin, Baylor University, coordinator of women's athletics, Lynn Holleran, Boston College, assistant director of athletics, Shelley E. Appelbaum, Bowling Green State University, associate director of athletics, Lu Wallace, Brigham Young University, director of women's athletics

C

Christine A. Dawson, University of California, Berkeley, associate director of athletics, Judith R. Holland, University of California-Los Angeles, senior associate athletics director, Diane Milutinovich, California State University, Fresno, associate director of athletics, Marcy Weston, Central Michigan University, associate director women's athletics, Cynthia Oxley, University of Cincinnati, assistant director of athletics, Linda F. White, Clemson University, associate athletics director, Marsha L. Smeltzer, Colorado State University, associate athletic director/student services, Joyce Aschenbrenner, University of Colorado, Boulder, associate athletics director/external

D-G

Jaclyn E. Silar, Duke University, senior woman athletics administrator, Earline C. Leggett, East Carolina University, assistant director of athletics for business, Carole J. Huston, Eastern Michigan University, associate director of athletics, Janice Stocker, Florida State University, associate director of athletics, Ann Marie Lawler, University of Florida, associate athletics director, Bernadette McGlade, Georgia Institute of Technology, associate director of athletics, Elizabeth Murphey, University of Georgia, assistant athletics director

H-L

Martlyn Kaho'ohanohano, University of Hawaii, Honolulu, assistant athletics director, Diane Howell, University of Houston, assistant director of athletics, Karol A. Kahrs, University of Illinois, Champaign, associate director of athletics, Mary Ann Rohleder, Indiana University, Bloomington, compliance coordinator, J. Elaine Hieber, Iowa State University, associate director of athletics, Carol Adolph, Kansas State University, ticket manager/athletics, Betsy G. Stephenson, University of Kansas, associate director of athletics, Judy Devine, Kent State University, associate athletics director, Bernadette Locke-Mattox, University of Kentucky, assistant director of athletics, Mary Kay Hungate, Louisiana Tech University, associate athletics director-academics/compliance, Carole Snyder, University of Louisville, administrative assistant

M

Suzanne J. Tyler, University of Maryland, College Park, senior associate director of athletics, Lynn Parkes, University of Memphis, associate athletic director-women's athletics, Kelly Landry, University of Miami (Florida), assistant director of athletics, Karen L. Womack, Miami University, associate athletics director, Kathy Lindahl, Michigan State University, associate director of athletics, Margaret J. Bradley-Doppes, University of Michigan, associate director of athletics, Samye Johnson, Mississippi State University, assistant athletics director-women's athletics, Kathryn R. Strickland, University of Mississippi, assistant director of athletics, Sarah K. Reesman, University of Missouri, Columbia, assistant director of athletics

N-O

Barbara A. Hibner, University of Nebraska, Lincoln, associate athletics director, Lisa A. Kelleher, University of

Nevada, Las Vegas, assistant director of athletics/Olympic, Angie D. Taylor, University of Nevada, senior woman athletics administrator, Karen Fey, New Mexico State University, associate director of athletics, Linda K. Estes, University of New Mexico, associate director of athletics, Beth Miller, University of North Carolina, Chapel Hill, assistant athletics director, Nora Lynn Finch, North Carolina State University, associate athletics director, Dee Abrahamson, Northern Illinois, interim assistant athletics director, Diane Stark, Northeast Louisiana University, director of women's athletics, Betsy J. Mosher, Northwestern University, associate director of athletics, Melissa L. Conboy, University of Notre Dame, associate director of athletics, Michelle O. Willis, Ohio State University, associate athletics director; Peggy J. Pruitt, Ohio University, senior associate director of athletics, Ann A. Baer, Oklahoma State University, assistant athletics director; Rebecca Buwick, University of Oklahoma, head gymnastics coach, Robyn R. Sharp, Oregon State University, associate director of athletics; Barbara G. Walker, University of Oregon, associate athletics director

P

Denise J. Cohen, University of the Pacific (California), assistant director of athletics, Ellen L. Perry, Pennsylvania State University, associate athletics director, Carol J. Sprague, University of Pittsburgh, associate athletics director; Jomi Comstock, Purdue University, associate director of athletics

R-S

Martha E. Hawthorne, Rice University, assistant athletics director, Rita Kay Thomas, Rutgers University, New Brunswick, senior assistant director of athletics, Jana Doggett, San Diego State University, assistant director of athletics, Carolyn Lewis, San Jose State University, associate director of athletics, Laurie J. Massa, University of South Carolina, Columbia, senior woman athletics administrator, Lisa Love, University of Southern California, associate director of athletics, Jeannie Olson, Southern Methodist University, assistant director of athletics, Helen Grant, University of Southern Mississippi, compliance coordinator, Sherry LeBas, University of Southwestern Louisiana, assistant athletics director, Cheryl L. Levick, Stanford University, associate director of athletics, Doris R. Soladay, Syracuse University, associate athletics director

T

Maxine V. Neill-Johnson, University of Texas-El Paso, associate director of athletics, Lynn Hickey, Texas A&M University, College Station, associate director of athletics, Carolyn Dixon, Texas Christian University, associate athletics director, Jeannine McHaney, Texas Tech University, associate athletics director, Marnie W. Swift, University of Toledo, associate athletics director; Sandy Barbour, Tulane University, senior associate director of athletics, Judy MacLeod, University of Tulsa, associate director of athletics

U-V

Julie Del Gorno, U.S. Military Academy, assistant director of athletics, Mary A. McElroy, U.S. Naval Academy, assistant athletic director/compliance, Mary Ellen Cloninger, Utah State University, associate director of athletics, Fern Gardner, University of Utah, senior associate director of athletics, June Stewart, Vanderbilt University, assistant director of athletics, Sharon McCloskey, Virginia Polytechnic Institute, recruiting coordinator, Jane Miller, University of Virginia, assistant director of athletics

W

Dianne Dailey, Wake Forest University, director of women's athletics, Marcia L. Saneholtz, Washington State University, senior associate athletics director, Marie T. Tuite, University of Washington, senior associate athletics director, Kittle J. Blakemore, West Virginia University, assistant director of athletics, Kathy Beauregard, Western Michigan University, associate director of athletics, Cheryl A. Marra,

University of Wisconsin, Madison, associate director of athletics, Fern Howes, University of Wyoming, coordinator of athletics activities

Division I-AA

A-B

Calli Theisen Sanders, University of Alabama at Birmingham, assistant director of athletics, Shirley A. Walker, Alcorn State University, coordinator of women's sports, Judy Clarke, Appalachian State University, associate director of athletics, Sonja Stewart, Austin Peay State University, assistant director of athletics, Shirley B. Lee, Bethune-Cookman College, executive assistant to the president, Carol Ladwig, Boise State University, director of women's athletics, Averill C. Haines, Boston University, assistant athletics director, Joan Taylor, Brown University, associate director of athletics, Rosalyn K. Ewan, Bucknell University, associate director of athletics, Jona Braden, Butler University, associate director of athletics

C

Alison Cone, California Polytechnic State University, San Luis Obispo, associate athletics director; Judith M. Brame, California State University, Northridge, senior associate director of athletics, Irene Shea, California State University, Sacramento, associate athletics director, Candalene McCombs, Canisius College, director of academic development, Kim Evette Hollins, Central Connecticut State University, assistant director of athletics; Mary Kaufman, University of Central Florida, assistant director of athletics-women's sports, Carol J. Drowota, Charleston Southern University, associate professor of English, Janet Little, Colgate University, assistant athletics director, Merry L. Ormsby, Columbia University-Barnard College, associate athletics director, Patricia Babcock, University of Connecticut, associate director of athletics

D-E

Jo Ann Harper, Dartmouth College, associate athletics director, Caroline B. Price, Davidson College, head tennis coach, R. Elaine Dreidame, University of Dayton, senior associate athletics director, Mary Lamb-Bowman, Delaware State University, women's basketball coach, Mary Ann Hitchens, University of Delaware, associate athletics director, Jean Beiger, Drake University, assistant athletics director, Susan M. Ryan, Duquesne University, director of sports information, Kelly E. Andrews, East Tennessee State University, head women's volleyball coach, Martha Mullins, Eastern Kentucky University, associate director of athletics, Pamela A. Parks, Eastern Washington University, volleyball coach, Linda Crick, University of Evansville, associate director of athletics

F-G

Cynthia Dupont-Jones, Florida A&M University, coordinator of women's athletics, Marianne Reilly, Fordham University, assistant director of athletics, Sherry J. Carter, Furman University, head women's basketball coach, Patricia Thomas, Georgetown University, associate director of athletics, Brenda Carter, Georgia Southern University, senior woman athletics administrator, Patricia C. Bibbs, Grambling State University, coordinator of women's athletics

H-I

Patricia W. Henry, Harvard University, senior associate director of athletics, Cindy Lewis, Hofstra University, director of women's athletics, Ann Zelesky, College of the Holy Cross, senior administrator of women's athletics, Nancy Graziano, Idaho State University, director of student services, Kathy D. Clark, University of Idaho, associate director of athletics, Linda G. Herman, Illinois State University, associate director of athletics, Andrea Myers, Indiana State University, associate director of athletics, Linda Sagnelli, Iona College, director of intramurals

J-L

Sadie Magee, Jackson State University,

instructor/health and physical education, Janet D. Lucas, James Madison University, associate athletics director, Patricia M. Fisher, Lafayette College, assistant director of athletics, Karen Adams, Lehigh University, senior associate athletics director, Brenda Bonheim, Liberty University, women's athletics coordinator

M

Anne McCoy, University of Maine, assistant athletics director, Alison Sexton, Marist College, assistant director of athletics, Elaine Sortino, University of Massachusetts, Amherst, associate director of athletics, Diane Cummings, Middle Tennessee State University, assistant women's basketball coach, Pauline Banks, Mississippi Valley State University, women's athletics coordinator, Joan Martin, Monmouth College (New Jersey), associate athletics director, Susan M. Jacobson, Montana State University-Bozeman, associate director of athletics, Katherine E. Noble, University of Montana, associate director of athletics, Arlise Emerson, Morgan State University, assistant director of athletics; Margaret Simmons, Murray State University, assistant director of athletics

N

Cathy J. Compton, Nicholls State University, head softball coach, Dorothy J. Alston, North Carolina A&T State University, special assistant to the chancellor; Tina Slinker, University of North Texas, head women's basketball coach, Kristin L. Burns, Northeastern University, associate director of eligibility/compliance, Kelly Patton-Woodward, Northern Arizona University, associate director of athletics, Sandra C. Williamson, University of Northern Iowa, associate director of athletics, Denise Dewey, Northwestern State University, softball/volleyball coach

P-R

Carolyn J. Schlie Femovich, University of Pennsylvania, senior associate athletics director, Jocelyn Adams, Prairie View A&M University, head volleyball coach, Amy Campbell, Princeton University, associate director of athletics, Lauren E. Anderson, University of Rhode Island, associate director of athletics, Ruth Goehring, University of Richmond, associate athletics director

S

Brenda Gray, Sam Houston State University, women's coordinator, Malinda Ashcraft, Samford University, volleyball coach, Regina Sullivan, University of San Diego, assistant director of athletics, Joyce Legere, Siena College, assistant director of athletics, Charlene M. Johnson, South Carolina State University, assistant director of athletics, Lana Richmond, Southeast Missouri State University, assistant athletics director, Charlotte West, Southern Illinois University at Carbondale, associate athletics director, Kathryn Berg, Southern Utah University, associate director of athletics, Mary Jo Wynn, Southwest Missouri State University, director of women's athletics, Dana Craft, Southwest Texas State University, associate director of athletics, Deborah M. Polca, St. Francis College (Pennsylvania), associate director of athletics, Kathleen Meehan, St. John's University (New York), senior associate director of athletics, Rosalyn Dunlap-Alia, St. Mary's College (California), assistant athletics director-academic services, Kim E. Culligan, St. Peter's College, assistant director of athletics, Dianne Baker, Stephen F. Austin State University, assistant athletics director for academics

T-V

Marcia Borys, Tennessee Technological University, assistant director of athletics, Milly MacDonell, University of Tennessee at Martin, head volleyball coach, W. Sue Leffall, Texas Southern University, assistant director of athletics, Nance Reed, Towson State University, associate director of athletics, Joyce Sorrell, Troy State University, coordinator of women's athletics, Elise Visscher, Valparaiso University, director of women's athletics, Mary Anne Dowling, Villanova University, associate director of athletics

W-Z

Pamela Roecker, Wagner College, assistant director of athletics, Carol A. Nelson, Weber State University, director-Wildcat Club, Betty J. Peele, Western Carolina University, assistant director of athletics, Kathy Orban, Western Illinois University, associate director of athletics compliance, Pam Herrford, Western Kentucky University, associate director of athletics, Barbara Blosser, College of William & Mary, associate director of athletics, Barbara Chesler, Yale University, associate director of athletics, Pauline N. Saternow, Youngstown State University, associate athletics director

Division I-AAA

A-C

Barbara J. Reimann, American University, associate director of athletics, Van Compton, University of Arkansas, Little Rock, assistant director of athletics, Lisa A. Boyer, Bradley University, head women's basketball coach, Alice Henry, University of California, Santa Barbara, associate athletics director, Petrina Long, University of California, Irvine, associate director of athletics, Mary Alyce Jeremiah, California State University, Fullerton, associate director of athletics, Wanda Watkins, Campbell University, women's basketball coach, Laneigh Clark, Centenary College, softball/volleyball coach, Laura Lageman, College of Charleston, associate director of athletics, Fannie McCullough, Chicago State University, assistant director of athletics, Alice Khol, Cleveland State University, associate director of athletics, Regina S. Markland, Coastal Carolina University, assistant director of athletics, Melissa Fowle, Coppin State College, compliance officer, Mary Higgins, Creighton University, compliance coordinator

D-G

Jean Lent Ponsetto, DePaul University, senior associate athletics director; Patricia Kellstrom, University of Detroit Mercy, business manager for athletics, Tracey Flynn, Fairfield University, assistant director of athletics, Ann Gulino, Fairleigh Dickinson University, Leaneck, associate director of athletics, Katrina McCormack, Florida Atlantic University, sports information director, Mary Alice Manella, Florida International University, assistant director of athletics, Susan A. Collins, George Mason University, associate director of athletics, Mary Jo Warner, George Washington University, senior associate director of athletics, Blaine Hughes, Georgia State University, associate director of athletics

H-L

Jennifer L. Heppel, University of Hartford, assistant athletics director/compliance, Kathleen Klepek, University of Illinois, Chicago, assistant athletics director, Kathleen M. McNally, La Salle University, assistant director of athletics, Dana Chappell, Lamar University, assistant athletics director; Cindy Masner, Long Beach State University, assistant director of athletics; Margaret M. Alaimo, Long Island University-Brooklyn Campus, associate director of athletics, Diane Aikens, Loyola College (Maryland), director of women's programs, Carolyn O'Connell, Loyola University (Illinois), associate director of athletics

M-N

Michelle Sharp, Manhattan College, head women's basketball coach, Tat Shuely, Marquette University, coordinator of women's athletics, Kathy Zerlaut, University of Maryland, Baltimore County, assistant director of athletics, Lisa Jones, University of Maryland, Eastern Shore, softball/volleyball coach; Lynne Phelan Robinson, Mount St. Mary's College (Maryland), assistant director of athletics, Debbie Knight, University of New Orleans, head athletics trainer, Barbara Green, Niagara University, assistant director of athletics, Rebecca Offenbacher, University of North Carolina, head tennis coach,

See Division I SWAs, page 16 ▶

*Does not include those 31 schools that have two separate athletics departments, one for men and one for women. Those programs are not required to list a "senior woman in athletics administration" on the Designation of Institutional Representatives form. To update or correct information on this list, please contact Shirley D. Comes at the NCAA national office, 913/339-1906.

Division I SWAs

► Continued from page 15

Lynne Agee, University of North Carolina, Greensboro, associate athletics director, Pat Howey, University of North Carolina, Wilmington, assistant director of athletics, Lynn Gaziano, Northeastern Illinois University, assistant director of athletics

O-R

Mikki Flowers, Old Dominion University, associate athletics director, Sherry Nolen, Oral Roberts University,

administrative assistant to the athletics director, Roxanne K. Levenson, Pepperdine University, assistant director of athletics, Kathy (Sturdyvin) Scobba, University of Portland, women's athletics coordinator, Patricia Nicol, Providence College, assistant director of athletics, Nancy L. Roberts, Rider University, head women's volleyball coach, Susan Hofacre, Robert Morris College, associate professor of sports management

S

Sandee Hill, University of San Fran-

cisco, associate director of athletics, Amy E. Hackett, Santa Clara University, associate director of athletics, Sue Regan, Seton Hall University, associate athletics director, Barbara Sparks-McGlinchy, University of South Florida, associate athletics director, Barbara Hick, St. Bonaventure University, assistant director of athletics, Irma Garcia, St. Francis College (New York), senior woman athletics administrator, Ellen Ryan, St. Joseph's University (Pennsylvania), assistant athletics director, Lori Flanagan, St. Louis University,

assistant director of Athletics for compliance, Dee Romine, Stetson University, senior woman athletics administrator

T-X

Cathy Beene, University of Texas at Arlington, associate director of athletics, Jane E. Findling, University of Texas at San Antonio, assistant athletics director/development, Sally Guerette, University of Vermont, assistant director of athletics, Kristen L. Davis, Virginia Com-

monwealth University, director of compliance services, Darlene Bailey, Wichita State University, associate director of athletics, Jill Deese, Winthrop University, director, academic services/athletes, Carol A. Hammerle, University of Wisconsin-Green Bay, associate director of athletics, Deanna D'Abbraccio, University of Wisconsin-Milwaukee, compliance coordinator, Peggy Wynkoop, Wright State University, associate director of athletics, Ginger Fulton, Xavier University (Ohio), assistant athletics director

Survey

► Continued from page 14

"The problem is, you can trample on institutional autonomy."

Duties vary widely

The survey also revealed a wide discrepancy in the title and duties of SWAs. The percentage of SWAs who report they are not the highest-ranking woman administrator increases slightly from Division I to Division III, although overall only nine percent reported they were

not the highest-ranking female

Of greater concern is the percentage of women who are either not at the assistant or associate athletics director level, and/or who do not have decision-making responsibilities at their schools. A look at the list of SWAs reveals those positions ranging from athletics directors to lacrosse coaches to ticket managers to secretaries.

Only 18 percent of respondents said they had decision-making

authority, although that percentage jumped to 61 percent when asked if they had combined decision-making and advisory authority.

"The survey tells us that some women, not most, think this is a token position," Justus said. "The main thing is there is not consistency from division to division as to what the SWA's role is."

Other findings of interest

The Committee on Women's Athletics also notes other survey

results of interest:

■ Divisions II and III SWAs are less likely to represent their institution at the NCAA Convention.

■ Division I SWAs reported more satisfaction with the current definition of their role as SWA than the Divisions II and III SWAs.

■ SWAs from all divisions reported having access to their chief executive officers.

■ Most SWAs from all divisions

reported having served as SWA for five or more years and having been involved in college athletics for 20 or more years.

"There's a significant amount of administrative, coaching and teaching experience of those who serve as SWAs," Justus said. "More of those women need to be moving into athletics directors positions."

■ SWAs, particularly at the Divisions II and III levels, have many other duties outside those associated with the SWA position.

Committee notices

► Continued from page 3

Men's and Women's Fencing: Emmanuil Gregory Kaidanov, Pennsylvania State University, appointed to replace David M. Mirahnik, resigned from committee.

Men's and Women's Tennis: Melissa L. Conboy, University of Notre Dame, appointed to replace Ron Stephenson, resigned from committee.

Paul M. Lockwood, University of Oklahoma, appointed to replace Karl Benson, resigned from committee.

Wrestling: Mike Moyer, George Mason University, appointed to replace Thomas G. Hutchinson, no longer at an NCAA

institution.

Joe Dowler, University of Wyoming, appointed to replace David D. Cox, no longer at a Division I institution.

Special committees

Division I Task Force to Review the NCAA Membership Structure: Delete the following: William E. Tucker, Texas Christian University, Michelle O. Willis, Temple University, Gary A. Cunningham, California State University, Fresno.

Add the following: Judith A. Davidson, Central Connecticut University, Christopher Hill, University of Utah, Robert Lawless, Texas Tech University; Lynn Parkes, University of

Memphis

Add the following committee: **NCAA Special Television Committee:** Linda Bruno, Atlantic 10 Conference, Tom Butters, Duke University, Cedric W. Dempsey, NCAA executive director (chair); Charles S. Harris, Arizona State University; John J. Crouthamel, Syracuse University; Robert E. Frederick, University of Kansas. NCAA staff liaisons: Thomas W. Jernstedt, primary; David E. Cawood.

Council subcommittees

Budget Subcommittee: Richard E. Peck, University of New Mexico, appointed as the Presidents Commission representative.

Certification

Division II seeks simpler plan

► Continued from page 1

tuated with minimum intrusion to the institutions and conducted in a cost-efficient manner." The subcommittee noted that for those institutions currently performing a thorough institutional self-study once every five years (as required by the NCAA), the only additional expense would be for the external peer-review team.

The joint subcommittee formed the following guidelines, which the special committee reviewed at its recent meeting:

■ An institution would be required to engage in a full self-study and evaluation of its athletics program (including an external peer review) once every 10 years.

■ An institution would continue to be required to conduct an interim self-study and evaluation (without external peer review) once every five years.

■ The model for reviewing the operation of an institution's athletics program would incorporate the four principles currently being used to evaluate Division I programs (governance and commitment to compliance, academic integrity, fiscal integrity, and

commitment to equity).

The proposal of a 10-year cycle differs from Division I, where a once-in-five-year cycle is in place.

Another area in which the Division II program might differ from Division I involves the number of individuals on a peer-review team. Division I uses four- and five-person teams, including a chief executive officer as chair of the team. At its recent meeting, the special committee expressed a preference for fewer peer reviewers. It has not yet discussed presidential involvement.

Division I developed a comprehensive pilot program before it launched the genuine item, but Division II is working under a tighter timetable, and a pilot program might not be necessary or desirable. In April, the special committee will submit its recommendation to the Presidents Commission and Council. If those groups accept the plan, Division II delegates will vote on it at the 1996 NCAA Convention.

To meet its deadline, the special committee will meet often; one meeting tentatively is scheduled for December, and two more are planned for January. Arend D. Lubbers, president of Grand Valley State University, chairs the special committee.

Legislation

Congress passes gender-equity disclosure act

► Continued from page 3

vides specific information concerning the opportunities and benefits afforded to male and female student-athletes.

Institutions must disclose the number of male and female full-time undergraduate students and list the varsity teams that compete in intercollegiate athletics competition. For each varsity team, the following information must be disclosed:

■ The number of participants, as of the day of the team's first scheduled contest,

■ The total operating expenses attributable to the team, although institutions also may report expenses on a per capita basis for each team (expenditures attributable to closely related teams, such as swimming and diving, may be reported together, provided such combinations are reported separately for men's and women's teams);

■ Whether the head coach (including graduate assistants and volunteers) is male or female and whether the head coach is assigned to the team on a full-time or part-time basis; and

■ The number of assistant coaches (including graduate assistants and volunteers) who are male and the number who are female and whether they are assigned to the team on a full-time or part-time basis.

The following information also must be disclosed, although not on a team-by-team basis:

■ The total amount of money spent on athletically related student aid, stated separately for the men's and women's teams overall, and the ratio of athletically related student aid awarded male athletes to athletically related student aid awarded female athletes;

■ Total recruiting expenditures, stated separately for men's and women's teams overall;

■ The total revenues generated by all men's teams and all women's teams, although institutions also may report revenues generated on a per-team basis; and

■ The average annual institutional salaries of the head coaches and assistant coaches of men's teams, across all sports, and the average annual institutional salaries of the head coaches and assistant coaches of women's teams, across all sports.

If a coach has responsibility for

more than one team and the institution does not allocate the coach's salary by team, the institution is to divide the salary by the number of teams and to allocate the salary among the teams on a basis consistent with the coach's responsibilities. The term "operating expenses" is defined to mean expenditures on lodging and meals, transportation, officials, uniforms, and equipment.

Institutions must compile this information annually for the preceding academic year and disclose it to students and potential students upon request, as well as to the public. Unlike the original version of the legislation, the final version does not require institutions to submit the information to the Department of Education and the secretary of education to compile the data into a report to be submitted to Congress.

The secretary is directed to promulgate regulations to implement the legislation within 180 days after enactment, and each institution is to make its first disclosure report available no later than October 1, 1996.

President Clinton is expected to sign the legislation into law.

HAVE A PHOTO IDEA?

Mail photos (black-and-white preferred) to Jack L. Copeland, Managing Editor, The NCAA News, 6201 College Boulevard, Overland Park, Kansas 66211-2422.

NCAA Record

DIRECTORS OF ATHLETICS

Eugene Doris appointed athletics director at Fairfield. **Thomas J. O'Connor**, athletics director at St. Bonaventure since 1992, named athletics director at George Mason replacing **Jack Kvanetz**, who left the university in August to become athletics director at George Washington. O'Connor also has served as athletics director at Santa Clara and Loyola (Maryland).

ASSOCIATE DIRECTOR OF ATHLETICS

Pete Oliszczak, assistant AD at North Dakota for the past three years, promoted to associate athletics director for internal affairs.

SENIOR WOMAN ADMINISTRATOR

Mary Ann Rohleder, compliance coordinator at Indiana, given additional responsibilities as senior woman administrator. She replaces **Isabella Hutchison**, who will remain with the athletics department there as associate athletics director for special projects.

ASSISTANT DIRECTORS OF ATHLETICS

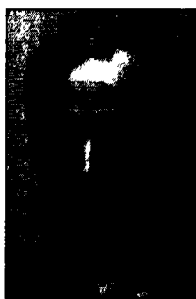
Doug Archie named assistant AD at North Dakota. He previously worked in the athletics department at Toledo, from

Suffolk names Leyden its women's coach

Edward F. Leyden, most recently head women's basketball coach at Tufts, has been named head coach for women's basketball at Suffolk, succeeding **Joe Walsh**, who will remain as associate athletics director and head coach of the university's baseball program.

Leyden spent one season at Tufts and before his stint there served from 1989 to 1993 at Reading Memorial High School in Massachusetts. From 1982 to 1989, he was head coach at Revere High School, also in Massachusetts. He was named coach of the year by the Massachusetts Basketball Coaches Association in 1987 and 1988.

Leyden's coaching background also includes serving as head coach of the Massachusetts AAU and the Bay State Games. He is president of the Eastern New England Umpires Association and is a full-time mathematics teacher at Revere High School.



Leyden

which he earned a law degree in 1993. **Ron Sadler**, vice-president of finance for US Olympic Festival '94, named assist-

ant athletics director at St. Louis.

COACHES

Baseball—**Todd Asalon**, assistant coach

Calendar

October 10-12	Council	Kansas City, Missouri
October 11-13	Men's and Women's Swimming Committee	Kansas City, Missouri
October 19-20	Presidents Commission Committee on Sportsmanship and Ethical Conduct in Intercollegiate Athletics	Boston
October 23-25	Division I Women's Basketball Committee	Minneapolis
October 25	Honors Committee	Kansas City, Missouri
October 27	Division I Task Force to Review the NCAA Membership Structure	Chicago

at Northern Kentucky during the 1993 and 1994 seasons, named head coach at Thomas More.

Baseball assistant—**John Costello**, former player for the St. Louis Cardinals, named pitching coach at St. Louis.

Men's basketball—**Mike McLeese** named at Howard after serving as head coach at Dunbar High School in Washington, D.C., where he won four public-school and three city championships. His teams were 180-40 in seven seasons.

Men's basketball assistants—**Kendall Chambers**, an assistant marketing director at the United States Basketball League,

named assistant coach at Southern Connecticut State, where he played as a guard from 1990 to 1992. He replaces **Walter Esdaile**, who left the staff after seven seasons to become director of economic development for the City of New Haven (Connecticut). **Stanley Cromartie** named assistant coach at Bethune-Cookman after serving as head coach at Edward Waters College in Jacksonville, Florida, for four seasons. **Steve Marcellino** retained on the staff and **Mark Meacham** and **Paul Gorski** appointed as aides at

See NCAA Record, page 18 ►

Polls

Division I Men's Cross Country

The Martin Surfacing top 25 NCAA Division I men's cross country teams through October 4 as selected by the United States Cross Country Coaches Association, with points:

1 Georgetown, 438, 2 Arkansas, 426, 3 Wisconsin, 420, 4 Iowa State, 405, 5 Penn State, 308, 6 Tennessee, 302, 7 Arizona, 292; 8 (tie) Colorado and Oklahoma State, 290, 10 Dartmouth, 275, 11 Michigan, 269, 12 Notre Dame, 232, 13 Montana State, 185, 14 Providence, 180, 15 (tie) Brigham Young and Oregon, 166, 17 (tie) Northern Arizona and Stanford, 149, 19 Kansas, 142, 20 Idaho State, 132, 21 Army, 117, 22 Washington, 93, 23 Boston U., 73, 24 Villanova, 40, 25 Florida, 35.

Division I Women's Cross Country

The Martin Surfacing top 25 NCAA Division I women's cross country teams through October 4 as selected by the Women's Intercollegiate Cross Country Coaches Association, with points:

1 Arkansas, 197, 2 Providence, 186, 3 Villanova, 183, 4 Stanford, 176, 5 Wisconsin, 171, 6 Georgetown, 145, 7 Colorado, 143, 8 Oregon, 141, 9 Michigan, 140, 10 Penn State, 127, 11 Alabama, 120, 12 UCLA, 119, 13 Brigham Young, 115, 14 Nebraska, 90, 15 Wake Forest, 74, 16 North Carolina, 72, 17 Arizona, 71, 18 Notre Dame, 58, 19 Colorado State, 52, 20 William and Mary, 44, 21 Washington, 38, 22 Kansas, 36, 23 Auburn, 21, 24 Boston U., 17, 25 Cornell, 16.

Division II Men's Cross Country

The top 25 NCAA Division II men's cross country teams through October 3 as listed by the United States Cross Country Coaches Association:

1 Adams State, 2 Western State, 3 Edinboro, 4 Lewis, 5 Abilene Christian, 6 Nebraska-Kearney, 7 Mankato State, 8 UC Riverside, 9 South Dakota, 10 Cal Poly Pomona, 11 Central Missouri State, 12 South Dakota State, 13 Emporia State, 14 Southern Illinois-Edwardsville, 15 Cal State Chico, 16 North Dakota State, 17 Southern Indiana, 18 East Stroudsburg, 19 Ashland, 20 Kutztown, 21 Fort Hays State, 22 Cal State Stanislaus, 23 Minnesota-Duluth, 24 Keene State, 25 Augustana (South Dakota).

Division II Women's Cross Country

The top 25 NCAA Division II women's cross country teams through October 3 as listed by the United States Cross Country Coaches Association:

1 Adams State, 2 North Dakota, 3 Cal State Los Angeles, 4 Western State, 5 North Dakota State, 6 UC Davis, 7 Abilene Christian, 8 Edinboro, 9 Emporia State, 10 North Florida, 11 Augustana (South Dakota), 12 Air Force, 13 Massachusetts-Lowell, 14 Seattle Pacific, 15 Millersville, 16 Fort Hays State, 17 South Dakota State, 18 Northwest Missouri State, 19 Springfield, 20 Minnesota-Duluth, 21 Slippery Rock, 22 Humboldt State, 23 Ashland, 24 Central Missouri State, 25 West Georgia.

Division III Men's Cross Country

The top 25 NCAA Division III men's cross country teams through October 4 as selected by the United States Cross Country Coaches Association, with points:

1 North Central, 225, 2 Calvin, 210, 3

Rochester, 203, 4 Rochester Institute of Technology, 184, 5 Wabash, 177, 6 Wisconsin-La Crosse, 172, 7 Wisconsin-Oshkosh, 153, 8 Wisconsin-Stevens Point, 151, 9 Haverford, 140, 10 Carleton, 132, 11 Williams, 127, 12 UC San Diego, 115, 13 MIT, 107, 14 Christopher Newport, 101, 15 Brandeis, 87, 16 Luther, 81, 17 Nebraska Wesleyan, 57, 18 Otterbein, 55, 19 St. Thomas, 53, 20 St. Lawrence, 47, 21 Wisconsin-Whitewater, 39, 22 St. John's (Minnesota), 37, 23 Geneseo State, 22, 24 Wisconsin-Eau Claire, 13, 25 Augustana (Illinois), 12.

Division III Women's Cross Country

The top 25 NCAA Division III women's cross country teams through October 4 as selected by the United States Cross Country Coaches Association, with points:

1 Calvin, 221, 2 Cortland State, 220, 3 Wisconsin-Oshkosh, 206, 4 Hope, 200, 5 Moravian, 186, 6 Geneseo State, 173, 7 Colby, 158, 8 St. Olaf, 154, 9 St. Benedict, 150, 10 UC San Diego, 128, 11 Bowdoin, 115, 12 Wartburg, 112, 13 Williams, 107, 14 Wisconsin-La Crosse, 90, 15 Wisconsin-Stevens Point, 86, 16 St. Thomas (Minnesota), 72, 17 Luther, 70, 18 Rowan, 54, 19 Emory, 50, 20 Washington and Lee, 47, 21 Wisconsin-Eau Claire, 42, 22 Allegheny, 37, 23 Baldwin-Wallace, 23, 24 Haverford, 13, 25 St. Lawrence, 10.

Division I Field Hockey

The top 20 NCAA Division I field hockey teams through October 3, with records in parentheses and points:

1 North Caro. (10-0) 120
2 James Madison (8-0-1) 114
3 Old Dominion (8-2-1) 108
4 Connecticut (10-1) 100
5 Ohio St. (8-1) 98
6 Northeastern (8-1-1) 90
7 Northwestern (7-2-1) 84
8 Ball St. (8-1-1) 78
9 Massachusetts (6-1-2) 72
10 Penn St. (6-3-1) 65
11 Delaware (8-1) 59
12 Iowa (7-3) 52
12 Virginia (7-5) 52
14 New Hampshire (8-3) 42
15 Maryland (6-4-2) 36
16 Boston U. (5-5) 28
17 Princeton (6-1) 26
18 Pennsylvania (5-1-1) 18
19 Boston College (6-3-1) 8
19 Rutgers (4-4-1) 8

Division II Field Hockey

The top five NCAA Division II field hockey teams in each region through October 4, with records:

North: 1 Bloomsburg, 8-0-2, 2 East Stroudsburg, 6-4-1, 3 Long Island-C. W. Post, 4-3, 4 Merrimack, 2-2, 5 Keene State, 3-4-1.

South: 1 Lock Haven, 9-0, 2 Millersville, 9-2, 3 Shippensburg, 6-3, 4 Kutztown, 5-5-1, 5 Catawba, 4-1.

Division III Field Hockey

The top NCAA Division III field hockey teams in each region through October 4, with records:

Northeast: 1 Middlebury, 6-0, 2 Plymouth State, 6-1, 3 Southern Maine, 6-2-1, 4 Williams, 4-1, 5 Bowdoin, 5-1.

South: 1 Mary Washington, 7-1-1, 2 Eastern Mennonite, 7-1, 3 Salisbury State, 6-3, 4 Goucher, 9-1, 5 Lynchburg, 10-0.

North Atlantic: 1 Cortland State, 9-0, 2 William Smith, 11-1, 3 Ithaca, 7-2-1, 4 Brockport State, 9-3, 5 Hartwick, 6-3.

South Atlantic: 1 Trenton State, 6-0, 2 Messiah, 5-3-1, 3 Rowan, 7-1, 4 Swarthmore, 13-0, 5 Gettysburg, 6-2-1.

Great Lakes: 1 Denison, 6-2-1, 2 Wittenberg, 10-2, 3 DePauw, 8-2.

Division I-AA Football

The Sports Network top 25 NCAA Division I-AA football teams through October 2, with records in parentheses and points:

1 Marshall (5-0) 1,656
2 Montana (5-0) 1,581
3 Youngstown St. (4-0-1) 1,523
4 Idaho (4-0) 1,481
5 McNeese St. (4-1) 1,295
6 Central Fla. (4-1) 1,257
7 Troy St. (3-1) 1,182
8 William & Mary (4-1) 1,136
9 Grambling (4-0) 1,033
10 Western Ky. (4-1) 917
11 Northern Iowa (3-2) 913
12 Boston U. (3-1) 900
13 Eastern Ky. (3-2) 750
14 Pennsylvania (2-0) 640
14 Southern-B.R. (3-1) 640
16 Boise St. (5-0) 623
17 Western Caro. (3-2) 618
18 Sam Houston St. (5-0) 578
19 James Madison (3-1) 503
20 Tennessee Tech (3-2) 379
21 Appalachian St. (3-1) 341
22 Alcorn St. (3-2) 290
23 Northern Ariz. (3-2) 271
24 Stephen F. Austin (1-2-1) 201
25 Middle Tenn. St. (2-2) 169

Division II Football

The top 20 NCAA Division II football teams through October 2, with records in parentheses and points:

1 North Ala. (4-0) 80
2 North Dak. St. (4-0) 75
3 Valdosta St. (5-0) 72
4 Pittsburg St. (4-0) 65
5 New Haven (3-1) 62
5 Tex. A&M-Kingsville (3-1) 62
7 Northeast Mo. St. (4-0) 55
8 Portland St. (3-2) 54
9 Ferris St. (4-0) 50
10 Central Okla. (5-0) 44
11 Carson-Newman (4-1) 41
12 Millersville (4-0) 36
13 Central Ark. (4-1) 32
14 Northern Colo. (2-1) 25
14 West Chester (4-1) 25
16 West Georgia (4-1) 15
16 UC Davis (2-2) 15
18 South Dak. St. (4-1) 11
19 Indiana (Pa.) (2-2) 12 1/2
20 Eastern New Mex. (4-1) 5

Division III Football

The top six NCAA Division III football teams in each region through October 2, with records:

East: 1 Rowan, 4-0, 2 Plymouth State, 3-0, 3 Union (New York), 3-1, 4 (tie) Brockport State and Merchant Marine, 3-1, 6 Buffalo State, 3-1.

North: 1 Mount Union, 4-0, 2 (tie) Albion and Allegheny, 4-0, 4 Baldwin-Wallace, 4-0, 5 Augustana (Illinois), 3-0, 6 Wheaton (Illinois), 3-0.

South: 1 Washington and Jefferson, 4-0, 2 Frostburg State, 4-0, 3 Emory and Henry, 4-0, 4 Dickinson, 4-0, 5 Trinity (Texas), 4-0, 6 Guilford, 4-0.

West: 1 Wisconsin-La Crosse, 5-0, 2 Central (Iowa), 4-0, 3 Hamline, 3-1, 4 La Verne, 3-0, 5 Illinois College, 4-0, 6 Wisconsin-Whitewater, 3-1.

Division I Men's Swimming

The preseason top 25 NCAA Division I

men's swimming teams as selected by the College Swimming Coaches Association of America, with points:

1 Michigan, 123, 2 Stanford, 122, 3 Texas, 114, 4 Auburn, 110, 5 California, 104, 6 Southern California, 98, 7 Arizona, 94, 8 Tennessee, 84, 9 Minnesota, 83, 10 Southern Methodist, 79, 11 Arizona State, 69, 12 Miami (Florida), 66, 13 Florida, 65, 14 Georgia, 62, 15 Alabama, 48, 16 Iowa, 46, 17 Ohio State, 42, 18 North Carolina, 35, 19 Harvard, 31, 20 Kansas, 30, 21 South Carolina, 29, 22 Virginia, 22, 23 Nebraska, 21, 24 Michigan State, 18, 25 Iowa State, 8.

Division I Women's Swimming

The preseason top 25 NCAA Division I women's swimming teams as selected by the College Swimming Coaches Association of America, with points:

1 Stanford, 199, 2 Texas, 184, 3 Southern California, 181, 4 Michigan, 174, 5 Auburn, 164, 6 Florida, 154, 7 UCLA, 145, 8 Southern Methodist, 142, 9 Arizona, 131, 10 Northwestern, 123, 11 Arizona State, 117, 12 Georgia, 113, 13 Tennessee, 100, 14 Alabama, 84, 15 North Carolina, 66, 16 Nebraska, 60, 17 Colorado State, 58, 18 South Carolina, 57, 19 California, 53, 20 Minnesota, 38, 21 Wisconsin, 36, 22 Ohio State, 35, 23 LSU, 31, 24 Kansas, 24, 25 Texas A&M, 24.

Division III Women's Tennis

The top NCAA Division III women's tennis teams in each region through October 5 as listed by the Intercollegiate Tennis Association:

East: 1 Williams, 2 Amherst, 3 Trenton State, 4 Bowdoin, 5 Skidmore, 6 Tufts, 7 Middlebury, 8 (tie) Wheaton (Massachusetts) and Colby, 10 Franklin and Marshall, 11 Smith, 12 Vassar, 13 Brandeis, 14 Nazareth, 15 Union (New York), 16 Catholic, 17 (tie) MIT and St. Lawrence.

Midwest: 1 Luther, 2 Wisconsin-Eau Claire, 3 Washington (Missouri), 4 DePauw, 5 Wisconsin-Whitewater, 6 Augustana (Illinois), 7 Aurora, 8 St. Mary's (Indiana), 9 (tie) Wisconsin-Oshkosh and Wisconsin-La Crosse.

South: 1 Mary Washington, 2 Meredith, 3 Hollins, 4 Randolph-Macon Woman's, 5 Methodist, 6 (tie) Sweet Briar and Christopher Newport.

Division I Women's Volleyball

The Tachikara top 25 NCAA Division I women's volleyball teams through October 4 as selected by the American Volleyball Coaches Association, with records in parentheses and points:

1 Stanford (12-0) 1,149
2 Nebraska (14-0) 1,101
3 UCLA (13-1) 1,054
4 Penn St. (14-1) 1,009
5 Pacific (Cal.) (9-2) 924
6 Ohio St. (10-2) 900
7 Hawaii (9-2) 871
8 UC Santa Barb. (13-0) 843
9 Florida (12-2) 815
10 Long Beach St. (9-3) 686
11 Southern Cal. (9-2) 685
12 Notre Dame (15-1) 615
13 Arizona St. (8-4) 608
14 Arizona (7-3) 528
15 Texas (12-2) 510
16 Brigham Young (10-3) 494
17 Colorado (9-4) 388
18 New Mexico (9-3) 332
19 Wisconsin (14-2) 302
20 Idaho (15-1) 282
21 Duke (8-3) 219
22 Washington St. (10-5) 134

23 Georgia (11-4) 80
24 Wyoming (9-5) 63
25 Oregon St. (9-6) 62
25 Houston (6-3) 62

Division II Women's Volleyball

The Tachikara top 25 NCAA Division II women's volleyball teams through October 4 as selected by the American Volleyball Coaches Association, with records in parentheses and points:

1 Cal St. Bakersfield (20-1) 567
2 Cal St. Los Angeles (16-0) 544
3 Northern Mich. (12-2) 518
4 Michigan Tech (13-1) 501
5 Regis (Colo.) (15-5) 476
6 Northern Colo. (12-4) 426
7 Air Force (16-3) 410
8 Neb.-Kearney (12-3) 400
9 Barry (10-3) 346
10 Hawaii-Hilo (12-4) 340
11 Augustana (S.D.) (18-1) 328
12 Portland St. (10-9) 293
13 Minn.-Duluth (11-3) 289
14 Central Mo. St. (18-2) 280
15 Metropolitan St. (11-9) 218
16 Nebraska-Omaha (11-6) 198
17 Fla. Southern (7-5) 193
18 St. Cloud St. (14-4) 186
19 Mankato St. (10-8) 181
20 Tampa (11-5) 147
21 UC Riverside (10-4) 132
22 Cal Poly Pomona (9-6) 110
23 New Haven (14-0) 74
24 North Fla. (N/A) 47
25 Wayne St. (Mich.) (10-2) 36

Division III Women's Volleyball

The Tachikara top 15 NCAA Division III women's volleyball team through October 4 as selected by the American Volleyball Coaches Association, with records in parentheses and points:

1 Washington (Mo.) (24-0) 314
2 Juniata (16-5) 278
3 UC San Diego (12-3) 250
4 Ithaca (27-1) 239
5 St. Olaf (16-2) 221
6 Brockport St. (20-4) 177
7 Trinity (Tex.) (15-4) 173
8 Wis.-Stout (20-1) 143
9 Wis.-Eau Claire (17-2) 124
10 Bluffton (21-6) 111
11 Wis.-La Crosse (11-4) 99
12 Kalamazoo (20-4) 82
13 Stony Brook (N/A) 70
14 Claremont-M.S. (10-7) 50
15 Wis.-Whitewater (12-4) 48

Men's Water Polo

The top 20 NCAA men's water polo teams through October 4 as selected by the College Water Polo Coaches Association, with points:

1 Stanford, 100, 2 Southern California, 95, 3 California, 89, 4 UCLA, 86, 5 Pepperdine, 79, 6 Pacific (California), 74, 7 UC Santa Barbara, 70, 8 UC Irvine, 67, 9 Navy, 60, 10 Air Force, 53, 11 Massachusetts, 52, 12 UC San Diego, 44, 13 Long Beach State, 41, 14 (tie) UC Davis, Princeton and Slippery Rock, 26, 17 Claremont-Mudd-Scripps, 22, 18 Chaminade, 20, 19 Bucknell, 9, 20 Chapman, 8.

NCAA Record

► Continued from page 17

Manhattanville

Women's basketball—Karl Foerster, women's basketball coach at Muhlenberg, will take a leave of absence for the 1994-95 season.

Women's basketball assistants—Brandi Dunigan named assistant women's coach at Alaska Anchorage after serving as assistant women's coach at Eastern Kentucky during the 1993-94 season. Kris Witfill named graduate assistant coach at Duquesne.

Men's golf—Cody Barden, who served for the past three years as the teaching professional at the Tournament Players Club at Sawgrass in Ponte Vedra Beach, Florida, named head men's golf coach at Pepperdine. He succeeds Kurt Schuette, who resigned in July to become head coach at Southern California.

Men's ice hockey assistant—A. J. Baker named assistant hockey coach at Alabama-Huntsville.

Skating assistant—John Estle, head skating coach at Alaska Fairbanks from 1982 to 1990 and most recently head coach and program coordinator for the cross-country skating program at the U.S. Olympic Education Center in Marquette, Michigan, returned to Alaska Fairbanks as an aide.

Women's softball—Mitch Hanson named head coach at North Dakota State, replacing Greg Crowley, who led the program for the past two seasons.

Women's softball assistants—Darren Mueller appointed assistant coach at North Dakota State. Laura Shroyer named assistant women's softball coach at Ohio Northern. Roger Willhite named assistant coach at Houston Baptist.

Swimming assistant—James Sweeney selected assistant swimming coach at Miami (Florida).

Women's tennis assistant—Erica Silbersher named assistant women's tennis coach at Amherst.

Men's track and field—Jim Benick hired as men's track and field coach at Wisconsin-River Falls, where he has served since 1990 as an assistant men's and women's coach.

Men's and women's track and field assistant—Jud Logan, American record holder in the hammer throw and a member of the 1984, 1988 and 1992 U.S. Olympic teams, named assistant coach at Ashland, replacing Ricky Vaughn, who left

this summer to accept an assistant coaching position at UTEP.

Wrestling—John Lowe named head coach at Western Maryland, replacing Paul Johnson, who resigned after five seasons.

Marketing and promotions director—Steve Lyons, corporate marketing director with the Arena Football League's Charlotte Rage in 1992 and 1993, named director of athletics marketing and promotions at Winthrop.

Sports information directors—Tim Glon picked as SID at Ohio Northern, replacing Cort Reynolds, who resigned. Mike Sanders named sports information direc-



Softball: Mitch Hanson
Softball assistant: Darren Mueller

tor at Gettysburg, where he also will serve as assistant to the Orange and Blue executive director. Matthew Weaver named sports information director at Thiel.

Sports information assistant—Joan von Thron, sports information director for four years at American, named assistant SID at North Carolina State, replacing Pam Rakes, who resigned in August.

Assistant ticket manager—Megan Davis, a graduate assistant in the marketing office at West Virginia for the past two years, named assistant ticket manager at Cincinnati.

Trainer—Carolyn Corbeil, senior athletics training intern at Northeastern, named head athletics trainer at Emerson.

Assistant trainers—Dave Carr, head athletics trainer at Concordia (Michigan) for two years while completing a master's degree at Michigan, named an assistant in the training department at St. Louis, replacing Dave Novak. Scott Millar named assistant athletics trainer at Alaska Anchorage after serving as a student trainer there for the past two years.

CONFERENCES

Sharon Pavol named publicity intern at the Mid-Continent Conference. Brian Teter hired as assistant commissioner at the Great Midwest Conference.

Notables

The American Volleyball Coaches Association announced the following playoffs of the week October 3: Paola Paz-Soldan, San Jose State Division I, Kim Hoppes, Michigan Tech Division II, and Amy Albers, Washington (Missouri), Division III.

The USA Volleyball Accreditation Program, a U.S. Volleyball Association training exercise, recently added 11 coaches to the instructor cadre. They are Karen Boyd, American Deaf Volleyball Association, Deitre Collins, assistant coach at South Alabama, Shang Hsiung, USA Volleyball Chesapeake Region, Pat Kendrick, head coach at George Mason, Tina Lockhart, assistant coach at Texas, Lynne McDonald, USA Volleyball North Country Region Director, Kum Oden, two-time Olympian and current USA Volleyball women's national team member, Niels Pedersen, USA Volleyball Great Lakes Region adviser, Stu Sherman, Graceland College, Merlin Thompson, Queens (New York), and Kim Walker, Shaw.

ESPN announced the following staff promotions: Steve Anderson, managing editor since 1990, named senior vice-president for remote production; Rick Barry, vice-president for administration since 1990, named vice-president for administration and production; Rosa Gatt, senior vice-president for communications since 1988, named senior vice-president for communications and employee relations; Reggie Thomas, senior vice-president for operations and engineering since 1988, named senior vice-president for operations, engineering and new technology; John Wildhack, senior vice-president for remote production since 1993, named senior vice-president for programming; and David Zucker, vice-president of programming since 1991, named senior vice-president and assistant general manager of ESPN International.

Etc.

CONFERENCE MEMBERS

Albertus Magnus Daniel Webster,

Endicott, Emerson River and Johnson and Wales announced they are merging to form the Great Northeast Athletic Conference for men's sports. The new league will begin competition effective with the 1995-96 academic year. The president of the league will be Phil Rowe, athletics director at Daniel Webster, and the league's vice-president will be Jim Domaorcki, assistant athletics director at Rivier.

SPORTS SPONSORSHIP

Central Connecticut State announced it is adding women's soccer as an intercollegiate sport beginning with the 1995-96 academic year.

CORRECTION

A chart on Division I initial-eligibility standards in the October 3 issue of The NCAA News contained inaccurate information about financial aid for nonqualifiers under the terms of the proposal made by the NCAA Presidents Commission at its September 27-28 meeting. Legislation for 1994-95 and 1995-96 would be as it is now, however, for 1996-97 and beyond, the square for nonqualifiers should have read "Meets neither qualifier nor partial qualifier standards. Can receive nonathletic institutional aid based on need in the freshman year."

Deaths

Paul Bienz, a former world-record sprinter and an all-American at Tulane, died August 31 in Fort Wayne, Indiana, after a lengthy illness. He was 68. Bienz tied the world record in the 100-yard dash in 1948 with a time of 9.4 seconds. He tied the world mark of 20.3 held by Jesse Owens in the 200 the next year. After serving in the Air Force, Bienz played football and ran track at Tulane. He was a member of the Green Wave's 1949 team that won the Southeastern Conference championship. After turning down an offer from the NFL's Chicago Cardinals, Bienz became a high-school teacher, coach, athletics director and administrator in Fort Wayne. He retired in 1986 as an administrator at Fort Wayne Northrop High School. In 1975, Bienz was inducted into the Indiana track hall of fame.

Lawrence McDermott, former athletics director at Millersville, died recently of natural causes. He was 62. McDermott served as athletics director at the institution from

1969 to 1981 and was a professor at the university. He taught and coached basketball and football at Delmar (Delaware) High School. A graduate of West Chester and Penn State, where he received a master's degree in 1960, McDermott earned a doctorate at Temple in 1969. During his tenure as athletics director, the athletics program at Millersville grew from eight men's and four women's sports to 10 men's and nine women's programs. At the time of his death, McDermott served as a professor of health and physical education at Millersville.

Bob Matheson, a first team all-American football player at Duke in 1966, died September 5 after a long battle with Hodgkin's disease. He was 49. Matheson was a key member of the "No Name" defense that led the Miami Dolphins to three consecutive Super Bowls in the early 1970s. He was a first-round draft pick of the Cleveland Browns and joined the Dolphins in 1971. He remained there through the 1979 season, then returned to his alma mater as an assistant coach. From 1988 to 1990, he worked as an assistant coach at Minnesota. He later worked for a cancer research center in Durham, North Carolina.

Jack Spinks, the first black player from the state of Mississippi to be drafted in the NFL, died September 29 in Jackson, Mississippi, from a stroke. He was 64. Spinks was a running back at Alcorn A&M (now Alcorn State) from 1948 to 1952. He was drafted by the Pittsburgh Steelers in 1953 and later played for the Green Bay Packers, Chicago Cardinals and New York Giants during his seven-year NFL career. During his playing career, Spinks led Alcorn A&M to a 29-11-3 record and three Southern Collegiate Athletic Conference championships. From 1959 to 1985, he served as an assistant coach at his alma mater. In 1992, Alcorn State opened its new \$9 million facility and named it Spinks Stadium, which seats 22,500. In 1985, Spinks was inducted into the Mississippi sports hall of fame.

Clarence Williams, a running back at South Carolina from 1974 to 1976 and later an NFL running back, was shot and killed September 17 while driving with a friend in Columbia, South Carolina. Williams played for the San Diego Chargers from 1977 to 1981 and with the Washington Redskins from 1982 to 1983.

The Market

Readers of The NCAA News are invited to use The Market to locate candidates for positions open at their institutions, to advertise open dates in their playing schedules or for other purposes relating to the administration of intercollegiate athletics. In addition, individuals seeking employment in intercollegiate athletics also are welcome to place positions-wanted advertisements.

Rates: 65 cents per word for general classified advertising (agate type) and \$32 per column inch for display advertising for member institutions (Commercial display advertising is available only to NCAA corporate sponsors, official licensees and members, or agencies acting on their behalf).

Word-counting example: "Position wanted: Retired athletics administrator seeks part-time work. Contact: John P. Doe, 1234 Main Street, Anytown, KS 99999-1234, or call 999/555-5555." (22 words x 65 cents = \$14.30)

Deadlines: Orders and copy for The Market are due by noon Central time six days prior to the date of publication for general classified space and by noon seven days prior to the date of publication for classified display and commercial display advertising. Orders and copy will be accepted by mail or fax.

Copy restrictions: Advertisements that indicate a closing date for applications and nominations must list a date that does not precede the publication date. The NCAA News reserves the right to refuse advertisements that do not comply with this or other restrictions.

For more information, call The NCAA News at 913/339-1906, ext. 3000, or write The NCAA News, 6201 College Boulevard, Overland Park, Kansas 66211-2422, Attention: The Market. To fax an ad, call 913/339-0031.

Positions Available

Commissioner

Northeast-10 Athletic Conference Commissioner: Nominations and applications are invited for the position of commissioner of the Northeast-10 Athletic Conference. The NE-10 Conference consists of 10 Division II institutions located in New England. At the present time, the conference sponsors 13 intercollegiate sports for both men and women. Responsibilities

The commissioner is the chief administrative officer of the conference whose responsibilities include: A) day-to-day operation of the conference; B) enforcement of the constitution, bylaws and sport regulations of the conference; C) oversight of all conference championship tournaments; D) representation of the conference to the NCAA; E) development of strategies to accomplish the goals and objectives of the NE-10. The commissioner will report to the chairman of the NE-10 Presidents Council, a president of a member college. Qualifications: Candidates should possess and demonstrate administrative experience in intercollegiate athletics at the Division II level; experience in media relations and marketing; knowledge of and commitment

to NCAA rules and regulations; leadership skills and business experience; and the ability to work with and support the institutions that comprise the conference. Appointment and compensation: Annual appointment to begin July 1, 1995. The salary range will be commensurate with qualifications and experience but will not include health or retirement benefits. The commissioner will be expected to operate from his/her own residence with office support being provided by the conference. Application Procedure: Applicants are to submit a letter of application, resume, and names, addresses and telephone numbers of three references by December 1, 1994, to Robert E. Burke, Northeast-10 Conference Commissioner, American International College, 1000 State Street, Springfield, MA 01109. The NE-10 is an Equal Opportunity Employer.

Assistant A.D.

The University of Tennessee is accepting applications for the position of Assistant/Associate Director for Community Relations/Career Enhancement. The duties will include facilitating the education of student athletes regarding career choices and placement opportunities. Create network of potential employers for future graduates. Arrange community service projects for student-athletes. Work with athletes who have exhausted their eligibility on degree completion, readmission and other concerns associated with continuing education. Salary commensurate with experience. Three to five years experience in higher education preferred. Bachelor's degree required. Master's preferred. Application deadline: November 1, 1994. Send application and resume to Dr. Carmen Tegano, The University of Tennessee Athletic Department, P.O. Box 15016, Knoxville, TN 37901. Fax number: 615/974-4691. The University of Tennessee is an Affirmative Action/Equal Opportunity Employer.

Academic Counselor

University of Houston Intercollegiate Athletics: The University of Houston invites

applications for the following positions in the Student-Athlete Services Unit of the Athletic Department. Review of applications begins immediately until all positions are filled. Academic Counselor for Football: Advise and counsel student-athletes regarding academic expectations, selection of major course selection, study skills techniques, career planning, and other areas necessary for academic success. Supervise evening study hall and tutoring sessions. Maintain frequent contact with faculty, participate in recruiting activities and monitor academic progress as it relates to eligibility, graduation and quality of student life of football student-athletes in compliance with university, Southwest Conference and NCAA rules. Reports to the coordinator of student-athlete academic services. Qualifications: Advanced degree in guidance and counseling or related field required. Minimum of three years experience in an academic support program for athletes in a collegiate setting. Possess genuine interest and concern for student-athletes and an understanding of their challenges. Ability to motivate, strong communication and organizational skills, and a commitment to the graduation of student-athletes. Knowledge of NCAA rules. Academic Counselor for Learning Development: Develop skill-instructional

materials and programs in the areas of reading, writing, study skills and test-taking strategies for student-athletes. Work with academically at-risk students, provide skill instruction in an individualized program, and arrange and supervise tutoring. Serve as academic counselor to assigned athletic teams. Qualifications: Advanced degree in education, guidance and counseling or related area required. Minimum of three years experience in teaching, advising, counseling and developing learning skills with a diverse population. Possess genuine interest and concern for student-athletes and an understanding of their challenges. Ability to motivate, strong communication and organizational skills, and a commitment to the graduation of student-athletes. Knowledge of NCAA rules. Send application materials to Human Resources, University of Houston, Houston, TX 77204-2770. The University of Houston is an Equal Opportunity/Affirmative Action Employer. Minorities, women, veterans and persons with disabilities are encouraged to apply.

Athletics Trainer

Athletics Trainer/Women's Basketball Coach: Southern Vermont College (E.C.A.C. and provisional NCAA Division III member). Training duties include care, prevention, treatment, rehabilitation of athletes, processing athletic insurance claims, coverage for home athletic events. Women's basketball coach responsible for all facets of the program including recruiting. Qualifications: Bachelor's degree required. N.A.T.A. certification, college-level training, coaching experience preferred. Salary mid-teens. Send cover letter, resume and three references by November 7, 1994, to Personnel Coordinator, Southern Vermont College, Bennington, VT 05201. Equal Opportunity Employer/Affirmative Action.

Business Manager

The Naval Academy Athletic Association (N.A.A.) is accepting applications for the position of Assistant Athletic Business Manager. The responsibilities would

include: Assisting the associate athletic director/business manager/N.A.A. treasurer in every facet of that person's role. Oversee maintenance of general ledger of N.A.A. operations. System administrator of in-house Pascalian computer system. Assist in budget preparation and monitoring of 29 varsity sports. Oversee cash receipts and cash disbursements. Qualifications: Accounting degree, 3-5 years' general ledger experience. Athletic management experience a plus. Basic knowledge of computers is necessary. Spreadsheet experience (Excel or Lotus) a plus. Applications will be accepted until October 21, 1994, or until the position is filled. Please direct all applications to Mr. Steve Orsini, Associate Athletic Director/Business Manager, Naval Academy Athletic Association, 566 Brownson Road, Annapolis, MD 21402. Fax 410/263-7390.

Facilities

Ice Arena Manager: Ferris State University hockey team invites applications for a full-time manager for the Robert L. Ewigleben Ice Arena in Big Rapids, Michigan. This position is responsible for the direction of all areas of ice arena operations. Applicants must possess the following minimum qualifications: Bachelor's degree in business administration or related field; two years of related experience in addition to educational requirements; excellent oral and written communication skills; and ability to interact effectively with all organizational and user groups. Master's degree or significant progress toward same and ice arena management experience are preferred. Salary which includes an attractive benefits package is competitive and commensurate with duties and qualifications. To ensure consideration, send letter of application, resume, transcripts and three letters of recommendation postmarked no later than October 19, 1994, to Ferris State University, Administrative Services, 207 Prudden Building, Christina Weber, 420 Oak Street, Big Rapids, MI 49307-2020. An Equal

The Market

► Continued from page 18

Opportunity/Affirmative Action Employer.

Marketing

Director of Marketing. The Mid-Continent Conference invites applications for the position of director of marketing. Responsibilities: direct the conference's cultivation and procurement of corporate sponsorships, develop and implement yearly marketing program for the conference's men's and women's programs, assist in the coordination of the conference's radio package. Qualifications: bachelor's degree required, master's preferred. Experience in athletics development or sales desired. Must possess excellent oral and written communication skills. Salary: commensurate with experience. Review of applications will begin immediately and continue until the appropriate candidate is identified. Interested persons should send a letter of application, resume and three references to: Dr. Jon A. Steinbrecher, Acting Commissioner, Mid-Continent Conference, 40 Shuman Boulevard, Suite 118, Naperville, IL 60563. The Mid-Continent Conference is an Affirmative Action/Equal Opportunity Employer.

Sports Information

Assistant Sports Information Director. Florida State University seeks qualified candidates for the position of assistant sports information director. This position will produce media guides and game programs and handle publicity and promotion for Florida State volleyball, women's basketball and softball programs. Will assist in home game operations of all F.S.U. sports as assigned by S.I.D. Qualifications: A master's degree in appropriate area of specialization, or a bachelor's degree in appropriate area and two years' experience. Experience in intercollegiate athletics essential. Knowledge of P.C.s essential. PageMaker and Microsoft Word software applications preferred. Ability to write well and evidence of composition of publications essential. Experience in advertising and promotion of sports events essential. Salary: Commensurate with experience. Send two copies of resume and cover letter by October 20 to: F.S.U. Personnel Relations, 216 Williams Johnston Building, Tallahassee, FL 32306-1001.

Sports Information Director. Cornell College has an immediate sports information director opening, a 12-month, half-time position with flexible hours and fringe benefits. Duties include writing news releases and features, assisting in production of athletic publications, compiling and distributing athletic statistics and overseeing athletic reporting. A bachelor's degree with six months of related experience is required. Knowledge of athletics, media relations, sports promotion and computers required. Candidate must demonstrate excellent writing, communications and interpersonal skills and enjoy working with faculty, staff, students and the public. Send letter of application, resume and writing samples by October 21 to: Mary Squiers, Director of Personnel Services, Cornell College, 600 First Street West, Mount Vernon, IA 52314-1098. Cornell is an Affirmative Action/Equal Opportunity Employer and encourages applications from women and minority candidates.

Women's Coordinator

Women's Program Coordinator. Southern Vermont College (E.C.A.C. and provisional NCAA Division III member). Head coaching responsibilities for women's basketball/softball teams, development of women's athletic programs with strong emphasis on recruiting, and sports information. Qualifications: Bachelor's degree required; college-level coaching/playing experience; desktop publishing background highly desirable. Salary: mid-teens. Send cover letter, resume and three references by November 7, 1994, to: Personnel Coordinator, Southern Vermont College, Bennington, VT 05201. Equal Opportunity Employer/Affirmative Action.

Basketball

Southern Illinois University at Carbondale invites applicants for Restricted-Earnings Basketball Assistant Coach. Responsibilities: Coordination of team travel, on-campus recruiting, planning and implementing daily practices, conducting pre-

season and off-season conditioning, scouting, monitoring the academic progress of student athletes, coordinate and direct individual and team summer camps, and daily office administration. Qualifications: Bachelor's degree required (master's preferred). Previous coaching experience required. Applicants should possess excellent communication skills, both written and oral, and have knowledge of NCAA rules and regulations. Salary: \$12,000 (50 percent position). Other employment is possible. Application deadline: October 17, 1994. Send letter of application, resume and three names of references to: Men's Basketball Search Committee, 119 Lingle Hall, Southern Illinois University at Carbondale, Carbondale, IL 62901-6620. (Fax 618/453-5152) Southern Illinois University at Carbondale is an Affirmative Action/Equal Opportunity Employer.

Lacrosse

Head Coach Women's Lacrosse/Assistant Athletic Trainer. Susquehanna University is seeking applications for the position of head coach of women's lacrosse and assistant athletic trainer. The position is full-time, nine-months and may commence by November 15, 1994, or as late as January 15, 1995. Applicants must have experience as a collegiate women's lacrosse player or as a coach at the high-school or college level. N.A.T.A. certification required. Bachelor's degree required, master's preferred. Susquehanna University is a member of the Middle Atlantic Conference and Division III of the NCAA, sponsoring 10 sports for women and 10 sports for men. Please send letter of introduction, resume and three current references to: Don Harnum, Director of Athletics, Susquehanna University, Selingsgrove, PA 17870. Applications accepted through October 24, 1994. Susquehanna University is an Equal Opportunity/Affirmative Action Employer.

Rowing

Mercyhurst College is seeking a Head Rowing Coach. Twelve-month position with benefits. Duties include coaching, boat repair, recruiting and travel. Varsity program includes assistant coaches. Bachelor's degree minimum; master's preferred. Contact: Pete Russo, Athletic Director, Mercyhurst College, 501 East 38th Street, Erie, PA 16546.

Soccer

Head Men's Soccer Coach. Saint Mary's College of Minnesota invites applicants to assume responsibilities of coaching an NCAA Division III men's soccer program. The soccer coach's responsibilities shall include: recruitment of qualified student-athletes, organization or practice of games, scheduling, budget management, and compliance with college, conference and NCAA rules. The position will be combined with additional coaching duties, teaching or administrative responsibilities. Bachelor's degree required and master's preferred. Review of applications will begin on November 1, 1994. Send letter of application, resume and three letters of recommendation to: Don Olson, Saint Mary's College #62, 700 Terrace Heights, Winona, MN 55987-1399. Saint Mary's College is an Equal Opportunity/Affirmative Action Employer.

Women's Soccer Assistant Coach. Louisiana State University invites applicants for the full-time, 12-month position of women's soccer assistant coach. Responsibilities include, but are not limited to: recruiting and assisting in all areas of a Division I soccer program. Qualifications: Bachelor's degree required. Playing experience at the collegiate level is required. Knowledge of NCAA rules. Coaching and recruiting experience at the collegiate level preferred. Applications will be accepted until November 30, 1994, or until suitable applicant is found. Starting date is January 1, 1995. Send cover letter, resume and two letters of recommendation to: Miriam Hickey, Head Soccer Coach, Louisiana State University, P.O. Box 25095, Baton Rouge, LA 70894-5095. Phone 504/388-8769. Louisiana State University is an Equal Opportunity/Affirmative Action Employer.

Assistant Women's Soccer Coach. University of Wyoming. Full-time, 10-month appointment, faculty nontenure track in athletics. Bachelor's degree required. Date of appointment: December 1, 1994. Qualifications: Playing or coaching experience at the club, high-school or collegiate level required. Responsibilities: Assist the head coach in all phases of the program including, but not limited to: recruiting, training, correspondence, travel arrangements, match management and public relations. Adherence to university, W.A.C. and NCAA policies, procedures and

regulations. Salary: Commensurate with experience and qualifications. To apply, send letter of application and resume to: Search Committee, Assistant Women's Soccer Coach, Athletic Department, P.O. Box 3414, University Station, Laramie, WY 82071. Applications must be received by November 8, 1994. An Equal Opportunity/Affirmative Action Employer.

Head Women's Soccer Coach/Assistant Sports Information Director. The University of North Florida, a member of NCAA Division II and the Sunshine State Conference, invites applications for the position of head women's soccer coach/assistant sports information director. The individual selected will be responsible for implementing the initial women's soccer program which will begin play fall 1995. Responsible for directing all aspects of the women's soccer program, including recruiting quality student-athletes, organizing and planning practices and game strategies, coordinating skill and physical development, scheduling, budgeting, planning team travel, monitoring the student-athletes' academic progress, public relations and promotional activities, compliance with university, state, conference and NCAA rules and regulations, assisting the sports information director with media guide production, statistics compilation, media releases and select team travel. Qualifications: Bachelor's degree and three years of high-school level coaching experience or higher required. Closing date is October 20, 1994. Starting date: January 3, 1995. Salary \$21,000. Send letter of application and resume to: Department of Human Resources, The University of North Florida, 4567 St. John's Bluff Road, Jacksonville, FL 32224. U.N.F. is an Affirmative Action/Access/Equal Opportunity Employer.

Squash

Head Men's Squash Coach and Assistant Coach of Tennis. Immediate opening at Hobart College, Geneva, N.Y. Duties: Head coach of squash team which was ranked No. 11 nationally in 1993-94. Previously assistant tennis coaching duties have been part of this position; these responsibilities are negotiable. Qualifications: Bachelor's degree required along with proven squash playing and coaching experience. Nine-month internship appointment. Compensation includes entry-level salary and benefits. Application Deadline: October 25. Contact Mike Hanna, Director of Hobart Athletics, 315/781-3565. Send letter of application, resume, and the names and telephone numbers of three references to: Michael J. Hanna, Director of Athletics, Hobart College, Geneva, NY 14456. Hobart and William Smith Colleges are an Affirmative Action/Equal Opportunity Employer.

Track & Field

Assistant Women's Track & Field Coach. The College of St. Catherine invites applications for a part-time, five-month position as assistant track & field coach starting January 1995. Coaching duties in one or more of the following areas: sprints/hurdles, jumps and throws. Other administrative duties as assigned by the head coach. Bachelor's degree and 1-2 years' coaching experience required. Background in physical education and/or collegiate competition experience preferred. Review of applications will begin October 30, 1994, and continue until position is filled. To apply, send letter of application, resume and the names/phone/addresses of three references to: Human Resources Department, The College of St. Catherine, 2004 Randolph Avenue, St. Paul, MN 55105. For more information, contact head coach Paul Johnson at 612/690-8778. An Affirmative Action/Equal Opportunity Employer.

Phys. Ed./Athletics

Health and Physical Education. S.U.N.Y. Potsdam, the oldest higher education institution in the State University of New York, invites applications for the following positions for the 1995-96 academic year. Lecturer—Coach women's soccer and lacrosse and teach physical education. Qualifications: Bachelor's degree in health and physical education required, master's degree preferred; collegiate coaching experience. Lecturer—Coach men's lacrosse team and teach physical education activities. Qualifications: Bachelor's degree in health and physical education required, master's degree preferred; collegiate coaching experience preferred. Lecturer (pending budgetary authorization)—Coach

women's volleyball and teach physical education activities. Qualifications: Bachelor's degree in health and physical education required, master's degree preferred; background in volleyball; coaching experience preferred. Assistant Professor/Lecturer (pending budgetary authorization)—Develop, organize, manage and instruct courses in outdoor activities and environmental studies on the campus and at Star Lake, the college's conference recreation site. Qualifications: Master's degree in outdoor education or environmental education required, doctorate preferred with teaching experience in an outdoor setting and a strong interest in wellness preferred. To assure full consideration, applications should be received by January 12, 1995. Qualified candidates should send a letter of application, resume, and the names and telephone numbers of at least three references to: Chair, Search Committee for Health and Physical Education, S.U.N.Y. Potsdam, Potsdam, NY 13676. S.U.N.Y. Potsdam is an Equal Opportunity/Affirmative Action Employer committed to excellence through diversity.

Open Dates

Women's Basketball Tournament, 1994-95 CableVision Classic. The University of



ASSOCIATE
DIRECTOR OF
ATHLETICS/SWA
Intercollegiate Athletics

Temple University is inviting applications for Associate Director of Athletics/SWA. This full-time, 12 month position will assist Director in the organization and implementation of all intercollegiate departmental policies and be responsible for the daily supervision of all administrative management personnel who coordinate ten sports including women's basketball. The selected candidate will also administer our Drug, Education, Testing and Rehabilitation (DETER) program and serve as Co-Compliance Coordinator for the NCAA Atlantic 10 and Big East Conference.

Requirements are a Bachelor's degree (Master's preferred) and at least five years of athletic administration experience at the collegiate level. Proven knowledge of NCAA rules, excellent organizational, communication and supervisory skills, and ability to use a PC must be evident in your qualifications.

Qualified candidates should forward vitae with cover letter to: Lisa Stepp, Personnel Services, Temple University, 1601 North Broad Street, Philadelphia, Pennsylvania 19122. FAX: (215) 204-5921. An equal opportunity/affirmative action employer

Nebraska is seeking Division I opponents for its tournament scheduled November 24-25, 1995. The tournament includes a \$2,000 guarantee and ground transportation. For more information, please contact Karin Nicholls at 402/472-6462.

Women's Basketball. Oklahoma State University is seeking Division I teams to compete in a Thanksgiving Tournament on November 24 & 25, 1995. Guarantee available. Call Jack Easley at 405/744-6774 or 405/744-7500.

Football: Division III, Wabash College, Indiana. Seeking a home game for September 9, 1995. Financial guarantee or nonconsecutive years contract. Contact: Greg Carlson, 317/364-4300.

Women's Basketball: University of Wisconsin-Green Bay is seeking Division I team for the 1995 Days Inn Phoenix Classic Tournament December 1 and 2, 1995. Includes guarantee, gifts, awards, and banquet. Contact Emily Bauer, 414/465-2145.

HEAD COACH OF MEN'S SOCCER THE UNIVERSITY OF CHICAGO

Ten-month, nontenure track faculty appointment.

RESPONSIBILITIES: Include instruction in the required physical education program, the coaching and recruiting for the men's soccer program and administrative responsibilities for intercollegiate athletics game management.

QUALIFICATIONS: A master's degree (in physical education or a related field) is preferred. Demonstrated coaching and teaching experience. All candidates also should possess an understanding of the role physical education and athletics play in a rigorous academic setting and an ability to identify and attract outstanding students to the university.

SALARY AND RANK: Commensurate with qualifications. (An outstanding benefits package is provided including an excellent tuition-reimbursement program for faculty children.)

STARTING DATE: February 1, 1995.

THE UNIVERSITY

A member of the University Athletic Association and the NCAA (Division III), the University of Chicago sponsors 20 varsity sports for an undergraduate population of 3,400 students in a unique commitment to the highest academic standards and extensive conference travel and competition.

APPLICATION PROCEDURE

Applications will be reviewed immediately with an appointment forthcoming upon identification of the appropriate candidate. Direct a letter of introduction, resume and three references (with current phone numbers) to:

Mr. Thomas Weingartner, Chair
Department of Physical Education and Athletics
The University of Chicago
5640 South University Avenue
Chicago, Illinois 60637

The University of Chicago is an
Affirmative Action/Equal Opportunity Employer.
Women and minorities are encouraged to apply.

SAN DIEGO STATE UNIVERSITY Director of Athletics

San Diego State University (SDSU) invites applications and nominations for the position of Director of Athletics. SDSU competes at the Division IA level of the NCAA and belongs to the Western Athletic Conference. Currently, the University competes in seven men's and 10 women's sports, and expects to achieve gender equity by 1998.

The successful applicant will be a highly motivated and success-oriented individual who will continue the University's pursuit of excellence in its athletic programs. We require a strong administrator with budget and human resources management skills, a successful entrepreneur, and a community relations proponent. Dedication to the goals of optimum success for student athletes in their academic and athletic endeavors, the integrity of the program, and support of institutional control is essential.

SDSU is a comprehensive university of more than 27,000 students. Part of the 22 campus California State University system, the University is a focal point and major resource for the greater San Diego region, and the Athletic Program is an important link between the University and its supportive community.

A bachelor's degree and a minimum of 5 years of increasing responsibility and success in the administration of athletic programs on the collegiate level is required. Experience in the administration of professional sports or business could substitute for collegiate experience in exceptional cases, if the candidate has a demonstrable knowledge of NCAA standards and regulations.

The Director of Athletics reports directly to the President of the University.

The Search Committee will begin evaluating applications by October 31, 1994. Please forward a letter of interest with resume, or nominations, to:

Chair, Director of Athletics Search Committee
Office of the President
San Diego State University
San Diego, CA 92182-1620
Tel: 619/594-5901 Fax: 619/594-6022
E-mail: anderson_ellene@mailgw.sdsu.edu

SDSU is an Affirmative Action, Equal Opportunity University.

HEAD FIELD HOCKEY & HEAD SOFTBALL COACH

Organize and administer all phases of a competitive Division III Intercollegiate Field Hockey and Softball program with strong emphasis on recruitment and retention. Organize and administer the academic tracking of all student athletes.

Bachelor's Degree required; previous college-coaching experience preferred.

Full time, ten-month, non-tenured track, comprehensive benefit program. Minimum salary of \$32,129.

An accredited State College of New Jersey offering 50 undergraduate and graduate programs, William Paterson College is committed to educational excellence, cultural diversity and community outreach.

Send resume, transcript and three letters of recommendation no later than October 30, 1994 to:

Arthur Eason, Director of Athletics



WILLIAM PATERSON COLLEGE
300 Pompton Road, Drawer NCAA
Wayne, New Jersey 07470

An Equal Opportunity Employer

SPORTS INFORMATION DIRECTOR

You will administer the sports information office and serve as an informational liaison between the department and the Mid-American Conference, the NCAA, and local/regional/national media. Must be able to manage budgets for office and promotional assignments, prepare and edit media guides for revenue-producing sports, sell game program advertisements and sports posters, coordinate statistics and write news releases for athletic teams, maintain radio network coverage and perform other duties as assigned by the athletic director.

Qualifications include a bachelor's degree (master's preferred) in communications, journalism or a related field. Experience in sports information helpful. We offer an attractive salary and a comprehensive benefits package for the qualified candidate. Please send your letter of application, resume and the names of three current references to Mr. Darrell Hedric, Interim Athletic Director, 230 Millett Hall, Miami University, Oxford, OH 45056. Equal opportunity in education and employment. Application deadline is October 17, 1994.

MIAMI UNIVERSITY

■ Legislative assistance

1994 Column No. 36

NCAA Bylaw 15.2.1.4 Fees and related expenses for prospects

Member institutions should note that in accordance with Bylaw 15.2.1.4, it is not permissible for an institution to waive, pay in advance or guarantee payment of the following expenses for a prospective student-athlete, unless such benefits generally conform to institutional policy as it applies to other prospective student-grantees: (1) the institution's processing fee required prior to the admissions office's evaluation of the prospect's application, (2) the orientation-counseling tests fee required of all incoming freshmen, (3) the preadmission academic testing fee, (4) advance tuition payment or room deposit, (5) damage deposits for dormitory rooms, (6) ROTC deposits for military equipment, or (7) any other pre-enrollment fees required of prospective student-grantees. It should be noted that per Bylaw 15.2.1.4.1 (fees rebate), if the prospect enrolls and is awarded financial aid covering institutional fees, the fees described in items 1 through 4 above may be rebated as a part of the institution's regular fees.

During its August 31, 1989, telephone conference, the NCAA Interpretations Committee reviewed the provisions of Bylaw 15.2.1.4 and determined that membership in a select group of incoming students (all of whom apparently will participate in extracurricular activities) does not appear to be an

appropriate standard (under NCAA legislation) to serve as a basis for waiving admissions fees for student-athletes.

Bylaw 12.5.1.1-(b) Institutional promotions

Member institutions should note that in accordance with Bylaw 12.5.1.1-(b), an NCAA institution or recognized entity thereof (e.g., fraternity, sorority or student government organization) may use a student-athlete's name, picture or appearance to support its charitable or educational activities or to support activities considered incidental to the student-athlete's participation in intercollegiate activities, provided the specific activity or project in which the student-athlete participates does not involve cosponsorship, advertisement or promotion by a commercial agency other than through the reproduction of the sponsoring company's officially registered trademark or logo on printed materials such as pictures, posters or calendars. The company's emblem, name, address and telephone number may be included with the trademark or logo. Personal names, messages and slogans (other than officially registered trademark) are prohibited.

During its July 26, 1994, telephone conference, the Interpretations Committee determined that a commercial advertisement that appears in an institutional athletics publication (e.g., media guide, game program) that appears on the same page as the name or picture of a student-athlete with remaining eligibility is not limited to the sponsoring company's officially registered regular trademark or logo, name, address and telephone number, provided

the name or picture of the student-athlete is not included as part of the advertisement. For example, if an institution's football game program has pictures (head shots) of football student-athletes with their names and jersey numbers across the top of a page and the bottom of the same page contains a commercial advertisement, the advertisement may contain more than the sponsors' officially registered trademark or logo, name, address and telephone number, provided the student-athletes' pictures are not included as part of the advertisement.

Please note that items other than institutional athletics publications (e.g., schedule cards, posters, tickets, calendars) continue to be governed by the restriction that only the sponsoring company's officially registered trademark or logo, and name, address and telephone number, may appear on the same page as a picture of a student-athlete with eligibility remaining.

This material was provided by the legislative services staff as an aid to member institutions. If an institution has a question or comment regarding this column, such correspondence should be directed to Nancy L. Mitchell, assistant executive director for legislative services, at the NCAA national office. This information is available on the Collegiate Sports Network.

News quiz answers: 1-True 2-(a) 3-(d) 4-True 5-(b) 6-True 7-(b)

NABC

► Continued from page 13

many constituent groups seem bewildered about the NCAA's legislative process and its resulting rules and regulations. The confusion may be exacerbated, Dempsey said, because many people in intercollegiate athletics administration are accustomed to a finality that is synonymous with athletics competition.

"The frustrating part to most of us is we are used to winning and losing, and there's no winning and losing in the democratic process," he said. "Democracy is based on compromise. When you have extreme positions, it is very difficult to achieve that. You may start here and end up with something less than that."

"The present system is cumbersome. It is awkward. I don't know one group in the Association that is totally comfortable about the Association."

Dempsey encouraged the coaches to become more active on their campuses by expressing their concerns to their chief executive officers and athletics directors. He also urged the coaches to develop allies in the Association, such as the NCAA Student-Athlete Advisory Committee and others, that will assist them in formulating and advancing positions.

"The Student-Athlete Advisory Committee has been the most effective body in the last several years," he said. "Last year they were 6-0 on legislation that they spoke about. You'll find student-athletes to be a very important ally. Understand who the Council members of the Association are. It's important those individuals understand you and what you are trying to accomplish. There are other constituent groups you need to try to bring in."

Communication encouraged

Duke University men's basket-

Coaches do about-face on pro basketball draft rule

HOUSTON — Men's basketball coaches have exercised a 180-degree turn on the professional basketball draft rule that was adopted at the 1994 NCAA Convention.

At the second annual National Association of Basketball Coaches Issues Summit, coaches one after another said NCAA Bylaw 12.2.4.2.1 has proven to be too disruptive to their programs. It was a sharp contrast to the support the coaches expressed last year when the legislation was in the proposal stage.

Bylaw 12.2.4.2.1 allows a student-athlete with athletics eligibility remaining to declare himself or herself eligible for a professional basketball draft and resume his or her athletics eligibility provided the student-athlete declares an intention to return to intercollegiate participation within 30 days after the draft. The student-athlete can apply for the draft and return to intercollegiate competition just once in his or her career.

Ronald J. Maestri, athletics director at the University of New Orleans and chair of the NCAA Professional Sports Liaison Committee, said basketball coaches overwhelmingly favored the legislation last year. According to Maestri, approximately three-fourths of coaches supported the measure.

Now, all that has changed. A straw vote taken at the issues summit indicated that well in excess of 90 percent of the coaches attending now favor revoking the rule.

Why the sudden change?

"You create a problem," said Clem Haskins, head men's basketball coach at the University of Minnesota, Twin Cities. "No. 1, we're all about educating people. You can't convince an 18- to 22-year-old man that he isn't an (NBA draft) lottery pick."

Haskins said while he welcomes Voshon Leonard back to the Gophers squad for the 1994-95 season, he said Leonard's decision to declare for the draft caused a bevy of problems for his staff and team.

"It just opens a large can of worms," he said. "The agents. They're going to get to your kids. It gets out of coaches' hands."

"To say the rule is good for the student-athlete is misleading," said Pat Kennedy, men's basketball coach at Florida State University. "The temptation created by this rule is horrible. The NBA loves the rule because they'll take a kid (as the) 20th, 21st, 22nd pick and sign him next year for less money."

Maestri encouraged the coaches to give the rule another year to provide more time to evaluate its impact. He said he was surprised to learn about the coaches' attitude toward the rule.

"I was surprised by the straw vote," Maestri said. "We'll go back to our committee. We'll discuss it. The (NCAA) Council already has endorsed it. I'd imagine that we would endorse it in January....I think we need to

hear the responses. We will look at this and if we are wrong, we can revisit the issue and change it."

Coaches are concerned that sports agents would attempt to persuade student-athletes who are not necessarily top players to declare themselves eligible for the professional draft, if for no other purpose than to use it as a barometer of their market value.

"There are 30 or 40 kids who didn't come out," said Jim Boeheim, men's basketball coach at Syracuse University. "My guy wasn't even thinking about it until (the agents) got to him and got to his mother."

"The rule caused problems because it opened the idea of applying to the draft to a whole group of who had never seriously considered it before," Kennedy said. "There had to be 20 to 30 kids who were now talking about entering the draft, and that meant dealing with their families and the whole area of agents and advisers."

Twenty underclassmen declared for the draft and nine of them were selected in the first 16 picks. A total of 12 were chosen and two others — Leonard and Charles Claxton of the University of Georgia — took advantage of the new rule and returned to their institutions. The remaining ones were unable to return to their schools because of academic or disciplinary reasons, Maestri said.

— Ronald D. Mott

ball coach Mike Krzyzewski, fourth vice-president of the NABC board of directors, agreed with Dempsey that effective communication between coaches and other constituent groups is critical. However, Krzyzewski noted, those communication lines do not always appear to be open.

"I want to amplify on communication," he said. "There are a lot of different ways to communicate. Talking to administrators cannot be done on every campus."

Krzyzewski also added that the NABC is pleased with its progress in being involved in the legisla-

tive process. He noted that members of the NCAA Presidents Commission, Council, committees and staff attended the issues summit, which is evidence of that improvement.

"We feel very good about where things are going now," he said. "We're seeing more representation on committees. When it pertains to men's basketball, then we should have some representation."

The NABC released a written position on initial-eligibility standards. In it, the group outlined its position on the six Convention proposals and stated its

short-term and long-term goals.

"The Proposition 16 standards which take effect in August 1995 or proposed legislation that increases the required grade-point average in the core curriculum should be delayed for one year," the position said. "The effective date would become August 1996."

The NABC position paper also said the group supports Proposal No. 2-50, a Council measure that would postpone the effective date of Proposal No. 16 and maintain the partial-qualifier definition that was adopted with its enact-

ment at the 1992 Convention. But the NABC position paper adds that it does not support Proposal No. 16 as it currently is structured.

Reggie Minton, men's basketball coach at the U.S. Air Force Academy, said he sees no need to increase initial-eligibility standards for student-athletes since student-athletes graduate at a higher rate than nonathletes.

"The student-athlete is doing better than the student body," Minton said. "I'm not so sure why we are interested in changing the standards."