

The NCAA News



Official Publication of the National Collegiate Athletic Association

September 9, 1991, Volume 28 Number 31

Final revenue checks from 1990-91 delivered

Checks were mailed to Division I institutions August 30 to complete the revenue distribution plan for 1990-91.

A total of \$72,874,699 was distributed to 34 Division I conferences and 16 independent institutions. Division I members received the revenue in five installments:

- Basketball fund, \$31,250,000, mailed April 19. This money was distributed to Division I conferences

Revenue distribution list: Page 3

based upon their teams' performances in the 1985-1990 NCAA basketball tournaments.

- Academic enhancement fund, \$7,375,000, mailed June 28. Each Division I member received \$25,000 to be used for academic programs for student-athletes.

- Needy student-athlete fund, \$2,999,896, mailed August 2. This money was distributed so Division I student-athletes receiving a Federal Pell Grant may apply for a grant to be used in emergency situations. There is no obligation to repay the money.

- Sports-sponsorship fund, \$10,416,673, mailed August 16. Di-

vision I members received money based upon the number of men's and women's sports they sponsored in 1989-90.

- Grants-in-aid fund, \$20,833,130, mailed August 30. This money was distributed among Division I institutions based upon the number of grants-in-aid they awarded to both men and women during 1989-90.

The Special NCAA Advisory Committee to Review Recommendations Regarding Distribution of Revenues developed the plan for distributing the revenue from the Association's new seven-year, \$1 billion television contract with CBS. In 1990, suggestions were solicited from the membership, and 350 responses were made. The special committee's recommendations subsequently were approved by the NCAA Executive Committee.

Besides the five categories for which Division I members received money, \$1 million was distributed among the Division II membership according to a formula devised by the Division II Championships Committee.



Victor M. Royal photo

Football heroes

Former Purdue University and Kansas City Chiefs quarterback Len Dawson presents Doak Walker's Heisman Trophy to Robert E. Sprenger, NCAA assistant executive director for Visitors Center/special projects, during College Football Kickoff '91 activities August 31 at the NCAA Visitors Center. Walker, a three-time all-America at Southern Methodist University, was unable to attend, but hundreds of football fans were on hand to enjoy the presentation of the trophy for display at the center, a concert by marching bands from the University of Kansas and Kansas State University, and other activities.

Another increase pushes membership to 1,056

For the fifth consecutive year, membership in the Association has topped 1,000 and reached an all-time high with a net growth of 21 new active member institutions, conferences, affiliated organizations and corresponding members in the past year.

The new total of 1,056 members represents a two percent increase since last year, the largest increase since 1982. The net growth of 21 new members also is the largest since 1982.

There were actually 40 new members across the four member-

ship categories, but some others dropped their memberships in the past year, changed categories or were reclassified.

Active membership increased by a net 20 institutions. Divisions II and III each went up by nine, and the membership in Division I rose by two. There were two new voting conferences added in the past year, but three nonvoting conferences dropped membership. The number of affiliated organizations remained the same, and corresponding members rose by two.

The totals by membership cate-

gory are 847 active member institutions, 109 conferences, 59 affiliated organizations and 41 corresponding members.

New active members include Division I institution College of Charleston and Division II institutions Wheeling Jesuit College, West Liberty State College, New Mexico Highlands University, Presbyterian College, Lander College, Elon College, Carson-Newman College, Catawba College, Francis Marion College, Wingate College, Gardner-Webb College, Mars Hill College

and Limestone College.

New active members in Division III are State University of New York, College at Old Westbury; York College (New York); Cedar Crest College; Bard College; Rosemont College; Defiance College; Bennett College; Fontbonne College, and Wiley College.

New conference members joining in the past year are the Great Midwest Conference, Peach Belt Athletic Conference, South Atlantic Conference, Capital Athletic Con-

See Another, page 20

In the News

Legislative sessions	2
Committee notices	2
Comment	4-5
CFA survey	5
Football rules	5
Interpretations	5
Football statistics	5-11
Executive Committee	12-15
minutes	12-15
NCAA Record	16-17
The Market	18-19
Briefly	20

Colors

John Mackovic, head football coach at the University of Illinois, Champaign, got into the spirit of the school's recent "Salute to America" when he donned a patriotic shirt at the Fighting Illini's August 31 home game against East Carolina University. More than 2,000 Operation Desert Storm veterans and their families and friends were guests at the game. Other NCAA member institutions around the country sponsored similar events on the football season's opening weekend.



Mark Jones photo

Dreyer joins Council

Dorothy E. Dreyer, assistant professor of speech and faculty athletics representative at Wayne State University (Michigan), has been appointed to the NCAA Council.

She replaces Cheryl Tucker, who is no longer at a Division II institution.

Dreyer has been on the Wayne State (Michigan) faculty since 1969 and has served as faculty athletics representative since 1979. She is a fellow of the American Speech and Hearing Association and currently is vice-president for legislation of the Michigan Speech and Hearing Association. She also serves as legislative counselor for the American Speech and Hearing Association and is a consultant for speech pathology to the Veterans Administration Medical Center in Allen Park, Mich.

The Kent State University graduate also is on boards of directors for Family Care Alternatives, the Detroit Art Institute and the Michigan State Board of Hearing Aid Dealers. Dreyer has a master's degree from

Kent and a Ph.D. from Michigan State University.

She served on Wayne State (Michigan) selection committees for varsity coaches in football (1980), women's basketball (1980) and men's basketball (1982).



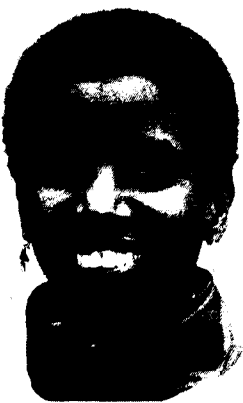
Dorothy E. Dreyer



Donnie Duncan
University of Oklahoma



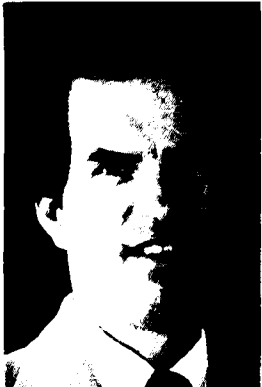
Linda K. Estes
University of New Mexico



Nikki Franke
Temple University



Thomas J. Frericks
University of Dayton



Jeffrey L. Gamber
York College (Pennsylvania)



Paul W. Gikas, M.D.
University of Michigan



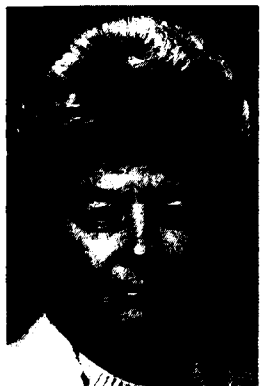
Margaret Harbison
East Texas State University



Alfred R. Mathews Jr.
California State University,
Hayward



Scott Perelman
University of Kansas



Jenepher P. Shillingford
Bryn Mawr College



Robert M. Sweazy
Texas Tech University



Frederick R. Turoff
Temple University

Committee chairs

Twelve new NCAA committee chairs assumed office September 1 or during the summer. They are Donnie Duncan, Special Events Committee; Linda K. Estes, Men's and Women's Skiing Committee; Nikki Franke, Men's and Women's Fencing Committee; Thomas J. Frericks, Division I Men's Basketball Committee; Jeffrey L. Gamber, Division III Men's Basketball Committee; Paul W. Gikas, M.D., Special Planning Committee for Drug Testing; Margaret Harbison, Postgraduate Scholarship Committee; Alfred R. Mathews Jr., Division II Men's Basketball Committee; Scott Perelman, Men's and Women's Tennis Committee; Jenepher P. Shillingford, Field Hockey Committee; Robert M. Sweazy, Eligibility Committee, and Frederick R. Turoff, Men's Gymnastics Committee.

Committee Notices

Member institutions are invited to submit nominations to fill interim vacancies on NCAA committees. Nominations to fill the following vacancies must be received by Fannie B. Vaughan, executive assistant, in the NCAA office no later than September 20.

Division III Women's Volleyball Committee: Replacement for Allen F. Ackerman, formerly at Elmhurst College. Appointee must be from Division III and should be from the Midwest women's volleyball region.

Men's and Women's Swimming Committee: Replacement for Clark Yeager, no longer at California State University, Chico. Appointee must be from Division II and must represent men's swimming.

National Youth Sports Program Committee: Replacement for Stephen Joyner, Johnson C. Smith University, resigned from the committee. Appointee must be from an active NCAA member institution that sponsors a National Youth Sports Program or from a member conference of the Association.

COMMITTEE CHANGES

The following changes should be made in the 1991 NCAA Committee Handbook. Appointments are effective immediately unless otherwise noted.

NCAA Council: Appointed to replace Cheryl Tucker as a Division II member of the Council: Dorothy E. Dreyer, assistant professor of speech and faculty athletics representative, Wayne State University, 555 Manoogian, Detroit, Michigan 48202.

GENERAL COMMITTEES

Committee on Competitive Safeguards and Medical Aspects of Sports: William B. Manlove, Widener University, appointed to replace John M. Williams, formerly at Mississippi College, as the Football Rules Committee representative on the committee.

Committee on Financial Aid and Amateurism:

Robert A. Bowsby, now at the University of Iowa instead of the University of Northern Iowa.

Special Events Committee: Ferdinand A. Geiger, University of Maryland, College Park, appointed to replace John D. Swofford, University of North Carolina, Chapel Hill, resigned. Donnie Duncan, University of Oklahoma, was appointed to replace Swofford as chair.

SPORTS COMMITTEES

Division I Baseball Committee: Jackson S. Leggett, now at Clemson University instead of Western Carolina University.

Division II Women's Basketball Committee: Patty Dick, Washburn University of Topeka, appointed to replace Mary Ortelie, no longer at an NCAA member institution.

Wrestling Committee: James Fallis, Lake Superior State University, appointed to replace Paul Kendle, no longer at an NCAA member institution. P. J. Smith, Pembroke State University, appointed to replace Blaine Gorney, Livingstone College, institution no longer sponsors wrestling. Robert A. Bowsby, now at the University of Iowa instead of the University of Northern Iowa.

SPECIAL COMMITTEES

Special Committee to Review the NCAA Enforcement and Infractions Process: Three new members appointed are Benjamin R. Civiletti, Venable, Baetjer and Howard; Charles B. Renfrew, Chevron Corporation, and Philip W. Tone, Jenner and Block. They replace Morris A. Arnold, Fort Smith, Arkansas, and Robert R. Merhige Jr., Richmond, Virginia.

SUBCOMMITTEES

Council Subcommittee on Eligibility Appeals: Richard A. Johannigmeier, Washburn University of Topeka, appointed to replace Cheryl Tucker.

Compliance directory coming

Division I member institutions are being asked to review information contained in the March 1991 Division I Compliance Coordinators Directory and submit any changes or corrections by September 20 to N. Bea Pray in the NCAA

compliance services department.

The second edition of the directory will be mailed to Division I institutions and conferences in late September. Current listings have been submitted to conference offices for review, Pray said.

Questions/Answers

Readers are invited to submit questions to this column. Please direct any inquiries to *The NCAA News* at the NCAA national office.

Q How many championships will be sponsored by the NCAA in 1991-92?

A The NCAA will sponsor 76 championships—the same as last year.

Legislative Assistance

1991 Column No. 31

Correction—preseason practice dates

In the August 28, 1991, edition of *The NCAA News* (1991 Column No. 30), it was reported that Divisions I and II member institutions that conduct a nontraditional playing season during the fall may not begin permissible preseason practice prior to September 7 or the first day of classes, whichever is earlier. Please note that the above-mentioned restrictions were adopted by the NCAA Council during its July 31-August 2, 1991, meeting and are applicable only to team sports.

In individual sports, Divisions I and II member institutions that conduct a nontraditional playing season during the fall may not begin permissible preseason practice prior to September 7. A member institution utilizing the 144-day traditional playing season option may begin practice either September 7 or the date that permits the institution 21 practice opportunities (see NCAA Bylaw 17.02.13) prior to the institution's first contest.

Core curriculum—remedial courses

Divisions I and II member institutions should note that in accordance with Bylaw 14.3.1.1.1, courses taught at a level below the high school's regular academic instructional level (e.g., remedial, special education, compensatory) may not be considered core courses, regardless of the course content. In this regard, the Council, during its April 15-17, 1991, meeting, determined that courses labeled as "lower level or remedial" by the Texas Educational Agency (TEA) and completed after the spring of 1991 may not be utilized to fulfill the core-curriculum requirements of Bylaw 14.3. Accordingly, based on the most recent information received from TEA, it appears that Correlated Language Arts I-IV, fundamentals of mathematics, consumer mathematics, introductory biology and introductory physical science may not be used as core courses per Bylaw 14.3 if they are taken subsequent to the spring of 1991. Such courses taken during and prior to the spring of 1991 may be utilized as core courses only if they meet the definition of an NCAA core course per Bylaw 14.3.1.1.1 and the high-school principal certifies that the courses are not remedial or lower level as taught at that high school.

NCAA Bylaw 14.2.4.1—determining a season of eligibility

Member institutions should note that in accordance with Bylaw 14.2.4.1, any competition (including a scrimmage with outside competition), regardless of time, during a season in an intercollegiate sport would be counted as a season of competition in that sport. This provision is applicable to intercollegiate athletics competition conducted by a two- or four-year collegiate institution at the varsity or subvarsity level. Member institutions should be aware of a National Junior College Athletic Association (NJCAA) regulation that permits a student-athlete to compete in a preseason scrimmage against outside competition without utilizing a season of competition. Please note that although a student-athlete would not utilize a season of competition under the NJCAA regulation, the student-athlete would utilize a season of competition under NCAA rules. Finally, a student-athlete would utilize a season of competition per Bylaw 14.2.4.1 if the student participates in any scrimmage or other form of practice with outside competition, regardless of whether the institutions involved in the scrimmage or practice are utilizing the Association's playing rules (see Bylaw 17.24).

NCAA Bylaw 15.3.4—gradation or cancellation of financial aid during period of award

During its July 11, 1991, conference, the NCAA Interpretations Committee reviewed the provisions of Bylaws 15.3.4.1 (gradation or cancellation permitted) and 15.3.4.2 (gradation or cancellation not permitted) and determined that a member institution may not set forth athletically related conditions in a student-athlete's financial aid agreement (e.g., financial aid contingent upon specified performance or playing a specified position) that would permit the institution to graduate or cancel the student-athlete's financial aid during the period of the award if such conditions are not satisfied.

This material was provided by the NCAA legislative services department as an aid to member institutions. If an institution has a question it would like to have answered in this column, the question should be directed to Nancy L. Mitchell, assistant executive director for legislative services, at the NCAA national office.

1990-91 NCAA Division I revenue distribution

	Basketball Fund	Grant- in-aid Fund	Sports Sponsorship Fund	Academic Enhancement Fund	Student-athlete Fund	Needy Distribution to Members	Average Per Member
American South Conference Arkansas State, Central Florida, Lamar, Louisiana Tech, New Orleans, Southwestern Louisiana, Texas-Pan American	\$172,414	\$297,813	\$113,885	\$175,000	\$00.00	\$759,112	\$108,445
Atlantic Coast Conference Clemson, Duke, Georgia Tech, Maryland, North Carolina, North Carolina State, Virginia, Wake Forest	3,965,517	1,627,955	554,240	200,000	82,393	6,430,105	803,763
Atlantic 10 Conference Duquesne, George Washington, Massachusetts, Penn State, Rhode Island, Rutgers, St. Bonaventure, St. Joseph's (Pennsylvania), Temple, West Virginia	905,172	976,355	584,607	250,000	96,296	2,812,430	281,243
Big East Conference Boston College, Connecticut, Georgetown, Pittsburgh, Providence, St. John's (New York), Seton Hall, Syracuse, Villanova	3,793,103	669,055	607,386	225,000	106,315	5,400,859	600,095
Big Eight Conference Colorado, Iowa State, Kansas, Kansas State, Missouri, Nebraska, Oklahoma, Oklahoma State	2,500,000	1,269,083	364,432	200,000	114,289	4,447,804	555,976
Big Sky Conference Boise State, Eastern Washington, Idaho, Idaho State, Montana, Montana State, Nevada-Reno, Northern Arizona, Weber State	258,621	355,863	75,922	225,000	83,211	998,617	110,957
Big South Conference Augusta, Charleston Southern, Campbell, Coastal Carolina, Davidson, North Carolina-Asheville, Radford, Winthrop	00.00	38,019	60,738	200,000	57,043	355,800	44,475
Big Ten Conference Illinois, Indiana, Iowa, Michigan, Michigan State, Minnesota, Northwestern, Ohio State, Purdue, Wisconsin	3,491,379	2,544,891	766,825	250,000	154,358	7,207,453	720,745
Big West Conference Cal State Fullerton, Fresno State, Long Beach State, Nevada-Las Vegas, New Mexico State, Pacific, San Jose State, UC Irvine, UC Santa Barbara, Utah State	1,120,690	606,501	349,249	250,000	117,356	2,443,796	244,380
Colonial Association American, East Carolina, George Mason, James Madison, Navy, North Carolina-Wilmington, Richmond, William and Mary	560,345	327,033	364,431	200,000	57,246	1,509,055	188,632
East Coast Conference Central Connecticut State, Delaware, Drexel, Hofstra, Maryland-Baltimore County, Rider, Towson State	258,621	63,135	349,247	175,000	50,499	896,502	128,072
Great Midwest Conference 	00.00	00.00	00.00	00.00	47,229	47,229	—
Ivy Group Brown, Columbia, Cornell, Dartmouth, Harvard, Pennsylvania, Princeton, Yale	258,621	00.00	873,117	200,000	91,594	1,423,332	177,917
Metro Atlantic Conference Canisius, Fairfield, Iona, La Salle, Loyola (Maryland), Manhattan, Niagara, St. Peter's, Siena	301,724	45,551	250,548	225,000	66,241	889,064	98,785
Metropolitan Conference Cincinnati, Florida State, Louisville, Memphis State, South Carolina, Southern Mississippi, Tulane, Virginia Tech	948,276	1,040,702	296,101	200,000	65,629	2,550,708	318,839
Mid-American Conference Ball State, Bowling Green, Central Michigan, Eastern Michigan, Kent, Miami (Ohio), Ohio, Toledo, Western Michigan	474,138	1,411,145	478,317	225,000	108,767	2,697,367	299,707
Mid-Continent Conference Akron, Cleveland State, Eastern Illinois, Illinois-Chicago, Northern Illinois, Northern Iowa, Valparaiso, Western Illinois, Wisconsin-Green Bay	431,034	486,257	311,285	225,000	109,381	1,562,957	173,662
Mid-Eastern Conference Bethune-Cookman, Coppin State, Delaware State, Florida A&M, Howard, Maryland-Eastern Shore, Morgan State, North Carolina A&T, South Carolina State	258,621	223,341	113,884	225,000	162,332	983,178	109,242
Midwestern Conference Butler, Dayton, Detroit, Evansville, Loyola (Illinois), Marquette, St. Louis, Xavier (Ohio)	689,655	39,951	91,109	200,000	52,748	1,073,463	134,183
Missouri Valley Conference Bradley, Creighton, Drake, Illinois State, Indiana State, Southern Illinois, Southwest Missouri State, Tulsa, Wichita State	560,345	571,873	250,547	225,000	125,941	1,733,706	192,634
North Atlantic Conference Boston U., Hartford, Maine, New Hampshire, Northeastern, Vermont	301,724	340,359	379,615	150,000	45,797	1,217,495	202,916
Northeast Conference Fairleigh Dickinson-Teaneck, Long Island-Brooklyn, Marist, Monmouth (New Jersey), Mount St. Mary's (Maryland), Robert Morris, St. Francis (New York), St. Francis (Pennsylvania), Wagner	258,621	36,667	144,254	225,000	57,654	722,196	80,244
Ohio Valley Conference Austin Peay State, Eastern Kentucky, Middle Tennessee State, Morehead State, Murray State, Tennessee State, Tennessee Tech	431,034	225,176	113,884	175,000	85,051	1,030,145	147,164
Pacific-10 Conference Arizona, Arizona State, California, Oregon, Oregon State, Southern California, Stanford, UCLA, Washington, Washington State	1,293,103	1,883,650	523,871	250,000	114,901	4,065,525	406,553
Patriot League Army, Bucknell, Colgate, Fordham, Holy Cross, Lafayette, Lehigh	00.00	103,265	470,724	175,000	48,250	797,239	113,891
Southeastern Conference Alabama, Auburn, Florida, Georgia, Kentucky, Louisiana State, Mississippi, Mississippi State, Tennessee, Vanderbilt	2,413,793	1,684,732	364,432	250,000	142,910	4,855,867	485,587
Southern Conference Appalachian State, Citadel, East Tennessee State, Furman, Marshall, Tennessee-Chattanooga, Virginia Military, Western Carolina	258,621	259,010	159,440	200,000	73,397	950,468	118,809
Southland Conference McNeese State, North Texas, Northeast State (Louisiana), Northwestern State (Louisiana), Sam Houston State, Southwest Texas State, Stephen F. Austin, Texas-Arlington	344,828	446,170	129,070	200,000	110,609	1,230,677	153,835
Southwest Conference Arkansas, Baylor, Houston, Rice, Southern Methodist, Texas, Texas A&M, Texas Christian, Texas Tech	1,206,897	1,234,814	303,694	225,000	82,598	3,053,003	339,223
Southwestern Conference Alabama State, Alcorn State, Grambling, Jackson State, Mississippi Valley, Prairie View A&M, Southern-Baton Rouge, Texas Southern	258,621	202,456	91,110	200,000	184,209	936,396	117,050
Sun Belt Conference Alabama-Birmingham, Jacksonville, North Carolina-Charlotte, Old Dominion, South Alabama, South Florida, Virginia Commonwealth, Western Kentucky	862,069	124,962	75,923	200,000	121,442	1,384,396	173,050
Trans America Conference Arkansas-Little Rock, Centenary, Florida International, Georgia Southern, Georgia State, Mercer, Samford, Stetson, Texas-San Antonio	301,724	75,456	45,553	225,000	52,953	700,686	77,854
West Coast Conference Gonzaga, Loyola Marymount, Pepperdine, Portland, St. Mary's (California), San Diego, San Francisco, Santa Clara	517,241	47,190	68,331	200,000	32,916	865,678	108,210
Western Conference Air Force, Brigham Young, Colorado State, Hawaii, New Mexico, San Diego State, UTEP, Utah, Wyoming	948,276	1,138,225	402,395	225,000	98,341	2,812,237	312,471
Independents Brooklyn, Chicago State, DePaul, Hardin-Simmons, Liberty, Miami (Florida), Missouri-Kansas City, Nicholls State, Northeastern Illinois, Cal State Northridge, Notre Dame, Southeastern Louisiana, Southern Utah State, Wisconsin-Milwaukee, Wright State, Youngstown State	905,172	457,683	288,507	400,000	00.00	2,051,362	128,210
GRAND TOTALS	\$31,250,000	\$20,854,338	\$10,416,673	\$7,375,000	\$2,999,896	\$72,895,907	\$247,105

Comment

A NECESSARY EVIL?

Affirmative action providing women with overdue opportunities

By Kathy DeBoer

A multitude of Division I head women's volleyball coaching jobs have changed hands in the last year. At my last count, the tally was running close to 20. For those of you keeping score in the "battle of the sexes," this year the women clearly are winning. About 75 percent of the new hires have been women.

At the Volleyball Festival, University of California, Santa Barbara, athletics director John Kasser made this comment: "Women's volleyball has taken a leadership role in the area of affirmative action, and we should be proud of it."

In my travels this summer, I have not been struck with our collective sense of pride in this issue. In fact, the emotion I most commonly encounter is anger. Male coaches are angry about reverse discrimination and token interviews; female coaches are angry at being labeled unqualified and opportunistic; both sexes are angry at biased gender stereotypes.

At the risk of sounding preachy, let me share with you my observations on this collective, albeit divisive, anger. The place to start is with the concept of affirmative action and whether it is justified. As I understand it, gender-based affirmative action is an attempt to remedy past discrimination against women in sports by giving preference to them in the hiring process.

In practice, it means an employer selects essential qualifications for a position and gives priority to women meeting those standards. The Acosta and Carpenter literature, a longitudinal study on hiring patterns in women's sports, shows quite clearly that there has been a steady decline in the number of women holding head coaching positions in women's volleyball.

This decline has occurred even though the number of women with college playing experience, an essential qualification for women, continues to increase. Since the number of women holding coaching

About the author

Kathy DeBoer is in her sixth year as assistant athletics director at the University of Kentucky. DeBoer, who doubles as the women's volleyball coach, supervises the operation of administration of nonrevenue sports at Kentucky.



DeBoer

jobs in men's volleyball has not significantly increased, women, as a group, have become under-represented in the volleyball coaching ranks. The current affirmative action crusade is an attempt, at least on the women's side of the athletics equation, to remediate the deficit.

To some, affirmative action is a euphemism for reverse discrimination; that is, it is patently unfair to men. To others, affirmative action is "just" discrimination; that is, it is prejudice with an enlightened purpose.

In the aggregate, affirmative action is the only solution to past discrimination, but, from an individual perspective, it is very unfair. The reason is that the men who benefited from past discrimination against women are not objects of reverse discrimination now; and the women who were disadvantaged by that discrimination are not the ones who are benefiting from affirmative action now.

I do not have any patent solutions to the affirmative action/reverse discrimination debate, but I will provide suggestions for meaningful dialogue.

It is infuriating to me when women pretend that affirmative action does not exist. I have been given two fabulous opportunities—one from Ferris State University, one at the University of Kentucky—to coach college volleyball. In both

cases, I was qualified enough to be offered the job by someone who believed in affirmative action; in neither case was I, on paper, the most qualified applicant. I do not feel guilty about taking those jobs, but now I clearly understand that they carried with them certain obligations.

Women must work long hours to overcome the disadvantage of short or nonexistent apprenticeships. As a 24-year-old head coach, I did a lot of "reinventing the wheel." It is a great way to learn, but it is extremely time-inefficient.

We must face the fact that there are negative stereotypes that are associated with women coaches. Our coaching style, personal life and appearance will be under constant review.

We must be hyper-vigilant, for if we fail, we hurt not only ourselves, but we hurt women coaches collectively.

It is equally infuriating to me to be asked by a male colleague why unqualified women are getting all the jobs. I think the poor chap is probably seeking empathy; he either cannot get into the college coaching ranks or he cannot move from his current situation, and he is convinced it is due to reverse discrimination.

All in all, my discussions about affirmative action and reverse discrimination have made me very suspicious of the word "fair." We so often use it when describing what is good for us in our current situation. Affirmative action is a trade-off of current discrimination against men for past discrimination against women. Total fairness is equal opportunity for all people for all coaching jobs; i.e., men and women competing to coach men and women. We are still a long way from that definition of the word "fair." Until we get there, I think I will join John Kasser in celebrating volleyball's commitment to a partial solution.

Reprinted from *American Volleyball magazine*.

Agent expects money to link pros, colleges

Leigh Steinberg
Sports agent

The Associated Press

"The colleges are going to have to look for new funding sources. One of the first places the colleges will look is pro football and basketball. They will say in football, 'Wait a second. There are no minor leagues. We are paying through scholarships for the development of all of your talent. We think it's reasonable for pro football to support some of the collegiate programs since we are your feeder.'"

"I think we will see a day when there's direct funding from football and basketball straight through to the colleges. There are certainly discussions behind the scenes."

David Stern, commissioner
National Basketball Association

The Associated Press

"Those colleges that are in big-time athletics are in it for their own business reasons. If they're not successful, they should get out of it. Maybe they should return to the goal of educating kids, which really wouldn't be



Opinions

such a terrible thing anyway.

"The sports leagues would make do. If they didn't have quite the stream, they would develop something. More people would go to the Continental Basketball Association, or some substitute."

Paul Tagliabue, commissioner
National Football League

The Associated Press

"I think college football has a tremendous source of income, which is television, and I think colleges basically have to decide how they want to finance themselves. They play football at the level they do for their own reasons, not for our reasons, and they face some serious questions in how they divide up their total finances. I don't see any basic change in the NFL role unless the colleges decide to make some changes."

Bobby Bowden, head football coach
Florida State University

Chicago Tribune

"I think one day there will be a national champion with two losses."

Dick Sheridan, head football coach
North Carolina State University

Newsday

"There are coaches and athletics directors who are out there and who are capable of making the right decisions. Now we have a lot of well-meaning people making suggestions who can do more harm than good."

Don James, head football coach
University of Washington

Newsday

"I feel betrayed. We were asked by our bosses how we could cut back (economically), and they took all of our ideas and instead they cut all these other things, like coaches and scholarships. Once you used to be able to outwork another coach. Now your phone calls are regulated, (recruiting) visits are regulated, everything...."

Athletics programs struggle to keep up with the Joneses

By Pat Forde

Louisville Courier-Journal

Whether a college athletics program is intended to be a for-profit organization or not, running such a broad-based operation is becoming increasingly difficult. How did athletics departments land themselves in this mess?

"I think the big reason," said former University of Michigan athletics director Donald B. Canham, "is empire building."

It goes like this: School A builds a state-of-the-art indoor practice facility. You'd better believe arch-rival School B wants one—needs one.

Athletics directors, most of whom have more of a sports background than a business background, surround themselves with small fiefdoms and budgets in the tens of millions. The bottom line often is brushed off in an effort to remain competitive—and once there is a taste of success, it's hard to return to

fiscal reality.

"Athletics departments make money, live on it, get used to that standard of living, and they don't want to go back," said University of Texas at Austin women's athletics director Donna A. Lopiano.

Canham agrees. He was a member of a consulting group called in to study the restructuring of the University of Maryland, College Park, athletics department after it was shaken to the core by the drug-related death of basketball star Len Bias.

"They were overstaffed by 17 people," Canham said. "That's all over the country. Schools are just overstaffed. They've got PR guys on top of PR guys."

In addition to cutting staff, both Canham and Indiana University, Bloomington, professor Murray Sperber (author of "College Sports, Inc.") suggest that a sharp sword be taken to nonrevenue sports. They question the extensive travel by such teams.

An example: The University of Kentucky's baseball team spent the first three weekends of the 1991 season traveling to Savannah, Georgia; Macon, Georgia, and Birmingham, Alabama. Then the Wildcats took a trip to Phoenix and Tucson for three games in March. The cost of the Arizona trip was \$19,000.

"Schools are playing women's tennis in Honolulu," Canham said. "They say, 'We got free rooms.' Well, sure they got free rooms. But how much did it cost to fly everyone over there?"

"I coached minor sports (track and field at Michigan), but the fact remains: What can you afford? You can't afford a wild schedule and scholarships for everyone. I'm not saying football is more important than track and field, but football pays its own way."

Lopiano disagrees with making minor sports the scapegoat. Citing an NCAA financial report, she notes that football and basketball account

for 51 percent of the average Division I-A school's expenses.

"What good is it going to do hacking away at sports that don't spend a lot of money?" she asked. "That's short-term, and it's short-sighted."

Lopiano and others have proposed widespread cuts in recruiting expenses, staff costs and scholar-

ships. But whatever universities decide to do to ease the athletics budget crunch, the solutions do not promise to be easy.

"I think athletics is in for a tremendous shake-up," Canham said.

Excerpted from an article in the *Louisville Courier Journal*.

The NCAA News

(ISSN 0027-6170)

Published weekly, except biweekly in the summer, by the National Collegiate Athletic Association, 6201 College Boulevard, Overland Park, Kansas 66211-2422. Phone: 913/339-1906. Subscription rate: \$24 annually prepaid; \$15 annually prepaid for junior college and high school faculty members and students; \$12 annually prepaid for students and faculty at NCAA member institutions. No refunds on subscriptions. Second-class postage paid at Shawnee Mission, Kansas. Address corrections requested. Postmaster send address changes to NCAA Publishing, 6201 College Boulevard, Overland Park, Kansas 66211-2422.

Publisher Ted C. Tow
Editor-in-Chief P. David Pickle
Managing Editor Timothy J. Lilley
Assistant Editor Jack L. Copeland

The Comment section of The NCAA News is offered as opinion. The views expressed do not necessarily represent a consensus of the NCAA membership. An Equal Opportunity Employer.

Time for reality in discussing college athletics

By Frederick M. Scaffidi

USA Today's June focus on the relationship of academics to NCAA Division I athletics was both provocative and informative. Many salient points were made and many statistics presented. Excellent commentary was made by writers, coaches, politicians and college professors.

However, as the chairman of a university department closely related to athletics, my perspective of the problems and solutions are quite different than some of those presented. It appears to me that some of the commentaries ranged from naive to deceptive.

Let me illustrate:

Rep. Tom McMillen, the intelligent and outstanding former basketball player who is a noted proponent of Congressional intervention into academic integrity among colleges, has completely oversimplified the graduation rate as being a major criterion of academic success at a Division I institution. If the reporting of graduation statistics became mandatory, the obvious responses of the athletics factories would be to graduate more athletes. This would be accomplished by expanding some of the curricula to such a degree that nearly any course would fit into a given program.

Currently, many universities are moving in that direction by creating loosely constructed majors with such vague names as undergraduate studies, liberal studies, personalized stud-

About the author

Frederick M. Scaffidi is an associate professor at the University of South Alabama and is chairman of the department of health, physical education and leisure services.



Scaffidi

ies, etc. This obviously will thwart the NCAA's intention of having students declare a legitimate major by the beginning of the junior year.

Also, a potentially erroneous assumption is that a school with a low graduation rate is somehow neglecting the needs of its athletes. This may not always be the case. It is possible that a school with a low rate does not, as a rule, fall prey to giving favors to ill-equipped, revenue-sport athletes. If that is true, should the faculty be commended for its integrity rather than criticized for a lack of concern?

Dale Brown, the loquacious and wily coach of the Louisiana State University basketball team, spends a great deal of time bragging about how athletes have a higher graduation rate than nonathletes. This is rarely true when comparing only basketball and football athletes with nonathletes, as the USA Today sur-

vey indicates. Putting tennis players, swimmers, golfers, etc., into the pool completely distorts the intent of examining the big-money sports.

Also, I doubt the public is aware of the highly organized academic advising present at most athletics factories. Well intentioned but naive academic advisers coddle the athletes by helping them register, drop courses gain incomplete grades to find a convenient major. Special tutoring programs also are available. If nonathletics students, who often work or raise families, were given that kind of attention, the non-athletics graduation rate likely would be significantly higher.

My experience also tells me that if special attention were not given to athletes, the grade-point-average gap between the revenue-sport athletes and nonathletes would be considerably wider.

Thomas DiBacco, the American University historian, places much of the blame on the coaches. While it is easy to see that many big-time coaches resemble a combination of military man, politician and used-car salesman, it is patently unfair to place the major blame on them. They are lured by boards of trustees and prodded by administrators to do one thing: win. The method is not normally important.

The rhetoric heard from athletics directors and university administrators about ethics and academic soundness is generally misleading. The easiest way to avoid confronting problems in big-time athletics is

never to look for them. Planned ignorance presents a viable escape route for an administrator if the "can of worms" opens.

One of the most sound commentaries that I read came from Rick Wolff, the editor of the magazine parody, Sports Illustrated. He suggested that we stop the pretention that all athletes must graduate or even take academic courses. The integrity of institutions of higher learning would be better if the constant subversive pressure to pass athletes was missing.

I concur entirely! We must come to grips with the reality that should be obvious. Big-time football and basketball have two major purposes: They attempt to make money, and they serve as a measure of self esteem for a community or an entire state. There is little, if any, connection with big-time athletics and true academic purpose.

If student-athletes were not required to enroll in a graduation track but could opt for a developmental one, a great deal of pride could return to the academic sector. No longer would athletics departments feel pressure to coerce anyone to keep athletes eligible. Directors of admissions could regain a great deal of pride.

It is interesting to watch some coaches attack the NCAA, the organization that represents their interests. They probably are well aware that the NCAA's philosophy, which suggests that true academic

integrity is possible in Division I football and basketball, is unreasonable. This lack of reality is the major reason that fund-raisers/coaches must bend the rules to attract the best athletes. While there are many quality student-athletes, it should be apparent that the numbers game demands the recruiting of less academically qualified athletes.

I would be remiss to criticize without suggestions for change. Reality therapy is past due in Division I institutions. Graduation rates should not be the measuring stick unless a nongraduation option is available. Also, real athletics review must be undertaken by the individual institutions. Rather than administrators hand-picking athletics boards or committees, the selection should come from the institution's faculty-representative body via normal election procedures.

The suggestion that Federal legislation will help is doubtful. Far too many politicians are fans as well as legislators. Lobbying pressures will create an atmosphere of mistrust.

The NCAA must face the realities of the athletics monster present in Division I sports. Decorating the truth with superficial solutions merely wards off an interested and poorly informed public.

Frederick M. Scaffidi is associate professor/chairman of the department of health, physical education and leisure services at the University of South Alabama.

Why the hurry on football poll?

By Gene Frenette
Florida Times-Union

All summer long, Bobby Bowden could see the lights of this upcoming train. There was no stopping it, and he knew from experience that not facing this problem head-on could only make life harder on his Florida State University football program.

So Bowden did what many coaches occasionally do when presented with a No. 1 ranking at the least meaningful time of the season. He laughed it off.

"Yeah, my tombstone is going to read: 'August Coach of the Year,'" Bowden said.

Really, there's no bigger joke in college football than the preseason poll, a crystal ball The Associated Press has provided since 1950. The recent unveiling of Florida State as the No. 1 team is no exception.

Florida State no more deserves to be first than the University of Miami No. 3 or the University of Florida No. 5 or Georgia Institute of Technology No. 8. The Seminoles shouldn't even be listed. Nor should anyone else because, contrary to what people think or conveniently forget, the preseason poll carries too much weight in deciding where teams actually finish.

No poll is held in higher regard than AP, not so much because of the voters (sportswriters, sports-casters) as the fact its tradition goes back to 1936. For the initial 14 years, the first AP poll didn't come out until early October, after teams had already played two or three games.

Tired as you may be of hearing how things were done better in the old days, that system was far more efficient than trying to pick teams in August based on reputa-

tion and number of returning starters. Why should Florida State or anyone be given the No. 1 ranking in August? The last time the Seminoles had it, Miami (Florida) shoved it back so far down Florida State's throat (31-0) that Deion Sanders was forced to stop bragging for two whole days.

Four times in the last 10 years the preseason No. 1 was removed from that perch in its opening game. Brigham Young University

Preseason polls should be abolished. It's absurd to cast judgment on teams before the ball is even snapped....

did it to Miami (Florida) last season, preceded by No. 1 tumbles by Florida State in 1988, Auburn University in 1984 and the University of Michigan in 1981.

Trendy as it is for coaches to belittle a No. 1 ranking as the kiss of death, it's just a self-defense mechanism, a way of cushioning the fall in the event of a loss. No coach wants to emphasize the obvious — being No. 1 is the easiest position from which to wind up the national champion. You don't need anybody above you to lose because there is nobody above you.

"I still think it's easier to slip up on a national championship than to come out and hold on to one from the start," said Bowden.

Maybe, but it's getting tougher.

No unranked team has finished No. 1 since Brigham Young pulled it off in 1984, probably the most controversial final ranking in the last decade.

What would happen if Florida State was ranked 15th instead of first? That means the Seminoles probably would have to go 11-1, maybe 12-0, plus win their bowl game to have a shot at No. 1. The only reason Colorado won it all last season at 11-1-1 is because it started out high enough (No. 5) in the preseason to recover. Georgia Tech began the season 34th in the eyes of AP voters. Consequently, it finished No. 2 at 11-0-1 simply because Georgia Tech's inferior reputation (and schedule?) forced it to make a longer climb.

Bowden can stiff-arm that No. 1 ranking all he wants. He can moan about the pressure of fulfilling gargantuan expectations, about the comeuppance Miami (Florida) gave Florida State when it revealed in its own No. 1 hype three years ago. The fact is, other than won-lost record, preseason rankings have the greatest bearing on where a team finishes. The higher a team is positioned in August, the higher it's likely to be in January.

Preseason polls should be abolished. It's absurd to cast judgment on teams before the ball is even snapped, especially since those same rankings ultimately decide the national champion.

But as long as Florida State must play within this system, don't gripe about being No. 1 in August. As things stand now, the Florida State-Michigan loser may still have a better shot than a lot of previous national champions at finishing No. 1.

Don't kid yourself, Bobby. Where a team starts does matter.

Letter to the Editor

Baseball can't be a hit when it's out of season

We as college baseball coaches and athletics directors need to wake up. According to a Sports Illustrated poll, 52 percent of the American public is interested in pro baseball, second only to a 60 percent interest in football.

College football interests only 40 percent, pro basketball 34 percent and 32 percent college basketball. Yet those three sports are bringing in literally millions of dollars from gate receipts and television contracts.

Notice the correlation between pro football and college football. Then notice the correlation between pro basketball and college basketball.

Notice that pro baseball is the second most interesting sport to Americans (even though its popularity has dropped seven percent in the last five years) and that college baseball is not even interesting enough to be included in the survey. It's somewhere below bowling and auto racing.

Do you think we may be doing something wrong?

You can't tell us coaches that the American public would not like the rah, rah of college baseball competition just as they love the rah, rah of college football and basketball. It's obvious it isn't our sport that's wrong.

What's wrong? This question has many answers, but without a doubt, the most obvious answer is that we are trying to play the sport at the wrong time of year. The sport needs to be played when baseball is supposed to be played, pure and simple.

The sports calendar should be August to November for football, November to March for basketball and April to August for baseball. Do away with the archaic idea that we must jam all the three major sports into the nine-month school calendar. Our sport is not designed to be played in cold, wet weather.

All baseball coaches and athletics directors should get a copy of Gene Stephenson's (Wichita State University coach) and Gary Ward's (Oklahoma State University coach) proposals to move college baseball to the right time of the year. Also, our leaders should approach NBC and ABC. They have no baseball available to them since ESPN and CBS have long-term contracts with the Major Leagues. The money ABC and NBC would pay college baseball could easily offset the cost of moving into the summer months.

The big revenue producer remaining to college athletics directors that is completely untapped is baseball. But to make it a revenue producer, we must move it to the time that the fans want it. Case in point: There have been several attempts to move pro football and pro basketball into the summer months — the time normally reserved for baseball. The American public simply will not have it, nor will they support it.

Let's wake up. We are missing the boat.

Hill Denson
Baseball coach
University of Southern Mississippi

Football survey reveals attention to education

A College Football Association survey of 2,957 Division I-A football student-athletes reveals that 89 percent of those responding say their primary reasons for attending college are to gain an education.

Only eight percent of those surveyed cited preparation for professional sports as their principal motivation for attending college.

The survey was conducted in the spring, a time of year that generally attracts fewer seniors. Of those responding, 30 percent were first-year players, 27 percent second-year players and 25 percent third year. Eighteen percent were fourth- or fifth-year players. Players from 54 institutions were surveyed.

Asked why they played the game, 65 percent said they did because they enjoyed it or because of the competitive challenge. Eleven percent said they pursue college football because of a desire to play professionally. Twenty percent said they played because college football provided them with grant-in-aid assistance that aided their education. Asked if they would have attended college if they didn't play football, 84 percent said they would have.

The most popular major was business (31 percent), followed by social sciences (20 percent), arts and humanities (11 percent), and communications (10 percent).

Asked to rate their reasons for attending a particular institution, 93 percent said the football program was "very important" or "important" while 92 percent said an institution's academic reputation was very important or important. Eighty-six percent said the coach was significant. Other factors, in order, were financial aid, specific academic offerings, location and parents' preference. Of the individuals affecting college selection, 28 percent said their mothers were most influential while 24 percent cited their fathers.

Other results from the survey:

Academics

Nineteen percent had high-school grade-point averages between 3.500 and 4.000, while 31 percent were between 3.000 and 3.500. Forty-six

CFA survey results

Selected results from a College Football Association survey of 2,957 football players at 54 CFA members:

Primary reasons for attending college		Final high school		Benefits of playing college football	
Gain education	89%	3.500-4.000	19%	Free education	23%
Prepare for pro sports	8	3.000-3.500	31	Responsibility	20
Other	3	2.500-3.000	26	Relationship skills	15
		2.000-2.500	20	Dealing with pressure	14
		Less than 2.000	4	Maturity/experience	9
Why they play college football		ACT scores		Playing skills	6
Enjoyment of game	65%	26 and above	12%	Character development	6
Necessity of grant	20	21-25	31	Team pride	3
Desire pro career	11	16-20	44	Travel	1
Camaderie	2	10-15	12		
Other	2			Suggestions for improving college football	
Major fields of study		SAT scores		More financial support	55%
Business	31%	1001 and above	26%	Cut practice time	12
Social sciences	20	751-1000	53	More academic emphasis	8
Arts/humanities	11	601-750	19	Fewer regulations	7
Communications	10	Below 600	2	More concern	5
Undecided	8			No spring practice	4
Natural sciences	7	Number of paid recruiting visits		Other	9
Physical education	7	5	16%		
Engineering	5	4	18	Sources of financial support	
Agriculture	1	3	24	Parents	58%
		2	18	Athletics scholarships	19
		1	14	Personal savings/job	11
		0	10	Pell Grant	10
Grade-point averages		Number of times tested for drugs		Other	2
College		0	7%		
3.500-4.000	3%	1-2	23		
3.000-3.500	12	3-4	24		
2.500-3.000	25	5-9	26		
2.000-2.500	43	10 or more	20		
Less than 2.000	17				

percent were between 2.000 and 3.000, and four percent had high-school GPAs of less than 2.000.

Collegately, only three percent had GPAs between 3.500 and 4.000, while 12 percent were between 3.000 and 3.500. Sixty-eight percent were between 2.000 and 3.000, while 17 percent were below 2.000.

Eighty-seven percent of those surveyed met the ACT minimum of 15 that is required to be eligible for intercollegiate athletics (because of structural changes in the test, the current ACT minimum is 18; however, the standard for those surveyed was 15). Most of those (44 percent) were between 16 and 20, but 31 percent had scores between 21 and 25. Twelve percent were above 26.

On the SAT, 79 percent had scores

above 751. Twenty-six percent had scores of 1001 or higher.

When asked to indicate the number of hours per week currently spent on football and related activities during the season, better than one-third (34 percent) said 20 to 25 hours. Twenty-six percent said more than 30 hours were required. In the off-season, 61 percent of those surveyed spent 10 to 15 hours on football-related activities.

Financial aid

Eighty-one percent of the student-athletes surveyed receive a full athletics grant-in-aid, while 17 percent receive no aid. Asked about their primary source of financial support, 58 percent said their parents, while 19 percent said they relied on their athletics scholarships. Ten percent

specified a Pell Grant.

Of the players on a full athletics grant, 37 percent said they needed more than \$200 a month beyond what is provided by a scholarship. Twenty-six percent said between \$150 and \$200 would be adequate, while 22 percent specified between \$101 and \$150. Five percent said \$0 to \$50 would suffice.

Recruiting

Of those responding, 74 percent said they were recruited very actively or actively by the institutions they eventually attended.

Eighteen percent had four expense-paid recruiting trips, while 24 percent had three such trips. Only 10 percent had no such trips. Forty-four percent of those surveyed paid for between one and nine trips out

of their pockets.

Almost half (47 percent) had only zero to five in-person recruiting contacts. Twenty-eight percent had between six and 10, while 25 percent had 11 or more. Almost 70 percent said they had at least a good knowledge of NCAA regulations that pertain to them as student-athletes.

Ninety-five percent said they had received no illegal inducements during the recruiting process.

Substance abuse

The survey showed that most Division I-A players are tested for drugs—some of them frequently. Twenty-three percent have been tested once or twice, while 24 percent had been tested three or four times. Twenty-six percent have undergone five to nine tests; only seven percent never have been tested.

Only 10 percent said they had used a drug other than alcohol since entering college. Eighty-six percent had consumed alcoholic beverages since entering college. Of that group, 73 percent said they don't drink regularly. Of those who do drink, beer is easily the preferred choice (95 percent).

Miscellaneous

Fifty-two percent of those who responded to the survey were white. Forty-three of the remaining 48 percent were Black. The racial mix is about 52/48 at all positions except offensive lineman (79 percent white) and secondary (72 percent non-white).

Forty-two percent of those responding came from cities of 100,000 or fewer people. Twenty-two percent came from a very large city (500,000 or more) or its suburb, while 13 percent attended high school in a rural area.

Seventy percent lived with both parents, while 23 percent lived only with their mothers. Four percent were raised by their fathers.

Most of the fathers of the respondents were involved in technical occupations (31 percent), while most of the mothers (30 percent) were involved in some sort of management career.

CompuServe aids communication

A partnership between the NCAA and the world's largest personal information service is making statistics, polls, press releases and legislative services information available to the Association membership in a more timely and less costly manner than before.

CompuServe now offers the Association's new Collegiate Sports Network, which replaces the NCAA Communications Network that was offered through Dialcom for the past four years.

Anyone who has a home computer equipped with a telephone modem and is a subscriber to CompuServe soon can gain access to football, men's and women's basketball, and baseball and women's softball statistics; all sports polls administered by the NCAA, and press releases. CompuServe currently has approximately 835,000 subscribers.

Also, a legislative services database—the same database used in-house by the NCAA legislative services staff in handling interpretations—will be available only to member institutions.

The hourly connection fee to obtain NCAA statistics, polls and press releases is \$15.80, plus a 30-cent communications charge, and the hourly rate for the legislative services database is \$12.50, com-

pared to hourly charges of \$22 to \$25 for those services on Dialcom.

The ease of using the Collegiate Sports Network, paired with the lower cost of using it, should make the service more attractive to the Association's membership, said Daniel W. Spencer, NCAA director of data processing.

"The goal is to increase the level of communication among NCAA members and between members and the national office," he said.

"We feel like we will have more control with CompuServe, and we can offer the service at a lower cost."

"It is up and open," Spencer said of the network's availability. Football statistics and last season's baseball and softball statistics already are in the system, and last season's basketball statistics will be available within the next 45 days.

The legislative services database also is available. "We expect to see its usage go up, because for the first time, the membership and the legislative services staff will have access to identical information," Spencer said.

The legislative database previously available to the membership was created by Dialcom and updated weekly using information provided by the NCAA legislative services staff. But CompuServe makes it possible for member insti-

tutions to tap into the same in-house database that the legislative services staff uses and updates daily.

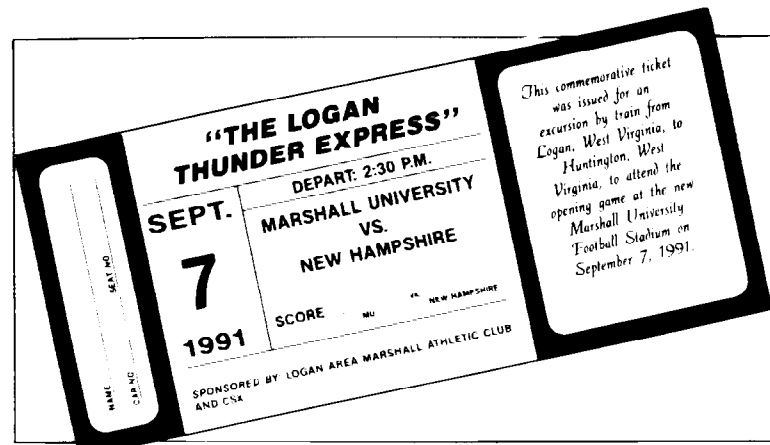
"It means that someone from a member institution could get on the phone with a legislative services staff member, and they could then look at identical information on their computer screens," Spencer said.

Another advantage is that subscribers to the service will benefit from any programming improvements that are made in the in-house database. Such improvements typically did not benefit users of Dialcom, which handled programming for the database it offered to the membership.

In fact, the ability to improve all Collegiate Sports Network offerings through CompuServe is another attraction of the system.

"It's unlimited as to what we can do. CompuServe is willing to work with us," Spencer said. "The more information we can put on the board, the better off we'll be."

Representatives of member institutions can call or write Spencer at the national office to request an introductory membership kit. Spencer will provide a CompuServe enrollment kit, which includes a \$15 usage credit for new CompuServe users.



Commemorative tickets were issued for a historic train ride

Marshall fans hop on board to celebrate new stadium

A passenger train hadn't passed through the tiny town of Logan, West Virginia, in 30 years until 1,250 passengers hopped on board September 7 for a trip to Huntington, West Virginia, where they watched the first game at Marshall University's new 28,000-seat football stadium.

The half-mile long, 28-car locomotive was sold out. Governor Gaston Caperton, various state and local celebrities and nearly half of Logan's 3,000 residents were on board the "Thunder Express" to see the game against the University of New Hampshire.

"This just shows what a small group can do when it works together," said Scooter Shreve, director of the university's Big Green Scholarship Foundation.

The train was the brainchild of coal operator and train buff Rick Abraham. CSX provided the equipment and tracks. Equipment for the coach cars had to be hauled in from Indiana; others were privately owned cars rented for the excursion.

The tickets cost only \$50 for the ride, a tailgate party and a ticket to the game. Proceeds, which were expected to exceed \$25,000, went to the Big Green Scholarship Fund.

Committee reprimands UCLA track coach

The NCAA Men's and Women's Track and Field Committee has publicly reprimanded the head women's track and field coach at the University of California, Los Angeles, for an incident at the 1991 NCAA Division I Men's and Women's Outdoor Track Championships.

The committee cited Bob Kersee for misconduct for instructing a student-athlete to false-start intentionally in a race, thereby disqualifying the runner from that race and allowing her to rest for a subsequent race.

"The committee considers Mr. Kersee's action a flagrant violation of the misconduct rule," said Mark T. Young, committee chair and head women's track and field coach at Yale University. "Mr. Kersee's deci-

sions to instruct his student-athlete to false-start lacked integrity, made a mockery of the rules and discredited the championships. In addition, he deprived another student-athlete from participating in the event.

"The track and field committee believes Mr. Kersee compounded his error in judgment by publicly discussing and boasting about his action," Young continued. "The committee considers this conduct to be contrary to the type of sportsmanship and ethical behavior that should be exhibited at NCAA championships.

"The committee and indeed the intercollegiate athletics community cannot tolerate this type of behavior," Young said.



Run for the hills

Enjoying one of the NCAA championships' most scenic stages, the Division I Men's and Women's Cross Country Championships return to the desert southwest this fall as the University of Arizona hosts for the second time in six years. The lush, rolling Sheraton El Conquistador Golf and Tennis Resort again is the site of the championships, set for November 25. Cut from the mountains, the resort boasts 45 holes for golf; the championships course will be laid out on the golf courses. The average temperature in Tucson in November is nearly 73 degrees, with little or no rainfall. The last time the championships were held in Arizona, in 1986, Arizona's Aaron Ramirez won the individual championship when Joe Falcon of the University of Arkansas, Fayetteville, tripped and fell late in the race. Falcon finished second to lead the Razorbacks to the team championship.

Administrative Committee minutes

1. Acting for the Council, the Administrative Committee:

a. Appointed Dorothy Dreyer, Wayne State University (Michigan), to the NCAA Council, replacing Cheryl Tucker, no longer at a member institution.

b. Appointed Richard A. Johannmeier, Washburn University of Topeka, to the Council Subcommittee on Eligibility Appeals, replacing Ms. Tucker.

c. Appointed William B. Manlove Jr., Widener University, to the Committee on Competitive Safeguards and Medical Aspects of Sports, replacing John M. Williams, no longer at a member institution.

d. Appointed Ferdinand A. Geiger, University of Maryland, College Park, to the Special Events Committee, replacing John D. Swofford, University of North Carolina, Chapel Hill, resigned; appointed Donnie Duncan, University of Oklahoma, to serve as chair of the committee, also replacing Mr. Swofford.

e. Denied a request by the Special Events Committee to grant a waiver of Bylaw 21.1.1.2 to permit both James L. Jones, Ohio State University, and James I. Tarman, Pennsylvania State University, to continue to serve on the committee until September 1, 1993.

competition for a basketball student-athlete.

(5) Mississippi College, one-semester extension of the 10-semester rule for a track and field student-athlete.

(6) Nebraska Wesleyan University, additional season of competition for a football student-athlete.

(7) Nicholls State University, additional season of competition for a basketball student-athlete.

(8) University of Southern Colorado, additional season of competition and one-semester extension of the 10-semester rule for a basketball student-athlete.

(9) Southwest Baptist University, waiver of the residence requirement set forth in Bylaw 14.3.4.1 for a football student-athlete.

(10) Tennessee Technological University, additional season of competition for a football student-athlete.

(11) Western Kentucky University, additional season of competition for a golf student-athlete.

i. Granted a waiver of the contact period per Bylaw 13.1.3.2 as requested by the College of the Holy Cross, whose admissions procedures conflict with the football contact periods; directed that the institution be informed of the specific effects of this waiver.

j. Approved a report of membership classification changes effective September 1, 1991.

2. Acting for the Executive Committee, the Administrative Committee:

Authorized the three-member subcommittee of the Minority Opportunities and Interests Committee to meet with representatives of the National Football League regarding the NFL Minority Coaches Program; directed that committee to recommend the details of that program under NCAA legislation in time for the Administrative Committee to report its recommendations to the October Council meeting.

3. Report of actions taken by the executive director per Constitution 4.3.2. Acting for the Council:

a. Granted waivers per Bylaw 14.8.6.1-(c) to permit student-athletes from various member institutions to participate in competition involving national teams in basketball, golf, softball, swimming, tennis, water polo and wrestling.

b. Granted waivers per Bylaw 14.8.6.2-(c) to permit student-athletes from various member institutions to participate in international competition in basketball (all-star foreign tours).

c. Granted waivers per Bylaw 14.9.1.1-(a) to exempt student-athletes at seven member institutions from the minimum satisfactory-progress requirements for the 1990-91 academic year.

d. Granted a waiver of the transfer residence requirement per Bylaw 14.9.1.2-(c), as recommended by the Committee on Infractions, to permit a student-athlete to transfer from the University of Nevada, Las Vegas, whose basketball program has been placed on probation with sanctions that would preclude the team from participating in postseason competition during all of the remaining seasons of the student-athlete's eligibility.

e. Granted waivers per Bylaw 16.13 to permit institutions to provide incidental expenses in these situations:

(1) To student-athletes to attend funerals of members of the student-athletes' families.

(2) To student-athletes to attend recognized awards ceremonies at which the student-athletes would be honored.

Division I men's cross country poll slated

Beginning with its preseason poll September 10, the U.S. Cross Country Coaches Association again will issue rankings for Division I men's cross country this season.

Weekly regular-season rankings of the top 25 teams will be released every Tuesday beginning September 24, except November 12, which follows a weekend when most teams

are idle. The final poll will be released November 19, six days before the Division I Men's Cross Country Championships in Tucson, Arizona.

Don Kopriva, longtime Midwest editor for Track and Field News, is entering his sixth year as coordinator of the poll.

Interested coaches and others

can hear a tape recording of the poll by calling 708/960-3218 Tuesday through Friday. No collect calls can be accepted. The polls also will be published every week in The NCAA News.

Results of major competitions can be sent by fax to the same telephone number, or mailed to Kopriva.

Interpretations Committee minutes

Acting for the NCAA Council, the Interpretations Committee:

Hardship

1. **Computing traditional playing season for purposes of hardship.** Reviewed the provisions of NCAA Bylaws 14.2.5-(b) and 14.2.5-(c) and a previous Council decision (reference: Item No. 10-c of the minutes of the Council's August 2, 1989, meeting) and recommended that the Council reverse its previous decision, which indicates that the calculation of an institution's completed events in individual sports in which championships selection is based upon competition throughout the entire season (e.g., tennis, golf) must include competition that occurs during the entire season (traditional and nontraditional segment) rather than just the traditional segment; recommended that the Council consider sponsoring legislation to include any of the institution's outside competition prior to the NCAA championship in both individual and team sports in determining the institution's completed events for purposes of applying the hardship rule.

Publicity

2. **Student-athletes making comments regarding prospect's ability.** Reviewed the provisions of Bylaw 13.1.1.1 (comments prior to signing) and determined that prior to the signing of a prospect to a National Letter of Intent or institutional tender of financial aid, a student-athlete may not provide comments to the media regarding a prospect other than confirming the institution's recruitment of the prospect.

Advertising/endorsements

3. **Member institution providing commercial outlets (e.g., third-party distributors) with schedule cards (and other noncommercial items) containing names and pictures of enrolled student-athletes.** Reviewed the provisions of Bylaw 12.5.1.1 (institutional, charitable or educational promotions), a previous Council interpretation (reference: Item No. 11-b of the minutes of the Council's October 8, 1990, meeting) and a previous Interpretations Committee decision (reference: Item No. 4 of the minutes of the committee's November 29, 1990, conference) and determined that a member institution would be permitted to distribute noncommercial items (i.e., items not for sale) at commercial

establishments, provided the institution generally distributes such items to other commercial establishments in the community; the committee noted that it would not be permissible for the distribution of such items to be associated with the purchase of any item at the commercial establishment. In a related matter, the committee noted that it would not be permissible for a member institution (or member conference) to utilize noninstitutional outlets for the sale of an institution's (or conference's) media guide; recommended that the Council review the issue regarding the sale of media guides and other informational publications (which include the names and pictures of enrolled student-athletes) at noninstitutional outlets.

Financial aid

4. **Employee dependent tuition benefit program.** Reviewed the provisions of Bylaws 15.02.1, 15.02.3.1-(a) and a previous Council interpretation (reference: Item c of the minutes of the Council's December 15, 1975, conference) and confirmed that an employee dependent tuition benefit program would constitute financial aid administered by the institution; recommended that the NCAA Financial Aid and Amateurism Committee review the issue of employee tuition benefits to determine whether it wishes to recommend that the Council sponsor legislation to exempt such benefits from being characterized as institutional financial aid per 15.02.3.1.

Off-campus recruiting/coaching duties

6. **Member institutions with combined men's and women's sports programs.** Reviewed the provisions of Bylaw 11.7.5.1 (contact and evaluation of prospects off campus) and determined that in combined programs (e.g., men's and women's track), it is permissible for all of the institution's coaches to be involved in off-campus recruitment activities at any one time; however, the institution may not exceed the limits on the number of coaches who may recruit prospective student-athletes at any one time in either the men's or women's sport; for example, if an institution conducts a combined men's and women's track program, no more than two coaches may be involved in off-campus recruiting activities of male track prospective student-athletes at any one time and no more than two coaches may be involved in off-campus recruiting activities of female track prospective student-athletes at any one time; determined, however, that all four coaches would be permitted to observe a competition in which both male and female prospective student-athletes participate.

5. **Application of daily and weekly hour limitations.** Reviewed the provisions of Bylaws 17.1.5.1 (daily and weekly hour limitations - playing seasons), 17.1.5.2 (weekly hour limitations - outside playing season), 17.3.1-(a) (length of playing season - Divisions I and II) and 17.3.2.1.1 (permissible conditioning activities) as they relate to the following situations:

Playing seasons/daily and weekly hour limitations

utes of the Council's December 15, 1975, conference) and confirmed that an employee dependent tuition benefit program would constitute financial aid administered by the institution; recommended that the NCAA Financial Aid and Amateurism Committee review the issue of employee tuition benefits to determine whether it wishes to recommend that the Council sponsor legislation to exempt such benefits from being characterized as institutional financial aid per 15.02.3.1.

Playing seasons/daily and weekly hour limitations

utes of the Council's December 15, 1975, conference) and confirmed that an employee dependent tuition benefit program would constitute financial aid administered by the institution; recommended that the NCAA Financial Aid and Amateurism Committee review the issue of employee tuition benefits to determine whether it wishes to recommend that the Council sponsor legislation to exempt such benefits from being characterized as institutional financial aid per 15.02.3.1.



Conference No. 14
August 28, 1991

1993, when Mr. Tarman's term on the committee expires; noting that there is no waiver authority that would deal with this situation.

f. Appointed Patty Dick, Washburn University of Topeka, to the Division II Women's Basketball Committee, replacing Mary M. Ortel, no longer at a member institution.

g. Appointed James Fallis, Lake Superior State University, and P. J. Smith, Pembroke State University, to the Wrestling Committee, replacing Blaine Gorney, Livingstone College, institution no longer sponsors wrestling, and Paul Kendle, no longer at an NCAA institution, respectively.

h. Approved requests for various eligibility waivers per Bylaw 14.9.1.1-(a) due to service in the Persian Gulf war, as follows:

(1) University of Central Oklahoma, additional semester of competition for a basketball student-athlete (must be second semester).

(2) Francis Marion College, one-semester extensions of the 10-semester rule for a baseball student-athlete and a basketball student-athlete.

(3) George Mason University, additional season of competition for a track and field student-athlete (indoor track).

(4) Juniata College, additional season of

Binders available

Readers of The NCAA News are reminded that binders, which provide permanent, convenient storage of back issues of the paper, are available from the publishing department.

They may be purchased from the circulation office at the NCAA (913/339-1900).

Subcommittee definitions of bowl receipts seek consistency

In the culmination of a two-year joint effort with the Football Bowl Association, the NCAA Special Events Committee's Postseason Football Subcommittee has established definitions for the components of a bowl game's gross receipts.

The subcommittee agreed upon the proposed definitions at its August 13-14 meeting in Kansas City, Missouri. The recommendations have been forwarded to the NCAA Council for approval.

Audits that began two years ago revealed that bowl games were computing gross receipts differently. For example, the manner in which some bowls calculated interest income was not consistent with that used by other bowls.

In response to these discrepancies, the subcommittee began working with the Football Bowl Association which includes representatives from all certified bowl games—to create detailed definitions of the various components of gross receipts and make the reporting process consistent from bowl to bowl.

The subcommittee's recommendation contains definitions for the following components of gross receipts:

- Ticket sales;
- Membership fees/dues;
- Programs, concessions and merchandising sales;
- Advertising income;
- Radio broadcast rights;
- Television contracts;
- Title-sponsorship rights contracts;
- Title-sponsorship entertainment expenses;

"The goal of this process is to ensure that participating institutions receive 75 percent of all revenue...."

Donnie Duncan

- Allocation of title-sponsorship rights;
- Film/movie/video rights;
- Licensing fees;
- Corporate sponsors/contributors;
- Corporate sponsors/contributors' pregame and half-time shows;
- Interest income;
- Letter of credit recertification;
- Affiliated organizations;
- Game-related events, and
- Other revenue.

"The subcommittee has developed definitions for all of these categories in the hope that all bowls will compute their gross receipts in the same way," said Donnie Duncan, director of athletics at the University of Oklahoma and chair of the Special Events Committee. "The goal of this process is to ensure that participating institutions receive 75 percent of all revenue generated

from events associated with a post-season football game."

The subcommittee also established a process for bowls to appeal circumstances that are not specifically addressed in the definitions.

In other matters, the subcommittee:

- Met with three bowl-game representatives to discuss the gross receipts definitions and the Internal Revenue Service's position on bowl title sponsorship. The representa-

tives were John T. Bell, executive director of the Mazda Gator Bowl and chair of the Football Bowl Association; Jim L. Brock, executive vice-president of the Mobil Cotton Bowl, and Charles W. Callahan, associate director of the Mazda Gator Bowl.

• Received an application for certification from the proposed Alamo Bowl in San Antonio, Texas. If approved, the game could be certified by December 1993.

• Approved the Eagle Aloha Bowl's request to change its name to Jeep Eagle Aloha Bowl, effective this year.

After the Postseason Football Subcommittee adjourned, the Special Events Committee spent considerable time at its August 15 meeting discussing whether the NCAA should be involved in certifying postseason football and basketball all-star games. The Council had asked the committee to study the issue after the Professional Sports Liaison Committee recommended that the Association stop certifying all-star games.

In response to the Council's request, the committee agreed to spend the next year developing a

recommendation on the NCAA's role in certifying such contests.

The Special Events Committee and the Professional Sports Liaison Committee share a concern that postseason all-star contests may be inconsistent with the goals and purposes of the Association because they cause student-athletes to miss class time. The majority of postseason all-star basketball contests require participants to miss at least four days of class; postseason football all-star games all require seven days away from school, but they usually occur during vacation periods.

Further compounding the issue is the perception that some all-star games—particularly in basketball—are essentially professional tryout camps.

The committee also voted to ask the Council to approve a waiver of the playing-date requirement for the 1993 East-West Shrine Football Classic. Bylaw 30.2.2.6 requires certified all-star football games to be played on or before January 21; the East-West classic currently is scheduled for January 23, 1993. The Council granted a similar waiver for the 1991 game.

Football Rules Committee issues more interpretations

The NCAA Football Rules Committee has issued a rules-interpretation bulletin clarifying rules pertaining to on-field advertising, fumbles and penalty-enforcement spots.

The bulletin contains changes that should be noted in 1991 NCAA

Football Rules and Interpretations to reflect the intent of the rules. It is the second bulletin issued this year by David M. Nelson, the committee's secretary-rules editor.

The memo, dated August 23, has been sent to all rules-committee members, conference commissioners and officiating organizations.

The first item clarifies that no commercial advertising is permitted in the field during regular-season games. It defines the field as the "entire area within the limit lines," including the goal posts.

Three other changes clarify whether a touchback or safety should be called when a ball is fumbled forward from the end zone and out of bounds in the field of play.

The final revision is an editorial change in the rule regarding enforcement procedures after a scrimmage kick.

A summary of the changes, including the new wording of each rule, is included in the accompanying box.

Football rules interpretations

Following are the rules affected by the interpretations bulletin issued August 23 by the NCAA Football Rules Committee:

Rule 1-2-1-h (page FR-19)

New wording: "Commercial advertising is prohibited on the field (Exception: Permitted when the corporate sponsor is associated with the name of any game not played in-season). No corporate sponsors or other commercial advertising is permitted during regular-season games. The field is the entire area within the limit lines and includes the goal posts."

Rule 8-5-1-b Exception (page FR-95)

New wording: "The ball belongs to Team B at the spot where the pass or fumble was intercepted or the kick was caught when a Team B player intercepts a forward pass, fumble or backward pass or catches a scrimmage or free kick between his five-yard line and the goal line and his original momentum carries him into the end zone, where the ball (1) is declared dead in his team's possession, (2) goes out of bounds in the end zone or (3) is fumbled forward from the end zone out of bounds in the field of play."

Note: This change allows a Team B fumble from the end zone out of bounds in the field of play to be returned to the spot of the interception or catch of a kick.

Rule 8-5-1-a (page FR-94)

New wording: "(It is a safety when) the ball

becomes dead out of bounds behind a goal line (except from an incomplete forward pass); becomes dead in the possession of a player on, above or behind his own goal line, or is fumbled forward from the end zone out of bounds in the field of play, and the defending team is responsible for the ball being there."

Rule 8-6-1-a (page FR-95)

New wording: "(It is a touchback when) the ball becomes dead out of bounds behind a goal line (except from an incomplete forward pass); becomes dead in the possession of a player on, above or behind his own goal line, or is fumbled forward from the end zone out of bounds in the field of play, and the attacking team is responsible for the ball being there."

Note: These changes clarify when a safety or touchback should be called if the ball is fumbled from the end zone into the field of play and out of bounds.

Rule 10-2-2-e Exception 5 (page FR-111)

New wording: "The basic enforcement spot is the spot where the kick ends when Team B fouls occur:

- a. During scrimmage kick plays other than a try.
- b. During a scrimmage kick play in which the ball crosses the neutral zone.
- c. Three yards beyond the neutral zone.
- d. Before the end of the kick.
- e. When Team A does not have possession of the ball when the down ends.

News Fact File

The National Education Association's recent report on educational statistics included the following findings:

• Public elementary-school enrollment rose from 26.4 million students last year to nearly 27 million this year, while public high-school enrollment was static, and

• Public per-pupil expenditures rose 5.2 percent from last year, for a national average of \$5,208.

Source: Report on Education Research, May 15, 1991.

Sara Lee announces NCAA Woman of the Year finalists

Barry Boyd, executive vice-president of Sara Lee Personal Products, recently announced the 52 state-level NCAA Women of the Year award-winners.

Each of the 52 winners, representing the 50 states, Washington, D.C., and Puerto Rico, advances to the finals and is eligible to be named the NCAA Woman of the Year.

"There's been a silent revolution in women's athletics," Boyd said. "This award turns up the volume it increases recognition of women's accomplishments and resonates with new opportunities for those who follow."

Hanes Her Way, a division of Sara Lee Corporation, sponsors the NCAA Woman of the Year Award as part of Sara Lee's three-year NCAA partnership. As the official corporate partner for NCAA women's athletics programs, Sara Lee hopes to improve recognition and increase opportunities for female collegiate athletes.

The following individuals were named the NCAA Woman of the

Year for their states: Alabama—Lynn Noelle Bradley, University of Alabama, Tuscaloosa; Alaska—Greta Fadness, University of Alaska, Anchorage; Arizona—Maece Malone, Arizona State University;

District of Columbia—Sue Anne Cassidy, Catholic University; Florida—Wanda Burns, Florida State University; Georgia—Sheila Taormina, University of Georgia; Hawaii—Heather Hasslinger,

Kentucky—Marcia Mount, Centre College; Louisiana—Sandi Dion, Centenary College; Maine—Rachel L. Bouchard, University of Maine; Maryland—Donna White, Washington College (Maryland); Massachusetts—Gwen K. Young, Smith College; Michigan—Julie Farrell-Ovenhouse, Michigan State University; Minnesota—Betsy Hansen, Hamline University; Mississippi—Amy Lyn Sutt, University of Southern Mississippi; Missouri—Stacy Roberts, Northeast Missouri State University.

Montana—Kathleen Monaghan, Montana State University; Nebraska—Janni Mau, Kearney State College; Nevada—Amy Warrick, University of Nevada, Las Vegas; New Hampshire—Traci Walker, Plymouth State College; New Jersey—Pamela Franklin, Princeton University; New Mexico—Maria Gurreri, University of New Mexico; New York—Mary Beth Riley, Canisius College; North Carolina—Traci McIntyre, Appalachian State University; North Dakota—Whit-

ney Anne Meier, University of North Dakota; Ohio—Rebecca Little, Kenyon College; Oklahoma—Jessica Frey, University of Oklahoma; Oregon—Joy Selig, Oregon State University; Pennsylvania—Kelly Marsh, Bucknell University.

Puerto Rico—Angelis L. Marrero, The American University of Puerto Rico; Rhode Island—Cami White, Providence College; South Carolina—Kelly Long, Clemson University; South Dakota—Bridget Lindquist, Augustana College (South Dakota); Tennessee—Patty Wiegand, University of Tennessee, Knoxville; Texas—Krista Wilson, Southern Methodist University; Utah—Brenda Alcom, University of Utah; Vermont—Laura Wilson, University of Vermont; Virginia—Jennifer Winter, Virginia Commonwealth University; Washington—Lisa Petticoard, Gonzaga University; West Virginia—Aileen J. Convery, West Virginia University; Wisconsin—Lori Stich, Ripon College; Wyoming—Shelly Thacker, University of Wyoming.

"There's been a silent revolution in women's athletics. This award turns up the volume."

Barry Boyd

sity; Arkansas—Cynthia Denise Moore, University of Arkansas, Fayetteville; California—Anja Bordt, St. Mary's College (California); Colorado—Leslie McCulloh, University of Denver; Connecticut—Kristine Campbell, Yale University; Delaware—Jill Kristine Hershey, University of Delaware;

University of Hawaii; Idaho—Stacey Asplund, University of Idaho.

Illinois—Lynn Devers, University of Illinois, Champaign; Indiana—Beth Christiansen, Butler University; Iowa—Jan Jensen, Drake University; Kansas—Stacey Slavens, Emporia State University;

Kickers maintain accuracy, but coaches play it safe

By James M. Van Valkenburg
NCAA Director of Statistics

Despite narrower uprights, the nation's field goal kickers are almost as accurate as last year—at 66.5 percent now vs. 67 for the 1990 season in Division I-A. Even so, production is down a hefty 20.4 percent.

The reason? Coaches are playing it safe. They are opting for almost



30 percent fewer short kicks—those of 29 yards or less—i.e., from the 12-yard line or closer (add 17 to the yard line for the range). At short range, the angle can be tougher than in professional football because the hash marks are closer to the sideline in college.

And they are more cautious about trying long kicks, with the uprights back to 18 feet, 6 inches apart after 32 years at 23-4. The number of attempts from 40 yards or more is down more than 30 percent. But attempts from middle range—30 to 39 yards—are almost as frequent, with a drop of only nine percent from last year.

Kickers are making the most of their limited long-range chances:

	1991	1990
Division I-A:	To Date	Final
Games played	69	623
Range, percent made:		
29 yds. or less	86.9	87.8
30 to 39 yds.	61.7	73.6
40 yds. or more	60.9	48.3
Extra-point kicks ..	90.5	96.0

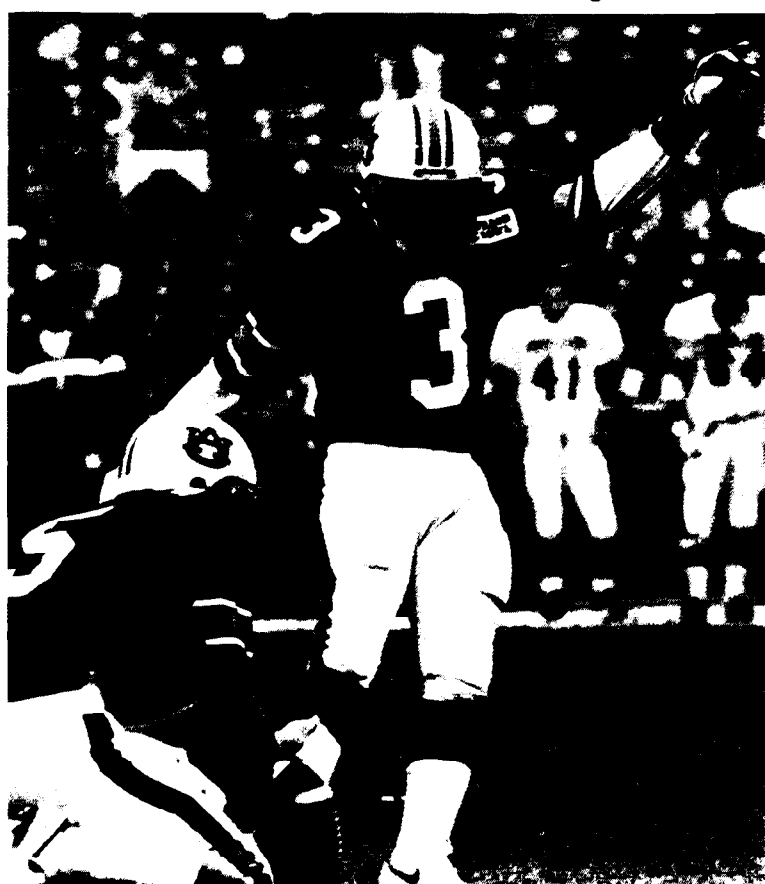
It seems quite safe to predict that the amazing 60.9 figure will go down a lot. The all-time accuracy record from 40 yards or more is 52.4 percent in 1984.

Coaches are going for the first down more often when close to the goal, and that is exactly what the rulesmakers had in mind. Field-goal production is down to 1.72 made per game so far in Division I-A vs. 2.16 for all of last season (the record: 2.31 in 1988). That is the lowest since 1980, when the average was 1.61.

Honoring Maurer

Wittenberg's Dave Maurer, the No. 7 coach in winning percentage in college football history at .842, will be honored September 21 for his pending induction into the National Football Foundation's College Football Hall of Fame.

Maurer compiled a remarkable 129-23-3 head-coaching record at Wittenberg over 15 seasons ending



Jim Von Wyl of Auburn is among the top returning kickers in Division I-A.

with 1983. His team won the national championship in Division III in 1973—the year the division was formed—won it again in 1975 and finished second in 1978 and 1979. He is a past president of the American Football Coaches Association and a past member of the NCAA Football Rules Committee. The AFCA voted him College Division coach of the year in 1973 and 1975.

A tough disciplinarian, Maurer always was able to adapt his offense and defense to the talent on his squad.

When he is inducted formally in December, Maurer will become the first hall-of-fame coach to spend his entire career at a traditional Division III school. (And he was voted in the first year his name appeared on the ballot.) His predecessor, Bill Edwards, who was inducted into the Hall of Fame in 1986, later head-coached at Vanderbilt. Wittenberg's first hall-of-fame coach, Ernie Godfrey, became a long-time assistant at Ohio State (1929-61) after a 10-year, .744 record.

Maurer assisted Edwards during all of his 14-year term at Wittenberg through 1968, as the team went 98-20-4 and twice was voted college division national champion. Maurer also head-coached the swimming, track and golf teams before becoming head football coach. He served

as director of athletics from 1973 to 1982.

Now, Maurer, 59, is professor of health and physical education. He resumed coaching the men's golf team in 1985, and in 1990, his team tied for fourth in the NCAA Division III championships.

He will be presented his hall-of-fame plaque by Ritter Collett of the Dayton Daily News at half time of the home opener against Wooster, reports sports information director Alan Aldinger. That night, a number of former players and coaches will speak at a gala dinner. The celebration kicks off a fund drive for stadium renovation and improvement of other outdoor athletics facilities.

.800 coaches

Only 21 coaches in all of college football's 122-year history won at least 80 percent of their games in a career of at least 10 seasons at the four-year level, including all divisions and associations.

Bob Reade, current head coach at Division III Augustana (Illinois), leads the list by a narrow .883 to .881 over the legendary Knute Rockne of Notre Dame. Reade is 117-15-1 for 12 years entering this season. Rockne's 13th and final season was 1930, and his record was 105-12-5 (ties computed as half won, half lost in percentage).

Division I-A individual leaders

Through games of September 7

RUSHING									
	CL	G	CAR	YDS	AVG	TD	YDSPG		
Butler By'not'e, Ohio St.	So	1	26	189	7.3	1	189.00		
Sean Burwell, Oregon	So	1	30	189	6.3	1	189.00		
Eric Gallon, Kansas St.	Jr	1	27	184	6.8	2	184.00		
Ricky Powers, Michigan	So	1	27	176	6.5	0	176.00		
Derek Brown, Nebraska	So	1	23	175	7.6	0	175.00		
Tony Sands, Kansas	Sr	1	19	174	9.2	1	174.00		
Billy Smith, Central Mich.	Sr	2	69	325	4.7	0	162.50		
Ryan Benjamin, Pacific	Jr	2	25	324	13.0	2	162.00		
Vaughn Dunbar, Indiana	Sr	1	33	161	4.9	0	161.00		
Ron Jackson, Tulsa	Jr	2	64	320	5.0	1	160.00		
Russell White, California	Jr	1	21	133	6.3	1	133.00		
Kevin Williams, UCLA	Jr	1	13	132	10.2	1	132.00		
Rob Perez, Air Force	Sr	2	33	260	7.9	3	130.00		
Michael Carter, Hawaii	So	2	50	259	5.2	2	129.50		
Corey Sylve, Western Mich.	Sr	2	47	237	5.0	0	118.50		
Adrian Murrell, West Va.	Jr	2	46	227	4.9	1	113.50		
Robert Strait, Baylor	So	1	7	112	16.0	2	112.00		
LeRoy Smith, Bowling Green	Jr	2	58	223	3.8	1	111.50		
Jerome Bettis, Notre Dame	So	1	11	111	10.1	0	111.00		
Lindsey Chapman, California	So	1	16	111	6.9	2	111.00		
Aaron Hayden, Tennessee	Fr	1	19	109	5.7	1	109.00		
Corey Croom, Ball St.	Jr	2	39	216	5.5	3	108.00		
Ronald Williams, Clemson	So	1	14	108	7.7	1	108.00		
Kameno Bell, Illinois	Sr	1	14	108	7.7	2	108.00		
Jeff Cothran, Ohio St.	So	1	7	105	15.0	1	105.00		

PASSING EFFICIENCY									
	CL	G	ATT	CMP	INT	YDS	TD	RATING	POINTS
(Min. 15 att. per game)									
Shane Matthews, Florida	Jr	1	22	17	77.7	1	4.55	272	247.0
Mark Barsotti, Fresno St.	Jr	1	20	15	75.00	0	0.00	224	218.6
Tony Sacca, Penn St.	Sr	2	39	24	61.54	0	0.00	396	206.1
Leon Clay, Texas Christian	Jr	1	26	18	69.23	0	0.00	253	201.7
David Klingler, Houston	Sr	1	57	36	63.16	0	0.00	510	190.4
Matt Rodgers, Iowa	Sr	1	18	12	66.67	0	0.00	168	181.7
Casey Weldon, Florida St.	Sr	2	56	41	73.21	0	0.00	517	180.2
Jason Verduzco, Illinois	Jr	1	36	25	69.44	0	0.00	352	179.1
Tommy Maddox, UCLA	So	1	24	16	66.67	1	4.17	263	177.9
Rick Mirer, Notre Dame	Jr	1	17	11	64.71	1	5.88	209	175.6
Marvin Graves, Syracuse	So	1	18	11	61.11	2	11.11	211	155.7
Alex Van Pelt, Pittsburgh	Jr	2	50	33	66.00	1	2.00	377	151.7
Tom Tarver, Rutgers	Sr	1	30	21	70.00	1	3.33	275	151.3
Billy Joe Hobert, Washington	So	1	31	21	67.74	1	3.23	244	148.7
Jamie Gill, Texas Tech	Sr	1	21	13	61.90	0	0.00	137	148.1
Elvis Grbac, Michigan	Sr	1	25	14	56.00	1	4.00	178	147.4
T. J. Rubley, Tulsa	Sr	2	47	30	63.83	1	2.13	292	146.9
Matt Veatch, San Jose St.	Sr	1	41	23	56.10	1	2.44	388	146.8
Eric Zeier, Georgia	Fr	2	42	26	61.90	0	0.00	340	145.6
Stan White, Auburn	So	1	27	14	51.85	1	3.70	236	142.3

TOTAL OFFENSE									
	CL	G	CAR	YDS	PLS	YDS	YDPL	TD*	YDSPG
David Klingler, Houston	5	23	6	17	57	510	62	527	8.50
Matt Veatch, San Jose St.	2	7	12	5	41	388	43	383	8.91
Jeff Blake, East Caro.	12	26	18	8	42	353	54	361	6.69
Jason Verduzco, Illinois	3	0	17	-17	36	352	39	335	8.59
Gino Torretta, Miami (Fla.)	3	27	0	27	33	297	36	324	9.00
Dave Brown, Duke	8	19	42	23	50	323	58	300	5.17
Mike Romo, Southern Methodist	3	6	0	6	57	290	60	296	4.93
Ty Detmer, Brigham Young	16	52	70	-18	78	606	94	588	6.26
Tom Tarver, Rutgers	6	13	15	2	30	275	36	273	7.58
Casey Weldon, Florida St.	6	31	5	26	56	517	62	543	7.76
Shane Matthews, Florida	3	8	13	5	22	272	25	267	10.68
Leon Clay, Texas Christian	10	37	23	14	26	253	36	267	7.42
Mark Barsotti, Fresno St.	6	42	0	42	20	224	26	266	10.23
Troy Kopp, Pacific	7	12	48	-36	78	557	85	521	6.13
Rick Mirer, Notre Dame	6	56	6	50	17	209	23	259	11.26
Billy Joe Hobert, Washington	1	5	0	5	31	244	32	249	7.78
Frank Dolce, Utah	11	36	20	16	62	479	73	495	6.78
Stan White, Auburn	5	7	7	0	27	236	32	236	7.38
Matt Rodgers, Iowa	4	67	0	67	18	168	22	235	10.68
Michael Carter, Hawaii	50	308	49	259	38	208	88	467	5.31
Jim Clement, Miami (Ohio)	26	152	34	118	55	348	81	466	5.75

More Division I-A statistics, page 10

Division I-AA team leaders

Through games of September 7

RUSHING									
	CL	G	CAR	YDS	AVG	TD	YDSPG		
Tony Scales, Va. Military	Jr	1	17	167	9.8	2	167.00		
Gerald Robinson, Northern Ariz.	Jr	2	28	295	10.5	2	147.50		
Joe Campbell, Middle Tenn. St.	Sr	1	22	146	6.6	2	146.00		
Robert Green, William & Mary	Sr	1	28	140	5.0	4	140.00		
Curtis Thomas, Sam Houston St.	Sr	1	30	134	4.5	2	134.00		
Hugh Swilling, Furman	So	1	18	126	7.0	2	126.00		
Roscoe Echols, Western Ky.	Jr	1	20	124	6.2	0	124.00		
Carl Tremble, Furman	Jr	1	16	123	7.7	2	123.00		
Tim Mitchell, Eastern Wash.	Sr	1	23	123	5.3	0	123.00		
Derrick Franklin, Indiana St.	Sr	1	27	121	4.5	1	121.00		
Leonard Dandridge, Connecticut	Fr	1	21	120	5.7	1	120.00		
Wade Booker, Stephen F. Austin	Fr	1	6	119	19.8	2	119.00		
Eddie Thompson, Western Ky.	Jr	1	19	118	6.2	2	118.00		
Scott Smith, Southwest Tex. St.	So	1	17	117	6.9	0	117.00		
Cedric Sims, Citadel	Jr	1	12	115	9.6	1	115.00		
Pat Kennedy, Villanova	Sr	1	16	113	7.1	2	113.00		
Marcus Mines, Va. Military	Sr	1	18	113	6.3	0	113.00		
Scott Hersley, Idaho St.	So	1	10	110	11.0	0	110.00		
Scott Council, Va. Military	Sr	1	14	110	7.9	0	110.00		
Calvin Johnson, Northeastern	Sr	1	16	110	6.9	1	110.00		

PASSING EFFICIENCY									
	CL	G	ATT	CMP	INT	YDS	TD	RATING	POINTS
(Min. 15 att. per game)									
Donald Carr, Howard	Sr	1	15	12	80.00	0	0.00	190	12.67
Ralph Barone, Northeastern	Jr	1	21	12	57.14	2	9.52	303	14.43
Chris Hake, William & Mary	Sr	1	27	21	77.78	0	0.00	290	10.74
Trevor Cavanaugh, Idaho St.	Sr	1	23	13	56.52	1	4.35	269	11.70
Jeff Thorne, Eastern Ill.	So	2	34	23	67.65	1	2.94	295	8.68
Doug Nussmeier, Idaho	So	1	34	24	70.59	2	5.88	336	9.88
Brian Downey, Southern Ill.	Sr	2	46	24	52.17	1	2.17	355	9.89
Jeff Madenich, Boise St.	Jr	1	28	18	64.29	0	0.00	262	9.36
Willie Davis, Western Ill.	So	1	16	10	62.50	1	6.25	176	11.00
Antoine Ezell, Florida A&M	Sr	1	18	9	50.00	1	5.56	225	12.50
Fred Gatlin, Nevada-Reno	Jr	1	31	18	58.06	2	6.45	293	9.45
Steve McNair, Alcorn St.	Fr	1	25	11	44.00	1	4.00	229	9.16
Michael Payton, Marshall	Jr	2	51	30	58.82	0	0.00	475	9.31
Ricky Jordan, Jackson St.	So	1	27	13	48.15	1	3.70	229	8.48
Mark Williams, East Tenn. St.	Sr	1	16	7	43.75	0	0.00	160	10.00
Tom Colombo, Villanova	Jr	1	32	20	60.61	0	0.00	263	7.97
Ben Higgins, Samford	So	2	53	28	53.85	1	1.92	415	7.36
Greg Moore, Boston U.	So	1	33	23	69.70	1	3.03	228	6.91
Mike Goddard, Stephen F. Austin	So	1	16	9	56.25	0	0.00	172	7.63
Ray Allen, Indiana St.	Jr	1	18	8	44.44	2	11.11	166	9.22

TOTAL OFFENSE</

Division I-A individual leaders

SCORING									
	CL	G	TD	XP	FG	PIS	PTPG		
Desmond Howard, Michigan	Sr	1	4	0	0	24	24.00		
Sundatia Patterson, Iowa St.	Jr	1	4	0	0	24	24.00		
Tracy Good, Houston	Jr	1	3	0	0	18	18.00		
Lew Montgomery, Iowa	Jr	1	3	0	0	18	18.00		
Brian Treggs, California	Sr	1	3	0	0	18	18.00		
John Brown III, Houston	Sr	1	3	0	0	18	18.00		
Harrison Houston, Florida	So	1	3	0	0	18	18.00		
Rick Mirer, Notre Dame	Jr	1	3	0	0	18	18.00		
Lin Elliott, Texas Tech	Sr	1	0	3	4	15	15.00		
Greg Zomalt, California	Jr	1	2	2	0	14	14.00		
Roman Anderson, Houston	Sr	1	0	10	1	13	13.00		
John Biskup, Syracuse	Jr	1	0	4	3	13	13.00		
Chip Hileary, Kansas	Jr	1	2	0	0	12	12.00		
Marty Thompson, Fresno St.	Jr	1	2	0	0	12	12.00		
Sean Lachapelle, UCLA	Jr	1	2	0	0	12	12.00		
Siran Stacy, Alabama	Sr	1	2	0	0	12	12.00		
Eric Gallon, Kansas St.	Jr	1	2	0	0	12	12.00		
Stephen McGuire, Miami (Fla.)	Jr	1	2	0	0	12	12.00		
Derrick Cullors, Texas Christian	Fr	1	2	0	0	12	12.00		
Earl Coleman, Purdue	Jr	1	2	0	0	12	12.00		
Dion Johnson, East Caro.	Sr	1	2	0	0	12	12.00		
Eric Hunter, Purdue	Jr	1	2	0	0	12	12.00		
Lindsey Chapman, California	So	1	2	0	0	12	12.00		
Anthony Jones, Oregon	Sr	1	2	0	0	12	12.00		
Sean Dawkins, California	So	1	2	0	0	12	12.00		

RECEPTIONS PER GAME									
	CL	G	CT	YDS	TD	CTPG			
Fred Gilbert, Houston	Jr	1	11	180	2	11.00			
Korey Beard, Southern Methodist	Jr	1	10	106	0	10.00			
Aaron Turner, Pacific	Jr	2	17	277	2	8.50			
Marcus Grant, Houston	Jr	1	8	173	1	8.00			
C. J. Davis, Washington St.	Jr	1	8	118	1	8.00			
Aaron Mundy, Virginia	So	1	8	116	0	8.00			
Luke Fisher, East Caro.	Sr	1	8	95	0	8.00			
Rod Moore, Utah St.	Sr	2	15	262	3	7.50			
David Lewis, Texas Christian	Jr	1	7	90	1	7.00			
Marcus Goodwin, Toledo	Sr	1	7	86	0	7.00			
Desmond Howard, Michigan	Sr	1	7	86	3	7.00			
Elbert Turner, Illinois	Sr	1	7	78	1	7.00			
Rod Coleman, Indiana	Sr	1	7	75	0	7.00			
John Brown III, Houston	Sr	1	7	73	3	7.00			
Orlando McKay, Washington	Sr	1	7	67	0	7.00			
Aaron Shaw, Duke	Sr	1	7	66	1	7.00			
Wayde Butler, Southwestern La.	Jr	2	13	191	1	6.50			

RECEIVING YARDS PER GAME									
	CL	G	CT	YDS	TD	YDSPG			
Fred Gilbert, Houston	Jr	1	11	180	2	180.00			
Marcus Grant, Houston	Jr	1	8	173	1	173.00			
Dion Johnson, East Caro.	Sr	1	5	157	2	157.00			
Aaron Turner, Pacific	Jr	2	17	277	2	138.50			
Richard Hill, Ohio	Sr	1	5	134	1	134.00			
Rod Moore, Utah St.	Sr	2	15	262	3	131.00			
Horace Copeland, Miami (Fla.)	Jr	1	4	131	1	131.00			
C. J. Davis, Washington St.	Jr	1	8	118	1	118.00			
Aaron Mundy, Virginia	So	1	8	116	0	116.00			
Gus Palma, Illinois	Sr	1	4	114	1	114.00			
Korey Beard, Southern Methodist	Jr	1	10	106	0	106.00			
Danan Hughes, Iowa	Jr	1	4	103	1	103.00			
Brian Treggs, California	Sr	1	5	100	3	100.00			
Carl Pickens, Tennessee	Jr	1	4	98	1	98.00			
Wayde Butler, Southwestern La.	Jr	2	13	191	1	95.50			

ALL-PURPOSE RUNNERS									
	CL	G	RUSH	REC	PR	KOR	YDS	YDSPG	
Ryan Benjamin, Pacific	Jr	2	324	70	0	180	574	287.00	
Dion Johnson, East Caro.	Sr	1	0	157	24	96	277	277.00	
Charles Levy, Arizona	Fr	1	26	51	0	180	257	257.00	
Sean Burwell, Oregon	So	1	189	19	0	40	248	248.00	
Vaughn Dunbar, Indiana	Sr	1	161	17	0	47	225	225.00	
Butler Byrd, Ohio St.	So	1	189	8	0	0	197	197.00	
Derek Brown, Nebraska	So	1	175	17	0	0	192	192.00	
Desmond Howard, Michigan	Sr	1	4	86	3	93	186	186.00	
Eric Gallon, Kansas St.	Jr	1	184	0	0	0	184	184.00	
Corey Sylve, Western Mich.	Sr	2	237	63	17	49	366	183.00	
Fred Gilbert, Houston	Jr	1	0	180	0	0	180	180.00	
Ricky Powers, Michigan	So	1	176	0	0	0	176	176.00	
Carl Pickens, Tennessee	Jr	1	0	98	67	9	174	174.00	
Tony Sands, Kansas	Sr	1	174	0	0	0	174	174.00	
Marcus Grant, Houston	Jr	1	0	173	0	0	173	173.00	
Kameno Bell, Illinois	Sr	1	108	60	0	0	168	168.00	
Shelby Hill, Syracuse	So	1	39	95	34	0	168	168.00	
Ernie Rhett, Florida	So	1	75	92	0	0	167	167.00	
Lindsey Chapman, California	So	1	111	0	0	53	164	164.00	
Lee Miles, Baylor	Sr	1	35	19	69	40	163	163.00	
Billy Smith, Central Mich.	Sr	2	325	0	0	0	325	162.50	
Ron Jackson, Tulsa	Jr	2	320	5	0	0	325	162.50	
Glyn Milburn, Stanford	Jr	1	16	12	28	100	156	156.00	

FIELD GOALS									
	CL	G	FGA	FG	PCT	FGPG			
Lin Elliott, Texas Tech	Sr	1	5	4	80.0	4.00			
John Biskup, Syracuse	Jr	1	3	3	100.0	3.00			
Brian Lee, Mississippi	So	2	5	6	66.7	3.00			
Chris Yergenson, Utah	Jr	2	5	5	100.0	2.50			
Jason Elam, Hawaii	Jr	2	7	5	71.4	2.50			
Sean Wright, Boston College	So	2	4	4	100.0	2.00			
Jason Ziegler, Texas	Fr	1	2	2	100.0	2.00			
Byron Bennett, Nebraska	So	1	2	2	100.0	2.00			
Daron Alcorn, Akron	Jr	1	2	2	100.0	2.00			
Scott Bonnell, Indiana	Jr	1	2	2	100.0	2.00			
Nelson Welch, Clemson	Fr	1	2	2	100.0	2.00			
Russell Anderson, Southern Methodist	Jr	1	2	2	100.0	2.00			
Michael Husted, Virginia	Jr	2	5	4	80.0	2.00			
Bryan Lucas, Miami (Ohio)	Sr	2	3	3	100.0	1.50			
Mike Brown, Colorado St.	Sr	2	4	3	75.0	1.50			
Joe Wood, Air Force	Jr	2	4	3	75.0	1.50			
Scott Kaplan, Pittsburgh	Jr	2	4	3	75.0	1.50			
Sean Fleming, Wyoming	Jr	2	4	3	75.0	1.50			
Todd Peterson, Georgia	Jr	2	7	3	42.9	1.50			

INTERCEPTIONS									
	CL	G	NO	YDS	TD	IPG			
Anthony Hickman, Texas Christian	Sr	1	2	82	1	2.00			
Robert Davis, Vanderbilt	So	1	2	72	0	2.00			
Eric Castle, Oregon	Jr	1	2	69	0	2.00			
John Mommson, Michigan	Jr	1	2	0	0	2.00			
Steve Israel, Pittsburgh	Sr	2	2	107	1	1.00			
Geff Kerwin, Penn St.	So	2	2	50	0	1.00			
Dave Bielinski, Bowling Green	Jr	2	2	48	0	1.00			
Curtis Banks, Arkansas	Sr	2	2	13	0	1.00			
Derrick Hoskins, Southern Miss	Sr	2	2	10	0	1.00			
Michael James, Arkansas	Sr	2	2	0	0	1.00			
Cajardo Lindsey, Miami (Ohio)	Sr	2	2	0	0	1.00			
Jim Schwartz, Purdue	Sr	1	1	66	1	1.00			
Lance Dutton, Michigan	Sr	1	1	50	1	1.00			
Demetrius Dubose, Notre Dame	Jr	1	1	49	1	1.00			
Mical Padgett, Texas	Sr	1	1	46	0	1.00			
Ricky Turner, North Caro. St.	Jr	1	1	41	0	1.00			
Tracy Saul, Texas Tech	Jr	1	1	40	0	1.00			
Thomas Adams, Purdue	Jr	1	1	37	0	1.00			
John Derby, Iowa	Sr	1	1	34	0	1.00			
Mike Reid, North Caro. St.	Jr	1	1	31	0	1.00			
Jody Graham, California	So	1	1	29	0	1.00			
Wyatt Smith, Duke	Sr	1	1	25	0	1.00			
Fimel Johnson, Illinois	So	1	1	24	0	1.00			
George Teague, Alabama	Jr	1	1	24	0	1.00			
Scott Harmon, Oklahoma St.	So	1	1	22	0	1.00			

PUNTING									
	CL	NO	AVG						
(Min. 36 per game)									
Trent Thompson, Temple	So	6	49.50						
Dan Eichloff, Kansas	So	6	48.50						
Rusty Carlsen, Utah St.	Jr	13	47.77						
Daron Alcorn, Akron	Jr	5	46.20						
Ed Garro, Virginia	Jr	6	46.00						
Shayne Edge, Florida	Fr	5	45.20						
Paul Snyder, Miami (Fla.)	Jr	5	45.00						
Ron Dale, Southern Cal.	Sr	4	44.25						
David Lawrence, Vanderbilt	Jr	6	44.00						
Charles Langston, Houston	Sr	4	43.75						
Brian Parvin, Nevada-Las Vegas	Jr	11	43.73						
Billy Joe Hobert, Washington	So	8	43.38						
Ken Brenham, Baylor	Sr	4	43.25						
Scott Bryant, Southern Miss	Sr	8	43.13						
John Jeff, East Caro.	Sr	4	43.00						
Brian Borders, Toledo	Jr	7	42.57						
Mitch Berger, Colorado	So	7	42.43						
Jason Hanson, Washington St.	Sr	8	42.38						
Tim Kilpatrick, North Caro. St.	Jr	6	42.17						
Damon Keller, Ball St.	Jr	11	41.82						
Daren Parker, South Caro.	Sr	4	41.75						
Mike Riley, Mississippi St.	Sr	8	41.38						
Ed Bunn, UTEP	Jr	15	41.33						
Noian Kirkman, North Caro. St.	Jr	4	41.25						

NET PUNTING									
	PUNTS	AVG	RET	YDS	NET	AVG			
Notre Dame	2	50.0	1	1	49.5				
Temple	6	49.5	4	28	44.8				
Kansas	7	45.6	2	9	44.3				
Miami (Fla.)	5	45.0	3	4	44.2				
Florida	5	45.2	1	12	42.8				

Division I-AA individual leaders — Division I-AA team leaders

SCORING									
	CL	G	TD	XP	FG	PTS	PTPG		
Gerald Duffey, Florida A&M	Jr	1	4	0	0	24	24.00		
Robert Green, William & Mary	Sr	1	4	0	0	24	24.00		
Joe King, Nevada-Reno	Sr	1	3	0	0	18	18.00		
Scott Donald, Villanova	Jr	2	3	0	0	18	18.00		
Geoff Mitchell, Weber St.	Sr	2	5	0	0	30	15.00		
Tony Scales, Va. Military	Jr	1	2	0	0	12	12.00		
Jimmy Smith, Jackson St.	Sr	1	2	0	0	12	12.00		
Brian Mitchell, Northern Iowa	Sr	1	0	3	3	12	12.00		
Joe Campbell, Middle Tenn. St.	Sr	1	2	0	0	12	12.00		
Cedric Tillman, Alcorn St.	Sr	1	2	0	0	12	12.00		
Elia Ala'ilima-Daley, Idaho	Sr	1	2	0	0	12	12.00		
Charles Swann, Indiana St.	Sr	1	2	0	0	12	12.00		
Jack Douglas, Citadel	Sr	1	2	0	0	12	12.00		
Dan Lyle, Va. Military	Sr	1	2	0	0	12	12.00		
Hugh Swilling, Furman	So	1	2	0	0	12	12.00		
Sylvester Jones, Idaho St.	Jr	1	2	0	0	12	12.00		
Wade Booker, Stephen F. Austin	Fr	1	2	0	0	12	12.00		
Pat Kennedy, Villanova	Sr	1	2	0	0	12	12.00		
Eddie Thompson, Western Ky.	Jr	1	2	0	0	12	12.00		
Tim Lester, Eastern Ky.	Sr	1	2	0	0	12	12.00		
Chuck Fox, Western Ill.	Sr	1	2	0	0	12	12.00		
Curtis Thomas, Sam Houston St.	Sr	1	2	0	0	12	12.00		
Reggie Brown, Alabama St.	Sr	1	2	0	0	12	12.00		
Nat Singleton, Grambling	Sr	1	2	0	0	12	12.00		
Carl Tremble, Furman	Jr	1	2	0	0	12	12.00		

RECEPTIONS PER GAME									
	CL	G	CT	YDS	TD	CTPG			
Kasey Dunn, Idaho	CL	1	10	126	1	10.00			
Brian Straughter, Boston U.	Sr	1	8	92	1	8.00			
Bo Gilhard, Prairie View	So	1	8	90	0	8.00			
Darrell Philon, Southeast Mo. St.	Sr	2	14	229	2	7.00			
Alfred Pupunu, Weber St.	Sr	2	14	212	0	7.00			
Jeff Parker, Bethune-Cookman	Sr	2	14	170	2	7.00			
Pat Nelson, Liberty	Sr	1	7	105	0	7.00			
Alex Davis, Connecticut	Jr	1	7	93	1	7.00			
Mark Didio, Connecticut	Sr	1	7	79	1	7.00			
Rob Tesch, Montana St.	Jr	2	13	197	2	6.50			
Scott Dykes, East Tenn. St.	So	1	6	160	1	6.00			
Scott Donald, Villanova	Jr	1	6	84	3	6.00			
David Berardinelli, Bucknell	Jr	1	6	78	1	6.00			
Michael Lucke, William & Mary	Sr	1	6	77	1	6.00			
John Perry, New Hampshire	Jr	1	6	66	0	6.00			
Bill Cockhill, Montana	So	1	6	64	0	6.00			
Bryan Reeves, Nevada-Reno	So	1	6	63	0	6.00			
Sheldon Forehand, Boise St.	Jr	1	6	56	0	6.00			
Brian Gloden, Sam Houston St.	Sr	1	6	54	0	6.00			
Clarence Miller, Illinois St.	Sr	1	6	52	0	6.00			
Matt Walsh, Bucknell	Jr	1	6	38	0	6.00			

RECEIVING YARDS PER GAME									
	CL	G	CT	YDS	TD	YDSPG			
Mike Wilson, Boise St.	CL	1	4	165	1	165.00			
Scott Dykes, East Tenn. St.	So	1	6	160	1	160.00			
Kasey Dunn, Idaho	Sr	1	10	126	1	126.00			
Horace Brooks, Alabama St.	Jr	1	2	120	1	120.00			
Timothy Daniel, Florida A&M	Jr	1	3	115	1	115.00			
Darrell Philon, Southeast Mo. St.	Sr	2	14	229	2	114.50			
Torrance Small, Alcorn St.	Sr	1	5	112	0	112.00			
Wade Hampton, Nevada-Reno	Jr	1	3	111	1	111.00			
Scott Thompson, Villanova	Sr	1	3	110	0	110.00			
Charles Swann, Indiana St.	Sr	1	3	108	2	108.00			
Alfred Pupunu, Weber St.	Sr	2	14	212	0	106.00			
Pat Nelson, Liberty	Sr	1	7	105	0	105.00			
Scott Adams, Northeastern	Sr	1	3	105	1	105.00			
John McCallister, Idaho St.	Jr	1	2	101	1	101.00			
Rob Tesch, Montana St.	Jr	2	13	197	2	98.50			

ALL-PURPOSE RUNNERS									
	CL	G	RUSH	REC	PR	KOR	YDS	YDSPG	
Barry Bourassa, New Hampshire	Jr	1	89	0	0	0	214	214.00	
Scott Dykes, East Tenn. St.	So	1	160	0	0	45	205	205.00	
Charles Swann, Indiana St.	Sr	1	108	0	0	87	195	195.00	
Rob Tesch, Montana St.	Jr	2	197	10	177	384	192.00		
Robert Green, William & Mary	Sr	1	140	51	0	0	191	191.00	
Gerald Robinson, Northern Ariz.	Jr	2	295	0	18	67	380	190.00	
Calvin Johnson, Northeastern	Sr	1	110	12	0	57	179	179.00	
Billy Swain, Southern Ill.	So	2	0	124	0	219	343	171.50	
Marshall Hale, Tennessee Tech	Sr	1	65	10	0	95	170	170.00	
Tony Scales, Va. Military	Jr	1	167	0	0	0	167	167.00	
Mike Wilson, Boise St.	So	1	0	165	0	0	165	165.00	
Pat Kennedy, Villanova	Sr	1	113	12	0	39	164	164.00	
Freddie Solomon, South Caro. St.	So	1	0	159	0	0	159	159.00	
Alex Davis, Connecticut	Jr	2	178	83	0	54	315	157.50	
Jamie Jones, Eastern Illinois	So	2	184	108	0	0	292	146.00	
Joe Campbell, Middle Tenn. St.	Sr	1	146	0	0	0	146	146.00	
Marcus Henderson, Stephen F. Austin	Fr	1	65	0	0	71	144	144.00	
Darrell Philon, Southeast Mo. St.	Sr	2	0	229	58	0	287	143.50	
Harry Brown, Alcorn St.	So	1	11	63	0	69	143	143.00	
Kenny Shedd, Northern Iowa	Jr	1	0	16	101	24	141	141.00	
Tim Mitchell, Eastern Wash.	Sr	1	123	13	0	0	136	136.00	

FIELD GOALS									
	CL	G	FGA	FG	PCT	FGPG			
Brian Mitchell, Northern Iowa	Sr	1	3	3	100.0	3.00			
Rick Swendinger, Nevada-Reno	Fr	1	2	2	100.0	2.00			
Alex Lacson, Eastern Wash.	Fr	1	2	2	100.0	2.00			
Chad Davis, Citadel	Fr	1	2	2	100.0	2.00			
William Hoffman, Villanova	So	1	2	2	100.0	2.00			
Cameron Bair, Illinois St.	Jr	1	3	2	66.7	2.00			
Chris Dill, Murray St.	Fr	1	4	2	50.0	2.00			
Gerald Dasbach, Sam Houston St.	Sr	2	3	3	100.0	1.50			
Johnathan Muhammed, Texas Southern	Fr	2	3	3	100.0	1.50			
Michael O'Neal, Samford	Jr	2	3	3	100.0	1.50			
Tim Klinger, Montana St.	So	2	4	3	75.0	1.50			
Terry Belden, Northern Ariz.	So	2	4	3	75.0	1.50			
David Cool, Ga. Southern	Sr	2	3	3	100.0	1.50			
Skip Shelton, Nicholls St.	Jr	2	3	3	100.0	1.50			

INTERCEPTIONS									
	CL	G	NO	YDS	TD	IPG			
Eric Wards, Alcorn St.	So	1	4	57	0	3.00			
Warren McIntire, Delaware	Jr	1	4	83	1	2.00			
Terrance Shaw, Stephen F. Austin	Fr	1	2	76	0	2.00			
Ronald Alexander, McNeese St.	Jr	1	2	46	0	2.00			
Kris Yangas, Northeastern	Fr	1	2	31	0	2.00			
Rodney Oglesby, Ga. Southern	Sr	2	3	23	0	1.50			
James Williams, Mississippi Valley	So	2	3	15	0	1.50			
Sean Roundtree, Northern Ariz.	Fr	2	3	97	1	1.00			
Alonzo Brown, Mississippi Valley	Fr	2	2	25	0	1.00			
Darryl Pounds, Nicholls St.	Fr	2	2	18	0	1.00			
Morgan Ryan, Montana St.	So	2	2	17	0	1.00			
Jackie Washington, Tenn. Chatt.	Fr	2	2	4	0	1.00			
J. J. Chaney, Southern Ill.	So	2	2	1	0	1.00			
Sheridan May, Idaho	Fr	1	1	98	1	1.00			
Lester Smith, Citadel	Sr	1	1	66	0	1.00			
William Houston, Murray St.	Sr	1	1	51	0	1.00			
Frank Robinson, Boise St.	Sr	1	1	45	0	1.00			
Jesse Morris, Western Ill.	So	1	1	36	0	1.00			
Von Ganaway, Indiana St.	Jr	1	1	32	0	1.00			
Tom Johnson, Colgate	Sr	1	1	31	0	1.00			
Keino Taylor, Florida A&M	Fr	1	1	30	0	1.00			
Emanuel Martin, Alabama St.	Sr	1	1	26	0	1.00			
Darius Hadley, South Caro. St.	Jr	1	1	26	0	1.00			
Peter Burns, Northern Iowa	Jr	1	1	25	0	1.00			
Malcolm Everett, Youngstown St.	Jr	1	1	25	0	1.00			

PUNTING									
	CL	NO	AVG						
Harold Alexander, Appalachian St.	Jr	18	47.56						
Jim Kantowski, East Tenn. St.	Jr	8	44.75						
Pumpkin Tutors, Tenn. Chatt.	Sr	8	44.00						
Gene Vadas, Delaware	Sr	10	44.00						
Brian Pindar, Eastern Ill.	Sr	8	44.00						
Kirk Duce, Montana	Sr	6	43.33						
Don Norton, Ga. Southern	Sr	17	43.00						
Brian Dowler, Marshall	Sr	15	42.93						
Rick Swendinger, Nevada-Reno	Sr	4	42.75						
Pat Neely, McNeese St.	So	12	42.42						
Chad McCarty, Northeast La.	Jr	8	42.13						
Leo Araguz, Stephen F. Austin	Jr	4	42.00						
Steve Krieger, Indiana St.	Jr	4	41.75						
Joel Alsbrook, Middle Tenn. St.	Fr	4	41.50						
Colin Godfrey, Tennessee St.	Jr	12	41.25						
Brad Allen, North Texas	Sr	8	40.25						
Jeff Mottola, Maine	Jr	5	40.20						
Michael Andrews, Morgan St.	Sr	17	39.35						
Gerald Dasbach, Sam Houston St.	Sr	6	38.67						
Kenny Pauley, Western Caro.	So	8	38.50						
Tim Mosley, Northern Iowa	So	10	38.30						
Brian Southard, Va. Military	Jr	6	38.17						
Carl Lyles, Bethune-Cookman	So	10	38.10						

NET PUNTING					
	PUNTS	AVG	NO RET	YDS RET	NET AVG
Idaho	2	51.5	1	8	47.5
Florida A&M	2	46.5	1	8	46.0
Montana	6	43.3	2	6	42.3
Appalachian St.	18	47.6	10	95	42.3
Tenn. Chatt.	8	44.3	5	19	41.9
East Tenn. St.	8	44.8	3	27	41.4
Furman	2	38.5	2	5	41.0
Nevada-Reno	4	42.8	1	9	40.5
Idaho	4	42.0	2	7	40.3
Idaho	2	39.0	2	-2	40.0
Idaho	8	42.1	5	18	39.9
Idaho	6	40.5	3	9	39.0
Idaho	15	42.9	7	64	38.7
Idaho	5	40.2	2	8	38.6
Idaho	4	41.5	2	12	38.5
Idaho	10	44.0	4	57	38.3
Idaho	6	37.3	3	3	37.8
Idaho	10	38.1	3	5	37.6
Idaho	6	38.7	2	10	37.0
Idaho	17	43.0	11	103	36.9
Idaho	8	44.0	3	58	36.8
Idaho	4	41.8	2	22	36.3
Idaho	10	35.9	6	1	35.8
Idaho	8	40.3	2	39	35.4

Executive Committee minutes

Following are the minutes of the August 12-13, 1991, meeting of the NCAA Executive Committee, which was held at the LaCosta Hotel and Resort in Carlsbad, California. All actions taken by the Executive Committee are included.

1. NCAA Foundation. Robert Khayat, president of the NCAA Foundation, joined the meeting to present a status report on its activities. He summarized the Foundation's role as one of support for, rather than administration of, programs and activities, noting that he worked closely with the NCAA staff in this regard.

2. Previous Minutes. It was voted that the minutes of the May 6 meeting and the June 13 telephone conference be approved as distributed.

3. Actions Taken by Executive Director. It was voted that the actions taken by the executive director on behalf of the Executive Committee since the May 6 meeting be approved.

4. Administrative Committee Minutes. It was voted that the minutes of Administrative Committee Telephone Conference Nos. 7-12 be approved as distributed.

5. Report of Special Advisory Committee to Review Recommendations Regarding Distribution of Revenues. Judith M. Sweet, chair of the special committee, provided a status report on the revenue-distribution plan for 1990-91. It was noted that a subcommittee of the Presidents' Commission would meet August 16 to review the principles upon which the plan is based.

The Executive Committee was advised that in its July 11 telephone conference, the Administrative Committee had remanded to the Financial Aid and Amateurism Committee its recommendations regarding the needy student-athlete fund, specifically dealing with the eligibility for use of such funds by foreign student-athletes and domestic student athletes who do not qualify for Pell Grants, and proper certification of the financial need of such individuals. It had agreed that such individuals would not be included in the program this year.

6. Report of Budget Subcommittee. B. J. Skelton, chair of the Budget Subcommittee, presented its report.

a. Mr. Skelton called the Executive Committee's attention to the following actions of the Budget Subcommittee:

(1) Approved changes in the Association's investment guidelines, noting that they do not affect its conservative investment philosophy.

(2) Noted that the NCAA national office would experience no staff growth in fiscal year 1991-92.

(3) Acted on funding requests from affiliated organizations;

(4) Noted that inasmuch as the new monies generated by the CBS Sports television contract had been committed by previous Executive Committee action, steps were taken to make up a projected deficit of approximately \$3.6 million for 1991-92. They included imposing limits on first-class travel of 600 miles for committee members and 900 miles for staff members; reducing the national office furniture and equipment budget, and carrying forward approximately \$1 million of the Funded Operating Reserve to 1991-92 operations; and

(5) In response to requests that the revenue-distribution checks be sent earlier, noted that this would result in a significant reduction in investment income to the Association; and agreed that in light of the difficulty in balancing the 1991-92 budget, the distribution timetable used for the 1990-91 payments would be maintained for 1991-92, but that distribution checks to conference offices would be sent via Federal Express.

b. It was voted that the report of the Budget Subcommittee and minutes of its July 15 meeting be approved.

c. The Budget Subcommittee also recommended the following:

(1) That the Divisions II and III championships reserves be eliminated, in order to avoid the confusion regarding the championships allocations to Divisions II and III. Accordingly, effective with the 1991-92 budget, the per diem and transportation for Divisions II and III would be line items in the budget; thus, any year-end overage or surplus in those accounts would be included in overall NCAA surplus or deficit; and

(2) That the staff be directed to develop guidelines for all committees to assist them with fiscal planning, using three-year cycles, including the following:

(a) Requiring all sports committees to submit any recommendations with budgetary impact no later than the May Executive Committee meeting each year;

(b) Requiring the Divisions I, II and III Championships Committees to submit their recommendations at the May meeting; and

(c) Requiring the Council and Presidents' Commission to forward recommendations

with budgetary impact from their April meetings to the May meeting of the Executive Committee.

d. It was voted that the recommendations be approved.

7. General Operating Budget. It was voted that the 1991-92 general operating budget be approved, subject to adjustments in certain line items to reflect Executive Committee actions later in the meeting.

[Note: Subsequent to this action, the revenue and expense line items for Division III championships were increased by \$20,000, resulting in an increase in the general operating budget to \$168,742,000.]

8. Report of Committee on Competitive Safeguards and Medical Aspects of Sports. The Divisions I, II and III Championships Committees reported on their discussions regarding the recommendations of the competitive safeguards committee, and the Executive Committee took the following actions:

a. Agreed that if a student-athlete selected for NCAA drug testing quits the team prior



Meeting
August 12-13

to notification of selection and then wishes to rejoin the team, the athlete may not compete until he or she is tested at the institution's expense;

b. Referred to the Council the recommendation that the NCAA squad-list form be revised to include a column to indicate the reason for a student-athlete's change in status, noting that it supported the recommendation but that the form is under the jurisdiction of the Council;

c. Agreed not to require a student-athlete who has been excused from an NCAA drug test to travel to the next available NCAA drug-testing site for specimen collection;

d. Declined to charge institutions for the cost of analyzing "dilute specimens";

e. Agreed that the policy of testing both winning and losing teams should be continued; but directed the competitive safeguards committee to continue to address the problems associated with late-night testing and develop satisfactory alternatives for consideration;

f. Supported the Council's approval of proposed legislation to permit member institutions to administer the drug-testing consent form separately from the Student-Athlete Statement; to require all student-athletes to sign the drug-testing consent form annually; to specify that the consent form must be signed before the student-athlete is eligible to participate in practice or competition; and to specify that any student-athlete on an NCAA squad list must have signed a drug-testing consent form;

g. Approved the recommendation to reduce on-campus prebowl testing by 50 percent (i.e., test 18 teams from nine bowls selected randomly, instead of testing teams from all 18 bowl games);

h. Agreed to endorse the Athletic Drug Reference list compiled by the Glaxo pharmaceutical firm as the official NCAA brand-name banned drug list, with an appropriate disclaimer regarding the completeness of the list;

i. Reaffirmed enforcement of the policy banning the use of tobacco products at NCAA championships by participants, sports committees, coaches and officials; and

j. Received the preliminary results from the drug testing conducted from January to June 1991.

9. Report of Ad Hoc Committee to Administer the Conference Grant Program. Eugene F. Corrigan, chair of the ad hoc committee, presented the recommendations of the Division I Championships Committee regarding the conference grant program.

It was voted that the ad hoc committee and the staff be directed to review and revise the reporting forms and procedures for administering the program with a view toward reducing the administrative burden involved, for review at the December meeting; that controls for assuring accountability on the part of conferences receiving the grants be maintained; and that emphasis on the four areas in which expenditures are required be maintained (i.e., improvement of men's and women's basketball officiating, compliance and enforcement, drug education and enhancement of opportunities for ethnic minorities and women).

[Note: In a separate discussion, a member of the Division I Championships Committee requested that the ad hoc committee consider awarding the same amount to both automatic qualifying and nonautomatic qualifying conferences that sponsor Division I men's and women's basketball.]

10. Report of Minority Opportunities and Interests Committee. The Executive Committee reviewed the request that the number of minority interns be increased from three to five, effective in 1992-93. It was reminded

that at its May 1991 meeting, it had determined that the number of interns would not be increased for 1991-92.

It was voted that effective with the 1992-93 fiscal year, the number of minority interns be increased from three to five.

11. Report of Ad Hoc Committee to Review 1991 Convention Proposal No. 63. In their separate meetings, the Divisions I, II and III Championships Committees reviewed the recommendations of the ad hoc committee. It was noted that the Council had agreed to sponsor legislation for the 1992 Convention to expand the oversight responsibility of the division championships committees to hear and approve appeals for division-wide exceptions to playing rules based on significant financial impact (subject to the final approval of the Executive Committee). The Divisions I, II and III Championships Committee recommended the following:

a. That "significant financial impact" be defined as any rules change that would exceed \$1,000 in cost;

b. That "participation impact" not be considered a basis for division-specific rules differences, inasmuch as it was believed that there are more disadvantages possible from abuse than there are advantages to be gained by addressing participation impact; and

c. That the following procedures for processing an exception appeal be adopted:

(1) An appeal for a division-wide exception can be made by the appropriate sports committee with rules-making responsibilities; a division championships committee; the Executive Committee, or eight member institutions, not all of which can be from the same conference;

(2) An appeal that originates from a source other than a sports committee will be referred to the sports committee for study and a recommendation;

(3) The sports committee will solicit opinions from the division seeking the exception through a survey prepared and tabulated by the national office. Language for the survey will be approved by the committees or institutions originating the appeal. Although the sports committee, division championships committees or Executive Committee are not bound by the results of the survey, a majority of the members in a division who sponsor the sport should desire the exception for it to be considered favorably; and

(4) The sports committee must report to the division championships committees on its study and rationale for its decision either to recommend approval or disapproval of the appeal.

d. The chair expressed the ad hoc committee's appreciation to the assistant executive director for publishing for his assistance;

e. It was voted that the recommendations be approved.

12. Report of Student-Athlete Advisory Committee. It was noted that in its meeting the previous day, the Administrative Committee had reviewed proposed legislation to increase the Student-Athlete Advisory Committee from 16 to 28 members and had agreed to delay the effective date of the legislation to August 1993 (rather than immediately).

It was voted that the action be approved.

13. Report of Two-Year College Relations Committee. The Executive Committee reviewed the request of the Two-Year College Relations Committee that it reconsider its May 1991 action to deny funding for the publication of an eligibility brochure for two-year college administrators.

It was voted that the request be approved in concept and referred to the staff's in-house publications committee to determine the appropriate form the publication should take; and that as a matter of policy, all future requests for published materials first be considered by that committee and its recommendation submitted to the Executive Committee.

14. Council Referrals. The Executive Committee reviewed items referred by the Council for action or information and took the following actions:

a. Noted that the Council had approved the publication of pocket recruiting guides for Divisions II and III, subject to the availability of funds; and referred the matter

to the staff publications committee;

b. Noted that the Council had agreed to sponsor a resolution expressing support for the concept of NCAA-sanctioned summer basketball camps for men and women, noting that the details of the plan, including sources of funding, would need to be developed in anticipation of legislation for the 1993 Convention;

c. Noted that the Council had approved legislation to establish a Division I-AAA football classification; that the legislation did not provide for the establishment of a Division I-AAA football championship, and that the Council would sponsor a resolution specifying that the size of the Division I-AA Football Championship would not be decreased for at least five years;

d. Noted that in response to a question from the Executive Committee, the Council approved noncontroversial legislation, for 1991 only, to specify that either the conference champion (as specified in the legislation adopted at the 1991 Convention) or another team(s) designated by the conferences could participate in the Heritage Bowl; and

e. Noted that the Council voted to sponsor all proposals submitted by the Executive Committee for the 1992 Convention. [Note: Also refer to Minute No. 20-f-(7).]

15. Basketball Officiating Program. In their separate meetings, the Divisions I, II and III Championships Committees reviewed a report on the estimated costs and other considerations related to expanding the Division I men's and women's basketball officiating clinics to include Divisions II and III officials.

a. It was the sense of the meeting that the cost, logistical problems relative to hotels as clinic sites and the current responsibilities of the men's and women's clinicians precluded expansion of the clinics. The Division II Championships Committee suggested that consideration be given to ways in which conferences could include Divisions II and III officials in their clinics.

b. It was voted that the Basketball Officiating Committee be directed to develop low-cost alternatives (other than the expansion of clinics) to address the needs of Divisions II and III officials.

16. Support of NCAA Championships. In their separate meetings, the Divisions I, II and III Championships Committees discussed whether to adopt a policy requiring member institutions to support the meets and tournaments of the Association if they chose to participate in any postseason competition.

It was voted that Bylaw 31.2.1 be revised by the addition of the following regulation: "Eligible members in a sport who are not also members of the National Association of Intercollegiate Athletics will participate (if selected) in the NCAA championship or in no postseason competition in that sport."

17. Distribution of Materials at NCAA Championships. It was voted that the sale or distribution of newspapers, handbills, flyers, memorabilia or promotional materials at the site of an NCAA championship without the advance written approval of the NCAA be prohibited.

18. National Collegiate Championships and Related Matters. Messrs. Corrigan, Jerry M. Hughes and Rocco J. Carro, chairs of the Divisions I, II and III Championships Committees, respectively, reported their committee's actions on recommendations from sports committees.

The Executive Committee took the following actions on the championships committee's recommendations regarding their respective championships:

a. **Men's and women's fencing.**

(1) Declined to administer regional tournaments under the auspices of the NCAA for qualifying purposes into the National Collegiate Men's and Women's Fencing Championships;

(2) Determined that the selection criteria for allocated berths should not be weighted with specific percentages; approved the specification of primary and secondary factors to be considered in the selection process; but noted that results of noncollegiate competition could not be considered; and

(3) Declined to reimburse per diem, transportation and hotel expenses for one addi-

tional armorer for the championships.

b. **Men's and women's golf.**

(1) **Joint recommendations.**

(a) Authorized reimbursement of ground transportation, per diem and lodging expenses for one additional official each for the National Collegiate Women's and Divisions I, II and III Men's Golf Championships, effective with the 1993 championships, and

(b) Agreed that participating institutions be required to have a representative (i.e., a paid staff member) accompany their participating student-athlete(s) throughout the competition; that failure to comply with this policy may (rather than necessarily would) subject an institution to the financial penalties specified in Bylaw 31.1.9; further, agreed to extend this policy to all NCAA championships. (Note: More stringent policies approved by the Executive Committee for selected championships supersede this requirement.)

(2) **National Collegiate women.**

(a) Designated the University of Oregon as host institution for the 1994 championships, May 25-28; and

(b) Effective with the 1992 championships, reduced from 18 to 15 the number of rounds in which a team or individual must participate in order to be considered for selection; and established the following sliding scale for the elimination of highest rounds in computing a team's scoring average: 15-20 rounds, eliminate the two highest scores; 21-23 rounds, eliminate the three highest scores; 24-26 rounds, eliminate the four highest scores; and 27 or more rounds, eliminate the five highest scores.

(3) **Division I men.**

(a) Designated the following as host institutions for the regional tournaments of the 1992 championships, May 21-23: East Colgate University; Central Southern Methodist University; and West University of Arizona;

(b) Designated Southern Methodist as the host institution for the 1994 championships, June 1-4;

(c) Determined that effective with the 1992 championships, the field would be cut after 36 holes from 156 players to the low 15 teams (plus ties) and the low six individuals not on those teams (plus ties);

(d) Declined to provide host institutions for regional tournaments automatic selection into the regional tournament;

(e) Declined to increase games expense limits for regional tournaments from \$2,000 to \$3,000;

(f) Approved in principle the hiring of Golfstat, effective with the 1993 championships, to process regular-season results to assist with the selection process; but directed the staff to attempt to negotiate a more favorable fee; and

(g) Realigned the following institutions for selection purposes, effective with the 1992 championships: University of South Carolina, Columbia, from District 3 North to District 3 South; and Murray State University and Morehead State University, from District 3 North to District 4.

(4) **Division II men.**

(a) Changed the Division II Men's Golf Championships dates from the second full week to the third full week in May (Tuesday-Friday), effective with the 1992 championships;

(b) Designated Wofford College as the host institution for the 1992 championships, May 19-22; and

(c) Designated California State University, Stanislaus, as the host institution for the 1993 championships, May 18-21.

(5) **Division III men.**

(a) Reduced the number of berths in the Division III Men's Golf Championships allocated for institutions in District 6 from 15 to 10 and increased the allocation for District 3 from 15 to 20, effective with the 1992 championships; and

(b) Accepted the Division III men's golf subcommittee's rationale as to why two practice rounds were necessary prior to competition.

c. **Men's gymnastics.**

(1) Approved that effective with the 1992 National Collegiate Men's Gymnastics

See Executive, page 13

SPORTS CAREERS
1991 CONFERENCE
ATLANTA • OMNI HOTEL
OCTOBER 25, 26, 27

- Meet experts from the sports industry
- Over 50 prominent speakers
- Unlimited Networking
- Job interview opportunities

Early registration discounts available

Call Now **1-800-776-7877**

COLLEGE PROSPECTS OF AMERICA
Over 400 Scouts In
45 States, 4 Countries

Providing Accurate Profiles On High School
Athletes In 26 Sports To College Coaches
Nationwide . . . NEVER ANY FEE!

If You Are Not Receiving Them Or Need Athletes,
Call Tracy Jackson On Our Coaches' Hotline:
1-800-235-2762

Executive

Continued from page 12

Championships, selection to regional qualifying meets may be based on scores in competition in which a maximum of 12 gymnasts compete, rather than only those in which a maximum of nine gymnasts compete.

(2) Approved that the top five all-around gymnasts and the top five individuals in each event who are not members of a qualified team advance to the national championships from each regional tournament (rather than the top 12 all-around finishers and the top 12 finishers in each event from each regional).

(3) Designated the University of Iowa and the University of New Mexico as host institutions for the 1992 East and West regional qualifying meets, respectively, April 11.

(4) Designated New Mexico as the host institution for the 1993 championships, April 15-17, and

(5) Noted that the Men's Gymnastics Committee plans to submit recommendations at the December meeting related to cost-saving measures for the championships.

d. Women's gymnastics.

(1) Approved that effective with the 1992 National Collegiate Women's Gymnastics Championships, qualification and seeding for regional competition would be based on a team's and an all-around competitor's six best regular-season meet scores, of which two must be home and two must be away; and that to compute the regional qualifying score, the high and low scores from those six meets would be eliminated and the remaining four scores averaged;

(2) Deferred until the December meeting a recommendation that qualification and seeding for the national championships be based solely on the results of regional competition, rather than on a combination of regular-season scores and the regional score; noted that this would appear to be a significant change that, according to Executive Committee policy, should be submitted for approval at least one year prior to its effective date; and requested that the Women's Gymnastics Committee provide information as to the effect this change would have had on the championships field over the past few years. (Note: The qualification procedures will remain unchanged for the 1992 championships.);

(3) Designated the following as host institutions for regional qualifying meets of the 1992 championships, April 11: Central—University of Missouri, Columbia; Midwest—University of Utah; Northeast—Pennsylvania State University; Southeast—University of Florida; and West—University of California, Berkeley;

(4) Designated Oregon State University as the host institution for the 1993 championships, April 15-17.

(5) Approved that effective with the 1993 championships, host institutions for regional competition be required to guarantee a minimum of \$3,000 as 75 percent of the net receipts;

(6) Determined that each institution with a team participating in the national championships would be required to be represented at the organizational meetings and throughout the competition by an athletics director, senior woman administrator or other designee in an administrative position;

(7) Remanded to the committee for additional information and review at the December meeting the recommendation that a penalty-card system to address coaches' misconduct be implemented at the championships and for meets used for qualification to the championships; and noted that in any case, it would not be appropriate to mandate such a system for regular-season meets, and

(8) Reviewed concerns expressed by a coach regarding the committee's administration of the championships and its relationship with the National Association of Collegiate Gymnastics Coaches (Women). It was the sense of the meeting that the committee had not acted inappropriately in the conduct of the championships.

e. Men's lacrosse.

(1) Designated Rutgers University, New Brunswick, and the University of Maryland, College Park, as the host institutions for the 1994 and 1995 Division I Men's Lacrosse Championships, May 28-30 and May 27-29, respectively, and

(2) Approved that the 1992 Division III Men's Lacrosse Championship be conducted at the same site as the Division I championship, on the Sunday between the Division I semifinal and championship games (Saturday and Monday); and that this format be evaluated subsequent to 1992. [Note: It was agreed that the general operating budget would be adjusted to include \$20,000 in revenue and \$20,000 in expense to reflect this action.]

f. Women's lacrosse. Realigned Colgate University, Hofstra University and Cornell University from the Mid-Atlantic to the Northeast region, and realigned the University of Delaware from the South to the Mid-Atlantic region for selection purposes for the 1992 National Collegiate Women's Lacrosse Championship.

g. Men's and women's rifle. Designated Murray State University as the host institution for the 1992 National Collegiate Men's and Women's Rifle Championships, March 5-7.

h. Men's and women's skiing. Increased officials' fees from \$100 to \$150, effective with the 1993 National Collegiate Men's and Women's Skiing Championships.

i. Women's soccer. Increased the bracket for the Division III Women's Soccer Championship from 16 to 20 teams, effective with the 1992 championship.

j. Women's softball.

(1) Joint recommendations.

(a) Denied a request from the Women's Softball Committee that the Executive Committee reconsider its policy that recommendations with a budgetary impact must be submitted at the May meeting, or that a contingency fund be established to deal with recommendations from sports committees that meet subsequent to the May meeting each year;

(b) Allocated \$3,000 for the development of a computer software program to assist the Divisions I, II and III subcommittees in compiling power-rating information for national polls and the selection processes, effective with the 1993 championships.

In a related action, the Executive Committee noted that numerous sports committees were authorized to use computer programs to assist with the compilation of similar information. It agreed that a procedure should be implemented to ensure that, where applicable, the rights to such programs remain the property of the NCAA. It was agreed that the staff would work with legal counsel to develop the necessary contracts and/or safeguards, and

(c) Specified that season-ending performance be considered as part of an institution's won-lost record during the selection process.

(2) Division I.

(a) Awarded automatic qualification to the following for the 1992 Division I Women's Softball Championship: Big Eight, Big Ten, Big West, Pacific-10, Gateway Collegiate Athletic, Mid-American and Western Athletic Conferences;

(b) Denied a request that the four teams that were required to be at the site of the Women's College World Series two days prior to competition be provided an additional day's per diem; and directed the staff to study this and other requests for additional per diem for other championships and submit its recommendations for review at the May 1992 meeting;

(c) Awarded the University of Oklahoma \$1,500 as an honorarium for serving as the host institution for the 1991 Women's College World Series, and

(d) Revised the dates for the Women's College World Series from Wednesday through Sunday of Memorial Day weekend to Thursday through Monday, effective with the 1992 championship.

(3) Division II.

(a) Awarded automatic qualification to the following for the 1992 Division II Women's Softball Championship: Missouri Intercollegiate Athletic Association, and the New England Collegiate, Sunshine State, Great Lakes Intercollegiate, North Central Intercollegiate, Northern California and Pennsylvania State Athletic Conferences;

(b) Authorized the reimbursement of air transportation expenses for two of the four officials assigned to the championship session, effective with the 1993 championship, and

(c) Authorized payment of a flat fee of \$300 each for the four umpires at the finals, rather than a game-by-game fee, effective with the 1992 championship.

(4) Division III.

(a) Specified that at least two teams, rather than one, be selected from each of the five regions for the Division III Women's Softball Championship, effective with the 1992 championship;

(b) Denied requests that two institutions receive an additional day's per diem for their participation in the 1991 championship, or that all six teams receive an additional day's per diem for future championships; noted that the staff would prepare recommendations in this regard for review at the May 1992 meeting;

(c) Declined to authorize reimbursement of air transportation expenses for two of the four umpires in the finals, rather than one;

(d) Authorized payment of a flat fee of \$450 each for the four umpires at the finals, rather than a game-by-game fee, effective with the 1992 championship, and

(e) Awarded automatic qualification to the following for the 1992 championship: Michigan Intercollegiate Athletic Association, and the Iowa Intercollegiate, Massachusetts State College, New Jersey and Ohio Athletic Conferences.

k. Men's and women's swimming.

(1) Division I.

(a) Denied a request that a moratorium be placed on the field size for the 1992 Division I Men's and Women's Swimming and Diving Championships to permit the number of



Bill Simms photo

Special recognition

On behalf of Special Olympics, Chicago White Sox manager Jeff Torborg (right) presents an appreciation award to Sam Peltzer, chair of the University of Chicago's board of athletics and recreational sports. The school recently hosted the Chicago Special Olympics for the third consecutive year.

participants to remain at a 1:12 ratio; and directed the Men's and Women's Swimming Committee to limit the number of participants in the 1992 championships to 270 men and 230 women (approximately a 1:15 ratio);

(b) Designated the University of Texas at Austin, as the host institution for the 1992 women's championships, March 19-21;

(c) Designated the following as host institutions for zone diving meets for the 1992 men's and women's championships, March 13-14: Zone A—Princeton University; Zone B—Florida State University; Zone C—University of Minnesota, Twin Cities; Zone D—University of Nebraska, Lincoln; and Zone E—Brigham Young University, and

(d) Awarded automatic qualification to the following for diving competition at the 1992 men's and women's championships: Men—Southwest Athletic, Big Ten, Southeastern, Pacific-10, Big East and Metropolitan Collegiate Athletic Conferences; Women—Southwest Athletic, Big Ten, Southeastern, Pacific-10, Big Eight and Western Athletic Conferences.

(2) Division III.

(a) Designated the State University of New York, Buffalo, as the host institution for the 1992 Division III Men's and Women's Swimming and Diving Championships, March 12-14 and March 19-21, respectively;

(b) Designated Emory University as host institution for the 1993 men's and women's championships, March 11-13 and March 18-20, respectively, and

(c) Directed the Division III subcommittee of the Men's and Women's Swimming Committee to limit the number of competitors at the 1992 championships to 239 men and 247 women (approximately a 1:14 ratio); to report back at the May 1992 meeting as to the number of individuals in each event; and to achieve a 1:16 ratio of participants by the 1993 championships.

l. Men's and women's tennis.

(1) Division I.

(a) Designated the University of Georgia as the host institution for the 1993 Division I Men's Tennis Championships, May 21-30, and directed the Men's and Women's Tennis Committee to determine an alternate site for 1994;

(b) Realigned Mount Saint Mary's College (Maryland) from Region II to Region I for selection purposes, effective with the 1992 championships, and

(c) Adjusted the dates formula for the Division I Women's Tennis Championships to specify that the championships begin the second Wednesday in May (rather than the Wednesday following the first weekend), due to natural changes in the calendar; and

noted that in 1992, those dates would be May 13-21.

(2) Division II. Designated the University of Central Oklahoma as the host institution for the 1992 Division II Men's Tennis Championships, May 8-14.

(3) Division III.

(a) Designated Emory University as the host institution for the 1992 Division III Men's Tennis Championships, May 14-21;

(b) Declined to provide a one-year waiver of Bylaw 31.3.4.4 that would permit the championships to begin prior to noon Sunday;

(c) Approved that all matches through the quarterfinals of the men's team championship be played to completion (rather than being terminated upon the determination of a team winner); that matches subsequent to the quarterfinal round be played to decision unless both coaches agree to play to completion; that all singles matches in progress be played to completion; that all play-out matches be played to decision unless both coaches agree to play to completion; but directed the subcommittee to provide additional information as to why the play-out procedures are different for the men's and women's championships;

(d) Determined that team results from fall competition (beginning September 1) would not be considered for selection to the men's championships;

(e) Declined to approve Pomona-Pitzer Colleges as the host institution for the 1992 Division III Women's Tennis Championships, and directed the Division III women's subcommittee to determine a site that met the requirements of the 500-mile radius policy (i.e., at least 25 percent of the participants in the past three championships must have come from within a 500-mile radius of the site);

(f) Revised the formula for determining the dates of the women's championships, specifying that the championships would begin the Tuesday following the second Sunday in May, in order to reduce the number of student-athletes competing on Sunday;

(g) Modified the number of matches played each day by a student-athlete competing in both singles and doubles competition, specifying that two rounds of singles and one round of doubles be conducted the first and second days, and that the finals of singles competition and the semifinals and finals of doubles competition be conducted the third day; but directed the subcommittee to provide additional information as to why the format differs from the men's championships;

(h) Determined that all matches in the women's team championships be played to completion, rather than to decision, and

See Executive, page 14



PEOPLE-TO-PEOPLE SPORTS COMMITTEE

We've been sending teams to compete abroad for over 35 years!

Created by President Eisenhower to promote international friendship and goodwill through sports, People-to-People Sports is a non-profit organization that has sponsored teams in all sports, men's and women's - basketball, soccer, baseball, ice hockey, football, tennis, and many more!

Clients over the years have included Michigan, Rutgers, Old Dominion, the Ivy League, the Big 8 Conference; and smaller schools like So. Illinois, Bowdoin, and C.W. Post. Let us know your sport, when and where you want to travel, and we will organize a program that your team will never forget!

Give us a call and we will develop a program specifically for your team.

**PEOPLE-TO-PEOPLE SPORTS COMMITTEE
80 CUTTER MILL ROAD, SUITE 208
GREAT NECK, NY 11021
(516)482-5158 FAX:(516)482-3239**

- * A Non-Profit Organization
- * Over 35 Years Worldwide Experience
- * Programs In All Sports
- * Excellent Government Contacts
- * Member Of Sports Governing Bodies
- * Distinguished Diplomatic Council
- * Prominent Sports Council
- * University Experienced Personnel
- * Tailor Made Programs
- * Significant Group Travel Discounts
- * Any Level Of Competition
- * Men's and Women's Teams
- * Represent USA as Sports Ambassadors

Executive

Continued from page 13

(i) Received the information that the Division III men's tennis subcommittee had issued a letter of private reprimand to a student-athlete found guilty of misconduct at the 1991 championships.

m. Men's and women's track and field.

(1) Division I.

(a) Deferred until the December meeting the recommendation that in order to be eligible for the Division I Men's and Women's Indoor Track, Outdoor Track and Field and Cross Country Championships, institutions be required to compete in a minimum of six regular-season meets in those sports, respectively.

(b) Declined to authorize reimbursement of expenses for one member of the Division I men's and women's track and field subcommittee to conduct annual site surveys with the staff liaison for the cross country, indoor and outdoor championships, noting that these decisions should be left to the staff.

(c) Specified that effective with the 1992 championships, qualifying performances for the indoor championships be made at indoor track meets between December 1 and the Sunday prior to the championships; and that qualifying performances for the outdoor championships be made at outdoor meets between March 1 and the Thursday prior to the championships.

(d) Deferred until the December meeting the recommendation that effective with the 1994 indoor championships, the 3,200-meter relay be replaced with the distance-medley relay, and requested additional rationale for the change.

(e) Designated Boise State University as the host institution for the 1994 outdoor championships, June 1-4, and

(f) Designated the following as host institutions for the regional qualifying meets of the 1991 cross country championships, November 16: Districts 1 and 2 - Lehigh University; District 3 - Furman University; District 4 - Indiana University, Bloomington; District 5 - Wichita State University; District 6 - University of North Texas; District 7 - University of Utah; and District 8 - California State University, Fresno.

(2) Division II.

(a) Specified that effective with the 1992 Division II Men's and Women's Outdoor Track and Field Championships, only qualifying marks achieved after February 1 would be accepted, and directed the subcommittee to consider changing that date to March 1 after 1992 (the same date established for the Divisions I and III championships).

(b) Specified that effective with the 1992 indoor and outdoor championships, performances used to qualify for the same event for both indoor and outdoor championships must be achieved at different meets.

(c) Designated the following as host institutions for the regional qualifying meets of the 1991 cross country championships, November 9: East - Springfield College; South - Mississippi College; Great Lakes - Southern Illinois University, Edwardsville; Central - North Dakota State University; and West - Sonoma State University.

(d) Designated Slippery Rock University of Pennsylvania as the host institution for the 1992 cross country championships, November 21, and

(e) Designated the University of South Dakota as the host institution for the 1993 indoor championships, March 12-13.

(3) Division III.

(a) Designated Colby College as the host institution for the 1992 Division III Men's and Women's Outdoor Track Championships, May 27-30.

(b) Designated the following as host institutions for regional qualifying meets of the 1991 cross country championships, November 16: Northeast - University of Southern Maine; and Midwest - Allentown College of St. Francis de Sales, and

(c) Specified that effective with the 1992 championships, qualifying performances for the indoor championships must be made at indoor meets between December 1 and the Saturday prior to the championships; and that qualifying performances for the outdoor championships must be made at outdoor meets between March 1 and the Friday prior to the championships.

n. Wrestling.

(1) **Joint recommendations.** Increased officials' fees for the Divisions I, II and III Wrestling Championships from \$70 to \$90 per session in Division I and from \$60 to \$80 per session for Divisions II and III, effective with the 1993 championships.

(2) Division I.

(a) Designated the University of North Carolina, Chapel Hill, as the host institution for the 1994 championships, March 3-5, and

(b) Authorized payment of \$200 for an individual to assist the computer operator in compiling and distributing seeding information, effective with the 1993 championships. [Note: Subsequent to the meeting, it was clarified that hiring this individual to perform these tasks would reduce mailing costs by approximately \$800; accordingly, the payment was authorized for the 1992 cham-

pionships.]

(3) Division II.

(a) Designated the following as host institutions for the regional qualifying tournaments of the 1992 Division II Wrestling Championships: South - Longwood College; Midwest - Southern Illinois University, Edwardsville; Northeast - Southern Connecticut State University; Midwest - Ferris State University; and West - University of California, Davis.

(b) Declined to increase the number of qualifiers for the 1993 championships from 140 to 160.

(c) Effective with the 1992 championships, authorized the reimbursement of air transportation expenses for six officials (one from each region), rather than five, and ground transportation expenses for three officials, rather than four, and

(d) Determined that the champions in each weight class from each of the six qualifying tournaments would advance to the championships (for a total of 60), and that the remainder of each region's qualifiers be determined by converting each region's three-year point total to a percentage of the championships' three-year point total and multiplying this percentage by the number of remaining qualifiers (80).

(4) Division III.

(a) Designated Trenton State College as the host institution for the 1992 Division III Wrestling Championships, March 6-7.

(b) Designated Wabash College as the host institution for the 1992 regional qualifying tournament, February 28-29, and

(c) Declined to authorize reimbursement of air transportation expenses for six additional officials.

o. Division I baseball.

(1) Approved the following change in the policy banning the use of tobacco products at NCAA championships, noting that the revision would apply to all NCAA championships (new language in boldface): "The use of tobacco products by individuals on the field of play, as well as during other championship activities such as banquets, autograph sessions, press conferences and postgame interviews, shall be prohibited".

(2) Approved an exception to the Association's per diem policy to provide Creighton University (host institution for the 1991 College World Series) \$6,300 to offset expenses incurred for its participation in the series, noting that host institutions normally receive per diem only for actual days of competition but that due to the schedule of competition, the university incurred lodging and meal expenses for the full 8½ days of competition.

(3) Denied the recommendation that championship flags be awarded at each regional tournament to the championship and second-place teams, or that a second flag be awarded to each of the eight teams at the College World Series.

(4) Accepted the position of the Division I Baseball Committee that it would not be in the best interests of the championship to establish a minimum financial guarantee for institutions desiring to host regional tournaments; and reaffirmed its current procedures, and

(5) Received without comment the information that the committee was compiling data to support an eventual request to expand the bracket from 48 to 64 teams.

p. Division I men's basketball.

(1) Reaffirmed the continuity-of-membership requirements in Bylaws 18.5.1 and 31.3.4.3 for automatic qualification into the Division I Men's Basketball Championship.

(2) Approved the recommendation that the National Association of Basketball Coaches be provided an annual grant of \$50,000 through the 1994 championship; [Note: It was agreed that in light of this action, the NABC would not be required to submit a grant application for 1992-93 or 1993-94.]

(3) Specified that a host institution or conference for any tournament session must conduct a minimum of one collegiate men's basketball game in the facility in which the session will be conducted, and that the game must be scheduled prior to February 1; agreed that the policy would apply to preliminary-round hosts beginning in 1995 and to Final Four hosts beginning in 1998, and agreed that hosts for sessions scheduled prior to those years would be asked to make their best effort to comply.

(4) Determined that effective with the 1995 championship, preference would be given to facilities with a seating capacity of at least 12,000.

(5) Determined that nonalcoholic beer may not be sold at any tournament site, noting that such beverages generally contain a trace percentage of alcohol, and that in any case the perception of selling the beverage would not be desirable.

(6) Declined to authorize the expenditure of \$10,000 for T-shirts for all student-athletes participating in the championship.

(7) Noted that the recommendation that drug testing of losing teams be discontinued was rendered moot by the Executive Committee's earlier action reaffirming the testing of both winning and losing teams;



Getting in the spirit

Football fans took advantage of festivities kicking off the 1991 football season to tour the NCAA Visitors Center at the national office.

(8) Agreed to require participating institutions to utilize 50 hotel rooms for a minimum of two nights at each preliminary-round site, and that an additional 25 rooms be held for each team on a nonguaranteed basis, and

(9) Designated the University of South Florida as host institution for a first- and second-round session of the 1994 championship, replacing the original Sun Belt Conference as host (in light of the recent realignment of the conference).

q. Division I women's basketball.

(1) Increased game officials' fees from \$275 to \$300 per game and the standby officials' fees from \$100 to \$150 per session, effective with the 1993 Division I Women's Basketball Championship.

(2) Designated the following as host institutions for regional tournaments of the 1994 championship, March 24 and 26: East - Rutgers University, New Brunswick; Midwest - University of Arkansas, Fayetteville; Midwest - University of Texas at Austin; and West - Stanford University.

(3) Designated the following as host institutions for regional tournaments of the 1995 championship, March 23 and 25: East - University of Connecticut; Midwest - University of Tennessee, Knoxville; Midwest - Drake University; and West - University of California, Los Angeles.

(4) Designated Virginia Commonwealth University as the host institution for the 1994 Women's Final Four, April 2-3 (Richmond Coliseum), and the University of Minnesota, Twin Cities, as the host institution for the 1995 Women's Final Four, April 1-2 (Target Center), contingent upon the arenas agreeing to cover commercial signage in accordance with NCAA policy.

(5) Agreed to provide the NCAA women's basketball secretary-rules editor the additional title of national coordinator of women's basketball officiating, noting that this individual performs essentially the same functions as the men's secretary-rules editor and national coordinator; but expressed concern about the desirability of one individual holding both positions in men's and women's basketball; and directed the appropriate entities (e.g., the Men's and Women's Basketball Rules Committees, the Division I Men's and Women's Basketball Committees and the Basketball Officiating Committee) to address this concern.

(6) Awarded automatic qualification to the following for the 1992 championship: Atlantic Coast, Atlantic 10, Big East, Big Eight, Big Sky, Big Ten, Big West, Gateway Collegiate Athletic, Metropolitan Collegiate Athletic, Metro Atlantic, Mid-American, Midwestern Collegiate, North Star, Ohio Valley, Pacific-10, Southeastern, Southern, Southland, Southwest, Sun Belt (formerly American South), Western Athletic and West Coast Conferences, and the Colonial Athletic Association.

(7) Approved that effective with the 1992-93 season, a conference that conducts single round-robin, regular-season competition without a postseason tournament would be eligible for automatic qualification, as long as each member institution played a minimum of 14 conference games [Note: Currently, a conference must conduct either double round-robin, regular-season competition (with or without a postseason tournament), or single round-robin competition with a postseason tournament.].

(8) Approved the following policy: Members of the coaching staff or other representatives of participating institutions or conferences shall not make public state-

ments critical of officiating in any NCAA competition. Failure to comply with this policy may subject the individual, institution or conference to the misconduct provisions of Bylaw 31.1.8, and specified that this policy be applied to all NCAA championships.

(9) Authorized reimbursement of air transportation expenses annually for four individuals to assist with the on-site administration of the media operation at the Women's Final Four, effective with the 1993 championship, and

(10) Noted the Division I Women's Basketball Committee's concern about the policy adopted at the May 1991 meeting regarding bracket expansion (i.e., that expansion of any championship bracket would not be considered unless there was compelling indication of growth, defined as increased sponsorship or improved financial status).

The Division I Championships Committee indicated that it intended to advise the Division I Women's Basketball Committee that it understood those concerns and realized that there may be other reasons to consider expansion, at the appropriate time (i.e., the pressure for automatic-qualifying berths; the popularity, visibility and potential for further development of the sport). However, the position taken in May was in response to budgetary concerns vis-a-vis the Association's priorities in this climate of cost containment and fiscal responsibility, and those factors have not changed. Accordingly, it would be premature to reconsider or abandon that position at this time.

r. Division I-AA football.

(1) Awarded automatic qualification to the following for the 1991 Division I-AA Football Championship: Big Sky, Gateway Collegiate Athletic, Ohio Valley, Southern, Southland and Yankee Conferences.

(2) Clarified that proposed legislation for the 1992 Convention would bring the Heritage Bowl under the administrative requirements of Bylaw 31.5 (Financial Administration of Postseason Football) but exempt it from the financial requirements of Bylaw 31.5.1, and

(3) Noted but took no action regarding the concern expressed by the Division I-AA Football Committee about the establishment of a Division I-AAA football classification and the possibility of the eventual establishment of a Division I-AAA football championship.

s. Division I men's ice hockey.

(1) Designated the following as sites for the Division I Men's Ice Hockey Championship, contingent upon receiving written notification by December 31 that the involved entities will follow NCAA specifications to the letter and execute any contracts that the Association requires:

(a) 1994 (March 31 and April 2) - Saint Paul Civic Center, St. Paul, Minnesota; University of Minnesota, Twin Cities, host.

(b) 1995 (March 30 and April 1) - Providence Civic Center, Providence, Rhode Island; Providence College, host, and

(c) 1996 (March 28 and 30) - Riverfront Coliseum, Cincinnati, Ohio; Miami University (Ohio), host.

(2) Designated the following as sites for regional tournaments of the 1992 championship, contingent upon receiving written confirmation that the involved entities will follow NCAA specifications to the letter and execute any contracts that the Association requires: East - Providence Civic Center, Providence College, host and West - Joe Louis Arena, Detroit, Michigan; Michigan State University, host, and agreed that re-

gional competition could be held either Thursday and Saturday or Friday and Sunday.

(3) Awarded the University of Minnesota, Twin Cities, and the University of Minnesota, Duluth, 10 percent of the net receipts from the 1991 championship as the honorarium for serving as hosts (to be divided according to a formula developed by the institutions).

(4) Approved the following policy regarding institution's payment for game tickets: "Full payment for tickets must be forwarded to the appropriate tournament manager within 30 days of the last date of competition at the site. A \$500 per-day fine shall be assessed for each day an institution fails to pay for its tickets subsequent to the 30-day deadline"; further, directed that all fines or financial penalties assessed by sports committees in accordance with Bylaw 31.1.9 should accrue to the NCAA Foundation.

(5) Referred to the staff for further study the request that semifinal participants be provided an extra day of per diem.

(6) Awarded automatic qualification to the following for the 1992 championship: Western Collegiate Hockey Association, Central Collegiate Hockey Association, Eastern College Athletic Conference and Hockey East.

(7) Authorized reimbursement of local ground transportation expenses for officials at the regional tournaments and championship session (either 21 cents per mile round trip or rental car expense).

(8) Effective with the 1993 championship, eliminated the requirement that the Division I Men's Ice Hockey Committee select at least one independent institution to participate in the championship, and

(9) Received the information that the committee issued public reprimands to and withheld two and one-half days per diem and transportation expenses for three student-athletes from one institution, and issued a private reprimand to a director of athletics and a sports information director, all as a result of misconduct incidents that occurred during the 1991 championship.

t. Division I women's volleyball.

(1) Awarded automatic qualification to the Metropolitan Collegiate Athletic Conference for the 1991 Division I Women's Volleyball Championship, and

(2) Realigned the University of Alabama, Birmingham; University of Cincinnati and Memphis State University from the South to the Midwest region (thereby placing all institutions in the new Great Midwest Conference in the Midwest region).

u. **Appeals of Bylaw 31.3.4.3.1(a).** Received the report of the Division I Championships Committee that it had reviewed two appeals for relief from the requirements of Bylaw 31.3.4.3.1(a) regarding automatic-qualification criteria for the Division I Men's Basketball Championship. Specifically, the bylaw requires that a new member added to a conference that maintains continuity of membership shall not represent the conference as the automatic qualifier until it has been a member of Division I for at least the eight preceding academic years.

(1) It was the sense of the meeting that institutions that had begun the process of reclassifying to or applying for Division I membership were disadvantaged when the waiting period was changed from three to eight years. Accordingly, the Division I Championships Committee voted to reaffirm the eight-year waiting period, but to credit member institutions with the time served in complying with membership requirements prior to January 1, 1989. It was noted that this action constituted the principle upon which an individual institution may seek relief; and it specified that appropriate documentation must be submitted to the NCAA national office indicating the point at which the institution began the process of reclassification or application. Recognizing that the NCAA does not require any forms or other materials to be filed by an institution as it begins this process, the Division I Championships Committee suggested that appropriate documentation might include such items as a press release, newspaper article or correspondence announcing its intent to become a member of Division I.

(2) It was voted that the action of the Division I Championships Committee be approved.

v. Division II baseball.

(1) Declined to increase the Division II Baseball Championship bracket from 24 to 28 teams.

(2) Increased the squad size from 22 to 24 persons, noting that the number in the official party would remain at 28.

(3) Realigned Longwood College from the South Atlantic to the North Atlantic region, effective with the 1992 championship.

(4) Increased umpires' fees for regional tournaments from \$50 to \$75 per game, and established a flat fee of \$1,000 for umpires in the championship session (based on an increase of \$75 to \$90 per game), effective with the 1993 championship.

(5) Awarded automatic qualification to the following for the 1992 championship: California Collegiate and Missouri Intercol-

See Executive, page 15

Executive

Continued from page 14

legiate Athletic Associations, and the Great Lakes Valley, Gulf South, New England Collegiate, North Central Intercollegiate Athletic, Northeast-10, Northern California Athletic, Pennsylvania State Athletic and Sunshine State Conferences;

(6) Declined to allocate moneys from the general operating budget to televise the 1993 championship game, but directed the staff to investigate the possibility of using moneys from the official championship baseball contract to telecast highlights from the championship session via satellite, and

(7) Awarded Troy State University a \$1,500 honorarium for serving as the host institution for the 1991 championship.

w. Division II men's basketball.

(1) Declined to revise the selection criteria for the Division II Men's Basketball Championship to permit the Division II Men's Basketball Committee to revise its selection procedures "as necessary";

(2) Declined to approve a change in current policy to specify that an institution with any player who is not eligible for postseason competition, rather than a starting player or front-line reserve, may be disqualified from consideration for selection;

(3) Denied the request that game officials assigned to regional competition be reimbursed for actual rental car expenses while at the site;

(4) Awarded automatic qualification to the following for the 1992 championship: California Collegiate, Central Intercollegiate and Missouri Intercollegiate Athletic Associations, and the Great Lakes Intercollegiate, Great Lakes Valley, Gulf South, Lone Star, New England Collegiate, New York Collegiate Athletic, North Central Intercollegiate, Northeast-10, Northern California Athletic, Pennsylvania State Athletic, Southern Intercollegiate and Sunshine State Conferences;

(5) Reduced the minimum seating capacity for regional tournaments from 2,500 to 2,000 for the South region and from 1,800 to 1,600 for the New England region;

(6) Reduced the minimum financial guarantee required of regional host institutions from \$24,000 to \$20,000 for the South region, from \$15,000 to \$12,000 for the East region, and from \$10,000 to \$8,500 for the New England region;

(7) Approved the Springfield Civic Center, Springfield, Massachusetts, as the site of the 1992 and 1993 finals of the championship, noting that the agreement included a 30-day renewal clause to be applied at the conclusion of the 1992 tournament;

(8) Denied the request for an additional day per diem for one institution in the 1991 championship;

(9) Received the information that in light of the anticipated increase in sponsorship of Division II men's basketball, the Division II Men's Basketball Committee planned to submit a request for a bracket expansion at the May 1992 meeting, and

(10) Accepted the Division II Men's Basketball Committee's position that it did not believe it would be appropriate to consider the amount of an institution's guarantee exclusively when evaluating bids, inasmuch as the existing financial guarantees had been in effect only one year.

x. Division II women's basketball.

(1) Awarded automatic qualification for the 1992 Division II Women's Basketball Championship to the following: California Collegiate Athletic, Central Intercollegiate Athletic and Missouri Intercollegiate Athletic Associations, and the Great Lakes Intercollegiate, Great Lakes Valley, Gulf South, New England Collegiate, New York Collegiate Athletic, Northeast-10, Northern California Athletic, North Central Intercollegiate, Southern Intercollegiate Athletic and the Pennsylvania State Athletic Conferences, and

(2) Realigned Eastern Montana College from the North Central to the West region for selection purposes.

y. **Division II football.** Deferred action until the December meeting on the recommended maximum games expenses and minimum guaranteed net receipts for the Division II Football Championship; and directed the staff to work with the Division II Football and Men's Basketball Committees to develop more consistent policies in this regard.

z. **Power-rating systems.** Noted that the Division II Championships Committee had reviewed the various power-rating systems used by selected sports committees in selecting participants for Division II championships and directed the staff to develop recommendations for a consistent system, for review at the December meeting.

aa. Division III baseball.

(1) Agreed that strong emphasis should be placed on regional representation in the Division III Baseball Championship, with the intent of selecting six teams from the Mid-Atlantic region, five teams each from the New England and Central regions, four teams each from the South and Midwest regions, three teams each from the New York and Midwest regions and two teams from the West region; but noted that if the

Division III Baseball Committee had conclusive comparative data, it may select a number other than described above from a region;

(2) Clarified that in addition to the criteria listed in Bylaw 31.3.3, the following criteria (in no preferential order) could be considered in the selection of participants: late-season performance, team balance, reserve pitching strength and conference standings, if applicable;

(3) Awarded Albion College a \$1,500 honorarium for serving as the host institution for the 1991 championship;

(4) Increased the squad size from 22 to 23 players, effective with the 1992 championship, noting that the official traveling party remained at 27;

(5) Increased umpires' fees for regional tournaments from \$50 to \$60 per game, and established a flat fee of \$800 for umpires in the championship session (based on an increase from \$60 to \$70 per game), and

(6) Noted as a point of information that the committee had issued letters of private reprimand for three separate incidents of misconduct during the 1992 championships; expressed concern that stronger action had not been taken; and suggested that in the future the committee consider issuing public reprimands in situations comparable to those described in the report.

bb. Division III men's basketball.

(1) Awarded automatic qualification for the 1992 championship to the following: College Athletic, Dixie Intercollegiate Athletic, Iowa Intercollegiate Athletic, Little East, Massachusetts State College Athletic, Middle Atlantic Collegiate Athletic (two berths), Midwest Collegiate Athletic, Minnesota Intercollegiate Athletic, New Jersey State College Athletic, North Coast Athletic, Ohio Athletic, Old Dominion Athletic, Southern California Intercollegiate Athletic and State University of New York Athletic Conferences; Michigan Intercollegiate and University Athletic Associations, and College Conference of Illinois and Wisconsin;

(2) Denied the request that two additional officials be reimbursed for air transportation for the championship, and

(3) Designated Buffalo State College as the host institution for the 1993, 1994 and 1995 championships, March 19-20, March 18-19 and March 17-18, respectively.

cc. Division III women's basketball.

(1) Effective with the 1993 Division III Women's Basketball Championship, increased officials' fees for regional tournaments from \$125 to \$150 and for the championship from \$150 to \$200;

(2) Declined to authorize the selection of four additional officials for the championship session, and

(3) Awarded automatic qualification for the 1992 championship to the following: Iowa Intercollegiate Athletic, Little East, Middle Atlantic States Collegiate Athletic, Minnesota Intercollegiate Athletic, New Jersey Athletic, Ohio Athletic, Wisconsin Women's Intercollegiate Athletic and Women's Intercollegiate Athletic Conferences, and the Michigan Intercollegiate and University Athletic Associations.

dd. Division III women's volleyball.

(1) Effective with the 1991 Division III Women's Volleyball Championship, realigned institutions in each conference receiving automatic qualification so that all members in a conference were placed in the same respective regions, with the exception of the University Athletic Association (whose membership spans several regions), and

(2) Realigned Trinity University (Texas) from the West to the South region.

ee. **Division III men's ice hockey.** Awarded automatic qualification for the 1992 Division III Men's Ice Hockey Championship to the following: Minnesota Intercollegiate Athletic Association, State University of New York Athletic Conference and Northern Collegiate Hockey Association.

ff. **Per diem policy for Division III championships.** The Division III Championships Committee reported that it had reviewed the results of a survey to determine institution's reaction to proposed changes in the transportation and per diem policy for Division III championships; noted that there was not sufficient consensus to change the policy for 1991-92, and agreed to discuss the current policy and proposed changes during the Division III business session at the 1992 Convention.

gg. **Statement of Relationship with Presidents Commission.** The Executive Committee reviewed a statement drafted by the Presidents Commission to more clearly define the relationship between the two bodies.

It was voted that the statement be approved.

hh. **Proposed Legislation for 1992 Convention.** The Executive Committee reviewed proposed legislation for the 1992 Convention that, if adopted, would affect its responsibilities, noting that the division championships committees had reviewed the proposals in their separate meetings. The Executive Committee took the following actions:

a. In light of its expressed interest in cost containment, agreed not to endorse or sup-

port any proposals that, if adopted, would have an impact on the 1991-92 general operating budget; noted that this action applied specifically to Proposal No. 86 (to establish a 12-member Compliance Committee) and Proposal No. 87 (to expand the Interpretations Committee by one member); and agreed to advise the sponsors of the reasons for this position;

b. Agreed not to support Proposal No. 88 to establish an NCAA Women's Volleyball Rules Committee, noting that Executive Committee policy specified that the Association shall publish playing rules in a particular sport only if they are considered necessary, complete and distinct from other published rules for that sport;

c. Agreed to oppose Proposal No. 93 to permit championships competition to begin prior to noon Sunday if the host institution is selected to conduct two NCAA championship contests at the same outdoor facility and darkness is a primary concern; noted that such a departure from the current policy that Sunday competition not begin prior to noon could present problems for other championships (specifically, that pressure may be brought to bear by television networks on championships scheduling); noted that Bylaw 31.1.1.1 authorizes the executive director to grant waivers of this regulation when warranted by special and unusual circumstances, making such legislation unnecessary; and agreed that the sponsors should be so advised and asked to consider withdrawing the proposal;

d. Noted that the Council took no action on Proposal No. 95, which would direct the Council and Presidents Commission to consider sponsoring legislation at the 1993 Convention to establish a biennial legislative Convention and, in alternate years, a non-legislative Convention;

e. Noted that Proposal No. 98 to direct the Council to develop plans for an initial-eligibility clearinghouse would most likely be withdrawn by the sponsors;

f. Reviewed final drafts of proposals submitted by the Executive Committee and took the following actions:

(1) Approved a proposal specifying that the Heritage Bowl shall be conducted no earlier than one week after the conclusion of the Division I-AA Football Championship;

(2) Approved a proposal specifying that all postseason championship football games and bowl games (e.g., the Heritage Bowl) that are exempt from the maximum number of football contests in Divisions I-A and I-AA shall meet the requirements applicable to the certification of postseason bowl games; noted that the Administrative Committee had approved changes in the proposal to exclude the Division I-AA football championship and to exclude the Heritage Bowl from the financial requirements of the postseason bowl-game requirements;

(3) Approved a proposal establishing a three-year period during which an existing National Collegiate Championship will not be canceled or its transportation or per diem expenses discontinued due to that championships failure to meet the minimum percentage sponsorship requirements for maintaining the championship;

(4) Approved a proposal confirming that transportation expenses may be provided during the second consecutive year during which a National Collegiate Championship falls below minimum sponsorship percentages, and to specify that a National Collegiate Championship that falls below the 50-

institution sponsorship requirements and fails to meet net-receipt requirements shall not be discontinued until the subsequent academic year;

(5) Discussed at length a proposal to establish two-team Division II championships in the sports of field hockey, men's ice hockey and men's lacrosse, and to make appropriate adjustments in the divisional representation of the sports committees responsible for the conduct of those events.

(a) The Division I Championships Committee reported that in its separate meeting it had voted to oppose the proposal. Its position was based on (1) the estimated cost (\$90,000) of conducting the events, especially in this climate of cost containment; (2) insufficient sponsorship of the three sports, and (3) the philosophical inconsistency of establishing additional championships that do not meet the minimum sponsorship requirements of Bylaw 18.2.3 in light of the tenuous position of several National Collegiate Championships with greater sponsorship.

(b) The Divisions II and III Championships Committees supported the proposal, noting that (1) a resolution passed at the 1991 Convention mandated that the legislation be submitted in 1992, as part of the membership-restructuring proposals, and (2) as a result of the multidivision-reclassification legislation adopted at the 1991 Convention, effective in September 1992 Division II institutions no longer would be able to participate in Division III championships in sports in which the Association sponsored Division I and Division III championships, but not Division II.

(c) It was voted that the Executive Committee support the proposal.

(6) Approved a proposal to permit the division championships committees to consider and approve appeals for division-specific exceptions to the applicable playing rules, subject to the final authority of the Executive Committee;

(7) Agreed to withdraw for the 1992 Convention and resubmit for consideration at the 1993 Convention proposals to increase the size of the Division III Baseball, Division III Women's Basketball and Men's Soccer Committees, due to their impact on the 1991-92 budget, and

(8) Noted but took no position on a proposal to delete the requirement that sponsors of proposed legislation provide cost estimates to the Association and/or the membership, and to specify that the Council or the Presidents Commission, at its discretion, may require sponsors to provide such information.

ii. **Playing Rules.** In accordance with the oversight provisions of Bylaws 21.3.4.2 (c) and 21.4.1.3, the Executive Committee reviewed the recommendations of the Division I, Division II and Division III Championships Committees regarding changes in playing rules in the areas of player safety, financial impact and image of the sport. It took the following actions:

a. Men's ice hockey.

(1) Declined to permit half-shield face masks to be used in intercollegiate competition, and

(2) Reaffirmed that mouth guards shall remain a mandatory piece of protective equipment.

b. Men's lacrosse.

(1) Determined that effective in 1992, players must wear helmets bearing a NOCSAE seal (thereby making mandatory what

previously had been recommended);

(2) Specified that intraoral mouth guards must be yellow or another readily visible color;

(3) Determined that leaving the bench during a fight will subject a player to an expulsion foul;

(4) Expanded the penalty for an expulsion foul to include suspension from the team's next game, and

(5) Added taunting and baiting to the technical-foul, illegal team-personnel action.

c. **Baseball.** Contingent upon standards being developed by NOCSAE for a catcher's helmet, agreed that language would be added to the protective equipment rule that strongly recommends that catchers wear protective helmets while fielding their positions.

d. **Men's and women's swimming.** Determined that effective with the 1992-93 season, the following recommended plummet depths for diving would become mandatory: 10-meter platform, 16 feet; three-meter springboard, 12 feet, and one-meter springboard, 11 feet.

22. **NCAA Internship Program.** The Executive Committee reviewed a report on the status of the ethnic minority and women's enhancement internship programs. Kenneth A. Free noted for the record that the proper terminology when referring to Blacks was African Americans.

It was voted that the report be accepted.

23. **Convention Planning.** The Executive Committee received a report on plans for the 1992 and future Conventions. In response to the directive at the May 1991 meeting, it was reported that the Division III business session would be accommodated at the Hilton; the Division II business session would be held at the Anaheim Convention Center the first day but at the Hilton for its second session, and that the Honda awards dinner would be held at the Hilton.

It was voted that the report be received.

24. **State and Federal Legislation.** The executive director advised the Executive Committee of the status of state and federal legislation that could affect the NCAA enforcement or eligibility program procedures.

25. Future Meeting Dates and Sites.

a. It was agreed that the August 9-11, 1992, meetings of the Executive and Divisions I, II and III Championships Committees would be changed to August 12-14, in order to provide more time between those and the August 5-7 Council meeting.

b. The Executive Committee noted the dates and sites of other future meetings:

(1) December 9, 1991, Ritz-Carlton Hotel, Kansas City, Missouri. [Championships committees, December 8.]

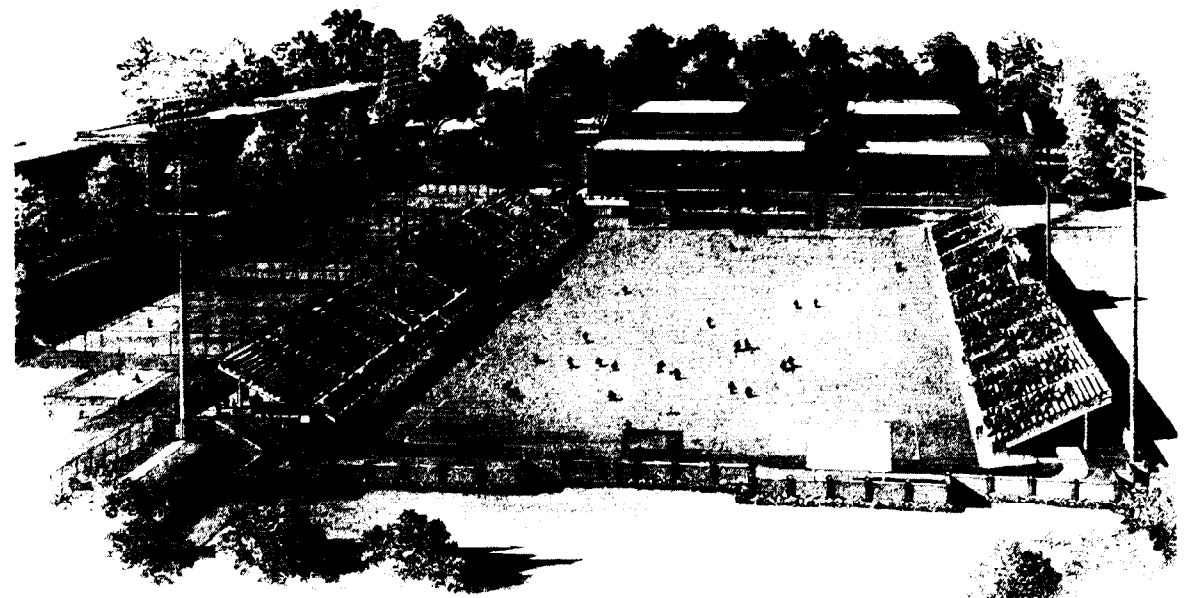
(2) May 4-5, 1992, Iowas Ventana Canyon Hotel, Tucson, Arizona. [Championships committees, May 3-4.]

(3) August 13-14, 1992, Hyatt Regency, Beaver Creek, Colorado (tentative). [Championships committees, August 12-13.]

(4) December 7, 1992, Kansas City, Missouri; hotel to be determined. [Championships committees, December 6.]

(5) May 3-4, 1993; site to be determined. [Championships committees, May 2-3.]

26. **Executive Session.** [Note: The staff left the meeting, and the Executive Committee met in executive session.] It was the sense of the meeting that the contract of the executive director should be enhanced as discussed, and the secretary-treasurer was asked to effect the appropriate revisions.



New stadium

University of North Carolina, Greensboro, soccer fans visited a brand new facility September 7 when the 1991 season opened. Phase one of the new stadium, which includes 3,540 seats, a press box and field lights, has been completed at a cost of \$3.6 million. North Carolina-Greensboro's men's and women's teams will use the facility in their first season of competition in NCAA Division I.

NCAA Record

CHIEF EXECUTIVE OFFICER

Charles R. Fuget appointed interim president at Indiana (Pennsylvania). He has been deputy secretary and commissioner for higher education for the Pennsylvania State Department of Education since 1988.

DIRECTORS OF ATHLETICS

Bob Lee named at Pacific, where he was a standout quarterback in the 1960s. Lee, who has been working in real estate sales, was selected earlier this summer to serve as play-by-play radio broadcaster for Pacific football games. **Maureen Horan-Pease** and **Vernon Mummert** given additional duties as interim ADs at Drew, where they replace **Dick Szlasa**, who also stepped down as head men's lacrosse coach to join the teaching staff at Glenelg Country School in Maryland. **Horan-Pease**, who has been associate AD for women, coaches field hockey at the school and Mummert coaches men's soccer and tennis. **Texas-Arlington's Bill Bibb** selected as commissioner of the Trans America Athletic Conference, effective September 15. **Tom Pucci** appointed at California (Pennsylvania) after serving as AD at South Carolina-Spartanburg since 1987. He also has headed the program at Cal State Sacramento. **Denis E. Lambert** announced he will step down in June 1992 at Vermont, where he has been AD since 1973. Lambert, a former chair of the NCAA Men's and Women's Skiing Committee, has been affiliated with Vermont for nearly four decades as a student, teacher, coach and administrator.

ASSOCIATE DIRECTORS OF ATHLETICS

Arizona announced the promotions of assistant ADs **John Perrin** and **Kathleen "Rocky" LaRose** to associate AD for finance and operations and associate AD for sports programs/services, respectively. Also, Arizona assigned additional duties to **Ted Kissell**, who becomes associate AD for sports programs and external operations. **Barry Brickman** appointed associate AD for business affairs at Western Kentucky after three years as business manager at UTEP. He also has been an administrator and women's softball coach at Delta State. **Steve DiTolla** promoted from associate AD for business affairs to senior associate AD at Cal State Fullerton, where he served earlier this year as interim AD. He has been at the school for six years.

ASSISTANT DIRECTORS OF ATHLETICS

Gayle Hopkins promoted from assistant AD for student-athlete services to the new post of assistant AD for student-athlete alumni development and services at Arizona. **Marvin Cobb** reassigned to new duties in the school of medicine at Southern California. **Joe Baker** given additional duties as assistant AD for operations at Alabama-Huntsville, where he continues to serve as head men's basketball coach. **Connie Bandy Hodge** selected at Duquesne, where she also will be head women's volleyball coach. **Doug Beard** promoted from business manager at Wisconsin-Milwaukee, where he has worked since 1989. He earlier served as interim AD at Wisconsin-Stout. **Gail Peabworth** promoted at Wabash, where she will continue to coach the men's swimming and diving teams as part of her duties as the school's aquatics director. She has been at Wabash since 1987.

COACHES

Baseball **Timmy Kelly** named at Mercy. He previously was an assistant at Pace. **Dennis Grace** hired at Penn State-Behrend, where he also will be head men's soccer coach. He replaces **Greg Williams**, who moved to Embury-Riddle. **Steve Green** promoted from assistant at Purdue, where he has been on the staff for five years. Green replaces **Dave Alexander**, who becomes Purdue's compliance officer after coaching the Boilermakers to a 407-380-6 record through 14 seasons. **Missouri-Rolla's Robert Boucher** named head men's soccer coach at Allentown. **Patt Foster** appointed at Grinnell, where he also will assist with football.

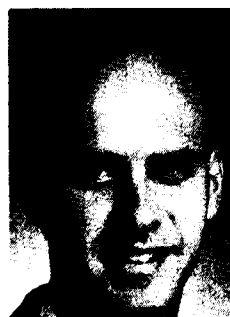
Baseball assistants - **Kevin Howard** selected at Morehead State, where he has been a graduate assistant coach. The former Wooster player's replacement in the graduate assistant's post will be **Chris Rodgers**, who has been a student assistant at Morehead State. **Matt Moore** joined the staff at Butler after two seasons as an aide at Davis and Elkins, where he also played. **Gary Tuck** selected at Notre



Cal State Fullerton named **Steve DiTolla** senior associate AD



Joe Baker appointed assistant AD at Alabama-Huntsville



Wisconsin-Milwaukee promoted **Doug Beard** to assistant AD

Dame. The former Arizona State assistant and minor-league manager in the Houston Astros organization was a catching coach with the New York Yankees during 1990. **Mickey Lashley** selected for the new program at Texas-San Antonio. He was an all-America pitcher at Oklahoma in the 1970s and also played in the Los Angeles Dodgers organization. **Peter Wilk** joined the staff at Harvard. The former Rollins shortstop and pitcher has been an aide at Boston U. for the past two seasons. **Bill Jarman** appointed at Western Carolina, where he previously was a graduate assistant coach. Jarman also has served on the staff at Pembroke State.

Men's basketball - **Mark Adams** named at Central Connecticut State after two years as an assistant at Washington State. Adams, who compiled an overall 119-88 record in head coaching stints during the 1980s at Rocky Mountain and Western Oregon State, also has been an aide at Idaho State. **Jay Lawson** selected at Bentley, where he was an assistant from 1985 until earlier this summer, when he left to become an aide at Fairfield. He replaces **Frank Sullivan**, who was named head coach at Harvard. Through seven years at Bentley, Sullivan coached his teams to a 114-86 record and two appearances in the Division II Men's Basketball Championship. He also has been an assistant at Villanova, Lehigh and Seton Hall. **Nick DelTufo** appointed at Mont-

named at Longwood. He was a standout player at Tiffin. **Todd Franklin** appointed at Missouri-Rolla after serving as a graduate assistant coach at Austin Peay State. **Steve Post** named volunteer assistant at Manhattan. He previously was an aide at Iona and also has coached at the high-school level in New York City. **Shay Berry** joined the staff at New York University after serving last season as a part-time aide at Yale. **Kevin O'Connell** named at Chicago after two years as a volunteer assistant at Southern California.

Women's basketball - **Rose Mohl** selected at East Stroudsburg, where she captained the 1984-85 team. She has been head girls' coach at East Stroudsburg (Pennsylvania) High School for the past four years. **Alice De Fazio** named at Montclair State, where she played from 1976 to 1980. She is a former head coach at Jersey City State and assistant at Seton Hall who has worked most recently as head coach at St. Dominic Academy in Jersey City, New Jersey. **Sacred Heart's Ed Swanson** promoted from part-time to full-time status at the school, where he also continues to assist with men's basketball and serve as head women's cross country coach. **Cal State Fullerton's Maryalycie Jeremiah** designated as interim senior woman administrator at the school, where she will take on supervisory responsibilities for eight other Titan



East Stroudsburg picked **Rose Mohl** for women's basketball



Eastern Connecticut State cross country head is **Steve Browning**

clair State after assisting at Fairleigh Dickinson-Madison. He also has coached at Upsala, where as a player he helped lead the Vikings to a runner-up finish in the 1980 Division III Men's Basketball Championship. **Jeff Olinger** named at Luther after serving as an assistant at Mankato State.

Men's basketball assistants - **Jeff Maher** joined the North Carolina-Wilmington staff as a part-time aide. He has held positions on the staffs at Oregon State and Duquesne. **Eddie Fields** and **Ken Roth** hired at Murray State. Fields, a former Oklahoma standout player, previously was a part-time women's assistant at Drake, where he earlier had assisted with the men's team and served briefly as interim head men's coach. Roth has been on the staffs at Armstrong State, North Greenville and, most recently, Georgia State. Murray State also named former Racer graduate assistant coach **Daddy Henley** as a part-time aide and **Tommy Wade** as graduate assistant coach. **John Bajusz** joined the Cornell staff as a volunteer aide. Bajusz, who holds Cornell's career scoring mark, is a former purchasing agent and sales representative for the Chicago Bulls and also has worked at basketball camps. **Chris Theobald** appointed at Mankato State, where he previously was a graduate assistant coach.

Also, **Francis LaMantia** hired at St. Anselm. He is a former aide at Clarkson and St. Lawrence. **Cas Kosciulek** named at Allentown, where he also coached during the 1988-89 season before leaving to work as a minor-league baseball umpire. **Darrin Kibel** selected for a part-time position at North Carolina-Greensboro. He is a former associate head coach at Onconita State. **Don Williams Jr.**

sports. **Laura Hungerford** stepped down after six years at Maine-Farmington to become head women's softball and assistant women's basketball coach at Chicago.

Women's basketball assistants - Former Ohio State all-America player **Nikita Lowry** named at Michigan, replacing **Debbie Norman**, who joined the staff at Southwest Texas State. Lowry, who played professionally in Italy after graduating at Ohio State, has been in the Ford Motor Company College Graduate Program for the past nine months. **Rice's Jeff Spivey** joined the staff at Texas-San Antonio. **Cathy Schick** promoted from a part-time to a full-time position at Montana State, where she joined the staff last year. **Dawn Marsh**, a member of Tennessee's 1987 Division I championship team who helped coach the Volunteers to another title last year as a part-time aide, joined the staff at South Alabama.

Men's and women's cross country **Steve Browning** appointed at Eastern Connecticut State after serving for two years as a men's assistant at Connecticut College, where he also assisted with track. Browning, a former Bates student-athlete, replaces **Peter McDevitt**, who stepped down after two seasons. **Joe Klim** named at Elmhurst, where the three-sport Bluejay standout recently graduated. He also was promoted from assistant to head men's and women's track coach at the school.

Men's cross country assistant - **Kevin Helm** joined the staff at Allentown. He is a former runner at Carnegie Mellon.

Men's fencing - **Janusz Steplowski** appointed at Chicago. He has been president and head coach of the Great Lakes Fencing Association in Chicago since 1982.

Field hockey - **Tricia Muneses** selected at Western Maryland. The former Skidmore student-athlete previously was assistant field hockey and women's lacrosse coach at Goucher. She replaces **Susan Sandomato**, who left after one season with a 6-5-2 record to move with her family to Florida.

Field hockey assistants - **Lori Criswell** named at Muhlenberg. She is a former academic all-America player at West Chester. **Jennifer Ulehla** selected as the first full-time assistant for field hockey and women's lacrosse at Towson State. She recently completed her playing career in both sports at Maryland. **Kathy Railey** joined the staff at Western Maryland, where she also will assist with women's lacrosse. She played at Gettysburg.

Football assistants - Former Wichita State and Washington Redskins receiver **Anthony Jones** appointed receivers coach at Western Maryland, which also named former Green Terror players **Pat Duncan**, **Mike Hamm** and **Ben Kling** to coach defensive ends and placekickers, quarterbacks, and the defensive line, respectively. **Ed Hofmann** and **Ed Neumann** joined the staff at Delaware Valley, where Neumann returns to the staff he left after the 1989 season. Hofmann has been head coach at Hatboro-Horsham High School in Pennsylvania for the past two seasons. **Dick Markus** selected as assistant freshman coach at John Carroll, which also announced new assignments for **Joe Keough**, who will coach the offensive line, and **Jim Thompson**, who will coach outside linebackers.

In addition, **Paul Thompson** named defensive line and strength and conditioning coach at Indiana (Pennsylvania), where he is a former player. **Patt Foster** joined the staff at Grinnell, where the former Redlands receivers coach also will be head baseball coach. Also, former Central (Iowa) Division III wrestling champion **Tim Hackel** joined the Grinnell staff part-time. **Brian Elkin** appointed tight ends coach at Wagner, where he also will assist with track. Elkin, a former assistant at Albany (New York), is joined on the Wagner staff by newcomers **Rich Heffernan**, defensive ends coach; **H. T. Kinney**, secondary coach; and **Michael White**, receivers coach. Heffernan and White recently completed playing careers at Rhode Island and Springfield, respectively, and Kinney, a former Wisconsin-Platteville player and Monmouth (New Jersey) assistant, has coached and played in Italy for the past year.

Men's golf - **Clark Perry** promoted from assistant at Clark (Massachusetts), where he has worked in the school's office of information systems for 25 years. **Herb Lauffer** takes on additional duties at Penn State-Behrend, where he is athletics director. Lauffer replaces **Dave First**, who served as golf coach for four years.

Men's golf assistant **Kevin Salisbury** given additional duties at Clark (Massachusetts), where he recently joined the athletics staff as aquatics director and head men's and women's swimming coach.

Women's gymnastics **Mary Lewis** appointed at Longwood. The former North Carolina State volunteer assistant has worked for various camps and clubs.

Women's gymnastics assistants - **Cheri Way** joined the staff at Denver. She was an all-America gymnast in the uneven bars at Alabama, where she helped the Crimson Tide to the National Collegiate women's team title in 1988. **Jeffery A. Thompson** hired at Illinois after two years on the staff at Wisconsin. He replaces **J. A. Dominguez**.

Men's ice hockey - **Nick Mitropolous** promoted from assistant at Tufts, where he has been on the hockey staff for three years. Mitropolous, who also is an assistant trainer at the school, replaces **Ben Sands**, who will continue to assist with the team after serving as head coach for five seasons.

Men's ice hockey assistants **Chris Serino** named at New Hampshire, which also announced that assistant men's athletics director **David O'Connor** will take on additional duties with the team. Serino, who played baseball and ice hockey at American International, previously was head hockey coach for three seasons at Northfield Mount Hermon School in Massachusetts. O'Connor was interim head coach for New Hampshire during the 1987-88 season. **Jerry Pawloski**

joined the staff at Harvard, where he was a standout defenseman from 1984 to 1988. Pawloski recently has worked as a personal financial planner for IDS Financial Services, Inc., in Boston.

Men's lacrosse **Jon Bock** resigned at Denver to pursue business interests. His teams were 11-11 through two seasons. **David Webster** named for the new program at Marymount (Virginia). He previously was an assistant at Hampden-Sydney and is a former football aide at Dickinson, where he played lacrosse and football. **Kevin Gates** selected at Notre Dame after serving as a graduate assistant coach at Salisbury State.

Men's lacrosse assistant - **Matthew Roth** appointed at Greensboro. He recently completed his playing career at Guilford, where he started as goalkeeper for three years.

Women's lacrosse assistants - **Jennifer Ulehla** joined the field hockey and women's lacrosse staffs at Towson State. She helped lead Maryland's lacrosse team to runner-up finishes in the last two National Collegiate women's championships, earning all-America honors last season. **Goucher's Tricia Muneses** named head field hockey coach at Western Maryland. **Kathy Railey** appointed assistant field hockey and women's lacrosse coach at Western Maryland. She recently completed her playing career in the sports at Gettysburg.

Men's soccer - **Orville Mowatt** named at New York Maritime. **Rob Chesney** promoted from assistant at Montclair State, where he also played. **Wil Clinton** selected at Mercy. He previously was head coach at Pace, leading that team to an 11-21-2 record through two seasons before the school dropped the program. **Robert Boucher** appointed at Allentown. He previously coached men's and women's soccer at Missouri-Rolla, where he also headed the baseball program, and also has coached soccer at Albright. **Dennis Grace** hired at Penn State-Behrend, where he also will be head baseball coach. Grace is a former head soccer coach at Indiana State, Bloomsburg and Notre Dame, where his 1988 team appeared in the Division I Men's Soccer Championship.

Women's soccer **David Isham** selected at Illinois College, where he assisted with the men's team last year and is a former standout player. **Andy Schechter** promoted from assistant at Clark (Massachusetts), where he is a former team captain.

Men's and women's soccer assistants - **Buck Rowlee** appointed men's assistant at New Hampshire College after serving on the staff at North Carolina-Wilmington, where he played. **Kevin Keelan** hired for the men's staff at Tampa. He played professionally in England, where he is among a select number of soccer players who have received the Member of the British Empire award from the queen, and in the North American Soccer League. **Daniel Kennelly** named men's and women's aide at Greensboro. He is a former assistant at Alfred. **Colleen Corwell** selected for the women's staff at American. She previously was head girls' coach at Walsingham Academy in Virginia. **Ellen Taggart** joined the women's staff at Tufts. She was a standout player at Massachusetts. **Matt Paton** named women's aide at Eastern Connecticut State. The former Keene State player replaces **Dave Latourette**, who joined the men's staff at Hartford. **David Plourde** appointed to the men's staff at Roger Williams. He has coached boys' and girls' soccer at the high-school level.

Also, **Mauro Felipe** selected for the women's staff at Rochester Institute of Technology. He is a former North American Soccer League player. **Jim Felix** and **Paulo Dias** joined the men's staff at Harvard, which also announced the selection of **Stacey Flionis** as women's aide. Felix is a former head coach at Stony Brook and Dias formerly was head coach of the Portimonense professional club in Portugal. Flionis also is a former head coach at Clark (Massachusetts). **Bill Haley** and **Steve Cote** hired as men's and women's assistants, respectively, at St. Anselm, where Haley played. **Bill Moukoulis** selected as men's assistant at Allentown. He is a former aide at Widener. **Mike Parsons** named men's aide at Notre Dame, which also announced that

See Record, page 17

Record

Continued from page 16

Karen Stanley joined the women's staff. Parsons, a former head coach at Stetson and Methodist, has been director of coaching and player development for the Virginia Beach Soccer Club and the Norfolk Youth Soccer League in Virginia since 1989, and Stanley, a former Cal State Chico soccer captain, previously was head coach of the women's club team at Seattle Pacific.

Women's softball Kim Franchi promoted from assistant at Glassboro State, where she has been on the staff for three years. She also played for the Profs... **Nadine Roth** resigned after one season at North Dakota State, where she led the team to a 12-22 record last year. Roth, who also served as an aide at the school for one season, accepted a teaching job in the Fargo, North Dakota, school system... **Melody Cope** appointed at North Carolina-Greensboro. The former North Carolina-Wilmington player and assistant replaces **Mary Jo Campbell**, who became the school's interim head trainer after coaching her softball teams to a 77-64 record through four years... **Lori Sadewater** named at Grinnell, where she also will coach women's volleyball. She played both sports at Beloit... **Loras' Connie Bandy Hodge** named assistant athletics director and head women's volleyball coach at Dubuque. Her softball teams at Loras were 61-100-1... **Laura Hungerford** selected at Chicago, where she also will assist with women's basketball. She previously was head softball coach for five years at Maine-Farmington, where she also served for six years as head women's basketball coach.

Men's and women's swimming and diving Mary Schutten named at Calvin, where she also will coach women's volleyball... **Dave Clark** hired as men's and women's coach at Wisconsin-Milwaukee after 10 years as men's coach at Northern Illinois, his alma mater. Clark's Husky teams compiled a 68-45 dual-meet mark... **Kim Lessard** assumed additional duties as men's coach at Washington (Maryland), where she continues to hold the women's swimming post she took over last season. Lessard replaces **Dennis Berry**, who remains at the school as swim center director and director of recreational sports after leading the Shoremen through their inaugural season in swimming last year... **Cathy Wright-Eger** promoted from assistant to head women's coach at Purdue... **Michael Clark** appointed aquatics director at Marymount (Virginia), where he takes over duties as head women's coach and also will start a men's team. The former James Madison swimmer and assistant worked most recently as an aide for the Curl/Burke Swim Club in northern Virginia.

Men's and women's swimming and diving assistants Matt Kredich joined the men's staff at Harvard, which also announced the selection of **Keith Miller** as men's and women's diving assistant. Kredich previously was on the staff at Stanford and former Tufts standout diver Miller coached diving at Wesleyan.

Men's and women's tennis Cory Tusler named men's and women's coach at Bentley, where he was interim coach last season. The former Harvard and Wellesley assistant led the Bentley men to the regular-season Northeast-10 Conference team title... **Stacie Whaley McIntosh** hired as women's coach at Murray State. She worked as head professional this summer at a country club in Kentucky and has assisted with high-school tennis... **Lenny Lee** selected as men's coach at Trenton State. He has been head men's coach at Eastern College of St. David's and women's coach at Montgomery County (Pennsylvania) Community College, leading those teams to a combined record of 78-33... **Marla Matt** appointed women's coach at Illinois-Chicago. The former Western Michigan all-Mid-American Athletic Conference player previously was an aide at Chicago State... **Betty Claus** retired as women's coach at Wisconsin-Milwaukee, where she will continue to serve as a physical education instructor. Claus coached her teams to a 148-80 record through 14 seasons.

In addition, **David McPeck** named women's coach at Potsdam State, where he assisted with women's basketball last year and now assists with men's basketball... **Jay Cheraskin** appointed men's coach and **Harvey Ebel** named women's coach at Lehman. Cheraskin, a high-school teacher in Yonkers, New York, replaces **Ted Hurwitz**, who became director of the City University of New York Athletic Conference. Ebel has taught



David Isham selected for women's soccer at Illinois College



Mauro Felipe joined Rochester Institute women's soccer staff



Wisconsin-Milwaukee named Dave Clark for swimming

tennis at Lehman, where he is a former basketball player, since 1971... **Bob Wind** selected as men's coach at Yeshiva... **Andraea Dalmas** appointed men's and women's coach at Allentown. The former Bowling Green player is a former aide at the junior-college level who also has been head professional at a country club... **Paul Lubbers** selected as men's and women's coach at North Carolina-Greensboro, where the former Georgia standout is a former teaching and research assistant in the school of health and human performance. He has coached a high-school girls' team in Chesterton, Indiana.

Men's and women's tennis assistant Ryland Hanstad joined the staff at American as a graduate assistant coach.

Men's and women's track and field Nick Kramer appointed women's coach at Hope, replacing **Karen Bishop**. Kramer, who has worked as a cross country and track aide at Hope, served the past three years as a track assistant at Holland (Michigan) High School... **Joe Klim** pro-



Paul Lubbers selected for tennis at North Carolina-Greensboro



Bruce McAllister named trainer at North Central

moted from assistant to head men's and women's coach at Elmhurst, where he also will coach men's and women's cross country.

Men's and women's track and field assistants David Kaiser, an assistant at Kansas, joined the staff at Wake Forest, which also announced the selection of former Dartmouth standout **Evan Brown** as graduate assistant coach... **Brian Elkin** appointed at Wagner, where he also will assist with football.

Men's volleyball Ron Wilde named at UC San Diego. Wilde, who played on a national-championship team at Pepperdine in 1978, also led the Waves to an NCAA title in 1986 while serving as interim head coach. He also has been head women's coach at Iowa State and served most recently as head boys' and girls' coach at Francis Parker High School in San Diego, where he retains his position with the girls' team.

Women's volleyball Kay Largess selected at Roger Williams. She has coached for several years at the amateur level and also coached at a junior-high school in Texas... **Cheryl Lambert** named at Southwestern Louisiana, replacing **Wilo Colon**, who returned to his native Puerto Rico. Lambert previously was an assistant at B. F. Terry High School in Rosenberg, Texas, and is a former successful head coach in Louisiana... **Lori Sadewater** appointed at Grinnell, where she also will coach women's softball... **Mary Schutten** selected at Calvin, where she also will coach women's swimming. Schutten, a former Calvin student-athlete who replaces **Janna TerMolen** in the volleyball post, is a former head coach at Dordt College in Iowa, where her teams were 123-60... **Michele Moy** named at New York University, where she previously has worked as a part-time trainer and is a former player. She is a staff physical therapist at New York's Hospital of Joint Diseases... **Connie Bandy Hodge** selected at Dubuque, where she also becomes assistant athletics director. She previously was head women's volleyball and softball coach at Loras, her alma mater, where her volleyball teams compiled a 127-118-4 record.

Women's volleyball assistants Sean Lynch joined the staff at North Carolina-Wilmington. The former Texas-Arlington aide replaces **Elaine Penn**, who remains at North Carolina-Wilmington as intramu-

als director... **Gordie Mahon** named at Pepperdine, where he was a volunteer assistant during the past two seasons. He replaces **Le Valley Pattison**, who was named head coach at El Camino Junior College in California... **Jennifer Dominguez** appointed at Elmhurst. The former Kansas State player, who has been an aide at Drake and Iowa State, replaces **Therese Dorian**, who stepped down to attend law school... **Mike Chandler** hired at Tampa. He is a former head coach at Edgewood College in Wisconsin... **Andrea Menkin** joined the staff at Eastern Connecticut State. She is a former player at Bentley... **Kim Reefer** of Ferris State selected at Notre Dame. She was a standout player at Central Michigan... **Deborah Mohler** joined the staff at New York University, where she played during the 1980s. She also has played professional beach volleyball in New York and New Jersey.

Wrestling assistants Tim Hackel of Central (Iowa) joined the football staff at Grinnell... Former Missouri all-America

Sports information directors Mike Lamb promoted from associate to interim SID at Toledo, where he has been on the staff since 1988... **Scott D. Morse** selected at Wagner after serving for the past year as an assistant at Lehigh. He replaces **Alan McCandless**, who accepted a position with ABC-TV.

Strength and conditioning coach Brett Hessing hired as Pepperdine's first strength coach. He has worked for the past three years in Tulsa, Oklahoma, as an exercise consultant.

Ticket manager Vivian Akers-Thompson given additional duties at Catawba, where she is administrative assistant to the athletics director.

Trainers Tom Mollson hired at Elmhurst, where he has been a student trainer. He replaces **Mike Gilmartin**, who became an assistant trainer at Northwestern after seven years at Elmhurst... **Bruce McAllister** selected at North Central after serving for five years as an assistant professor of health and physical education and director of the sports medicine and athletics training curriculum at Northern Illinois. He served last year as head trainer for the Division I Men's Swimming and Diving Championships.

Assistant trainers Henry King joined the staff at New York University. He was a high-school trainer last year... **Carolyn Weeks** appointed at Hobart and Smith. She is a recent Delaware graduate... **Carole Banda** and **Eric Hoffman** joined the staff at Notre Dame, which also announced the appointment of **LouAnne Jefferson** as an intern. Banda previously was an assistant at Morehead State and Hoffman was a student trainer at Purdue.

CONFERENCES

Bill Bibb selected as commissioner of the Trans America Athletic Conference, effective September 15. Bibb, athletics director at Texas-Arlington since 1989, was a founding father of the TAAC during a 16-year stint as head men's basketball coach at Mercer, where he also served as AD for nine years... **Phyllis Holmes** named commissioner of the North Star Conference, as it prepares to merge with the Mid-Continent Conference in July 1992. Holmes, who previously was women's athletics director and head women's basketball coach at Greenville, replaces **Arnold D. Fielkow**, who is now deputy commissioner and general counsel for the Continental Basketball Association... **Duane P. Lindberg** selected as assistant commissioner for electronic communications at the Pacific-10 Conference after serving as assistant commissioner of the Southwest Athletic Conference. Lindberg returns to a staff where he served as assistant public relations director from 1983 to 1986 and assistant commissioner for compliance and enforcement from 1986 to 1989.

ASSOCIATIONS

Kinda Asher appointed director of public relations for the United States

Field Hockey Association, replacing **No-reen Landis-Tyson**.

NOTABLES

James "Jimmie" L. McDowell, director of corporate development for the Liberty Bowl Football Classic and retired executive director of the National Football Foundation and Hall of Fame, named by the Downtown Athletic Club as South sectional representative on the Heisman Memorial Trophy Committee. He replaces **Fred Russell**, who had served in the post since 1953... **Lauren Gregg**, head women's soccer coach at Virginia, selected to assist with the U.S. women's soccer team when it participates in the first Women's World Cup in China November 10-30.

DEATHS

Joseph DeBonis, who became the Metro Atlantic Athletic Conference's first supervisor of men's basketball officials four years ago, died September 3 in East Meadow, New York. He was 68. DeBonis, who played basketball at New York University, was the only person ever to both play in and officiate a National Invitation Tournament championship game, and he also had officiated in NCAA tournaments... **Sel Hannah**, a ski team captain at Dartmouth during the 1930s who went on to help create more than 200 ski areas in the United States, died August 31 in Franconia, New Hampshire, at age 77... **Robert Burns Rutherford Jr.**, head golf coach at Penn State from 1950 to 1956 and a 45-year employee of the university at his retirement in 1970, died of heart failure August 14 in State College, Pennsylvania. He was 86. He was a former president of the Golf Coaches Association of America.

CORRECTION

Due to a reporting error, a story on Washington athletics director Barbara Hedges in the August 14 issue of The NCAA News incorrectly portrayed former Washington AD Milo R. Lude's new relationship with the Rockbuster Bowl. Lude is executive vice-president of the Raycom Management Group. Keith Tribble is the bowl's executive director.

POLLS

Division II Football

The preseason top 20 NCAA Division II football teams, with points:

1. North Dak. St.	80
2. Pittsburg St.	76
3. Indiana (Pa.)	72
4. Mississippi Col.	68
5. Jacksonville St.	64
6. Grand Valley St.	60
7. East Tex. St.	56
8. Northern Colo.	52
9. North Ala.	48
10. Edinboro	44
11. Portland St.	40
12. Northeast Mo. St.	35
13. Wofford	33
14. Texas A&I	28
15. Virginia Union	23
16. Mankato St.	21
17. Cal Poly SLO	16
18. Angelo St.	9
19. Millersville	6
19. Tuskegee	6

Membership campaign starts for compliance coordinators

The membership drive for the National Association of Athletic Compliance Coordinators (NAACC) was launched recently with the distribution of organizational and membership materials to individuals on each Division I campus with primary responsibility for institutional compliance programs.

The individuals should receive materials consisting of the report of the NAACC Steering Committee, results of a preliminary survey and a membership application.

The steering committee was formed in September 1990 to study the issue of developing a national organization of compliance administrators. Serving on the committee are Britton Banowsky (Southland Conference), Linda Bruno (Big East Conference), Melissa Conboy (University of Notre Dame), Doug Johnson (University of Miami (Florida)), Jamie McCloskey (Mid-American Conference), Al Papik (University of Nebraska, Lincoln), David Price (Pacific-10 Conference), Dale Smith (Metropolitan Collegiate Confer-

ence) and Jim Weaver [Miami (Florida)].

The steering committee initially directed that compliance administrators be polled on the issues relating to such an organization. The overwhelming majority (more than 90 percent) of the 136 responding indicated a willingness to join such an organization, attend an annual meeting and actively serve through the proposed organization's committee structure.

"The steering committee has met several times and discussed a wide variety of issues, including the composition of the organization, its relationship to the NCAA and its approach to legislative process. Professional development of compliance coordinators is the primary purpose of the organization," said McCloskey, spokesperson for the organization.

McCloskey said he expects the NAACC to conduct its first meeting in concert with the NCAA compliance services and legislative services departments in 1992.

The Market

Readers of The NCAA News are invited to use The Market to locate candidates for positions open at their institutions, to advertise open dates in their playing schedules or for other appropriate purposes.

Rates are 55 cents per word for general classified advertising (agate type) and \$27 per column inch for display classified advertising. Orders and copy are due by noon five days prior to the date of publication for general classified space and by noon seven days prior to the date of publication for display classified advertising. Orders and copy will be accepted by mail, fax or telephone.

For more information or to place an ad, call Susan Boyts at 913/339-1906 or write NCAA Publishing, 6201 College Boulevard, Overland Park, Kansas 66211-2422. Attention: The Market.

Positions Available

Commissioner

Trans America Athletic Conference, Assistant Commissioner For Information, Marketing And Championships. An NCAA Division I conference with nine members invites application for position of assistant commissioner responsible for implementing marketing/promotions program for sponsorships, radio TV package, public relations, conference sports information releases, publications, newsletters, conducting and administering conference championships for men and women. Experience required at college level in sports marketing and promotions, public relations and sales, extensive SIB background, previous experience administering college championships for men and women. Excellent organization and administrative skills and ability to communicate effectively both orally and written. BA degree required, masters preferred. Salary commensurate with experience and qualifications. Applications accepted and position open until filled. To apply, send application resume and three letters of reference to: Bill Bibb, Commissioner, Trans America Athletic Conference, 337 Muldree Avenue, Suite 200, Athens, GA 30605. An Equal Opportunity/Affirmative Action Employer.

Assistant A.D.

Assistant Athletics Director for Marketing and Development—California State University, Fullerton, invites applications for this position. Responsibilities: Direct all marketing and development efforts of the Athletics Department to include marketing, income, personal and corporate donations, department special projects and team fund raisers, oversee the Director of Broadcasting and Sales, maintain budget and financial records, knowledge gifts and contributions, plan social events and coordinate athletes, fund raising with university development efforts. Qualifications: Equivalent to graduation from a four-year institution and three years of successful marketing or fund raising experience; masters degree and experience in intercollegiate athletics is desirable and may substitute for one year experience; general

knowledge of principles, problems and logically analyze and solve operating problems of organization and management; plan and initiate actions to implement group decisions; define procedural problems, draw valid conclusions and establish and maintain cooperative working relationships. Salary: \$31,824-\$41,570. Applications: Call CSUF Personnel Services, 714/449-5355, for an application form. Deadline: September 16, 1991. California State University, Fullerton, is an Equal Opportunity/Affirmative Action Employer.

Academic Coordinator

Coordinator Of Academic Services. University of Arizona. Full-time, 12 month position. Primary Function: Implement, direct and integrate all aspects of the University's Intercollegiate Athletics academic support services program. Responsible for all ICA academic related activities, including supervision of academic counselors and tutors for student athletes. Serve as University liaison regarding admissions of new student athletes. Organize academic orientation activities for incoming student athletes and be available to meet with recruits during weekend visits. Generate reports and statistical data for applicable NCAA and Pacific 10 Conference requirements and support current and future direction of academic services. Limited day-to-day counseling of selected student athletes. Requirements: Bachelor's degree required; masters or higher degree preferred. Two years academic advising and/or counseling experience required at a Division I institution, preferably counseling student athletes. Knowledge of NCAA rules and regulations. Salary commensurate with experience and qualifications. Applications will be accepted through October 4, 1991, or until position has been filled. Send letter of application, resume and three letters of recommendation to: Kathleen LaRose, Associate Director for Sports Programs/Services, Mr. Kale Center Room 233, University of Arizona, Tucson, AZ 85721-602/821-2473. The University of Arizona is an Equal Opportunity/Affirmative Action Employer.

Business Manager

Director of Business Services, Chief Financial Officer (CFO): Kansas State University has an immediate opening for an individual to administer all fiscal aspects associated with its multi-million dollar Department of Inter-

collegiate Athletics budget. BS degree in business, finance, accounting or related field is required. 3-5 years' experience in fiscal management desired. Candidate must have excellent computer skills including knowledge of the Pacolin System as well as common software such as Lotus. Competitive salary with benefits. Interested candidates should forward credentials along with three references by September 16, 1991, to: Jim Epps, Senior Associate Director, Bramlage Coliseum, Manhattan, KS 66502. KSU is committed to a policy of nondiscrimination on the basis of race, sex, national origin, handicap, religion, age, sexual orientation or other nonmerit reasons, all as required by applicable laws and regulations.

Executive Director

Triathlon Federation/USA, the national governing body for the sport of triathlon, with headquarters in Colorado Springs, seeks a new full-time Executive Director. The new Executive Director will have an opportunity to work closely with the current Executive Director during the month of December and assume full responsibilities as Executive Director effective January 1, 1992. Send resume and letter including salary history to: Thomas C. Walker, 3510 Turtle Creek Boulevard, #10 A, Dallas, Texas 75219.

Facilities

Wellesley College, Department of Physical Education and Athletics. Position Opening (Full-time, 12 month position, beginning immediately). Facility Manager. Responsible for the day-to-day administration of all sport facilities, including summer programs, coordinates the use of facilities by instructional athletic, recreational programs, oversees facility usage by outside groups, supervises the equipment, uniform, laundry operation staff, assists in athletic and recreation event management. Qualifications: Position requires a bachelor's degree, preferably in either general administration, physical education or recreation. Previous experience in facility athletic event and recreation management desirable. Applications: Send letter of application, resume and three letters of recommendation to: Louise O'Neal, Chair/Director of Athletics, Wellesley College, Wellesley, MA 02181. Wellesley College is an Equal Opportunity/Affirmative Action Employer.

Fund-Raising

Athletic Fund-Raiser. Jacksonville State University, located in Northeast Alabama, is accepting applications for an Athletic Fund Raiser. Background: The Board of Trustees at

Jacksonville State University has made the decision to move from Division II to Division IAA of the NCAA contingent on the raising of outside funds. Duties: The Athletic Fund Raiser is responsible for planning and coordinating all facets of athletic fund raising program. Assists the Athletic Director in promotions, works closely with athletic department coaches and staff, organizes phone calls and other fund raising efforts. The successful candidate must be a college graduate with a bachelor's degree as a minimal academic requirement and have a successful business, fund raising or equivalent background. Professional experience with significant public contact and strong financial background are highly desirable. In addition, the candidate should have excellent communication and interpersonal skills with the ability to manage multiple priorities effectively. Candidates must have a minimum of three years successful experience in fund raising business or related development activities. Salary: Competitive and commensurate with qualifications and experience. Interested applicants should send a letter of application and resume to: Personnel Services, Jacksonville State University, Jacksonville, Alabama 36265. An EO/AA Employer.

Baseball

Assistant Baseball Coach—Virginia Commonwealth University is accepting applications for the position of full-time assistant baseball coach. The individual will have duties primarily in the areas of recruiting, coaching of pitchers, coordination of team defense, preparation and implementation of scouting reports, coordination and directorship of camps, and other responsibilities as assigned by the head coach. Related bachelor's degree is required; masters degree preferred. Division I recruiting and coaching experience extremely helpful. Application deadline is September 30, 1991. Experience working in a culturally diverse university setting is preferred. Send resume along with a letter of application and three letters of reference to: Tony Guzzo, Head Baseball Coach, Virginia Commonwealth University, VCU Box 2003, Richmond, Virginia 23284. VCU is an Equal Opportunity/Affirmative Action Employer. Women, minorities and persons with disabilities are encouraged to apply.

Basketball

Assistant Men's Basketball Coach. Utah State University is seeking an Assistant Men's Basketball Coach responsible for planning, directing, and implementing a process for the recruitment of student athletes to a highly competitive Division I program, will also

provide assistance with academic advising, public relations and on the court coaching. Bachelor's degree is required; preference will be given to successful Division I experience and proven ability to work successfully within the framework of program, department, university, and NCAA rules and regulations. Resumes must be received by September 20, 1991, mail to: Kohn Smith, Head Basketball Coach, Utah State University, Logan UT 84322-7400. USU is an AA/EO Employer.

Part-Time Assistant Women's Basketball Coach. Seven-month position available October 1, 1991. \$5,000.00 stipend position. Responsibilities include assisting Head Coach with organization, administration, and implementation of the Women's Basketball program, including recruiting student athletes and scouting opponents, organization and supervision of practices and games, directing a preseason conditioning program for athletes, travel with the team as required and other basketball administrative duties, as assigned by the Head Coach. Qualifications: High school diploma. Prior coaching experience required. Send letter of application, resume, and a minimum of three references to: Saint Louis University, Human Resources, 3500 Lindell, St. Louis, MO 63103. An Equal Employment/Affirmative Action Employer.

Field Hockey

Assistant Women's Lacrosse/Field Hockey Coach. Roanoke College has an immediate opening for a part-time assistant women's lacrosse and field hockey coach. Selected applicant will have collegiate playing experience and/or high school or college coaching background, strong interpersonal and organizational skills. Responsibilities include assisting in all aspects of coaching, game management and team travel. Please call 703/375-2334 and send resume with current references to: Tracy Coyne, Women's Lacrosse Coach, Roanoke College, Salem, VA 24153. Roanoke College is an Equal Opportunity Employer.

Gymnastics

Gymnastics Coach: Position requires supervision of recreational/pre-school director. Must be capable of coaching and directing competitive programs up to level 9. Requires

full knowledge of competitive teams and competitions in USGF, AAU, and YMCA Events. Gymnastic program is stable and strong, 25 years in existence. Facility includes fully equipped multi-event gym. Excellent benefits package. Salary range: \$20,000 to \$25,000. Send resumes to: Mr. Stephen K. Powell, CEO, Spartanburg YMCA Family Center, 266 South Pine Street, Spartanburg, SC 29302. Deadline: September 30, 1991.

Softball

Assistant Coach Softball, Penn State. The Department of Intercollegiate Athletics, Penn State, seeks someone to perform/assist in a variety of administrative and coaching duties to include planning and organizing recruiting campaigns, coordinating game and tournament arrangements, assisting with clinics and workshops and for providing counseling and guidance to team members. This individual will also assist in organizing and conducting team practices. Interested applicants should possess a bachelor's degree or equivalent, plus up to one year of effective softball coaching experience. Send letter of application, resume and salary requirements to: Employment Division, Job # 1130, 120 South Burrows Street, University Park, PA 16801. Application Deadline: September 23, 1991. An Affirmative Action/Equal Opportunity Employer. Women and minorities encouraged to apply.

Swimming

Physical Science Teacher/Swim Coach needed at William Howard Taft High School in San Antonio, Texas. Additional club coaching with Alamo Area Aquatics as well as Summer League coaching and pool management available. Salary dependent on education and experience. For information contact: George Block, Aquatics Director, Northside Independent School District, (O) 512/681-4026 (H) 512/436-4294.

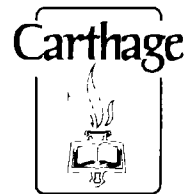
Biology Teacher/Swim Coach needed at Oliver Wendell Holmes High School in San Antonio, Texas. Additional club coaching with Alamo Area Aquatics as well as Summer League coaching and pool management available. Salary dependent on education and experience. For information contact: See The Market, page 19.

ASTROTURF ASTROTURF ASTROTURF

— WANTED — Dead or Alive

Up to 75,000 Sq. Ft.
of Used Synthetic Turf
We will pay top dollar plus
all shipping and handling.

Call
MASTERMIND DEVELOPMENTS
COLLECT - 204/489-3986



Athletic Director

Carthage requests nominations and applications for the position of Athletic Director and Chairperson of the Department of Physical Education.

The College adheres firmly to NCAA Division III athletic philosophy and holds charter membership in the College Conference of Illinois and Wisconsin (CCIW), one of the most competitive Division III conferences in the country.

Priorities for the new athletic director will include: insuring competitive programs in all intercollegiate sports; developing a vibrant intramural program in which the majority of Carthage students participate; and protecting and strengthening the academic reputation of the Physical Education Department.

Carthage is enjoying rapid growth, which translates into new programs and improved facilities. The College seeks a builder -- personable and dynamic -- who can lead others toward a vision of quality. Salary and benefits are competitive.

Located on the shore of Lake Michigan midway between Chicago and Milwaukee, the campus offers quick urban access from the relaxed environment of a small city. Founded in 1847, Carthage is affiliated with the Evangelical Lutheran Church in America.

Until September 20, please address correspondence to:

Mr. Paul R. Hegland
Special Assistant to the President
Carthage College
Kenosha, Wisconsin 53140

AA/EOE

RUTGERS UNIVERSITY FOUNDATION

Director of Scarlet R Athletic Fund-Raising and Assistant Director of Athletics for Development

Rutgers seeks an experienced development professional to obtain capital and annual support for its 30-team intercollegiate athletics program. Rutgers is a member of NCAA Division I. The University currently raises over \$1 million annually for athletics. Rutgers has 48,000 students and over 200,000 alumni.

Candidate must have 3-5 years' experience, a strong interest in athletics and a bachelor's degree. Must have superior interpersonal and communications skills. Should be resourceful, have a high energy level, and be results, people and service oriented.

Salary commensurate with experience. Excellent benefits. Please reply in confidence to:

Mr. Bruce D. Newman
President
Rutgers University Foundation
Winants Hall
7 College Avenue
New Brunswick, New Jersey 08901-1261

RUF is an Equal Opportunity, Affirmative Action Employer

SOLANO COMMUNITY COLLEGE

Solano Community College is accepting applications for the following full-time management position:

Division Chair, Physical Education and Athletics—beginning date negotiable—12 months/40 hours per week.

Responsible for directing the Health and P.E. instructional program and intercollegiate athletics program for men and women.

Minimum Qualifications: MA degree in P.E. or a related field; two years of postsecondary teaching exp. in P.E. or related field and/or coaching exp., and one year of formal training, internship or leadership exp.

Salary: \$63,546 - \$67,410; excellent fringe benefits for employee and dependents.

Deadline: Friday, October 18, 1991, at 5:00 p.m. All application materials must be submitted by the deadline date to include: SCC completed application, supplementary application, current resume of educational and professional experience and college transcripts of MA/MS and advanced degrees.

For application/information contact: Personnel Office, Solano Community College, 4000 Suisun Valley Road, Suisun, CA 94585, 707/864-7128. AA/ELLO

SEARCH REOPENED

DIRECTOR OF ATHLETICS AND PHYSICAL EDUCATION

MINIMUM QUALIFICATIONS: Master's degree in education or physical education; minimum of three years of full-time responsible administrative experience; ability to administer intercollegiate, physical education, and recreational programs.

RESPONSIBILITIES/DUTIES: Administer intercollegiate, physical education, and recreational programs; coordinate the physical education department; supervise the physical education staff; coordinate the physical education budget.

SALARY: \$45,000 - \$55,000. Position available January 1, 1992. This salary will begin on October 1, 1991.

Employment Office, Human Resources Department
Florida Community College in Jacksonville
101 W. Duval Street
Jacksonville, Florida 32202
(904) 241-1100

COLUMBIA UNIVERSITY IN THE CITY OF NEW YORK

Columbia-Barnard Women's Athletic Consortium

Announcement of a Position Vacancy: HEAD COACH OF WOMEN'S BASKETBALL/ ASSOCIATE in PHYSICAL EDUCATION

Qualifications: Bachelor's degree required, master's preferred. Previous successful coaching and recruiting experience on the college or university level is preferred. Candidates should have demonstrated ability in recruiting, motivating student-athletes, organization and administration, public relations and fund-raising. A thorough knowledge of NCAA rules is expected.

Responsibilities: Coaching and directing a varsity program in Women's Basketball.

Appointment: As soon as possible.

Salary: Commensurate with qualifications and experience.

Application: Send letter of application, resume and three letters of recommendation by September 23, 1991, to:

Merry L. Ormsby
Associate Director of Athletics
Columbia University
Dodge Physical Fitness Center
New York, New York 10027

Columbia University is committed to Affirmative Action and Equal Opportunity Programs.

The Market

Continued from page 18

George Block, Aquatics Director, Northside Independent School District, (O) 512/681-4026, (H) 512/436-4294.

Assistant Men's/Women's Swimming Coach. Northern Illinois University. Full time, 9 month position. Responsibilities: recruiting coordinator, poolside assistant, and administrative duties. Qualifications: Bachelor's degree required. Extensive collegiate or club coaching experience necessary. Application deadline: September 20, 1991. Send a letter of application and resume to Jeanne Fleck, Head Men's and Women's Swimming Coach, Northern Illinois University, 101 Evans Field House, DeKalb, IL 60115. EEO/AA Employer.

Wrestling

Wrestling Coach/Intramural Director. Ten month position available. Responsibilities include recruiting, scheduling, and promotion of the wrestling and intramural programs. Successful candidate may also teach Recreational activity courses in the Department of Social Sciences. Qualifications: Bachelor's degree required, master's degree preferred. Experience in coaching wrestling required. Knowledge and understanding of NCAA policies and regulations governing amateur sports necessary. Send letter of application, resume, and a minimum of three letters of

recommendation to: Office of Employee Relations, Lake Superior State University, Sault Ste. Marie, Michigan 49783-1699. Application Deadline: September 25, 1991. An Equal Opportunity/Affirmative Action Employer.

Graduate Assistant

Graduate Assistant/Part-Time. Academic Enhancement—North Dakota State University is seeking qualified applicants for a 9-month graduate assistantship/part-time in the Athletic Academic Enhancement Program. Will serve as an assistant to the director with all general responsibilities related to academic enhancement. Specific responsibilities include: coordinate and maintain study tables; develop and implement a tutorial program; assist in the continuation of academic support services for student athletes. Full tuition waiver including a \$5,000 stipend for the academic year. Starting date September 1, 1991, or thereafter until filled. Send letter of application, resume, and three letters of recommendation to: Dr. Robert Entz, Division Director IUPER/A, Bison Sports Arena, North Dakota State University, P.O. Box 5600, Fargo, ND 58105-5600. North Dakota State University is an Equal Opportunity Institution.

Graduate Assistant/A.T.C. Northern Illinois University. The Department of Physical Education is seeking qualified NATA certified graduate assistants. Responsibilities will include serving as the athletic trainer for an area community college or high school and supervising student trainers. Remuneration includes tuition waiver and \$3,250.00 per semester. Position begins January 1, 1992.

Apply as soon as possible to Dr. Nadine Zimmerman, Northern Illinois University, Department of Physical Education, Anderson Hall, DeKalb, IL 60115. 815/753-1407.

Miscellaneous

Sport Psychologist. The United States Sports Academy is currently seeking sport psychologists for international assignments in the Far East. Doctorate in sport psychology required. Duties include preparing a Badminton team for international competition and participation in the 1992 Olympic Games in Barcelona, Spain. Send letter of application, resume, copy of official transcripts, and three references to: United States Sports Academy, Attn: International Search Committee, One Academy Drive, Daphne, Alabama 36526, 205/626-3303. Equal Opportunity Employer.

Chairman of Sport Coaching. The United States Sports Academy, "America's Graduate School of Sport", is conducting a search for a Chairman of Sport Coaching. The Chairman of Sport Coaching will have the general duties of supervising, promoting and instructing in the sport coaching curriculum. Doctorate in physical education or related field required with coaching at the college level preferred. Send letter of application, resume, official transcripts, and three letters of recommendation to: United States Sports Academy, Attn: Search Committee, One

Academy Drive, Daphne, Alabama 36526, 205/626-3303. Equal Opportunity Employer.

Assistant Coordinator for Athletic Student Life. Department of Intercollegiate Athletics. Description: Assistant Coordinator for Athletic Student Life for the Department of Intercollegiate Athletics at Tulane University. Full-time appointment, 12-month basis. Position available immediately. Qualifications: Bachelor's degree required, master's degree preferred. Previous successful experience at the Division I level in the areas of academic support services for student athletes. Ability to foster and maintain working relationships with University administrators, faculty and staff. Thorough knowledge of the rules and regulations governing the conduct of intercollegiate athletics. Responsibilities: Assist the Assistant Athletic Director for Athletic Student Life in carrying out the following responsibilities: Represent academic services program to University administration, faculty, alumni, prospective students and parents. Implement program services to specifications of the University and in compliance with NCAA and conference regulations. Establish comprehensive guidelines for tutorial services, eligibility certifications, recruiting presentations, academic performance evaluations and reporting. Maintain effective dialogue among University administration, faculty, student athletes and parents. Salary: Commensurate with experience. Deadline for Application: September 20, 1991. Send letter of application, resume and names, addresses and

phone numbers of minimum of three references to: Tulane University, Employment Coordinator, Personnel Department, Uptown Square, 200 Broadway, Suite 318, New Orleans, LA 70118. Tulane University is an Equal Opportunity/Affirmative Action Employer.

Earn A Master's Degree In Sport Science in two five-week summer sessions plus a mentorship. Scholarships and other financial aid available. Contact: The United States Sports Academy, Department of Student Services, One Academy Drive, Daphne, Alabama 36526. 1-800-223-2668. An Affirmative Action Institution. SACS Accredited.

Open Dates

Virginia Commonwealth University Women's Basketball Team is looking for a game for 1991-92 season. Please contact Robin Muller 804/367-2375.

Football—Open Dates—Cortland State, N.Y. 9/5/92 (H) or 10/3/92 (H); 9/18/93 (A) or 10/2/93 (A). Contact: Lee Roberts, Director of Athletics, 607/753-4953.

The University of Kansas Women's Basketball program is seeking home opponent for game on December 14, 1991. Contact: Renee Brown, University of Kansas, 913/864-3822.

COLGATE UNIVERSITY

DIRECTOR OF ATHLETICS

COLGATE UNIVERSITY invites nominations and applications for the position of Director of the Division of Physical Education, Recreation and Athletics. Colgate is a private liberal arts college with a strong tradition of excellence in academic programs and intercollegiate athletics. Twenty-two men's and women's varsity teams compete in the Patriot League; varsity hockey competes in the ECAC Division I. The Director reports to the Provost and supervises all aspects of a required physical education program, varsity, club and intramural sports and recreation programs and facilities. The successful candidate will have demonstrated (1) leadership ability, (2) the strong management skills necessary to direct the personnel, programs and facilities of the Division; and (3) a clear understanding of the role of athletics in the context of a demanding academic environment. A bachelor's degree is required.

A letter expressing interest and qualifications, accompanied by the candidate's resume and names of three references, should be directed to:

Office of the Dean of the Faculty
Athletics Director Search
Colgate University
13 Oak Drive
Hamilton, NY 13346

The interviewing of candidates will begin in September 1991, with the position available beginning January 1, 1992.

Colgate University is an Equal Opportunity/
Affirmative Action Employer.

Women and minorities are strongly encouraged to apply.

TROY STATE UNIVERSITY

Athletics Director

Troy State University is seeking an athletics director to lead the institution's move to NCAA Division I/AA. Currently a Division II institution, TSU is on line to be reclassified to the higher division by June 1993. Troy State has won 11 national championships since 1968 and 57 Gulf South Conference championships since 1971. The University is seeking an individual with strong leadership skills and athletics administration experience at the Division I level to build on the program's past success. The qualified candidate will have solid experience in athletics development and promotions as well as a broad understanding of NCAA Division I compliance requirements. Deadline for applications is September 20, 1991. Send letter of application, resume and references to:

Dr. Doug Patterson
Vice Chancellor
c/o Office of Personnel Services
Troy State University
Troy, AL 36082
TSU is an AA/EEO Employer

EAST STROUDSBURG UNIVERSITY

invites applications for the position of ATHLETIC DIRECTOR

JOB DESCRIPTION: The Athletic Director holds faculty status within the newly created Athletic Department. The Athletic Director must provide overall leadership for the Intercollegiate Athletic Program including the establishment of a close liaison with student leadership, faculty, the Intercollegiate Athletic Committee and the Administration. The Athletic Director is responsible for developing and administering an annual budget, supervising and coordinating all personnel assigned to the Intercollegiate Athletic Program, coordination and oversight of athletic facilities, supervising the scheduling and operation of all athletic contests, overseeing eligibility certification of student athletes, and monitoring the Athletic Grants in Aid Program. The Athletic Director will be responsible for furthering financial support and program awareness both on and off campus and for developing a long term plan for the Intercollegiate Athletic Program.

QUALIFICATIONS: Candidates must possess a master's degree and have three to five years of experience in athletic administration. Candidates should provide evidence of both their superior leadership skills and their ability to work with culturally diverse populations of students, University faculty, staff and administration, alumni and the public. Candidates must be committed to high academic standards, the NCAA Division II philosophy, and ensure of strict compliance with regulations governing intercollegiate athletics and all applicable University, Conference, and NCAA rules, as well as Title IX and Affirmative Action/Equal Opportunity guidelines. Demonstration of effective communication skills and fund-raising abilities will also be highly considered.

East Stroudsburg University is a member of NCAA Division II and of the Pennsylvania State Athletic Conference. The University currently offers 17 sports, with women's soccer to be added this year.

Position available after July 1, 1992. Salary range is \$36,350 - \$59,210 (nine-month salary/summer employment supplement). Review of applications will begin on or about November 15, 1991, and continue until position is filled. Qualified persons interested in this position should forward a letter of application describing qualifications for the position, a current vitae, and three letters of recommendation to: Diane W. Husic, Ph.D., Chairperson, Search/Screen for Athletic Director, Gessner Building.

The Athletic Director position reports to the Provost and V.P. of Academic Affairs.

East Stroudsburg University
East Stroudsburg, PA 18301

ESU is an AA/EEO Employer M/F/H/V

FLORIDA TECH

Head Men's Basketball Coach

The Florida Institute of Technology invites applications and nominations for the position of Head Men's Basketball Coach.

The University has a full-time undergraduate enrollment of 2,300 and is located in Melbourne, Florida, on the Space Coast. Florida Tech is a member of NCAA Division II and the Sunshine State Conference.

Job Description: This is a full-time, 12 month position. Responsible for the overall conduct of the program including budget management, schedule development, recruitment, staff selection and supervision, and public relations and fund raising. The Head Coach reports to the Director of Athletics.

Qualifications: Bachelor's degree required/master's preferred. Knowledge of the NCAA rules and regulations. Minimum three years coaching experience at the intercollegiate level. Salary commensurate with education, experience and qualifications. Application deadline September 13.

Send letter of application, resume and the name, address and telephone number of three recommendations to:

William K. Jurgens
Director of Athletics
Florida Institute of Technology
150 W. University Blvd.
Melbourne, FL 32901

The Florida Institute of Technology is an
Equal Opportunity/Affirmative Action Employer

KENT STATE UNIVERSITY

POSITION:

Assistant Athletic Director in Charge of Finances.

RESPONSIBILITIES:

Incumbent will be responsible for: financial planning and budget development; income and expense accounting, reconciliation with the University accounts; game management responsibilities including organization, accounting, ticket sales, programs, parking, concessions and security; purchasing and equipment control, maintaining accurate records and accountability of all travel requisitions and reconciliations; departmental payroll, insurance, dining hall arrangements; providing current financial statements weekly to all coaches; office operations, telephone, and supplies, and other duties as assigned by the Director of Intercollegiate Athletics.

QUALIFICATIONS:

Bachelor's degree required; master's in Business Administration, accounting or five years of athletics administration preferred. Administration and managerial experience including budget development, purchasing and accounting required. Knowledge of intercollegiate athletics preferred. Computer background required and experience in intercollegiate athletics is desirable. Experience with "Athletic Department Support System" software preferred.

SALARY:

Commensurate with experience.

APPLICATIONS:

Applications accepted from September 2, 1991, to September 23, 1991.

Please forward letter of application, professional resume and three letters of recommendation to:

Mr. Paul V. Amodio
Athletic Director
Kent State University
Dix Stadium
Kent, Ohio 44242

KENT STATE IS AN EQUAL OPPORTUNITY EMPLOYER

UNLV

Director of Intercollegiate Athletics

RESPONSIBILITIES: The Director of Intercollegiate Athletics will be responsible for the supervision and direction of coaches and staff and operation of athletic facilities; the planning and administration of the athletic budget; the advocacy and continued development of 14 sports (7 men - 7 women) in a highly successful NCAA Division I-A athletic program; compliance with requirements and standards of NCAA Division I-A athletic governing bodies; the hiring, supervision, and evaluation of personnel; academic standards and personal growth for student-athletes; and the effective negotiation of radio and television contracts.

QUALIFICATIONS: Successful candidates should have exceptional organizational, administrative, marketing, communications, and interpersonal skills; and demonstrated leadership, public relations, and fund-raising abilities. Candidates should have administrative experience in athletics in increasingly responsible positions, possess creative and motivational skills, and have evidence of personal integrity and high ethical standards. A bachelor's degree is required with a master's degree preferred.

SALARY: Competitive. Commensurate with qualifications and experience.

THE SETTING: UNLV is one of the fastest growing universities in the nation with a current enrollment of more than 18,200 students. UNLV was recently cited by U.S. NEWS & WORLD REPORT (1990-91) as one of the "up-and-coming" colleges and universities in the U.S. Located in cosmopolitan Las Vegas, the university has the strong support of the community's rapidly growing population of 850,000 residents.

APPLICATION: Applications and/or nominations and a complete file including current resume, and three letters of reference must be received by October 2, 1991. Applications and a complete file should be sent to: University of Nevada, Las Vegas; John C. Unrue and Dwaine Knight, Co-chairs; Athletic Director Search Committee; c/o Senior Vice President and Provost's Office; 4505 Maryland Parkway, Las Vegas, NV 89154-1002. Additional inquiries may be directed by phone to the office of the Senior Vice President and Provost at 702-739-3301.

The University of Nevada, Las Vegas is an equal opportunity/affirmative action employer. UNLV employs only U.S. citizens and aliens authorized to work in the U.S.

A YOUNG, PROUD, AND GROWING UNIVERSITY



