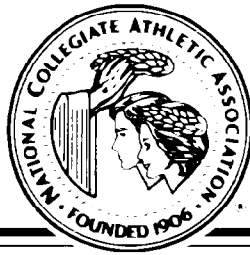


# The NCAA News



Official Publication of the National Collegiate Athletic Association

June 12, 1991, Volume 28 Number 24

## Panel plans hearings on enforcement

The blue-ribbon committee that is studying the NCAA enforcement process will conduct hearings July 26-27 in Washington, D.C., and is inviting written submissions from anyone wishing to comment on that process.

Rex F. Lee, former U.S. solicitor general who is chairing the special committee, announced the hearings today (June 12). Lee now is president of Brigham Young University.

"Anyone who wishes to express a view regarding the NCAA's enforcement and infractions process is invited to do so in writing," Lee said.

"The written submission also should indicate whether an appearance before the committee is desired."

The written statements must be received by NCAA Executive Director Richard D. Schultz at the NCAA national office not later than June 26. Schultz is personally staffing the special committee.

Lee emphasized that a written submission is a prerequisite to being invited to appear at the hearings but does not guarantee such an appearance.

"If it appears that the number of individuals requesting in-person appearances is greater than the number that can be handled effectively during the hearings, the committee will limit the number to appear," he said.

"In that instance, the committee may determine that those granted appearances must be persons with equity in the issues involved—for example, someone representing an

See Panel, page 2



## The victors

**Luis Garcia (No. 5) celebrates Louisiana State's victory in the College World Series. Coverage of the baseball championship is on page 10.**

## Women's athletics survey published

Results of the Association's 1988-89 study on women in intercollegiate athletics have been published.

Copies of the executive summary of the survey, which was requested by the NCAA Committee on Women's Athletics and developed by the Association's research staff, were mailed this week to athletics directors and senior women administrators of athletics programs at all NCAA member institutions.

Copies of the full survey results are available from Stanley D. Johnson, NCAA director of professional development, or Ursula R. Walsh, NCAA director of research, at the national office.

### Career barriers

The study explores women's perceptions of barriers they encounter in pursuit of careers in college athletics. It was conducted with the intent of gaining insight into the factors that prevent women from pursuing or remaining in intercollegiate athletics.

Data were collected from women student-athletes, coaches and administrators at 180 randomly selected member institutions representing all membership divisions and subdivisions (I-A, I-AA, I-AAA, II and III). In an effort to represent a cross section of team and individual sports while maintaining a manageable sample of student-athletes, the study was limited to basketball, softball, swimming and diving, tennis, volleyball, and track and field.

Each of the sports selected has a substantial number of women participants nationally. Each selected

institution was assigned one sport, and the student-athletes of that sport were asked to participate.

### Findings

Following is a sampling of key findings reported in the executive summary.

### Administrators

• Eighty-five percent of the administrators responding agreed that discrimination exists in athletics administration. In addition, 78.5

*The study explores women's perceptions of barriers they encounter in pursuit of careers in college athletics*

percent agreed that there are many qualified women who apply but who are not selected for openings in athletics administration, and 69.9 percent believe that there are many qualified women who do not apply for job openings in college athletics administration.

• Ninety-three percent of the administrators indicated that "old-boy networking" was a factor negatively affecting women in intercollegiate athletics administration. Lack of opportunity for advancement and inadequate salary also were cited as negative factors by 90.9 percent and 89.9 percent of the

See Women's, page 2

## Details of finalized revenue-distribution plan summarized

(Editor's note: The NCAA Executive Committee recently approved final adjustments to the formula for distributing revenue generated by the Association's new television contract with CBS for the 1990-91 academic year. The following report summarizes the finalized distribution plan in its entirety.)

In December 1989, the NCAA Administrative Committee appointed the Special NCAA Advi-

sory Committee to Review Recommendations Regarding Distribution of Revenues and charged it with developing plans for distributing the \$1 billion generated by the seven-year television contract with CBS Sports. One and a half years later, the final component of the distribution plan has been approved by the NCAA Executive Committee, establishing a complete plan for the 1990-91 academic year.

This report summarizes the distribution plan in its entirety. Toward that end, the following background information may be helpful.

As an initial step, the committee invited the membership to submit recommendations in writing. More than 350 suggestions were received in response to Executive Director Richard D. Schultz's challenge to exercise creativity in distributing the revenues in order to best serve the membership and the student-athlete.

Those responses constituted the basis for the committee's early discussions and the establishment of principles that would guide it in its deliberations over the next several months. Among them:

• That the distribution formula eventually developed provide a mechanism for sharing the revenue equi-

tably, though not equally, among all member institutions.

• That consideration be given to distributing some portion of the revenue based on the breadth of an institution's athletics program.

• That care be taken to avoid funding special interests of various segments of the membership or items that may be more an institution's responsibility than that of the Association, to ensure that the distribution benefits the broadest possible segment of the membership.

• That an institution's expenses for participating in an NCAA championship be more adequately covered, and that a common distribution formula be applied to all championships that traditionally had received a distribution of receipts after expenses.

• That the committee's recommendations address the image of the NCAA and intercollegiate athletics in general, and that the welfare of individual student-athletes (not solely that of the institutions) be considered.

• That the committee be cognizant of the fact that it may not be possible to develop a distribution plan that would fully satisfy the concerns of all institutions or programs.

Throughout the 1990-91 academic year, preliminary concepts were developed and circulated among the membership, and additional comments were sought. This process resulted in the refinement and adjustment of the recommendations ultimately submitted to and approved by the NCAA Executive Committee.

The distribution plan for 1990-91 reflects the stated principles to the greatest extent possible, given the significant diversity of athletics programs and interests and the information available to date. The special advisory committee will remain in place throughout the 1991-92 academic year to carefully review and evaluate the plan to ensure that the guiding principles continue to be appropriate and that the plan in operation reflects those principles. It stands ready to recommend adjustments in and refinement of the plan as deemed necessary and appropriate.

This report summarizes the following components of the distribution plan for 1990-91:

- Academic-enhancement fund.
- Needy student-athlete fund.
- Budget allocations for programs and services.
- Broad-based distribution

(sports-sponsorship and grants-in-aid fund).

• Basketball fund.

• Division II enhancement fund.

Taking into consideration all components of the distribution plan and the allocations for programs and services, the membership will receive approximately \$108.35 million from the Association in 1990-91. Included in this report is an analysis of the

See Details, page 6

## In the News

<b>Legislative Assistance</b> .....	<b>2</b>
<b>Eligibility</b>	
Committee meets .....	<b>3</b>
<b>Men's Lacrosse</b>	
Committee meets .....	<b>3</b>
<b>Big Ten on academics</b> .....	<b>5</b>
<b>San Diego State</b>	
Infractions report .....	<b>8</b>
<b>NCAA Record</b> .....	<b>9</b>
<b>Simpson</b>	
Infractions report .....	<b>12</b>
<b>The Market</b> .....	<b>13</b>
<b>Briefly in the News</b> .....	<b>16</b>

## 1990-91 Revenue Distribution Schedule

Payments	Checks mailed
Basketball fund .....	April 19
Division II enhancement .....	May 24
Academic enhancement .....	June 28
Needy student-athlete .....	August 2
Sports-sponsorship payment .....	August 16
Grants-in-aid payment .....	August 30

## Women's

Continued from page 1  
administrators, respectively.

• Seventy-five percent said they were aware of existing stereotypes that might be perceived as barriers to attracting and/or retaining women in athletics careers. Of these women, 54.4 percent specifically said their involvement in sports often led others to assume that they preferred homosexual lifestyles.

### Coaches

• More than 90 percent of the coaches agreed that the following four factors negatively affect a woman's decision to coach at the intercollegiate level: inadequate salary relative to time commitment involved, inadequate salary in general, infringement on family life, and travel burdens.

• Eighty-nine percent of the coaches agreed that women coaches provide models and guidance for women athletes in ways that men cannot. They also agreed that there is discrimination in athletics administration.

• Ninety-four percent of the responding coaches "somewhat" or "strongly" agreed that coaching needs to be marketed to young women as a viable profession.

### Officials

(Note: Also participating in the survey were 124 women who officiate various women's sports.)

• Ninety-four percent of the officials agreed that travel associated with officiating was perceived to be a negative factor influencing a woman's decision not to become an official. Other perceived negative factors associated with being a woman official were: infringement on family life (92.7 percent), disrespect from coaches (92.6 percent), "old-boy networks" (87.8 percent), interference with marital relationship (83.7 percent), sex discrimina-

## Women's Perceived Barriers

Agree that discrimination exists	85%
Agree the "old boy" network was negative factor	93%
Aware of stereotypes that may be barriers	75%

### Coaches

Negatives: Inadequate salary; infringement on family life; travel burdens	90% plus
Agree female coaches are role models	89%
Agree coaching should be marketed as viable career	94%

tion (82.9 percent), and lack of networking with other officials (82.5 percent).

• Ninety-two percent of the officials agreed that officiating needs to be marketed to young women as a viable profession. Only 47.1 percent were in favor of establishing quotas, and giving more voice to student-athletes (15.4 percent) was an unpopular option for improving the status of the officiating of intercollegiate athletics for women.

### Student-athletes

• Eighty-nine percent of the participating student-athletes said they'd compete on the college level if they had it to do over again. But only 5.3 percent said they'd be seeking a position in intercollegiate athletics immediately following graduation.

• Seventy-five percent said a career offering a higher average salary influenced their decision to

### Officials

Agree travel is a negative factor	94%
Officiating should be marketed as viable career	92%
Favor establishing quotas for women	47%

### Student-athletes

Would compete again on college level	89%
Would seek higher-paying career than athletics	75%
Doesn't matter if qualified coach is male or female	61%

look outside intercollegiate athletics for employment. The desire for a higher salary "greatly influenced" 48.3 percent of these athletes.

• Sixty-one percent of the athletes said it didn't matter whether a man or a woman coached their teams, as long as he or she was qualified.

## Sponsorship, institutional form revisions readied

Revised institutional information and sports-sponsorship forms will be mailed beginning July 1 from the NCAA national office.

The forms, two of five membership information forms, were reviewed and revisions recommended by the Council Subcommittee to Review the NCAA Official Information and Sports Sponsorship Form. The recommendations were approved by the NCAA Council at its April 15-17 meeting.

Form 91-7, the sports-sponsorship form, has been expanded to provide the opportunity for institutions with separate athletics departments for men's and women's programs to have both directors of athletics sign the form.

Additionally, the form will be printed in triplicate so institutions can send one copy to the NCAA national office, send one copy to their conference office and retain one copy for their files.

The sports-sponsorship form will be mailed July 1, according to Shirley Whitacre, membership coordinator in the national office. The

legislative deadline is September 15, and failure to meet the deadline could result in being declared ineligible for NCAA championships or in a fine.

"We are asking that the forms be returned by August 1 in order to establish championships eligibility and facilitate publishing of the NCAA Directory and other publications," Whitacre said.

Form 91-8, designation of institutional representatives, also provides a place to designate the men's and women's directors of athletics for those institutions with separate programs. Also, the form requests the name of the individual who is responsible for coordinating compliance activities and thus is authorized to contact the national office for rules interpretations.

In addition, the form provides an opportunity for institutions with a female director of athletics to name a senior man in athletics administration.

"This form will be mailed by July 15; and while there is no legislative deadline, we request that the forms be returned by August 15," Whitacre said.

The conference membership information form, 91-9, will be mailed by July 10 and should be returned by August 1. For the first time, Form 91-9 will be computer-generated.

The other two forms — affiliated- and corresponding-membership information forms — will be mailed August 1 and should be returned no later than September 1.

## Committee Notices

### COMMITTEE CHANGES

Please add the following to your copy of the 1991 NCAA Committee Handbook:

#### Subcommittees

**Council Subcommittee on Certification:** Warner Alford, University of Mississippi; Susan A. Collins, George Mason University; Joseph N. Crowley, University of Nevada, Reno, chair; Arthur Eason, William Paterson College; Douglas S. Hobbs, University of California, Los Angeles; Craig Thompson, American South Athletic Conference; Marjorie A. Trout, Millersville University of Pennsylvania.

## Panel

Continued from page 1

NCAA member institution or conference, someone who has been directly involved in an infractions case, or someone specifically invited by the committee."

The committee officially named the Special Committee to Review the NCAA Enforcement and Infractions Process was recommended by Schultz as part of his 1990-91 goals, formulated last summer. It held its first meeting May 29 in Atlanta and will meet again June 30-July 1 in Washington, D.C., as well as in conjunction with the July 26-27 hearings.

Serving with Lee on the special committee are former Chief Justice of the United States Warren E. Burger; two U.S. district judges, Morris S. Arnold of the Western District of Arkansas and Robert R. Merhige Jr. of the Eastern District of Virginia; a former Mississippi state supreme court judge, Reuben V. Anderson, Jackson, Mississippi; Paul R. Verkuil, president of the College of William and Mary and former law school dean at Tulane University; Charles Ehrhardt, professor of law and faculty athletics representative at Florida State University; Becky R. French, general counsel for North Carolina State University, and two members of the NCAA Council — Charles Cavagnaro, a former newspaper editor who is now director of athletics at Memphis State University, and William M. Sangster, dean of the college of engineering and faculty athletics representative at Georgia Institute of Technology and a former president of the American Society of Civil Engineers.

## Legislative Assistance

1991 Column No. 24

### NCAA Bylaws 13.12.3 and 14.8.6.1—exceptions and waivers for state games

As set forth in Bylaw 14.8.6.1-(d), a student-athlete who wishes to participate in officially recognized state and national multisport events must be sure prior to such participation that the events in question are sanctioned by the NCAA Council. The Council's approval is necessary in order to waive the prohibition against outside competition set forth in Bylaws 14.8.1 (sports other than basketball) and 14.8.2 (basketball). In accordance with the provisions of Bylaw 14.8.6.1-(d), the following state games have received approval from the NCAA Administrative Committee (acting for the Council) to permit student-athletes with eligibility remaining to participate in all of the events' sports:

Alabama Sports Festival IX  
Badger State Games (Wisconsin)  
Bay State Games (Massachusetts)  
Cornhusker State Games (Nebraska)  
Empire State Games (New York)  
Florida Sunshine State Games  
Mountain State Games (West Virginia)  
Nutmeg State Games (Connecticut)  
Ohio Sports Festival  
State Games of Oregon  
Prairie Rose State Games (Illinois)  
Prairie Rose State Games (North Dakota)  
Show-Me State Games (Missouri)  
Star of the North State Games  
Utah Summer Games  
White River Park State Games (Indiana)

Further, the use of a member institution's facilities for state games and the participation of an institution's athletics department staff member(s) in such recognized regional or national training programs or competition would be considered an exception to the tryout legislation in accordance with the provisions of Bylaws 13.12.3.3 and 13.12.3.4.

Student-athletes with collegiate eligibility remaining who wish to participate in state-games competition not listed above should contact the institution with which they are affiliated or the applicable state-games organization to request that it submit the necessary waiver request to the NCAA legislative services department. Further, a member institution scheduled to host state-games competition on its campus may not be involved in the conduct, promotion or administration of the activity (other than activities incidental to supervising the use of the facilities) and would be subject to all applicable NCAA recruiting legislation, according to

Bylaw 13.12.3.3.

Member institutions should note that in the sport of basketball, a basketball coach and a basketball student-athlete from the same institution may participate in state games sanctioned by the NCAA. Further, in Divisions I and II, not more than two basketball student-athletes from the same institution may participate on the same team under these circumstances. In addition, a coach and a student-athlete from the same institution may participate in sports other than basketball in state games sanctioned by the NCAA. In Division I, for those sports subject to playing-season segment limitations per Bylaw 17.1.4 (i.e., team sports for the 1991 summer), there is a limit on the number of student-athletes with remaining eligibility who may participate on the same team, as follows: field hockey — 5, lacrosse — 5, soccer — 6, and volleyball — 2. There are no limits on the number of Division I student-athletes who may participate on the same team in individual sports and in the team sports of baseball, softball and water polo during the summer, provided the state games occur prior to August 1, 1991. In Division II, there is no limit on the number of student-athletes with remaining eligibility from the same institution who may participate on the same outside team in state games other than basketball (in which there is a limit of two) and soccer (in which there is a limit of six). In Division III, there is no limit on the number of student-athletes with remaining eligibility from the same institution who may participate in state multisport events, except in the sport of soccer (in which there is a limit of six).

### NCAA Bylaw 16.12.1.6—summer use of athletics equipment

Member institutions should note that in accordance with Bylaw 16.12.1.6, a student-athlete may retain and use institutional athletics equipment (per the institution's normal equipment policy) during a summer vacation period. A student-athlete would not be charged with a season of competition per Bylaw 14.02.6 for the use of such equipment during a summer vacation period. Summer is defined as the period following the last date of final examinations for the spring term through the first permissible preseason day of practice or first date of classes, whichever occurs earlier.

*This material was provided by the NCAA legislative services department as an aid to member institutions. If an institution has a question it would like to have answered in this column, the question should be directed to Nancy L. Mitchell, assistant executive director for legislative services, at the NCAA national office.*

# Eligibility review touches on drug testing, foreign athletes

Year-round drug testing, foreign student-athletes and the publication of eligibility decisions in The NCAA News were topics discussed as part of a review of approximately 600 eligibility cases at the NCAA Eligibility Committee's semiannual meeting May 6-8 in Monterey, California.

Drug-Testing Protocol 9.0 has been amended to require an exit test at least 30 days prior to the anniversary of an initial positive test result for student-athletes who tested positive for NCAA banned substances. The protocol, which was approved June 5 by the NCAA Administrative Committee during a telephone conference, came from a recommendation made to the NCAA Committee on Competitive Safeguards and Medical Aspects of Sports by the Eligibility Committee.

Robert A. Oliver of the University of Northern Colorado, Eligibility Committee chair, said the intent of the committee's proposal was to provide the necessary time for the eligibility staff to review the pertinent information for an appeal, instead of forcing a review immediately prior to competition. Since this was the first year of mandatory year-round drug testing for banned substances under the provisions of NCAA Bylaw 18.4.1.5, the potential number of such eligibility appeals has tripled. Prior to the 1990-91 academic year, drug testing was conducted by the NCAA only in conjunction with NCAA championships.

The revised protocol requires that the mandatory exit test be conducted during the 11th month of the minimum one-year suspension. That timetable would allow necessary time for all relevant documentation



Robert A. Oliver

to be gathered and for the appeal to be processed.

"At the end of the one-year period of ineligibility, restoration of eligibility is not automatic; at a minimum, a negative exit-test result must be obtained before an appeal from an institution will be considered, and competition must be missed before restoration can occur," said Janet M. Justus, NCAA director of eligibility and staff liaison to the Eligibility Committee.

During its meeting, the Eligibility Committee noted that the intent of the drug-testing legislation (NCAA Bylaw 18.4.1.5.1) is to ensure the loss of at least the equivalent of one season of competition for all student-athletes who test positive under this legislation. Consistent with this principle, a student-athlete who has been redshirted during a season in which he has tested positive will lose a season of competition. Otherwise, student-athletes who compete during a season in which they test positive will suffer harsher consequences than those who do not compete.

## Certification discussed

The committee also discussed the certification process for foreign stu-

dent-athletes. Since the number of appeals involving foreign student-athletes has increased significantly, particularly with regard to amateurism regulations and academic fraud, Justus emphasized that, if possible, certification issues need to be addressed early. The committee agreed that institutions should be encouraged to ask appropriate questions of foreign prospects early in the certification process in order to avoid an eligibility problem during the middle of the academic year or, worse yet, in the middle of the season of competition.

Regarding amateurism issues, when recruiting or certifying a foreign student-athlete, institutions need to look at the student-athletes' participation history in a particular sport with foreign clubs or teams, Justus said.

"In doing so," Justus said, "it is important to ask these questions: (1) Did the student-athlete ever sign a contract with or orally agree to commit to an organization; and if so, what is the nature of the agreement? (2) What is the nature of the organization (e.g., does it receive funding from a professional sports entity)? (3) Did the student-athlete ever receive expenses or compensation in conjunction with competition; and if so, what kind? (4) Did the student-athlete's manager or coach or organization pay for his education? (5) Are there people on his club or team who are professionals? (6) If he received compensation, was it based on athletics performance (e.g., finish in a race, place in a tournament)? and (7) Did the student-athlete have a manager, agent or sponsor?"

Justus said an affirmative answer to any of the above questions is an

indication that additional scrutiny is necessary prior to certification. Such questions should be asked by the individual responsible for certification and the information obtained, if questionable or vague, should be verified with the appropriate entity.

"The committee wants institutions to know that even though there are myriad ways in which a foreign student-athlete may professionalize himself or herself, a student-athlete may regain eligibility through the eligibility-appeals process," Justus said. "If the facts of the situation demonstrate that there are mitigating factors, then eligibility may be restored with conditions such as repayment of funds and/or missed competition."

The committee also reminded member institutions to use the NCAA Guide to International Academic Standards for Athletic Eligibility to avoid eligibility problems by ensuring that the authenticity of

academic credentials of a prospective foreign student-athlete are confirmed by the respective country's appropriate accrediting agency.

Finally, the Eligibility Committee has approved changes in the published monthly listing of eligibility decisions. The committee believes that the listing serves as an important educational tool for the membership and that it should include information that indicates not only the eligibility result, but also action that was taken by the institution, conference or NCAA Committee on Infractions as a result of the institution's (or athletics department staff member's) involvement in the violation.

"The membership now will not only know the eligibility consequences of a particular violation, but also will be informed of the consequences to the institution or the involved institutional staff member for the occurrence of that violation," Justus said.

## Tournament sites switched

The NCAA Division I Men's Basketball Committee has announced a change in two sites of preliminary-round sessions of the 1993 Division I Men's Basketball Championship.

The St. Louis Arena, St. Louis, Missouri, now will serve as the site for the 1993 Midwest regional and the Hoosier Dome in Indianapolis, Indiana, will host first- and second-round sessions of the Midwest region that year. Previously, the first- and second-round games were slated for St. Louis; the regional was

slated for Indianapolis.

First- and second-round games in Indianapolis will be played Friday and Sunday, March 19 and 21, 1993. The regional will be played in St. Louis Thursday and Saturday, March 25 and 27, 1993.

The change was requested by the Midwestern Collegiate Conference and Butler University, cohosts in Indianapolis, to avoid conflict with the Indiana state high-school basketball tournament. The Missouri Valley Conference will host the regional in St. Louis.

## Lacrosse tourney sites proposed

The NCAA Men's Lacrosse Committee has voted to recommend to the Executive Committee that Rutgers University, New Brunswick, host the Division I semifinals and final in 1994, and that the University of Maryland, College Park, host those same rounds of the silver-anniversary championship in 1995.

Rutgers has hosted the semifinals and final, which were combined at one site in 1986, twice, and the championship game three times. Maryland hosted the championship game twice and the semifinals and final once. Maryland also will host the semifinals and final in 1993.

In other championships matters, the committee, which met June 1-5 in Colorado Springs, Colorado, reaffirmed that minimum financial guarantees are part of the criteria for site selection. The guarantees are based on a two-year average of income less game expenses for respective rounds of competition.

The committee also is evaluating a power rating/strength of schedule index for possible implementation in the spring of 1992 and the feasibility of predetermined sites for the Division I championship.

## Rules actions

In actions regarding the playing rules, the committee voted to recommend to the NCAA Executive Committee that a one-game suspension be added to the penalty for expulsion fouls. Currently, a player is assessed a three-minute non-releasable penalty and is suspended for the game in which the foul occurs.

In addition, the committee voted to recommend that a player who leaves the bench during a fight be assessed an expulsion foul. All players who leave the bench would be

expelled from the game in which the foul occurs and suspended for the team's next game, but the in-home of the penalized team will serve only one three-minute non-releasable penalty.

The committee also voted to recommend that compression undergarments that extend below the game shorts be similar in color to the shorts and that underjerseys be white, gray or the same color as the predominant color of the jersey. Underjerseys must be tucked in if they extend below the game shirt. Members of a team must wear the same color compression garments and underjerseys. Jersey numbers cannot be obscured.

The committee voted to recommend that taunting and baiting be added to the technical foul, illegal team-personnel action, and that mandatory mouthpieces be a readily visible color.

In other playing-rules actions, the committee voted that altered handles are illegal and a crosse with an altered handle constitutes an illegal crosse.

If a personal foul occurs after a goal is scored or at the end of a

period, the ball will be awarded to the offended team at center.

On a face-off, the goalkeeper and three other players can line up anywhere behind the defensive-clearing line. They had been restricted to the defensive goal area.

When there has been a change of possession, play will be resumed within a five-second period once the ball has been signaled ready for play.

## Other rules changes

The committee also made a number of changes relating to the field, balls, and scorers and timers:

- Pylons should be placed at the intersection of the table area and sideline.

- The crease cannot be painted a solid color.

- Yellow was added as an approved color for the ball.

- The home-team scorer will be the official scorer, and ball retrievers are mandatory.

- When there is a visible game clock, the timer will not remain on the field after informing the official of the time remaining in the period. A horn will signal the expiration of time.

## News Quiz

The following questions relate to information that appeared in May issues of The NCAA News. How many can you answer?

1. True or false: Eastern Connecticut State University defeated Central College (Iowa) for the 1991 Division III women's softball title.
2. True or false: Former Desert Storm prisoner of war Jeffrey Zaun was a college student-athlete.
3. True or false: Little support exists within the NCAA membership for tougher academic standards.
4. True or false: Only 27 drug tests administered by the NCAA last fall were positive.
5. True or false: Duke University won its fifth College Football Association academic award this year.
6. True or false: Hobart College now has won 13 Division III men's lacrosse titles.
7. True or false: The Federal Trade Commission has subpoenaed NCAA television-contract information.
8. True or false: Western Athletic Conference Commissioner Joseph L. Kearney has been named winner of the 1991 Corbett Award.
9. True or false: The 1990-91 basketball injury rates are below the three-year averages.
10. True or false: Participation decreased significantly in college sports during 1989-90, while the number of sports sponsored by member institutions increased slightly.

Answers appear on page 16.



## COLLEGE PROSPECTS OF AMERICA

Over 400 Scouts In  
45 States, 4 Countries

Providing Accurate Profiles On High School  
Athletes In 26 Sports To College Coaches  
Nationwide . . . NEVER ANY FEE!

If You Are Not Receiving Them Or Need Athletes,  
Call Tracy Jackson On Our Coaches' Hotline:

**1-800-235-2762**

## Capitalize on ALL Scoring Opportunities in ATHLETIC FUNDRAISING

### Recruit the Ezell & Co. Team

- MARKETING
- FUNDRAISING
- RESEARCH
- PUBLIC RELATIONS
- PROPOSAL WRITING
- DONOR IDENTIFICATION

**EZELL & Co., Inc.**  
E. Thomas Ezell

Innovative Strategies in Management & Development

2833 N.E. 26th STREET • FT. LAUDERDALE, FLORIDA 33305  
TELEPHONE (305) 564-8185

# Comment

## Some coaches dislike the track their sport is on

By Jerry Wizig  
Houston Chronicle

What if they gave an Olympics and no Americans contended for gold medals in track and field?

Under the worst-case scenario, some Southwest Athletic Conference coaches foresee such a possibility in the not-too-distant future. In their view, the sport's dire plight in this country soon will be threatened even more by the track on which it seems to be headed.

- Less development of college athletes, who have traditionally been the lifeblood of U.S. Olympic and international teams.

- Empty seats at meets.
- Lessening attention from news media that are attracted more and more to professional sports.

- NCAA-mandated cuts in scholarships and coaching staffs in the near future.

University of Texas at Austin coach Stan Huntsman said, "Our only chance is probably to let the NCAA kill us off on their level and then establish it on a club level like the European system."

"The best thing to do is change the minds of the college presidents and get their support for track and field," said Huntsman, head coach for the U.S. men's Olympic team in 1988.

In the opinion of Texas A&M University's Ted Nelson, "Track and field is bleeding pretty good, and if we don't stop the arteries, we'll bleed to death."

Rice University's Steve Straub and John McDonnell of the University of Arkansas, Fayetteville, like Huntsman, feel collegiate track and field may be better off outside the NCAA.

"I'd like to see the coaches break away from the NCAA and get TAC (The Athletics Congress, the U.S. governing body for the sport) involved," Straub said.

Huntsman suggested, "Say 10 schools want to fund 24 track scholarships. I think they should be allowed to do that. The best thing is to have separate men's and women's programs. Nobody can afford them but a few, so they make us conform to their standards."

"If they keep cutting and squeezing the life out of us," McDonnell said, "we should form our own organization of schools that want track and field."

Clyde Hart of Baylor University and Texas A&M's Nelson disagree.

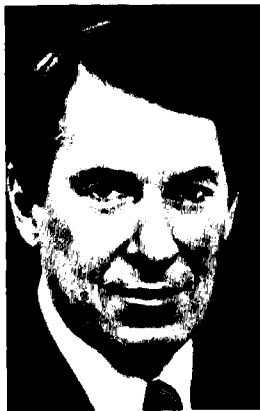
"I haven't heard anyone who seriously suggested that," said Hart, president of the National Track and Field Coaches Association. "We have to recognize that we have been kicked, and we have to adjust."

Said Nelson, "The secret to the NCAA running track and field is, it has to be that way as long as your school is a member."

"We need to get the coaches more involved, rather than a select few who are on the track and field rules committee dictating what we do."

Under the changes approved at the 1991 NCAA Convention in January, Division I schools must cut track scholarships by 10 percent and reduce coaching staffs for the 1992-93 school year.

Current limits are 14 men's and 16 women's scholarships. Staffs must be reduced to a head coach,



Clyde Hart

one full-time assistant and a part-time assistant who can be paid only \$12,000 a year. Nonpaid volunteers and graduate assistants will not be permitted.

"To me, that scholarship and a half that is cut means four kids walking the streets who could be getting some financial aid on a

partial grant," McDonnell said.

Huntsman, noting the effect of two full-time coaches spread over 20 events, said, "Sending a kid out alone to practice the vault with a pole in his hand would be suicide."

The collegiate background of almost every U.S. Olympic medal winner in track and field supports Hart's view that "We have been the bulwark of the Olympic movement."

He sees a future when schools will specialize in certain events say Texas Christian University and the University of Houston in the sprints, Texas in the field events and distances, Baylor in the quarter-mile and relays.

"We have been our own worst enemy," Hart says. "I'll go to my grave saying I fought it, telling kids to pick up and go to a meet hundreds of miles away, instead of in our own conference. We forget

what it was like to come down to the mile relay to see who was going to win a Texas-Texas A&M-Rice-Baylor quadrangular.

"We created the monster."

Texas Christian coach Bubba Thornton sees it differently. "Fewer and bigger meets" is his suggestion.

**"If you can go out and promote professional wrestling, why can't you market and promote track and field?"**

Tom Tellez

"It adds pressure because you have to perform, but as those meets build

interest, they become an event. I see little interest in a Texas-Blinn dual meet (held recently at Austin). If you have good athletes, do you want to go to the Penn Relays or a triangular meet?"

Houston coach Tom Tellez sat enthralled as a youth amid crowds of 50,000 at the Coliseum Relays in Los Angeles and 20,000 or 25,000 at the Compton Relays. Those meets are extinct.

"If you can go out and promote professional wrestling, why can't you market and promote track and field?" Tellez wonders. It's an expertise beyond most coaches, who now are hard-pressed to find enough hours to recruit and coach their teams.

"TAC or someone has to take it over and market it better so that the kids can see it on the tube and build

See *Some*, page 5

## NCAA investigations need parameters

Frank Hill, California state senator  
Los Angeles Times

"I don't want there to be shady things going on in college athletics. I think (the NCAA) ought to have the right to investigate. But I think there ought to be a set of parameters because the power of the NCAA—the impact it can have on an institution or an individual's career—is incredible."

"It's not just monetary. It's your reputation...all sorts of things. This quasipublic institution whatever you call it has got a lot of power."

"This has been an ongoing issue for 10 years. The NCAA has been saying all along, 'We'll take care of it. Let us work on it. We understand it.' My perception is (that) they're stalling. I don't think they see it as a serious issue. They're trying to come up with a political response of their own."

"Let them do whatever the hell they want to, and if my bill can move the process along, I think that's terrific. I hope (former) Chief Justice Burger (as a member of a special committee reviewing the NCAA enforcement process) comes out with some minimal level of due process. If (the NCAA) really does make a sincere effort in that direction, I would be happy to drop my bill."

"But I'll guarantee you, were it not for states putting pressure on the NCAA, it wouldn't have dealt with this issue at all."

Richard D. Schultz, executive director  
NCAA

Atlanta Journal-Constitution

"It's not out of concern for providing due process that we're doing this (reviewing the infractions process). We think our practices are relatively fair. Our major concern is that we don't have laws passed that make it



### Opinions

difficult for us to have any type of rules enforcement at all.

"This is a voluntary association, a private organization that has the right to establish rules of membership—and the members themselves make the rules. If the members want to vote out our entire enforcement process, they can do that."

Mike Archer, assistant football coach  
University of Virginia

Richmond Times-Dispatch

"Last year (as head coach at Louisiana State University), I had four freshmen we were redshirting who I had to have see a psychologist during the season. They were having trouble adapting—going from the top of the mountain in high school to being just a freshman. Some coaches won't tell you that, but it's very common."

"You have to derecruit them. You've told them for six months they're the greatest (players) in the world. Now, they're just one of 95, and they're probably not going to play as freshmen. They're away from home for the first time, and homesickness becomes a big part of that."

"Three years ago...I walk out of a meeting, and five minutes later, a big lineman walks in my office in tears. This is a 270-pound gorilla, heaviest-recruited player in the state, and he's homesick."

"Your life depends on the decision of a 17-year-old kid—that's the craziness—and on what they base their decisions. I've had (prospects) we lost tell me, 'The girls were better looking,' or 'They served soup at every meal,' or 'They had better steaks.'"

"We talk about academics, and we're going to try to help these kids graduate...and (help them) with the rest of their lives...and they're making decisions based on the absolute craziest reasons. 'The beds were bigger.' Unbelievable."

**"If our members want to vote out our entire enforcement process, they can do that."**

Richard D. Schultz



Doris Soladay, associate athletics director  
Syracuse University

Syracuse Herald American

"It's not easy being a student-athlete. You're carrying a full load of classes. You're expected to practice and perform well in your sport."

"There are a lot of demands on you. You have to play and use your time well to stay ahead of the game."

Jim Walden, head football coach  
Iowa State University

The Des Moines Register

"People like to see the kids come out and play (in the annual spring football game). If you didn't do anything else, you got to see a kid you heard me talking about. Mostly, I play it for the kids. They like to play. They like to put the suits on. It's not just a good time to show off."

Bill Frieder, head men's basketball coach  
Arizona State University

The Arizona Republic

"Look at the excitement created by the college game, the success of the NCAA tournament. The game has never been more popular. Why mess with (the three-point line)?"

## The NCAA News

(ISSN 0027-6170)

Published weekly, except biweekly in the summer, by the National Collegiate Athletic Association, 6201 College Boulevard, Overland Park, Kansas 66211-2422. Phone: 913/339-1906. Subscription rate: \$24 annually prepaid; \$15 annually prepaid for junior college and high school faculty members and students; \$12 annually prepaid for students and faculty at NCAA member institutions. No refunds on subscriptions. Second-class postage paid at Shawnee Mission, Kansas. Address corrections requested. Postmaster send address changes to NCAA Publishing, 6201 College Boulevard, Overland Park, Kansas 66211-2422.

Publisher ..... Ted C. Tow  
Managing Editor ..... Timothy J. Lilley  
Assistant Editor ..... Jack L. Copeland

The Comment section of The NCAA News is offered as opinion. The views expressed do not necessarily represent a consensus of the NCAA membership. An Equal Opportunity Employer.



# Big 10 CEOs back enhanced academic standards

The Big Ten Conference council of presidents has voted to support the concept of adopting enhanced academic standards at the 1992 NCAA Convention and to work closely with the conference's faculty leadership in identifying and supporting these proposals in conjunction with other conferences and the NCAA Presidents Commission.

Areas discussed for strengthening academic standards include increasing initial and continuing eligibility requirements, including the estab-

lishment of a national qualitative progress rule; raising academic requirements for junior-college transfers who were nonqualifiers out of high school, and increasing the national quantitative continuing-eligibility requirements.

Steven C. Beering, president of Purdue University and chair of the council of presidents, said, "Our meetings were quite productive. We are pleased with the progress reports of the joint group in regard to guiding principles for the conference

and simplification and deregulation of conference rules. In addition, we adopted the principles recently articulated by the Knight Commission related to presidential responsibility and authority for intercollegiate athletics."

The council of presidents encouraged conference faculty representatives and men's and women's athletics administrators to adopt a coordinated policy in conjunction with the conference office to ensure that the Big Ten will provide leadership in establishing and maintaining high standards of sportsmanlike conduct relative to Big Ten intercollegiate competition.

"We want the very best possible atmosphere for the conduct of intercollegiate athletics on our campuses," Beering said.



Steven C. Beering

The council of presidents also announced it:

- Applauds women's athletics in the Big Ten, and endorses the numerous promotional efforts being planned by the conference office and Big Ten institutions to celebrate

the 10th anniversary of women's conference competition.

In a related matter, the council of presidents voted to support an amendment at the 1992 NCAA Convention that would delay implementation of the reduction in grants-in-aid in women's sports from August 1, 1992, to August 1, 1993, pending the outcome of an NCAA study to determine the impact of these cuts in achieving gender equity at various programs within Division I.

- Adopted in principle the procedure outlined by the NCAA Presidents Commission to control coaches' outside income.

- Encouraged Commissioner James E. Delany and the directors of athletics to pursue conference-bowl relationships below the conference-championship level.

## Some

Continued from page 4

from the grass-roots level," Tellez said. "We need meets in the summer, like the old U.S.-Russian dual meets on a summer circuit.

"I guarantee if a guy like (former baseball commissioner) Peter Ueberroth were hired, he could do it.

"Track and field is cheap for young kids to participate in, it's safe, and it gives a great feeling of accomplishment to the youngster who comes in third or fifth and takes that medal home with him.

"Millions of kids want to be like

"The worst thing that ever happened to track and field in this country," he said of the change. "We have yet to go to the grocery store or the gas station and order metrically. I don't know it (the metric system), and I don't want to learn it.

"Put the 100-yard dash and the mile back in the program. Even in Europe, they have the famous 'Miracle Mile' every summer at Oslo (Norway). They don't call it the 'Miracle 1,500 Meters.'"

With men's and women's events now held in the same meets, most

**"Put the 100-yard dash and the mile back in the program. Even in Europe, they have the famous 'Miracle Mile' every summer at Oslo (Norway). They don't call us the 'Miracle 1,500 Meters.'"**

Clyde Hart

Carl Lewis and win Olympic gold medals. I have stacks of letters from them. So does Carl."

Tellez, like most coaches, fears the increasing pressure of nonrevenue sports. "The colleges seem to feel that the money is all in football and basketball, and that that's everything at the collegiate level," Tellez said. "It's not. They are two sports.

"Football and basketball should support themselves and let the colleges support the nonrevenue sports like us."

The fallout from the Ben Johnson steroids scandal at the 1988 Olympics continues to hurt the sport, Arkansas' McDonnell said. "With Johnson and the others who have been caught, the person on the street thinks our sport is a bunch of junkies," he said. "Track and field has done something about drugs, where professional sports has done nothing."

Baylor's Hart traces part of the decline in interest to the change to the metric system.

meets take longer than a college baseball doubleheader to complete.

"Our championships should not be combined men and women," McDonnell said. "I think the women agree. They're in the same plight we are. No one is watching them, either."

(A total of) 239 schools fund Division I women's track compared to 240 men's programs.

"We add another element of interest," Texas women's coach Terry Crawford said. "If the meet is run efficiently, women's events don't have to double the length of the meet."

As for the sport's current state, Crawford said. "There are some very bright minds working on it. I hope the NCAA is ready to listen to the coaches who are in the trenches every day."

Hart isn't sure what the future holds. "If we were dumb enough to make the changes, we should be smart enough to change it back," he said. "But I may not live to see it."

By Doug Mitchell  
The Houston Post

Athletes attending The Houston Post's second annual college recruiting seminar recently were told that they can take control of a recruiting situation early, alleviating frustration.

More than 100 parents, coaches and high-school seniors-to-be heard NCAA enforcement representative Edward B. Lupomech and Post columnist Butch Woolfolk, a former student-athlete, speak on the recruiting experience.

Lupomech said it is the athlete who makes the ultimate choice whether to violate NCAA recruiting rules.

"If you get put into a situation, you have the choice whether to break the rule or not," Lupomech said. "We can't stop you or the coaches from breaking the rules. It's the coach's choice to put something in your hand or (yours) to have your hand out.

"This is your recruitment. You are in charge of what goes on.

"You can tell these coaches that you don't want to talk to them after 10 p.m., or have them stopping by during school hours and taking you out of class. It's important for you to get your grades, too."

Woolfolk, a highly recruited high-school player who later starred at the University of Michigan, warned recruits of the frustration they may face.

"It's going to be great when you get that call from that first school asking if they can call anytime," Woolfolk said. "Then it's going to be that third school, fourth school

and fifth school.

"Then, you're going to realize it's very frustrating. You have the responsibility to control everything that goes on during recruiting. You

**"You have the responsibility to control everything that goes on during recruiting."**

Butch Woolfolk

owe it to a school that if you decide to stay in state, and an out-of-state school calls, not to waste its time."

Woolfolk also advised the recruits to allow an out to recruiters making possible illegal offers, rather than threatening to turn them in.

"If a coach offers you something, your response should be, 'Coach, are you testing me? I don't do that.' Then you don't get in trouble and the coach can back off the situation without feeling threatened."

Former Oakland Raiders and Cleveland Browns linebacker Gerald Irons, whose son, Jarrett, plays high-school football, said the seminar provides "a great service to the athletes, because there's so much confusion at this time in their lives. They can make a lot of mistakes, but they found out a lot of good information before making a decision."

Brandell Jackson, considered one of the area's top prospects for the upcoming season, said the seminar changed his views on recruiting.

"I heard a lot of things that really changed my mind," Jackson said. "I know now I'll make a good choice on which college I choose."

## Letter to the Editor

To The Editor:

I read with interest the two letters that appeared in recent editions of The NCAA News that were critical of concerns expressed by the Committee on Financial Aid and Amateurism in a March 20, 1991, News article related to 1991 Convention Proposal No. 46-3.

The committee's comments centered around the proposal's intent and, more importantly, its likely results. The committee recognized that a legitimate issue was at stake, that being whether Division I institutions' commitments of financial aid to student-athletes shall be narrowly or broadly defined.

Consider the following example to illustrate the committee's concern: Two swimmers (both recruited) at a given institution are receiving institutional financial aid. The first is receiving a partial athletics grant with additional financial aid awarded without regard to athletics. The second student-athlete is awarded an equal amount, none of which is based upon athletics ability.

Under the rule adopted in January (as amended by Proposal No. 46-3), the institution would be required to count all of the aid received by the first student and none of the second student's aid. This seems consistent with the intent of the amendment's sponsors.

If, however, the institution was concerned about meeting the minimum financial aid commitment, it could award \$1 of athletics aid to the second student-athlete and count the entire amount awarded to that student since the full amount awarded now would be considered countable aid. In so doing, the institution effectively would double its financial aid commitment under the rule in question.

The Convention's published proceedings show that this point was not raised at any time during the discussion of Proposal No. 46 or any of its amendments.

The committee believed the legislation's effectiveness was diluted, making it less meaningful. Further, the committee did not believe that this was the sponsor's intent nor did the membership fully understand the issue when the legislation was approved.

Following a lengthy discussion, the committee requested that the issue be raised in the News and that the Council be encouraged to consider the issue for possible 1992 Convention action. Should the membership believe that the minimum financial aid criteria in Division I are too harsh, the minimum commitment of grant-in-aid funds could be reduced through legislation. The committee believes that a narrow definition of athletics aid should be simple and direct, providing the fairest and most equitable standard.

Marvin G. Carmichael, Chair  
Committee on Financial Aid and Amateurism

## State due-process legislation

Following is an update on pending or enacted legislation in several states regarding the provision of due process in athletics-association infractions investigations.

State	Still active	Status
California	Yes	Moved to committee. Hearings expected this fall during an interim legislative session.
Florida	Yes	Enacted May 30.
Illinois	Yes	Passed House. Moved to Senate Executive Committee.
Iowa	No	Died in committee.
Kansas	Yes	Passed Senate. Moved to House Federal and State Affairs Committee for consideration during 1992 legislative session.
Minnesota	Yes	In Senate Committee on Education for consideration during 1992 legislative session.
Nebraska	Yes	Became law in February 1990.
Nevada	Yes	Became law in April 1991.
New York	Yes	After introduction last month, the bill was assigned to the Senate Committee on Rules for consideration during the 1992 legislative session.
South Carolina	Yes	Will be reviewed by the Senate Committee on Education during the 1992 legislative session.

# Details

Continued from page 1

benefits to member institutions and student-athletes and a chart indicating the target dates on which checks will be (or have been, in some cases) mailed to member institutions and conferences.

Questions regarding the distribution plan should be directed to Louis J. Spry, associate executive director, at the NCAA national office.

## 1990-91 NCAA

### Revenue-distribution plan Academic-enhancement fund

A total of \$7.4 million is allocated for enhancement of academic-support programs for student-athletes at Division I institutions. A payment of \$25,000 will be sent June 28 to each Division I institution. There are no specific guidelines for or restrictions on the use of these academic-enhancement moneys; however, institutions should be prepared to explain how the funds were used to enhance their academic programs and services for student-athletes.

### Needy student-athlete fund

A total of \$3 million will be sent to conference offices August 2 to assist student-athletes in Division I with special financial needs. Each

conference will serve as the administrator of the fund for its member institutions; independent institution's funds will be assigned to a conference office for administrative purposes, based on the same assignments made for administration of the National Letter of Intent.

*Taking into consideration all components of the distribution plan and the allocations for programs and services, the membership will receive approximately \$108.35 million from the Association in 1990-91*

Student-athletes will apply for funds by submitting an application form to the conference office. Conferences annually will be required to report to the NCAA national office the purposes for which the moneys were used and the specific amounts for each purpose.

a. The following uses of the moneys are permissible; a conference or independent institution may develop more stringent provisions if it wishes to do so:

(1) Medical expenses (except

those covered by another insurance program, either institutional or personal);

(2) Hearing aids;

(3) Vision therapy (e.g., contact lenses, eyeglasses);

(4) Off-campus psychological counseling;

(5) Travel expenses for parents or student-athletes related to family emergencies;

(6) Purchase of expendable academic course supplies (e.g., notebooks, pens) and rental of nonexpendable supplies (e.g., computer equipment, cameras) that are required for all students enrolled in the course, and

(7) Articles of clothing and shoes, up to \$200.

b. The allocation for each institution is based on the number of student-athletes who received Pell grants (either actual dollars or credit for them). The distribution that will be made in August 1991 will be based on the number of Pell-grant student-athletes during 1990-91; the August 1992 distribution will be based on the number of Pell-grant student-athletes during 1991-92, and so on.

c. "Countable" student-athletes, for purposes of determining an institution's allocation, are defined as those Pell-grant student-athletes who have received coaching during the previous year in a varsity sport in which the NCAA conducts championships, as reported on the sports sponsorship form submitted by September 15 each year, and which meet the minimum contests and participants requirements of Bylaw 20.9.3.3 for Division I membership. Student-athletes participating in a sport classified in a division other than Division I will not be counted in determining the allocation; however, all Pell-grant student-athletes participating in a varsity sport are eligible to apply for funds. [Note: Even though the Association does not conduct a Division I-A football championship, participants in that sport will be counted.]

An institution is not obligated to award its entire fund each year; if funds remain at the end of the year, a conference could choose to pool these moneys and use them for any member institution. However, an institution or conference could accumulate no more than three times the average amount of its allocation over the previous three-year rolling period.

The moneys may not be used for administrative purposes (i.e., conferences may not charge an administrative fee, nor may salary or staff expenses for administering the fund be paid from these moneys).

### Budget allocations for programs and services

Effective with the 1990-91 academic year, the distribution of net receipts to member institutions for participation in NCAA championships was eliminated and those receipts included in the budget for incorporation into the distribution plan. In addition to the other components outlined in this document, revenues have been earmarked for the following programs, services and benefits to the membership:

a. Increases in the official traveling parties and per diem for NCAA championships in all divisions, which were in effect for the 1990-91 championships season;

b. Catastrophic-injury insurance for student-athletes in all three divisions (effective August 1, 1991), and

c. An inflationary increase in the Division I conference grant program.

Effective with fiscal year 1991-92, two percent of the annual rights fee from the television contract will be set aside each year in a membership trust, to continue to fund programs and services for the membership if there are compelling economic needs at the end of the current contract. This amounts to approximately \$2.4 million in 1991-92 and will increase commensurate with the increase in the television rights fee each year. If it is not necessary to use the trust for these purposes, the moneys will be distributed to the membership in some form.

### Broad-based distribution

The broad-based distribution (\$31.25 million for 1990-91) is made to all Division I institutions on the basis of the number of varsity sports sponsored (weighted one-third, comprising approximately \$10,416,667) and the number of athletics grants-in-aid awarded (weighted two-

distribution will be based on previously submitted squad lists, and the number of athletics grants-in-aid will be calculated from those lists.

a. **Sports-sponsorship fund.** An institution will receive a unit for each sport sponsored in excess of 12 (the minimum requirement for Division I membership). Only sports in which the NCAA conducts championships competition and which meet the minimum contests and participants requirements of Bylaw 20.9.3.3 will be counted. According to current information, an institution should receive between \$6,500 and \$7,000 for each sport it sponsors above 12.

When the Division I membership is required to sponsor a minimum of seven sports for men and seven sports for women effective September 1994, an institution will receive credit in the sports-sponsorship component beginning with its 14th sport sponsored.

(Note: Even though the Association does not conduct a Division I-A football championship, that sport and athletics grants awarded in it will be counted in the broad-based distribution.)

b. **Grants-in-aid fund.** The grants-in-aid component is based on the number of athletics grants awarded by each institution (based on full-time equivalencies), beginning with one grant and progressing in value in increments of 50. Grants awarded above 150 would be valued the same; i.e.:

Grants Nos. 1-50 1 valuation point each

Grants Nos. 51-100 2 valuation points each

Grants Nos. 101-150 10 valuation points each

Grants Nos. 151 and above 20 valuation points each

The accompanying chart indicates the value of each number of grants. One valuation point is worth approximately \$90, based on the information available to date.

As with sports sponsorship, athletics grants will be counted only in sports in which the NCAA conducts championships competition (and also in Division I-A football, as noted earlier) and which meet the minimum contests and participants requirements of Bylaw 20.9.3.3.

The NCAA Committee on Infractions will consider withholding all or a portion of an institution's share of the broad-based distribution moneys as a penalty in infractions cases.

### Basketball fund

The basketball fund, totaling \$31.25 million in 1990-91, provides for moneys to be distributed to Division I conferences based on their performances in the Division I Men's Basketball Championship over a six-year rolling period (beginning with the period 1985-1990 for the 1990-91 distribution, then with the period 1986-1991 for the 1991-92 distribution, and so on). Independent institutions receive a full unit share based on their tournament participation over the same rolling six-year periods. The payments for 1991 were sent to conferences and independent institutions April 19.

One unit is awarded to each institution participating in each game, except the championship game.

For the purpose of distributing the basketball fund, a conference is defined as one that comprises at least six member institutions that have been classified in Division I for the eight preceding academic years. If a conference falls below the six-

See Details, page 7

## Analysis of Benefits to Member Institutions and Student-Athletes

\$3.00 million	<b>NEEDY STUDENT-ATHLETE FUND.</b> Division I student-athletes who are receiving a Federal Pell Grant may apply for a grant to be used in emergency situations. There is no obligation to repay the money.
\$3.50 million	<b>CATASTROPHIC INJURY INSURANCE.</b> All student-athletes in each division are covered in the event of catastrophic injury received while playing or practicing.
\$7.40 million	<b>ACADEMIC ENHANCEMENT FUND.</b> Each Division I member will receive \$25,000 to be used for academic programs for student-athletes.
\$1.35 million	<b>SCHOLARSHIPS.</b> Awards are made to student-athletes to complete their degrees for postgraduate work; further, awards are made to ethnic minorities and women to obtain advanced degrees in athletics administration.
\$24.67 million	<b>CHAMPIONSHIPS EXPENSE.</b> Transportation and per diem for official traveling parties for all championships in all divisions.
\$20.83 million	<b>GRANTS-IN-AID FUND.</b> To be distributed among Division I institutions based upon the number of athletics grants-in-aid they award to both men and women.
\$10.42 million	<b>SPORTS SPONSORSHIP FUND.</b> To be distributed among Division I institutions based upon the number of men's and women's sports they sponsor.
\$31.25 million	<b>BASKETBALL FUND.</b> To be distributed to Division I conferences based upon their teams' performances in the immediate past six NCAA basketball tournaments. (Note: The value of a unit is \$43,100 compared to \$294,468 in 1990. Conference members and independents receive the same unit values. The maximum number of units per institution per year is five.)
\$4.93 million	<b>GRANTS AND ROYALTIES.</b> Includes grants to Division I conferences and affiliated members, and merchandising royalty payments to Division I member institutions. [Note: Conferences must expend their grants (up to \$128,000 per conference) on men's and women's officiating improvements, compliance programs, drug education, and enhancement of opportunities for ethnic minorities and women.]
\$1.00 million	<b>DIVISION II ENHANCEMENT.</b> To be distributed among the membership of Division II according to a formula developed by the Division II Championships Committee.
\$108.35 million	<b>TOTAL DIRECT PAYMENTS OR BENEFITS.</b>

*A total of \$7.4 million is allocated for enhancement of academic-support programs for student-athletes at Division I institutions*

thirds, comprising approximately \$20,833,333).

The sports-sponsorship payment will be sent to institutions August 16; the grants-in-aid payment will be sent August 30. If a conference so desires, the moneys may be sent to the conference office (rather than to individual institutions) upon the unanimous approval and authorization of the chief executive officer of each institution in that conference. If they are sent to the institu-

*Effective with fiscal year 1991-92, two percent of the annual rights fee from the television contract will be set aside each year in a membership trust to continue to fund programs and services for the membership if there are compelling economic needs at the end of the current contract*

tion, they will be addressed to the attention of the chief executive officer, with a copy of the covering memorandum to the director of athletics.

The 1990-91 distribution will be based on sports-sponsorship and grants-in-aid data from the 1989-90 academic year. The grants-in-aid

# Details

Continued from page 6

member requirement, the basketball-fund moneys are retained by the conference for a one-year period.

Relative to the numerous conference realignments occurring, the following will apply:

a. In the event an institution leaves a conference and realigns with another and its original conference remains in operation, the units it earned remain with the conference that it left.

b. If an institution leaves a conference to become an independent, the units that institution earned are retained by the conference that it left.

c. If an independent institution joins a conference, it retains the unit(s) it earned as an independent prior to the date it elected to join the conference; any units the institution earns subsequent to that date accrue to the conference.

d. If a conference disbands, each individual institution retains the units it earned in the basketball fund.

A conference representative that

loses a play-in game will receive one unit in the basketball distribution.

No conference will lose all its units if it is represented in the tournament by an institution that later is declared ineligible. In this situation, the number of units in the basketball pool would be reduced to one. [By way of example, assume

be reduced to one. In another scenario, assume that the conference is represented by two teams (one automatic qualifier and an at-large team), and one of the teams subsequently is declared ineligible. Its units will be completely vacated; the units earned by the other team will be unaffected.]

but among Division II members May 24. This financial enhancement of Division II will be \$2 million in 1991-92 and \$3 million in each subsequent year through the remainder of the contract.

For 1990-91, one-half of this fund was divided evenly among all Division II members (\$2,841 each), ex-

accordance with the same procedures that have been implemented for the Division I basketball fund (i.e., using a rolling six-year average).

In order to receive moneys from either the basketball fund or the equal-distribution fund, an institution must be active and eligible for championships competition and must have declared its intention to participate in all NCAA championships competition listed on the NCAA-NAIA joint-declaration form. An exception may be granted in extenuating circumstances.

If an institution reclassifies from Division II to Division I or Division III, its basketball moneys shall remain with the conference that it left (or, if it was an independent, shall accrue to the basketball fund); its equal-distribution moneys shall accrue to that pool for redistribution.

An institution that reclassifies from Division I to Division II or vice versa will share in the revenue distribution plan of the respective division, effective upon its reclassification date (i.e., September 1).

*The distribution plan for 1990-91 reflects the stated principles to the greatest extent possible, given the significant diversity of athletics programs and interests and the available information to date. The special advisory committee will remain in place throughout the 1991-92 academic year to carefully review and evaluate the plan to ensure that the guiding principles continue to be appropriate and that the plan in operation reflects those principles.*

that Conference A is represented in the tournament by only one institution (the automatic qualifier) and it advances to the Final Four, thereby earning five units. If the institution subsequently is declared ineligible, the number of units will

Conferences are urged, but not required, to distribute moneys from the basketball fund equally among all their member institutions.

## Division II enhancement fund

A total of \$1 million was distri-

cluding those institutions that chose to compete in one or more NAIA team championships. The other half was distributed to conference offices and independents based upon their participation in the Division II Men's Basketball Championship in

## Estimated Payments from Grant-In-Aid Fund

No. of Grants	Value	No. of Grants	Value	No. of Grants	Value	No. of Grants	Value	No. of Grants	Value	No. of Grants	Value
1	\$ 90	51	\$4,680	101	\$14,400	151	\$60,300	201	\$150,300	251	\$240,300
2	180	52	4,860	102	15,300	152	62,100	202	152,100	252	242,100
3	270	53	5,040	103	16,200	153	63,900	203	153,900	253	243,900
4	360	54	5,220	104	17,100	154	65,700	204	155,700	254	245,700
5	450	55	5,400	105	18,000	155	67,500	205	157,500	255	247,500
6	540	56	5,580	106	18,900	156	69,300	206	159,300	256	249,300
7	630	57	5,760	107	19,800	157	71,100	207	161,100	257	251,100
8	720	58	5,940	108	20,700	158	72,900	208	162,900	258	252,900
9	810	59	6,120	109	21,600	159	74,700	209	164,700	259	254,700
10	900	60	6,300	110	22,500	160	76,500	210	166,500	260	256,500
11	990	61	6,480	111	23,400	161	78,300	211	168,300	261	258,300
12	1,080	62	6,660	112	24,300	162	80,100	212	170,100	262	260,100
13	1,170	63	6,840	113	25,200	163	81,900	213	171,900	263	261,900
14	1,260	64	7,020	114	26,100	164	83,700	214	173,700	264	263,700
15	1,350	65	7,200	115	27,000	165	85,500	215	175,500	265	265,500
16	1,440	66	7,380	116	27,900	166	87,300	216	177,300	266	267,300
17	1,530	67	7,560	117	28,800	167	89,100	217	179,100	267	269,100
18	1,620	68	7,740	118	29,700	168	90,900	218	180,900	268	270,900
19	1,710	69	7,920	119	30,600	169	92,700	219	182,700	269	272,700
20	1,800	70	8,100	120	31,500	170	94,500	220	184,500	270	274,500
21	1,890	71	8,280	121	32,400	171	96,300	221	186,300	271	276,300
22	1,980	72	8,460	122	33,300	172	98,100	222	188,100	272	278,100
23	2,070	73	8,640	123	34,200	173	99,900	223	189,900	273	279,900
24	2,160	74	8,820	124	35,100	174	101,700	224	191,700	274	281,700
25	2,250	75	9,000	125	36,000	175	103,500	225	193,500	275	283,500
26	2,340	76	9,180	126	36,900	176	105,300	226	195,300	276	285,300
27	2,430	77	9,360	127	37,800	177	107,100	227	197,100	277	287,100
28	2,520	78	9,540	128	38,700	178	108,900	228	198,900	278	288,900
29	2,610	79	9,720	129	39,600	179	110,700	229	200,700	279	290,700
30	2,700	80	9,900	130	40,500	180	112,500	230	202,500	280	292,500
31	2,790	81	10,080	131	41,400	181	114,300	231	204,300	281	294,300
32	2,880	82	10,260	132	42,300	182	116,100	232	206,100	282	296,100
33	2,970	83	10,440	133	43,200	183	117,900	233	207,900	283	297,900
34	3,060	84	10,620	134	44,100	184	119,700	234	209,700	284	299,700
35	3,150	85	10,800	135	45,000	185	121,500	235	211,500	285	301,500
36	3,240	86	10,980	136	45,900	186	123,300	236	213,300	286	303,300
37	3,330	87	11,160	137	46,800	187	125,100	237	215,100	287	305,100
38	3,420	88	11,340	138	47,700	188	126,900	238	216,900	288	306,900
39	3,510	89	11,520	139	48,600	189	128,700	239	218,700	289	308,700
40	3,600	90	11,700	140	49,500	190	130,500	240	220,500	290	310,500
41	3,690	91	11,880	141	50,400	191	132,300	241	222,300	291	312,300
42	3,780	92	12,060	142	51,300	192	134,100	242	224,100	292	314,100
43	3,870	93	12,240	143	52,200	193	135,900	243	225,900	293	315,900
44	3,960	94	12,420	144	53,100	194	137,700	244	227,700	294	317,700
45	4,050	95	12,600	145	54,000	195	139,500	245	229,500	295	319,500
46	4,140	96	12,780	146	54,900	196	141,300	246	231,300	296	321,300
47	4,230	97	12,960	147	55,800	197	143,100	247	233,100	297	323,100
48	4,320	98	13,140	148	56,700	198	144,900	248	234,900	298	324,900
49	4,410	99	13,320	149	57,600	199	146,700	249	236,700	299	326,700
50	4,500	100	13,500	150	58,500	200	148,500	250	238,500	300	328,500

# Aztec athletics program receives no penalties

## I. Introduction.

In April 1989, San Diego State University learned that violations of NCAA legislation may have occurred in the women's basketball program. The university immediately commenced an investigation. By letter dated May 18, 1989, the university initially notified the NCAA enforcement staff that a violation of NCAA legislation had been discovered. The university submitted a summary of its findings and actions to the NCAA enforcement staff later that year.

During the summer of 1990, the NCAA enforcement staff interviewed the former head women's basketball coach, as well as several other individuals. On February 6, 1991, a letter of official inquiry was sent to the university's president, and a copy of the pertinent allegations was mailed to the former coach. A prehearing conference was held April 10, 1991, with institutional officials. Representatives of the university and the former head coach and his counsel appeared before the committee for a hearing April 19, 1991.

This case involved a head coach who, in a series of meetings over a weekend at a national women's basketball tournament, met separately with a professional sports agent and a student-athlete who was a member of his team, and then with the student-athlete and the agent together for the purpose of marketing the student-athlete to the agent and assisting the student-athlete in developing a standard professional agent's contract. In the process, the head coach in his own handwriting completed the proposed terms of a standard agent's contract that were to be negotiated for the student-athlete, including salary, bonuses, money transfer procedures, transportation, and other pertinent matters and perquisites attendant to a professional career in a foreign country.

After listening particularly to the coach's testimony at the hearing, the committee determined that the head coach had violated the Association's well-publicized rules prohibiting a head coach from marketing a student-athlete's talents for professional purposes. Moreover, the committee determined that the head coach had violated the principles of ethical conduct in that his actions were done knowingly. His actions, while limited,

were done purposefully and constitute a major violation of NCAA legislation as set forth in Bylaw 19.2.

In assessing penalties, the committee noted that the university had in place an extensive compliance program; had a career-counseling panel as provided for in Bylaw 12.3.4 available for the student-athlete's use, and was unaware that such a violation was taking place. Once members of the athletics department staff suspected that a violation had occurred, they reported the information to the athletics department administration. Upon being notified of these events, the university's

will be informed that in the event he had sought employment or affiliation in an athletically related position at an NCAA member institution during the two-year period from the time of his official termination by San Diego State University, he and the involved institution would have been requested to appear before the Committee on Infractions in order for the committee to consider whether that member institution should be subject to the show-cause procedures of Bylaw 19.4.2.1-(f), which could have limited the former coach's athletically related duties at the new institution for a designated

agent. Specifically, the coach obtained a blank standard player contract from a player agent and, with the assistance of the student-athlete, completed the proposed contract in his handwriting, requesting a \$200,000-per-year salary; a \$25,000 signing bonus; a \$40,000 shoe and clothing contract; food and lodging allowances; use of an automobile; long-distance telephone and airfare allowances, and procedures for foreign-money transfers and other technical matters related to a foreign professional basketball career. After the coach and the young woman completed this contract, they met with the player agent, who subsequently signed the student-athlete to a professional contract to play women's basketball in Italy.

## B. [NCAA Bylaw 10.01.1]

A former head women's basketball coach acted contrary to the principles of ethical conduct inasmuch as he did not, on all occasions, deport himself in accordance with the generally recognized high standards normally associated with the conduct and administration of intercollegiate athletics in that the former coach's involvement in the finding set forth in Part II-A of this report demonstrates a knowing effort on his part to operate the university's women's basketball program contrary to the requirements and provisions of NCAA legislation.

## III. Committee on Infractions penalties.

For the reasons set forth in Part I of this report, the Committee on Infractions found that this case involved a major violation of NCAA legislation that occurred after September 1, 1985. NCAA Bylaw 19.4.2.2, as adopted by the Association's membership, requires prescribed minimum penalties, "subject to exceptions authorized by the Committee on Infractions in unique cases on the basis of specifically stated reasons," that include: (a) a two-year probationary period (including a periodic, in-person monitoring system and written institutional reports); (b) the elimination of all expense-paid recruiting visits to the institution in the involved sport for one recruiting year; (c) a requirement that all coaching staff members in the sport be prohibited from engaging in any off-campus recruiting activities for one recruiting year; (d) a

requirement that all institutional staff members determined by the Committee on Infractions knowingly to have engaged in or condoned a major violation be subject either to termination of employment, suspension without pay for at least one year or reassignment of duties within the institution to a position that does not include contact with prospective or enrolled student-athletes or representatives of the institution's athletics interests for at least one year; (e) one year of sanctions precluding postseason competition in the sport; (f) one year of sanctions precluding television appearances in the sport, and (g) institutional recertification that the current athletics policies and practices conform to all requirements of NCAA regulations.

As set forth in Part I of this report, the Committee on Infractions determined that this case was a "unique" case and that the institution should not receive the penalties prescribed by NCAA legislation. The factors considered included: prompt detection by the university of the violation; thorough investigation and reporting of the violations to the NCAA; cooperation in the processing of the case; initiation of strong disciplinary actions, and the existence of an extensive compliance program (including the establishment of administrative procedures designed to ensure that the institution will maintain compliance with the principles of institutional control and rules compliance on matters relating to professional agents.)

Accordingly, the committee exercised its discretion not to impose a probationary period or other significant sanctions upon the university. The following actions also shall apply to this case:

A. San Diego State University shall be subject to the provisions of NCAA Bylaw 19.4.2.3 concerning repeat major violators for a five-year period beginning on the date the action by the committee is announced to the public.

B. During the five-year period applicable to repeat major violators, the university shall submit annual written reports to the NCAA enforcement staff and the committee concerning the university's program of informing coaches, members of the athletics department staff and

See Aztec, page 16

## Case summary

- During the 1988-89 academic year, a former head women's basketball coach represented a former women's basketball student-athlete in the marketing of her athletics ability during negotiations with a professional sports agent.

- The former head coach demonstrated a knowing effort to operate the university's women's basketball program contrary to the requirements and provisions of NCAA legislation.

- Information gathered during investigation of this case revealed that university officials were unaware a violation was taking place, and that the school had an extensive rules-compliance program in place.

- No penalties were imposed on the school, although it will be subject to the Association's legislation concerning repeat major violators for five years.

- Because the former head coach has been out of college athletics in excess of two years, no further action is contemplated.

president immediately authorized an investigation, informing the enforcement staff of the matter. Subsequently, the university severed relations with the head coach and hired a new women's basketball coaching staff. It is the committee's opinion that in matters related to its obligations to the NCAA membership, the university acted responsibly and correctly. Therefore, the committee determined that no sanctions should be imposed on the university.

Due to his involvement in the violations of NCAA legislation found in this case, the former head women's basketball coach

period. The committee noted that the former head coach had not been employed in any athletically related job at any level since his termination of employment by the university on May 14, 1989.

## II. Violations of NCAA legislation, as determined by committee.

### A. [NCAA Bylaw 11.1.5]

In March 1989, the then head women's basketball coach represented a then women's basketball student-athlete in the marketing of her athletics ability to play women's professional basketball during her negotiations with a professional sports

# State legislation relating to athletics

This report summarizes legislation currently pending in state legislatures that could affect or is otherwise of interest to intercollegiate athletics programs and student-athletes at NCAA member institutions. Set forth below is a list of 21 bills from 12 states. The report includes two bills that have been introduced and 19 pending bills on which action has been taken since the last report (see the May 29, 1991, issue of The NCAA News). Newly introduced bills are marked with an asterisk. Pending bills discussed in the previous report on which no action has been taken do not appear in this report.

This report is based on data provided by the Information for Public Affairs on-line state legislation system as of May 31, 1991. Listed bills were selected for inclusion in this report from a larger pool of bills concerning sports, and they therefore do not necessarily represent all bills that would be of interest to individual member institutions. Bills pending in the District of Columbia and U.S. territories are not available on-line and are not included.

The NCAA has not verified the accuracy or completeness of the information and is providing this summary as a service to members. For further information regarding a particular bill, members should contact the state legislature concerned.

As an overview, the table below summarizes the number of bills included in this report by subject:

Anabolic steroids	4
Coaches retirement trust	4
Scalping	3
Athlete agents	2
Due process	2
Liability	2
Tickets	1
Trainers	1
Women in sports	1
Miscellaneous	1

Two bills have become law since the last report—one on due process and one on tickets.

The legislatures in five states—Alaska, Minnesota, Missouri, Texas and Vermont—have adjourned since the last report, bringing to 25 the number of state legislatures that have adjourned. In Alaska, Minnesota and Vermont, bills will carry over to 1992. In Missouri and Texas pending bills died at the conclusion of the session if they had not been cleared for the governor's signature.

## Alabama S. 193 (Author: Little)

Authorizes football coaches of public universities in Alabama to participate in the American Football Coaches Retirement Trust.

Status: 4/18/91 introduced. 5/16/91 passed Senate. To House.

## California A. 925 (Author: Hannigan)

Provides that sports officials at any level of competition shall not be liable for acts or omissions related to their officiating duties; provides penalties for assaulting a sports official.

Status: 3/4/91 introduced. 5/10/91 to Assembly Committee on Public Safety. 5/21/91 from Assembly Committee on Public Safety. Do pass as amended. To Assembly Committee on Ways and Means.

## California S. 712 (Author: Lockyer)

Provides that any person who sells a ticket to an event at a price higher than the price charged by the original distributor is guilty of a misdemeanor, unless written permission has been granted by the owner or operator of the event.

Status: 3/6/91 introduced. 3/14/91 to Senate Committee on Judiciary. 4/30/91 from Senate Committee on Judiciary. Do pass as amended. To Senate Committee on Appropriations. 5/20/91 from Senate Committee on Appropriations. Reported.

## Connecticut H. 5128 (Author: Migliaro)

Requires that police expenses for traffic regulation and control at any game be paid by the organization conducting or promoting the game.

Status: 1/9/91 introduced. 5/24/91 passed House. To Senate. 5/28/91 passed Senate. To Governor.

## Connecticut S. 232 (Author: Meotti)

Prohibits the imposition of a service charge on any ticket sold at the site of an event.

Status: 1/22/91 introduced. 5/2/91 passed Senate. To House. 5/9/91 passed House. To Governor. 5/28/91 signed by Governor.

## Florida H. 845 (Author: King)

Creates the Collegiate Athletics Association Compliance Enforcement Procedures Act; provides that hearings must be held before finding that association rules were violated; specifies hearing procedures; provides restrictions on penalties imposed by associations; provides for liability of associations.

Status: 3/5/91 introduced. 4/22/91 passed House. To Senate. 4/25/91 passed Senate. 5/15/91 to Governor. 5/30/91 signed by Governor.

## Illinois H. 1311 (Author: Capparelli)

Repeals of Ticket Scalping Act.

Status: 4/3/91 introduced. 5/24/91 passed House. To Senate.

## Illinois S. 598 (Author: Maitland)

Authorizes participation in the American Football Coaches Retirement Trust by football coaches at public colleges and universities.

Status: 4/11/91 introduced. 5/24/91 passed Senate. To House.

## \*Illinois S. 800 (Author: Rock)

Provides that the Ticket Scalping Act does not apply to brokers who meet specified requirements.

Status: 4/12/91 introduced. 5/23/91 passed Senate. To House.

## Louisiana H. 1349/S. 606 (Authors: Kennard/Hinton)

Relate to the classification of anabolic steroids; provide for penalties.

Status: 4/29/91 H. 1349 and S. 606 introduced. 5/15/91 S. 606 passed Senate. To House. 5/21/91 H. 1349 passed House. To Senate.

## Louisiana S. 392/S. 393 (Authors: Lauricella/Doland)

Relate to the American Football Coaches Retirement Trust.

Status: 4/23/91 S. 392 and S. 393 introduced. To Senate Committee on Retirement. 5/13/91 S. 392 and S. 393 from Senate Committee on Retirement. Do pass. 5/20/91 S. 392 and S. 393 passed Senate. To House.

## Massachusetts S. 428 (Author: Lees)

Regulates the use of anabolic steroids.

Status: 1/30/91 introduced. 5/15/91 passed Senate. To House.

## New Hampshire S. 85 (Author: Hollingworth)

Establishes a committee to study methods for achieving greater gender equity in athletics; requires that the committee report its findings by December 1, 1991.

Status: 1/18/91 introduced. 2/19/91 passed Senate. To House. 3/26/91 to House Committee on Education. 5/7/91 from House Committee on Education. Do pass as amended.

## New Jersey A. 1795 (Author: McEnroe)

Requires the registration of all athlete agents; establishes a New Jersey Athlete Agent Regulatory Board; prescribes certain behavior.

Status: 1/18/90 introduced. 5/23/91 passed Assembly. To Senate.

## New York S. 3385 (Author: Cook)

Provides that any person who voluntarily and without compensation renders certain services in a sports program of a nonprofit organization shall not be liable for acts or omissions in those services, except in cases of gross negligence or willful misconduct.

Status: 3/5/91 introduced. To Senate Committee on Judiciary. 5/15/91 from Senate Committee on Judiciary. Reported.

## \*New York S. 6020 (Author: Stafford)

Provides that in a proceeding that may result in the imposition of a sanction by a national collegiate athletics association, parties shall be given an opportunity for a notice and hearing; provides for judicial review of association decisions; prohibits an association from imposing sanctions unless it has met these standards.

Status: 5/21/91 introduced. To Senate Committee on Rules.

## Oklahoma H. 1113 (Author: Williams)

Modifies list of steroids included in the Schedule IV list of controlled substances.

Status: 2/4/91 introduced. 3/12/91 passed House. To Senate. 4/15/91 passed Senate. To House for concurrence. 4/17/91 House refused to concur in Senate amendments. To Conference Committee. 5/24/91 House adopted Conference Committee report. 5/28/91 Senate adopted Conference Committee report. To Governor. •

## Texas H. 918 (Author: Wilson)

Relates to the regulation of athletics trainers.

Status: 2/11/91 introduced. 5/20/91 passed House. To Senate. 5/21/91 to Senate Committee on Health and Human Resources.

## Texas S. 1519 (Author: Armbrister)

Relates to the regulation of certain athlete agents.

Status: 4/16/91 introduced. 5/16/91 passed Senate. To House. 5/20/91 to House Committee on Business and Commerce.



# NCAA Record

## CHIEF EXECUTIVE OFFICERS

**George F. West** appointed president at Delaware Valley, where he has been acting president since early this year. **The Rev. William J. Byron** announced his retirement as president at Catholic, effective in June 1992. He was a member of the NCAA Presidents Commission from 1984 to 1989 and served as the Commission's Division III chair in 1989. **Richard D. O'Brien** named interim chancellor at Massachusetts, where he has been provost. **Sister Marian W. Hoben** resigned as president at Immaculata, effective June 30, 1992. **Kay Howe** selected for the presidency at Western State. She previously was vice-chancellor for academic services at Colorado.

## DIRECTORS OF ATHLETICS

Wisconsin-Stevens Point's **Mark Mazzoleni** named assistant men's ice hockey coach at Minnesota. Mazzoleni, who has been head men's ice hockey coach at Wisconsin-Stevens Point since 1985, became AD at the school last year. **Ted Leland** selected at Stanford after serving as AD at Pacific since 1988. Leland, who holds a doctorate from Stanford, is a former football assistant at the school. He also has served as AD at Dartmouth, in addition to holding administrative posts at Houston and Northwestern. **Bob Bowsby** appointed at Iowa after serving as AD at Northern Iowa since 1984. Bowsby, a former assistant director of recreational services at Iowa, is chair of the NCAA Wrestling Committee and also has served on the Financial Aid and Amateurism Committee. **Paul Miller** named at North Carolina-Wilmington after serving for the past year as assistant to the president for athletics at Louisiana Tech. He earlier served for four years as AD at Louisiana Tech, and also has been associate AD at West Virginia and Missouri.

## ASSOCIATE DIRECTORS OF ATHLETICS

**Susanne Bair** selected for a newly created position at Northeast Missouri State. For the past three years, she has been administrative assistant to the associate AD for women's sports at Indiana. Bair, an NCAA postgraduate scholarship recipient, also has been an athletics administrator at the high-school level. **Thomas Boeh** named associate AD for external affairs at Northwestern after serving as senior associate AD at Maine, where he has been an administrator for three years. He replaces **Don MacLachlan**, who stepped down to become vice-president of marketing and broadcasting for the Houston Oilers. **Leanne Grotke** announced her retirement as associate AD for internal affairs at Cal State Fullerton, effective September 1. She came to the school in 1978 as its first women's athletics director, after serving in a similar position at Indiana for 13 years. Grotke, who said she plans to marry and move to Florida, served on the NCAA Executive Committee from 1985 to 1990.

## ASSISTANT DIRECTORS OF ATHLETICS

**John Angelus** promoted from head men's basketball coach at Chicago. **Roxanne Dale** appointed at Colorado College, where she also will be head women's basketball coach, effective August 15. **Phil Hughes** hired as assistant AD for academic services at Michigan after serving for three years as assistant AD for athletics student services at Tulane.

## COACHES

**Baseball**—**Pat Foster** selected at Grinnell, where he also will assist with football. He previously was a football aide at Redlands.

**Men's basketball**—**Jim Brovelli** received a five-year contract extension through the 1986-87 season at San Francisco, where he has served since 1984. **Pat Cunningham** selected at Chicago after three years as head coach at Manchester. Cunningham, who also was an aide at Illinois State from 1979 to 1987, replaces **John Angelus**, who was promoted to assistant athletics director at the school. Angelus led Chicago to a 146-175 record through 16 years in the post. **Jerry Tarkanian** announced he would step down at Nevada-Las Vegas after next season. Through 18 years at the school, he has coached his teams to a 483-103 record, as well as a Division I title in 1990 and 12 NCAA postseason appearances overall. His 30-year coaching record of 811-145 also includes a stint at Long Beach State.

**Men's basketball assistants**—**Dave Wood** joined the staff at Toledo. The



**Paul Miller** named AD at North Carolina-Wilmington



**Northeast Missouri State** named **Susanne Bair** associate AD



**Wisconsin-La Crosse** picked **Alice Simpson** for women's basketball

former Purdue assistant has served most recently as an assistant boys' coach at Jefferson High School in Lafayette, Indiana, in addition to serving as an assistant professor of restaurant, hotel and institutional management at Purdue. Wood also has been on the basketball and football staffs at Indianapolis. **Tyrone Beaman** and **Randy Peele** appointed at North Carolina-Greensboro. Beaman is a former Tennessee player who served as an aide at Cornell last season, and Peele coached at Campbell for the past three seasons and also has been on the staffs at Virginia Wesleyan, St. Michael's and Tennessee-Martin.

**Women's basketball**—**Chris Wielgus** appointed at Fordham. She is a former head coach at Dartmouth, where her teams won four Ivy Group championships and made one appearance in the Division I Women's Basketball Championship before she stepped down in 1984 to raise children. Since then, she has been involved in various basketball camps and developmental programs. Wielgus replaces **Lou Kern**, whose contract was not renewed after he coached the Lady Rams to a 54-90 record in five seasons. **Alice Simpson** selected at Wisconsin-La Crosse after serving as head coach at Winona State since 1986. Her Winona State teams compiled a 39-85 record. **Roxanne Dale** appointed at Colorado College, where she also will be assistant athletics director. Dale previously was head coach at Wellesley, where she had coached and served on the physical education faculty since

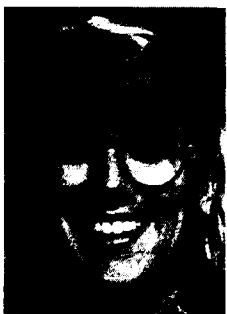
**Men's golf**—**Greg Wallace** given additional duties at Grinnell, where he continues to serve as head football coach. He succeeds **Edd Bowers**, who retired after 25 years in the post. **John Jasinski** named at Toledo, where he is a former player who also served from 1984 to 1987 as a Rocket assistant. Since 1989, he has been the head professional at Stone Oak Country Club in Holland, Ohio. Jasinski succeeds **Don Kotnik**, who coached the team for 17 years.

**Women's gymnastics**—**Scott Bull** promoted from associate head coach to co-head coach at UCLA, where he also served stints as an aide from 1980 to 1984 and 1985 to 1987. Bull also has been on the staffs at Arizona and Georgia, where he helped coach the Bulldogs to an NCAA title in 1989.

**Men's ice hockey**—Wisconsin-Stevens Point's **Mark Mazzoleni** stepped down as athletics director and hockey coach at the school to become an ice hockey assistant at Minnesota. Under Mazzoleni, Wisconsin-Stevens Point has won the last three Division III Men's Ice Hockey Championship titles. The former Michigan State goalie also has been an aide at Illinois-Chicago.

**Women's lacrosse**—**Debbie Gallagher** resigned after six years at Haverford, where her teams compiled a 66-30 record, to enter the sporting-goods business full time. Gallagher coached four of her teams to appearances in the Division III Women's Lacrosse Championship.

**Men's soccer**—Officials at Denver



**Jeanne Fleck** named women's swim coach at Northern Illinois



**Jim Collins** appointed track coach at Illinois Wesleyan



**Sonya Locke** selected for Southern Illinois women's volleyball

1980. **Liz Galloway** named at Lamar after two seasons as an assistant at DePaul. She is a former head coach at Mundelin who also has served as an aide at Dartmouth.

**Women's basketball assistants**—**Cheryl Littlejohn** and **Faith Mimnaugh** joined the staff at North Carolina State. Littlejohn, who played on Tennessee's 1987 Division I championship team, previously was an investigator for the Drug Enforcement Administration. Mimnaugh, a former standout player at Loyola (Illinois), previously was a graduate assistant coach at North Carolina State. The women fill positions previously held by **Karen Freeman**, who joined the staff at Arizona, and **Que Tucker**, who was named assistant executive director for student services at the North Carolina High School Athletic Association.

**Football assistants**—**Jim Collins** named quarterbacks and wide receivers coach at Illinois Wesleyan, where he also will be head men's track coach. The former all-Ohio Athletic Conference wide receiver at Wittenberg was a football assistant during the 1990 season at Central Michigan while enrolled in graduate school. **Mike Kelly** promoted from special teams coordinator and offensive backfield coach to associate head coach and recruiting coordinator at San Francisco State. Kelly, who joined the staff last year, also will be responsible for the team's academic-assistance program. **Jack Sells** dismissed from the staff at Tennessee, where he had served since 1989.

Cain also steps down as head women's volleyball coach at Grinnell.

**Men's and women's swimming assistant**—**Kimberly Iak** selected at Toledo, where she will assist in the development of a women's team that will begin competition next season. The former Cortland State swimmer previously was an aide at Ball State.

**Women's tennis**—**Jane Preyer** resigned after six years at Duke, where her teams compiled a 122-44 record and won four straight Atlantic Coast Conference titles. She will begin graduate studies at North Carolina next fall. **Dotty Lemieux** announced her retirement after eight years as tennis coach at Wittenberg, where her teams were 70-23 and won four Ohio Athletic Conference titles. Lemieux has served a total of 23 years at Wittenberg, where she was women's volleyball coach for 16 of those years.

**Men's and women's tennis assistant**—**Peter Saffrey** named at Hawaii, effective September 1. Saffrey, who played for the Rainbows in the early 1970s, is a full-time art director for a business in Hawaii.

**Men's track and field**—**Jim Collins** appointed at Illinois Wesleyan, where he also will assist with football. This spring, he has served an internship as an assistant track coach at Alma.

**Women's volleyball**—**Sonya Locke** selected at Southern Illinois, where she was an all-America player in the early 1980s and an assistant for seven years before becoming head coach at Kankakee (Illinois) Community College last year. She coached her only Kankakee team to a 35-5 record. **Megan Hurley** appointed at Central (Iowa) after serving as a graduate assistant coach at Fort Hays State. Hurley, a former player and aide at Wayne State (Nebraska), replaces **Nancy Wright**, who resigned after four seasons in which she led the Flying Dutch to one Iowa Intercollegiate Athletic Conference title. **Sheila Cain** resigned after three years at Grinnell, where she also steps down as head women's swimming coach to become men's and women's swimming coach at Colby.

**Women's volleyball assistants**—**Jenny Miller** and **Vicki Verkouteren** hired at Indiana. Miller, a former Illinois State and Wichita State player, served for four years as head girls' volleyball and softball coach at Champaign (Illinois) Central High School before becoming a graduate assistant volleyball coach at Louisville last season. Verkouteren, a former New Mexico State standout, will be a graduate assistant coach at Indiana after serving last season as head coach at Mount St. Mary's (California). **Kip Yoshimura** named at Weber State, effective August 1. He previously was head men's and women's volleyball coach at Rancho Santiago College in California and was a graduate assistant coach at Long Beach State when the 49ers won the Division I women's title in 1989.

## STAFF

**Fund-raising director**—**Dave Gunther** selected as the first executive director of the newly formed Big Green Club at North Dakota, where he retains the title of assistant athletics director. The former Fighting Sioux men's basketball coach became assistant AD four years ago.

**Sports communications, promotions and marketing director**—**Mike Bruckner** resigned at New Hampshire, where he has held positions relating to sports information for the past 12 years. Bruckner is moving to Gehring Associates, a public relations firm in Keene, New Hampshire, specializing in higher education and university relations.

**Sports information directors**—**Dianne Boyer** appointed women's SID at Minnesota, effective July 22. For the past four years, she has been assistant SID at Navy. **Curt Smyth** promoted from part-time to full-time SID at St. Joseph's (Maine), where he is a recent graduate.

**Trainer**—**Mike Barnish** named at Northwestern, where he has been interim head trainer since January. He had been assistant head trainer at the school for seven years.

## ASSOCIATIONS

**Rick Minch** given additional duties as assistant executive director of the National Association of Collegiate Directors of Athletics, where he retains the title of director of communications. Also, NACDA announced the promotion of administrative assistant **Lisa Topolski** to assistant to the executive director and the appointment of intern **Matt Wolfert** to

the position of assistant to the executive director.

## NOTABLES

**Jessie Kenlaw**, head women's basketball coach at Houston, selected as women's coach of the year by the Black Coaches Association after leading the Lady Cougars to a 20-12 record and a Women's National Invitation Tournament bid.

## DEATHS

**Howard "Hobby" Hobson**, who coached Oregon to the first NCAA basketball championship in 1939, died of congestive heart failure June 9 in Portland, Oregon. He was 87. Hobson's "Tall Firs" defeated Ohio State, 46-33, in the championship game of what was to become the Division I Men's Basketball Championship. The coach, who also played at Oregon, led his teams at the school to a 212-124 record in 11 seasons, then coached from 1947 to 1957 at Yale. He also was the author of a book based on his doctoral thesis at Columbia, titled "Scientific Basketball." Hobson became a charter member of the National Basketball Hall of Fame in 1965. **Barnard D. Bachner**, a lacrosse player at Clark (Massachusetts), was killed May 31 in an auto accident in the Washington, D.C., area. He was to serve as a team tri-captain for the 1992 season. **Adam Thornton**, a former soccer player at Grinnell, died of cancer March 21 in Ames, Iowa. He was 32.

## POLLS

### Division I Baseball

The Collegiate Baseball final top 30 NCAA Division I baseball teams, with records in parentheses and points:

1. Louisiana St. (55-18)	496
2. Wichita St. (66-13)	495
3. Creighton (51-22)	489
4. Florida (51-21)	487
5. Long Beach St. (45-22)	483
6. Fresno St. (42-23)	480
7. Florida St. (56-15)	479
8. Clemson (60-10)	475
9. Oklahoma St. (47-20)	463
10. Cal St. Northridge (44-18-1)	460
11. Texas (48-18)	456
12. Hawaii (51-18)	455
13. Southern Cal (46-17-1)	452
14. Miami (Fla.) (46-17)	448
15. Southwestern La. (49-20)	443
16. Texas A&M (44-23)	442
17. Maine (48-18)	440
18. Stanford (39-23)	437
19. Pepperdine (41-17-1)	432
20. California (37-27)	429
21. Ohio St. (53-13)	425
22. Mississippi St. (42-21)	424
23. South Ala. (44-17)	421
24. Southern Miss. (42-24)	418
25. Alabama (42-20)	412
26. Georgia Tech (42-26)	409
27. North Caro. St. (48-20)	408
28. Missouri (41-20)	403
29. Baylor (40-20)	399
30. St. John's (N.Y.) (44-14-1)	395

### Division I Men's Tennis

The Volvo Tennis final top 25 NCAA Division I men's tennis teams as ranked by computer average by the Intercollegiate Tennis Coaches Association:

1. Southern California, 19.76; 2. Georgia, 17.28; 3. Stanford, 16.53; 4. UCLA, 15.96; 5. California, 14.48; 6. Louisiana State, 12.36; 7. Pepperdine, 10.42; 8. Arizona State, 9.58; 9. Florida, 9.43; 10. Tennessee, 9.36; 11. Texas Christian, 8.79; 12. Kentucky, 8.59; 13. Auburn, 8.56; 14. Miami (Florida), 7.44; 15. Harvard, 7.26; 16. UC Irvine, 7.18; 17. North Carolina, 7.00; 18. Notre Dame, 6.77; 19. South Carolina, 6.71; 20. Mississippi State, 6.58; 21. Texas, 6.50; 22. Kansas, 6.18; 23. Mississippi, 5.58; 24. Indiana, 5.55; 25. (tie) Duke and Minnesota, 5.43.
---

### Division I Women's Tennis

The Volvo Tennis final top 25 NCAA Division I women's tennis teams as selected by the Intercollegiate Tennis Coaches Association, with points:

1. Stanford, 150; 2. (tie) Florida and UCLA, 141; 4. Georgia, 132; 5. Pepperdine, 126; 6. Texas, 116; 7. Duke, 114; 8. (tie) Arizona and California, 100; 10. Arizona State, 98; 11. Oklahoma State, 93; 12. Miami (Florida), 80; 13. Brigham Young, 75; 14. San Diego State, 68; 15. Tennessee, 60; 16. Indiana, 59; 17. Mississippi, 49; 18. (tie) Louisiana State and San Diego, 45; 20. William and Mary, 39; 21. Wisconsin, 31; 22. Kentucky, 25; 23. Utah, 15; 24. Texas Christian, 12; 25. Clemson, 9.
---

### Division II Men's Tennis

The Volvo Tennis final top 20 NCAA Division II men's tennis teams as listed by the Intercollegiate Tennis Coaches Association:

1. Rollins, 2. Cal Poly San Luis Obispo, 3. UC Davis, 4. Armstrong State, 5. Southwest Baptist, 6. Cal State Bakersfield, 7. Ferris State, 8. Bloomsburg, 9. UC Riverside, 10. Cal Poly Pomona, 11. South Carolina-Spartanburg, 12. Jacksonville State, 13. Florida Atlantic, 14. Cal State Sacramento, 15. Cal State Hayward, 16. Tennessee-Martin, 17. Southern Illinois-Edwardsville, 18. Abilene Christian, 19. Mercyhurst, 20. Northwest Missouri State.
---

### Division II Women's Tennis

The Volvo Tennis final top 20 NCAA Division II women's tennis teams as listed by the Intercollegiate Tennis Coaches Association:

See Record, page 13

# LSU wins College World Series behind Ogea, Rios

Louisiana State, behind the outstanding pitching of Chad Ogea and the unexpected heroics of center fielder Armando Rios, defeated Wichita State, 6-3, to win its first Division I Baseball Championship June 8 at Rosenblatt Stadium in Omaha, Nebraska.

The fourth-seeded Tigers (55-18), who hit .329 in the tournament, set two College World Series records and tied another in their four-game sweep to the title. Louisiana State's average of 12 runs per game exceeded the mark of 11 set by Notre Dame in 1957. Also, the Tigers' .993 fielding average, the result of one error in the tournament, surpassed the previous average of .989 set by Washington State with its two errors in 1955. The Tigers hit nine home runs in four games and tied the CWS record set by Arizona State in six games during the 1981 tournament.

"I'm happy for the people of Louisiana," said Louisiana State coach Skip Bertman, who has led the Tigers to the College World Series five times in the last six years. "Chad (Ogea) pitched a good game. If peaking means anything, we sure did peak at the right time."

After second baseman Tookie Johnson singled with two outs in the second inning, Rios hammered a Tyler Green slider over the wall in left-center field to give the Tigers a 4-1 lead.

Rios started another two-run inning for the Tigers in the fourth when he was hit by a Darren Dreifort pitch with two outs. Lyle Mouton walked, and both scored after Rich Cordani tripled off the wall in right-center field. The two-run triple gave Louisiana State a commanding 6-1 lead.

"I knew I was hitting the ball hard in all the games," said Rios, who had one hit in 13 at-bats prior to his home run. "I knew I was going to come through in one game. I'm glad it was the last game."

The right-handed Ogea limited the Shockers to four hits and three runs (two earned) over seven-plus innings and continually was able to get an out when he needed one.

Said Ogea, "It took me three

years to get this, and it's well worth it. I felt good pitching. I made the good pitches when I needed to, and the defense played great behind me. The outfielders made great catches when we needed them."

Tigers catcher Gary Hymel, who hit .500 (7-for-14) with four home runs and 10 runs batted in, was named the tournament's most outstanding player. He said the Tigers kept the pressure on the Shockers the whole game.

Said Hymel, "We scored early, and we didn't let up. Lyle (Mouton) and I didn't swing the bats well but the other guys came through. That's what you need to be a championship team."

Mouton did have a big tournament for the Tigers, as he hit .429 with three home runs and 10 runs batted in. For the second consecutive year, Mouton was named to the all-tournament team.

"We weren't afraid to win this," said Mouton. "We knew what we wanted."

Joining Hymel and Mouton on the all-tournament team from Louisiana State were Ogea and first baseman Johnny Tellechea. Other members of the team included Creighton second baseman Mike McCafferty and outfielder Steve Hinton; Wichita State outfielder Jim Audley and pitcher Kenzie Steenstra; Long Beach State third baseman Jason Giambi, and Florida shortstop Kevin Polcovich and designated hitter Mario Linares.

A crowd of 16,612 set a College World Series record for the championship game. Overall, College World Series attendance totaled 133,763, the second-best turnout in history.

**Game 1**  
Fresno St. . . . .000 042 000—6 9 1  
Florida St. . . . .010 010 100—3 8 0  
Bobby Jones and Todd Johnson; Roger Bailey, John Nedeau (6), John Wasdin (8), Ricky Kimball (9) and Pedro Grifol. W—Jones, L—Bailey. HR—Chris Falco, Fresno St.; Ty Mueller, Florida St.

**Game 2**  
Florida . . . . .000 100 000—1 8 1  
Louisiana St. . . . .100 210 40x—8 11 0  
John Burke, Ron Scott (5), John Pricher (7), Rob Bonanno (8) and Mario Linares; Paul Byrd, Chad Ogea (5), Mark LaRosa (8), Rick Greene (9) and Gary Hymel. W—Ogea, L—Burke. HR—Lyle Mouton, Louisiana St. (2); Pat Garrity, Louisiana St.



Chad Ogea (left) scattered four hits and allowed three runs—only two of them earned—in seven innings against Wichita State. LSU catcher Gary Hymel (center) was named the CWS' most outstanding player. Coach Skip Bertman (right) said his team peaked at just the right time.

**Game 3**  
Creighton . . . . .002 050 010—8 11 0  
Clemson . . . . .000 004 000—4 7 1  
Mike Heathcott and Ryan Martindale; Jason Angel, Paxton Briley (5), Mike Holtz (6), Eric Bradford (7), Aaron Jersild (8), Tim Peele (9) and Mike Lockhart. W—Heathcott, L—Angel.

**Game 4**  
Long Beach St. . . . .030 010 001—5 8 2  
Wichita St. . . . .202 022 00x—8 10 2  
Steve Trachsel, Andy Croghan (5), Todd Taylor (7) and Willy Speakman; Kenzie Steenstra, Darren Dreifort (6), Jaime Bluma (9) and Doug Mirabelli. W—Steenstra, L—Trachsel. S—Bluma. HR—Mirabelli, Wichita St.; Jason Giambi, Long Beach St.

**Game 5**  
Florida St. . . . .000 000 000—0 3 0  
Florida . . . . .100 003 01x—5 11 2  
Tim Davis, Ricky Kimball (6), Bryan Harris (8) and Pedro Grifol; Marc Valdes and Mario Linares. W—Valdes, L—Davis

**Game 6**  
Louisiana St. . . . .030 413 004—15 15 1  
Fresno St. . . . .020 000 001—3 7 5  
Mike Sirotko, Mark LaRosa (7), Rick

Greene (9) and Gary Hymel, Adrian Antonini, Robbie Saitz, Mike Salazar (4), Jim Greenlee (6), Tommy Minor (7), Jim Patterson (9) and Todd Johnson. W—Sirotko, L—Saitz. HR—Hymel, Louisiana St. (2), Chris Falco, Fresno St.

**Game 7**  
Clemson . . . . .112 300 040—11 13 3  
Long Beach St. . . . .304 102 011—12 8 4  
Mike Kimbrell, Scott Miller (3), Chad Phillips (6), Eric Bradford (7) and Jim Anderson, Mike Lockhart; Steve Whitaker, Jimmy Griego (4), Todd Taylor (8) and Willy Speakman. W—Taylor, L—Bradford. HR—Eric Macrina, Clemson; Scott Talanoa, Long Beach St.; Ed Christian, Long Beach St.; Speakman, Long Beach St.

**Game 8**  
Wichita St. . . . .000 200 000 001—3 6 2  
Creighton . . . . .200 000 000 000—2 8 2  
Tyler Green, Jaime Bluma (10) and Doug Mirabelli; Alan Benes, Darin Harris (9), Brian O'Connor (10) and Ryan Martindale. W—Bluma, L—O'Connor.

**Game 9**  
Florida . . . . .000 002 000—2 7 2  
Fresno St. . . . .000 001 000—1 8 0  
John Burke, Rob Bonanno (7), John Pricher

(9) and Mario Linares; Bobby Jones and Todd Johnson. W—Burke, L—Jones, S—Pricher.

**Game 10**  
Long Beach St. . . . .210 000 100—4 4 1  
Creighton . . . . .090 000 22x—13 12 1  
Dennis Gray, Andy Croghan (2), Todd Taylor (7), Jimmy Griego (8) and Eric Vargas; Eric Maloney, Darin Harris (7), Aaron Puffer (9) and Ryan Martindale. W—Maloney, L—Gray. HR—Steve Hinton, Creighton; Martindale, Creighton.

**Game 11**  
Louisiana St. . . . .300 553 003—19 14 0  
Florida . . . . .200 020 310—8 13 3  
Paul Byrd, Chad Ogea (6), Mark LaRosa (7), David Herry (8), Rick Greene (9) and Gary Hymel; Cord Corbitt, Rob Bonanno (4), John Pricher (5), Doug Brennan (9), Nick McClellan (9) and Mario Linares, Jimmy Bell, W—Byrd, L—Corbitt. HR—Hymel, Louisiana St. (2); Linares, Florida (2); Lyle Mouton, Louisiana St.

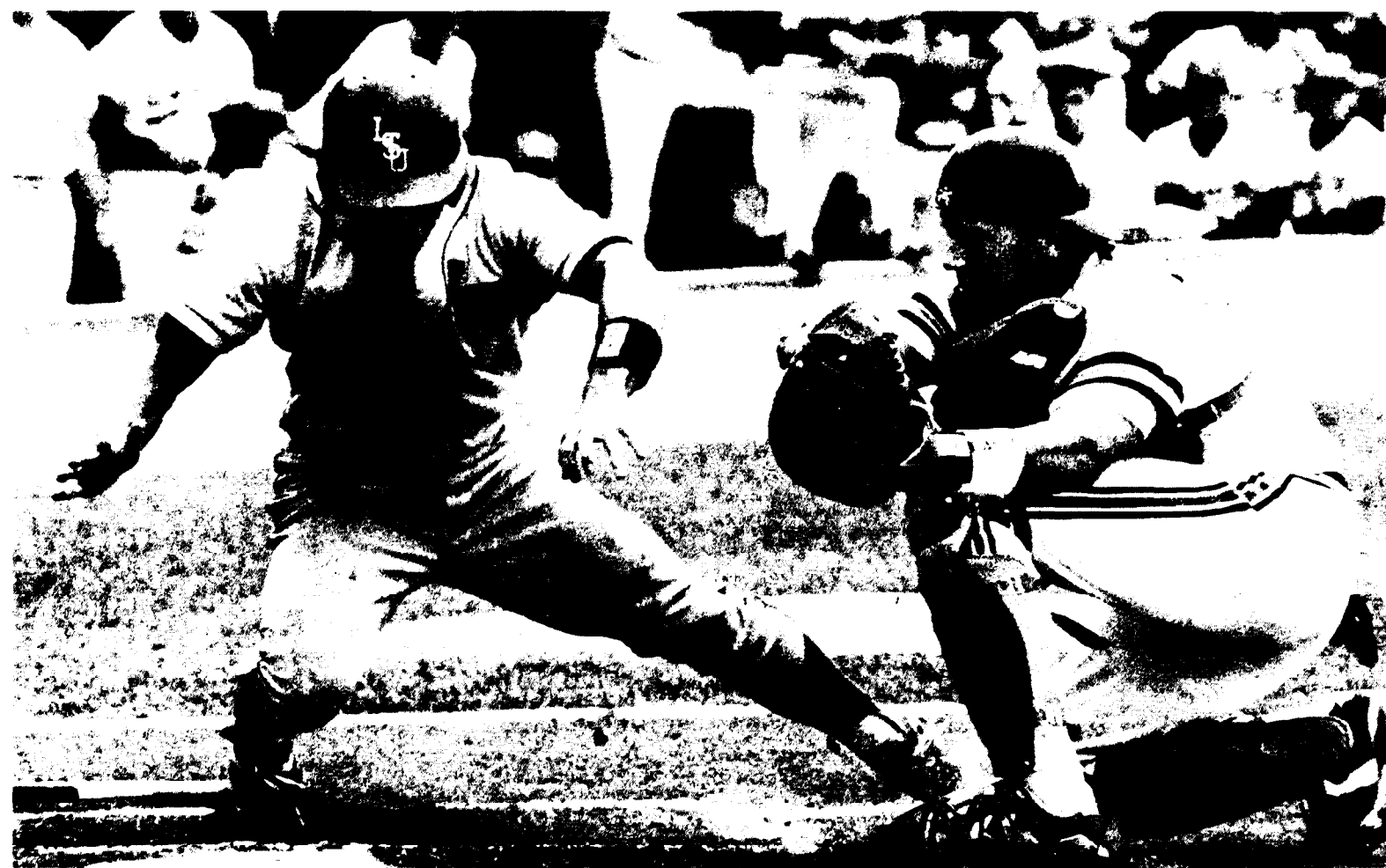
**Game 12**  
Creighton . . . . .000 210 000—3 9 3  
Wichita St. . . . .001 230 50x—11 14 2  
Mike Heathcott, Brian O'Brien (7), Scott Sorenson (8) and Ryan Martindale, Brian Davidson; Kenzie Steenstra and Doug Mirabelli. W—Steenstra, L—Heathcott. HR—Mike Jones, Wichita St.

Championship game				
Louisiana St.	ab	r	h	rbi
Tookie Johnson, 2b	4	1	1	0
Armando Rios, cf	3	3	2	2
Lyle Mouton, rf	4	2	0	0
Rich Cordani, lf	4	0	1	3
Gary Hymel, c	3	0	1	0
Pat Garrity, dh	4	0	2	1
Johnny Tellechea, 1b	3	0	0	0
Chris Moock, 3b	3	0	0	0
Andy Sheets, ss	3	0	1	0
Chad Ogea, p	0	0	0	0
Rick Greene, p	0	0	0	0
Totals	31	6	8	6
Wichita St.	ab	r	h	rbi
Billy Hall, 2b	3	1	2	0
Chris Wimmer, ss	4	0	1	0
Jim Audley, cf	3	1	0	1
Doug Mirabelli, c	3	0	0	0
Todd Dreifort, rf	3	0	1	1
Mike Jones, 3b	3	0	0	0
S. McCloughan, dh	1	0	0	0
D. Dreifort, p-dh	3	0	0	0
Jason White, 1b	4	0	0	0
Tommy Tilma, lf	3	1	1	1
Tyler Green, p	0	0	0	0
Jaime Bluma, p	0	0	0	0
Totals	30	3	5	3
Louisiana St.	220	200	000	6 8 0
Wichita St.	100	100	010	3 5 1

E—Green, DP—Louisiana St. 1, Wichita St. 3, LOB—Louisiana St. 7, Wichita St. 5. 2B—Rios, 3B—Cordani, HR—Rios, Tilma, SB—Hall (3), Wimmer, SF—Cordani, L. Dreifort.

Louisiana St.	ip	h	er	bb	so
Ogea (Winner)	7.0	4	3	2	4
Greene (Save)	2.0	1	0	0	2
Wichita St.	ip	h	er	bb	so
Green (Loser)	3.0	5	4	4	3
D. Dreifort	4.1	3	2	2	1
Bluma	1.2	0	0	0	2

HBP—Hymel (by Green); Rios (by D. Dreifort); Moock (by D. Dreifort). PB—Hymel. Umpires—Lee Hagler, Tony Patch, Bill Rosenberry, Dan Pederson, Bill Lopina, Dave Yeast. T—2:54, A—16,612.



Tiger Tookie Johnson couldn't avoid the tag on the scoring attempt, thanks to good defensive work by Wichita State catcher Doug Mirabelli. Johnson, however, singled with two outs in the

second inning and came home on teammate Armando Rios' homer.

# Rebel Schutte, Oklahoma State claim golf honors

Warren Schutte did not read the script.

This was supposed to be Phil Mickelson's championship. This was the tournament in which Arizona State's Mickelson would establish himself as the greatest collegiate golfer ever—the first to win three individual championships by himself.

But Nevada-Las Vegas' Schutte fired a tournament-best five-under-par 67 on the final day to capture the championship, while Mickelson struggled to a 75. It was the first individual championship for the Cougars.

Oklahoma State won its seventh team championship at the June 5-8 tournament, hosted by San Jose State at Poppy Hills Golf Course in Pebble Beach, California.

It was the first championship for the Cowboys since 1987 and the seventh in their history. The victory puts the Cowboys into fourth place among all team championships winners.

## TEAM RESULTS

1. Oklahoma St., 300-280-294-287 1161; 2. North Caro., 298-286-287-297 1168; 3. Arizona St., 309-283-289-294 1175; 4. Wake Forest, 298-285-302-295 1180; 5. Brigham Young, 295-295-297-298 1185; 6. Georgia Tech, 303-292-302-291 1188; 7. Southern Cal., 299-295-302-294 1190; 8. Nevada-Las Vegas, 309-292-305-285 1191; 9. (tie) Arkansas, 312-292-297-291 1192; Texas, 304-296-297-295 1192; and UTEP, 301-296-295-300 1192.

12. Central Fla., 305-296-297-298 1195; 13. Clemson, 312-287-301-296 1196; 14. North Caro. St., 302-300-300-295 1197; 15. (tie) Stanford, 308-294-306-292 1200; South Caro., 311-295-298-296 1200; and New Mexico, 310-295-295-300 1200; 18. (tie) Northwestern, 296-303-304-298 1201; and Arizona, 303-298-301-299 1201; 20. Florida, 300-298-307-301 1206; 21. Oklahoma, 307-298-306-296 1207.

22. Georgia, 311-301-299-299 1210; 23. Southern Methodist, 308-301-306-297 1212; 24. (tie) UCLA, 310-298-307-300 1215; and Ohio St., 311-303-300-301 1215; 26. Texas Christian, 316-299-303-298 1216; 27. Rice, 314-312-299-293 1218; 28. Miami (Ohio), 308-295-310-312 1225; 29. Mississippi St., 306-304-311-306 1227; 30. Louisiana St., 314-303-304-307 1228.

## INDIVIDUAL RESULTS

1. Warren Schutte, Nevada-Las Vegas, 72-70-74-67—283; 2. David Duval, Georgia Tech, 76-70-71-69 286; 3. Franklin Langham, Georgia, 72-69-71-75 287; 4. (tie) Craig Hainline, Oklahoma St., 74-72-71-72 289; Dave Bishop, UTEP, 72-74-69-74 289; Manny Zerman, Arizona, 76-72-70-71 289; Phil Mickelson, Arizona St., 74-70-70-75 289; and Tom Scherrer, North Caro., 75-71-71-72 289; 9. Hans Albertson, Wake Forest, 76-69-74-71 290; 10. (tie) Jeff Lee, Oklahoma, 73-71-75-72 291; Jim Lemon, Arizona St., 75-70-68-78 291; and Scott DeSerrano, Oklahoma St., 79-69-73-70 291.



Warren Schutte's final-round 67—the best individual score of the championships—powered him to the crown

13. Bryan Pemberton, Southern Cal., 73-74-75-70-292; 14. (tie) Pat Moore, North Caro., 75-72-71-75—293; and Ron Whittaker, Wake Forest, 72-71-75-75—293; 16. (tie) Casey Martin, Stanford, 77-71-77-69 294; Chad Magee, Texas Christian, 79-69-73-73 294; Gary Nicklaus, Ohio St., 77-74-73-70 294; Jack O'Keefe, Arkansas, 80-69-76-69—294; John Aber, North Caro., 78-71-71-74 294; Kelly Mitchum, North Caro. St., 72-74-73-75—294; 22. (tie) Andrew Rice, Central Fla., 77-74-71-73 295; Bob May, Oklahoma St., 72-71-74-78—295; John Sosa, Texas, 77-70-74-74—295; Michael Cooper, Texas, 73-75-69-78—295; Pat Bates, Florida, 72-71-76-76 295; and Tim Herron, New Mexico, 73-70-76-76 295.

28. (tie) Brenden Pappas, Arkansas, 82-74-68-72 296; Kevin Wentworth, Oklahoma St., 75-68-80-73—296; Steve Edgley, Northwestern, 76-70-75-75 296; Iec Burton, North Caro., 73-72-74-77 296; 32. (tie) Bill McGowan, Northwestern, 71-74-75-77 297; Dave Solomon, UCLA, 76-74-75-72 297; Mike Swingle, Washington, 72-74-79-72 297; Nicky Goetze, Clemson, 78-70-73-76 297; and Paul Stankowski, UTEP, 76-74-71-76 297; 37. (tie) Christian Cevaer, Stanford, 75-76-73-74—298; Jeff Kraemer, Brigham Young, 71-74-75-78 298; and Robert Dargan, South

Caro., 78-70-76-74—298.

40. (tie) Brett Quigley, South Caro., 80-73-74-72 299; Chris Greenwood, North Caro. St., 77-76-73-73—299; Jon Whittemore, Southern Methodist, 75-74-73-77—299; Ramon Brobio, Brigham Young, 79-76-73-71—299; and Scott Sullivan, Arizona St., 81-75-74-69—299; 45. (tie) Bill Smith, North Caro., 75-75-74-76—300; Brad McGuire, Rice, 81-76-70-73 300; Chris Zambri, Southern Cal., 80-73-74-73 300; Christian Pena, Arizona, 75-75-76-74—300; Derek Freeman, Oklahoma, 76-74-77-73—300; James Kim, Southern Cal., 74-74-75-77 300; Jaxon Brigman, Oklahoma St., 79-73-76-72 300; Jimmy Johnston, Georgia Tech, 73-75-81-71—300; Paul Ginn, Southern Methodist, 77-73-77-73—300; Ryan Rhees, Brigham Young, 77-73-74-76 300; and Shaun Micheal, Indiana, 80-73-73-74—300.

56. (tie) Bobby Collins, Wake Forest, 76-74-78-73 301; Bowen Sargent, North Caro. St., 81-72-76-72—301; David White, Arkansas, 81-72-74-74 301; Dean Wilson, Brigham Young, 71-74-81-75 301; Hans Strom-Olsen, Central Fla., 74-71-76-80 301; Jon Hurst, Old Dominion, 74-74-76-77 301; Mike Weir, Brigham Young, 76-74-75-76 301; and Iom Shaw, Georgia Tech, 79-72-76-74 301; 64. (tie) Carl Paulson, South Caro., 77-77-72-76 302; Danny Ellis, Clemson, 80-72-76-74—302,



Kevin Wentworth fired a second-round 68 to help his team take a lead it never relinquished

and Jason Nishimoto, UTEP, 74-77-77-74—302.

67. (tie) Brett Dean, Arizona St., 80-73-77-73 303; Brian Gay, Florida, 78-73-76-76—303; Brian Kortan, New Mexico, 80-79-69-75—303; Cary Corby, Oklahoma, 79-74-75-75—303; John Cowgill, Central Fla., 74-76-75-78 303; Jon Wardrup, Southern Cal., 72-74-78-79—303; Malloim Joseph, Central Fla., 80-75-76-72 303; and Monte Montgomery, Nevada-Las Vegas, 80-75-78-70—303; 75. (tie) Hans Kersting, New Mexico, 76-76-79-73—304; Jeff Junk, Miami (Ohio), 77-70-76-81 304; Kevin Kemp, Wake Forest, 74-71-83-76 304; Mark Swygert, Clemson, 77-73-83-71—304; Mark Telerico, Miami (Ohio), 77-76-79-72 304; and Omar Uresti, Texas, 77-79-75-73—304.

81. (tie) Bill Brown, Georgia, 78-79-74-74—305; Bo Fennell, Ga. Southern, 71-77-79-78 305; Cade Stone, Arizona St., 80-70-78-77 305; Chan Reeves, Georgia Tech, 76-75-77-77 305; Charlie Stevens, Texas Christian, 79-73-79-74 305; Cris Leon, Nevada-Las Vegas, 77-74-78-76 305; Derek Grams, Northwestern, 72-77-83-73 305; Jean-Paul Herbert, Texas, 77-74-79-75 305; Kent Wiese, UCLA, 79-73-78-75 305; Sean Gorgone, Miami (Ohio), 76-73-74-82—305.

91. (tie) Alan Rosen, Rice, 79-77-78-72

306; Bo Beard, Clemson, 77-80-74-75 306; Daniel Seawell, South Caro., 76-75-76-79—306; Darin Osborn, Nevada-Las Vegas, 80-73-80-73 306; and Notah Begay, Stanford, 75-71-81-79—306; 96. (tie) Craig Kanada, Ohio St., 80-78-77-72—307; David Berganio, Arizona, 78-72-79-78 307; Keith Albritton, Florida, 76-77-79-75—307; Paul Bastien, Central Fla., 82-75-75-75—307; Ted Gleason, UCLA, 77-74-80-76 307; Tony Soerries, Florida, 74-77-76-80 307.

102. (tie) Bobby Richardson, New Mexico, 82-74-76-76 308; Jason Larson, Louisiana St., 77-80-74-77 308; Richard Breed, Southern Methodist, 77-78-81-72—308; Robby Ware, Mississippi St., 75-77-76-80—308; and Steve Runge, Ohio St., 79-78-72-79 308; 107. (tie) Andrew Raitt, Nevada-Las Vegas, 84-75-75-75—309; Benji Nelson, Mississippi St., 75-78-84-72 309; Brad Newman-Bennett, Northwestern, 77-82-77-73—309; Kevin Hammer, Florida, 78-77-80-74 309; Mike Milliken, Stanford, 81-76-77-75—309; and Steve Haynes, UCLA, 80-78-74-77—309.

113. (tie) Blake Johnson, Rice, 81-82-73-74—310; Chris Smith, Ohio St., 76-73-79-82 310; Deane Pappas, Arkansas, 74-77-80-79 310; Perry Moss, Louisiana St., 79-76-76-79 310; Scott Sterling, Louisiana St., 81-79-76-74 310; and Tim Todd, San Diego St., 79-80-77-74 310; 119. (tie) Christian Chernock, Southern Methodist, 79-76-81-75 311; Craig Webb, Louisiana St., 77-73-83-78 311; Hans Haas, Arkansas, 77-79-79-76 311; Jeff Makohon, Rice, 78-77-79-77 311; Mark Strickland, Wake Forest, 78-77-75-81 311; Sean Farren, Mississippi St., 78-71-77-85 311; Steve Isley, North Caro. St., 77-78-81-75 311; and Vivek Bhandari, Southern Cal., 80-78-79-74—311.

127. (tie) Adam Weinstein, Miami (Ohio), 78-76-81-77 312; Ben Bangert, Texas Christian, 77-77-77-81 312; Briny Baird, Georgia Tech, 78-75-78-81 312; Cameron Doan, UTEP, 79-72-84-77 312; James Hanse, Rice, 76-84-78-74 312; Matt Blaugrund, UTEP, 82-76-78-76 312; Michael Christie, South Caro., 80-82-76-74 312; Mike Ambriz, New Mexico, 81-75-74-82 312; and Trev Anderson, Arizona, 74-79-81-78 312; 136. Watt Whatley, Mississippi St., 82-78-78-75 313.

137. (tie) Greg Kennedy, Georgia, 81-80-75-78 314; Joel Hartwell, North Caro. St., 76-80-78-80 314; Kevin Claborn, UCLA, 78-77-80-79 314; Rett Crowder, Louisiana St., 83-75-78-78 314; and Ron Wuensche, Wisconsin, 79-79-77-79 314; 142. (tie) Bobby Doolittle, Clemson, 81-72-78-84 315; Todd Murcer, Oklahoma, 81-79-79-76 315; and Tony Aguilar, Texas Christian, 81-80-75-79 315; 145. (tie) Greg Boots, Southern Methodist, 80-81-75-80 316; Harry Rudolph, Arizona, 85-79-76-76 316; Paul Claxton, Georgia, 80-77-85-74 316; and Ren Budde, Texas Christian, 85-81-78-72 316.

149. (tie) Ken Vanko, Ohio St., 79-80-78-80 317; and Neal Hendee, Georgia, 86-76-79-76—317; 151. (tie) Adrian Morley, Northwestern, 80-82-77-79—318; and Chad Ginn, Mississippi St., 78-81-80-79 318; 153. Patrick Lee, Oklahoma, 79-81-82-77 319; 154. Dave Rutkowski, Stanford, 84-84-79-74 321; 155. John Hink, Miami (Ohio), 85-77-83-WD—WD; Justin Leonard, Texas, 79-77-DQ-73 DQ.



Defending champion Phil Mickelson of Arizona State wasn't able to put together the kinds of scores he needed to claim a third NCAA championship. He sandwiched a pair of 70s between an

opening-round 74 and a final-round 75 to finish in a five-way tie for fourth place.

Photo by Robert Fish/The Herald, Monterey

Photo by Alan McEwen/The Herald, Monterey

Photo by Orville Myers/The Herald, Monterey



# Simpson College's self-imposed penalties accepted

## I. Introduction.

In the summer of 1990, the NCAA enforcement staff received an anonymous telephone call reporting possible violations of NCAA legislation involving a member of Simpson College's board of trustees (who also would be considered a representative of the institution's athletics interests) and a Simpson College wrestling student-athlete. The caller reported that a loan of money had been provided to the student-athlete to help the young man purchase a motorcycle, and that the young man was living at the representative's residence during the summer months at no cost to the young man.

In January 1991, the enforcement staff interviewed the two persons, and both confirmed the information provided by the anonymous caller. An official inquiry was sent to the institution March 1, 1991, and the institution responded in writing April 1, 1991. Included in the institution's response was a statement by the representative regarding additional money and purchases for the young man. A prehearing conference was held with the institution April 5, 1991.

This case involved a member of the board of trustees who had provided numerous gifts over the years to the college generally and to the wrestling program specifically, all within permissible NCAA guidelines. Over the years, he also had employed needy college students, including student-athletes employed within college and NCAA rules. In this case, the student-athlete was referred to the representative by an alumnus who was a former student-athlete and presently a high school wrestling coach in another state. During conversations, the young man indicated to the representative that he needed transportation to get to work. The representative agreed to lend money to the young man in return for work around his home and property. Loans were made for a motorcycle and insurance and, on another occasion, for eyeglasses. The loans were repaid through an extensive work schedule for which records and photographs were provided. No thought was entertained by the representative that these actions might constitute a violation of NCAA extra-benefit rules. No member of the college staff or of the athletics department was aware of these events.

Upon being notified of the possible violations, the college's president immediately placed the full resources of the college behind an investigation; cooperated fully with the NCAA enforcement staff, and brought the investigation to a

quick and timely conclusion. In the same manner, the member of the board of trustees involved in the violations cooperated completely with the enforcement staff and the college, including making all his records readily available. The former student-athlete also cooperated without reservation.

The committee found that this was a

quick and timely conclusion. In the same manner, the member of the board of trustees involved in the violations cooperated completely with the enforcement staff and the college, including making all his records readily available. The former student-athlete also cooperated without reservation.

## Case summary

• During 1989 and 1990, a representative of the college's athletics interests lent a total of \$2,794 to a student-athlete, who also received lodging and meals in the representative's home at no cost to the student-athlete. The student-athlete paid the entire loan balance by working for the representative.

• The Committee on Infractions determined that this case, while involving a serious, major violation, was unique because the principals cooperated fully; no member of the university's staff (including the athletics department) was involved, and the college's president acted forcefully in applying disciplinary actions.

• The Committee on Infractions accepted the college's self-imposed penalties and incorporated them with its own. In addition to applying sanctions to the representative of the school's athletics interests and requiring the school to broaden the scope of its compliance and rules-education efforts, the committee noted that the college will be subject to the Association's legislation regarding repeat major violations for five years.

serious, major violation. As such, the college could have been assessed the minimum prescribed penalties for a major violation, including: a two-year probationary period, a one-year postseason sanction in the sport of wrestling, and the elimination of off campus recruiting and official visits for one year. However, the committee may grant exceptions in "unique" cases. The committee has determined that this was a truly unique case because: the violation, while serious, was inadvertent and limited in scope; the principals involved cooperated fully; no member of the athletics department staff nor any member of the college staff was involved; the forceful actions of the college's president set the standard for the entire college staff; disciplinary actions were taken by the president, and the college had not been involved in previous violations.

In imposing penalties, the committee chose to accept the actions of the institution as sufficient. These actions included: a strong and extensive education program throughout the college and among representatives of the college's athletics inter-

recruiting wrestling team members or from providing use of his personal property to student-athletes. In addition, for one year, the representative will be prohibited from traveling or lodging with the wrestling team on away trips; hosting or attending social events associated with the wrestling program, and providing financial contributions to the college's intercollegiate athletics program.

## II. Violations of NCAA legislation, as determined by committee.

[NCAA Bylaws 16.12.2.1 and 16.12.2.3-(a)]

During the period from September 1989 to June 1990, a member of the institution's board of trustees (who also was a representative of the college's athletics interests) lent a total of \$2,794 to a student-athlete. While the young man was employed at the representative's home, the representative provided lodging and meals for the student-athlete for one month at no cost to the young man. The student-athlete repaid the \$2,794 to the representative with \$1,000 from the rebate on his college meal plan and the remaining \$1,794 from the young man's wages while

working for the representative.

Specifically, in the fall of 1989, the representative paid the cost (\$174) for an eye examination and glasses for the student-athlete. On April 28, 1990, the representative gave a \$2,500 check to the young man written on the account of the representative's wife to help the young man purchase a motorcycle. On April 29, 1990, the representative gave an additional \$120 to the student-athlete to help the young man purchase insurance for the motorcycle. From April 29, 1990, to June 17, 1990, the representative employed the young man and reduced the young man's loan balance by approximately \$1,185 (\$5.00 per hour for approximately 237 hours). Then, from approximately May 16, 1990, to June 17, 1990, the student-athlete was provided room and board at the representative's home. On June 10, 1990, the representative gave the young man a \$600 bonus. On June 17, 1990, the young man completed repayment of the loans.

## III. Committee on Infractions penalties.

For the reasons set forth in Part I of this report, the Committee on Infractions found that this case involved a major violation of NCAA legislation that occurred after September 1, 1985. NCAA Bylaw 19.4.2.2, as adopted by the Association's membership, requires prescribed minimum penalties, "subject to exceptions authorized by the Committee on Infractions in unique cases on the basis of specifically stated reasons," that include: (a) a two-year probationary period (including a periodic, in-person monitoring system and written institutional reports); (b) the elimination of all expense-paid recruiting visits to the institution in the involved sport for one recruiting year; (c) a requirement that all coaching staff members in the sport be prohibited from engaging in any off-campus recruiting activities for one recruiting year; (d) a requirement that all institutional staff members determined by the Committee on Infractions knowingly to have engaged in or condoned a major violation be subject either to termination of employment, suspension without pay for at least one year or reassignment of duties within the institution to a position that does not include contact with prospective or enrolled student-athletes or representatives of the institution's athletics interests for at least one year; (e) one year of sanctions precluding postseason competition in the sport; (f) one year of sanctions precluding television appearances in the sport, and (g) institutional recertification that the current athletics policies and practices conform to all requirements of NCAA regulations.

Also, for reasons set forth in Part I of this report, the Committee on Infractions determined that this case was a "unique" case in which the institution should receive less than the full set of minimum penalties otherwise required by NCAA legislation. The committee accepted those actions taken by the institution and incorporated them with its own as follows:

A. The college shall expand and

broaden its compliance and education program to the whole college community and especially to representatives of its athletics interests.

B. Members of the wrestling staff and/or athletics department staff members shall not be assisted by institutional representatives in the recruitment of student-athletes in the sport of wrestling for one year, effective June 1, 1991.

C. The college shall conduct a complete internal audit of its intercollegiate athletics program and forward the results to the NCAA enforcement staff and Committee on Infractions; further, the institution shall conduct an annual audit each fall for a period of five years.

D. The representative of the college's athletics interests involved in this case shall be permanently prohibited from:

1. Recruiting wrestling team members on behalf of the college.

2. Employing Simpson College student-athletes.

3. Lodging or providing meals to student-athletes.

4. Allowing student-athletes to use his personal property.

E. For a period of one year (effective June 1, 1991), the representative shall be prohibited from:

1. Traveling or lodging with the wrestling team on away trips.

2. Hosting or attending social events associated with the wrestling program.

3. Contributing any monies to the college's intercollegiate athletics program.

F. Simpson College shall be subject to the provisions of NCAA Bylaw 19.4.2.3 concerning repeat major violators for a five-year period beginning on the effective date of the penalties in this case.

(NOTE: Should Simpson College appeal either the findings of violations or proposed penalties in this case to the NCAA Council subcommittee of Division III members, the Committee on Infractions will submit an expanded infractions report to the members of the Council who will consider the appeal. This expanded report will include additional information in accordance with Bylaw 32.8.5. A copy of the committee's report would be provided to the institution prior to the institution's appearance before the Council subcommittee and, as required by Bylaw 32.8.6, would be released to the public.)

Also, the Committee on Infractions wishes to advise the institution that when the penalties in this case become effective, the institution should take every precaution to ensure that their terms are observed; further, the committee intends to monitor the penalties during their effective periods, and any action contrary to the terms of any of the penalties shall be considered grounds for imposing more severe sanctions in this case.

Finally, should any actions by NCAA Conventions directly or indirectly modify any provision of these penalties or the effect of the penalties, the committee reserves the right to review and reconsider the penalties.)

NCAA COMMITTEE  
ON INFRACTIONS

## Administrative Committee minutes

### I. Acting for the Council, the Administrative Committee:

a. Appointed Margaret J. Gatz, University of Southern California, to the Research Committee, replacing Joan Girgus, Princeton University, resigned.

b. Approved a proposed amendment to Bylaw 30.13-(b) to permit exceptions to the 100-mile limitation for summer-basketball-league participation in instances in which no league exists within 100 miles of an individual's home, as directed by the committee in its May 22 telephone conference; also directed that a further amendment to that legislation be prepared, for review in the next telephone conference, to provide additional exceptions based on demonstrated educational reasons.

c. Directed the staff to investigate Boston, Massachusetts, as the preferred site for the August 5-7, 1992, Council meeting, with Seattle, Washington, as an alternate site.

2. Acting for the Executive Committee, the Administrative Committee:

a. Approved a recommendation by the Division I Men's Basketball Committee that the 1993 Midwest regional be conducted in the St. Louis Arena instead of the Indianapolis

Hoosier Dome, March 25 and 27, and that a Midwest first/second-round session of the 1993 championship be conducted in the Hoosier Dome instead of the St. Louis Arena, March 19 and 21, an adjustment necessary to avoid a conflict with the Indiana high-school basketball tournament.

b. Approved a recommendation by the Men's Water Polo Committee that Mikasa



Conference No. 9  
June 5, 1991

be approved as supplier of the official championship ball of the NCAA water polo championship.

c. Approved funding for NCAA participation with the U.S. Olympic Committee and the National Football League in a grants program for laboratory research related to athletics drug testing.

d. Approved changes in 1990-91 Drug-Testing Protocol 9.0 as recommended by the Eligibility Committee and the chair of the

Committee on Competitive Safeguards and Medical Aspects of Sports.

e. Authorized the Committee on Financial Aid and Amateurism to conduct an additional 1991 meeting to complete its work regarding 1991 Convention Proposal Nos. 87 and 88.

3. Acting for the Council and the Executive Committee, the Administrative Committee:

a. Clarified that the responsibility for interpretations regarding the needy student-athlete fund in the revenue-distribution plan will be handled by the Ad Hoc Committee to Administer the Conference Grant Program, as proposed by the Executive Committee, noting that the Council had stated that it should be handled by the legislative services department and the Interpretations Committee.

b. Noted that the Division I Championships Committee will conduct a telephone conference to review the Heritage Bowl situation.

c. Scheduled Administrative Committee conferences for the remainder of 1991 (the next conference is June 19): July 11 (in conjunction with meeting in Dallas with Presidents Commission officers) and July 30 (in conjunction with Council meeting in Sun Valley); August 11 (in conjunction with Executive Committee meeting in Carlsbad, California) and August 28; September 11 and 25; October 6 (in conjunction with Council meeting in Kansas City) and October 23; November 13 and 27; December 8 (in conjunction with Executive Committee meeting in Kansas City) and December 18.

4. Report of actions taken by the executive director per Constitution 4.3.2. Acting for the Council:

a. Approved 107 summer basketball leagues (62 for men and 45 for women) per Bylaws 14.8.5.2 and 30.13, as reported in previous editions of The NCAA News.

b. Granted waivers per Bylaws 14.8.6.1-(d) and 14.8.6.2-(b) to permit student-athletes from various member institutions to participate in competition as part of the 1991 Alabama Sports Festival and Utah Summer Games.

## Questions/Answers

Readers are invited to submit questions to this column. Please direct any inquiries to The NCAA News at the NCAA national office.

**Q** How much is a subscription to The NCAA News?

**A** The basic cost for an annual (46-issue) subscription to the News is \$24 and includes second-class postage. A first-class postage option is available for an additional \$26 (i.e., a one-year subscription with first-class postage is \$50). High-school and junior-college personnel may subscribe to the News for \$15 (second-class rate). Students and faculty members at NCAA member institutions may subscribe for \$12 per year (second-class rate).

Stop by Our Booth at  
CoSIDA in San Francisco and  
**SAY HELLO TO  
A LEADER**

College Sports Hotlines<sup>SM</sup>

- Enhance the image of your teams
- Provide a valuable service to fans and alumni

Learn how you can win with Advanced Telecom Services<sup>®</sup>:

- Experience providing over 60 college and pro 900 Sports Hotlines.
- Marketing support that will help ensure your line is a winner.
- Exclusive VoiceTone<sup>SM</sup> feature, that takes your message not only to touchtone callers, but also to the 38.5% of U.S. households that use rotary dial phones.

Stop by and say hello...or give us a call.  
Because if you know the score—

**OPPORTUNITY IS CALLING!**



Advanced Telecom Services, Inc.

996 Old Eagle School Road, Wayne, PA 19087-1806  
215-964-9146 • fax: 215-964-9117

See us  
at  
CoSIDA  
July  
7-11



# 80 summer hoop leagues approved

An additional 80 summer basketball leagues have been approved for student-athlete participation, bringing to 266 the number that have been certified by the NCAA Council.

Questions concerning the application process or the requirements for NCAA approval of summer leagues should be directed to Robert A. Burton, legislative assistant, at the NCAA national office.

Following are the 45 men's and 35 women's leagues recently approved for participation.

## Men's leagues

**California** LaJolla YMCA Summer Open Basketball League, La Jolla. **Connecticut** SAND Men's Summer Basketball League, Hartford; Connecticut Shoot-Out Summer Basketball League, New Haven; Wallingford Boys Club Summer League, Wallingford. **Florida** Riverfront Summer Basketball League, Tampa. **Georgia** Atlanta Metro Pro-Am League, Atlanta; Atlanta Pro-Am Summer League, Atlanta. **Illinois** Chicago Pro-Am National City Leagues Association, Chicago; Gus Macker 3-on-3 Basketball Tournament, Chicago; Sonny Parker Summer Basketball League, Chicago; Gus Macker 3-on-3 Basketball Tournament, Decatur; Des Plaines Park District Men's Summer Basketball League, Des Plaines; Gus Macker 3-on-3 Basketball Tournament, Peoria; Gus Macker 3-on-3 Basketball Tournament, Rockford; Gus Macker 3-on-3 Basketball Tournament, Sterling; Westmont Park District, Westmont. **Indiana** Gus Macker 3-on-3 Basketball Tournament, Fort Wayne; The Hoosier Hoops Classic, Michigan City; Gus Macker 3-on-3 Basketball Tournament, Muncie,

**Iowa** Gus Macker 3-on-3 Basketball Tournament, Cedar Falls. **Kentucky** Walton-Verona Summer Basketball League, Walton. **Maryland** Annapolis Recreation Department Summer Basketball League, Annapolis; Charm City Basketball League, Baltimore.

**Massachusetts** Swampscott Adult Basketball League, Swampscott. **Michigan** Gus Macker 3-on-3 Basketball Tournament, Belding; St. Cecilia Summer College League, Detroit; Gus Macker 3-on-3 Basketball Tournament, Flint; Gus Macker 3-on-3 Basketball Tournament, Gaylord; Gus Macker 3-on-3 Basketball Tournament, Port Huron. **Minnesota** Gus Macker 3-on-3 Basketball Tournament, St. Paul; Minnesota Pro-Am League, St. Paul. **New Jersey** Camden Recreation Adult Basketball League, Camden. **New Mexico** Gus Macker 3-on-3 Basketball Tournament, Roswell. **New York** Gus Macker 3-on-3 Basketball Tournament, Buffalo; Town of Hamburg Recreation Department Summer Basketball League, Hamburg; Watervliet Recreation Department Summer Basketball League, Watervliet. **Ohio** The Cleveland Summer League, Cleveland; Gus Macker 3-on-3 Basketball Tournament, Columbus; Lakewood Y Summer Basketball, Lakewood; The Worthington League, Worthington. **Pennsylvania** Easton Area Neighborhood Center Summer Adult Basketball League, Easton; Lancaster Recreation Commission League, Lancaster; Pottsville Recreation Summer Adult Basketball League, Pottsville; Gus Macker 3-on-3 Basketball Tournament, Sharon. **Wisconsin** Gus Macker 3-on-3 Basketball Tournament, Milwaukee.

## Women's leagues

**Arizona** BCI Valley Wide Summer Basketball League, Scottsdale. **Florida** Florida Flamingos Women's Summer League, Miami; Riverfront Summer Basketball

League, Tampa. **Georgia** Atlanta Pro-Am Summer League, Atlanta. **Illinois** Gus Macker 3-on-3 Basketball Tournament, Chicago; Gus Macker 3-on-3 Basketball Tournament, Decatur; Gus Macker 3-on-3 Basketball Tournament, Peoria; Gus Macker 3-on-3 Basketball Tournament, Rockford; Gus Macker 3-on-3 Basketball Tournament, Sterling. **Indiana** Gus Macker 3-on-3 Basketball Tournament, Fort Wayne; The Hoosier Hoops Classic, Michigan City; Gus Macker 3-on-3 Basketball Tournament, Muncie. **Iowa** Gus Macker 3-on-3 Basketball Tournament, Cedar Falls. **Maryland** Charm City Basketball League, Baltimore. **Michigan** Gus Macker 3-on-3 Basketball Tournament, Belding; Gus Macker 3-on-3 Basketball Tournament, Flint; Gus Macker 3-on-3 Basketball Tournament, Gaylord; Gus Macker 3-on-3 Basketball Tournament, Port Huron.

**Minnesota** Chaska Summer Basketball League, Chaska; Gus Macker 3-on-3 Basketball Tournament, St. Paul; **Missouri** Kutis Collegiate 3-on-3 League, St. Louis. **New Mexico** Gus Macker 3-on-3 Basketball Tournament, Roswell. **New York** Gus Macker 3-on-3 Basketball Tournament, Buffalo; Town of Hamburg Recreation Department Summer Basketball League, Hamburg. **Ohio** Gus Macker 3-on-3 Basketball Tournament, Columbus; Women's Open Summer League, Columbus; Lake County Summer Women's Basketball League, Mentor. **Pennsylvania** Lancaster Recreation Commission League, Lancaster; Gus Macker 3-on-3 Basketball Tournament, Sharon. **Texas** River City Summer League, Corpus Christi; River City Summer League, El Paso; Euless Parks and Leisure Services Department NCAA Sanctioned Women's Summer Basketball League, Euless; River City Summer League, Lubbock; River City Summer League, Tyler. **Wisconsin** Gus Macker 3-on-3 Basketball Tournament, Milwaukee.

# Calendar

June 13

Council Subcommittee to Review 1991 Reform Proposals Hearings, Chicago, Illinois

June 14-15

Council Subcommittee to Review 1991 Reform Proposals, Chicago, Illinois

June 17

Committee on Financial Aid and Amateurism, Chicago, Illinois

# Record

Continued from page 9

sion II women's tennis teams as listed by the Intercollegiate Tennis Coaches Association:

1. Cal Poly Pomona, 2. UC Davis, 3. Cal Poly San Luis Obispo, 4. Abilene Christian, 5. Air Force, 6. Cal State Bakersfield, 7. Florida Southern, 8. Barry, 9. Cal State Sacramento, 10. Cal State Los Angeles, 11. West Georgia, 12. Shippensburg, 13. Ferris State, 14. Sonoma State, 15. Jacksonville State, 16. Cal State Hayward, 17. Denver, 18. Northern Colorado, 19. Valdosta State, 20. Pace.

## Division III Men's Tennis

The Volvo Tennis final top 16 NCAA Division III men's tennis teams as listed by the Intercollegiate Tennis Coaches Association:

1. Kalamazoo, 2. UC Santa Cruz, 3. Claremont-Mudd-Scripps, 4. Washington (Maryland), 5. Swarthmore, 6. Gustavus Adolphus, 7. UC San Diego, 8. Washington and Lee, 9. Emory, 10. Pomona-Pitzer, 11. MIT, 12. Kenyon, 13. Amherst, 14. DePaul, 15. Wheaton (Illinois), 16. Binghamton.

## Division III Women's Tennis

The Volvo Tennis final top 22 NCAA Division III women's tennis teams as listed by the Intercollegiate Tennis Coaches Association:

1. Mary Washington, 2. Gustavus Adolphus, 3. UC San Diego, 4. Emory, 5. Pomona-Pitzer, 6. St. Thomas (Minnesota), 7. Wellesley, 8. Kenyon, 9. (tie) Skidmore and Trenton State, 11. Vassar, 12. St. Olaf, 13. Washington and Lee, 14. (tie) Sewanee (University of the South)

and Washington (Maryland), 16. Denison, 17. Luther, 18. Washington (Missouri), 19. Haverford, 20. Franklin and Marshall, 21. Sweet Briar, 22. Rhodes.

# News Fact File

Between 1981 and 1989, average annual football expenses increased significantly for Divisions I, II and III. In relationship to total expenses, however, football expenses have declined on a percentage basis since 1977. In relative terms, the annual growth rate for average football expenses was less than the annual growth rate for average total expenses related to men's athletics. During the period 1977-1989, the percentage of football expenses to total men's expenses decreased.

Source: *Revenues and Expenses of Intercollegiate Athletics Programs (1990 edition)*

# The Market

Readers of The NCAA News are invited to use The Market to locate candidates for positions open at their institutions, to advertise open dates in their playing schedules or for other appropriate purposes.

Rates are 55 cents per word for general classified advertising (agate type) and \$27 per column inch for display classified advertising. Orders and copy are due by noon five days prior to the date of publication for general classified space and by noon seven days prior to the date of publication for display classified advertising. Orders and copy will be accepted by mail, fax or telephone.

For more information or to place an ad, call Susan Boyts at 913/339-1906 or write NCAA Publishing, 6201 College Boulevard, Overland Park, Kansas 66211-2422, Attention: The Market.

## Positions Available

### Athletics Director

**Athletic Director.** Gordon College invites applications for the position of athletic director. Gordon is an independent, residential liberal arts college that is distinctively Christian in its educational philosophy. Successful candidates must be committed Christians who can integrate their faith with their responsibilities. Responsibilities include overall administration of the college's intramural and intercollegiate athletic program which includes 12 varsity sports. Candidates must have at least 5 years' experience in administration and/or coaching at the college level; strong communicative and organizational skills; and a master's degree. Send application letter, resume and three letters of reference by June 30 to: Stephen C. MacLeod, Dean of Student Development, Gordon College, 255 Grapevine Road, Wenham, MA 01984.

**Athletic Director.** 12 month tenure track faculty position. Minimum requirements: Masters Degree, experience as Assistant Athletic Director and/or Athletic Director at college level desirable. Successful candidate will have experience and familiarity with Title IX guidelines, NCAA Compliance and Equity Issues. Responsibilities: Athletic administration and related duties. Rank and Salary: Based on academic credentials, experience, and requirements of the faculty collective bargaining agreement. Immediate opening. Send vita, three letters of recommendation, and graduate transcripts to: Paul Lancaster, Chairperson, Athletic Director, Search Committee, 3 Student Development, California University, California, PA 15419 by July 8, 1991. An Affirmative Action/Equal Opportunity Employer.

### Associate A.D.

**Mississippi State University** invites applications for the position of Assistant Athletic Director of Facilities and Management. The Assistant Athletic Director provides assistance to the Director of Athletics by assuming responsibility for management of daily operations related to departmental events and facilities. Minimum qualifications: Bachelor's degree with at least two years' experience in a

knowledge of applicable NCAA rules, good interpersonal relations and verbal and writing communication skills. Starting date July 15, 1991. Send cover letter, resume and three references by June 20, 1991, to: Ken Bothol Associate Athletic Director, Idaho State University, Campus Box 8173, Pocatello, ID 83209. Idaho State University is an Affirmative Action/Equal Opportunity Employer.

**Academic Counselor.** The University of Michigan is seeking qualified candidates for the position of Athletic Academic Counselor, working with the sport of football. Responsibilities include advising and counseling student athletes on academic needs, reviewing academic standing and course selection, monitoring of study table and tutoring programs, and production and maintenance of academic records. Qualifications: Bachelor's degree required, master's preferred or an equivalent combination of education and experience. Salary is commensurate with qualifications. Applicants should submit letter of application, resume, and a list of three references by July 3, 1991 to: Bob De Carolis, Associate Athletic Director, The University of Michigan, Ann Arbor 48109-2201. The University of Michigan is an Equal Opportunity Employer.

## Administrative

**Dean Of Student Services.** The United States Sports Academy, America's graduate school of sport, seeks qualified candidates for the Dean of Student Services position. The Dean reports directly to the President/CEO and is responsible for admissions, financial aid, student records, alumni affairs and general services to students. Required: 3-5 years successful administrative experience in admissions, preferably at graduate level; knowledge of Federal/state financial aid policies; excellent computer and communication skills. Preferred: background in sport education or related fields; experience in alumni affairs and student personnel administration. Send letter of application, resume, copy of official transcripts, and three references to: United States Sports Academy, Attn: Search Committee, One Academy Drive, Daphne, Alabama 36526. Equal Opportunity Employer.

## Athletics Counselor

**Counselor/Athletic Counseling.** 12 month permanent full time position to begin August 12, 1991, in the Athletic Counseling Program, 140 Carroll Avenue 84, Northern Illinois University, DeKalb, IL 60115-2854. Professional staff position in a comprehensive Athletic Counseling Program. Send letter of interest, resume and three letters of reference or requests for information to Don Bramlett. For full consideration, have application materials completed by July 17, 1991.

## Athletics Trainer

**Assistant Athletic Trainer.** Position Description: Ten month position in Department of Intercollegiate Athletics. Provide varsity sport coverage for primarily women's sports. Responsibilities: 1. Responsible to Head Athletic Trainer for policies and procedures followed in the training room. 2. Coordinate care and coverage for women's sports including all phases of prevention, evaluation and rehabilitation. 3. Maintain accurate records of team injuries. 4. Assist in clinical supervision of very limited number of students. 5. Perform other duties as assigned by the Head Athletic Trainer. Qualifications: 1. N.A.T.A. Certified and Illinois Registered. 2. Bachelor's Degree

required. Salary: Commensurate with qualifications and experience. Appointment Date: August 1, 1991. Application Deadline: To assure full consideration, applications are due by July 1, 1991. Applications will be accepted until date of deadline. Application Procedures: Eligible, interested candidates should send a letter of application, resume, and references and/or contact: William McGee, Jr., A.T., C/R, Head Athletic Trainer, Bradley University, Peoria, IL 61625, 309/677-2686. Bradley University is an Affirmative Action and Equal Opportunity Employer.

**Head Athletic Trainer.** California State University, Stanislaus in Turlock, CA. This is a full time, 10 month position with the following responsibilities: (1) Direct and supervise all aspects of the athletic training program for 11 intercollegiate sports. (2) Teach courses and oversee clinical supervision of undergraduates in an NATA approved athletic training concentration. (3) Control training room budget and maintain insurance records. Qualifications: Master's Degree in PE or related area; three years experience in athletic training with supervision of student trainers; NATA certification as well as CPR and First Aid. Position available August 15. Submit letter of application, resume, credentials and three references by July 1 to: Joe Donahue, Athletic Director, CSU Stanislaus, Turlock CA 95380. CSUS is an EO/AA Employer. Women and minorities are encouraged to apply.

**Assistant Athletic Trainer.** Job Description: 1. Assist the Head Athletic Trainer and other associated medical personnel in the prevention and care of athletic injuries for the Intercollegiate Athletics at Kent State University. 2. Carry out all policies and procedures of the Athletic Training Facilities as directed by the Head Athletic Trainer. 3. Have primary responsibility for the supervision of various athletic teams as directed by the Head Athletic Trainer, including Men's Basketball. 4. Assist in the instruction and supervision of the Student Athletic Trainers in an apprentice/ internship. 5. Assist in the recruitment of potential Student Athletic Trainers. 6. Assist in monitoring the academic progress of Student Athletic Trainers. Qualifications: 1. National Athletic Trainers Association Certification. 2. Master's degree required. 3. One to three years of work experience as a Certified Athletic Trainer. Term: Twelve month appointment, commencing July 15, 1991. Salary: Commensurate with skills and experience of the candidate. Application: 1. Letter of application. 2. Resume. 3. Transcripts. 4. Three letters of recommendation. Application Deadline: June 20, 1991. Contact Person: John C. Faulstich, A.T., C, Head Athletic Trainer, Dix Stadium, Kent State University, Kent, OH 44242. 216/672-7866/2766.

## Executive Director

**Executive Director.** USRowing National Governing Body for Olympic sport of rowing. Related management, marketing and fund raising experience required. Send resume with five references by July 15 to USRowing, Attn: Search Committee, 201 S. Capitol, Suite 400, Indianapolis, IN 46225.

## Marketing

**Coordinator For Marketing And Promotions.** Western Kentucky University invites applications for the position of Coordinator for Marketing and Promotions. Serving under the direction of the Athletics Director, the coordinator is responsible for developing and implementing a plan to generate revenues for intercollegiate athletic programs through advertising and sponsorship sales, special events, ticket sales, promotional programs, and licensing. A bachelor's degree is

preferred. Experience in sports marketing is desired. Salary is \$17,000-\$20,000 per year (commensurate with experience and educational background). Interested applicants should submit a letter of application, resume, and names of three references along with addresses and telephone numbers by June 26, 1991 to: Director of Personnel Services, Western Kentucky University, 1526 Russellville Road, Bowling Green, KY 42101 3576. An Equal Opportunity Employer.

## Public Relations

**The University of Texas at Austin, Intercollegiate Athletics for Women.** Minority Internships Available for 1991-92. Position: The Department of Intercollegiate Athletics for Women will have internships available in the area of sport marketing and sport publicity/sport information for the 1991-92 academic year. These internships are funded by private donations earmarked specifically for minority candidates. Eligibility: An undergraduate degree in the area of sport management, marketing, journalism, communications, kinesiology/physical education, or other related area preferred. Candidate must show desire to pursue career in sport marketing, publicity, or related area. Conditions of Appointment: The minority internships are for the 9 month school year (with possibility of extending to 12 months). Internship amount is \$550-\$700 per month, depending upon qualifications. The intern will receive continuing education credits from UT for successfully completing this appointment. A successful intern may be given the opportunity to renew for a second year. Starting Date: Exact starting date is negotiable, with September 1 being latest start and July 1 being earliest start. Responsibilities: Marketing internship recipient will assist in marketing and promotion of events, season ticket drives, special events such as national and regional championships, and fund raising events/operations. Sport publicity internship recipient will assist in all facets of the sports publicity office, including working with the media, writing features, publicizing events. How To Apply for Minority Internship: Submit letter of application, resume, and two letters of recommendation to: Lynn Wheeler, Assistant Director, Bellmont 718, University of Texas, Austin, TX 78712, 512/471-7693. Since the minority internships are limited to qualified minority candidates (women and generally recognized racial minorities), a candidate needs to indicate gender and race in letter of application. Application Deadline: Review of credentials will continue until candidates are selected.

## Sports Information

**Assistant Sports Information Director.** Drake University, Des Moines, IA. Assist in the daily operational activities of the athletic department. Primary responsibilities: working with women's athletics and non-revenue sports. Experience should include writing news releases, producing media guides and promotional pieces, compiling statistical information, and assisting with press box operations. Should be proficient with MacIn-

tosh computer operations. Bachelor's degree in journalism or related field and previous experience within sports information required. Send letter of application, resume, three letters of recommendation and work samples to: Mike Mahon, Sports Information Office, Drake Fieldhouse, Des Moines, IA 50311. Applications must be postmarked by June 20, 1991.

**Assistant Sports Information Director.** The Naval Academy seeks qualified applicants for the position of Assistant Sports Information Director. Responsibilities include publicizing all of Navy's 33 varsity sports, writing and editing media guides, press releases and game programs, coordinating media interviews and writing feature stories. Qualifications: Must have Macintosh computer experience and knowledge of desktop publishing plus the ability to work with diverse coaching staff and knowledge of nonrevenue sports. Applicant must have at least one year's experience as an assistant or intern within a major intercollegiate athletic program. Available immediately. Application deadline: June 22. Tentative starting date: July 8. Please send letter of application, resume and writing samples to: Thomas F. Bates, Sports Information Director, Naval Academy Athletic Association, United States Naval Academy, Annapolis, MD 21402.

**American South Conference, Associate Director of Communications.** The American South Conference invites applications for the full-time position of Associate Director of Communications. The American South Conference will merge with the Sun Belt Conference, effective July 2, 1991. The merged conference will represent 11 NCAA Division I institutions that compete in a total of eight men's and seven women's championships. The qualified candidate will direct much of the conference's media relations as related to publications, weekly news releases, statistical information, championship events and other areas as assigned. Candidates must have a bachelor's degree in journalism or a related field, as well as at least four years experience in sports information or sports related public relations. A working knowledge of desktop publishing, specifically Macintosh with Page-Maker 4.0, is required. The candidate must

See The Market, page 14

## HEAD ATHLETIC TRAINER WEBER STATE UNIVERSITY

The University invites applications for the 11-month position starting July 15. Individual will be responsible for the administration of the total athletic training program, including 13 sports. One assistant ATC and one graduate ATC. NATA certified required. Master's degree preferred. Minimum three years' experience at a Division I level preferred. College experience required. Screening will begin June 24 and will continue until position is filled. Send letter of application, resume and three references with current daytime telephone numbers to: Mr. Richard Hannan, Athletic Director, c/o Human Resources Dept., Weber State University, Ogden, UT 84408-1016. WSU is an AA/EOE.

## SPORT JOBS

Resume Registry Serving  
the Sporting Goods Industry  
Matching YOU with Jobs.  
216/722-9096  
Box 841, Medina, OH 44258

## The Market

Continued from page 13

also have strong organizational, communication and writing skills. Salary is commensurate with experience and qualifications. The American South Conference is an Equal Opportunity/Affirmative Action Employer. Women and minority candidates are encouraged to apply. Position starting date: August 1, 1991. Send letter of application, resume, work samples and three references by no later than June 30, 1991, to: Tom Burnett, Director of Communications, American South Conference, One Galleria Blvd., Suite 2016, Metairie, LA 70001.

**Sports Information Intern:** Brown University seeks an intern for its Sports Information office. Candidate should be a self-starter, possess excellent knowledge of all sports, have strong written and communication skills, marketing and promotional experience and Macintosh computer knowledge. A bachelor's degree is required. Nine-month position beginning September 1, with stipend of \$7,500. Send letter of application, resume and letters of recommendation to: Christopher Humm, Director of Sports Information, Brown University, Box 1932, Providence, RI 02912. Deadline for applications is July 1, 1991. Brown University is an Affirmative Action/Equal Opportunity Employer.

**Sports Information Intern:** Furman University seeks qualified applicants for a new position of sports information intern. Responsibilities include assisting the SID in publicizing Furman's eight male intercollegiate sports, and specifically the program's soccer and baseball programs. Requirements include bachelor's degree, sports information experience, writing and editing skills, working knowledge of statistics, and experience with publications design, layout, and production. This is a 10-month position, from July 15, 1991, to May 15, 1992. Stipend is \$650 per month. Please send letter of application, resume, samples of work and letters of recommendation to: Hunter Reid, Sports Information Director, Furman University, Greenville, SC 29613.

**Sports Information Director:** The Missouri Intercollegiate Athletic Association, an NCAA Division II association with 12 members located in Missouri and Kansas, seeks a Sports Information Director, to begin by August 1, or sooner. Required Qualifications: Bachelor's degree in journalism or related field, or commensurate experience. Experience in intercollegiate athletics sports information and hands-on understanding and working ability with computers. Responsibilities: Publication and distribution of association media guides, record books and other association publications. Processing and distribution of statistics reports and releases for the Association's 8 men's sports and 7 women's sports. Compilation, updating and distribution of all MIAA sports records. Coordination of league championships information and distribution of publicity releases in both regular season and championship events. Assisting in the selection of All-MIAA sports teams and the announcement of those selections. Selection and distribution of publicity releases for the MIAA Athlete of the Week program. Please send a letter of application, resume and a list of names, addresses and telephone numbers of 3 references to: Ken B. Jones, Commissioner, MIAA, Box 308, Maryville, Missouri 64468. The MIAA is an Equal Opportunity/Affirmative Action Employer and encourages applications from women and members of minority groups.



## The Market

Continued from page 14

California, San Diego. Part-time, 10-month position beginning no later than September 1, 1991. NCAA Division III competitive program. Part-time salary (approximately \$10,000). Bachelor's degree or equivalent required. Submit letter of application, resume, and three letters of recommendation by July 1, 1991. University of California, San Diego, c/o Marilyn Hill, Athletic Coordinator, 0905, 9500 Gilman Drive, La Jolla, CA 92093. 0905 UC San Diego is an Affirmative Action/Equal Opportunity Employer.

## Volleyball

**Head Women's Volleyball Coach.** Virginia Polytechnic Institute and State University invites applications for the full-time position as Head Women's Volleyball Coach. Duties include on the floor coaching, recruiting, scouting, and day-to-day operations. Individual credentials should reflect proven success in coaching, recruiting and working with the student athlete. Salary is commensurate upon experience. This is a 12-month renewable contract position. Application deadline is June 14, 1991. Starting date July 1, 1991. Send letter of application, resume and three letters of recommendation to: Jeffrey T. Bourne, Athletic Business Manager, Virginia Tech, 357 Jamerson Center, Blacksburg, VA 24061-0502. Virginia Tech is an Equal Opportunity/Affirmative Action Employer.

**Assistant Volleyball Coach.** Responsibilities include recruiting coordination and evaluation, supervising training and conditioning, administrative duties and all other areas pertinent to operating a competitive Division I program. Salary commensurate with qualifications and experience. This is a nine-month part-time position. Bachelor's degree required. Previous college coaching experience desired. Preference will be given to applicants who can serve well in an increasingly diverse university community. Send letter of application, resume and listing of professional references to: Jon Potter, Head Volleyball Coach, Idaho State University, Box 8173, Pocatello, ID 83209. Search will remain open until filled, however, the screening committee will begin reviewing applications on June 25, 1991. Idaho State University is a committed Equal Opportunity/Affirmative Action Institution.

**Head Women's Volleyball Coach.** Other responsibilities in College of HPER may be combined from: 1) teach fitness, sports, coaching theory, first aid/CPR, aquatics, other areas as needed; 2) supervise student teachers and/or interns; 3) teach methodology classes; 4) coordinate summer sports camps; 5) athletic administration; 6) assistant coaching in another sport. Requires earned master's in appropriate area, college coaching experience in sport. Strong desire to develop a nationally competitive program, commitment to mission of Dill institution. Prefer affiliated experiences at high school level. Academic staff position, full-time academic year appointment, summer employment possible. Begin Aug. 26, 1991. Screening begins on a 12-month basis. Responsibilities: 1. Head coach is responsible for all phases of a successful wrestling program including: coaching, recruiting, program development, scheduling, budget management, supervising of assistant coach, fund-raising, public relations, and promotional activities related to the program; 2. Organizing, directing and building interest for summer sports camp for wrestling. Qualifications: 1. Bachelor's degree required, master's degree preferred; 2. Previous collegiate coaching experience or comparable teaching and coaching experience; 3. Commitment to the academic goals of the University; 4. Competence and ability in recruiting, fund-raising and public relations; 5. Commitment to and responsibility for adhering to all policies, rules and regulations of MSU, the Big Ten Conference and the NCAA. Deadline for Applications: June 28, 1991. Send a letter of application and resume, three letters of recommendation, and include the names and phone numbers of at least three other references. George Perles, Director of Athletics, Michigan State University, 218 Jenison Field House, East Lansing, MI 48824-1025.

## Graduate Assistant

**Graduate Assistants.** Northeast Louisiana University has two Graduate Assistant coaching positions available in the areas of pole vault, horizontal jumps and multi events. Duties include assisting head coach with all aspects of the program. Stipend is \$4,500 and includes a tuition waiver. Interested candidates should contact: Dennis Groll, Track Coach, Athletic Department, Northeast Louisiana University, Monroe, Louisiana 71209. Call: 318/396-8310.

**Graduate Assistantship in Women's Volleyball.** Murray State University, a Division I program and a member of the Ohio Valley Conference, is seeking applicants to fill a graduate assistantship position. Responsibilities include assisting with coaching, recruiting and scouting, supervise study hall and other duties as assigned by the head coach. B.S. degree required. Successful applicant should have previous playing experience and high school or collegiate experience desirable but not required. This position may be filled by an individual working towards a master's degree or an individual seeking additional training on the undergraduate level. Effective dates of employment August 1, 1991 - June 1, 1992. Application deadline July 28, 1991. Send letter of application, resume, transcript and names of three references to Oscar Segovia, Head Women's Volleyball Coach, Murray State University, 110 Carr Health Building, Murray, KY 42071. EOE/MFVH.

**Graduate Assistant - Athletic Trainer.** Responsibilities: Work under Head Athletic Trainer. Oversee student trainers, work all phases of the sports program. Some travel required. Requirements: Bachelor's degree required, NATA certification preferred. Available: August 1991. Stipend: \$10,000. Deadline: July 15, 1991. Please submit resume, transcripts and three letters of recommendation to: Drew Dillon, A.T.C., Queens College Athletics, 6530 Kissena Boulevard, Flushing, New York 11367. EOE/AA.

**Graduate Assistantship** available for Division I Women's Tennis Program. Assist the head coach with all aspects of the tennis program including practice and competition, conditioning, recruiting, and other related duties. Previous coaching experience and/or exceptional knowledge of tennis required. Bachelor's degree required along with acceptance into the graduate school. Stipend of \$4,000 plus tuition waiver. Send letter, vita and transcripts to Ms. Andrea Seger, Director of Intercollegiate Athletics/Women, Ball State University, Muncie, IN 47306. Ball State is an Equal Opportunity and Affirmative Action Employer.

**Graduate Assistantship Position.** Position: Graduate Assistantship available for the 1991-92 academic year in women's soccer. Available: August 1991. Salary: \$5,000 stipend and a 6 credit tuition waiver. Minimum Qualifications: Bachelor's Degree from an accredited four-year institution required. Preference will be given to candidate with a strong background in women's collegiate soccer. Responsibilities: Assist Head Coach with all aspects of the women's soccer program, including team training, goalkeeper training, scouting and recruiting, weight room supervision, and various administrative duties. Application Deadline: July 5, 1991 or until position is filled. Applications: Send a letter of application and a resume to: Tom Saxton, Women's Soccer Coach, Michigan State University, 214 Jenison Field House, East Lansing, MI 48824. MSU is an Affirmative Action/Equal Opportunity Institution.

**Graduate Assistant/Softball.** Campbell University a Division I Member of The Big South Conference. Assist the head coach with practice, recruiting, competition, and administrative duties. Previous playing and/or coaching experience required. Pitching knowledge preferred but not a requirement. Send letter of application, resume, and three references by July 1, 1991 to: Julie Brzezinski, Head Softball Coach, P.O. Box 10, Buies Creek, NC 27506.

## COORDINATOR OF FACILITIES AND EQUIPMENT

### Western Kentucky University

is accepting applications for the position of Coordinator of Facilities and Equipment. Reporting to the Associate Athletics Director, the coordinator is responsible for managing the athletics equipment which includes: purchasing, record management, inventory control, repairing and storage of equipment, as well as the preparation and scheduling of athletics facilities. A bachelor's degree is required (master's preferred). Experience in athletics equipment and facilities operation is also desired. Compensation is \$17,000 per year. Interested applicants should submit letter of application and resume along with the names, addresses and telephone number of three references by June 26, 1991, to: Director of Personnel Services, Western Kentucky University, 1526 Russellville Road, Bowling Green, KY 42101-3576. An Equal Opportunity Employer.

University, 214 Jenison Field House, East Lansing, MI 48824. MSU is an Affirmative Action/Equal Opportunity Institution.

**Graduate Assistant/Softball.** Campbell University a Division I Member of The Big South Conference. Assist the head coach with practice, recruiting, competition, and administrative duties. Previous playing and/or coaching experience required. Pitching knowledge preferred but not a requirement. Send letter of application, resume, and three references by July 1, 1991 to: Julie Brzezinski, Head Softball Coach, P.O. Box 10, Buies Creek, NC 27506.

**Sports Information Graduate Assistantship.** The University of Arkansas Women's Athletic Department is seeking qualified applicants for a 9-month graduate assistantship in the Women's Sports Information Office. Must have academic credentials to receive admission to the University of Arkansas graduate school. Will serve as assistant to Director of Women's Sports Information. \$5,000 stipend and tuition waiver. Send resume, work samples and three references to: Bill Smith, Director of Women's Sports Information, University of Arkansas, 215 Barnhill Arena, Fayetteville, AR 72701.

**Graduate Assistant** position available in Tennis. Successful applicant will serve as assistant head coach in the sport. Assistantships include tuition waiver and stipend. Stipend depends upon Graduate Record Examination (GRE) score. Maximum stipend is \$8,000 a year. Send letter of resume to: Tynes Hildebrand, AD, Athletic Fieldhouse, Northwestern State University, Natchitoches, LA 71497 or call 318/357-5459.

**Graduate Assistants.** The University of Arkansas at Little Rock is seeking to fill two graduate assistant positions, one for the sports of Men's and Women's Tennis and one for the sports of Men's and Women's Swimming and Water Polo. Graduate assistants will be responsible for assisting the head coaches in the administration and supervision of their respective sports program which will include development of daily training schedules, recruiting, event management and all other duties as assigned by the head coaches. Qualifications: Bachelor's degree required, acceptance by the UALR Graduate Program, working knowledge of NCAA regulations, good organization and communication skills, previous coaching and competitive experience is desirable. Assistantships: Tuition and nonresident fee waiver with \$5,600 stipend. Send letter of application, personal resume, college transcripts and three references by July 15, 1991 to: Richard Turner, Assistant Director of Athletics, University of Arkansas at Little Rock, 2801 South University Avenue, Little Rock, Arkansas 72204.

**Graduate Assistant/Recruiting.** University of Illinois at Urbana-Champaign. Position available August 15. Responsibilities include: securing transcripts from prospects, development of recruiting list and marketing plans; supervision of computer editing of football video library; desktop publishing; coordination of volunteer recruiters, assisting with football game day visits, summer camps, recruiting weekend events, etc. Reports directly to the Recruiting Coordinator for the Division of Intercollegiate Athletics. Send letter of application, resume, and references along with undergraduate transcript on or before July 1 to: Randy Rodgers, Recruiting Coordinator, University of Illinois, Department of Intercollegiate Athletics, 1402 South First Street, Champaign, IL 61820-6939. AA/EOE.

## WILMINGTON COLLEGE

### Athletic Training

**PROGRAM DIRECTOR:** Established athletic training program working toward NATA accreditation seeks program director to teach wide range of athletic training courses and to provide clinical supervision. Must be NATA certified. Doctorate preferred. Position available August 15th.

**ATHLETIC TRAINER:** Established program seeks NATA certified trainer, for a one-year visiting position, to teach wide range of athletic training courses and to provide clinical supervision.

To apply, send letter of application, resume and names, addresses and telephone numbers of three references by June 28, 1991, to:

Norman Smith  
Vice-President of Academic Affairs  
Wilmington College  
Pyle Center Box 1285  
Wilmington, Ohio 45177

Wilmington College is an Equal Opportunity Employer

## EAST CAROLINA UNIVERSITY

### Assistant Director of the Pirate Club

**Requirements and Responsibilities:** A highly motivated individual with very strong communication skills. Must possess proven ability to work with volunteers and donors. Strong leadership, organization and management skills needed. Position serves as coordinator for all Pirate Club chapters. Extensive annual travel necessary to oversee fund drive operations. Prior experience in athletics fund-raising and/or athletics administration preferred. Bachelor's degree required.

**Appointment:** Full-time, 12-month position reporting to the Director and Executive Secretary of the Pirate Club.

**Salary:** Commensurate with background and experience.

**Application Procedure:** Letter of application, current resume, and names of five references who may be contacted must be received no later than June 20, 1991. Mail to:

Dave Hart Jr.  
Director of Athletics  
East Carolina University  
365 Sports Medicine Building  
Greenville, NC 27858-4353

Constituent institution of The University of North Carolina, An Equal Opportunity/Affirmative Action University. Applicants must comply with provision of the Immigration and Control Act.

## Intramurals

**Director of Intramurals:** Vassar College seeks a part-time person beginning 1991-92 academic year with responsibilities including development, coordination and supervision of all aspects of the Intramural Program. Vassar is a private liberal arts college with 2,200 students competing at the Division III level. This is a half-time academic year contract reporting to the Director of Athletics, B.A., preferably in PE/Sport Management or related field. Salary: \$12,000. Possibilities of a part-time coaching position as a head coach in men's and women's diving or women's soccer also exist. Send letter of application, resume and list of references to: Mr. Andy Jennings, Director of Athletics, Box 259, Vassar College, Poughkeepsie, NY 12601. Applications will be accepted until the position is filled. Women and minority candidates are encouraged to apply. AA/EOE.

## Miscellaneous

**Coaching/Administrative/Teaching Position.** Clark University invites applications for a full-time 10-month coaching/administrative/teaching appointment as Head Coach of Men's and Women's Swimming and Diving. Golf Coach, Director of Aquatics, and Weight Room Supervisor. Responsibilities: Includes organizing, administering, and supervising the Varsity Swimming and Diving programs; hiring and supervising an assistant coach; organizing and administering a fall golf program; overseeing pool maintenance and care; and supervision of the weight room. As Director of Aquatics, responsibilities will include the development of instructional classes, recreational programs, working with outside groups and supervising lifeguards. Qualifications: Bachelor's degree required. Master's degree preferred. Previous coaching experience at the collegiate level preferable. Knowledge and understanding of pool maintenance and care necessary. Ability to recruit academically oriented student athletes within the Division III philosophy. Clark is a very selective Liberal Arts University with an enrollment of 2,200 undergraduate and 600 graduate students, located in Central Massachusetts. Salary: Commensurate with qualifications and experience. Application deadline: June 21, 1991. Starting Date: August 15, 1991, or as soon as possible. Send letter of application, resume, three recommendations and a list of professional references to: Linda S. Moulton, Director of Athletics, Clark University, 950 Main Street, Worcester, Massachusetts 01610. Clark University is an Affirmative Action/Equal Opportunity Employer.

**Assistant Director Athletic Academic Services.** Salary: \$35,024 to \$45,028. Based on qualifications and experience. Position: Under the direction and supervision of the Director, Athletic Academic Services, incumbent will be responsible for planning, managing and evaluating the tutorial and study hall services, the academic progress and athletic eligibility monitoring systems, and the Student Athlete Assistance Program's (SAAP) drug screening; serving as the Athletic Department Computer Information Analyst, serving as liaison to the Counseling Center, Financial Aid Office, Learning Center tutorial programs and various academic department chairpersons, providing academic, personal, and career counseling to student athletes; assisting the coaching staff in the assessment of potential recruits' admissions to the university; providing potential athletes, parents, and coaches with admissions and academic information; serve as a member of the SAAP Committee and teach academic success strategy classes. Qualifications: Education: Bachelor's degree or equivalent in one of the behavioral sciences required. Master's degree in Counseling, College Student Personnel or related field preferred. Experience: Four years of professionally related experience in a collegiate student personnel program or other professionally related experience required. (Possession of a master's degree in a directly related field may be substituted for one year of experience.) Preference given to applicants with administrative, computer systems and student-athlete academic counseling experience. Skills: In addition, the successful candidate must have strong interpersonal and organizational skills; be able to communicate effectively both orally and in writing; demonstrated effectiveness in working with and meeting the needs of diverse ethnic student cultures; and be able to work efficiently within the framework of intercollegiate athletics. The intercollegiate athletic program includes 11 men's and seven women's sports, and grants-in-aid are offered in all sports. The University competes in Division I-A of the National Collegiate Athletic Association, the Big West Conference. Filing: Resume, application, and three letters of recommendation should be sent by June 29, 1991, to: Teena Shields, Administrative Assistant, Fresno State University, 5305 N. Campus Drive/Room 147, Fresno, California 93740-0027.

**Health & Physical Education Instructor/Men's Basketball Coach** for Linn-Benton Community College, beginning September 9, 1991. Full-time, 9-month, 175-day faculty contract. Current starting salary range: \$19,521 - \$25,894 annually plus fringe benefits. 1991-92 academic year salary is being negotiated. Requires: Master's degree in physical education and health or equivalent, or 27 graduate hours in the subject matter. In addition, experience as a basketball coach is required, with experience as a head basketball coach at the community college level preferred. Experience or knowledge in teaching Wellness, Health, First Aid, and a variety of Physical Education classes at the community college level is also preferred. Application deadline: 5 p.m., July 8, 1991. Apply with LBCC Application, resume and unofficial transcripts at the Human Resources Department, CC 108C, LBC, 6500 S.W. Pacific Blvd., Albany, OR 97321 (503) 967-6502. EOE/AAE.

**Open Dates**

**Football Division III:** Ferrum College seeks to fill open dates on 9/21/91, 9/19/92, 9/25/93, 9/24/94. Contact Hank Norton, Director of Athletics, Ferrum College, Ferrum, VA 24088. 703/365-4493.

**Troy State University** has open dates: October 10, 1992, and October 9, 1992, for away and home... October 31, 1992, single game away for guarantee... Contact Athletics Director Robert E. Stewart, 205/670-3480, Davis Hall, Troy State University, Troy, AL 36082.

**Women's Basketball.** Frostburg State University, Frostburg, Maryland. Two home games: December 4, 1991; February 7 or 8, 1992; February 13, 1992; February 18, 1992. Will travel to your institution the following year. Contact: Jim Crawley - 301/689-4465.

**Football Division III:** Emory & Henry College, Emory, VA, seeks to fill home football date on October 31, 1992. Corresponding away date on October 30, 1993. Contact Lou Wacker 703/944-4121.

**Men's Basketball Tournament Opening.** November 15 and 16, 1991. Housing can be provided. For more information contact: Dr. Eric Forseth, Athletic Director, Northwest Nazarene College, Nampa, ID 83686, 208/467-8876, Fax # 208/467-8396.

**Football, Division III.** Open Dates. Plymouth State College seeks to fill open dates on September 12 or 19, 1991. Interested in home-and-home series and willing to sign four year commitment. Contact Steve Barnford, Athletic Director, 603/535-2751.

**Men's Basketball.** Sheldon Jackson College, Alaska. November 29-30, 1991. Guarantee \$4,000. Contact: Len Nardone, 907/747-5271.

**Men's Basketball Division III Tournament Opening.** November 23, 24th, 1991, at St. John Fisher College. Guarantee available. Contact Andy Moore: 716/385-8309.

**Women's Swimming.** Penn State University is seeking two teams for an invitational on December 7 & 8, 1991. Contact Bob Kimmel at (814) 865-1432 or (814) 237-2223.

**Men's Basketball Division III Tournament.** Opening now available for one team due to late withdrawal. Tournament to be held at Hamilton College, Clinton, NY, January 25-26, 1992. Guarantee includes meals and lodging for travel party of (18). Contact Tom Murphy at 315/859-4114.

**Men's Basketball Tournament (Div. III)** Nov. 22-23, 1991 at Stockton State Col in Pomona, NJ (near Atlantic City). Needs one team for Tip Off Tournament. Contact: Larry James at 609/652-4217.

## Assistant Director of Athletics

### Sports Information/Marketing/Promotions

#### (Senior Public Information Representative)

## University of California, Davis

Salary: \$3,150 - 4,725/mo.

Supervise all aspects of sports information and media-related services. Participate with the Associate Director to design and implement the Intercollegiate Athletics marketing plan. Includes advertising sales, season ticket sales, courtesy car program, summer sports camps, business sponsor program and all promotional activities to increase attendance for revenue-producing sports and events. Demonstrated excellent public speaking, writing, editing, marketing and promotions knowledge and skills. Special req.: Submit at least three business reference contacts with application. **Vacancy listing #0431.** For application materials, call UC Davis Employment 916/752-0531. M-F, 10 a.m.-2 p.m. E.O.E.

Send applications to: Employment Office  
TB 122  
University of California  
Davis, CA 95616

Final filing date: June 18, 1991.

## EAST STROUDSBURG UNIVERSITY

**East Stroudsburg University** invites applications for the following positions in its NCAA Division II intercollegiate athletics program (wrestling is a Division I sports)

FULL-TIME POSITIONS			
Head Coach of Wrestling	Active	\$22,000-25,000	
Head Women's Basketball Coach	Active	\$27,000-30,000	
PART-TIME POSITIONS			
Head Coach of Women's Soccer	Active	\$3,000	
Assistant Baseball Coach	Anticipated	\$3,000	
Assistant Football Coach(es)	Anticipated	\$2,000-4,000	
Head Men's and Women's Tennis Coach	Anticipated	\$5,000	
Asst. Men's and Women's Volleyball Coach	Active	\$2,000	
Asst. Wrestling Coach	Anticipated	\$12,000	
Coordinator of Facilities (May be combined with coaching position)	Anticipated	\$5,000	
Asst. Men's and Women's Track Coach	Anticipated	\$1,700	

Bachelor's degree required. For head coaching positions, three years of related coaching experience needed. All other positions require one year of experience. Successful candidates for the coaching positions must demonstrate expertise in the sport and a commitment to the rules and regulations of the NCAA, the PA State Athletic Conference and East Stroudsburg University. All coaches are responsible for recruiting talented student athletes and monitoring their academic progress towards graduation.

Send letter of application, current resume and the names, addresses and phone numbers of three current references to: Dick DeSchraver, Interim Athletic Director, East Stroudsburg University, East Stroudsburg, PA 18301. Review of applications will begin July 15, 1991, and continue until position is filled. ESU is an AA/EEO Employer. M/F/H/V.

## UNIVERSITY OF CINCINNATI

### Assistant Athletic Director—Compliance

**POSITION DESCRIPTION:** Full-time, 12-month appointment. This position will provide assistance to the athletics director and University administration in matters related to NCAA and Great Midwest Conference rules and eligibility issues.

**MINIMUM QUALIFICATIONS:** Bachelor's degree with a minimum of three years' experience in education or athletics administration. Direct experience in NCAA rules at the Division I level.

**DESIRED QUALIFICATIONS:** Master's or law degree and recent and extensive experience in NCAA rules and regulations compliance.

**RESPONSIBILITIES:** Position is responsible for rule education and monitoring for men's and women's athletics and serves as a resource for the University on athletically related rules and regulations.

**SALARY:** Commensurate with experience and qualifications.

**APPOINTMENT DATE:** July 1, 1991.

**APPLICATION DEADLINE:** Until position is filled.

**APPLICATION PROCEDURE:** Send letter of application, resume and names and addresses of three references to:

GEORGE WOLTERMAN  
UNIVERSITY OF CINCINNATI  
ATHLETIC DEPARTMENT, M.L. 21  
CINCINNATI, OHIO 45221

The University of Cincinnati is an Equal Opportunity Educator and Employer

# Reporter paints perfect picture of student-athlete

San Francisco Examiner writer **Dwight Chapin** recently provided readers with an enlightening description of University of San Francisco student-athlete **Kari McCallum**: "One of these days," Chapin wrote, "Kari McCallum is going to meet herself coming and going."

Why?

As Chapin noted, in the past year, McCallum:

- Was the top runner on the women's cross country team.
- Played in 18 of the school's 20 women's soccer games.
- Finished with winning records in both singles and doubles for the women's tennis team.
- Volunteered in campus ministry and at a convalescent home.
- Tutored underprivileged children.

dren.

• Maintained a 3.660 grade-point average (4.000 scale) with a double major of psychology and religion.

"I think if I played one thing year round, I'd be a lot better at it," she

Members of the football, men's basketball and men's swimming teams took part in sand-bagging efforts in and around Monroe, Louisiana.

## Briefly in the News

told Chapin. "But I enjoy having fun."

When prolific spring rains inundated parts of Louisiana, Northeast Louisiana University student-athletes pitched in to help protect area residents from flooding. "People just called and said they needed some help," said assistant men's basketball coach **Keith Richard**.

While attending Georgia Institute of Technology, **Brian Fleury**, a baseball player, was diagnosed as having Hodgkin's disease. The disease has been in remission for more than 18 months, and he now is a senior cocaptain on the University of Delaware baseball team.

Fleury recently talked about the ordeal with the University of Delaware Update. Following are excerpts

of his comments.

"(When discovered), it was stage three out of stage four. Not terrible news because no vital organs were involved, but not great news either.

"I had a couple of surgeries, a couple of biopsies, three months of chemotherapy, three months of radiation treatment and another three months of chemo.

"I found great things in that year. I got sick a lot and never really felt good, but I met a lot of really young children with cancer and learned just how very special they are. Especially Doug, a young boy from Minnesota who was in for a bone-marrow transplant. His brother was the donor.

"We went into remission at the same time. He still writes to me. He's really tiny because of all the treatment he's had. We met once after we were out of the hospital at the Metrodome, where Georgia Tech was playing in a tournament.

"I was so touched. I was falling apart, and here was this 11-year-old telling me about life.

"A lot of kids my age don't understand. They think they have troubles and a lot of people are unfortunate—but compared to kids with cancer, kids who have missed their whole childhoods, I don't know.

"The last time I saw Doug, he patted me on the back and said, 'hey man, WIT—Whatever It Takes.' Now, I write WIT in the brim of my hat at the beginning of each season."

The College Football Hall of Fame is operating under its summer schedule. Through September 2, the Kings Island, Ohio, complex will be open daily from 9 a.m. to 6 p.m.

Downtown Athletic Club officials have announced formation of The National Heisman Trophy Club. Members will receive a plaque, the opportunity to attend the Heisman award ceremony and dinner, and other benefits. More information may be obtained by calling the Downtown Athletic Club at 800/662-5007.

Colgate University men's tennis coach **Joe Abrahamson** earned career victory No. 350 this season—his 26th at the school. According to the school, he is among the top 15 coaches in Division I in career victories.

In response to an item in the May 1, 1991, issue of The NCAA News concerning Villanova University baseball coach **George Bennett**, St. Joseph's University (Pennsylvania) sports information director **Ken Krsolovic** reports that Bennett actually earned 82 career victories at St. Joseph's (Pennsylvania), not 68, as was reported in the May 1 News.

More Report Cards: Named scholar-athletes at Miami University (Ohio) were **Karina Goping**, **Trevor Hanlon** and **Matt Scarr**. Each owns a cumulative grade-point average of at least 3.200 (4.000).

Hunter College has announced that 64 student-athletes have earned GPAs of at least 3.000, including 27 with GPAs of at least 3.500. Four of them earned 4.000s.

Six of the eight student-athletes on Grand Canyon University's women's tennis team own cumulative GPAs of at least 3.500. Senior **Michel Pyle** has the "lowest" GPA of the group with a 3.620.

## Aztec

*Continued from page 8*

student-athletes about NCAA requirements concerning involvement with professional agents, and the availability of a university career-counseling panel that can assist them within NCAA rules and regulations.

C. Due to his involvement in the violations of NCAA legislation found in this case, the former head women's basketball coach will be informed in writing by the NCAA that in the event he had been employed or affiliated in an athletically related position at an NCAA member institution during the two-year period from the official date of his termination by the university (May 14, 1989, to May 14, 1991), he and the involved institution would have been requested to appear

before the Committee on Infractions in order for the committee to consider whether that member institution should have been subject to the show-cause procedures of Bylaw 19.4.2.1-(1), which could have limited the former coach's athletically related duties at the new institution for a designated period. However, because the two-year period in question has expired and because the former coach has not been employed at an NCAA member institution since his termination of employment from San Diego State University, no further action by the committee is contemplated.

(NOTE: Should San Diego State University appeal either the findings of violations or proposed penalties in this case to the NCAA Council subcommittee of Division I members, the Committee on Infractions will submit an expanded infractions report to the members of the Council who will consider the appeal. This expanded report will include additional information in accordance with

Bylaw 32.8.5. A copy of the committee's report would be provided to the institution prior to the institution's appearance before the Council subcommittee and, as required by Bylaw 32.8.6, would be released to the public.

Also, the Committee on Infractions wishes to advise the institution that when the penalties in this case become effective, the institution should take every precaution to ensure that their terms are observed; further, the committee intends to monitor the penalties during their effective periods, and any action contrary to the terms of any of the penalties shall be considered grounds for imposing more severe sanctions in this case.

Finally, should any actions by NCAA Conventions directly or indirectly modify any provision of these penalties or the effect of the penalties, the committee reserves the right to review and reconsider the penalties.)

NCAA COMMITTEE  
ON INFRACTIONS

### News quiz answers:

1-False, 2-True, 3-False, 4-True, 5-False, 6-False, 7-True, 8-True, 9-False, 10-True.

# When it comes to Insurance, colleges come to NSU.

When it comes to meeting the sophisticated insurance needs of today's college athletic programs, one name stands out: National Sports Underwriters, Ltd.

NSU specializes in the development and administration of sports insurance programs and is the administrator of the NCAA sponsored insurance programs.

### The sponsored insurance programs include:

- Life time Catastrophic Injury
- Basic Athletic Injury
- Staff Accident
- Exceptional Athlete Disability

### Other coverages available include:

- Comprehensive General Liability
- Athletic Participant Legal Liability
- Spectator Liability
- Non-owned/Hired Auto
- Loss-of-Revenue
- Sports Camps
- All-Star Games and Bowl coverages

NSU is the leader in college athletic insurance services, serving a client roster of more than 1,200 colleges, universities and affiliated organizations throughout the United States.

**Recruit NSU for your teams, too.**

**Call 1-800-621-2116 today.**



NATIONAL  
SPORTS  
UNDERWRITERS, LTD.

d.b.a NSU Sports Insurance Agency in Various States  
9300 Metcalf, Suite 350  
Overland Park, Kansas 66212  
Phone (913) 383-3133  
Fax: (913) 383-9515

An affiliate of K&K Insurance Group, Inc.  
and Lincoln National Corporation