

The NCAA News



Official Publication of the National Collegiate Athletic Association

January 2, 1991, Volume 28 Number 1

Record turnout expected for 'reform Convention'

The reform agenda—considered by most observers to be the most extensive package of major legislative proposals at any single Convention in NCAA history—apparently will draw a record turnout for the Association's 85th annual Convention January 7-11 in Nashville.

As of December 28, a total of 2,293 persons had preregistered for the sessions at the Opryland Hotel—nearly 300 more than on the comparable date a year ago.

Last year, when just over 2,000 had preregistered as of December 29, the eventual Convention attendance in Dallas was a record 2,171. So it is likely that this year's attendance will exceed 2,300 and may reach 2,400.

Some who preregister do not actually attend the Convention, but they usually are offset by late registrations.

Last year's Convention was the first to exceed 2,000 attendees, and

that came after four straight years in the 1,800 range—1,896 in San Francisco in 1989, 1,816 in Nashville in 1988, 1,820 in San Diego in 1987 and 1,861 in New Orleans in 1986.

Just 10 years ago, 1,314 attended

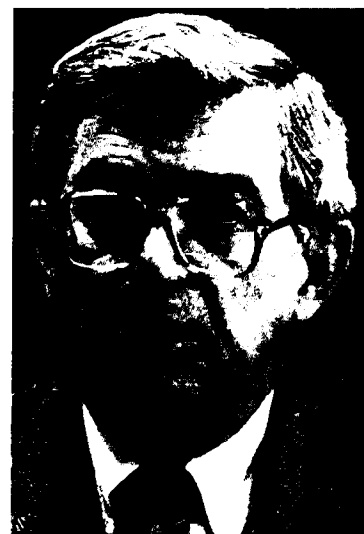
the 75th annual Convention in Miami Beach—establishing a record at the time.

Format

This year's Convention is a day longer than last year, returning to the "extra day" format employed from 1987 through 1989. The Executive Committee was compelled to add half a day to the division business sessions and half a day to the general business session in light of the volume and complexity of the proposed legislation.

Also playing a part in the extended schedule is the fact that there will be 100 or more roll-call votes—on every proposal in the reform package, which includes all

See Record, page 5



Albert M. Witte

Convention highlights

- "State of the Association" address, opening session, 4:30 p.m. Monday

- Annual delegates reception, 6 p.m. Monday

- Special breakfast for CEOs, 6:30 a.m. Tuesday

- Division business sessions begin at 8 a.m. Tuesday and

continue to noon Wednesday

- 26th annual honors program, 7:30 p.m. Tuesday

- Luncheons for all delegates, noon Tuesday, Wednesday and Thursday

- General business session begins at 1:30 p.m. Wednesday and continues to noon Friday as needed

Reform agenda gets strong CEO support

A poll of the chief executive officers of NCAA colleges and universities shows strong support for all portions of the "reform agenda" that will be voted upon at the 85th annual NCAA Convention January 7-11 in Nashville.

The poll was conducted for the NCAA Presidents Commission just before Christmas by Wilford S. Bailey of Auburn University, a former NCAA president, and John W. Ryan, president emeritus of Indiana University and a former chair of the Presidents Commission. Bailey and Ryan are serving as consultants to the Commission in that group's efforts to gain passage of the reform proposals.

40 percent participation

More than 40 percent of all CEOs at NCAA institutions participated in the poll, and they supported every proposal in the reform package, with most of them receiving favorable margins ranging from 70 percent to nearly 100 percent.

The reform proposals deal largely with reductions in time demands on student-athletes, cost reduction and refinements of the NCAA membership structure.

"We are deeply appreciative of both the response rate and the results of the poll," Bailey and Ryan said in releasing the results December 27. "We conducted the survey at a very busy time for most presidents and chancellors. That they took the time to respond with such an overwhelming level of support is most encouraging."

Close vote

The only proposals that did not receive at least a 2-to-1 margin in favor were those dealing with greater voting autonomy in Division I (Proposal No. 48), which was supported by 54.7 percent of the Division I CEOs responding; sports-sponsorship requirements in Division I (No. 45), favored by 60 percent of that division's respondents, and summer financial aid for student-athletes (No. 28), supported by 62 percent in Division I.

"Concerns regarding the voting autonomy issue may be resolved at the Convention," Bailey said, "if the NCAA Council will sponsor an

amendment to establish a delayed effective date."

Strong support

Meanwhile, the CEOs overwhelmingly favored reductions in recruiting, numbers of coaches and numbers of grants-in-aid; elimination of athletics dormitories; reductions in playing and practice seasons; elimination of the opportunity to be classified in more than one NCAA membership division in certain sports, and tougher Division I membership criteria in the areas of scheduling and minimum financial aid commitment.

The reductions in playing and practice seasons, subject of considerable publicity in recent months, were supported by 90 percent of the Division I CEOs, as well as by more than 82 percent in Division II and nearly 79 percent in Division III.

Delegates will use a new system of electronic voting in Nashville

An electronic voting system will be employed for the first time at the 1991 Convention in Nashville.

The system, if it works as well as it has in tests, should significantly shorten the time that will be needed to complete the 95 or more roll-call votes that are expected at the Convention. Counting from 450 to 500 votes per minute, the system could handle a roll-call tally in as little as one minute in division business sessions and two minutes in the general session.

Each voting delegate to the Convention will receive a voting box that acts as a radio transmitter and receiver.

When a vote begins, each delegate will turn on the box specially coded for that delegate's member institution or conference. A slowly flashing light will appear. Then, the delegate will push one of three voting buttons—for "yes," "no" or "abstain"—and the light will begin to flash more rapidly.

A vote still can be changed at that point. Only when the delegate

pushes a "lock-in" button does the unit transmit the vote. At that time, the light on the unit will quit flashing and appear solid.

Meanwhile, the electronic voting system's central computer begins searching for signals from boxes where votes have been cast. When it finds one, it checks the unit's coding to verify that the institution or conference is eligible to vote on the proposal, and then collects the vote.

Once the computer collects the vote, the light on the box will go out, letting the voter know that the vote has been recorded. The central computer can go through its voting list as many times as necessary to collect all votes. It will be up to the session chair to determine whether enough time has been allowed for votes to be cast.

As votes are counted in the central computer, results can be sent to a printer at the chair's podium, where they will be announced to delegates. Results also will be transmitted to a printer in the Convention's media room, rather than being printed in

the computer area as in past years.

The new electronic system is intended for use only on roll-call votes, which means that the colorful voting paddles that have become a trademark of NCAA Convention sessions still will be used for other votes. However, the electronic system could be used even on paddle votes where an accurate count is needed.

Upon arrival in Nashville, delegates are being asked to register as early as possible. At that time, the delegate will receive a voting paddle, then be asked to move to a special counter near the registration area to receive the electronic voting unit. Each voting delegate will be asked to show the paddle in order to receive the unit.

Delegates also will receive a 1½-inch-thick packet of punch cards, just in case the new system fails. If that happens, the Convention will resort to the old system for conducting roll-call votes, employing the punch cards.

12 to join Commission in '91

Twelve new members will join the NCAA Presidents Commission upon adjournment of the 1991 Convention in Nashville, including six representing Division I institutions and three each from Divisions II and III.

Commission members are elected by their peers at NCAA member institutions or, in the case of Division I-A conferences, selected by the chief executive officers in each of those conferences. They serve four-year terms or, in the case of interim replacements, the remainder of the vacant term.

The roster for the 1991 Commission will be distributed at the Nashville Convention. Outgoing Commission members serve until the end of the Convention.

The remaining 32 Commission members continue their terms in 1991.

The 12 new Commission members:

Division I

Gene A. Budig, University of Kansas, replacing Martin A. Masingale, University of Nebraska, Lincoln (position designated by the Big Eight Conference).

Ronald G. Eaglin, Coastal Carolina College of the University of South Carolina, replacing Michael R. Ferrari, Drake University, who was eligible for reelection to a full term but chose not to run due to institutional obligations. This is a Division I-AAA at-large position.

Eamon Kelly, Tulane University, replacing Bernard F. Sliger, Florida State University, as a representative of Division I-A football independents in the South.

Curtis L. McCray, California State University, Long Beach, replacing Harold H. Haak, California State University, Fresno (position designated by the Big West Conference).

Oscar C. Page, Austin Peay State

University, replacing Stanley G. Rives, Eastern Illinois University, as the Division I-AA Central representative.

William E. Shelton, Eastern Michigan University, replacing Paul J. Olscamp, Bowling Green State University (position designated by the Mid-American Athletic Conference). Shelton will serve the remainder of Olscamp's term.

Division II

Thomas W. Cole, Clark Atlanta University, replacing Billy C. Black, Albany State College (Georgia).

John W. Moore, California State University, Stanislaus, replacing Lloyd D. Vincent, Angelo State University.

Olin B. Sansbury, University of South Carolina at Spartanburg, replacing Michael J. Adanti, Southern Connecticut State University.

Division III

James R. Appleton, University of Redlands, replacing Jack L. Stark, Claremont McKenna College (Claremont McKenna-Harvey Mudd-Scripps Colleges consortium).

Rev. Michael J. Lavelle, John Carroll University, replacing John R. Brazil, Southeastern Massachusetts University.

Cordell Wynn, Stillman College, replacing William A. McMillan, Rust College. Wynn, a charter member of the Commission in 1984, becomes the second president to be elected to serve a second term, joining Arend D. Lubbers, Grand Valley State University, in that distinction.

Photographs and biographical sketches of the new Commission members will be featured in the January 16 issue of The NCAA News.

Meanwhile, at press time, Division I Commission members were in the process of selecting the group's new Division I chair, to replace Sliger. The individual elected will join the other 1991 Commission officers on the Commission's executive committee: R. Gerald Turner, University of Mississippi, Commission chair; Asa N. Green, Livingston University, Division II chair, and David L. Warren, Ohio Wesleyan University, Division III chair.

Althea Gibson will receive NCAA's highest honor

Tennis great Althea Gibson will receive the Association's Theodore Roosevelt Award at the 1991 NCAA Convention in Nashville, Tennessee.

The "Teddy Award" is the highest honor the NCAA can confer on an individual. Gibson becomes the first woman to receive the award, which will be presented during the NCAA honors dinner beginning at 7:30 p.m. Tuesday, January 8, in the Presidential Ballroom of the Opryland Hotel.

A 1953 graduate of Florida A&M University, Gibson competed on the women's tennis and basketball teams and the men's golf team. She joined the Ladies Professional Golf Association in 1965 and made an attempt to qualify for an LPGA event this past summer.

Gibson, who was raised in New York City's Harlem area, was the first black tennis player to gain international prominence. She won

56 major singles and doubles championships during her 23-year career.

She was the American Tennis Association of National Negro Women singles champion for 10 consecutive years (1948 to 1957).

In 1956, she won the singles title and was a member of the winning doubles team at the French Open Championship. Gibson also won the singles titles at both Wimbledon and the U.S. Open Championship in 1957 and 1958, in addition to winning doubles titles at Wimbledon in 1956, 1957 and 1958. She was a member of the Wightman Cup team in 1957 and 1958.

After retiring from the tennis circuit in 1960, Gibson became director of community relations and promotional representative for Ward Baking Company in New York City. She joined the Essex County Park Commission as special sports consultant in 1970 and became program director at Valley View Racquet Club in 1972.

In 1975, she was appointed state commissioner of athletics in New Jersey and served in that position

until 1985. She served on the three-member state athletics control board from January 1986 until March 1988, when she was appointed to the Department of Community Affairs, specializing in physical fitness and its application to senior citizens.

Gibson has written an autobiography and performed as an actor and singer, and she was active in the formation of Vanguard Sports Management, Inc., a personal-management and sports-equipment corporation. She has served on numerous professional tennis committees; worked with the LPGA; developed a tennis instructional film series and served as national director of the Pepsi Cola Mobile Tennis Program, and made numerous public appearances for groups such as the Girl Scouts, Boy Scouts, YMCA and YWCA.

Her many honors include the Associated Press Poll-Fredrick C. Miller Eagle and Babe Zaharias awards as the most outstanding woman athlete of 1957-58 and the Banneer award for sportsmanship. She received an honorary degree

from Monmouth College (New Jersey) in 1980 and is honored in the Florida Sports Hall of Fame and the National Lawn Tennis Hall of Fame and Museum.

Gibson still participates in tennis, golf and bowling.



Althea Gibson

Decision to cut soccer reaffirmed

Southeast Missouri State University's Board of Regents recently reaffirmed an earlier decision to discontinue immediately its intercollegiate soccer program.

Southeast Missouri State first cut soccer in May 1989 as part of overall budget cuts. It was reinstated for a two-year period later that month through funding from out-

side sources. The two-year extension ran out at the end of this season.

Richard A. McDuffie, Southeast Missouri State athletics director, said that with the school's pending move to Division I, he didn't believe the department could allocate resources that would give the soccer program a chance to be successful at the Division I level.

Zahn is emcee for honors event

Paula Zahn, coanchor of "CBS This Morning," will emcee the NCAA honors dinner at the 1990 Convention in Nashville, Tennessee.

The dinner will begin at 7:30 p.m. Tuesday, January 8, in the Presidential Ballroom of the Opryland Hotel. Highlights of the dinner include the presentation of the Theodore Roosevelt Award and recognition of the College Athletics Top XII.

Zahn, a native of Naperville, Illinois, graduated from Stephens College in Columbia, Missouri. She attended Stephens on a cello scholarship and combined her music studies with journalism, her eventual major.

She competed on the varsity golf and swimming teams at Stephens. She also attended Caius College at Cambridge University in England and the University of Valencia in Spain.

In 1978, Zahn began her career at WFAA-TV in Dallas. From 1979 to 1987, she worked as an anchor and

reporter at stations in San Diego, Houston, Boston and Los Angeles. She joined ABC News in November 1987 and was coanchor of "World News This Morning" and the news segments of "Good Morning America." She also anchored "The Health Show."

She traveled to Cuba in April 1989 to report on Mikhail Gorbachev's visit and to Moscow in May 1988 for the fourth Reagan-Gorbachev summit. In Cuba, she secured the only one-on-one interview with Fidel Castro. She also anchored the morning news broadcast from New Orleans during the Republican National Convention in August 1988.

In addition to her work as a morning news anchor, Zahn anchored and reported on two prime-time news specials for ABC News—"America's Kids: Diet of Danger" in December 1988 and "The Electronic Time Machine" in May 1989.

She moved to her current position with CBS in February 1990.



Paula Zahn

During her career, Zahn has received two Emmy awards, a National Commission on Working Women award, and a newscaster-of-the-year award (1983) from American Women in Radio and Television.

Legislative Assistance

1991 Column No. 1

In an effort to assist the membership in understanding proposed legislation to be voted upon at the 1991 NCAA Convention, the NCAA Interpretations Committee has responded to requests for interpretations related to various Convention proposals. Please note that the Interpretations Committee's decisions regarding these interpretations will be reviewed by the NCAA Council prior to the Convention, and any changes will be distributed to the membership prior to the division business sessions.

The following is a list of the issues related to 1991 Convention proposals reviewed by the Interpretations Committee during its December 17, 1990, in-person meeting (1990 Conference No. 19).

1991 Convention Proposal No. 20

1. Recruiting—telephone calls and contacts. Reviewed the provisions of Proposal No. 20-C and determined that it would be permissible for institutional staff members to receive telephone calls initiated by a prospective student-athlete at the prospect's expense prior to July 1 following the completion of the prospect's junior year in high school, provided the telephone conversation is conducted for the purpose of arranging or requesting complimentary admissions to an institution's athletics event and no recruitment takes place during the call.

1991 Convention Proposal No. 21

2. Contacts and evaluations. Reviewed Proposal No. 21 as it relates to the following situations:

a. Determined that Proposal No. 21-D limits a member institution to three in-person, off-campus recruiting contacts per prospect at any site, regardless of the number of sports in which the prospect is being recruited by that institution.

b. Confirmed that a visit by a coaching staff member to a high school (without contact) counts as an evaluation per Proposal No. 21-A for all prospects in that sport at the high school.

c. Agreed that the limitation in Proposal No. 21-B that institutional staff members may not evaluate a prospective student-athlete on more than four occasions during the academic year is sport specific; therefore, if a prospect is being earnestly recruited by a member institution in more than one sport, it would be permissible for institutional staff members to evaluate the prospective student-athlete on four occasions in each sport during the academic year; however, institutional staff members in any given sport would be limited to a total of four evaluations under such circumstances.

d. Determined that an institution would utilize one evaluation and one contact during the same day if the institution observes the prospect's practice or competition and subsequently makes a permissible contact with the prospect.

e. Determined that a member institution that utilizes its four evaluations in the sport of football during the fall playing season would be precluded from evaluating the prospect during the May evaluation period; noted that under such circumstances, it would not be permissible for the institution to visit a prospects institution or observe any practice or competition at any site at which the prospect participates (even if the institution is recruiting a different prospect in that sport), inasmuch as such activities would constitute an evaluation per Proposal No. 21-A.

1991 Convention Proposal No. 22

3. Recruiting—National Letter of Intent dead periods. Reviewed the provisions of Proposal No. 22, which would preclude the National Letter of Intent from being hand delivered during a dead period, and determined that it would not be permissible for an institutional staff member to travel to a prospect's residence to deliver a National Letter of Intent during that time period, even if no contact occurs in conjunction with the delivery; determined that it would be permissible for an institution to deliver a National Letter of Intent by Federal Express or facsimile; in a related matter, confirmed that in accordance with NCAA Bylaw 13.1.4.3-(d), the dead period would remain in effect subsequent to the prospect's signing of the National Letter of Intent for the remainder of the five-day period.

1991 Convention Proposal No. 23

4. Recruiting materials. Reviewed the provisions of Proposal No. 23 as it relates to the following issues:

a. Determined that the one-color restriction on institutional press releases applies to all athletics department releases.

b. Determined that the one-color restriction also would be applicable to all press releases issued by member conferences.

c. Determined that a member institution may not print its athletics department stationery in more than one color (i.e., the restriction extends beyond the issue of limiting to one color the stationery that actually is sent to prospects).

d. Determined that a prospective student-athlete would not be precluded from receiving an admissions department videotape related to the general benefits of attending the institution, provided the videotape is issued in accordance

See Legislative, page 8



David Bing



Edith McGuire Duvall



Michael L. Garrett



Tone N. Grant



Steve Juday



Capt. James C. Lewis

Silver Anniversary honorees are community leaders

A penchant for community service is the common denominator among this year's recipients of the NCAA Silver Anniversary awards.

The six recipients of the awards, which recognize former student-athletes who have gone on to distinguished careers since completing their college athletics careers 25 years ago, are David Bing, basketball; Edith McGuire Duvall, track; Michael L. Garrett, football and baseball; Tone N. Grant, football and lacrosse; Steve Juday, football and baseball, and Capt. James C. Lewis, lacrosse and soccer.

These individuals and six of today's top student-athletes will be honored as this year's College Athletics Top XII. The group will be recognized at the NCAA Convention in Nashville, Tennessee, during the honors dinner that begins at 7:30 p.m. Tuesday, January 8, in the Presidential Ballroom at the Opryland Hotel.

Following are biographical sketches of the six award winners:

David Bing

Bing was a 1966 consensus all-America basketball player at Syracuse University. He was the first basketball player to be named the

school's athlete of the year. Bing averaged 24.9 points and 10.3 rebounds per game during his career. He scored 1,883 career points, a school record that stood until 1989. While at Syracuse, Bing was a member of Phi Kappa Alpha and Sigma Alpha Mu.

After graduation, Bing enjoyed a 12-year career in the National Basketball Association. He played nine years for the Detroit Pistons and was voted the league's rookie of the year in 1967. A seven-time all-star selection, Bing's jersey number (21) was retired by the Pistons in 1983.

A member of the Naismith Memorial Basketball Hall of Fame, Bing currently is president of Bing

Steel, a wholesale steel and steel-strip-processing business. In addition, he formed Superb Manufacturing, Inc., an automotive stampings business, in 1985, and Heritage 21, Inc., a construction management firm for commercial and office buildings, in 1989.

Bing's civic contributions include work with the Michigan Cancer Foundation, March of Dimes, Michigan Society of Crippled Children and Adults, Big Brothers, Metropolitan Boys Club of America, Spe-

cial Olympics and the St. Ceciliaville Inner City Basketball Program. Bing serves on the board of directors for several Detroit organizations, including the Economic Club of Detroit, the Boys and Girls Club of Metropolitan Detroit, Junior Achievement, and the Detroit Urban League. In 1985, Bing was named Detroit's Humanitarian of the Year. He is a major contributor to Syracuse's minority scholarship fund.

Edith McGuire Duvall

Duvall was a standout track athlete at Tennessee State University. She won a gold medal in the 200-meter dash at the 1964 Olympics and was a silver medalist in the 100-meter dash and 400-meter relay. Duvall set a world record in the 70-yard dash, breaking Wilma Rudolph's standard. She tied an American record in the 100-meter dash and was a member of six AAU all-America women's track teams. While at Tennessee State, Duvall was a member of Delta Sigma Theta.

Duvall owns three McDonald's franchises in the Oakland, California, area. Her civic contributions include involvement with the United Negro College Fund and the Big

Sisters program in the Oakland area. She participates in the Oakland school district's mentor program, serving as a role model for students.

Michael L. Garrett

A two-time all-America football player at the University of Southern California, Garrett won the 1965 Heisman Trophy. He rushed for 1,440 yards that year, starting at both tailback and cornerback. Garrett also was an all-Pacific-10 Conference outfielder.

While at Southern Cal, Garrett was one of the founders of the Cool-Head Program, which involved meeting with youth groups to offset racial tension. Garrett volunteered at McLaren House, a county home for abused children, and was an assistant curator at the California Museum of Science and Industry.

After graduating from Southern California, Garrett played professional football for eight years, becoming the first player to rush for more than 1,000 yards for two different teams. He was an all-pro selection and played in two Super Bowls. In late December 1990, Garrett was named associate director of athletics at Southern California. He

previously was director of business for the Great Western Forum and also has been a color commentator for Prime Ticket television.

Garrett founded San Diego's Harabee House, the West Coast's first community-based institution for juvenile delinquents. He also heads the East Los Angeles Youth Activity Foundation and is cochair of the Ricky Bell Memorial Golf Tournament.

Tone N. Grant

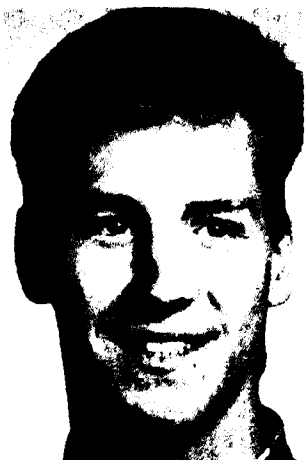
Grant was a three-year letter-winner in football and lacrosse at Yale University. His 1966 lacrosse team finished third nationally. While at Yale, Grant financed his education by obtaining education loans, maintaining scholarship jobs and coaching at a junior high school. Grant was a member of the 1966 Class Council, the Berzelius Society and Delta Kappa Epsilon.

Grant currently is president and one of three principals of Refco Group, Ltd., the largest futures and options firm in the world. His firm's clients include international financial institutions, insurance companies and governments. While serving as the senior vice-president and

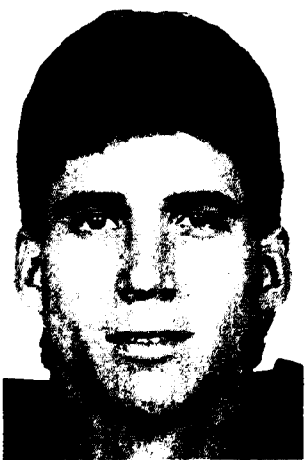
See Silver, page 5



Suzanne M. Favor



Patrick W. Kirksey



Edward T. McCaffrey



Meredith L. Rainey



Marie L. Roethlisberger



Patrick H. Tyrance

Six top student-athletes will be cited by NCAA

Four individual champions representing two NCAA sports—gymnastics and track and field—and two all-America football players are this year's Today's Top Six.

The honorees are runner Suzanne M. Favor, University of Wisconsin, Madison; gymnast Patrick W. Kirksey, University of Nebraska, Lincoln; wide receiver Edward T. McCaffrey, Stanford University; runner Meredith L. Rainey, Harvard University; gymnast Marie L. Roethlisberger, University of Minnesota, Twin Cities; and linebacker Patrick H. Tyrance Jr., University of Nebraska, Lincoln.

These individuals and six Silver Anniversary award winners will be honored as this year's College Athletics Top XII during this year's honors dinner at the NCAA Convention in Nashville, Tennessee. The dinner will begin at 7:30 p.m. Tuesday, January 8, in the Presidential Ballroom at the Opryland Hotel.

Following are biographical sketches of Today's Top Six:

Suzanne M. Favor

Favor is a nine-time NCAA champion and won an unprecedented four 1,500-meter titles at the Division I Outdoor Track and Field Championships. She recently won the inaugural Babe Zaharias award as female athlete of the year. She also won the 1990 Jumbo Elliott award. She won 54 of 56 finals races during her collegiate track career. She was undefeated in Big Ten Conference and NCAA individual track competition (32 races). She finished second at the 1990 Division I Women's Cross Country Championships.

She maintained a 2.823 grade-point average (4.000 scale) while earning a degree in art (graphic design). She has been a three-year volunteer with the Wisconsin Special Olympics and was honorary chair for the Children's Miracle Network. She has made numerous

appearances for nonprofit groups on behalf of the University of Wisconsin Foundation and Alumni Association.

Patrick W. Kirksey

Kirksey took top honors on the parallel bars in the 1990 NCAA Men's Gymnastics Championships and helped Nebraska win the team championship. He was the all-around champion in 1989 and was a member of Nebraska's 1988 championship team. He won 10 Big Eight Conference titles during his career, including five of the championship's seven individual titles in 1990. He was a two-time conference all-around champion and a finalist for the IBM/George Nissen award for the top senior gymnast.

The recipient of an NCAA postgraduate scholarship, Kirksey received a degree in finance and had a grade-point average of 3.632. He was on the Big Eight academic honor roll and received the Ne-

braska athletics/academic counseling high medal of distinction.

A two-time recipient of the Hartung Award as Nebraska's gymnast of the year, Kirksey gave a motivational speech at the 1990 Future Farmers of America convention.

Edward T. McCaffrey

McCaffrey has started at wide receiver for four years. He has earned all-America and all-Pacific-10 Conference honors. He led the conference in receptions per game and yardage and finished in the top 10 in the final NCAA statistics in those categories. He has been selected to play in the East-West Shrine game.

He has maintained a 3.400 grade-point average and will earn a bachelor's degree in economics and a master's degree in organizational behavior. He is the pen pal to the John S. Clarke Elementary School in Pennsylvania and is a founder of the Stanford Undergraduate Law

Society.

Meredith L. Rainey

The first woman from the Ivy Group to win an NCAA individual track title, Rainey took top honors in the 800 meters at the 1989 outdoor track championships and again at the 1990 indoor championships. She set a record of 2:02.77 at the indoor championships. She also won the 800 meters at both the 1990 TAC championships and the U.S. Olympic Festival.

Rainey maintained a 3.300 grade-point average. Her degree is in social studies. She is the recipient of an NCAA postgraduate scholarship and Harvard College and Elizabeth Cary Agassiz scholarships.

The cochair of the Harvard-Radcliffe Foundation for Women's Athletics, she has been a member of the Big Sister program and the executive board of the Black Students Association. She also has worked with

See Association, page 5

Comment

Momentous changes loom at NCAA Convention

By Thomas O'Toole
Scripps Howard News Service

If a massive reform package passes as expected at the NCAA Convention in Nashville, the inmates will no longer run the asylum. The caretakers finally will.

University presidents, reacting to either a need for serious change or a glut of negative publicity, are spearheading efforts to build a new model for collegiate athletics, one called for by NCAA Executive Director Richard D. Schultz last year.

Proposals to cut coaches, contests, scholarships and the hours demanded of athletes will dominate the annual legislative meeting January 7 to 11 in Nashville, Tennessee.

"This is the first major effort in many years to begin the process of making athletes indistinguishable from the general student body," said Albert M. Witte, current NCAA president. "The reform package that is coming up owes much to (the presidents') political muscle."

Schultz said, "If we are successful with most of these things, we'll have a pretty good framework or road map from which to work. But if

we're going to have substantive changes, the presidents really have to be involved and take a leadership role. Change doesn't come easy, especially in college athletics."

The presidents, without a doubt, now are the major players in the reform movement

"There's going to be a lot of special-interest groups debating about playing and practice seasons, reductions of coaching staffs, reductions of scholarships, and so forth," Schultz said. "But, in the end, most of those things are going to pass. The Presidents Commission has done a good job of doing its homework and establishing a good base of support."

The presidents, without a doubt, now are the major players in the reform movement. The Knight Commission—which includes college presidents; business leaders; Rep.

Tom McMillen, D-Maryland, and Secretary of Education Lamar Alexander—and groups of athletics directors and conference commissioners all contributed significantly.

But the Presidents Commission set the tone by establishing policy.

"The work the Presidents Commission has done and the efforts it has taken in the past few months are much greater than anything it has done in the past," said Karl Benson, commissioner of the Mid-American Conference. "(The president) have a lot at stake. They have failed in the past and it doesn't appear they are going to fail this time."

The presidents' failure came in 1987. When they tried to push through reforms, they were defeated by the NCAA old guard and power coaches, who rallied behind an impassioned speech by Michigan's Bo Schembechler defending the status quo.

That time, the presidents lacked organization and preparation.

"Some cynics say that will happen this time, but the environment is different," University of Maryland, College Park, President William Kirwan said. "The environment is

right for change. And the presidents are feeling guilty that they have not taken a stronger stand."

In that environment, there are three major facets of the reform package that will be voted on by the membership:

● **Cost containment:** Most officials agree that expenses are out of hand and threatening the future of athletics departments. Even some of the most successful schools in the country operate in the red.

But not everyone agrees on how to cut costs. A proposal has been made to trim coaching staffs. Other proposals will cut the number of scholarships by 10 percent, the amount of time spent on recruiting and the number of games a team can play during a season (other than football and basketball).

"The costs of intercollegiate athletics will sink intercollegiate athletics if we don't take some strong steps," Kirwan said.

● **Time demands:** These proposed changes are seen by some as the Convention's most significant.

"I've long believed one problem we've needed to address is the excessive demands the system puts on

a student-athlete's time," University of Miami (Florida) President Edward Foote said. "This (proposal) brings the balance between intercollegiate athletics and academics into much better equilibrium."

Others see them as the most distressing. The debate figures to be emotional. "I wouldn't want to predict any fights," Witte said, "but there will be some controversy."

● **Restructuring:** Another emotional issue. Some schools who compete on a serious Division I level only in basketball may drop to Division II. Division I membership would require sponsorship of seven men's and seven women's sports. There also would be financial aid minimums applied.

Critics see the proposal as a way to eliminate schools with smaller budgets from Division I and call it a contradiction to force athletics departments to increase commitments while at the same time being told to cut costs. Supporters call it an attempt to group schools with the same philosophy of broad-based departments.

Looking Back

Five years ago

The 80th annual Convention, January 13-15, 1986, at the Hilton Riverside in New Orleans, permitted final voting in the separate division business sessions for the first time. The Convention voted to authorize drug testing at NCAA championships and postseason football contests. John R. Davis, Oregon State University, was NCAA president.

Ten years ago

The 75th annual Convention, January 12-14, 1981, at the Fontainebleau Hilton in Miami Beach, adopted the "governance plan" to include women's athletics programs and services within the NCAA structure, including 19 additional women's championships. The NCAA president was William J. Flynn, Boston College.

Twenty years ago

The 65th annual Convention, January 11-13, 1971, at the Astroworld Hotel in Houston, deferred action on a recommendation by the Financial Aid Committee that all financial aid be based on need and that annual new grants be limited to 30 in football and six in basketball. The Convention also adopted a recodified constitution and bylaws. Harry M. Cross, University of Washington, was NCAA president.

Thirty years ago

The 55th annual Convention, January 9-11, 1961, at the Penn-Sheraton Hotel in Pittsburgh, adopted legislation requiring a student-athlete to complete all seasons of eligibility within a five-year period. It also abolished the National Collegiate Boxing Championships. Herbert J. Dorricott of Western State College (Colorado) was NCAA president.

Forty years ago

The 45th annual Convention, January 11-13, 1951, at the Adolphus Hotel in Dallas, voted to revise the Sanity Code by dropping the provision governing financial aid to student-athletes. The Convention also abolished the enforcement mechanism assigned to the Constitutional Compliance Committee and Panel. Hugh C. Willett, University of Southern California, was president.

Fifty years ago

The 36th annual Convention, December 29-31, 1941, at the Book-Cadillac Hotel in Detroit, awarded a grant to the National Association of Basketball Coaches for publications and research projects. Philip O. Badger, New York University, was NCAA president.

Sixty years ago

The 26th annual Convention, December 31, 1931, at New York City's Astor Hotel, inaugurated the practice of conducting "round table conferences" at the time of the Convention. The president was Charles W. Kennedy, Princeton University.

Seventy years ago

The 16th annual Convention, December 29, 1921, at the Astor, created the allied membership category for athletics conferences, created the NCAA Council and appointed a special committee to study college baseball. Brig. Gen. Palmer E. Pierce, U.S. Military Academy, was NCAA president.

Eighty years ago

The sixth annual Convention, December 28, 1911, at the Astor, voted to divide the membership into eight geographical districts and appointed a committee to regulate college soccer. Palmer Pierce, then a captain, was president.

There is no 'best' football player

Furman Bisher, columnist

The Atlanta Journal and Constitution

"I'm not sure but what the Heisman Trophy has outlived its purpose. That it isn't more of a blight than it is a celebration of the college game.

"It causes more rancor than it does pleasure. There is one winner. There are 20,000 losers, give or take a few. It has turned into a political contest.

"John Heisman didn't like the idea himself at first. 'There are just too many good players out there to be singling out one,' he said. He refused to allow his name to go on it, so it began as the DAC (Downtown Athletic Club) Award. When Heisman died... his name was slapped on the trophy.

"What I always thought it should be was a prize for seniors only. Not just for one season, but for a career. I'm even more adamant about it now that some guys have collected their piece of sculpture, then run off to the pros with it.

"There is no 'best college football player,' and that's the only guideline the Downtown Athletic Club lays out. On what given day? Runner, thrower, blocker, tackler? And what about scholarship and keeping your nose clean?"

Walter Byers

Former NCAA executive director

The Associated Press

"I do not believe this Convention is one of the most important in the last 20 or 30 years, as a lot of people say.

"The reform proposals by the Presidents Commission and those that are supposedly going to come from the Knight Foundation are miniature in form and really won't change much of anything."

Herschel Walker, professional football player
Minnesota Vikings

The Dallas Morning News

"It is natural for young athletes to dream about success in sports. Every young baseball player dreams of hitting a home run in the big leagues or pitching in the World Series. Every young football player dreams of scoring a touchdown in the Super Bowl. But young athletes have to realize that it is unlikely those dreams will come true.

"I certainly never thought I would be a pro athlete. I always planned on going to college because I knew you needed a degree to be an FBI agent. That was my career goal, because I had a couple of cousins who were in the FBI. But I wasn't always sure I would be able to play sports in college.

"I got good grades in high school, but they didn't give me A's just because I was an athlete. I worked hard. I took a lot of pride in my school work. My

parents supported me, and my teachers encouraged me to work hard and not cheat myself by just scraping by.

"Young people should think about that. Just because you are the best player on your team today, that doesn't mean you can count on sports to achieve your life goals."



Opinions

Richard J. Evrard, director of legislative services
NCAA

The Atlanta Journal and Constitution

"The NCAA staff isn't proclaiming the Persian Gulf crisis a national emergency, but for the purposes of the student-athlete's eligibility (if they are called to active duty), this is what we will couch it under.

"I don't have an exact figure, but we've had a couple of calls from individuals and a call from an institution inquiring about this situation."

Donna A. Lopiano, director of women's athletics
University of Texas, Austin

The Chronicle of Higher Education

"It's real important to say, yes, we've got to pass these (proposals to place time limits on sports participation and seasons), but we shouldn't adopt them blindly.

"We need limits, but you have to design them in ways that aren't dysfunctional."

The NCAA News

(ISSN 0027-6170)

Published weekly, except biweekly in the summer, by the National Collegiate Athletic Association, 6201 College Boulevard, Overland Park, Kansas 66211-2422. Phone: 913/339-1906. Subscription rate: \$24 annually prepaid; \$15 annually prepaid for junior college and high school faculty members and students; \$12 annually prepaid for students and faculty at NCAA member institutions. Second-class postage paid at Shawnee Mission, Kansas. Address corrections requested. Postmaster send address changes to NCAA Publishing, 6201 College Boulevard, Overland Park, Kansas 66211-2422.

Publisher Ted C. Tow
Editor-in-Chief Thomas A. Wilson
Managing Editor Timothy J. Lilley
Assistant Editor Jack L. Copeland
Advertising Manager Marlynn R. Jones
The Comment section of The NCAA News is offered as opinion. The views expressed do not necessarily represent a consensus of the NCAA membership. An Equal Opportunity Employer.

Record

Continued from page 1

amendments-to-amendments relating to that package as well as several items that have multiple voting requirements.

The Association is introducing a new electronic voting system for use in roll-call situations. Each voting delegate will receive an electronic voting unit, as explained on page 1 of this issue of The NCAA News. Each also will receive a supply of punch-card ballots—the system used last year—in case the new electronic system fails to perform as designed.

Continuing Convention features:

- The honors program will be conducted as a dinner, instead of the traditional luncheon, for the second straight year. Althea Gibson will become the first woman to receive the Theodore Roosevelt Award during the event Tuesday evening, January 8.

- The popular NCAA calendar booklet again will be given as a memento to all Convention registrants.

- Delegates will have three luncheons, instead of the two held last year—one each during the primary voting days, Tuesday, Wednesday and Thursday.

- The NCAA interpretations center, staffed by the legislative services department, will be available near the registration desks, as will the complimentary soft-drink bar, a Convention message center, and a special display featuring the NCAA Visitors Center and the NCAA Foundation.

- The ever-popular delegates reception will be Monday evening, and a special reception for chief executive officers only is Tuesday evening, just before the honors dinner. In addition, the CEOs in attendance will have a special breakfast meeting at 6:30 a.m. Tuesday, just before voting begins in the division and subdivision business sessions.

The major sessions in Nashville are scheduled as follows:

Monday: Opening business session, 4:30 p.m. Delegates reception, 6 p.m.

Tuesday: Special breakfast for CEOs, 6:30 a.m. Subdivision and division business sessions begin at 8 a.m. and continue through the day. Delegates luncheon at noon. Special CEO reception, 5:30 p.m. Honors dinner, 7:30 p.m.

Wednesday: Division business sessions continue from 8 a.m. to noon. Delegates luncheon at noon. General business session, 1:30 to 5 p.m.

Thursday: General business session continues, 8 a.m. to 5 p.m. Delegates luncheon at noon.

Friday: General business session continues if needed, 8 a.m. to noon. Registration for the Convention begins at 3 p.m. Sunday, January 6, and continues until 7 p.m. that day. Other registration hours: Monday, 8 a.m. to 5:30 p.m. Tuesday, 7 a.m. to 5 p.m. Wednesday, 8 a.m. to 5 p.m. Thursday, 8 a.m. to 5 p.m. Friday, 8 a.m. to noon, if needed.

Convention leaders

Chairing the major sessions of

the Convention will be the following:

- Albert M. Witte, NCAA president, University of Arkansas, Fayetteville, opening business session, honors dinner and general business session.

- B. J. Skelton, NCAA Division I vice-president, Clemson University, Division I-A and Division I business sessions.

- Charlotte West, NCAA Council member, Southern Illinois University, Carbondale, Division I-AA business session.

- R. Elaine Dreidame, NCAA Council member, University of Dayton, Division I-AAA business session.

- Jerry M. Hughes, NCAA Division II vice-president, Central Missouri State University, Division II business session.

- Rocco J. Carzo, NCAA Division III vice-president, Tufts University, Division III business session.

Legislation

All of the basic 120 proposals and the related amendments-to-amendments have been reviewed in detail in The NCAA News, beginning in the November 12, 1990, issue and concluding in the December 26 issue.

The legislative highlights are in the special grouping identified by the Presidents Commission for action early in the respective business sessions. Included are all of the proposals sponsored by the Presidents Commission, most of which were developed by a group of Division I conference commissioners under the "Conference of Confer-

ences" label.

Also in the Commission grouping—which constitutes the "reform agenda"—are the proposals developed by the Special Committee on Cost Reduction and the Special Committee to Review the NCAA Membership Structure. All of those proposals are sponsored by the NCAA Council and strongly supported by the Presidents Commission.

Those appear in the Convention Program immediately after the consent package, which includes 18 proposals.

The reform agenda deals with numerous issues, including reductions in recruiting, grants-in-aid and numbers of coaches; restrictions on playing and practice seasons; elimination of athletics dormitories and reductions in use of training tables; eventual strengthening of the criteria for membership in Division I, and virtual elimination of multidivision-classification opportunities.

Among the highlights in the topical groupings after the reform package:

General

A resolution envisioning a mandatory athletics certification program, a proposal to eliminate Convention voting by conferences and an attempt to eliminate restrictions on extending and accepting invitations to play in football bowl games.

Amateurism

A resolution calling for legislation

to permit student-athletes to enter a professional draft without losing their collegiate eligibility. Also, a proposal to specify that a student-athlete who becomes a professional in any sport is ineligible for college athletics in all sports.

Eligibility

An attempt to permit all student-athletes in all divisions to compete for five years if they are within a year of graduating when they begin their fifth year of enrollment (in Division I, this would mean a fourth year of eligibility for nonqualifiers or partial qualifiers). Also, proposals dealing with Division III's liberalized transfer rule.

Academics

A proposal to grant a fourth season of eligibility to nonqualifiers or partial qualifiers in Division I if they have at least 96 semester or 144 quarter units at the start of their fifth year of enrollment. Also, another attempt to add minimum grade-point-average requirements to the satisfactory-progress rule.

Financial aid

An amendment to require any equivalency grant to represent at least one-third of the amount of a full grant.

Recruiting

A proposal requiring a prospect to present an ACT or SAT score before receiving an expense-paid visit to a Division I or II institution.

Playing seasons

Attempts to reinstate spring football practice periods that were shortened at last year's Convention.

Highest possible vote on any issue is all-time high of 903

The greatest number of votes that can be cast on any issue at the NCAA's 85th annual Convention is an all-time high of 903, which is 22 higher than a year ago.

The highest possible vote never happens, of course, because not every NCAA voting member attends the Convention. But most do. Last year, a record 87.3 percent of all voting members—769 of 881—were in attendance.

Included in this year's total of 903 are 822 active member institutions and 81 conferences that have the voting privilege. By division, the vote totals are as follows:

- **Division I:** 294 institutions and 37 conferences, for a total of 331 possible votes. Included in that number are 106 Division I-A insti-

tutions and nine I-A conferences (115 total on a I-A issue), 85 Division I-AA institutions and nine conferences (94 total in that subdivision), and 103 Division I-AAA institutions and 19 conferences (122 total).

- **Division II:** 205 institutions and 17 voting conferences, for a total of 222. That is the highest ever for Division II.

- **Division III:** 323 institutions and 27 conferences, for a 350 total—also the highest ever for that division.

In most years, more than 95 percent of all Division I members attend Conventions (the record is 97.1 percent, last year in Dallas), and Division I-A members all attend every year. In Division II, more than 80

percent of the members attend, with a record 88.8 percent set last year. Division III generally attracts 65 percent or better and has moved past 70 percent in three of the last four years (with a record 71.7 percent last year).

Other factors

There are voting circumstances that complicate any analysis of the possible voting totals. "Restricted" members can vote on constitutional issues but not on most bylaw mat-

ters, while those restricted only in a single sport cannot vote on issues affecting only that sport.

Further, all-male institutions cannot vote on issues involving only women's athletics, and all-female institutions cannot vote on issues involving only men's athletics.

Currently, there are 11 all-male institutions in the membership (two in Division I-AA, one in Division II and eight in Division III). There also are eight all-male conferences

(three Division I-AAA and five Division III). There are 28 all-female institutions (25 in Division III and three in Division II) and seven all-female conferences (two in I-AAA and five in III).

Considering all of that, the highest possible vote on a men's-only issue would be 868; on a women's-only matter, the high would be 884.

Voting records

Most of the votes at any NCAA

See *Highest*, page 12

Association

Continued from page 3

homeless children.

Marie L. Roethlisberger

The uneven-bars champion at the 1990 National Collegiate Women's Gymnastics Championships, Roethlisberger won seven Big Ten Conference titles during her career. She was the conference gymnast of the year or shared that honor in 1987, 1988 and 1989. She has been a national-team member and was an alternate on the 1984 U.S. Olympic team. She received the 1990 American Award, which is given to the nation's outstanding senior woman gymnast as voted by the coaches.

Roethlisberger had a 3.680 grade-point average and earned degrees in biochemistry and premedicine. An academic all-America, she is the recipient of the Big Ten Conference medal of honor and an NCAA postgraduate scholarship.

She received the first Honda Inspiration Award, which is given to an athlete who has overcome significant personal adversity to achieve

excellence in academics and athletics. Roethlisberger has a hearing impairment as the result of a case of spinal meningitis that she contracted when she was 2 years old.

She has worked with programs such as Just Say No to Drugs, the Ronald McDonald House and the Multiple Sclerosis Society.

Patrick H. Tyrance

Tyrance has been a two-year starter for Nebraska at linebacker and has been the Cornhuskers' leading tackler. He earned both all-America and all-Big Eight Conference honors.

A National Football Foundation and College Hall of Fame scholar-athlete, Tyrance has maintained a 3.452 grade-point average. His major is premedicine. An NCAA postgraduate scholarship recipient, he is a member of the Fellowship of Christian Athletes and has been part of the Best of America Say No to Drugs campaign. He also received the athletics/academic counseling unit distinction award.

Silver

Continued from page 3

general counsel for Commerce Union Corporation, Grant's activities included acting as one of five members of the creditor bank steering committee representing more than 130 international banks in the restructuring of the debt of Zaire. Grant also negotiated with representatives of Iran about bank-debt settlements during the 1981 hostage crisis. Grant served in Vietnam, receiving various combat decorations.

Grant's civic contributions include cofounding the Music City Track Club, a nonprofit organization for young men and women. All 70 members have been awarded college scholarships. He chaired the 1990 Mackey Awards Banquet, which raised \$1 million for the Better Boys Foundation of Chicago. Grant is a member of the Economic Club of Chicago and the California and Tennessee bar associations.

Steve Juday

As the Associated Press' 1965 first-team all-America quarterback, Juday led Michigan State University to a 20-8-1 record during his career. His 1965 squad was 10-0 and voted the national champion by United Press International. While at Michigan State, Juday set 12 career pass-

ing records and was named the most outstanding back of the 1966 Hula Bowl all-star game. Juday earned three letters in baseball. A National Football Foundation Hall of Fame Scholar, Juday won the Big Ten Golden Helmet Award for scholarship and athletics and the Big Ten Conference Medal of Honor.

While at Michigan State, Juday was involved with the Campus Crusade, the Blue Key Honor Society and the Excalibur Honorary Society.

Juday has been the director of human resources, chemicals and performance products for Dow Chemical since 1987. He is responsible for all aspects of the human component in Dow's \$2½ billion United States operations. Juday has been with Dow in various positions since 1967.

Juday is a coach and administrator for the Midland American Legion baseball committee and is on the Midland Northwest Little League Board of Directors. Juday is a member of the Michigan State Athletic Council.

Capt. James C. Lewis

Lewis was a member of four national-championship teams, three in lacrosse and one in soccer, while

at the United States Naval Academy. The Lacrosse Hall of Fame member received the sport's Turnbull Trophy, recognizing him as the best offensive player in 1964, 1965 and 1966; he was the first three-time winner of the award. He played in three national semifinals in soccer, scoring Navy's only goal in a 1-0 victory in the 1964 soccer championship.

While at Navy, Lewis was selected as a Captain of Achievement by the American Academy of Achievement. He received the Golden Plate Award and the Naval Academy Athletic Association Sword.

Lewis currently serves as a program manager for the Naval Air Systems Command. He is responsible for aerial target systems and for developing engineering for the program. He is an active-duty naval aviator and works in developmental flight testing at the Naval Air Test Center and the Pacific Missile Test Center. A Top Gun graduate, Lewis was one of only two Navy pilots selected each year for the Air Force Test Pilot School.

Lewis coaches the Springfield (Virginia) Youth Club boys' soccer team. In its first year of competition, his 1990 squad went 17-0-0 and won the Virginia state championship for its age group.



They've reached new heights.

Unsurpassed in their individual sports, these dedicated collegiate women are an inspiration. Voted on by over 800 NCAA member schools, each one has been chosen for her athletic achievements, outstanding leadership skills as well as her academic excellence and community involvement.

One will be selected to receive the 1989/1990 Honda-

Broderick Cup at the Collegiate Woman Athlete of the Year banquet in Nashville, Tennessee on January 9, 1991.

And in addition to the awards presentation, American Honda will contribute \$2,000 to the general scholarship fund of each athlete's university. So the victory is truly shared by everyone.

THE
HONDA
Awards
PROGRAM



Debbie Graham
Stanford Univ.,
Tennis

Leslie Lyness
Univ. of No. Carolina,
Field Hockey

Tara Cross
Cal. State,
Long Beach, Volleyball

Jennifer Azzi
Stanford Univ.,
Basketball

Michiko Hattori
Univ. of Texas,
Golf

Shannon Higgins
Univ. of No. Carolina,
Soccer

Jill Andrews
UCLA,
Gymnastics

Janet Evans
Stanford Univ.,
Swimming & Diving

Suzy Favor
Univ. of Wisconsin,
Track & Field

Vicki Huber
Villanova Univ.,
Cross Country

Lisa Longaker
UCLA,
Softball

© 1990 American Honda Motor Co., Inc.

Southern hospitality—Nashville style—awaits Convention

For the third time in seven years, the NCAA is settling in for Southern hospitality—Nashville style—at its 85th annual Convention.

The Association returns to "Music City USA" after meetings there in 1985 and 1988, but even though it has been only three years since the last visit, Convention delegates are in for some new treats.

By no means the least of those added attractions is the recently expanded Convention hotel, the Opryland. The facility, which also hosted the previous Nashville meetings, now offers 1,891 guest rooms, along with a new indoor water garden, the two-acre Cascades.

Complementing the hotel's 2½-acre Conservatory (an attraction in its own right with its 10,000 tropical plants), the Cascades features streams, brooks, waterfalls and a half-acre lake. Twice every night, the Opryland stages a fountain and laser-beam show in the area, which also features the music of a country harpist.

And, of course, the hotel is just

part of Opryland USA, a 406-acre wooded city-within-a-city nine miles from downtown Nashville and seven miles from Nashville International Airport. Opryland USA also encompasses the Grand Ole Opry, which has been putting on its live country music radio show since 1925; the General Jackson, a showboat; Opryland, a musical theme park, and studios of The Nashville Network, a national cable-television network, and radio station WSM.

Even with those potential distractions, however, the Opryland Hotel is well-equipped to permit the Association to conduct its business in an atmosphere of hospitality and attentive service.

The Opryland offers more meeting and convention space than any other hotel in the country—more than 300,000 square feet. The Presidential Ballroom, a 31,400-square-foot room complete with a permanent stage, will house the honors dinner and general business session. The opening business session Mon-

day afternoon, January 7, will be in the 19,200-square-foot Tennessee Ballroom.

In the hotel also are 14 restaurants and lounges, including the Cascades Restaurant, which occupies a series of islands in the Cascades. Other dining areas, ranging from the casual to the elegant, include Rachel's Kitchen, Rhett's and the Old Hickory Room.

Although the Opryland is situated on the grounds of Nashville's most popular tourist facility, the state capital of Tennessee offers Convention delegates many other activities with which to occupy their spare time. Even in January, when temperatures range on the average from lows near 30 degrees to highs in the 50s, there is much to do.

In keeping with its reputation as a musical haven, Nashville clubs offer not only the country music for which the city is famed worldwide, but also live bluegrass, rock, jazz and comedy. And many of those attractions will be easily accessible

via a free shuttle service between the Opryland and downtown Nashville that will be offered by the hotel.

The shuttle, which will provide transportation to the West End, Second Avenue and Union Station areas of downtown, will operate from 7 p.m. to midnight Monday, January 7, and from 6 p.m. to midnight Wednesday and Thursday, January 9 and 10. Departures will be on the half-hour and hour from the Magnolia lobby.

While entertainment is easy to find in Nashville, the city also offers attractions appealing to interests ranging from the historical to the meditative, including a few that have been built since the NCAA's last visit. A listing of a few of these widely varying points of interest follows:

Grand Ole Opry—The 65-year-old Grand Ole Opry offers performances featuring many of country music's greatest stars on Friday and Saturday nights. Tickets for shows at the 4,400-seat facility, located at 2804 Opryland Drive, are difficult, but not impossible, to obtain. Further information is available from the Grand Ole Opry, telephone 615/889-3060.

The General Jackson—Also located in the Opryland USA complex, the paddlewheel showboat offers daytime and evening cruises from its dock on the Cumberland River. Every cruise is highlighted by a musical stage production in the Victorian Theater. Tickets are \$11.95 for daytime cruises (everyone age 4 and older); \$32.95 for evening cruises (\$25.95 for children 4-11). The telephone number is 615/889-6611.

Ryman Auditorium and Museum—Although the Grand Ole Opry moved to its Opryland facility in 1974, country music fans revere the theater at 116 Fifth Avenue North that served as the Opry's home for 31 years beginning in 1943. Admission: adults \$2; children

6-12 \$1; 5 and under free. Hours: 8:30 a.m. to 4:30 p.m. daily.

The Hermitage—President Andrew Jackson's Greek Revival mansion lies on 625 acres of rolling woodland at 14580 Rachel's Lane. Admission: adults \$7; age 65 and over \$6.50; children 6-18 \$3.50; under 6 free. Operating hours: 9 a.m.-5 p.m. daily.

State Capitol—Located on Charlotte Avenue in downtown Nashville, the capitol was completed in 1855 as a monument to the people of the Volunteer State. Guided tours are available daily between 9 a.m. and 3 p.m.

Country Music Hall of Fame and Museum—Located at 4 Music Square East, the museum is dedicated to the greatest entertainers, composers and leaders of the country music industry. Admission (including a tour of RCA's historic Studio B): \$6; ages 6-11 \$1.75.

Grassmere Wildlife Park—Just opened last summer, the animal park presents such animals as bears, bison, cougars, otter, elk, deer and more in a native Tennessee forest. It is open from 10 a.m. to 5 p.m. daily at 377 Nolensville Road in south Nashville.

The Parthenon—The only full-scale replica of the Parthenon of Athens, Greece, now has an added attraction—the 42-foot-tall Athena statue, the second-tallest indoor statue in the world. The Parthenon, open 9 a.m. to 4:30 p.m. Tuesday through Saturday, is located two miles west of downtown Nashville on West End Avenue. Admission: adults \$2.50; age 62 and over \$1.25; children 4-17 \$1.25; under 4 free.

Centennial Sportsplex—The recently completed recreational and competitive sports complex, open to the public at 222 25th Avenue North, features an indoor ice rink, aquatic center, fitness center and tennis center. Information about admission can be obtained by calling 615/259-6399.

Financial report shows surplus

The Association's 1989-90 revenue exceeded expense, creating a surplus in operations for the eighth consecutive year and the 35th time in 36 years, according to the report of the treasurer, which will be presented to delegates at the 1991 Convention.

The report is published in the Association's Annual Reports, which will be available at the Convention.

The 1989-90 surplus of \$2.75 million represents 2.8 percent of the general operating budget, according to Judith M. Sweet, NCAA secretary-treasurer. The Executive Committee had approved a budget of \$98,228,000 for 1989-90. Revenues amounted to \$98,970,184, or 100.8 percent of the budget. The total amount was an increase of 12.7 percent over the previous year.

The report showed expenses of \$96,224,123, or 98.0 percent of the budget. Expenses increased by 17.7 percent over 1988-89.

Sweet pointed with particular pride to the fact that 63.9 percent of the Association's out-of-pocket payments went to member institutions, conferences, affiliated organizations or programs for student-athletes and the nation's youth. In 1989-90, the NCAA spent \$61.49 million in this manner.

During the past year, the Association engaged the firm of Price Waterhouse as auditor and tax consultant. As a result, certain reclassifications have been made to consolidate the balance sheets and

Camps still open

Players not already invited but wishing to participate in a series of training camps to prepare the U.S. men's soccer team for international competition, including the 1992 Olympics, still can be selected for the program through procedures announced by the U.S. Soccer Federation.

The camps are intended to prepare the USSF's Under-23 team for third- and fourth-round Olympics qualification matches beginning in April, as well as for participation in this year's World University Games and Pan American Games.

Information on how to qualify to participate in the camps can be obtained from the USSF's national-teams office, telephone 719/578-8300. The procedure requires a series of evaluations by coaches at state and regional levels.

NCAA revenue, expense, surplus 1980-1990

Year	Revenue	Expense	Surplus
1980-81	\$23,331,263	\$22,376,004	\$ 955,259
1981-82	28,810,338	29,016,327	(205,989)
1982-83	33,148,173	30,053,782	3,094,391
1983-84	39,969,096	37,410,391	2,558,705
1984-85	43,899,237	42,828,611	1,070,626
1985-86	51,361,047	45,584,558	5,776,489
1986-87	61,971,181	52,916,795	9,054,386
1987-88	82,808,606	69,476,470	13,332,136
1988-89	87,826,856	81,725,899	6,100,957
1989-90	98,970,184	96,224,123	2,746,061

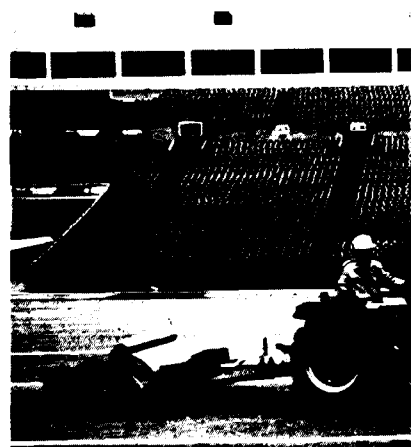
revenue and expense statements of the NCAA and its wholly owned subsidiary, the National Collegiate Realty Corporation. On August 31, 1990, the Association's assets totaled \$44,878,322, about \$4.6 million more than the previous year. Fund balances at that date amounted to \$27,773,527, or 61.9 percent of assets. Current and long-term liabilities were \$17,104,795.

Copies of the 1989-90 Annual Reports, containing the reports of the Executive Committee and treasurer as well as a statistical review of

the year; financial summaries from all 1989-90 championships; reports for all standing committees, and the abridged minutes of the Council, Executive Committee and Presidents Commission, also will be mailed to NCAA members.

Additional copies of the book may be purchased for \$6 (\$12 for nonmembers) by sending remittance to NCAA Publishing, 6201 College Boulevard, Overland Park, Kansas 66211-2422 (telephone 913/339-1900). First-class postage is an additional \$2 per book.

PREVENT RAINOUTS IMPROVE PLAYING CONDITIONS



SUPER SOPPERS
REMOVE WATER
FROM ANY
PLAYING SURFACE:

- GRASS
- CLAY
- SAND
- DIRT
- ARTIFICIAL TURF

PICK UP 100 TO 25,000 GALLONS PER HOUR
SATISFACTION GUARANTEED

For further information, call 1-800-752-5308
or write:

KURANDA
USA

P.O. Box 6651
Annapolis, MD 21401

RAYCOM

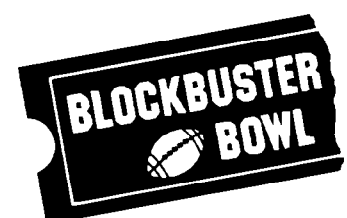
MANAGEMENT GROUP

The nation's leading marketing and management company for intercollegiate athletics.

Presenting two of the brightest events in college basketball and football...



Charlotte Coliseum



Raycom Management Group • P.O. Box 36309 • Charlotte, NC 28236
(704) 331-9494

Legislative

Continued from page 2

with the same issuance-and-retrieval policy applicable to all prospective students; noted that it would be permissible (in accordance with the institution's regular admissions policies) for the athletics department to send such a videotape to a prospect; finally, determined that it would be permissible for a prospect to receive an admissions department videotape prior to the September 1 at the beginning of the prospect's junior year in high school, but only if such a videotape is part of a regular institutional mailing to all prospective students.

e. Determined that it would be permissible for a member institution to mail summer camp brochures prior to the September 1 at the beginning of the prospects junior year in high school, inasmuch as the primary purpose of such brochures is not related to the recruitment of the particular prospect.

1991 Convention Proposal No. 27

5. **Transfer eligibility—Division III.** Reviewed the requirement in Proposal No. 27 that the student would have been eligible had he or she remained at the institution from which the student transferred and determined that such a requirement would relate not only to academic eligibility, but also would be applicable if the student-athlete is suspended or disqualified from the institution (as distinguished from being suspended from the institution's athletics team) for disciplinary reasons.

1991 Convention Proposal No. 28

6. **Summer financial aid—incoming student-athletes.** Reviewed the provisions of Proposal No. 28 as they relate to the following situations:

a. Determined that an incoming student-athlete who is a nonqualifier or a partial qualifier may receive financial assistance from the institution to attend its summer term prior to the student-athlete's initial full-time enrollment, provided the student-athlete qualifies to receive such aid on the same basis as other students generally; further, that under such circumstances, the source of such funds may be athletically related (e.g., from the athletics department).

b. Confirmed that in accordance with previous committee decisions (reference: Item No. 2-d of the minutes of the committee's January 10, 1990, conference and Council approval during its October 8-10, 1990, meeting of Item No. 1 of the minutes of the committee's July 19, 1990, conference), Proposal No. 28 would not apply to transfer students (unless the transfer student is attending an institution's mandatory summer orientation program for students and student-athletes alike).

c. Determined that a member institution does not have to structure the financial aid package provided to an incoming student-athlete in the same manner as any other student; therefore, once a student-athlete qualifies for financial aid on the same basis as other students generally, it would be permissible for the athletics department to provide such assistance in the form of a grant.

d. Agreed that the requirement that the student-athlete qualifies to receive such aid on the same basis as other students generally would preclude the athletics department from establishing a specific program to provide financial assistance only to incoming student-athletes, even if a similar program from other sources is available to other students (nonathletes) at the institution.

1991 Convention Proposal No. 29

7. **Academic counseling.** Determined that the adoption of Proposal No. 29 would permit member institutions flexibility in determining the academic counseling program appropriate for each recruited student-athlete and would not require that all such student-athletes participate in such programs, it being understood that the opportunity to participate in such a program is made available to all recruited student-athletes.

1991 Convention Proposal No. 32

8. **Expenses for competition.** Reviewed Proposal No. 32 and determined that the limitations on regular-season team travel that would prohibit a team (or individual) from departure earlier than 48 hours prior to competition would not be applicable to postseason bowl contests or NCAA championships; recommended that the Council sponsor an amendment-to-amendment to indicate that a 36-hour limitation for returning to campus following an institution's athletics event would be applicable to postseason contests, NCAA championships and competition that takes place during the institution's official vacation period during the academic year (other than competition in Alaska or Hawaii).

1991 Convention Proposal No. 33

9. **Annual coaches certification.** Reviewed Proposal No. 33 and determined that the standardized national test taken as part of the certification procedures must be produced by the NCAA; determined that the NCAA may provide more than one test to accommodate the different rules in various sports; recommended that, if necessary, legislation be enacted to require coaches to have passed (as opposed to taken) a standardized national test covering NCAA recruiting legislation; in this regard, agreed that if Proposal No. 33-1 is adopted, the NCAA could require coaches to pass the test before the coach is permitted to engage in off-campus recruiting.

1991 Convention Proposal Nos. 34, 35 and 36

10. **Restricted-earnings coach—compensation.** Reviewed Bylaw 11.02.3-(a) as set forth in Proposal Nos. 34, 35 and 36

and confirmed that a restricted-earnings coach could receive the actual cost of educational expenses incurred as a graduate student only if the individual is enrolled in the institution's graduate program; otherwise, the restricted-earnings coach is limited to compensation during the academic year from the institution's athletics department that does not exceed \$12,000.

1991 Convention Proposal No. 34

11. **Coaching limitations—I-A football.** Reviewed Proposal No. 34-A and confirmed that there is no limitation on the amount of compensation a restricted-earnings coach may receive from employment outside of the institution; in a related matter, confirmed that in sports other than football and basketball, a restricted-earnings coach may be employed in a private camp without including employment earnings from the camp in the established compensation limitations for a restricted-earnings coach.

1991 Convention Proposal No. 34-2

12. **Coaching limitations—I-A football.** Reviewed Amendment-to-Amendment No. 34-2 and Bylaw 11.02.3-(a) indicating that a member institution may combine two restricted-earnings positions into one coaching position, provided the compensation or remuneration is not in excess of \$24,000 from the institution's athletics department during the academic year and not in excess of \$8,000 during the summer; noted that it would not be permissible under this proposal for a restricted-earnings coach (who may receive the actual cost of educational expenses incurred as a graduate student if enrolled as a graduate student) to receive an amount that is double the cost of educational expenses.

1991 Convention Proposal No. 36

13. **Coaching limitations—sports other than football.** Reviewed the provisions of Proposal No. 36-C, which indicate that an institution that conducts a men's and women's swimming and diving program may employ, in lieu of two restricted-earnings coaches (one in each sport), one head or assistant coach to coach both men and women divers; determined that such an additional head or assistant coach would not have any restrictions related to compensation and may engage in off-campus recruiting activities (subject to the limitations normally placed on the head or assistant coach).

1991 Convention Proposal No. 36-6

14. **Coaching limitations—sports other than swimming and diving.** Reviewed Amendment-to-Amendment No. 36-6 and determined that it would preclude a member institution that does not conduct both a men's and a women's program in a sport (e.g., baseball, field hockey) from utilizing one head or assistant coach, in lieu of two restricted-earnings coaches, in that sport.

1991 Convention Proposal Nos. 37 and 40

15. **Coaching duties—off-campus recruiting/maximum awards—Divisions I-A and I-AA football, Division I basketball, and Division I equivalency sports.** Reviewed the provisions of Proposal Nos. 37-C, which would limit the number of institutional coaching staff members who may contact or evaluate prospects off campus at any one time based on the number of financial grants that may be awarded in the particular sport, and 40-C, which would reduce by 10 percent the number of financial aid grants in men's and women's sports, and determined that the proposals would apply independently of each other; thus, the adoption of both proposals could result in a sport (e.g., wrestling) having a reduction in the number of coaching staff members who may recruit prospects off campus at one time; noted that the effective date of Proposal No. 40-C (August 1, 1993) would provide institutions an opportunity to address this issue at the 1992 Convention.

1991 Convention Proposal No. 38

16. **Playing and practice seasons—Divisions I and II.** Reviewed Proposal No. 38 as it relates to the following situations:

a. Reviewed Proposal Nos. 38-A and 38-B (playing season—athletically related activities) and determined that if track student-athletes from an institution are listed as participants for cross country, such student-athletes must participate fully in cross country practices; noted that if student-athletes are practicing in track events (e.g., hurdles, long jump, high jump) unrelated to the sport of cross country, such practice must be counted in the institution's established segment in the sport of track.

b. Reviewed Bylaw 17.02.1.2-(i) as set forth in Proposal No. 38-B (definition of athletically related activities), which indicates that voluntary individual workouts may be monitored for safety purposes by an institution's strength and conditioning personnel, and determined that it would be permissible for a member institution's coach to serve as both a sports coach and a strength and conditioning coach, provided the individual performs strength and conditioning responsibilities on a department-wide basis and is counted in the member institution's coaching staff limitation for the sport in which the individual is a coach.

c. Reviewed Proposal No. 38-D (definition of athletically related activities) and determined that it would be permissible for an institution to reserve a practice facility to be utilized by athletes during their voluntary individual workouts outside of the playing season during the academic year without such an arrangement being considered as a countable athletically

related activity, provided participation in the workouts is not mandatory and the coach is not present during any of the workouts; determined that it would be permissible for the coach to design a general individual workout program for a student-athlete (as opposed to a specific workout program for specific days), provided the workouts are not mandatory and the program's implementation is left to the discretion of the student-athlete (see Item No. 16-o regarding reserving facility during summer).

d. Reviewed Proposal No. 38-D (length of playing season) and determined that indoor and outdoor track are considered the same sport for purposes of determining an institution's 24-week/144-day playing season.

e. Reviewed the provisions of Proposal No. 38-D (length of playing season) and determined that a member institution would be permitted to conduct a single 24-week traditional season in an individual sport beginning in the fall and ending in late winter/early spring (even though the NCAA championship in that sport is not conducted until late spring), provided once the institution's segment has been completed, the institution's team does not participate in any additional practice activities.

f. Reviewed Amendment-to-Amendment Nos. 38-5 and 38-8 and determined that an institution would calculate the number of weeks in which competition may occur in the same manner in which institutions currently calculate the 26-week playing and practice season in team sports (see Bylaw 17.1.5).

g. Reviewed the provisions of Bylaw 17.1.5.3.2 (no practice activity immediately following a member institution's competition) as set forth in Proposal No. 38-E (time limits for athletically related activities) and determined that student-athletes may participate in voluntary individual workouts (e.g., golfers working on practice tees subsequent to the completion of a round), provided such activities are not supervised or held at the direction of the member institution's coach.

h. Reviewed Amendment-to-Amendment Nos. 38-5, 38-6, 38-8, 38-9 and 38-10 and noted that the adoption of any of these amendments-to-amendments would eliminate the distinction between nontraditional and traditional playing segments and would render moot the provisions of Bylaw 17.1.5.5.2 (missed class time during nontraditional segment).

i. Reviewed the provisions of Bylaw 17.1.5.2 as set forth in Proposal No. 38-E (time limits for athletically related activities), which permits eight hours per week of weight-training and conditioning activities during the portion of the academic year outside of the institution's playing season, and confirmed that the activities set forth in current Bylaws 17.2.11.1-(c) through 17.2.11.1-(h) would be precluded at any time outside of the institution's playing and practice season; in addition, any on-field or on-court activity would be limited to conditioning and fitness activities, and equipment related to the student-athlete's sport may not be utilized.

j. Reviewed Bylaw 17.1.5.3.4 (preseason practice) as set forth in Proposal No. 38-E and determined that in sports in which a traditional season or segment is conducted during the fall, weekly hour limitations would not be applicable during the institution's preseason practice period (prior to the first day of competition or classes for the regular academic year), even if students are enrolled in summer school.

k. Reviewed Bylaw 17.1.5.5.2 (missed class time during nontraditional segment) as set forth in Proposal No. 38-E (time limits for athletically related activities) and determined that a student-athlete would not be subject to the missed-class restriction applicable during the institution's nontraditional segment when the individual participates in outside competition in an individual sport, provided the student-athlete does not represent the member institution and receives no equipment or expenses from a member institution pursuant to participation in the event.

l. Reviewed Proposal Nos. 38-F and 38-G (preseason practice and first contest dates) and Amendment-to-Amendment No. 38-15 (effective August 1, 1991), which precludes an institution from beginning competition or practice during its nontraditional segment until September 7, and determined that an institution with written contracts executed prior to November 15, 1990, may forward a copy of the contract to the Associations legal counsel for review to determine if a waiver of the September 7 starting date for practice and competition in the fall 1991 may be granted; in a related matter, reviewed Proposal No. 38-H (maximum number of contests) and determined that similar procedures would be applicable if an institution has a written contract executed prior to November 15, 1990, that would place the institution over the maximum contest or date of competition limits in that sport; noted that in both situations, such a waiver, if granted, would be applicable only for the 1991-92 academic year.

m. Reviewed Proposal No. 38-K (prohibition against outside competition during academic year) and determined that it would be permissible for student-athletes to compete unattached in individual competition (i.e., the student-athlete receives no expenses from the outside team and does not represent the outside team in the competition) during the academic year without jeopardizing the student-athlete's eligibility for intercollegiate competition; in a related matter,

See Legislative, page 9

Six committees will oversee Convention-related business

Six NCAA committees are appointed annually by the Association's Council to handle details associated with the conduct of the Convention. They include the Credentials Committee, the Memorial Resolutions Committee, the Voting Committee, the Nominating Committee, and the Men's and Women's Committees on Committees.

Following are summaries of the duties and rosters of the 1991 Convention committees.

Credentials Committee

The Credentials Committee has the authority to examine the credentials of delegates to the Convention. It can determine the authority of any delegate to vote or represent a member, although that determination is subject to appeal to the Convention.

Members of the committee are Paul H. Brand, University of Alabama, Huntsville, chair; Michael Gilleran, West Coast Conference, and Marion Wilkinson, Immaculata College.

Memorial Resolutions Committee

Members of the Memorial Resolutions Committee have compiled the names of individuals associated with intercollegiate athletics who passed away during 1990. A report memorializing these individuals will be prepared and given during the Convention.

Committee members include James Doyle, DePaul University, chair; Laurie Priest, Mount Holyoke College, and Richard A. Johanningmeier, Washburn University.

Voting Committee

The Voting Committee is responsible for counting votes when called on by the chair of any Convention voting session. At least one member from each NCAA district serves on the committee, with the chair appointed at large.

Serving on the 1991 Voting Committee are Karen J. Tropp, Nichols

College, District 1; Daniel P. Starr, Canisius College, District 2; L. Douglas Johnson, University of Miami (Florida), District 3; Steve Becker, University of Wisconsin, Superior, District 4; Lynn Dorn, North Dakota State University, District 5; Gerald L. St. Martin, University of Southwestern Louisiana, District 6; Katherine E. Noble, University of Montana, District 7; Barbara G. Walker, University of Oregon, District 8; Don Bryant, University of Nebraska, Lincoln, at-large; Norman D. Kaye, St. Leo College, at-large; Ron Randleman, Sam Houston State University, at-large; Marnie W. Swift, University of Toledo, at-large, chair, and William Thomas, Tennessee State University.

Nominating Committee

The Nominating Committee is responsible for developing slates of individuals to fill vacancies in NCAA offices and on the Association's Council.

Members of the committee include:

Division I: Kevin M. White, University of Maine, Orono (Region I); Susan A. Collins, George Mason University, chair (I); Richard L. Sander, Virginia Commonwealth University (2); Charles Cavagnaro, Memphis State University (2); Bradford E. Kinsman, University of Detroit (3); Del Brinkman, University of Kansas (3); Robert M. Sweazy, Texas Tech University (4), and Margie H. McDonald, Western Athletic Conference (4).

Division II: Louise Albrecht, Southern Connecticut State University (1); Wilburn A. Campbell Jr., Albany State College (Georgia) (2); Dean Davenport, Ferris State University (3), and Karen L. Miller, California State Polytechnic University, Pomona (4).

Division III: Lawrence R. Shiner, Jersey City State College (1); Geraldine Knortz, Hamilton College (2); Louis F. Miller, Hampden-Sydney



Paul H. Brand



Susan A. Collins



Bruce A. Corrie



James Doyle



Fern Gardner



Marnie W. Swift

College (3), and David A. Jacobs, Whittier College (4).

Committees on Committees

The Men's and Women's Committees on Committees are appointed to nominate candidates to fill vacancies on the Association's men's and women's governing sports committees. Serving on the committees for the 1991 Convention are:

Men's Committee on Committees: McKinley Boston Jr., University of Rhode Island (Division I, District 1); G. Larry James, Stockton State College (III-2); Paul Griffin, University of South Florida (I-3); Bruce A. Corrie, Northwestern University, chair (I-4); Ken B. Jones, Missouri Intercollegiate Athletic Association (II-5); James Vick, University of Texas, Austin (I-6); Stanley B. Sheriff, University of Hawaii

(I-7); Dan Guerrero, California State University, Dominguez Hills (II-8); David M. Hutter, Case Western Reserve University (III at-large); Gene E. Hooks, Wake Forest University (I-AL); Richard J. Hazelton, Trinity College (Connecticut) (III-AL), and James A. Martin, Tuskegee Institute (II-AL).

Women's Committee on Committees: Linda S. Moulton, Clark University (Massachusetts) (III-1); Robertha Abney, Slippery Rock University of Pennsylvania (II-2); Bettye Giles, University of Tennessee, Martin (II-3); Peggy Pruitt, Ohio University (I-4); Barbara A. Hibner, University of Nebraska, Lincoln (I-5); Barbara L. Camp, Southern Methodist University (I-6); Fern Gardner, University of Utah, chair (I-7); Marcia L. Saneholtz, Washington State University

(I-8); Harriett L. Crannell, Millikin University (III-AL); Peggy E. Martin, Central Missouri State University (II-AL); Janet D. Lucas, James Madison University (I-AL), and Joyce Wong, University of Rochester (III-AL).

Binders available for keeping News

Readers of The NCAA News are reminded that binders, which provide permanent, convenient storage of back issues of the paper, are available from the publishing department.

Each of the rugged, vinyl-covered binders holds 23 issues of the News. They may be purchased for \$10 each, or two for \$19. Orders should be directed to the circulation office at the NCAA (913/339-1900).

Legislative

Continued from page 8

determined that a student-athlete who practices (but does not compete) on an outside team during the academic year would not jeopardize the student's intercollegiate athletics ability in that sport.

n. Reviewed the provisions of Proposal No. 38-L (prohibition against coaching activities with outside teams) and determined that a member institution's coaching staff member would be precluded from acting as a supervisor or director of an outside league if a student-athlete from the coach's team is a participant on a team in the league.

o. Reviewed the provisions of Proposal No. 38-M (summer practice prohibition) and determined that it would not be permissible for a member institution to reserve the use of its facility during the summer for student-athletes, inasmuch as such an arrangement would constitute practice that is financially supported by a member institution.

1991 Convention Proposal No. 44

17. **Scheduling—Division I.** Reviewed Proposal No. 44 and Bylaw 20.9.4.1 (100-percent-scheduling requirement against Division I opponents) and determined that in multiteam tournament competition in individual sports, an institution may utilize such competition to meet the 100-percent-scheduling-requirement, provided at least two-thirds of the institutions competing in the tournament consist of Division I members.

1991 Convention Proposal No. 46

18. **Membership requirements—Division I financial aid.** Reviewed the following issues as they relate to Proposal No. 46.

a. Reviewed Bylaw 20.9.1.2.1 (athletics aid) as set forth in Proposal No. 46 and determined that for purposes of meeting the appropriate minimum financial aid requirement, athletically related aid is defined as unearned, nonrepayable financial aid awarded and administered by the member institution (including the department of athletics) and based on athletics ability; recommended that the Council modify the language in 20.9.1.2.1 to reflect this interpretation.

b. Confirmed that there is a difference between athletically related aid in Proposal No. 46 and countable aid in Proposal No. 46-3; noted that countable aid is based on the equivalency value included on the institution's squad list form and would include all institutional financial aid (including nonathletically

related aid) granted to a counter per 15.5.

c. Determined that the limit of five equivalencies for cross country set forth in Proposal No. 46-B was intended to apply separately to men's and women's cross country teams.

d. Determined that in the head-count sports of women's gymnastics, women's volleyball and women's tennis, it would be necessary for an institution to count the actual dollar amount of athletically related aid provided to the student-athlete in determining whether the institution is meeting the minimum financial aid requirements.

1991 Convention Proposal No. 51

19. **Multidivision classification—Divisions II and III.** Reviewed Proposal No. 51, which indicates that a majority of Division I institutions surveyed must approve a petition from a Division II or III institution to have any one of its men's sports (other than football or basketball) and any one of its women's sports classified, or have the sport continue to be classified, in Division I; determined that a majority of all Division I member institutions sponsoring the sport (not just a majority of those responding to the survey) must approve such a request.

1991 Convention Proposal No. 66

20. **Membership requirements—Division I.** Reviewed Proposal No. 66, which indicates that a Division I member institution shall graduate a minimum of 50 percent of its student-athletes receiving athletically related financial aid, and determined that all student-athletes who are counters pursuant to Bylaw 15.5 must be included in the calculation for determining whether the institution has satisfied the 50-percent requirement.

1991 Convention Proposal No. 69

21. **Amateurism.** Reviewed the provisions of Proposal No. 69 and determined that the proposal would be applicable to any student-athlete entering a regular term at a collegiate institution on a full-time basis on or subsequent to August 1, 1991; determined that no exception would be allowed for a multisport participant who may be professional in one sport, but who delayed initial full-time enrollment in an NCAA member institution until after August 1, 1991, in an effort to meet the initial-eligibility requirements to participate in a sport other than that in which the individual is participating as a professional.

1991 Convention Proposal Nos. 70 and 71

22. **Preenrollment training expenses/developmental training expenses.** Reviewed Proposal Nos. 70 and 71 and determined that the adoption of these proposals also would permit foreign student-athletes to receive authorized pre-enrollment training expenses and/or summer developmental training expenses from the Olympic Committee or other appropriate national sports governing body in the student-athletes country.

1991 Convention Proposal No. 79

23. **Satisfactory progress—grade-point average.** Reviewed Proposal No. 79 and confirmed that a transfer student-athlete is not subject to the grade-point-average requirement until the student has earned 24-semester or 36-quarter hours of credit from the certifying institution; confirmed that for all student-athletes, the grade-point average would be based only upon credit hours attempted at the certifying institution.

1991 Convention Proposal No. 84

24. **Financial aid—summer school.** Reviewed Proposal No. 84 and determined that athletically related financial aid is defined as any financial aid based in any degree on the student-athlete's athletics ability; recommended that the Council modify the current language to reflect this interpretation if the proposal is adopted; noted that partial qualifiers and nonqualifiers may not receive athletically related financial aid during the summer preceding initial enrollment, but would not be precluded from receiving aid under existing legislation or, if adopted, in accordance with Proposal No. 28, provided the student-athlete qualifies for such aid on the same basis as other students generally.

1991 Convention Proposal No. 98

25. **Official visit—ACT or SAT score.** Reviewed Proposal No. 98 and determined that prior to receiving an official visit from a Division I or II member institution, a prospective student-athlete's test score must be presented in writing through an official high school or testing agency document, but does not have to be received directly from the testing agency; recommended that the Council submit an amendment-to-amendment to Proposal No. 98-1 to permit a Division I or II member institution to provide an expense-paid visit to a prospective student-athlete who presents a pre-ACT (as well as a PSAT) score.

Schedule of meetings during 85th NCAA Convention

The meetings of the NCAA and those of several conferences and affiliated organizations will be conducted at the Opryland Hotel, Nashville, Tennessee, in early January 1991. The American Football Coaches Association will conduct its annual meeting January 7-10 at the New Orleans Hilton Riverside and Towers, New Orleans, Louisiana. The American Baseball Coaches Association will meet January 3-6 at the New Orleans Hilton Riverside and Towers, New Orleans, Louisiana. The College Athletic Business Management Association will meet January 6-9 at the Stouffer Hotel, Nashville, Tennessee. The National Association of Academic Advisors for Athletics will meet January 3-6 at the Opryland Hotel, Nashville, Tennessee.

Friday, January 4		
Time	Event	Room
8 a.m.-6 p.m.	Professional Development Seminar Registration	Governors Lobby
Noon-1:30 p.m.	Professional Development Seminar Luncheon	Taylor B
1:30 p.m.-5:30 p.m.	Professional Development Seminar	Taylor A
6 p.m.-7 p.m.	Professional Development Seminar Reception	Taylor B
Saturday, January 5		
Time	Event	Room
7 a.m.-5 p.m.	Professional Development Seminar Registration	Governors Lobby
8 a.m.-9 a.m.	Professional Development Seminar Breakfast	Taylor B
8 a.m.-12:30 p.m.	NCAA Council	Browning A
9 a.m.-12:30 p.m.	Professional Development Seminar	Taylor A
12:30 p.m.-2 p.m.	Professional Development Seminar Luncheon	Taylor B
Noon-5 p.m.	Council of Collegiate Women Athletic Administrators Board of Directors	Donelson A
12:30 p.m.-1:30 p.m.	NCAA Council Luncheon	Browning B
1:30 p.m.-5 p.m.	NCAA Division I Steering Committee	Browning A
1:30 p.m.-5 p.m.	NCAA Division II Steering Committee	Sevier A
1:30 p.m.-5 p.m.	NCAA Division III Steering Committee	Sevier B
7 p.m.-5:30 p.m.	Professional Development Seminar	Taylor A
6 p.m.-10 p.m.	National Football Foundation and Hall of Fame Dinner	Cheekwood
Sunday, January 6		
Time	Event	Room
7:30 a.m.-8 p.m.	NCAA Media Headquarters	Centennial B
8 a.m.-9 a.m.	Professional Development Seminar	Taylor B
8 a.m.-Noon	NCAA Men's Committee on Committees	Sam Houston
8 a.m.-5 p.m.	NCAA Council	Browning A
8:30 a.m.-1 p.m.	National Football Foundation and Hall of Fame Honors Court	Volunteer
9 a.m.-Noon	Division I-A Commissioners	Natchez Trace B
9 a.m.-12:30 p.m.	Professional Development Seminar	Taylor A
9 a.m.-5 p.m.	American Association of State Colleges and Universities	Appalachian
10 a.m.-11:30 a.m.	NCAA Media Brunch	Knoxville A
10 a.m.-2 p.m.	Council of Collegiate Women Athletic Administrators Board of Directors	Donelson A
Noon-1:30 p.m.	NCAA Men's and Women's Committees on Committees	Donelson B
12:30 p.m.-1:30 p.m.	NCAA Council Luncheon	Browning B
12:30 p.m.-4 p.m.	U.S. Fencing Coaches Association	Shiloh
1 p.m.-2:45 p.m.	Division I-A Women's Athletics Administrators Steering Committee	Belmont
1 p.m.-5 p.m.	NCAA Division II Men's Basketball Committee	Johnson
1 p.m.-5:30 p.m.	Ohio Valley Conference	Cumberland B
1 p.m.-6 p.m.	Midwestern Collegiate Conference	Sam Davis
1:30 p.m.-5 p.m.	College Commissioners Association	Natchez Trace B
2 p.m.-5 p.m.	Faculty Athletics Representatives Association	Adams
2 p.m.-6 p.m.	NCAA Women's Committee on Committees	Sam Houston
2 p.m.-6 p.m.	College Football Association Board of Directors	Hermitage
3 p.m.-4 p.m.	Council of Collegiate Women Athletic Administrators	Jefferson B
3 p.m.-5 p.m.	Atlantic 10 Conference	Nancy Ward
3 p.m.-7 p.m.	NCAA Complimentary Soft-Drink Bar	Presidential Lobby
3 p.m.-7 p.m.	NCAA Interpretations Center	Presidential Lobby
3 p.m.-7 p.m.	NCAA Registration	Jefferson A
4 p.m.-5 p.m.	Division I-A Women's Athletics Administrators	Taylor A
4 p.m.-5 p.m.	Division II Faculty Athletics Representatives	Carroll A
4 p.m.-5:30 p.m.	Women's Basketball Coaches Association Issues Committee	Ashwood
5 p.m.-6 p.m.	Division I-A Directors Association Executive Committee	Cheekwood
5 p.m.-7 p.m.	Faculty Athletics Representatives Association Reception	Magnolia
5 p.m.-7 p.m.	St. Louis Intercollegiate Athletic Association	Cumberland A
5:30 p.m.-10 p.m.	NCAA Postseason Football Committee	Cherokee
6 p.m.-7 p.m.	Council of Collegiate Women Athletic Administrators Reception	Knoxville
6 p.m.-8 p.m.	College Sports Information Directors of America	Cumberland C
6 p.m.-10 p.m.	University Commissioners Association	Washington
7 p.m.-10 p.m.	College Division Commissioners Association	W.C. Handy
7:30 p.m.-10 p.m.	Maryland Association of Collegiate Directors of Athletics	W.C. Handy
8:30 p.m.-10 p.m.	Haverford Group	Cumberland B
Monday, January 7		
Time	Event	Room
7:30 a.m.-11:30 a.m.	Missouri Valley Conference	Belle Meade

7:30 a.m.-11:30 a.m.	American Association of State Colleges and Universities	Two Rivers
7:30 a.m.-11:30 a.m.	Atlantic Coast Conference	Cherokee
7:30 a.m.-11:30 a.m.	Atlantic 10 Conference	Cumberland A
7:30 a.m.-11:30 a.m.	Big South Conference	Cumberland B
7:30 a.m.-11:30 a.m.	Big West Conference	Adams A
7:30 a.m.-11:30 a.m.	California Collegiate Athletic Association	Cumberland B
7:30 a.m.-11:30 a.m.	Central Collegiate Hockey Association	Robertson A
7:30 a.m.-11:30 a.m.	Colonial Athletic Association	Sam Davis
7:30 a.m.-11:30 a.m.	Commonwealth Coast Conference	Shiloh
7:30 a.m.-11:30 a.m.	ECAC Executive Council	Commodore
7:30 a.m.-11:30 a.m.	Metro Atlantic Athletic Conference	Clifton
7:30 a.m.-11:30 a.m.	Metropolitan Collegiate Athletic Conference	Nancy Ward
7:30 a.m.-11:30 a.m.	Midwestern Collegiate Conference	Sevier
7:30 a.m.-11:30 a.m.	New England Women's 8	Appalachian
7:30 a.m.-11:30 a.m.	Ohio Valley Conference	Sam Houston
7:30 a.m.-11:30 a.m.	Pacific-10 Conference	Browning B
7:30 a.m.-11:30 a.m.	Patriot League	Johnson
7:30 a.m.-11:30 a.m.	Pennsylvania State Athletic Conference	Natchez Trace B
7:30 a.m.-11:30 a.m.	St. Louis Athletic Conference	Sylvan
7:30 a.m.-11:30 a.m.	South Atlantic Conference	Two Rivers
7:30 a.m.-11:30 a.m.	Southeastern Conference	Browning A
7:30 a.m.-11:30 a.m.	Southland Conference	Robertson C
7:30 a.m.-11:30 a.m.	Southwestern Athletic Conference	Donelson A
7:30 a.m.-11:30 a.m.	Trans America Athletic Conference	Mercer
7:30 a.m.-11:30 a.m.	University Athletic Association	Donelson B
7:30 a.m.-11:30 a.m.	Western Athletic Conference	Robertson B
7:30 a.m.-11:30 a.m.	Wisconsin State University	Ashwood
7:30 a.m.-11:30 a.m.	Yankee Conference	Cleveland
8 a.m.-10 a.m.	NCAA Division I Men's Basketball Committee	Belmont
8 a.m.-11 a.m.	NCAA Men's and Women's Committees on Committees	Natchez Trace A

8 a.m.-5:30 p.m.	NCAA Complimentary Soft Drink Bar	Presidential Lobby
8 a.m.-5:30 p.m.	NCAA Interpretations Center	Presidential Lobby
8 a.m.-5:30 p.m.	NCAA Registration	Presidential Lobby
8:30 a.m.-11:30 a.m.	Southwest Athletic Conference	Cheekwood
9 a.m.-11:30 a.m.	East Coast Conference	Hermitage
11 a.m.-Noon	NCAA Committee on Women's Athletics Open Forum	Tennessee
11:30 a.m.-2 p.m.	NFFHF Council Luncheon	Jefferson A
11:45 a.m.-1:30 p.m.	Southern and Southern Conferences Luncheon	Jefferson B
Noon-4 p.m.	NCAA Presidents Commission	Carroll
12:30 p.m.-1:30 p.m.	National Association of Division I Independents	Mercer
12:30 p.m.-1:30 p.m.	University Athletic Association	Cleveland
12:30 p.m.-2:30 p.m.	Middle Atlantic States Collegiate Athletics Conference	Browning B
12:30 p.m.-4 p.m.	Rocky Mountain Athletic Conference	Belmont
12:30 p.m.-4:30 p.m.	American South Conference	Robertson A
12:30 p.m.-4:30 p.m.	Big East Conference	Cherokee
12:30 p.m.-4:30 p.m.	Big Eight Conference	Sam Davis
12:30 p.m.-4:30 p.m.	Big Sky Conference	Commodore
12:30 p.m.-4:30 p.m.	Big Ten Conference	Taylor
12:30 p.m.-4:30 p.m.	Colorado Athletic Conference	Shiloh
12:30 p.m.-4:30 p.m.	Eastern College Athletic Conference	Magnolia
12:30 p.m.-4:30 p.m.	Gateway and Missouri Valley Conferences Joint Meeting	Belle Meade
12:30 p.m.-4:30 p.m.	Great Lakes Intercollegiate Athletic Conference	Cumberland B
12:30 p.m.-4:30 p.m.	Ivy Group	Natchez Trace A
12:30 p.m.-4:30 p.m.	Mid-American Athletic Conference	Sevier
12:30 p.m.-4:30 p.m.	Mid-Continent Conference	Cumberland C
12:30 p.m.-4:30 p.m.	Missouri Intercollegiate Athletic Association	Natchez Trace B
12:30 p.m.-4:30 p.m.	New South Women's Athletic Conference	Volunteer
12:30 p.m.-4:30 p.m.	North Atlantic Conference	Johnson
12:30 p.m.-4:30 p.m.	North Central Intercollegiate Conference	Browning A

12:30 p.m.-4:30 p.m.	North Coast Athletic Conference	Cumberland A
12:30 p.m.-4:30 p.m.	Northeast Conference	Appalachian
12:30 p.m.-4:30 p.m.	Northern California Athletic Conference	Cheekwood
12:30 p.m.-4:30 p.m.	Ohio Athletic Conference	Robertson C
12:30 p.m.-4:30 p.m.	Southern Conference	Nancy Ward
12:30 p.m.-4:30 p.m.	Sun Belt Conference	Robertson B
12:30 p.m.-4:30 p.m.	Sunshine State Conference	Two Rivers
12:30 p.m.-4:30 p.m.	Western Collegiate Hockey Association	Donelson B
12:30 p.m.-4:30 p.m.	Wisconsin Women's Intercollegiate Athletic Conference	Donelson A
2 p.m.-4 p.m.	NCAA Student-Athlete Advisory Committee	Judge's Parlour
2 p.m.-4:30 p.m.	College Football Association	W.C. Handy
3 p.m.-4:30 p.m.	Midwest Intercollegiate Football Conference	Sam Houston
4:30 p.m.-5:30 p.m.	NCAA Opening Business Session	Tennessee Ballroom
5:30 p.m.-6:30 p.m.	NCAA Voting Committee	Cleveland
6 p.m.-7:30 p.m.	NCAA Delegates Reception	Presidential Ballroom
7:30 p.m.-11:30 p.m.	NCAA Interpretations Committee	Hermitage
7:30 p.m.-11:30 p.m.	City University of New York Athletic Conference	Johnson
7:30 p.m.-11:30 p.m.	College Conference of Illinois and Wisconsin	Sylvan
7:30 p.m.-11:30 p.m.	Dixie Intercollegiate Athletic Conference	Ashwood
7:30 p.m.-11:30 p.m.	Gateway Collegiate Athletic Conference	Cherokee
7:30 p.m.-11:30 p.m.	Gulf South Conference	Natchez Trace B
7:30 p.m.-11:30 p.m.	Hockey East Association	Appalachian
7:30 p.m.-11:30 p.m.	Ivy Group	Natchez Trace A
7:30 p.m.-11:30 p.m.	Metropolitan Collegiate Conference	Commodore
7:30 p.m.-11:30 p.m.	Mid-American Athletic Conference	Sevier
7:30 p.m.-11:30 p.m.	Mid-Continent Conference	Cumberland A
7:30 p.m.-11:30 p.m.	Mid-Eastern Athletic Conference	Nancy Ward
7:30 p.m.-11:30 p.m.	National Athletic Steering Committee	Cumberland B

7:30 p.m.-11:30 p.m.	New York Collegiate Athletic Conference	Mercer
7:30 p.m.-11:30 p.m.	North Star Conference	Sam Houston
7:30 p.m.-11:30 p.m.	Southeastern Conference	Browning A
7:30 p.m.-11:30 p.m.	Southern Independent Collegiate Officials Association	Shiloh
7:30 p.m.-11:30 p.m.	Southern Intercollegiate Athletic Conference	Clifton
7:30 p.m.-11:30 p.m.	West Coast Conference	Belmont
7:30 p.m.-11:30 p.m.	Western Collegiate Hockey Association	Donelson B
8 p.m.-10 p.m.	NCAA Student-Athlete Advisory Committee	Judge's Parlour
Tuesday, January 8		
Time	Event	Room
6:30 a.m.-7:45 a.m.	North Atlantic Conference	Volunteer
6:30 a.m.-8 a.m.	NCAA Chief Executive Officers Breakfast	Magnolia Ballroom
6:30 a.m.-8 a.m.	Big Eight Conference	Cheekwood
6:30 a.m.-8 a.m.	Central Intercollegiate Athletic Association	W.C. Handy
6:30 a.m.-8 a.m.	Missouri Valley Conference	Cherokee
6:30 a.m.-8 a.m.	Pacific-10 Conference	Sevier
6:30 a.m.-8 a.m.	Southern Conference	Donelson
7 a.m.-8 a.m.	NCAA Division I-AA Football Committee	Cumberland A
7 a.m.-8 a.m.	Atlantic 10 Conference	Cumberland B
7 a.m.-8 a.m.	Big East Conference	Belle Meade
7 a.m.-8 a.m.	Big West and Mid-American Athletic Conferences	Natchez Trace A
7 a.m.-8 a.m.	Colonial Athletic Association	Cleveland
7 a.m.-8 a.m.	Ivy Group	Natchez Trace B
7 a.m.-8 a.m.	Lone Star Conference	Sylvan
7 a.m.-8 a.m.	New Jersey Athletic Conference	Ashwood
7 a.m.-8 a.m.	Northeast Conference	

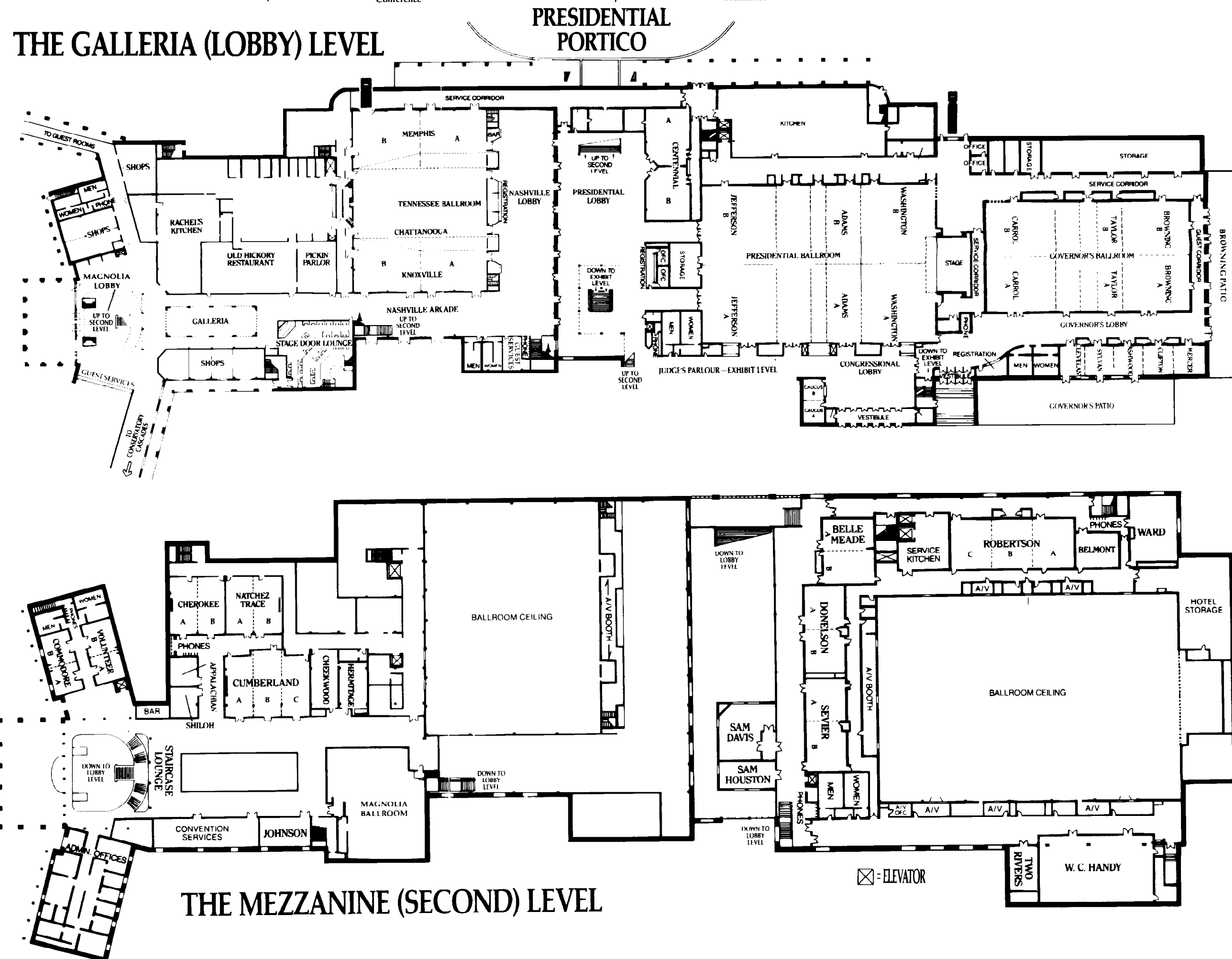
7 a.m.-8 a.m.	Southeastern Conference	Nancy Ward
7 a.m.-8 a.m.	Western Football Conference	Sam Houston
7 a.m.-5 p.m.	NCAA Complimentary Soft-Drink Bar	Presidential Lobby
7 a.m.-5 p.m.	NCAA Registration	Presidential Lobby
7:30 a.m.-8 p.m.	NCAA Media Headquarters	Centennial B
8 a.m.-10 a.m.	NCAA Division I-A Business Session	Tennessee Ballroom
8 a.m.-10 a.m.	NCAA Division I AAA Business Session	Adams
8 a.m.-Noon	NCAA Division II Business Session	Governors A
8 a.m.-Noon	NCAA Division III Business Session	Governors B
10:15 a.m.-Noon	NCAA Division I Business Session	Tennessee Ballroom
Noon-12:30 p.m.	NCAA Men's Committee on Committees	Sam Houston
Noon-1 p.m.	NCAA Voting Committee	Sam Davis
Noon-1:15 p.m.	NCAA Delegates Luncheon	Presidential Ballroom
12:30 p.m.-1 p.m.	NCAA Women's Committee on Committees	Sam Houston
1:30 p.m.-5 p.m.	NCAA Division I Business Session	Tennessee Ballroom
1:30 p.m.-5 p.m.	NCAA Division II Business Session	Governors A
1:30 p.m.-5 p.m.	NCAA Division III Business Session	Governors B
5 p.m.-7:30 p.m.	NCAA Division I-AA Football Committee	Mercer
5:30 p.m.-6:30 p.m.	National Consortium for Academics and Sports	Nancy Ward
5:30 p.m.-7 p.m.	NCAA Chief Executive Officers Reception	Magnolia Ballroom
5:30 p.m.-7 p.m.	NCAA Council	Sevier
5:45 p.m.-7:15 p.m.	Middle Atlantic States Collegiate Athletic Conference Reception	Commodore
7:30 p.m.-9:30 p.m.	NCAA Honors Dinner	Presidential Ballroom

Wednesday, January 9		
Time	Event	Room
6:30 a.m.-7:45 a.m.	North Atlantic Conference	Commodore
6:30 a.m.-8 a.m.	Big Eight Conference	Sam Houston
6:30 a.m.-8 a.m.	Mid-American Athletic Conference	Natchez Trace
6:30 a.m.-8 a.m.	North Star Conference	Belmont
6:30 a.m.-8 a.m.	Southern Conference	Donelson
7 a.m.-8 a.m.	Atlantic 10 Conference	Belle Meade
7 a.m.-8 a.m.	Big East Conference	Cumberland B
7 a.m.-8 a.m.	Colonial Athletic Association	Cheekwood
7 a.m.-8 a.m.	Ivy Group	Cleveland
7 a.m.-8 a.m.	National Association of Student Financial Aid Administrators	Johnson
7 a.m.-8 a.m.	Southeastern Conference	Nancy Ward
7 a.m.-5 p.m.	NCAA Complimentary Soft-Drink Bar	Presidential Lobby
7:30 a.m.-8 p.m.	NCAA Media Headquarters	Centennial B
8 a.m.-Noon	NCAA Division I Business Session	Presidential Ballroom
8 a.m.-Noon	NCAA Division II Business Session	Governors A
8 a.m.-Noon	NCAA Division III Business Session	Governors B
8 a.m.-5 p.m.	NCAA Interpretations Center	Presidential Lobby
8 a.m.-5 p.m.	NCAA Registration	Presidential Lobby
Noon-1:15 p.m.	NCAA Delegates Luncheon	Tennessee Ballroom
Noon-1:15 p.m.	NCAA Voting Committee	Sam Davis
Noon-1:30 p.m.	NCAA Eligibility Committee	Hermitage
1:30 p.m.-5 p.m.	NCAA General Business Session	Presidential Ballroom
5:15 p.m.-7:15 p.m.	NCAA Interpretations Committee	Johnson
5:30 p.m.-7 p.m.	Springfield College Alumni Association Reception	Cheekwood
5:45 p.m.-7:15 p.m.	Middle Atlantic States Athletic Conference Reception	Belle Meade
6 p.m.-10 p.m.	Northeast-10 Conference	Cleveland

Thursday, January 10		
Time	Event	Room
6:30 a.m.-7:45 a.m.	North Atlantic Conference	Commodore
6:30 a.m.-8 a.m.	Big Eight Conference	Sam Houston
6:30 a.m.-8 a.m.	Mid-American Athletic and Big West Conferences	Sevier
6:30 a.m.-8 a.m.	Ohio Athletic Conference	Cheekwood
6:30 a.m.-8 a.m.	Pacific-10 Conference	Browning B
7 a.m.-8 a.m.	Atlantic 10 Conference	Natchez Trace
7 a.m.-8 a.m.	Big East Conference	Cumberland B
7 a.m.-8 a.m.	Colonial Athletic Association	Natchez Trace
7 a.m.-8 a.m.	Ivy Group	Cleveland
7 a.m.-8 a.m.	New Jersey Athletic Conference	Johnson
7 a.m.-8 a.m.	Southeastern Conference	Nancy Ward
7 a.m.-5 p.m.	NCAA Complimentary Soft-Drink Bar	Presidential Lobby
7:30 a.m.-8 p.m.	NCAA Media Headquarters	Centennial B
8 a.m.-Noon	NCAA General Business Session	Presidential Ballroom
8 a.m.-5 p.m.	NCAA Interpretations Center	Presidential Lobby
8 a.m.-5 p.m.	NCAA Registration	Presidential Lobby
Noon-1:15 p.m.	NCAA Delegates Luncheon	Tennessee Ballroom
Noon-1:15 p.m.	NCAA Voting Committee	Sam Davis
1:30 p.m.-5 p.m.	NCAA General Business Session	Presidential Ballroom
5:45 p.m.-7:15 p.m.	Middle Atlantic States Collegiate Athletic Conference Reception	Belle Meade
6 p.m.-10 p.m.	Northeast-10 Conference	Cleveland

Friday, January 11		
Time	Event	Room
6:30 a.m.-7:45 a.m.	North Atlantic Conference	Commodore
6:30 a.m.-8 a.m.	Big Eight Conference	Sam Davis
7 a.m.-8 a.m.	Atlantic 10 Conference	Natchez Trace A
7 a.m.-8 a.m.	Colonial Athletic Association	Natchez Trace B
7 a.m.-Noon	NCAA Complimentary Soft-Drink Bar	Presidential Lobby
7:30 a.m.-8 p.m.	NCAA Media Headquarters	Centennial B
8 a.m.-Noon	NCAA General Business Session	Presidential Lobby
8 a.m.-Noon	NCAA Interpretations Center	Presidential Lobby
8 a.m.-Noon	NCAA Registration	Presidential Lobby
12:30 p.m.-3 p.m.	NCAA Interpretations Committee	Belmont
3 p.m.-6 p.m.	NCAA Council	Browning A

Saturday, January 12		
Time	Event	Room
8 a.m.-Noon	NCAA Council	Browning A



Top sports schools help make Christmas brighter for GIs

Some Marine units in Saudi Arabia received boxes of frisbees, sports equipment and shirts as Christmas presents, compliments of more than 25 big-name U.S. colleges.

More than 18 large boxes of equipment, books, posters and other material were donated by the schools to the troops in Operation Desert Shield.

Pennsylvania State University sent 140 shirts monogrammed with "Penn State Salutes Armed Forces." The University of Florida sent six footballs from the Freedom Bowl. The University of Notre Dame provided six practice jerseys, and the University of California, Los Angeles, shipped one football game jersey, along with some hats and T-shirts.

The University of Iowa's Hawk Shop sent a collection of hats and football books. The University of Louisville provided posters autographed by players, and the University of Alabama, Tuscaloosa, sent visors, shirts and posters. Ohio University's contribution included softballs, volleyballs, baseballs and shirts. Street and Smith magazine sent copies of the pro basketball issue, and Ohio State University provided football trading cards.

The effort was organized by Phil Straw, former Marine and executive assistant to Rep. Clarence Miller, R-Ohio. Straw said he fondly remembered receiving packages and

letters from home while he served in Vietnam.

"All the pep talks pale in comparison with letters from home," he said.

Straw randomly selected a number of major universities and asked them to donate whatever they could.

"I simply ask them, 'If you were over there and you were 21, standing on the edge of war, what are you missing most and what would you like to have?'" Straw said. "When you leave it open like that, you can almost hear their imagination kick into gear."

At UCLA, for example, Straw reached Tony Perri, an assistant equipment manager, who rummaged through some things while Straw waited on the phone, returning to say he had a game jersey that



Frank Beamer

column by Donald Kaul of Tribune Media Services, Inc.:

... All is not gloom and doom in the world of intercollegiate athletics. Yes, the race goes mainly to the swift and, yes, cheaters very often win and, yes, to the spoiled belong the victories, but integrity, self-sac-

Good sports

he was sending.

"We are very happy to make a contribution to our servicemen in Saudi Arabia," wrote Iowa store officer Dale Arens. "Our thoughts are with them and their well-being. We hope these Hawkeye goods will make the days a little brighter."

Right stuff

The following is excerpted from a

rifice and honor still exist in college sports.

Take, for example, the case of Frank Beamer, the football coach at Virginia Tech.

Beamer is a very good coach. His team got better as the season went along this year (always a good sign) and beat three bowl teams at the end of the season. So, naturally, he got a job offer.

NCAA seminar topics are sports marketing and promotion

Promotion and marketing of intercollegiate athletics programs will be the focus of the 13th NCAA Professional Development Seminar, set for January 4-6 at the Opryland Hotel in Nashville, Tennessee, prior to the Association's 1991 Convention.

Among those scheduled to speak during the seminar are Chris Voelz, women's athletics director at the University of Minnesota, Twin Cities; Neal Bendesky, assistant athletics director at the University of Miami (Florida); Bob McDevitt, vice-president of marketing for Host Communications in Lexington, Kentucky; Alan Friedman, editor of Team Marketing Report, and Nancy

Hogshead, vice-president of the Women's Sports Foundation.

Moderating the seminar will be James A. Shaffer, vice-president for public affairs at Butler University.

Hogshead will speak during the luncheon opening the seminar at noon January 4.

Following the luncheon, and after opening remarks from Shaffer, McDevitt will review various elements of the Association's new corporate partnership agreement with the Sara Lee Corporation, which will promote women's athletics exclusively.

Friedman also will speak January 4 on creative ways to increase at-

tendance at athletics events.

Voelz will open the January 5 schedule with comments on attracting campus constituencies (i.e., faculty, staff and students) to athletics events.

Bendesky's presentation will focus

Chapman in familiar role at Convention

Because several issues up for consideration at the 1991 Convention have generated numerous alternative proposals, Alan J. Chapman's 17th straight year of service as parliamentarian could prove to be one of his most challenging.

But, as usual, Chapman will be prepared to rule on the parliamentary questions that can result from juggling so many related proposals.

Because of the complex nature of NCAA legislation, Chapman confers with Association officers and staff weeks in advance of the Convention to study the parliamentary aspects of proposals and head off problems that could occur in the business sessions.

Chapman, a professor of engineering at Rice University, has served as parliamentarian at every annual Convention since 1975. He was NCAA president in 1973 and 1974.

A member of the National Association of Parliamentarians, he will serve in the 1991 general business session and in the Divisions I and I-A sessions.

Assisting as parliamentarians in other business sessions will be Francis W. Bonner, professor of English and former faculty athletics representative at Furman University, Division I-AA; Howard Elwell, director of athletics at Gannon University, Division II, and Armin P. Langholtz, faculty athletics representative at Capital University, Division III.

Boston College offered him \$160,000 a year plus the possibility of lucrative television and radio contracts to come up north. (Beamer makes \$110,000 with Virginia Tech and, needless to say, his radio and television opportunities in Blacksburg, Virginia, are limited.)

He thought about it a while, then refused the job. More than that, he said that he would neither seek nor accept a raise in salary from Virginia Tech until "such time as all faculty and classified workers are given the same opportunity."

Beamer said: "I think I'm where I need to be right here. Other things are more important than money, including people and relationships with people."

"... When I came in I asked everyone to hang together... and to work together to build this football program. Faculty and budget are tight right now, and I'm not going to take a raise."

In this day when sporting news is often dominated by quick-buck artists whose word isn't worth a salesman's smile, that statement is breathtaking in its nobility.

Donate building

The family of Bill Bowerman, former University of Oregon track coach, will donate a \$2.1 million track and field building to Oregon, the school announced.

"The Bowerman family's gift will truly make Hayward Field one of

the world's premier track facilities," Oregon athletics director Bill Byrne said.

Bowerman, 79, said it has been his longtime dream to build a track center at the university's Hayward Field, site of the U.S. Olympic trials in 1972, 1976 and 1980.

"We hope the facility will contribute not only to the sport of track and field but to the general education of University of Oregon students and the state as a whole," Bowerman said.

Completion is scheduled for the fall of 1991.

Bowerman, his three sisters and three sons all attended Oregon. While an undergraduate, Bowerman ran the 440 under then-coach Bill Hayward, for whom the field is named. When Hayward retired in 1948, Bowerman replaced him.

Bowerman had 23 winning seasons and four NCAA team championships during his career at Oregon. He retired in 1973.

In 1972, he was named head coach of the U.S. Olympic track and field team, and in 1981, he was inducted into the National Track and Field Hall of Fame. He coached 28 Olympians, 12 American record-holders and 24 NCAA champions.

In 1964, Bowerman and a former student, Phil Knight, each put up \$500 and went into the shoe business. The same business, Nike, Inc., had revenues of \$2.2 billion last year.

Highest

Continued from page 5

Convention are by a show of voting paddles and thus are not counted. Because of that, all Association voting records are limited to those that have been officially counted, whether by a paddle count or by roll call.

The highest counted vote in Association history was 746 at last year's Convention in Dallas. That came on a proposal to include basketball and football in a resolution calling for reductions in student-athletes' mandated playing and practice activities.

In fact, the top three vote counts in history were at last year's Convention. Next were 743 on the time-reduction resolution itself and 741 on a proposal dealing with exempted contests in basketball.

The only other count ever to exceed 700 was 704 at the annual Convention in 1987, on a proposal to move the detailed financial aid legislation from the constitution to the bylaws.

All-time high counts by division:

• Division I-A, 115 (the maximum possible), 1990 Convention, proposal to shorten the spring prac-

tice period in football.

• Division I-AA, 96 (one short of the maximum possible at the time), 1990, the spring practice issue in football.

• Division I as a whole, 327, 1990, on three separate occasions. One was a proposal to grant a fourth year of eligibility for nonqualifiers and partial qualifiers, another was a resolution regarding freshman ineligibility, and the third was the Division I segment of the proposal to include basketball and football in the time-reduction resolution. At last year's Convention, no fewer than 25 counted votes exceeded the former high count of 319.

• Division II, 187, 1988 annual Convention, Division II tryout provisions. That was the only voting record that was not bettered at last year's gathering.

• Division III, 238, 1990, on two occasions. One was the Division III vote on including basketball and football in the time-reduction resolution; the other was on reductions in the basketball season in Division III.

\$10,000 Ontario Indoor Tennis Championships

Qualifying: February 1-3
Main Draw: February 6-10
Mayfair West Racquet Club
Toronto, Canada

Send entry and cheque to:
Ontario Tennis Association
1220 Sheppard Ave. E.
Willowdale, Ontario M2K-2X1

Entry Fee:

MSQ & LSQ — \$30.00

MS & LS — \$40.00

MD & LD — \$20.00/player

Entry Deadline:

January 29
For more information call:
Brooks Hipgrave, Tournament Director
at 416/495-4215

*Billeting available on request

Come up and experience
some good Canadian hospitality!

NCAA Record

FACULTY ATHLETICS REPRESENTATIVE

George Browne named at Seton Hall, succeeding **John Mitchell**, who served for four years as faculty representative.

DIRECTORS OF ATHLETICS

Alvin J. Van Wie announced his retirement at Wooster, effective July 1, 1991. Van Wie has served as AD at his alma mater since 1974, and also coached men's basketball for 18 years beginning in 1961, in addition to coaching men's tennis. He was NCAA Division III vice-president during 1988 and 1989, and was a Council member from 1986 to 1989. Van Wie also is a former member of the NCAA Men's Basketball Rules Committee, and he currently serves on the Special Advisory Committee to Review Recommendations Regarding Distribution of Revenues. ... **David Dugan** selected at West Georgia, where he previously was a physical education and recreation professor. Dugan, who served for four months as interim AD at the school in 1988, has been at West Georgia since 1972. ... **Joseph Boylan** chosen at Loyola (Maryland) after six years as assistant AD for academic support programs at Rutgers. Boylan also served as associate head men's basketball coach during his 17-year stay at Rutgers, and he is a former basketball aide at American.

ASSISTANT DIRECTOR OF ATHLETICS

Jim Miller appointed at North Carolina State, where he will be responsible for compliance. For the past four years, Miller has been president of his own sports management service. He played basketball and baseball at Old Dominion and is a former men's basketball assistant at Virginia Military and Northwestern State (Louisiana).

COACHES

Baseball—**Greg Christodulu** promoted from assistant at Susquehanna, where he joined the staff last year and also serves as assistant football coach. He also has been a football aide at Albany (New York) and James Madison.

Men's basketball—**Bobby Paschal** received a three-year contract extension



King's (Pennsylvania) selected **Richard Mannello** for football



Brian Dennison named football aide at North Central



Billy Campfield joined football staff at Northern Colorado

through 1994 at South Florida. Last year, Paschal, who is in his fifth season at the school, coached the Bulls to their first Sun Belt Conference title and Division I Men's Basketball Championship berth.

Football **Richard Mannello** named at King's (Pennsylvania), which is reinstating its program after dropping it 27 years ago. Mannello has been quarterbacks and fullbacks coach at Northeastern for the past two years and is a former player and assistant coach at Springfield. ... **Stephen C. Hackett** selected at Norwich, effective January 15. He previously was associate head coach and offensive coordinator at Coast Guard, where he had been on the staff since 1982, and he also has coached at Princeton and Syracuse. ... Wartburg's **Don Canfield** appointed at St. Olaf, where he played in the early 1960s. Through 18 years at Wartburg, Canfield coached his teams to a 97-71-1 record, including a 64-33 mark and an appearance in the Division III Football Championship during the past 10 seasons. He also has been an assistant at Valparaiso. ... **Tom Coughlin** selected at Boston College, where he is a former assistant. He has been receivers coach for the New York Giants for the past three seasons and also has coached for the Philadelphia Eagles and Green Bay Packers.

Football assistants—**Brian Dennison** selected for a full-time position as recruiter

and assistant coach at North Central, where he coached the offensive line on a part-time basis last season. He is a former offensive tackle at the school. ... **Don Eck, Darrell Gast** and **Rick Clark** hired at James Madison. Eck, who will coach the offensive line, and Gast, who will tutor wide receivers, previously were on the staff at Arizona, while Clark, the Dukes' new defensive line coach, has served at Central Washington, Arizona and, most recently, Long Beach State. ... **Billy Campfield**, a former Kansas and Philadelphia Eagles running back, appointed running backs and special teams coach at Northern Colorado, where he also will serve as minority recruiting coordinator for athletics. He is a former assistant at Cal State Sacramento. ... **Scott Rigg** promoted from part-time defensive line coach to defensive coordinator at Quincy, where he has been on the staff for five years.

Men's lacrosse assistant—**Todd Curry** named at Loyola (Maryland). Curry, who has played in the Major Indoor Lacrosse League for the past four years, was a three-time all-America player at Syracuse.

Men's soccer—**Steve Sampson** resigned at Santa Clara to accept a position with the 1994 World Cup Committee. Through five seasons, he coached his Bronco teams to a 64-19-19 record, including a 20-0-3 mark in 1989, when that

squad tied with Virginia for the Division I title. The Broncos also appeared in the 1990 tournament.

Men's and women's tennis—**Sue Patton** retired at Seton Hall, where she has coached the women's team for 18 seasons and the men's team for four seasons.

Women's track and field—**Brian McDonnell** appointed interim coach at St. Thomas (Minnesota) while **Joe Sweeney** takes a one-year leave of absence. McDonnell, a former runner at the school, has been a cross country and track aide at St. Thomas since 1986.

STAFF

Minority recruiting coordinator **Billy Campfield** named at Northern Colorado, where he also will be an assistant football coach.

NOTABLES

Former wrestling standouts **S. Wade Schalles** of Clarion and **Michael J. Caruso** of Lehigh selected for induction into the National Wrestling Hall of Fame, along with the late **Richard W. Barker**, longtime head wrestling coach at Cornell College. ... **Dottie Zenaty** selected Division I coach of the year and **Sharon Goldbrenner** of Trenton State named Division III coach of the year by the College Field Hockey Coaches Association.

DEATHS

Art Acker, former athletics director and coach of five sports at Cal State Chico, died December 24 in California at age 99. Acker, who played basketball at Millikan, coached football, basketball, baseball, track and boxing at Cal State Chico. ... **Brian Schmitz**, a freshman wrestler at Iowa, was killed in a farm accident December 19 near Crawfordville, Iowa. He was 19. Schmitz, who wrestled at 158 pounds, was killed when he was trapped beneath equipment on his parents' farm.

POLLS

Division I Baseball

The preseason top 40 NCAA Division I baseball teams as selected by Collegiate Baseball, with points:

1. Stanford, 493; 2. Oklahoma State, 491; 3. Arizona State, 488; 4. Georgia Tech, 484; 5. Louisiana State, 481; 6. Miami (Florida), 479; 7. Arkansas, 473; 8. Texas, 470; 9. Florida State, 465; 10. Loyola Marymount, 462; 11.

Wichita State, 455; 12. Long Beach State, 452; 13. Southern California, 447; 14. North Carolina, 446; 15. Pepperdine, 441; 16. Oklahoma, 438; 17. Florida, 436; 18. Creighton, 432; 19. Georgia Southern, 429; 20. Texas A&M, 426; 21. Southern Illinois, 422; 22. Clemson, 416; 23. Cal State Northridge, 410; 24. Washington State, 409; 25. Maine, 401; 26. Minnesota, 399; 27. Fresno State, 396; 28. Auburn, 393; 29. Old Dominion, 390; 30. Cal State Fullerton, 387; 31. UCLA, 384; 32. Mississippi State, 380; 33. Arizona, 376; 34. Notre Dame, 372; 35. Southern Mississippi, 368; 36. Brigham Young, 362; 37. Ohio State, 357; 38. Illinois, 354; 39. Hawaii, 350; 40. South Carolina, 342.

Division II Baseball

The preseason top 30 NCAA Division II baseball teams as selected by Collegiate Baseball, with points:

1. Jacksonville State, 474; 2. Florida Southern, 468; 3. Armstrong State, 432; 4. Lewis, 414; 5. UC Riverside, 412; 6. Rollins, 408; 7. New Haven, 394; 8. Troy State, 368; 9. Tampa, 358; 10. Cal Poly San Luis Obispo, 330; 11. Columbus, 322; 12. Southern Illinois-Edwardsville, 318; 13. Chapman, 272; 14. North Alabama, 264; 15. Mankato State, 232; 16. Florida Tech, 230; 17. Mansfield, 226; 18. Sonoma State, 214; 19. Northern Kentucky, 178; 20. Eckerd, 176; 21. UC Davis, 152; 22. Sacred Heart, 128; 23. South Carolina-Spartanburg, 108; 24. Northwest Missouri State, 94; 25. Florida Atlantic, 92; 26. Livingston, 90; 27. California (Pennsylvania), 84; 28. Cal State Stanislaus, 28; 29. Regis (Colorado), 26; 30. (tie) Norfolk State, Delta State and Southeast Missouri State, 22.

Division III Baseball

The preseason top 30 NCAA Division III baseball teams as selected by Collegiate Baseball, with points:

1. Marietta, 492; 2. North Carolina Wesleyan, 488; 3. Wisconsin-Oshkosh, 485; 4. Aurora, 481; 5. Eastern Connecticut State, 479; 6. Methodist, 473; 7. Ferrum, 468; 8. Cal State San Bernardino, 463; 9. Ithaca, 460; 10. Montclair State, 459; 11. Claremont-Mudd-Scripps, 457; 12. William Paterson, 452; 13. La Verne, 449; 14. Trenton State, 442; 15. Mary Washington, 441; 16. Otterbein, 440; 17. William Penn, 436; 18. Lynchburg, 431; 19. Cal State Stanislaus, 429; 20. Amherst, 425; 21. Johns Hopkins, 421; 22. Wooster, 419; 23. Southern Maine, 417; 24. St. Olaf, 411; 25. Simpson, 407; 26. Rensselaer, 402; 27. Elizabethtown, 391; 28. Nebraska Wesleyan, 389; 29. William Penn, 383; 30. Ohio Wesleyan, 380.

Record number of CEOs are preregistered for Convention

Nearly 40 percent of the NCAA institutions that are sending delegates to the 1991 NCAA Convention in Nashville will be represented by their presidents or chancellors, according to preregistration totals through December 28.

As of that date, 266 presidents and chancellors had preregistered as voting, alternate or visiting delegates for their institutions. A total of 679 institutions had preregistered at that point.

That is the largest number of CEOs ever to preregister for an NCAA Convention. The record for the number actually attending a Convention was 199 at the special "integrity" Convention in June 1985. A year ago, 185 CEOs had preregistered as of late December; 169 actually attended the 1990 gathering.

Among the 266 CEOs preregistered this year are 178 from Division I, 61 from Division II and 27 from Division III. Within the Division I total, 80 of the 106 Division I-A CEOs are preregistered, as well as 47 from Division I-AA and 51 from I-AAA. The 178 Division I CEOs represent 60.1 percent of the CEOs in that division.

Following is the CEO preregistration list as of December 28, in alphabetical order by last name in each division and subdivision. Presidents Commission members are indicated by asterisks; CEOs serving on the NCAA Council are indicated by pound signs.

Division I

I-A: Lamar Alexander, University of Tennessee, Knoxville; Bill L. Atchley, University of the Pacific; Ray Authement, University of Southwestern Louisiana; Steven C. Beerling, Purdue University; Myles

Brand, University of Oregon; Neil S. Bucklew, West Virginia University; John V. Byrne, Oregon State University; John R. Campbell, Oklahoma State University; Thomas G. Carpenter, Memphis State University; John T. Casteen III, University of Virginia; Stanford Cazier, Utah State University; Lattie F. Coor, Arizona State University.

John P. Crecine, Georgia Institute of Technology; William E. Davis, Louisiana State University; John DiBiaggio, Michigan State University; Robert H. Donaldson, University of Tulsa; James J. Duderstadt, University of Michigan; Thomas Ehrlich, Indiana University, Bloomington; Daniel E. Ferritor, University of Arkansas, Fayetteville; Edward T. Foote II, University of Miami (Florida); *Gail Fullerton, San Jose State University; Milton D. Glick, Iowa State University; Milton A. Gordon, California State University, Fullerton; *Harold H. Haak, California State University, Fresno.

Diether Haenicke, Western Michigan University; James E. Halligan, New Mexico State University; Paul Hardin, University of North Carolina, Chapel Hill; *Thomas K. Hearn, Wake Forest University; Frank E. Horton, University of Toledo; *Stanley O. Ikenberry, University of Illinois System; Donald Kennedy, Stanford University; William E. Kirwan, University of Maryland, College Park; Charles B. Knapp, University of Georgia; John E. La Tourette, Northern Illinois University; Robert W. Lawless, Texas Tech University; Francis L. Lawrence, Rutgers University, New Brunswick.

Max Lennon, Clemson Univer-

sity; Aubrey K. Lucas, University of Southern Mississippi; Rev. Edward A. Malloy, University of Notre Dame; James E. Martin, Auburn University; *Martin A. Massengale, University of Nebraska, Lincoln; James D. McComas, Virginia Polytechnic Institute; Curtis L. McCray, California State University, Long Beach; William H. Mobley, Texas A&M University; Rev. J. Donald Monan, Boston College; Haskell Monroe, University of Missouri, Columbia; Larry K. Monteith, North Carolina State University; William V. Musc, University of Akron.

*Lt. Gen. Dave R. Palmer, U.S. Military Academy; Paul G. Pearson, Miami University (Ohio); Richard E. Peck, University of New Mexico; *Chase N. Peterson, University of Utah; A. Kenneth Pye, Southern Methodist University; John Quinn, University of Tennessee, Knoxville; Hunter R. Rawlings III, University of Iowa; Charles B. Reed, Florida State University System; George Rupp, Rice University; John W. Ryan, Indiana University System; Donna E. Shalala, University of Wisconsin, Madison; William E. Shelton, Eastern Michigan University.

Albert Simone, University of Hawaii; *Bernard F. Slinger, Florida State University; Arthur K. Smith, University of South Carolina, Columbia; Samuel H. Smith, Washington State University; Joseph A. Steger, University of Cincinnati; Donald C. Swain, University of Louisville; Joab Thomas, Pennsylvania State University; Chang-Lin Tien, University of California, Berkeley; William E. Tucker, Texas Christian University; *R. Gerald Turner,

University of Mississippi; Richard L. Van Horn, University of Oklahoma; Arnold R. Weber, Northwestern University.

Jon Wefald, Kansas State University; Morton W. Weir, University of Illinois, Champaign; Charles T. Wethington, University of Kentucky; John E. Worthen, Ball State University; Joe B. Wyatt, Vanderbilt University; *Charles E. Young, University of California, Los Angeles; Donald W. Zacharias, Mississippi State University; James H. Zumberge, University of Southern California.

I-AA: Robert A. Alost, Northwestern State University (Louisiana); Steven Altman, University of Central Florida; Martin J. Anisman, Sam Houston State University; Julius W. Becton, Prairie View A&M University; *Ronald Beller, East Tennessee State University; Oswald P. Bronson, Bethune-Cookman College; Rev. John E. Brooks, Holy Cross College; Myron L. Coulter, Western Carolina University; George W. Cox, Tennessee State University; *Joseph N. Crowley, University of Nevada, Reno; Constantine W. Curris, University of Northern Iowa; William B. DeLauder, Delaware State College.

George M. Dennison, University of Montana; Rev. Edmund J. Dobbin, Villanova University; Edward B. Fort, North Carolina A&T State University; Hanly Funderburk, Eastern Kentucky University; Marshall Gordon, Southwest Missouri State University; C. Nelson Grote, Morehead State University; Nicholas L. Henry, Georgia Southern University; Leon Howard, Alabama State University; Eugene M. Hughes, Northern Arizona University; Alfred

F. Hurley, University of North Texas; John Johns, Furman University; *Joseph B. Johnson, Grambling State University.

Maj. Gen. John W. Knapp, Virginia Military Institute; Ronald J. Kurth, Murray State University; Richard G. Landini, Indiana State University; Peter Likins, Lehigh University; Thomas C. Meredith, Western Kentucky University; Dale Nitzsche, University of New Hampshire; Frederick W. Obear, University of Tennessee, Chattanooga; Oscar C. Page, Austin Peay State University; *Stanley Rives, Eastern Illinois University; *Albert F. Smith, South Carolina State College; Eugene W. Smith, Arkansas State University; Hoke L. Smith, Towson State University.

Dolores R. Spikes, Southern University, Baton Rouge; Jerome H. Supple, Southwest Texas State University; John E. Thomas, Appalachian State University; Paul H. Thompson, Weber State University; Paul R. Verkuil, College of William and Mary; *Dwight Vines, Northeast Louisiana University; Angelo Volpe, Tennessee Technological University; Ralph H. Wagoner, Western Illinois University; Thomas P. Wallace, Illinois State University; Walter Washington, Alcorn State University; Lt. Gen. C. E. Watts III, The Citadel.

I-AAA: Martin G. Abegg, Bradley University; Warren B. Armstrong, Wichita State University; Geoffrey Bannister, Butler University; Francis T. Borkowski, University of South Florida; James J. Brady, Jacksonville University; James W. Cleary, California State University, Northridge; Michael J. Conaton, Xavier

See Record, page 17

Gain in attendance for football is slight

Even with another big year in Division I-AA, college football attendance showed its third smallest increase ever in 1990, but it was enough to produce the second highest total in history at 36,560,247.

The figures cover all 673 four-year college varsity teams (533 are NCAA members).

The increase is 153,950—or four-tenths of one percent. Only the 1986 and 1987 increases, both around 75,000, have been smaller since NCAA official record-keeping began in 1957.

Division I-AA's surge in per-game average hit 11,265—highest under the current division format. By contrast, Division I-A fell in per-game average to 41,377—lowest in the same span, during which I-A has had from 104 to 106 teams and I-AA from 84 to 89. (As the result of a special NCAA Convention, 40 of 137 I-A teams moved to I-AA, creating a 97-92 split in 1982. In 1983, eight Mid-American Athletic Conference teams returned to I-A, creating the current lineup.)

The national attendance record remains 36,652,179 in 1984—the year the U.S. Supreme Court struck down the NCAA television plan (season tickets had been sold before the court decision) and brought back unrestricted televising of college games for the first time since the early 1950s. Every year since, national attendance has been below the 1984 level.

Only twice in history has Division I-A attendance dropped in both average and total—in 1985 and 1988. The only big increase in attendance came in 1989. Here are the national, I-A and I-AA attendance figures under the current lineup:

Year	Attendance	I-A	I-AA
1983	36,301,877	42,162	10,844
1984	36,652,179	42,548	10,885
1985	36,312,022	42,040	10,919
1986	36,387,905	42,049	11,064
1987	36,462,671	41,963	11,151
1988	35,581,790	41,454	10,326
1989	36,406,297	41,970	10,839
1990	36,560,247	41,377	11,265

*All-time high

The record per-game averages in both I-A (43,689) and I-AA (11,709)

came in 1982, the only year of the 97-92 split; under the current lineup, 1984 has the top I-A average and 1990 produced the highest in I-AA.

Only four I-A conferences were up in average this year, while in I-AA, eight were up in average and three set all-time highs—the Southwestern Athletic (20,704), Mid-Eastern Athletic (13,220) and Ohio Valley (11,630).

Once again, factors in the I-AA increase were games in big-city neutral sites. Led by Grambling, Tennessee State and Florida A&M, the top 30 teams played in 15 such games totaling 575,825 this year vs. 14 for 470,947 in 1989 and 10 for 287,358 in 1988.

Divisions II and III helped the national increase with tiny increases of their own in per-game average. Division I-A, even though down in average, played 12 more games for a total of 615, most ever with the current lineup, and thus increased in total by 138,883.

SEC on top again

For the third year in a row, the Southeastern Conference is on top in I-A over the Big Ten, which ruled for three decades before that. The SEC average of 63,870 is down a bit from its record high in 1989, but its 4.2 million is No. 2 in I-A history (record: SEC's 4,351,832 in 1986).

The I-A conferences showing per-game increases are the Southwest Athletic, Atlantic Coast, Mid-American and Big West. The Big West's 11.04 is the biggest percentage increase.

In I-AA, the other five conferences showing per-game increases (after the record years in the SWAC, MEAC and OVC) are the Southland, Southern, Big Sky, Gateway and Patriot. The OVC's 33.25 percent jump is by far the biggest.

Below I-AA, the Southern Intercollegiate is on top at 6,967, replacing the Lone Star. The 1988 champion Central Intercollegiate again is No. 2.

Michigan's 17th straight

Michigan took its 17th straight

See Gain, page 15

CONFERENCE	TEAMS	GAMES	*1989		1990			PCT. CHANGE	
			ATTENDANCE	AVERAGE	GAMES	ATTENDANCE	AVERAGE	IN AVERAGE	
Southeastern (I-A)....	10	63	4,123,005	65,445#	66	4,215,400	63,870	Down	2.41
Big Ten (I-A).....	10	59	3,492,647	59,197	60	3,533,504	58,892	Down	0.52
Pacific-10 (I-A).....	10	60	3,006,176	50,103	58	2,872,173	49,520	Down	1.16
Big Eight (I-A).....	8	49	2,362,465	48,214	49	2,257,825	46,078	Down	4.43
Atlantic Coast (I-A)..	8	49	2,010,317	41,027	47	1,988,781	42,314	Up	3.14
I-A Eastern Ind.	9	51	2,294,563	44,991#	55	2,313,301	42,060	Down	6.51
I-A Southern Ind.	9	51	2,187,376	42,890#	52	2,157,335	41,487	Down	3.27
Southwest (I-A)	9	51	1,914,608	37,541	53	2,087,248	39,382	Up	4.90
Western Athl. (I-A)...	9	55	1,844,999	33,545	55	1,784,807	32,451	Down	3.26
Other I-A Ind.	7	34	853,140	25,092	34	841,256	24,743	Down	1.39
Southwestern (I-AA)*..	7	41	765,738	18,677	40	828,169#	20,704#	Up	10.85
Mid-American (I-A)....	9	44	689,698	15,675	45	744,368	16,542	Up	5.53
Big West (I-A).....	8	37	528,921	14,295	41	650,800	15,873	Up	11.04
Mid-Eastern (I-AA) ...	7	41	521,529#	12,720	36	475,909	13,220#	Up	3.93
Ohio Valley (I-AA) ..	7	34	296,739	8,728	40	465,183	11,630#	Up	33.25
Ivy (I-AA).....	8	43	557,872	12,974	41	471,245	11,494	Down	11.41
Southland (I-AA).....	7	38	423,772	11,152	38	436,110	11,477	Up	2.91
Southern (I-AA).....	8	44	495,918	11,271	44	504,248	11,415	Up	1.28
Big Sky (I-AA).....	9	52	550,975#	10,596	50	531,060	10,621	Up	0.24
All I-AA Independents*	12	68	672,622	9,892	69	657,792	9,533	Down	3.63
Gateway (I-AA).....	7	40	315,633	7,891	36	313,409	8,706	Up	10.33
Yankee (I-AA)	9	48	460,683	9,598	49	423,459	8,642	Down	9.96
Patriot (I-AA)*+	6	30	217,039	7,235	30	223,893	7,463	Up	3.15
DIVISION I-A	106	603	25,307,915	41,970	615	25,446,798	41,377	Down	1.41
DIVISION I-AA*	87	479	5,278,520	11,020	473	5,328,477	11,265	Up	2.22
I-A & I-AA Combined*..	193	1082	30,586,435	28,268	1088	30,775,275	28,286	Up	0.06
NCAA DIVISION II* ...	120	597	2,537,538	4,250	580	2,472,811	4,263	Up	0.31
NCAA DIVISION III* ..	220	1027	1,994,148	1,942	1036	2,015,560	1,946	Up	0.21
ALL NON-NCAA*	140	668	1,288,176	1,928	673	1,296,601	1,927	Down	0.05
ALL VARSITY TEAMS ..	673	3374	36,406,297	10,790	3377	36,560,247	10,826	Up	0.33

By Totals: Div. I-A up 138,883 or 0.55 percent; Div. I-AA up 49,957 or 0.95 percent; Div. II down 64,727 or 2.55 percent; Div. III up 21,412 or 1.07 percent; all non-NCAA up 8,425 or 0.65 percent; all below I-A up 15,067 or 0.14 percent; national total up 153,950 or 0.42 percent.

By Percentage of Capacity: Div. I-A 77.7 percent—Southeastern 93.3, Atlantic Coast 88.3, Big Ten 82.6, Big Eight 79.9, Eastern Ind. 78.9, Pacific-10 73.7, Southern Ind. 72.8, Western Athl. 70.6, Southwest 69.8, Mid-American 67.1, Other Ind. 61.1, Big West 59.7.

Div. I-AA 54.5—Southern 77.2, Southland 63.6, Ohio Valley 62.8, Southwestern 60.4, Mid-Eastern 59.4, Gateway 59.1, Big Sky 58.3, Yankee 54.1, All Ind. 50.9, Patriot 49.8, Ivy 30.1.

Record high for this conference. * Reflects 1990 changes in conference, division and association lineups to provide a parallel, or valid comparison in each case; conferences, independent groups and divisions marked (*) did not have the same lineup in 1990 as in 1989 (and only those teams competing for a conference title are included); 1990 lineups used throughout this report. + Name changed from Colonial to Patriot before this season.

Conf. (Teams)	G	Average	Change	Conf. (Teams)	G	Average	Change
Southern Inter. (9)*...	38	6,967	Up 460	South Atlantic (8)* ...	41	2,843	Down 570
Central Inter. (11) ..	49	6,481	Up 568	Div. II Independ's (14)*	68	2,751	Up 257
Western Football (6)*..	31	6,011	Up 539	Middle Atlantic (9)....	44	2,615	Up 378
Gulf South (9)	42	6,000	Up 563	Wisconsin State (9)	44	2,543	Down 101
North Central (10)....	53	4,694	Down 838	Michigan Inter. (6)....	26	2,455	Up 261
Lone Star (8).....	39	4,353	Dn 1,589	Ohio Athletic (10)*....	51	2,438	Down 84
Pennsylvania (14).....	67	4,120	Up 257	Indiana Collegiate (5)*	25	2,368	Down 127
Missouri Inter. (10)*..	46	3,844	Up 94	Centennial Football (8)..	41	2,270	Down 81
Little Three	12	3,683	Down 531	New Jersey State (7)...	34	2,232	Up 169
Arkansas Inter. (7)*..	34	3,575	Up 209	Minnesota Inter. (10)...	47	2,216	Down 284
Oklahoma Inter. (5)...	25	3,296	Up 3	Independent Conf. (6)*..	30	2,180	Down 444
Midwest Inter. (11)*..	57	3,023	Up 102	Northern Inter. (7)....	34	2,148	Up 285
Northern Calif. (6)....	29	3,008	Up 344	Div. III Independ's (53)...	249	2,101	Up 130
Old Dominion (6)*	29	2,974	Up 329	North Coast (9)*	44	2,063	Down 101

* Different lineup, 1990 vs. 1989, or new conference; 1989 figures are used whether member or not in 1990, to provide parallel or valid comparisons.

		G	Average	Change
1	Michigan	6	104,508	Down 848
2	Tennessee	7	95,220	Up 1,303
3	Ohio St.	6	85,349	Up 47
4	Penn St.	6	85,204	Up 1,559
5	Auburn	7	81,425	Down 1,083
6	Georgia	6	80,173	Down 1,362
7	Clemson	6	79,196	Up 379
8	Nebraska	7	76,239	Down 59
9	Texas	5	76,007	Up 21,239
10	Florida	7	75,261	Up 3,618
11	Michigan St.	5	73,879	Up 1,563
12	Alabama	7	71,963	Down 1,080
13	Louisiana St.	6	71,528	Up 639
14	Washington	6	70,986	Up 3,261
15	Southern Cal.	5	70,555	Up 7,964
16	Oklahoma	7	69,455	Up 429
17	Brigham Young	6	66,002	Up 747
18	South Caro.	7	65,515	Down 4,832
19	Florida St.	6	61,229	Down 135
20	Iowa	6	61,014	Down 6,686
21	Illinois	6	60,820	Down 3,567
22	Arizona St.	6	60,694	Down 2,435
23	Notre Dame	6	59,075	Down 3,041
24	West Va.	7	56,223	Down 4,426
25	Kentucky	6	55,473	Up 2,009
26	UCLA	6	54,604	Up 483
27	Texas A&M	6	54,252	Down 7,519
28	Arizona	6	54,098	Up 3,899
29	Colorado	6	51,729	Up 2,775
30	Miami (Fla.)	6	51,046	Down 588
31	Wisconsin	7	51,027	Up 11,021
32	California	5	50,532	Up 17,068
33	Arkansas	7	49,499	Down 1,609
34	Syracuse	5	46,973	Down 1,597
35	North Caro.	7	45,643	Up 543
36	Indiana	6	45,596	Down 2,467
37	Virginia	6	44,017	Up 7,550
38	North Caro. St.	6	43,667	Down 959

	G	Average	Change
39 Texas Tech	5	42,841	Up 5,553
40 Virginia Tech . . .	6	42,521	Up 9,029
41 Air Force	6	42,496	Down 5,511
42 Purdue	6	42,079	Up 995
43 Georgia Tech . . .	6	42,014	Up 7,663
44 Hawaii	8	41,380	Down 3,155
45 Stanford	5	40,997	Down 13,256
46 Louisville	6	40,978	Up 969
47 Minnesota	6	40,392	Up 785
48 Missouri	6	38,717	Down 3,182
49 Pittsburgh	7	38,208	Down 8,497
50 Army	7	37,975	Down 6,186
51 Mississippi+ . . .	6	37,659	Down 3,150
52 Oregon	7	37,354	Down 2,229
53 Baylor	5	37,353	Up 3,561
54 Iowa St.	6	35,996	Down 8,028
55 Navy \$\$	8	35,200	Up 6,874
56 Oklahoma St. . .	5	33,621	Down 4,529
57 Fresno St.	7	32,881	Down 1,219
58 Vanderbilt	6	32,570	Down 5,514
59 Maryland@@ . . .	5	31,664	Down 6,793
60 Washington St. .	5	30,915	Down 1,073
61 Kansas	5	30,775	Down 5,175
62 Mississippi St. X	6	30,663	Up 150
63 Houston+	7	29,934	Up 1,485
64 Utah	5	29,878	Up 5,342
65 East Caro.	5	28,657	Down 1,009
66 Texas Christian..	6	28,112	Up 3,256
67 Northwestern . .	6	28,062	Down 957
68 Colorado St. . .	6	26,577	Up 1,742
69 Temple	4	25,925	Up 6,332
70 Duke	5	25,612	Down 2,952
71 Tulane	6	25,490	Down 6,626
72 Oregon St. . . .	6	24,355	Down 3,925
73 Boston College .	6	24,274	Down 3,558
74 Memphis St. XX	7	23,602	Down 5,510
75 Tulsa	5	22,865	Down 2,523
76 Southwestern La.	5	22,395	Up 6,304

DIVISION I-AA:		G	Average	Change
1 Grambling	6	30,152	Down	201##>
2 Tennessee St.	7	26,714	Up	17,064*>>
3 Southern-B.R.	6	26,189	Up	9,255**
4 Jackson St.	5	24,540	Down	7,729
5 Boise St.	6	21,169	Up	1,123
6 Alabama St.	7	20,214	Up	5,047##
7 Florida A&M	7	19,428	Down	556X&S
8 Howard	6	18,247	Up	1,678##
9 Pennsylvania ..	5	18,048	Up	1,275
10 Ga. Southern ..	6	17,878	Up	29
11 Alcorn St.	6	17,846	Up	10,269++
12 Delaware	6	17,450	Down	1,863
13 Appalachian St.	4	17,091	Up	4,316
14 Nevada-Reno	6	16,557	Up	2,323
15 Citadel	6	16,288	Down	1,560
16 Texas Southern..	5	16,208	Up	8,608##
17 Harvard	5	16,100	Down	720
18 Northeast La. ...	6	16,084	Up	559
19 Eastern Ky.	6	15,767	Up	327
20 Marshall	7	15,401	Up	989
21 Arkansas St.	3	15,319	Down	254
22 Furman	5	15,208	Up	2,266
23 Central Fla.	7	15,067	Down	403
24 North Caro. A&T	5	14,498	Up	2,189
25 McNeese St.	5	14,425	Up	2,689
26 Yale	6	14,337	Down	8,044
27 North Texas	7	13,654	Down	1,335
28 Holy Cross	6	13,642	Up	827
29 South Caro. St.	5	12,535	Down	729
30 William & Mary.	6	12,514	Down	438

DIVISION II:	G	Average
--------------	---	---------

Nebraska's Kruse heads volleyball's academic all-Americans

Nebraska all-America Janet Kruse compiled some impressive statistics as the Husker volleyball team worked its way to the semifinals of the 1990's Division I Women's Volleyball Championship. Kruse compiled impressive numbers in the classroom as well, en route to being named the 1990 GTE academic all-America of the year in the University Division.

Kruse, a 6-1 junior outside hitter, has a cumulative grade-point average of 4.000 (4.000 scale) in biological sciences at Nebraska. During the season, she paced the Huskers with 282 digs, adding 395 kills, 25 service aces and 84 blocks.

College Division honors as academic all-Americans of the year were shared by Cynthia Capp, a senior at West Virginia Wesleyan, and Robin Pals, a senior at Northwestern College (Iowa).

To be eligible for GTE academic all-America honors, a student-athlete must be a starter or key reserve and must maintain a cumulative

GPA of at least a 3.200 on a 4.000 scale. The GTE academic all-America teams are selected by a vote of the 1,600-member College Sports Information Directors of America (CoSIDA).

"Because they play a so-called 'minor' sport, volleyball players often don't receive equal recognition with athletes who play sports like football. It is particularly gratifying to herald the athletics and academic achievements of the members of the GTE academic all-America volleyball team," sportscaster Dick Enberg, spokesman for the GTE academic all-America teams program, said.

Following are the complete GTE academic all-America volleyball teams:

UNIVERSITY DIVISION

First team

Laura Bush, Illinois, 3.730 grade-point average in English; Diane Ellefritz, Western Illinois, 3.960 in psychology; Martha Firnhaber, Southern Illinois, 4.000 in business



Janet Kruse

administration; Joy Jordan, Indiana, 3.820 in mathematics; Janet Kruse, Nebraska, 4.000 in biological sciences; Jill Elizabeth Moore, Georgia, 3.830 in arts and sciences.

Second team

Christine Brandl, UTEP, 3.870 in biology/premedicine; Catherine Burkhart, Manhattan, 4.000 in biochemistry; Annette Carney, Southwestern Louisiana, 3.850 in clinical psychology; Beth Christiansen, Butler, 3.880 in elementary educa-

tion; Mindy Gowell, Arizona State, 3.810 in sociology; Jennifer Kleyn, Auburn, 4.000 in mathematics.

Third team

Becki Bolli, Nebraska, 3.720 in exercise science; Danielle Mahaffey, Eastern Kentucky, 3.930 in chemistry/premedicine; Laurie Maxwell, Louisville, 3.740 in special education; Stacia Mellinger, Butler, 3.880 in English; Rebecca Yarish, Kent, 3.840 in mathematics; Julie Young, Western Michigan, 3.950 in history/English.

COLLEGE DIVISION

First team

Cynthia Capp, West Virginia Wesleyan, 4.000 in chemistry/physics/education; Sandra Capp, West Virginia Wesleyan, 3.960 in chemistry/nutrition; Marlys Gwaltney, Fort Hays State, 3.970 in exercise science; Robin Pals, Northwestern College (Iowa), 3.980 in biology; Chris Schimmoeller, Georgetown College, 4.000 in English; Trina Schimmoeller, Georgetown College, 4.000

in English.

Second team

Laura Dill, Southeast Missouri State, 3.780 in business management; Tammy Hahn, Pittsburg State, 4.000 in accounting; Shelley Kennedy, Southeast Missouri State, 3.880 in computer science; Julie Oswald, Briar Cliff, 4.000 in biology; Kathryn Pongonis, Denison, 3.900 in Spanish; Holly Whitehill, Utica Tech, 4.000 in business/public management.

Third team

Regina Carbajal, UC Riverside, 3.510 in economics; Tanya Edmunds, North Carolina-Greensboro, 3.960 in exercise/sports science; Susannah Gardner, MIT, 4.000 (5.000 scale) in mechanical engineering; Michelle Johannes, Mount Holyoke, 3.940 in physics; Barbara Malone, Guilford, 3.870 in sports medicine; Teresa Martin, Northern Colorado, 3.800 in dietetics; Christine Muehlbauer, St. Benedict, 3.980 in English.

Coaches select men's and women's all-America soccer teams

Hermann Trophy winners Ken Snow and April Kater headline the 1990 National Soccer Coaches Association of America all-America teams for Division I.

Snow, a four-time first-team all-America forward from Indiana, became the first player in school history to accomplish that feat. Snow also is the third player in history to win the Hermann Trophy twice. He set Indiana career records in goals (84) and points (196).

Kater, a senior forward from Massachusetts, finished her career as the all-time scoring leader for the Minutewomen (35 goals and 21 assists for 91 points).

Joining Snow on the first team were his teammate Chad Deering and Bill Thompson of national champion UCLA, who were honored for the second time. Ian Banda of Wooster was named to the Division III team for the fourth time.

The members of the NSCAA all-America teams, with previous years a player was named to the team indicated by the number of asterisks following the name, are:

Division I

Men's first team: Goalkeeper—Kasey Keller*, Portland; backs—Scott Cannon, Evansville; Jeff Agoos*, Virginia, and Tom Loeber, South Carolina; midfielders—Mark Santel**, St. Louis; Dario Brose*, North Carolina State, and Chad Deering*, Indiana; forwards—Bill Thompson*, UCLA; David Weir, Evansville; Ken Snow***, Indiana, and Steve Rammel, Rutgers.

Men's second team: Goalkeeper—Trey Harrington, Evansville; backs—Peter DiMaggio, Columbia; Trong Nguyen, San



Ken Snow

Diego State, and George Dunn, Duke; midfielders—Giam-Paulo Pedroso, Southern Methodist; Chris Verhaegen, Boston U., and Nicholas Stavrou, Cleveland State; forwards—Henry Gutierrez*, North Carolina State; Robert Ukrop, Davidson; James Glenn, Clemson, and Manuel Logos, Wisconsin-Milwaukee.

Men's third team: Goalkeeper—Sal Rosamilia, Columbia; backs—Alexi Lalas*, Rutgers; Mike Burns, Hartwick, and John Milne, Dartmouth; midfielders—Jeff Baicher, Santa Clara; Paul Caffrey, Adelphi; Paul Holocher, Santa Clara, and Chris Henderson, UCLA; forwards—Gerrell Elliott, Fresno State; Pearce Tormey*, Clemson; Dan Sankar, Dartmouth, and Leigh Cowlishaw, Richmond.

Women's first team: Goalkeeper—Heather Taggart, Wisconsin; backs—Beth Grecco, Connecticut; Sandra Gaskill, William and Mary, and Julie Foudy, Stanford; forwards—Suzanne Baily, Brown; Robin Lotze**, William and Mary; Lisa Cole, Southern Methodist; Mia Hamm, North Carolina; Charmaine Hooper, North



Jay Varrato

Carolina State; Kristine Lilly**, North Carolina; April Kater, Massachusetts, and Brandi Chastain, Santa Clara.

Women's second team: Goalkeeper—Kim Romero, Hartford; backs—Stacey Blazo, North Carolina; Jeannette Goepfert, Monmouth (New Jersey); Kathy Kobler, Princeton; Robyn Neigel, Colorado College; Laurie Hill, UC Santa Barbara, and Linda Hamilton, North Carolina; forwards—Cissy Waford, Colorado College; Karla Thompson, Colorado College; Amanda Cromwell, Virginia; Tina Conti, Villanova, and Kim Lemere, Hartford.

Division II

Men's first team: Goalkeeper—Justin Throneburg, Tampa; backs—Gary Smallshaw**, Gannon; Totty Totty, New Hampshire College, and Henrick Svartholm, Southern Connecticut State; midfielders—Jason Haupt*, North Carolina-Greensboro; John Debrito*, Southern Connecticut State, and Gary Ross, Lock Haven; forwards—Chris Payne, Florida Tech; Tal Benaya, Bridgeport; Ike Ofoje*, New Hampshire College, and Vasco Rubio, Seattle Pacific.

Men's second team: Goalkeeper—Stefan Wall, Northeast Missouri State; backs—Eugene Larkin, Long Island-C. W. Post; Niklas Fredriksson, Tampa, and Andrew Hyslop, South Carolina-Spartanburg; midfielders—Andrew Ziemer, Sonoma State; Robin Chan, Florida Tech, and Yahnnes Tesema*, Southern Connecticut State; forwards—Daniel DosSantos, Sacred Heart; Emmanuel Charles, Oakland; Sherwin O'Neil, Long Island-Southampton, and Troy Bingham, Gannon.

Women's first team: Goalkeeper—Kim Abbott, Sonoma State; backs—Kyllene Carter*, Barry; Leandra May-Dodge, Cal State Chico; Alyson Foley, Keene

State; Kate Ricci, Buffalo, and Beth Ann O'Leary, Merrimack; forwards—Angel Schofield, Springfield; Dina Gentile, Adelphi; Stacy Ball, Sonoma State; Shannon Payne, Cal Poly Pomona; Heather Jaeger, Barry, and Karen Beckner, Sonoma State.

Division III

Men's first team: Goalkeeper—Jay Varrato, Elizabethtown; backs—Ho Lee, Emory; Robbie Martin*, Elizabethtown, and Ian Williams, Muhlenberg; midfielders—Phillip Wolf*, Wheaton (Illinois); Kevin Mills, Kenyon, and Ian Banda***, Wooster; forwards—Michael McFarland, Virginia Wesleyan; Robert Lake, Williams; Derek Bylsma, Kalamazoo, and Michael Grimsley, Greensboro.

Men's second team: Goalkeeper—Steve Webber*, Babson; backs—Mphatso Namwali, Wooster; David Holmes*, Methodist, and Andy Logar, Glassboro State; midfielders—Chris Morgan, Elizabethtown; Vezir Ajro, Wesleyan, and Brian Wiercinski, Colby; forwards—Joel Kapitaniuk*, Wheaton (Illinois); Matthew Schrader, Ohio Wesleyan; Don Robbins, Rochester Institute of Technology, and Greg Bajek**, Kean.

Men's third team: Goalkeeper—Chris Davis, Pomona-Pitzer; backs—Roger Bridge, Macalester; Michael Benne, Virginia Wesleyan, and Henrique Silva, Salem State; midfielders—Matt Jackson, Macalester; Matthew Mathias, Drew, and Armando Luna, Claremont-Mudd-Scripps; forwards—Andrew Kessinger, Ohio Wesleyan; Scott Cahoon, Emory; Douglas Edwards, Scranton, and Noah Epstein, Colorado College.

Women's first team: Goalkeeper—Shelly Krisfalusi, Kalamazoo; backs—Catherine Byrne, Methodist; Julie Macko, St. Mary's (Minnesota); Holly Spiech**, Scranton, and Lisa Hines, Plymouth State; forwards—Anne Thorpe**, Methodist; Sarah Russell, Bowdoin; Corie Curtis**, Macalester; Ann Haggerty, Smith; Karen Hertel, Cortland State, and Janine Englehard**, Cortland State.

Women's second team: Goalkeeper—Beth Howland, Ithaca; backs—Trisha Tinucci, St. Thomas (Minnesota); Cathy Moss, Ithaca; Colleen O'Brien, Bates; Carmen Bumgarner, Brandeis, and Rebecca Smith, Allegheny; forwards—Amy Harris, Kalamazoo; Tricia Criswell**, Methodist; Colette Gilligan, Methodist; Lisa Nassif, Smith, and Jill Barber, Wheaton (Illinois).

Women's third team: Goalkeeper—Kathy Yarnott, St. Benedict; backs—Jennifer Kingsbury, UC San Diego; Kristen Supko, Connecticut College; Leigh Sears, Ohio Wesleyan, and Leslie Benintend*, Cortland State; forwards—Amy Hyde, Elizabethtown; Veronica Pile, Mary Washington; Kelly Gorman, Rochester; Bernadette Conlon, Cortland State; Elizabeth Nasser, Williams, and Cassandra Kral, Smith.

Gain

Continued from page 14

national attendance title and extended its streak of 100,000-plus crowds to an incredible 97 over 15 years since November 8, 1975.

Tennessee broke its 10-year-old record with a 95,220 average, and again topped Ohio State. In fact, the first eight teams finished in exactly the same order as last year (Penn State, Auburn, Georgia, Clemson and Nebraska being the others).

Texas enjoyed the nation's biggest increase at 21,239 and jumped to ninth (from 25th) at 76,007.

Norfolk State (14,904) is No. 1 in Division II, edging Jacksonville State. Dayton repeated as Division III champion.

Questions/Answers

Readers are invited to submit questions to this column. Please direct any inquiries to The NCAA News at the NCAA national office.

Q May student-athletes be paid for appearing on television?

A According to NCAA Bylaw 12.5.3, if a student-athlete's appearance on radio or television is related in any way to athletics ability or prestige, the student-athlete shall not receive any remuneration for that appearance, nor shall the student-athlete make any endorsement, expressed or implied, of any commercial product or service. The student-athlete, however, may receive legitimate and normal expenses directly related to such an appearance, provided it occurs within a 30-mile radius of the institution's main campus.

The Athletic Employment Hotline

Coaches (Men's & Women's Sports)

Athletic Administration

Trainers

Graduate Assistants

Call 1-900-454-4JOB

\$2.00 first minute. \$1.00 each additional minute.

Governmental affairs report

A review of recent Federal government activities affecting the NCAA membership is published in The NCAA News. These reports are prepared by Squire, Sanders & Dempsey, the Association's legal counsel in Washington, D.C.

Student Right-to-Know Act

As reported in The NCAA News October 25, Congress approved a compromise version of the Student Right-to-Know Act (S. 580), which requires reporting of student and student-athlete graduation rates, beginning in 1993. President Bush signed the bill into law November 8.

As adopted, the legislation requires all institutions awarding athletically related financial aid to report annually to the Department of Education and to make available to prospective student-athletes current and four-year average graduation rates for the student body as a whole, itemized according to race and sex, and for student-athletes in football, basketball, baseball, track and field and cross country, and all other sports combined, also itemized according to race and sex.

Institutions are permitted to report the required data through an athletics association or conference, as long as data reported by that means are substantially comparable to those required by the act. A special NCAA committee is preparing proposed revisions to existing NCAA graduation-rate reporting legislation to permit NCAA members to take advantage of this opportunity. One significant change required by the act is that graduation is to be measured on a "150 percent of normal" (or six-year) standard, rather than the five-year standard historically used by the NCAA in compiling graduation-rate statistics.

One complication that has become apparent since passage of the bill is that all institutions, whether awarding athletically related aid or not, are required biennially to report graduation rates on the "150 percent of normal" standard without flexibility to report substantially comparable data through an athletics association. This means that registrars may be required to compile graduation rates for the student body on two different bases in alternate years. It is anticipated, however, that technical revisions to the bill will be made in early 1991, and congressional staff have indicated a willingness to work with the education community in developing uniform reporting requirements.

Among the requirements of S. 580 is a mandate to the secretary of education that he report by April 1,

1991, on the feasibility of requiring reporting of data on institutional revenues from and expenditures for intercollegiate athletics programs. The NCAA had opposed the inclusion of such an institutional reporting requirement in the bill, and we believe it unlikely that the Congress will seriously consider such a proposal in the upcoming session.

Minority scholarships

Following a week of controversy, the Education Department December 18 announced that private colleges and universities that receive Federal funds may administer privately funded race-exclusive scholarships provided that they do not fund such scholarships with their own funds. The Education Department did not address race-exclusive scholarships funded by state and local governments, which it said are covered by the Supreme Court decisions construing the Constitution. This statement came in the wake of the December 12 announcement by the Assistant Secretary for Civil Rights Michael L. Williams that "race-exclusive" scholarships—even those that are privately financed—discriminate against other students and violate Title VI of the Civil Rights Act of 1964, which prohibits discrimination on the basis of race, color, or national origin. Such violations could result in the termination of all Federal funding to the college or university concerned. The December 12 announcement, in turn, came after Williams wrote to Fiesta Bowl officials December 4 stating that schools that accepted money from the Fiesta Bowl for minority scholarships would violate the Civil Rights Act. Many questions remain unanswered, and Williams said the Education Department will provide a four-year transition period to assure that students receiving scholarships or being evaluated for scholarships do not suffer and to permit universities to review their programs under Title VI. The Education Department will not pursue a broad compliance review of minority scholarships, but it will investigate complaints received during the four-year transition period.

Tax treatment of bowl-sponsorship payments

This fall, the Dallas field office of the Internal Revenue Service ruled that the Cotton Bowl Athletic Association was subject to unrelated business income tax on funds donated by Mobil Oil Company in exchange for title-right privileges for the Mobil Cotton Bowl Classic. The ruling was made in connection with an audit of the Cotton Bowl's 1988-89 tax return. A final IRS

ruling has not yet been issued, but the initial decision reflects increasing interest on the part of IRS in commercial or quasi-commercial sources of revenue of tax-exempt organizations.

"Due-process" legislation

No action was taken in the 101st Congress on companion bills (H.R. 5464 and S. 2996) introduced by the Nevada congressional delegation to require the NCAA to adopt "due-process" safeguards in its enforcement procedures. With the subsequent resolution of the NCAA show-cause proceeding involving the University of Nevada, Las Vegas, we believe it unlikely that these bills will be reintroduced in 1991.

Antilobby legislation

Notwithstanding a major effort by the professional sports leagues and the NCAA, proposed Federal legislation that would have banned the operation of a sports-based lottery by any state or political subdivision was stripped at the last minute from the omnibus crime bill passed in the waning hours of the 101st Congress. Opposition to the measure by states in which such a lottery exists or has been under consideration reportedly led to a decision by Sen. George J. Mitchell, D-Maine, to have it removed from the conference crime legislation.

Considerable interest remains among the professional leagues in renewing the antilobby effort in 1991, but this time as part of a broader measure that would prohibit all state-authorized sports-based gambling. The bill would include a "grandfather" provision exempting previously authorized gambling within a particular state. The NCAA is considering the extent to which it should involve itself in this broader effort.

Antidrug abuse legislation

Anabolic steroids: A provision adding anabolic steroids to Schedule III of the Controlled Substances Act was included in the 1990 omnibus crime legislation passed at the end of the 101st Congress. The effect of this change is to make distribution of anabolic steroids without a prescription a felony punishable by up to five years' imprisonment and a fine of up to \$250,000. A provision of the House anticrime bill, which would have imposed penalties on coaches, trainers or others who seek to persuade athletes to use anabolic steroids, was dropped from the bill prior to passage.

Drug testing: House and Senate proposals to regulate drug testing also died with adjournment of the 101st Congress. One of the House

proposals, relating to certification of testing laboratories, was included in omnibus crime legislation passed by that body, but was dropped from the anticrime legislation ultimately enacted. The Hatch-Boren bill (S. 1903), which would have defined the circumstances in which drug testing could occur, never received a hearing before the Senate Committee on Labor and Human Resources, and also died with adjournment. Staff for House Energy and Commerce Committee Chair Rep. John Dingell, D-Michigan, the sponsor of the laboratory certification bill, have indicated that the chair is likely to separate the drug-testing provisions from the laboratory certification standards and to introduce two bills in the next Congress.

National Youth Sports Program

FY 1991 appropriation: On November 5, President Bush signed into law the fiscal year 1991 appropriations bill for the Departments of Labor, Health and Human Services, and Education, and Related Agencies. The bill allocates \$10.832 million for the 1991 NYSP, an increase of \$214,000 over last year. The Senate bill had appropriated \$11.1 million for the NYSP. This amount was reduced in conference, along with appropriations for all other domestic discretionary programs, by an across-the-board cut of 2.41 percent.

Reauthorization: On November 3, President Bush signed the Human Services Reauthorization Act, which reauthorizes all Community Services Block Grant programs, including the NYSP, for four more years. The provision reauthorizing the NYSP describes the program more accurately than did the preexisting authorization.

Title IX

On December 12, Education Department Assistant Secretary Michael L. Williams issued a press release outlining his priorities and strategy for enforcement of civil rights laws. Williams identified seven areas on which the Office for Civil Rights will focus, one of which is "discrimination on the basis of sex in athletics programs." He also said the Office for Civil Rights will initiate a national compliance review program to determine whether educational institutions are addressing the problem of discrimination. For a number of years, the Education Department has conducted only complaint investigations, not compliance reviews. This announcement may indicate that the OCR may conduct compliance reviews of intercollegiate athletics programs, even when no complaint has been filed

against the institution.

Copyright

1989 Cable and Satellite Royalty Fees: The Tribunal has not yet initiated a proceeding to distribute the more than \$25 million in 1989 cable royalty fees.

Canadian proceeding: The Copyright Board of Canada issued a decision October 2 establishing the copyright royalties that Canadian cable systems will pay in 1990 and 1991 for retransmitting distant television and radio signals and allocating those fees among copyright owners. Because it did not participate in the hearing, the American College Sports Collective did not receive fees for U.S. college sports programming. The collective representing Major League Baseball received 3.69 percent of the royalties; the collective representing the NBA, NHL, CFL and NFL received 2.71 percent of the royalties.

In contrast to the U.S. Copyright Royalty Tribunal, the Copyright Board concluded that the television producer—not the sports team—owns the copyright in the television production of a sports event, in the absence of an agreement to the contrary. It found that the television networks, not the professional sports leagues, owned the rights to some of the professional football games. A number of parties have filed applications for review of the decision.

Taxation of scholarships and interest paid on student loans

Congress adjourned without taking action on the several pending bills that would have partly or fully restored the exclusion from taxable income of scholarships or would have reinstated the deduction for interest paid on student loans.

Key personnel changes

The retirement of Rep. Augustus F. Hawkins, D-California, will cause a reshuffling of key posts on the House Committee on Education and Labor, of which Rep. Hawkins was chair for several years. Chairmanship of the full committee will go to Rep. William D. Ford of Michigan, who took the lead in opposing the proposal requiring institutions to disclose athletics revenues and expenses.

Ford also opted to take over the chairmanship of the Subcommittee on Postsecondary Education.

Also of significance is the appointment December 17 of Lamar Alexander, former governor of Tennessee and currently president of the University of Tennessee, Knoxville, as secretary of education.

Calendar

January 4-6	NCAA Professional Development Seminar, Nashville, Tennessee
January 5-6	Council, Nashville, Tennessee
January 6	Postseason Football Subcommittee, Nashville, Tennessee
January 6-12	NCAA Convention and related meetings, Nashville, Tennessee
January 7	Presidents Commission, Nashville, Tennessee
January 7	Division I Men's Basketball Committee, Nashville, Tennessee
January 7	Committee on Women's Athletics Open Forum, Nashville, Tennessee
January 7	Student-Athlete Advisory Committee, Nashville, Tennessee
January 8	Division I-AA Football Committee, Nashville, Tennessee
January 9	Eligibility Committee, Nashville, Tennessee
January 9	Interpretations Committee, Nashville, Tennessee
January 11-12	Council, Nashville, Tennessee
January 17-19	Legislative Review Committee, San Diego, California
January 21-22	Committee on Competitive Safeguards and Medical Aspects of Sports, Kansas City, Missouri
January 21-23	Football Rules Committee, Corpus Christi, Texas
January 29-February 1	Division III Women's Volleyball Committee, Marco Island, Florida

Amendment-to-amendment date has passed

You've just discussed something in your conference meeting, and now you want to submit an amendment to one of the proposals in the Convention Official Notice and Convention Program.

No problem, right? Just write it up quickly and take it to the Convention work suite before 1 p.m. Monday, right?

Wrong. That's the way it worked in the old legislative calendar, but not any more.

In the legislative calendar that went into effect last February, all amendments-to-amendments and resolutions had to be submitted not later than October 15—and all of them are printed in the Official Notice and will appear in the Convention Program.

Also, any individual member could submit an amendment-to-

amendment or a resolution in past years. Now it takes eight member institutions to do so.

The only exception to the new deadline is that the NCAA Council is permitted to sponsor an amendment-to-amendment or a resolution at the Convention itself if such sponsorship is approved by at least a two-thirds majority of the Council and the proposal is distributed at the Convention. The Executive Committee has the same authority in regard to the provisions of Bylaw 31

(executive regulations).

So if you are racing down the Opryland hallways in an attempt to get to room 3131 before 1 p.m. Monday, slow down. You have plenty of time, because you can't submit your amendment-to-amendment anyway.

The staff members in 3131 will be happy to see you, however, and they will assist with any other questions you may have regarding the Convention legislation and the legislative process.

Advisors to convene in Nashville

The National Association of Academic Advisors for Athletics will hold its 16th annual conference January 3 through 6 in Nashville, Tennessee, site of the 1991 NCAA Convention.

Among the speakers at the meeting at the Opryland Hotel are Stanley D. Johnson, NCAA director of professional development, and Daniel T. Dutcher, NCAA legislative assistant.

Record

Continued from page 13

University (Ohio); Donald N. Dedmon, Radford University; Rev. Daniel A. Degnan, St. Peter's College; Rev. James M. Demski, Canisius College; Anthony J. DiGiorgio, Winthrop College; *Rev. Albert J. DiUlio, Marquette University; Ronald G. Eaglin, Coastal Carolina College of the University of South Carolina.

*Michael R. Ferrari, Drake University; Brother Raymond L. Fitz, University of Dayton; Billy J. Franklin, Lamar University; R. Kirby Godsey, Mercer University; Alan F. Harre, Valparaiso University; Michael Hooker, University of Maryland, Baltimore County; William P. Hytche, University of Maryland, Eastern Shore; Rev. Aloysius P. Kelley, Fairfield University; James V. Koch, Old Dominion University; John W. Kuykendall, Davidson College; Gordon H. Lamb, Northeastern Illinois University; Rev. James N. Loughran, Loyola Marymount University; J. Barton Luedeke, Rider College.

*Samuel H. Magill, Monmouth College (New Jersey); Modesto A. Maidique, Florida International University; Charles A. McCallum, University of Alabama at Birmingham; Rev. William McConville, Siena College; Rev. Michael G. Morrison, Creighton University; Paige E. Mulhollan, Wright State University; W. H. Nedderman, University of Texas, Arlington; Rev. Brian J. O'Connell,

Niagara University; Rev. Neil O'Connell, St. Bonaventure University; Rev. Christian R. Oravec, St. Francis College (Pennsylvania); David Outcalt, University of Wisconsin, Green Bay; John M. Palms, Georgia State University; Jack W. Peltason, University of California, Irvine.

Rev. Thomas R. Peterson, Seton Hall University; Rev. Nicholas Rashford, St. Joseph's University (Pennsylvania); George A. Russell, University of Missouri, Kansas City; Brother Thomas J. Scanlan, Manhattan College; Gerald R. Sherratt, Southern Utah State College; James M. Shuart, Hofstra University; G. Warren Smith, Southeastern Louisiana University; *Stephen Joel Trachtenberg, George Washington University; Eugene Trani, Virginia Commonwealth University; James S. Vinson, University of Evansville; Norman A. Wiggins, Campbell University; J. H. Woodward, University of North Carolina, Charlotte.

Division II

*Michael Adanti, Southern Connecticut State University; Robert N. Aebersold, Slippery Rock University of Pennsylvania; James B. Appleberry, Northern Michigan University; Harry Ausprich, Bloomsburg University of Pennsylvania; Donald F. Behrend, University of Alaska, Anchorage; *Billy C. Black, Albany State College (Georgia); Ken Blair, Western State College (Colorado);

Leon E. Boothe, Northern Kentucky University; Rita Bornstein, Rollins College; Frank D. Brown, Columbus College; Gary J. Burckett, Lincoln Memorial University; Robert A. Burnett, Armstrong State College; Anthony James Catanese, Florida Atlantic University.

*Anthony F. Ceddia, Shippensburg University of Pennsylvania; Robert A. Davis, Florida Southern College; *Robert C. Dickeson, University of Northern Colorado; William F. Dorrill, Longwood College; Ed Elliott, Central Missouri State University; William M. Fulkerson Jr., Adams State College; Donald R. Gerth, California State University, Sacramento; Robert E. Glennen, Emporia State University; *Asa N. Green, Livingston University; Edward H. Hammond, Fort Hays State University; Jack Hawkins, Troy State University; Manuel L. Ibanez, Texas A&I University.

Martin C. Jischke, University of Missouri, Rolla; Kent M. Keith, Chaminade University; Leroy Keith, Morehouse College; *Rod C. Kelchner, Mansfield University of Pennsylvania; Hugh O. La Bounty, California State Polytechnic University, Pomona; Earl Lazerson, Southern Illinois University, Edwardsville; Bill J. Lillard, Central State University (Oklahoma); *Arend D. Lubbers, Grand Valley State University; David E. McFarland, Kutztown University of Penn-

sylvania; Harold J. McGee, Jacksonville State University; John Moore, California State University, Stanislaus; William E. Moran, University of North Carolina, Greensboro.

Jerry D. Morris, East Texas State University; Dwayne C. Nuzum, University of Colorado, Colorado Springs; Rev. Kevin G. O'Connell, Le Moyne College; Joseph B. Oxendine, Pembroke State University; Margaret N. Perry, University of Tennessee, Martin; *Walter Peterson, Franklin Pierce College; *Margaret Preska, Mankato State University; Sam Rankin, Chadron State College; Wendell G. Rayburn, Lincoln University (Missouri); Diane L. Reinhard, Clarion University of Pennsylvania; *Tyronza R. Richmond, North Carolina Central University; *Bruce A. Samson, University of Tampa.

Olin B. Sansbury Jr., University of South Carolina at Spartanburg; H. Erik Shaar, Lake Superior State University; Edwin G. Speir, Georgia College; Lloyd Svendsbye, Augustana College (South Dakota); Cleon F. Thompson Jr., Winston-Salem State University; *Lloyd D. Vincent, Angelo State University; John Pierce Watkins, California University of Pennsylvania; Del D. Weber, University of Nebraska, Omaha; John D. Welty, Indiana University of Pennsylvania; Craig Dean Willis, Lock Haven University of Pennsylv-

vania; John T. Wolfe Jr., Kentucky State University; #Kent Wyatt, Delta State University.

Division III

Michael F. Adams, Centre College; Ronald L. Applbaum, Westfield State College; James Ash, Whittier College; Charles J. Bensman, Thomas More College; #Robert G. Bottoms, DePauw University; *John R. Brazil, Southeastern Massachusetts University; Henry Copeland, College of Wooster; Brent Devore, Otterbein College; *Anthony J. Diekema, Calvin College; Richard Ferrin, Maryville College (Tennessee); C. Carlyle Haaland, Thiel College; #George M. Harmon, Millsaps College; Eugene Hotchkiss III, Lake Forest College; William A. Kinnison, Wittenberg University.

John Lilley, Pennsylvania State University-Behrend College; *David Marker, Cornell College (Iowa); *Roger Martin, Moravian College; John Nazarian, Rhode Island College; Natale A. Sicuro, Roger Williams College; Michael K. Simpson, Utica College; *Jon C. Strauss, Worcester Polytechnic Institute; *Catherine A. Tisinger, North Adams State College; Charles O. Warren, Plattsburgh State University College; *David L. Warren, Ohio Wesleyan University; Kenneth J. Weller, Central College (Iowa); F. Sheldon Wettack, Wabash College; James J. Whalen, Ithaca College.

The Market

Readers of The NCAA News are invited to use The Market to locate candidates for positions open at their institutions, to advertise open dates in their playing schedules or for other appropriate purposes.

Rates are 55 cents per word for general classified advertising (agate type) and \$27 per column inch for display classified advertising. Orders and copy are due by noon five days prior to the date of publication for general classified space and by noon seven days prior to the date of publication for display classified advertising. Orders and copy will be accepted by mail, fax or telephone.

For more information or to place an ad, call Susan Boyts at 913/339-1906 or write NCAA Publishing, 6201 College Boulevard, Overland Park, Kansas 66211-2422, Attention: The Market.

Positions Available

Athletics Director

Director of Athletics. The University of North Texas invites applications and nominations for the position of Director of Athletics. Position involves leading, administering, and managing a comprehensive program of men's and women's intercollegiate athletics. The University competes in eight varsity sports for men and seven for women. Teams participate either in the Southland Conference, or independently as Division I members of the NCAA (Division IAA for football). NT seeks someone with a proven record in administering intercollegiate athletic programs with a commitment to academic excellence; demonstrated skills in the management of financial affairs; strong knowledge of NCAA regulations and procedures; familiarity with athletic programs and policies of similar major universities; ability to recruit, manage, and motivate an outstanding coaching staff; and experience in successful promotion, fund-raising, and development efforts. Outstanding interpersonal and leadership skills are essential. Salary is commensurate with experience. Position is available immediately. Closing date for applications is January 18, 1991. Send nominations and applications, including a resume and references to: Dr. Rogers Redding, Chair, Search Committee, University of North Texas, P.O. Box 13737, Denton, Texas 76203. Affirmative Action/Equal Opportunity Employer.

Director of Athletics. The Virginia Military Institute invites nominations and applications for the position of Director of Intercollegiate Athletics, a person who reports directly to the Superintendent (President) and is responsible for administering the athletic program in conformity with NCAA and conference regulations, and with policies recommended by the Athletic Council and approved by the Superintendent. Qualifications include substantial experience in athletic administration, a record of financial responsibility, and a strong personal and professional commitment to the proper role of college athletics in higher education. An advanced degree or equivalent experience is preferred. Founded in 1839, VMI is a four-year, wholly undergraduate, military college for young men; maximum enrollment is 1,300 cadets. VMI has

been a member of The Southern Conference since 1924 and sponsors thirteen intercollegiate sports. Lexington is an attractive and historic town with two colleges and 8,000 residents located between Roanoke and Charlottesville. The closing date for applications is 1 February 1991, and duties will begin no later than 1 July 1991. Salary is negotiable and competitive. A full curriculum vitae, with names and addresses and telephone numbers of three references, should be sent with a concise cover letter outlining the applicant's views on the role of the athletic director in a military college setting to: Professor Thomas W. Davis, Provost and Dean's Office, Virginia Military Institute, Lexington, VA 24450. AA/EOE.

Athletics Trainer

Assistant Athletic Trainer — University of Red-

lands. Responsibilities: Part-time position will assist head trainer, assist in home and away event coverage as assigned, assist with supervision of student trainers and injury rehabilitation. Nine-month stipend with additional salary added for a coaching assignment, preferably assist spring sport (track or other). Salary Range: \$8,000-\$10,000. Tuition remission also available for graduate studies. Qualifications: Athletic training experience in a variety of sports. Should possess or be eligible for NATA certification. Bachelor's degree in physical education, sports medicine or related field. Coaching background helpful. Starting Date: February 1, 1991, or sooner. Send resume and list of references to: Greg Sazacka, Director of Athletics, P.O. Box 3080, Redlands, CA 92373-0999. Applications will be accepted until position is filled. University of Redlands is a private co-educational university and is a member of NCAA Division III and the Southern California Intercollegiate Athletic Conference. University of Redlands is an Equal Opportunity/Affirmative Action Employer and encourages women and minorities to apply.

Business Manager

Director of Athletic Business Services. Ball State University, Muncie, Indiana. Professional position available January 1991 to serve as the Business Affairs administrative liaison to the Directors of Intercollegiate Athletics. Individual will provide professional services in the management of financial resources, business services and ticket sales. The Athletic Ticket manager will report to the Director of Athletic Business Services. Bachelor's degree in Business Administration, Accounting, Finance or related area or an equivalent combination of education and experience and at least five years' experience in financial management are required. Experience in University and Intercollegiate Athletics financial management and planning, and athletic ticket sales preferred. Review of applications will begin immediately and continue until the position is filled. Send letter of application,

resume, and three (3) original letters of recommendation to Thomas E. Spangler, Director of University Budgets, University Budget Office, Administration Building, Room 210A, Ball State University, 2000 University Avenue, Muncie, IN 47306. Ball State University Practices Equal Opportunity in Education and Employment.

Development

Assistant Director of Development/Athletics. The University of Pittsburgh is seeking an Assistant Director of Development/Athletics for the Pitt Golden Panthers to assist in the administration of internal operations and provide support in all aspects of athletics fund-raising. The Assistant Director of Development/Athletics will supervise and direct office staff and internal operations in the absence of the Director of Development for Athletics. A Bachelor's Degree and prior fund-raising experience are required. Salary is commensurate with qualifications and experience. Applications should be sent to Mike O'Brien, Director of Development for Athletics, Pitt Golden Panthers, University of Pittsburgh, P.O. Box 7436, Pittsburgh, PA 15213. Application deadline is January 16, 1991. The University of Pittsburgh is an Equal Opportunity/Affirmative Action Employer.

Public Relations

Director of Communications position available.

ble—Olympic boxing program, Colorado Springs. Duties: media/public relations, publications, event coverage. Position requires strong writing and editing skills. Degree with journalism/public relations concentration, three years' experience sports-related field. Send resume: USA Boxing, 1750 E. Boulder, Colorado Springs, Colo. 80909. FAX: 719/632-3426.

Sports Medicine

Sports Medicine Faculty: Messiah College has a tenure faculty position open in Sports Medicine, starting in 1991-92. Responsible for teaching in a Sports Medicine major, with associated duties in athletic training. Administrative responsibilities in Sports Medicine possible, depending on interest and qualifications. Master's degree in Sports Medicine and NATA certification required; doctorate strongly preferred. Rank and salary commensurate with qualifications. Messiah is an undergraduate Christian liberal arts college seeking candidates committed to an evangelical expression of the Christian faith. Send letter of inquiry and resume to: Dr. Layton Shoemaker, Chair, Department of HPER, Messiah College, Grantham, PA 17027. Women and minorities encouraged to apply. An Affirmative Action, Equal Opportunity Employer.

Director of Athletic Medicine/Staff Physician. The University of Texas at Austin. The University of Texas at Austin is seeking applicants for the Director of Athletic Medicine for the University of Texas Men's Intercollegiate Athletics Department. This will be a shared

position between the Department of Men's Intercollegiate Athletics and the University of Texas Student Health Center. Responsible for the overall administration and supervision of athletic medical programs in the Men's Intercollegiate Athletic Program as well as for providing direct patient care as a staff physician to UT Austin students 20 hours per week. Requires a Doctoral degree in medicine; current license or eligibility for licensure to practice medicine in the State of Texas; and Board Certification or current Board Eligibility in family practice, internal medicine, or pediatrics. Post-residency experience in sports medicine preferred. Position available July 1, 1991. Qualified applicants should send letter of interest and resume by February 28, 1991, to: Melinda McMichael, M.D., Medical Director, Student Health Center, The University of Texas at Austin, Box 7339, University Station, Austin, Texas 78713. An Equal Opportunity/Affirmative Action Employer.

Ticket Office

Assistant Ticket Manager: Applications are being accepted for the position of Assistant Ticket Manager in the Athletic Department at the University of Oklahoma. Reports directly to the Athletic Ticket Manager. A Bachelor's Degree in Business Administration/Sports Management or related field plus two years' experience in a computerized athletic ticket operation are required. Responsibilities will include coordinating game-day ticket sales for all athletic events, reconciling all ticket

See The Market, page 18

ATHLETIC DIRECTOR University of MIAMI

Reports to president. Serves as chief operating and administrative officer and principal fund-raiser of intercollegiate athletics department. The successful applicant has demonstrated success as a managerial leader and the firm conviction that student-athletes should make education their highest priority. Send resume with earnings history to:

Athletic Director Search
UNIVERSITY OF MIAMI
Box 248106
Coral Gables, FL 33124-4626

An Equal Opportunity, Affirmative Action Employer



**STATE CENTER
COMMUNITY
COLLEGE DISTRICT**
located in central California,
is recruiting for a Cross
Country/Track Coach
Instructor for our Fresno
City College campus.

Position provides direction in all facets of a successful college cross country and track program including: selection and supervision of assistant coaches and support staff (trainer, equipment manager, etc.); developing and implementing a strong student-athlete recruitment program for cross country and track, including the recruiting assignments for all assistant coaches; teaching courses as assigned within the master's degree specialty area, and other duties as assigned and outlined in job announcement.

Minimum standards require a master's degree in any subject matter commonly taught at the community college level or the equivalent.

Filing Deadline: February 15, 1991.

Contact:
State Center Community College District
Certified Personnel Office
1525 E. Weldon Ave.
Fresno, CA 93704
209/226-0720

Equal Employment Opportunity/
Affirmative Action Employer

NCAA ETHNIC MINORITY AND WOMEN'S VITA BANK

The NCAA Ethnic Minority and Women's Vita Bank has been established to help individuals, institutions and other organizations identify positions for ethnic minority and female candidates in the field of athletics. This service includes the areas of coaching, officiating, athletics administration, teaching and support services (e.g., athletics trainer, business manager, ticket manager, facility manager, sports information director, academic counselor, etc.).

Institutions and other organizations seeking qualified candidates, or individuals interested in registering for the NCAA Ethnic Minority and Women's Vita Bank are encouraged to call or write:

Stanley D. Johnson
Director of Professional Development
NCAA
6201 College Boulevard
Overland Park, Kansas 66211-2422
Telephone: 913/339-1906

The Market

Continued from page 17

consignments, and assisting with daily office operations. Send resume, by January 21, 1991, to: University of Oklahoma Personnel Services, 905 Asp Avenue, Norman, OK 73019. The University of Oklahoma is an Equal Opportunity Employer.

Athletic Ticket Manager, Ball State University, Muncie, Indiana. Professional position available January 1991 responsible for the management of Athletic Ticket Office business functions and ticket sales. The Athletic Ticket Manager will report to the Director of Athletic Business Services. Bachelor's degree or an equivalent combination of education and experience required. Experience in financial management and ticket sales preferred. Review of applications will begin immediately and continue until the position is filled. Send letter of application, resume, and three (3) original letters of recommendation to Thomas E. Spangler, Director of University Budgets, University Budget Office, Administration Building, Room 210A, Ball State University, 2000 University Avenue, Muncie, IN 47306. Ball State University Practices Equal Opportunity in Education and Employment.

University of Wisconsin-Madison, Division of Intercollegiate Athletics, Madison, Wisconsin. Position: Assistant Ticket Manager. Full-time, 12-month position beginning February 1, 1991. Primary Responsibilities: (1) Personally direct and maintain the U/W Preferred Seating and Parking programs. Work closely with customers requesting preferred seating in accordance with the seating policy. (2) Coordinate and supervise the distribution and allocation of event badges and credentials. (3) Act as ombudsman between Athletic Ticket Office and season ticket purchasers. (4) Assist in the designing, printing, ordering and record keeping of all ticket stock. (5) Become operationally knowledgeable in all aspects of the automated ticketing system. (6) Assist in the formation, implementation and review of ticket sale procedures. (7) Assist the Athletic Department and Athletic Board in the development of policies pertaining to overall management of the Athletic Ticket Office. (8) Become completely familiar with Athletic Board policies, the University of Wisconsin-Madison policies, the State of Wisconsin Statutes and Big Ten Conference and NCAA rules and regulations governing the sale and distribution of athletic tickets. (9) Direct the total operation of the Athletic Ticket Office in the absence of the Ticket Manager. (10) Assume any additional duties assigned within the Ticket Office and the Athletic Department. Qualifications: (1) Bachelor's degree required with a Master's Degree preferred. (2) Successful administrative experience in a business or business-related enterprise and/or ticketing experience. (3) Strong background/training in public relations skills. Salary: Commensurate with qualifications and experience. Minimum \$28,000. Deadline for Application: January

31, 1991. Procedure for Application: Apply in writing to: Tim Van Alstine, 1440 Monroe Street, Madison, WI 53711. Include resume, credentials and letters from references who may be contacted. Please include phone numbers of references. The University of Wisconsin is an Equal Opportunity, Affirmative Action Employer.

Basketball

Head Basketball Coach for Women, full-time position, September-May. Responsible for the organization, direction and administration of women's basketball program, including conditioning, practice sessions, games, scouting, budget management and recruitment; additional duties may include organization of department transportation, assistant coaching in fall or spring sport, or assistance in sports information. Qualifications: Bachelor's degree, good organizational and administrative skills and ability to communicate with all constituencies; experience in participating in basketball, recruiting and scouting; knowledge and commitment to policies and regulations of NCAA and philosophical emphasis on educational features of program required. Master's degree; three years' coaching experience at collegiate level preferred. Salary: \$20,320-\$31,630; normally not to exceed \$22,800. Send letter of application, resume and three letters of reference to: Gaynelle Pratt, Personnel Office, Keene State College, Keene, NH 03431. Review of applications will begin January 31, 1991. AA/EOE.

Head Women's Basketball Coach (1/2), Physical Education Faculty (1/2). Full-time, non-tenure track faculty/coach position to begin August 15, 1991. Teach Physical Education courses as per area of expertise; Head Coach for Women's Basketball Program; administer budget, schedule contests, recruit athletes. Must be able to advise students, participate in governance and continue professional development. Salary commensurate with experience. Qualifications: master's degree in Physical Education; (teaching certification preferred); experience as college Head Coach preferred; proven ability to relate well with community; personal commitment to Jesus Christ; commitment to the educational mission of Malone College as a Christian liberal arts institution; commitment to establishing positive relationships with students and staff regardless of race, gender, disability or religious beliefs and to equal opportunity for women, minorities and handicapped. Closing date for applications is February 15, 1991. Applicants should send: letter of application, current resume with three references, statement of philosophy of Christian higher education to: Dr. Ronald G. Johnson, Vice President and Dean of the College, Malone College, Canton, Ohio 44709.

Field Hockey

Athletic Coach II (Women's Field Hockey Coach) Responsibilities: Organize, develop & maintain all aspects of field hockey program to include: administrative duties, recruiting, scheduling, team travel, summer camp program, facilities, officials, budget, practice and

conditioning. Evaluate opponents and potential recruits. Assist with fund raising. Assist the director as assigned. Duties begin July 1, 1991. Minimum Qualifications: Bachelor's degree, master's preferred; three years of coaching experience, NCAA Division I head coaching experience preferred; excellent public relations skills; knowledge and commitment to NCAA, NAC and University rules and regulations; experience as a participant at the U.S. National Team level desirable. Salary: \$27,090-\$42,170; starting salary normally not to exceed \$30,400. Send resume (non-citizens must include current visa status) by February 1, 1991, to: Judith L. Ray, Director of Women's Athletics, University of New Hampshire, Room 115, Field House, Durham, NH 03824. Women and minorities are encouraged to apply. UNH is an AA/EOE Employer.

Football

Assistant Football Coach: Brown University, an NCAA Division I-AA institution located in Providence, RI, is seeking applicants for an assistant football coach. This is a 12-month position. Responsibilities include coaching a position and recruiting in a primary and secondary geographic area. Qualifications: Bachelor's degree; coaching experience at the college level; knowledge of position techniques, fundamentals and drills. Ability to represent the educational goals and philosophy of Brown University. Letter of application and resume with references should be forwarded by January 25, 1991, to: Mickey Kwiatkowski, Head Football Coach, Box 933, Brown University, Providence, RI 02912.

Head Football Coach: Northwestern College (Minnesota) has an opening for a Head Football Coach with a desire to develop a strong football program in a Christian College setting. The Coaching position is a 12-month position and approximately 33 FTE; the other .67 FTE of the responsibility may include teaching or Athletic Director. Minimum education is a master's degree and must have at least five years of significant coaching experience. Northwestern College is a nondenominational Evangelical Christian College of about 1,110 students. The candidate must have an understanding and acceptance of Northwestern's Doctrinal Statement and Standard of Conduct. Quali-

fied persons should send letter of application and resume to Dr. David G. Ondercin, Vice President for Academic Affairs, Northwestern College, 3003 N. Snelling Avenue, Roseville, MN 55113.

Head Football Coach/Lectures. Teaching duties consist of undergraduate physical education courses, including skills, theory and licensure courses. Master's degree required. College coaching and teaching preferred. UMM competes in NAA Div. I. Needed immediately. Resume, credentials by February 1 to: Mark Fohl, P.E. Center, University of Minnesota, Morris, MN 56267. The University of Minnesota is an Equal Opportunity Employer and specifically invites and encourages application from women and minorities.

Head Football Coach, William Penn College, Division III. We would like an energetic, clean living coach who has experience recruiting, teaching, and coaching. A risk-taker who can create a seriously competitive team of student-athletes is preferred. A Master's degree is required. Ability to leap tall buildings in a single bound not necessary, but should be able to make it in two or three bounds. Send resumes and names of three references by January 15, 1991, to: Dr. David Throgmorton, Academic Dean, William Penn College, Oskaloosa, IA 52577.

Lacrosse

Head Coach, Men's Lacrosse. Part-time, nine months starting February 15; duties: selecting and directing part-time assistant, evaluation and recruitment of academically qualified lacrosse players, organizing and conducting team workouts and competition, arranging Division I schedule and team travel, and managing scholarship aide and budget. BA, proven success in coaching and ability to work with student-athletes, colleagues, and the community. Intercollegiate coaching and recruiting experience preferred. Letter, resume, and names and addresses of three current references by January 25, to: John C. Parry, Athletic Director, Butler University, 4600 Sunset Avenue, Indianapolis, IN 46208. EOE/AA.

Assistant Women's Lacrosse Coach, Roanoke College has an immediate opening for a part-time assistant women's lacrosse coach. Selected applicant will have collegiate playing experience and/or high school or college

coaching background, strong interpersonal and organizational skills. Responsibilities include assisting in all aspects of coaching, game management and team travel. Please call, 703/375-2334, and send resume with current references to: Tracy Coyne, Women's Lacrosse Coach, Roanoke College, Salem, VA 24153. Roanoke College is an Equal Opportunity Employer.

Soccer

Head Women's Soccer Coach. University of San Francisco. Duties include organizing and directing all phases of a Division I women's soccer program, including but not limited to scheduling, recruiting, conditioning, promotions and public relations. Qualifications: Bachelor's degree, master's degree preferred; three years' experience. Successful collegiate coaching experience in soccer or equivalent experience. The position is part-time with an annual salary of \$16,000. Please send a letter of application, resume and references to: Dr. Sandee L. Hill, Associate Athletic Director, University of San Francisco, 2130 Fulton St., SF, CA 94117. Deadline: 1/31/91. AA/EOE.

Soccer. Two half-time positions available in the Department of Kinesiology and Physical Education, i.e., head coaches for the men's and women's intercollegiate soccer programs. Additional duties include teaching service courses. Appointments begin September 1, 1991. College coaching experience, current U.S.S.A. license and master's degree preferred. Salary range for each position is \$19,989-\$27,743 annually. Application Deadline: February 15, 1991. Send application, resume and three recent letters of recommendation to: Dr. Stanley J. Clark, Chair, Department of Kinesiology and Physical Education, California State University, Hayward, CA 94542. An Equal Opportunity, Affirmative Action Employer. Position #91-92 KPE-CT-1 (Men's Soccer Coach), #91-92 KPE-CT-2 (Women's Soccer Coach).

Head Men's Soccer Coach—Huntington College is seeking a person for a full-time position as head soccer coach with other assigned duties (Physical Education instructor and/or Athletic Training and Administrative duties).

Duties will consist of directing an established NAIA soccer program. Huntington is a Christian liberal arts college committed toward the academic, spiritual, and physical development of the student-athlete. To apply, send letter of application and resume to: Tom King, Director of Athletics, Huntington College, 2303 College Avenue, Huntington, Indiana 46750. Applications will be accepted until January 21, 1991, or until position is filled.

Swimming

Head Coach, Men's Swimming. Harvard University invites applications for a full-time, nine-month position as head coach of Men's Swimming. The head coach is responsible for the development, organization and management of all phases of the intercollegiate swimming and diving program for men. Duties include recruiting, fund-raising and supervision of support staff. Will also assist the Director of Aquatics in the conduct of the total aquatics program. Additional administrative duties may be assigned. Qualifications: Baccalaureate degree required; five years' coaching experience desired with high level competitive swimmers; collegiate coaching experience preferred. Must be able to communicate effectively and recruit within the Ivy League philosophy. Good background in aquatics programs desirable. Salary commensurate with previous experience. Application deadline is 8 February 1991. Please send letter of application and resume to Ms. Patricia W. Henry, Associate Director of Athletics, 80 JFK Street, Harvard University, Cambridge, Massachusetts 02138. Harvard University is an Equal Opportunity and Affirmative Action Employer.

Volleyball

Assistant Coach — Women's Volleyball (Coaching classification), 90 academic year appointment. Intercollegiate Athletics Department. Salary Range: \$34,301-\$47,607 (commensurate with experience).

See The Market, page 19

VASSAR COLLEGE Director of Athletics

VASSAR COLLEGE seeks a Director of Athletics. The athletics program includes nine men's and nine women's varsity sports, and sixteen club sports, involving approximately 500 students. The College also offers a substantial intramural program. Vassar competes at the NCAA Division III level.

The Director of Athletics is the principal administrator of the athletics program and reports directly to the Dean of the College, Vassar's chief academic officer. The Director should provide strong leadership for a growing program that is consistent with the academic mission of the College.

Appointment will be at the rank of Professor in the Department of Physical Education and Dance, with eligibility for tenure. The term of appointment as Athletic Director is five years and may be renewed. Duties may include coaching one varsity sport. Substantial experience in administering and coaching college athletics and an understanding of the role of athletics in a residential liberal arts college are essential. Salary commensurate with experience.

Women and minority candidates are encouraged to apply. AA/EOE. Send letter of application, resume and three current letters of recommendation by February 1 to:

Nancy S. Dye
Dean of the Faculty
Vassar College
Poughkeepsie, NY 12601

YUBA COLLEGE

Come live in the scenic Sacramento Valley with abundant wildlife, recreation and low-cost living, yet within two hours of Lake Tahoe, Reno and San Francisco.

YUBA COMMUNITY COLLEGE DISTRICT is currently accepting applications for PHYSICAL EDUCATION INSTRUCTOR/HEAD WOMEN'S BASKETBALL COACH (full-time, tenure-track position).

QUALIFICATIONS: Master's Degree in Physical Education or related area or equivalent.

ADDITIONAL QUALIFICATIONS: Evidence of the potential to: (1) teach Health Education, Physical Assessment, Aerobics and other Divisional course offerings; and (2) organize and conduct a successful Intercollegiate Women's Basketball Program including: recruiting, academic counseling, substance abuse prevention, public relations, budget control, scheduling, practice and game organization.

APPLICATION PROCEDURE: Position announcements and applications are available from the Yuba College Personnel Office, 2088 North Beale Road, Marysville, CA 95901; or call 916/741-6975; or 24-hour job line 916/634-7733.

FINAL FILING DATE: Friday, February 15, 1991.

EOE/AA

Carthage Head Swimming Coach Aquatics Director

Carthage seeks a dynamic and inspiring coach to develop a competitive intercollegiate men's and women's swimming program. Competing in the College Conference of Illinois and Wisconsin (CCIW), Carthage is committed to athletics and academic excellence. The duties of the coach focus on effective recruiting and teaching of student-athletes.

The position carries with it the rank of Lecturer in Physical Education, and additional job responsibilities include management of the Seidemann Natatorium, supervision of lifeguards and instruction in the W.S.I. program.

Located on the shore of Lake Michigan midway between Chicago and Milwaukee, Carthage offers quick urban access from the relaxed environment of a small city. Salary and benefits are competitive and attractive.

Starting date is projected to be in the spring of 1991. Please submit nominations and applications, with references to: Kevin F. McCarthy, Director of Athletics, Carthage College, Kenosha, Wisconsin 53140.

CARLETON COLLEGE

FULL FACULTY APPOINTMENT

Head Women's Tennis Coach

ASSIGNMENT INCLUDES:

(1) A full-time faculty/coach position, at Instructor or Assistant Professor rank, in Division III institution.

(2) Additional responsibilities for Men's Tennis.

REQUIREMENTS: Bachelor's degree, master's degree preferred. Demonstrated ability to successfully coach tennis and teach a variety of classes at the college or high school level.

APPOINTMENT: Full-time faculty position; salary commensurate with education and experience, and with other Division III colleges.

APPLICATION: Send statement of interest, resume, and three letters of reference to:

Mylla Urban
Department Chair and Athletic Director
CARLETON COLLEGE
1 North College Street
Northfield, MN 55057

APPLICATION DEADLINE: Applications will be reviewed beginning February 15, 1991.

Carleton College is an Equal Opportunity/Affirmative Action Employer and encourages application from women and minority candidates.

COMMISSIONER Michigan Intercollegiate Athletic Association (MIAA)

The colleges of the Michigan Intercollegiate Athletic Association (Adrian, Albion, Alma, Calvin, Hope, Kalamazoo, Olivet) invite applications for the position of Commissioner with appointment effective July 1, 1991. The successful candidate will succeed Albert L. Deal who is retiring after 20 years of distinguished service.

The Commissioner's duties include preparation of reports, maintenance of records, enforcement of the Association's rules and regulations, appointment of the League Publicist and Supervisors of Officials and the direction of their respective activities.

Other responsibilities involve public relations as concerns the member colleges and their commitments to the liberal arts, the interpretation of intercollegiate athletics programs in the context of the Association and NCAA Division III philosophies, and the advancement of the athletics programs sponsored by the MIAA.

The Commissioner reports to the Association's Athletics Board of Control and its Board of Directors. The Commissioner's position is part-time and requires a flexible schedule.

Applicants should hold the Bachelor's degree; however, a Master's is preferred. Management experience in education, athletics, business and other fields is desirable. A familiarity with NCAA Division III athletics and the MIAA is helpful.

Letter of application, resume and three letters of recommendation should be sent to Dr. Donald A. Morris, President, Olivet College, Olivet, MI 49076.

Applications will be reviewed beginning February 1, 1991, and will continue to be received until the position is filled.

The Market

Continued from page 18

rate with qualifications and experience). Duties include working with all facets of the women's volleyball program as directed by the Head Women's Volleyball Coach, and teaching in the Physical Education/Recreation Administration Department (.43 coaching, .47 teaching). Undergraduate degree required. Master's degree and successful teaching at the college level preferred. At least one degree in PE or related field required. Current CPR certification required. Commitment to academics and knowledge of NCAA rules necessary. Preference will be given to applicants who can (1) teach a wide variety of Physical Education classes chosen from among team and individual sports/aquatics; (2) and have experience with recruiting in California junior colleges and high schools. Apply to: Dr. Kendrick Walker, Athletic Director, California Polytechnic State University, San Luis Obispo, CA 93407. Starting Date: April 1991; deadline for receipt of application and resume, February 1, 1991. AA/EOE.

Physical Education

San Francisco State University. Department of Physical Education has two full-time posi-

tions available for 1991-92: Assistant Football Coach (Offensive Backs) (\$27,708-\$36,420) and Head Women's Basketball Coach (\$33,192-\$58,116). Bachelor's degree required, master's degree preferred. Teaching competencies must include intermediate level in at least two activity areas and breadth at the beginning level. Prefer at least one degree in physical education, ability to work in professional environment, teach and coach successfully among diverse ethnic populations, and recruit student athletes into a non-scholarship athletics program. Assistant Football position available August 1, 1991, application screening begins February 5, 1991. Head Women's Basketball position available September 1, 1991, application screening begins February 15, 1991. Applicants submit letter, vitae, and names, addresses and phone of three references to Dr. Robert House, Chair, Department of Physical Education, SFSU, 1600 Holloway, San Francisco, CA 94132. Affirmative Action/Equal Opportunity Employer.

Phys Ed./Athletics

Grinnell College, Department of Intercollegiate Athletics/Physical Education invites applications for a non-tenurable faculty position at the assistant professor rank, as assistant football coach and head coach of baseball or softball. Responsibilities include scheduling, budgeting, attracting qualified scholar athletes and teaching some physical education classes in an elective educational program, beginning August 1, 1991. A master's degree is required with a concentration in physical education or related field. Applicants should

send vita, three letters of reference and official college transcript to: Will Freeman, Chair, Department of Physical Education, PEC, Grinnell College, Grinnell, Iowa 50112. The search will remain open until the position is filled; to be assured of consideration, submit all application materials by February 8, 1991. Grinnell College is an Affirmative Action, Equal Opportunity Employer and especially seeks women and minority candidates.

Coaching/Physical Education. Head coach for women's basketball, also able to coach golf, cross country or track and field. Preferred teaching in elementary physical education and movement fundamentals. Coaching and teaching experience preferred. Master's degree required. Strong recruiting skills expected. The University of Dubuque is a member of the NCAA Division III and the Iowa Intercollegiate Athletic Conference. Send letter of application, resume, names and phone numbers of three different professional references to: Jon Davison, Director of Athletics, University of Dubuque, 2000 University Avenue, Dubuque, Iowa 52001. Applications will be accepted until position is filled. AA/EOE.

Graduate Assistant

Graduate Assistantships. University of Redlands. Available in men's and women's track and cross country, tennis and athletic training.

Responsibilities for each sport will include coaching, recruiting and related duties as assigned by the head coach. Qualifications: Bachelor's degree and admission to the University's graduate program. Collegiate competitive experience and a desire to coach/teach as a profession. Remuneration includes tuition remission, apartment on campus, meal contract and monthly stipend. Starting Date: February 1, 1991, or sooner. Send resume and list of references to: Greg Warzecka, Director of Athletics, P.O. Box 3080, Redlands, CA 92373-0999. Applications will be accepted until position is filled. University of Redlands is a private, co-educational university and is a member of NCAA Division III and the Southern California Intercollegiate Athletic Conference. University of Redlands is an Equal Opportunity, Affirmative Action Employer and encourages women and minorities to apply.

Graduate Assistant in Football. University of California at Berkeley, a member of the Pacific 10 Conference. An Equal Opportunity Employer. You must have at least a 3.0 grade point average and a score of 1000 on the Graduate Record Examination. Please contact coach Tom Keele at 209 Memorial Stadium, University of California, Berkeley, CA 94720.

Miscellaneous

NE Pennsylvania Summer Camp: Looking

for Qualified, Caring and Enthusiastic staff to join our nine-week program. Need: Gymnastics, Basketball, Boating & Waterfront Instructors. Call/Write: Camp Towanda, 96 Coopers Ln., River Vale, NJ 07675; 201/666-2411.

Athletic Director. Full-time/part-time. Great personality, loves kids, relates well to staff, hard worker. If this describes you and you want to be associated with a top New England all boys sports camp, please apply for this position by sending your resume to: Camp Winadu, 5 Glen Lane, Mamaroneck, New York 10543.

Open Dates

Football—Division III. Kalamazoo College. Open Dates: 10/5/91 Home or Away, 9/17/94, 9/24/94, 10/1/94, 9/16/95, 9/23/95, 9/30/95. Contact: Dave Warrack, 616/383-8517.

Women's Basketball. James Madison University needs three Division I teams to compete in its JMU Nielsen Classic Women's Basketball Tournament on November 29-30, 1991. Guarantee available. Contact Andrea Morrison at 703/568-6513.

Football—Division II: Northeast Missouri State University seeks home and home or

single dates, 9/7/91 or 9/14/91, and 9/12/92. No Division I or IAA. Contact Eric Holm, Head Football Coach, at 816/785-4170.

Women's Soccer. Lewis University is looking for a team (any division) to compete in the 1991 Soccer Classic (four-team tournament) on September 7th and 8th. Contact: Evan Fillers or Alex Hernandez, 815/838-0500, extension 495.

Division III Football. Millsaps College is seeking a home and home agreement in 1992, 93, or 1993-94. Several dates are available. Call Bob King, Director of Athletics, at 601/974-1191, or Tommy Manager, Head Coach, at 601/974-1192.

**CALL
THE
MARKET
913/339-1906**

MORGAN STATE UNIVERSITY HEAD FOOTBALL COACH

Morgan State University is seeking candidates for the position of Head Football Coach. The position is a full-time appointment which may carry faculty rank in the Department of Health, Physical Education and Recreation. Responsibilities include all aspects of coaching a Division I-AA football team, identifying and recruiting academically and athletically qualified student-athletes, managing the football budget and interacting with all University constituencies regarding the football program.

A master's degree in health, recreation or physical education, five years' experience in coaching football at a Division I level institution, proven ability to motivate young people, sound fundamental knowledge of the game of football and a proven ability to communicate goals and objectives of an intercollegiate football program to the entire University community. Salary commensurate with qualifications and experience.

Send a letter of application, a current resume and three letters of recommendation by Wednesday, January 16, 1991, to:

Mrs. Armada W. Grant, Personnel Director
Morgan State University
Truth Hall 318
Cold Spring Lane at Hillen Road
Baltimore, Maryland 21239

U M B C

UNIVERSITY OF MARYLAND BALTIMORE COUNTY

Head Coach for Men's Soccer

RESPONSIBILITIES: Administer a Division I Men's Soccer program including: recruiting, budgeting, travel, scouting, instructing, and other responsibilities as assigned by the Athletic Director. Teach in the Physical Education Program.

QUALIFICATIONS: Bachelor's degree in Physical Education or related field; ability to recruit Division I level student-athletes; strong communication skills; knowledge of NCAA rules and regulations; three years of successful coaching experience, college level preferred.

UMBC an autonomous campus of the University of Maryland System, located on approximately 500 acres, ten minutes south of Baltimore, serves metropolitan Baltimore as its public doctoral granting research university. Serves over 10,000 student population, both residential and commuter. UMBC is a member of the East Coast Conference.

TYPE AND DATE OF APPOINTMENT: 12 month appointment—starting date July 1, 1991.

SALARY: Commensurate with qualifications and experience.

APPLICATION DEADLINE: February 1, 1991.

Send letter of application, resume, and three letters of reference to:

Dr. Charles Brown
Director of Athletics and Physical Education
UMBC
Baltimore, Maryland 21228

UMBC is an AA/EOE and encourages minorities, women and the disabled to apply.

Search Extended UNIVERSITY OF NORTH CAROLINA AT WILMINGTON Division of Academic Affairs

Position Announcement

Director of Intercollegiate Athletics

THE UNIVERSITY OF NORTH CAROLINA AT WILMINGTON invites applications and nominations for the position of Director of Intercollegiate Athletics.

UNC-Wilmington is a comprehensive Level I university in the University of North Carolina System with an enrollment of 7,000 students and a faculty and staff of over 800. UNCW is located in Wilmington, a coastal port city with a metropolitan population of more than 100,000.

The Director of Intercollegiate Athletics, who reports to the Provost, is responsible for administering the personnel, budget, and facilities component of the university athletic program, which has 16 men's and women's teams competing at the NCAA Division I level in the Colonial Athletic Association and nationally. Additionally, the Director is expected to oversee a fund-raising program and to ensure compliance with NCAA, Conference, and University regulations.

Minimum requirements for the position include a Master's degree, administrative leadership experience at the collegiate level, effective communication skills, and the ability for appropriate decision-making. Experience in Athletic Administration at the Division I level is desirable.

The preferred starting date is July 1, 1991. Applications with resume and three letters of reference should be forwarded to:

Search Committee—Director of Intercollegiate Athletics
c/o Office of Provost/Vice Chancellor for Academic Affairs
University of North Carolina at Wilmington
Wilmington, NC 28403-3297

The deadline for receiving applications: **March 15, 1991.**

The University of North Carolina at Wilmington is an Equal Opportunity Employer with an Affirmative Action Program.

Head Coach,
Men's and Women's
Swimming;
Recreation
Coordinator

Lawrence
University

This is a new three-year, renewable full-time appointment in the Department of Athletics and Recreation.

RESPONSIBILITIES: Organize, manage and coach men's and women's swimming/diving. Recruit student-athletes for these programs. Manage the pool facility and aquatic programs. Oversee recreation program to promote regular physical activity among Lawrence students that leads to a life-long appreciation for the benefits of physical activity. Perform administrative duties as assigned by the Director of Athletics and Recreation.

QUALIFICATIONS: Master's degree in recreation and demonstrated successful coaching experience in swimming preferred. Women and minorities are encouraged to apply.

SALARY: Commensurate with experience and qualifications.

APPLICATION DEADLINE: Monday, January 28, 1991.

APPLICATION PROCEDURE: Send resume, three letters of recommendation, and records of coaching and teaching experience to:

Rich Agness
Director of Athletics and Recreation
P.O. Box 599
Lawrence University
Appleton, Wisconsin 54912

LAWRENCE UNIVERSITY
Promotes Equal Opportunity for All

THE COLLEGE OF WOOSTER

DIRECTOR OF PHYSICAL EDUCATION, ATHLETICS, AND RECREATION

The College of Wooster seeks to appoint a Director of Physical Education, Athletics, and Recreation. The Director will be responsible for the administration and supervision of all aspects of the program: intercollegiate sports, intramural sports, recreation, related facilities, and fiscal management. An important responsibility is the supervision and evaluation of staff. The Department of Physical Education offers a minor and an instructional activities program. The Director is expected to show leadership in the proper role of physical education and athletics in the educational program at an NCAA Division III institution. This is a twelve-month position, with the expectation of teaching an academic course and/or coaching an athletics team as appropriate. The Director will have faculty status and will report to the Vice President for Academic Affairs.

Qualifications: Master's Degree; administrative, teaching, and coaching experience in physical education/athletics, preferably in the context of a college of liberal arts and sciences, and demonstrated ability to work effectively with coaches, athletics staff, faculty, and students.

The College of Wooster is a highly selective, nationally recognized liberal arts college with a commitment to excellence in undergraduate education. It is located in northeastern Ohio, one hour south of Cleveland and Lake Erie. The College has 150 full-time faculty, and a large proportion of the 1,800 students are active in sport and recreation at various levels.

The College wishes to ensure that the search committee identifies qualified candidates who are women or members of minority groups. Applicants so belonging are encouraged to identify themselves if they wish. The College is an Equal Opportunity/Affirmative Action Employer.

The deadline for nominations and applications is January 15, 1991; full consideration will be given to those applying by that date. Send letter, curriculum vitae, and names of three references to:

Professor William Baird
Chair, Physical Education Search Committee
Galpin Hall
The College of Wooster
Wooster, OH 44691

Ashland wrestling coach grapples with 'triple-double' roster

"Triple-double" has become a popular basketball term. Ashland University wrestling coach **Tom Linder** also applies it to his roster, which includes three sets of twins.

Linder recruited two sets this year — **Brad and Brian Pence**, and **Don and Jon Jones**. They joined redshirt freshmen **Greg and Gil Donahue**.

"At times," Linder said recently, "it can be very confusing. We're still coming up with ideas on how we can use them to our advantage."

Columbus College basketball players are reminding foes and fans of the American commitment to the crisis in the Middle East by wearing uniform patches representing units from Ft. Benning, Georgia, that are involved in Operation Desert Shield.

Columbus women's uniforms include the unit patch of the 197th Infantry Brigade — stationed at Ft. Benning — while the men's uniforms sport the patch of Forces Command, which represents the other Ft. Benning-based units involved in Operation Desert Shield.

"(Women's basketball) Coach (Jay) Sparks' team and mine wanted

consecutive field goals last November 14 against Austin Peay State University, and that the team recently had snapped a 139-game streak in which at least one three-pointer was scored. Alquist wondered if any team in any division could top either one of those marks. Well?

Steve Spurrier, head football coach at the University of Florida, has donated \$50,000 to the school (which also is his alma mater), with \$25,000 going to Gator Boosters, Inc., (it's earmarked for women's athletics) and the other \$25,000 going to Florida College of Health and Human Performance, from which he graduated.

"Being a Florida graduate is a big reason why such good things have happened to me and my family,"

Steve Spurrier



Spurrier said, "and I'm very happy to make this contribution."

Chuck McCuen, Georgia State University tennis coach, has announced establishment of an endowed scholarship fund to honor the memory of **Ken Hill**, who played

Kim Vinson



at Georgia State and later coached the school's women's team before passing away suddenly in 1988 at age 26.

Georgia State officials also announced that **Crimson** has been dropped from the school's athletics teams' names. **Panthers** and **Lady Panthers** now are the official names,

as they were prior to 1988-89.

The school also announced development of an academic-support program for student-athletes, which is being facilitated by the athletics department's recent move to more spacious offices in downtown Atlanta.

Kim Vinson, women's volleyball coach at Cameron University, spent her holiday break directing teams of (soccer and volleyball) athletes, musicians and actors on a two-week visit to Jamaica sponsored by Christian Outreach International. After matches, Vinson said those on the tour "will sing songs, and players and coaches will give their testimony."

Vinson took part in a similar tour of Austria, Germany and Holland in 1988.

Briefly in the News

to do something to recognize all our troops," said Columbus men's coach **Herbert Greene**, "but there is no single patch representing all the military units in the Middle East. Since Ft. Benning is such a large part of our community, we decided on the patches of their units."

Nine Allentown College men's basketball players recently joined head coach **Jim Hutnik** for a holiday visit to the pediatrics ward of Allentown's Sacred Heart Hospital. The group spent hours visiting with young patients and their parents just before Christmas.

Joining Hutnik were Allentown players **Mark Blair**, **Chris Gosseaux**, **Ron Grier**, **Mike Kearney**, **Mike Kerr**, **Larry Lowry**, **Jeff Magoon**, **Anthony Southerland** and **Greg Ware**.

University of Dayton basketball players already have raised \$5,100 for the Caring Program for Children, and all they've done is hit three-pointers.

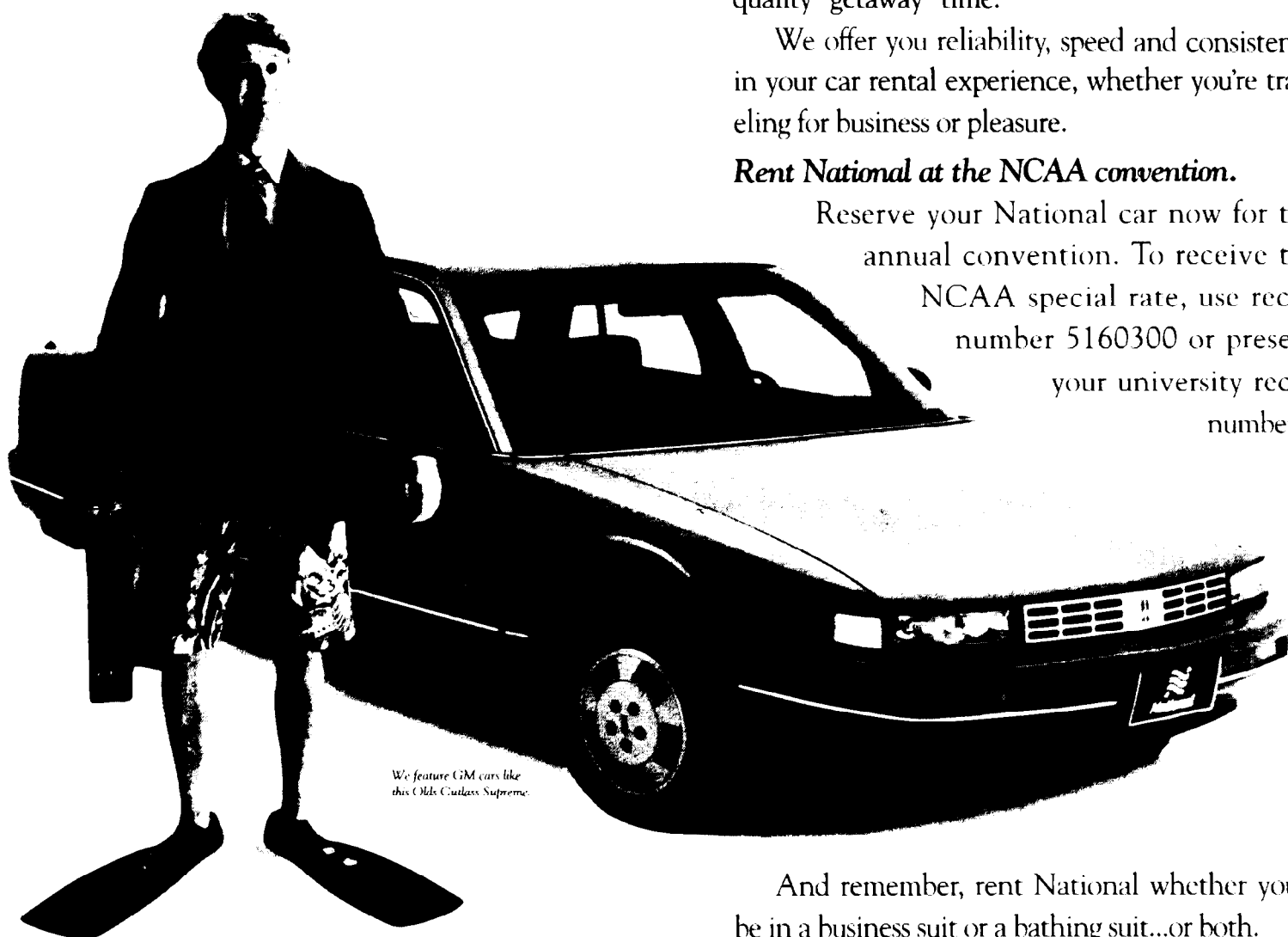
Two local companies have pledged a combined \$100 to the program, which provides routine health care for local needy children, for each three-pointer Dayton scores. With a long way left to go, the Flyers already have found the mark 51 times.

Count the University of Missouri, Columbia, as another men's basketball program that has faced competition from 46 states and the District of Columbia. According to Tiger sports information director **Bob Brendel**, Delaware, Maine, New Hampshire and Vermont are the missing states.

And from **Jon Alquist**, sports editor of the University of Arizona's alumni magazine, comes word that Wildcat teams have faced competition from 42 states and the District of Columbia. Unless somebody can document a whole map (i.e., all 50 states), further reports simply will be forwarded to **Jim McKone**, SID at the University of Texas, Pan American, who started all this several weeks ago.

Alquist, in his state-by-state report, also said Arizona made 15

Your car rental needs aren't restricted to business.



We feature GM cars like this Oldsmobile Cutlass Supreme.

As a preferred car rental supplier for the NCAA, National understands your needs for quality "getaway" time.

We offer you reliability, speed and consistency in your car rental experience, whether you're traveling for business or pleasure.

Rent National at the NCAA convention.

Reserve your National car now for the annual convention. To receive the NCAA special rate, use recap number 5160300 or present your university recap number.

And remember, rent National whether you'll be in a business suit or a bathing suit...or both.

For information and reservations, call 1-800-NCR-NCAA.

National Car Rental



The official car rental company for NCAA Championships.

