

# The NCAA News



Official Publication of the National Collegiate Athletic Association

December 19, 1990, Volume 27 Number 45

## Grants' role in revenue distribution is undecided

With one exception, the Association's plan for distributing moneys generated by the \$1 billion television contract with CBS has been approved by the NCAA Executive Committee. Still to be determined are details surrounding the grant-in-aid component of the broad-based portion of the distribution plan.

Following is a summary of the plan, as approved by the Executive Committee.

### General features

General features of the plan include:

- Eliminate the traditional distribution of net receipts based upon performance or participation in NCAA championships.

• Increase official traveling parties and per diem allowances for National Collegiate and Divisions I, II and III championships.

• Increase the official traveling party for the Division I Men's Basketball Championship to 100 at the Final Four and 75 for preliminary rounds, and increase the per diem allowance to \$150.

• Provide catastrophic-injury insurance for student-athletes in all three divisions, effective August 1, 1991.

• Provide an inflationary increase for the conference grant program.

• Distribute moneys to Division I conferences based upon the number of units earned by the teams in the Division I Men's Basketball Championship, using a rolling six-year period (the basketball pool).

• Distribute moneys to Division I institutions based upon the number of intercollegiate sports sponsored and the number of athletically related grants-in-aid awarded (the broad-based pool).

• Provide a graduated financial enhancement for Division II (\$1 million in 1990-91, \$2 million in 1991-92, and \$3 million in 1992-93 and for each remaining year of the contract).

Half of this allocation will be distributed to conferences whose teams participated in the Division II Men's Basketball Championship during a rolling six-year period, beginning with 1985-90, in accordance with the same guidelines developed for distribution of the Division I basketball pool.

The other half of the allocation will be distributed equally among all active Division II members that are eligible for NCAA championships in accordance with NCAA Bylaw 31.2.1.4.

• Distribute a portion of the moneys for academic enhancement.

• Establish a fund to which needy Division I student-athletes could apply for financial assistance, with no obligation to pay back the moneys.

**About the fund**

This fund, which has been set at \$3 million for fiscal 1990-91, will be administered by conference offices. The amount each conference will receive will be determined by dividing \$3 million by the total number of Division I student-athletes who received (during the previous academic year) coaching in a sport in

which the Association conducts championships and multiplying that amount by the number of student-athletes participating at each member institution in the conference.

A needy student-athlete is defined as one who qualifies for a Pell Grant. And for purposes of determining an institution's allocation, countable student-athletes are those who received coaching during the previous year in a varsity sport in which the Association conducts championships, as reported on the sports-sponsorship form submitted by September 15 each year, and that meets the minimum contests and participants requirements of NCAA Bylaw 20.9.3.3 for Division I membership.

(Note: Student-athletes competing in a sport classified in a division other than Division I would not be counted in determining the allocation.)

See Grants', page 3

## Mississippi's Turner to chair Commission

R. Gerald Turner, chancellor of the University of Mississippi, has been elected by the members of the NCAA Presidents Commission to serve as chair of the Commission in 1991.

He will replace Martin A. Massengale, chancellor at the University of Nebraska, Lincoln, and recently named president of the University of Nebraska System, at the conclusion of the 1991 NCAA Convention in Nashville.

A member of the Presidents Commission since April 1989, when he was selected by the Southeastern Conference to replace Marshall M. Criser, University of Florida, as its Commission representative, Turner will complete his service on the Commission and thus his term as chair at the end of the 1992 NCAA Convention.

He has been chancellor at Ole Miss since April 1984 and served prior to that as vice-president of executive affairs at the University of Oklahoma from 1979 to 1984. From



R. Gerald Turner

1975 to 1979, he was at Pepperdine University as associate professor of psychology, director of psychological testing, chair of the social science division and vice-president for university.

See Mississippi's, page 2

## Proposal calls for completed ACT or SAT before institutional visit

*(Editor's Note: This is the sixth in a seven-part series reviewing the legislation facing delegates to the 1991 NCAA Convention. This installment covers the recruiting grouping, other than those recruiting proposals included earlier in the agenda.)*

A prospect would have to present an ACT or SAT score before receiving an expense-paid recruiting visit to a Division I or II institution, if the lead proposal in the recruiting grouping is adopted by the Convention next month in Nashville.

While the proposal does not require achievement of a specific minimum score, it would prohibit an

individual from accepting a paid visit unless he or she had taken the SAT or ACT on a national testing date under national testing conditions and presented the score—whatever it is—to the institution being visited.

That legislation originally was submitted by the Metropolitan Collegiate Athletic Conference and subsequently was sponsored by the NCAA Council.

With most of the major recruiting proposals being included in the reform agenda for the Nashville Convention (and reviewed in the November 19 issue of The NCAA News), the rest of the recruiting grouping deals with rather narrowly

focused issues.

Four of them relate to Division I women's basketball. One, from the Southland Conference, would trade the January 17-24 evaluation period in that sport for a period from December 26 through December 31. A similar one, sponsored by the Council, trades the December 1-15 evaluation period for 15 other days scattered through the month of December.

Another Council-sponsored women's basketball item would prohibit a Division I women's basketball coach from being employed by or lecturing at a noninstitutional basketball camp or clinic that includes

See Proposal, page 2



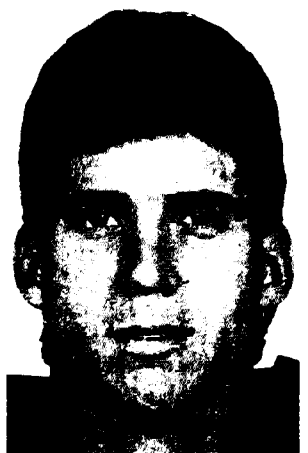
Neil A. Covone



Suzanne M. Favor



Morris R. Gardner



Edward T. McCaffrey



Patrick H. Tyrance



Cami L. White

## Fall finalists for Top Six awards are announced

A World Cup soccer player, the winner of the inaugural Babe Zaharias Award, and a National Football Foundation and College Hall of Fame scholar-athlete are among the six student-athletes chosen as fall finalists for the NCAA Today's Top Six awards. The fall finalists are soccer player Neil A. Covone, Wake Forest University; runner Suzanne M. Favor, University of Wisconsin, Madison; nose tackle Morris R. Gardner, University of Illinois,

Champaign; wide receiver Edward T. McCaffrey, Stanford University; linebacker Patrick H. Tyrance Jr., University of Nebraska, Lincoln; and field hockey player Cami L. White, Providence College.

Six finalists will be chosen from among these student-athletes and the winter/spring nominees listed in the October 15, 1990, issue of The NCAA News. The Today's Top Six finalists and the Silver Anniversary award winners will be recognized at

the NCAA honors dinner, which is held during the annual Convention.

Top Six selections are based 50 percent on athletics ability, 25 percent on academic achievement, and 25 percent on character, leadership and activities. Selections are made by the Honors Committee.

Following are biographical sketches of the fall finalists:

### Neil A. Covone

Covone has remained a full-time student despite traveling extensively

as captain of the under-20 World Cup team and the 1990 U.S. World Cup team. He is primarily a defensive midfielder and was a starter at Wake Forest since his freshman season. He has earned all-Atlantic Coast Conference honors and is considered one of the top 10 collegiate soccer players.

He maintained a 3.027 grade-point average (4.000 scale) while earning degrees in politics and economics. He is a volunteer with a

youth soccer program and frequently speaks at functions for charitable organizations.

### Suzanne M. Favor

Favor is a nine-time NCAA champion and won an unprecedented four 1,500-meter titles at the Division I Outdoor Track and Field Championships. She recently won the inaugural Babe Zaharias Award as female athlete of the year. She also won the 1990 Jumbo Elliott

See Fall finalists, page 2

# Proposal

*Continued from page 1*

prospects, which is now the rule governing Division I men's basketball.

## Summary

Following is a summary of the 12 proposals in the recruiting grouping, including the business session in which each proposal will be acted upon.

**No. 98:** To require a prospect to present an ACT or SAT score (achieved on a national testing date under national testing conditions) prior to receiving an expense-paid visit. Sponsored by the NCAA Council. General business session, Divisions I and II only.

**No. 98-1:** To amend No. 98 by adding a score from a PSAT test as another alternative. Sponsored by the Ivy Group and the Patriot League. General business session, Divisions I and II only.

**No. 99:** To permit Divisions II and III

institutions to provide meals to prospects and their parents during unofficial visits, regardless of whether the same opportunity is available to all prospective students visiting that institution. Sponsored by the Middle Atlantic States College Athletic Conference. General business session, Divisions II and III only.

**No. 100:** To exempt from the current recruiting "dead periods" that surround all initial signing dates for the National Letter of Intent those institutions that are not subscribers to the National Letter of Intent program and that have established their own institutional "dead periods." Sponsored by the Ivy Group. General business session, Divisions I and II only.

**No. 101:** To exempt from the current recruiting "dead periods" that surround the fall initial signing dates for the National Letter of Intent those institutions that are not subscribers to the National Letter of Intent program and that have established their own institutional "dead

periods." Sponsored by the Ivy Group. General business session, Divisions I and II only.

**No. 102:** To permit a Division I-A head football coach to conduct one visit with a prospect at the prospect's school and one visit with the prospect at the prospect's home on different calendar days, rather than on the same day. Sponsored by 10 Division I-A institutions. Division I-A business session.

**No. 103:** To limit the evaluation period in Divisions I-A and I-AA football during the month of May to 15 consecutive weekdays designated in writing by the member institution. Sponsored by the Southeastern Conference. Division I business session, Divisions I-A and I-AA only.

**No. 104:** To permit any member of an institution's athletics department other than a volunteer coach to provide automobile transportation for a prospect in football between the prospect's home or educational institution and the campus in conjunction with an official visit. Sponsored by the Southland Conference. Division I business session, Divisions I-A and I-AA only.

**No. 104-1:** To amend No. 104 by specifying that the member of the athletics department staff must have been certified in a conference certification program. Sponsored by the Southland Conference. Division I business session, Divisions I-A and I-AA only.

**No. 104-2:** To amend No. 104 by specifying that the provision applies to full-time staff members, with other staff members limited to providing such transportation within a 100-mile radius of the campus. Sponsored by the Southland Conference. Division I business session, Divisions I-A and I-AA only.

**No. 105:** To add the period from December 26 through December 31 and delete the period from January 17 through January 24 as permissible evaluation periods in Division I women's basketball. Sponsored by the Southland Conference. Division I business session.

**No. 106:** To trade the December 1 through December 15 evaluation period in Division I women's basketball for evaluation periods from the first Monday through the first Saturday in December, the Tuesday through Saturday prior to Christmas and the period from December

27 through December 30. Sponsored by the Council. Division I business session.

**No. 107:** To change the permissible dates during which Division I women's basketball coaches may evaluate prospects in Hawaii due to the dates of the state girls basketball championship. Sponsored by the Big West Conference. Division I business session.

**No. 108:** To prohibit a Division I women's basketball coach from being employed by or lecturing at a noninstitutional basketball camp or clinic that includes prospects. Sponsored by the Council. Division I business session.

**No. 109:** To specify that a Division I institution shall not provide complimentary admissions to a prospect to attend a postseason conference tournament. Sponsored by eight Division I-AAA institutions. Division I business session.

*(Next in the series: The final installment will cover the proposals in the playing-seasons grouping, other than those that were included in the Presidents Commission grouping.)*

## Fall finalists

*Continued from page 1*

Award. She won 54 of 56 finals races during her collegiate track career. She was undefeated in Big Ten Conference and NCAA individual track competition (32 races). She finished second at the 1990 Division I Women's Cross Country Championships.

She maintained a 2.823 grade-point average while earning a degree in art (graphic design). She has been a three-year volunteer with the Wisconsin Special Olympics and was honorary chair for the Children's Miracle Network. She has made numerous appearances for nonprofit groups on behalf of the University of Wisconsin Foundation and Alumni Association.

### Morris R. Gardner

An all-America nose tackle, Gardner has been a candidate for the Outland Trophy and the Lombardi Award. He is a two-time all-Big Ten Conference selection and is a member of Illinois' all-decade and all-century teams.

He has maintained a 3.049 grade-point average and his degree is in sociology. He has spoken to groups regarding various campus and community issues and has led campus rallies fighting racial discrimination. He also has spoken to many youth groups regarding the importance of education and staying away from drugs.

### Edward T. McCaffrey

McCaffrey has started at wide receiver for four years. He has earned all-America and all-Pacific-10 Conference honors. He led the conference in receptions per game and yardage and finished in the top 10 in the final NCAA statistics in those categories. He has been selected to play in the East-West Shrine game.

He has maintained a 3.400 grade-point average and will earn a bache-

lor's degree in economics and a master's degree in organizational behavior. He is the pen pal to the John S. Clarke Elementary School in Pennsylvania and is a founder of the Stanford Undergraduate Law Society.

### Patrick H. Tyrance

Tyrance has been a two-year starter for Nebraska at linebacker and has been the Cornhuskers' leading tackler. He earned both all-America and all-Big Eight Conference honors.

A National Football Foundation and College Hall of Fame scholar-athlete, Tyrance has maintained a 3.452 grade-point average. His major is premedicine. He is a member of the Fellowship of Christian Athletes and has been part of the Best of America Say No to Drugs campaign. He also received the athletics/academic counseling unit distinction award.

### Cami L. White

White has been a four-year starter at Providence, which has played in the NCAA Division I Field Hockey Championship three of the last four years. She scored a school record 34 points in 1989 and holds the school career assist record. She has earned both regional and all-America honors.

She has a 3.960 grade-point average and is an accounting major. She ranks first in a class of 937 and is an academic all-America. She also is a member of the accounting association.

## Delegates urged to register before business session

Voting delegates to the NCAA's 85th annual Convention next month in Nashville are urged to register and pick up their voting paddles before the opening business session Monday afternoon, January 7.

In years past, delegates have not needed their voting paddles until the division business sessions began acting on legislation. But that changes this time around.

After the opening business session at last January's Convention—during which key votes were taken on changing the order of business for the Convention—the NCAA Council determined that all voting in the opening session would have to be by voting paddle. There will be no more voice or hand votes in that session.

That change in procedure was announced in the Official Notice of the Convention, which was mailed to the membership November 15.

The registration desk at the Convention opens at 3 p.m. Sunday, January 6, and remains open until 7 p.m. that evening. It reopens at 8 a.m. Monday, January 7, and is open until 5:30 p.m. that day. The opening business session begins at 4:30 p.m. that day.

## Calendar

January 4-6	NCAA Professional Development Seminar, Nashville, Tennessee
January 5-6	Council, Nashville, Tennessee
January 6	Postseason Football Subcommittee, Nashville, Tennessee
January 6-12	NCAA Convention and related meetings, Nashville, Tennessee
January 7	Presidents Commission, Nashville, Tennessee
January 7	Division I Men's Basketball Committee, Nashville, Tennessee
January 7	Committee on Women's Athletics Open Forum, Nashville, Tennessee
January 7	Student-Athlete Advisory Committee, Nashville, Tennessee
January 8	Division I-AA Football Committee, Nashville, Tennessee
January 9	Eligibility Committee, Nashville, Tennessee
January 9	Interpretations Committee, Nashville, Tennessee
January 11-12	Council, Nashville, Tennessee

## Mississippi's

*Continued from page 1*

iversity affairs. He was on the staffs of San Antonio College and Prairie View A&M University between 1970 and 1975.

Turner holds three psychology degrees, the baccalaureate from Abilene Christian University and the master's and doctorate from the University of Texas, Austin.

He will join Asa N. Green, president of Livingston University, and David L. Warren, president of Ohio Wesleyan University, as officers of the Commission in 1991. Green and

Warren continue their terms as Division II and Division III chairs, respectively. The nominating and balloting process to select a Division I chair is under way.

Turner will be the fourth CEO to chair the Commission. John W. Ryan, then president of Indiana University, was chair in 1984 and 1985; John Brooks Slaughter, then chancellor at the University of Maryland, College Park, served in that position from 1986 to mid-1988, and Massengale has chaired the group since then.

## Legislative Assistance

1990 Column No. 45

### Signing with agents prior to postseason bowl game or NCAA certified all-star contest

Member institutions are reminded that according to the provisions of NCAA Bylaw 12.3.1, any individual who contracts or has ever contracted (orally or in writing) to be represented by an agent in the marketing of the individual's athletics ability or reputation in a sport no longer is eligible for intercollegiate athletics in that sport. This regulation would apply to eligibility for participation in a bowl game or other postseason football contest. Also, Bylaw 30.2.2 requires that the management of an NCAA certified college all-star football or basketball contest must conduct the game in accordance with the Association's principles for the conduct of intercollegiate athletics. Thus, a student-athlete who signs with an agent prior to his member institution's participation in a postseason bowl contest or his individual participation in an NCAA certified college all-star football or basketball contest would be ineligible to participate in that contest.

### Special airline flight benefits

Member institutions should note that in accordance with Bylaw 13.6.2.3, the airfare for commercial transportation for the official visit of a prospective student-athlete may not exceed coach (or comparable) class; further, per Bylaw 13.6.2.3.1, an institution may not arrange payment of the airline ticket to permit a prospect (or the prospect's relatives or friends) to take advantage of ticket bonuses, rebates, refunds or other benefits connected with the purchase of the ticket. In this regard, it would not be permissible for a prospective student-athlete or the prospect's relatives or friends to receive special airline flight benefits such as a free or reduced-cost

ticket when the institution arranges payment for the prospect's ticket in conjunction with an official visit. In addition, Bylaw 16.12.2.1 (extra-benefit rule) would preclude a student-athlete (or the student-athlete's relatives or friends) from receiving any benefit associated with the institution's payment of travel expenses in conjunction with Bylaw 16.8.1.2 (competition while representing the institution) or 16.8.1.3 (other competition).

### Home-town awards

Member institutions should note that in accordance with Bylaw 16.1.4.5, it is permissible for a home-town group (other than the institution's athletics booster club) to provide an award (e.g., certificate, medal or plaque) to a student for outstanding accomplishments in intercollegiate athletics, provided the value of such an award does not exceed \$50. Please note that per Bylaw 16.1.7.1, the member institution, its booster club or any other organization may not pay the expenses of the student-athlete to return home to receive the award for athletics accomplishments or for other personal purposes. The student may return home at his or her own expense to attend a recognition event and receive an award from any home-town group that is not related to the institution and is not the institution's local athletics booster group.

*This material was provided by the NCAA legislative services department as an aid to member institutions. If an institution has a question it would like to have answered in this column, the question should be directed to William B. Hunt, assistant executive director for legislative services, at the NCAA national office.*

## News Fact File

Seven non-NCAA sports are sponsored on a varsity (rather than club) basis for men and/or women by more than five member institutions: Crew is sponsored by 43 institutions for men and by 41 for women; squash, 16 for men and 29 for women, and sailing, 23 for men and 15 for women. There are 13 women's varsity ice hockey programs, seven in women's badminton, seven in men's pistol and six in men's bowling.

*Source: The Sports and Recreational Programs of the Nation's Colleges and Universities, Report No. 7.*

# Grants

Continued from page 1

tion, even though all student-athletes participating in varsity sports are eligible to apply for funds. And although the NCAA does not sponsor a Division I-A football championship, all student-athletes in that sport are counted.)

Conferences will serve as administrators of the funds for their members. An institution is not obligated to award its entire fund each year.

If moneys remain at the end of the year, a conference may pool them and use them for any member institution. However, no member can accumulate more than three times the average amount of its allocation over the previous three-year rolling period.

Independent institutions' moneys will be assigned to the conference office that administers each independent's participation in the National Letter of Intent program. Any independent that does not use its entire fund at the end of a given year would retain the moneys for its sole use (i.e., it would not pool them for the conference's use).

Permissible uses of the moneys include (conferences or independents are free to develop more stringent provisions):

- Medical expenses (except those covered by another insurance program, either institutional or personal).
- Hearing aids.
- Vision therapy.
- Off-campus psychological counseling.

- Travel expenses for parents or student-athletes related to family emergencies.

- Purchase of expendable academic course supplies (e.g., notebooks, pens) and rental of nonexpendable supplies (e.g., computer equipment, cameras) that are required for all students enrolled in the course.

- One suit jacket, suit coat or dress, not to exceed \$200.

Moneys are not to be used for administrative purposes (i.e., conferences may not charge an administrative fee, nor may salary or staff expenses for administering the fund be paid from these moneys).

The Ad Hoc NCAA Committee to Administer the Conference Grant Program has been given responsibility for issuing interpretations when questions arise relating to permissible uses of the fund.

Plans call for moneys to be distributed each August, beginning in August 1991. Student-athletes will apply for funds by submitting an application to the appropriate conference office. Conferences will report annually to the Association the purposes for which moneys were used and the specific amounts of awards.

## Basketball pool

Following are elements of the plan to distribute funds from the basketball pool:

- Independent institutions will receive a full unit share based on their tournament participation over the rolling six-year period.

- An independent institution that joins a conference will retain the unit(s) it earned as an independent prior to the date it elected to join the conference. Any units earned after that date will accrue to the conference the independent joined.

- If an institution leaves one conference to join another, the units it earned would remain with the conference it left.

- Conferences are being urged (but are not required) to distribute moneys from the basketball pool among all their members in some manner.

- Any conference that did not participate in the Division I Men's Basketball Championship during the period 1985-90 will not receive a share from this pool from the 1985-90 distribution. However, any such conferences that participate in the 1991 tournament as part of the play-in format will receive a share from the 1986-91 distribution.

- No conference will lose all of its units from this pool if it is represented in the tournament by an institution that later is declared ineligible. If this happens, the units accrued by that team will be reduced to one.

These moneys will be distributed in April 1991.

## Broad-based pool

Funds from this pool will be distributed to all Division I institutions based on (a) the number of varsity sports sponsored (one-third of the pool) and (b) the number of grants-in-aid awarded (two-thirds

of the pool).

Institutions will receive one unit of the sports-sponsorship portion of the pool for each sport sponsored in excess of the 12 that represent the minimum requirement for Division I membership. If the new sports-sponsorship requirements for Division I membership are adopted at the 1991 Convention, an institution would receive credit beginning with its 14th sport sponsored.

Only sports in which the NCAA sponsors championships and that meet the minimum contests and participants requirements of NCAA Bylaw 20.9.3.3 will be counted.

The formula to be used for distributing the two-thirds of this pool to be based on grants-in-aid has not been finalized. The Special NCAA Advisory Committee to Review Recommendations Regarding Distribution of Revenues is in the process of scheduling a February 1991 meeting to review further and adjust this aspect of the plan.

It has been determined, however, that all broad-based distribution will be based on the most recent data available (i.e., from the 1990-91 academic year, if feasible), and that the grants-in-aid component will be based on athletics aid at the outset (rather than on countable aid for the first year of the plan and on athletics aid thereafter, as originally planned). Plans call for these moneys to be distributed beginning next August.

## Other elements

Other elements of the distribution plan include:

- **Academic enhancement.** Included in the 1990-91 NCAA budget is an allocation of \$7.3 million for enhancement of academic-support programs for student-athletes at Division I institutions. A flat, equal payment of \$25,000 will be provided to each Division I institution for this purpose in May 1991.

- **Membership trust.** Following a recommendation made by the NCAA Presidents Commission, two percent of the annual television rights fee is being set aside each year in a membership trust, beginning with fiscal year 1991-92. Moneys in this trust will not be used to fund new programs and services, but rather to continue to fund current programs and services if there are compelling economic needs at the end of the current television contract.

Interest earned on the funds will accrue to the trust, and if the trust is not required for this purpose, all moneys will be returned to the membership in some form.

- **Committee on Infractions consideration.** The Association's Committee on Infractions, as part of this plan, is being asked to consider withholding all or a portion of an institution's share of the broad-based pool as an additional penalty in infractions cases.

- **Special committee status.** The special committee will remain intact at least through fiscal year 1990-91.

Questions regarding any aspect of the revenue-distribution plan should be directed to the NCAA national office.

# Delegates will use electronic voting system in Nashville

With at least 95 roll-call votes scheduled at next month's Convention, delegates will have ample opportunity to learn how to use an electronic voting system that will be employed for the first time in Nashville.

But Convention voters should quickly discover that the boxes they will use to cast their votes are about as easy to handle as a garage-door

opener.

"It's the same principle," said Daniel W. Spencer, NCAA director of data processing and the staff member who has been responsible during the past year for developing the system. "Punch a button, it knows to open; punch another, it knows to close. But it is a little more sophisticated."

It's also fast. If the system works

as well as it has in tests, that voting box should significantly reduce the time needed to complete a roll-call vote—cutting it from the seven to 10 minutes using the old punch-card system at last year's Convention to no more than four minutes per vote.

Counting from 450 to 500 votes per minute, the system could handle a roll-call tally in as little as one minute in division business sessions and two minutes in the general session, Spencer said.

## NCAA, Betty Ford Center establish antidrug program

The NCAA and the Betty Ford Center in Rancho Mirage, California, are joining forces in the fight against alcoholism and drug addiction.

The NCAA/Betty Ford Center Alcoholism and Drug-Addiction Awareness Program has been established to help coaches and administrators at NCAA member institutions expand their awareness and understanding of alcoholism and addiction treatment.

ABC Sports will financially sponsor the program.

"We are very proud to be able to support such a worthy program," said Dennis Swanson, president of ABC Sports. "Capital Cities/ABC and ABC Sports are committed to fighting the serious societal problems resulting from drug addiction and alcohol abuse."

"We believe that the Betty Ford Clinic will provide the expertise to help college coaches and administrators better understand those problems," Swanson said.

During the next five years, the program will permit representatives of NCAA Division I schools to attend special three-day "profes-

Put simply, the voting box acts as a radio transmitter and receiver.

When a vote begins, each delegate will turn on the box specially coded for that delegate's member institution or conference. A slowly flashing light will appear. Then, the delegate will push one of three voting buttons for "yes," "no" or "abstain"—and the light will begin to flash more rapidly.

But the unit does not transmit the vote to the system's central computer just yet, which means that the vote can be changed. Only when the

delegate pushes a "lock-in" button does the unit transmit the vote. At that time, the light on the unit will quit flashing and appear solid.

Meanwhile, the system's central computer begins searching for signals from boxes where votes have been cast. When it finds one, it checks the unit's coding to verify that the institution or conference is eligible to vote on the proposal, and then collects the vote.

"The computer has a list of who can vote," Spencer said. "It goes through the list and talks to each box, basically."

Once the computer collects the vote, the light on the box will go out, letting the voter know that the vote has been recorded. The central

See *Delegates*, page 9

## Shuttle available at Convention

Free shuttle service from the Opryland Hotel to downtown Nashville will be available to NCAA Convention delegates January 7, 9 and 10.

The shuttle, provided by the hotel, will operate from 7 p.m. to midnight January 7 and from 6 p.m. to midnight January 9 and 10. Departures will be on the half-hour and hour from the Magnolia lobby.

Jerry Wayne, director of marketing for Opryland, said, "We want to give NCAA Convention delegates an opportunity to get out of the hotel and experience some of the other opportunities that Nashville offers. The NCAA meeting is such a long Convention that we wanted to provide delegates with more options for entertainment and make their stay a little better."

The hotel also operates a daily shuttle service to the Nashville airport from 6 a.m. to midnight. Round trip service is \$11 and one-way service is \$7.



Delegates to the 1991 Convention in Nashville will cast roll-call votes with this transmitter/receiver



# Comment

## War on steroids must be fought on several fronts

By Ken Mannie

Hats off to Sen. Joe Biden, D-Delaware, and those who labored with him on the recently signed antisteroid legislation (The NCAA News, December 3). This long-overdue law will at last put teeth in the "steroids are a no-no" rhetoric that has, and with good reason, saturated the media since the Ben Johnson incident during the 1988 Olympic Games.

This new piece of legislation, one that places these androgenic-anabolic compounds in the classification of a controlled substance, furnishes the DEA with the authority (and hopefully, adequate funding) to make a dent in the multimillion dollar black market steroid crisis.

That's right; I said "crisis." Numerous studies, most recently the findings of Penn State's Charles Yesalis, et al., indicate that the abuse of these synthetics (abuse, at least in my nomenclature as a health education teacher, being defined as "the use of a drug without medical indication"), has reached epidemic proportions in the male teenage population (extrapolated figures exceed 500,000 nationwide). Yesalis' just released findings from his most recent work differ with the results from a self-reported, 1989 NCAA study that surveyed athletes about their own levels of anabolic drug use.

While an in-depth comparison of the two studies is beyond the scope of this piece, the differences in estimated usage are stark, with Yesalis' projected use rates being significantly higher than the NCAA's results. Self-admittedly, Yesalis is quick to point out that the actual percentage of use is "somewhere in between."

In any event, we are obviously faced with a seemingly proliferating problem—one that requires an offensive by all of us who have a perpetual concern for the health and well-being of our young people, as well as that of our chosen profession.

### Problem's history

This entire chemical war is not a recent aberration; its roots date back, at least by some accounts, to the late '50s.

The Eastern Bloc countries have a notorious reputation for the early experimentations with these compounds on athletes, and due to the successes of some of these participants in international competition, certain Western athletes and coaches felt they needed to follow suit to "keep up."

This mentality eventually trickled down to professional athletes, then to the collegiate ranks, and probably most disturbingly, to the junior high and high school levels. I have personally counseled youngsters as young as 12 who are using the drugs because they want to possess a physique similar to a "pro" wrestler, or one of the bodybuilders who graces the cover of one of the teen-targeted muscle magazines.

Unfortunately, be it due to inadequate research on the deleterious effects of these drugs on the human system during the past few decades or the "hear no evil, see no evil, speak no evil" mind-set of those who were in position to alert a largely uneducated public, many of our young people are under the



Ken Mannie

erroneous assumption that drug-induced muscles can be equated with good health. In fact, what actually may be occurring is external growth with concurrent internal death.

Skeptics of the ever-growing hazardous effects list associated with steroids (most of whom are either narcissistic users or those who have a vested interest in the steroid market) will expound on the lack of documented deaths associated with chronic steroid abuse. Yet, you would be hard-pressed to find a reliable, scrupulous physician (especially one who has expertise in this area) who would deny that we now know enough about these drugs and their devastating rampage on the liver, endocrine system, cardiovascular system, skeletal and connective tissues, and immunity system

to warrant serious concern about their usage.

It must also be understood that medical examiners do not routinely check for steroids in cases of sudden death in athletes (much less the physique enthusiast from the corner gym who suffers a myocardial infarction), so we are still dealing with an unknown factor.

However, the documented deaths and life-threatening abnormalities associated with steroid abuse are all a prudent individual should need for abstention. Unfortunately, those of us who are responsible for educating and guiding young people on performance enhancement and good health habits are having our honorable intentions stymied by some closed minds and deaf ears.

### No easy answers

There are no easy, distinct answers to the myriad of questions posed by this dilemma of "hormonal roulette." One thing is certain: All of us better be prepared for a long, hard-fought war, and we would be well-advised to have an arsenal of effective, reliable weapons. Yes, testing will certainly help, but only if done in a truly random, year-round fashion with constant updating in testing technology so that we can stay ahead of those unscrupulous "biochemists" who are feverishly at work at masking techniques or undetectable "designer" steroids.

Certainly, the civil rights issue will always be a hotly debated topic with regard to any type of testing program. The bottom line, though, is our responsibility to provide our young people with the right to fair competition and a healthy, productive life when their sports careers are committed to the scrapbook.

For obvious reasons, the vast majority of high schools never will be able to implement drug-testing programs. We at the collegiate level must do everything within our means to assist administrators, coaches, parents and the youngsters themselves (both athletes and non-athletes) with all of the educational resources available. Believe me, they need and want our help, because it is at their level that the situation is most critical.

### Reliable data needed

The educational process must be ongoing at the collegiate level, as well, with correct, updated information available to our athletes. These young people have a constant hunger for reliable data on nutritional guidelines, training procedures and other variables in their physical development. When it comes time to discuss the steroid issue, obtain the services of an authority in this area; a "whiz-bang, don't use the stuff" routine is not only inefficient, it is a disservice to

the athletes. They need to be made aware of exactly what these drugs are, how they work, what they do when introduced to the system. They also must be systematically taken through all of the effects of the compounds in a comprehensive manner.

For those who refuse to be dissuaded from anabolic drug use, punitive action must be taken. Now that testing is making inroads as a viable deterrent, we must be sure not to bastardize the system with a lax approach to enforcement. There always will be individuals attempting to buck the testing system, and though they certainly require counseling, there eventually should be a point of "no return" regarding competition. Only then will we send the correct message to these young people.

Our guiding principle in the athletics community needs to parallel that of the medical profession when approaching an area as volatile as the anabolic drug-use issue... "first, do not harm."

With legislation, education, testing and a lifetime commitment to the young people entrusted to us, we can begin to break the stronghold this epidemic has in our society.

*Mannie is strength and conditioning coach at the University of Toledo.*

## Commitment of Olympic sports athletes recognized

**Jon Wefald, president**  
**Kansas State University**

*The Kansas City Star*

"Most CEOs around the country agree that academic excellence has to be the No. 1 priority and that intercollegiate athletics should not be the tail that wags the dog.

"I think many of the recommendations of the Presidents Commission, especially for the major sports, will pass because they are right and they are appropriate.

"But I also think that (college presidents) recognize that with some of the Olympic sports, they have students who are incredibly committed both academically and athletically.

"I think to a great extent there will be some flexibility."

**Gerry DiNardo, head football coach**  
**Vanderbilt University**

*Sports information release*

"I believe my success can be measured, and I believe that if we graduate everyone and everyone gets a good education—and we don't win football



### Opinions

games—that's not a sign of excellence.

"I believe if we win all our football games and no one gets a good education—no one graduates—that is not a sign of excellence.

"I want to be judged by graduating football players, winning games and, at the same time, keeping all the rules and the spirit of the rules in order."

**Richard D. Schultz, executive director**  
**NCAA**

*The Washington Post*

"We're not going to solve the (cheating) problem by doubling or tripling the (NCAA) enforcement staff. We're also not going to solve it by passing a lot more rules.

"We've got to go at it the other way, getting schools to take pride in rules compliance. If you want to stonewall the NCAA, it's no problem (because the Association lacks subpoena power in enforcement investigations). If a school really wants to fight us, there isn't any way we can probably come down with a tough penalty. Unless that smoking gun turns up."

**Stanley O. Ikenberry, president**  
**University of Illinois, Champaign**

*Chicago Tribune*

"There's absolutely no sympathy for a (Division I-A) play-off among Big Ten presidents. And I doubt there's any sympathy among the other presidents. The concept is wrong.

"It's a bad idea whose time hasn't come."

**Glenn Dickey, columnist**

*San Francisco Chronicle*

"The confusion over the No. 1 college football team has led a surprising number of otherwise rational sportswriters to clamor again for a tournament

to decide No. 1.

"Sorry, fellas, but it doesn't make sense to extend an already overly long football season just so you can make sense of the football rankings. Believe it or not, some college football players are serious about their classes, and this would take them away even longer.

"It would also increase the chance of injury, an especially daunting prospect for the vast majority of players who will never become professionals.

"In pro sports, it's important to determine who should be No. 1. It isn't necessary in college sports. Indeed, this has been a most entertaining season precisely because of the uncertainty over which team belongs on top. Let's keep it that way."

**Milton Steinbaum, principal**  
**Oxon Hill High School**

*The Associated Press*

"I was looking for a person (to coach the boys' basketball team) who could handle the job, and I didn't care if it was a male or female or whether he or she was blue, green or yellow. The only question I had to ask her (Pat Harris) before giving her the job was whether she could handle the coaches out there who would be giving her a hard time.

"She did not seem fazed. She just said, 'I'll do my best,' and that was good enough for me."

**Art Rosenbaum, columnist**

*San Francisco Chronicle*

"Is there a solution for incurable intercollegiate scandals? So far, the answer is no. Somebody always wants an edge. Some realists contend it is impossible to combine quality sports competition and quality learning competition—not enough time for both.

"Maybe the end will be intramural sports in school, while the NFL, NBA and baseball open their own athletics colleges (camps) for high school dropouts. Then, they can subsidize and train their own future product."

## The NCAA News



[ISSN 0027-6170]

Published weekly, except biweekly in the summer, by the National Collegiate Athletic Association, 6201 College Boulevard, Overland Park, Kansas 66211-2422. Phone: 913/339-1906. Subscription rate: \$24 annually prepaid; \$15 annually prepaid for junior college and high school faculty members and students; \$12 annually prepaid for students and faculty at NCAA member institutions. Second-class postage paid at Shawnee Mission, Kansas. Address corrections requested. Postmaster send address changes to NCAA Publishing, 6201 College Boulevard, Overland Park, Kansas 66211-2422.

Publisher ..... Ted C. Tow  
Editor-in-Chief ..... Thomas A. Wilson  
Managing Editor ..... Timothy J. Lilley  
Assistant Editor ..... Jack L. Copeland  
Advertising Manager ..... Marlynn R. Jones  
The Comment section of The NCAA News is offered as opinion. The views expressed do not necessarily represent a consensus of the NCAA membership. An Equal Opportunity Employer.

# Three coaches share top rating for career wins

By James M. Van Valkenburg  
NCAA Director of Statistics

Dean Smith of North Carolina, Jerry Tarkanian of Nevada-Las Vegas and Jim Boeheim of Syracuse all rank No. 1 in victories at the current stages of their careers on the all-time Division I coaching chart.

In addition, all three rank in the top 10 in winning percentage, compared with all other coaches in men's Division I history at the same points in their careers.

Five more current Division I coaches have no No. 1 rankings in either victories or percentage but rank in the top 10 in both categories. They are UTEP's Don Haskins, James Madison's Lefty Driesell, Indiana's Bob Knight, Louisville's Denny Crum and Georgetown's John Thompson.

Nineteen more current head coaches in Division I rank in the top 10 in victories, but not percentage. More about them later.

Smith, Haskins and Missouri's Norm Stewart, all starting their 30th season, are in the all-time top 10 for the first 29 seasons of a career:

Most Wins, First 29 Seasons:	Years	Wins
Dean Smith, North Caro.	62-90	688
John Wooden, Indiana St.		
& UCLA	47-75	664
Henry Iba, NW Mo. St.		
Colorado & Oklahoma St.	30-58	619
Adolph Rupp, Kentucky	31-52	617
	54-60	617
Guy Lewis, Houston	57-85	578
Don Haskins, UTEP	62-90	563
Norm Stewart,		
N. Iowa & Missouri	62-90	552
Frank McGuire, St. John's		
(N.Y.), North Caro. & South		
Caro.	48-79	534
Ed Diddle, Western Ky.	23-51	532
Harold Anderson, Toledo &		
Bowling Green	35-63	504

In the percentage top 10, Smith ranks fifth at 688-203 for .772, entering this season, and Haskins ninth at 563-243 for .699. Stewart is well below the top 10 at .669 for his 552-273.

Kentucky's Rupp is the percentage leader at .847 for his 617-113 record over the first 29 seasons of his 41-season career. UCLA's Wooden is second at .804. Third is F. C. "Phog" Allen of Kansas, barely edging Oklahoma State's Iba, .7732 to .7728. Allen was 450-132 for the first 29 seasons of a 48-season career, while Iba was 619-182 for the first 29 of his 41 years.

## Wins favor moderns

The top five above on the 29-year best-percentage list and the top 10 on the 29-year most-victories list make an important point—the most-victories list favors current coaches, while the percentage list favors the oldtimers.

Smith's teams played 891 games in his first 29 years. In the same span, Wooden's teams played 826, Iba's 801, Rupp's 730 and Allen's only 582, or 20.1 games per season vs. 30.7 for Smith. Smith's first season was 1962, Wooden's was 1947, Iba's 1930, Rupp's 1931 and Allen's 1906.

By the way, both Smith and Rupp played under Allen (who played at Kansas under the game's inventor, Dr. James Naismith), and North Carolina, Kentucky and Kansas rank Nos. 1-2-3 in all-time victories.

## Five-year project

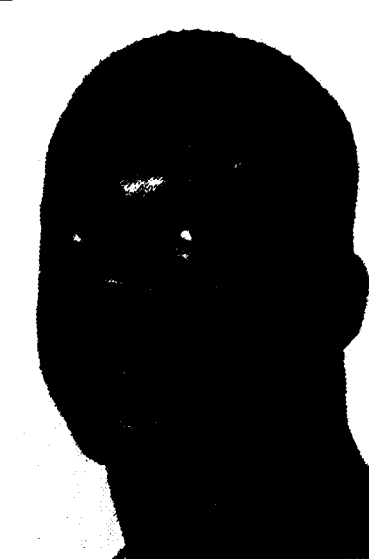
The career beginnings lists for Division I were compiled by Gary K. Johnson, NCAA assistant statistics coordinator, over a span of more than five years. (The active all-divisions victory leader at 806 entering the season is Clarence "Big-house" Gaines of Division II Winston-Salem, second to Rupp's 875 on the all-time list; complete coaching records are unavailable in Division II.)



**Ann Gilbert of Oberlin leads Division III scoring with a 32.1 average**



**Wisconsin-Rivers Falls' Dean Cook, with a 30.1 average, leads Division III scoring**



**Shaquille O'Neal of Louisiana State leads Division I in rebounds per game**



**Georgetown's Dikembe Mutombo is the Division I leader in blocked shots**

In percentage, North Carolina's Norman Shepard is the first-year leader (23-0 in 1924), the only Division I coach with a perfect record at that level. For the first two years, the leader is Lew Andreas, 33-3 for .917 in 1925 and 1926 at Syracuse. For the first three, it is Nibs Price, 39-4 for .905 from 1925 to 1927 at California. For the first four, five, six and seven seasons, it is Buck

Iba (485) are next, then comes Lou Carnessecca of St. John's, fourth at 484.

Others in the top 10 are Rupp (471), Knight (468), Wooden (464), Driesell (436), Louisville's Peck Hickman with 420 his first 22 seasons (1945-66) and Georgia's Hugh Durham (413 victories).

In percentage, Tarkanian's .826 (on 565-119) is a distant second to Rupp's amazing .850 his first 22

Oklahoma State's Eddie Sutton (295), Carnessecca (294), West Virginia's Gale Catlett (292) and Hickman (290) over their first 14 seasons.

In percentage, Boeheim's .761 (for 343-108) ranks eighth, just ahead of Crum and Tennessee's Ray Mears, both at .760.

As for the other five current coaches with top-10 rankings in both victories and percentage, Haskins (563-243 for .699 over 29 seasons) is sixth in victories and ninth in percentage; Driesell (560-249, .692 over 28) ranks sixth and 10th, respectively; Knight (532-198, .729 over 25) ranks fifth and ninth; Crum (463-156, .748 over 19) ranks second and 10th, and Thompson (423-142, .749 over 18) ranks third and ninth.

As for the 19 other current coaches making the top 10 for their entire careers through the 1990 season, here is that list:

Coach, college	Yrs. thru	Rank	Wins
Glenn Wilkes, Stetson	33	9	512
Tom Young,			
Old Dominion	30	7	510
Norm Stewart, Missouri	29	7	552
Lou Henson, Illinois	28	7	556
Gene Bartow,			
Ala.-Birmingham	28	9	536

Lou Carnessecca, St. John's (N.Y.)	22	4	484
Digger Phelps, Notre Dame	20	*6	417
Gale Catlett, West Va.	18	10	375
Lute Olson, Arizona	17	10	353
Boyd Grant, Colorado St.	12	6	260
Gene Keady, Purdue	12	9	253
Nolan Richardson, Arkansas	10	5	226
Wimp Sanderson, Alabama	10	*6	216
Bruce Stewart, Middle Tenn. St.	8	4	184
Pete Gillen, Xavier (Ohio)	5	*8	119
Speedy Morris, La Salle	4	*3	100
Kermit Davis, Texas A&M	2	*3	50
Roy Williams, Kansas	2	*7	49
Dick Hunsacker, Ball St.	1	*4	26

\*Tied for that position.

Hunsacker is tied with Boeheim, Crum and Richardson, all with 26 victories their first season. The all-time leader is Indiana State's Bill Hodges at 33-1 in 1979—the year his Larry Bird-led team was undefeated until the Division I championship game, when it lost to Earvin "Magic" Johnson and Michigan State in the most-watched NCAA game in television history.

## Basketball notes

Freeman at St. John's (New York), starting in the late 1920s.

Clair Bec of Rider and Long Island-Brooklyn leads for years eight through 18, then it is Rupp for years 19 through 41. (Most-victories leaders come later.)

## Tarkanian and Boeheim

Tarkanian's 565 victories heading into his 23rd season tops all other Division I coaches for their first 22 years on the job. Smith (496) and

seasons. Iba's .798 is third. Then come CCNY's Nat Holman at .764, Smith .764, Rhode Island's Frank Keaney at .763, Allen .760, Wooden .754, Andreas .746 and Knight .735.

Boeheim's 343 wins entering his 15th season tops all others for the first 14 years. Then come Louisville's Denny Crum (338), North Carolina State's Everett Case (331 in 1947-60), Thompson (321), Tarkanian (318), Oklahoma's Billy Tubbs (306),

## Division I single-game highs

1991 BASKETBALL SINGLE-GAME HIGHS Men's - Division I Through Monday, December 17			
INDIVIDUAL	No.	Player, Team, Opponent, Date	
Points	56	Brent Price, Oklahoma vs. Loyola (Cal.), Dec. 15	
	50	Von McDade, William & Mary vs. Illinois, Dec. 3	
	48	Terrell Lowery, Loyola (Cal.) vs. Idaho St., Dec. 1	
	45	Bobby Phills, Southern B.R. vs. Texas College, Dec. 6	
	44	Donnell Hayden, North Texas vs. Nicholls St., Dec. 5	
	43	Malik Sealy, St. John's (N.Y.) vs. Central Conn. St., Nov. 24	
	43	Doug Day, Radford vs. Central Conn. St., Dec. 12	
	42	Kevin Bradshaw, U.S. Intl. vs. Northeastern, Nov. 27	
	41	Obet Vazquez, Central Conn. St. vs. Radford, Dec. 12	
	41	Terrell Lowery, Loyola (Cal.) vs. Oklahoma, Dec. 15	
Rebounds	22	Rob Renfro, Mercer vs. N.C.-Asheville, Dec. 3	
	21	Warren Kidd, Middle Tenn. St. vs. Mississippi Val., Nov. 23	
	21	Dikembe Mutombo, Georgetown vs. Hawaii Loa, Nov. 23	
	21	Ervin Johnson, New Orleans vs. Nicholls St., Dec. 8	
	21	Kermit Holmes, Oklahoma vs. Loyola (Cal.), Dec. 15	
	21	Dale Davis, Clemson vs. South Caro. St., Dec. 17	
Assists	16	Terry Evans, Oklahoma vs. Loyola (Cal.), Dec. 15	
	15	Terry Evans, Oklahoma vs. Va. Commonwealth, Dec. 8	
	15	Ray Johnson, Sam Houston St. vs. Louisiana Tech, Dec. 10	
Blocked Shots	14	Shawn Bradley, Brigham Young vs. Eastern Ky., Dec. 7	
	11	Dikembe Mutombo, Georgetown vs. Hawaii Loa, Nov. 23	
	10	Byron Tucker, George Mason vs. Miami (Fla.), Nov. 23	
	9	Oliver Miller, Arkansas vs. Louisiana Tech, Dec. 5	
	9	Oliver Miller, Arkansas vs. South Ala., Dec. 11	
Steals	10	Deylon Anderson, Montana vs. Simon Fraser, Nov. 15	
	9	Michael Ervin, Prairie View A&M vs. Bay Ridge Christian, Nov. 27	
	9	Tim Owens, San Francisco vs. California, Dec. 1	
	9	Scott Burrell, Connecticut vs. Maine, Dec. 9	
	9	Brent Price, Oklahoma vs. Loyola (Cal.), Dec. 15	
	9	Doug Day, Radford vs. Central Conn. St., Dec. 12	
	9	Brent Price, Oklahoma vs. Loyola (Cal.), Dec. 15	
	9	Jay Goodman, Utah St. vs. Brigham Young, Nov. 24	
	9	Michael Burd, Navy vs. Mt. St. Mary's (Md.), Nov. 26	
	9	Mike Klinzing, Kent vs. Air Force, Dec. 1	
	9	Sean Waters, Central Mich. vs. Wright St., Dec. 8	
Free Throws	20	Paul Denmond, Davidson vs. Central Conn. St., Nov. 23	
	17	Darryl Reid, Southwest Mo. St. vs. Hawaii, Nov. 26	
	16	Eric Murdock, Providence vs. Rhode Island, Dec. 8	
	15	Kendall Youngblood, Utah St. vs. Brigham Young, Nov. 24	
	15	Terrell Lowery, Loyola (Cal.) vs. Idaho St., Dec. 1	
	15	Chris Lowry, Air Force vs. Mesa St., Dec. 6	
TEAM	No.	Team, Opponent, Date	
Points	172	Oklahoma vs. Loyola (Cal.), Dec. 15	
	162	Loyola (Cal.) vs. Chaminade, Nov. 25	
	162	Oklahoma vs. Angelo St., Dec. 1	
	159	Southern B.R. vs. Texas College, Dec. 6	
	154	Texas-Arlington vs. Huston-Tillotson, Nov. 29	
3-Point FG	21	Nevada-Las Vegas vs. Nevada Reno, Dec. 8	
	20	Navy vs. Mt. St. Mary's (Md.), Nov. 26	
	19	Loyola (Cal.) vs. Chaminade, Nov. 25	
	17	Montana St. vs. Rocky Mountain, Nov. 28	
FG Pct.	71.4	Oklahoma vs. Loyola (Cal.), Dec. 15	
	69.4	Southwest Mo. St. vs. Northeast La., Nov. 23	
	69.1	Iowa St. vs. Chaminade, Nov. 23	
	68.3	St. John's (N.Y.) vs. Central Conn. St., Nov. 24	
	68.1	Loyola (Ill.) vs. Northwestern, Dec. 15	

1990-91 WOMEN'S DIVISION I BASKETBALL SINGLE-GAME HIGHS Through Monday, December 17			
INDIVIDUAL	No.	Player, Team, Opponent, Date	
Points	46	Lisa McMullen, Alabama St. vs. Florida, Dec. 8	

Rebounds	44	Angela Moorehead, Tennessee Tech vs. New Hampshire, Dec. 7
	41	Lisa Foss, Northern Ill. vs. Washington, Dec. 1
	41	Lisa McMullen, Alabama St. vs. Marquette, Dec. 2
	41	Lisa McMullen, Alabama St. vs. Ga. Southern, Dec. 19
	41	Jan Jensen, Drake vs. Iowa St., Dec. 14
	40	Kathy Halligan, Creighton vs. Wisconsin, Dec. 9
	23	Lisa Leslie, Southern Cal. vs. San Diego St., Dec. 4
	23	Kelly Hubert, Nebraska vs. Wisconsin, Dec. 7
	22	Nicole Jackson, North Texas vs. Southern Methodist, Dec. 1
	22	Belinda Strong, LIU-Brooklyn vs. Rider, Dec. 15
	21	Rachel Bouchard, Maine vs. Rhode Island, Dec. 1
	21	Belinda Strong, LIU-Brooklyn vs. Fordham, Dec. 1
	21	Priscilla Robinson, Middle Tenn. St. vs. Arkansas St., Dec. 1
Assists	22	Trine Freil, Pacific vs. Wichita St., Dec. 14
	17	Shanya Evans, Providence vs. Northeastern, Dec. 4
	15	Dana Drew, Toledo vs. Detroit, Dec. 3
Blocked Shots	13	Suzanne Johnson, Monmouth (N.J.) vs. Delaware, Dec. 13
	9	Allison Echols, Georgia Tech vs. East Tenn. St., Nov. 24
	9	Suzanne Johnson, Monmouth (N.J.) vs. Boston U., Nov. 25
	8	Genia Miller, Cal St. Fullerton vs. Cal St. Northridge, Nov. 23
	8	Trish Elser, Fairfield vs. Northeastern, Dec. 7
	8	Vanessa Blair, Mt. St. Mary's (Md.) vs. St. Peters, Dec. 8
	8	Trish Andrew, Michigan vs. Eastern Mich., Dec. 11
	8	Donna Djorovic, Youngstown St. vs. Slippery Rock, Dec. 15
Steals	11	Teri Bartlett, Texas A&M vs. Oklahoma St., Dec. 5
	10	Arrianna Smith, Nicholls St. vs. Ball St., Dec. 1
	10	Kim Homa, Kent vs. Central Fla., Dec. 2
	10	Kim Kawamoto, Army vs. Hofstra, Dec. 4
	9	Terrilyn Johnson, Kansas vs. UCLA, Nov. 24
	9	Tracy Krueger, Marshall vs. Ohio, Nov. 28
	9	Jovonne Smith, Arizona St. vs. San Diego, Dec. 1
	9	Sheri Dillard, Texas A&M vs. Prairie View A&M, Dec. 3
	9	Hazel Olden, Indiana St. vs. Western Ky., Dec. 4
	9	Gwen Doyle, Louisville vs. Bradley, Dec. 9
	9	Betsy Gilmore, Dartmouth vs. Minnesota, Dec. 17
3-Point FG	9	Carin Stites, Oklahoma vs. Arkansas, Nov. 27
	8	Addie Cassidy, Nicholls St. vs. Nevada-Reno, Nov. 23
	8	Lynda Kukla, Valparaiso vs. Chicago St., Dec. 15
	7	Carla Cantrell, East Tenn. St. vs. Pepperdine, Nov. 23
	7	Stefanie Pempfer, Idaho St. vs. Southern Utah St., Dec. 4
	7	Sheila Ethridge, Louisiana Tech vs. Louisiana St., Dec. 8
	7	Brenda Hatchett, Lamar vs. McNeese St., Dec. 8
	7	Nicole Lehmann, North Caro. St. vs. Western Caro. Dec. 8
Free Throws	18	Carol Szczepkowski, Michigan vs. Eastern Mich., Dec. 11
	15	Lauren Mazza, Lafayette vs. Princeton, Nov. 27
	15	Amy Rakers, Southern Ill. vs. Northern Ill., Nov. 28
	15	Trisha Stafford, California vs. Oklahoma St., Dec. 1
	15	Debbie Sporch, Oregon vs. New Mex. St., Dec. 7
	15	Rosalyn Groce, Radford vs. Delaware St., Dec. 8
	15	Cindy Holcomb, Weber St. vs. Portland St., Dec. 15

TEAM	No.	Team, Opponent, Date
Points	137	North Caro. St. vs. Western Caro., Dec. 8
	132	Kent vs. Stetson, Nov. 30
	130	Loyola (Cal.) vs. Masters, Nov. 23
	129	Purdue vs. Kent, Dec. 8
	122	Valparaiso vs. Kent, Nov. 24
FG Pct.	70.2	Fresno St. vs. Cal St. Northridge, Nov. 30
	69.4	North Caro. St. vs. Drake, Nov. 23
	68.0	Arkansas vs. Mississippi, Dec. 15
	68.1	Maryland vs. Western Mich., Dec. 2
	66.0	Butler vs. Vanderbilt, Nov. 24
3-Point FGM	13	St. Joseph's (Pa.) vs. Auburn, Dec. 8
	12	Valparaiso vs. Chicago St., Dec. 15
	11	Niagara vs. Delaware, Nov. 25
	11	Alabama St. vs. Ga. Southern, Dec. 9
	11	New Mex. St. vs. Oregon, Dec. 17

# Basketball Statistics

Through games of December 17

## Men's Division I individual leaders

SCORING						
	CL	G	TFG	3FG	FT	PTS
1. Bobby Phills, Southern-B.R.	CL	7	49	26	24	148
2. Alphonso Ford, Miss. Valley	So	8	96	25	61	278
3. Kevin Bradshaw, U.S. Int'l.	So	10	126	18	64	334
4. Von McDade, Wis.-Milwaukee	Sr	8	85	32	54	256
5. Curtis Stuckey, Bradley	Sr	6	66	19	39	190
6. Donnell Hayden, North Texas	Sr	8	89	22	39	239
7. Steve Rogers, Alabama St.	Jr	7	72	20	45	209
8. Terrell Lowery, Loyola (Cal.)	Jr	7	66	24	43	199
9. Doug Overton, La Salle	Sr	6	58	15	36	167
10. Steve Smith, Michigan St.	Sr	6	61	11	32	165
11. Larry Johnson, Nev.-Las Vegas	Sr	3	32	4	14	82
12. Byron Houston, Oklahoma	Jr	7	66	0	58	190
13. Obet Vasquez, Central Conn.	Jr	8	93	10	21	217
14. John Tait, Marshall	Sr	9	81	16	59	237
15. Rodney Monroe, North Caro.	Sr	5	49	25	8	131
16. Tom Davis, Delaware St.	Sr	7	73	0	37	183
17. Mike Iuzzolino, St. Francis (Pa.)	Sr	7	55	27	46	183
18. Robert Youngblood, Southern-B.R.	So	4	42	0	20	104
19. Harold Miner, Southern Cal.	So	6	57	15	26	155
20. Brent Price, Oklahoma	Jr	9	75	36	39	225
21. Desi Wilson, FDU-Teaneck	Sr	7	65	0	45	175
22. Shaquille O'Neal, Louisiana St.	So	5	55	0	15	125
23. Joey Wright, Texas	Sr	5	44	7	29	124
24. Terrell Brandon, Oregon	Jr	6	54	8	31	147
25. Eric Leslie, Rhode Island	Sr	4	29	6	34	98

REBOUNDING						
	CL	G	NO	AVG		
1. Shaquille O'Neal, Louisiana St.	So	5	74	14.8		
2. Shaun Vandiver, Colorado	Sr	8	114	14.3		
3. Larry Stewart, Coppin St.	Sr	6	84	14.0		
4. Dewayne Tanks, Southern-B.R.	Sr	4	56	14.0		
5. Tim Burroughs, Jacksonville	Jr	7	97	13.9		
6. Ervin Johnson, New Orleans	So	7	96	13.7		
7. Clarence Weatherspoon, St. John's	Jr	4	54	13.5		
8. Kermit Holmes, Oklahoma	Sr	9	119	13.2		
9. Dale Davis, Clemson	Sr	8	104	13.0		
10. Steve Carney, Northeastern	Sr	7	91	13.0		
11. Reginald Slater, Wyoming	Jr	8	103	12.9		
12. Popeye Jones, Murray St.	Jr	9	115	12.8		
13. Chris Gatling, Old Dominion	Jr	8	102	12.8		
14. Michael Pollie, Florida St.	Sr	5	63	12.6		
15. Kevin Roberson, Vermont	Sr	6	75	12.5		
16. Travis Williams, South Caro. St.	Sr	7	86	12.3		
17. Dikembe Mutombo, Georgetown	Sr	7	83	11.9		
18. Tom Gugliotta, North Caro. St.	Jr	5	59	11.8		
19. Gary Alexander, South Fla.	Jr	5	59	11.8		
20. John Rivers, Virginia Tech	Jr	4	47	11.8		

BLOCKED SHOTS						
	CL	G	NO	AVG		
1. Shawn Bradley, Brigham Young	Fr	8	52	6.5		
2. Dikembe Mutombo, Georgetown	Sr	7	39	5.6		
3. Cedric Lewis, Maryland	Sr	6	32	5.3		
4. Shaquille O'Neal, Louisiana St.	So	5	24	4.8		
5. Acie Earl, Iowa	So	8	37	4.6		
6. Oliver Miller, Arkansas	Jr	9	36	4.0		
7. Luc Longley, New Mexico	Sr	9	33	3.7		
8. Steve Spurlock, Appalachian St.	Jr	7	25	3.6		
9. Eric Riley, Michigan	Jr	7	25	3.6		
10. Kevin Roberson, Vermont	Jr	6	21	3.5		
11. Lewis Preston, Va. Military	So	7	23	3.3		
12. Keith Owens, UCLA	Sr	7	22	3.1		

ASSISTS						
	CL	G	NO	AVG		
1. Greg Anthony, Nevada Las Vegas	Jr	3	32	10.7		
2. Danny Tirado, Jacksonville	Jr	7	69	9.9		
3. Chris Corchiani, North Caro. St.	Jr	5	49	9.8		
4. Van Usher, Tennessee Tech	Jr	8	75	9.4		
5. Terry Evans, Oklahoma	So	8	74	9.3		
6. Terrell Lowery, Loyola (Cal.)	Jr	7	61	8.7		
7. Erwin Harper, Southern-B.R.	Jr	4	34	8.5		
8. Arnold Bernard, Southwest Mo. St.	Sr	9	73	8.1		
9. Keith Wade, Toledo	Sr	8	64	8.0		
10. Mike Jelinsky, Columbia	So	6	48	8.0		
11. Delano Johnson, N.C. Charlotte	So	7	55	7.9		
12. Erik Spoelstra, Portland	Jr	6	46	7.7		
13. Clayton Adams, Duquesne	Sr	3	23	7.7		

## Women's Division I individual leaders

SCORING						
	CL	G	TFG	3FG	FT	PTS
1. Lisa McMullen, Alabama St.	Jr	8	87	41	30	245
2. Rehema Stephens, UCLA	Jr	7	80	13	25	198
3. Genia Miller, Cal St. Fullerton	Sr	7	73	0	48	194
4. Lisa Foss, Northern Ill.	Sr	7	71	0	49	191
5. Jan Jensen, Drake	Sr	9	100	1	30	231
6. Andrea Stinson, North Caro.	Sr	6	68	7	11	154
7. Sheila Ethridge, Louisiana	Sr	5	48	14	16	126
8. Shannon Thomas, Appalac. St.	Jr	7	63	1	47	174
9. Tracy Lis, Providence	Jr	7	65	8	34	172
10. Andrea Congreaves, Mercer	So	5	53	2	14	122
11. Sarah Behn, Boston College	So	7	58	12	41	169
12. Mary Greybush, La Salle	Sr	5	46	0	27	119
13. Holly Russ, UTEP	Jr	7	56	17	37	166
14. Jenny Mitchell, Wake Forest	Sr	6	63	0	15	141
15. Angela Moorehead, Tennessee	Jr	8	76	5	30	187
16. Suzanne Bowen, Colgate	Sr	4	38	0	17	93
17. Rachel Bouchard, Maine	Sr	9	72	0	64	206
18. Wendy Scholtens, Vanderbilt	Sr	10	85	1	59	230
19. Kathy Halligan, Creighton	Jr	8	71	2	19	182
20. Sonja Tate, Arkansas St.	So	9	78	21	45	181
21. Julie Voelklings, Butler	So	8	67	2	44	158
22. Tidda Hardy, Florida Int'l	Jr	7	57	0	26	154
23. K. McCusker, Massachusetts	Sr	6	53	0	25	131
24. Tarcha Hollis, Grambling	Sr	6	50	10	20	130
25. Tressa Reese, N.C.-Wilmington	Sr	6	50	10	20	130

REBOUNDING						
	CL	G	NO	AVG		
1. Tarcha Hollis, Grambling	Fr	6	88	14.7		
2. Lisa Leslie, Southern Cal.	Fr	6	82	13.7		
3. Sheri Turnbull, Vermont	Fr	5	68	13.6		
4. Belinda Strong, LIU-Brooklyn	Jr	7	93	13.3		
5. Sirena Autman, Sam Houston St.	Sr	7	92	13.1		
6. Shannon Thomas, Appalachian St.	Jr	7	91	13.0		
7. Gladys Burke, Augusta	Sr	8	102	12.8		
8. Tracy Wilson, Ga. Southern	Sr	8	101	12.6		
9. Keshia Campbell, South Caro. St.	Sr	8	101	12.6		
10. Leigh Ann Walker, Manhattan	Jr	7	82	12.4		
11. Kathy Gilbert, Columbia-Barnard	Sr	6	74	12.3		
12. Lisa Powell, Alcorn St.	Sr	6	98	12.3		
13. Jackie Farmer, Clemson	Sr	6	73	12.2		
14. Kirsten Brendel, Pennsylvania	Jr	5	60	12.0		
15. Brenda Bruggeman, Southern Methodist	Jr	5	60	12.0		
16. Rachel Bouchard, Maine	Sr	9	107	11.9		

BLOCKED SHOTS						
	CL	G	NO	AVG		
1. Suzanne Johnson, Monmouth (N.J.)	Jr	6	34	5.7		
2. Genia Miller, Cal St. Fullerton	Sr	7	29	4.1		
3. Tricia Gibson, Loyola (Cal.)	Sr	7	29	4.1		
4. Trish Andrew, Michigan	So	7	25	3.6		
5. Diana Moore, Prairie View	Jr	11	38	3.5		
6. Tanya Hansen, Rutgers	Jr	6	26	3.3		
7. Maggie Stinnett, Baylor	Sr	6	19	3.2		
8. Jackie Farmer, Clemson	Fr	7	22	3.1		
9. Tonya Tounsel, Southern-B.R.	Sr	9	28	3.1		
10. Lisa Sandbothe, Missouri	Sr	9	26	2.9		
11. Valerie Richardson, South Ala.	Sr	7	20	2.9		
12. Connie Hurt, Pittsburgh	Sr	7	20	2.9		

ASSISTS						
	CL	G	NO	AVG		
1. Shanya Evans, Providence	Sr	7	90	12.9		
2. Margaret McKeon, St. John's (N.Y.)	Sr	7	67	9.6		
3. Anja Bordt, Saint Mary's (Cal.)	Sr	8	72	9.0		
4. Cecilia Ramsey, Tennessee Tech	Sr	8	70	8.8		
5. Kathy Adelman, Portland	So	8	67	8.4		
6. Nancy Kennelly, Northwestern	Jr	5	41	8.2		
7. Vanessa Selden, Oregon	So	6	49	8.2		
8. Michelle Collins, Siena	Jr	3	24	8.0		
9. Michelle Burden, Kent	Fr	7	55	7.9		
10. Stephany Raines, Mercer	Jr	5	38	7.6		
11. Michelle Hennessey, Cal St. Fullerton	Jr	7	53	7.6		
12. Gaynor O'Donnell, East Caro.	So	6	45	7.5		
13. Amy Claborn, Texas	Sr	6	45	7.5		

FIELD-GOAL PERCENTAGE						
(Min. 5 FG Made Per Game)	CL	G	FG	FGA	PCT	
1. Marques Bragg, Providence	Jr	7	39	47	83.0	
2. Jethro Owens, Northwestern (La.)	So	7	38	46	82.6	
3. Stacey Augmon, Nevada-Las Vegas	Sr	3	25	32	78.1	
4. Patrick Tompkins, Wisconsin	Sr	7	44	59	74.6	
5. Luc Longley, New Mexico	Sr	9	62	84	73.8	
6. Marcus Kennedy, Eastern Mich.	Sr	7	56	76	73.7	
7. Chris Brooks, West Va.	Sr	4	33	45	73.3	
8. Greg Lee, Ohio St.	Sr	7	39	54	72.2	
9. Oliver Miller, Arkansas	Jr	9	60	84	71.4	
10. Ricky Nedd, Appalachian St.	Fr	7	39	55	70.9	
11. David Brewer, Southwest Mo. St.	Sr	9	46	65	70.8	
12. Lester James, St. Francis (N.Y.)	Jr	4	28	40	70.0	
13. Warren Kidd, Middle Tenn. St.	So	8	52	75	69.3	
14. Victor Alexander, Iowa St.	Sr	10	97	141	68.8	
15. Perry Carter, Ohio St.	Sr	7	48	70	68.6	
16. Ken Leeks, Central Fla.	Jr	5	47	69	68.1	
17. Larry Johnson, Nevada-Las Vegas	Sr	3	32	47	68.1	
18. Byron Houston, Oklahoma St.	Jr	7	66	98	67.3	
19. Mark Randall, Kansas	Sr	6	39	58	67.2	
20. Bryant Feggin, North Caro. St.	So	5	40	60	66.7	

FREE-THROW PERCENTAGE						
(Min. 2.5 FT Made Per Game)	CL	G	FT	FTA	PCT	
1. Ed Ward, Appalachian St.	Sr	7	20	20	100.0	
2. Brad Niemann, DePaul	Jr	5	13	13	100.0	
3. Labradford Smith, Louisville	Sr	4	13	13	100.0	
4. Bill McCaffrey, Duke	So	8	23	24	95.8	
5. Allan Houston, Tennessee	So	5	22	23	95.7	
6. Jarrod Davis, Gonzaga	Jr	9	38	40	95.0	
7. Aaron Benson, Air Force	Sr	6	19	20	95.0	
8. Terry Dehere, Seton Hall	So	6	18	19	94.7	
9. Chuck Murphy, DePaul	Jr	6	15	16	93.8	
10. Donald Hodge, Temple	Jr	5	15	16	93.8	
11. Locksley Collie, Texas	Sr	5	15	16	93.8	
12. Rick Fox, North Caro.	Sr	7	28	30	93.3	
13. Tracy Shelton, West Va.	Jr	4	14	15	93.3	

3-POINT FIELD-GOAL PERCENTAGE						
	CL	G	FG	FGA	PCT	
1. Billy Dreher, California	So	4	6	6	100.0	
2. Labradford Smith, Louisville	Sr	4	8	10	80.0	
3. Keith Jennings, East Tenn. St.	Sr	8	19	24	79.2	
4. Johnny Perkins, Montana St.	Jr	7	18	26	69.2	
5. Mike Wawrzyniak, Cleveland St.	So	7	12	18	66.7	
6. Rod Wheeler, Virginia Tech	So	5	10	16	62.5	
7. Oliver Taylor, Seton Hall	Sr	6	11	18	61.1	
8. Kevin Israel, St. Francis (N.Y.)	Sr	4	11	18	61.1	
9. Sean Sutton, Oklahoma St.	Jr	7	13	22	59.1	
10. Mark Anglavar, Marquette	Sr	5	13	22	59.1	
11. Donald Whiteside, Northern Ill.	Sr	6	10	17	58.8	
12. Melvin Hunt, Baylor	Sr	7	18	31	58.1	

3-POINT FIELD GOALS MADE PER GAME						
		CL	G	NO	AVG	
1.	Bobby Phills, Southern-B.R.	Sr	4	26	6.5	
2.	Rodney Monroe, North Caro. St.	Sr	5	25	5.0	
3.	Ronnie Schmitz, Mo.-Kansas City	So	10	45	4.5	
4.	Aaron Nichols, Citadel	So	6	25	4.2	
5.	Terry Brown, Kansas	Sr	6	25	4.2	
6.	Brent Price, Oklahoma	Jr	9	36	4.0	
7.	Von McDade, Wis.-Milwaukee	Sr	8	32	4.0	
8.	Ray Younger, Texas Southern	Sr	9	35	3.9	
9.	Mike Iuzzolino, Saint Francis (Pa.)	Sr	7	27	3.9	
10.	Brian Hill, Ill.-Chicago	Jr	6	23	3.8	
11.	Kyle Kerleagan, Cal St. Northridge	Jr	8	30	3.8	
11.	Marc Rybczyk, Central Conn. St.	So	8	30	3.8	



# Basketball Statistics

Through games of December 16

## Men's Division II individual leaders

SCORING									
	CL	G	TFG	3FG	FT	PTS	AVG		
1 Tom Murphy, Colo. Christian	Sr	10	126	19	36	295	29.5		
2 Gary Matison, St. Augustine's	Sr	10	116	13	60	305	30.5		
3 Myron Brown, Slippery Rock	Sr	7	74	18	46	212	30.3		
4 Chris Parker, Johnson Smith	Sr	8	87	39	58	272	30.2		
5 Truman Greene, Lock Haven	Sr	8	75	45	45	240	30.0		
6 Jeff Delaveaga, Cal Lutheran	Sr	7	66	31	40	203	29.0		
7 Julius Fritz, Fort Valley St.	Sr	6	60	10	38	168	28.0		
8 Chris Kuhlmann, Morningside	Sr	8	75	27	39	216	27.0		
9 Gary Hunt, Tuskegee	Jr	6	57	7	39	160	26.7		
10 Isaac Washington, Texas A&I	Sr	8	81	9	42	213	26.6		
11 Lambert Shell, Bridgeport	Jr	9	94	4	46	238	26.4		
12 Jon Baskin, Mesa St.	Sr	9	97	0	44	238	26.4		
13 Harold Ellis, Morehouse	Jr	10	101	10	44	256	25.6		
14 Terry McCoy, Shaw (N.C.)	Jr	8	71	36	26	204	25.5		
15 Hank Poy, Colorado Mines	Sr	7	53	23	46	175	25.0		
16 Tony Smith, Pfeiffer	Jr	7	60	26	28	174	24.9		
17 Mark Sherrill, Johnson Smith	Jr	9	80	20	43	223	24.8		
18 Derek Flowers, Fla. Southern	Sr	8	77	0	44	198	24.8		
19 Drew Adderly, Assumption	Jr	5	48	2	25	123	24.6		
20 Mike Morris, Ala.-Huntsville	Sr	8	72	22	30	196	24.5		
21 David Cruse, Clarion	Jr	7	60	25	24	169	24.1		
22 Ralph Rivers, Metropolitan St.	Jr	7	65	6	31	167	23.9		
23 Chris White, South Dak. St.	Jr	6	49	15	30	143	23.8		
24 Charles Mims, Texas A&I	Sr	8	66	23	33	188	23.5		
25 Eric Taylor, Oakland	Jr	7	56	21	29	162	23.1		
26 Corey Crowder, Ky. Wesleyan	Jr	7	55	15	36	161	23.0		
27 Armando Becker, Central Mo. St.	Sr	5	45	3	22	115	23.0		
28 Stuart Thomas, Cal Poly SLO	Sr	7	51	3	55	160	22.9		
29 James Morris, Central St. (Okla.)	Fr	7	58	0	44	160	22.9		
30 Lance Geinett, Millersville	Jr	5	41	19	13	114	22.8		
31 Erik Fisher, San Fran. St.	Sr	9	70	36	29	205	22.8		
32 Chris Pliz, Mo.-St. Louis	Sr	7	53	18	35	159	22.8		
33 John Scally, Concordia (N.Y.)	Jr	8	68	23	22	181	22.6		
34 Anthony Soule, Oakland	Jr	7	59	0	40	158	22.6		
35 Darron Greer, Regis (Colo.)	Sr	10	95	0	33	223	22.3		

REBOUNDING									
	CL	G	NO	AVG					
1 Keith Hill, Shippensburg	Sr	8	111	13.9					
2 Marvin Childs, Hampton	So	10	130	13.0					
3 Troy Zierke, Fort Hays St.	Sr	6	76	12.7					
4 Anthony Smith, Columbus	Sr	8	101	12.6					
5 David Vonesh, North Dak.	Sr	6	74	12.3					
6 Jerome Coles, Norfolk St.	Sr	9	109	12.1					
7 Nathan Marks, Mankato St.	Jr	6	71	11.8					
8 Jason Jacobsen, Stonehill	Jr	6	71	11.8					
9 Kenney Toomer, Calif. (Pa.)	Jr	7	82	11.7					
10 Michael Bivins, Albany St. (Ga.)	So	9	104	11.6					
11 Jay Guidinger, Minn.-Duluth	Sr	10	113	11.3					
12 Iantham Alleyne, St. Augustine's	Sr	10	110	11.0					
13 Jon Baskin, Mesa St.	Sr	9	99	11.0					
14 Anthony Tolbert, LeMoyn-Owen	Sr	5	55	11.0					
15 C. Burkette, Jacksonville St.	Jr	7	76	10.9					
16 Bill Vitti, Saginaw Valley	Jr	7	76	10.9					
17 Cedric Oates, Fort Valley St.	Jr	6	65	10.8					
18 Kevin Simmons, Fort Valley St.	Jr	5	54	10.8					
19 Kenny Simpson, Mo. Southern St.	Jr	8	86	10.8					
20 Tim Robinson, Wis. Parkside	Fr	8	128	10.7					
21 James Hector, American Int'l	Fr	8	85	10.6					
22 Fred Clemon, Alabama A&M	So	7	74	10.6					
23 Sheldon Owens, Shaw (N.C.)	Jr	8	84	10.5					
24 Jason Williams, New Haven	So	9	94	10.4					
25 Jon Cronin, Stonehill	Jr	6	62	10.3					

ASSISTS									
	CL	G	NO	AVG					
1 Gallagher Driscoll, St. Rose	Jr	8	81	10.1					
2 Doug Ingalls, Northern Mich.	Sr	7	69	9.9					
3 C. Russell, Slippery Rock	Sr	7	68	9.7					
4 Demetri Beekman, Assumption	So	5	42	8.4					
5 Mark Benson, Texas A&I	Sr	8	64	8.0					
6 Steve Fagan, Pace	Jr	6	48	8.0					
7 Charles Jordan, Erskine	Jr	6	48	8.0					
8 Fred Kerr, Indiana (Pa.)	So	9	69	7.7					
9 Pat Madden, Jacksonville St.	Sr	7	51	7.3					
10 Bart Ingmer, North Dak. St.	Jr	7	50	7.1					
11 Derek Walton, Edinboro	Sr	9	64	7.1					
12 Charles McDonald, Troy St.	Jr	7	47	6.7					
13 Chris Williams, Calif. (Pa.)	Jr	7	47	6.7					

FIELD-GOAL PERCENTAGE									
	CL	G	FG	FGA	PCT				
(Min. 5 FG Made Per Game)									
1 DeJon Robles, Western St.	Sr	9	53	70	75.7				
2 Tim Knowles, Cal Poly SLO	Sr	7	35	47	74.5				
3 Craig Crichtow, Pace	Sr	6	48	65	73.8				
4 Wesley Spencer, Shaw (N.C.)	Jr	8	52	73	71.2				
5 Mike Widener, Livingstone	Jr	7	41	58	70.7				
6 Jason Siemon, Morningside	So	8	60	85	70.6				
7 Curtis Reed, Shaw (N.C.)	Jr	8	56	80	70.0				
8 James Morris, Central St. (Okla.)	Fr	7	58	83	69.9				
9 Anthony Tolbert, LeMoyn-Owen	Sr	5	46	66	69.7				
10 Bobby Latham, Barry	Fr	7	45	66	68.2				
11 Jay Guidinger, Minn.-Duluth	Sr	10	77	113	68.1				
12 Otis Evans, Wayne St. (Mich.)	Jr	8	47	69	68.1				
13 David Vonesh, North Dak.	Sr	6	46	68	67.6				
14 Danny Dohogne, Southeast Mo. St.	Sr	9	66	98	67.3				
15 Ryan Williams, South Dak.	Jr	6	33	49	67.3				
16 Woodrow Shivers, SIU-Edwardsville	Jr	8	45	67	67.2				
17 Jon Traywick, West Chester	Sr	9	51	76	67.1				
18 Walter Aikens, Queens (N.C.)	Sr	8	64	96	66.7				
19 Derek Flowers, Fla. Southern	So	6	41	62	66.1				
20 Alvin Wimberly, Tuskegee	Sr	10	95	144	66.0				
21 Darron Greer, Regis (Colo.)	Jr	5	25	38	65.8				
22 John Mueller, Washburn	Jr	6	42	64	65.6				
23 Tom Schurfranz, Bellarmine	Sr	7	49	75	65.3				
24 Willard Mack, LIU-C.W. Post	Jr	9	72	111	64.9				
25 Roger Middleton, Chapman	Jr	5	48	74	64.9				
26 Drew Adderly, Assumption	Jr	5	48	74	64.9				

FREE-THROW PERCENTAGE									
	CL	G	FT	FTA	PCT				
(Min. 2.5 FT Made Per Game)									
1 Keith Abeyia, Southern Colo.	Jr	8	24	24	100.0				
1 Chris Williams, Calif. (Pa.)	Jr	7	22	22	100.0				
3 Vernon Ragsdale, Angelo St.	Sr	5	27	28	96.4				
4 Scott Spaanstra, Northern Mich.	Jr	7	24	25	96.0				
5 James Curreton, Pittsburg St.	Jr	7	24	25	96.0				
6 Jai Hill, Bloomsburg	Fr	7	19	20	95.0				
7 Calvin Lyles, Merrimack	Jr	6	16	17	94.1				
8 Rob Maurer, Bridgeport	Fr	9	30	32	93.8				
9 Lance Geinett, Millersville	Jr	5	13	14	92.9				
10 Steve McCracken, Stonehill	So	12	36	39	92.3				
11 Willie Fisher, Jacksonville St.	Jr	7	24	26	92.3				
12 Scott Martin, Rollins	Sr	7	24	26	92.3				
13 Danny Gold, Missouri-Rolla	Jr	8	22	24	91.7				
14 Kyle Jordre, Augustana (S.D.)	Sr	7	22	24	91.7				
15 David Baird, Lincoln (Mo.)	Sr	7	22	24	91.7				
16 Mark Mynatt, S.C. Spartanburg	Sr	7	20	22	90.9				
17 Rico Burkett, North Dak.	Sr	6	20	22	90.9				
18 Chris Kuhlmann, Morningside	Sr	8	39	43	90.7				
19 Erik Fisher, San Fran. St.	Sr	9	29	32	90.6				
20 Tony Budzik, Mansfield	Jr	10	38	42	90.5				

3-POINT FIELD-GOAL PERCENTAGE									
	CL	G	FG	FGA	PCT				
1 Erik Fisher, San Fran. St.	Sr	9	36	47	76.6				
2 David Wolf, Hollins	So	7	12	16	75.0				
3 Ryan Williams, South Dak.	Jr	6	29	44	65.9				
4 Keith Abeyia, Southern Colo.	Jr	8	27	46	58.7				
5 Dwight Walton, Florida Tech	Fr	7	13	20	65.0				
6 Jeff Smithley, IU/PUI-Ft. Wayne	Jr	9	27	43	62.8				
7 Mike Cottrell, Lenoir-Rhyne	Jr	10	19	32	59.4				
8 Tony Budzik, Mansfield	Jr	8	21	36	58.3				
9 Matt Markle, Shippensburg	Jr	7	14	24	58.3				
10 Clarence Rich, IU/PUI-Ft. Wayne	Jr	7	11	19	57.9				
11 Brian Ricchetto, Ashland	Sr	6	19	33	57.6				
12 Reginald Harris, Fort Valley St.	Jr	9	16	28	57.1				
13 Walter Hurd, Virginia Union	Jr	9	16	28	57.1				

3-POINT FIELD GOALS MADE PER GAME									
	CL	G	NO	AVG					
1 Truman Greene, Lock Haven	Sr	8	45	5.6					
2 S. Williams, Central St. (Okla.)	Sr	6	32	5.3					
3 Terry McCoy, Shaw (N.C.)	Jr	8	36	4.5					
4 J.J. Taylor, Valdosta St.	Jr	8	36	4.5					
5 Jeff delaveaga, Cal Lutheran	Jr	7	31	4.4					
6 Chris Parker, Johnson Smith	So	9	39	4.3					
7 Brian Roscoe, Cal St. Stanislaus	Sr	7	30	4.3					
8 Calvin Aultman, Troy St.	Sr	9	38	4.2					
9 Neal Robinson, Colorado-CS	Sr	8	33	4.1					
10 Erik Fisher, San Fran. St.	Sr	9	36	4.0					

## Team leaders

SCORING OFFENSE					SCORING DEFENSE				
	G	W-L	PTS	AVG		G	W-L	PTS	AVG
1. Lock Haven	8	5-3	888	111.0	1. Eastern Mont.	10	9-1	565	56.5
2. Central St. (Okla.)	7	6-1	757	108.1	2. South Dak.	6	6-0	343	57.2
3. Troy St.	9	6-3	962	106.9	3. Humboldt St.	8	4-4	472	59.0
4. Barry	8	7-1	850	106.3	4. Minn. Duluth	10	9-1	591	59.1
5. Jacksonville St.	7	6-1	743	106.1	5. Central Mo. St.	5	5-0	297	59.4
6. West Tex. St.	8	8-0	848	106.0	6. Cal. St. Bakersfield	7	4-3	423	60.4
7. Slippery Rock	7	6-1	742	106.0	7. N.C. Central	5	0-5	311	62.2
8. Fort Valley St.	6	4-2	630	105.0	8. Cal. St. Dom. Hills	8	4-4	510	63.8
9. UC Riverside	6	5-1	627	104.5	9. Calif. (Pa.)	7	7-0	447	63.9
10. LeMoyne-Owen	6	6-0	615	102.5	10. Notre Dame (Cal.)	8	2-6	513	64.1
11. Indiana (Pa.)	9	7-2	922	102.4	11. West Tex. St.	8	8-0	515	64.4
12. Mesa St.	9	6-3	915	101.7	12. Hampton	10	8-2	644	64.4
13. Ashland	7	7-0	706	100.9	13. Lewis	9	6-3	582	64.7
13. Delta St.	7	6-1	706	100.9	14. Mo. Western St.	8	7-1	519	64.9

# Basketball Statistics

Through games of December 8

## Men's Division III individual leaders

SCORING					
CL	G	TFG	3FG	FT	PTS
1 Dean Cook, Wis.-River Falls	Sr	8	94	35	241
2 T. Dupree, Polytechnic (N.Y.)	Jr	9	104	3	245
3 Fred Marinaccio, Staten Island	Sr	4	46	8	115
4 Dale Turnquist, Bethel (Minn.)	Sr	7	79	2	199
5 Andre Foreman, Salisbury St.	Jr	8	87	13	224
6 Ed Saxon, Case Reserve	Jr	5	53	7	139
7 Chris Jans, Loras	Sr	8	70	39	222
8 David Hicks, Centre	Sr	5	51	0	137
8 Secundino Diaz, Hunter	Jr	5	44	8	137
10 Damon Rogers, Dubuque	Sr	9	89	26	246
11 Mark Junk, Knox	Sr	6	61	16	222
12 Leon Hill, Emory & Henry	Sr	8	72	7	212
13 Lamont Strothers, Chris. Newport	Sr	8	85	18	231
14 Dave Crawford, Dubuque	Sr	9	94	9	238
15 Tim Rapp, UC San Diego	Sr	6	53	11	139
16 Kevin Whitmore, Colby	Sr	7	64	18	181
16 Rodney Stephens, North Adams St.	Jr	7	60	0	181
16 James Bradley, Otterbein	Sr	7	65	8	181
19 Brett Andricks, Millikin	Sr	5	45	19	129
20 Eric Toner, Principia	Jr	8	75	4	209
21 Larry Norman, Tufts	Jr	7	74	1	209
22 John Daileanes, Colby	Sr	4	63	20	175
22 Mike Nelson, Hamilton	Sr	2	46	0	110
25 Joel Dillingham, Lawrence	So	2	35	14	121
25 Brad Alberts, Ripon	Sr	7	66	2	168
26 Chris Galligan, Nichols	Sr	8	71	5	191
27 W. Sender, Southeastern Mass.	Sr	7	68	2	167
28 Teon Harmon, John Jay	So	8	70	19	189
29 Anthony Jones, Gallaudet	Sr	8	73	0	188
30 Troy Porter, Elizabethtown	Jr	8	77	0	188
30 Russell Turner, Hampden-Sydney	Jr	6	46	20	141
32 Dan Costello, Mt. St. Vincent	Sr	7	65	0	162
33 Will Hartsfield, Glassboro St.	So	7	65	1	162
33 Robert Walker, Lehman	So	7	65	1	162
35 F. Inness, New England Col.	Fr	8	76	0	185

REBOUNDING					
CL	G	NO	AVG		
1 Mike Smith, Hamilton	Jr	5	73	14.6	
2 Dale Turnquist, Bethel (Minn.)	Sr	7	97	13.9	
3 Tremier Johnson, Knox	Sr	6	83	13.8	
4 Mark Kleppe, Coe	Sr	7	95	13.6	
5 Jerry Keish, Wesleyan	Sr	4	53	13.3	
6 Jerry Keish, Wesleyan	Sr	6	79	13.2	
7 Andre Foreman, Salisbury St.	Jr	8	103	12.9	
8 Tim Bonsant, Southern Me.	Jr	5	63	12.6	
9 Ray Johnson, Upsala	So	4	49	12.3	
10 Dave Crawford, Dubuque	Sr	9	109	12.1	
11 David Tomlinson, MIT	Sr	8	95	11.9	
11 Scott Dyer, Norwich	Sr	8	95	11.9	
11 Randy Thomas, Skidmore	So	8	95	11.9	
14 Sean Fletcher, St. John Fisher	Jr	6	69	11.5	
14 Tim Dicke, Wilmington	Sr	6	69	11.5	
16 Eric Porter, Upper Iowa	Sr	8	90	11.3	
17 F. Inness, New England Col.	Fr	8	88	11.0	
17 Derrick Malcolm, Macalester	So	7	77	11.0	
19 Chris Fite, Rochester	Jr	9	98	10.9	
20 Chris Haray, Scranton	Sr	6	65	10.8	
21 Brad Baldrige, Wittenberg	Sr	7	75	10.7	

ASSISTS					
CL	G	NO	AVG		
1 Matt Harrison, Calvin	Jr	7	68	9.7	
2 Steve Artis, Chris. Newport	So	8	76	9.5	
3 Keith Newman, Bethel (Minn.)	Jr	7	64	9.1	
4 Pat Skerry, Tufts	Jr	7	61	8.7	
5 Eric Johnson, Coe	Jr	7	58	8.3	
6 Dennis Jacobi, Bowdoin	Jr	5	41	8.2	
7 Allen Fields, St. Joseph's (Me.)	So	8	64	8.0	
7 R. Williams, Southeastern Mass.	Sr	8	64	8.0	
9 Vince Ross, Salisbury St.	Jr	8	61	7.6	
10 Ashunta Hamilton, Carthage	So	4	30	7.5	
11 Mike Danan, Yeshiva	Fr	5	37	7.4	
12 Darren Smith, Knox	So	6	43	7.2	
13 Mark Cottom, Ferrum	Jr	7	50	7.1	
13 Tim Lawrence, Maryville (Tenn.)	Jr	7	50	7.1	

## Women's Division III individual leaders

SCORING					
CL	G	TFG	3FG	FT	PTS
1 Ann Gilbert, Oberlin	Sr	8	109	4	35
2 Missy Sharer, Grinnell	Sr	8	85	17	60
3 Suzanne Coyne, Wilmington (Ohio)	Jr	7	87	0	12
4 Arlene Eagan, Buffalo St.	Jr	6	60	0	26
5 Pam Wilson, Colorado Col.	Jr	7	71	1	23
6 Lisa Kirchenwitz, Wis.-Oshkosh	Sr	7	68	8	20
7 Ana Cayro, Loras	So	6	59	0	22
8 Linda Rose, Nichols	Jr	9	87	0	32
8 Krista Jacobs, Ohio Wesleyan	Jr	9	76	9	45
10 Brenda Straight, Neb. Wesleyan	So	8	65	35	18
11 Christine Carlson, Grove City	Sr	5	47	1	19
12 Hilary Williams, Baruch	Sr	5	43	0	26
13 Katarina Pulkinen, Southern Me.	Jr	6	45	0	14
14 Julie Roche, Bates	Sr	6	45	0	41
14 Donna Luft, Allentown	Sr	8	73	0	39
16 Kim Wilson, Montclair St.	Sr	8	66	0	28
17 Judy James, York (Pa.)	So	11	99	5	32
18 Kathy Flory, York (Pa.)	Sr	11	97	2	37
19 Kathy Hulin, Augustana (Ill.)	Sr	7	67	0	13
20 Katie Roberts, Wartburg	So	9	61	1	64
21 Laurie Pankuck, Susquehanna	Sr	8	66	1	32
21 Debbie Shockey, Western Md.	So	8	63	19	20
23 Michelle Jones, Wm. Paterson	Sr	6	46	10	21
24 Jill Morrison, Lake Forest	Sr	9	78	0	28
25 Carol Flinchbaugh, Frank & Marsh	So	7	45	16	37
26 Wendy Gibbs, La Verne	Sr	8	59	0	45
27 Elizabeth Lynch, Connecticut Col.	Jr	7	63	0	15
27 Toyah Houck, Notre Dame (Md.)	Fr	7	56	0	29
29 Kim Huisheere-Ciochon, Beloit	Jr	8	62	0	37
30 Corina Gutierrez, Gallaudet	So	10	90	0	20
30 Laurie Taylor, Claremont-M.S.	Sr	7	63	3	11
30 Carrie Metzler, St. Norbert	Sr	5	41	0	18
33 Kathy Beck, Moravian	Jr	9	74	0	31
34 Jennifer Repard, Utica Tech	Sr	8	58	1	42
35 Becky Kok, Otterbein	Jr	6	54	0	11

REBOUNDING					
CL	G	NO	AVG		
1 Hilary Williams, Baruch	Sr	5	103	20.6	
2 Caroline Barry, Middlebury	Jr	6	117	19.5	
3 Eleanor Davis, St. Mary's (Md.)	Sr	6	106	17.7	
4 Bekkie Siebel, Rand. Macon Woman's	Fr	7	120	17.1	
5 Kate Nolan, Mount Holyoke	Sr	5	79	15.8	
6 Lori Eberhart, Neb. Wesleyan	So	8	123	15.4	
7 Toyah Houck, Notre Dame (Md.)	Fr	7	106	15.1	
8 Tina Griffiths, Norwich	Fr	7	104	14.9	
9 Carla Cannon, Wesley	So	9	132	14.7	
10 Sue Burns, Skidmore	So	9	131	14.6	
11 Esty Wood, Connecticut Col.	So	7	101	14.4	
11 Liza Janssen, Wellesley	Fr	7	101	14.4	
13 Mary Dick, Emory	Sr	7	97	13.9	
14 Arlene Eagan, Buffalo St.	Sr	6	82	13.7	
14 Alison O'Brien, Hamilton	Sr	6	82	13.7	
16 Vanessa Morgan, Keuka	Sr	8	108	13.5	
17 Wendy Gibbs, La Verne	Sr	8	107	13.4	
18 Esther Dykstra, Olivet	Jr	6	80	13.3	
19 Carrie Kaczmarek, New York U.	So	8	105	13.1	
20 Carla Myers, Lebanon Valley	Sr	7	91	13.0	
21 Sherri Starkey, Ferrum	Fr	8	102	12.8	

ASSISTS					
CL	G	NO	AVG		
1 Karen Barefoot, Chris. Newport	Fr	10	104	10.4	
2 Kileen Kertesz, Marietta	Jr	9	79	8.8	
3 Tammie McDowell, Salem St.	Sr	6	50	8.3	
4 Allison Gagnon, Southern Me.	Jr	6	49	8.2	
5 Leigh Glover, Wis.-River Falls	Sr	11	86	7.8	
6 Paula Busnock, York (Pa.)	Jr	12	89	7.4	
7 Laura Beaman, Cal. St. B'dino	Jr	6	43	7.2	
8 Cathy Hayes, Bowdoin	Jr	6	49	7.0	
9 Lynn Elliott, Connecticut Col.	So	7	49	7.0	
10 Karen Walker, Beloit	Sr	8	55	6.9	
11 Debbie Shockey, Western Md.	So	8	52	6.5	
11 Julie Schindler, Wis. Stevens Point	Fr	6	39	6.5	
13 Lisa Attebery, Denison	Jr	7	45	6.4	
13 Deanne Arnold, Wilmington (Ohio)	Jr	7	45	6.4	

FIELD-GOAL PERCENTAGE					
CL	G	FG	FGA	PCT	
1 Rusty Newnam, Menlo	So	7	41	54	75.9
2 Torrance Shelton, Millsaps	Sr	7	58	78	74.4
3 Greg Kemp, Aurora	Fr	6	42	57	73.7
4 Jerry Dennis, Otterbein	Fr	7	38	52	73.1
5 Paul Ferrell, Guilford	Jr	7	35	48	72.9
6 Erik Allen, Gust. Adolphus	Jr	4	29	40	72.5
7 Brad Schultz, St. Olaf	Jr	8	50	69	72.5
8 Rick Batt, UC San Diego	Jr	6	32	45	71.1
9 Scott Baxter, Capital	Sr	7	44	62	71.0
9 Daryle Dooms, Lynchburg	Jr	7	44	62	71.0
11 Brad Adams, Bates	Jr	6	30	43	69.8
12 Wade Gugin, Hope	Jr	6	46	66	69.7
13 Dan Nettleton, Wartburg	Sr	9	45	65	69.2
13 Dale Eilrich, Ohio Wesleyan	Sr	8	54	78	69.2
13 Andy Kutz, Kenyon	Sr	6	36	52	69.2
16 George Mixon, Denison	Jr	6	40	53	68.3
17 Mike Williams, Monmouth (Ill.)	So	6	37	55	67.3
18 Keith Ferdinand, Bates	So	7	44	56	66.7
19 Todd Hennink, Calvin	Sr	5	30	45	66.7
19 Eric Chlenskask, Chicago	Sr	5	32	48	66.7
19 Rafael Henriquez, Hunter	Jr	9	49	74	66.2
22 Chris Conklin, Albion	Sr	7	41	62	66.1
23 Tim Mokma, Grove City	Sr	7	37	56	66.1
24 Kenn Kaminski, Baldwin-Wallace	Jr	8	44	67	65.7
25 Kevin Larson, Wis.-River Falls	So	7	51	78	65.4
26 Steve Honderd, Calvin	Jr	7	51	78	65.4

FREE-THROW PERCENTAGE					
CL	G	FT	FTA	PCT	
1 Brad Stieg, Millikin	Fr	5	16	16	100.0
1 Matt Carpenter, Ripon	Fr	5	14	14	100.0
1 Jay Klage, Gust. Adolphus	Jr	4	15	15	100.0
1 Joe Johnson, Waynesburg	Jr	4	12	12	100.0
1 John Davidson, Earlham	Jr	2	6	6	100.0
6 Mike Bachman, Alma	Jr	9	24	25	96.0
7 Jeff Mann, York (Pa.)	So	8	21	22	95.5
8 Andy Enfield, Johns Hopkins	Sr	9	40	42	92.5
9 Frank Sciolia, Cabrini	So	6	15	16	93.8
10 Damon Rogers, Dubuque	Sr	9	42	45	93.3
10 Tom Gibson, Heidelberg	Jr	5	37	40	92.5
12 Brad Alberts, Ripon	Sr	8	24	26	92.3
13 C. Pronchinski, Wis. Stevens Point	Sr	7	24	26	92.3
13 Don Wagner, Juniata	Jr	7	36	39	92.3
13 Jeff Thomas, King's Pa.	Jr	6	23	25	92.0
16 Chris Sonnenman, Wilmington	Jr	6	23	25	92.0
17 Tim Cibulka, St. John's (Minn.)	Fr	3	22	24	91.7
17 Joel Dillingham, Lawrence	So	2	11	12	91.7
19 James Bradley, Otterbein	Sr	7	43	47	91.5

3-POINT FIELD-GOAL PERCENTAGE					
CL	G	FG	FGA	PCT	
1 Keith Ferdinand, Bates	So	6	9	13	69.2
2 Andy Schultz, Gust. Adolphus	Sr	4	11	17	64.7
3 Mike Bachman, Alma	Jr	9	18	29	62.1
4 Todd Hennink, Calvin	Jr	7	31	50	62.0
5 Denny Nicholson, Nazareth (N.Y.)	Sr	8	12	20	60.0
5 Kevin Larson, Wis.-River Falls	Jr	5	9	15	60.0
5 Andy Moore, Muskingum	Sr	8	14	24	58.3
8 Rick Montreal, Wis.-River Falls	So	7	14	24	58.3
8 Jim Sheker, Dickinson	Sr	6	13	23	56.5
10 Eric Elliott, Hope	Sr	9	18	32	56.3
11 Eric Lawson, Wilkes	Jr	7	14	25	56.0

3-POINT FIELD GOALS MADE PER GAME					
CL	G	NO	AVG		
1 Chris Gerschacht, Bethany (W.Va.)	Jr	5	26	5.2	
2 Chris Jans, Loras	Sr	8	39	4.9	
3 Matt Alcorn, Kenyon	Sr	6	29	4.8	
4 Todd Hennink, Calvin	Sr	7	31	4.4	
5 Joe Cawley, Norwich Me.	So	8	34	4.3	
6 Joe Dudeck, Southern Me.	So	6	24	4.0	
7 Jason Valant, Colorado Col.	Jr	6	24	4.0	
7 Tom Nicholson, Frank & Marsh	Jr	5	20	4.0	
7 Al Palsa, Bethany (W.Va.)	Jr	5	20	4.0	
10 Scott Kerr, Frostburg St.	Jr	7	27	3.9	



# NCAA Record

## CHIEF EXECUTIVE OFFICERS

**Steven B. Sample** selected as president at Southern California, effective March 31, 1991. He has been president at Buffalo for the past eight years. **Carroll W. Brewster** announced he will step down as president at Hobart and William Smith in June 1992. **Oscar Prater** named president at Fort Valley State after serving as vice-president for administrative services at Hampton. **Barry Thompson** selected for the presidency at West Texas State. He has been president at Tarleton State.

## FACULTY ATHLETICS REPRESENTATIVE

**Jay Stanley** appointed at Towson State, where he is a professor in the sociology and anthropology department. He succeeds **Jim Ewig**, who died in September.

## DIRECTORS OF ATHLETICS

**Chet S. Gladchuk** named at Boston College, where he played football in the early 1970s. Since 1988, he has been AD at Tulane, and he also has held administrative posts at Massachusetts and Syracuse. **Francis Poisson** resigned after 14 years as AD at Bridgeport, where he has been affiliated with athletics for 35 years. He will step down January 1. **William Moultrie** stepped down after four years as AD at Howard, where he will continue to serve as head men's and women's track coach. **John Clark** selected at St. Lawrence, where he has been head wrestling coach since 1971. Clark, a St. Lawrence graduate who led his 1988 wrestling team to a Division III title, succeeds **Bob Sheldon**, who will retire at the end of the school year.

## ASSOCIATE DIRECTOR OF ATHLETICS

**Hugh Yoshida** appointed at Hawaii, effective January 1, after serving for the past three years as executive secretary of the Oahu Interscholastic Association in Hawaii. Yoshida, who also has been a high school coach and athletics administrator, replaces **Rockne Freitas**, who was named vice-president for university relations at Hawaii in October.

## ASSISTANT DIRECTOR OF ATHLETICS

Illinois-Chicago's **Val Belmonte** named director of coaching and youth programs at USA Hockey. Belmonte became assistant AD at Illinois-Chicago earlier this year after serving as head men's ice hockey coach at the school for eight years.

## COACHES

**Football** **Fred Goldsmith** received a five-year contract extension at Rice. The Owls posted their best record (5-6) in 10 years this season. Goldsmith's second at Rice. **Jackie Sherrill** named at Mississippi State. Sherrill returns to coaching with a 13-year record of 105-45-3 in stints as head coach at Washington State, Pittsburgh and, most recently, Texas A&M. **Bob Sutton** promoted from defensive coordinator at Army, where he has been on the staff since 1983. He also has been an aide at Michigan, Syracuse, Western Michigan and Illinois. **Rex Grimes** resigned after three seasons at William Penn, where his teams compiled a 2-27 record. **Mike Schonewolf** resigned after four years at Marietta, where he led his teams to a 10-30 mark. He previously served as offensive coordinator at the school for four seasons. **Brad Senter** selected at Newberry. He is a former aide at Duke, North Carolina State, New Mexico Highlands (where he also was associate athletics director) and Samford who has worked most recently at North Carolina's fund-raising Educational Foundation Inc. **Barry Gallup** named at Northeastern after serving for 19 years on the staff at Boston College, where he also played. **John Palermo** resigned after one season at Austin Peay State, where this year's team was 0-11. **Dennis Caryl** selected at Washburn, where he was interim head coach this season and led the Ichabods to a 4-6 mark, including three victories in their last four games. Caryl stepped in last summer for **Larry Elliot**, who took a medical leave of absence. Elliot decided last month that his health would not permit him to return to the post. **Tom Rossley** hired at Southern Methodist, where he was offensive coordinator last year before serving this season as an assistant with the Atlanta Falcons. Rossley also has coached at Holy Cross, Rice, Cincinnati and Arkansas, as well as in the United States Football League and Canadian Football League. **William "Rip" Scherer** selected at James Madison after three seasons as offensive coordinator at



**Chet S. Gladchuk**  
named AD at  
Boston College

**James Madison** picked  
William "Rip" Scherer  
as football coach

Arizona. Scherer, a quarterback at William and Mary during the 1970s, also has been offensive coordinator at Georgia Tech and Alabama, and has served on the staffs at Virginia, Penn State, North Carolina State and Hawaii. **John Mumford** received a three-year contract extension at Southeast Missouri State, which will move from Division II to Division I-AA next season after finishing with a 7-3 record this year in Mumford's first season as head coach.

**Football assistants**—**Paul Ferraro** appointed defensive coordinator and inside linebackers coach at Bowling Green, which also hired **Bob Ligashesky** as outside linebackers coach. Ferraro was on the staff at Ohio this year and also has been an aide at Massachusetts, Syracuse, Villanova, Dartmouth, Catholic and Maine. Ligashesky has coached at Arizona State and, most recently, Kent. **Robert Bernardi**, football program coordinator at Arizona for the past five years, named assistant commissioner of the American South Conference.

**Men's golf**—**James W. Kent** promoted from assistant at Delaware, where he is associate professor of physical education, athletics and recreation. Kent, who has been a faculty member at the school since 1974, has assisted with golf for the past eight seasons.

**Women's softball**—**Walter Yohai** named at Massachusetts Maritime. He has coached girls' softball and basketball at Bourne High School in Massachusetts for the past nine years. Yohai replaces **Steve Flanders**, who retains duties as head women's volleyball coach at the academy.

## STAFF

**Sports information assistant**—**Robert Himber** joined the staff at Yeshiva as a student assistant.

## CONFERENCES

**Steve Argo** resigned as sports information director and compliance coordinator at the Trans America Athletic Conference to enter business in Georgia. Argo has been with the league since 1984. Also, the conference announced that sports information intern **Michael Martin** has resigned to move to the Kansas City area. **Lou Bonder** hired by the Eastern States Athletic Conference as supervisor of basketball officials for the 1990-91 men's basketball season. **Robert Bernardi** appointed assistant commissioner of the American South Conference, effective January 2. He is football program coordinator at Arizona, where he has served for five years. Bernardi also has been on the football staffs at Oregon State and Cal State Northridge.

## ASSOCIATIONS

**Val Belmonte** named director of coaching and youth programs at USA Hockey, effective in January 1991. Belmonte is assistant athletics director and former head men's ice hockey coach at Illinois-Chicago. He also has assisted with hockey programs at North Dakota and Harvard, in addition to serving as an aide at Illinois-Chicago.

## NOTABLES

**Lon Kruger**, head men's basketball coach at Florida, selected as head coach for the U.S. men's basketball team that will compete in the 1991 FIBA Junior Men's World Championship in Edmonton, Canada. **James L. "Jim" McDowell** announced his retirement after 21 years as executive director of the National Football Foundation and Hall of Fame, effective March 31, 1991. He will continue to serve the foundation as a consultant.

## DEATHS

**Ralph Floyd**, athletics director at Indiana since 1978, died December 15 in Indianapolis after a lengthy battle with cancer. He was 65. Floyd, who played football at William and Mary in the 1940s, held coaching positions early in his career at his alma mater, Richmond and North Carolina, then served in coaching

and administrative posts for 19 years at South Carolina before serving from 1975 to 1976 as associate AD at Clemson. He recently completed a term as chair of the NCAA Postgraduate Scholarship Committee. **Doyle Nave**, a reserve quarterback who came off the bench in the 1939 Rose Bowl and passed Southern California to victory over previously unbeaten Duke, died December 9 in Burbank, California. He was 75. **Ralph "Mac" McKinzie**, former head football coach at Eureka, Warburg and Northern Illinois, died December 7 in Eureka, Illinois, at age 96. McKinzie, who also played at Eureka before serving as football coach and athletics director there from 1921 to 1938, coached future President Ronald Reagan at the school. **Everett "Joe" Brooks**, head football coach at Illinois College from 1956 to 1985, died December 3 in Jacksonville, Illinois, at age 68. Brooks, whose football teams compiled a 113-127-9 record, also coached baseball at the school from 1947 to 1985 and was athletics director for 30 years. **Lawrence H. Tiihonen**, a football player at Columbia during the 1920s, died of pneumonia November 30 in Princeton, New Jersey. He was 89. Tiihonen was a longtime coach and athletics director at the Lawrenceville School in New Jersey.

## CORRECTION

Due to a reporting error, the school where Division II double statistics titlist Ernest Priester plays was incorrectly named in the Football Notes column in the December 10 issue of The NCAA News. Priester, who led Division II in scoring and receiving yards per game this season, plays at Edinboro.

## POLLS

### Division I Men's Golf

The top 20 NCAA Division I men's golf teams as selected by the Golf Coaches Association of America through December 12, with points:

1. Arizona State, 180; 2. North Carolina, 169; 3. Nevada-Las Vegas, 154; 4. Clemson, 146; 5. Oklahoma State, 144; 6. Georgia Tech, 134; 7. Central Florida, 132; 8. UTTP, 119; 9. Arizona, 102; 10. Texas, 98; 11. Tennessee, 82; 12. Nevada-Reno, 68; 13. Kent, 64; 14. Southern California, 58; 15. Louisiana State, 57; 16. Oklahoma, 46; 17. Georgia, 40; 18. Ohio State, 38; 19. Florida, 19; 20. (tie) North Carolina State and Arkansas, 12.

### Division II Men's Golf

The top 20 NCAA Division II men's golf teams as listed by the Golf Coaches Association of America through December 11:

1. Abilene Christian, 2. Jacksonville State, 3. Florida Southern, 4. Bryant, 5. Columbus, 6. Southern Illinois-Edwardsville, 7. Indiana (Pennsylvania), 8. Troy State, 9. Slippery Rock, 10. Cameron, 11. Cal State Sacramento, 12. North Dakota State, 13. Indianapolis, 14. Cal State Stanislaus, 15. Florida Atlantic, 16. Wofford, 17. Houston Baptist, 18. Tennessee-Martin, 19. South Carolina-Spartanburg, 20. (tie) Cal State Dominguez Hills and Rollins.

### Division III Men's Golf

The top 20 NCAA Division III men's golf teams as listed by the Golf Coaches Association of America through December 10:

1. Methodist, 2. Ohio Wesleyan, 3. Gustavus Adolphus, 4. Cal State San Bernardino, 5. Skidmore, 6. Allegheny, 7. Wittenberg, 8. Salem State, 9. Ramapo, 10. Rochester, 11. UC San Diego, 12. Washington and Lee, 13. Christopher Newport, 14. Millikin, 15. Wooster, 16. Nebraska Wesleyan, 17. Claremont-Mudd-Scripps, 18. John Carroll, 19. Central (Iowa), 20. Hamilton.

### Division I Women's Swimming and Diving

The Shackle Performance top 25 NCAA Division I women's swimming and diving teams as selected by the College Swimming Coaches Association of America, with dual-meet records in parentheses and points:

1. Texas (1-0) ..... 392
2. Stanford (0-0) ..... 382
3. California (2-0) ..... 370
4. UCLA ..... 316
5. Southern Cal (3-0) ..... 316
6. Florida (5-0) ..... 302
7. Georgia (4-0) ..... 279
8. Michigan (4-0) ..... 270
9. Tennessee (5-1) ..... 186
10. Virginia (3-1) ..... 160
11. North Caro (3-1) ..... 156
12. Southern Methodist (3-0) ..... 129

13. Alabama (2-2) ..... 124
14. Arkansas (4-0) ..... 122
15. Arizona St. (2-4) ..... 94
16. Clemson ..... 91
17. Penn St. (4-1) ..... 64
18. Iowa (5-1-1) ..... 61
19. Kansas (4-1) ..... 59
20. Nebraska (4-0) ..... 30
20. Minnesota (3-0) ..... 30
22. Arizona (2-2) ..... 25
22. Princeton (4-1) ..... 25
24. Harvard (3-0) ..... 20
24. Brigham Young ..... 20

### Division I Men's Tennis

The Volvo Tennis top 25 NCAA Division I men's tennis teams as selected by the Intercollegiate Tennis Coaches Association through December 12, with points:

1. Stanford, 200; 2. UCLA, 192; 3. Georgia, 183; 4. (tie) Tennessee and Southern California, 171; 6. South Carolina, 159; 7. California, 154; 8. Texas Christian, 142; 9. Arizona State, 128; 10. (tie) Texas and Louisiana State, 121; 12. Miami (Florida), 111; 13. Notre Dame, 105; 14. Kentucky, 90; 15. North Carolina, 88; 16. Pepperdine, 81; 17. Arizona, 74; 18. Harvard, 58; 19. West Virginia, 44; 20. (tie) Kansas and Florida, 40; 22. (tie) Fresno State and Mississippi, 31; 24. Clemson, 18; 25. (tie) UC Irvine and San Diego, 16.

### Division I Women's Tennis

The Volvo Tennis top 25 NCAA Division I women's tennis teams as selected by the Intercollegiate Tennis Coaches Association through December 12, with points:

1. Stanford, 150; 2. Florida, 144; 3. UCLA, 138; 4. Georgia, 132; 5. California, 126; 6.

Texas, 119; 7. Arizona State, 115; 8. Oklahoma State, 106; 9. Duke, 105; 10. Arizona, 96; 11. Pepperdine, 84; 12. Southern California, 81; 13. Tennessee, 79; 14. San Diego, 77; 15. San Diego State, 70; 16. Indiana, 61; 17. South Carolina, 55; 18. Kentucky, 47; 19. Clemson, 30; 20. Utah, 28; 21. Brigham Young, 26; 22. Mississippi, 16; 23. Texas A&M, 12; 24. Houston, 11; 25. (tie) Notre Dame and U.S. International, 10.

### Division II Wrestling

The top 20 NCAA Division II wrestling teams as listed by the National Wrestling Coaches Association through December 12:

1. North Dakota State; 2. Central State (Oklahoma); 3. Nebraska-Omaha; 4. Portland State; 5. Northern Colorado; 6. South Dakota State; 7. Ferris State; 8. Wisconsin-Parkside; 9. Grand Valley State; 10. North Dakota; 11. Lake Superior State; 12. California (Pennsylvania); 13. Pittsburgh Johnstown; 14. Augustana (South Dakota); 15. Buffalo; 16. San Francisco State; 17. Ashland; 18. Kearney State; 19. Pembroke State; 20. Colorado School of Mines.

### Division III Wrestling

The top 20 NCAA Division III wrestling teams as listed by the National Wrestling Coaches Association through December 17:

1. Augsburg; 2. Brockport State; 3. Montclair State; 4. Simpson; 5. John Carroll; 6. Delaware Valley; 7. Central (Iowa); 8. Augustana (Illinois); 9. St. Lawrence; 10. Buena Vista; 11. Kean; 12. Wisconsin-Whitewater; 13. Oneonta State; 14. Wisconsin-Stevens Point; 15. Albany (New York); 16. Thiel; 17. Trenton State; 18. Binghamton; 19. Lycoming; 20. Ithaca.

## Delegates

*Continued from page 3*

computer can go through its voting list as many times as necessary to collect all votes. It will be up to the session chair to determine whether enough time has been allowed for votes to be cast.

"Our toughest problem is ensuring that the delegates are educated to use the system without any mistakes early on," said S. David Berst, NCAA assistant executive director for enforcement and the Convention's director of voting. For that reason, instructions on how to use the system will be included in the Convention Program and also will be provided by the chair of each business session when it is time to use the unit.

But once delegates get the hang of it, the system not only should speed up voting, but eliminate a lot of confusion.

"My hope is that it saves us from utter chaos," Berst said. "There are a large number of roll-call votes this year, and that number seems to increase each year."

Last year, the Convention struggled through a record 50 roll-call votes, using a system in which a separate punch card was used for each vote. The cards had to be collected and fed into a computer.

"Some dissatisfaction was expressed with the time necessary to determine the outcome of a vote," Berst said. "Through no one's fault, the technology just didn't seem to be there to handle the vote more quickly."

A number of concerned observers—ranging from NCAA Executive Director Richard D. Schultz to electrical engineering professor Ronald G. Schultz, the faculty athletics representative at Cleveland State University—left that Convention believing that there had to be a better way.

Just as the NCAA's Schultz was urging the national office staff to improve the voting system, Cleveland State's Schultz proposed the solution—the electronic voting box. Then, it was up to Spencer to learn whether such a system could be produced.

"Dan is the person who figured out how to make it happen," Berst said.

Spencer contacted a Kansas City

manufacturer, Colt Technology, which in turn specially produced the wireless units for the NCAA.

"In the past, with the card system, voting wasn't totally automated, but now it will be," Spencer said.

As votes are counted in the central computer, results can be sent to a printer at the chair's podium, where they will be announced to delegates. Results also will be transmitted to a printer in the Convention's media room, rather than being printed in the computer area as in past years.

The system should make life easier for members of the Voting Committee, who previously had to pick up punch cards, make sure they were punched and stacked properly, and carry them to the computer.

"We hope their task now will be simply to aid anyone who's having trouble with the voting unit," Berst said.

The new electronic system is intended for use only on roll-call votes, which means that the colorful voting paddles that have become a trademark of NCAA Convention sessions still will be used for other votes. However, the electronic system could be used even on paddle votes where an accurate count is needed, Berst said.

Upon arrival in Nashville, delegates are being asked to register as early as possible. At that time, the delegate will receive a voting paddle, then be asked to move to a special counter in the registration area to receive the electronic voting unit. Each voting delegate will be asked to show the paddle in order to receive the unit.

Delegates also will receive a 1½-inch-thick packet of punch cards, Berst said—just in case the electronic system fails on its maiden voyage. "We'll go ahead and hand those out this year, with the hope that we won't have to use them," he said.

To make that as unlikely as possible, the system is undergoing several tests in advance of the Convention.

"It's done very well so far," Berst said. "It's done exactly what was anticipated. It'll be taken to Nashville and tested in the rooms where it will be used, to ensure that there will be no problems there, like interference with the signal."

# Florida's baseball team 'adopts' third-grade class

It is unusual to see a group of athletes involved in the community on a regular basis. That's exactly what the University of Florida baseball team is doing — getting involved on a regular basis. How regular? Not just an occasional appearance, once a month or even once a week. Try twice a week — every week.

Every Tuesday and Thursday, members of the Gator baseball team take 90 minutes out of their schedules to develop a special relationship with a class of third-grade students at Kimball Wiles Elementary School in Gainesville.

"We wanted the University of Florida baseball team to get involved with the community on a regular basis," says head coach Joe Arnold. "There are few better ways to get involved than being a part of the educational process. This is a special type of program in that the kids build a one-on-one relationship with students," Arnold told Steve McClain of the Florida sports information office.

Those one-on-one relationships are created on the initial visit by a player to the school. Upon his arrival, a player is assigned to a student whom he will work with exclusively throughout the semester. That player, in effect, becomes "adopted" by the student.

"It really is something to see some

of the kids' reactions when the players come in for the first time," says Bev Arnold, third-grade teacher and wife of the Gator coach.

"I was a little tentative my first trip over to the school," recalls Gator junior and outfielder Dave Majeski. "After I spent the first 15 minutes with my student, I found myself with a genuine concern about the kid's interests, hobbies and problems."

"We let the players know what subject areas of school we want them to concentrate on with their students," adds Bev Arnold. "Whether it be math, reading or writing, some areas are given more

behavior."

The relationships are rewarding for the players as well. "It was surprising to go to my mailbox after my first visit and see a letter from my student," Majeski adds. "It made me feel like the trip was well worth it to see my student make gains in the classroom and be proud of it."

"I don't think most 18- to 21-year-old kids see themselves as possible role models for younger children," Bev Arnold says. "I think for many players, it is the first time in their life they realize what kind of an impact they can have on younger kids. The positive role model that these players provide is worth more

## Good sports

attention with some students. Likewise, if a student has trouble with getting along with others or disobeying teachers, the players will spend extra time stressing the importance of discipline and respect.

"The most surprising thing about the program is how much of an effect the players have on the students after they leave from the first visit," she said. "The students begin to correspond with the players, telling them stories of their accomplishments in the classroom and good

than anything we can teach in the classroom."

## Switching roles

Mike Monroe's friends from high school were going to Division I basketball programs, and when he headed for Division II Millersville University of Pennsylvania, he carried some serious doubts along.

"I thought I would be a loser," he said, "and that everything would fall apart."

"Since I've been here," said the senior point guard, "everything has worked in my favor. It was a good selection for me," he told Gordie Jones of the Lancaster Intelligencer-Journal.

Monroe has been identified as one of the best guards in Eastern basketball. His high school coach and family were his motivation to succeed. Now, he has added another group of supporters.

Last summer, Monroe served as a counselor at Project Forward Leap, an academic camp for disadvantaged youngsters.

"I see myself in some of them," he says. "I thought about when I was younger. People around the neighborhood (West Philadelphia) would go back and tell somebody in the



Mike Monroe

family if I was doing something, and they would get on my back. I knew a lot of people around, so it was hard to get into something without somebody finding out."

He said there were 79 youngsters (11- and 12-year-olds) in Project Forward Leap. He was directly responsible for five of them, ushering them to classes, answering questions, offering guidance.

"They asked me mostly about college," Monroe said. "The majority of the kids were smart kids, but the mother was on drugs, or there were problems in the family, like the father beats up the mother, or something. I started to try to motivate them, telling them positive things that can happen in their lives, instead of always talking about the negative things."

"For myself, playing hard every day and giving 110 percent will make me happy."

Monroe knows he can't slack off. Those 79 kids from Project Forward Leap have a standing invitation to every Millersville home game.

He motivates them; now, they are motivating him.

## That's the ticket

The University of Wyoming has launched Operation Copper Bowl to help make the holidays more enjoyable for families of soldiers and airmen serving in the Persian Gulf with Operation Desert Shield.

Under Operation Copper Bowl, Wyoming residents who can't travel to Tucson, Arizona, to watch Wyo-

oming play California in the Copper Bowl are asked to buy game tickets for donation to the families of troops in the Persian Gulf.

"We can't bring our troops home from the Persian Gulf for Christmas," said university vice-president Pete Simpson, "but over the holidays, we'd like to bring some of their family members into our family—the Wyoming family—and make them our guests for the Copper Bowl."

The university is working with Davis-Monthan Air Force Base and the Army's Fort Huachuca, both in the Tucson area. It is estimated that about 800 of Davis-Monthan's airmen are serving in the Persian Gulf and about 1,300 G.I.s from Fort Huachuca are involved in Operation Desert Shield. Combined, the two military installations are home to some 3,200 family members of service personnel who won't be able to share Christmas and New Year's with their loved ones.

In announcing Operation Copper Bowl, Simpson said, "A lot of Wyomingites—in and outside the state of Wyoming—have told me they'd like to go to the Copper Bowl but the cost of transportation and lodging is just more than they can afford."

"We're asking all Wyomingites, including businesses, service organizations, veterans, people with family members in the military, to donate to Operation Copper Bowl," Simpson said. "All it takes is one ticket to help a military spouse, son or daughter have a happier holiday season."

Brian Miracle, university trustee, started the idea for Operation Copper Bowl, remembering a similar project that allowed more than 1,000 servicemen from Mississippi's Keesler Air Force Base to attend the 1968 Sugar Bowl. He also had a similar personal experience.

"When I was in the army many years ago," Miracle said, "someone gave me the opportunity to see the East-West Shrine Game in San Francisco. I couldn't have afforded to go. It was one of the best presents I got while in the service."

# Boost in team scoring sought in water polo

In an effort to increase scoring, thereby boosting interest in the sport among fans, the NCAA Men's Water Polo Committee, at its December 10-12 meeting in San Diego, voted to recommend to the Executive Committee that the ejection period for personal faults be reduced from 35 to 20 seconds.

FINA, the international governing body for swimming, diving and water polo, is expected to implement the 20-second ejection rule in January 1991.

The committee also will recommend that the date of the 1991 championship be moved to December 6-8, rather than the Thanksgiving holiday weekend. The event would be held at the Belmont Plaza Pool in Long Beach, California, with the host institution still to be named.

Additionally, the committee will recommend that officials fees be increased from \$45 to \$50.

The committee also acted on the following rules matters:

- Rule 1-11 was altered so that all players, whether disqualified or not, must wear a cap in the team area.

- Rule 2-14 was revised so that protests must be documented at the match site no later than 15 minutes following the conclusion of a contest.

- An addition was made to Rule 1-11 so that the 35-second clock will be reset after a ball-under situation.

- Rule 5-11-b was added so that a goal does not count if the referee blows the whistle signaling a foul.

- A note was added to Rule 7-6-l, stating that if a player is not visibly red-flagged by the secretary prior to being waved in by the referee, no penalty throw shall be assessed.

- Rule 8-2-c was altered to state: A player taking a free throw must release the ball within a reasonable amount of time and without undue delay but does not have to take the free throw immediately. A player may be tackled if he regains possession of the ball after the ball leaves the hand. Failure to put the ball in play without undue delay is a technical foul.

nical foul.

- Rule 8-9 was revised so that the referee who signals for a penalty shot shall position the field players and the goalkeeper, and the other referee shall take a position in the back court.

On August 1, 1991, the committee will mail a rules questionnaire to all head men's water polo coaches at NCAA member institutions, requesting input for rules changes in 1992. The deadline for returning the survey will be September 15, 1991.

# Previous estimates of steroid use low, study says

Steroid use among college athletes is higher than previously estimated, and perhaps as high as 20 percent among football players, according to researchers who asked universities to estimate use among opponents.

A professor in Pennsylvania State University's college of health and human development said his study sets an "upper limit" of actual anabolic steroid use among college athletes, whereas an NCAA study done last year set the lower limit.

"The mean overall projected rate of use of anabolic steroids across all sports surveyed was 14.7 percent for male athletes and 5.9 percent of females," said Charles Yesalis, who studied steroid use with researchers from five other schools.

Yesalis said the study illustrates a problem that is bigger than estimated earlier. A 1989 NCAA study based on self-reporting estimated steroid use at less than five percent.

But a researcher for the 1989 study pointed out that it asked only about steroid use in the past year. The new study asked a question that was more open-ended — if there was ever any steroid use.

"For years, a number of researchers have believed that with self-reporting, there's an underreporting of use," Yesalis told the Associated Press.

"This represents an upper bound;

and for the first time there are boundaries, and somewhere in between is reality," Yesalis said.

Even though the five schools that agreed to participate in the study were estimating use among opponents, the athletes said a lot about their own programs, Yesalis believes.

Previous studies have shown that a significant amount of steroid use is tied to the perception that opponents are using them in other words, "I only use them because he uses them."

"It's like going to expert informants on what's going on," Yesalis said. "It lets you project your behavior on others without endangering yourself. The literature does say that people who use drugs see more use around them."

The director of the NCAA's drug-testing program said the self-reporting study probably did not detect all use and that college sports' largest governing body gave credence to the Yesalis report.

"Perceptions are very important in this area," said Frank D. Uryasz, NCAA director of sports sciences. "Athletes tell us if they were sure the guy across the line wasn't using steroids, they wouldn't."

"They still believe they're competing against dirty athletes," Uryasz said.

The more recent study was conducted at five institutions across the country that were guaranteed anonymity. The researchers were from Michigan State University; Ohio State University; Penn State; the University of California, Los Angeles; Vanderbilt University, and West Virginia University.

The study projected steroid use at 29.3 percent for football teams, 20.6 percent among men's track and field teams, and 16.3 percent for women's track and field.

More athletes also perceived steroid use to be increasing, Yesalis said.

Rick Albrecht, a research assistant at Michigan State's office of

medical education, cautioned that Yesalis' questions differed from those in the 1989 NCAA steroid study conducted by Michigan State.

The NCAA study asked about steroid use in the last year. Yesalis' asked about steroid use at any time.

"I think he's correct in assuming that we have a bottom boundary here and that actual use is somewhat higher — but how much higher? That's the \$64,000 question," Albrecht said.

For Uryasz, though, it doesn't matter what the specific numbers are.

"I'm not sure it's important to get at the number," Uryasz said. "If there's any use, there's a problem."

## Questions/Answers

Readers are invited to submit questions to this column. Please direct any inquiries to The NCAA News at the NCAA national office.

**Q** When may NCAA member institutions begin gymnastics practice and competition, and how long may the season last?

**A** As noted in NCAA Bylaws 17.9.1 and 17.9.2, there are no limitations regarding the dates on which member institutions may commence practice sessions or conduct competition in gymnastics, and there are no limitations regarding the length of an institution's playing season in gymnastics.

# UCLA justifies No. 1 ranking with women's volleyball title

UCLA's sophomore class proved to be a jinx to opponents during the Division I Women's Volleyball Championship. The Bruins, behind the performances of three sophomores, defeated Pacific in three games in the championship final December 15 at Maryland's Cole Field House.

Power hitting from sophomores Natalie Williams and Marissa Hatchett led No. 1-ranked UCLA to its second NCAA women's volleyball title.

Williams, a 6-1 hitter, and Hatchett, a 6-1 middle blocker, recorded 12 kills each as the Bruins won, 15-9, 15-12, 15-7, over the fifth-ranked Tigers. Also contributing a solid performance for UCLA was Lisa Hudak, a sophomore middle blocker. Hudak added eight kills with no errors in 14 attempts.

Pacific was led by all-Americans Krissy Fifer and Cathey Scotlan. Fifer had 13 kills, hitting .320, while Scotlan added 11 kills and four block assists.

UCLA head coach Andy Banachowski's squad finished the year with a 36-1 record. The Bruins' only loss came to second-ranked Nebraska.

"I am elated to have won," Banachowski said.

"I felt going in that we could play them better this time," he said, remembering the Bruins' victory in a five-game match against Pacific during the regular season. "I thought we would have to put a little more pressure on the serving. I felt that we could out-ball-handle them. I think that we put everything together tonight—everything that we talked about all year. And we played an excellent match."

Pacific coach John Dunning agreed.

"I thought UCLA played very



## Championship Results

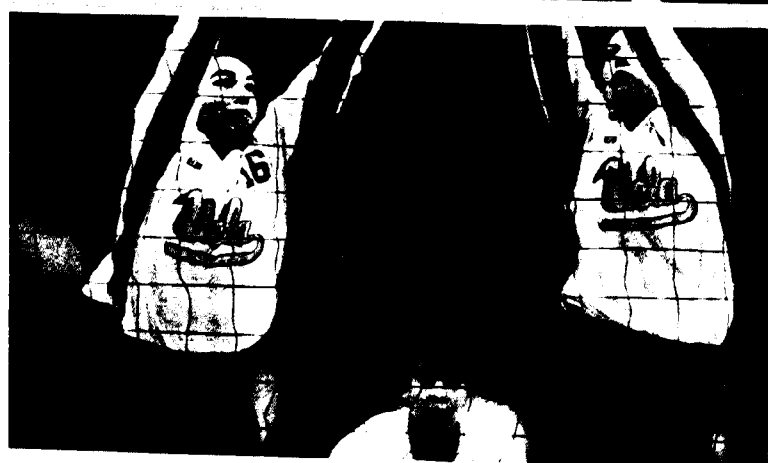
well. They were a better team tonight. Nothing we could do about it. They flat outplayed us. We stuck to our game plan, but they were on a mission."

UCLA defeated Louisiana State in three games (15-13, 15-10, 15-6) to gain a berth in the final match. Junior Jenny Evans paced the Bruins with 17 kills. Hatchett and Williams had 14 kills and 12 kills, respectively. Behind Fifer's 21 kills, Pacific upset Nebraska, 15-13, 11-

15, 15-9, 15-12, to advance to the championship match. The Tigers ended the season with a 30-6 record.

Williams was named the tournament's most outstanding player. Joining her on the all-tournament team were Monique Adams, Louisiana State; Evans, UCLA; Fifer, Pacific; Hatchett, UCLA, and Holly McPeak, UCLA.

CHAMPIONSHIP										
Pacific	9	12	7							
UCLA	15	15	15							
Pacific	SA	BS	DG	K	E	TA	Pct.			
Sharon Kasser	0	0	2	6	3	15	.200			
Melanie Beckenhauer	0	0	4	2	1	5	.200			
Katy Eldridge	1	0	10	8	9	35	.000			
Vikki Simonis	0	0	15	0	0	1	.000			
Cathey Scotlan	0	0	6	11	7	29	.138			
Devin Scruggs	0	0	4	4	2	12	.167			
Krissy Fifer	0	0	3	13	5	25	.320			
Carol Conti	0	0	5	0	0	0	.000			
Natasha Soltysik	0	0	2	0	0	0	.000			
Heather Schoeny	0	0	6	2	1	5	.200			
Totals	1	0	57	46	28	127	.142			
UCLA	SA	BS	DG	K	E	TA	Pct.			
Traci Broadway	2	0	3	0	0	0	.000			
Marissa Hatchett	0	2	5	12	6	27	.222			
Samantha Shaver	1	0	11	7	2	27	.185			
Jenny Evans	0	0	11	5	2	22	.136			
Natalie Williams	1	0	7	12	6	29	.207			
Holly McPeak	0	0	10	1	0	2	.500			
Lisa Hudak	0	0	1	8	0	14	.571			
Irene Renteria	0	0	0	4	0	4	1.000			
Jennifer Gratteau	0	0	0	0	0	0	.000			
Totals	4	2	48	49	16	125	.264			



UCLA's Holly McPeak (16) and an unidentified Bruin take on Pacific's Vikki Simonis in the championship final of the Division I Women's Volleyball Championship at College Park, Maryland

# Eagles win fourth I-AA crown

There is no place like Allen E. Paulsen Stadium for Georgia Southern.

The Eagles ran their record at their home stadium to 50-2 with a 36-13 victory over Nevada-Reno December 14 in the 13th annual Division I-AA Football Championship in Statesboro, Georgia.

The victory marked the school's fourth championship in the last six years.

"It's our house and it's something special to the players and people in the area," said Georgia Southern quarterback Raymond Gross. "And we don't take too kindly to people breaking house rules."

Gross ran for 145 yards on 31 carries and scored on an eight-yard run to lead the Eagles to their 15th consecutive home-field play-off victory. Nevada-Reno tried to stack its defense to stop the inside handoff to fullback Joe Ross, Georgia Southern's leading rusher, but Gross com-

pensated with big gains as he ran the Eagles' option to near-perfection.

"I had the option to run the ball just about every time when they took the fullback out of it," Gross said. "The lane was there."

Nevada-Reno attempted to adjust to Gross' outside runs in the second half, but he in turn made late pitches to the trailing backs that resulted in second-half touchdowns by Darryl Hopkins on runs of three and 18 yards.

Georgia Southern's other touchdowns came on a 14-yard run by Ross—capping a 43-yard, seven-play drive after Karl Miller's 51-yard return of the game's opening kickoff—and a 15-yard pass interception return by Alex Mash with 44 seconds left in the game.

"I think we had a big advantage," Georgia Southern coach Tim Stowers said. "The (option) offense isn't run in the Big Sky Conference. It

takes more than a week to get ready for it."

Stowers succeeded Erk Russell, who led the Eagles to their previous three championships, and became the first coach to lead a team to the Division I-AA championship in his first year. A partisan crowd of more than 23,000 cheered on the Eagles to their unprecedented fourth championship title.

"The game was not much different than playing Notre Dame in Rome," said Nevada-Reno coach Chris Ault. "There are no excuses from this end. Georgia Southern played a great game. I'm disappointed we didn't show any better."

The victory was Georgia Southern's (12-3) eighth in a row since starting the season with three losses in its first four games. Nevada-Reno reached the championship game for the first time in six play-off appearances and finished the season with a 13-2 record. The Wolf Pack won triple-overtime victories over Furman in the quarterfinals and Boise State in the semifinals to reach the championship.

CHAMPIONSHIP

Nevada-Reno .....3 3 0 7 13

Ga. Southern .....7 7 6 16—36

First Quarter

Ga. Southern—Joe Ross 14 run (Mike Dowis kick) (11:34)

Nevada-Reno—Kevin McKelvie 37 field goal (5:05)

Second Quarter

Ga. Southern Raymond Gross 8 run (Dowis kick) (2:38)

Nevada-Reno McKelvie 44 field goal (0:03)

Third Quarter

Ga. Southern—Darryl Hopkins 3 run (kick failed)

Fourth Quarter

Ga. Southern—Hopkins 18 run (Dowis kick) (14:52)

Nevada-Reno—Ross Ortega 3 pass from Chris Vargas (McKelvie kick) (6:22)

Ga. Southern—Dowis 41 field goal (1:06)

Ga. Southern—Alex Mash 15 interception return (kick failed) (0:44)

	Nevada-Reno	Ga. Southern
First Downs .....	21	20
Rushing Yardage .....	56	323
Passing Yardage .....	265	69
Return Yardage .....	0	97
Passes		
(Att.-Comp.-Int.) .....	53-27-2	5-2-0
Punts (No.-Avg.) .....	6-38.8	2-37.0
Fumbles (No.-Lost) .....	1-1	5-4
Penalties		
(No.-Yards) .....	10-77	8-66



Celebrating the Bruins' championship victory are Laurie Jones (8), Mia Lambert (6) and Jennifer Gratteau (12)

# Baseball coaches supporting an amendment to legislation

The American Baseball Coaches Association has announced support of an amendment to the coaching-limitations proposal at the January NCAA Convention.

Proposal No. 36 would reduce the coaching staffs to three coaches (head coach or assistant coach and a restricted earnings coach), and the ABCA is recommending support of Proposal No. 36-1, which would allow four coaches, including a restricted-earnings coach.

The ABCA said that a recent survey of the 272 institutions sponsoring NCAA Division I baseball indicates that reducing baseball to three coaches will result in minimal savings but there will be great loss of coaching opportunities as well as severe damage to the quality and growth of the sport.

"In no way should this be the result of any legislation," ABCA Executive Director Jerry A. Miles

said. "Our association strongly is requesting support for passage of No. 36-1."

The ABCA-sponsored survey, which had a 100 percent return from the 272 baseball coaches, showed that if Proposal No. 36 passes, 54 full-time baseball coaches would lose their jobs. Another 222 part-time, graduate assistant and volunteer coaches also would have to be terminated.

While a total of 276 baseball coaches would lose their jobs, the survey indicated that in sports other than baseball and football only 90 coaches would be cut.

The ABCA also is opposed to the recommendation to reduce scholarships 10 percent which would leave baseball with 11.7 annual grants—and the proposal that would not allow a grant to be divided into less than thirds.

# Men's volleyball seeks eight-team play-off field

Bracket expansion was the topic of discussion at an NCAA Men's Volleyball Committee meeting held December 13-16 in conjunction with the Division I Women's Volleyball Championship at the University of Maryland, College Park.

The committee will recommend to the NCAA's Executive Committee that the National Collegiate Men's Championship field be expanded from four to eight teams, beginning with the 1992 championship at Ball State University.

Under the proposal, four regionals featuring two teams each would be staged. The winner of each regional would advance to the championship semifinals and final. NCAA men's volleyball currently

has a 1:13 participation ratio.

The Executive Committee will review the volleyball committee's proposal at its May 1991 meeting.

In addition, the volleyball committee will survey the membership early next year about the bracket-expansion issue and also will ask for reaction to the current rally-point scoring system, which has been in place since 1990-91.

The committee also discussed an increase in officials' fees. Already approved by the Executive Committee, the fees are as follows: semifinals—first and second referee, \$150; lines judges, \$35, and scorer, \$45; final—first and second referee, \$200; lines judges, \$35, and scorer, \$45.



Eligibility appeals

Eligibility Appeals Concerning Recruiting Violations							
DIVISION I							
NCAA Rule(s)	Facts	Recruiting Advantage	Result	NCAA Rule(s)	Facts	Result	
B 13.02.4, 13.2 and 13.6.1	Graduate assistant football coach transported PSA (prospective student-athlete) to SAT testing site and bought PSA breakfast. PSA had signed National Letter of Intent.	No.	Eligibility restored.	B 13.1.4-(a)	While recruiting several PSAs (women's basketball), head and assistant coaches both visited the same two high schools during same day.	No.	Eligibility restored.
B 13.01.5.1, 13.02.4.3, 13.1.2.1, 13.1.4-(b), 13.2.1 and 13.9.1	Men's basketball coaching staff has excessive recruiting contacts with PSA. Assistant coach purchased meals for PSA's high school coach and coach's son; used two representatives of institution's athletics interests during PSA's recruitment and sent flowers to PSA's mother. Representative of institution's athletics interests involved in obtaining National Letter of Intent signature to assistant coach.	Yes.	Eligibility not restored at institution (On appeal, NCAA Eligibility Committee for Division I affirmed decision.)	B 13.11.5	Sports information director wrote article about PSA's (men's basketball) intent to enroll at the institution, which was printed in on-campus publication. PSA previously had committed to attend institution.	No.	Eligibility restored.
B 13.1.5.2-(a)	PSA (women's basketball) had contacts with coaching staff prior to participating in two high school contests. PSA was making official paid visit (high school and institution in the same city), left campus during visit to compete and returned to complete the visit after her participation.	No.	Eligibility restored.	B 13.12.1	PSA (wrestling) worked out with assistant coach at PSA's high school.	No.	Eligibility restored.
B 13.11.1	Men's head volleyball coach commented on PSA's athletics ability on local cable television program.	No.	Eligibility restored.	B 13.12.1	PSA (wrestling) participated in a tryout during official paid visit.	No.	Eligibility restored.
B 13.1.5.2 and 13.10.1	PSA (men's basketball) had contact with head and assistant coaches at summer competition site prior to PSA's participation. Assistant coach commented publicly on PSA's athletics ability to a reporter.	No.	Eligibility restored.	Eligibility Appeals (Other Than Those Involving Recruiting Violations)			
B 13.1.5.2	PSA (men's basketball) had contact with head and assistant coaches at summer competition site prior to PSA's participation.	No.	Eligibility restored.	DIVISION I			
B 13.6.2.6	Transfer PSA (men's basketball) received air transportation from PSA's junior college to campus for his official paid visit and from campus to his home. Cost of transportation to PSA's home exceeded cost of transportation to junior college; PSA repaid excess cost.	No.	Eligibility restored.	B 14.6.5.3.3	SA (women's basketball) learned institution planned to discontinue desired academic program for incoming freshmen. SA enrolled at initial institution to preserve grant-in-aid, declared major as undecided, practiced and competed in six contests prior to transfer.	Waiver request denied. (Season of competition used per B 14.2.4.1.)	
B 13.6.2.4 and 13.7.2.1	Transfer PSA's (football) official paid visit exceeded 48 hours; institution paid for return portion of transportation. Institution arranged for PSA's round-trip transportation to airport not closest to campus.	No.	Eligibility restored.	B 14.2.1	SA (baseball) sustained head injury during practice. SA was unable to attend collegiate institution for one semester.	Extension request granted for period of time equal to the number of days from the date SA was unable to attend a collegiate institution to next opportunity to enroll (approximately six months).	
B 13.02.4.4 and 13.1.3.9.4	PSA (softball) had in-person contact with assistant coach during dead period.	No.	Eligibility restored.	B 14.8.5.2	SA (men's basketball) participated in one contest in unsanctioned summer league. SA erroneously believed league was sanctioned at time of participation; league later sanctioned subsequent to SA's participation.	Eligibility restored.	
B 13.1.2.1	PSAs (women's tennis) had contact with representative of institution's athletics interests during official paid visit.	No.	Eligibility restored.	B 14.5.2 and 14.5.3.10	Transfer SA (football) competed in 11 contests while ineligible because transfer credits were improperly counted by institution toward satisfactory-progress requirements. SA had several opportunities to meet satisfactory-progress requirements, but did not do so because each time institution misadvised him that he had sufficient credit hours to be eligible.	Eligibility restored after SA is withheld from first intercollegiate contest of 1990-91 season. (10 percent of contests).	
B 13.02.4.4 and 13.11.6.3	Graduate assistant football coach was at PSA's high school prior to 8 a.m. on first day of National Letter of Intent signing period and had contact with local reporter while PSA was signing. PSA intended to attend the institution prior to violations.	No.	Eligibility restored.	B 14.2.1	SA (women's tennis) enrolled full time in junior college in fall 1987 and subsequently was injured in automobile accident. SA was unable to attend a collegiate institution for remainder of academic year.	Extension granted for period of time equal to the number of days from the date SA was unable to attend collegiate institution to next opportunity to enroll (approximately 12 months).	
B 13.7.1.2.2 and 13.7.5.4.1	PSA (women's soccer) made official paid visit prior to beginning her senior year in high school. Institution required repayment of costs of visit by PSA.	No.	Eligibility restored.	B 14.5.2	SA (wrestling) competed in five contests during fall 1989 while ineligible under satisfactory progress legislation.	Eligibility restored after SA is withheld from first five intercollegiate contests of 1990-91 season.	
B 13.11.6.3	PSAs (football, women's soccer) appeared in photographs simulating National Letter of Intent signing ceremonies with coaching staff, which were later printed in local newspaper.	No.	Eligibility restored.	B 14.5.3.11-(b)	SAs (wrestling, men's soccer, and women's cross country and track) failed to officially declare major by fifth semester of enrollment. Each was progressing toward a designated major at time of violation.	Eligibility restored.	
B 13.02.4.4	PSA (women's soccer) made unofficial visit to campus during dead period. (Institution is not a participant in National Letter of Intent program.)	No.	Eligibility restored.	B 14.5.2	SA (football) competed while ineligible due to instructor not reporting acceptable summer school credits prior to fall semester. SA had completed course requirements.	Eligibility restored.	
B 13.7.2	PSA's (men's basketball) official paid visit exceeded 48 hours because PSA missed return flight after assistant coach left airline tickets at the institution. PSA had no contact with institution after alternative arrangements were made.	No.	Eligibility restored.	B 12.1.1 and 12.2.1.3 and 12.2.3.2	SA (men's soccer) had three-month tryout with reserve team of English professional soccer team. SA participated in three contests and received minimal expenses. SA did not sign contract.	Eligibility restored for 1991-92 season after SA is withheld from the first three intercollegiate contests and the loss of one season of competition. (Affirmed by NCAA Eligibility Committee for Division I.)	
B 13.1.2.1 and 13.2.2-(b)	PSA (men's basketball) received clothing items from SA (student-athlete) host with entertainment money during official paid visit. Assistant coach provided PSA name of former	No.	Eligibility restored.	B 12.1.1	SA (men's soccer) received expenses, signed "trainee" contract and participated in five contests over a two-year period with reserve team of English professional soccer team.	Eligibility not restored. (Affirmed by NCAA Eligibility Committee for Division I.)	
				B 14.5.3.1 and 14.5.3.8	Several SAs (football, wrestling, baseball) competed while ineligible under university policy that was in effect over a period of several years, which allowed credit to be awarded for "D" grades in "C-wall" classes. "D" grades were used toward satisfactory progress requirements even though those credits could not be used toward a degree at institution. As a result, SAs received additional credit for subsequent higher grades upon reenrollment in the same classes.		Eligibility restored after each SA is withheld from number of contests equal to the number each SA participated in while ineligible. (On appeal, the NCAA Eligibility Committee for Division I restored the eligibility after each is withheld from equivalent of 10 percent of the contests in which each participated while ineligible.)
				B 14.5.3.1	Several SAs (baseball, football) competed while ineligible under institutional policy that had been in effect over a period of several years, which allowed for credit to be awarded for "D" grades in "C-wall" courses. "D" grade was used toward satisfactory-progress requirements even though credits could not be used toward a degree at the institution.		Eligibility restored after SA is withheld from number of contests equal to the number each SA participated in while ineligible. (On appeal, the NCAA Eligibility Committee for Division I restored the eligibility after each SA is withheld from the equivalent of 10 percent of contests in which each participated while ineligible.)
				B 15.2.5.3-(b) and 15.2.5.4-(b)	Nonscholarship SA (women's volleyball) received scholarships awards from outside organizations that were not disbursed through the institution. SA endorsed awards directly to institution.		Eligibility restored.
				B 14.8.5.2	SA (men's basketball) participated in three contests in unsanctioned summer basketball league. Head coach required SA to withdraw upon learning of participation.		Eligibility restored after SA is withheld from first regularly scheduled intercollegiate contest of 1990-91 season.
				B 12.5.2.1	SAs' (men's basketball) names were used in local radio station anti-drug promotion spot that implied SAs were endorsing the commercial sponsors. SAs did not authorize use of their names and ads subsequently were taken off the air.		Eligibility restored.
				B 12.2.1.4	SA (men's basketball and football) had tryout during the academic year with representative of professional football team on institution's campus. SA had completed his basketball eligibility and at time of violation, had not considered participating in football during his fifth year at institution. SA was unaware his actions violated NCAA rules.		Eligibility restored.
				B 15.1	SA (wrestling) was over-awarded \$1,541 in financial aid during 1986-87 and 1988-89 academic years.		Eligibility restored upon repayment.
				B 12.1.1-(a)	SA (women's volleyball) received \$100 prize for place-finish in summer volleyball tournament. SA thought awards of up to \$150 were permissible. SA reported violation and repaid money.		Eligibility restored.
				B 13.7.5.4.2	SA (football), a partial qualifier served as a student host during his initial year in residence and received \$10. SA repaid money.		Eligibility restored.
				B 14.8.2	SAs (men's basketball) participated in high school charity slam-dunk contest. Head coach thought contest met provisions of B 12.5.1.1. Institution will withhold SAs from one intercollegiate contest during 1990-91 season.		Eligibility restored.
				B 14.3.2.2.1	During fall 1989, SA (football) received \$1,500 in athletically related aid as a nonqualifier. Institution erroneously believed SA was partial qualifier. SA repaid impermissible aid.		Eligibility restored.
				B 16.12.2.3-(c)	Men's assistant track coach loaned automobile to SAs on one occasion.		Eligibility restored upon repayment of value of use of automobile.
				B 12.5.2.1	SA (ice hockey) modeled in wrestling catalog. SA's name did not appear and he received no compensation. SA self-reported violation.		Eligibility restored after SA is withheld from first intercollegiate contest of the 1990-91 season.
				B 14.2.1	SA (football) chose not to attend institution for one academic year for personal reasons.		Extension request denied.
				B 12.2.3.2 and 12.2.3.2.4	SA (ice hockey) dressed for five regular-season contests with a major junior A hockey team prior to January 11, 1989. SA did not sign a contract or receive compensation.		Eligibility restored after SA is withheld from first five intercollegiate contests of 1990-91 season.

# 29 football players get postgraduate scholarships

Postgraduate scholarships of \$5,000 each have been awarded to 29 football players at NCAA member institutions.

The NCAA annually awards 125 postgraduate scholarships to student-athletes who have excelled academically and athletically and are in their last year of intercollegiate athletics competition.

In addition to the 29 football honorees, the NCAA awards grants to 28 basketball players (14 each for men and women) and to 68 student-athletes participating in sports other than football and basketball (34 each for men and women) in which the NCAA conducts championships.

Of the 29 football scholarships, 10 are awarded to Division I student-athletes; 10 are for Divisions II and III, and the remaining nine are selected at large.

To qualify for an NCAA postgraduate scholarship, a student-athlete must have an overall grade-point average of 3.000 (4.000 scale) or its equivalent and must have performed with distinction as a member of the varsity team in the sport in which the student-athlete was nominated. The student-athlete also must intend to continue academic work beyond the baccalaureate degree as a full-time graduate student. In addition, the student-athlete must have behaved, both on and off the field, in a manner that has brought credit to the student-athlete, the institution and intercollegiate athletics.

Following is a complete list of the 1990 NCAA postgraduate scholarship winners for football:

## Division I

**David William Edeal** (University of Nebraska, Lincoln, 3.905 grade-point average in mechanical engineering)—A starter at center for the nationally ranked Cornhuskers, Edeal was a walk-on before earning an athletics scholarship. He anchored a line that helped Nebraska finish second in the nation in rushing offense. Edeal was selected as a GTE/CoSIDA academic all-America and is a University of Nebraska Board of Regents Scholar. A member of the American Society of Mechanical Engineers, Edeal plans to obtain a master's degree in business administration.

**Donald Wayne Hollas** (Rice University, 3.529 grade-point average in managerial studies/political science)—Hollas set several records as a quarterback at Rice, including most rushing touchdowns by a quarterback and highest completion percentage in a single season. Only the second quarterback in Rice history to gain more than 2,000 total yards in a season, Hollas was named the Associated Press Southwest Conference player of the week once during the 1990 season. Hollas is a GTE/CoSIDA academic all-America selection and was named a National Football Foundation and Hall of Fame Freshman Scholar-Athlete. He was a member of Rice's athletes speakers bureau and was a Special Olympics volunteer. Hollas plans to study advertising or marketing in graduate school.

**John Howard Lavalette** (College of the Holy Cross, 3.556 grade-point average in mathematics/pre-medicine)—Lavalette was one of four student-athletes to receive medical fellowships from the National Football Foundation and Hall of Fame. A starting wide receiver at Holy Cross, Lavalette was vice-chair of the Student Government Association. He also was a member of Pi Mu Epsilon, a national mathematics honor society. Lavalette plans to attend medical school next fall.

**Curtis Tyson Lovelace** (University of Illinois, Champaign, 3.505 grade-point average in business administration)—Lovelace recently was awarded a scholarship to study law from the National Football Foundation and Hall of Fame. A three-year starter at center for Illinois, Lovelace helped guide the Illini to three postseason bowl appearances. He received the Toyota Leadership Award and the Honda Scholar-Athlete Award in addition to being named to the Illinois all-decade team. A member of Alpha Tau Omega fraternity, Lovelace was a volunteer speaker for several campus organizations. Lovelace plans to study law after graduation.

**Michael McGowan** (University of Montana, 3.970 grade-point average in history)—A three-time GTE/CoSIDA academic all-America selection, McGowan was an all-Big Sky performer. McGowan, a starter at outside linebacker, led Montana to the Division



Donald Wayne Hollas



William Scott Musgrave



Michael McGowan

I-AA play-offs his sophomore and junior seasons. He was involved with Young Life Youth Ministries and was a member of the student-athlete advisory board at Montana. McGowan plans to pursue a master's degree in theology.

**William Scott Musgrave** (University of Oregon, 3.460 grade-point average in finance)—Musgrave received a fellowship to study business from the National Football Foundation and Hall of Fame. A two-year starter at quarterback for Oregon, Musgrave broke almost every single-season and career passing record for the Ducks. He was a member of the Golden Key national honor society and was a Honda Scholar Athlete. A Rhodes Scholar nominee, Musgrave was one of 10 finalists for the American Football Coaches Association Coaches Choice Award. He was active with Special Olympics. Musgrave will pursue a master's degree in business administration.

**Huey L. Richardson, Jr.** (University of Florida, 3.100 grade-point average in economics)—A three-year starter at defensive end for Florida, Richardson was one of 12 finalists for the Lombardi Award. He was a first-team all-Southeastern Conference selection. Richardson, a team captain, was active in student government and was a three-time all-Southeastern Conference academic selection. Richardson plans to pursue a master's degree in either business administration, economics or sports administration.

**David Allen Roberts** (Florida State University, 3.544 grade-point average in interpersonal communications)—A starting tight end for Florida State, Roberts holds several Seminole records, including most receptions in a game and most receiving yards in a game. He was a three-time ESPN/Army Scholar-Athlete of the Week and was a Toyota Leadership Award winner. A GTE/CoSIDA academic all-America pick, Roberts was a member of Lambda Chi Alpha fraternity, the Fellowship of Christian Athletes and the Florida State Pre-Law Society. He was active in the Say No To Drugs program and the Volunteer to Read program. Roberts plans to study law after graduation.

**Eric Michael Schweiker** (Fordham University, 3.935 grade-point average in political science)—A four-year starter at center for Fordham, Schweiker was a second-team all-Liberty Conference selection. A team captain, he was a member of Phi Beta Kappa and Phi Kappa Phi, both national honor societies. Schweiker was a Fordham Presidential Scholar and was a member of the Matteo Ricci Society, a cultural and intellectual society. Schweiker plans to pursue a law degree.

**Patrick Henry Tyrance, Jr.** (University of Nebraska, Lincoln, 3.452 grade-point average in biological science)—An all-Big Eight Conference selection at inside linebacker, Tyrance led the nationally ranked Cornhuskers in tackles for the second year. He was one of 11 student-athletes to receive a scholarship from the National Football Foundation and Hall of Fame. A frequent public speaker, Tyrance was a member of the Mortar Board National Honor Society and the Fellowship of Christian Athletes. He was a member of the Big Eight Conference Honor Roll three consecutive years and was a Phillips 66 Big Eight Classroom Champion. Tyrance plans to attend medical school after graduation.

## Divisions II and III

**Scott Louis Boyens** (Augustana College (South Dakota), 3.600 grade-point average in biology)—A starting fullback for Augustana (South Dakota), Boyens ended his career among the school's top 15 leading rushers. Boyens was a member of the Blue Key National Honor Society, was vice-president of the Fellowship of Christian Athletes and was a member of Tri-Beta Biological Society. He was a four-time winner of the Regents Scholarship. Boyens plans to attend medical school next year.

**David Lynne Conn** (Washington and Jefferson College, 3.640 grade-point average in psychology)—Conn recorded eight interceptions as a senior, breaking Washington and Jefferson's school record for career interceptions. He also owns the school standard for pass breakups. A three-time all-conference pick, Conn was voted his team's most valuable player and team captain. He received the Paul L. Reardon Award, recognizing excellence in academics and athletics. He was a member of the Pre-Law Society,

the Psychology Club and the Christian Youth Association. Conn plans to study law after graduation.

**Anthony Leon Cooley** (North Carolina Central University, 3.270 grade-point average in biology)—A three-year letter winner at tight end, Cooley was a two-time all-Central Intercollegiate Athletic Association selection. He led North Carolina Central to the Division II play-offs in 1988. Cooley was selected as his school's most outstanding male junior and received the Ross B. Townes Award for excellence in athletics and academics. A member of the U.S. Naval Reserve, Cooley also participated in indoor and outdoor track for North Carolina Central. Cooley plans to pursue a master's degree in an animal research field.

**John Reginald Freda** (U.S. Coast Guard Academy, 3.680 grade-point average in mathematical and computer science)—Freda was a four-year letter winner at defensive tackle for Coast Guard. He was a member of the Big Brothers/Big Sisters program and was a Dean's List member from 1987-90. In addition to playing football, Freda was a member of the track and field team, finishing fifth in the hammer throw at the Connecticut Intercollegiate Conference outdoor meet and sixth in the 35-pound weight throw at the ECAC indoor meet. Freda plans to pursue a postgraduate degree in operations research.

**Robert Ernest Hackney** (Hamline University, 3.520 grade-point average in English and economics)—An all-conference first-team selection at quarterback, Hackney holds several Hamline passing records, including most completions in a season and most passing yards in a game, a single season and a career. Hackney was selected as the Minnesota Intercollegiate Athletic Conference offensive player of the week three times and twice was named Football Gazette's NCAA regional player of the week. A member of Pi Gamma Mu, Hackney was a resident adviser and a member of his school's dorm council. In addition to playing football, Hackney participated in track and field, throwing the javelin. Hackney plans to study American literature after graduation.

**Michael Anthony Hoffman** (Muhlenberg College, 3.989 grade-point average in biology and natural sciences)—Hoffman was a three-year starter at defensive back for Muhlenberg. He was a member of the Centennial Football Conference academic honor roll and was a GTE/CoSIDA academic all-America selection twice. A member of Phi Kappa Tau fraternity, Hoffman received the Maude Wright Scholarship and the Todd L. Romig Award, recognizing him as the best junior scholar-athlete. Hoffman lettered in baseball and was a second-team all-conference selection. Hoffman plans on attending medical school after graduation.

**Thomas Jay Langer** (University of Northern Colorado, 3.950 grade-point average in computer science)—As starting outside linebacker, Langer led Northern Colorado to its first Division II play-off berth since 1980. He led the team in tackles and was an all-North Central Conference first-team selection. A member of the Mortar Board National Honor Society and a Special Olympics volunteer, Langer received the Presidential Academic Scholarship and the Adolph Coors Academic Athlete Scholarship. He was recognized as a departmental scholar and as the Outstanding Computer Science Senior of the Year. Langer plans to obtain a master's degree in computer science.

**James Brian Meek** (Case Western Reserve University, 3.590 grade-point average in computer engineering)—A starting split end for Case Reserve, Meek led his team in receptions and reception yardage as a junior. He was a first-team all-conference selection and a Football Gazette honorable mention all-America pick last year. A member of the Dean's List every semester, Meek was a member of Tau Beta Pi, the professional engineering society. Meek has begun a master's program in computer engineering at Case Reserve.

**Robert Vincent O'Toole** (Carnegie Mellon University, 3.970 grade-point average in mechanical engineering)—A first-team GTE/CoSIDA academic all-America selection, O'Toole was an honorable mention all-America pick during his junior season. A starting inside linebacker, O'Toole led his team in tackles two seasons. He was presi-

dent of Beta Theta Pi fraternity and was recognized as an Andrew Carnegie Scholar. O'Toole plans to study biomedical engineering or enter medical school after graduation.

**Darcy Dion Prather** (Massachusetts Institute of Technology, 4.600 grade-point average (on a 5.000 scale) in electrical engineering and science technology and society)—A Rhodes Scholar, Prather was a National Football Foundation and Hall of Fame Scholar-Athlete. As a starting inside linebacker for MIT, Prather broke 10 school records, including most unassisted tackles, most assisted tackles, most tackles in a game and most tackles in a season. Prather was an all-Eastern Collegiate Football Conference first-team selection and was conference player of the week. He was recognized by Pizza Hut as a Division III honorable mention all-America. Prather was a member of the National Society of Black Engineers and received the American Telephone and Telegraph Distinguished Scholar Award. Prather plans to pursue a master's degree in technology and policy.

## At large

**Kevin Donnalley** (University of North Carolina, Chapel Hill, 3.361 grade-point average in economics)—Donnalley was one of 11 student-athletes to receive a scholarship from the National Football Foundation and Hall of Fame. As a starting offensive tackle, Donnalley started every game at North Carolina. He was named to the Japan Bowl team, the Blue-Gray Bowl team and the Senior Bowl squad. He was appointed as a legislative assistant to the North Carolina Department of Transportation for two summers. He was an Atlantic Coast Conference all-academic selection and a GTE/CoSIDA academic all-district member. Donnalley plans to pursue a master's degree in business administration.

**White Solomon Graves** (Louisiana State University, 3.593 grade-point average in zoology)—Graves was one of 11 student-athletes to receive a scholarship from the National Football Foundation and Hall of Fame. As a quarterback for Louisiana State, Graves was named his team's offensive player of the game after the Georgia contest. A member of Omicron Delta Kappa, a national leadership society, Graves co-authored a scientific paper presented to the American Ornithologists Union. He was a member of the Alpha Epsilon Delta pre-medicine honor society and has been a guest speaker at several community events. Graves will study medicine at Louisiana State University.

**Christopher Bernard Howard** (U.S. Air Force Academy, 3.700 grade-point average in political science)—Howard was the first recipient of the Draddy Graduate Fellowship, a grant from the National Football Foundation and Hall of Fame. As a starting halfback for Air Force, Howard was named to the first-team all-Western Athletic Conference academic squad. A class president, Howard was also a wing sergeant major, responsible for the morale and training of 3,000 cadets. Howard was selected to work with the House Armed Services Committee during a summer research program. Howard plans to pursue a master's degree in public policy.

**Patrick John Jackson** (Bowling Green State University, 3.960 grade-point average in production and operations management and procurement and materials management)—A starting tight end for Bowling Green, Jackson was a member of Omicron Delta Kappa and Golden Key National Honor Society. He received the Mid-American Conference Commissioner's Award and the Bowling Green State President's

Award. Jackson was a first-team academic all-America his senior year and a second-team selection as a junior. Jackson plans to enroll in a master's of business administration program.

**Vincent John Mooney** (Yale University, 3.480 grade-point average in electrical engineering and computer science)—Mooney was a two-year letter winner at center and offensive guard for Yale. He worked the past three summers as an intern in the American Telephone and Telegraph Bell Laboratories Engineering Scholarship Program. Mooney was a member of Yale Students for Life and was a contributing writer to the Yale Political Magazine. Mooney plans to study computer engineering after graduation.

**William Todd Sandroni** (University of Mississippi, 3.530 grade-point average in pharmacy)—A four-year letter winner at safety for Mississippi, Sandroni was a GTE/CoSIDA academic all-America selection. He led the Southeastern Conference in interceptions two years in a row. Sandroni was a member of the NCAA's Student-Athlete Advisory Committee and the Fellowship of Christian Athletes. A Special Olympics volunteer, Sandroni was a member of Omicron Delta Kappa leadership society. Sandroni plans to obtain a master's degree in business administration.

**Michael Shawn Sawatzky** (University of Oklahoma, 3.590 grade-point average in management)—Sawatzky was named to the GTE/CoSIDA academic all-America team and was a three-time member of the first-team all-Big Eight academic squad. A starting offensive guard, Sawatzky was named first-team all-Big Eight by United Press International. He won the Toyota Leadership Award during the Nebraska contest. Sawatzky was a member of the University of Oklahoma Leadership Program and Beta Gamma Sigma. Sawatzky plans to study business management in graduate school.

**Reginald Daniel Sharley** (University of Dayton, 3.490 grade-point average in communications and journalism)—As a starting quarterback for Dayton, Sharley holds several school passing records, including single-season passing efficiency. Sharley was instrumental in leading Dayton to the Division III national championship during his junior year. He was a charter member of the Golden Key Honor Society and was a member of the Religious Awareness Group. Sharley received the John L. MacBeth Scholarship Award, recognizing him as the football player with the highest grade-point average through two years. Sharley plans to study law after graduation.

**Michael Gerard Sullivan** (University of Miami (Florida), 3.145 grade-point average in business management and organization)—A four-year starter at offensive guard for Miami (Florida), Sullivan's team finished fifth in total offense during the 1990 season. Sullivan received the Iron Arrow award, the highest honor at the University of Miami. He was a senator in student government and was a volunteer for Special Olympics. Sullivan was a member of Omicron Delta Kappa and received the Toyota Leadership Award twice. Sullivan will pursue a master's degree in business administration at Miami (Florida).

## Alternates

Charles George Gillingham, Stanford University; Craig Edwin Irons, Washington and Lee University; William Rowland Jones, III, Hampden-Sydney College; John Michael Tokish, U.S. Air Force Academy.

## Big field expected

World University Games officials predicted December 12 that next year's event will attract a record 6,000 competitors.

With four months to go before the closing date, 70 nations with 4,000 competitors have entered.

Officials said the final total will pass the 5,573 record set in Zagreb, Yugoslavia, three years ago.

The United States has entered the biggest team—420 to compete in the 11 sports.

The games will be held July 14 to 25 in Sheffield, England.

## The Athletic Employment Hotline

Coaches (Men's & Women's Sports)  
Athletic Administration  
Trainers  
Graduate Assistants

**Call 1-900-454-4JOB**

\$2.00 first minute. \$1.00 each additional minute.

# The Market

Readers of The NCAA News are invited to use The Market to locate candidates for positions open at their institutions, to advertise open dates in their playing schedules or for other appropriate purposes.

Rates are 55 cents per word for general classified advertising (agate type) and \$27 per column inch for display classified advertising. Orders and copy are due by noon five days prior to the date of publication for general classified space and by noon seven days prior to the date of publication for display classified advertising. Orders and copy will be accepted by mail, fax or telephone.

For more information or to place an ad, call Susan Boyts at 913/339-1906 or write NCAA Publishing, 6201 College Boulevard, Overland Park, Kansas 66211-2422, Attention: The Market.

## Positions Available

### Associate A.D.

**Associate Athletic Director for External Affairs.** Under the general direction and supervision of the Director of Athletics, the Associate Athletic Director will have overall management responsibility for the Athletic Advancement program and all programs with external constituencies. Other administrative duties may be assigned. Responsibilities include: Long- and Short-Term Planning, Athletic Revenue Producing Programs, Fund Raising, Merchandising, Marketing and Promotions, Athletic Advertising, Sponsorship Program, Sports Information, Alumni Affairs, Media Relations, Corporate/Public Relations, Relationship with External Constituencies. Provide a liaison function with appropriate University offices. The Associate Athletic Director will be responsible for the development, implementation and evaluation of the program and support staff. Qualifications include: Bachelor's Degree required. Experience in Fund Raising required. Experience in Athletic Administration or Intercollegiate Athletics preferred. Familiarity with Division I Program preferred. Management experience (or direct experience) in other advancement areas preferred (e.g. Marketing/Promotions, etc.). Consideration may be given to candidates with no experience in athletic fund raising if applicant possesses experience in the private business sector. Salary: Commensurate with experience and educational background. Application Deadline: Application accepted until position is filled. Send letter of application, resume, and transcripts to: Ms. Susie Lofton, Human Resources Manager, San Jose State University, One Washington Square, San Jose, CA 95192-0046.

### Assistant A.D.

**Assistant Athletic Director for Business Affairs.** Under the general direction and supervision of the Director of Athletics, the Assistant Athletic Director for Business Affairs will be responsible for the management of departmental fiscal matters and for the operation of the Athletic Business Office. Other administrative duties may be assigned. The responsibilities of the Assistant Athletic Director for Business Affairs include the following: Monitor fiscal integrity of athletic program, financial administration, prepare, monitor and evaluate the athletic budget, ticket operation, purchasing, athletic personnel program, team travel, financial aid program, office automation and computerization, department planning, provide a liaison function with appropriate university offices. The Assistant Athletic Director will be responsible for the development, implementation and evaluation of the program and support staff. Qualifications include: Bachelor's Degree required, experience in working with computerized information system required (e.g. data base, etc.), experience in athletic administration or intercollegiate athletics preferred, experience as an Athletic Business Manager at the Division IA level preferred, effective communication skills required, ability to manage various projects simultaneously. Salary: Commensurate with experience and educational background. Application Deadline: Applications accepted until position is filled. Send letter of application, resume, and transcripts to: Ms. Susie Lofton, Human Resources Manager, San Jose State University, One Washington Square, San Jose, CA 95192-0046.

### Athletics Trainer

**Assistant Athletic Trainer.** Creighton University seeks a person for the position of Assistant Athletic Trainer. This is a ten-month position

in an NCAA Division I Athletics program. Job Responsibilities include: 1. The prevention and care of athletic injuries for all sports at Creighton University. 2. Travel with the Women's Basketball, Softball and occasionally the Soccer team. 3. Maintain accurate and up-to-date injury records and daily correspondence with the coaching staff. 4. Teach and supervise student athletic trainers in an internship athletic training program. 5. Assist the head athletic trainer and team physician in the administration of a drug testing and education program. 6. Perform all duties as assigned by the head athletic trainer. Minimum Requirements: 1. Master's Degree. 2. NATA Certification. 3. Licensed in the State of Nebraska or eligible. Application Deadline: January 1, 1991. Effective Date: February 1, 1991. Please send a letter of application, resume, three letters of professional recommendation, and transcripts to: Steven C. Brice/Head Athletic Trainer, Creighton University, 2400 California, Omaha, NE 68178. Phone: 402/280-1793. Creighton University is an Equal Opportunity Employer.

**Campbell University** is looking for a person to serve as Head Athletic Trainer. A Bachelor's degree is required (Master's preferred). Responsibilities consist of directing the athletic training program for 14 sports, recruit and supervise student trainers, serve as liaison with team doctor and teach sports medicine class. Campbell University is a rural church-related school, located between Raleigh and Fayetteville, N.C. The athletic program is NCAA Division I and a member of the Big South Conference. Salary is commensurate with experience. Starting date 1/7/91. Send letter of application, resume, and three references to: Wendell L. Carr, Athletic Director, Campbell University, P.O. Box 10, Buies Creek, NC 27506.

**Physical Therapist/Athletic Trainer.** The Sports Medicine Section of the Student Health Service at the University of North Carolina is seeking a physical therapist/athletic trainer to assist with the athletic training coverage for the Tar Heel athletic teams and provide physical therapy care to the student body. Salary range is \$26,000-\$29,000 plus fringe benefits. Applicants must be eligible for N.C. Physical Therapy Licensure, and Sports Certified Specialist, or NATA Certified Athletic Trainer. Applicants should send a letter of application, curriculum vitae, letters of recommendation and placement folders by February 1, 1991, to: Chairperson: Physical Therapist/Athletic Trainer Search Committee, Charlene M. Justice, Personnel Representative, Student Health Service Bldg. 469H, CB #7470, University of North Carolina, Chapel Hill, NC 27599. An Equal Opportunity/Affirmative Action Employer. Women and minorities are encouraged to identify themselves.

**Athletic Trainer.** Full-time, 36-week position at St. Louis Community College at Meramec. Provides care for injured athletes; provides preventive therapeutic services; coordinates physical examinations; maintains appropriate patient records; manages training room. Requires a Bachelor's degree. Certification by NATA, First Aid and CPR Instructor's Certificate and one year of relevant full-time experience. Min. \$16,277 for 36 wks. Resume and cover letter must be received by closing date of January 15, 1991, at the St. Louis Community College, Human Resources Dept. 300 S. Broadway, St. Louis, MO 63102. For further information, call Robert Botterger at 314/984-7791; FAX: 314/539-5170. Equal Opportunity/Affirmative Action Employer.

**Assistant Athletic Trainer/Instructor**—One position at small State University. Required: National Athletic Trainer's Association Certification, at least bachelor's in HPER and/or Athletic Training or related area. Desirable: Appropriate master's, athletic training experience. Primary responsibilities: Teaching and working with athletic training program at University with fieldwork in area high schools. Minority applications encouraged. Send letter, vita, transcripts of all college work, at least three current letters of recommendation by February 11, 1991, to: Dean James H. Paternos, Livingston University, Livingston, Alabama 35470. Equal Opportunity Employer. Head Athletic Trainer: Hunter College is seeking

ing an NATA Certified Athletic Trainer. Immediate opening. Responsibilities include treatment and rehabilitation of athletic injuries, coordination and education of the student-trainers, ordering supplies, and following up on insurance claims. Liaison to team physician and hospital. B.A. degree required—12-month position. Salary commensurate with experience. Send resume to: Terry Wansant, Acting Athletic Director, Hunter College, 695 Park Avenue, New York, NY 10021. EOE/AA.

**Assistant Athletic Trainer**—University of Redlands. Responsibilities: Part-time position will assist head trainer, assist in home and away event coverage as assigned, assist with supervision of student trainers and injury rehabilitation. Nine-month stipend with additional salary added for a coaching assignment; preferably assist spring sport (track or other). Salary Range: \$8,000-\$10,000. Tuition remission also available for graduate studies. Qualifications: Athletic training experience in a variety of sports. Should possess or be eligible for NATA certification. Bachelor's degree in physical education, sports medicine or related field. Coaching background helpful. Starting Date: February 1, 1991, or sooner. Send resume and list of references to: Greg Sarzecka, Director of Athletics, P.O. Box 3080, Redlands, CA 92373-0999. Applications will be accepted until position is filled. University of Redlands is a private co-educational university and is a member of NCAA Division III and the Southern California Intercollegiate Athletic Conference. University of Redlands is an Equal Opportunity, Affirmative Action Employer and encourages women and minorities to apply.

## Development

**Counselor for Learning Development.** Responsibilities: Counsel student-athletes on a regular basis, review their academic performance and progress. Must coordinate program for learning differences, study skills and have the ability to comprehend, diagnose, and prescribe to students with learning differences. Qualifications: Minimum Bachelor's Degree/Preferable Counseling/Guidance, Education. Experience Preferred/Part-time position. Send letter of application, resume, academic background to Cathy Beene, Asst. Athletic Director, University of Houston, 3855 Holman, Houston, Texas 77204-5121. The University of Houston is an Affirmative Action, Equal Opportunity Employer. Deadline: January 1, 1991.

**Assistant Director of Development/Athletics**—The University of Pittsburgh is seeking an Assistant Director of Development/Athletics for the Pitt Golden Panthers to assist in the administration of internal operations and provide support in all aspects of athletics fund-raising. The Assistant Director of Development/Athletics will supervise and direct office staff and internal operations in the absence of the Director of Development for Athletics. A Bachelor's Degree and prior fund-raising experience are required. Salary is commensurate with qualifications and experience. Applications should be sent to Mike O'Brien, Director of Development for Athletics, Pitt Golden Panthers, University of

Pittsburgh, P.O. Box 7436, Pittsburgh, PA 15213. Application deadline is January 16, 1991. The University of Pittsburgh is an Equal Opportunity/Affirmative Action Employer.

## Marketing

**Marketing and Promotions.** Western Michigan University is seeking a Director of Promotions and Licensing for the Athletic Department. This position is a full-time, 12-month appointment. Requirements: (1) Bachelor's degree (Master's preferred). (2) Excellent oral and written communication skills. (3) Two years' experience in marketing, promotion, communication, journalism. (4) Knowledge or experience in trademark licensing procedures, including legalities, familiarity with product manufacturing and merchandising techniques and working knowledge of retail sales operations. (5) Knowledge of NCAA rules and regulations. The deadline for receipt of applications is Dec. 31, 1990. Applicants should send a letter of application and a resume to: Dr. Leland Byrd, Director of Athletics, Western Michigan University, Kalamazoo, MI 49008. Western Michigan University is an Affirmative Action/Equal Opportunity Employer.

## Sports Information

**Sports Information Director**—The Trans America Athletic Conference invites applications for appointment as Sports Information Director. This is a full-time, twelve-month appointment. Responsibilities: 1. Prepare brochures, media guides, news releases, newsletters, programs, flyers, and other written materials relative to men's and women's athletic programs. 2. Administer system of files, reference materials, statistics, results, and records for athletic programs. 3. Coordinate media-related events. Qualifications: 1. Bachelor's degree or equivalent with demonstrated leadership, organizational, and writing ability. 2. Two years' experience in sports information. 3. Familiarity with word-processing and computer information systems. Salary: Commensurate with experience. Position Available: February 1, 1991. Application Procedure: Send letter of application, resume, writing/work samples and other relevant materials to: Commissioner Lou McCullough, Trans America Athletic Conference, 337 S. Milledge Ave., Suite 200, Athens, GA 30605. Application Deadline: January 15, 1991.

**Sports Information Director.** Position available at Allegheny College to support one of the nation's top Division III programs. Twelve of 20 Gator teams have been nationally ranked in the last five years, winning conference titles in 11 sports. Ideal candidate will have a bachelor's degree, experience in sports information and appreciation of athletics' role in an excellent liberal arts college. Strong writing, editing and organizational skills are required, with knowledge of print production techniques and microcomputer applications. Experience with desktop publishing will be a plus. The SID supervises up to six student writers and statisticians and reports to the

Director of Public Information. Candidates should be available to begin work by Feb. 15. Send letter of application, resume, work samples, and names of three references to: Michael Debraggio, Director of Public Information, Allegheny College, Meadville, PA 16335. Review of applications will begin on Jan. 2, 1991. Allegheny is an Equal Opportunity Employer.

## Baseball

**Baseball Coach/Physical Education Instructor.** Master's and experience required. Training in physiology/kinesiology preferred. Responsibilities include teaching, coaching, and advising students. LeTourneau University is an independent evangelical Christian university and seeks trained professionals who possess a maturing Christian faith and are committed to the mission of an evangelical residential, Christian university. Send resume to: Dr. H. Glenn Sumrall, Vice-President for Academic Affairs, LeTourneau University, P.O. Box 7001, Longview, TX 75607-7001.

## Football

**Athletics/Football:** Four (4) positions for Assistant Football Coach/Instructor at small State university. Required: master's in HPER or related field with a minimum of 18 semester hours in field; one position may be filled with bachelor's degree only as an administrative assistant. Responsibilities: coaching, recruiting, and some teaching. Minority applications encouraged. Send letter, vita, all college transcripts, and at least three current letters of recommendation by January 3, 1991, to: Dr. Jim Pate, Director of Athletics, Livingston University, Livingston, Alabama 35470. No consideration will be given to incomplete applications. Equal Opportunity Employer.

**Head Football Coach.** Johnson C. Smith University is now accepting applications for a full-time Head Football Coach position; JCSU is an NCAA Division II and CIAA Conference Member. Qualifications: Graduation from an accredited college or university with a Bachelor's Degree and/or Master's Degree Preferred in related field. Minimum two years' coaching experience at the College Level (High School will be considered). Knowledge of NCAA and CIAA regulations. Demonstrated coaching and recruiting ability. Ability to communicate effectively with students and athletes, willingness to have as a primary goal, the academic well-being of the student-athletes. Primary Responsibilities: Planning, organizing, and managing a Division II football program within the guidelines established by the University, the NCAA and the CIAA Conferences. Recruiting student-athletes, scheduling football games, and preparing the team for competition in high level Division II football. Promote the educational well-being of all student-athletes. Participate in University and Athletic Department public relations and participate in various activities to help market

the athletic program. Head Football Coach will report directly to the Athletic Director. Other duties as assigned. Application Procedure: Send letter of application and resume, including references to: Eddie McGirt, Chairperson-Athletic Nominating Committee, Athletic Department, Johnson C. Smith University, 100 Beatties Ford Road, Charlotte, NC 28216. Office Number: 704/378-1072. Fax Number: 704/378-1084. Deadline for Application: December 18, 1990. An Affirmative Action/Equal Opportunity Institution.

**Assistant Men's Football Coach.** The Ohio State University, Columbus, Ohio. Qualifications: Bachelor's degree required along with three letters of recommendation. Coaching experience at the collegiate level in football. Division I coaching experience helpful. Responsibilities: Must be able to recruit qualified student-athletes in the context of the rules, regulations and the philosophy of the University, Big Ten and NCAA. Candidates should have experience in planning practice, recruiting, and other related duties. Duties: Assists Head Coach in the instruction of athletes in fundamentals and rules. Assists in selection of players for positions on team and coaches techniques of the game. Recommends courses of action for game strategy and performs other specific duties as may be assigned by head coach. Comes out recruiting assignments as required. Monitors academic progress of athletes. Scouts other schools (opponents). Salary: Commensurate with experience and ability. Full-time position, 12 months per year. Send application to: Bill Myles, Athletic Department, The Ohio State University, Rm. 230—St. John Arena, 410 Woody Hayes Drive, Columbus, Ohio 43210. Affirmative Action/Equal Opportunity Employer.

**Head Football Coach**—(GA368) Heads team of assistant coaches, student-athletes and auxiliary staff in development of football program. Guides and instructs team. Provides leadership during athletic events. Coordinates developmental clinics and summer camp. Recruits qualified student athletes. Makes public appearances and assists in promotional and public relations endeavors. Oversees assigned budget. Qualifications: Graduate of college/university with background in physical education/related field or equal combination of training/coaching/professional playing experience. Must have advanced degree; or training/work experience at a level that equates to an advanced degree. Ability to manage a football program within institutional, Central Intercollegiate Athletic Association and National Collegiate Athletic Association rules and regulations. Salary commensurate with education and experience. Appointment Date: 1/91. Submit resume, official transcripts, three letters of reference by 12/28/90 or first of each month thereafter until filled. Apply to: Virginia State University, Office of Human Resources, Box PP, Petersburg, VA 23803.

**Head Football Coach.** Northwestern College (Minnesota) has an opening for a Head Football Coach with a desire to develop a

See The Market, page 15

## HEAD FOOTBALL COACH Marietta College

Marietta College seeks qualified applicants for the position of Head Football Coach. Duties will include coaching and administering the NCAA Division III, Ohio Athletic Conference, football program. Candidates must have previous successful head coaching experience at the high school and/or college level and the ability to recruit quality student-athletes. Bachelor's degree required, master's degree preferred. Salary for this full-time, ten-month position will be commensurate with experience and qualifications. Review of applications will begin January 12, 1991, but applications will be accepted until the position is filled. Send letter of application, resume and three letters of professional recommendation to:

Debora Lazorik  
Director of Athletics  
Marietta College  
Marietta, OH 45750-3031

MARIETTA COLLEGE is an Affirmative Action Educator and Employer. Women and Minorities are encouraged to apply.

## Carthage Head Swimming Coach Aquatics Director

Carthage seeks a dynamic and inspiring coach to develop a competitive intercollegiate men's and women's swimming program. Competing in the College Conference of Illinois and Wisconsin (CCIW), Carthage is committed to athletics and academic excellence.

The duties of the coach focus on effective recruiting and teaching of student-athletes.

The position carries with it the rank of Lecturer in Physical Education, and additional job responsibilities include management of the Seidemann Natatorium, supervision of lifeguards and instruction in the W.S.I. program.

Located on the shore of Lake Michigan midway between Chicago and Milwaukee, Carthage offers quick urban access from the relaxed environment of a small city. Salary and benefits are competitive and attractive.

Starting date is projected to be in the spring of 1991. Please submit nominations and applications, with references to: Kevin F. McCarthy, Director of Athletics, Carthage College, Kenosha, Wisconsin 53140.

## NOTICE OF VACANCY Heidelberg College

**POSITION TITLE:** Men's Cross Country/Men's & Women's Track Coach.

**CATEGORY:** Full-Time/10 Months with Benefits.

**DEPARTMENT:** Athletics.

**SALARY:** Heidelberg College is seeking a qualified individual to coach and direct the Men's Cross Country and Men's & Women's Track Program. Master's degree is required. Previous college coaching experience. Experience in recruitment, promotions, public relations, scheduling, and supervision of assistants. Teaching involves instruction in the H&PE majors program.

**APPLICATION PROCEDURE:** Send letter of application, resume and listing of professional references to:

John D. Hill  
Director of Athletics  
Heidelberg College  
310 E. Market St.  
Tiffin, OH 44883

The search will remain open until the position is filled. The application deadline is January 1, 1991, however, the committee will begin reviewing applications immediately. Heidelberg College is a committed Equal Opportunity/Affirmative Action Institution.

## EARLHAM COLLEGE

### Head Coach Women's Soccer and Lacrosse

Earlham College, a selective, private, coeducational liberal arts college of approximately 1,200 students, seeks a head coach for women's soccer and lacrosse. Intercollegiate coaching experience is desired; a master's degree is preferred. Teaching in the activity program is required. Other duties will be assigned according to interests, expertise, and needs of the department. Applications will be reviewed beginning January 9, 1991. Send letter of application, resume, three current letters of recommendation, and transcripts to:

Porter Miller  
Athletic Director  
Earlham College  
Richmond, IN 47374

As a Quaker college committed to Affirmative Action/Equal Employment Opportunity, Earlham especially encourages applications from women, racial minorities and Quakers.

## JERSEY CITY STATE COLLEGE

### Head Women's Softball and Volleyball Coach

FULL-TIME (12 MONTHS)

Responsible for the organization, administration and development of the women's softball and volleyball programs (NCAA Div. III) including recruitment/retention of student-athletes, promotion of an effective public relations program, fund-raising and knowledge of NCAA rules. Additional assignment(s) in a needed support service in the Athletic Department. Responsible to the Director of Athletics.

**Minimum Qualifications:** bachelor's degree required, master's preferred. Successful volleyball and softball coaching experience on the secondary and/or collegiate level. Demonstrated organizational and communication skills. Employment Date: February 18, 1991. Salary Range: \$27,362.54-\$38,316.38.

Please submit letter of application, resume and three (3) current letters of reference by January 9, 1991, to: Lawrence R. Schiner, Director of Athletics, Jersey City State College, 2039 Kennedy Boulevard, Jersey City, New Jersey 07305-1597.

AA/EOE



## The Market

Continued from page 14

strong football program in a Christian College setting. The Coaching position is a 12-month position and approximately .33 FTE; the other .67 FTE of the responsibility may include teaching or Athletic Director. Minimum education is a master's degree and must have at least five years of significant coaching experience. Northwestern College is a nondenominational Evangelical Christian College of about 1,110 students. The candidate must have an understanding and acceptance of Northwestern's Doctrinal Statement and Standard of Conduct. Qualified persons should send letter application and resume to Dr. David G. Ondercin, Vice President for Academic Affairs, Northwestern College, 3003 N. Snelling Avenue, Roseville, MN 55113.

### Lacrosse

**Women's Lacrosse, Interim Head Coach.** Muhlenberg College has an immediate opening for a Women's Lacrosse Coach/Lecturer in Physical Education. This faculty assignment for the spring '91 semester is to replace the present coach during a leave of absence. Candidates with a Master's Degree are preferred. Extensive coaching/playing experience is required. A background combining Field Hockey with Lacrosse experience would be beneficial. Teaching ability-oriented courses included. Please call, 215/821-3380 and send resume to: Ralph Kirchenheiter, Athletic Director, Muhlenberg College, Allentown, PA 18104. Muhlenberg is an Equal Opportunity Employer.

### Soccer

**Head Men's Soccer Coach, Syracuse University.** Full-time, 12-month position. Provide leadership, organization and administration for all phases of a competitive men's soccer program, including but not limited to scheduling, recruiting, conditioning, budget preparation, promotion and public relations. Qualifications: Bachelor's degree, Master's preferred; three-four years' successful college coaching experience in soccer or equivalent; ability to recruit highly skilled soccer players who meet university academic standards; ability to relate to and communicate with student athletes; knowledge of NCAA regulations; strong organizational skills. Send letter of application, resume and three letters of recommendation, by January 11, 1991, to: Office of Human Resources, Skytop Office Bldg., Syracuse University, Syracuse, NY 13244. AA/EOE.

### Softball

**Part-Time Women's Softball Coach.** Immediate opening. The athletic program is accepting applications from individuals to organize and administer the women's softball team. This includes recruiting, managing and coaching. Bachelor's degree and prior coaching experience required. Starting Date: January 15, 1991. Send resume and three letters of recommendation to: Terry Wansart, Athletic Director, Hunter College, Athletic Department, 695 Park Avenue, New York, New York 10021. AE/EO Employer.

### Swimming

**Head Coach, Men's Swimming.** Harvard Uni-

versity invites applications for a full-time, nine-month position as head coach of Men's Swimming. The head coach is responsible for the development, organization and management of all phases of the intercollegiate swimming and diving program for men. Duties include recruiting, fund-raising and supervision of support staff. Will also assist the Director of Aquatics in the conduct of the total aquatics program. Additional administrative duties may be assigned. Qualifications: Baccalaureate degree required; five years' coaching experience desired with high level competitive swimmers; collegiate coaching experience preferred. Must be able to communicate effectively and recruit within the Ivy League philosophy. Good background in aquatics programs desirable. Salary commensurate with previous experience. Application deadline is 8 February 1991. Please send letter of application and resume to Ms. Patricia W. Henry, Associate Director of Athletics, 60 JFK Street, Harvard University, Cambridge, Massachusetts 02138. Harvard University is an Equal Opportunity and Affirmative Action Employer.

### Track & Field

**Assistant Coach of Men's and Women's Track & Field.** Responsible for coaching of sprints, hurdles, and relays; meet management, fund-raising, scouting, recruiting, and assisting in all facets of the MU Track & Field program. Bachelor's degree, previous college coaching, and competitive experience are desirable. Normal dates of employment: Oct. 15-June 1. Salary for this position is \$2,000. Send letter of intent, resume, and three (3) references (name, address, & phone number) to Human Resources Department, G-1 Alumni Hall, Mansfield University, Mansfield, PA 16933. Refer to Position C-18. Deadline date for application is February 1, 1991. Mansfield University is an Affirmative Action Employer and encourages the applications of women, minorities, and the handicapped.

### Volleyball

**Women's Head Volleyball Coach.** Qualifications: Demonstrated successful college coaching and recruiting experience of at least three years. Bachelor's Degree required. Must have a good working knowledge of NCAA Rules and Regulations. Responsibilities: Coaching and recruiting of student-athletes in accordance with Big Sky Conference and NCAA guidelines. Includes, but is not limited to, scheduling, budget management, marketing the program, supervision of off-season programs. Salary: Dependent upon qualifications and experience. Starting Date: January 15, 1991. Application: This is a full-time non-tenure track position. Potential candidates are requested to submit a letter of application, list of references, and a resume by January 2, 1991, to: Angela Taylor, Primary Women's Administrator, Athletic Department, Old Gym, University of Nevada, Reno, Nevada 89557. The University of Nevada is an Equal Opportunity/Affirmative Action Employer and does not discriminate on the basis of race, sex, or creed in any program or activity and encourages the employment of minority groups and women. The University of Nevada employs only U.S. Citizens and aliens lawfully authorized to work in the United States.

### Physical Education

**Physical Education/Athletics - Vassar College.** Full-time, tenure track, faculty/coach position. Head coach of men's and women's varsity swimming teams in competitive Division III program, beginning August 1991. Teach physical education aquatics courses for credit. WSIT and LGIT certification pre-

ferred. Master's degree and college coaching experience or equivalent required. Women and minority candidates are encouraged to apply. Send resume and three letters of recommendation by March 1, 1991, to: Roman Czula, Chair, Box 132, Vassar College, Poughkeepsie, NY 12601. AA/EOE.

**San Francisco State University.** Department of Physical Education has two full-time positions available for 1991-92: Assistant Football Coach (Offensive Backs) (\$27,708-\$36,420) and Head Women's Basketball Coach (\$33,192-\$58,116). Bachelor's degree required, master's degree preferred. Teaching competencies must include intermediate level in at least two activity areas and breadth at the beginning level. Prefer at least one degree in physical education, ability to work in professional environment, teach and coach successfully among diverse ethnic populations, and recruit student-athletes into a non-scholarship athletics program. Assistant Football position available August 1, 1991, application screening begins February 5, 1991. Head Women's Basketball position available September 1, 1991, application screening begins February 15, 1991. Applicants submit letter, vitae, and names, addresses and phone of three references to: Dr. Robert House, Chair, Department of Physical Education, SFSU, 1600 Holloway, San Francisco, CA 94132. Affirmative Action/Equal Opportunity Employer.

**Sport Management, Georgia Southern University.** Tenure track. Assistant professor. Teach graduate and undergraduate courses in Sports Management, pursue research, and advise students. Earned doctorate in Sport Management required at time of appointment, work experience in sport industry preferred. Candidates should possess expertise in facility management and sport marketing. Application deadline is March 15, 1991. Starting date is September 10, 1991. Contact: Patrick R. Cobb, Search Coordinator, Georgia Southern University, LB 8076, Statesboro, GA 30460-8076. Affirmative Action/Equal Opportunity Institution. Georgia is an Open Records State.

### Graduate Assistant

**Graduate Assistant - Women's Basketball.** The ideal candidate will possess a Bachelor's degree, coaching experience, familiarity with conditioning programs, recruitment process and camps. Excellent organizational skills. Interested candidates should submit a resume and three letters of reference to the Director of Personnel, Niagara University, Niagara University, NY 14109. Niagara University is an Equal Opportunity/Affirmative Action Employer.

**Graduate Assistantships - University of Redlands.** Available in men's and women's track and cross country, tennis and athletic training. Responsibilities for each sport will include coaching, recruiting and related duties as assigned by the head coach. Qualifications: Bachelor's degree and admission to the University's graduate program. Collegiate competitive experience and a desire to coach/teach as a profession. Remuneration includes tuition remission, apartment on campus, meal contract and monthly stipend. Starting Date: February 1, 1991, or sooner. Send resume and list of references to: Greg Warzecka, Director of Athletics, P.O. Box 3080, Redlands, CA 92373-0999. Applications will be accepted until position is filled. University of Redlands is a private, co-educational university and is a member of NCAA Division III and the Southern California Intercollegiate Athletic Conference. University of Redlands is an Equal Opportunity, Affirmative Action Employer and encourages women and minorities to apply.

**Graduate Assistant in Football - University of California at Berkeley.** a member of the Pacific 10 Conference. An Equal Opportunity Employer. You must have at least a 3.0 grade point average and a score of 1000 on the Graduate Record Examination. Please contact coach Tom Keele at 209 Memorial Stadium, University of California, Berkeley, CA 94720.

### Miscellaneous

**The University of Wisconsin-River Falls** is accepting applications for three positions: 1. Head women's volleyball coach/assistant in either softball or track, and teaching volleyball. 2. Head women's basketball coach. 3. Head swimming and diving coach and teaching W/S.I., Life Guard Training, and swimming classes. Preference will be given to individuals with the ability to teach any of the following: Adapted physical education, Elementary physical education, Activity classes. Minimum of a master's degree preferred. Experience in teaching and coaching required. Send letter of application, resume, three current letters of recommendation, and transcripts to: Dr. Michael G. Davis, UW-River Falls, River Falls, WI 54022, by February 1, 1991. Indicate position you are seeking. Women and minorities are encouraged to apply.

### Open Dates

**Women's Basketball, Division I: Fairfield University** needs two teams to compete in its Warner's Classic, December 6 and 7, 1991. Guarantee available. Contact Dianne Nolan, 203/254-4040.

**Football, NCAA Division III.** Gannon University has open dates as follows: September 14, 1991 - Away. Return game at Gannon on either September 26 or October 10, 1992. Contact Bud Elwell, 814/871-7415.

**Men's Basketball, NCAA Division II.** Due to cancellation, Gannon University has one

opening in the 1991 Porreco Cup Basketball Tournament. December 29-30, 1991. Excellent guarantee. Contact Bud Elwell, 814/871-7415.

**Men's Basketball, Division I.** Saint Louis University is seeking four (4) home games for the 1991-92 season with Division I opponents, two (2) opponents for the annual Bud Light Classic (Dec. 20 & 21) and (2) single games. Guarantee available or possibility of arranging additional games. If interested, contact: Debbie Yow, Director of Athletics, 314/658-3177.

**Softball - Western Illinois University** - seeking competition for March 29-30, 1991. Contact Kathy Veroni, 309/298-1753.

**Women's Soccer - Lewis University** is looking for a team (any division) to compete in the 1991 Soccer Classic (four team tournament) on September 7th and 8th. Contact: Evan Fiffles or Alex Hernandez, 815/838-0500, extension 495.

**Division II: Teams needed for Jostens Dutch Country Classic Women's Basketball Tournament, November 22 & 23, 1991.** Call Millersville University in Pennsylvania, 717/872-3402.

**Women's Basketball, Division II.** Cal Poly, San Luis Obispo, CA, seeks one team to compete in our tournament, Dec. 6 & 7, 1991. Please call Jill Orrock, 805/756-1159 or 2923 (message).

**Women's Basketball, Division III.** North Central College needs two teams to compete in the December 6 & 7, 1991 Portillo's Classic. Contact: Kim Hansen, 708/420-3473.

**University at Buffalo, Men's Basketball** seeking Division I home and away games for 1991-1992 basketball season. Guarantees available. Contact Dan Bazzani, 716/636-3025.

## NCAA ETHNIC MINORITY AND WOMEN'S VITA BANK

The NCAA Ethnic Minority and Women's Vita Bank has been established to help individuals, institutions and other organizations identify positions for ethnic minority and female candidates in the field of athletics. This service includes the areas of coaching, officiating, athletics administration, teaching and support services (e.g., athletics trainer, business manager, ticket manager, facility manager, sports information director, academic counselor, etc.).

Institutions and other organizations seeking qualified candidates, or individuals interested in registering for the NCAA Ethnic Minority and Women's Vita Bank are encouraged to call or write:

Stanley D. Johnson  
Director of Professional Development  
NCAA  
6201 College Boulevard  
Overland Park, Kansas 66211-2422  
Telephone: 913/339-1906



**BATES  
COLLEGE**  
Lewiston, Maine 04240

### Director of Athletics

**Bates College** invites applications for the position of Director of Intercollegiate Athletics and Chair of the Department of Physical Education. The appointment will begin by August 1, 1991.

**Bates College** is a highly selective, coeducational institution of the liberal arts and sciences, which supports athletics and recreational activities in the context of placing the highest values on the academic achievement and personal growth of its 1,500 students. It sponsors 14 women's and 13 men's intercollegiate teams; eight club sports are available. The College participates in Division III athletics and is a member of the New England Small College Athletic Conference.

**Responsibilities:** The Director, who also serves as chair of the Faculty Department of Physical Education, is responsible to the Vice President for Academic Affairs for all instructional and recreational programs of the Department and for the full range of policies and procedures in support of intercollegiate athletics. The Director also is responsible for overseeing the professional development of faculty in this area, for preparing and administering budgets, for coordinating uses of athletics facilities, and for representing the College in regional and national athletics organizations. The Director is expected to maintain some teaching or coaching responsibilities.

**Qualifications:** Candidates should have at least the master's degree and a strong record of both effective coaching and administrative experience. Candidates also must be able to demonstrate their commitment to the pursuit of excellence in athletics within a college that insists on academic excellence and on respect for gender, racial and ethnic diversity. Candidates must have strong organizational and communication skills.

**Applications:** Send a letter of interest, resume, academic transcripts, and a list of five references with their addresses and phone numbers, to: Professor John Kelsey, Chair, Physical Education Search Committee, Coram Library, Bates College, Lewiston, Maine 04240. Deadline for completed applications is February 15, 1991.

**BATES COLLEGE** is an Equal Opportunity/Affirmative Action Employer and especially encourages applications from Women and Minority Candidates.

## PHYSICAL EDUCATION INSTRUCTOR

### Head Women's Basketball Coach

Springfield College seeks a full-time, tenure track faculty member in the Department of Physical Education and Health Fitness. Responsibilities include instructional assignments in undergraduate Physical Education courses, supervision of Physical Education Pre-Practica and Practica experience; in addition to undergraduate academic advisement. As a member of the Intercollegiate Athletic Coaching Staff, responsibilities include Head Women's Basketball Coach NCAA Division II Program (member Northeast Ten Conference), recruitment of Student/Athletes, supervision of graduate assistant coaching staff, and promotional activities for the Women's Basketball program. Qualifications: Earned Master's Degree in Physical Education required; Doctorate preferred; experience in college teaching, and coaching required; demonstrated student-athlete recruitment competencies. Academic appointment rank and salary commensurate with credentials and experience. Letter of application, curricular vita and four letters of reference should be sent to: Professor Dorothy Zenaty, Chairperson Search Committee, Springfield College, 263 Alden St., Springfield, MA 01109. Date of Appointment: September 1, 1991. Deadline of Applying: January 30, 1991.

AN EQUAL OPPORTUNITY,  
AFFIRMATIVE ACTION EMPLOYER

## TO REACH THE MARKET

(1) Mail copy to:

The NCAA News  
6201 College Boulevard  
Overland Park, Kansas 66211-2422  
Attention: The Market

(2) Send information via fax by calling 913/339-0031.

(3) Call Susan Boyts at 913/339-1906.

## UNIVERSITY OF WASHINGTON

SEATTLE, WASHINGTON 98195



### DIRECTOR OF INTERCOLLEGIATE ATHLETICS UNIVERSITY OF WASHINGTON SEATTLE, WASHINGTON

The University of Washington invites nominations and applications for the position of Director of Intercollegiate Athletics.

The University seeks a creative leader with the integrity and experience to direct a comprehensive program of NCAA Division I men's and women's intercollegiate athletics. Minimum qualifications include a bachelor's degree; an understanding of and commitment to the role of athletics in an institution of higher learning; success in managing income-generating budgets; strong interpersonal and communications skills; ability to work with diverse populations of students, faculty, staff and the public.

Washington's intercollegiate athletics department has an annual budget for operations of approximately \$15 million, including 23 sports for men and women, academic support services, and the marching band. The Director is responsible for these programs and oversees budgets, fund-raising, media contract negotiations and sports facilities. The Director must also ensure strict compliance with regulations governing intercollegiate athletics and all applicable University and State rules and laws. The Director reports to the Vice President for University Relations, and with the President, Faculty Athletic Representative, and Primary Women's Athletic Administrator serves as a member of the PAC-10 Council, the Conference's governing body.

Salary commensurate with experience. Preferred starting date July 1, 1991.

Inquiries, nominations, and applications should reach the search committee by January 31, 1991, and should be addressed to Professor Richard Dunn, Chair, Athletic Director Search Committee, P.O. Box 50097, Seattle, WA 98145-5097.

The University of Washington is an Equal Opportunity, Affirmative Action Employer and encourages nominations of and applications from women and minority candidates.

# Visiting football players help Michigan woman avoid danger

East Texas State University football players **Dusty Corner** and **Mick Still** were walking near the team hotel in Grand Valley, Michigan, November 16 (East Texas State was in town to play Grand Valley State University in the Division II football play-offs) when a local woman bounded up to them like an old friend.

"She came up to us...and was acting like she knew us well," Still told **Warren Morrison**, sports editor of the Commerce (Texas) Journal. "Then, we noticed she was holding a can of mace and was making motions with her head toward the guy."

The guy, according to the duo, was wearing ragged blue jeans, a beat-up leather jacket and about six days' beard growth. The woman, Grand Valley State alumnus **Alison Mark**, was walking to her car after work when the man approached her and made several frightening comments.

In a letter to the East Texas State coaching staff, Mark explained that when she noticed Still and Corner



**Dusty Corner**



**Mick Still**

director **Gregory L. Lockard** is one of 48 New Jersey residents recently inducted into Leadership New Jersey for 1990-91, the school announced December 4.

Leadership New Jersey is a non-profit organization dedicated to dealing with current issues facing the Garden State. A new class is

inducted annually into the organization, which will conduct a series of seminars on issues facing the state over the next year.

American South Conference officials announced December 7 establishment of a program in cooperation with the University of

New Orleans and the Louisiana National Guard to send videotapes of conference members' basketball games and coaches' shows to American forces participating in Operation Desert Shield.

"We hope that the nation's military personnel in the Middle East will enjoy watching some great college basketball action," said Commissioner **Craig Thompson**, who added that the program would continue throughout the season or until American troops come home.

Ohio University student-athletes are spending part of their holiday break visiting area hospitals and nursing homes. During some visits, they sing Christmas carols. During others, they offer skill-instruction drills.

"I think it's a healthy reflection on our athletes and coaches," said

athletics director **Harold N. McElhane**. "Here's a chance for (them) to give back to the community that supports them, and what better time to give back than during the giving season?"

University of Iowa officials announced recently that the school's Finkbine Golf Course has been selected to host a stop on the Professional Golf Association's 1991 Ben Hogan Tour. This is believed to be the first time that a university has been selected to host a PGA event.

Mary Washington College men's basketball players will stay active over the semester break by participating in a four-game, eight-day (January 2-9) trip to Europe. Club teams from Belgium, Germany and The Netherlands are on the schedule.

## Briefly in the News

walking toward her and the man, she told him she knew the pair and hurried over to them as if they were long-lost friends. Mark carried on a mostly one-sided conversation with the pair, who quickly realized what was happening and asked the man to leave.

After his departure, Still and Corner walked Mark to her car. "I was so scared at the time that I didn't think to get (the players') names," Mark said in the letter, which she delivered personally the next day at the play-off game. "All I could think about was getting in my car and getting out of there."

"I seriously believe the man would have tried to hurt me had your players not come along," she told the coaches. "They could have...saved my life. You should be very proud of them."

University of Indianapolis wrestler **Jim Tonte**, 27, earned the Indiana Little State championship at 167 pounds the weekend of December 1. "It wasn't pretty, but I did it," said Tonte, who saw a promising career virtually wiped out by knee surgery several years earlier.

He graduated in 1985, but decided recently to return to school and obtain his teaching certification. He also decided to try wrestling again.

His four victories in the Little State meet pushed his career record to 38-19-1, and they relieved some pressure. "I felt like a role model and that there was pressure on me to win," Tonte said. "I've broken that pressure, and now, I feel like I can just go out and wrestle."

Rupp Arena at the University of Kentucky welcomed its five-millionth men's basketball fan December 8 when the Wildcats hosted the University of Kansas. Rupp Arena opened in 1976.

Clark University (Massachusetts) men's basketball assistant **Tom Gibbons** is following in the footsteps of his father (**Bill Sr.**) and brother (**Bill Jr.**).

Like Tom, both are Clark (Massachusetts) alumni who went on to coaching careers. Bill Jr., in fact, was a teammate of Clark head coach **Kevin Clark**.

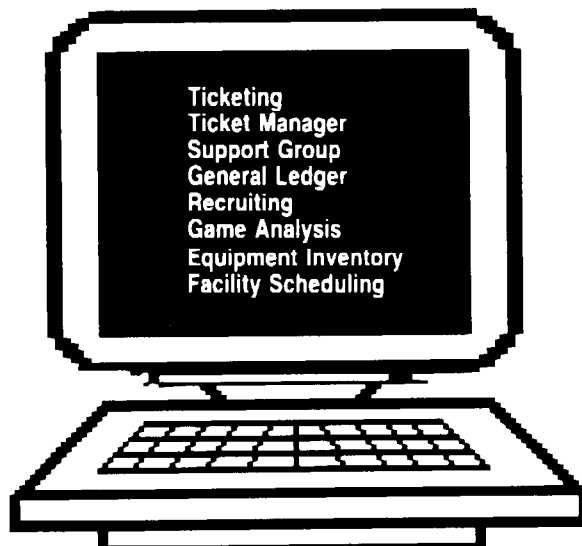
Montclair State College athletics

## INSEPARABLE

### NASHVILLE and country music



### QUALITY and Paciolan Systems



### CABMA and athletics



We look forward to  
demonstrating our systems  
at CABMA

January 6 - 9

Stouffer Nashville Hotel

## PACIOLAN SYSTEMS

(213) 595-1092  
2875 Temple Avenue, Long Beach, CA 90806