



# NCAA renews funding for drug-education speakers bureau

The NCAA Executive Committee has approved 1989-90 funding for the NCAA's drug-education speakers bureau, which provides grants to help member institutions and conferences pay fees for speakers at drug-education and wellness programs.

The Executive Committee renewed the program for the coming academic year at its August 14-15 meeting in Hyannis, Massachusetts. New guidelines for the program were approved August 2-4 by the NCAA Council, which met in San

Diego.

The new requirements limit the grants to \$500 per speaker, but there is no change in the annual maximum of \$1,500 per institution or conference. Thus, a program featuring three speakers could receive up to \$1,500, while a program with a single speaker could receive not more than \$500.

The per-speaker grant limit was proposed by the drug-testing and drug-education subcommittee of the Committee on Competitive Safeguards and Medical Aspects of

Sports. The subcommittee supported the change to encourage member institutions and conferences to bring in numerous speakers rather than exhaust their entire yearly allocation on one presentation.

The NCAA will publish the new grant requirements early this fall in a new brochure on the Association's drug-education and drug-testing programs. The requirements are listed below for institutions and conferences wishing to begin work immediately on applying for grants.

• Funding is available only to

active NCAA member institutions or conferences.

• Grant funds are to be used for speaker fees not to exceed \$1,500 per academic year per institution or conference-administered program.

• Speakers-bureau funds cannot be used for travel, lodging or other nonfee expenses.

• The maximum fee that will be allowed per speaker is \$500. For example, a program of three speakers could receive up to the maximum grant of \$1,500; a program with a single speaker could receive not more than \$500.

• The event for which funding is requested must be part of a drug-education or wellness program for student-athletes or athletics personnel.

• An NCAA drug-education grant-request form must be submitted and approved before the event for which funding is requested.

• The speaker(s) should be chosen by the institution or conference.

• Speakers are to be well-qualified to speak on drug-education or wellness topics, as evidenced by submission of a resume, curriculum vitae or biography.

• An NCAA evaluation form must be completed by event participants and submitted to the NCAA before grants will be released.

• The NCAA will mail reimbursement checks directly to the speaker(s).

• The NCAA can help institutions or conferences develop one-day or multiday training sessions conducted by experts in drug education.

Grant-request forms and more information about the speakers bureau are available by contacting Frank D. Uryasz, director of sports sciences, at the NCAA national office.

## Six schools to join ECAC September 1

Six institutions recently were approved unanimously for membership in the Eastern College Athletic Conference by the league's executive committee.

Joining the ECAC September 1 are the University of Maryland, College Park, a Division I NCAA member institution; Duquesne University, Division I; Colby-Sawyer College, Division III; College of Our Lady of Elms, Division III; Mount St. Mary College (New York), Division III, and College of St. Rose, a member of the National Association of Intercollegiate Ath-

letics (NAIA Division II).

"The addition of these new members, which represent both the largest of our Division I membership and the smallest of our private, Division III members, underscores the unique success of our efforts to

provide a variety of services and postseason-championship activities to a widely diverse group of collegiate institutions," said Clayton W. Chapman, ECAC commissioner.

The ECAC manages more than 90 championships in 19 sports.

## Committee Notices

Members institutions are invited to submit nominations to fill interim vacancies on NCAA committees. Nominations to fill the following vacancies must be received by Fannie B. Vaughan, executive assistant, in the NCAA office no later than September 29, 1989.

**Legislation and Interpretations Committee:** Replacement for Mary Jean Mulvaney, University of Chicago, retiring January 1, 1990. Appointee must be a woman from Division III.

**Men's and Women's Soccer Committee:** Replacement for Louis Marciani, resigned from East Stroudsburg University of Pennsylvania to accept a position as associate director of athletics at the University of Southern Mississippi, a Division I institution. Appointee must be a Division II representative of men's soccer.

### COMMITTEE CHANGES

**Presidents Commission:** Rodney C. Kelchner, Mansfield University of Pennsylvania, appointed to replace William T. O'Hara.

### Council-appointed committees

**Basketball Officiating:** Denny Crum, University of Louisville, appointed to replace C. M. Newton; Marian Washington, University of Kansas, appointed to replace C. Vivian Stringer; Joan C. Cronan, University of Tennessee, Knoxville, appointed to replace Sarah E. J. Yates.

**Eligibility:** Susan A. Collins, George Mason University, appointed to

replace Della Durant.

**Postgraduate Scholarship:** David B. Keilitz, Central Michigan University, appointed to replace Richard W. Burns.

**Recruiting:** George Raveling, University of Southern California, appointed to replace C. M. Newton.

### Sports committees

**Division II Women's Basketball:** Donna Guimont, St. Anselm College, appointed to replace Carolyn V. Hodges.

**Division III Men's Basketball:** William H. Carey, Nazareth College (New York), appointed to replace Edgar L. Green.

**Women's Gymnastics:** Jane Betts, Massachusetts Institute of Technology, appointed effective September 1, 1989, to replace Nancy LeGant, declined appointment; Larry Cox, Ohio State University, appointed to replace Judith L. Avenir.

**Men's and Women's Soccer Rules:** Michelle C. Morgan, Amherst College, appointed to replace Diane Boettcher.

**Women's Soccer:** Dang Pibulvech, Colorado College, appointed as chair effective September 1, 1989, replacing Michelle C. Morgan.

**Men's and Women's Track and Field:** Beverly Kearney, University of Florida, appointed to replace Kathleen Hildreth; Carol Stevenson moved from Indiana University, Bloomington, to Purdue University.

## News Fact File

The 147 legislative proposals in the 1989 NCAA Convention Program included 207 separate voting requirements, due to multipart amendments. Of those 207, a total of 117 (56.5 percent) involved all three membership divisions. Division I-A was involved in 79.7 percent of all voting opportunities; Division I-AA, 77.8 percent; Division I-AAA, 73.9 percent; Division II, 71 percent, and Division III, 72.5 percent.

Source: Annual staff analyses of Convention legislative procedures, prepared for the NCAA Council.

## Football

Continued from page 1

sponsoring men's basketball that year, 265 (or 92 percent) participated in the survey. Of the 105 Division I-A football programs, 98 (94 percent) took part.

Tables reflecting the survey results appear below:

TABLE 1

Average Hours Attempted and Earned in 1987-1988 (Including Summer) by NCAA Division I Men's Basketball Players.

Average Hours Attempted	Number of Institutions	Average Hours Earned	Percentage of Institutions
20.0 TO 21.99	3	18.14	1.1
22.0 TO 23.99	1	21.31	0.4
24.0 TO 25.99	14	25.36	5.3
26.0 TO 27.99	31	25.20	11.7
28.0 TO 29.99	75	26.23	28.3
30.0 TO 31.99	83	27.85	31.3
32.0 TO 33.99	44	29.32	16.6
34.0 TO 35.99	14	29.82	5.3
TOTALS	265		100.0

TABLE 2

Average Hours Attempted and Earned in 1987-1988 (Including Summer) by NCAA Division I-A Football Players.

Average Hours Attempted	Number of Institutions	Average Hours Earned	Percentage of Institutions
24.0 TO 25.99	11	24.09	12.3
26.0 TO 27.99	23	24.71	22.4
28.0 TO 29.99	34	25.75	34.7
30.0 TO 31.99	21	27.49	19.6
32.0 TO 33.99	8	30.09	10.0
34.0 TO 35.99	1	27.91	1.0
TOTALS	98		100.0

## Legislative Assistance

1989 Column No. 30

### NCAA Bylaw 30.1—Division I academic-reporting procedure

Compliance with the academic-reporting legislation in Bylaw 30.1 requires completion of NCAA Form 89-6. Following are interpretations that have been provided by the national office to assist Division I member institutions in completing the Academic Reporting Form.

1. Form 89-6 must be completed in its entirety (and submitted to the national office by the October 1, 1989, deadline described below) by any institution classified as a member of Division I as of October 1, 1989, even if the institution was classified in a different division prior to that time.

For Division I institutions that have classified a single men's sport (and/or a single women's sport) in Division II or Division III in accordance with the provisions of Bylaw 20.4, the academic-reporting requirements do not apply to student-athletes participating only in a single sport so classified, inasmuch as those student-athletes would not have been recruited or subject to the same eligibility standards for continuing intercollegiate competition as those participating in Division I sports.

Division II or Division III institutions that conduct a single men's sport (and/or a single women's sport) in Division I are not required to submit a report for purposes of Bylaw 30.1.

2. The term "entering freshmen" found in Form 89-6 refers to individuals who enrolled initially and were classified by the certifying institution as first-time freshmen during the year in question. Individuals who entered the institution after the fall term during an academic year would be included, if the institution considered those individuals first-time freshmen.

3. Information should be reported only for those students considered by the institution to be enrolled in a full-time program of studies. In addition, in questions pertaining solely to student-athletes, information should be reported for those student-athletes recruited per Bylaws 13.02.8 and 13.02.9 (page 71, 1989-90 NCAA Manual).

4. The form's glossary defines "satisfactory progress" by listing criteria in three areas (i.e., degree progress, institutional progress and NCAA progress). A student-athlete must meet all three criteria to comply with satisfactory-progress requirements.

5. In Item No. 2, student-athletes are included in the total if they were recruited per Bylaws 13.02.8 and 13.02.9 and were in attendance at the institution on the first day of classes.

Please note that recruited student-athletes who attended the institution should be included even if they did not participate in intercollegiate athletics. Recruited student-athletes would not be included if they attended practice but left the institution before the beginning of the term.

6. Item No. 5 requests both "core" and overall grade-point averages for entering recruited student-athletes in football and men's basketball for the 1988-89 academic year. Please note that if the reporting institution does not require an overall grade-point average for admissions purposes and the information is not included on a particular individual's official high school transcript, the line for "GPA Overall" should be left blank.

In the same item (i.e., No. 5), the "core" grade-point average should be reported on a 4.000 scale; however, if an individual fails to meet the core-curriculum requirement due to the number or distribution of core classes attempted, write "Inc" (for incomplete) on the "GPA Core" line.

The most significant change in Form 89-6 is the manner in which information will be reported for obvious qualifiers. In Item No. 5, for a student who was certified as an "obvious qualifier" on Form 48-C (i.e., for a grade-point average not calculated), write "OQ" on the "GPA Core" line.

7. Please note that the graduation rates in Item Nos. 8 and 9 include only those students who entered the institution as first-time freshmen and not as transfer students.

In addition, this year's form does not include the option to estimate the institutional graduation rate. Accordingly, reporting institutions should submit graduation rates based on reliable data.

Completed academic-reporting forms, signed by the institution's chief executive officer, must be in the NCAA national office no later than October 1, 1989. Any form received after that date must have been postmarked no later than September 23. Failure to return a properly completed form by the deadline will render the institution ineligible to enter a team or individual competitors in an NCAA-sponsored meet or tournament during the 1989-90 academic year.

Questions concerning the annual Division I academic-reporting requirement should be directed to John H. Leavens, assistant executive director for compliance services, at the national office.

### NCAA Bylaw 11.02.4—graduate assistant coaches

The Division I subcommittee of the NCAA Legislation and Interpretations Committee agreed that the provisions of Bylaw 11.02.4 and Figure 11-1 would not preclude a graduate assistant coach from receiving compensation for employment from a source outside the institution during the academic year, provided the institution does not arrange such employment and it is legitimate compensation for work actually performed.

This material was provided by the NCAA legislative services department as an aid to member institutions. If an institution has a question it would like to have answered in this column, the question should be directed to William B. Hunt, assistant executive director for legislative services, at the NCAA national office.

# A second

Continued from page 1

published in a separate publication August 1.

• Legislation submitted by the Council or the Presidents Commission would be due August 15 in both versions, but the Legislative Review Committee recommends a precise schedule in advance of that for submission and review of all proposals from NCAA committees that are submitted to the Council.

• Both would have a second publication of all proposals, as modified in the interim, by September 15. Again, however, the advisory committee would use the News as the publication vehicle, while the Legislative Review Committee prefers a separate publication.

• Both call for an October 15 deadline for submission of amendments to the amendments and a November 15 final publication, with the advisory committee favoring publication in the News and the other committee preferring the customary publication of the Official Notice of the Convention.

• The advisory committee supports regional hearings between September 20 and October 10. The Legislative Review Committee does not believe such meetings would be effective or well-attended; instead, it suggests that key amendments be presented in The NCAA News in a series of pro-and-con articles.

As directed by the Council, following is the full text of the Legislative Review Committee's timetable proposal:

## Legislative timetable

The committee reviewed in detail a preliminary statement prepared by the NCAA Presidents Commission Advisory Committee that included recommendations related to the Association's legislative process. It was noted that while the goals of different interest groups in improving the legislative process are similar, there are varying viewpoints as to

the best means of accomplishing those goals. The committee attempted to assimilate and review the differing approaches, and concluded that the following new legislative timetable (to be effective in 1990) should be recommended to the Council.

## Membership

1. The following schedule is suggested for proposed amendments submitted by the membership.

a. **July 1:** Deadline for submission of amendments, each with a statement of intent and separate statement of rationale (that may not exceed 200 words). A primary contact person must be designated from among the institutions (minimum of eight) sponsoring the amendment.

b. **July 1-5:** Legislative Review Committee works with primary contact person to review and refine the proposal to ensure that it meets the intent of the sponsor, to ensure that the placement of the amendment is consistent with maintaining the organizational integrity of the Manual, and to edit the intent and rationale statements of the sponsors for purposes of clarity and brevity. (Note: There would be no effort by the Legislative Review Committee during this period to change the substance or intent of the proposal.)

c. **July 15:** Legislative Review Committee deadline for finalization of language and placement of amendment (with sponsors' approval of changes) and editorial revision of statements of intent and rationale (sponsors' approval not required).

d. **August 1:** Publication of proposed amendments by the membership. It is suggested that this publication be separated from The NCAA News in order to facilitate the membership's use of materials related to proposed amendments and to assure more precisely the date that this publication would be received by the membership. The

publication would include instructions regarding a proposed August 1-September 1 period during which each proposal may be refined, as follows:

(1) Without going through a formal amendment-to-amendment process, sponsors would be permitted to refine and change their proposals during this period without the limitation of Constitution 5.3.1.2. In other words, as long as the change in the amendment is "germane" to the original proposal (submitted by the July 1 deadline), the changes could increase or decrease the modification of the original amendment.

(2) Member institutions would have the opportunity to contact the primary contact person for each amendment's sponsors to offer suggested revisions of the proposal. The name, title and institution of the primary contact person would be published with the amendment August 1.

(3) Member institutions that support the amendment as published should indicate such support to the primary contact person because once the proposal is modified by the sponsors, it may be further amended (by nonsponsors) only in its modified form, and the only permissible amendments to amendments by nonsponsors would be those that do not increase the modification of the revised provision (per Constitution 5.3.1.2).

(4) Statements of intent and rationale for each proposal would be published with the amendment August 1 to assist member institutions in evaluating the merits of each proposal.

e. **September 1:** Deadline for submission by sponsors of any modifications to original member-submitted amendments.

(1) The primary contact person for each proposal would be responsible for ensuring that all the original

sponsors agree to the modification.

(2) The modifications to this point only must be "germane" to the original amendment and may be more or less restrictive than the original proposal. This approach is consistent with Robert's Rules of Order and is intended to allow sponsors maximum flexibility in refining each proposal based on input from the membership.

f. **September 15:** Second publication of member-submitted amendments, this time as modified, to be sent to the membership with instructions regarding the proposed September 15-October 15 period for amendments to amendments. [Note: During this review period, amendments to amendments may not increase the modification of the provision to be amended (per Constitution 5.3.1.2).]

g. **October 15:** Deadline for submission of amendments to amendments.

h. **November 15:** Publication of Official Notice of the Convention.

## Council, Commission

2. The following schedule is suggested for amendments submitted by the Council, its steering committees and the Presidents Commission.

a. **July 1:** Deadline for submission of recommendations from the Association's committees to the Council regarding proposed legislation to be considered during the next annual Convention.

b. **July 2-3:** NCAA Administrative Committee or a legislative subcommittee designated by the Council reviews all standing committee reports and directs the staff to prepare legislation, as well as intent and rationale statements, for proposals deemed most likely to receive the Council's support. A similar process is established for Presidents Commission proposals.

c. **July 4-15:** Legislative Review Committee works with the staff to review and refine legislative propos-

als to ensure that each meets its intent, to ensure that the placement of each amendment is consistent with maintaining the organizational integrity of the Manual, and to edit the intent and rationale statements for purposes of brevity and clarity.

d. **July 15:** Legislative Review Committee deadline for review of prospective Presidents Commission and Council proposals. These proposals would be mailed to Council members as part of their August meeting agenda.

e. **August 1-7:** Council meets during the week to consider legislative proposals (i.e., those prepared by the staff and Legislative Review Committee, as well as any others deemed appropriate) and also reviews member-submitted proposals.

f. **August 15:** Deadline for submission of amendments by the Council, its steering committees and Presidents Commission.

g. **July 15-September 1:** Legislative Review Committee works with the staff to review and refine all proposals sponsored by the Council, its steering committees and the Presidents Commission. The final form of each legislative proposal would be approved by the Administrative Committee or a legislative subcommittee of the Council or Presidents Commission.

h. **September 1:** Legislative Review Committee deadline for finalization of amendments.

i. **September 15:** Publication to the membership of all amendments submitted by the Council, its steering committees and the Presidents Commission. This publication would include instructions regarding the proposed September 15-October 15 amendment to amendment period.

j. **October 15:** Deadline for submission of amendments to amendments.

k. **November 15:** Publication of Official Notice of the Convention.

# Academics

Continued from page 1

there has been enough happening to get their attention, are beginning to say, 'we've got to do something,' Bradley suggested.

"I think presidents haven't been focused on athletics because they have other responsibilities. But now that it's beginning to take their jobs from them, they are beginning to give it their attention."

## Academics vs. winning

At Maryland, Chancellor William E. Kirwan presented a four-page policy statement to the university's governing board that spells out five "areas of responsibility" for coaches. The policy emphasizes two areas: academic success and adherence to university, Atlantic Coast Conference and NCAA rules.

"In the absence of satisfactory academic performance by the student-athletes, winning records will not constitute a successful program," the policy says. The policy will be incorporated into the contracts of all head coaches at Maryland.

Bradley applauds that approach as an effective way to deal with what he says is college athletics' biggest problem, at least in football and basketball—"pro coaches coaching college." Too many times, Bradley believes, a coach promises an athlete's parents that "I'm going to take care of your son," then fails to take an interest in the athlete off the playing field or court.

"When you get past the high school level, you have pro coaches—



Steve Milburn

people who are hired just to coach, and that's all they do—and then you have coaches like Jerry Claiborne."

Claiborne is head football coach at Kentucky. His program recently was honored by the College Football Association for graduating the highest percentage of 1983 freshmen among CFA member institutions.

"I would have said, before Jerry Claiborne, that maybe you can't do anything about it (coaches' attitudes about academics)," Bradley said. "Now, I'd say you can."

"I don't think it takes any more than (coaches) doing what the academics people ask, rather than putting their hat down when they see us walk across the field and saying, 'Uh-oh, here it comes'... We're on the same team."

## Coach in charge

At Louisville, Howard Schnellenberger did not wait for a visit



Bob Bradley

from Milburn.

"I would rather have the kid still be in school (but) unable to play for us because he doesn't have the C average than... to be shooting for that lower level and then not make it," Schnellenberger told reporters as he explained his new grade policy at the opening of football practice.

Milburn said there is a practical reason for the policy—Schnellenberger "was tired of never being sure" of the academic eligibility of a handful of his players, some of whom were forced to leave the squad after three to four years of work.

"It puts more pressure on us to make sure the guys get to 2.000," Milburn admitted. "However, the positive thing is, the coach is 'the man,' the opinion leader who sets the standard everybody goes by... that makes our job easier because the kids know they have to

make 2.000."

## Bad publicity

Schnellenberger was moved to take action out of concern for his program and its student-athletes, Milburn said.

However, the academic adviser concedes that many schools across the nation are toughening academic standards and expectations as a reaction to negative publicity about college athletics.

"Any change probably occurs when there is an environmental change," Milburn said. "Negative publicity is a change."

For that matter, Kentucky's Bradley believes, Proposition 48 was a reaction to bad publicity in such media as CBS-TV's "60 Minutes" and Sports Illustrated.

"If you look at the NCAA, or the presidents, or most of us in athletics, it's mostly a reaction," he said.

Apparently, it was the news that Florida State University football standout Deion Sanders participated in the 1989 USF&G Sugar Bowl despite his failure to attend classes for two months prior to the game that prompted the Florida Board of Regents to adopt its class-attendance policy. United Press International reported that regents dubbed that policy the "Deion Sanders Rule."

"If (athletes) don't go to classes or don't take exams, they are not going to participate in athletics events," Charles F. Reed, chancellor of the State University System of Florida,

said after the regents' decision. "The university system's purpose is not athletics or entertainment. Its purpose is that our young people go to class and graduate."

"The 'Sanders rule,'" the NAAAA's Milburn said, "is a way for these institutions in Florida to deal with a specific concern." Indeed, every institution either faces special problems or has established unique methods for administering athletics programs, he said.

## Innovations

Across the state from Milburn, colleague Bradley eagerly anticipates the installation of a computer system that—for a while, at least—will be unique to Kentucky.

Wang Laboratories Inc. provided more than \$80,000 to the school's athletics association to install a program that athletics director C. M. Newton said "will enable all our coaches in football, basketball and all our sports to track the progress of their student-athletes, academically and athletically, throughout their careers at Kentucky."

Although the system initially was proposed by Wang as a tracking system for coaches, it has evolved into a compliance tool, Bradley said. Any individuals who become prospective student-athletes at Kentucky—even youngsters who attend a camp at the school—will be tracked by the computer through the recruitment process and after

See Academics, page 18

# Comment

## Paying athletes is overkill

By Mike Strickler

I have been sports information director at Virginia Military Institute for 12 years, and I would like to take exception to those who maintain that college athletes in revenue-producing sports should be paid.

I know people are aware of the cost of a college education today; but for the record, let's take a look at Virginia's two Division I-A football schools, Virginia Polytechnic Institute and the University of Virginia.

At Virginia Tech, using a weighted average of in-state and out-of-state fees for tuition, room and board, and books, the four-year cost is \$24,000. At Virginia, the four-year cost is \$29,424. Of course, many athletes, especially those in football, are redshirted and are on scholarship for five years at their respective institutions.

Let's go a step further and look at a sample of students who finish their college education, walk away with a degree and do not owe a penny.

A recent doctoral dissertation done at Iowa State University shows the average indebtedness of that school's undergraduates after four years to be \$7,761. VMI's director of financial aid considers this to be a very conservative figure when looking at the nation's colleges as a whole.

Some call the problem a moral issue, "a question of fairness." I think this could be an assessment of the situation, but it should come from the other side of the fence. Frankly, I am surprised there has not been a revolt from the ranks of the mainstream college students and parents of these students.

Big-time college athletes today have an enormous advantage over the average college student: from the admissions process to the availability of a battery of tutors for which they do not have to pay, to preferential food service, to the availability of summer employment, to reputations giving them access to potential job opportunities after finishing their eligibility and, yes, leaving college behind debt-free.

Some people say that too many



Mike Strickler

athletes today are not prepared to take advantage of the opportunity a college scholarship provides. I will agree with that statement, but colleges and the NCAA are working to improve that situation.

Are these athletes then being exploited?

College athletics is big business. It's a business world out there, and I'm sure that many individuals making minimum wage and working for large corporations feel that they are being exploited by their employers, who make millions of dollars. And these individuals don't have the opportunity of a free ride for a college education, with extra advantages at their fingertips.

Some people feel that this type of thinking should have been "sacked around the time the face mask was introduced," as one columnist put it recently. I think that can be done if you discard the basic premise that college is for an education. Obviously, the NCAA and the nation's college presidents do not wish to discard that premise. Proposition 48 has been a major step forward in tightening eligibility requirements for college athletes. With those presidents becoming more involved, we can expect tougher requirements and more restrictions on college athletics.

Exploited? How about opportunity!

The college scholarship athlete is getting a \$25,000-plus free education in addition to other multiple benefits. Sure, he or she has to work hard, but success in most cases does not come easy. A better label would be a tremendous opportunity for success in all phases of life for these individuals. Yes, the opportunity is there.

Let's place a little bit of the burden on the individual and not make excuses out of outside factors.

Call me old-fashioned, but I have a sneaking suspicion that the vast majority of Americans today think along the same lines.

## Division II eligibility rules discriminatory, coach says

By Eric Olson  
Omaha World-Herald

The number of student-athletes playing football at the University of Nebraska, Omaha, is down this year, and coach Sandy Buda said the main reason is a "discriminating" set of NCAA eligibility requirements for incoming freshmen.

Eighty players reported to fall camp. In past years, it was common for at least 90 to start fall practice.

"Everybody in the conference is down," Buda said. "I was talking to Rocky Hager from North Dakota State at the league meetings, and he said he expected to have only 90 players for two-a-days. That's low for them. And Augustana (South

Dakota) only has 76 guys."

The causes for the declines, according to Buda, are tougher eligibility requirements for incoming freshmen and players already in school and the reduction in scholarships a Division II school can offer, which went from 45 to 40 a year ago.

"There are fewer kids that can come out for football," Buda said, "yet those same kids that can't play are walking around eligible to go to school. That's discriminating."

To enroll in the University of Nebraska system, a student must be proficient in nine "core" classes in high school compared to the 11 the NCAA requires.

According to the NCAA's Pro-See *Division II*, page 5

## To gain perspective, cut all aid and play with students who enroll

Bill Joy, athletics trainer  
Eastern New Mexico University  
ENMU News Service

"The pressure of winning has gotten way out of proportion.

"Not only have kids lost some of the perspective of what we're here for, but the coaches have, too. This includes the NCAA and NAIA—anywhere scholarships are given.

"And most of the coaches don't want to teach anymore; all they want to do is coach. That's because of the pressures of winning. They're not letting kids be kids. They work them 365 days a year; the ultimate thing is to win on Saturdays.

"The only way to solve the problem is to cut out financial aid altogether and let the schools play with the athletes who are students at the school."

Bob Bockrath, senior associate athletics director  
University of Arizona

*The Arizona Republic*  
"We don't make decisions on sports based on the amount of money they bring in. If we did that, we would have to get rid of every sport here other than football and men's basketball.

"Title IX is a fact of life. The sooner people understand that and stop complaining about it and move ahead, the better off we'd all be.

"There was a great inequity prior to Title IX that got corrected. I think we ought to focus on it in terms of revenue and nonrevenue sports, not men's and women's sports.

"If we were to make a decision on something, I think it would be based on the competitiveness of the sport rather than on its financial structure."

Bo Schembechler, head football coach  
and athletics director  
University of Michigan

*The Associated Press*  
"This is a difficult year for the football coach at a school predominantly known for basketball. But we will try to live up to our basketball team."

Joseph B. Johnson, president  
Grambling State University

*The Associated Press*  
"I feel very strongly that when people have made a commitment, they should honor it. The NCAA is a voluntary organization. When we joined it, we said that we would abide by their rules. I think I'm sending a message to everyone in our athletics department that if you violate the rules, there is a price to be paid, and you will pay it.

"We intend to prevent further problems.

"I think we're clean. I don't think there are any more problems. I have had every coach and every director in that department sign a form that if they violate any NCAA rule, they will be terminated. They all signed it, so I presume we're clean.

"I will say this: If something does happen again, the people in the department know what will happen to them."

Frank E. Vandiver, former president  
Texas A&M University

*The Houston Post*  
"How can we expect ethics to be learned in the general environment of collegiate athletics today?

"We need to clean up the collective acts of recruiting, educating and graduating student-athletes. But I submit that the NCAA cannot do the job. It has become too wrapped in its false realities, too closed to solutions other than its own, too wedded to enforcement rather than encouragement, too much a part of the whole sad problem.

"I think the time has come for a survey of the whole spectrum of American collegiate athletics problems. I don't think Congress or legislatures should get into what is essentially private business. But I think high-level concern is proper.

"So I urge President Bush to create a blue-ribbon presidential commission to look at the problem and recommend a national policy."

Jerry Walker, student-athlete  
Seton Hall University

*The Atlanta Journal and Constitution*  
"Tell me, what would the rest of the world do with that team (U.S. Olympic basketball team composed of professional stars)? It won't be close. I mean, not even close. I just don't think our pros should be able to play.

"We can still beat everybody in the world with college players. College players can do just fine as long



Bob Bockrath



Joseph B. Johnson

as they pick the best ones to play."

David R. Gavitt, commissioner  
Big East Conference

*The Atlanta Journal and Constitution*  
"The Olympic dream is still going to be there (even with professional athletes being allowed to compete). It's just that now, it's going to come at a later age."

Forest Tennant, M.D.  
California Commission on Drugs

*The Associated Press*  
"Anabolic steroids are the overriding issue in sports. The use of anabolic steroids is undermining the morale of these people (athletes) more than cocaine or marijuana.

"Athletes are a special group. Good athletes are tagged at 11 or 12 years of age and get treated differently. They become very undisciplined and have feelings of invulnerability.

"In the pros, money is a factor. The pros don't create the problem, but they have more money to buy more drugs."

David M. Nelson, secretary-rules editor  
NCAA Football Rules Committee

*NCAA College Football Media Kit*  
"Scoring has increased from an average of 32 points a game in 1958 to 46.1 in 1987 since goal posts were widened... and the change in unlimited substitution in 1965. The average number of field goals increased from 0.18 a game to a record of 2.30 in 1984. Successful point-after-touchdown attempts have increased from



## Opinions

68 percent in 1958 to 95.6 percent in 1987.

"The major factor in the 46 percent rise in scoring has been the huge increase in field goals. Eliminating the tee should have an effect on the kicking game."

Bill McGillis, director of compliance  
University of Houston

*The Dallas Morning News*  
"If your coaches know that the university will not tolerate any deviance from the rules, then you can be successful in that regard.

"I can tell you now it is very clear the university will not tolerate people knowingly violating NCAA or Southwest Athletic Conference rules. We don't have a situation where the coach says he doesn't know what a rule was. I think in the past, we have had that situation."

## The NCAA News

(ISSN 0027-6170)

Published weekly, except biweekly in the summer, by the National Collegiate Athletic Association, 63rd Street, P.O. Box 1906, Mission, Kansas 66201. Phone: 913/384-3220. Subscription rate: \$24 annually prepaid. Second-class postage paid at Shawnee Mission, Kansas. Address corrections requested. Postmaster send address changes to NCAA Publishing, P.O. Box 1906, Mission, Kansas 66201. Display advertising representative: Host Communications, Inc., P.O. Box 3071, Lexington, Kentucky 40596-3071.  
Publisher ..... Ted C. Tow  
Editor-in-Chief ..... Thomas A. Wilson  
Managing Editor ..... Timothy J. Lilley  
Assistant Editor ..... Jack L. Copeland  
Advertising Manager ..... Marlynn R. Jones  
The Comment section of The NCAA News is offered as opinion. The views expressed do not necessarily represent a consensus of the NCAA membership. An Equal Opportunity Employer.

# Researchers find overall decline in catastrophic grid injuries

Today's high school and collegiate football players are less likely to suffer permanent spinal-cord injuries than were their counterparts of the late 1970s and early 1980s.

This is the finding of a report released recently by researchers Frederick O. Mueller, professor of physical education at the University of North Carolina, Chapel Hill, and Dr. Robert C. Cantu, chair of the surgery department and chief of neurosurgery at Emerson Hospital in Concord, Massachusetts.

According to the report, "Annual Survey of Catastrophic Football Injuries, 1977-88," 10 U.S. football players sustained permanent cervical-cord injuries during 1988. Nine of the injured players were in high school, and one was a community college student-athlete.

Eight such injuries were sustained in 1987 and three in 1986, all by high school players.

Although the number of catastrophic injuries has increased for

the past two years, the researchers point out that the overall trend, begun in the late 1970s, is toward fewer permanent cervical-cord injuries.

Citing other research that found an average of nearly 20 such injuries per year from 1971 to 1975, Mueller and Cantu write, "For the past 12 years (1977-1988), there have been a total of 116 football players with permanent cervical-cord injuries. Ninety-six of these injuries have been to high school players and 15 to college players. These data indicate a reduction in the number of permanent cervical-cord injuries when compared to data published in the early 1970s. The 1988 data are slightly higher than the 1987 data but continue the dramatic reduction that started in 1984."

Among other factors, Mueller and Cantu credit the reduced number of disabling spinal injuries to rules changes adopted in 1976 by the NCAA and the National Feder-

ation of State High School Associations to prohibit using the head as the initial contact point when blocking and tackling.

"Major areas of emphasis that should be given credit are the 1976 rule changes that eliminated the head as the initial point of contact during blocking and tackling, improved medical care both at the game site and in medical facilities, and improved coaching techniques in teaching the fundamentals of tackling and blocking," the report says.

The importance of proper tackling techniques is highlighted by the authors' analysis of the activity players were involved in at the time of injury. They found that tackling has been associated with two-thirds of the catastrophic injuries since 1977; in 1988, eight of the injuries were caused by tackling. (The other two injuries last year involved a player being tackled and a player diving for a fumble.)

Because catastrophic injuries are most likely to be tackling-related, a majority of the injuries occur to defensive players. In 1988, nine of the 10 injured student-athletes were playing defense.

Other findings included the following:

- The incidence of permanent-paralysis injuries per 100,000 players was 0.69 in high school and 1.33 in college during 1988.

- Catastrophic injuries occur more frequently in games than in practices. Last season, seven of the 10 permanent cervical-cord injuries occurred in games.

- In 1988, three high school players suffered subdural hematomas that resulted in permanent disability.

- In addition to the 10 permanent

## TABLE II

Catastrophic Injuries 1977-1988		
Type of Activity		
ACTIVITY	NUMBER	PERCENT
Tackling	46	39.6
Tackling head down	27	23.2
Tackling on punt	2	1.7
Tackling on kick-off	6	5.1
Tackled	8	6.9
Tackled on kick-off	1	0.9
Collision	3	2.6
Blocking on kick	3	2.6
Blocking	1	0.9
Contact after interception	2	1.7
Blocked	1	0.9
Hitting tackle-machine	1	0.9
Unknown	15	13.0
<b>TOTAL</b>	<b>116</b>	<b>100.0</b>

cervical-cord injuries and three disabling cerebral injuries, 11 high school student-athletes and seven collegians fully recovered from spinal or cerebral injuries suffered in 1988.

Mueller and Cantu offer several suggestions for reducing catastrophic head and spinal injuries. They claim it is most important for coaches to drill players in proper fundamentals, particularly blocking and tackling. An underlined statement in the report urges "shoulder block and tackle—keep the head out of football."

They further recommend that rules prohibiting spearing be enforced in practice and in games. Players should be taught that the helmet is a protective device, not a

weapon.

In addition, the authors stress that it is important for student-athletes to do proper strengthening exercises so they can hold their necks firmly erect while tackling or blocking.

The report offers several other suggestions:

- Coaches, physicians and trainers should ensure that the players' equipment—especially the helmet—fits properly.

- If possible, a physician should be on the field during games and practices. If a physician cannot be present, arrangements should be made to get a doctor's immediate care if needed. Each institution should have on its staff a trainer who is qualified in both treating and preventing injuries.

- Coaches and medical staff must know exactly what to do if a catastrophic head or neck injury occurs. In some cases, proper preparation can prevent permanent disability.

- Players who experience or show signs of a head injury should receive immediate medical attention and should not be allowed to return to practice or a game without permission from medical authorities. Signs of a possible head injury include loss of consciousness, visual disturbances, headache, inability to walk correctly, disorientation and memory loss.

The annual study of catastrophic injuries is conducted with funding from the NCAA. The researchers collect injury data from high school and college coaches, athletics directors, school administrators, physicians, athletics trainers, state and national athletics organizations, sporting-goods dealers and manufacturers, newspaper clippings, and colleagues.

## TABLE I

Permanent Cervical Cord Injuries 1977-1988

YEAR	SANDLOT	PRO AND SEMIPRO	HIGH SCHOOL	COLLEGE	TOTAL
1977	0	0	10	2	12
1978	0	1	12	0	13
1979	0	0	8	3	11
1980	0	0	11	2	13
1981	1	0	6	2	9
1982	1	1	7	2	11
1983	0	0	11	1	12
1984	1	0	5	0	6
1985	0	0	6	2	8
1986	0	0	3	0	3
1987	0	0	8	0	8
1988	0	0	9	1	10
<b>TOTAL</b>	<b>3</b>	<b>2</b>	<b>96</b>	<b>15</b>	<b>116</b>

\*Figures are updated annually due to new cases investigated after publication.

## Proposal would limit brochure's use

The NCAA Communications Committee voted recently to ask the NCAA Council to sponsor legislation that would eliminate the athletics recruiting brochure as a permissible recruiting item in Divisions I and II. The Council will consider this request at its October 16-18 meeting.

Current legislation allows a media guide or a recruiting guide to be sent to a prospective student-athlete. Roger O. Valdiserri, committee chair and associate director of athletics at the University of Notre Dame, said many Division I institutions print both publications—sending one to prospects and the other to media. "Our committee made this recommendation in the belief that the recruiting efforts of individual coaches, including face-to-face meetings, is the most positive and effective recruiting tool.

"The Communications Committee believes this action will reduce institutional expenses without adversely affecting the recruiting process. It would be an appropriate step toward more effective cost management," Valdiserri added.

## Division II

Continued from page 4

position 48, a freshman also must score at least a 15 on the American College Test or 700 on the Scholastic Aptitude Test to be eligible for athletics.

The NU system has no minimum-score requirement on entrance exams for nonathletes. The average ACT score for UNO freshmen, including nonathletes, was 19.1 in 1988-89. The maximum scores are 36 on the ACT and 1,600 on the

Meeting July 26-28 in Naples, Florida, the committee also heard presentations from Jeff Ruhe, senior vice-president of Sports Channel America; Mark Carlson, director of sports information at CBS, and Michael Aresco, program manager at ESPN, regarding their networks' plans for the upcoming year. The committee expressed concern that the high school game of the week, broadcast by the Sports Channel, might intensify the recruiting process.

Other actions taken by the committee follow:

## News will go to Mondays

Biweekly publication of The NCAA News ends with this issue. The News will be published Mondays for 14 weeks beginning with the next issue, which will be printed and mailed September 11.

Monday issues of the News will include national football statistics in all divisions and weekly notes on the college football season. Monday publication will continue through

- It was voted that media seminars, which were discontinued when the College Football Preview began, be reinstated. These seminars would bring together many of the nation's leading sports writers to discuss subjects of interest relating to intercollegiate athletics.

- The committee suggested that the loss and subsequent replacement of advertising dollars due to the potential reduction of beer commercials be placed on a future agenda of the NCAA Professional Development Seminar.

December 11.

Those responsible for placing advertising in The Market should note that deadlines for receipt of copy will change during the Monday schedule. Display classifieds will be due at noon Central time on the Monday prior to publication, and general classifieds will be due at noon Central time on the Wednesday prior to publication.

make it twice as tough for athletes everywhere. That's not right."

Buda said he also dislikes the NCAA's satisfactory-progress rule, which requires student-athletes to pass 24 credit hours toward a specific degree in one calendar year.

"They have no freedom to go the pace they want to," Buda said. "If I wanted to take six years to graduate, I don't have that option if I want to participate in athletics. There is little freedom for athletes to explore."

## TABLE III

Catastrophic Injuries 1977-1988		
Position Played		
POSITION	NUMBER	PERCENT
Defensive back	38	32.8
Kick-off team	14	12.1
Defensive line	7	6.0
Linebacker	10	8.6
Kick-off return	5	4.3
Defensive end	5	4.3
Offensive back	5	4.3
Quarterback	3	2.6
Flanker	2	1.7
Wide receiver	2	1.7
Punt coverage	1	0.9
Punt return	1	0.9
Drill	1	0.9
Unknown	22	18.9
<b>TOTAL</b>	<b>116</b>	<b>100.0</b>

## TABLE IV

Incidence per 100,000 Participants 1977-1988*		
YEAR	HIGH SCHOOL	COLLEGE
1977	0.77	2.67
1978	0.92	0.00
1979	0.62	4.00
1980	0.84	2.67
1981	0.46	2.67
1982	0.54	2.67
1983	0.84	1.33
1984	0.38	0.00
1985	0.46	2.67
1986	0.23	0.00
1987	0.62	0.00
1988	0.69	1.33

\*Based on 1,300,000 High School—Junior High School Players and 75,000 College Players

Do You Want to Evaluate All The Junior and Senior Football Players In The Chicagoland Area for

**LESS THAN ONE RECRUITING TRIP?**

Call Us For Information or How To Subscribe to our Testing Service at:

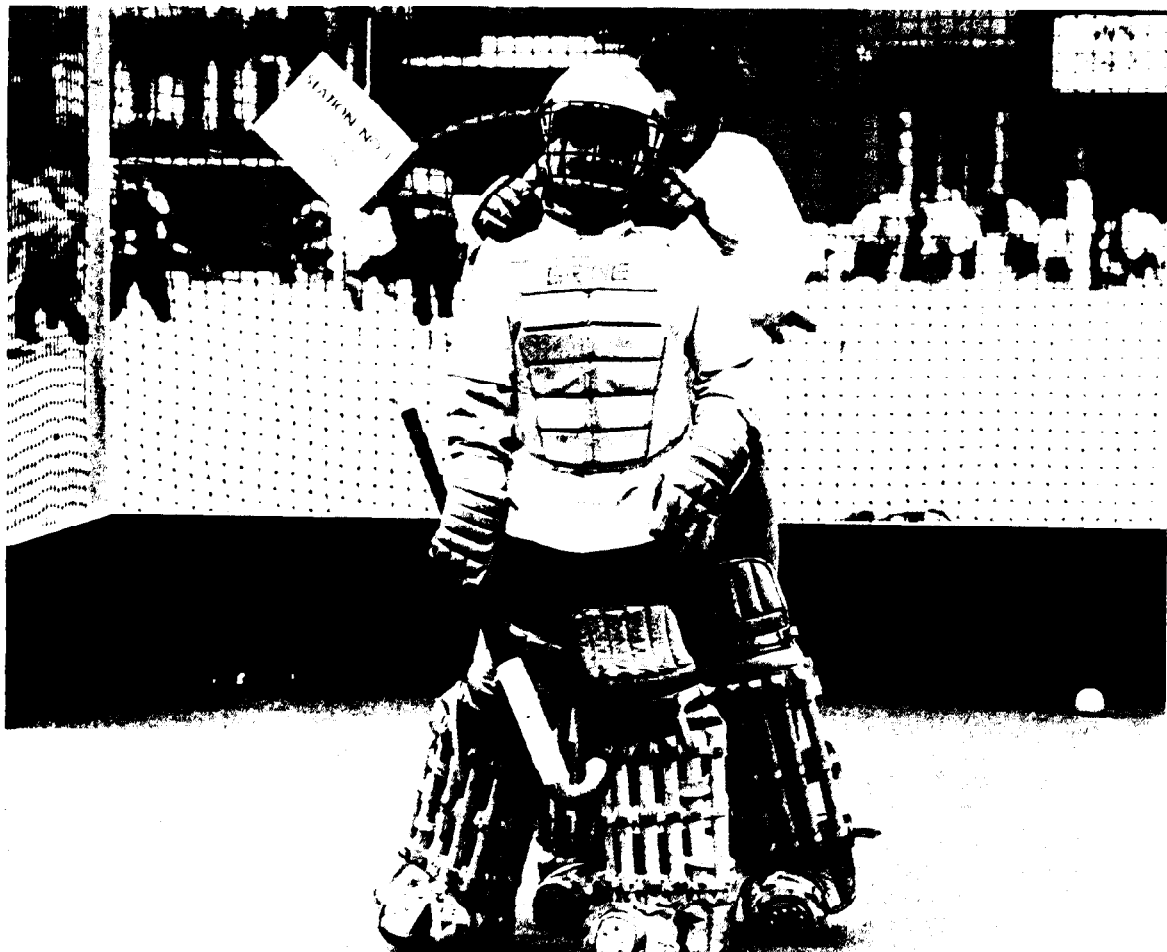
**1-800-421-4885**

**HIGH SCHOOL GRIDIRON REPORT**

1926 Waukegan Road - Suite 4B - Glenview, Ill. 60025

Telephone (312) 724-0760 - WATS 1-800-421-4885

FAX (312) 724-0762



A field hockey goalie learns about balance and positioning from Diane Moyer, head field hockey coach at Yale University



Gene Bartow, men's basketball coach at the University of Alabama at Birmingham, talks to a group at the University of Washington

# YES

Continued from page 1

participants in a clinic during the Division I women's basketball West regional at the University of Texas, Austin. Speaking at the clinic was Texas women's basketball coach Jody Conratt, whose team advanced to the regional championship.

More than 300 other coaches took time out from their championships schedules to instruct and advise young YES participants. After his team defended its Division I men's tennis championship, Stanford University coach Dick Gould

encouraged youngsters to enjoy tennis and to aspire to higher levels of achievement, both on and off the court.

The YES baseball clinic, held in conjunction with the College World Series in Omaha, Nebraska, drew 450 participants and featured coach Mark Marquess of Stanford University. Providing instruction were Norm DeBriyn of the University of Arkansas, Fayetteville; Mike Martin of Florida State University, and Mike Roberts of the University of North Carolina, Chapel Hill, all of whom were managing teams that

still were in contention for the championship.

In addition to the coaches, collegiate student-athletes played an important role in the YES clinics. They provided demonstrations, in-

dividual instruction and small-group discussions on the role and responsibilities of student-athletes.

Joy Jordan of Indiana University, Bloomington, led a discussion for 11- and 12-year-old girls at a summer YES clinic held in conjunction with the National Youth Sports Program at the University of Penn-

sylvania. Her reaction to the experience made it clear that the youngsters weren't the only ones who benefit from the clinics.

"It felt good to spread the word about life and education through sports," the sophomore volleyball player said. "These kids taught me firsthand about the hardships of drugs and their personal lives."

NCAA corporate sponsors also are actively involved in the YES program. Their support, which provided all instruction, T-shirts, printed materials and promotional

items, enabled the NCAA to offer the clinics at no cost to the youngsters who attended.

According to James W. Host, president of Host Communications, Inc., and member of the NCAA corporate-sponsor team, the YES program has become a "highlight of the NCAA corporate-sponsor program. Without exception, the corporate sponsors are committed to the ultimate success of the program."

The corporate sponsors for 1988-89 were American Airlines; American Express; Coca-Cola USA; The Gillette Company; Greyhound Lines, Inc.; Mitsubishi Electric Sales America, Inc.; National Car Rental; Oldsmobile; Pizza Hut; Rawlings Sporting Goods Company, and WorldTek Travel.

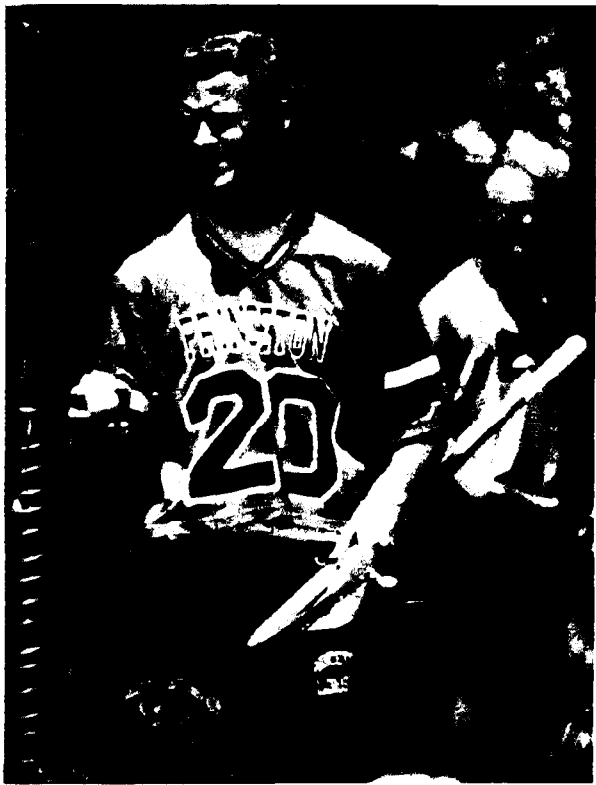
**"It felt good to spread the word about life and education through sports"**



A youngster gets hands-on instruction on spiking from Mike Normand, Loyola Marymount University men's and women's volleyball coach



Student-athletes Brian Kelly (right) of the University of Mississippi and William Boulware Jr. of Dartmouth College lead running drills during a YES clinic at the University of Pennsylvania



Princeton University lacrosse player Andy Moe discusses student-athlete responsibilities



At right, men's and women's swimming coach Bob Boettner of Clemson University directs swim drills at Indiana University Natatorium



Above, a youngster learns about the rotation of the ball from Bob Bennett, head baseball coach at California State University, Fresno



At left, a young athlete shoots during a water polo clinic in Long Beach, California



LaRue Fields, women's basketball coach at the University of Minnesota, Twin Cities, positions a youngster for a pass (at right).

# Summary of Executive Committee actions

Following is a summary of all actions taken during the Executive Committee's August 14-15 meeting in Hyannis, Massachusetts.

## Financial

**Budget Subcommittee:** The Executive Committee voted that the minutes of the Budget Subcommittee's July 31 meeting be revised to clarify that effective with the 1990-91 budget, the Divisions II and III block grants will be included as line items, rather than reflected as expenditures of excess receipts, and will be subject to annual review as are other budget items; that the Budget and Staff Evaluation Subcommittees be reconstituted by attrition into one committee comprising seven individuals (the five NCAA officers and two Executive Committee members at large), with responsibility for administering the charges of both entities; that the 1989-90 general operating budget be approved in the amount of \$89,728,000.

**Allocation of ESPN television rights fees.** The Executive Committee voted to reaffirm the following formula, which has been used for the past nine years to allocate ESPN television rights fees among NCAA championships:

1. Fifty percent of the total rights fees is allocated to the Division I Men's Basketball Championship for ESPN cablecasts of selected tournament games.

2. A basic rights fee of \$10,000 is allocated to each of the other 18 championships that receive full coverage.

3. A \$3,000 fee is allocated to each of the nine championships that receive "special feature" coverage in ESPN Sports Center shows or like presentations (i.e., at least five minutes of coverage exhibited once, or three minutes aired two or more times).

4. The remaining fees are prorated among the 14 championships that generate average gross net receipts over a three-year period, on the theory that attendance and television viewership are related and thus represents the best available evidence to judge the value of the events under the lump-sum ESPN contract.

**Football television assessments.** After reviewing the procedures for collecting the four percent assessment against football television rights fees per Bylaw 22.2.3, the Executive Committee agreed that Executive Director Richard D. Schultz would explore with the respective rights holders the feasibility of their paying the assessment to the Association prior to the rights fees' being distributed to the participating teams.

**Divisions II and III block grants.** The Executive Committee received a report from the chairs of the Divisions II and III Championships Committees stating that the chairs intended to develop a document outlining the history of the block grants as a matter of record, and that their respective committees intended to be diligent in controlling expansion of championships brackets and in emphasizing regional competition.

**Funding for eligibility clearinghouse study.** The Executive Committee authorized Price Waterhouse to conduct a feasibility study of the establishment of a national clearinghouse for certification of initial eligibility (per Bylaw 14.3) at a cost of \$24,000.

**Special Committee on Cost Reduction.** The Executive Committee voted that one member each from the Special Committee on Cost Reduction and the Special Committee to Review the Membership Structure be reimbursed according to the Association's standard committee-reimbursement policy to attend one another's meetings.

**Revenue from state lotteries.** The Executive Committee agreed to review at its December 1989 meeting the issue of the establishment of state lotteries to pick the winners of National Football League games, with revenues allocated to athletics programs at state institutions.

## General committees

**Committee on Competitive Safeguards and Medical Aspects of Sports.** The Executive Committee:

Denied a recommendation that the NCAA ban the use of tobacco products by student-athletes, officials, coaches, trainers and other tournament personnel on the field of play at all NCAA championships, but voted to draft a statement discouraging the use of tobacco in any form at NCAA championships and urging member institutions and conferences to do likewise.

Also, took the following actions regarding the list of banned drugs:

• Agreed to eliminate the sympathomimetic amines category (including over-the-counter cold and diet medications).

• Agreed to incorporate Bylaw 31.2.1.2 regarding drugs and procedures subject to restrictions into Bylaw 31.2.3.1 (banned drugs) to render a student-athlete ineligible in accordance with the ineligibility provisions of Bylaw 18.4.1.5.

• Approved a revision to specify that evidence confirming the practice of blood doping would (rather than may) be cause for action consistent with that taken for a positive drug test.

• Removed restrictions on the use of corticosteroids.

• Added urine manipulation and the use of urine-manipulating substances to the list of banned methods.

• Approved a revision to expand the drug screening now permitted for nicotine to additional selected nonbanned substances.

In addition, took the following actions regarding drug-testing protocol:

• Agreed that upon recommendation of the

drug-testing subcommittee, the Executive Committee could limit testing to selected banned-drug classes, rather than test for every category of banned drug.

• Deleted the provision that precluded crew chiefs from testing student-athletes at their institutions.

• Agreed to preclude another organization from collecting specimens during an NCAA championship or certified postseason football bowl game.

• Agreed to require a coach's or trainer's signature on the student-athlete notification form if an athlete wished to defer testing until completion of his or her final event of the day.

• Agreed that at selected championships and during on-campus testing, alternative methods of student-athlete notification may be used.

• Authorized crew chiefs to release a sick or injured student-athlete from the collection station only after appropriate arrangements for having the student-athlete tested at another time have been made and documented on the Student-Athlete Signature Form.

• Reaffirmed that coaches are allowed access to the collection station at student-athletes' request.

• Reaffirmed the policy of postcompetition testing at all championships, but directed the competitive safeguards committee to continue to explore other alternatives that would alleviate the problems inherent in postcompetition and late-night testing.

Also, agreed to take no action on the committee's recommendations regarding the application of ineligibility sanctions, noting that these issues would be addressed legislatively by the membership at the 1990 Convention (see below); voted to ask the Council to sponsor legislation at the 1990 Convention to establish year-round testing for selected drugs and in selected championships in all divisions; agreed that the intent of the legislation would be to apply the same ineligibility sanctions for positive tests from both year-round and postseason testing, and to require that as a condition of restoration of eligibility, an athlete be retested and prove "clean."

Additionally, contingent upon approval of a year-round drug-testing program, agreed to eliminate the current voluntary off-season testing program, directed the national office staff to discuss with NCAA legal counsel the development and administration of a drug-testing consent form in the event the year-round testing program is approved; agreed that as part of the procedure for appealing to the Eligibility Committee for restoration of eligibility as a result of a positive test, institutions be required to review possible involvement of athletics personnel in their documentation of an investigation of drug use.

**Subcommittee to Review Drug-Testing Ineligibility Sanctions.** The Executive Committee voted to forward the following three legislative alternatives to the membership at the 1990 Convention:

• An amendment to Bylaw 31.2.3.6 to apply the existing executive regulations pertaining to team-ineligibility sanctions to postseason competition in all sports, including certified postseason football bowl games.

• Amendments to Bylaws 14.1.1.2, 18.4.1.5 and 31.2.3.4 to specify that a student-athlete who is found to have utilized (in preparation for or participation in an NCAA championships event or certified postseason football bowl game) a banned drug be declared ineligible for regular-season competition through the time period ending 30 days after the first contest in that sport during the next academic year, in addition to the existing ineligibility sanctions applicable to postseason competition during the prior academic year, and to specify that team-ineligibility sanctions related to the use of banned drugs would not apply, except as currently applied (i.e., no team sanctions would be applied unless an institution knowingly allowed an ineligible student-athlete to participate in an NCAA championships event or a certified postseason football bowl game).

• An amendment to Bylaw 31.2.3.6 to specify that team-ineligibility sanctions related to the use of banned drugs in NCAA championships and certified postseason football bowl games shall not apply, except as currently applied.

Agreed to seek the support of the Presidents Commission and Council for this action and request that the Presidents Commission designate these proposals for roll-call votes at the 1990 Convention.

**Special Planning Committee for Drug Testing.** The Executive Committee referred to the staff for further study and resolution of questions raised by legal counsel a proposal that the Association assist in a proposed anabolic-steroid testing program that a member institution planned to include in its regular-season football contracts.

**Ad Hoc Committee to Administer the Conference Grant Program.** After reviewing a report on the program, the Executive Committee agreed that the ad hoc committee had acted responsibly in allowing conferences a reasonable degree of flexibility in constructing individual programs, and it directed the ad hoc committee to continue to monitor the program carefully to ensure that conferences' proposals adhere to the basic requirements of the program.

**Special Committee on Grants to Undergraduates.** The Executive Committee:

Approved a recommendation that part-time students be eligible for grants (including tuition, fees and \$100 for books); that such students be required to carry a minimum of six semester hours (nine quarter hours) per term for a maximum of five terms; that successful completion with a cumulative grade-point average

of 2.000 (4.000 scale) be a prerequisite for funding in subsequent terms, and that these part-time students be approved for funding before other applications are evaluated.

Also, approved a recommendation that effective with the 1990 spring term, student-athletes interested in attending spring/summer or summer/fall terms, either full-time or part-time, be awarded funds returned by member institutions due to failure of other awardees to fulfill the requirements; requested that in future reports, the special committee include both the name of the awardee and the institution at which he or she is enrolled.

## Championships

**Certification-of-eligibility/availability form.** The Executive Committee voted that the certification-of-eligibility/availability forms be eliminated effective with the 1989-90 academic year; that institutions be reminded via pre-championship mailings that only student-athletes eligible under Bylaws 12, 13, 14, 15 and 16 may compete in NCAA championships, and that institutions be advised that it is incumbent upon them to notify the NCAA national office prior to the selection date for each championship of any student-athlete who may have participated in regular-season competition but subsequently is determined to be ineligible or unavailable for NCAA championships competition.

**Adjustment of place standings in individual-team championships.** The Executive Committee revised Bylaw 31.2.2.4(a) to specify that when a student-athlete competing as an individual in an NCAA championship is declared ineligible subsequent to the competition, the placement of those student-athletes who finished below the ineligible competitor shall be adjusted (see executive regulations section below).

The Executive Committee denied an appeal from the University of Wisconsin, Madison, to adjust the final team standings in the 1983 Division I Men's Cross Country Championships. Wisconsin requested that Bylaw 31.2.2.4(a), an executive regulation, be interpreted to permit this adjustment, since that position was vacated voluntarily by the University of Texas, El Paso, as a result of participation in the event by student-athletes suspected of violating NCAA eligibility rules. In denying the appeal, the Executive Committee noted that no UTEP student-athletes had been declared ineligible; that it was not possible to determine what point totals should be adjusted, and that it was not possible to assume that any appropriate adjustment, if made, would have left UTEP without enough points to stay in first place.

**Regional advisory committees.** The Executive Committee approved the following guidelines for regional advisory committees:

1. Regional advisory committees should comprise a minimum of three members each.

2. Each conference sponsoring the respective sport should be represented—if possible without creating disproportionate representation, however, more than one individual may represent the same conference.

3. At least one person should represent independent institutions, if the number of independent institutions in a region warrants such representation.

4. Governing sports committees shall be responsible for officially approving all regional advisory committee members' appointments, for ensuring that they meet the criteria for service and for ensuring that appropriate representation exists (i.e., all members must be salaried on a regular basis by a member institution or organization and be performing a regular staff function to which they devote at least 50 percent of their time; the advisory committee should be representative of a cross-section of the region's membership and reflect a broad geographical distribution; no conference should have disproportionate representation, and individuals whose institutions belong to both the NCAA and the National Association for Intercollegiate Athletics (NAIA) shall not participate in decisions regarding NCAA championships if the institution declares its intention to participate only in the NAIA championship).

The Executive Committee also voted that the terms of regional advisory committee members be limited to three consecutive years, and that a member may be reappointed only after having been off the committee for three consecutive years.

It was agreed that regional advisory committee members may not participate in discussions or vote on decisions affecting their own teams or individuals, but that they need not be removed from regional telephone conferences at any point.

**Automatic-qualification criteria.** Bylaw 31.3.4.2(c), an executive regulation, was revised to specify that in order to be eligible for or retain automatic qualification, a conference must have at least six institutions that are eligible for the NCAA championship rather than simply having six institutions that sponsor the sport and compete during the season (see executive regulations section below).

**Review of championships misconduct incidents.** After reviewing two incidents of misconduct that occurred during the 1988-89 championships season, the Executive Committee voted to remind all governing sports committees of their responsibilities to adhere strictly to and to enforce the policies and procedures established or approved by the Executive Committee in the administration of their respective championships.

The Executive Committee also voted to direct governing sports committees to report all actions regarding misconduct situations to the respective division championships committee as a matter of information.

**Drug-testing protocol violation.** The Executive Committee voted to advise a member institution involved in a drug-testing protocol violation during a 1988-89 championships event that the NCAA's investigation of the incident had been concluded and that no further action was necessary.

## Baseball.

**Division I.** Voted to increase from five to six the number of umpires assigned to each regional tournament, voted to provide Creighton University \$15,000 for serving as the host institution for the 1989 College World Series.

**Division II.** Voted not to extend the championship session by one day; denied a request that institutions hosting regional competition be required to guarantee a minimum of \$3,000 in net receipts; voted not to permit the committee to give preference to an institution that has not hosted a tournament session as recently as another when selecting sites; voted that, as a condition of receiving automatic qualification, a conference must conduct its season-ending tournament (if such a tournament is used to determine its championship representative) using the same rules that are used in the championship—specifically, games must be nine innings, rather than seven, and "speed-up" rules be prohibited.

Also, voted not to require, as a condition for automatic qualification, that a conference determine its championship representative by 5 p.m. on the Saturday prior to the selections; approved a power-rating index recommended by the baseball committee to assist in the selection of teams; denied a request to increase officials' fees from \$50 to \$100 per game, but approved a request to permit the committee to assign officials from within a 200-mile radius of the site, rather than 100 miles.

In addition, approved regional realignment of the following institutions for selection purposes, effective with the 1990 championship: Ashland College, from the North Central to the North Atlantic, and Albany State College (Georgia) and Valdosta State College, from the South to the South Atlantic.

**Division III.** Voted to allow the committee to give preference in the site-selection process to institutions that have a field tarp, but denied permission for the committee to state that a site with lights is "highly desirable;" voted to provide Eastern Connecticut State University a \$750 honorarium for serving as the host institution for the 1989 championship.

Also, realigned for selection purposes Maryville College (Missouri); Washington University (Missouri); and Webster University from the Midwest to the Midwest region; voted to defer action until the December meeting on a recommendation that regional tournaments played at facilities without lights be conducted over four days, instead of three.

## Men's basketball.

**Division I.** Voted that Cedric W. Dempsey, outgoing chair of the basketball committee, be commended for his outstanding efforts and contributions to the success and growth of the Division I Men's Basketball Championship.

Also, approved the following future dates and sites for championship competition:

1992 first and second rounds: East—Greensboro Coliseum, Greensboro, North Carolina, March 19 and 21 (Atlantic Coast Conference, host), and The Centrum, Worcester, Massachusetts, March 20 and 22 (Holy Cross College, host); Southeast—Riverfront Coliseum, Cincinnati, Ohio, March 19 and 21 (University of Cincinnati, host), and The Omni, Atlanta, Georgia, March 20 and 22 (Georgia Institute of Technology, host); Midwest—Bradley Center, Milwaukee, Wisconsin, March 19 and 21 (Marquette University, host), and the University of Dayton Arena, Dayton, Ohio, March 20 and 22 (University of Dayton, host); West—University Pavilion, Boise, Idaho, March 19 and 21 (Boise State University, host), and University Activity Center, Tempe, Arizona, March 20 and 22 (Arizona State University, host).

1992 regionals: East—The Spectrum, Philadelphia, Pennsylvania, March 26 and 28 (Temple University, host); Southeast—Rupp Arena, Lexington, Kentucky, March 27 and 29 (University of Kentucky, host); Midwest—Kemper Arena, Kansas City, Missouri, March 27 and 29 (Big Eight Conference, host); West—University Arena, Albuquerque, New Mexico, March 26 and 28 (University of New Mexico, host).

1993 first and second rounds: East—L. B. Joel Memorial Coliseum, Winston-Salem, North Carolina, March 18 and 20 (Wake Forest University, host), and the Carrier Dome, Syracuse, New York, March 19 and 21 (Syracuse University, host); Southeast—Orlando Arena, Deland, Florida, March 18 and 20 (Stetson University, host), and Vanderbilt University Memorial Gymnasium, Nashville, Tennessee, March 19 and 21 (Vanderbilt University, host); Midwest—Rosemont Horizon, Rosemont, Illinois, March 18 and 20 (DePaul University, host), and St. Louis Arena, St. Louis, Missouri, March 19 and 21 (Missouri Valley Conference, host); West—Jon M. Huntsman Center, Salt Lake City, Utah, March 18 and 20 (University of Utah, host), and the McKale Center, Tucson, Arizona, March 19 and 21 (University of Arizona, host).

1993 regionals: East—Meadowlands Arena, East Rutherford, New Jersey, March 26 and 28 (Rutgers University, New Brunswick, host); Southeast—Charlotte Coliseum, Charlotte, North Carolina, March 25 and 27 (University of North Carolina, Charlotte, host); Midwest—Indiana Hoosier Dome, Indianapolis, Indiana, March 25 and 27 (Butler University and Midwestern Collegiate Conference, cohosts); West—

Kingdome, Seattle, Washington, March 26 and 28 (University of Washington, host).

Final Four (approved contingent upon receiving written confirmation that the involved entities would follow NCAA specifications to the letter and execute any contracts that the Association required): 1994—Charlotte Coliseum, Charlotte, North Carolina, April 2 and 4 (University of North Carolina, Charlotte, host); 1995—Kingdome, Seattle, Washington, April 1 and 3 (University of Washington, host); 1996—Meadowlands Arena, East Rutherford, New Jersey, March 30 and April 1 (Rutgers University, New Brunswick, host); 1997—Indiana Hoosier Dome, Indianapolis, Indiana, March 29 and 31 (Butler University and Midwestern Collegiate Conference, cohosts).

Also, supported and forwarded to the Council a proposed amendment to Bylaw 21.6.5 to specify that the Division I Men's Basketball Committee shall comprise one representative from each of the four geographical regions and five members at large, with no more than three individuals representing any one region; approved revision of Bylaw 31.02.3, an executive regulation, to further define misconduct (see executive regulations section below).

In addition, awarded automatic qualification for the 1990 championship to the following: Atlantic Coast, Atlantic 10, Big East, Big Eight, Big Sky, Big Ten, Big West, East Coast, Metro Atlantic Athletic, Metropolitan Collegiate Athletic, Mid-American Athletic, Mid-Eastern Athletic, Midwestern Collegiate, Missouri Valley, North Atlantic, Northeast, Ohio Valley, Pacific-10, Southeastern, Southern, Southland, Southwest Athletic, Southwestern Athletic, Sun Belt, Trans America, West Coast and Western Athletic Conferences; the Ivy Group, the Association of Mid-Continent Universities, and the Colonial Athletic Association.

In addition, approved a recommendation that, effective with the 1991 championship, the following criteria be used in determining the 30 automatic qualifying conferences: Rankings against nonconference competition (including won-lost percentage and rating percentage index ranking) and nonconference scheduling (including home and road won-lost records, strength of schedule vs. home and road opponents, and won-lost record vs. non-Division I opponents); approved policies, procedures and standards designed to enhance the presentation of the championship—the Final Four in particular—and achieve the level of quality control necessary for the event, effective with the 1991 championship.

Finally, directed the Division I Men's Basketball Committee to review at its December meeting the entire issue of the determination of automatic qualifiers, giving further consideration to the concept of providing a distribution of tournament receipts for nonautomatic-qualifying conferences.

**Division II.** Awarded automatic qualification for the 1990 championship to the following: California Collegiate Athletic, Central Intercollegiate Athletic and Missouri Intercollegiate Athletic Associations, and the Great Lakes Valley, Great Northwest, Gulf South, Lone Star, Midwest Collegiate, New England Collegiate, North Central Intercollegiate Athletic, Northern California Athletic, Northeast-10, Pennsylvania State Athletic, Southern Intercollegiate Athletic and Sunshine State Conferences.

Approved permitting the committee to move a team to a tournament site outside its region if its proximity to an opponent outside its region is comparable and/or, in the committee's opinion, would result in a better competitive matchup; realigned Armstrong State College from the South Atlantic to the South region; voted to ask the Council to sponsor legislation at the 1990 Convention to increase the committee from six to eight members.

Also, approved conducting regional competition Thursday and Friday or Friday and Saturday prior to the championship session and permitting the committee to make exceptions to these dates due to extenuating circumstances; approved requiring each participating institution's sports information director and an individual in an administrative capacity (other than a coaching-staff member) to accompany the team to all tournament sessions.

In addition, voted to require the following representatives of each participating institution to attend these championship functions: pre-championship meetings—administrator, head coach and sports information director; press conference—administrator, head coach and sports information director; banquet—administrator, head coach, sports information director and team members; approved, effective in 1990, conducting the "Elite Eight" Saturday, Sunday and Monday, rather than Thursday, Friday and Saturday, voted to increase from two to three the number of officials for all tournament games; approved use of the power ranking system recommended by the Division II Baseball Committee to assist in the selection of teams.

Endorsed the following recommendations regarding enhancement of the Division II Men's Basketball Championship and forwarded them to the subcommittee comprising members of the basketball committee and the Special Committee to Review the Membership Structure: Expand the championship field from 32 to 40 teams; allocate \$3.5 million among the 40 participating teams (\$50,000 per game), and obtain live television coverage of the championship game on a national network and attempt to provide television coverage for other play-off games.

**Division III.** Awarded automatic qualification. See Summary, page 9



Continued from page 8

for the 1990 championship to the following: Dixie Intercollegiate, Iowa Intercollegiate Athletic, Little East, Michigan Intercollegiate Athletic, Middle Atlantic States Collegiate Athletic (two berths), Midwest Collegiate Athletic, Minnesota Intercollegiate Athletic, New Jersey Athletic, North Coast Athletic, Ohio Athletic, Old Dominion Athletic, Southern Intercollegiate Athletic and State University of New York Athletic Conferences, and the College Conference of Illinois and Wisconsin.

Also, denied an appeal by the Collegiate Athletic Conference that its automatic qualification be restored; reduced the ban on Rust College's participation in the championship from two additional years to one, noting that removal of the institution from the 1989 championship due to the discovery of two ineligible student-athletes counted as one of the two years, making 1990 the final year that the institution will be prohibited from participating in the tournament; deferred action on a recommendation that the number of games played at each session of the tournament be revised until the full championships committee conducts a telephone conference to review the subject further, noting that the NCAA Administrative Committee could approve the recommendation so that it could be implemented for the 1990 championship, if desired.

In addition, approved the following institutional alignments and regions for selection purposes: Designate the South Atlantic region as the Atlantic region; realign the City University of New York Athletic Conference from the East region to the Atlantic region; realign Pennsylvania State University-Behrend College from the Middle Atlantic region to the East region; realign the state of Connecticut from the Northeast region to the Atlantic region, except for Eastern Connecticut State University; realign the state of Virginia from the South Atlantic region to the South region; realign the state of Texas from the West region to the South region; realign the state of West Virginia from the South Atlantic region to the Great Lakes region; realign Carnegie-Mellon University, Grove City College, Thiel College, Waynesburg College, and Washington and Jefferson College from the Middle Atlantic region to the Great Lakes region, and realign the state of Indiana, excluding Earlham College, from the Great Lakes region to the Midwest region.

Also, approved permitting the committee to rank 20 teams in its weekly national poll, instead of 10; increased officials' fees from \$125 to \$150 for quarterfinals and from \$150 to \$200 for the semifinal and championship games; increased the number of officials for the championship session from four to eight, instructing the committee to select the two officials for the third-place game from the local area and provide them only a lcc (no per diem or transportation expenses).

Women's basketball. The Executive Committee:

Division I—Approved the following dates and sites for future championships competition: 1991 regionals, all March 21 and 23: East—The Palestra, Philadelphia, Pennsylvania [St. Joseph's University (Pennsylvania), host]; Midwest—Thompson-Boling Arena, Knoxville, Tennessee (University of Tennessee, Knoxville, host); Midwest—Frank Erwin Center, Austin, Texas (University of Texas, Austin, host); West—Thomas and Mack Center, Las Vegas, Nevada (University of Nevada, Las Vegas, host).

1992 Women's Final Four—Los Angeles Sports Arena, Los Angeles, California, April 3 and 5 (University of California, Los Angeles; University of Southern California, and Los Angeles Sports Council, hosts).

1993 Women's Final Four—The Omni, Atlanta, Georgia, April 2 and 4 (Georgia Institute of Technology, host).

Also, awarded automatic qualification for the 1990 championship to the following: American South, Atlantic Coast, Atlantic 10, Big East, Big Eight, Big Ten, Big Sky, Big West, Gateway Collegiate Athletic, High Country Athletic, Metro Atlantic Athletic, Metropolitan Collegiate Athletic, Mid-American Athletic, Ohio Valley, Pacific-10, Southeastern, Southern, Southland, Southwest and Sun Belt Conferences, and the Colonial Athletic Association.

In addition, voted not to permit the committee to award one of the 48 championship berths to a team from among the 11 nonautomatic-qualifying conferences if none of that group is selected at large on the basis of won-lost record and strength of schedule; voted to advise the NCAA Administrative Committee that the Division I Championships Committee supports the involvement of women in the areas of the upcoming television negotiations that affect the Division I Women's Basketball Championship, if feasible.

Division II—Awarded automatic qualification for the 1990 championship to the following: California Collegiate Athletic and Central Intercollegiate Athletic Associations and the Continental Divide, Empire State, Great Lakes Valley, Gulf South, Lone Star, Midwest Collegiate, Missouri Intercollegiate Athletic, New England Collegiate, North Central Intercollegiate Athletic, Northeast-10, Northern California Athletic, Southern Intercollegiate Athletic and Pennsylvania State Athletic Conferences.

Also, remanded to the Division II Women's Basketball Committee for further review a recommendation that the Empire State Conference be realigned from the East region to the New England region; voted not to permit the committee to determine quarterfinal pairings based on a seven-year, round-robin rotation

that would provide for all regions to play one another within that time period.

Division III Awarded automatic qualification for the 1990 championship to the following: College Conference of Illinois and Wisconsin; Iowa Intercollegiate Athletic, Little East, Massachusetts State College Athletic, Middle Atlantic States Collegiate Athletic, Minnesota Intercollegiate Athletic, New Jersey Athletic, Ohio Athletic and Women's Intercollegiate Athletic Conferences, and the University Athletic Association.

Also, realigned Johns Hopkins University and Western Maryland College from the Atlantic region to the Mid-Atlantic region; voted to permit the committee to rank 20 teams in its weekly national poll, instead of 10; voted not to increase alternate officials' fees from \$30 to \$50, but directed the committee to consider officials' fees consistent with those for the men's championship.

Field hockey. The Executive Committee:

Division I Approved conducting first-round games Wednesday or Thursday following selections, effective in 1990, rather than conducting first- and second-round games on consecutive days; approved Springfield College as host institution for the 1989 championship, November 17-18.

Division III—Denied a request to expand the national poll from 10 to 20 teams.

Football. The Executive Committee:

Division I-AA Reduced the number of independent institutions that must be selected to participate in the championship from two to one, effective with the 1989 championship; awarded automatic qualification for the 1989 championship to the following: Big Sky, Gateway Collegiate Athletic, Ohio Valley, Southern, Southland, Southwestern Athletic and Yankee Conferences.

Division II—Denied an expansion of the official traveling party from 57 to 62.

Men's and women's golf. The Executive Committee:

Division I—Voted to make permanent the regional-qualifying system used on a one-year experimental basis for the 1989 men's championships; increased, effective in 1990, the number of qualifiers for the men's regional tournaments from 108 to 120 in the East, from 100 to 111 in the Central and from 85 to 93 in the West (a total increase from 293 to 324); approved the following hosts for 1990 men's regional tournaments, to be held May 24-26: East—Georgia Southern College (Savannah Inn and Country Club); Central—Ohio State University (Scarlet Golf Course); West—New Mexico State University (University Golf Course).

Also, approved the University of New Mexico (South Golf Course) as host for the 1992 championships, June 10-13; realigned the University of Tennessee, Knoxville, from District 3 North to District 3 South.

In addition, revised the women's championships selection process as follows, effective with the 1990 championships:

1. Permit the committee to consider the following factors in selecting teams and individuals, rather than relying solely on computer rankings: computer differential averages, head-to-head competition, strength of schedule, tournament finishes, recommendations of regional advisory committees and balanced regional representation.

2. Provide each region no fewer than one team berth and, when two or more teams are considered essentially equal, give priority to the region with the least representation.

3. When two or more individuals from either Division II or III are considered essentially equal, give priority to the division with the least representation.

4. For Division I allocations, select one individual from each of the five regions and the remaining individuals at large.

Finally, approved Ohio State University (Scarlet Golf Course) as host institution for the 1991 women's championships, May 22-25.

Division II—Denied approval of Ahlens Christian University as host for the 1990 men's championships and directed the committee to determine an alternative host site.

Division III—Realigned the following from District I to District 2 for selection purposes, effective with the 1990 championships: Clarkson University, Hamilton College, Hartwick College, New Paltz State University College, New York University, Rensselaer Polytechnic Institute, Skidmore College, Union College (New York), Utica College, Yeshiva University and U.S. Merchant Marine Academy.

Men's gymnastics. The Executive Committee approved Houston Baptist University as host for the 1990 championships, to be held April 19-21 at Sam Houston Coliseum; approved the following hosts for regional meets, to be held April 7: West—University of Oklahoma (Lloyd Noble Center); East—Pennsylvania State University (Recreation Building).

Women's gymnastics. The Executive Committee approved the following hosts for 1990 regional meets, April 7: Central—University of Minnesota, Twin Cities, Midwest—University of Utah, Northeast—Ohio State University; Southeast—University of Florida; West—University of California, Los Angeles.

Also, approved the University of Alabama, Tuscaloosa, as host for the 1991 championships, April 19-20; approved conducting regional meets in one session instead of two, effective in 1990; denied a request by the committee to pay regional advisory committee chairs \$300 each to administer the regular-season score-reporting system, but voted to permit host institutions to include this expense in their proposed budgets; for regional meets, increased the number of judges selected from outside the region in which the competition is conducted from three to four, and authorized the selection

of one judge from each of the other four regions.

In addition, referred to the national office staff for further study a request that all 12 squad members be reimbursed transportation and per diem expenses, rather than only those who actually compete; directed that the staff report include cost estimates and recommendations regarding the appropriateness of such a policy for all individual-team championships in which separate team competition is conducted; voted to review this matter at the Executive Committee's May 1990 meeting.

Ice hockey. The Executive Committee:

Division I—Voted to request that the NCAA Council sponsor an amendment to Bylaw 17.10.3-(a) at the 1990 convention to change the starting date for regular-season competition from the second to the third Friday in October, effective immediately; and contingent upon approval of this amendment by the membership, approved conducting the semifinal and championship games of the Division I tournament the weekend following the Division I Men's and Women's Basketball Championships, effective in 1991.

Also, increased officials' fees from \$250 for the referee and \$60 for the backup officials to \$300 (rather than \$350, as recommended by the Division I Ice Hockey Committee) and \$75, respectively; approved continuation of the best-two-of-three-game format for first- and second-round games that was approved on a one-year experimental basis in August 1988; approved provision to the University of Minnesota, Duluth, and the University of Minnesota, Twin Cities, of \$10,000 and \$30,000, respectively, for coshosting the 1989 championship; awarded automatic qualification for the 1990 championship to the following: Central Collegiate Hockey, Hockey East and Western Collegiate Hockey Associations and the Eastern College Athletic Conference.

Division III Awarded automatic qualification for the 1990 championship to the following: Minnesota Intercollegiate Athletic Conference, Northern Collegiate Hockey Association and State University of New York Athletic Conference; denied a request to establish a specific minimum seating capacity for any championship session, and directed the committee to continue determining what constitutes the criterion "adequate seating" on a case-by-case basis; denied recommendations to conduct the semifinal and championship games at a predetermined site and to revise the tournament format.

Men's lacrosse. The Executive Committee:

Division I Approved Syracuse University as host for the 1991 championship, May 25 and 27; granted a waiver of Bylaw 31.7.2.II.5-(a) to permit the committee to conduct its annual meeting on the East Coast in 1990.

Division III—Approved a recommendation that two of the four officials for the championship be permitted to use air transportation, if necessary.

Women's lacrosse. The Executive Committee:

Division III Denied increasing the official traveling party from 22 to 24.

Joint recommendation—Approved Princeton University as host for the semifinals and finals of the 1990 National Collegiate and Division III championships, May 19-20.

Men's and women's rifle. The Executive Committee approved the U.S. Naval Academy as host for the 1990 championships, March 9-10.

Men's and women's skiing. The Executive Committee approved the following championships dates, sites and hosts: 1990—University of Vermont (Mount Mansfield and the Trapp Family Lodge, Stowe, Vermont), March 7-10; 1991—University of Utah (Park City, Utah), March 6-9.

Women's softball. The Executive Committee: Joint recommendation—Eliminated the tiebreaker procedure that had been in use since the 1985 championships.

Division I—Awarded automatic qualification for the 1990 championship to the following: Big Eight, Big Ten, Big West, Pacific-10, Gateway Collegiate Athletic, High Country Athletic and Mid-American Athletic Conferences; approved reimbursement of air-transportation expenses for four of the six officials assigned to the championship session, if necessary.

Also, effective with the 1991 season, approved realignment of the current seven regions into six regions, resulting in the following changes: Realign the state of Illinois from the Midwest region to the Midwest region, eliminate the Central region due to the pending merger of the High Country and Western Athletic Conferences, and realign the remaining High Country members to the West region; realign the state of Texas from the Central region to the Midwest region; rename the Northwest region the Pacific region and incorporate into it three former Division II members.

Division II—Awarded automatic qualification for the 1990 championship to the following: California Collegiate and Missouri Intercollegiate Athletic Associations and the New England Collegiate, North Central Intercollegiate, Pennsylvania State Athletic, Northeast-10 and Sunshine State Conferences; voted not to extend the quarterfinals from two to three days.

Division III Approved Eastern Connecticut State University as host for the 1991 championship, May 17-20; voted not to increase the official traveling party from 22 to 23; voted not to expand the championship bracket from 20 to 24 teams; voted to permit the committee to assign four umpires, rather than three, to each of the four-team regionals.

Men's and women's swimming. The Executive Committee:

Division I Directed the committee to es-

tablish standards to achieve the following participation ratios as benchmarks (rather than absolute fields) for the men's and women's championships: by 1990, 1:12; by 1991, 1:14; by 1992, 1:16; voted not to permit the committee to establish qualifying standards for the 100-yard medley and freestyle relays, continuing these events as optional-entry events (i.e., only those student-athletes who had qualified in another event could participate in them); directed the committee to establish a standard for optional-entry events in the men's and women's championships that would eliminate between 20 and 30 percent of the optional entries that competed in 1989 (rather than eliminating only 10 to 15 percent, as recommended by the swimming committee).

Also, approved Indiana University, Bloomington (Indiana University Natatorium), as host for the 1991 women's championships, March 21-23; approved the following hosts for 1990 zone diving meets: Zone A—U.S. Naval Academy; Zone B—University of Kentucky; Zone C—University of Michigan; Zone D—Southern Methodist University; Zone E—Brigham Young University.

In addition, awarded automatic qualification for the diving competition at the 1990 men's and women's championships to the following: Men's—Big Ten, Big Eight, Metropolitan Collegiate Athletic, Southeastern and Southwest Athletic Conferences; women—Big Ten, Big Eight, Metropolitan Collegiate Athletic, Pacific-10, Southeastern and Southwest Athletic Conferences.

Voted to permit use of automatic relay-takeoff judging equipment to be charged as a games expense for the men's and women's championships.

Division II Directed the committee to establish standards to maintain the 1989 men's and women's championships field sizes as benchmarks (rather than absolute field sizes) for the 1990 championships (127 men, a 1:8.5 participation ratio, and 134 women, a 1:8.4 participation ratio); voted not to permit the committee to conduct the diving qualifying meet two days prior to the championships, rather than one; voted to score 16 places, rather than 12, in the men's and women's championships; voted to reimburse transportation and per diem expenses only for four individuals per qualified relay team, regardless of the number of student-athletes who may swim on the team in the preliminaries and finals (rather than reimbursing substitutes).

Also, voted to permit institutions to enter a team optionally (i.e., student-athletes must have qualified in another event) in the five relays, with the following stipulations: medley relay—only institutions that have qualified in one of the two medley relays or that have four student-athletes who have qualified in individual events may enter; freestyle relays—only institutions that have qualified in at least one of the freestyle relays or that have four student-athletes who have qualified in individual events may enter.

Division III—Directed the committee to establish standards to achieve participation ratios of 1:12 for the 1990 men's and women's championships as a benchmark rather than absolute fields (approximately 262 women and 224 men) and to report at the May 1990 Executive Committee meeting rationale as to why the fields should not be reduced further to achieve 1:16 ratios; voted not to permit the committee to establish optional-entry standards for the men's and women's 200-yard medley and freestyle relays, continuing them as optional events (i.e., only student-athletes who had qualified in other events could participate); approved Wheaton College (Illinois) as host for the 1990 men's championships (Schroeder Swim Center, Brown Deer, Wisconsin, March 15-17) and for the 1990 women's championships (Norris Aquatic Center, Northwestern University, March 8-10).

Joint recommendations—Voted not to establish a five percent margin of error or a system of prorated expenses for certain competitors if the championships exceed their benchmarks; directed the national office staff to submit a report at the December 1989 Executive Committee meeting regarding the feasibility of encouraging institutions in selected individual-team championships to purchase restricted tickets that would limit the ability to change air-transportation plans.

Men's and women's tennis. The Executive Committee:

Division I Voted not to increase the number of days of competition for the men's individual championships from five to six; voted not to increase the number of individual awards for the first- and second-place teams in the men's and women's championships from nine to 10; directed the national office staff to survey athletics directors and coaches to determine opinion on changing the scoring system in the men's and women's championships from no-ad to regular scoring and on the concept of eliminating individual competition from the championships.

Division II—Approved the University of California, Davis, as host for the 1990 women's championships, May 6-12; approved Southern Illinois University, Edwardsville, as host for the 1990 men's championships, May 14-20 at the Dwight Davis Tennis Center, St. Louis, Missouri; directed the committee to return to the West in future years to meet the requirement that at least 25 percent of the participants in the past three championships be located within a 500-mile radius of the proposed site.

Division III Deferred until the December Executive Committee meeting consideration of requests to expand the men's championships bracket from 10 to 12 teams with no increase in the total number of participants and to increase the women's championships bracket from 10 to

12 teams with a cap of 112 participants; approved Swarthmore College as host for the 1990 men's championships, May 13-20; voted to conduct the women's team-championship competition over four days instead of three, to be consistent with the men's format, voted to conduct the women's championships the third week of May instead of the second week, effective in 1990.

Also, voted to conduct "play-outs" to determine place finishers Nos. 5 through 10 as an official part of the men's and women's championships formats; declined to sponsor legislation to increase Division III representation on the committee from three to four representatives each for men's and women's tennis; denied a request that a staff member be assigned specifically to the Division III subcommittee and noted that championships staffing assignments are not in the purview of the Division III Championships Committee.

Men's and women's track and field. The Executive Committee:

Division I Directed the committee to establish qualifying standards for the 1990 men's and women's indoor championships to achieve the three-year average number of participants in the championships as a benchmark (270 men, a 1:28 ratio, and 213 women, a 1:21.9 ratio), and to establish a procedure using "A" and "B" standards to achieve those benchmarks (i.e., meeting the "A" standard automatically would qualify a competitor for the championships; meeting the "B" standard would qualify a competitor only if positions were available in the particular event and that benchmark was not exceeded); directed the committee to establish qualifying standards for the 1990 men's and women's outdoor championships to achieve the three-year average number of participants in the championships as a benchmark (388 men, a 1:21.5 ratio, and 267 women, a 1:20.1 ratio), and to establish the same "A" and "B" qualifying procedures for the indoor championships.

Also, approved the University of Oregon as host for the 1991 men's and women's outdoor championships, May 29-June 1; approved the following as host institutions for 1989 cross country regional qualifying meets, November 11: Districts 1 and 2—Yale University; District 3, Furman University; District 4, Purdue University; District 5, Indiana State University; District 6, University of North Texas; District 7, University of Utah; District 8, California State University, Fresno.

Division II Voted to maintain the current number of participants in the men's and women's indoor championships as a cap (126 men, a 1:18.2 ratio, and 114 women, a 1:14.3 ratio), and to establish the "A" and "B" qualifying procedures approved for Division I; directed the committee to establish qualifying standards for the 1990 men's and women's outdoor championships to limit the field size to the two-year average number of participants in the championships (caps of 236 men, a 1:15.3 ratio, and 135 women, a 1:18.2 ratio), and to use the same "A" and "B" qualifying procedures approved for the indoor championships.

Also, approved the University of South Dakota as host for the 1990 men's and women's indoor championships, March 9-10; approved Hampton University as host for the 1990 men's and women's outdoor championships, May 24-26; denied appeals by Sonoma State University and Michigan Technological University for reimbursement of transportation and per diem expenses for their participation in the 1989 outdoor championships.

Division III—Voted to maintain the current number of participants in the men's and women's indoor championships as a cap (158 men, a 1:25.7 ratio, and 138 women, a 1:18.1 ratio) and to continue the use of provisional standards to achieve the caps; directed the committee to establish qualifying standards to maintain the 1989 men's and women's outdoor championships field sizes as benchmarks for the 1990 championships (327 men, a 1:19.8 ratio, and 234 women, a 1:16.1 ratio), and to maintain the current qualifying system (i.e., one absolute standard instead of an "A" and "B" system) for the championships; directed the committee, after the 1990 championships, to evaluate the success of this system in not exceeding the benchmarks.

Also, approved Smith College as host for the 1990 men's and women's indoor championships, March 9-10; approved North Central College as host of the 1990 men's and women's outdoor championships, May 23-26.

Men's volleyball. The Executive Committee approved the University of Hawaii as host for the 1991 championship, May 3-4.

Wrestling. The Executive Committee:

Division I—Denied a request for a special one-day meeting for three of the six members of the Division I subcommittee, but approved one additional day's per diem for all six members to extend the annual meeting by one day in 1990.

Division II—Authorized the committee to assign officials from within a 500-mile radius of the site instead of 400 miles; approved the following as hosts for 1990 regional qualifying tournaments, February 24: West—San Francisco State University; Midwest—Southern Illinois University, Edwardsville; Midwest—Ferris State University; Northeast—Manfield University of Pennsylvania; Southeast—Pembroke State University.

Also, denied approval of Portland State University as host of the 1990 championships, March 2-3, and denied approval of Central Missouri State University as host of the 1991 championships, March 10-12; directed the committee to give strong consideration to conducting the 1990 championships at the

# NCAA Record

## CHIEF EXECUTIVE OFFICERS

**Bruce Poulton** resigned as chancellor at North Carolina State, where he served in the post for seven years. **Charles J. McClain**, president at Northeast Missouri State, named commissioner of the Missouri Coordinating Board for Higher Education. **Jack Hawkins** selected as chancellor at Troy State, effective September 1. He succeeds **Ralph Adams**, who served in the post for 25 years.

## FACULTY ATHLETICS REPRESENTATIVE

**John Kloetzel** named at Maryland-Baltimore County, where he is associate professor of biological sciences. He replaces **James Mohr**.

## DIRECTORS OF ATHLETICS

**Al Gonzales** selected at New Mexico State, where he has been interim AD since August 1986. The former Aggie football standout has been employed in various posts at the university since 1971. **John Cochrane** named interim AD at Northeast Missouri State, where he has been head women's cross country and track coach for nine years. He replaces one-year acting AD **Sam Lesseig**, who will return to teaching full-time in the school's mathematics and computer science division. **Martin P. Devlin** appointed at Rider, where he was assistant AD from 1976 to 1981 and also served as head men's tennis coach before working the past eight years with Prince Manufacturing, Inc. **William C. Bibb** named at Texas-Arlington after serving as AD at Mercer since 1980. A member of Kentucky's national-championship basketball team in 1954, Bibb also has been head men's basketball coach at Mercer since 1974.

Also, **Tom Jones**, who serves as faculty athletics representative at Alabama, appointed interim AD at Alabama. He replaces **Steve Sloan**, who resigned after 2½ years in the post, citing differences of opinion with the university's new president. He will work in another capacity at the university for the next six months, then seek a position elsewhere. Sloan is a former Alabama football quarterback who also has been a football coach at Vanderbilt, Texas Tech, Mississippi and Duke. **Roger Williams' Joel Dearing** selected as head men's and women's volleyball coach at Springfield. **Daniel L. Bridges** named at Cal Tech, effective October 1. Bridges is head baseball and assistant football coach at the school. He succeeds **Warren G. Emery**, who will retire after serving as AD since 1964. **Ronald Stern** appointed at Gallaudet, his alma mater, where he lettered in four sports in the early 1970s. He has been principal of the junior high program at California School for the Deaf's Fremont campus since 1984.

## ASSOCIATE DIRECTORS OF ATHLETICS

Philadelphia Textile's **Julie Soriero** named head women's basketball coach at Pennsylvania. **Herb Taylor** selected at New Mexico State. He previously was director and manager of the Arena Auditorium at Wyoming, where he also served from 1982 to 1986 as director of promotions, marketing and special projects. Taylor also has been an assistant AD at Puget Sound. **Mike Knight** promoted from assistant AD to associate AD in charge of compliance at Nicholls State, where he also is head baseball coach. **David Thomas** appointed associate AD for internal management at Cal State Los Angeles. He previously was athletics director at Old Westbury. **Robert Carlson** promoted from assistant AD at Clarion, where he joined the staff in 1987 after serving as head wrestling coach and associate AD at Utah. **John Lemieux** named at Colby-Sawyer, where he also will coach the school's new men's basketball team beginning in 1990. He formerly was head women's basketball coach at Keene State.

## ASSISTANT DIRECTORS OF ATHLETICS

**Norm Reilly** appointed assistant AD for media relations at Tulane after nine years on the sports information staff at Georgia. **Easton LeBouef** promoted after two years as business manager to assistant AD in charge of budget control at Nicholls State. He also has been executive director of the university's fundraising Colonels' Brigade. Also, the school announced the retirement of **Marion S. Curtis**, who also stepped down as head women's volleyball coach and was awarded the title of assistant athletics director emeritus. She had been assistant



**Nicholls State promoted Mike Knight to associate AD**



**Robert Carlson promoted to associate AD at Clarion**



**Jim Tillet joined Mississippi State basketball staff**

AD since 1975 and had been affiliated with the school for 26 years. **Dick Reynolds** given additional duties at Otterbein, where he has been head men's basketball coach for 17 seasons and will retain that post. **Wagner's Kevin Flanagan** named at Upsala, where he also will assist with football. **Charles Murray Jr.** selected at New Paltz State, where he also will be head women's swimming coach and assist with men's swimming. He previously was a teacher and swimming coach at Pine Bush High School in New York. **Steve Balsan** appointed at Mercy, where he also will be sports information director. **Betsy Mosher** named assistant AD for intercollegiate programs at Northwestern, effective October 1. The former women's basketball coach at Wisconsin-Whitewater and California (Pennsylvania) and former NCAA compliance representative served the past year as administrative assistant for legislation at the Big Ten Conference.

## COACHES

**Baseball** Former Detroit Tigers all-star catcher **Bill Freehan** selected at Michigan, his alma mater. Freehan, who was an all-star 11 times during his 15 years

Institute of Technology and Nazareth (New York), where he also served during spring 1986 as interim head coach. For the past year, Clune has coached an elite team in Ireland. **Kevin Bannon** appointed at Rider after seven years at Trenton State, where last year's team was runner-up in the Division III Men's Basketball Championship. His Trenton State teams compiled a 145-48 record, including a 30-2 mark last season. **Mark Paluszak** named at Lake Superior State. He previously was an assistant at Otterbein and is a former head coach at Ohio Dominican and George Williams and an aide at Eastern Michigan and Bowling Green. Paluszak's coaching record is 78-112, including a 49-23 mark at George Williams. **John Lemieux** selected for the new men's program at Colby-Sawyer, where he also will serve as associate athletics director. Colby-Sawyer will sponsor men's basketball beginning in 1990. Lemieux formerly was head women's basketball coach at Keene State.

**Men's basketball assistants**—**Allan Hatcher** appointed at Western Kentucky after six seasons as head coach at Marshall County (Kentucky) High School, where



**North Central named Ron Weissenhofer to football staff**



**Wisconsin-River Falls picked Paul Gandrud for men's golf**



**Bob Hagan joined hockey staff at Rochester Institute**

with the Tigers, is president of a firm in suburban Detroit but plans to divest himself of business interests. **Ken Campbell** named at East Tennessee State, his alma mater, after 15 years as head coach at Eau Gallie High School in Florida, where his teams were 342-151. **Sal Garrilli** appointed at Ramapo. He has been head coach since 1985 at Jersey City State, where his teams recorded a 64-83 mark, and he also has been an assistant at Kean. **John Seymour** named for the part-time position at Glassboro State. He previously was on the staff at Rutgers, where he served last season as pitching coach, and also has been a graduate assistant coach at Trenton State.

**Baseball assistants** **Bob Moranda** joined the staff at Virginia. He previously was a graduate assistant coach at Eastern Kentucky, where he also played as an outfielder. **Steve Smith** hired at Mississippi State after two seasons on the staff at Texas A&M. The former Mississippi College and Baylor athlete also played for four seasons in the San Francisco Giants' minor-league system. **Tim Gallagher** appointed at Ramapo. He has been an aide at Charleston, Marshall and, most recently, Jersey City State. **Billy Gardner Jr.** selected at Hartford. Gardner, whose father served stints as manager of the Minnesota Twins and Kansas City Royals, recently retired from professional baseball after playing in the Royals and Boston Red Sox organizations.

**Men's basketball**—Mercer's **William C. Bibb** named athletics director at Texas-Arlington. Through 15 years as head coach, Bibb coached Mercer to a 222-194 record and two appearances in the Division I Men's Basketball Championship. **Paul Clune** selected at New Paltz State. He is a former assistant at Rochester

his teams compiled a 158-35 record. **Jimmy Dykes** hired at Arkansas-Little Rock. The former Arkansas player and graduate assistant coach served the past two seasons as a part-time aide at Kentucky and also has coached at Cal State Sacramento and Appalachian State. **Michael P. Sheridan** selected at Denison after four years on the staff at Davis and Elkins. **Kenny Clark** named to a full-time position at Texas-Pan American, where he was a graduate assistant coach last season. He replaces **Jim Schuster**, who resigned to enter private business. **Jim Tillet** hired at Mississippi State. He previously was head coach at De La Salle High School in New Orleans, where his teams were 196-55 through seven seasons and his 1986 squad won a state title. Tillet replaces **Duane Reboul**, who was named head coach at Birmingham-Southern. **Tim Orтели** appointed at New Jersey Tech. He has been associate coach at Bridgewater West High School in New Jersey since 1986.

In addition, **Brian Ellerbe** named at South Carolina, which also announced the promotion of **Eddie Payne** from assistant to associate head coach. Ellerbe previously was on the staff at George Mason and also has been an aide at Rutgers and Bowling Green. **Greg Vetrone** appointed at Fairleigh Dickinson-Teaneck after four years on the staff at Long Island-C. W. Post, where he also played. **Ken Roth** selected at Georgia State. He coached at North Greenville College last season and also has been on the staff at Armstrong State. Roth replaces **Mark Slonaker**, who accepted a position at Georgia. **John Haskins** named at Pembroke State, where he also will coach men's tennis. He previously coached cross country and golf and assisted with men's

basketball at Gardner-Webb. **Gerald Arcouette** hired at Southeastern Massachusetts. **Joe Lombardi** promoted to assistant head coach at St. Francis (Pennsylvania), where he has been on the staff for two years. **Brett Steele** selected at Marietta, where he also will be sports information director.

Also, **Mike Wilson** appointed at Missouri Southern State. He has been head coach at Graceland for the past eight seasons and is a former aide at Missouri Western State. **David Siepert** named to a part-time position at Penn State after serving last season as a full-time assistant at Rochester. The former Muhlenberg player also has been a graduate assistant coach at Shippensburg. **Dan Wilcutt** and **Harold Ott** hired at Webster. Wilcutt is a former student assistant at Missouri, and Ott is a Marquette graduate who played high school basketball in the St. Louis area. **Al Modrejewski** named at Clarion after two seasons on the staff at Point Park. He also has been an assistant at Alliance and St. Mary's (Michigan). **Lowes Moore** joined the staff at Albany (New York), where he will coach the junior varsity team and serve as chief recruiter. The former West Virginia guard, who also played for three National Basketball Association teams and the Albany Patroons of the Continental Basketball Association, was head coach last season at Hudson Valley Community College in New York. **Don Harnum** appointed at Rider as the school's first full-time assistant. A former academic all-America player at Susquehanna, Harnum previously served on the staff at Trenton State. **Christian Appleman** selected as graduate assistant coach at Penn State, where he recently completed his three-year playing career as a point guard.

**Women's basketball** **Julie Soriero** selected at Pennsylvania. She has been head coach since 1982 at Philadelphia Textile, where she also has been assistant athletics director since last year. Her Philadelphia Textile basketball teams recorded a 132-73 mark and appeared twice in the Division II Women's Basketball Championship. She also has coached at Haverford. **Potsdam State's Addy Malatesta** named field hockey and women's tennis coach at Wilkes. **Carolyn A. Jensen** appointed at Mills. She previously was head girls' coach at Highland High School in Bakersfield, California. **Margaret "Gie" Parsons** named at Clarion after eight years as head coach at Thiel, where her teams recorded a 110-73 mark, won three Presidents' Athletic Conference titles and appeared in one Division III Women's Basketball Championship. **Eldon Price** appointed at Rider, where he served the past four years as assistant men's basketball coach. **Jocelyn Beck** promoted from assistant at Lehigh, where she has been on the staff for two seasons and directed the team for nine games last season while predecessor **Anne Sinnott Skutches** was on maternity leave. Beck also has served as head coach at Kutztown. Skutches stepped down after two seasons at Lehigh. **Tim Engle** named at Notre Dame (Maryland). He is a former assistant at Loyola (Maryland) who also has coached in Baltimore-area private schools.

## Women's basketball assistants

Former Tennessee-Martin head coach **Karen Lawler** hired for a part-time position at Purdue. She replaces **Rosie Jones**, who joined the staff at South Carolina. **Reggie Carney** selected at Boston U. after 12 years as head girls' coach at Hoffman High School in South Amboy, New Jersey. Carney, whose overall record at the school was 296-37, coached his last five teams to state titles. He also is a former head women's softball coach at Northern Arizona. **Former Tennessee all-America guard Shelia Collins** joined the staff at Georgia Tech after playing professionally in Germany and Italy for the past three years. **Chancellor Dugan** named to a part-time position at Eastern Kentucky, where she played from 1979 to 1982. She previously was an assistant for three years at Morehead State and also has been on the Alabama staff. **Two-year George Washington aide and former Gettysburg all-America Karen Tessmer** selected at Dartmouth. Also, former Michigan State second-team academic all-America **Julie Polakowski Swanson** joined the Dartmouth staff after serving since 1987 as head girls' coach at Regina High School in Iowa City, Iowa. **Nancy Boucher** hired at Southeastern Massachusetts. **Toni Roesch** named at Ma-

rietta, where she also will coach women's soccer.

In addition, **Lauree Gott** and **Kelly Greenberg** appointed to full-time and part-time positions, respectively, at Northeastern. Gott previously was head coach at Husson, where her team last season was 23-1. Greenberg recently completed her playing career at La Salle, where she also participated in field hockey. **Inge Nissen** hired at Florida International. The former Old Dominion all-America player also played professionally and coached overseas. She replaces **Larry Rosenberg**, who resigned to enter private business. **Denise L. Becher** appointed at Mansfield, where she also will be head women's tennis coach. She is a former starting point guard at Pittsburgh who has served on the instructional staff of several schools' camps. **Missy Vogel** named at Allegheny, her alma mater, where she also will assist with women's softball. She previously was a graduate assistant basketball coach at Duquesne. **LaDonna Wilson** promoted from graduate assistant coach to a full-time position at Austin Peay State. She is a former player at Missouri Southern State. **Loretta Hummelford** joined the staff at Kent after serving as an aide at Louisville since 1982. **St. Lawrence's Anita D'Ascenzo** named head field hockey coach at Fairfield. **Cheryl Dozier** named at Lake Superior State. She is a recent Aquinas graduate. **Kim Van Deraa** selected at Troy State, where she also will be head women's volleyball coach.

## Men's and women's cross country

**Larry Ehmer** named women's coach at Swarthmore, where he also will coach women's track. **Susan Bessin** selected as men's and women's coach at Drew, where she is a former field hockey and lacrosse player. She will retain her post as assistant track coach at nearby Madison (New Jersey) High School. Bessin replaces **Les Longden**, who will remain on the staff as Bessin's assistant. **Stan Hughes** named women's coach at Denison, where he will retain his duties as women's track coach. He also has coached at Otterbein. Hughes replaces **Phil Torrens**, who will continue to coach men's cross country and assist with men's track at Denison. **Elvis Forde** appointed men's and women's coach at Austin Peay State, where he also will be women's track coach. **Tim Bowman** stepped down as men's and women's cross country and track coach at St. Francis (Pennsylvania) to accept posts in those sports at Glenville State. **Mary Beth Kennedy** given additional duties as women's coach at Otterbein, where she will continue to coach women's basketball. She replaces **Richard Smith**, who remains at the school as head women's track and field coach. **Bob McFall** chosen as men's coach at Webster, where he also will coach men's track. He previously was head track coach for 11 years at Muncie (Indiana) Central High School and has coached at the high school level in Indiana for 34 years.

**Men's and women's cross country assistants** **Karyn Thomas** appointed as women's assistant at Otterbein. She has been a cross country and track coach for the past three years at high schools in Ohio. **Greg Recht** selected for the men's program at Webster, where he also will assist with men's track.

**Field hockey**—**Susan K. Stimmel** selected at Denison, where she also will coach women's lacrosse. Stimmel served last year as a lacrosse assistant at Upper Arlington (Ohio) High School. She replaces **Tracy Coyne**, who stepped down after two years at Denison. **Kathy Stockman** appointed at Pine Manor, where she also will coach women's lacrosse and serve as intramurals director. She previously assisted with field hockey at Bridgewater State (Massachusetts), where she also was head women's lacrosse coach. Stockman succeeds **Lynne Wilkie**, who was named sports information director at Elms. **Carolyn E. LaBar** selected as field hockey and women's lacrosse coach at Wells. The former Syracuse field hockey player has served as head field hockey coach at Montclair State. **Addy Malatesta** named at Wilkes, where she also will coach women's tennis. Malatesta previously was head women's basketball and soccer coach at Potsdam State. She replaces **Gay Meyers**, who retired.

Also, **Jacklyn L. "Jackie" Keeley** promoted from assistant at Lehigh, where she also will be head women's lacrosse coach. She has assisted with both sports

# Record

Continued from page 10

at Lehigh for the past three years... **Anita D'Ascenzo** named at Fairfield, where she also will coordinate club sports. She previously was assistant field hockey and women's basketball and lacrosse coach at St. Lawrence. D'Ascenzo replaces **Melissa Falen**, who was selected as head field hockey and women's lacrosse coach at Notre Dame (Maryland). Falen also assisted with women's softball at Fairfield... **Laurie Parker** appointed at Carnegie-Mellon. She is a former field hockey standout at Indiana (Pennsylvania).

**Field hockey assistant** **Mary Beth Dwyer** named at Ohio State. The former Rutgers lacrosse all-America previously was a graduate assistant coach at Frostburg State.

**Football** Former Principia head coach **I. J. Gorman** named offensive line coach at Haskell Indian Junior College.

**Football assistants** — **Todd Fitch** rejoined the staff at Bowling Green, where he was a graduate assistant coach last season and will coach receivers and tight ends. Since March, he has been a volunteer assistant at West Virginia, and he also has been on the staff at Ohio Wesleyan. Fitch replaces **Mark Miller**, who resigned to begin a business career... **Tony Caviglia** joined the staff at New Mexico State as defensive backs coach. He is a former assistant at Cal Poly San Luis Obispo and Chabot College who has served more recently as a graduate assistant coach at Southern California and Ohio State... **Chris Collier** selected as defensive coordinator at Juniata, where he also will assist with men's and women's track and field and serve as intramurals director. He previously was a graduate assistant coach at Millersville. Juniata also announced that a former quarterback at the school, **Mike Culver**, will serve as receivers coach this season... **Rob Kuhlman** and **Greg Hermesen** named offensive coordinator and defensive line coach, respectively, at Western Michigan. Kuhlman rejoins the WMU staff after a year in private industry in Massachusetts, while Hermesen previously coached for eight years at Mankato State... **Jerry Fremin** selected as offensive coordinator at Nicholls State, where he was offensive line coach last year.

Also, **Doug Bryant** and **Chris Rorke** appointed graduate assistant coaches at Georgia Tech. Bryant previously was an assistant at Claymont High School in Ulrichsville, Ohio, and Rorke has been a football camp instructor who also has worked in the athletics office at Dartmouth, where he played quarterback... **Kevin Doherty** named at Tufts, where he is a former starting halfback, after two years as a graduate assistant coach at Syracuse. Also, Tufts named **Paul Dresens**, the team's leading rusher last season, as a graduate assistant coach... **John Welty** appointed defensive coordinator at Illinois Benedictine, his alma mater. He served in a similar position at Simpson for the past four seasons... **Brian VanGorder** selected as defensive line coach at Grand Valley State after earning coach-of-the-year honors in the Fort Lauderdale, Florida, area last year as head coach at Boca Raton High School. Also, former Ohio State defensive tackle **Ray Holliman** and recent Knox all-America **Todd Monken** joined the Grand Valley State staff as graduate assistant coaches... **Mike Bollinger** returned to his alma mater, St. Francis (Pennsylvania), as running backs coach. Also joining the Red Flash staff were defensive backs coach **Michael Dalli**, former assistant at Boca Raton (Florida) Academy; quarterbacks coach **Audie Nelson**, former aide at Anacortes (Washington) High School, and **Andy K. Paronish**, an employee in St. Francis' physical plant office.

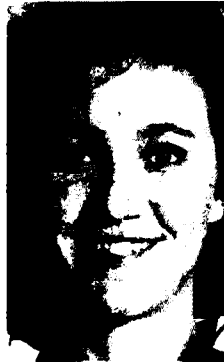
In addition, **Dave Preszler** hired as offensive backfield coach at Montana State after three years as football and assistant track coach at Century High School in Bismarck, North Dakota. Also, **Lee Ziegler** was promoted from graduate assistant coach to full-time offensive line coach for the Bobcats, and **Gregory Clough** and **Dan Lind** were selected as graduate assistant coaches at the school. Clough previously was head coach at Southwest High School in Minneapolis and Lind was an assistant at Richfield (Minnesota) High School... **Joe McLaughlin** appointed defensive backs coach at East Stroudsburg, where he was a team cocaptain last season. Also, Lowell defensive line coach **Gary Boyle** was named defensive tackles coach at East Stroudsburg and former Missouri Western State player and student assistant **Dwayne Wimmer** was selected as a graduate assistant coach responsible for the



**Illinois Wesleyan** named **Joe Shehan** as swim coach



**Denise L. Becher** picked by Mansfield for women's tennis



**North Dakota State** named **Jolyn Koppinger** volleyball coach

Warriors' running backs... **Kevin Flanagan** selected as defensive coordinator at Upsala, where he also will be assistant athletics director. Flanagan is a former assistant AD and football aide at Wagner. Also named to the Upsala staff were **George Gaspar**, defensive line coach; **Mike Kuchieski**, linebackers coach; **Jim Davidson**, quarterbacks coach, and **Don Scullin**, receivers coach... **David Lamontagne** hired at Southeastern Massachusetts.

Also, **Bill Mosca**, **Ted Hanlon**, **Jim Reareic** and **Kevin Welsh** joined the staff at Marietta... Former Mount Union running back **David McLaughlin** named for the only full-time assistant's post at Otterbein after serving as offensive coordinator last year at Manchester. He also has been on the staffs at Mount Union and Grand Valley State... **David Lopez** joined the staff at Virginia Military, where he will work with the offensive line. He has been assistant strength and conditioning coach at Army for the past two years... **Ron Weissenhofer** appointed as linebackers coach at North Central. Weissenhofer, who works for a commodities broker in Chicago, is a former Notre Dame linebacker who also played briefly for the New Orleans Saints... **Jim Anderson** named offensive line coach at Springfield after serving last season on the staff at

staff as defensive backs and offensive line coaches, respectively... **Dennis "Dirt" Winston** named linebackers coach at Slippery Rock. The Arkansas graduate and former Pittsburgh Steelers and New Orleans Saints linebacker previously was linebackers coach at Grove City.

**Men's golf** **George Carl** appointed at Fairfield. He is a former Time-Life employee who worked most recently at a Fairfield-area country club... **Paul Gandrud** named at Wisconsin-River Falls. The former Wisconsin-Stout player previously was assistant golf pro at a course in Fdina, Minnesota.

**Women's gymnastics** **Lynn Rogers** signed to a new three-year contract at Cal State Fullerton, where his teams have compiled a 418-80 record through 15 years. The Titans finished sixth at last season's National Collegiate Women's Gymnastics Championships.

**Men's ice hockey assistants** **Lawrence Mongelluzzo** named at Colgate. He served on the staff at Rensselaer last season and also played ice hockey in West Germany for a year... **Bob Hagan** joined the staff at Rochester Institute of Technology. He has been an assistant at Oswego State, where he also was an all-America player.

**Men's lacrosse assistant** **David Metzbow** hired at Princeton. Since



**Wisconsin-River Falls** selected **Jill Halsted** for volleyball post



**Lyndel Rhodes** hired as equipment manager at North Alabama



**Boston U.** appointed **Paul Fitzpatrick** marketing director

Lehigh. He returns to his alma mater, where he was a Kodak all-America selection as a linebacker in 1985 and served as head freshman coach in 1986 and graduate assistant coach in 1987... **David Dunn** appointed part-time receivers coach and **Mark Robichaud** selected for a full-time internship working with linebackers at Wesleyan. Dunn, a former standout receiver at Connecticut, works for an insurance firm, while Robichaud served last season as inside linebackers coach at Springfield.

In addition, **Joe Clifton** and **Tom Hoglen** joined the staff at Trenton State, where both are former players. Clifton will coach outside linebackers and Hoglen will be assistant line coach... **Richard Biscayart** assigned additional duties as receivers coach at Wesley, where he has been sports information director for the past four years. Also joining the Wesley staff are former New York Jets player **Joe Wysock**, offensive line coach; former Cornell quarterback **Chip Knapp**, linebackers coach, and former Mansfield player **Mike Drass**, defensive line coach... **Rich Simononis** named wide receivers and tight ends coach at Delaware Valley, his alma mater. He previously worked in Pennsylvania as a sales representative... **Fred Mariani** given additional duties as recruiting coordinator at Lehigh, where he is offensive line coach. He also has been on the staffs at St. Joseph's (Indiana) and Morehead State. Also, **Greg Gigantino** joined the Lehigh staff as linebackers coach after four years as an assistant at Davidson. Gigantino, a former Wagner letterman, also served during 1984 as head coach at Iona and has been an aide at Rutgers... **Darren Twombly** selected to coach the offensive and defensive lines at Davidson. He is a former center at Boston College... **Tom Stella** and **John Moore** joined the Macalester

1987, he has been on the staff at Delaware, where he also was a standout attackman.

**Women's lacrosse** — **Susan K. Stimmel** named at Denison, where she also will coach field hockey. Stimmel, who played on Temple's 1984 national-championship lacrosse team, was a lacrosse assistant last year at Upper Arlington (Ohio) High School and has been an aide at Massachusetts. She replaces **Tracy Coyne**...

**Kathy Stockman** selected as head field hockey and women's lacrosse coach at Pine Manor. Stockman, who previously was cohead lacrosse coach and field hockey assistant at Bridgewater State (Massachusetts), replaces **Lynne Wilkie**, who was named sports information director at Elms... **Carolyn E. LaBar** named at Wells, where she also will coach field hockey. She has served as head field hockey coach and assistant lacrosse coach at Montclair State... **Terry Malloy** appointed for the new varsity program at Susquehanna, where he has coached a women's lacrosse club for the past three years. Malloy also is head men's soccer coach at the school... **Jacklyn L. "Jackie" Keeley** promoted from assistant at Lehigh, where she also will coach field hockey. The U.S. women's team member and former Ursinus all-America has assisted with field hockey and lacrosse for the past three years at Lehigh... **Melissa Falen** selected at Notre Dame (Maryland), where she also will coach field hockey. She previously was head field hockey and assistant women's softball coach at Fairfield.

**Women's lacrosse assistant** — St. Lawrence's **Anita D'Ascenzo** selected as head field hockey coach at Fairfield.

**Men's and women's rifle** — **Ed Etzel** stepped down after 12 seasons at West Virginia to become the school's athletics counselor. The 1984 Olympic gold medalist's teams have compiled a 96-3 record in dual-match competition and won five of

the last seven NCAA championships, and 30 of his shooters have won first-team all-America honors. He is secretary-rules editor of the NCAA Men's and Women's Rifle Committee.

**Men's soccer** **Brian Doran** appointed interim head coach at Clarkson, where he has been an assistant for 12 seasons. Doran, who has been an official for NCAA soccer competition, also is supervisor of the university's glass shop... London native **Gerard D'Arcy** selected at Otterbein. He has held teaching, coaching and managerial positions in Ohio since 1980. D'Arcy replaces **Steve Locker**, who was named head coach at Rochester after leading Otterbein to a 52-44-5 mark and three Ohio Athletic Conference titles through six seasons... **Steve Ross** promoted from assistant at Virginia Military, where he has been on the staff for two seasons. He replaces **Doug Bartlett**, who will serve as Ross' assistant while coaching men's lacrosse at the school... **David Symes** named at Mercy... **Charles McGlinn** appointed at Wesley. He is the all-time No. 2 scorer at St. Joseph's (Pennsylvania)... **Paul Sidhu** selected as interim head coach at Longwood, where he also will coach men's tennis. He previously was a graduate assistant coach with the soccer team and also was a three-year member of the squad. Sidhu replaces **Rich Posipanko**, who was named head coach at Winthrop. Posipanko's teams compiled a 117-49-21 mark through nine seasons.

**Men's soccer assistants** **Jeff McEntee** named at New Jersey Tech, where he was the outstanding senior athlete last year as a soccer and baseball player... **Emanuel "Youngie" Martin** hired at Southeastern Massachusetts... **Winston Smith** and **Paul Gillard** joined the staff at Stevens Tech. Smith has coached at the high school level in his native Trinidad and Gillard is a recent Rider graduate.

**Women's soccer** **Steve Shaw** selected at UC Irvine, where he was an all-conference player in 1986. Formerly a coach at Newport Harbor High School in California, Shaw replaces **Lisa Fraser**, who was named women's coach at Washington State... Potsdam State's **Addy Malatesta** appointed head field hockey and women's tennis coach at Wilkes... **Toni Roesch** named at Marietta, where she also will assist with women's basketball... **Tom Mastrandreu** appointed at Otterbein. Born on the Greek island of Thassos, Mastrandreu has coached several teams in Ohio, including the women's club team at Ohio State from 1984 to 1986. He succeeds **Jon McInnes**, who left Otterbein with a 7-19-1 record through two seasons to complete work on a doctorate.

**Women's soccer assistants** **Jorn Hansen** hired at Southeastern Massachusetts... **Tony Horta** named at Hartford after three years on the staff at Connecticut.

**Men's and women's soccer assistant** **Paul Norfolk** appointed at Macalester. He is a former professional player who has coached in England, Italy and New Zealand.

**Women's softball** **Judi Garman** signed to a new three-year contract at Cal State Fullerton, where she has coached teams to a 515-136-3 record through 10 years, including a 47-15 mark last season. Seven of her teams have appeared in the championship round of the Division I Women's Softball Championship... **Dawn Langley** named at Pembroke State, where she also will coach women's volleyball. She previously was women's tennis coach and trainer at St. Andrews.

**Women's softball assistants** **Missy Vogel** selected at Allegheny, her alma mater, where she also will assist with women's basketball... Fairfield's **Melissa Falen** appointed head field hockey and women's lacrosse coach at Notre Dame (Maryland).

**Men's and women's swimming and diving** — **Joe Shehan** named men's and women's coach at Illinois Wesleyan, where he also will be aquatics director and men's tennis coach. Shehan previously was head boys' and girls' swim coach at Roosevelt High School in Kent, Ohio, and is a former assistant at Case Reserve. Illinois Wesleyan will sponsor swimming for the first time since 1968... **Mike Santo** appointed at Cal State Los Angeles, where he retains his duties as head men's water polo coach... **Teri McKeever** given additional duties as men's coach at Fresno State, where her women's teams have compiled a 14-14 record through two seasons. The former Southern California all-America also has been an assistant at Fresno State.

Also, **Charles Murray Jr.** selected as

women's coach at New Paltz State, where he also will be assistant athletics director and assist with men's swimming. He previously coached boys' and girls' swimming at Pine Bush High School in New York, where his teams had a 283-38 record... **Chris V. Marshall** appointed men's coach at Lehigh, replacing **Bruce Gardiner**, who resigned as men's and women's coach to become a student-recruitment officer in the school's admissions office. Marshall was a graduate assistant coach at Lehigh last winter after serving as cocaptain of the men's team during the 1987-88 season. Gardiner has coached the men's team to a 110-73 record since 1972 and the women's team to a 52-47 record since 1980... **Bob Pearson** named men's and women's coach at Macalester. He is a recent Hamline graduate who has coached at the high school level in Minnesota... Grinnell women's coach **Cindy Mueller** appointed head women's volleyball coach at Macalester.

**Men's swimming and diving assistant** **David Anderson** hired at Minnesota after two seasons on the staff at Nebraska.

**Men's and women's tennis** **Joe Shehan** selected as men's coach at Illinois Wesleyan, where he also will be aquatics director and head men's and women's swim coach... **Eric Hayes** appointed men's coach at South Florida after two years as head women's coach at Kansas. The former Clemson aide replaces **Bill Perrin**, who resigned to accept an education position near Philadelphia... **Addy Malatesta** named at Wilkes, where she also will coach field hockey. The former Potsdam State women's basketball and soccer coach replaces **Gay Meyers**, who retired... **George Freebersyser** given additional duties as women's coach at Marietta, where he is head men's basketball coach... **Warren Preti** hired as men's and women's coach at Southeastern Massachusetts... **John Haskins** selected as men's coach at Pembroke State, where he also will assist with men's basketball. He previously was a cross country and golf coach and men's basketball assistant at Gardner-Webb. Haskins replaces **Scott Colclough**, who joined the faculty at North Carolina A&T... **Lilian Almeida**, a former all-America player at Southern Illinois-Edwardsville, appointed women's coach at Webster. She is an international banking officer at a St. Louis bank... **Denise L. Becher** selected as women's coach at Mansfield, where she also will assist with women's basketball.

In addition, **Irene Harris** hired as women's coach at Fresno State, her alma mater. She previously was head girls' coach at San Joaquin Memorial High School in California and is a ranked singles player in northern California. Harris replaces **John Haug**, who was interim head coach last season... **Keith Puryear** and **Laurie Macgill** named men's and women's coaches, respectively, at Maryland-Baltimore County. Puryear previously was men's and women's assistant at the school, and Macgill is a former South Florida all-America player... **Paul Sidhu** hired at Longwood, where he also will be interim men's soccer coach... **Kirk Pearson** and **Albert "Buzz" Holmes** selected as men's and women's coaches, respectively, at Hartford. Pearson is an assistant pro at a club in Simsbury, Connecticut, who also has coached a high school girls' team. Holmes recently was inducted into the Connecticut High School Coaches Association Hall of Fame after coaching from 1963 to 1986 at Simsbury High School... **George Ekeren** named women's coach at Macalester. He was a Minnesota Intercollegiate Athletic Conference doubles champion at Gustavus Adolphus.

**Men's and women's track and field** — **Larry Ehmer** appointed women's coach at Swarthmore, where he also will coach women's cross country... **Elvis Forde** appointed women's coach at Austin Peay State, where he also will be men's and women's cross country coach. The Barbados native and member of that nation's 1984 and 1988 Olympic teams previously worked in the information office of the Barbados consulate in New York. He also has been a graduate assistant coach at Southern Illinois, where he was a two-time all-America runner... **Tim Bowman** stepped down as men's and women's cross country and track coach at St. Francis (Pennsylvania) to take on the same duties at Glenville State... **Bob McFall** named men's coach at Webster, where he also will coach men's cross country. He previously was head track coach for 11 years at Muncie (Indiana) Central High School and has coached at the high school level in Indiana for 34 years... **Tim Pilon** promoted from assistant to head men's coach at Macalester, where he will continue to

See Record, page 12

# Record

Continued from page 11

serve as head men's cross country coach.

**Men's and women's track and field assistants**—Chris Collier named at Juniata, where he also will assist with football and serve as intramurals director... Carlene Willkom selected at Lewis. She previously was a graduate assistant coach at Wisconsin-Stevens Point, where she also won the heptathlon title and finished second in the triple jump during the 1987 Division III Women's Outdoor Track and Field Championships... Greg Reecht named men's assistant at Webster. He participated in cross country and track at Missouri Baptist, where he is a recent graduate... Robert Lasorsa selected at Kent, where he will coach throwers. The former Springfield all-America previously was an aide at Army and also has been on the staff at North Carolina State.

**Men's and women's volleyball**—Sandra Stein appointed women's coach at Nicholls State after two years as head coach at Incarnate Word. She previously was a graduate assistant coach at South Alabama. Stein succeeds Marion S. Curtis, who retired as head coach and assistant athletics director... Jolyn Koppinger selected as women's coach at North Dakota State after serving the past year as an assistant at Gonzaga. She captained Scottsdale (Arizona) Community College to a National Junior College Athletic Association women's title in 1985 and also played and served as an assistant at Washington... Northeastern's Mark Massey named women's coach at Cal State Los Angeles. Through four years at Northeastern, Massey led his teams to a 98-42 record... Dawn Langley appointed for the women's program at Pembroke State, where she also will coach women's softball after serving as women's tennis coach and trainer at St. Andrews. She replaces Tommy Thompson in the volleyball post, where he coached his teams to a 188-81 record from 1981 to 1988. Thompson remains at the school as physical education chair.

In addition, Joel Dearing named men's and women's coach at Springfield. He previously was athletics director and head volleyball coach at Roger Williams, where his men's teams were 41-22 through three years (23-7 last season) and his women's teams compiled a 133-114 mark through eight years. Dearing is secretary of the Eastern Intercollegiate Volleyball Association... Maria DiClemente promoted from assistant to head women's coach at Northeastern, her alma mater, where she joined the coaching staff prior to last season... Jill Halsted selected as women's coach at Wisconsin-River Falls. The former Minnesota all-America previously was a player for the Minnesota Monarchs of the Major League Volleyball circuit and is a former assistant at North Carolina State... Kim Van Deraa named women's coach at Troy State, where she also will assist with women's basketball... Cindy Mueller appointed at Macalester. She previously was women's volleyball and swimming coach at Grinnell.

**Women's volleyball assistants**—Lynnea Loudbeck selected at North Central, where she played volleyball and softball and was named the outstanding senior female athlete last year... Maurice Batie appointed to a part-time position at Iowa, where he also has served as a graduate assistant coach and volunteer assistant... Lee Cole named student assistant at Tennessee-Martin. She is a former all-America player at Mississippi University for Women... Barbra Page hired at Southeastern Massachusetts... Janna Preman and Joan Brennan appointed at Salem State, where both are former players. Preman served last season as an assistant for the men's club team at Salem State and Brennan directs a power volleyball league in Beverly, Massachusetts.

**Men's water polo**—Tom Milich hired at Fresno State after serving the past two years as an assistant at UC Irvine. He also has been on the staff at Long Beach State and served as head coach at El Dorado High School in Placentia, California, where he coached U.S. Olympic swimming medalists Janet Evans and John Mykkanen. Milich currently is assisting the U.S. national team as goalies' coach.

**STAFF**

**Athletics counselor**—Ed Etzel appointed to the position of counseling psychologist at West Virginia, where he will step down as head men's and women's rifle coach.

**Aquatics director**—Joe Shehan named at Illinois Wesleyan, where he will coach men's and women's swimming and also will be head men's tennis coach.



Paul E. Helgren named promotions coordinator at Eastern Michigan



North Dakota State appointed Jeff Schwartz women's SID



David Emory selected as head trainer at Delta State

**Athletics programs coordinator**—Nick Giaquinto selected for a new position at Sacred Heart, where he will continue to serve part-time as head baseball coach and intramurals director. He also has played professional football for the Miami Dolphins and Washington Redskins.

**Business manager**—Nicholls State's Easton LeBouef promoted to assistant athletics director in charge of budget control at the school.

**Business assistant**—Bubba Cunningham given additional duties as associate business manager at Notre Dame, where he continues to serve as ticket manager.

**Communications director**—Kurt Kehl selected at Princeton, replacing Chuck Yrigoyen, who was named assistant director for public information for the Ivy

Group. Kehl has been sports information director at Washington and Jefferson since 1985.

**Development coordinator**—Ken Elder, former special assistant to the athletics director and sports information coordinator at Georgia State, appointed at Georgia State.

**Equipment managers**—Kristi Short-Grosskopf selected at Lawrence, where she also will serve as trainer... Lyndel Rhodes appointed at North Alabama, where he was a graduate assistant manager.

**Facility director**—Herb Taylor, director and manager of the Arena Auditorium at Wyoming, named associate athletics director at New Mexico State.

**Marketing director**—Paul Fitzpatrick selected at Boston U. after serving as

membership adviser for the Suburban Athletic Club in Framingham, Massachusetts. Fitzpatrick competed in crew while a student at Boston U.

**Marketing and promotions director**—Bill Scholl appointed at Notre Dame. He previously was director of financial development for the Logan Center in South Bend, Indiana, and also was development director for the 1987 International Summer Special Olympic Games.

**Media relations manager**—Mark Panus named at Princeton after serving as an intern in the Ivy Group office the past year. He replaces Paul Huegel, who was named associate publications director at Seton Hall.

**Promotions and ticket sales coordinator**—Paul E. Helgren promoted from assistant sports information director at Eastern Michigan, where he has worked since 1985. He replaces Ron Macosko.

**Publications director**—Steven Vanderpool selected at Southern California. Vanderpool, who previously worked at Host Communications, Inc., replaces Jim Gigliotti, who accepted an editor's position with NFL Properties.

**Publications assistant**—Paul Huegel appointed associate director of publications at Seton Hall after serving as media relations manager at Princeton.

**Publicity director**—Donna Hart named at Texas, where she will work in women's athletics. She previously was assistant sports information director at Missouri and also has been women's SID at Iowa State.

**Publicity assistant**—Becca Wohlt ap-

pointed at Texas, where she will work in women's athletics. She has been a student assistant at the school for the past 15 months.

**Special events coordinator**—Jack Nixon named at New Mexico State, where he will continue to broadcast Aggie football and basketball games on radio. He will coordinate promotions, special events and fund-raising at the school.

**Sports information directors**—Edward Freeman appointed at Swarthmore... Robert Leblein given additional duties at New Jersey Tech, where he is an assistant coach for men's basketball. He previously was director of development and alumni relations at Morris Catholic High School in New Jersey... Pete Troy hired at Mount St. Mary's (Maryland) after serving as assistant SID at Catholic, where he is a recent graduate... Jeff Schwartz named women's SID at North Dakota State. He previously was assistant sports editor of the Mount Vernon (Ohio) News and is a former information services coordinator at Mount Vernon Nazarene... Mike Pearson returned to Illinois, where he was assistant SID from 1975 to 1979. Since leaving Illinois, he has served as assistant SID and assistant director of university public relations at Michigan State. He also has been promotions coordinator at Western Michigan... Brett Steele named at Marietta, where he also will assist with men's basketball... Bob Delaney appointed sports information coordinator at Webster after serving the past year as assistant SID at St. Louis. He

See Record, page 17

## Financial summaries

1989 Men's and Women's Skiing Championships			
	1989	1988	
Receipts	\$ 5,888.50	\$ 6,765.28	
Disbursements	44,148.13	54,246.06	
	( 38,259.63)	( 47,480.78)	
Expenses absorbed by host institutions	0.00	14,546.39	
	( 38,259.63)	( 32,934.39)	
Transportation expense	( 97,976.97)	( 66,251.09)	
Per diem allowance	( 31,260.00)	( 25,160.00)	
Deficit	( 167,496.60)	( 124,345.48)	
Charged to general operating budget	167,496.60	124,345.48	

1988 Division III Men's Soccer Championship			
	1988	1987	
Receipts	\$ 34,331.89	\$ 44,258.55	
Disbursements	57,712.32	52,604.95	
	( 23,380.43)	( 8,346.40)	
Expenses absorbed by host institutions	317.65	3,644.80	
	( 23,062.78)	( 4,701.60)	
Transportation expense	( 66,515.55)	( 62,054.96)	
Deficit	( 89,578.33)	( 66,756.56)	
Charged to general operating budget	23,062.78	4,701.60	
Charged to division championships reserve	66,515.55	62,054.96	
	89,578.33	66,756.56	

1989 Men's Fencing Championships			
	1989	1988	
Receipts	\$ 3,585.95	\$ 808.70	
Disbursements	33,958.64	28,572.23	
	( 30,372.69)	( 27,763.53)	
Transportation expense	( 38,685.52)	( 18,760.34)	
Per diem allowance	( 13,200.00)	( 11,420.00)	
Deficit	( 82,258.21)	( 57,943.87)	
Charged to general operating budget	82,258.21	57,943.87	

1989 Division I Women's Basketball Championship			
	1989	1988	
Receipts	\$ 1,736,657.71	\$ 1,432,398.50	
Disbursements	686,126.97	550,792.31	
	1,050,530.74	881,606.19	
Guarantees received from sponsoring agency	75,000.00	50,000.00	
Guarantees received from host institutions	46,216.99	39,781.30	
Expenses absorbed by host institutions	4,015.55	508.30	
	1,175,763.28	971,895.79	
Distribution to competing institutions	( 705,448.00)	( 583,136.00)	
Transportation expense	( 383,381.07)	( 270,844.59)	
Per diem allowance	( 251,790.00)	( 187,440.00)	
Deficit	( 164,855.79)	( 69,524.80)	
Charged to general operating budget	164,855.79	69,524.80	

1989 Women's Fencing Championships			
	1989	1988	
Receipts	\$ 3,290.50	\$ 568.36	
Disbursements	30,921.87	27,722.01	
	( 27,631.37)	( 27,153.65)	
Transportation expense	( 24,900.70)	( 11,751.31)	
Per diem allowance	( 10,900.00)	( 10,700.00)	
Deficit	( 63,432.07)	( 49,604.96)	
Charged to general operating budget	63,432.07	49,604.96	

## Texas Tech's Sweazy added to program for faculty reps

One speaker has been added to the schedule for the fall meeting of the Faculty Athletics Representatives Association, which will be held September 29 at the Hyatt Regency Crown Center in Kansas City.

Robert M. Sweazy, Texas Tech University faculty athletics representative, will join NCAA President Albert M. Witte of the University of Arkansas, Fayetteville, in an afternoon discussion of the status of faculty representatives within the NCAA.

A complete schedule for the meeting appears below.

Marilyn Coffman of the NCAA legislative services department is handling arrangements for the meeting, including meeting registration and room reservations. Registration fee for the meeting is \$15.

For more information, contact Coffman at the national office (P.O. Box 1906, Mission, Kansas 66201; telephone 913/384-3220).

**Meeting schedule**  
8:00-8:30 a.m.: Registration.  
8:30-9:30 a.m.: Academic Integrity and Intercollegiate Athletics—Richard D.

Schultz, Executive Director, NCAA.

9:30-10:15 a.m.: **Current Academic Issues Facing the NCAA**—Sara McNabb, university registrar and director of admissions, Indiana University, Bloomington; Bonnie Slatton, faculty athletics representative, University of Iowa; Robert R. Snell, faculty athletics representative, Kansas State University, and Ursula R. Walsh, director of research, NCAA.

10:15-10:30 a.m.: Break.  
10:30-11:45 a.m.: **Current Academic Issues Facing NCAA** (continued).  
11:45-1:15 p.m.: Lunch.

1:15-3:30 p.m.: **Status of Faculty Athletics Representatives Within NCAA**—Albert M. Witte, president, NCAA, faculty athletics representative, University of Arkansas, Fayetteville; Robert M. Sweazy, faculty athletics representative, Texas Tech University.

**Consideration of Proposed Legislation to Rename "Faculty Athletics Representative" as "Institutional Athletics Representative"**—Charles Ehrhardt, faculty athletics representative, Florida State University.

**The Work of the FARA Academic Review Committee**—Jerry Kingston, faculty athletics representative, Arizona State University.

**Plans for 1990 NCAA Convention in Dallas.**

## Volleyball in spotlight

Coaches and players from four of the nation's outstanding women's collegiate volleyball teams will participate in the Accent on Women's Volleyball press conference September 6 at the Blaisdell Center in Honolulu.

Discussion will focus on the 1989 women's volleyball season and the 1989 Division I Women's Volleyball Championship, to be hosted by the University of Hawaii December 14 and 16 at the Blaisdell Center.

The Accent on Women's Volleyball participants will include Mick Haley, coach of the defending NCAA Division I champion Texas Longhorns; coach Dave Shoji of the 1988 runner-up Hawaii Rainbow Wahines; coach Andy Banachowski of UCLA, a 1988 semifinalist, and coach Rich Feller from Colorado

State, a perennial top-20 team. Each coach will be accompanied by his top player.

Members of the media are invited to interview the coaches and players.

This marks the third year that the Accent on Women's Volleyball press conference has been conducted. The event has been held each year in the host city for the Division I championship, allowing members of the media to interview some of the top collegiate coaches and players and promote community awareness and enthusiasm for the championship.

Hawaii, Colorado State, Texas and UCLA will be competing in the Hawaiian Airlines Wahine Volleyball Classic September 7-9. The September 7-8 matches will be played at the Blaisdell Center and the September 9 matches will be played in Maui.

# Summary

## Continued from page 9

University of Wisconsin, Parkside.

Division III Voted to eliminate the Midwest region and realign four institutions in that region to the West region and the remaining five to the East region, approved the following as host institutions for 1990 regional qualifying tournaments, February 19-20: West - Augsburg College; East - Gallaudet University; approved Ithaca College as host of the 1990 championships, March 2-3; approved Augustana College (Illinois) as host of the 1991 championships, March 1-2.

### Playing rules

**Men's ice hockey.** The Executive Committee approved the addition to the rules of a statement to clarify that the committee is not responsible for testing or approving playing equipment for use in intercollegiate contests and to provide information regarding the appropriate avenue for these functions.

**Men's and women's swimming.** The Executive Committee rejected a recommendation that the scoring system for regular-season meets be revised to score three places (or five, by mutual agreement of the participating institutions), and agreed to review at its December 1989 meeting a report on the actions of rules-making committees in general relative to the specification in Bylaw 21.5.1.5.2 that rules must be the same for all three divisions.

**Men's and women's track and field.** The Executive Committee approved recommendations regarding changes in the dimensions of the hammer-throw cage.

**Wrestling.** The Executive Committee:

- Approved a recommendation that the name or initials of a wrestler's institution be on meet uniforms, effective with the 1994-95 season.

- Voted that medical forfeits be permitted and points earned by wrestlers who forfeit for medical reasons be counted; it was noted further that for the NCAA championships and in accordance with Bylaw 31.1.7, only a team or tournament physician is authorized to recommend disqualification of an athlete for medical reasons, and the committee is responsible for enforcement of the medical recommendation if it involves disqualification.

- Voted that wrestlers be required to maintain contact in matches involving sight-handicapped wrestlers.

- Voted that restricted zones be designated on the side of each mat, and that coaches and other team personnel be permitted to leave these zones only to approach the scoring table to correct the score or time, request an interpretation or question the referee's application of a rule, or move toward the mat during a charged time out or at the end of a match.

- Voted that intentional breaches of decorum may be included among acts that are punishable as unsportsmanlike conduct.

### Executive regulations

The Executive Committee:

- Revised Bylaw 31.02.3 to include the term

## Sports-medicine policy is revised

The NCAA Council has approved a revision in Association sports-medicine policy to recommend that institutions obtain an immunization history as part of a student-athlete's preparticipation medical evaluation.

The change in Policy No. 2, "Medical Evaluations and Records," of the NCAA Sports Medicine Handbook was proposed by the Committee on Competitive Safeguards and Medical Aspects of Sports. The Council approved the revision at its August 2-4 meeting in San Diego.

The revised policy recommends that institutions require student-athletes to undergo a medical evaluation when they enter the intercollegiate athletics program and that a review of the student-athlete's immunization history be conducted as part of this evaluation. Current Centers for Disease Control guidelines will determine what constitutes an appropriate history.

The new policy on medical evaluations and records recommends the following immunization schedule for student-athletes who have not been immunized appropriately:

- First visit—tetanus and diphtheria (Td); oral poliovirus vaccine (OPV), and measles, mumps and rubella (MMR).

- Two months after first visit—Td and OPV.

- Eight to 14 months after first visit—Td and OPV.

- Ten years later—Td.

- Every 10 years—repeat adult Td booster.

"unprofessional behavior" in the language defining misconduct in an NCAA championships event.

- Approved the revised language of Bylaws 31.1.12, 31.5 and 31.6.4.5 regarding the administration of postseason football games that was approved in principle by the Administrative Committee in its April 30 conference.

- Revised Bylaw 31.2.2.4 to specify that when a student-athlete competing as an individual in an NCAA championships event is declared ineligible after the competition, the placement of those student-athletes who finished below the ineligible competitor shall be adjusted.

- Revised Bylaw 31.3.4.2 to specify that in order to be eligible for or to retain automatic qualification, a conference must have at least six institutions that are eligible for the NCAA championships competition in the respective sport.

### Convention

**Proposed legislation.** The Executive Committee:

- Approved and agreed to ask the Council to sponsor an amendment to Bylaw 18.3.1 to establish combined-scoring National Collegiate Men's and Women's Fencing Championships and amendments to Bylaws 21.5.2 and 21.6.11

to reconstitute the Men's and Women's Fencing Committees into one committee consisting of eight members.

- Declined to endorse an amendment to Bylaw 21.6.27 to increase the size of the Division I Women's Volleyball Committee from six to eight.

- Approved procedures recommended by the national office staff to administer the drug-testing consent form if legislation is adopted at the 1990 Convention to separate it from the student-athlete statement.

- Agreed with the Council that legislation be submitted to amend Constitution 3.6.2 to delete the statement that dues cover the direct costs of Association publications, Convention operations, establishment of playing rules and statistics.

**Note:** The Executive Committee also agreed to sponsor other legislative proposals and to request sponsorship from other entities. Those appear in the championships and general committee sections of this summary.

**Convention planning.** The Executive Committee approved a proposal to shorten the Convention by combining the Monday and Tuesday schedules. It agreed that the Divisions II and III business sessions would convene at 8 a.m. Tuesday, rather than 9 a.m.

Also, the Executive Committee directed that

a straw vote be taken during the business sessions of the 1990 Convention to determine members' preferences regarding assigned seating by divisions and/or reserved seating.

### Miscellaneous

**Minutes.** The Executive Committee approved as distributed the minutes of its May 1, 1989, meeting; approved actions taken by the executive director on behalf of the Executive Committee since the May 1 meeting, and approved as distributed minutes of Administrative Committee Telephone Conference Nos. 7-11 regarding actions taken on behalf of the Executive Committee.

**Revised legislative calendar.** After reviewing a memorandum outlining the positions of the Presidents Commission Advisory Committee and the Legislative Review Committee on conducting regional hearings in preparation for the legislative calendar that becomes effective next February 1, the Executive Committee voted to advise the Presidents Commission and the NCAA Council that it supports the position of the Legislative Review Committee in opposition to the conduct of regional hearings. The Executive Committee also noted that, if the hearings were approved by the membership at the 1990 Convention, it would be obligated to authorize the necessary funding.

**University of Kentucky infractions case.** The Executive Committee approved a recommendation from the Committee on Infractions that, in accordance with Bylaw 31.2.2.5, the University of Kentucky be required to return its share of receipts from the 1988 Division I Men's Basketball Championship after distribution to the Southeastern Conference office and other conference institutions.

**Beer advertising.** The Executive Committee voted that Executive Director Richard D. Schultz and the basketball television negotiating committee be authorized to address the issue of beer advertisements in the Division I Men's Basketball Championship in the best interests of the Association and its member institutions and conferences.

**Insurance.** The Executive Committee voted to accept the annual report on the Association's insurance coverage.

**Meeting schedule.** The Executive Committee approved the concept of extending the championships committees' meetings and shortening the Executive Committee meeting and directed the staff to develop the specific schedules, and voted that further consideration be given to the desirability of conducting Administrative Committee, special committee or subcommittee meetings the day before the championships committees' meetings.

# We Put The World At Your Fingertips.



Whether you're travelling for business or pleasure, it's a complicated world out there. It takes a world-class agency to help you through the rough spots, to sort out the best travel schedules and to secure the best prices. It takes an agency with experience and clout to get you what you want everytime you travel, an agency that can get you the attention you deserve. As the nation's leading sports travel network, WORLDTEK is the one to choose.

**WORLDTEK TRAVEL.**  
We make a world of difference in your travel planning.

Call Toll Free Today  
For Reservations 1-800-243-1800  
For Information 1-800-243-1723



111 Water Street, New Haven CT 06511

Official Travel Agency  
For NCAA® Championships

# Indiana's Jerry Yeagley now a soccer hall-of-famer

**Jerry Yeagley**, men's soccer coach at Indiana University, Bloomington, recently was inducted into the U.S. Soccer Federation's hall of fame. Known as an innovator in the college game, the coach of the reigning Division I champions soon will begin his 17th season at Indiana.

His record at the school is 275-47-21.

**Edward L. Jones**, a News subscriber and a past president of the Associated Alumni Clubs of the University of Southern California, maintains a tally of the individuals who have received NCAA postgraduate scholarships since the program began in 1964. He does the same thing with those individuals selected for the Association's Today's Top Six awards.

His research shows his alma mater and its Pacific-10 Conference leading in both categories.

The top institutions in recipients of postgraduate scholarships from 1964 to the present, according to Jones' data: USC, 35; U.S. Air Force Academy, 32; Stanford University, 28; University of Notre Dame, 27; Brigham Young University and the University of California, Los Angeles, 26; Dartmouth College and the University of Georgia, 23; the University of Nebraska, Lincoln; Pennsylvania State University, and the University of Texas, Austin, each 22, and Ohio State University and Yale University, 21.

Leading the conferences in that listing are the Pac-10, 171; Big Ten, 116; Ivy Group, 105; Western Athletic, 91; Southeastern, 90; Big Eight, 84; Southwest Athletic, 73, and Atlantic Coast, 67.

Jones' research on the Today's Top Six honorees shows USC with six and BYU with five; then come the University of Michigan, Nebraska, Stanford and UCLA with four each and Ohio State, the University of Oregon and Penn State with three each.

Top conferences in that category are the Pac-10, 21; Big Ten, 11; Southeastern, nine; Big Eight, seven; Western Athletic, five, and Atlantic Coast and Southwest Athletic, four each.

Jones also has done compilations of football academic all-Americans. He is interested in seeing more

## New rules affect Michigan fans

Fans going to University of Michigan football games this fall are being advised to pack lightly.

Most of the stuff on the fan's game-day checklist, including the umbrella, now is prohibited at Michigan Stadium. Bags, cups, bottles, coolers, chair backs and backpacks also are banned.

The university is trying to prevent drinking at the stadium by banning most things in which alcoholic beverages are carried. Fans also will have to stay out if they leave the stadium during a game.

As for umbrellas and chair backs, the university said they block the view of other fans in the 101,701-seat stadium and take up too much room.

"All of this has to do with making the game more enjoyable for people," Jack Weidenbach, senior associate athletics director, told the Associated Press.

He said letters outlining the changes were mailed to season-ticket holders, and there were few complaints.

"Most people are in favor of it," assistant ticket manager Steve Lambright said.



**Jerry Yeagley**



**Gale Catlett**



**John Kuester**



**Bobby Cremins**

publicity nationwide for the academic achievements of student-athletes. His address is 3195 Somerset Drive, Lafayette, California 94549.

From the Bike Athletic Company comes a new logo sporting an anti-drug message that will be used on shipping boxes, sales literature, apparel tags, point-of-purchase materials and hard-goods packaging.

Included in the new art is the logo of Fight Against Drugs (FAD), the drug-prevention and education program established three years ago by

series of community projects this season, and most of them will involve United Way agencies.

"We were looking for ways for our football players and coaches to be involved in the community and to show our appreciation to the community," head coach **Dave Roberts** said August 8 in announcing the commitment.

New Mexico State University officials have announced that the school's annual invitational softball tournament has been renamed the

Sweden and Finland.

Coached by **Gale Catlett** of West Virginia University and **John Kuester** of George Washington University, the team scored more than 85 points in every game, broke 100 twice and captured the title of the Pohjola Tournament in Helsinki—in part by defeating the Soviet Estonia team, 86-60.

Trivia Time: Johns Hopkins teams have appeared in the Division I Men's Lacrosse Championship 17 times. How many of those teams have advanced to the semifinals? Answer later.

**Bobby Cremins**, Georgia Institute of Technology men's basketball coach, got the star—actually two-star treatment this month from the U.S. Air Force. During a two-week tour of U.S. bases in France, Greece, Spain and Turkey, Cremins—who presented basketball clinics—was extended the courtesy and amenities normally given to a (two-star) major general.

More Report Cards: North Dakota State University student-athletes **Joe Regnier** and **Kristi Kremer** have been named the top student-athletes in the North Central Intercollegiate Athletic Conference for 1988-89. Regnier, who also has been

awarded an NCAA postgraduate scholarship, has a cumulative grade-point average of 3.540 (4.000 scale) in business administration. Kremer, also an NCAA postgraduate scholarship recipient, has a 3.900 GPA in nursing.

For the fifth time in the past seven years, Southern Illinois University, Carbondale, women student-athletes have led the way for their peers in the Gateway Collegiate Athletic Conference. Last fall, 52 Saluki women were named to the league's academic honor roll—the highest number of any member school. "Grades come first for our athletes," said **Charlotte West**, associate athletics director. "That's the way it's been the 32 years I've been here. We wouldn't want it any other way. Many people work toward that end, and their efforts keep paying off."

In a related note, Gateway Conference officials have announced that 427 student-athletes from member schools were named to the academic honor roll for the spring semester after earning GPAs of at least 3.200. Illinois State University produced the most honorees with 64. Southern Illinois was next with 61. Ten of those honored earned 4.000s.

In third place was Western Illinois  
*See Briefly, page 20*

## Briefly in the News

the Maxwell Memorial Football Club of Philadelphia.

According to **Bruce Gerson**, sports information director at Carnegie-Mellon University, the school's men's cross country team will open the 1989 season September 2 against Duquesne University and West Liberty (West Virginia) State College by attempting to pick up its 100th and 101st consecutive head-to-head victories. Carnegie-Mellon has not dropped a match since 1979.

Northeast Louisiana University's football team will participate in a

Troy Cox/Roadrunner Invitational in memory of a former assistant coach who died last June 21 in an auto accident.

**Troy Cox**, who spent four seasons on the Roadrunner staff, died on his way home after finishing a newspaper delivery route. He hit a deer, and his pickup rolled down an embankment. He was 24.

From **John Wooding**, assistant commissioner of the Atlantic 10 Conference, comes word that the league's all-star men's basketball team recently completed a 10-day, six-game, undefeated trip through



## Players of the year

**Malival Washington** (left) of the University of Michigan and former Stanford University standout **Tami Whillinger** have been named 1988-89 collegiate players of the year. Chosen by a panel selected by the Intercollegiate Tennis Coaches Association, Washington and Whillinger will be honored by



**Volvo Tennis and Tennis Magazine**, the award's sponsors, September 5 during the U.S. Open Tennis Championships. Both sophomores last year, only one—Washington—will return to school this fall. Whillinger turned pro after the NCAA championships.

# Seminoles, Pac-10 top 1989 toughest-schedule list

By James M. Van Valkenburg  
NCAA Director of Statistics

The 12th annual NCAA toughest-schedule survey shows Florida State on top, but the Pacific-10 Conference dominates the overall picture with six teams in the top nine.

Florida State's opponents, all in Division I-A, had a 78-34-0 record (bowls included) last season against other I-A teams when not playing Florida State. That is a .696 percentage—second highest in survey history to the .708 posted by Notre Dame's 1978 opponents for the 1979 preseason survey.

Then the Pacific-10 domination begins, with Oregon State's schedule second, Stanford's third, Southern California's fourth, Washington's sixth, Washington State's seventh and Arizona's ninth. Two more Pac-10 teams made the top 20—Oregon's schedule ranks 17th and California's 19th.

This was inevitable mathematically because the Pac-10 had a 27-7 record vs. outside I-A opponents last season for a .794 percentage highest by any I-A conference so far in the 1980s and one of the highest ever in major-college football. Mysteriously, just three Pac-10 teams were invited to bowls.

The members play each other, so this lifts the entire conference. Of course, the reverse can be true. A team's tough nonconference schedule can be pulled down because its conference members have a losing nonconference record. Independents are not locked in to a conference schedule.

Keep in mind, however, that schedules are drawn up many years in advance, and an opponent's strength can change in the meantime.

### A reminder

Remember, too, that the NCAA preseason program answers just one question—what did your I-A opponents this season do last season, bowls included, when not playing you? Deleting their games against you is a vital element. Without it, a big-winning team like Florida State, 11-1 last season, would have no chance to rank high—its foes would start 1-11 (assuming the same opponents again). And conversely, foes of a 1-10 team would enjoy a 10-1 start.

Also, the NCAA program does not go another step and factor in the teams faced by each of your opponents, as does the NCAA basketball program. Thus all 8-3 teams are equal, all 7-4 teams are equal, etc., and we all know this is not true—just ask any team in any of those cases. And all games vs. teams below I-A are deleted because I-A teams annually win about 75 percent of such games (the seven conferences usually above one million in attendance play very few games vs. I-AA teams and win about 90 percent of them).

"Toughest" always will be a subjective thing influenced by opinion and tinged by regional bias.

### Florida State's schedule

The schedule awaiting Bobby Bowden's team includes eight bowl teams—Auburn, Clemson, Florida, Louisiana State, Miami (Florida), South Carolina, Southern Mississippi and Syracuse (alphabetically, for objectivity). No other team is playing more than six bowl teams this fall.

The national list always includes only those teams playing at least nine I-A opponents. Here are all teams playing at least 520 opposition (number of bowl teams in parentheses):



**Bobby Bowden's Seminoles face the toughest schedule in Division I-A based on 1988 results**



**Georgia Southern's Erk Russell must prepare to face the toughest schedule in Division I-AA**



**Eastern Kentucky's Roy Kidd should earn career victory No. 200 before the season is very old**



**Southern Methodist's Forest Gregg faces a unique challenge with the 1989 Mustangs, who open against Rice**

Division I-A:	W	L	T	*Pct.
2. Oregon St. (5).....	78	38	2	.669
3. Stanford (4).....	71	44	0	.617
4. Southern Cal (4).....	69	43	6	.610
5. Notre Dame (4).....	64	42	4	.600
6. Washington (4).....	69	46	2	.598
7. Washington St. (3).....	62	41	4	.598
8. Penn St. (4).....	66	45	0	.595
9. Arizona (4).....	64	44	3	.590
10. Maryland (5).....	61	42	3	.590
11. Wyoming (4).....	67	49	0	.578
12. San Diego St. (5).....	75	55	0	.577
13. Auburn (6).....	61	46	0	.570
14. Louisiana St. (4).....	62	47	1	.568
15. Louisville (4).....	59	45	0	.567
16. Southern Miss. (3).....	62	48	0	.564
17. Oregon (4).....	63	48	7	.564

		Preseason		Final	
Yr.	Leader	Pct.	Rank	Pct.	Pct.
80	Penn St.	.661	3	.647	
81	Florida St.	.684	7	.607	
82	Florida St.	.614	5	.625	
83	UCLA	.681	2	.641	
84	Penn St.	.670	1	.613	
85	Florida	.661	3	.660	
86	Notre Dame	.672	3	.634	
87	Notre Dame	.657	1	.673	
88	Kentucky	.644	10	.595	

Division I-AA:	W	L	T	*Pct.
2. Lafayette (1).....	46	32	0	.590
3. Northwestern La. (3).....	56	41	2	.576
4. Western Caro. (5).....	54	40	1	.574
5. Bucknell (0).....	47	36	2	.565
6. Northeastern (1).....	58	48	1	.547
7. S.F. Austin (4).....	58	48	2	.546
8. South Caro. St. (2).....	42	35	1	.545
9. Colgate (1).....	51	43	4	.541
10. Harvard (1).....	50	43	3	.536
11. Tenn. Chatt. (5).....	61	54	1	.530
12. Boston U. (2).....	52	46	2	.530
13. Villanova (2).....	58	52	0	.527
14. Marshall (4).....	53	48	1	.525
15. Montana (3).....	46	42	0	.523
16. Jackson St. (2).....	52	48	0	.520
17. Idaho (3).....	44	41	0	.518
18. Eastern Wash. (4)#.....	50	47	0	.515
18. East Tenn. St. (3)#.....	49	46	2	.515
20. Furman (3).....	44	42	1	.511
21. McNeese St. (3).....	48	46	0	.510
22. Tennessee St. (2).....	48	46	2	.510



## Football notes

18. Texas A&M (4).....	56	44	0	.560
19. California (4).....	65	51	2	.559
20. Michigan (6).....	63	49	8	.558
21. Tennessee (5).....	62	49	1	.558
22. UCLA (2).....	61	48	5	.557
23. South Caro. (5).....	53	42	2	.557
24. Missouri (6)#.....	65	52	0	.556
24. Mississippi St. (6)#.....	55	44	0	.556
26. Virginia Tech (5).....	60	48	1	.555
27. Southern Methodist (3).....	54	44	0	.551
28. Pittsburgh (4).....	60	49	0	.550
29. Colorado St. (4).....	64	53	1	.547
30. Utah (5).....	71	59	2	.545
31. Virginia (3)#.....	54	47	2	.534
31. Texas (4)#.....	55	48	0	.534
31. Syracuse (3)#.....	55	48	0	.534
34. Wisconsin (6).....	57	49	12	.534
35. Michigan St. (6).....	59	52	9	.529
36. Kansas (4).....	54	48	1	.529
37. Illinois (6).....	60	53	8	.529
38. Air Force (5).....	62	56	1	.525
39. Kansas St. (4).....	47	43	1	.522
40. Mississippi (5).....	52	48	0	.520

\*Ties computed as half won, half lost.  
#Only exact ties in percentage.

Preseason rankings are based solely on the previous year, but many teams will change in strength, so that some early season "upsets" will not appear to be upsets at all later in the season. From now on this season, the NCAA toughest-schedule computer program will be based solely on 1989 results, and the final ranking will not include bowls.

That will change things, but usually not to a major extent. Eight preseason leaders finished the season in the top five, two others in the top 10.

The only major exception came in 1978, when Pittsburgh's opponents fell from No. 1 at .645 in the preseason to No. 47 at .514 in the final rankings.

Here are the annual preseason toughest-schedule leaders in I-A and how they finished in that season's final rankings, then the final leaders and how they ranked in the preseason list:

		Preseason		Final	
Yr.	Leader	Pct.	Rank	Pct.	Pct.
78	Pittsburgh	.645	47	.514	
79	Notre Dame	.708	4	.639	

As the list shows, seven toughest-schedule champions were at least sixth in the preseason, and two Penn State in 1984 and Notre Dame in 1987 started and finished on top. No champion started lower than 26th or below .552 in won-lost percentage. Only one national champion, Penn State in 1982, did it while facing the nation's toughest schedule.

Nine of 12 preseason leaders (including 1989) were independents, with Florida State and Notre Dame tied at three each, Penn State two, and Pitt one.

In the final rankings, eight of 11 were independents, with Notre Dame and Penn State tied at three each, Florida State one, and Virginia Tech one. As earlier mentioned, independents are not locked in to conference schedules.

The Southeastern Conference has had four leaders—two preseason and two final—and the Pacific-10 the other two, reflecting the fact that these two rank 1-2 in nonconference success over the same span.

**Georgia Southern leads**

In Division I-AA, independent Georgia Southern leads the list a second year in a row, with Lafayette second and Northwestern State (Louisiana), last year's final toughest-schedule leader, third.

In I-AA, the list always includes those playing at least eight I-AA or I-A opponents. Games against teams below I-AA are deleted. Here are all teams with schedules at least two games over the break-even or .500 level (games against I-AA playoff and/or I-A bowl teams in parentheses):

Division I-AA:	W	L	T	*Pct.
1. Ga. Southern (1).....	42	23	1	.644

Changes in strength from one season to the next can be much more drastic in I-AA. Two final leaders, James Madison in 1986 and Georgia Southern in 1987, amazingly were 72nd in the preseason. James Madison's foes started the year 32-45-1 for .417 based on 1985 and jumped to 46-28-1 for .620. Georgia Southern's opponents went from .418 (32-45-2) to .603 (47-31-0).

Only Florida A&M in 1983 (first both times), Georgia Southern in 1988 (from first to second) and South Carolina State in 1985 (second to first) stayed up.

Here are the annual I-AA preseason toughest-schedule leaders and how they finished in that season's final rankings, then the final leaders and how they ranked in preseason:

		Preseason		Final	
Yr.	Leader	Pct.	Rank	Pct.	Pct.
83	Florida A&M	.660	1	.640	
84	South Caro. St.	.617	18	.517	
85	Tennessee Tech	.590	16	.500	
86	South Caro. St.	.595	19	.520	
87	Western Ky.	.622	27	.482	
88	Ga. Southern	.688	2	.580	

**Unique opportunity**

Southern Methodist, 27th on the toughest-schedule list, in reality is No. 1 by a mile, coming back with a small, green squad after playing no games for the last two seasons due to a "death penalty" probation that has another year to go.

Coach Forrest Gregg hosts Rice September 2 with just 42 scholarship players. Most are just out of high school, and only three ever have played in a college game. Rice has the country's longest I-A losing streak at 18 but is a favorite for the

first time in 10 years. But Gregg, an SMU graduate, Super Bowl coach and Hall of Fame player, goes about his business as happily as someone building a house from scratch.

"The big question is, can SMU win without cheating?" Gregg told Gene Wojciechowski, Los Angeles Times. "I think you have a set of rules and you play by them. It's just as simple as that."

It is unprecedented in modern Division I football. Georgia Southern coach Erk Russell started a team from scratch but played nonvarsity schedules the first two years. Gregg says he would prefer to start with freshman games. But SMU must play Connecticut, 7-4 last year; Notre Dame's defending national champions; 8-4 North Texas, and eight games in the tough Southwest Athletic Conference.

On the SMU roster are 21 National Honor Society members, 12 honor roll members and various other academic standouts. "We will go onto the field for the right reason—to play football and get an education," Gregg says.

A battery of reforms and safeguards has been established, and SMU has moved its home games from Texas Stadium to venerable Ownby Stadium, which seats 23,615. SMU President A. Kenneth Pyc, who came from Duke, has promised to drop football at the first evidence of cheating.

"We're trying to change the environment in which intercollegiate athletics is run," athletics director Doug Single told Scott McCartney of the Associated Press. "We're in the national spotlight, and we have a unique opportunity to position ourselves as a school that can win and do it the right way."

**Kidd's 200th coming**

The next victory for Eastern Kentucky coach Roy Kidd will make him the 19th coach in college football history, regardless of division or association, to reach 200 career victories. It could come as early as September 2 against Western Carolina. That would make him 200-74-8 in his 26th season. He will become the sixth active coach to reach 200.

A former Eastern Kentucky quarterback, he will be only the sixth 200 club member to get all his victories at the same college. The past four years, Kidd has set aside funds from his summer football camp to pay for regular drug testing of Eastern players. "If you test positive once, it's between you and the trainer," Kidd says. "The second time, I will be told, so will your parents and you must enter counseling and straighten up before you come back."

## Initial-eligibility exceptions

Following is a report of actions taken by the NCAA Council Subcommittee on Initial-Eligibility Exceptions. This report includes actions taken since the last summary was published. It appeared in the May 17, 1989, issue of The NCAA News.

### a. The subcommittee considered the following test-score waiver requests:

- Approved the application of a nonrecruited prospective student-athlete who presented acceptable Swedish credentials and no test score. The subcommittee's approval was contingent upon the student-athlete's successful completion of the ACT or SAT on a national testing date under national testing conditions.

- Approved the application of a recruited student-athlete who presented 11 core courses with a grade-point average of 2.910 and no test score. Upon graduation from high school, the student-athlete planned to enroll in the armed services rather than attend college; the student-athlete's plans subsequently changed. The subcommittee's approval was contingent upon the student-athlete's successful completion of the ACT or SAT on a national testing date under national testing conditions.

- Approved the application of a recruited prospective student-athlete who presented strong English secondary-school credentials and no test score. The student-athlete learned of the test-score requirement in May (subsequent to the SAT test-registration deadline) and was unsuccessful in an attempt to register on the day of administration of the SAT in June. There were no ACT tests given in England in June. The subcommittee's approval was contingent upon the student-athlete's completion of the ACT or SAT on a national testing date under national testing conditions.

- Approved the application of a recruited student-athlete who presented 11 core-course credits with a grade-point average of 2.400, standard ACT scores of 6 and 7, and a score of 23 achieved during a nonstandard administration of the test after the July 1 deadline. The student-athlete is learning-disabled; he was unaware of the opportunity to complete a nonstandard administration of the test prior to the July 1 deadline. The subcommittee noted that the NCAA Academic Requirements Committee had approved the nonstandard administration of the ACT to the student-athlete.

- Approved the application of a recruited student-athlete who presented acceptable Algerian credentials and no ACT or SAT score. The subcommittee noted that the student-athlete's first contact with the applicant member institution and first exposure to the standardized test-score component of Bylaw 14.3 occurred three weeks prior to his initial collegiate enrollment in January 1989. The subcommittee's approval was contingent upon the student-athlete's successful completion of the ACT or SAT on a national testing date under national testing conditions.

- Approved the application of a recruited student-athlete who presented 14 core-course credits with a grade-point average of 2.580 and a combined SAT score of 660. The student-athlete graduated from high school in June 1986. The subcommittee approved the retroactive application of the Council's March 19, 1987 (Minute No. 11), decision to permit the combination of the student-athlete's highest scores achieved on verbal and math subsections of the SAT from different national testing dates. Further, the subcommittee waived the application deadline, inasmuch as the retroactive application of the Council's decision was unclear at the time the deadline passed for the submission of the student-athlete's application.

### b. The subcommittee considered the following core-course waiver requests:

- Approved the application of a recruited prospective student-athlete who presented 12½ core courses with a grade-point average of 2.520 and an ACT score of 19, including a mathematics subscore of 19. The student-athlete lacked one-half core-course credit in mathematics.

- Denied the application of a recruited student-athlete who presented 10½ core courses with a grade-point average of 2.520 and an ACT score of 20, including a mathematics subscore of 11. He lacked one-half core-course credit in mathematics. In its denial of the application, the subcommittee noted the student-athlete's lack of proficiency in math as reflected in his ACT mathematics subscore.

- Approved the application of a recruited student-athlete who presented 10 core courses with a grade-point average of 2.700 and an ACT score of 24, including an English subscore of 20. The student-athlete lacked one core-course credit in English.

- Approved the application of a recruited prospective student-athlete who presented

10½ core-course credits with a grade-point average of 3.900 and an ACT score of 26. The student-athlete lacked one-quarter credit in natural science and one-half credit in social science.

- Approved the application of a recruited prospective student-athlete who presented 12 core-course credits with a grade-point average of 2.545 and an SAT score of 790. The student-athlete lacked a natural science laboratory course.

- Approved the application of a recruited prospective student-athlete who presented

11½ core-course credits with a grade-point average of 2.857 and two ACT scores of 20, with natural science subscores of 20 and 24, respectively. The student-athlete lacked one-half core-course credit in natural science.

### c. The subcommittee:

- Denied the international-academic-standards waiver application of a recruited student-athlete from the Bahamas who presented an SAT score of 700 but did not present five different academic subject passes on the General Certificate of Education (GCE) or equivalent examinations as speci-

fied in the NCAA Guide to International Academic Standards for Athletics Eligibility. The institution requested that the subcommittee allow the student-athlete to meet the core-course requirement applicable to student-athletes from the United States per Bylaw 14.3.1.1. The subcommittee declined to waive the requirements in the Guide to International Academic Standards for Athletics Eligibility based upon the student-athlete's marginal secondary record.

### d. The subcommittee:

- Denied the graduation waiver applica-

tion of a recruited prospective student-athlete who left high school in 1983 during the middle of his senior year and, upon the request of the U.S. Army, completed the GED in June 1983 with a standard score average of 49.8, which met the minimum initial-eligibility requirements in effect at that time. The GED, however, was taken the same year the student-athlete's high school class graduated. In its denial of the application, the subcommittee noted the marginal nature of the student-athlete's high school core-curriculum grades.

## Legislation and Interpretations Committee minutes

Acting for the NCAA Council, the Legislation and Interpretations Committee:

### Tentative conference schedule

1. Confirmed the following dates for Legislation and Interpretations Committee conference calls to be conducted between September and December 1989: September 14, September 28, October 12, October 26, November 16, November 30 and December 14 (in-person meeting). Conferences will begin at 9 a.m. Central time.

### Coaches

2. **Part-time coach employed by professional organization.** Reviewed the provisions of NCAA Bylaws 11.3.3.1 and 11.3.3.2.1, and confirmed a staff interpretation that an institution's part-time strength and conditioning coach is precluded from also being

employed in the same capacity by a professional sports organization, inasmuch as the regular responsibilities of a professional team's strength coach cannot be separated effectively from the observation or contacting of talent at the collegiate institution;



Conference No. 11  
July 20, 1989

agreed that such an individual could serve as a temporary consultant (but not as a coach) for the member institution if employed by a professional team, or could serve as a temporary consultant (but not as a coach) for the professional team if employed by the institution.

### Advertisements/endorsements

3. **Commercial sponsor's name or logo on national-team uniform.** Reviewed the provisions of Bylaw 12.5.4 and a previous Council interpretation (reference: Item No. 3 of the minutes of the NCAA Administrative Committee's April 5, 1978, conference), and agreed that student-athletes who are selected to participate on the U.S. Tennis Association's national team would be permitted to wear that team's official uniform, even though a corporate sponsor's name or logo is included on the uniform.

### Playing and practice seasons

4. **Countable contests for an institution.** Reviewed the provisions of Bylaw 17.02.2 and a previous Council interpretation (reference: Item No. 7 of the minutes of the NCAA officers' August 21, 1974, conference), and determined that if a member institution participates in a football scrimmage for two quarters with a foreign

institution and for two quarters with an NCAA member institution, such activities must count as two scrimmages for purposes of meeting the applicable contest limitations; advised the staff to archive the 1974 interpretation in light of the adoption during the 1987 special NCAA Convention of new playing- and practice-season restrictions.

### Initial eligibility

5. **Summer recommended reading materials.** Reviewed the provisions of Bylaw 15.2.7.2 and agreed that an incoming student-athlete would not be permitted to receive summer recommended reading materials (i.e., books on a reading list) unless such materials are provided by the institution at no charge to all incoming students; recommended that this interpretation be included in the initial-eligibility chart being prepared by the staff for the committee's review.

## Administrative Committee minutes

1. Acting for the Council, the Administrative Committee:

a. Appointed Denny Crum, University of Louisville, to the Basketball Officiating Committee, replacing C. M. Newton, no longer a Division I men's basketball coach.

b. Appointed Marian Washington, University of Kansas, to the Basketball Officiating Committee, replacing C. Vivian Stringer, University of Iowa, who declined the appointment.

c. Appointed Joan C. Cronan, University of Tennessee, Knoxville, as the Council representative on the Basketball Officiating Committee, replacing Sarah F. J. Yates, Florida A&M University, declined.

d. Appointed Susan A. Collins, George Mason University, as the Division I Council representative on the Eligibility Committee, replacing Della Durant, retired.

e. Appointed David B. Keilitz, Central Michigan University, as the Council representative on the Postgraduate Scholarship Committee, replacing Richard Burns, retired.

f. Appointed Donna Guimont, St. Anselm

College, to the Division II Women's Basketball Committee, replacing Carolyn Hodges, no longer at a member institution.

g. Appointed William Carey, Nazareth College (New York), to the Division III Men's Basketball Committee, replacing Edgar L. Green, now at a Division I institution.

h. Appointed Larry Cox, Ohio State



Conference No. 12  
August 13, 1989

University, and Jane Betts, Massachusetts Institute of Technology, to the Women's Gymnastics Committee, replacing, respectively, Judith L. Avener, Pennsylvania State University, resigned from the committee, and Nancy LeGant, who declined the appointment.

i. Appointed Dang Pibulvech, Colorado College, as chair of the Women's Soccer Committee effective September 1, replacing

James Kadlecck, University of Northern Colorado, who is leaving college athletics in December.

j. Continued a review of proposed changes in the Association's committee appointment process; placed the topic on the agenda for the October Council meeting and directed the staff to prepare a report of the suggested changes, including legislation necessary to implement those changes.

2. **Report of actions taken by the executive director per Constitution 4.3.2.** Acting for the Council:

a. Approved 42 summer basketball leagues (25 for men and 17 for women) per Bylaws 14.8.5.2 and 30.11, as reported earlier in The NCAA News.

b. Granted waivers per Bylaw 14.8.6.1-(c) to permit student-athletes from four member institutions to participate in basketball tryouts and competition involving national teams.

c. Granted waivers per Bylaw 14.8.6.2-(c) to permit student-athletes from various institutions to participate in foreign tours sponsored by Athletes in Action, Score

International, Verich Repts Team USA, Atlantic 10 Conference, Pacific-10 Conference and International Sports Exchange (all basketball).

d. Granted a waiver of the transfer residence requirement per Bylaw 14.9.2.2 to permit a student-athlete to transfer from the University of Oregon for health reasons and be eligible immediately at another institution.

e. Granted waivers per Bylaw 16.13 as follows:

(1) Providence College, to provide student-athletes travel expenses to attend the funeral of a former teammate.

(2) University of Alabama, Tuscaloosa, to provide student-athletes travel expenses to attend the funeral of a prospective student-athlete who had signed a National Letter of Intent at the institution.

(3) California State University, Fresno, to provide expenses to the family of a student-athlete who died while enrolled in summer school at the institution to assist in transporting the body to his home town for burial.

## Leagues to cosponsor NCAA compliance seminar

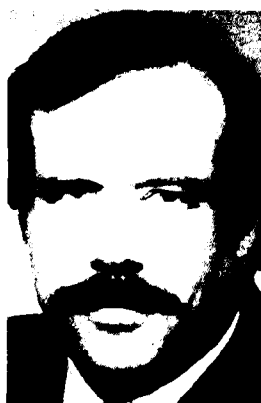
The North Coast Athletic Conference and the Ohio Athletic Conference will cosponsor a regional NCAA compliance seminar, geared specifically for Division III members, September 25-26 in Columbus, Ohio.

In addition, a forum to discuss issues relevant to Division III members will precede the compliance seminar. This forum will be chaired by Alvin J. Van Wie, director of men's athletics at College of Wooster and NCAA Division III vice-president.

"We're pleased to cosponsor this NCAA compliance seminar because we feel there is a continuing need for our administrators to get the current information on NCAA rules, especially as they pertain to Division III," said Dennis Collins, executive director of the North Coast Athletic Conference.

Some of the items to be discussed at the seminar include academic requirements, certification of athletics eligibility, awarding of financial aid, length of playing seasons, and recruiting rules and regulations.

"We are gearing the seminar to all administrators at Division III insti-



Dennis Collins

tutions, inviting presidents, financial aid directors, admissions officers, registrars, directors of athletics and faculty athletics representatives," Collins added. "There will be specific breakout sessions for financial aid directors, admissions officers and registrars, so we are encouraging them to attend."

Commissioner James W. Lessig and Associate Commissioner Jamie McCloskey of the Ohio Athletic Conference have helped organize the seminar.

"We feel the forum will be an excellent additional attraction for

Division III athletics administrators to attend the seminar," McCloskey said. "There has been a greater interest by Division III members in compliance and legislative issues the last several years, and this event is a great way to combine the two," he said.

The seminar will begin at 1 p.m. Monday, September 25, with the Division III forum. The compliance seminar will begin with a general session at 2 p.m. and will continue with breakout groups from 3:30 to 5 p.m. The NCAA will host an eve-

ning reception at 5:30. The seminar will reconvene Tuesday, September 26, with a general session from 9 a.m. to noon.

The seminar will be at the Radisson Hotel, Interstate 71 and Morse Road in Columbus.

The seminar is open to all NCAA-affiliated administrators. For more information, contact Collins at the North Coast Athletic Conference (216/871-8100) or McCloskey at the Ohio Athletic Conference (419/249-7179).

## Questions/Answers

Readers are invited to submit questions to this column. Please direct any inquiries to The NCAA News at the NCAA national office.

**Q** What are the Association's annual dues?

**A** Dues vary by membership classification and include:  
Active members—Division I, \$1,800; Division II, \$900; Division III, \$900. Conferences—Division I, \$900; Division II, \$450; Division III, \$450. Affiliated membership is \$225, and corresponding membership is \$225.



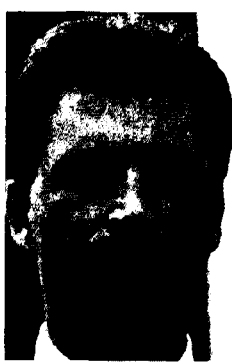
# Record

Continued from page 12

also works part-time as a sports correspondent for the South County Journal... Steve Balsan selected at Mercy, where he also will be assistant athletics director... Washington and Jefferson's Kurt Kehl named communications director at Princeton.

**Sports information assistants**  
Vickie Hasselfeldt joined the staff at Indiana, where she has worked as a student assistant. She also has been an intern with the Amateur Basketball Association of the USA... James Herlihy named staff associate at Bates. He is a former sports information assistant at Plymouth State who worked more recently as an administrative assistant with the Charlotte (Florida) Rangers minor-league baseball club... Norm Reilly, associate SID at Georgia, appointed assistant athletics director for media relations at Tulane... Lisa Galeano selected at Hofstra after two years as a sports anchor and reporter at a Long Island television station. She also has been a free-lance production assistant for ABC Sports... John Bianco hired as a graduate assistant at Fresno State. He was a sports information intern at Arkansas last year... Mike Lund hired at Portland State, where he will work primarily with women's athletics. He worked the past two years as SID at Lewis and Clark, where he also was an assistant women's basketball coach for one season.

Also, Missouri's Donna Hart appointed publicity director for women's athletics at Texas... Eastern Michigan's Paul E. Helgren promoted to coordinator of promotions and ticket sales at the school... Gary Pine and Linda Dodge joined the staff at Southern California. Pine previously was SID at Azusa Pacific and replaces Nick Salata, who was named media relations director by the Los Angeles Kings. Dodge, a former West Coast Athletic Conference and Stanford publicist, replaces Alisa Acuna, who stepped down to begin her own public relations firm... Donna Graham appointed to an internship at Cincinnati. She is a recent graduate of Mississippi University for Women, where she assisted with sports information... Joe Gorby selected for the



Phillips Cross promoted to trainer at North Alabama



Diman T. Smith named trainer at Rochester Institute



Laurie S. Simpson joined training staff at Mansfield

newly created post of sports information specialist at Michigan Tech. He previously was a graduate assistant at Western Kentucky... Mark Meighen appointed graduate assistant SID at Slippery Rock. He previously was a public and media relations assistant with the Buffalo Bills.

**Strength and conditioning coach**  
Army's David Lopez named assistant football coach at Virginia Military.

**Trainers** Drew cohead trainer James Douglas Kantor appointed assistant trainer at Denison, his alma mater. He also has been a head trainer at the high school level... David Emory selected at Delta State after one year as trainer at North Greenville College. He also has been a graduate assistant trainer at Mississippi... Greg Clark named at West Georgia after serving as a graduate assistant trainer at Fork Union Military Academy in Virginia. He replaces longtime West Georgia trainer Pat O'Donoghue, who is working on a doctorate... Kristi Short-Grosskopf selected at Lawrence, where she also will be equipment manager. She served from 1986 to 1988 as assistant trainer at Wisconsin-Stevens Point... Diman T. Smith named at Rochester Institute of Technology, replacing Luigi Rende, who resigned to begin a private sports medicine practice. Smith previously operated a training service in Sinclairville, New York... Phillips Cross promoted from assistant at North Alabama, where he became a full-time aide in 1987. He

replaces Johnny Long, who remains at the school as a member of the physical education faculty after serving as trainer since 1971.

**Assistant trainers** Gary Johnson hired at Purdue. He has been assistant chief of physical therapy at Purdue Hospital since 1987 and is a former graduate assistant trainer at Indiana... Laurie Shannon appointed at Pine Manor after completing a two-year internship at Boston College... Glen Schwab hired at Virginia Military after serving as a graduate assistant trainer at West Virginia... Michelle Pettit named at Lehigh after serving the past three years as trainer and assistant coordinator at a sports institute in Ridge-wood, New Jersey... Laurie S. Simpson appointed at Mansfield. She is a former head trainer at Danville Area High School in Pennsylvania... Mark Laursen returned to the staff at Maryland-Baltimore County after serving last year as an assistant at Boston U... Lisa Egnell selected at Macalester. She is a Gustavus Adolphus graduate.

**Women's athletics coordinator**  
Lynn Oberbillig given additional duties at Nicholls State, where she has been head women's softball coach for nine years.

**CONFERENCES**  
Paul Bobb, athletics director at CCNY, elected president of the City University of New York Athletic Conference... Julie Kluge selected as promotions director by the Western Collegiate Hockey Association.

tion. She has worked in the sports information office at Wisconsin for the past five years... Chuck Yrigoyen appointed assistant director for public information for the Ivy Group, effective September 11. He has been communications director at Princeton for the past four years. Also, Douglas Q. Davis II was hired as the Ivy Group's first administration intern and Paul Prox was selected as the league's sports information intern. Davis is a former Colgate hockey player, and Prox previously was an intern with the Pittsburgh Steelers and in the sports information office at Pittsburgh... Bob Barrett will retire October 1 as associate commissioner of the Southeastern Conference, where he has been on the staff since 1978... Betsy Mosher, administrative assistant for legislation at the Big Ten Conference, named assistant athletics director for intercollegiate programs at Northwestern.

**ASSOCIATIONS**  
Tim Taylor, head men's ice hockey coach at Yale, selected to coach the U.S. national men's ice hockey team at the 1990 World Championship in Switzerland. He coached this year's team to a sixth-place finish at the World Championship and is a former Olympic assistant coach.

**NOTABLES**  
Men's basketball coaches Denny Crum of Louisville and Mike Krzyzewski of Duke elected to serve on the board of directors of the National Association of Basketball Coaches. They will fill positions vacated by C. M. Newton, who recently became athletics director at Kentucky, and Ladell Anderson, who retired as men's basketball coach at Brigham Young... Mimi Murray, professor of physical education and former women's gymnastics coach at Springfield, is serving as assistant chief of the mission for the United States at the World University Games, which end August 31 in Duisburg, West Germany... The first four members of the Rose Bowl Hall of Fame are the late Woody Hayes, who coached Ohio State to four Rose Bowl victories; Jim Plunkett, who was the 1971 game's most valuable player as a quarterback at Stanford; Chalmers W. "Bump" Elliott, the longtime

Iowa athletics director who won Rose Bowl championships as a player and coach at Michigan, and the late Howard Jones, who coached Southern California to five victories in Pasadena from 1930 to 1940.

**DEATHS**  
Ricky Berry, a Sacramento Kings basketball player who won all-America mention in 1988 as a player at San Jose State, was found dead of a self-inflicted gunshot wound at his Sacramento home August 14. He was 24. Berry, the son of former San Jose State coach Bill Berry, was the school's all-time leading scorer and was a member of the 1987 U.S. Pan American men's basketball team, which won the silver medal. He also played during his freshman year at Oregon State... Gordon F. McCullough, special assistant to the vice-president and head men's golf coach at Hartford and former men's basketball coach and athletics director at the school, died after a long illness August 23 in New Haven, Connecticut. He was 53. McCullough coached teams to four consecutive appearances in the Division II Men's Basketball Championship (1972 through 1975) and served as AD from 1974 to 1986... Four members of the Navy cross country team were killed August 14 in an automobile accident in Rossville, Pennsylvania. The victims included Robert Packowski, a 21-year-old senior at the academy who captained the 1988 cross country team and was captain-elect of the 1989 track team. Also killed were 20-year-old juniors William Donovan, Donald Landry and Andrew G. Myers. Police said the midshipmen were pronounced dead at the scene of the accident after their car left the road, struck several trees and burst into flames. The four athletes were staying at nearby Gifford Pinchot State Park, where they were undergoing voluntary cross-country conditioning.

Carlos Yates, the leading scorer in George Mason basketball history, was shot to death August 13 in Washington, D.C., in what police said was they believe was a drug-related incident. Yates, who was 27, played at George Mason from 1981 to 1985 and was the Division I runner-up in scoring in 1983... Les See Record, page 18

# The Market

Readers of The NCAA News are invited to use The Market to locate candidates for positions open at their institutions, to advertise open dates in their playing schedules or for other appropriate purposes.

Rates are 55 cents per word for general classified advertising (agate type) and \$27 per column inch for display classified advertising. Orders and copy are due by noon five days prior to the date of publication for general classified space and by noon seven days prior to the date of publication for display classified advertising. Orders and copy will be accepted by telephone.

For more information or to place an ad, call Susan Boyts at 913/384-3220 or write NCAA Publishing, P.O. Box 1906, Mission, Kansas 66201.

## Positions Available

### Athletics Director

**Athletic Director/Assistant Professor.** Trinity College has a full-time, non-tenured position available September '89. Responsibilities include supervising the coaches of crew, field hockey and soccer, coaching tennis and teaching courses in wellness and nutrition. Scheduling of athletic events, budgeting and supervision of the athletic facilities and equipment. Doctorate preferred. Rank and salary dependent on qualifications. Applications will be accepted until position is filled. Send resume, three references, and salary requirements to: Personnel Director, Trinity College, 125 Michigan Avenue, N.E., Washington, D.C. 20017. AA/EOE. Or phone, 202/939-5021.

**The University of Alabama, Director of Athletics.** The University of Alabama invites nominations and applications for the position of Director of Athletics. This senior administrative position reports directly to the President of the University and is responsible for the leadership and management of the Intercollegiate Athletic program. Criteria for selecting the Director of Athletics includes a preferred minimum of five (5) years of experience in a senior administrative post in a successful Division I athletic program; a reputation of impeccable integrity among NCAA and other college athletic governing bodies; and a demonstrated record of commitment to high academic standards for student-athletes.

Letters of nomination or application, along with a current resume and three letters of reference, should be submitted to: Harry J. Knopke, Ph.D., Secretary, Director of Athletics Search Advisory Committee, Presidents Office, The University of Alabama, Box 870100, Tuscaloosa, AL 35487-0100. The University of Alabama is an Equal Opportunity Employer.

### Assistant A.D.

**Assistant A.D./Women's Coaching Responsibilities—Full-Time.** Assistant Director is responsible for scheduling of 23 teams and administration of two women's programs, including recruitment/practice, game planning and promotion. BA Degree, experience preferred. Submit interest letter/resume and three letters of recommendation to: Terry Wansant, Hunter College Athletics, 695 Park Ave., N.Y., N.Y. 10021. AA/EOE.

### Academic Adviser

**Academic Adviser:** Wright State University is seeking applications for the position of Academic Adviser in Athletics. The person will coordinate all academic activities related to monitoring and enhancing the academic performance of student-athletes. Qualifications: Minimum, Bachelor's degree with Master's preferred in Counseling/Education or related field. Two or more years' experience at the university level in advising, counseling, or related area. Strong organization, communication and supervisory skills. Knowledge of NCAA regulations. Submit application and resume to: Peggy Wynkoop, Assistant Director of Athletics, Wright State University, Day

ton, Ohio 45435. Application Deadline: September 15, 1989. Wright State University is an Affirmative Action/Equal Opportunity Employer.

### Academic Coordinator

**Assistant Academic Coordinator.** Responsibilities: Responsible for the management of daily operations of Academic Support Services for all student-athletes. Emphasis in areas of academic advising/counseling, maintaining academic records on satisfactory progress, degree progress, compiling required reports, other related duties as assigned. Reports directly to Assistant Athletic Director for Academic Services and NCAA/Big Eight Compliance. Qualifications: Required—Bachelor's degree required. Must have minimum one year full-time work experience in higher education setting. Must demonstrate ability to motivate and relate to student-athletes from diverse backgrounds. Must demonstrate ability to motivate and relate to female student-athletes. Must have good communication and organization skills. Preferred—A minimum of two years' work experience in athletic-academic advising/counseling. Master's degree in counseling, student personnel or related field. Type of Appointment: 12-month appointment. Must be able to work flexible hours, including evenings and weekends. Salary: Commensurate with experience. Application Procedure: Send letter of application, resume, transcripts and three letters of references to: Theophilus D. Gregory, Assistant Athletic Director, NCAA/Big Eight Compliance and Academic Affairs, University of Colorado, Boulder Stadium 106, Campus Box 368, Boulder, Colorado 80309-0368. Application Deadline: Post-marked no later than October 1, 1989. The University of Colorado, Boulder, has a strong institutional commitment to the principle of diversity. In that spirit, we are particularly interested in receiving applications from a broad spectrum of people, including women, members of ethnic minorities, and disabled individuals.

### Athletics Trainer

**Assistant Athletic Trainer.** Saint Louis University, Saint Louis, Missouri. Purpose of Position: This position will be a vital part of the Saint Louis University Sports Medicine Program. Primary Responsibilities: Care, prevention, treatment, and rehabilitation of athletic injuries for women's sports. Some supervision of student athletic trainers. Assists Head Trainer with some administrative duties. Candidates will be required to work closely with the Head Trainer and Saint Louis University Hospital Medical Staff to coordinate rehabilitation treatment, injury prevention and immediate care of injuries. Minimum Qualifications: Bachelor's degree. NATA certification. Missouri state license as an Athletic Trainer. Candidates must possess the ability to work well with people and have good communication skills. Women's Sports: Fall—field hockey, volleyball, tennis, swimming, and diving. Winter—basketball. Spring—softball. Bene-

fits: Saint Louis University offers an excellent salary and benefits package, which includes medical/life/dental insurance, retirement plans, tuition waiver for employees and family, and a recreation center. Saint Louis University is a Catholic Jesuit University, the first institution of higher learning west of the Mississippi. Founded in 1818, the university has 11 schools and colleges on four campuses. The total student population is comprised of 11,000 students. To apply send letter of application and resume to: Saint Louis University, University Personnel Services, 3500 Lindell Blvd., St. Louis, MO 63103. EOE/M/F/V/H.

**Athletic Trainer/Academic Instructor.** Immediate opportunity for an Academic Instructor who is also certified as an Athletic Trainer. In addition to certification, requirements include a BS degree in math, physics, or marine engineering and naval architecture. A graduate degree in education and teaching experience in an industrial or adult education environment are preferred. This job includes approximately 50% classroom instruction in technical academic disciplines that supplement a variety of apprenticeships in marine crafts and trades. Approximately 50% of the work schedule includes responsibility for the training needs of seven men's varsity intercollegiate athletic teams as well as the instruction of student trainees. NATA certification as an Athletic Trainer is required. The Apprentice School was established in 1919 and has graduated 7,000 apprentices over the history of the company. Current enrollment is 700. Newport News Shipbuilding is a major defense contractor engaged in Naval ship design, construction and overhaul, with a history back to 1886 that includes such maritime legends as Yorktown, United States, Enterprise and Los Angeles. The company is currently building a number of nuclear-powered aircraft carriers and submarines and is the design agent for Seawolf, the Navy's next generation of attack submarines. We offer a competitive salary and comprehensive benefits. For confidential consideration, send your resume and salary requirements to: Mr. Jay Dunn, Newport News Shipbuilding, Code NCAA, 4101 Washington Avenue, Newport News, VA 23607. Newport News Shipbuilding is an Equal Opportunity Employer.

**Assistant Athletic Trainer.** Bentley College invites applicants for a full-time, nine-month position to begin September 1989. Duties include assisting the Head Athletic Trainer in the care, prevention and management of athletic injuries for men's and women's varsity athletic programs. Additional duties as directed by the Head Athletic Trainer. NATA certificate required, and must work towards Massachusetts state license. Salary commensurate with experience. Send letter of application and resume to: Human Resources Department, Bentley College, 175 Forest Street, Waltham, MA 02154-4705.

**Assistant Athletic Trainer/Instructor.** Full-time, 10-month position. Bachelor's Degree in Sports Medicine, Physical Education, Health Education, or related area; NATA Certification required. Responsibilities include: teaching/advising in Sports Medicine major, assistant head trainer in duties with 15 Division I sports. Send letter of application and three letters of reference to: John T.

Locke, Sports Medicine Department, University of Detroit, 4001 W. McNichols Road, Detroit, MI 48221; or call 313/927-1740. Deadline: September 30 or until filled. EOE/AAE.

### Executive Director

**Executive Director, Certification Programs.** The United States Sports Academy is seeking an Executive Director of Certification Programs. Person will be responsible for the planning, organization, direction, control, implementation, and evaluation of all certification programs of the Academy. Must have terminal preparation in the area of sport or a related field, experience in teaching at the graduate level, and experience in program development. Preferred characteristics include coaching and/or athletic administration background, scholarly productivity, and experience in continuing education programs either as an instructor or an administrator. Salary commensurate with experience and background. Send letter of application, resume, copy of transcripts and three references to: Personnel/United States Sports Academy, One Academy Drive, Daphne, AL 36526. EOE/AA.

### Facilities

**Intramural—Recreation/Equipment—Facility Manager.** Responsible for creating, organizing and administering intramural—recreation program. Also responsible for inventory, maintenance and distribution of equipment and coordination of sports facilities and events. Baccalaureate or equivalent experience preferred. Send letter, resume and list of references to: Search Committee, Intramural Director, Dean of Student Affairs, Philadelphia College of Textiles and Science, Schoolhouse Lane and Henry Avenue, Philadelphia, PA 19144.

### Guidance Counselor

**Personnel Counselor.** University of Arkansas Athletic Department. Qualifications: Doctorate preferred with training in and a major in counseling. Prefer Ed. Counseling or Psychology. Prefer person who has competed in athletics or has counseled athletes at the college or young adult level. Job Description: Twelve-month position. Work with varsity athletes, utilizing the "whole person" approach. Purpose is to help the individual become a responsible, well-rounded, self-reliant person in a social and economic sense. The person selected must possess excellent human relations and communications skills. Must be experienced in organizing and/or conducting Human Growth seminars for athletes. Seminars should be incremental, progressive and continuous. Drug and alcohol education is a prime part of the position. Prefer person with knowledge of NCAA rules and regulations. Send Application to: (Application Deadline: September 15, 1989) Dr. Fred Vescolani, Associate Athletic Director,

University of Arkansas, Broyles Athletic Complex, Fayetteville, AR 72701. The University of Arkansas is an Affirmative Action/Equal Opportunity Employer.

### Sports Information

**Sports Information Director.** Job Description: Organize, direct and administer the Sports Information Office under the direct supervision of the Athletic Director with additional support to and from the Public Information Office. Minimum Requirements: Demonstrated skills in computers, desk top publishing, graphic design, writing, editing, public speaking and supervision of assistants. A minimum of two years' experience in a related field and a Master's degree will be preferred. Rank and Salary: A full-time, twelve-month staff appointment at approximately \$1,990 per month. To Apply: Applicants should forward a letter of application, resume, three recent letters of recommendation, and examples of writing and publications completed to: Personnel Office, California State University, Chico, CA 95929-0300. Applications will be reviewed beginning September 13, 1989, until the position is filled with an expected October 1, 1989, starting date. Affirmative Action/Equal Opportunity Employer.

**Information Specialist, Sports Information.** The University of Missouri-Columbia Intercollegiate Athletics Department seeks an energetic individual to prepare news and feature articles, edit publications, and assist in publicity responsibilities. Requires a Bachelor's degree in Journalism or a related area or an equivalent combination of education and experience. One year experience in journalistic activities is desirable. Experience in a collegiate or professional sports publicity office is preferred. Please send resume and cover letter by September 15, 1989, to: University of Missouri-Columbia, Personnel Service, 201 S. 7th Street, 130 Heinkel Bldg., Columbia, MO 65211. AA/EOE.

**Internship.** The Big Ten Conference: The Big Ten Conference announces the creation of the C. D. Henry Internship, a one-year entry-level appointment for an ethnic-minority individual in the Conference Service Bureau. Dr. Charles D. Henry was assistant Big Ten Commissioner from 1974 until his death in 1982. His contributions were substantial in helping to promote the overall missions of the Conference, and particularly in the areas of affirmative action and equal opportunities for ethnic minorities and women. The intern will have primary responsibilities in the Service Bureau, with additional duties in promotions, marketing and championships. The candidate shall possess an undergraduate degree in public relations, journalism, communications or a related field, with a desire to pursue a career in athletics administration. The intern will assist the Service Bureau director and his staff in the preparation of weekly press releases, yearbooks, all-Conference teams, etc. Employment term is September 15, 1989, to July 15, 1990; salary is \$1,600 per month. Candidates should forward a cover letter with a resume, three writing See The Market, page 18

# Academics

Continued from page 3 they enroll.

"Our ultimate hope is that if there ever is an inquiry from the NCAA or the Southeastern Conference or whoever... we can just push a button and call up a wealth of information."

The computer system isn't the first innovation at Kentucky that will have a positive effect on student-athletes' academic performance. In 1981, the school became the first in the nation to open an academic center—the Center for Academic and Tutorial Services (CATS)—for student-athletes.

Since then, a number of schools have emulated the concept, Bradley said. "Every school should try to do that," he added.

Another innovation he has noticed nationwide is simply one of manpower; more schools are hiring academic advisers. Since Bradley has been involved in NAAAA, he has seen its membership grow from 32 to last year's total of 450.

Although Bradley is highly critical of Proposition 48 (he believes it will be ineffective so long as nonqualifiers can transfer to NCAA member institutions from junior colleges), he credits the legislation with one positive effect: It has "made more people aware of academics." In turn,

that is a reason why more academic advisers are being employed at universities.

### Support systems

Milburn believes that, in addition to providing one academic adviser (preferably more), schools should at least commit themselves to providing some kind of orientation program for freshmen and then providing structured support—in the form of a study hall or tutorial program—for all student-athletes.

Clearly, more and more schools across the country are doing that, and not only in Division I.

Pittsburg State, which recently joined the NCAA as a Division II member, will begin requiring freshmen and transfer student-athletes to attend weekly one-hour sessions where guest speakers will discuss topics intended to ease the adjustment to college life.

"First and foremost, we established this enhancement program to give each student-athlete the best possible chance to excel in the classroom," said program director and assistant football coach Chuck Moller in a news release announcing the program.

"There is a tremendous amount of strain athletically on student-athletes, both physically and mentally, that regular students don't

have," Moller noted. "But we still require our student-athletes to do as well or better academically than average college students."

"This program is designed to give each student-athlete an avenue to achieve this success that we demand.... We want to bring these resources and programs to the students. It's one thing to say that there's a tutoring system here, or that the information is in the library, but it's much better to bring someone in from the tutoring department or library to actually show our students how to use the services."

### Obligations

Back at Louisville, Milburn worries about whether some schools actually provide too much support.

Still, he believes that schools are obligated to do whatever they can to ensure that student-athletes receive sufficient support academically.

"The institution has to make a commitment to make sure that any student in intercollegiate athletics is not at a disadvantage academically," he said. "We've got to provide some kind of network, and hope the coaching staff will be involved... to do otherwise would be institutional malfeasance."

# Record

Continued from page 17

Wheeler, a former all-America football player and coach at Abilene Christian, died August 12 in Alice, Texas, after a two-year illness. He was 58. Wheeler was an offensive tackle at Abilene Christian in the early 1950s who also coached the Wildcats to a 30-27 record as head coach from 1962 to 1967. He was assistant superintendent of schools in Alice... **Peter Tishman**, a nationally ranked fencer at New York University during the early 1940s who later was treasurer of the Amateur Fencers League of America, died August 10 in Fair Lawn, New Jersey, following a long illness. He was 69... **James M. Munro**, a Notre Dame football player during the 1950s who later was president of an Iowa investment firm, died August 8 in Des Moines after suffering a heart attack. He was 54... **Merrill "Chief" Fuller**, captain of Michigan State's 1916 baseball squad and a founder of the school's Varsity Club, died July 16 in St. Joseph, Michigan, at age 97.

### CORRECTIONS

Due to an editor's error, a story that appeared in the August 16 issue of The NCAA News about a meeting of the Faculty Athletics Representatives Association scheduled for September 29 inadvertently reported two different dates for the meeting.

Due to an editor's error, a story on the National Letter of Intent program in the August 16 issue of the News erroneously identified the commissioner of the Big Eight Conference. He is Carl C. James. The story also incorrectly identified James as president of the Collegiate Commissioners Association. Commissioner Joseph L. Kearney of the Western Athletic Conference is CCA president.

### POLLS

**Division I-AA Football**  
The preseason top 20 NCAA Division I-AA football teams, with last year's regular-season records in parentheses and points:

1. Furman (9-2)	80
2. Ga. Southern (9-2)	76
3. North Texas (8-3)	70
4. Eastern Ky. (9-2)	68
5. Delaware (7-4)	65
6. Idaho (9-1)	56
7. Jackson St. (8-0-2)	56
8. Northwestern I.a. (9-2)	48
8. Holy Cross (9-2)	48
10. Southwest Mo. St. (5-5)	43
11. Marshall (10-1)	40
12. Boise St. (8-3)	36
12. James Madison (5-6)	36
14. Indiana St. (5-6)	28
15. Florida A&M (7-3-1)	18
15. Massachusetts (8-3)	18
17. S. F. Austin St. (9-2)	16
18. Middle Tenn. St. (7-4)	13
19. Arkansas St. (5-6)	11
20. William & Mary (6-4-1)	7

**Division II Football**  
The preseason top 20 NCAA Division II football teams, with last year's regular-season records in parentheses and points:

1. North Dak. St. (10-0)	80
2. Texas A&I (8-2)	74
3. Portland St. (8-2-1)	72
4. Jacksonville St. (9-1)	67
5. Cal St. Sacramento (8-2)	64
6. Indiana (Pa.) (8-2)	59
7. Mississippi Col. (9-2)	56
8. Winston-Salem (10-1)	48
9. Millersville (9-1)	46
9. St. Cloud St. (7-4)	46
11. Butler (8-1-1)	42
12. Angelo St. (6-4)	36
13. N.C. Central (8-1-1)	34
14. Augustana (S.D.) (8-3)	31
15. UC Davis (7-2-1)	21
16. Grand Valley St. (7-4)	17
17. Shippensburg (6-4)	16
18. East Tex. St. (8-3)	13
19. Albany St. (Ga.) (8-2)	8
20. North Dak. (7-4)	5

# The Market

Continued from page 17

samples and at least one letter of recommendation to: Mark Rudner, Big Ten Conference, 1111 Plaza Drive, Suite 600, Schaumburg, IL 60173-4990.

### Ticket Office

**Director of Ticket Operations, University of Wisconsin-Madison, Division of Intercollegiate Athletics.** Responsibilities: Direct the ticketing functions of the Athletic Ticket Office. Direct, supervise and insure the proper and adequate training of all Ticket Office personnel. Design and cause to be printed tickets, etc. Direct the processing of all ticket orders, assignment of seats and distribution of tickets, and direct and supervise the sale of tickets. Direct the acquisition and distribution of tickets and credentials from or to visiting teams. Work cooperatively with the Athletic Department Business Office to maintain and establish adequate controls and procedures for collection and security of all receipts, preparation and retention of reports of printing and sale of tickets, reconciliation of ticket receipts, routinely reporting ticket sales and other transactions, etc. Work cooperatively with the Athletic Department Office of Promotion and Development. Prepare and submit to the Director of Athletics and Athletic Board appropriate reports, etc. Bachelor's Degree and at least three years' experience in ticket sales or related field are required. Salary is commensurate with qualifications, experience and market. Application deadline October 1, 1989. Send resume and letter of interest to Kit Saunders-Nordeen, Associate Director, 1440 Monroe St., Madison, WI 53711. The University of Wisconsin is an Equal Opportunity/Affirmative Action Employer.

### Basketball

Assistant Women's Basketball Coach. The

University of San Diego invites applications and nominations for the position of Assistant Basketball Coach for Women. The University is an independent Catholic institution sponsoring a comprehensive NCAA Division I intercollegiate athletic program and is a member of the West Coast Conference. Responsibilities: Assist the Head Coach with all aspects of the program with an emphasis on talent assessment, recruiting, scouting, on- and off-court responsibilities and administrative duties as assigned. Qualifications: Bachelor's degree; three years' coaching experience, preferably at the college level; a commitment to academic achievement; the ability to recruit quality student-athletes; a knowledge of NCAA regulations. Applications are being accepted immediately; however, the position will remain open until a suitable candidate is found. Interested candidates should submit a letter of application, resume, the names, addresses, titles and phone numbers of three references to: Tom Iannaccone, Director of Athletics, University of San Diego, Alcalá Park, San Diego, CA 92110. EOE.

**Overseas Basketball Jobs.** I am a veteran overseas coach recruiting truly outstanding ex-college men and women players for selected jobs in Asia, Australia and Europe. Send complete college, post-college playing background to Coach Dave Adkins, P.O. Box 66041, West Des Moines, Iowa 50265.

**Head Women's Basketball Coach.** Full-time (12-month) position. Starting Date: September 18, 1989. Deadline for Applications: September 8, 1989. Qualifications: Bachelor's Degree required; Master's Degree preferred. Head and/or assistant coaching experience at the collegiate level preferred. Send application and resume to: Rob Fournier, Assistant Director of Athletics, The University of Akron, Akron, OH 44325-5201. The University of Akron is an Equal Education and Employment Institution.

**Head Women's Basketball Coach, Associate Director of Athletics,** Philadelphia College of Textiles and Science, an independent, co-educational, four-year college, is nationally recognized both for its pre-professional programs in business, science, fashion, apparel and textiles, and for its NCAA Division I and II sports programs; is seeking a qualified educator/administrator to lead its physical education, recreational sports and intercollegiate programs. The head coach responsibilities

will include recruiting, scouting, coaching and administering all aspects of a Division II program. The associate director responsibilities will include teaching, assisting in the administration of the intramural program, coordinating all sport-related schedules and recruitment efforts of coaches, and monitoring the student-athlete academic progress. Assist in hiring, evaluation and supervision of full- and part-time staff, preparation of budgets, and supervision and conduct of home contests. The successful candidate will have a master's degree, and a successful history of coaching women's basketball, and experience in administration and management of college-level sports programs. Applications and nominations are currently being accepted and evaluations will continue until the position is filled. Please mail letter of application, resume and three professional references to: Dr. Gloria A. Thompson, Dean of Student Affairs, Philadelphia College of Textiles and Science, School House Lane and Henry Avenue, Philadelphia, PA 19144. PCTES is an Affirmative Action, Equal Opportunity Employer.

**Assistant Basketball Coach.** The University of Rochester invites applications for the position of assistant basketball coach for men. Equally important additional responsibilities will be assigned based upon the candidates' expertise. The position is a full-time, academic-year appointment in the Department of Sports and Recreation; a Division III member of the NCAA competing in the University Athletic Association. A Master's degree, background in physical education or related field, and prior coaching and playing experience preferred. To apply, send letter of application and names of three references to: Jeffrey Vennell, Director of Sports and Recreation, University of Rochester, Rochester, New York 14627. Equal Opportunity Employer (M/F).

### Cross Country

Assistant Women's Cross Country and Track and Field Coach, Ball State University, Muncie, Indiana. NCAA Division I assistant coaching position. Assist the head coach with all phases

of the women's cross country/track and field program with emphasis on the throwing events and/or jumping events and strength development. Responsibilities in the areas of recruiting, meet management, public relations and fund-raising. Other responsibilities as assigned by the head coach. Commitment to and responsibility for adhering to all rules and regulations of Ball State University, the Mid-American Conference and the NCAA. Minimum Qualifications: Bachelor's degree; successful collegiate coaching experience and/or competitive experience. Renewable one-year, 12-month contract beginning immediately; salary \$18,000. Direct application letter, three recent references, transcripts and vita to: Ms. Andrea Seger, Director of Intercollegiate Athletics/Women, Ball State University, Muncie, IN 47306. Position open until filled; selection process will begin immediately. Ball State University Practices Equal Opportunity in Education and Employment.

### Golf

**Head Women's Golf Coach.** The University of San Francisco. The University will be starting a Women's NCAA Division I Women's Golf Program with competition beginning in 1990-1991. The position of Head Coach could be either full- or part-time. Responsibilities include the day-to-day operations of the program: coaching, administration, recruiting, scheduling, fund-raising, etc. The minimum of a Bachelor's degree is required. At least three years of successful golf coaching or related experience is necessary. Salary is commensurate with experience plus excellent benefits. The deadline for applications is September 15, 1989. Applicants should send a letter of application, a resume and three letters of recommendation to: Robert Sunderland, S.J., Athletic Director, University of San Francisco, CA 94117. AA/EOE.

### Lacrosse

Head Coach—Women's Lacrosse—Penn State: The Department of Intercollegiate

Athletics is accepting applications from individuals to organize and administer the Women's Lacrosse Program, to include recruiting student-athletes, scheduling, budgeting and coaching/teaching lacrosse skills. The applicants should possess a Bachelor's degree, or equivalent, plus one to two years of effective coaching experience; have sound management skills, thorough knowledge of NCAA rules, demonstrated skill in administration to direct an NCAA Division I program. In addition, head coaching experience with coaching collegiate-age athletes in a college setting preferred. This position is a 12-month position, funded through June 30, 1990, with excellent possibility of re-funding. Send letter of application, resume and salary requirements to: Employment Division, Dept. NO-096, 120 S. Burrows St., University Park, PA 16801. Application Deadline: September 20,

1989. An Affirmative Action/Equal Opportunity Employer. Women and minorities encouraged to apply.

### Softball

**Adelphi University—Head Women's Softball Coach/Assistant to the SID.** Full-time position. Bachelor's degree and prior coaching experience required. Responsible for all facets of a strong, historically successful Division I program. The ability to accept and follow through with diverse duties is necessary. Write with resume, list of references to: Robert Hartwell, Director of Athletics, Adelphi University, Garden City, NY 11530. An Affirmative Action/Equal Opportunity Employer.

See The Market, page 19

## Head Baseball Coach

Full Time - 12 Months

**RESPONSIBILITIES:** Management and development of the Baseball Program (NCAA Division III), including recruitment/retention of student-athletes, promotion of an effective Public Relations Program, and knowledge of NCAA rules and regulations. Additional assignment(s) such as Assistant Coach in another sport (preferably football), and/or in a needed support service in the Athletic Department. **MINIMUM QUALIFICATIONS:** Bachelor's Degree required, Master's preferred. Successful Baseball coaching experience on the secondary and/or collegiate level. **SALARY:** Minimum starting salary is \$25,177. Please submit letter of application, resume and three letters of reference by September 8, 1989, to: Lawrence R. Schiner, Director of Athletics, Jersey City State College, 2039 Kennedy Boulevard, Jersey City, New Jersey 07305-1597.

# HEAD COACH OF LACROSSE

(Search Extended)

**HOBART COLLEGE** is accepting applications for the position of head coach of lacrosse. Duties include organization and management of a nationally competitive lacrosse program. Instructing in physical education and coaching responsibilities in a winter sport may be assigned by the Director of Athletics. **Qualifications:** Bachelor's degree required, Master's preferred. Applicant must have demonstrated a commitment to the highest ethical standards of intercollegiate athletics. Proven coaching, organizing and recruiting abilities are essential as are effective skills in written and oral communication.

**Salary:** Commensurate with experience and qualifications. **Application:** Screening of applicants will begin immediately. Send letter of application and resume to include the names, addresses and phone number of three (3) references by September 15, 1989, to:

**Michael J. Hanna**  
Director of Athletics  
Hobart College  
Geneva, NY 14456

Hobart and William Smith Colleges are an Affirmative Action/Equal Opportunity Employer.

Hobart College is a liberal arts institution placing strong emphasis on academic achievement and competes in Division III of the NCAA.

## Enforcement Representative

### NCAA Enforcement Department

Applications are being accepted for an opening in the NCAA enforcement department.

An enforcement representative is primarily responsible for the investigation of assigned infractions cases and making oral presentations of information and evidence at Committee on Infractions meetings. The investigation process includes locating principals, making appropriate appointments and travel plans for interviews, preparing memorandums of information collected, developing official case files, analyzing information on file to determine what additional steps should be taken to complete a case, and ensuring that established investigative procedures are followed.

This position would require relocation to the Kansas City area and would involve extensive travel. It is preferred that the applicant have a law degree or other postgraduate education, experience in intercollegiate athletics (either as a student-athlete or as an administrator), and effective oral and written communication skills.

Interested candidates should send a cover letter and resume to:

**Charles E. Smrt**  
Director of Enforcement  
NCAA  
P.O. Box 1906  
Mission, Kansas 66201

Deadline for applications is September 18, 1989.

The NCAA is an Equal Opportunity Employer.

## Office Services Manager

### NCAA Business Department

Applications are being accepted now for the position of office services manager in the business department of the NCAA national office.

Initially, the office services manager will be responsible for researching, developing and implementing policies and procedures and hiring staff for the Office Services Center, which is being planned for the new NCAA headquarters building. The primary function of the office services center will be to handle all duplication projects, distribution of incoming and outgoing mail, intraoffice mail, publications shipping, and various related activities at the national office.

Once the center is operational, the office services manager will be responsible for supervision and management of the office services center staff as well as assisting with the day-to-day activities.

Essential qualifications for this position are strong organization and managerial abilities, strong verbal communication skills, and good human relations skills. Previous work experience in a similar office-administration position is desired.

Interested candidates should send a letter and resume to:

**Mr. Richard D. Hunter**  
Director of Operations  
NCAA  
P.O. Box 1906  
Mission, Kansas 66201

Deadline for applications is September 20, 1989.

The NCAA is an Equal Opportunity Employer.

# The Market

Continued from page 18

**Women's Softball Coach.** Job Description: Coach the Women's Softball Team and teach a class within the Physical Education Department as assigned by the Chair. Minimum Requirements: Master's Degree and experience coaching college women is required. Demonstrated skills in recruiting, budgeting, game management and public relations will be expected. Rank and Salary: 10-month faculty appointment as a coaching specialist ranging in salary from \$18,000 to \$28,000 depending on class load, auxiliary duties assigned by the Athletic Director, and professional experience. To Apply: Candidate should forward a letter of application and resume with three recent letters of recommendation to: Search Committee, Athletic Director's Office, California State University, Chico, Chico, CA 95929-0300. Applications will be reviewed beginning September 15, 1989, until the position is filled. Full-time duties will begin Spring semester (January 1, 1990). It is hoped the candidate can assist with the fall program if available.

**Assistant Softball Coach: Texas A&M University.** 3/4 time, 12-month position. Responsible for assisting the head coach in all duties involved with coaching the women's softball team. Salary commensurate with experience. By resume only to: Bob Brock, Softball Coach, Texas A&M University, College Station, Texas 77843. Application Deadline: 9/20/89. Position available 10/1/89. Affirmative Action/Equal Opportunity Employer.

## Strength/Conditioning

**Head Strength and Conditioning Coach—**Illinois State University Athletic Department is accepting applications for the position of Head Strength and Conditioning Coordinator, a 12-month, full-time position. Qualifications: Bachelor's degree required, Master's degree preferred. Educational background and knowledge in exercise physiology, strength and conditioning principles and methods, nutrition, equipment, and applied athletic training and physical fitness. Experience working with Division I athletic programs and athletic training staff in rehabilitation of varsity athletes is desired. Responsibilities include the following: Coordinate and supervise men's and women's individual and team strength and conditioning programs; analyze, prescribe, write, monitor and evaluate pre-season, in-season, off-season workouts for the members of the university's twenty intercollegiate athletic teams; monitor the safe and successful daily operation of the weight

room facilities; maintain and improve the facilities within budget limitations; effectively schedule teams in weight room facilities. The candidate will also be responsible for establishing an effective line of communication with all head coaches; supervising graduate assistant(s) as assigned to this area and upholding high standards of ethical performance. Salary: Commensurate with experience and qualifications. Application Deadline: October 1, 1989, or until position is filled. Send letter of application, resume, college transcripts, and three current letters of recommendation to: Dr. Linda Herman, Associate Athletic Director, Horton Field House, Illinois State University, Normal, Illinois 61761. An Equal Opportunity/Affirmative Action Employer.

**Assistant Strength & Conditioning Coach,** University of Arizona. Bachelor's degree and NSCA certification required. Minimum experience required: two years as Assistant or Head Strength Coach in an NCAA institution. Prefer background in exercise physiology. Primary responsibility is the development of strength and conditioning programs for non-revenue sports programs. Applications accepted through September 18, 1989, or until position is filled. Salary—negotiable. Faculty position. Send letter of application and resume to Rocky LaRose, Assistant Director of Athletics for Special Services, The University of Arizona, McKale Center—Rm 233, Tucson, Arizona 85721. The University of Arizona is an Equal Opportunity/Affirmative Action Employer.

## Swimming

**Assistant Swimming/Diving Coach (Women's and Men's).** A part-time, 10-month appointment, effective August 15, 1989. Bachelor's degree required, master's degree preferred. Prior intercollegiate experience is necessary. Duties include: Recruiting Coordinator—organize mailings and scheduling of on-campus visits; Head Diving Coach—coach divers in all capacities (conditioning, teaching new dives, seasonal planning, etc.); assist head coach in administrative duties. Send letter of application to Dan Ross, Head Swimming Coach, Purdue University, Room 44 Mackey Arena, West Lafayette, IN 47907. Purdue University is an Equal Opportunity/Affirmative Action Employer.

## Track & Field

**Assistant Men's and Women's Track and Field Coach.** 12-month, full-time position in the Department of Athletics at the University of Virginia. Responsibilities include coaching sprinters and jumpers, recruitment of student-athletes, assisting the head coach with home meet management, team travel arrange-

ments, and other related duties. The qualifications required are a Bachelor's Degree, with a Master's preferred, having demonstrated at least two years of successfully coaching sprinters and jumpers at the collegiate level; having good recruiting and administrative skills; having a thorough understanding of NCAA rules and regulations. The starting date is October 1, 1989, and the salary is commensurate with experience. Send a letter of application, resume, and recommendations by September 8, 1989, to: Fred Binggeli, Director of Track and Field, University of Virginia, P.O. Box 3785, Charlottesville, VA 22903. The University of Virginia is an Equal Opportunity/Affirmative Action Employer.

**Assistant Track Coach.** Responsibilities: Coaching and recruiting shot, discus, and javelin throwers for both men and women; responsible for ordering and maintaining equipment; design and implement weight and training programs for all events; assist with meet management; assist with team travel arrangements. Qualifications: Required—knowledge of university life; demonstrate good organizational and communications skills; collegiate and/or international experience in track and field; knowledge of NCAA rules. Preferred—bachelor's degree; knowledge of periodization; college coaching experience. Type of Appointment: Ten (10) month appointment. Salary: \$15,000. Application Procedure: Send letter of application, resume and three letters of reference to: Jerry Quillen, Head Track and Cross Country Coach, University of Colorado, Stadium 100, Box 368, Boulder, CO 80309. Application Deadline: Postmarked no later than September 15, 1989. The University of Colorado at Boulder has a strong institutional commitment to the principle of diversity. In that spirit, we are particularly interested in receiving applications from a broad spectrum of people, including women, members of ethnic minorities and disabled individuals.

## Volleyball

Southwestern Michigan College has the following position available: Assistant Women's Volleyball Coach (part-time position). This position will begin immediately. This position will enable a coach to work in an outstanding collegiate program under the leadership of one of the NJCAA's finest coaches—Mr. Jim Bermingham. Send letter of application and resume to: Ronald Gunn, Dean of Sports Education, Southwestern Michigan College, Dowagiac, Michigan 49047. Application Deadline: ASAP. Celebrating A Quarter Century

of Excellence. SMC is an EOE, Title IX, Section 504 Employer.

**Assistant Volleyball Coach.** Part time position with a Division I women's program competing in the Athletic 10 Conference. Bachelor's degree with playing experience at college level and/or coaching experience preferred. Assist head coach with NCAA Division I team in all phases of practices, conditioning, recruiting, fund-raising and supervision of scholastic progress of student-athletes. Letter of application should be forwarded to: Tene Veitard, Head Volleyball Coach, Rutgers—The State University, P.O. Box 5061, New Brunswick, New Jersey 08903. An Equal Opportunity/Affirmative Action Employer.

## Miscellaneous

**Exercise Physiologist.** Position at the Concordia College Fitness Center in Bronxville, N.Y. (lower Westchester County). Applicants should have master's degree (or near completion) in exercise physiology or related discipline. Experience in designing programs for healthy individuals and cardiac patients is desirable. Position includes conducting preliminary fitness evaluations followed by close supervision of fitness training programs and teaching as an adjunct in the department of physical education. Contact: Thomas Ellwell, Director, Concordia College Fitness Center, 171 White Plains Road, Bronxville, NY 10708. 914/961-8763.

## Open Dates

**Men's Division III Basketball:** Ursinus College, Collegeville, PA 19426, is seeking two opponents for the 1989-90 season. Will reciprocate in 1990-91. Call Al Angello, Head Coach, 215/489-4111 (Ext. 2251) or 215/887-8964.

**Women's Softball, Division I.** Seeking home games on April 7, 8, 28 or 29 for 1990. Call Terry DeTuro, Head Coach, University of Virginia, at 804/924-8958, or 804/589-3829.

**Men's Baseball, Division I.** Eastern Illinois University has open dates of Apr. 7-8, 1990, and is seeking games. Guarantee available. Contact: Dan Callahan, 217/581-2522, or 581-2319.

**NCAA Division I team** needed for eight team tournament, Jan. 3, 4, 5, 1990. Call Cindy Russo at Florida International University, 305/554-3160.

**Women's Basketball—**The University of Mississippi has open dates for 1989-90. Contact Donny Fuller, 601/232-7241.

# Are you missing The News?

If your copy of The NCAA News isn't getting to you when it should, or if it isn't getting there at all, let us know. We don't want you to miss any of the action of college sports.

Attach your mailing label in the space below and note any corrections, or fill in the blanks below. Send it to: **Circulation Office, The NCAA News, P.O. Box 1906, Mission, Kansas 66201.**

Attach old mailing label here

Name \_\_\_\_\_  
 Institution \_\_\_\_\_  
 Address \_\_\_\_\_  
 City \_\_\_\_\_  
 State \_\_\_\_\_ Zip \_\_\_\_\_

## Assistant Personnel Manager NCAA Business Department

Applications are being accepted now for the position of assistant personnel manager in the business department of the NCAA national office.

The assistant personnel manager will be responsible for coordinating the recruitment and selection of personnel for nonexempt positions; processing and acknowledging all inquiries regarding employment opportunities; monitoring applicant flow for affirmative action purposes; assisting with new-employee orientation, and assuming responsibility for the administration of assorted employee benefit programs.

Candidates for this position must possess a degree in personnel administration, human resources or a related field; work experience in personnel administration; strong oral and written communication skills, and the ability to organize work.

Interested candidates should send a letter and resume to:

Suzanne E. Mason  
 Personnel Manager  
 NCAA  
 P.O. Box 1906  
 Mission, Kansas 66201

Deadline for applications is September 15, 1989.  
 The NCAA is an Equal Opportunity Employer.

Athletics

## ASSOCIATE ATHLETICS DIRECTOR

— Search Extended —

The University of Maryland at College Park is seeking applications and nominations for the position of Associate Athletics Director. Responsible for directly supervising the revenue sports program and assisting the Director of Athletics in the overall administration, management and control of the Department. Assists in the supervision of the administrators who are responsible for student affairs, business administration, day-to-day operations, fund-raising and marketing. Assists in establishing policies and procedures to ensure compliance with University, ACC and NCAA rules and regulations and promoting the mission of the Department, the University's high standard of academic excellence and the general welfare of student athletes. Oversees the preparation of the departmental budget. Monitors budgetary compliance. Controls and monitors all contracts/guarantees, ensuring the integration of sports schedules and facility usage. Represents the Department on University committees. Serves as liaison with University offices and outside agencies. Oversees necessary arrangements for postseason competition. Bachelor's degree required, master's preferred with experience in athletics related areas. **Position Available:** September 15, 1989. **Applications Deadline:** September 15, 1989. **Resume and three references should be submitted with applications to:** Lew Perkins, Athletics Director, Screening Committee Chair, P.O. Box 295, College Park, Maryland 20740-0295. The University of Maryland is an Equal Opportunity/Affirmative Action Employer.

## Directors of Division I Men's Basketball

Applications are being accepted now for two newly created positions as directors of Division I men's basketball.

The directors of Division I men's basketball will serve as the staff liaisons with the institutions/conferences and local organizing committees that serve as hosts for all sessions of the Division I Men's Basketball Championship. The directors' primary responsibilities will be to work closely with each host in all aspects of tournament administration and to assist the NCAA Division I Men's Basketball Committee in the development and implementation of policies and procedures. Included in the director's responsibilities will be: staffing tournament sessions; processing budgets and financial reports; public relations; marketing; game management; corporate involvement, and handling selected projects as assigned by the associate executive director.

This position would require a clear understanding of the NCAA, the ability to communicate effectively, both orally and through written materials; excellent organizational and administrative skills, and the flexibility to travel extensively. Applicants should have experience in intercollegiate athletics or an affiliated organization as an administrator.

Interested candidates should send a letter of application, resume and a list of references to:

Thomas W. Jernstedt  
 Associate Executive Director  
 NCAA  
 P.O. Box 1906  
 Mission, Kansas 66201

CLOSING DATE FOR APPLICATIONS: September 15, 1989.

The NCAA is an Equal Opportunity Employer.

## COORDINATOR OF RECREATION

University of Maryland  
 Baltimore County

Full-time 12-mo. position.

**RESPONSIBILITIES:** Coordinate college recreation program that includes competitive intramurals, drop-in activities, club programs and special events. Budget, hire, schedule, advertise, promote and supervise day, evening and weekend offering. Reports to Director of Athletics & P.E.

UMBC, an autonomous campus of the University of Maryland System located on approximately 500 acres ten minutes south of Baltimore, serves metropolitan Baltimore as its public doctoral-granting research university. Serves over 10,000 student population, both residential and commuter.

**QUALIFICATIONS:** B.S. degree in P.E. or related field plus 5 years' experience in administration of college recreation programs.

**SALARY:** Commensurate with experience and qualifications.

**APPLICATIONS:** Submit letter of application, resume and three references by Sept. 13, 1989, to:

Dr. Charles Brown  
 Director of Athletics & P.E.  
 UMBC  
 Baltimore, MD 21228

UMBC is an Affirmative Action/Equal Opportunity Employer and women, minorities and disabled are encouraged to apply.



LAFAYETTE COLLEGE

Director of Athletics  
 and

Head of Department of Physical Education and Athletics

Lafayette College invites applications and nominations for the position of Director of Athletics and Head of the Department of Physical Education and Athletics. The Director/Department Head is responsible for the administration of the intercollegiate athletics program, intramural sports and recreational activities. Lafayette College competes in NCAA Division I in all sports, except football, which is in Division I-AA. Lafayette is a member of The Colonial League, the Eastern College Athletic Conference and the NCAA.

The responsibilities of this position include the selection and evaluation of the coaching staff, team scheduling, the preparation and supervision of the operating budget, and the formation and implementation of policies, procedures, and programs conducted by the Department.

Candidates for this position should possess a baccalaureate degree, have experience in the administration of an intercollegiate athletics program, and, in particular, have an understanding of the proper role of an athletics program and its personnel in a college committed to academic excellence.

This position is available on January 1, 1990, or at a mutually agreed date. The position offers a competitive salary and an excellent benefits package. Women and minorities are encouraged to apply.

Applicants should forward letter and resume to Mr. H. C. Kissiah, Dean of Students, Lafayette College, Easton, PA 18042, by September 15, 1989. Lafayette is an Equal Opportunity Employer.

## PACIFIC-10 CONFERENCE



### ASSISTANT COMMISSIONER, COMPLIANCE AND ENFORCEMENT

The Pacific-10 Conference is seeking a qualified administrator whose primary responsibility will be to assist the Associate Commissioner in the areas of compliance.

**Responsibilities:** Specific duties include assisting with rules education, conducting field investigations under the supervision of the Associate Commissioner, conducting institutional rules visits, providing rules interpretations to Conference members, preparing the Conference Handbook for publication, making Conference meeting arrangements, preparation of Conference meeting minutes, serving as staff liaison with selected coaches' groups and Conference committees and special projects as assigned.

**Qualifications:** Bachelor's Degree and minimum of three years' experience with Division I intercollegiate athletics required. Must have a working knowledge of NCAA rules and regulations. Strong oral and written communications skills are necessary.

**Applications:** Send letter of application and resume, including three references, to:

Mr. David Price  
 Associate Commissioner  
 Pacific-10 Conference  
 800 So. Broadway, Suite 400  
 Walnut Creek, CA 94596

Applications received by September 10, 1989, will receive full consideration. Interviewing will begin prior to that date.

An Equal Opportunity/Affirmative Action Employer.

# Briefly

Continued from page 14

University, which contributed 51 student-athletes to the list—including nine of the 12 women's volleyball players on the Westerwinds roster.

Three St. Francis College (Pennsylvania) student-athletes have been named Northeast Conference outstanding student-athletes in their sports. The honorees are men's basketball player **John Hilvert** (3.700 GPA), women's volleyball player **Gretchen Rothrauff** (3.900 GPA) and distance runner **Randall Wilson** (3.700 GPA).

Pennsylvania State Athletic Conference officials have announced that 175 scholar-athletes have been selected for 1988-89 from the 14 member schools. Each honoree carries a cumulative GPA of at least 3.500.

University of Georgia women student-athletes enjoyed a fine spring in the classroom. The school reports that 58 of the 99 women earned a B average or higher, and 21 of the 58 had GPAs above 3.600—including 10 with 4.000s.

Eastern Illinois University officials have lots of academic successes to praise. Here are some of the them:

- Fifty-four of the 67 student-athletes who completed athletics eligibility in 1987-88 (80.8 percent) have graduated.

- Every women's basketball

player who played four years for coach **Barbara Hilke** has graduated.

- Twenty-five of the 31 men's basketball letter-winners under nine-year coach **Rick Samuels** have graduated.

- The football team's cumulative GPAs for the past two fall semesters (i.e., grades earned during the playing season) were 2.620 and 2.540, respectively.

Bentley College officials have announced that 52 student-athletes earned dean's list recognition during the spring semester. Leading the way was distance runner **Steve Sarkozy**, who posted a 4.000 for the second straight semester.

At the University of California, Los Angeles, 206 student-athletes earned spring-semester GPAs of at least 3.000. Seventy-one of them earned at least a 3.500, and five had 4.000s.

Women's volleyball players **Sherri Gentry** and **Catherine Mader**, each of whom earned a 4.000, topped the list of 65 student-athletes from the University of Missouri, Columbia, who were named to the 1988-89 Big Eight Conference honor roll.

Women's volleyball players also distinguished themselves at Tennessee Technological University, where the school's first-ever athletics director's honor roll included all six starters. Student-athletes representing 13 Tennessee Tech varsity pro-



Heidi Connell

grams were included on the spring-semester list, which required a GPA of at least 3.000.

West Coast soccer fans will be glued to their TV sets the weekend after Labor Day, when the new Pacific Sports Network will televise live the seventh annual Met 1:1 Soccer Classic from the University of San Francisco.

In addition to the Dons, the field will include reigning Division I champion Indiana, Seton Hall University and Stanford University.

That same weekend also will be special at the University of Duquesne. September 9 is the date for the dedication of a new sports center, the rededication of the remodeled McCormick Gymnasium and



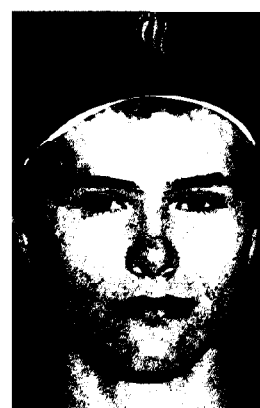
Matt Joganich

the induction of the first class into the school's athletics hall of fame.

The hall of famers include **Johnny Armstrong, Sol Butler, Donald Emery, Bob Finnegan, Jim Kinney, Dave Kuehl, Emil Lussow, Kenneth "Moco" Mercer, Clarence Parker, Norm Rathje, Bill Riedel, John Smith and Robert Williams.**

More Report Cards: A school-record 19 student-athletes representing 15 East Stroudsburg University of Pennsylvania athletics teams were named Pennsylvania State Athletic Conference scholar-athletes for 1988-89.

Eleven student-athletes with perfect 4.000 grade-point average were among the 74 males from the University of Georgia who earned GPAs of at least 3.000 for the spring quarter. Among the 11 were football



Craig Niedermaier

player **Mark Hyer** and men's basketball player **Alec Kessler.**

Three student-athletes from the University of Illinois, Chicago, were awarded Avery Brundage Scholarships for 1989-90. They include women's volleyball player **Heidi Connell**, swimmer **Matt Joganich** and baseball player **Craig Niedermaier.** The scholarship fund was established 15 years ago by the late **Avery Brundage**, a University of Illinois alumnus who was widely known for his work in international amateur athletics circles.

Trivia Answer: Fifteen of the 17 Johns Hopkins teams that have appeared in the Division I men's lacrosse tournament have played in the semifinals, and 13 of those have played in the championship game (seven won the title).

## NCAA announces several staff changes, promotions

### Gerdy to SEC

John R. Gerdy, a legislative assistant in the national office since August 1986, has been named assistant commissioner of the Southeastern Conference. Gerdy, who will assume his new duties September 25, will handle institutional relations and educational programs.

He replaces SEC Associate Commissioner Robert M. Barrett, a member of the conference staff since 1978, who is retiring.

Gerdy is a 1979 graduate of Davidson College, where he



John R. Gerdy

earned basketball all-America honors and was named Southern Conference player of the year as a senior. Gerdy was named all-conference three times, and he graduated as Davidson's career scoring leader.

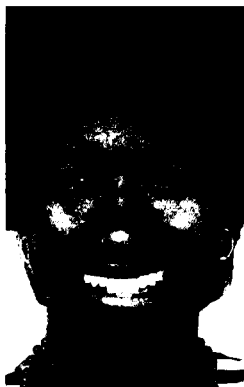
### Hunter named in championships

Gail D. Hunter joined the national office staff August 22 as assistant director of championships. For the past three years, Hunter has been an attorney in the Seattle area specializing in civil litigation.

As an undergraduate at Fredonia State University College, she participated in women's volleyball, women's basketball, and track and field. She earned a bachelor's degree in business administration and theatre arts/technical theatre.

Hunter earned her law degree in 1986 from the University of North Carolina, Chapel Hill.

An active member of the Seattle law community, she served on the



Gail D. Hunter

Federal Bar Association's legislative committee, was a board member of the community work-release program and was a volunteer coach in the YMCA youth basketball league.

### Thomas is new accountant

Sarah A. Thomas joined the national office staff August 21 as



Sarah A. Thomas

an accountant in the business department.

A recent graduate of the University of Wisconsin, Stout, Thomas holds a bachelor's degree in business administration with emphasis in accounting and finance.

As an undergraduate, she worked as assistant to the business director in the school's athletics

department. Thomas also was head student athletics trainer from 1985 through 1989.

### Lewis to join championships

Harley W. Lewis has been named assistant director of championships in the NCAA national office, filling a vacancy created recently by the promotion of Karl D. Benson to director of championships.

For the past 14 years, Lewis has

served as director of athletics at the University of Montana, his alma mater. He also holds a graduate degree from the school.

Lewis coached Montana's track and cross country teams from 1966 to 1978, and he coached the same two sports from 1964 to 1966 at the University of Portland.

Active in Association affairs, Lewis has served on the track and field committee since 1984 and recently was appointed to the Special Committee on Cost Reduction.



Harley W. Lewis

## Royal, Stephenson and Thiebe promoted

Three members of the NCAA national office staff have been promoted to chief-aide positions, effective September 1.

Victor M. Royal has been named director of graphics in the publishing department. Betsy G. Stephenson has been named director of Division I men's basketball operations in the championships department. And Edward A. Thiebe has been named director of youth programs in the administration department.

### Royal

A 1972 graduate of Central Missouri State University, Royal holds a bachelor's degree in commercial art with a minor in graphic arts. He joined the NCAA publishing



Victor M. Royal

department in May 1984 as publications production coordinator.

Responsible for the design of various NCAA publications and for art direction of championships promotional posters and other projects, Royal's work for the Association recently was honored by the Advertising Club of Kansas City.

### Stephenson

Stephenson earned her undergraduate degree in personnel administration from the University



Betsy G. Stephenson

of Kansas in 1983. While in school, she participated in women's intercollegiate volleyball.

She joined the national office staff in March 1984 as a member of the enforcement department. Stephenson was named administrative assistant in the championships department in September 1986.

Last October, she was named

executive assistant in championships, where she has assisted in administration of the Association's men's and women's basketball officiating-improvement programs and in administration of the Division I Men's Basketball Championship.

### Thiebe

Thiebe joined the national office staff as youth programs coordinator in May 1986.

A graduate of Springfield College, he earned a master's degree from the University of South Flor-



Edward A. Thiebe

ida and completed one year in the doctoral program at the University of North Carolina, Greensboro.

Thiebe joined the NCAA from Old Dominion University, where he served as coordinator of the athletics camp, assistant soccer coach and adjunct professor.