

The NCAA News



Official Publication of the National Collegiate Athletic Association

October 10, 1988, Volume 25 Number 35

Blacks underrepresented in all athletics jobs, survey shows

Data collected in the Survey of NCAA Member Institutions and Conferences on Minority Representation show that Blacks are underrepresented in administrative positions in departments of athletics at member institutions and conferences, according to the NCAA Council Subcommittee to Review Minority Opportunities in Intercollegiate Athletics.

The survey data suggest that there

is a serious problem in terms of minority representation in positions of authority in collegiate athletics, the subcommittee said in its report to the NCAA Presidents Commission (minorities other than Blacks were included in the survey, but the numbers were so small as to be negligible).

The minority survey showed that at all NCAA member institutions, Blacks hold 6.1 percent of all full-

time administrative positions in departments of athletics. That number is out of proportion with the number of black student-athletes who participate in intercollegiate athletics. The survey showed that 14.4 percent of all male student-athletes and 8.1 percent of all female student-athletes are black.

The positions of director of athletics, associate director of athletics and assistant director of athletics

are occupied by Blacks only 4.4 percent of the time.

Statistics from Division I-A show that black athletes make up 21.4 percent of the men's teams and 11.3 percent of the women's teams. Blacks are found in only 5.4 percent of the administration positions.

The survey showed that only 2.4 percent of full-time administrators at the conference level are black. Thus, Blacks are less represented in

conference offices than they are at the institutional level.

The survey does not show any large pool of Blacks in an area that would feed into leadership positions in intercollegiate athletics.

The percentages of black graduate and undergraduate students who are involved in departments of athletics are not much different from the percentages of those who already

See Blacks, page 12

1988-89 Association budget shows 3.3 percent increase

The Association's 1988-89 general operating budget is \$82,011,000, a 3.3 percent increase over the \$79,425,000 approved by the Executive Committee for the 1987-88 fiscal year.

Direct payments to member institutions and conferences and funds set aside for scholarships and educational benefits to student-athletes total \$54,516,060, or 66.5 percent of the budget.

A new budget category—grants to conferences, which was included in Division I men's basketball distribution in the 1987-88 budget—totals \$3,520,000, or 4.3 percent.

Membership payments occur through distribution of receipts from championships, grants, per diem allowances, transportation guarantees and royalties.

Distribution of payments from the Division I Men's Basketball Championship is estimated at \$32,140,800, a 3.1 percent increase over the \$28,645,700 provided for in

the 1987-88 budget. This year's distribution will account for 39.2 percent of the approved budget.

The Association is expecting increased revenues from the Divisions II and III championships.

Estimated revenues from Division II championships are \$759,000, more than \$120,000 over the 1987-88 estimate, and Division III championships' revenues are expected to increase by more than \$80,000 to \$396,000 as compared to \$362,500 in 1987-88.

Championships in Division I, other than the men's basketball championship, are expected to account for \$7,118,000 (8.7 percent) in revenues as compared to \$5,564,100 (7 percent) in the last budget.

On the expenditures side of the budget, the Association is estimating an increase of \$250,000 in legal fees to a total of \$1,750,000.

Drug testing and education will

See 1988-89 budget, page 3

REVENUE

		PERCENTAGE
Division I men's basketball	\$64,383,800	78.5
	\$64,497,500	81.2
Other Division I championships	7,118,200	8.7
	5,564,100	7.0
Communications	3,071,400	3.8
	2,431,000	3.1
Investments	1,551,200	1.9
	1,300,000	1.6
Football TV assessments	1,300,000	1.6
	1,500,000	1.9
Corporate sponsorships	1,260,000	1.5
	950,000	1.2
Publishing	1,099,500	1.3
	1,001,500	1.3
Membership dues	831,000	1.0
	870,000	1.1
Division II championships	759,200	0.9
	637,200	0.8
Division III championships	396,900	0.5
	311,200	0.4
General	239,800	0.3
	362,500	0.4
Totals		
1988-89	\$82,011,000	
1987-88	\$79,425,000	

Projected 1988-89 NCAA revenues (bold face) total \$82,011,000, of which \$64,383,800 (78.5 percent) comes from the Division I Men's Basketball Championship.

Five appointed to assistant executive director positions

Five NCAA staff members have been promoted to assistant executive director positions as Executive Director Richard D. Schultz continues the staff restructuring first announced in the September 19 issue of The NCAA News.

Named to serve as assistant executive directors:

• S. David Berst, director of enforcement, becomes assistant executive director for enforcement.

• Patricia E. Bork, director of women's championships, is now assistant executive director for championships.

• John H. Leavens, director of

compliance services, was named assistant executive director for compliance services, which now is a separate NCAA staff department.

• Frank E. Marshall, director of accounting, was promoted to assistant executive director for business affairs.

• Wallace I. Renfro, director of publishing, was named assistant executive director for publishing.

Those positions became available as a result of last month's announcement that Thomas W. Jernstedt, Stephen R. Morgan, Louis J. Spry and Ted C. Tow had been named associate executive directors, a

new level in the staff structure.

The five new assistant executive directors join Merrily Dean Baker, assistant executive director for administration; David E. Cawood, assistant executive director for communications, and William B. Hunt, assistant executive director for legislative services, at the department-head level in the staff.

"As I stated earlier," Schultz said, "one of the major purposes of the staff revision is to create some opportunities for advancement in the staff, and that process continues."

The restructuring of the staff is intended to ensure the efficiency of

the national office operation and to recognize the changes in the role of the executive director since Schultz assumed that position a year ago.

Berst joined the staff in March 1972 as an executive assistant in the investigations area, before establishment of the enforcement department. He has served as director of enforcement since 1977. A graduate of MacMurray College, he was assistant director of admissions there and then served as head baseball coach and assistant basketball coach until joining the NCAA staff.

Bork, a University of Kansas journalism graduate, joined the

NCAA as a publications editor in July 1978. In 1981, she became an assistant director of women's championships, and she has served as director of women's championships since September 1982. Prior to joining the staff, she was a publications writer and production assistant for the Golf Course Superintendents Association of America.

Leavens was hired in September 1982 as a legislative assistant and was promoted to director of legislative services in 1984. A year later, he was named director of compliance services. A former assistant to the

See Five, page 2



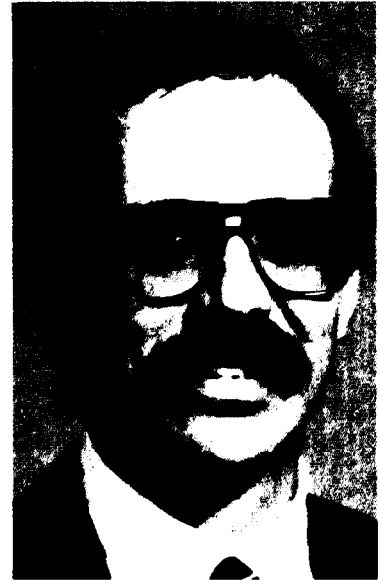
S. David Berst



Patricia E. Bork



John H. Leavens



Frank E. Marshall



Wallace I. Renfro

Legislative Assistance

1988 Column No. 35

NCAA O.I. 501 and Bylaw 5-1-(j)-(6)— nonqualifier and partial qualifier

Divisions I and II member institutions are reminded that a nonqualifier is prohibited from practicing, competing and receiving athletically related financial aid (and a partial qualifier from practicing and competing) during the second year of residence unless and until the student-athlete has satisfied the provisions of O.I. 501 by fulfilling an academic year of residence (i.e., by enrolling in a minimum full-time program of studies during each term of attendance for a regular academic year and completing a minimum full-time program during each term of attendance, or by accumulating a number of hours that is at least equivalent to the sum total of the minimum load of each of the required terms of the academic year). While a student-athlete may have completed the provisions of O.I. 501, he or she also must have satisfied the provisions of Bylaw 5-1-(j)-(6) (satisfactory progress) in order to be eligible for intercollegiate competition during the second year of residence.

A student-athlete may satisfy the provisions of Bylaw 5-1-(j)-(6) with: (1) satisfactory completion prior to each fall term of an accumulative total of semester or quarter hours of academic credit that is equivalent to the completion of an average of at least 12 semester or quarter hours during each of the previous academic terms in academic years in which the student-athlete has been enrolled in a term or terms, or (2) satisfactory completion of 24 semester or 36 quarter hours of academic credit since the beginning of the previous fall term. Additionally, a student shall meet the satisfactory-completion requirement by maintaining a grade-point average that places the student-athlete in good academic standing as established by the institution for all students who are at an equivalent stage of progress toward a degree.

Finally, Divisions I and II member institutions are reminded that the NCAA Council has approved a limited exception for those student-athletes who have not satisfactorily completed either 24 semester or 36 quarter hours of academic credit since the beginning of the fall term or averaged at least 12 semester or quarter hours during each of the previous terms of attendance. The Council agreed that during the 1988-89 academic year only, a student-athlete may be eligible if he or she has satisfactorily completed 24 semester or 36 quarter hours of academic credit since the beginning of the student-athlete's last season of competition.

NCAA Bylaw 1-10—precollege expense

The Legislation and Interpretations Committee reviewed the provisions of Bylaw 1-10 and agreed that:

1. The provisions of Bylaws 1-1-(b) and 1-10-(a) would not preclude a member institution from providing a state high school association the use of its facilities at a reduced cost, provided such an arrangement is consistent with the institution's published fee structure governing the use of its facilities by educational and nonprofit organizations. The committee noted that institutions may have different fee rates for individuals or organizations in different categories, provided the rates are published and applied consistently to all entities within that category.

2. The provisions of Case No. 243 and Bylaw 1-10 would prohibit high school groups (e.g., band members, cheerleaders) from participating in a season-ticket sales program for member institutions, even when the opportunity to participate is available to any group in the community and all groups participating receive the same sales commission.

3. A member institution is not precluded from providing equipment (e.g., a computer) to a high school under the provisions of Bylaw 1-10 when there is no athletics department involvement and the equipment is not utilized to benefit only the high school's athletics program.

This material was provided by the NCAA legislative services department as an aid to member institutions. If an institution has a question it would like to have answered in this column, the question should be directed to William B. Hunt, assistant executive director for legislative services, at the NCAA national office.



Interns welcomed

Stanley D. Johnson (right), NCAA director of professional development, welcomes interns Susan E. Glatter and Patrick C. Carter, who were among six persons recently selected for an internship program aimed at enhancing opportunities in intercollegiate athletics for ethnic minorities and women. Glatter, a graduate of Northwestern University and the University of Kansas school of law, will work in compliance services. Carter, a Grambling State University graduate, will work in the legislative services department.

U.S. Supreme Court hears arguments in NCAA appeal of Tarkanian ruling

The NCAA's contention that it should be permitted as a private, voluntary organization to exercise disciplinary authority over its membership was heard by the U.S. Supreme Court October 5 as arguments were presented in the 12-year-old case involving the Association and University of Nevada, Las Vegas, coach Jerry Tarkanian.

The attorney representing Tarkanian countered that the NCAA violated the coach's due process rights during an investigation of rules violations in the university's men's basketball program.

A decision in the case, which stems from the NCAA's effort in 1977 to have Tarkanian suspended from his coaching post for two years, is expected by next summer.

At issue in the case is whether the NCAA is a "state actor" and therefore obliged, like a government agency, to protect the due process rights of individuals in the enforcement of its rules.

The case was brought to the Supreme Court by the Association, which is appealing a Nevada Su-

preme Court ruling that the NCAA violated Tarkanian's due process rights. The state court barred UNLV from suspending Tarkanian and prohibited the NCAA from penalizing the university for not carrying out the suspension.

Speaking for the NCAA, attorney Rex Lee argued that the Nevada Supreme Court's ruling could harm the Association's "revered role in the preservation of amateur athletics in college sports." He said the ruling already has curtailed the NCAA's "ability to conduct its investigations as it sees in its best interest."

Lee told the court that as a private group, the NCAA is not bound by the constitutional requirements that apply to a government agency.

Samuel Lionel, the attorney for Tarkanian, argued that the NCAA is a state actor because its sanctions ultimately are carried out by government bodies; in this case, a state university.

The university is given no choice but to enforce NCAA sanctions if it wishes to participate in NCAA com-

petition, Lionel said. Therefore, the university and the Association act together to enforce NCAA rules.

"The NCAA is the only game in town," the attorney argued. "If a university wants to engage in major athletics, it must belong to the NCAA."

Lee disagreed, saying the university ultimately holds the authority to discipline an employee. "The university did not have to dismiss (Tarkanian)," he said. "There were other options available to them."

In agreeing to abide by NCAA rules, UNLV did not delegate any government function to the Association, Lee said.

The high court's justices offered little indication of how they will decide the case in the questions they asked Lee and Lionel. Several of the justices, however, suggested that Tarkanian's complaint possibly should be directed at the university rather than the NCAA. A couple of justices also made statements questioning whether participation in major college athletics is crucial to a university's mission.

Illinois official urges abolishment of athletics association

By John Dowling

The Illinois state auditor general has urged that the University of Illinois Athletic Association be abolished after an investigation of charges of improper use of association workers and questionable in-kind gifts to athletics officials.

In a 21-page report to the state legislature, Auditor General Robert Cronson said former athletics director Neale Stoner and other officials treated the association's resources "as private funds that were not subject to the level of accountability expected for public funds."

Stoner resigned in July after it was learned that he had received free dry cleaning in exchange for football and basketball tickets and had used association employees for work on his personal car and home. Two other officials quit as a result of similar allegations.

"Regardless of the corrective action taken so far... reform cannot be really assured so long as the athletics association continues to function as a separate corporate entity," Cronson said.

He said the athletics association's duties should be taken over by the university and that similar action should be taken at other state universities.

Craig Bazzani, the university's vice-president for business and finance, said school officials agree that the association should be absorbed into the university and called Cronson's report "a necessary step." "It will be another effort to demonstrate to the public that the university came to grips with this properly," he said.

Cronson said the university's own investigation of the case was conducted properly and that "significant" steps had been taken to correct the problems, including the resignations of the officials and formation of a committee to review university athletics.

The association is a not-for-profit corporation that runs the university's intercollegiate athletics programs and is overseen by a board of faculty, alumni and university officials.

Since the association is funded primarily through ticket sales and

other athletics revenue, its officials have argued that its funds are not public money subject to state scrutiny.

But Cronson said that argument is undercut by the heavy involvement of university officials in the association and by the fact that the association has received state funds indirectly.

The auditor general, who has pushed for greater financial scrutiny of several quasipublic bodies, declared that "problems will continue to arise" until state lawmakers decide whether the association is a public or private group.

Five

Continued from page 1
commissioner of the Mid-American Athletic Conference, he earned a bachelor's degree at Duke University and a master's in sports administration at Ohio State University.

Marshall has been the NCAA's director of accounting since May 1985, when he was hired to replace Marjorie K. Fieber, who had served the Association for 33 years. He

Cronson's specific findings of "irregularities," some of which have been disclosed previously, include:

- The association paid for trips to golf tournaments by Stoner, associate athletics director Vance Redfern and two owners of a local travel agency.

- The association paid country-club fees and dues for top athletics administrators and coaches.

- Redfern attended a weight-loss clinic at a \$2,217 cost paid by the association.

- Athletics officials received personal home and auto maintenance work valued at \$5,486 from associ-

ation employees.

- Stoner and Redfern received \$10,752 worth of dry cleaning in return for free basketball and football season tickets.

- Stadium maintenance superintendent Robert Wright received a \$3,000 discount on carpeting for his home that was acknowledged as a gift to the athletics association.

Stoner, the university's athletics director for eight years, received a settlement worth about \$330,000 when he resigned.

Dowling writes for the Associated Press.

was director of accounting at Southwest Missouri State University for nine years before joining the NCAA and was a junior accountant there for two years before that. He did his undergraduate and graduate study at that institution.

Renfro joined the staff in March 1972 as a publications editor in the NCAA's College Athletics Publishing Service in Phoenix, before that

office was merged with the national office publishing operation in 1973. He became publishing production manager in 1975 and has been director of publishing since 1977. Prior to his NCAA service, he was assistant director of information and sports information director for four years at Southwest Missouri State University, where he did his undergraduate and graduate study.

Chapman named ECAC commissioner

Clayton W. Chapman has been named commissioner of the Eastern College Athletic Conference, replacing Robert M. Whitelaw, who will retire June 30 after 17 years as ECAC commissioner and 29 years with the conference.

Chapman joined the ECAC as assistant commissioner in 1971; since 1980, he has been associate commissioner.

He is currently a member of the NCAA Special Committee on Deregulation and Rules Simplification. He also was a member of the former NCAA Constitution and Bylaws Committee.

A 1957 graduate of Cornell University with a degree in mechanical engineering, Chapman played varsity football and later became cap-



Clayton W. Chapman

tain of the undefeated crew team that captured the Grand Challenge Cup at Henley, England.

After graduation, he served in the U.S. Air Force three years and returned to Cornell as freshman crew coach in 1961. He was named assistant athletics director at Cornell in 1969 and became the first secretary of the Ivy League before joining the ECAC staff.

Chapman is the fourth commissioner of the ECAC, which is composed of 255 member institutions and sponsors 93 championships.

Hillsdale dedicates facility

Hillsdale College's new health education and sports complex was dedicated October 8 in ceremonies before Hillsdale's homecoming football game with Wayne State University (Michigan).

College officials described the \$11.5-million facility as a "jewel of small-college athletics facilities," rivaling those at many larger schools.

The remodeling and expansion project includes a new addition to the existing field house with an indoor track, tennis and racquetball

courts, an Olympic-size swimming pool, training areas, locker rooms, and athletics offices.

The new complex includes an exercise-physiology and sports-medicine facility containing an array of state-of-the-art equipment. In addition, a new basketball-volleyball arena is scheduled for completion before the end of the current semester.

Construction of the new complex was boosted by more than \$1 million in contributions from individuals, businesses and foundations in the Hillsdale area.

Officials said the new sports complex will be open and available for community use as well as college-related activities.

ESPN will carry OVC basketball

ESPN will again telecast a five-game late-night Ohio Valley Conference basketball series, as well as the championship game of the 1988-89 conference basketball tournament.

The six-game package was announced jointly October 5 by Commissioner James E. Delany and Bray Cary, president of Creative Sports Marketing in Charlotte, North Carolina.

"We are pleased to offer OVC basketball to a national audience" for the second year in a row, Delany said. "With the success of our telecast last year, plus the strong showing of our teams in postseason play, we feel that OVC basketball is at its highest level."

Last year's five-game series produced two in-house sellouts and one near-sellout. The five games averaged 7,800 fans, more than double the average attendance figures for the normal, prime-time games.

Lotson joins NCAA staff

Adrienne R. Lotson has joined the national office staff as an enforcement representative in the enforcement department.

She is a former assistant director of education and information services at the Women's Sports Foundation in New York, New York.

Lotson subsequently attended law school at the University of Califor-



Adrienne R. Lotson

nia, Berkeley, where she received a Juris Doctor degree. She also was a clerk for several law firms while enrolled at California.

Lotson received an undergraduate degree in psychology at Dartmouth College.

Iowa schools report graduation rates

Graduation rates of University of Iowa student-athletes dropped last year, but Iowa State University athletes are doing better in school, according to annual reports.

Hawkeye scholarship athletes graduated at a higher rate than the student body as a whole, while the number of Iowa State athletes earning degrees was slightly below the graduation rate for the Iowa State populace in 1987, the reports said.

The University of Iowa said 51 of 96 recruited athletes entering in 1982-83, or 53 percent, graduated by August 1987. That's down from 64 percent in 1986.

University of Iowa officials said the problem was not with football and basketball athletes, whose graduation rates actually improved from 46 percent to 52 percent, but the rate for male athletes in nonrevenue sports dropped from 64 percent to 54 percent and women graduates dropped from 79 percent to 53 percent, United Press International reported.

Iowa officials say the tough reporting requirements understate the actual academic picture, because transfer students who graduate cannot be counted.

Iowa State said 51 of 94 athletes recruited for the 1982-83 year received degrees. That was a sharp

jump up from 41 percent the year before. Some 48 percent of male Iowa State athletes graduated, while 66 percent of the women earned degrees.

Charles McCandless, Iowa State executive vice-president, credited coaches for recruiting better athletes and the athletics advising program for the improved performance.

Susquehanna plans tribute to Staggs

Amos Alonzo Staggs is a name legendary to college football, particularly at Susquehanna University, where he and his son, A. A. Staggs Jr., coached from 1947 to 1952 (21-19-3, .525), and the football field has been named in their honor.

Susquehanna will remember the Staggs legend with Amos Alonzo Staggs Day October 22 when the Crusaders play host to Widener University. The game also will serve as the annual Parents' Weekend

contest. From 1984 to 1986, 47 football players left Iowa State due to poor academic standing, the university said. In 1987, only eight of 39 senior football players graduated and 25 ended their eligibility not in good academic standing.

Graduation rates for both Iowa and Iowa State athletes in 1985 was 60 percent.

A special highlight of the weekend will be the return of Amos Jr., who was head coach at Susquehanna from 1935 to 1946 and 1953-54, in addition to the years with his father.

Amos Jr. will be honored at half time and will be joined by a reunion of many of his former players. That same day, he will receive an honorary degree from the university at a dinner in the Degenstein Campus Center.

1988-89 budget

Continued from page 1
account for \$1,950,000 (2.4 percent).

Transportation costs and per diem allowances are guaranteed for all National Collegiate Championships and Division I championships in 1988-89. Transportation for Divisions II and III championships is

guaranteed through the block-grant funding program.

The 1988-89 budget was approved by the Executive Committee in its August meeting, and a revision was approved by the Administrative Committee September 28.

EXPENSE

		0	PERCENTAGE	100
Division I men's basketball distrib.	\$32,140,800 \$28,645,700		39.2 36.1	
Champs. transportation guarantees	4,953,100 4,666,200		6.1 5.9	
Champs. game & administrative	4,232,600 3,990,000		5.2 5.0	
Grants to conferences	3,520,000 3,505,000		4.3 4.4	
Champs. per diem allowances	3,438,500 2,955,400		4.2 3.7	
Other champs. distributions	3,390,860 2,170,700		4.1 2.7	
Communications department	3,185,200 2,825,650		3.9 3.6	
Div. II & III block grants	3,000,000 3,100,000		3.7 3.9	
General	2,706,400 1,394,100		3.3 1.8	
Publishing department	2,383,200 1,867,300		2.9 2.4	
Drug testing & education	1,950,000 1,965,000		2.4 2.5	
Legal services	1,750,000 1,500,000		2.1 1.9	
Enforcement department	1,748,400 1,964,500		2.1 2.5	
Administration department	1,743,300 1,503,900		2.1 1.9	
Committees	1,180,000 1,272,000		1.4 1.6	
Championships department	1,175,000 1,043,700		1.4 1.3	
National Forum	1,131,000 950,000		1.4 1.2	
Grant to NCAA Foundation	1,000,000 6,800,000		1.2 8.6	
Royalties to members	900,000 674,000		1.1 0.8	
Insurance—general & liability	900,000 692,500		1.1 0.9	
Legislative services department	840,500 737,700		1.0 0.9	
Rent	766,200 732,000		0.9 0.9	
Catastrophic insurance	765,000 947,000		0.9 1.2	
Clinics and competition	761,000 517,400		0.9 0.6	
Business department	751,000 639,200		0.9 0.8	
Compliance services department	720,100		0.9	
Postgraduate scholarships	550,000 600,000		0.7 0.8	
Contingency	352,040 686,250		0.4 0.9	
Development grants	96,800 79,800		0.1 0.1	
Funded Operating Reserve	1,000,000		1.3	
Totals				
1988-89	82,011,000			
1987-88	79,425,000			

Of estimated 1988-89 NCAA expenses (bold face), \$54,516,060, or 66.5 percent of the total, will be paid directly to member institutions.



Calendar

October 10-12	Council, Kansas City, Missouri
October 14-15	Committee on Financial Aid and Amateurism, Kansas City, Missouri
October 14-17	National Youth Sports Program Committee, Kansas City, Missouri
October 29-30	Committee on Infractions, Kansas City, Missouri
November 11-13	Committee on Infractions, Tucson, Arizona
November 28	Presidents Commission Ad Hoc Committee on the National Forum, Washington, D.C.
December 1-2	Special Committee on Deregulation and Rules Simplification, Kansas City, Missouri
December 4	Divisions I, II and III Championships Committees, Kansas City, Missouri
December 5	Executive Committee, Kansas City, Missouri
December 12-15	Men's Water Polo Committee, San Diego, California

Comment

Most Big Ten coaches want NCAA to adopt tie-breaker

By Joe Mooshil

Most Big Ten Conference coaches say they favor legislation that would introduce a tie-breaking system in college football, saying nobody likes games that end in a tie.

During their weekly telephone-conference interview, most of the coaches said they favored the system used in the National Football League, where there is sudden death but no more than a fifth quarter played.

"I've always been in favor of a tie-breaker," said Hayden Fry, whose Iowa Hawkeyes recently played to a 10-10 tie against Michigan State. "It would add excitement and determine the winner. I have never gone for a tie.



Hayden Fry

"Any system, even the one the pros have, would be acceptable."

Michigan State's George Perles also supported the NFL-style tie-breaker.

"I think it would bring a spark to college football," Perles said. "The



George Perles

networks, the fans, the conferences all would like it. Most people like to put it on the line, win or lose."

It is too early to determine whether the 10-10 tie with Iowa will affect the conference championship, Perles said.

"Last year, it didn't make any difference," Perles said of MSU's 14-14 tie with Illinois. "This year, we won't know until all the chips are

in."

The Spartans won the title with a 7-0-1 record last year, and Iowa and Indiana finished second with 6-2 records.

Bo Schembechler's thoughts went back to the thought of tie-breakers.

"I haven't thought much about it since 1973," said the Michigan coach. "If we had had a tie-breaker with Ohio State, it would have saved a lot of grief for a lot of people. I haven't seen much sentiment to have it put into the rules. We could stand either way."

In 1973, Michigan and Ohio State played to a 10-10 tie. Both teams were 7-0-1 in the Big Ten and 10-0-1 overall but Ohio State got the nod to go to the Rose Bowl in a vote by athletics directors.

John Cooper of Ohio State wasn't very keen about the idea.

"I haven't thought about it," he

said. "The way we're playing now, I don't think it's a very good idea."

Don Morton of winless Wisconsin said, "I'd love to have that problem. I have no opinion either way."

Bill Mallory, whose Indiana Hoosiers played to a 28-28 tie against Missouri, was in favor of using the NFL system.

"You don't think about it until you have one," said Mallory. "You don't feel like you've accomplished anything."

Northwestern's Francis Peay was all for the idea.

"Have a coin toss and play a sudden-death period," said Peay.

"The fans and the kids would be for it. It would be suspenseful; it would bring the game to a sudden and dramatic conclusion."

Mooshil writes for the Associated Press.

If freshman eligibility a problem, rule it out

Paul R. Verkuil, president
College of William and Mary
Excerpted from a letter
to Sports Illustrated

If those schools that urge a return to freshman ineligibility were more interested in selecting athletes who are closer to the academic mean of the student body, the added burden of varsity play in the first year would be entirely manageable.

Freshman basketball and football players at a school like William and Mary are able to adjust socially and academically, as well as athletically, because they are fully integrated into campus life.

Moreover, one wonders whether the pressures encountered by student-athletes at most big-time athletics schools aren't too much for sophomores and

juniors, as well as for freshmen.

Focusing on the academic side of the equation—i.e., seeking a better fit between student-athlete and institution—may mean, in sports like football, that large state universities, which often are mandated to have essentially open admission standards, will dominate the more selective private and public institutions. But isn't this what happens anyway?

To Division I institutions with selective academic standards for athletes, freshman teams would mean significantly higher costs... that only the "profitable" schools could easily absorb.

If freshman participation in varsity sports is a concern at particular schools or in particular conferences, they can rule freshmen ineligible on their own.

Why winning is properly valued

George Will, columnist
Washington Post Writers Group

"Athletes who seek a competitive edge through chemical advantage do not just overvalue winning; they misunderstand why winning is properly valued. It is properly valued as the reward for, and evidence of, praiseworthy attributes. They include the lonely submission to an exacting training regimen and the mental mastery of pressure, pain and exhaustion.

"In short, sport is valued not only because it builds character but because it puts on display and crowns with glory, for the elevation of spectators as well as participants, attributes we associate with good character. Good character, not good chemistry.

"A society's recreation is charged with moral significance. Sport would be debased, and with it a society that takes sport seriously, if sport did not strictly forbid things that blur the distinction between the triumph of character and the triumph of pharmacology."

Walter Phythian, varsity football player
Northeast Louisiana University
NCAA College Football Media Kit

"The greatness of football is not the game itself; it is the camaraderie that will linger forever. The game merely brings men together. When the days of playing are over, it is not the plays or games I will remember but the friends I made along the way.

"Football teaches young men how to handle the pressures of life, how to deal with triumphs and failures, and how to keep them in proper perspective. But most importantly, it teaches young men how to deal with the responsibility of being relied upon and how to perform for the good of others."

Mike Bantom, member
1972 U.S. Olympic basketball team
The New York Times

"It took 16 years, but we finally have to admit that the rest of the world has caught up with the theory and how we play the game (of basketball).

"We give a lot away to the Russians and the other up-and-coming teams in how we choose our team. I have seen these Russians. They play together all year long on club teams and on the national team. They are a very experienced team, while we are still using the all-star method. Maybe we should rethink the way we put together our Olympic team. I don't think we should be giving away such a big advantage.

"The answer is to send our best; and if they happen to beat our best, so be it. Maybe the 19- and 20-year-olds who now represent us should wait until they become pros to represent us."

Donald Kaul, columnist
Chicago Tribune Media Services

"The big story of the Olympics, of course, was Ben Johnson, the Canadian sprinter whose medal was taken from him because his medicine chest contained something besides aspirin.

"Everybody said it was a terrible thing because he violated the 'Olympic spirit.'

"Nonsense. If the Olympic spirit means anything, it's doing anything you can to win, then renting the resultant glory to the highest bidder.

"Some have estimated that as many as 60 percent of world-class athletes use drugs to run faster, jump

higher and get richer. And so long as you can make millions of dollars or become a Hero of the Republic by being No. 1, athletes are going to continue to seek out a mother's helper."

Andrea Lloyd, member
U.S. women's Olympic basketball team
United Press International

"Some people smoke and take drugs for no reason. If you take drugs and win a gold medal, is that so terrible? It's something you don't want to do, but you can't just condemn him (Canadian sprinter Ben Johnson) and be really upset with him.

"If Carl (Lewis) won because he worked hard and got there without drugs, then he should be the winner



Opinions

and Ben shouldn't. But athletes are not mad at Ben for any other reason.

"People do stupid things even when there is not anything at risk. If you have a chance to win a gold medal and be a hero, you can't hold him (up to criticism) for something like that."

Jay Martin, director of athletics
Ohio Wesleyan University
Athletic Administration

"In the last decade, Ohio Wesleyan University has had some good times and some bad times. Budgetary problems, enrollment problems and many of the other problems that have affected small liberal arts colleges have all had an impact on our campus.

"No event, however, has had a greater impact on our campus than the Division III Men's Basketball Championship that our team won in March.

"Never has the morale been so high at Ohio Wesleyan University. Never has the relationship between the community and campus been so strong. Never has the 'egghead vs. jock' conflict been so silent. Never have the students demonstrated such overwhelming support and excitement for anything on this campus."

Without break on grants, Walden says he'll resign

Iowa State University head football coach Jim Walden says he may leave before his contract expires in 1991 if the NCAA does not change its rules to allow weak teams to offer more grants-in-aid, or require strong teams to offer fewer.

"I will not continue to compete and stand before young people and stand before adults and try to find excuses when I shouldn't have to," Walden said. "I will not coach in a system that will not allow me a mutual right to compete, and I'm not going to deceive people."

Walden said that although he is allowed to offer the same 30 grants per year as other schools, more players leave weak teams before they complete their eligibility. He said it is likely Iowa State will have only 79 scholarship players during the fourth year of his contract in 1991, or 16 fewer players than stronger Big Eight teams, such as Nebraska and Oklahoma.

"If it's no better than 79 in four (years), you won't see me a fifth here, unless they drop the



Jim Walden

numbers to 85," Walden told United Press International.

"I'm serious about that. I might quit this job and politic as a union man to try to do just that. I'll make every speech in America talking about how foolish it is to be using 95 football players when we can actually get by with 85.

Walden said he does not want to leave Iowa State and hopes to build a "conscientious, healthy, wonderful, go-to-bowl-games program."

Walden said he cannot ask people to support a program

See Without, page 5

The NCAA News

[ISSN 0027-6170]

Published weekly, except biweekly in the summer, by the National Collegiate Athletic Association, Nall Avenue at 63rd Street, P.O. Box 1906, Mission, Kansas 66201. Phone: 913/384-3220. Subscription rate: \$24 annually prepaid. Second-class postage paid at Shawnee Mission, Kansas. Address corrections requested. Postmaster send address changes to NCAA Publishing, P.O. Box 1906, Mission, Kansas 66201. Display advertising representative: Host Communications, Inc., P.O. Box 3071, Lexington, Kentucky 40596-3071.

Publisher Ted C. Tow
Editor-in-Chief Thomas A. Wilson
Managing Editor Timothy J. Lilley
Assistant Editor Jack L. Copeland
Advertising Manager Marlynn R. Jones
The Comment section of The NCAA News is offered as opinion. The views expressed do not necessarily represent a consensus of the NCAA membership. An Equal Opportunity Employer.

Yow won her biggest victory before Olympic gold-medal game

By Harry Shattuck
Houston Chronicle

Even if her team had not earned the women's basketball Olympic gold medal, U.S. coach Kay Yow would have emerged a winner.

She is alive. She is healthy.

And a year ago, none of that was taken for granted.

Hers is a story of enormous courage, yet one shared by women all over the world.

In August 1987, Yow discovered she had cancer. And she was told her right breast and 20 lymph nodes must be removed.

"My immediate tendency was to pray to God that this circumstance might change," says Yow, 45, the unassuming head coach at North Carolina State University.

She underwent a modified radical mastectomy, the same operation Nancy Reagan experienced. And though some suggested Yow would be wise to give up the rigors of preparing for the XXIVth Summer Games, she never wavered in her determination.

"I felt like I was holding God's hand and squeezing real hard," Yow told Raleigh News and Observer sportswriter Chris Cobbs in November, once the operation was successfully completed.

"I think of the giant sequoia trees in California and how, when the winds blow and storms come, the roots get deeper in order to survive.

"My own roots seem to be deeper now, and I want to stand tall and stand firm."

Quick sees need for earlier trials for U.S. swimmers

The U.S. Olympic swimming team, disappointed with the results of the Seoul games, where the East Germans took 29 medals to 18 for the U.S. and East German women captured 22 to seven for U.S. women, thinks early time trials for American swimmers might help.

Every U.S. swimmer swam times that were slower than those at the Olympic trials in August. Many swimmers feel the trials come too late for athletes to condition themselves for fast times, according to Roy S. Johnson, a reporter for the Atlanta Journal and Constitution.

U.S. coach Richard Quick, who is head women's swimming coach at Stanford University, told Johnson, "We need to think about making changes in the entire system, not just the trials. It's very important to maintain a competitive situation to make the squad, but we need a situation where the trials are earlier."

Quick said that would take major changes at all levels, including the NCAA championships.



Kay Yow

She takes 18 vitamins every day. And she must undergo a mammogram every six months to make certain no new sign of cancer is found.

Yow continually reassures her players, however, that she feels well. She reassures herself, too, saying, "I don't worry much if I have an ache

in my chest or my hand swells or something. Heck, somebody could run into my car out in the parking lot or something."

Yow has been accepting challenges for a long time.

Two younger sisters have served as head coaches at major colleges, but Kay was the forerunner and she was hardly prepared.

Five years after graduation from East Carolina University in 1964, with a major in English, Yow applied for a teaching job at a small North Carolina high school.

"But the principal said I could have it only if I'd agree to coach the girls," Yow says.

"He knew I'd been an all-state player. But I didn't know anything about coaching and just wanted to be an English teacher. I finally gave in and took the job, hoping to do it only until they found somebody

else. I was scared to death."

As the school's librarian, too, Yow began to read about coaching techniques.

"I read books, attended clinics and watched the men practice," she says. "We did the same thing they did. I asked so many questions. I have this insatiable appetite to learn. And that's probably one of the things that has helped me most."

She learned well enough that her high school team won four consecutive conference championships.

In 1976, North Carolina State summoned Yow. And her record with the Wolfpack is 291-105, including a 10-17 ledger, her only losing season, in 1987-88, when her illness prevented Yow from coaching full-time.

She coached a U.S. team to two victories over the Soviet Union in Moscow, including a Goodwill

Games championship in 1986, and Yow gained notoriety when she smuggled Bibles into that country.

All the time, she lived by the philosophy, "When life kicks you, let it kick you forward."

She served as Pat Head Summitt's assistant during the 1984 Olympics; and Summitt said, upon learning of her friend's illness, "If anyone can handle it and bounce back and take on a pressure-packed job, it's Kay. She is so upbeat."

"I saw her as caring, honest and loyal. Where I am stern and firm, Kay is sensitive and caring, and she watches and reads people very well."

And she maintains a strong faith.

"When I took the U.S. team to Russia, God held my hand the whole way," Yow says. "He never let go. When I had the surgery, He held my hand real tight. And He's never let go."

Our clout counts... for you!



It's teams with **clout** that stand apart . . . just like those you see at these NCAA Championships. How did they get here? Through the champs of the travel business — **Fugazy International Travel** — official travel agent for NCAA Championships!

With 115 years in the business, we've achieved the influence — the **clout** — to negotiate special unpublished travel and accommodations prices to save you money.

And, there's no charge for this unique attention! Anyone, anywhere can request a **free** quote on sports, group or corporate travel.

Call Toll Free 1-800-243-1723

Whether you're traveling solo, a coach or a director with a team to move, a college or university administrator with a budget to consider, or a corporate executive with a complex itinerary . . . call **FUGAZY**, the international travel experts with the **clout** that counts!

1-800-243-1723

FUGAZY
INTERNATIONAL
TRAVEL 67 WHITNEY AVENUE
NEW HAVEN, CT 06510
772-0470



... and we mean **business!**

Without

Continued from page 4
that is "running on 1½ legs when other programs were running on two legs."

Walden said similar problems forced Stan Parrish to announce that he will step down as head coach at Kansas State University at the end of the season.

"That whole thing (at Kansas State) has got me stirred up. I keep trying to forget it. Today, it hits me right back in the face. I could be doing this four years from now, trying to explain why we're 1-3 after we just got through playing four teams that had 93 guys and I had 79. That's not right," Walden said.

Upcoming showdowns will whittle list of perfect I-A teams

By Jim Van Valkenburg
NCAA Director of Statistics

The list of undefeated-untied teams in Division I-A is down to 12 after the latest series of upsets October 8, and it will grow shorter after the major confrontations set for October 15.

Only national-champion Miami (Florida) at 12-0-0 was perfect after the bowls last season, as two other perfects [Oklahoma (Miami's foe in the Orange Bowl) and Syracuse (tied by Auburn in the Sugar Bowl)] failed to win.

But not since 1936, has there been zero undefeated-untied teams in the regular season in major-college football.

Two perfect-record teams, Miami (Florida) and Notre Dame, will collide at South Bend, Indiana, October 15; while three other perfects—Duke, Oklahoma State and Southern California—will be in jeopardy against once-beaten foes (Clemson, Nebraska and Washington, respectively).

Southern California has faced the toughest schedule of any perfect-record team so far. It will face the strongest future schedule; and its overall schedule is toughest, not only among the perfect 12, but for all 104 I-A teams.

Its first five foes were 15-5 (.750) when not playing Southern Cal. Its remaining six foes are 22-8 (.733) vs. I-A opposition, and all 11 opponents are 37-13 (.740) vs. I-A opponents so far this season.

Div. I-A Perfect Teams	Schedules: Past	Future	Entire Sched.
Southern Cal.....	.750	.733	.740
UCLA.....	.619	.700	.667
Miami (Fla.).....	.594	.559	.570
Notre Dame.....	.447	.654	.567
Wyoming.....	.609	.407	.500
Arkansas.....	.421	.520	.477
West Va.....	.308	.583	.440
Ball St.....	.222	.600	.421
South Caro.....	.333	.500	.417
Oklahoma St.....	.412	.409	.410
Western Mich.....	.167	.520	.372
Duke.....	.233	.375	.321

Nine of those 12 were bowl teams last year, but three are coming up from losing records—Ball State was 4-7, and Duke and Western Michigan both were 5-6.

In evaluating the above table, note that South Carolina, West Virginia and Wyoming have won six games each, Miami and Oklahoma State four each, and all others five each.

Note also that eight perfects have the toughest part of their schedules yet to come. And, in this connection, three teams have faced opposition with a combined winning percentage under .300—Western Michigan, Ball State and Duke. Ball State's remaining foes are .600 and Western's .520, but Duke's are only .375.

In overall-schedule strength among the perfect 12, UCLA ranks second, so its November 19 confrontation with Southern Cal looms large. So does Southern Cal-Notre Dame a week later. But Miami-Notre Dame is the biggest game at this stage.

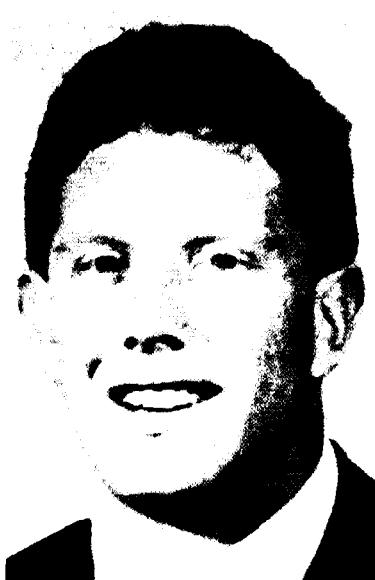
Toughest so far

Southern Cal is tied for third with Tennessee (at .750) on the list of toughest schedules played to date, which helps explain Tennessee's winless mark. Mississippi, which upset Alabama October 8, leads the list at .789 (15-4 vs. I-A teams when not playing Mississippi), with San Diego State's schedule second at .762. Others in the top 10 are Pittsburgh and Texas A&M, both .706; Virginia Tech and Cal State Fullerton, both .696, and Florida State and Kentucky, both .694.

The Pacific-10 Conference dominates the list of strongest future schedules simply because it dominates the nonconference rankings,



John David Francis of Florida leads Division I-A in field goals with 2.17 per game



Division I-AA total-offense leader Mark McGowan, Lehigh, averages 286.6 yards per game



St. Cloud State's Harry Jackson is Division II's leading rusher with 157.4 yards per game



Ron Griffin of Aurora leads Division III rushers with 175.3 yards per game

having won 24 of 28 games vs. outside I-A opponents. Eight of the top 10 are Pac-10 teams. Penn State and Arizona are tied for first at .759—the future foes of each are 22-7 vs. I-A teams when not playing them. Southern Cal is third at .733, then come Air Force .720, Oregon State .708, four teams tied at .700—Oregon, Washington, Stanford and UCLA—and California at .690.

Putting past and future schedules together, Southern Cal is first at .740 for its entire schedule, followed by Arizona .729, Oregon State .673, UCLA and Stanford tied at .667, Rice .663, Washington .660, East Carolina .659, Oregon .653, and Arizona State .646. Once again, all but two are in the Pac-10.

Quite a change

The toughest-schedule list represents quite a change from the pre-season list, when the highest-ranked Pac-10 team was Southern Cal, 10th at .591. That is because the preseason ranking was based solely on last season's results, and the Pac-10 had only a so-so year in outside games compared to its current .857 pace, which is well above the decade high of .755 by the Southeastern Conference in 1985.

Kentucky led the preseason rankings by a narrow margin over Louisiana State, followed by Ohio State, Florida State, Texas A&M, Miami (Florida), Michigan, Notre Dame, Alabama and Southern Cal.

Remember, the NCAA toughest-schedule program is based solely on won-lost records among I-A teams, with no regard to the teams faced by opponents of each I-A team.

Five I-AA perfects

Only five teams in Division I-AA are undefeated and untied approaching the midseason mark, or through October 8. Alphabetically, they are Lafayette, Marshall, Nevada-Reno, Pennsylvania and Western Illinois.

Lafayette's perfect record will be in jeopardy October 15 when it faces 4-I Army, a I-A team, as will Western Illinois' when it meets 4-2 Eastern Illinois.

The strongest part of Lafayette's schedule is to come. Its remaining I-AA and I-A foes so far have a .700 percentage vs. I-AA/I-A opposition, giving its entire schedule a .556 rating, 10th nationally. Nevada-Reno has faced the strongest schedule so far (Pennsylvania has won four games, all others five).

Div. I-AA Perfect Teams	Schedules: Past	Future	Entire Sched.
Lafayette.....	.375	.700	.556
Nevada-Reno.....	.667	.407	.487
Western Ill.....	.467	.400	.425
Marshall.....	.316	.393	.362
Pennsylvania.....	.192	.420	.342

A year ago, Marshall ended up 10-5, losing the national champion-

ship game to Northeast Louisiana. Western Illinois was 7-4. But the other perfects had losing records—Pennsylvania 4-6, Nevada-Reno 5-6 and Lafayette 4-7.

Combining past and future schedules, the current toughest-schedule top 10 in I-AA shows Northwestern State (Louisiana) on top at .600, followed by Georgia Southern at .592, Bucknell .590, Louisiana Tech .577 (four vs. I-A opponents), Montana State .575, Western Carolina .574, Colgate .568, Northeastern .565, Eastern Washington .564, and Lafayette, as mentioned, .556.

Remember, this is based solely on this season, with games vs. teams below I-AA deleted.

Quotes of the week

Columbia student after his team ended its Division I-AA-record 44-game losing streak October 8 with a 16-13 homecoming victory over Princeton: "This just proves there is a God."

Columbia coach Larry McElreavy, entering the press room with

tana, 26-17: "Next time we come here, they'll have to put in speed bumps to slow us down." (*Dave Cook, Idaho SID*)

Oklahoma State quarterback Mike Gundy, third nationally in Division I-A passing efficiency, on his running back, Barry Sanders, national leader in rushing (203.3 yards per game), scoring (22.5) and all-purpose running (275.3): "He's a guy who reads the Old Testament, the New Testament, never does anything wrong and hasn't burned a bridge in his life. There isn't a person on this campus who dislikes him."

Colorado State noseguard Greg Baker on Colorado center Erik Norgard: "We have a hog farm, and I told my dad if we had a hog as good as Norgard, we'd make a lot of money."

Nebraska's Richard Bell on the Husker kicking game, which had a blocked-punt touchdown vs. Nevada-Las Vegas: "Coach (Tom) Osborne says every time we've won the kicking game, we've won the game."



Football notes

the game ball and a cigar, was asked when he sensed victory. He replied: "About four minutes after the game was over."

His team led 27-0 at halftime, but Millikin coach Carl Poelker was not pleased and he let his squad know about it. The players were quiet as they walked up the ramp back onto the field. Then came a voice in the back: "But coach, I thought we were ahead." Said Poelker: "I had a hard time controlling myself—I nearly laughed out loud." (*John Arenberg, Millikin SID*)

Notre Dame coach Lou Holtz before his undefeated team played at Pittsburgh October 8: "As I look down the road at the rest of our schedule, I see nothing but semis coming at us." Final score: Notre Dame 30, Pittsburgh 20. Next "semi": Undefeated Miami (Florida) at South Bend October 15.

After Luther freshman Ted Rohling kicked a 39-yard field goal with seven seconds left to upset nationally-ranked Buena Vista, 12-10, winning coach Bob Naslund was interviewed by Kevin Dolan of KMT in Cedar Rapids, Iowa. "You sound a little hoarse," Dolan said. "Yeah," said Naslund, who has a decidedly bass voice. "I'm usually a soprano." (*Jerry Johnson, Luther SID*)

Idaho coach Keith Gilbertson after his team committed seven turnovers to waste 604 yards in total offense in losing to error-free Mon-

And when he says something, it's kind of like E. F. Hutton. You listen." (*Tim Allen, Big Eight Conference SID*)

Kent coach Dick Crum, discussing mistakes by his players during the game: "They're human. They're bound to make mistakes. You don't think my hair got this way naturally, do you?" (*John Wagner, Kent SID*)

Iona athletics director Rick Mazzuto had just learned that St. Peter's had decided to drop football on the morning before a night game with Iona. Unable to reach his head coach, Mazzuto called assistant Rick D'Amico, a good-sized man, who soon was beside himself: "The lunches (ordered for the trip)—what are we going to do with all the lunches?" (*David Torremeo, Iona SID*)

Family affairs

All his life, UCLA flanker Mike Farr has lived in the shadows of his famous father, Mel, and brother, Mel Jr., both of whom were outstanding running backs at UCLA. As he warmed up for the Nebraska game, he heard the public address announcer say: "At flanker, No. 9, Mel Farr."

"Then, in the game against Long Beach State, I caught a pass, and they said: 'Mel Farr on the reception,'" Farr said. "I can't get a break."

Earlier this year, Farr had more important concerns. He complained of pain in his knee long after an injury in the eighth game last season.

He badgered UCLA doctors for a closer look and X-rays disclosed a benign bone tumor below the knee, unrelated to the injury. Doctors said a walnut-sized hole in his bone probably had been there for some time. Farr rejected an operation that would put him on crutches for several months, sought a second opinion and decided on a different kind of operation that greatly shortened recovery time. Three months afterward, he was running.

During recuperation, Farr was motivated by the chance to play with quarterback Troy Aikman, No. 1 nationally in career passing efficiency among active Division I-A players. As Farr told Jerry Crowe of the Los Angeles Times: "When they show his highlights on TV, they've got to show somebody catching the ball." Farr leads UCLA in catches at 28 and receiving yards at 338 through October 8; Aikman says, "He does a great job of getting open."

St. Cloud State quarterback Stacy Jameson, off to an outstanding start, has twin sisters, Toni and Tami, who are candidates for starting positions on the St. Cloud women's basketball team. (*Todd Clark, St. Cloud assistant SID*)

Fitchburg State uses a rare brother combination of junior Paul LeBlanc at center and brother Rich, a freshman, at quarterback. Any other such brother combinations, past or present? (*David Marsh, SID staff associate, Fitchburg State*)

California Lutheran senior center Pat Wolcott, expected to anchor the line, is redshirting due to a preseason knee injury but is assisting offensive line coach Bernie Kyman. Wolcott has leadership in his blood—his great-great-uncle Oliver Wolcott was one of the drafters and signers of the Declaration of Independence. (*Greg Seiler, California Lutheran SID*)

Oberlin has three "brother acts" this fall—defensive back Joe D'Egidio and fullback Mike D'Egidio are twins; quarterback Bill Lohnes, a transfer from Columbia, and running back Ed Lohnes, and center Ken Laposky and linebacker Mike Laposky. (*Steve Pulver, Oberlin SID*)

Binders available

Readers of The NCAA News are reminded that binders, which provide permanent, convenient storage of back issues of the paper, are available from NCAA publishing.

Each of the rugged, vinyl-covered binders holds 23 issues of the News. They may be purchased from \$7.50 each, or two for \$14. Orders should be directed to the circulation department at the national office (913/831-8300).

Football Statistics

Through games of October 8

Division I-A individual leaders

RUSHING									
	CL	G	CAR	YDS	AVG	TD	YDSPG		
Barry Sanders, Oklahoma St.	Jr	4	95	813	8.6	13	203.25		
Anthony Thompson, Indiana	Jr	5	149	825	5.5	14	165.00		
Steve Broussard, Washington St.	Jr	5	114	771	6.8	8	154.20		
Darren Lewis, Texas A&M	So	4	102	587	5.8	3	146.75		
Tony Boles, Michigan	Jr	5	124	685	5.5	6	137.00		
Tim Worley, Georgia	Jr	6	109	761	7.0	11	126.83		
Eric Bieniemy, Colorado	So	5	105	629	6.0	5	125.80		
Emmitt Smith, Florida	So	6	125	751	6.0	6	125.17		
Darrell Thompson, Minnesota	Jr	5	113	583	5.2	7	116.60		
Robert Davis, Western Mich.	Sr	5	112	575	5.1	7	115.00		
Eric Ball, UCLA	Sr	5	101	562	5.6	4	112.40		
Blake Ezor, Michigan St.	Jr	5	129	554	4.3	0	110.80		
Don Riley, Central Mich.	Jr	5	88	542	6.2	4	108.40		
Keith Jones, Illinois	Sr	5	94	537	5.7	4	107.40		
Derek Loville, Oregon	Jr	5	118	536	4.5	6	107.20		
Eric Wilkerson, Kent	So	6	133	642	4.8	4	107.00		
Tony Stewart, Iowa	So	6	134	636	4.7	5	106.00		
Mark Stevens, Ball St.	Sr	5	106	501	4.7	7	100.20		
Dee Dowis, Air Force	Jr	6	74	597	8.1	6	99.50		
Heikoti Fakava, Hawaii	Sr	5	107	495	4.6	8	97.33		
Deon Booker, Louisville	Sr	6	98	584	6.0	4	95.20		
Tommy Jackson, Nevada-Las Vegas	So	5	86	476	5.5	4	95.20		
Jon Volpe, Stanford	Jr	5	100	475	4.8	4	95.20		

SCORING									
	CL	G	TD	XP	FG	PTS	PTPG		
Barry Sanders, Oklahoma St.	Jr	4	15	0	0	84	22.50		
Anthony Thompson, Indiana	Jr	5	14	0	0	80	16.80		
Greg Johnson, Air Force	Jr	6	13	2	0	80	13.33		
Tim Worley, Georgia	Jr	6	12	0	0	72	12.00		
Heikoti Fakava, Hawaii	Sr	5	9	0	0	54	10.80		
Brian Mitchell, Southwestern La.	Jr	5	9	0	0	54	10.80		
Cary Blanchard, Oklahoma St.	So	4	0	25	6	43	10.75		
Johnny Johnson, San Jose St.	Jr	6	10	2	0	62	10.33		
John David Francis, Florida	Jr	6	0	21	13	60	10.00		
Charlie Baumann, West Va.	Sr	6	0	29	10	58	9.67		
Philip Doyle, Alabama	So	4	1	12	7	39	9.75		
Kendall Trainor, Arkansas	Sr	5	0	18	10	48	9.60		
John Harvey, UTEP	Sr	5	0	0	0	48	9.60		
Carl Harry, Utah	Sr	5	0	0	0	48	9.60		
Steve Broussard, Washington St.	Jr	5	0	0	0	48	9.60		
Chris Jacke, UTEP	Sr	6	0	27	10	57	9.50		
Roman Anderson, Houston	Fr	4	0	14	8	38	9.50		
Kenny Stucker, Ball St.	Fr	5	0	20	9	47	9.40		
Steve Loop, Fresno St.	Jr	6	0	23	11	56	9.33		
John Creek, Western Mich.	Sr	5	0	21	8	45	9.00		
Eric Metcalf, Texas	Sr	4	6	0	0	36	9.00		
Carlos Huerta, Miami (Fla.)	Fr	4	0	15	7	36	9.00		

PASSING EFFICIENCY									
	CL	G	ATT	CMP	INT	PCT	YDS	TD	RATING
(Min. 15 att. per game)									
Tim Rosenbach, Washington St.	Jr	5	147	102	69.39	5	3.40	1475	10.03
Troy Aikman, UCLA	Jr	5	127	84	66.14	4	3.15	1103	8.69
Mike Gundy, Oklahoma St.	Jr	4	79	51	64.56	1	1.27	833	10.54
Tony Kimbrough, Western Mich.	Sr	4	125	80	64.00	4	3.20	1143	9.14
David Riley, Ball St.	Jr	5	95	66	69.47	2	2.11	837	8.81
Chip Ferguson, Florida St.	Sr	6	130	83	63.85	4	5.38	1204	9.26
Anthony Dilweg, Duke	Sr	5	109	68	62.39	4	3.67	930	8.53
Mark Kamphaus, Boston College	Sr	5	108	63	57.80	3	2.75	978	8.97
Warren Jones, Hawaii	Sr	4	114	69	60.53	4	3.51	975	8.55
Todd Philcox, Syracuse	Jr	4	130	73	56.15	3	2.31	1037	7.98
Steve Walsh, Miami (Fla.)	Sr	5	75	48	64.00	2	2.67	601	8.01
Michael Taylor, Michigan	Jr	5	125	79	63.20	5	4.00	1064	8.51
Reggie Slack, Auburn	Sr	6	196	108	55.38	6	3.08	1642	8.42
Randy Weinik, Wyoming	Jr	6	244	158	64.75	2	82	1633	6.69
Eric Wilhelm, Oregon St.	Fr	6	114	65	57.02	1	88	905	7.94
Mark Barsotti, Fresno St.	Sr	6	176	115	65.34	10	5.68	1429	8.12
Ken Lutz, San Jose St.	So	5	88	43	48.86	3	3.41	717	8.15
Darnell Dickinson, Pittsburgh	So	5	176	97	55.11	4	2.27	1352	7.68
Pat Hegarty, UTEP	So	5	263	156	59.32	10	3.80	1959	7.45
Scott Mitchell, Utah	So	4	66	34	51.52	1	1.52	456	6.91
Andre Ware, Houston	Sr	5	188	106	56.38	5	2.66	1402	7.46
Brant Snyder, Utah St.	Sr	5	151	90	59.60	6	3.97	1145	7.58
Rodney Peete, Southern Cal.	Sr	5							

RECEIVING									
	CL	G	CT	YDS	TD	CTPG			
Jason Phillips, Houston	Sr	4	39	538	3	9.75			
Boo Mitchell, Vanderbilt	Sr	4	41	674	3	8.20			
James Dixon, Houston	Sr	4	31	379	5	7.75			
Robb Thomas, Oregon St.	Sr	5	37	497	3	7.40			
Tom Waddle, Boston College	Sr	5	37	478	5	7.40			
Kevin Evans, San Jose St.	Jr	6	40	547	1	6.67			
Carl Harry, Utah	Sr	5	33	564	8	6.60			
Clarkson Hines, Duke	Jr	5	32	563	5	6.40			
Erik Affholter, Southern Cal.	Jr	5	31	364	3	6.20			
Roger Boone, Duke	Jr	5	31	218	0	6.20			
Johnny Johnson, San Jose St.	Jr	6	37	438	2	6.17			
Bryan Bero, Utah	Sr	5	30	207	0	6.00			
Eric Young, Rutgers	Sr	5	23	333	2	5.75			
Tim Stallworth, Washington St.	Jr	5	28	479	4	5.60			
Ricky Proehl, Wake Forest	Jr	5	28	470	3	5.60			
Aaron Grimm, Utah	Sr	5	28	444	2	5.60			
Greg Washington, Kansas St.	Jr	5	28	368	4	5.60			
Mike Farr, UCLA	Sr	5	27	338	0	5.60			
Kendall Smith, Utah St.	Sr	5	27	308	5	5.40			
Alvin Lee, Louisiana St.	So	5	27	343	3	5.40			
Dan Bitson, Tulsa	So	5	26	444	5	5.20			
Rob Moore, Syracuse	So	5	26	444	7	5.20			
Monty Gilbreath, San Diego St.	Jr	5	26	389	1	5.20			
Pat Newman, Utah St.	Jr	5	26	371	4	5.20			
Steve Williams, Illinois	Jr	5	26	358	2	5.20			

ALL-PURPOSE RUNNERS									
	CL	G	RUSH	REC	PR	KOR	YDS	YDSPG	
Barry Sanders, Oklahoma St.	Jr	4	813	66	73	149	1101	275.25	
Michael Pierce, Tulane	Jr	5	135	374	0	472	981	196.20	
Tony Boles, Michigan	Jr	5	685	45	0	196	926	185.20	
Johnny Johnson, San Jose St.	Jr	6	524	438	0	112	1074	179.00	
Steve Broussard, Washington St.	Jr	5	771	41	0	82	894	178.80	
Anthony Thompson, Indiana	Jr	5	825	61	0	886	177.20		
Eric Metcalf, Texas	Jr	4	373	177	65	61	676	169.00	
Eric Wilkerson, Kent	Sr	6	642	51	0	312	1005	167.50	
Tim Worley, Georgia	Jr	6	761	21	0	189	971	161.83	
Blake Ezor, Michigan St.	Jr	5	554	24	0	200	778	155.60	
Keith Stephens, Louisville	Jr	6	247	128	110	434	919	153.17	
Andrew Greer, Ohio	Sr	5	332	30	0	403	765	153.00	
Reggie McKinney, East Caro.	Sr	6	264	178	0	467	907	151.17	
Darren Lewis, Texas A&M	Fr	4	174	123	73	223	593	148.25	
Eric Henley, Rice	Jr	5	536	120	0	77	733	146.60	
Derek Loville, Oregon	Jr	6	6	349	0	519	874	145.67	
Reggie Thornton, Bowling Green	Jr	5	6	244	127	359	724	144.80	
Chris Galters, Minnesota	Jr	5	0	293	0	422	715	143.00	
Mark Seay, Long Beach St.	So	5	-3	508	35	166	706	141.20	
Kendall Smith, Utah St.	Sr	5	53	302	0	350	705	141.00	
Randy Marriott, North Caro.	Sr	5	190	41	0	332	563	140.75	
Carlos Snow, Ohio St.	So	4							

TOTAL OFFENSE									
	RUSHING	PASSING	NET	ATT	YDS	PLS	YDS	YDPL	TD*
Scott Mitchell, Utah	21	41	62	21	263	1958	284	1938	8.02
Anthony Dilweg, Duke	20	19	46	27	203	1814	223	1787	8.01
Tim Rosenbach, Washington St.	34	240	38	202	147	1475	181	1677	9.27
Randy Weinik, Wyoming	59	361	80	281	195	1642	254	1923	7.57
T.J. Rubley, Tulsa	18	53	64	11	203	1520	221	1509	6.83
Tony Kimbrough, Western Mich.	27	90	42	48	125	1143	152	1191	7.84
Erik Wilhelm, Oregon St.	27	71	41	30	244	1633	271	1663	6.14
Eric Jones, Vanderbilt	65	274	86	188	150	1166	215	1353	6.30
Brent Snyder, Utah St.	43	131	191	60	188	1402	231	1342	5.81
Sean Covey, Brigham Young	34	97	108	-11	164	1318	198	1307	6.60
Steve Walsh, Miami (Fla.)	3	1	3	-2	130	1037	133	1035	7.78
Troy Taylor, California	41	184	102	82	159	1186	200	1268	6.34
Scott Erney, Rutgers	16	60	27	33	182	1223	198	1256	6.34
Warren Jones, Hawaii	78	357	93	264	109	978	187	1242	6.64
Mike Johnson, Akron	62	239	130	109	175	1355	237	1464	6.18
Terrence Jones, Tulane	95	380	208	172	183	1290	278	1462	5.26
Rodney Peete, Southern Cal.	21	105	43	62	151	1145	172	1207	7.02
Todd Ellis, South Caro.	15	11	90	-79	211	1510	226	1431	6.33
Ken Lutz, San Jose St.	66	235	254	-19	176	1429	242	1410	5.83
Pat Hegarty, UTEP	27	70	50	20	176	1352	203	1372	6.76
Reggie Slack, Auburn	16	75	14	61	125	1064	141	1125	7.98
Jay Grudden, Louisville	34	51	142	-91	199	1440	233	1349	5.79
Mark Kamphaus, Boston College	13	15	50	-35	109	930	122	885	7.34

*Touchdowns responsible for

FIELD GOALS			
-------------	--	--	--

Football Statistics

Through games of October 8

Division I-AA individual leaders

RUSHING										FIELD GOALS										INTERCEPTIONS									
CL	G	CAR	YDS	AVG	TD	YDSPG	CL	G	FGA	FG	PCT	FGPG	CL	G	NO	YDS	TD	IPG											
Fred Killings, Howard	Jr	5	115	769	6.7	4	153.80	Chuck Rawlinson, S. F. Austin St.	Fr	4	12	11	917	2.75	Scott Sims, Dartmouth	Sr	4	5	66	0	1.25								
Fine Unga, Weber St.	Jr	5	105	698	6.6	4	139.60	Kirk Duce, Montana	Fr	6	20	14	700	2.33	Kevin Smith, Rhode Island	So	5	6	69	0	1.20								
Bryan Keys, Pennsylvania	Jr	4	118	558	4.7	7	139.50	Chris Lutz, Princeton	So	4	9	8	889	2.00	Mark Seals, Boston U.	Sr	5	6	44	0	1.20								
Lewis Tillman, Jackson St.	Jr	5	113	673	6.0	8	134.60	Dennis Waters, Tenn.-Chatt.	Sr	6	16	12	750	2.00	Stanley Hall, Marshall	Sr	5	5	43	0	1.00								
Joe Arnold, Western Ky.	Sr	5	109	654	6.0	4	130.80	Dan Maher, Western Ky.	Sr	5	10	9	900	1.80	Garry Jordon, New Hampshire	Jr	5	5	27	0	1.00								
Harold Scott, Northeastern	Jr	5	115	626	5.4	5	125.20	Keith Chapman, North Texas	Sr	5	10	9	900	1.80	Reggie Johnson, Delaware St.	Jr	4	4	7	0	1.00								
Eloy Harris, Eastern Ky.	Jr	4	90	470	5.2	8	117.50	Bjorn Nittmo, Appalachian St.	Sr	5	11	9	818	1.80	Rick Harris, East Tenn. St.	Sr	6	5	77	0	83								
Bruce Harris, Idaho	So	5	89	557	6.3	3	111.40	Billy Hayes, Sam Houston St.	Sr	4	11	8	636	1.75	Don Thomas, Middle Tenn. St.	Sr	6	5	73	0	83								
Tom Costello, Lafayette	Fr	4	83	439	5.3	4	109.75	Dewey Klein, Marshall	Fr	5	13	9	615	1.60	Dave Murphy, Holy Cross	Jr	6	5	65	0	83								
Reggie Barnes, Delaware St.	Sr	4	87	426	4.9	2	106.50	Lance Wiley, McNeese	Sr	6	13	9	692	1.50	Dominic Corr, Eastern Wash.	Jr	6	5	6	0	83								
Adrian Johnson, Citadel	Jr	5	107	531	5.0	5	106.20	Tom Withka, Villanova	So	5	7	7	1000	1.40	Keith Morik, Boise St.	So	5	4	77	0	80								
Scott Malaga, Cornell	Jr	4	101	422	4.2	6	105.50	Rob Courter, Richmond	So	5	8	7	875	1.40	Harvey Morik, Southern-B.R.	Jr	5	4	54	0	80								
Tori Vactor, Indiana St.	So	5	84	520	6.2	6	104.00	Mike Black, Boise St.	Fr	5	10	7	700	1.40	Douglas Craft, Southern-B.R.	So	5	4	23	0	.80								
Greg Abbruzzese, Columbia	So	4	76	401	5.3	1	100.25																						
Gene Brown, Citadel	Sr	5	87	496	5.7	8	99.20																						
Charvez Foger, Nevada Reno	Fr	5	121	496	4.1	5	99.20	(Min. 1.2 per game)	CL	NO	YDS	TD	AVG	(Min. 1.2 per game)	CL	NO	YDS	TD	AVG										
Tim Lester, Eastern Ky.	Fr	5	65	485	7.5	2	97.00	H. Huckaby, Florida A&M	Jr	12	287	3	23.92	(Min. 1.2 per game)	CL	NO	YDS	TD	AVG										
Kenet Goldsmith, Furman	Jr	6	89	568	6.4	3	94.67	J. Bledsoe, Massachusetts	So	9	197	1	21.89	Dave Meggett, Towson St.	Sr	8	330	2	41.25										
Judd Garrett, Princeton	Sr	4	76	376	4.9	3	94.00	Mark Hurt, Alabama St.	Jr	8	188	0	21.00	Mark Hurt, Alabama St.	Jr	8	165	0	21.00										
Jeff Dingle, Villanova	So	5	75	456	6.1	3	91.60	B. Alexander, S. F. Austin St.	Sr	15	255	0	17.00	Darryl Holcombe, Eastern Ill.	Jr	6	196	0	32.50										
James Darby, South Caro. St.	Sr	5	72	456	6.3	6	91.20	J. Isom, Tennessee Tech	So	5	73	0	14.60	Renard Coleman, Montana	Jr	6	181	0	30.17										
Peter Lombardi, Villanova	Sr	5	85	439	5.2	3	87.80	Erick Teran, Ohio	So	8	115	0	14.38	Chris Pollard, Dartmouth	Sr	6	129	0	29.83										
Carl Smith, Maine	So	5	71	433	6.1	3	86.60	Mark Gallagher, Holy Cross	So	6	139	1	13.90	Tony Roland, Idaho St.	Sr	7	203	0	29.00										
								Chris Taylor, Baylor St.	So	6	82	0	13.67	John Lake, Idaho	Sr	7	200	1	28.57										

SCORING										KICKOFF RETURNS										PUNTING																																																																																																																																																			
CL	G	TD	XP	FG	PTS	PTPG	CL	G	NO	YDS	TD	AVG	CL	G	NO	YDS	TD	AVG	CL	G	NO	YDS	TD	AVG	CL	G	NO	YDS	TD	AVG																																																																																																																																									
Tim Egerton, Delaware St.	Jr	5	67	1	13.40	A. Herring, Youngstown St.	So	7	193	0	27.57	Gerald Broadway, Grambling	Sr	26	40.54	Mike Marks, Idaho St.	Jr	11	145	0	13.18	Tim Broady, Murray St.	Sr	9	247	0	27.44	Jack Phelps, Holy Cross	Sr	25	40.44	Dave Meggett, Towson St.	Sr	9	117	0	13.00	John Jarvis, Howard	Jr	10	273	1	27.30	Jimmy Poirer, McNeese	So	36	40.36	Erick Torain, Lehigh	So	5	10	2	0	50	12.50	Tony Logan, Nevada-Reno	Sr	15	180	0	12.00	V. Henry, Sam Houston St.	Sr	6	162	0	27.00	Mike Krause, Western Ill.	Jr	35	40.34	Dave Meggett, Towson St.	Sr	4	8	0	0	48	12.00	Cedric Jones, Western Ky.	Sr	16	185	0	11.56	Steve Elminger, Indiana St.	Jr	10	266	0	26.60	Billy Smith, Tenn. Chatt.	Sr	42	40.33	Phillip Ng, Lafayette	So	5	9	0	0	54	10.80	Jeff Steele, Northeast La.	Jr	25	266	0	10.64	Tim Donovan, Holy Cross	Jr	10	265	1	26.50	Steve Merka, S. F. Austin St.	Sr	32	40.13	Chuck Rawlinson, S. F. Austin St.	Fr	4	0	10	11	43	10.75	M. Camper, North Texas	Sr	9	95	1	10.56	C. Mitchell, Massachusetts	Jr	9	233	0	25.89	Bryan Campbell, Lamar	Sr	32	38.88	Bryan Keys, Pennsylvania	Jr	4	7	0	0	42	10.50	Darryl Jones, Jackson St.	Sr	10	105	0	10.50	Mike Cadore, Eastern Ky.	Sr	8	207	0	25.88	Scott Todd, James Madison	So	25	39.72

Football Statistics

Through games of October 1

Division II individual leaders

RUSHING						
	CL	G	CAR	YDS	TD	YDSPG
Harry Jackson, St. Cloud St.	Jr	5	137	787	7	157.4
Greg Paterra, Slippery Rock	Sr	4	100	572	6	143.0
Randy Holmes, Wayne St. (Mich.)	So	4	86	566	6	141.5
Chris Simdorn, North Dak. St.	So	4	66	564	10	141.0
Scott Highley, Millersville	Jr	4	75	499	4	124.8
Kelvin Minette, Southern Utah St.	Jr	5	110	622	7	124.4
Curtis Bell, Fort Valley St.	Jr	4	62	484	4	121.0
Andy Bellagamba, Springfield	Sr	4	103	484	6	121.0
Steve Roberts, Butler	Jr	5	147	604	10	120.8
Tommy Compton, North Ala.	Jr	4	80	471	6	117.8
David Gullede, Jacksonville St.	So	5	93	544	8	116.8
Bill Burkhead, Springfield	So	4	99	449	4	112.3
John Gronski, Bemidji St.	Jr	4	80	447	2	111.8
Mike Rybicki, Michigan Tech	Sr	4	94	428	2	107.0

SCORING						
	CL	G	TD	XP	FG	PTS
Steve Roberts, Butler	Jr	5	13	2	0	80
Chris Simdorn, North Dak. St.	So	4	10	2	0	62
Troy Slusser, Washburn	Sr	4	8	2	0	50
Tony Satter, North Dak. St.	So	4	8	0	0	48
David Gullede, Jacksonville St.	So	5	8	0	0	48
Bob Gilbreath, Eastern N. Mex.	Jr	4	0	10	9	37
Randy Holmes, Wayne St. (Mich.)	So	4	6	0	0	36
Smitty Horton, West Chester	Jr	4	6	0	0	36
Scott Forst, Hillsdale	Jr	4	6	0	0	36
Greg Paterra, Slippery Rock	Sr	4	6	0	0	36
Heath Sherman, Texas A&I	Sr	4	6	0	0	36
Andy Bellagamba, Springfield	Sr	4	6	0	0	36
Tommy Compton, North Ala.	Jr	4	6	0	0	36

PASSING EFFICIENCY									
	CL	G	ATT	CMP	PCT	INT	YDS	TD	RATING
(Min. 15 att. per game)									
Mark Sedinger, Northern Colo.	Jr	4	112	78	69.6	5	1073	9	167.6
Jeff Mitchell, Indianapolis	So	3	62	37	59.6	7	615	8	162.9
Bryan Pendergast, Cal St. Sacramento	Jr	4	75	44	58.6	3	738	5	155.3
Tye Cottle, Valdosta St.	So	4	89	52	58.4	4	771	7	148.0
Mike Braucher, Ashland	Jr	4	70	44	62.8	2	601	4	148.0
Tim Rosenkranz, St. Mary's (Cal.)	Jr	4	104	57	54.8	2	824	8	142.7
Russell Johnson, Hampton	So	5	82	31	37.8	6	758	9	136.9
Sparky McEwen, Ferris St.	So	5	85	47	55.2	1	614	6	136.8
Mike Quinn, UC Davis	Fr	3	45	27	60.0	0	287	3	135.5
Al Niemela, West Chester	Sr	4	105	62	59.0	8	753	9	132.1

RECEIVING						
	CL	G	CT	YDS	TD	CTPG
Cedric Tillman, Northern Colo.	Jr	4	33	543	5	8.3
Alvin Johnson, Central Mo. St.	Sr	4	39	479	2	7.8
Gary Isaia, Northeast Mo. St.	Sr	4	37	472	6	7.4
Todd Smith, Morrisville	Sr	4	37	469	4	7.4
Jon Bratt, St. Mary's (Cal.)	Sr	4	24	299	2	6.0
Herman West, West Tex. St.	Sr	4	24	292	0	6.0
Sean Beckton, Central Fla.	So	5	30	432	3	6.0
Shannon Sharpe, Savannah St.	Jr	5	30	351	4	6.0
Bill Hess, West Chester	Sr	4	23	325	4	5.8
Troy Slusser, Washburn	Sr	4	23	490	7	5.8
Mike Sellar, UC Davis	Sr	4	22	295	3	5.5
Pat Wordekemper, Wayne St. (Neb.)	Fr	5	27	328	3	5.4

TOTAL OFFENSE						
	CL	G	PLAYS	YDS	YDSPG	
Tommy Compton, North Ala.	Jr	4	173	1143	285.8	
Mark Sedinger, Northern Colo.	Jr	4	112	1143	285.8	
Jeff Frost, Northeast Mo. St.	So	5	209	1332	266.4	
Shane Willis, Central Fla.	So	5	204	1311	262.2	
Jeff Mitchell, Indianapolis	So	3	95	764	254.7	
Alan Brown, Mo. Southern	Jr	5	224	1249	249.8	
Barry Griffiths, Washburn	Sr	4	118	922	230.5	
Earl Harvey, N.C. Central	Sr	5	250	1120	224.0	
Mike Horton, New Haven	Sr	4	149	876	219.0	
Jack Hull, Grand Valley St.	Fr	5	162	1036	207.2	
William Williams, Humboldt St.	Jr	4	168	822	205.5	
Sam Mannery, Calif. (Pa.)	So	4	149	805	201.3	
Stephan Vanner, Bemidji St.	Jr	4	135	801	200.3	
Chris Simdorn, North Dak. St.	So	4	85	789	197.3	

Division III individual leaders

RUSHING						
	CL	G	CAR	YDS	TD	YDSPG
Ron Griffin, Aurora	So	4	107	701	10	175.3
Paul Manternach, Grinnell	Sr	3	105	468	7	158.0
Gareth Grayson, Cortland St.	Sr	4	117	620	7	155.0
Terry Underwood, Wagner	Jr	4	96	611	6	152.8
Anthony Lawrence, Bridgewater (Va.)	Jr	5	149	699	5	139.8
Jay Peterson, Canisius	Sr	4	87	536	3	133.8
Donis Toler, Denison	Jr	4	90	520	7	125.0
Jeff Saveressing, Wis.-River Falls	Jr	4	97	497	5	124.3
Chad Dunston, Rhodes	Jr	4	73	477	7	119.3
Travis Talton, Wis.-Whitewater	So	4	72	464	6	116.0
Scott Spicer, Denison	So	4	100	460	5	115.0
Dennis Gareau, Norwich	So	4	92	455	2	113.8
Jim Hackett, Middlebury	Sr	2	27	227	2	113.5

SCORING						
	CL	G	TD	XP	FG	PTS
Ron Griffin, Aurora	So	4	10	0	0	60
Paul Manternach, Grinnell	Sr	3	7	0	0	42
Erik Burgwald, Augustana (Ill.)	Sr	3	7	0	0	42
Donnell Newman, Gallaudet	So	4	9	0	0	54
Joe Henry, St. John's (Minn.)	Sr	3	6	2	0	38
Tim Oliver, Wabash	So	3	6	0	0	36
Mike Whitehouse, St. Norbert	Jr	4	5	8	3	47
Scott Barnyak, Carnegie Mellon	So	4	7	2	0	44
Chris Warren, Ferrum	Jr	5	9	0	0	54
Eddie McShan, St. Lawrence	Jr	3	5	2	0	32

PASSING EFFICIENCY									
	CL	G	ATT	CMP	PCT	INT	YDS	TD	RATING
(Min. 15 att. per game)									
Steve Musumeci, Kean	Fr	3	47	28	59.5	3	425	8	178.8
Mike Hane, Whitier	Jr	3	66	45	68.1	3	619	6	167.8
Dave Doran, Carroll	Sr	3	63	36	57.1	5	648	6	164.2
Doug Toivonen, Concordia-Mhead	Sr	4	122	71	58.2	3	1025	12	156.1
Mike Fanger, Lewis & Clark	So	4	116	71	61.2	3	1016	9	155.1
John Clark, Wis.-Eau Claire	Sr	4	86	49	56.9	5	706	10	152.5
Mike McCarthy, Canisius	Sr	4	61	39	63.9	2	524	3	145.6
Scott Hurlinger, Dayton	Sr	3	77	43	55.8	3	679	5	143.5
John Lahti, St. John's (Minn.)	So	4	107	57	53.2	4	865	9	141.3
Todd McCormick, Ill. Benedictine	Sr	4	77	42	54.5	2	698	2	133.9
Jeff Olson, Wis.-Whitewater	Sr	4	144	83	57.6	3	1051	8	133.0
Eric Dahlquist, Kenyon	Sr	3	111	54	48.6	5	919	8	132.9

RECEIVING						
	CL	G	CT	YDS	TD	CTPG
Roger Little, Dubuque	Sr	4	40	591	5	10.0
Mike Funk, Wabash	Jr	3	26	298	1	8.7
Tom Karenbauer, Grove City	Jr	4	34	458	2	8.5
Dan Grant, St. John's (Minn.)	Sr	3	25	283	1	8.3
Theo Blanco, Wis. Stevens Pt.	Fr	5	41	514	4	8.2
Dan Ruhl, Lewis & Clark	Fr	3	24	322	4	8.0
Steve Townsend, Wheaton (Ill.)	Sr	3	22	391	3	7.3
Drew Privette, Augsburg	Jr	4	29	319	4	7.3
Mike Cottle, Juniata	Sr	4	28	362	5	7.0
Dennis McDermott, St. John's (N.Y.)	Jr	4	28	506	7	7.0
Mike Whitehouse, St. Norbert	Jr	4	26	415	5	6.5
Ed Beemiller, Kenyon	Sr	4	26	362	4	6.5

TOTAL OFFENSE						
	CL	G	PLAYS	YDS	YDSPG	
Mike Fanger, Lewis & Clark	Jr	3	166	1043	347.7	
Roger Waialae, Dubuque	Sr	4	183	1286	321.5	
Ben Furman, Wheaton (Ill.)	Sr	3	137	909	303.0	
Kirk Baumgartner, Wis.-Stevens Pt.	Jr	5	263	1481	296.2	
Tim Peterson, Wis.-Stout	Jr	4	140	1048	262.0	
Jason Duff, Rose-Hulman	Jr	4	162	1039	259.8	
John Clark, Wis.-Eau Claire	So	4	141	978	244.5	
Eric Dahlquist, Kenyon	Sr	4	170	976	244.0	
Greg Whitney, Worcester Tech	Sr	4	154	973	243.3	
John Lahti, St. John's (Minn.)	Sr	3	99	718	239.3	
Cubby Davis, Juniata	Sr	4	158	935	233.8	
David Detrick, Wis.-Superior	Jr	5	217	1140	228.0	
Dave Doran, Carroll	Sr	3	79	643	214.3	
Scott Spicer, Denison	So	4	160	852	213.0	
Rob King, Washington (Mo.)	Sr	4	153	843	210.8	
Todd McCormick, Ill. Benedictine	So	4	123	843	210.8	

FIELD GOALS						
	CL	G	FGA	FG	PCT	FGPG
Bob Gilbreath, Eastern N. Mex.	Jr	4	14	9	64.3	2.25
Clayton Perkins, Albany St. (Ga.)	So	4	9	6	66.7	1.50
Earl Wessels, Southeast Mo. St.	Jr	4	8	6	75.0	1.50
Alex Bauer, St. Mary's (Cal.)	So	5	11	7	63.6	1.40
Richard Grote, Mo. Southern	Fr	5	13	7	53.8	1.40
Dave Ruder, Washburn	Fr	4	8	5	62.5	1.25
J.D. Lane, North Ala.	Sr	4	10	5	50.0	1.25
Chris Kaufman, Indianapolis	Jr	4	8	5	62.5	1.25
Steve Foster, Hillsdale	Fr	4	9	5	55.6	1.25

PUNT RETURNS						
	CL	NO	YDS	AVG		
(Min. 12 per game)						
Paul Deberry, Virginia Union	So	7	146	20.9		
Kerry Simen, Texas A&I	Jr	8	161	20.1		
Mark Steinmeyer, Kutztown	Fr	7	133	19.0		
Chris Holder, Tuskegee	Fr	5	78	15.6		
Carl Johnson, Cal St. Hayward	Jr	15	218	14.5		
Steve Carson, Northeast Mo. St.	Fr	6	87	14.5		
David Hutton, Indianapolis	Sr	12	171	14.3		
Russell Cambridge, Morris Br'n	So	12	167	13.9		
Willie Deloach, Savannah St.	Fr	10	132	13.2		

KICKOFF RETURNS						
	CL	NO	YDS	AVG		
(Min. 12 per game)						
Robb Cook, Saginaw Valley	So	5	208	41.6		
Jonas Eldridge, Northern Colo.	Jr	7	290	41.4		
Bernard Hiltson, Morris Brown	Fr	7	283	40.4		
Andre Johnson, Ferris St.	Jr	10	351	35.1		
Abel Fernandez, Nebr.-Omaha	Fr	6	192	32.0		
Steve Brown, Calif. (Pa.)	Jr	12	369	30.8		
Tyrone Tracy, Fort Hays St.	Jr	13	375	28.8		
Dave Elle, South Dak.	Jr	11	299	27.2		
Troy Nelson, North Ala.	Fr	12	320	26.7		

Division II team leaders

PASSING OFFENSE			
	G	ATT	CMP
St. Mary's (Cal.)	5	166	103
Northern Colo.	4	116	80
Mo. Southern	5	205	106
Central Fla.	5	183	102
Northeast Mo. St.	5	185	92
Cal St. Sacramento	4	102	59
Washburn	4	131	65
West Tex. St.	4	167	102
Winona St.	5	180	91
New Haven	4	142	77
Morris Brown	5	145	70

90 NCAA swimmers selected as academic all-Americans

A total of 119 student-athletes, including 90 from NCAA member institutions, have been selected for all-academic teams compiled by the College Swimming Coaches Association of America. The group includes 26 performers from the 1987 squads.

Among the honorees maintaining perfect grade-point averages are Enrique Conterno, Case Reserve; Adam Fitzgerald, North Carolina State; Marcus Hevelke, Clarion; Paul Hudak, Case Reserve; Dawn Ledbetter, Johns Hopkins; Rebecca Little, Kenyon, and Brett Outcalt, Minnesota.

The coaches selected men's and women's squads in all NCAA divisions. To qualify for all-academic team honors, swimmers must qualify to participate at the NCAA swimming and diving championships, have a cumulative grade-



Linda Leith

point average of at least 3.500 (4.000 scale), and have completed the equivalent of 24 hours at their institutions.

Following are the 1988 men's and women's CSCAA all-academic teams, including grade-point averages:

Division I women

Linda Leith, Georgia, 3.970;



Michelle Steyaert

Becky Anderson, Iowa, 3.950; Robyn Benincasa, Arizona State, 3.930; Bente Rist, Arizona State, 3.840; Deanne Burnett, Georgia, 3.840; Iris Von Jouanne, Southern Illinois, 3.830; Lori Rea, Southern Illinois, 3.810; Tracy Mulvaney, UC San Diego, 3.800; Jenny Jordan, Southern Methodist, 3.740; Megan Doberneck, California, 3.730; Peggy Rothenbach, Georgia, 3.730; Kristin Kuhlman, California, 3.700; Kim Marsden, Tennessee, 3.700; Amy Clark, California, 3.620; Barb Harris, Northwestern, 3.620; Paige Wright, Northwestern, 3.620; Aileen Convery, West Virginia, 3.600; Sheila Taormina, Georgia, 3.530; Jackie Taljaard, Southern Illinois, 3.550; Nancy Osborne, Arizona State, 3.530; Renee Borup, South Carolina, 3.500, and Jennifer Wieder, UC San Diego, 3.500.

Division I men

Adam Fitzgerald, North Carolina

State, 4.000; Brett Outcalt, Minnesota, 4.000; David Kohel, Texas A&M, 3.910; Sean Dailey, Hawaii, 3.830; Guy Farrow, Hawaii, 3.820; Eric Lang, Virginia, 3.810; Torbjorn Johansson, Utah, 3.730; Lawrence Fulbeck, UC San Diego, 3.590; Benoit Seguin, Florida State, 3.510; Steven Bell, Cincinnati, 3.500; Matt Frawley, Stanford, 3.500; Ken Brakebill, Stanford, 3.500; Jeff Garr, Stanford, 3.500; Byron Burson, Stanford, 3.500, and Sean Murphy, Stanford, 3.500.

Division II women

Michelle Steyaert, Oakland, 3.790; Janice Etchepare, North Dakota, 3.770; Lori Bachoffer, Northern Michigan, 3.770; Kristi Rosenbaum, Clarion, 3.590, and Kristi Spicer, Oakland, 3.570.

Division II men

Marcus Hevelke, Clarion, 4.000; Tim Nelson, Cal State Chico, 3.940; Neil Leary, Cal Poly San Luis Obispo, 3.790; Danna Giaccone, Cal Poly San Luis Obispo, 3.670; Rick Songster, Clarion, 3.520, and Mike Ewing, North Dakota, 3.500.

Division III women

Rebecca Little, Kenyon, 4.000; Dawn Ledbetter, Johns Hopkins, 4.000; Annette Laursen, Kenyon, 3.940; Nancy Gritter, DePauw, 3.900; Tiffany Jeisel, Denison, 3.760; Sarah Rockswold, St. Olaf, 3.750;

Nancy Fabrizio, Augustana (Illinois), 3.730; Jennifer Straley, Hope, 3.660; Tereza Zurick, Kenyon, 3.780; Katy Furnish, Grinnell, 3.650; Erin Fraher, Wellesley, 3.640; Liesel Pruis, Calvin, 3.620; Lori Gano, Hope, 3.610; Libby Stern, Pomona-Pitzer, 3.610; Jean Hoeve, St. Olaf, 3.600; Boadie Dunlop, Washington (Missouri), 3.600; Michelle Sims, DePauw, 3.580; Ann Howard, Rochester, 3.560; Kara Krafft, Denison, 3.530; Erin Finneran, Kenyon, 3.520, and Jen Ehrlinger, Case Reserve.

Division III men

Paul Hudak, Case Reserve, 4.000; Enrique Conterno, Case Reserve, 4.000; Robert Schmidt, St. John's (Minnesota), 3.960; Joseph Turk, Wabash, 3.880; Eric Jensen, Claremont-Mudd-Scripps, 3.830; Guy Genin, Centre, 3.810; Thomas Burkart, Kalamazoo, 3.690; Ian Brooks, Johns Hopkins, 3.670; Jeff Perkins, Kenyon, 3.670; Alan Diercks, Claremont-Mudd-Scripps, 3.660; Craig Clear, Colorado College, 3.640; David Stevenson, Oberlin, 3.640; Timothy Niznik, St. Olaf, 3.610; Scott Peters, Kenyon, 3.580; Scott Richardson, Rochester, 3.580; Mark Lange, St. John's (Minnesota), 3.550; Michael Winkerman, Kalamazoo, 3.550; Tadd Ferguson, Kenyon, 3.540; Kyle Torke, Grinnell, 3.510; Aaron Glatzer, Kenyon, 3.500, and Karl Degenhardt, Washington (Missouri), 3.500.

Indoor track standards set

Qualifying standards have been established for 1989 indoor track and field championships.

Men's and women's championships in Division I will be held at the Hoosier Dome in Indianapolis, the Division II championships will return to the University of South Dakota and the Division III championships will be conducted at Bowdoin College. All three meets will be held March 10-11.

Altitude adjustments for sites at elevations of 3,000 feet or higher have been established for the coming season and will appear in the 1989 NCAA Track and Field/Cross Country Rules and in the indoor track championships handbook.

Qualifying marks must be made in indoor competition after December 1, with entries due March 6. All field-event marks must be measured, recorded and entered metrically.

Coaches also should note in certain events the qualifying index for tracks of 200 meters, under 200 meters and over 200 meters.

Men's standards

Event	Division I		Division II		Division III	
	FAT	MT	FAT	MT	FAT	MT
55 Meters	6.23	**	6.35	**	6.50	6.2
55-Meter Hurdles	7.27	**	7.45	**	7.74	7.4
200 Meters						
(Under 200m/220 yds.)*	21.67	**	**	**	**	**
(220m/200 yds.)*	21.37	**	**	**	**	**
(Over 200m/220 yds.)*	21.07	**	**	**	**	**
400 Meters						
(Under 200m/220 yds.)*	47.96	47.7	**	**	**	**
(200 m/220 yds.)*	47.16	46.9	48.50	48.2	49.64	49.4
(Over 200m/220 yds.)*	46.76	46.5	**	**	**	**
800 Meters	1:50.40	1:50.1	1:53.90	1:53.6	1:54.94	1:54.7
1,500 Meters#	**	**	3:54.50	3:54.2	3:55.24	3:55.0
Mile#	4:03.48	4:03.2	4:12.50	4:12.2	4:13.80	4:14.0
3,000 Meters#	8:03.98	8:03.7	**	**	**	**
Three-Mile#	**	**	13:54.30	13:54.0	14:11.94	14:11.7
5,000 Meters#	**	**	14:37.50	14:37.2	14:42.94	14:42.7
1,600-Meter Relay						
(Under 200m/220 yds.)*	3:13.45	3:13.12	**	**	**	**
(200m/220 yds.)*	3:10.65	3:10.4	3:15.50	3:15.2	3:20.24	3:20.0
(Over 200m/220 yds.)*	3:07.85	3:07.6	**	**	**	**
Mile Relay						
(Under 200m/220 yds.)*	3:14.65	3:14.4	**	**	**	**
(200m/220 yds.)*	3:11.85	3:11.6	3:16.70	3:16.4	3:21.44	3:21.1
(Over 200m/220 yds.)*	3:09.05	3:08.8	**	**	**	**
3,000-Meter Relay	7:25.60	7:25.3	**	**	**	**
Two-Mile Relay	7:28.60	7:28.3	**	**	**	**
High Jump	2.22		2.12		2.07	
Long Jump	7.72		7.35		7.10	
Triple Jump	15.94		15.20		14.27	
Pole Vault	5.28		4.80		4.58	
Shot Put	18.10		16.15		15.52	
35. Lb. Weight	18.50		**		15.54	

*Size of track

#Altitude adjustment available

Women's Standards

Event	Division I		Division II		Division III	
	FAT	MT	FAT	MT	AT	MT
55 Meters	6.90	**	7.14	**	7.34	7.0
55-Meter Hurdles	7.90	**	8.40	**	8.64	8.3
200 Meters						
(Under 200m/220 yds.)*	24.55	**	**	**	**	**
(220m/200 yds.)*	24.25	**	**	**	**	**
(Over 200m/220 yds.)*	23.95	**	**	**	**	**
400 Meters						
(Under 200m/220 yds.)*	55.70	55.4	**	**	**	**
(200 m/220 yds.)*	54.80	54.5	57.50	57.2	59.14	58.9
(Over 200m/220 yds.)*	54.13	53.8	**	**	**	**
800 Meters	2:09.30	2:09.0	2:17.00	2:16.7	2:18.44	2:18.2
1,500 Meters	**	**	4:41.00	4:40.7	4:42.64	4:42.4
Mile#	4:45.60	4:45.3	5:01.00	5:00.7	5:05.24	5:05.0
3,000 Meters#	9:24.26	9:24.0	10:06.00	10:05.7	10:02.04	10:01.8
1,600-Meter Relay						
(Under 200m/220 yds.)*	3:44.34	3:44.1	**	**	**	**
(200m/220 yds.)*	3:41.75	3:41.5	3:56.00	3:55.7	4:03.24	4:03.0
(Over 200m/220 yds.)*	3:39.16	3:38.9	**	**	**	**
Mile Relay						
(Under 200m/220 yds.)*	3:45.54	3:45.3	**	**	**	**
(200m/220 yds.)*	3:43.00	3:42.7	3:57.30	3:56.9	4:04.44	4:04.2
(Over 200m/220 yds.)*	3:40.36	3:40.1	**	**	**	**
3,200-Meter Relay	8:48.80	8:48.5	**	**	**	**
Two-Mile Relay	8:51.80	8:51.5	**	**	**	**
High Jump	1.81		1.70		1.65	
Long Jump	6.14		5.78		5.50	
Triple Jump	12.46		11.58		11.08	
Shot Put	15.10		13.51		12.85	

*Size of track

#Altitude adjustment available

Survey says tuition costs discourage teens

Fewer than six out of 10 young people say they have saved for college, and nearly 50 percent said tuition costs prevent many from seeking a higher education, according to a poll released October 9.

In addition, more than one out of three teen-agers and young adults questioned in a survey commissioned by the Council for Advancement and Support of Education believe the most expensive colleges offer the best education.

The poll, aimed at measuring student awareness of college issues, was based on telephone interviews of 1,001 people ages 13 to 21 from August 24 to September 7. It was released as part of National Higher Education Week, which began October 9. The poll, conducted by the Gallup Organization, had a margin of sampling error of plus or minus three percentage points.

Thirty-eight percent agreed that "the higher the tuition costs of a college, the better the quality of education a student will receive," according to the Associated Press. Among precollege-age students, the figures were higher: 53 percent of 13- to 15-year-olds agreed with the statement; 41 percent of 16- and 17-year-olds surveyed did. But only 27 percent of current college students and graduates felt that way.

Basketball information requested

Wayne Patterson, research specialist at the Basketball Hall of Fame, requests that NCAA member institutions add his name to their mailing lists for men's and women's basketball releases. Media guides for both sports are wanted, he said.

Postseason wrapups in both sports also are requested, Patterson said. Material can be mailed to Patterson at the Basketball Hall of Fame, P. O. Box 179, Springfield, Massachusetts 01101-0179.

Asked what they thought was the major reason more students do not go to college, 48 percent said they thought the reason was that college

"Only 20 percent cited social life or athletics reputation as 'extremely important' (in selecting a college)."

is too expensive and they can't afford it.

Fifty-nine percent of high school juniors and seniors polled said they or someone in their families had saved for their college education.

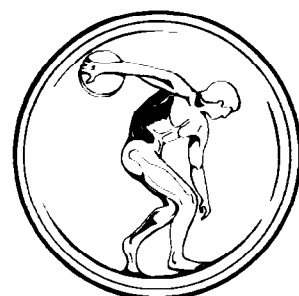
The rest said they hadn't saved or they didn't know.

Asked what they'd do if they couldn't afford the college they wanted, 37 percent said they'd try to get loans, 32 percent would look for part-time jobs, 14 percent said they would select another college and two percent said they would not attend college at all. The rest weren't sure.

Other findings:

Sixty-seven percent said that in selecting a college, availability of particular courses and curriculum was "extremely important;" 44 percent cited the school's academic reputation; 45 percent said expense was a crucial factor. Only 20 percent cited social life or athletics reputation as "extremely important."

Seven out of 10 believe public colleges offer as good an education as private schools, and three out of five felt two-year institutions are on a par with four-year schools.



Hughston Sports Medicine Hospital

An international resource and referral center for the prevention and treatment of musculo-skeletal disorders with particular emphasis on those related to Sports Medicine.

Hughston Sports Medicine Hospital

P.O. Box 2319
Columbus, GA 31902-2319
1-800-288-1517/EXT 128

NCAA Record

CHIEF EXECUTIVE OFFICERS

William T. O'Hara, a member of the Presidents Commission, resigned as president at Bryant, effective July 31, 1989. ... **Kenneth G. Ryder**, president at Northeastern, named chancellor at the school, effective upon the selection of his successor. ... **G. T. Smith** resigned as chancellor and president at Chapman. ... **Donald W. Walters** resigned as president at Montclair State.

FACULTY ATHLETICS REPRESENTATIVE

Allan G. Fischer selected at North Dakota State, where he is dean of the college of science and mathematics and professor of biochemistry. He succeeds **David Forbes**.

DIRECTORS OF ATHLETICS

Albert "King" Dixon II named interim AD at South Carolina, replacing **Dick Bestwick**, who stepped down for health reasons. School officials said Bestwick will return to the school as soon as his health improves but will not resume the AD's duties. Dixon is associate vice-president for alumni affairs at South Carolina and was an all-conference football player there in the late 1950s. ... **Dick Hill** appointed interim AD at Louisville, where he has been senior associate athletics director for the past two years. He stepped in for **Bill Olsen**, who is on a sabbatical until November 14 to study the athletics operations of other universities.

ASSISTANT DIRECTOR OF ATHLETICS

Hallie Cohen given additional duties at Fairleigh Dickinson-Madison, where she continues to serve as head field hockey and women's softball coach.

COACHES

Men's basketball—**Ronald St. John** promoted at York (New York), his alma mater, where he has been an assistant for the past four years and previously was head junior varsity coach for five seasons. ... **Upsala's Russ Thompson** appointed assistant coach at Fairleigh Dickinson-Teaneck, where he previously served in 1983 before accepting the Upsala post. Thompson coached Upsala to an appearance in the Division III Men's Basketball Championship in 1986.

Men's basketball assistants—**Kevin Patterson** named at Cal Poly Pomona, where he was a graduate assistant coach last season. He also has been an assistant at Diamond Bar High School in California. Patterson succeeds **Gar Forman**, who joined the staff at New Mexico State. ... **John Robie** joined the staff at Massachusetts as a part-time assistant. ... **Jay Wolfe** selected at Capital after serving since 1986 as a graduate assistant coach at Ohio. He also has been on the staff at Vinton County High School in Ohio. ... **John Fitzpatrick** named at Fordham.

Women's basketball—**Tom Bonerbo** selected at Fairleigh Dickinson-Madison, where he also will be sports information director.

Women's basketball assistants—**Neil Cavallaro** and **Terri Stahl** appointed at New Haven. Also, **Carlos Aldave** left the staff to become an assistant at Miami (Florida). Cavallaro previously was an assistant at West Haven (Connecticut) High School and Stahl was a member of New Haven's national-championship team in 1987. ... **Amy Como** named at Gannon, where she recently completed a four-year playing career. ... **Michelle "Mimi" Walters** selected at Greensboro after two years as an assistant at Brevard College in North Carolina.

Football—**Stan Parrish** announced his resignation at Kansas State, effective at the end of the season. Parrish, who is in his third season at the school, had a 2-23-1 record there at the time of his announcement. He also has been head coach at Marshall. ... **Harper Davis** announced his retirement at Millsaps, effective at the end of the season. Davis' teams at Millsaps have won more than 130 games during his 25 years at the school. He will be succeeded by his longtime assistant, **Tommy Ransager**.

Football assistants—**Brad Hokin** named to a part-time position at Massachusetts. ... **Glenn Gottshalk** selected to coach the defensive line at Fairleigh Dickinson-Madison, which also appointed **Wayne Braxton** to the staff. Gottshalk has coached at several New Jersey high schools during the past 15 years. Braxton also will serve as the school's head men's lacrosse coach and facilities director.

Men's ice hockey—**Dave Collins** appointed at Dayton, where he was a goalie



Dick Hill named interim AD at Louisville

Maryville (Missouri) picked **Susan Gillette** for softball post

during the 1970s. He succeeds **Keith Johnson**.

Men's ice hockey assistant—**Robert Emery** selected at Plattsburgh State, succeeding **Glen Giovannucci**, who joined the staff at Army. Emery is a former Boston College defenseman who also played in the American Hockey League before coaching earlier this year in the New England College Development Hockey League.

Men's lacrosse—**Lake Forest's Wayne Braxton** named at Fairleigh Dickinson-Madison, his alma mater, where he also will assist with football and serve as facilities director.

Women's lacrosse assistant—**Wendy R. Veeder** appointed at Wells, where she also will be head women's soccer coach and an instructor of lifetime sports and fitness.

Men's soccer—**Victor Soliz** selected at York (New York). He has coached teams in international play.

Men's soccer assistant—**Ken McDonald** hired at Vanderbilt. The former Penn State standout previously coached at a St. Louis high school.

Women's soccer—**Steve Ropski** promoted from assistant at Gannon, where he is a member of the biology faculty. ... **Wendy R. Veeder** appointed at Wells, where she also will assist with women's lacrosse and serve as an instructor of lifetime sports and fitness. She is a former coach at Springfield and Boston U, who also coached a 19-and-under select team during a 1987 tour of Eastern Europe.

Women's soccer assistant—**Liza Gozley** named part-time assistant at Massachusetts.



David Johnson named tennis coach at Western Carolina

Track coach Harry Lehwald promoted at McNeese State

Women's softball—**Susan B. Gillette** appointed at Maryville (Missouri), where she also will coach women's volleyball and serve as coordinator of facilities and events. ... **Mike Corbett** named at Gannon, where he serves as director of recreation and intramurals. He is a former baseball player in the Detroit Tigers organization.

Men's and women's swimming and diving—**Hugh Robert Bofenkamp** named women's coach at Wells. He previously was an assistant at Ithaca. ... **Tim Davis** appointed men's and women's diving coach at Notre Dame. He previously was head swimming coach at Clay High School in South Bend, Indiana, and is a former Indiana assistant.

Men's and women's tennis—**Steve Huefner** returned to the post as men's coach that he previously held at Gannon from 1980 to 1984. He is assistant director of financial aid at the school and also has served a stint as head men's basketball coach. ... **Jeffrey Greene** appointed men's and women's coach at Fairleigh Dickinson-Teaneck, where he is a former assistant. The former Vanderbilt player served the past two years as head coach at Rochelle High School in New Jersey and also has been head professional at the New York Tennis Club. ... **David Johnson** named men's and women's coach at Western Carolina. He previously was head coach at Charlotte (North Carolina) Country Day School, where his men's team won a state title in 1987. He also has been head men's coach at South Carolina-Spartanburg.

Women's tennis assistant—**Maggie**

Morris selected for the part-time position at Trinity (Texas), where she played from 1980 to 1982. The former Army head coach was an assistant professional at a Phoenix country club during the past year. She also is a former assistant at Indiana.

Men's track and field—**Harry Lehwald** promoted from assistant to cohead coach at McNeese State, where he will handle day-to-day program responsibilities while **Bob Hayes** retains administrative duties in addition to devoting time to his responsibilities as athletics director. Lehwald joined the McNeese State staff four years ago after serving as a head coach at the high school level and as an assistant women's coach at Arkansas.

Women's volleyball—**Susan B. Gillette** named at Maryville (Missouri), where she also will coach women's softball and serve as facilities and events coordinator.

Wrestling—**John R. "Jack" Spates** selected at Cornell after three years as an assistant at Army, where he was runner-up in 1987 in balloting to select a national assistant coach of the year. Spates, an NCAA College Division champion at 118 pounds for Slippery Rock in 1973, also has been an assistant at Pittsburgh.

STAFF

Facilities director—**Wayne Braxton** selected at Fairleigh Dickinson-Madison, where he also will be head men's lacrosse and assistant football coach.

Facilities and events coordinator—**Susan B. Gillette** appointed at Maryville (Missouri), where she also will coach women's softball and volleyball.

Operations director—**Robert Sugar** named at Long Island-C. W. Post.

Sports information directors—**Hun-**

assistant. Scaletta will work primarily with the conference's director of basketball operations.

NOTABLES

Doug Hauff appointed vice-president of sales and marketing for the 1990 Seattle Goodwill Games Organizing Committee. He will be on leave from his post as president of a Seattle commercial real estate firm. ... Advertising sales directors **William E. Horowitz** and **Robert M. Jeremiah** promoted to the posts of vice-president for national advertising sales and vice-president for sales administration, respectively, at ESPN. The cable network also promoted affiliate-marketing executives **Keno V. Thomas** and **Alexander C. Wieder** to vice-president for affiliate marketing, Western division, and vice-president for affiliate marketing services, respectively.

DEATHS

Charles Patterson, a basketball standout at Oregon in the 1930s and the first Black to play the sport in the old Pacific Coast Conference Northern Division, died October 1 of a heart attack in Portland, Oregon. He was 74. Patterson later worked 20 years as an accountant for the Oregon Tax Commission. ... **Harvey Griffin**, former assistant athletics director and assistant football coach at Oklahoma State, died September 29 of an aortic aneurysm in Enid, Oklahoma. He was 63. Griffin was the school's offensive coordinator and quarterbacks coach from 1970 to 1973 and was assistant AD from 1970 to 1978.

Leonard D. Macaluso, an all-America football player at Colgate in 1930, died August 27 in Bayonet Point, Florida. Called "The Gentle Locomotive" by sportswriters, Macaluso played at the school from 1928 to 1930 and led the nation in scoring (145 points) during his senior season. ... **Vernon "Catfish" Smith**, the star of a 1929 Georgia upset of Yale and a member of the National Football Foundation's Hall of Fame, died September 29 in La Jolla, California. He was 80. As an end, Smith scored every point in a 15-0 victory over Yale during the dedication game for Georgia's Sanford Stadium.

CORRECTION

Due to an editor's error, the Record section of the June 22 issue of The NCAA News erroneously reported the school where Sue Daggett was named head women's volleyball coach. She is the head coach at Wellesley, not Wesleyan, where Gale Lackey continues to serve as head coach.

POLLS

Division II Men's Cross Country

The top 20 NCAA Division II men's cross country teams as listed by the Division II Cross Country Coaches Association through October 3:

1. South Dakota State, 2. Southeast Missouri State, 3. Edinboro, 4. Mankato State, 5. Cal State Los Angeles, 6. Cal Poly San Luis Obispo, 7. Southern Indiana, 8. Lowell, 9. Cal Poly Pomona, 10. UC Riverside, 11. Augustana (South Dakota), 12. Shippensburg, 13. Lewis, 14. Southern Connecticut State, 15. Indiana (Pennsylvania), 16. Keene State, 17. Cal State Hayward, 18. Troy State, 19. UC Davis, 20. Ashland.

Division II Women's Cross Country

The top 20 NCAA Division II women's cross country teams as listed by the Division II Cross Country Coaches Association through October 3:

1. Cal Poly San Luis Obispo, 2. Navy, 3. Air Force, 4. UC Davis, 5. Southeast Missouri State, 6. Indiana (Pennsylvania), 7. Army, 8. Cal State Los Angeles, 9. Ferris State, 10. Cal State Northridge, 11. Edinboro, 12. Mankato State, 13. Millersville, 14. North Dakota State, 15. South Dakota State, 16. Grand Valley State, 17. Southern Illinois-Edwardsville, 18. Springfield, 19. Cal Poly Pomona, 20. Angelo State.

Division III Men's Cross Country

The top 20 NCAA Division III men's cross country teams as selected by the Division III Cross Country Coaches Association through October 3, with points:

1. North Central, 140; 2. Wisconsin-Oshkosh, 133; 3. Rochester, 125; 4. St. Thomas (Minnesota), 111; 5. Brandeis, 110; 6. St. John's (Minnesota), 100; 7. Wisconsin-LaCrosse, 90; 8. Cortland State, 83; 9. Luther, 82; 10. Augustana (Illinois), 80; 11. Wisconsin-Stevens Point, 78; 12. St. Joseph's (Maine), 64; 13. Glassboro State, 58; 14. Calvin, 54; 15. St. Lawrence, 37; 16. Washington (Missouri), 32; 17. Carnegie-Mellon, 28; 18. Rochester Institute of Technology, 26; 19. Methodist, 17; 20. Case Reserve, 15.

Division III Women's Cross Country

The top 20 NCAA Division III women's cross country teams as selected by the Division III Cross Country Coaches Association through October 3, with points:

1. Wisconsin-Oshkosh, 140; 2. St. Thomas (Minnesota), 133; 3. Wisconsin-LaCrosse, 122; 4. St. Olaf, 116; 5. Carleton, 99; 6. (tie) Ithaca

and Cortland State, 94; 8. Southern Maine, 89; 9. Colby, 70; 10. Hope, 55; 11. (tie) Gettysburg and Williams, 53; 13. Wisconsin-Stevens Point, 52; 14. Luther, 49; 15. Rochester, 46; 16. Bates, 44; 17. Smith, 41; 18. Allegheny, 32; 19. Washington (Missouri), 29; 20. Messiah, 26.

Division I Field Hockey

The top 20 NCAA Division I field hockey teams through October 2, with records in parentheses and points:

1. Old Dominion (11-0) 120
2. North Caro. (7-1) 114
3. Massachusetts (8-1) 108
4. Northwestern (8-1-1) 102
5. Delaware (7-1) 96
6. Iowa (7-4) 89
7. Northeastern (5-1-1) 85
8. Stanford (3-1) 78
9. Boston U. (5-0-1) 72
10. Connecticut (5-2-1) 63
11. Rutgers (7-2) 60
12. Penn St. (6-2) 57
13. Pennsylvania (4-0-1) 54
14. Maryland (5-6-1) 42
15. Temple (5-2-1) 36
16. Providence (5-1-2) 25
17. Duke (5-0-2) 16
18. Northern Ill. (9-2-1) 9
19. Boston College (4-4) 8
20. West Chester (4-5) 5

Division III Field Hockey

The top 10 NCAA Division III field hockey teams through October 2, with records in parentheses and points:

1. Kutztown (11-0) 59
2. Trenton St. (11-0) 55
3. William Smith (7-3) 48
4. Bloomsburg (10-1) 42
5. Cortland St. (9-1) 36
6. Salisbury St. (7-0-1) 30
7. Elizabethtown (9-0-2) 24
8. Slippery Rock (6-2-1) 18
9. Frostburg St. (8-2) 12
10. St. Lawrence (5-3) 4 1/2

Division I-AA Football

The top 20 NCAA Division I-AA football teams through October 3, with records in parentheses and points:

1. North Texas (3-1) 80
2. Western Ill. (5-0) 76
3. Appalachian St. (3-1) 71
4. Marshall (4-0) 66
5. Nevada-Reno (4-0) 65
6. Lafayette (4-0) 62
7. Ga. Southern (3-1) 50
8. Idaho (3-1) 50
9. William & Mary (3-1) 49
10. Western Ky. (3-1) 48
11. Furman (4-1) 36
12. Massachusetts (3-1) 36
13. Montana (4-1) 34
14. Connecticut (3-1) 25
15. Boise St. (4-1) 23
16. Middle Tenn. St. (3-2) 22
17. S. F. Austin St. (4-1) 16
18. Eastern Ky. (2-2) 14
19. New Hampshire (3-1) 8
20. Northwestern La. (3-1) 8

Division II Football

The top 10 NCAA Division II football teams through October 2, with records in parentheses and points:

1. North Dak. St. (4-0) 80
2. Central Fla. (5-0) 76
3. Indiana (Pa.) (4-0) 72
4. Winston-Salem (5-0) 67
5. Texas A&I (3-1) 65
6. Jacksonville St. (5-0) 58
7. Millersville (4-0) 56
8. Butler (4-1) 53
9. Augustana (S.D.) (4-1) 47
10. Fast Tex. St. (4-1) 43
11. West Chester (3-1) 41
12. Cal St. Northridge (4-1) 37
13. Albany St. (Ga.) (4-0) 31
14. North Dak. (4-1) 29
15. Bowie St. (5-0) 23
16. Tenn.-Martin (4-1) 19
17. St. Cloud St. (4-1) 16
18. Bloomsburg (4-1) 12
19. Nebraska-Omaha (4-1) 6
20. Northern Mich. (3-2) 4

Division III Football

The top six NCAA Division III football teams in each region through October 2, with record:

East: 1. Ithaca, 4-0; 2. Fordham, 4-0; 3. Hofstra, 4-0; 4. Plymouth State, 4-0; 5. Wagner, 3-1; 6. (tie) Coast Guard, 3-1, and Montclair State, 3-1.

North: 1. Augustana (Illinois), 3-0; 2. Wabash, 3-0; 3. Dayton, 3-1; 4. Baldwin-Wallace, 3-1; 5. Adrian, 3-1; 6. Wittenberg, 3-1.

South: 1. Ferrum, 5-0; 2. Carnegie-Mellon, 4-0; 3. Moravian, 4-0; 4. Iycoming, 4-0; 5. Mercyhurst, 4-0; 6. (tie) Rhodes, 4-0, and Dickinson, 4-0.

West: 1. Concordia-Moorhead, 4-0; 2. Wisconsin-Whitewater, 3-1; 3. Central (Iowa), 3-0; 4. Hamline, 4-0; 5. Occidental, 2-1; 6. St. Norbert, 3-1.

Division I Men's Golf

The preseason top 20 NCAA Division I men's golf teams as selected by the Golf Coaches Association of America, with points:

1. Oklahoma State, 161; 2. UTEP, 156; 3. Arizona State, 141; 4. Wake Forest, 129; 5. Florida, 117; 6. (tie) Oklahoma and Texas, 114; 8. UCI-A, 109; 9. Arizona, 106; 10. Georgia, 102; 11. Clemson, 95; 12. Georgia Tech, 94; 13. Arkansas, 78; 14. Southern California, 72; 15. Louisiana State, 66; 16. South Carolina, 65; 17. Ohio State, 34; 18. Tennessee, 23; 19. North Carolina State, 21; 20. Washington, 20.

See Record, page 15

Legislation and Interpretations Committee minutes

Acting for the NCAA Council, the Legislation and Interpretations Committee:

Waivers

1. Transfer student "(4-2-4)" whose first four-year institution did not sponsor intercollegiate competition. Reviewed a previous committee decision (reference: Item No. 4 of the minutes of the committee's May 5, 1988, conference) and confirmed that a student who attended a four-year institution that never sponsored the student-athlete's sport, subsequently enrolled in and participated at a two-year college, and then transferred to another four-year institution must be considered a "4-2-4" rather than a pure two-year college transfer; agreed that the provisions of NCAA Bylaw 5-1(k)-(l) would apply in this situation and that no authority exists in the current legislation for the committee to grant relief under these circumstances.

Transfer eligibility

2. Determination of status of "4-2-4" transfer. Confirmed that the waiver provisions of Bylaw 5-1(k)-(l)(ii) would not be applicable to a student-athlete who attended a four-year institution, subsequently enrolled in a two-year college and, during his two-year college enrollment, concurrently en-



Conference No. 15
September 15, 1988

rolled as a regular student at a second four-year institution, then attended a second two-year college, and now has transferred back to the first four-year institution, noting that this regulation is intended to apply only to the four-year institution attended immediately before the two-year college from which

the student makes the final transfer.

Tryouts/camps and clinics

3. Restriction on participation of senior prospects. Reviewed a situation in which an outside organization wishes to utilize a member institution's facilities to conduct a clinic that involves senior prospective student-athletes; concluded that because the clinic is scheduled to occur on the institution's campus, the provisions of Bylaw 1-7 would relate specifically to this situation and would prohibit the involvement of senior prospective student-athletes; determined that the general waiver provisions of Bylaw 1-6(d)-(5) would not set aside the application of Bylaw 1-7 under these circumstances.

Publicity

4. High school coach as color commentator for a member institution's radio broadcast. Agreed that the provisions of Bylaw 1-4(d) would not preclude a radio station from hiring a high school coach who would

provide color commentary on a member institution's football radio broadcasts, provided the employment of this individual is the sole responsibility of the radio station and the member institution's coach does not participate in pregame or postgame interviews; referred this item to the Council for further review and consideration from a deregulation standpoint of the provisions of Bylaw 1-4(d) and Case No. 201.

Publicity

5. Coach's weekly radio show. Reviewed a previous committee interpretation (reference: Item No. 3 of the minutes of the committee's June 16, 1988, conference) and the provisions of Bylaw 1-4(d) and determined that:

a. Bylaw 1-4(d) would preclude a member institution's coach from participating in an interview of a high school basketball coach even if no athlete from the high school is being recruited by the institution (either in the same sport or in a different sport).

b. Bylaw 1-4(d) would preclude a member

institution's coach from interviewing a high school coach even if the high school coach is not involved in any sport in which a prospect is being recruited by the member institution.

c. The provisions of Bylaw 1-4(d) would not preclude a member institution's coach from participating in a radio sports program in which the first half of the show is devoted to interviews with high school coaches and the second half of the show is devoted to interviews with college coaches; however, a member institution's coach would not be permitted to discuss high school teams and games during the second half of the show.

Professional employment

6. Part-time employment by a professional organization. Confirmed that the provisions of NCAA Constitution 3-6(d) and Case Nos. 150 and 152 would preclude a member institution's coach who has taken a temporary unpaid leave of absence from the institution from serving as a pitching coach for a professional baseball organization (minor-league franchise).

Blacks

Continued from page 1

hold full-time positions. Thus, the only identifiable pool of talent from which to draw minority applicants within collegiate athletics administration is the student-athletes, the survey concluded.

The survey also attempted to assess minority representation in the coaching ranks.

It found that Blacks hold 4.6 percent of the full-time men's head-coaching positions at NCAA member institutions and 4.8 percent of full-time head-coaching positions of women's teams. Again, in this category, Division I-A, which is the division with the most black athletes, has 3.9 percent black men's head coaches, and 4.7 percent of women's full-time head coaches are black.

There is some hope that this number will increase in the future, however, as a much higher percentage of full-time assistant coaches

are black, the subcommittee's report on the survey said. Overall, 15.2 percent of men's full-time assistant coaches are black and 9.5 percent of women's full-time assistants are black. Those percentages indicate that a pool of experienced talent is being developed.

It is evident from data on black coaches that Blacks are represented in only a few sports, the subcommittee's report stated. The highest percentages are in men's and women's basketball, with football and men's and women's track being other sports where there is a relatively high concentration of black coaches.

In many sports, however, it is clear that Blacks almost are nonexistent, both as coaches and as athletes. It is hard to identify reasons for this occurrence, but it is a problem that probably should be addressed, the Presidents Commission was told.

The subcommittee's report said, "The picture presented by the survey is bleak, indicating the need for action by member institutions and conferences to address this absence of demonstrated opportunity."

"Actions to date by the NCAA will address the situation in part, and over time; but more is required by the member institutions and conferences."

"The NCAA Minority Enhancement Program provides opportunities for minorities and women in the

See Blacks, page 13

Kentucky State joins conference

Kentucky State University has become the 10th member of the Great Lakes Valley Conference, it has been announced.

Kentucky State joins Ashland College; Bellarmine College; Indiana University-Purdue University, Fort Wayne; Northern Kentucky University; Lewis University; Kentucky Wesleyan College; St. Joseph's College (Indiana); the University of Indianapolis, and the University of Southern Indiana in the conference.

"This is the 10th year for our conference, and we're happy that Kentucky State is our 10th member school," Commissioner Richard F. Scharf said.

According to Scharf, Kentucky State will begin conference championship play during the 1989-90 school year.

The Thorobreds will compete in conference competition in men's and women's basketball, men's baseball, women's fast-pitch softball, men's cross country and golf, and men's and women's tennis.

There is no conference competition in football.

Kent suspends ice hockey play for the season

The Kent State University men's ice hockey program has been suspended by President Michael Schwartz for one year after a hazing incident that resulted in misdemeanor charges being brought against 12 of the team's members.

Schwartz said September 22 that he decided to cancel the season over the incident, which sent one player to the hospital.

Kent State University Police Chief John Peach said seven players took five freshman team members to the basement of a house off campus September 16, shaved their heads in Mohawk-style haircuts, and forced them to drink a mixture of rum and beer. One freshman had a negative reaction to the mixture and was hospitalized. The five freshmen were charged with underage consumption of alcohol, a first-degree misdemeanor.

Two team members were charged with supplying alcohol to minors, and five team members were charged with violating Ohio's state hazing law.

Schwartz said, "The nature and character of this university are ill-served by conduct that does not reflect our values of belief in the rule of law, civility and decency, as well as respect and dignity for all persons."

"When the culture of a sport comes into conflict with the culture of the university that supports the sport, then the sport and its culture cannot persist."

Kent competes in the four-member American Collegiate Hockey Association.

Percentage of Blacks working in departments of athletics: full-time personnel

Position	Division I-A M	Division I-A W	Division I-AA M	Division I-AA W	Division I-AAA M	Division I-AAA W	Division II M	Division II W	Division III M	Division III W	Overall M	Overall W
Directors of Athletics	1.3	0.0	5.7	0.0	1.9	0.0	7.1	0.0	1.5	0.7	3.4	0.2
Assoc. Directors of Athletics	4.3	0.0	0.0	0.0	0.0	0.0	13.8	4.6	0.0	0.0	3.1	0.4
Asst. Directors of Athletics	5.8	0.0	4.4	1.7	4.8	3.2	9.2	4.6	3.0	0.0	4.7	1.0
Primary Women Administrators	1.4	0.0	1.4	3.5	0.0	0.0	0.0	6.6	0.0	0.0	0.6	1.4
Academic Counselors	11.5	6.8	14.0	6.2	17.1	7.1	24.3	20.3	9.3	0.0	13.5	7.5
Administrative Assistants	2.5	3.7	0.0	9.4	2.8	5.6	3.4	16.8	7.3	0.0	2.8	5.6
Business Managers	1.5	1.5	11.9	0.0	3.4	13.8	4.2	4.2	0.0	0.0	3.7	3.6
Equipment Managers	6.7	1.9	13.0	0.0	7.8	0.0	11.1	2.6	7.4	2.0	8.8	1.5
Sports Information Directors	1.7	0.3	5.4	2.0	1.5	1.5	3.8	0.0	1.8	0.0	2.6	0.6
Strength Coaches	2.1	0.0	11.4	0.0	22.2	0.0	39.7	0.0	0.0	0.0	8.1	0.0
Ticket Managers	0.0	1.0	4.0	1.6	0.0	3.3	5.1	10.2	0.0	12.5	1.5	2.9
Trainers	1.8	0.8	2.6	1.7	1.1	0.0	0.9	0.0	0.7	0.0	1.5	0.6
Other (please specify)	5.0	0.0	5.2	0.0	5.5	0.0	0.0	4.7	5.6	0.0	4.6	0.5
Totals	3.9	1.5	5.8	1.9	4.0	2.3	6.4	3.1	2.7	0.6	4.4	1.7

Percentage of Blacks working in departments of athletics: full-time head coaches—men's teams

Sport	Division I-A M	Division I-A W	Division I-AA M	Division I-AA W	Division I-AAA M	Division I-AAA W	Division II M	Division II W	Division III M	Division III W	Overall M	Overall W
Baseball	0.0	0.0	3.1	0.0	0.0	0.0	4.9	0.0	0.0	0.0	1.2	0.0
Basketball	12.2	0.0	16.7	0.0	13.3	0.0	6.3	0.0	5.9	0.0	9.8	0.0
Cross Country	3.2	1.6	7.7	0.0	5.6	0.0	6.0	0.0	1.6	0.0	4.2	0.3
Fencing	0.0	0.0	0.0	0.0	—*	—	0.0	0.0	0.0	0.0	0.0	0.0
Football	4.3	0.0	6.1	0.0	0.0	0.0	11.9	0.0	2.4	0.0	5.6	0.0
Golf	0.0	0.0	0.0	0.0	0.0	0.0	4.6	0.0	0.0	0.0	0.6	0.0
Gymnastics	0.0	0.0	0.0	0.0	0.0	0.0	0.0	0.0	0.0	0.0	0.0	0.0
Ice Hockey	0.0	0.0	0.0	0.0	0.0	0.0	0.0	0.0	0.0	0.0	0.0	0.0
Lacrosse	0.0	0.0	0.0	0.0	0.0	0.0	0.0	0.0	3.2	0.0	1.9	0.0
Rifle	0.0	0.0	0.0	0.0	0.0	0.0	25.0	0.0	—	—	6.7	0.0
Skiing	0.0	0.0	0.0	0.0	0.0	0.0	0.0	0.0	0.0	0.0	0.0	0.0
Soccer	3.8	0.0	5.4	0.0	4.1	0.0	0.0	0.0	3.3	0.0	3.4	0.0
Swimming	0.0	0.0	0.0	0.0	0.0	0.0	0.0	0.0	1.8	0.0	0.7	0.0
Tennis	2.2	0.0	0.0	0.0	0.0	0.0	14.5	2.4	5.5	0.0	4.3	0.3
Track	6.5	0.9	6.1	0.0	0.0	0.0	10.2	0.0	6.3	0.0	7.6	0.2
Volleyball	0.0	0.0	—	—	0.0	0.0	0.0	0.0	0.0	0.0	0.0	0.0
Water Polo	0.0	0.0	0.0	0.0	0.0	0.0	0.0	0.0	0.0	0.0	0.0	0.0
Wrestling	3.4	0.0	8.3	0.0	0.0	0.0	9.1	0.0	2.7	0.0	4.7	0.0
Overall Totals	3.7	0.2	6.3	0.0	5.0	0.0	7.0	0.1	2.9	0.0	4.5	0.1

* There were no individuals reported in categories with this designation.

Percentage of Blacks working in departments of athletics: full-time assistant coaches—men's teams

Sport	Division I-A M	Division I-A W	Division I-AA M	Division I-AA W	Division I-AAA M	Division I-AAA W	Division II M	Division II W	Division III M	Division III W	Overall M	Overall W
Baseball	1.5	0.0	0.0	0.0	0.0	0.0	0.0	0.0	6.7	0.0	1.9	0.0
Basketball	31.9	0.7	27.5	0.0	29.0	0.0	28.6	0.0	26.3	0.0	29.4	0.2
Cross Country	18.2	0.0	19.0	0.0	0.0	0.0	0.0	0.0	50.0	0.0	16.9	0.0
Fencing	11.1	0.0	0.0	0.0	—*	—	—	—	—	—	10.0	0.0
Football	14.3	0.3	14.9	0.0	0.0	0.0	15.1	0.0	6.6	0.0	13.3	0.2
Golf	0.0	0.0	0.0	0.0	—	—	—	—	0.0	0.0	0.0	0.0
Gymnastics	0.0	0.0	—	—	—	—	—	—	—	—	0.0	0.0
Ice Hockey	0.0	0.0	0.0	0.0	0.0	0.0	0.0	0.0	0.0	0.0	0.0	0.0
Lacrosse	0.0	0.0	0.0	0.0	—	—	0.0	0.0	0.0	0.0	0.0	0.0
Rifle	—	—	—	—	—	—	—	—	—	—	—	—
Skiing	0.0	0.0	—	—	0.0	0.0	—	—	0.0	0.0	0.0	0.0
Soccer	0.0	0.0	0.0	0.0	0.0	0.0	0.0	0.0	0.0	6.8	0.0	3.3
Swimming	0.0	0.0	0.0	0.0	0.0	0.0	0.0	0.0	0.0	0.0	0.0	0.0
Tennis	0.0	0.0	0.0	0.0	0.0	0.0	0.0	0.0	0.0	0.0	0.0	0.0
Track	18.0	0.0	14.4	0.0	0.0	14.3	20.0	0.0	4.6	0.0	13.3	1.0
Volleyball	0.0	0.0	0.0	0.0	—	—	0.0	0.0	—	—	0.0	0.0
Water Polo	—	—	—	—	—	—	0.0	0.0	0.0	0.0	0.0	0.0
Wrestling	0.0	0.0	0.0	0.0	—	—	0.0	0.0	0.0	0.0	0.0	0.0
Overall Totals	15.0	0.3	16.6	0.0	18.4	0.7	17.0	0.0	8.2	0.4	15.0	0.2

* There were no individuals reported in categories with this designation.

Blacks

Continued from page 12

form of scholarships and internships, and it is hoped that this effort will produce a pool of highly qualified people in the area of sports administration within a few years. More programs of this type are needed, however, to truly address the problem."

Concerning the tables accompanying the report, the subcommittee

said that in certain sports, the total number of coaches named was very small; so some of the percentages may be somewhat misleading.

The data tables that show the number of coaches in each division are helpful in judging the pool from which these percentages are taken; however, this is not the case with football or men's and women's basketball. Also, when percentages are reported for black men and women

in all tables except those referring to student-athletes, they are percentages of the total number of people in these positions. Thus, to determine the total percentage of Blacks occupying these positions, it is possible to simply add the percentage of men and percentage of women.

The survey data reflect responses from 74 Division I-A institutions, 51 institutions from Division I-AA and 54 I-AAA schools.

Percentage of Blacks working in departments of athletics:
full-time head coaches—
women's teams

Sport	Division I-A		Division I-AA		Division I-AAA		Division II		Division III		Overall	
	M	W	M	W	M	W	M	W	M	W	M	W
Basketball	4.3	2.8	4.2	6.3	8.4	8.4	5.4	5.4	2.2	0.0	4.5	3.9
Cross Country	4.3	6.9	11.9	3.3	0.0	0.0	3.6	0.0	0.0	1.9	3.5	2.6
Fencing	20.0	0.0	0.0	0.0	—*	—	0.0	0.0	0.0	0.0	7.8	0.0
Field Hockey	0.0	0.0	0.0	0.0	0.0	0.0	0.0	0.0	0.0	0.0	0.0	0.0
Golf	0.0	0.0	0.0	0.0	0.0	0.0	0.0	0.0	0.0	0.0	0.0	0.0
Gymnastics	0.0	0.0	0.0	0.0	0.0	0.0	0.0	0.0	0.0	0.0	0.0	0.0
Lacrosse	0.0	0.0	0.0	0.0	0.0	0.0	0.0	0.0	0.0	0.0	0.0	0.0
Rifle	0.0	0.0	—	—	0.0	0.0	—	—	—	—	0.0	0.0
Skiing	0.0	0.0	—	—	0.0	0.0	0.0	0.0	0.0	0.0	0.0	0.0
Soccer	0.0	0.0	0.0	0.0	0.0	0.0	0.0	0.0	0.0	0.0	0.0	0.0
Softball	0.0	0.0	0.0	0.0	0.0	0.0	8.0	1.3	0.0	1.8	1.9	1.0
Swimming	0.0	0.0	0.0	0.0	0.0	0.0	0.0	0.0	0.0	0.0	0.0	0.0
Tennis	2.4	0.0	4.0	0.0	0.0	0.0	4.1	2.0	1.7	1.7	2.3	0.9
Track	10.7	9.0	14.6	4.3	29.5	9.8	15.1	0.0	3.6	1.8	11.0	4.2
Volleyball	0.0	0.0	3.0	0.0	0.0	2.0	2.1	5.2	0.0	2.7	0.8	2.1
Overall Totals	2.7	2.0	4.9	2.2	4.1	3.2	5.0	2.5	0.9	1.0	2.9	1.9

* There were no individuals reported in categories with this designation.

Percentage of Blacks working in departments of athletics:
full-time assistant coaches—
women's teams

Sport	Division I-A		Division I-AA		Division I-AAA		Division II		Division III		Overall	
	M	W	M	W	M	W	M	W	M	W	M	W
Basketball	2.2	12.0	4.8	4.8	6.5	6.5	0.0	8.0	0.0	10.9	2.9	9.1
Cross Country	47.1	0.0	0.0	0.0	0.0	0.0	0.0	0.0	25.0	0.0	17.7	0.0
Fencing	—*	—	0.0	0.0	—	—	—	—	—	—	0.0	0.0
Field Hockey	0.0	0.0	0.0	0.0	0.0	50.0	0.0	0.0	0.0	0.0	0.0	8.0
Golf	0.0	0.0	—	—	—	—	—	—	—	—	0.0	0.0
Gymnastics	0.0	0.0	0.0	0.0	0.0	0.0	0.0	0.0	0.0	0.0	0.0	0.0
Lacrosse	0.0	0.0	0.0	0.0	0.0	50.0	—	—	0.0	0.0	0.0	9.2
Rifle	—	—	—	—	—	—	—	—	—	—	—	—
Skiing	0.0	0.0	—	—	—	—	—	—	0.0	0.0	0.0	0.0
Soccer	0.0	0.0	0.0	0.0	—	—	0.0	0.0	0.0	0.0	0.0	0.0
Softball	0.0	0.0	0.0	0.0	0.0	0.0	100.0	0.0	0.0	0.0	5.0	0.0
Swimming	0.0	0.0	0.0	0.0	0.0	0.0	0.0	0.0	0.0	0.0	0.0	0.0
Tennis	0.0	0.0	0.0	0.0	0.0	0.0	—	—	0.0	0.0	0.0	0.0
Track	21.1	0.0	3.2	0.0	0.0	30.8	25.0	0.0	7.7	0.0	13.3	1.6
Volleyball	0.0	3.3	0.0	0.0	0.0	0.0	0.0	0.0	0.0	0.0	0.0	2.1
Overall Totals	5.8	5.8	2.9	2.3	4.0	10.0	5.0	5.0	2.7	2.7	4.5	5.0

* There were no individuals reported in categories with this designation.

Percentage of Blacks participating in intercollegiate athletics:
men's teams

Sport	Division I-A	Division I-AA	Division I-AAA	Division II	Division III	Overall
Baseball	3.7	8.9	4.7	5.3	2.6	4.5
Basketball	59.8	55.7	59.5	45.6	17.5	39.9
Cross Country	4.9	10.6	7.6	6.7	2.4	5.6
Fencing	1.7	5.1	18.4	0.0	2.9	3.8
Football	36.3	32.1	11.6	27.5	7.2	24.7
Golf	0.5	2.3	0.4	4.3	0.0	1.3
Gymnastics	3.3	6.3	2.0	5.9	4.5	3.8
Ice Hockey	0.0	0.5	0.6	0.2	0.7	0.4
Lacrosse	2.7	0.9	1.4	1.9	2.0	1.8
Rifle	0.0	2.4	11.3	7.8	1.6	5.4
Skiing	0.0	0.0	0.0	0.0	0.0	0.0
Soccer	5.5	2.9	5.7	5.4	4.4	4.8
Swimming	1.8	0.2	0.6	1.1	0.8	1.0
Tennis	2.2	8.0	3.7	6.9	1.5	3.8
Track	24.6	26.1	25.0	20.3	9.6	19.6
Volleyball	2.9	0.0	0.0	12.9	3.6	5.6
Water Polo	0.6	0.0	0.0	2.1	0.0	0.4
Wrestling	4.5	8.2	8.9	7.3	4.0	5.8
Total	21.4	21.0	11.9	16.7	5.7	14.4

Percentage of Blacks participating in intercollegiate athletics:
women's teams

Sport	Division I-A	Division I-AA	Division I-AAA	Division II	Division III	Overall
Basketball	37.1	30.5	29.0	20.0	9.5	21.9
Cross Country	7.3	9.4	8.3	6.5	3.1	6.3
Fencing	1.5	4.3	15.4	0.0	8.8	5.9
Field Hockey	0.3	1.5	0.5	1.1	1.3	1.1
Golf	0.3	0.0	0.0	0.0	0.0	0.1
Gymnastics	3.3	2.1	1.4	0.6	1.8	2.2
Lacrosse	3.3	0.7	3.1	0.7	0.9	1.1
Rifle	0.0	0.0	0.0	0.0	0.0	0.0
Skiing	0.0	0.0	0.0	0.0	0.0	0.0
Soccer	0.0	2.4	1.2	0.8	1.6	1.4
Softball	2.1	6.1	2.7	8.2	2.4	4.4
Swimming	0.4	0.2	0.4	0.6	0.3	0.4
Tennis	1.2	4.5	4.5	2.7	0.5	2.1
Track	25.2	20.8	29.0	22.6	8.6	19.7
Volleyball	7.0	12.7	7.5	11.0	3.5	7.4
Total	11.3	11.3	9.7	10.2	3.4	8.1

Committee Notices

Member institutions are invited to submit nominations to fill interim vacancies on NCAA committees. Nominations to fill the following vacancy must be received by Fannie B. Vaughan, executive assistant, in the NCAA office no later than November 7, 1988.

Men's and Women's Swimming: Replacement for Ray A. Bussard, retired from the University of Tennessee, Knoxville, effective September 1, 1988. Appointee must be a Division I representative of men's swimming.

COMMITTEE CHANGES

Council: Change name of Sarah E. Hill to Sarah E. Yates. Jenepher P. Shillingford, Bryn Mawr College, appointed to replace Charles J. Gordon, Rhodes College.

Presidents Commission: Thomas K. Hearn, president, Wake Forest University, appointed to replace John B. Slaughter, representing the Atlantic Coast Conference; Slaughter's replacement as Commission chair is Martin A. Massengale, chancellor, University of Nebraska, Lincoln. Marshall M. Criser, president, University of Florida, appointed to replace Joab Thomas, representing the Southeastern Conference. Gregory M. St. L. O'Brien, University of New Orleans, appointed to replace Walter B. Waetjen, Cleveland State University. Stephen J. Trachtenberg, George Washington University, appointed to replace Noah N. Langdale Jr., Georgia State University.

Council-Appointed Committees

Communications Committee: Roger O. Valdiserri, University of Notre Dame, appointed chair, replacing John D. Swofford, University of North Carolina, Chapel Hill, who remains a member of the committee.

Professional Sports Liaison Committee: Ann Marie Lawler, University of Florida, appointed to replace Jeanne Taylor, University of Mississippi.

Recruiting Committee: Kenny Turner, student-athlete, University of Virginia, appointed to replace Keith Balderston, University of Oregon.

Special Events Committee: James L. Jones, Ohio State University, appointed to replace George S. King Jr., Purdue University; King's replacement as committee chair is John D. Swofford, University of North Carolina, Chapel Hill. Cynthia B. Mazda, previously at University of Hawaii, has accepted position as assistant commissioner at Atlantic 10 Conference.

Committee on Women's Athletics: Richard H. Perry, University of California, Riverside, appointed to replace Christopher Dittman, Continental Divide Conference.

Sports Committees

Men's Basketball Rules Committee: Gary Colson, previously at University of New Mexico, appointed assistant men's basketball coach at the University of California, Berkeley.

Women's Basketball Rules Committee: Louise Albrecht, Southern Connecticut State University, reelected for term ending September 1, 1991.

Division I Women's Basketball Committee: Judith R. Holland, University of California, Los Angeles, appointed chair to replace Nora Lynn Finch, North Carolina State University. Change name of Sarah E. Hill to Sarah E. Yates. Change name of Susie Pembroke-Jones to Susie Jones; also, Jones is now assistant director of athletics at George Washington University.

Division II Women's Basketball Committee: Susan W. Lubking, West Chester University, appointed to replace Kathy Richey-Walton, Slippery Rock University. Pamela Martin, Humboldt State University, appointed to replace Nancy Rowe, New Hampshire College.

Division III Women's Basketball Committee: Ishmell H. Edwards, Rust College, appointed to replace Rose Price, North Central College.

Division I Women's Volleyball Committee: Chris Voelz, University of Oregon, appointed director of women's athletics at University of Minnesota, Twin Cities.

Division II Women's Volleyball Committee: Deborah Chin, University of New Haven, appointed chair to replace Jane Meier, Northern Kentucky University, who remains a member of the committee.

Division III Women's Volleyball Committee: Lawrence R. Bock, Juniata College, reelected for term ending September 1, 1991.

Special Committees and Subcommittees

Special Committee on Grants to Undergraduates Who Have Exhausted Institutional Financial Aid Opportunity: Leo W. Munson, Texas Christian University, appointed to replace Lee McElroy, no longer at University of Houston.

Council Subcommittee to Review Minority Opportunities in Intercollegiate Athletics: Change name of Sarah E. Hill to Sarah E. Yates.

NCAA Representatives to Other Organizations

American Association of Collegiate Registrars and Admissions Officers: Sarah N. McNabb, Indiana University, Bloomington, appointed to replace Clifford F. Sjogren, University of Michigan.

NCAA-NAIA Joint Committee: Bruce McLeod, University of Minnesota, Duluth, appointed to replace Hal Lane, Howard Payne University. Nancy Page, University of Wisconsin, Stevens Point, appointed to replace Susan A. Carberry, no longer at an NCAA member institution.

United States Gymnastics Federation: Fred Turoff, Temple University, appointed to replace Gail H. Davis, Rhode Island College, effective December 1, 1988.

United States Volleyball Association Board of Directors: Robert L. Newcomb, University of California, Irvine, appointed to replace G. Thomas Tait, Pennsylvania State University.

United States Volleyball Association Delegate Assembly: Michael L. Haley, University of Texas, Austin, appointed to replace Robert J. Yoder, University of Southern California.

With 19 winning seasons, coach still seen as teacher first

As Millsaps College football mentor Harper Davis prepares for retirement after a quarter-century of coaching at the small Mississippi school, admirers ranging from his school's president to former players to sportswriters are lauding an inspirationally successful career.

As enjoyable as such attention may be, however, Davis hasn't forgotten that he still has a job to do this season.

"Although I've announced I'm retiring at the end of this year, that doesn't mean that I'm going to let up on this year," he told Millsaps' sports information director, Suresh Chawla, early in the season. "I expect only the best things out of these kids I have, and you'd better believe they're going to perform at more than 100 percent for me."

Like a long line of teams that preceded it, Davis' 25th Millsaps squad quickly rewarded its coach with the effort he demands. Millsaps won its first three games in come-from-behind fashion and currently appears to be headed for a 20th winning season under the coach.

The coach's admirers say Davis is the ideal Division III coach, for whom a love of teaching and concern for his students is more important than the win-at-all-costs attitude that pervades much of athletics.

But Davis is a winner, too.

Entering this season, Davis' 131 victories at Millsaps ranked 11th among all Division III coaches. During the 1980s alone, his record of 58-14-1 entering this season gave him the eighth best winning percentage in Division III at .801.



Harper Davis

Successful player, too

He has also had a taste of success at the major-college level, where he was a four-time all-Southeastern Conference halfback in the late 1940s before playing two seasons in the National Football League. Later, he returned to Mississippi State as an assistant coach but eventually found himself selling insurance and then coaching high school football before the call came from Millsaps.

"The job offer came at a time when my children needed stability," Davis told Jackson (Mississippi) Clarion-Ledger and Daily News writer Lee Baker in a recent interview.

"I'd seen all phases of football, from the big time to high school. This was Division III football, but a stable job with tenure and a good retirement program. The college has been good to me and (I hope) I've been good for the college."

Davis took a team that was 0-8 his first season—1964—and nursed it to a winning mark only two seasons later. In 1975, the Majors were invited to the Division III Football Championship; and in 1980, Mill-

saps compiled a 9-0 mark, just to mention two highlights of Davis' career.

Looking back, however, the coach takes more satisfaction from "seeing a guy you'd coached make good," as he told Baker. "Not necessarily get rich, but become a solid citizen—a good, Christian person. That's what it's all about—turning out good people."

Those former players are appreciative of the concern that Davis has shown for them through the years. Many of them recently attended a reception and dinner held for Davis following Millsaps' season-opening, come-from-behind victory over Rose-Hulman.

Saying goodbye

Likewise, alumni of the school are looking forward to showing their appreciation for the coach when he makes his last home-field appearance during Millsaps' October 22 homecoming game against Rhodes.

"With Harper Davis' retirement as head football coach at the end of this season, much more will be remembered of him than a winning football tradition," wrote Millsaps president George M. Harmon in the latest issue of Major Notes, a publication of the college.

"With the too often well-deserved criticism of college athletics, with the pressure to win at any cost and with the negative values that are transmitted to young people by some coaches and overzealous alumni, it is refreshing that in the milieu of athletics there is Millsaps College and other colleges like ours that value athletics competition but

that place it in the perspective of an academic setting," Harmon said. "Harper Davis...has helped maintain this perspective; and for that, we owe him our gratitude."

Davis' retirement becomes effective in August.

"It's not going to be easy to get used to not being on that sideline

week after week, encouraging those kids to work harder or do their best because they're representing Millsaps," he told Chawla.

"I've seen so many kids come and go through our program that I'm so proud of. It's been pretty easy, considering Millsaps gets students who are always good ones."

FINANCIAL SUMMARIES

1987 Division II Football Championship

	1987	1986
Receipts.....	\$ 531,483.00	\$ 313,642.10
Disbursements.....	251,546.80	172,096.63
	279,936.20	141,545.47
Guarantees received from host institutions.....	8,395.00	37,287.25
Expenses absorbed by sponsoring agency.....	1,310.65	
	289,641.76	178,832.72
Transportation expense.....	(258,841.25)	(154,866.82)
Per diem allowance.....	(65,550.00)	(72,675.00)
Deficit.....	(34,749.49)	(48,709.10)
Charged to division championships reserve.....	34,749.49	48,709.10

1988 Division III Women's Tennis Championships

	1988	1987
Receipts.....	\$ 1,312.61	\$ 253.69
Disbursements.....	22,456.34	17,396.09
	(21,143.73)	(17,160.40)
Expenses absorbed by host institution.....	194.54	0.00
	(20,949.19)	(17,160.40)
Transportation expense.....	(30,046.27)	(28,186.12)
Deficit.....	(50,995.46)	(45,346.52)
Charged to general operating budget.....	20,949.19	17,160.40
Charged to division championships reserve.....	30,046.27	28,186.12
	50,995.46	45,346.52

1988 Division II Men's Golf Championships

	1988	1987
Receipts.....	\$ 188.88	\$ 0.00
Disbursements.....	18,091.29	16,226.82
	(17,902.41)	(16,226.82)
Expenses absorbed by host institution.....	2,220.00	1,010.00
	(15,682.41)	(15,216.82)
Transportation expense.....	(40,894.30)	(32,832.50)
Deficit.....	(56,576.71)	(48,049.32)
Charged to general operating budget.....	15,682.41	15,216.82
Charged to division championships reserve.....	40,894.30	32,832.50
	56,576.71	48,049.32

The Market

Readers of The NCAA News are invited to use The Market to locate candidates for positions open at their institutions, to advertise open dates in their playing schedules or for other appropriate purposes.

Rates are 55 cents per word for general classified advertising (agate type) and \$27 per column inch for display classified advertising. Orders and copy are due by noon five days prior to the date of publication for general classified space and by noon seven days prior to the date of publication for display classified advertising. Orders and copy will be accepted by telephone.

For more information or to place an ad, call 913/384-3220 or write NCAA Publishing, P.O. Box 1906, Mission, Kansas 66201.

Positions Available

Associate A.D.

Associate Athletic Director. California State University, Dominguez Hills, is seeking applicants for the position of Associate Athletic Director. This person will assist in executive direction of a NCAA Division II intercollegiate athletic program. Major responsibilities include development and management of athletic fund-raising, marketing, promotions and activities. Will also assist with home game and facilities management functions. Qualifications: Bachelor's degree in business, athletics, communications or related field. Master's degree preferred. Minimum of three years in athletic administration with demonstrated skills in required areas. Application Deadline: October 17, 1988. Submit letter of application, resume and three current letters of recommendation to: Personnel Department, California State University, Dominguez Hills, 1000 East Victoria Street, Carson, California 90747. An Equal Opportunity/Affirmative Action, Section 504, Title IX Employer.

Athletics Trainer

Athletic Trainer/Instructor of Physical Education. Qualifications: Master's degree and N.A.T.A. Certification Required. R.P.T. Desired. Salary: Commensurate with qualifications and experience; position available January 1989. Responsibilities: Provide first aid, injury prevention, evaluation, treatment, and rehabilitation for student athletes. Coordinate a student trainer program and help with the implementation of a sports medicine curriculum in the PE Dept. Recruit, train, and assign student trainers with coverage of the in-season sports(s). Supervise all training room equipment, supplies, and student trainers. Suggest, develop and implement new programs (e.g., handbook) in sports medicine operation as well as health education. Be willing to assist in any teaching and/or departmental assignment. Application/Deadline:

is 28 October 1988. Send letter of application, resume, and three (3) letters of recommendation to either: Dr. Ray Pennington, Athletic Director, Pembroke State University, Pembroke, NC 28372 or Dr. Tommy Thompson, Chairman, PE Dept., Pembroke State University, Pembroke, NC 28372. Pembroke State University is an Equal Opportunity Employer and actively solicits applications from minorities and women.

Athletic Trainer/Clinical Instructor: Mount Union College is seeking an athletic trainer/clinical instructor in the NATA Approved Athletic Training Education Program. This full-time, ten-month faculty position includes teaching within the Sports Medicine and/or Physical Education majors, plus daily clinical supervision of student athletic trainers. Qualifications: NATA certification and at least a Master's in a Sports Medicine related field with at least one year of full-time experience, including the supervision of student athletic trainers. Candidates must have a strong commitment to the liberal arts environment and athletic training education. Compensation and academic rank are competitive, based on experience and qualifications. MUC is an AA/EEO. Send letter of application, resume and names, addresses and phone numbers of three references to: Daniel Gorman, Chair, Department of Health, Physical Education, Sports Management and Sports Medicine, Mount Union College, Alliance, Ohio 44601. Application Deadline: October 24, 1988.

Athletic Trainer: The University of North Carolina at Asheville invites applications for the position of Athletic Trainer. UNCA is a member of NCAA Division I-AAA and the Big South Conference. The individual will have the responsibility of serving as head trainer for 12 intercollegiate teams. In addition they will be responsible for recruiting and supervising student trainers and for teaching basic sports medicine classes. A master's degree is required and a doctorate is highly desirable. This will be a twelve-month position starting July 1, 1989. Salary commensurate with qualifications and experience. Send resume and letter of application to: Ed Farrell, Director of Athletics, The University of North Carolina at Asheville, Asheville, North Carolina 28804. Applications will be received until the position is filled. UNCA is an EOE/AA. **Assistant Athletic Trainer:** St. Joseph's University, Philadelphia, Pennsylvania. Immediate Opening. Division I athletics program. It is a

full-time, 10-month position. Reports to the head athletic trainer with primary responsibility being women's athletics. Qualifications: NATA certification, bachelor's degree (master's preferred) in athletic training or related field. Salary commensurate with experience. Letter of application and resume to: Ms. Mary Ellen Ryan, Assistant Director of Athletics, St. Joseph's University, 5600 City Avenue, Philadelphia, PA 19131. St. Joseph's is an Affirmative Action/Equal Opportunity Employer.

Marketing

Assistant or Associate Professor, tenure-line position in Department of Physical Education involves preparation of individuals desiring careers in Sport Management/Marketing. Responsibilities include leadership of Sport Management/Marketing program, teaching at undergraduate and graduate levels, assisting in coordination of internship experiences in Sport Management/Marketing areas, pursuing personal research, advising students, and other duties as assigned. Qualifications include an earned doctorate in physical education or related fields, administrative and/or management experience, and ability to interact with faculty having diverse backgrounds in physical education and related fields. Expected beginning date is August 1989. Salary is competitive. Applicants should send an application letter, vitae, list of references and transcripts or placement file to: Dr. Clint Strong, Chair, Search and Screen Committee, HPER 121, Indiana University, Bloomington, IN 47405. Applications received before February 15, 1989, will be assured of consideration.

Sports Information

Assistant Sports Information Director. California State University, Fullerton. \$19,262-\$23,222 per month. CSUF is looking for a qualified individual to gather and disseminate information for press releases, media guides and athletic event programs for 2 men's sports and 4 women's sports. The successful candidate will have the equivalent to four years of professional or technical experience in obtaining, interpreting and disseminating information, analyze data and presenting facts in writing or editing articles, press releases and brochures. Some sports related experience preferred. Send resume to: Office of Personnel Services, (T-14-P), California State University, Fullerton, California 92634, or call 714/773-2425 for an application. First applications review will be October 21, 1988, however applications will be accepted until position is filled. AA/EEO Employer.

Aquatics

Director of Aquatics. Special Olympics International Headquarters, located in Washington, D.C., is seeking a director of aquatics to oversee the training, administration, and evaluation of a sports program for individuals with mental retardation in all U.S. states and 73 countries. This individual will possess, at minimum, a Bachelor's Degree in education or recreation management, have practical experience in working with individuals with

mental retardation, knowledge of the aquatics community and associations, and event management experience. Extensive travel involved. Salary negotiable. Position deadline: October 15. Send resume to: Aquatics Search Committee, Special Olympics International, 1350 New York Avenue, N.W., Suite 500, Washington, D.C. 20005.

Program Coordinator/Aquatics: Manage swimming facility, supervise staff, and coordinate a complete schedule of youth and adult aquatic programs at a new public recreation center. Must have WSI certification and strong aquatic background. Recreation or related degree and at least two years of full-time aquatic programming experience required. Send letter and resume to: Search Committee (Aquatics), c/o Island Recreation Association, P.O. Box 6121, Hilton Head Island, SC 29938.

Basketball

Men's Assistant Basketball Coach/Athletic Resident Advisor. Part-time position. \$4,200 plus one-bedroom apartment. Contact: Judith Lammers, East Central College, P.O. Box 529, Union, Missouri 63084. 314/583-5193. Closing Date: October 14, 1988. **Basketball Internship.** Basketball coaching internship available—Rose Hulman Institute of Technology. Duties to include recruiting, on-the-floor coaching and specific duties as assigned by the head basketball coach. Salary: To be determined. Please contact: Bill Fenlon, Head Basketball Coach, Rose-Hulman Institute of Technology, 5500 Wabash, Terre Haute, IN 47803. Starting Date: October 15.

Football

Football Players—England-Europe-Scandinavia. Graduating senior football players interested in playing football in England Europe-Scandinavia 1989 season (April thru August 15) write for details of assignment. Athletic Enterprises, 6941 Antigua Place, Sarasota, FL 34231, PH: 813/921-4966. **Coaching Football—England-Europe-Scandinavia.** Graduate assistants and/or experienced coaches interested in coaching football in England Europe-Scandinavia 1989 season contact us for details. Some positions start January/February 1989. Athletic Enterprises, 6941 Antigua Place, Sarasota, FL 34231. PH: 813/921-4966.

Gymnastics

Head Men's Gymnastics Coach. Qualifications: Bachelor's Degree with gymnastics experience on the college level. Coaching experience in college gymnastics. Must possess demonstrated ability to direct gymnastic program, ability to recruit, teach and handle young men. Responsibilities: Complete responsibility for coaching, recruiting and related duties in the intercollegiate gymnastics program at The Ohio State University. Salary: Commensurate with experience and ability. Send application to: Bill Myles, Athletic Department—The Ohio State University, Rm. 229—St. John Arena, 410 Woody Hayes Drive, Columbus, Ohio 43210. Equal Opportunity Employer.

Lacrosse

Assistant Lacrosse Coach. Applications and nominations are invited for the position of Assistant Lacrosse Coach at the United States Naval Academy. Appointment to the position will be with faculty status in the Physical Education Department. Qualifications: 1. Bachelor's Degree required and Master's Degree preferred. 2. Applicant must possess extensive competitive lacrosse experience and preferably had successful teaching/coaching experience with the ability to continue to build a nationally competitive program. 3. National or International name recognition desired. 4. Combative Activities background. Responsibilities: 1. Include teaching in the physical education department. 2. Potential to assume leadership role in Combative Activities area. 3. Involvement in the Intramural Program. 4. Recruit potential midshipmen to the Naval Academy. 5. Assist with the other related programs. Salary: Commensurate with experience and qualifications. Submit resume before 25 October 1988, to: Attn: Professor E.C. Peery, Head, Physical Education Department, Lejeune Hall, Stop 4a, United States Naval Academy, Annapolis, MD 21402. An Affirmative Action, Equal Opportunity Employer.

Soccer

Women's Soccer Coach. Case Western Reserve University is seeking a head women's soccer and assistant swimming coach. This is a full-time position. Responsibilities include head coaching and administration of the women's soccer program, assistant coaching in swimming, teaching physical education classes within a one-year required program, and recruiting students within University, NCAC, UAA, and NCAA policies. Qualifications: Master's degree, WSI, and head coaching experience preferred. Salary: Rank and salary commensurate with professional preparation and experience. Applicants should send a letter of application, vitae, and three letters of reference to: Nancy Gray, Coordinator of Women's Athletics, Emerson Physical Education Center, 10900 Euclid Ave., Cleveland, OH 44106. Applications will be accepted until November 15, 1988. Starting Date: January 2, 1989. "CWREU is an Equal Opportunity/Affirmative Action Employer."

Strength/Conditioning

Part-Time Assistant Strength Coach. Ten-month appointment. Starting salary \$7,800/year with possible additional summer responsibility at additional pay. Position Available: January 9, 1989. Will assist in development and administration of strength and conditioning programs for 32 intercollegiate varsity sports. Will work closely with head strength coach in administration and implementation of strength training and conditioning for football and basketball. Bachelor's degree in physical education or related field. Master's degree preferred. Experience in strength training and conditioning at Division I level desirable. Please send application letter, resume and references to:

Dr. Paul Kennedy, Head Strength and Conditioning Coach, Rutgers University, Division of Intercollegiate Athletics, Hale Center, CN1373, Piscataway, New Jersey 08855. Application Deadline: November 15, 1988. Rutgers University is an Equal Opportunity/Affirmative Action Employer.

Track & Field

Assistant Men's Track & Field Coach— University of Wisconsin-Madison. Responsibilities: Coaching horizontal jumps, high jump and all throwing events, recruiting student athletes; other duties assigned by head coach, including but not limited to administrative responsibilities, audio-visual work, meet management and strength training. Qualifications: Bachelor's degree required. Master's preferred; previous college coaching experience; thorough knowledge of track and field; successful recruiting experience; demonstrated leadership and organizational ability. Salary is competitive and commensurate with experience and ability; full benefit package. Submit letter of application, resume and three letters of reference to: Ed Nuttycombe, Head Track Coach, UW Athletic Department, 1440 Monroe Street, Madison, WI 53711, by October 21, 1988. The University of Wisconsin is an Equal Opportunity, Affirmative Action Employer.

Assistant Track and Field Coach. The Wichita State University Intercollegiate Athletic Association is accepting applications for the position of Assistant Track and Field Coach from interested, experienced and qualified individuals. Responsibilities: To seek and recruit high school students qualified to be successful, academically and athletically, at the NCAA Division I level; to teach/coach qualified student-athletes in skills of pole vaulting, jumping, throwing and hurdling; use of computers for disk storage of recruiting files, record keeping, performance ratings, etc. Twelve-month position; salary commensurate with knowledge, background and successful experience. Qualifications: Bachelor's degree required. Demonstrated experience competing in track and field events; minimum one year's recruiting/coaching experience at the college level in the skills of pole vaulting, jumping, throwing and hurdling. Applications: Send letter of application, current resume, and names of three references, not later than October 24, 1988, to: Tom Shupe, Director of Athletics, The Wichita State University, Campus Box 18, Wichita, KS 67208-1595. The Wichita State University is an Equal Opportunity/Affirmative Action Employer.

Volleyball

Volleyball/Softball Coach. The University of North Carolina at Asheville invites applications for the position of Volleyball/Softball Coach. UNCA is a member of NCAA Division I-AAA and the Big South Conference. The individual will have the responsibility of coaching volleyball and softball. In addition they will teach a maximum of six hours in health and fitness. A master's degree is required. This will be a twelve-month position starting July 1, 1989. Salary commensurate with qualifications and experience. Send resume and letter of

See The Market, page 15

Record

Continued from page 11

Division I Women's Volleyball

The top 20 NCAA Division I women's volleyball teams through October 3, with records in parentheses and points:

1. UCLA (11-0)	160
2. Hawaii (10-1)	152
3. Stanford (11-1)	144
4. Texas (10-3)	136
5. Brigham Young (15-2)	128

Sponsorship on Big Ten ADs' agenda

Athletics directors of Big Ten Conference schools are scheduled to address the concept of corporate sponsorship in an October 24 meeting.

The league's promotions/television committee and championships and awards committee have asked for review of the matter, according to Mark Rudner, director of the Big Ten Service Bureau.

"We don't have a policy relating to corporate sponsorship at the present time," he explained. "The two committees asked the directors to address that matter, and it is on their agenda for later this month."

Rudner said the ADs are not expected to move toward an aggressive solicitation of corporate sponsorship for Big Ten events. "Basically," Rudner said, "they have been asked to review the matter and indicate their opinion on the concept of corporate sponsors."

"I believe that before any action could be taken, the Council of Ten (Big Ten members' CEOs) would have to address the idea and take some kind of action," Rudner said.

"Everything taking place at this time is very preliminary... nothing more than tentative discussions and review of the corporate-sponsor concept."

6. Illinois (8-3)	120
7. Nebraska (11-3)	108
8. San Jose St. (13-1)	100
9. Pacific (8-5)	93
10. Kentucky (13-1)	84
11. Southern Cal (11-3)	76
12. Oklahoma (12-4)	74
13. Long Beach St. (9-2)	71
14. Texas-Arlington (9-2)	59
15. San Diego St. (12-3)	54
16. Washington (9-2)	41
17. Arizona (9-3)	32
18. Oregon (8-6)	20
19. Minnesota (9-4)	12
20. Arizona St. (10-3)	6

Division II Women's Volleyball

The top 20 NCAA Division II women's volleyball teams through October 4, with records in parentheses and points:

1. North Dak. St. (16-0)	160
2. Portland St. (12-4)	152
3. Cal St. Sacramento (16-3)	144
4. UC Riverside (5-1)	136
5. Cal St. Northridge (12-7)	128
6. Regis (Colo.) (13-2)	120
7. Central Mo. St. (12-2)	112
8. St. Cloud St. (13-6)	97
9. West Tex. St. (13-5)	95
10. Cal St. Bakersfield (10-5)	92
11. Nebraska-Omaha (7-8)	84
12. Tampa (9-0)	68
13. East Tex. St. (9-0)	63
14. Chapman (17-7)	61
15. Northern Colo. (11-5)	46
16. Cal Poly Pomona (9-4)	38
17. Fla. Southern (10-1)	36
18. IU/P.U.-Fl. Wayne (8-5)	24
19. Mississippi-Women (6-1)	12
20. Mankato St. (13-3)	8

Men's Water Polo

The top 20 NCAA men's water polo teams as selected by the American Water Polo Coaches Association through October 3, with records in parentheses and points:

1. UCLA (16-0)	100
2. California (15-2)	95
3. Stanford (13-4)	90
4. Long Beach St. (5-5)	83
5. Southern Cal (9-3)	82
6. UC Irvine (7-5)	75
7. Pacific (2-2)	70
8. Fresno St. (9-11)	64
9. UC Santa Barb. (11-3)	61
10. UC San Diego (5-7)	55
11. Navy (11-5)	50
12. Brown (3-5)	44
13. Pepperdine (5-3)	41
14. Air Force (3-5)	34
15. Loyola (Ill.) (1-3)	31
16. Iona (5-4)	25
17. Bucknell (3-4)	20
18. Wash. & Lee (5-2)	15
19. Claremont-M-S (2-7)	10
20. Army (5-6)	3

Purdue hosts alcohol-awareness campaign

Purdue University will host its first campus campaign for National Collegiate Alcohol Awareness Week October 17 to 22.

The theme will be "Get ABSURD," for "Get a Better Student Understanding of Responsible Drinking."

"Get ABSURD Week" at Purdue initiates a year-round emphasis on alcohol education and recognition of the individual's ultimate responsibility for decisions regarding his or her use or nonuse of alcohol," said Steven C. Beering, Purdue president. "In addition, we want to encourage a partnership to prevent campus problems associated with

alcohol misuse," he told United Press International.

"Get ABSURD Week" will include various workshops, displays and activities aimed at individual responsibility for alcohol use through education, said Kay Nelson, alcohol- and drug-education coordinator for the Purdue Student Hospital.

Some events planned for the week include a mock driving-while-intoxicated trial, a panel discussion with a question-and-answer period and a trivia game with alcohol-related questions.

The biggest event, "Tie One On," will be held at Ross-Ade Stadium

prior to the Purdue-Iowa football game October 22. Fans will be asked to tie on a red ribbon, demonstrating support of responsible drinking.

All events are run by students and supported by members of the Purdue faculty and administration and by local community members, Nelson said.

This is the fifth year for National Collegiate Alcohol Awareness Week, which is sponsored by the Inter-Association Task Force on Alcohol and Other Substance Abuse Issues. Purdue's first awareness week is sponsored on campus by Health Promotion Programs of the Purdue Student Hospital.

Loyola (Maryland) to join MAAC in 1989

Loyola College (Maryland) athletics director Thomas M. Brennan has announced that the college will enter the Metro Atlantic Athletic Conference beginning with the 1989-90 academic year.

Loyola was offered admission to the MAAC September 20, along with Canisius College, Niagara University and Siena College. All four schools were unanimously approved by a vote of the presidents

of the current MAAC schools and are expected to accept the invitations.

Current MAAC schools include the U.S. Military Academy, Fordham University, Holy Cross College, Fairfield University, Iona College, La Salle University, Manhattan College and St. Peter's College.

Army, Fordham and Holy Cross will leave the MAAC after the 1989-90 season to join the Colonial

League.

"This change in conference identity is consistent with the college's plan to expand the entire athletics program, with a special emphasis on men's and women's basketball," Brennan said.

During the 1989-90 sports season, the MAAC will be a two-division league. After that, it will become a nine-team, single-division conference.

Tort-reform coalition announces name change

John Riddle, president of the coalition lobbying for tort reform in the sports and recreation community, has announced that the group has changed its name to the Coalition of Americans to Protect Sports "CAPS."

The organization was formerly known as (PLS) Product Liability Sports.

Riddle explained that the group initially was founded in 1986 to combat the product liability problems in American sports and recreation.

"Since its conception, however,

our research has shown that the sports liability/litigation crisis involves more than just product liability; coaches, volunteers, referees, leagues, schools, and park and recreation departments all are faced with liability problems and skyrocketing insurance premiums," Riddle said.

He added, "When the Boy Scouts of America's insurance costs jump from \$2 million to \$10 million in just two years, there's a liability problem threatening their future existence. When a county operated water park is hit with a \$27 million

lawsuit that forces it to cease operation, there's a dilemma that needs to be solved.

"When a 15-year-old baseball player is allowed to be sued because of accidentally injuring another player when he slid into the base, there's obviously a problem with a legal system that allows such foolishness."

Richard Feldman, executive director of CAPS, said, "Our new name better identifies and encompasses all of the parties we represent — the entire 150 million sports enthusiasts across this nation."

The Market

Continued from page 14

application to: Ed Farrell, Director of Athletics, The University of North Carolina at Asheville, Asheville, North Carolina 28804. Applications will be received until the position is filled. UNCA is an EOE/AA.

Wrestling

Assistant Wrestling Coach. Cornell University invites applications for the position of assistant wrestling coach for its very ambitious Division I wrestling program. Applicants must be self-starting go-getters who can get the job done. Duties include teaching technique, recruiting, assisting with day-to-day operations and other administrative duties as assigned by the head coach. This is a 12-month position offering a competitive salary dependent upon previous experience. Application deadline is November 2nd, 1988. Send letter of application and resume to: Jack Spates, Head Wrestling Coach, Cornell University, P.O. Box 729, Ithaca, New York 14851-0729. Cornell University is an Equal Opportunity/Affirmative Action Employer.

nity/Affirmative Action Employer.

Assistant Wrestling Coach. The U.S. Military Academy is seeking candidates for the position of Assistant Wrestling Coach. Bachelor's Degree is required. Position is a full-time appointment and the salary is commensurate with experience. The duties will include assisting the head coach in all areas of responsibility. The primary areas of emphasis will be developing and implementing a nationwide recruiting program, and teaching progressive wrestling techniques. Please send resume to: Ed Steers, Head Wrestling Coach, U.S. Military Academy, West Point, N.Y. 10996.

Graduate Assistant

Graduate Assistantships. Two-year appointment. Stipend \$5,040 per year. Must meet admission requirements for HSU graduate school. One appointment coaching football, one appointment coaching women's softball. Starting Date: January 11, 1989. Send letter of application, resume, transcript, and three letters of recommendation on or before November 18, 1988, to: Graduate Coordinator, Department of Health and P.E., Humboldt State University, Arcata, California 95521. An Affirmative Action/Equal Opportunity Employer.

Graduate Work Assistantship Athletic Trainer.

Northern Michigan University is seeking a graduate work assistant for its athletic teams. The stipend is \$4,500 plus a tuition waiver. The individual must be fully admitted to the graduate program. Qualifications: (1) NATA Certified or Eligible for Certification (2) Two years' experience at college level. Description: This is a two-year program with extensive work with specific sport assignments in a coeducational setting. Responsibilities: (1) Athletic Trainer with women's volleyball/men's and women's basketball. (2) Athletic Trainer with football/early season hockey/coordinate rehabilitation of injured varsity athletes. (3) Travel extensively with the above teams. (4) Assist with prevention, care, treatment of all varsity athletes. (5) Assist in supervision of athletic training facilities and maintaining medical records. (6) Coordinate inservice training for student trainers. (7) Assist in supervision of student trainers. Send letter of application, resume, three letters of recommendation by November 7, 1988, to: Mark Stoessner, Athletic Training

Services, Athletic Department, Northern Michigan University, Marquette, MI 49855. Northern Michigan University is an Affirmative Action/Equal Opportunity Employer.

Open Dates

Division II Men and Women Only! Play three intercollegiate games against Division II teams and solve your scheduling nightmare. "Freeport Sunshine Shootout." Freeport, Grand Bahamas, January 1-8, 1990. Contact: Sport Tours International, Inc., 6944 N. Port Washington Road, Milwaukee, WI 53217, 414/228-7337.

Football, Division III. Guilford College needs game for November 4, 1989. Contact: Alan Platt, 919/292-5511, extension 158.

Women's Basketball, Division I. Bucknell

University is seeking a Game (home or away) December 19th, 20th, or 21st, 1988. Please contact: Lon Howard, Head Women's Basketball Coach, 717/524-1211.

Mankato State University has open dates in football: 1989 — September 9 home; 1990 — September 8 home or away; 1991 — September 7, September 14; 1992 — September 12 home. Call 507/389-6111.

Football, Division III. Alfred University seeks to fill the following dates: 11/11/89 (home); 11/10/90 (away); 9/28/91; 10/19/91; 11/09/91; and corresponding dates in 1992. Call Gene Castrovillo, 607/871-2193.

Women's Basketball. West Texas State University needs teams to compete in tournament December 1-3, 1988. Contact: Bob Schneider, 806/656-2693. Guarantee.

Franklin and Marshall College seeking one additional entry for women's basketball tournament, January 6th and 7th, 1989. Open to any Division II or III institution. Franklin and Marshall, located in southeastern Pennsylvania. Call Linda Hopple at 717/291-4107 for more information.

University of Alabama in Huntsville has openings to host home varsity hockey game in Huntsville, Alabama, on February 3rd and 4th, 1989. Guarantee for travel and accommodations negotiable for home games. In addition UAH can travel to play away games on the following dates: November 25th and 26th, 1988; January 6th and 7th, 1989; January 13th and 14th, 1989; and February 10th and 11th, 1989. Contact Doug Ross, Head Coach, at 205/895-6144.

United States Sports Academy

"America's Graduate School of Sport" offers

Master's Degree
Independent Study
Certification



in

***Sport Coaching**
***Sport Fitness Management**
***Sport Management**
***Sports Medicine**

-Master's Degree in One Year
-Flexible, Sport Specific, Accredited
-Career Advancement and Pay Increment
-Nationwide Locations in:

Alabama California
Missouri Wisconsin

or a cluster near!

Call Toll Free 1-800-262-USSA or write:

USSA
One Academy Drive
Daphne, Alabama 36526

The United States Sports Academy is an Equal Opportunity Institution accredited by the Southern Association of Colleges and Schools and accepts graduate students regardless of race, religion, sex, age or national origin.

THE UNIVERSITY OF TENNESSEE KNOXVILLE

MINORITY FELLOWSHIP

Position: Minority Fellowship Athletic Administration.

Available: January 1, 1989.

Salary: \$1,000 monthly base pay for 12 months.

Qualifications: Bachelor's Degree required.

Responsibilities: Responsible to the Director of Athletics, while working under the guidelines of the office of the SID, Promotions, Fund-Raising, Tickets, Academics and Supervisor of Facilities.

Applications: Forward a letter of application, complete resume and references to:

Bill Higdon
University of Tennessee
P.O. Box 15162
Knoxville, TN 37901-5162

Application Deadline: November 15, 1988.

The University of Tennessee, Knoxville, does not discriminate on the basis of race, sex, color, religion, national origin, age, handicap or veteran status in provision of educational opportunities or employment opportunities and benefits.

DIRECTOR OF ATHLETICS and CHAIRPERSON, PHYSICAL EDUCATION and RECREATION

Grand Valley State University invites nominations and applications for the combined position of Director of Athletics and Chairperson, Physical Education and Recreation. The Director/Chair is responsible for the following:

- Intercollegiate Athletics—oversight of 15 sports at the NCAA Division II level with membership in the Great Lakes Intercollegiate Athletics Conference.
- Physical Education and Recreation degree programs including physical education, therapeutic recreation and athletic training.
- Intramural athletics and campus recreation.

The Director/Chair reports to the Vice President for Finance and Administration and to the Dean of the Science and Mathematics Division. Candidates will possess at least a master's degree in an appropriate field, with a doctorate preferred, and significant college-level experience in the administration of physical education and athletic programs.

Grand Valley State is a growing public university with 9,200 students located in Western Michigan near Grand Rapids.

The applicant review process will begin on December 1, 1988. The position is available in the Spring 1989. Interested applicants should send a letter of application, resume, and a list of references to:

Athletic Director/Chair
Physical Education and Recreation Search Committee
Room 16 Zumberge Library
Grand Valley State University
Allendale, MI 49401

Affirmative Action/Equal Opportunity Employer

Kullen returns to coaching after heart transplant

By Ken O'Quinn

New Hampshire men's ice hockey coach Bob Kullen has returned the books the nurse brought to help him prepare for death.

And he can smile at the doctors who, for five straight nights, told his parents and his fiancée he would not live to see the sun rise.

Kullen laughs all the way down the ice these days, surrounded by his Wildcat hockey team. Stricken with a rare disease that kills most of its victims, Kullen received a heart transplant 13 months ago.

"I feel great," he said, sitting on the sun-drenched football bleachers near his office. "It helped that I was in good shape. I was young, physically fit. Nothing would've prevented me from getting the disease," but being in good health "helped me to live through it."

A new beginning

Kullen is enjoying a fresh beginning on the Durham campus. A newlywed with a new heart and a new home, he celebrated his 40th birthday on the opening day of the new season in late September at



Bob Kullen

Shivley Arena, a place he did not expect to see again 14 months ago.

A doctor had diagnosed his illness as amyloidosis, a buildup of protein that prevents the heart's muscle fibers from functioning normally and a disease for which there is no cure.

"What he was saying was, 'it's done,'" Kullen said. "There was, in fact, no hope at that point."

The news shocked a man who has been fitness conscious throughout his adult life. He played golf and squash and ran regularly while holding steady at 155 pounds, slightly above his playing weight as an all-

America defenseman at Bowdoin College.

Suddenly, in January 1987, he began experiencing fatigue and shortness of breath while climbing stairs.

No explanation

For three months, hospital tests offered no explanation, though an X-ray revealed an enlarged heart that piqued doctors' curiosity.

In early May, while showing a prospective player the campus, Kullen fainted on the field house stairs. Athletics trainer Scott Byron told Kullen "these sort of occurrences don't happen to a healthy, active 38-year-old," and urged him to get a more extensive analysis.

Two weeks later, at Lahey Clinic in Burlington, Massachusetts, a doctor examined Kullen and told him to return for additional tests. Looking back, Kullen said, "He must have known something was wrong."

It was. The doctor said he had never seen a case of amyloidosis in 10 years as a cardiologist. There is no medical treatment or operation that can cure it, and Kullen's condi-

tion was certain to get worse.

"It was so rare, they didn't know how long it was going to take for the heart to break down. They knew it was going to happen. They didn't know how quickly," Kullen said.

"It's something you can't believe somebody's telling you."

People stunned

People in the hospital were stunned. In a cardiac ward where everyone else was 50 or 60, here was a healthy, athletic 38-year-old who might be dead in a month.

A transplant was deemed unlikely because doctors were unsure if Kullen was strong enough to withstand the operation and because they were uncertain whether the disease had spread to other organs. But Kullen's doctor did not rule out the possibility.

"You learn that as long as you have a glimmer of hope, you're still in the ball game, and that was a key," Kullen said.

But in June and July, his heart deteriorated further, and in late July, he was rushed by ambulance to Lahey Clinic for what doctors surmised were his waning days.

He shriveled to 119 pounds and, during one five-day stretch, lay in bed barely alert as doctors told his family each morning he probably would not live until dinner. And each evening the prognosis was, "Well, he made it this far, but we don't think he can make it until morning."

When tests indicated the disease was confined to the heart, doctors searched for a hospital that would consider Kullen for a transplant. Only Presbyterian Hospital in Pittsburgh agreed, because doctors there had performed a similar operation successfully in the past. When one heart was too small, another was found and the operation was performed August 29.

"Eventually, Bob would have died of the illness, and it wouldn't have been many more days," said Bartley Griffith, M.D., who performed the operation.

In third season

After spending last season walking his way to good health, Kullen has his weight up to 140 pounds. He walks nearly four miles each day, plays golf and skates at practice. This will be his third season as head coach at New Hampshire.

Though he must limit his salt intake and avoid high-cholesterol foods, "we expect him to exercise in unrestricted fashion," Griffith said.

The experience has left Kullen "more sensitive to people in need" and less inclined to worry about things he can't control.

He awakens each morning happy to be alive, "and that sort of supersedes worrying about whether or not it's going to rain at the barbecue or whether the lawn's cut."

"In many ways, I shouldn't be here, so those kinds of things aren't as much a concern to me," he said.

Going to the rink each day is a joy because he agonizes less when things go awry.

Follow instructions

Kullen attributes his recovery to the same maxim his coaching staff tries to convey to players: Do what you are asked.

He recalled doctors instructing him to breathe into a machine six times a day to expand his lungs, and to walk up and down the hall several times daily.

"I didn't have to do it. No one was watching me to make sure I did it because I wanted to make it."

Doctors, like coaches, "know a heck of a lot more about it than you do, so you do what they ask you to do."

O'Quinn writes for the Associated Press.

Millersville plans to expand women's tournament

At Millersville University of Pennsylvania, women's athletics director **Marjorie A. Trout** has announced plans to hold an all-divisions basketball tournament beginning in 1989.

Trout is hoping to expand the Dutch Country Classic to include three tournaments—one for teams from each NCAA membership division. For the past three years, the event has included competition in Divisions II and III.

"The Dutch Country Classic's primary purpose is to promote women's sports in general," Trout said, "and women's basketball specifically, through this unique format. Our goal is to have four teams in each (NCAA membership) division participate, with the competition to take place only within a particular division."

"Because we're based in Lancaster County and in the middle of the mid-Atlantic corridor of New York, Philadelphia and Washington, I believe we have the lodging, facilities, and campus and community support necessary to make the tournament a success."

This year, the December 3-4 classic will include Division II teams from Millersville, Queens College, the U.S. Military Academy and Shippensburg University of Pennsylvania. The Division III tournament field includes Salisbury State College, Glassboro State College, York College of Pennsylvania and Lebanon Valley College.

Athletics directors at institutions in Maryland have formed MACDA—the Maryland Association of College Directors of Athletics. ADs at all of the state's four-year colleges and universities are members.

Elected the group's first president was **Betsy Alden** of the College of Notre Dame. MACDA's next meeting will be held in February at Western Maryland College.

Bill Beagan, commissioner of the Central Collegiate Hockey Association, recently was honored by the Metropolitan Detroit Convention and Visitors Bureau. Beagan received the J. Lee Barrett Award for his contributions to the area's meeting and convention industry.

In other CCHA news, Beagan has announced the addition of four



William Beagan

cable networks to the league's game-of-the-week television series for 1988-89. The weekly telecasts will be available in every major market in the nation.

Middlebury College alumnus **Greg Lewis** returned to the ancient college ritual of "cramming" as he prepared to report for NBC from several venues during the summer Olympics in Korea.

"When I was a student at Mid-

Briefly in the News

dlebury, I found that I could learn a lot of material in a short amount of time," Lewis said. "One professor warned me that all that cramming and spitting out facts on tests would get me nowhere in life. Actually, it was the perfect way to prepare for what I'm doing now."

Almost 1,000 people attended the second annual all-sports auction held as a fund-raiser for Southwest Missouri State University athletics. The auction grossed over \$90,000 for the school's Bears Fund.

"Our program has grown extremely rapidly since our Division I involvement," said **Bill Rowe Jr.**, director of athletics. "We've enjoyed tremendous success in a very short period of time."

"A lot of the things we have been able to do in the areas of scholarship assistance and some of our recruiting ventures are things that have come as a direct result of the Bears Fund and the fans whose generosity has made this auction such a huge success."

More Report Cards: Sixty-two student-athletes from Southwest Missouri State University were

named to the Gateway Collegiate Athletic Conference honor roll for spring 1988—the most from any Gateway member. Other members' totals included Illinois State University, 55; Southern Illinois University, Carbondale, 55; Western Illinois University, 49; Indiana State University, 49; Wichita State University, 32; University of Northern Iowa, 28; Drake University, 21, and Bradley University, 19.

Student-athletes named to the honor roll had a grade-point average of at least 3.200 (4.000 scale). Forty of the honorees had 4.000 GPAs.

Pan American University women's tennis player **Rosa Cantu** has been named recipient of the La-Mantia Award as the university's best female student-athlete for 1987-88. Besides compiling a GPA in excess of 3.000, Cantu put together one of the top three singles records on the squad last spring. "She really balanced academics and athletics, as shown by her record," said coach **David Cross**.

Southeastern Conference athletics directors voted recently to retain the current seven-game conference football schedule, which includes five permanent opponents and two rotating opponents. That format is in effect this year for the first time and replaces a six-game format that featured five permanent opponents and one on a two-year rotation.

At the same meeting, conference ADs awarded the league's men's basketball tournament to Orlando, Florida, in 1990 (the first SEC basketball play-offs visit to Florida); Nashville, Tennessee, in 1991; Birmingham, Alabama, in 1992, and Lexington, Kentucky, in 1993.

Great Northwest Conference officials have announced the addition of California State University, Sacramento, to the Division II basketball conference's roster. The Hornets will become the league's seventh member, effective next season.

In making the announcement, GNC officials noted the possibility of adding an eighth member for 1989-90.

Trenton State College sports teams have made big news in Division III—recently and over the past decade.

Trenton State's eight spring-sports teams posted a cumulative record of 104-39 (.727 winning percentage) and won four New Jersey Athletic Conference titles.

Even more notably, the school's athletics programs have produced 14 NCAA Division III championships (in five sports) in the decade—a total equalled during that time only by Kenyon College, whose men's and women's swimming teams have dominated the sport at the Division III level.

Purdue University basketball fans can look forward to a book on the Boilermakers' 1987-88 Big Ten Conference championship season. Set for a November 1 release, the volume will be published by Chicago-based Bonus Books and is being written by **Mark Montieth**, a sports writer on leave from the Fort Wayne Journal-Gazette. He is a 1977 graduate of Indiana University, Bloomington.

"I know, I know," Montieth told the Associated Press recently. "People think an IU grad shouldn't be doing a book on a Purdue team. But I went to Indiana for its journalism school. I did this book because it was something I wanted to try professionally, and I thought there was a good story to tell with this (Purdue) team."

Questions/Answers

Readers are invited to submit questions to this column. Please direct any inquiries to The NCAA News at the NCAA national office.

Q Under what circumstances are physicians' letters required for the NCAA drug-testing program?

A Executive Regulation 1-7-(c) requires that a physician's letter be submitted if a student-athlete is administered specific local anesthetics, specific asthma or exercise-induced bronchospasm medications, and/or corticosteroids. Letters should contain information regarding time, route and dose of administration according to the specific guidelines of Executive Regulation 1-7-(c). Such letters should be submitted to the drug-testing crew chief at the championship site.

The final determination of the permissibility for usage of these substances will be made according to limitations expressed in Executive Regulation 1-7-(c) and/or quantities of these substances used.

It is not required that letters be submitted for other prescription or over-the-counter medications inasmuch as the student-athlete must declare the use of all medications at the time of specimen collection. A physician's letter will not exempt a student-athlete from the responsibility to use nonbanned substances.