

The NCAA News



May 6, 1987, Volume 24 Number 19

Official Publication of the

National Collegiate Athletic Association

Search for executive director narrowed to four

Four individuals have been approved by the NCAA Executive Committee as finalists to succeed Walter Byers as the next executive director of the NCAA.

The four, who represent a national cross section of prominent intercollegiate administrators, were recommended to the Executive Committee by a special NCAA Executive Director Search Committee, which was chaired by Wilford S. Bailey, faculty athletics representative at Auburn University and current NCAA president.

The finalists are John R. Davis, associate director of athletics, Oregon State University, and immediate past NCAA president; John W. Ryan, president of Indiana University, and first chair of the NCAA Presidents Commission; Harvey W. Schiller, commissioner of the Southeastern Conference, and Richard D. Schultz, director of athletics at the University of Virginia.

"We agree unanimously as a committee that these are the individuals most highly qualified for the position," Bailey said. "We had applications and recommendations on approximately 80 people, which provided us an excellent pool from which to choose



John R. Davis



John W. Ryan



Harvey W. Schiller



Richard D. Schultz

candidates for this important position."

Bailey became chair of the special committee while serving as the NCAA secretary-treasurer and chair of the Executive Committee's Staff Evaluation Subcommittee last August, when Byers announced his intention to retire no later than August 31, 1988. Byers has been the Association's only

full-time executive director, serving since October 1, 1951.

The executive director elect is expected to be named in mid-June.

Others on the search committee were Staff Evaluation Subcommittee members Edward E. Bozik, director of athletics at the University of Pittsburgh, and Connie J. Claussen, coordinator of women's athletics at the

University of Nebraska, Omaha; Executive Committee members Marino H. Casem, director of athletics at Southern University, Baton Rouge, and Royce N. Flippin Jr., director of athletics at Massachusetts Institute of Technology, and Barbara S. Uehling, former University of Missouri, Columbia, chancellor, who represented presidential interests.

Interviews with the finalists will be conducted by representatives from the NCAA Presidents Commission, the NCAA Council and the NCAA Executive Committee.

"We hope to administer interviews in late May in Mission," said Thomas J. Frericks, University of Dayton athletics director and current NCAA

See Search, page 5

Many special Convention proposals concern sports seasons

A total of 43 legislative proposals have been submitted for consideration at the Association's sixth special Convention, scheduled June 29-30 at Loews Anatole Hotel in Dallas.

The total includes 22 submitted by member institutions or conferences in accordance with the April 30 deadline. Those join 16 proposals announced earlier by the NCAA Presidents Commission and five that will be sponsored by the NCAA Council.

Of the 43, the Presidents Commission has designated 23 for roll-call

votes—and because of some multi-part amendments with different voting requirements, the total number of roll-call ballots to be cast probably will exceed 30.

Legislation regarding playing and practice seasons constitutes the largest topical grouping, with 16 proposals. There are 10 amendments dealing with financial aid, seven involving recruiting, six relating to athletics personnel, three in the area of academics and eligibility, and one classified as general.

Ten of the 43 submissions are resolutions calling for studies or other future action, rather than amending specific legislation at this time.

The general business session will have only 14 proposals to handle, because the remaining 29 will be voted upon in the separate division and subdivision business sessions.

Division I faces 14 proposals, in addition to four scheduled for vote by Division I-A and seven by Division I-AA (two amendments have portions for action by both Divisions I-A and

I-AA). Division II voters will consider six proposals of their own, while Division III has one.

A summary of all 43 proposals follows. The order in which the proposals will appear in the Official Notice and Program of the special Convention will be reported in the May 13 issue of The NCAA News.

The Official Notice and Program will be mailed to all members May 15.

Financial Aid

1. Reduce the permissible numbers of grants-in-aid in various Division I

sports, including the following reductions in men's sports: baseball, 13-12; cross country and track, 14-13; fencing, 5-4; gymnastics, 7-6; ice hockey, 20-17; lacrosse, 14-12; rifle, 4-3; skiing, 7-6; soccer, 11-10; swimming, 11-10; water polo, 5-4, and wrestling, 11-10. Similar reductions also are proposed in reference to the following women's sports: cross country and track, 16-13; fencing, 5-4; field hockey, 11-10; golf, 6-5; lacrosse, 11-10; skiing, 7-6; soccer, 11-10; softball, 11-10, and

See Many, page 10

Sharing of basketball receipts to be studied

In addition to approving the selection process for a new NCAA executive director and identifying four finalists for the position (see story, page 1), actions that will affect a wide range of individuals associated with the NCAA were taken by the Association's Executive Committee during a May 4-5 meeting in Kansas City.

Included in those actions were moves that will:

- Begin work toward determining

future distribution of receipts from the Division I Men's Basketball Championship;

- Continue the pilot program on officiating improvement—including approval of a measure designed to limit coaches' contact with game officials (see story, page 4);
- Use an Executive Committee subcommittee to review team sanctions related to ineligibility as a result of positive drug tests, particularly as they relate to the executive regulations;

- Study alternatives for national office space in the Kansas City area;
- Begin a detailed look at the formation of an NCAA foundation.

After reviewing a report concerning the future distribution of receipts from the Division I men's basketball tournament, the Executive Committee voted to support the following concepts in principle:

- That net receipts continue to be split on a 60/40 (participating institutions/NCAA) basis;
- That a limit on the increase in shares of net receipts paid to participating teams of five percent per year be established, and
- That a scholarship-endowment

See Sharing, page 4



Rep. Silvio Conte

NCAA honors Rep. Conte

The NCAA has presented U.S. Rep. Silvio O. Conte, R-Massachusetts, with a special award for his continuing support of the National Youth Sports Program.

Last year, Conte successfully defeated efforts to cut \$2.5 million in Federal funding to the NYSP. In addition to Federal funding, the NYSP is supported by the NCAA, See NCAA, page 13

CFA to consider three football play-off formats

A committee of the College Football Association will present proposals for three Division I-A championship play-off formats to the CFA membership in its annual meeting May 29-31 in Dallas.

The CFA's Long Range Planning Committee has devised play-off schemes consisting of two teams, one game; four teams, three games, and eight teams, seven games, according to committee chair Glen C. Tuckett, athletics director at Brigham Young University.

Tuckett said the three proposals for a CFA Division I-A championship will be presented to the full CFA membership without any committee endorsement.

"The committee is not for or against any particular proposal," Tuckett said, "but we had a responsibility to present to our membership the most workable formats."

Tuckett said the main considerations of the committee in devising the play-off schemes was to avoid disruption in classroom time of players and the current postseason bowl schedule.

"Every one of the proposals is tied in with the bowls as they currently are structured," Tuckett said. "There is no way we want to be found in opposition to the bowls. It just appears that if

Glen C. Tuckett



there is a play-off system, the people directly involved—the NCAA and the CFA—ought to be creating the system instead of letting someone else do it."

Tuckett said the committee decided to withhold further details of the play-off proposals until they were presented to the CFA convention.

Members of the CFA Long Range Planning Committee in addition to Tuckett are Robert C. James, commissioner, Atlantic Coast Conference; Monte Johnson, athletics director, University of Kansas; the Rev. Edmund P. Joyce, faculty athletics representative, University of Notre Dame; Joseph V. Paterno, head foot- See CFA, page 13

In the News

I-AA rift

Special NCAA Convention proposals to be voted on by Division I-AA members regarding football could cause a loss in membership in the Big Sky Conference. Page 3.

Champion

The University of California, Los Angeles, captures the NCAA Men's Volleyball Championship. Page 8.

Schedule

Meeting schedule for the special Convention in Dallas June 29-30. Page 10.

Scholarship winner learned a big lesson

Alan Drooz, columnist
Los Angeles Times

John Nojima always has been considered a heady ballplayer; and to the NCAA, that's worth something.

The senior business administration major from California State University, Dominguez Hills, is one of 10 men basketball players in the nation—and the only one from Division II—to be awarded a \$2,000 postgraduate scholarship by the NCAA.

Nojima, who started 71 straight games this season and has managed to maintain a 3.890 grade-point average going into his last semester, was one of 15 California finalists interviewed by the Rhodes scholarship committee.

"This is like going to the Final Four," Toro coach Dave Yanai said. "I really believe this is tougher than making all-America. This is only 10 guys from the whole country."

Nojima said he was surprised to win the scholarship because he hadn't been picked as an academic all-America by the Sports Information Directors of America. A couple of high-level math courses kept him from a 4.000 average, he says. "Ever since high school, I've gotten B's in math," he admitted.

It's enough to make a scholar-athlete blush.

Nojima led the conference in three-pointers this season in helping the Toros to the California



John Nojima

Collegiate Athletic Association title. He was second in assists in school basketball history.

But Nojima's playing days are over, and he is ready for the next step—a master's degree in management consulting, and possibly law school after that.

"I felt lucky enough to play as much as I did," he said. "Any other school or under any other coach, I would have sat on the bench. If I could, I would continue playing, but basketball took me this far. And I know school's more important."

It's a lesson some of his peers have trouble learning. For Nojima, it paid off.

Accreditation process would benefit athletics

By L. Jay Oliva, chancellor
New York University

We do not expect a national agency like the NCAA to review the ethics and quality of our academic life with tomes of regulations and a handful of overworked "policemen."

Instead, we regularly expose our academic programs to the view of visiting accreditation committees, whom we ourselves invite, composed of experienced and tough-minded peers from other institutions. These committees report to an elected board of our colleagues and tell us when we are sailing smoothly and when we are missing the boat.

We are willing to review our physicists and their curricula, our libraries and their services, our financial management and its records, even our boards of trustees and their fund-raising capabilities.

We bring peer review to bear on our academic, financial and student life, and we successfully overcome our fear that the reviewers will not gain a competitive advantage.

How and when was athletics divorced from this institutional quality control?

Why should we not utilize peer review in athletics, which is mentioned in accrediting guidelines along with all other aspects of university activity?

Why should we not invite groups of academic and public leaders with a knowledge of athletics to join the accrediting process and visit individual athletics programs as a major part of that process?

Such groups would carefully examine the athletics enterprise, developing a confidential report as part of the general accreditation report to the president and board of trustees.

The specific machinery to implement athletics accreditation is simple because the general machinery is already in place and working.

The nation is divided into regional accrediting associations composed of university and college delegates who elect commissions to oversee academic accreditation, and these commissions employ able staffs to implement visits and reviews of individual institutions.

The process of institutional accreditation now occurs on a regularly established timetable and can be followed up as often as needed. A visiting committee of experienced campus leaders from various parts of the region is assembled by the regional commission for each particular campus.

That part of the review committee concerned with athletics would include a selection of experts from other campuses and public agencies in such areas as financial aid, admissions, athletics financing, alumni

See Accreditation, page 3

NCAA wants it both ways?

Rhonda Windham, varsity basketball player
University of Southern California

The Sporting News

"The thing that gets me most is how the NCAA can have it both ways.

"They'll take you out of school to do an NCAA (commercial) spot or whatever, but if Nike or Converse or somebody else wants to do anything like that for a poster or something—even if it's on a weekend—there's no way.

"Even if the money is going to charity, the NCAA won't allow it—like the Steve Alford thing.

"I think a lot of the problems stem from the fact that the athlete doesn't really have anyone speaking for him.

"It would be great just for the athletes to have some representation at the conventions and meetings.

"As it is, these people are passing all kinds of rules that dictate what we can and can't do; but generally, they have no idea how it actually will affect us and even what is best for us.

"They see student-athletes as one broad classification of people trying to get around the rules they are setting up, so they have to pass more rules.

"Well, somebody has to be able to say, 'That rule stinks; it doesn't serve its purpose, and it puts another burden on the student-athlete—and on the universities.'"

Woody Widenhofer, head football coach
University of Missouri, Columbia

The Kansas City Times

"If you make a recruiting mistake, you are obligated to eat that scholarship for four years.

"Legally, I guess you aren't. But your moral obligation to that kid is awfully important.

"You are not going to be right 100 percent of the time (in recruiting). If you are right 70 percent, you are probably lucky; and then if you have 50 percent of those guys who go through without an injury of some kind, you are fortunate."

Edward L. Young
College Park, Georgia

Letter to The Atlanta Journal

"The recent uproar over the statements made by Al Campanis (former Los Angeles Dodgers general manager) is indicative of our society today. When a person reveals a problem, we tackle the revealer.

"In this instance, Campanis is the revealer, unbeknownst to himself. All Campanis did was reveal to us that society has a problem with placing Blacks in decision-making positions.

"Firing him did nothing to solve the problem. When I woke up this morning, the number of black front-office personnel remained the same. Believe me, more than Campanis share those same distorted views about Blacks. This thought pattern prevails way beyond the sports world. So, the answer is not in firing one man for verbalizing what many others keep hidden in their hearts.

"If Campanis is the lone culprit, I must go turn on my TV, for surely there are no fewer than 20 major-league teams calling a news conference to announce the hiring of their new black general manager or president."

Larry McElreavy, head football coach
Columbia University

The Associated Press

"In some ways, I'm glad we didn't win a game last year, because we didn't work hard enough to deserve it. It would have been positive reinforcement for the wrong reasons."

Bob Valesente, head football coach
University of Kansas

The Kansas City Times

"We also tell them (recruits) that from our point of view, it (athletics grants-in-aid) is a four-year agreement (even though the grant is a one-year renewable agreement). If they lose their eligibility or commit a crime, then it will not be renewed.

"But I feel very responsible to that young man we recruit. As long as he is working and as long as he meets the academic requirements, we will honor that scholarship."

Richard Lapchick, director
Center for the Study of Sport

San Francisco Examiner

"The greatest tragedy of the dumb-jock culture is that the jocks themselves have come to believe they're dumb jocks.

"It's the universal stereotype of the dumb jock that they're treated differently no matter where they are. What we're trying to do at the center is to empower those athletes to take control of their own destinies. The key is never to yield that responsibility.

"The first time a guidance counselor says, 'OK, take shop, industrial arts,' and a player says, 'I want to take biology; then we'll know we're on the right track.'"



Rhonda Windham



Woody Widenhofer

Darnelle Manning, mother of Danny Manning
University of Kansas basketball player

Knight-Ridder Newspaper

"I don't want to see the same thing happen to Danny (as happened to his father, Ed, who left college to play professional basketball), even if I have to sit on him.

"I feel that while he's here (at Kansas), he should get his degree. At some point in his life, he's going to need it. One day, Danny's going to be 35 or 36, and he's going to find his legs aren't willing to perform anymore."

Ira Michael Heyman, chancellor
University of California, Berkeley

The Chronicle of Higher Education

"It's (national dialogue on college athletics issues) an attempt by the Presidents Commission, as generalists, to be both influential and try to direct the attention of the huge legislative body of the NCAA to the big questions

Opinions Out Loud

rather than the small particulars. As presidents, it's what we do best.

"Without a consensus (among the presidents), I don't think anything more is going to happen unless we conduct a national forum in which presidents and the athletics establishment participate, centering on the proper place of intercollegiate athletics.

"Then, we're going to have to make an explicit decision as presidents of colleges about what we want to do next. This process will, we hope, lead to choice."

Benny Dees, head men's basketball coach
University of Wyoming

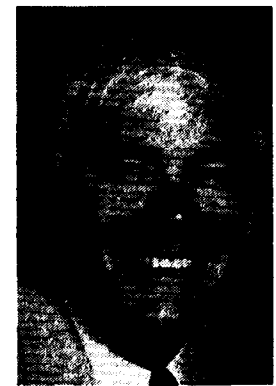
USA Today

"No doubt about it (that the current basketball recruiting period has been one of the cleanest in terms of rules infractions). Kids have been keeping appointments; people aren't stealing them away. Most of all, you're just hearing fewer things.

"We've probably had fewer problems—kids getting illegal things—than I've ever seen."



Ira M. Heyman



Benny Dees

The NCAA  News

[ISSN 0027-6170]

Published weekly, except biweekly in the summer, by the National Collegiate Athletic Association, Nall Avenue at 63rd Street, P.O. Box 1906, Mission, Kansas 66201. Phone: 913/384-3220. Subscription rate: \$20 annually prepaid. Second-class postage paid at Shawnee Mission, Kansas. Address corrections requested. Postmaster send address changes to NCAA Publishing, P.O. Box 1906, Mission, Kansas 66201. Display advertising representative: Host Communications, Inc., P.O. Box 3071, Lexington, Kentucky 40596-3071.

Publisher Ted C. Tow
Editor-in-Chief Thomas A. Wilson
Managing Editor Timothy J. Lilley
Assistant Editor Jack L. Copeland
Advertising Director Wallace I. Renfro
The Comment section of The NCAA News is offered as opinion. The views expressed do not necessarily represent a consensus of the NCAA membership. An Equal Opportunity Employer.

Proposed Division I-AA changes could split up Big Sky

By Jim Poore

(Boise) Idaho Statesman

Remember Humboldt State? That is not a war cry. That is "Remember Humboldt State," as in "Don't make us sit through that again, please."

Humboldt State was Boise State's 71-0 victim in last fall's first annual Anesthesia Bowl.

If certain Big Sky Conference presidents have their way, Bronco football fans may be seeing more of Humboldt State than they probably care to.

The Big Sky Conference could be nearing a critical juncture. The league has been one of the nation's strongest, if not the strongest, I-AA football conferences, and its basketball teams have had their days in Division I.

But if new rules favored by some of the league's financially troubled schools—including, unfortunately, Idaho State University—are adopted,



Stephen D. Nadauld John H. Keiser

then bad times, and a possible breakup of the league, could be ahead.

The NCAA Presidents Commission has recommended that spring practice be cut out for I-AA football and that the number of football scholarships be reduced from 70 to 65.

Last January, Weber State President Stephen Nadauld, chair of the Big Sky Presidents' Council, suggested similar proposals be looked at

this spring.

Here are Nadauld's proposals:

- Reduction of football scholarships from 65 to 55.
- Reduction in the size of football coaching staffs in the Big Sky to one head coach and four full-time assistants.
- The elimination of spring football practice.
- Cutting the size of the basketball coaching staffs to one head coach, one full-time assistant and one part-time assistant.

Initially, the moves might save a few dollars—and there are some Big Sky schools that are financially strapped. But the moves eventually would cost the schools. Without spring practice, and with 40 fewer scholarships than I-A schools, non-league games against Utah and Oregon State would become impossible.

Unless, of course, the Big Sky teams wanted to be Humboldt State for a day.

Fans' support, and their dollars, slowly would dry up as crowds dwindled.

If those rules are adopted, Boise State, Nevada-Reno and, perhaps, the University of Idaho might be forced either to leave the league or form another league that isn't set on self-destruction. Montana State probably would go with those three schools.

Boise and Reno are two growth areas with large population bases that are going to rebel at moving backwards.

At Idaho, its fiercely proud alumni undoubtedly will pressure the administration to keep pace with Boise and Reno. Having already dropped back from the big-time to I-AA, the Van-

dals will be reluctant for any further slippage.

Boise State President John Keiser said he believes the people of Boise would rally against cutbacks. Keiser said he feels Boiseans want to see BSU compete against Utah, Long Beach State and other I-A schools.

"There ought to be one institution in the state that has the capacity to do that," Keiser said. "The population, and the facilities, are here."

For a growth-minded city—a city that has giants like Boise Cascade, Morrison-Knudsen, Ore-Ida, Albertson's and J. R. Simplot in its midst—the thinking should not be along the lines of getting smaller.

"It is probably as important for us to be able to be competitive in intercollegiate athletics at this level in the remainder of the 20th century and into the 21st as it was when Boise Junior College was growing with the community, expanding to the level it is now," Keiser said. "I don't think the role of intercollegiate athletics is going to change any in Boise; and I would think, and hope, the entire community ought to see it that way."

Keiser said he could see Boise State leaving the Big Sky if the league moves backward instead of forward.

"I would think maybe Reno feels that way, and there may be another institution or two that does," Keiser said. "I just think that the kind of lowest-common approach is a mistake; anything we're affiliated with and worth having ought to be looking upward and not downward."

Keiser hopes, rightly, that the entire community—BSU backers, Idaho State backers, legislators, business people—would support keeping the Big Sky strong, or Boise State leaving it. As the community grows, the already athletics-oriented population is going to want to see quality competition.

If Boise, and southwestern Idaho, is to grow economically, it has to grow in other ways. Bending to certain Big Sky factions is not growth in any way.

"We'd prefer to go independent for a few years and look for a new conference rather than march backwards," Keiser said.

The Big Sky had better listen. Keiser is not alone in his thinking, and a Big Sky Conference without Boise State, Nevada-Reno, Idaho and, possibly, Montana State—four of its strongest members—is a shell of itself.

Accreditation

Continued from page 2

affairs, recruitment and institutional organization.

Before the actual visit of the review committee, the campus would be asked to include athletics in the detailed "self-study," which it must prepare on key institutional questions.

Then, for the better part of a week, the visiting committee would visit the campus, comparing the "self-study" against reality—in this case, reviewing files with faculty, administrators, financial officers, athletics staff, coaches, housing officers and athletes.

As is now the case with all other aspects of accrediting visits, a report would be prepared that would include the visiting committee's view of the athletics program and its place in fulfilling the school's mission. The report would be submitted to the individual institution for response; then the report and the response would be submitted to the regional commission for a decision on the future of the school's accreditation.

The commission could opt continuation, deferral with an alert, revisitation, denial or even a special staff visit to deliver specific concerns.

The decision would be made and implemented with a large degree of sensitivity to the goals of individual schools. After all, the purpose of accreditation is not to punish an institution but to help it achieve and maintain, across the board, standards of excellence.

Crucially, these reports and the advice from commissions of one's academic colleagues across the country often serve as the lever that

These reports and advice often make it possible for academic leaders to take on local pressures that underlie much of the corruption

enables a president or trustees to bring an institution and its constituents to deal with reality—which makes it possible for academic leaders, who know the right thing to do, to take on the local pressures that underlie much of the corruption we read about.

Fear of the judgment of the general academic community is powerful, and concern for one's accreditation status is extremely high.

Athletics will not be reformed nationally campus by campus.

The NCAA cannot be blamed for failing to deliver what individual presidents and boards are reluctant or unable to enforce at their own institutions.

Our American colleges and universities have built a respected and accepted system of accreditation for academic activities. The machinery is already in place. We have but to extend it over the entire institution.

These comments were excerpted from a column in The New York Times.

Looking Back

Five years ago

More than 900 persons attended one of four NCAA-sponsored regional meetings—May 5, 1982, in Chicago; May 7 in Cherry Hill, New Jersey; May 10 in Atlanta, and May 11 in Denver—designed to explain NCAA rules and procedures to administrators and coaches in women's athletics. (June 2, 1982, NCAA News)

Ten years ago

Home Box Office, Inc., in May 1977 purchased the cable television rights for the 1977 College World Series championship game. Rights fees were not announced. ("NCAA: The Voice of College Sports")

Twenty years ago

A total of 550 institutions—93.5 percent of the membership—reported by May 5, 1967, that they were in compliance with the Association's 1,600 legislation (for athletics eligibility). Of those, 347 were using the national academic-prediction tables, while 112 used institutional tables and 91 used conference tables. ("NCAA: The Voice of College Sports")

Thirty years ago

The NCAA Executive Committee, meeting May 30, 1957, in Chicago, received a report indicating that the 1957 University Division Basketball Championship (now the Division I Men's Basketball Championship) would realize a surplus of \$176,500, an all-time high (approximately \$1,200 more than in 1955). (1957-58 NCAA Yearbook)

Schembechler joins effort to control sports agents

College football coaches, including University of Michigan coach Bo Schembechler, and Michigan lawmakers have teamed up to announce bills policing sports agents and requiring penalties for alumni boosters who offer college athletes gifts or money.

"The agent problem is the one thing that I have not been able to control," Schembechler said. "Everything else we have been able to police."

A bill to be introduced by three state lawmakers would require agents to be registered with the Michigan Department of Licensing and Regulation and post a \$25,000 bond. The law would subject them to a number of penalties for violations of a series of rules for proper conduct.

"They even contacted a sophomore on my team," Schembechler said of the agents. "They could gain complete control of players, and who knows where the money to pay them comes from. Then, almost anything could happen. You could get into gambling problems."

Joining Schembechler and Eastern Michigan University football coach Jim Harkema at a press conference in Ann Arbor were bill sponsors Reps. Perry Bullard, D-Ann Arbor; Joseph Palamara, D-Wyandotte, and House Speaker Gary Owen, D-Ypsilanti.

A second bill would make it a two-year felony for anyone, including a pro sports agent or alumni booster, to promise or give anything of value to a student-athlete either to get him to enroll in a certain college or to sign with a pro agent.

The bill is modeled after a California law that was passed last year but is tougher by making the illegal inducements a felony, the Associated Press reported.

It also provides that any student-athlete who solicits or accepts something of value is subject to a civil penalty of \$1,000 or the amount the student accepted, whichever is greater.

Paterno critical of pros' tactics

Joe Paterno, head football coach at Pennsylvania State University, says the NCAA should limit the amount of time that National Football League teams can recruit on college campuses.

"I'm angry with the professional leagues right now," Paterno said. "I think that unless we can do something to get some kind of restraints on the way they come in and work out kids and take them off your campus, it's almost impossible."

"I'm not going to be very receptive to the pros until they change their draft back to where it belongs in February," Paterno told the Associated Press.

"I think somebody's got to start saying, 'That's enough.' We've got to have some sanity in this thing."



Bo Schembechler

Schembechler said he had to take away all-America defensive back Garland Rivers' athletics scholarship for the spring term because Rivers had signed with New York agents Norby Walters and Lloyd Bloom.

"I don't know whether Garland will be able to finish school now," Schembechler said, adding that he did not know how much money his star defensive back had received.

"They put people on every campus to approach the players," the coach said of sports agents. "There is probably one of these guys on our campus right now; and if I catch him, I'll break his neck."

Harkema said agents also have approached some of his Eastern Michigan football players, but none was offered money because they were not high draft prospects.

Students shouldn't be taught that failures can be ignored

The St. Petersburg Times

An editorial

Florida requires its high school students to earn at least a 1.500 grade-point average—that's midway between a D and a C—for graduation. Those who don't make it get no diploma. Some people argue that the standard is too tough, but it seems beyond dispute that whatever the standard is, the state ought to have one.

Now there is a new controversy. Some high school registrars, rightfully concerned that too many children are failing to make the cut, contend that a failed course shouldn't be counted in figuring the grade-point averages. What's more, they say the law already excludes it. Dade County already has so decided.

That's a tortured interpretation of the law. Just about everyone knows it's not what the legislature intended. Education Commissioner Betty Castor knows it too, since she was in the legislature, but she has bucked the question back to the legislature rather than rule on it. Castor does make a persuasive argument, however, that the legislature should approve a "certificate of completion" for students who take all required courses but who don't make the required grade-point average, whichever way it is computed.

The case for not counting F's is much weaker. Students who fail a course already have the option of retaking it; and if they pass the second time, the first failing grade is discounted completely.

Not to count the F in the first instance would remove any incentive for the student to retake the course, especially if the course is an elective or a required course for which there is an alternative. Indeed, a student who is making D's in a course would be strongly tempted to fail it deliberately. That's because a D that is counted lowers the average more than an F that is not.

High school students are old enough to learn the consequences of failure. It is not in their best interest to teach them that failure can simply be ignored. The registrars who would convey that message are well-meaning, but wrong.

Sharing

Continued from page 1

fund be created to finance the completion of undergraduate degrees by student-athletes who exhaust athletics eligibility before completing all necessary course work for a degree.

The Executive Committee's Budget Subcommittee will review specifics of these proposals and other recommendations for receipt distribution at its July meeting.

Another subcommittee was ap-

Officiating programs to continue

NCAA Executive Committee action has resulted in continuation of programs to improve men's and women's basketball officiating.

After meeting April 24, the Special NCAA Committee on Basketball Officiating recommended to the Executive Committee (which approved the proposals) that a series of clinics for men's and women's basketball officials be continued through 1987-88.

A maximum of eight clinics for men and eight for women will be scheduled, possibly on successive days in the same locations. Men's head coaches will be required to attend 1987-88 clinics as a condition of their conference's automatic qualification into NCAA postseason tournaments.

In making the recommendations, the special committee noted highly positive feedback from participants in the seven men's and five women's clinics conducted during 1986-87. Although no committee has been specifically charged to handle the women's clinics, the group noted its support for the program, urged continuation of men's and women's clinics, and indicated its desire to see an extensive review of the programs take place after 1987-88.

The special committee indicated that recommendations to develop a standing program to improve officiating could be made following that review.

The committee did request Executive Committee support of an amendment to NCAA Bylaw 6-1-(b)-(1) that would exclude reimbursement for officiating in an institution's off-season intramural basketball competition from the maximum amount of permissible financial aid. "Such employment could be an excellent means of identifying and developing men's and women's basketball officials," the group noted in recommending Executive Committee support for of the legislative change.

In approving the request, the Executive Committee asked that legislation be drafted to exclude reimbursement for officiating in any off-season intramurals program, not just basketball.

Another recommendation approved by the Executive Committee — and one that probably will generate much discussion during the summer mandates compliance with NCAA Men's and Women's Basketball Rule 3-2 as a condition of conference automatic qualification for the Division I Men's Basketball Championship. The rules states that "the captain is the representative of his or her team and may address an official on matters of interpretation or to obtain essential information, if it is done in a courteous manner."

"Specifically," the special committee noted in its request, "no conversation may take place between game officials and coaches from the beginning to the end of the game (including half time) except to discuss a correctable error or other unusual circumstance that may warrant discussion, and then only if both coaches are part of the discussion."

pointed by the group to review information on office-space needs for the national office and recommend a plan of action to be reported to the Executive Committee at its August meeting. Named subcommittee chair was Thomas J. Frericks, NCAA secretary-treasurer. Also named to the subcommittee were NCAA Executive Director Walter Byers and Controller Louis J. Spry and Executive Committee members Harvey W. Schiller, Royce N. Flippin and Connie J. Claussen.

In reviewing recommendations from the Special NCAA Postseason Drug-Testing Committee, the Executive Committee voted to authorize the calling of a national meeting of college team physicians, prior to the start of the 1987-88 academic year, to outline the Association's drug-testing program to these individuals.

The Executive Committee voted to approve the concept of testing game officials and asked NCAA legal counsel to provide information and opinions on this testing. The Council also

will be asked to consider a draft of legislation that would initiate this line of drug testing.

A subcommittee was appointed to study further the concept of applying team sanctions in those cases where positive individual drug tests cause loss of eligibility, with particular attention to be paid to appropriate executive regulations. Executive Committee members Edward E. Bozik, University of Pittsburgh athletics director; Albert M. Witte, faculty athletics representative at the University of Arkansas, Fayetteville, and Schiller were named to the group.

Championships matters also took up a portion of the Executive Committee's time, and the following were among the actions taken:

- Division I-AA football—A request to increase the official traveling party from 60 to 65 was approved.

- Men's soccer—An on-campus site for the final two rounds in Division I was approved, but a request to expand the Division I bracket from 23 to 24 was denied; a final-four

concept was approved for the Division II championship, but the request for an off-day between the semifinals and finals was denied; a Division III request for an off-day also was denied.

- Women's soccer—A Division III request for an off-day between first- and second-round games was denied.

- Division III football—A request to maintain the championship bracket at 16 teams was approved, but a request that transportation for first-round games be guaranteed from the division block grant was denied. First-round transportation expenses will continue to be paid by receipts from those games.

Action concerning several other issues also was taken by the Executive Committee. The group voted to support a draft of legislation for the 1988 Convention that would amend Constitution 5-8-(e) and Executive Regulations 1-(a)-(1) and 1-(b)-(1) as they pertain to the establishment and maintenance of National Collegiate Championships and division championships

in the same sport.

After reviewing several questions regarding Proposal No. 34 from the 1987 NCAA Convention, the Executive Committee determined that the authority granted the division championships committees to "maintain oversight responsibility for applicable playing regulations in the areas of player safety, image of the sport and financial impact" should be considered final. The group requested that the Legislation and Interpretations Committee confirm this interpretation and determine whether any legislative changes are necessary.

The Executive Committee also voted to authorize funding for a feasibility study on the establishment of an NCAA foundation. The group requested that Byers coordinate this research project and report results to the Association's Administrative Committee.

A complete summary of all actions taken by the Executive Committee will appear in the May 13, 1987, issue of The NCAA News.

Coca-Cola
Trade mark ®
CLASSIC

RED · WHITE · & · YOU

© 1986 The Coca-Cola Company.
Coca-Cola is a registered trademark of
The Coca-Cola Company.

Search

Continued from page 1

secretary-treasurer, who will chair the Executive Committee for the selection process. "If we do complete the interviews during this time, we hope to have an individual appointed by mid-June."

Following the interview process, the selection committee will collect information from the different groups that meet with the finalists. It then will make a recommendation to the full NCAA Executive Committee, which has the responsibility to employ an executive director.

"I wish to commend Wil Bailey and his committee for the outstanding job they did in the search process," Frericks said. "We have four excellent candidates, and we will have a difficult job selecting only one from this group."

Members of the groups who will interview the finalists are:

NCAA Presidents Commission: John B. Slaughter, University of Maryland, College Park; James W. Cleary, California State University, Northridge; Rev. L. Edward Glynn, St. Peter's College, and James J. Whalen, Ithaca College.

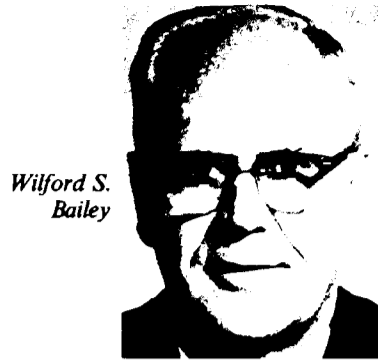
NCAA Council: Howard Elwell, director of athletics, Gannon University, Division II vice-president; Judith M. Sweet, director of athletics, University of California, San Diego, Division III vice-president, and Albert M. Witte, faculty athletics representative, University of Arkansas, Fayetteville, Division I vice-president.

NCAA Executive Committee: Merrily Dean Baker, director of women's athletics, University of Minnesota, Twin Cities; Francis W. Bonner, faculty athletics representative, Furman University; Robert H. Frailey, director of athletics, American University, and Leanne Grotke, associate director of athletics, California State University, Fullerton.

Following are biographical sketches of the finalists:

John R. Davis

Davis has been on the faculty of Oregon State University since 1971, first as head of the department of agricultural engineering (1971-75), then as associate dean and director,



Wilford S. Bailey

agricultural experiment station (1975-85) and director of special programs (1985-87). He currently has a dual assignment: associate director of athletics and chair of the calendar conversion council in the office of the vice-president for academic affairs and provost.

Before joining the Oregon State University faculty, he held the following positions: dean, college of engineering and architecture, University of Nebraska, Lincoln (1965-71); head (1965) and professor (1964-65), department of agricultural engineering, University of Nebraska; hydraulic engineering/water resources research, Stanford Research Institute (1962-64), and lecturer and specialist, department of irrigation, University of California, Davis (1957-62).

Davis received his B.A. and M.S. degrees from the University of Minnesota, Twin Cities, and a Ph.D. (agricultural engineering) from Michigan State University.

He is a member of numerous professional and honorary societies. He is the author of numerous scientific publications and has contributed to international research activities in the Far East, Middle East, Africa and Central America.

Davis, 59, has been actively involved in the administration of intercollegiate athletics for the past 18 years. These activities include faculty athletics representative, University of Nebraska (1969-71); institutional athletics representative, men's intercollegiate athletics, Oregon State University (1972-87); president of the Pacific-10 Council (1978); chair of the NCAA Nominating Committee (1980); NCAA secretary-treasurer



Thomas J. Frericks

(1983-1984), and NCAA president (1985-1986).

John W. Ryan

Ryan is president of Indiana University, a position he has held since 1971. He holds a concurrent appointment as professor of political science in the college of arts and sciences, graduate school. Before his appointment as president of Indiana University, he had held the following positions: vice-president and chancellor for regional campuses, Indiana University (1968-71); chancellor of University of Massachusetts, Boston (1965-68); vice-president, academic affairs, Arizona State University (1963-65); executive assistant to the president, University of Massachusetts, Amherst (1962-63), and associate professor/assistant professor, University of Wisconsin, Madison (1958-62).

Ryan is scheduled to retire as president July 31, 1987, at which time he becomes president emeritus and will continue as a professor of political science.

He received his B.A. degree from the University of Utah, an M.A. from Indiana University and a Ph.D. (political science) from Indiana.

Ryan, 58, has been the recipient of 10 honorary degrees and has written extensively about academic administration and public administration.

He is a member of numerous professional and honorary societies and serves on the boards of directors of several organizations. He has served in a variety of leadership positions of such educational organizations as the American Council on Education, Association of American Universities,

and National Association of State Universities and Land Grant Colleges.

Ryan had been active in the administration of intercollegiate athletics, having served as chair of the Council of Ten (Presidents of Big Ten Conference member institutions) since 1981 and as the first chair of the NCAA Presidents Commission (1984-1986).

Harvey W. Schiller

Schiller has served as commissioner of the Southeastern Conference since September 1986. Prior to that, he had served for 24 years as an officer in the U.S. Air Force, from which he retired at the rank of colonel. He was the recipient of many military awards, including the Legion of Merit and Distinguished Flying Cross.

In the Air Force, he had more than 15 operational and educational assignments and is a graduate of Armed Forces Staff College, Industrial College of Armed Forces and D.O.D. Labor Relations School.

In 1980, Schiller was appointed permanent professor and head of the department of chemistry at the U.S. Air Force Academy—an appointment made by the President of the United States with the advice and consent of the Senate.

He received a B.A. degree from The Citadel and M.S. and Ph.D. (chemistry) degrees from the University of Michigan. He has a number of publications in areas of his research interests in chemistry.

Schiller has had extensive experience with international sports programs. He is chair of the Games Preparation Committee of the U.S. Olympic Committee (responsible for all matters concerning selection and participation of athletes and officials in World University, Olympic and Pan American Games) and a member of U.S. Olympic House of Delegates.

While at the Air Force Academy, Schiller served as chair of the academy's Athletic Association and as its faculty representative to the NCAA and Western Athletic Conference. He served as president of the WAC Council.

Schiller, 47, has been a sports commentator for ESPN and has had extensive experience in the areas of

sports television, marketing and promotion.

He is a member of the NCAA Executive Committee, chairing its Budget Subcommittee, and is the NCAA representative to the U.S. Olympic Committee Executive Board.

Richard D. Schultz

Schultz is director of athletics at the University of Virginia, a position he has held since 1981.

Prior to his appointment to that position, he held the following positions: director of athletics, Cornell University (1976-81); assistant to the president (for athletics and external programs), University of Iowa (1974-76); coaching positions at the University of Iowa: head basketball coach (1970-74), head baseball coach and freshman basketball coach (1960-64); high school teacher, coach and athletics director, Humboldt, Iowa (1950-60); player-manager, professional baseball (1953-56).

While teaching and coaching in high school in Humboldt, Iowa, Schultz owned and operated a home-building business.

Schultz received his B.S. degree from Central College (Iowa) and his M.A. degree from the University of Iowa. He has considerable graduate work beyond the M.A. He is to receive an honorary degree this month from Central.

Schultz, 58, has had extensive consulting experience to corporations on reorganization and business management and to universities regarding management of athletics programs and blending of academics and athletics.

He has extensive radio and television experience, having hosted two weekly syndicated TV programs and served as analyst on both baseball and basketball telecasts.

Schultz has been a speaker for the NCAA Professional Development Seminar; chaired the Marketing Committee in 1985, and has been a member of the Division I Men's Basketball Committee since 1983 and chair of this committee since 1985. During the past year, he chaired the Special NCAA Television Negotiations Committee.

Student-athlete forms own company to meet college costs

By Mike Diegel

Chris Larsen found a concrete way of paying her way through college. She works with the sticky, stone aggregate.

But she doesn't have to slog through goopy cement, spreading and smoothing it into a sidewalk or curbing, then hosing off the residue before her jeans congeal.

She owns the company.

The Mount St. Mary's College senior has parlayed a summer job with a company that specialized in road maintenance into what for most

people would be a full-time occupation. But Larsen oversees the operations of Chrisco ("That's a pet name that kind of stuck," she explained) between a full load of classes and her time spent as an all-America performer on the Lady Mountaineer track team.

"I started in the summer after my senior year in high school (1983)," she said. "I did everything from driving the truck to backfilling to making the forms (for the concrete)."

"I took the job for the money," Larsen continued. The \$5 an hour she

earned was considerably higher than more traditional types of summer work would pay a woman.

"Knowing I wanted to work for myself—I wanted to be a CPA, and that's still down the road—I saw the opportunity in construction," Larsen said. "In the past four years, the business has been very lucrative."

"I learned the work wasn't really that difficult if you organize your crew, watch your material and plan your work. And with all the machines, you don't need that much brawn—(not) in road maintenance, anyway."

She discovered the state of Maryland offered help to women and minorities who wanted to obtain certification and aid with the bonding and insurance requirements needed to bid on a job. In the summer of 1985, she decided to start Chrisco.

Larsen didn't intend to compete with her old company. She was interested in working on home-improvement projects.

"There are people who rush out (when you're on a job) and say, 'Will you do my driveway?'" Larsen said.

For two years, she had answered that the company she worked for did not do that kind of job. Now, she could offer those people an alternative: Chrisco.

She got Chrisco's first contract—a driveway apron for a church—from an inquiry.

"A man came out of the church and asked for a price," Larsen said, and she supplied one. "He said that was fine and we did his driveway apron for him."

"I wanted to work on those kinds of things on weekends and evenings," she said. "That's what I wanted to do until graduation (this May). Then one thing led to another..."

Now, Chrisco's 10 workers are involved in a 200-plus townhouse project.

That (contract) enabled me to put on a crew full time," Larsen said. She also gained a full-time partner.

"That helped me a lot," Larsen said. "I wanted to finish up what I had started (a degree in accounting). I do the company's books at night and I can negotiate insurance and so on when I have time." Meanwhile, her partner handles bidding for jobs.

Originally, the company bid on just one phase of the townhouse project. "Now," Larsen said, "we have gotten all the excavating and landscaping. It's turned into quite a big contract." Other jobs have followed, and Larsen estimates that Chrisco will do more than \$1 million in business this year.

When she hasn't been supervising her workers or attending classes in accounting and her minor, business and finance, Larsen has been competing up and down the East Coast in the pentathlon and other indoor track events.

When she talks about her company, enthusiasm gushes out like cement down a truck chute. But she's more modest when discussing her other accomplishments.

"In every meet, I usually run in five or six events," Larsen quietly admitted. That can mean competing in three field events, a hurdles race and

one or two relays, depending on what Mount St. Mary's coach Lynn Phelan Robinson wants.

Larsen's versatility prompted her interest in the multievent heptathlon, which is run in the outdoor season, and the pentathlon, an indoor sport.

"I found I was doing four or five events a meet anyway," she said. "It

See *Student-athlete*, page 13



Chris Larsen supervises a work crew before attending class



Larsen competes in ECAC pentathlon championship



Division I women's tennis fans may 'see triple' at finals

Tennis fans may be seeing double at the Division I women's championships... or even triple.

When the championships are held at UCLA May 14-21, Duke will have one of the leading doubles teams in freshmen Patty and Christine O'Reilly. If the Blue Devils receive a team bid, sister Terri also will be on hand, giving the tournament its first set of identical triplets.

Considered among the top young talents in the nation, the New Jersey-born O'Reillys provided coach Jayne Preyer with a one-family recruiting coup.

Patti, Christine and Terri all have won tournament titles on both the junior and college levels, and each has been ranked at the top of the Eastern Tennis Association 18-and-under age group.

The only clue the average observer would have in telling them apart would be that Patty plays left-handed.

While the triplets maintain their individuality with separate housing and wardrobes, Preyer occasionally finds herself thinking of them as one entity.

"They play so much alike and they're so supportive of each other and of the team," she said. "And I think their team spirit has rubbed off on our other players."

While fans try to sort the O'Reillys out, Florida, UCLA and Miami (Florida) will be among the teams out to upset the balance at the top of the tournament standings.

Since the NCAA championships began in 1982, Stanford and Southern California have established a clear pattern, alternating as champions. But when the top teams convene

again in Los Angeles, the Lady Gators, Bruins and Hurricanes will be in prime positions to upset the status quo.

Florida, 12th in the Intercollegiate Tennis Coaches Association (ITCA) preseason poll, has risen to the top spot with a nucleus of veterans and the dividends of a strong recruiting campaign. Seniors Tammy Whittington and Jill Hetherington are joined by freshmen Shaun Stafford, Denise Dayan, Cathy Goodrich and Nicole Polasek. Goodrich and Hetherington are ranked No. 1 among doubles teams.

Coach Andy Brandi, whose team has dominated the Southeastern Conference in recent years, returns the Lady Gators to the national field after a year's absence.

UCLA also has passed state rivals Stanford and Southern California to emerge as one of the favorites. The Bruins are an experienced group led by top-10 performer Joni Urban.

Allyson Cooper has made a strong comeback from injury to join fellow veterans Jane Thomas and Jennifer Fuchs, who rank high in doubles.

Miami (Florida) has the leading singles player in the division in junior Ronni Reis, who already has a taste of national honors. She and Lise Gregory captured the doubles championship last spring and now rank second behind Goodrich and Hetherington. Gregory, a senior, is ranked eighth in singles.

Among the younger Hurricanes are sophomore Elizabeth Levinson and freshman Kerri Reiter.

California boasts one of the nation's leading young talents in sophomore Karen Shin, who replaces all-America



Terri, Patty and Christine O'Reilly

Heather Ettus at the forefront of the Golden Bear attack. Shin, a veteran of Junior Wightman Cup competition, was newcomer of the year in the Northern Pacific Athletic Conference. Junior Jennifer Prah and senior Linda Oechsle also will be on hand.

While unable to hold on to the No. 1 spot in the ITCA poll, Stanford will be a powerful force at the tournament. The defending champions have been beset by injuries but could make a run at the title. Senior Patti Fendick, the 1986 singles champion, is ranked second to Reis in the latest listings.

Northwestern, a regular visitor in the Division I field, has a top-10 player in sophomore Katrina Adams,

ITCA freshman of the year last season. Senior Diane Donnelly helps make the Wildcats a dark horse to watch at UCLA.

Trinity (Texas) returns most of last year's semifinalist squad, including senior Elvyn Barrable, junior Ann Hulbert and sophomore Jane Holdren.

Like Stanford, Southern California also had a disappointing spring but has the talent to continue the team-victory pattern at the championships. Juniors Mary Norwood and Caroline Kuhlman lead the Trojan effort.

Brigham Young has been a surprise this season, rising into the ITCA top 10. The Cougars are paced by one of

the leading doubles teams, Lesley Hakala and Michelle Taylor. Sophomore Susanna Lee and freshman Mary Beth Young are also on hand.

Kentucky has a rising star in sophomore Sonia Hahn, who has risen to No. 3 in the ITCA listings after failing to make the preseason top 50.

Indiana has an experienced squad featuring junior Reka Monoki and senior Janet McCutcheon, as well as promising sophomore Kelly Mulvihill.

Texas is led by fifth-ranked Anne Grousbeck, who will team with Beverly Bowes to form one of the top-seeded doubles teams at the tournament.

Southern Cal men's tennis players focus on NCAA crown

Southern California's men's tennis team still has its collective eye focused on the national title.

While much of the nation's top 20 has been scrambled this spring, Dick Leach's Trojans have remained favorites throughout the season and probably will be the team to beat when the Division I Men's Tennis Championships are held May 15-23 at Georgia.

Gone from the upper echelon of the Intercollegiate Tennis Coaches Association (ITCA) poll are such Division I powers as Stanford and Pepperdine. Moving up have been Long Beach State and three teams from the Southeastern Conference.

Southern California, which once dominated collegiate tennis with cross-town rival UCLA, has finished only as high as third (twice) since sharing the title with the Bruins in 1976. But the presence of two first-class players—one the coach's son—will help the Trojans change the course of their

recent history.

Sophomore Luke Jensen has climbed to second behind Southern Methodist's Richey Reneberg in the ITCA singles rankings. Senior Rick Leach is fourth, and he has a very proud father.

"It's been a dream come true having him play for me," coach Leach said. "I guess he'll be on the professional circuit next year, and it will be strange not having him around. He's been a good team player for four seasons."

The younger Leach, who teamed with Tim Pawsat to win the 1986 doubles title, is paired this year with Scott Melville as the nation's third-ranked doubles team. Sophomore John Carras is another capable player.

Long Beach State is the Cinderella entry for 1987. The 49ers climbed from 16th in the preseason poll to second in mid-April with a 24-4 record against California competition. Coach Larry Easley's strength is in his soph-

omore class, which includes ranked players Richard Bergh and Greg Failla.

UCLA has won more team championships than any other school and has the talent and depth to challenge its neighbors for this year's title. The Bruins are particularly strong in doubles, where the combinations of Don Nahirney-Patrick Gilbreath and Tim Triguero-Buff Farrow rank high in the ITCA listings. Nahirney was a

doubles semifinalist last spring. Brett Greenwood is another key performer for UCLA.

Tournament host Georgia, 1985 NCAA champion, heads the Southeastern Conference contingent. Dan Magill's Bulldogs are led by senior Phillip Johnson, No. 5 among singles players. He also teams with sophomore Stephen Enochs to rank high in doubles. Trey Carter is another veteran likely to excel before the home

crowd at Henry Feild Stadium.

Texas has forged ahead of Southwest Conference rival Southern Methodist in the ITCA poll and has high hopes for a fourth straight tournament appearance. Longhorns Royce Deppe and Charles Beckman, partners for four years, head the doubles rankings. Deppe also was a singles quarterfinalist last spring.

Louisiana State has enjoyed an-
See Southern Cal, page 8

Florida Southern after seventh baseball title

Florida Southern is hoping to add a seventh national championship trophy to the display case at Lakeland.

The Moccasins should travel to Montgomery, Alabama, as one of the favorites at the Division II Baseball Championship, to be held May 22-27.

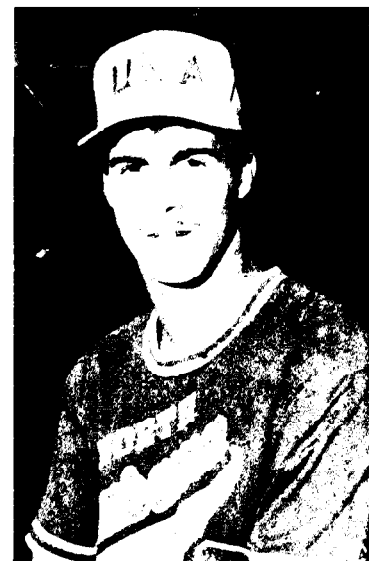
Chuck Anderson's squad, which captured the 1985 crown, is 38-6 this season and ranked at the top of Collegiate Baseball's latest poll.

Much of Florida Southern's success has been delivered by the right arm of senior Terry Gilmore, who is concluding one of the most remarkable pitching careers in Division II history. Gilmore is 10-0 this spring, bringing his total collegiate mark to 30-2. He has walked only 16 batters this season, while striking out 77.

Sophomore third baseman Cris Allen has improved on an outstanding freshman season by hitting .370 this spring. Junior outfielder Billy Koll (.359) also provides solid offense for the Moccasins.

Lefthander Chuck Lavrusky (7-1) and relief ace James Gelb (3-1 with 10 saves) join Gilmore on a stellar senior pitching staff.

Columbus (27-6), runner-up in 1986, hit its stride late this spring,



Mark Krumback



Tom Weeks



Rick Leach



Scott Melville

going on an 11-1 run in April. Cougar bats have been at their best in the clutch. With runners on base, Columbus has a team average of over .400, and nearly half its runs have been scored with two outs.

Power-hitting outfielder Scott Riddle is the Cougars' leading offensive force.

Tampa (30-8-1) joins Florida South-

ern and Eckerd to make the Sunshine State Conference one of the nation's toughest. The Spartans have a tournament-tested squad, returning almost everyone from last spring's South-region championship team.

Noted for its team speed, Tampa also features power hitting from senior outfielders Rodney Ehrhardt and
See Florida Southern, page 8

Maryland and Cornell are men's lacrosse favorites

Maryland and Cornell, two lacrosse powers of the mid-1970s, will be top challengers for the 1987 Division I Men's Lacrosse Championship.

Maryland has been atop the United States Intercollegiate Lacrosse Association (USILA) poll for most of the year. The Terps won championships in 1973 and 1975 and finished second four times in the 1970s.

"The thing that has made the 1987 team special is the total unselfish nature of the players," coach Dick Edell said. "Our concept is just to get the ball to the open man, and they have done that up and down the field."

One of the key figures on this year's squad is goalie Jim Beardmore, whose father, Bud, coached Maryland's two national champions. He has stopped about 75 percent of the shots he has faced.

"His play in our North Carolina game was about as outstanding as a goaltender could play," Edell said.

Beardmore gets help from an excellent close defense. Senior Brian Jackson, junior Dan Coughlan and sophomore Jeff McNeil form that unit.

The Terps have a balanced offense. Junior attackman Brendan Hanley has over 40 points, split almost evenly between goals and assists. Mike Mosko has more than 30 goals. Kirk Thurston and Tom Worstell are other top scorers. Worstell was a first-team all-America at midfield last year.

Maryland has been very successful on face-offs due to players like Todd Ensor and Phil Willard. Ensor

sprained an ankle in the Johns Hopkins game but is expected back for the tournament.

"It was a good team a year ago," Edell said. "We were one of the regular-season defcats that North Carolina reversed in the play-offs."

Cornell coach Richie Moran has three national championships to his credit, including back-to-back titles in 1976 and 1977. Cornell's 16-13 overtime victory over Maryland in 1976 marked the last time that neither Johns Hopkins or North Carolina made the title contest.

"A lot of things have fallen into place for us," Moran said about his squad.

The offense was an unknown quantity with 11 of the top 12 scorers gone from the 1986 team. Attackman Tim Goldstein has provided some answers. He has over 50 assists this season and over 70 points. Steve Meyer and John Wurzbarger are both 30-goal scorers.

One unit that was in place from the beginning was the defense. Like Maryland, Cornell sports one of the nation's top goalies in sophomore Paul Schimoler. He also has a save percentage over 70. He gets help out front from the likes of Steve Paletta, Tim Vivian, Aaron Jones and Mike DeStefano.

"The defense formed a good area of strength for us," Moran said. "We put together a form and they followed it."

North Carolina will make a strong bid to defend its title. Coach Willie Scroggs' team completed the regular season with an 8-3 record, identical to the record it posted a year ago.

The defense is solid. Senior Chris Walker has 81 ground balls and has caused 47 loose balls. Tom Haus was the player of the year in Division I last season, and Boyd Harden and Harry McCambridge are other key figures. Junior Barney Aburn has a save percentage of 62.

The offense has been balanced and more productive than a year ago. Senior attackman Gary Seivold, the most valuable player in last year's title game, has 19 goals and 13 assists. Junior midfielder Pat Welsh has 15 goals and 13 assists. Tim Welsh, also a midfielder, has 28 points, split evenly between goals and assists.

The Tar Heels won back-to-back titles in 1981 and 1982.

Syracuse won the national championship in 1983 and was runner-up in 1984 and 1985. The Orangemen were semifinalists last season.

Coach Roy Simmons Jr. has another explosive offensive team. Senior midfielder Todd Curry, a first-team all-America last season, has scored about 20 goals. Attackmen John Zurberti, Tom Nelson and Gordie Mapes are all in the 30-point range. Midfielder Rhett Cavanaugh also can put the ball in the net. Brothers Paul and Gary Gait have become contributors as freshmen.

Perennial power Johns Hopkins would like nothing better than to start a new string of championship-game appearances. Last year, the Blue Jays lost to North Carolina in the semifinals and sat out the title contest for the first time since 1976.

Coach Don Zimmerman has a



Syracuse attackman John Zurberti

young defense that has played well. Freshman goalie Quint Kessenich has stopped nearly 60 percent of the shots he has faced.

Junior Mike Morrill has paced the attack, along with first-team all-Americans Craig Bubier and Brian Wood. Wood opened the season at midfield but is playing attack again. Midfielders Larry LeDoyen and Brendan

Kelly are other key offensive performers.

The Blue Jays have a total of six national championships to their credit, including three in a row in 1978, 1979 and 1980.

Navy is another team that finds itself back in a prominent position in the lacrosse world. The Middies were

See Maryland, page 8

Cal State Fullerton women are back to defend softball title

Cal State Fullerton has played in every NCAA Division I Women's Softball Championship and returns this year to defend its 1986 title. The championship, hosted by Creighton University, will be May 20-24 at the Seymour Smith Softball Complex in Omaha, Nebraska.

Earlier this season, Titan coach Judi Garman celebrated her 400th career victory (in eight seasons) at Cal State Fullerton. Her team is 45-4 this season, including a 21-1 mark in the Pacific Coast Athletic Association.

Senior Connie Clark's talent on the mound has earned her a 24-1 record and a 0.35 earned-run average. She shares pitching duties with freshmen Chris Gage (9-1, 0.47) and Janis Okerlund (12-2, 0.60).

All-America Chenita Rogers is batting .406 and leads the Titans with 63 hits and 19 stolen bases. The senior left fielder was an all-tournament selection in 1986. Freshman first baseman Missy Coombes, .374, is leading teammates with 28 runs batted in. Junior center fielder Rina Foster, .323, has 27 runs batted in.

The Titans had a 34-game winning streak, which began March 6 and ended with a loss to Cal Poly Pomona April 21. They have been ranked first in the nation for more than a year—since the second week of the 1986 season.

Texas A&M, just off a successful road trip to the Diamond Invitational in Albuquerque, is preparing for its fifth consecutive trip to the championship. The Lady Aggies, 46-7 this season, finished second in 1986 behind Cal State Fullerton.

Senior Shawn Andaya, a standout on the mound and at the plate, has a 0.52 ERA with a 27-5 record and is batting .311 with 25 runs batted in. Pitcher Julie Carpenter, 1.24, also has turned in outstanding performances this season with five consecutive shutouts earlier in the year. Andaya has contributed four one-hitters and five two-hitters, with more than 10 batters struck out in each of her last nine games. Also, she surpassed the 1,000 mark in career strikeouts earlier this season.

Lead-off batter Julie Smith owns the team's longest hitting streak, hav-

ing hit safely in the past 12 games to boost her average to .363.

Other team standouts include junior Liz Mizera, .354; freshman Renee Blaha, .300; sophomore walk-on Erika Eriksson, .288, and senior Judy Trussell, .255.

Nebraska, 34-9, has finished regular-season play and is preparing for

Big Eight tournament action after a first-place conference finish. The Cornhuskers recently swept second-place Iowa State for an 8-2 conference record.

Interim coach Ron Wolforth's team plays aggressive offense, with 50 stolen bases in 68 attempts while holding opponents to 19 stolen bases in 25

attempts. Also, they have outscored opponents 151 to 47 overall, 42 to 6 in the first inning alone.

Pitching is shared by all-America Lori Sippel, 0.38, and Donna Dardorff, 0.34. The two combine for a 29-6 record, with each notching more than 100 strikeouts. A third pitcher, Marlys Handley, has been benched since late March due to an injury.

Outfielder Margie Ogrodowicz, .298, leads the team with 38 hits and 16 stolen bases and has scored 31 times in 39 games. All-America Lori Richins, .274, has 34 hits, nine of them coming in the last six games. Power hitter Jane Kremer, .262, has 33 hits and leads teammates with 24 runs batted in. The sophomore shortstop also has a .438 slugging percentage with 11 intentional walks.

The Cornhuskers are batting .253 as a team, with only four errors in the last 11 games.

UCLA has become a better all-around team than it was last year, relying equally on pitching and hitting to achieve its 33-7 record. The Bruins, under coach Sharron Backus, are 0-2 in the Pacific-10 Conference with 12 games remaining.

Freshman Lisa Longaker and sophomores Michelle Phillips and Samantha Ford have shared pitching duties this season. Longaker, 12-3, owns a 0.26 earned-run average with 142 strikeouts in 116 innings. She also has 11 shutouts to her credit. Phillips is pitching 0.49 with a 10-1 record, while Ford is 10-2 with a 0.31 ERA. The pitching staff has thrown 24 shutouts in 1987.

Top hitters for the Bruins include all region left fielder Sandra Arledge, who leads her team with a .402 batting average. The senior has recorded 47 hits and 22 runs batted in this season. Leading the team in runs batted in at 28 is sophomore third baseman Janice Parks, .339.

As a team, the Bruins are hitting .300 with 164 runs in 40 games while holding opponents to 35 runs.

With only 10 players on the roster, Utah State boasts a very versatile team. The most talented of these is pitcher/utility infielder Kristie Skoglund. The all-High Country Athletic Conference player has a 13-5 record

with a 0.70 earned-run average and is hitting .364. She has filled in at several positions this season and most likely will see action at shortstop when not on the mound.

In her four years with the Aggies, Skoglund has struck out only nine times in more than 450 at-bats.

Kendra Ireton, a four-year starter at second base, has drastically improved her .216 average of last year. She is hitting .402 in 1987, with three doubles and one home run in her last outing.

Overall, the Aggies have batted .264 on the way to a 24-10 record.

The Northwestern Wildcats, under head coach Sharon Drysdale, are leading the Big Ten Conference with an 11-1 record. Overall, the team has compiled a 25-6 season, with 13 games remaining.

Pitcher Lisa Ishikawa, who twice received all-America honors, is finishing her career at Northwestern with a 15-2 record. She has eight shutouts and one no-hitter 89 1/3 innings, with a 0.31 earned-run average. Freshman Chinazo Opia, 5-1, has a 0.61 earned-run average in 57 1/3 innings.

Top hitters for the Wildcats have been Ndidi Opia and Lynna Hallick. Opia, a sophomore catcher, has a .304 average with 28 hits in 29 games, while Hallick has been hitting .297 with 22 hits in 29 plate appearances.

Arizona currently is tied for first place in the Pacific-10 Conference with a 5-1 record. The Wildcats, 41-11 overall, have five games remaining before entering tournament action.

Top players include freshman Vivian Holm, .333, who has 48 stolen bases in 51 attempts, giving her the most stolen bases in a season in Division I history.

Leading the Wildcats with 34 runs batted in each are sophomore Stacy Engel, .359, and junior Jamie Wheat, .277. Wheat also has four triples and four home runs to her credit.

Pitching duties have been shared mainly by Teresa Cherry and Lisa Bautista. Cherry, a junior, has a 0.89 earned-run average and 58 strikeouts in 181 1/3 innings. Bautista has thrown 74 strikeouts in 131 1/3 innings for a 1.23 earned-run average.



Kristie Skoglund



UCLA keeps men's volleyball championship on West Coast

The West Coast continued its dominance of men's volleyball as host UCLA defeated Southern California, 3-0, for the National Collegiate Men's Volleyball Championship May 1-2 at Pauley Pavilion.

The victory extends the Bruins' string of titles to 13, all of which have come under head coach Allen Scates. Penn State overcame Ohio State, 15-3, 15-6, 15-6, for a third-place finish.

Tournament most-valuable-player Ozzie Volstad led the Bruins with 23 kills and was successful on 52.6 percent of his kill attempts. "I wanted to go out the way I came in," Volstad said. The senior, who also was a member of UCLA's unbeaten 1984 team, added, "It was two years without a championship, and that's good incentive."

Southern Cal rallied from a 10-4 deficit in the third game, coming from behind with nine consecutive points. The Trojans had game-point at 14-13, but lost the ball when sophomore Chris Martz served into the net.

The Trojans regained the serve when Bruin Don Dendinger was called for four hits, but lost it immediately. UCLA rallied, gaining two points off a block and a Volstad spike into the Trojans' back court. The winning point came when a spike by Trojan Owen McKibbin landed out of bounds.

The score was close in the first game before UCLA rallied with seven

consecutive points and widened the margin to 13-5.

The Trojans fought off game-point eight times and scored seven points before UCLA sophomore Matt Sonnichsen scored with a kill off a block for the final 15-11 score.

The 26-minute second game saw less action, with the Bruins scoring five times before Southern Cal got on the board. The only other point for the Trojans came with a kill by Johnson off a Trevor Schirman block.

Also named to the all-tournament team were Chris Chase, Penn State; Javier Gaspar, Penn State; Adam Johnson, Southern Cal; Arne Lamberg, UCLA; Jeff Williams, UCLA, and Dave Yoder, Southern Cal.

UCLA	SA	BS	DC	K	E	TA	Pct.
UCLA	15	15	16				
Southern Cal	11	2	14				
UCLA	SA	BS	DC	K	E	TA	Pct.
Jeff Williams	0	0	9	17	4	28	.464
Matt Sonnichsen	0	0	10	8	3	16	.313
Don Dendinger	0	0	2	12	3	23	.391
Arne Lamberg	0	0	10	20	3	31	.548
Trevor Schirman	0	0	7	10	5	17	.294
Ozzie Volstad	0	2	7	23	3	38	.526
Benny Wang	0	0	0	0	0	0	.000
Mark Tedsen	0	0	1	0	0	0	.000
Total	0	2	46	90	21	153	.451
Southern Cal	SA	BS	DC	K	E	TA	Pct.
Tom Duke	0	0	3	19	4	31	.484
Chris Martz	0	1	1	10	1	24	.375
Mike Hurlbut	0	0	1	6	6	17	.000
Dave Yoder	0	1	7	25	10	45	.333
Mike Lauterman	0	0	8	1	1	4	.000
Adam Johnson	0	2	7	14	5	26	.346
Sean Sheward	0	0	0	0	0	0	.000
Owen McKibbin	0	0	2	4	3	10	.100
Jon Schisler	0	0	0	0	0	0	.000
Total	0	4	29	79	30	157	.312



Ozzie Volstad (right) of UCLA

Norm Schindler photo

Florida Southern

Continued from page 6

Dean Kelly and from sophomore first baseman Tino Martinez.

Cal State Dominguez Hills, with a blend of consistent pitching and timely hitting, has compiled a 29-11 record to reach the No. 4 spot in the Collegiate Baseball poll. Regional runners-up in 1986, the Toros hope to make it all the way to Montgomery this month.

Mike Aspray and reliever Chris Haslock head the pitching staff, while outfielders Jon Beuder and Fred Hanker deliver the offense. Beuder had a five-for-five hitting day in March.

New Haven (11-1) has been hampered by the harsh weather in the Northeast but will be favored to represent the region at the championship. Frank Viera's Chargers rely on a senior-led order featuring first baseman Les Wallin, shortstop Paul Zegray and catcher Frank Forcucci.

Jacksonville State (23-8) has faced a tough battle in the Gulf South Conference, which also features top-20 teams North Alabama, Valdosta

State and Delta State.

The Gamecocks' Stewart Lee has been one of the leading offensive stars in Division II this spring. The linebacker-turned-third baseman has become Jacksonville State's all-time home run leader and has a full season remaining. Lee's 1986 average has hovered well above .400.

Cal State Sacramento (30-18) made a strong showing at the finals last year but again must get past Cal State Dominguez Hills to make the field.

Outfielder Brian Casteel, the most valuable player at last year's West regional, heads a solid senior class that also includes shortstop Kevin Ohama and right-handers Rocco Buffolino and Dave Olsen. Buffolino made the all-tournament team at Montgomery last spring.

North Alabama (34-7-1) hopes to edge Jacksonville State in the South Central region and return to the tournament field after a year's absence.

The Lions rely on solid pitching and exceptional speed. Seniors Chuck Ashcraft and Pat Bruce lead the mound staff, while fleet shortstop

Mark Krumback paces the offense.

Wright State (15-4) has edged past Mankato State and Shippensburg as the favorite in the North Central region. Now in their last season in Division II, the Raiders feature a junior-dominated lineup that includes pitchers Don Bosway and Joe Schivone and left fielder Brian Bailey.

Cal Poly-Pomona (25-21) rounds out Collegiate Baseball's top 10. The Broncos, three-time national champions, are led by first baseman Tom Weeks and third baseman Tom Lorenz. Another plus is the expertise of coach John Scolinos, now closing in on his 1,100th career victory.

Another California Collegiate Athletic Association power, Cal State Northridge, also is a candidate to qualify from the West. The Matadors, Division II champions in 1984, have an experienced squad that includes pitchers Jeremy Hernandez and Dan Penner and first baseman John Balanz.

Troy State has slipped from the top 10 in 1986, but the defending cham-

pion is likely to be heard from at the championships. The tournament host, missing last spring's dominating pitching, relies on regulars Mark Smartt and Warren Arrington.

Eckerd features one of the nation's top strikeout artists in sophomore Jim Hoog, as well as talented outfielders in Mickey Pina and Gary Noble.

Gulf South rivals Valdosta State and Delta State could topple Colum-

bus in the region. Valdosta State boasts potent hitters in Terry Sawick and Jojo Blaha, while Delta State gets dependable pitching from seniors Johnnie Taylor and Tom Hostetler.

Southern Illinois-Edwardsville, already a division power in wrestling and tennis, could make an impact in baseball as well. The Cougars have specialized in walks this spring, drawing 91 bases on balls in their first 18 games.

Southern Cal

Continued from page 6

other fine season, challenging Georgia and Tennessee for conference honors and rising steadily in the poll.

Junior Billy Uribe and senior Carlos Homedes lead Jerry Simmons' Tiger squad, one of seven SEC teams with hopes of making the Division I field.

Renneberg gives Southern Methodist the singles favorite. The junior, who lost to Stanford's Dan Goldie in the 1986 finals, has been atop the ITCA poll since last fall. Teammate Stefan Kruger is also in the top 10. Renneberg and senior Den Bishop are fourth in doubles, with Kruger and Ed Ross another tandem likely to be invited.

Tennessee did not make the tournament last spring after a surprise victory in the SEC. The Volunteers are not likely to stay home for a second season. Junior Byron Talbot has skyrocketed in the singles listings, moving into the top 10 from a pre-season ranking of 48th. Classmate Shelby Cannon is No. 13.

Miami (Florida), the best of the independents, features a blend of collegiate veterans and Swedish newcomers. Seniors Andrew Burrow and Chuck Willenborg head a roster that also includes junior college star Ollie Jonsson and freshman Johan Donar.

Pepperdine, the 1986 runner-up, has seen its fortunes fall off this season but still could make an impact at Athens. Veterans Robby Weiss, Marty Laurendeau and Augustine Moreno are joined by freshmen An-

drew Sznajder and David Wells-Roth.

Texas Christian could give the Southwest Conference a third team in the field. The Horned Frogs boast a seasoned lineup featuring all-America Tom Mercer and highly ranked Neil Broad, as well as transfer Patrick Smith, the 1986 Division II singles champion from Stephen F. Austin State.

Another Division II veteran is South Carolina coach Kent DeMars, whose teams at Southern Illinois-Edwardsville won seven straight national titles. Transfer Ken Diller, two-time all-America at UCLA, joins Jan Sandberg and Brian Barker on the Gamecock roster.

Intrastate rival Clemson is ranked just below South Carolina. The Tigers' depth was hurt by graduation, but coach Chuck Kriese has several all-America candidates back. Brian Page and Matt Frooman form a potent doubles combination.

Traditional power California has the sixth-ranked singles player in senior Steve DeVries.

Kentucky, long in the shadow of other Southeastern Conference teams, could receive its first NCAA invitation.

UC Irvine, with both experience and freshman talent, offers Long Beach State a challenge in the Pacific Coast Athletic Association.

Michigan hopes to become the first Big Ten Conference representative to get past the opening round under the tournament's match-play format.

Maryland

Continued from page 7

regulars in the tournament between 1971 and 1982. They got their first bid in three years last season and will make a strong challenge for the title this year.

Coach Bryan Matthews has a tough defense led by Nick Amatuuccio, Joe Schweitzer and goalie Joe Donnelly. The man-down defense has been a key factor, allowing only seven goals in 65 chances for a percentage of 10.8.

Navy has a young attack composed of sophomores Paul Basile and Tom Hanzsca and freshman Mike Herger. Basile has about 40 assists while Herger has scored 30 goals.

Brown is a young team that has come together well in 1987. Sophomore attackman Jamie Munro has over 40 points, while junior Bernie Buonanno is in the same range. Senior Reed Overby and freshmen Rich Tuo-

hey and Tom Dwyer provide firepower from the midfield. Freshman goalie Steven Ayers has a save percentage in the mid-60s.

Massachusetts is another New England team that could be a threat this year. Senior attackman Tom Carmean has about 40 assists and passed the century mark in career assists this season. Freshman Scott Hiller has scored about 30 goals. The key performer could be goalie Sal LoCascio. He was a second-team all-America as a freshman last year and set a tournament record with 29 saves against Johns Hopkins.

This year's tournament will include a team from the West. The top candidates are Air Force and Michigan State. Air Force goalie Ken Wessels has stopped over 70 percent of the shots he has faced. Key performers

for Michigan State include attackman Adam Mueller and goalie Chris Barber.

Some selections in this year's expanded 12-team field will not be decided until the final game of the regular season. Towson State, Loyola (Maryland), Duke and Adelphi have posted some impressive wins this year. Army could be a candidate, along with Pennsylvania, Harvard and Rutgers.

Selections will be made Sunday, May 10. Regionals and quarterfinals are May 13 and May 17, respectively, at campus sites. The semifinals and final are May 23 and 25 at Rutgers.

"You're going to have to be in super condition physically and mentally" to succeed in the semifinals and final, said Cornell's Moran. "I would be just delighted to be in it."

Three-pointer has had little impact on scoring in men's game

By James M. Van Valkenburg
NCAA Director of Statistics

Many veteran coaches and other experts have said that the new three-point goal of 1987 and the 45-second clock instituted in 1986 will bring some of the most profound changes in college basketball history.

That certainly may yet prove to be true; but simply on the basis of the scoring figures in the final men's Division I statistics trends, it is not yet true. The three-pointer is supposed to open up the inside game and give the big players more freedom to score. But without the three-pointer, scoring would have been down in 1987.

The average Division I game in 1987 produced seven three-pointers in 18.25 attempts for 38.4 percent accuracy. As a result, the average game produced 145.5 points (both teams combined), all 8,580 games involving at least one of the 290 Division I teams). That is an increase of 6.8 points a game over the 138.7 in 1986.

But the point is, without the three-point rule, national scoring would have been down two-tenths of a point to 138.5, so how can one argue that the three-pointer opened up the inside game?

No footnotes needed

We have received many inquiries about whether we will have footnotes or separate tables for scoring leaders. The answer is no and will continue to be no. We will have a separate column showing how many three-pointers the scorer made before and after 1987. Before this year, three-pointers were not counted in official national rankings. To be fair to these players, the number of pre-1987 three-pointers made will be included in parentheses, so one could make any desired comparisons.

But no asterisks, footnotes or separate tables. Why? Because three other rules changes produced even bigger changes in scoring in past years, and we do not footnote those. When the one-and-one free-throw rule was put in for the 1953 season, free throws made per game increased 10.5 per game (from 31.6 to 42.1). When the rule was changed for the 1958 season,

free throws made fell 7.2 per game (from 40.8 to 33.6). A third major change in the free-throw rule in 1973 brought a drop of 8.8 made per game (from 35 to 26.2). All are bigger than the seven extra points produced by three-pointers in 1987.

No rules involved

The most dramatic change in scoring in the last 30 years involved no rules changes whatever. It was caused by the coaches who devised various zone defenses to stop the big man. In just seven years, scoring fell 18 points per game, from 153.1 in 1975 to a 30-year low of 135.1 in 1982, directly due to a drop of 9.6 field goals made per game (from an all-time-high 6.29 in 1975 to a 19-year low of 53.3 in 1982).

- 1933 10-second line introduced (before this, one could dribble out a 10-9 lead under own goal last part of game). No player can stand in free-throw lane with ball more than three seconds.
- 1936 Player may reenter game twice (since 1919 could come back only once).
- 1937 No offensive player can remain in lane more than three seconds.
- 1938 Center jump eliminated (before this, center jump after each goal; one team thus could keep possession most of game by winning center jump).
- 1945 Goal-tending banned. Five persons now disqualify player (four since 1910). Unlimited substitution introduced.
- 1953 One-and-one free-throw rule introduced (bonus only if first missed). In effect entire game except last three minutes, when every foul is two shots. Bonus free-throw only if first made.
- 1955 Two-shot penalty last three minutes eliminated; one-and-one entire game.

Basketball trends

Field-goal attempts fell 28 per game, from 139.2 in 1973—second highest in history—to a then all-time low of 111.2 in 1982.

In 1982 alone, scoring fell 5.1 points. In 1983 came the flood of experiments with the clock and three-pointer, but that increased scoring only to 138.7—more than it would have been in 1987 except for the three-pointer. Field-goal attempts now are only 117.3 per game or just 6.2 above the all-time low in 1982. So zone defenses and slow-down games are still with us.

Zones never will disappear (unless made illegal and even then that is hard to enforce), partly because it takes more talent to play a top man-for-man. But the experts are confident the new rules will eventually bring more man defense and will open up the inside game.

Major rules changes

A popular notion is that the clock and three-pointer are the first big changes in college basketball in ages. Not so. There have been many big changes. Here are 16 of the bigger ones, having an effect on individual scoring in many cases:

- 1924 Player fouled must shoot own free throw (one man usually shot them all

- 1957 Lane increased from six feet to 12 feet.
- 1958 One free throw for each common foul first six minutes each half, one-and-one thereafter.
- 1968 Dunk made illegal.
- 1973 Current free-throw rule adopted—free throw eliminated on first six common fouls each half, one-and-one thereafter.
- 1977 Dunk legal again.
- 1986 45-second clock is in.
- 1987 Three-point field goal is in.

The 1945 goal-tending ban came one year after Oklahoma State's 7-foot Bob Kurland made an impact (Kurland and Oklahoma State still won NCAA championships in 1945 and 1946). The 1968 no-dunk rule came one year after UCLA's Lew Alcindor (now Kareem Abdul-Jabbar) had played his first season (UCLA won two more NCAA crowns in 1968 and 1969). Widening of the lane to 12 feet in 1957 came after shot-blocker Bill Russell had led San Francisco to NCAA crowns in 1955 and 1956. The one-and-one rule in 1953 came after fouls per game hit an all-time-high 44.9 in 1952.

Interestingly, when the dunk was banned in 1968, scoring went up; and when it was made legal again in 1977, scoring went down (by small margins in each case).

We continue to believe that the 10-

Cal Poly-SLO men's basketball placed on year's probation

I. Introduction.

During the course of an investigation into possible violations in a men's basketball program at another institution, attention was drawn to possible violations in the men's basketball program at California Polytechnic State University, San Luis Obispo. The violations were of two types: (a) The head coach violated the provisions regarding tryouts by both personally observing prospective student-athletes in basketball pick-up games with current players and having members of the team who participated assist him in determining whether to award financial aid, and (b) the head coach allowed members of the men's basketball team to become involved in basketball practice prior to October 15 by participating in certain basketball activities during a physical education course in basketball. These

activities took place openly and with the knowledge of the institution for many years.

The NCAA's investigation of this case was lengthened and unduly complicated by the fact that the men's head basketball coach gave incomplete and misleading information to the institution's administration, and neither the coach nor the director of athletics knew or understood the appropriate NCAA rules and regulations.

During the course of the investigation, the head coach resigned and has suffered a very substantial financial penalty.

II. Violations of NCAA regulations as determined by the NCAA Committee on Infractions.

A. Violation of the tryout rule [NCAA Bylaw 1-6(a)].

During the springs of 1983, 1984 and 1985, then men's head basketball coach Ernie Wheeler evaluated the basketball skills of several prospective student-athletes while view-

ing these prospects during pick-up basketball games on the university's campus with members of the university's basketball team during the prospects' official paid visits; further, on several of these occasions, members of the university's basketball coaching staff arranged these tryouts by encouraging the prospects to bring their workout clothing to campus in the event of an opportunity to "shoot around." These pick-up games occurred over a long period of time, and athletics administrators should have been in a position to discover and correct this practice.

B. Violation of the out-of-season practice legislation [NCAA Bylaw 3-1-4(a)-(1) and O.I. 304].

In the fall of 1985, and for many years prior, then men's head basketball coach Ernie Wheeler and other members of the university's basketball coaching staff conducted preseason basketball practices on the university's campus during and after conducting a class (PEM 183). Specifically, prior to October 15, a coaching staff member conducted this basketball and physical conditioning class, which was mandatory for all members of the university's basketball team, and following the class, team members were issued basketballs and scrimmage vests, divided into groups by position (posted by Wheeler) and participated in various basketball drills and scrimmages while being observed for short periods of time by coaching staff members, and finally, after October 15, the class became a part of the practice sessions for the university's basketball team, and only those individuals who were members of the university's basketball team participated. This course was not monitored by the athletics administration sufficiently to ensure that the class was conducted in accordance with NCAA requirements concerning out-of-season practice.

C. Violation of the principles governing institutional control [NCAA Constitution 3-2].

Over a substantial period of time, there were repeated failures to exercise adequate institutional controls over the administration of the athletics program, specifically in the areas of physical education classes taught by men's basketball coaching staff members and workout activities involving prospective student-athletes during their official paid visits.

III. Committee on Infractions Penalties.

A. Former men's head basketball coach Ernie Wheeler shall be publicly reprimanded for his part in violations of NCAA regulations

as set forth in this report.

B. The institution shall be placed on probation for a period of one year from the date these penalties are imposed, which shall be the date the 15-day appeal period expires or the date the university notifies the executive director that it will not appeal to the NCAA Council, whichever is earlier, or the date established by Council action as a result of an appeal by the university to the Council. During this probationary period, the university shall be required to demonstrate in writing that it is in full compliance with NCAA legislation (particularly concerning out-of-season practice regulations in men's basketball and tryouts), and that it has in place a program for educating its athletics staff concerning NCAA legislation.

Other 1987 figures

National field-goal percentage was 46.4 in 1987 because of the three-point shot, lowest since the 46 percent in 1975. But eliminate the three-point attempts and it was 47.9 vs. 47.7 in 1986 and the record 48.1 in 1984. Free throw accuracy was 69 percent vs. 69.1 in 1986, personal fouls 39.3 vs. 39.1 in 1986. The average game produced 54.4 field goals in 117.3 attempts and 29.7 free throws in 43 attempts (vs. 54.7, 114.6, 29.4 and 42.5, respectively, in 1986).

Conference leaders

The Big Ten Conference led the nation in scoring offense in 1986 at 78.6 points a game, followed by the Ohio Valley Conference at 78.1 and Atlantic Coast Conference 77.7. In field-goal accuracy, it was ACC 49.8 percent, Big Ten 49.7 and the Southland Conference edging the Big Eight Conference for third, 48.32 to 48.26. In free-throw accuracy, it was the ACC 72, East Coast Conference 71.9 and Big Ten 71.5. Defensively, the Southwest Athletic Conference led in allowing 65.9 points per game, the Big East Conference in field-goal percentage defense at 44.6. (Team season leaders in all categories including three-pointers were published in The NCAA News April 29.)

In most three-pointers made per game, it was a tight three-conference race. The Pacific Coast Athletic Association averaged 4.399, the Ivy Group 4.394, the ACC 4.392. In three-point attempts, it was Missouri Valley Conference 10.647, Atlantic 10 Conference 10.605 and ACC 10.58. In three-point accuracy, it was Big Ten 42.3 percent, Gulf Star Conference 41.9 and ACC 41.5.

Single-game leaders

The season high for three-pointers made by a team in Division I was 17 by Oklahoma vs. Nebraska February 21. In Division II, it was 15 by Cal State Sacramento vs. Humboldt State February 10; and in Division III, 16 by Grinnell vs. Knox February 7. Most attempts were 34 by Cal State Sacramento, 44 by Grinnell and 35 by Nevada-Las Vegas vs. Indiana in the Final Four, March 28. Most three-pointers made in Division I were 12 each by Niagara's Gary Bossert vs. Siena January 7 and by Butler's Darrin Fitzgerald vs. Detroit February 9. In Division II, it was 11 by Cal State Sacramento's Alex Williams in the same game above; and in III, it was also 11, by Bethany's (West Virginia) Ron Bozick vs. Oberlin January 3.

Women's trends

Scoring and field-goal shooting accuracy fell in women's Division I basketball in 1987, but by small margins, while free-throw accuracy set a record.

The average game produced 138 points in 1987 (both teams combined, all 7,914 games involving at least one of the 280 Division I teams). That is the lowest in four years of official national trends (138.6 in 1985 the previous low) but only by a small amount. It was 138.7 in 1986. Field-goal accuracy was down to 43.9 percent—same as in 1985—compared to 44.2 percent in 1986. Free-throw accuracy set a record at 66.3 percent, breaking the 65.7 set in 1986.

All in all, women's figures have changed very little in four years of compilations. That may change in 1988 with the introduction of the three-point shot (women always have had a clock during the NCAA period—it is 30 seconds), but then again, maybe not, since conference experiments in 1987 produced very few three-pointers.

The Big Eight Conference led the nation in scoring offense at 74.8, the Southeastern Conference again led in field-goal accuracy at 47.6 and the Big East Conference led in free-throw accuracy at 70.3 percent.

Infractions will submit an expanded infractions report to the members of the Council who will consider the appeal. This report will include additional information in accordance with Section 6 of the Official Procedure Governing the NCAA Enforcement Program, and a copy will be provided to you prior to the institution's hearing.

Also, the Committee on Infractions wishes to advise the university that when the penalties and corrective actions, as determined by the committee or Council subcommittee, become effective, the university shall take every precaution to ensure that their terms are observed. Further, the committee intends to monitor the penalties during their effective periods, and any action contrary to the terms of any of the penalties shall be considered grounds for extending the university's probationary period, as well as to consider more severe sanctions in the case.

NCAA COMMITTEE ON INFRACTIONS

Committee Notices

COMMITTEE CHANGES

Appointments are effective immediately unless otherwise noted.

Council: Karen L. Miller, California State Polytechnic University, Pomona, appointed to replace Louise Albrecht, Southern Connecticut State University, resigned.

Committee on Competitive Safeguards and Medical Aspects of Sports: Kathleen Wear-McNally, La Salle University, appointed as the ex officio Council member; term will be concurrent with her service on the NCAA Council. James R. Andrews, M.D., Troy State University, appointed to the at-large position. Kip Corrington, Texas A&M University, appointed to the position earmarked for an undergraduate student-athlete. All three terms begin September 1, 1987.

Committee on Infractions: John E. Nowak, University of Illinois, Champaign, appointed to succeed Frank J. Remington, effective September 1, 1987.

Professional Sports Liaison Committee: Victor A. Bubas, Sun Belt Conference, appointed to replace Douglas W. Weaver; term concurrent with his service on the NCAA Council. Re-elected Andrew J. Baylock, University of Connecticut, and Louis A. Lamoriello, Providence College.

Research Committee: John W. Stoepler, University of Toledo, appointed to replace Gwendolyn Norrell as chair. Marianne M. Jennings, Arizona State University, appointed to replace Norrell as a member. Kirk Cureton, University of Georgia, appointed to replace Sharon Plowman.

Eligibility requirements are altered

Pennsylvania State University athletes will be allowed to take fewer college credits per semester but will have to do better in those courses, under revisions in eligibility requirements approved by the faculty senate.

The changes, as did the university's previous policy, exceed NCAA legislative requirements for athletics eligibility. The NCAA requires students to take 24 credits a year.

The proposals, adopted by a voice vote at the senate's April 28 meeting, would affect athletes enrolling at Penn State this fall, the Associated Press reported.

"The difference will be negligible. For the most part, the kids will just do better," said Don Sheffield, director of

the university's academic support center for athletes.

Under the new proposals, student-athletes would be required to have earned 52 instead of 56 credits by the end of four semesters, 83 instead of 89 by the end of six semesters and 118 instead of 122 credits by the end of eight semesters.

The biggest difference, Sheffield said, comes in the number of "grade-point deficiencies" an athlete would be allowed. Under Penn State's formula, students earn grade-point deficiencies by getting D's and F's in courses.

Under the new regulations, athletes would be allowed only half as many deficiency points as the nonathlete.

Special Convention schedule of meetings

Following is a schedule of the meetings of the NCAA and those of several conferences and affiliated organizations that will be conducted during the NCAA's special Convention at the Loews Anatole Hotel, Dallas, Texas, June 29-30, 1987.

Sunday, June 28			Monday, June 29			Tuesday, June 30		
Time	Event	Room	Time	Event	Room	Time	Event	Room
8 a.m.-5 p.m.	American South Athletic Conference	Fleur-De-Lis B	7:30 a.m.-6 p.m.	NCAA Media Headquarters	Sapphire	10 a.m.-Noon	Big South Conference	Cooper
8 a.m.-5 p.m.	Council of Ivy Group Presidents	Ruby	7:30 a.m.-6 p.m.	NCAA Media Interview Room	Topaz	10 a.m.-Noon	College Football Association	Cannes Theater
8 a.m.-5 p.m.	Metropolitan Collegiate Conference	Rosetta	8 a.m.-10 a.m.	College Football Association Board of Directors	Inverness	10 a.m.-Noon	West Coast Athletic Conference	Library
8 a.m.-6 p.m.	NCAA Media Headquarters	Sapphire	8 a.m.-10 a.m.	Southwest Athletic Conference	Grand Ballroom A	10 a.m.-12:30 p.m.	Mid-American Conference	Grand Ballroom D
8 a.m.-6 p.m.	NCAA Media Interview Room	Topaz	8 a.m.-11 a.m.	East Coast Conference	Peonie	10 a.m.-1 p.m.	Southern Conference	Emerald
Noon-2 p.m.	NCAA Media Luncheon	Coral	8 a.m.-11 a.m.	Metro Atlantic Athletic Conference	Fleur-De-Lis B	10:30 a.m.-12:30 p.m.	High Country Athletic Conference	Obelisk B
Noon-8 p.m.	Big East Conference	Obelisk A	8 a.m.-Noon	NCAA Presidents Commission	Grand Ballroom E	10:30 a.m.-12:30 p.m.	Ohio Valley Conference	Rosetta
1 p.m.-3 p.m.	NCAA Faculty Representatives Forum	Governors Hall	8 a.m.-Noon	Mid-Eastern Athletic Conference	Cardinal A	11:30 a.m.-1:15 p.m.	NCAA Voting Committee	Inverness
1 p.m.-6 p.m.	Big Eight Conference	Batik A	8 a.m.-Noon	Midwestern Collegiate Conference	Cardinal B	Noon-1 p.m.	Big Eight Conference	Peonie
1 p.m.-6 p.m.	Pacific-10 Conference	Metropolitan	8 a.m.-Noon	Missouri Valley Conference	Batik A	1:30 p.m.-2 p.m.	NCAA Opening Business Session	Chantilly Ballroom
1:30 p.m.-5 p.m.	Atlantic Coast Conference	Batik B	8 a.m.-12:30 p.m.	Western Athletic Conference	Cardinal A	2 p.m.-5:30 p.m.	NCAA National Forum	Chantilly Ballroom
2 p.m.-7 p.m.	Western Athletic Conference	Cardinal A	8 a.m.-1 p.m.	Atlantic 10 Conference	Batik B	6:30 p.m.-8 p.m.	NCAA Delegates Reception	Grand Ballroom
2:30 p.m.-6:30 p.m.	Southeastern Conference	Obelisk A	8 a.m.-1 p.m.	Big East Conference	Obelisk A			
3 p.m.-5 p.m.	Gateway Collegiate Athletic Conference	Amethyst	8 a.m.-1 p.m.	Colonial Athletic Conference	Honeysuckle			
3 p.m.-6 p.m.	NCAA Council	Wedgewood	8 a.m.-1 p.m.	Council of Ivy Group Presidents	Ruby			
4 p.m.-6 p.m.	American Association of State Colleges and Universities	Chambers	8 a.m.-1 p.m.	Pacific-10 Conference	Miro			
4 p.m.-6 p.m.	American Football Coaches Association	Senators Hall	8 a.m.-1 p.m.	Sun Belt Conference	Coral			
4 p.m.-6 p.m.	Lone Star Conference	Cardinal B	8 a.m.-1 p.m.	Trans America Athletic Conference	Chantilly Foyer			
4 p.m.-7 p.m.	Midwestern Collegiate Conference	Fleur-De-Lis A	8 a.m.-5:30 p.m.	NCAA Registration	Chantilly Foyer			
6 p.m.-8 p.m.	Atlantic 10 Conference	Dardenelles	8 a.m.-5:30 p.m.	NCAA Complimentary Soft Drink Bar	Rosetta			
6 p.m.-8 p.m.	Mid-Eastern Athletic Conference	Cooper	8:15 a.m.-10 a.m.	Eastern College Athletic Conference Council	Amethyst			
			8:30 a.m.-1 p.m.	California Collegiate Athletic Association	Dardenelles			
			9 a.m.-11 a.m.	Southwestern Athletic Conference	Fleur-De-Lis A			
			9 a.m.-Noon	Southland Conference	Rambling Rose			
			9 a.m.-Noon	Sunshine State Conference	Governors Hall			
			9 a.m.-1 p.m.	Big Ten Conference	Grand Ballroom B			
			9:30 a.m.-1 p.m.	Pacific Coast Athletic Association	Chambers			
			10 a.m.-11:30 a.m.	Eastern College Athletic Conference				

Many

Continued from page 1

swimming, 14-12. In addition, Division I women's tennis would be established as an equivalency sport (6). All to be effective August 1, 1988. (Presidents Commission—roll-call vote, Division I.)

2. Reduce the permissible number of grants-in-aid in various Division II sports, including the following men's sports: baseball, 10-9; basketball, 12-11; cross country and track, 14-12; fencing, 5-4; gymnastics, 6-5; ice hockey, 15-12; lacrosse, 12-10; rifle, 4-3; skiing, 7-6; soccer 10-9; swimming, 9-7; water polo, 5-4, and wrestling, 10-9. Similar reductions are proposed for the following women's sports: basketball, 12-11; cross country and track, 14-12; fencing, 5-4; field hockey, 7-6; golf, 6-5; gymnastics, 6-5; lacrosse, 11-10; skiing, 7-6; soccer, 11-9; swimming, 9-7, and tennis, 6-5. All to be effective August 1, 1988. (Presidents Commission—roll-call vote, Division II.)

3. Reduce the permissible number of initial financial aid awards in Division I-AA football from 30 to 25, and reduce the overall grant limitation in Division I-AA football from 70 to 65, to be effective August 1, 1988. (Presidents Commission—roll-call vote, Division I-AA.)

4. Reduce the permissible number of grants-in-aid in Division II football from 45 to 40 in 1988. (Presidents Commission—roll-call vote, Division II.)

5. Reduce the permissible number of grants-in-aid in Division II football from 45 to 40 in 1987 and from 40 to 35 in 1988, also reducing the permissible number of grants-in-aid in Division II basketball from 12 to 10 in 1988 and the overall limitation for grants-in-aid in Division II sports other than football and basketball from 60 to 50 in 1988. (Pennsylvania State Athletic Conference—Division II.)

6. Reduce the maximum awards limitation in Division I-A football from 95 to 90. August 1, 1988. (Pacific 10 Conference—roll-call vote, Division I-A.)

7. Increase the permissible number of grants-in-aid in Division I basketball from 13 to 15. August 1, 1988. (14 institutions—Division I. Will be ruled out of order; sponsors will challenge ruling. Roll-call vote if challenge is successful.)

8. Increase the permissible number of grants-in-aid in Division I ice hockey from 20 equivalencies to 24 head-count. August 1, 1987. (Hockey East Association—Division I. Will be ruled out of order; sponsors will challenge ruling.)

9. Resolve that the NCAA Committee on Financial Aid and Amateurism be directed to study the concept of limiting athletically related financial aid in some or all sports to tuition and fees (with any other institutional financial aid to be based on the established need of the recipient) and to report its conclusions to the Presidents

Commission not later than August 1, 1988. (Presidents Commission—roll-call vote, all divisions.)

10. Resolve that the Council be directed to conduct a study of the concept of relating the permissible number of grants-in-aid in each sport to the graduation rate of recruited athletes in that sport, in comparison with the graduation rate of students in general at the involved institution, and that the Council present legislation at the 1988 annual Convention if the results of the study warrant such action. (Presidents Commission—roll-call vote, all divisions.)

Personnel

11. Eliminate one of the nine full-time assistant coaches in Division I-A football; eliminate one of the seven full-time assistant coaches in Division I-AA football, and eliminate one of the combination of six graduate assistant and volunteer coaches in Division I-A and Division I-AA football, to be effective August 1, 1988. (Presidents Commission—roll-call votes, Divisions I-A and I-AA separately.)

12. Resolve that the Council be directed to conduct a study of the numbers of individuals involved in coaching in each sport in Division I, as well as the number of administrative support staff positions in the athletics departments in that division, and that the Council present legislation at the 1988 annual Convention to constrain those numbers if the result of the study warrants such action. (Presidents Commission—roll-call vote, Division I.)

13. Permit a Division I-AA member institution that sponsors a junior varsity intercollegiate football team (but no freshman football team) to employ or otherwise utilize two additional part-time coaches in the sport of football, subject to the understanding that a proportionate reduction would be made in the number of graduate assistant football coaches utilized by the institution. (Seven institutions—Division I-AA.)

14. Modify the current legislation that will limit (effective August 1, 1987) Division I basketball to one head coach, two assistant coaches and two other coaches who currently may be volunteer assistants and/or graduate assistants, by stipulating that the two "other" coaches also could be part-time assistants, rather than volunteer or graduate assistants. (Eight institutions—Division I.)

15. Modify the current limitations on Division I basketball coaches (effective August 1, 1987) to permit one of the two "other" coaches to be a part-time assistant. (Six members of the Big East Conference—Division I.)

16. Modify the current limitations on Division I basketball coaches (effective August 1, 1987) to permit continuation of a part-time assistant coach until August 1, 1989. (Six members of the Southeastern Conference—Division I. Will be ruled out

of order; sponsors will challenge ruling.)

Recruiting

17. Resolve that the Convention express its view that member institutions should limit their annual evaluation and contact periods in each sport to a total of no more than four months; further, that specific legislation be drafted in this regard for consideration by the membership at the 1988 Convention. (Presidents Commission—roll-call vote, all divisions.)

18. Resolve that the Convention express its support of the concept of further limitations on the total number of permissible paid visits that may be provided annually by a member institution; further, that specific legislation be drafted in this regard for consideration by the membership at the 1988 Convention. (Presidents Commission—roll-call vote, all divisions.)

19. Resolve that the Council be directed to conduct a study of means of reducing the "extra" recruiting opportunities attendant to high school all-star games and to institutional and/or private sports camps and clinics, and that the Council present legislation at the 1988 annual Convention if the results of the study warrant such action. (Presidents Commission—roll-call vote, all divisions.)

20. Reduce the number of institutional paid visits from 95 to 85 in Divisions I-A and I-AA football and from 18 to 15 in Division I basketball, effective August 1, 1987. (Mid-American Athletic Conference—Divisions I-A, I-AA and I, as indicated.)

21. Establish a limit of three contacts per Division I women's basketball prospect at the prospect's educational institution. (Six institutions—Division I.)

22. Establish evaluation-period limitations in Division I women's basketball to recognize different girls' high school playing seasons, to permit scouting at the women's national junior college and AAU championships, and to reduce the permissible number of observations per prospect in Division I women's basketball from four to three. (22 institutions—Division I.)

23. Require that meals provided to a prospect during an official visit take place on campus, except for breakfast and the initial meal upon arrival for the visit. (Seven members of the Pacific-10 Conference—all divisions, divided vote.)

Playing Seasons

24. Limit spring football practice in Division I-A to 20 sessions in 30 calendar days and specify that no more than 15 practice sessions may involve contact. (Presidents Commission—roll-call vote, Division I-A.)

25. Eliminate spring football practice in Division I-AA. (Presidents Commission—roll-call vote, Division I-AA.)

26. Limit spring football practice in Division I-AA to 15 sessions in 25

calendar days and specify that no more than 10 practice sessions may involve contact. (Six members of the Ohio Valley Conference—Division I-AA.)

27. Limit spring football practice in Division I-AA to 20 sessions in 30 calendar days and specify that no more than 15 practice sessions may involve contact. (13 institutions—Division I-AA.)

28. Eliminate spring football practice in Division II. (Presidents Commission—roll-call vote, Division II.)

29. Establish a maximum six-month (26 weeks) playing and practice season in all Division I sports and reduce contests or playing dates in Division I sports as follows: baseball, 80-70 (55 in the spring); golf, 30-28; tennis, 35-30; indoor and outdoor track, 29-24; traditional volleyball season, 35-32, and nontraditional volleyball season, 12-6. Also, reduce the waiver opportunities available to exempt certain contests from the regular-season limitations. All to be effective August 1, 1987. (Council—roll-call vote, Division I.)

30. Amend Item No. 29 to specify that a Division I institution's "traditional" season in all sports other than football cannot begin until September 1 or the first day of fall-term classes, whichever occurs first (rather than August 15). (Big East Conference—Division I.)

31. Amend Item No. 29 to permit 60 Division I baseball games in the spring, rather than 55. (Six institutions—Division I.)

32. Establish a maximum six-month (26 weeks) playing and practice season in all Division II sports and reduce contests or playing dates in three Division II sports as follows: baseball, 80-70 (55 in the spring); golf, 30-28, and nontraditional volleyball season, 12-6. Also, reduce the waiver opportunities available to exempt certain contests from the regular-season limitations. All to be effective August 1, 1987. (Council—roll-call vote, Division II.)

33. Amend Item No. 32 to permit 60 Division II baseball games in the spring, rather than 55. (Sunshine State Conference—Division II.)

34. Establish a maximum five-month (21 weeks) playing and practice season in all Division III sports and limit the maximum number of contests or playing dates in all Division III sports. Also, reduce the waiver opportunities available to exempt certain contests from the regular-season limitations. All to be effective August 1, 1987. (Council—roll-call vote, Division III.)

35. Require that each member institution establish policies concerning student-athletes' missed class time and athletics competition scheduled during final-examination periods. (Council—roll-call vote, all divisions.)

36. Establish fall NCAA championship events in the sports of baseball, softball, tennis and golf (in addition to spring championships), with the

requirement that each member institution select either the fall or the spring as its official championship season in those sports. Effective August 1, 1988. (Seven institutions—all divisions, two-thirds majority required.)

37. Modify the application of O.I. 313 to apply the out-of-season practice restriction in that regulation to student-athletes in all sports, rather than only those involved in football and basketball. (Council—roll-call vote, all divisions.)

38. Limit the amount of time (per day and per week) that women basketball players can spend in practice and competition during the season, but permit such practice under certain conditions throughout the academic year; also, require that institutions formally notify all student-athletes of playing- and practice-season limits applicable to their sports. (18 institutions—all divisions, divided vote. Portion extending permissible practice period is subject to review by the parliamentarian.)

39. Resolve to develop legislation to limit the number of hours per day and per week that may be utilized by a student-athlete to practice and participate in his or her sport; further, specify those practice activities that are to be precluded outside the regular playing and practice season. (25 institutions—all divisions.)

Academics and Eligibility

40. Resolve that an in-depth study be conducted of the effects of varsity participation upon the academic performance of freshman student-athletes in Division I and Division II; further, that the results of the study be reported to the Council, Presidents Commission and membership by August 1, 1988. (Presidents Commission—roll-call vote, all divisions.)

41. Resolve that a study be conducted of the number of credits attempted versus the credits earned by student-athletes in Division I-A football and Division I men's and women's basketball for the 1987-88 academic year, including summer sessions, with the results to be reported by August 1, 1988, and legislation to be presented at the 1989 annual Convention if the study results warrant such action. (Big East Conference—Division I.)

42. Permit student-athletes to utilize five (rather than four) years of eligibility within a five-year period. (Eight institutions—all divisions, divided vote.)

General

43. Resolve that the NCAA be directed to conduct, on behalf of the Presidents Commission, a series of national forums; further, that a series of extensive studies be conducted during that same time period to provide evidence as to the effects of participation in intercollegiate athletics, both on the student-athlete and on the college or university. (Presidents Commission—roll-call vote, all divisions.)

New team-scoring system emphasizes pin in NCAA wrestling competition

Once again, the pin is the ultimate goal in collegiate wrestling.

The NCAA Wrestling Committee, meeting in Marco Island, Florida, April 25-29, approved a new team-scoring system for the sport, reducing the point award for the technical fall and thereby placing renewed emphasis on the pin.

Under the new plan, the fall still is worth six points in dual meets, as are the forfeit, default and disqualification. The technical fall, a decision by 15 or more individual points, now will be worth five team points. A major decision, by eight to 14 points, will earn four points and a decision by one to seven points will be worth three team points.

Under the old system, a technical fall was worth six points—the same as a pin. The new plan also simplifies the scoring by combining the major-decision and superior-decision categories.

In tournaments, the fall, forfeit, default and disqualification will be worth one point each, the technical fall three-fourths of a point and the major decision one-half point.

The committee also expressed its concern over warnings and point awards issued for stalling in the closing moments of a match. While no rule change was made, the following statement will be included as a point of emphasis in the 1988 rules:

"The NCAA Wrestling Committee feels that the outcome of too many matches has been determined by stall-

ing penalties in the late stages of a match (i.e., the final 15 to 20 seconds).

"It is the opinion of the committee that with the increased excitement among coaches, referees and spectators during the closing seconds of many matches, stalling penalties are often called unjustly and unfairly. Frequently, these are penalties that would not be called during comparable action earlier in the match.

"The committee therefore urges that during the concluding moments of a match, a stalling warning or penalty should be called only when stalling is unquestionably occurring."

In reviewing weight classes and weight allowances, the committee approved plans to study differences in weight between the time of the regulation weigh-in and the time of actual competition. Wrestlers at next season's championships will be weighed for a second time on mat-side scales. The findings will remain confidential until considered by the committee.

The committee urged conferences and individual institutions to conduct similar studies during the season.

Rule 4, which governs the conduct of meets and tournaments, was revamped to clarify match procedures. A new introductory section declares that "a match occurs during that time period beginning with the start of the first period and ending with the conclusion of wrestling at the end of the third period or when a fall, technical fall, disqualification or default occurs."

The rule also now defines a pre-

match period (from the time a contestant steps onto the mat until the first period begins) and a postmatch period (from the conclusion of the match until the contestants leave the mat) and provides specific guidelines for the conduct of those periods.

Following is a preliminary list of other rules changes made by the committee:

• Rule 4-2—"If the visiting team's contestant steps onto the mat first, he cannot be withdrawn or replaced," added after first sentence.

• Rule 4-7—"Overtime begins at the start of the one-minute rest period," added in the second paragraph.

• Rule 4-8—"To determine the winner" changed to "to determine advancement."

• Rule 6-4—"Would" changed to "may" in second sentence to protect a wrestler throwing headgear without unsportsmanlike intent.

• Rule 6-14—"Fleeing the wrestling area or forcing, including dragging, an opponent out of the wrestling area, as a means of avoiding the scoring of points or wrestling, is a technical violation. Penalty points shall not be awarded in situations where near-fall points are earned."

• Rule 7-1-d--The official's injury time will occur only after the wrestler's injury time has expired.

• Rule 8-3-h--The referee still is allowed to "verbally instruct the wrestlers" but may not coach them.

Clarification of cross country relay sought

The NCAA Men's and Women's Skiing Committee will recommend a clarification in the definition of a cross country relay for championships purposes.

The clarification is among several recommendations developed by the committee when it met April 28 to May 1 at Amelia Island, Florida. All of the recommendations regarding conduct of the National Collegiate Championships will be forwarded to the Executive Committee.

Under the clarification, the committee has specified that a qualified relay team will comprise three individuals, each one of whom may ski in the individual cross country event and must ski in the relay race. The only exception would be in the case of illness or injury, which must be verified by the meet physician.

Also, the committee will recommend that skiers may compete only in the disciplines (Alpine or Nordic) in which they qualify.

Although the committee did not

Baseball player banned from all conference sports

A Mississippi Valley State baseball player was banned forever from Southwestern Athletic Conference sports after allegedly going for a gun during a scuffle in a baseball game, SWAC officials said.

SWAC officials said Levert Hawkins, a first baseman for the team, cannot play any sports at Mississippi Valley or any other SWAC school. Officials said it was the first time in 68 years that such a violation had occurred.

The penalty stems from the seventh-inning brawl during the second game of a double-header between Mississippi Valley and Jackson State University in Jackson.

Jackson State's Wes Chamberlain, who was suspended for two games, became entangled with Hawkins as he raced back to first base. The SWAC said eyewitnesses reported seeing Hawkins, a senior from Water Valley, fire a pistol during the brawl. No one was injured.

change the procedure for the NCAA championships, it will ask both regions of the country to experiment during regular-season competition with both diagonal and skating techniques for cross country events.

While both techniques may be used at the current time, meet organizers will be asked to conduct races using one technique or the other throughout the competition for all racers.

The committee hopes to gather information about the number of violations, the degree of course control required and the impact on the competition using either one or the other technique.

There were no major rules changes made by the committee, although it did clarify language throughout the rules and will require that secondary timing be hand timing, even when

two electrical systems are employed.

Also, videotapes of the slalom and cross country relay races may be used by the jury to disqualify competitors provided that the tapes are produced by the host institution and are from consistent locations.

Middlebury College will be recommended as the host for the 1988 National Collegiate Men's and Women's Skiing Championships March 9-12. Allocations for individual positions in the meet will be the same as 1987 except in men's giant slalom (East 17, West 19), women's giant slalom (East 17, West 19) and women's slalom (East 17, West 19).

The committee requested bids for the 1989 championships and noted that any institution interested in being the host should contact Cindy Smith in the national office.

Legislative Assistance

1987 Column No. 19

Bylaw 5-1-(j)—outside competition

The Division I subcommittee of the NCAA Legislation and Interpretations Committee has reviewed the application of Case No. 350 (1987-88 NCAA Manual), which prohibits a partial qualifier or nonqualifier from participating during the first year of enrollment at a Division I member institution in athletics competition on an institutional club team or outside sports team. The subcommittee determined that the provisions of Case No. 350 would not apply to outside competition during the summer following the conclusion of the initial academic year; further, it was agreed that the application of Case No. 350 would permit partial qualifiers or nonqualifiers to participate during the initial academic year in limited "tryouts" for an outside team, subject to the understanding that partial qualifiers or nonqualifiers would be prohibited from representing such a team in outside competition during the initial academic year and could not actually compete on the outside team until the summer following the academic year.

Evaluation restrictions—representatives

During the 1987 annual Convention, Division I member institutions adopted Proposal No. 47, which (effective August 1, 1987) will preclude any recruiting contact, including correspondence and telephone calls, by representatives of athletics interests on campus or off campus. The Division I subcommittee of the Legislation and Interpretations Committee has reviewed the application of Proposal No. 47 and determined that this regulation would not preclude an athletics representative from viewing a prospective student-athlete's athletics contest on his or her own initiative, subject to the understanding that the athletics representative may not contact the prospective student-athlete. The Division I subcommittee noted that an athletics representative also would be prohibited under these circumstances from contacting the prospective student-athlete's coach, principal or counselor in an attempt to evaluate the prospect, as well as from visiting the prospect's educational institution to pick up film or transcripts pertaining to the evaluation of the prospect's academic eligibility or athletic ability.

Limitations on financial aid awards

The Division I subcommittee of the Legislation and Interpretations Committee has confirmed that the term "recruited" as used in Bylaw 6 and O.I. 601 would apply only to the prospective student-athlete's recruitment by the certifying member institution. Accordingly, in determining whether a student-athlete would be considered "countable" or "exempted" under the legislation governing limitations on financial aid awards, the issue of whether the student-athlete was "recruited" as a prospect would be determined on the basis of whether the individual was recruited by the certifying member institution. The prospect's recruitment by any other member institution would not relate to the application of this legislation.

Interpretations Column No. 4

Interpretations columns (as distinguished from Legislative Assistance columns) are published in The NCAA News solely for the purpose of identifying revisions in official interpretations that are approved by the Council for inclusion in the NCAA Manual's case book (i.e., those interpretations that are presented in the form of situations, questions and answers). Generally, the Interpretations columns are published less frequently than the Legislative Assistance columns, which include summaries of other official interpretations made by the Council and the Legislation and Interpretations Committee. If the two columns appear in the same edition of The NCAA News, the effort is made to include both on the same page of the News; however, such an arrangement is not always possible. Accordingly, this is a reminder that 1987 Interpretations Column No. 4, which included the revision of five cases in the 1987-88 NCAA Manual, was printed on page 17 of the April 29, 1987, edition of The NCAA News.

This material was provided by the NCAA legislative services department as an aid to member institutions. If an institution has a question it would like to have answered in this column, the question should be directed to William B. Hunt, assistant executive director, at the NCAA national office.

Announcing a Joint Marketing Agreement Between . . .

Athletech

Computer Systems Inc.

the proven innovator in applying technology to athletics with . . .

Game Analysis Recruiting Sports Information

Camp Management Voice Strength Training

Video Editing By Computer Academic Tracking

GIS

GLOBE INFORMATION SYSTEMS, INC.

a world-wide leader in . . .

Fund Raising Accounting

Facilities Scheduling Ticketing

Athletech Computer Systems Inc. 2889 Hyde Park Court

Clearwater, Florida 33519

Telephone (813) • 786 • 5398

Athletech has established itself as the premier provider of systems, training, and consulting to college athletics.

- Named one of the top 100 companies among America's 4,000 plus value added computer resellers, the only company serving athletics to be so honored.
- Systems utilize affordable "IBM compatible" computers, for maximum flexibility and reliability.
- Systems function in simple English and your own terminology.
- Athletic professionals with the unique ability to adapt knowledge and experience to the latest advances in technology.

Athletech clients say it best . . .

"... made a significant contribution to the success of our season . . . a great and welcome improvement over our old system."
Jack Elway, Head Football Coach, Stanford University

"... cuts down work time by 50% to 60%."
Bill Mallory, Head Football Coach, Indiana University

"It is without hesitation that we highly recommend Athle-Tech computer software."
Mike Gottfried, Head Football Coach, The University of Pittsburgh

"... designed and supported by professionals who understand our business . . . tremendous flexibility which allows us to tailor the system to our specific needs."
Cam Cameron, Assistant Football Coach, The University of Michigan



CHIEF EXECUTIVE OFFICERS

WILLIAM DeLAUDER named president at Delaware State. He is dean of arts and sciences and professor of chemistry at North Carolina A&T... **WILLIAM M. SUTTLES**, executive vice-president and provost at Georgia State, appointed acting president at the school... **A. LEE FRITSCHLER** selected president at Dickinson. He is director of the Center for Public Policy Education at the Brookings Institution.

DIRECTORS OF ATHLETICS

Providence's **LOUIS A. LAMORIELLO** appointed president of the New Jersey Devils of the National Hockey League. Lamoriello became head men's ice hockey coach at the school 15 years ago and was named in 1982 to succeed Dave Gavitt as the school's AD. Lamoriello recently became a member of the NCAA Professional Sports Liaison Committee when it assumed the duties of the Ice Hockey Developmental Funding Committee, of which Lamoriello was a member... **HAROLD W. "MICKEY" CONNOLLY** announced his retirement after 21 years at Southeastern Massachusetts, effective September 1. The former Boston College football player saw the Southeastern Massachusetts program grow to encompass 21 intercollegiate sports and an intramurals and recreation program.

COACHES

Baseball—Assistant **CARL GIURANNA** named to coach the team at West Chester after the death on April 27 of head coach **NEIL SERPICO**.

Baseball assistant **JOHN SCHALY** of Kentucky selected head coach for the new program at Berry. He is the son of head coach Don Schaly of defending Division III champion Marietta. The younger Schaly coached at Iowa State and Marietta before joining the Kentucky staff in 1985.

Men's basketball **BOB HALLBERG** appointed at Illinois-Chicago after 10 years at Chicago State, which moved to Division I from the National Association of Intercollegiate Athletics in 1984. Hallberg's Chicago State teams posted a 224-84 record. He previously coached six years at St. Xavier in Chicago, where he also was athletics director... **JERRY KIRKSEY** named at Southwest Baptist, replacing **DENNIS PHILLIPS**, who is taking a leave of absence to pursue doctoral studies. Kirksey previously coached at Drury, which he led to the NAIA men's basketball title in 1979... The contract of **DICK DANFORD** was extended through 1989 at Hardin-Simmons, where his teams have compiled a 48-67 record through his first four years at the school. His 1985-86 team posted the school's best record in 13 years and last season's squad finished fifth in the Trans America Athletic Conference after being picked to finish ninth.

Men's basketball assistants—**RFMY MCCARTHY** resigned after four seasons at Utah to pursue another coaching position, and one-year assistant **BOB BURTON** also stepped down to return to the head coach's job he previously held at West Valley Junior College in Saratoga, California... **JEFF BURKHAMER** appointed at Morehead State after two seasons at Baptist... **DALE CLAYTON** named at Southwestern Louisiana after three seasons as associate head coach at Samford. He previously has served on the staffs at Milligan, Delta State and Vanderbilt. Clayton succeeds



REGGIE FRANKLIN, who was named head coach at Midland (Texas) College.

Women's basketball—**JAN ROSSMAN** announced her retirement at New Haven, where she coached for four seasons and led her last team to the Division II national title. She plans to concentrate full time on a restaurant she owns and other business interests. Rossman's teams compiled a 78-39 record during her tenure at New Haven, including a 29-2 mark in winning the championship. She previously coached at Slippery Rock and at the high school level... **MIKE MILLER** named at Messiah, where he guided the Falcons to a 9-12 record as interim coach last season... **LAURA KUHLMAN** selected at Kalamazoo.

Women's basketball assistants—**SUE HANSEN** resigned after one season at Western Illinois. She said she probably will return to coaching at the high school level. Hansen also has been on the staff at Nebraska... **JAMES "BUCKY" GILL** resigned after two years at Temple to pursue other opportunities. The former Philadelphia high school coach also served on the staff at Oregon State before arriving at Temple.

Women's cross country—**DONNA TIEGS**



selected at Mankato State, where she also will coach women's track and field. She previously was women's cross country and track and field coach at Northwest Missouri State for two years and earlier coached at Dodge City (Kansas) Community College. Tiegs succeeds **SANDY HOOVER**, a graduate assistant who headed the program for one year.

Field hockey **GILLIAN RATTRAY** stepped down at Penn State, where she has coached since 1974, to teach full time in health, physical education and recreation at the school. Rattray's teams have participated in postseason play 10 straight years, including appearances in the Division I Field Hockey Championship the past four seasons, and won two national titles prior to entering NCAA competition. Her record at the school is 176-49-21. Rattray



Bob Hallberg named head men's basketball coach at Illinois-Chicago

Jeff Burkhamer appointed assistant men's basketball coach at Morehead State

also coached the women's lacrosse team at Penn State to three national U.S. Women's Lacrosse Association titles before stepping down with a 134-19-3 record in 1985... **LINDA MacDONALD** resigned after three years at Bentley to begin graduate studies in California. Her Bentley teams compiled a 37-9-2 record and made two Division III Field Hockey Championship appearances, reaching the semifinals last season.

Football—**MIKE MAHONEY** appointed at Murray State, where he was an assistant in 1979 and from 1981 to 1985 before serving for one season as defensive line coach at Kansas. He also has been on the staffs at Arizona and William and Mary.

Football assistants **JOHN ZAMBERLIN** named inside linebackers coach and **BILL McGOVERN** appointed secondary coach at Massachusetts. Zamberlin, a former linebacker with the New England Patriots and Kansas City Chiefs who was a volunteer assistant at Pacific Lutheran in 1985, replaces **MIKE DUNBAR**, who was named head coach at Central Washington. McGovern, a former Holy Cross all-America free safety who was secondary coach for the Crusaders last season,



Gillian Rattray stepping down at Penn State to teach full time

Linda MacDonald resigned as Bentley field hockey coach to begin graduate studies

replaces **MIKE VAN DIEST**, who moved to the staff at Northwestern... **BOB LARSON**, **CHARLIE CARPENTER**, **RON COOPER**, **THOMAS "ROCK" ROGGEMAN II** and **GLENN JONES** selected at Murray State. Offensive coordinator and running backs coach Larson previously was head coach at Butler County Community College in Kansas. Carpenter will coach the offensive line after two seasons at Cumberland. Linebackers coach and recruiting coordinator Cooper previously served in the same positions at Austin Peay and also has coached at Appalachian State and Minnesota. Former Notre Dame letterman Roggeman served as a graduate assistant for the Fighting Irish before becoming Murray State's defensive ends coach and strength coach. Jones previously coached at Kansas and Morehead State. In another move at Murray State, former Iowa State graduate assistant coach **FRIC ROARK** was named a volunteer assistant. Roark also has served on the staffs at Southeastern Oklahoma State and San Diego State... **FRANK L. HERSHEY** appointed offensive backs coach at Harvard. Since 1965, Hershey has coached at Norwich, Franklin and Marshall, Millersville, and, most recently, Dartmouth, where he has served since 1981... **ANDY BARANEK** named offensive backs coach at Muhlenberg. The former East Stroudsburg all-America served last year as assistant coach at Saucon Valley High School in Pennsylvania... **REGIS SCAPE** selected defensive coordinator and inside linebackers coach at John Carroll. He previously was head coach for nine years at Chanel High School in Bedford, Ohio. Also, former Case Reserve all-America offensive lineman **MARK RAIFF** chosen to be a graduate assistant coach at John Carroll.

Men's ice hockey—**LOUIS A. LAMORIELLO** named president of the New Jersey Devils of the National Hockey League after 15 seasons at Providence, where he also has been athletics director since 1982. Lamoriello's Providence teams posted a .578 winning percentage during his tenure and appeared in the Division I Men's Ice Hockey Championship four times, including a second-place finish in 1985. He also served as commissioner of the seven-team Hockey East Association, which was founded in 1983... **PERRY ABRAM** of St. Thomas (Minnesota) named athletics director at Anoka (Minnesota) High School. Abram's St. Thomas teams compiled a 105-42-1 record through his five seasons at the school and appeared three times in the Division III Men's Ice Hockey Championship in addition to winning three Minnesota Intercollegiate Athletic Conference titles.

Men's soccer—**HUGH BEASLEY** appointed at Georgia State after three years at Rollins, where his teams were 32-18-4.

Women's soccer—**JERRY SMITH** selected at Santa Clara, replacing **MARK NARCISO**,

who resigned. Smith previously coached women and assisted with men at Foothill College and he also has coached high school and club teams in California.

Women's softball assistant **JFANNE HESS** appointed at Kalamazoo, where she also will continue to coach women's volleyball.

Men's and women's tennis **MARTY WOLF** resigned at Cincinnati, where he had coached since 1981, to devote more time to business ventures and his family. His women's teams compiled a 69-56 record and the men's teams posted a 62-41 mark.

Women's track and field—**PETER FOX SMITH** will relinquish administrative duties in the sport at Dartmouth but will continue as cross country coach and work with women runners during the winter and spring terms after accepting a three-year appointment as an adjunct professor of German at the school... **DONNA TIEGS** selected at Mankato State, where she also will coach women's cross country. Tiegs previously coached the sports for two years at Northwest Missouri State and earlier coached at Dodge City (Kansas) Community College. She succeeds **SANDY HOOVER**, a graduate assistant who headed the program for one year.

STAFF

Academic counselors—**ERIK VISSER** appointed at San Francisco, where he has been interim counselor since September. He will retain his duties as head women's soccer coach at the school... **MIKE HALL** named academic adviser at Liberty, where he has been serving as director of admissions and advising in the School of Lifelong Learning.

Strength and conditioning coach—**MIKE WIECZOREK** selected at North Dakota after nearly three years as football strength and conditioning coach at Central Missouri State.

Ticket manager **JAMES M. STERK** named at Maine, succeeding **LISA BURGER**, who resigned to enter private business. Sterk previously was assistant to the ticket operations director at North Carolina.

CONFERENCES

CHARLES E. CLARK, faculty athletics representative at East Tennessee State, elected to a two-year term as president of the Southern Conference... **LOUIS A. LAMORIELLO**, commissioner of the Hockey East Association and athletics director and head men's ice hockey coach at Providence, appointed president of the New Jersey Devils of the National Hockey League.

DEATHS

HERNELL "JEEP" JACKSON, a senior men's basketball player at UTEP who was a first-team all-Western Athletic Conference selection last season, died May 2 after apparently suffering cardiac arrest while playing in a game with a Fort Bliss all-star team in El Paso. He was 23. An autopsy was ordered to determine the cause of death... **GUS JOHNSON**, who played one season at Idaho and later was an assistant coach at Kent State after a successful career in the National Basketball Association, died April 28 of brain cancer in Akron, Ohio, at age 48. Johnson played in five NBA All-Star games during a nine-year stint with the Baltimore Bullets, then closed out his career in the early 1970s with the Phoenix Suns and Indiana Pacers. He was known as one of professional basketball's earliest practitioners of spectacular slam-dunk shots... **NEIL SERPICO**, head baseball coach at West Chester since 1970, died April 27 after suffering an apparent stroke the previous day during a game between his team and Long Island-C. W. Post. The former New Hampshire football and baseball player also spent time in the Baltimore Orioles organization before pursuing a teaching career. As baseball coach at West Chester, Serpico led his teams to a combined 292-241-5 record.

LARRY BETHEA, a former Michigan State standout and graduate with a degree in urban development who played six seasons for the Dallas Cowboys, died April 23 of what officials in Newport News, Virginia, said was apparently a self-inflicted gunshot wound. He was 30. Police said Bethea was a suspect in two convenience store robberies that occurred just hours before he was found dead... Former U.S. Rep. **EDITH S. GREEN**, D-Oregon, died April 21 in Tualatin, Oregon, at age 77. She chaired the subcommittee of the House Committee on Education and Labor that wrote the Higher Education Act of 1972, which is best known for the Title IX provision that attacked discrimination on the basis of sex in education... **LUTHER EVANS**, a sports writer with the Miami Herald who covered college athletics during his 45-year career with the newspaper, died April 2 in Miami of lung cancer. He was 67.

DIRECTORY CHANGES

Sports Committees

Division II Women's Basketball—Gladys Ziemer, instead of Zeimcr.

Men's Gymnastics—Robert H. Dvorak, instead of Hutch Dvorak.

POLLS

Division I Baseball

The top 30 NCAA Division I baseball teams as selected by Collegiate Baseball through games of April 27, with records in parentheses and points:

1. Texas (49-8)	498
2. Pepperdine (39-8-3)	495
3. Oklahoma State (43-5)	494
4. Arkansas (39-8-1)	492
5. Cal State Fullerton (35-14)	487
6. Stanford (34-14)	486
7. Georgia Tech (37-9)	482
8. Michigan (37-7)	481
9. Georgia (32-12)	479
10. Florida State (40-12)	478
11. UCLA (34-16-1)	477
12. Clemson (40-9-1)	473
13. Texas A&M (39-17-1)	469
14. Hawaii (35-16)	467
15. Seton Hall (29-7)	463
16. South Carolina (34-10)	460
17. Auburn (31-11)	458
18. Washington State (35-13)	451
19. Miami (Florida) (31-17-1)	449
20. Old Dominion (30-12)	447
21. Nebraska (31-13)	443
22. Tulane (41-14)	440
23. New Orleans (34-17)	437
24. Arizona State (30-22)	436
25. Wichita State (42-16)	433
26. Oral Roberts (36-11)	429
27. Oklahoma (32-14)	427
28. Florida (26-20)	423
29. Central Michigan (24-7)	420
30. Louisiana Tech (37-10)	419

Division III Women's Softball

The top 20 NCAA Division III women's softball teams through games of April 27, with records in parentheses and points:

1. Trenton State (37-3)	99
2. Central (Iowa) (25-8)	94
3. Eastern Connecticut State (23-8)	92
4. Wisconsin-Oshkosh (25-5)	85
5. Calvin (18-2)	78
6. Allegheny (16-9)	75
7. Cal State Stanislaus (18-13)	68
8. Luther (17-12)	63
9. Glassboro State (25-9)	60
10. Montclair State (25-6)	55
11. Ithaca (19-9)	48
12. Wisconsin-Whitewater (20-5)	43
13. Worcester State (17-1)	38
14. Ohio Northern (18-5)	37
15. Muskingum (18-9)	24
16. Salisbury State (16-7)	22
17. Whittier (26-10)	19
18. Illinois Benedictine (17-11)	18
19. Kean (25-10)	13
20. Elizabethtown (21-2)	12

Calendar

May 3-7	Men's and Women's Swimming Committee, Kansas City, Missouri
May 11-13	Professional Sports Liaison Committee, Colorado Springs, Colorado
May 11-14	Men's Gymnastics Committee, Orlando, Florida
May 12-14	Men's Ice Hockey Committee, San Diego, California
May 13-14	Drug Education Committee, Los Angeles, California
May 14-16	Special Committee on Deregulation and Rules Simplification, Kansas City, Missouri
May 20-21	Recruiting Committee, San Francisco, California
May 26-29	Division II Women's Basketball Committee, Orlando, Florida
May 31-June 4	Men's Lacrosse Committee, Monterey, California
June 3-5	Committee on Infractions, Kansas City, Missouri
June 4-5	Long Range Planning Committee, Kansas City, Missouri
June 5-6	Committee on Review and Planning, Kansas City, Missouri
June 8-11	Women's Fencing Committee, Hyannis, Massachusetts
June 11-12	Postgraduate Scholarship Committee, San Diego, California
June 11-13	Special Committee on Deregulation and Rules Simplification, San Francisco, California
June 11-13	Division III Men's Basketball Committee, South Lake Tahoe, California
June 16-19	Women's Gymnastics Committee, Cape Cod, Massachusetts
June 17-18	Committee on Competitive Safeguards and Medical Aspects of Sports, Jackson, Wyoming
June 17-20	Men's and Women's Rifle Committee, Kansas City, Missouri
June 21-26	Division I Men's and Women's Track and Field Committee, Sun Valley, Idaho
June 22-25	Division III Women's Basketball Committee, South Lake Tahoe, California



ADMINISTRATORS OF NCAA SPONSORED INSURANCE PROGRAMS

NCAA Lifetime Catastrophic Injury Insurance
NCAA Basic Athletics Injury Insurance
NCAA Athletics Staff Accident Insurance

For information contact:
American Sports Underwriters, Incorporated
9300 Metcalf, Suite 230
Overland Park, Kansas 66212
1-800-621-2116 • In Kansas 913-383-3133

American Sports Underwriters, Inc., is a company devoted exclusively to the underwriting and development of insurance for the sports industry.

Student-athlete

Continued from page 5

was my own choice. I couldn't imagine doing just one event. That would be boring.

"I like all the events," Larsen added, "(but) I guess my favorite is the high jump."

She holds the school record in both the heptathlon and pentathlon, as well as the shot put, indoor long jump and three relay distances. As a junior, she was named a Division II all-America after her performance at the 1986 NCAA championships.

During this year's indoor season, Larsen bettered her own shot put mark twice and helped lead the Lady Mountaineers to indoor victories in the Mason-Dixon Conference Cham-

pionship; the Navy Invitational, and a five-team meet at the University of Delaware, where she finished second in five events.

Occasionally, her business and track lives mean sacrifices in her social life, which revolves around a boyfriend and friends at other colleges in the Frederick, Maryland, area.

"I'll get busy and we won't see each other for a month," Larsen said, referring to her circle. "Then we'll go out and have a few."

With all that's going on in her life, at least one aspect has been sent to the back 40 acres—temporarily, anyway. Larsen has had to give up entering her horse, Hustler, in area shows.

"I just don't have the time I had in

high school," Larsen said. "I used to go out before class and ride him in the morning, but that time is taken up with office work and on-the-job visits."

At one time, Larsen considered starting a business training horses. She knows western and English styles of riding, and Hustler is trained in both, but she has her druthers.

"I prefer English pleasure. I love to jump," Larsen said, then confessed she felt bad about not spending more time with Hustler. "He's such a pleasure to be around." But she realizes that, sometimes, something has to give, and she knows who to blame.

"I've always involved myself in too many things at one time," she said with a wistful smile.

NCAA

Continued from page 1

private business, schools and colleges.

"I am deeply honored to be recognized by such a wonderful program," Conte said. "The National Youth Sports Program provides an invaluable service to disadvantaged youth through its use of sports training to install self-confidence.

"This is my kind of program because it not only provides children with a healthy meal, but offers them the long-term benefit of obtaining the self-confidence and skills they need to succeed in life," Conte said.

The National Youth Sports Program provides disadvantaged boys and girls ages six to 12 instruction in

competitive and lifetime sports. The program also provides free daily meals and offers an educational component covering drug abuse, health and nutrition, and educational and job opportunities.

CFA

Continued from page 1

ball coach, Pennsylvania State University; William F. Putnam, faculty athletics representative, University of South Carolina; Grant Teaff, head football coach, Baylor University; Joab L. Thomas, president, University of Alabama, Tuscaloosa, and Charles M. Neinas, executive director of the CFA.

The NCAA News



The Market

Readers of The NCAA News are invited to use The Market to locate candidates for positions open at their institutions, to advertise open dates in their playing schedules or for other appropriate purposes.

Rates are 45 cents per word for general classified advertising (agate type) and \$22.60 per column inch for display classified advertising. Orders and copy are due by noon five days prior to the date of publication for general classified space and by noon seven days prior to the date of publication for display classified advertising. Orders and copy will be accepted by telephone.

For more information or to place an ad, call 913/384-3220 or write NCAA Publishing, P.O. Box 1906, Mission, Kansas 66201.

Positions Available

Associate A.D.

Associate Athletic Director/Head Coach of Cross Country and Track. Description of Position: The Associate Director will have administrative responsibilities in the following areas: Scheduling of intercollegiate contests; Management of athletic facilities; Assisting in budget preparation; Supervision of intercollegiate programs and staff; Directing RPI Invitational Hockey Tournament; Additional responsibilities as assigned by the Director of Athletics. As head coach of Cross Country and Track, the coach will have overall responsibility for all phases of the programs. This will include coaching, program organization and planning, meet preparation and recruiting. Qualifications: An advanced degree in Physical Education or a related field with evidence of successful administration of athletic programs. A strong background in coaching cross country and track and field with college experience preferred. A candidate must be able to work effectively with college students and must have a coaching philosophy which emphasizes teaching techniques and fundamentals. Interpersonal skills are essential. Salary: Commensurate with qualifications and experience. Appointment: Full time, nine months, renewable. Application Procedure: Send letter and supporting credentials to: Office of Human Resources, Employment Manager, Rensselaer Polytechnic Institute, Troy, New York 12180-3590. RPI is an Affirmative Action/Equal Opportunity Employer.

Assistant A.D.

Assistant Athletic Director. The University of California, San Diego, is seeking an experienced Assistant Athletic Director for a broad-based, competitive NCAA Division III men's and women's program. Successful candidate will assist Athletic Director with daily operations. Major responsibilities will include game management; supervision of designated sports teams, special events, and personnel; compliance with University policies and NCAA rules; recruiting; and overseeing facility scheduling and equipment control. Salary:

\$32,000 for 12 months. Final job offer dependent upon approval of funding. Qualifications: Master's degree preferred. Successful experience in athletic administration. Ability to work within academic environment with integrity, creativity, and sound judgment. Excellent interpersonal and organizational skills. Candidates should submit by May 29, 1987, letter of application, resume, and 3 letters of recommendation to: Staff Personnel, University of California, San Diego, Q016/22574-C, La Jolla, CA 92093. UCSD is an equal opportunity/affirmative action employer.

Assistant Athletic Director For Business Affairs. The University of Southern California is seeking an Assistant Athletic Director for business affairs. Responsibilities include budget formulation; all accounting and financing functions; classification of gifts; collection and receivables; business systems and business-related aspects of game management; ensure compliance on all major contracts; direct department personnel operations. Requirements: Bachelor's degree, CPA preferred; MBA desirable; experience in management of business affairs at comparable level in another institution; demonstrated skills in administration, personnel management, and knowledge of NCAA rules. Full benefits. Salary commensurate with experience. Send letter of application, resume, and 3 letters of recommendation to Michael B. McGee, University of Southern California, Department of Athletics, Los Angeles, CA 90089-0602. Deadline for receipt of applications May 22.

Athletics Trainer

Athletic Trainer/Coach/Instructor. Plymouth State College is seeking applications for the position of Assistant Athletic Trainer, Assistant Women's Coach, and H.P.E.R. Instructor. Responsibilities include: Assistant coaching in at least one women's sport. Master's degree preferred, NATA certification required, 1 year in college level athletic training preferred. Normal starting salary: \$15,130-\$18,000. Starting date: August 15, 1987. Send cover letter and resume to: Gene Fahey, Interim Director of Athletics, P.E. Center, Plymouth State College, Plymouth, NH 03264. Application deadline: May 15, 1987. PSC is an EOE/AA.

Associate Athletic Trainer. The College of William and Mary, Associate Athletic Trainer, 10-month renewable contract from August 1 to May 31. Qualifications: NATA certification

required, master's degree preferred. Responsibilities: Athletic trainer for a broad based Division I athletic program. Salary commensurate with experience. Send letter of application, vita, and three letters of recommendation to: Steven L. Cole, Director of Sports Medicine, College of William and Mary, P.O. Box 399, Williamsburg, Virginia 23187. Application Deadline: June 1, 1987. The College of William and Mary is an Equal Opportunity/Affirmative Action Employer.

Athletic Trainer. Full-time position available; appointment Fall 1987. Master's degree and NATA certification required. Responsibilities include athletic team training, supervision of student trainers and teaching in the women's health and physical education department. Salary commensurate with qualifications and experience. Send letter of application, including a resume, college transcripts and three letters of recommendation, to: Ms. Jo Ann Meadows, Director of Athletics, State University of New York College at Oswego, Lee Hall, Oswego, New York 13126, by May 29, 1987. State University College at Oswego is an Equal Opportunity/Affirmative Action Employer.

Assistant Athletic Trainers (2 positions). Applicants must have Bachelor's degree (Master's preferred) and NATA Certification. Applicants must possess: strong contact sports training experience; willingness and ability to teach undergraduate courses; willingness to travel; ability to work in a coed environment; ability to work with medical personnel; experience in the supervision of an athletic training room, including a drug education/testing program. Contracts for 10 months beginning August 1. Salary is \$15,000—dependent upon qualifications and experience. Submit letter of application, resume (which includes the names, addresses and phone numbers of at least three references), and other supporting materials to: Doug Fullerton, Director of Men's Athletics, Montana State University, Brick Breeden Fieldhouse, Bozeman, MT 59717-0025. Applications will be reviewed on May 22, 1987, with interviews to be conducted immediately thereafter. MSU is an equal opportunity/affirmative action employer.

Women's Trainer/Softball Coach. Loyola University of Chicago is seeking a certified trainer who will also coach the softball team for a full-time, 9-month appointment effective August 15, 1987. Trainer duties include: Supervise the training room and all modalities in the treatment and rehabilitation of athletes; design and administer rehabilitation program for injured athletes in conjunction with Head Trainer and team physician; supervise all women's teams' home events and travel in-season to all away competition; provide primary care for women athletes and assist Head Trainer with men's non-revenue sports. Responsibilities as Softball Coach include: Plan, organize and conduct practice, select and recruit prospective student athletes; develop and implement competition schedules and adhere to all University, NCAA and MCC rules and regulations. Send letter of application, resume, and three letters of recommendation to: Office of Human Resources, Attn: Mr. S. Hewitson, Loyola University of Chicago, 6525 N. Sheridan Road, Chicago, Illinois 60626. Equal Opportunity/Affirmative Action Employer.

Part-time Athletic Trainer (3 positions). North Carolina State University. Will assist athletic

trainers with the operation of the athletic training program. Will be assigned to football, soccer, wrestling, baseball, women's soccer, or volleyball. Must have a bachelor's degree and N.A.T.A. certification or be eligible for certification. Send letter of application and resume to Jim Rehbock, A.T.C., Coordinator of Sports Medicine, North Carolina State University, Box 8501, Reynolds Coliseum, Raleigh, N.C. 27695-8501 by June 1, 1987. Equal Opportunity/Affirmative Action Employer.

Business

Director of Athletic Business and Finance. CPA or MBA degree required; ability to work effectively in a State University system; experience or knowledge in the following areas: budget development and implementation, purchasing, systems management, payroll, accounting, and finance. Responsibilities: Consults with the Director of Athletics and other departmental personnel on budget and finance matters. Responsible for financial planning and budget projecting. Develops and implements operating procedures pertaining to financial controls. Supervises the development and implementation of the department's budget to include individual cost center budgets. Works with various University offices to ensure compliance with University and State policies and regulations. Responsible for purchasing procedures and supervises departmental purchasing to include receiving and payments. Establishes accounting systems and prepares necessary reports. Oversees departmental investments with University pooled accounts. Supervises the Business Office staff; oversees departmental insurance programs, approves travel advances and expenses. Performs miscellaneous duties as assigned. Effective date of appointment: July 1, 1987; application deadline: May 30, 1987. Send applications to: Mr. John D. Swafford, Director of Athletics, University of North Carolina, P.O. Box 2126, Chapel Hill, NC 27515. Women and minorities are encouraged to identify themselves voluntarily. An Affirmative Action/Equal Opportunity Employer.

Equipment Manager

Assistant Equipment Manager. University of Colorado, Boulder. 9-month appointment. Start: August 1, 1987. Salary: \$13,500. Written applications only to: Equipment Manager Search Committee, Campus Box 368, University of Colorado, Boulder, Colorado 80309. Applications must be postmarked no later than May 21, 1987. Job Description: Assistant manager of equipment with daily operation of college athletic equipment room. Includes repair of equipment, fitting of equipment, field maintenance, laundry, supervision of student employees. Position will require travel to all away football games and supervise movement of team equipment to game sites. Will be required to work Saturdays during fall and spring football. Qualifications: College education preferred. Minimum of two years experience working in college athletic equipment room or similar position. University of Colorado, Boulder, has a strong institutional commitment to the principle of diversity. In

that spirit, we are particularly interested in receiving applications from a broad spectrum of people, including women, members of ethnic minorities and disabled individuals.

Sports Information

Sports Information Director. Case Western Reserve University is accepting nominations and applications for a Sports Information Director. Duties include providing full-time news, information, and media relations services to the CWRU Department of Athletics. The Sports Information Director also serves as information liaison with the National Collegiate Athletic Association, the North Coast Athletic Conference, and the University Athletic Association. The Sports Information Director works with the Director of University Communication and the Director of Athletics to produce news releases, publications, and other aspects of media relations. Occasional supervision of clerical and student personnel will be required. Requirements include 2-3 years of sportswriting experience at another institution or in the media. Experience with computer-assisted information processing on an IBM PC or Apple is preferred. Apply to: Department of Human Resources, 220 Pardee Hall, Case Western Reserve University, Cleveland, OH 44106. CWRU is an Affirmative Action/Equal Opportunity Employer.

Assistant Sports Information Director. University of Colorado, Boulder. Start: July 1, 1987. Salary: Commensurate with experience. Written application only to: Sports

Information Search Committee, Campus Box 368, University of Colorado, Boulder, Colorado 80309. Applications must be postmarked no later than May 21, 1987. Job Description: Assist sports information director with publicity needs of the 15 men's and women's intercollegiate sports, including the hosting of all home events, maintenance of records, production of department publications and coordination of office student assistance. Qualifications: College degree with journalism or public relations major preferred. Minimum of two years experience in a college sports information office or in a similar position required. Computer experience (IBM PC) also preferred. University of Colorado, Boulder, has a strong institutional commitment to the principle of diversity. In that spirit, we are particularly interested in receiving applications from a broad spectrum of people, including women, members of ethnic minorities and disabled individuals.

Sports Information Internship. Gain extremely valuable experience by serving a public relations and events management internship with the John Hancock Sun Bowl. The John Hancock Sun Bowl is offering this 7-month internship, effective June 15, 1987, with the possibility of a permanent position being filled January 15, 1988. Salary for the internship period is \$1,000 per month. Applicants must possess: experience and/or demonstrate skills in sports information, media relations, assistance with press box operation, news writing, publication production, and event management. The intern will be involved extensively in coordinating press ap-

See The Market, page 14

PENN STATE ASSISTANT WOMEN'S BASKETBALL COACH

Twelve month appointment in the Department of Intercollegiate Athletics. Responsible for assisting in coaching assignments, performing administrative duties, for recruiting quality student athletes and for establishing preliminary game schedule. Requires Bachelor's degree (or equivalent) and 1-2 years of effective coaching experience. Must possess ability to work within a Division I NCAA program. Start June 1, 1987. Salary commensurate with experience and qualifications. Apply by May 18, 1987, to:

Ms. Della Durant, Assistant Athletic Director
The Pennsylvania State University
204 Recreation Building, Department NC-B
University Park, PA 16802
An Equal Opportunity/Affirmative Action Employer

Commissioner Metropolitan Collegiate Athletic Conference

The Metro Athletic Conference invites applications and nominations for the position of Commissioner. The Metro Conference, located in Atlanta, Georgia, consists of the following Division I institutions: Cincinnati, Florida State, Louisville, Memphis State, South Carolina, Southern Mississippi and Virginia Tech.

The Commissioner, who reports to the Executive Committee of the Conference, is the chief administrative officer of the league, which includes the following 13 sports: Men's Cross Country, Women's Cross Country, Volleyball, Men's Basketball, Women's Basketball, Men's Swimming and Diving, Women's Swimming and Diving, Indoor Track, Men's Tennis, Women's Tennis, Golf, Track, and Baseball.

Candidates must possess a bachelor's degree and be knowledgeable in all phases of intercollegiate athletics. The ideal applicant should have a thorough understanding of NCAA rules and regulations; have strong administrative, oral, and written skills; and should be experienced in promotions and marketing.

Salary will be commensurate with experience, qualifications and education.

Applications and nominations will be received until May 18, 1987.

Sidney Weatherford
Chairman, Commissioner Search Committee
Metro Athletic Conference
One Ravinia Drive, Suite 1120
Atlanta, Georgia 30346
Equal Opportunity Employer

FIELD HOCKEY/LACROSSE COACH SMITH COLLEGE

Organize and coach field hockey and lacrosse, recruit prospective scholar-athletes and guide the personal development of the Smith student who participates in athletics; perform other assistant coaching and teaching duties as assigned. Qualifications include a Master's Degree preferred. Competitive experience as well as successful college-level coaching in these sports. A coaching philosophy compatible with that of Smith College and the ability to work within the guidelines established by the NCAA and the NEW 6 Conference. Compensation is commensurate with experience. Direct letter, resume and three letters of recommendation by May 15, 1987, to:

Lawrence A. Fink
Director of Athletics
Ainsworth Gymnasium
Smith College
Northampton, Mass. 01063

An Equal Opportunity Employer

Mount Holyoke College

POSITION: Full-time lecturer in the Department of Physical Education. Head Coach of Women's Basketball and/or one of the following: Assistant Athletic Trainer, Varsity Field Hockey Coach or Varsity Softball Coach. Teach activity classes.

QUALIFICATIONS: Master's degree preferred. Candidates must show evidence of successful coaching experience at high school and/or college level and teaching experience. The assistant athletic trainer must possess NATA certification.

RESPONSIBILITIES: Ability to coach and teach within the philosophy of NCAA Division III athletics and a highly selective liberal arts institution.

SALARY: Commensurate with experience and qualifications.

APPOINTMENT: July 1, 1987.

APPLICATION PROCEDURE: Send letter of application, resume, and three current letters of recommendation to:

Les J. Poolman, Chairman
Department of Physical Education
Mount Holyoke College
South Hadley, MA 01075

Mount Holyoke College is an Equal Opportunity/Affirmative Action Employer, which encourages women and minorities to include themselves among applicants.

The Market

Continued from page 13

erations for the bowl's three major athletic events—the college football bowl game on Christmas Day, the All-American Golf Classic October 28-30, and a college basketball classic December 28-29. In addition, the item will be involved in managerial activities related to all of the bowl's events, including the Thanksgiving Day Parade, and especially those activities related to the All-American Golf Classic. For this reason, knowledge of the sport of golf would be helpful. Deadline for applications is May 22, 1987. Applicants should send resumes, names, addresses, and phone numbers of three references, and any materials demonstrating experience in the above mentioned areas to: Sam Jenkins, Executive Director, John Hancock Sun Bowl, P.O. Box 95, El Paso, Texas 79941. Equal Opportunity/Affirmative Action Employer.

Basketball

Men's Assistant Basketball Coach. Description of Position: Assist Head Coach in all phases of the basketball program. This includes recruiting, coaching, practice organization, and public relations. An additional assignment will be made, depending upon experience and expertise, as an assistant coach in a fall sport. The candidate will also teach activity courses in the required physical education program. Position Requirements: A degree in Physical Education or related discipline. Playing and/or coaching experience and a strong background in teaching and coaching basketball skills, ability to be effective in enrollment work, and ability to work effectively with college students. Emphasis on teaching techniques and fundamentals. Salary: Commensurate with education & experience. Appointment: Nine months, full-time, renewable. Application Procedure: Send letter of application and supporting credentials no later than April 28, 1987, to: Employment Manager, Human Resources Office, Rensselaer Polytechnic Institute, Pittsburgh Building, Troy, New York 12180-3590. RPI is an Affirmative Action/Equal Opportunity Employer.

Assistant Women's Basketball Coach. St. Cloud State University has an opening for an Assistant Women's Basketball Coach to assist the head coach in all phases of the basketball program. Bachelor's degree required, master's degree preferred; successful high school or college basketball coaching experience required. Position is a fixed term, 75% appointment, starting September 8, 1987. Salary Range: \$12,000 to \$19,000 (75%), according to years of experience. St. Cloud State University is a member of the North Central Conference and NCAA Division II. To apply send letter of application, resume, transcripts and three recent letters of recommendation to: Gladys Ziemer, Director, Women's Athletics, St. Cloud State University, St. Cloud, Minnesota 56301. Applications must be received by May 22, 1987.

Head Women's Basketball Coach. Elmhurst College is seeking applications for the position of Head Women's Basketball Coach, Assistant Softball. Other duties include teaching various theory and activity classes in physical education. Master's degree required. Elmhurst College is a member of the CCW (NCAA Division III). Competitive salary. Send letter of application, resume, three letters of recommendation and transcript to: Allen Ackerman, Director of Athletics, Elmhurst College, 190 Prospect Avenue, Elmhurst, Illinois 60126.

Assistant Women's Basketball Coach. Part-time position. Responsibilities include recruiting, scouting and assistance with floor instruction during practice and games. Bachelor's degree required. May instruct physical education activity courses, as needed. Forward letter of application, resume and references to: Journey Beard, Oklahoma Baptist University, Shawnee, OK 74801. EOE.

Assistant Men's Basketball Coach. The University of Idaho seeks a full-time assistant coach. Duties will include responsibilities in budgeting, travel, scouting, recruiting, scheduling, camp administration, counseling, public relations, and on the floor coaching. Apply by May 15 to: Tim Floyd, Head Basketball Coach, University of Idaho, Kibbie ASU Center, Moscow, Idaho 83843. Include letter of application, resume, and list of current references. Starting Date: As soon as possible after selection. AA/EOE.

Assistant Women's Basketball Coach. Responsibilities: Assist in all phases of the basketball program, including coaching, recruiting, scouting, counseling and correspondence. Qualifications: Undergraduate degree is a minimum. Prior coaching experience and/or intercollegiate competition is necessary. Ability to coach and instruct players. Terms of Contract: Full time. Position Available: July 1, 1987. Salary Range: Commensurate with qualifications and experience. Application Deadline: June 1, 1987. Qualified applicants are invited to submit their application, resume and three letters of recommendation to: Sr. Maria Pares, Head Women's Basketball Coach, Marquette University, 1532 West Clybourn Street, Milwaukee, Wisconsin 53233.

Assistant Women's Basketball Coach. Terms of Contract: August 16, 1987-May 15, 1987 (9-month, full-time). Salary: \$13,500. Responsibilities: 1) Daily management of the

basketball office. 2) Assistance and preparation for practice sessions. 3) Recruitment of student-athletes. 4) Monitoring of students' academic progress. 5) Acting as liaison between team and head coach. 6) Assist in travel arrangements and will travel with the team. 7) Maintenance of rapport with the university community, parents, alumni and friends' group. 8) Perform other duties as assigned by the head coach. Qualifications: 1) Bachelor's degree required; Master's degree preferred. 2) Experience as a player or coach in a competitive collegiate program. 3) Ability to recruit athletes compatible with the program. 4) Interaction skills to deal with coaches, athletes, recruits, parents, etc. 5) Ability to contribute to floor coaching. 6) Must possess typing and computer skills. Application Procedure: Application deadline—May 18, 1987. Send letter of application, resume, three letters of reference, and college transcripts to: Kittle J. Blakemore, Head Coach, WVU Women's Basketball, P.O. Box 877, Morgantown, WV 26507. West Virginia University has an enrollment of approximately 17,000 students. West Virginia University is a member of the NCAA, the Atlantic 10 Conference, and is Division I in all sports for women. West Virginia University is an affirmative action, equal opportunity employer.

Associate Head Coach Women's Basketball. Terms of Contract: July 1, 1987-June 30, 1988 (12-month, full-time). Salary: Commensurate with Experience and Qualifications. Responsibilities: 1) Assist the Head Coach in coaching and administering the Women's Basketball Program. 2) Plan, organize, and supervise all practices. Assume coaching responsibilities at competitive events. 3) Identify, evaluate, and encourage application of student basketball athletes for West Virginia University. 4) Assist in coordinating the recruiting and scouting of potential student/athletes. 5) Develop the independent game schedule and coordinate the Conference game schedule. 6) Assist in all other phases of the basketball program as directed by the Head Coach (travel with the team, public relations, conditioning, team meetings, etc.). Qualifications: 1) Master's Degree. 2) Experience in coaching high school and college basketball. 3) Technical knowledge in coaching and teaching skills and strategy of basketball. 4) Organizational and communication skills, ability to inter-relate well with players, parents, press, and others. 5) Fiscal planning, budget preparation, and fiscal management skills. 6) Recruiting, experience and coaching contacts. 7) Competitive playing experience in basketball at the collegiate level. Application Procedure: Application deadline—May 18, 1987. Send letter of application, resume, three letters of reference, and college transcripts to: Kittle J. Blakemore, Head Coach, WVU Women's Basketball, P.O. Box 877, Morgantown, WV 26507. West Virginia University has an enrollment of approximately 17,000 students. West Virginia University is a member of the NCAA, the Atlantic 10 Conference, and is Division I in all sports for women. West Virginia University is an affirmative action, equal opportunity employer.

Head Coach—Women's Basketball. West Chester University is seeking qualified applicants for the position of Head Coach. Responsibilities include: operation of an NCAA Division II and PSAC Basketball program; recruitment, administration and budget management, scheduling, staff selection; academic relations; interpretation and implementation of institutional, department, conference and NCAA guidelines; maintain alumni and community public relations; and conduct fund-raising. Master's degree preferred; bachelor's degree required. Head and/or Assistant Coaching experience at the college or university level and proven integrity, leadership and competence in coaching women's basketball at the university levels. Salary commensurate with experience. Send letter of application, resume, and list of references postmarked by May 22, 1987, to: Ms. Susan Lubking, Associate Director of Athletics, WEST CHESTER UNIVERSITY, West Chester, PA 19383. West Chester University is an affirmative action/equal opportunity employer. Women and minorities are encouraged to apply.

Assistant Basketball Coach. Delta State University seeks an Assistant Men's Basketball Coach and Instructor in Health, Physical Education and Recreation. Master's degree required. Prior college coaching and recruiting experience preferred. Deadline for applications is May 15. Send letter of application, resume and minimum of three letters of reference to Head Coach Steve Reeves, Delta State University, P.O. Box 3173, Cleveland, MS 38733. Minorities are encouraged to apply. EOE/M/F.

Head Men's Basketball Coach. Elmira College invites applications for the position of Men's Basketball Coach. Candidate must possess strong leadership ability and dedication to maintain a high quality competitive Division III basketball program. Responsibilities include organization and administration of the varsity and JV programs, recruiting and public relations. This position may be combined with other coaching/teaching/administrative responsibilities in accordance with college needs and particular skills of candidate. Bachelor's degree required with prior competitive coaching experience. Salary: Commensurate with experience and qualifications. Application Deadline: May 25, 1987. Letter of application, resume and three current letters of reference should be forwarded to: Patricia Thompson, Director of Athletics, Elmira College, Elmira, New York 14901. Equal Opportunity Employer.

Assistant Women's Basketball Coach. University of Colorado, Boulder. Full-time. Start: July 1, 1987. Salary: Negotiable. Send letter of application, resume, and three letters of

recommendation to: Women's Basketball Search Committee, Campus Box 368, University of Colorado, Boulder, Colorado 80309. Application Deadline: May 21, 1987. Job Description: Assistance and preparation for practice sessions; recruiting; general office administration; scouting; on-floor and game coaching; other related duties. Qualifications: Bachelor's degree, minimum three years coaching experience preferred. University of Colorado, Boulder, has a strong institutional commitment to the principle of diversity. In that spirit, we are particularly interested in receiving applications from a broad spectrum of people, including women, members of ethnic minorities and disabled individuals.

Cross Country

Head Coach for Men's and Women's Cross Country Running, Nordic Skiing and Track. Northern Michigan University invites applications for the position of Head Men's and Women's Cross Country Running, Nordic Skiing and Track. Responsibilities: Duties consist of all phases of a competitive NCAA Division II Program, including budgeting, fund-raising, promotions, public relations and supervising assistant coaches. Conducting the program in accordance with NCAA, NCSA, and Great Lakes Intercollegiate Athletic Conference rules and regulations. Concern for the academic welfare of student-athletes. Other duties as assigned by the Athletic Director. Qualifications: Minimum of a bachelor's degree. Prior competitive coaching experience at the collegiate level preferred. Ability to establish a good rapport and effective working relationship with players, administrators, college faculty and staff, alumni, professional colleagues and the general public. Proven administrative, organizational and recruiting skills. No prior involvement with NCAA violations. Salary: Negotiable. Commensurate with experience and qualifications. Application Procedure: Letters of application, resume and three letters of reference and transcripts should be sent by May 29, 1987, to: Barbara Beck, Personnel Ass't, Employment, Northern Michigan University, 202 Cohodas Administration Bldg., Marquette, MI 49855. Northern Michigan University's intercollegiate athletic program consists of seven men's sports and five women's sports. Northern is a member of the National Collegiate Athletic Association Division II, National Collegiate Ski Association and a member of the Great Lakes Intercollegiate Athletic Conference. Northern Michigan University is an affirmative action and equal opportunity employer.

Assistant Cross Country and Track and Field Coach for Men's and Women's Teams specifically responsible for distance/middle distance events. Bachelor's degree or equivalent required, Master's preferred. Two to three years successful coaching experience in track and field. Nine-month position. Send resume and 3 letters of recommendation by May 29, 1987, to Richard Coleman, Head Track and Field Coach, Manley Field House, Syracuse University, Syracuse, NY 13244-5020. Equal Opportunity/Affirmative Action Employer.

Field Hockey

Field Hockey/Lacrosse Coach/Coordinator of Women's Athletic Recruiting. Roanoke College, a selective, private, coeducational liberal arts college of approximately 1,250 students, seeks a head coach of women's field hockey and women's lacrosse for a pending full-time position. Other duties include coordinating recruiting of female athletes for the Admissions Department. Travel will be required. Application procedure: Letter of application, resume, three current letters of recommendation and transcripts should be sent to: Ed Green, Athletic Director, Roanoke College, Salem, Virginia 24153. Deadline for application is May 15, 1987.

Football

Assistant Football Coach. Gallaudet University, NCAA Division III, is seeking a part-time football coach for inside linebackers. Previous collegiate or high school experience required. Willingness to learn sign language. Contact: Mr. Bob Westermann, Athletic Director/Head Football Coach, Gallaudet University, 800 Florida Ave., NE, Washington, DC 20002. 202/651-5601. Gallaudet University is an Equal Opportunity Employer.

Assistant (Defensive Coordinator) Football Coach/Physical Education Instructor. Position: Full-time probationary faculty (tenure-track) appointment in the Department of Physical Education and Athletics. Defensive coordinator in football and instructor in the physical education service and professional preparation programs, teaching lifetime activities and methods classes. Qualifications: Master's degree in physical education or a related area, Ph.D. preferred. Successful experience in teaching and coaching highly

Head Women's Volleyball Coach North Dakota State University

Position: Head Women's Volleyball Coach/Lecturer in Physical Education.

Qualifications: Master's degree strongly preferred in physical education or related field. Demonstrated success coaching volleyball at the secondary or college level. Successful teaching experience. Must show evidence of strong interpersonal communication skills.

Responsibilities: Will be responsible for the total women's volleyball program, including recruiting. NDSU is Division II and a member of the North Central Conference. Academic assignment will include teaching undergraduate courses in the physical education program.

Salary: Commensurate with qualifications and background.

Deadline for Applications: May 15, 1987, or thereafter until filled.

Effective: August 15, 1987.

Application: Please submit letter of application, professional resume, official transcripts and three current letters of recommendation to:

Lynn Dorn
Director of Women's Athletics
Bison Sports Arena
North Dakota State University
Fargo, ND 58105-5600

North Dakota State University
is an Equal Opportunity Institution

competitive football. University experience teaching fitness, aerobics, aquatics, cardio-pulmonary resuscitation (CPR) and health preferred. Salary: Commensurate with qualifications and experience. Application procedure: Send letter of application, resume, transcripts, and three (3) current letters of recommendation by June 5, 1987, to: Chair, Department of Physical Education and Athletics, McPhee Physical Education Center, (NW-Eau Claire, Eau Claire, WI 54702-4004. The University of Wisconsin Eau Claire is an Equal Opportunity/Affirmative Action Employer.

Assistant Football Coach/Interns. Gain complete experience on the college level. Intern positions are full-time from Aug. 10 to Nov. 20, 1987. Prior coaching experience preferred. \$3,000 stipend (or \$1,500 plus room and board). Mail resume to: Dale Manlove, Athletic Director/Head Football Coach, Widener University, Chester, PA 19013. All responses will be answered. No calls please.

Soccer

Soccer Graduate Assistant. Assist with fall practice and games, winter weight training program, recruiting, scouting and spring season. Successful college playing experience desired. Available September 1987. Tuition, fees and stipend. Applications and resumes: Rick Dell, Soccer Coach, Trenton State College, Trenton, New Jersey 08625. An Affirmative Action/Equal Opportunity Employer.

Assistant Women's Varsity Soccer Coach. Division III. State University at Oneonta. August 23 thru October 31, 1987; 3 pm to 5:30 pm plus game times. Small stipend plus other benefits. Call: 607/431-3595 or write Dr. Joan Kingsley, Physical Education Department, State University College, Oneonta, New York 13820. Equal Opportunity/Affirmative Action Employer.

Assistant Men's Soccer Coach. Responsibilities: Under the guidance of the Head Men's Soccer Coach, assist in all phases of the soccer program, including coaching, recruiting, scheduling, equipment inventory and correspondence. Qualifications: An undergraduate degree is a minimum. Prior coaching experience and/or intercollegiate competition is necessary. Extensive knowledge of soccer a must. Ability to coach and instruct players. Terms of Contract: Part time, 10-month contract. Position Available: August 1, 1987. Salary Range: Commensurate with qualifications and experience. Application Deadline: June 1, 1987. Qualified applicants are invited to submit their resume and three letters of recommendation to: Jerry Panek, Head Men's Soccer Coach, Marquette University, 1532 West Clybourn Street, Milwaukee, Wisconsin 53233.

Swimming & Diving

Assistant Men's and Women's Swim Coach. Appointment: August 24 until May 23. Education: Bachelor's degree required, master's degree preferred. Experience: Experience in college coaching and recruiting preferred. Responsibilities: Clanton University of Pennsylvania, an NCAA Division II member, is seeking a highly qualified individual to assist with all facets of the men's and women's swimming program. Individual will report to aquatic director. Duties will include on-deck coaching, recruiting and some administrative

Assistant Basketball Coach Israeli National League and European Cup

Maccabi Tel-Aviv of the Israeli National League invites applications for the position of Assistant Basketball Coach. Qualifications: Age 25-40. At least 3 years of experience in college-level basketball. Responsibilities will include European travel and scouting of teams in the European Cup. Salary Range: \$25,000-\$30,000 tax-free, use of apartment and car, and a round-trip flight to Israel. Please send resume, letter of intent, and 3 letters of recommendation by May 28th to:

Dr. Menahem Less
15 Kilburn Road
Garden City, NY 11530

responsibilities. Salary: This will be a 9-month, non-teaching contract with salary commensurate with experience and qualifications. Application: Submit letter of application, resume and three current letters of recommendation by May 18, 1987, to: Dick Beanier, Director of Athletics, Clanton University of Pennsylvania, Tiffin Gymnasium, Clanton, PA 16214. Clanton University is an Equal Opportunity Employer.

Swimming & Diving. Purdue University, Graduate Assistant (M & W Swimming). Duties include assisting Head Coaches with work-out organization and evaluation, recruitment of prospective student athletes. Position carries tuition waiver and stipend. Contact Dan Ross/Kathie Wickstrand-McIntosh, Room 44, Mackey Arena, West Lafayette, IN 47907. Purdue University is an Equal Opportunity/Affirmative Action Employer.

Tennis

Tennis Coach. Responsibilities include recruiting, budgeting, scheduling, fund-raising and other related activities in all phases of the men's and women's tennis program. Teach undergraduate courses in HPER. Qualifications: Bachelor's degree required. Master's degree preferred. Successful coaching and teaching experience preferred. Starting Date: July 1, 1987. Salary: Commensurate with qualifications and experience. Deadline: May 22, 1987. Interested applicants should submit letters of application, resume and three letters of recommendation to: Bruce Griines, Director of Athletics, W.T. Box 909, West Texas State University, Canyon, Texas 79016.

Track & Field

Wanted—Head Track Coach/Instr. HPER. Fort Hays State University. Non-tenured faculty position. Salary competitive/negotiable. Starting date negotiable. You will coach men's and women's programs and teach part-time in HPER department. You will be responsible for all matters pertaining to head coaching position, such as scheduling, recruiting, fund-raising, budgeting, academic and athletic growth of athletes and keeping program on highly competitive level. Minimum of master's degree in physical education, Ph.D. or Ed.D. preferred in teaching HPER. Prefer two years intercollegiate-level coaching experience in track. Proven ability to recruit effectively and ethically. Background must reflect ability to do what job description asks. To apply, send resume and three current letters of recommendation by Monday, May 28, 1987, to Dr. Gary Arbogast, Chrm., Track Coach Search Committee, Fort Hays State University, Hays, KS 67601-4099.

Assistant Coach Women's Track and Field. Western Illinois University seeks Assistant

Track and Field Coach. Part-time, 9-month, non-tenure position. Bachelor's degree, coaching experience required; ability to coach technique events (throwing and jumping); good communicative and organizational skills. Closing date for applications is May 20, 1987. Send letter of application, resume, transcripts and three recent letters of recommendation to: Dr. Helen Smiley, Director, Women's Intercollegiate Athletics, Brophy Hall, Western Illinois University, Macomb, Illinois 61455. AA/EOE.

Track Coach—Women. (Assignment as Head Women's Coach or Assistant Coach to be determined by qualifications of candidate chosen.) Available: August 1, 1987. Salary: \$15,000-\$23,284. Qualifications: Bachelor's degree required, Master's preferred. Previous coaching experience on the collegiate and/or high school level required. Ability to recruit quality student-athletes is a necessity. Responsibilities: Direct, organize, and administer a Division I track program within the guidelines of Ohio University, the Mid-American Conference, and the NCAA. Some teaching in the school of health and sports sciences may be required. This position reports to the Director of Athletics. Forward letter of application, complete resume, and references to: Harold McElhane, Director of Athletics, Ohio University, P.O. Box 689, Athens, Ohio 45701. Application Deadline: May 29, 1987. Ohio University is an Equal Opportunity Employer.

Assistant Track Coach—Men and Women. The Wichita State University invites applications and nominations for the position of Assistant Track Coach—Men and Women. Responsibilities: The assistant coach is responsible for coaching, recruiting, and administrative duties as assigned by the head coach. Will also have meet management responsibilities for the K. T. Woodman Track Classic and championship events hosted by The Wichita State University. Must comply with the policies of The Wichita State University, NCAA, Missouri Valley Conference, and Gateway Collegiate Athletic Conference. Qualifications: Bachelor's degree required. Demonstrated ability as a field event coach preferred. Collegiate coaching experience preferred. Salary: Commensurate with experience and qualifications. Deadline: Applications must be received by May 29, 1987. Applications: Send letter of application, current resume, and list of five references to: John Kormelson, Head Track Coach—Men and Women, The Wichita State University, Campus Box 18, Wichita, KS 67208-1595. The Wichita State University is an Equal Opportunity/Affirmative Action Employer.

Volleyball

Head Women's Volleyball Coach. Montana Tech is seeking a Head Coach to direct an

See The Market, page 15

PENN STATE HEAD WOMEN'S FIELD HOCKEY COACH

Twelve month appointment in the Department of Intercollegiate Athletics which is responsible for the organization and administration of the Women's Field Hockey Program. Duties include scheduling, budgeting, and recruiting excellent student athletes. This individual must possess coaching expertise, sound management skills and have a thorough knowledge of NCAA rules. Must also have demonstrated skill in administration to direct a NCAA Division I program. Requires Bachelor's degree (or equivalent), Master's degree preferred, and three to five years of coaching experience, preferably with coaching college-age athletes in a collegiate setting. Salary commensurate with experience and qualifications. Application deadline: May 18, 1987. Send letter of application, salary requirements and resume to:

Ms. Della Durant, Assistant Athletic Director
The Pennsylvania State University
204 Recreation Building, Department NC-WF
University Park, PA 16802
An Equal Opportunity/Affirmative Action Employer

Binghamton

State University of New York
Department of Physical Education

The Department of Physical Education has the following openings for the 1987-88 academic year:

Athletic Trainer: Instructor or Assistant Professor, tenure track position. Head trainer for 17 sports, teach wellness and fitness-related courses, and supervise a core of student trainers. Candidates should have NATA Certification, five years of experience and Master's degree.

Dance: Lecturer, 10-month temporary appointment. Teach classes in jazz, modern dance and yoga. Candidates must have teaching competencies in above areas and a Master's degree is preferred.

Cross Country and Track and Field Coach for Men and Women: Lecturer, part-time for 10 months temporary appointment (\$9,000-\$10,000). Coach the above teams and teaching expertise in aerobic fitness-related courses.

A Master's degree in Physical Education or related area is preferred for above positions. Salaries are competitive and commensurate with qualifications.

SUNY-Binghamton is a residential university of approximately 12,000 undergraduate and graduate students, offering 64 degree programs within five academic units. Its athletic program is classified in Division III.

Applications including letter, vita, transcripts, and three current letters of recommendation should be sent to:

Nell C. Jackson, Director of Physical Education
Department of Physical Education
West Gym
SUNY at Binghamton
Binghamton, New York 13901

Application deadline is May 20, 1987, or until a suitable candidate has been identified.

SUNY Binghamton is an equal opportunity, affirmative action employer.

Head Women's Tennis Coach University of Illinois

100%, 10-month appointment in Division I, Big Ten institution. Responsible for planning, development, administration of all phases of women's tennis program; budget, scheduling, travel, equipment, recruiting, support services coordination, public relations.

Master's degree preferred, demonstrated coaching success, event management and financial planning experience, good interpersonal skills. Minimum three years coaching experience desired.

Start August 15, 1987; salary commensurate with qualifications and experience.

By May 20 send letter, resume, transcripts, three letters of recommendation to: Karol Kahrs, Associate Director of Athletics, 505 East Armory, 235 J Armory Building, Champaign, Illinois 61820. 217/333-0171.

Qualified applicants interviewed during advertising period.

AA/EOE.

The Market

Continued from page 14

NAIA nationally competitive team. Responsibilities include coaching and teaching in HPER department and complete direction of the women's volleyball program with regard to recruiting, scheduling, budgeting, game management, and supervision of student athletes. Qualifications: Bachelor's degree required. Master's degree preferred. Successful teaching and coaching experience preferred. Starting date: July 1, 1987. Salary: Negotiable commensurate with qualifications and experience. Send letter, resume and three letters of recommendation by May 29, 1987, to: James F. Michelotti, Chair, Athletic Committee, Montana Tech, Butte, MT 59701. Affirmative Action/Equal Opportunity Employer.

Assistant Women's Volleyball Coach. Responsibilities: Under the guidance of the Head Women's Volleyball Coach, assist in all phases of the volleyball program, including coaching, recruiting, scouting, counseling and correspondence. Qualifications: An undergraduate degree is a minimum. Prior coaching experience and/or intercollegiate competition is necessary. Ability to instruct and coach players. Terms of Contract: Part-time, 10-month contract. Position Available: August 15, 1987. Salary Range: Commensurate with qualifications and experience. Application Deadline: June 1, 1987. Qualified Applicants are invited to submit their application, resume and three letters of recommendation to: Tai Shieley, Head Women's Volleyball Coach and Coordinator of Women's Athletics, Marquette University, 1532 West Clybourn Street, Milwaukee, Wisconsin 53233.

Head Coach Women's Volleyball and Assistant Coach Women's Basketball. Rider College, Lawrenceville, New Jersey. Responsibilities: Coach and direct NCAA Division I volleyball program/assist with basketball program. Qualifications: Minimum of a bachelor's degree, thorough knowledge of volleyball and basketball; coaching experience at the intercollegiate level preferred; ability to recruit effectively and develop alumni support. Salary negotiable. Starting date: September 1, 1987. Send letter of application, resume and three letters of recommendation by May 22 to: John B. Carpenter, Athletic Director, Rider College, 2083 Lawrenceville Road, Lawrenceville, New Jersey 08648. Rider College is an Affirmative Action/Equal Opportunity Employer.

Head Volleyball Coach. S.E. Missouri State U. seeking a head women's volleyball coach for competitive NCAA Division II program. Responsible for coaching, team travel, recruiting, budget management, scheduling. Teach and assist in Commercial or Therapeutic Recreation Program in the Dept. of HPER. Master's Degree required in Recreation. Send letter of application, resume, official transcripts and three letters of reference before 5/25/87 to: Dr. John Schneider, Chairperson, Dept. of HPER, Southeast Missouri State University, 314/651-2100. An EO/MF/AA Employer.

Wrestling

Assistant Men's Wrestling Coach. Responsibilities: Assist in all phases of the wrestling program, including coaching, recruiting, equipment inventory and correspondence. Qualifications: An undergraduate degree is a minimum. Prior coaching experience and/or intercollegiate competition is necessary. Ability to instruct and coach players. Terms of Contract: Part-time, 10-month contract. Position Available: September 1, 1987. Salary Range: Commensurate with qualifications and experience. Application Deadline: June 1, 1987. Qualified individuals are invited to submit their resume and three letters of recommendation to: Fred Rideout, Head Men's Wrestling Coach, Marquette University, 1532 West Clybourn Street, Milwaukee, Wisconsin 53233.

Head Wrestling, Assistant Football or Head Wrestling/Head Soccer. Must contact Robert Mueller, Director of Athletics, United States Military Academy Preparatory School, Fort Monmouth, New Jersey, by phone prior to May 15, 1987. Office 201/532-5313, Home 201/747-9427. Equal Opportunity/Affirmative Action Employer.

Physical Education

Exercise Physiologist. Full-time position beginning June 1987. A master's degree (or near completion) in exercise physiology or a related discipline is required. Experience in designing exercise programs for healthy individuals and cardiac patients is desirable. Teaching as an adjunct in the Department of Physical Education will also be expected. Apply to: Thomas Elwell, Director, Concordia College Fitness Center, 171 White Plains Road, Bronxville, New York 10708, 914/961-8763.

Graduate Assistant

Graduate Assistantships. Graduate Study in

Sport Coaching, Sport Management, Sports Medicine, Fitness Management leading to a M.S.S. Graduate Assistantships and Scholarships are available for the 1987 academic year. Assistantships include tuition waiver and a \$3,300.00 stipend. Interested students should apply immediately. For more information contact: Admissions Office, U.S. Sports Academy, One Academy Drive, Daphne, Alabama 36526, 205/626-3303. The Academy accepts students regardless of race, religion, sex or national origin. Accredited by Southern Association of Colleges and Schools.

Graduate Assistantship available in men's and women's swimming. Diving expertise helpful, but not necessary. Division III Program. Competitive stipend, board payment and tuition waiver. Send letter of application, resume, and three letters of reference to: Mary Bretscher, Aquatics Director, DePaul University, Greencastle, IN 46135.

Graduate Assistants - Training. Loyola College is seeking two graduate assistants to work with women's athletics, club and intramural sports, record keeping and to provide daily operation of training room, ATC and computer background necessary. Tuition plus stipend. Will interview at NATA Convention in Columbus, Ohio, in June. Please bring resume and three letters of recommendation or send resume to: Joe Artuso, Trainer, Loyola College, 4501 N. Charles Street, Baltimore, Maryland 21210-2699. Affirmative Action Employer.

Graduate Assistant: University of Wisconsin-Green Bay. Athletic trainer for women's athletics. Nine-month appointment beginning September 1. Bachelor's degree required, NATA certification preferred. Responsibilities include care and prevention of athletic related injuries, assist in supervision of training room, travel with some women's athletic programs, particular emphasis on basketball. Stipend of \$5,000. Submit resume and letters of recommendation to: Otis Chambers, Athletic Trainer, Phoenix Sports Center, University of Wisconsin-Green Bay, Green Bay, WI 54301.

Graduate Assistant in Athletic Training. Qualifications: Bachelor's degree required, NATA eligible/certified, and must have applied to graduate school. Responsibilities: Emphasis on preventive care and treatment of injuries to student athletes participating in intercollegiate sports. Starting Date: August 7, 1987. Deadline for Applications and Resumes: June 15, 1987, forwarded to: Dr. David I. Scott, Director of Sports Medicine, Rutgers University, Lewis Brown Athletic Center, P.O. Box 1149, Piscataway, New Jersey 08855-1149. Equal Opportunity/Affirmative Action Employer.

Graduate Assistant/Sports Information. The University of New Orleans has a position for Graduate Assistant in the office of sports information for the 1987-88 academic year. Applicant should have previous sports information experience and ability to produce brochures, press releases and maintain statistics. This position carries a tuition and books waiver and a \$3,500 stipend for a 10-month period beginning in August. Send letter of application and resume to: Mike Bujol, Sports Information Director, UNO Athletic Department, Lakefront Arena, New Orleans, Louisiana 70148. Equal Opportunity/Affirmative Action Employer.

Graduate Assistant - Women's Basketball. The Wichita State University Intercollegiate Athletic Association seeks a graduate assistant women's basketball coach for a 10-month period, August 1, 1987, to May 27, 1988. The Graduate Assistant will support the head coach in general administrative responsibilities and other coaching duties as specified. Stipend of \$5,000 available. Bachelor's degree required. Must be enrolled in a master's degree program at The Wichita State University. Send letter of application, current resume, and list of references by May 22, 1987, to: Karen Harden, Women's Bas-

TRENTON STATE COLLEGE PROGRAM ASSISTANT AQUATICS/INTRAMURALS AND RECREATION

The Program Assistant reports to the Director of Intramurals & Recreation and assists with the management of a newly constructed Aquatics Center as it relates to the intramural, intercollegiate & instructional sports program. Also responsible for assisting with further development of the College's intercollegiate swimming program. Req'd.: 2-3 yrs. exp. in pool management & recreational sports; appropriate Red Cross Certifications, marketing background, ability to coach collegiate swimming; Bachelor's req'd., Master's pref'd. Send resume by 5/15/87 to Bert Davis, Director, Intramurals & Recreation, Trenton State College, CN4700 Hillwood Lakes, Trenton, New Jersey 08650-4700. To enrich education through diversity, TSC is an AA/EOE.

ketball Coach, The Wichita State University, Campus Box 18, Wichita, KS 67208. The Wichita State University is an Equal Opportunity/Affirmative Action Employer.

Graduate Assistant for Field Hockey/Lacrosse for 1987-88 academic year. Starting Date: August 24, 1987. Assistantship includes a \$3,000 stipend plus a maximum of \$4,000 in tuition remission. Bachelor's degree with playing experience at college level and/or coaching experience required. Assist head coach with NCAA Division I teams in all phases of practices, conditioning, recruiting, fund-raising and supervision of scholastic progress of student athletes. Applications and resumes must be submitted no later than June 15, 1987, and forwarded to: Ann Petracco, Head Coach of Women's Field Hockey and Lacrosse, Rutgers-The State University, Lewis Brown Athletic Center, P.O. Box 1149, Piscataway, New Jersey 08855-1149. Equal Opportunity/Affirmative Action Employer.

Graduate Assistants. Allegheny College is seeking Graduate Assistants to help coach the football team and be responsible in another area/sport as assigned by the Athletic Director. Assistantships will carry a tuition waiver to qualified candidates in a Master's of Education program, a stipend and housing accommodations. The positions are 10 months in duration beginning August 1, 1987, and may be renewed. Interested candidates please forward a resume to: Peter Vaas, Head Football Coach, Box 33, Allegheny College, Meadville, PA 16335. Allegheny is an Equal Opportunity Employer.

Graduate Assistantships. All Sports, contact Dr. Brad Hovius, Director of Athletics, P.O. Box A-3, Delta State University, Cleveland, MS 39833. EOE/M/F.

Miscellaneous

Head Men's Soccer Coach, Tennis Coach, Golf Coach, Softball Coach. Saint Mary's College is seeking qualified candidates to be responsible for organizing, administering and coaching within the philosophy of a NCAA Division III program. Responsibilities could be combined with assistant coaching in hockey, soccer, volleyball, basketball or assignments as ice facility manager or athletic field. Salary based on experience and combination of position. Send letter of application, resume and three letters of reference by May 15, 1987, to: Don Olson, Box 62, Saint Mary's College, Winona, Minnesota 55987. Equal Opportunity/Affirmative Action Employer.

Arena Director, Promotions & Marketing.

Physical Education Instructor, Assistant Coach - 1 sport, preferably baseball. Supervise Arena operation including scheduling of facility, ticket sales, ice rental, game operations, building maintenance. Promote and Market Clarkson University Athletic teams; Teach classes in Physical Education program; Duties also include being an assistant coach in one sport. B.S. degree in Physical Education and resume by May 25, 1987, to: Mr. Steve Yanoukos, Athletic Department, Clarkson University, Potsdam, NY 13676. Clarkson University is an Affirmative Action/Equal Employment Opportunity Employer MFVH (Minority, Female, Veteran, Handicap).

Head Men's Soccer Coach/Assistant Lacrosse Coach - Sports Information Director - Sports Medicine Director/Head Trainer. Hampden-Sydney College is seeking qualified candidates for the positions listed above. The applicants will be responsible for organizing, administering and coaching within the philosophy of an NCAA Division III program. Salary based on experience. Send letter of application and resume to: L. S. Miller, Box 698, Hampden-Sydney, Virginia 23943. EOE.

Intern/Assistant - Office of Athletic Communications, Full Time. Princeton University's Office of Athletic Communications is seeking a full-time Intern/Assistant for a 10-month appointment beginning August 1, 1987. This position carries a modest stipend. The position offers excellent training experience in all phases of public relations and involves heavy contact with both print and electronic media. Qualifications include a baccalaureate degree as well as demonstrated competence in the field of journalism, sports information, or general public relations. APPLICATION DEADLINE: May 30, 1987. Send resume to: Ms. Gina Book, Personnel Services, PRINCETON UNIVERSITY, Princeton, New Jersey 08544. Princeton University is an affirmative action/equal opportunity employer.

Open Dates

Women's Basketball. Chapman College is seeking one team, preferably Division I, for the Chapman Doubletree Tournament in Orange, California, November 27 through November 28, 1987, two games guarantee. Contact: Paul Kahn, 714/997-6691.

Men's Basketball. Grand Valley State seeks one Division II or NAIA team for Tip Off

Tournament November 20-21, 1987. Guarantee. Contact: Tom Villeneuve, 616/895-3205.

Football, Division IAA. Montana State University needs games for the 1988 season, either home or away. Dates are 9/3, 9/10, 11/12, and 11/19. Contact: Joe Roberts, Assistant Athletic Director, 406/994-4221.

Men's Basketball, Division I. Montana State University is seeking games for the 1987-88 season. Contact: Nick Durham, Assistant Men's Basketball Coach, 406/994-4221.

Women's Basketball, Division I. Bradley University is seeking one team for its Lady Brave Classic November 27 & 28, 1987. Guarantee included. Contact: Lisa Boyer, 309/677-2681.

Women's Basketball, Division I. University of Colorado seeks Division I team to fill four-team field of Coors Classic Tournament, Thursday and Friday, December 3 & 4, 1987. \$1,500 guarantee. Contact: Ceal Barry, Head Coach, 303/492-6086.

Basketball Division III. January 1-8, 1988. The Great Bahamas Goomby Shoot Out, 3 games, need one men's team, one women's team. Call: Sport Tours International, 800/654-0566.

University of Iowa Women's Basketball needs a home game Dec. 8, 9, or 10, 1987, or Jan. 4, 5, or 6, 1988. \$1,500 guarantee. Contact: Linda C. Hackett, Assoc. Athletic Director, 319/335-9247.

Men's Basketball, Division II. Central Missouri State University is seeking home and home arrangement with Division II opponent for 1987-88. Contact: Jim Woodridge, Head Basketball Coach, 816/429-4251.

Women's Basketball, Division II. Clarion University of Pennsylvania is seeking one Division II team for the Lady Eagle Classic December 4-5, 1987. Contact: Athletic Director Dick Besnier, 814/226-1997.

Women's Basketball. Fordham University is seeking one Division I team for the Lady Rams Invitational, December 5 and 6, 1987.

For details, contact Suzanne Shea, Assistant AD, at 212/579-2448. Guarantee available.

Football, Division III. Buffalo State College. Need home game for October 17, 1987. Home-and-home possibility. Contact: Jerry Boyes, 716/878-6514.

Women's Basketball, Division I. Cancellation - Need one team for Christmas Tournament December 29 & 30, 1987. Guarantee or return game. Contact: Courtney Leishman, Brigham Young University, 801/378-4227.

Women's Basketball, Division II. Mankato State University seeks two games for following dates: 12-29-87, 12-30-87 and 1-2-88. Contact: Sarah Novak, 507/389-2678 or 507/389-1458.

Men's Basketball. St. Joseph's College of Maine needs one team for a tournament December 5th and 6th, 1987. Meals and lodging provided. Contact: Rick Simonds, 207/892-6766.

Women's Basketball. St. Joseph's College of Maine has an opening for one game home or away January 15, 16 or 17, 1988. Contact: Rick Simonds, 207/892-6766.

Women's Basketball. New Mexico State University is seeking one Division I team for Leggs Classic December 4 & 5, 1987. Guarantee included. Call: Linda Koch, 505/646-4049.

Women's Volleyball, Division I. Illinois State University is seeking one team for its Red Bird Classic September 18 & 19, 1987. Guarantee available. Contact: Julie Morgan, 309/438-8461.

Women's Basketball, Division I. The University of Nebraska is seeking two teams due to late withdrawal for the Husker Classic November 27 & 28, 1987. Guarantee included. Call: Steve High, 402/472-6462.

Women's Basketball. East Carolina University is seeking two Division I teams for Lady Pirate Converse Classic December 4-5, 1987. Guarantee included. Contact: Basketball Office, 919/757-6384.

PENN STATE ASSISTANT WOMEN'S GYMNASTICS COACH

Twelve month appointment in the Department of Intercollegiate Athletics. Responsible for assisting in coaching assignments, performing administrative duties, for recruiting quality student athletes and for establishing preliminary game schedule. Requires Bachelor's degree (or equivalent) and 1-2 years of effective coaching experience. Must possess ability to work within a Division I NCAA program. Salary commensurate with experience and qualifications. Apply by June 15, 1987 to:

Ms. Della Durant, Assistant Athletic Director
The Pennsylvania State University
204 Recreation Building, Department NC-G
University Park, PA 16802

An Equal Opportunity/Affirmative Action Employer

Assistant Basketball Coach

Central Brooklyn Pro-Am seeks two part-time volunteer assistants to work in the development of former Division I and Division II players for NBA, Pro-Am and AAU competition. Excellent opportunity to work with quality players. Send letter of application and resume to:

The Central Brooklyn Basketball Organization
1071 New Lots Avenue
Brooklyn, New York 11208

Assistant Athletic Director

Responsible to Director of Athletics in assisting with the daily operation of the department of intercollegiate athletics. Major responsibility will be to handle the majority of women's programs and will serve as the primary women's administrator. Responsibilities include supervision of daily operation of intercollegiate athletic sports program, supervision of equipment personnel and supervision of athletic training staff. Bachelor's degree required, Master's degree preferred. Prefer minimum of three years athletic administration experience at the collegiate level. Application deadline is May 23, 1987. Send letter of application, resume, three letters of recommendation and official college transcripts to: Chair, Search and Screening Committee, c/o Athletic Department, Bowling Green State University, Bowling Green, Ohio 43403. Equal Opportunity/Affirmative Action Employer.

MANAGER UNIVERSITY ATHLETIC CENTER

FAIRLEIGH DICKINSON UNIVERSITY seeks an energetic, dynamic professional to manage and market the newly constructed George and Phyllis Rothman Center, the University's multi-million dollar recreational and athletic complex, scheduled to begin operations this spring. The modern facility, which will seat approximately 5,000 people and is located on the Teaneck-Hackensack Campus, is also planned as a center for cultural and social activities. The Manager will be responsible for scheduling and coordinating all athletic events at the Center, and attracting to it, through aggressive marketing, revenue-producing programs such as professional sports events, concerts, trade shows and exhibits. Qualifications: An undergraduate degree or five to seven years of significant related experience, three to five years of experience managing and coordinating facilities for sports events, trade shows and/or other special events; knowledge of state and local laws pertaining to seating, liability and insurance; excellent human relations and communications skills. Resumes, including salary requirements, should be forwarded by May 22, 1987 to: Employment Coordinator, FAIRLEIGH DICKINSON UNIVERSITY, 1000 River Road, Teaneck, New Jersey 07666.

equal opportunity/affirmative action employer m/f



University of Arkansas Assistant Coach of Men's Diving and Swimming

The University of Arkansas is accepting applications for an assistant men's diving and swimming coach. Emphasis is on coaching diving. The selected person will recruit for a top-25 Division I program. The person selected must be knowledgeable of NCAA rules and be able to work harmoniously with swimmers as well as divers.

Qualifications: Bachelor's degree required, master's degree preferred. Must have had competitive and coaching experience at a Division I college or university.

Send letter of application, transcript, resume and three letters of recommendation to:

Kent Kirchner
University of Arkansas
Barnhill Arena
Fayetteville, AR 72701

Applications accepted until May 25, 1987. Salary commensurate with experience and qualifications.

The University of Arkansas is an Equal Opportunity Employer



PITTSBURG STATE UNIVERSITY

Director of Intercollegiate Athletics

Pittsburg State University, presently a member of the NAIA and the Central States Intercollegiate Conference, is seeking a Director of Intercollegiate Athletics. The University has petitioned to become a NCAA Division II member in 1989. The University has had a number of national titles and runner-up awards in the NAIA. Its intercollegiate athletics program includes 5 men's sports (basketball, cross country, football, indoor/outdoor track and field, and golf) and 5 women's sports (basketball, indoor/outdoor track and field, cross country, softball, and volleyball). As part of the PSU Campaign for Distinction, the Intercollegiate Athletics Campaign goal is \$1,652,000.

The Director reports to the President. Responsibilities include the planning and management of the intercollegiate athletics program; fiscal, personnel and facilities management; fund-raising; ensuring program compliance with Association, conference, Title IX and University policies and regulations; and work with the Athletic Policy Committee, University officials, alumni, booster groups, and various other constituency groups.

Qualifications: Candidates must have a proven record of a strong commitment to academic integrity and the development of scholar-athletes. Candidates must provide documented evidence in the following areas: a successful administrative experience record with increasing responsibilities in intercollegiate athletics or related field; leadership abilities to develop a long-term quality visionary plan for the University intercollegiate athletics program (especially a practical knowledge of NAIA and NCAA rules during the transition period); effective oral and written communication skills, as well as interpersonal skills, to relate well with the University community, general public, and media. A Bachelor's degree is required with a graduate degree preferred. Sufficient fund-raising experience is required, and college/university coaching is desired.

Terms of Employment: A twelve-month annual appointment. Salary range \$40,000 to \$45,000. Appointment date negotiable, but no later than January 1, 1988.

Nominations are to be postmarked by June 1, 1987. Applicants are to send a letter of interest, a resume, and 3-5 names of references with addresses and telephone numbers by June 15, 1987, to:

Mr. Bill Hollenbeck, Chair
Screening Committee for Director
of Intercollegiate Athletics
Pittsburg State University
Pittsburg, KS 66762

Pittsburg State University is an Equal Opportunity, Affirmative Action Employer

Proposed aid cuts could triple debts of some graduates

The Reagan administration's proposed cuts in student aid would more than triple the debt burden for some graduates and leave others with more than \$60,000 to repay, according to a congressional study released in April.

"Under the administration's proposal, less aid would be provided; and there would be a shift from grants to loans, which would result in larger debt burdens for students upon graduation," concluded the report by the

Coach Knight reprimanded by committee

The NCAA Division I Men's Basketball Committee has withheld \$10,000 from the more than \$1 million share of Indiana University, Bloomington, in the net receipts of the 1987 NCAA Division I Men's Basketball Championship and publicly reprimanded coach Bob Knight for improper conduct directed to the tournament management of the 1987 NCAA Midwest regional championship game in Cincinnati.

During the Louisiana State University game, Knight was assessed a technical foul for going onto the court to address a game official. Immediately, he went to the scorer's table and conducted himself in an inappropriate manner, subjecting himself to the misconduct provisions as defined by NCAA Executive Regulation 1-2(o), the committee ruled.

The committee notified Knight and the school in writing prior to the Indiana's appearance the following Saturday, March 29, in the national semifinals, that it had received allegations of misconduct and that he and university officials would have the opportunity to review those charges with the committee following the conclusion of the championship.

Knight and Indiana representatives reviewed the allegations with the basketball committee Thursday, April 23, in Chicago. Following the hearing, the committee unanimously adopted the financial penalty and reprimand.

Indiana officials notified committee chair Richard D. Schultz, athletics director at the University of Virginia, that neither the institution nor Knight would appeal the committee's decision to the NCAA Executive Committee.

New publications can be ordered

The 1987 edition of the NCAA Men's Soccer Rules is among three new editions of NCAA publications available for sale in May.

Also available are the 1987 Ready-Easy Football Rules, a simplified version of the Men's Football Rules and Interpretations, and the 1987 NCAA Convention Proceedings, an edited version of the verbatim transcript from each of the 1987 Convention's business sessions and the honors luncheon.

Copies of the soccer rules are available for \$3, the Ready-Easy Football Rules sell for \$1.50, and the 1987 Convention Proceedings costs \$6 for members of the Association and \$12 for nonmembers.

To receive an order form for any of the Association's more than 50 publications, including The NCAA News, call or write: NCAA Publishing, P.O. Box 1906, Mission, Kansas 66201, 913/384-3220. First-class postage is an additional \$2 per book.

School quits league

St. Thomas University (Florida) will leave the Sunshine State Conference, Commissioner Bob Vanatta has announced.

The conference will continue as a six-member league, with expansion possible in the future.

General Accounting Office.

It also said a new income-based loan program could cost substantially more for students who choose low-income professions and take longer to repay their debt, the Associated Press reported.

The Education Department is seeking to eliminate the \$592 million college work-study program, to curtail student loan subsidies and to make grants available to a million fewer students.

It also wants to expand a \$5 million pilot program of income-based loans to \$600 million and 500,000 students. Monthly payments on the unsubsidized loans would be based on the graduate's annual income.

Sen. Lawton Chiles, D-Florida, a member of the finance committee and its education subcommittee, requested the study. The agency projected the impact of the administration

proposals on 12 students chosen from 57 cases supplied by a private university, public university, a community college and a historically black college in Florida.

According to the agency, a student

a higher-interest guaranteed loan of \$12,411 and a \$1,596 income-contingent loan, increasing the student's debt burden upon graduation to about \$20,700 from \$5,635.

The investigators also looked at a

and work-study under the proposal, the agency said.

The money would be made up by a \$13,000 guaranteed student loan and a \$17,989 income-contingent loan, swelling the student's debt burden to \$53,007 from \$24,239 if the student chose a high-income field or \$61,539 if a low-income profession were selected.

Education Secretary William Bennett, testifying before the subcommittee, said the department never has denied that its proposals would increase indebtedness for some students.

Chiles questioned whether a student from a low-income family would attend a college if the student faced the prospect of a \$53,000 debt. "Don't you think you're putting it beyond their reach?" he asked.

"They'll do more comparison shopping, price-shopping, among institutions," Bennett replied.

One senator questioned whether the proposals to cut student aid would put a college education beyond the reach of students from low-income families because of the prospect of \$53,000 in debts upon graduation

at the public University of Florida with divorced parents, a sibling in college and an annual family income of \$27,613 would lose a grant, a low-interest loan and a work-study opportunity. The loss would be offset by

student at the University of Miami (Florida), a private school where an education costs \$70,226. The student, from a family of six with an annual income of \$10,165, would lose some \$24,000 in low-interest loans, grants



Bring Championship Travel to Campus and Make Money Doing It!

Now you can realize airline travel discounts as high as 70% as our partner in a profitable on-campus business.

Our major, unrestricted and unpublished air fares and special tariffs are available to teams and other college groups, as well as all members of the campus community.

Call today! Learn how you can create a new profit center for your college or university.

TOLL FREE
1-800-243-1723

The Official Travel Agent for NCAA Championships

FUGAZY INTERNATIONAL TRAVEL

67 WHITNEY AVENUE
NEW HAVEN, CT 06510

772-0470



©1986 by Fugazy International Travel