

The NCAA News



February 11, 1987, Volume 24 Number 7

Official Publication of the

National Collegiate Athletic Association

Playing rules now subject to review

Among the duties of the division championships committees authorized by legislation approved at the 1987 NCAA Convention is the review of applicable playing rules developed by sports committees with playing-rules responsibilities.

Under procedures established for the review of playing rules, any rules changes affecting player safety, financial impact on the membership or the "image" of the sport will be forwarded to the three championships committees, which will make recommendations to the NCAA Executive Committee regarding the appropriateness of the changes.

The overview authority came in part as a result of a recommendation from the Special Committee to Review Playing Rules, which was established in 1985 to assist the sports committees in a study of their playing rules to insure equitable compliance with Bylaw 3-5.

Bylaw 3-5 was approved at the 1985 Convention and mandated the use of playing rules developed by NCAA sports committees in all intercollegiate competition—in-season as well as championship competition. The legislation became effective August 1, 1986.

With the assistance of the special committee, all of the sports committees have completed a review of their playing rules to determine those that are administrative in nature (those having to do with preparations for the contest such as facilities specifications, number of officials, format) and those that are conduct rules (equipment specifications, duties of officials, scoring, violations).

Some administrative rules can be altered by mutual consent of the competing institutions. However, there can be no mutual-consent alteration of conduct rules and penalties that are in place for violations of conduct rules.

Of greatest concern to the special committee were facilities specifications that might have made existing facilities unacceptable under Bylaw 3-5 and would have resulted in a financial impact on a member institution.

The division championships committees will begin review of the playing-rules changes at their first meetings in May.



Baseball preview

Torey Lovullo, second baseman for the UCLA Bruins, leads off The NCAA News' preview of the intercollegiate baseball season. Lovullo, a three-year starter, was coplayer of the year in the Pacific-10 Conference. The preview begins on page 8.

Changes in travel policy announced for NCAA winter championships

Since the NCAA's contract with Greyhound Lines was not renewed for 1986-87, administrators and coaches at member institutions should note changes in official transportation policy for winter championships.

The transportation section of several winter championships handbooks, which were published before a final decision on the contract renewal was made, carry the following statement on charter bus arrangements:

"Arrangements to transport teams via commercial charter bus must be made through the official motorcoach carrier for NCAA championships, Greyhound Lines, Inc., Phoenix, Arizona. The Association will not be

responsible for reimbursement of commercial charter bus costs purchased through other sources."

Richard D. Hunter, NCAA director of finance, has indicated that the requirement of using Greyhound no longer exists. Instead, coaches or administrators who make championships travel plans should refer to the following charter information, which appears on page 6 of the 1986-87 NCAA Travel Handbook:

"Arrangements to transport teams via commercial charter bus may be made for travel associated with team championships. The cost for charter bus arrangements should be paid by the institution and reimbursement

Coaches to preview '87 football season

Ten outstanding coaches will gather February 22-24 in Kansas City, Missouri's, Westin Crown Center with approximately 60 sportswriters from across the nation to participate in the College Football '87 Preview.

Coaches who will attend the 11th annual NCAA-sponsored preview are Bobby Bowden, Florida State University; Dick Crum, University of North Carolina, Chapel Hill; Rocky Felker, Mississippi State University; Ken Hatfield, University of Arkansas, Fayetteville; Jimmy Johnson, University of Miami (Florida); Bill Mallory, Indiana University, Bloomington; Keith Piper, Denison University; Erk Russell, Georgia Southern College; Larry Smith, University of Southern California, and Denny Stolz, San Diego University.

Charles McClendon, executive director of the American Football Coaches Association, also will attend the preview, which will be moderated by University of North Carolina, Chapel Hill, athletics director John D. Swofford, chair of the NCAA Communications Committee.

John L. Toner, director of athletics at the University of Connecticut and chair of the Special NCAA Postseason Drug-Testing Committee, and Dr. Don Catlin, director of the University of California, Los Angeles, Medical Center, will kick off the preview February 23 with a panel discussion about the NCAA's post-season drug-testing program.

Following are brief biographical

sketches of the coaches selected for the 1987 preview.

Bobby Bowden

For most coaches, a 7-4-1 record that included a bowl victory would be a big year. But for Bowden over the past 10 years, only the 1981 season ranks below last season's record.

Bowden's record is impressive considering the competition Florida State faces on the road. Bowden, dubbed "The King of the Road," is 2-2 at Nebraska, 2-0 at Ohio State, 1-0 at Notre Dame, 4-1 at Louisiana State and 3-3 at Miami (Florida). Bowden has compiled a 41-24-2 record on the road against top-notch teams since he came to Florida State in 1976.

A lifelong Baptist and lay preacher, Bowden has compiled an overall record of 168-70-4 at Samford, West Virginia and Florida State. He is 90-36-3 at Florida State.

Dick Crum

Crum, the dean of Atlantic Coast Conference coaches, has compiled a 67-35-3 record and has led North Carolina to six bowl games in nine years.

Crum has coached eight first-team all-Americans in the past seven years, 10 1,000-yard rushers, three of the school's top five leaders in total offense and rushing, and four of the top five passers.

At Miami (Ohio), Crum posted a 34-10-1 record and led the Redskins to three Mid-America Conference championships. Before becoming head coach, Crum served for five years as an assistant under Bill Mallory, who also will attend the preview.

Rockey Felker

Dream became reality for Felker January 6, 1986, when he became Mississippi State's 29th head football coach.

Felker, the youngest head coach in Division I-A at 33, immediately perked up the struggling Mississippi State program, leading the Bulldogs to their first winning season since 1981 with a 6-5 record.

Felker quarterbacked Mississippi State to its second-best record (9-3) in school history in 1974 and led the Southeastern Conference that year in total offense with 1,593 yards.

Ken Hatfield

Since returning to his alma mater in 1984, Hatfield has rekindled the spirit that existed at Arkansas during the 1960s. Hatfield's 26-8-1 record is the best among Southwest Conference coaches over the past three years.

After an outstanding high school career, Hatfield starred for the Razorbacks as a defensive back and was a member of the 1964 national-championship team.

Hatfield entered the collegiate coaching ranks as an assistant at Tennessee and Florida. In 1978, he went to Air Force as offensive coordinator, and a year later he was elevated to head coach. Hatfield turned the program around after four years at the helm, winning eight games in 1982 and the Hall of Fame Bowl. The following year, Air Force won 10 games and the Independence Bowl.

Hatfield became the Razorback coach the following year and has since built Arkansas into a top contender for the Southwest Conference

See Coaches, page 3

In the News

Addressing a concern

Student-athletes should be given the same latitude as coaches in switching schools and not have to sit out a year. Page 2.

Stats, notes

Basketball notes and statistics in all NCAA men's and women's divisions. Pages 5-7.

1099 forms

Members of all NCAA committees have been sent copies of IRS form 1099 reflecting payments from the NCAA in 1986 that they must declare as income. Page 4.

Spotlight

The NCAA Spotlight on Women's Basketball is scheduled February 19 in New York City. Page 9.

Convention set numerous records

The total attendance at the 1987 NCAA Convention in San Diego was not an all-time high, but almost every other Convention record was bettered at the meeting last month.

An audit of all Convention registrations has been completed in the NCAA national office, and the official total attendance in San Diego was 1,820—well over the unofficial 1,760 reported at the Convention itself. The total is the second largest of all time, trailing only the 1,861 in New Orleans one year earlier.

Even without that record, there were more organizations, more registered voting members and members of each of the three divisions in attendance than at any previous NCAA

Convention.

The only other Convention records that did not fall were the percentage of Division I members in attendance (95.6 percent, under the 95.8 percent a year earlier) and the number of proposals to be voted upon (including amendments to amendments) (181, tied for fourth all time; the record is 257 in 1976).

Here are the key statistics regarding the '87 Convention:

- Total attendance: 1,820. Record is 1,861 in New Orleans, 1986.
- Organizations represented: 857. Previous record was 855 in 1986.
- Registered voting members: 741. Previous record was 717 in 1986.
- Percentage of voting members

present: 85.7 percent. Previous record was 82.7 percent, 1986.

• Highest recorded vote: 704 (on Proposal No. 44). Previous record was 641 in Dallas in 1984.

• Active member institutions: 678. Previous record was 661 in 1986.

• Number of Division I members (institutions and conferences): 327. Previous record was 321 in 1986.

• Division I percentage: 95.6 percent. Record is 95.8 percent, 1986.

• Division II members: 178. Previous record was 176 in 1986.

• Division II percentage: 86 percent. Previous record was 83 percent, 1986.

• Division III members: 241. Previous record was 237 in 1986. See Convention, page 4

Coach has parachute, players should, too

By Paul Franklin
Eastern Basketball magazine

College administrators addressed several issues at the NCAA Convention in San Diego. One topic they didn't address was that of changing addresses.

The rule of having players sit out a year if they transfer to another Division I school is a good rule. A fair rule. But it's time for an addendum.

And its time for the NCAA to shift gears.

It's fine to address the problem of drug abuse in athletics, and it's fine to address academic deficiencies on campuses around the country. But those are problems better handled by member schools. Universities should clean up their own homes.

The NCAA, meanwhile, should turn its attention toward some of the more well-adjusted kids entering college basketball programs.

For example, it could assist today's young athletes by giving them an escape clause when the coach of their choice leaves town for greener pastures. For greener dollars.

I'm talking about either incoming freshmen or transfer students.

If you're 17, 18 years old, if you're taking visits around the country, one of the primary criteria for selecting a college is the man who is running the basketball program. Sure, geography comes into play. Sure, curriculum comes into play. Sure, a particular conference comes into play. But so does playing for a certain coach.

Say a kid signs a National Letter of Intent in November. "It was a tough decision," the top-40 player says of Dynamite U. "But it came down to wanting to play for coach Fairtoall."

Come April, coach Fairtoall decides to take the assistant's job in the NBA. Or, come April, coach Fairtoall is fired. And, named his successor that May is coach Jerkowitz.

I say a kid should have the option of getting out of his commitment. At least up to the date of school registration.

Let the player have a fresh start as far as who helps him make the difficult adjustment to college ball.

Don't tell me about responsibility to commitment. Or about learning about life's unfair slaps in the face. If a nonathlete is accepted at the college of his choice, he can bail out in August and show up at freshman orientation at any school across the country.

In dealing with an 18-year-old freshman, or with a 20-year-old transfer who has to make the adjustment to a larger, more demanding four-year environment, schools should allow a kid to choose the coach of his choice. If, in fact, the issue is important to him.

Hey, there are enough struggling, maladjusted kids in this world. Why turn out a few more over a rule carved in stone? A rule that should be thrown like a stone into the river of ignorance.

Give Proposition 48 time to take effect

Rick Bozich, columnist
Louisville Courier-Journal

To make all freshman Division I football and men's basketball players ineligible is an emotional reaction to the unfortunate news that Len Bias took too much cocaine, after which the world discovered that Maryland basketball players struggled in the classroom.

Let students who can handle both loads handle both loads.

Craig Hawley accomplished two impressive things in his first semester at the University of Louisville. He won a starting guard position and he earned four A's and a B in engineering school.

Let those who come to school unprepared for the increased workload have a year to arrange their schedules, thoughts and priorities.

Let Proposition 48 have four years to take effect.

The fact is there are other ways for the NCAA to demonstrate that it sincerely wants to improve academic performance. The best is to reduce the increasing workloads it demands of its athletes.

Over the last two decades, the beginning of college football season has crept from the middle of September into the last week of August. Schools once played nine games. Then, 10. Now, it's 11, which does not include bowl games or the bonus contests like trips to Hawaii or the Kickoff Classic.

Basketball is just as guilty. The regular-season schedule now has jumped to 28 games. Last year, counting the tournament, Louisville played 39 games. Duke played 40. Kentucky played 36.

Now that the field of the NCAA tournament has been padded to 64 teams, the event stretches over three grinding, emotional weekends. If you survive into the NCAA finals and none of the weekends overlaps with your school's spring break, you are guaranteed to miss six to 10 days of classes.

Recently, to accommodate television and make money, Big Ten teams played on Sunday, Monday, Thursday and Saturday. Some games, to accommodate television and make money, were moved back to 9:30 p.m., which must be ideal for any kid with a 7:30 chemistry lab.

You get the idea. . . . Give Proposition 48 a chance to let freshmen who are capable remain eligible.

Bowls vs. I-A play-off: Happiness multiplied by nine is much better

By Ken Denlinger, columnist
The Washington Post

"Big-deal college football games come every few years. Games that leap beyond traditional, regular-season wars. Games that cause even nonfans, in their pursuit of more worthy matters, to have a look.

"In other decades, we have had Notre Dame-Michigan State (1965), Texas-Arkansas (1969), Oklahoma-Nebraska (1971) and Notre Dame-Alabama in the 1973 Sugar Bowl.

That's often enough.

"The present structure of major-college football offers enough for everybody, but not too much. There is a nice blending of pleasant matches in the existing bowl system. And if a pair of independent teams happen to go unbeaten, an independent bowl is there to accommodate them.

"By my count, there were 18 bowl games this season. That meant nine schools went home wildly excited. And the nine losers will be glad for the experience. A postseason system that makes many young men happy and only a few sad seems better than one that leaves only a single school fulfilled."

Al McGuire
TV sports commentator

Eastern Basketball magazine

"The most important trait an official can have is the ability to set the tempo of the game, which should then be maintained throughout.

"And whenever an official has a conference with a coach, he should be sure to invite immediately the opposing coach to join in, which usually means it ends up like Reykjavik, with no real discussion whatsoever.

"The ideal official keeps a low profile during the game. He's resourceful and takes the initiative. He has a dignity of voice but does not suggest any pomposity. He works as part of the team, has an understanding of the game, the players and the coaches; and he knows what the rules say and — even more importantly — what they mean.

"Always remember that referees don't have to be good. But they must be consistent so the players and coaches can adjust. Even if they are consistently incompetent, they're good.

"If you want to be a good ref, consistency is what counts. If you're consistent, you're a Michelangelo in black and white."

San Diego Tribune

Excerpted from an editorial

"Freshman students who happen to be athletes should know what a classroom looks like before they're called upon to perform athletically.

"They might even come to realize what an education can mean to them before their all-consuming athletics obligations work to persuade them otherwise."

Jim Petersen, former varsity basketball player
University of Minnesota, Twin Cities

Minnesota (alumni magazine)

"Freshmen should probably sit out their first year of varsity athletics because it takes a year to get adjusted to that kind of academic life.

"It's a good idea if it's across the board and everybody's doing it. I don't think it would hurt the individual very much. . . . It's important for freshmen to learn the (university) system first and get the academics down.

"If that were to happen, you'd find academic standards would rise quite a bit. I think it would be incredible, in fact. If freshmen were allowed to assimilate into campus life without having to travel, without having the pressure of having to perform on their shoulders at an early age, you would find that not only would graduation rates rise, but the athletes would learn quite a bit more.

"I wish I would have sat out my freshman year and had been redshirted to gain a year of eligibility, because I didn't play that much and yet, it was very frustrating to me because I didn't get to know the system and I was expected to perform. It was a very, very difficult transition."

George F. Will, columnist
Washington Post Writers' Group

"Some (athletics) reforms can serve the interests of antireformers who favor (football) elephantiasis. So pervasive is the cynicism in college football—a giant entertainment industry grafted onto higher education—some football factories are supporting one reform in order to combat another reform.

"Now, some football factories favor ending freshman eligibility. So the new recruits can study more? Hardly. That would just keep the freshmen off the field on autumn Saturday afternoons. They could still practice, attend team meetings and weight training—a full-time vocation.

No, some football factories want all freshmen to be

ineligible so more responsible schools will not be able to play their more academically qualified freshmen. . . ."

George Hochfield, professor of English
State University of New York, Buffalo

The Associated Press

"I intend to try to appeal to the alumni not to support the fund-raising campaign (to upgrade sports programs at the school) that will be undertaken now. There's some hope that the money won't be raised for this ambitious program.

"It's a degradation to the university. There is absolutely no way in which athletics programs are compatible with academics. Academic standards are always threatened by it."

John Feinstein, columnist

The Washington Post

"So now the NCAA (Men's Basketball) Rules Committee has decided that the three-point shot isn't really a 19-foot, nine-inch shot but a 21-foot shot.

"It all depends on how you measure, according to Ed Steitz, the mouthpiece for the rules committee. Henceforth, he says, the distance will be measured from the backboard rather than from the center of the basket.

"Not a bad idea. But why not measure from the third row and call it a 60-foot shot?"

"When is someone going to stand up and say this is a

Opinions Out Loud

joke? Steitz keeps saying the fans love it. Sure, they love it—when their team hits the shot. When their team misses, they hate it. Many coaches who are against the rule have given up criticizing it, at least until the season is over. . . .

"This undoubtedly will be remembered as the year of the three-point shot because the closeness of the line, no matter how you measure it, skews the game. . . ."

James W. Davis, professor of political science
Washington University (Missouri)

Chicago Tribune

"We do not know nearly enough about the impact on careers and lifestyles of educational debt. We do not know as much as we should about the effect the prospect of debt has on the decision to go to college, or on the choice of college. No one believes that loans have no effect. But what is a cause for concern in Congress seems of small consequence in the administration.

"Yet, consider the impact of the administration's (student-loan) program. An undergraduate receiving a first degree could graduate owing as much as \$18,000. An additional two years for an MBA could increase the debt another \$20,000. So could two years for a master's degree in social work. Three years for a law degree would add \$30,000 of debt. Work for a Ph.D. or M.D. would yield even more handsome debts.

"A new MBA on Wall Street may be able to pay off a high educational debt with the first year-end bonus. A new associate in a New York law firm would have no reason to feel hard-pressed. But how about the teacher, or social worker, or civil servant, or army officer or artist? Such former students may be years paying off their school debt, and the interest meter keeps ticking. . . .

"Those who go into lower-paying occupations may wind up paying more for their educations. The monthly payments will be smaller, but they will go on longer and interest on the unpaid balance will keep adding up.

"Bizarre is a word that comes to mind. We should want to provide incentives for bright young people to go into teaching, research, the arts, public service, the armed forces. The loan program now proposed by the administration will discourage entry into anything but the most lucrative careers."

The NCAA News

[ISSN 0027-6170]

Published weekly, except biweekly in the summer, by the National Collegiate Athletic Association, Nall Avenue at 63rd Street, P.O. Box 1906, Mission, Kansas 66201. Phone: 913/384-3220. Subscription rate: \$20 annually prepaid. Second-class postage paid at Shawnee Mission, Kansas. Address corrections requested. Postmaster send address changes to NCAA Publishing, P.O. Box 1906, Mission, Kansas 66201. Display advertising representative: Host Communications, Inc., P.O. Box 3071, Lexington, Kentucky 40596-3071.
Publisher Ted C. Tow
Editor-in-Chief Thomas A. Wilson
Managing Editor Timothy J. Lilley
Assistant Editor Jack L. Copeland
Advertising Director Wallace I. Renfro
The Comment section of The NCAA News is offered as opinion. The views expressed do not necessarily represent a consensus of the NCAA membership. An Equal Opportunity Employer.

Coaches

Continued from page 1
title.

Jimmy Johnson

In three seasons at Miami (Florida), Johnson has guided the Hurricanes to three New Year's Day bowl games, including this year's Fiesta Bowl showdown against Penn State with the No. 1 ranking on the line.

Johnson's first coaching test came at Oklahoma State, where he turned the program around in five years. Johnson coached Oklahoma State to two bowl games and had an overall record of 30-25-2 before taking over at Miami.

Since arriving at Miami, Johnson has compiled a 29-8 record. He was named the 1986 Walter Camp Football Foundation Coach of the Year for leading Miami to an 11-0 regular-season finish.

Bill Mallory

In 30 years of collegiate-level football, Mallory (as a player and coach) has been associated with 24 winning teams and 10 league champions and has participated in six bowl games. He now is in the process at Indiana of adding another chapter to his successful career.

Another in a long line of coaches with ties to Miami's (Ohio) "Cradle of Coaches," Mallory has an overall 109-76-1 record.

Mallory coached Northern Illinois from 1980 until he was named at Indiana in 1984. He was selected as 1986 Big Ten coach of the year for leading Indiana to only its third bowl game in its 101-year history.

Keith Piper

Piper, in his 34th season at Denison, has gained national attention for his use of the single-wing offense.

Denison earned berths in the past two NCAA Division III championships and has ranked among the division leaders in rushing, total and scoring offense.

Erk Russell

When Georgia Southern reinstated football in 1981 after a 41-year hiatus, Russell was called upon to head the program, and the Eagles have not touched down yet.

Georgia Southern has compiled a 47-15-1 record under Russell and last fall became the first team to win back-to-back NCAA Division I-AA championships. Russell served as Georgia's defensive coordinator for 17 years before arriving at Georgia Southern.

Russell's coaching career began at Auburn, where he earned 10 letters during his collegiate career.

Larry Smith

Since becoming a head coach in 1976, Smith has developed a reputation for rebuilding football programs. He now will try his luck at Southern California, which hired Smith in early January.

Smith successfully rebuilt Tulane's program in four years, finishing his final year with a 9-3 record and a Liberty Bowl berth.

Smith then took over a troubled Arizona program and directed the Wildcats to six consecutive winning seasons.

Denny Stolz

Stolz has had a magic touch throughout his 19-year collegiate coaching career. In his first year at San Diego State, Stolz led the Aztecs to their first Western Athletic Conference football title, their first victory over Brigham Young since 1970 and their best record since 1979. San Diego State capped the year with a Holiday Bowl appearance.

In addition to San Diego State's conference title, Stolz has led five other teams to league championships. With Bowling Green's 1985 Mid-American Conference title, Stolz won back-to-back titles in two different leagues.



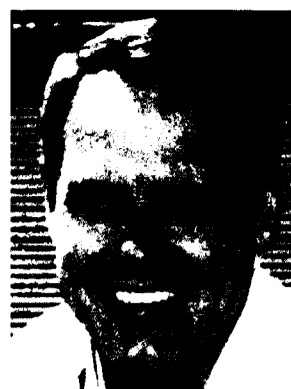
Bobby Bowden



Dick Crum



Rocky Felker



Ken Hatfield



Jimmy Johnson



Bill Mallory



Keith Piper



Erk Russell



Larry Smith



Denny Stolz

Letter to the Editor

Colleague takes writer to task

To the Editor:

I read with interest and a good deal of consternation the remarks by Mesa College biology professor Bruce Bauerle regarding college athletics and athletes published in a recent issue. Though a portion of Professor's Bauerle's message is well worth considering, I am fearful that much of what he wrote reflects, mainly, his lack of knowledge and understanding of, or empathy for, competitive sports.

I am a professor and academic administrator at Mesa College. I enjoy competitive sports and have been a close observer of the athletics program at Mesa College. I think I write from knowledge, not prejudice. Perhaps Professor Bauerle cannot claim the same.

I think Professor Bauerle's article makes only one point worthy of serious consideration: Competitive sports are dangerous. Every young man or woman who engages in sports should be aware of these dangers. The point is well-taken but not new. The issue is debated continuously both in and out of athletics circles and has been debated for some time. Coaches go out of their way to explain these dangers to athletes. Few are discouraged, no more than skiers, hang-gliding enthusiasts, mountain climbers or others who participate in dangerous physical activities are discouraged.

The remainder of Professor Bauerle's article is demeaning and misinformed, at least as it relates to his home institution. He poses as an expert on the curricula in physical education and recreation, calling degrees in these disciplines "dubious" and graduates from them "only marginally employable."

He writes from ignorance. If he would take a close look he would find that courses in tests and measurements, kinesiology, biomechanics, anatomy and physiology, and exercise physiology, which are at the heart of the physical education program, are as rigorous as the courses taught in his field, biology. He also would find that graduates in these two programs have been quite employable and successful.

It also is clear that Professor Bauerle knows very little about athletics scholarships or sports funding at his institution. No "full rides" are given, as he implies; no board and room, no book money, no spending money; only tuition, and for many not even that. If money was the most important drawing card,

few athletes would sign up. To make a dollar calculation to show that athletes are "working" for less than a minimum wage and expect that to deter participation in athletics only demonstrates the good professor's distance from the issue he attempts to elucidate.

Perhaps the most demeaning statements in Professor Bauerle's epistle are reserved for coaches who are said to encourage athletes to play when "slightly injured" and "to take steroids and perhaps other drugs in order to win." Professor Bauerle should know, if he is the expert he purports to be, that Mesa College was the first institution in the state to undertake drug testing of its athletes. This has been accompanied by a drug-counseling program. In addition, I have found Mesa College coaches to be extremely sensitive to their players' health. In the NAIA national football play-offs last fall, for instance, the coach used a third-string quarterback rather than risk permanent injury to his ailing first- and second-string men despite the importance of the game.

The professor's final insults were directed at athletes themselves. Though he admits that the physical regimen of athletics is demanding, he fails to acknowledge that many athletes do find time and energy to be students as well.

Instead, he pictures all athletes as lugs looking for easy courses and as "border failures in required academic courses," counterbalancing their low grades with "hand outs" in the physical education department. That is stereotypical garbage. Of course there are bad apples in sports, and there are lugs and failures, too. But all such types are not engaged in college athletics. And scores of young men and women who participate in sports are good, even superior, scholars. Instead of a fair evaluation, he chooses to picture the lug as the typical athlete.

I am sure that much of what Professor Bauerle wrote was aimed at the general competitive athletics scene, not at Mesa College. Unfortunately, he makes so many direct references to his home institution that it is impossible to separate the generic from the specific. If he intended an affront to his home institution, he owes an apology to a lot of people who thought otherwise.

Don MacKendrick
Professor of History and
Dean, School of Social and Behavioral Sciences
Mesa College

United States Tennis Association Announces

The USTA Tennis Facility Awards

To honor outstanding tennis facilities under the jurisdiction of:

- a parks and recreation department.
- an educational institution.
- industrial complexes.

CATEGORIES:

- Small tennis centers (4-10 courts).
- Large tennis centers (11 or more courts).
- Large tennis centers with permanent and / or temporary spectator seating (minimum 1,000).
- Tournament tennis centers with permanent stadium seating (minimum 3,000) and outer courts.

Deadline for receipt of application: **June 5, 1987**

Detach and Return to:

Facility Awards Committee

USTA Center for Education and Recreational Tennis
729 Alexander Road ■ Princeton, New Jersey 08540

Please send an application for USTA Tennis Facility Awards to:

Name _____
Address _____
City _____
State _____ Zip _____
Phone _____



Committee members get 1099 forms

Members of all NCAA committees—including the Presidents Commission, Council and Executive Committee—have been sent copies of Internal Revenue Service form 1099 reflecting the payments received from the NCAA during 1986 that they must declare as income.

Only those individuals who received \$600 or more from the Association were sent forms.

Those payments represent the per diem and "flat rate" amounts received during the calendar year. The Association is required under Federal tax laws to report those amounts paid to nonemployees and independent contractors, according to NCAA Controller Louis J. Spry.

"Expenses that are directly reimbursed, such as air travel for committee members, are not included on the form because they do not have to be reported as income," Spry said. "But we are required by law to report the per diem paid to committee members, along with the \$100 'flat rate' travel benefit."

Once the committee member reports as income the amount reflected on the 1099 form, he or she then should report as expenses the amounts paid for lodging, meals, entertainment and other appropriate expenditures related to the meetings attended.

This is the fourth year that the Association has reported the payments as required, and an explanation of the procedure has appeared in The NCAA News each of those years.

Sites recommended for volleyball play-off

The Division III Women's Volleyball Committee has voted to recommend that first-round and quarterfinal matches in the 1987 national championship be played November 12-14 at an on-campus site, with finals November 20-21 on the campus of one of the four finalists.

The following conferences were recommended for automatic qualification: Michigan Intercollegiate Athletic Association, Middle Atlantic States Collegiate Athletic Conference, Minnesota Intercollegiate Athletic Conference, Ohio Athletic Conference and the State University of New York Athletic Conference.

Convention

Continued from page 1
vious record was 226 in 1986.

- Division III percentage: 70.3 percent. Previous record was 65.7 percent in 1986.

- Number of proposals: 182. Record is 257 in 1976.

Among other interesting Convention attendance facts, all but two of the Division I member institutions—289 of 291—were in attendance. Thirty-eight of the 51 Division I conferences were registered. All 114 Division I-A members (105 institutions and nine conferences) were in attendance. The average Division I-A delegation was 3.85 persons per member, while it was 2.74 in I-AA and 2.01 in I-AAA, for an overall average of 2.87 persons per delegation in Division I.

In Division II, 162 of the 185 member institutions were in San Diego. Division II members averaged 1.98 delegates.

A total of 227 of 316 Division III institutions attended, averaging 1.47 delegates per member.

The overall registration figure included 1,540 delegates from active member institutions, 104 from member conferences, 21 representing affiliated members, eight corresponding members, 40 visitors and 107 news media representatives.

Legislative Assistance

1987 Column No. 7

Printed recruiting aids—Proposal No. 88

As noted in 1987 Legislative Assistance Column Nos. 5 and 6, the Legislation and Interpretations Committee has reviewed several issues regarding the application of 1987 Convention Proposal No. 88, which was adopted as amended at the 1987 Convention to specify that the annual athletics press guide and recruiting brochure must utilize only one color of printing inside the covers. The committee has made the following interpretations in reference to the application of this regulation.

The committee agreed that the one-color restriction would not be applicable to pictures and printing on the inside front cover or inside back cover of the press guide and recruiting brochure but would be applicable to pictures and printing on any pages inside the covers of these items. It should be noted that the one-color restriction that relates to pictures and printing inside the covers of the guide and brochure would not relate to the pages themselves; there would be no restriction on the color of pages in these items. In addition, the committee determined that a member institution may not develop a separate press guide or recruiting brochure to send to the media or alumni that does not meet the specifications outlined in Proposal No. 88. Finally, a member institution would be precluded from the distribution subsequent to August 1, 1987 (the effective date for Proposal No. 88), of any press guide or recruiting brochure with multicolored pictures and printing on any page inside the covers of such items.

Junior college transfer waiver

The provisions of NCAA Bylaw 5-1-(n)-(1) normally permit a transfer student from a junior college to receive a waiver of the residence requirement if the NCAA Eligibility Committee concludes that the student changed institutions in order to continue participation in a sport because the student's original junior college dropped the sport from its intercollegiate program or never sponsored the sport on the intercollegiate level while the student was in attendance at that institution. This waiver opportunity is provided subject to the understanding that the student never attended any other collegiate institution that offered intercollegiate competition in that particular sport and provided the student earned at least a minimum 2.000 grade-point average at the junior college.

The Division I subcommittee of the Legislation and Interpretations Committee has reviewed the application of Bylaw 5-1-(n)-(1) in light of the related provisions of Bylaw 5-1-(j)-(9), which specify that a transfer student from a junior college who was a nonqualifier [per Bylaw 5-1-(j)] must graduate from the junior college and complete 48 semester or 72 quarter hours of transferable degree credit to be immediately eligible at an NCAA Division I member institution. The Division I subcommittee noted that if a nonqualifier were permitted to utilize the Bylaw 5-1-(n)-(1) waiver subsequent to enrollment at a junior college, the individual could avoid the application of Bylaw 5-1-(j)-(9). Accordingly, the Division I subcommittee agreed that an individual who is a nonqualifier and transfers from a junior college would be precluded from utilizing Bylaw 5-1-(n)-(1) in order to waive the residence requirement at a Division I member institution.

Permissible benefits—occasional meals

Revised Case No. 68 (reference: the Interpretations column published in the October 20, 1986, edition of The NCAA News) prohibits representatives of a member institution's athletics interests from serving as "sponsors" or "foster families" to student-athletes, since such an arrangement would constitute an extra benefit unless the sponsorship program exists to provide the same benefits and supportive services to all students at the institution. Prior to this revision, Case No. 68 permitted "sponsors" under certain specified conditions but precluded special arrangements by "sponsors" with the exception of an occasional family home meal. Several member institutions have asked whether the exception for "an occasional family home meal" remains in effect in light of the revision of Case No. 68.

The Legislation and Interpretations Committee has reviewed this issue and determined that it would remain permissible under revised Case No. 68 for an institutional staff member or representative of its athletics interests to provide an occasional family home meal to student-athletes. The committee noted that the reference to "an occasional family home meal" would in itself restrict such meals to infrequent and special occasions and would require that the meal be provided in an individual's home. The committee also noted specifically that a student-athlete would be permitted to receive a family home meal on Thanksgiving or Christmas in accordance with this interpretation.

Interpretations

1987 Column No. 2

Paid campus visit—free admissions

(Revises Case No. 232)

Situation: A prospective student-athlete visits an institution at the expense of the institution. (90)

Question: Is it permissible to provide the prospective student-athlete with two admissions to a campus athletics event (in addition to the prospect's own) as permitted in Bylaw 1-9-(f)?

Answer: No, unless such admissions are provided in conjunction with actual entertainment expenses for the prospect's parents (or legal guardians) or spouse during a financed visit to an institution's campus. Otherwise, the extra admission privilege described in Bylaw 1-9-(f) is restricted solely to a visit financed by the prospect. [B 1-9-(f) and (j)]

Satisfactory-progress rule—exceptions

(Revises Case No. 332-(c))

Situation: Bylaw 5-1-(j)-(vi) permits the NCAA Academic Requirements Committee to establish criteria for exceptions to the satisfactory-progress rule [Bylaw 5-1-(j)-(6)], which shall be administered by the conference members of the Association and, in the case of an independent institution, by the NCAA Eligibility Committee. (606)

Question: What criteria for exceptions to the legislation have been established by the Academic Requirements Committee?

Answer: Exceptions may be granted as follows: (c) Medical absence—The provisions of Bylaw 5-1-(j)-(6)-(ii)-(1) may be prorated at 12 hours per term of actual attendance during an academic year in which a student misses a term or is unable to complete a term as a result of an injury or illness. Such an exception may be granted only when circumstances clearly supported by appropriate medical documentation establish that a student-athlete is unable to attend a collegiate institution as a result of an incapacitating physical injury or illness involving the student or a member of the student's immediate family. [B 5-1-(j)-(6)-(vi)]

Division III—academic honor award

(Revises Case No. 418)

Situation: In accordance with the Division III membership criteria, an institution may offer a student-athlete an academic honor award under circumstances as outlined in Bylaw 11-3-(a)-(4)-(i) without consideration of the recipient's need. Such financial aid shall be awarded "independently of athletics interests." (526)

Question: What requirements shall be met to assure that such aid is awarded independently of athletics interests?

Answer: The following requirements shall be met: No quota of awards shall be designated for student-athletes, athletics participation shall not be required prior or subsequent to college enrollment and no athletics department staff member shall be involved in designating the recipients of such awards. [B 11-3-(a)-(4)-(i)]

Division III—review of aid package

(Revises Case No. 421)

Situation: The Division III membership criteria prohibit members of an institution's athletics staff from arranging or modifying the financial assistance package assembled for a student-athlete by the institution's regular financial aid authority. (585)

Question: May an athletics department staff member be involved in any manner in the determination of the institutional financial assistance packaging to be awarded a student-athlete?

Answer: No. However, an athletics department staff member may present evaluations of potential student-athletes to the institution's financial aid authority, provided other institutional representatives have the same privilege. [B 11-3-(a)-(6)]

Athle-Tech

Computer Systems Inc.



Results

Game Analysis Voice Video Strength Training

Academic Tracking Recruiting Budget Management

- Stanford, Michigan, and Indiana all used Athle-Tech's game analysis this season...as a result they have two more things in common — their **Best Records** in years and trips to post season **Bowl Games**.

- Named one of the **Top 100 Companies** among America's 4,000 plus value added computer resellers, the only company serving athletics to be so honored.

- In the **Season Directly Prior** to the installation of Athle-Tech systems, only 2 of 9 programs finished above .500...in their **First Season with Athle-Tech Systems** 8 of these same 9 programs finished at .500 or above!

- To find out how Athle-Tech can help improve your results, or to arrange for a demonstration contact us at: (813) 786-5398

Athletech Computer Systems Inc.

2889 Hyde Park Court Clearwater, Florida 33519

James Madison rebounds from devastating season

By James M. Van Valkenburg

NCAA Director of Statistics

The most improved team in men's Division I basketball?

On a won-lost basis, James Madison is far in front—so far, in fact, that it will be difficult for any team to catch the Dukies, who are coming back strong after their only losing season in 18 years of varsity basketball—11 of them in Division I.

Everything that could go wrong did go wrong last season for coach John Thurston, who took over after 10 years as Lou Campanelli's chief assistant. Players missed a total of 27 games with injury or illness, and that does not include a starter who missed the last half of the season because of illness. Two more expected to play major roles were eligible but sat out the season to improve their academic situation. As a result, the Dukies finished 5-23.

Now, they are 16-6 going into a February 14 home game with William and Mary—an improvement of 14 games (11 more victories, 17 fewer defeats is 28; divide by two)—a figure exceeded by only five teams in the 15 seasons we have been compiling most-improved leaders.

No other teams are up even as much as 10 games, but there have been a number of other outstanding turnarounds. Through February 10, Oregon State under veteran Ralph Miller, who has won more than 600 games, is tied with UCLA for the Pacific-10 Conference lead after a losing season in 1986. Baylor's Gene Iba, nephew of the legendary Henry Iba (767-game winner at Oklahoma State), recently upset Texas Christian and is tied for second in the Southwest Athletic Conference after a 3-13 conference finish a year ago, his first on that job. Another veteran, Morehead State's Wayne Martin, is 8-1 for a close second in the Ohio Valley Conference after a 1-13 league finish in 1986. Ron Palmer has Long Beach State second in the Pacific Coast Athletic Association after a 3-15 PCAA record last year.

Annual leaders

James Madison has only an outside mathematical chance at the record improvement of 16½ games by North Carolina A&T in 1978 and Murray State in 1980. Annual champions: Year, team, games up, coach: 1973—North Caro. St. (27-0), 10½, Norm Sloan; 1974—Kansas (23-8), 10½, Ted Owens; 1975—Holy Cross (20-8), 11, George Blancy; 1976—North Tex. St. (22-4), 16, Bill Blakeley; 1977—Southwestern La. (21-8), 12½, Jim Hatfield; 1978—North Caro. A&T (20-8), 16½, Gene Littles; 1979—Wagner (21-7), 13, P. J. Carlesimo; 1980—Murray St. (23-8), 16½, Ron Greene; 1981—Tulsa (26-7), 15, Nolan Richardson; 1982—Cal St. Fullerton (18-14), 11½, George McQuarn; 1983—Utah St. (20-9), 15, Rod Tueller; 1984—(tie) Loyola (Md.) (16-12), 12, Mark Amatucci, and Northeastern (27-5), 12, Jim Calhoun; 1985—Cincinnati (17-14), 12½, Tony Yates; 1986—Bradley (32-3), 12½, Dick Versace.

Bill Blakeley's team at North Texas State is third at 16 games in 1976. Then comes a pair of 15s—by Tulsa in Nolan Richardson's first year on the job in 1981 (winning the National Invitation Tournament) and Rod Tueller at Utah State in 1983. The coaches of the record-holders were Gene Littles at North Carolina A&T (up from 3-24) and Ron Greene at Murray State (up from 4-22).

Three nonchampions were up at least 13 games—Fresno State at 14 in 1978 in Boyd Grant's first year; Michigan State, 13½ in 1978 under Jud Heathcote in Earvin "Magic" Johnson's first season, and Xavier (Ohio), 13 in 1983 under Bob Staak.

The keys

The keys to the James Madison turnaround, in addition to no injuries or illness, are point guard Benny Gordon, a New York City native who came from Trinidad (Colorado) State Junior College, and forward Kennard Winchester from Crumpton, Maryland, one of the redshirts mentioned above.

Thurston, a 38-year-old New York City native and Seton Hall graduate,



Western Michigan's Booker James ranks high in Division I scoring and rebounding

prefers an upbeat, pressing style of play. He was Campanelli's chief aide when the Dukies scored three NCAA tournament upsets in three years—in 1981 over Georgetown, in 1982 over Ohio State and in 1983 over West Virginia.

New coaches on list

Of 45 other Division I teams showing marked improvement in conference or in full-season play or both, 11 are coached by men in their first year on the job. Three of these also are in their first year as a head coach at the four-year level—South Carolina's George Felton, Wichita State's Eddie Fogler and Manhattan's Bob Delle Bovi.

The other eight have previous head-coaching experience at the four-year level but are new on their current job.



DeAnn Craft, Central Florida, leads Division I in free-throw percentage

the team won 18 last year and has a good shot this year, even though injuries slowed the team a bit after a 14-2 start. It is quite a change from 1982, when his first team went 5-23 and had only six scholarship players at season's end. He inherited a program that was almost dead. Only 100 students were attending games.

The big change came when Grawer got some highly rated home-grown talent (Monroe Douglass and Roland Gray) to stay home. Season-ticket sales more than doubled.

"St. Louisans are largely people who are born, raised and die here," says Grawer. "It's a good thing. If I can build this team with eight, nine, 10 St. Louis kids, I'd rather do it."

St. Louis born and bred, Grawer won three state titles at DeSmet High



Georgia senior Katrina McClain ranks sixth in Division I scoring at 24.9

Brown 2,225 through games of February 2. Closing in are Brigham Young's Tresa Spaulding at 1,963, South Alabama's Orphie Moore at 1,938, Missouri's Renee Kelly (1,925), Appalachian State's Valorie Whiteside (1,893), Georgia's Katrina McClain (1,869), Illinois' Jonelle Polk (1,760) and North Carolina-Charlotte's Kristin Wilson (1,660). Whiteside is the only junior in the group and an early candidate to reach 3,000 points next season.

Memphis State has produced the most 2,000-point career scorers with four. They are Betty Booker, whose last year was 1981; Linda Street (1981); Linda McKinnie (1982), and Regina Street (1985). All played under Mary Lou Johns.

Colleges with three career 2,000-pointers are Drake (Sharon Upshaw, Lorri Bauman, Wanda Ford), Louisiana Tech (Pam Kelly, Angela Turner, Janice Lawrence), Mississippi (Peggie Gillom, Deborah Temple, Jannifer Gillom), Old Dominion (Inge Nissen, Nancy Lieberman, Anne Donovan) and Southern California (Paula McGee, Pam McGee, Cheryl Miller).

Quotes of the week

Kansas men's coach Larry Brown, a New York native, on still another rumor that he is leaving for the New York Knicks: "I haven't talked to anybody. Not Scotty Stirling, the Knicks general manager; not Ed Koch, the mayor of New York, nobody. Not even a Manhattan cab driver."

Another New Yorker, Nebraska men's coach Danny Nee: "I hear all the time about New Yorkers in coaching, but it's all overrated, all those stories about street smarts. It comes down to population density. There are so many people back there, hey, I mean, there's gotta be some good people. It's simple math." (Tim Allen, Big Eight Conference SID)

Virginia Military men's coach Joe Cantafio on his program's progress, after his team lost a nine-point half-time lead to lose at Tennessee-Chattanooga: "You know, our bus broke down coming here, but I didn't get any offers of transportation from Mack McCarthy (their head coach). Five years ago, Murray (Arnold, then head coach) would have sent limousines to pick us up and make sure we got to town." (Mike Strickler, Virginia Military SID)

Alcorn State men's coach Davey Whitney after his team's 24-point loss to Grambling: "Instead of power moves to the basket, we were making Barbie Doll moves." (Stanley Lewis, Alcorn State SID)

Western Michigan men's coach Vern Payne after a victory at Toledo, the fifth road victory for his team: "I can't explain it. But I know when we get back for Monday's home game, I'm going to get the kids out of class at 2 o'clock and drive them around town in a bus for two hours." (Dave Grant, Western Michigan graduate assistant)

John Carroll men's coach Tim



Dick Hempy, Otterbein, leads Division III in scoring at 29.7 points per game

Baob: "The basketball season is too long. I love the game, but I love my mother-in-law, too, and I wouldn't think of living with her for six months." (Julie Dalpiaz, John Carroll assistant SID)

Carleton men's coach Guy Kalland on Brad Tompkins: "Brad is our E.F. Hutton. When he talks, everybody listens." (Patricia Martin, Carleton SID)

Bridgewater (Virginia) men's coach Bill Leatherman: "Yes, I'm pleased with our record going from 6-19 last year to 11-6 now, but, you know, there are no great records in Division III because there is no Division IV." (Curt Dudley, Bridgewater SID)

"They were so many fouls called, the officials were on oxygen during timeouts," said Penn State-Behrend men's coach Doug Zimmerman with a sigh after 96 fouls (exceeding the division record of 74) were called in a game with Grove City. (Lori Jakiela, Penn State-Behrend SID)

The Marquette women's coach, Sister Maria Pares, to Debbie Becker of USA Today about her high jinks when she was in the novitiate (she is the only nun coaching in Division I women's basketball): "I was always in trouble. My brother came to visit me. He had a Honda cycle. I asked an older sister—because I knew she wouldn't know—"Can I go for a ride on my brother's Honda?" She says okay, thinking it's a car. A father of one of my friends took a picture and mailed it to me. Well, they checked all the mail. There I was on the back of a Honda, the veil flying. Let me tell you, that was a scandal."

Can you top these?

The sixth-ranked women's team of Pomona-Pitzer also scores high marks for public service. When it finally had three weekdays without a game, the team donated seven pints of blood to erase the blood-bank debt of the father of a 1974 Pomona College graduate—and came back to lift weights that evening. (Nettie Morrison, Pomona-Pitzer SID)

The Canisius Lady Griffs already have played four overtime games this season, going 1-3, and coach Mike Rappl says, "I have enough gray hair already without this." (Bob Dzimian, Canisius assistant SID)

We goofed

The professional three-point shot is not measured to the backboard (see The NCAA News, January 28). It is measured from the center of the hoop, and the distance from there toward the top of the key is 23 feet, nine inches, or four feet longer than the college three-point distance.

In the corners, the pro distance is 22 feet, as we said, or two feet, three inches longer than the college distance.

From the backboard toward the top of the key, the pro distance is 25 feet and the college distance 21 feet. The free-throw line always has been measured from the backboard and is 15 feet, both college and pro.

Basketball notes

They are Pittsburgh's Paul Evans, Rhode Island's Tom Penders, Kansas State's Lon Kruger, Iowa's Tom Davis, Southwest Texas State's Harry Larabee, Mississippi's Ed Murphy, Grambling State's Bob Hopkins and St. Mary's (California) Lynn Nance.

Others ranking high

The others showing marked improvement include Dartmouth, Harvard, Central Michigan, Kent State, Western Michigan, Illinois-Chicago, Valparaiso, Wisconsin-Green Bay, Eastern Kentucky, UC Santa Barbara, Furman, Louisiana Tech, Alabama State, Texas Southern, Virginia Commonwealth, North Carolina-Charlotte, Georgia Southern, Portland, San Francisco, Air Force, New Mexico, Clemson, Penn State, Providence, Montana State, Boise State, Radford, Campbell, American, Lehigh, Towson State, New Orleans, Brooklyn and Central Florida.

Four and five years

Another way to look at improvement is over four or five years—those who started at the bottom and have attained a higher level. Two prime examples are Cleveland State, 8-20 the season before Kevin Mackey took over four years ago, and St. Louis, which had reached bottom before Rich Grawer took over five years ago.

Mackey's first team was 14-16, but his 1987 team is headed toward a third straight 20-victory season and is battling for the top spot in the Association of Mid-Continent Universities. After his team's stunning success in the NCAA tournament a year ago (upsetting Indiana, before a one-point loss to Navy), Mackey now has a shoe contract, a radio show, a television show and a full book of speaking engagements. The 40-year-old Bostonian is recognized as one of the game's top recruiters.

"Yeah, I'm an overnight sensation," Mackey says, "and it only took me 20 years to get here."

Grawer has built a new spirit and attendance base at St. Louis. He does not have a 20-game winner yet, but

School there and assisted Norm Stewart at Missouri. He was the man St. Louisans were waiting for.

Home-court streaks (cont.)

Kansas still owns the longest Division I home-court victory streak at 46 games after defeating Notre Dame, 70-60. Its last two games this season are February 14 vs. Oklahoma (the last team to beat Kansas in Lawrence) and Kansas State February 19.

But we have discovered that Temple is in second place at 32 games (not counting games against other teams in Philadelphia's Big Five in the Palestra and Spectrum, both neutral sites), all in McGonigle Hall on the Temple campus. The next Temple home game is February 19 vs. St. Bonaventure. Third is Northeastern's 31 games with Boston U. next, February 14. In Division II, Abilene Christian completed its home regular-season schedule with a 38-game streak. And DePauw's Division III record home streak has reached 61 games with Indiana/Purdue-Indianapolis next, February 19.

Identical milestones

Kansas coach Larry Brown got his 100th victory as Kansas coach in his 127th game February 7. Oddly, the legendary F. C. "Phog" Allen also got his 100th victory as Kansas coach in his 127th game, back in the 1920s, and Ted Owens also made it 100-for-127 in the late 1960s to start his career at Kansas. (Jeff Bollig, Kansas assistant SID)

Women's 2,000-pointers

Three players in women's Division I basketball already have surpassed 2,000 career points this season, and several others are within striking distance. Going into this season, 102 Division I players had reached 2,000 career points, led by Lynette Woodward, who had 3,649 through 1981 before going on to the Olympic championships of 1984 and now the Harlem Globetrotters.

Villanova's Shelly Pennfather had 2,150, Tennessee Tech's Cheryl Taylor 2,135 and Long Beach State's Cindy



Through games of February 9

Men's Division I individual leaders

SCORING							
CL	G	TFG	3FG	FT	PTS	AVG	
1. Kevin Houston, Army	Sr	20	199	40	181	619	31.0
2. Dennis Hopson, Ohio St.	Sr	23	237	44	155	673	29.3
3. Dave Robinson, Navy	Sr	23	257	1	107	670	29.1
4. Terrance Bailey, Wagner	Sr	18	185	27	107	504	28.0
5. Hersey Hawkins, Bradley	Jr	23	229	21	131	610	26.5
6. Darrin Fitzgerald, Butler	Sr	22	198	127	53	576	26.2
7. Frank Ross, American	Sr	21	188	64	97	537	25.6
8. Gay Elmore, Va. Military	Sr	21	199	18	120	536	25.5
9. Clarence Grier, Campbell	Sr	22	217	5	120	559	25.4
10. Derrick Chievous, Missouri	Jr	24	201	8	188	596	24.9
11. Byron Larkin, Xavier (Ohio)	Jr	23	201	22	138	562	24.4
12. Ledell Eckles, New Orleans	Jr	20	182	52	67	483	24.1
13. Reggie Williams, Georgetown	Sr	21	186	51	79	502	23.9
14. Reggie Lewis, Northeastern	Sr	24	215	23	119	572	23.8
15. Timman Bevely, Youngstown	Jr	23	212	48	72	544	23.7
16. Ben Hinson, Baptist	Sr	22	196	49	75	516	23.5
17. Armon Gilliam, Nevada-Las Vegas	Sr	25	227	0	132	586	23.4
18. Daren Queenan, Lehigh	Jr	21	180	5	127	492	23.4
19. Lawrence Mitchell, Austin Peay	Sr	22	187	3	107	514	23.4
20. Steve Alford, Indiana	Sr	21	157	70	104	488	23.2
21. Scott Brooks, UC Irvine	Sr	22	162	85	102	511	23.2
22. Jose Ortiz, Oregon St.	Sr	21	182	0	123	487	23.2
23. Jeff Grayer, Iowa St.	Jr	20	177	7	107	463	23.1
24. Tony White, Tennessee	Sr	21	176	16	117	485	23.1
25. Bernard Jackson, Loyola (Ill.)	Sr	23	194	30	111	529	23.0

BLOCKED SHOTS				
CL	G	NO	AVG	
1. Dave Robinson, Navy	Sr	23	106	4.6
2. Derrick Lewis, Maryland	Jr	17	71	4.2
3. Rodney Blake, St. Joseph's (Pa.)	Jr	20	79	4.0
4. Lester Fonville, Jackson St.	Sr	22	83	3.8
5. Charles Smith, Pittsburgh	Jr	24	86	3.6
6. Dallas Comegys, DePaul	Sr	21	75	3.6
7. Landrith Baugh, Howard	Sr	21	75	3.6
8. Charles Smith, Ball St.	Sr	21	74	3.5
9. Monty Henderson, Siena	So	19	61	3.2
10. Tim Perry, Temple	Jr	26	80	3.1
11. Roy Brown, Virginia Tech	Jr	22	67	3.0
12. Dwayne Schintzius, Florida	Fr	24	73	3.0

ASSISTS				
CL	G	NO	AVG	
1. Mark Wade, Nevada-Las Vegas	Sr	25	272	10.9
2. Tony Fairley, Baptist	Sr	21	206	9.8
3. Tyrone Bogues, Wake Forest	Sr	21	202	9.6
4. Andre Van Drast, Wagner	Sr	18	171	9.5
5. Avery Johnson, Southern-B.R.	Jr	19	179	9.4
6. Duane Washington, Middle Tenn. St.	Sr	21	195	9.3
7. Frank Smith, Old Dominion	Jr	22	187	8.5
8. Gary Payton, Oregon St.	Fr	21	176	8.4
9. Taurence Chisholm, Delaware	Jr	20	160	8.0
10. Anthony Manuel, Bradley	So	21	167	8.0

STEALS				
CL	G	NO	AVG	
1. Tony Fairley, Baptist	Sr	21	94	4.5
2. Joe Jeter, Delaware St.	Sr	20	73	3.7
3. Doug Usitolo, Boise St.	Jr	21	76	3.6
4. Roderick Ford, Texas-Arlington	Jr	24	84	3.5
5. Darryl McDonald, Texas A&M	Jr	19	59	3.1
6. Michael Williams, Baylor	Jr	21	65	3.1
7. Duane Washington, Middle Tenn. St.	Sr	21	65	3.1
8. Reggie Adams, Kent St.	So	20	60	3.0
9. Mike Boswell, Colgate	Sr	22	65	3.0
10. Michael Sims, Marquette	Jr	20	59	3.0

REBOUNDING				
CL	G	NO	AVG	
1. Jerome Lane, Pittsburgh	So	24	316	13.2
2. Chris Dudley, Yale	Sr	19	246	12.9
3. Dave Robinson, Navy	Sr	23	282	12.3
4. Andre Moore, Loyola (Ill.)	Sr	23	281	12.2
5. Bob McGann, Morehead St.	Sr	21	241	11.5
6. Brian Rowson, N.C. Wilmington	Sr	21	241	11.4
7. Greg Anderson, Houston	Sr	21	233	11.1
8. Largest Abajemisin, Wagner	Sr	19	210	11.1
9. Harry Willis, Weber St.	Sr	22	235	10.7
10. Gerry Besselink, Connecticut	Sr	21	224	10.7

FIELD-GOAL PERCENTAGE					
CL	G	FG	FGA	PCT	
(Min. 5 FG Made Per Game)					
1. Alan Williams, Princeton	Sr	18	119	169	70.4
2. Horace Grant, Clemson	Sr	23	184	271	67.9
3. Danny Manning, Kansas	Jr	23	209	326	64.1
4. Robert Gomboff, Louisiana Tech	Sr	22	140	219	63.9
5. Eric Leckner, Wyoming	Jr	22	150	236	63.6
6. Jeff Hines, Davidson	Jr	22	138	219	63.0
7. John Tate, Arkansas St.	So	24	146	232	62.9
8. Jose Ortiz, Oregon St.	Sr	21	182	290	62.8
9. Steve Rehholz, Hofstra	Sr	19	108	173	62.4
10. J. R. Reid, North Caro.	Fr	22	116	187	62.0
11. Greg McDermott, Northern Iowa	Jr	21	113	183	61.7
12. Jerry Pryor, Clemson	So	23	126	205	61.5
13. Claude Williams, North Caro. A&T	Jr	18	100	165	60.6
14. Armon Gilliam, Nevada-Las Vegas	Sr	25	227	376	60.4
15. Mike Richmond, UTEP	Sr	22	120	199	60.3
16. Dave Robinson, Navy	Sr	23	257	427	60.2
17. Will Perdue, Vanderbilt	Jr	24	165	275	60.0
18. Tom Curry, Marshall	Jr	22	114	190	60.0
19. Fred Burton, LIU-Brooklyn	So	17	123	205	60.0

FREE-THROW PERCENTAGE					
CL	G	FT	FTA	PCT	
(Min. 2.5 FT Made Per Game)					
1. Kevin Houston, Army	Sr	20	181	194	93.3
2. Bob Gullickson, St. Francis (Pa.)	Sr	19	60	66	90.9
3. Steve Alford, Indiana	Sr	21	104	115	90.4
4. Michael Smith, Brigham Young	So	25	64	71	90.1
5. Scott Haffner, Evansville	So	21	54	60	90.0
6. Nate Blackwell, Temple	Sr	26	80	89	89.9
7. Darryl Johnson, Michigan St.	Sr	21	87	97	89.7
8. Kevin Presto, Miami (Fla.)	So	20	51	57	89.5
9. Ted Houpt, Winthrop	Sr	19	51	57	89.5
10. Tony White, Tennessee	Sr	21	117	133	88.9
11. Mark Henry, Niagara	So	20	51	58	87.0
12. Danny Pearson, Jacksonville	Sr	22	101	115	87.8
13. Eric Adams, Hardin-Simmons	Jr	21	72	82	87.8
14. Jim McPhee, Gonzaga	So	22	79	90	87.8
15. Jame Norton, Boston Col.	Jr	22	63	72	87.5
16. Charles Ray, Pan American	Sr	21	63	72	87.5
17. Scott Zanon, Montana	Sr	23	67	77	87.0

3-POINT FIELD-GOAL PERCENTAGE					
CL	G	FG	FGA	PCT	
1. Eric Rhodes, S.F. Austin St.	Jr	23	48	80	60.0
2. Matt Whitehead, Yale	Jr	18	27	45	60.0
3. Scot Dimak, S.F. Austin St.	So	23	35	60	58.3
4. Reginald Jones, Prairie View	Jr	20	33	57	57.9
5. Steve Alford, Indiana	Sr	21	70	121	57.9
6. William Scott, Kansas St.	Jr	21	59	103	57.3
7. Tom Fiepkie, Pan American	Sr	22	47	88	53.4
8. Michael Tait, Clemson	Sr	23	51	96	53.1
9. Jeff McGill, Eastern Ky.	Jr	20	63	119	52.9
10. Andrew Moten, Florida	Sr	24	47	89	52.8

3-POINT FIELD GOALS MADE PER GAME				
CL	G	NO	AVG	
1. Darrin Fitzgerald, Butler	Sr	22	127	5.8
2. George Ivory, Mississippi Val.	Sr	22	93	4.2
3. Tony Ross, San Diego St.	Fr	20	80	4.0
4. Freddie Banks, Nevada-Las Vegas	Sr	25	99	4.0
5. Scott Brooks, UC Irvine	Sr	22	85	3.9
6. Arthur Walton, Houston Baptist	Sr	21	71	3.4
7. Rob Zinn, Vermont	Sr	21	71	3.4
8. Dave Mooney, Coastal Caro.	Jr	22	74	3.4
9. Gary Bossert, Niagara	Sr	20	67	3.3
10. Steve Alford, Indiana	Sr	21	70	3.3
11. Eliazar Gorden, Southwest Tex. St.	Jr	20	64	3.2

REBOUNDING				
CL	G	NO	AVG	
1. Booker James, Western Mich.	Sr	21	223	10.6
2. Lester Fonville, Jackson St.	Sr	22	233	10.6
3. Dyron Nix, Tennessee	So	21	222	10.6
4. Ronnie Grandison, New Orleans	So	21	221	10.5
5. Vince Langston, Hardin-Simmons	Jr	21	217	10.3
6. Joe Calavita, Vermont	Jr	19	191	10.1
7. Darek Robinson, Ark.-East. Shore.	Sr	19	190	10.0
8. Paris McCurdy, Ark.-Lit. Rock	So	24	238	9.9
9. Randy Anderson, Stetson	So	22	218	9.9
10. David Holloway, Prairie View	Sr	20	198	9.9

Team leaders

SCORING OFFENSE				
CL	G	W-L	PTS	AVG
1. Nevada-Las Vegas	25	24-1	2392	95.7
2. North Caro.	22	20-2	2028	92.2
3. Clemson	23	21-2	2061	89.6
4. Oklahoma	22	19-3	1961	89.1
5. Iowa	23	21-2	2030	88.3
6. Providence	21	16-5	1853	88.2
7. Middle Tenn. St.	21	18-3	1847	88.0
8. UC Irvine	22	11-11	1934	87.9
9. Michigan	23	15-8	2009	87.3
10. Niagara	20	14-6	1723	86.2
11. Ohio St.	23	15-8	1976	85.9
12. Florida	24	18-6	2060	85.8
13. Montana St.	22	17-5	1888	85.8
14. Loyola (Calif.)	22	10-12	1880	85.5
15. Pittsburgh	24	20-4	2047	85.3

SCORING MARGIN			
OFF	DEF	MAR	
1. Clemson	89.6	69.9	19.7
2. North Caro.	92.2	73.6	18.6
3. Nevada-Las Vegas	95.7	78.6	17.1
4. Iowa	88.3	72.6	15.7
5. Purdue	83.0	67.5	15.6
6. Indiana	82.4	67.1	15.3
7. DePaul	75.0	59.8	15.2
8. Georgetown	79.2	64.9	14.3
9. Florida	85.8	71.7	14.2
10. New Orleans	82.3	68.3	14.0
11. Pittsburgh	85.3	71.5	13.7
12. Western Ky.	79.4	65.7	13.7
13. Duke	80.0	66.5	13.5
14. Southwest Mo. St.	68.8	55.8	12.9

FIELD-GOAL PERCENTAGE			
FG	FGA	PCT	
1. Clemson	767	1410	54.4
2. North Caro.	772	1431	53.9
3. Princeton	435	817	53.2
4. Marshall	679	1282	53.0
5. Louisiana Tech	646	1231	52.5
6. Michigan	815	1555	52.4
7. Lafayette	587	1123	52.3
8. Missouri	652	1249	52.2
9. Kansas	678	1300	52.2
10. Indiana	650	1255	51.8
11. Montana	651	1258	51.7
12. Pittsburgh	729	1414	51.6
13. Davidson	596	1159	51.4

FREE-THROW PERCENTAGE			
FT	FTA	PCT	
1. Army	340	427	79.6
2. Michigan St.	309	394	78.4
3. Alabama	335	429	78.1
4. Northern Iowa	306	394	77.7
5. Wagner	379	490	77.3
6. Niagara	359	470	76.4
7. Ohio St.	496	653	76.0
8. Ala.-Birmingham	440	583	75.5
9. Tennessee	320	424	75.5
10. Providence	414	550	75.3
11. Indiana	343	456	75.2
12. Georgia Tech	254	339	74.9
13. Murray St.	292	390	74.9
14. UC Irvine	420	561	74.9

3-POINT FIELD-GOAL PERCENTAGE				
CL	G	FG	FGA	PCT
1. Indiana	21	88	157	56.1
2. S.F. Austin St.	23	98	185	52.7
3. Niagara	20	89	180	49.4
4. Illinois	23	82	167	49.1
5. Illinois St.	22	75	155	48.4
6. Yale	19	74	155	47.7
7. Jacksonville	22	137	287	47.7
8. Nicholls St.	18	69	146	47.3
9. Eastern Mich.	21	103	218	47.2
10. Florida	24	141	299	47.2
11. Cincinnati	21	79	168	47.0

SCORING DEFENSE				
CL	G	W-L	PTS	AVG
1. Southwest Mo. St.	24	19-5	1340	55.8

The NCAA News



Basketball Statistics

Through games of January 31

Men's Division II individual leaders

SCORING						
	CL	G	TFG	3FG	FT	PTS
1. Bill Harris, Northern Mich.	Sr	20	205	92	98	600
2. Ralph Tally, Norfolk St.	Sr	17	163	51	104	481
3. Ernest Lee, Clark (Ga.)	Sr	20	211	22	116	580
4. Gerald Glass, Delta St.	So	20	224	5	85	538
5. Jessie Jackson, Alas.-Anchorage	Sr	21	181	63	116	553
6. John Edwards, SIU-Edwardsville	Sr	19	203	0	78	484
7. Anthony Barge, West Ga.	Sr	16	136	39	93	404
8. Daryl Cambrelen, LIU-Southampton	Jr	16	172	25	105	398
9. Stan Kappers, St. Joseph's	Jr	20	172	0	133	477
10. Mike Dean, St. Thomas (Fla.)	So	20	176	58	63	473

REBOUNDING						
	CL	G	NO	AVG		
1. Brian White, Mansfield	Sr	18	246	13.7		
1. Andre Porter, LIU-Southampton	Sr	15	205	13.7		
3. Mike Holmes, Bellarmine	Jr	19	254	13.4		
4. Gerald Glass, Delta St.	So	20	256	12.8		
5. Gary Cromartie, Winston-Salem	Jr	14	174	12.4		
6. Anthony Ikeobi, Clark (Ga.)	Jr	20	244	12.2		
7. Gerald Woodberry, Ferris St.	Sr	19	229	12.1		
8. Norman Taylor, Bridgeport	Jr	20	241	12.1		
9. Leonard Harris, Virginia St.	Jr	15	180	12.0		
10. Hansi Grad, Alas.-Anchorage	So	21	251	12.0		

3-POINT FIELD-GOAL PERCENTAGE						
	CL	G	FG	FGA	PCT	
1. Mark Scallion, Mt. St. Mary's	Sr	21	34	65	52.5	
2. Mike Sanders, Northern Colo.	Sr	20	39	63	54.0	
3. Pete Barton, Phila. Textile	Jr	20	39	73	53.4	
4. D. Huddleston, Mo. Rolla	Jr	18	30	57	52.6	
5. Charles Byrd, West Tex. St.	Jr	20	52	119	52.1	
6. Jerry Neese, Indianapoli	Jr	19	41	79	51.9	
7. Mike Doyle, Phila. Textile	Sr	20	63	122	51.6	
8. John Worth, Ky. Wesleyan	Sr	20	65	126	51.6	
9. Joe Pazer, Merrimack	So	19	49	95	51.6	
10. Barry Williams, North Ala.	So	18	37	72	51.4	

FIELD-GOAL PERCENTAGE						
(Min. 5 FG Made Per Game)	CL	G	FG	FGA	PCT	
1. Todd Linder, Tampa	Sr	20	191	246	77.6	
2. Norman Taylor, Bridgeport	Jr	20	174	262	66.4	
3. Jim Gable, Eckerd	Sr	16	84	129	65.1	
4. Randall Mounts, St. Augustine's	Sr	16	108	167	64.7	
5. Rod Ruth, Michigan Tech	Jr	20	187	292	64.0	
6. Dante Johnson, Johnson Smith	Sr	17	149	233	63.9	
7. Jim Best, Assumption	Jr	18	150	238	63.0	
8. Stan Kappers, St. Joseph's (Ind.)	Jr	20	172	274	62.8	
9. Kris Kearney, Fla. Southern	So	21	118	188	62.8	
10. Curt Fiser, Rollins	Jr	20	161	260	61.9	

FREE-THROW PERCENTAGE						
(Min. 2.5 FT Made Per Game)	CL	G	FT	FTA	PCT	
1. Mike Sanders, Northern Colo.	Sr	21	69	73	94.5	
2. David Grice, Morningside	Sr	19	83	88	94.3	
3. Mike Kuehn, Mankato St.	Jr	20	60	68	88.2	
4. Lance Kimmel, Ashland	Jr	19	57	65	87.7	
5. Clint Davis, Bellarmine	Sr	19	49	56	87.5	
6. Anthony Barge, West Ga.	Sr	16	93	107	86.9	
7. Mike Doyle, Phila. Textile	Jr	20	73	84	86.9	
8. Mike Newell, Randolph-Macon	So	18	46	53	86.8	
9. Dave Moran, Southern Ind.	Sr	21	59	68	86.8	
10. Rodney Roberts, West Ga.	Jr	19	71	82	86.6	

3-POINT FIELD GOALS MADE PER GAME						
	CL	G	NO	AVG		
1. Bill Harris, Northern Mich.	Sr	20	92	4.6		
2. John Worth, Ky. Wesleyan	Sr	20	65	3.2		
3. Mike Doyle, Phila. Textile	Jr	20	63	3.2		
4. Bobby Licare, Lowell	Jr	19	39	3.1		
5. Charles Byrd, West Tex. St.	Jr	20	62	3.0		
6. Jessie Jackson, Alas.-Anchorage	Sr	21	63	3.0		
6. Ralph Tally, Norfolk St.	Sr	17	51	3.0		
8. Mike Dean, St. Thomas (Fla.)	So	20	58	2.9		
9. Barry Randles, Livingston	Jr	18	48	2.7		
10. Brian O'Neil, Stonehill	So	18	47	2.6		

Team leaders

SCORING OFFENSE						
	G	W-L	PTS	AVG		
1. Shaw	18	8-10	1685	93.6		
2. West Ga.	19	18-1	1778	93.6		
3. Ky. Wesleyan	20	18-2	1866	93.3		
4. SIU-Edwardsville	19	15-4	1768	93.1		
5. Virginia Union	18	15-3	1672	92.9		
6. Southern Utah St.	22	18-4	2041	92.8		
7. Alabama A&M	18	14-4	1634	90.8		

SCORING MARGIN						
	OFF	DEF	MAR			
1. Ky. Wesleyan	93.3	70.5	22.8			
2. Tampa	85.4	69.0	16.4			
3. North Ala.	85.8	69.7	16.1			
4. Virginia Union	92.9	77.3	15.6			
5. Norfolk St.	80.9	65.5	15.4			
6. Southern Ind.	86.3	71.3	15.0			
7. West Ga.	93.6	79.6	13.9			

FIELD-GOAL PERCENTAGE						
	FG	FGA	PCT			
1. Tampa	634	1145	55.4			
2. Johnson Smith	571	1057	54.0			
3. Fla. Southern	670	1263	53.0			
4. Eastern Mont.	576	1088	52.9			
5. Delta St.	663	1273	52.1			
6. St. Joseph's (Ind.)	532	1022	52.1			
7. Missouri-Rolla	566	1088	52.0			

3-POINT FIELD-GOAL PERCENTAGE						
	G	FG	FGA	PCT		
1. Virginia St.	19	72	147	49.0		
2. Missouri-Rolla	18	69	142	48.6		
3. West Tex. St.	20	88	182	48.4		
4. Mo. St. Louis	18	109	228	47.8		
5. Phila. Textile	20	135	283	47.7		
6. Indiana (Pa.)	17	82	173	47.4		
7. Mt. St. Mary's	21	77	163	47.2		

Women's Division II individual leaders

SCORING						
	CL	G	TFG	FT	PTS	AVG
1. Theresa Lorenz, Bloomsburg	So	19	225	59	509	26.8
2. Melissa Olson, Augustana (S.D.)	Sr	20	207	111	525	26.2
3. Belinda Hill, Bridgeport	Jr	15	140	80	360	24.0
4. Kim Disbro, Fla. Southern	Sr	19	159	125	443	23.3
5. Candace Fincher, Valdosta St.	Sr	17	143	108	394	23.2
6. Tina Moynihan, Slippery Rock	Sr	13	128	39	295	22.7
7. Sally Watson, Fla. Atlantic	Jr	20	191	64	446	22.3
8. Lisa Walters, Mankato St.	Jr	21	193	76	462	22.0
9. Robin Graul, Alas.-Anchorage	So	15	124	80	328	21.9
10. Amy Wilhelm, Morningside	Sr	20	186	64	436	21.8
11. Laura J. Anderson, Nebraska-Omaha	Jr	21	166	116	448	21.3
11. Tiawanna Dixon, Albany St. (Ga.)	Fr	18	160	64	384	21.3
13. Jill Halapin, Pitt-Johnstown	Jr	17	146	65	357	21.0
14. Valletta Johnson, Norfolk St.	Fr	15	129	54	312	20.8
15. Janet Clark, Northwest Mo. St.	So	18	153	68	374	20.8
16. Jackie Dolberry, Hampton	So	19	172	49	393	20.7
17. Shannon Williams, Valdosta St.	Fr	17	130	86	346	20.4
18. Patty Rauch, Keene St.	Sr	17	148	45	341	20.1
19. Carolyn Huntley, Winston-Salem	Sr	15	120	59	299	19.9
20. Kelly Leintz, Northwest Mo. St.	Jr	18	142	72	356	19.8
21. Candi Nielsen, Augustana (S.D.)	Jr	20	137	120	394	19.7
22. Sandra Bogan, Florida Int'l	Sr	18	133	81	347	19.3
22. Cheryl Hubbard, Gannon	Sr	18	147	53	347	19.3

REBOUNDING						
	CL	G	NO	AVG		
1. Antoinette Goode, Cal St. Hayward	Jr	20	303	15.1		
2. Jackie Anderson, Livingstone	Jr	15	227	15.1		
3. May Kate Long, Tenn.-Martin	So	19	258	13.6		
4. Pam Wells, St. Augustine's	Sr	17	219	12.9		
5. Jennifer Dimaggio, Pace	Jr	20	256	12.8		
5. Karen Eye, Randolph-Macon	Sr	15	192	12.8		
7. Heidi Keyes, Metropolitan St.	Jr	18	229	12.7		
8. Angela Hamilton, Johnson Smith	So	17	215	12.6		

FIELD-GOAL PERCENTAGE						
(Min. 5 FG Made Per Game)	CL	G	FG	FGA	PCT	
1. Tracy Payne, St. Joseph's (Ind.)	So	18	128	191	67.0	
2. Candace Fincher, Valdosta St.	Sr	17	143	219	65.3	
3. Tiawanna Dixon, Albany St. (Ga.)	Fr	18	160	258	62.0	
4. Jill Halapin, Pitt-Johnstown	Jr	17	146	239	61.1	
5. Pat Colon, Southeast Mo. St.	Sr	21	150	250	60.0	
6. Tracy Vann, Pembroke St.	Jr	16	109	182	59.9	
7. Sally Watson, Fla. Atlantic	Jr	20	191	319	59.9	
8. Robin Bradley, Eastern N. Mex.	Jr	17	117	196	59.7	
9. Tammy Wilson, Central Mo. St.	So	20	144	244	59.0	
10. Paula Hunter, Morningside	So	20	116	198	58.6	

FREE-THROW PERCENTAGE						
(Min. 2.5 FT Made Per Game)	CL	G	FT	FTA	PCT	
1. Mary Fisher, Michigan Tech	Sr	19	51	55	92.7	
2. Lisa Acker, Immaculata	Sr	12	31	34	91.2	
3. Bridgett Moore, Valdosta St.	Sr	17	60	68	88.2	
4. Kaye Klotzer, Mo. St. Louis	Sr	21	62	71	87.3	
5. Beth Dunkenberger, Randolph-Macon	Jr	15	53	61	86.9	
6. Sally Watson, Fla. Atlantic	Jr	20	64	74	86.5	
7. Jeanette Clevon, Northeast Mo. St.	Sr	16	68	79	86.1	
8. Julie Eisenschank, St. Cloud St.	So	19	52	61	85.2	
9. Kim Disbro, Fla. Southern	Sr	19	125	147	85.0	
10. Cathy Fox, Tampa	Sr	16	54	64	84.4	

3-POINT FIELD GOALS MADE PER GAME						
	CL	G	NO	AVG		
9. Angela Henderson, Winston-Salem	Jr	15	184	12.3		
10. Camillia McKenzie, Shaw	Jr	15	158	12.2		
10. Carlisa Staples, Shaw	So	13	158	12.2		
12. Lupe Quintana, Cal St. Los Angeles	So	21	250	11.9		
13. Tiawanna Dixon, Albany St. (Ga.)	Fr	18	210	11.7		
14. Pam Logan, Central St. (Ohio)	Sr	17	195	11.5		
15. Debra Larsen, Cal Poly-Pomona	Sr	19	216	11.4		
16. Pam Wheeler, Bowie St.	So	15	168	11.2		

Team leaders

SCORING OFFENSE						
	G	W-L	PTS	AVG		
1. Hampton	19	18-1	1698	89.4		
2. Morningside	20	13-7	1745	87.2		
3. Pitt-Johnstown	17	14-3	1460	85.9		
4. Valdosta St.	17	12-5	1455	85.6		
5. Tampa	18	13-5	1512	84.0		
6. Mt. St. Mary's	17	16-1	1427	83.9		
7. Albany St. (Ga.)	18	18-0	1502	83.4		
8. Alas.-Anchorage	15	12-3	1247	83.1		
9. Delta St.	17	16-1	1402	82.5		
10. Augustana (S.D.)	20	13-7	1647	82.3		

SCORING MARGIN						
	OFF	DEF	MAR			
1. Hampton	89.4	61.5	27.9			
2. Saginaw Valley	79.8	53.7	26.1			
3. Delta St.	82.5	58.9	23.6			
4. Mt. St. Mary's	83.9	61.4	22.6			
5. Lake Superior St.	80.3	57.8	22.5			
6. West Tex. St.	81.1	59.3	21.8			
7. Pace	80.7	59.8	21.0			
8. Albany St. (Ga.)	83.4	62.6	20.9			
9. Pitt-Johnstown	85.9	66.5	19.4			
10. Southeast Mo. St.	75.2	56.4	18.8			

FIELD-GOAL PERCENTAGE						
	FG	FGA	PCT			
1. St. Joseph's (Ind.)	547	1058	51.7			
2. North Dak. St.	606	1187	51.1			
3. Fla. Atlantic	521	1049	49.7			
4. Bemidji St.	590	1188	49.7			
5. Missouri-Rolla	572	1154	49.6			
6. Mt. St. Mary's	574	1162	49.4			
7. Pitt-Johnstown	581	1177	49.4			
8. Augustana (S.D.)	653	1323	49.4			
9. Pembroke St.	535	1096	48.8			
10. Morningside	723	1494	48.4			

3-POINT FIELD-GOALS MADE PER GAME						
	G	NO	AVG			
1. Bellarmine	264	358	73.7			
2. Delta St.	249	338	73.7			
3. Lake Superior St.	316	431	73.3			
4. Eastern Mont.	310	433	71.6			
5. Valdosta St.	360	503	71.6			
6. Fla. Atlantic	178	250	71.2			
7. Michigan Tech	242	341	71.0			
8. St. Cloud St.	257	363	70.8			
9. Augustana (S.D.)	341	482	70.7			
10. Mankato St.	266	376	70.7			

Men's Division III individual leaders

SCORING						
	CL	G	TFG	FT	PTS	AVG
1. Dick Hemy, Otterbein	Sr	19	213	0	139	565
2. Scott Tedder, Ohio Wesleyan	Jr	18	193	29	113	528
3. Greg Grant, Trenton St.	So	19	189	34	123	535
4. Rod Swartz, Hiram	Sr	17	168	53	8	



Longhorns, Tigers lead final march down trail

By Gibson Smith
The NCAA News Staff

Perennial contender Texas and upstart Louisiana State are the teams to watch as Division I baseball squads begin navigating a familiar but soon-to-change course toward Omaha and the College World Series.

A new road to the Division I Baseball Championship will open in 1988, when the current format gives way to a system that will pair the winners of two four-team divisions in a single national-championship game.

For now, however, the old double-elimination trail is the only path to the title, and Texas (51-14) and pitching-rich Louisiana State (55-14) appear ready to set the pace in 1987.

This spring will be the 41st since the Longhorns appeared in the first College World Series at Kalamazoo, Michigan. Since then, Texas has captured four national titles. Cliff Gustafson's team reached the championship game three straight times before losing in regional play last year, and it has an excellent opportunity to claim another trophy in 1987.

Conspicuous by his absence will be the Longhorns' dominating Greg Swindell, who was on the mound for the Cleveland Indians a scant three months after completing his brilliant college career. Gone as well are tournament veterans Jay Searcy, Dan Pena and Bobby Behnsch.

But shed no tears for Gustafson and his squad. The Longhorn roster is replete with pro prospects, particularly in the infield.

Third baseman Scott Coolbaugh (.336 batting average in 1986) is the leading hitter in a top-notch infield that also includes second baseman Todd Haney (.279) and shortstop Coby Kerlin (.281).

Catcher Brian Johnson (.263) will provide guidance to a pitching staff lacking the big name of years past. Mark Petkovsek (12-1 record, 3.09 earned-run average in 1986) provides

one proven arm and will be joined by the promising Curt Krippner (8-2, 3.16).

Also available for mound duty is Kevin Garner (3-1, 2.05), but he may be more valuable to Gustafson in the outfield, where the junior hit .314 and was second only to Searcy in home runs and RBIs.

Louisiana State has made only one appearance in the College World Series, compared to 23 for Texas. But coach Skip Bertman has built a program that should be flirting with the finals for years to come.

It is the Tiger pitching that has college baseball followers buzzing. Louisiana State has every hurler back from last year's fifth-place squad and adds two talented newcomers.

Bullpen standout Barry Manuel (10-3, 2.37) is perhaps the top arm, but Mark Guthrie (9-2, 4.24), Stan Loewer (14-4, 3.80) and Dan Kite (8-3, 3.18) provide exceptional starting pitching as well. Veteran Gregg Patterson returns from injury to further bolster the staff.

Junior-college standout Andy Berg and freshman Ben McDonald also will be available.

All but overlooked in the chatter over the Tiger pitching is outfielder Joey Belle (.354, 21 home runs), perhaps the best player in the Southeastern Conference.

The key for Louisiana State is replacing its entire starting infield, a unit that included first baseman Jim Bowie and third baseman Jeff Yurtin (.361 each).

Other contenders

UCLA (39-23) could field its best team ever in 1987, featuring power hitting and power pitching. Those strengths are represented by senior second baseman Torey Lovullo (.317, 16 homers) and junior pitcher Alex Sanchez (16-3, 4.06), the coplayers of the year in the Pacific-10 Conference.

Gary Adams' Bruins also feature catcher Billy Haselman (.364), a freshman all-America last season; slugging outfielder Steve Hisey, and a deep pitching staff.

If the pieces fall into place, UCLA could become the fourth Pacific-10 school in the last decade to claim the national title.

But Stanford (38-23) will be among those challenging the Bruins in conference play. The Cardinal adds a terrific recruiting class to a solid returning nucleus.

Junior Jack McDowell (11-4, 2.51) is one of the nation's top collegiate pitchers, and Stanford also has right-handers Lee Plemel (7-4, 3.36) and Rob Wassenaar (7-1, 4.19).

Outfielder Toi Cook (.357), also a Cardinal football star, provides the biggest bat for coach Mark Marquess' team.

Florida State (61-13) suffered heavy losses from the team that finished second at Omaha last spring. But with the arrival of new talent and the return of all-America pitcher Richie Lewis (14-2, 3.59), the Seminoles should be back in the national chase in 1987.

Lewis struck out 201 batters in 128 innings last year. (However, as the Seminoles' 1987 season began last weekend against Samford, Lewis was serving a suspension handed down by coach Mike Martin after the pitcher was involved in a fight that resulted in aggravated battery charges being filed against Lewis.) Junior-college help comes to the mound from Jerry Nelson and Rod Byerly, and to the field from infielders Don Erickson, Edwin Alicea and Rafael Bournigal.

Robin Ventura posted an unforgettable freshman season for Oklahoma State (56-15) last year. The third baseman hit .469 for the Cowboys, with 21 home runs and 96 RBIs. First baseman Jimmy Barragan put up similar numbers (.420, 24, 91) for coach Gary Ward.

The young Cowboys are strong at nearly every position but must replace four pitchers who contributed 40 wins last year before moving on to the professional ranks.

Miami (Florida) (50-17) loses key players, including top hitter Chris Howard (.370) and Division I career save leader Rick Raether. But coach Ron Fraser, who needs 18 victories to reach 1,000, always finds a way. Last season, the Hurricanes, 1982 and 1985 champions, hit only .282 but finished third in the College World Series.

This time around the key may be second baseman Jorge Robles, Florida junior college player of the year.

Georgia Tech (45-23) is a strong favorite to win a third straight title in the Atlantic Coast Conference. The Yellow Jackets could have their best offensive team ever, featuring senior outfielder Mike Fowler (.353) and sophomore third baseman Frank Bolick (.345).

The Yellow Jackets also have dependable pitching, led by seniors Roger Kinard and Todd Shivr.

Among the other teams that could challenge for national honors are defending champion Arizona (49-19), Pepperdine (38-21), UC Santa Barbara (45-19), Indiana State (48-21), Michigan (47-12) and Maine (41-23).

Conference capsules

Of the 48 berths in the 1987 Division I Baseball Championship bracket, 26 will go to representatives of conferences that qualify automatically. Here is a look at the races in those conferences:

Atlantic Coast

Top teams—Georgia Tech (45-23),



Alex Sanchez, UCLA

with explosive bats and solid pitching, is the clear favorite. Clemson (42-21) has no major weakness and could offer a strong challenge. North Carolina (33-22) and North Carolina State (35-15) feature young talent.

Top players—Mike Fowler, of, Georgia Tech (.353); Chuck Baldwin, 1b, Clemson (.370); Darin Campbell, ss, North Carolina (.349); Jeff Hartsock, p, North Carolina State (8-3, 3.07); Bill Narleski, ss, Virginia (.370); John Morabito, of, Wake Forest (.393).

Atlantic 10

Top teams—Rutgers (28-18) may have the best shot in a wide-open race. The Scarlet Knights had no seniors on their 1986 championship team. Temple (30-17) is the best of the rest.

Top players—Glenn Gardner, of, Rutgers (.398); Gary Resetar, c, Rutgers (.404); Ken Smith, p, West Virginia (10-0, 3.21); Darren O'Neil, 3b, Temple (.350).

Big East

Top teams—Seton Hall (32-26) fields a team of veterans but must fill pitching gaps with youngsters. St. John's (New York) (35-15) suffered graduation losses but still could make a run.

Top players—Craig Biggio, c, Seton Hall (.351); Ed Walsh, 1b, Providence (.387); Matt Lepncw, 1b, Georgetown (.357); Brian Lohman, lf, Pittsburgh (.353); Robert Lambraia, of, St. John's (.351).

Big Eight

Top teams—Oklahoma State (56-15) loses pitching but should win its seventh straight conference title. Okla-

homa (44-21) must rebuild but has some talent on hand.

Top players—Robin Ventura, 3b, Oklahoma State (.469, 21 HR, 96 RBIs); Jimmy Barragan, 1b, Oklahoma State (.420, 24 HR, 91 RBIs); Kevin Burdick, ss, Oklahoma (.439); Jack Armstrong, p, Oklahoma (transfer from Rider); Mike Rogers, 1b, Missouri (.407, 17 HR); Todd Bunge, of, Nebraska (.347).

Big Ten

Top teams—Michigan (47-12) has won six conference crowns in seven years and is favored to do it again, despite the loss of .440 hitter Casey Close. Illinois (34-19-2) could move up in the West if the pitching comes through. Northwestern (39-14) will rebuild under new coach Larry Co-chell, who previously was at Oral Roberts.

Top players—Mike Ignasiak, p, Michigan (8-3); Chris Lutz, p, Michigan (7-0, 2.52); Scott Barczy, c, Northwestern (.338); Tony Ariola, p, Northwestern (6-3, 2.66); Scott Meadows, 2b, Ohio State (.353); Joe Armentrout, cf, Wisconsin (.391); Scott Cepicky, 1b, Wisconsin (.360); Mickey Morandini, ss, Indiana (.422).

Colonial

Top teams—James Madison (35-14) returns its top eight pitchers as well as a solid offensive nucleus and could field its best team ever. East Carolina (40-10) also has strong pitching and could challenge for the championship in this overlooked baseball conference.

Top players—Rod Boddie, of, James Madison (.383); Jeff Garber, *See Longhorns, page 9*



Joey Belle, Louisiana State

Longhorns

Continued from page 8

ss, James Madison (.372); Jim Peterson, p, East Carolina (12-4, 3.88); Craig Van Deventer, p, East Carolina (8-1, 3.20); Luke Sable, 3b, George Mason (.386).

East Coast

Top teams—Delaware (28-12-1) could unseat Rider to return to its familiar spot atop the conference standings, but someone must replace the offense lost with third baseman Paul Murphy. Lafayette (27-13) also could challenge.

Top players—Mark Rubini, cf, Delaware (.421); Todd Powell, c, Delaware (.386); Ted Aceto, 2b, Bucknell (.420); Rich Lehosky, 1b, Towson State (.405); Jeff Mutis, p, Lafayette (10-4, 3.04); George Yolich, ss, Lafayette (.382).

ECAC

Top teams—Maine (41-23) should again be at the top of the Eastern College Athletic Conference. The Black Bears, paced by veteran pitching, again could make an impact on the national picture. New York Tech (27-27) could win the newly formed and competitive Diamond Division ahead of Pace (24-15). Fordham (24-13), Long Island-Brooklyn (18-15) and Canisius (18-6) are strong in the other divisions.

Top players—Steve Loubier, p, Maine (8-1, .331); Jeff Plympton, p, Maine (8-3, 4.88); Tom Boyce, of, New York Tech (.372); Louis Hernandez, lf, Long Island-Brooklyn (.442); Pete Harnisch, p, Fordham (9-1, 2.06); Mike Pisacreta, of, Pace (.381); Brian Baldwin, p, Northeastern (7.0, 2.02).

Eastern Intercollegiate

Top teams—Led by one of the nation's top pitching staffs, Harvard (19-11) is a likely choice to unseat Navy (30-10), whose 1986 stars are now on active duty. Dartmouth (23-19) and Brown (23-18) also may challenge in a league dominated by pitching.

Top players—Mike Remlinger, p, Dartmouth (7-7, 1.32); Chris Marchok, p, Harvard (2-3, 1.70); Jim DePalo, c, Harvard (.363); Steve Wieman, p, Navy (6-1, 1.05); Mike Schultz, cf, Navy (.430); Tom Cascino, 1b, Army (.430).

Metrol

Top teams—Florida State (61-13) lost several stars from its runner-up team but scored big on the recruiting circuit and will be back in the tournament. South Carolina (43-23) has not missed an invitation in the 1980s either, and the Gamecocks specialize in the long ball. Memphis State (40-16) and Virginia Tech (38-21) also will be strong again.

Top players—Richie Lewis, p, Florida State (14-2, 3.59, 202 strikeouts in 128 innings); Trey McCoy, 3b, Virginia Tech (.341); Ed Fulton, c, Florida State (.296); Jose Marzan, of, Florida State (.322); Dave Hollins, 3b, South Carolina (.305, 19 HR); Darrell Lindsey, p, Southern Mississippi (9-7, 3.25); Jeff Acuff, of, Memphis State (.337, 18 HR).

Mid-American

Top teams—Central Michigan (43-16-1) has won three straight conference crowns and should make it four in 1987. The Chippewas have solid pitching and are strong up the middle with good speed. Kent State (42-15) was one of the top hitting teams in Division I last season and could make its first tournament appearance since 1964.

Top players—John VanderWal, of, Western Michigan (.349); Mark Davis, 1b, Ball State (.401); Andy Rohn, 2b, Central Michigan (.427); Tim McDonald, p, Central Michigan (8-1, 3.39); Mike Bishop, 1b, Kent State (.378); Ben Burnau, p, Miami (Ohio) (7-7, 3.06).

Midwestern Collegiate

Top teams—Oral Roberts (43-20) gets a new pilot in Gary Vaught, who moves from just up the road at Kansas State. With plenty of talent back, he should have the Titans in the tournament again. Xavier (29-28) has the

pitching to win in the North division.

Top players—Mike Shambaugh, 1b, Oral Roberts (.358); Bob Zupcic, cf, Oral Roberts (.293); Jeff Ahr, of, Xavier (.331); Paul Lee, p, Evansville (7-3, 3.73); Gary Peters, p, Detroit (4-6, 3.31).

Missouri Valley

Top teams—One of the nation's top baseball conferences expects another banner year, and Indiana State (48-21) ranks among the very best in Division I. The Sycamores return most of the team that took them to their first appearance in Omaha last spring. Wichita State (45-18) and Bradley (35-26) also have plenty back.

Top players—Boi Rodriguez, 3b, Indiana State (.313); Mike Eberle, c, Indiana State (.314); Mike Gardiner, p, Indiana State (8-3, 3.28); Tim Campbell, 1b, Bradley (.387); Steve Finley, of, Southern Illinois (.354); Mark Standiford, 2b, Wichita State (.342).

Ohio Valley

Top teams—Eastern Kentucky (33-23) has won three straight conference trophies and is likely to win a fourth this spring. The Colonels rely on explosive hitting. Tennessee Tech (28-21-1) and Middle Tennessee State (32-30) could battle it out in the other division.

Top players—Robert Moore, of, Eastern Kentucky (.341); Jeff Cruise, p, Eastern Kentucky (10-1, 4.78); Steve Hawkins, ss, Tennessee Tech (.348); Todd Kemp, p, Tennessee Tech (5-6, 2.98, 133 strikeouts in 91 innings); Brian Staley, c, Morehead State (.376); Dave Cappuzzello, p, Akron (5-0, 2.43).

Pacific Coast

Top teams—UC Santa Barbara (45-19) brings a lofty national ranking and abundant College World Series hopes to the new season. The Gauchos may have their best pitching staff ever and dependable bats as well. Cal State Fullerton (36-21) has missed the tournament for two years after a 10-year run that included two national championships. The Titans have a strong pair of starting pitchers but must replace the heart of the batting order. Nevada-Las Vegas (35-22) must fill key gaps in the infield but will have another tournament-worthy squad.

Top players—Quinn Mack, of, UC Santa Barbara (.393); Erik Johnson, ss, UC Santa Barbara (.354); Mike Harkey, p, Cal State Fullerton (9-6, 3.41); Larry Casian, p, Cal State Fullerton (6-1, 2.84); Mike Goff, p,

Fresno State (11-5, 3.38); Steve Bates, of, Fresno State (.368); Reed Peters, of, Nevada-Las Vegas (.357); Mike Sugar, 3b, UC Irvine (.384).

Pacific-10

Top teams—UCLA (39-23), after years in the shadows of its conference rivals, is a prime choice to win it all in 1987. The Bruins boast the coplayers of the year in the Pacific-10 (Lovullo and Sanchez). Stanford (38-23) is also top-five material. Defending champion Arizona (49-19) lost heavily in the pro draft but returns enough veterans to return to the tournament. Arizona State (34-28), five times the Division I champion, should be on the upswing with improved defense. In the North, Oregon State (39-15) is favored to retain its title, with Portland State (39-23) another possibility.

Top players—Alex Sanchez, p, UCLA (16-3, 4.06); Torey Lovullo, 2b, UCLA (.317); Billy Haselman, c, UCLA (.364); Jack McDowell, p, Stanford (11-4, 2.51); Toi Cook, of, Stanford (.357); Steve Strong, c, Arizona (.396); Chip Hale, 3b, Arizona (.340); Ted Dyson, 1b, Arizona State (.379, 15 HR); Rodney Peete, ss, Southern California; Ken Bowen, ss, Oregon State (.293); Bryan Ganter, of, Oregon State (.357); Ken Brauckmiller, p, Portland State (7-2, 2.24); Rick Falkner, of, Portland (.347); Jeff Hooper, c, Washington State (.350); Larry Frostad, of, Washington (.355).

Southeastern

Top teams—Louisiana State (55-14) has a terrific pitching staff and other talent spread across the field. Georgia (35-24) also has strong pitching and could make its first play-off appearance ever. Auburn (31-24) must overcome the loss of most of its top hitters. Perennial champion Mississippi State (34-21) fields a young team that must be watched for the future.

Top players—Barry Manuel, p, Louisiana State (10-3, 2.37); Joey Belle, of, Louisiana State (.354, 21 HR); Cris Carpenter, p, Georgia (7-4, 2.88); Tony Haney, 1b, Auburn (.325); Dan Paradoa, of, Mississippi State (.376); Nelson Arriete, p, Mississippi State (6-2, 3.29); Rodney Brewer, of, Florida (.357); Bubba Simon, 3b, Mississippi (.396); Jeff Geer, 1b, Tennessee (.346); Terry Schumpert, 2b, Kentucky (.364).

Southern

Top teams—Western Carolina (33-28) can swing the bats—the Cata-mounts posted a .341 team average last spring and return four of their top hitters. Appalachian State (40-13)

lost three pitchers to the pros but have the bats back.

Top players—Clint Fairey, 3b, Western Carolina (.425); Freddie Hailley, of, Western Carolina (.407); Mike Carson, of, Western Carolina (.367); Ed Dubiel, of, Appalachian State (.385); Tommy Green, 1b, Appalachian State (.372); Billy Masse, of, Davidson, (.333); Mike Monte, p, Citadel (9-3, 2.84).

Southland

Top teams—In the final year before realignment in this conference, Louisiana Tech (36-25) is a strong favorite to repeat as champion. Lamar (33-23) welcomes a new coach and returns promising overall ability.

Top players—Charlie Montoyo, 2b, Louisiana Tech (.383); Richie LeBlanc, p, Louisiana Tech, (10-5, 3.39); John Tirrell, 2b, Lamar (.357); Terry Mathews, 1b, Northeast Louisiana (.337); Kenny Miller, c, McNeese State (.335); Steve Carson, 1b, Arkansas State (.341).

Southwest

Top teams—Texas (51-14) has the nation's best infield and enough talent elsewhere to make it back to Omaha. Baylor (40-22) is dominated by seniors and could move into the play-off picture. Texas A&M (45-23), losing key players from last year, will substitute speed for power in 1987. Arkansas (43-17) suffered devastating losses through graduation and the pro draft but may bounce back.

Top players—Kevin Garner, of-p, Texas (.314, 3-1, 2.05); Scott Coolbaugh, 3b, Texas (.336); Mark Petkovsek, p, Texas (12-1, 3.09); Ever Magallanes, ss, Texas A&M (.310); Mike Malinak, of, Baylor (.372); Brad Meyer, ss, Baylor (.354); Tim Peters, p, Arkansas (6-0, 2.56); Jay Knoblauch, of, Rice (.340); Mike Humphreys, of, Texas Tech (.372).

Southwestern

Top teams—Replacing hitting and pitching star Earl Sanders (.432, 11-2) will not be easy, but Jackson State (34-20) should have the talent to repeat as champion. Alcorn State (10-17), with its strongest hitters back, will provide the greatest challenge to the Tigers.

Top players—Wes Chamberlain, rf, Jackson State (.393); Franklin Harris, c, Jackson State (.340); Matthew Cain, lf, Alcorn State (.412); Cornell Haugabook, p, Southern (7-3, 3.51); Don Brown, 3b, Mississippi Valley State (.389).

Sun Belt

Top teams—Old Dominion (43-16) spent much of last season in the nation's top 10 and, with its pitching intact, could make a bid to return to that level in 1987. South Florida (52-16) also reached lofty heights but enters the new season without its strongest bats. Jacksonville (38-26) is talented and experienced.

Top players—Todd Azar, rf, Old Dominion (.486); Wiley Lee, 2b, Old Dominion (.341); Jim Hvizda, p, Old Dominion (12-3, 2.97); Eddie Rush, ss, South Florida (.343); Matt Miller, p, Jacksonville (7-2, 3.63); Scott Hibernert, c, Western Kentucky (.332);

Stewart Cole, ss, North Carolina-Charlotte (.336).

Trans America

Top teams—As the conference regains its automatic qualification, Georgia Southern (36-23-1) should take full advantage. The Eagles have a potent offense and deep pitching. New member Stetson (36-22) will rely on junior college products to shore up its hitting.

Top players—Mike Shepherd, of, Georgia Southern (.387, 15 HR); Joe Bonanno, dh, Georgia Southern (.368); Steve Woide, p, Stetson (6-5, 4.04); Barry Veal, cf, Mercer (.401); Lynn Turner, of, Hardin-Simmons (.354).

West Coast

Top teams—Pepperdine (38-21-2), which lost to eventual Division I champion Arizona in the Central regional last year after eliminating Texas, has nearly everyone back and adds a strong recruiting class. Loyola Marymount (50-15), fifth in the College World Series, has more players to replace but should be back in the tournament under coach Dave Snow.

Top players—Tony Lewis, p, Pepperdine (10-3, 2.49); Paul Faries, ss, Pepperdine (.356); Doug Simons, p, Pepperdine (6-1, 2.51); Chris Donnels, 3b, Loyola Marymount (.350, 21 HR); Rob Richie, of, Nevada-Reno (.407); Matt Laiolo, 1b, St. Mary's (California) (.323).

Western Athletic

Top teams—Hawaii (43-24) has strong pitching and enough ability elsewhere to break up its pattern of reaching the national tournament only in even years. Defending champion San Diego State (42-23) must fill key gaps. Brigham Young (34-18) will benefit from a move to the conference's Eastern division.

Top players—Markus Owens, 3b, Hawaii (.357); Dan Nyssen, of, Hawaii (.274); Joey Vierra, p, Hawaii (11-3, 3.39, with eight saves); Mike Erb, p, San Diego State (9-4, 2.80); Nikko Riesgo, of, San Diego State (.355); David Willes, 2b, Brigham Young (.403); Brad Eager, c, Brigham Young (.338); Dan Broderick, of, Air Force (.430); Mike Mulvaney, of, Wyoming (.406).

Independents

Top teams—Miami (Florida) (50-17) always finds a way to get to the College World Series. Last season the bats failed the Hurricanes, but Ron Fraser's team wound up third in Division I. In 1987, Miami will replace key losses with proven junior college standouts. Central Florida (46-13) and Florida International (41-18) are other powers in the Sunshine State. Pan American (42-19) loses little and looks to return to the tournament.

Top players—Mike Fiore, 1b, Miami (Florida) (.307); Steffen Majer, p, Miami (Florida) (4-0, 4.06); Jose Soto, of, Central Florida (.336); Brett Moushon, p, Florida International (4-1, 2.61); Danny Kennedy, p, Pan American (11-2, 2.78); Jeff Crabill, 2b, Maryland-Baltimore County (.480, 18 doubles); Ted Wood, of, New Orleans (.368).

Basketball spotlight is set February 19 in New York

The fifth annual NCAA Spotlight on Women's Basketball will be held at New York City's Hilton at Rockefeller Center February 19.

Members of the media are given an opportunity to interview coaches and players from some of the nation's top women's basketball teams. The media session begins at 9 a.m. and is followed by a reception and luncheon.

Participating in the 1987 Spotlight will be Jody Conradt, head coach, and Andrea Lloyd, senior forward, University of Texas, Austin; Joan Bonvicini, head coach, California

State University, Long Beach; Kay Yow, head coach, Trena Trice, senior forward and Annemarie Treadway, senior guard, North Carolina State University; Theresa Greutz, head coach, and Sue Wicks, junior forward, Rutgers University, New Brunswick, and Pat Summitt, head coach, and Bridgette Gordon, sophomore forward, University of Tennessee, Knoxville.

Summitt coached the United States women's basketball team to a gold medal at the 1984 Olympics in Los Angeles. Yow will coach the team at the 1988 games in Seoul, Korea.

Top Division I players

Listed below are the top returning Division I players in several statistical categories:

Batting

1986 Rank	Player, Team	G	AB	Hits	Avg.
3.	Todd Azar, Old Dominion	57	210	102	.486
7.	Robin Ventura, Oklahoma St.	69	241	113	.469
9.	Barry Petrachenko, La Salle	37	139	63	.453

Home Runs

1986 Rank	Player, Team	G	No.	Avg.
4.	Devy Bell, North Caro.	55	24	0.44
9.	Trey McCoy, Virginia Tech	59	24	0.41

Runs Batted In

1986 Rank	Player, Team	G	No.	Avg.
2.	George Yolich, Lafayette	40	64	1.60
9.	Todd Azar, Old Dominion	57	87	1.53

Doubles

1986 Rank	Player, Team	G	No.	Avg.
3.	Scott Metz, Ill. Chicago	51	25	0.49
6.	Rodney Brewer, Florida	48	21	0.44

Triples: 1. Craig Maki, Wyoming (9 in 46 games, 0.20 per game).

Stolen Bases: 2. Jack Allen, Fordham (40 in 37 games, 1.08 per game).

Earned-Run Average

1986 Rank	Player, Team	G	IP	R	ER	ERA
1.	Steve Wieman, Navy	9	51.6	11	6	1.05
3.	Mike Remlinger, Dartmouth	15	79	22	14	1.59
4.	Chris Marchok, Harvard	8	53	12	10	1.70

Most Victories

1986 Rank	Player, Team	G	IP	W	L	Pct.
3.	Gilbert Heredia, Arizona	65	165.3	16	3	.842
4.	Richie Lewis, Florida St.	28	127	14	2	.875
4.	Stan Loewer, Louisiana St.	28	123.6	14	4	.778

Saves: 3. Cris Carpenter, Georgia (14).

Strikeouts (per 9 innings): 1. Richie Lewis, Florida St. (14.3).

Troy State tries to maintain standard in Division II

Troy State set a high standard for the South Central region in 1986.

In the first year of a realigned regional system, the Trojans rose from a sixth-place finish nationally in 1985 to capture the Division II baseball championship. Troy State will be strong again in 1987, as will South Central rival Southern Illinois-Edwardsville.

The Trojans lose the nation's leading hitter and the winningest pitcher but still will challenge for the top spot.

Depth of talent in the Northeast and the West regions could pose the greatest threats to Troy State's reign.

Regional roundup

A region-by-region look at the competition follows:

Northeast

Once again, this region boasts a number of talented teams and should continue to be well-represented in the play-offs.

New Haven (31-5) has been in the championship series at Montgomery, Alabama, the past two years and should be in position to repeat in 1987. This season, the Chargers will be playing on a field newly renamed in honor of Frank Vieira, who now has coached at New Haven for 25 years.

Leading the New Haven attack is first baseman Les Wallin, a senior who hit .393 last spring. Shortstop Paul Zegrav and catcher Frank Forcucci, also seniors, return as well.

New Haven's top priority will be to rebuild a pitching staff led last year by Brian Stone and Mark Hadje.

Le Moyne (27-6) is another play-off-seasoned team, having missed post-season only once in the last 12 years. Senior Eric Holstein has been a remarkably consistent hitter, compiling averages of .384 and .383 over the last two seasons. Sophomore Pete Hoy and junior Dan Kelly lead a deep Dolphin pitching staff.

Adelphi (31-6) is senior-heavy, with rightfielder Peter Castoro and pitchers Vic Crema and Bill Lewis hoping to repeat as all-conference selections.

Other top teams—Mansfield (27-20) loses top hitter Randy Vargason but maintains a top-notch outfield. Slippery Rock (24-16) returns its entire 1986 lineup. Ramapo (14-18), champion in 1984, should bounce back from an off year. Quinnipiac (20-10-1) also could contend.

Other top players—Tony Dow, rf, Quinnipiac (.377); Tom Royal, lf, Mansfield (.350); Ray Falnant, c, Assumption (.387); Jack LePore, 2b, Assumption (.388); Joe Clark, of, Mercy (.421); Tim Mahoney, c, Merrimack (.443); Darrell Zug, 3b, Millersville (.383); Ron Wasko, p, Slippery Rock (7-1, 1.20).

South Atlantic

Columbus (45-16) established itself as a new power in this region last spring, defeating perennial power Valdosta State and becoming the last team eliminated in the championship round at Montgomery.

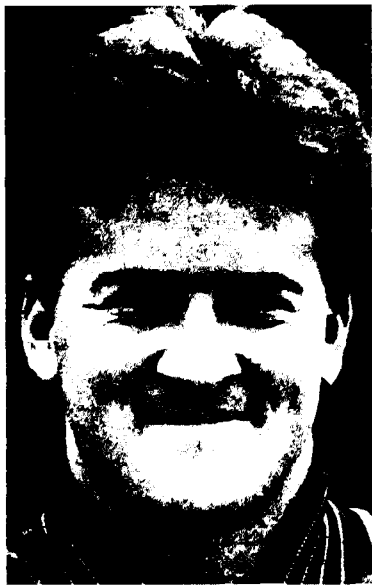
Cougar fans welcome the return of outfielder Scott Riddle (.385, 14 HR), who last year led Division II with 83 runs batted in.

Columbus lost its top three pitchers to the professional draft but has a dependable arm in the bullpen in Todd Ammons (2.50, eight saves), who notched two wins at the championship series.

Valdosta State (43-17) remains a team to be reckoned with. The Blazers return all-America right fielder Terry Sawick (.428), along with senior third baseman Jojo Blaha (.361).

Tommy Thomas' squad will get more offensive help from three transfers, and if mound help can be found for veteran Dennis Crawford, Valdosta State could be back atop the region in 1987.

Further scrambling the picture in the Gulf South Conference is West Georgia (33-20), which returns a solid nucleus of hitters but must improve on its 1986 pitching performance.



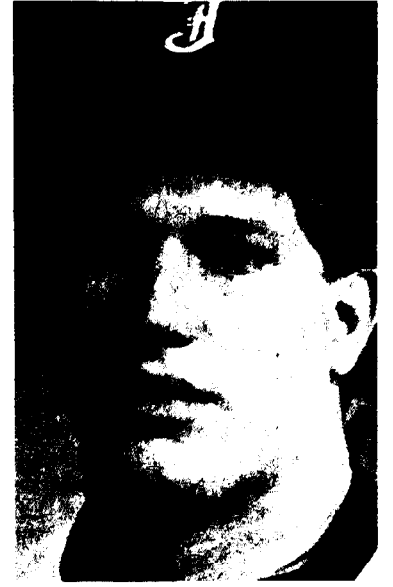
Rodney Erhardt, Tampa



Dan Willette, Mankato State



Rocco Buffolino, Cal State Sacramento



Stewart Lee, Jacksonville State

Tennessee-Martin features Division II's premier base thief in senior center fielder Churchill Moore, who stole 65 last year. The Pacers also benefit from strong overall pitching.

Other top teams—Northern Kentucky (22-21), in its second year of NCAA play, must rely on newcomers on the pitching staff. Bellarmine (26-23) has young talent and good team speed.

Other top players—Richard Allen, cf, Bowie State (.400); Gary Flowerdew, 2b, Northern Kentucky (.463); Scott Rash, of, Randolph-Macon (.524, leading hitter in Division II); Bobby King, ss, Paine (.390).

South

The state of Florida, that year-round baseball capital, features numerous powerful teams and should be the scene of another spirited fight for regional honors.

Tampa (36-23) returns nearly everyone from a team that captured the regional title in 1986, and coach Kenny Dominguez looks for a repeat this May.

Rodney Erhardt, all-America senior outfielder, leads the Spartan offense with help from sophomore first baseman Tino Martinez. They combined for 35 homers and 128 runs batted in last season.

Overall team speed and strong defense are other strengths for Tampa.

Florida Southern (45-15), which won its sixth national title in 1985, lost narrowly to Tampa in last year's South final. Terry Gilmore (9-2, 2.45

brings a 20-2 career record to the new season.

Senior outfielder Glen Fernandez (.354) and sophomore third baseman Cris Allen (.344) provide most of the offense for the Moccasins.

Florida Atlantic (44-10) returns seven everyday players and three of its top four pitchers, and put together an outstanding recruiting campaign as well.

Righthander Scott Halama (7-2, 2.04) is the leader on the mound. Fellow senior Gonzalo Carcache is a .387 hitter at second base.

Other top teams—Eckerd (35-15), with excellent power and deep pitching, could contend for national honors. St. Thomas (Florida) (23-24) puts a lot of runs on the scoreboard.

Other top players—Mickey Pina, cf, Eckerd (.393); Chris Seaman, p, Eckerd (7-3, 2.20); Jim Hoog, p, Eckerd (66 strikeouts in 38 innings); Cliff Champion, 1b, St. Leo (.379); Dave Neville, c, St. Thomas (Florida) (.353).

North Central

Mankato State (35-15) emerged the victor in the first year of play in the North Central region. The Mavericks lost three players to the professional ranks but return seven starters.

Third baseman Dan Willette is a proven hitter (.406), and fellow senior Dave Whiteford adds more offense (.378) in center field. Mike Kanter (9-2, 2.84) is the ace of the staff.

Twin brothers Tom and Tim Lepel move into the everyday lineup after

hitting well off the bench as sophomores.

Shippensburg (35-14), which was eliminated in a 10-inning heartbreaker in the regional last year, must rebuild its infield but returns strong pitching led by Jay McHenry (8-1, 2.90) and Ron Ney.

The Raiders have dependable bats in the hands of outfielders Doug Furness (.392) and Jeff Teeter (.349).

Wright State (37-20) has a junior-oriented team and should make a strong bid to reach the championship series in its final season in Division II.

Left fielder Brian Bailey is a fine all-around hitter (.342), while classmate Don Bosway (9-2, 2.95) leads a staff that is strong at the top but lacks depth.

Other top teams—St. Cloud State (27-15) boasts a strong outfield, but must rebuild its infield.

Other top players—John McFarland, of, St. Cloud State (.433); Mike Hammerle, 3b, Grand Valley State (.382); Randy Wadsworth, c, California (Pennsylvania) (.377); Bill Hummel, rf, North Dakota State (.372); John Stitz, 1b, St. Joseph's (Indiana) (.418); Cary Grubb, Clarion (.426).

South Central

Troy State made it look easy in last year's championship round, getting superb pitching in sweeping its four games and completing postseason play 12-0.

Trojan pitchers combined for an earned-run average of 1.25 in the final series, topped Mike Perez' one-hitter against Columbus in the championship game. Third baseman Wendell Stephens was named most valuable player.

But both Stephens and that masterful mound staff are gone in 1987. Troy State now must rely on hitters such as second baseman Mark Smartt (.405) and center fielder Warren Arrington (.376, 11 HR, 40 stolen bases).

The four pitchers who combined for 35 wins will be replaced by untested but promising junior college products.

Southern Illinois-Edwardsville (39-21) set a school record for victories last spring but came up short in its bid to again represent the region at Montgomery.

The Cougars' key weapon is versatile Tony Duenas, who earned all-America honors as a pitcher two years ago and holds nearly every school hitting record as well. SIU-Edwardsville has other mound talent on hand and adds center fielder P. J. Riley, a transfer from Kansas.

North Alabama (34-16-1) reached the tournament in 1985 but was beset by poor defense a year ago. The Lions, with excellent speed, could contend again this spring.

Senior shortstop Mark Krumbach had 31 stolen bases to go along with a .378 average and 49 RBIs.

Jacksonville State (46-12) is another Gulf South Conference power. The Gamecocks lost all-America first base-

man Chris Garmon (.460) and two other starters but still have plenty of talent on hand.

Third baseman Stewart Lee (.383, 23 homers) was Jacksonville State's top tackler as a freshman football linebacker before turning his full attention to baseball.

Other top teams—Southeast Missouri State (29-13-1) suffered devastating graduation losses but could remain competitive with pitching. Central Missouri State (27-17) returns a solid nucleus from its conference championship squad.

Other top players—Chris Schnurbusch, ss, Central Missouri State (.377, 34 stolen bases); Jeff McEnroe, Central Missouri State (5-0, 2.10); John Viehmann, c, Missouri-Rolla (.432); Steve Kretz, c, Northeast Missouri State (.381); Scott Weber, ss, Northwest Missouri State (.371).

West

Cal State Sacramento emerged from this region to make a strong showing at the finals last year, but the other baseball powers of the California Collegiate Athletic Association will try to keep the Hornets from repeating that feat in 1987.

John Smith's squad lost four players to the pros and was particularly stung in pitching. But six transfers come aboard from winning Division I programs and Rocco Buffolino (10-3, 3.82) provides a dependable arm.

Brian Casteel was the most valuable player in the regional after hitting three home runs, and shortstop Kevin Ohama hit .319 and stole 49 bases last season.

Regional runner-up Cal State Dominguez Hills (32-22-1), defending champion in the CCAA, returns a potent pitching staff. Senior righthander Mike Aspray allowed only two earned runs per game in conference play. A key addition is Chris Haslock, an ace reliever from the junior college ranks.

Senior outfielders Fred Hanker and Jon Beudeer provide the offensive punch.

Cal Poly-Pomona, the national runner-up in 1985, fell off to a 24-28 mark last season. But John Scolinos, the most successful active coach with 1,066 victories, enters his 40th season with a veteran team led by a particularly strong outfield.

Cal State Northridge (23-26), Division II champion in 1984, loses only four players from last season and should be another CCAA contender for national honors. Junior first baseman John Balfanz paces a team solid in offense, defense and pitching.

Other top teams—San Francisco State (27-15) won the Northern California Athletic Conference and is improved for 1987.

Other top players—John Wilson, p, San Francisco State (11-0, 3.13); Wayne Warren, cf, Cal State Hayward (.350); Craig Bonato, rf, Metropolitan State (.362); Mark Fobian, lf, Sonoma State (.418); Mike Ryser, c, Southern Utah State (.357).

Top Division II players

Listed below are the top returning Division II players in several statistical categories:

Batting						
1986 Rank	Player, Team	G	AB	Hits Avg.		
1.	Scott Rash, Randolph-Macon	26	103	54 .524		
4.	Gary Flowerdew, Northern Ky.	44	151	70 .464		
5.	Alton Ross, St. Augustine's	36	121	56 .463		
Home Runs						
1986 Rank	Player, Team	G	No.	Avg.		
1.	Stewart Lee, Jacksonville St.	56	23	0.41		
2.	John Balfanz, Cal St. Northridge	47	19	0.40		
3.	Kirt Manwaring, Coastal Caro.	50	19	0.38		
Runs Batted In						
1986 Rank	Player, Team	G	No.	Avg.		
2.	Mike Cassala, Valdosta St.	53	77	1.45		
7.	Scott Riddle, Columbus	61	83	1.36		
10.	Les Wallin, New Haven	36	47	1.31		
Doubles						
1986 Rank	Player, Team	G	No.	Avg.		
3.	Peter Castoro, Adelphi	37	18	0.49		
7.	Bill Hancock, Denver	34	16	0.47		
Triples: 1. Scott Rash, Randolph-Macon (7 in 26 games, 0.27 avg.)						
Stolen Bases: 1. Churchill Moore, Tenn.-Martin (65 in 48 games, 1.35 avg.)						
Earned-Run Average						
1986 Rank	Player, Team	G	IP	R	ER	ERA
2.	Dan Kelly, LeMoyne	8	43.6	15	6	1.24
5.	Ron Wasko, Slippery Rock	9	55	19	10	1.64
7.	Mark Eskins, Jacksonville St.	16	97.6	42	22	2.03
Most Victories						
1986 Rank	Player, Team	G	IP	W	L	Pct.
2.	John Wilson, San Fran. St.	15	95	11	0	1.000
2.	Kevin Thomas, Coastal Caro.	16	95.6	11	2	.846
2.	Dennis Crawford, Valdosta St.	17	104	11	4	.733
Strikeouts (per 9 innings): Jim Hoog, Eckerd (66 in 38.6 innings, 15.4 avg.)						

Marietta digs in against Division III competition

Defending champion Marietta will try to keep the Division III Baseball Championship trophy tucked away at home when it plays host again to the finals in May.

Marietta, making its 11th straight NCAA tournament appearance last spring, won its third national championship of the 1980s with two victories over Ithaca.

The Pioneers will miss third baseman Mike Brandts, the championship series' most outstanding player, and three-time all-America pitcher Jim Katschke, but the team has talent returning at the plate and on the mound.

Ithaca, Methodist, Trenton State, Wisconsin-Oshkosh, Montclair State and Cal State Stanislaus are among the teams in other regions with hopes of taking the title out of town.

Regional roundup

Following is a region-by-region look at the top Division III contenders:

Northeast

Ithaca, champion in 1980 and runner-up three other times, struggled in the fall season but should be back in the thick of the championship race by May.

The Bomber roster has a distinct Canadian flavor. Five members of the squad were born north of the border, including first baseman Tim Wilson (.370, all-tournament) and pitcher Chris Gill (8-3), who struck out 19 batters in a fall exhibition.

Another player of interest is pitcher Mike Middaugh, who, doubling as quarterback of the Ithaca football team, now has played in national championships in two sports.

Also on hand is outfielder Steve Graham (.382), rookie of the year in the Independent College Athletic Conference.

Eastern Connecticut State (34-11), which barely missed representing the Northeast last season, hopes to reclaim the national crown it captured in 1982. The Warriors' pitching was among the best in Division III, and the entire staff returns.

Senior Brian Cassidy (9-3, 1.98) and junior lefthander Ismael Roman (7-0, 2.55) head the mound crew. Designated hitter Jim Danis (.372) sparks the offensive side.

North Adams State (22-13) beat Eastern Connecticut State in the first round of the regional last year, and veteran coach Joseph Zavattaro will have the Mohawks back in contention this season. Zavattaro is looking for improvement in both pitching and catching.

Senior shortstop Sean McMahon (.349) leads North Adams State, with offensive support from juniors Kevin Carmody and Brian Rucinski.

St. Joseph's (Maine) (34-10) returns an experienced pitching staff and an everyday lineup that is strong overall. Outfielder Arlo Pike (.408) carries the biggest bat.

Bridgewater State (Massachusetts) (24-8) had its best season ever and has its eye on a tournament berth. John Kiely is an all-around talent, batting .448 at first base and notching a 2.76 earned-run average on the mound.

Other top teams—Western New England (26-10) goes into the schedule with several untested freshmen. Salem State (32-12) has won 32 or more games for two years. Brandeis (22-11) loses only one starter from its Greater Boston League championship squad.

Other top players—Bob Boutin, 2b, Brandeis (.365); Jim Hounam, c, Salem State (.472); Bernie Cornell, 3b, Plymouth State; Bob Maio, 2b, Rhode Island College; Mike Turilli, 2b, Suffolk.

Mid-Atlantic

Montclair State (36-11-1) was undefeated in the regional last year and should be the team to beat once again.

Pitcher Brian Cheswick, who made the all-tournament team last year at Marietta, has departed, but sophomore Anthony Foti should help take up the slack. Foti (10-0, 2.54) was all-America as a freshman.

Two more all-tournament players return on the offensive side. Shortstop Jim Fasano (.371) earned that honor for a second straight season, while versatile sophomore John Deutsch (.328) was selected as the designated hitter.

Moravian (18-6) returns its entire squad. If the pitching is shaky, strong hitting still could carry the Greyhounds. Seniors Wayne Walling, Mike Guro and Dale Houser all hit .370 or better.

William Paterson (30-9-2), led by all-America center fielder Bruce Dostal, will be looking for coach Jeff Albies' 300th career victory and another title in the New Jersey Athletic Conference.

John Jay (24-14) could field its best team ever. The Bloodhounds return 14 pitchers, as well as the entire lineup that hit .349 as a team, and adds a strong recruiting class.

Other top teams—Ferrum (26-13) adds two quality pitchers and looks for improvement. Upsala (31-15) suffered heavy graduation losses from last year's play-off team but should contend again.

Other top players—Grant Renfrow, 1b, Ferrum (.397); Ed Honchen, p, Upsala (11-3, 2.84); Jim Briscoe, 1b, John Jay (.368).

South

Methodist (43-6) made its fifth straight tournament appearance last year and is a likely choice to return in 1987. Seven starters are back for the Monarchs, along with a young but talented pitching staff.

The Monarchs are quick on the basepaths. Three players stole 40 or more bases, led by 47 thefts by second baseman Jansen Evans. All-America center fielder Dan Hartline (.410) added 45 and sophomore left fielder Mike Brewington (.405) 42.

Perennial South power Trenton State (35-9) also will be back in the play-off picture. However, the Lions must replenish a pitching staff decimated by graduation. The 1987 roster is missing three starters who combined for 18 victories a year ago.

Junior Dan Brown provides at least one dependable arm. Brown was 6-3 with a 2.79 earned-run average. Seniors Ken Nelson (.411) and Mike Nowitzke (.392) furnish the offensive punch, after combining to drive in 90 runs last season.

Bridgewater (Virginia) (23-7) loses only one player to graduation from a team that won the Old Dominion Athletic Conference for a second straight year. Shortstop Barry Davis (.404) and righthanded pitcher Jeff Dean (7-1) lead the Eagles.

Lynchburg (19-9) will help coach Gerry Thomas to his 400th victory this spring and contend for a berth in the regionals. Percy Abell (.358), Tim Blake (.349) and Jim Stratton (.347) man the all-senior outfield.

Other top teams—North Carolina Wesleyan (39-7) has a senior-laden team with strong pitching. Stillman (26-16) will continue to be strong in the Southern Intercollegiate Athletic Conference. Virginia Wesleyan (29-9) loses only one everyday player.

Other top players—David Campbell, of, Virginia Wesleyan (.427); Paul Prisco, c, North Carolina Wesleyan (.380); Randy Ferguson, p, Stillman (10-3).

Mideast

Marietta (48-13-2) loses four other top hitters besides Brandts and two of its best starting pitchers.

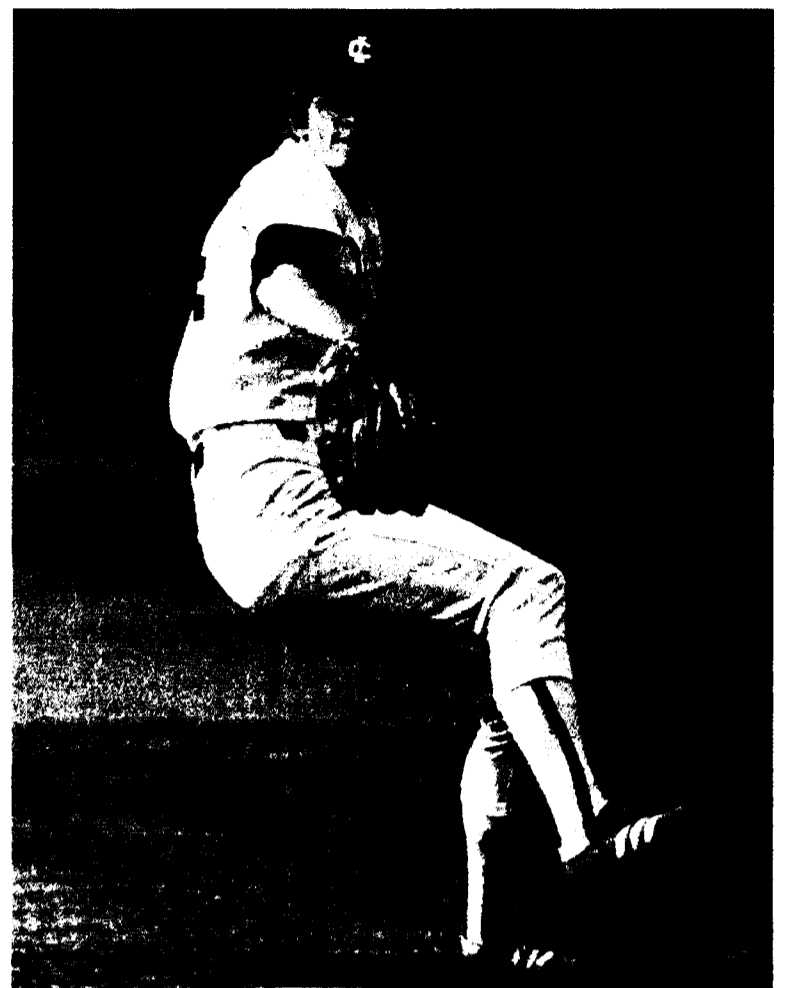
The Pioneers are not quite ready to concede the Mideast to someone else, however. Championship veterans are prepared to plug the gaps with their own talents.

Seniors Roger Thompson (.364) in the outfield and John Sudges (.351) at first base will shoulder much of the offensive load, along with all-tournament catcher Drew Witouski (.331) and promising sophomore Bill Holmes (.380).

Junior Steve Oberhelman (6-1, 3.46) and senior Jim Anderson (5-0, 4.27) will be among those vying to replace Katschke as Marietta's top arm.

North Central (31-13), which made a strong showing against Marietta in the regional title game, has a solid nucleus back from a team that led the NCAA in hitting (.378).

Left fielder Ken Ritter hit .477 as a sophomore and set school records for home runs and runs batted in to earn all-America honors. Matt Richards



Chris Gill, Ithaca

leads the Cardinal staff after going 8-0 as a junior.

Wooster (36-14) hopes to advance to the championship finals after a pair of regional tournament appearances. Senior Rick Sforzo will seek player-of-the-year honors in the North Coast Athletic Conference for a third straight season. The third baseman/shortstop hit .468 last spring.

Erik Young quickly has made a huge impact on the athletics scene at Baldwin-Wallace (20-19-1). Last spring he emerged as one of the top young talents in Division III, hitting .393 as a freshman outfielder. He also shows his skills as the quarterback of an outstanding Yellow Jacket football team.

Baldwin-Wallace loses star second baseman Jim Magazine but regains the services of its top 1985 hitter, Doug Dockus.

Ohio Wesleyan (29-20-1) loses ace lefthander Hank Jones (the Division III leader in wins) as well as record-setting hitters Mike Milligan and Brad Warnimont. But the Battling Bishops gain a talented incoming class and welcome back junior center fielder Scott Tedder (.438).

Other top teams—Gettysburg (16-9) has a new coach in John Campo and most of its Middle Atlantic States Collegiate Athletic Conference title squad returns. Elmhurst (25-16) returns five .300 hitters. Ohio Northern (25-13-1) should post its 17th consecutive winning season. Wittenberg (29-13-1) lost only two seniors.

Other top players—Sean Murphy, p, Gettysburg (3-1, 1.71); Mike Gargano, 1b, Elmhurst (.412); Fred Bianculli, 2b, Glassboro State (.405); Brian Ramsey, lf, Ohio Northern (.417).

Midwest

Wisconsin-Oshkosh (35-7), 1985 national champion, came up winless at Marietta last spring. But the Titans, who scored 11.2 runs per game to lead Division III, are prepared to reload in 1987.

Back is outfielder Terry Jorgensen, who hit .462 and stroked 15 home runs. Heavy-hitting Rusty Kryzanski moved on to the pros, but second baseman Todd Schliem (.400) and outfielder Jim Peerenboom (.372) should help maintain Wisconsin-Oshkosh's offensive standards.

St. Thomas (Minnesota) (32-12) graduated five of its top seven hitters but has an experienced squad on hand. Senior center fielder Nick Whaley batted .411 last spring.

The Tommies also have a pair of

proven lefthanders on the mound in Joe Myer (9-2, 1.41) and Tony Benson (7-1, 2.47).

Calvin (18-15) hit .338 as a team, plays good defense and now has improved its pitching staff.

Shortstop Kevin Schipper (.365) and second baseman Kevin VanDuyn (.340) have intertwined their athletic careers, forming the starting backcourt for the Knight basketball team as well as turning double plays together.

Aurora (25-12) boasts a seasoned pitching staff, with every hurler who recorded a 1986 victory returning. The best of them is junior Dale Koehrig (10-0).

The Spartans also feature an outstanding senior double-play combination in shortstop Mark Morris (.377) and second baseman Mark Chambers (.333).

Other top teams—Hope (18-16) returns six players who hit over .300 for last year's Michigan Intercollegiate Athletic Association champs. St. Olaf (24-15) lacks pitching experience but has good power and defense. MacMurray (35-19) should have another strong hitting team. William Penn (33-10) also has good hitting but loses three proven pitchers.

Other top players—Jim Klunder, of, Hope (.368); Brad Burger, of, MacMurray (.351); Jerry Kutzler, p, William Penn (10-1, 2.06).

West

The Division III finals are a familiar spot for Cal State Stanislaus (24-20-1). The Warriors won the national crown in 1976 and 1977 and have been runners-up twice since. Coach Jim Bowen picked up his 400th victory last year and is ready to make another trip to the tournament.

Cal State Stanislaus hit over .300 as a team in 1986 and has most of its offensive weapons back. Chief among them is junior shortstop Adam Hilpert (.360).

Claremont-Mudd-Scripps (24-16) had an injury-hampered infield last year, but the unit returns in 1987 for a run at regional honors. Senior first baseman Larry Schmadeka hits at a .360 clip.

Other top teams—UC San Diego (23-19-1) had Division III's top defensive team and returns seven starters. Cal State San Bernardino could have an impact in its first season of intercollegiate baseball.

Other top players—Bob Natal, c, UC San Diego (.395).

Top Division III players

Listed below are the top returning Division III players in several statistical categories:

Batting

1986 Rank	Player, Team	G	AB	Hits	Avg.
1.	Vinnie Degifico, Southern Me.	37	137	72	.526
2.	Chris Cartee, Wartburg	38	112	58	.518
3.	Sammy Richardson, Rust	32	125	64	.512

Home Runs

1986 Rank	Player, Team	G	No.	Avg.
1.	John Kiely, Bridgewater (Mass.)	32	15	0.47
2.	Sammy Richardson, Rust	32	15	0.47
4.	Brad Burger, MacMurray	54	25	0.46

Runs Batted In

1986 Rank	Player, Team	G	No.	Avg.
1.	Mike Shipulski, Worcester Tech.	26	45	1.73
3.	Ken Ritter, North Central	44	74	1.68
4.	Sammy Richardson, Rust	32	53	1.66

Doubles

1986 Rank	Player, Team	G	No.	Avg.
1.	Mike Ottosen, DePauw	34	20	0.59
3.	Tony James, Va. Wesleyan	32	17	0.53
4.	Danny Hartline, Methodist	51	26	0.51

Triples: 1. Reggie Zinn, Rust (10 in 42 games, 0.24 per game.)
Stolen Bases: 1. Reggie Zinn, Rust (58 in 42 games, 1.38 per game.)

Earned-Run Average

1986 Rank	Player, Team	G	IP	R	ER	ERA
2.	Bill Matterna, Rhode Island Col.	10	49.3	10	8	1.46
3.	Dan Dwyer, Central (Iowa)	11	55.3	21	10	1.63
5.	Sean Murphy, Gettysburg	11	47.3	25	9	1.71

Most Victories

1986 Rank	Player, Team	G	IP	W	L	Pct.
6.	Frankie Moore, N.C. Wesleyan	14	95	11	2	.846
6.	Ed Honchen, Upsala	15	96	11	3	.786
8.	Anthony Foti, Montclair St.	13	74.3	10	0	1.000

Strikeouts (per 9 innings): 1. Dave Drahn, Coe (49 in 34.3 innings, 12.8 avg.)

CHIEF EXECUTIVE OFFICERS

RALPH EAKIN appointed president at East Carolina. He previously was vice-president for planning and budgeting at Bowling Green... **JOHN L. LAHEY** appointed president at Quinnipiac. He previously was executive vice-president at Marist... **RICHARD S. WALLACE** named president at Augusta, where he previously was vice-president for academic affairs.

DIRECTORS OF ATHLETICS

LOYAL K. PARK, former AD at Loyola (Illinois), selected at Frostburg State. He also has been AD at Salem (West Virginia) and coached baseball at Harvard and football and basketball at Edinboro. Park succeeds **HAROLD J. CORDTS**, who had served as acting AD since July 1986... **JOSEPH O'DONNELL** appointed at American after two years as assistant AD at Wichita State. He previously was an assistant AD at La Salle from 1972 to 1984.

ASSOCIATE DIRECTOR OF ATHLETICS

MIKE WALSH promoted after five years as assistant AD to the post of associate AD for marketing and promotion at Wagner, where his duties will include service as executive director of the Seahawk Club. He will continue as defensive coordinator for the Wagner football team.

ASSISTANT DIRECTORS OF ATHLETICS

George Mason's JAY MARSH appointed associate director of development for athletics at the school, where he will head the Patriot Club, which raises scholarship funds for student-athletes... **MIKE DIORKA** promoted to assistant AD for recreation and facilities at St. Joseph's (Pennsylvania), where he has been director of recreation and facilities since 1982. He will continue to serve as assistant track and cross country coach.

COACHES

Women's basketball—**EMILY MANWARING** resigned at East Carolina, effective at the end of the season. Her teams have won more than 200 games and posted six 20-win seasons during her eight-year tenure at the school.

Football—**MARTY FINE** named at East Carolina... **TOM JONES** appointed at Lock Haven after two seasons as offensive coordinator at Middle Tennessee State. He succeeds **JACK FISHER**, who resigned at the end of the season with a nine-year record of 34-56-1. Jones previously has been on the staffs at Tennessee, Morehead State, Eastern Kentucky, Iowa State and West Georgia.

Football assistants—**GEORGE WHEELER** hired to coach the defensive line at Missouri after stints at Utah and with the New Jersey Generals of the United States Football League. He previously was on the Missouri staff from 1978 to 1982... Former Navy head coach **GARY TRANQUILL** named quarterbacks coach and Virginia Tech defensive backfield coach **PHIL ELMASSIAN** also hired at Virginia. Tranquill was Navy's head coach for five seasons and Elmassian served on the Virginia Tech staff the past two years... **PAUL ARSLANIAN** named secondary coach at Northern Arizona, where he played in the early 1970s. He previously was defensive coordinator and linebacker coach for two seasons at West Texas State. Arslanian also was coach at Snow from 1975 to 1982 before serving as defensive coordinator and linebacker coach at Eastern New Mexico for two years... **MARK "CORKY" COLLINS** resigned after five years as defensive line coach at Wagner, where he also stepped down as executive director of the Seahawk Club, to enter private business... **RON BROWN** appointed receivers coach at Nebraska after three years as defensive backfield coach and assistant to the athletics director at Brown. He succeeds **GENE HUEY**, who was named top assistant and offensive coordinator at Wyoming... Middle Tennessee State's **DENNIS THERRELL** selected at Lock Haven... **TIM KARRS** and **TIM LAURITO** hired at Clarion, succeeding **AL JACKS** and **CHARLES RUSLAVAGE**, who retired from active coaching but will remain on the Clarion physical education faculty. Karrs, who will serve as offensive coordinator, previously was head coach at William Fike High School in North Carolina; and Laurito, who will coach defensive backs, was defensive coordinator last season at Coffeyville (Kansas) Junior College after serving three years on the staff at Nebraska. Jacks and Ruslavage each served terms as head coach at Clarion... **KEVIN COLLITON** named offensive coordinator at Shippensburg after four seasons at Salisbury State, where he was receivers coach from 1983 to 1985 and offensive coordinator last season... **GREG MEYER** appointed quarterbacks and receivers coach at Ball State after two years at Wichita State. He also served five years on the staff at Arizona State... **ED DINSKI** resigned as offensive line coach at Colgate to enter private business. He served as the Red Raiders' defensive line coach for three years before moving to his most recent post last season... **CHARLES SABBATINI** and **KENNETH FERRO** named defensive coordinator and offensive line coach, respectively, at Nicholls State. Sabbatini previously was defensive coordinator at Mississippi Delta Junior College and Ferro was offensive coordinator at John Ehret High School in Louisiana.

Men's golf—**HAL HANSEN** appointed at Clarion, succeeding **FRANK LIGNELLI**, who stepped down from the position and is now on sabbatical leave from the school. Hansen previously was golf pro at Pinecrest Country Club in Brookville, Pennsylvania.

Men's soccer—Former English professional player **ROGER CREED** named at Dayton, succeeding **PETE HAYES**, who resigned after three seasons with a 14-37-1 record at the school. Creed previously coached teams at Paul VI High School in Fairfax, Virginia, to a 47-4-2 record from 1984 to 1986 and also was an assistant at George Mason in 1984.

Women's softball—**TAMMY DANNER** selected at Lehigh. She will continue to serve as training supervisor for the Allentown (Pennsylvania) YMCA/YWCA... **TAMMY STRITENBERGER** appointed at Clarion, replacing **MARTY REYNOLDS**, who resigned. Stritenberger has assisted with Clarion's women's basketball team the past four seasons.

Men's and women's track assistants—**GREG MASON** and **BARRY CUVELIER** named at Wartburg. Both have coached at the high school level... **FRANK ABRAMS** selected at

Bowling Green after two years as throwing coach at Ashland. He also has been on the staff at Oberlin.

Women's volleyball—**CHERYL ALEXANDER** resigned at Cal State Bakersfield, citing personal reasons. Her teams compiled a 65-108 record through seven seasons.

STAFF

Aquatic center manager—**DAVID S. DUDA**, former head women's swimming coach at Cleveland State, appointed at Florida International.

Counseling director—**JOY O'SHIELDS** named director of the Counseling Program for Intercollegiate Athletics at Connecticut.

Fund-raising director—**MIKE WALSH** named executive director of the Seahawk Club at Wagner as part of his duties as the school's new associate athletics director for marketing and promotion. He succeeds **MARK "CORKY" COLLINS**, who resigned as executive director and football defensive line coach

to enter private business.

Sports information director **PATRICK GILLESPIE** named sports information media coordinator at Alfred after two years as part-time SID at Gannon and director of publicity for the Midwest Collegiate Conference.

Strength and conditioning coordinator—**RUSS RIEDERER** appointed one of two strength and conditioning coordinators at Purdue. **GREG LEHMAN** continues to serve in the other position.

NOTABLES

MAMIE RALLINS, head women's track coach at Ohio State, will serve as head coach of the U.S. women's team at the World Indoor Championships in Indianapolis March 6-8... **ROY CHERNOCK** of William and Mary and **BOB PARKS** of Eastern Michigan will coach the indoor and outdoor track teams, respectively, during upcoming competition between the United States and England. Assisting with the indoor team is **GEORGE**

WILLIAMS of St. Augustine's and assisting with the outdoor team are **JOHN MOON** of Seton Hall and manager **JOE PIANE** of Notre Dame.

DEATHS

CARSON R. "KETCH" NIEFER, football and basketball coach during the 1950s at Kalamazoo, died January 12 in Orlando, Florida. He was 74.

DIRECTORY CHANGES

District 1—Central Connecticut State University: **Andrea S. Wickerham (PWA)**; Fairfield University: **Harold Menninger (AD)**.

District 2—College of Mount Saint Vincent, Riverdale, New York 10471 (new member): **Doris Smith (P)**—212/549-8000, **Robert A. Annunziata (AD)**—212/549-8000, Division III; Susquehanna University: **Gerald Gordon (F)**—717/374-0101; Villanova University: **Mary Anne Dowling (PWA)**.

District 3—Georgia Institute of Technology: See Record, page 13

Bring Championship Travel to Campus and Make Money Doing It!

Now you can realize airline travel discounts as high as 70% as our partner in a profitable on-campus business.

Our major, unrestricted and unpublished air fares and special tariffs are available to teams and other college groups, as well as all members of the campus community.

Call today! Learn how you can create a new profit center for your college or university.

**TOLL FREE
1-800-243-1723**

The Official Travel Agent for NCAA Championships

**FUGAZY
INTERNATIONAL
TRAVEL** 67 WHITNEY AVENUE
NEW HAVEN, CT 06510

772-0470

Record

Continued from page 12

Henry C. Bourne Jr. (P); Memphis State University; Nicholas L. White (F); Virginia Polytechnic University; Dale T. Baughman (AD)—703/961-6796.

District 5—University of Missouri, Columbia; Duane Stucky (C); West Texas State University; Membership transferred to District 6.

District 6—Bishop College; Ben Lilly (AD); East Texas State University; James McFeeley (F); Southern Methodist University; Dudley T. Parker (AD); Southern University, Baton Rouge; Joffre T. Whisenton (P).

Conference Eastern States Athletic Conference: Tom Shirley, Allentown College, Center Valley, Pennsylvania 18034 (P)—215/282-1100; Mid-Eastern Athletic Conference: Add Florida A&M University as a member; Northern Collegiate Hockey Conference (new member): Don Amiot (Comm.), University of Wisconsin, Stevens Point.

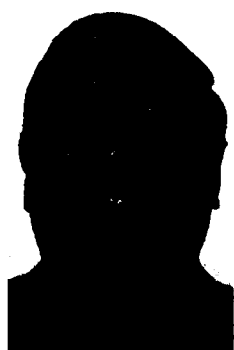
CORRECTION

Due to an editor's error, a photo caption on the front page of the February 4 issue of The NCAA News incorrectly identified a former Southern California tennis player who was a member of the team that won the doubles title at the 1986 Division I Men's Tennis Championships. The player's name is Tim Pawsat.

POLLS

Division II Men's Basketball
The top 20 NCAA Division II men's basketball teams through games of February 2, with records in parentheses and points:

1. Ky. Wesleyan (18-2).....160
2. Norfolk St. (16-1).....152
3. West Ga. (19-1).....144
4. Mt. St. Mary's (19-2).....136
5. Tampa (17-3).....128
6. Millersville (18-2).....118
7. St. Anselm (15-2).....113
8. Gannon (17-3).....102
9. St. Cloud St. (17-3).....93
10. Virginia Union (15-3).....83
11. New Haven (17-3).....80
12. West Tex. St. (16-4).....66
13. UC Riverside (16-4).....57
14. Alas.-Anchorage (16-5).....55
15. Delta St. (16-5).....52
16. Dist. Columbia (15-4).....41
17. Alabama A&M (15-4).....16
17. SIU-Edwardsville (16-4).....16



Loyal K. Park selected to be athletics director at Frostburg State



Mike Walsh promoted to associate athletics director at Wagner



Assistant to AD Jay Marsh of George Mason promoted to a development post

19. Lock Haven (16-5).....15
20. New Hampshire (15-5).....11

Division III Men's Basketball

The top 20 NCAA Division III men's basketball teams through games of February 3, with records:

1. Potsdam St.18-0
2. DePauw16-2
3. Widener16-2
4. Otterbein16-3
5. Calvin15-2
6. Neb. Wesleyan16-4
7. Southeastern Mass.15-0
8. King's (Pa.)15-2
9. Centre15-3
10. Hope15-3
11. North Park17-3
12. Jersey City St.13-5
13. Cal St. Stanislaus14-5
14. Nazareth (N.Y.)15-3
15. Clark (Mass.)14-2
16. Amherst13-1
17. Hamilton11-3
18. Wis.-Whitewater13-5
19. Frank. & Marsh.13-5
20. Claremont-M-S.15-4
20. Washington (Mo.)13-5

Division II Women's Basketball

The top 20 NCAA Division II women's basketball teams through games of February 1, with records in parentheses and points:

1. Cal Poly-Pomona (19-1).....140

2. Delta St. (15-1).....133
3. Southeast Mo. St. (19-2).....124
4. Mt. St. Mary's (16-1).....121
5. Nebraska-Omaha (17-4).....112
6. Pace (18-3).....100
7. Wright St. (17-3).....96
8. New Haven (13-2).....95
9. North Dak. St. (19-2).....79
9. Hampton (18-1).....79
11. Albany St. (Ga.) (18-0).....70
12. West Tex. St. (16-3).....66
13. Bentley (15-1).....56
14. Lake Superior St. (17-2).....48
15. Florida Int'l (17-2).....39
16. Pitt-Johnstown (15-3).....37
17. Cal St. Los Angeles (15-6).....27
18. Central Mo. St. (16-4).....23
19. St. Cloud St. (12-7).....9
20. Gannon (15-3).....5
20. Virginia St. (12-3).....5

Division III Women's Basketball

The top 20 NCAA Division III women's basketball teams through games of January 31, with records:

1. Rust17-1
2. Elizabethtown.....16-0
3. Kean15-2
4. Scranton17-1
5. Concordia-Mhead15-3
6. Pomona-Pitzer17-2
7. N.C.-Greensboro15-2
8. Wis.-Stevens Point14-1

9. Rochester14-3
10. St. John Fisher15-2
11. Rockford17-0
12. Alma16-2
13. Capital12-3
14. Allegheny15-2
15. Stony Brook13-1
16. Salem St.13-4
17. Centre15-1
18. Southern Me.16-3
19. Loras12-3
20. St. Norbert12-3

Men's Gymnastics

The top 20 NCAA gymnastics teams through February 3, with points:

1. UCLA280.90
2. Penn St.280.55
3. Oklahoma280.10
4. Cal St. Fullerton.....278.90
5. California276.50
6. Houston Baptist276.25
7. Nebraska273.95
8. Illinois273.80
9. Iowa273.45
10. Ohio St.273.35
11. Arizona St.272.60
12. Southern Ill.271.75
13. Minnesota270.90
14. Michigan St.270.15
15. Michigan268.05
16. Western Mich.264.80
17. Stanford263.50
17. Northern Ill.263.50
19. Wisconsin262.50
20. Navy261.00

Division I Ice Hockey

The top 10 NCAA Division I men's ice hockey teams through games of February 2, with records in parentheses and points:

1. North Dak. (26-6).....58
2. Bowling Green (27-4-1).....56
3. Harvard (15-2).....54
4. Boston College (20-6).....46
4. Michigan St. (24-6-1).....46
6. Maine (19-8-2).....37
7. Denver (18-11-3).....36
8. Minnesota (23-9-1).....35
9. Colgate (16-4).....25
10. Lowell (16-8-1).....24

Division III Ice Hockey

The top 10 NCAA Division III men's ice hockey teams through games of February 2,

with records in parentheses and points:

1. Plattsburgh St. (21-5).....60
2. Bowdoin (14-3).....56
3. St. Cloud St. (16-4-1).....52
4. Babson (13-3-1).....48
5. Mankato St. (15-6-1).....44
6. Wis.-River Falls (15-4-1).....40
7. Oswego St. (15-6).....36
8. Salem St. (16-7-1).....29
9. Bemidji St. (12-7-1).....29
10. Hamilton (12-3).....25

Division I Men's Swimming

The top 20 NCAA Division I men's swimming teams as compiled by the College Swimming Coaches Association of America through January 28, with points:

1. Texas211
2. Stanford209
3. Florida203
4. Southern Cal189
5. California173
6. Arizona St.159
7. UCLA158
8. Iowa137
9. Michigan131
10. Alabama114
11. Arizona108
12. Louisiana St.100
13. Tennessee82
14. Southern Ill.68
15. South Caro.61
16. Texas A&M48
17. Nebraska40
18. Harvard27
19. Arkansas26
19. Auburn26

Division I Women's Swimming

The top 20 NCAA Division I women's swimming teams as compiled by the College Swimming Coaches Association of America through January 28, with points:

1. Texas238
2. Stanford227
3. Florida219
4. Clemson195
5. UCLA181
5. Southern Cal169
7. Georgia153
8. California151
9. Arizona St.151
10. Louisiana St.147

See Record, page 16

The NCAA News

The Market

Positions Available

Academic Counselor

Academic Counselor. The University of Texas at Austin, Men's Athletics Department, is now accepting applications for the position of Academic Counselor. Minimum requirements for the position are a Master's degree plus three years experience in counseling students at the college level. Work hours are generally 8:00 a.m. to 5:00 p.m. but require some flexibility. Preferred requirements are a Ph.D. plus a background in athletics, either as a player or coach, and working knowledge of basic computer use. The salary range is between \$28,000 and \$32,000 per year depending upon qualifications. All qualified applicants should submit a letter of intent and resume to Leon Black, Assistant Athletic Director for Academic Affairs, University of Texas at Austin, Men's Athletics Department, P.O. Box 7399, Austin, TX 78713, no later than March 15, 1987. Position will be available on or about April 1, 1987. The University of Texas is an equal opportunity/affirmative action employer.

Administrative Asst.

Assistant to the Director for Administration.

Position oversees the intramural and recreational programs at IPFW. Coordinates the monitoring, reviewing and counseling of the academic standing and progress of student athletes. Supervises NCAA eligibility certification and assists in the athletic program administration. Qualifications include bachelor's degree or equivalent education and experience in an educational setting in recreation/athletics and counseling. Position is a recurring 10-month position with period of appointment from mid-August to mid-May each academic year. Initial appointment will be as soon as possible following March 1, 1987, until May 14. Apply by February 23, 1987, by sending a letter of application and resume with references to: Mr. Arnie Ball, Indiana University-Purdue University at Fort Wayne, 2101 Coliseum Blvd. East, Fort Wayne, Indiana 46805. IPFW is an Equal Opportunity/Affirmative Action Employer.

Athletics Director

Whitworth College is seeking a Director of Athletics with demonstrated experience in the development and administration of an athletic program in the context of a Christian liberal arts college. He or she will be academically qualified to teach in a liberal arts discipline (which could be physical education), to coach one sport (not football or basketball), and to administer a program comprising nine sports and involving 300 students. Doctorate preferred. Send letter of interest; resume and placement file if available; and names of three references by 3/13/87 to: Chair, Athletic Director Search Com-

mittee, Personnel Office, Whitworth College, Spokane, WA 99251. EOE/DF/504.

Assistant A.D.

Assistant Director of Athletics and Recreational Services. Direct and supervise the operations of the new Recreation Center opening in the fall of 1987 and schedule all recreational and athletic facilities. Develop, organize, and manage a comprehensive Recreational Services program to meet the needs of the University community. Duties include coordination of hiring, supervising and evaluation of professional staff responsible for intramurals, club sports, informal recreation, aquatics, fitness/wellness and noncredit instruction. Starting date immediate. Degree in sports administration/recreation or related field preferred. Experience should include a minimum of four years on collegiate level in recreation/athletics with minimum two years experience in facility management. Experience with pool management desirable. Compensation commensurate with experience. Send letter of application, resume and three letters of recommendation by February 28, 1987, to: Larry Keating, Director of Athletics and Recreational Services, Seton Hall University, South Orange, NJ 07079.

Promotions

Mount Saint Mary's College solicits applications for Director of Marketing and Promo-

tions. Immediate opening. The nation's oldest independent Catholic college (enrollment 1,400) will open a new athletic/recreation/convocation facility this year and begin NCAA Division I competition in 1988. The Mount seeks a highly motivated person to meet the challenges these moves will present. Significant financial success must go hand in hand with enhancement of athletic programs standing as complimentary to liberal arts mission. Responsibilities include basketball ticket sales (both teams in Division II Top 5), operation of successful booster club and revenue generation through events sponsorships and advertising. Two years experience and degree in appropriate field required. Resume, three letters of recommendation and work samples should be sent by March 6, to: Tom Balistrere, Director of the AKCC, Mount Saint Mary's College, Emmitsburg, Maryland 21727. An Equal Opportunity/Affirmative Action Employer.

Sports Information

Sports Information Director. Full time, 12 months. Responsibility mainly with football and direction of sports news staff. At least five years SID experience necessary. Bachelor's degree or equivalent experience necessary. Salary: Commensurate with experience. Position Available: March 1. Please send letter of application, resume, three letters of reference and phone numbers of three persons who may be contacted for additional information to: Ralph W. Carpenter, Assistant Athletic Director, Texas A&M University, College Station, Texas 77843. Application Deadline:

February 20. Texas A&M is an Equal Opportunity/Affirmative Action Employer.

Sports Information Director. University of Miami. Position available immediately. Starting Salary: Commensurate with experience. Requirements: Bachelor's degree in communications or related field required; 3-5 years experience in sports information or related sports publicity field. Application Deadline: March 1, 1987. Responsibilities: Management and supervision of sports information office that includes four full-time assistants, secretary, student assistant and interns. Oversee media relations and publicity activities for entire athletic department that includes 16 varsity sports; direct press facility operations and oversee preparation of all athletic department publications. Application Procedure: Submit letter of application and resume to: Bill Wall, Associate Athletic Director, University of Miami, P.O. Box 248167, Coral Gables, Florida 33124, 305/284-3822. The University of Miami is a private institution and a member of the NCAA Division I. The University of Miami is an Affirmative Action/Equal Opportunity Employer.

Director of Sports Information. Loyola College in Maryland is currently seeking an individual to coordinate our sports information office and related promotional activities, including the season ticket sales effort. This position reports to the Assistant Athletic Director of Marketing, Fund-Raising and Promotions. Bachelor's degree required; must demon-

strate successful production of athletic-related publications. Must also present evidence of strong writing and editing skills. Salary commensurate with qualifications and experience. Loyola is an NCAA, Division I, ECAC Metro Conference member institution. Submit resume with salary history by February 25, 1987, to: Athletic Search, Personnel Department, Loyola College, 4501 N. Charles Street, Baltimore, MD 21210-2699. Affirmative Action Employer.

Sports Information Director. West Chester University is seeking qualified applicants for the position of Sports Information Director. This position reports to the Director of Public Relations, in cooperation with the Athletic Director. Responsibilities include coordinating all publicity for the University's intercollegiate program; write and edit athletic publications; perform internal and external public relations functions for intercollegiate programs; and maintain records of intercollegiate activities. West Chester University has 23 men's and women's intercollegiate teams. Qualifications: Bachelor's degree in journalism preferred; at least one year's experience in sports information at collegiate or professional level. Please send letter of application and resume postmarked by February 20, 1987, to: Personnel Office, Sports Information Director, WEST CHESTER UNIVERSITY, West Chester, PA 19383. West Chester University is an Affirmative Action Employer.

See The Market, page 14

Director of Athletics

The University of South Carolina at Spartanburg is seeking an experienced Athletics Director. Knowledge and experience in the following areas will be an important aspect of this senior-level position: (1) Development of community financial support of USCS athletics. (2) Business Management expertise to oversee all financial and administrative aspects of the athletics program. (3) Supervision of promotion and public relations related to all athletic events, programs and personnel.

Current program consists of six men's sports (basketball, baseball, cross-country running, soccer, tennis and golf) and four women's sports (basketball, volleyball, tennis and softball). We are currently competing in the NAIA.

Qualifications: A bachelor's degree minimum, master's degree preferred. Previous successful record in athletic administration with emphasis on the above criteria. Salary will be commensurate with experience.

Application Deadline: March 6, 1987. Apply:

Office of the Chancellor
University of South Carolina at Spartanburg
Spartanburg, South Carolina 29303

Equal Opportunity Employer

Head Women's Basketball Coach

Description: Responsibility for complete operation of NCAA Division I basketball program, including: staff selection; administration; budget management; scheduling; recruiting; academic/entrance retention matters; ability to understand, interpret and implement Institutional, NCAA and CAA guidelines; public relations matters; and working directly with Director of Athletics to achieve goals and objectives of the University.

Requirements: Master's degree. (Bachelor's degree may be accepted with successful experience in related field.)

Deadline: Applications must be postmarked no later than February 28, 1987, to be considered.

Salary: Commensurate with experience.

Application Procedure: Send a letter of application, updated resume, three (3) letters of recommendation, plus names, addresses and telephone numbers of at least three (3) persons who can be contacted as references to:

Dr. Ken Karr
Director of Athletics
East Carolina University
Minges Coliseum
Greenville, NC 27834-4353

An Equal Opportunity/Affirmative Action Employer

CARTHAGE COLLEGE

Kenosha, Wisconsin

Position Title: Head Volleyball Coach/Head Softball Coach or Assistant Coach in another sport (Track), teaching assignments in Health, Physical Education and Recreation.

Responsibilities: Serve as Head Volleyball Coach/Head Softball Coach or assist in one other area. Teach in the Major Physical Education and Health program and the required Physical Education program for all students.

Qualifications: Master's Degree in Health Education or Physical Education preferred. Coaching and playing experience in Volleyball at college level preferred. Organizational ability and experience in student/athlete recruitment. Prior teaching experience in the public schools and higher education preferred.

Contract Terms: An administrative contract.

Salary: Commensurate with education and experience.

Application Procedure: Send letter of application, which includes professional goals, resume, credentials, letters of recommendation and transcripts, to:

Mr. August R. Schmidt
Head of Physical Education Department and Athletic Director
Carthage College
Kenosha, WI 53141

Application Deadline: February 27, 1987.

Readers of The NCAA News are invited to use The Market to locate candidates for positions open at their institutions, to advertise open dates in their playing schedules or for other appropriate purposes.

Rates are 45 cents per word for general classified advertising (agate type) and \$22.60 per column inch for display classified advertising. Orders and copy are due by noon five days prior to the date of publication for general classified space and by noon seven days prior to the date of publication for display classified advertising. Orders and copy will be accepted by telephone.

For more information or to place an ad, call 913/384-3220 or write NCAA Publishing, P.O. Box 1906, Mission, Kansas 66201.

The Market

Continued from page 13

ative Action/Equal Opportunity Employer. Women and minorities are encouraged to apply.

Basketball

Open Position. Grinnell College is seeking a head women's basketball and women's soccer coach. Faculty rank of instructor or assistant professor, depending on qualifications. Full-time, non-tenure-track faculty position coaching women's intercollegiate basketball and soccer in the fall. Responsibilities include scheduling, budgeting, attracting qualified scholar-athletes, and teaching some physical education classes in an elective co-curricular program. Position begins August 17, 1987. Master's degree preferred with concentration in physical education or related field, and experience in coaching. Expertise in physiology of exercise desirable. Salary commensurate with full benefits. Send letter of application, resume, three letters of reference, and official college transcript no later than March 2, 1987, to: Dee Fairchild, chairperson, Department of Physical Education, Physical Education Complex, Grinnell College, P.O. Box 805, Grinnell, IA 50112. Grinnell College is an affirmative action, equal opportunity employer, and especially seeks women and minority candidates.

Head Basketball Coach. Fordham University invites nominations and applications for the position of Head Coach, Men's Varsity Basketball. The head coach is responsible for directing all activities associated with a successful Division I basketball program. Candidates must have a bachelor's degree, experience directing a major basketball program, a strong commitment to the academic values of Fordham University, and must be willing to fully comply with all institutional, conference and NCAA policies and procedures. Salary is negotiable and commensurate with qualifications and experience. ABSOLUTELY NO TELEPHONE CALLS WILL BE ACCEPTED. Letters of nomination or application, and a resume should be sent to: Mr. Francis X. McLaughlin, Director of Athletics, Fordham University, East Fordham Road, Bronx, New York 10458. Position Available: Spring 1987. Fordham University is an Affirmative Action/Equal Opportunity Employer.

Head Men's Basketball Coach. Rice University seeks a head men's basketball coach with at least three years successful coaching experience at the college, university or professional level. The successful candidate will possess the ability to organize and administer a competitive intercollegiate program, recruit student-athletes who have the ability to succeed academically and athletically, promote, develop and maintain positive relationships with the administration, students, parents, and the media, and comply at all times with the rules and regulations of Rice University, NCAA and the SWC. The position is a full-time, 12-month post that is available immediately. Undergraduate degree required. Salary is commensurate with qualifications and experience. Send letter of application and resume by 2/20/87 to: Mr. Jerry Berndt, Director of Athletics, Rice University, P.O. Box 1892, Houston, Texas 77251. EOE A/A M/F/V/H.

Cross Country

Manitako State University is seeking head coach of women's cross country/track and field. Full-time, 9-month, four-year, fixed term contract. Responsible for all phases of the women's intercollegiate cross country and track and field programs, including: coaching, recruitment, meet preparation, budget management, supervision of assistants, scheduling, public relations, and fund raising. Will teach in an area of exercise sciences, adapted physical education, elementary physical edu-

cation or tests and measurement. Teaching load will be 41% and the coaching load will be 59%. Application deadline is March 1, 1987, and send applications to: Ms. Georgene Brock, Director of Women's Athletics, Manitako State University, PO Box 28, Manitako, MN 56001.

Football

Assistant Football Coach. Southern Illinois University at Carbondale, Illinois, is accepting applications for the position of Assistant Football Coach. This is a full-time, 12-month position. Qualifications: Bachelor's degree, master's degree preferred. College experience required. Responsibilities include coaching defensive secondary and assisting the head football coach in all areas of a Division I-AA football program. Salary: Based on qualifications. Applications and letters of recommendation should be sent to: Ray Dorr, Head Football Coach, Intercollegiate Athletics, Southern Illinois University, Carbondale, Illinois 62901. Application Deadline: March 1, 1987. SIU is an Equal Opportunity/Affirmative Action Institution.

Defensive Football Coordinator. New Mexico Highlands University announces an opening for Defensive Football Coordinator. Qualifications: Candidate must have a demonstrated ability to coordinate the defense successfully. Must have knowledge of all positions on the defense. Three years college experience required with preference given to small college coaches. Proven recruiting experience in the Southwest region required. Proven ability to handle all office and extra tasks as assigned by the Head Coach. BA minimum. Salary range: \$15,000-\$18,000, 12-month appointment. About the University: New Mexico Highlands University is a state-supported four-year institution located in Las Vegas, New Mexico. Closing date for applications: Postmarked no later than midnight February 20, 1987. Applications should include a letter of intent, resume, and the names of three (3) references including their addresses and phone numbers. Applications must be sent to: Pat Darbro, Head Football Coach, Chairperson, Search and Screen Committee, Football Office, New Mexico Highlands University, Las Vegas, New Mexico 87701. New Mexico Highlands University is an AA/EO Employer.

Assistant Football Coach. San Jose State University invites application for assistant football coach. Position is to coach outside linebackers and work as a member of a team of four defensive coaches responsible for coaching, organizing, recruiting and game-plan preparation for defensive team. Duties will include teaching in department of human performance and other duties assigned by head football coach. Salary range is \$37,380.00-\$45,096.00. Letter of application and resume to: Claude Gilbert, Head Football Coach, San Jose State University, One Washington Square, San Jose, CA 95192.

Assistant Football Coach. Marietta College is seeking to fill two assistant football coaching positions. The college is a member of the Ohio Athletic Conference and NCAA Division III with an enrollment of 1,100. Responsibilities include coaching and recruiting in football plus one other coaching assignment and teaching physical education. Areas of teaching expertise: Red Cross certification in teaching aquatics, first-aid and CPR. Recreation background will also be considered. A master's in physical education or recreation is required with strong undergraduate work in these areas, as is the ability to fit comfortably into a rigorous small college. Collegiate coaching experience is preferred but not required. The positions are non-tenured but renewable appointments starting as soon as possible. Salary is commensurate with experience and qualifications. Send cover letter, resume, and three letters of reference to: Dr. J. Phillip Roach, Athletic Director, Marietta College, Marietta, Ohio 45750. Applications will be received until the interview process begins. Marietta College is an Affirmative Action/Equal Opportunity Employer.

Assistant Football Coach. NCAA Division III liberal arts college seeking an Assistant Football Coach and Strength Program Coordinator. This person will also have duties with a second sport. Qualifications: Bachelor's degree or beyond with two-three years of college coaching experience. This is a full-

time, entry-level staff position. Applications due by February 25; Employment Date is March 16. Send application letter, resume and the names, addresses and phone numbers of three references to: Michael J. Hanna, Director of Athletics, Hobart College, Geneva, New York 14456. Equal Opportunity/Affirmative Action Employer.

Assistant Football Coach. Columbia University in the City of New York is offering a defensive line position. Successful background in coaching on high school or college level required; ability to recruit student athletes under Ivy League and NCAA regulations is necessary. Bachelor's Degree required. Salary commensurate with experience. Appointment date as soon as possible. Send letter of application, resume and recommendations to: Larry McElreavy, Head Football Coach, Dodge Physical Fitness Center, Columbia University, New York, NY 10027. Columbia University is committed to affirmative and equal opportunity programs.

Ohio Wesleyan University is seeking to fill the position of Assistant Football Coach. The university is a member of the North Coast Athletic Conference and NCAA Division III with an enrollment of 1,600. Responsibilities will include assisting in the organization, direction, and coaching of the varsity football program. Other responsibilities will also include one of the following: assistant track or baseball, facilities director, and other duties assigned by the athletic director. A bachelor's degree is required. Master's degree preferred. Collegiate coaching experience is preferred but not required. This is a non-tenured but renewable appointment starting on or after March 15, 1987. Salary is commensurate with experience and qualifications. Send cover letter, resume and three letters of reference by March 1, 1987, to: Dr. John A. Martin, Athletic Director, Ohio Wesleyan University, Delaware, Ohio 43015. Ohio Wesleyan University is an Affirmative Action/Equal Opportunity Employer.

Assistant Football Coach. Individual to serve as offensive line coach and to share recruiting responsibilities; teaching responsibilities in either recreation or physical education. Will have responsibility in one other area chosen from the following: assistant basketball coach, assistant baseball coach, wrestling coach, women's softball coach or intramurals. Ten-month faculty appointment. Preferred qualifications include a master's degree; willingness to follow NCAA rules and regulations; ability to teach student-athletes; personal integrity and understanding of the place of athletics within an academic context are crucial. Salary commensurate with experience, education and qualifications. Ferrum College is a member of NCAA Division III and the ECAC. Send letter of application, resume and the names and telephone numbers of three references to: Mr. Joy A. McConnell, Director of Personnel Services, Ferrum College, Ferrum, Virginia 24088-9001. Application deadline March 15, 1987. An Equal Opportunity Employer.

North Central College is seeking part-time football coaches. Experience with receivers and/or offensive line is preferred. Send letter of application, resume and references to: Paul Connor, Head Football Coach, North Central College, Naperville, Illinois 60566. Equal Opportunity Employer.

Soccer

Soccer Coach. St. Francis College of Pennsylvania seeking applicants for the position of men's soccer coach (part time). The college is a member of the NCAA, Division I and ECAC Metro Conference. Candidates should submit a resume and references to: Tom Iannaccone, Director of Athletics, St. Francis College, Loretto, Pennsylvania 15940. EOE.

Head Men's Soccer Coach. NCAA Division I university, TAC Conference soccer program. Candidate to organize, administer, coach and recruit for the men's soccer program. Qualifications: Master's degree in physical education and three years head coaching experience. Knowledgeable of NCAA rules and regulations. Salary: Commensurate with experience and qualifications. Position Available: July 1, 1987, or 12-month appointment. Send letter of application and three letters of reference by February 23, 1987, to: Dr. G. Rankin Cooter, Director of Athletics, Georgia State University, University Plaza, Atlanta, Georgia 30303-3083.

Tennis

Director of Racquet Sports. Duties to include general supervision and coaching of women's intercollegiate tennis and squash, assisting with a women's spring sport, and teaching in the physical education program. Requirements: Bachelor's degree required, master's preferred. Experience in coaching desired. Salary at Rank: Commensurate with qualifications. Appointment: September 1987. Closing Date: March 16, 1987. Submit letter of application, include curriculum vita and three letters of reference, to: Mr. Thomas E. Murphy, Athletic Director, Hamilton College, College Hill Road, Clinton, New York 13323. Hamilton College is an Equal Opportunity Employer.

University of Richmond. Coordinator of Tennis Operations. Position: Head Coach of the Men's and Women's Division I Tennis Programs. This is a twelve-month, full-time position.

Qualifications: Bachelor's Degree required; Master's preferred. An equivalent number of years in a professional, administrative and instructional capacity will be given consideration. Previous coaching experience at the college level preferred. Thorough knowledge of NCAA rules and regulations expected. Candidates must possess a strong commitment to academic excellence at a highly selective institution. Responsibilities: Full administration of the Division I Men's and Women's Tennis Program including organizing, coaching, recruiting, budgeting, and scheduling; the coordination of tennis operations and management of tennis facilities on campus. Salary: Commensurate with experience and qualifications. Application Procedure: Submit letter of application, resume, and three (3) letters of recommendation to: Ms. Charlotte Fugett, Personnel Director, Maryland Hall, University of Richmond, VA 23173. Application Deadline: March 15, 1987. Effective Date: August 1, 1987. The University of Richmond is an Equal Opportunity Employer.

Volleyball

Arizona State University is seeking an Assistant Women's Volleyball Coach. This position will be a nine-month position. Duties will include practice management, recruiting, assisting in budget considerations and other areas of the program. Must have knowledge of NCAA, PAC 10 and Institutional rules. Must have former playing and coaching experience at the intercollegiate level. Applications mailed directly to Arizona State University, Personnel Department, Tempe, Arizona 85287. Closing date of the position is February 24, 1987. Arizona State University is an Equal Opportunity/Affirmative Action Employer.

Head Women's Volleyball Coach. Cornell University invites applications for the position of Head Volleyball Coach. Under the direction of the Athletic Director, individual will be responsible for the planning and executing of the women's intercollegiate volleyball program. Duties include: 1) Coaching—plan, organize and supervise all practices, team meetings and matches. Responsible for selecting the squad and for policies and practices relative to individual and team participation. 2) Recruiting—identify, evaluate and encourage application and acceptance of student-athletes at Cornell in accordance with Ivy League and University policy. 3) Administration—represent Cornell on volleyball-related matters as assigned by Athletic Director. 4) Physical Education—physical education classes will be assigned by the Director of Physical Education. 5) Other Duties—individual will be assigned an additional coaching position within the department to be determined in the hiring process. Individual credentials should reflect proven success and potential in coaching, recruiting and working with student-athletes. Salary dependent upon previous background and experience. Application Deadline: February 27, 1987. Starting Date: No later than May 1, 1987. Send application and personal resume to: Laing E. Kennedy, Director of Athletics, Cornell University, P.O. Box 729, Ithaca, New York 14851. Cornell University is an Equal Opportunity/Affirmative Action Employer.

Wrestling

Head Wrestling Coach and Physical Education Teacher. San Francisco State University Department of Physical Education invites application for a full-time coaching track position as head wrestling coach. Master's degree required. Teaching competencies to include intermediate level in at least two activity areas and breadth at the beginning level. Candidates are expected to be full participating faculty members through teaching, service on department committees, and other assignments made by the athletic director and department chair. Position available August 31, 1987. Salary range: \$25,812-\$39,168. Submit cover letter, vita, Placement File, all college transcripts, and three letters of recommendation to: Dr. Jean L. Perry, Chair, Department of Physical Education, San Francisco State University, 1600 Holloway Avenue, San Francisco, California 94132. 415/469-1258 by March 13, 1987. An equal opportunity/affirmative action employer.

Graduate Assistant

Manitako State University is seeking graduate assistants in physical education for 1987-88. Stipend of \$3,250 plus 1/2 tuition waiver. Applicants are needed as assistant coaches in: baseball, men's and women's basketball, men's and women's track, football, hockey, softball, wrestling, administrative assistant in women's athletics, administrative assistant in men's athletics, diving coach and cheerleading coach. Apply to: Dr. Kent Kalm, Assistant Chair of Physical Education, Manitako State University, PO Box 28, Manitako, MN 56001. Applications accepted until position filled.

Graduate Assistant/Men's Basketball. Bethany College, W.Va., an NCAA Division III school, seeks applicants for the position of graduate assistant coach in men's basketball commencing with the fall term of 1987-88. Duties will include coaching, recruiting, scout-

ing, supervision of facilities and an additional coaching or administrative assignment in the athletic department. Candidates must be eligible for unconditional admission to West Virginia University's graduate program. Deadline for application is March 15, 1987. Send letter of interest and resume to: Wally Neal, Acting Director of Athletics, Bethany College, Bethany, W.Va. 26032. Bethany is an equal opportunity/affirmative action employer.

Indiana State is seeking a graduate assistant for Fall 1987. Candidate will be on the court coaching as well as work with recruiting. Volleyball coaching or player in the past is needed. Send letter of interest and resume to: Debbie L. Holzappel, Head Volleyball Coach, Indiana State University, Arena Room 107, Terre Haute, IN 47809.

Graduate Assistantships. Openings for the 1987-88 school year in the sports of men's and women's track, softball, baseball, men's and women's tennis and women's basketball. Send letter of interest and resume to: Bernard Cooper, Athletic Director, Indiana State University, Arena Room 107, Terre Haute, IN 47809.

Graduate Assistant or Part-Time Assistant Women's Athletic Trainer. Appointment Conditions: 9 months. Starting Salary: \$6,500. Position Available: August 17, 1987. Job Description: Assist the head women's trainer in providing medical coverage for all women's intercollegiate sports. Travel with athletic teams and coverage of home athletic events as necessary. Assist in the supervision of a growing student trainer program, including administration of in-service programs. Teach up to three athletic training classes in the Physical Education Department during the academic year. Qualifications Required: Bachelor's degree, intercollegiate experience as a student trainer, eligible to take NATA certification exam. Preferred: NATA certified. Application Procedure: Consideration of application will be expedited by the receipt of the following: a) a letter of application; b) resume; c) three letters of recommendation; d) official transcripts. Submit applications to: Max Urlick, Director of Athletics, Iowa State University, 133 Olsen Building, Ames, IA 50011. Application Deadline: March 6, 1987. Iowa State University is an equal opportunity/affirmative action employer.

Head Women's Basketball Coach. Due to cancellation we need one team for a four-team Christmas Tournament December 28-29, 1987. Guarantee or return game. Anyone interested in these dates or other possibilities call: Courtney Leishman, Brigham Young University, 801/378-4227.

Miscellaneous

California State University, Fullerton. Department of Athletics. The Athletic Department is developing an applicant pool for head and assistant coaches in the following sports programs: Baseball, Men's/Women's Basketball, Men's/Women's Cross Country, Men's/Women's Fencing, Football, Men's Golf, Men's/Women's Gymnastics, Men's Soccer, Softball, Men's/Women's Tennis, Women's Track, Women's Volleyball, Wrestling, Water Polo. Qualifications—Coaching experience or comparable sports teaching/management experience, recruiting ability, demonstrated interest in athletic academic progress, knowledgeable about NCAA rules and willingness to promote sport. Salary Schedule—Commensurate with candidate's qualifications and experience and any position opening. Applications—Send letter of application stat-

ing area of interest and a resume, including references to: Leanne Grotke, Associate Director of Athletics, P 156, California State University, Fullerton, Fullerton, California 92634. CSUF is an Affirmative Action/Equal Opportunity Employer. All personnel policies conform with the requirements of Executive Order 11254, Title IX of the Higher Education Amendment of 1972 and other federal regulations regarding nondiscrimination.

Open Dates

Women's Basketball. The University of Minnesota, Twin Cities, is seeking Division I teams for Dial Classic Tournament November 27-28, 1987. Contact: Donna Olson, 612/624-4044.

Women's Basketball, Division I. Eastern Illinois needs games or tournament Thanksgiving 1987. Call: Deanna Dabbaraccio at 217/581-6008.

Football, Division II. Mankato State is seeking teams for the following dates: 9-12/87, 9-10-88, 9-1-90, 9-14-91 and 9-5-92. Contact: Ron Wellman, 507/389-1795.

Men's Basketball. Southern Illinois University at Edwardsville is looking to schedule Division I away games for a guarantee; Division II or III teams for home games with a guarantee. Also, teams are needed for a tournament November 20 and 21, 1987, or January 2 and 3, 1988. Call Larry Graham, 618/692-2871.

Football, Division III. Findlay College, Findlay, Ohio, seeks opponents for October 17 and November 7, 1987. Contact: Max Kidd, Athletic Director, 419/424-6633.

Division I Women's Basketball. Due to cancellation we need one team for a four-team Christmas Tournament December 28-29, 1987. Guarantee or return game. Anyone interested in these dates or other possibilities call: Courtney Leishman, Brigham Young University, 801/378-4227.

Football, Division III. Randolph-Macon College in Virginia needs games on 9/10/88 and 9/9/89, and also 9/17/88 and 9/16/89. Contact: Jim Blackburn, Football Coach, 804/752-7363.

Women's Basketball, Division II. Cal State Hayward needs one team for a 2-day tournament for December 4th & December 5th, 1987. Contact: Barb Iken at 415/881-3066, 415/881-3038.

Football, Division I-AA. Eastern Illinois University needs a home football game for 9/5/87. Guarantee or home at home possibility. Contact: R.C. Johnson, 217/581-2319.

Football, Division II. Texas A&I University seeks opponents on these dates: Sept. 12, 19 and 26, and Oct. 24, 1987. Home or away, or home-and-home. Contact: Ron Harms, Athletic Director, 512/595-2500.

Football in England. Wanted Division III football team to play in England August 1987. Write or call for details. Athletic Enterprises, 6941 Arctique Place, Sarasota, Florida 33581. PH 813/921-4966 or 813/924-5623.

See The Market, page 15

Publications Editor NCAA Publishing Department

Applications are being accepted for a publications editor position in the NCAA publishing department. Publications editors are responsible for editing and production of NCAA publications (including rules books, records books, membership publications) and general printed materials (e.g., forms, pamphlets, office supplies). Publications editors also are reporters for The NCAA News, the Association's tabloid newspaper published 46 times a year.

Qualifications include full-time professional experience in editing, sports writing and publications production, at least three years required. Must be capable typist, accurate writer, careful editor, knowledgeable in sports and adaptable to desk-oriented position with very limited travel. Starting salary \$18,500 to \$20,000. Starting date approximately April 1, 1987.

Send cover letter, resume and salary history by March 2 to:

Wallace I. Renfro
Director of Publishing
NCAA
P.O. Box 1906
Mission, Kansas 66201

The NCAA is an equal opportunity/affirmative action employer

Assistant Football Coach/ Coordinator of Defense

Northern Michigan University invites applications for the position of: Assistant Football Coach/Coordinator of Defense.

Responsibilities: On-field coaching, recruiting and other duties assigned with 50% teaching of Physical Education classes. Northern Michigan University has a strong Div. II football program.

Minimum Qualifications: Bachelor's Degree and successful high school or college coaching.

Additional Desirable Qualifications: Master's Degree and coaching at the collegiate level.

Salary: Competitive.

Deadline: Screening of applications will begin on Feb. 20, 1987. Please send letter of application, resume, transcripts, credentials and three letters of recommendation to the following address:

Barbara Beck, Personnel Ass't Employment
Room 204 Cohodas Administrative Center
Northern Michigan University
Marquette, MI 49855, 906/227-2330

Northern Michigan University is a public regional state university of 7,500 students and 900 employees located in Michigan's beautiful Upper Peninsula on the shore of Lake Superior.

AN AFFIRMATIVE ACTION/EQUAL OPPORTUNITY EMPLOYER

Head Men's Basketball Coach

Description: Responsibility for complete operation of NCAA Division I basketball program, including: staff selection; administration; budget management; scheduling; recruiting; academic/entrance retention matters; ability to understand, interpret and implement Institutional, NCAA and CAA guidelines; public relations matters; and working directly with Director of Athletics to achieve goals and objectives of the University.

Requirements: Master's degree. (Bachelor's degree may be accepted with successful experience in related field.)

Deadline: Applications must be postmarked no later than February 28, 1987, to be considered.

Salary: Commensurate with experience.

Application Procedure: Send a letter of application, updated resume, three (3) letters of recommendation, plus names, addresses and telephone numbers of at least three (3) persons who can be contacted as references to:

Dr. Ken Karr
Director of Athletics
East Carolina University
Minges Coliseum
Greenville, NC 27834-4353

An Equal Opportunity/Affirmative Action Employer

HEAD WOMEN'S GOLF COACH Ohio State University

Responsibilities: Full-time, 12-month appointment. Organize, develop and implement a nationally ranked women's intercollegiate golf program. Coordinate recruiting, team selection, coaching and advising the athletes; formulate schedule, manage budget, conduct tournaments. Also assist with management of golf course, teach golf lessons, coordinate outings and special events; oversee other activities of golf course operation and pro shop.

Qualifications: Bachelor's degree required, master's degree preferred; previous successful coaching at collegiate level and PGA and LPGA teaching card desired. Ability to recruit national calibre golfers.

Application Deadline: March 1, 1987, for prime consideration.

Application Procedure: Send letter of application, personal vita and three letters of recommendation to:

Phyllis J. Bailey
Associate Director of Athletics
The Ohio State University
410 Woody Hayes Drive
Columbus, Ohio 43210

The Ohio State University is an Equal Opportunity/Affirmative Action Employer.

Director Of Strength Training/ Lecturer Of Physical Education

Description: Supervision and control of all activities involved with a NCAA Division I-A strength training program, including: administration; budget management; scheduling of facilities; public relations matters; purchasing; establishing good working relationship with coaches of all sports and other departmental personnel; ability to understand, interpret, and implement Institutional, NCAA, and CAA rules and regulations. Physical Education teaching as assigned by the Department Chair of HPERs.

Requirements: Master's degree.

Deadline: Applications must be postmarked no later than March 13, 1987, to be considered.

Salary: Commensurate with experience.

Application Procedure: Send a letter of application, updated resume, three (3) letters of recommendation, plus names, addresses and telephone numbers of at least three (3) persons who can be contacted as references to:

Dr. Ken Karr
Director of Athletics
East Carolina University
Minges Coliseum
Greenville, NC 27834-4353

An Equal Opportunity/Affirmative Action Employer

HEAD WOMEN'S BASKETBALL COACH

Date Position Available: March 3, 1987.

Application Deadline: For full consideration all materials must be received by February 28, 1987.

Salary: Commensurate with experience and background.

Responsibilities: Will be responsible for the total women's basketball program including administrative duties, coaching, and recruiting.

Qualifications: Must have college coaching experience, preferably at a Division I level. A demonstrated competence in the area of recruiting female student-athletes. A proven competence in the area of coaching nationally ranked females in basketball.

Applications: Persons interested in this position, or knowing of others possessing the qualifications as stated above, should immediately submit a letter of application with a current resume of experience and three references to:

Mr. Dwight Rainey
Associate Athletic Director
Clemson University
P.O. Box 31
Clemson, SC 29633

Clemson University Is An Affirmative
Action/Equal Opportunity Employer

ATHLETIC DIRECTOR North Texas State University

North Texas State University is conducting a national search for an Athletic Director. The Search Committee invites applications and nominations for the position.

NTSU, with an enrollment of 21,000, is a nationally and internationally recognized undergraduate, graduate, and research institution, with recognized programs in Business, Education, Basic and Applied Sciences, Computer Science, Hotel/Restaurant Management, Music, and the Liberal Arts. It is projected to be the fourth largest public university in Texas by the year 2000.

The University competes in 9 varsity sports for men and 8 for women. Teams participate either in the Southland Conference or independently as Division I members of the NCAA (Division I-AA for football). In 1986 the school installed a new synthetic football field and state-of-the-art weight training facilities. A new 8-lane, all-weather track will be installed this spring.

The Athletic Director reports directly to the President through the Special Assistant for Athletics. The chosen candidate will have demonstrated ability to develop a long-term vision for the athletic program; implement a coordinated fund-raising effort; supervise the athletic staff; manage a budget and a major athletic complex; plan an effective marketing and promotion program; promote support for athletics among students, faculty, staff, and community; coordinate development efforts with the University's Advancement Office; sustain continuing contacts with friends and alumni of the University, and administer a Division I athletic program in compliance with NCAA standards.

Applications should be submitted by February 20, 1987, to the following:

Dr. Peter B. Lane, Search Committee Chairman
P.O. Box 13737, N.T. Station
Denton, Texas 76203-3737

NTSU is an Equal Opportunity/Affirmative Action Employer.

Executive Director American Baseball Coaches Association

Applications are being accepted now for the position as Executive Director of the American Baseball Coaches Association.

The Executive Director will be responsible for planning, organizing and directing activities of the ABCA under general direction of the Board of Trustees. These responsibilities include coordinating the activities of all committees, officers and staff. Responsible for generating revenue for the association and for insuring the maintenance of financial support to meet the ABCA budgetary requirements. Responsible for administering the budget of the ABCA as approved by the Board of Trustees. Responsible for the recruitment, selection, development and supervision of the administrative staff. Responsible for preparing and presenting reports to the Board of Trustees and Executive Committee.

Candidates shall have at least a bachelor's degree, previous administrative experience and preferably some baseball experience.

Salary and other terms will be commensurate with experience and qualifications.

Interested candidates should send a resume and list of references to:

Dr. John Winkin
Chairman of ABCA Search Committee
Athletic Department
University of Maine
Orono, Maine 04469

Closing date for applications: February 20, 1987.

The ABCA is an equal opportunity employer

LIBRARY/CURATOR NAISMITH MEMORIAL BASKETBALL HALL OF FAME Springfield, Massachusetts

Founded in 1959, the Naismith Memorial Basketball Hall of Fame is a successful international cultural resource serving the basketball world. The \$11 million new Basketball Hall of Fame, which opened June 30, 1985, attracted over 107,000 visitors from all over the world in its first year.

The Library/Curator will report to the Executive Director of the Basketball Hall of Fame. The successful applicant must possess a knowledge of the sport and be a subject specialist in all levels of the game. The Library/Curator will develop special collections and serve as a cataloger.

Demonstrated research and library-museum experience will be required. Salary will be in the \$20,000 range, negotiable based on library and/or museum experience.

The deadline for applications is February 28, 1987. Include three letters of reference from your most recent employer(s). Applications, including complete resume and references, should be sent to:

Mr. Joseph M. O'Brien
Executive Director
Naismith Memorial Basketball
Hall of Fame
P.O. Box 179
Springfield, MA 01101-0179

An Equal Opportunity, Affirmative Action Employer

Commissioner ECAC Metro Conference

The ECAC Metro Conference invites applications and nominations for the position of Commissioner. The Commissioner is the administrative officer of the conference and reports directly to the Executive Committee of the conference. The ECAC Metro Conference, founded in 1981, is a Division I conference and consists of nine member institutions: Fairleigh Dickinson University, Long Island University, Loyola College (Maryland), Marist College, Monmouth College, Robert Morris College, St. Francis College of New York, St. Francis College of Pennsylvania and Wagner College.

Candidates must possess a bachelor's degree and graduate degrees are desirable. In addition to having a thorough understanding and appreciation of college and university academic institutions, candidates should also have strong administrative, interpersonal, oral and written communication, promotional and fund-raising skills, knowledge of NCAA rules and regulations governing intercollegiate sports programs.

Salary for the position will be commensurate with experience and qualifications.

Deadline for receipt of application is March 1, 1987. Starting date is July 1, 1987.

Letter of application and resume should be sent to:

Mr. Paul Lizzo, Chairman
Commissioner Search Committee
ECAC Metro Conference
Long Island University
University Plaza
Brooklyn, NY 11201

Affirmative Action Employer

Director of Athletic Development

University of Wisconsin-Milwaukee invites applications for the position Director of Athletic Development. Responsible for organizing, coordinating and administering all fund-raising activities in support of intercollegiate athletics. Insuring that the athletic department staff follow and comply with all policies and procedures for fund-raising activities and events. Work with director of athletics and director of marketing, promotions and sports information to coordinate efforts and develop long-range plans. Position is responsible to the director of development and responsive to the athletics director. Bachelor's degree and at least three years of professional fund-raising experience, preferably in intercollegiate athletics. Demonstrated organization/verbal skills and proven ability to work with volunteers and donors. Submit letter of application, resume and minimum of three letters of reference by March 1, 1987, to:

Daryl Ann Leonard
Director of Athletics
University of Wisconsin-Milwaukee
P.O. Box 413
Milwaukee, Wisconsin 53201

UWM is an Affirmative Action/Equal Opportunity Employer.

COMMISSIONER American South Athletic Conference

The American South Athletic Conference (ASAC), formally announced in December 1986 and consisting of Arkansas State University, Lamar University, Louisiana Tech University, University of New Orleans, Pan American University and the University of Southwestern Louisiana, invites applications and nominations for the position of Commissioner.

The Commissioner is the chief administrative officer of the ASAC, which will include the men's sports of basketball, indoor/outdoor track, cross country, baseball, golf and the women's sports of basketball, indoor/outdoor track, cross country, tennis, volleyball.

Candidates must possess a bachelor's degree and be knowledgeable in all phases of intercollegiate athletics with demonstrable abilities in organization, communication and promotions/marketing. Salary will be competitive depending upon abilities and experience.

Resumes and nominations will be received until February 15, 1987. Resumes only. Resumes and/or nominations should be sent to:

Terry Don Phillips
ASAC Commissioner Search
Department of Athletics
University of Southwestern Louisiana
201 Reinhardt Drive
Lafayette, LA 70506-4297

ASSISTANT FOOTBALL COACH UNIVERSITY OF MASSACHUSETTS/AMHERST

Contract Length: 52-Week Calendar-Year Appointment.

Employment Date: March 1987.

Qualifications: Master's degree preferred, Bachelor's degree from an accredited institution required. Successful football coaching experience (higher education preferred). Ability to successfully complete the administrative tasks of the position.

Responsibilities: Assistant Coach of the University's Division I-AA Football Team. Coaching, recruiting, scouting, academic counseling, and other duties as assigned by the head coach.

Deadline For Submission Of Application: February 25, 1987.

Application: Please submit letter of application listing relevant specific experiences in coaching and recruiting. Also submit detailed resume, supporting documents, and the names and telephone numbers of three references to:

Chairperson, Search Committee (Football)
Department of Athletics/Intramurals
Boyden Building
University of Massachusetts/Amherst
Amherst, MA 01003

Letters of recommendation are useful in the screening process but may be deferred if desired.

University Of Massachusetts
Is An Affirmative Action/Equal Opportunity Employer

Men's and Women's Soccer Committees propose changes

The NCAA Men's and Women's Soccer Committees met recently in separate sessions to discuss and take action on issues affecting their respective sports. Following are summaries of those meetings.

Men's committee

Divisions I and II members of the Men's Soccer Committee will recommend to the Executive Committee that a final-four format be adopted, to be played at an on-campus site for the 1987 season.

The committee, meeting February 4-7 in Kansas City, also is requesting flexibility for Divisions II and III to allow a three-day, final-four format, with an off day between the first and second rounds. In addition, Division II is requesting an off weekend, playing the final four the week after Thanksgiving. Division I will study possible realignment of regions in

order to better match regions with conference membership. This will minimize the number of automatic qualifiers within a region and reduce total regions from eight to four. An additional at-large selection also will be requested, increasing from 23 to 24 the teams in the field.

In other action, the committee voted to allow experimentation with substitutions and yellow cards administered by officials. Any conference or institution wishing to experiment with either of these rules must submit a written request to C. Cliff McCrath, secretary-rules editor, Seattle Pacific University, Seattle, Washington 98119, by August 1, 1987.

Automatic qualifiers recommended by each division are as follows:

Division I—Atlantic Coast Conference, Big East Conference, Colonial Athletic Association, Eastern College Athletic Conference, Metropolitan Collegiate Athletic Conference and Pacific Coast Athletic Association.

Division II—California Collegiate Athletic Association, New England Collegiate Conference, Northern California Athletic Conference, Pennsylvania State Athletic Conference and Sunshine State Conference.

Division III—Dixie Intercollegiate Athletic Conference, Independent College Athletic Conference, Massachusetts State College Athletic Conference, Michigan Intercollegiate Athletic Association, New Jersey State Athletic Conference, North Coast Athletic Conference, Southern California Intercollegiate Athletic Conference and the State University of New York Athletic Conference.

Women's committee

The Women's Soccer Committee, meeting February 2-5 at Newport Beach, California, reviewed the format of the Division III championship and will recommend that first- and second-round sessions be conducted Friday and Sunday rather than Saturday and Sunday.

This change, which needs approval of the Executive Committee, will minimize the advantage of teams that receive a first-round bye and play the winner of the first-round game the following day. If this is denied, the recommendation is that the championship be conducted over three consecutive weekends under the same format as the National Collegiate Championship.

Also needing Executive Committee approval is the soccer committee's proposal for an increase in officials' fees.

Recommendations were made to three special Council subcommittees regarding playing and practice seasons, recruiting processes, and coaching-staff and scholarship limitations.

In other discussion, the committee voted that the final four should not be conducted over Thanksgiving weekend because of the potential negative impact on attendance, and that semi-

final games should be conducted at 11 a.m. and 1 p.m. Saturday and the championship game at 1 p.m. Sunday.

The committee appointed the following as chairs of the regional advisory committees:

National Collegiate: New England—Michelle Morgan, Amherst College; Northeast—Sandra Weeden, State University of New York, Stony Brook; Central—Meridy Smith-Mamani, University of Cincinnati; South—Mike Covone, Barry University, and West—Susan A. Carberry, California State University, Dominguez Hills.

Division III: New England—Ms. Morgan; Northeast—Ms. Weeden; South/Mideast—Cheryl Marra, Denison University, and West—Ken Andrews, Macalester College.

It was agreed that effective with the 1988 season, the committee would limit regional advisory committee members to three-year terms insofar as possible.

Record

Continued from page 13

11. North Caro.	105
12. Michigan	102
12. Alabama	102
14. Texas A&M	70
15. Tennessee	51
16. Southern Ill.	46
17. South Caro.	44
18. Miami (Fla.)	40
19. Penn St.	32
20. Colorado St.	19

Division II Men's Swimming

The top 10 NCAA Division II men's swimming teams as compiled by the College Swimming Coaches Association of America through January 28, with points:

1. Oakland	392
2. Cal St. Chico	274
3. Cal St. Northridge	259
4. Tampa	208
5. Cal St. Bakersfield	123
6. Shippensburg	101
7. Missouri-Rolla	93
8. Wright St.	90
9. Clarion	71
10. Cal St. Hayward	58

Division II Women's Swimming

The top 10 NCAA Division II women's swimming teams as compiled by the College Swimming Coaches Association of America through January 28, with points:

1. Clarion	338
2. Army	241
3. Tampa	240
4. Cal St. Northridge	218
5. Northern Mich.	195
6. Wright St.	112
7. Fla. Atlantic	97
8. UC Davis	75
9. Navy	72
10. Bloomsburg	56

Division III Men's Swimming

The top 10 NCAA Division III men's swimming teams as compiled by the College Swimming Coaches Association of America through January 28, with points:

1. Kenyon	384
2. St. Olaf	246
3. Wheaton (Ill.)	229
4. UC San Diego	227
5. Denison	107
6. Johns Hopkins	97
7. Claremont-M-S	85
8. Hope	69
9. Amherst	65
10. Williams	61

Division III Women's Swimming

The top 10 NCAA Division III women's swimming teams as compiled by the College Swimming Coaches Association of America through January 28, with points:

1. Kenyon	386
2. UC San Diego	259
3. Ithaca	156
4. Pomona-Pitzer	137
5. Hope	91
6. Denison	89
7. Smith	82
8. Lake Forest	70
9. Hamline	52
10. Wheaton (Ill.)	47

Men's Volleyball

The Tachikara top 20 NCAA men's volleyball teams as compiled by the College Volleyball Coaches Association through matches of February 2, with records in parentheses and points:

1. Penn St. (7-0)	231
2. UCLA (13-3)	225
3. Pepperdine (4-1)	214
4. Southern Cal (9-3)	202
5. UC Santa Barb. (14-3)	182
6. George Mason (6-1)	174
7. Long Beach St. (9-2)	168
8. Stanford (9-3)	154
9. Hawaii (0-0)	151
10. Ohio St. (5-3)	120
11. Ball St. (9-8)	110
12. San Diego St. (0-1)	108
13. Cal St. Northridge (3-8)	90
14. IU/PU-Ft. Wayne (7-4)	85
15. Loyola (Calif.) (10-3)	78
16. UC San Diego (NA)	61
17. Rutgers-Newark (1-3)	60
18. East Stroudsburg (0-1)	52
19. Navy (1-7)	33
20. Princeton (0-0)	15

Announcing:

National is the Official Car Rental Company for NCAA Championships.



National is proud to be the "official car rental company" for NCAA Championships. And we're out to perform well on your scorecard. Just look at the outstanding travel value we provide you:

Special Low NCAA Rates. Simply show your NCAA affiliated school I.D. at the time of rental to take advantage of these low unlimited mileage daily rates:

Car Type	Daily Rate*
Economy	\$31.00
Compact	32.00
Mid-size	33.00
Full-size 2-dr	34.00
Full-size 4-dr	35.00

Cars in Top-Condition. According to the United States Auto Club's recent car condition audit of the major car rental companies, National's cars are "the best in overall condition." Choose from our wide range of car sizes and models. You'll enjoy the same kind of reliability with whatever vehicle you select to fit your plans.

24-Hour Peace of Mind. Thanks to our strict car maintenance program, you'll probably never need this service. But it's nice to know that National, backed by the Amoco Motor Club, provides free 24-hour emergency road service. Assistance can be just a toll-free call away. Anytime of night or day.

Convenient Service Where You Need Us. National Car Rental is conveniently available with fast, friendly service at over 3000 locations in 113 countries and territories around the world. You'll find us in over 1000 locations in the U.S. alone. And it won't be hard to find us. Our rental counters are right in the major airport terminals where you need us—to get you off and running without delay.



The NCAA deserves National attention:

For details and reservations, call toll-free 800-CAR-RENTSM or your travel consultant.

*Rates shown are non-discountable, available at participating locations and subject to change without notice. Specific cars are subject to availability. You pay for gas used and return the car to the renting location. Normal rental qualifications apply. A surcharge may apply in certain metro areas. Rates slightly higher for drivers under 25.