

The NCAA News

July 30, 1986, Volume 23 Number 28

Official Publication of the



National Collegiate Athletic Association

Nominations open Presidents Commission to have 11 positions vacant in January

The NCAA Presidents Commission's Presidential Nominating Committee is inviting nominations from chief executive officers of NCAA member institutions to fill vacancies on the commission that will occur in January 1987.

Eleven commission terms expire in January, and two of the chief executive officers holding those positions are eligible for reelection to a full four-year term because they have served less than half a term. The other nine positions involve three each from Divisions I, II and III.

CEOs at NCAA member institutions may submit nominations

to the Presidential Nominating Committee for any of the January expirations. All such submissions will be considered by the nominating committee in conjunction with the Commission's September 30-October 1 meeting in Kansas City, Missouri.

In addition, any candidate receiving nominations from at least 10 chief executive officers automatically will be included on the eventual ballot for the appropriate position, as specified in the NCAA constitution.

Balloting will occur this fall, and results of the election will be

See Presidents, page 5

Nominations deadline September 5 for NCAA officer, Council posts

Member institutions or conferences wishing to submit nominations for four NCAA offices and 11 Council positions with terms expiring in September 1987 must do so by September 5.

As reported in the July 16 issue of The NCAA News, nominations may be sent to the chair of the NCAA Nominating Committee, C. W. "Hootie" Ingram, Florida State University (P.O. Box 2195, Tallahassee, Florida 32316), or to any member of the Nominating Committee. A copy of the nomination also should be sent to Fannie B. Vaughan at the NCAA national office.

Those wishing to nominate individuals for Council positions should consult Constitution 5-5(c), which lists the Association's geographical regions for purposes of Council representation.

A brief paragraph describing the qualifications of each nominee should accompany the nomination form, which appears on page 5 of this issue.

The Nominating Committee will propose candidates to serve as NCAA president, secretary-treasurer, Division I vice-president and Division II vice-president. The latter two positions must be filled

See Nominations, page 4

Candidates sought for positions on NCAA general committees

Administrators at NCAA member institutions are invited to submit nominations for vacancies on NCAA general committees, which are appointed by the Council.

The vacancies to be filled are for terms beginning September 1, 1987. Committee members who are eligible for reelection normally are reelected. The NCAA Council appoints general-committee members according to the provisions of Bylaws 12-1 and 12-3. Vacancies on sports committees will be listed in The NCAA News in October.

Sports committee members are elected by the annual Convention upon the recommendation of the Men's Committee on Committees and the Women's Committee on Committees.

Nominations should be submitted to Fannie B. Vaughan, administrative assistant, in the NCAA national office no later than August 29.

Administrators are to submit the nominee's name, title, institution, division, district and conference, along with a brief paragraph

See Candidates, page 5

Executive Committee will consider 1986-87 budget for Association

Approval of the Association's 1986-87 budget, requests for reconsideration of earlier actions and reports from several general and sports committees are among the agenda items for the August 11-12 meeting of the NCAA Executive Committee in Seattle.

Budget projections for the 1986-87 fiscal year were in final draft stages at press time. Complete details of the budget and a summary of Executive Committee actions will be included in the August 27 issue of The NCAA News.

In addition to the general operating budget for the next fiscal year, the committee also will review the 1985-86 fiscal year and year-end projections, as well as allocations of any excess receipts.

Also to be reviewed is a comprehensive reevaluation of NCAA programs, services and management procedures, which was designed to

increase the efficiency of the Association's organizational and administrative structure.

Other major issues to be considered by the Executive Committee include a request by the Special NCAA Postseason Drug-Testing Committee for reconsideration of an interpretation of the penalties to be imposed as part of the postseason drug-testing program, which is set to begin this fall.

The Executive Committee earlier affirmed an interpretation that would make squads in team-championships competition ineligible for further participation if a student-athlete who played in earlier rounds of the postseason event subsequently tested positive for a banned substance. The Executive Committee will be asked to revise its interpretation to limit declaration of ineligibility to the individual student-athlete(s) and not their team(s).

In addition, a report from the spe-

cial committee also will be received from that group's chair, former NCAA President John L. Toner.

Another request for reconsideration involves one of the most publicized nonbasketball-related championships decisions in recent NCAA history. The Baseball Committee has requested Executive Committee reconsideration of action it took in May to adopt a final-four format for the College World Series beginning in 1988.

In May, the sports committee had recommended adoption of a final four only if a lucrative network television contract for the event had been secured by the time the format change would take effect. However, the Executive Committee acted to approve the change regardless of the status of broadcast coverage of the event.

In other business, the Executive Committee will receive a status report on the development of a set of

See Executive, page 4

Members' share of NCAA revenues continues to grow; now 60 percent

The 1986-87 NCAA revenue budget probably will reflect about a 16.2 percent increase with an estimated 60 percent of those moneys being paid directly to NCAA member institutions, according to the chair of the NCAA Special Budget Subcommittee, Col. Harvey W. Schiller, faculty athletics representative at the U.S. Air Force Academy and chair of the budget subcommittee, made that announcement after the meeting of the budget subcommittee July 20-21.

"The phenomenal growth in the NCAA's capacity to generate revenue is directly beneficial to the membership, and particularly those institutions responsible for contributing to that revenue growth," Schiller said. "Obviously, the Division I men's basketball tournament is the primary source of revenue, accounting for 76.4 percent of the gross revenues, and that tournament's net NCAA revenues contribute approximately 55 percent of the moneys used in payment of the NCAA expense budget."

Schiller emphasized that as a result of past management decisions, the NCAA returns a remarkable percentage of its generated dollars in direct



Col. Harvey W. Schiller

payments to NCAA member institutions. In 1975, the NCAA returned 50.5 percent of gross revenues to its members. In 1980, the percentage of dollars paid to member institutions increased to 58.4 percent; and in

1985, an all-time record high of 66 percent of generated dollars was paid to the membership. (See chart, page 4.)

The membership payments were \$2.98 million in 1975 and \$11.8 million in 1980; and in 1985, the amount paid out was \$29.5 million.

"The accounting for the 1985-86 fiscal year will not be completed until November," Schiller said, "but it is anticipated that payments to member institutions in the current year will be above the 60 percent level."

"The percentage of return," Schiller said, "is dependent obviously on a number of factors, and whether the NCAA Executive Committee can continue to achieve the remarkable level of 66 percent is problematical. It is my own view, however, that despite such costly necessities as the NCAA drug-testing program, the NCAA in the near-term future of the next two to three years will be able to return a majority of its revenue to the membership."

In calculating the moneys paid to the membership, only those funds that are paid as a result of NCAA

See Members, page 4

Reports by subcommittees top agenda for Council

The first reports from four NCAA Council subcommittees will highlight the agenda for the Council's summer meeting, scheduled August 13-15 at the Westin Hotel in Seattle.

Appointed after the spring Council meeting, the subcommittees were created to review coaches' outside income, financial aid issues, playing seasons and the recruiting process in college athletics.

The reports will be presented in Seattle by the subcommittee chairs—B. J. Skelton, Clemson University, on coaches' outside income; David L. Maggard, University of California, Berkeley, financial aid issues; NCAA Secretary-Treasurer Wilford S. Bailey, Auburn University, playing seasons; and Albert M. Witte, University of

Arkansas, Fayetteville, recruiting.

It is not likely that the Council will arrive at any decisions in this meeting regarding possible legislation in those four areas. Such decisions more likely will occur in the Council's fall meeting, scheduled October 13-15 in Kansas City, Missouri.

Numerous proposals for legislation to be considered at the 1987 NCAA Convention may come from various other committee reports at the Seattle meeting, however.

Committees scheduled to report include the Academic Requirements, Classification, Division I Championships, Eligibility, Executive, Extra Events, Insurance, Long Range Planning, Postseason Football, Recruiting and Research Committees; the Com-

mittee on Infractions; the Subcommittee on Eligibility Appeals, and the following special committees: Deregulation and Rules Simplification, Foreign Student Records, Measuring Athletics Program Success, and Postseason Drug-Testing.

The Council will receive an extensive document entitled "Comprehensive Reevaluation of NCAA Programs, Services and Management Procedures for the Purpose of Achieving Increased Efficiency in the NCAA Organizational and Administrative Structure."

Much of that document already has been reviewed by the Special Budget Subcommittee and the Administrative Committee, but a special paper detailing steps necessary to

implement two portions of the document—one proposing an extensive restructuring and reduction of NCAA committees and the other suggesting steps to reduce paperwork and time demands for NCAA staff and committees—will be presented to the Council.

Also on the agendas for the Council and the three division steering committees are the customary review of Administrative Committee actions, membership data and requests, new and revised interpretations, all legislation already prepared for the January Convention, a few appointments to vacancies on committees, a status report on enforcement activities and implementation of the new compliance services, and the quarterly review of governmental activities.

In the News

Unattainable

Total victory over drug abuse is not an achievable goal. Page 2.

NCAA speaker

Olympic great Wilma Rudolph has been named keynote speaker for the NCAA Professional Development Seminar. Page 4.

Officiating clinics

A pilot program of four regional clinics to improve women's basketball officiating has been approved. Page 9.

Sports myth

The belief that the home-site team has an advantage in the NCAA men's basketball play-offs is untrue, statistics show. Page 12.



There is no such thing as total victory over drug abuse

By Dick Fenlon

The Columbus Dispatch

The Ohio State football player is in Earle Bruce's office. The coach says he can tell something's wrong, because everything in the player's life appears to be going downhill.

"What's the problem?" Bruce asks.

The player says, "There's no problem."

So the coach tries another tack, goes at it from another angle. Sternness becomes understanding, understanding becomes anger, anger becomes compassion. Still, the player admits nothing.

It is the classic stonewall, and the stonewall wins.

"You've got a good-looking, fuzzy-faced kid sitting there," said Bruce. "And he says, 'No, you're wrong, coach,' and you tend to believe him. Maybe it's because you want to do that. Or maybe you think that maybe you're wrong."

"And all of a sudden, you find out you're right. That where all that smoke was, there was a fire."

Once, a coach had only his own suspicions. "Half the time, after I'd spent an hour with a young man because of his problems, he'd leave and I'd think there was something wrong with me," Bruce said. "And he was probably high when he was sitting there."

Now, there is evidence. It comes from weekly drug testing. Ohio State is going into it for the third year in football.

"I notice that Joe Paterno came out for it," Bruce said. "It's about time college coaches spoke up and said what needs to be done and why we need to do it. And anyone who says it's not being done for the sole purpose of helping the young man is crazy."

You wonder if you'd even want to be a coach today; but, then again, it's probably no different than being a parent, multiplied by 90. In dealing with drug abuse, Bruce said he's reluctant to give up on anybody.

"I've been a football coach for 34 years," he said, "and it's tough for me to say, 'I'm finished with you.' I'd rather penalize them, work them harder, and eventually either make them come

around or make them quit. It's very difficult for me to say, 'Get out of here—we don't need you anymore.' It's almost like they're your own kids. You don't kick your own kids out of the house. You try to save them, as much as possible."

So Bruce does what he thinks is best. Dealing with the results of drugs—doing the right thing after the positive test—is an imperfect science, and there are no textbooks to help. "We've not started some kids, and left some at home on

trips," said Bruce. "It was costly—very costly. One father sat in my office and tried to talk me out of it."

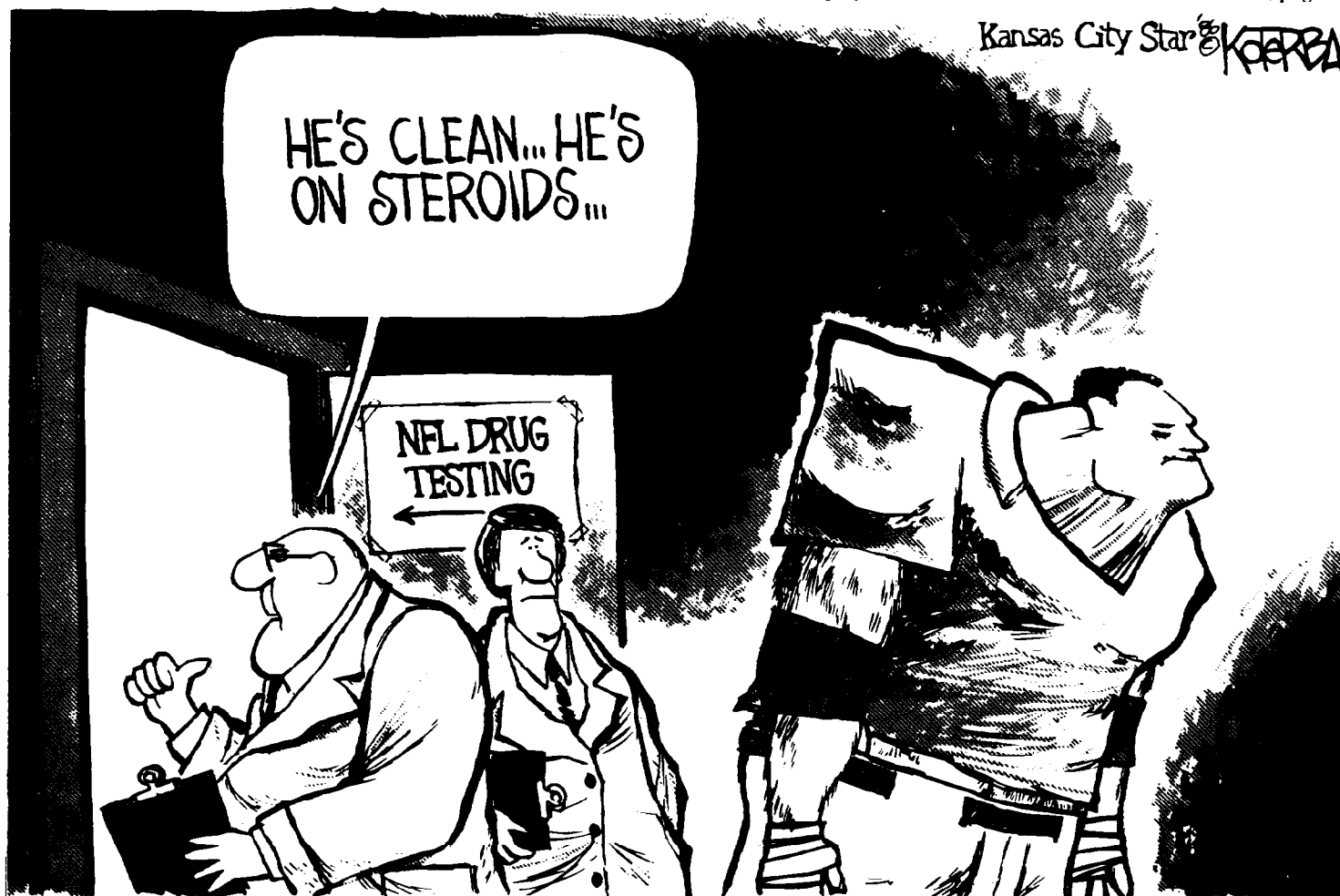
Bruce won, and lost, at the same time. That's usually the way it is. There is no total victory in dealing with either drugs or alcohol abuse, which Bruce contends is a far bigger problem than drugs. Angry at what a player is doing to himself, Bruce can at the same time be moved to compassion by knowing where that player

came from.

"What if your first drug encounter was at age 13 or 14, and the supplier was your dad?" he asked. It was the case, he said, of one of his players.

"But the one thing that I try to tell our players is that no one put that cocaine up anybody's nose or made him free-base it. You walk in your own shoes. You're responsible for your actions."

See There is, page 3



It's racist to say Blacks can't meet new academic criteria

By Thomas Sowell

Scripps-Howard News Service

You may have heard the one about the college athlete who won five letters—but had to have someone else read them to him. Unfortunately, that is too close to painful reality to be funny.

Of this year's 18 first-round draft choices of

the National Basketball Association, fewer than half graduated from the colleges they attended. Not one majored in math, English, philosophy, engineering or any of the sciences. Most majored in recognized "gut" subjects. This is a longstanding pattern among college athletes in other sports as well.

While a handful of these youngsters will get

dazzling salaries when they turn pro, most college athletes will not be chosen in any round by any professional team. More than 90 percent of college athletes never sign a pro contract.

Add to this the fact that most college athletes do not get a degree—not even in Mickey Mouse subjects—and it is clear that the vast majority, whom you never hear about, have pathetically little to show for four years of their life. They have simply spent four years providing entertainment for their classmates, alumni, media audiences and paying customers in the stadium.

The rationale is that college athletics is an "amateur" activity. The coach's salary may be in six figures and the college may make millions; but if a few dollars manage to trickle down to the athlete who puts his body on the line, that is regarded as a scandal. The real scandal is not in those penny-ante payments under the table but in what goes on openly all the time.

The colleges' pious explanation of unpaid athletes who bring in big bucks at the box office is that they are receiving an "opportunity" for "education."

This explanation wears pretty thin when you realize that most of these athletes don't get a degree—and that those who do often squeak by in meaningless courses. The kinds of academic standards applied to athletics was revealed when one university managed to keep one of its basketball players going for two years even though he couldn't read. A faculty member who protested against lower standards for athletes at another university was fired.

Any sports fan knows that a disproportionate number of both college and professional athletes are black.

Athletics provides a way for some to escape poverty and enter a world they would never see otherwise. Tragically, however, it creates the illusion of far more opportunity than actually exists. There are fewer than 3,000 Blacks in all professional sports put together, including coaches and trainers. This is nothing for millions of black youths to rely on.

Belatedly, the NCAA has made some small efforts to clean up its act. It has ruled that athletes entering college must have a total of 700 points from their verbal and math scores on the Scholastic Aptitude Test in order to be eligible to play. What does that amount to? Well, technically, it is 700 points out of a possible 1,600. But SAT scores do not start at zero. You get 400 points just for showing up, so it's really 300 points earned out of a possible 1,200 points. We're not talking about Rhodes scholars.

Unfortunately, some civil-rights leaders have denounced the new NCAA rule, saying that it's racist to force Black students to meet such standards.

I think it is racist to say that they can't meet the standards. Colleges who want good teams will have no choice but to bring these youngsters up to requirement, perhaps by tutoring them in the summer before they enter. It may be the only decent education they will ever get.

Economist Thomas Sowell is a senior fellow at the Hoover Institution on War, Revolution and Peace in Stanford, California.

Shorter basketball season? No chance

J. D. Barnett, head men's basketball coach
University of Tulsa

Tulsa World

"That (reducing the number of basketball games) won't happen because of economic reasons. People who are putting 15,000 and 17,000 in their arenas are going to fight that."

Nancy Reagan

First Lady of the U.S.

The Washington Post

"We must create an atmosphere of intolerance for drug use in this country. We must educate

wanted on campus. The man was incredibly naive."

William J. Bennett
Secretary of Education

Knight-Ridder Newspapers

"I will be glad to act if Congress gives me the authority to withhold Federal funds from schools that do not protect their students from drugs."

"If our academic and cultural institutions have become so 'sophisticated' that they have forgotten their elementary duties and responsibilities, then it is time for us to call them back to first principles and responsibilities."

"Why don't all the people who run our colleges agree that colleges are going to be drug-free?"

The Champaign-Urbana News-Gazette
Excerpted from an editorial

The problems of alcohol and drugs, the sex scandals, the recruiting violations, and all the other negatives that make such big sports headlines are largely attributable to the NCAA's prime and rewardable incentive. That's winning.

If your college wins big in football, it wins big in television income. If it fits into the NCAA basketball journey to the Final Four, then the longer it can stay in, the more money it will earn. All the time, of course, the NCAA is using the talents of young people and the facilities and goodwill of its membership to build its own resources.

See Opinions, page 3

Opinions Out Loud

our children to the dangers of drugs. We must reach those addicts who need help so that they can save themselves. We must stop the trafficking of drugs. And we must take individual responsibility for the drug problem.

"It's too late to save Len Bias, but it's not too late to save the young kids who idolized him. For their sake, I implore you to be unyielding and inflexible and outspoken in your intolerance to drugs."

"Those who don't take an active, hostile position against drugs are giving their tacit approval. People have turned their backs long enough. For too long, our nation denied that a problem even existed. And just the other day, I heard the chancellor of a major university deny that students could get any kind of drug they

The NCAA News

[ISSN 0027-6170]

Published weekly, except biweekly in the summer, by the National Collegiate Athletic Association, 1111 Avenue at 63rd Street, P.O. Box 1906, Mission, Kansas 66201. Phone: 913/384-3220. Subscription rate: \$20 annually prepaid. Second-class postage paid at Shawnee Mission, Kansas. Address corrections requested. Postmaster send address changes to NCAA Publishing, P.O. Box 1906, Mission, Kansas 66201. Display advertising representative: Host Communications, Inc., P.O. Box 3071, Lexington, Kentucky 40596-3071.

Publisher Ted C. Tow
Editor-in-Chief Thomas A. Wilson
Managing Editor Timothy J. Lilley
Assistant Editor Jack L. Copeland
Advertising Director Wallace I. Renfro
The Comment section of The NCAA News, is offered as opinion. The views expressed do not necessarily represent a consensus of the NCAA membership. An Equal Opportunity Employer.

Georgia could help decide future role of college athletics

By Lee Shearer

The Athens (Georgia) Observer

The University of Georgia is in a unique position to make some hard decisions about the relationship of the university and intercollegiate athletics," an authority on sports and the law told a faculty reform committee recently.

"The nation is looking to Georgia to see what it will do," said John C. Weistart, Duke University law professor.

Because Georgia got wide national attention during the Jan Kemp trial, so will its efforts at reform, Weistart told the University Council's ad hoc committee on academic policies. The earlier recommendations of a similar committee of arts and sciences professors, he told the faculty group, had been widely reported in newspapers across the country.

Weistart began with the premise that "a college or university should first decide what sort of educational institution it wants to be. Its athletics program should mirror these choices and adhere to the same level of academic aspiration."

By the time Weistart was through, his talk had become, according to one key committee member, "sort of a watershed for me in my thinking."

English professor George Marshall, the committee's chair, would not elaborate on what that watershed represents but did say, "What I see more and more as coming is concern for the rights of athletes."

Another committee member, math professor Jeremy Kilpatrick, also was impressed. Kilpatrick said he was "very taken" with Weistart's argument that faculty should have a voice in athletics policy. In the present situation of

presidentially appointed faculty members, "basically all you're getting is a proxy vote," said Kilpatrick. "If the faculty are appointed by the administration, you may as well let the administrators do it."

Another important point, Kilpatrick felt, was Weistart's argument that a school's athletics teams ought not be a group consisting largely of

John C. Weistart



students barely able to meet a school's admissions requirements but "that we should try to get the distribution for the athletes to look like the distribution (as measured by SAT or grade-point average) for the rest of the students. I think that's a very important point."

Weistart said a committee like this needs to ask two questions: "What should we do?" and "How did we get here?"

He pointed out that even coaches in academically suspect programs feel comfortable in making pronouncements about the value of education, so you have to ask what are the assumptions behind the coach's statements.

Weistart's assumption is that academics come first, but "a lot of people would disagree with that," he said.

He said that often athletics departments represent a group of students "educationally distinct" from other students. That distinction is sometimes justified by the services they perform for a school, enhancing revenue and image, but Weistart said those justifications are inadequate.

He disagreed for three reasons, he said: "Colleges and universities are endowed with a public trust that assumes they will further the education of young people;

"The stated guidelines of the NCAA assume that athletes will be like other students in the university. The NCAA goes to great lengths through its regulatory process to make sure athletes get 'nothing special.'"

"I believe that there is great potential for embarrassment to a university when an athletics department operates distinctly from the university."

Such scandal, he argued, "impedes the larger education function" of a school. And it is embarrassing, he said, because "The public expects that universities will do what they say they're doing."

But "achieving academic integrity in a big-time athletics program is really very difficult," he said, because "the structure of athletics in this country is just a little out of whack."

The only option for a youngster talented in

football or basketball is a four-year school. That "sounds as if it's the beginning of a formula for disaster," Weistart said.

If there were any choice, many would choose not to go to college, as they do in tennis, baseball or hockey, he said. But in football and basketball, that choice to enter the minor leagues does not exist.

That "unnatural marriage" of college and sports creates constant pressure on admissions standards, which have gone lower and lower for 15 years, he said.

But the athletes are on the short end either way. "There's a tremendous unfairness in the present arrangement," Weistart argued. "The higher you raise your admission standards, the more you deny promising young athletes the opportunity to pursue their sport."

Weistart spoke from a prepared outline, but soon departed from it in response to the committee's questions.

Here are some of his other observations: "One idea I feel strongly negative about is the idea of a special curriculum for athletes."

"Isn't it a little unusual for a faculty to give outsiders (the NCAA) extensive control over the relationship of its students to the university?"

"(NCAA deliberations) often turn not on what is best for the athletes, but on how much it's going to cost."

"(The NCAA) operates too much like an economic cartel while dabbling in educational policy."

"The last point is, I think athletes ought to end up with something at the end of their athletics careers. The university's responsibility to them should not end when their usefulness to the university has ended."

Opinions

Continued from page 2

Mr. Byers and the NCAA will embark this November on an extensive drug-testing program for national championship events. That will be the kind of window dressing that the NCAA has been furnishing intercollegiate athletics for the last quarter-century.

The ultimate impact of those championships will remain big money—big money for the winners in the tradition of big-time college athletics, with all the human problems that tradition has created.

Perhaps the newest and perhaps the most serious problem is drug abuse. But, that only adds to a long list including alcohol, cheating, deemphasis of academic programs for athletes and the demoralizing impact of winning at any cost.

Despite its sloganeering; its creation of token scholarship programs, and its rules, commissions, committees and gigantic organization, the NCAA is effective only in augmenting its own income and offering to member institutions the incentive of money for those that win.

Presidents of many of the major institutional members last year began to make themselves heard about what they see as wrong in the national structure of intercollegiate athletics.

Those voices should continue to be heard rather than permitting intercollegiate athletics to self-destruct. The danger signals are there, and Mr. Byers and the NCAA aren't helping to relieve them."

Furman Bisher, columnist

The Atlanta Journal

"I would not try to complete a box score of the college basketball players who have been arrested or sacked for lifting television sets,

There is

Continued from page 2

Some people all want to blame it on this, or that, or something else. Or find an excuse. I can't go to a class for a kid, either, or see that he doesn't go up on High Street and drink beer and alcohol every night. I can't do that. I like to think we have some degree of control over our players, but that's not part of it. That's part of being a student."

Bruce said he's all for education. "We've tried education since the day I arrived, and that's great," he said. "But that five percent—or whatever it is—who need the help, they're addicts. And addicts are liars. They don't tell the truth. They can't help themselves. They're hiding it. And they're not the problem, you are. And what do you do about that five percent?"

Eventually, perhaps, despite all your intentions, you flat give up. No person likes to do

stealing cars, rape, shoplifting, peddling drugs or generally violating society. It seems that in some warped minds, basketball scholarships are viewed as a license to have the run of the pasture.

"It is shameful that the game, born of the purest of intentions by a pious gentleman, should have become the cesspool of college sports. Rigged games once were the coaches' major curse. Now, the downward swing is to drugs and other forms of debauchery, while coaches turn their heads or give their animals protective cover...."

"The finger points in the end to the coach who'll abide anything to get four high-scoring seasons. It's no basketball monopoly. There was a football coach who lost his place at a big-time school mainly because, at a postseason meeting, he told his players, 'I don't care what you do. Just don't get caught.' True story."

John Reid, executive director
Holiday Bowl

Arizona Republic

"The whole sports business is getting tougher. The bowl business is exceedingly tough. We're feeding on each other. It's not a healthy situation."

Brian Bosworth, varsity football player
University of Oklahoma

The Associated Press

"I have a little bit of a strange image and people think, 'Hey, he's a football player, acting like that, he has to be on something.'"

"I am here to prove you can be different and still be straight."

"It's just that we're in a glamorous position, and some people think that (drugs) go with the glamorous type. I abhor the fact that there are those who feel they have to do drugs to fit that stereotype."

that, and Bruce said he is fortified by the knowledge that the problem percentage is very small.

"We're talking about 95 to five, not 50-50," he said. "I'd be out of coaching if I thought it was that bad."

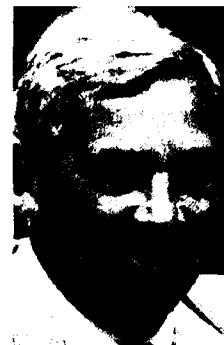
Some brought their problems with them from high school.

Said Bruce, "I don't think you can know about a kid in high school. Because normally, it's hidden. The coach won't talk about it, or isn't informed enough to know what to do. And parents are very protective. So the only way we find out about it is after he gets here. We've steered clear of some players. You don't want to bring too many problems into your program."

Left unsaid is the obvious point: There'll be plenty to deal with without asking for more.



Brian Bosworth



Eugene F. Corrigan

Eugene F. Corrigan, athletics director
University of Notre Dame

The Dallas Morning News

"The CFA (College Football Association) was created to get schools with common problems concerning football together to work out those problems. And I think the CFA has done that very well. It has gotten football coaches, athletics directors and faculty reps together in the same room. It's addressed some significant issues and provided the impetus for legislation."

"Everyone is getting some money (the organization has provided for a more even distribution of television revenue). Not everyone is getting the exposure. But we're still working on it."

"Not having the Pac-10 or Big Ten (as a member of the organization) is a gap. Ideally, you would like to have everyone involved. But it has not worked out that way, nor does it appear it will change in the near future."

Vincent J. Dooley, athletics director
University of Georgia

The Associated Press

"I do believe that this is one of the problems with the NCAA in dealing with people and problems (the NCAA's refusal to grant a discretionary waiver to a rule so that Dooley could watch his son play in a state high school all-star football game). What they're (NCAA national office) is saying is right - there is no provision for a discretionary waiver to this rule. But I think this is certainly an example of where an exception to a rule would be in order. There should be some sort of mechanism for appeal where common sense should prevail."

"This hurts the NCAA. It gives the organization a bad name. No family in America would understand this. It demonstrates a lack of common sense."

The Orlando Sentinel

Excerpted from an editorial

"What can be done to boost the declining number of minority students attending colleges and universities nationwide?"

"The Southeastern Consortium for Minorities in Engineering has one sensible answer: Identify and nurture academically promising students as early as possible."

"That's what this group of 22 universities and 160 corporations has been doing in the past 10 years to help more than 26,000 students in seven Southeastern states."

"Teachers are trained at the universities to identify minority students who may have the aptitude for engineering, mathematics and science as early as the sixth grade. They then encourage the students to take advanced college preparatory courses such as algebra and physics."

"Students also get assistance from local minority engineers who tutor them through their junior and senior years in high school. The result: Of 2,300 high school graduates last year assisted by the consortium, 86 percent continued their education. Contrast that to the national average of about 50 percent of all high school graduates who said they planned to go on to college."

"Why not expand this successful program to other subjects?"

Letter to the Editor

Remark was off base

To the Editor:

As an NCAA Division III baseball coach, I take strong exception to statements made by Joe McIlvaine of the New York Mets. His view of college baseball was grossly unfair. Here at Montclair State, we played 48 games this spring. However, last fall we played 25 games, and this summer all of our players will participate in leagues averaging 40-game schedules. Our preseason scrimmages total 10 games. Therefore, our nonscholarship athletes played approximately 123 games this year. This is roughly the equivalent of a minor-league season and double the number Mr. McIlvaine claims a college player can expect.

Mr. McIlvaine is also way behind the times if he believes there is only one coach for a college team. At Montclair State, we have separate coaches for the infielders, outfielders and hitters. I supervise the pitchers and catchers. This is all at a Division III school.

College baseball is a step to the pros. One merely has to study the draft list yearly to see where the trend has gone. Mr. McIlvaine's mistake is in thinking a college career results in an immediate major-league roster spot. Very few college coaches believe or foster that philosophy. Good college baseball does serve as a substitute for the first few minor-league seasons in a player's development.

If it doesn't, Mr. McIlvaine, why are so many college players drafted each season?

Kevin Cooney
Head Baseball Coach
Montclair State College

Wilma Rudolph selected as speaker for seminar

Three-time Olympic gold medalist Wilma Rudolph will be keynote speaker at the NCAA Professional Development Seminar August 15-16 in Indianapolis.

The seminar, "Marketing Collegiate Athletics," will be held at the Radisson Hotel, where a panel of promotion and marketing experts will share their



Wilma Rudolph

ideas with athletics department personnel from across the country.

Rudolph won gold medals in the 100- and 200-meter dashes and 400-meter relay for the United States at the 1960 Olympics in Rome. At the time, she was a student at Tennessee State University. Her life story was the subject of a recent NBC television movie, "Wilma." The 20th of 22 children, Rudolph suffered several debilitating childhood illnesses, ranging from scarlet fever to polio. She walked only with the aid of a leg brace until

the age of nine.

After graduating from Tennessee State, she served her country in numerous offices, including positions with the Department of Labor and the U.S. Olympic Committee. Since 1982, she has directed the Wilma Rudolph Foundation in Indianapolis, which provides youths with supervised training, motivation and competition in athletics disciplines. "Integral to fulfilling those purposes," Rudolph says, "is a strong emphasis on academic achievement as a necessary complement to the attainment and maintenance of self-worth and productivity in life."

She recently was named one of the 100 most popular lecturers on the college circuit.

Registration for the seminar is \$160 for NCAA members, \$125 each for three or more representatives from one institution. The fee includes the seminar sessions, reception, continental breakfast, luncheon, seminar notebook and all materials.

Special discount rates are available through American Airlines by contacting Fugazy Travel, Inc. (800/243-1800). Hotel reservation cards will be mailed upon confirmation of seminar registration. Room rates are \$60 for single or double occupancy. For more information, contact Beverly Reynolds, Host Communications, at 606/253-3230.

I-AA title match moved back

Due to a scheduling conflict, the date of the 1986 NCAA Division I-AA Football Championship has been changed from December 20 to Friday, December 19, at 8 p.m. (Pacific Standard Time). The championship game will be played in the Tacoma (Washington) Dome and nationally televised by ESPN.

The NCAA Division I-AA Football Committee, noting that the National Football League's Seattle Seahawks are scheduled to host the Denver Broncos December 20, felt it was in the best interest of the championship to avoid a scheduling conflict.

Participating teams in last year's championship split \$95,160, which was more than twice the amount distributed to participants in the 1984 play-offs. Expansion from 12 to 16 teams for this year's championship tentatively has been approved, pending the Division I Championships Committee and Executive Committee review of budget evaluations and seeding information. First-round byes will be eliminated if the expanded

field is approved.

The NCAA Division I-AA committee also has recommended to the Executive Committee that the two-year waiting period for automatic qualification be waived for the Gateway Collegiate Athletic Conference, which is entering its second year of league play.

The Executive Committee last May ruled that the two-year waiting period for automatic qualification may be waived if the championship's governing sports committee believes a conference deserves consideration.

Members of the Gateway Collegiate Athletic Conference include Eastern Illinois University; Illinois State University; Indiana State University; University of Northern Iowa; Southern Illinois University, Carbondale, and Southwest Missouri State University.

Automatic qualification already has been approved for the Big Sky, Mid-Eastern Athletic, Ohio Valley, Southern, Southland and Yankee Conferences.

Championships Corner

Championships bids

Sports committees are soliciting bids from institutions interested in hosting the following championships: 1990 and 1991 Women's Golf Championships, 1987 and 1988 Women's Lacrosse Championships, 1989 Division I Women's Swimming and Diving Championships, 1988 Division II Men's and Women's Swimming and Diving Championships, and 1988 Division III Men's and Women's Swimming and Diving Championships.

Interested parties should contact Patricia W. Wall at the NCAA national office.

Executive

Continued from page 1

common playing rules for men's and women's basketball (see related story on page 9.)

Sports committee recommendations first will be reviewed by the respective division championships committees, which also meet in Seattle August 10.

The Division I committee will forward material from sports committees representing 20 championships, including requests for expanded fields in women's gymnastics, women's softball and men's tennis.

The Division II committee will forward requests from committees on

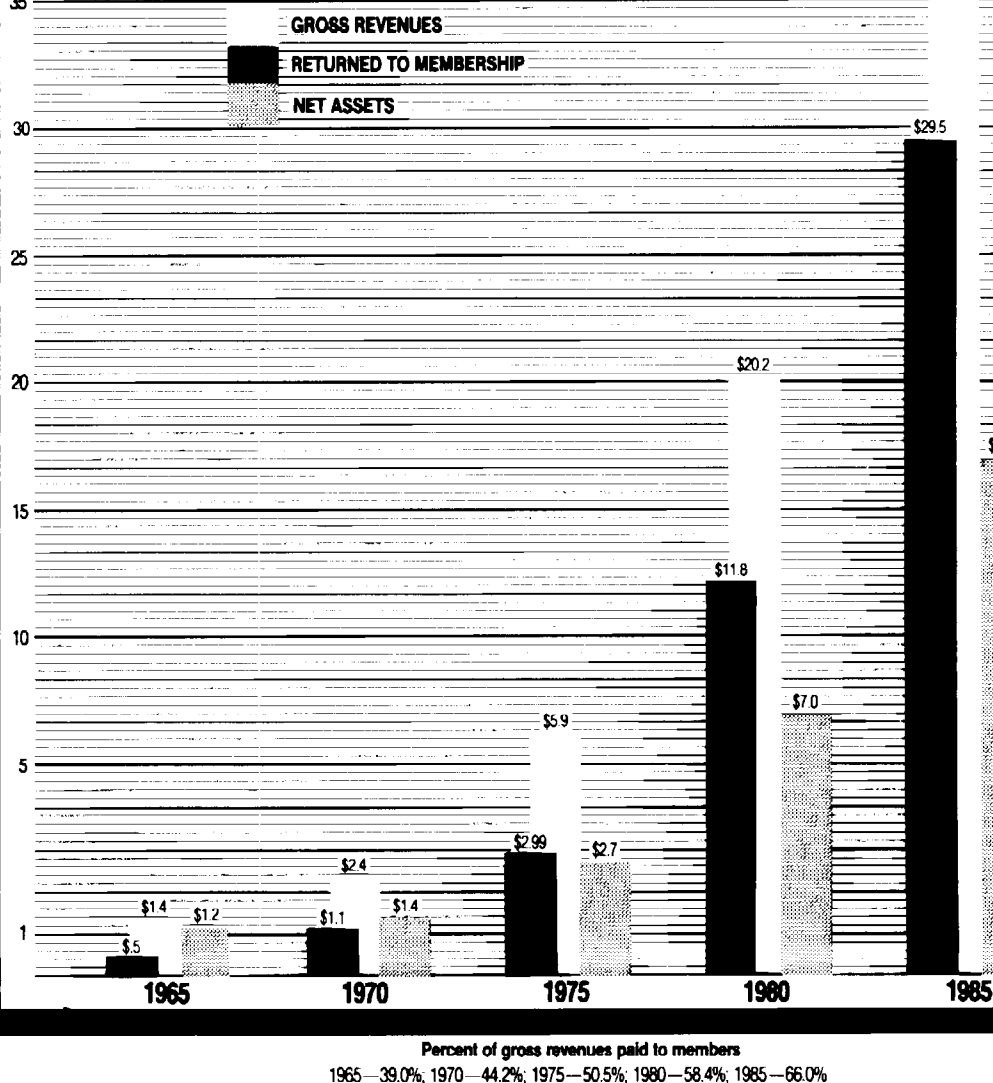
eight championships, and the Division III committee will forward recommendations affecting 13 championships.

The Executive Committee also will review the results of a survey conducted to gauge sentiment on the concept of Divisions II and III student-athletes' advancement to Division I championships competition and will take any action deemed appropriate, based on those results.

Other reports, including one on the state of the Association's insurance coverage, also will be received by the group.

MILLIONS OF DOLLARS

NCAA FINANCIAL ANALYSIS 1965-1985



Members'

Continued from page 1

championship competition, the NCAA marketing and merchandising program, the postgraduate scholarship program, and other miscellaneous activities are counted. NCAA payments to the representatives of

member institutions to attend meetings are not included in the formula. Each year, the NCAA budget carries 70 accounts for the expenses of the rules committees and championships committees, as well as the expenses of the members of the NCAA general

committees and other standing and ad hoc committees. The 1985-86 budget for committee meeting expenses is \$1.1 million.

"The new budget," Schiller said, "will contain approximately \$1 million for all committee expenditures."

More summer basketball leagues approved

Twenty additional summer basketball leagues have been approved by the NCAA Administrative Committee, acting for the Council, to bring the total of approved leagues to 358.

Other lists of approved leagues have appeared in the May 14, May 28, June 4, June 18, July 2 and July 16 issues of The NCAA News.

Any questions concerning the application process or requirements for NCAA approval of summer basketball leagues should be referred to Kevin C. Lennon, legislative assistant, at the NCAA national office.

Following is a list of the additional 17 men's and three women's leagues approved.

Men's leagues

Connecticut—Michael Nolan Basketball League, East Hartford. Florida—Dade Street Community Center Basketball League, Tallahassee. Iowa—River City Basketball Adult Summer League, Dubuque. Maryland—Montgomery County Recreation Department Men's Summer Basketball "A" Division, Silver Springs. Massachusetts—Nathan Bill Basketball League, Springfield. Michigan—W. C. Haus 3 on 3 Tourney, St. Clair; 3-on-3 Basketball Tournament, Shelby. New Jersey—Florham Park Men's Summer Basketball League, Florham Park; Lawnside Summer Basketball League, Lawnside; Branch Brook Open Basketball League, Newark. New York—Town of Hempstead Adult Basketball League, Hempstead; Mount Vernon Summer Basketball League, Mount Vernon; Town of Geddes Summer Basketball League, Syracuse. Ohio—Racquet & Fitness Center Outdoor Basketball

League, Newark. Pennsylvania—Pottsville Recreation Summer Basketball League, Pottsville. Tennessee—Hays Avenue Summer Basketball League, Jackson. West Virginia—Saint Albans Parks and Recreation Men's Summer Basketball League, St. Albans.

Women's leagues

Michigan—3-on-3 Basketball Tournament, Shelby. New York—The Henry Street Women's Basketball League, New York. Ohio—Racquet & Fitness Center Outdoor Basketball League, Newark.

Nominations

Continued from page 1

by members of the Council.

A summary of the available Council positions follows:

Division I

Two of the five representatives elected or reelected must be from Division I-A conferences—the Pacific Coast Athletic Association, to replace Lewis A. Cryer (Division I vice-president), and the Southeastern Conference, where Joan C. Cronan is eligible for reelection.

Of those elected or reelected, one must be from Region I of Division I. Four of those elected or reelected must be women.

Division I members eligible for reelection, in addition to Cronan, are Della Durant, Pennsylvania State University, and Charlotte West, Southern Illinois University, Carbondale.

Not eligible for reelection, in addition to Cryer, is Sondra Norrell-Thomas, Howard University.

Division II

Two of the three members elected must be from certain regions of Division II—one from Region 2 and one from Region 4. In addition, one of the three must be a chief executive officer.

Not eligible for reelection are Rudy Carvajal, California State University, Bakersfield; Asa N. Green, Division II vice-president, Livingston University, and James R. Spalding, Bellarmine College.

Division III

One of the three representatives elected must be from Region 2 of Division III. One must be a chief executive officer; one must be a woman.

Not eligible for reelection are Anthony J. Diekema, Calvin College; Mary Jean Mulvaney, University of Chicago, and Patricia A. Thompson, Elmira College.

Nominating Committee members were listed in the July 16 issue of the News.

Candidates

Continued from page 1

describing the nominee's qualifications. A separate nomination letter is to be provided for each candidate and it should indicate whether the candidate would serve if appointed.

A list of all general committee vacancies follows. A complete listing of committees may be found in the 1985-86 NCAA Directory. Committee changes that have occurred since publication of the Directory have been printed in the Committee Notices or the NCAA Record columns of The NCAA News.

Academic Requirements—Two expirations. Eligible for reappointment: Douglas S. Hobbs, University of California, Los Angeles (I); Clifford F. Sjogren, University of Michigan (I) (chair).

Classification—Three expirations. Not eligible for reappointment: Carol A. Blazina, Oneonta State University College (III); Sondra Norrell-Thomas, Howard University (I); Joe L. Singleton, University of California, Davis (II) (chair). Two of those appointed or reappointed must be women. One must be from Division II and one from Division III. Singleton must be replaced as chair.

Community and Junior College Relations—One expiration. Eligible for reappointment: John Cooper, Arizona State University. Appointment of a replacement for Keith Colson, retired from New Mexico State University, is in process.

Competitive Safeguards and Medical Aspects of Sports—Four expirations. Eligible for reappointment: Elsworth R. Buskirk, Pennsylvania State University (exercise physiology research); Douglas B. McKeag, M.D., Michigan State University (medicine); Carol C. Teitz, M.D., University of Washington (medicine); James C. Puffer, M.D., University of California, Los Angeles (medicine) (chair). One of those appointed or reappointed must be a woman. Three must represent the field of medicine. One must represent the field of exercise physiology research.

Constitution and Bylaws—Two expirations. Eligible for reappointment:

Lawmaker calls for sports study

Legislation has been introduced in the U.S. House of Representatives that calls for the organization of a 15-member Congressional advisory committee on intercollegiate athletics, composed mainly of educators, to study issues such as eligibility requirements, recruiting violations and drug use. The committee would report back to Congress after a year's study.

The legislation, which is not expected to reach the floor of the House before adjournment in October, was introduced by Rep. Thomas Luken, D-Ohio.

The NCAA has taken the position that the legislation is unnecessary because its Presidents Commission already is working toward reforms in those areas.

Peach Bowl has changed hands

The Atlanta Chamber of Commerce officially took over the problem-plagued Peach Bowl July 1 after the board of directors of the post-season college football game unanimously approved the move.

Gerald Bartels, executive vice-president of the chamber of commerce and new president of the Peach Bowl, promised that the bowl will "move to a different drumbeat," the Associated Press reported. "We realized that, regardless of public perception, the Peach Bowl has made a lot of people happy over its 18 years," Bartels said.

The board elected two officers in addition to Bartels to oversee the transition. John Hornbeck Jr. was named treasurer and Lee Ayres was named secretary.

Lynn Dorn, North Dakota State University (II); Edward W. Malan, Pomona-Pitzer Colleges (III). One of those appointed or reappointed must be from Division II, one from Division III. One must be a woman.

Drug Education—Two expirations. Eligible for reappointment: Marilyn J. Hatcher, San Diego State University. Not eligible for reappointment: Robert J. Murphy, M.D., Ohio State University (Division I team physician) (chair). One of those appointed or reappointed must be a woman; one must be a Division I team physician or NCAA athletics trainer. Murphy must be replaced as chair.

Eligibility—Two expirations. Eligible for reappointment: Della Durant, Pennsylvania State University (I) (Council). Not eligible for reappointment: Olav B. Kollevoll, Lafayette College (I) (chair). One of those appointed or reappointed must be a Council member. One must be a woman. Kollevoll must be replaced as chair.

Extra Events—Two expirations. Not eligible for reappointment: Clarence E. Gaines, Winston-Salem State University (II) (chair); Carole J. Huston, Bowling Green State University (I). One of those appointed or reappointed must be a woman. Gaines must be replaced as chair.

High School All-Star Games—One expiration. Eligible for reappointment: Sam Jankovich, University of Miami (Florida). Individual appointed or reappointed must be from District 3.

Ice Hockey Developmental Funding—One expiration. Eligible for reappointment: Louis A. Lamoriello, Providence College.

Infractions—Two expirations. Eligible for reappointment: Marilyn V. Yarbrough, University of Kansas. Not eligible for reappointment: Frank J. Remington, University of Wisconsin, Madison (chair). One of those appointed or reappointed must be a woman. Remington must be replaced as chair.

Insurance—One expiration. Eligible for reappointment: Roy S. Stevens, University of North Alabama (chair).

Long Range Planning—Three expirations. Eligible for reappointment: Robert F. Steidel Jr., University of California, Berkeley (I); John L. Toner, University of Connecticut (former NCAA president and secretary-treasurer) (I). Not eligible for reappointment: William J. Flynn,

Boston College (I) (former NCAA president and secretary-treasurer) (chair). One of those appointed or reappointed must be a former NCAA president and secretary-treasurer. Flynn must be replaced as chair.

National Youth Sports Program—One expiration. Eligible for reappointment: Donald W. Morefield, University of Dayton.

Postgraduate Scholarship—Two expirations. Eligible for reappointment: Ralph N. Floyd, Indiana University, Bloomington (I) (chair). Appointment of a replacement for Ethel L. McLendon, retired from Kentucky State University, is in process; the woman appointed will be eligible for reelection.

Postseason Football—Four expirations. Eligible for reappointment: Rocco J. Carzo, Tufts University (III-1); George S. King Jr., Purdue University (I-4) (chair). Not eligible for reappointment: Frederick E. Gruninger, Rutgers University, New Brunswick (I-2); Ann Marie Lawler, University of Florida (I-at-large). One of those appointed or reappointed must be from District 1, one from District 2, one from District 4. One must be a woman.

Professional Sports Liaison—Three expirations. Eligible for reappointment: Patricia H. Meiser, University of Connecticut; William E. Reeves, University of Texas, Arlington; Dean Smith, University of North Carolina, Chapel Hill (National Association of Basketball Coaches representative). One of those appointed or reappointed must be a woman, one must be an NABC representative.

Public Relations and Promotion—Three expirations. Eligible for reappointment: Debbie Harmison Byrne, Old Dominion University (I-at large); David E. Housel, Auburn University (I-A); Joseph L. Kearney, Western Athletic Conference (I-A) (chair). One of those appointed or reappointed must be a woman. Two must be from Division I-A.

Recruiting—Three expirations. Eligible for reappointment: Ann Marie Lawler, University of Florida (I); Bill Menefee, Baylor University (I). Not eligible for reappointment: Douglas W. Weaver, Michigan State University (I). One of those appointed or reappointed must be a woman.

Research—Three expirations. Eligible for reappointment: Robert C. Deming, Ithaca College (III) (director of athletics); Glennelle Halpin, Auburn University (I) (academic tests and measurements expert); Robert E. Stake, University of Illinois, Cham-

paign (I) (academic tests and measurements expert). One of those appointed or reappointed must be a director of athletics. Two must have expertise in academic tests and measurements. One must be from Division III.

Summer Baseball—One expiration. Eligible for reappointment: Andrew J. Baylock, University of Connecticut.

Television, Football—Six expirations and one vacancy. Eligible for reappointment: William B. Manlove Jr., Widener University (at large-III). Not eligible for reappointment: John D. Swofford, University of North Carolina, Chapel Hill (I-A-3) (chair); Donald B. Canham, University of Michigan (I-A-4); August Erfurth, Rice University (I-A-6); Phyllis L. Howlett, Big Ten Conference (at large I-A); James E. Delaney, Ohio Valley Conference (at large I-AA Central).

Presidents

Continued from page 1

announced at the 1987 NCAA Convention in January. In the balloting, a chief executive votes only for candidates to represent his or her own NCAA division.

All nominations should be sent to: Presidential Nominating Committee, NCAA, P.O. Box 1906, Mission, Kansas 66201, for receipt not later than Monday, September 22.

Terms expiring in January 1987 are as follows:

Division I

Pope A. Duncan, president, Stetson University. Division I-AAA, Region 2.

William E. Lavery, president, Virginia Polytechnic Institute. Division I-A, Region 2. Candidates must represent Division I-A independent institutions in the South.

Martin A. Massengale, chancellor, University of Nebraska, Lincoln. Division I-A, Region 3. Candidate is eligible for reelection to full term. Big Eight Conference designates this position.

Stanley J. McCaffrey, president, University of the Pacific. Division I-A, Region 4. Pacific Coast Athletic Association designates this position.

Stanley G. Rives, president, Eastern Illinois University. Division I-AA, Region 3. Represents Division I-AA Central football region. Candidate appointed earlier this month; eligible for reelection to full term.

Nominees may be from any Division I region inasmuch as the continuing members of the Commission

Appointment of a replacement for Keith Colson, retired from New Mexico State University, is in process. One of those appointed or reappointed must be from Division I-A, District 3; one from Division I-A, District 4; one from I-A, District 6. One must be a woman. One must be from I-AA Central. One from Division III. Swofford must be replaced as chair by one of the Division I-A members.

Top XII Selection—Three expirations. Eligible for reappointment: Lindsey Nelson, Knoxville, Tennessee (nationally distinguished citizen). Not eligible for reappointment: Gail Fullerton, San Jose State University; Fred Russell, Nashville Banner (nationally distinguished citizen) (chair). Two of those appointed or reappointed must be nationally distinguished citizens. One must be a woman. Russell must be replaced as chair.

from that division meet the constitutional representation requirements. NCAA regions are outlined in Constitution 5-5(c).

Division II

Arend D. Lubbers, president, Grand Valley State College. Division II, Region 3.

Ladell Payne, president, Randolph-Macon College. Division II, Region 2.

Barbara J. Seelye, president, Keene State College. Division II, Region 1.

Nominees may be from any Division II region.

Division III

Richard C. Gilman, president, Occidental College. Division III, Region 4.

Paul Hardin, president, Drew University. Division III, Region 2.

Cordell Wynn, president, Stillman College. Division III, Region 3.

Nominees may be from any Division III region.

The Presidential Nominating Committee is chaired by Walter Washington, president, Alcorn State University.

Other members of the nominating committee: Division I—Lattie F. Coor, University of Vermont; Jeffrey R. Holland, Brigham Young University, and Otis A. Singletary, University of Kentucky. Division II—James W. Cleary, California State University, Northridge, and Margaret R. Preska, Mankato State University. Division III—William A. Kinnison, Wittenberg University, and Dennis O'Brien, University of Rochester.

TO: NCAA NOMINATING COMMITTEE

Please consider the following nominations for Council members whose terms expire January 1987.

1987 NCAA OFFICERS:

President: _____
(Name, Title, Institution)

Secretary-Treasurer: _____
(Name, Title, Institution)

Division I Vice-President: _____
(Must be a Council member) (Name, Title, Institution)

Division II Vice-President: _____
(Must be a Council member) (Name, Title, Institution)

COUNCIL: (Name, Title, Institution)

Pacific Coast Athletic Association: _____
(I-4) (Incumbent not eligible for reelection)

Southeastern Conference: _____
(I-2) (Incumbent, Joan C. Cronan, Univ. of Tennessee, Knoxville, eligible for reelection)

I-1: _____
(Incumbent, Della Durant, Pennsylvania State University, eligible for reelection)

Nominating entities such as conferences are urged to submit from two to four candidates for a given position, including not more than one chief executive officer, faculty athletics representative, director of athletics, primary woman administrator of athletics programs and commissioner.

PLEASE SUBMIT A SEPARATE FORM OR LETTER FOR EACH NOMINATION. IN ADDITION TO THIS FORM, A BRIEF PARAGRAPH DESCRIBING THE QUALIFICATIONS OF THE CANDIDATE SHOULD BE PROVIDED FOR EACH NOMINATION.

Submitted by _____

(Name, Title, Institution or Conference)

I-AL: _____
(Incumbent, Charlotte West, Southern Illinois University, Carbondale, eligible for reelection)

I-AL: _____
(Incumbent not eligible for reelection)

II-2: _____
(Incumbent not eligible for reelection)

II-4: _____
(Incumbent not eligible for reelection)

II-AL: _____
(Incumbent not eligible for reelection)

III-2: _____
(Incumbent not eligible for reelection)

III-AL: _____
(Incumbent not eligible for reelection)

III-AL: _____
(Incumbent not eligible for reelection)

The NCAA News



NCAA Record

CHIEF EXECUTIVE OFFICERS

GREGORY B. WOLFE, president at Florida International, named senior research fellow in Latin American affairs at the University of Cambridge in England. ROBERT J. TERRY named interim president at Texas Southern, where he has been professor of biology. RICHARD D. CHESHIRE resigned as president at Tampa, effective August 31. WILLIAM PICKETT selected as president at St. John Fisher. He previously was vice-president for university relations and adjunct professor of history in the school of education at San Diego.

DIRECTORS OF ATHLETICS

PAUL ROACH appointed at Wyoming, where he has been executive director since last fall of the Cowboy Joe Club, the university's athletics booster organization. He also served the school as an assistant football coach from 1962 to 1970. ROBERT H. FRAILEY resigned at American, effective in May 1987. The NCAA Executive Committee member has served in the AD post for 22 years. Frostburg State's KENNETH KUTLER selected at Hartwick. At Frostburg State, Kutler also was men's basketball and soccer coach. Upper Iowa wrestling coach MIKE MCCREADY given additional responsibilities as interim AD. LYNN M. PACALA named at Occidental, where she is coordinator of the tennis program. Pacala, who coached the Occidental women's tennis team to the finals of the 1986 Division III team championship before losing to Trenton State, previously served as the school's AD in 1981 and 1982. Former Clemson AD BILL McLELLAN appointed at Southern Mississippi. LYNN MILLER named at Wheaton (Massachusetts), where she will continue to coach tennis. She succeeds NIKI JANUS, who resigned. DAVE SEILS selected at Trinity (Illinois), where he will continue as women's softball and men's basketball coach. ROY LOVE, retiring after 14 years as AD at Portland State, named men's golf coach at the school.

ASSOCIATE DIRECTORS OF ATHLETICS

L. BUDD THALMAN named at Penn State, where he will be responsible for communications. He previously was public relations director for the Buffalo Bills and once was sports information director at Navy. ROSS BARTOW resigned at Tampa to become events manager for the Tampa Sports Authority. In his new position, he will work with the Hall of Fame Bowl. ARDEN KRAGALOTT named at Hartwick, where she also will be head women's basketball and tennis coach. She previously was assistant women's basketball coach at North Dakota State. Kragalott succeeds BETSY BRUCE, former acting associate AD who was named women's field hockey and lacrosse coach at Hamilton.

ASSISTANT DIRECTORS OF ATHLETICS

Messiah's NANCY CLELAN named head women's basketball coach at Johns Hopkins. Besides serving in the assistant's post, she coached women's basketball at Messiah. JOE ALLEVA appointed at Duke, where he has been director of finance in the athletics department since 1980. He succeeds AL BUEHLER, who was named chairman of Duke's health, physical education and recreation department. Buehler continues as the Blue Devils' track and cross country coach. ANNE McCLOSKEY reassigned at Loyola (Maryland), where she will be responsible for intramural and recreational sports. She previously was assistant AD/primary woman administrator of athletics programs at the school. McCloskey also will give up her duties as head women's lacrosse coach. BRENT BLEDSOE selected at William and Mary, where he will be responsible for facilities and events operations. He previously was the school's promotions director for two years and was once associate AD at Liberty. Georgia Southern's KEN WINSTEAD named executive director of the Duck Athletic Fund at Oregon. Since joining Georgia Southern in 1982, he has been responsible for athletics fund-raising. Winstead also was an assistant director of the Cougar Club at Houston for one year. CECILIA DeMARCO appointed at New Hampshire, where she has resigned her duties as head women's basketball coach and now will serve as assistant women's lacrosse coach. PHIL GODFREY named at Washington (Missouri), where he has been facilities manager the past two years. He will oversee facilities management, equipment and athletics training operations, transportation, hiring of officials, and summer camps.

COACHES

Baseball—Former Oral Roberts coach LARRY COCHELL appointed at Northwestern. CocHELL's Titan squads were 428-171-2 through 10 seasons and participated in the Division I Baseball Championship seven times. He also has coached at Cal State Los Angeles and Emporia State. CocHELL is a member of the NCAA Baseball Committee. RANDY STUCKEY promoted from assistant at Gustavus Adolphus, his alma mater. He has been on the Gusties' staff for two seasons. JEFF JENKINS named at Heidelberg, where he was assistant football coach and head men's tennis coach last year. He succeeds JERRY McDONALD, who was named assistant men's basketball coach at the school.

Baseball assistants—New York Yankees pitcher TOMMY JOHN named pitching coach at North Carolina, effective after the end of the Yankees' season. His professional pitching career has spanned 23 years, during which he has won 262 games. RUSS MOLLET hired



Bill McLellan named athletics director at Southern Mississippi



Lynn M. Pacala promoted to athletics director at Occidental



Cecilia DeMarco promoted to assistant AD at New Hampshire

at Washington (Missouri), where he also will be assistant football coach. He previously was assistant football coach at Southwest Missouri State. JIM CASE selected at Alabama-Birmingham after serving as a graduate assistant coach at Mississippi State. GREG APLETON promoted at Georgia, where he has been a graduate assistant coach.

Men's basketball BERNARD TOMLIN selected at William Paterson. He has been an assistant at Duquesne since 1982 and also has been on the staffs at St. Bonaventure and Hofstra. JAMES D. ALDEN named at Bates. Alden previously was a physical education teacher in Auburn, Maine, where he served from 1981 to 1985 as boys' basketball coach at Edward Little High School. He succeeds GEORGE L. WIGTON, who has assumed responsibility for all racket sports at Bates, including the men's and women's tennis teams he already coaches. DON LA VIOLETTE selected at St. Norbert, where he will continue to serve as head football and men's tennis coach. La Violette, who has been football coach since 1983, is believed to be one of only two NCAA head coaches in both football and men's basketball. He succeeds MIKE HEIDEMAN, who resigned to pursue other opportunities. BILL CHAMBERS appointed at North Carolina Wesleyan after five years as head coach at Dudley High School in Greensboro, North Carolina. Niagara assistant MICHAEL J. DALEY named at Nazareth (New York). He has been on the staff at Niagara for six seasons. Daley also was a head boys' high school basketball coach for nine years. St. Andrews' DOUGLAS RILEY selected at Plattsburgh State. Riley's teams compiled a 165-61 record and won three Dixie Conference championships in the last six seasons of his nine-year tenure at St. Andrews. PAUL PHILLIPS appointed at Anna Maria. He formerly was a part-time assistant at Assumption. LEROY ALEXANDER JR. named at Fort Valley State. Frostburg State's KENNETH KUTLER named athletics director at Hartwick. His teams were 28-24 through two seasons at Frostburg State, where he also was men's soccer coach.

Men's basketball assistants—PAT FLANNERY hired at William and Mary after three seasons on the staff at Drexel. He also has coached at Bucknell. JEFF PRICE named at Georgia Southern, where he previously was on the staff during the 1982-83 season. He was an assistant at Washington last season and also has been an assistant at Union (Kentucky). KEITH DAMBROT selected at Eastern Michigan. He previously was head men's coach for two years at Tiffin, where his teams were 40-23, and he also has been an assistant at Akron. GLEN DONAHUE and JOHN MULROY appointed at Detroit. Donahue previously coached 19 seasons at Highland Park Community College, where his teams compiled a 401-205 record. Mulroy regains his part-time position at Detroit after a year on the staff at Central Michigan. JERRY McDONALD named at Heidelberg, where he has been head baseball coach. McDonald is a former men's basketball assistant at Denison. Former Maryland assistant BART BELLAIRS appointed at Massachusetts. He once was head men's coach at Wilkes and also is a former Western Illinois assistant. DENNIS A. FELTON hired to a new position at Delaware. The former Howard player has been an assistant at the high school and community college levels. UTEP's DUKE ALLGOOD appointed at Stephen F. Austin State. DAVE MANZER named at Virginia Military. He previously was a graduate assistant coach at Miami (Ohio) and also has been an assistant at Mount Nazarene. PHIL MARTELLI selected at St. Joseph's (Pennsylvania). He formerly was head boys' coach at Bishop Kenrick High School in Norristown, New Jersey. GERRY KASSIN appointed at Portland after three years on the staff at Texas Tech. He previously was a high school coach in South Dakota and Colorado for 17 years. Kassin succeeds GEORGE LIBBON, who was hired at Oregon. Duquesne's BERNARD TOMLIN named head coach at William Paterson.

Women's basketball—PAUL KAHN appointed at Chapman after six years as girls' basketball coach at Costa Mesa (California) High School. DENISE L. BABINCHAK selected at Gettysburg, where she also will coach women's softball. The Gettysburg graduate was girls' coach at Gettysburg High School the past two seasons. Messiah's NANCY CLELAN named at Johns Hopkins. Her teams were 115-90 at Messiah, where she

also served the past two years as assistant athletics director. LAURIE TURNER named at Idaho. She previously was at Eastern Oregon State, where her teams were 77-38. ARDEN KRAGALOTT selected at Hartwick, where she also will be associate athletics director and coach women's tennis. She previously was a women's basketball assistant at North Dakota State. She succeeds acting coach JEFF ALLEN, who took charge of the program last season. NANCY STRAPKO appointed at Plymouth State, where she also will coach women's softball. She has been head women's basketball and softball coach at Sioux Falls College the past three years and earned South Dakota Intercollegiate Conference coach-of-the-year honors in basketball in 1985-86. ROBIN TIMOTHY-FOAKES named at Wesleyan, where she also will coach women's soccer. She previously was coordinator of athletics and girls' basketball coach at Northfield (Massachusetts) Mount Hermon School. Timothy-Foakes substitutes for MIDGE BEECHER, who is taking a leave of absence after six years as head women's basketball and tennis coach. GREGORY BRUCE appointed at Portland State after two years as an assistant at Notre Dame. He also has coached at Thunderbird High School in Phoenix, Arizona. JERRY BUCCILLA named at Heidelberg, his alma mater, where he also will serve as an assistant men's soccer coach. PAM EVANS selected at Wittenberg. She previously was an assistant at Ithaca. MARY VIELBIG appointed at Northwood after three seasons at Lansing (Michigan) Community College, which twice won the state junior college women's basketball championship during her tenure. She also will serve as women's athletics coordinator. Ball State's MARSHA REALL named at Purdue. She coached six years at Saginaw Valley State before going to Ball State last year. LAURIE PIRTLE of Capital selected at Cincinnati. Capital reached the semifinals of the Division III Women's Basketball Championship last season, giving her an 83-16 record through four seasons at the school. ADOLPH ELLIS promoted from assistant at Sacred Heart. He was an assistant for both the men's and women's teams for two years before devoting full time to the women's team last

season. Quinnipiac's BARRY WOLFSON appointed at Upsala. Last season, Wolfson's Quinnipiac team was 24-2 and received an invitation to the Division II Women's Basketball Championship. He also was head women's coach for four years at Somerset County College in New Jersey and an assistant at Kean.

Women's basketball assistants—Southern California's KATHY OLIVIER named at UCLA. The former Nevada-Las Vegas all-America player has been at Southern California for three seasons. She also has been a graduate assistant coach at Nevada-Las Vegas and an assistant at UC Irvine. Notre Dame's GREGORY BRUCE named head women's coach at Portland State. BILL FENNELLY of Fresno State and CAREN TRUSKE of Northern Illinois hired at Notre Dame. Fennelly was at Fresno State for five years and also has been an assistant at William Penn. Truske was recruiting coordinator at Northern Illinois last season after serving there in a part-time position. TONDALAYA JACKSON and MAUREEN PINE named at Cornell. A former Grambling player and assistant sports information director, Jackson also has been a National Youth Sports Program supervisor. Pine previously was on the staff for two seasons at Smith, where she also was assistant women's softball coach. Claremont-Mudd-Scripps' PAUL HALPERT named at Chapman. North Dakota State's ARDEN KRAGALOTT named associate athletics director and women's basketball and tennis coach at Hartwick. Ithaca's PAM EVANS appointed head women's coach at Wittenberg. ADOLPH ELLIS promoted to head women's coach at Sacred Heart. MELISSA WASHBURN hired at Kalamazoo, where she also will coach field hockey.

Men's and women's cross country—DAVID TROY selected at Alabama, where he also will be assistant track coach. He coached at Colorado from 1979 to 1985, leading the Buffs to three Big Eight Conference cross country championships. Troy recently spent 10 months coaching in Africa in a program sponsored by the U.S. Information Agency. ROB WILDER named at Wofford, succeeding Col. JOHN ARRINGTON, a military science professor in the ROTC program who was reassigned by the Army. JOHN KERNAN appointed at Heidelberg, where he previously was men's soccer coach and will continue to serve as head men's and women's track coach. He also has been head track coach at Kansas Wesleyan.

Field hockey—LINDA SMURL named at Hartwick, where she also will coach women's lacrosse. She previously was women's lacrosse coach at Mount Holyoke and also once coached at Elms College. Smurl succeeds BETSY BRUCE, who was named head women's field hockey and lacrosse coach at Hamilton. MELISSA WASHBURN selected at Kalamazoo, where she also will be an assistant women's basketball coach. She previously was a coach, teacher and assistant athletics director at Maumee Valley Country Day School in Toledo, Ohio. SANDY HOODY named the first full-time field hockey and women's lacrosse coach at Towson State. She was an assistant field

hockey and women's lacrosse coach at Princeton last season. In field hockey, she succeeds NANCE REED, who continues as the school's assistant athletics director and as an assistant in field hockey and women's lacrosse. LAURIE MAGOON appointed at Babson, where she also will coach women's lacrosse. She previously was assistant field hockey and women's lacrosse coach at Boston U. for two seasons.

Field hockey assistants—Princeton's SANDY HOODY named head field hockey and women's lacrosse coach at Towson State. LAURIE MAGOON of Boston U. named head field hockey and women's lacrosse coach at Babson.

Football—LOU DESLOGES appointed interim coach at Plymouth State, succeeding JAY COTTON, who was named an assistant at Massachusetts. Desloges has been defensive coordinator at the school for two years and was defensive line coach in 1983 and 1984. He has been on the staff a total of nine years. Cottone coached at Plymouth State for five years, during which Panther running back Joe Dudek set a new all-time collegiate touchdown record. TODD SIMONSEN promoted from assistant to interim head coach at Upper Iowa. Before coming to the school last season, he was a graduate assistant coach at Iowa. JACK CHARNEY named at Nichols. He has been an assistant at Springfield, Norwich, American International and, most recently, at Brown.

Football assistants—BOBBY ALLEN hired as defensive coordinator at Drake after serving last season as a graduate assistant coach at Minnesota. He also was on the staff at Colorado for two seasons. Allen succeeds TENNY DEWEY, who has named coach at Bishop Miege High School in suburban Kansas City. RUSS MOLLET selected to coach the defensive secondary and linebackers at Washington (Missouri), where he also will assist with the baseball team. He previously was assistant football coach and the football team's strength coach at Southwest Missouri State. He also has coached at Arkansas Tech and Western Illinois. He succeeds STEVE BREITBEIL, who resigned. MARK McHALE named offensive line coach at Southern Mississippi. He previously served one year at East Carolina and also has been offensive coordinator and offensive line coach at Appalachian State and Shepherd College. McHale also has been on the staff at West Virginia. GREG HILLMEYER appointed as a graduate assistant coach to work with the offensive line at Arizona. He recently graduated from Georgia Tech, where he played from 1982 to 1985. GERRY ROMBERG promoted from part-time assistant at Coast Guard, where he also will be sports information director. Also promoted were STEVE HACKETT, who becomes offensive coordinator, and JIM GOLLEGLEY, who becomes defensive coordinator. In addition, former assistant DON PINHEY rejoined the staff as defensive line coach. HERB WALLING, MARK HACKETT, and Midshipmen First Class TOM LORD and TOM MacDONALD named at Maine Maritime. Walling will coach receivers; Hackett, defensive backs; Lord, the defensive line.

See Record, page 7

Six repeat on academic all-America at-large teams selected by CoSIDA

Six repeat first-team members top the list of GTE women's at-large academic all-America selections, which were made through voting by members of the College Sports Information Directors of America (CoSIDA).

Massachusetts field hockey player Megan Donnelly, North Carolina State shooter Jodi Coble, Delaware track athlete Alison Farrance and Villanova track athlete Joanne Kehs were the repeaters in the university division. Lycoming swimmer Meg Altenderfer and Augustana (Illinois) runner Lynne Robertson were the returning first-team selections in the college division.

Villanova's Kehs was the top vote-getter for the second consecutive year. The combined GPA for the university-division selections was 3.964, and the overall GPA for the college-division honorees (excluding one student-athlete who had a 4.600 on a 5.000 scale) was 3.932.

Perfect (4.000) averages were turned in by five university-division selections—Fairleigh Dickinson-Teaneck's Katie Coombs, Drake's Wendy Olson, Texas' Diana Dopson, and Kansas State's Ann Stadler and Jacque Struckhoff, and by four college-division honorees—Rice's Michelle Dokter, DePauw's Nancy Gritter and Robertson.



Anne Stadler

Jacque Struckhoff

Following is a list of first- and second-team selections in both divisions:

UNIVERSITY DIVISION

First teams: Jodi Coble, postgraduate, North Carolina State, 3.940 in veterinary medicine, rifle; Katie Coombs, senior, Fairleigh Dickinson-Teaneck, 4.000 in biology, fencing; Megan Donnelly, senior, Massachusetts, 3.950 in anthropology, field hockey; Julie Estin, junior, Alabama, 3.960 in applied math, gymnastics; Alison Farrance, senior, Delaware, 3.940 in economics/English literature, track; Joanne Kehs, senior, Villanova, 3.910 in English, track; Wendy Olson, senior, Drake, 4.000 in journalism/political science, tennis; Kayla Skelly, senior, Western Michigan, 3.940 in biology/medicine, cross country; Anne Stadler, junior, Kansas State, 4.000 in English/education, track; Jacque Struckhoff, junior, Kansas State, 4.000 in nutrition science, cross country.

Second team: Nichole Ali, postgraduate, Nebraska, 3.550 in business administration, track; Lynn Dennison, senior, Indiana, 3.750 in English/political science, golf; Diana Dopson, sophomore, Texas, 4.000 in interior design, tennis; Carol Galloway, senior, Connecticut, 3.700 in physical therapy, track; Stephanie Herbst, sophomore, Wisconsin, 3.310 in business, track; Tina Krebs, senior, Clemson, 3.590

in architecture, track; Karen Krietzberg, senior, Drexel, 3.930 in environmental science, swimming; Megan Neyer, senior, Florida, 3.610 in psychology, swimming; Jeri Pantalone, senior, Ohio, 3.930 in economics, field hockey; Sue Schroeder, senior, Michigan, 3.880 in German, cross country.

COLLEGE DIVISION

First team: Meg Altenderfer, senior, Lycoming, 3.970 in mass communications/art, swimming; Julie Chen, senior, MIT, 4.600 (5.000 scale) in mechanical engineering, field hockey; Michelle Dokter, senior, Rice, 4.000 in math, swimming; Tammy Donnelly, junior, Indiana (Pennsylvania), 3.880 in business administration, track; Nancy Gritter, sophomore, DePauw, 4.000 in premedicine, swimming; Theresa Meade, senior, Scranton, 3.940 in premedicine, cross country; Ilyse O'Desky, senior, Muhlenberg, 3.930 in psychology, tennis; Lynne Robertson, senior, Augustana (Illinois), 4.000 in psychology/biology, cross country; Patty Rupp, junior, Rochester, 3.770 in molecular genetics, swimming; Colleen Skelly, sophomore, Ithaca, 3.960 in biology, cross country/track; Karen Sterner, junior, Augsburg, 3.870 in math/education, track.

Second team: Linda Burkhart, senior, Eastern Mennonite, 3.790 in premedicine, field hockey; Allegra Burton, junior, Wesleyan, 3.620 in English, cross country; Sandra Elliott, senior, Northern Colorado, 3.780 in physical education, tennis; Leila Garrett, senior, William Smith, 3.800 in biology, swimming; Denise Hall, senior, Culver-Stockton, 3.970 in elementary education, tennis; Darla Moberly, senior, Central Missouri State, 3.720 in business, track; Julia Kirkland, junior, Macalester, 3.660 in biology, cross country/track; Anne Kister, sophomore, Grove City, 4.000 in secondary education/business administration, tennis; Deborah Neil, senior, Kenyon, 3.260 in chemistry, swimming; Kris Ritchier, senior, Wittenberg, 3.970 in biology, track.

Record

Continued from page 6

and MacDonald, the defensive ends and off backs. Also, linebackers coach ED BIGGIE was given additional responsibilities as defensive coordinator. ... FRANK HAUSER appointed defensive coordinator at Wesleyan. He previously coached at Glastonbury (Connecticut) High School, which he led to a Class LL state football title in 1984. ... Southern California's RUSS PURNELL named special assignments coach with the National Football League Seattle Seahawks. He was in charge of tight ends and special teams during his four years with the Trojans. ... Akron's KEN WOODRUFF hired to coach linebackers at Baldwin-Wallace. He coached the defensive interior during his three seasons at Akron. He also has been a high school coach. ... KEN GARLAND promoted to defensive line coach at Idaho State, where he has been a graduate assistant coach. The former Willamette and Western Oregon assistant succeeds STEVE SOSNOWSKI, who resigned. ... North Dakota's BRUCE BUKOWSKI selected as defensive coordinator and recruiting coordinator at Wisconsin-Whitewater, where he also will be an assistant track coach. Bukowski has been defensive line coach and recruiting coordinator at North Dakota for two years. He also has coached at Wisconsin-LaCrosse and Wisconsin-Eau Claire. ... MIKE EARLY hired at Wisconsin-Stout, where he also will be head wrestling coach. He previously was head wrestling coach and assistant football coach at Loras. ... LOU DESLOGES promoted to interim head coach at Plymouth State. ... TODD SIMONSEN promoted to interim head coach at Upper Iowa.

Women's gymnastics NANCY LeGANT appointed at Wisconsin-Whitewater. She formerly was head women's coach at Wisconsin-Milwaukee from 1982 to 1985 and coached the Teachers' Institute in Caracas, Venezuela, to a national championship in 1975. LeGant succeeds DEAN CALHOUN, who resigned to teach and coach in the Stevens Point, Wisconsin, school system.

Men's golf—ROY LOVE named at Portland State, where he is retiring from the athletics director's post after 14 years. Love previously has been head baseball coach and assistant football coach at the school. He succeeds HAROLD BLUESTEIN, who had coached men's golf since 1983.

Women's golf—JUNE MAYSON selected at South Alabama. She is a former women's Alabama state champion and Ladies Professional Golf Association teaching pro, and is the mother of Louisiana State women's coach Karen Mayson Bahnsen. Mayson succeeds RICK PERRY, who remains at the school as assistant women's basketball coach.

Men's lacrosse—DARREN F. LAWLOR appointed at Hartwick, where he also will coach women's soccer. He previously was an assistant men's lacrosse coach at Washington and Lee and also has been an assistant in men's lacrosse and women's soccer at Harvard. Lawlor succeeds DAVID ROBINSON, who resigned. ... PIERRE McGUIRE promoted at Babson, where he was an assistant last season. He will continue to assist with men's ice hockey.

Men's lacrosse assistant—Washington and Lee's DARREN F. LAWLOR named head men's coach at Hartwick, where he also will coach women's soccer. ... PIERRE McGUIRE promoted to head coach at Babson.

Women's lacrosse—SANDY LANAHAN



North Carolina Wesleyan named Bill Chambers men's basketball coach



Michael J. Daley named head men's basketball coach at Nazareth (New York)



Keith Dambrot named men's basketball assistant at Eastern Michigan

CAMPANARO, a seven-time member of the United States lacrosse team, selected at Loyola (Maryland), where she has coached women's field hockey for two years. Campanaro replaces ANNE McCLOSKEY, who has been given new duties as assistant athletics director for intramural and recreational sports at the school. McCloskey's teams compiled a 103-41-4 record and appeared in postseason competition six times during her 10-year coaching tenure. ... NANCY BECK named at Wittenberg. She previously was an assistant women's coach at Notre Dame (Maryland). ... SANDY HOODY named the first full-time women's lacrosse and field hockey coach at Towson State. She was an assistant women's lacrosse and field hockey coach at Princeton last season. In lacrosse, she succeeds LISA PIERCE, who was a part-time coach at the school last spring.

Men's soccer—LARRY ZELENY of Gettysburg named at Gustavus Adolphus. Zeleny coached at Gettysburg for six years, leading the team to league championships the past two seasons. ... DAVID OLMOS appointed first-ever coach at Texas-San Antonio after six years as an assistant at Trinity (Texas). He is considered one of Texas' top soccer referees and has been active in youth leagues. ... Salem State's NICHOLAS PADOVANI given additional duties as director of intramural programs at the school. He moves to the school's full-time staff after coaching the men's soccer team for six years, during which the Vikings have appeared in the last three Division III Men's Soccer Championships. ... TOM BARTLETT promoted at Heidelberg, where he was an assistant last season. Bartlett, who also is a full-time junior high school science teacher, was head coach at the school from 1978 to 1982 and also served as an assistant from 1974 to 1977. He succeeds JOHN KERNAN, who was given new responsibilities as men's and women's cross country coach in addition to his existing duties as men's and women's track coach. ... Frostburg State's KENNETH KUTLER named athletics director at Hartwick. His teams at Frostburg State compiled a 134-92-30 record and reached the Division III Men's Soccer Championships in 1981 and 1983. He also was the school's men's basketball coach. ... JEFFREY TIPPING selected at Muhlenberg. He previously was head women's coach and assistant men's coach at Hartwick.

Men's soccer assistants—JOE LENGVEL hired at Webster. He is a recent graduate of Fontbonne, where as a player he helped lead

his team to the 1985 National Little College Athletic Association championship. ... RONALD HANSEN named at Skidmore. He is a former assistant men's coach and head women's coach at Cortland State. ... GLENN MYER-NICK appointed at Hartwick, where he was a two-time all-America player in the mid-1970s and was named the outstanding collegiate player in the nation in 1976. He previously was an assistant at Tampa for one season. ... JERRY BUCCILLA named at Heidelberg, where he also will coach women's basketball. In soccer, he succeeds TOM BARTLETT, who was promoted to head men's coach at the school. ... Hartwick's JEFFREY TIPPING named head men's coach at Muhlenberg.

Women's soccer—JOHN W. SHAFFER selected at St. Francis (Pennsylvania). The former Indiana (Pennsylvania) player has been working in the insurance business. ... DAREN F. LAWLOR appointed at Hartwick, where he also will coach men's lacrosse. He previously was men's lacrosse assistant at Washington and Lee and he also has been an assistant in women's soccer and men's lacrosse at Harvard. In soccer, he succeeds JEFFREY TIPPING, who was named head men's soccer coach at Muhlenberg. ... ROBIN TIMOTHY-FOAKES selected at Wesleyan, where she also will coach women's basketball. She was an assistant women's coach at Westfield State in 1982. In soccer, she succeeds DON LONG, who is assuming responsibility for the women's tennis team, in addition to his existing duties as men's tennis and squash coach.

Women's soccer assistants—CAROL EDWARDS named at Hartford. The former Plymouth State player has been a coach in the Simsbury, Connecticut, area.

Women's softball—NANCY STRAPKO selected at Plymouth State, where she also will coach women's basketball. In 1983, she was head women's softball coach at Sioux Falls College, where she also coached the women's basketball team for three years. ... CONNIE THOMPSON named at Rockford, where she also will coach women's volleyball. She previously coached both sports at Mount Senario in Wisconsin. Thompson succeeds GLENDA SMITH, who resigned after three years to enter doctoral studies. ... DENISE L. BABIN-CHAK appointed at Gettysburg, where she also will coach women's basketball.

Women's softball assistants—Ohio State's BETH PERINE hired at Penn State. The former Buckeye pitcher has been on the staff at

Ohio State since 1983. ... MAUREEN PINE of Smith named assistant women's basketball coach at Cornell.

Men's and women's swimming—JOHN RYAN, head women's coach at Southern Methodist, appointed aquatics director at Wesleyan. At Southern Methodist, his teams finished as high as 10th (in 1985) in the Division I Women's Swimming and Diving Championships. He succeeds PAT CALLAHAN, who will continue as Wesleyan's crew coordinator and head women's crew coach. ... FRED RUSSELL resigned after 10 years at Wisconsin-Milwaukee to coach for the Elmbrook Swim Club in Wisconsin. He was the National Association of Intercollegiate Athletics' women's coach of the year last season after leading his team to a fourth-place finish in the 1986 NAIA National Championships. ... RAYMOND "SKIP" KENITZER promoted to head women's coach at Northern Colorado, where he was an assistant last season. He succeeds NANCY MEYER, who resigned after three years in the post.

Men's tennis DAVE BONAGURA given additional responsibilities at Upsala, where he has coached the women's team for one year. He succeeds CHARLIE LUNDGREN, who came out of retirement last year to coach for a season and who will continue as the school's tennis director. ... WILLIAM BRYAN BRIDDELL named at Skidmore. He is a former women's assistant at Florida State and a men's and women's assistant at Salisbury State.

Women's tennis—BILL ZAIMA promoted at UCLA, where he was an assistant for nine seasons before becoming interim head coach earlier this year. He also was head women's coach at the school from 1972 to 1976. ... DON LONG given additional responsibilities at Wesleyan, where he has been men's tennis and squash coach. He substitutes for MIDGE BEECHER, who is taking a leave of absence as women's basketball and tennis coach.

Men's and women's track and field SCOTT HALL promoted from assistant men's coach at Northern Colorado. He succeeds TOM BENICH, who announced his retirement after 23 years, during which he also coached the men's cross country team until it was discontinued in 1984. Hall was an assistant at Idaho State prior to joining the Northern Colorado staff.

Men's and women's track and field assistants—DAVID TROY named at Alabama, where he also will be head men's and women's cross country coach. ... SCOTT HALL promoted to head men's coach at Northern Colorado. ... BRUCE BUKOWSKI hired at Wisconsin-Whitewater, where he also will be an assistant football coach. Bukowski previously has coached track and field at the high school and college levels and will coach the weight events for the Warhawks.

Men's volleyball—DICK LEATHERMAN selected at Chapman. The two-time Ohio State all-America was personnel coordinator for the 1984 Olympic volleyball team and was head coach in 1984 of the Saudi Arabian Air Force squad.

Women's volleyball—LYNN DAVIDSON appointed at James Madison after one year as head coach of the men's club team at Minnesota. She previously has been head women's coach at East Carolina and a women's assistant at Minnesota. ... FRANK RALSTON named at Wittenberg. She is a former women's assistant at Texas.

Women's volleyball assistants—JERRIE

McGAHAN hired at Metropolitan State. She was captain of the U.S. volleyball team in 1975 and has played with the Denver Comets of the International Volleyball Association and in the Italian Volleyball Federation.

Men's water polo—LINDA LAYE named at Chapman, where she has been an athletics trainer for two years.

Wrestling—AL MUEHLHAUSEN appointed at Gustavus Adolphus, his alma mater. He has been head coach at LeSueur High School in Minnesota the past two years. ... MIKE EARLY named at Wisconsin-Stout, where he also will assist with football. He previously coached wrestling for five years at Loras, where he also assisted with football. ... BRAD KER selected at North Dakota, where he was an assistant for four years. He served last year as interim head coach and won North Central Conference wrestling coach-of-the-year honors. ... Missouri coach BOB KOP-NISKY resigned, effective August 1, after 12 years at the school. He will enter private business.

STAFF

Equipment manager—WILLIAM J. "TEX" RITTER named for men's athletics at Ball State. He previously was men's and women's equipment manager at Akron for 10 years.

Facilities manager JODI HAWKINS promoted after one year as assistant at Washington (Missouri). She succeeds PHIL GODFREY, who was promoted to assistant athletics director at the school after two years in the post.

Facilities assistant JEFF DVORAK named at Washington (Missouri). He previously worked in the athletics department at Southern Illinois while pursuing a master's degree in sports administration. Dvorak replaces JODI HAWKINS, who was promoted to facilities manager at Washington.

Fund-raising coordinator KEN WINSTEAD appointed executive director of the Duck Athletic Fund at Oregon. He previously was assistant athletics director in charge of fund-raising at Georgia Southern.

Marketing director—ED MCKEE named at George Washington. The former Indiana State sports information director was manager of the Washington, D.C., office of Eagle Sports Group during the past year and director of communications for the 1986 National Old Timers Baseball Classic. He also has been director of basketball for Special Olympics Inc. and director of media and public relations for the Indiana Pacers. McKee succeeds MANNY ROSENBERG, who resigned to enter private business. ... FRANK MILLER-ICK appointed at Babson, where he also will serve as sports information director.

Men's athletics administrative assistant—MIKE O'BRIEN selected at Ball State after one season as a men's basketball assistant at Western Illinois.

Orthopedic surgeon—Dr. ROBERT W. METCALF retired as orthopedic surgeon for Brigham Young football.

Promotions director—CHRIS BAUMANN appointed at William and Mary. He previously was assistant to the athletics director at Salisbury State. ... LARRY PITROF selected to oversee marketing, promotions and sports information at Wisconsin-Milwaukee. He previously was an account executive with a Milwaukee radio station.

Sports information directors—MATT FISCHER named at Chapman. He is the

See Record, page 8

NCAA places University of Wisconsin, Madison, on probation

The NCAA Committee on Infractions has announced that it has placed the University of Wisconsin, Madison, on probation for two years for violations involving a former student-athlete in men's basketball.

In addition to the probationary period, the Committee on Infractions adopted a series of corrective actions taken by the university prior to the hearing in this case, including: (1) the implementation of a comprehensive compliance program at the university; (2) a monitoring procedure for all outside athletics representatives; (3) removal of two outside athletics representatives from involvement in the university's athletics program; (4) the forfeiture of games won and records achieved in men's basketball from January 25, 1982, to March 1984 due to the participation of an ineligible student-athlete, and (5) action against the current men's head basketball coach who was aware in 1982 of the primary violation considered in this case.

No sanction regarding television appearances or postseason competition was imposed in the case, and the men's basketball team remains eligible to participate in such programs or events.

The university initiated the investigation of this case in July 1985 as a result of newspaper articles indicating that a representative of the university's athletics interests had guaranteed a personal bank loan on behalf of a

men's basketball team member in 1982. The university's report of its findings was forwarded to the NCAA enforcement staff for review and subsequently was considered by the Committee on Infractions.

"Although the initial violation in the case occurred under a former men's head basketball coach," said Thomas J. Niland Jr., acting chair, Committee on Infractions, "the committee was concerned that in the fall of 1982, the current head coach and an assistant were aware of the violation, and the athletics department failed to exercise appropriate administrative diligence to determine the eligibility status of the student-athlete in question. Consequently, the young man participated in two additional basketball seasons while ineligible.

"Additional penalties would have been imposed in this case," Niland said, "if the committee had not been convinced that the university's administration vigorously pursued its investigation of the bank loan in question upon learning of the matter in 1985, and that the university already had taken its own meaningful, corrective actions."

The findings in the case included violations related to the provision of extra benefits to a student-athlete, institutional control and failure to apply NCAA eligibility rules properly.

The following is the complete text of the penalties and a summary of the violations found in the case.

Penalties to be imposed upon institution

1. The University of Wisconsin, Madison, shall be publicly reprimanded and censured, and placed on probation for a period of two years, effective July 15, 1986, it being understood that should any penalty in this case be set aside for any reason other than by appropriate action of the Association, the penalties shall be reconsidered by the NCAA; further, at the conclusion of each probationary year, the NCAA enforcement staff shall review the athletics policies and procedures of the university, which shall include an in-person visit to the university's campus.

2. The Committee on Infractions also voted to adopt the actions previously taken by the university (as described in the following paragraphs) as a part of the NCAA penalties in this case, and the committee reserves jurisdiction to ensure that the stated terms of these paragraphs are implemented fully and satisfactorily.

a. The university's athletics board has implemented a comprehensive compliance program under the direction of the university's deputy director; further, this program includes an "economic interview" with each entering student-athlete who receives athletically related financial aid.

b. Effective September 1, 1986, no representative of the university's athletics interests shall be used in the recruitment of prospective student-athletes (including on-campus recruiting contacts, telephone calls and written communication with prospects) unless the individual: (1) is invited to do so by the appropriate head coach; (2) has been approved by the university's "management team;" and (3) has been certified by the director of athletics as having completed an educational program regarding conference and NCAA legislation governing recruiting and extra-benefit regulations.

c. The current contract of the men's head basketball coach, which is scheduled to expire May 1989, will not be extended during 1986, and his salary for the 1986-87 academic year has been frozen (no increases from either institutional or other sources); further, he has

received a letter of reprimand and has been placed on probation for a period of at least one year, with the explicit condition that any further violation of NCAA rules will result in termination (subject only to the opportunity to take a less drastic action if, but only if, the violation is minor and not a result of any fault on the coach's part).

d. Effective immediately, each athletics department staff member shall report promptly in writing to that individual's immediate supervisor and to the deputy director in charge of compliance any information indicating a possible violation of NCAA legislation; further, the deputy director shall report all such information with appropriate recommendations to the faculty athletics representative and the NCAA, and finally, failure to follow this procedure will result in disciplinary action by the university.

e. Two representatives shall be disassociated from the university's athletics program, which shall include action to prohibit them from participation in any activities associated with the recruitment of prospective student-athletes during the probationary period; further, the university shall curtail, to the extent of its authority, the involvement of these individuals in the university's athletics program during the probationary period.

f. The university will forfeit all intercollegiate men's basketball games won during the period a certain student-athlete participated while ineligible, and the university shall request that appropriate changes be made in Big Ten Conference records. The university also will request that all references to Big Ten Conference honors achieved by the student-athlete during the period of his ineligibility be struck from the conference records; further, the university does not intend to provide the young man athletically related financial aid in the future to complete academic work at the university.

g. A letter of reprimand will be issued to an associate director of athletics for his failure to take appropriate steps to verify that no violation had occurred concerning a bank loan obtained by a student-athlete.

h. The men's basketball program has termi-

nated and will not utilize a "foster parent" support system (i.e., Badger Buddy Program).

Summary of violations of NCAA legislation

1. Violations of NCAA legislation during the enrollment of a certain student-athlete [NCAA Constitution 3-1-(g)-(5), 3-2 and 4-2-(a)—O.I. 11]—(a) In 1982, a representative of the university's athletics interests personally guaranteed loans totaling \$4,214.80 on behalf of a student-athlete and his mother at a bank to assist them in the purchase of an automobile; further, beginning in June 1983 and continuing to the summer of 1985, the representative made periodic payments totaling \$3,185.05 toward the balance of a loan to the young man's mother; (b) the student-athlete was permitted to participate in intercollegiate basketball competition while ineligible during the 1981-82, 1982-83 and 1983-84 academic years; further, the men's head basketball coach and a then assistant basketball coach were aware no later than in the fall of 1982 that the young man had been the recipient of an improper "extra benefit" under NCAA regulations, and finally, the university's athletics department failed to exercise appropriate administrative diligence in determining the eligibility status of the young man when he obtained an automobile under questionable financial arrangements, and (c) during a period beginning in May 1982 and ending in August 1983, a representative of the university's athletics interests provided the student-athlete loans of cash and furniture (total value of \$2,231); further, the young man has not paid any portion of the balance of these loans to date.

2. Additional violation involving the head basketball coach [NCAA Bylaws 5-6-(d) and 5-6-(d)-(5)]—With full knowledge at the time that certain practices of the university's intercollegiate men's basketball program were not in compliance with NCAA legislation, the men's head basketball coach attested on August 10, 1983, on a statement filed with the chief executive officer of the university that he had reported to the chief executive officer his knowledge of and involvement in any violations of NCAA legislation involving his institution when, in fact, he had not done so.

Legislative Assistance

1986 Column No. 27

Division I academic-reporting procedure

In its July 20 telephone conference, the NCAA Administrative Committee reviewed the application of NCAA Bylaw 5-6(e) (Division I academic-reporting requirement) to member institutions that have taken advantage of multidivision-classification opportunities set forth in Bylaw 10.

For Division I institutions that have classified a single men's sport and/or a single women's sport in Division II or Division III in accordance with the provisions of Bylaw 10-3, the committee ruled that the Division I academic-reporting requirement would not apply to student-athletes participating only in a sport so classified.

Similarly, Division II or Division III institutions that conduct a single men's sport (and/or a single women's sport) in Division I would not be required to submit a report for purposes of Bylaw 5-6(e).

Several additional interpretations have been provided by the national office in response to questions concerning the academic-reporting procedure, and these interpretations are listed below to assist Division I member institutions in completing the report:

1. In Question Nos. 1, 2 and 3 on the academic-reporting form, the term "entering" refers only to those individuals classified by the institution as first-time freshmen and does not include transfer students from either two- or four-year institutions. Only those questions related to the calculation of graduation rates would require information concerning transfer students.

2. In Question No. 1 on the form, reference to the institution's special-admissions authority is intended to elicit information concerning the institution's authority to admit students who fail to meet the established academic admissions standards that normally are considered applicable for entering students by the institution and is not intended to relate to waivers of the institution's deadlines for receipt of application on admissions material.

3. In Question No. 2 on the form, the requested high school grade-point average for each entering or recruited student-athlete in the sports of football and men's basketball for the 1985-86 academic year should be furnished based on the initial eligibility standard (2.000 rule) in effect at the time of those students' matriculation, not the revised 2.000 core-curriculum requirement effective August 1, 1986.

4. Also in Question No. 2, both the SAT and ACT scores should be reported for each student, if available; however, if the institution requires only an SAT or ACT score for admission purposes and both scores are not available, the report should include whichever test score is required by the institution.

5. Question No. 3 on the form requests information concerning recruited student-athletes who competed in intercollegiate athletics during the 1984-85 academic year. Please note that all recruited student-athletes who represented the institution during 1984-85 are to be included in this group, regardless of whether those individuals received financial assistance. Individuals who did not compete during the 1984-85 academic year (e.g., redshirts) would not be included.

6. Also in Question No. 3, student-athletes who completed eligibility in 1984-85 and returned for the 1985-86 academic year having met satisfactory academic progress standards should be included in column (d), even though the individuals would not have represented the institution in intercollegiate athletics during the 1985-86 academic year.

Completed academic-reporting forms, signed by the institution's chief executive officer, must be received in the NCAA national office not later than October 1, 1986. Any form received after that date must have been postmarked not later than September 23. Failure to return a properly completed form by the deadline will render the institution ineligible to enter a team or individual competitors in an NCAA-sponsored meet or tournament during the 1986-87 academic year.

Questions concerning the annual Division I academic-reporting requirement should be directed to John H. Leavens, director of compliance services, at the national office.

Penn launches Palestra renovation

The University of Pennsylvania Board of Trustees has approved phase I of the multimillion-dollar Palestra renovation project, athletics director Paul Rubincam has announced. This initial portion of the renovation of the 60-year-old Palestra is estimated to cost \$750,000.

"I'm delighted that we have been given the approval for phase I," said Rubincam. "We are looking at a long-range renovation of the Palestra, and this summer is the beginning of the restoration."

Phase I entails several improvements that will serve the public. In-

cluded are new courtside seats on the first level and the placing of contour seats behind the two baskets. Also included in Phase I is the improvement of the press facilities.

"This is a long-overdue restoration that will not only benefit the university but also the city of Philadelphia," Rubincam added. "For the past 60 years, the Palestra has been the main arena for college basketball in the city. With the proposed renovations, it can only improve in terms of viewing and comfort for our basketball fans."

Work inside the Palestra is to begin in mid-July or early August.

Record

Continued from page 7

former SID at San Francisco State and was an assistant at Washington State, and he also has been assistant publicity director for the San Francisco Giants... Mississippi State's BO CARTER resigned to accept a sports information position with the Southwest Athletic Conference... Albion's STEVE PULVER selected at Oberlin. He also has been a graduate assistant at Ohio State and an assistant at LeMoyne... FRANK MILLERICK named at Babson, where he also will serve as marketing director. He has been SID at Fitchburg State the past two years... WAYNE KOEHLER named information director for the Sunshine State Conference, in addition to his duties as SID at Florida Southern... JOE FAVORITO appointed at Monmouth after working last winter as interim SID at Iona. He also has worked for a New York City sports public relations firm and for one season as head statistician for the Atlantic Coast Hockey League... KEN CERINO hired at Springfield. He has been SID at MIT since 1979 and also has served at Iowa State and Siena. He succeeds BOB MARX, who resigned to enter private business.

Sports information assistants JEFF BOILING hired at Kansas State, where he has been an intern since last August. He replaces MIKE PRUSINSKI, who joined the sports information staff at Colorado.

Ticket services director BETTIE ADAMS named director of William and Mary Hall and ticket services at William and Mary. She has been assistant director of William and Mary Hall since 1970. Adams succeeds LESTER HOOKER, who served in the posts for nearly 20 years.

Trainers STEVE FOSTER appointed head men's trainer at Dayton. He had been head trainer at DePaul since 1983. Foster succeeds EDDIE KWEST, who retired after 32 years of service... JOHN CONNOLLY named head trainer at Northwestern after two years as an assistant trainer at Purdue. He once was assistant trainer at Northwestern. Connolly replaces STEVE LONG, who resigned to pursue a degree in physical therapy... Chapman's LINDA LAYE named head men's water polo coach at the school... PAULA SAMMARONE selected assistant trainer at Pittsburgh after two years as an assistant at Eastern



Bill Zaima appointed head women's tennis coach at UCLA



Ken Cerino selected as sports information director at Springfield

Kentucky. She served during late July on the training staff at the U.S. Olympic Sports Festival in Houston.

Women's athletics coordinators MARY VIELBIG appointed at Northwood Institute, where she also will coach women's basketball... EILEEN F. SHAFFER selected at Upsala. She continues as a teacher and coach at Orange High School in New Jersey.

CONFERENCES

SAMUEL LOGAN, professor of agricultural economics at UC Davis, named president of the Northern California Athletic Conference for the coming year, and JESSELYN SAF-FOLD of the student affairs office at San Francisco State named secretary. Remaining as treasurer is MARTHA YATES, professor of physical education and health science at Sonoma State... JAMIE McCLOSKEY appointed assistant commissioner of the Mid-American Conference after four years as NCAA assistant director of legislative services. Also, Lori Brown named the MAC's assistant information director. She previously was assistant sports information director at Miami (Ohio). Both McCloskey and Brown also will assist with administration of the Ohio Athletic Conference... WILLIAM WEILNER, professor of education and psychology and athletics department faculty representative at Duquesne, elected president of the Iowa Intercollegiate Athletic Conference... BO CAR-

funded Select Committee on Athletic Problems and Concerns in Higher Education from 1982 to 1983, named director of university news and publications at Northern Arizona. He previously was executive director of information services for the Phoenix Union High School District in Arizona.

DEATHS

Former Buffalo Bills fullback JIM BRAXTON, who played at West Virginia, died July 28 in Buffalo of brain cancer. He was 37... WILLIAM D. "BILL" ROHR, head men's basketball coach at Miami (Ohio) from 1951 to 1957, died July 15 in Oxford, Ohio. He was 68. Rohr's teams compiled a 91-47 record and won four Mid-America Conference championships... WILLIAM C. STRYKER II, director of athletics relations at Princeton, died June 24 in Belle Mead, New Jersey, after a long illness. He was 59. The 1959 Princeton graduate returned to the school as sports information director in 1958 and was named to his most recent post in 1975. He was the public-address announcer at Princeton athletics events for many years... Bethune-Cookman football player JEFF BUIEY was killed July 28 in Lake City, Florida, after the van he was driving apparently skidded on rain-dampened pavement and struck a utility pole. Buiuey, 20, was a former all-state running back at Lake City's Columbia High School and would have been a sophomore at Bethune-Cookman. His 16-year-old brother

Rawlings to provide official basketballs

The NCAA and Rawlings Sporting Goods Company have announced a three-year agreement for Rawlings to become the official and exclusive supplier of basketballs for the NCAA Divisions I, II and III Men's and Women's Basketball Championships.

The contract becomes effective August 1, 1986, and extends through the 1989 championships.

Rawlings also will be provided exclusive rights to distribute a complete line of NCAA basketballs at the retail level nationwide.

"We are delighted to have Rawlings associated with the NCAA," said Richard D. Schultz, chair, Division I Men's Basketball Committee. "We are impressed by the total commitment that Rawlings has made to intercollegiate athletics."

Robert P. Burrows III, Rawlings president, attributes the agreement to the stability of the American-owned company and to its ability to execute the various marketing support programs necessary to promote the NCAA symbol.

Burrows cited the introduction and implementation of the Rawlings National Youth Basketball Tournament, a vehicle to increase the awareness and to underscore further the NCAA's commitment to America's youth. The tournament, called "Junior 64," will be very similar to college tournaments.

Rawlings, a Figgie International Company, manufactures baseball, basketball, football and soccer products and is a major supplier of sports equipment and uniforms to college,

professional, high school, youth and other sports organizations. The company will celebrate its 100th birthday in 1987.

DIRECTORY CHANGES

District 1—Boston University: Charles G. Strickler (FR).

District 2—Carnegie-Mellon University: Richard L. Enos (FR); Catholic University: Fred O'Connor (AD); East Stroudsburg University: Robert Sutton (AD); Fordham University: Stanley W. Pycior (FR); Suzanne M. Shea (PWA); Kings College: Father Anthony De-Conciliis (FR).

District 3—East Tennessee State University: Les Robinson (AD); Eastern Kentucky University: H. Hanly Funderburk Jr. (P); Marymount College of Virginia: Changed name to Marymount University; Samford University: George Crocker (FR).

District 4—Butler University: Richard E. Martin (FR); Calvin College: Roger J. Stouwie (FR); Indiana Central University: Changed name to University of Indianapolis; Kenyon College: Perry Lentz (FR); Lake Superior State College: H. Erik Shaar (P); University of Minnesota: Minneapolis: Merrily Dean Baker (PWA), new phone number is 612/624-4044.

District 5—University of Missouri: St. Louis: Marguerite Ross Barnett (C); University of Tulsa: John Benn (AD), Barry Kinsey (FR).

District 6—Louisiana Tech University: Patrick P. Garrett (FR); Rice University: Jerry L. Berndt (AD).

District 7—Colorado State University: G. James Francis (FR); Idaho State University: Tom Jewell (AD); University of Nevada, Reno: Christopher H. Exline (FR).

District 8—Arizona State University: Marianne Jennings (FR); California State University, Fresno: Peter Simis (FR); California State University, Fullerton: Barbara S. Stone (FR); University of California, Irvine: Kaia Hedlund (PWA).

Affiliated—National Association of Collegiate Gymnastics Coaches (Women): Jackie Walker (P), San Jose State University, San Jose, California 95192—405/277-3540; The National Football Foundation and Hall of Fame: New address is Bell Tower Building, 1865 Palmer Avenue, Larchmont, New York 10538—914/834-0474; Women's Basketball Coaches Association: New address for executive director Betty Jaynes is 1687 Tullie Circle, Suite 127, Atlanta, Georgia 30329—404/321-2922.

Conference—Empire State Conference: Commissioner is Denise Cohen, Molloy College; Lone Star Conference: New president is Lloyd D. Vincent, Angelo State University; Southern California Intercollegiate Athletic Conference: Woody Studenmund, Department of Economics, Occidental College, Los Angeles, California 90041 (Chairman); Harvey Good (Secretary-Treasurer); Sunshine State Conference: Bob Vanatta, Commissioner, 2453 Kingfisher Lane, G 202, Clearwater, Florida 33520—813/577-9166.

CORRECTIONS

Because of an editor's error, The NCAA News erroneously reported in its July 16 issue that the University of California, Los Angeles, will be the site for the first and second rounds of the West regional in the 1989 Division I Men's Basketball Tournament. The correct site is Reunion Arena in Dallas, with Southern Methodist University serving as host... In the same issue, the fielding category of the Division III baseball statistics was inaccurate due to incorrect information supplied to the NCAA statistics service. UC San Diego's fielding percentage of .964 was the best in the division in 1986, and Simpson should be eliminated from the list. Consequently, all other ranked teams move up one spot and Elizabethtown becomes No. 15. The Blue Jays, 14-17 last season, had 662 put-outs and 246 assists with 47 errors, for a fielding percentage of .951.

Eligibility Rulings

Actions of the NCAA Eligibility Committee during the weeks of July 21 and July 28:

University of Tennessee, Knoxville

The eligibility of two football student-athletes was restored subsequent to being withheld from the first intercollegiate football contest of the 1986-87 football season. The violations in this case involved the provisions of Constitution 3-1-4(g)(3). The committee mitigated the violations in this case due to the fact that the young men did not receive compensation in exchange for their complimentary passes.

University of North Dakota

The eligibility of a prospective student-athlete in the sport of hockey, who served a bench penalty for a major junior hockey team, was restored immediately.

University of Oklahoma

The eligibility of a prospective student-athlete who was provided improper transportation during his official visit was restored immediately.

George Mason University

The eligibility of a female soccer student-athlete who represented the institution in a soccer contest while temporarily withdrawing from the institution was restored subsequent to the university's first intercollegiate soccer contest.

University of Montana

The eligibility of a female gymnastics student-athlete who received financial aid for a limited period prior to being certified eligible was restored immediately.

Uryasz joins staff

Frank D. Uryasz has joined the national office staff as assistant director of research and sports science. He will assist with the Association's drug-testing and education programs and in promoting the general health and safety of student-athletes.

Uryasz is a 1983 graduate of the University of Nebraska, Lincoln, where he earned a master's degree in business administration. He joins the NCAA staff from Bishop Clarkson College Hospital, Omaha, Nebraska, where he was registrar for the institution's college of nursing.

Improved officiating in women's basketball is program's goal

A pilot program of four regional clinics to improve women's basketball officiating has been approved for this fall by the NCAA Administrative Committee.

Approval of the program, which had been recommended by an ad hoc group made up of the chairs and secretary-rules editors for both the Men's and Women's Basketball Rules Committees, was given July 20.

The clinics will begin October 5 in Birmingham, Alabama. Clinics also will be conducted October 26 in San Francisco, November 2 in Chicago and November 9 in Philadelphia.

The recommendations came about as the result of an NCAA Executive Committee request that the ad hoc group study the desirability of eventually integrating women's basketball officiating with the men's pilot program, which also will begin this fall.

Because the recommendations included considerations for the selection of officials for the Division I Women's Basketball Championship and the criteria for automatic qualification, they also were discussed and approved by the Division I Women's Basketball Committee during its July 6-10 meeting.

The four regional clinics are for Division I conferences' supervisors of women's basketball officials (or other conference administrators responsible for women's programs), each confer-

ence member's head or full-time assistant women's basketball coach, and officials.

The supervisors of officials and the head or full-time assistant coach of each institution in a Division I conference that has been awarded automatic qualification for the 1987 championship are required to attend one of the four regional clinics. If they do not attend, the conference's recommendations of officials to be assigned to the 1987 championship will not be solicited or accepted by the Division I Women's Basketball Committee.

Additionally, all officials of automatic-qualifying conferences are encouraged but not required to attend one of the clinics in 1986; however, preference will be given by the Division I Women's Basketball Committee to assigning officials to the 1987 championship who have done so.

Attendance by supervisors, head or full-time assistant coaches and officials of nonautomatic-qualifying conferences is encouraged but not required in 1986.

Effective with the 1987-88 academic year, to be eligible for automatic qualification for the Division I Women's Basketball Championship, a conference's supervisor of officials, all head or full-time assistant women's basketball coaches and officials must attend a regional clinic.

If a conference that has been

awarded automatic qualification does not comply with the requirement, it will be subject to having none of its officials assigned to work in the Division I women's championship, a financial penalty or the loss of automatic qualification for that year.

All of the clinics will be conducted by Marcy Weston, secretary-rules editor for the NCAA Women's Basketball Rules Committee. She will be assisted by June Courteau, a prominent women's basketball official.

The following conference assignments have been made to each of the four regional clinics:

• **Birmingham**—Atlantic Coast Conference, Big South Conference, Gulf Star Conference, Metropolitan Collegiate Athletic Conference, New South Conference, Ohio Valley Conference, Southeastern Conference, Southwestern Athletic Conference, Southland Conference and Southwest Conference.

• **San Francisco**—High Country Athletic Conference, Mountain West Athletic Conference, Pacific Coast Athletic Association, Pacific-10 Conference and West Coast Athletic Conference.

• **Chicago**—Big Eight Conference, Big Ten Conference, Gateway Collegiate Athletic Conference, Mid-Amer-

ican Athletic Conference and Midwestern Collegiate Conference.

• **Philadelphia**—Atlantic 10 Conference, Big East Conference, Colonial Athletic Association, East Coast Conference, Ivy Group, Metro Atlantic Athletic Conference, Seaboard Conference, Mid-Eastern Athletic Conference and Southern Conference.

Institutions or conferences that want to send their representatives to a site other than the one to which they are assigned should contact Patricia E. Bork, director of women's championships, at the NCAA national office.

An instructional videotape will be provided to each Division I conference. In addition, the first clinic in Birmingham will be videotaped and the tape made available to all Division I conferences in attendance at the clinics. Divisions II and III conferences may purchase either or both of the tapes.

At the direction of the NCAA Executive Committee, the ad hoc group that met in Kansas City June 24-25 also developed recommendations for a common set of rules for men and women and a combined rules committee structure.

Under the recommendations, a common rules book would be published for the 1987-88 season, with modifications for the men's or women's

game included where appropriate or necessary, and the two committees would be combined at their current strength September 1, 1988. By attrition, the combined committee would be reduced to 14, including a secretary-rules editor and an assistant secretary-rules editor.

The new committee would be structured with four representatives of men's basketball (two from Division I and one each from Divisions II and III), four representatives of women's basketball (two from Division I and one each from Divisions II and III) and four at-large noncoaching representatives (two representing men's interests, including one from Division I, and two representing women's interests, including one from Division I).

In separate conference calls, the Women's Basketball Rules Committee voted unanimously to support the recommendations, and the men's committee voted that at this time it is in favor of similar rules and working toward a common set of rules but is opposed to a combined committee.

The recommendations for common rules and a combined committee will be considered by the NCAA Executive Committee when it meets in August. It was noted by the ad hoc group that the NCAA Council had gone on record in favor of a common set of playing rules.

NCAA adopts Big Ten penalties imposed against Iowa

The NCAA Committee on Infractions has announced that it has adopted penalties previously imposed by the Big Ten Conference on the University of Iowa, mainly for violations found in the men's swimming program.

The conference prohibited the men's swimming coach from recruiting prospective student-athletes in person, off campus for one year and reduced the value of athletically related financial aid that may be awarded during the 1986-87 academic year in men's swimming by one grant.

The NCAA also reviewed isolated violations found in women's volleyball, softball and golf. The NCAA

adopted the university's action to reprimand its women's volleyball coach and determined that the total value of grants-in-aid in women's golf should be reduced by one grant in the 1987-88 academic year.

Sanctions regarding postseason events and television appearances were not imposed, and the university remains eligible for such programs and events in all sports.

"The violations in men's swimming were of particular concern to the committee," said Thomas J. Niland Jr., acting chair, Committee on Infractions. "The actions of the Big Ten Conference were considered sufficient and consistent with NCAA enforce-

ment policies, however, in that they directly affect the men's head coach and the men's swimming program.

"The violations found in women's programs were considered isolated and inadvertent in nature," said Niland, "and the committee believes that the actions taken by the university and the committee in regard to those programs will enhance the university's future efforts to maintain compliance."

The following is a complete text of the penalties imposed in this case and a summary of violations.

Penalties to be imposed upon institution

1. Based upon the Committee on Infractions' review of the nature and circumstances of the violations previously found by the Big Ten Conference, the committee determined that

the actions taken by the conference and the university should be adopted by the NCAA. These actions require that:

a. The men's head swimming coach be prohibited from contacting prospective student-athletes in person, off campus for one calendar year starting June 1, 1986.

b. The university be prohibited from awarding more than the value of 10 athletically related grants-in-aid (as set forth in O.I. 600) in men's swimming during the 1986-87 academic year.

c. The men's head swimming coach be admonished; the men's swimming program be placed on probation by the university, and members of the men's swimming coaching staff be informed that any additional infractions will result in additional disciplinary action against them.

d. The women's head volleyball coach be reprimanded and educational seminars be implemented regarding NCAA legislation for

coaching staff members in women's sports.

2. After consideration of one violation found in women's golf, the committee determined that the university shall be prohibited from awarding more than the value of five athletically related grants-in-aid (as set forth in O.I. 600) to members of its women's golf team during the 1987-88 academic year.

3. The committee also determined that no action should be taken in regard to the university's failure to declare a student-athlete ineligible in men's swimming due to the lack of clarity among NCAA, Big Ten Conference and institutional personnel concerning the proper application of the eligibility rules in question. The committee also noted that the student-athlete eventually was declared ineligible and no longer is enrolled in the institution.

Summary of violations of NCAA legislation

1. Violations of NCAA legislation involving the men's intercollegiate athletics program

See NCAA, page 12

The NCAA News

The Market

Readers of The NCAA News are invited to use The Market to locate candidates for positions open at their institutions, to advertise open dates in their playing schedules or for other appropriate purposes.

Rates are 45 cents per word for general classified advertising (agate type) and \$22.60 per column inch for display classified advertising. Orders and copy are due by noon five days prior to the date of publication for general classified space and by noon seven days prior to the date of publication for display classified advertising. Orders and copy will be accepted by telephone.

For more information or to place an ad, call 913/384-3220 or write NCAA Publishing, P.O. Box 1906, Mission, Kansas 66201.

Positions Available

Athletics Trainer

Athletic Trainer for Women's Sports. Primary responsibilities for all women's intercollegiate sports (7). Application Deadline: August 18, 1986. Salary: Commensurate with experience. Qualifications: Undergraduate degree, ATC certification desired, (nine-month appointment) application, recommendations and references should be forwarded to: Lawrence Weise, Director of Athletics, St. Bonaventure University, St. Bonaventure, NY 14778.

Assistant Athletic Trainer. Salary: Commensurate with qualifications and experience and within budget guidelines. Qualifications: Certification by the NATA, master's degree preferred, but not required. Applicant should have a minimum of two years' experience in athletic training post-undergraduate work. Combined R.P.T./A.T.C. desirable but not required. Responsibilities: Include travel and supervision of an NCAA Division I Men's Basketball Team. The position will be directly responsible to the head athletic trainer. Additional duties include supervision and instruction of student trainers, care and rehabilitation of all athletes in a coed training room and

duties as assigned. Applicant must have the ability to work with all athletes, male and female, as well as all sports, male and female. They must be well versed in the use of current modality and rehabilitation equipment. Application Deadline: August 22, 1986. Send letters of application, resume, transcripts and letters of recommendation to: Mr. William T. Lyons, Athletic Trainer, University of Wyoming, University Station Box 3414, Laramie, Wyoming 82071. The University of Wyoming is an Equal Opportunity/Affirmative Action Institution.

Athletic Trainer. LeMoyné College, Syracuse, New York, seeks an athletic trainer for its intercollegiate program. Certification is required. Salary commensurate with work experience and qualifications. Deadline: August 15, 1986. Position begins on September 1, 1986. Duties also include control of equipment. Send letter of application, resume, and references to: Thomas J. Niland, Jr., Director of Athletics, LeMoyné College, LeMoyné Heights, Syracuse, NY 13214.

Assistant Athletic Trainer. Position available at the University of Chicago. Additional opportunity to work as a rehabilitation therapist in University of Chicago Center for Sports Medicine. Duties consist of assisting the head trainer in all areas of a comprehensive athletic training program for 20 men's and women's intercollegiate athletic teams. Requirements: Bachelor's degree, master's degree preferred, and NATA certification. Staff position; 10-month, full-time appointment. Starting Date: September 1, 1986. Please send complete application, including resume,

transcripts and three recent letters of reference by closing date of August 20, 1986, to: Mary Jean Mulvaney, Chairman, Department of Physical Education and Athletics, University of Chicago, 5640 South University Avenue, Chicago, Illinois 60637, 312/962-7684. The University of Chicago is a private institution and is an affirmative action/equal opportunity employer.

Development

Assistant Men's Athletic Director For Development (Executive Director of MSU-ASA: Bobcat Booster Club). Desired Qualifications: Minimum of bachelor's degree or equivalent; successful fund-raising experience; organizational ability; excellent communications skills; planning and implementation of sound fund-raising activities; ability to relate to and work effectively with diverse groups; sales performance ability. Responsibilities: Secure external financial support for athletic programs; budget management, office operation, coordination of fund-raising projects; public relations; assisting the Director of Men's Athletics. Travel is required. Full-time position; non-tenured, no faculty rank. Screening will begin August 1. Interested applicants should submit a letter of application and a resume, which includes at least three references, to: Doug Fullerton, Director of Men's Athletics, Montana State University, Brick Breiden Fieldhouse, Bozeman, MT 59717-0025. MSU is an AA/EEO Employer.

Hurricane Club Director and Assistant for Development Services. University of Miami, Coral Gables, Florida. Responsibilities include the organization, budget, calendar, etc. for the annual fund drive, liaison with the University of Miami alumni office, coordinate social activities for the Hurricane Club, and other duties as assigned. Bachelor's degree with master's preferred. Responsible to the Director of Development Services. Please submit letter of application and resume to Sam Janikovich, University of Miami, 41 Hurricane Drive, Coral Gables, FL 33146. Salary commensurate with experience and qualifications. The University of Miami is an Affirmative Action/Equal Opportunity Employer.

Fund-Raising

Athletic Fund-Raising. Temple University seeks an experienced fund-raising professional to serve as Director of Development for intercollegiate athletics. Successful can-

didate will possess a bachelor's degree, several years of fund-raising experience, and the demonstrated ability to coordinate a number of large-scale development activities for men's and women's athletics. Forward resume and salary history by August 8, 1986, to: Joseph M. Lunardi, Temple University, Rm. 203 USB, 1601 N. Broad St., Phila., PA 19122. Equal opportunity/affirmative action employer.

Assistant Director of The Mustang Club. Southern Methodist University Athletic Department is seeking to fill the position of Assistant Director of The Mustang Club. It is a full-time, 12-month position. A bachelor's degree is required with additional experience in the field of fund-raising in major college athletic programs. Computer experience is helpful. Salary is commensurate with experience. Deadline for application is August 15, 1986. Send applications and resumes to: Barbara Camp, Associate Athletic Director, Southern Methodist University, Athletic Department, Moody Coliseum, Box 216, Dallas, TX 75275. SMU is an Equal Opportunity/Affirmative Action Employer.

Sports Information

Assistant Coordinator/Sports Information. Central Michigan University is seeking an Assistant Coordinator/Sports Information to prepare and distribute information and publicity materials relative to athletic programs. Bachelor's in Communication, Journalism, related field or the equivalent experience required; one year of experience in broadcast or print media preferred. Magazine/sports program experience and advertising sales experience desired. Knowledge of men's/women's intercollegiate athletics; demonstrated ability to communicate effectively and project a positive public image; evening/weekend work schedule and travel required. Salary: \$15,650-\$22,213, commensurate with qualifications. Apply by August 8, 1986, to: Personnel Office, 109 Rowe Hall, Mt. Pleasant, MI 48859. CMS is an Affirmative Action and Equal Opportunity Institution.

Sports Information Director. Shepherd College, (Division I NAIA, West Virginia Conference) located 70 miles from Baltimore and Washington, is seeking an applicant for a 12-month position as SID. Responsibilities include: Production of media guides, programs, news releases, organizing and coordinating statistical services, working with radio networks, supervising part-time assistants, soliciting program advertising and coordinating media and promotional operations. Major emphasis will be placed on publicizing foot-

ball, basketball and seven other sports. Candidates must possess strong public relations, writing and editing skills. IBM-PC equipped office. Employment to begin immediately. Salary commensurate with experience. Resume, including three references and transcripts etc., are due postmarked August 13. Send vita with letter of application to: Mike Jacobs, Athletic Director, Shepherd College, Shepherdstown, West Virginia 25443. Shepherd College is an Affirmative Action/Equal Opportunity Employer.

Graduate Assistant/Sports Information. Primarily women's basketball, volleyball and softball. Twelve-month position beginning September 1, 1986. \$4,800. By resume only to: Lynn Hickey, Assistant Athletic Director and Head Women's Basketball Coach, Texas A&M University, College Station, TX 77843. Application Deadline: 8/19. Affirmative Action/Equal Opportunity Employer.

Sports Information Director. Department of Athletics, Boise State University. Responsibilities: Preparation of promotional materials, brochures, media guides, programs, feature releases, news releases and other forms of publications; organization and supervision of statistical crews and scoring tables; coordination of contacts with the media; and supervision of student interns. This position is responsible for football (Division I-AA) and basketball (Division I) and reports to the assistant director of athletics for marketing. Qualifications: Bachelor's degree required, ability to relate positively to coaches, staff, media and the general public; experience in intercollegiate sports information preferred; solid writing skills with a background in publications, and proven ability in editing and proofreading. Salary: Commensurate with experience and qualifications. Closing Date: August 29, 1986. Starting Date: As soon as possible. To apply send letter of application, resume, two letters of recommendation and samples of professional work to: SID Search Committee, Department of Athletics, Boise State University, 1910 University Drive, Boise, Idaho 83725, 208/385-1826. EEO/AA Institution.

Baseball

Assistant Coach Baseball. University of South Alabama is seeking an Assistant Baseball Coach. Must have strong background in coaching pitchers. College and/or professional playing and coaching background is preferred. Coach will be responsible for teaching fundamentals of pitching while organizing and supervising pitching staff. Also, recruiting experience and ability is vital. Strong contacts

with high school coaches, junior college coaches, and professional scouts will be helpful. Fund-raising experience is desired. Salary will be commensurate with experience. Mail applications and letters of recommendation to: Steve Kittrell, University of South Alabama, Athletic Department, Mobile, Alabama 36688. Application Deadline: August 15, 1986. Equal Opportunity/Affirmative Action Employer.

Assistant Athletic Coach (Assistant Baseball Coach). Bachelor's degree in an appropriate area of specialization and one year of coaching experience at the high school level or above. Successful experience as a graduate assistant or intern in an athletic program is acceptable for up to one year of the required experience. Prefer University or College level. Annual salary range full-time \$14,720-\$26,500. Send resume and three letters of recommendation to: Ms. Doris Cannon, University of Central Florida, Personnel Services, Orlando, Florida 32816. Application recruitment postmark deadline is August 14, 1986. Equal Opportunity/Affirmative Action Employer.

Assistant Baseball Coach. The University of Southwestern Louisiana at Lafayette, Louisiana, a Division I-A state supported, coeducational institution, invites highly qualified applicants to assist in all phases of the baseball program. Duties will include, but will not be limited to, training and conditioning, organizing and implementing practice schedules, evaluating and recruiting prospective student-athletes, game coaching, promoting and maintaining positive public relations, scouting and other related assigned duties. Requires bachelor's degree plus four years' minimum successful baseball coaching experience at the collegiate level and a strong personal commitment to athletics within the academic setting. Apply with letter of application by August 1, 1986, to: Oliver Blanchard, Jr., Assistant Athletic Director, USL, 201 Reinhardt Drive, Lafayette, LA 70506-4297. USL is an affirmative action equal opportunity employer.

Basketball

Georgetown University is seeking a Graduate Assistant Women's Basketball Coach. Bachelor's degree minimum. Assist head coach in on-campus and local recruiting and scouting. Assist in coaching floor practice. Salary includes tuition plus stipend commensurate with experience. Application deadline is August 10, 1986. Send letter of application and

See The Market, page 10

Slaughter asks for higher academic standards for athletes at Maryland

A task force formed after the cocaine-related death of basketball star Len Bias was asked July 28 to consider tougher academic standards for student-athletes at the University of Maryland, College Park.

The proposal was made by Chancellor John B. Slaughter.

"I believe firmly," Slaughter said in a letter dated July 18, "that we must establish a policy that encourages and supports the retention of student-athletes toward graduation and not merely eligibility for intercollegiate athletics. Our current practice of allowing students who are on academic warning, or below, to continue to participate in intercollegiate athletics is not consistent with this philosophy.

"I am, therefore, considering a policy that would declare all student-athletes who are on academic warning, or below, as ineligible for intercollegiate athletics as long as they remain in this status."

"This policy may be controversial in that we are establishing higher standards for our student-athletes," Slaughter wrote. "However, I believe it is reasonable, educationally sound and long overdue. Participation in intercollegiate athletics is a privilege that a student earns. These individuals serve as representatives of the campus and, therefore, it is appropriate to establish higher academic performance requirements for participation in intercollegiate athletics.

"Further, as you well know, the participation in intercollegiate athletics requires a substantial time commitment as well as some absences from class to participate in scheduled activities. Therefore, I think it is not in a student's or the university's best interests to permit students who are on academic warning or below to participate."

Slaughter is chair of the NCAA Presidents Commission.



John B. Slaughter

Calendar

July 28-30	Women's Tennis Committee, Kansas City, Missouri
July 29-August 1	Men's Golf Committee, Kansas City, Missouri
July 30-August 1	Special Committee on Deregulation and Rules Simplification, Centerville, Massachusetts
July 31	Academic Requirements Committee, Kansas City, Missouri
July 31-August 1	Extra Events Committee, Kansas City, Missouri
August 1-2	Special Committee on Foreign Student Records, Kansas City, Missouri
August 4-5	Professional Sports Liaison Committee, Kansas City, Missouri
August 10	Divisions I, II and III Championships Committees, Seattle, Washington
August 11-12	Executive Committee, Seattle, Washington
August 11-12	Eligibility Committee, Seattle, Washington
August 13-15	Council, Seattle, Washington
August 15-17	Committee on Infractions, Colorado Springs, Colorado
September 8-10	Special Committee on Deregulation and Rules Simplification, Kansas City, Missouri
September 25-28	Committee on Infractions, Booth Bay Harbor, Maine
September 30-October 1	Presidents Commission, Kansas City, Missouri
October 13-15	Council, Kansas City, Missouri
November 6	Drug Education Committee, Kansas City, Missouri
November 14-17	Committee on Infractions, Kansas City, Missouri
December 2-3	Special Committee to Review Playing Rules, Kansas City, Missouri

The Market

Continued from page 9

resume to: Patricia Prather, Assistant Director of Athletics, Georgetown University, Washington, D.C. 20057. Georgetown University is an Affirmative Action/Equal Opportunity Employer.

Assistant Women's Basketball Coach. NCAA Division I institution; bachelor's degree required; nine-month position (September-May) includes room and board, stipend, and master's degree credits; contact Associate AD Gela Mikalauskas, Wagner College, Staten Island, NY; 718/390-3470.

Assistant Women's Basketball Coach. Part-time, 10-month position starting as early as August 25, 1986. Salary negotiable. Responsibilities include: Assistance in recruiting, scouting, practices, academic supervision

and public relations. Qualifications: Bachelor's degree required. College-level basketball playing experience preferred. Application Deadline: August 12, 1986. Send application letter, resume and three letters of recommendation to: Martha Hutchinson, Women's Basketball Coach, Athletic Department, University of North Dakota, Grand Forks, ND 58202. Equal Opportunity/Affirmative Action Employer.

Assistant Coach of Men's Basketball and Instructor in Physical Education. Full-time position available. Requires BA degree; experience in coaching men's basketball at the collegiate level; ability to work with students, faculty and alumni; able to work within the framework of Ivy League regulations. Send resume to: Mr. Samuel Howell, Associate Director, Athletics, Princeton University, Princeton, New Jersey 08544. EOE/AEE.

Women's Assistant Basketball Coach. Intern position at William Smith College, Geneva, New York, Division III. Salary: \$3,600 plus room and board. Submit application letter, resume and references by August 15, 1986, to: P.J. Elliott, Women's Basketball Coach,

William Smith College, Geneva, New York 14456. 315/789-5115. AA/EOE.

Cross Country

Head Women's Cross Country Coach. University of Houston. Bachelor's Degree required. Level I T.A.C. Certification required. Must have experience in coaching a successful cross country program. Coaching responsibilities will also include assisting in Women's Track/Field. Administrative responsibilities

for both Men's and Women's Track and Field Programs. Salary is commensurate with experience. Send resume by August 1 to: Tom Tellex, Athletic Department, University of Houston, 3855 Holman, Houston, Texas 77004.

Head Women's Cross Country and Track Coach. Part-time position at NCAA Division I institution; bachelor's degree required; contact Associate AD Gela Mikalauskas, Wagner College, Staten Island, NY; 718/390-3470. **Graduate Assistant Cross Country Coach.** Troy State University. Responsible for TSJ

See The Market, page 11

Middlebury College Head Women's Swim Coach

Position: Head Women's Swim Coach, Assistant Field Hockey and a Spring assignment to be determined. Instructor in Physical Education.

Qualifications: 1. Minimum of bachelor's degree. 2. Previous coaching experience, preferably at the college level. 3. Prepared to work within the framework of the New England Small College Athletic Conference.

Application Deadline: August 9, 1986.

Application Procedures: Submit letter of application, resume and three recent letters of recommendation to:

G. Thomas Lawson, Chairman
Department of Physical Education and Athletics
Middlebury College
Middlebury, Vermont 05753

Middlebury College is an Equal Opportunity Employer

COMPLIANCE REPRESENTATIVE NCAA Compliance and Enforcement Department

Applications are being accepted for an immediate opening in the newly restructured NCAA compliance and enforcement department. The department's compliance section was created after the June 1985 special Convention to provide support services to member institutions' chief executive officers in their renewed commitment to greater NCAA rules compliance.

A compliance representative's primary responsibility includes:

- Assistance to member institutions in identifying and attacking specific problems and developing procedures to prevent rules violations.
- Development of model procedures and guidelines for successful operation of athletics programs.
- Campus visitation on request of a member institution to assist in analyzing the overall structure and administration of its athletics programs, and its compliance with NCAA legislation.
- Implementation of the forms and processes used by institutions in conducting the required periodic self-studies and annual financial audits.
- Cooperation with member conference officials in assisting their institutions in rules compliance.

This position requires a working knowledge of NCAA regulations and the ability to communicate effectively, both orally and in writing. It is necessary that the applicant have recent administrative experience in intercollegiate athletics.

Interested candidates should send a letter of application and resume to:

John H. Leavens
Director of Compliance
NCAA
P.O. Box 1906
Mission, Kansas 66201

An affirmative action/equal opportunity employer.

ASSISTANT MEN'S WRESTLING COACH

RESPONSIBILITIES: Assist in all phases of the wrestling program including coaching, recruiting, equipment inventory and correspondence.

QUALIFICATIONS: An undergraduate degree is a minimum requirement. Prior coaching experience and/or intercollegiate competition is necessary.

TERMS OF CONTRACT: Part-time, 10-month contract.

SALARY RANGE: Commensurate with qualifications and experience.

POSITION AVAILABLE: October 1, 1986.

APPLICATION DEADLINE: September 15, 1986.

QUALIFIED INDIVIDUALS ARE INVITED TO SUBMIT THEIR RESUME AND THREE LETTERS OF RECOMMENDATION TO:

Fred Rideout
Head Men's Wrestling Coach
Marquette University
1532 West Clybourn Street
Milwaukee, WI 53233

Equal Opportunity/Affirmative Action Employer

WHEATON COLLEGE (COACHING POSITIONS)

Part time assistant coaches are needed in the following sports: Cross Country, Field Hockey, Tennis, and Volleyball. Candidates should have prior playing or coaching experience at the high school or college level. Interested candidates should contact:

Lynn Miller
Athletic Director
Wheaton College
Norton MA 02766
(617) 285-7722, Ext. 366.

DARTMOUTH COLLEGE Immediate Openings Coaching Positions Available Head Coach of Men's Lacrosse and Women's Soccer

General Duties: Responsible for the organization, development and administration of Division I, Ivy League men's lacrosse and women's soccer programs, including budget preparation, recruiting and supervision of assistant coaches.

Coach of Track and Field

General Duties: Responsible for organizing and administering the recruitment of Division I, Ivy League men's and women's track and field program for hurdles, sprints and jumps.

Qualifications: Demonstrated successful coaching experience in respective sports at the college level; ability to communicate effectively as well as successfully recruit within the Ivy League philosophy of no athletic grants-in-aid and highly selective academic standards. Bachelor's degree minimal.

Salary: Commensurate with experience.

Employment Date: These are both full-time, 12-month positions, beginning immediately.

Application Deadline: Send letter of application, resume and references by August 11, 1986, to:

Louise O'Neal
Associate Director of Athletics
Dartmouth College
Alumni Gym
Hanover, NH 03755

Dartmouth College is an Equal Opportunity
Affirmative Action Employer

Head Men's Basketball Coach Northern Michigan University

Northern Michigan University is gripped by the loss of Glenn Brown, who directed the Wildcat Men's Basketball Program for 18 years. Glenn passed away on July 9, 1986. In order to carry on the excellent tradition established by Coach Brown, Northern Michigan University is seeking nominations and applications for the position of Head Men's Basketball Coach.

Responsibilities: Responsible for the organization, direction and administration of the Men's Basketball Program. Must have commitment to compliance with the rules, regulations, and policies of the NCAA and Northern Michigan University. Must represent the University in a positive and ethical manner at all times. Recruit quality student-athletes who have the ability to achieve academically and athletically and monitor their performance.

The Head Coach must be able to promote the basketball program, develop and maintain effective relationships with the administration, faculty, staff, alumni, community and media.

Other responsibilities as may be assigned by the Director of Athletics.

Qualifications: Bachelor's degree required, master's degree preferred. Successful coaching experience as a head coach at the collegiate level or as a full-time assistant at the NCAA Division II level or Division I level is preferred. Commitment to the academic success of student-athletes is required.

Salary: Negotiable. Commensurate with experience and qualifications.

Applications: Position will be filled as soon as a suitable applicant is found. Application screening will begin on August 15, 1986. Submit letter of application, resume and names of references to:

Bea Marana
Employment Supervisor
Northern Michigan University
Personnel Department
Marquette, MI 49855

Northern Michigan University Is An
Equal Opportunity/Affirmative Action Employer.

The Market

Continued from page 10

men's and women's cross country teams, track distance events. \$3,600 stipend with tuition waiver, two-year commitment. Appointment contingent upon acceptance into Troy State graduate program. Position begins September 1. Direct inquiries to: Charles Oliver, Head Track Coach, Troy State University, Troy, Alabama 36082. Affirmative Action/Equal Opportunity Employer.

Diving

Diving Coach (part-time). Primary responsibility for coaching, recruiting, and administration of the diving program; report directly to the Head Swimming Coach; opportunity to establish an age group program in new natatorium that opens fall semester 1986; other duties as assigned by the Head Swimming Coach. Qualifications: Bachelor's degree minimum; previous coaching experience; competitive experience desirable; thorough knowledge of diving and ability to apply that knowledge in coaching highly skilled athletes; ability to relate to and work effectively with athletes, colleagues, and the public. Send application letter, resume, and references to: Coach Frank Comfort, Head Swimming Coach, University of North Carolina, P.O. Box 2126, Chapel Hill, NC 27515.

Gymnastics

Gymnastics, Head Coach. University of Connecticut. Part-time position. October 1, 1986, to March 30, 1987. Responsibilities include administration of total program and preparation of team for competition. Send application to: Patricia H. Meiser, Associate Athletics Director, U-78, Field House, Room 200, 2111 Hillside Road, Storrs, Connecticut 06268. Deadline: August 6, 1986. Equal Opportunity/Affirmative Action Employer.

Assistant Women's Gymnastics Coach, University of Illinois-Champaign. Full-time, 10-month, starting September 1, 1986. Salary commensurate with experience, qualifications. Responsibilities include: Assist with preparation, coaching of practices and competitive events; recruitment; promotions and team-related administrative duties. Qualifications: Bachelor's degree and previous experience coaching at gymnastics club and/or college level. Technical knowledge of USGF rules and skills to coach, spot Class I and Elite gymnasts. Prefer knowledge of NCAA rules. Application Deadline: August 8, 1986. Send application letter, resume and references to: Dr. Beverly Mackes, 235H Armory, 505 East Armory Drive, Champaign, Illinois 61820, 217/333-7974. Qualified applicants will be interviewed during advertising period and through deadline date. The University of Illinois is an Affirmative Action/Equal Opportunity Employer.

Lacrosse

Graduate Assistant—Men's Lacrosse. Full tuition waiver. Contact John McCloskey, Lehigh University, Taylor Gym, #204, Bethlehem, PA 18015. (215) 861-4917.

Phys Ed./Athletics

Lecturer/Coach. Full-time, non-tenure academic year appointment beginning 9/1/86.

Qualifications: Master's degree in physical education required. Previous college/public school teaching desirable. Demonstrated expertise in coaching women's basketball at the college level highly desirable; experience in coaching girl's high school basketball required. Responsibilities: Coaching women's varsity basketball. Teaching may include: Introduction to Physical Education, Principles of Health, Methods of Physical Education, Supervision of Practicum/Fieldwork and a selection of such activity courses as swimming, racquet sports, wrestling and baseball. Other coaching duties may include baseball or softball. Salary dependent on degree/experience. Send letter of application, resume, transcripts and three current letters of recommendation, postmarked no later than August 8, to: Dr. Jack Sheftmire, Chairperson, E/HPER, University of Maine-Fresno, Maine 04769. UMFI is an AA/EO Employer and encourages applications from women and minorities.

Swimming

Assistant Coach/Men's and Women's Swimming. Full-time, nine-month position beginning 9/1/86. Primary responsibility in administration of travel, purchasing, recruiting and meet management. Bachelor's degree required with experience in administration. Salary commensurate with experience. Send letter of application, resume and references to: Mel Nash, Swim Coach, Texas A&M University, College Station, Texas 77843. Application Deadline: August 19, 1986. Affirmative Action/Equal Opportunity Employer.

Head Swimming Coach. Full- or part-time position with responsibilities for all aspects of coaching and recruiting NCAA Division II men's and women's swimming program. Other teaching and/or coaching possibility depending on background. Salary: Negotiable. Bachelor's degree preferred. Send resume and letter of application by August 8, 1986, to: Thomas A. Billingsley, Director of Administration, Mercyhurst College, Glenwood Hills, Erie, PA 16546. AA/EOE.

Tennis

Assistant Tennis Coaching Position in Women's Athletics at The University of Iowa. Half-time position may be permanent or filled by graduate assistant. Bachelor's degree in physical education or related area and coaching experience required. Division I coaching experience and experience with NCAA recruiting rules and regulations, administration, organization and training preferred. Responsibilities primarily in the areas of administration and recruitment of student-athletes. Salary depends upon qualifications. Starting date negotiable; screening to begin June 30, 1986. Send letter of application and three letters of recommendation to: Linda C. Heckett, Associate Director, Women's Athletics, The University of Iowa, 340F Carver Hawkeye Arena, Iowa City, IA 52242. The University of Iowa is an Equal Opportunity/Affirmative Action Employer.

Women's Head Tennis Coach. Responsibilities: 1. Organize and coach the Women's Intercollegiate Tennis Team (Division I-Southeastern Conference). 2. Recruit highly skilled tennis players according to NCAA and SEC rules and regulations. 3. Organize and supervise practices. 4. Schedule matches and arrange travel plans. 5. Prepare budget recommendations. 6. Be responsible for equipment and uniforms. 7. Maintain team, financial and other records. 8. Opportunity to sponsor summer camp program. Qualifications: Bachelor's degree; prefer master's degree. Previous successful coaching experience on the high school or college level.

Strong background in teaching and coaching skills. Salary: Commensurate with experience and qualifications. Starting Date: September 1, 1986. Application Deadline: August 15, 1986. Application Procedures: Send letter of application, vita, credentials and three letters of recommendation to: Joe Ciampi, Assistant Athletic Director, P.O. Box 351, Auburn, AL 36830. Auburn University is an Equal Opportunity Employer.

Track & Field

Track and Field Graduate Assistant. Prefer experience in jump, sprint or middle distance events. Stipend plus fee waiver. Contact: Les Stevens, Track Coach, Central Missouri State University, Warrensburg, MO 64093, 816/429-4254 or 4250.

Assistant Track Coach. Full-time position in Division I women's track and field program. Expertise in field events and/or sprints required. Coaching and recruiting experience in Division I national level program preferred. Assist in administration and recruit as permitted by NCAA. Salary dependent on qualifications; starting date August 18, 1986. Send letter of application, resume and three letters of recommendation to: Linda C. Heckett, Associate Director, The University of Iowa, Carver Hawkeye Arena, Iowa City, IA 52242. For further information regarding the position, contact Head Coach Jerry Hassard (319/353-7288). Screening will begin immediately. Equal Opportunity/Affirmative Action Employer.

Graduate Assistant, Track and Field. Mississippi State University. Prefer experience in throwing events. Stipend plus meals. Contact Bob Kitchens, Head Track Coach, P.O. Drawer 5327, Mississippi State, MS 39762, 601/325-2892.

Assistant Women's Track Coach, University of California. Responsibilities include coaching jumps, hurdles, and heptathlon, and assisting head coach in recruiting and meet management. Bachelor's degree required; master's degree preferred. Starting date August 18, 1986. Salary range \$12,000-\$14,000. Send resume and references by August 8 to Tony Sandoval, Head Coach, 177 Hearst Gym, University of California, Berkeley, CA 94720, phone 415/642-9447 or 687-3862. Equal Opportunity/Affirmative Action Employer.

Head Men's Track and Cross Country Coach with teaching responsibilities in the Physical Education department and recruiting for men's track and cross country. Qualifications: Master's degree required, successful coaching experience desired, strong interest in an NCAA Division III men's athletic program. Position available August 1986. Preference given to applications received by August 11, 1986. Send letter of application, resume, transcripts and three letters of recommendation to: Suzanne Miller, Personnel Director, Simpson College, 701 North "C" Street, Indianola, Iowa 50125; or call 515/961-1511. EO/AAE.

Assistant Coach for Men's and Women's Track and Field teams at The University of Virginia. Full-time assistant track and field coaching position with responsibilities in sprinting, hurdling or throwing events. Other responsibilities include assisting the head coach with recruiting, meet management,

team travel and summer camps. B.S. degree required, master's degree preferred. Salary commensurate with experience and qualifications. Deadline for application: August 15, 1986. Send letter of application, resume, and letters of recommendation to: Fred Binggell, Head Track and Field Coach, University of Virginia Athletic Department, P.O. Box 3785, Charlottesville, VA, 22903. Equal Opportunity/Affirmative Action Employer.

Volleyball

Women's Head Volleyball Coach. Position: Head coaching duties consisting of actual coaching and conducting practice sessions. Administrative duties to be co-directed through Assistant Athletic Director's office. Prefer experienced teacher/coach with a minimum of two years. Required to be a full-time graduate assistant. Salary: \$4,725, nine months (GA salary). Submit letter of application and resume to: Sadie Allison, Director of Athletics, P.O. Box 13041 SFA, Nacogdoches, TX 75962. For more information call 409/569-3506.

Wrestling

Assistant Wrestling Coach. Purdue University is seeking qualified candidates for the position of Assistant Wrestling Coach. Duties include coaching, recruiting and other duties as assigned by the Head Coach. Bachelor's degree required and a master's degree preferred. Successful collegiate coaching experience preferred. Salary commensurate with experience. Send resume and letter of application by August 6, 1986, to: Bill Trujillo, Head Wrestling Coach, Purdue University, Mackey Arena, West Lafayette, Indiana 47907. Purdue University is an Equal Opportunity/Affirmative Action Employer.

Miscellaneous

Part-time Assistant Field Hockey Coach. **Assistant Lacrosse Coach (Apply for One or Both).** Bachelor's Degree and coaching or playing experience. Commitment to Division III philosophy in context of a liberal arts college. Filing deadline August 8, 1986. Forward resume to: Dr. Linda Arena, Women's Athletic Director, Wittenberg University, P.O. Box 720, Springfield, Ohio 45501. Wittenberg University is an Equal Opportunity/Affirmative Action Employer.

Graduate Assistant

Graduate Assistant/Swimming. The University of Wisconsin-Milwaukee is seeking a qualified graduate assistant for its swimming program. Includes out-of-state tuition waiver and a \$7,500 stipend. Send letter of application and resume to: Daryl A. Leonard, Athletic Director, University of Wisconsin-Milwaukee, P.O. Box 413, Milwaukee, WI 53201.

Graduate Assistantships. Available at Northwestern State University of Louisiana. Two positions: Volleyball and Women's Tennis.

Salary: \$2,000 per semester plus out-of-state tuition waiver. Apply by calling Pat Pierson, Women's Coordinator at 318/357-5891 or Tynes Hildebrand, Athletic Director at 318/357-5251.

Graduate Assistantship/Women's Basketball. Georgia Southern College, Division I Assistant Coaching position. \$8,000 stipend. Will also pay for work on master's degree. Responsibilities include assisting head coach in all phases of program including practice, recruiting, game responsibilities, conditioning program, scouting, team travel plans, academic counseling and other administrative details, etc. Desired qualifications are bachelor's degree and previous playing experience on college level. Application deadline August 15. Send resume and three letters of recommendation to: Jeannie Milling, Head Coach Women's Basketball, Georgia Southern College, L.B. 8082, Statesboro, Georgia 30460-8082. Equal Opportunity Employer.

Wanted: Division III men's team to play in Guadeloupe during Christmas vacation period 1986. Write for details—Athletic Enterprises, 6941 Antigua Place, Sarasota, FL 33581, PH 813/921-4966.

Football in Europe. Wanted: Division III football teams to play in Finland, Norway, Sweden, England, West Germany and Switzerland during summer 1986. Write for details—Athletic Enterprises, 6941 Antigua Place, Sarasota, FL 33581, PH 813/921-4966.

Women's Basketball, NCAA Division I. Grappling State University, Louisiana, is seeking home game with Division I opponents. December 2, 9, 10 or 11, 1986. Call: 318/274-2450.

Women's Basketball. The University of Hawaii needs one team for a tournament Nov. 29-30. Guarantee available. Please contact Bill Neffel at 808/948-7347.

Men's Basketball, Division II. Virginia Union University is seeking games for the 1986-87 season. Tip-Off Tournament November 21 and 22 (Richmond). Two regular season games, home-and-home or away. Division I, II, or III. Contact: Jim Battle or Dave Robbins 804/257-5890 or 257-5790.

Women's Basketball. Northwestern State University of Louisiana is seeking one NCAA Division I or II team to compete in the Lady Demon Christmas Classic, December 4 and 5. Contact Pat Pierson at 318/357-5891 or home 318/357-0339.

Open Dates

Men's Basketball. California University of Pennsylvania is seeking one team for a tournament on November 21-22, 1986. Guarantee. Call: Jan McConnell, 412/938-4351 or Tim Loomis, 412/938-4360.

Basketball in Guadeloupe-French West Indies.

HEAD BASKETBALL COACH Ball State University

NCAA Division I coaching position effective August 25, 1986. Responsible for the organization and administration of all aspects of the women's basketball program. Demonstrated coaching expertise in planning and directing collegiate women's basketball team; ability to recruit; good organization, management and public relation skills. Two to five years' coaching of women's basketball preferred. Initial four-year, 12-month contract, salary negotiable. Send letter, vita, original transcripts and three current, original letters of recommendation to:

Ms. Andrea Seger
Director of Athletics/Women
Ball State University
Muncie, IN 47306

Position open until filled; selection process will begin immediately.

Ball State University Practices Equal Opportunity in Education and Employment.

Legislative Assistant NCAA Legislative Services

Applications are being accepted for an immediate opening on the NCAA legislative services staff.

Legislative assistants primarily are responsible for providing guidance concerning the application of NCAA legislation in specific situations, both in writing and by telephone; assisting in preparation and review of forms required by NCAA legislation, and completing appropriate research and analysis of materials necessary to implement the Association's rules and regulations.

The work requires a comprehensive knowledge of NCAA regulations and the ability to communicate effectively while assisting in the analysis and development of NCAA legislation.

Experience in intercollegiate athletics, either as a student-athlete or administrator, and a legal or other postgraduate education are preferred.

Interested candidates should send a resume to:

William B. Hunt
Assistant Executive Director
NCAA
P.O. Box 1906
Mission, Kansas 66201

Director of Marketing and Media Relations

Responsibilities: The Director of Marketing and Media Relations will have the responsibility for the overall promotion, marketing and ticket sales of the University's athletic program. Specific areas of responsibility include sports information, season tickets, publications, media relations, pregame and half time promotional activities and special events. The Director will also have supervisory and budgetary responsibilities. Personnel within the unit include professional staff, graduate assistants and clerical workers. This position reports directly to the Director of Intercollegiate Athletics.

Qualifications: Minimum of bachelor's degree with master's degree preferred.

Ability to work, communicate and develop rapport with students, alumni, faculty, administration and general public.

Salary: Commensurate with background and experience.

Term of Appointment: Twelve-month position.

Application Deadline: August 4, 1986.

Please forward letter of application, professional resume, and three letters of reference to:

Mr. Paul Amodio
Director of Intercollegiate Athletics
Kent State University
149 Memorial Gym
Kent, Ohio 44242

Kent State is an Equal Opportunity Employer

Sports Information Director Chicago State University

Chicago State University, an expanding urban university in the NCAA Division I, seeks a Sports Information Director to assume overall responsibilities for sports information. The successful candidate will be in charge of the dissemination of information for the promotion of 15 intercollegiate sports, the major one being Men's Division I Basketball. This includes total responsibility for media guides, program guides, promotion brochures, media relations, game statistics, etc. A Bachelor's degree in Journalism, Communications or English is required, along with several years of experience in sports information/promotion.

Must qualify for Civil Service Status.

Application deadline is August 15, 1986. Send letter of application and resume to:

Ms. Sandra Ragan
Director of Personnel Services
Chicago State University
Cook Administration Building
95th Street at King Drive
Chicago, Illinois 60628

Chicago State University Is An
Affirmative Action/Equal Opportunity Employer

Executive Director Of The Scarlet R Athletic Fund-Raising Program Rutgers University Foundation

The Rutgers University Foundation seeks an Executive Director of the Scarlet R Athletic Fund-Raising Program to develop strategies and execute plans for generating financial support from various private sources to help meet the future financial needs of Rutgers University's Athletic Program. The position also carries the title of Assistant Director of Athletics for Development. Rutgers has a student body of approximately 47,000 and over 180,000 alumni. Currently, \$1 million annually is raised for athletic purposes. The candidate must have a B.A. or higher degree in a relevant field with at least three years of professional experience in university development, or the equivalent, and must be familiar with intercollegiate programs.

Salary: Commensurate with experience.

Application: Send letter of application, resume and samples of direct mail to:

Mr. Bruce D. Newman
Executive Vice President
Rutgers University Foundation
191 College Avenue
New Brunswick, New Jersey 08903

An Equal Opportunity/Affirmative Action Employer.

HEAD COACH MEN'S BASKETBALL

The University of South Florida is seeking applications and nominations for the position of head men's basketball coach. Responsible for full administration of the men's basketball program including NCAA compliance, recruiting and coaching. **Qualifications:** Bachelor's degree and at least three years' successful coaching experience at the collegiate level. Salary commensurate with professional qualifications and experience. **Application Deadline:** August 7, 1986. Applications and nominations of qualified candidates should be forwarded to:

Paul Griffin
Director of Athletics
University of South Florida
PED 214
Tampa, Florida 33620

The University of South Florida is an
Equal Opportunity/Affirmative Action Employer.

Associate Director Sports Administration

Youth for Understanding, an international exchange program for high school students, is seeking an Associate Director for its Sport for Understanding program. Responsibilities include designing and developing policies and procedures for SFU program, planning and developing overseas team itineraries, selecting coaching staff, recruiting of American hosts for inbound teams and administering all team sanctions and requirements.

Qualified candidates must have a graduate degree in physical education or sports administration, a minimum of five years' experience in sports management, sports knowledge of official sanctioning body requirements, strong oral and written communication skills and previous supervisory experience. International sports experience desirable.

If interested, please send letter of application and resume including salary requirements to:

Personnel Director
YOUTH FOR UNDERSTANDING
3501 Newark St., NW
Washington, DC 20016

Affirmative Action/Equal Opportunity Employer

Home-site advantage is far and away just a myth in basketball

By Richard M. Campbell
The NCAA News Staff

What does history say about the chances of an NCAA institution winning a men's basketball championship by playing games on its regular home court or in its home city for one or more rounds?

Possibly the biggest fallacy surrounding the Division I men's championship is that the home team wins most of the time.

In fact, after extensive research of the NCAA basketball tournament over the past 11 years, the fairest conclusion is that, at best, the home team has had its problems.

The winning percentage for the "home" team in the 11 years since 1976 has overlapped the process of seeding teams, a practice which has been in effect the last eight seasons. The NCAA Division I Men's Basketball Committee's primary objective in seeding is to provide equal balance in the four geographical regions. Realistically, however, home-site scheduling is necessary to insure that natural interest is maintained in all four regions.

"The men's basketball committee conducted an extensive study of the history of tournament play to better evaluate the feasibility of allowing home-court situations," said Thomas

W. Jernstedt, NCAA assistant executive director. "The study showed that there was no clear-cut advantage to teams who played first- or second-round games on their homes courts or in their home cities."

For games in the tournament that were played in one team's home city over the 11-year period, those "home" teams posted a 27-15 record or 64.3 winning percentage. For games played within a 120-mile radius but not in a "home" city, the closest-to-home team won only 33 of 67 games for a 49.3 winning percentage. That averages out to a 60-49 record (55 percent) when home city and 120-mile radius are taken together.

The tournament bracket includes 64 teams, with all teams playing in the first round. It is the intention of the committee to select the 35 best at-large teams in the nation regardless of location. In filling the bracket, the committee may move one or more at-large teams or automatic qualifiers to other regions to enable it to balance the four regions.

"The committee decided to continue to permit home-court games in the first and second rounds to maintain the interest of prospective host institutions," Jernstedt continued. "It did decide two years ago, in conjunction

with the National Association of Basketball Coaches (NABC) board of directors, that the concept of teams playing in a home-court situation beyond the second round should be avoided."

Interestingly enough, the only team in the past 11 years that had a home-site game and then went on to win the championship was Indiana. The Hoosiers won the 1981 title after beating Alabama-Birmingham and St. Joseph's (Pennsylvania) in the regional semifinals and finals in Bloomington, Indiana.

In the past eight years, in all tournament games in which one team was seeded better than its opponent (seeding was used and published beginning in 1979; before that, seeding was done only for byes), there have been 135 upsets in 396 games. That means that 34.1 percent of all tournament games were won by lower-seeded teams.

In the 1986 NCAA championship, Syracuse, Louisiana State and Georgia Tech played a total of five games at "home" sites and managed to win three of the five. Syracuse, seeded No. 2 in the East regional, whipped No. 15 seed Brown, 101-52, in the first round but suffered a 97-85 setback to No. 7 Navy in the second round.

Louisiana State, seeded 11th in the

Southeast regional, pulled two upsets in a row, dispatching No. 6 Purdue, 94-87 in double overtime, and then edging No. 3 Memphis State, 83-81. In the regional semifinal round in Atlanta the next weekend, Georgia Tech made a "home" city appearance but fell to the streaking Tigers, 70-64.

Home-court or home-city situations were much more frequent in the early years of the tournament. But they became close to nonexistent for a long period, with just nine such teams in the 13 years ending with 1978 (five winners, four losers by home teams) out of 274 teams.

With the expansion to 40 teams in 1979, 13 teams have played at least two games at home sites (either home-court or home-city) and the overall record is 20-6 (76.9 percent). In 1980, the most home-site games were played (seven) but the "home" team won only three of those. In 1983, only two home-site games were played, with La Salle and Houston each winning.

In the contrast between home-site advantage and seeding, the interesting fact is that seeding seems to be more important. In fact, for games in which the "home" team was the higher seed, the higher seed won 16 of 20. But in contests in which the "home" team was the lower seed, the lower seed won only six of 16 games. For games played within a 120-mile radius but

not in the home city, the "home" team seeded higher won 19 of 26 games but could manage only four of 21 wins as the lower seed.

Overall, in games in which the home-site team was the higher seed, the "home" team posted a 35-11 (76.1 percent) record while the lower seeded "home" team had only a 10-27 (27.0 percent) mark.

In the past eight years, in games in which one team's location was in the arena city, there have been 10 upsets in 36 games played, for 27.8 percent. But in only six (16.7 percent) of those games has the team with the "home advantage" won.

In the past eight years, in games in which one team's location was within a 120-mile radius of the arena but not in the arena city, there have been 11 upsets in 47 games played, for 23.4 percent. But in only 10 of those games (12 percent) has the team with the "home advantage" won.

The overall record in games in which one team's location was in the arena city or within the 120-mile radius of the arena, there have been 21 upsets in 83 games played for 25.3 percent. But in only 10 of those games (12 percent) has the team with the "home advantage" won.

Here is a year-by-year breakdown of teams that played in "home" cities and the results:

Team records playing in 'home' cities

	Score	Seed	Team	Site	Seed	Team	Round
1986	101-52W	2	Syracuse	Syracuse, N.Y.	15	Brown	1st
	94-87W*	11	Louisiana St.	Baton Rouge, La.	6	Purdue	1st
	97-85L	2	Syracuse	Syracuse, N.Y.	7	Navy	2nd
	83-81W	11	Louisiana St.	Baton Rouge, La.	3	Memphis St.	2nd
	70-64L	2	Georgia Tech	Atlanta, Ga.	11	Louisiana St.	RSF
*Double Overtime							
1985	65-58W	2	Georgia Tech	Atlanta, Ga.	15	Mercer	1st
	79-70W	7	Notre Dame	Notre Dame, Ind.	10	Oregon St.	1st
	51-49L	9	Dayton	Dayton, Ohio	8	Villanova	1st
	70-53W	2	Georgia Tech	Atlanta, Ga.	7	Syracuse	2nd
	60-58L	7	Notre Dame	Notre Dame, Ind.	2	North Carolina	2nd
1984	84-68L	9	Ala.-Birmingham	Birmingham, Ala.	8	Brigham Young	1st
	92-83W	6	Memphis St.	Memphis, Tenn.	11	Oral Roberts	1st
	66-48W	6	Memphis St.	Memphis, Tenn.	3	Purdue	2nd
	72-67W	1	Kentucky	Lexington, Ky.	5	Louisville	RSF
	54-51W	1	Kentucky	Lexington, Ky.	2	Illinois	RF
1983	70-58W	—	La Salle	Philadelphia, Pa.	—	Boston Univ.	Op.
	60-50W	1	Houston	Houston, Tex.	8	Maryland	2nd
1982	66-56W	5	St. John's (N.Y.)	Uniondale, N.Y.	12	Pennsylvania	1st
	89-68L	5	St. John's (N.Y.)	Uniondale, N.Y.	4	Alabama	2nd
	78-74L	3	Tulsa	Tulsa, Okla.	6	Houston	2nd
	68-66W	4	Ala.-Birmingham	Birmingham, Ala.	1	Virginia	RSF
	75-68L	4	Ala.-Birmingham	Birmingham, Ala.	3	Louisville	RF
1981	95-70W	6	Wichita St.	Wichita, Kan.	11	So.-Baton Rouge	1st
	60-56W	6	Wichita St.	Wichita, Kan.	3	Iowa	1st
	61-56L	3	Utah	Salt Lake City	2	North Carolina	RSF
	87-72W	3	Indiana	Bloomington, Ind.	7	Ala.-Birmingham	RSF
	78-46W	3	Indiana	Bloomington, Ind.	9	St. Jos. (Pa.)	RF
1980	90-82W	6	Purdue	W. Lafayette, Ind.	11	La Salle	1st
	89-85L	10	Western Kentucky	Bowling Green, Ky.	7	Virginia Tech	1st
	99-71W	5	Arizona St.	Tempe, Ariz.	12	Loyola (Calif.)	1st
	76-73L	11	Utah St.	Ogden, Utah	6	Clemson	1st
	87-73W	6	Purdue	W. Lafayette, Ind.	3	St. John's (N.Y.)	2nd
	89-75L	5	Arizona St.	Tempe, Ariz.	4	Ohio St.	2nd
	55-54L	1	Kentucky	Lexington, Ky.	4	Duke	RSF
1979	86-67W	7	Southern Cal	Los Angeles, Calif.	10	Utah St.	1st
	89-79L	7	Southern Cal	Los Angeles, Calif.	2	DePaul	2nd
	76-71W	1	UCLA	Los Angeles, Calif.	9	Pepperdine	2nd
1978	92-83W	—	Pennsylvania	Philadelphia, Pa.	—	St. Bonaventure	1st
	103-97L	—	La Salle	Philadelphia, Pa.	—	Villanova	1st
1977	83-72W	—	Idaho St.	Pocatello, Idaho	—	Long Beach St.	1st
1976	70-61W	—	UCLA	Los Angeles, Calif.	—	Pepperdine	RSF
	82-66W	—	UCLA	Los Angeles, Calif.	—	Arizona	RF

Bigger play-off sought in Division I softball

A request to increase the size of the bracket for the Division I Women's Softball Championship is one of several recommendations being forwarded by the NCAA Women's Softball Committee.

All of the recommendations of the committee, which met July 15-18 in Kansas City, will be considered by either the NCAA Executive Committee in August or by the Administrative Committee.

In addition to requesting an increase in the size of the bracket, the committee also will recommend that the top four teams nationally be seeded in the tournament. The committee noted that the increase would keep the number of participating teams well within the 1:8 ratio.

The committee also will recommend automatic qualification for the following conferences: Pacific-10 Conference, Pacific Coast Athletic Association, Big Ten Conference, Big Eight Conference and High Country Athletic Conference.

No decision was made regarding future sites for the Division I tournament. The contract with Creighton University continues through the 1987

championship, and the committee is expected to make a decision for the 1988 and 1989 tournaments in January.

The committee still is looking for a site for the 1987 Division II tournament, and it will recommend Eastern Connecticut State University for the Division III site in 1987.

The conferences being recommended for automatic qualification in Division II are: Missouri Intercollegiate Athletic Association, California Collegiate Athletic Association, Northeast-Eight Athletic Conference, New England Collegiate Conference and Pennsylvania State Athletic Conference.

In Division III, the conferences receiving recommendations for automatic qualification are: New Jersey Athletic Conference, Iowa Intercollegiate Athletic Conference, Massachusetts State College Athletic Conference and State University of New York Athletic Conference.

Additionally, the committee will recommend an increase in the size of the Division III bracket from 12 to 18 teams, with seeding for the top four teams.

For all three divisions, the committee voted to recommend an increase in the umpires' fee to \$45 per game and the scorers' fee to \$15 per game.

Amateur Softball Association rules are used in all NCAA softball championship games, and the committee voted to make several modifications to those rules.

The most notable recommendation will be to move the pitching rubber back three feet to 43 feet from home plate. However, the pitcher still will be required to start her motion with both feet on the rubber. The change is being recommended in an effort to put more offense into the game.

The committee also voted to adopt the ASA designated-hitter rule for NCAA competition. Also, the ASA reentry rule will not result in a forfeit but in ejection of the coach or a player. The committee will recommend to the ASA that the slap bunt be scored as a sacrifice if a runner is advanced.

Although the committee discussed the possibility of creating NCAA softball rules, it decided not to pursue the idea at this time.

NCAA

Continued from page 9

[NCAA Constitution 3-1-(g)-(5) and 4-2-(a), and Bylaws 1-1-(b)-(1), 1-4-(a)-(3) and 1-9-(j)]—(a) In August 1984, a prospective student-athlete represented the Hawkeye Swim Club in swimming competition in Florida, and club funds were used to pay the cost of his air fare, lodging and meals for this trip; further, a university van was utilized to return the young man from Florida to Iowa City, Iowa, a trip that included several days' lodging in the home of a swimming team member; (b) in December 1984, a then men's assistant swimming coach arranged for a student-athlete to receive a round-trip airline ticket on credit between Cedar Rapids, Iowa, and Toronto, Canada, in order for the young man to compete in a swimming meet; further, upon arriving in Toronto, the coach transported the young man from the airport to a local hotel where the young man was lodged in the coach's room at no cost, and finally, through the arrangements of the men's head swimming coach, the Hawkeye Swim Club provided the young man approximately \$200 for "training expenses" for the period December 1984 to February 1985; (c) in the spring of 1983, a then men's assistant swimming coach provided a prospective student-athlete automobile transportation from the young man's high school to the prospect's home; further, the coach telephoned a newspaper to announce the signing of the prospect, and (d) during the 1985-86 men's swimming season and during the 1986 Big Ten Conference Men's Swimming Championships, a student-athlete was permitted to compete while ineligible as a result of involvement in a recruiting violation.

2. Violations of NCAA legislation involving the women's intercollegiate athletics program [NCAA Constitution 3-1-(a) and 3-1-(g)-(5)

and Bylaw 7-2]—(a) In March 1985, a representative of the university's athletics interests gave a contribution to the Athletics Foundation to pay the expenses for a student-athlete in the sport of women's golf to compete in a tournament; further, after determining that a payment by the university for these expenses would be contrary to United States Golf Association legislation, the young woman and her parents unsuccessfully attempted to obtain a loan, and the representative (who accompanied the student-athlete on this trip) paid her expenses with the understanding that he would be

repaid by the student-athlete, and finally, the student-athlete, who has no remaining athletics eligibility, repaid the representative \$2,500 in November 1985; (b) on October 22, 1985, the women's head volleyball coach transported three student-athletes from the university's campus to another city where the coach evaluated prospects from the student-athletes' former high schools, and (c) in April 1985, a then assistant softball coach observed a softball game of an opponent when she attended a game involving two of her former teammates from a summer league.

Women gymnasts sought for trials

Applications for competition in the 1987 World University Games team trials for women's gymnastics are being accepted by the United States Gymnastics Federation.

There will be 16 slots in the trials, set for June 1987, with the top 10 all-around gymnasts from the 1986 NCAA Division I Women's Gymnastics Championships given priority.

An additional six slots will be filled by petition, and petitioning athletes must be properly admitted and registered for the 1987 fall semester in a full-time course of study at a recognized university. If petitioned slots are not filled, selection would go back to rank order from the NCAA Division I championships.

The top six gymnasts in rank order from the trials will compose the team,

and ties will be broken by the highest individual event score. The top four athletes in rank order from the trials will compete in the World University Games, assuming that specified criteria had not visibly deteriorated in comparison to fellow team members during the training process.

The specified criteria are a demonstrated ability to perform entire routines, freedom from any small disabling injuries, consistency in intrasquad competition during training, mental readiness, physical appearance and weight, attitude, and team support-spirit.

Further information may be obtained by writing: United States Gymnastics Federation, 1099 North Meridian Street, Suite 380, Indianapolis, Indiana 46204.

Committee Notices

Member institutions are invited to submit nominations for interim vacancies on NCAA committees. Nominations to fill the following vacancies must be received by Fannie B. Vaughan, administrative assistant, in the NCAA office no later than August 20, 1986.

Women's Basketball Rules: Replacement for Sharon Chatman, no longer at San Jose State University. Appointee must be from Division I.

Women's Gymnastics: Replacement for Larry Bilhartz, Oklahoma State University, resigned from the committee because his institution no longer sponsors women's gymnastics.

Men's Swimming: Replacement for Ernest W. Maglischo, California State University, Bakersfield, resigned from the committee. Appointee must be from Division II. Replacement for secretary-rules editor Robert F. Busbey, Cleveland State University, resigned from the committee.

Men's and Women's Track and Field: Replacement for secretary-rules editor John T. Mitchell, resigned from the University of Alabama, Tuscaloosa. Replacement for Richard A. Hill, Southern University, Baton Rouge, who no longer is the director of athletics. Appointee must be a Division I administrator [as defined by NCAA Bylaw 12-4-(a)-(3)].

Wrestling: Replacement for Robert J. Kopnisky, resigned from the University of Missouri, Columbia. Appointee must be from Division I. Kopnisky also must be replaced as chair. Kopnisky's resignation is effective August 1, 1986.