

# Athletes fight drug abuse

University of Notre Dame head football coach Lou Holtz and 14 student-athletes participated in the NCAA-sponsored Fiesta Bowl Youth Development Program this year in Phoenix. Holtz and the athletes filmed public-service announcements for the Boys and Girls Clubs of America and also made announcements to speak out to America's youth against drug and alcohol abuse.

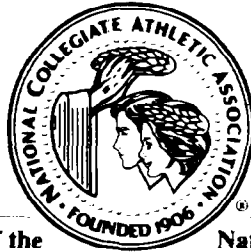


From left, Thurman Thomas, Oklahoma State University; Lorenzo White, Michigan State University, and Gary Bender, CBS Sports



From left, Jim Harbaugh, University of Michigan; Lou Holtz, head coach, University of Notre Dame, and John Paye, Stanford University

# The NCAA News



May 28, 1986, Volume 23 Number 22

Official Publication of the

National Collegiate Athletic Association

## Federal government contributes \$5.8 million for NYSP

With the aid of several influential lawmakers, the 1986 National Youth Sports Program was funded May 13 for \$5.8 million, according to NYSP Committee chair Christ Petrouleas.

The NYSP is a partnership enterprise that brings together the Federal government, represented by the Office of Community Services (Health and Human Services), and the nation's colleges and universities, acting through the NCAA.

Approximately 55,000 youngsters nationwide will participate in the program, which is organized into two areas: the activity program that includes instruction and competition in a variety of sports activities and the enrichment program that includes

instruction in drug and alcohol abuse, nutrition and personal health, career opportunity, job responsibility, and educational opportunities.

Petrouleas indicated that Sen. Paula Hawkins of Florida was instrumental in moving the bill through Congress, as well as House of Representatives members Wayne Natcher of Kentucky, Silvio Conte of Massachusetts, Carl Pursell of Michigan and House Speaker Thomas (Tip) O'Neill of Massachusetts.

"This program had strong bipartisan support because of its successful history and its efficiency," he said. "Because of the checks and balances inherent in the program, dollar for dollar, the taxpayer gets the best

return possible on his or her money."

In the program, young people from disadvantaged areas are introduced to a new environment and new ideas through a competitive sports program that stimulates them towards self-improvement and advancement. Participation in sports can be very beneficial to young people, serving to build good habits, direct the competitive urge toward new goals and satisfy the human desire to belong.

"One of the attractive things about the NYSP is not so much the sports competition but the opportunity that these youngsters have to participate in something positive and enriching in their lives," Petrouleas added.

Boys and girls 10 through 16 years

old are eligible to participate in the program, and 140 colleges and universities will serve as project sites in 1986. The NYSP program is effective June 1 through August 31 on five-week, five-days-per-week or six-week, four-days-per-week schedules.

Instruction is made available in swimming, football, basketball, softball, gymnastics, volleyball, dance, tennis, and track and field. The teachers include college and high school coaches, and many well-known athletes work as staff members on the various campuses.

Participating institutions donate the services of a project administrator and hire a qualified staff. NYSP provides the opportunity to partici-

pate more fully in community life while helping to alleviate some community problems.

Petrouleas, assistant director of athletics at Wayne State University (Michigan), has been with the program since 1970 and he admits the uniqueness of the program has contributed to its success. Even a 4.3 percent reduction in the program's funding (down from \$6.1 million in 1985) has not affected the long-range plans.

Among the unique services are a free medical examination for each participant to identify previously undetected physical problems, and each participant is served a meal and snack

See Federal, page 10

## More than 143,000 tickets requested for '87 Final Four

More than 41,000 orders, which requested more than 143,000 tickets, were received for the 1987 Division I Men's Basketball Championship Final Four next March at the Louisiana Superdome in New Orleans.

A computerized drawing, which will utilize a random-number-generating program developed by Data Systems International of Kansas City, Missouri, will be held at the NCAA national office to determine those applications that will be processed. The drawing will be reported by The NCAA News.

Approximately 15 percent of the orders came from Louisiana, but requests for Final Four tickets certainly had an international flavor. All 50 states were represented, along with the District of Columbia, Puerto Rico, several Canadian provinces and England.

"The demographics of the applications reveal the universal appeal of the Final Four," said Louis J. Spry, the Association's controller, who coordinated the statistical information with United Missouri Bank of Kansas

City, Missouri, which served as a clearinghouse for the processing of orders.

A computer printout of ticket  
See More, page 8



Rick O'Quinn photo

## A feather in Cardinal's cap

Dan Goldie of Stanford was the men's singles champion in the NCAA Division I Men's Tennis Championships at Athens, Georgia. Stanford won the team title, the sixth for the Cardinal in the past 10 years. Story on page 4.

### In the News

#### Cutting costs

One athletics director says that a cut in recruiting costs at least would help slow the spiraling costs in intercollegiate athletics programs. Page 2.

#### Merger studied

Committees have been named to study a proposed merger of the Big Sky Conference and the Mountain West Athletic Conference. Page 11.

#### Academic control

A faculty committee at the University of Georgia recommends that the school's athletics association lose its status as a private corporation and come under academic control. Page 12.

## Cut recruiting costs to help total program, Maggard suggests

By Glenn Dickey  
San Francisco Chronicle

The cost of intercollegiate sports programs keeps going up and up. Can this spiral be at least slowed, if not stopped? University of California, Berkeley, athletics director David L. Maggard says he thinks so.

Maggard, a member of the NCAA Council, says, "We've got to look at legislation that will cut down on recruiting expenses. There are no real recruiting restrictions. Coaches can get around any rules we have. For instance, basketball coaches are limited to three visits to a prospect's home, but they can make unlimited appearances at the player's games."

There is considerable incentive for making those appearances: Final Four teams made \$800,000 apiece this season. Some of that is split with their conferences, but as one basketball league official told me, "Historically, it's been a good investment to buy a seven-footer."

Splitting that big pie into shares for everybody would be a start in the

right direction. The Pacific-10 Conference, in effect, has done that with Rose Bowl money: After expenses for the participating team are taken out, the revenue is split equally among the conference schools. The share this year was more than \$500,000, and nearly all conferences have similar arrangements.

Legislation to cut back on recruiting is another way of attacking the problem. "Nobody wants to be the first to cut back," Maggard said, "so it has to be done on a national level. And it can be done."

"I remember when we cut back to 95 football scholarships. Some schools had 150 on scholarship at that time, and they said cutting back would ruin college football. Well, college football has never been healthier. Competition is stronger than it's ever been, and interest is high."

Another advantage to a cutback: "Coaches could spend more time on their own campuses," Maggard says.

There is no sensible argument against a cutback in recruiting. Re-

cruiting raises the level only of individual teams; it does nothing for the sport as a whole. And there's no question it's out of hand. I vividly remember Oklahoma football coach Barry Switzer telling me he would fly "anywhere" to visit a good player. "We have an unlimited recruiting budget," he said.

Another plus: This legislation would reverse NCAA policy, which has been aimed at reducing costs by taking money away from athletes—fewer scholarships and no incidental money. Recruiting reductions would hurt only the airlines.

"We have to be more disciplined and accountable," Maggard said, directly contradicting Switzer's position. "We have to understand that our television money is probably going to be lower, and that we're going to be squeezed."

The most obvious squeeze has been on nonrevenue-producing sports (basically everything but football and basketball). As costs have risen, many schools have responded by cutting



David L. Maggard

back on "minor" sports.

On his own campus, Maggard is working on a program to make these sports self-sustaining.

"We've been lucky in that we've been able to pay off the deficit that was here when I was hired, and we've been operating in the black the last few years," he said. "But we're feeling the pinch this year, and it won't get any better. We're having to approach our program more and more like a private school, because we don't get any state funds or university funds."

"We can't rely on football to carry

the whole load. Even basketball can make money only if we sell out every game, play in postseason tournaments and get good TV money."

Maggard has been working on a program in which alumni who participated in minor sports would contribute to an endowment program, which would pay operating costs for the sports.

The program has been in effect before, but because Maggard has concentrated on football and basketball the past few years, he hasn't spent much time with it. In the coming year, he's going to make a concentrated pitch for the endowment program.

"We've got 13 sports now, and I'd like to keep a broad-based program," he said. "We're not going to cut any sports this year, but I feel a year is enough time to gauge the support for a sport. If we don't get the financial support we need for these sports, in a year, we may have to make some tough decisions on which ones to keep."

Maggard says it's doubly important that minor sports carry their financial weight, because rising costs have put more pressure on football and basketball coaches to succeed, so that more money will come in.

"I think there's probably more pressure on football and basketball than there's ever been in our history," he said. "We've got to change that."

## Self-disclosure is not the issue; integrity is

By Al Carter  
Houston Chronicle

Self-disclosure, the practice of admitting one's sins and then punishing one's self until it hurts—or almost hurts—has been shot dead, the Texas Christian University Horned Frogs say, by the NCAA's decision to apply tough sanctions against TCU. But the Frogs are only muddying the waters.

Self-disclosure isn't dead. It was never alive.

It wasn't as if there were two dozen schools parked outside the NCAA confessional just waiting to hear the sound of wrist being slapped before rushing in to tell all. Scandals, admitted or uncovered, do not make for cheerful reading in the papers.

It is to coach Jim Wacker's enduring credit that he suspended seven players and turned his school in to the NCAA for no other reason than it was the right thing to do. But Wacker cried "foul" loud enough to almost be mistaken for the kind of common felon known to howl for mercy as he's being hauled off to the NCAA clink.

"The NCAA had asked us to take a stand for self-disclosure and self-policing," Wacker said. "For us to just lie down and say we got what we deserved is not right. Because that's not what happened."

True, the current Frog staff had

nothing to do with the violations. True, the Frogs punished themselves plenty by cutting loose seven players last fall and dooming themselves to last place.

But lie down is exactly what the Frogs should have done. Had the Frogs taken it like Frogmen, it might have helped some other guilt-ridden coach someday to muscle up the courage to come clean.

The biggest setback for self-disclosure was hearing the Frogs scream in mortal agony.

Cutting through the bitter rhetoric, the bottom line is whether Wacker would have acted the same knowing what penalties confession would bring.

"Yes," he says without hesitation. "We told the kids how we were going to operate. We told our alumni we would turn them in. Either you're going to do it right or you're not."

Whether the NCAA did right by TCU will be decided as soon as the NCAA passes judgment on another school guilty of violations as numerous and as severe as TCU's, and does so without any gesture of cooperation and disclosure from that school.

If that school doesn't get hammered to the tune of a three-year bowl and TV ban and a two-year suspension of

See *Self-disclosure*, page 3

## 'You're supposed to be a cheerleader'

Beth Bunge, discus and shot put competitor  
Ohio State University

The Ohio State Lantern

"People want to know how much you lift; then they're scared of you, they're threatened."

"The image (of women student-athletes) is not changing very much. I usually tell people I'm a thrower (she bench-presses 205 pounds and squat-lifts 350 pounds).

"You're supposed to be a cute little cheerleader. I was lifting weights with the football team. I thought people had figured out that girls are allowed to lift weights. We were outcasts. It wasn't easy."

"Now, I don't care what people think."

Don Carthel, head football coach  
Eastern New Mexico University

Information services

"Yes (something can be done about cheating). I think you will find that the alumni are 90 percent of the problem and that they eventually will be eliminated from any form of recruiting. I think you will see rules about this take place within the next two or three years."

Steve Patterson, head men's basketball coach  
Arizona State University

The Arizona Republic

"I'm all for it (the three-point goal in men's intercollegiate basketball next season).

"All of a sudden, I'm reading these quotes from

## Opinions Out Loud

everyone who has major reservations, and I think maybe there's something I'm not thinking about.

"But I like anything that will make the defense come out and guard you. Anything that opens up the game and potentially speeds it up, good."

"The threat of the shot as much as the shot itself is good for the game. People have to be more conscious of outside shooters. You have to go out and defend (against) them."

Research Reports  
The Wilson Quarterly

A review of "Choosing Elites," by Robert Klitgaard

"Black youths, Klitgaard suggests, need the helping hand. In 1983, 8.5 percent of all whites taking the SAT scored above 1,200—roughly the minimum score for admission to elite colleges. But only 0.7 percent (or 570) of all Blacks did.

"Critics have charged that such standardized tests are culturally biased in favor of whites. But Blacks, on average, Klitgaard points out, do worse in college—and in graduate schools—than do their white counterparts who have the same test scores. He suggests that the competitive ethos of many elite institutions may dishearten minorities."

Chalmers W. Elliott, athletics director  
University of Iowa

Associated Press

"We are suggesting that student-athletes should be singled-out (with a drug-testing program), just like anything else he does, in a fishbowl, more than other students."

"It's one of the responsibilities student-athletes are expected to carry."

Paul Sanderford, head women's basketball coach  
Western Kentucky University

Chicago Tribune

"Women's basketball is getting better and better. I've been in coaching nine years; and in my first year, out of 13 kids, I had one who could make a jump shot."

"There are more good teams. Some teams were so dominant that there weren't any upsets. There weren't any Western Kentuckys. The quality and equity are much better from top to bottom. There's more distribution of players, and there are more good players."

George D. Miller, secretary-general  
United States Olympic Committee

Olympian

"The American public accepts the high salaries and lucrative contracts that are awarded to professional athletes, but they also retain a special place in their hearts and minds for the struggling amateur."

Paul Silas, assistant coach  
The New Jersey Nets

The New York Times

"The thing that turned me around at Creighton was that I flunked accounting. That was a blow to my ego. The next year, I got an A in the same class. I went on to be an academic all-America, play in the National Basketball Association for 16 seasons and be president of the players association."

"So, if you persevere, you can make it no matter what your background."

Terrel H. Bell, professor of education  
University of Utah

The Chronicle of Higher Education

"I don't think university presidents are assuming their responsibility for the public schools. They have as much to gain from improved secondary schools as secondary schools have to gain from better elementary schools."

Mel Narol, lawyer  
Princeton, New Jersey

Los Angeles Times

"I give officials a 10-item legal checklist. It's a list of things to check out before a competition begins, such as making sure the playing surface is safe, if the area immediately around the playing area is safe. They're types of things officials always did check out, but now they understand that the reasons for being extremely careful go beyond the area of athlete safety."

"At clinics where I talk about the legal vulnerability of officials today, I'm hearing officials ask things like: 'Should I get out of it? Is this too much of a risk for my family?'"

"I've seen no evidence that significant numbers of high school and college officials are leaving officiating because of the fear of litigation, but a lot of them are asking themselves if they want to run the risk any longer. Lawyers in my own law firm tell me they think I'm crazy for working high school basketball games."

"No referee has lost a liability case, but we fear if one does, it'll touch off a chain reaction of similar suits. There have been some settlements in cases that have cost some referees some out-of-pocket money. In one case I'm familiar with, a referee spent \$5,000 on a case where there

See *Opinions*, page 3

## Legislative Assistance

1986 Column No. 21

### Self-financed visit

The NCAA Administrative Committee has reviewed the application of 1986 Convention Proposal No. 50, which would permit an institutional staff member to accompany a prospect who is on a self-financed visit and provide transportation for the purpose of viewing practice or competitive facilities that are located off the institution's main campus but within the 30-mile area surrounding the campus. The committee determined that this amendment to Bylaw 1-9-(f) would permit such transportation only to off-campus practice and competition sites that involve the prospect's sport. If the prospect wishes to view during a self-financed visit off-campus practice and competition sites in other sports, it would be necessary for the prospect to arrange his or her own transportation to such sites.

### Professional team—revenue

The Administrative Committee has reviewed and affirmed the existing official interpretation regarding the distribution of revenues from a game involving an intercollegiate athletics team and a professional sports team (e.g., a baseball game in which a member institution's team plays against a professional baseball team). The current interpretation would permit a member institution to receive a share of the receipts from such a contest, provided the institution has a formal agreement with the professional sports team regarding the institution's guarantee or share of receipts, and the contractual terms are consistent with agreements made by the professional team for similar collegiate or nonprofessional competition. This interpretation will be included as an agenda item for discussion during the NCAA Council's August 13-15, 1986, meeting.

### Tryout rule—officiating

The Administrative Committee has considered the application of the tryout rule to a situation in which a college coaching staff member wishes to officiate a high school contest. The committee concluded that the current legislation would preclude the involvement of the coaching staff member in such an officiating assignment, inasmuch as this activity would appear to be inconsistent with the provisions of the Association's tryout rule. The Council will discuss during its August 1986 meeting the possibility of developing an official interpretation that would permit such officiating assignments under certain limited, specified conditions.

*This material was provided by the NCAA legislative services department as an aid to member institutions. If an institution has a question that it would like to have answered in this column, the question should be directed to William B. Hunt, assistant executive director, at the NCAA national office.*

## SUNY system gets approval to upgrade sports programs

Trustees of the State University of New York, the nation's largest public university system, voted May 28 to allow campuses to grant athletics scholarships and upgrade their sports programs to major-college levels.

For the time being, the two resolutions adopted by a 12-2 vote apply only to the State University of New York, Buffalo, which has requested permission to embark on a five-year effort to elevate its sports program from its existing nonscholarship status.

But the ruling might prompt other SUNY schools, which all now compete in the Division III bracket of the NCAA, to try to attain major-college status as well, according to an Associated Press report.

There are 64 campuses and 363,000 students in the SUNY system. Twenty-nine of those campuses are the larger, four-year university centers such as Albany and Binghamton.

"I do not know if other campuses which have an interest (in upgrading athletics) will be able to come forward with a plan," SUNY Chancellor Clifton Wharton Jr. said.

Like Buffalo, any campuses taking the step must meet 10 prerequisites the trustees laid down. These include such things as first compiling "widespread" comment from those in the campus community about the effects of upgrading athletics, showing that athletics scholarships can be "supported exclusively from nontax funds," and assuring that both male and female students will get "equitable athletics opportunity" under an upgraded scheme.

In addition, one of the resolutions warns that "athletics cannot come at the expense of academic programs and essential activities at a campus or by diverting funds from other SUNY campuses."

Wharton said there should be no "degradation" or "erosion" of SUNY academics eligibility standards with the admission of student-athletes.

The chancellor said that keeping unqualified students out of SUNY schools, and also preventing cheating by coaches and boosters, can be done by "eternal vigilance and strong, and I mean strong, oversight" by campus administrators.

## Self-disclosure

*Continued from page 2*

scholarships—the same sanctions prescribed for the Frogs had they not come clean—then TCU can beef.

"How many more would have come clean or how many wouldn't have, nobody knows," Wacker says. "But if self-disclosure doesn't account for something, the NCAA should quit singing that song."

Maybe, but it's tough to hear any song above the chorus of corruption in the SWC.

Neither SMU nor TCU will be eligible for the 1987 Cotton Bowl. The list of 1986 conference title con-

tenders has dropped from nine to seven teams with the season still four months away.

The three church schools in the Southwest Athletic Conference all are on probation: Baylor in basketball and TCU and SMU in football. Texas A&M, Houston and even Texas are under investigations of either an internal or external sort.

The question is not one of trying to promote self-disclosure. The question is how can the cheatingest conference in America restore the kind of integrity that makes self-disclosure a moot issue.

## Opinions

*Continued from page 2*  
was a settlement.

"When you think about it, officials at all levels are under great pressure to be excellent, if not perfect, all the time. And yet, it's not expected of other participants in sports. I mean, if a baseball player goes three for 10 all the time, he could make the hall of fame. But if an umpire goes three for 10, he's out of a job."

### The New York Times

*Excerpted from an editorial*

"The daunting question of how to improve teaching in America has evoked a provocative answer from a distinguished panel convened by the Carnegie Forum on Education and the Economy. It thinks teachers, like doctors, should be certified by a national standard, and then given a great deal more responsibility for running the public schools. The forum proposes not just to exhort but to carry its ideas into the political ring. The effort deserves enthusiastic encouragement and attentive review.

"Education reform again is in the air. Concern for the nation's competitiveness makes it a political issue at every level of government.

"To stimulate reform, the Carnegie forum summoned leaders from education, government and business, including the presidents of the two main teachers unions. Their proposal is shrewd and their plan of action credible. If teaching is to be a respected and rewarded pursuit, they conclude, teachers must gain greater autonomy in choosing instructional methods and allocating resources. In return, they have to be made more accountable for students' progress.

"And how to overcome the predictable resistance by established education bureaucracies, particularly in large urban districts like New York, where change is overdue? The Carnegie group well understands that the whole structure of public education resists change and therefore

aims to shift the allegiance of political leaders to the side of reform. That is the right starting point, if voters will heed the call."

### American Council on Education

**Draft of proposed guidelines for drug-testing of athletes**  
*The Chronicle of Higher Education*

"The drug-testing program should require students to give their written consent to the program prior to their participation in any intercollegiate athletics program. There must at this time be full disclosure to the athletes of all facts surrounding the program so that each student can give his or her informed consent."

### Bud Withers, columnist

*Eugene Register-Guard*

"The Oregon women's athletics department grosses \$50,000 or so in a year. It spends close to a million.

"Yet, you get the feeling that, Title IX or no, college athletics departments would find a way to destroy themselves. Are there not enough paupers out there to effect some NCAA legislation to control the vastness of football and basketball?"

"Oregon will send its football coaches on the road for three weeks. It's spring recruiting season. Is it really necessary? Only because UCLA and Stanford and everybody else does it.

"Spring practice has finished. Does Oregon need that? Yes, because everybody else has spring practice.

"We have to have all that, says the ruling class. UCLA and USC control Oregon within a little fiefdom called the Pac-10. Nebraska and Oklahoma keep the hammer over the heads of five or six others in the Big Eight.

"Television, the golden goose, loves it. So do the bowl games. So do the NFL and NBA, which, for nothing, get polished players.

"Perhaps the time has come to let the moneyed few go form their superconference. Let the others rotidooover reason."



## NACDA exhibit

Bill Belknap, assistant athletics director at the University of Wisconsin, Madison, looks over a model of a floating air dome, one of the exhibits at the recent NACDA Fund-Raising and Athletic Facilities Clinic in Dallas. With Belknap is Jim Smith, an exhibitor representing California Products.



## Men's team picks up eighth NCAA title

## A Cardinal rule in tennis: Don't ever count Stanford out

Sixth-seeded Stanford upset three higher-seeded teams to capture the team title at the Division I Men's Tennis Championships May 17-25 at Georgia.

Also, the Cardinal's Dan Goldie defeated Southern Methodist's Richey Reneberg in the individual singles championship, clinching a Stanford sweep of the team and singles titles in both the men's and women's Division I championships.

Stanford upset third-seeded Clemson, 5-2, in the team quarterfinals and second-seeded UCLA, 5-1, in the semifinals before defeating fifth-seeded Pepperdine, 5-2, in the championship match. Pepperdine had beaten fourth-seeded Southern California, 5-2, and top-seeded Southern Methodist, 5-1, to reach the finals.

The team championship is Stanford's eighth overall and sixth since the tournament's team-play format was adopted in 1977. All eight titles have come under the tutelage of head coach Dick Gould.

Leading 4-2 entering doubles play, Stanford clinched the crown when the No. 2 doubles team of Patrick McEnroe and John Letts beat Pepperdine's Gilberto Cicero and Robby Weiss, 6-2, 6-3.

"I can't describe how good this feels," said McEnroe, the younger brother of 1978 Division I men's singles champion and professional tennis star John McEnroe. "It was a total team effort. If (Letts and I)

hadn't clinched it, then somebody else probably would have. That's the type of team we have."

After leading his team to victory playing in the No. 1 singles spot, Goldie entered individual singles play as the No. 3 seed, behind top-seeded Rick Leach of Southern California and second-seeded Jay Berger of Clemson.

The Stanford senior survived a third-set tiebreaker in the quarterfinals to defeat Southern Methodist's John Ross, and he never lost another set through the remainder of the tournament. It took Goldie only 63 minutes to beat SMU sophomore Reneberg in the finals, 6-2, 6-1.

"I was really pleased with the way I played. I came out trying to move my feet, hit the ball hard and stay loose," Goldie said of his victory over Reneberg. "That's what I've been able to do the last three matches."

A semifinal showdown involving Goldie and Leach was spoiled by UCLA's Brad Pearce, who beat Leach 6-1, 7-6, in the quarterfinals before losing to Goldie, 6-2, 7-6. Meanwhile, Clemson's Berger was ousted in the first round by Texas' Royce Deppe, who stayed alive in the tournament until losing to Reneberg in the semifinals.

Leach regrouped to team with Tim Pawsat and won the doubles title. The twosome defeated UCLA's unseeded duo of Michael Kures and Dan Nahirney in the championship match, 6-

7, 6-4, 6-2.

A total of 20,092 fans attended the eight sessions of the 102nd annual championships.

"I thought it was great that we had such strong attendance after we lost early in the team competition and we only had one player make it past the first round of the individual competition," said Dan Magill, head coach at Georgia, the tournament's host.

"There are people who travel a long way to watch the tournament, but most of the spectators are from the Athens area," he said. "It's great that they support it no matter who wins it."

## Team results

**First round**—Southern Methodist 5, Louisiana State 2; Arkansas 5, California 2; Southern California 5, Utah 1; Pepperdine 7, Georgia 2; Stanford 5, Harvard 2; Clemson 5, Oklahoma State 0; Texas 5, Miami (Florida) 3; UCLA 5, Minnesota 0.

**Quarterfinals**—Southern Methodist 5, Arkansas 1; Pepperdine 5, Southern California 2; Stanford 5, Clemson 3; UCLA 5, Texas 2.

**Semifinals**—Pepperdine 5, Southern Methodist 1; Stanford 5, UCLA 1.

## Stanford 5, Pepperdine 2

**Singles**—No. 1: Dan Goldie, Stanford, def. Kelly Jones, Pepperdine, 7-6 (7-2), 5-7, 6-3; No. 2: Jim Grabb, Stanford, def. Robbie Weiss, Pepperdine, 6-3, 6-4; No. 3: Patrick McEnroe, Stanford, def. Marty Laurendeau, Pepperdine, 6-2, 7-5; No. 4: Augustine Moreno, Pepperdine, def. Eric Rosenfeld, Stanford, 6-1, 6-2; No. 5: Doug Sachs, Pepperdine, def. John Letts, Stanford, 6-7 (5-7), 7-5, 6-2; No. 6: Scott Moody, Stanford, def. Craig Johnson, Pepperdine, 6-7 (4-7), 6-0, 6-2.

**Doubles**—No. 2: McEnroe-Letts, Stanford, def. Gilberto Cicero-Weiss, Pepperdine, 6-2, 6-3.

## Individual results

## Singles

**First round**—Rick Leach, Southern California, def. Jeff Chambers, North Carolina, 6-2, 6-2; Kenny Thorne, Georgia Tech, def. Den Bishop, Southern Methodist, 6-1, 7-6; Christian Schulthes, Utah, def. Steve DeVries, California, 4-6, 6-4, 6-4; Roger Smith, Ohio State, def. Kent Kinnear, Clemson, 6-1, 6-4.

Brad Pearce, UCLA, def. Jeff Scolnick, Miami (Ohio), 7-6, 6-3; Phillip Johnson, Georgia, def. Jan Sandberg, South Carolina, 4-6, 7-5, 6-3; Robby Weiss, Pepperdine, def. Billy Uribe, Louisiana State, 6-3, 6-2; Paul Koscielski, Texas, def. Larry Scott, Harvard, 7-5, 7-5.

Dan Goldie, Stanford, def. Tim Corwin, Kalamazoo, 7-5, 6-4; Dan Goldberg, Michigan, def. Shelby Cannon, Tennessee, 6-7, 6-3, 6-2; John Ross, Southern Methodist, def. Tim Donovan, Brown, 6-3, 6-7, 6-4; Tim Trigueiro, UCLA, def. Gregg Hahn, Alabama, 6-3, 6-4.

Bobby Blair, Arkansas, def. Phil Williamson, Columbia, 6-4, 7-5; Tom Mercer, Texas Christian, def. Paolo Toffolo, Temple, 6-2, 6-4; Richard Matuszewski, Clemson, def. Neil Smith, Stephen F. Austin, 6-2, 7-6; Jeff Hersh, Duke, def. Kimmo Alkio, Texas A&M, 6-4, 1-6, 6-4.

Robert-Jan Bierens, Brigham Young, def. Bruce Man Son Hing, UC Irvine, 6-2, 2-6, 7-6; Tom Goles, Stephen F. Austin, def. Ville Jansson, Northeast Louisiana, 6-2, 6-1; Stefan Kruger, Southern Methodist, def. Casey Merickel, Minnesota, 7-5, 6-3; Richard Bergh, Long Beach State, def. Mike Wolf, Kansas, 6-2, 6-4.

Brian Page, Clemson, def. Scott Melville, Rice, 7-5, 6-2; Joey Blake, Arkansas, def. John Carras, Southern California, 7-5, 6-4; Ned Caswell, Furman, def. Patrick McEnroe, Stanford, 6-2, 5-7, 6-3; Kelly Jones, Pepperdine, def. Trey Carter, Georgia, 7-6, 5-7, 6-3.

Richard Schmidt, Arkansas, def. Andy Olyphant, Utah, 7-6, 6-3; Luke Jensen, Southern California, def. Andrew Burrow, Miami (Florida), 0-6, 7-5, 6-3; Pat Connor, Oklahoma State, def. Lee Sponaugle, Penn State, 6-3, 6-1; Richey Reneberg, Southern Methodist, def.

Olivier Lorin, Oklahoma, 6-1, 7-6.

John Zahurak, Maryland, def. Marty Laurendeau, Pepperdine, 7-6, 6-4; Jim Grabb, Stanford, def. Jonas Ehrlin, Weber State, 6-4, 7-6; Michael Kures, UCLA, def. Lars Nordmark, Indiana State, 6-1, 6-3; Royce Deppe, Texas, def. Jay Berger, Clemson, 6-2, 2-6, 7-5.

**Second round**—Leach, Southern California, def. Thorne, Georgia Tech, 6-2, 6-2; Schulthes, Utah, def. Smith, Ohio State, 4-6, 6-3, 7-6; Pearce, UCLA, def. Johnson, Georgia, 6-1, 7-6; Weiss, Pepperdine, def. Koscielski, Texas, 6-0, 6-3.

Goldie, Stanford, def. Goldberg, Michigan, 6-7, 6-1, 1-0 (retired); Ross, Southern Methodist, def. Trigueiro, UCLA, 6-2, 3-6, 7-5; Mercer, Texas Christian, def. Blair, Arkansas, 6-2, 6-1; Matuszewski, Clemson, def. Hersh, Duke, 6-0, 6-4.

Bierens, Brigham Young, def. Goles, Stephen F. Austin, 6-4, 6-4; Kruger, Southern Methodist, def. Bergh, Long Beach State, 6-4, 6-1; Blake, Arkansas, def. Page, Clemson, 3-6, 6-1, 7-5; Caswell, Furman, def. Jones, Pepperdine, 3-6, 6-3, 7-6.

Jensen, Southern California, def. Schmidt, Arkansas, 6-2, 7-5; Reneberg, Southern Methodist, def. Connor, Oklahoma State, 6-1, 6-4; Grabb, Stanford, def. Zahurak, Maryland, 7-6, 4-6, 7-5; Deppe, Texas, def. Kures, UCLA, 6-4, 6-4.

**Third round**—Leach, Southern California, def. Schulthes, Utah, 6-1, 7-6; Pearce, UCLA, def. Weiss, Pepperdine, 3-6, 6-2, 6-2; Goldie, Stanford, def. Ross, Southern Methodist, 6-4, 4-6, 7-6; Matuszewski, Clemson, def. Mercer, Texas Christian, 7-6, 1-6, 7-6 (7-2).

Kruger, Southern Methodist, def. Bierens, Brigham Young, 6-3, 2-6, 6-1; Blake, Arkansas, def. Caswell, Furman, 7-5, 6-2; Reneberg, Southern Methodist, def. Jensen, Southern California, 6-3, 6-2; Deppe, Texas, def. Grabb, Stanford, 4-6, 7-6, 6-4.

**Quarterfinals**—Pearce, UCLA, def. Leach, Southern California, 6-2, 6-2; Goldie, Stanford, def. Matuszewski, Clemson, 6-4, 6-0; Blake, Arkansas, def. Kruger, Southern Methodist, 7-

See *A Cardinal*, page 9

## Stanford women three-of-five in Division I team crowns

For the third time in five years, Stanford owns the Division I Women's Tennis Championships team title.

With their 5-4 victory over defending champion Southern California in the team finals of the fifth annual tournament, the top-seeded Cardinal women continued to alternate as titlists with the Women of Troy. The Cardinal also won in 1982 and 1984, while Southern California won in 1983 and 1985.

Stanford also claimed the Division I women's singles title when junior Patty Fendick defeated Trinity (Texas) senior Gretchen Rush during the May 15-23 championships at Texas.

In team play, Stanford advanced to the semifinals with lopsided victories over Harvard and Northwestern and then beat fifth-seeded Miami (Florida), 6-3. Southern California advanced in equally impressive fashion, blasting Texas A&M and Arizona State before taking a 6-3 decision from third-seeded Trinity (Texas) in the semifinals.

Fendick upset Southern California's top-ranked Caroline Kuhlman at No. 1 singles in the team-championship match, then watched her teammates win at Nos. 2 and 3 singles, No. 5 singles, and No. 2 doubles to clinch the title.

Fendick's victory in the team finals broke Kuhlman's 30-match victory streak, but that was only the beginning of the Southern California sophomore's problems.

Three days later, Fendick and Kuhlman squared off once more in the quarterfinals of singles play, where Kuhlman was the top seed and Fendick was seeded sixth. Fendick won again, 6-4, 6-4.

"For Caroline, it must have been difficult to be up for this match after losing in the team finals," Fendick said. "Plus, she has played so many matches this year and had incredible results—being undefeated. I took advantage of the fact that she likes to

hit lots of strong shots on the run. I didn't let her do that."

Besides ousting Kuhlman from the tournament, Fendick advanced to the singles finals without losing a set. In the championship match, however, she quickly lost the first set to Trinity's second-seeded Rush before she recovered to win the title, 2-6, 6-1, 6-3.

"I had trouble getting started. I had played 15 matches before this and I was getting a little flat; I couldn't get my feet going," she said after the match.

"I think I just had a little left over for the end and that pulled me through."

For Rush, it was her second trip to the singles finals without a victory. She also was a semifinalist in 1984.

The doubles championship was won by top-seeded Lise Gregory and Ronni Reis of Miami (Florida), who defeated second-seeded Rush and Ann Hulbert of Trinity in the finals, 7-6, 6-2. The Miami twosome never lost a set in their march to the title.

## Team results

**First round**—Stanford 8, Harvard 1; Northwestern 6, UCLA 3; Miami (Florida) 8, U.S. International 1; California 6, Texas 2; Southern California 8, Texas A&M 1; Arizona State 5, Clemson 4; Trinity 8, Kentucky 1; Oklahoma State 6, San Diego State 3.

**Quarterfinals**—Stanford 5, Northwestern 1; Miami (Florida) 5, California 3; Southern California 5, Arizona State 1; Trinity 5, Oklahoma State 2.

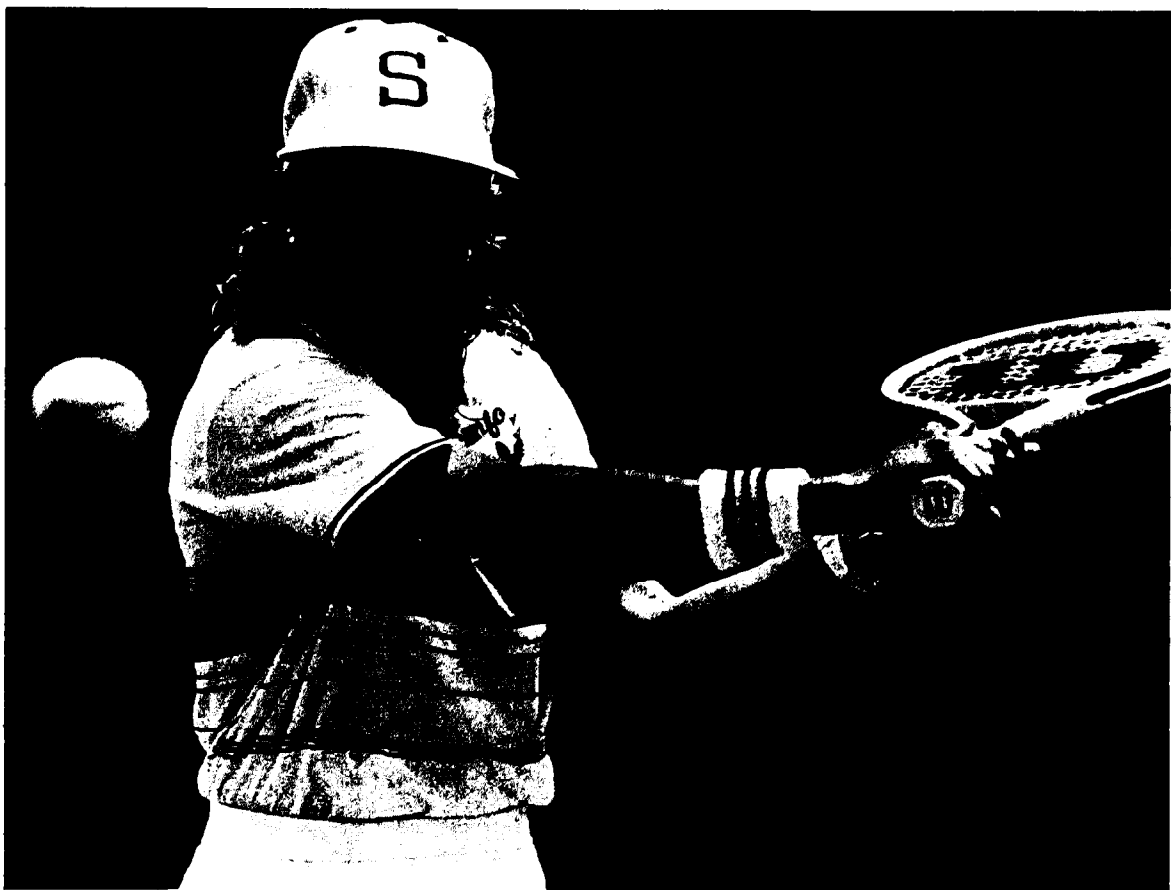
**Semifinals**—Stanford 6, Miami (Florida) 3; Southern California 6, Trinity 3.

**Third-place match**—Miami (Florida) 5, Trinity 4.

## Stanford 5, Southern California 4

**Singles**—No. 1: Patty Fendick, Stanford, def. Caroline Kuhlman, Southern California, 7-5, 6-2; No. 2: Marianne Werdel, Stanford, def. Heliane Steden, Southern California, 6-4, 6-1; No. 3: Leigh Anne Eldredge, Stanford, def. Maeve Quinlan, Southern California, 6-4, 6-0; No. 4: Mary Norwood, Southern California, def. Stephanie Savides, Stanford, 6-2, 6-1; No. 5: Kay Tittle, Stanford, def. Ginny Purdy, Southern California, 6-3, 3-6, 6-4; No. 6: Claudia Hernandez, Southern California, def. Cari Hagey, Stanford, 6-4, 6-2.

**Doubles**—No. 1: Kuhlman-Dena Levy, Southern California, def. Fendick-Eldredge, Stanford, 7-5, 6-2; No. 2: Hagey-Savides,



Patty Fendick, Stanford

Susan Allen Camp photo

Stanford, def. Steden-Norwood, Southern California, 6-4, 7-5; No. 3: Quinlan-Purdy, Southern California, def. Tittle-Werdel, Stanford, 6-4, 5-7 (retired).

## Individual results

## Singles

**First round**—Gretchen Rush, Trinity, def. Wendy Gilles, Wisconsin, 6-1, 6-3; Hilary Shane, Princeton, def. Jean Marie Sterling, Southern Methodist, 7-5, 6-0; Nicole Stafford, Clemson, def. Lise Gregory, Miami (Florida), 2-6, 6-4, 7-6; Anne Grousbek, Texas, def. Rakefet Binyamini, U.S. International, 6-4, 6-1.

Monique Javer, San Diego State, def. Kathy Vigna, Harvard, 6-0, 6-0; Jennifer Prah, California, def. Jane Cohodes, Georgia, 6-1, 6-4; Susanna Lee, Brigham Young, def. Tessa Price, Oklahoma State, 6-1, 6-4; Namratha Apporao, William and Mary, def. Laura Garcia, South Florida, 6-0, 1-6, 6-2.

Heliane Steden, Southern California, def. Rene Simpson, Texas Christian, 6-2, 3-6, 7-5; Cynthia MacGregor, San Diego State, def. Michelle Taylor, Brigham Young, 6-4, 6-1; Sherri Norris, Arizona State, def. Anna Almansa, South Florida, 7-5, 6-3; Libbie Brende, Oklahoma State, def. Sylvie Tetreault, U.S. International, 6-0, 6-1.

Marianne Werdel, Stanford, def. Sue Taylor, Duke, 7-5, 6-1; Jane Holdren, Trinity, def. Tamaka Takagi, Kentucky, 7-6, 6-4; Heather Ettus, California, def. Jane Thomas, UCLA, 4-6, 6-1, 6-3; Stina Almgren, Houston, def. Debbie Daniel, Trenton State, 6-4, 6-3.

Ann Hulbert, Trinity, def. Allyson Ingram, Arizona State, 6-4, 6-7, 6-1; Cathy Hofer, Clemson, def. Jennifer Fuchs, UCLA, 0-6, 7-6, 6-3; Reka Monoki, Indiana, def. Jennifer Santrock, Southern Methodist, 4-6, 6-3, 6-3; Beverly Bowes, Texas, def. Leigh Anne Eldredge, Stanford, 6-2, 1-6, 7-5.

Mary Norwood, Southern California, def. Eilida, Pepperdine, 6-3, 6-4; Tammy Whittington, Florida, def. Katrina Adams, Northwestern, 7-6, 6-3; Jill Smoller, Arizona, def. Cathy Berry, San Diego State, 6-1, 6-4; Ronni Reis, Miami (Florida), def. Sonia Hahn, Kentucky, 6-3, 6-1.

Joni Urban, UCLA, def. Carol Coparans, Arizona State, 6-3, 6-3; Renata Baranski, Oklahoma State, def. Eileen Tell, Texas, 7-6, 6-2; Karen Shin, California, def. Diane Donnelly, Northwestern, 4-6, 6-3, 6-2; Patty Fendick, Stanford, def. Ros Riach, Miami (Florida), 6-3, 6-3.

Jill Hetherington, Florida State, def. Lesley Hakala, Brigham Young, 6-2, 6-4; Wendy Wood, Rice, def. Kelly Mulvihill, Indiana, 6-1, 6-2; Ingelise Driehuis, Clemson, def. Anne Moeller, San Diego State, 6-2, 6-3; Caroline Kuhlman, Southern California, def. Elvyn

See *Stanford*, page 9



# Abilene Christian men win fifth straight Division II crown

Abilene Christian, winner of the last four Division II men's outdoor track team titles, added another one to the collection at the May 21-24 championships at Cal State Los Angeles. In addition, the Wildcat women took top honors in the women's championships for the second year in a row (see accompanying story).

Don Hood's Abilene Christian squad crushed the opposition, outdistancing second-place finisher Southeast Missouri State, 142-60. Cal State Los Angeles was third (59), St. Augustine's placed fourth (51) and Angelo State was fifth (50).

Seven individual championships were claimed by Abilene Christian athletes. Ian Morris, the Trinidad national champion in the 400 meters, captured two titles (200 meters, 20.76, and 400 meters, 45.10) and contributed to two others (400-meter relay, 39.98, and 1,600-meter relay, 3:04.82).

Freddie Williams won his third consecutive 800-meter crown in 1:48.25, while Steve Thaxton claimed the pole vault championship at 5.35 meters (17-6½). Wildcat Cam Miller vaulted the same height but was second because of more attempts.

Ahmed Shata successfully defended his 1985 crown in the shot with a meet record 19.46 (63-10¼).

East Texas State had winners in three events—Bobby Bankston in the 100 meters (10.39) and Agapius Amo in the 3,000-meter steeplechase (18:45.35) and 10,000 meters (29:15.82).

Ron Lee of Cal State Bakersfield was a double winner in the 110-meter high hurdles (13.88) and high jump (2.19, 7-2¼).

Charles Cheruiyot of Mount St. Mary's, a Kenyan Olympian, established a meet mark in the 5,000 meters with a 13:51.30. Rob Jeurgens, last year's winner and former record-holder, was second (14:08.13).

#### Team results

1. Abilene Christian, 142; 2. Southeast Missouri State, 60; 3. Cal State Los Angeles, 59; 4. St. Augustine's, 51; 5. Angelo State, 50; 6. East Texas State, 42; 7. Mount St. Mary's, 36; 8. Cal

State Bakersfield, 28; 9. Cal State Sacramento, 24; 10. Edinboro, 23.

11. Cal Poly-San Luis Obispo, 21; 12. Ashland, 20; 13. (tie) Indiana (Pennsylvania) and Hampton, 17; 15. UC Davis, 16½; 16. (tie) Southern Connecticut State, Texas A&I, Indiana Central and North Dakota, 13; 20. North Carolina Central, 11½.

21. (tie) San Francisco State and New York Tech, 10; 23. (tie) Indiana (Pennsylvania) and Morehouse, 9; 25. (tie) Lowell, Liberty and Northwest Missouri State, 8; 28. (tie) Troy State and Alabama A&M, 30. (tie) Kutztown and Shippensburg, 6.

32. (tie) Cal State Northridge, Keene State and Slippery Rock, 5; 35. Cal State Chico, Cal Poly-Pomona, LIU-C.W. Post, Lincoln (Missouri) 4; 39. (tie) Millersville, Howard Payne, North Dakota State and Mankato State, 3.

43. (tie) West Georgia, Springfield and Missouri-Rolla, 2; 46. (tie) Stephen F. Austin State, Clarion, Humboldt State and District of Columbia, 1.

#### Individual results

**100-meter dash**—1. Bobby Bankston, East Texas State, 10.39; 2. Rowan Wade, St. Augustine's, 10.46; 3. Dana Gardner, Southeast Missouri State, 10.48; 4. Chester Hynes, Cal State Sacramento, 10.52; 5. Darren Williams, Abilene Christian, 10.63; 6. Reginald McCary, Alabama A&M, 10.85; 7. Aatron Kenney, Angelo State, 17.4; Greg Meghoo, Abilene Christian, disqualified.

**200-meter dash**—1. Ian Morris, Abilene Christian, 20.76; 2. Dana Gardner, Southeast Missouri State, 20.92; 3. Tyrone Harrell, St. Augustine's, 21.02; 4. Aatron Kenney, Angelo State, 21.12; 5. Greg Meghoo, Abilene Christian, 21.17; 6. Reginald McCary, Alabama A&M, 21.28; 7. Robert Hill, North Carolina Central, 21.54; 8. Timothy Martin, Troy State, 22.09.

**400-meter dash**—1. Ian Morris, Abilene Christian, 45.10 (meet record; old record—45.12, Charlie Phillips, Abilene Christian, 1983); 2. Davison Lishebo, Mount St. Mary's, 45.83; 3. Tyrone Harrell, St. Augustine's, 45.95; 4. Berris Long, New York Tech, 46.72; 5. Eric McPhee, Troy State, 46.86; 6. Rufus Jackson, Cal State Los Angeles, 47.07; 7. Timmy Morris, Cal State Sacramento, 47.74; 8. Glen Ho-Sang, St. Augustine's, 48.74.

**800-meter run**—1. Freddie Williams, Abilene Christian, 1:48.25; 2. Rod DeHaven, South Dakota State, 1:48.67; 3. Dariusz Janczewski, Ashland, 1:49.03; 4. Sandy Chapman, St. Augustine's, 1:49.16; 5. Lewis Elton, LIU-C.W. Post, 1:49.45; 6. Tony Young, Cal State Los Angeles, 1:50.43; 7. Shaun Carlile, Southeast Missouri State, 1:50.77; 8. Martin Gow, New York Tech, 1:51.41.

**1,500-meter run**—1. Steve Gerhart, UC Davis, 3:43.00; 2. Kip Cheruiyot, Mount St. Mary's, 3:43.17; 3. Dariusz Janczewski, Ashland, 3:44.27; 4. Rod DeHaven, South Dakota State, 3:44.64; 5. Tony Young, Cal State Los Angeles, 3:46.33; 6. Norm Keller, Southeast Missouri State, 3:46.54; 7. Pedro Caceres,

Southeast Missouri State, 3:47.08; 8. Chris Romero, Humboldt State, 3:49.80.

**3,000-meter steeplechase**—1. Agapius Amo, East Texas State, 8:45.35; 2. Tim Hawthorne, Edinboro, 8:52.10; 3. Pedro Caceres, Southeast Missouri State, 8:54.20; 4. David Garcia, Texas A&I, 8:57.02; 5. Eddie Toro, Cal Poly-Pomona, 9:01.58; 6. Robert Anderson, UC Davis, 9:03.38; 7. Phil Alban, Mankato State, 9:06.34; 8. Doug McConnell, Clarion, 9:07.84.

**5,000-meter run**—1. Charles Cheruiyot, Mount St. Mary's, 13:51.30 (meet record; old record—13:58.48, Rob Jeurgens, Ashland, 1985); 2. Rob Jeurgens, Ashland, 14:08.13; 3. Graham Luil, Edinboro, 14:17.17; 4. Agapius Amo, East Texas State, 14:21.22; 5. Michael Moloto, Abilene Christian, 14:27.29; 6. Joe Rubio, Cal Poly-San Luis Obispo, 14:32.64; 7. Brad Ortmeier, Northwest Missouri State, 14:36.90; 8. William Maloney, Edinboro, 14:47.15.

**10,000-meter run**—1. Agapius Amo, East Texas State, 29:15.82; 2. Art Waddle, Southeast Missouri State, 29:17.40; 3. Brad Ortmeier, Northwest Missouri State, 29:38.40; 4. Rod Ellsworth, Keene State, 29:43.40; 5. Dennis Simonaitis, Lowell, 29:54.30; 6. Jay O'Keefe, Southern Connecticut State, 30:06.26; 7. Mike Platt, Edinboro, 30:12.36; 8. Todd Stevens, South Dakota State, 30:16.07.

**110-meter high hurdles**—(all times wind-aided) 1. Ron Lee, Cal State Bakersfield, 13.88; 2. James Collins, Texas A&I, 13.95; 3. Derrick Knowles, St. Augustine's, 14.11; 4. Rod Welch, Angelo State, 14.34; 5. Bobby Bankston, East Texas State, 14.50; 6. Antonio Carter, St. Augustine's, 14.56; 7. Randy Simmons, Angelo State, 14.59; 8. Tyrone Howell, Hampton, 14.76.

**400-meter hurdles**—1. Chris Green, Indiana Central, 51.56; 2. Alan Randall, Abilene Christian, 51.89; 3. Bruce Tiller, Kutztown, 51.96; 4. Dave Johnson, Cal Poly-San Luis Obispo, 52.06; 5. Randal Walker, Hampton, 52.19; 6. David Barrow, Millersville, 52.93; 7. Jay Burden, Cal State Los Angeles, 53.19; 8. Scott Muckelroy, Stephen F. Austin State, 53.51.

**400-meter relay**—1. Abilene Christian (Darren Williams, Ian Morris, Shane Howell, Greg Meghoo), 39.98; 2. Cal State Sacramento, 40.66; 3. Angelo State, 40.67; 4. North Carolina Central, 41.13; 5. Cal State Los Angeles, 41.37; 6. East Texas State, 41.46; 7. Troy State, 41.48; New York Tech did not finish.

**1,600-meter relay**—1. Abilene Christian (Darren Williams, Freddie Williams, Frank Hill, Ian Morris), 3:04.82; 2. St. Augustine's, 3:08.23; 3. Hampton, 3:09.21; 4. Cal State Sacramento, 3:09.51; 5. New York Tech, 3:10.65; 6. Angelo State, 3:11.72; 7. Cal Poly-San Luis Obispo, 3:12.11; 8. District of Columbia, 3:13.3.

**High jump**—1. Ron Lee, Cal State Bakersfield, 2.19 (7-2¼); 2. Steve Jones, Cal State Los Angeles, 2.19 (7-2¼); 3. Matthew McVette, Shippensburg, 2.16 (7-1); 4. (tie) Kevin Fullen, Abilene Christian, and Obie Martin, North Carolina Central, 2.16 (7-1); 6. Stuart Burleson,



Agapius Amo, East Texas State

Howard Payne, 2.13 (6-11¼); 7. Willie Boykin, West Georgia, 2.10 (6-10¼); 8. Anthony Mudy, Cal Poly-San Luis Obispo, 2.10 (6-10¼).

**Pole vault**—1. Steve Thaxton, Abilene Christian, 5.35 (17-6½); 2. Cam Miller, Abilene Christian, 5.35 (17-6½); 3. Michael Thornton, Abilene Christian, 5.00 (16-4); 4. Bob Ferguson, Southeast Missouri State, 4.85 (15-11); 5. (tie) Andrew Avellar, UC Davis, and Kriss Grimes, Abilene Christian, 4.85 (15-11); 7. Tobie Hatfield, Abilene Christian, 4.85 (15-11); 8. John Hietala, Mankato State, 4.70 (15-5).

**Long jump**—1. Kerry Therwhanger, Angelo State, 7.73 (25-4½); 2. John Alexander, St. Augustine's, 7.72 (25-4); 3. Dwayne Reid, Hampton, 7.70 (25-3¼); 4. Gary Jackson, Cal State Northridge, 7.66 (25-1¼); 5. Clinton Pruiet, Morehouse, 7.51 (24-7½); 6. John Bodine, North Dakota State, 7.49 (24-7); 7. Everton McDougall, Abilene Christian, 7.41 (24-3½); 8. Darrell Starks, Alabama A&M, 7.40 (24-3¼).

**Triple jump**—1. Stan Oporski, Cal State Los Angeles, 16.36 (53-8¼); 2. Earl Whiting,

See Abilene, page 8

## Women's team makes it a clean sweep for Wildcats in track

Abilene Christian scored 112 points and won its second consecutive Division II Women's Track Championships title May 21-24 at Cal State Los Angeles. A strong Cal Poly-San Luis Obispo team was runner-up for the second year in a row, after capturing the first three team crowns.

The Wildcats had 93½ points, followed by Alabama A&M, 65; Hampton, 63, and Cal Poly-Pomona, 51½.

Yolanda Henry led Abilene Christian's surge, tallying a total of 23 points in four events. The junior from Houston, Texas, won the high jump for the third straight year and set a meet record at 1.89 meters (6-2¼). She also claimed a first place in the 400-meter hurdles (58.78).

Camille Coates, who contributed 19½ points in 1985, also was effective in 1986. She scored 17 points, including eight for a second-place finish in

the 100 meters. Ann Foster won her third consecutive triple jump title, leaping a meet record 12.80 (42-0), and sophomore Marlene Lewis claimed the championship in the discus at 53.10 (174-2). She also was second in the shot put with a 14.46 (47-5¼) toss.

Cal Poly-San Luis Obispo was paced by Patrice Carpenter in the sprints, Gladees Prieur in the middle distances and Deena Bernstein in the javelin. Carpenter took first place in the 400-meter dash (52.96) and third in the 200 meters (23.30). Prieur, winner of the 1985 1,500 meters, won again (4:18.98) and also placed seventh in the 800 meters (2:10.66). Bernstein earned her first national championship in the javelin with a mark of 48.24 (158-3).

Dannette Young, Alabama A&M, won her third consecutive champion-

ships in the 100- and 200-meter events. Her time of 11.31 in the 100 meters was a meet record. Darla Moberly of Central Missouri State set a new mark in the 3,000 meters (9:20.85), and Patricia Ann Davis of St. Augustine's established a meet record in the 100-meter hurdles (13.20).

Other meet records were set by the Alabama A&M 400-meter relay team (44.50), Hampton 1,600-meter relay team (3:34.73) and Cal Poly-Pomona's Debra Larsen in the heptathlon (5,827).

#### Team results

1. Abilene Christian, 112; 2. Cal Poly-San Luis Obispo, 93½; 3. Alabama A&M, 65; 4. Hampton, 63; 5. Cal Poly-Pomona, 51½; 6. (tie) Cal State Northridge and St. Augustine's, 35; 8. Cal State Hayward, 27; 9. Cal State Sacramento, 25; 10. Seattle Pacific, 22.

11. Central Missouri State, 18; 12. (tie) Southeast Missouri State and New York Tech, 14; 14. (tie) Stephen F. Austin State and Army, 13; 16. Indiana (Pennsylvania), 12; 17. Tuske-

gee, 10; 18. Slippery Rock, 9; 19. (tie) Portland State and Angelo State, 8.

21. (tie) UC Davis, Indiana Central, Ashland and Edinboro, 7; 25. (tie) Navy, North Dakota State and San Francisco State, 6; 28. (tie) Troy State and Springfield, 5; 30. (tie) Minnesota-Duluth, Nebraska-Omaha, Air Force, Liberty and West Chester, 4.

35. (tie) St. Cloud State and Southern Connecticut State, 3; 37. East Stroudsburg, LIU-C.W. Post and Cal State Chico, 2; 40. (tie) Kutztown, Mount St. Mary's and Shippensburg, 1.

#### Individual results

**100-meter dash**—1. Dannette Young, Alabama A&M, 11.31 (meet record; old record—11.54, Eldece Clarke, Hampton, preliminaries, 1986); 2. Camille Coates, Abilene Christian, 11.40; 3. Sandra Dennis, New York Tech, 11.53; 4. Patricia Ann Davis, St. Augustine's, 11.61; 5. Eldece Clarke, Hampton, 11.62; 6. Vivienne Spence, Hampton, 11.63; 7. Wanda Eades, St. Augustine's, 12.03; 8. Paula Devane, Abilene Christian, 12.08.

**200-meter dash**—(all times wind-aided) 1. Dannette Young, Alabama A&M, 22.84; 2. Vivienne Spence, Hampton, 23.23; 3. Patrice Carpenter, Cal Poly-San Luis Obispo, 23.30; 4. Camille Coates, Abilene Christian, 23.51; 5. Eldece Clarke, Hampton, 23.66; 6. Jearl Miles, Alabama A&M, 23.86; 7. Linda Coleman, Stephen F. Austin State, 24.00; 8. Wanda Eades, St. Augustine's, 24.46.

**400-meter dash**—1. Patrice Carpenter, Cal Poly-San Luis Obispo, 52.96; 2. Trina Creekmore, Hampton, 53.49; 3. Linda Coleman, Stephen F. Austin State, 53.88; 4. Jeannette Palmer, Hampton, 54.01; 5. Debra Cooke, New York Tech, 54.14; 6. Millicent Rowe, Alabama A&M, 54.48; 7. Gwynne Schwartz Jones, Cal State Chico, 55.08; 8. Vivienne Spence, Hampton, 55.10.

**800-meter run**—1. Jeannette Palmer, Hampton, 2:08.24; 2. Jill Ellingson, Cal Poly-San Luis Obispo, 2:08.70; 3. Carol Womack, Navy, 2:08.88; 4. Susan Acker, Stephen F. Austin State, 2:09.01; 5. Janice Moreau, Nebraska-Omaha, 2:09.24; 6. Jackie Hardman, San Francisco State, 2:10.14; 7. Gladees Prieur, Cal Poly-San Luis Obispo, 2:10.66; 8. Eleanor Carey, Cal Poly-Pomona, 2:11.49.

**1,500-meter run**—1. Gladees Prieur, Cal Poly-San Luis Obispo, 4:18.98; 2. Jill Ellingson, Cal Poly-San Luis Obispo, 4:26.06; 3. Laura Byrne, Southeast Missouri State, 4:26.41; 4. Rachida Asname, Abilene Christian, 4:27.27; 5. Anamarie Hunt, Liberty, 4:28.32; 6. Paula Brunetto, Southern Connecticut State, 4:28.69; 7. Kathy Ewing, Indiana (Pennsylvania),

4:49.02; 8. Lori Walker, West Chester, 4:33.56.

**3,000-meter run**—1. Darla Moberly, Central Missouri State, 9:20.85 (meet record; old record—9:22.54, Karen Dunn, Wake Forest, 1985); 2. Lori Lopez, Cal Poly-San Luis Obispo, 9:31.49; 3. Nancy Dietman, North Dakota State, 9:34.51; 4. Joann Howard, Cal Poly-Pomona, 9:39.54; 5. Nancy Riedel, UC Davis, 9:42.56; 6. Sally Carlson, UC Davis, 9:43.36; 7. Nancy Bowman, Cal State Northridge, 9:51.49; 8. Kathleen Stec, Shippensburg, 9:53.94.

**5,000-meter run**—1. Bente Moe, Seattle Pacific, 16:31.49; 2. Darla Moberly, Central Missouri State, 16:43.92; 3. Nina Manriquez, Cal State Northridge, 16:52.12; 4. Teresa Sobieski, Army, 16:52.68; 5. Coleen Snyder, Edinboro, 17:06.91; 6. Alexandra Aguirre, Cal State Northridge, 17:16.20; 7. Kris Katterhagan, Cal Poly-San Luis Obispo, 17:38.37; 8. Sherrie Roach, Cal Poly-Pomona, 18:15.56.

**10,000-meter run**—1. Tammy Donnelly, Indiana (Pennsylvania), 33:44.01; 2. Debra Myra, Portland State, 34:25.47; 3. Bente Moe, Seattle Pacific, 34:46.75; 4. Magdalena Manriquez, Cal State Northridge, 34:57.27; 5. Alexandra Aguirre, Cal State Northridge, 35:11.28; 6. Tracy Watson, Edinboro, 35:59.77; 7. Georgiana Messinger, East Stroudsburg, 36:50.07; 8. Lori Lawson, Kutztown, 37:34.67.

**100-meter hurdles**—1. Patricia Ann Davis, St. Augustine's, 13.20 (meet record; old record—13.53, Davis and Cece Chandler, Cal Poly-San Luis Obispo, 1985); 2. Natalie Day, Cal State Sacramento, 13.67; 3. Elaine Mitchell, Alabama A&M, 13.83; 4. Janet Williams, Springfield, 13.86; 5. Renea Toliver, Air Force, 14.07; 6. Ruth Whitehead, San Francisco State, 14.11; 7. Jewel Nicholson, New York Tech, 14.35; 8. Yolanda Henry, Abilene Christian, 14.7.

**400-meter hurdles**—1. Yolanda Henry, Abilene Christian, 58.78; 2. Natalie Day, Cal State Sacramento, 59.14; 3. Veron Brown, Cal State Hayward, 1:00.30; 4. Sharon Hanson, Cal Poly-San Luis Obispo, 1:00.32; 5. Laurie Hagan, Cal Poly-San Luis Obispo, 1:00.79; 6. Stephanie Brown, Troy State, 1:01.27; 7. Anne Fischer, LIU-C.W. Post, 1:01.63; Janet Williams, Springfield, did not finish.

**400-meter relay**—1. Alabama A&M (Dannette Young, Jearl Miles, Cefornia Polk, Jancinta Bartholomew), 44.50 (meet record; old record—44.67, Hampton, preliminaries, 1986); 2. Abilene Christian, 44.62; 3. Hampton, 44.64; 4. St. Augustine's, 45.69; 5. Cal Poly-San Luis Obispo, 46.11; 6. Cal State Northridge, 46.85; 7. Troy State, 47.07; Cal State

See Women's, page 8



Debra Larson, Cal Poly-Pomona

Ben J. Esparza photos

# Frostburg State gets its first men's outdoor track crown

Spurred by winning performances in the 100 meters, 110-meter high hurdles and 400-meter relay, Frostburg State claimed its first Division I Men's Outdoor Track Championships team title May 21-24 at Wisconsin-LaCrosse. It was the Bobcats' second track title this year, after winning the 1986 indoor crown in March.

Frostburg State, which finished fifth in 1985, scored 61 points but barely held off second-place finishers Lincoln (Pennsylvania) and Wisconsin-LaCrosse with 58 points each. Lincoln was the defending champion, while the Indians were runners-up in 1985.

Maynard Hurd, the 1986 indoor winner in the 55-meter hurdles (7.40), won his second consecutive 110-meter hurdles crown in 14.01. Steve Terry grabbed the individual championship in the 100 meters (10.92) and then anchored a record-breaking 400-meter relay team (40.39). Joseph Barber added points with a third-place finish in the 100 meters (10.94) and a fifth-place showing in the 200 meters (21.87), while Leonard Wright was third in the 200 meters (21.58) and fifth in the 100 (11.00).

Lincoln almost captured the team title with wins in the 200-meter dash [by William Darby (21.50)] and 1,600-meter relay (3:11.96). Darby also was second in the 100 meters (10.93). Three Lions scored in the 110-meter high hurdles: Reginald Pate, second, 14.33; Terry McDonald, fourth, 14.55, and David Hightower, fifth, 14.58.

Wisconsin-LaCrosse was paced by Terry Strouf, who won the shot (17.92 meters, 58-9/16) and placed third in the hammer (53.58, 175-9). Mike Meeter was third in the decathlon (6,657), Bruce Nelson placed second in the pole vault (4.72, 15-5), Mark Rohm tied for second in the high jump (2.08, 6-10) and Dave Valentine was third in the 10,000 meters (30:14.32).

James Gathje of St. John's (Minnesota) set a meet record in the 3,000-

meter steeplechase with a time of 8:43.93.

## Team results

1. Frostburg State, 61; 2. (tie) Lincoln (Pennsylvania) and Wisconsin-LaCrosse, 58; 4. St. Thomas (Minnesota), 52; 5. Mount Union, 46; 6. Occidental, 43; 7. Susquehanna, 25; 8. Nebraska Wesleyan, 22; 9. Denison, 20; 10. Buffalo State, 18.

11. Wisconsin-Platteville, 16; 12. (tie) St. John's (Minnesota) and Wisconsin-Stevens Point, 15; 14. (tie) Southeastern Massachusetts, Otterbein, Claremont-Mudd-Scripps and Simpson, 14; 18. Southern-New Orleans, 13; 19. (tie) Wisconsin-Oshkosh and Grove City, 12.

21. (tie) North Central and Fitchburg State, 11; 23. Baldwin-Wallace, 10 1/2; 24. Carleton, 10 1/3; 25. (tie) Stockton State, Lynchburg, Rose-Hulman and Monmouth (Illinois), 10; 29. (tie) Union (New York), Wabash, Montclair State, Kenyon and Wheaton (Illinois), 8.

34. Fredonia State, 7; 35. (tie) Methodist, Case Reserve, Albion, Cal State Stanislaus, Glassboro State, Bates and St. Olaf, 6.

42. Merchant Marine, 5 1/2; 43. (tie) Brockport State, Calvin, Brandeis, Muskingum, Salisbury State, Willamette, Williams, Albany (New York), Rochester Institute of Technology, Augustana (Illinois) and Haverford, 5.

54. William Paterson, 4; 55. John Carroll, 3 1/2; 56. (tie) Christopher Newport, Cortland State, La Verne, Ohio Wesleyan, Ripon and Rochester, 3.

62. (tie) Worcester, Lawrence, Middlebury, Alma and Hamline, 2; 67. (tie) Ithaca, Eastern Mennonite, Redlands, Westfield and Sewanee (University of the South), 1; 72. MIT, 1/3.

## Individual results

**100-meter dash**—1. Steven Terry, Frostburg State, 10.92; 2. William Darby, Lincoln (Pennsylvania), 10.93; 3. Joseph Barber, Frostburg State, 10.94; 4. Daryl Brownlee, Buffalo State, 10.97; 5. Leonard Wright, Frostburg State, 11.00; 6. Elliot Lightfoot, Lincoln (Pennsylvania), 11.10; 7. Mark Messana, Claremont-Mudd-Scripps, 11.27; Malcolm Hardy, Occidental, did not finish.

**200-meter dash**—1. William Darby, Lincoln (Pennsylvania), 21.50; 2. Lamar Smith, Buffalo State, 21.57; 3. Leonard Wright, Frostburg State, 21.58; 4. Malcolm Hardy, Occidental, 21.85; 5. Joseph Barber, Frostburg State, 21.87; 6. Brian Crossman, Fitchburg State, 21.94; 7. Steven Terry, Frostburg State, 21.97; 8. Mark Messana, Claremont-Mudd-Scripps, 22.24.

**400-meter dash**—1. Mike Spangler, Susquehanna, 46.55; 2. Brian Crossman, Fitchburg State, 46.95; 3. Scott Shorney, Denison, 46.99; 4. Lamar Smith, Buffalo State, 47.61; 5. Rick Harkwell, St. Thomas (Minnesota), 47.68; 6. Rowan Welch, Ohio Wesleyan, 48.00; 7. Mark E. Long, Lincoln (Pennsylvania), 48.03; 8. Tyrone Brooks, Redlands, 48.60.

**800-meter run**—1. Marcell Stephens, Mount Union, 1:51.13; 2. Max Harn, Wisconsin-Oshkosh, 1:51.14; 3. Ron Moran, Nebraska Wesleyan, 1:51.84; 4. Christopher Keane, Merchant Marine, 1:52.07; 5. Brian Butterfield, Occidental, 1:52.54; 6. Lionel Shaw, Occidental, 1:52.72; 7. George Hadrick, Lincoln (Pennsylvania), 1:53.74; 8. Phil Herbert, St. Thomas (Minnesota), 2:00.3.

**1,500-meter run**—1. Arne Schrader, Wisconsin-Stevens Point, 3:47.87; 2. Marc Zibblatt, Occidental, 3:49.54; 3. Ron Moran, Nebraska Wesleyan, 3:49.91; 4. Liam O'Neill, Haverford, 3:49.96; 5. Jeff Brooks, Simpson, 3:50.58; 6. Tom Tuori, Rochester, 3:51.06; 7. Daniel Casper, Carleton, 3:51.54; 8. Jim Larranaga, St. Thomas (Minnesota), 3:51.68.

**3,000-meter steeplechase**—1. James Gathje, St. John's (Minnesota), 8:43.93 [meet record; old record—8:46.71, Jim Gathje, St. John's (Minnesota), 1985]; 2. Jeff Hyman, St. Thomas (Minnesota), 8:50.49; 3. Scott Alpetter, Otterbein, 9:02.41; 4. Frank Bielinski, St. Thomas (Minnesota), 9:02.84; 5. Bill Rediske, Wisconsin-LaCrosse, 9:03.03; 6. Dale Froster, Rochester Institute of Technology, 9:04.03; 7. Eric Griffin, Lawrence, 9:04.29; 8. John Ellison, Williams, 9:04.43.

**5,000-meter run**—1. Jeff Hyman, St. Thomas (Minnesota), 14:22.00; 2. Todd Moxley, Wheaton (Illinois), 14:29.19; 3. John Fitzgerald, Bates, 14:30.39; 4. Gary Paterson, North Central, 14:31.94; 5. John Bielinski, St. Thomas (Minnesota), 14:35.19; 6. Tom Faust, St. Thomas (Minnesota), 14:39.43; 7. Paul Ruston, Rochester Institute of Technology, 14:42.82; 8. Dave Valentine, Wisconsin-LaCrosse, 14:44.71.

**10,000 meters**—1. James White, Southeastern Massachusetts, 29:36.70; 2. Tom Schnurr, Otterbein, 30:13.56; 3. Dave Valentine, Wisconsin-LaCrosse, 30:14.32; 4. Scott Scheffler, Salisbury State, 30:22.52; 5. Paul Thurmes, St. Thomas (Minnesota), 30:37.44; 6. Scott Costello, Glassboro State, 32:40.5.

**110-meter high hurdles**—1. Maynard Hurd, Frostburg State, 14.01; 2. Reginald Pate, Lincoln (Pennsylvania), 14.33; 3. Scott Ether-ton, Nebraska Wesleyan, 14.54; 4. Terry McDonald, Lincoln (Pennsylvania), 14.55; 5. David Hightower, Lincoln (Pennsylvania), 14.58; 6. Jason Mouring, Glassboro State, 14.68; 7. Aaron Larson, Hamline, 14.69; 8. Victor Gilmer, Westfield State, 14.79.

**400-meter hurdles**—1. Jeff Walder, Susquehanna, 51.89; 2. Garrett Tallman, Wabash, 52.45; 3. Amod Field, Montclair State, 52.86; 4. Ric Perona, Wisconsin-Stevens Point, 52.95; 5. Glenn Johnson, Mount Union, 53.13; 6. Jim Terwilliger, Cortland State, 53.77; 7. Brian Lamb, North Central, 53.82; 8. Ken Harris, Augustana (Illinois), 58.44.

**400-meter relay**—1. Frostburg State (Joe Barber, Leonard Wright, Carlos Acker, Steve Terry), 40.39 (meet record; old record—40.71, Southern-New Orleans, 1977 and 1982); 2.

Trask, Southern-New Orleans, 25.34; 3. Traci Sawyers, Fisk, 25.41; 4. Jolene Schmidt, Wisconsin-LaCrosse, 25.51; 5. Diane Watson, Frostburg State, 25.59; 6. Michelle Mazurik, Rochester, 26.58.

**400-meter dash**—1. Trena Marshall, CCNY, 55.02; 2. Murtonda Durant, Massachusetts-Boston, 55.19; 3. Kendra Brandrup, Pomona-Pitzer, 56.00; 4. Lisa Trask, Southern-New Orleans, 56.11; 5. Pam Olsgaard, Concordia-Moorhead, 56.18; 6. Kim Huey, Wheaton (Illinois), 56.74; 7. Jennifer Phillips, St. Thomas (Minnesota), 57.82; 8. Traci Sawyer, Fisk, 58.88.

**800-meter run**—1. Genesis Eddins, Massachusetts-Boston, 2:09.28; 2. Gail Ierardi, Fitchburg State, 2:12.25; 3. Lynda Glinski, Buffalo, 2:12.73; 4. Lisa Koelgen, St. Thomas (Minnesota), 2:12.76; 5. Kaye Matthews, Muskingum, 2:13.19; 6. Cathy Ausloos, Wisconsin-Stevens Point, 2:13.58; 7. Mary Schlick, Macalester, 2:13.81; 8. Mary Kastelic, Wisconsin-LaCrosse, 2:13.91.

**1,500-meter run**—1. Lisa Koelgen, St. Thomas (Minnesota), 4:29.66 [meet record; old record—4:34.21, Rose McIlrath, St. Thomas (Minnesota), 1983]; 2. Christina Ilgner, Middlebury, 4:31.66; 3. Michelle Trimble, Occidental, 4:33.51; 4. Darrelle Boyd, Massachusetts-Boston, 4:33.64; 5. Virginia Zaleski, Trenton State, 4:33.74; 6. Jennifer Shaver, Allegheny, 4:34.74; 7. Mary Schlick, Macalester, 4:35.79; 8. Terri Smith, Franklin & Marshall, 4:38.00.

**3,000-meter run**—1. Gwynn Hardesty, Smith, 9:38.86; 2. Michele Trimble, Occidental, 9:45.58; 3. Cindy Hennessy, St. Thomas (Minnesota), 9:45.92; 4. Lois Lucente, Franklin & Marshall, 9:48.68; 5. Michelle Nichol, Trenton State, 9:50.01; 6. Linda Reinman, Dickinson, 9:51.14; 7. Betsy Bachtel, Gallaudet, 9:51.80; 8. Nancy Benson, Tufts, 9:54.39.

**5,000-meter run**—1. Julia Kirtland, Macalester, 16:46.27; 2. Linda Reinman, Dickinson, 17:11.28; 3. Cindy Hennessy, St. Thomas (Minnesota), 17:15.06; 4. Betsy Bachtel, Gallaudet, 17:18.49; 5. Sue Meyer, Wisconsin-Stout, 17:19.00; 6. Sheri Winter, Wisconsin-LaCrosse, 17:21.33; 7. Paulette Goodrich, St. Thomas (Minnesota), 17:21.57; 8. Sheila Geere, Wisconsin-Stout, 17:25.49.

**10,000-meter run**—1. Julia Kirtland, Macalester, 34:52.87; 2. Sheri Winter, Wisconsin-LaCrosse, 35:44.42; 3. Paulette Goodrich, St. Thomas (Minnesota), 36:00.86; 4. Martha Perkins, Hamilton, 36:05.52; 5. Sue Meyer, Wisconsin-Stout, 36:06.21; 6. Amanda Shaw, Franklin & Marshall, 36:44.59; 7. Anne Goldsworthy, Carroll, 36:48.85; 8. Louise Roberts, Buffalo, 36:58.85.

**100-meter hurdles**—1. Lori Sears, Central (Iowa), 14.42; 2. Gail Brown, Frostburg State, 14.45; 3. Debra Wells, Fitchburg State, 14.50; 4. Karen Sterner, Augsburg, 14.92; 5. Paulette



Maynard Hurd, Frostburg St.

Occidental, 40.90; 3. Lincoln (Pennsylvania), 41.13; 4. Southern-New Orleans, 41.35; 5. Denison, 41.62; 6. Christopher-Newport, 41.66; 7. Wisconsin-LaCrosse, 41.93; 8. Augustana (Illinois), 42.00.

**1,600-meter relay**—1. Lincoln (Pennsylvania) (Mark E. Long, George Hadrick, Andre Hall, DeKalo Whitfield), 3:11.96; 2. Southern-New Orleans, 3:12.60; 3. Mount Union, 3:13.97; 4. Susquehanna, 3:14.12; 5. Frostburg State, 3:14.30; 6. St. Olaf, 3:14.56; 7. Baldwin-Wallace, 3:16.79; 8. Augustana (Illinois), 3:17.02.

**High jump**—1. Eric Ealy, Monmouth (Illinois), 2.08 (6-10); 2. (tie) Mark Rohm, Wisconsin-LaCrosse, and Mark Speer, Kenyon, 2.08 (6-10); 4. David Walker, Albany (New York), 2.08 (6-10); 5. Brandt Johnson, Williams, 2.08 (6-10); 6. (tie) Leo Miller, John Carroll, and Tony Vitello, Baldwin-Wallace, 2.08 (6-10); 8. Larrie White, Baldwin-Wallace, 2.08 (6-10).

**Pole vault**—1. Ken DeBos, Mount Union, 4.72 (15-5); 2. Bruce Nelson, Wisconsin-LaCrosse, 4.72 (15-5); 3. Dan Newman, Baldwin-Wallace, 4.72 (15-5); 4. David Bell, Muskingum, 4.72 (15-5); 5. Steve Hable, Wisconsin-Oshkosh, 4.62 (15-2); 6. Mike Murray, St. Thomas (Minnesota), 4.52 (14-10); 7. Duncan Littlefield, Middlebury, 4.52 (14-10); 8. (tie) Jeff Brown, Carleton, Lonnie Coates, Merchant Marine, and Robert White, MIT, 4.42 (14-6).

**Long jump**—1. Scott Shorney, Denison,

7.39 (24-3); 2. Vance Mueller, Occidental, 7.36 (24-1 1/4); 3. Rodney Burgess, Methodist, 7.25 (23-9 1/2); 4. Pat Corbet, Fredonia State, 7.22 (23-8 1/4); 5. Scott Etherton, Nebraska Wesleyan, 7.19 (23-7); 6. Barry Tyler, La Verne, 7.05 (23-1 1/2); 7. Neal Guggemos, St. Thomas (Minnesota), 7.03 (23-0 3/4); 8. Mike Johnson, Ithaca, 6.94 (22-9 1/4).

**Triple jump**—1. Major Tallent, Lynchburg, 14.81 (48-7); 2. Willie Dawson, Mount Union, 14.75 (48-4 3/4); 3. Henry Jordan, Cal State Stanislaus, 14.74 (48-4 1/4); 4. Kevin Conners, Willamette, 14.50 (47-7); 5. Tom Spurling, Occidental, 14.43 (47-4 1/4); 6. Evan Perkins, Wisconsin-LaCrosse, 14.43 (47-4 1/4); 7. McKinley Mercer, Alma, 14.39 (47-2 1/2); 8. Raymond Toppins, Frostburg State, 14.35 (47-1).

**Shot put**—1. Terry Strouf, Wisconsin-LaCrosse, 17.92 (58-9 1/2); 2. Mark Loy, Mount Union, 17.27 (56-8); 3. Bryan Bennett, St. Thomas (Minnesota), 16.83 (55-2 1/2); 4. Troy Nelson, Wisconsin-LaCrosse, 16.16 (53-0 1/4); 5. James McElhane, Grove City, 16.06 (52-8 1/4); 6. Todd Ciesielski, Ripon, 15.85 (52-0); 7. Doug Presny, Wisconsin-Platteville, 15.80 (51-10); 8. B. Hampton Bass, Sewanee (University of the South), 15.63 (51-3 1/4).

**Discus**—1. Mike Mielke, Stockton State, 54.94 (180-3); 2. Doug Presny, Wisconsin-Platteville, 52.60 (172-7); 3. Dave Kamps, Wisconsin-Platteville, 51.58 (169-3); 4. Greg Steelman, Brandeis, 51.02 (167-5); 5. Michael Beckwith, Frostburg State, 49.78 (163-4); 6. Erwin Grabians, Case Western, 49.24 (161-6); 7. Tim Holmstrom, Augustana (Illinois), 49.04 (160-11); 8. Dave McKegg, St. Thomas (Minnesota), 47.66 (156-4).

**Hammer**—1. Carl Giles, Claremont-Mudd-Scripps, 59.14 (194-0); 2. Scott Remillard, Union (New York), 55.00 (180-5); 3. Terry Strouf, Wisconsin-LaCrosse, 53.58 (175-9); 4. Mark Palmer, Brockport State, 53.52 (175-7); 5. Stephen Baptista, Southeastern Massachusetts, 53.36 (175-1); 6. Chris Beard, Occidental, 52.70 (172-11); 7. Patrick Carmody, Worcester, 51.94 (170-5); 8. Chris Hickie, Claremont-Mudd-Scripps, 51.76 (169-10).

**Javelin**—1. Chris Trapp, Rose-Hulman, 69.62 (228-5) (meet record; old record—first time with new javelin); 2. James McElhane, Grove City, 67.06 (220-0); 3. Dan Pekrul, Albion, 64.06 (210-2); 4. Wade Weisz, St. John's (I.), 63.96 (209-10); 5. Frank Bellini, William Paterson, 63.32 (207-9); 6. Kevin Ferguson, Case Reserve, 61.22 (200-10); 7. Dan Dooley, Montclair State, 60.18 (197-5); 8. Philip Landes, Eastern Mennonite, 59.98 (196-9).

**Decathlon**—1. Kip Janvrin, Simpson, 7,323; 2. Rick Bollin, Carleton, 6,748; 3. Mike Meeter, Wisconsin-LaCrosse, 6,657; 4. Pete Vandebrake, Calvin, 6,547; 5. Kurt Hasentein, North Central, 6,524; 6. Todd Jorgenson, St. Olaf, 6,503; 7. Bob Healy, Fredonia State, 6,494; 8. Mark Speer, Kenyon, 6,489.

# Massachusetts-Boston wins Division III women's track title

Massachusetts-Boston, winner of the first two Division III Women's Indoor Track Championships, earned its first outdoor title May 21-24. The Beacons slipped past second-place finisher and host Wisconsin-LaCrosse, 52-49 1/2, while St. Thomas (Minnesota) was third with 48 points.

Massachusetts-Boston's Genesis Eddins, who won the 400 meters in 1985, took top honors in the 800 meters (2:09.28) in 1986. Ann Brissett won her first outdoor championship in the 400-meter hurdles (1:00.70), along with placing second in the triple jump (11.76 meters, 38-7). In addition, the 1,600-meter relay team established a meet record of 3:42.67, breaking its own 1985 record of 3:45.26.

Wisconsin-LaCrosse's top performer was Sheri Winter, who placed second in the 10,000 meters (35:44.42) and sixth in the 5,000 meters (17:21.33).

Several meet records were established, including a 4:29.66 in the 1,500 meters by Lisa Koelgen of St. Thomas (Minnesota); a high jump mark of 1.78 (5-10) by Michelle Reidi of Wisconsin-Stevens Point, and a 12.35 (40-6 1/4) in the triple jump by Karen Grant of Methodist. Earlier this year, Grant broke the indoor triple jump mark, leaping 39-3 1/4.

Julia Kirtland of Macalester was a double winner in the 5,000 meters (16:46.27) and 10,000 meters (34:52.87).

## Team results

1. Massachusetts-Boston, 52; 2. Wisconsin-LaCrosse, 49 1/2; 3. St. Thomas (Minnesota), 48; 4. (tie) Occidental and Macalester, 34; 6. (tie) Southern-New Orleans and Frostburg State, 30; 8. Pomona-Pitzer, 26; 9. (tie) CCNY and Wheaton (Illinois), 22.

11. Methodist, 18; 12. Rochester, 17; 13. (tie) Stony Brook and Wisconsin-Stevens Point, 16; 15. (tie) Fitchburg State, Concordia-Moorhead and Dickinson, 14; 18. Grinnell, 13; 19. (tie) Trenton State and Augsburg, 12.

21. (tie) Albany (New York) and Christopher Newport, 11; 23. (tie) Smith, Willamette, Central (Iowa), Cal State Stanislaus and Rochester

Institute of Technology, 10; 28. (tie) Franklin & Marshall, Cortland State and Wisconsin-Stout, 9.

31. (tie) Middlebury, Binghamton and Bridgewater (Massachusetts), 8; 34. (tie) Allegheny, Buffalo, Fisk and Gallaudet, 7; 38. (tie) Nebraska Wesleyan, Hamilton and Southeastern Massachusetts, 6.

41. (tie) Brandeis, Heidelberg, Redlands and Muskingum, 5; 45. (tie) Wisconsin-Whitewater, Fredonia State and Ithaca, 4; 48. (tie) Williams, Rhode Island, Carroll and Montclair State, 3.

52. (tie) Adrian, Brockport State and Salem State, 2 1/2; 55. (tie) Bethel, Cornell College, Baldwin-Wallace, Hamline, Claremont-Mudd-Scripps and William Penn, 2.

61. (tie) Wooster and Tufts, 1.

## Individual results

**100-meter dash**—1. Michele Jones, Rochester, 12.42; 2. Lisa Trask, Southern-New Orleans, 12.60; 3. Michelle Mazurik, Rochester, 12.64; 4. Francene Young, Macalester, 12.72; 5. Michele Lewis, Ithaca, 12.76; 6. Jeanne Berthasavage, Rhode Island, 12.85; 7. Dianna Thomas, Claremont-Mudd-Scripps, 12.86; 8. Michelle Dickens, Christopher Newport, 13.53.

**200-meter dash**—1. Winsome Fodderingham, Albany (New York), 24.53; 2. Lisa



Julia Kirtland, Macalester

Trask, Southern-New Orleans, 25.34; 3. Traci Sawyers, Fisk, 25.41; 4. Jolene Schmidt, Wisconsin-LaCrosse, 25.51; 5. Diane Watson, Frostburg State, 25.59; 6. Michelle Mazurik, Rochester, 26.58.

**400-meter dash**—1. Trena Marshall, CCNY, 55.02; 2. Murtonda Durant, Massachusetts-Boston, 55.19; 3. Kendra Brandrup, Pomona-Pitzer, 56.00; 4. Lisa Trask, Southern-New Orleans, 56.11; 5. Pam Olsgaard, Concordia-Moorhead, 56.18; 6. Kim Huey, Wheaton (Illinois), 56.74; 7. Jennifer Phillips, St. Thomas (Minnesota), 57.82; 8. Traci Sawyer, Fisk, 58.88.

**800-meter run**—1. Genesis Eddins, Massachusetts-Boston, 2:09.28; 2. Gail Ierardi, Fitchburg State, 2:12.25; 3. Lynda Glinski, Buffalo, 2:12.73; 4. Lisa Koelgen, St. Thomas (Minnesota), 2:12.76; 5. Kaye Matthews, Muskingum, 2:13.19; 6. Cathy Ausloos, Wisconsin-Stevens Point, 2:13.58; 7. Mary Schlick, Macalester, 2:13.81; 8. Mary Kastelic, Wisconsin-LaCrosse, 2:13.91.

**1,500-meter run**—1. Lisa Koelgen, St. Thomas (Minnesota), 4:29.66 [meet record; old record—4:34.21, Rose McIlrath, St. Thomas (Minnesota), 1983]; 2. Christina Ilgner, Middlebury, 4:31.66; 3. Michelle Trimble, Occidental, 4:33.51; 4. Darrelle Boyd, Massachusetts-Boston, 4:33.64; 5. Virginia Zaleski, Trenton State, 4:33.74; 6. Jennifer Shaver, Allegheny, 4:34.74; 7. Mary Schlick, Macalester, 4:35.79; 8. Terri Smith, Franklin & Marshall, 4:38.00.

**3,000-meter run**—1. Gwynn Hardesty, Smith, 9:38.86; 2. Michele Trimble, Occidental, 9:45.58; 3. Cindy Hennessy, St. Thomas (Minnesota), 9:45.92; 4. Lois Lucente, Franklin & Marshall, 9:48.68; 5. Michelle Nichol, Trenton State, 9:50.01; 6. Linda Reinman, Dickinson, 9:51.14; 7. Betsy Bachtel, Gallaudet, 9:51.80; 8. Nancy Benson, Tufts, 9:54.39.

**5,000-meter run**—1. Julia Kirtland, Macalester, 16:46.27; 2. Linda Reinman, Dickinson, 17:11.28; 3. Cindy Hennessy, St. Thomas (Minnesota), 17:15.06; 4. Betsy Bachtel, Gallaudet, 17:18.49; 5. Sue Meyer, Wisconsin-Stout, 17:19.00; 6. Sheri Winter, Wisconsin-LaCrosse, 17:21.33; 7. Paulette Goodrich, St. Thomas (Minnesota), 17:21.57; 8. Sheila Geere, Wisconsin-Stout, 17:25.49.

**10,000-meter run**—1. Julia Kirtland, Macalester, 34:52.87; 2. Sheri Winter, Wisconsin-LaCrosse, 35:44.42; 3. Paulette Goodrich, St. Thomas (Minnesota), 36:00.86; 4. Martha Perkins, Hamilton, 36:05.52; 5. Sue Meyer, Wisconsin-Stout, 36:06.21; 6. Amanda Shaw, Franklin & Marshall, 36:44.59; 7. Anne Goldsworthy, Carroll, 36:48.85; 8. Louise Roberts, Buffalo, 36:58.85.

**100-meter hurdles**—1. Lori Sears, Central (Iowa), 14.42; 2. Gail Brown, Frostburg State, 14.45; 3. Debra Wells, Fitchburg State, 14.50; 4. Karen Sterner, Augsburg, 14.92; 5. Paulette

Hansell, Southern-New Orleans, 14.93; 6. Andrea Spaulding, Cortland State, 14.94; 7. Sherry Pastor, Baldwin-Wallace, 15.06; 8. Winsome Fodderingham, Albany (New York), 15.53.

**400-meter hurdles**—1. Ann Brissett, Massachusetts-Boston, 1:00.70; 2. Trena Marshall, CCNY, 1:00.76; 3. Andrea Spaulding, Cortland State, 1:01.42; 4. Penny Gerner, Wisconsin-LaCrosse, 1:01.88; 5. Sue Probst, Wisconsin-Whitewater, 1:02.54; 6. Dawn McCauley, Williams, 1:03.24; 7. Pam Stiehler, Bethel, 1:03.35; 8. Tammy Krell, Concordia-Moorhead, 1:04.32.

**400-meter relay**—1. Frostburg State (Tania Brown, Susan Terrell, Diane Watson, Vicki Proctor), 47.43; 2. Wisconsin-LaCrosse, 47.48; 3. Pomona-Pitzer, 48.19; 4. Southern-New Orleans, 48.64; Massachusetts-Boston disqualified.

**1,600-meter relay**—1. Massachusetts-Boston (Murtonda Durant, Ann Brissett, Sonji Larts and Genesis Eddins), 3:42.67 (meet record; old record—3:45.26, Massachusetts-Boston, 1985); 2. Frostburg State, 3:48.60; 3. Pomona-Pitzer, 3:48.78; 4. St. Thomas (Minnesota), 3:51.82; 5. Wisconsin-LaCrosse, 3:52.96; 6. Occidental, 3:53.52; 7. William Penn, 3:56.95; 8. Wisconsin-Stevens Point, 3:57.34.

**High jump**—1. Michelle Reidi, Wisconsin-Stevens Point, 1.78 (5-10) [meet record; old record—1.76 (5-9 1/4), Yolanda Gibson, Brooklyn, 1982]; 2. Crystal Joseph, Binghamton, 1.70 (

# Florida Southern, Cal State Stanislaus claim men's golf titles

## Division II championships

Defending team champion Florida Southern, buoyed by the steady play of individual medalist Lee Janzen, cruised to an 11-stroke victory over runner-up Columbus and became the first team to win four NCAA Division II Men's Golf Championships team titles.

Janzen, who last year finished runner-up by five strokes to Columbus' Hugh Royer in the individual competition, defeated the defending champion by five strokes at the May 20-23 championships, which were hosted by Tampa at the Innisbrook Resort.

Royer, whose first-round 68 represented the lowest round of the 72-hole individual tournament, entered the final round trailing Janzen, who fired 70s the first three rounds, by one stroke. Janzen held off Royer's charge and increased his lead by four strokes with a final-round 71, while Royer finished with a 75.

Janzen's victory gave Florida Southern the all-time lead in individual champions with three and marked the second time the Moccasins have won back-to-back titles under coach Charley Matlock. Florida Southern also won the team titles at the 1981 and 1982 championships.

In addition to Janzen, Florida Southern, which finished with a four-round team total of 1,196, also got a strong performance from Pat Chisholm, who finished in a four-way tie for fourth. Don Fardon and Scott Hawkins, who finished tied for 34th and 44th, respectively, rounded out Florida Southern's top four scorers.

Cal State Northridge and Troy State finished four strokes behind Columbus to tie for third, while Sam Houston State finished fifth with 1,217.

### Team results

1. Florida Southern, 294-299-303-300—1,196; 2. Columbus, 304-307-298-298—1,207; 3. (tie) Cal State Northridge, 314-301-303-293—1,211, and Troy State, 307-301-304-299—1,211; 5. Sam Houston State, 307-304-299-307—1,217; 6. Tampa, 303-309-300-307—1,219; 7. Florida Atlantic, 307-301-310-309—1,227; 8. Cal State Sacramento, 315-313-307-305—1,240; 9. Ferris State, 313-316-309-304—1,242; 10. Central Connecticut State, 310-312-311-312—1,245; 11. Slippery Rock, 315-310-311-313—1,249; 12. Indiana (Pennsylvania), 304-321-314-313—1,252; 13. Tennessee-Martin, 317-311-315-310—1,253; 14. Northeast Missouri State, 320-317-315-314—1,266; 15. Gannon, 320-333-319-324—1,296.

### Individual results

1. Lee Janzen, Florida Southern, 70-70-71—281; 2. Hugh Royer, Columbus, 68-73-70-75—286; 3. Bill Langston, Stephen F. Austin State, 74-73-74-73—294; 4. Jeff Butler, Troy

State, 76-71-73-75—295; 5. (tie) Juan Velasco, Northeast Missouri State, 74-74-71-79—298; Ernie Alonso, Tampa, 74-72-74-78—298; Pat Chisholm, Florida Southern, 72-79-76-71—298, and Jim Hagstrom, Slippery Rock, 76-76-72-74—298; 9. Frank Shiro, Cal State Sacramento, 81-74-71-73—299; 10. (tie) Creed Caudill, Delta State, 75-72-75-78—300; Ted Green, Ferris State, 75-76-77-72—300, and Petey Petri, Sam Houston State, 76-74-73-77—300; 13. (tie) Jeff Bellnap, Sam Houston State, 77-78-75-72—302, and Tim Hogarth, Cal State Northridge, 79-71-74-78—302; 15. Scott Johnson, Tampa, 79-76-73-75—303; 16. (tie) Don Muccino, Central Connecticut State, 74-77-74-79—304; Joe McGihon, Cal State Northridge, 78-78-77-71—304; Per Segerstrom, Florida Atlantic, 75-75-77-77—304; Pat Boyd, Cal State Northridge, 80-75-78-71—304; Jeff Leonard, Tampa, 71-80-77-76—304, and Richard Hatcher, Columbus, 79-75-76-74—304; 22. (tie) Donnie Massengale, Sam Houston State, 76-77-74-80—307; Mike Adams, Florida Atlantic, 79-74-81-73—307; Jon Levitt, Cal State Northridge, 77-77-78-75—307, and Andy Vaughn, Troy State, 82-75-78-72—307.

26. (tie) Ken Novak, Angelo State, 79-79-76-74—308; Kyle Anderson, Minnesota-Duluth, 75-78-79-76—308; Keith Gocal, Southern Illinois-Edwardsville, 78-78-75-77—308, and Scott Hay, Columbus, 78-79-75-76—308; 30. (tie) Gordon Vietmeier, Slippery Rock, 78-71-78-82—309; Tom Heffer, Gannon, 79-79-73-78—309; Greg Doll, Ferris State, 77-80-75-77—309, and Rudy Virga, Central Connecticut State, 78-76-78-77—309; 34. (tie) Gregg Downey, Portland State, 77-80-74-79—310, and Don Fardon, Florida Southern, 78-74-80-78—310; 36. (tie) Keith Kail, Tennessee-Martin, 79-77-76-79—311; Dave McAtee, Southern Indiana, 80-76-75-80—311; Robbie Cotten, Troy State, 76-83-74-78—311; Jon Leonard, Columbus, 79-81-78-73—311, and Kevin Earl, Cal State Sacramento, 83-78-79-71—311; 41. Mike Wright, Troy State, 80-72-79-81—312; Jason Brown, UC Davis, 78-82-74-78—312, and John Traugh, Wright State, 78-81-77-76—312.

44. (tie) Blake Wilson, Florida Atlantic, 76-82-76-79—313, and Scott Hawkins, Florida Southern, 74-82-77-80—313; 46. (tie) Tom Coffman, Ferris State, 77-78-77-82—314; Al Thompson, North Dakota, 71-82-76-85—314; Daryl Walker, Sam Houston State, 78-77-77-82—314; Steve Davis, Tennessee-Martin, 77-79-79-79—314; Tim Colson, Sam Houston State, 80-76-80-78—314; Craig Stevens, Jacksonville State, 80-83-74-77—314, and Wayne Tyni, Cal State Northridge, 82-82-74-76—314; 53. Ray Pearce, Tennessee-Martin, 81-76-80-78—315; Dan Pelczarski, Indiana (Pennsylvania), 76-78-81-80—315; Jose Faberes, Northeast Missouri State, 82-74-79-80—315; Chuck Whittington, Cal State Sacramento, 75-81-79-80—315; Bobby Martin, Florida Atlantic, 86-73-76-80—315, and Mike Morton, Troy State, 75-84-82-74—315; 59. (tie) Doug Gradwell, Indiana (Pennsylvania), 76-81-78-81—316; John Sweeney, Indiana (Pennsylvania), 75-85-77-79—316, and Paul Royak, Tampa, 79-81-78-78—316; 62. Ty Grove, Indiana (Pennsylvania), 77-80-81-79—317; 63. (tie) Ben Witter, Indiana (Pennsylvania) 83-82-78-75—318, and Chuddy Carless, Slippery Rock, 79-84-79-76—318; 65. (tie) Bill Kellum, Florida Atlantic, 77-79-82-81—319, and John O'Hara, Central Connecticut State, 81-83-80-75—319.

67. (tie) Kevin Giancola, Central Connecticut State, 77-76-85-82—320; Jim MacKay, Columbus, 81-80-77-82—320; Steve Smith, Northeast Missouri State, 77-84-80-79—320, and Mike Albonetti, Tennessee-Martin, 81-85-80-74—320; 71. Louis Hurrell, Tennessee-Martin, 80-79-80-82—321; 72. Mike Horn, Wayne State (Michigan), 76-80-83-83—322, and Russ

Miller, Ferris State, 84-82-80-76—322; 74. Frank Vana, Assumption, 80-83-82-78—323; 75. (tie) Pat Henry, Cal State Sacramento, 83-80-81-81—325, and Mike Mattucci, Florida Southern, 84-76-85-80—325; 77. (tie) James Bailey, Cal State Sacramento, 76-85-78-87—326; Darrin Urban, Tampa, 84-81-76-85—326, and Bob Baxter, Central Connecticut State, 83-83-79-81—326; 80. Arthur Brunn, Slippery Rock, 85-79-82-81—327; 81. Jay Sartini, Gannon, 80-84-83-81—328; 82. Bo Ververka, Gannon, 84-83-82-81—330; 83. Michael Worrick, Ferris State, 84-86-82-79—331; 84. (tie) Bob Ponosny, Gannon, 77-87-81-91—336, and Vance Lesseig, Northeast Missouri State, 87-85-83-83—340; 86. Rick Maharry, Northeast Missouri State, 88-87-90-76—341; 87. Mike Wyland, Slippery Rock, 82-88-92-85—347; 88. Chris Miller, Gannon, 94-91-89-84—350.

## Division III championships

Cal State Stanislaus, paced by three golfers who placed among the top 16 finishers, held off a late charge by UC San Diego and won its ninth NCAA Division III Men's Golf Championships team title in 12 years, while Worcester Polytechnic's Eric Meerbach claimed individual honors with one stroke to spare at the May 20-23 tournament hosted by King's.

Veteran Nick Bocchino led Cal State Stanislaus, placing in a four-way tie for fourth with a four-round total of 298 over the par-71, 6,475-yard Fox Hill Country Club in Exeter, Pennsylvania. As a team, Cal State Stanislaus shot 1,208 to finish nine strokes ahead of UC San Diego.

Other top finishers for Cal State Stanislaus coach Jim Hanny, who has led the Warriors to all of their team titles and has coached four individual champions over the 12-year history of the championships, included 12th-place finisher Pat Lay, who finished five strokes off the pace at 301, and Chuck Burley, whose 303 was good for 16th place. None of the three shot a round of more than 79, and Lay fired a third-round 71 to boost the Warriors to an 18-stroke advantage over UC San Diego entering the final round.

UC San Diego picked up nine strokes on the Warriors and finished with a team total of 1,217 behind the play of Pat Weishan, who lost a playoff for individual honors at last year's championships. Weishan bounced back from a disappointing third-round 78 to finish one stroke off the pace and in a tie for second with Methodist's Brian Connor.

Meerbach, an individual entry, fired a one-under-par 70 in the first round and then fell to rounds of 73 and 77, while Connor climbed to within one stroke with a three-round total of 221. Meerbach made his one-stroke

lead stand up, matching Connor shot for shot with a final round 76 to become Worcester Polytechnic's first individual champion.

Rochester's Greg Perry blistered the course with a final-round five-under-par 66 to set a championships record for lowest score over 18 holes. The previous low was 68.

### Team results

1. Cal State Stanislaus, 304-301-296-307—1,208; 2. UC Davis, 310-297-312-298—1,217; 3. Gustavus Adolphus, 315-302-301-303—1,221; 4. Ohio Wesleyan, 303-307-308-304—1,222; 5. Greensboro, 308-304-304-312—1,228; 6. Salem State, 312-302-309-306—1,229; 7. Methodist, 311-303-308-309—1,231; 8. Wooster, 310-310-310-306—1,236; 9. Allegheny, 319-313-302-306—1,240; 10. (tie) Millikin, 323-305-317-299—1,244, and Wittenberg, 312-307-314-311—1,244; 12. Central (Iowa), 313-316-307-314—1,250; 13. Ramapo, 319-306-311-315—1,251; 14. Nebraska Wesleyan, 308-315-313-317—1,253; 15. Rochester, 318-326-311-304—1,259; 16. Franklin and Marshall, 327-314-313-311—1,265; 17. King's, 333-329-329-318—1,309.

### Individual results

1. Eric Meerbach, Worcester Polytechnic, 70-73-77-76—296; 2. (tie) Brian Connor, Methodist, 75-74-72-76—297, and Pat Weishan, UC San Diego, 72-72-78-75—297; 4. (tie) Nick Bocchino, Cal State Stanislaus, 77-74-72-75—298; Greg Peterson, Gustavus Adolphus, 75-76-71-76—298; Mike Richards, Ohio Wesleyan, 74-74-78-72—298, and Greg Perry, Rochester, 79-76-77-66—298; 8. (tie) Jim Irvin, Ohio Wesleyan, 74-78-76-71—299, and Chuck Konecke, Ramapo, 73-73-76-77—299; 10. (tie) Eric MacCluen, Greensboro, 77-72-75-76—300, and Joost Steenkamer, UC San Diego, 78-74-76-72—300; 12. Pat Lay, Cal State Stanislaus, 77-74-71-79—301; 13. (tie) Paul Martin, Amherst, 75-77-76-74—302; Darrell Crall, Greensboro, 75-77-74-76—302, and Scott Copeland, Wittenberg, 77-73-79-73—302; 16. Chuck Burley, Cal State Stanislaus, 74-74-77-78—303; 17. Lee Ramsayer, Muskingum, 75-72-78-79—304; 18. (tie) Bill Naughton, Buena Vista, 79-76-74-76—305; Joe Jaspers, Central (Iowa), 80-77-75-73—305; Rick Bidnick, Christopher Newport, 76-79-73-77—305; Bob Jan, Millikin, 78-73-80-74—305, and Mark Delaney, Salem State, 76-74-79-76—305; 23. (tie) Fred Eames, Allegheny, 79-80-71-76—306; Jamie Bernel, Central (Iowa), 79-79-73-75—306, and Bob Brady, Nebraska Wesleyan, 78-80-71-77—306.

26. (tie) Gary Oechsle, Cal State San Bernardino, 78-76-79-74—307; Ed Schopp, Franklin and Marshall, 75-76-76-80—307; James Cook, Oswego State, 80-74-78-75—307, and Doug Houser, Wittenberg, 78-77-76-76—307; 30. (tie) Troy Williams, Cal State Stanislaus, 77-79-76-76—308; Mike Maras, Gustavus Adolphus, 77-79-78-74—308, and Mike O'Laughlin, UC San Diego, 80-74-78-76—308; 33. (tie) John Zurich, Greensboro, 79-76-77-77—309; John Olszewski, King's, 77-74-78-80—309; Kurt Hoelstein, Methodist, 80-77-76-76—309; Michael Kelley, Wabash, 79-81-77-72—309; Tad Mason, Wooster, 78-77-78-76—309; Charles Hutchinson, Wooster, 77-79-78-75—309, and Davis Houck, Wooster, 79-76-80-74—309; 40. (tie) Dave Glabicki, Allegheny, 81-78-74-77—310; Bart Bradford, Gustavus Adolphus, 83-76-76-75—310; Rudy Regalado, Redlands, 73-78-82-77—310; Tom Dyer, Salem State, 79-79-77-75—310; Will Carey, Scranton, 78-82-74-76—310, and Scott Hill, Wisconsin-Whitewater, 79-79-77-75—310; 46. (tie) Jim Peluso, Ramapo, 76-77-78-80—311; Scott

Lumb, Salem State, 79-80-76-76—311; Steve Serino, Salem State, 78-77-77-79—311; Tim Frechette, Williams, 78-76-81-76—311, and Jamie Ross, Wooster, 76-78-76-81—311.

51. (tie) Glen Andrade, Cal State Stanislaus, 76-81-77-78—312; David Walker, Franklin and Marshall, 80-78-77-77—312; Greg Avant, Gustavus Adolphus, 81-75-76-80—312; John Walsh, Methodist, 81-76-78-77—312; Mark Hawk, Millikin, 81-80-78-73—312; Todd Vargello, Rochester, 79-81-74-78—312, and Kurt Rehboltz, Wisconsin-Stevens Point, 80-79-80-73—321; 58. (tie) Paul Christopher, Muskingum, 74-78-79-82—313, and Mike Higgins, Nebraska Wesleyan, 75-77-80-81—313; 60. (tie) Jay Coatta, Gustavus Adolphus, 82-75-79-78—314; Scott Hall, Ohio Wesleyan, 75-78-82-79—314; Richard Rankin, Salem State, 82-72-81-79—314; Brian Paquette, Salve Regina, 79-77-80-78—314, and Robert Spellman, Skidmore, 76-81-80-77—314; 65. (tie) Scott Sundstrom, Allegheny, 79-82-79-75—315; Kevin Lea, UC San Diego, 80-77-82-76—315, and Ron Cindrich, Wittenberg, 78-77-77-83—315; 68. (tie) Mark Hilday, Franklin and Marshall, 86-81-77-73—317; Sam Wallace, Hampden-Sydney, 78-77-84-78—317; Rob Russell, North Carolina-Greensboro, 80-79-83-75—317; Scott Walker, Ohio Wesleyan, 81-77-77-82—317, and Charley Black, Pomona-Pitzer, 78-85-80-74—317; 73. (tie) Darrell Bock, Methodist, 76-79-82-81—318; Robert Peterson, Nebraska Wesleyan, 79-79-80-80—318; Darrell Fairleigh, Ramapo, 85-75-78-80—318, and Patrick Rahilly, Westfield State, 83-81-75-79—318.

77. (tie) Tim Pittia, La Verne, 80-79-77-83—319, and Lawrence Romjue, Nebraska Wesleyan, 76-79-84-80—319; 79. (tie) Robbie Leppert, Allegheny, 82-76-78-84—320; Robert Tamblin, Methodist, 80-76-84-80—320; Gary Yuenger, Millikin, 83-76-84-77—320, and K.C. Wiswedel, Oswego State, 79-73-82-86—320; 83. (tie) Rob Wilson, Central (Iowa), 76-79-84-82—321; Otto Juhl, Glassboro State, 80-79-75-87—321; Dale Callaghan, Greensboro, 77-79-78-87—321; Mike Voeller, Millikin, 81-86-79-75—321, and Michael Albright, Wittenberg, 79-80-83-79—321; 88. (tie) Dave Chuba, Allegheny, 80-79-85-78—322; Dan Wyant, Ohio Wesleyan, 80-83-77-82—322, and Tim McKone, Williams, 81-79-84-78—322; 91. (tie) Bryan Beatty, DePauw, 81-80-84-78—323; Joe Hourigan, King's, 79-82-78-84—323; Frank Bruno, Millikin, 84-76-80-83—323; Tom Pranio, Ramapo, 85-81-79-78—323, and Harris Podvey, Sewanee (University of the South), 81-79-82-81—323; 96. (tie) Bill Spurbeck, Central (Iowa), 78-82-80-84—324, and Ken Lowe, Rochester, 80-83-81-80—324.

98. (tie) Bob Jones, Denison, 83-82-82-78—325; Mark Reineke, Sewanee (University of the South), 81-81-83-80—325; Brad Sterling, UC San Diego, 80-86-80-79—325; Dave Weiss, Rochester, 80-86-79-80—325, and Dave Kilfoyle, Wooster, 81-83-78-81—325; 103. (tie) Sandy LaFoca, Scranton, 80-82-82-82—326, and Charles Foehl, Williams, 83-81-80-82—326; 105. (tie) Trevor Jares, Nebraska Wesleyan, 79-87-82-80—328, and Mike Saba, Rochester, 81-86-81-80—328; 107. Eric Asel, MIT, 84-83-82-81—330; 108. (tie) Scott Himler, Capital, 83-83-82-83—331, and Jeff Blinderman, Franklin and Marshall, 88-79-83-81—331; 110. (tie) Marc Richter, Greensboro, 88-81-80-83—332, and John Wheeler, Washington and Lee, 81-82-82-87—332; 112. Frank Lockwood, Ramapo, 86-82-82-83—333; 113. Mark Henry, King's, 88-86-85-78—337; 114. (tie) Steve Kimbal, Central (Iowa), 86-81-79-92—338, and Brian Woodard, Wittenberg, 81-81-82-94—338; 116. Todd Scarafino, Franklin and Marshall, 86-90-86-81—343; 117. Jim McDonald, King's, 89-87-88-82—346; 118. Tom Iskra, King's, 94-88-88-78—348.

## Abilene

Continued from page 6

Southeast Missouri State, 16.16 (53-0/4); 3. Keith Presberry, Southeast Missouri State, 16.12 (52-10/4); 4. Carroll Vincent Cobb, Morehouse, 16.08 (52-9/4); 5. Everton McDougall, Abilene Christian, 15.76 (51-8/4); 6. Robert Johnson, Abilene Christian, 15.74 (51-7/4); 7. Alton Henry, Cal State Bakersfield, 15.68 (51-5/4); 8. James Browne, Abilene Christian, 15.60 (51-2/4).

**Shot put**—1. Ahmed Shata, Abilene Christian, 19.46 (63-10/4) (meet record; old record—62-8/4; Lennart Flyman, Angelo State, 1984); 2. Mike Bolden, Cal State Los Angeles, 18.09 (59-4/4); 3. Kyle Freeman, Angelo State, 17.86 (58-7/4); 4. Jim Halter, Cal Poly-San Luis Obispo, 17.84 (58-6/4); 5. Marc McFadden, Lincoln (Missouri), 17.68 (58-0/4); 6. Dave Levos, North Dakota, 17.40 (57-1/4); 7. Doug Keele, Indiana Central, 16.97 (55-8/4); 8. Brent Cole, Indiana Central, 16.94 (55-7/4).

**Discus**—1. Dave Levos, North Dakota, 55.96 (183-7/4); 2. Kyle Freeman, Angelo State, 54.48 (178-9/4); 3. Greg Porter, Abilene Christian, 52.70 (172-11/4); 4. Mike Bolden, Cal State Los Angeles, 52.12 (171-0/4); 5. Vic DeMarines, Lowell, 51.60 (169-3/4); 6. Ross Brockshus, South Dakota State, 49.52 (162-5/4); 7. Arthur Prince, Springfield, 49.28 (161-8/4); 8. Greg Retzer, Cal State Los Angeles, 49.12 (161-2/4).

**Hammer**—1. Ken Blanchard, Southern Connecticut State, 61.92 (203-2/4); 2. Mark Winyard, Liberty, 60.04 (197-0/4); 3. Robert Missio, Cal State Bakersfield, 60.04 (197-0/4); 4. Jim Halter, Cal Poly-San Luis Obispo, 57.92 (190-0/4); 5. Kenneth Norlan, Cal State Sacramento, 56.85 (185-7/4); 6. Marvin Brandt, Abilene Christian, 55.00 (180-5/4); 7. Greg Retzer, Cal State Los Angeles, 54.20 (177-10/4); 8. Rod Carrillo, Cal State Los Angeles, 53.12 (174-3/4).

**Javelin**—1. Steve Koel, San Francisco State, 69.92 (228-5/4) (meet record; old record—first

with new javelin); 2. Gino Tatum, Cal State Los Angeles, 64.88 (212-10/4); 3. Don Stiffler, Edinboro, 63.20 (207-4/4); 4. James Geist, Slippery Rock, 62.74 (205-10/4); 5. David Maudie, Indiana (Pennsylvania), 62.52 (205-1/4); 6. Alan Herbert, Angelo State, 61.58 (202-0/4); 7. Ryan Sharkey, Missouri-Rolla, 61.42 (201-6/4); 8. Colin McCall, Abilene Christian, 59.38 (194-10/4).

**Decathlon**—1. Robert Ekpete, Mount St. Mary's, 7,380; 2. Mike Marsh, Abilene Christian, 7,176; 3. John Schwepker, Southeast Missouri State, 6,845 points; 4. David Medvetz, Indiana (Pennsylvania), 6,784; 5. David Marden, Cal State Chico, 6,622. (Only five competitors.)

## Reporter killed

A Bakersfield, California, newspaper reporter was killed May 23 when he was struck in the head during the hammer-throw competition at the NCAA Division II Men's and Women's Outdoor Track Championships at California State University, Los Angeles.

Phil Klusman, 43, was hit by a practice throw by Ricky Vaughn of Angelo State. The reporter, who covered collegiate athletics for the Bakersfield Californian, was standing in foul territory when the 16-pound steel ball struck him on the top of the head.

Klusman was taken to the Los Angeles County Trauma Center and was pronounced dead at 4:03 p.m.

## More

Continued from page 1

orders filled 873 pages and revealed that Louisianians placed 15.1 percent of all orders (6,227). Texas was second (4,753), followed by Illinois (2,238), Kentucky (2,010), Tennessee (1,696) and New York (1,681).

The host city of New Orleans was responsible for the placement of 1,405 orders. Baton Rouge was second with 1,318.

Orders also came from North Pole, Alaska; Braggadocio, Missouri; Bow, New Hampshire; Bean Station, Tennessee; Muleshoe, Texas; Golden Meadows, Louisiana; Paw Paw, Michigan; Cucamonga, California, and Gulf Breeze, Florida.

Harrow, Middlesex, England and Battle Ground, Washington, were represented.

In all, 41,487 requests for 143,464 tickets were received, outdistancing last year's 38,394 requests for 133,822 tickets for the Final Four in Dallas. The average request was for 3.45 tickets. The precise breakdown includes: 339 requests for two tickets at \$20 each; 415 requests for four tickets at \$20 each; 922 requests for two tickets at \$35 each; 1,566 requests for four tickets at \$35 each; 9,981 requests for two tickets at \$50 each and 28,264 requests for four tickets at \$50 each.

## Women's

Continued from page 6

Hayward did not finish.

**1,600-meter relay**—1. Hampton (Vivienne Spence, Trina Creekmore, Kristal Harris, Jeannette Palmer), 3:34.73 (meet record; old record—3:35.82, Morgan State, 1983); 2. Abilene Christian, 3:37.44; 3. Cal Poly-San Luis Obispo, 3:38.62; 4. Alabama A&M, 3:38.97; 5. Cal State Hayward, 3:42.47; 6. St. Augustine's, 3:42.49; 7. New York Tech, 3:42.96; 8. Cal State Northridge, 3:42.49.

**High jump**—1. Yolanda Henry, Abilene Christian, 1.89 (6-2/4) (meet record; old record—6-0. (tie) Phyllis Blunston, Cal State Bakersfield, 1982; Sue McNeal, Cal Poly-San Luis Obispo, 1982; Henry, Abilene Christian, 1985); 2. Sue Patterson, Cal State Northridge, 1.83 (6-0); 3. Mazel Thomas, Abilene Christian, 1.83 (6-0); 4. Janet Nicolls, Cal Poly-Pomona, 1.80 (5-10/4); 5. Miloe McCall, Cal State Hayward, 1.74 (5-8/4); 6. Dionne Bruff, Alabama A&M, 1.74 (5-8/4); 7. (tie) Karen Kraemer, Cal Poly-San Luis Obispo, and Debra Larsen, Cal Poly-Pomona, 1.74 (5-8/4).

**Long jump**—1. Jancinta Bartholomew, Alabama A&M, 6.27 (20-7/4); 2. Mazel Thomas, Abilene Christian, 6.21 (20-4/4); 3. Debra Larsen, Cal Poly-Pomona, 6.16 (20-2/4); 4. Jearl Miles, Alabama A&M, 6.15 (20-2/4); 5. Julie Hay, Minnesota-Duluth, 6.01 (19-8/4); 6. Lori Costello, Cal State Northridge, 5.95 (19-6/4); 7. Pamela Pearson, Army, 5.94 (19-5/4); 8. Sylvia Dyer, Abilene Christian, 5.89 (19-3/4).

**Triple jump**—1. Ann Foster, Abilene Christian, 12.80 (42-0/4) (meet record; old record, 41-9/4, Foster, 1985); 2. Miloe McCall, Cal State Hayward, 12.48 (40-11/4); 3. Pamela Pearson, Army, 12.31 (40-4/4); 4. Sylvia Dyer, Abilene Christian, 12.31 (40-4/4); 5. Regina Hawkins, St. Augustine's, 12.14 (39-10/4); 6. Jan Antoine, Hampton, 12.06 (39-6/4); 7. Mazel Thomas,

Abilene Christian, 11.99 (39-4/4); 8. Debra Alexander, Hampton, 11.92 (39-1/4).

**Shot put**—1. Janet Fitts, Tuskegee, 15.02 (49-3/4); 2. Marlene Lewis, Abilene Christian, 14.46 (47-5/4



# Stanford

Continued from page 4

Barrable, Trinity, 6-2, 6-1.

**Second round**—Rush, Trinity, def. Shane, Princeton, 6-0, 6-1; Grousebeck, Texas, def. Stafford, Clemson, 6-3, 6-2; Prah, California, def. Javer, San Diego State, 3-6, 6-4, 6-4; Lee, Brigham Young, def. Appo-Rao, William and Mary, 3-6, 6-3, 6-2.

MacGregor, San Diego State, def. Steden, Southern California, 6-3, 3-6, 6-2; Norris, Arizona State, def. Brende, Oklahoma State, 6-4, 6-0; Werdel, Stanford, def. Jane Holdren, Trinity, 7-5, 7-5; Ettus, California, def. Almgren, Houston, 6-3, 7-5.

Hofer, Clemson, def. Hulbert, Trinity, 6-3, 6-2; Bowes, Texas, def. Monoki, Indiana, 6-1, 6-1; Norwood, Southern California, def. Whittington, Florida, 6-2, 4-6, 6-0; Reis, Miami (Florida), def. Smoller, Arizona, 6-3, 6-3.

Baranski, Oklahoma State, def. Urban, UCLA, 6-4, 6-3; Fendick, Stanford, def. Shin, California, 6-0, 6-0; Hetherington, Florida, def. Wood, Rice, 6-1, 6-0; Kuhlman, Southern California, def. Driehuis, Clemson, 6-1, 6-4.

**Third round**—Rush, Trinity, def. Grousebeck, Texas, 6-7, 6-1, 6-4; Prah, California, def. Lee, Brigham Young, 6-2, 6-2; Norris, Arizona State, def. MacGregor, San Diego State, 6-3, 6-1; Ettus, California, def. Werdel, Stanford, 6-2, 6-2.

Bowes, Texas, def. Hofer, Clemson, 6-2, 6-4; Reis, Miami (Florida), def. Norwood, Southern California, 6-0, 4-6, 6-3; Patty Fendick, Stanford, def. Baranski, Oklahoma State, 6-1, 6-4; Kuhlman, Southern California, def. Hetherington, Florida, 7-6, 6-1.

**Quarterfinals**—Rush, Trinity, def. Prah, California, 6-3, 6-0; Norris, Arizona State, def. Ettus, California, 6-1, 2-6, 6-2; Bowes, Texas, def. Reis, Miami (Florida), 6-4, 4-6, 6-4; Fendick, Stanford, def. Kuhlman, Southern California, 6-4, 6-4.

**Semifinals**—Rush, Trinity, def. Norris, Arizona State, 6-4, 0-6, 6-4; Fendick, Stanford, def. Bowes, Texas, 6-4, 6-2.

**Championship**—Fendick, Stanford, def. Rush, Trinity, 2-6, 6-1, 6-3.

#### Doubles

**First round**—Gretchen Rush-Ann Hulbert, Trinity, def. Cari Hagey-Stephanie Savides, Stanford, 6-2, 7-6; Leslie Hakala-Michele Taylor, Brigham Young, def. Laura Glitz-Carol

## A Cardinal

Continued from page 4

6, 6-3; Reneberg, Southern Methodist, def. Deppe, Texas, 6-2, 7-6.

**Semifinals**—Goldie, Stanford, def. Pearce, UCLA, 6-2, 7-6; Reneberg, Southern Methodist, def. Blake, Arkansas, 6-4, 6-3.

**Championship**—Goldie, Stanford, def. Reneberg, Southern Methodist, 6-2, 6-1.

#### Doubles

**First round**—Charles Beckman-Royce Deppe, Texas, def. Alfonso Mora-Scott Wlodychak, Maryland, 6-7, 7-5, 6-2; Shelby Cannon-Byron Talbot, Tennessee, def. Neal Berryman-Roger White, Abilene Christian, 6-3, 6-3; Richard Schmidt-Tim Siegel, Arkansas, def. Mike Wolf-Michael Center, Kansas, 6-1, 4-6, 7-5; Patrick McEnroe-John Letts, Stanford, def. Matt Frooman-Brian Page, Clemson, 6-7, 6-3, 6-3.

Kelly Jones-Augustine Moreno, Pepperdine, def. Robert-Jan Bierens-Greg Hayward, Brigham Young, 6-2, 7-5; Ville Jansson-Peter Jetzel, Northeast Louisiana, def. Mikael Knutas-Richard Persson, Arkansas-Little Rock, 6-4, 6-2; Den Bishop-Stefan Kruger, Southern Methodist, def. Andrew Burrow-Chris Louw, Miami (Florida), 7-6, 6-1; Michael Kures-Dan Nahirney, UCLA, def. Jay Berger-Kent Kinneer, Clemson, 6-1, 6-0.

Tim Cass-Steve Bickham, New Mexico, def. Roger Smith-Richard Berry, Ohio State, 6-4, 2-6, 7-5; Dan Goldie-Jim Grabb, Stanford, def. Paul Landry-Bob Zoller, Cal Poly-San Luis Obispo, 6-2, 6-4; Gregg Hahn-Clinton Ferreira, Alabama, def. Larry Scott-Arkie Engel, Harvard, 7-6, 4-6, 6-4; Jim Sharton-Ed Filer, Michigan, def. Richard Matuszewski-Brandon Walters, Clemson, 7-5, 7-6.

John Ross-Richey Reneberg, Southern Methodist, def. Patrick McGee-Greg Van Emburgh, Kentucky, 3-6, 6-4, 6-3; Ken Diller-Brad Pearce, UCLA, def. Richard Ashby-Jan Sandberg, South Carolina, 6-2, 7-5; Steve DeVries-Chris Schoop, California, def. Alex Palladino-Jim Burda, Kalamazoo, 4-6, 7-5, 6-0; Rick Leach-Tim Pawsat, Southern California, def. Dexter MacBride-Fannie Reinach, Trinity, 6-4, 6-1.

**Second round**—Beckman-Deppe, Texas, def. Cannon-Talbot, Tennessee, 6-4, 4-6, 6-3; Schmidt-Siegel, Arkansas, def. McEnroe-Letts, Stanford, 6-3, 7-5; Jones-Moreno, Pepperdine, def. Jansson-Jetzel, Northeast Louisiana, 6-1, 6-7, 6-4; Kures-Nahirney, UCLA, def. Bishop-Kruger, Southern Methodist, 6-4, 7-6.

Cass-Bickham, New Mexico, def. Goldie-Grabb, Stanford, 4-6, 6-3, 6-4; Hahn-Ferreira, Alabama, def. Sharton-Filer, Michigan, 3-6, 6-3, 6-2; Diller-Pearce, UCLA, def. Ross-Reneberg, Southern Methodist, 7-6, 6-3; Leach-Pawsat, Southern California, def. DeVries-Schoop, California, 6-3, 7-5.

**Quarterfinals**—Schmidt-Siegel, Arkansas, def. Beckman-Deppe, 7-6, 6-3; Kures-Nahirney, UCLA, def. Jones-Moreno, Pepperdine, 6-1, 6-7, 6-4; Hahn-Ferreira, Alabama, def. Cass-Bickham, New Mexico, 6-4, 7-6; Leach-Pawsat, Southern California, def. Diller-Pearce, UCLA, 7-5, 6-3.

**Semifinals**—Kures-Nahirney, UCLA, def. Schmidt-Siegel, Arkansas, 6-2, 6-7, 6-3; Leach-Pawsat, Southern California, def. Hahn-Ferreira, Alabama, 6-3, 4-6, 7-5.

**Championship**—Leach-Pawsat, Southern California, def. Kures-Nahirney, UCLA, 6-7, 6-4, 6-2.

Coparanis, Arizona State, 1-6, 6-3, 6-4; Jill Hetherington-Jane Martin, Florida, def. Vanne Akagi-Gaye Gensler, Texas A&M, 6-1, 7-5; Sharon Fletcher-Alyssa Finerman, California, def. Alice Reen-Jane Cohodes, Georgia, 6-4, 7-5.

Ros Riach-Cathy Richman, Miami (Florida), def. Carolina Kuhlman-Dena Levy, Southern California, 6-3, 3-6, 7-5; Joni Urban-Maria LaFranchi, UCLA, def. Sylvie Tetreault-Clare Thompson, U.S. International, 7-5, 6-3; Katrina Adams-Diane Donnelly, Northwestern, def. Ingelise Driehuis-Marianne Groat, Clemson, 6-2, 6-3; Stina Almgren-Kathy Foxworth, Houston, def. Renata Baranski-Robyn Lamb, Oklahoma State, 7-6, 6-3.

Jennifer Fuchs-Jane Thomas, UCLA, def. Kim Labuschagne-Karen Marshall, Texas A&M, 6-3, 6-4; Patty Fendick-Leigh Anne Eldredge, Stanford, def. Susanna Lee-Sydney Fulford, Brigham Young, 6-1, 6-2; Mary Norwood-Heliane Steden, Southern California, def. Lisa Fortman-Wendy Gillis, Wisconsin, 6-1, 4-6, 7-5; Simone Schilder-Lisa Bobby, Clemson, def. Laurie Cronk-Wendy Wood, Rice, 6-1, 5-7, 6-1.

Carie Groce-Liz Mooney, Nebraska, def. Kathy Vigna-Erika Smith, Harvard, 5-7, 6-4, 6-2; Jill Smoller-Susan Russo, Arizona, def. Janet McCutcheon-Kelly Mulvihill, Indiana, 6-2, 6-0; Tamaka Takagi-Sonia Hahn, Kentucky, def. Chris Gillies-Ingrid Hetz, James

Madison, 6-2, 6-1; Lise Gregory-Ronni Reis, Miami (Florida), def. Jana Klepac-Elvyn Barrable, Trinity, 6-3, 6-1.

**Second round**—Rush-Hulbert, Trinity, def. Hakala-Taylor, Brigham Young, 6-0, 6-1; Hetherington-Martin, Florida, def. Fletcher-Finerman, California, 3-6, 6-0, 6-0; Riach-Richman, Miami (Florida), def. Urban-LaFranchi, UCLA, 6-2, 7-5; Adams-Donnelly, Northwestern, def. Almgren-Foxworth, Houston, 6-1, 6-3.

Fuchs-Thomas, UCLA, def. Fendick-Eldredge, Stanford, 6-2, 7-6; Norwood-Steden, Southern California, def. Schilder-Bobby, Clemson, 6-3, 6-4; Groce-Mooney, Nebraska, def. Smoller-Russo, Arizona, 6-0, 6-2; Gregory-Reis, Miami (Florida), def. Takagi-Hahn, Kentucky, 6-1, 6-1.

**Quarterfinals**—Rush-Hulbert, Trinity, def. Hetherington-Martin, Florida, 6-3, 6-4; Adams-Donnelly, Northwestern, def. Richman-Riach, Miami (Florida), default; Fuchs-Thomas, UCLA, def. Norwood-Steden, Southern California, 6-3, 3-6, 6-3; Gregory-Reis, Miami (Florida), def. Groce-Mooney, Nebraska, 6-2, 6-1.

**Semifinals**—Rush-Hulbert, Trinity, def. Adams-Donnelly, Northwestern, 4-6, 6-4, 6-4; Gregory-Reis, Miami (Florida), def. Fuchs-Thomas, UCLA, 6-3, 6-0.

**Championship**—Gregory-Reis, Miami (Florida), def. Rush-Hulbert, Trinity, 7-6, 6-2.

## "WE CAN HELP!"

ARE YOU LOOKING FOR A CERTIFIED ATHLETIC TRAINER? If so, the ATHLETIC TRAINER NATIONAL REGISTRY is a communication network that can help you!

By advertising in the JOB OPPORTUNITY BULLETIN, your position will be sent worldwide to certified athletic trainers and curriculum directors.

If you want to eliminate a lot of the hassle of reviewing resumes, the COMPUTERIZED RECRUITING SERVICE will reduce the paperwork and present qualified candidates.

For more information, call or write:  
**ATHLETIC TRAINING SERVICES, INC.**  
2012 S. Mission  
Mt. Pleasant, MI 48858  
(517) 772-5888



"LET US HELP!"

# Team up with Greyhound<sup>®</sup> and see what kind of sports we really are.

## Charter Greyhound, and we'll return up to 10% of your school's billings.

Every time you ride with us — from athletic teams to the band and other college organizations — you're helping to build the total amount of NCAA charter billings on Greyhound. And that adds up to big returns for your school.

With our new game plan, as the total NCAA volume figure grows, the percentage of billings that are returned to you will grow as well.

Up to a maximum 10% rate of return that goes directly to the athletic department.

So when you go Greyhound, you're getting more than our reputation for safety, service and reliability. You're getting a new way to keep expenses down.

When you're ready to plan your charters for the season, call us at 1-800-USA-NCAA. We'll give you more information and immediate charter quotes. And your Greyhound NCAA sales representative will contact you soon afterwards.

This year, put a good sport on your team. Choose Greyhound charters all season long.



Official Motorcoach Carrier for NCAA Championships



**GO GREYHOUND**  
And leave the driving to us.<sup>®</sup>

# Improve U.S. schools or face second-rate status, report warns

Teachers should get the pay, prestige and autonomy to transform the nation's factory-like public schools into places where children will learn to think for themselves, a blue-ribbon panel has reported.

The Carnegie Corporation task force, including heads of both major teachers unions, warned that unless the education system is rebuilt, Americans will have to reconcile themselves to "a massive decline in our standard of living."

The Carnegie Task Force on Teaching as a Profession, headed by IBM chief scientist and Vice-President Lew-

## 36 additional summer leagues are approved

Thirty-six additional summer basketball leagues have been approved by the NCAA Administrative Committee, acting for the Council, to bring the total of approved leagues to 148.

The first list of 112 approved leagues was published in the May 14 issue of The NCAA News. Additional leagues will be reported in the News as they are approved.

Following is a list of the additional 28 men's and eight women's leagues approved.

### Men's Leagues

**Alabama**—Birmingham Summer Basketball League, Birmingham; Huntsville Collegiate Summer League, Huntsville. **Arkansas**—G.W. Carver YMCA & Dunbar Recreation Center Summer Basketball League, Little Rock. **California**—Southern California Coaches Basketball League, Inglewood; Greater Bay Area Summer Basketball League, Menlo Park. **Connecticut**—Pearl Street Summer Basketball League, Waterbury. **Florida**—Wildwood Community Center Summer League, St. Petersburg. **Indiana**—Gary Summer Basketball League, Gary; Valparaiso YMCA Summer Basketball League, Valparaiso. **Massachusetts**—All-Cape Summer Basketball League, Dennis. **Michigan**—Sandy Sanders Summer Basketball League, Ann Arbor. **Missouri**—Metro Men's Summer Basketball League, St. Louis. **New Jersey**—Don Kennedy Summer Basketball League, Jersey City; Trenton Men's Summer Basketball League, Trenton; Washington Summer Basketball League, Washington. **New York**—Elmcot/Miller-Lite Summer Basketball League, New York; S-G Men's Summer Basketball League, Scotia; Fairview-Greenburgh Community Center Summer Basketball League, White Plains.

**North Carolina**—Charlotte Parks and Recreation Department Summer League, Charlotte. **Ohio**—Northwest Recreation Summer League, Dayton. **Pennsylvania**—Fountain Park Adult League, Allentown; Altoona Recreation Commission Men's Summer League, Altoona; Summer Hardcourt Basketball League, Erie; Media Rec Summer Basketball League, Media; 11th & Pike Summer Basketball League, Reading. **Tennessee**—Park Commission Bluff City Classic, Memphis. **Texas**—City of Bedford Open Summer League, Bedford; Redbird Recreation Summer Collegiate Basketball League, Dallas.

### Women's Leagues

**Connecticut**—Pearl Street Summer Basketball League, Waterbury. **Florida**—Wildwood Community Center Summer League, St. Petersburg. **Indiana**—Gary Summer Basketball League, Gary. **Michigan**—Sandy Sanders Summer Basketball League, Ann Arbor. **Ohio**—Northwest Recreation Summer League, Dayton. **Pennsylvania**—Altoona Recreation Commission Women's Summer League, Altoona; Women's Basketball League, Reading; 1986 Women's Basketball Tournament, Reading.

## Federal

Continued from page 1 daily.

"The real satisfaction I get from this program comes from talking to previous participants who tell me that the program gave them new choices and motivated them to do something constructive with their lives," Petrouleas continued.

Representatives of the NCAA and the President's Council on Physical Fitness met in 1968 to discuss the utilization of college and university athletics facilities during the summer. On March 17, 1969, the White House announced that the Federal government was committing \$3 million to establish a sports program for economically disadvantaged youth.

"I am glad the NCAA has supported and nurtured the program over the years," Petrouleas said.

is M. Branscomb, called for radical changes in the way teachers are trained and compensated, the Associated Press reported.

It urged that the bachelor's degree in education be abolished, education studies be concentrated at the graduate level and a new national board for professional teaching standards be created to certify top teachers.

The panel said that in exchange for greater autonomy, teachers must be prepared to accept greater accountability if their pupils fail to learn.

The task force called for a new order in the profession, with "lead teachers" working year-round and commanding salaries averaging \$65,000, advanced certificate holders earning \$42,000 for 10 months' work, and certified teachers—the majority—earning \$35,000. The average teacher now earns around \$25,000.

The panel said teachers' pay also should be pegged to productivity, as determined in part by their students' performance. But it said the current methods of gauging students' performance—including standardized tests—must be improved.

The report said some schools could be run by committees of lead teachers instead of principals and that teachers could hire administrators instead of the other way around.

Mary Hatwood Futrell, president of the 1.8 million-member National Education Association, joined American Federation of Teachers President Albert Shanker and a dozen other prominent political and civic leaders in signing the report.

But Futrell added a written statement of "support with reservations" that sharply challenged several of the report's key findings, including what

she said was a presumptuous proposal to abolish the bachelor's degree in education. She also criticized the lead teacher plan, saying it "suggests that some teachers are more equal than others."

The report said teachers' "compensation should be based on proven competence, not time in the chair." It urged a stop to paying teachers more simply for acquiring graduate credits.

Many educators have expressed frustration at what they contend is a rising tide of paperwork and mandates imposed by states in recent years in a rush to raise scholastic standards.

"Many of the best people now staffing our schools are immensely frustrated," said the task force report, "A Nation Prepared: Teachers for the 21st Century."

"They see the bureaucratic structure within which they work becoming

even more rigid and the opportunities for exercising professional judgment becoming even more limited."

The study expressed special concern about attracting more minorities into teaching, saying, "We cannot tolerate a future in which both white and minority children are confronted with almost exclusively white authority figures in the schools."

U.S. Secretary of Education William J. Bennett said he was "very pleased so many of the recommendations move in the directions we've been urging: merit pay, high standards, parental choice, liberal arts (for prospective teachers)."

But he said, "there's a missing person in this report: the principal.... You cannot run a school with a committee. When a parent comes to school, she does not want to see a committee."

# WHAT QUENCHES A FULL COURT THIRST?



# THIRST AID FOR THAT DEEP DOWN BODY THIRST.

# Big Sky, Mountain West Conferences study merger proposal

Two committees have been appointed to study the feasibility of combining the men's Big Sky Conference and women's Mountain West Athletic Conference.

Current members of the leagues would compete in one conference if presidents of the Big Sky and Mountain West schools vote to approve the merger, which was discussed May 21 at a meeting of the Big Sky Confer-

## ACC changes baseball site to Greenville

A new site for the Atlantic Coast Conference baseball tournament, a change in athletics eligibility rules and smaller basketball backboards were among the varied items considered during the conference's spring meeting.

Athletics directors and faculty representatives from the ACC member schools have agreed to move the baseball tournament to Greenville, South Carolina, for the next three years.

Commissioner Robert C. James said Greenville Municipal Stadium "is recognized as probably one of the finest minor-league facilities in the country, if not the finest. To not use the best facility you have available to you is not being fair to your sport."

The tournament was held this year in Durham, North Carolina. James said there's an opportunity for the league to make more money from the tournament at the 7,000-seat Greenville stadium. But he added that finances weren't the main concern.

James said league baseball coaches felt "very strongly" the tournament should be moved to Greenville but "if the tournament is not successful there, certainly Durham would be one of the first places we would return to."

Next year's tourney will be played May 13-18. James also said that ACC teams will play a 21-game league baseball schedule next year and increase that to 28 conference games in 1988. He said that will give ACC schools more competition against Division I teams.

The league also "very, very firmly reaffirmed our support for proposition 48 [NCAA Bylaw 5-1-(j)]," James said. "We're going to continue to work as far as we can to preclude any change."

Bylaw 5-1-(j) is the rule that set minimum academic requirements for incoming athletes to be eligible. The rule, passed three years ago, takes effect next fall, and James said the ACC would oppose any effort to delay its implementation.

In other discussions at the spring meeting, as reported by the Associated Press, league officials:

— Revised a conference rule on athletics eligibility "which we felt was extremely restrictive and far too punitive," James said. Athletes who participate with outside teams during their college season will be ineligible only for the remainder of that season, not for an entire calendar year as under the old rule.

— Discussed using basketball backboards that are six inches shorter at the bottom. The new baskets reduce the chance of tall players hitting their heads on the glass. James said the change isn't mandatory, but that the league will look into the matter and "we're hoping... we will have them every place this fall." This year's NCAA championships were played with the shortened boards.

— Agreed to meet with representatives of high schools in the ACC area concerned that ACC Tuesday night basketball telecasts conflict with high school basketball games. James said the ACC will work to address the concerns but noted high schools are notified by June 1 which games the league plans to televise the following winter.

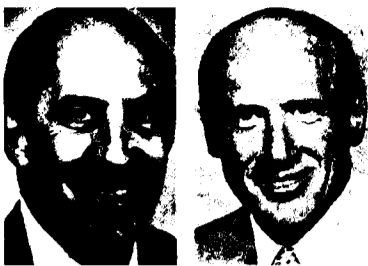
ence presidents' council.

The alignment of the two conferences would not necessarily mean that Mountain West universities would automatically become members of the Big Sky Conference, or vice versa.

For example, female athletes at Eastern Washington University are members of the Mountain West Conference, but male athletes compete independently at the Division I level. If the merger of the two conferences is approved by the Big Sky presidents, Eastern's men would not necessarily become Big Sky competitors.

Also, female athletes at Northern Arizona University and the University of Nevada, Reno, are not members of the Mountain West Conference, but those schools are members of the Big Sky. The merger would not necessarily induct female athletes at Northern Arizona and Nevada-Reno into Big Sky membership.

Nevada-Reno and Northern Arizona have expressed interest in joining the Mountain West Conference, while



Joseph Crowley

Richard D. Gibb

Eastern Washington has made a bid to join the Big Sky. That seven-year effort by Eastern was rejected by Big Sky presidents in May 1985.

Eastern President H. George Frederickson said discussion of the merger "is the first step in what could become for each conference's appointed committee a good look at core sports, conference membership and what

institutions and how many should be considered for that membership."

Frederickson, who has led Eastern Washington's bid to become a Big Sky member, said the university will not actively lobby the committee studying the alignment issue, the Associated Press reported.

"They know how we feel. They're on their own, and they have a lot of work to do," Frederickson said.

University of Idaho President Richard Gibb said, "There is merit in having a merger, but there are merits against it that need to be heard."

Gibb said the proposed new conference would have to maintain the importance and funding of women's athletics.

"My mind is totally open to the merger. My concerns would be that the women's programs not suffer in any way."

The alignment vote may not be conducted soon, as the presidents

requested that a report on the subject be issued in December.

Gibb said the three-member committees, which will represent separately the Big Sky and Mountain West Conferences, also will study long-range planning for both conferences.

The Big Sky committee will be chaired by Nevada-Reno President Joseph Crowley, while the Mountain West committee will be chaired by Idaho State University President Richard Bowen.

The Big Sky Conference is composed of Northern Arizona, Nevada-Reno, Weber State College, Boise State University, Idaho State, Idaho, Montana State University and the University of Montana.

Members of the Mountain West Conference are Eastern Washington, Montana State, Montana, Idaho State, Idaho, Boise State and Weber State. Portland State University recently dropped its membership.

Press on, NCAA.

Instead of just teams, you develop team players. Rather than just sportsmen, you nurture sportsmanship.

Not always an easy job. But every year, long after their last game is won or lost, young men and women enter life with a very special character, confidence, honor and drive. For that we can thank, in great degree, the NCAA.

State Farm is proud to be associated with the NCAA. And we're grateful for the fine athletes and fine citizens which it produces.

Like a good neighbor, State Farm is there.

# Georgia faculty panel proposes academic control of athletics

The University of Georgia Athletic Association should lose its status as a private corporation and come under the control of the university's academic officials, a faculty committee has recommended.

Under the proposal issued by a five-member reform committee of the

university's college of arts and sciences, Georgia's sports program would operate as an auxiliary of the university, as the school bookstore does.

The university's intercollegiate sports program is operated by the athletic association, a private corporation that the general assembly in

1949 exempted from the laws and regulations that govern state agencies.

But the committee proposed that the association cease to be an independent body and that its holdings and personnel be transferred into an athletics department within the university's division of student affairs.

Also, the committee recommended "that a committee of faculty and students elected by the faculty and students, together with the vice-president for student affairs, establish and monitor the policies of the (athletics) department."

Emory Thomas, a history professor who headed the committee, said a copy of the report will be sent to State University System Chancellor H. Dean Propst and interim Georgia President Henry King Stanford, who takes office June 1.

Georgia athletics director Vincent J. Dooley was out of the country last week and could not be reached for

comment on the report. Associate athletics director Lee Hayley said he had not read the report and added, "It would be addressed by the athletic board anyway, not by me."

The faculty athletics representative, William M. Powell, said he would not comment on the report until he had read it. University spokesman Tom Landrum said outgoing President Fred C. Davison, who also is chair of the athletic association board, has not responded to the report.

Athletic association officials previously have defended the association's private status as a financial necessity; because state agencies cannot borrow money, the private athletic association serves as a way to finance such projects as stadium expansions, officials said.

The Georgia Athletic Association had an income of \$13.7 million last year.

The faculty reform committee was formed in March in response to the

trial of a Federal lawsuit filed by Jan Kemp. Kemp, a former instructor in the university's developmental studies program, agreed to a \$1.08 million settlement and reinstatement to her job after a jury found she was fired for protesting preferential treatment for student-athletes.

Among other recommendations in the faculty report is a proposal to end the separation of athletes from other students in dining and residential facilities.

"Student-athletes should have the same opportunity as other students to grow and mature as human beings in a university environment," the report said.

Thomas said he hoped the university will adopt all 17 recommendations included in the committee's report, which he said is aimed at making Georgia a leader in reform.

"We simply did the best we could," he said. "We think it's practical, not visionary. It can be done."

## Florida's Carr keeps watch for rules violations — anywhere

University of Florida athletics director William Carr said he doesn't care that other teams scrutinize the Gators since their 1984 NCAA probation.

"That's fine," Carr said, "because we're watching them, too. Yes, we're turning people in to the NCAA. Every time we hear something about another school, we call the NCAA and tell them about it."

Carr, who said he doesn't use spies but only forwards information offered to him about other schools, declined to tell *The Lakeland Ledger* May 20 which teams he has turned in.

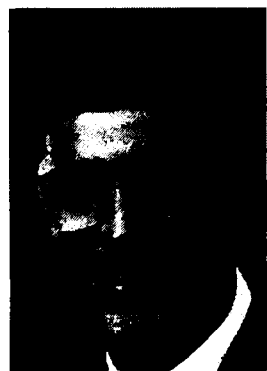
He also said he is careful to telephone only the NCAA and never to put any allegations on paper because of Florida's public-records law, which would make any such letters available for public inspection.

"I talk to the NCAA a lot about other schools, but I do not write them

someone (a college recruiter) gives a kid (a high school recruit) a ride home from football practice (a violation of NCAA rules)."

Florida will continue following the letter of NCAA regulations even after sanctions are lifted, he said.

The team falls under the NCAA's new five-year "repeat violator" plan. In it, if a school is found guilty of major violations for a second time, the sport in which violations occurred can be suspended.



William Carr

letters, because that's subject to discovery," he said, saying the practice was fair because other teams often report Florida.

"The first principle of justice is equal enforcement, whatever the situation may be," Carr said. "I know people are calling about us, because we get phone calls from people along the way, saying, 'Hey, what about this, or what about that?'"

Original NCAA sanctions against Florida for its recruiting violations called for the Gators to be ineligible for bowl games from 1984 through 1986 and for live television appearances between 1985 and 1987.

However, the sanctions could be lifted this fall after UF officials go before the NCAA infractions committee in November.

Florida now makes it sports boosters who are active in recruiting sign a certificate promising compliance with NCAA rules and also documents campus recruiting visits for all sports.

The worst aspect of the athletics director post, Carr said, is worrying about all the NCAA's rules.

"...I'm committed to complying with the NCAA rules," he said.

"But in a society where we are aborting 1 1/2 million babies a year, I'm more concerned about that as a human being than I am about whether

## Southland won't add new members

The presidents of the six Southland Conference schools voted May 21 not to expand the conference by adding three more universities, Commissioner Dick Oliver said.

During a conference call, the presidents voted against admitting Southwest Texas State University, Stephen F. Austin State University and Sam Houston State University into the league.

"They voted, and under the constitution it requires no more than one negative vote and obviously they had more than one," he said.

# ATTENTION

## COLLEGE TRAVEL PLANNERS!

### Save 37% or More

### on Your ANNUAL Budget With the NCAA Travel Plan

CALL 1-800-243-1723

- Now receive major, unrestricted and unpublished discounts on airfares
- Now take advantage of the NCAA'S volume leverage in an unprecedented way
- Now receive \$150,000 in travel insurance every time you fly
- Now receive your tickets overnight if needed
- Now order or check flight information 24 hours a day, seven days a week . . . toll free!

Don't miss the opportunity to cut your travel expenses in all respects, including team travel, scouting and recruiting trips, and campus visits.

**FUGAZY**  
INTERNATIONAL  
TRAVEL 67 WHITNEY AVENUE  
NEW HAVEN, CT 06510  
**203-772-0470**

THE OFFICIAL TRAVEL AGENT  
FOR NCAA CHAMPIONSHIPS

**Tie In To The Existing NCAA Travel Plan and SAVE BIG!**

# The NCAA News



# NCAA Record

## CHIEF EXECUTIVE OFFICERS

The Rev. ALBERT DiULIO appointed at Xavier (Ohio). He previously was associate dean of the college of business administration at Marquette... WILLIAM C. NELSEN named chancellor at Augustana (South Dakota), where he has been president... CLIFFORD V. SMITH selected at Wisconsin-Milwaukee, effective September 1. He previously was head of the radiation center and the department of nuclear engineering at Oregon State... RICHARD TERRY has announced his retirement at Quinnipiac, effective August 31.

## DIRECTORS OF ATHLETICS

Southwestern Louisiana's TERRY DON PHILLIPS has reconsidered and decided not to move to Southern Mississippi, as announced May 13... JOHN FREEMAN named AD and head football coach at Lincoln (Missouri). He previously was assistant AD at Northeastern... La Salle's BILL BRADSHAW appointed at DePaul. Bradshaw was at La Salle for eight years... JERRY VANDERGRIFF appointed at Angelo State, where he has been head football coach for four years. He will assume his new duties at the start of the fall semester... JOHN BLOCK named at Gordon, where he also will be head basketball coach... GENE MITZ selected at Rose-Hulman, where he also will serve as assistant football coach.

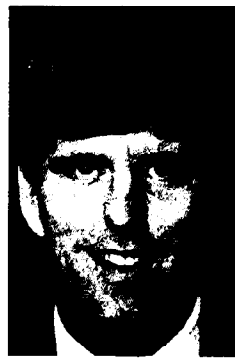
**ASSISTANT DIRECTOR OF ATHLETICS**  
JOHN FREEMAN of Northeastern named athletics director and head football coach at Lincoln (Missouri).

## COACHES

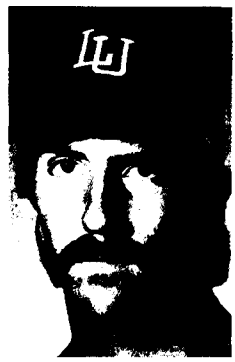
**Baseball**—Interim South Florida coach ED-DIE CARDIERI named head coach at the school after leading the Bulls to the Sun Belt Conference championship and a berth in the South I regional of the Division I Baseball Championship. Cardieri was named interim coach when Robin Roberts resigned in June 1985... CURT FATZINGER appointed at his alma mater, Wisconsin-Platteville. He has been coach of the school's women's softball team for four seasons and was manager in 1984 of the Platteville Cardinals summer baseball team. Fatzinger succeeds TERRY OWENS, who remains at the school as sports information director... CLYDE PARRISH selected at St. Andrews. The successful high school football, basketball and baseball coach has coached football at Red Springs High School in North Carolina the past three years. Through three decades, his teams in the three sports at a number of high schools have collected more than 1,000 victories... IVAN GEORGE has announced his retirement at Gannon, where he has coached since 1964. His career record is



Scott Herson named swimming coach at Ashland



Stew Morrill named head men's basketball coach at Montana



David Perkins promoted to head baseball coach at Lamar

261-339-2... DAVID PERKINS promoted at Lamar. He joined the Cardinals' staff in 1983 as an assistant to former coach Jim Gilligan.

**Baseball assistants**—MIKE EVANS resigned at Nebraska to seek a head coaching position at another school. Evans served as pitching coach for three seasons and was head defensive coach in 1984. He previously coached at McAlester (Oklahoma) High School and Omaha Creighton Prep in Nebraska... ROBERT "BUD" MERRELL named to a part-time position at South Florida... DAVID PERKINS promoted to head coach at Lamar.

**Men's basketball**—KARL FOGEL promoted at Northeastern, where he was an assistant to former head coach Jim Calhoun. Fogel came to the school in 1979 after coaching for three years at Curry. He also was an assistant from 1973 to 1976 at Boston State... STEW MORRILL promoted at Montana. He was an assistant for eight years to former Grizzly coach Mike Montgomery. Before arriving at Montana, he was an assistant at Gonzaga, where he played in the early 1970s... BOB BROWN resigned at St. Anselm, where his teams compiled a 36-47 record during his three-year tenure. Last season, he was named Northeast-Eight Conference coach of the year after leading his team to a 21-9 record and a berth in the Division II Men's Basketball Championship. He will be succeeded by his assistant, KEITH DICKSON, who came to St. Anselm one year ago after serving on the staff at Bentley for four seasons... JOHN BLOCK named at Gordon, where he also will serve as athletics director. The 10-year National Basketball Association veteran is a former head coach at UC San Diego and former assistant at Oral Roberts. He founded the Oakbridge Chris-

tian Sports Camp... BILL MCGONEGAL promoted at Long Island-Southampton, where he has been an assistant for four years. He also has been head women's coach at Mercy High School in Riverhead on Long Island. McGonegal succeeds KEN FELTEN, who resigned after three years to pursue business opportunities... JAY LOWENTHAL named at Quincy. He previously was an assistant at South Alabama, where he also served as athletics academic adviser. Lowenthal also has been an assistant at Elmhurst.

**Men's basketball assistants**—JON MACKAY, a volunteer aide at Tulsa last season, named to a part-time position at Northern Illinois, and former Iowa star KENNY ARNOLD selected as a graduate assistant... Northeastern's KARL FOGEL promoted to head coach at the school... PAUL FAISON hired at Lowell. He previously was a volunteer assistant at Bentley... Montana's STEW MORRILL promoted to head coach at the school... KEITH DICKSON named head coach at St. Anselm, where he was an assistant last season... Lamar's AL BARBRE named head coach of the school's women's basketball team. He was an assistant to former Lamar men's coach Pat Foster for three seasons... STAN PELCHER resigned at Canisius to pursue business interests. He was Nick Macarchuk's top assistant for four seasons... GARY M. MILLER appointed at Elizabethtown, replacing DAN REITMEYER, who resigned. Miller was interim head coach at Gettysburg from 1983 to 1985 and was varsity coach at Spring Grove Area High School in Pennsylvania from 1971 to 1983... BILL MCGONEGAL promoted to head coach at Long Island-Southampton... South Alabama's JAY LOW-

ENTHAL named head coach at Quincy.

**Women's basketball**—JOE McKEOWN appointed at New Mexico State. He previously was first assistant at Oklahoma... BRIAN BERGER named at Colorado State after five seasons at Chapman. Berger's teams at Chapman compiled a 114-32 record and participated in the Division II Women's Basketball Championship four times... BONNIE FOLEY resigned at Plymouth State. She coached for three years at the school, where she also served as head women's softball coach... AL BARBRE named at Lamar, where he was an assistant on Pat Foster's men's basketball staff for three seasons. It is Barbre's first women's basketball position in 22 years of coaching at the high-school and collegiate levels. He also has been a men's basketball assistant at Stephen F. Austin and Louisiana Tech.

**Women's basketball assistants**—AGNUS McGLADE BERENATO selected at Georgia Tech, where she will assist her sister, head coach Bernadette McGlade. Berenato once was head coach at Rider, where her teams compiled a 69-50 record during her four-year tenure... Oklahoma's JOE McKEOWN named head coach at New Mexico State.

**Men's and women's cross country**—DALE R. LUY appointed at Elizabethtown. The former Gettysburg all-America track athlete previously was track coach and cross-country coordinator at Lower Dauphin High School in Pennsylvania.

**Football**—JERRY BOYES named Buffalo State's first full-time coach. He has been an assistant at Ithaca since 1978. He succeeds part-time coach LES DUGAN, whose teams were 19-24 through five seasons... JOHN FREEMAN selected at Lincoln (Missouri), where he also will serve as athletics director. He previously was assistant AD at Northeastern.

**Football assistants**—DAVE STECKEL appointed offensive coordinator at Dickinson. He previously was defensive line coach at Minnesota... VINCENT S. ARDUINI hired at Harvard, where his duties will be determined this summer. He previously was an assistant at Norwich. Arduini also has been an assistant at Davidson, where he served concurrently as head wrestling coach... GENE MITZ named at Rose-Hulman, where he also will serve as athletics director. He served as an assistant last season at Southwest Missouri after spending two years at Ball State. Mitz also has been head coach at Triton (Illinois) Junior College and North Park and an assistant at Drake and Northwestern.

**Golf**—BRITTON W. HARRISON named at Lamar. The former touring professional was a three-time all-America at Oklahoma State in the late 1970s. He succeeds interim coach

MIKE DIRKS, who stepped in after former coach Gregg Groat left for Oklahoma in December 1985.

**Golf assistant**—JUDY JETER resigned at Wichita State after three years. She served as women's team coordinator. Jeter plans to pursue other interests.

**Men's ice hockey**—ED WRIGHT named at Buffalo, where he coached from 1970 to 1981. His career record at Buffalo is 133-136-6. Wright will continue to serve as the school's intramurals program director.

**Men's ice hockey assistants**—ROBERT MANCINI resigned at Lake Superior State, where he has been chief recruiter since 1983. He is considering a coaching offer from Italy's Team Auronzo.

**Men's soccer**—JOHN BARRET JR. named at Fairfield... JOHN WIGNOT appointed at Rhode Island College. He has extensive experience with high-school and youth soccer programs, including coaching stints at LaSalle Academy and Smithfield High School in Rhode Island.

**Men's soccer assistant**—DAVID KEMMY named at Rhode Island College, where he serves as sports information director. He has been a high school wrestling and baseball coach and a recreation-league soccer coach.

**Women's softball**—CURT FATZINGER named head baseball coach at Wisconsin-Platteville, where he has coached women's softball the past four years. His teams at the school compiled a 41-49 record... BONNIE FOLEY resigned at Plymouth State, where she also served as women's basketball coach. Her 1984 softball team won an Eastern College Athletic Conference championship.

**Men's swimming**—SCOTT HERNON appointed at Ashland, where the school is reinstating its swimming program. He also will serve as women's swimming coach. He previously was head women's and assistant men's coach at East Carolina for one season. The former Marine was a four-time all-America in swimming at Fairmont State.

**Women's swimming**—ANNE JAMES named at Northern Michigan. She previously was at Texas Tech for four seasons, where she also served as the academic counselor for women's athletics. Texas Tech is dropping its men's and women's swimming and diving programs for budgetary reasons. James also has been head men's and women's coach at Cal State Hayward... SCOTT HERNON selected at Ashland after one season as head women's and assistant men's coach at East Carolina.

**Men's tennis**—Fresno State's DUANE BAL-LARD has announced his retirement. He has

See Record, page 14

# The NCAA News



# The Market

Readers of The NCAA News are invited to use The Market to locate candidates for positions open at their institutions, to advertise open dates in their playing schedules or for other appropriate purposes.

Rates are 45 cents per word for general classified advertising (agate type) and \$22.60 per column inch for display classified advertising. Orders and copy are due by noon five days prior to the date of publication for general classified space and by noon seven days prior to the date of publication for display classified advertising. Orders and copy will be accepted by telephone.

For more information or to place an ad, call 913/384-3220 or write NCAA Publishing, P.O. Box 1906, Mission, Kansas 66201.

## Positions Available

### Associate A.D.

**Associate Director of Athletics.** Summary: The Associate Director will be responsible for the administration of sport programs for the Department of Intercollegiate Athletics, the supervision of department personnel and will oversee facilities and events management as assigned. The individual will direct the various phases of athletic department policies and procedures which are related to the management of the athletic programs. All responsibilities will be performed in collaboration with other Associate Athletic Directors and the support of several Assistant Directors. Reports to the Director of Athletics, who has comprehensive responsibilities for all management aspects of the department. Qualifications: Candidate should have at least five years of experience in the development, management and administration of a comprehensive athletic program. Previous collegiate coaching experience would be helpful but is not necessary. Candidate should be familiar with NCAA rules and regulations, have the ability to effectively communicate verbally and in writing, and have experience with facilities management and operations, and with personnel administration. Skills of this nature are generally associated with the completion of a Bachelor's Degree. Additional training in organizational management, or administration, usually demonstrated by the completion of a Master's Degree in a related field is

desirable. Salary: Commensurate with experience and qualifications. Application Procedure and Deadline: Paul R. Rubincam, Jr., Director of Athletics, University of Pennsylvania, 235 South 33rd Street, Philadelphia, PA 19104. Deadline for resume with references: June 15, 1986. The University of Pennsylvania, Division of Recreation & Interscholastic Athletics, is an Equal Opportunity/Affirmative Action Employer.

**Associate Athletic Director, Fund-Raising.** The University of Missouri-Columbia, a Division I school in the Big Eight Conference, has an immediate opening for an individual to direct all fund-raising activities of the department including annual giving, capital campaigns for major facility improvement, endowments, bequest, and sports improvement funds. Responsibilities include directing the Missouri Athletic Scholarship Associates contribution program; all individual, group and corporate giving programs; athletic ticket policy; The Tiger Lounge; and development activities with alumni, boosters and support groups. Bachelor's degree or equivalent combination of education and experience is necessary. Six to eight years' related experience, preferably at the Division I level, is necessary. Please submit letter of application and resume by June 20, 1986, to: Jack Lengyel, Athletic Director, University of Missouri-Columbia, Personnel Services, 201 South 7th Street, Heinkel Building Room 130, Columbia, Missouri 65211. AA/EOE.

### Assistant A.D.

**Assistant Athletic Director For Business.** Mississippi State University, a land grant institution in Starkville, Mississippi, is a comprehensive state university of 12,000 students. A

member of the Southeastern Conference and Division IA of the NCAA, Mississippi State's men's and women's intercollegiate athletic programs include football, basketball, baseball, volleyball, softball, track, golf and tennis. The successful applicant will report to the Athletic Director and will assume such duties as the preparation and control of the athletic budget, the development and maintenance of the athletic accounting system, the coordination of an athletic personnel system in conjunction with the accounting system of the State of Mississippi. Applicants should have an appropriate undergraduate degree. A Master's degree and/or professional certification are highly desirable. Salary is competitive and commensurate with qualifications. The position will be available June 15, 1986. Send a letter of application and current resume with at least three references to: Charles L. Carr, Director of Athletics, Mississippi State University, P.O. Drawer 5327, Mississippi State, MS 39762. Mississippi State University is an Affirmative Action/Equal Opportunity Employer.

**Assistant Director of Athletics for Facilities & Operations.** Responsible for supervision, maintenance, and management of all athletic facilities and operational components, policies, procedures and facilities; in charge of liaison with non-academic service departments involved with operation of the Athletic Center. Qualifications: BS or BA in Athletics or Business Administration, 3-4 years' experience in facilities supervision or athletic-related physical plant work. Forward resume and cover letter by 6/19/86 to: Mr. Charlie Titus, Director of Athletics, UMass/Boston, Harbor Campus, Boston, MA 02125-3393. An affirmative action/equal opportunity/Title IX employer.

### Administrative Asst.

**Arizona State University** is seeking an Administrative Assistant in football beginning August 1, 1986. Will provide administrative support to the Head Football Coach. Duties and responsibilities include monitoring recruiting program to ensure NCAA guidelines are met, coordinating recruitment schedules, team travel arrangements, meeting and visitations for football program, coordinating relations between football staff and academic services and supervision of office staff. Salary is commensurate with abilities. Application deadline is June 20. Mail application and letters of interest to Arizona State University, Personnel Department, Tempe, Arizona 85287. Arizona State University is an Equal Opportunity/Affirmative Action Employer.

### Athletics Trainer

**Assistant Athletic Trainer.** Liberty University

in Lynchburg, Virginia, a coeducational, Christian, liberal arts university, invites applications for the position of assistant athletic trainer. This is a non-tenured staff position. A master's degree, NATA certification and football training experience are required. Major responsibilities will be football and men's basketball with assistance in other minor sports. Successful candidate must exhibit a strong commitment to Christian education in building a quality athletic training program within the context of Christian values. Salary is commensurate with experience. Please send a letter of application, resume, and three letters of recommendation to: Ms. Conyle S. Pumphrey, Head Athletic Trainer, Liberty University, Box 20000, Lynchburg, Virginia 24056-8001. Application Deadline: June 6, 1986.

**Athletic Trainer.** Athletic Trainer to assist Head Trainer in athletic program, administrative insurance program. Term appointment, 12-month position starting August 15, 1986. Salary: \$20,000 to \$24,000, commensurate with experience plus benefits. Qualifications: NATA certification, 3 years' experience in men's and women's intercollegiate program required, Master's and Cybex II experience preferred. Submit letter of application, resume and two letters of recommendation no later than July 15, 1986, to: Dr. Salvatore R. Esposito, Assistant Dean, 215 Alumni Arena, State University at Buffalo, Buffalo, New York 14260. AA/EOE.

**Head Athletic Trainer.** Hamilton College invites applications for the position of Head Athletic Trainer. Reporting to the Medical Director, responsibilities include the supervision and provision of the prevention, evaluation, treatment and rehabilitation of athletic injuries for an undergraduate student population of 1,625. Assists in sports medicine training of Resident Physicians. 10-month position. Salary range \$19,000-\$22,000. Position requires Bachelor's degree, minimum of 5 years' experience as certified Athletic Trainer, and certification in Basic Life Support. Master's degree preferred. Send resume no later than June 15, 1986, to: Sarah G. Steele, Director of Personnel, Hamilton College, Clinton, NY 13323. Hamilton College is an Equal Opportunity Employer.

**Athletics: Graduate Assistant Women's Athletic Trainer.** Ten-month position starting August 18, 1986. Assist full-time trainers in working with nonrevenue sports. Position will require some travel with one or more teams. Bachelor's degree and admission to University of Maryland, College Park Graduate School and NATA certification required. Division I experience preferred. Stipend \$7,350 and remission of tuition and fees. By July 1, 1986, send letter of application, resume, and names of three references to Robert T. Stumpf, Associate Athletic Director, Department of Intercollegiate Athletics, University of Maryland, P.O. Box 295, College Park, Maryland 20740-0295. AA/EOE.

**Head Athletic Trainer.** Responsible for men's

and women's Division III intercollegiate athletic program. Preference will be given to candidates with previous intercollegiate experience and master's degree. Salary commensurate with experience. Deadline for Applications: June 15, 1986. Send resume and references to: J. E. Banner, Director of Athletics, Carnegie-Mellon University, Pittsburgh, PA 15213. Carnegie-Mellon is an Equal Opportunity Employer.

**Assistant Athletic Trainer.** Assist Head Athletic Trainer in all phases of care, prevention and rehabilitation of injuries for intercollegiate athletics, intramural and physical education programs. Bachelor's degree and A.T.C. required; Graduation from NATA approved program preferred; minimum two years' full-time A.T. experience preferred. Experience in supervision of student athletic trainers desirable. 9½-month appointment beginning September 1, 1986. Salary commensurate with experience and qualifications. Send letter of application, resume and three letters of recommendation by June 20, 1986, to: Rick Hartzell, Director of Athletics, UMC, 5401 Wilkens Avenue, Baltimore, MD 21228. UMC is an AA/EOE and women and minorities are encouraged to apply.

**Athletic Trainer.** Bethany College seeks NATA certified Athletic Trainer starting August 15, 1986 (10-month appointment). ARC first aid instructor and experience required; master's degree and EMT preferred. Send credentials and names of three references by June 16, 1986, to: Professor Wallace B. Neel, Bethany College, Bethany, West Virginia 26032. Bethany is an Equal Opportunity Employer.

## Development

**Assistant Director of Development.** Austin Peay State University. Regular full-time position. Bachelor's degree and fund-raising experience desired. Must be able to develop, coordinate, and execute yearly promotion plans for athletics; assist with additional development activities. Salary range: \$22,000 to \$25,000. Submit APSU application, letter of interest, resume, three letters of recommendation, and transcript to Personnel Office, APSU, Clarksville, Tennessee 37044 by June 18, 1986. For more detailed information and application contact 615/648-7177. To ensure full consideration, application material must be received or postmarked by the deadline. Minorities, women, and members of other protected groups are encouraged to apply. EOE/AA.

## Sports Information

**Graduate Assistant (Anticipated).** To assist in publicizing 24-sport program in Division II university. Duties include preparation of news releases, feature articles, media guides, sta-

tistical reports, game coverage, etc. Nine-month position beginning September 2, 1986. Stipend of \$3,500 plus tuition waiver. Must maintain nine credits per semester as full degree student. Bachelor's degree in English, journalism, public relations or related field. Send resumes to: Nevin Morris, Sports Information Director, West Chester University, West Chester, PA 19383. West Chester University is an affirmative action/equal opportunity institution. Women and minorities encouraged to apply.

## Sports Medicine

**Plymouth State College** is seeking a candidate for the position of Assistant Professor (or Instructor, depending on credentials) to teach in the areas of Health Education and Sports Medicine, and to help coordinate the student athletic training curriculum. Qualifications: Doctorate preferred, or enrolled in a doctoral program. Teaching experience in related areas preferred. To apply, send letter of application, names and addresses of three references, and current resume to: Dr. Arthur Bourgeois, Chairman, Department of Health and Physical Education, Box E, Plymouth State College, Plymouth, N.H. 03264 by June 23, 1986. PSC is an AA/EOE employer.

## Baseball

**Assistant Coach, Baseball.** Arizona State University is seeking an Assistant Baseball Coach. Must have strong background in coaching pitchers. College and/or professional playing and coaching background is preferred. Coach will be responsible for teaching fundamentals of pitching while organizing and supervising pitching staff. Also, recruiting experience and ability is vital. Strong contacts with high school coaches, junior college coaches, and professional scouts in Arizona and California will be helpful. Salary will be commensurate with experience. Mail application and letters of recommendation to: Arizona State University, Personnel Department, Tempe, Arizona 85287. Application deadline is June 13, 1986. Arizona State University is an Equal Opportunity/Affirmative Action Employer.

**Assistant Baseball Coach**—Pitching expertise preferred. Graduate Assistantship position in counseling, industrial technology and education, safety, vocational education/rehabilitation, hospitality and tourism, psychology or media technology. Coaching/playing experience desired. Individual involved in on-field coaching, recruiting, student advisement and other normally expected responsibilities. The University of Wisconsin-Stout successfully competes in the Wisconsin State University Conference. Contact Coach Terry Petrie

See The Market, page 14

# Record

Continued from page 13

been the Bulldogs' coach for 16 years and has had only one losing season in the past 12 years, compiling a career coaching mark of 197-146-1. Ballard will remain on Fresno State's faculty.

**Women's volleyball**—KATHY FRANKLIN appointed at Hartford. She has coached at the high school level for 12 years, most recently at Central High School in Bristol, Connecticut.

## STAFF

**Academic counselor**—Texas Tech's ANNE JAMES named head women's swimming and diving coach at Northern Michigan. She has been head women's swimming and diving coach and academic counselor for women's athletics at Texas Tech for the past four years.

**JAY LOWENTHAL** appointed head basketball coach at Quincy. He previously was assistant basketball coach and athletics academic adviser at South Alabama.

**Sports information director**—KEVIN PROVENCHER resigned after five years at St. Anselm to pursue new career opportunities. He was SID at New Hampshire College prior to arriving at St. Anselm.

**Hunter's JEFF BERNSTEIN** will serve this summer as director of public relations for the United States Basketball League's Westchester Golden Apples. He plans to resume his duties at Hunter in September.

**Trainer**—MARK KEPPLER appointed head athletics trainer at Bucknell, effective August 1. He has been head trainer and physical education instructor at Carnegie-Mellon since 1975.

**Trainer assistant**—KATHY JOSEFOW hired at Rhode Island, where she will assist in

all phases of athletics training. She previously was assistant trainer at Northeastern for two years. Josefow succeeds LYNN HUBER, who accepted a sports-medicine position in Philadelphia.

## CONFERENCES

RON BERTOVIICH named commissioner of the Atlantic 10 Conference after serving as assistant commissioner for two years. He first joined the conference's staff in 1982 as information director and was interim commissioner during the summer of 1984 before being named assistant commissioner. He becomes the conference's third commissioner.

## ASSOCIATIONS

SAM JENKINS, the Sun Bowl Association's immediate past president, named the organization's executive director.

## DEATHS

RICHARD LENNON, a baseball player at Florida International during the 1983 and 1984 seasons, died May 13 from injuries received in an automobile accident. He was 25. The Stoughton, Massachusetts, native was a self-employed fence contractor in the Miami, Florida, area.

FREDERICK DOUGLAS "FRITZ" POLLARD SR., the first Black to be named an all-America college football player, died May 11 at age 92. The Chicago native was a halfback at Brown in 1915 and 1916 and led the team to the 1916 Rose Bowl. He played professional football after World War I and became the only Black ever to serve as head coach of a National Football League team when he directed the Hammond, Indiana, squad in 1924.

ANDREW J. VASILOVICH, a former volunteer hockey coach at Lewis, died May 6 at age 66 in Chicago. He volunteered in

1970 to form Lewis' hockey team and coached there until 1974.

## POLLS

### Division I Baseball

The top 30 NCAA Division I baseball teams through May 19, as compiled by Collegiate Baseball, with records in parentheses and points:

1. Florida St. (53-11)	497
2. Louisiana St. (50-11)	496
3. Miami (Fla.) (43-15)	495
4. Oklahoma St. (50-13)	493
5. Texas (49-12)	490
6. Michigan (47-10)	489
7. South Fla. (50-14)	487
8. Loyola (Calif.) (45-12)	482
9. UC Santa Barbara (44-17)	480
10. UCLA (39-21)	479
11. Oklahoma (43-19)	477
12. Texas A&M (44-21)	474
13. San Diego St. (42-21-1)	473
14. Stanford (35-21)	470
15. Arizona (41-18)	469
16. Hawaii (41-22)	467
17. Alabama (41-18)	465
18. Arkansas (42-15)	462
19. Maine (38-21)	460
20. Pepperdine (35-19-2)	458
21. Tulane (46-13)	457
22. Georgia Tech (42-21)	454
23. Oral Roberts (41-18)	453
24. North Caro. St. (35-13)	451
25. South Caro. (42-21)	448
26. Southern Ill. (39-20-2)	445
27. Central Mich. (41-14-1)	444
28. Pan American (41-17)	440
29. St. John's (N.Y.) (33-13-1)	437
30. Indiana St. (45-19)	432

## FINANCIAL SUMMARIES

### 1985 Division III Men's Soccer Championship

	1985	1984
Receipts	\$ 44,566.25	\$ 31,268.06
Disbursements	39,416.60	33,812.01
	5,149.65	( 2,812.01)
Expenses absorbed by host institutions	5,372.53	3,747.05
	10,522.18	1,203.10
Transportation expenses	71,388.64	84,634.80
Per diem allowance	10,522.18	1,203.10
	( 71,388.64)	( 84,634.80)
Charged to general operating budget	\$ 71,388.64	\$ 84,634.80

### 1985 Division III Women's Volleyball Championship

	1985	1984
Receipts	\$ 14,831.30	\$ 24,111.63
Disbursements	30,752.30	31,068.69
	( 15,921.00)	( 6,957.06)
Expenses absorbed by host institutions	1,933.95	908.74
	( 13,987.05)	( 6,048.32)
Transportation expenses	47,094.96	83,361.40
	( 61,082.01)	( 89,409.72)
Charged to general operating budget	\$ 61,082.01	\$ 89,409.72

### 1985 Division II Football Championship

	1985	1984
Receipts	\$213,602.00	\$259,309.65
Disbursements	124,620.42	132,354.99
	88,981.58	126,954.66
Guarantees paid by host institutions	12,335.92	0.00
Expenses absorbed by host institutions	0.00	37.50
	101,317.50	126,992.16
Transportation expenses	103,427.94	140,422.54
Per diem allowance	58,140.00	57,000.00
	( 60,250.44)	( 70,430.38)
Charged to general operating budget	\$ 60,250.44	\$ 70,430.38

## The Market

Continued from page 13

(715/232-1459 or 2116), University of Wisconsin-Stout, Menomonie, Wisconsin 54751. Stout is an AA/EOE.

**Head Baseball Coach.** Qualifications: Bachelor's degree required, master's degree preferred. Successful experience in coaching baseball, college level preferred. Prefer experience as a college player. Recruiting experience helpful. Responsibilities: Reports directly to the Director of Athletics. Responsible for conducting a successful Division II program and all its manifestation, which includes recruiting, organization, coaching abilities and budgetary responsibilities. Must be committed to the goals of the University and able to follow the rules and guidelines set forth by the PSAC and NCAA. Salary: \$7,000-\$10,000. Salary to be negotiated, maximum \$10,000 plus benefits. Term of Appointment: September 1, 1986-May 15, 1987. Application Deadline: June 20, 1986. Potential candidates should submit a letter of application, resume and three current letters of recommendation to: Roger Melner, Director of Athletics, Mansfield University, Mansfield, Pennsylvania 16933. Mansfield University is an Affirmative Action/Equal Opportunity Employer. Black persons and other minority persons are encouraged to apply.

**Assistant Baseball Coach.** Miami University (Ohio). Full-time, 10-month position starting August 4, 1986. Assists the head coach in the administration of a Division I Baseball program including coaching, scouting, and recruiting student-athletes primarily in Ohio. Requires a Bachelor's degree, experience in intercollegiate playing and/or in high school coaching, and thorough knowledge of NCAA rules and regulations. Master's degree desired. Send letter, resume, and list of references to: Jon Pavliako, Head Baseball Coach, Department of Intercollegiate Athletics, Miami University, Oxford, Ohio 45056. Equal Opportunity in education and employment M/F/H.

## Basketball

Washington State University seeks Women's Assistant Basketball Coach. Starting July 1, 1986, 12-month, full-time appointment with salary commensurate with experience and qualifications. Responsibilities include: organize, develop, and coordinate a competitive Division I recruiting program, assist with the operation of summer camps and coaches clinics, participate in program and department fund-raising and public relations. Qualifications: Bachelor's Degree required. Demonstrated success in planning and directing an effective recruiting program. Thorough knowledge of NCAA recruiting rules and academic eligibility standards. Application deadline: June 1, 1986. Send application letter, resume, and three letters of recommendation to: Harold Rhodes, Women's Basketball Coach, Washington State University, Bohler Gym M-9, Pullman, WA 99164-1602. AA/EOE.

**Assistant Coach-Women's Basketball.** Purdue University, West Lafayette, Indiana, is seeking

qualified candidates for the position of Assistant Coach. The duties would include recruiting coordinator, coaching, and administrative duties assigned by the Head Coach. Requires Bachelor's degree, Master's degree preferred, and three years of coaching experience. Send resume and letter of application to Dr. Carol Mentler, Associate Athletic Director, Purdue University, Mackey Arena, West Lafayette, Indiana 47907. Deadline is June 1, starting date July 1. Purdue University is an Equal Opportunity/Affirmative Action Employer.

**Assistant Basketball Coach Position.** East Carolina University will accept applications for a full-time assistant in the Men's Basketball Program until June 6, 1986. Duties: Assist in all facets of recruiting. Contribute to the planning, organization and administration of the men's basketball program. Coordinate team travel plans. Assist with clinics and camps. Coordinate the academic support services for the team. Additional duties as required by the Director of Athletics. Qualifications: Bachelor's degree required, Master's preferred. College level coaching experience preferred. Demonstrated knowledge of NCAA regulations. Effective written and verbal communication skills. Salary: Commensurate with experience. Application Process: Send letter of application, resume and three (3) professional references to: Director of Athletics, East Carolina University, Minges Coliseum, Greenville, NC 27834-353. Deadline: Postmarked no later than June 6, 1986. An Affirmative Action/Equal Opportunity Employer.

**Assistant Basketball Coach (Women):** The University of Oklahoma is seeking an aggressive, outgoing person for the position of recruiting coach on the national level is important. Successful candidates must possess outstanding communication skills as well as sound knowledge of NCAA rules and regulations. Familiarity with Division I Women's Basketball as well as college coaching and playing experience desired. Please send a brief resume including the following: personal profile, educational background, basketball coaching and playing experience. Also send a list of references. This should include person's name, position, address and phone numbers. Do not send letters of recommendations. They will be requested if necessary. Application deadline: June 30, 1986. Start: August 15, 1986. Send resume to: Search Committee, Women's Basketball, 151 W. Brooks Room E-16, Norman, OK 73019. Equal Opportunity Employer.

**Coach Basketball in Saudi Arabia.** Club team needs head coach and assistant coach. Both will work with 16- to 25-year-olds; assistant will also work with boys under 16. One-year contract with renewal option depending on record. Competition within Saudi Arabia, only. Coaches will train players in U.S. in August before traveling to Saudi. Tax-exempt salaries: head coach, \$50,000; assistant, \$35,000. Employer will provide housing, food, transportation and full medical coverage. Moslems preferred, but not a requirement. Proficiency in Arabic also a plus, but interpreters will be provided. Send resume and description of accomplishments (including win-loss record) to: I.T.V.S., 1643 N. Almeron, Suite 104, Tucson, AZ 85712. Call 602/325-1681 for more information.

**Assistant Women's Basketball Coach.** Full-time position starting July 1. Responsibilities include: Assist the head coach in the administration of a Division I basketball program.

Duties in the areas of recruiting, scouting, on-court instruction and travel/game administration. Qualifications: Bachelor's degree required, Master's degree preferred. Prior intercollegiate playing and/or coaching experience and a working knowledge of NCAA rules. Salary is commensurate with qualifications and experience. Closing Date: June 15, 1986. Send letter, resume and three letters of reference to: Mildred B. West, Women's Athletic Director, Adair Gymnasium, The College of William and Mary, Williamsburg, VA 23185. EEO/AA.

The University of Pittsburgh at Johnstown announces a staff position in the Athletic Department. Responsibilities include assistant coach in men's basketball and coaching cross country and track. Supervision of intramural track and cross country meets are also required. This is a nine-month, non-tenured stream, renewable staff appointment. Salary—Entry level with consideration given for experience. Candidate must possess a baccalaureate degree and have experience as a coach or athlete at the collegiate level. Send resume and recommendations to Personnel Office, Biddle Hall, University of Pittsburgh at Johnstown, Johnstown, PA 15904. Application deadline is June 4, 1986. Date of appointment—July 1, 1986. UPJ is an Affirmative Action/Equal Opportunity Employer and encourages applications from minority candidates.

**Part-Time Men's Basketball Coach.** Bachelor's degree required. Collegiate basketball coaching experience preferred. Duties include assisting in preseason conditioning program, assist in daily practice sessions, reviewing high school film and other duties as assigned by Head Coach. 10-month appointment with stipend of \$7,900. Contact Gene Keady, Basketball Coach, Mackey Arena, Purdue University, West Lafayette, IN 47907. Purdue University is an Equal Opportunity/Affirmative Action Employer.

**Men's Assistant Basketball Coach.** Winthrop College, a state-supported, coeducational institution in Rock Hill, South Carolina, invites applications for a men's assistant basketball coach. Winthrop has a student enrollment of over 5,000 students. Located in a community of about 45,000, the campus shares the benefits of the Charlotte, North Carolina, metropolitan area in which over 1 million people live. The men's assistant basketball coach is under the direction of the men's head basketball coach, and is responsible for planning, organizing and implementing strategies associated with the coaching of men's basketball. This process will interface with all aspects of the men's basketball program. Recruiting of student-athletes for the basketball program will be a major function of the process. Candidates for this position are expected to show evidence of a Bachelor's Degree and three years' experience in the area of coaching basketball. Experience in coaching preferred at the intercollegiate level with an NCAA basketball program, and an

understanding of NCAA rules and regulations preferred. This 12-month position offers a competitive starting salary and excellent fringe benefit package. Winthrop College is an Equal Opportunity Institution and an Affirmative Action Employer. The College is governed by civil rights laws, including Title IX of the Education Amendments of 1972 and Section 504 of the Rehabilitation Act of 1973, as amended. The closing date for applications is June 2, 1986. Applications should include a letter expressing interest, a complete resume, and the names, addresses, and phone numbers of three professional references. Applications should be requested from: Steve Vecendak, Athletic Director, Head Basketball Coach, Winthrop College, Rock Hill, South Carolina 29733. 803/325-2140.

**Assistant Women's Basketball Coach/Head Men's Tennis Coach/Intramural Director.** Position involves assisting to the head women's basketball coach, directing the men's tennis program and directing all intramural activity. Both coaching positions involve practice and games, recruiting, scouting, budget development and scheduling. The intramural program is designed to meet the needs of both men and women and serves approximately 2,000 students. Oakland University is a state institution located in Rochester, Michigan. Interested applicants should send an application, resume and two reference letters to: The Employment and Staff Development Office, 140 North Foundation Hall, Oakland University, Rochester, Michigan 48063. Application Deadline is June 6, and the position will begin July 1, 1986. Oakland University is an Affirmative Action/Equal Opportunity Employer.

## Cross Country

**Assistant Women's Cross Country/Track & Field Coach.** Columbia University/Barnard College Athletic Consortium. Responsibilities: Assist Head Coach with coaching, recruiting, and organizing a quality Division I cross country/track and field program for Columbia and Barnard Women on All-University Teams. Qualifications: Bachelor's Degree, coaching experience and ability to work within the framework of by League and NCAA Regulations and financial aid regulations. Competitive experience and recruiting experience at the college level desirable. Appointment: As soon as possible. Send letter of application, resume and three letters of recommendation to: Marge Tverky, Associate Director of Athletics, Columbia University, Dodge Physical Fitness Center, New York, NY 10027. Columbia University is an Affirmative Action/Equal Opportunity Employer.

**Head Women's Cross Country Coach (Part-time).** Direct all aspects of Division III program. Prior head coaching experience preferred. Application deadline: June 15, 1986. Appointment is for 1986-87 academic year.

Send letter of application and resume to: Dr. Judy Burling, Athletic Director, Regis College, 235 Wellesley Street, Weston, MA 02193. An Equal Opportunity/Affirmative Action Employer.

## Football

**Assistant Football Coach and Coaching another sport (assistant basketball or head women's softball).** This is a nine-month position beginning August 1, 1986. Salary is commensurate with qualifications and experience of the candidate. Minimum Qualifications: Bachelor's Degree required. Master's Degree preferred. Coaching experience on the high school and/or college levels desired. Ability to recruit quality student-athletes is necessary. Responsibilities include: Assisting in the organization, direction, and coaching of the Varsity Football Program. Assist in the recruitment of quality student-athletes. Assist in the sport of basketball with similar responsibilities or serve as the head coach in Softball. Teaching courses within the Physical Education Department is also required. Applicants should send a resume, three letters of recommendation, and records of coaching and teaching experience to: Dr. J. Phillip Roach, Athletic Director, Marietta College, Marietta, OH 45750-3031. Application Deadline: June 10, 1986. AA/EOE.

**Assistant Football Coach.** Ohio Wesleyan University is seeking an assistant football coach. Responsibilities under the direction of the head football coach include: offensive or defensive coordinator; recruiting responsibilities as assigned; monitoring academic progress of student-athletes. Also, this person will assist in another sport such as baseball or lacrosse or serve as intramural director. Master's is required. Compensation is commensurate with experience. Send resume and three letters of recommendation to: Dr. John A. Martin, Athletic Director, Ohio Wesleyan University, Delaware, Ohio 43015. Ohio Wesleyan is an Equal Opportunity/Affirmative Action Employer.

**Graduate Assistant/Football/Men's Tennis.** Heidelberg College is seeking applications for graduate assistant to assist in football and be responsible for men's tennis program. Heidelberg is a Division III institution in the Ohio Athletic Conference. Submit letter of interest and resume to Mr. John Hill, A.D., Heidelberg College, 310 East Market Street, Tiffin, Ohio 44883, or call 419/448-2019. Heidelberg is an Equal Opportunity/Affirmative Action Employer.

**Assistant Football Coach/Coordinate Strength Program/Assistant Track Coach.** NCAA Division III school is seeking an offensive line or defensive line football coach who can organize and administer the weight training program. Coaching responsibilities also include assisting in the track program. Qualifications include a bachelor's degree or beyond and a thorough understanding of the sports of football and track. Salary commensurate with ability and experience. Closing date for applications is July 28, 1986, with employment beginning in June. Send letter of application, resume, and two letters of reference to: Greg Carlson, Head Football Coach, Wabash College, Crawfordsville, IN 47933. Equal Opportunity Employer.

**Assistant Varsity Football/Head Wrestling Coach.** Position: Assistant Football (Defense) and Head Wrestling Coach in Division III program. Qualifications: Master's Degree required, graduate or undergraduate degree in Physical Education. Application Procedures: Submit application, personal resume and references to: Dr. Wallace E. Baines, Head, Division of Education, Norwich University, Northfield, Vermont 05663. Application Deadline: June 13, 1986. An equal opportunity employer.

## Ice Hockey

**Head Men's Ice Hockey Coach.** Alaska Pacific University is seeking a full-time head coach for men's ice hockey. APU, a new and innovative university, is beginning a new athletic program in the '86-'87 academic year. The first-year program will consist of four sports at the NAIA level. It is planned to add four additional sports the second academic year (1987-'88) that will include men's ice hockey. NCAA Division II application is also planned for the second year, with the ice hockey program projected to compete at the Division I level. Duties will include recruiting, budgeting, scheduling, promoting, fund-raising and administration of the hockey program. Qualifications: BA required, MA preferred. Demonstrated ability to coach intercollegiate, intrascholastic, Junior A or professional hockey. Salary: Commensurate with qualifications and experience. Appointment Beginning Date: September 1, 1986. Respond with letter, resume and letters of reference to: Mike Blewett, Athletic Director, Alaska Pacific University, 4101 University Drive, Anchorage, AK 99508. Closing Date: June 13, 1986. APU is an EO/AA Employer.

See The Market, page 15

## Women's Basketball Coach Elmhurst College

Women's Basketball Coach/Physical Education Teacher. Elmhurst College (suburban area of Chicago, Illinois) invites applications for a full-time position as basketball coach, possibly softball also, in a highly successful, nationally ranked athletic program. Applicant must possess a commitment to Division III philosophy and liberal arts education. Qualifications include master's degree in physical education or closely related field, and ability to teach among the following activities: dance, (strongly preferred), swimming, individual sports. Salary competitive.

Elmhurst College is a thriving college with a total day/evening enrollment of 3,400 students, a vital commitment to athletics, a first-class sports facility, and membership in the CCIW Conference and the NCAA. Applicants should send a covering letter, undergraduate and graduate transcripts, resume, and three letters of recommendation to: Search Committee, Physical Education/Athletic Department, Elmhurst College, 190 Prospect Avenue, Elmhurst, Illinois 60126.

## ASSISTANT ATHLETIC DIRECTOR FOR PROMOTIONS, MARKETING AND FUND-RAISING

Responsible for the development of marketing strategies and coordination of athletic fund-raising activities. Other responsibilities include promotion of individual and game season ticket sales for athletic department events. Development of promotional themes, activities, and materials.

**Qualifications:** Bachelor's degree required; experience in public relations and/or marketing; knowledge of athletic administration. Good written and verbal communication skills.

**Salary:** Commensurate with qualifications and experience. This is a 12-month appointment.

Send a letter of application, resume, and three letters of reference to:

Thomas O'Connor  
Director of Athletics  
Laevey Activity Center  
Santa Clara University  
Santa Clara, CA 95053

Deadline for application is June 8, 1986. Starting date is August 1, 1986.

Santa Clara is an Equal Opportunity Affirmative Action Employer

## HEAD WOMEN'S SOCCER COACH 100% Appointment—10-Month Position

**Responsibilities:** 1. Organize and administer all phases of a competitive Division I soccer program. 2. Assess talent and recruit prospective student-athletes capable of Division I competition at a prestigious academic institution. 3. Supervise assistant coaching staff. 4. Establish and maintain effective relationship with high school coaches, media and general public, with special emphasis on the state of Wisconsin. 5. Comply with University, Big Ten and NCAA rules and regulations, enforce UW athletic board policies.

**Qualifications:** 1. Successful collegiate soccer coaching experience required—3 year minimum preferred. 2. Proven success in the area of personal relations skills in dealing with female student-athletes, peers, administrative personnel and the general public. 3. Master's degree preferred. 4. Successful competitive experience in collegiate soccer preferred. 5. Strong personal commitment to the growth and development of women's athletics within the academic setting.

**Salary:** Commensurate with qualifications and background.

**Deadline for Application:** June 6, 1986.

**Procedures for Application:** Apply in writing to:

Paula Bonner  
Assistant Athletic Director  
University of Wisconsin-Madison  
1440 Monroe Street  
Madison, WI 53711

Include resume, credentials and three letters of reference.

The University of Wisconsin is an Equal Opportunity/Affirmative Action Employer

## The Market

Continued from page 14

### Lacrosse

**Intramural-Recreation Director/Women's Lacrosse Coach.** Master's degree in Recreation, Leisure Studies, or related field required; experience in recreation administration, programming and supervision; demonstrated ability in the supervision and training of assistants; ability to coach women's lacrosse, to plan, supervise and administer an NCAA Division III program in the context of a liberal arts college, and previous experience in lacrosse, coaching, and with women-athletes. This is a continuing academic year staff appointment with salary commensurate with education and experience. Responsibilities begin September 1; filing deadline June 23, 1986. Forward letter of application, vita and three current letters of recommendation to: Dr. Linda Arena, Women's Athletic Director, P.O. Box 720, Wittenberg University, Springfield, Ohio 45501. Wittenberg University is an equal opportunity/affirmative action employer.

### Soccer

**Head Soccer and Track Coach/Physical Education Professor.** Full-time tenure track academic year faculty position at Blackburn College, Illinois, NCAA III, beginning Fall 1986. Responsibilities include: teaching courses in the physical education/management major including physiology of exercise and test and measurements, plus coaching and some recruiting for men's soccer and the combined men's and women's track team. Qualifications: A doctorate in physical education (preferred for faculty status) plus demonstrated excellence in teaching and a commitment to coaching in a selective liberal arts college context. Competitive Salary. Send applications, resumes and at least three references by 10 June to Dean Arthur Danken, Blackburn College, Carlinville, Illinois 62626. An Equal Opportunity Employer.

**Head Soccer, Women's Soccer.** Duties: Serve as Head Soccer Coach for NCAA Division I program. Plan, organize and administer total women's Soccer Team. Fall 1986 will be first year to conduct soccer. Assist with Women's Athletics Fund-Raising. Assist with Academic Advising and Counseling. Additional duties as mutually agreed upon. Qualifications: Bachelor's degree required. Will consider Master's or Doctoral candidates. Prior playing experience. Prior coaching and recruiting experience highly desirable. Familiarity with NCAA Rules preferred. Salary: Half-time or graduate assistant salary, determined by candidate qualifications. Effective Date: July 1, 1986. Twelve-month position. Application Deadline: June 6, 1986. Application Procedure: Submit letter of application, extensive soccer resume, and three current letters of recommendation to: Ruth Cohoon, Director, Women's Athletics, University of Arkansas, Bamhill Arena, Room 215, Fayetteville, AR 72701. The University of Arkansas is an equal opportunity/affirmative action institution.

**Soccer Coach (Part-time).** For a successful Division I program. Requires knowledge of the game and ability to coach in a highly competitive conference. Reply to Steve Reinhardt, Athletics Department, Lafayette College, Easton, PA 18042, or call 215/250-5495. Equal Opportunity Employer.

### Softball

**Head Women's Softball Coach (Part-time).** Direct all aspects of Division III program. Prior head coaching experience preferred. Application deadline: June 15, 1986. Appointment is for 1986-87 academic year. Send letter of application and resume to: Dr. Judy Burling, Athletic Director, Regis College, 235 Wellesley Street, Weston, MA 02193. An Equal Opportunity/Affirmative Action Employer.

### Swimming

**Assistant Swim Coach.** Coaching experience preferred. Graduate assistantship position in counseling, industrial technology and education, safety, vocational education/rehabilitation, hospitality and tourism, psychology or media technology. Individual involved in on-deck coaching, recruiting, student advisement and other normally expected responsibilities. The University of Wisconsin-Stout successfully competes in the WSCC/WIAC. Contact Coach John Miller (715)232-2281 or (2116), University of Wisconsin-Stout, Menomonie, Wisconsin 54751. Stout is an AA/EOE.

### Tennis

Assistant Tennis Coaching position at The

University of Iowa. Half-time position may be permanent or filled by graduate assistant. Bachelor's degree in physical education or related area and coaching experience required. Division I coaching experience and experience with NCAA recruiting rules and regulations, administration, organization and training preferred. Responsibilities primarily in the areas of administration and recruitment of student-athletes. Salary depends upon qualifications. Starting date negotiable; screening to begin June 1, 1986. Send letter of application and three letters of recommendation to: Linda C. Hackett, Associate Director, Women's Athletics, The University of Iowa, 340F Carver Hawkeye Arena, Iowa City, IA 52242. The University of Iowa is an Equal Opportunity/Affirmative Action Employer.

**Head Coach Women's Tennis.** Harvard University invites applications for position of Head Coach of Women's Tennis on a 9-month basis starting September 1, 1986. Baccalaureate degree required. Must be tournament level player with high degree of organizational skills. Previous coaching experience and good interpersonal skills necessary. Responsible for all aspects of women's tennis program including scheduling, recruiting, fund-raising, alumni interaction. Will travel with the team and be responsible for ordering of equipment. Application Deadline: June 18, 1986. Cover letter and resume with three letters of reference to: John P. Reardon Jr., Director of Athletics, Harvard Department of Athletics, 60 John F. Kennedy Street, Cambridge, Mass. 02138. An Equal Opportunity/Affirmative Action Employer.

### Track & Field

**Assistant Women's Track Coach.** Full-time, 12-month position with responsibility for recruiting, coaching all areas of track and field (preferably field events) and meet management, etc. Master's degree in physical education or related field and experience in coaching at college level preferred. Must be certified at least as a level I coach by PAC, CTF, CAC or any other recognized track and field organization, and willing to work in a highly academic institution. Salary commensurate with experience and qualifications. Send letter of application, resume, three references and transcripts to: Victor Lopez, Head Women's Track Coach, Rice University, Department of Athletics, P.O. Box 1892, Houston, Texas 77251, by June 15, 1986. EOE/M/F/V/H.

**Track Coach.** Instructor in HPER and Head Men's Indoor and Outdoor Track Coach. Temporary one-year appointment starting August 22, 1986. Opportunity to apply for permanent position in 1987. Teach in HPER area, coach men's indoor and outdoor programs, including recruiting and other appropriate divisional assignments. MA required. Evidence of successful teaching and coaching experience at secondary and/or collegiate level. Head track coaching experience preferred. Send letter of application, resume with transcripts, and three current letters of recommendation to: Robert Boeniger, Adams State College, Alamosa, Colorado 81102, 303/589-7401. Applications accepted until June 20, 1986, or until position is filled. AA/EOE.

**Women's Track and Cross Country Head Coach.** West Virginia University is accepting resumes and recommendations for a qualification

head coach to direct its Division I Women's Track and Cross Country program. Bachelor's degree is required, three years' coaching experience preferred. The 9-month appointment renewed annually will provide a starting salary range of \$15,000 to \$20,000. Excellent indoor and outdoor facilities. Resume and recommendations are requested by July 1, 1986, for a starting date of August 11, 1986. Send to attention of Tom Shupe, Associate Athletic Director, P.O. Box 877, Morgantown, West Virginia 26506. West Virginia University is an Equal Opportunity/Affirmative Action Employer.

### Volleyball

**Head Coach of Women's Division I Volleyball Team.** Position may include limited teaching in lifetime sports. Master's degree required, preferably in physical education. Screening will begin June 9. Interested persons submit resume, official undergraduate and graduate transcripts, letter of application and two current letters of recommendation to: Dr. Leotis Morrison, Associate Athletic Director, James Madison University, Harrisonburg, VA 22807. Affirmative Action/Equal Opportunity Employer.

**Women's Head Volleyball Coach.** Position: Head Coach of a Southeastern Conference, NCAA Division I volleyball program. Bachelor's Degree required, Master's preferred. Successful coaching experience at college level. Thorough knowledge of NCAA rules and regulations. Responsible for full administration of the women's volleyball program including recruiting, budgeting, staff, and coaching. Salary: Commensurate with experience and qualifications. Submit letters of application and resume to: Charles L. Carr, Director of Athletics, Mississippi State University, Drawer 5327, Mississippi State, MS 39762.

**Full-Time Assistant Women's Volleyball Coach.** Assist in coaching a Division I women's volleyball team in the highly competitive Southeastern Conference. Bachelor's degree required. Demonstrated coaching experience at the high school or college level preferred. Responsibilities include recruiting (within university guidelines), team practices, conditioning and weight programs, scouting, scheduling, travel arrangements, fund-raising, promotions, public relations, organizing off-season programs, camps, clinics and other duties as assigned by head coach. Must be well organized and possess the ability to perform a variety of detailed tasks. Knowledge of NCAA rules and regulations along with excellent oral and written communication skills highly desirable. Salary commensurate with experience and qualifications. Send letter of application, resume, three references and transcripts to: Debbie Sokol, Head Volleyball Coach, Rice University, Department of Athletics, P.O. Box 1892, Houston, Texas 77251 by June 15, 1986. EOE/M/F/V/H.

**Head Coach, Women's Volleyball.** Caldwell College is accepting applications for the position of Head Women's Volleyball Coach. Preferred requirements include demonstrated coaching ability at the high school or college level. Interested candidates should call the Athletic Department Monday through Friday between the hours of 10 a.m. to 4 p.m. at 201/228-4424, Caldwell College, Caldwell,

New Jersey 07006. AA/EOE.

**Women's Volleyball Coach.** Appointment Date: July 1, 1986. Responsibilities: Organizing and starting volleyball program at major Southern university, recruiting, coaching, scheduling, preparing and administering budget. Summer camp opportunities available. Qualifications: Bachelor's or master's degree, previous successful coaching experience, strong background in teaching and coaching skills. Salary: Commensurate with experience and qualifications. Application Procedure: Send letter of application, vita, credentials and three letters of recommendation to: Joe Ciampi, Assistant Athletic Director, P.O. Box 351, Auburn, Alabama 36830. Deadline: June 1, 1986. Auburn University is an Equal Opportunity Employer.

### Miscellaneous

**Intramural Director/Facilities Coordinator.** Qualifications: Master's Degree required, Doctorate preferred. Experience: Facilities coordinator experience preferred. Background relating to intramurals and open recreation required. Prefer teaching experience in HPER. Supervisory experience required. Personal: Applicant must possess the ability to interact with colleagues, students, and constituents of the community. Strong people skills are desired. Responsibilities: 1. Coordinate facilities. 2. Oversee and direct the intramural and open recreation program. 3. Responsible for the development and expenditure of the intramural budget. Salary: Commensurate with qualifications and experience. Appointment: 12 month appointment potentially beginning August 1, 1986. Application Deadline: July 8, 1986. Applications must include resume, transcripts and three letters of recommendation to: Mr. Tom Tschider, Director of Marketing and Promotions, University of North Dakota, Grand Forks, ND 58202. Equal Opportunity/Affirmative Action Employer.

**Athletic Trainer, Men's Soccer, Men's Golf, Ice Facility Manager.** Saint Mary's College invites applications to fill two full-time 9½-month positions. Positions involve athletic trainer, men's soccer coach, men's golf coach, ice facility manager, equipment manager and an assistant coaching position in soccer, hockey, basketball, volleyball or softball. Duties include coaching, scheduling, recruiting, scouting, and administrative responsibilities. Athletic Trainer position includes management of training room and supervision of student trainers. Salary dependent upon previous experience. Application Deadline: June 11, 1986. Decisions to be made by July 1, 1986. Positions begin August 15, 1986. Send letter, resume and three letters of reference to: Don Olson, Box 62, Saint Mary's College, Winona, Minnesota 55987. Equal Opportunity/Affirmative Action Employer.

### Graduate Assistant

**Graduate Assistant Openings—Mankato State University.** Graduate Assistant openings in wrestling, men's track and field, hockey, football (defensive backfield) baseball, women's softball, sports information, intramurals and men's athletic administration. Assist

coach or department head with organization and conduct of program. Salary: \$3,250 for 9-month appointment with tuition deferment of six quarter credits each term. Preference will be given to students who have undergraduate major or minor in physical education with intent to pursue graduate work at master's level in physical education. A 2.8 undergraduate GPA is required for consideration. Applications will be accepted until filled. Send letter of application to: Joe Walsh, Chair of Physical Education/Graduate Program, Mankato State University, P.O. Box 28, Mankato, Minnesota 56001.

**Graduate Assistant-Women's Field Hockey and Lacrosse.** Includes tuition waiver. If interested, contact: MaryBeth Holder, Lehigh University, Women's Field Hockey/Lacrosse, Taylor Gym, Number 38, Bethlehem, PA 18015.

**Graduate Assistant.** The University of Connecticut is seeking a graduate assistant to serve in a coaching capacity in the men's track and field program for the 1986-87 academic year. Experience in weight/pole vault preferred. Please send resume to: Bill Kelleher, U-78, Division of Athletics, Fieldhouse, Room 200, 2111 Hillside Road, Storrs, Connecticut 06268.

### Open Dates

**Football.** The University of Idaho, Division I-AA, needs game for September 12, 1987. Call: Bill Belknap, 208/885-0200.

**Women's Basketball.** The University of Minnesota-Morris is seeking one game in Southern California on Friday, December 5, 1986. Prefer NCAA III or other non-scholarship opponent. Call 612/589-2211 ext. 6430.

**Men's Basketball NCAA Division II.** Berry University of Miami Shores, Florida, is seeking home games with Division I or II opponents. Guarantee. Call: 305/758-3392, ext. 494.

**Men's Basketball.** Mansfield University is seeking one team for tournament on November 21 and 22. Guarantee available. Also need two games for 1986-87. Call: Roger Mainsner, 717/662-4208.

## Sports Information Director

Responsible for all public relations and publicity in support of a Division III college athletics program. Produces weekly sportsletter, provides information to media and arranges for on-campus media coverage of athletic events, prepares preseason brochures and programs for home events, supervises student interns, and assumes other responsibilities as assigned by the Director of Public Information and Publications.

Requires a B.A., a thorough knowledge of college sports, and excellent written and oral communication skills. Experience in layout, editing and compiling sports statistics preferred.

Send resume by June 15 to the Office of Personnel Services, Connecticut College, 270 Mohegan Ave., New London, CT 06320. EOE.

## Assistant Athletic Director Women's Coach/Athletic Trainer

**Duties:** Administration of Women's Athletics on the NAIA Division II level, reporting to the Director of Athletics. Women's Coach (which would include recruiting) in one or more of the following sports: volleyball, basketball, softball.

**Qualifications:** Master's degree preferred, with administrative or previous coaching experience. Also of interest are candidates with backgrounds in athletic training.

**Terms of Contract:** Full-time, non-tenure coaching. 12-month appointment. Starting date August 15, 1986.

**Salary:** Commensurate with experience.

**Applications:** Send letter of application, resume, along with letters of recommendation to:

Roger M. Kirkhart  
Director of Athletics  
Tiffin University  
155 Miami Street  
Tiffin, Ohio 44883

**Deadline for Applications:** June 20, 1986.

Equal Opportunity/Affirmative Action Employer

## DIRECTOR OF ATHLETICS

**POSITION:** The Athletic Director is the principal administrator for the Department of Intercollegiate Athletics and reports to the Special Assistant to the President. The position requires extensive knowledge of athletic issues as they relate to the administration of a major athletic program at an NCAA Division I-A level. The Director must plan and manage department budget; supervise and evaluate personnel; communicate effectively and work with governing associations, the community, and related publics. The Director is responsible for overseeing all aspects of the athletic program in accordance with University, Conference, and NCAA rules and regulations.

**QUALIFICATIONS:** Candidates shall have a baccalaureate degree (advanced degree preferred). They shall have at least five years of successful experience in a senior level athletic administrative position at a major university with a recognized men's and women's athletic program, preferably at the NCAA Division I-A level. Such experience should include sound fiscal management, knowledge of NCAA rules and governance, scheduling, and experience in public relations activities.

**APPOINTMENT AND SALARY:** A 12-month, non-tenured appointment to be extended by mutual agreement. Salary is competitive based on qualifications and experience.

**GENERAL INFORMATION:** The University of Wyoming is a comprehensive, multi-purpose institution serving approximately 9,800 students in the on-campus setting and has extensive off-campus obligations. Academic programs are offered through seven colleges, the Graduate School, and the School of Extended Studies and Public Service. The University competes on the NCAA Division I-A level in football and NCAA Division I level in 11 men's sports and 8 women's sports. The University holds memberships in NCAA, Western Athletic Conference, High Country Athletic Conference, and College Football Association.

**APPLICATIONS:** Nominations and applications must be postmarked by July 11, 1986. Applicants should submit a letter, resume, and references to:

David L. Baker  
Special Assistant to the President  
University of Wyoming  
University Station, Box 3434  
Laramie, Wyoming 82071

AN EQUAL OPPORTUNITY/AFFIRMATIVE ACTION EMPLOYER

## YALE UNIVERSITY Associate Director For Alumni Athletic Affairs

A 12-month, full-time position reporting to the Director of Athletics. Yale provides 35 varsity sports for men and women, all of which are NCAA Division I. Responsible for alumni affairs directly connected with the athletic program, including central administrative support to the varsity sport associations and assistance in the fund-raising efforts of these associations. Acts as the department's liaison with the University Development Office, the Alumni Fund and the Association of Yale Alumni. Provides general development support to the Director of Athletics in accord with guidelines set by the University Development Office and the Alumni Fund. Bachelor's degree and a minimum of two years' relevant experience in the area of alumni affairs or fund-raising are required. Should have a broad knowledge of men's and women's intercollegiate athletics. Proficiency with analytical methods, organization, and communication skills (verbal and written) highly desirable. Knowledge of Yale University and of the Ivy League highly desirable. Must have good interpersonal capability. Direct applications to: Mr. Frank B. Ryan, Director of Athletics, Yale University, Box 402A Yale Station, New Haven, Connecticut 06520. Application Deadline: June 20, 1986.

Yale is an Equal Opportunity/Affirmative Action Employer

## ASSISTANT ATHLETIC DIRECTOR SPORTS FACILITIES MANAGEMENT

**Responsibilities:** A 12-month appointment. He/She must demonstrate management leadership skills. He/She must demonstrate competency in the management of human and financial resources, interpersonal relationships and communications. He/She must plan, organize, direct, control, administer all athletic facilities, buildings and grounds; event management, crowd control, security maintenance and repairs of buildings, facilities and grounds. He/She must manage budgets, scheduling events, activities and supervise maintenance and custodial personnel.

**Qualifications:** B.A. Degree required. Degree in engineering desirable. Intercollegiate athletics experience required. A minimum of five years' administrative experience required.

**Salary:** Commensurate with experience and qualifications.

**Deadline:** May 30, 1986. Will start work immediately.

**Mail Resumes to:**

Mike Lude, Director  
Intercollegiate Athletics  
Graves Building GC-20  
University of Washington  
Seattle, Washington 98195

The University of Washington is an Equal Opportunity Employer

## EASTERN COLLEGE ATHLETIC CONFERENCE Assistant Commissioner

Eastern College Athletic Conference is seeking applications for the position of Assistant Commissioner. Responsibilities and duties will include: Coordination, assistance and administration of Conference's women's and men's championship programs and women's officiating bureaus, with particular emphasis in the sport of basketball officiating; assistance in the overall administration of the diversified Conference services.

Position available commencing August 1, 1986. Closing date for applications: July 1, 1986. Minimum Qualifications: Bachelor's Degree. Prefer applicant with background including coaching, officiating and/or athletic administrative experience. ECAC encourages the applications of women and minorities for this position and is an Equal Opportunity Employer.

Send letter of application, including salary requirements, resume and list of references to:

Scotty Whitelaw  
Commissioner  
Eastern College Athletic Conference  
P.O. Box 3  
Centerville, MA 02632

# Attempt made to clarify playing rules' role in play-off selections

Modifications in non-NCAA playing rules will have a more significant role in the selection of some Association championships fields if a recommendation made by the Special Committee to Review Playing Rules is approved by the Executive Committee.

The recommendation, which applies only to governing sports committees that do not publish playing rules, would permit those committees to require adherence to rules modifications during the regular season as a criterion for selection to a championship field.

For example, if the NCAA Men's Gymnastics Committee, which does not publish playing rules, adopted a modification to international gymnastics rules (which are followed in regular and postseason intercollegiate competition) for use in the National Collegiate Men's Gymnastics Championships, this recommendation would permit the committee to consider for selection to the championship only those teams that have used the modification in regular-season competition.

The committee met May 19-20 in Kansas City. All of the recommendations will be forwarded to the NCAA Administrative Committee, which had referred a number of questions to the special committee.

Specifically, the Administrative Committee had referred requests from the Field Hockey, Division II Women's Volleyball and Women's Soccer Committees that criteria for selection into NCAA championships include use of specific playing rules during regular-season competition. Inasmuch as none of the committees has rule-making responsibilities, there was a question about the authority of the sports committees to create in-season

playing rules as a part of their tournament-selection processes.

Although the special committee recommended that the requests be granted immediately, it also recommended that Bylaw 12-5 be amended to clarify the action.

The special committee also had been asked to comment on the application of the provisions of Bylaw 3-5 to regular-season participation by a member of an institution's wrestling team in a tournament sponsored by the national wrestling federation that is not conducted under NCAA wrestling rules and to consider similar possibilities in other sports.

In response, the special committee indicated that Bylaw 3-5 clearly was not intended to prohibit the participation of NCAA member institutions or their student-athletes in traditional events open to nonintercollegiate contestants; and inasmuch as the contests are not conducted by NCAA member institutions, the provisions of Bylaw 3-5 should not apply.

Similarly, in response to a request to comment on whether an NCAA and an NAIA institution can agree to the use of playing rules other than those developed by the NCAA for a contest being conducted at the site of the NAIA school, the special committee recommended that the provisions of Bylaw 3-5 not apply because the contest is not being conducted by the NCAA school.

Appointed by the NCAA Council in 1985, the special committee assists the various sports committees with rules-making responsibilities in their efforts to make NCAA playing rules sufficiently flexible so that all levels of the membership can conduct their intercollegiate contests in accordance with Bylaw 3-5. The special committee also reviewed the progress being made by the sports committees.

"The passage of Bylaw 3-5 at the 1985 Convention made the use of playing rules developed by the Association mandatory in all intercollegiate contests conducted by the member

institutions," special committee chair Fred Jacoby said. "But there was some sentiment in the membership that some of the rules if strictly enforced would make it difficult for some institutions to continue their programs.

"For example, a facility that does not quite meet the specifications established in the playing rules but traditionally has been acceptable for competition suddenly could not be used. Obviously, that is a situation that should be avoided."

At its first meeting a year ago, the special committee developed a set of guidelines that suggested a separation of the rules into those that are administrative in nature (having to do with preparation for the contest) and those that are conduct in nature (having to do with the actual play of the contest itself).

"For the most part, the sports committees responded well to the guidelines," Jacoby said. "Not all of the committees have had a chance to

meet since the guidelines were developed, so we still have some to review. The most consistent concern that we encountered was a reluctance to physically divide the rules, separate administrative rules from conduct and put them in a different area. I think we have solved that problem, however."

The special committee agreed that the sports committees could add a statement to the beginning of the rules explaining the difference between administrative and conduct rules and listing the references to the administrative rules.

"I think it probably will take two or three years before all the committees are comfortable with the adjustments they have made," said Jacoby, "but progress certainly has been made."

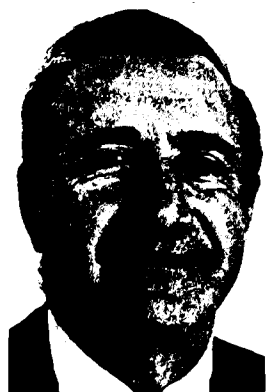
Bylaw 3-5 becomes effective August 1 in all sports for which the Association has developed playing rules. The mandatory use of the playing rules has been required in the sports of football and basketball since 1983.

## Costello to head new conference

The Little East Conference, which includes six of New England's NCAA Division III schools, will begin play with the men's and women's basketball seasons in November 1986.

Members of the new conference are Eastern Connecticut State University; Plymouth State College; Rhode Island College; Southeastern Massachusetts University; the University of Massachusetts, Boston, and the University of Southern Maine.

Richard A. Costello, athletics director at Southern Maine, has been selected president of the conference.



Richard A. Costello

A member of the USM staff for 33 years, Costello was the longtime NAIA chair in New England and recently was inducted into that organization's national hall of fame.

William Baird, athletics director at Rhode Island College, will serve as secretary-treasurer. Southern Maine's Al Bean will serve the first term as sports information director.

Conference play will begin with a home-and-home series this winter in men's and women's basketball, followed by a postseason tournament.

The conference has submitted an application for automatic bids to the NCAA Division III tournaments.

# Our Starting Five Is In Your Court.

Valvoline's comprehensive line of motor oils is designed to meet the demands of today's engines. Valvoline All-Climate is a multi-grade oil that provides excellent protection in all weather conditions. Valvoline Turbine is a high-performance oil for modern engines. Valvoline Super HPD is a premium oil for heavy-duty applications. Valvoline's advanced technology ensures long engine life and optimal performance.