

The NCAA News

March 5, 1986, Volume 23 Number 10

Official Publication of the



National Collegiate Athletic Association

Liability coverage studied

Having reviewed three existing group insurance programs and approved their continuation for 1986-87, the NCAA Insurance Committee has taken the first steps toward development of athletics liability coverage for purchase by NCAA member institutions.

During a February 24-25 meeting in Phoenix, the committee reviewed a preliminary proposal from K & K Insurance Agency, Inc., the same underwriter that helped develop the Association's liability coverage for 1985-86 NCAA championship events.

After receiving the proposal, the committee directed K & K to take the following steps in advance of the group's June 2-3 meeting:

1. K & K will provide a draft of a proposed athletics liability policy for review by the committee and NCAA legal counsel.

2. K & K will provide additional information to the committee regarding a proposed waiver-and-release statement that athletics participants would be required to sign.

3. At the request of the company, the committee will permit K & K to develop case studies (i.e., specific policy recommendations and corresponding premiums) involving randomly selected institutions in each NCAA membership division in an effort to predict accurately the costs of the proposed program.

Should all necessary preparatory work be completed, the committee could approve a final proposal at the above-mentioned June meeting for recommendation to the NCAA Council.

In other business, the committee received reports from representatives of American Sports Underwriters, Inc., (administrators) and State Mutual Life Assurance Company of America (underwriters) of the three group insurance programs currently being offered to the membership.

It was reported that more than 25 percent of the membership (206 institutions) was enrolled in the lifetime catastrophic-injury program. Although it was reported at the meeting that there had been no claims filed to date in this program, the committee was advised that at least three catastrophic injuries had occurred so far

See *Liability*, page 14



Todd Allred photo

Softball preview

Kerry Steitz of Fresno State is ready to get into the swing of things as the NCAA women's softball season approaches. For a preview of the season in all divisions, see pages 4-5.

'87 Final Four ticket procedure set

Ticket applications for the 1987 NCAA Division I men's basketball Final Four are being accepted at the NCAA national office, according to Richard D. Schultz, athletics director at the University of Virginia and chair of the Division I Men's basketball Committee.

The 1987 Final Four is scheduled March 28 and 30, 1987, at the Louisiana Superdome in New Orleans, Louisiana. Tickets are \$20, \$35 and \$50 and will admit the bearer to the national semifinals and national championship games.

Fans with questions about the 1986 and 1987 NCAA Basketball Championships can call 913/362-1987.

Interest income generated by ticket application money will be used to support one or more of the NCAA's youth and scholarship programs such as Volunteers for Youth, sports clinics, National Youth Sports Program and the annual NCAA postgraduate scholarship awards.

Schultz also announced the following procedures for those who want to order tickets for the 1987 Final Four:

Final Four:

An official order form, or a photocopy of same, must be used to apply for tickets. Payments without application forms will not be accepted. Official order forms may be obtained by calling 913/362-1987 or writing NCAA Final Four Tickets, P.O. Box 1906, Mission, Kansas 66201.

All ticket applications must be received no later than April 15, 1986. Applications received after that date will be returned to sender.

The NCAA or the United Missouri Bank of Kansas City, N.A., is not responsible for returning incorrect applications to sender before the April 15, 1986, deadline for reapplication.

The NCAA will not make exceptions for late applications delayed by mail service. Applications received after midnight April 15 will be returned, unopened, to the sender.

A separate application form must accompany each payment. Each application form must include a personal check for the correct amount, payable to the "NCAA Final Four." No postage or handling fees will be accepted.

Committee to seek new drug category

An additional category of drugs to be included in the NCAA drug-testing plan will be recommended by the Special NCAA Committee on Drug Testing for Executive Committee approval.

In essence, the category is being recommended for inclusion in the drug-testing program so that student-athletes who are taking prescription medication for hay fever or other allergies will not be unnecessarily penalized or held out of competition at NCAA championships or Association-certified postseason football bowl games.

John L. Toner, director of athletics at the University of Connecticut and chair of the drug-testing committee, said that discussions with medical personnel of the United States Olympic Committee led to the proposal for a new drug category.

"As USOC sophistication develops in the area of drug testing, we want to be able to take advantage of that experience," Toner said.

Student-athletes who are taking prescription medicine authorized by a physician would not be penalized by the drug-testing process, Toner

said. They could be granted exemptions, he said.

Toner said the NCAA committee emphasized in its meeting March 3 in Atlanta that each championship and each certified bowl game is subject to testing, as are all athletes participating in those events.

"We will not announce who is or who is not to be tested," Toner said. "We would advise everyone to be prepared for testing."

Testing by the NCAA is scheduled to begin in the 1986-87 academic year, as authorized by NCAA Convention approval of Proposal No. 75.

The committee's agenda in Atlanta included a review of the procedure to be employed during each phase of drug testing. To start the drug-testing procedure, it has been estimated that 16 crew chiefs will be required, with two on each of eight teams representing the eight NCAA districts.

A subcommittee was established to set standards for laboratory analysis of tests, and the subcommittee will announce soon its plan to advertise for laboratories on a regional basis that can meet NCAA standards. Toner said the committee was particularly interested in those laboratories

See *Committee*, page 18

In the News

Impressive

Marquette University has some impressive numbers attached to its basketball history—the number of players who have earned degrees. Page 2.

Previews

Championships previews in Division I men's and women's basketball, men's and women's rifle, Divisions I and III men's and women's track, Division II men's and women's swimming, Division III women's swimming, and Division III men's ice hockey. Pages 8-12.

Travel plans

Divisions II and III athletics directors are reminded that travel plans for NCAA championships should be made through Fugazy International Travel. Page 16.

Television will cater to basketball junkies in next few weeks

For college basketball junkies, ESPN will be satisfying much of their needs in the coming weeks. The cable network, which reaches 37 million homes, will televise 26 conference play-off games—22 of them live.

That's more than double last year's output. There will be seven live Big East Conference games starting with the quarterfinals, seven Atlantic Coast Conference games (four live) and six Sun Belt Conference contests (five live).

In addition, the championship games of the Atlantic 10, Metro Atlantic, Missouri Valley, Midwestern Collegiate, Southwest Athletic and Western Athletic Conferences will be seen.

"We also will have the facility under our whip-around format to cut into

35 to 40 games," says ESPN spokesman Chris LaPlaca. "We could go into the Big Eight, Metro, Pacific Coast Athletic Association and possibly Big Sky games at an appropriate stoppage point or during half time of the games we are doing."

CBS doesn't get into the postseason act until the NCAA tournament, while NBC will provide the championship games of the Southeastern Conference March 8 and ACC March 9 to close out its coverage for the season.

CBS will be in Kansas City March 9 for live coverage of the selection and draw for the NCAA Division I Men's Basketball Championship 64-team field.

ESPN analyst Dick Vitale and his partners will be back for coverage of

21 NCAA tournament games—12 live—while CBS will do 45.4 hours of live tourney coverage, including the NCAA Final Four at Dallas March 29 and 31. Included in CBS' 45.4 hours is the NCAA Division I Women's Basketball Championship at Lexington, Kentucky, March 30.

Also March 30, NBC will present its one-hour "Al McGuire's Championship Special," when the former Marquette University coach conducts interviews with the championship-round coaches and projects the NBA draft.

ESPN's NCAA tourney coverage consists of 19 (12 live) first-round games March 13-14 and two live regional semifinals March 20-21 to wind up its tourney coverage.

The March 22-23 regional finals

are the weekend domain of CBS.

CBS will show live first-round games from Ogden, Utah, March 13 and from Long Beach, California March 14, starting at 11:30 p.m. Eastern time. For the March 15-16 second-round games, a viewer will be able to see three games of the four games each day from noon to 6:30 p.m. Eastern time.

CBS also will show two regional semifinals March 20-21, getting the first pick over ESPN because of the competition and/or starting time.

Billy Packer, CBS' analyst, sees the NCAA tournament as a free-for-all. Both he and Vitale agree that the 45-second shot clock, in effect for the tourney for the first time, should reduce the likelihood of a longshot champion, such as Villanova Univer-

sity last year and North Carolina State University in 1983.

"On paper, a healthy North Carolina, Kansas, Georgia Tech and Duke look like the top four," Vitale said. "There's a lot of parity this year. There's no clear-cut dominating team like Georgetown the past couple of years."

"Seven or eight other teams could get in the Final Four—like Memphis State, Nevada-Las Vegas, Michigan, Syracuse or St. John's (New York). With the shot clock, a talented team, one in the top 15, will survive the six rounds while a ball-control, disciplined team with less talent won't," Vitale said.

This article was written by Dick Joyce, Associated Press basketball writer.

Graduation rate embellishes rich basketball tradition

By Steve Aschburner
The Milwaukee Journal

To this day, Ulice Payne still cringes when he thinks about it.

"Hank would always wait until practice to get you," Payne, a former basketball player at Marquette University and now the commissioner of securities for the state of Wisconsin, said about Hank Raymonds, former assistant coach and head coach.

"He would call you over, start talking to you with his hands on your shoulders, face to face, and the whole team knew what was going on. You were in trouble for not hitting the books or for blowing a test. The rest of the guys'd rib you about it: 'Hank cracked you, Hank cracked you.'"

Embarrassing little chats like that—about missed classes, not missed free throws—have been a

part of Marquette's basketball program for nearly a quarter-century now and—say players, coaches and faculty members close to the program—are a major reason for the school's success in graduating players.

The numbers are impressive. In the 24 years beginning in 1961-1962 and ending in 1984-1985, Marquette University has granted degrees to 90.3 percent of its scholarship basketball players. Of 134 young men who played for the Warriors during that time and completed their athletics eligibility, 121 have graduated. In the 10 years since 1975-1976, 30 of 34 (88.2 percent) Marquette players have graduated.

Compare that with a nationwide figure for all NCAA Division I athletes of 26 percent, as reported last

June in a survey of 196 schools by USA Today.

Compare that, also, with Marquette's own figures for its student body at large. According to the most recent figures compiled by the university's office of institutional research, 69.5 percent of MU students entering in 1978-1979 graduated within six years of enrolling.

Naturally, the athletics department is proud of its figures for basketball, the school's showcase sport. So proud, in fact, that it publishes the figures in its basketball press guides and game programs. So proud that the graduation rate has bumped aside boasts of 20-victory seasons and NCAA-tournament appearances when a Marquette coach walks into a high school player's living room.

"I remember using that in my recruiting: 'It's higher than the average student body,'" said Payne, who graduated from Marquette in 1978 and served two years as a part-time assistant coach.

Said Raymonds, now the school's athletics director: "What we tell them is, 'If you come to Marquette and are willing to work, you'll have an opportunity to graduate.'"

Impressive as they are, though, the numbers raise two important questions:

• Assuming the figures are correct, do they say anything about the quality of the degrees granted? In other words, are Marquette degrees simply easier for basketball players to get?

• If the degrees are legitimate, how does Marquette do it?

There are several factors that might offer credibility to Marquette's academic offerings and prevent a player from slipping through the system. The simple fact that it is a private school seems to help. At last year's NCAA Final Four, the graduation rates of the three private schools—Villanova (91 percent), Georgetown (81.5 percent) and St. John's (New

York) (72.5 percent)—were far greater than that of the one public school, Memphis State.

Also, Marquette has no developmental studies program available to students with inferior high school credentials, a loophole often exploited by coaches at sports-dominated schools. Its core curriculum is substantial, a product of its Jesuit character, and requires a sizable liberal-arts background regardless of major. Class sizes are relatively small, allowing for more individual attention. Finally, there is no physical-education major, a popular choice of athletes at many public universities.

OK, if Marquette players actually have to work for their degrees, why are they able to do so more successfully than their counterparts in many other universities?

A big head start, said those interviewed, comes from the emphasis Warrior coaches place on academics when recruiting.

Bo Ellis, recruited from Chicago in 1973, said, "It all depends on where your head is at, what you got on your shoulders. With Marquette, it was

See *Graduation*, page 3

We haven't been asking enough

Harley Bowers, executive sports editor
Macon Telegraph and News

"I remain firmly convinced that we will see a significant improvement in both the (ACT and SAT) test scores and grade-point averages for high school athletes, black and white, now that the barrier they must climb has been established. And they will be stronger individuals for having made the climb.

"This business of accepting people into colleges all over the country simply because they have athletic talent is sickening. Many of the other abuses in college athletics are the result of recruiting the wrong type of people. Correct this and the task of straightening other things out will be a lot easier.

"Our problem in the past is that we haven't been asking enough."

Matt Marsom, member of the editorial board
Basketball Weekly

"I propose that there be sanctioned evening leagues established across America for the thousands of young men and women who either aren't interested in college or aren't eligible because of an inferior grade-point average and subpar test scores.

"I'm not talking about intramural leagues at the local YMCA; but instead, programs in which a young man can hone his skills against other top-notch competition with the dream of one day getting a chance to play professionally or in a foreign league.

"Yes, such an endeavor would take lots of time and probably even more money. But I believe it would be well worth the effort. Today's society must present high school students with alternatives to college after their prep days



Rev. Edmund P. Joyce



John Wooden

Rev. Edmund P. Joyce, executive vice-president
University of Notre Dame
CFA Sidelines

"If I had dictatorial powers, one of the first moves I would make would be to place an NCAA representative at each Division I school to monitor, on a continuing basis, the basic honesty of an institution's program in football and basketball.

"His duties would involve checking on the admission cases, following the academic progress of the athlete, maintaining records on graduation rates, investigating all rumors pertaining to illegal inducements or booster-club activities—particularly those forwarded by other schools. I would like to see him have regular contact with the president or faculty rep to inform them of his analysis of their program or even to alert these officials to certain danger signs. I would think a conscientious president or faculty rep would welcome such information from a neutral but authoritative source."

John Wooden, former head men's basketball coach
University of California, Los Angeles
Interscholastic Athletic Administration

"Over the years, I have come to define success as peace of mind, which can be attained only through self-satisfaction—knowing you made the effort to do the best of which you are capable.

"That is success. We are all equal in that respect. We may not be equal as far as opportunity is concerned. We may not be equal as far as ability is concerned. We are equal, however, as far as having the opportunity to make the most of conditions as they exist in our particular situation according to the abilities that we possess and our opportunity to try to improve upon them."

Blackie Sherrod, columnist
The Dallas Morning News
Athletic Business

"I'm not sure there is more cheating now or if we just know more about it. A certain amount of subsidizing of athletes has been going on for as long as I can remember, which is 40 years.

"Back when I was in school, players would have jobs sweeping out the gym once a week—'winding an eight-day clock,' we used to call it.

"I'm not saying don't do anything about it just because it's gone on all this time. I'm saying let's not be hypocritical about it. If you're going to do something about it, then do it."

Bo Jackson, Heisman Trophy winner
Auburn University
The Associated Press

"I think I've matured 10 years in these last four years. I've learned to cope with people and accept criticism. But the biggest thing is getting closer to my degree in family and child development. That will take me much further than my athletic ability will."

Letter to the Editor

To the editor:

Professional franchises change cities because of lack of support all of the time. If the College World Series leaves Omaha, it is hard to justify this on the basis of lack of support. Omaha has supported the College World Series very well.

It appears, however, that the almighty dollar may decide the issue. Remember, the short-term gain might not be a lasting one. The TV networks give, but they also take away. It would be good to remember that ESPN also was a supporter when nobody else wanted the College World Series.

Robert J. Gerraughty
Vice-President for Administration
Creighton University

Looking Back

Five years ago

CBS was awarded the rights to televise the 1982, 1983 and 1984 Division I Men's Basketball Championships in an announcement made March 4, 1981. The rights fee was not disclosed, but Division I Men's Basketball Committee Chair Wayne Duke said the final proposals by both CBS and NBC represented "a ringing endorsement of the vitality and popularity of college basketball and the NCAA tournament." (March 15, 1981, NCAA News)

Ten years ago

Exclusive rights to the 1977, 1978 and 1979 Division I Men's Basketball Championships were awarded in March 1976 to NBC. Rights fees were not announced, but an NCAA News editorial said the \$2.5 million paid by NBC for the 1976 championship would be doubled by the end of the three-year contract. (March 15, 1976, NCAA News)

Twenty years ago

Texas Western College (now University of Texas, El Paso) completed a storybook season by racing to the Division I Men's Basketball Championship in March 1966 at College Park, Maryland. Along the way, the Miners defeated Oklahoma City, Cincinnati, Kansas, Utah and Kentucky. Coach Don Haskins at 36 was one of the youngest ever to win the NCAA tournament. ("The Classic: The History of the NCAA Basketball Championship")

Thirty years ago

The University of San Francisco won its second straight NCAA basketball championship under coach Phil Woolpert, downing Iowa at Evanston, Illinois, after defeating UCLA, Utah and SMU to reach the finals. ("The Classic: The History of the NCAA Basketball Championship")

Opinions Out Loud

are completed, without making a young person feel like a failure for not wanting to go after a college degree.

"Come next fall, there are going to be more skilled 17- and 18-year-old athletes than ever before without colleges or universities to call their own. Some will sit home because their grades and test scores didn't stack up. Others won't go, not because they're not motivated, but because college isn't for them. These youngsters still deserve the opportunity to groom their respective talents outside the university environment."

Jack Hartman, head men's basketball coach
Kansas State University
The Associated Press

"When I announced my retirement, it was not because of problems in college athletics...it came out in all the stories that that was one of the strong reasons I got out. I was very disappointed about that.

"We all realize there are things in major college athletics that give us concern. But that would apply to almost any profession or business, and I think we're making great strides in those areas."

Tom Bradbury, assistant editor
The Charlotte Observer

"The hard truth is that athletics is the road to college for a relative few—and the road to a professional career for only a few of those.

"For the vast majority of students, depending on athletics is economic suicide. The system needs to say to them from the very beginning that academic achievement is essential—even if they plan on winning the Heisman Trophy, making all-pro and never being injured.

"Making academic achievement the prerequisite for athletics participation is one effective and essential way of doing that."

Graduation

Continued from page 2

education first, basketball second."

Said Payne, "A lot of times, it had to do with background. Did a guy come from a high school or a family that pushed him? Other guys never had to handle studying."

Once enrolled, the players seem to get much of their direction, incentive and motivation from Raymonds. From the time he was hired by Marquette in 1962 as an assistant to Eddie Hickey, through his years under Al McGuire, as head coach from 1977-1983 and now as athletics director, Raymonds has been the constant in the MU program. Although Marquette has no academic adviser working exclusively in its athletics department, Raymonds has served unofficially in that capacity. That, and as surrogate parent.

Perhaps not surprisingly, Marquette players have been and are treated with special attention by the school, attention not available to other students. Tutors are readily provided. Players receive special registration times. Through frequent letters from the coaches, instructors are informed when they have players in their classes, are notified in advance about excused absences for road games and are requested to call the coaches if a particular player is starting to falter in class.

Some students and members of the Marquette faculty have viewed such constant monitoring as improper, claiming that it might place a professor in the compromising situation of padding a grade or failing a star athlete. However, one instructor of a freshman English class who taught several former MU players, said the coaches' attention never, in his experience, lapsed into pressure to aid or pass a struggling player.

"Years ago I had a basketball player in class," said Carla Hay, associate professor of history, "and the only communication I ever had from the athletics department was a letter asking me to let them know if the young man had any trouble."

Raymonds defended that approach.

"I had an investment in them—those players were an investment to Marquette University—and if I ever assisted them, it was not to do anything illegal," he said. "Some people started to think that was wrong; but, hell, we weren't going to class for 'em."

Said Payne, "We were told which teachers were tougher, and which weren't. But so was everybody else."

Mentioning an instructor of a fine-arts course who was renowned on campus for being kind to point averages, Payne said, "Sure, I took him. You took him. Hank told us, 'My kids took him, too.'"

"Some of the teachers were tougher just because we were basketball players. I think they went the other way, trying to prove they weren't going to do anyone any favors."

Like many parents, Raymonds recalls the young men who failed as clearly as he does those who graduated, maybe more so. Yet, he does not think any of the 13 who did not graduate was misled or mistreated by the school.

"Everybody expects other people to be like you were, but maybe they weren't brought up like you were," Raymonds said. "Some of the youngsters, they don't have the confidence in themselves; they don't go to class because they're afraid they'll be embarrassed."

"But it's a lot like catching a bus. It's all self-discipline. As much as you want them to catch the bus, it's up to them to get there. Generally, if you go to class, do the work assigned, (a school is) gonna be fair with you," he said.

"I think we've got a good system. I'm not saying it's the best—sure, you're gonna lose some—but it's worked."

Academic planning should be part of the recruiting process

By George Schubert

The process and costs of recruiting potential student-athletes are out of control on many college and university campuses. Hundreds of thousands of dollars are being spent, mainly by coaches and alumni, to identify, evaluate and recruit individuals with potentially outstanding athletic skills.

Far too often, little or no attention, outside of meeting basic eligibility requirements, is given to the student-athlete's academic skills or needs. When a student-athlete has been identified as having learning disabilities or other academic deprivations, a total educational plan should be presented to the individual and his or her parents that demonstrates how the institution will meet the academic needs of the individual.

Recruitment is the key to bringing athletics talent to a campus. However, people who recruit students who have outstanding athletics talent also need to recruit for acceptable academic potential. Recruiters need to examine and consider honestly the meaning of the term student-athlete.

Academic planning should be a requirement within the recruitment process. The recruiter and the institution (based on the institution's academic mission, available academic programs, resources for assisting students who need special help and an evaluation of the student's academic potential) should be able to provide an appropriate academic program that, if followed by the student, affords him or her a realistic opportunity to graduate.

The passage of Proposal No. 48 (January 1983) and the modification of that resolution by the passage of Proposal No. 16 (January 1986) will change the recruitment procedures in many Division I institutions. However, the major change for any of these institutions is that they no longer will recruit particular students. Some of those students now will be recruited by Division II institutions, and the problems of how to educate these athletes will be shifted

from Division I to Division II.

The total athletics-recruitment process needs in-depth analysis. Proposal No. 16 has created a situation whereby Division I institutions will alter the identification and selection of high school students they plan to recruit, but much of that process continues to lack academic planning elements.

There needs to be a blending of the following intangible qualities into the student-athlete recruitment program: responsibility, respect, confidence, conscience, empathy, courage and honesty. If the correct ingredients are found and properly mixed, the product should be integrity.

The responsibility of an educational system is to educate those students accepted into the system, not to prostitute their athletics ability temporarily and then discharge them from the institution because of educational failure.

Schubert is dean of university college and summer sessions and institutional representative for athletics at the University of North Dakota. He is a member of the NCAA Research Committee.

Deadline for applications announced

The American Baseball Coaches Association has set a December 1, 1986, deadline for applications for a \$2,000 grant for graduate-level research in baseball.

The funds will be administered by the ABCA Research Committee, which is chaired by Phil Swimley, baseball coach at the University of

California, Davis.

Applicants will be asked to submit an outline of their research proposal with hypothesis, an itemized budget and estimated completion date of the research. Applications are available from Swimley by writing to him in care of the physical education department at the University of California, Davis, California 95616.

Team up with Greyhound[®] and see what kind of sports we really are.

Charter Greyhound, and we'll return up to 10% of your school's billings.

Every time you ride with us — from athletic teams to the band and other college organizations — you're helping to build the total amount of NCAA charter billings on Greyhound. And that adds up to big returns for your school.

With our new game plan, as the total NCAA volume figure grows, the percentage of billings that are returned to you will grow as well.

Up to a maximum 10% rate of return that goes directly to the athletic department.

So when you go Greyhound, you're getting more than our reputation for safety, service and reliability. You're getting a new way to keep expenses down.

When you're ready to plan your charters for the season, call us at 1-800-USA-NCAA. We'll give you more information and immediate charter quotes. And your Greyhound NCAA sales representative will contact you soon afterwards.

This year, put a good sport on your team. Choose Greyhound charters all season long.



Official Motorcoach Carrier for NCAA Championships



GO GREYHOUND
And leave the driving to us.[®]

© 1985 Greyhound Lines, Inc.

Cal Poly-Pomona hopes to start new softball reign

By Wallace I. Renfro
The NCAA News staff

Doom's day has come and gone. But there are plenty of survivors.

The Doom is Debbie Doom, who with her UCLA mound mate Tracy Compton terrorized Division I women's softball. Together they pitched the Bruins to College Softball World Series titles in 1984 and 1985.

Doom and Compton have graduated, and it is expected that the power will shift to Cal-Poly Pomona, Nebraska, Cal State Fullerton, Texas A&M and Northwestern. In fact, a preseason poll of the Division I Women's Softball Committee ranked the top five teams in that order.

Preseason polls are good only until the first of the new season. But since pitching plays such a dominant part in softball, there is good reason to believe that Cal Poly-Pomona could start its own reign of terror.

The Broncos return junior pitching ace Rhonda Wheatley, whose 48 victories last year were more than all but two teams' victories in Division I. Her 0.27 earned-run average was eighth best in the nation.

Pomona also returns outfielder Alison Stowell (.269).

On paper, it should be a rebuilding year for Nebraska (38-11). The Cornhuskers return only two starters from a team that won the Big Eight Conference and finished second in the nation. Coach Wayne Daigle admits that his team will be young, but he believes he "has never had a team with more raw talent."

If fall competition is any indication, the Huskers are in good shape. They were 15-1 against teams like Illinois State, Oklahoma and Kansas. One of the reasons is NCAA all-tournament-team pitcher Lori Sippel, a sophomore who was 15-5 last spring and pitched a no-hitter in the NCAA championship. Leading the offense is second baseman Lori Richins (.311).

Pomona and Nebraska both will face tough conference competition. Nebraska is one of five Big Eight teams ranked in the top 20, and the Broncos have to contend with Cal State Fullerton, which finished third in the nation last year while Pomona finished fourth.

Fullerton has two all-Americans returning to anchor the offense. Third baseman JoAnn Ferrieri hit for a .328 average last year, and shortstop Terri Oberg went .298. Also returning is pitcher Susan LeFebvre, whose 23-6 record was ninth best in the country for victories last year.

Texas A&M (45-12) went into post-season play ranked second in the nation last year, but a 2-1 loss to Louisiana Tech kept them out of the CSWS. The loss of two all-Americans this spring hurts, but there is lots of firepower returning. A total of seven starters return, including second baseman Judy Trussel (.313) and third baseman Cindy Cooper (.318). Also back is pitcher Shawn Andaya (21-3).

If pitcher Lisa Ishikawa can return to the form of her freshman year, 1986 could be the year for Northwestern (40-12-1). In an "off" season as a sophomore last year, Ishikawa was 26-7, with 288 strikeouts. As a freshman, she posted a 33-7 record and struck out 469 batters. The Wildcats also have freshman pitcher Nanci Clement, who struck out more than 300 as a high school senior.

For the record, UCLA can't be counted out. The Bruins are ranked sixth going into the season and return a strong nucleus of hitters, including Mary Ricks (.266) and Gina Holmstrom (.261). If freshman pitchers Samantha Ford and Michelle Phillips



Tami Johnston, Toledo

can fill the gap left by Doom and Compton, UCLA will be back in the fight.

Other teams to watch are California (35-25), Arizona State (38-17) and Fresno State (53-15).

Winners of five conferences automatically qualify for the Division I Women's Softball Championship. Following is a look at those conference races.

Big Eight Conference

This has to be the toughest conference in the country. No fewer than five teams are ranked in the top-20 preseason poll. That means that several teams could be disappointed when it comes time to make selections for regional competition.

Kansas (38-17) is ranked seventh in the poll and certainly will contend for the league title. The big gun for the Jayhawks is Tracy Bunge, who had a 24-11 record last spring. She also is the leading hitter at .358. Behind her at the plate is senior outfielder Ann Brent (.342). Kansas is picked by almost everyone as a challenger to Nebraska for the conference championship.

Oklahoma State could be the surprise team in the league. The Cowgirls (30-15) are picked ninth in a preseason poll. There will be a lot of young faces on the team. The leader is second baseman Mary Hammen, a .277 all-Big Eight selection.

The other two Big Eight teams picked to finish in the top 20 are Oklahoma (17th) and Missouri (19th). Both have veteran ball clubs with solid pitching.

Big Ten

Northwestern, with Ishikawa and company, is the clear favorite to repeat as conference champion. Right behind the Wildcats is Indiana (47-20-1) and hard-hitting Karleen Moore (.377), whose 84 hits were the most in the country last year. Also returning for Indiana is pitcher Amy Umterbrink,

who threw five no-hitters and one perfect game.

Experience is the strength for the Hoosiers. All of their top hitters return, and they have a lot of team speed.

Michigan (28-20) was second in the conference last year, but the Wolverines lost a lot. Still, there are five juniors returning, including catcher/third baseman Alicia Seegert (.338) and pitcher/first baseman Vicki Morrow (.312).

If a talented group of freshmen come through, Michigan could be right back in the thick of the conference race.

High Country Athletic Conference

Utah (44-13) lost its all-America first baseman, but the Utes return seven other starters and a total of nine letter-winners. It is hard to believe that they will not win the conference and a trip to the NCAA tournament again.

One of the reasons is pitcher Michele Townsend, who was 22-7 last year and hit .289 as a designated hitter. A couple of other good reasons are outfielders Pipi Hollingsworth (.303, 8 doubles, 5 triples) and Pati Rivas (.293).

If the Utes cannot repeat as league champion, the reason may be Utah State (30-17), which returns its entire team. Junior first baseman/pitcher Kristie Skoglund leads the attack for the Aggies. She posted an 18-8 record on the mound and hit at .369. Leading the hitting is Kelly Smith (.400).

New Mexico (42-24) could have as many as five freshmen starting, but there is enough experience returning to make the Lobos a contender. The pitching is led by Arlene Hernandez (28-17), and the offense is anchored by shortstop Sheila Blonigan (.307, 20 stolen bases).

Mid-American Conference

With only one starter gone from the team that won the conference title

last year, Toledo (44-23) is a clear favorite to repeat this spring. Included among the returnees is Tami Johnston, the top returning earned-run-average leader in the country (0.21). She also was tied for third in the nation in victories at 26-8.

Toledo also is solid in the field with .376 hitter Kelly Meinhart back at catcher and Julie Clark (.203) returning in center. The good news for Toledo is that none of the three is a senior.

Central Michigan (44-12) will argue the point with Toledo about who is best in the league. The Chippewas have strong defense, good team speed and depth on the mound. The top pitcher is Karen Wongstrom (16-3, 106 strikeouts). Kelly VanderMolen, shortstop, will lead the offensive attack (.313).

Bowling Green was 24-25-2 overall last spring but finished third in the league at 10-8. Only one senior graduated, and the return of Kathy Fisher (.340) and Sandy Krebs (.344) could turn the Falcons into contenders.

Pacific Coast Athletic Association

This must be one of the toughest conferences in the nation. Last year, the league sent two teams to the College World Series: Cal State Fullerton (54-10) finished third and Cal Poly-Pomona (52-18) finished fourth. Both teams have enough talent to get back there this spring.

If either teams slips, Pacific will be ready to step in. The Tigers (42-24) lost a lot of speed, but they will replace that with power hitting. The team is lead by senior second baseman Kari Johnson (.248, .943 fielding average). The pitching is anchored by senior Tami Joslin (19-9, 0.70 ERA).

Long Beach State (25-19) could be fielding the best 49er team ever. The 49ers tied for third in the league last year, but a good mixture of youth and experience should improve their chances. Leading the hitting is senior

outfielder Lisa Limp (.337). Also back is pitcher Sandy Winchester (10-5, 7 shutouts).

In addition to those teams from automatic-qualifying conferences, there are a number of other top squads that could qualify for postseason play as at-large entries. Following is a look at other top Division I teams by region.

Northeast

Adelphi (37-15) will continue to be a dominant force in the Northeast, primarily because of outstanding pitching. Ranked second in the nation in earned-run average last year (0.28), the Panthers return both of their top pitchers—well, their only pitchers last year.

Julie Bolduc (25-12) and Kris Peterson (12-3) accounted for every pitch made last year. Bolduc was third in the nation in ERA last year at 0.28 and led the nation in strikeouts with 337, and Peterson was 10th in ERA at 0.35.

Connecticut (34-7) also returns its entire pitching staff. Back are Denise Hannon (14-3), Cherie Anderson (11-3) and Mary Linhares (9-1, 0.19). The biggest concern is offensive consistency with two big sticks gone, but Dawn Muzoleski (.304) and Jodi Dinga (.288, .338 on-base percentage) will help.

Rutgers (28-15-1) did not lose a player to graduation, so there is a lot of experience and depth this spring. Kelly Gallagher went 17-9 on the mound last year and had a .665 ERA. The offense is led by Paula Lucca (.280).

Two players to keep an eye on are Harvard's Mary Baldauf, the top hitter in the nation last year at .488, and Canisius' Colleen Sander, the No. 3 hitter at .444.

South

Coach Bill Galloway has had Louisiana Tech in the College Softball World Series two of the last three years. If he makes it this spring, it will be with a young team and the veteran pitching of senior Stacey Johnson. Johnson was 29-15 last year with an ERA of 0.50.

The offense will come from shortstop Faith Holman (.249), first baseman Shirley Moir (.224) and the new faces.

Florida State (36-12-2) returns experience and depth. Laurie Holler, third baseman, averaged .236 at the plate last year and had nine triples; and Greta Bahn, senior shortstop, hit .274. The best news is that Julie Larsen is back on the mound. She was 18-1 last year and led the nation in average strikeouts per nine innings with 10.

If the new recruits are as good as coach Lou Piel believes, the South Carolina Gamecocks (34-10-3) could be better than last year. Leading the attack from the pitching mound will be Darlene Lowery (24-6), sixth in the nation last year for most victories.

The surprise teams in the South could be George Mason (43-8) and Nicholls State (47-14-1).

Mideast

Illinois State (31-18) continues to be a factor in the region; and with the return of pitching ace Maxine McGlaughlin (15-9) and .314 hitter Lisa Golchert, the Redbirds could make it uncomfortable for other teams in the Mideast this spring.

Bradley was 34-15-1 last year and should win over 30 games again in 1986. Beth Hawkins returns to the mound. She was 21-7 last year, with 13 shutouts and a 0.64 ERA. Gwen Seputis brings power to the plate (.342); 14 of her 54 hits were for extra bases.

Division I statistics

Batting

1985	Rank	Player, Team	G	AB	Hits	Avg.
	1.	Mary Baldauf, Harvard	25	82	40	.488
	2.	Colleen Sander, Canisius	35	124	55	.444
	3.	Kelly Smith, Utah St.	47	145	58	.400
	4.	Lisa Martinez, California	58	168	66	.393

Home Runs

1985	Rank	Player, Team	G	No.	Avg.
	1.	Liz Mizera, Texas A&M	52	18	0.35
	2.	Mary Baldauf, Harvard	25	6	0.24
	3.	Gina Rhoda, Valparaiso	29	5	0.17
	4.	Cecilia Campbell, La Salle	51	8	0.16
	5.	Amy Green, Southeastern La.	32	5	0.16
	6.	Meg Hartnett, Mississippi St.	40	6	0.15

Runs Batted In

1985	Rank	Player, Team	G	No.	Avg.
	1.	Colleen Sander, Canisius	35	47	1.34
	2.	Krys Bondarenko, Canisius	33	37	1.12
	3.	Erin Owen, Stetson	31	32	1.03
	4.	Gina Rhoda, Valparaiso	29	29	1.00
	5.	Cecilia Campbell, La Salle	51	46	0.90
	6.	Angela Tucci, Princeton	39	35	0.90

Doubles: 1. Colleen Sander, Canisius (14 in 35 games, 0.40 per game).
Triples: 1. Rose Gustafson, Youngstown St. (5 in 20 games, 0.25 per game).
Stolen Bases: 1. Brenda Woodard, Texas-Arlington (36 in 49 games, 0.73 per game).

Earned-Run Average

1985	Rank	Player, Team	G	IP	R	ER	ERA
	1.	Tami Johnston, Toledo	40	232	18	7	0.21
	2.	Julie Bolduc, Adelphi	42	258	30	9	0.24
	3.	Shawn Andaya, Texas A&M	31	298	14	11	0.26
	4.	Rhonda Wheatley, Cal Poly-Pomona	61	434.3	38	17	0.27
	5.	Julie Larsen, Florida St.	21	122	10	5	0.29
	6.	Kris Peterson, Adelphi	23	138.7	24	7	0.35

Most Victories

1985	Rank	Player, Team	G	IP	W	L	Pct.
	1.	Rhonda Wheatley, Cal Poly-Pomona	61	434.3	48	16	.750
	2.	Lisa Ishikawa, Northwestern	38	253.1	26	7	.788
	3.	Tami Johnston, Toledo	40	232	26	8	.765
	4.	Julie Bolduc, Adelphi	42	258	25	12	.676
	5.	Darlene Lowry, South Caro.	36	207	24	6	.800
	6.	Tracy Bunge, Kansas	45	262	24	12	.667
	7.	Susan LeFebvre, Cal St. Fullerton	33	200	23	6	.793

Strikeouts (per 7 innings): 1. Julie Larson, Florida St. (175 in 122 innings, 10.0 average).

Slaten's return has Matadors eyeing fourth straight crown

It almost is impossible to overestimate the importance of Kathy Slaten to the Cal State Northridge softball pitching staff. Simply put, she very likely could lead the Matadors to the Division II national championship.

She has done that twice before. In fact, 1986 could bring the Matadors their fourth consecutive title. Last year, she helped Northridge to the championship in spectacular fashion.

The Matadors' stumbling block was Akron. Slaten gave Akron its first loss, 3-0, with a one-hit, 12-strikeout performance. Then in what could have been the championship game, she pitched 15 innings, struck out 20, but lost the game, 2-0, on a pair of unearned runs.

It could have been the darkest hour for the Matadors. Their ace had been beaten and after having to pitch 15 innings. But after a short rest, she came back to pitch seven more innings and won the championship, 2-1. Akron probably was ready to test Slaten for a bionic right arm.

For the year, Slaten went 41-11, with an 0.21 earned-run average, 553 strikeouts in 410 1/3 innings and had 30 shoutouts. With her back on the mound, the chances for anyone to unseat Northridge are slim.

The bad news for everyone else is that she will not be alone. Also back is Delanee Anderson (16-5, 0.26), and Arizona State transfer Lisa Martin joins the staff. That combination will give the Matadors what coach Gary Torgeson calls "possibly the strongest pitching staff on the Division II level."

The Matadors (62-19) also return center fielder Barbara Jordan, who hit .259 and played errorless ball, and second baseman Lori Shelly (.227), who will move to shortstop to anchor an all new infield.

Akron (51-10), runner-up the last two years, again appears to be the team most likely to upset Northridge. The Zips return six starters, including pitcher Renee Vance (25-6), who beat Slaten in that 15-inning marathon. Vance is a complete player, with a .292 batting average.

The Zips have plenty of offense. Traci Alcorn hit .354 last year, and she returns at third. Also back are outfielders Kim Cassidy (.275) and Debbie Firth (.272). Lisa Arvey, shortstop/second base, was a member of the 1985 NCAA all-tournament team.

There is added incentive for the Zips in 1986. They will host the national championship.

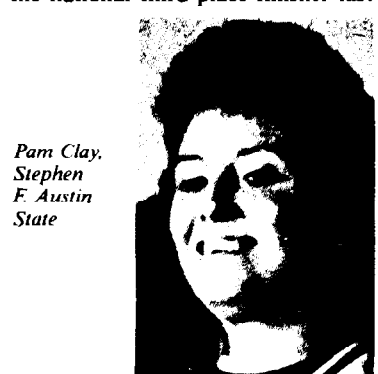
Sacred Heart (47-6) finished fourth in the national championship last year and has been in the final four all four years of the tournament's history.

Winners of the New England Collegiate Conference (12-0), an automatic-qualifying conference, the Lady Pioneers depend on junior pitcher Debbie Tidy, who has a lifetime record of 56-7 and an ERA of 0.13. The offensive punch will come from outfielder Nancy Stanton (.301) and infielder Kim Schmidt (.297).

Sam Houston State (37-11) had an "off" year in 1985. It was the first time in four years that the Ladykats have not been in the final four. They won the 1982 title, finished second the next year and were third in 1984.

The Ladykats are solid. Eight starters return, and the pitching could be the best in the school's history. Back on the mound are JoAnne Graham (17-6, 0.51), and newcomer Elaine Devlin will add depth. The offense is potent, with shortstop Sandy Mader (.384), center fielder Mary Baskin (.344) and second baseman Julie Thomas (.302).

Stephen F. Austin State (56-5) was the national third-place finisher last



Pam Clay,
Stephen
F. Austin
State

year. The Ladyjacks lost some key personnel from that team, including a 20-game winner on the mound; but Pam Clay returns. She went 28-2 last year, third best in the nation. Also back are Stella Castro (.371) and Holly Nuber (.341) in the outfield.

Other teams that could be contenders for the play-offs are Southern Illinois-Edwardsville (40-13), with .329-hitting Kim Martinez but a new pitching staff; Wayne State (Michigan) (30-18-1), Wisconsin-Parkside

(30-15) and Grand Valley State (22-12).

There are six conferences that are automatic qualifiers to the NCAA tournament. Following are the top ranked teams in those conferences.

California Collegiate Athletic Association

Northridge is the overwhelming favorite to capture the conference title, but Cal Poly-San Luis Obispo and Cal State Bakersfield could be contenders.

SLO (36-19) was second in the conference to Northridge last year and has most of the team returning. The Mustangs boast a lot of offensive punch. Included in the returnees are outfielders Jill Hancock (.390) and Lorie Norcia (.328), shortstop Lisa Hour (.314) and catcher Kelia Gorman (.364). Also back is pitcher Randie Hill (0.95 ERA).

Cal State Bakersfield was only 10-21 last year, but six starters return from the squad and there is a new coach. Janice Heriford, center field, and Jill Pylman, third, will lead the offense.

Missouri Intercollegiate Athletic Association

It will be a three-team race in this conference, and none of them wants to be the favorite. Northeast Missouri State (28-14) won the title a year ago, but its coaches pick Southeast Missouri State to win in 1986. Southeast Missouri (32-19) was second, but its coaches pick Northwest Missouri State. And Northwest (25-22-1) was third, but it picks Northeast.

On paper, Northeast still is the team to beat. The Bulldogs return solid offense and pitching. Jenette Clevon, junior shortstop, is the leader at .315. The pitching staff returns Trish Kongable (12-3, 0.61, seventh in the nation in strikeouts last year) and Tami Billerbeck (6-4, 0.97).

Southeast will rely on pitcher/designated hitter Tracie Eudaley to anchor the team. She hit .307 and had a 0.37 ERA. Outfielder Pat McDonagh also is a .300 hitter.

Pitching may be the biggest problem for Northwest, with Shelley Lewis gone; but the entire starting lineup returns. Karen Hopewell may be the best shortstop in the league. She hit .248 last year. The offense is led by Janet Schieber (.295) and Jennifer Mertz (.301).

North Central Intercollegiate Athletic Conference

Augustana (South Dakota) (33-17) still is the team to beat in the North Central. The Vikings are experienced and deep. Seven senior starters return to the lineup, led by pitchers Amy Jorgenson (11-6, .343 batting average) and Kirstin Oseth (10-5, .407).

Nebraska-Omaha (10-1) also returns an experienced team; in fact, its starting lineup is intact. Deb Hensley, pitcher/outfielder, earned all-America honors last year with her 14-8 record, 0.83 ERA and .270 batting average. Also returning are Karen Becker (.277) and Kathy Gass (.264).

Mankato State also will be a contender for the conference championship. The Mavericks return Ann Leahy, whose 24-11 record last year was sixth best in the nation.

New England Collegiate Conference

Sacred Heart is the dominant team in this conference, but Bridgeport could be a team to watch. The Purple Knights (21-19) have a solid nucleus returning and some promising freshmen.

They are led by outfielder Bonnie Richards (.280) and shortstop Jenny Goduto (.284). Pitching may be the weak area.

Also expected to contend are New Haven and Quinnipiac.

Northeast-Eight Athletic Conference

American International (36-16-2) has made it to the regional level of NCAA tournament play the last two years. The Yellow Jackets would like

to make it to the final four in 1986, but that would mean getting past Sacred Heart.

Offense will not be the problem for them. Returning are three .300 hitters, including Karen Wright (.317), Kim Mitchell (.308) and Karen Berube (.305). Pitching could be the problem, however.

Springfield (25-14) has two of the nation's leading hitters in Kathy Mangano (.407) and Niffy Heggie (.406). They finished finished seventh and eighth in 1985. Also returning is outfielder Tammy Oswell (.319).

The Northeast-Eight probably is the best hitting conference in the nation. Assumption returns the nation's top two hitters—Ellen Tremper and Barbie Barrett—tied for No. 1 at .505.

Division III advantage goes to Eastern Connecticut State

It is a very tight group, that top echelon of Division III softball teams. In fact, only three teams have made it into the top two spots in the nation.

Eastern Connecticut State won the national championship in 1982 and again last year. Trenton State was champion in 1983 after finishing in the runner-up spot the year before and has finished in the No. 2 spot the last two years. Buena Vista, the host for the 1986 championship, was the title winner in 1984 after finishing as the runner-up the year before.

But this could be the year for a new face in the championship game. Not new faces, however Eastern Connecticut is as strong as ever. Buena Vista did not make it into regional competition last year and still is rebuilding somewhat. And Trenton State lost six starters, including four all-Americans.

That could leave some room for a new opponent for Eastern Connecticut. The contenders for the honor are Montclair State, Cortland State, UC San Diego, Ithaca, Salem State, Allegheny, and St. Thomas (Minnesota), which is not to say that Trenton State and Buena Vista will not be there again.

Eastern Connecticut (39-0) appears unbeatable. The Warriors lost only one senior to graduation from a team that was eighth in the nation in both

Pennsylvania State Athletic Conference

With its top three pitchers returning a combined ERA of 0.42 and only one senior gone from a .290-hitting club, Bloomsburg (35-6) still is the team to beat in the league.

Susan Kocher (16-2, 0.23) is the pitching ace, and the offense is led by Suzanne Luna (.352), Karen Hertzler (.344) and Kathy Berry (.304).

Shippensburg (22-4) also returns its entire pitching staff plus eight starters in the field. The big stick is Penny Wiker, whose .408 average was sixth best in the nation last year.

Lock Haven (20-14) returns a lot of offense and pitcher Ginny Neiss (10-2, 0.97). The offensive punch comes from Sandy Staib (.321), Tina Martin (.320) and Kim Hasson (.308).

fielding and earned-run average.

Three of the four top pitchers return, led by Julie Bacher (17-3) and Kim Durocher (11-4).

The hitting is led by sophomore catcher Lynn Rouchelleau (.355, 28 runs batted in) and Andrea Costa, sophomore center fielder (.320, 11 stolen bases).

Despite its losses, Trenton State (43-8) is not toothless. The Lions will be three-deep in pitchers, led by Donna O'Connell (14-4, 0.59), and the hitting is anchored by senior outfielder Linda Brunner (.378). The biggest test for the Lions will be getting by New Jersey Athletic Conference opponent Montclair State.

The Indians (27-11) pushed Trenton State hard last year and won a regional berth. Debbie Emery is the leading player on the team. She had an 0.85 ERA last year and hit .307 as a shortstop.

If Buena Vista (30-19) comes up with sufficient hitting strength, it could be back in the national picture. Pitching should not be any problem.

Salem State (22-11) was a co-champion in the Massachusetts State College Athletic Conference and represented the league in regional play. The Lady Vikings have a solid nucleus

See Division III, page 12

Division II statistics

Batting

1985					
Rank	Player, Team	AB	Hits	Avg.	
1.	Ellen Tremper, Assumption	91	46	.505	
1.	Barbie Barrett, Assumption	91	46	.505	
3.	Teri Komer, Fla. Southern	74	32	.432	
4.	Teresa Taylor, Fla. Southern	92	39	.424	
6.	Penny Walker, Shippensburg	71	29	.408	
7.	Kathy Mangano, Springfield	118	48	.407	
8.	Niffy Heggie, Springfield	138	56	.406	
9.	Kendra Thompson, Quincy	116	47	.405	

Home Runs

1985					
Rank	Player, Team	G	No.	Avg.	
5.	Regina Barthen, Mercy	28	6	0.21	
6.	Laura Allgeier, Bellarmine	29	5	0.17	
6.	Kathy Mazur, Edinboro	29	5	0.17	
8.	Jackie Zapalac, Sam Houston St.	43	7	0.16	

Runs Batted In

1985					
Rank	Player, Team	G	No.	Avg.	
1.	Laura Allgeier, Bellarmine	29	33	1.14	
2.	Barbie Barrett, Assumption	26	29	1.12	
3.	Kim Bedford, Shippensburg	29	30	1.03	
4.	Kendra Thompson, Quincy	42	36	0.86	

Doubles: 1. Judy Aiello, Gannon (8 in 19 games, 0.42 per game).
Triples: 4. Jen Wright, Minn.-Duluth (7 in 30 games, 0.23 per game).
Stolen Bases: 1. Pattie Schaefer, Mt. St. Mary's (17 in 17 games, 1.00 per game).

Earned-Run Average

1985							
Rank	Player, Team	G	IP	R	ER	ERA	
1.	Kathy Slaten, Cal St. Northridge	58	410.3	29	12	0.20	
2.	Susan Kocher, Bloomsburg	21	121	13	4	0.23	
3.	Pam Clay, S. F. Austin St.	32	207	11	9	0.30	
4.	Tracie Eudaley, Southeast Mo. St.	35	210.7	57	11	0.37	
5.	Kathy Mazur, Edinboro	22	125	21	7	0.39	
6.	Jill Bogel, Quincy	15	102	16	6	0.41	
7.	Renee Vance, Akron	31	207	26	15	0.51	
10.	JoAnne Graham, Sam Houston St.	26	164	24	12	0.51	

Most Victories

1985						
Rank	Player, Team	G	IP	W	L	Pct.
1.	Kathy Slaten, Cal St. Northridge.....	58	410.3	41	11	.788
2.	Pam Clay, S. F. Austin St.....	32	207	28	2	.933
3.	Randie Hill, Cal Poly-SLO.....	42	256	26	12	.683
4.	Renee Vance, Akron.....	31	207	25	6	.806
5.	Ann Leahy, Mankato St.....	35	234	24	11	.686

Strikeouts (per 7 innings): 1. Dori Stankewitz, Fla. Southern (139 in 85 innings, 11.4 average).

Division III statistics

Batting

1985					
Rank	Player, Team	AB	Hits	Avg.	
2.	Donna Mauro, Molloy	102	58	.569	
3.	Marcia Fichtelman, Ohio Northern	71	36	.507	
4.	Carole McCraw, Va. Wesleyan	90	43	.478	
6.	Kathleen Mahon, New Paltz St.	75	35	.467	
7.	Monique Joyce, Fitchburg St.	88	41	.466	
8.	Kim Smith, Rhode Island	73	34	.466	
10.	Mary Ann Veltre, Hunter	67	34	.463	

Home Runs

1985					
Rank	Player, Team	G	No.	Avg.	
1.	Julie Curtis, Whittier.....	36	11	0.31	
3.	Susie King, Marywood.....	19	5	0.26	
4	Sandra Decker, Worcester St.....	27	7	0.26	
6.	Cathy Klashka, Manhattanville.....	22	5	0.23	

Runs Batted In

1985					
Rank	Player, Team	G	No.	Avg.	
1.	Mary Ann Veltre, Hunter	18	33	1.83	
2.	Marcia Fichtelman, Ohio Northern	25	39	1.56	
3.	Donna Mauro, Molloy	30	46	1.53	
4.	Nancy Bradshaw, Mount Union	22	32	1.45	
5.	Kathleen Mahon, New Paltz St.	22	32	1.45	

Doubles: 1. Donna Mauro, Molloy (13 in 30 games, 0.43 per game).
Triples: 1. Lisa Sullivan, Western Md. (9 in 15 games, 0.60 per game).

Earned-Run Average

1985							
Rank	Player, Team	G	IP	R	ER	ERA	
1.	Amy Boudouin, Aurora	20	120	16	3	0.18	
2.	Kim Durocher, Eastern Conn. St.	18	93.7	14	6	0.45	
3.	Darsi Doyl, Luther	31	207	32	17	0.45	
4.	Donna O'Connell, Trenton St.	23	130.7	27	11	0.59	
5.	Sally Grim, Ursinus	23	140.7	36	14	0.70	
6.	Gayle Varady, Stockton St.	17	113.7	31	12	0.74	
7.	Wendy Williams, Albany (N.Y.)	22	150	38	16	0.75	

Most Victories

1985							
Rank	Player, Team	G	IP	W	L	Pct.	
1.	Lisa Wymer, Methodist	41	253	29	12	.707	
5.	Kathy Rodriguez, Whittier	25	157	18	5	.783	
5.	Patty Spielbauer, William Penn	25	204	18	7	.720	
5.	Darsi Doyl, Luther	31	207	18	11	.621	
8.	Amy Boudouin, Aurora	20	120	17	1	.944	
8.	Julie Bacher, Eastern Conn. St.	23	134.7	17	3	.850	

Strikeouts (per 7 innings): 1. Patty Spielbauer, William Penn (200 in 204 innings, 6.9 average).

'Doctored' regionals provide geographical cure for tournament

By James M. Van Valkenburg
NCAA Director of Statistics

When the NCAA Men's Division I Basketball Committee announces the field and the pairings for the 48th annual Division I Men's Basketball Championship March 9, it is inevitable there will be complaints from coaches, media and followers about some teams having to play tournament games in other sections of the country.

So it is time for a lesson in history, geography and population, to show that this long-time practice really makes a lot of sense. In fact, it is an important factor in the growth of the tournament from humble, red-ink beginnings in 1939 to one of the great annual national events in sports, sold out a year in advance.

To start, there are roughly twice as many people living east of the Mississippi River, and about twice as many Division I basketball teams are east of the Mississippi, which means twice as many tournament teams in the eastern half of the country.

But in the early years (1939 to 1950) of eight-team tournaments—one from each district—there were four districts and four teams west of the Mississippi and four east of it. Why did this work? Simply because the National Invitation Tournament in New York, which started in 1938 and competed on an equal basis with the NCAA in the early years, drew nearly all its teams from the eastern half of the country.

Even after the NCAA expanded its field with automatic qualification for major conference champions in the early 1950s (thus becoming the premier postseason tournament), the late Arthur "Dutch" Lonborg of Kansas, committee chair from 1949 to 1960, pointed out in the tournament book, "The Classic," that, "A few (top) teams did not get in (the NCAA) because they wanted to go to New York for the NIT."

As recently as 1970, coach Al McGuire, a New Yorker, with a 22-3, eighth-ranked Marquette team, refused an NCAA bid because the committee wanted to move his team from the Midwest regional to the Midwest. Instead, he went to the NIT and won it. (In the Midwest, he would have knocked heads with the likes of Jacksonville—which reached the championship game—plus Iowa and Kentucky, making it by far the toughest regional.)

A prime example

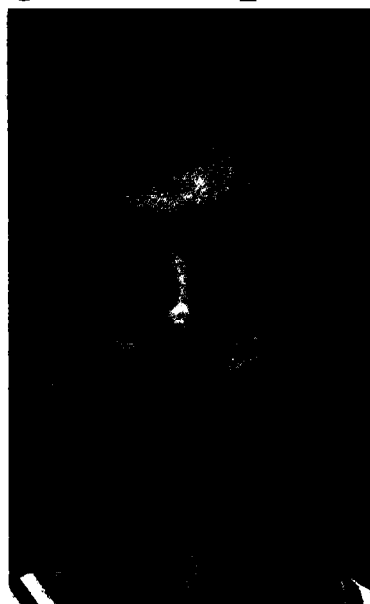
A prime example of what could happen when the committee is locked in by geography took place in 1955, when Bradley, with a 7-19 record, and Oklahoma City, 9-17, were picked at-large (as almost the only independents) from District 5 for the Midwest regional. A year earlier, Bradley was picked with a 15-12 record and reached the national championship game, losing to La Salle (Bradley was an independent both years, although a long-time member of the Missouri Valley Conference before and since). In 1955, Bradley again made the committee look better, reaching the regional final.

But in 1956, the committee was able to go outside the district for independents. Memphis State was picked in 1956, Loyola of New Orleans in 1957 and 1958, DePaul in 1959 and 1960, Marquette in 1961. No more 7-19 and 9-17 selections.

Better balance

In recent years, the committee has changed regional conference assignments to provide more balance. For instance, the Big Ten Conference champion was moved from the Midwest to the Midwest, and the Southwest Conference champion from the Midwest to the West.

Last year, St. John's (New York) and Georgetown, the top two teams in the polls, would have collided in the East, but St. John's was sent to the West regional, which it won to reach the Final Four. In 1982, George-



Utah State's Greg Grant is among the leading scorers in Division I



Delaware's Taurence Chisholm is second in assists in Division I



Kansas' Vickie Adkins ranks high in scoring and field-goal percentage



Rhode Island's Michele Washington is among Division I's top scorers

town went to the West, won it and reached the championship game against North Carolina. Both would have been in the East without the move. Few could argue the logic of these moves. But if it is logical for the top teams, is it not logical for the lesser teams as well, to create better balance?

Enough glory for all

Teams from every region of the country have won at least one NCAA championship and can look back on many moments of glory. The Pacific-10 Conference leads in championships with 13—10 of them by UCLA in one 12-year span under John Wooden. Big Ten Conference teams have won seven crowns, Southeastern Conference teams five, and Atlantic Coast Conference and Missouri Valley Conference teams four each. Please note, we are using actual conference mem-

berships year by year. The Big Ten and SEC have been in existence since the start in 1939, but the ACC was formed in 1953, and all four MVC champions now are members of other conferences.

Using actual memberships (as opposed to current memberships) each year, the seven-year-old Big East Conference has the best all-time winning percentage at .671 with its 47-23 record and two titles. Close behind are the ACC (.659), the Big Ten (.647), Pacific-10 (.638), Metropolitan Collegiate Athletic Conference (.619), MVC (.630), SEC (.622), Big Eight Conference (.600), Southland Conference (.522), West Coast Athletic Conference (.521), all Midwest independents (mainly Notre Dame, Marquette, DePaul and Dayton) .516 on 83-78 and all Eastern independents (before they formed conferences like the Big East and Atlantic 10) .502 on 110-109. All other conferences and groups are under .500.

Another way of measuring is to use current conference lineups and each team's all-time record. Only the Big Ten remains exactly the same at .647, and goes to No. 1 using this method, followed by the ACC (.618-65, adding current members in 1939-52) at .645, Pacific-10 (.618-75) at .611, Metro (71-52) .577, SEC (.75-61) and Big Eight (.86-70) both .551, Southland (.8-7).533, ECAC North Atlantic Conference (.12-11) .522, Big East (.106-99, adding all those years when its members were independents) .517, MVC (.33-31) .516, WCAC (.36-35) .507 and all independents 76-75 for .503. Below .500, there are some big differences, current vs. actual lineups.

Basketball notes

The Ohio Valley Conference, for instance, goes from 6-22 to 17-35, but the Metro Atlantic Athletic Conference goes from 21-23 to 0-2, the Midwestern Collegiate Conference

from 15-16 to 2-4, the Pacific Coast Athletic Association from 34-47 to 13-21, Atlantic 10 from 52-69 to 10-12, Western Athletic Conference from 44-69 to 24-37 and the Sun Belt Conference from 26-33 to 12-16.

Most improved teams
Bradley's "unique group" (February 26 notes) can build a strong lead for the men's national most-improved title for 1986. The Braves, 30-1 going into the Missouri Valley Conference tournament semifinals March 4, were up 12½ games over 17-13 in 1985 (13 more victories, 12 fewer losses is 25, then divide by two) and by sweeping that tournament could reach 13½ games entering the NCAA tournament.

Fairfield is 24-6 entering the NCAA tourney after sweeping the Metro Atlantic Conference—both tournament and regular season—for a 12-game improvement over 11-17 in 1985.

Next is Southern Mississippi, up 10½ games (17-10 vs. 7-21) heading into the Metropolitan Collegiate Athletic Conference tournament, then 20-10 Davidson, up 10 games, and two teams up nine games—26-3 Kentucky and 16-11 New Mexico State. Davidson swept the Southern Conference tournament, while the other two had yet to enter postseason play at press time.

Fairfield tied for last place in the MAAC a year ago, but first-year coach Mitch Buonaguro toughened the Stags with an off-season conditioning program of sprints and agility drills starting at 6:30 a.m. three days a week, and they responded with the college's first winning season since 1979. Veteran coach M. K. Turk played a flock of freshmen at Southern Mississippi a year ago, and now they are maturing. It is still a young team, with just one senior starter.

Bobby Hussey, like Turk a veteran coach with 200-plus victories, turned Davidson around in his fifth year on the job. It is Davidson's first winning season since 1974 and first conference-tournament crown since 1970, after a stretch of 20-victory seasons and high national ranking under Terry Holland and his predecessor, Lefty Driesell.

Kentucky has returned to its customary high rank in Eddie Sutton's first year on the job. At New Mexico State, Neil McCarthy, a veteran 200-game winner in a new job, did it by emphasizing team defense, with a bit of new talent, but above all by building personal integrity reinforced by a heavy dose of discipline. He wants his players "to be good citizens off the court" as well. He set up 16 hours a week of study halls, with tutors. If a player misses a class or a study hall, he must run three miles at 5:30 a.m.

From another angle, Brown finished near the bottom in the Ivy League a year ago and was voted there in the preseason but won the championship under Mike Cingiser, in his fifth year. Brown is 16-10 (vs. 9-18 in 1985) entering the NCAA tournament.

And taking the long-range view, Samford now has won 51 games in a little less than three seasons starting in 1984 vs. just 48 victories its first seven years in Division I, reports SID Bill Nunnally. Mel Hankinson, another 200-game winner, took over in 1985.

Three lead women
It is a three-team race for the most-improved title in women's Division I basketball between North Texas State, Colorado and Ohio; and it likely will go down to the wire, with conference tournaments and perhaps even the NCAA tournament producing the winner.

North Texas State is up 14 games (19-9 vs. 4-22) under Judy Buckles-Nelson, now in her third season (the first season was a 2-25 nightmare). Her young players are maturing, and she added two important new players this season—Clara Campbell and Joy Roberts—who were high school teammates in Dallas then went to separate junior colleges in Texas.

Colorado tied for second in the Big Eight Conference regular season and is 19-8 entering the conference tournament vs. 6-22 a year ago. It is Ceal Barry's seventh season, and the team is realizing the potential apparent in 1985 when injuries ruined things. That makes Colorado's improvement 13½ games—the same figure boasted by Ohio (24-2 vs. 11-16) as it enters Mid-American Conference tournament play. This is Amy Prichard's second year as a head coach.

Another 2,000-pointer
Add one more name to the list of potential 2,000-point career scorers in men's Division I basketball—Michigan State's Scott Skiles, who needed just six more points in a home game March 5 against Indiana. Skiles just missed the 1,300-point cutoff in the preseason career scoring list, but he is having a tremendous senior season, reports Mark Rudner, Big Ten Conference assistant SID. Skiles would be only the 10th player in Big Ten history to reach 2,000.

A new career coming
While the basketball career of Colby-Sawyer's standout center Kelly Bryant is coming to an end, she may be on the verge of a new career. The gifted senior art major will be the lead player in this year's Colby-Sawyer traveling theater production. In the play, she sings (she has been in the choir since her freshman year), acts, plays guitar and juggles (the last two skills learned in the past three months).

Trish Lindberg, children's theater director, calls Bryant "the most natural actress we have ever had—she improvises so well and is a natural comedienne." She missed half her junior season when she studied painting at the Massachusetts College of Art, yet she has 1,292 points and

1,199 rebounds over her career. The Cavendish, Vermont, native has had one-woman shows of her oils and acrylics in Vermont in the past year. (Art Springsteen, Colby-Sawyer SID)

Can you top these?
Rhode Island has played seven overtime games this season—one short of the Division I record shared by Western Kentucky (1978) and Portland (1984). Five of them were consecutive road games. The Rams stand 2-5 in these games. (Jim Norman, Rhode Island SID)

Humboldt State's Lumberjacks started the year as the "Jack Attack" and finished it as the "Heart Attack," as 11 games out of 30 were not decided until the final shot of the game (Humboldt was 4-7 in buzzer jobs), and six more were decided in the last minute. Said coach Tom Wood of his 12-18 team: "They had big, tall hearts. I have never seen or been around a bunch of guys who pushed it to the limit like they did." (Bryan Dangerfield, Humboldt State SID)

It was really a family affair when Lewis beat Indiana Central, 62-59. For Lewis, Tom Niego scored 27, Joe Niego 15, Charlie Niego 12 and Mark Niego 8. Make it Niego 62 Indiana Central 59. Charlie and Tom are twins and seniors, while Joe and Mark are the younger brothers. The team stands 23-4 and Tom, Joe, Charlie and Mark are 1-2-3-4 on the season scoring list. Can any college team in history top that? (Mike Aliobella, Lewis SID)

Quotes of the week

Kansas' 7-1 Greg Dreiling, reflecting on being a senior on a Big Eight Conference championship team: "If I ever die, I'd like to come back as a Jayhawk basketball player and do it all over again."

Missouri men's coach Norm Stewart on his team's ball handling: "We don't trust our equipment guy. It's like we think there's no air in the ball, so we bounce it. If we'd quit bouncing the ball, we'd get a quicker game and more movement." (Tim Allen, Big Eight Conference SID)

Duke's Johnny Dawkins, the country's only returning consensus all-America, is one of the best conditioned athletes around. He ran a 4:39 mile the day before preseason practice began in 1984 and runs under five minutes regularly. He had two last-second clutch plays 24 hours apart February 15-16 to beat North Carolina State and Notre Dame, the latter a blocked shot by David Rivers, and he played 37 minutes each game. Said Duke coach Mike Krzyzewski: "He could go out and play another 40 minutes right now. It's the rest of us who need some time off." (John Roth, Duke assistant SID)

Worcester Polytechnic women's coach Naomi Graves during a recent game when an opposing player took a few too many steps without dribbling: "Forget your luggage, just hop on the bus next time." (Roger Crimmins, Worcester Polytechnic SID)

The NCAA News



Basketball Statistics

Through games of March 3

Men's Division I individual leaders

SCORING						
	CL	G	FG	FT	PTS	AVG
1. Terrance Bailey, Wagner	Jr	27	301	199	801	29.7
2. Joe Yezbak, U.S. International	Jr	28	299	157	755	27.0
3. Scott Skiles, Michigan St.	Sr	26	277	145	699	26.9
4. Reggie Miller, UCLA	Jr	26	247	181	675	26.0
5. Ron Harper, Miami (Ohio)	Sr	28	282	121	685	24.5
6. Dell Curry, Virginia Tech	Sr	28	291	103	685	24.5
7. Reggie Lewis, Northeastern	Jr	26	230	161	621	23.9
8. Lamont Harris, St. Francis (Pa.)	Jr	27	238	148	624	23.1
9. Len Bias, Maryland	Sr	28	236	174	646	23.1
10. Frank Ross, American	Jr	28	270	105	645	23.0
11. Walter Berry, St. John's (N.Y.)	Jr	31	283	148	714	23.0
12. Jim McCaffrey, Holy Cross	Sr	25	218	135	571	22.8
13. Jay Elmore, Vill.	Jr	28	232	173	637	22.8
14. Greg Grant, Utah St.	Sr	27	244	124	612	22.7
15. Anthony Watson, San Diego St.	Sr	26	226	132	584	22.5
16. Steve Alford, Indiana	Jr	25	225	110	560	22.4
17. Don Marbury, Texas A&M	Sr	28	260	106	626	22.4
18. Dwayne Randall, Nevada-Reno	Sr	26	230	121	581	22.3
19. Tony White, Tennessee	Jr	27	241	120	602	22.3
20. David Robinson, Navy	Jr	30	251	158	660	22.0
21. Larry Krystkowiak, Montana	Sr	28	220	176	616	22.0
22. Kevin Houston, Army	Jr	27	228	138	594	22.0
23. John Newman, Richmond	Sr	29	243	148	634	21.9
24. Byron Larkin, Xavier (Ohio)	So	29	251	129	631	21.8
25. Chad Tucker, Butler	Jr	28	235	139	609	21.8
26. Norris Coleman, Kansas St.	Fr	28	254	101	609	21.8
27. Andre Ervin, Long Island	Sr	27	213	161	587	21.7
28. Keith Smith, Loyola (Cal.)	Sr	26	220	123	563	21.7
29. Chuck Person, Auburn	Sr	28	259	83	601	21.5
30. Darryl Kennedy, Oklahoma	Jr	31	255	151	661	21.5
31. Dan Majerle, Central Michigan	So	26	217	119	553	21.3
32. Jeff Gray, Iowa St.	So	27	238	96	572	21.2
33. Buck Johnson, Alabama	Sr	23	190	107	487	21.2
34. Cedric Hill, Southwestern La.	Sr	28	252	83	587	21.0
35. John Sherman Williams, Indiana St.	Sr	28	232	119	583	20.8
36. Dennis Hopson, Ohio St.	Jr	26	214	112	540	20.8

BLOCKED SHOTS				
	CL	G	NO	AVG
1. David Robinson, Navy	Jr	30	178	5.9
2. Tim Perry, Temple	So	29	119	4.1
3. Rodney Blake, St. Joseph's (Pa.)	So	30	112	3.7
4. Warren Martin, North Carolina	Sr	24	79	3.3
5. Curtis Kitchen, South Florida	Sr	28	89	3.2
6. Roy Tarpley, Michigan	Sr	29	90	3.1
7. Rony Seikaly, Syracuse	So	27	78	2.9
8. Rik Smits, Marist	So	26	75	2.9
9. William Bedford, Memphis St.	Jr	27	77	2.9
10. Charles Smith, Pittsburgh	So	27	74	2.7

ASSISTS				
	CL	G	NO	AVG
1. Mark Jackson, St. John's (N.Y.)	Jr	31	275	8.9
2. Laurence Chisholm, Delaware	So	27	231	8.6
3. Tyrone Bogues, Wake Forest	Jr	28	235	8.4
4. Ralph Lee, Xavier (Ohio)	Sr	29	242	8.3
5. Draffon Davis, Marist	So	27	225	8.3
6. Derric Thomas, Monmouth (N.J.)	So	25	205	8.2
7. Girard Harmon, McNeese St.	Sr	26	213	8.2
8. Jim Pagnaga, St. Francis (N.Y.)	Sr	27	220	8.1
9. Jim Les, Bradley	Sr	31	248	8.0
10. Frank Smith, Old Dominion	So	29	230	7.9

					REBOUNDING
		CL	G	NO	AVG
1. David Robinson, Navy	Jr	30	396	13.2	
2. Greg Anderson, Houston	Jr	27	355	13.1	
3. Brad Sellers, Ohio St.	Sr	26	339	13.0	
4. Don Hill, Bethune-Cookman	Sr	27	312	11.6	
5. Ron Harper, Miami (Ohio)	Sr	28	323	11.5	
6. Larry Krystkowiak, Montana	Sr	28	314	11.2	
7. Walter Berry, St. John's (N.Y.)	Jr	31	346	11.2	
8. Kevin Carter, Loyola (Md.)	Sr	27	290	10.7	
9. Dwayne Randall, Nevada-Reno	Sr	26	272	10.5	
10. Bob McCann, Morehead St.	Jr	27	282	10.4	
11. Rickie Winslow, Houston	Jr	26	271	10.4	

FIELD-GOAL PERCENTAGE						
(Min. 5 Fg Made Per Game)		CL	G	FG	FGA	PCT
1. Brad Daugherty, North Caro.		Sr	30	252	388	64.9
2. Kenny Gattison, Old Dominion		Sr	29	202	313	64.5
3. Ken Norman, Illinois		Jr	28	199	310	64.2
4. Jim Turner, Brown		Sr	26	196	306	64.1
5. Derrick McKee, Alabama		So	27	147	230	63.9
6. Albert Thomas, Centenary		Sr	28	173	271	63.8
7. George Jones, Northwestern La.		So	26	130	207	62.8
8. Kevin Duckworth, Eastern Illinois		Sr	29	220	352	62.5
9. Terry Williams, Southern Methodist		Jr	27	142	229	62.0
10. Gerald Bush, Northwestern La.		Jr	27	153	247	61.9
11. Dan Bingenheimer, Missouri		Sr	32	182	294	61.9
12. Mike Williams, Bradley		Sr	31	172	280	61.4
13. Tom Hammonds, Georgia Tech		Fr	28	140	228	61.4
14. Matt Bullard, Colorado		Fr	27	138	226	61.1
15. Rik Smits, Marist		So	26	178	292	61.0
16. Andre Spencer, Northern Arizona		Sr	27	201	332	60.5
17. Jerome Batiste, McNeese St		Jr	28	222	367	60.5
18. David Robinson, Navy		Jr	30	251	415	60.5
19. Calvin Cannady, East Tennessee St		Sr	28	143	237	60.3
20. Danny Manning, Kansas		So	31	225	373	60.3
21. Ed Young, Dayton		Jr	28	163	273	59.7
22. Walter Berry, St. John's (N.Y.)		Jr	31	283	474	59.7
23. Rob Rose, George Mason		Sr	29	163	274	59.5
24. Darryl Johnson, Michigan St		Jr	25	188	318	59.1

FREE-THROW PERCENTAGE						
(Min. 2.5 Fg Made Per Game)	CL	G	FT	FTA	PCT	
1. Jim Barton, Dartmouth	Fr	26	65	69	94.2	
2. Damon Goodwin, Dayton	Sr	28	84	91	92.3	
3. Rick Suder, Duquesne	Sr	29	135	147	91.8	
4. Scott Covall, William and Mary	Sr	29	111	121	91.7	
5. Ron Rowan, St. John's (N.Y.)	Sr	31	78	86	90.7	
6. Mike Androlewicz, Lehigh	Sr	28	84	93	90.3	
7. Scott Skiles, Michigan St.	Sr	26	145	161	90.1	
8. John Bajusz, Cornell	Jr	26	89	99	89.9	
9. Clifford Waddy, Western Carolina	Sr	28	70	78	89.7	
10. Scott Brooks, UC Irvine	Jr	27	68	76	89.5	
11. Derek Rucker, Davidson	So	30	103	116	88.8	
12. Luke Murphy, Hofstra	Sr	28	94	106	88.7	
13. John Newman, Richmond	Sr	29	148	167	88.6	
14. Ken Barlow, Notre Dame	Sr	26	83	94	88.3	
15. Reggie Miller, UCLA	Jr	26	181	205	88.3	
16. Andy Hurd, Northern Arizona	Sr	27	89	101	88.1	
17. Ed Titus, Rider	So	28	96	109	88.1	
18. Alan Campbell, Weber St.	Sr	27	80	91	87.9	
19. Rick Olson, Wisconsin	Sr	27	88	101	87.1	
20. Chris Elzey, Pennsylvania	Jr	26	81	93	87.1	
21. Earl Kelley, Connecticut	Sr	21	141	162	87.0	
22. Tony White, Tennessee	Jr	27	120	138	87.0	
23. Bill Brennan, Vermont	Jr	24	66	76	86.8	
24. Howard Evans, Temple	So	29	92	106	86.8	
25. David Moss, Tulsa	Jr	29	105	121	86.8	

STEALS					
	CL	G	NO	AVG	
1. Darron Brittman, Chicago St.	Sr	28	139	5.0	
2. Jim Pagnaga, St. Francis (N.Y.)	Sr	27	112	4.1	
3. Leroy Allen, Hofstra	Jr	28	100	3.6	
4. Harold Starks, Providence	Sr	23	74	3.2	
5. Ron Harper, Miami (Ohio)	Sr	28	89	3.2	
6. Michael Anderson, Pan American	Sr	27	85	3.1	
7. Tyrone Bogues, Wake Forest	Jr	28	88	3.1	
8. Bruce Douglas, Illinois	Sr	28	83	3.0	

REBOUNDING				
	CL	G	NO	AVG
11. David Boone, Marquette	Jr	26	271	10.4
12. Horace Grant, Clemson	Jr	30	312	10.4
13. Michael Clarke, Ark.-Little Rock	Sr	27	275	10.2
14. Jerry Adams, Oregon	Sr	26	264	10.2
15. Largest Apbelemisn, Wagner	Jr	26	263	10.1
16. Doug Cook, Florida A&M	Sr	28	281	10.0
17. Harold Pressley, Villanova	Sr	33	330	10.0
18. Andre Moore, Loyola (Ill.)	Jr	27	269	10.0
19. Chris Dudley, Yale	Jr	26	256	9.8
20. Ronnie Grandison, New Orleans	So	27	262	9.7
21. Lamont Harris, St. Francis (Pa.)	Jr	27	262	9.7

Team leaders

SCORING OFFENSE					SCORING DEFENSE				
	G	W-L	PTS	AVG		G	W-L	PTS	AVG
1. Cleveland State	27	24-3	2463	91.2	1. Princeton	26	13-13	1429	55.0
2. U.S. International	28	8-20	2543	90.8	2. St. Peter's	28	16-12	1539	55.0
3. Oklahoma	31	24-7	2780	89.7	3. Tulsa	29	21-8	1642	56.6
4. North Carolina	30	26-4	2630	87.7	4. UTEP	29	24-5	1647	56.8
5. Michigan St.	26	20-6	2168	83.4	5. North Carolina A&T	27	20-7	1543	57.1
6. Syracuse	27	23-4	2242	83.0	6. Texas Christian	27	20-7	1544	57.2
7. Middle Tennessee	31	22-9	2559	82.5	7. Temple	29	24-5	1682	58.0
8. Kansas	31	28-3	2543	82.0	8. Colgate	25	1-4	1462	58.5
9. Memphis St.	29	25-4	2375	81.9	9. Fresno St.	29	15-14	1707	58.9
10. Duke	31	29-2	2524	81.4	10. Indiana St.	28	11-17	1662	59.4
11. UC Irvine	27	16-11	2166	80.2	11. Richmond	29	23-6	1722	59.4
12. Georgetown	28	22-6	2244	80.1	12. West Texas St.	28	11-17	1670	59.6
13. Providence	27	15-12	2162	80.1	13. UAB	34	24-10	2028	59.6
14. UNlv	32	28-4	2562	80.1	14. Southwest Missouri	27	21-6	1623	60.1
15. Florida St.	27	11-16	2156	79.9	15. South Florida	28	14-14	1684	60.1
16. Loyola (Cal.)	27	18-9	2156	79.9	16. Old Dominion	29	22-7	1753	60.4
17. Chicago St.	28	22-6	2224	79.4	17. Canisius	27	20-7	1634	60.5
18. Virginia Tech	29	22-7	2302	79.4	18. Oregon St.	25	12-13	1520	60.8

SCORING MARGIN				WON-LOST PERCENTAGE			
	OFF	DEF	MAR		W-L	PCT	
1. Cleveland State	91.2	68.9	22.3	1. Bradley	30-1	.968	
2. North Carolina	87.7	67.9	19.8	2. Duke	29-2	.935	
3. Syracuse	83.0	67.1	15.9	3. Kansas	28-3	.903	
4. Georgetown	80.1	64.4	15.7	4. Kentucky	26-3	.897	
5. Navy	77.5	62.1	15.4	5. Cleveland State	24-3	.889	
6. Memphis St.	81.9	66.5	15.4	6. UNLV	28-4	.875	
7. Notre Dame	79.1	64.2	14.9	7. St. John's (N.Y.)	27-4	.871	
8. Michigan St.	83.4	69.2	14.2	8. Navy	26-4	.867	
9. Oklahoma	89.7	75.6	14.0	9. North Carolina	26-4	.867	
10. Duke	81.4	67.6	13.8	10. Memphis St.	25-4	.862	
11. Kentucky	74.3	60.8	13.5	11. Michigan	25-4	.862	
12. Kansas	82.0	68.7	13.4	10. Xavier (Ohio)	25-4	.862	
13. Michigan	77.7	64.7	13.0	13. Pepperdine	24-4	.857	
14. Georgia Tech	76.6	63.8	12.8	Current Winning Streak: Bradley 21, Duke 13, North Carolina A&T 13, Navy 12, Ohio 10			
15. Illinois	74.0	61.7	12.4				

SCORING MARGIN				WON-LOST PERCENTAGE		
	OFF	DEF	MAR		W-L	PCT
1. Cleveland State	91.2	68.9	22.3	1. Bradley	30-1	.968
2. North Carolina	87.7	67.9	19.8	2. Duke	29-2	.935
3. Syracuse	83.0	67.1	15.9	3. Kansas	28-3	.903
4. Georgetown	80.1	64.4	15.7	4. Kentucky	26-3	.897
5. Navy	77.5	62.1	15.4	5. Cleveland State	24-3	.889
6. Memphis St.	81.9	65.5	16.4	6. UNLV	28-4	.875
7. Notre Dame	79.1	64.2	14.9	7. St. John's (N.Y.)	27-4	.871
8. Michigan St.	83.4	69.2	14.2	8. Navy	26-4	.867
9. Oklahoma	89.7	75.6	14.0	9. North Carolina	26-4	.867
10. Duke	81.4	67.6	13.8	10. Memphis St.	25-4	.862
11. Kentucky	74.3	60.8	13.5	11. Michigan	25-4	.862
12. Kansas	82.0	68.7	13.4	10. Xavier (Ohio)	25-4	.862
13. Michigan	77.7	64.7	13.0	13. Pepperdine	24-4	.857
14. Georgia Tech	76.6	63.8	12.8	Current Winning Streak: Bradley 21, Duke 13, North Carolina A&T 13, Navy 12, Ohio 10		
15. Illinois	74.0	61.7	12.4			

FIELD-GOAL PERCENTAGE				FIELD-GOAL PERCENTAGE DEFENSE			
	FG	FGA	PCT		FG	FGA	PCT
1. North Carolina	1080	1899	56.9	1. Texas Christian	600	1480	40.5
2. Kansas	1024	1805	56.7	2. Georgetown	690	1689	40.9
3. Michigan St.	887	1572	56.4	3. St. Peter's	574	1395	41.1
4. Georgia Tech	845	1540	54.9	4. South Florida	621	1499	41.4
5. Illinois	876	1617	54.2	5. Navy	775	1866	41.5
6. Indiana	789	1466	53.8	6. Houston Baptist	693	1645	42.1
7. Alabama	819	1523	53.8	7. Marist	625	1482	42.2
8. St. John's (N.Y.) ..	929	1739	53.4	8. Temple	671	1587	42.3
9. Pepperdine	870	1639	53.1	9. UTEP	672	1584	42.4
10. Northwestern St. La.	703	1328	52.9	10. San Diego	658	1549	42.5
11. Syracuse	906	1712	52.9	11. San Jose St.	592	1391	42.6
12. Georgia	875	1659	52.7	12. St. Joseph's (Pa.) ..	720	1689	42.6
13. Pittsburgh	833	1583	52.6	13. North Carolina A & T	622	1454	42.8
14. Wyoming	751	1428	52.6	14. UAB	810	1890	42.9
15. Louisville	963	1816	52.5	15. Syracuse	676	1572	43.0
16. George Mason	812	1550	52.4	16. Pan American	657	1523	43.1

Expecting the unexpected is best advice in men's basketball

Expect the unexpected when the 1986 NCAA Division I Men's Basketball Championship gets under way March 13. That way, you will be prepared for a buzzer-beating dunk like the one Lorenzo Charles used to propel North Carolina State past the brothers of Phi Slamma Jamma (aka Houston's Cougars) in 1983, or for another coaching clinic like the one conducted by Villanova's Rollie Massimino and Georgetown's John Thompson in the 1985 championship game.

Both games were classics, and the 1986 tournament promises more of the same. First-round action gets under way March 13, regionals will begin March 20 and the Final Four will advance to Dallas' Reunion Arena March 29 and 31.

Nine squads had gained spots in the 64-team tournament as of March

4, including St. Joseph's (Pennsylvania) (Atlantic 10 Conference champion), Drexel (East Coast Conference champion), Fairfield (Metro Atlantic Conference winner), Xavier (Ohio) (Midwestern Collegiate Conference titlist), Davidson (Southern Conference champion), Jacksonville (winner in the Sun Belt Conference), Arizona (Pac-10 Conference champion), Brown (Ivy League titlist) and Pepperdine (West Coast Conference winner).

Even with the expanded field, the Division I Men's Basketball Committee will make some tough decisions during its March 7-9 selection meeting in Kansas City. Through March 2, 53 Division I men's teams had won at least 20 games and 21 more had amassed at least 18 victories.

The possibility of one conference dominating the Final Four (like the

Big East's three national semifinalists a year ago) exists again. Should that occur, look for the league to be either the Atlantic Coast, Big East or Big Ten. As many as six teams could show up in the bracket from the ACC or Big Ten, and the Big East could be represented by as many as four teams.

Twenty-nine play-off spots will be taken by automatic qualifiers like the nine mentioned above, leaving 35 at-large bids in the four regions. Everybody seems to enjoy picking an "early-bird" Final Four, which will be especially difficult this season due to the quality of teams throughout the country.

Among teams that must be considered contenders for a spot in the semifinals are Duke, Georgia Tech and North Carolina in the ACC; St. John's (New York), Syracuse, Georgetown and defending champion Vil-

lanova from the Big East; Michigan, Indiana, Michigan State, Purdue and Illinois from the Big Ten; Louisville and Memphis State from the Metro; Kansas from the Big Eight; Kentucky from the Southeastern and independent Notre Dame.

A lot depends on the seeding of teams in each region. Just about every team in the field will have the ability to get hot, win six in a row and walk away with the title. For that reason, also watch Navy, Miami (Ohio), Cleveland State, Xavier (Ohio), Bradley, Fairfield, Nevada-Las Vegas and Pepperdine.

More than any Division I tournament of the 1980s, this field will showcase the talents of impact players. Kenny Walker (Kentucky), Ron Harper [Miami (Ohio)], Dwayne "Pearl" Washington (Syracuse), Steve

Alford (Indiana), Johnny Dawkins (Duke)... the list goes on and on.

The coaching savvy of veterans like Massimino will be challenged by upstarts like Fairfield's Mitch Buonaguro, a former Villanova assistant who has led the Stags to a tournament berth in his first season.

In all likelihood, at least two of the four No. 1 regional seeds will advance to the Final Four, and at least one surprise team will upset its way to the semifinals. You want favorites—an accurate list of predictions for the outcome of this tournament? Forget it.

But consider this list, from which should come the 1986 Division I champion: Duke, North Carolina, North Carolina State, St. John's, Notre Dame, Kentucky, Louisville, Bradley, Kansas and Indiana.

Undefeated Texas in no mood for surprises in tournament

Texas has done it again.

The Longhorns raced through the Division I women's basketball regular season undefeated and probably will enter the 1986 NCAA tournament as one of the top seeds, as they have in the past. Pairings will be announced by the Division I Women's Basketball Committee following a March 7-9 meeting in Kansas City.

What coach Jody Conradt and her players hope to avoid is the upset, something that befell a 1985 Texas team that looked like a sure thing for a spot in the final four. Western Kentucky unraveled the Longhorns' apparent cloak of invincibility with a 92-90 victory in the regional semifinals, and the Lady Hilltoppers advanced to the final four with a four-point victory over Mississippi.

Ranked No. 4 as of March 3, Western Kentucky is just one of the teams out to topple Texas from the top of the division when action in the 40-team play-offs get under way with first-round games March 12. Second-round games will be concluded by March 16, and regional contests will begin March 20. The final four will assemble in Lexington, Kentucky, for the semifinals and championship March 28 and 30.

As was the case with Texas' departure a year ago, some surprises certainly will occur as the 1986 tournament begins. In fact, some upsets have taken place already. Consider Maryland's unexpected march to the Atlantic Coast Conference championship and a berth in the Division I field. The unranked Terrapins got past Virginia and North Carolina, which are likely to earn at-large bids for postseason action.



Katrina McClain, Georgia

Five of the 18 automatic-qualification berths reserved for conference champions have been claimed (as of March 4) by Maryland, South Carolina (Metro Conference champion), Georgia (Southeastern Conference winner), Villanova (Big East Conference titlist) and Gateway Conference champion Southern Illinois.

With at least 25 teams sporting 20-victory records, the Division I Women's Basketball Committee certainly will have its work cut out in building the tournament bracket and seeding the qualifiers. Several teams certainly have the potential to earn a spot in the final four.

Despite its recent tournament woes, Texas easily could reach the semifinals. Led by the steady, heady play of

guard Kamie Ethridge, the Longhorns are playing the kind of team basketball that characterizes a champion. Although Texas shows up among the national leaders in seven of the eight team statistical categories compiled weekly by the NCAA statistics service, no Longhorn player can be found among the individual national leaders in any category.

Georgia, on the other hand, has Katrina McClain, one of the top scorers and hottest shooters in the division. With their spot in the tournament already clinched, the Bulldogs easily could make a second straight trip to the division's championship game.

Another team that could be back in the final four after a year off is Southern California. Like Texas, Cheryl Miller and company were stunned in regional semifinal action last season, which marked the first time that Southern Cal had not played for the national championship since Miller donned a maroon and gold uniform. Look for the Trojans to make a strong bid for the title.

Following is a list of some other teams with the potential to make a serious run for the Division I championship:

Rutgers, Penn State and St. Joseph's (Pennsylvania) from the Atlantic 10 conference; Virginia and North Carolina from the ACC; most of the Southeastern Conference (Auburn, Louisiana State, Mississippi, Tennessee and Vanderbilt, besides Georgia); Iowa and Ohio State from the Big Ten, and independent Louisiana Tech.

When all is said and done though, this may be Texas' year to stay on top.



Kamie Ethridge, Texas

Murray State, West Virginia headed for another shootout

Defending champion Murray State and West Virginia probably will stage another classic shootout for the 1986 NCAA Men's and Women's Rifle Championships team title, which will be decided March 15 at Navy. A year ago, the Racers bested the then-two-time defending champion Mountaineers by a single point, a margin of difference in shooting accuracy that can be measured by the diameter of the period at the end of this sentence.

Coach Ed Etzel's Mountaineers would top the existing championships record (6,206, which they hold), should the duplicate their qualifying mark of 6,207.

Coach Elvis Green also has Murray State within championships striking distance. The Racers compiled a team mark of 6,184, more than 30 points

better than their 1985 championship-winning score of 6,150.

Other teams and their qualifying marks include surprising South Florida (6,104), Army (6,102), three-time NCAA champion Tennessee Tech (6,092), East Tennessee State (6,089), Washington State (6,063), Texas A&M (4,560 in smallbore only) and St. John's (New York) (1,514 in air rifle only).

Olympic gold medalist Pat Spurgin of Murray State has qualified high in individual competition, where air rifle may be the most interesting match. Only 15 points separate the No. 1 qualifier from No. 32, the final entrant in the field.

"We are very excited about hosting the championships," said Navy coach Web Wright, whose son (also Web)

"defected" to West Virginia and is the top qualifier in the individual smallbore event. "For the first time in the history of the championships, we will use computerized scoring that will feed results to the competitors on television monitors."

This high-tech innovation should provide an interesting contrast to the historic charm of Annapolis and the Naval Academy on the western shore of Chesapeake Bay. Following is a list of individual qualifiers in smallbore and air rifle:

Smallbore

Web Wright, West Virginia, 1,175; Deena Wigger, Murray State, 1,173; Pat Spurgin, Murray State, 1,167; Kristin Peterson, South Florida, 1,167; Mike Anti, West Virginia, 1,167; Kim Hogrefe, West Virginia, 1,163; Christian Heller, West Virginia, 1,163; Tony Leone, Tennessee Tech, 1,161.

Christina Dean, St. John's (New York),

1,158; Gordon Taras, Army, 1,155; Bill Dodd, West Virginia, 1,153; Marianne Wallace, Murray State, 1,153; Peter Durbin, South Florida, 1,151; Rhonda Barush, Army, 1,150; Gary Stephens, Murray State, 1,150; Jim Bishop, West Virginia, 1,147; Rob Harbison, Tennessee-Martin, 1,146.

Tommy Arthur, Air Force, 1,146; Dave Johnson, West Virginia, 1,145; Annette Tyler, Texas A&M, 1,145; Michael Terzi, Washington State, 1,144; Andrea Cardon, Washington State, 1,144; Bart Parnall, Navy, 1,143; Fritz Boike, Tennessee Tech, 1,143; Patrick Domitrovich, Washington State, 1,143; Eric Uptagrafft, Texas A&M, 1,141; Kurt Kisch, East Tennessee State, 1,141.

Jesse Johnston, Tennessee Tech, 1,141; Craig Blake, St. John's (New York), 1,141; Wayne Johnson, UTEP, 1,141; Rex Clothier, Alaska-Fairbanks, 1,140; Randy Powell, Army, 1,140; Alison Schultz, Murray State, 1,140; James Clancy, Army, 1,138; Mike Moore, Texas A&M, 1,138; Howard Randall, East Tennessee State, 1,138, and Dale Szpisjak, Navy, 1,138.

Air rifle

Mike Anti, West Virginia, 394; Dave John-

son, West Virginia, 394; Pat Spurgin, Murray State, 394; Bill Dodd, West Virginia, 392; Marianne Wallace, Murray State, 388; Kristina Dean, St. John's (New York), 388; Christian Heller, West Virginia, 387; Kristin Peterson, South Florida, 387.

Deena Wigger, Murray State, 386; Gary Stephens, Murray State, 386; Randy Powell, Army, 386; Kurt Kisch, East Tennessee State, 386; Anthony McCormick, Citadel, 386; Roger Davidson, West Virginia, 385; Mike Munn, Tennessee Tech, 385.

Kim Hogrefe, West Virginia, 384; Annette Kraml, Ohio State, 384; Tommy Arthur, Air Force, 383; Andrea Cardon, Washington State, 383; Alison Schultz, Murray State, 383; Jim Bishop, West Virginia, 383; Ed Davis, Tennessee-Martin, 382; Web Wright, West Virginia, 382; Dave Yeager, East Tennessee State, 382.

M. Elaine Worland, South Florida, 382; Fritz Borke, Tennessee Tech, 382; Larry Arthur, Army, 380; Tony Leone, Tennessee Tech, 380; John Gasperino, Navy, 380; Robert Winovitch, Texas A&M, 379; David Bates, Navy, 379, and Peter Durbin, South Florida, 379.

Arkansas sets sights on third straight indoor track crown

Defending champions Arkansas (men) and Florida State (women) will be among the fields at the 1986 Division I Men's and Women's Indoor Track Championships March 14-15 at The Myriad in Oklahoma City, Oklahoma. The two-day meet, hosted by Oklahoma, will be the 22nd indoor championships for the men and the fourth for the women.

Men's championships

At the beginning of the indoor season, Arkansas coach John McDonnell said his Razorbacks had a realistic chance of defending their 1985 indoor title if they could stay healthy. With the indoor championships now only weeks away, the certificate of health appears in order as the 1986 Southwest Athletic Conference champion heads toward its third consecutive indoor title.

Arkansas' strengths lie in the middle-distance and field events. Senior Paul Donovan, 1985 indoor 1,500-meter champion, leads the middle-distance corps (3:56.39 mile), along with Gary Taylor (3:58.26 mile) and Joe Falcon (4:03.19 mile). Falcon paced Arkansas to second place in the 1985 NCAA Division I Men's Cross Country Championships with a seventh-place finish (30:01.11). Indoors, the freshman raced to one of the fastest collegiate two-mile times this season (8:35.4).

Doug Consiglio, last year's anchor on the Razorbacks' second-place distance medley relay team, set an indoor collegiate record in the 1,000 meters (2:19.64) and also has qualified in the 1,500 meters (3:55.91 in mile).

Defending outdoor 400-meter champion Roddie Haley made the qualifying mark in the 500 meters (1:01.18) but might be called upon to anchor Arkansas' 1,600-meter relay team, if it can qualify in the last two weeks before the meet. The 3,200-meter relay team also is expected to make the mark.

The Razorbacks will miss graduate Mike Conley, 1985 indoor and outdoor long jump and triple jump champion, but they should score in the jumps. Junior long jumper Mike Davis (25-6) and sophomore John Register (25-2½) have qualified. Last year's high jump runner-up Bill Jasinski (7-3½ season best) is back for his last indoor season, as is last season's fourth-place shot put finisher Marty Kobza (65-4 season best).

Tennessee, the runner-up last sea-

son, once again should provide the top competition for Arkansas. The Volunteers return strong sprint and long-jump contingents. Last year's 55-meter dash champion, Sam Graddy, is back and in great form. The senior ran the fastest collegiate 60-yard time in the nation this year (6.08). Terry McDaniel also has qualified in that event (6.19).

In the field events, jumper John Tillman (53-9 triple jump and 25-3½ long jump), Greg Neal (25-11 long jump) and Pat Reid (61-9 shot) have qualified.

Other top qualifying performers include (season best listed):

500 meters—Danny Harris, Iowa State, 1:01.36; Dennis Mitchell, Florida, 1:01.38.

1,500 meters—Paul Larkins, Oklahoma State, 3:59.5 in mile.

3,000 meters—Paul Larkins, Oklahoma State, 8:35.0 in two mile; Brian Abshire, Auburn, 7:54.66.

3,200-meter relay—Houston Baptist, 7:22.19.

High jump—Dothel Edwards, Georgia, 7-4½; Greg Gonsalves, Boston U., 7-4½.

Pole vault—Terry Womack, Oklahoma, 18-0; Doug Fraley, Fresno State, 17-8½; David Watson, Florida, 17-6; Tim Kamfield, Oregon, 17-4½; Mike Shafe, Baylor, 17-4; Lang Lohr, Illinois, 17-4.

Long jump—Scott Sanders, Ball State, 25-9¼; Moses Kiyai, Iowa State, 25-6¼.

Triple jump—Floral Edrick, Nebraska, 54-3¼; Moses Kiyai, Iowa State, 52-11.

Shot put—Dimitrios Koutsoukis, Washington State, 65-5½; Steve Cate, Louisiana Tech, 63-6; Bruce Anderson, Washington State, 62-7½.

35-pound weight throw—Tore Gustafsson, Washington State, 73-5½; Stefan Jonsson, Washington State, 69-4; Christopher Hall, Rhode Island, 65-7½.

Women's championships

The competition for the women's crown should be intense.

Since Florida State's main scoring threat, Esmeralda Garcia, had not qualified at press time, the Lady Seminoles will be hard-pressed to retain the title. Garcia is the winner of the 1985 indoor triple jump and world record-holder in the event (44-4). Florida State does return defending 55-meter champion Michelle Finn (6.86 season best).

The next three 1985 finishers—Texas (second), Louisiana State (third) and Nebraska (fourth)—should challenge for top honors.

The Southwest Athletic Conference champion Longhorns feature two seasoned sprinters: senior Juliet Cuthbert, the 1985 NCAA outdoor 200-meter champion, and Mary Bolden, a transfer from Tennessee who placed fifth outdoors in 1984 in both the 100-



Terri Turner and Juliet Cuthbert, Texas

and 200-meter dashes. Both have qualified in 55 meters (Bolden, 6.81; Cuthbert, 6.83).

Other qualifiers include Karen Nelson in the 55-meter hurdles (7.72) and long jump (20-3¼), Sametra King in the 500 meters (1:12.39), Karol Davidson in the 1,000 meters (2:27.50 in 1,000 yards), Liz Natale in the 3,000

meters (9:22.65), Shelley Fuhrman in the high jump (6-1), Terri Turner in the triple jump (43-9) and Dot Lane in the shot put (50-10). Both relays also have qualified (3:37.46 mile relay, 8:48.43 3,200).

Three Louisiana State sprinters have made the mark in the 55-meter hurdles—Alicia Bass (7.68), Scho-

wonda Williams (7.75) and Cheryl Wilson (7.87). Williams also qualified in the 500 meters (1:20.00 600-yard time).

In the field events, the Tigers feature long jumpers Sharon Clarke (20-3 and 41-6½ triple jump) and Claire Connor (20-3) and shot putter Teresa Williford (51-1¼). The 1,600-meter relay team also has qualified (3:41.21).

Nebraska, which won the first two indoor track championships, will be led by sprinter Angela Thacker (6.78 season best in 55 meters). Other qualifiers include two in the 500 meters—Lynetta Wilson (1:12.04) and Michelle Milling (1:12.30)—and Tammy Thurman in the high jump (5-11¼). Both relay teams have made the mark: 3:40.12 in the mile relay and 8:50.20 in the two-mile relay.

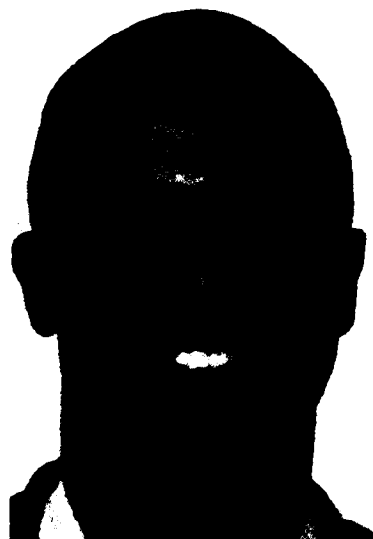
Other top qualifying performers include (season best listed):

500 meters—Nawal El Moutawakel, Iowa State, 1:11.12; Gervaise McCraw, Southern California, 1:19.50 in 600 yards.

High jump—Candy Cashell, Delaware, 5-11¼.

Triple jump—Wendy Brown, Southern California, 42-8¼; Yvette Bates, Southern California, 41-9¼.

Shot put—Diana Clements, Southern California, 55-8¼.



Sam Graddy, Tennessee



Roddie Haley, Arkansas

Two top teams return in strength for Division III title bids

Two of the top teams in the 1985 Division III men's and women's indoor track championships appear to have the edge going into this year's meet March 14-15 at Bethel College in St. Paul, Minnesota.

Lincoln (Pennsylvania), runner-up in the 1985 men's competition, and defending women's champion Massachusetts-Boston have qualified numerous competitors for the second Division III championships for both men and women.

Men's championships

Although 1985 runner-up Lincoln lost personnel who contributed 24 of last season's 34-point total, coach Cyrus D. Jones has replaced the losses with an equally talented squad.

The sprints seem to be the strongest area for the Lions, led by freshmen William Darby and Andre Randolph. Darby raced to the fastest Division III 55-meter time in the country this season with a 6.28, while Randolph posted a 6.51. Darby also will compete in the 400 meters (49.44), where he hopes to fill the shoes of former Lion Barrington Fearon, who won the event in 1985.

In the 55-meter hurdles, two Lincoln scorers are back—juniors Reginald Pate and Dave Hightower. Pate placed third in 1985 and has clocked a 7.48 time in 1986, while fourth-place finisher Hightower has a season best

of 7.49. In addition, Marus Johnson will run the 800 meters (1:54.09).

Lion field-event competitors include Tom Trass in the high jump (6-10) and Kenneth Williams in the long jump (22-11). Both are sophomores.

Defending national champion St. Thomas (Minnesota) had qualified only two competitors at press time: John Bielinski in the 800 meters (14:37.3) and pole vaulter Mike Murray (14-10), who finished third in 1985 with a 15-0 vault. So, it appears Lincoln's main threat will be Wisconsin-LaCrosse, which has qualified eight athletes in six events.

The Indians did not compete in last year's meet but did finish second in the 1985 Division II Men's Outdoor Track Championships, behind Lincoln. Three of those point-getters have qualified indoors, including Matt Krissel in the 55-meter hurdles (7.69), Evan Perkins in the triple jump (49-0½) and Mike Meeteer in the pole vault (15-7). Meeteer, who won the 1985 outdoor decathlon, also has qualified in the long jump (23-0½).

Other Wisconsin-LaCrosse competitors are Earl Novotney in the 400 meters (49.60), Eric Keller in the triple jump (46-11) and Terry Strouf in the shot put (51-10).

Other top qualifying performers include (season best listed):

55 meters—Michael Pitts, Christopher Newport, 6.1; Nick Goddard, Emory, 6.51; Tim McCrossen, St. Lawrence, 6.2.

55-meter hurdles—Victor Gilmer, Westfield State, 7.59; Brian Lamb, North Central, 7.72; Mike Franklin, Christopher Newport, 7.81.

400 meters—Tim McCrossen, St. Lawrence, 48.6; Kirk Dixon, St. Lawrence, 48.7; Brian Crossman, Fitchburg State, 49.06; Steve Krause, Brandeis, 49.44.

800 meters—Ron Moreau, Bentley, 1:52.94.

1,500 meters—Dave Langdon, Brandeis, 3:54.51; Mark Herlihy, Tufts, 4:11.65 in mile; Sean Hurley, Tufts, 4:12.36 in mile.

5,000 meters—John Fitzgerald, Bates, 14:24.25; Jukka Tammisuo, St. Lawrence, 14:29.9; Arnie Schraeder, Wisconsin-Stevens Point, 13:56.6 in three-mile run.

High jump—Matt Leszyk, Ithaca, 6-10; Matt Schechter, Bates, 6-9½; Doug Lyons, Amherst, 6-9.

Pole vault—David Bell, Muskingum, 14-10; Steve Hoyer, Fredonia State, 14-9¼.

Long jump—Pat Corbett, Fredonia State, 23-4¼; Mike Johnson, Ithaca, 23-0¼.

Triple jump—Willie Noel, Christopher Newport, 48-0; Gerry Lincoln, North Central, 46-9.

Shot put—Mark Loy, Mount Union, 54-9½; Greg Steelman, Brandeis, 53-0¼.

35-pound weight—Mike Mielke, Stockton State, 57-11¼; Mitch Longley, Westfield State, 58-6½; Greg Steelman, Brandeis, 55-10.

Women's championships

Paced by three returning NCAA champions, Massachusetts-Boston leads all contenders in the race for the Division III Women's Indoor Track Championships team title.

This year, coach Sherman Hart has added field-event depth to an already powerful running contingent. Everyone from the 1985 squad returns, including individual champions Murtunda Durant in the 400 meters (57.60 season best), Michelle Williams in the

55-meter hurdles (8.47 season best) and Ann Brissett in the triple jump (36-8 season best).

Durant also has qualified in the 55 meters (7.56), along with Delores Booth (7.63). In addition to Williams in the hurdles, freshman Jackie James, runner-up in the Massachusetts state 100-meter hurdles event (8.74 in 55-meter hurdles), and Brissett (8.78) have made the mark.

Genesis Eddins, first-place outdoor finisher (55.34) and second-place indoor finisher (57.67) in the 400 meters, leads all qualifiers in the 400 with a 56.48 clocking. The sophomore also heads the 800-meters qualifying list with a 2:10.34.

Darrelle Boyd, who finished fifth indoors in the 800 meters and fourth in the 1,500 meters, has qualified again in both events with a 2:14.6 and 4:38.17. Junior Diane Weeder, a transfer from Southern Methodist, will join Boyd in the 1,500 meters (4:41.42) and compete in the 3,000 meters (10:08.00).

Four-time all-America Brissett leads the field-event corps but should receive help from high jumper Georgia Traficante (5-6½) and shot putters Debbie d'Entremont (43-5) and Maureen Roche (42-9).

Springfield, 10th in the Division II women's outdoor championships, will compete in the Division III indoor meet because the Division II indoor

championships were discontinued. The Chiefs are led by Division II 400-meter hurdles champion Janet Williams, who has qualified in six events. The senior has season bests of 7.0 in the 55 meters, 8.02 in the 55-meter hurdles, 57.85 in the 400 meters, 5-6¼ in the high jump, 18-3¼ in the long jump and 37-1 in the triple jump.

Springfield also features Yvette Moore in the 55-meter hurdles (8.68 season best), Ginger Stewart in the 800 meters (2:17.67) and Diane Hanks in the 3,000 meters (10:08.8).

Other top qualifying performers include (season best listed):

55 meters—Winsome Foderingham, Albany (New York), 7.30.

55-meter hurdles—Winsome Foderingham, Albany (New York), 8.67; Traci Sawyers, Fisk, 8.70; Juanita Lovell, Fisk, 8.80.

400 meters—Andrea Kincannon, Bates, 57.48; Kathy Forrest, Wesleyan, 58.40; Traci Sawyers, Fisk, 58.6; Trena Marshall, CCNY, 56.2 in 440 yards; Sharon Mason, CCNY, 59.2 in 440 yards.

800 meters—Trena Marshall, CCNY, 2:13.58; Gail Jerardi, Fitchburg State, 2:15.2; Tonya Bynoe, Bowdoin, 2:16.0.

1,500 meters—Mercedes Diaz, CCNY, 4:43.2; Teresa Kittredge, Bentley, 4:44.3; Gwyn Hardesty, Smith, 5:06.08 in mile.

3,000 meters—Gwyn Hardesty, Smith, 10:02.8; Teresa Kittredge, Bentley, 10:10.0; Linda Reinman, Dickinson, 10:12.0.

Long jump—Michelle Dickens, Christopher Newport, 18-0¼; Andrea Kincannon, Bates, 17-11; Angela Williamson, Fisk, 17-4.

Triple jump—Glen-Marie Martin, CCNY, 36-1¼.

Shot put—Claudia Stanley, Christopher Newport, 44-1½; Bronwen Morrison, Bowdoin, 40-3½.

Competition could be closing in on dominating Hawkeyes

Iowa may never be the same after March 15. The state's wrestling-crazed fans may go over the edge at the 56th annual NCAA Division I Wrestling Championships hosted by Iowa at its 15,502-seat Carver Hawkeye Arena.

Tickets were such a hot commodity that a lottery, used previously only by the NCAA to determine Division I men's basketball Final Four ticket recipients, had to be used for this year's championships, which get under way with preliminary rounds March 13.

Spectators should have plenty to get excited about since a team title race, something that has been missing from the last seven championships, has shaped up between defending champion Iowa, surprising Iowa State, Big Eight champion Oklahoma and Eastern powers Penn State and Clarion.

Iowa, winner of nine of the last 10 team titles, including the last eight in a row, has dominated the tournament, with the exception of the 1978 championships when the Hawkeyes escaped with a ½-point victory over Iowa State. Iowa's margin of victory in its other eight team victories has ranged from 20¼ to 53 points.

The comfortable margins the Hawkeyes have enjoyed appear to have diminished to the point that an upset here and there could put Iowa's team title in jeopardy.

Adding to Iowa's worries is the absence of all-America 118-pounder Matt Egeland, runner-up at last year's championships, who quit the squad a few weeks ago.

Egeland's departure, coupled with the lack of a heavyweight qualifier, will put plenty of pressure on coach Dan Gable's squad. Defending 158-pound champion Marty Kistler will lead the Hawkeyes in the 167-pound



Dan Gable

slot this year. Kistler sported a 32-1 record at press time and was ranked No. 1 by The Amateur Wrestling News. Jim Heffernan (150), runner-up at last year's championships, also carried a No. 1 ranking. Other championships-tested Hawkeyes include Greg Randall (134), Kevin Dresser and Rico Chiapperelli (177), all of whom placed in the top five at last year's championships, along with runner-up Duane Goldman (190).

Iowa State, which started a conditioning program 30 weeks ago that is designed to have the Cyclones peaking for the championships, enjoyed an impressive season despite losing the Big Eight title by 1¼ points to Oklahoma two weeks ago.

First-year coach Jim Gibbons will have 10 qualifiers at the championships, including his younger brothers, Joe, the defending 142-pound champion, and Jeff (134), a freshman who had a 17-13 record at press time.

The Cyclones handed Iowa its only dual-meet loss February 23 in a 19-16 victory at Ames, to avenge their only loss of the season, a 25-9 rout at Iowa last January in which they managed to win only one match. The rematch was tied at 16 going into the heavyweight match, which John Heropoulos, a top contender for a championships title, won 10-3 for the winning margin.

Veterans Bill Kelly (126), Mike Van Arsdale (167) and Bob Gassman (177) have had impressive seasons and are capable of contending for a title. If the Cyclones' team-title chances hinge on the performances turned in by freshmen Tim Krieger (150) and Eric Voelker (190), Gibbons may have the

depth it takes to win it. Krieger has a string of 81 consecutive victories that dates to his junior year in high school, and he leads the Cyclones in technical falls with eight. The emergence of Voelker, who had a 19-3 record at

Championship Preview

season's end, has allowed Gibbons to move Heropoulos to heavyweight and add more depth to his lineup.

Oklahoma, runner-up at last year's championships, has come on strong since the return of defending 177-pound champion Melvin Douglas, who was held out of competition until some eligibility matters were cleared up in mid-January. Dan Chaid, the defending 190-pound national champion, along with Big Eight champions Joe Melchiorre (118) and Nick Neville (134), will have the Sooners in contention for a top-five finish.

Clarion, having one of its best years, enters the championships coming off a regular season in which the Golden Eagles of coach Bob Bubb have defeated powers Oklahoma State and Wisconsin. Paul Clark (134) leads a veteran lineup that includes Ken Nellis (150), Ken Haselrig (158) and Jim Beichner (190).

Penn State will be out to improve upon last year's seventh-place championships finish behind potential titlists Jim Martin (118), a freshman who carried a 31-1 record into the Eastern Wrestling League tournament, and Greg Elinsky (167), who earned all-America status last year with a seventh-place finish.

In addition to Iowa State's Gibbons, Oklahoma's Douglas and Chaid, and Iowa's Kistler, Bloomburg's Ricky Bonomo (118), who quit the team at the start of the spring semester but rejoined it a week later, and Wisconsin's Jim Jordan (134) also are defending champions.



Joe Gibbons



Dan Chaid

ATTENTION BASKETBALL COACHES AND NACDA MEMBERS

*If you are attending the NABC and NACDA Conventions
and the Final Four Tournament in Dallas*

CALL 1-800-243-3180

and receive:

**Major Savings on Airlines
70% Discount**

WITH RESTRICTIONS

UP TO 40% Discount — no Restrictions!

Don't miss the opportunity to cut your travel expense on this
and other trips for you, your team, coaches and administrative staff.

**FUGAZY
INTERNATIONAL
TRAVEL** 67 WHITNEY AVENUE
NEW HAVEN, CT 06510
203-772-0470

THE OFFICIAL TRAVEL AGENT
FOR NCAA CHAMPIONSHIPS

Tie In To The Existing NCAA Travel Plan and SAVE BIG!

Cal State Northridge, Clarion expect to end up on top again

Cal State Northridge and Clarion, two names synonymous with Division II swimming excellence, will vie for their respective championships at the 1986 Division II Men's and Women's Swimming and Diving Championships, March 12-15, at the Justus Aquatic Center in Orlando, Florida.

Cal State Northridge has claimed nine of the past 11 men's championships, and Clarion won the first two NCAA women's championships (1983 and 1984) after previously taking numerous Association for Intercollegiate for Women crowns.

Men's championships

Cal State Northridge looks unbeatable again in the Division II race. Winner of the last five championships, the Matadors return 437 points of their record-setting 488-point total of a year ago.

Double 1985 champions Jeff Kubiak (200-yard breaststroke and 200-

yard individual medley) and senior Roland King (one- and three-meter diving) top the list of returnees. Kubiak holds the Division II record in the 200-yard breaststroke at 2:00.40. He qualified for the 1986 competition with a 2:04.69. In addition, the Cal State Northridge junior made the mark in the 100-yard breaststroke (57.27), 200-yard individual medley (55.24) and the 400-yard individual medley (4:06.01).

Reed Gershwind, who single-handedly collected 47 points at the 1985 championships, has qualified in the 100-yard freestyle (46.38), 200-yard freestyle (1:42.45), and on several relay teams. The Matadors have some of the best relay times in the country, including a 3:07.62 in the 400-yard freestyle relay, a 6:52.39 in the 800-yard freestyle relay and a 3:28.83 in the 400-yard medley relay.

Oakland, Cal State Bakersfield,

Cal State Chico and Tampa also should field strong teams. Oakland, which finished sixth in last year's meet, is led by Steve Larson in the 50-yard freestyle (20.93), 100-yard backstroke (51.63) and 200-yard backstroke (1:55.09). The Pioneers also possess one of the top breaststrokers in the country in Mark VanderMey.

Oakland relays also are strong with times of 3:04.82 in the 400-yard freestyle relay, 6:53.00 in the 800-yard freestyle relay and 3:23.83 in the 400-yard medley relay.

Standouts for Tampa include Jeff Fagler in the 50-yard freestyle (20.60) and 100-yard freestyle (45.94) and Mike Halfast in the 200-yard freestyle (1:40.80).

Women's championships

Clarion, winner of two NCAA championships and the third-place finisher in 1985, should battle it out

with last year's runner-up Cal State Northridge. 1985 champion South Florida would have been a factor if the Lady Bulls had not moved to Division I.

All of Clarion's 1985 scorers are back, including seven-time all-American Tina Bair. The junior placed second nationally in the 50- and 100-yard freestyle and the 100-yard butterfly and assured Clarion top-three finishes as anchor of four relays.

Bair swam the division's best times this season in the 50-yard freestyle (23.96) and 100-yard freestyle (52.19) and the second best time in the 200-yard freestyle (1:54.21).

In addition, Clarion has the division's best times in the 200-yard freestyle relay (1:37.38), 400-yard freestyle relay (3:34.72), 800-yard freestyle relay (7:44.57) and 200-yard medley relay (1:51.31) and second best in the 400-yard medley relay (4:01.70).

Six-time all-America A'Lisa Woi-cicki has qualified in the 50-yard freestyle (24.26), 100-yard freestyle (52.31), 200-yard freestyle (1:55.20), 100-yard butterfly (57.75) and 200-yard butterfly (2:07.87).

Cal State Northridge has NCAA finishes of first in 1982, third in 1983 and second in 1984 and 1985. Although hit hard by graduation, coach Pete Accardy has put together another excellent squad.

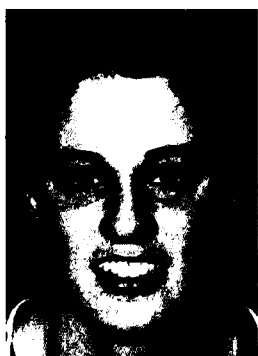
Freshman Stacey Mettam appears to be the leading backstroke in the division with times of 1:00.00 in the 100-yard backstroke and 2:10.44 in the 200-yard backstroke. Her freshman teammate, Tina Schnara, could be the division's leading breaststroke (1:06.04 in the 100-yard breaststroke and 2:24.16 in the 200-yard breaststroke).

Tampa, paced by backstroke Janet Pietroforte, is another threat.

Kenyon to go for third title in row

Kenyon, winner of the past two Division III Women's Swimming and Diving Championships, will try to continue the streak at the 1986 championships, March 13-15, at C. T. Branin Natatorium in Canton, Ohio. However, UC San Diego, third in 1985, may have the depth to win its first title.

Six-time NCAA individual champion Patty Abt leads the Kenyon lineup. The junior holds individual NCAA records in the 50-yard freestyle (23.56), 100-yard freestyle (52.04) and 200-yard freestyle (1:52.80), and she shares NCAA team records in the 400-yard medley relay (3:59.28), 200-yard freestyle relay (1:36.56) and 400-yard freestyle relay (3:32.66). She also claims the honor of being the first Division III woman swimmer to qual-



Patty Abt

ify for the Division I championships.

Individually this season, Abt has qualified in the 50-yard freestyle (24.55), 100-yard freestyle (53.93) and 200-yard freestyle (1:56.55).

Teammate Amy Heasley holds the division's best time in the 200-yard butterfly (2:12.86) and also has made the mark in the 100-yard butterfly (1:00.99), 200-yard individual medley (2:16.82) and 400-yard individual medley (4:51.75).

UC San Diego swimmers have compiled some of the division's top times in almost every event. Irene Mons, 1985 national champion in the 500-yard freestyle, leads the nation again in that event (5:10.09).

Teammate Anita Hill has been impressive, qualifying in the 100-yard freestyle (54.38), 200-yard freestyle (1:55.71), 500-yard freestyle (5:10.32), and earning the Tritons' top relay times. To date, UC San Diego tops the division in the 200-yard freestyle relay (1:40.07), 800-yard freestyle relay (7:53.00) and 200-yard medley relay (1:52.37).

Tracy Mulvaney in the 1,650-yard freestyle (17:26.32) and 400-yard individual medley (4:45.25), Alison Gilmore in the 100-yard butterfly (1:00.11), and Debbie Smith in the 100-yard backstroke (1:00.73) and 200-yard backstroke (2:11.12) are other top Triton competitors.

Other top teams include Pomona-Pitzer and Wheaton (Illinois).

Announcing: National is the Official Car Rental Company for NCAA Championships.



We feature cars like the Buick Regal.

National was recently designated the "official car rental company" for NCAA Championships. And we're out to perform well on your scorecard. Just look at the outstanding travel value we provide you:

Special Low NCAA Rates. Simply show your NCAA affiliated school I.D. at the time of rental to take advantage of these low unlimited-mileage daily rates:

Car Type	Daily Rate*
Economy	\$27.00
Compact	28.50
Mid-size	30.00
Full-size 2-dr	31.00
Full-size 4-dr	31.50

Cars in Top-Condition.

According to the United States Auto Club's car condition studies of the major car rental companies, National's cars are "the best in overall condition." Choose from our wide range of car sizes and models. You'll enjoy the same kind of reliability with whatever style you select to fit your plans.

24-Hour Peace of Mind.

Thanks to our strict car maintenance program, you'll probably never need this service. But it's nice to know that National, backed by the Amoco Motor Club, provides 24-hour emergency road service. Assistance can be just a toll-free call away. Anytime of night or day.

Convenient Service Where You Need Us.

National Car Rental is conveniently available with fast, friendly service at over 3000 locations in 116 countries and territories around the world. You'll find us in 1000 locations in the U.S. alone. And it won't be hard to find us. Our rental counters are right in the major airport terminals where you need us—to get you off and running without delay.

National Car Rental.

The NCAA deserves National attention.*

For details and reservations, call toll-free 800-CAR-RENTSM or your travel consultant.

*Rates shown are non-discountable, available at participating locations and subject to change without notice. Specific cars are subject to availability. You pay for gas used and return the car to the renting location. Normal rental qualifications apply.

Division III

Continued from page 5
returning.

Allegheny (31-7) was fifth in the nation last year, but all-America pitcher Julie Dennis is gone. The test for coach Kay Gould is how quickly she can find a replacement. The offense is there.

Cortland State (23-10) finished sixth in the NCAA tournament in 1985, and the entire starting lineup is back.

UC San Diego (28-20) may be ready to make its bid for the final six. The Tritons earned a regional berth last year, and eight of the nine starters return in 1986. Pam Hardaway (.310) is the offensive leader.

St. Thomas (23-17) also returns a veteran club after a 1985 regional appearance.

Ithaca (19-12) returns eight starters from a team that lost to Cortland State in regional play. The entire infield is back, and so is pitcher Kathy Volpi, who was 12-5 last year.

Luther lost some but should have a good balance of veterans and newcomers. Returning is Iowa Intercollegiate Athletic Conference co-MVP Darsi Doyle, pitcher.

Champions of five conferences automatically qualify for the NCAA championship. Following is a look at the top contenders in each of those leagues.

Bowdoin sidetracked

Although Bowdoin was ranked No. 1 in the final regular-season NCAA Division III ice hockey poll, the Polar Bears' hopes for a championship berth have been put on ice.

Due to New England Small College Athletic Conference regulations, Bowdoin will not be eligible for the eight-team field that will be selected March 9 for the third annual NCAA Division III Men's Ice Hockey Championship, which gets under way with first-round, on-campus games March 14-16.

The championship format involves four two-game first-round series, which utilizes a "mini-game" tie-breaker system if the two teams split the series. The four first-round winners advance to the March 21-22 semifinals and finals at an on-campus site.

Five at-large teams will be selected from the East region, while three teams from the West region will be awarded at-large berths.

Defending champion Rochester Institute of Technology is a likely selection from the East region. The Tigers have rolled to a 26-4 record and finished the season ranked in a tie for second with St. Thomas (Minnesota), which was a contender for a berth in the West region with a 26-4 record.

Bemidji State's defensive-oriented team once again has veteran coach Bob Peters eyeing a berth in the West region for another shot at the championship. The Beavers, runner-up last year, were ranked fourth in the final poll with a 21-7-1 record.

Sixth-ranked Mankato State (24-5-3) and ninth-ranked St. Scholastica (18-11-2) appear to be the front-runners for the West region's third playoff berth.

In addition to RIT, contenders for berths in the East region include fifth-ranked Elmira (24-4), seventh-ranked Plattsburgh State (22-9-1), eighth-ranked Babson (18-6-1), 10th-ranked Norwich (16-10-1), Salem State and Oswego State.

NCAA on ESPN

ESPN will broadcast a one-hour program produced by NCAA Productions on the 1986 honors luncheon program, which was held during the 1986 Convention in New Orleans. Times for the honors luncheon show are March 11, 7 p.m., Eastern time; March 12, 3 p.m., Eastern time; and March 26, 6 a.m., Eastern time.

Iowa Intercollegiate Athletic Conference

Buena Vista and Luther will battle for the conference title. The only other contender is Central (Iowa) (19-14). The Flying Dutch beat Luther and Buena Vista in the conference tournament last year.

Coach George Wares did it with a mostly freshman and sophomore team. Now, all of those players are back with experience. The pitching staff is led by Shelley Weiss (11-6, 0.85 ERA) and Laurie Suttin (7-3).

Central has a pair of bona fide hitters in first baseman Kris Thompson (.348) and second baseman Kelly Gould (.311, 9 stolen bases).

New Jersey Athletic Conference

Trenton State and Montclair State probably will fight it out for the league title, but they will not be without some competition from Glassboro State (24-16-1) and Stockton State (21-9-1).

Glassboro will rely on a strong offensive lineup to carry it. The Profs return most of their starters from

1985, including shortstop Andrea Bramante (.348, 6 doubles, 5 triples, 2 homers), second baseman Kellie Earling (.319) and first baseman/outfielder Shona Reichardt (.234).

Freshman pitching will play a big part in Stockton's 1986 success. The Lady Ospreys do return junior pitcher Gayle Varady, however, and she had an earned-run average of .857 last spring.

Massachusetts State College Athletic Conference

Bridgewater State (Massachusetts) (21-11) pressed Salem State for the league title last year, and seven of those starters return. The Bears will have lots of experience and a solid infield this spring.

Two-time all-America Deb Carriero, senior third baseman, is the leader. She hit .370 last year with six triples. Also back is senior outfielder Chris Russell, who hit .412 in 1984 but fell to .357 last year. Darlene Dusseault (15-5) will anchor the pitching staff.

North Adams State (15-11) has a

fine defensive team; the big question mark will be steady pitching.

Westfield State (18-13) also is a serious contender. Seven starters return, including pitcher/outfielder Donna McLean (16-13, .308 batting average). Also back is shortstop Cheryl Bassett (.318).

All in all, it should be a tough conference race this spring.

Minnesota Intercollegiate Athletic Conference

St. Thomas probably is the class of the conference, especially with St. Olaf, the defending champion, facing a rebuilding year.

The Oles (19-11) lost two all-conference players and three pitchers to graduation and transfer. That leaves a lot of shoes to be filled. Still, there is plenty of offense returning.

Augsburg (21-12) would like to return to its winning ways. The Augies won three consecutive league titles from 1982 to 1984 but finished third last spring.

Macalester (17-13) could challenge for the title. Eight starters return, led

by third baseman Renee Ledin (.293).

State University of New York Athletic Conference

Buffalo (19-9) won the conference last year but lost to league opponent Cortland State and then to Ithaca in regional play. In 1986, the Royals have to replace four of their starters and their top pitcher. It sounds like a lot, but there is plenty of talent returning.

Albany (N.Y.) (15-6-1) returns seven starters, including Wendy Williams (15-6), who had 139 strikeouts (second in the nation last year) and an 0.75 ERA (10th best). Included in her victories were three no-hitters and six shutouts.

Williams will have support from an infield that includes third baseman Monique Romano and first baseman Dawn Mackey, a transfer.

New Paltz State (14-7) also returns seven starters; and the group includes Kathleen Mahon, third baseman. Mahon hit .467 in 1985, sixth best in the nation; and her 32 runs batted in were fifth best.

Our Starting Five Is In Your Court.



Valvoline continues its sponsorship of NCAA sports.

When we sponsor NCAA sports events on television, we know our products are being used in the most demanding of circumstances. But we're not just sort of there, we're just going the distance. This year we're sponsoring the NCAA's National Youth Sports Program. Having disadvantaged kids do something positive over the summer is one of the NCAA's priorities. And one of ours.

We believe the NCAA is special.

And we also mean that we want your car to be special. At Valvoline, we understand the demands of your driving habits. For example, if you're a long-distance driver, we'll give you our new Valvoline Full Guard Motor Oil. We were the first to introduce a special oil for turbocharged engines.

Indeed, we have a history of being first. Back in 1893, Valvoline lubricated the first successful gas-powered automobile in the U.S.

Valvoline: Because your car is special.

Valvoline Oil Company, Lexington, KY Division of Ashland Oil, Inc. ©1986, Valvoline Oil Company.

The NCAA News



Championships Results

SIU-Edwardsville wins another Division II wrestling crown

Southern Illinois-Edwardsville advanced six wrestlers to the semifinal round and went on to win its third successive NCAA Division II Wrestling Championships team title by 12½ points over runner-up Edinboro.

The Cougars, host of the February 28-March 1 championships, wrapped up the team title after the first three matches in the championship round. Tim Wright started SIU-Edwardsville's victory march by defending his 118-pound title for the third straight year.

Allan Grammer followed with a 7-4 decision over Portland State's Anthony Amado for the 126-pound title, and Steve Stearns then gave the Cougars an insurmountable lead with an overtime victory against Edinboro's David Ray in the 134-pound class. Stearns, who celebrated his title-clinching victory with three back flips across the mat, was as happy as coach Larry Kristoff about winning the team title.

"Winning at home is the biggest thrill going because we get to do it before family and friends," Kristoff said. "This means more than the last two put together."

"Last year we won, but it wasn't exciting. This gives me chills, up and down."

Edinboro won the next two matches after Stearns' victory. Greg Wright pinned Central Missouri State's Mark Danner in the 142-pound title match, and Bob Kauffman beat SIU-Edwardsville's Brian McTague, 8-3, in the 150-pound championship match.

Dean Hall capped Edinboro's effort with a 7-3 victory over Liberty's Mike Hatch in the heavyweight class. Cal State Bakersfield, also with three titlists, was third with 81½ points.

Koln Knight of Augustana (South Dakota), who successfully defended his 190-pound title, was named the

championships' most outstanding wrestler.

TEAM RESULTS

1. SIU-Edwardsville, 119; 2. Edinboro, 106½; 3. Cal St. Bakersfield, 81½; 4. North Dak. St., 53½; 5. Liberty, 36½; 6. Augustana (S.D.), 33½; 7. Neb.-Omaha, 31½; 8. St. Cloud St., 26; 9. South Dak. St., 25½; 10. San Fran. St., 25; 11. Northern Mich., 23½; 12. Portland St., 22; 13. North Dak., 21; 14. Calif. (Pa.), 20½; 15. Northwest Mo. St., 20½; 16. Central Mo. St., 20; 17. Lake Superior St., 19; 18. Oakland, 17½; 19. (tie) Pembroke St., Norfolk St. and Ashland, 17; 22. Wright St., 16½; 23. Cal St. Chico, 16; 24. Grand Valley St., 15½; 25. Pitt-Johnstown, 12½; 26. Indiana Central, 4; 27. Southern Conn. St., 3; 28. Mankato St., 2; 29. Livingstone, 1½; 30. (tie) Humboldt St. and LIU-C.W. Post, 1.

INDIVIDUAL RESULTS

118-pound class

First round—Tim Wright, SIU-Edwardsville, def. Darin Baldwin, Livingstone, by technical fall, 15-0; John Christen, North Dak., def. Roger Singleton, Grand Valley St., 8-8; 1-0; Steve Anderson, North Dak. St., def. Terry Schmucker, Northwest Mo. St., 10-8; Brian Guzzo, South Dak. St., def. Rick Goodwin, San Fran. St., 3-2.

Quarterfinals—Wright def. Dave Rowan, Edinboro, by injury forfeit; Christen def. Pat Ingold, Northern Mich., 9-8; Perry Ainscough, Liberty, def. Anderson 16-2; Brett McNamar, Cal St. Chico, def. Guzzo, 3-2.

Semifinals—Wright def. Christen, 14-3; Ainscough def. McNamar, 15-6.

Finals—Wright def. Ainscough, 4-3; Third place—Christen def. McNamar, 6-4; Fifth place—Singleton def. Ingold, 9-4; Seventh place—Guzzo def. Goodwin 7-7, 4-3.

126-pound class

First round—Paul Anderson, St. Cloud St., def. Cliff Lentz, San Fran. St., 8-3; Joe Stukes, Pembroke St., def. Aaron Jackson, Cal St. Chico, 9-7; Alan Grammer, SIU-Edwardsville, def. Berard Priante, Lake Superior St., by technical fall, 23-8; Tim Begley, Wright St., def. Andre Harnitz, Mankato St., 11-7; Alan Paradise, Cal St. Bakersfield, def. Mike Hermann, Northwest Mo. St., 14-2; Rick Travis, Calif. (Pa.), def. Rick Goeb, North Dak. St., 15-10.

Quarterfinals—Anderson def. Tim Bonds, Norfolk St., 7-3; Grammer def. Stukes, by technical fall, 19-3; Begley def. Paradise, 15-4; Amado def. Travis, by technical fall, 23-6.

Semifinals—Grammer pinned Anderson, 2:18; Amado def. Begley, 2-1.

INDIVIDUAL RESULTS

118-pound class

Preliminary round—Pete Regalado, Augustana (Ill.), def. Matt Diehl, Central (Iowa), 4-2; Tim Eberhard, Concordia (Ill.), pinned Neil Salkowski, York (Pa.), 3:54; Pete Gonzalez, Montclair St., pinned Scott Martin, Rhode Island Col., 5:52.

First round—Landall Cormier, Chicago, def. Jon Canty, St. Lawrence, 13-2; Shawn Sheldon, Albany (N.Y.), def. Regalado, 16-2; Tim Jacoutot, Trenton St., pinned Paul Schuman, Ithaca, 4:50; Eberhard def. Mike Mueller, Wis.-River Falls, by default; Gonzalez def. Troy Monks, Brockport St., 11-4; John Goempel, Mount Union, def. Dave Barthel, St. John's (Minn.), 19-7; Rich Williams, Delaware Valley, def. Scott Arneson, Wis.-Platteville, 8-2; Mike Stilson, Buena Vista, def. Guy Bowers, Cortland St., 8-0.

Quarterfinals—Sheldon def. Canty, 13-6; Jacoutot pinned Eberhard, 1:37; Gonzalez def. Goempel, 12-5; Williams def. Stilson, 10-0.

Semifinals—Sheldon def. Jacoutot, 2-1; Gonzalez def. Williams, 15-2.

Finals—Sheldon def. Gonzalez, 6-5; Third place—Jacoutot pinned Williams, 0:41; Fifth place—Bowers def. Schumann, 3-2; Seventh place—Eberhard def. Regalado, 8-5.

126-pound class

Preliminary round—Gary Reesor, Lebanon Valley, def. Tim Potratz, Wis.-Oshkosh, 7-1; Randy Simpson, Capital, pinned Pat Hornick, Ripon, 6:54; Pete Hayek, John Carroll, pinned Jamie Molnar, Buffalo, 2:51.

First round—Keith Gliva, Augsburg, def.

Finals—Grammer def. Amado, 7-4; Third place—Stukes def. Anderson, 13-8; Fifth place—Begley def. Travis, 8-6; Seventh place—Goeb def. Paradise, 8-6.

134-pound class

First round—Bill O'Connor, Northwest Mo. St., def. Tony Molchak, Ashland, 12-11; Robert Burrows, Central Mo. St., pinned Jack Maughan, North Dak. St., 4:30; Steve Stearns, SIU-Edwardsville, def. Skip Goerner, Lake Superior St., 3-2; Skip Smith, Wright St., def. Tony Trabucco, Cal St. Chico, 8-8; 8-5; Pat Dorn, South Dak. St., def. Ira Cheatham, Norfolk St., 3-2; David Ray, Edinboro, def. Warren Dumas, Pembroke St., 9-2; Andy Leiter, North Dak., def. Rich Bailey, Cal St. Bakersfield, 18-12.

Quarterfinals—O'Connor def. Burrows, 11-2; Stearns def. Smith, 13-7; Ray def. Dorn, 17-3; Rich Ellingson, San Fran. St., def. Leiter, 6-3.

Semifinals—Stearns def. O'Connor 10-2; Ray pinned Ellingson, 2:34.

Finals—Stearns def. Ray, 2-2, 1-1, criteria decision; Third place—Cheatham def. O'Connor, 8-2; Fifth place—Ellingson def. Molchak, 6-4; Seventh place—Trabucco def. Burrows, 6-5.

142-pound class

First round—Mark Danner, Central Mo. St., def. Kirwyn Adderly, Norfolk St., by technical fall, 19-2; Mike Frazier, North Dak. St., def. John Sanderson, Grand Valley St., 7-4; Bill Newton, Cal St. Bakersfield, def. Jeff Becker, Augustana (S.D.), 16-6; Mike Walsh, San Fran. St., def. Al Bastian, Mankato St., 6-6, 4-4, criteria decision; Greg Wright, Edinboro, pinned Mike Box, Cal St. Chico, 2:15; Perry Fink, South Dak. St., def. Steve Pruett, Liberty, by technical fall, 17-2.

Quarterfinals—Danner def. Shawn Murdoch, Lake Superior St., 8-3; Frazier def. Newton, 12-6; Wright pinned Walsh, 4:13; Fink def. Kip Kristoff, SIU-Edwardsville, 13-2.

Semifinals—Danner def. Frazier, 8-0; Wright def. Fink, 5-3.

Finals—Wright pinned Danner, 1:20; Third place—Murdoch def. Frazier, 9-4; Fifth place—Sanderson pinned Fink, 3:28; Seventh place—Kristoff def. Newton, 4-3.

150-pound class

First round—Mark Hernandez, Cal St. Chico def. Keith Lawver, Northern Mich., 10-2; Matt Olejnik, Cal St. Bakersfield, pinned Chad Gutenkauf, South Dak. St., 3:15; Dave Witgen, Oakland, def. Lance Rogers, North Dak. St., 7-7, 5-3; Bob Kauffman, Edinboro, def. Jerry Olson, Humboldt St., 12-4; Jim Martinson, North Dakota, def. Thurman Bell,

Livingstone, by technical fall, 15-0; Jack Thomas, Wright St., def. Shawn Knudsen, Nebraska-Omaha, 6-4; Brian McTague, SIU-Edwardsville, pinned Todd Logsdon, Liberty, 1:57; Lloyd Hygelund, Portland St., def. Vinnie Hanlon, Calif. (Pa.), 6-2.

Quarterfinals—Olejnik def. Hernandez, 11-2; Kaufman def. Witgen, 8-4; Martinson def. Thomas, 6-1; McTague def. Hygelund, 5-4.

Semifinals—Kaufman def. Olejnik 10-7; McTague def. Martinson, 6-5.

Finals—Kaufman def. McTague 8-3; Third place—Hanlon def. Olejnik, 17-8; Fifth place—Rogers def. Martinson, 4-3; Seventh place—Bell def. Lawver, 8-8, 12-4.

158-pound class

First round—Mike Haesey, Edinboro, def. Kory Mosher, North Dak., 12-4; Darrin Arberry, Indiana Central, def. Ted Price, Wis.-Parkside, 18-10; Wayne Trosino, Portland St., def. Gene Green, North Dak. St., 2-2, 6-2; Bob Dahm, SIU-Edwardsville, def. Steve Williams, Livingstone, by technical fall, 16-1; Bud Postma, South Dak. St., def. Tom Cluchey, Pembroke St., 7-3; Pat Huyck, Cal St. Bakersfield, def. Todd Kendle 20-7; Brad Hildebrandt, Neb.-Omaha, def. Craig Settles, San Fran. St., 17-3.

Quarterfinals—Haesey def. Arberry, 11-4; Dahm def. Trosino, 3-2; Huyck def. Postma, 7-1; Ken Davis, Wright St., def. Hildebrandt, by disqualification, 5:47.

Semifinals—Haesey def. Dahm, by injury forfeit; Huyck def. Davis, by injury forfeit.

Finals—Huyck def. Haesey, 8-4; Third place—Green def. Kendle, 7-6; Fifth place—Dahm def. Davis, by injury forfeit; Seventh place—Arberry def. Hildebrandt, 5-4.

167-pound class

First round—John Morgan, North Dak. St., def. Mike Osterlof, Colorado Mines, 10-2; Mike Wood, Norfolk St., def. Willie Mays, Pembroke St., 9-4; Darryl Pope, Cal St. Bakersfield, def. Bill Easton, Northwest Mo. St., 16-5; Mark Kristoff, SIU-Edwardsville, pinned Brad Solberg, North Dak., 2:45; John Barrett, St. Cloud St., def. Brad Morris, Ferris St., 10-0.

Quarterfinals—Morgan def. Dave Held, Edinboro, 11-2; Pope def. Wood, 6-3; Kristoff def. Fred Meyer, Southern Conn. St., 10-9; Barrett def. John Solomonson, Oakland, 11-7.

Semifinals—Pope def. Morgan, 8-4; Kristoff def. Barrett, 9-5.

Finals—Pope def. Kristoff, 12-4; Third place—Barrett def. Morgan, 9-4; Fifth place—Solomonson def. Wood, 12-4; Seventh place—Meyer def. Held, 14-3.

177-pound class

First round—Marvin Jones, Cal St., Ba-

kersfield, pinned Vincent Brothers, Norfolk St., 0:57; Ray Porter, Ashland, def. Robert Watkins, Humboldt St., by technical fall, 16-1; Wayne Love, Northwest Mo. St., def. Pat Stand, Oakland, 6-3; Pat Johannes, North Dak. St., def. Shawn Yde, Wis.-Parkside, 13-5; Pat Bussey, Liberty, def. Dean Wygal, Portland St., 9-3.

Quarterfinals—M. Jones def. Dennis Veal, Northern Colo., by technical fall 17-2; Love def. Porter, 13-9; Paul Jones, Neb.-Omaha, def. Johannes, 9-1; Matt Furey, Edinboro, def. Bussey, 12-1.

Semifinals—M. Jones def. Love, by technical fall, 26-9; P. Jones def. Furey, 5-4.

Finals—M. Jones def. P. Jones, 13-6; Third place—Porter def. Love, 6-3; Fifth place—Furey def. Bussey, 11-4; Seventh place—Johannes def. Wygal, 12-7.

190-pound class

First round—Koln Knight, Augustana (S.D.), pinned Mike Arnold, Lake Superior St., 1:40; R.J. Nebe, Neb.-Omaha, def. Don Wolfe, Humboldt St., 10-8; Rich Kramer, Mankato St., def. Mark Sanders, Portland St., 12-2; Ernie Badger, SIU-Edwardsville, pinned Matt Palmer, North Dak. St., 4:11; Jay Stainback, Pembroke St., def. Eric Mittlestead, Cal St. Bakersfield, 8-5; John Kroez, LIU-C.W. Post, def. Tim Gleeson, San Fran. St., 5-3.

Quarterfinals—Knight def. Larry Bethel, Livingstone, by technical fall, 15-0; Nebe pinned Kramer, 3:32; Stainback def. Badger, 11-5; Derrick Munos, Northern Mich., def. Kroez, 7-3.

Semifinals—Knight def. Nebe, 13-0; Munos def. Stainback, 12-5.

Finals—Knight def. Munos, by technical fall, 16-0; Third place—Nebe def. Gleeson, 6-2; Fifth place—Badger def. Stainback, 10-4; Seventh place—Arnold def. Palmer, by technical fall, 17-2.

Heavyweight class

First round—Carlton Haselrig, Pitt-Johnstown, def. John Kehrl, Portland St., 8-3; Dean Hall, Edinboro, def. Jason Math, Mankato St., by technical fall, 16-0; Mike Hatch, Liberty, def. William Martin, Norfolk St., 5-0; Al Holleman, South Dak. St., def. Alex Koehler, San Fran. St., by technical fall, 16-0.

Quarterfinals—Haselrig pinned Randy Seiler, Lake Superior St., 6:53; Hall def. Larry Eide, Central Mo. St., 18-6; Hatch def. Craig Brooks, Oakland, 11-8; Holleman pinned Ed Christensen, St. Cloud St., 5:39.

Semifinals—Hall def. Haselrig, 8-6; Hatch def. Holleman, 8-7.

Finals—Hall def. Hatch, 7-3; Third place—Haselrig def. Holleman, 2-1; Fifth place—Brooks pinned Koehler, 1:51; Seventh place—Christensen def. Martin, 11-3.

Montclair State tames Lions for Division III wrestling title

Nick Milonas and John Monaco each won their second straight NCAA Division III Wrestling Championships individual title to lead Montclair State to its first team title since 1976.

The Indians, who sent four grapplers to the finals of the 12th annual tournament conducted February 28-March 1, ended a combined seven-year reign by host Trenton State and Brockport State, the runner-up in the 69-team field.

Montclair State paced all schools with five place-winners and prevented defending champion Trenton State from earning an unprecedented third straight team title.

The Indians tallied 87½ points to Brockport State's 78 and Buena Vista's 60½. Trenton State finished fifth with 53½ points.

Milonas, the 126-pound champion, was named the championships most outstanding wrestler. He improved his season record to 32-1 and his career mark to 116-7.

Monaco, the 177-pound champion, moved up a weight class after winning the 167-pound title last year. He improved his season record to 28-2 with an 11-6 title-match decision over Sam Walker of John Carroll.

Delaware Valley's Shaun Smith also was a repeat champion as he defended his 142-pound title. Albany (New York) had two champions—Shawn Shelton (118) and heavyweight Chris Tironi.

TEAM RESULTS

1. Montclair St., 87½; 2. Brockport St., 78; 3. Buena Vista, 60½; 4. John Carroll, 55½; 5. Trenton St., 53½; 6. Ithaca, 52½; 7. Albany (N.Y.), 51½; 8. Central (Iowa), 42; 9. St. Lawrence, 37½; 10. Delaware Valley, 34½; 11. Glassboro St., 33½; 12. Buffalo, 29½; 13. (tie) Cornell College, St. Olaf and Upper Iowa,

22; 16. Binghamton, 21; 17. Augsburg, 20½; 18. Wis.-Whitewater, 18½; 19. Chicago, 17½; 20. Wis.-River Falls, 15½.

21. Wis.-Oshkosh, 14; 22. Lebanon Valley, 13½; 23. (tie) Capital and Cortland St., 13; 25. Ohio Northern, 12½; 26. Mount Union, 11½; 27. Thiel, 11½; 28. Concordia (Ill.), 10½; 29. Oswego St., 10½; 30. Trinity (Conn.), 9.

31. Olivet, 8½; 32. Hiram, 8; 33. (tie) Wartburg and Allegheny, 7; 35. Concordia-M'head, 6½; 36. (tie) Augustana (Ill.) and Wis.-Stout, 5½; 38. St. Thomas (Minn.), 4½; 39. Western New Eng., 4; 40. Coe, 3½.

41. (tie) Rochester Inst. and Washington (Mo.), 2; 43. (tie) Kean, Locoming, Millikin, Wash. & Lee and York (Pa.), 1½; 48. (tie) MacMurray, Potsdam St., Rutgers-Camden, Rutgers-Newark, St. John's (Minn.), Oneonta St. and Rhode Island Col., 1.

INDIVIDUAL RESULTS

118-pound class

Preliminary round—Pete Regalado, Augustana (Ill.), def. Matt Diehl, Central (Iowa), 4-2; Tim Eberhard, Concordia (Ill.), pinned Neil Salkowski, York (Pa.), 3:54; Pete Gonzalez, Montclair St., pinned Scott Martin, Rhode Island Col., 5:52.

First round—Landall Cormier, Chicago, def. Jon Canty, St. Lawrence, 13-2; Shawn Sheldon, Albany (N.Y.), def. Regalado, 16-2; Tim Jacoutot, Trenton St., pinned Paul Schuman, Ithaca, 4:50; Eberhard def. Mike Mueller, Wis.-River Falls, by default; Gonzalez def. Troy Monks, Brockport St., 11-4; John Goempel, Mount Union, def. Dave Barthel, St. John's (Minn.), 19-7; Rich Williams, Delaware Valley, def. Scott Arneson, Wis.-Platteville, 8-2; Mike Stilson, Buena Vista, def. Guy Bowers, Cortland St., 8-0.

Quarterfinals—Sheldon def. Canty, 13-6; Jacoutot pinned Eberhard, 1:37; Gonzalez def. Goempel, 12-5; Williams def. Stilson, 10-0.

Semifinals—Sheldon def. Jacoutot, 2-1; Gonzalez def. Williams, 15-2.

Finals—Sheldon def. Gonzalez, 6-5; Third place—Jacoutot pinned Williams, 0:41; Fifth place—Bowers def. Schumann, 3-2; Seventh place—Eberhard def. Regalado, 8-5.

126-pound class

Preliminary round—Gary Reesor, Lebanon Valley, def. Tim Potratz, Wis.-Oshkosh, 7-1; Randy Simpson, Capital, pinned Pat Hornick, Ripon, 6:54; Pete Hayek, John Carroll, pinned Jamie Molnar, Buffalo, 2:51.

First round—Keith Gliva, Augsburg, def.

Keith Crowningshield, St. Lawrence, 10-4; Pat Hart, Binghamton, def. Reesor, 9-7; Glenn Cogswell, Ithaca, def. Bob Carr, Luther, 11-1; Nick Milonas, Montclair St., def. Simpson, by technical fall, 19-3; Hayek pinned Keith Lewis, Millikin, 1:47; Rich Widmer, Trenton St., def. Mike Pantaleo, Olivet, 16-10; Jay Van Cleve, Cornell, def. Jason Benoit, Worcester Tech, 5-4; Tim Hackel, Central (Iowa), def. Daryll Miller, Oneonta St., 11-5.

Quarterfinals—Gliva def. Hart, 10-8; Milonas def. Cogswell, 10-2; Hayek def. Widmer, 7-6; Hackel def. Van Cleve, 6-2.

Semifinals—Milonas def. Gliva, by technical fall, 21-6; Hackel def. Hayek, 18-8.

Finals—Milonas def. Hackel, 20-7; Third place—Simpson def. Hayek, 15-12; Fifth place—Cogswell def. Gliva, by default; Seventh place—Van Cleve def. Hart, 6-4.

134-pound class

Preliminary round—Martin Mahon, Rutgers-Camden, def. Robert Soares, Worcester Tech, 10-8; Scott DeTore, Brockport St., def. Chris LoPresto, Ithaca, by technical fall, 17-1; Steve Irving, Buffalo, def. Dino Delviscio, Elizabethtown, 13-11; Mario Pyles, Washington (Mo.), def. John Sherber, Wis.-River Falls, 6-4.

First round—Ralph Venuto, Trenton St., def. Pete Sartori, Rochester Inst., 6-2; Greg Roehrich, St. Olaf, def. Mahon, by forfeit; Dail Fellin, Buena Vista, pinned Todd Samuel, North Central, 6:53; DeTore def. Darren Scott, Ohio Northern, 16-5; Dean Miller, Cornell Col., def. Irving, 14-6; Dave Barr, Binghamton, def. Mik Sessor, Mount Union, 10-5; Phil Corbett, St. Thomas, (Minn.), def. Pyles, 10-8; Mark Shortleeve, St. Lawrence, def. Larry Anker, Wash. & Lee, 15-1.

Quarterfinals—Venuto def. Roehrich, by default, 4:13; DeTore pinned Fellin, 2:35; Miller pinned Barr, 3:59; Shortleeve def. Corbett, 13-7.

Semifinals—DeTore def. Venuto, 7-2; Shortleeve, def. Miller, 4-3.

Finals—Shortleeve def. DeTore, 4-3; Third place—Venuto def. Miller, by forfeit; Fifth place—Scott def. Roehrich, by default; Seventh place—Fellin def. Corbett, 13-6.

142-pound class

Preliminary round—Rick Stahl, Central (Iowa), def. Rodney Smith, by injury default; John Balog, Albany (N.Y.), def. Carlos Gallego, Augustana (Ill.), 8-2; Shaun Smith, Delaware Valley, def. Todd Bender, Wis.-Whitewater, 18-

6; Karl Monaco, Montclair St., def. Dave Meirick, Luther, 10-4; Rob Allison, Brockport St., def. Greg Kaye, Wis.-River Falls, 7-6.

First round—Tom Bennett, John Carroll, def. Mark Nace, Trenton St., 4-3; Jerry Tennant, Mount Union, def. Stahl, by technical fall, 15-0; Ken Pratt, Cornell Col., def. Balog, 4-1; Smith def. Don Wichman, Augsburg, 8-2; Monaco def. Dan Keating, St. Lawrence, 10-0; Mark Gumble, Binghamton, pinned Roy Wilt, Thiel, 2:18; Paul Van Oosbree, Buena Vista, def. Allison, 4-3; Pete Mankowich, Ithaca, def. Charles Hammock, Gallaudet, by technical fall, 22-7.

Quarterfinals—Nace def. Tennant, 8-0; Smith def. Pratt, by technical fall, 18-3; Gumble def. Monaco 9-7; Van Oosbree def. Mankowich,

3-2.

Semifinals—Smith def. Nace, by technical fall, 15-0; Gumble def. Van Oosbree, 10-7.

Finals—Smith def. Gumble, 17-6; Third place—Van Oosbree def. Mankowich, 11-4; Fifth place—Allison def. Nace, by default; Seventh place—Monaco def. Wilt, 13-5.

150-pound class

Preliminary round—Jim Fox, Albany (N.Y.), def. Paul Amoroso, Wesleyan, 4-1; Ed Reilly, Rutgers-Newark, def. Jamie Wilhiever, Wabash, 9-2; Dave Hickson, Buffalo, def. Chris Ledyard, Ithaca, 7-2; Tim Koffski, Augsburg, pinned Steve McKenzie, Wheaton (Ill.), 4:01; Andy Lamancusa, Mount Union, def.

See Montclair, page 14

"WE CAN HELP!"

ARE YOU LOOKING FOR A CERTIFIED ATHLETIC TRAINER? If so, the ATHLETIC TRAINER NATIONAL REGISTRY is a communication network that can help you!

By advertising in the JOB OPPORTUNITY BULLETIN, your position will be sent worldwide to certified athletic trainers and curriculum directors.

If you want to eliminate a lot of the hassle of reviewing resumes, the COMPUTERIZED RECRUITING SERVICE will reduce the paperwork and present qualified candidates.

For more information, call or write:
ATHLETIC TRAINING SERVICES, INC.
2012 S. Mission
Mt. Pleasant, MI 48858
(517) 772-5888.

"LET US HELP!"

Montclair

Continued from page 13

Brian Akey, St. Lawrence, 15-6.

First round—Brian Barratt, Glassboro, pinned Kevin Azinger, Central (Iowa), 1:11; Fox def. Ed Brady, Wis.-Whitewater, by overtime criteria decision; Daryl Stumph, Hiram, def. Reilly, 12-6; Jeff Payne, Allegheny, def. Hickson, 5-3; Mike Schimp, Buena Vista, def. Koffski, 7-3; Joe Darling, Oswego St., def. Joe Humphreys, Lycoming, 7-3; Lamancusa def. Mickey Best, Chicago, 9-8; John Leone, Brockport St., pinned Todd Ponick, Wis.-River Falls, 6:25.

Quarterfinals—Barratt def. Fox, 9-3; Stumph def. Payne, 5-4; Darling def. Schimp, 11-3; Leone def. Lamancusa, 7-2.

Semifinals—Barratt def. Stumph, 11-6; Leone def. Darling, 2-1.

Finals—Barratt def. Leone, 7-3; Third place—Azingar pinned Darling, 1:40; Fifth place—Stumph def. Fox, 7-1; Seventh place—Payne pinned Schimp, 3:53.

158-pound class

Preliminary round—Rick Spaulding, St. Lawrence, def. Mark Macy, Wheaton (Ill.), 12-8; Roger Forystek, St. Olaf, def. Jon Honsel, Moravian, 9-3; Paul Donner, Concordia-Mhead, def. Nick Triantafell, Worcester Tech, 3-1.

First round—Dwayne Standridge, Trenton St., def. Jim Goetz, Potsdam St., 7-2; Spaulding def. Bill Cioffi, Glassboro St., 7-0; Todd Slade, Brockport St., pinned Dana Spires, Thiel, 1:24; Forystek def. Ken Mansell, MacMurray, 8-6; Dan Dresser, Buena Vista, def. Donner, 13-1; Jason Barnett, John Carroll, def. Mike Pope, Wis.-River Falls, 14-1; Kelly McGovern, Central (Iowa), def. Jason Kingrey, Heidelberg, 5-0; Dave Zarczyn, Cortland St., def. Matt Parmely, Cornell Col., 5-3.

Quarterfinals—Standridge def. Spaulding, 6-0; Slade def. Forystek, by technical fall, 16-1; Dresser def. Barnett, 5-2; McGovern def. Zarczyn, 5-1.

Semifinals—Slade def. Standridge, 13-2;

Dresser def. McGovern, 7-3.

Finals—Slade def. Dresser, 10-4; Third place—Standridge def. Spaulding, 5-3; Fifth place—Barnett def. McGovern, 9-8; Seventh place—Zarczyn def. Forystek, by overtime criteria decision.

167-pound class

Preliminary round—Eric Tupper, Coe, def. Mike Price, Potsdam St., 14-6; Winthrop Phillips, Wash. & Lee, def. Craig Robley, Luther, 11-1; Tom Raedeke, Concordia-Mhead, def. Dave Lang, Brockport St., by technical fall, 20-5; Tony DeCarlo, John Carroll, def. John Wetherell, Wis.-Whitewater, 6-2; Brian Keller, Wis.-River Falls, def. Carmine DiPietro, Rhode Island Col., 10-2.

First round—Steve Hile, Ithaca, def. Bill Finkle, Rutgers-Newark, 6-1; Tupper pinned Jeff Hansen, Glassboro St., 6:20; Rod Wilt, Thiel, def. Phillips, by default, 2:39; Jay McGovern, Central (Iowa), def. Raedeke, 8-5; Jeff Schlieff, Augsburg, def. DeCarlo, 6-2; Steve Klein, Buffalo, def. Drew Brophy, Delaware Valley, 6-0; Keller def. Willie Lake, Olivet, 12-5; Jay Hines, Mount Union, def. Dan Albinson, Wheaton (Ill.), 12-3.

Quarterfinals—Hile def. Tupper, 16-7; Wilt def. McGovern, 7-1; Klein def. Schlieff, 6-3; Keller def. Hines, by default, 3:00.

Semifinals—Hile def. Wilt, 3-1; Klein def. Keller, 3-0.

Finals—Klein def. Hile, 7-2; Third place—Wilt def. Keller, 1-0; Fifth place—Schlieff def. Lake, 8-2; Seventh place—DeCarlo def. Hines, by forfeit.

177-pound class

Preliminary round—Kevin DiPatri, Trenton St., def. Tim Slade, Brockport St., 6-5; Brian Costigan, Wartburg, def. Wayne Ebanks, Oneonta St., 14-6; Joe Erigo, Buffalo, def. Roger Crebs, Lycoming, 11-7; Russ Kring, Mount Union, def. Paul Roux, St. Lawrence, 5-4.

First round—Rich Kichman, Lebanon Val-

ley, def. Brett Larson, Concordia-Mhead, 10-7; Kurt Kreiter, Augustana (Ill.), def. DiPatri, 9-6; John Monaco, Montclair St., def. Tom Tuomi, Concordia (Ill.), 12-2; Keven Besch, Buena Vista, def. Costigan, 10-7; Jay Schwartz, Thiel, def. Erigo, 12-11; Sam Walker, John Carroll, def. Ed Hay, Kean, 11-1; Terry Schuler, Wis.-Whitewater, def. Kring, 10-2; Joe Adam, Trinity (Conn.), pinned Steve Goodall, Cornell, 6:59.

Quarterfinals—Kichman pinned Kreiter, 0:39; Monaco def. Besch, 15-5; Walker def. Erigo, 13-3; Schuler def. Adam, 10-3.

Semifinals—Monaco def. Kichman, 18-4; Walker def. Schuler, 10-8.

Finals—Monaco def. Walker, 11-6; Third place—Besch def. Kichman, 10-5; Fifth place—Schuler def. Adam, 9-2; Seventh place—Tuomi def. Goodall, 18-8.

190-pound class

Preliminary round—Pat Conners, St. Lawrence, def. Frank Bojniewicz, Augustana (Ill.), 4-2; Scott Bloom, Olivet, def. Mark Gaspich, Montclair St., 12-6; Dan Dugan, Glassboro St., def. Greg Finnau, John Carroll, by techni-

cal fall, 17-1.

First round—Paul Morlock, Concordia-Mhead, def. Mike Sanzo, Brockport St., 6-4; Steve Kopecky, Wis.-Whitewater, def. Conners, 7-2; Mike Himes, Upper Iowa, def. Gary Solomon, Western New Eng., 8-0; Bloom def. Vince Cameron, Ohio Northern, 7-2; Dugan pinned Alan Davis, Thiel, 2:59; Dwayne Fischer, Wis.-Oshkosh, def. Marty Pidel, Albany (N.Y.), 8-2; Dean Gavin, Wartburg, def. Steve Deckard, Susquehanna, 7-6; Gene Shin, Chicago, def. Todd McArdell, Cortland St., 13-3.

Quarterfinals—Kopecky pinned Morlock, 4:44; Himes def. Bloom, 9-3; Fischer pinned Dugan, 2:52; Shin def. Gavin, 14-2.

Semifinals—Himes def. Kopecky, 11-1; Shin def. Fischer, 5-4.

Finals—Himes def. Shin, 4-2; Third place—Fischer def. Kopecky, 8-6; Fifth place—Dugan def. Finnau, 13-0; Seventh place—McArdell def. Gavin, 17-6.

Heavyweight class

Preliminary round—Glenn Chavis, Trenton St., def. Glenn Giesey, Case Reserve, 3-2; Sal-

D'Angelo, John Carroll, def. Tim Hicks, Cornell, 4-2; Mitch Katz, Western New Eng., def. Mike Gilmore, Lycoming, by technical fall, 17-2; Lynn Thomsen, Augustana (Ill.), def. Mike Baker, Ohio Northern, 6-1.

First round—Dave Witt, Wis.-Stout, def. Rusty Middlebrook, Brockport St., 5-4; Rolf Carlson, St. Olaf, pinned Chavis, 2:13; Jim Petty, Montclair St., def. John Buhner, Oswego St., 3-1; Craig Hanson, Buena Vista, def. D'Angelo, 4-3; Russ Sutherland, Buffalo, def. Katz, 14-9; Chris Tironi, Albany (N.Y.), def. John Kotula, by technical fall, 15-0; Rich Kane, Ithaca, def. Thomsen, 3-2; Greg Geisenhof, Binghamton, pinned Kip Crandall, Millikin, 0:47.

Quarterfinals—Witt def. Carlson, 7-6; Petty def. Hanson, 3-0; Tironi def. Sutherland, 8-0; Kane def. Geisenhof, 11-7.

Semifinals—Petty def. Witt, 8-6; Tironi pinned Kane, 6:38.

Finals—Tironi def. Petty, 12-3; Third place—Middlebrook def. Kane, 3-1; Fifth place—Carlson def. Witt, by default; Seventh place—Hanson def. Sutherland, 7-4.

Liability

Continued from page 1

during 1985-86 at institutions that were not participating in the NCAA program.

While enrollments were significantly lower in both the basic athletics injury program (43) and the athletics staff accident program (31), it was noted that neither program was approved for marketing by American Sports Underwriters before late July 1985.

Minor changes were approved in two of the programs, which will make up the Association's group insurance portfolio for 1986-87.

In the first, a new premium class was added to the catastrophic program's rate structure for institutions that sponsor neither football nor any other so-called high-risk sports (men's and/or women's gymnastics, ice hockey, men's lacrosse, men's or women's swimming and diving, or wrestling).

The second change involved an increase of rates for the athletics staff accident program. Institutions enrolling for 1986-87 will be charged 60 cents for each \$1,000 of coverage, up from 55 cents for 1985-86.

By the end of March, athletics

directors, athletics business managers and insitutional risk managers at all member institutions will receive information concerning the group insurance offerings for 1986-87. Questions or requests for additional information may be directed to Richard D. Hunter, NCAA director of finance and staff liaison to the insurance committee and group-policy underwriters.

The committee also decided to survey the membership in an effort to assess the insurance needs of intercollegiate athletics departments throughout the nation. Survey forms will be

mailed no later than April 30, and data obtained will provide the committee with information regarding the types of insurance being purchased, policy limits in effect and companies currently writing athletics-related policies.

The committee also directed the national office staff and Association legal counsel to draft a condensed version of the group's policy statement, "Considerations for Insurance Coverage," for possible inclusion in the Recommended Policies and Practices section of the 1987-88 NCAA Manual.

Bowl to be played after Christmas

The 1986 Holiday Bowl will be played December 30, the first post-Christmas playing date in the eight-year history of the game, bowl officials said February 26.

The first six holiday bowls were played on the Friday before Christmas. Last year, the bowl was moved to the Sunday before Christmas.

"The post-Christmas date will make more teams available to be selected by the bowl," incoming bowl president James C. Schmidt said.

He said exam schedules for many schools had blocked the Holiday Bowl from attracting many top teams, and the new date may help boost tourism because people coming to San Diego for the game may stay through the New Year holiday.

The 1986 and 1987 games will pit the winner of the Western Athletic Conference against an at-large team picked by the bowl committee. In 1988, two at-large teams will be invited.

Championships Summaries

Division III Men's Basketball

Northeast regional: First round—Salem St. 73, Clark (Mass.) 71; Southeastern Mass. 64, Western Conn. St. 62. **Third place**—Clark (Mass.) 78, Western Conn. St. 77. **Championship**—Southeastern Mass. 81, Salem St. 66.

South Atlantic Regional: First round—Jersey City St. 67, Roanoke 61; Upsala 66, Trenton St. 64. **Third place**—Trenton St. 58, Roanoke 55. **Championship**—Jersey City St. 69, Upsala 64.

Middle Atlantic regional: First round—Susquehanna 79, Washington (Md.) 75; Frank & Marsh. 61, Scranton 57. **Third place**—Washington (Md.) 94, Scranton 78. **Championship**—Susquehanna 79, Frank & Marsh. 72 (ot).

East regional: First round—Potsdam St. 83, New York U. 67; Alfred 88, Nazareth (N.Y.) 86. **Third place**—Nazareth (N.Y.) 87, New York U. 73. **Championship**—Potsdam St. 80, Alfred 51.

South regional: First round—LeMoyné-Owen 92, John Carroll 78; Centre 70, Chris. Newport 62. **Third place**—Chris. Newport 75, John Carroll 73. **Championship**—LeMoyné-Owen 72, Centre 69.

Midwest regional: First round—Ill. Wesleyan 79, Wis.-Whitewater 75; Ripon 68, North Park 65. **Third place**—Wis.-Whitewater 89, North Park 73. **Championship**—Ill. Wesleyan 63, Ripon 57.

West regional: First round—Neb. Wesleyan 89, Pomona-Pitzer 59; Dubuque 71, St. John's (Minn.) 47. **Third place**—St. John's (Minn.) 71, Pomona-Pitzer 52. **Championship**—Neb. Wesleyan 51, Dubuque 50.

Great Lakes regional: First round—DePauw 69, Wittenberg 55; Otterbein 100, Calvin 84. **Third place**—Wittenberg 84, Calvin 77. **Championship**—Otterbein 82, DePauw 76.

Quarterfinal pairings (all March 9): South-eastern Mass. (22-6) at Jersey City St. (23-6); Susquehanna (22-7) at Potsdam St. (29-0); Ill. Wesleyan (19-9) at LeMoyné-Owen (27-2); Otterbein (28-2) at Neb. Wesleyan (24-4).

Semifinals and finals March 14-15 at Calvin College, Grand Rapids, Michigan.

Division III Women's Basketball

East regional: First round—New York U. 70, Buffalo St. 65; Albany (N.Y.) 74, Columbia-Barnard 67. **Third place**—Columbia-Barnard 89, Buffalo St. 73. **Championship**—Albany (N.Y.) 68, New York U. 66.

Northeast regional: First round—Salem St. 58, Bridgewater St. (Mass.) 47; Emmanuel 59, Southern Me. 50. **Third place**—Southern Me. 59, Bridgewater St. (Mass.) 55. **Championship**—Salem St. 77, Emmanuel 60.

Great Lakes regional: First round—St. Norbert 77, Susquehanna 63; Wis.-Whitewater 71, Alma 65. **Third place**—Alma 74, Susquehanna 61. **Championship**—Wis.-Whitewater 57, St. Norbert 56.

South regional: First round—Rust 74, Chris. Newport 43; N.C.-Greensboro 84, Va. Wesleyan 73. **Third place**—Va. Wesleyan 83, Chris. Newport 56. **Championship**—Rust 99, N.C.-Greensboro 61.

Mid-Atlantic regional: First round—Elizabethtown 70, Moravian 64; Scranton 70, Juniata 53. **Third place**—Juniata 66, Moravian 50. **Championship**—Elizabethtown 74, Scranton 60.

Atlantic regional: First round—Kean 68, Ohio Northern 64; Capital 84, Allegheny 66.

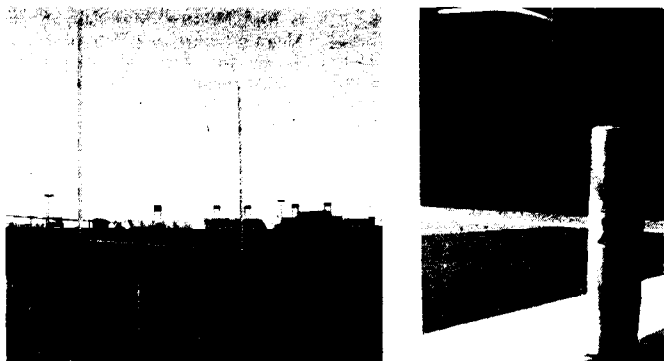
Third place—Allegheny 80, Ohio Northern 66. **Championship**—Capital 72, Kean 71 (ot).

Central regional: First round—Eastern Conn. St. 71, Elmhurst 68; William Penn 80, Carroll 68. **Third place**—Elmhurst 75, Carroll 59. **Championship**—William Penn 75, Eastern Conn. St. 59.

West regional: First round—Bishop 83, Pomona-Pitzer 57; Concordia-Moorhead 67, St. Mary's (Cal.) 63. **Third place**—St. Mary's (Cal.) 73, Pomona-Pitzer 57. **Championship**—Bishop 90, Concordia-Moorhead 84.

Quarterfinal pairings (March 7 or 8): Albany (N.Y.) (26-3) at Salem St. (26-1); Wis.-Whitewater (24-3) at Rust (21-3); Elizabethtown (24-5) at Capital (25-3); William Penn (22-6) at Bishop (26-2).

Semifinals and finals March 14-15 on the campus of one of the semifinalists.



SLINGSHOT "87"

"If you think SAFETY is expensive, try an INJURY"

The single standard football goal post with safety foremost in mind. Why risk possibility of collision between your players and the goal posts, especially if your current ones have two posts in the ground and are unpadded. It happens every week end. Why should you take a chance.

Two way adjustable sleeve. Improved tightening points and pressure release system for the the crossbar at the connecting point to the gooseneck, makes Slingshot "87" a must for all playing fields—PRO, COLLEGE or HIGH SCHOOL.

When you demand the very best at a competitive price, demand National Slingshot "87", the company that guarantees its quality.

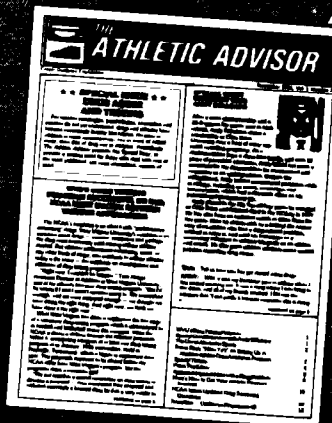
ADDED MEASURE PADDING

National, the company with the 7' padding designed for that added measure of safety. Increase in safety + Decrease in cost = "The Added Measure"

National Goal Post Co., Inc.
445A North Trail
Stratford, Conn. 06497
(203) 375-8487



NATIONAL GOAL POST CO., INC



Calendar

March 7-9	Division I Men's Basketball Committee, Kansas City, Missouri
March 7-9	Division I Women's Basketball Committee, Kansas City, Missouri
March 21-22	Division II Men's Basketball Committee, Springfield, Massachusetts
March 30-April 1	Women's Basketball Rules Committee, Lexington, Kentucky
March 31-April 2	Men's Basketball Rules Committee, Dallas, Texas
April 2-3	Presidents Commission, Chicago, Illinois
April 7-10	Men's Fencing Committee, Kansas City, Missouri
April 7-10	Division I Women's Volleyball Committee, Kansas City, Missouri
April 12-15	Division III Football Committee, Kansas City, Missouri
April 14-16	Council, Kansas City, Missouri
April 14-17	Men's Gymnastics Committee, Kansas City, Missouri
April 14-17	Division III Football Committee, Kansas City, Missouri
April 21-24	Division I-AA Football Committee, Kansas City, Missouri
April 21-24	Men's and Women's Swimming Committees, Jacksonville, Florida
April 22-25	Division III Women's Volleyball Committee, Kansas City, Missouri
April 23-24	Drug Education Committee, New Orleans, Louisiana
April 28-May 1	Wrestling Committee, Kansas City, Missouri
May 2-3	Men's Volleyball Committee, University Park, Pennsylvania
May 4	Divisions I, II and III Championships Committees, Kansas City, Missouri

ADs reminded about travel for play-offs

Athletics directors and coaches at NCAA Divisions II and III institutions are reminded that travel plans for Association individual-team championships events should be made through Fugazy International Travel, the official travel agent for NCAA championships.

"Divisions II and III individual-team championships events this year do not have guarantees for transportation reimbursement for participants," explained Richard D. Hunter, NCAA director of finance. "In those cases, the Association may provide some reimbursement if funds become available from the event or other sources. However, any money that might become available will be distributed only to those institutions that utilized Fugazy in making championships travel plans.

"Fugazy currently is offering some very attractive discounts for NCAA travelers," Hunter continued, "which is another reason we encourage member institutions to utilize the service."

According to Karen LaRose, manager of the NCAA travel service at Fugazy's New Haven, Connecticut, headquarters, major airlines are cooperating in offering NCAA travelers who book through Fugazy significant, unrestricted discounts.

"We are able to offer up to 40 percent discounts with no restrictions whatsoever, and these are exclusive arrangements made only to the NCAA travel service," she explained. "The NCAA is a big organization, and it has a lot of clout. The airlines understand this and are doing all they possibly can to accommodate our requests for space, even in last-minute situations."

LaRose said that in addition to discounts offered by American Airlines, an NCAA corporate sponsor, Fugazy can offer the discounts mentioned above on flights with Delta, Eastern, Ozark, Republic, TWA, United and U.S. Air. "The two biggest advantages I see to these discounts," said LaRose, "are the fact that late qualifiers for championships can take advantage of reduced-rate fares, and competitors who finish early in a championship may leave the site immediately without suffering a flight-cancellation penalty."

More information on Fugazy's travel discounts is available toll-free at 1-800-243-1800 (from Alaska, Connecticut, Hawaii or Puerto Rico, call 0-203-562-6222 collect). Administrators interested in more information on potential travel reimbursement should contact Hunter at the NCAA national office.

Nebraska needn't disassociate itself from boosters, Massengale believes

University of Nebraska, Lincoln, Chancellor Martin Massengale says he doesn't see why the university should go along with NCAA Executive Director Walter Byers' call for disassociating alumni and boosters from athletics programs.

"I don't think the loyal and dedicated alumni should be punished because of the violations of the few," Massengale told the Associated Press.

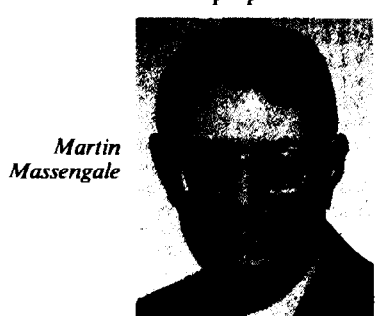
Byers told a group of sportswriters and coaches who attended the NCAA's annual College Football Preview in Kansas City, Missouri: "There's nothing wrong with intercollegiate athletics except the recruiting process."

Massengale said he suspected Byers' observation that recruiting was the only thing wrong with intercollegiate athletics stemmed from the fact that most violations the NCAA deal with involve recruiting.

"It is still incumbent on all of us to

make sure that principles are not violated," Massengale said.

Byers said alumni and boosters must be disassociated from athletics programs. He supported a Southwest Athletic Conference proposal to limit



Martin Massengale

all recruiting contacts to a school's staff members. NCAA rules already prohibit alumni and boosters from any off-campus recruiting.

Massengale said the problem arises when boosters either don't know the rules or don't heed them.

"We have a great many loyal alumni and friends," Massengale said, "and they have operated within the rules. That is not to say they couldn't violate them in the future; but if they know the university is not going to tolerate it, I don't think this will happen."

Nebraska Director of Athletics Robert S. Devaney said the rules already in place severely limit alumni.

"About all they can do," Devaney said, "is to call a prospective recruit and tell him they live in the area and say that Nebraska is a great place to go. I don't know how they can limit alumni much more than that."

Devaney said recruiting violations always have been part of big-time intercollegiate athletics.

"You're not going to get rid of them completely," Devaney said. He said the best possible enforcement is needed to keep recruiting violations to a minimum to preserve "the good of intercollegiate athletics."

Legislative Assistance

1986 Column No. 10

Complimentary admissions

The NCAA Administrative Committee has reviewed the application of Constitution 3-1-(g)-(3) to the administration of complimentary-ticket policies in conjunction with conference championship basketball tournaments. The committee noted that the provisions of Constitution 3-1-(g)-(3), as amended effective August 1, 1985, permit complimentary admissions to be provided only by a pass list for family members, relatives and fellow students designated by the student-athlete. "Hard tickets" may not be issued, and the student-athlete may not receive any payment from any source for the complimentary admissions or exchange them for any item of value. The committee confirmed these requirements in the administration of conference championship basketball tournaments, which would require the use of a pass list (rather than "hard tickets") to handle complimentary admissions for family members, relatives and fellow students designated by the student-athlete.

Camp directories

In response to requests from member institutions, the Administrative Committee has reviewed the application of Case No. 186 (page 309, 1985-86 NCAA Manual), which includes a general prohibition against the purchase of advertising space by a member institution in publications designed to provide information concerning the athletics participation or evaluation of prospective student-athletes. During the 1986 Convention, the membership determined that although the prohibition in Case No. 186 would extend generally to advertisements regarding member institutions' summer camps or clinics, such advertisements would be permissible if placed in a periodical that includes a camp directory in which the size and format of such advertisements placed by any member institution are the same.

Several member institutions have requested additional information indicating whether this interpretation includes a limit on the size of summer-camp advertisements that may be placed in the periodical's camp directory (assuming that all such advertisements are the same size). The Administrative Committee has agreed that in order to meet the requirements of this interpretation, a "camp directory" must include multiple listings of summer camps on each page, and that a full-page advertisement for a member institution's summer camp may not be considered an appropriate listing in a

camp directory. Accordingly, each page in a permissible "camp directory" must include at least two summer-camp advertisements, and no single advertisement may exceed more than a half-page in size in order to meet the requirement that the size and format of such advertisements placed by any member institution in a particular periodical must be the same.

Transfer waiver

The Administrative Committee has reviewed the application of the transfer waiver provisions of Bylaw 5-1-(m)-(14)-(ii), one of the six requirements related to this particular regulation. This requirement stipulates that in order to be eligible for the transfer waiver, the student did not receive athletically related financial assistance or the student's athletically related financial assistance was not renewed for the ensuing academic year at the previous institution.

The situation reviewed by the Administrative Committee involved a student-athlete who transferred to the certifying institution at midterm of the current academic year after receiving notice that her athletically related financial assistance would not be renewed for the 1986-87 academic year by her original institution. The committee ruled that under such circumstances, a student-athlete who already had transferred prior to this date may qualify for a waiver (to be effective beginning with the fall term of the 1986-87 academic year) under this regulation if all other conditions of Bylaw 5-1-(m)-(14) are met and the student-athlete can demonstrate reliance upon the understanding that a waiver of the transfer rule was available because the midterm transfer occurred when financial aid had not been renewed for the ensuing year.

The committee stipulated, however, that subsequent to this date (March 5, 1986), no student-athlete may qualify for a waiver per Bylaw 5-1-(m)-(14) if the individual transfers prior to the completion of the academic year during which financial aid is available to the student-athlete. In other words, if a student-athlete who could receive financial aid for the full academic year transfers at midterm, the waiver provisions of Bylaw 5-1-(m)-(14) would not be applicable even though the individual has received notice that financial aid will not be renewed during the subsequent academic year. In taking this position, the committee noted that eligibility under the waiver provisions of the Association's transfer rules consistently has been determined on the basis that a student-athlete must satisfy each requirement for the waiver at the time of initial enrollment in the certifying institution.

Support the National Women's Basketball Association and become a part of history by purchasing an Official Founder's NWBA T-Shirt.



Blue on White NWBA T-Shirt
50/50 Cotton/Poly
\$8.95



Schools and organizations placing an order for 1000 or more T-Shirts receive this beautiful wall plaque commemorating their support of the National Women's Basketball Association.



QUANTITY	CHILDREN'S SIZES				ADULT SIZES				AMOUNT @ \$8.95	TOTAL	
	6-8 Yrs.	10-12 Yrs.	14-16 Yrs.	S	M	L	XL				
SEND CHECK OR MONEY ORDER TO:										POSTAGE & HANDLING 1.50 PER SHIRT	
NATIONAL WOMEN'S BASKETBALL ASSOCIATION										N.C. RESIDENTS ADD 4½% TAX	
P.O. Box 240298 Charlotte, NC 28224										FOREIGN ORDERS ADD \$6.00	
										TOTAL ENCLOSED	

The NCAA News



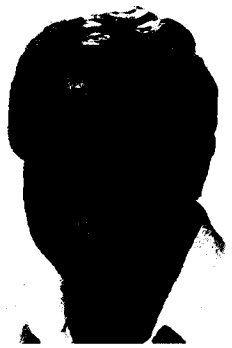
NCAA Record

DIRECTORS OF ATHLETICS

ROY LOVE resigned at Portland State, where he has been AD since 1972, effective September 1. A Portland State alumnus, Love also took the Viking baseball team to eight postseason appearances in 13 years as head coach. After a four-month leave, he will return to the university as associate professor of health and physical education. THOMAS N. HICKMAN named at Ferrum. He joined the institution's staff in 1977 as an instructor and was named chair of the division of recreation and leisure in 1985. BOBBY THOMPSON named at Nebraska-Omaha. GENE SLAUGHTER has resigned as head football coach at Capital but will continue as AD, a position he has held since 1981.



Roy Love resigned as athletics director at Portland State



Gene Slaughter will give up coaching duties at Capital

COACHES

Baseball assistant—JOE MOELLER named pitching coach at Southern California.

Women's basketball—NANCY WALSH resigned at Adrian, where she compiled a 233-152 record in 22 seasons. She will continue as professor of physical education. KATHY MARKEY resigned at Western Illinois, where she had served as interim coach this season.

Women's basketball assistant—JOANN BETTS released at Western Illinois.

Cross country—JOHN FLAMER stepped down at Southern Illinois-Edwardsville after 18 seasons.

Football—BOB A. CAMPIGLIA resigned at Coast Guard to join the Vanderbilt staff. His record in three seasons was 11-19, including 4-6 finish in 1985. JAMES P. MONOS JR. hired at Lebanon Valley, where he also will serve as admissions counselor. A graduate of Shippensburg, he coached at the school from 1976 to 1979 and has served as the university's director of financial aid since then. GENE SLAUGHTER stepped down at Capital but will continue as the school's athletics director. His record in 25 seasons was 120-95-3.

Football assistants—FRANK NOVAK named associate head coach at Massachusetts. He most recently has served on the coaching staffs of the United States Football League Oklahoma Outlaws and Birmingham Stallions. NEIL PUTNAM selected at Dartmouth, where he was an assistant coach from 1962 to 1964. He served as head coach at Lafayette and compiled a 44-55-3 record in 10 years. He also has coached at Miami (Ohio), his alma mater; Yale, and Youngstown State. Former Alabama and Notre Dame assistant MAL MOORE named receivers coach for the National Football League St. Louis Cardinals. PETE MCCARTY AND DENNIS GOLDMAN hired at Holy Cross. McCarty had been defensive coordinator at American International, and Goldman was secondary coach at Northeastern. Both will serve as defensive

assistants for the Crusaders. TED UNBEHAGEN named at Houston.

Ice hockey—JACK RILEY stepped down at Army and was replaced by his son ROB, former Babson head coach who was an Army assistant. The elder Riley had been at the school since 1950 and had coached the 1960 U.S. Olympic team to a gold medal.

Track and field—JOHN FLAMER resigned at Southern Illinois-Edwardsville after nine seasons. He had been cross country coach for 18 years.

Wrestling—Former Oklahoma State stand-out GRADY PENINGER has resigned after 24 years at Michigan State. He will remain with the school in a teaching capacity.

STAFF

Sports information director—MIKE KORTEK promoted at Northern Illinois, where he had been an assistant for 12 years and had served as interim director following the retirement of BUD NANGLE in 1984.

Sports information assistants—STEVENEMETH named associate director at Northern Illinois. He has been an assistant since joining the staff in 1979. JANELLE MARTIN hired at Northern Illinois. She is a 1984 Kansas graduate and had worked for that school's Williams Educational Fund.

DEATHS

Lehigh Director of Athletics RICHARD P. GIBNEY died February 25 at age 42. He had been AD at the school since November 1984. HERMAN E. PHILLIPS, who won Olympic gold and silver medals as a middle-distance runner, died February 16 in Angola, Indiana, at age 82. Phillips was a standout at Butler as an undergraduate and won gold and silver medals in the 1928 Olympics at Amsterdam. He later coached at his alma mater and at Purdue, and he was elected to the Helms Foundation Hall of Fame in 1970.

CORRECTION

Due to an editor's error, an item in the February 19 issue of The NCAA News reported

that William "Red" Downes had resigned as head men's basketball coach and head men's soccer coach at Western New England. Downes will continue as soccer coach at the school.

POLLS

Division I Baseball

The top 30 NCAA Division I baseball teams through February 23, with records in parentheses:

1. Florida St.	(9-1)
2. Miami (Fla.)	(8-2)
3. Texas	(8-2)
4. Cal St. Fullerton	(8-3)
5. Oklahoma St.	(0-0)
6. California	(10-3)
7. South Florida	(9-2)
8. Stanford	(10-4)
9. Michigan	(0-0)
10. Arizona	(13-6)
11. South Caro.	(1-1)
12. Maine	(0-0)
13. Loyola (Calif.)	(12-1)
14. Houston	(9-1)
15. Brigham Young	(0-0)
16. Old Dominion	(2-1)
17. Alabama	(3-1)
18. Louisiana St.	(3-1)
19. Indiana St.	(0-0)
20. Arkansas	(4-2)
21. Oral Roberts	(4-4)
22. Florida	(5-3)
23. Wichita St.	(0-0)
24. Arizona St.	(14-5)
25. Hawaii	(6-5)
26. Oregon St.	(0-0)
27. Tulane	(4-0)
28. Southern Cal	(7-3)
29. Nebraska	(0-0)
30. UCLA	(10-4)

Division II Men's Basketball

The top 20 NCAA Division II men's basketball teams through February 24, with records in parentheses and points:

1. Wright St. (24-2)	160
----------------------	-----

2. St. Cloud St. (23-3)	152
3. Mt. St. Mary's (23-3)	144
4. Sam Houston St. (25-4)	129
5. Sacred Heart (23-4)	126
6. Cheyney (23-4)	124
7. Cal Poly-SLO (22-4)	107
8. LIU-C. W. Post (22-3)	95
9. Lewis (22-4)	85
10. Tampa (21-6)	80
11. Millersville (23-4)	76
12. Gannon (22-5)	74
13. Va. Union (20-6)	63
14. Norfolk St. (21-4)	55
15. New Hamp. Col. (21-5)	46
16. West Ga. (20-6)	43
17. St. Anselm (21-6)	27
18. Abilene Christian (20-6)	24
19. Southeast Mo. St. (21-6)	18
20. Cal St. Hayward (22-7)	9

Division II Women's Basketball

The top 20 NCAA Division II women's basketball teams through February 23, with records in parentheses and points:

1. Cal Poly-Pomona (23-3)	160
2. Florida Int'l (25-1)	148
3. Mankato St. (25-2)	147
4. Mt. St. Mary's (21-1)	137
5. Central Conn. (22-3)	124
6. Southeast Mo. St. (23-4)	122
7. Hampton (24-3)	107
8. Quinnipiac (24-2)	102
9. Northern Ky. (21-4)	100
10. Phila. Textile (22-5)	86
11. Delta St. (22-2)	85
12. Central Mo. St. (20-5)	69
13. Lake Superior St. (23-4)	62
14. Cal St. Northridge (18-6)	46
15. St. Augustine's (24-4)	46
16. North Dak. St. (18-8)	36
17. Alabama A&M (24-3)	36
18. Slippery Rock (20-5)	34
19. UC Davis (17-9)	10
20. Pace (18-7)	8
21. Bellarmine (20-5)	8

Division III Men's Basketball (Final)

The top 20 NCAA Division III men's basketball teams through February 24, with records in parentheses:

1. Potsdam	(27-0)
2. DePauw	(25-1)
3. Otterbein	(26-2)
4. Neb. Wesleyan	(22-4)
5. LeMoyne-Owen	(25-2)
6. Wis.-Whitewater	(23-3)
7. Nazareth (N.Y.)	(21-4)
8. Ripon	(18-5)
9. Jersey City St.	(21-6)
10. Wittenberg	(22-4)
11. Calvin	(20-4)
12. North Park	(21-5)

13. Clark (Mass.)	(20-4)
14. Western Conn. St.	(24-1)
15. St. John's (Minn.)	(22-4)
16. Alfred	(22-2)
17. Susquehanna	(20-7)
18. Centre	(20-6)
19. Duquesne	(20-6)
20. Washington (Md.)	(19-5)
21. New York U.	(21-4)

Division I Ice Hockey

The top 10 NCAA Division I ice hockey teams through February 24, with records in parentheses and points:

1. Denver (29-9)	60
2. Michigan St. (27-8-2)	56
3. Boston College (24-10-2)	51
4. Harvard (19-5-1)	48
5. Minnesota (28-10)	45
6. Boston U. (21-12-2)	39
7. Western Mich. (28-10)	35
8. Wisconsin (25-13)	34
9. Yale (16-7)	27
10. Minn.-Duluth (25-12-1)	19

Division III Ice Hockey

The top 10 NCAA Division III ice hockey teams through February 24, with records in parentheses and points:

1. Bowdoin (19-5)	60
2. St. Thomas (Minn.) (21-5)	56
3. RIT (26-4)	52
4. Bemidji St. (20-7)	48
5. Plattsburgh St. (20-8)	44
6. Mankato St. (23-5-2)	40
7. Elmira (23-4)	36
8. St. Scholastica (18-10-1)	32
9. Babson (17-6-1)	28
10. Wis.-River Falls (15-11-2)	24

Men's Volleyball

The top 20 NCAA Division III men's volleyball teams through February 24, with records in parentheses and points:

1. Pepperdine (10-0)	315
2. Southern Cal (9-1)	303
3. UCLA (18-3)	290
4. Stanford (7-3)	277
5. George Mason (8-3)	256
6. UC Santa Barb. (10-5)	255
7. Long Beach St. (10-6)	253
8. Hawaii (5-1)	250
9. Penn St. (16-6)	233
10. San Diego St. (4-5)	222
11. Ball St. (10-10)	204
12. Ohio St. (18-7)	190
13. East Stroudsburg (9-4)	172
14. Cal St. Northridge (6-9)	169
15. IU/P.U.-Ft. Wayne (9-6)	162
16. Loyola (Calif.) (9-6)	156
17. UC-San Diego (11-6)	141
18. Rutgers-Newark (5-8)	129
19. Navy (6-5)	121
20. St. Mary's (Calif.) (11-10)	107

The NCAA News



The Market

Readers of The NCAA News are invited to use The Market to locate candidates for positions open at their institutions, to advertise open dates in their playing schedules or for other appropriate purposes.

Rates are 45 cents per word for general classified advertising (agate type) and \$22.60 per column inch for display classified advertising. Orders and copy are due by noon five days prior to the date of publication for general classified space and by noon seven days prior to the date of publication for display classified advertising. Orders and copy will be accepted by telephone.

For more information or to place an ad, call 913/384-3220 or write NCAA Publishing, P.O. Box 1906, Mission, Kansas 66201.

Positions Available

Academic Coordinator

Academic Coordinator, Rice University. Assume responsibility for academic counseling of all student-athletes including supervision of tutors/counselors. Master's degree required. Ph.D., a knowledge of Southwest and NCAA academic regulations preferred. Counseling and guidance experience or equivalent preferred. Must be willing to work varied hours and in excess of 40 hours per week. Submit resume to: Jan Griffin, Rice University, P.O. Box 2666, Houston, Texas 77252, 713/527-4074. EOE/M/F/V/H.

Administrative Asst.

Administrative Assistant-Men's Athletics. Duties include coordinating half times, liaison for student support groups, advertising sales, assist in arranging coaches' television shows, assist in golf tournament operation, and assist in staging varsity events. Bachelor's degree and experience in coaching required. Master's degree and athletic administration preferred. Entry level, 12 month renewable contract position. Send letter of application, resume and three (3) letters of recommendation to: Mr. Don Purvis, Athletic Director/Men's, Ball State University, Muncie, Indiana

47306. Review of applications will begin on March 31, 1986, and continue until position is filled. Ball State University practices equal opportunity in education and employment.

Associate A.D.

Associate Director of Athletics. Responsibilities: The Associate Director of Athletics is responsible for developing and organizing all fund-raising activities related to the intercollegiate athletic program, for directing and managing sports information services, for establishing and maintaining liaison with alumni and booster groups, and for all aspects of marketing and promotions. The position reports to the Director of Athletics. Requirements: Candidates must have at least a bachelor's degree with appropriate experience. A master's degree is desirable. Salary: Commensurate with credentials and experience. Start-up Date: July 1, 1986. Deadline: Applications, including curriculum vitae, transcripts and references, must be received by April 15, 1986. All materials should be sent to: Search Committee-A.D.A., Office of the Director of Athletics, The University of North Carolina at Wilmington, 601 South College Road, Wilmington, NC 28403-3297. An equal opportunity/affirmative action employer.

Athletics Trainer

Head or Assistant Athletic Trainer. Head or assistant athletic trainer for expanding athletic program. Responsibilities will include: Program Supervision, Daily treatment and in-

struction. Instruction will include: Supervision of practicum students, and possibly an introductory course in sports medicine. Training of apprentices will also be necessary. Qualifications: NATA certification, master's degree in physical education and experience as an athletic trainer required. Submit letter of application, resume, college placement file if any and two letters of recommendation to: The Office of Faculty and Staff Relations, SUNY College at Brockport, 408 Administration Building, Brockport, NY 14420. Deadline: April 15, 1986. EOE/A&E.

Athletic Trainer. West Chester University is seeking qualified athletic trainer to fill a faculty position as a trainer in selected collegiate sports including wrestling and baseball starting Fall 1986. This position also serves as a clinical instructor and classroom teacher in the athletic training education program. NATA athletic trainer certification, a master's degree (doctorate preferred), and 5 years' experience in clinical supervision, clinical athletic training and classroom teaching are required. Must be eligible for state certification. Academic rank and salary are dependent upon qualifications. Send application, resume and three letters of reference postmarked by March 17, 1986, to: Mr. Phillip B. Donley, Director, Athletic Training Education Center, West Chester University, West Chester, PA 19383. West Chester University is an Affirmative Action/Equal Opportunity Employer. Women and minorities are encouraged to apply.

Athletic Training Graduate Assistantship. Illinois State University athletic department will offer a graduate assistantship in athletic training for 1986-87. Certification preferred but will accept candidates who are close to taking the certification exam. Nine-month position, travel with teams, no teaching, tuition waiver, room and board, and books. Contact: Kathy Schindewolf, Illinois State University, Athletic Department, Horton Field House, Normal, Illinois 61761. Deadline April 15, 1986. Equal Opportunity/Affirmative Action University.

Aquatics

Aquatics Director/Head Men's and Women's Swim Coach. Responsibilities: Coaching of men's and women's varsity swimming at Division I level; program recruiting and budget management; directing the aquatics program to include teaching, lifeguarding, recreational swimming, camps, and facility use by outside groups. Qualifications: Water safety instructor's certificate advanced lifesaving, CPR, first-aid training and experience as a college coach with proven ability to recruit outstanding student-athletes. Send letter of application, resume and three letters of recommendation

to: Francis X. McLaughlin, Director of Athletics, Fordham University, E. Fordham Road, Bronx, NY, 10458-5155. No Phone Calls. Affirmative Action/Equal Opportunity Employer.

Basketball

Assistant Women's Basketball Coach. Full-time 12-month position. Assist in women's basketball program; primary responsibility for scouting, some recruiting, academic support, and other responsibilities as assigned by head coach. Master's degree preferred; 1-3 years' demonstrated successful coaching experience in women's basketball desired, competitive experience in basketball at college level. Send letter of application, resume, and three letters of recommendation by April 7, 1986, to: Barbara Jacobs, Head Women's Basketball Coach, Manley Field House, Syracuse University, Syracuse, New York 13244-5020. Equal Opportunity/Affirmative Action Employer.

Men's Head Basketball Coach. Position: Head Coach of a Southeastern Conference, NCAA Division I basketball program. Bachelor's degree required. Master's preferred. Successful coaching experience at college level. Thorough knowledge of NCAA rules and regulations. Responsible for full administration of the men's basketball program including recruiting, budgeting, staffing, and coaching. Salary: Commensurate with experience and qualifications. Submit letters of application and resume to: Charles L. Carr, Director of Athletics, Mississippi State University, Drawer 5327, Mississippi State, MS 39762. Mississippi State University is an Equal Opportunity/Affirmative Action Employer.

Women's Basketball Coach. Full-time assistant professor and coach. Search Extended. Teaching specialization and physical fitness/exercise physiology. Responsibilities will include teaching in related areas, supervision of a faculty/staff fitness program and coaching women's basketball. ACSM certification desirable, master's required, doctorate preferred. This is a tenure track position commencing September 1986. Teaching effectiveness and a commitment to liberal arts education are essential. Rank and Salary: Commensurate with experience. Filing Deadline: April 21, 1986. Forward letter of application, vita and three current letters of recommendation to: Dr. T. P. Martin, Chair, HPE Department, Wittenberg University, P.O. Box 720, Springfield, Ohio 45501. Wittenberg University is an Equal Opportunity/Affirmative Action Employer.

Head Women's Basketball Coach. Elmhurst College is seeking applications for the position of Head Women's Basketball Coach with expertise in the teaching of Exercise Physiol-

ogy. Master's Degree required. Ph.D. preferred. Elmhurst College is a member of the CCW (NCAA Division III). Competitive salary. Send letter of application, resume, transcripts and three letters of recommendation to: Allen Ackerman, Director of Athletics, Elmhurst College, 190 Prospect Ave., Elmhurst, IL 60126. Pending Board Approval.

Graduate Assistant. The University of Tulsa is seeking a Graduate Assistant for the 1986-87 academic year to work with the men's basketball coaching staff. Responsibilities include: videotape exchange, statistical analysis, player management, summer camp administration and coaching. Minority applicants encouraged. Applicants must be admissible to the appropriate program in the graduate school. Assistantship includes tuition, and board of waiver and a \$4,600 stipend based on a 12-month appointment. Send letter and resume to: J.D. Barnett, Head Basketball Coach, The University of Tulsa, 600 South College, Tulsa, Oklahoma 74104. An EOE/AA Employer.

Crew

Freshman/Assistant Heavyweight Crew Coach—Recruits on and off campus, assists in administration of boathouse and tank, oversees non-university rowing programs. Requires BS degree or equivalent experience, successful background coaching crew with several years' experience at collegiate level, and ability to work with students, faculty, and alumni. Please send resume to: Allen E. Mosley, Princeton University, Personnel Services, CJO Hall-NC, Princeton, New Jersey 08544. EOE/AAA M/F.

Field Hockey

Field Hockey/Lacrosse Assistant Coach. Full-time Assistant Coach in Division I Field Hockey/Lacrosse program. Master's degree required, preferably in physical education. Major responsibility in recruiting and possibility of limited teaching in lifetime sports. Screening to begin March 31, position available June 1. Interested persons send resume, official graduate and undergraduate transcripts, letter of application, and two current letters of recommendation to: Leotis Morrison, Associate Athletic Director, James Madison University, Harrisonburg, Virginia 22807. An Affirmative Action/Equal Opportunity Employer.

Football

Assistant Football Coach. Full-time twelve-month position to coach one of the following

positions: defensive line, linebackers, defensive ends or running backs. Must have college degree, experience at the Division I level, past success in recruiting, high energy. Prefer experience with use of computer in football. Submit resume and supporting materials by March 27, 1986, to: John Rosenberg, Head Football Coach, Box 1933, Brown University, Providence, RI 02912. Brown University is an Affirmative Action/Equal Opportunity Employer.

Lacrosse

Men's Lacrosse Coach. Keuka College, located in the Finger Lakes region of New York, seeks a Men's Lacrosse Coach and Student Activity Director. This is an administrative position within the division of Student Affairs, available July 1, 1986. Primary responsibilities include residence hall and student activity programming, leadership training, supervision and management of a coed residence facility housing 150 students. Secondary responsibilities include developing all phases of a Division III men's lacrosse program. Bachelor's degree required. Master's degree preferred. Student Affairs experience desirable. This is a full-time (12-month) position which requires living on campus. Apartment furnished and board provided while classes are in session. Starting salary mid-threes. Send letter of application, resume and three letters of reference by March 14, 1986, to: Jane E. Klug, Dean of Student Affairs, Keuka College, Keuka Park, New York 14478. EOE.

Physical Education

Physical Education, Chair. Professor or Associate. Tenure track. Ph.D. in sport sciences (MA with NATA certification and significant experience considered). Chair, teach in program refocusing on sport sciences. Consultative leadership required, range of teaching skills desirable, minor sport coaching possible. Salary competitive with liberal arts colleges. Candidates with specialization in teacher preparation need not apply. Apply by March 28 to Dean Harry Jensen, Capital University, Columbus, Ohio 43209. An EO/AA employer. A college of the American Lutheran Church.

Physical Education. Instructor or Assistant Professor, baseball coach/athletic director. Combination of responsibilities dependent on academic credentials and experience. Graduate degree in physical education required. Twelve-month contract, tenure-track. Send vita and letter of application by April 1 to Dr. Jay Gunnels, Chair, Department of Health, Physical Education and Recreation, See The Market, page 18

Measles vaccinations required for event

The Arkansas Department of Health has mandated measles vaccinations for all student-athletes and traveling parties visiting the University of Arkansas, Fayetteville, host for the Division I Women's Swimming and Diving Championships March 20-22 because of a measles outbreak on campus.

Athletes, coaches, trainers, cheerleaders and others at the championships must show documentation of having received measles vaccine after 1968 and after the age of 15 months, with the exception of persons providing proof of birth in 1957 or before. Records must include the date of the measles vaccination and must be properly signed by a physician, his or her designee or a public health official.

No medical or religious exemptions will be accepted.

Public health nurses will be available at the institution to check records before championships participation, and the Arkansas Student Health Service staff will be available to administer the vaccine.

State health officials recommend pretrip administration of MMR (mumps, measles, rubella) vaccine, which will be used on site if necessary, or red measles vaccine—not German measles vaccine. Athletics administrators and coaches should contact the Arkansas athletics department if they find it necessary to have championships participants and other traveling personnel vaccinated upon their arrival in Fayetteville.

The NCAA Women's Swimming Committee urges all competitors and other persons traveling to the cham-

pionships to obtain vaccinations in advance of their arrival at Arkansas. Questions should be directed to Ruth Cohoon, Arkansas primary woman athletics administrator, at 501/575-4959.

Committee

Continued from page 1

that have expertise in the analysis of all common street drugs and particularly anabolic steroids.

Standards of procedure on notification of the student-athlete and the institution of positive testing were reviewed. The committee also discussed sanctions and the procedures for appealing sanctions.

The number of student-athletes to be tested at a particular site still is under review, as is a proposed sched-

Coaches rule out smokeless tobacco

That big "chaw" of tobacco that many associate with baseball players has no place in New England college ball, say the region's coaches.

The use of tobacco by New England collegiate players will be curtailed under a resolution recently passed by their coaches.

The New England Intercollegiate Baseball Association approved a recommendation that "all members of the association should prohibit the use of tobacco substances by baseball players during practice sessions and games."

ule for testing. Toner said the review will continue up to the date of testing so that the committee can assure state-of-the-art testing at as many championships as possible and that the drug testing stays within budget.

The NCAA Drug Education Committee recently requested that member institutions provide their plans for drug-awareness and drug-testing programs. A survey of the membership is in progress.

The drug-testing committee will be

developing guidelines for institutional testing policies after a review of the various institutional plans.

"The common goal," Toner said, "is to develop a national drug-testing policy."

The drug-testing committee will be represented at NCAA Regional Rules Seminars this spring to provide information on policies and procedures for drug testing. A schedule for the seminars will be published later this month in The NCAA News.

The Market

Continued from page 17

Brier Cliff College, Sioux City, Iowa 51104. AA/EOE.

PE/Sport Management. Applications are invited for an Assistant Professor, tenure track, 9-month position for 1986-87. Qualifications: Expertise in sport management, doctoral degree (preferred), publications, and experience in external funding. Responsibilities: Teaching, research, and internship procurement and supervision. A letter of application, vita, and three letters of recommendation to be received by April 1, 1986. Dr. William L. Alsop, Chair, Search Committee, School of Physical Education, WVU, Morgantown, WV 26506-6616. AA/EOE.

Soccer

Assistant Men's and Women's Soccer Coach (One Position). Appointment Date: Negotiable. Salary: Commensurate with experience and qualifications. Ten (10) month appointment in the Department of Intercollegiate Athletics. (Salary and benefits can be arranged on a 12 month basis.) Responsibilities: 1. Assist the head coach in all aspects of planning, developing and coaching the total MSU men's and women's soccer program. 2. Active involvement in public relations, fund-raising, and promotional activities. 3. Help run the Michigan State Sports School in summer (4 weeks optional). Qualifications: 1. Bachelor's degree required. 2. Collegiate playing experience in a competitive program. 3. Experienced coaching background. 4. Ability to recruit athletes to Michigan State in order to maintain a competitive Division I program in the Big Ten. 5. Commitment to, and responsibility for, adhering to all rules and regulations of MSU, the Big Ten Conference and the NCAA. Deadline for Application: March 31, 1986. Send letter of application with a minimum of three references to: Douglas W. Weaver, Director of Athletics, Michigan State University, 218 Jenison Field House, East Lansing, MI 48824-1025. MSU is an Affirmative Action/Equal Opportunity Employer.

Swimming & Diving

Clemson University. Assistant Coaching Position. Major college swimming program is looking for Graduate Assistant coaches. Duties include on deck coaching and recruit-

ing. Stipend includes a full scholarship plus funding through the Athletic Department. Contact or send resume to Bob Boettner, Box 31, Jervy Athletic Center, Clemson, SC 29633.

Track & Field

Assistant Coach Men's and Women's Track and Field/Cross Country. Stanford University. Responsibilities: Assist with administration of the men's and women's track and field program; supervise the off-season program; conform to NCAA, conference, and departmental policies. Teach in the physical education program. Qualifications: Bachelor's degree; previous successful coaching experience in the college or university level. Appointment: Academic appointment; renewable annually. Salary: Commensurate with experience. Application: Send resume and references, by April 15, 1986, to: Brooks T. Johnson, Director of Track and Field, Department of Athletics, Physical Education and Recreation, Stanford, California 94305. Stanford University is an equal opportunity/affirmative action employer.

Volleyball

Head Women's Volleyball Coach. Full-time, nine-month position. Organize and administer all phases of a competitive Division I volleyball program, including budget, travel, public relations, fund-raising and promotional activities. Assess talent and recruit prospective student-athletes. Communicate and work effectively with women student-athletes, members of the university community and general public. Master's degree preferred; 3 years' demonstrated successful volleyball coaching experience, preferably at college level, required; successful competitive experience in women's volleyball preferred. Send letter of application, resume and three letters of recommendation by March 31, 1986, to: Chet Gladchuk, Associate Athletic Director, Manley Field House, Syracuse University, Syracuse, New York 13244-5020. Equal Opportunity/Affirmative Action Employer.

Assistant Women's Volleyball Coach in a Division I Program. 10-month, 100 percent appointment. Responsibilities: Recruiting, transportation arrangements, assisting in coaching and other duties as assigned. Qualifications: Experience as an assistant coach in a competitive program; ability to recruit and identify athletes compatible with the program; interaction skills to deal with coaches, athletes, recruits, parents and others; ability to contribute to floor coaching as requested. Bachelor's degree preferred. Salary: Commensurate with qualifications. Appointment Date: August 1, 1986. Application

Deadline: April 1, 1986. Send letter of application, resume, three letters of recommendation to: Dr. Linda Herman, Associate Athletic Director, 211 Horton Field House, Illinois State University, Normal, Illinois 61761. Equal Opportunity/Affirmative Action University.

Graduate Assistant

Graduate Assistant. The Citadel is seeking a graduate assistant to help train goalkeepers and field players in our soccer program. Stipend, housing and meals included. Interested coaches apply to: Bill Barfield, Athletic Department, The Citadel, Charleston, South Carolina 29409.

Graduate Assistantships. Graduate Study in Sport Coaching, Sport Management, Sports Medicine, Sport Research, and Fitness Management leading to a Master's of Sport Science degree. Graduate Assistantships and Scholarships are available for the 1986-1987 academic year. Assistantships include tuition waiver and a \$3,300.00 stipend. Inter-

ested students should apply immediately. For more information contact: Director of Admissions, United States Sports Academy, Box 8650, Mobile, AL, 36689-0650, (205) 343-7700. The Academy accepts students regardless of race, religion, sex, or national origin.

Graduate Assistant. Miami University offers tuition waiver plus stipend for Graduate Assistant Volleyball Coach. Contact: Carolyn Condit, Millett Hall, Oxford, Ohio 45056, 513/529-6922. Deadline for application April 14, 1986.

Miscellaneous

Sports Information/Head Swimming Coach. A dual appointment as head men's and women's swim coach and sports information director. Responsible for publicity, promotion, media contact, programs, brochures and statistical records for nine men's and eight women's NCAA Division III sport programs.

NCAA Administration Department YOUTH PROGRAMS COORDINATOR

Applications are being accepted for a position in the administration department to work with NCAA youth programs.

Duties will include the organization and supervision of the newly established NCAA clinics for youth 10 to 16 years of age, assisting with the conduct of the National Youth Sports Program and other topics as assigned.

The position requires organizational and administrative abilities, strong writing skills and ability to communicate effectively.

Applicants should have some postgraduate education and experience in intercollegiate athletics, either as a student-athlete or as an administrator.

Interested candidates should send a letter of interest with a resume and a list of references to:

Ruth M. Berkey
Assistant Executive Director
NCAA
P.O. Box 1906
Mission, Kansas 66201

Men's Head Athletic Trainer UNIVERSITY OF DAYTON

Applications are being accepted for the position of head athletic trainer for ten sport programs. This is a twelve-month position.

1. Must have strong commitment to sports medicine in the college environment.

2. Position requires ability to implement an effective injury-prevention program, expertise in injury evaluation and emergency care and rehabilitation and reconditioning.

3. Coordinate medical clearances, maintain accurate and updated medical records, communicate frequently with team physicians, schedule coverage for practices, home and away contests; Budget preparation, ordering and inventory of supplies; Instruct and train student athletic trainers and administer athletic insurance program.

QUALIFICATIONS: NATA certifications. Bachelor's degree required (master's preferred). At least two years of athletic training experience preferable at a Division I institution.

SALARY: Starting salary commensurate with experience and qualifications of the individual.

STARTING DATE: July 1, 1986.

APPLICATIONS: Applications should be received no later than March 30, 1986. Interested candidates should send a detailed resume, with cover letter to:

Gene Schill
Associate Director of Athletics
University of Dayton
Dayton, Ohio 45469-0001

An Equal Opportunity/Affirmative Action Employer

IDAHO STATE UNIVERSITY DIRECTOR OF ATHLETICS

DUTIES: Under administrative direction from the President of the University, is responsible for: (1) Managing and directing all phases of an NCAA Division I program (Division I-AA in football), 6 men's sports and 6 women's sports. (2) Working with the Executive Director of the Bengal Athletic Foundation in a vigorous fund-raising and promotional program. (3) Representing the athletic program in public relations with students, alumni, faculty, community, and the media. (4) Maintaining academic integrity of a successful athletic program consistent with the academic goals and mission of the institution. (5) Assuring that NCAA rules and regulations are followed by all coaches in all sports.

REQUIREMENTS: Master's Degree or equivalent required; five years' experience in athletic administration or as a head coach.

KNOWLEDGE AND ABILITIES: Candidates are expected to be knowledgeable about NCAA rules and regulations. The position requires demonstrated skills in fiscal management, fund-raising, communications with alumni, faculty, students, the community, and the media promoting a positive image of the program; demonstrated skill at maintaining good interpersonal staff relations.

SALARY: \$43,000 to \$48,000.

APPLICATIONS: Letter of application, resume, and three current letters of recommendation directly relating to the candidate's qualifications for this position should be submitted by March 15, 1986, to:

Darold H. Chambers, Chairman
Athletic Director Search Committee
Idaho State University
Box 8196
Pocatello, Idaho 83209

EOE

THE UNIVERSITY OF TULSA Director of Intercollegiate Athletics

Applications and nominations are invited for the position of Director of Intercollegiate Athletics. The Director is responsible for the administration of a Division I athletic program for men and women, and reports to the Vice President for Administration.

Major areas of responsibility include the development and implementation of athletic fund raising strategies and sports promotion programs, and the utilization of prudent fiscal and personnel practices in the management of the department's resources. The individual should have a firm commitment to the intellectual and athletic development of young men and women.

Date of Appointment: May 15, 1986

Qualifications: Bachelor's degree required; master's or higher degree desirable; athletic background necessary; business or previous management experience required; background in fund raising desirable; an understanding of the role of athletics in a selective private university is essential.

Salary: Negotiable based on qualifications and experience.

Application: Closing date for applications is March 31, 1986. Letters of application should include a resume and names, addresses, and telephone numbers of five (5) references. Letters of nomination should be received by March 17, 1986. Send to:

Michael W. Davis
Vice President for Administration
THE UNIVERSITY OF TULSA
600 South College Avenue
Tulsa, Oklahoma 74104

An Equal Opportunity/Affirmative Action Employer.

ASSISTANT MEN'S BASKETBALL COACH KENT STATE UNIVERSITY

Kent State University invites applications and nominations for the position of Assistant Men's Basketball Coach. Kent State is a member of the Mid-American Conference (MAC) and Division I of the NCAA.

RESPONSIBILITIES: Under the direct supervision of the Head Basketball Coach. Understand the academic standards and supervision of the basketball program. Recruiting of student-athletes (areas assigned by head coach); (1) correspondence and contacts, (2) observation/evaluation, and (3) campus visitation. Assist in assigned phase of the basketball program in offense, defense, and conditioning. Specific areas assigned to assistant coach: (a) develop and organize scouting schedule (b) Fall weight program (c) supervise game films and film exchange, and (d) scouting: specific—team scouting critique—Conference games. Assist in developing assigned practice plan and assist with academic counseling as needed. On-floor coaching in all areas specified by head coach. Assist in developing areas of concentration for graduate assistant. Should be fully aware of both University and NCAA rules and regulations pertaining to his job. Continually strive for excellence in the coaching profession. **QUALIFICATIONS:** Minimum of Bachelor's Degree with Master's Degree preferred. Successful background in coaching, recruiting, organization, counseling. Ability to work, communicate and develop rapport with students, alumni, faculty, administration and general public. **SALARY:** Commensurate with background and experience. **TERM OF APPOINTMENT:** 12-month position. **APPLICATION DEADLINE:** Accepting applications until March 28, 1986. Please forward letter of application, professional resume, and three letters of reference to: Mr. Jim McDonald, Head Coach/Men's Basketball, Department of Intercollegiate Athletics, Kent State University, Kent, Ohio 44242.

KENT IS AN EQUAL OPPORTUNITY EMPLOYER

The Market

Continued from page 18

Associate Athletic Director, Old Dominion University, Norfolk, VA 23508. Old Dominion is an Affirmative Action/Equal Opportunity Employer.

Open Dates

Division III Men's Basketball. Emory and Henry College, Virginia, needs two Division III teams to complete field for Thanksgiving tournament, November 29-30. \$500 guarantee. Contact: Bob Johnson, 703/944-3121.

Men's Basketball. Penn State available for December 1986 Holiday Tournament. Contact: Barry Jones, 814/865-1757.

Football in Europe-New Zealand-Australia. Wanted: Division III football teams to play in Europe-New Zealand-Australia in 1986. Write for details—Athletic Enterprises, 6941 Antigua Place, Sarasota, FL 33581. Telephone: 813/921-4966.

Men's Basketball. William Paterson College is looking for Division III teams for the 1986 Tip Off Tournament November 21 and 22, 1986. Contact: Coach Huddy Mahon at 201/595-2170.

Women's Basketball. Providence College (Providence, RI) seeking one Division I team to fill a four-team field in the PC Invitational December 6 and 7, 1986. Guarantee available. For additional information, contact Bob Foley at 401/865-2527.

Women's Basketball. Thanksgiving Tournament at Southwest Missouri State University. All Division I, 4-team Classic, November 28-29, 1986. Contact: Valerie Goodwin, 417/836-4136.

Women's Basketball. Division I Texas A&M University needs one Division I team to complete four-team tournament December 5-6, 1986. Contact: Eileen Feeney, 409/845-1053.

Women's Basketball. The University of Minnesota, Twin Cities, is seeking Division I teams for a Dial Classic Tournament November 28-29, 1986, guarantee. Contact: Donna Olson 612/376-5244.

BUSINESS MANAGER

Position available to manage the procurement, financial and operational affairs of the Division of Intercollegiate Athletics.

Requires a bachelor's degree in Business Management or Accounting or equivalent related work experience, and approximately two years' administrative and budgetary experience, preferably in an intercollegiate athletic or university business/accounting office. Also requires some supervisory experience and effective communication skills. Experience in conversion of manual records to an automated system utilizing microcomputers is desirable.

Salary: \$22,730-\$30,688, plus comprehensive benefits package including tuition remission for employee and children.

To apply, send a resume referring job No. 189 to:

The State University
of New Jersey
RUTGERS
Division of Personnel Services
New Brunswick, N.J. 08903
An Affirmative Action/
Equal Opportunity Employer

DRAKE UNIVERSITY

HEAD COACH-WOMEN'S BASKETBALL

QUALIFICATIONS: Successful women's collegiate basketball coaching experience required. Minimum three years' preferred. Proven success in public relations. Commitment to national prominence. Master's degree preferred.

DUTIES: Organize and conduct all phases of a Division I basketball program including budget, schedule, travel, public relations, NCAA and conference rules and regulations, recruitment and supervision of staff. Establish and maintain effective relationships with high school coaches, media and general public.

APPOINTMENT DATE: April 1.

SALARY: Commensurate with qualifications.

APPLICATION DEADLINE: March 10.

Letters of application, resume and names of three references with telephone numbers should be sent to:

Betty Werner Miles
Associate Athletic Director
Drake University Fieldhouse
Des Moines, IA 50311

Drake University is an
Affirmative Action/Equal Opportunity Employer.

MEN'S VARSITY BASKETBALL COACH (Division I)

RESPONSIBILITIES: The position of Head Varsity Basketball Coach carries with it all the responsibilities and duties expected of a Division I highly competitive program within the ECAC. Those duties include: (1) Practice organization; (2) Sound teaching techniques; (3) Professional conduct of self, staff and team; (4) Budget management; (5) Schedule consultation with A.D.; (6) Development of recruiting program; (7) Maintenance of high safety standards; (8) Service to alumni, development and community; (9) Program goals and objectives for players; (10) Academic consultation for student-athletes; (11) Conduct and knowledge of rules pertaining to UVM, ECAC and NCAA.

QUALIFICATIONS: A minimum of a bachelor's degree, master's preferred. College coaching experience highly desirable.

REMUNERATION: The salary will be dependent on experience and qualifications, for a nine-month appointment on contractual basis. EXCELLENT FRINGE BENEFITS.

APPLICATION: Interested candidates should send a cover letter and their resumes to: Mr. Richard Farnham, Assistant Athletic Director, Patrick Gymnasium, University of Vermont, Burlington, Vermont 05405.

DEADLINE FOR APPLICATION: March 15, 1986.

The University of Vermont is an
Equal Opportunity/Affirmative Action Employer.

DIRECTOR OF ATHLETICS

Loyola College, a private Jesuit institution, serving approximately 3,000 students, invites applications and nominations for the position of Director of Athletics.

The Athletic Department of Loyola College consists of eight Division I men's sports and six Division I women's sports. Loyola College is a member of the National Collegiate Athletic Association, the Eastern College Athletic Conference and the ECAC Metro Basketball Conference.

The Director of Athletics reports to the Academic Vice President/Provost. Responsibilities include overseeing the administration and development of all intercollegiate athletic programs, managing the departmental budgets, coordinating use of athletic facilities, supervising athletic personnel, conducting fund-raising efforts, and representing the College to internal and external constituencies.

The College is seeking a highly qualified individual who has a commitment to Jesuit and Catholic education and to academic progress and achievement for student-athletes in that setting; demonstrated ability in collegiate sports program management, human and financial resource management, interpersonal relations and communication, fund-raising and promotions, personnel supervision, policy formulation and implementation, and communication with media; and an ability to represent the College and athletic program effectively and articulately.

The salary is negotiable, commensurate with experience and credentials.

Potential candidates are requested to submit a letter of application, resume, and the names of three references by April 14, 1986, to:



Kathleen E. Donofrio
Director of Personnel
LOYOLA COLLEGE
4501 N. Charles Street
Baltimore, Maryland 21210-2699

Loyola strongly encourages the applications of women and minorities for this position, and is an equal opportunity/affirmative action employer.

MIAMI-DADE COMMUNITY COLLEGE

South Campus

INSTRUCTOR, HEAD COACH WOMEN'S BASKETBALL

Individual to teach health related/exercise courses and skills classes. **Requires:** A Master's Degree. The Bachelor's or required Master's must be in Physical Education, Physiology or a health related area. College coaching and recruiting experience desired. **Salary:** Based on Academic Rank established by Education and Experience. Liberal Benefits.

Send resume, cover letter, and three letters of reference by March 21, 1986, to:

Miami-Dade Community College
Personnel Services
11011 S.W. 104 St.
Miami, FL 33176

An Equal Access/Equal Opportunity
Community College.

ATHLETIC DIRECTOR

CLARION UNIVERSITY OF PENNSYLVANIA

Clarion University is seeking an Athletic Director to administer a nationally recognized NCAA Division II athletic program. The university sponsors 16 sports for men and women including several co-ed sports. All programs are Division II except Wrestling and Women's Gymnastics, which are Division I.

The Athletic Director will receive a faculty, tenure track, 12-month appointment with rank and salary dependent upon qualifications and experience. A Master's degree, prior coaching experience, prior athletic administrative experience, successful participation in the organization, coordination, and administration of athletic fund-raising, and a thorough understanding of NCAA rules and procedures are the minimum qualifications. The Athletic Director reports directly to the President of the University.

Duties will include, but are not limited to, the planning, the participation in, and the direction of a vigorous fund-raising and promotional program; the representation of the athletic program in public relations with students, alumni, faculty, and the external community; the management of personnel, budget, and athletic programs, and the supervision of the physical facilities assigned to athletics.

Starting date negotiable but prefer July 1, 1986.

Letter of application, vita and three current letters of reference must be received by April 4, 1986. Material should be submitted to:

Athletic Director Search Committee
Department of Health and Physical Education
Clarion University of Pennsylvania
Clarion, Pennsylvania 16214

Clarion University is an
Equal Opportunity/Affirmative Action Employer.

NATIONAL COORDINATOR OF MEN'S BASKETBALL OFFICIATING

Applications are being accepted now for a part-time position as the national coordinator of men's basketball officiating. The national coordinator will administer a two-year program to be in operation for the 1986-88 academic years.

Responsibilities of the national coordinator will include the following: serve as one of the staff liaisons with the NCAA Men's Basketball Rules Committee and assist with the production of printed rules material; develop education materials for basketball officials; provide staff support to the NCAA Divisions I, II and III Men's Basketball Committees in matters of officiating; develop and implement a plan to certify the officiating programs of automatic qualifying conferences; plan and coordinate regional officiating clinics; develop and maintain written principles for proper game management; develop an officials' enhancement program and prepare a coordinated plan for conferences that would assist in officials' recruitment, training and off-season development.

This position requires a general understanding of NCAA Men's Basketball Rules and Interpretations and experience related to basketball officiating; the ability to communicate effectively, both orally and through written materials, excellent organizational and administrative skills.

SALARY: \$18,000-\$20,000 for each of the two years of the pilot program.

Candidates interested in the position should send a resume and list of references to:

Thomas W. Jernstedt
Assistant Executive Director
NCAA
P.O. Box 1906
Mission, Kansas 66201

CLOSING DATE FOR APPLICATIONS: March 15, 1986.

Are you missing The News?

If your copy of The NCAA News isn't getting to you when it should, or if it isn't getting there at all, let us know. We don't want you to miss any of the action of college sports.

Attach your mailing label in the space below and note any corrections, or fill in the blanks below. Send it to: Circulation Department, The NCAA News, P.O. Box 1906, Mission, Kansas 66201.

Attach old mailing label here

Name _____

Institution _____

Address _____

City _____

State _____ Zip _____

HEAD MEN'S BASKETBALL COACH THE UNIVERSITY OF TEXAS AT SAN ANTONIO

The University of Texas at San Antonio is seeking nominations and applications for the position of Head Men's Basketball coach.

RESPONSIBILITIES: Responsible for the organization, direction, and administration of the men's basketball program. Promote intercollegiate athletics as an integral part of The University's goals of academic and athletic excellence. Must have commitment to compliance with the rules, regulations, and policies of the NCAA, Trans America Athletic Conference, and The University of Texas at San Antonio and must represent The University in a positive, professional, and ethical manner at all times. Recruit quality student-athletes who have the ability to succeed academically and athletically—then to monitor the student-athletes' performance in meeting academic and eligibility criteria.

The Head Coach must be able to promote the basketball program, develop, and maintain effective relationships with the administration, faculty, staff, students, alumni, the community, and the media.

Other responsibilities as may be assigned by the Director of Athletics.

QUALIFICATIONS: Bachelor's degree required, Master's degree preferred. Requires at least five (5) years of intercollegiate coaching, as well as a demonstrated record of success, at a major educational institution. Demonstrated fund-raising experience a must.

SALARY: Negotiable. Commensurate with experience and qualifications.

APPLICATIONS: Nominations, letters of application, and resumes should be submitted by March 6, 1986, to:

Personnel Department
Attn: Chairman, Basketball Coach Search Committee
The University of Texas at San Antonio
San Antonio, Texas 78285

The University of Texas at San Antonio is an
Equal Opportunity/Affirmative Action Employer.

Academic all-America teams named

Nevada-Reno senior Chris Starr, Abilene Christian senior Claudia Schleyer and junior Jeannie Demers of Buena Vista lead the selections to the 1986 academic all-America teams announced February 27 by the College Sports Information Directors of America.

Starr leads Division I in free-throw accuracy (93.6 percent through February 24) and is near the top in scoring (22 points per game) and field-goal shooting (64.9 percent). Schleyer led Division II in scoring (27.8 points per game) and Demers led Division III women in scoring (31.3 points per game) through the regular season.

The women's basketball academic all-America squad is one of several selected through voting by CoSIDA members to honor outstanding student-athletes for their classroom performances. Following is a complete list of the 1986 women's academic basketball teams:

UNIVERSITY DIVISION

First team

Guards—Amy Privette, Wake Forest, 3.860 grade-point average in history; Misty Thomas, Nevada-Las Vegas, 3.900 in premedicine. Forwards—Christa Champion, Brown, 3.700 in biomedical engineering; Caroline Mast, Ohio, 3.800 in math; Chris Starr, Nevada-Reno, 3.700 in health education.

Second team

Guards—Anne Dean, UCLA, 3.490 in communications; Julie Polakowski, Michigan State, 3.800 in math. Forwards—Hilarie Cranmer, Hofstra, 3.500 in biomedical engineering; Ann Kirwin, Bucknell, 3.600 in international relations; Arlene Lampe, St. Louis, 3.680 in accounting.

Honorable mention

Guards—Beth Ayers, Marquette, 3.500 in medical technology; Jody Beerman, Central Michigan, 3.800 in health and fitness; Ellen Brennan, Monmouth (N.J.) 4.000 in marketing-finance; Tory Ehle, Georgia Tech, 3.200 in industrial engineering; Jeannette Feaster, New Mexico State, 3.520 in health science. Forwards—Lisa Diane Allison, Oklahoma, 3.680 in finance; Stephanie Bollie, Nebraska, 3.900 in nutrition management; Jill Crandley, La Salle, 3.340 in computer sciences; Kristen Foley, Rutgers, 3.670 in journalism and mass media; Amy Hile, Indiana State, 3.400 in sports studies; Sharon Nast, Fordham, 3.440 in communications.

COLLEGE DIVISION

First team

Guards—Jeannie Demers, Buena Vista, 4.000 in elementary and secondary education; Penny Dickos, Tampa, 4.000 in accounting. Forwards—Darlene Brusco, Point Park,

Trojans to drop women's sport

The University of Southern California will drop its intercollegiate women's gymnastics program at the conclusion of the 1986 season, the school announced.

Athletics director Michael B. McGee cited financial considerations, a lack of a proper on-campus gymnastics facility and other competitive disadvantages as reasons for the decision. He said that as a result of the decision, the athletics department's annual budget will be reduced by more than \$140,000.

The men's gymnastics program at the school was eliminated in 1981 for similar reasons.

"For the past several years, USC's athletics department has experienced a net operating loss," McGee said in a statement.



Chris Starr



Claudia Schleyer



Jeannie Demers



Misty Thomas

3.910 in accounting-computer sciences; Gretchen Gates, Chicago, 3.600 in economics; Claudia Schleyer, Abilene Christian, 4.000 in biology.

Second team

Guards—Jane Meyer, Elizabethtown, 3.470 in political science; Shelley Ritz, junior, Scranton, 3.900 in physi-

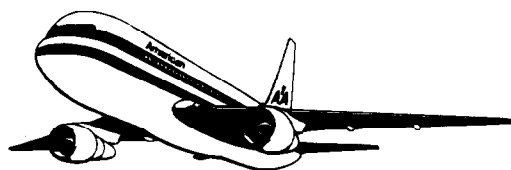
cal therapy. Forwards—Heidi Carroll, Cal State Sacramento, 3.450 in biological sciences; Cathy Fox, Tampa, 3.910 in math; Pam Summers, Hamline, 3.710 in math-education.

Honorable mention

Guards—Hilary Fink, Smith, 3.510 in Russian literature; Kim His-

song, Nebraska Wesleyan, 3.890 in biology-premedicine; Sue Rupp, Ashland, 3.930 in health-physical education-recreation; Judy Stewart, St. Joseph's (Indiana), 3.690 in math-computer sciences. Forwards—Martha Beverage, MIT, 4.500 (5.000 scale) in chemistry-engineering; Cynthia

Boyer, Western Maryland, 3.200 in biology; Lisa Dement, Wooster, 3.780 in psychology; Lori Harris, Defiance, 3.510 in math; Bridgette Moore, Valdosta State, 3.820 in premedicine; Margaret Womack, Missouri Southern, 3.610 in physical education-psychology.



HOW TO FLY THROUGH A TOUGH ROAD SCHEDULE.

American Airlines knows that when it comes to road games, the last thing you want to think about is travel arrangements. That's why calling one of our more than 100 Meeting Specialists makes so much sense.

With one phone call, we'll take care of everything down to the smallest detail. From pre-reserved seating, to car rental arrangements. We'll even deliver your tickets directly to you or your team's official Travel Agent.

It's the perfect way to get to your meeting, convention or game.

So when you're the visitor, call the official airline for the NCAA Championships, American Airlines, at (800) 433-1790. STAR #S9043.

We'll take care of the travel plans so you can take care of the game plans.

American Airlines
Something special in the air.™