

The NCAA News

December 2, 1985, Volume 22 Number 43

Official Publication of the



National Collegiate Athletic Association



Gary G. Dineen photo

Top three finishers

The top three finishers in the Division I Men's Cross Country Championships are Tim Hacker, Wisconsin; Yobes Ondieki, Iowa State, and Keih Hanson, Marquette (in the rear). Complete results are on page 6.

Proposal by SWC heads list of 15 recruiting amendments

(Editor's Note: This is the third in a series of articles dealing with legislation to be considered at the 1986 NCAA Convention. This article reviews the recruiting proposals.)

An attempt by the Southwest Athletic Conference to eliminate all in-person recruiting by boosters heads a series of 15 proposals dealing with recruiting that will be considered by delegates to the 1986 NCAA Convention.

NCAA Bylaw 1-2-(b), adopted by Divisions I and II at the 1983 NCAA Convention, prohibits any in-person, off-campus recruiting contact by a representative of an institution's athletics interests. The Southwest Conference proposal would take that concept one step further by preventing any in-person recruiting contact by boosters, alumni or any other representative of an institution's athletics interests, on or off campus.

Adoption of the proposal would mean that all involvement in recruiting, as far as in-person contacts are concerned, would be restricted to institutional staff members.

"Basically, we are trying to be consistent," Fred Jacoby, commissioner of the conference, told The NCAA News. "Our feeling was, if it is good legislation off campus, why wouldn't it be good on campus?"

"What we have in recruiting now is a triangle, with the coach at the top, the prospect at one corner and the booster at the other," Jacoby said. "The coach is trying to recruit the student, but the coach also is trying to get the booster or alum to work with him. Then, when the booster comes into contact with the prospect, that booster becomes very competitive with boosters from other institutions, and you have problems."

"What our proposal seeks to do is eliminate the triangle by taking the booster—representative of athletics interests or whatever you want to call that individual—completely out of recruiting," he explained.

Jacoby emphasized that the proposal would not prevent letter-writing and telephone contacts with prospects by alumni or boosters.

Others

Other key proposals in the recruiting grouping deal with evaluation (talent assessment) visits, institutional

or conference aid agreements, recruiting contacts at high schools by Divisions I-A and I-AA institutions, and recruitment of 2,000 nonqualifiers who enroll in junior colleges.

Seven member institutions are sponsoring an amendment to Bylaw 1-3 to specify that each Division I or II NCAA member institution must limit its noncontact off-campus talent assessment (i.e., scouting the prospect) to not more than six regular-season observations of the prospect's team.

See Proposal, page 9

CWS format may change if TV contract secured

With attendance and television ratings increasing for college baseball, the NCAA is considering a format for 1988 for the Division I Baseball Championship similar to that of the Division I Men's Basketball Championship. However, any change is contingent upon securing a suitable live national television network contract.

The new format proposal by the NCAA Baseball Committee will be studied by the Executive Committee during its December 9 meeting in Irving, Texas.

At the request of the Executive Committee, the Baseball Committee reviewed the restructuring of the baseball tournament (College World Series) to a format that would include a 48-team bracket with 24 first-round sites, where best-two-out-of-three series would be played. Currently, 16 teams qualify for the tournament via regionals and all games are played at Rosenblatt Stadium in Omaha, Nebraska.

Under the proposed format, the 24 winners from first-round games would compete in four six-team regionals. The four regional winners would advance to Omaha for a final single-elimination tournament.

First-round and regional sites
See CWS, page 9

In the News

Double victory

The University of Wisconsin, Madison, captures the NCAA Division I Men's and Women's Cross Country Championships team titles. Page 6.

Experimentation

Requests are being accepted from women's conferences that want to use the experimental coaching-box rule during the 1985-86 basketball season. Page 12.

Speakers selected for professional development seminar

Top athletics administrators from 10 NCAA member institutions are among the speakers scheduled to participate in the NCAA Professional Development Seminar January 10-11 in New Orleans.

The seminar will be held in conjunction with the annual Association Convention at the Hilton Riverside and Towers in New Orleans.

As of November 29, 170 persons had registered, the highest number for any of the professional development seminars in the past two years.

A registration form for the January seminar appears on page 9 of this issue.

The seminar is entitled "Administering an Efficient Athletics Department." The moderator will be Col. John J. Clune, athletics director at

the U.S. Air Force Academy.

The Saturday luncheon speaker will be Homer C. Rice, athletics director and assistant to the president at Georgia Institute of Technology. His topic will be "The Total Person Concept."

Seminar topics and leaders are as follows:

"Effective Athletics Budgeting" with Richard D. Schultz, athletics director, University of Virginia; Barbara Hedges, associate athletics director, University of Southern California; Lynn Eilefson, athletics director, San Jose State University; Judith M. Brame, women's athletics director, California State University, Northridge, and Tim Bourdon, athletics business manager at North Dakota State University.

Breakout sessions on budgeting are scheduled for state and student-funded programs, with Schultz as the leader; Divisions II and III programs, with Bourdon, and private institutions, with Hedges as the leader.

"Computers in Athletics" will be discussed by Lamar Ingram, education consultant with IBM; Mike Alderson, business manager, University of Washington athletics department, and Fred Schafer, a consultant from Onida, South Dakota.

Sessions on special computer applications include eligibility control with Ed Taylor, vice-president, Indecon of Indianapolis, Indiana; budget control, with Alderson as the leader, and ticketing and fund-raising with Page Singletary, director of marketing for Paciolan Systems, Inc.

The "Role of the Foundations in Athletics" will be covered by Jerry Tardy, vice-president for development, Indiana University Foundation, and Charles Johnson, vice-president for development, Eli Lilly Foundation.

"Successful Management Practices" will be discussed by Larry Foster, John R. Miller professor of management at the University of Alabama, Tuscaloosa.

A session on "Evaluating the Coaching Staff" will be conducted by Karol A. Kahrs, assistant director of athletics, University of Illinois, Champaign, and J. Frank Broyles, director of athletics, University of Arkansas, Fayetteville.

A discussion of facility designs to renovate gymnasiums or increase seat-

ing capacity in stadiums will be headed by Dale Swearingen, vice-president, The Osborn Engineering Co.; Kurt Rim, structural engineer, The Osborn Engineering Co., and Richard G. Shrider, director of athletics, Miami University (Ohio).

A panel of experts will discuss "Reducing Athletics Travel Costs." The panel includes W. James Host, president, Host Communications, Inc.; V. Topper Luciani, president, Fugazy International Travel; Joseph E. Sullivan, vice-president for marketing and advertising, National Car Rental; Robert Vecchione Jr., national accounts manager, National Car Rental; Eugene Rondeau, national manager, American Airlines, and Terry Underwood, vice-president, Greyhound Lines, Inc.



Judith M. Brame



J. Frank Broyles



Col. John J. Clune



Barbara Hedges



Karol A. Kahrs



Homer C. Rice



Richard D. Schultz

The rules sometimes can hurt the ones they serve

By John O'Connor

Richmond Times-Dispatch

Let's begin with the supposition that there's a rational explanation behind every NCAA rule. It's true. Most were enacted because of abuses. But a lot of these regulations sure seem silly.

Student-athletes on full scholarships can't work during the school year.

Possible abuse—Big-time players were getting meaningless jobs from alumni and being paid inordinate amounts of money on the rare occasions they were required to show up.

Reality—When is an athlete supposed to make money? How is an underprivileged student-athlete supposed to entertain himself during the school year? If he lives a considerable distance from the school he attends, how does he pay for trips home?

More than two members of a team and a coach are not allowed to meet during a time of year in which practice is not allowed.

Possible abuse—Off-season practice.

Reality—Study halls, with an assistant coach monitoring, are a violation of the rule.

A recruit visiting campus and his host (usually a player at the school) are allowed \$20 from the athletics department. That \$20 is supposed to be enough for food and entertainment for the two for 24 hours.

Possible abuse—The NCAA does not want athletics departments to compete for recruits by creating a lavish, unrealistic environment during a visit.

Reality—How can two young men eat and find something to do at night for \$20 a day?

A student-athlete can receive transportation from the athletics department for only specified trips (mainly to and from games).

Possible abuses—Some athletics departments would bankroll a player's weekend excursions home to see his family and girlfriend.

Reality—A player hurts his knee. Coach and/or representative of athletics department cannot take him to another town for a more qualified medical opinion.

If a player on scholarship in one sport wants to play another sport, the scholarship counts toward the second sport's allotment.

Possible abuses—They say Southern California used to bring in six scholarship sprinters a year, all of whom also happened to be running backs. It was an easy way to add to a limited number of grants in one sport.

Reality—A scholarship tennis player wants to try out for basketball but can't be allowed to compete because the basketball team already has its maximum of scholarship players.

Official practice season, when coaches can be present in the same

area as athletes, is limited.

Possible abuses—Some coaches would work their players too hard, too long.

Reality—"We spend a fortune recruiting a kid and the NCAA won't let us coach him," said one state basketball coach. Chances are the athlete will be required to work on his sport all year. Why not allow the coaches to offer instruction all year? "During the season, we're trying to work on a team concept," continued the coach. "I don't have time then to work with one player on the individual things he needs to do."

Incoming freshman student-athletes who are not required to enter special orientation classes are not allowed to receive summer school aid from the school.

Possible abuses—Freshman players on scholarship could earn college credits before school, and the fall season, actually began. Those credits would count toward eligibility.

Reality—A good student who comes to a college on athletics scholarship must pay his own way if he wants to get a head start during the summer on any of his classes. Meanwhile, a less-talented student has his summer remedial classes paid for.

Recruiters are allowed to make contact with prospective student-athletes only in approved months.

Possible abuses—A Southwest Athletic Conference football recruiter

once moved into a trailer behind a recruit's house to keep constant contact. Dubbed the bump rule because it was created so recruiters couldn't accidentally "bump" into recruits, say outside a player's sixth-period math class.

Reality—When a recruiter watches the prospective player play in a game during a month in which contact is

illegal, the recruiter cannot speak to the recruit after the game. Programs spend thousands of dollars sending assistant coaches all over the country to high school games, after which they can't talk to the players they're recruiting.

In closing, we hear from a wise state basketball coach: "You can't legislate morality."

Letter to the Editor

Give athletes five years' eligibility

To the Editor:

There is a proposal before the NCAA Convention this year (Proposal No. 68) that will help student-athletes graduate and allow institutions to save money at the same time.

The idea is based on the NCAA satisfactory-progress rule—which states that a student-athlete must complete 24 semester hours or 36 quarter hours per year in a specific degree program—and Bylaw 5-1-(c), which requires student-athletes to be enrolled in at least 12 academic hours per term. These rules translate into a five-year academic plan. If a student-athlete completes 12 hours every term, it will take five years to graduate.

Our belief is that many student-athletes lose interest in school and lose purpose or direction once their eligibility expires. Even if the institution offers to pay for the fifth year, many student-athletes still leave school because of the change in lifestyle and loss of being part of a team. Many schools cannot afford to pay for the fifth year, and many students—especially those from out-of-state—cannot complete their education because of the expense.

The solution? Instead of allowing student-athletes five years in which to play four, this new legislation would allow student-athletes five years to play five. The benefits would include:

1. Student-athletes could stay in school another year and they would by definition be making progress toward their degree or they would not be eligible.
2. Graduation rates for student-athletes would increase dramatically.
3. Costs would not increase because the number of scholarships would not increase.
4. Institutions actually would save money because they would not have to recruit as many students each year.
5. We could do away with redshirting students.
6. We could do away with NCAA Bylaw 5-1-(d)-(2), the hardship rule.
7. It would not prevent students from graduating earlier than five years.
8. It would provide an institution with means of paying for the fifth year of education, which most students need, without adding costs.
9. This rule should be implemented simultaneously with the proposed modification of NCAA Bylaw 5-1-(j), which is also geared toward improving academic performance.

Bylaw 5-1-(j) focuses on the front end of the five-year process—the admission standards. It will do nothing about solving the other major problem area—the other end of the five-year process, when a student's eligibility expires.

Adding a year of eligibility, coupled with the implementation of Bylaw 5-1-(j), will help ensure academic success for student-athletes and allow institutions and CEOs to be proud of the academic integrity of intercollegiate athletics.

The effective date of this legislation will be amended to August 1, 1987, because schools will have signed students and committed scholarships in basketball and football prior to the January Convention.

Gene Bleymaier
Director of athletics
Boise State University

Officials essentially are powerless

D. Stanley Eitzen, sociology professor
Colorado State University

Referee

"Officials can't do much, because violence, rule-bending and cheating have become very much a part of sports. But, officials have the power on the field or court, and they should use their expertise to get rules changed.

"There's an interesting parallel between the low respect society has for law enforcement and the government and what sports officials go through on the field or court in treatment by athletes."

Rich Grawer, head men's basketball coach
St. Louis University

Webster University news release

"It's not my job to condemn what is going on at other universities. I can't condemn another coach who gave \$100 to his player, because of the unique relationship between a coach and his player. I'm with my players three

Virginia Yankoskie, soccer rules committee chair
National Federation of State High School Associations
National Federation News

"No coach has a right to expect an official to serve as a disciplinarian. Instilling right attitudes and controlling the emotions of players under his or her direction remains the coach's prime responsibility.

"This authority is not always enough to insure sportsmanlike attitudes. This matter of keeping a game under control is the joint responsibility of the coach and the officials—thus placing coach and official on the same side.

"The official who is inconsistent, hesitant, inefficient and lacking in courage increases the problems of the coach as he or she tries to keep his or her players on an even keel. With coach and official presenting a united front and giving the impression of working toward a common goal, no games should ever get out of hand.

"Coaches, don't underestimate your influence on your players. Accept your responsibility. Run an educationally sound program."

Eddie Sutton, head men's basketball coach
University of Kentucky

The Associated Press

"Some institutions put so much pressure on a coach that he resorts to violating NCAA rules... to win. And by institutions, I mean everyone—alumni, administration, fans.

"I know some honest coaches who have become dishonest... to keep their jobs.

"Years ago, you could give a player \$15 a month for laundry money. A lot of people share my view that we should once again provide our student-athletes with spending money—perhaps \$50 or \$75 a month.

"You'll never eliminate what I call the 'barracudas'—the big-time cheaters. You have dishonest people in every profession.... But I truly don't think there are very many in college athletics."

Micki King Hogue, former men's diving team coach
U.S. Air Force Academy

Women's Sports and Fitness

"...I'm wondering whether the issue here isn't so much who coaches whom as it is the need to have more qualified women—women who can establish trust and respect on their teams. I think we can do ourselves more harm than good by insisting that women coach women purely for its own sake. Players, whether team members or individual athletes, will know in 10 minutes of a workout whether or not the coach has got it. At the Air Force Academy, where I'm now directing the women's program, we have 10 women's sports and two women coaches. I would love to be able to say I've got 10 for 10, but I haven't yet found qualified women for eight of my sports. And the right qualifications are my No. 1 criterion."

Opinions Out Loud

to five hours a day, seven days a week. If a toilet breaks in the dorm, the player will call me even though I can't fix my own toilet. But he calls me because of that special relationship.

"What I can't live with is members of my profession who violate academic standards."

Cheryl Miller, student-athlete
University of Southern California

The Chronicle of Higher Education

"I'd like to see reform in the financial status of college athletes. I'd like to see the NCAA begin to conform with international standards concerning athletes so that we'd be able to work, but the money would be put in a trust. A lot of us have the opportunity to do endorsements or some commercials, but we can't do it or we would lose our status as college amateurs. If the chance is there, you ought to be able to take it."

The NCAA News

(ISSN 0027-6170)

Published weekly, except biweekly in the summer, by the National Collegiate Athletic Association, Nall Avenue at 63rd Street, P.O. Box 1906, Mission, Kansas 66201. Phone: 913/384-3220. Subscription rate: \$20 annually prepaid. Second-class postage paid at Shawnee Mission, Kansas. Address corrections requested. Postmaster send address changes to NCAA Publishing, P.O. Box 1906, Mission, Kansas 66201.

Publisher Ted C. Tow
Editor-in-Chief Thomas A. Wilson
Managing Editor Steven M. Carr
Assistant Editor Timothy J. Lilley
Advertising Director Wallace I. Renfro
The Comment section of The NCAA News, is offered as opinion. The views expressed do not necessarily represent a consensus of the NCAA membership. An Equal Opportunity Employer.

Looking Back

Five years ago

President Fred C. Davison, University of Georgia, and Chancellor Charles E. Young, University of California, Los Angeles, examined the issue of financial aid based on need in a pro-and-con presentation in the NCAA News, with Davison arguing against basing athletics grants on need and Young presenting the case in favor of such a requirement. (December 15, 1980, NCAA News).

Twenty years ago

The Association announced in December 1965 that its 60th annual Convention would honor 50 members of the executive and legislative branches of the Federal government who were varsity lettermen in their college days—three members of the cabinet, 17 senators and 30 members of the House of Representatives. (November-December 1965 NCAA News)

Seventy years ago

Walter Camp of Yale University, for 30 years associated with the formulation of football playing rules, resigned December 28, 1915, from the Football Rules Committee. ("NCAA: The Voice of College Sports")

Eighty years ago

Sixty-two institutions attended a conference to reform the game of football. A Football Rules Committee was appointed and amalgamated with the former American Football Rules Committee. It was at this meeting that the Intercollegiate Athletic Association of the United States was formed as an educational body without legislative authority. ("NCAA: The Voice of College Sports")

Passing of Totten, Ehrhardt disarms I-AA foes

By James M. Van Valkenburg
NCAA Director of Statistics

From every angle, Mississippi Valley State's Willie Totten and Rhode Island's Tom Ehrhardt are two of the most productive quarterbacks in college football history, considering all NCAA divisions.

In putting points on the board, Totten is No. 1 by any measurement, comparing all the quarterbacks ever. Over his career, this former non-throwing quarterback in high school at Carrollton, Mississippi, is responsible for 944 points in 40 games—an incredible 23.6 points per game. He threw 139 touchdown passes (smashing the old record of 106 by Portland State's Neil Lomax from 1977 to 1980) and scored 18 touchdowns and one two-pointer. (Lomax, like Totten and Ehrhardt, played in Division I-AA.)

Putting it another way, Totten accounted for 208 points more than any other NCAA quarterback who has played the game (Lomax is second at 736 on the all-divisions chart).

On a total-offense yards-per-game basis, Totten also is No. 1 on the all-time collegiate career list. He produced 325.1 rushing-passing yards per game over his 40 games. That breaks the former collegiate (remember, that means all divisions) record of 317.7 by Lomax. Yards per play? Totten set that one, too, averaging 7.18 (breaking Lomax's 7.02 per total-offense play).

Five 10,000-yard passers

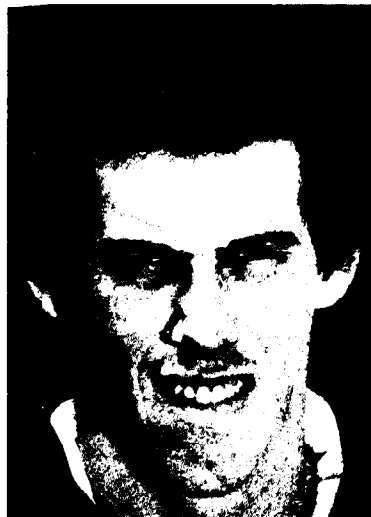
Only five quarterbacks in NCAA history have passed for at least 10,000 yards in a career—Lomax 13,220, Totten 12,708, Boston College's Doug Flutie (in Division I-A, 1981-1984) 10,579, Ehrhardt 10,325 and Bowling Green's Brian McClure (whose regular-season career ended November 23; all NCAA career records are regular-season only) 10,280. In career total offense only four NCAA collegians reached 10,000 rushing-passing yards—Lomax 13,345, Totten 13,004, Flutie 11,317 and Ken Hobart of Idaho, 11,127.

Ehrhardt, it should be noted, played his first two seasons at Long Island-C.W. Post in 1981 and 1982 before transferring to Rhode Island. However, if you consider simply the Division I-AA, or Rhode Island, portion of his career, Ehrhardt's per-game figures are even more impressive, with 309.1 total offense and 320.1 passing for 21 games (vs. 317.7 by Totten and 314.8 by Lomax, both over four seasons).

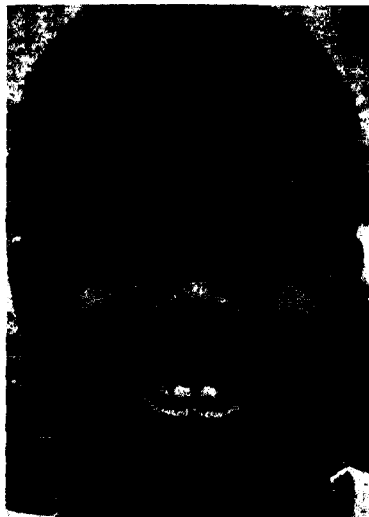
Over the past two seasons, Ehrhardt passed for 6,722 yards and 66 touchdowns. But over the same two seasons, Totten passed for a collegiate-record 8,252 yards and 95 TDs.

Totten, you see, harvested just about all the collegiate season records available in 1984, as coach Archie "Gunslinger" Cooley instituted a wild, no-huddle offense. With the departure of record-smashing receiver Jerry Rice, Totten's figures have been more human this fall, and he finished third in 1985 season total offense. The winner at 346 per game is Ehrhardt, trigger man in coach Bob Griffin's double-tight end, double-wide receiver offense, as wide open as any in the land. Ehrhardt's brother, Bob, was a passing standout at Rhode Island in the early 1970s. Second is Weber State's Dave Stireman, who averaged 341.7 and rushed for 512 net yards.

Almost overlooked in Totten's record harvest is a I-AA career mark for passing efficiency—146.8 points. This perhaps is the most remarkable of all his career records because it is so difficult to rank high in both efficiency and totals—that is an axiom of statistics. Keep in mind that Totten threw nearly 40 passes per game over four seasons. Only 4.82 percent were intercepted (75 of 1,555 attempts). Ehrhardt's two-season I-AA passing efficiency rating was 135.2 (and he threw 43.6 times per game). Lomax's career



Jack Trudeau, Illinois, ranks among the Division I-A passing efficiency leaders



Bowling Green's Stan Hunter ranks among the receiving leaders in Division I-A



Flip Johnson, McNeese State, is among the Division I-AA punt-return leaders



Keith Isom, Appalachian State, ranks among the Division I-AA kickoff-return leaders

efficiency was excellent, too, at 142.5. **Other season champions**

Furman senior Bobby Lamb, a six-footer from Commerce, Georgia, wins the I-AA passing efficiency championship with a division-record 170.9. His career figure of 156.3 is a record using a minimum of 225 completions. Idaho's Rick Sloan set a I-AA season mark by completing 68.1 percent, and Western Kentucky's Jeff Cesarone set another by having only 1.57 percent intercepted. In total offense, Lamb's 8.65 yards per play set a I-AA season mark, using a minimum of 2,000 yards.

The rushing championship goes to Lamar sophomore Burton Murchi-

son, 6-foot, 195 pounds from Woodville, Texas, at 140.6 yards per game. Nevada-Reno's Charves Foger, a 190-pound freshman from Las Vegas, Nevada, wins the scoring title at 10.8 points per game and has a I-AA freshman rushing record of 1,241 yards.

Holy Cross senior Gill Fenerty, a 200-pound New Orleans native who has no Southern accent ("New Orleans is a Northern city plopped down in the South," he says), wins the national crown in all-purpose running at 197 yards per game. Fenerty also leads all I-AA seniors in career rushing yards at 3,618, and his 120.6 yards per game over 30 games (he transferred from Louisiana State) ranks third on the all-time I-AA list.

On a rushing-per-carry basis, Southwest Missouri State senior Keith Williams sets a I-AA season record at 7.6, and his career 7.3 is a record for a minimum of 350 rushes.

Football notes

Forster by himself
Rhode Island's Brian Forster, a 216-pound junior from Danvers, Massachusetts, who also played hockey in high school, is in a class by himself statistically among all the tight ends in NCAA football history—all divisions.

He is the receiving champion with a I-AA record 11.5 catches per game, and his 115 total catches are 38 more than any NCAA tight end has ever caught in one season. His 1,617 yards this season are 292 more than any tight end ever in NCAA football. On the career charts, his 219 catches and 3,068 yards already are tight end collegiate (all divisions) records—and, remember, he still has another season to play.

Amazingly, the other Rhode Island tight end, 214-pound senior Tony DiMaggio, ranks 20th in receiving with 5.8 catches per game.

The Horn-Benn connection

Lehigh's Marty Horn, who threw for 9,120 yards (fourth in I-AA history) and 62 touchdowns, and his favorite target, split end Rennie Benn, who leads all I-AA seniors in receiving yards (3,662), catches (237) and touchdowns (44), were overshadowed by

Tennessee State's George Cimadevilla. The field-goal champion is Louisiana Tech's George Genyola at 2.18 per game, while Nevada-Reno's Marty Zendejas sets a I-AA season kicking record of 107 points. Richmond's John Armstrong is the champion in punt-return average at 20.6, while runner-up Willie Ware of Mississippi Valley State has harvested a bunch of records, among them season punt-return yards (561), season punt and kickoff-return combined yards (1,326), best average (21.7) and most touchdowns (5) on punt and kickoff returns combined, career punt-return average (16.4), career punt-return touchdowns (5), and career TDs on punt and kickoff returns combined (7).

Murray State's Rodney Payne is the champion in kickoff-return average at 29. The interception championship goes to Rhode Island's Mike Cassidy and Northern Arizona's George Duarte, each with nine in 10 games.

Two make history

The coaching match-up of Joe Paterno and 11-9 Penn State vs. Barry Switzer and once-beaten Oklahoma in the Orange Bowl is unique in college football bowl history.

How unique? It is the first Division I-A bowl match-up in which both coaches have won at least 100 games and have winning percentages above .800. Paterno will go into the game with a 20-year record of 187 victories, 43 losses and two ties for .810. Switzer will be above .800 regardless of the outcome of his team's game with Southern Methodist December 7. He now stands at 124-24-4 for .829 over 13 seasons and would be .830 with a victory over SMU. Switzer and Paterno are the top two active coaches in the land in I-A in terms of winning percentage, using a minimum of five years as a head coach.

Using minimums of 100 victories and .700 by each coach, there had been only 22 match-ups in bowls before this season out of nearly 500 bowl games involving major teams. Now the figure is 24, because Nos. 3 and 4 on the current winning per-

centage list are matched in the Sunkist Fiesta Bowl—Nebraska's Tom Osborne at .8101 to Paterno's .8103 (127-29-2 for 13 years) and Michigan's Bo Schembechler at .772 (195-55-7 for 23).

Using no minimum number of victories, it is exceedingly rare to have two .800 coaches matched in a bowl (or anywhere else, for that matter, because there are so few in any era of football). The winningest coach of all time in percentage terms (.881)—Knut Rockne of Notre Dame (1918-30)—was 57-4-3 for .914 entering his only bowl, the Rose, on January 1, 1925, but then was finishing his eighth season. He faced another legend, Stanford's Pop Warner, then 218-71-16 for .741.

A rare double .800 match-up took place in the 1981 Sunkist Fiesta, when Paterno, then .818, faced Southern California's John Robinson, then .845 for six seasons. Paterno's team won, 26-10. There may have been one or two others in bowl history going back to 1902—our research did not go that far—but Switzer-Paterno is the first double .800 match-up of veteran coaches with at least 100 victories each.

Championships at stake

Many of the first 22 match-ups of coaches with 100 victories and a .700 percentage decided national championships, and that might be the case again with Switzer-Paterno. Seven times, the winner was voted national champion—one each for Paterno (1982 season), Alabama's Paul "Bear" Bryant (1978 season), Notre Dame's Ara Parseghian (1973), Nebraska's Bob Devaney (1971), Texas' Darrell Royal (1969), Southern California's John McKay (1974) and Brigham Young's LaVell Edwards (1984). Four of those seven were undefeated and untied.

Eight times in the 22, the losing team had an undefeated-untied record spoiled, and thus lost a chance for a national crown. Bryant was the victim three times, after the 1974, 1973 and 1971 seasons; Georgia's Vince Dooley (1982), Royal (1970), Paterno (1978), Duke's Wallace Wade (1938) and Tennessee's Bob Neyland (1939) once each.

This means Penn State is now the 13th perfect-record team to play in such a match-up, and so far, the perfects have won just four times.

Bear vs. Woody

In terms of combined victories, no coaching match-up in history—in a bowl or anywhere else—can match Bryant (272 victories) vs. Ohio State's Woody Hayes (231) in the Sugar Bowl January 2, 1978. Bryant won that historic 503-victory match-up, 35-6. Second place is Bryant vs. Parseghian, 411 combined victories in the Orange Bowl, January 1, 1975. Until now, the highest combined percentage of the previous 22 match-ups was .791 by Paterno and Frank Kush of Arizona State in the 1977 Sunkist Fiesta.

Tied with 2-0 records in this unique

match-up history are Devaney, Dan Devine (Missouri and Notre Dame) and Howard Jones (Southern California), while Parseghian is 3-2, Paterno 2-2 thus far and Bryant 4-5 (Osborne is the 20th coach involved). This is the fifth such match-up in the Orange Bowl, but the Sugar leads with six. The Rose has had four of them, Cotton three, Gator and Sunkist-Fiesta now two each, Holiday one, and Florida Citrus one.

Many had no chance

Because the Rose Bowl was the only major bowl until the mid-1930s, many great coaches had no chance to be in such a match-up (remember, Rockne had only one). And Notre Dame's long-time no-bowl policy (Rockne was the only exception before the 1969 season) meant that Frank Leahy, No. 2 all-time at .864, had no chance. For instance, "Gloomy" Gil Dobie was an incredible 111-5-3 for .945 his first 18 seasons at Washington, Navy and Cornell through 1923 but never had a bowl team.

I-A decrease certain

Fourteen Division I-A games November 30 averaged 53,592—a little less than hoped for—so it now is certain that I-A attendance will be down for 1985. Even if the last five games in December draw full capacity—and that would include 100,000 in a soccer stadium in Melbourne, Australia, for Wyoming-UTEP and 71,580 in Philadelphia for Army-Navy—the final press-box figures would fall about 100 per game and 100,000 in total behind the final audited figure for 1984 (I-A teams play one less home game in 1985 than in 1984, if you are wondering about the disparity in those two figures). And when the final audited figures are received later this month, the deficit may be close to 200,000.

The current average is 42,188 for 600 games, with 79.6 percent of capacity. The final audited 1984 figures were 42,548 per game for 606 games, with 80.3 percent of capacity.

In Division I-AA, the final press-box figures show an average of 11,012 per game for 471 games vs. the final 1984 audited figures of 10,885 per game for 465 games. That tiny margin of just over one percent could be wiped out by the final audited figures; but in terms of totals, I-AA likely will stay up over 1984—simply because it played six more games. A favorable schedule was a major factor in the small per-game increase, because the 53.4 percent capacity (using press-box figures) is behind 1984's final 54.6 percent capacity.

The attendance figures for NCAA Divisions II and III and for non-NCAA members will be received later this month, and the final attendance report will be in the NCAA Convention issue of The NCAA News in early January.

(Final notes and statistics for Divisions I-A, II and III will be in the December 9 issue of The NCAA News.)

The NCAA News



Football Statistics

Through games of November 30

Division I-A individual leaders

RUSHING									
CL	G	CAR	YDS	AVG	TD	YDSPG			
Lorenzo White, Michigan St.	So	11	386	1908	4.9	17	173.5		
Paul Palmer, Temple	Jr	9	279	1516	5.4	9	168.4		
Bo Jackson, Auburn	Sr	11	278	1786	6.4	17	162.4		
Thurman Thomas, Oklahoma St.	So	11	302	1553	5.1	15	141.2		
George Swann, Miami (Ohio)	Jr	11	309	1511	4.9	12	137.4		
Barry Word, Virginia	Sr	10	207	1224	5.9	6	122.4		
Doug Dubose, Nebraska	Jr	10	203	1161	5.7	8	116.1		
Reggie Dupard, SMU	Sr	10	211	1161	5.5	12	116.1		
Steve Bartalo, Colorado St.	Jr	12	338	1368	4.0	12	114.0		
Rueben Mayes, Washington St.	Sr	11	228	1236	5.4	10	112.4		
Napoleon McCallum, Navy	Sr	10	246	1110	4.5	14	111.0		
Gordon Brown, Tulsa	Sr	11	189	1201	7.1	4	109.2		
Charles Gladman, Pittsburgh	So	10	184	1085	5.6	6	108.5		
Nuu Faola, Hawaii	Sr	9	184	952	5.2	10	105.8		
Darrell Wallace, Missouri	So	11	226	1120	5.0	5	101.8		
Larry Emery, Wisconsin	Jr	11	224	1113	5.0	3	101.1		
Reggie Taylor, Cincinnati	Jr	11	264	1112	4.2	3	101.1		
Ronnie Harmon, Iowa	Sr	11	209	1111	5.3	9	101.0		
Tony Cherry, Oregon	Sr	10	211	1008	4.8	9	100.8		
Allan Pinkett, Notre Dame	Sr	11	255	1100	4.3	11	100.0		
Dalton Hilliard, LSU	Sr	10	232	964	4.2	11	96.4		
Chris Hardy, San Diego St.	Jr	12	158	1150	7.3	7	95.8		
Kenny Flowers, Clemson	Jr	11	200	1052	5.3	13	95.6		

SCORING									
CL	G	TD	XP	FG	PTS	PTPG			
Bernard White, Bowling Green	Sr	11	19	0	0	114	10.4		
Bo Jackson, Auburn	Sr	11	17	0	0	102	9.3		
Carlos Reveiz, Tennessee	Jr	11	0	30	24	102	9.3		
Lorenzo White, Michigan St.	So	11	17	0	0	102	9.3		
Steve Gage, Tulsa	Jr	11	17	0	0	102	9.3		
Barry Belli, Fresno St.	So	11	0	46	18	100	9.1		
Napoleon McCallum, Navy	Sr	10	15	0	0	90	9.0		
Rob Houghton, Iowa	So	11	0	46	17	97	8.8		
Derek Schmidt, Florida St.	So	11	0	42	18	96	8.7		
George Swann, Miami (Ohio)	Jr	11	16	0	0	96	8.7		
Thurman Thomas, Oklahoma St.	So	11	16	0	0	96	8.7		
John Lee, UCLA	Sr	11	0	33	21	96	8.7		
Reggie Dupard, SMU	Sr	10	14	0	0	84	8.4		
Tim Lashar, Oklahoma	Jr	10	0	38	15	83	8.3		
Massimo Manca, Penn State	Sr	11	0	28	21	91	8.3		
Willie Turrell, New Mexico	Sr	11	14	6	0	90	8.2		
Max Zendejas, Arizona	Sr	11	0	23	22	89	8.1		
John Dietrich, Ball State	Sr	11	0	12	25	87	7.9		
Mike Gillette, Michigan	Fr	10	0	31	16	79	7.9		
Andre Guardi, Utah	Jr	12	0	40	18	94	7.8		
Mark Belli, Brigham Young	Jr	10	13	0	0	78	7.8		
Van Tiffin, Alabama	Jr	11	0	33	17	84	7.6		
Jeff Ward, Texas	Jr	11	0	27	19	84	7.6		
Kelly Pittman, Air Force	Sr	11	14	0	0	84	7.6		

PASSING EFFICIENCY									
CL	G	ATT	CMP	PCT	INT	YDS	ATT	TD	RATING
(Min. 15 att. per game)									
Jim Harbaugh, Michigan	Sr	11	212	139	65.57	6	2.83	1913	9.02
Kerwin Bell, Florida	So	11	288	180	62.50	8	2.78	2687	9.33
Chuck Long, Iowa	Sr	11	351	231	65.81	15	4.27	2978	8.48
Jim Karsatos, Ohio State	Jr	11	254	158	62.20	8	3.15	2115	8.33
Mike Shula, Alabama	Jr	11	254	136	53.54	8	3.49	2009	8.77
Vinny Testaverde, Miami (Fla.)	Jr	11	352	216	61.36	15	4.26	3238	9.20
Robbie Bosco, Brigham Young	Sr	12	474	313	66.03	23	4.85	3363	8.36
Kevin Sweeney, Fresno St.	Jr	11	295	177	60.00	4	2.37	2604	8.83
Jim Everett, Purdue	Sr	11	450	285	63.33	7	2.44	3851	8.11
Doug Gaynor, Long Beach St.	Sr	12	452	321	71.02	18	3.98	3563	8.88
David Norrie, UCLA	Sr	11	214	136	63.55	10	4.67	1819	8.50
Todd Santos, San Diego St.	So	12	357	226	63.31	17	4.76	2877	8.06
Danny McCoon, Cincinnati	Jr	9	201	115	57.21	5	2.49	1576	7.84
John Dewberry, Georgia Tech	Sr	11	193	110	56.99	8	4.15	1557	8.07
Kevin Murray, Texas A&M	So	11	251	147	58.57	10	3.98	1965	7.83
Mark Rypien, Washington St.	Sr	11	273	159	58.24	12	4.40	2174	7.96
Sammy Garza, UTEP	Jr	10	178	108	60.67	10	5.62	1505	8.46
Brian McClure, Bowling Green	Sr	11	371	226	60.92	16	4.31	2674	7.21
Billy Rucker, New Mexico	Jr	11	268	134	50.00	16	5.97	2475	9.24
Lee Saltz, Temple	Sr	11	229	107	46.72	8	3.49	1875	8.19
Stan Gelbaugh, Maryland	Jr	11	311	166	53.38	14	4.50	2475	7.96
Erik Kramer, N. C. State	Jr	11	339	189	55.75	12	3.54	2510	7.40
Greg Tipton, Hawaii	Jr	11	266	145	54.51	10	3.76	2041	7.67

RECEIVING									
CL	G	CT	YDS	TD	CTPG				
Rodney Carter, Purdue	Sr	11	98	1099	4	8.9			
Brad Muster, Stanford	Jr	9	78	654	4	8.7			
David Williams, Illinois	Sr	11	85	1047	8	7.7			
Webster Staughter, S. Diego St.	Sr	12	82	1071	10	6.8			
Marc Zeno, Tulane	So	11	73	1137	3	6.6			
Reggie Bynum, Oregon St.	Jr	10	61	703	7	6.1			
Loren Richey, Utah	Jr	12	73	971	7	6.1			
Mark Belli, Brigham Young	Jr	10	60	973	13	6.0			
Richard Estell, Kansas	Sr	12	70	1109	4	5.8			
Charles Lockett, Long Beach St.	Jr	12	69	949	10	5.7			
Mark Templeton, Long Beach St.	Jr	11	62	500	1	5.6			
Walter Murray, Hawaii	Sr	11	61	921	7	5.5			
Greg Baty, Stanford	Sr	11	61	690	3	5.5			
Kelly Smith, Brigham Young	Sr	9	49	530	2	5.4			
Trevor Molini, Brigham Young	So	12	63	849	3	5.2			
Joe Rowley, New Mexico St.	So	11	57	551	1	5.2			
Ken Allen, Indiana	Jr	11	55	929	3	5.0			
Stan Hunter, Bowling Green	Sr	11	55	761	7	5.0			
Thomas Rooks, Illinois	So	10	50	533	2	5.0			
Everett Crawford, Vanderbilt	So	10	50	533	2	5.0			
Michael Ramsauer, Wake Forest	So	11	54	450	1	4.9			
Cris Carter, Ohio State	So	11	53	879	8	4.8			
Jim Kilbane, Kent State	Sr	11	53	806	4	4.8			
Scott Helverson, Iowa	Sr	11	53	686	5	4.8			

ALL-PURPOSE RUNNERS									
CL	G	RUSH	REC	PR	KOR	YDS	YDSPG		
Napoleon McCallum, Navy	Sr	10	1110	348	157	439	205.4		
Paul Palmer, Temple	Jr	9	1516	131	0	96	174.3		
George Swann, Miami (Ohio)	Jr	11	1511	424	0	17	195.2		
Lorenzo White, Michigan St.	So	11	1908	28	0	0	176.0		
Bo Jackson, Auburn	Sr	11	1786	73	0	0	168.0		
Ronnie Harmon, Iowa	Sr	11	1111	597	0	147	185.5		
Thurman Thomas, Oklahoma St.	So	11	1553	98	115	15	178.1		
Ernest Givins, Louisville	Sr	11	204	577	154	801	173.6		
Tony Cherry, Oregon	Sr	10	1008	245	0	286	153.9		
Webster Staughter, S. Diego St.	Sr	12	58	1071	264	413	180.6		
Doug Dubose, Nebraska	Jr	10	1161	85	0	262	148.8		
Darrell Wallace, Missouri	So	11	1120	16	98	356	150.0		
Steve Bartalo, Colorado St.	Jr	12	1368	324	0	0	169.2		
Joe Rowley, New Mexico St.	So	11	459	551	0	531	154.1		
Barry Word, Virginia	Sr	10	1224	76	0	76	137.6		
Rueben Mayes, Washington St.	Sr	11	1236	252	0	0	148.8		
Reggie Dupard, SMU	Sr	10	1161	180	0	0	134.1		
Reggie Taylor, Cincinnati	Jr	11	1112	168	0	191	147.1		
Terrence Mathis, New Mexico	Fr	11	150	852	46	422	147.0		
Kevin Martin, Boston College	Jr	12	28	958	509	83	157.8		
Brad Muster, Stanford	Jr	9	521	654	0	0	117.5		

TOTAL OFFENSE											
	RUSHING			PASSING			TOTAL OFFENSE				
	CAR	GAIN	LOSS	NET	ATT	YDS	PLS	YDS	YDPL	TDR*	YDSPG
Jim Everett, Purdue	68	212	274	-62	450	3651	518	358.9	6.9	24	326.3
Robbie Bosco, Brigham Young	63	177	281	-104	474	3963	537	385.9	7.2	30	321.6
Doug Gaynor, Long Beach St.	137	482	578	-96	452	3563	589	346.7	5.9	25	288.9
Vinny Testaverde, Miami (Fla.)	68	154	312	-158	352	3238	420	308.0	7.3	25	280.0
Mike Norseth, Kansas	135	504	285	-219	408	2995	543	321.4	5.9	18	267.8
Jack Trudeau, Illinois	69	149	173	-24	446	2938	515	291.4	5.7	19	264.9
Larry Egger, Utah	58	79	177	-98	417	2988	475	289.0	6.1	21	262.7
Chuck Long, Iowa	40	62	153	-91	351	2978	391	288.7	7.4	27	262.5
Don Smith, Miss. State	190	862	308	-554	312	2332	502	288.6	5.7	21	262.4
Billy Rucker, New Mexico	164	619	237	-382	268	2475	432	285.7	6.6	20	259.7
Kevin Sweeney, Fresno St.	78	237	197	-40	295	2604	373	264.4	7.1	18	240.4
Shawn Halloran, Boston College	65	161	269	-108	423	2935	488	282.7	5.8	12	235.6
Brian McClure, Bowling Green	42	57	146	-89	371	2674	413	258.5	6.3	18	235.0
John Payne, Stanford	74	206	247	-41	405	2589	479	254.8	5.3	15	231.6
Todd Santos, San Diego St.	47	124	235	-111	357	2877	404	276.6	6.8	21	230.5
Kerwin Bell, Florida	54	79	297	-218	288	2687	342	246.9	7.2	21	224.5
Jim Miller, New Mexico St.	126	560	347	-213	338	2024	464	223.7	4.8	10	223.7
Mark Rypien, Washington St.	76	335	92	-243	273	2174	349	241.7	8.9	17	219.7
Stan Gelbaugh, Maryland	38	78	168	-90	311	2475	349	238.5	6.8	16	216.8
Chris Miller, Oregon	45	207	126	-81	329	2237	374	231.8	6.2	22	210.7
Ken Karcher, Tulane	39	45	157	-112	306	1991	345	187.9	5.4	10	208.8
Bar Weiss, Air Force	180	1173	411	1032	141	1449	321	2481	7.7	20	206.7
Erik Kramer, N. C. State	90	134	392	-258	339	2510	429	2252	5.2	17	204.7



Division I-AA individual leaders

RUSHING									
CL	G	CAR	YDS	AVG	TD	YDSPG			
Burton Murchison, Lamar	So	11	265	1547	5.8	8	140.6		
Gill Fenerty, Holy Cross	Sr	10	247	1368	5.5	7	136.8		
Charvez Foger, Nevada-Reno	Fr	10	179	1241	6.9	14	124.1		
Ken Gamble, Colgate	So	11	246	1361	5.5	15	123.7		
John Settle, Appalachian	Jr	11	254	1340	5.3	14	121.8		
Mike Clark, Akron	Jr	11	301	1299	4.3	12	118.1		
James Crawford, Eastern Ky	Jr	11	227	1282	5.6	6	116.5		
Jamie Potkul, Brown	Sr	9	239	1015	4.2	9	112.8		
Andre Garrison, New Hampshire	Sr	8	175	888	5.1	11	111.0		
Byron Mitchell, Southern Ill.	So	11	171	1211	7.1	7	110.1		
Keith Williams, SW Missouri St	Jr	11	158	1201	7.6	9	109.2		
Warren Marshall, James Madison	So	11	151	1181	5.4	4	107.4		
Gerald Anderson, Middle Tenn	So	10	182	1062	5.8	12	106.2		
Jon Francis, Boise State	So	11	203	1147	5.7	9	104.3		
Eloy Harris, Eastern Ky	Fr	11	179	1134	6.3	14	103.1		
Jamie Townsend, Eastern Wash	So	10	203	1007	5.0	11	100.7		
Stephen Wilson, Illinois State	Sr	11	231	1101	4.8	4	100.1		
Terry Hoover, Delaware St	Jr	10	112	962	8.6	8	96.2		
Oscar Smith, Nicholls St	Sr	10	206	947	4.6	11	94.7		
Merrill Hoge, Idaho State	Jr	11	198	1041	5.3	10	94.6		
Eddie Hayward, Tenn. Tech	Jr	11	247	1021	4.1	7	92.8		
Carl Boyd, Northern Iowa	So	11	237	1020	4.3	14	92.7		
John Stephens, NW Louisiana	So	11	202	1001	5.0	5	91.0		

SCORING									
CL	G	TD	XP	FG	PTS	PTPG			
Charvez Foger, Nevada-Reno	Fr	10	18	0	108	10.8			
Marty Zendejas, Nevada-Reno	So	11	0	50	19	107	9.7		
Dameon Reilly, Rhode Island	Sr	11	17	0	102	9.3			
Joe Thomas, Mississippi Val	Sr	11	17	0	102	9.3			
Chas Fox, Furman	Sr	9	13	4	82	9.1			
Andre Garrison, New Hampshire	Sr	8	12	0	72	9.0			
Carl Boyd, Northern Iowa	So	11	16	2	98	8.9			
Merrill Hoge, Idaho State	Jr	11	16	2	98	8.9			
Ken Gamble, Colgate	So	11	16	0	96	8.7			
Keith Williams, SW Missouri St	Sr	11	16	0	96	8.7			
Wayne Hill, Grambling	Jr	11	16	0	96	8.7			
George Benyola, Louisiana Tech	Sr	11	0	23	24	8.6			
John Taylor, Delaware St	Sr	11	15	2	92	8.4			
Eloy Harris, Eastern Ky	Fr	11	14	4	88	8.0			
Russ Klaus, Akron	Sr	10	0	23	19	8.0			
John Settle, Appalachian	Sr	11	14	2	86	7.8			
Rennie Benn, Lehigh	Sr	11	14	0	84	7.6			
Brian Decilio, Idaho	Fr	11	0	41	14	8.3	7.5		
Roberto Moran, Boise St	Jr	11	0	34	16	8.2	7.5		
Tim Foley, Ga. Southern	So	11	0	33	16	8.1	7.4		
Perry Qualls, Alcorn St	Sr	9	11	0	66	7.3			
Tom Stenglein, Colgate	Sr	11	13	2	80	7.3			

PASSING EFFICIENCY									
CL	G	ATT	CMP	PCT	INT	YDS/ATT	TD	PCT	POINTS
(Min. 15 att. per game)									
Bobby Lamb, Furman	Sr	11	181	106	58.56	6	3.31	1856	10.25
Eric Beavers, Nevada-Reno	Jr	11	319	199	62.38	12	3.76	2617	8.20
Rick Sloan, Idaho	Sr	11	229	156	68.12	11	4.80	1872	8.17
Willie Totten, Miss. Val.	Sr	11	492	295	59.96	29	5.89	3698	7.52
Dave Stireman, Weber State	Sr	11	378	206	54.50	18	4.76	3247	8.59
Mike Smith, Northern Iowa	So	11	291	169	58.08	11	3.78	2357	8.10
Bobby Brister, NE Louisiana	Sr	11	342	191	55.85	14	4.09	2880	8.42
Richard Myles, Alcorn St	Sr	9	256	130	50.78	3	1.17	2025	7.91
Tom Ehrhardt, Rhode Island	Sr	10	494	283	57.29	19	3.85	3542	7.17
Bob Bleier, Richmond	Jr	11	301	186	61.79	16	5.32	2208	7.34
Stan Yagiello, Wm. & Mary	Sr	11	413	240	58.11	10	2.42	2962	7.17
Tracy Ham, Ga. Southern	Jr	11	171	94	54.97	8	4.68	1415	8.27
Rick Worman, Eastern Wash	Sr	10	398	225	56.53	14	3.52	2882	7.24
Tom Mayfield, West Texas St	Jr	10	484	294	60.74	14	2.89	3404	7.03
Paul Singer, Western Ill.	Fr	9	208	115	55.29	7	3.37	1601	7.10
Tom Burgess, Colgate	Sr	11	339	175	51.62	15	4.42	2565	7.07
Alan Hooker, No. Caro. A&T	So	11	319	164	51.41	8	2.51	2066	6.48
Doug Hudson, Nicholls St	Jr	11	316	180	56.96	18	5.70	2348	7.43
Scott Linehan, Idaho	Jr	9	215	124	57.67	6	2.79	1617	7.52
Hazen Choates, Boise State	Jr	10	209	113	54.07	13	6.22	1612	7.71
Mike Whitaker, Eastern Ky	Jr	11	177	103	58.19	8	4.52	1294	7.31
Kevin Sisk, Murray State	Sr	11	239	133	55.65	12	5.02	1641	6.87
Dave Palazzi, Massachusetts	Fr	9	157	84	53.50	5	3.18	1152	7.34

RECEIVING									
CL	G	CT	YDS	TD	CTPG				
Brian Forster, Rhode Island	Jr	10	115	1617	12	11.5			
Stan Carraway, West Texas St	Jr	10	79	1237	11	7.9			
Joe Thomas, Mississippi Val.	Sr	11	83	1155	17	7.5			
Eric Yarber, Idaho	Sr	10	75	1103	10	7.5			
Scott Auker, Idaho	Sr	11	80	827	4	7.3			
William Brooks, Boston U.	Sr	11	79	1210	11	7.2			
Craig Stama, Weber State	Sr	11	77	1290	9	7.0			
Rennie Benn, Lehigh	Sr	11	73	1087	14	6.6			
Michael Clemons, Wm. & Mary	Jr	11	70	657	4	6.3			
David Pandt, Montana St	Sr	11	69	669	4	6.3			
Ron Gillam, Wm. & Mary	Sr	11	68	1110	7	6.2			
Sebastian Brown, Bethune-Cook	Sr	10	61	1032	9	6.1			
John Tagliaferri, Cornell	Jr	11	61	358	1	6.1			
Merrill Hoge, Idaho State	Jr	11	67	108	6	6.1			
Tom Stenglein, Colgate	Sr	11	65	984	13	5.9			
Leland Melvin, Richmond	Sr	11	65	956	8	5.9			
Alan Mullins, Western Ky	Sr	11	65	849	7	5.9			
Duwayne Pitts, Eastern Ill.	So	11	65	458	1	5.9			
Roy Banks, Eastern Ill.	Jr	10	59	817	9	5.9			
Tony Dimaggio, Rhode Island	Jr	9	52	591	4	5.8			
Donald Narcisse, So. Southern	Jr	11	63	709	5	5.7			
Rick Shepas, Youngstown St	Jr	11	61	959	3	5.5			
Calvin Pierce, Eastern Ill.	Jr	11	60	900	4	5.5			

ALL-PURPOSE RUNNERS									
CL	G	RUSH	REC	PR	KOR	YDS	YDSPG		
Gill Fenerty, Holy Cross	Sr	10	1368	187	1	414	1970		
Merrill Hoge, Idaho State	Jr	11	1041	708	0	364	2113		
Ken Gamble, Colgate	So	11	1361	162	0	520	2043		
Keith Williams, SW Missouri St	Sr	11	1201	510	0	232	1943		
Michael Clemons, Wm. & Mary	Jr	11	714	657	0	509	1880		
Brian Forster, Rhode Island	Jr	10	0	1617	60	0	1677		
Freddie Cook, Weber State	Sr	11	893	644	0	275	1812		
Jamie Potkul, Brown	Sr	9	1015	133	0	273	1421		
Burton Murchison, Lamar	So	11	1547	40	0	0	1587		
Andre Garrison, New Hampshire	Sr	8	888	156	0	107	1151		
Stan Carraway, West Texas St	Jr	10	0	1237	0	201	1438		
Charvez Foger, Nevada-Reno	Fr	10	1241	172	0	0	1413		
Rodney Payne, Murray State	Fr	11	960	106	0	464	1530		
Jamie Townsend, Eastern Wash	So	10	1007	377	0	0	1384		
Herbert Harbison, No. Caro A&T	Jr	11	51	730	340	430	1501		
Eric Yarber, Idaho	Sr	10	51	1103	182	14	1350		
Duwayne Pitts, Eastern Ill.	So	11	968	458	0	0	1426		
John Settle, Appalachian	Jr	11	1340	77	0	0	1417		
Earl Beecham, Bucknell	Jr	11	1299	268	0	470	1287		
Mike Clark, Akron	So	11	1020	389	0	0	1409		
Carl Boyd, Northern Iowa	Jr	11	669	217	0	492	1378		
Ronald Scott, Southern B R	Sr	11	122	92	99	232	1375		
John Taylor, Delaware St	Sr	11	1147	85	0	141	1373		

TOTAL OFFENSE									
CAR	GAIN	LOSS	NET	ATT	YDS	PLS	YDS	YDPL	TDR*
Tom Ehrhardt, Rhode Island	35	56	138	-82	494	3542	529	3460	6.5
Dave Stireman, Weber State	124	760	248	512	378	3247	502	3759	7.5
Willie Totten, Miss. Val.	69	180	136	44	492	3698	561	3742	6.7
Tom Mayfield, West Texas St	41	61	165	-104	484	3404	525	3300	6.3
Rick Worman, Eastern Wash	55	153	202	-49	398	2882	453	2833	6.3
Marty Horn, Lehigh	67	217	152	65	446	2975	513	3040	5.9
Stan Yagiello, Wm. & Mary	69	222	171	51	413	2962	482	3013	6.3
Sean Payton, Eastern Ill.	100	150	291	-141	494	3146	594	3005	5.1
Tom Burgess, Colgate	123	595	233	362	339	2565	462	2927	6.3
Bobby Brister, NE Louisiana	83	155	331	-176	342	2880	425	2704	6.4
Bernard Hawk, Bethune-Cook	24	29	75	-46	343	2438	367	2392	6.5
Eric Beavers, Nevada-Reno	39	84	107	-23	319	2617	358	2594	7.2
Jeff Cesarone, Western Ky	42	27	222	-195	447	2737	489	2542	5.2
Gilbert Renfro, Tennessee St	71	243	207	36	395	2492	456	2528	5.4
Jeff Miller, Indiana St	102	315	109	206	327	2055	429	2261	5.3
Richard Myles, Alcorn St	35	76	107	-31	256	2025	291	1994	6.9
Al Comer, Va. Military	112	306	262	44	348	2380	460	2424	5.3
Mike Smith, Northern Iowa	68	249	198	51	291	2357	353	2408	6.7
Peter Lane, Connecticut	101	330	349	-19	292	1973	333	1954	5.0
Dave Bates, Texas Arlington	81	470	152	318	288	2049	369	2367	6.4
Carl Fodor, Marshall	58	70	194	-124	400	2438	458	2314	5.1
Kip Allen, Citadel	57	88	289	-201	417	2478	474	2277	4.8
Alan Hooker, No. Caro. A&T	122	561	369	192	319	2066	441	2258	5.1

Touchdowns-Responsible-For are Players' TDs Scored and Passed For

FIELD GOALS								
	CL	G	FGA	FG	PCT	FGPG		
George Benyola, Louisiana Tech	Sr	11	31	24	77.4	2	18	Mike Cassidy, Rhode Is
Russ Klaus, Akron	Sr	10	29	19	65.5	1.90		George Duarte, Northern
Marty Zendejas, Nevada-Reno	So	11	24	19	79.2	1.73		Carl Johnson, Jackson
Paul Politi, Illinois St.	Jr	11	25	17	68.0	1.55		Darrell Woods, Jackson
Scott Roper, Texas-Arlington	So	11	26	17	65.4	1.55		Cecil Cox, Harvard
Tim Foley, Ga. Southern	So	11	17	16	94.1	1.45		Phillip Aldridge, Tenn.-
Roberto Moran, Boise St.	Jr	11	29	16	55.2	1.45		Bertram Chew, Delaware
Mike Angell, Northern Iowa	Fr	11	22	15	68.2	1.36		Tom Hennessey, Idaho
Chris Ingerslev, Brown	Sr	10	23	13	56.5	1.30		Tim Whaley, SE Louisiana
Brian Decio, Idaho	Fr	11	16	14	87.5	1.27		Robert Goins, Grambling
Dale Dawson, Eastern Ky.	Jr	11	19	14	73.7	1.27		Victor Hill, Grambling
John Dowling, Youngstown St.	So	11	20	14	70.0	1.27		Taylor Lackey, Richmond
Ardashir Nobahar, Grambling	So	11	22	14	63.6	1.27		Mike Mayo, Va. Military
Manny Manolas, Bethune-Cook	Fr	10	20	12	60.0	1.20		Harvard Firsher, Bethu

The NCAA News



Championships Results

Badgers run off with both cross country titles

Wisconsin became the first team to win the Division I Men's and Division I Women's Cross Country Championships in the same year November 25 at Marquette.

Tim Hacker, who finished eighth at the 1984 Division I Men's Cross Country Championships, led the 1985 field into the chute and the Badgers to their second national championship.

For the Wisconsin women, Stephanie Herbst, who was 28th last year, claimed the seventh spot in 1985 and paced a group of five Badger runners who finished among the top 36. It was Wisconsin's second straight national cross country championship.

North Carolina State freshman Suzie Tuffey, who did not run cross country in high school, was the women's individual champion, clocking 16:22.53 over the 5,000-meter course.

Tragedy shortened postrace celebrations after three members of the second-place Iowa State women's cross country team, two coaches and a student-trainer were killed when their plane crashed during a landing in Des Moines, Iowa. (See related story, this page.)

Hacker, a member of Wisconsin's 1982 men's championship team, covered the 10,000-meter course in 29:17.88, just under 12 seconds ahead of Iowa State's top finisher, Yobes Ondieki. Marquette runner Keith Hanson, who led most of the race, took third.

Arkansas, the 1984 men's team champion, finished second to the Badgers, who totaled 67 points. The Razorbacks, who captured the cross country and the men's indoor and men's outdoor track titles last year, compiled 104 points. Colorado was third and Arizona, last season's runner-up, was fourth.

Runners battled temperatures in the 30s and a light, misty rain.

"I like to see it a little bit warmer," Hacker told the Associated Press. "But the cold weather didn't hurt us that much."

Also scoring for Wisconsin were Joseph Stintzi, 11th; Scott Jenkins, 24th; Kelly Delany, 26th, and Jay Korhonen, 43rd.

Wisconsin's women's team tallied 58 points. Iowa State was second with 98 and North Carolina State third with 103.

Finishing behind Tuffey were Regina Jacobs of Stanford, who clocked 16:29.20, and Christine McMiken of Oklahoma State, who timed 16:30.00.

Herbst finished seventh overall. Also scoring for Wisconsin were Katie Ishmael, 15th; Lori Wolter, 22nd; Kelly McKillen, 31st and Holly Hering, 36th.

"Overall, they really ran the way we had planned it," said Wisconsin women's coach Peter Tegen. "Everyone stuck to their assignments."

Division I Men's Cross Country

Team results

1. Wisconsin, 67; 2. Arkansas, 104; 3. Colorado, 167; 4. Arizona, 179; 5. North Carolina, 200; 6. Iowa St., 228; 7. Navy, 233; 8. Boston U., 235; 9. Montana, 251; 10. Northeastern, 270; 11. N.C. State, 272; 12. UCLA, 283; 13. Tennessee, 345; 14. Texas, 347; 15. Purdue, 356; 16. Auburn, 358; 17. Stanford, 380; 18. Brigham Young, 399; 19. Iowa, 439; 20. West Virginia, 444; 21. Miami (Florida), 466; 22. Eastern Mich., 526.

Individual results

1. Timothy Hacker, Wisconsin, 29:17.88; 2. Yobes Ondieki, Iowa State, 29:29.32; 3. Keith Hanson, Marquette, 29:47.01; 4. Marc Oleson, Stanford, 29:52.67; 5. Jean Verster, Nebraska, 29:53.77; 6. Dean Crowe, Boston U., 30:00.00; 7. Joe Falcon, Arkansas, 30:01.11; 8. Raf Wyns, Iowa State, 30:02.35; 9. Eric Carter, Penn St., 30:03.84; 10. Benard Dunne, East Tenn. St., 30:05.23; 11. Joseph Stintzi, Wisconsin, 30:05.99; 12. George Nicholas, North Carolina, 30:06.45; 13. Grant Whitney, Cornell, 30:06.83; 14. Bob



N.C. State's Suzie Tuffey

Kempainen, Dartmouth, 30:07.71; 15. Dan Reese, Colorado, 30:12.29; 16. Chris Brewster, Michigan, 30:15.26; 17. Chris Zinn, Arkansas, 30:18.27; 18. Ken Halla, William & Mary, 30:19.36; 19. Brian Abshire, Auburn, 30:20.36; 20. Kenneth Velasquez, Montana, 30:21.86; 21. Joe Metcalf, Oklahoma St., 30:22.98; 22. Ronald Harris, Navy, 30:24.44; 23. Matthew Giusto, Arizona, 30:24.71; 24. Scott Jenkins, Wisconsin, 30:25.05; 25. Andy Ronan, Providence, 30:27.15; 26. Kelly Delaney, Wisconsin, 30:27.58; 27. Mark Souza, Northern Ariz., 30:32.14; 28. Paul Larkins, Oklahoma St., 30:32.54; 29. David Krafur, Tennessee, 30:32.82; 30. Alfredo Shahanga, UTEP, 30:33.32.

31. Chris Gorman, Northeastern, 30:35.15; 32. Chuck Trujillo, Colorado, 30:36.49; 33. Jon Butler, UCLA, 30:39.22; 34. Andre Woods, Arizona, 30:41.54; 35. Jean-Pierre Ndayisenga, West Virginia, 30:42.19; 36. James Farmer, North Carolina, 30:42.42; 37. Rusty Knowles, UC Irvine, 30:42.91; 38. Keith Morrison, Arizona, 30:43.28; 39. Ricky Wallace, N.C. State, 30:43.67; 40. Aaron Ramirez, Arizona, 30:44.31.

41. Paul Gisselquist, Minnesota, 30:44.63; 42. Ian Cherry, Arkansas, 30:45.03; 43. Jay Korhonen, Wisconsin, 30:45.47; 44. Espen Borge, Arkansas, 30:47.77; 45. Conrad Conneely, East Tenn. St., 30:49.02; 46. Pat Piper, N.C. State, 30:49.89; 47. Mick Bannister, Colorado, 30:53.51; 48. Gerard O'Reilly, Villanova, 30:54.39; 49. Jeff Holyfield, Navy, 30:55.88; James Faulkner, Austin Peay, 30:56.31.

51. Richard Cooper, Arkansas, 30:56.59; 52. Steve Barlow, Texas-San Antonio, 30:58.56; 53. David Halle, Illinois, 30:59.30; 54. Keith Iovine, Arkansas, 31:02.05; 55. Christopher Novak, Purdue, 31:02.94; 56. Michael Currinder, North Carolina, 31:04.41; 57. Tim Wakeland, Iowa State, 31:04.58; 58. Todd Wienke, Colorado, 31:06.68; 59. Kenneth McChesney, Montana, 31:07.28; 60. James Nagle, Purdue, 31:07.53.

61. James White, Southeastern Mass., 31:07.93; 62. Erik Hansen, Boston U., 31:08.54; 63. Brian Roche, Iowa, 31:09.18; 64. Rich Brownsberger, UCLA, 31:10.25; 65. Patrick Sang, Texas, 31:10.74; 66. Louis Poore, Navy, 31:11.87; 67. Anthony Smith, Houston, 31:12.25; 68. Scott Fry, Wisconsin, 31:12.54; 69. Gavin Gaynor, N.C. State, 31:13.02; 70. Pat Gillooly, Boston U., 31:16.39.

71. Joe Beatty, Montana, 31:16.39; 72. David Westover, Northeastern, 31:16.98; 73. Jay Marden, California, 31:18.95; 74. John Van Scoyoc, Miami (Ohio), 31:19.39; 75. Marvin Waters, Iowa, 31:19.88; 76. Sean McGuirk, Iowa, 31:20.55; 77. Frank Horn, Montana, 31:21.45; 78. Doug Consiglio, Arkansas, 31:23.05; 79. Ken Kaczinski, Northeastern,

31:23.50; 80. Terence Wheat, Rider, 31:23.54; 81. Are Nakkim, Boston U., 31:23.58; 82. Ted Goodlake, Tennessee, 31:23.59; 83. Rad Shirley, Brigham Young, 31:23.85; 84. Thomas Barrett, Texas, 31:24.17; 85. Martin Flynn, Clemson, 31:24.37; 86. David Giles, Tennessee, 31:24.71; 87. Johah Ngeny, N. Texas St., 31:24.78; 88. Greg Hale, Rhode Island, 31:25.41; 89. Dwight Woodruff, Navy, 31:25.91; 90. Gregory Matthews, Brigham Young, 31:26.75.

91. Steve Sergeant, Northeastern, 31:26.86; 92. William Will, North Carolina, 31:27.09; 93. Mark Junkermann, UCLA, 31:27.99; 94. Charles Cole, Bucknell, 31:28.45; 95. Brian Jaeger, Auburn, 31:28.91; 96. James Alborough, Stanford, 31:30.20; 97. Paul Osika, Eastern Mich., 31:30.47; 98. Michael McGowan, North Carolina, 31:31.00; 99. Andy Dunn, Colorado, 31:31.60; 100. Mark Hastings, Auburn, 31:31.90.

101. Jerry Marsh, UCLA, 31:32.43; 102. Jeff Atkinson, Stanford, 31:33.28; 103. Douglas Hobbs, Brigham Young, 31:33.51; 104. Noel Byrne, Texas, 31:33.96; 105. Jeff Taylor, N.C. State, 31:34.42; 106. Phillip Schoensee, Wisconsin, 31:35.43; 107. Curt Corvin, Washington, 31:37.05; 108. Joseph Chelgelo, Texas, 31:38.07; 109. Mike Kubitschek, Colorado, 31:38.39; 110. Douglas Lewandowski, Miami (Ohio), 31:39.22.

111. Christopher Williams, Purdue, 31:39.84; 112. Kevin Nibelink, Navy, 31:40.22; 113. Jim Ortiz, UCLA, 31:40.69; 114. Timothy Gannon, Northeastern, 31:41.88; 115. Kieran Stack, Iowa, 31:43.93; 116. Paul Partridge, Boston U., 31:44.56; 117. James Foley, Navy, 31:46.39; 118. Richard Findlow, Iowa St., 31:46.95; 119. Michael Mazier, Purdue, 31:47.85; 120. James Maxwell, Arizona, 31:47.93.

121. Harry Green, Texas, 31:48.52; 122. Chris Caldwell, Northern Ariz., 31:49.21; 123. Steve Schadler, Stanford, 31:50.26; 124. Doug Stutz, Brigham Young, 31:50.89; 125. Andy Herr, N.C. State, 31:51.47; 126. Paul Black, Iowa St., 31:54.01; 127. Ian Manners, West Virginia, 31:57.37; 128. Tom Grewe, UCLA, 31:58.01; 129. Gordon Rutenbur, Montana, 31:59.99; 130. Chris Morgan, Arizona, 32:00.52.

131. James Parker, Auburn, 32:02.33; 132. Brian Pahnke, Miami (Ohio), 32:02.73; 133. Steve Brown, N.C. State, 32:06.13; 134. Bob Thompson, Tennessee, 32:06.62; 135. Brian Kirkpatrick, West Virginia, 32:10.42; 136. Brian Donohoe, Texas, 32:12.42; 137. Donald Johns, Eastern Mich., 32:12.78; 138. David Fultz, Miami (Ohio), 32:13.83; 139. Doug Thompson, Tennessee, 32:15.09; 140. Joseph Wangui, West Virginia, 32:16.68.

141. Erik Helfrich, Auburn, 32:17.50; 142. David Williams, Purdue, 32:20.31; 143. David O'Hara, Brigham Young, 32:21.48; 144. Terry Croyle, West Virginia, 32:21.58; 145. Alan Lusk, Auburn, 32:21.67; 146. George Rodriguez, Eastern Mich., 32:25.68; 147. Rick Cummins, Tennessee, 32:28.19; 148. Mark Brosnan, Eastern Mich., 32:29.22; 149. Michael Miller, Purdue, 32:29.72; 150. Eric Reynolds, UCLA, 32:30.76.

151. John Cross, Eastern Mich., 32:32.29; 152. Jeremiah Wallace, Texas, 32:33.92; 153. Calvin Hudson, Auburn, 32:36.89; 154. Simon Gutierrez, Arizona, 32:38.73; 155. Brian Hayes, Iowa, 32:41.65; 156. Tom Gregoire, Montana, 32:41.99; 157. Guy Jackson, Navy, 32:42.66; 158. Charles Wechter, Miami (Ohio), 32:46.96; 159. John McGee, West Virginia, 32:48.75; 160. Clive Tulloh, Boston U., 32:54.57.

161. Charles Purser, N.C. State, 32:55.82; 162. Criss James, Brigham Young, 33:01.79; 163. Kirk Scharich, Eastern Mich., 33:04.16; 164. Tony Poirier, Montana, 33:14.00; 165. Tom Bellos, Iowa St., 33:14.96; 166. Reginald Harris, North Carolina, 33:15.23; 167. Trevor Sargeant, Iowa, 33:18.43; 168. Peter Bolen, Eastern Mich., 33:19.57; 169. Tom Kresl, Colorado, 33:24.40; 170. Eric Landis, North Carolina, 33:26.36.

171. Joseph Curtin, Iowa, 33:30.83; 172. Walter Manning, Northeastern, 33:35.63; 173. John Young, Tennessee, 33:37.34; 174. Michael



Marquette's Keith Hanson



Wisconsin's Tim Hacker

Connelly, West Virginia, 33:38.82; 175. Anthony Rossi III, Miami (Ohio), 33:54.97; 176. Bryan Pettingill, Stanford, 34:00.35; 177. Rick Black, Northeastern, 34:16.66; 178. John Campanik, Purdue, 34:30.78; 179. Brett Sanborn, Miami (Ohio), 34:40.07; 180. Barry Garrett, Iowa, 34:50.85.

181. Jeff Kostoff, Stanford, 35:10.96. Did not finish—Dave Groth, Iowa St.; Larry Jose, Brigham Young; Ryan Stoll, Stanford.

Division I Women's Cross Country

Team results

1. Wisconsin, 58; 2. Iowa St., 98; 3. N.C. State, 103; 4. Kentucky, 118; 5. Texas, 143; 6. UCLA, 200; 7. (tie) Kansas St. and Washington St., 227; 9. Brigham Young, 244; 10. Penn St., 253.

11. Oregon, 264; 12. Boston Col., 284; 13. Northwestern, 292; 14. New Mexico, 296; 15. Clemson, 303; 16. Villanova, 341.

Individual results

1. Suzie Tuffey, N.C. State, 16:22.53; 2. Regina Jacobs, Stanford, 16:29.20; 3. Christine McMiken, Oklahoma St., 16:30.00; 4. Polly Plumer, UCLA, 16:31.80; 5. Elizabeth Natale, Texas, 16:32.30; 6. Jenny Stricker, Harvard, 16:34.10; 7. Stephanie Herbst, Wisconsin, 16:36.80; 8. Angela Chalmers, Northern Ariz., 16:38.90; 9. Nora Collas, Houston, 16:41.90; 10. Janet Smith, N.C. State, 16:43.60.

11. Colette Goudreau, Indiana, 16:43.80; 12. Lisa Welch, Boston U., 16:47.90; 13. Carole Roybal, New Mexico, 16:49.70; 14. Anne Schweitzer, Texas, 16:50.80; 15. Katie Ishmael, Wisconsin, 16:53.80; 16. Tove Lutdal, Oklahoma, 16:53.90; 17. Jacque Struckhoff, Kansas St., 16:54.10; 18. Holly Murray, North Carolina, 16:54.50; 19. Karen Dunn, Wake Forest, 16:55.70; 20. Kirsten O'Hara, California, 16:55.90.

21. Jody Eder, Minnesota, 16:56.60; 22. Lori Wolter, Wisconsin, 16:57.20; 23. Stacia Prey, Penn St., 16:57.23; 24. Pamela Klassen, Rice, 16:58.40; 25. Bonnie Sons, Iowa St., 16:59.30; 26. Patricia Matava, Virginia, 16:59.70; 27. Sandra Blakeslee, Texas, 17:00.40; 28. Kayla Skelly, Western Mich., 17:02.40; 29. Jill Slette-dahl, Iowa State, 17:05.40; 30. Sherry Hoover, Kentucky, 17:06.20.

31. Kelly McKillen, Wisconsin, 17:06.90; 32. Sue Baxter, Iowa State, 17:07.30; 33. Jill Holiday, Brigham Young, 17:07.60; 34. Audrey Pierce, Kentucky, 17:08.60; 35. Alison Wiley, Stanford, 17:09.90; 36. Holly Hering, Wisconsin, 17:10.00; 37. Shannon Stryker, UCLA, 17:12.70; 38. Michelle Hallett, Boston Col., 17:13.00; 39. Becky Gallivan, Kentucky, 17:13.80; 40. Stacy Bilotta, N.C. State, 17:15.80.

41. Patricia Padorno-Betanvor, Kentucky, 17:16.70; 42. Julie Rose, Iowa State, 17:17.20; 43. Renee Harbaugh, N.C. State, 17:18.30; 44. Birgit Christiansen, Wisconsin, 17:19.30; 45. Sheryl Maahs, Iowa St., 17:20.20; 46. Linda Spaargaren, Washington St., 17:21.70; 47. Alyson Deckert, Kansas St., 17:22.30; 48. Tami Colby, Iowa St., 17:24.20; 49. Laura Paddock, Yale, 17:24.90; 50. Kari Jonassen, Washington St., 17:25.30.

51. Edell Hackett, Arkansas, 17:27.80; 52. Lauren Searby, Villanova, 17:28.00; 53. Chris McNamara, Colorado, 17:28.50; 54. Tina Krebs, Clemson, 17:29.20; 55. Lisa Breiding, Kentucky, 17:30.20; 56. Noeleen Mullan,

Brigham Young, 17:31.00; 57. Anne Stadler, Kansas St., 17:31.10; 58. Dina Alborano, Northwestern, 17:32.80; 59. Carrie Lautner, UCLA, 17:33.20; 60. Birgit Petersen, Oregon, 17:33.90.

61. Kim Roth, Oregon, 17:34.50; 62. Alena Palmquist, Northwestern, 17:36.10; 63. Elaine McGillian, St. Joseph's (Pennsylvania), 17:36.70; 64. Lisa Braun, Washington St., 17:37.00; 65. Virginia Connors, Boston Col., 17:37.30; 66. Patty Metzler, N.C. State, 17:38.80; 67. Anita Kelly, Northwestern, 17:39.40; 68. Elisa Frosini, Kentucky, 17:39.70; 69. Camille Rivard, Washington St., 17:39.80; 70. Desiree Scott, Rutgers, 17:39.90.

71. Avril McClung, Brigham Young, 17:40.50; 72. Ann Fallon, Boston Col., 17:40.60; 73. Brenda Bushnell, Oregon, 17:41.50; 74. Dawn Eriacho, New Mexico, 17:42.50; 75. Vickie Huber, Villanova, 17:43.50; 76. Lisa Ross, Penn St., 17:44.20; 77. Elsa Breit, Clemson, 17:44.80; 78. Stephanie Bassett, Wisconsin, 17:46.20; 79. Rhonda Sterkenberg, Northern Ariz., 17:46.40; 80. Kathy Pitcher, Penn St., 17:47.90.

81. Karol Davidson, Texas, 17:49.50; 82. Michelle Kalikin, Clemson, 17:52.00; 83. Terese Laughlin, Texas, 17:53.90; 84. Lize Brittin, Brigham Young, 17:55.50; 85. Deanna Schiedler, Oregon, 17:56.60; 86. Holly Lohr, Penn St., 17:59.00; 87. Kathleen Kuhn, Penn St., 17:59.40; 88. Cathy Schiro, Oregon, 17:59.70; 89. Laura McCloy, Texas, 17:59.80; 90. Denise Ball, UCLA, 18:01.40.

91. Anne Kendrick, UCLA, 18:01.70; 92. Nancy Hoffman, Kansas St., 18:02.20; 93. Cheryl Livingstone, Washington St., 18:02.80; 94. Annette Hand, Montana St., 18:03.90; 95. Mary Peruski, Northwestern, 18:04.20; 96. Julie Farrer, New Mexico, 18:04.70; 97. Joanne Power, Clemson, 18:05.20; 98. Lisa Polzinetti, Villanova, 18:05.80; 99. Charlene Letzring, Iowa St., 18:06.30; 100. Nancy Anderson, Brigham Young, 18:06.50.

101. Helen Rogers, Clemson, 18:06.55; 102. Lisa Wakem, Kansas St., 18:06.60; 103. Carol Parietti, George Mason, 18:07.40; 104. Jennifer Weekes, Boston Col., 18:08.30; 105. Diana Baca, New Mexico, 18:09.30; 106. Ellen Ellig, Texas, 18:09.70; 107. Yvette Haran, New Mexico, 18:09.90; 108. Dolores Carapella, Villanova, 18:10.90; 109. Angela Cook, Brigham Young, 18:11.90; 110. Gina Braz, Boston Col., 18:13.60.

111. Therese Doucette, Boston Col., 18:13.90; 112. Virginia Bryan, N.C. State, 18:14.20; 113. Amy Aston, Penn St., 18:16.50; 114. Kimber Pennington, UCLA, 18:17.20; 115. Becky Beachley, Northwestern, 18:20.00; 116. Sue Clancy, Boston Col., 18:22.90; 117. Lynn Segreti, Kentucky, 18:27.10; 118. Maureen Breen, Villanova, 18:27.40; 119. Zenny Kochler, Washington St., 18:33.20; 120. Marnie Mason, Brigham Young, 18:35.30.

121. Sue Keeney, Northwestern, 18:36.60; 122. Katherine St. Clair, Penn St., 18:39.60; 123. Janie Higinbotham, Oregon, 18:45.90; 124. Dolores Zamora, New Mexico, 18:46.10; 125. Carol Boyd, Northwestern, 18:55.40; 126. Anne Broe, Clemson, 18:58.70; 127. Mary Reed, Washington St., 19:07.50; 128. Jennifer Rahn, Villanova, 19:18.80; 129. Tania Fischer, UCLA, 21:09.20.

Did not finish—Kathy Franey, Villanova; Kathy Ormsby, N.C. State; Ute Jamroz, Clemson; Dawn Gale, New Mexico; Penny Graves, Oregon.

Plane crash kills runners from Iowa State team

Iowa State head women's track and cross country coach Ron Renko, assistant coach Pat Moynihan, three Iowa State women's cross country team members and a student-manager were killed November 25 in a plane crash during an attempted landing in Des Moines, Iowa.

The pilot of the plane also was killed.

The team was returning from the Division I Women's Cross Country Championships at Marquette University in Milwaukee, Wisconsin, where the Cyclones had finished second in the team standings.

Killed in the crash were junior runners Julie Rose and Sheryl Maahs and freshman Susan Baxter.

Preliminary reports indicate the crash was caused by a buildup of ice on the wings, but a Federal Aviation Administration investigation is continuing.

The Aero Commander was one of three university-owned planes transporting the cross country team members. The planes had been di-

verted from the Ames airport to Des Moines because of bad weather and construction on one runway.

Renko, 34, was in his seventh year at Iowa State after coaching at Golden Lutheran College in Minnesota for five years. He had guided the Cyclones to three Big Eight Conference titles and the 1981 Association of Intercollegiate Athletics for Women national championship.

Moynihan was in his third season at Iowa State after coaching in Saudi Arabia in 1982 and 1983. He had been an assistant at Iowa from 1978 to 1982.

Rose, 21, from Ashford, Kent, England, was a member of the English national cross country team in 1982 and was the all-England schools champion in the 1,300 meters for three years. She finished 42nd overall at the NCAA meet.

Maahs, 20, from Spirit Lake, Iowa, was 45th overall at the NCAA meet.

Baxter, 22, from Brentwood, Tennessee, finished 32nd overall.

Gary G. Dineen photo

Dan Johnson photo

Gary G. Dineen photo

The NCAA News



Championships Summaries

Division II Men's Cross Country

Team results

1. South Dakota St., 60; 2. Edinboro, 108; 3. Keene St., 134; 4. Southern Connecticut St., 136; 5. Cal Poly-Pomona, 154; 6. Lowell, 201; 7. Cal Poly-SLO, 214; 8. Mankato St., 218; 9. SE Missouri St., 224; 10. East Stroudsburg, 236.

11. Ferris St., 270; 12. Troy St., 281; 13. Liberty, 305; 14. UC Davis, 321; 15. Southern Indiana, 332; 16. North Dakota St., 369; 17. UC Riverside, 370.

Individual results

1. Samson Obowocha, East Texas St., 30:49.40; 2. Charles Cheruiyot, Mount St. Mary's, 30:52.70; 3. Agapius Amo, East Texas St., 31:29.10; 4. Sammy Cheruiyot, Mount St. Mary's, 31:30.80; 5. Derek Janczewski, Ashland, 31:56.30; 6. Chris Moulton, Keene St., 31:56.70; 7. Steve Perez, Cal Poly-Pomona, 32:02.90; 8. Scott Burns, Edinboro, 32:09.70; 9. Rod DeHaven, South Dakota St., 32:11.50; 10. Jay O'Keefe, Southern Connecticut St., 32:17.60.

11. Christian Palmer, Troy St., 32:20.70; 12. Briant Nierstedt, Southern Connecticut St., 32:25.00; 13. Gennaro Manocchio, Edinboro, 32:26.80; 14. Edward Toro, Cal Poly-Pomona, 32:31.30; 15. Pete Rittenger, Ferris St., 32:32.40; 16. Jack Cuvo, East Stroudsburg, 32:34.00; 17. Jeff Massmann, South Dakota St., 32:35.50; 18. Bob Wilson, South Dakota St., 32:39.70; 19. John Bass, Cal St. Hayward, 32:40.50; 20. Todd Stevens, South Dakota St., 32:43.10.

21. Brent Griffiths, Cal Poly-SLO, 32:45.30; 22. Brian Radle, SE Missouri St., 32:46.20; 23. Allan Severude, Augustana (South Dakota), 32:50.70; 24. Robert Beyer, South Dakota St., 32:51.80; 25. Thomas Rehl, Southern Indiana, 32:52.30; 26. Brian Moody, Lowell, 32:52.70; 27. Rodney Ellsworth, Keene St., 33:01.20; 28. Gregg Vaughn, Liberty, 33:02.30; 29. Roger Clark, Keene St., 33:03.40; 30. William Maloney, Edinboro, 33:03.70.

31. Stephen Overgaard, UC Davis, 33:04.10; 32. Norm Kellar, SE Missouri St., 33:06.60; 33. Michael Miner, Cal Poly-SLO, 33:06.90; 34. Chris Chisholm, Southern Connecticut St., 33:13.50; 35. Andy Kohlbrenner, Southern Connecticut St., 33:15.20; 36. John Cotter, Lowell, 33:16.80; 37. Pete Bushman, Mankato St., 33:24.90; 38. Rusty Whitam, East Stroudsburg, 33:25.20; 39. Mark Castro, UC Riverside, 33:25.80; 40. Rolf Schmidt, North Dakota St., 33:26.10.

41. Todd Vandervort, Mankato St., 33:26.90; 42. Joe Flannery, South Dakota St., 33:28.60; 43. Steve Repko, Edinboro, 33:30.40; 44. James Garrett, Slippery Rock, 33:32.20; 45. Mike Spencer, Cal St. Hayward, 33:32.60; 46. Jeff Schmidt, Mankato St., 33:33.50; 47. Luil Graham, Edinboro, 33:36.40; 48. William Wallace, East Stroudsburg, 33:37.30; 49. Brock Vaughn, Cal Poly-Pomona, 33:38.50; 50. Dan Ebright, Ferris St., 33:38.90.

51. Jeffrey Harwell, Troy St., 33:39.60; 52. John McKenna, Lowell, 33:41.00; 53. Mike Casner, Keene St., 33:41.50; 54. Robert Derrah Jr., Lowell, 33:42.60; 55. Gary Hill, Liberty, 33:45.90; 56. Scott Hatch, Keene St., 33:46.70; 57. Kelly Crawford, Nebraska-Omaha, 33:47.40; 58. David Loud, Cal Poly-Pomona, 33:48.60; 59. Stephan Pappa, Cal-Davis, 33:51.50; 60. Jerry Hernandez, Cal Poly-SLO, 33:51.90.

61. Mike Hulme, Edinboro, 33:55.40; 62. John Hancock, UC Davis, 33:57.50; 63. Robert Arsenault, Cal St. Los Angeles, 33:58.10; 64. David Kuritar, Liberty, 33:58.40; 65. David Scraback, Mankato St., 33:59.80; 66. Abel Mota, Cal Poly-Pomona, 34:01.60; 67. Mike Kloss, Ferris St., 34:02.00; 68. Tim Moore, South Dakota, 34:03.10; 69. Garrick Wakon, Southern Indiana, 34:03.90; 70. Arthur Waddle, SE Missouri St., 34:05.70.

71. John Pendergraft, SE Missouri St., 34:06.10; 72. Kenneth Ellingboe, Cal Poly-SLO, 34:06.90; 73. James Chaney, Cal Poly-SLO, 34:08.50; 74. Michael Danielson, Mankato, 34:09.40; 75. John Nichwitz, Bellarmine, 34:10.10; 76. Jay Townsend, SE Missouri St., 34:10.50; 77. Michael Woodman, Lowell, 34:10.90; 78. Nick Adams, SE Missouri St., 34:12.90; 79. Joseph Vickers, UC Riverside, 34:13.90; 80. Lars Smeenk, North Dakota St., 34:14.30.

81. Ed Bushnell, Southern Connecticut St., 34:14.60; 82. Hebert Saravia, UC Riverside, 34:15.50; 83. Jim McCarthy, Cal Poly-SLO, 34:16.70; 84. Fred Bunn, Ferris St., 34:17.10; 85. Mike Descrochers, Lowell, 34:18.00; 86. Nicholas Wolf, Troy St., 34:19.40; 87. Jason Cakouras, Lowell, 34:21.70; 88. Mark Gerber, East Stroudsburg, 34:25.90; 89. Michael Orban, Southern Indiana, 34:28.00; 90. Michael Turdo, Troy St., 34:28.90.

91. Jeffrey Appel, East Stroudsburg, 34:31.60; 92. Kirk Miller, Mankato St., 34:34.60; 93. William Hibbard, Troy St., 34:38.60; 94. Mark Anderson, North Dakota St., 34:39.70; 95. Joe Lake, Southern Indiana, 34:40.40; 96. Dave Aitkenhead, Southern Connecticut St., 34:42.80; 97. Rodney Viens, Keene St., 34:45.00; 98. Lee Davison, Southern Connecticut St., 34:47.10; 99. Michael Gorkalka, UC Davis, 34:48.40; 100. Tom Borawski, Edinboro, 34:51.70.

101. Craig Demmon, North Dakota St., 34:56.30; 102. Steve Fortier, Keene St., 34:56.90; 103. Joe Warner, Ferris St., 34:59.40; 104. Brian Olling, Liberty, 34:59.90; 105. Tom Daugherty, Liberty, 35:04.00; 106. Matt Peter-



Division III women's cross country runners take off

Billy Howard photo

son, Ferris St., 35:09.00; 107. Doug Burns, Mankato St., 35:10.20; 108. Rodney Sutherlin, Southern Indiana, 35:11.60; 109. Dave King, North Dakota St., 35:13.70; 110. Bradley Clary, Cal Poly-Pomona, 35:14.40.

111. Steve Sousa, East Stroudsburg, 35:16.60; 112. Timothy Watson, UC Riverside, 35:21.40; 113. Darryl Martin, UC Riverside, 35:22.90; 114. Matthew Forstie, UC Riverside, 35:25.80; 115. Michael Ledbetter, Troy St., 35:29.60; 116. Bill Farquhar, East Stroudsburg, 35:30.50; 117. Joe Rubio, Cal Poly-SLO, 35:33.70; 118. Lee Allard, Ferris St., 35:38.30; 119. John Krieg, North Dakota St., 35:39.40; 120. Ray McClanahan, Liberty, 35:47.50; 121. Robert Anderson, UC Davis, 35:56.50; 122. David Fouse, Liberty, 36:04.00; 123. Robert Clemons, Southern Indiana, 36:07.90; 124. John Foley, UC Davis, 36:22.10; 125. David Hansell, UC Davis, 36:47.20; 126. Kenneth Banks, Troy St., 37:17.20.

Division II Women's Cross Country

Team results

1. Cal Poly-SLO, 30; 2. Cal St. Northridge, 86; 3. Indiana (Pennsylvania), 89; 4. UC Davis, 127; 5. North Dakota St., 162; 6. South Dakota St., 179; 7. Cal Poly-Pomona, 199; 8. Springfield, 206; 9. Ashland, 209; 10. Wis.-Parkside, 211; 11. Liberty, 224.

Individual results

1. Bente Moe, Seattle Pacific, 17:42.20; 2. Nancy Dietman, North Dakota St., 17:55.50; 3. Jennifer Dunn, Cal Poly-SLO, 18:05.00; 4. Tammy Donnelly, Indiana (Pennsylvania), 18:12.30; 5. Bev Weiman, North Dakota St., 18:18.10; 6. Coleen Snyder, Edinboro, 18:21.60; 7. Lori Lopez, Cal Poly-SLO, 18:22.60; 8. Lesley White, Cal Poly-SLO, 18:23.30; 9. Ena Guevara-Mora, St. Thomas, 18:25.30; 10. Alexandra Aguirre, Cal St. Northridge, 18:26.60.

11. Katy Manning, Cal Poly-SLO, 18:33.60; 12. Noreen DeBettencourt, Cal Poly-SLO, 18:34.00; 13. Jackie Hubbard, South Dakota St., 18:34.70; 14. Vonda Scholtz, Mankato St., 18:35.30; 15. Jill Ellingson, Cal Poly-SLO, 18:37.60; 16. Renee Vertel, Liberty, 18:41.80; 17. Monika Zieschang, Cal St. Hayward, 18:42.90; 18. Kerrie Yenchak, Edinboro, 18:43.90; 19. Joann Howard, Cal Poly-Pomona, 18:44.70; 20. Sally Carlson, UC Davis, 18:45.20.

21. Connie Kampa, St. Cloud St., 18:45.90; 22. Heather Brookes, Cal St. Northridge, 18:46.30; 23. Nancy Riedel, UC Davis, 18:48.00; 24. Alane Keefer, Ashland, 18:49.00; 25. Nancy

Bowman, Cal St. Northridge, 18:51.00; 26. Julie Siler, Portland St., 18:52.10; 27. Kathleen Stec, Shippensburg, 18:58.00; 28. Kathy Ewing, Indiana (Pennsylvania), 18:58.70; 29. Lisa Bonaccorsi, Indiana (Pennsylvania), 19:00.10; 30. Margaret Barlog, Cal St. Northridge, 19:01.90.

31. Diane Hanks, Springfield, 19:02.60; 32. Mary Alico, Indiana (Pennsylvania), 19:03.10; 33. Elisa Benzoni, Indiana (Pennsylvania), 19:03.90; 34. Tamara McCarty, Cal St. Northridge, 19:04.90; 35. Sarah Hiett, Wisconsin-Parkside, 19:08.60; 36. Sherri Minkler, Cal Poly-SLO, 19:09.00; 37. Jennifer Thatcher, UC Davis, 19:10.70; 38. Annamaria Hunt, Liberty, 19:11.50; 39. Jill Perry, UC Davis, 19:12.30; 40. Darla Moberly, Central Missouri St., 19:13.30.

41. Joleen Hansen, South Dakota St., 19:14.70; 42. Michelle Marter, Wis.-Parkside, 19:15.30; 43. Jennifer Nichols, Abilene, 19:15.70; 44. Elizabeth Urquhart, Indiana (Pennsylvania), 19:19.50; 45. Nanci Line, Indiana (Pennsylvania), 19:20.90; 46. Jilleen Fobair, Wis.-Parkside, 19:24.40; 47. Anne Smith, North Dakota St., 19:24.90; 48. Charlene Hubbard, South Dakota St., 19:25.60; 49. Mistie Garcia, Cal Poly-Pomona, 19:26.30; 50. Janine Ogas, UC Davis, 19:28.00.

51. Shari Coressel, Ashland, 19:29.40; 52. Dolyne Divino, Springfield, 19:30.40; 53. Christine Brighton, Springfield, 19:31.00; 54. Janice Dehaye, Troy St., 19:31.70; 55. Ann Bertucci, UC Davis, 19:32.50; 56. Susan Miller, South Dakota St., 19:35.80; 57. Susan Borawski, Ashland, 19:37.60; 58. Martha Crinnell, Springfield, 19:38.60; 59. Kristy Forsberg, North Dakota, 19:39.90; 60. Connie Frank, Central Missouri St., 19:40.50.

61. Roberta Lopez, Cal Poly-Pomona, 19:44.80; 62. Sherri Roach, Cal Poly-Pomona, 19:45.20; 63. Elizabeth Wilson, UC Davis, 19:48.00; 64. Kimberly Sterton, Cal St. Northridge, 19:49.80; 65. Debbie Gresens, Ashland, 19:50.70; 66. Monica Carmona, Liberty, 19:54.50; 67. Karen Farley, Cal Poly-Pomona, 19:55.60; 68. Karen Jacobson, Wis.-Parkside, 19:58.10; 69. Kathy McDermott, Springfield, 20:04.70; 70. Kristen Hopper, Ashland, 20:07.60.

71. Peggie Volin, South Dakota St., 20:08.60; 72. Rebecca Anthony, Springfield, 20:10.00; 73. Patricia Molina, Cal Poly-Pomona, 20:10.80; 74. Lori Devine, North Dakota St., 20:11.80; 75. Karin Kadmas, North Dakota St., 20:20.00; 76. Anne Johnson, Cal St. Northridge, 20:21.00; 77. Nancy Knowles, Liberty, 20:34.80; 78. Julie Wunrow, Wis.-Parkside, 20:42.30; 79. Cheryl Mitchell, NE Missouri St., 20:44.90; 80. Trudy Nelson, South Dakota St., 20:46.30.

81. Joyce Towner, Ashland, 20:48.30; 82. Julie McReynolds, Wis.-Parkside, 20:59.10; 83. Pamela Fauber, Liberty, 21:06.20; 84. Julie Shorter, North Dakota St., 21:13.70; 85. Robin Currie, Liberty, 21:14.30; 86. Virginia Stewart, Springfield, 21:17.00; 87. Donna Colbrunn, North Dakota St., 21:28.00; 88. Lisa Briscoe, South Dakota St., 21:36.00; 89. Sue Merryman, Ashland, 21:38.00; 90. Kristi McDonald, Cal Poly-Pomona, 22:04.00; 91. Ann Reiter, Wis.-Parkside, 23:06.00.

Division III Men's Cross Country

Team results

1. Luther, 98; 2. North Central, 150; 3. RIT, 151; 4. Wheaton (Illinois), 158; 5. St. Thomas (Minnesota), 169; 6. St. Lawrence, 198; 7. Wis.-Oshkosh, 219; 8. MIT, 246; 9. St. John's (Minnesota), 264; 10. Occidental, 272.

11. (tie) Southeastern Mass. and Ithaca, 273; 13. Brandeis, 281; 14. Glassboro St., 296; 15. Mount Union, 314; 16. Frostburg St., 332; 17. Emory, 389; 18. Case Reserve, 403; 19. St. Joseph's (Maine), 429; 20. Roanoke, 476; 21. Haverford, 562.

Individual results

1. James White, Southeastern Mass., 25:35; 2. Arnie Schraeder, Wis.-Stevens Point, 25:57; 3. Thomas Tuori, Rochester, 26:03; 4. Donald Deckert, Glassboro St., 26:06; 5. Christopher Wilson, Wheaton (Illinois), 26:09; 6. Tony Lewis, Emory, 26:12; 7. Marty Dumoulin, St. Lawrence, 26:15; 8. Swight Scriber, Frostburg St., 26:19; 9. Gary Peterson, North Central, 26:21; 10. Todd Mosley, Wheaton (Illinois), 26:24.

11. Al Livingood, Luther, 26:25; 12. Roy Swaisgood, Messiah, 26:26; 13. Stephan Sandness, Luther, 26:29; 14. John Wagner, RIT, 26:30; 15. Thomas Faust, St. Thomas (Minnesota), 26:32; 16. John Bielinski, St. Thomas, 26:36; 17. Jukka Tammisuo, St. Lawrence, 26:37; 18. Eric Olson, Luther, 26:38; 19. James Gathje, St. John's (Minnesota), 26:40; 20. Paul Ruston, RIT, 26:42.

21. Larry Wood, North Central, 26:44; 22. Mark Hatch, Bates, 26:46; 23. Marc Ziblat, Occidental, 26:46; 24. Marcell Stephens, Mount Union, 26:48; 25. Helder Braz, Southeastern Mass., 26:53; 26. Scott Alpetter, Otterbein, 26:56; 27. Alden Estabrook, Frostburg St., 26:59; 28. Jeffery Scheffler, Salisbury St., 27:00; 29. Scott Wanek, Colorado Col., 27:03; 30. Steven Mullen, Wis.-Oshkosh, 27:03.

31. Brian Hawes, Luther, 27:04; 32. Donald Reiter, Wis.-Stevens Point, 27:04; 33. Mark Desjardins, Bates, 27:05; 34. Gordon Holterman, MIT, 27:05; 35. Mike Nier, RIT, 27:07; 36. Lindsey Dood, Hope, 27:08; 37. Edward Kimball, Brandeis, 27:09; 38. John Ellison, Williams, 27:13; 39. Jerry Goodenough, Ithaca, 27:13; 40. Peter Quint, Occidental, 27:14.

41. Thomas Schnurr, Otterbein, 27:15; 42. James Quinn, Ithaca, 27:15; 43. Brian Butterfield, Occidental, 27:16; 44. Don McGrath, RIT, 27:17; 45. Bob Pottle, North Central, 27:21; 46. William Niederberger, Wis.-Oshkosh, 27:22; 47. Larry Graham, Wheaton, 27:23; 48. Tom Wagner, St. Olaf, 27:24; 49. Chris O'Donnell, Union, 27:25; 50. Shylack Ndlovu, Messiah, 27:25.

51. Patt Zinn, North Central, 27:26; 52. Terry McNatt, MIT, 27:27; 53. Peter Swanson, Southern Maine, 27:28; 54. Hyon Kang, Colorado Col., 27:29; 55. Dean Burns, St. Lawrence, 27:30; 56. Jeffrey Hyman, St. Thomas, 27:31; 57. Craig Crandall, Luther, 27:31; 58. Chuck Martin, Mass.-Boston, 27:32; 59. Mark Harrington, Brandeis, 27:33; 60. Jeffery Brooks, Simpson, 27:34.

61. James Larranaga, St. Thomas, 27:35; 62. James McArdle, Wis.-Oshkosh, 27:35; 63. James Mazza, St. John's, 27:36; 64. Anton Briefer, MIT, 27:36; 65. Dwayne Stover, Roanoke, 27:37; 66. Chris Kamper, Carleton, 27:39; 67. Mike Maloney, Mount Union, 27:41; 68. Rick Garcia, St. Joseph's, 27:41; 69. Steve Leake, III, Wesleyan, 27:42; 70. Patrick O'Conner, Ithaca, 27:43.

71. Richard Surace II, Ithaca, 27:43; 72. Timothy Mohr, Wheaton, 27:44; 73. Andrew O'Donnell, Glassboro St., 27:45; 74. Michael McGuire, Southeastern Mass., 27:46; 75. Norman Pomainville, St. Lawrence, 27:46; 76. Mark Roshon, Case Reserve, 27:47; 77. Mike Keegan, Westfield St., 27:47; 78. John Collet, North Central, 27:48; 79. George Bockus, St. Joseph's, 27:48; 80. David Langdon, Brandeis, 27:49.

81. Jamie Pollard, Wis.-Oshkosh, 27:49; 82. George Trantow, Wis.-Oshkosh, 27:50; 83. Timothy Coleman, Wheaton, 27:50; 84. Christopher Cameron, Brandeis, 27:52; 85. John Schiller, St. Thomas, 27:55; 86. Rod Hinman, MIT, 27:55; 87. Tim Healy, RIT, 27:56; 88. Jeffery Dvergsten, St. John's, 27:59; 89. Timothy Heaney, St. John's, 28:03; 90. Dave Lieberman, Emory, 28:04.

91. Max Harn, Wis.-Oshkosh, 28:05; 92. Michael Surin, Buffalo, 28:06; 93. Robert Pyott, Glassboro St., 28:06; 94. Joseph Bohlke, St. John's, 28:07; 95. Dennis Beougher, Mount Union, 28:09; 96. Greg House, RIT, 28:11; 97. John Herlihy, III, Benedictine, 28:11; 98. Scott Costello, Glassboro St., 28:13; 99. Turan Erdogan, MIT, 28:14; 100. John Rayburn, Mount Union, 28:14.

101. Bill Mallet, MIT, 28:15; 102. Ed Menis, Case Reserve, 28:16; 103. Joe Gross, North Central, 28:17; 104. Nils Miller, Occidental, 28:18; 105. Shawn McCloud, Case Reserve, 28:18; 106. Paul Cornelison, St. John's, 28:19; 107. Neil Ritenhouse, Lewis & Clark, 28:20; 108. Scott Rippeon, Washington & Lee, 28:20; 109. Scott Magane, Southeastern Mass., 28:21; 110. Loran Storts, Luther, 28:22.

111. Terry Ramlo, Luther, 28:22; 112. Thomas Zuback, Frostburg St., 28:23; 113. Sean Brady, Allegheny, 28:25; 114. Tony Bjork, St. Lawrence, 28:26; 115. James Good, Mary Washington, 28:26; 116. Dave Laub, Emory, 28:29; 117. Andy Guay, Plattsburgh St., 28:30; 118. Eric Shoening, Bowdoin, 28:30; 119. Jeff Crocker, St. Joseph's, 28:32; 120. Will Sauer,

MIT, 28:33.

171. John Stiner, Cortland St., 28:33; 122. Andrew Barton, Wheaton, 28:35; 123. Douglas Johnson, St. John's, 28:36; 124. Brian Levine, Brandeis, 28:36; 125. Vince Van Burik, Case Reserve, 28:37; 126. Gary Tressler, Case Reserve, 28:38; 127. Ron Kulik, Montclair St., 28:39; 128. Duncan Douglas, St. Lawrence, 28:40; 129. Michael Salvon, Brandeis, 28:40; 130. Timothy Malloy, Glassboro St., 28:42.

131. Chris Creager, Mount Union, 28:43; 132. Thomas Linden, Roanoke, 28:44; 133. M. Walsh McGuire, Haverford, 28:44; 134. John Bansemer, Roanoke, 28:45; 135. David Linden, Roanoke, 28:45; 136. Mitchel Perry, Glassboro St., 28:47; 137. Thomas Seagren, Wheaton, 28:50; 138. Jeffery Moline, Colorado Col., 28:51; 139. James Webert, Frostburg St., 28:53; 140. Daniel Mears, Haverford, 28:55.

141. Jacob Carton, Haverford, 28:55; 142. Tom Thorpe, St. Lawrence, 28:56; 143. Steve Wood, RIT, 28:56; 144. Wade Hudson, Emory, 28:59; 145. Clifton Gamble, Frostburg St., 29:01; 146. Chris Tregillis, Occidental, 29:03; 147. Richard Brooks, St. Joseph's, 29:03; 148. John McMahon, Southeastern Mass., 29:06; 149. John Benson, Ithaca, 29:07; 150. Michael Griffith, Ithaca, 29:08.

151. Richard Wilson, Emory, 29:14; 152. Daniel Kuruna, Haverford, 29:16; 153. Francis Bielinski, St. Thomas, 29:17; 154. John Haller, St. Joseph's, 29:19; 155. Craig Parlato, Albany (N.Y.), 29:21; 156. Jose Olivas, Occidental, 29:22; 157. Rich Hudock, Case Reserve, 29:23; 158. Dewey Sowers, Lynchburg, 29:25; 159. John Reynolds, Lewis & Clark, 29:32; 160. Andre Burton, Glassboro St., 29:34.

161. Brian Falls, Roanoke, 29:39; 162. Tim Demme, Occidental, 29:39; 163. Thomas Gelsanliter, Haverford, 29:47; 164. Kyle Thomas, Frostburg St., 29:50; 165. Philips Yeich, Roanoke, 29:59; 166. Sean McLaughlin, Southeastern Mass., 30:06; 167. Tad Davis, Frostburg St., 30:13; 168. Robert Bennett, Mount Union, 30:18; 169. Thomas Mayer, Wis.-Oshkosh, 30:22; 170. Martin Mullin, St. Joseph's, 30:40.

171. Brian Taylor, Case Reserve, 30:41; 172. Caleb W. Meyer, Haverford, 30:43; 173. James Boule, St. Joseph's, 30:51; 174. Harris Gertz, Emory, 31:00; 175. John Peets, Mount Union, 31:04; 176. Ken Gale, Emory, 31:12.

Division III Women's Cross Country

Team results

1. Frank & Marsh., 73; 2. St. Thomas (Minnesota), 81; 3. Ithaca, 86; 4. Cortland St., 104; 5. Wis.-LaCrosse, 105; 6. Wis.-Stevens Point, 141; 7. Wellesley, 144; 8. Carleton, 233; 9. Allegheny, 237; 10. Occidental, 238; 11. Mary Washington, 266; 12. Hope, 288.

Individual results

1. Dorcas Denhartog, Middlebury, 18:05; 2. Julia Kirtland, Macalester, 18:41; 3. Allegra Burton, Wesleyan, 18:44; 4. Lois Lucente, Frank & Marsh., 18:59; 5. Patty Reynolds, Wis.-LaCrosse, 19:05; 6. Sheri Winter, Wis.-LaCrosse, 19:06; 7. Amanda Shaw, Frank & Marsh., 19:11; 8. Cindy Hennessy, St. Thomas (Minnesota), 19:12; 9. Betsy Bachtel, Gallaudet, 19:13; 10. Anne Goldsworthy, Carroll, 19:15.

11. Colleen Shelly, Ithaca, 19:19; 12. Berit Ashla, Amherst, 19:23; 13. Michele Trimble, Occidental, 19:24; 14. Sheila Richfies, Wis.-Stevens Point, 19:25; 15. Margaret Gehring, Buffalo, 19:28; 16. Anne Knight, Cortland St., 19:32; 17. Nancy Tang-Yuken, Millersville, 19:32; 18. Jennifer Tyne, Cortland St., 19:33; 19. Michelle Stone, St. Thomas, 19:34; 20. Gabriella Frittelli, Ithaca, 19:34.

21. Kristen Hoel, Wis.-Stevens Point, 19:35; 22. Sharon Sullivan, St. Thomas, 19:37; 23. Nichole Fogarty, Southeastern Mass., 19:37; 24. Carla Brown, Eastern Conn. St., 19:40; 25. Mary Ryan, Geneseo St., 19:41; 26. Maria Adelfio, Wellesley, 19:44; 27. Leslie Soderberg, Simmons, 19:45; 28. Jennifer Kegel, Wellesley, 19:48; 29. Tammy Walsh, Messiah, 19:51; 30. Terri Smith, Frank & Marsh., 19:52.

31. Sharon Stabler, Wis.-LaCrosse, 19:53; 32. Shelley Scherer, Carleton, 19:55; 33. Lorena Ferreira, Notre Dame, 19:57; 34. Beth Rosen, Tufts, 20:00; 35. Cathy Livingston, Ithaca, 20:05; 36. Marta Laughlin, St. Thomas, 20:05; 37. Jill Charron, Alma, 20:06; 38. Katrina Harriman, Frank & Marsh., 20:06; 39. Sha-van Adams, Grinnell, 20:07; 40. Beth Saxton, Ithaca, 20:08.

Stanford wins fifth title

Stanford sophomore Matt Tingler scored a goal with 47 seconds left in the second overtime to lift the Cardinal to an 11-10 victory over UC Irvine in the 17th NCAA Men's Water Polo Championship game December 1.

A capacity crowd of more than 2,000 at the Belmont Plaza Pool in Long Beach, California, watched Stanford claim its fifth NCAA men's water polo title since 1976.

Tingler already had one game-saver to his credit when he tied the score at 10-10 with only five seconds left in regulation time. His lob shot, looped over the head of UC Irvine goalie Mark Maizel, sent the contest into overtime. For an encore, the Stanford sophomore fired the game-winner from the left side to clinch the victory.

UC Irvine almost tied the Cardinal with 13 seconds remaining in the second overtime, but the goal was disallowed because of an offensive foul.

The Cardinal finished the year with a 25-4 record, while the Anteaters were 23-8, their best finish since capturing the national title in 1982 with a 7-4 victory over Stanford.

UCLA, three-time national champion, took third place with a 10-9 victory over UC Santa Barbara.

Stanford's David Imbernino and UC Irvine's Jeff Campbell were named co-MVPs of the tournament. Joining them on the all-tournament team were John Anderson of UC Santa Barbara, Maizel (goalie) and J. R. Salvatore of UC Irvine, Phil Castillo of Long Beach State, Craig Klass of Stanford, and Fernando Carsalade of UCLA.

First-round games: Stanford 18, Bucknell 4; UC Santa Barbara 7, Long Beach State 6; UC Irvine 15, Brown 8; UCLA 14, Loyola (Ill.) 6.

Consolation semifinals: Long Beach State 20, Bucknell 4; Brown 11, Loyola (Ill.) 10.

Championship semifinals: Stanford 7, UC Santa Barbara 6; UC Irvine 7, UCLA 6.
Seventh place: Bucknell 8, Loyola (Ill.) 6.
Fifth place: Long Beach State 13, Brown 9.
Third place: UCLA 10, UC Santa Barbara 9.
Championship game: Stanford 11, UC Irvine 10.

Championships Summaries

Division I-AA Football

First-round results: Georgia Southern 27, Jackson State 0; Eastern Washington 42, Idaho 28; Rhode Island 35, Akron 27; Arkansas St. 10, Grambling St. 7.

Second-round pairings: Georgia Southern (10-2) vs. Middle Tennessee (11-0); Eastern Washington (9-2) vs. Northern Iowa (10-1); Rhode Island (10-2) vs. Furman (11-1); Arkansas St. (9-3) vs. Nevada-Reno (10-1).

Division II Football

First-round results: North Dakota St. 31, UC Davis 12; South Dakota 13, Central (Ohio) 10 (2 o.t.); Bloomsburg 37, Hampton 28; North Alabama 31, Fort Valley St. 12.

Semifinal pairings: North Dakota St. (9-2-1) vs. South Dakota (10-2); Bloomsburg (12-0) vs. North Alabama (11-1).

Division III Football

Quarterfinal results: Ithaca 50, Montclair St. 28; Gettysburg 22, Salisbury 6; Central (Iowa) 71, Occidental 0; Augustana (Illinois) 21, Mount Union 14.

Semifinal pairings: Augustana (Illinois) (11-0) vs. Central (Iowa) (11-0); Ithaca (10-1) vs. Gettysburg (11-0-1).

Division I Men's Soccer

Third-round results: Hartwick 1, Boston U. 0; American 2, South Carolina 0; Evansville 1, Penn State 0; UCLA 2, Southern Methodist 0.

Semifinal pairings: Hartwick (17-2-1) vs. American (17-2-2); Evansville (20-2) vs. UCLA (18-1-4).

Division II Men's Soccer

Semifinal results: Florida International 4, New York Tech 1; Seattle Pacific 2, Davis & Elkins 1.

Championship pairings: Florida International (15-4-4) vs. Seattle Pacific (19-3).

Steps taken to ensure greater crowd control

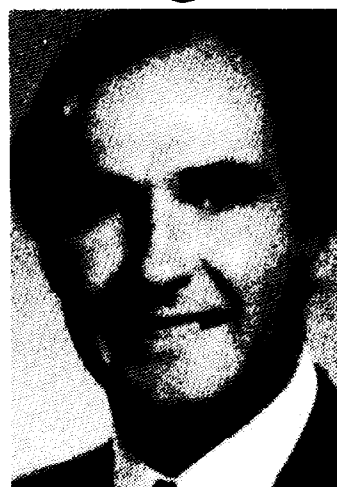
Crowd control measures designed to ensure safe playing conditions during the basketball season have been implemented by Ohio Valley Conference Commissioner James E. Delany.

In a memorandum directed to "students, friends and fans of OVC universities," Delany outlined steps game officials will take in the event that "ice, paper or debris is thrown on the court in sufficient quantities to cause a substantial delay of the game or endanger the health or safety of any player."

Although similar problems have been limited to only "a few occasions in the past" when "visiting players and coaches have been hit by ice, cups and other projectiles," the measures are an attempt to prevent a potentially emotional situation from getting out of hand.

"The two referees assigned by this office clearly do not have the power to control the actions of hundreds or thousands of fans," Delany wrote. "Pitting of game officials against an emotional crowd simply makes a bad situation worse."

"Responsibility for the behavior of the crowd lies first with individ-



Jim Delany

uals comprising the crowd and secondly with home management. The conference will cooperate in every reasonable attempt to help home management provide a safe place for athletes to compete in intercollegiate basketball," he wrote.

In the event a situation poses potential safety problems for players and coaches, Delany has instructed game officials to "return both teams to the locker rooms for

a minimum of 15 minutes.... This suspension of play will allow players to relax in their dressing room rather than having the inconvenience of standing or sitting around during a major clean-up effort."

At the conclusion of the 15-minute suspension, each team will be allowed a five-minute warm-up.

Crowd actions resulting in further substantial delay of the game or threatened safety of any player will result in a second 15-minute suspension, followed by a five-minute warm-up.

In addition, officials have the authority to assess technical fouls against either team "in the event supporters act in such a way as to interfere with the proper conduct of the game. This authority will be exercised wisely and prudently and will be exercised when all other attempts by home management and officials fail to control the situation," Delany wrote.

"Although this approach penalizes players, coaches and fair-minded fans, this approach seems preferable to calling off the game or playing the game without fans," the memo said.

Championships

Continued from page 7

20:43; 68. Patty Smanik, Wooster, 20:43; 69. Margaret McKelvey, Mary Washington, 20:44; 70. Tauna Jecmen, Hope, 20:45.

71. Lias Burnett, Allegheny, 20:45; 72. Angela Bartoszek, Wis.-LaCrosse, 20:46; 73. Teresa Chetnam, Hope, 20:47; 74. Cathy Christensen, Wellesley, 20:48; 75. Linda Neuls, Mary Washington, 20:50; 76. Meg Dempsey, Cortland St., 20:55; 77. Meg Sasing, Wis.-LaCrosse, 20:57; 78. Michelle Gladden, Gettysburg, 20:59; 79. Christine Dougherty, Mary Washington, 21:00; 80. Tammy Booth, Wis.-LaCrosse, 21:04.

81. Carol Glatz, Allegheny, 21:08; 82. Kathy Keltos, Ithaca, 21:09; 83. Deborah Abramson, Allegheny, 21:11; 84. Nancy Leet, Frank. & Marsh., 21:13; 85. Catherine Ausloos, Wis.-Stevens Point, 21:19; 86. Kimberly Donaldson, Occidental, 21:20; 87. Susan Meyers, Allegheny, 21:22; 88. Elizabeth Reed, Carleton, 21:22; 89. Andrea Berceau, Wis.-Stevens Point, 21:28; 90. Sue DeSanctis, Hope, 21:35.

91. Susan Hankins, Carleton, 21:36; 92. Melissa Marenich, Mary Washington, 21:46; 93. JoAnn Serungard, Carleton, 21:47; 94. Dana Barsness, Hope, 21:48; 95. Hilary Fuller, Carleton, 21:50; 96. Sue Hurley, Occidental,

21:55; 97. Anne Hankins, Carleton, 21:56; 98. Christine Garger, Cortland St., 21:58; 99. Connie Tkac, Mary Washington, 21:59; 100. Stefanie Balandia, Wellesley, 22:02.

101. Pam Shillingsburg, Mary Washington, 22:08; 102. Kathleen Seidl, Wis.-Stevens Point, 22:11; 103. Laura Comez, Occidental, 22:19; 104. Mary A. Donovan, Allegheny, 22:21; 105. Dana Gilchrist, Occidental, 22:31; 106. Stefanie Getchell, Mary Washington, 22:34; 107. Andrea Alarcon, Occidental, 22:40; 108. Mimmi Peterson, Wellesley, 22:52; 109. Melissa Fleming, Hope, 23:00; 110. Amy Stricker, Hope, 24:02; 111. Tamara Taylor, Hope, 24:36.



1985-86 NCAA championships dates and sites

FALL

Cross Country, Men's: *Division I*, University of Wisconsin, Madison, Wisconsin; *Division II*, South Dakota State University, Brookings, South Dakota; *Division III*, Luther College, Decorah, Iowa.

Cross Country, Women's: *Division I*, University of Wisconsin, Madison, Wisconsin; *Division II*, California State Polytechnic University, San Luis Obispo, California; *Division III*, Franklin and Marshall College, Lancaster, Pennsylvania.

Field Hockey: *Division I*, University of Connecticut, Storrs, Connecticut; *Division III*, Trenton State College, Trenton, New Jersey.

Football: *Division I-AA*, 8th, Tacoma Dome, Tacoma, Washington, December 21, 1985; *Division II*, 13th, Palm Bowl, McAllen Texas, December 14, 1985; *Division III*, 13th, Amos Alonzo Stagg Bowl, Phenix City, Alabama, December 14, 1985.

Soccer, Men's: *Division I*, 27th, The Kingdome, Seattle, Washington, December 14, 1985; *Division II*, 14th, campus site to be determined, December 7 or 8, 1985; *Division III*, 12th, campus site to be determined, December 7 or 8, 1985.

Soccer, Women's: *Champion* George Mason University, Fairfax, Virginia.

Volleyball, Women's: *Division I*, 5th, Western Michigan University, Kalamazoo, Michigan, December 20 and 22, 1985; *Division II*, 5th, Portland State University, Portland, Oregon, December 13-14, 1985; *Division III*, 5th, campus site to be determined, December 13-14, 1985.

Water polo, Men's: *Champion*—Stanford University, Palo Alto, California.

Lexington, Kentucky, March 28 and 30, 1986; *Division II*, 5th, Springfield Civic Center, Springfield, Massachusetts (American International University and Springfield College cohosts), March 20 and 22, 1986; *Division III*, 5th, campus site to be determined, March 14-15, 1986.

Fencing, Men's: *42nd championship*, Princeton University, Princeton, New Jersey, March 18-19, 1986.

Fencing, Women's: *4th championship*, Princeton University, Princeton, New Jersey, March 20-22, 1986.

Gymnastics, Men's: *44th championship*, University of Nebraska, Lincoln, Nebraska, April 4-5, 1986.

Gymnastics, Women's: *Division I*, 5th, University of Florida, Gainesville, Florida, April 18-19, 1986; *Division II*, 5th, U.S. Air Force Academy, Colorado Springs, Colorado, April 4-5, 1986.

Ice Hockey, Men's: *Division I*, 39th, Providence Civic Center, Providence, Rhode Island (Brown University and Providence College cohosts), March 27-29, 1986; *Division III*, 3rd, campus site to be determined, March 21-22, 1986.

Rifle, Men's and Women's: *7th championship*, U.S. Naval Academy, Annapolis, Maryland, March 14-15, 1985.

Skiing, Men's and Women's: *33rd*, University of Vermont, Burlington, Vermont, March 5-8, 1986.

Swimming and Diving, Men's: *Division I*, 63rd, I.U. Natatorium, Indianapolis, Indiana (Indiana University, Bloomington host), April 3-5, 1986; *Division II*, 23rd, Justus Aquatic Center, Orlando, Florida (Rollins College host), March 12-15, 1986; *Division III*, 12th, C. T. Branin Natatorium, Canton, Ohio (Kenyon College host), March 20-22, 1986.

Swimming and Diving, Women's: *Division I*, 5th, University of Arkansas, Fayetteville, Arkansas, March 20-22, 1986; *Division II*, 5th, Justus Aquatic Center, Orlando, Florida (Rollins College host), March 12-15, 1986; *Division III*, 5th, C. T. Branin Natatorium, Canton, Ohio (Kenyon College host), March 13-15, 1986.

Indoor Track, Men's: *Division I*, 22nd, The Myriad, Oklahoma City, Oklahoma (University of Oklahoma host), March 14-15, 1986; *Division III*, 2nd, campus site to be determined, March 14-15, 1986.

Indoor Track, Women's: *Division I*, 4th, The Myriad, Oklahoma City, Oklahoma (University of Oklahoma host), March 14-15, 1986; *Division III*, 2nd, campus site to be determined, March 14-15, 1986.

Wrestling: *Division I*, 56th, University of Iowa, Iowa City, Iowa, March 13-15, 1986; *Division II*, 24th, Southern Illinois University, Edwardsville, Illinois, February 28-March 1, 1986; *Division III*, 13th, Trenton State College, Trenton, New Jersey, February 28-March 1, 1986.

SPRING

Baseball: *Division I*, 40th, Rosenblatt Municipal Stadium, Omaha, Nebraska (Creighton University host), May 30-June 8, 1986; *Division II*, 19th, Patterson Stadium, Montgomery, Alabama (Troy State University host), May 23-28, 1986; *Division III*, 11th, Marietta College, Marietta, Ohio, May 29-June 1, 1986.

Golf, Men's: *Division I*, 89th, Wake Forest University, Winston-Salem, North Carolina, May 28-31, 1986; *Division II*, 24th, University of Tampa, Tampa, Florida, May 20-23, 1986; *Division III*, 12th, campus site to be determined, May 20-23, 1986.

Golf, Women's: *5th championship*, Ohio State University, Columbus, Ohio, May 28-31, 1986.

Lacrosse, Men's: *Division I*, 16th, Rutgers University, New Brunswick, New Jersey, May 24 and 26, 1986; *Division III*, 7th, campus site to be determined, May 17, 1986.

Lacrosse, Women's: *5th championship*, University of Maryland, College Park, Maryland, May 17, 1986.

Softball, Women's: *Division I*, 4th, Seymour Smith Softball Complex, Omaha, Nebraska (Creighton University host), May 21-25, 1986; *Division II*, 5th, University of Akron, Akron, Ohio, May 16-18, 1986; *Division III*, 5th, Buena Vista College, Storm Lake, Iowa, May 15-18, 1986.

Tennis, Men's: *Division I*, 102nd, University of Georgia, Athens, Georgia, May 17-25, 1986; *Division II*, 24th, California State University, Northridge, California, May 12-18, 1986; *Division III*, 11th, Claremont-Mudd-Scripps College, Claremont, California, May 12-18, 1986.

Tennis, Women's: *Division I*, 5th, University of Texas, Austin, Texas, May 15-23, 1986; *Division II*, 5th, California State University, Northridge, California, May 5-10, 1986; *Division III*, 5th, Kalamazoo College, Kalamazoo, Michigan, May 13-17, 1986.

Outdoor Track, Men's: *Division I*, 65th, Indianapolis, Indiana (Indiana University, Bloomington, host), June 4-7, 1986; *Division II*, 24th, California State University, Los Angeles, California, May 21-24, 1986; *Division III*, 13th, University of Wisconsin, La Crosse, Wisconsin, May 21-24, 1986.

Outdoor Track, Women's: *Division I*, 5th, Indianapolis, Indiana (Indiana University, Bloomington, host), June 4-7, 1986; *Division II*, 5th, California State University, Los Angeles, California, May 21-24, 1986; *Division III*, 5th, University of Wisconsin, La Crosse, Wisconsin, May 21-24, 1986.

Volleyball, Men's: *17th championship*, Pennsylvania State University, University Park, Pennsylvania, May 2-3, 1986.

WINTER

Basketball, Men's: *Division I*, 48th, Reunion Arena, Dallas, Texas (Southern Methodist University host), March 29 and 31, 1986; *Division II*, 30th, Springfield Civic Center, Springfield, Massachusetts (American International University and Springfield College cohosts), March 21-22, 1986; *Division III*, 12th, Calvin College, Grand Rapids, Michigan, March 14-15, 1986.

Basketball, Women's: *Division I*, 5th, University of Kentucky,

Legislative Assistance

1985 Column No. 43

Bowl-game and championship tickets to prospective student-athletes and team members

The Administrative Committee has determined that a member institution participating in a postseason football game or NCAA championship, either on its campus or within 30 miles of the institution's main campus, may not provide prospective student-athletes on their official expense-paid visits with tickets to the bowl game or championship, inasmuch as this would constitute excessive entertainment under provisions of Bylaw 1-8(j)-(3) and could provide a member institution with a significant recruiting advantage over other institutions. Further, institutional funds for entertaining prospective student-athletes under Bylaw 1-8(j)-(2)-(i) may not be utilized to purchase these tickets.

In addition, the provisions of Bylaw 1-1(b) would prohibit the institution from making special arrangements to have tickets for these events available for purchase by any prospective student-athlete.

Please note: Complimentary admissions to members of a participating team should be handled through a pass-list system consistent with the manner in which they are provided regular-season complimentary admissions.

This material was provided by the NCAA legislative services department as an aid to member institutions. If an institution has a question that it would like to have answered in this column, the question should be directed to William B. Hunt, assistant executive director, at the NCAA national office.

Morgan confident of renewed NCAA effort for compliance

By Doug Tucker

The fourth man to head the NCAA enforcement department hopes not to be the last.

But Stephen R. Morgan believes his job may go the way of the buggy-whip maker if corrections are not made soon in the troubled landscape of college sports. It's a conclusion based on his belief that the NCAA's efforts to enforce the rules of amateurism have been, for the most part, a failure.

"I wouldn't say that we have been a total failure," Morgan said. "But I do think this may be our last shot at having an enforcement program the membership believes in and will support. If we fail at this point and the membership loses confidence in us and the public cynicism prevails, it may be time to chuck the rules of amateurism and just take an anything-goes approach."

The 37-year-old Morgan officially took charge of the renamed, revamped arm of the ruling body of collegiate athletics in October. It no longer is the NCAA enforcement department. It now is the NCAA enforcement and compliance department.

The newly created compliance section will employ four full-time staffers to help schools live within the rules and avoid the greatly stiffened penalties awaiting violators as a result of the NCAA's special Convention last summer. In addition, two full-time field investigators are being added to the staff of 10.

The compliance unit will address a major point on Morgan's agenda—to reduce the adversarial relationship between the NCAA and member schools.

"If we can't turn the black hat white, maybe we at least can turn it a shade of gray," Morgan said. "We want to get to where the membership feels comfortable and knows there are people here who are interested in helping them, not just busting them."

Morgan also hopes the compliance department will help dispel what he calls the NCAA's "cloak of mystery."

"We certainly will have to maintain our confidentiality as to specific cases," he said. "But I hope we can shake off some of the mystique of the enforcement efforts and the department itself and show schools that there is a group of people here they can turn to if they feel like they've got a bad situation. If they're trying to figure out how to gain proper institutional control and how to monitor their booster groups, we'll have a group of people who are here to help them do that very thing. Then, maybe we can convince the members that we're really here to help and not as a secret-agent force."

The biggest headache, coaches and administrators say, is the overzealous

fan who pitches in to help recruit the top athletes. NCAA schools voted two years ago to outlaw boosters from recruiting off campus. The Southwest Athletic Conference, hit by the revelations at Texas Christian University and the recent Southern Methodist University probation, will offer a proposal at the NCAA Convention in January that would make it illegal for boosters to help recruit on-campus. (See story, page 1.)

The new penalty structure adopted at the special June Convention is radical, indeed. Infractions that once drew private reprimands now can

Stephen R. Morgan



result in forfeiture of games, ineligibility of players, and the banning of a head coach and others from off-campus recruiting for a year.

For major violations, mandatory penalties include the elimination of all expense-paid visits by recruits for at least one year, the banning of all coaches in the affected sport from off-campus recruiting and the termination or reassignment of all coaches or staff members who knowingly engaged in or condoned rule-breaking.

A school found guilty of major violations twice within a five-year period can be forced to suspend the last penalized sport for up to two years. This has been dubbed the "death penalty" for the effect people believe it would have on a program.

Morgan pointed out that the schools, led by a group of influential college presidents, voted these new rules upon themselves with only three dissenters.

"What has been missing, at least until recently, is a clear commitment on the part of the membership that they want things restored to order, that they want a significant enforcement effort to assist those institutions who want to comply," he said.

Morgan figures it will be several years before anyone can say definitely whether the "initiatives of 1985" have been a success or a failure.

"But if we look back and see that nothing has happened and the confidence has dissipated and the public perception continues to be one of cynicism, then we'll have to look hard to see if there's any value in continuing to go after it from this direction. I still think it's possible

Tucker is an Associated Press writer in the wire service's Kansas City, Missouri, bureau.

Proposal

Continued from page 1

That would exclude observing the team in postseason events.

Currently, such scouting is limited in terms of calendar periods but there is no limit on the number of times the institution can watch the prospect play in the regular-season, as long as there is no contact with the prospect.

The NCAA Council is sponsoring an amendment to Bylaw 1-2(a)-(1)-(iii), recommended by the Southwest Athletic Conference, that would prohibit a Division I or II member institution from issuing institutional or conference financial aid agreements prior to the initial signing date for the involved sport in the National Letter of Intent program. That prohibition now applies only in football and basketball; this proposal would apply it to all sports.

The Council also is the sponsor of an amendment to Bylaw 1-2(a)-(1) to permit each Division I-A or I-AA institution to visit a football prospect's educational institution only once each week for recruiting contact purposes during the appropriate contact period. The limitation would apply only in football.

The once-a-week restriction would apply regardless of the number of prospects being recruited in a given educational institution. The intent of the proposal, which was recommended by the Division I Steering Committee, is to reduce the football recruiting "traffic" in the high schools.

Another NCAA Council submission in the recruiting group was recommended by the NCAA Recruiting Committee. It would amend Bylaws 1-2(a) and 1-8(a) to prohibit Division

I member institutions from providing official visits for, or making in-person recruiting contacts with, a 2,000 nonqualifier in the first year of junior college enrollment.

In short, if the nonqualifier attends a junior college, the Division I institution could not give him or her a paid campus visit and could not contact him or her in person during the individual's first year at the junior college.

Summary

Following is a summary of the 15 recruiting proposals in the Official Notice of the NCAA's 80th annual Convention:

No. 40: Prevent any in-person recruiting contact by representatives of athletics interests, on campus or off, Divisions I and II.

No. 41: Limit noncontact off-campus talent assessment to six regular-season observations of a prospect's team per member institution, Divisions I and II.

No. 42: Prohibit issuance of institutional or conference financial aid agreements prior to the initial signing date stipulated for the sport in the National Letter of Intent, applying this to all sports, rather than only football and basketball, Divisions I and II.

No. 43: Permit each institution with football in Division I to visit a football prospect's educational institution only once each week (in the permissible contact period) for recruiting contact purposes, Divisions I-A and I-AA only (Monday, January 13).

No. 44: Prohibit Division I members from providing official visits for and making in-person contacts with a 2,000 nonqualifier in the first year of junior college enrollment, Division I only (Monday, January 13).

No. 45: Resolution directing that a committee be appointed to develop proposals that would establish limited recruiting contact periods in all NCAA sports, with the proposals to be presented at the 1987 Convention. Estimated cost to Association: \$800 times number serving on committee times number of meetings held by committee.

No. 46: Limit application of the tryout rule to those individuals who have begun classes for

the ninth grade or have attained their 15th birthday, also clarifying the exceptions to the tryout rule and providing a definition of "open" competition involving prospects that can be approved by the NCAA Council.

No. 47: Incorporate current requirements of Bylaws 1-6(e) and 1-10 and Case No. 419 concerning sports camps, coaching schools and clinics into a new Bylaw 1-7.

No. 48: Specify in the bylaws exactly what printed materials an institution's athletics department may distribute to prospective student-athletes (official publications available to all students, one annual press guide per sport, one annual recruiting brochure per sport, one annual schedule poster per sport, game programs, one wallet-size playing schedule per sport, and certain athletics department materials that are produced solely for student-athletes, such as policy manuals and team rules).

No. 49: Permit an institution to transport a new student-athlete to the campus from the bus or train station or airport nearest to the campus when the student-athlete initially arrives to attend classes.

No. 50: Permit an institutional staff member to accompany a prospect who is on a self-financed campus visit and provide transportation to view practice and competition facilities located off the campus but within the 30-mile area surrounding the campus.

No. 51: Prohibit all individuals on coaching staffs of member institutions from participating in coaching activities involving summer AAU basketball teams.

No. 52: Specify that an institution's intercollegiate team must be competing in a campus athletics event in order for the institution to provide complimentary admissions to a prospect visiting the institution's campus at his or her own expense.

No. 53: Allow an institutional staff member to be interviewed as a pregame, half-time or postgame guest during the broadcast of a high school or junior college contest.

No. 54: Prohibit any in-person, on- or off-campus recruiting in ice hockey by a member of a Division I institution's coaching staff during the Division I Men's Ice Hockey Championship.

(Next in the series: Proposals dealing with NCAA membership and division classification.)

CWS

Continued from page 1

would be based upon geographical location of teams.

The proposed dates for the play-off would be May 27-30 for the first round, June 2-5 for the regionals and June 9-12 for the College World Series at Rosenblatt Stadium.

The 1985 College World Series produced records in the number of spectators and the number of viewers on ESPN, which televised live 12 of the 15 games. Seven games televised during prime-time received a 2.6 rating, which represents 928,000 households. The 15 telecasts carried by the network received an average rating of 2.1 compared to a 1.9 rating in 1984.

The semifinal game between Texas and Miami (Florida), the eventual champion, received a 3.7 rating and was seen in 1.3 million households. The Texas-Miami championship game received a 2.2 rating.

A record 125,970 fans attended the 1985 play-off, breaking the previous record of 120,535 set in 1981.

Another item on the Executive Committee agenda is a proposal to create a national coordinator of men's basketball officiating at all levels of NCAA competition. The coordinator's main duty would be to develop a plan to certify the officiating programs at all Division I conferences that are granted automatic qualification to the NCAA tournament.

David R. Gavitt, commissioner of the Big East Conference, serves as special committee chair.

In other business, the Executive Committee will conduct an analysis of the 1984-85 Association championships and determine the allocation of excess receipts, consider amendments to the general operating budget and review all 1986 Convention legislation that would affect the committee's responsibilities.

Another agenda item will be a report by Integrated Services and Integrity Systems of Salt Lake City, which is proposing the development of a national integrity awareness program that would assist the NCAA in the reduction or elimination of drug abuse, sports gambling, improper

inducement or bribery, and other violations among student-athletes, coaches and staff members at member institutions.

The Executive Committee will consider a revision in an executive regulation that would allow the national office to deduct 50 percent of the costs of drug testing of championships participants from championships revenues, if the tests are authorized by the 1986 Convention. Another proposed executive regulation revision at the Convention would authorize the

Executive Committee to establish a list of banned drugs and to develop a drug-testing program with a system of penalties for violations.

Two appeals of earlier Executive Committee decisions will be heard. The Northern Pacific Athletic Conference is appealing a decision on automatic qualification to the Division I Women's Softball Championship, and the Women's Golf Committee is appealing a decision on the site of the 1987 National Collegiate Women's Golf Championships.

Two seminars planned

NCAA Professional Development Seminars have been scheduled for January and May, the first to be held January 10-11 in conjunction with the NCAA Convention in New Orleans.

The seminar, "Administering an Efficient Athletics Department," will focus on athletics budgeting, coaching-staff evaluations, computer applications, management skills, cost reduction and promotion.

The second seminar, "Promotion and Marketing Your Athletics Department," is scheduled for May 30-31 in Indianapolis.

The cost for each seminar is \$145 for each NCAA member, but the registration cost drops to \$125 per person if three or more persons from one member institution register. Nonmember registration is \$200.

Persons interested in registering or obtaining more information can complete the form below.

Registration form

DATE _____

NAME _____ PHONE (____) _____

Title: _____

School: _____

Address: _____

City: _____ State: _____ ZIP: _____

REGISTRATION FEE:

NCAA Member	\$145.00
Three or More (Same institution)	125.00
Late Fee after December 15	160.00
Nonmember	200.00

Make your check payable to: NCAA Seminar and mail to:

Host Communications
P.O. Box 3071
Lexington, Kentucky 40596-3071

For more information, contact Cheryl Levick, NCAA (913) 384-3220, or Dave Littleton, Host Communications, Inc. (606) 253-3230.

The NCAA News



NCAA Record

DIRECTOR OF ATHLETICS

DAVE HART announced his resignation at Missouri to become commissioner of the Southern Conference. Hart has been AD at Missouri for eight years.

ASSISTANT DIRECTOR OF ATHLETICS JOHN P. ARAOUZOS appointed at CCNY, where he has been a member of the athletics staff for 24 years.

COACHES

Women's basketball — CLYDE B. ROBINSON selected at Binghamton. He will continue as assistant to the athletics director.

Men's and women's diving — BOB KEENS selected at Rensselaer. A graduate of Ithaca, Keens has been coaching at area high schools for the past 20 years.

Football — JIM GARRETT resigned at Columbia after an 0-10 season... FRED PICKARD resigned at Tennessee-Martin after four seasons and a 12-31-1 record... JERRY MOORE released at Texas Tech... SERAFINO "FOGE" FAZIO released at Pittsburgh, where he compiled a 25-18-3 record in four seasons... LARRY DONOVAN and all nine assistant football coaches released at Montana. Donovan coached the Grizzlies for six seasons and had a 25-38-1 record... GERRY FAUST resigned at Notre Dame after five seasons and a 30-25-1 record prior to a November 30 game with Miami (Florida)... FRED ZECHMAN released at New Mexico State after three years and an 8-25 record... HAROLD C. "CHRIS" RAYMOND resigned at Colby. His teams won five games in the past three seasons... BILL YUNG released at UTEP after a four-year record of 7-38, including a 1-9 record thus far this season... GARY DARNELL resigned at Tennessee Tech. He posted a 3-29 record in three years. He has been replaced by offensive coordinator JAMES RAGLAND.

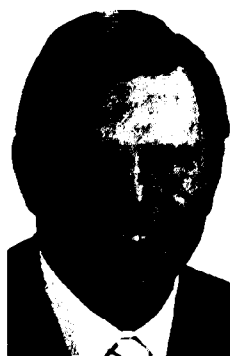
Women's soccer — STEVE LaROSA resigned at Adelphi.

STAFF

Assistant to the athletics director — CHRIS



Gerry Faust resigned as football coach at Notre Dame



Dave Hart to be commissioner of Southern Conference



Gary Kurdelmeier named executive director of USA Wrestling

KENNEDY, tutoring coordinator at Duke, promoted. He holds a Ph.D. from the institution.

Director of sports services — TOM MICKLE promoted at Duke, where he has been sports information director and director of promotion.

Promotion director JOHNNY MOORE selected at Duke, where he has been serving as associate sports information director.

Sports information director — JOHN ROTH appointed at Duke, where he has been an assistant SID.

Sports information assistant — CHARLES BLOOM named at Louisiana State. He had been an assistant in the athletics publicity office at South Carolina.

CONFERENCE

Dave Hart named commissioner of the Southern Conference (see Director of Athletics).

NOTABLES

GARY KURDELMEIER, associate athletics director and former wrestling coach at Iowa, named executive director of USA Wrestling, the sport's national governing body with

headquarters in Stillwater, Oklahoma.

DEATHS

ALBERT COTTON, sports editor of the Jackson (Michigan) Citizen-Patriot for 39 years, died November 24 at the age of 73. He was sports editor from 1938 until his retirement in 1977... MAURICE PODOLOFF, who was credited with making the National Basketball Association an everyday part of the American sporting scene, died November 25. He was 95. He was the first commissioner of the NBA and a former president of the American Hockey League. He devised professional basketball's first college player draft in 1947. He graduated from Yale in 1913 and Yale Law School in 1915... (For an account of the airplane crash involving the Iowa State women's cross country team, see page 6.)

POLLS

Division I-AA Football

The final season rankings of the top 20 teams in Division I-AA football, with records in parentheses and points:

1. Middle Tenn. St. (11-0).....80

2. Furman (10-1).....74	12. Albany State (9-2).....35
3. Nevada-Reno (10-1).....74	13. Butler (8-2).....35
4. Northern Iowa (10-1).....66	14. American International (8-2).....29
5. Idaho (9-2).....65	15. Santa Clara (8-2-1).....20
6. Arkansas State (8-3).....61	16. Clarion (8-2).....19
7. Rhode Island (9-2).....56	17. Mississippi College (7-2-1).....18
8. Grambling State (9-2).....47	18. Winston-Salem St. (9-2).....9
9. Georgia Southern (9-2).....45	19. Cal St. Sacramento (8-3).....8
10. Akron (8-3).....44	20. Texas A&I (8-3).....6
11. Eastern Washington (8-2).....42	
12. Appalachian St. (8-3).....36	
12. Delaware State (9-2).....36	
14. Louisiana Tech (8-3).....26	
15. Jackson State (8-2).....25	
16. William & Mary (7-4).....19	
17. Murray State (7-3-1).....14	
18. Richmond (8-3).....12	
19. Eastern Kentucky (8-3).....5	
20. Alcorn State (7-3).....4	

Division II Football

The final season rankings of the top 20 teams in Division II football, with records in parentheses and points:

1. UC Davis (9-1).....80	11. Hawaii (25-0).....79
2. North Alabama (10-1).....75	12. Illinois (36-2).....72
3. Bloomsburg (11-0).....73	13. Brigham Young (29-9).....66
4. South Dakota (9-2).....68	14. Arizona State (22-12).....58
5. Central (Ohio) (8-2).....64	15. Colorado State (25-8).....44
6. Fort Valley St. (9-2).....59	16. Arizona (15-11).....38
7. North Dakota St. (8-2-1).....57	17. Western Mich. (24-4).....34
8. Hampton (10-1).....49	18. Long Beach State (18-11).....24
9. Indiana (Pennsylvania) (8-2-1).....48	19. Texas A&M (25-7).....18
10. Towson State (7-2-1).....45	20. San Diego State (25-18).....10
11. NE Missouri St. (8-3).....39	

FINANCIAL SUMMARIES

1985 Division I Men's Baseball Championship

Receipts.....	\$1,287,469.74
Disbursements.....	576,673.94
	710,795.80
Team transportation and per diem expenses.....	546,817.09
	163,978.71
Distribution to competing institutions.....	\$81,989.00

See Record, page 11

The NCAA News



The Market

Positions Available

Athletics Trainer

Athletic Training. Curriculum Coordinator for N.A.T.A. Approved Undergraduate Program. Qualifications: Minimum — N.A.T.A. Certification, Master's Degree in Related Field, Teaching in Athletic Training Curriculum, and athletic training experience at the college level. Commitment to strong academic and athletic programs. Desirable — L.P.T. and/or Doctorate in Related Field, previous experience as a Curriculum Coordinator for an approved N.A.T.A. program. Responsibilities: Direct established N.A.T.A. Approved Undergraduate Curriculum. Direct established Graduate Program for State of West Virginia Certification. Academic advisor for Athletic Training Education Program. Strive to promote and enhance athletic training at the state and national level. Work cooperatively

with West Virginia University Athletic Department. Terms of Appointment: Twelve month, tenure track appointment at the rank of Assistant or Associate Professor, depending on academic credentials. Salary: Extremely competitive. Appointment Date: July 1, 1986. Application: Application should include letter of application, vita, three letters of recommendation and copy of official transcripts and/or certifications. Deadline for Application: December 31, 1985. Contact Person: Carl P. Bahneman, Chairperson, Athletic Training Search Committee, P.O. Box 6116, School of Physical Education, West Virginia University, Morgantown, WV 26506 6116.

Head Athletic Trainer. Head athletic trainer at University of Nebraska at Omaha. Starting date: January 13, 1986. Responsibilities: Organize and manage training room, supervise assistant trainer, graduate assistants and student trainers; coordinate and administer the athletic training program; event coverage; medical clearance for teams; maintain records for student-athletes including insurance information; teach six hours per semester in courses such as first aid and care and prevention of injuries. Qualifications: Master's degree in physical education or related field, certified NATA; certified as instructor in CPR and first aid; minimum of two years experience at the

college level in athletic training including working with the football team. Salary dependent upon experience and qualifications. Submit letter of application, completed resume, transcripts and a minimum of three personal recommendations by December 16, 1985, to: Connie Claussen, Coordinator of Women's Athletics, University of Nebraska at Omaha, 60th and Dodge, Omaha, Nebraska 68182. An affirmative action/equal opportunity employer.

Development

Assistant Director of Development/Athletics. Applications are invited for the position of Assistant Director of Development/Athletics

at Bloomsburg University. The Assistant Director has primary responsibilities for coordination of all athletic fund raising activities of the University. Other duties include: developing relationships with local businesses and industries and coordinating summer sports camps. Requirements: Bachelor's degree, experience in athletics or athletic fund raising. Salary range \$17,330 to \$22,455 with an excellent benefits package. Letter of application, resume, three reference letters should be submitted by January 8, 1986, to: Assistant Director of Development/Athletics Search Committee, c/o Linda Hill, Carver Hall, Bloomsburg University, Bloomsburg, PA 17815. Bloomsburg University is an Affirmative Action/Equal Opportunity Employer. Women and minorities are especially urged to apply.

Basketball

Basketball Coach/International Assignment. The United States Sports Academy — America's College of Sport Science — seeks a top professional who can help meet our leadership challenges and commitments in sports. The Academy is an accredited, special mission graduate college designed to serve the nation and the world as a resource for sport education with programs in instruction, research, and service. It is a global leader in the

operation of sport training and development programs around the world. B.S. in physical education, health education, or related field. Two-three years' experience in the area of basketball at the competitive level. This is a single status position which provides tax-free compensation, overseas air transportation, vacation, housing and medical insurance. Send resume, date of availability, salary requirements and three letters of recommendation to: Director of Recruitment, A.I.E.R.S., P.O. Box 8465, Dept. 460-832, Mobile, AL 36689-0465. EOE/AA.

See The Market, page 11

Director, Intercollegiate Athletics Florida A&M University

Florida A&M University is seeking qualified applicants for the position of Director, Intercollegiate Athletics. The appointment carries the responsibility for formulating policy and directing the University athletic program.

Requirements: Master's Degree in Physical Education or Business and 7 years' experience in the management of an athletic program; or Bachelor's Degree and 10 years' experience in a university or college athletic program. Prefer strong background in budgeting and financing activities. Consideration will be given to individual with background/experience or potential which enables planning for intercollegiate activities and competition with diverse group of institutions in NCAA Div. I athletics; previous affiliation as athletic director or top level manager in an institution with a successful Div. I program in basketball and Div. I-A or I-AA in football; demonstrated ability to coordinate and implement season ticket programs, radio and/or television networks, organized Booster support and ticket marketing programs; demonstrated commitment to integrity in athletics; a record of success in academic support programs for student athletes; a background which suggests awareness of the proper relationship of the intercollegiate athletic program to the university and its academic program; and demonstrated ability to plan and coordinate large athletic events.

Salary: Negotiable.

Letter of application, resume and the names of three references should be postmarked no later than January 23, 1986, and forwarded to: Ms. Dorothy L. Harp, Director, University Personnel Relations, Florida A&M University, Tallahassee, Florida 32307.

An Equal Opportunity/Affirmative Action Employer.

COMPLIANCE REPRESENTATIVE NCAA Compliance and Enforcement Department

Applications are being accepted for an immediate opening in the newly restructured NCAA compliance and enforcement department. The department's compliance section was created after the June 1985 special Convention to provide support services to member institutions' chief executive officers in their renewed commitment to greater NCAA rules compliance.

A compliance representative's primary responsibility includes:

- Assistance to member institutions in identifying and attacking specific problems and developing procedures to prevent rules violations.
- Development of model procedures and guidelines for successful operation of athletics programs.
- Campus visitation on request of a member institution to assist in analyzing the overall structure and administration of its athletics programs, and its compliance with NCAA legislation.
- Implementation of the forms and processes used by institutions in conducting the required periodic self-studies and annual financial audits.
- Cooperation with member conference officials in assisting their institutions in rules compliance.

This position requires a working knowledge of NCAA regulations and the ability to communicate effectively both orally and in writing. It is necessary that the applicant have recent administrative experience in intercollegiate athletics.

Interested candidates should send a letter of application and resume to:

John H. Leavens
Director of Compliance
NCAA
P.O. Box 1906
Mission, Kansas 66201

An affirmative action/equal opportunity employer.

University of North Dakota Head Football Coach

Qualifications: Minimum of three years football coaching at intercollegiate level, with head coaching experience desirable.

Personal: Applicant must possess the ability to interact with colleagues, students, and constituents of the community. Public speaking experience is required. Applicant must possess a strong personal commitment toward the academic well-being of the student-athlete.

Responsibilities: The University of North Dakota is seeking applications for an individual to direct a Division II football program to include the authority and responsibilities inherent to the position. These responsibilities to include creating an atmosphere conducive to the positive moral, academic, and athletic growth of student-athletes. Specific responsibilities shall include the hiring of assistant coaches and supervising their productivity, maintaining a state, regional, and national student-athlete recruitment program and making scheduling and budget recommendations to the Athletic Director. Responsibilities could include teaching within the HPER Department dependent on qualifications of individual selected. The individual selected must work completely within the standards and regulations of the University of North Dakota, the North Central Intercollegiate Athletic Conference, and the NCAA.

Salary: Negotiable (commensurate with experience and background).

Appointment: Immediately.

Application Deadline: December 20, 1985.

Application must include resume, transcripts, and three letters of recommendation to:

Dr. George Schubert, Chairman
Screening Committee
The University of North Dakota
Box 8026, University Station
Grand Forks, ND 58202

The University of North Dakota is an equal opportunity/affirmative action employer and subscribes to the laws and regulations prohibiting discrimination based on race, religion, color, creed, national origin, sex, handicapped, age, Vietnam era/disabled veteran status or any other proscribed category.

Record

Continued from page 10

Retained by the Association	81,989.71	\$ 163,978.71
1985 Division II Men's Baseball Championship		
Receipts	\$ 38,126.90	
Disbursements	49,150.26	
	(11,023.36)	
Team transportation expenses	102,097.72	
	(113,121.08)	
Charged to general operating budget	\$113,121.08	
1985 Division III Men's Baseball Championship		
Receipts	\$26,920.33	
Disbursements	55,608.70	
	(28,688.37)	
Expenses absorbed by host institutions	503.63	
	(28,184.74)	
Team transportation expenses	68,468.52	
	(96,653.26)	

Charged to general operating budget	\$96,653.26
1985 Division I Men's Golf Championships	
Receipts	\$21,919.82
Disbursements	30,926.90
	(9,007.08)
Expenses absorbed by host institutions	30.36
	(8,976.72)
Transportation expenses	77,958.53
	(86,935.25)
Charged to general operating budget	\$86,935.25
1985 Division II Men's Golf Championships	
Receipts	\$ 811.36
Disbursements	14,274.82
	(13,463.46)
Transportation expenses	24,208.50
	(37,671.96)
Charged to general operating budget	\$37,671.96

Readers of The NCAA News are invited to use The Market to locate candidates for positions open at their institutions, to advertise open dates in their playing schedules or for other appropriate purposes.

Rates are 45 cents per word for general classified advertising (agate type) and \$22.60 per column inch for display classified advertising. Orders and copy are due by noon five days prior to the date of publication for general classified space and by noon seven days prior to the date of publication for display classified advertising. Orders and copy will be accepted by telephone.

For more information or to place an ad, call 913/384-3220 or write NCAA Publishing, P.O. Box 1906, Mission, Kansas 66201.

The Market

Continued from page 10

Football

Assistant Football Coach, Division III Institution. Position available January 1, 1986. Assistant Football Coach, recruiting and varied duties as assigned by the head coach or athletic director. Experience in recruiting preferred. Bachelor's degree required, master's in P.E. preferred. Salary commensurate with experience. Application deadline: December 15, 1985. Send letter of application with resume, transcripts and three letters of recommendation to: Frank Amato, Head Football Coach, John Carroll University, University Heights, Ohio 44118. John Carroll University is an Equal Opportunity/Affirmative Action Employer.

Head Football Coach. North Park College seeks a person to direct competitive Division III football program. Bachelor's degree required, master's preferred. Load allocation and salary to be negotiated. Must have firm Christian commitment with knowledge of Chicago area recruiting strongly preferred. Send resume and letter of application by December 14 to: Dr. David Claerbout, Chair of the Search Committee, North Park College, 5125 North Spaulding, Chicago, Illinois 60625. An equal opportunity employer.

Head Football Coach. Texas Tech University is seeking a person to direct a Division I football program to include all responsibility and authority that goes along with the position.

tion. These responsibilities include creating atmosphere conducive to moral, spiritual, academic and athletic growth of student-athletes. Hire quality coaches and oversee their productivity, institute a nationwide recruiting program to a progressively competitive level. Work completely within framework of NCAA, Southwest Conference and Texas Tech University rules and procedures at all times. Head coach experience preferred; at least five years' experience at the intercollegiate level or higher required. Send resume and letter of application by Dec. 12, 1985, to T. Jones, Director of Athletics, Texas Tech University, P.O. Box 4199, Lubbock, TX 79409. Texas Tech University is an affirmative action and equal opportunity employer.

Head Football Coach — Humboldt State University. Responsibilities include coaching, recruiting, fiscal management, scheduling, retention of student-athletes and fund-raising. The Head Coach also teaches theory and activity courses. Qualifications: Master's Degree and a minimum of five years combined teaching/head coach experience. Top level assistant in a large college or professional program may be substituted for head coach experience. Salary: \$36,740 to \$51,120. Appointments are year by year subject to favorable annual review. Submit letter of application addressing philosophy and specific requirements, a current resume, and at least three letters of recommendation to: Mr. Charles Lindemann, Director of Athletics, Humboldt State University, Arcata, CA 95521. Deadline: 5:00 p.m., December 20, 1985.

Soccer

Head Men's Soccer Coach. Babson College is seeking applicants for the position of men's varsity soccer coach. Babson College is a Division III institution located in Wellesley, Massachusetts. The college has a rich and successful tradition in men's soccer. Head coaching experience at the intercollegiate level preferred, Master's degree preferred. Send resume, three letters of recommendation and letter of application by December 15, 1985, to: Serge DeBari, Chairman, Athletic Dept., Babson College, Babson, MA 02157. Babson College is an Affirmative Action/Equal Opportunity Employer.

Track & Field

Assistant Men's Track Coach. Western Michigan University is accepting applications for the position of assistant men's track coach. This is a full-time, 12-month position. Qualifications: Bachelor's degree and previous successful track coaching experience at the high school or college level. Responsibilities: Assist the head coach in the management of all assigned aspects of a Division I men's track and field program including practice and meet preparation, the recruitment of student-athletes, and fund-raising. Assume specific coaching responsibility in the areas of sprints, hurdles, relays, and jumping events. Participate in departmental and promotional activities as required by the Division of Intercollegiate Athletics. Application deadline: December 11, 1985. Send letter of application, resume, and three letters of recommendation to: Mr. Jack Shaw, c/o Employment Office, Western Michigan University, Kalamazoo, Michigan 49008. AA/EOE.

Track & Field

Washington State University seeks Head Volleyball Coach for Women. 12-month full-time appointment with salary commensurate with experience and qualifications. Position to begin Jan. 13, 1986. Organize, manage and coach a competitive Division I women's Volleyball program including recruitment, fund raising, involvement in public relations and promotional efforts, preparation of practices and competitive events and administrative duties of the Volleyball program. Bachelor's degree required. Demonstrated ability in planning and directing a successful volleyball program. Application deadline: Dec. 6, 1985. Send application letter, resume and 3 letters of recommendation to: Marcia Sanesholtz, Associate Athletic Director, Washington State University, Bohler Gym 107, Pullman, WA 99164-1610. AA/EOE.

Volleyball

Assistant Women's Volleyball Coach. Appointment Date: February 1, 1986. Salary: Commensurate with experience and qualifications. Ten (10) month appointment in the Department of Intercollegiate Athletics. (Salary and benefits can be arranged on a 12-month basis.) Responsibilities: 1. Assist the Head Coach in all aspects of planning, developing and coaching the MSU women's volleyball team. 2. Active involvement in public relations, fund-raising, and promotional activities. 3. Help run the Michigan State Sports School in August (2 weeks optional). Qualifications: 1. Bachelor's degree required. 2. Collegiate playing experience in a competitive program. 3. Ability to recruit athletes to Michigan State in order to maintain a competitive Division I program in the Big Ten. 4. Commitment to and responsibility for adhering to all rules and regulations of MSU, the Big Ten Conference, and the NCAA. Deadline For Application: January 7, 1986. Send letter of application with a minimum of three references to: Douglas W. Weaver, Director of Athletics, Michigan State University, 218 Jenison Field House, East Lansing, MI 48824-1025.

Head Coach For Women's Golf/Assistant Golf Pro

Responsibilities: organization, administration, and coaching of a Division I golf program for fall and spring seasons; assisting Class "A" PGA professional in Hanover Country Club operations for fall, spring and summer seasons.

Qualifications: LPGA/PGA apprentice program and collegiate competitive experiences minimal.

Application: send letter of application, resume and references to:

Bill Johnson
Hanover Country Club
Rope Ferry Road
Hanover, NH 03755

Dartmouth College is an
Equal Opportunity, Affirmative Action Employer.

Enforcement Representative NCAA Compliance and Enforcement Department

Applications are being accepted for immediate openings on the NCAA enforcement staff.

The positions will provide qualified individuals with the opportunity to be a part of the emphasis on NCAA rules compliance and enforcement that was supported overwhelmingly by the special NCAA Convention in June.

An enforcement representative is primarily responsible for the investigation of assigned infractions cases and making oral presentations of information and evidence at Committee on Infractions meetings. The investigation process includes locating principals, making appropriate appointments and travel plans for interviews, preparing memorandums of information collected, developing official case files, analyzing information on file to complete a case, and ensuring that established investigative procedures are followed.

The work requires a comprehensive knowledge of NCAA regulations and the ability to communicate effectively.

It is preferred that the applicant have a legal or other postgraduate education and experience in intercollegiate athletics, either as a student-athlete or an administrator.

Interested candidates should send a resume to:

Michael S. Glazier
Assistant Director of Enforcement
NCAA
P.O. Box 1906
Mission, Kansas

An affirmative action/equal opportunity employer.

Irish name Holtz

Minnesota coach Lou Holtz will become the 25th football coach at the University of Notre Dame, university officials announced November 27.

Holtz replaces Gerry Faust, who announced his resignation November 26.

Holtz took over the Minnesota football program in 1984, finishing 4-7, and guided the Gophers to a 6-5 finish in 1985, winning a bid to play Clemson in the Independence Bowl.

"He's a tremendous football coach with 16 seasons of good college coaching experience, and that was very important to us," said Notre Dame athletics director Eugene F. Corrigan.

regardless of race, religion, sex, or national origin.

Miscellaneous

Women's Volleyball and Tennis Coach. Faculty or staff position. In addition to coaching these sports must possess the ability to teach a wide range of activity courses (especially in the area of outdoor education). Recruitment of quality student athletes and other duties to carry out the current program of the department. Master's degree required. Salary commensurate with qualifications. Interested applicants should send resume and letter of inquiry to: Mr. Al Van Wie, Chairperson, Department of Physical Education and Athletics, The College of Wooster, Wooster, Ohio 44691. Closing Date: January 15, 1986. The College of Wooster is an Equal Opportunity/Affirmative Action Employer.

Sports Facilities Coordinator. University of Minnesota, Twin Cities campus. Responsibilities: Coordinate scheduling of all athletic facilities; lead planning of construction or renovation; inspect or supervise maintenance of all athletic facilities; supervise management of golf course, ice rink, tennis courts; supervise operation of equipment and locker rooms for physical education, recreational sports, and men's and women's intercollegiate athletics. Salary: \$38,000 minimum, initial appointment for 3 years. Requirements: BA, BS prefer MA, MS and five years' experience with college physical plant (prefer experience with college athletic facilities). For more information for complete job description or to submit letter of application, resume and three references contact: Greg Kittelsen, Physical Plan-

ning, 503 Morrill Hall, 100 Church Street S.E., Univ. of Minnesota, Minneapolis, Minnesota 55455. Closing date for applications is January 15, 1986. The Univ. of Minnesota is an equal opportunity educator and employer, and specifically invites and encourages applications from women and minorities.

Illinois State University — HPERD Graduate Program. Offers master's degrees in sports careers. Students having a sport career interest are urged to apply. Sports Administration, Coaching, Athletic Training, Exercise Science: Professional internships are possible. Financial Aid is available. Dr. Robert Koehler, HPR Graduate Director, ISU, Normal, Illinois 61761, (309) 438-8661.

Open Dates

Football, Division I-AA. The University of Northern Iowa has open dates on 9/6, 9/20 and 10/4-86. If you are interested in scheduling a game for any of these dates please contact: John "Jersey" Jermer, 315/273-3097. The University of Northern Iowa, Cedar Falls, Iowa 50614.

Women's Basketball. Holy Cross College seeking Division I team for 1986-87 Lady Crusader Tournament to be held on December 6 and 7 in Worcester, Massachusetts. Contact: Diane Holt, 617/793-2628.

Football Division III, Kean College. 10/25/86 away, 10/24/87 home. Contact: Hawley Waterman, Director of Athletics, 201/527-2251 or Jim Hazlett, Football Coach, 201/527-2323.

Head Football Coach Colby College

Colby seeks a Head Football Coach who understands the roll of athletics at a liberal arts college, accepts the NESCAC guidelines regarding recruiting, admissions and financial aid, and will work productively with students, faculty, administrators and alumni.

Duties include: 1) Coach the varsity football team with the help of an existing staff of assistants. 2) Work effectively with colleagues, alumni and others in the recruitment of student-athletes for the program. 3) Assume other duties as assigned by the Chairman of the Department of Athletics.

Qualifications: Coaching and recruiting experience at the college level is preferred.

Salary: Open, commensurate with experience.

Deadline: December 15, 1985.

Appointment Date: As soon as possible after January 1, 1986.

Send letter of interest, resume, and the names of three people who are qualified to recommend to:

Earl H. Smith
Dean of the College
Colby College
Waterville, Maine 04901
(207/872-3193)

Colby is an Affirmative Action/Equal Opportunity Employer.

Washington and Jefferson College Chairman, Department of Physical Education & Athletics

Washington and Jefferson College, a private, residential, liberal arts college of more than 1,000 students with a strong academic and student life tradition, invites applications for the position of Chairman, Department of Physical Education and Athletics.

The Chairman is responsible for providing leadership and management for a comprehensive program in physical education and intramurals and the intercollegiate athletic program for men and women. Washington and Jefferson College is a member of the Presidents' Athletic Conference and the NCAA III.

Requirements include an advanced degree and prior experience in coaching and educational administration. Candidates must possess high ethical standards, a commitment to academic progress and achievement for student-athletes, strong leadership, interpersonal and communication skills and a belief in the philosophy and objectives of Division III athletics.

Letters of application, resume and three letters of reference should be submitted to the President's Office, Washington and Jefferson College, Washington, Pennsylvania 15301, prior to March 1, 1986.

Washington and Jefferson College is an
Affirmative Action/Equal Opportunity Employer.

COLUMBIA UNIVERSITY IN THE CITY OF NEW YORK HEAD FOOTBALL COACH

GENERAL DESCRIPTION: in complete charge of the entire football program (Division I-AA), which includes the varsity squad, freshman squad and an informal junior varsity program. Under Ivy League coaching staff limitations, will have staff of six (6) full-time assistants and additional part-time assistants. Besides the actual coaching responsibilities, an intensive recruiting effort is expected within the rules and regulations of the NCAA, ECAC and Ivy League. Alumni relations in the areas of recruiting, summer job opportunities, career counseling and fund-raising is also a part of the job responsibility. We are looking for an individual who has an understanding of the Ivy League philosophies and one who is very concerned and involved with his players in non-football related areas.

COLUMBIA UNIVERSITY DESCRIPTION: Columbia is a member of the Ivy League. Admission to the College is based primarily on academic achievement and financial aid is awarded on the basis of need. The University is located in New York City and has an undergraduate enrollment of 3,000 students. All students must pursue a degree within a four-year period, and their athletic experience must be completed within four years of their initial enrollment (with limited and extenuating exceptions). The Ivy League does not permit freshmen to compete on the varsity level in the sport of football. The league is made up of Columbia, Pennsylvania, Cornell, Harvard, Yale, Brown, Princeton, Dartmouth; all are classified in Division I and Division I-AA in football. The Ivy League does not permit spring football practice, and we are permitted to schedule 10 contests.

GENERAL QUALIFICATIONS: Master's or Bachelor's Degree; successful background in coaching football on the college level preferably as head coach; successful experience in the recruitment of student-athletes with high academic standards; ability to work within the framework of Ivy League regulations and restrictions. Salary: commensurate with experience; Application date: December 20, 1985. Appointment date: as soon as possible.

MAIL RESUME AND REFERENCES TO: Mr. Al Paul, Director of Athletics, Columbia University, 436 Dodge Physical Fitness Center, New York, New York 10027.

COLUMBIA UNIVERSITY IS COMMITTED TO
AFFIRMATIVE ACTION AND EQUAL OPPORTUNITY
PROGRAMS

Financial strain has Idaho State discussing Division II move

Mounting financial problems for the Idaho State University athletics program have spawned a debate over whether the Big Sky Conference school should drop from the NCAA's Division I-AA to the less expensive Division II, and football coach Jim Koetter said it already has affected his recruiting.

"Anytime you have negative publicity, it'll hurt you," said Koetter, who already has started recruiting efforts for next season. "Things like this just

keep adding to the problem," he told the Associated Press.

Koetter, whose 5-5 Bengal squad wrapped up the season November 30 against 11th-rated Eastern Washington, said some of his current players already have expressed enough concern about the Division II talk that he will be meeting with them on the matter. He said he needs a commitment from the university administration so he can tell potential recruits "where we're going to be."

Idaho State President Richard Bowen first raised the prospect of the school dropping to Division II status when he told the state board of education this fall that the athletics program was continuing to run large deficits, with some projections seeing the red ink totaling more than \$140,000 in less than three years.

"I think the sentiment I've heard recently is that we will not" drop down to Division II, said Kathleen Hildreth, ISU women's athletics director.

But Scott Hobdey, assistant athletics director, citing similar financial problems plaguing both Boise State and Idaho, suggested a move down might be acceptable if the other two Big Sky Schools in the state would do the same thing.

"If we go to Division II all by ourselves, we wouldn't have any place to go," Hobdey said. "We would lose more students who wanted to attend ISU. I think just about everybody is opposed to ISU going to Division II

by ourselves, but opinions about going as a league will vary."

University-wide budget problems prompted ISU to shift \$90,000 earmarked for athletics to other programs this year, resulting in the elimination of men's tennis and wrestling

in 1986-87.

Hildreth estimated that dropping from Division I-AA to Division II would probably save the school some \$300,000 a year, but at the same time she said the move would cost it about \$318,000 in lost revenues.

Use of coaching box still open to women's basketball leagues

Requests still are being accepted by the NCAA Women's Basketball Rules Committee from conferences that wish to use the experimental coaching-box rule during the 1985-86 season.

"This is the only experimental rule available for the season," said Marcy Weston, secretary-rules editor for the women's rules committee. "We wanted to hold the number of experimental rules to a minimum during this first year of play under NCAA rules."

To use the experimental rule, which is the coaching-box rule used by the men for the last couple of seasons, a conference commissioner or supervisor of officials must make a formal request to J. Elaine Hieber, chair of the women's committee and the associate athletics director at Iowa State University.

"A conference must agree to use the rule in all conference games," Weston said "and it must agree to file an informational form provided by the committee for each game in which the rule was used."

The visiting team in nonconference games has the option to have the experimental rule used for the game. Requests from conferences to use the rule must be made prior to the beginning of conference competition.

Requests to use the rule may be made in writing or by phone.

Under the rule, the coaching box is described as a 28-foot-long area outlined outside the playing court and bounded by the midcourt marker extended, the sideline, the end line extended and the players' bench.

According to the regulations of the rule, a coach must stay within the confines of the coaching box to confer with substitutes and team attendants, to request a timeout, or to signal or communicate to the team. A coach, squad member or team attendant may leave the confines of the box area only if it is for the sole and distinct purpose of seeking information from the scorer or timer during a timeout

Texas-Arlington to drop football

The University of Texas, Arlington, citing worsening financial problems, has dropped intercollegiate football, it was announced November 25 by school President W. H. Nedderman.

"A level of deficit-financing has been reached that cannot be continued," Nedderman told a news conference. "Thus, we have no choice but to immediately discontinue our most costly sport, football, and thus reduce our athletics budget by over \$1 million a year."

Nedderman said the school would continue to have a basketball program and that head football coach Chuck Curtis' contract, which runs through December 1986, would be honored.

Texas-Arlington joined the Southland Conference in 1964 and was 4-6-1 this season.

Next in the News

Final season football statistics for Divisions I-A, II and III.

A story on the Executive Committee meeting December 9-10 in Irving, Texas.

ATTENTION COLLEGE TRAVEL PLANNERS!

Save 37% or More on Your ANNUAL Budget With the NCAA Travel Plan

CALL 1-800-243-1723

- **Now** receive major, unrestricted and unpublished discounts on airfares
- **Now** take advantage of the NCAA'S volume leverage in an unprecedented way
- **Now** receive \$150,000 in travel insurance every time you fly
- **Now** receive your tickets overnight if needed
- **Now** order or check flight information 24 hours a day, seven days a week . . . toll free!

Don't miss the opportunity to cut your travel expenses in all respects, including team travel, scouting and recruiting trips, and campus visits.

FUGAZY
INTERNATIONAL
TRAVEL 67 WHITNEY AVENUE
NEW HAVEN, CT 06510
203-772-0470

THE OFFICIAL TRAVEL AGENT
FOR NCAA CHAMPIONSHIPS

Tie In To The Existing NCAA Travel Plan and SAVE BIG!