

# The NCAA News

November 18, 1985, Volume 22 Number 41

Official Publication of the



National Collegiate Athletic Association



## Title hopes

David Imbernino, one of Stanford University's leading scorers, will help the Cardinal try to regain the NCAA Water Polo Championship November 29-December 1 in Long Beach California. The University of California, Berkeley, is the defending champion.

## Commission proposals to face early decision at Convention

**Editor's Note:** This is the first in a series of articles covering legislation to be considered at the 80th annual NCAA Convention. This article covers the academic proposals and a special grouping of three other amendments endorsed jointly by the Presidents Commission and the NCAA Council, as well as the items in the consent packages. In the remaining issues of the News leading to the Convention, other topical groupings will be presented in the order in which they will be considered at the Convention.)

The first two major groupings of legislation at the 1986 NCAA Convention carry a clear stamp of presidential interest, if the actions of the NCAA Presidents Commission are an indication.

After the customary two consent packages of noncontroversial legislation, which generally are acted upon in a total of two or three minutes, the Convention faces a grouping of five proposals under the heading of "Academics." Three of those have been designated by the Presidents Commission for roll-call votes.

Then comes a special grouping of three other proposals—all sponsored jointly by the Commission and the NCAA Council and placed early in the agenda to facilitate attendance and participation by as many institutional chief executive officers as possible.

### Academics

The academics section probably will attract the most attention at the Convention, at least from the news media. Three of the five proposals in that grouping are proposed amendments to NCAA Bylaw 5-1-(j), the requirements for initial eligibility in Division I that were adopted in the 1983 Convention and will go into effect next August 1 as written if this Convention does nothing to alter them.

It will have three options for alteration, and each will be voted upon by a roll-call of all Division I voting member institutions and voting conferences.

In fact, all five of the academics proposals relate to Division I only; therefore, they will be voted upon in the full Division I business session the afternoon of January 13. The results will be announced in the general business session early on the morning of January 14, and the Division I voting result will stand if it is not rescinded by the full Convention at that time.

First up for vote in the academics section is an amendment to Bylaw 5-1-(j) that would eliminate from the requirements adopted in 1983 all references to test-score requirements. In short, the requirement for initial eligibility in Division I then would be at least a 2.000 grade-point average in

the 11-course core curriculum, and national test scores would not be involved.

That proposal was submitted by the members of the Southwestern Athletic Conference and others—11 institutions in all. So was the next proposal to be voted upon, an alternative that would strike references in Bylaw 5-1-(j) to any specific test scores but would require the qualifier to have taken either the SAT or the ACT tests "for placement purposes only."

See Commission, page 13

## In the News

### Notes, stats

Football notes and statistics in all divisions. Pages 3-6.

### Previews

Championships previews in Divisions I-AA, II and III football and water polo. Page 8.

### Big victory

The biggest victory in the football career of Greg Curtis, tailback for Lawrence University, was against cancer. Page 12.

### Players paid?

A former all-American football player claims that many current top student-athletes are paid by sports agents. Page 16.

## Three new vice-presidents head list of NCAA nominations

Nominees to serve as Divisions I, II and III vice-presidents of the NCAA head the list of nominations being recommended to the membership by the NCAA Nominating Committee.

The committee's slate of candidates for NCAA offices and vacancies on the NCAA Council is being announced this week in The NCAA News and in the Official Notice of the 1986 NCAA Convention, to be mailed to all members Friday, November 22.

Nominated to serve as division vice-presidents are Lewis A. Cryer, commissioner of the Pacific Coast Athletic Association, Division I; Asa N. Green, president of Livingston University, Division II, and Judith M. Sweet, director of athletics at the University of California, San Diego, Division III.

Cryer is nominated to replace Arliss L. Roaden, former president of Tennessee Technological University, who now is executive director of the Tennessee Higher Education Commission and thus will relinquish his office and his Council position at the end of the January Convention. Cryer will serve

only for one year inasmuch as his term on the Council ends in January 1987.

Green will replace Ade L. Sponberg, director of athletics at North Dakota State University, who has served as Division II vice-president for the maximum two years. Green also will serve only one year because his Council term ends in January 1987.

Sweet will have a two-year term as Division III vice-president replacing Elizabeth A. Kruczek, director of athletics at Fitchburg State College, whose term on the Council ends.

Elections of the three division vice-presidents will take place during the Divisions I, II and III business sessions January 13 at the Convention in New Orleans. Their selections then will be ratified by the full Convention prior to the adjournment January 15.

The Nominating Committee's slate of candidates to fill Council vacancies includes several recommended reelections of Council members who have served half a term (two years) or less. Each such individual is eligible to

serve a full four-year term. Each division will fill its own vacancies on the Council during the division business sessions January 13.

The committee's nominations for Council positions are as follows, all for four-year terms except where indicated.



Lewis A. Cryer



Asa N. Green



Judith M. Sweet

### Division I

Division I-A conferences: Elect B. J. Skelton, faculty athletics representative, Clemson University (Atlantic Coast Conference) to term ending January 1988. Elect Robert R. Snell, faculty athletics representative, Kansas State University (Big Eight Con-

ference). Elect Clayne R. Jensen, Brigham Young University (Western Athletic Conference).

Division I-A Independent, South: Reelect Cecil W. Ingram, director of athletics, Florida State University.

Division I-AA East region: Elect

See Three, page 13

## More than 175 basketball games scheduled for national TV

CBS, NBC and ESPN will combine to telecast 177 regular-season basketball contests during the 1985-86 season. ESPN begins the new season when UCLA visits North Carolina November 24. CBS will conclude the season with telecasts of the Division I men's and women's championship games, March 30 and 31.

Including regional and split-national broadcasts, CBS will carry 28 regular-season games, NBC will carry 33 regular-season contests, and ESPN will telecast 116 regular-season games

(111 live and five on tape delay). In addition to the championship games, CBS also will carry Division I men's championship preview and selection shows and 19 other tournament contests.

Here are the 1985-86 schedules of the networks:

### CBS

**November:** 30—Georgia Tech vs. Michigan (at Springfield, Massachusetts).

**December:** 7—Kansas at North Carolina State; 14—St. John's (New

York) at UCLA; 28—Louisville at Kentucky.

**January:** Georgetown at St. John's (New York) (national); Notre Dame at DePaul or Southern California at Washington (double-header, split-national); 18—Ohio State at Boston College or Kentucky at Florida (split-national); Syracuse at Louisville or Arizona at Miami (Florida) (double-header, split-national); 19—North Carolina at Marquette; 25—Indiana at Illinois (national); St. John's (New York) at Pittsburgh or Southern Cal-

ifornia at Arkansas (double-header, split-national).

**February:** 2—Louisiana State at Georgetown; 8—Memphis State at Nevada-Las Vegas; Notre Dame at Syracuse (double-header); 15—Louisville at DePaul or UCLA at Arizona State (split-national); 22—Alabama-Birmingham at Michigan; Oklahoma at Duke (double-header); 23—Georgetown at Syracuse.

**March:** 1—Boston College at Villanova; Illinois at Georgia Tech (double-header); 2—Iowa at Indiana; 8—

Indiana at Michigan or UCLA at Oregon (split-national); 9—NCAA Basketball Championship Preview and Selection Show (national); 13—NCAA championship, first round; 14—First round; 15—Second round (triple-header, regional); 16—Second round (triple-header, regional); 20—Regional semifinals (double-header, national or split-national); 21—Regional semifinals (double-header, national or split-national); 22—Regional finals (double-header, national);

See More, page 13



## In show-biz terms, pros can't match appeal of an old hoofer like Bevo

**Mickey Herskowitz, columnist**  
*The Houston Post*

"With no disrespect to the pros, there are at least two ways the Hessians can't compete with the amateurs.

"They don't have their own campuses, where people can park their Winnebagos overnight; and if they want a mascot, they have to go out and rent one.

"I mean, Texas has a steer, SMU has a real pony, Rice has an owl and Houston has a cougar named Shasta, who once made a car commercial. It's true that TCU has a guy who dresses up as a horned frog, but then a live toad would be a little hard to see on the sideline and might get stepped on by Bevo or somebody—a gruesome thought.

"Notre Dame suits a fellow in a green suit and a green hat—a little tall for a leprechaun, we judged, but you got the idea. The night before the Irish knocked off Army, their coach took them to see the movie, 'Knut Rockne, All-American.' No way the pros can top that. Somehow, you can't picture Hugh Campbell taking the Oilers to the nearest drive-in and buying 50 tickets to 'North Dallas Forty.'"

**Bill Curry, head football coach**  
*Georgia Institute of Technology*  
*The Washington Post*

"I'm just as cynical as you. What surprised me the most (about college coaches) was the utter ruthlessness where the kids are involved, what some person will do to a young person, with no compunction.

"Look you right in the eye. Lie. That surprised me. Even as callous as I had become, I thought I'd seen it all. I hadn't. Absolute lack of conscience in pushing steroids into 17-year-old bodies, after having induced the guys to come there with clothes and \$100 bills slipped under motel room doors while they're on visits to the school.

"Trinkets. Nothin' really. But big to a poverty-stricken 17-year-old. Without a blink of conscience. 'It's okay; everybody does it. It's business.' The shuttling, from one rinky-dink course to the next, so that a kid may go to four bowls but have not one shred of advancement toward a degree."

**Johnny Dawkins, varsity basketball player**  
*Duke University*  
*Devilrium*

"I think it's great (Duke University's career-counseling committee for student-athletes). It helps relieve a lot of the pressure. You know what to expect, all the cans and cannots.

"It takes the pressure off because the committee members can help organize procedures. They know the

## Opinions Out Loud

ropes in dealing with agents. When so much can happen at once to an athlete, the committee can help protect the player."

**Paul Schaefer, varsity basketball player**  
*University of Evansville*  
*Indianapolis Star*

"It seems like you read every day about someone getting paid off somewhere. I'm surprised that there could be so many paid off. I don't know of anything going on at U.E. I've never heard of anyone (being paid.)

"All this doesn't bother me. I've never been offered anything. Anytime you have an outstanding program, accusations are going to be made."

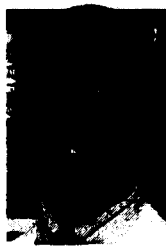
**Carl Golston, varsity basketball player**  
*Loyola University (Illinois)*  
*Indianapolis Star*

"As soon as the NCAA accepts college basketball as it is, a commercial venture, we'll all be better off.

"The NCAA must look after the well-being of the athlete. To stop the corruption, well, the only way is to pay the athletes legally—like \$100 to \$150 a month for expenses. Many players come from the lower part of the economy."



Bill Curry



Johnny Dawkins



Richard M. Bay

**Richard M. Bay, director of athletics**  
*Ohio State University*  
*The Ohio State Lantern*

"In short, the question becomes how many sports can we support with dignity? And, if we must downsize our operation by cutting programs, what criteria do we use to make that determination?

"At the last athletics council meeting when the ad hoc committee was appointed to study this issue, we were reminded again that many students at Ohio State do not believe we should cut sports.

"We were presented a petition to this end with more than 4,000 signatures. I suspect 50,000 others would have signed the document had they crossed the Oval at the right time. Idealistically, I would have signed it myself in the sense that Ohio State should provide for its students as many opportunities for education through competitive varsity athletics as possible. But what we should do idealistically and what we can do realistically often differ—and our department can no more sponsor an unlimited number of sports than the university can offer an unlimited number of academic courses or support countless academic departments.

"It is reassuring and comforting that at least 4,000 students believe we should not cut sports—but it also is disappointing that few of our sports ever draw 4,000 student spectators in an entire season, much less at a single event. I do not mean to be cynical or unfair, but there is not much of a commitment to signing a petition."

**Jerry Tarkanian, head men's basketball coach**  
*University of Nevada, Las Vegas*  
*The Chronicle of Higher Education*

"The first thing I'd like to see done is to raise entrance requirements for athletes—make it more difficult for kids to play as freshmen.

"A college's entrance requirements should be the same for athletes as for other students. If you're letting a kid in with a 500 on his SAT, and other students have to have 1,000, you know that kid can't compete academically, and there is going to be something shady going on to get him through.

"Oh, there should be special admissions. But in such cases, there should be no playing and no practice for the freshman year. And the kid should take courses in the areas in which he is lacking skills. He would be on full scholarship; and it would count against the total number of scholarships a college is permitted to give, but not count as a year of eligibility.

"It should be a year to make up for what he didn't get in high school. It would give a kid from a disadvantaged background the chance to catch up and not deprive him of a chance to go to a major university.

"The kid should have a chance to compete. It is unfair for him to come into a school where he has no chance to compete with other kids in the classroom."

**Sheila Wallace, head women's volleyball coach**  
*Ohio Northern University*  
*Sports information release*

"While our student-athletes are here primarily for an education and secondarily to participate in sports, they won't settle for mediocrity in either area.

"These kids are just never satisfied. When they win a conference title, they immediately set their sights on nationals, and they are continually striving to improve themselves academically. I have never had an athlete tell me I work them too hard...they expect the work and they want it."

**Ferdinand A. Geiger, director of athletics**  
*Stanford University*  
*USA Today*

"We go to great efforts not to separate our athletes from our student body. We don't have separate housing, cafeterias, or academic counseling. It is a step in the wrong direction to use an athletics scholarship as a weapon to subject an athlete to (drug) testing. The companies who make the testing kits—and this is the manufacturer—will tell you they are 97 percent accurate. Even if that's true, I don't believe 97 percent is good enough when you are talking about the embarrassment and trouble a falsely positive test could cause."

## Letters to the Editor

### Chamberlain's comment disturbs coach

To the Editor:

I cannot believe the comments made by Wilt Chamberlain (October 18 issue of *The NCAA News*) concerning stipends for scholarship athletes. Mr. Chamberlain suggested a stipend ("standardized and above-board") of \$300 to \$400 per month. For crying out loud, that is a car payment—an expensive car payment. What is the difference between giving an athlete a car and giving an athlete enough money for a car? If the stipend is designed to cover incidental expenses, let us make sure the expenses are incidental necessities, not incidental amenities.

I realize that the student-athlete has great demands on his or her time, but to receive a stipend above tuition and/or room and board instead of working is a bit excessive—especially to the degree that Mr. Chamberlain suggests. Don't these kids work in the summer? What happens to that money?

Realistically, most students should be able to work at least eight weeks over the summer. If the job pays only minimum wage, the individual will make over \$1,000. (I venture to say that most can work more than eight weeks and many at higher than minimum wage.) If an additional \$3,000 to \$4,000, as suggested by Mr. Chamberlain, is granted as a stipend, a bankroll is developing for an inordinate amount of incidental expenses.

I understand that college work-study programs are not accessible to scholarship athletes. Perhaps they should be. I support that. But... a student can pursue off-campus employment.

As I reflect on the statement by Mr. Chamberlain, I pose this question: How in the world does the Division III athlete do it? He and she do, you know.

Dan Palmer  
Head soccer coach  
North Central College

### CEOs, ADs must serve as watchdogs

To the Editor:

The NCAA and intercollegiate athletics are experiencing troubled times. The image of our nation's leading institutions of higher education is being eroded by cheating scandals in collegiate athletics programs.

In the past few weeks, we have seen examples of alumni payments to athletes, illegal recruiting tactics and the resignation of coaches for violations of NCAA standards.

These clearly are acts of unscrupulous people who seek to sway the competitive edge. These acts cannot be condoned at any level and must be dealt with in a manner that leaves no question about the integrity of our institutions.

Intercollegiate athletics at Chapman College exist to provide an outlet for those students who seek to exhibit their competitive skills. For those who take a more sedentary approach, it is meant to be a form of entertainment and a point of unifying a campus community.

Intercollegiate athletics are designed to conform to standards that are fair and equitable for all. Those seeking to soil the basic purposes must be appropriately disciplined. Let there be no confusion on one basic issue: The watchdog for intercollegiate athletics is not the NCAA, but it is the college presidents and athletics directors who have chosen to align their institutions with these organizations, thereby agreeing to enforce the standards in a framework of fair play.

At Chapman College, we are well aware of our unique responsibility. We gladly accept this obligation and pledge to you, our constituency, the promise that we will not tolerate conduct contrary to the moral and ethical standards by which the intercollegiate programs are to exist.

Walter L. Bowman  
Director of athletics  
Chapman College

### Athletes should be allowed to work

To the Editor:

With all the talk about paying athletes a monthly stipend, I see minimal uproar to the discriminatory practice of not allowing them to work legitimate, documented part-time jobs when school is in regular session.

The objections to this are either they don't have time or it would precipitate illicit payments.

In response to this, first, any illicit payments do not need a job situation to transpire, and this objection does not preclude athletes from working holidays and summers. Second, many athletes do have extra time to work preceding and following their seasons, like from September to October 15 in basketball. A compromise to allow them to work documented jobs during this time would seem fair. Third, disallowing only athletics-scholarship athletes to work documented part-time jobs—like mowing yards or hospital work—while allowing all other types of scholarship recipients to do so smacks of discrimination and un-Americanism and is against all that free enterprise stands for.

Finally, in *Star Trek II*, Spock said, "The needs of the many outweigh the needs of the few." Well, there are many financially underprivileged athletes who need to work part-time to buy clothes—much less date—who can't because some higher echelon is afraid of illicit payments to a small percentage of blue-chippers. Dear administrators, guess which hard-working group of graduates is withholding millions of dollars in donations from their respective universities because these honest athletes couldn't mow a few yards on a free Saturday during a school session? Be fair. Don't give athletes handouts, just a fair shake.

Mike Fuljenz  
Director, Investment Services  
James U. Blanchard & Co., Inc.  
Metairie, Louisiana

## The NCAA News

ISSN 0027-6170

Published weekly, except biweekly in the summer, by the National Collegiate Athletic Association, Nall Avenue at 63rd Street, P.O. Box 1906, Mission, Kansas 66201. Phone: 913/384-3220. Subscription rate: \$20 annually prepaid. Second-class postage paid at Shawnee Mission, Kansas. Address corrections requested. Postmaster send address changes to NCAA Publishing, P.O. Box 1906, Mission, Kansas 66201.

Publisher ..... Ted C. Tow  
Editor-in-Chief ..... Thomas A. Wilson  
Managing Editor ..... Steven M. Carr  
Assistant Editor ..... Timothy J. Lilley  
Advertising Director ..... Wallace I. Renfro  
The Comment section of *The NCAA News*, is offered as opinion. The views expressed do not necessarily represent a consensus of the NCAA membership. An Equal Opportunity Employer.

# Only two teams unbeaten, untied in Division I-A

By James M. Van Valkenburg  
NCAA Director of Statistics

One of these years in this era of more competitive balance, Division I-A will finish a season with no perfect-record teams, but it is doubtful it will happen this year.

The undefeated-untied list now has just two teams—Penn State and Bowling Green State, both 10-0. Both close the season on the road November 23 against traditional foes—Penn State at 5-4-1 Pittsburgh and Bowling Green at 2-8 Ohio. One upset is thinkable but two upsets are hard to imagine; so, for the 49th consecutive season, it appears major-college football will have at least one perfect-record team in the regular season (1936 was the last season with none).

In Division I-AA, the only perfect-record team, Middle Tennessee State at 10-0, closes its regular season at home against 1-9 Tennessee Tech, but then come the I-AA playoffs.

## Notre Dame schedule toughest

Neither of the perfect-record teams is playing a schedule ranked even close to the top 10. Notre Dame leads that list. Its 1985 foes combined have a .676 won-lost percentage (60-28-3) against I-A teams when not playing Notre Dame. Next come Florida at .670, Alabama .657, Rice .631, Auburn .624, Illinois .618, Michigan .617, Boston College .612, Oklahoma .609 and Minnesota .608.

The Penn State schedule now ranks 46th at .516 (46-43-4) and the Bowling Green schedule ranks 79th at .459 (38-45-2).

The top-10 schedules include six teams from two conferences—the Southeastern Conference and the Big Ten Conference. That is because these two rank 1-2 in won-lost percentage against I-A opponents outside the league—the SEC at .780 (30-7-4) and the Big Ten at .778 (21-6). Next come the Southwest Athletic Conference .636 (14-8), Big Eight Conference .577 (15-11), Pacific-10 Conference .534 (15-13-1) and Eastern independents .500 (18-18-1). All other conferences and groups are under .500.

## S.C. State leads in I-AA

South Carolina State, upset winner over Grambling State November 14, leads the Division I-AA toughest-schedule ranking at .670 (meaning its I-A and/or I-AA foes were 37-18-1 vs. I-A and/or I-AA teams when not playing South Carolina State). Lehigh is a distant second at .576; then come Florida A&M .558, Massachusetts .556, Northeastern .551, Boston U. .545, Alabama State .538, Southern-Baton Rouge .527, North Carolina A&T .5263 and Northeast Louisiana .5256. Middle Tennessee's schedule ranks 50th at .465 (33-38-1).

Against combined I-A and I-AA outside opponents, the Southwestern Athletic Conference leads at .643 (9-5 including 1-0 vs. I-A), the Southland Conference is next at .600 (18-12, 4-8 vs. I-A), then the Yankee Conference .583 (17-12-1, 0-1 vs. I-A) and the Gateway Collegiate Athletic Conference .500 (11-11, 2-3 vs. I-A). All others are under .500.

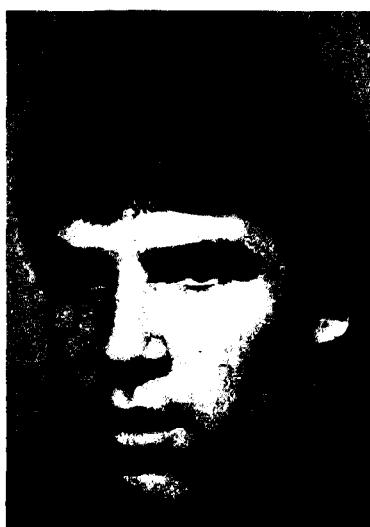
## McCallum sets all-purpose record

Navy's Napoleon McCallum, with the Army game left, already has smashed the Division I-A career record of 6,885 yards in all-purpose running, set by Stanford's little Darrin Nelson in 1977-1978-1980-1981 (he missed 1979 with an injury). McCallum now has 6,896, including 3,962 rushing, 786 receiving, 858 in punt returns and 1,290 in kickoff returns.

McCallum needs only 38 yards against Army December 7 to reach 4,000 in career rushing. Auburn's Bo Jackson (4,161 and a high-ranking 6.72 yards per rush) leads all seniors. Notre Dame's Allen Pinkett, at 3,951 with two games left, should reach 4,000 easily, while Louisiana State's Dalton Hilliard (3,660, three games) also can do it.

## McClure needs 199 for 10,000

Bowling Green's Brian McClure



John Diettrich, Ball State, is among the Division I-A scoring leaders

needs 199 against Ohio November 23 to become only the second 10,000-yard career passer in I-A (Boston College's Doug Flutie at 10,579 through last season is out of reach). Iowa's Chuck Long is second at 8,942 passing and has 63 career touchdown passes to McClure's 60.

UCLA's John Lee, with 77 career field goals, needs two against Southern California November 23 to break the record of 78 by Arizona State's Luis Zendejas through last season. Luis' brother Max has 74 for Arizona with one game left. Lee at 85.6 percent also is far ahead of the career accuracy record of 81.9.

## Totten's toteboard

Mississippi Valley State's Willie Totten has reached 12,478 passing and 12,767 in total offense, second in NCAA collegiate (all-divisions) history to Neil Lomax, who had 13,220 passing and 13,345 total offense for Portland State from 1977 to 1980. Totten's 138 career touchdown passes



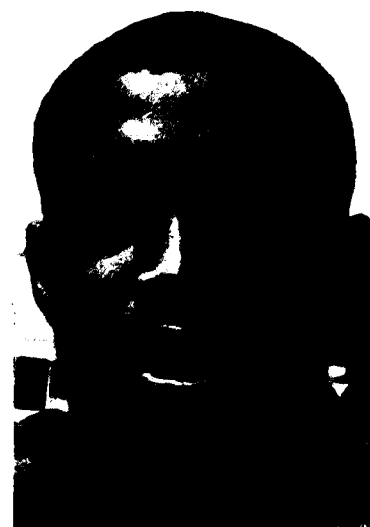
Nevada-Reno's Marty Zendejas ranks second in scoring in Division I-AA

## "A simple thing like a game"

North Carolina rallied from a 17-7 deficit to beat Clemson, 21-20, November 9 at Chapel Hill, with the winning points coming with 10 seconds on the clock. The heroics might never have occurred without a talk by former all-conference defensive back Steve Streater to the team the day before. Streater's car flipped over on a wet road as he returned to Chapel Hill after signing a pro contract, and a spinal injury left him paralyzed from the waist down.

"Steve told us about the 1980 Clemson game and the goal-line stand that won it in the closing moments," said defensive tackle Reuben Davis. "Then he talked about adversity and how you can battle back from it, how you should never give up. He's never given up—he still believes some way, somehow, he's going to walk again someday."

William Humes, who scored the winning touchdown, had lost a fumble



Steve Hansley, Northwest Missouri, is third in receiving in Division II

St. Peter's, which cancelled its 1984 football season after an opening 72-0 loss to Catholic because of a shortage of players, has fielded a team this fall and stands 3-4, with a squad of only 30 players. But coach Jim Gilrain has not lost his sense of humor. Before a home game against Georgetown, he said: "Everywhere we go, it's homecoming. Our kids think it's natural to have large crowds and parades. Georgetown contacted us and wanted to have their homecoming at our place." At a recent writers luncheon, Gilrain gave a short sermon on the image of his football team and the origin of its nickname, Peacocks. "The peacock represents resurrection and immortality," he said of the resurrection of the St. Peter's program. "We tell our players that, if you go to the zoo, the peacock always is in a special cage by itself. That's because once a peacock is provoked, you have to kill it." (Bill Waldy, St. Peter's SID)

Susquehanna coach William "Rocky" Rees on the smallness of his team: "If the Chicago Bears have the Refrigerator (defensive tackle and sometimes running back William Perry), then we have the ice cube trays." (Scott Deitch, Susquehanna SID)

After completing one of the most dramatic turnarounds in Lawrence's 92-year football history (from 2-6-1 to 7-2), second-year coach Rich Agness said: "To go 7-2 in a season in which no one picked you to do anything is an absolutely great feeling."

And no one had a happier time than running back Greg Curtis, who sold vacuum cleaners door-to-door last summer: "This is great. I just go to school and they send me commission checks as people make their payments." (Rick Peterson, Lawrence SID)

Millikin coach Carl Poelker commenting on quarterback John Cardamone's 67-yard touchdown run in a victory over Carroll (Wisconsin) November 9: "It took John so long to get to the end zone, I'm surprised the officials didn't call a delay-of-game penalty on us." (Jim Bowers, Millikin SID)

Prior to playing heavily favored Portland State, California Lutheran coach Bob Shoup said, "We pose as much of a threat to Portland as Belgium did to the Third Reich." But Shoup's team led much of the game



Mount Union's Scott Woolfranks fourth in Division III passing efficiency

before losing 27-20, as Portland State needed an interception at its two-yard line at the end to win. Said Shoup: "We had the guns, but not the ammunition at the end." (Jim Buchheim, California Lutheran SID)

## Blue Brigade left behind

Arizona now is assured of a fifth straight winning season, the first time that has happened since 1939-1942 and 1945 (no team in the war years of 1943 and 1944). The last time it happened five straight years at Arizona was 1933 through 1937, the "Blue Brigade" teams of coach Tex Oliver. After the 1937 season, a group of boosters presented Oliver with a bonus check of \$1,000—big money in those days. What did Tex do? He bought himself a new car and drove off to become the coach at Oregon. (Jim Muldoon, Pacific-10 Conference SID)

## Electrical flea-flicker

Western Illinois was leading, 7-3, over Winona State in a parent's day game November 9 at WIU and had just scored on a 58-yard touchdown pass on a flea-flicker play when the rest of the game was cancelled because of an electrical storm. Players said they felt a tingle when lightning hit nearby in the second quarter. Dick Pawlow, Western Illinois baseball coach, said he thought he saw sparks fly off the end of his umbrella. (Larry Heimburger, Western Illinois SID)

## Can you top these?

Utah's Erroll Tucker tied a Division I-A single-game record by intercepting two Utah State passes November 9 and returning both for touchdowns (66 and 41 yards). He now has three interception touchdowns for the season—equalling the I-A record. And he now has two punt-return touchdowns and a kickoff-return TD as well, making him the only I-A player ever to have more than one TD in more than one runback category (the others had one runback TD each). (Bruce Woodbury, Utah SID)

Ever hear of back-to-back runback touchdowns? Slippery Rock junior Troy Keefer, from Hollidaysburg, Pennsylvania, accomplished that rare feat with a 100-yard kickoff return at Shippensburg, then a 64-yard punt return the next time he touched the ball. In spite of his feat, Slippery Rock lost, 34-23. (John Carpenter, Slippery Rock SID)

## I-A gains, I-AA loses attendance

Division I-A gained back some attendance ground November 16 but not as much as was hoped for, and it is running out of games to equal the record 1984 figure. Crowds averaged 43,104, but if each team had equalled its previous season average, the average would have been 47,842. There are 61 I-A home games left vs. only 32 at this stage a year ago (mostly due to the calendar, with a later Thanksgiving), but if teams simply draw their average, attendance based on pressbox figures will be down about 100,000 for the year. Then the final audit can bring a reduction of as much as 100,000 more. Division I-AA crowds averaged only 7,218 November 16, and I-AA now is up only nine per game, while I-A is down 396 per game. The chart:

	Games	Attendance	Average	Pct. Cap.
Division I-A season figures to date ....	544	22,820,643	41,950	79.3
Same 105 teams at this stage in 1984 ..	574	24,306,364	42,346	80.5
Division I-AA season figures to date ..	439	4,775,436	10,878	53.4
Same 87 teams at this stage in 1984 ...	460	4,999,952	10,869	54.7

## Football notes

is the collegiate record, 32 more than Lomax.

Rhode Island's Tom Ehrhardt has 10,325 career passing yards, and Lehigh's Marty Horn is next at 8,857. Horn's favorite target, Rennie Benn, has 231 career catches, No. 2 all-time. The top career rusher in I-AA is Holy Cross' Gill Fenerty at 3,618 with one game left.

## Wedding anniversary game

Willie Mason is sports information director at District of Columbia, and his wife, Jean, is SID at Bowie State. When the two teams played November 16 in Washington, D.C., it was their 10th wedding anniversary. If that was not celebration enough, Willie, a recently ordained minister, gave his first Sunday sermon the next day at the Second Baptist Church in Annapolis, Maryland (only six minutes from their home near the campus in Bowie, Maryland).

"Willie used to be sports information director here at Bowie State and we met when I was a part-time student here," said Jean. "He knows and loves the kids here and our house is going to be packed with kids from both sides. It will be a real family gathering. Our older children keep statistics and our 8-year-old is a ball girl. We have been teasing each other all week, saying 'Don't come home if you win.'" (Final score: District of Columbia 21, Bowie State 0.) (Jean Mason, Bowie State SID)

## Win gains a tie

Bowdoin president A. LeRoy Greason is a 1946 graduate of Wesleyan; hence, he promised to give his Wesleyan necktie to Bowdoin coach Howard Vandersea if Bowdoin could upset Wesleyan for the first time since 1976. Bowdoin did just that, 13-9, and Greason presented Vandersea with the tie in a festive locker-room celebration. (H. Jay Burns, Bowdoin public relations fellow)

at the Clemson two-yard line earlier in the game. As he walked off the field, head down, coach Dick Crum pulled him aside. "He just told me to forget about it," Humes said. So with third down at the one-yard line in the last minute, Humes said, "I asked to have the ball. In the huddle we said 'We're taking the ball to Steve' (who was sitting in his wheelchair behind the back line of the end zone). That's all that was said."

And that is exactly what happened. After Humes crashed in behind tackle Harris Barton, guard Pat Sheehan scooped up the ball and a host of Tar Heel players rushed to Streater. Davis said it best: "If he can have faith, there's no reason why we shouldn't believe in ourselves in a simple thing like a game." (Rick Brewer, North Carolina SID)

## Quotes of the week

South Dakota coach Dave Triplett describing the plight of his squad after injuries have forced as many as nine starters to miss games: "Injuries never seem to leave us. There was more health in Europe during the Black Plague than there is on our team." (Mike Mahon, South Dakota SID)

Minnesota coach Lou Holtz before the Michigan game November 16: "When you play Michigan's defense, you wouldn't have a chance if you played 'em at the airport or on a handball court. Holding seven teams without a touchdown in this day and age is unbelievable (one of those seven was Iowa, which beat the Wolverines on a last-second field goal, 12-10, for their only loss; another was Illinois, which tied them, 3-3). I'm going to go home and check Ripley's Believe It or Not. If I'd known how tough it would be in this league, I wouldn't have come here." Final score: Michigan 48, Minnesota 7. (Bob Peterson, Minnesota SID)

# The NCAA News



# Football Statistics

Through games of November 16

## Division I-A individual leaders

RUSHING									
CL	G	CAR	YDS	AVG	TD	YDSPG			
Lorenzo White, Michigan St.	So	10	344	1685	4.9	16	168.5		
Paul Palmer, Temple	Jr	9	279	1516	5.4	9	168.4		
Bo Jackson, Auburn	So	10	247	1644	6.7	15	164.4		
Thurman Thomas, Oklahoma St.	So	9	258	1399	5.4	15	155.4		
George Swann, Miami (Ohio)	Jr	10	277	1404	5.1	12	140.4		
Doug Dubose, Nebraska	Jr	9	187	1115	6.0	8	123.9		
Barry Word, Virginia	So	10	207	1224	5.9	6	122.4		
Reggie Dupard, SMU	Sr	9	190	1077	5.7	12	119.7		
Steve Bartalo, Colorado St.	Jr	11	309	1275	4.1	12	115.9		
Charles Gladman, Pittsburgh	So	9	177	1004	5.7	6	111.8		
Napoleon McCallum, Navy	So	10	246	1110	4.5	14	111.0		
Gordon Brown, Tulsa	Sr	11	189	1201	7.1	4	108.2		
Rueben Mayes, Washington St.	Sr	10	199	1069	5.4	10	106.9		
Larry Emery, Wisconsin	Jr	10	209	1068	5.1	8	106.8		
Nuu Faaola, Hawaii	Sr	7	135	731	5.4	8	104.4		
Ronnie Harmon, Iowa	Sr	10	196	1036	5.3	8	103.6		
Allen Pinkett, Notre Dame	Sr	9	207	920	4.4	10	102.2		
Tony Cherry, Oregon	Jr	8	170	817	4.8	8	102.1		
Reggie Taylor, Cincinnati	Jr	10	241	1020	4.2	3	102.0		
Darrell Wallace, Missouri	So	10	205	1018	5.0	5	101.6		
Chris Hardy, San Diego St.	So	10	131	97.3	7.4	5	97.3		
Jamelle Holloway, Oklahoma	Fr	6	92	574	6.2	5	95.7		
Eddie Lewis, Utah	Fr	10	173	941	5.4	7	94.1		

SCORING									
CL	G	TD	XP	FG	PTS	PTPG			
Bernard White, Bowling Green	Sr	10	18	0	108	10.8			
Thurman Thomas, Oklahoma St.	So	9	16	0	96	10.7			
Derek Schmidt, Florida St.	So	10	0	42	18	9.6			
Lorenzo White, Michigan St.	So	10	16	0	96	9.6			
George Swann, Miami (Ohio)	Jr	10	16	0	96	9.6			
Reggie Dupard, SMU	Sr	9	14	0	84	9.3			
Steve Gage, Tulsa	Jr	11	17	0	102	9.3			
Barry Bell, Fresno St.	So	10	0	41	17	9.2			
Napoleon McCallum, Navy	So	10	15	0	90	9.0			
Bo Jackson, Auburn	Sr	10	15	0	90	9.0			
Rob Houghtlin, Iowa	So	10	0	42	16	9.0			
Willie Turral, New Mexico	Sr	10	14	0	90	9.0			
John Lee, UCLA	Jr	9	0	32	19	8.9			
Carlos Reveiz, Tennessee	Jr	9	0	23	19	8.9			
Mark Bellini, Brigham Young	Jr	10	13	0	78	8.7			
Massimo Manca, Penn State	So	10	0	24	20	8.4			
Kelly Pittman, Air Force	Sr	10	14	0	84	8.4			
Tim Lashar, Oklahoma	Jr	8	0	34	11	8.4			
Jeff Ward, Texas	Jr	11	0	36	18	9.0			
Andre Guardi, Utah	Fr	11	0	12	25	8.7			
John Dietrich, Ball State	Fr	10	0	31	16	7.9			
Mike Gillette, Michigan	Fr	10	0	31	16	7.9			
Max Zendejas, Arizona	Sr	10	0	22	19	7.9			

PASSING EFFICIENCY												
(Min. 15 att. per game)	CL	G	ATT	CMP	CMP	PCT	INT	INT	YDS	YDS/	TD	RATING
								PCT		ATT	PCT	POINTS
Mike Shula, Alabama	Jr	10	201	124	61.69	7	3.48	1814	9.02	16	7.96	156.8
Jim Karsatos, Ohio State	Jr	10	223	141	63.23	7	3.14	1936	8.68	18	8.07	156.5
Jim Harbaugh, Michigan	Sr	10	193	123	63.73	6	3.11	1683	8.72	15	7.77	156.4
Chuck Long, Iowa	Sr	10	320	210	65.62	14	4.38	2710	8.47	25	8.81	153.8
Vinny Testaverde, Miami (Fla.)	Jr	9	281	173	61.57	14	4.98	2637	9.38	19	6.76	152.7
Kerwin Bell, Florida	So	10	266	166	62.41	8	3.01	2344	8.81	18	6.77	152.7
Robbie Bosco, Brigham Young	Sr	11	437	291	66.59	22	5.03	3687	8.44	27	6.58	147.8
Tony Robinson, Tennessee	Sr	7	143	91	63.64	7	4.90	1246	8.71	8	5.19	145.5
Jim Everett, Purdue	Sr	10	411	263	63.99	9	2.19	3358	8.17	21	5.11	145.1
Doug Gaylor, Long Beach St.	Sr	11	415	295	71.08	16	3.86	3266	7.87	18	4.34	143.8
David Norrie, UCLA	Sr	10	193	122	63.21	8	4.15	1641	8.50	10	5.18	143.4
Kevin Sweeney, Fresno St.	Jr	10	268	155	57.84	7	2.61	2329	8.69	12	4.48	138.5
Todd Santos, San Diego St.	So	10	293	180	61.43	16	5.46	2363	8.06	10	5.14	138.5
John Dewberry, Georgia Tech	Sr	10	178	102	57.30	7	3.93	1480	8.31	10	5.82	137.8
Danny McColin, Cincinnati	Jr	8	180	101	56.11	4	2.22	1404	7.80	11	6.11	137.4
Billy Rucker, New Mexico	Jr	10	222	115	51.80	15	6.78	2168	9.77	9	4.05	133.7
Sammy Garza, UTEP	Jr	10	178	108	60.67	10	5.82	1505	8.46	8	3.37	131.6
Mark Rypien, Washington St.	Sr	10	256	150	58.59	11	4.30	2024	7.91	11	4.30	130.6
Greg Tipton, Hawaii	Jr	9	221	119	53.85	7	3.17	1729	7.82	11	4.98	129.7
Kelly Skouffor, Colorado St.	Jr	11	317	189	59.62	10	3.15	2218	7.00	15	4.73	127.7
Lee Saltz, Temple	Jr	11	229	107	46.72	8	3.49	1875	8.19	13	5.68	127.2
Erik Kramer, N. C. State	Jr	11	339	189	55.75	12	3.54	2510	7.40	16	4.72	126.4
Stan Gelbaugh, Maryland	Sr	10	286	152	53.15	14	4.90	2277	7.96	14	4.90	126.4

RECEIVING									
CL	G	CT	YDS	TD	CTPG				
Brad Muster, Stanford	Jr	8	73	618	3	9.1			
Rodney Carter, Purdue	Sr	10	89	986	2	8.9			
David Williams, Illinois	Sr	10	79	925	6	7.9			
Webster Slaughter, S. Diego St.	Sr	10	66	863	9	6.6			
Reggie Bynum, Oregon St.	Sr	9	56	643	7	6.2			
Loren Richey, Utah	Jr	11	66	893	7	6.0			
Mark Bellini, Brigham Young	Jr	9	54	872	13	6.0			
Charles Lockett, Long Beach St.	Jr	11	65	908	10	5.9			
Greg Baty, Stanford	Sr	10	59	671	2	5.9			
Marc Zeno, Tulane	So	9	51	788	2	5.7			
Richard Estell, Kansas	Sr	11	62	940	3	5.6			
Trevor Molini, Brigham Young	So	11	62	842	3	5.6			
Walter Murray, Hawaii	Sr	9	50	787	6	5.6			
Mark Templeton, Long Beach St.	Jr	10	55	450	1	5.5			
Kelly Smith, Brigham Young	Sr	9	49	530	2	5.4			
Thomas Rooks, Illinois	Sr	10	53	337	1	5.3			
Ken Allen, Indiana	Jr	10	52	851	3	5.2			
Joe Rowley, New Mexico St.	So	10	52	485	0	5.2			
Lew Barnes, Oregon	Sr	9	46	720	6	5.1			
Lakel Heimuli, Brigham Young	Jr	11	56	400	0	5.1			
Everett Crawford, Vanderbilt	So	10	50	533	2	5.0			
Michael Ramsey, Wake Forest	Sr	11	54	450	1	4.9			
Cris Carter, Ohio State	So	10	48	789	7	4.8			

ALL-PURPOSE RUNNERS									
CL	G	RUSH	REC	PR	KOR	YDS	YDSPG		
Napoleon McCallum, Navy	Sr	10	1110	348	157	439	2054		
Paul Palmer, Temple	Jr	9	1516	131	0	96	1743		
George Swann, Miami (Ohio)	Jr	10	1404	409	0	17	1830		
Thurman Thomas, Oklahoma St.	So	9	1399	103	104	0	1806		
Ronnie Harmon, Iowa	Sr	10	1036	535	0	147	1718		
Lorenzo White, Michigan St.	So	10	1685	22	0	0	1707		
Bo Jackson, Auburn	Sr	10	1644	48	0	0	1682		
Ernest Givins, Louisville	Sr	10	191	549	154	702	1596		
Tony Cherry, Oregon	Sr	8	817	185	0	259	1281		
Doug Dubose, Nebraska	Jr	9	1115	65	0	237	1417		
Webster Slaughter, S. Diego St.	Sr	10	68	863	163	374	1468		
Terrence Mathis, New Mexico	Fr	10	146	797	48	422	1411		
Darrell Wallace, Missouri	So	10	106	16	83	293	1408		
Steve Bartalo, Colorado St.	Jr	11	1275	272	0	0	1547		
Reggie Dupard, SMU	Jr	9	1077	174	0	0	1251		
Barry Word, Virginia	Sr	10	1224	76	0	76	1376		
Joe Rowley, New Mexico St.	So	10	1458	485	0	0	1385		
Rueben Mayes, Washington St.	Sr	10	1069	252	0	0	1321		
Brad Muster, Stanford	Jr	8	438	116	0	0	1056		
Reggie Taylor, Cincinnati	Jr	10	1020	158	0	140	1316		
Neal Anderson, Florida	Jr	10	939	349	0	17	1305		
Chris Hardy, San Diego St.	Sr	10	973	234	0	82	1289		
Jamie Morris, Michigan	So	10	842	191	0	212	1245		

	TOTAL OFFENSE										
	RUSHING			PASSING			TOTAL OFFENSE			YDSPG	
CAR	GAIN	LOSS	NET	ATT	YDS	PLS	YDS	YDPL	TD*		
Jim Everett, Purdue	81	198	231	33	411	3358	472	3325	7.0	22	332.5
Robbie Bosco, Brigham Young	57	129	266	137	437	3687	494	3550	7.2	22	322.5
Doug Gaylor, Long Beach St.	128	396	566	170	415	3266	543	3096	5.7	23	281.5
Vinny Testaverde, Miami (Fla.)	57	120	259	139	281	2637	338	2498	7.4	22	277.6
Don Smith, Miss. State	163	799	233	586	284	2144	447	2710	6.1	27	271.0
Mike Norrath, Kansas	125	483	289	214	377	2758	502	2972	5.9	18	270.2
Chuck Long, Iowa	36	56	145	-89	320	2710	356	2621	7.4	26	262.1
Jack Trudeau, Illinois	65	129	162	33	417	2631	482	2598	5.4	15	259.8
Larry Egger, Utah	52	62	166	-104	386	2680	438	2576	5.9	19	257.6
Billy Rucker, New Mexico	142	513	167	346	222	2168	384	2514	6.9	18	251.4
Shawn Halloran, Boston College	63	148	261	-113	410	2776	473	2663	5.6	11	242.1
John Paine, Stanford	66	188	217	-29	383	2428	449	2399	5.3	12	239.9
Kevin Sweeney, Fresno St.	71	211	191	20	268	2329	339	2349	6.9	15	234.9
Todd Santos, San Diego St.	37	98	174	-76	293	2363	330	2287	6.9	18	228.7
Mark Ryplen, Washington St.	67	313	84	229	256	2024	323	2253	7.0	14	225.3
Chris Miller, Oregon	32	145	98	47	283	1967	315	2014	6.4	19	223.8
Jim Miller, New Mexico St.	126	560	347	213	338	2024	464	2237	4.8	10	223.7
Stan Gelbaugh, Maryland	36	69	168	-99	296	2277	322	2178	6.8	15	217.8
Kerwin Bell, Florida	50	78	270	-192	266	2344	316	2152	6.8	18	215.2
Brian McClure, Bowling Green	36	47	128	-81	322	2195	358	2114	5.9	15	211.4
Bar Weiss, Air Force	168	1113	127	986	126	1308	294	2295	7.8	19	208.6
Erik Kramer, N. C. State	90	134	392	-258	339	2510	429	2252	5.2	17	204.7
Mike Greenfield, Northwestern	160	430	373	57	309	1985	489	2042	4.4	8	204.4

# The NCAA News



# Football Statistics

Through games of November 16

## Division I-AA individual leaders

RUSHING									
CL	G	CAR	YDS	AVG	TD	YDSPG			
Burton Murchison, Lamar	So	10	234	1407	6.0	8	140.7		
Gill Fenerty, Holy Cross	Sr	10	247	1368	5.5	7	136.8		
Ken Gamble, Colgate	So	10	233	1329	5.7	14	132.9		
Mike Clark, Akron	Jr	10	293	1273	4.3	12	127.3		
John Settle, Appalachian	Jr	10	235	1272	5.4	12	127.2		
Charvez Foger, Nevada-Reno	Fr	10	179	1241	6.9	14	124.1		
James Crawford, Eastern Ky.	Jr	10	195	1115	5.7	6	111.5		
Andre Garmon, New Hampshire	Sr	8	175	888	5.1	11	111.0		
Byron Mitchell, Southern Ill.	So	11	171	1211	7.1	7	110.1		
Keith Williams, SW Missouri St.	So	11	158	1201	7.6	9	109.2		
Gerald Anderson, Middle Tenn.	So	9	163	979	6.0	10	108.8		
Jamie Townsend, Eastern Wash.	So	9	193	977	5.1	11	108.6		
Warren Marshall, James Madison	Jr	10	197	1078	5.5	3	107.8		
Jon Francis, Boise State	So	10	177	1032	5.8	8	103.2		
Jamie Potkul, Brown	Sr	8	200	817	4.1	7	102.1		
Stephen Wilson, Illinois State	Sr	11	231	1101	4.8	4	100.1		
Eloy Harris, Eastern Ky.	Fr	10	163	984	6.0	11	98.4		
Oscar Smith, Nicholls St.	Sr	9	185	871	4.7	9	96.8		
Terry Hoover, Delaware St.	Jr	9	100	834	8.3	7	92.7		
Eddie Hayward, Tenn. Tech	Jr	9	223	826	4.2	7	92.6		
Brian Jager, Furman	Jr	9	150	832	5.5	9	92.4		
Merrill Hoge, Idaho State	Jr	10	168	892	5.3	10	89.2		
John Stephens, NW Louisiana	So	10	180	882	4.9	4	88.2		

SCORING									
CL	G	TD	XP	FG	PTS	PTPG			
Charvez Foger, Nevada-Reno	Fr	10	18	0	108	10.8			
Marty Zendejas, Nevada-Reno	So	11	0	50	107	9.7			
Joe Thomas, Mississippi Val.	Sr	10	16	0	96	9.6			
Dameon Reilly, Rhode Island	Sr	11	17	0	102	9.3			
Carl Boyd, Northern Iowa	So	10	15	2	92	9.2			
Chas Fox, Furman	Sr	9	13	4	82	9.1			
Ken Gamble, Colgate	So	10	15	0	90	9.0			
Wayne Hill, Grambling	Jr	10	15	0	90	9.0			
Andre Garmon, New Hampshire	Sr	8	12	0	96	8.7			
Keith Williams, SW Missouri St.	Sr	11	16	0	96	8.7			
George Benyola, Louisiana Tech	Sr	11	0	23	86	8.6			
John Taylor, Delaware St.	Jr	10	14	2	86	8.6			
Merrill Hoge, Idaho State	Jr	10	14	2	86	8.6			
Rennie Benn, Lehigh	Sr	10	14	0	84	8.4			
Russ Klaus, Akron	Sr	9	0	21	83	8.3			
Tim Foley, Ga. Southern	So	10	0	28	76	7.6			
Brian Decicco, Idaho	Fr	10	0	36	75	7.5			
Perry Qualls, Alcorn St.	Sr	8	10	0	60	7.5			
John Settle, Appalachian	Fr	10	12	2	74	7.4			
Mike Angell, Northern Iowa	So	9	11	0	66	7.3			
Jamie Townsend, Eastern Wash.	Sr	9	11	0	66	7.3			
Eric Yarbber, Idaho	Jr	10	0	31	73	7.3			
Roberto Moran, Boise St.	Jr	10	0	34	73	7.3			
Rene Weitmann, Idaho State	Jr	10	0	34	73	7.3			

PASSING EFFICIENCY									
CL	G	ATT	CMP	PCT	INT	YDS	ATT	TD	RATING
(Min. 15 att. per game)									
Bobby Lamb, Furman	Sr	10	152	90	59.2	4	2.63	1596	10.50
Rick Sloan, Idaho	Sr	10	177	126	71.19	6	3.39	1546	8.73
Eric Beavers, Nevada-Reno	Jr	11	319	199	62.38	12	3.76	2617	8.20
Richard Myles, Alcorn St.	Sr	8	216	113	52.31	2	5.43	1822	8.44
Willie Totten, Miss. Val.	Sr	10	455	273	60.00	22	3.49	3465	7.52
Dave Stremann, Weber State	Sr	10	304	188	61.84	12	3.95	2598	8.54
Bubba Brister, NE Louisiana	Sr	10	333	176	52.85	17	5.11	2854	8.57
Mike Smith, Northern Iowa	So	10	259	152	58.69	8	3.09	2019	7.80
Tom Ehrhardt, Rhode Island	Sr	10	494	283	57.29	19	3.85	3542	7.17
Bob Bleier, Richmond	Sr	11	301	186	61.79	16	5.32	2208	7.34
Stan Yagiello, Wm. & Mary	Sr	11	413	240	58.11	10	2.42	2982	7.17
Vern Harris, Idaho State	Sr	8	262	139	53.05	10	3.82	2035	7.77
Tod Mayfield, West Texas St.	Jr	10	484	294	60.74	14	2.89	3404	7.03
Paul Singer, Western Ill.	Fr	9	208	115	55.29	7	3.37	1801	7.70
Hazzan Chatoles, Boise State	Jr	9	180	98	54.44	11	6.11	1372	7.62
Doug Hudson, Nicholls St.	Jr	10	278	155	55.76	16	5.76	2048	7.37
Alan Hooker, No. Caro. A&T	So	10	287	148	51.57	8	2.79	1865	6.50
Scott Linehan, Idaho	Jr	8	215	124	57.67	6	2.79	1617	7.52
Rick Worman, Eastern Wash.	Sr	9	369	205	55.83	14	3.79	2568	6.96
Tom Burgess, Colgate	Sr	10	300	151	50.33	14	4.67	2219	7.40
Tracy Ham, Ga. Southern	Jr	10	154	83	53.90	8	5.19	1159	7.53
Dave Palazzi, Massachusetts	Fr	9	157	84	53.50	5	3.18	1152	7.34
Jeff Miller, Indiana St.	Sr	10	327	176	53.82	8	2.45	2055	6.28

RECEIVING									
CL	G	CT	YDS	TD	CTPG				
Brian Forster, Rhode Island	Jr	10	115	1617	12	11.5			
Stan Carraway, West Texas St.	Jr	10	79	1237	11	7.9			
Joe Thomas, Mississippi Val.	Sr	10	78	1071	16	7.8			
Eric Yarbber, Idaho	Sr	9	69	1031	10	7.7			
Scott Auker, Idaho	Sr	10	73	742	4	7.3			
William Brooks, Boston U.	Sr	10	69	974	7	6.9			
Craig Slama, Weber State	Sr	10	68	1172	6	6.8			
Rennie Benn, Lehigh	Sr	10	67	986	14	6.7			
Michael Clemons, Wm. & Mary	Jr	11	70	657	4	6.4			
Sebastian Brown, Bethune-Cook	Sr	9	57	974	8	6.3			
David Pandt, Montana St.	Sr	9	69	869	4	6.3			
Ron Gillam, Wm. & Mary	Sr	11	68	1110	7	6.2			
Merrill Hoge, Idaho State	Jr	10	60	651	5	6.0			
Leland Melvin, Richmond	Sr	11	65	956	8	5.9			
Duwayne Pitts, Eastern Ill.	So	11	65	458	1	5.9			
Roy Banks, Eastern Ill.	Jr	10	59	817	9	5.9			
Tony Dimaggio, Rhode Island	Sr	9	52	591	4	5.8			
Donald Narcisse, Tx. Southern	Jr	11	63	709	5	5.7			
Tod Stenglein, Colgate	Sr	10	56	856	11	5.6			
Alan Mullins, Western Ky.	So	10	55	733	6	5.5			
Calvin Pierce, Eastern Ill.	Jr	11	60	900	4	5.5			
Herbert Harbison, No. Caro. A&T	Jr	10	53	683	4	5.3			
Alonzo Carmichael, West. Caro.	Jr	10	53	561	0	5.3			

ALL-PURPOSE RUNNERS									
CL	G	RUSH	REC	PR	KOR	YDS	YDSPG		
Gill Fenerty, Holy Cross	Sr	10	1368	187	1	414	197.0	170.7	197.0
Ken Gamble, Colgate	So	10	1329	157	0	401	188.7	188.7	188.7
Merrill Hoge, Idaho State	Jr	10	892	651	0	286	182.9	182.9	182.9
Keith Williams, SW Missouri St.	Sr	11	1201	510	0	232	194.3	176.6	176.6
Michael Clemons, Wm. & Mary	Jr	11	714	657	0	509	188.0	170.9	170.9
Brian Forster, Rhode Island	Jr	10	0	1617	60	0	167.7	167.7	167.7
Freddie Cook, Weber State	So	10	786	576	0	200	156.2	156.2	156.2
Jamie Potkul, Brown	Sr	8	817	126	0	273	121.6	144.7	144.7
Burton Murchison, Lamar	So	10	1407	40	0	144.7	144.7	144.7	144.7
Andre Garmon, New Hampshire	Sr	8	888	156	0	107	115.1	143.9	143.9
Stan Carraway, West Texas St.	Jr	10	0	1237	0	201	143.8	143.8	143.8
Jamie Townsend, Eastern Wash.	So	9	977	297	0	127.4	141.6	141.6	141.6
Charvez Foger, Nevada-Reno	Fr	10	1241	172	0	141.3	141.3	141.3	141.3
Eric Yarbber, Idaho	Sr	9	41	1031	182	14	128.8	140.9	140.9
Mike Clark, Akron	Jr	10	1273	112	0	138.5	138.5	138.5	138.5
Herbert Harbison, No. Caro. A&T	Jr	10	1272	74	0	134.6	134.6	134.6	134.6
John Settle, Appalachian	Fr	10	867	73	0	394	133.4	133.4	133.4
Rodney Payne, Murray State	So	9	483	45	314	331	117.3	130.3	130.3
Chris Flynn, Pennsylvania	So	11	988	458	0	142.6	129.6	129.6	129.6
Duwayne Pitts, Eastern Ill.	Jr	10	549	268	0	470	128.7	128.7	128.7
Earl Beecham, Bucknell	Jr	10	871	386	0	125.7	125.7	125.7	125.7
Carl Boyd, Northern Iowa	So	10	0	0	0	125.7	125.7	125.7	125.7

TOTAL OFFENSE											
	CAR	GAIN	RUSH	PASSING	YDS	PLS	TOTAL OFFENSE				
	66	173	136	37	455	3465	52.1	YDS	YDPL	TD	YDSPG
Willie Totten, Miss. Val.	66	173	136	37	455	3465	52.1	3502	6.7	42	350.2
Tom Ehrhardt, Rhode Island	35	58	138	82	494	3542	52.9	3460	6.5	35	346.0
Dave Stremann, Weber State	110	722	226	496	333	3854	44.3	3350	7.6	28	335.0
Tod Mayfield, West Texas St.	41	61	165	104	484	3404	52.5	3300	6.3	21	330.0
Rick Worman, Eastern Wash.	48	127	186	59	369	2568	41.7	2509	6.0	22	278.8
Marty Horn, Lehigh	60	202	139	63	410	2712	40.7	2775	5.9	20	277.5
Stan Yagiello, Wm. & Mary	69	222	171	51	413	2962	48.2	3013	6.3	24	273.9
Sean Payton, Eastern Ill.	100	150	291	141	494	3145	59.4	3005	5.1	25	273.2
Vern Harris, Idaho State	50	191	178	13	282	2035	31.2	2048	6.6	18	256.0
Tom Burgess, Colgate	109	541	219	322	300	2219	40.9	2541	6.2	25	254.1
Bubby Brister, NE Louisiana	74	138	285	147	304	2596	37.8	2448	6.5	15	244.8
Gilbert Renfro, Tennessee St.	68	212	207	5	373	2392	44.1	2397	5.4	20	239.7
Bernard Hawk, Bethune-Cook	20	18	70	52	313	2181	33.3	2129	6.4	15	236.6
Eric Beavers, Nevada-Reno	39	84	107	23	319	2617	35.8	2594	7.2	30	235.8
Richard Myles, Alcorn St.	31	76	71	5	216	1822	24.7	1827	7.4	14	228.4
Jeff Miller, Indiana St.	102	315	109	206	327	2055	42.9	2261	5.3	22	226.1
Jeff Cesarone, Western Ky.	36	27	187	160	396	2399	43.2	2239	5.2	16	223.9
Al Comer, Va. Military	92	260	234	26	326	2191	41.8	2217	5.3	11	221.7
Peter Lane, Connecticut	101	330	349	19	292	1973	39.3	1964	5.0	14	217.1
Carl Fodor, Marshall	58	70	194	124	400	2438	45.8	2314	5.1	15	210.4
Kip Allen, Citadel	57	88	289	201	417	2478	47.4	2277	4.8	19	207.0
Mike Smith, Northern Iowa	59	230	190	40	259	2019	31.8	2059	6.5	13	205.9
David Bates, Texas-Arlington	72	454	107	347	249	1705	32.1	2052	6.4	12	205.2

# The NCAA News



# Football Statistics

Final regular-season statistics

## Division II individual leaders

RUSHING						
CL	G	CAR	YDS	TD	YDSPG	
Andre Gillespie, NE Missouri	Sr	9	180	1044	7	116.0
Tony Jones, Saginaw Valley St.	Sr	10	222	1141	9	114.1
Bob Dyer, Southern Utah State	Sr	9	179	1016	9	112.9
Mark Corbin, Central St. (Ohio)	Sr	9	192	990	12	110.0
Chul Swank, South Dakota	Sr	10	198	1077	5	107.7
Troy Smith, Millersville	Sr	9	185	949	5	105.4
Carl Painter, Hampton	Jr	9	159	941	9	104.6
Don Hair, Cal St. Sacramento	Fr	9	139	896	9	99.6
Larry Brown, Mankato St.	Sr	10	139	983	8	98.3
Heath Sherman, Texas A&I	Fr	9	155	883	7	98.1
Jim Gled, Cal Poly SLO	Sr	7	128	684	6	97.7
Clarence Johnson, North Alabama	Sr	9	183	878	7	97.6
Chuck Sanders, Slippery Rock	Sr	9	223	849	6	94.3
Wesley Williams, Angelo St.	Sr	8	134	741	9	92.6
Stevie Young, West Georgia	So	7	126	647	2	92.4

SCORING						
CL	G	TD	XP	FG	PTS	PTPG
Wesley Williams, Angelo St.	Sr	8	14	0	84	10.5
Derrick Harden, Eastern N.M.	Sr	8	12	4	76	9.5
Robert Clark, N.C. Central	Jr	9	13	0	78	8.7
Mark Corbin, Central St. (Ohio)	Sr	9	12	2	74	8.2
Scott Jones, South Dakota	Jr	10	13	2	80	8.0
Eddie Loretto, California-Davis	Fr	8	0	29	11	82.7
Walter Rule, Texas A&I	Jr	9	0	24	15	69.7
Andre Gillespie, NE Missouri	Sr	9	11	0	66	7.3
Bob Dyer, Southern Utah State	Sr	9	11	0	66	7.3
Sean Murphy, Towson St.	Sr	9	11	0	66	7.3
James Noble, S.F. Austin	Sr	9	11	0	66	7.3
Mike Doan, C.S. Northridge	Jr	9	0	21	14	63.7
Mike Healey, Valparaiso	Sr	10	11	2	68	6.8
Robert Funderburk, Mansfield	Jr	8	9	0	54	6.8

PASSING EFFICIENCY							RATING		
(Min. 15 att. per game)	CL	G	ATT	CMP	PCT	INT	YDS	TD	POINTS
Chris Petersen, Cal-Davis	Jr	8	185	129	69.7	4	1792	14	171.6
Greg Calcagno, Santa Clara	So	9	239	149	62.3	11	2038	15	145.4
Kurt Beathard, Towson St.	Sr	9	321	194	60.4	10	2552	21	142.3
Jim Gibson, Morningside	Sr	10	263	153	58.2	16	1991	20	134.5
Tony Carroll, Tuskegee	So	8	126	80	47.6	1	1015	7	132.0
Todd Whitten, S.F. Austin	Jr	9	311	161	51.8	11	2287	23	130.8
Chris Hegg, NE Missouri	Sr	9	403	224	55.6	18	2981	26	129.9
Willie Gillus, Norfolk St.	Sr	10	242	122	50.4	13	2010	15	128.8
Mark Thomsen, NW Missouri	Sr	9	243	135	55.6	4	1755	12	129.2
Rex Lambert, Abilene Christian	So	9	350	191	54.6	12	2546	21	126.5
Dave Denbraber, Ferris St.	So	9	321	181	56.4	8	2244	17	127.5

RECEIVING						
CL	G	CT	YDS	TD	CTPG	
Mike Healey, Valparaiso	Sr	10	101	1279	11	10.1
Robert Clark, N.C. Central	Sr	9	58	1200	13	6.4
Steve Hansley, NW Missouri	Sr	10	64	810	7	6.4
Dan Anderson, NW Missouri	Sr	10	63	866	6	6.3
Dale Casey, Ft. Valley St.	Jr	8	49	565	6	6.1
Dale Chippis, Towson St.	So	9	53	989	6	5.9
Tim Bishop, East Stroudsburg	Sr	10	56	776	3	5.6
Paul Page, Butler	Jr	10	55	775	7	5.5
Cedric Gordon, Ferris St.	Fr	10	53	793	8	5.3
Sean Murphy, Towson St.	Sr	9	47	710	9	5.2
Brian Fogg, Indiana Central	Sr	10	52	709	2	5.2

TOTAL OFFENSE						
CL	G	PLAYS	YDS	YDSPG		
Chris Hegg, NE Missouri	Sr	9	483	3037	337.4	
Earl Harvey, N.C. Central	Fr	9	485	2683	299.2	
Chris Parker, C.S. Northridge	Jr	8	403	2258	282.3	
Kurt Beathard, Towson St.	Sr	9	371	2419	268.8	
Todd Whitten, S.F. Austin	Jr	9	398	2415	268.3	
Rex Lambert, Abilene Christian	So	9	397	2389	265.4	
Chris Petersen, Cal-Davis	Jr	8	255	2069	258.6	
Kevin O'Shea, Franklin	So	10	488	2449	244.9	
Dave Denbraber, Ferris St.	So	9	375	2182	242.4	
Ned Cox, Angelo State	Jr	9	465	2143	238.1	
Dave Walter, Michigan Tech	Jr	9	456	2100	233.3	
Rich Ingold, Indiana (Pa.)	Sr	9	357	2094	232.7	

FIELD GOALS						
CL	G	FGA	FG	PCT	FGPG	
Walter Rule, Texas A&I	Jr	9	15	78.9	1.67	
Mike Doan, C.S. Northridge	Jr	9	20	14	70.0	1.56
James Knowles, North Alabama	Sr	9	21	13	61.9	1.44
Eddie Loretto, California-Davis	Fr	8	15	11	73.3	1.38
Jim Zacny, Missouri-Rolla	Fr	9	16	11	68.8	1.22
Keith Moore, Valdosta St.	Jr	9	19	11	57.9	1.22
Greg Guthrie, Northern Michigan	Jr	8	14	9	64.3	1.13
Dave Desilva, Cal St. Sacramento	Sr	9	17	10	58.8	1.11

PUNT RETURNS						
CL	NO	YDS	AVG			
(Min. 1.2 per game)						
Darryl Skinner, Hampton	Jr	12	232	19.3		
Keith Torrence, Winston-Salem	Fr	12	226	18.8		
Mike Scialla, Colorado Mines	Sr	11	168	15.3		
Sedric Jefferson, Tuskegee	Fr	10	125	12.5		
Warren Culppepper, Indiana Can.	Sr	14	174	12.4		
Derek Hill, Bloomsburg	Fr	22	273	12.4		
Jerry Woods, Northern Mich.	Fr	20	218	10.9		
Garland Watts, Central St. (Ohio)	Jr	11	117	10.6		
Darryl Holmes, Ft. Valley St.	Jr	20	208	10.4		

KICKOFF RETURNS						
CL	NO	YDS	AVG			
(Min. 1.2 per game)						
Rufus Smith, Eastern N.M.	Fr	9	311	34.6		
Kyle Wilson, Southern Utah St.	Fr	22	666	30.3		
Andy Pool, Northern Mich.	Jr	12	330	27.5		
Joe McLaughlin, E. Stroudsburg	Fr	12	320	26.7		
Clarence Bailey, Hampton	Sr	11	292	26.5		
Robert Kearney, N.C. Central	Sr	16	401	25.1		
Jarvis Redmond, NW Missouri	So	14	347	24.8		
Don Elmore, Central Missouri St.	Fr	18	445	24.7		
Todd Smith, Morningside	Fr	18	431	23.9		

## Division II team leaders

PASSING OFFENSE						
CL	ATT	CMP	PCT	INT	YDS	YDSPG
Northeast Missouri State	9	415	229	55.2	19	3022
North Carolina Central	9	366	172	47.0	18	2943
Abilene Christian	9	365	197	54.0	12	2616
Towson State	9	331	198	59.8	13	2594
Franklin	10	445	212	47.6	17	2739
Indiana (Pa.)	9	338	197	58.3	16	2383
Ferris State	10	417	224	53.7	14	2622
Cal St. Northridge	9	376	203	54.0	14	2342
Stephen F. Austin State	9	319	162	50.8	11	2310
Santa Clara	9	255	160	62.7	11	2201

PASSING DEFENSE						
CL	ATT	CMP	PCT	INT	YDS	YDSPG
Ft. Valley State	9	233	72	30.9	27	798
Livingston	9	206	86	41.7	14	813
North Alabama	9	192	67	34.9	15	830
Bloomsburg	9	220	86	39.1	24	866
Winston-Salem	9	217	82	37.8	23	1059
Liberty	8	160	87	54.4	5	996
Virginia Union	9	210	88	41.9	17	1149
Valdosta State	9	229	90	39.3	12	1202
Bemidji State	9	244	105	43.0	27	1232
North Dakota State	10	265	130	49.1	18	1369

SCORING OFFENSE						
CL	TD	XP	2XP	FG	SAF	PTS
Central State (Ohio)	9	50	29	6	5	358
California Davis	8	39	30	4	11	305
South Dakota	10	46	37	2	7	338
Stephen F. Austin State	9	41	35	1	5	302
Morningside	10	46	33	5	4	331
Northeast Missouri State	9	41	36	1	3	295
Indiana (Pa.)	9	40	35	1	4	291
Cal State-Hayward	8	32	24	2	7	245
Bloomsburg	9	37	28	5	4	272
Santa Clara	9	34	28	5	8	270

SCORING DEFENSE						
CL	TD	XP	2XP	FG	SAF	PTS
Ft. Valley State	9	4	3	1	4	43
North Alabama	9	8	8	0	4	68
Bemidji State	9	11	6	0	1	77
Indiana Central	10	13	9	2	3	104
Valdosta State	9	11	9	0	7	98
Ashland	10	13	10	1	6	110
Bloomsburg	9	13	11	0	4	103
Virginia Union	9	14	11	1	2	103
Missouri-Rolla	9	14	5	2	4	105

RUSHING OFFENSE						
CL	CAR	YDS	YDSPG			
South Dakota	10	574	3022	302.2		
Saginaw Valley State	10	596	3004	300.4		
Central State (Ohio)	9	465	2560	284.4		
North Dakota	10	577	2793	279.3		
Mankato State	10	486	2553	255.3		
Texas A&I	9	476	2223	247.0		
Cal St. Sacramento	9	397	2094	232.7		
Winston-Salem	9	455	2078	230.9		
Lock Haven	9	464	2058	228.7		
Mississippi College	9	466	2042	226.9		

RUSHING DEFENSE						
CL	CAR	YDS	YDSPG			
Ft. Valley State	9	318	431	47.9		
Northplk State	10	326	509	50.9		
Minnesota-Duluth	9	280	491	54.6		
Central State (Ohio)	9	261	522	58.0		
Cal State-Hayward	8	239	466	58.3		
Butler	10	370	667	66.7		
Hampton	9	293	607	67.4		
Virginia Union	9	305	641	71.2		
Ashland	10	354	810	81.0		
Missouri-Rolla	9	337	744	82.7		

TOTAL OFFENSE						
CL	PLS	YDS	YDSPG			
NE Mo. State	9	715	4243	471.4		
S. F. Austin State	9	685	4085	453.9		
Cal St. Sacramento	9	635	3904	433.8		
Central St. (Ohio)	9	666	3826	425.1		
Santa Clara	9	633	3751	416.8		
South Dakota	10	723	4154	415.4		
Morningside	10	606	4028	402.8		
Cal-Davis	8	544	3216	402.0		

TOTAL DEFENSE						
CL	PLS	YDS	YDSPG			
Ft. Valley State	9	551	1229	136.6		
North Alabama	9	639	1677	186.3		
Virginia Union	9	508	1766	196.2		
Hampton	9	526	1845	205.0		
American Int'l	9	556	1894	210.4		
Minnesota-Duluth	9	567	1920	2		

# Trenton State claims its third field hockey championship

Trenton State became the first three-time winner of the Division III field hockey championship with a 2-1 victory over Millersville November 17 at Trenton State.

After an early-season storm dumped two inches of snow in New Jersey, the championship game, originally scheduled for November 16 at host Drew University, was postponed a day and moved to the artificial-turf field at Trenton State. The third-place game was played at Drew November 16, but weather-related deterioration of the natural-turf facility forced the championship game move.

The Lions advanced to the championship with a 1-0 upset of top-ranked and defending champion Bloomsburg. Millersville defeated Drew 1-0 in the other semifinal.

The victory over Bloomsburg avenged a 2-1 semifinal loss to the Huskies suffered by the Lions a year ago, the only time a Trenton State team has not advanced to the championship game.

The Lions won the 1981 title (2-0

over Franklin and Marshall), lost 2-1 on penalty strokes to Ithaca in the 1982 championship and captured the

State 23. Saves: Bloomsburg 4, Trenton State 4. Penalty corners: Bloomsburg 3, Trenton State 13.

## Championship Results

1983 title with a 2-1 victory over the Bombers in a rematch.

Six Trenton State players were named to the 1985 all-tournament team, including Margie Flynn, Sue Gallo and Chris Heddy on offense and Charlotte Heenan (goalie), Cheryl Simonsen and Marie Whalen on defense. Also selected on offense were Kelley Shea of Millersville and Bloomsburg's Carla Shearer. Rounding out the defensive unit were Sally Gormley of Drew, Karen Hertzler of Bloomsburg and Millersville's Chris Telfer.

### Semifinals

Trenton State ..... 0 1-1  
Bloomsburg ..... 0 0-0  
Second half: TS—Sue Gallo (unassisted), 31:35.  
Shots: Bloomsburg 10, Trenton

Millersville ..... 1 0-1  
Drew ..... 0 0-0  
First half: M—Debbie Molinaro (Jodi Kaelder), 26:21.  
Shots: Drew 8, Millersville 1. Penalty

Saves: Drew 8, Millersville 1. Penalty

corners: Drew 3, Millersville 11.

### Third Place

Bloomsburg ..... 1 3-4  
Drew ..... 1 0-1  
First half: D—Mary Ellen Vieira (Bonnie Ethridge), 11:41; B—Lynn Hurst (Carla Shearer), 14:54.

Second half: B—Kim Fey (Diane Shield), 3:14; B—Carla Shearer (Kate Denny), 16:41; B—Karen Hertzler (Kate Denny), 19:28.

Shots: Bloomsburg 23, Drew 3. Saves: Bloomsburg 2, Drew 8. Penalty

corners: Bloomsburg 13, Drew 3.

### Championship

Trenton State ..... 1 1-2  
Millersville ..... 0 1-1  
First half: TS—Penny Kempf (Chris Heddy), 33:33.

Second half: TS—Chris Heddy (Penny Kempf), 4:58; M—Theresa Witmer (unassisted), 18:33.

Shots: Trenton State 18, Millersville 9. Saves: Trenton State 5, Millersville 3. Penalty corners: Trenton State 5, Millersville 7.

## Two of top four teams upset in Division I field hockey

Two of the top four teams in Division I women's field hockey were upset during the first weekend of tournament action. Iowa, ranked No. 2 in the final regular-season poll, lost to Northwestern (3-2) on penalty strokes after three overtimes in the second round, while No. 4 North Carolina dropped a 3-2 decision to defending champion Old Dominion in the second round.

The Lady Monarchs will host the final four and will face the Wildcats in

Mason (18-3); Evansville (18-0-2) vs. Indiana (13-4-3); Temple (14-0-2) vs. Penn State (14-5-1); UCLA (16-1-4) vs. Nevada-Las Vegas (18-1-2); Southern Methodist (16-4) vs. Air Force (14-2-2).

### Division II Men's Soccer

First-round results: New York Tech 3, Keene State 0; Missouri-St. Louis 2, Barry 0; Davis & Elkins 4, East Stroudsburg 0; Cal State Northridge (16-5) vs. Chapman (11-6-2).

Second-round pairings: Southern Connecticut State (16-1-1) vs. New York Tech (17-2-1); Missouri-St. Louis (11-5-2) vs. Florida International (13-4-4); Gannon (19-0) vs. Davis & Elkins (11-2-3); Seattle Pacific (17-3) vs. winner Cal State Northridge and Chapman.

### Division III Men's Soccer

Third-round results: UNC-Greensboro 3, Salem State 0; Washington (Missouri) 1, UC San Diego 0; Glassboro State 4, Elizabethtown 3.

Semifinal pairings: UNC-Greensboro (17-5) vs. Fredonia State (15-2-1); Washington (20-2) vs. Glassboro State (15-3-3).

### Women's Soccer

Second-round results: Massachusetts 3, Boston College 0; George Mason 1, Cortland State 0; Colorado College 3, Cal-Santa Barbara 0; North Carolina 4, N.C. State 2.

Semifinal pairings: Massachusetts (16-0) vs. George Mason (16-2-1); Colorado College (16-4-0) vs. North Carolina (17-1-1).

## Championships Summaries

the semifinals, while Boston University and Connecticut square off in the other semifinal contest.

### Division I Field Hockey

First-round results: Iowa 3, Stanford 0; Old Dominion 3, Virginia 1; Boston University 1, Massachusetts 0; Maryland 1, Penn State 0.

Second-round results: Northwestern 3, Iowa 2 (3 ot, penalty strokes); Old Dominion 3, North Carolina 2; Boston University 1, New Hampshire 0 (ot); Connecticut 2, Maryland 0.

Semifinal pairings: (November 23 at Old Dominion): Northwestern (19-1) vs. Old Dominion (19-5); Boston University (17-2-2) vs. Connecticut (17-2). Winners play for the championship November 24 at Old Dominion.

### Division I Men's Soccer

First-round results: Columbia 3, Long Island-Brooklyn 1; Clemson 5, N.C. State 2; South Carolina 3, Duke 0; George Mason 1, Virginia 0; Indiana 2, Akron 0; UCLA 3, California 1; Nevada-Las Vegas 2, Fresno State 1.

Second-round pairings: Hartwick (15-2-1) vs. Columbia (10-2-2); Connecticut (17-3-3) vs. Boston U. (13-3-1); Clemson (18-2-2) vs. South Carolina (19-2-1); American (15-2-2) vs. George

## USA Network has its biggest lineup of postseason games

The 10th annual Independence Bowl will be the sixth bowl game of the USA Network postseason schedule. Jim Zrake, executive producer of USA Sports, said the exclusive national cable rights for the bowl game, scheduled for 8 p.m. Eastern time December 21 in Shreveport, Louisiana, have been acquired from Mizlou Productions in New York.

USA's bowl schedule this season is the network's most extensive to date and includes the Cherry Bowl, Holiday Bowl, Freedom Bowl, Bluebonnet Bowl and Senior Bowl.

USA Network has more than 30 million subscribers nationwide.

## Majority of top basketball coaches in favor of giving stipend to players

More than half of 169 men's basketball coaches at NCAA member institutions answering an Association questionnaire said they favor giving student-athletes \$50 to \$100 a month spending money in addition to grants-in-aid.

Of the Division I coaches polled, 56 of 84 were in favor, according to information published in the Men's College Basketball Press Kit, compiled and edited by James M. Van Valkenburg, NCAA director of statistics.

In Division II, eight coaches were in favor of the proposal to 21 opposed. The Division III breakdown was 23 in favor to 33 opposed. The

total response was 87 positive to 82 negative (51.5 percent).

Most of the coaches in favor of giving student-athletes spending money specified that the money should be carefully regulated and that it should be used for well-defined expenses. In lieu of spending money, 13 coaches suggested that student-athletes be allowed to retain all of the Pell Grant allotment they are entitled to on the basis of need.

Coaches on both sides of the question acknowledged that the addition of spending money probably would not stop cheating in intercollegiate athletics.

Several coaches suggested that the

money for such a plan should come from television revenue from the NCAA basketball championships.

Coaches opposed to granting spending money said the players still have summers available to earn money and indicated that such income should be enough.

Another suggestion (by 10 coaches) was that players be allowed to work during the school year, as is the situation with nonathletes on academic scholarships.

Several of the coaches indicated that any plan to provide spending money should be limited to Division I institutions.

## Broadcast teams selected for bowl games

Broadcast teams have been selected to anchor Lorimar Sports Network's coverage of the Holiday, Freedom and Bluebonnet Bowls.

Veteran play-by-play announcer Tom Hammond and Minnesota head football coach Lou Holtz will anchor the broadcasts for the eighth annual Holiday Bowl, which will be broadcast December 22.

Holtz also will join play-by-play veteran Phil Stone for the December 30 telecast of the Freedom Bowl. Former Brigham Young University all-America quarterback Gifford Nielsen will join Hammond for the December 31 telecast of the Bluebonnet Bowl.

Market coverage for Lorimar's three postseason bowl game telecasts has passed 81 percent of the nation's television households, according to Dave Almstead, vice-president for Lorimar's television services.

A total of 115 markets have cleared the telecasts, including 69 of the top

80 markets and 38 of the top 40. Lorimar Sports is projecting final clearance to be more than 85 percent of U.S. television households by the time the games are broadcast.

Lorimar Sports also recently announced that KCBS-TV, the CBS affiliate in Los Angeles, heads the list of station clearances finalized over the past month for the network's 1986

college basketball telecasts. KCBS has signed on to carry 20 games of the Pacific-10 Conference syndicated package and through Lorimar Sports will serve as the only commercial station outlet in Los Angeles for UCLA and Southern California basketball games, except for those games selected for national broadcast by NBC.

## Ex-players hope to bolster program

A group of former athletes at Southeastern Louisiana University, which has said it might have to drop its football program to cut costs, has announced a fund-raising campaign to retain the program.

The former players said they would help raise about \$44,000 a year in a drive to attain \$440,000 a year in pledges for the next five years.

The S Club, a letterman's organization, is setting a goal of \$310,000 over the next five years toward a goal

of \$2 million, the figure cited by university President J. Larry Crain as necessary to maintain the program. Because of state budget cuts, Crain had announced earlier that the university might have to end its football program at the end of this season.

About 200 former players are expected to participate in the project, according to Grady Morgan, former trainer and executive director of the S Club. A committee of 15 former student-athletes is working with Morgan.

## NCAA Professional Development Seminar

### Administering An Efficient Athletics Department

January 10-11, 1986

The New Orleans Hilton Riverside & Towers



FORMULATION AND DEVELOPMENT OF ATHLETICS BUDGETS • ATHLETICS BUDGET CONTROL AND REDUCTION • SPECIAL BUDGETARY PROBLEMS THAT FACE THE STATE, STUDENT-FUNDED, AND PRIVATE ATHLETICS PROGRAMS • EVALUATION OF COACHING STAFF • INVESTMENT POSSIBILITIES FOR THE ATHLETIC DOLLAR • SPECIAL FACILITY DESIGN TO INCREASE SEATING AND TICKET SALES • SELECTION OF A COMPUTER SYSTEM TO FIT YOUR DEPARTMENTAL SIZE AND BUDGET • PROVEN COMPUTER PROGRAMS TO MAXIMIZE EFFICIENCY AND OUTPUT OF THE ATHLETICS DEPARTMENT • EFFECTIVE REDUCTIONS IN ATHLETICS TRAVEL COSTS • SUCCESSFUL TECHNIQUES TO IMPROVE MANAGEMENT SKILLS AND MOTIVATE THE ATHLETICS STAFF

These are just some of the topics addressed during the new and expanding series of NCAA Professional Development Seminars. The seminars, geared for athletics directors, assistant athletics directors, promotional managers, business managers and all men and women in collegiate athletics administration, are available to NCAA members and non-NCAA member institutions.



The registration fee includes: 10 seminar sessions, reception, continental breakfast, luncheon, seminar workbook and all materials.

To register, return this form with a check payable to:  
NCAA Professional Development Seminar  
Host Communications  
P. O. Box 3071  
Lexington, Kentucky 40596-3071

Registration Fee: NCAA member \$145.00  
For 3 or more from one institution \$125.00  
Late payment after December 25 \$160.00  
Non-NCAA member \$200.00

Name \_\_\_\_\_ Title \_\_\_\_\_  
School \_\_\_\_\_ Division \_\_\_\_\_  
Address \_\_\_\_\_  
Phone \_\_\_\_\_

For more information, contact David W. Littleton, Host Communications, (606) 253-3230 or Cheryl Lavick, NCAA (913) 384-3220



Tom Ehrhardt

## Rams may be on verge of best season ever

Bob Griffin has had some fine seasons during his 14-year coaching career at Rhode Island, but 1983 may go down as his watershed year when he decides to hang up his whistle.

Two years ago, quarterback Tom Ehrhardt transferred from Long Island-C.W. Post, sat out the required one year and subsequently has rewritten Rhode Island's career passing records, three of which his older brother, Bob, a 1971 graduate, established.

While Tom Ehrhardt was watching from the sidelines, wide receiver Dameon Reilly, who did not play

high school football, transferred from a community college for his sophomore year at Rhode Island and promptly won rookie-of-the-year honors in the Yankee Conference.

When the pair started in Griffin's backfield in 1984, the Rams' prolific offense carried them to the semifinals of the NCAA Division I-AA Football Championship. And the two have played another major role in leading Rhode Island, ranked No. 10 in the latest NCAA Division I-AA football poll, to another berth this season.

Rhode Island, the only team to make this year's 12-team play-off

field at press time, automatically qualified by winning the Yankee Conference title. Other automatic qualifiers will include the champions of the Big Sky, Ohio Valley, Southern, Southland and Southwestern Athletic Conferences. Berths also will be awarded to the division's top two independent teams; the remainder of the field will be selected at large. The top four teams, as seeded by the NCAA Division I-AA Football Committee, will receive first-round byes.

Eight teams will play first-round games November 30, followed by quarterfinals December 7, semifinals

December 14 and the championship December 21 at Tacoma, Washington's Tacoma Dome.

Rhode Island rolled to the Yankee Conference title with an offense that rolled up an average of 438 yards of total offense and more than 31 points a game.

The Rams' potent offense is triggered by Ehrhardt, who through nine games had accounted for 321 yards per game in total offense and ranked among the nation's leaders in passing efficiency with 243 completions in 434 attempts, 2,976 passing yards and 27

See Rams, page 11

## Unbeaten Augustana (Illinois) lives up to its nickname

The Augustana (Illinois) Vikings football team is very deserving of its school's nickname. Much like the Scandinavian sea rovers who ravaged the coasts of Europe, Augustana's Vikings have been on a three-year rampage on the NCAA Division III football front that would make their 10th-century counterparts proud.

The two-time defending national champion Vikings clearly are the team to beat in the 13th annual NCAA Division III Football Championship, which begins with first-round games November 23, followed by quarterfinals November 30, semifinals December 7 and the championship game—the Amos Alonzo Stagg Bowl—December 14 in Phenix City, Alabama.

This year's championship field was

increased from eight to 16 teams, with four teams being picked from each of four regions; however, the extra game Augustana will have to play if it reaches the finals may just be another notch in coach Bob Reade's sword. The Vikings had won 33 consecutive games as of November 15, boosting Reade's record to 65-8 as he winds up his seventh season.

Despite a season-ending knee injury to junior quarterback Kirk Bednar in the third game of the season, Augustana's dominant wing-T offense has reeled off an average of 314 rushing yards a game.

Running back Brad "Killer Smurf" Price, 5-5, 170 pounds, had rushed for a team-leading 836 yards as of November 15, and fullback Shane McCormick has not been tackled for

a loss all season en route to a per-carry average of 5.1 yards.

The Vikings do not throw the football often, but it usually pays when they do. Of the 20 completions Bednar and sophomore quarterback Greg Wallace have thrown, 17 have been for first downs.

Teams unfortunate enough to be in the North region also will find that Augustana's defense is just as dominant. Through games of November 2, the Vikings led Division III in scoring defense, allowing opponents just 5.3 points per game, as well as total defense with a 156.3 yards-per-game average.

In the West region, No. 2-ranked Central (Iowa), runner-up to Augustana last season, will rely on its

stingy defense, which ranks among the division's leaders. Offensively, versatile Matt Schulte had scored five touchdowns and kicked 29 extra points and seven field goals through eight games to rank among the division's leaders.

Third-ranked Union (New York) does not have as much offensive firepower as the teams that rolled to a runner-up championship finish in 1983 and advanced to last year's semifinals, but coach Al Bagnoli's defense could carry the Dutchmen through the East region to the championship. After eight games, Union's defense had given up just eight points a game, while allowing opponents an average of less than 45 yards rushing.

Teams in the South region will need to find a way to stop Carnegie-Mellon, which finished its regular season among the nation's leaders in total offense (434 yards a game) and scoring (33.8), if they have any hopes of making it to Phenix City, where the championship game returns after it was played there from 1973 to 1982.

Following are the pairings for the 1985 NCAA Division III Football Championship:

**East:** Ithaca (8-1) at Union (New York) (9-0); Western Connecticut (10-1) at Montclair State (9-1).

**South:** Carnegie-Mellon (8-0) at Salisbury State (9-1); Lycoming (10-0) at Gettysburg (9-0-1).

**North:** Albion (7-1-1) at Augustana (Illinois) (9-0); Denison (10-0) at Mount Union (10-0).

**West:** Coe (9-0-1) at Central (Iowa) (9-0); St. John's (Minnesota) (8-1) at Occidental (8-1).



## 1985-86 NCAA championships dates and sites

### FALL

**Cross Country, Men's:** *Division I*, 47th, Marquette University, Milwaukee, Wisconsin, November 25, 1985; *Division II*, 28th, East Stroudsburg University, East Stroudsburg, Pennsylvania, November 23, 1985; *Division III*, 13th, Emory University, Atlanta, Georgia, November 23, 1985.

**Cross Country, Women's:** *Division I*, 5th, Marquette University, Milwaukee, Wisconsin, November 25, 1985; *Division II*, 5th, East Stroudsburg University, East Stroudsburg, Pennsylvania, November 23, 1985; *Division III*, 5th, Emory University, Atlanta, Georgia, November 23, 1985.

**Field Hockey:** *Division I*, 5th, Old Dominion University, Norfolk, Virginia, November 23-24, 1985; *Division III championship*—Trenton State College, Trenton, New Jersey.

**Football:** *Division I-AA*, 8th, Tacoma Dome, Tacoma, Washington, December 21, 1985; *Division II*, 13th, Palm Bowl, McAllen Texas, December 14, 1985; *Division III*, 13th, Amos Alonzo Stagg Bowl, Phenix City, Alabama, December 14, 1985.

**Soccer, Men's:** *Division I*, 27th, The Kingdome, Seattle, Washington, December 14, 1985; *Division II*, 14th, campus site to be determined, December 7 or 8, 1985; *Division III*, 12th, campus site to be determined, December 7 or 8, 1985.

**Soccer, Women's:** *4th championship*, George Mason University, Fairfax, Virginia, November 23-24, 1985.

**Volleyball, Women's:** *Division I*, 5th, Western Michigan University, Kalamazoo, Michigan, December 20 and 22, 1985; *Division II*, 5th, Portland State University, Portland, Oregon, December 13-14, 1985; *Division III*, 5th, campus site to be determined, December 13-14, 1985.

**Water Polo, Men's:** *17th championship*, Belmont Plaza Pool, Long Beach, California (California State University, Long Beach host), November 29-December 1, 1985.

Lexington, Kentucky, March 28 and 30, 1986; *Division II*, 5th, Springfield Civic Center, Springfield, Massachusetts (American International University and Springfield College cohosts), March 20 and 22, 1986; *Division III*, 5th, campus site to be determined, March 14-15, 1986.

**Fencing, Men's:** *42nd championship*, Princeton University, Princeton, New Jersey, March 18-19, 1986.

**Fencing, Women's:** *4th championship*, Princeton University, Princeton, New Jersey, March 20-22, 1986.

**Gymnastics, Men's:** *44th championship*, University of Nebraska, Lincoln, Nebraska, April 4-5, 1986.

**Gymnastics, Women's:** *Division I*, 5th, University of Florida, Gainesville, Florida, April 18-19, 1986; *Division II*, 5th, U.S. Air Force Academy, Colorado Springs, Colorado, April 4-5, 1986.

**Ice Hockey, Men's:** *Division I*, 39th, Providence Civic Center, Providence, Rhode Island (Brown University and Providence College cohosts), March 27-29, 1986; *Division III*, 3rd, campus site to be determined, March 21-22, 1986.

**Rifle, Men's and Women's:** *7th championship*, U.S. Naval Academy, Annapolis, Maryland, March 14-15, 1985.

**Skating, Men's and Women's:** *33rd*, University of Vermont, Burlington, Vermont, March 5-8, 1986.

**Swimming and Diving, Men's:** *Division I*, 63rd, I.U. Natatorium, Indianapolis, Indiana (Indiana University, Bloomington host), April 3-5, 1986; *Division II*, 23rd, Justus Aquatic Center, Orlando, Florida (Rollins College host), March 12-15, 1986; *Division III*, 12th, C. T. Branin Natatorium, Canton, Ohio (Kenyon College host), March 20-22, 1986.

**Swimming and Diving, Women's:** *Division I*, 5th, University of Arkansas, Fayetteville, Arkansas, March 20-22, 1986; *Division II*, 5th, Justus Aquatic Center, Orlando, Florida (Rollins College host), March 12-15, 1986; *Division III*, 5th, C. T. Branin Natatorium, Canton, Ohio (Kenyon College host), March 13-15, 1986.

**Indoor Track, Men's:** *Division I*, 22nd, The Myriad, Oklahoma City, Oklahoma (University of Oklahoma host), March 14-15, 1986; *Division III*, 2nd, campus site to be determined, March 14-15, 1986.

**Indoor Track, Women's:** *Division I*, 4th, The Myriad, Oklahoma City, Oklahoma (University of Oklahoma host), March 14-15, 1986; *Division III*, 2nd, campus site to be determined, March 14-15, 1986.

**Wrestling:** *Division I*, 56th, University of Iowa, Iowa City, Iowa, March 13-15, 1986; *Division II*, 24th, Southern Illinois University, Edwardsville, Illinois, February 28-March 1, 1986; *Division III*, 13th, Trenton State College, Trenton, New Jersey, February 28-March 1, 1986.

### SPRING

**Baseball:** *Division I*, 40th, Rosenblatt Municipal Stadium, Omaha, Nebraska (Creighton University host), May 30-June 8, 1986; *Division II*, 19th, Patterson Stadium, Montgomery, Alabama (Troy State University host), May 23-28, 1986; *Division III*, 11th, Marietta College, Marietta, Ohio, May 29-June 1, 1986.

**Golf, Men's:** *Division I*, 89th, Wake Forest University, Winston-Salem, North Carolina, May 28-31, 1986; *Division II*, 24th, University of Tampa, Tampa, Florida, May 20-23, 1986; *Division III*, 12th, campus site to be determined, May 20-23, 1986.

**Golf, Women's:** *5th championship*, Ohio State University, Columbus, Ohio, May 28-31, 1986.

**Lacrosse, Men's:** *Division I*, 16th, Rutgers University, New Brunswick, New Jersey, May 24 and 26, 1986; *Division III*, 7th, campus site to be determined, May 17, 1986.

**Lacrosse, Women's:** *5th championship*, University of Maryland, College Park, Maryland, May 17, 1986.

**Softball, Women's:** *Division I*, 4th, Seymour Smith Softball Complex, Omaha, Nebraska (Creighton University host), May 21-25, 1986; *Division II*, 5th, University of Akron, Akron, Ohio, May 16-18, 1986; *Division III*, 5th, Buena Vista College, Storm Lake, Iowa, May 15-18, 1986.

**Tennis, Men's:** *Division I*, 102nd, University of Georgia, Athens, Georgia, May 17-25, 1986; *Division II*, 24th, California State University, Northridge, California, May 12-18, 1986; *Division III*, 11th, Claremont-Mudd-Scripps College, Claremont, California, May 12-18, 1986.

**Tennis, Women's:** *Division I*, 5th, University of Texas, Austin, Texas, May 15-23, 1986; *Division II*, 5th, California State University, Northridge, California, May 5-10, 1986; *Division III*, 5th, Kalamazoo College, Kalamazoo, Michigan, May 13-17, 1986.

**Outdoor Track, Men's:** *Division I*, 65th, Indianapolis, Indiana (Indiana University, Bloomington, host), June 4-7, 1986; *Division II*, 24th, California State University, Los Angeles, California, May 21-24, 1986; *Division III*, 13th, University of Wisconsin, La Crosse, Wisconsin, May 21-24, 1986.

**Outdoor Track, Women's:** *Division I*, 5th, Indianapolis, Indiana (Indiana University, Bloomington, host), June 4-7, 1986; *Division II*, 5th, California State University, Los Angeles, California, May 21-24, 1986; *Division III*, 5th, University of Wisconsin, La Crosse, Wisconsin, May 21-24, 1986.

**Volleyball, Men's:** *17th championship*, Pennsylvania State University, University Park, Pennsylvania, May 2-3, 1986.

### WINTER

**Basketball, Men's:** *Division I*, 48th, Reunion Arena, Dallas, Texas (Southern Methodist University host), March 29 and 31, 1986; *Division II*, 30th, Springfield Civic Center, Springfield, Massachusetts (American International University and Springfield College cohosts), March 21-22, 1986; *Division III*, 12th, Calvin College, Grand Rapids, Michigan, March 14-15, 1986.

**Basketball, Women's:** *Division I*, 5th, University of Kentucky,

# Team up with Greyhound<sup>®</sup> and see what kind of sports we really are.

## Charter Greyhound, and we'll return up to 10% of your school's billings.

Every time you ride with us — from athletic teams to the band and other college organizations — you're helping to build the total amount of NCAA charter billings on Greyhound. And that adds up to big returns for your school.

With our new game plan, as the total NCAA volume figure grows, the percentage of billings that are returned to you will grow as well. Up to a maximum 10% rate of return that goes directly to the athletic department.

So when you go Greyhound<sup>®</sup>, you're getting more than our reputation for safety, service and reliability. You're getting a new way to keep expenses down.

When you're ready to plan your charters for the season, call us at 1-800-USA-NCAA. We'll give you more information and immediate charter quotes. And your Greyhound NCAA sales representative will contact you soon afterwards.

This year, put a good sport on your team. Choose Greyhound charters all season long.



Official Motorcoach Carrier for NCAA Championships



# GO GREYHOUND

And leave the driving to us.<sup>®</sup>

## Parity opens title chase to 8 hopefuls

Parity is the word in collegiate water polo, says Stanford coach Dante Dettamanti. And, as the 1985 NCAA Men's Water Polo Championship approaches, this equality promises to make the tournament a wide-open affair. Competition begins November 29 at the Belmont Plaza Pool in Long Beach, California.

"There is not much difference between the top eight teams in the country," said Dettamanti, who coaches the currently No. 1-ranked Cardinal. "Every year we have had several teams that have been close but this year it goes all the way down to eight teams. Everybody has beaten each other this year."

Of the eight teams selected for the single-elimination championship tournament, at least four teams will come from the West region, one from the Midwest region and two from the East region. Notification of selection will take place before November 24.

Stanford (20-4) has held its No. 1 ranking most of the year and is the favorite to clinch its fifth title in 10 years. The Cardinal narrowly lost the championship game last year, 9-8, to the California Golden Bears.

"We learned a lot last year; it was the first time these guys (current team members) had gone," Dettamanti said. "We are really hungry and really want to win this year."

Leading goal scorers for the Cardinal are Craig Klass (46), Jaime Velez (39) and David Imbernino (36).

UCLA (19-5), UC Irvine (18-6) and Long Beach State (19-8) are other top contenders from the West. California (14-7), the defending national champion and a six-time winner, is in a must-win situation as the regular season ends. The Bears probably will have to beat out UC Santa Barbara (17-9) or Southern California (18-11) for the remaining at-large bid.

In the Midwest, Loyola (Illinois) appears to be the selection with a 18-7 record. Brown (24-8), Bucknell (23-6) and Navy (22-7) are battling for the East region's two spots.

## Lemons files defamation suit

Former University of Texas, Austin, men's basketball coach Abe Lemons has filed a defamation lawsuit against the university's athletics director for statements Lemons alleges were made during a summer alumni meeting, the Associated Press reported.

C. Robert Dorsett, attorney for Lemons, filed the suit against DeLoss Dodds in Travis County District Court November 12.

The suit claims that Dodds made "defamatory statements" about Lemons July 31 while addressing a Fort Worth meeting of the University of Texas ex-students association.

According to the suit, Dodds said Lemons was "fired from his position as head basketball coach at the University of Texas because of 'NCAA problems.'"

Lemons was fired March 10, just after the season ended.

The suit contends the "reputation and professional standing of (Lemons) have been greatly harmed as these remarks suggest that (Lemons) was guilty of violations of NCAA regulations and as such is some form of a 'cheater.'"

Dodds said he knew of the suit "a couple of weeks ago" but said he has not seen a copy of Lemons' suit and could not comment on it.

Lemons coached the Longhorns from 1977 to 1982, compiling a 112-63 record. He now is head men's basketball coach at Oklahoma City University.

## Madison Square Garden Network sets slate

Madison Square Garden Network, a regional programmer serving Connecticut, New Jersey and New York, has announced the following 52-game basketball schedule for 1985-86:

**December:** 1—Columbia at New York University (tape delay); 16—Catholic at New York University; 26—ECAC Holiday Festival, double-header at Madison Square Garden; 28—ECAC Holiday Festival, double-header at Madison Square Garden.

**January:** 4—Kansas at Memphis State, Mississippi State at Louisiana State, double-header; 5—Michigan State at Indiana; 6—St. Peter's at Iona; 9—North Carolina vs. Fordham, Georgia Tech vs. Rutgers, double-header at Madison Square Garden; 11—Virginia Tech at South Carolina, Southern Methodist at Kansas, double-header; 15—Army vs. Northeastern, St. John's (New York) vs. Seton Hall, double-header at the Meadowlands; 16—LaSalle at Iona;

18—Georgetown vs. Seton Hall, St. Peter's vs. Holy Cross, double-header at the Meadowlands; 22—St. Peter's vs. Manhattan, St. John's (New York) vs. Fordham, double-header at Madison Square Garden; 25—Fairfield

### TV in the News

vs. Holy Cross, Fordham vs. Iona, double-header.

**February:** 1—Florida State at South Carolina, Arkansas at Southern Methodist, Louisiana State at Georgia, triple-header; 5—Rider vs. Lafayette, Syracuse vs. Seton Hall, double-header at the Meadowlands; 8—Texas at Arkansas, Manhattan at Iona (tape delay); 9—Iowa at Minnesota; 12—Upsala at New York University (tape delay); 15—Boston College vs. Seton Hall, Fordham vs.

Iona, double-header at the Meadowlands; 18—Dayton vs. St. Peter's, Connecticut vs. Seton Hall, double-header at the Meadowlands (tape delay); 19—Army vs. LaSalle, Notre Dame vs. Manhattan, double-header at Madison Square Garden; 22—Ohio State at Illinois; 23—Indiana at Purdue; 26—Houston at Southern Methodist (tape delay); 28—Manhattanville at New York University.

**March:** 1—Metro Atlantic Conference tournament semifinals, double-header at the Meadowlands; 2—Memphis State at Louisville; 3—Metro Atlantic Conference tournament championship, Atlantic 10 Conference tournament championship, double-header at the Meadowlands; 7—Southeastern Conference tournament semifinals, double-header; 8—Big Eight Conference tournament semifinals, double-header; 9—Big Eight Conference tournament championship.

## Saturday games

SNI Sports Network will broadcast nine Missouri Valley Conference games on Saturdays beginning January 4.

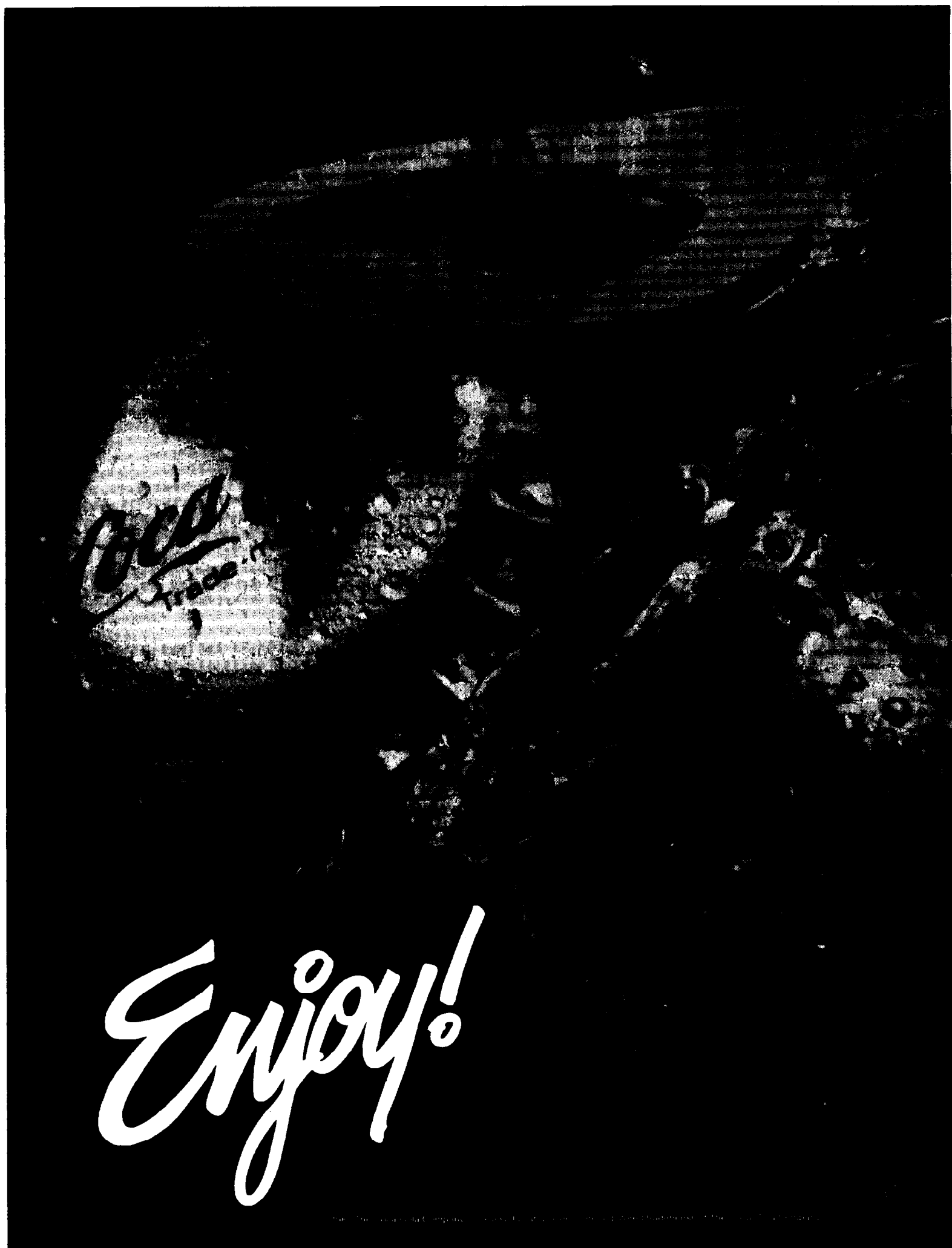
The St. Louis-based network will originate the broadcasts to stations in eight Midwest states. Cable systems in St. Louis, Chicago and Phoenix, along with the nationally distributed Commerce Satellite System, also will carry the package.

Following is the schedule of MVC telecasts:

**January:** 4—Tulsa at West Texas State; 11—Bradley at Drake; 18—Wichita State at Indiana State; 25—Indiana State at Illinois State.

**February:** 1—Bradley at Tulsa; 8—Tulsa at Drake; 15—Illinois State at Tulsa; 22—Wichita State at Bradley.

**March:** 1—Creighton at Wichita State.



## Unproven quarterback passes test for Aggies

The cloud of uncertainty that hovered above UC Davis football coach Jim Sochor in preseason has turned out to have a storm of touchdown passes in it that might sweep the Cal Aggies to the NCAA Division II Football Championship.

For the first time since 1979, Sochor had an unproven quarterback to run his sophisticated pro-style offense that relies on plenty of passing. When Roger Wilkinson, the heir apparent to all-America Scott Barry, found that off-season shoulder surgery prevented him from passing at peak efficiency and that his athletic skills were best used at running back, Sochor turned to a junior college transfer—Chris Petersen—for only the second time in his 16 years at UC Davis.

Petersen's performance thus far may spur Sochor to scour the junior college ranks more often. After an opening-season loss to Boise State, a Division I-AA team, Petersen has led the Cal Aggies to seven consecutive victories and the No. 1 spot in the latest NCAA Division II poll and has UC Davis poised for its fourth consecutive play-off bid.

The eight-team play-off field will be announced by November 24, with first-round games getting under way the following Saturday (November 30), followed by the semifinals December 7 and the championship December 14 at the Palm Bowl in McAllen, Texas. One team from each of four regions will be selected, with the rest of the field selected on the basis of strength without geographical consideration.

The only hurdles in UC Davis' path for the West region berth were formidable season-ending showdowns against 16th-ranked Cal State Hayward and 13th-ranked Cal State Sacramento, two Northern California Athletic Conference rivals that could prevent the Aggies from posting an all-divisions record of 15 consecutive conference championships.

The way Petersen has been playing, stopping the UC Davis offensive attack—which is ranked second in the division through seven games in scoring offense with a 38 points-per-game average and sixth in total offense with an average of more than 410 yards, will be no small feat. Petersen has led the division in passing efficiency, hitting 113 of 163 attempts for 1,613 yards and 12 touchdowns.

In addition to the three play-off contenders from the NCAC, fourth-ranked Santa Clara and 10th-ranked South Dakota also were in the picture for a play-off invitation.

In the South region, second-ranked Fort Valley State is on target to gain its first play-off berth since suffering a first-round loss in the 1982 tournament, along with North Alabama, a 1983 semifinalist.

North Alabama, long noted for dominant defensive units, continues to live up to its reputation. The Lions were ranked second in total defense through games of November 2, allowing opponents less than 195 yards per game, and scoring defense with an 8.6 per-game average.

Other South region teams with play-off aspirations include ninth-ranked Winston-Salem State, 11th-ranked Mississippi College and 18th-ranked Hampton.

Third-ranked Indiana (Pennsylvania) appears to have the inside track to a bid in the East region thanks to the pass-catch combination of quarterback Rich Ingold and receivers Dave Seidel and Tony Trave. Ingold, ranked among the division leaders in passing efficiency and total offense, had hit the receiving duo for a combined 77 catches and nearly 930 yards

## Rams

*Continued from page 8*  
touchdown passes.

Reilly has been on the other end of 13 of Ehrhardt's scoring strikes to rank among the division's scoring leaders with a 7.8 per-game average through games of November 9.

When Reilly is covered, Ehrhardt has found tight end Brian Forster open—several times. Forster, who established championship records with 18 catches and 252 net yards receiving in a 23-17 quarterfinal victory over Richmond last year, led the nation as of November 9 in receiving with nearly eight catches per game and 1,048 yards. Forster also had the division's season single-game high in receiving yardage with 327 yards against Brown.

Front-runners for other automatic berths or at-large bids at press time included No. 3 Nevada-Reno and No. 6 Idaho in the Big Sky; No. 1 Middle Tennessee State, No. 7 (tied) Akron

and No. 11 Murray State in the Ohio Valley; No. 2 Furman and No. 20 Marshall in the Southern; No. 7 (tied) Arkansas State in the Southland, and No. 4 Grambling, No. 16 Jackson State and Alcorn State and Mississippi Valley, which were tied for 18th, in the Southwestern Athletic.

Independent teams in contention

## Higher education to be examined

A new Carnegie Foundation book on the status of undergraduate education in the United States, similar to a report on high schools that helped spur reforms in that area, will be published within a few months.

Ernest L. Boyer, foundation president, dispatched observers to 30 campuses across the country to compile information on whether the nation's colleges and universities have strayed from their missions in teaching undergraduates.

The new book is entitled "College:

for a play-off berth include No. 9 Richmond, No. 12 Georgia Southern, No. 17 Colgate, and Delaware and Eastern Washington, which were tied for 13th.

No. 5 Northern Iowa and No. 15 Delaware State also may find themselves in postseason play by virtue of at-large berths.

The Undergraduate Experience in America."

Two years ago, Boyer's report on high schools played a significant role in the debate on how to restore value to a high school diploma.

Boyer does not expect the new report to generate as much intensity as his earlier book. "The public doesn't feel the same sense of ownership" for colleges and universities, he says. And he believes the problems in higher education are not so entrenched.



# HOW TO FLY THROUGH A TOUGH ROAD SCHEDULE.

American Airlines knows that when it comes to road games, the last thing you want to think about is travel arrangements. That's why calling one of our more than 100 Meeting Specialists makes so much sense.

With one phone call, we'll take care of everything down to the smallest detail. From pre-reserved seating, to car rental arrangements. We'll even deliver your tickets directly to you or your team's official Travel Agent.

It's the perfect way to get to your meeting, convention or game.

So when you're the visitor, call the official airline for the NCAA Championships, American Airlines, at (800) 433-1790. STAR #S9043.

We'll take care of the travel plans so you can take care of the game plans.

**American Airlines**  
*Something special in the air.*

# Lawrence running back breaks cancer's tackle

Greg Curtis didn't beat cancer. Like a football thrown to him out of the Lawrence University backfield, it was caught in time.

"Actually, I wasn't that concerned about it," Curtis said. "I didn't really dwell on the fact that there was a big problem. I knew it would take care of itself. I think my parents and my girlfriend at the time were more concerned. We caught it really early."

A senior economics major who makes the dean's list with as much regularity as he carried the football during the Vikings' 7-2 season, Curtis did beat the physical and emotional aftereffects of two operations, one to remove a cancerous testicle, the second for removal of nearby lymph glands.

"I think I'm an optimist," he said. "I have a competitive nature so that if I put my mind to something, I know I can beat it. The other thing is, I love football. I've been playing since I was a runt and I didn't want to give it up. Football is very important to me. It was crucial for me to come back and play."

The lymph surgery in June 1984 followed the first operation by one month. Complications resulted in his stomach filling with lymph fluid, requiring bed rest and periodic draining. He also dropped 30 pounds off his current 5-foot-8, 170-pound frame.

"The time I was the most down was after the second surgery. I filled up with lymph liquid and got real pregnant," he said with a laugh. "It was really frustrating, because I wanted to get back into shape. I just looked ridiculous waddling along. But I had to stay in bed to get the stuff to drain through my body."

"I was pretty weak, but I knew I would climb out of it."

No one questioned his conviction.

"I don't think he ever doubted he would come back. But neither did I," said Curtis' father, George. "The only way it wasn't going to happen was if he gave up."

"Can I claim my son made it because of courage or mental attitude? Probably not. He made it because first of all... it was caught in time. He couldn't have done that if he weren't one of the lucky ones."

Luck takes many forms. Crossed fingers can't compare with the emotional support of friends, family and teammates. But Curtis provided the thread that bound together his recuperative efforts from the very moment he realized there was a problem.

"It's important for kids, especially my age, that if they have a problem to go have it checked out, even if it is a personal area to be talked about with the doctor," said Curtis, who discovered the problem while taking a shower.

The months of bed rest paled in comparison to the hours of waiting and watching from the sidelines during the 1984 season when running back Curtis worked out with the team.

## Charges reinstated

A state appeals court November 13 reinstated charges against former Tulane University basketball star John "Hot Rod" Williams, apparently clearing the way for his case to be tried in district court. A new judge apparently will handle the case.

District Judge Alvin Oser threw out the charges of sports bribery from an alleged point-shaving scandal that led Tulane to drop its intercollegiate men's basketball program.

The judge said prosecutors deliberately kept back information, including a tape of a statement by a former Tulane player, that would have helped Williams' defense.

The 4th Circuit Court of Appeal said that although there was obvious misconduct by the prosecution, it was not sufficient to warrant the throwing out of the charges.

but didn't play. The Vikings finished the season 2-6-1.

"I actually thought I would play that same year," he said.

This year, Lawrence wound up 7-2 and Curtis finished atop the statistics with 576 yards on 190 carries and two touchdowns. He was the team's second-leading receiver with 22 receptions for 170 yards and two touchdowns.

He has one year of eligibility remaining—before heading to graduate school—and plans to use it to make up for the time he lost on the football field.

"None of us is going to make the pros," he said. "But it (football) fits in well with school. We get the right perspective."

That's easy for a guy like Greg Curtis, who never lost his perspective when a lot of others would have just been lost.

*Greg Curtis (with ball and inset), a senior tailback for the Lawrence Vikings*



## ATTENTION ATTENDEES OF...

The NCAA Convention — January 13-15  
American Baseball Coaches Assoc. — January 2-5  
American Football Coaches Assoc. — January 6-9  
in New Orleans!

## Major Savings on Airlines 70% Discount

WITH RESTRICTIONS

## UP TO 40% Discount - no Restrictions!

- **NOW** receive major, unrestricted and unpublished discounts on airfares
- **NOW** receive \$150,000 in travel insurance every time you fly
- **NOW** receive your tickets overnite if needed
- **NOW** order or check flight information 24 hours a day, seven days a week... toll free -

**1-800-243-1800**

**CALL NOW FOR LOWEST AIRFARES TO NEW ORLEANS**

## FUGAZY

INTERNATIONAL TRAVEL

67 WHITNEY AVENUE NEW HAVEN, CT. 06510

**203-772-0470**

*The Official Travel Agent for NCAA Championships*

# Commission

*Continued from page 1*

Again, the test score itself then would not be a part of the requirement for eligibility.

The third proposal in order is the joint offering of the Presidents Commission and the Council, establishing an eligibility index in which a slightly higher GPA in the core could offset a slightly lower test score, and vice-versa, for 1986-87 and 1987-88. The rule as adopted in 1983 then would go into full effect for 1988-89. That amendment was reported in detail in the November 4 issue of The NCAA News.

Adoption of any one of those three proposals would make the others moot.

Most observers of the Bylaw 5-1-(j) issue believe there are three current groups within the Division I membership in regard to that rule: one that wants no change in the rule and wants it to go into effect August 1, 1986, as planned; one that supports the concept of a limited eligibility index for a limited period of time, and one that prefers not to have the rule, or at least not to include test-score minimums as a requirement.

The other two academic proposals are not likely to attract nearly as much attention. One is a repeat attempt by the Big Ten Conference to establish minimum grade-point requirements for each step in the satisfactory-progress rule; the other is a Council amendment to clarify the

academic-reporting procedure established for Division I institutions by the special Convention in June.

## Special grouping

The Presidents Commission is urging its colleagues in the membership to support the three proposals in the special grouping that follows the academic section, although they are not designated for roll-call votes.

These proposals, all cosponsored with the NCAA Council:

- Amendments to the constitution and bylaws to affirm that student-athletes are responsible for their involvement in violations of NCAA regulations. This amendment was directed by the special Convention in June when it adopted a joint Commission-Council resolution in this regard.

- Bylaw amendments to permit a member institution's intercollegiate basketball team to participate in any year in not more than one of the competition opportunities that do not count toward the maximum number of contests. Again, this was the topic of an approved Commission-Council resolution at the June Convention. It is intended to treat the fact that some institutions have used combinations of the exception opportunities to play 35 to 40 basketball games in a season.

The third special-grouping item is a Council-Commission resolution intended to respond to the resolution

regarding enforcement procedures that was presented at the special Convention in June, where the delegates voted to refer it to the Council and the Commission.

This resolution encourages the Committee on Infractions to evaluate possible changes in enforcement policies and procedures over the next year, in the interest of efficient and effective processing of "secondary" and "major" infractions cases, assuring continuing due-process protection for all involved.

The resolution commits the Commission and the Council to give further consideration in 1986 to the Association's enforcement and compliance efforts and to determine whether to submit any legislation at the 1987 Convention to enhance those programs.

## Summary

Following is a summary of the first 21 proposals in the Official Notice of the NCAA's 80th annual Convention:

**Consent packages**  
No. 1: Exclude division vice-presidents from consideration in the numerical representation requirements for service on the Executive Committee.

No. 2: Change the names of the division meetings at NCAA Conventions to division business sessions in light of the federated voting opportunities now assured in the constitution.

No. 3: Affirm that a Division I-A head football coach cannot be present at an off-campus site for the signing of a National Letter of Intent or acceptance of an athletics grant-in-aid to be provided upon enrollment.

No. 4: Affirm that in all sports other than football, play-offs between or among conference members that tie for a conference championship may take place to determine the conference's automatic entry in an NCAA championship without the play-off contest(s) being counted against the contest limitation in the sport.

No. 5: Exempt from the limitations on contests or dates of competition any competition in championships conducted by the National Association of Intercollegiate Athletics (NAIA).

No. 6: Affirm the existing interpretation that a student must complete satisfactorily (i.e., pass) each of the 11 courses in the Bylaw 5-1-(j) core-curriculum requirement, regardless of whether the grade-point average in the core is better than 2.000 and the test-score requirement is met.

No. 7: Clarify that an institution may not award athletically related financial aid during the first academic year in residence to a transfer student from a Division III institution who is otherwise eligible under Bylaw 5-1-(m)-(14).

No. 8: Establish a minimum number of participants (three) in each contest in women's fencing in order to count the sport toward the sports sponsorship criteria in Divisions I and II.

No. 9: Abolish the Governmental Affairs Committee.

No. 10: Increase the membership of the Professional Sports Liaison Committee from six to eight by adding representatives of the American Football Coaches Association and the National Association of Basketball Coaches.

No. 11: Increase the membership of the Research Committee from seven to nine by adding two individuals experienced in academic tests and measurements.

No. 12: Require that at least one member of the Men's Gymnastics Committee be from each of the four men's gymnastics regions, rather than NCAA geographic regions.

No. 13: Affirm that teams in a sport in a division that has a national championship in that sport shall not be counted toward meeting

the minimum sponsorship percentage necessary to continue or establish a National Collegiate Championship for which all divisions are eligible in that sport.

## Academics

No. 14: Eliminate test-score requirements from Bylaw 5-1-(j). Division I only. Roll-call vote.

No. 15: Eliminate specific test-score from Bylaw 5-1-(j), instead requiring that the student has taken either the SAT or ACT "for placement purposes only." Division I only. Roll-call vote.

No. 16: Establish eligibility indices in Bylaw 5-1-(j) for two years, with the rule as adopted to go into effect August 1, 1988. Division I only. Roll-call vote.

No. 17: Establish qualitative academic progress requirements in the satisfactory-progress rule: a 1.700 for a first season of competition after the freshman year, a 1.850 for a second season after the freshman year, and a 2.000 for a third and fourth season after the freshman year. Division I only.

No. 18: Permit Division I member institutions to conduct their initial review of five-year graduation rates in the academic-reporting requirements on the basis of student enrollment initiated six, rather than five, years preceding the date the report is due. Division I only.

## Presidents Commission Grouping

No. 19: Affirm that student-athletes are responsible for their involvement in violations of NCAA regulations and should be restored to eligibility only when circumstances clearly warrant restoration; require the Eligibility Committee to report the basis for restoration of eligibility in cases involving "major" violations.

No. 20: Permit an institution's basketball team to participate in any one year in not more than one of the exception opportunities for competition that do not count toward the season limitation in that sport.

No. 21: Resolution regarding enforcement and compliance, as outlined in this article.

(Next in this series: *Financial aid proposals and those in the "General" category.*)

## More

*Continued from page 1*

23—Regional finals (double-header, national or split-national); 29—Championship semifinals (double-header, national); 30—NCAA Division I Women's Basketball Championship; 31—NCAA Division I Men's Basketball Championship.

## NBC

**December:** 21—Georgetown at DePaul.

**January:** 18—UCLA at Notre Dame; 25—Louisville at Kansas or Louisiana State at Auburn (split-national); Georgia Tech at North Carolina (double-header); UCLA at California (West Coast); 26—Notre Dame at North Carolina.

**February:** 1—St. John's (New York) at Syracuse (national); Maryland at Villanova or UCLA at Louisville (double-header, split-national); Arizona State at Washington State (West Coast); 2—Kentucky at North Carolina State; 8—Michigan at Illinois or South Carolina at Alabama-Birmingham (split national); Louisville at North Carolina State (double-header, national); Washington at Southern California (West Coast); 9—Georgia Tech at Duke; 15—Iowa at Michigan; Georgetown at Villanova (double-header, national); Southern California at Arizona (West Coast); 16—Notre Dame at Duke; 22—Louisville at Houston (national); St. John's (New York) at DePaul or Kentucky at Georgia (double-header, split-national); UCLA at Southern California (West Coast); 23—North Carolina at North Carolina State.

**March:** 1—North Carolina State at Oklahoma or Louisiana State at Kentucky (split-national); DePaul at UCLA (double-header, national); Washington at Arizona State (West Coast); 2—North Carolina at Duke; 8—Southeastern Conference championship (blackout in SEC area); 9—Atlantic Coast Conference championship (blackout in ACC area).

## ESPN

**November:** 24—UCLA at North Carolina; 27—Oregon State at Michigan State; 29—Great Alaska Shootout (double-header); 30—Great Alaska Shootout (double-header).

**December:** 1—Great Alaska Shootout (third-place and championship double-header); 3—Notre Dame at Indiana; 7—Loyola (Illinois) at Notre Dame; 10—Iona at Louisville; Auburn at Alabama-Birmingham (dou-

ble-header); 13—Loyola (Illinois) at Bradley; 14—Pittsburgh at West Virginia; Kentucky at Kansas (double-header); 17—North Carolina at Jacksonville; 18—Indiana at Louisville; 19—Wake Forest at North Carolina State; 20—Richmond Times-Dispatch Tournament (double-header); 21—West Virginia at Virginia Tech; Richmond Times-Dispatch Tournament championship game (double-header).

**January:** Georgetown at Pittsburgh; Boston College at Syracuse; Washington at California (triple-header); 4—North Carolina State at North Carolina (afternoon); Kentucky at Vanderbilt; Duke at Maryland double-header, evening; 6—Syracuse at Villanova; South Carolina at Memphis State (double-header); 7—St. John's (New York) at Boston College; 8—Wake Forest at Georgia Tech; Arkansas at Texas (double-header); 9—Virginia Commonwealth at Alabama-Birmingham; Louisville at Memphis State; UCLA at Washington (triple-header); 11—Pittsburgh at Syracuse; 13—Villanova at Connecticut; South Alabama at Alabama-Birmingham (double-header); 14—North Carolina at Maryland; 16—Wake Forest at Duke; 18—Duke at North Carolina (afternoon); Pittsburgh at Villanova; Texas at Southern Methodist (double-header, evening); 20—Villanova at Georgetown; Old Dominion at Texas (women) (double-header); 21—Seton Hall at Connecticut; Duke at Georgia Tech (double-header); 23—Clemson at South Carolina; North Carolina State at Maryland (double-header); 25—Southern Methodist at Houston; Maryland at Duke (double-header); 27—Georgetown at Providence; Virginia Tech at Memphis State (double-header); 28—Syracuse at Boston College; Wake Forest at Maryland (double-header); 29—Kentucky at Louisiana State; Southern California at UCLA (tape delay) (double-header); 30—Alabama-Birmingham at Old Dominion; North Carolina at Virginia; Arizona State at Washington (triple-header). (New York); Cincinnati at Memphis State (double-header); 4—North Carolina at Georgia Tech (tape delay); 6—Washington at UCLA; 8—North Carolina-Charlotte at Western Kentucky; Kentucky at Mississippi (double-header); 10—St. John's (New York) at Georgetown; Bradley at Illi-

nois State; 11—DePaul at Old Dominion; 13—Old Dominion at Virginia Commonwealth; Maryland at North Carolina State (double-header); 14—Oregon State at Washington; 15—Virginia at Georgia Tech; Mississippi State at Kentucky; Alabama at Auburn; Stanford at California (quadruple-header); 17—Syracuse at Pittsburgh; Tulsa at Wichita State (double-header); 18—St. John's (New York) at Villanova; 19—Auburn at Georgia; Florida State at Louisville (double-header); 20—Maryland at North Carolina; 22—Georgia Tech at Maryland; Notre Dame at Miami (Florida); Florida at Louisiana State; Arizona State at Oregon State (four games); 24—Connecticut at Pittsburgh; Kansas at Oklahoma (double-header); 26—Louisville at South Carolina;

## Three

*Continued from page 1*

John P. Reardon Jr., director of athletics, Harvard University.

Division I-AA Central region: Elect G. E. "Sonny" Moran, director of athletics, Morehead State University, to term ending January 1989.

Division I-AAA: Elect Victor A. Bunas, commissioner, Sun Belt Conference. Reelected Don J. DiJulia, commissioner, Metro Atlantic Athletic Conference, to term ending January 1988. Reelected Kathleen M. Wear, assistant director of athletics, La Salle University.

Division I at large: Reelected Della Durant, assistant director of athletics, Pennsylvania State University, to term ending January 1987. Elect Charlotte West, director of women's athletics, Southern Illinois University, Carbondale, to term ending January 1987.

## Division II

Region II-2: Elect Sandra T. Shuler, associate director of athletics, North Carolina Central University.

At large: Reelected Louise Albrecht, associate director of athletics, Southern Connecticut State University, to term ending January 1988. Elect Elwood N. "Al" Shields, director of athletics, Bentley College.

## Division III

Region III-1: Elect Mary R. Barrett, associate director of athletics,

Syracuse vs. St. John's (New York) at Madison Square Garden (double-header); 27—North Carolina State at Georgia Tech; 28—Sun Belt Conference tournament semifinal game.

**March:** 1—Virginia at Maryland (afternoon); Seton Hall at St. John's (New York); Sun Belt Conference tournament championship (double-header, evening); 5—Missouri Valley Conference tournament championship; 6—Big East Conference tournament quarterfinals (afternoon and evening double-headers); 7—Atlantic Coast Conference tournament quarterfinals (afternoon double-header); Big East Conference tournament semifinals (evening double-header); 8—Atlantic Coast Conference tournament quarterfinals (early-morning

double-header, tape delay of quarterfinal games played on the evening of the 7th); Atlantic Coast Conference tournament semifinals (afternoon double-header); Big East Conference tournament championship game; 9—Southwest Athletic Conference tournament championship game (afternoon); Atlantic Coast Conference tournament championship game (tape delay, evening).

In addition to its regular-season package, ESPN also will air at least 20 games from the Division I men's basketball tournament, regional and final-four coverage of the Division I women's basketball tournament, and the Division II men's and women's basketball championship games from Springfield, Massachusetts.

University of Massachusetts, Boston. Region III-2: Elect William A. Marshall, director of athletics, Franklin and Marshall College.

At large: Elect Al Van Wic, director of athletics, College of Wooster.

The terms of all other Council members continue, as do those of

NCAA President John R. Davis and Secretary-Treasurer Wilford S. Bailey, whose terms will expire in January 1987.

Jack V. Doland, president of McNeese State University, chaired the Nominating Committee for the second consecutive year.

## Committee Notices

### COMMITTEE CHANGES

**Baseball:** Joseph Zavattaro, North Adams State College, appointed to replace Mike Riskas, Pomona-Pitzer Colleges, resigned.

**Men's Golf:** R. W. Robinson, Clemson University, appointed to replace John Wadas, University of South Florida, no longer an administrator under the NCAA definition [Bylaw 12-5-(a)-(3)].

**Men's Ice Hockey:** Sidney J. Watson, Bowdoin College, appointed to replace James W. Ellingwood, North Adams State College, deceased. Paul Duffy, Geneseo State University College, appointed to replace Thomas J. Birmingham, no longer at St. Anselm College.

**Women's Softball:** Marjorie A. Trout, Millersville University, appointed to replace Barbara Dearing, formerly at Liberty University (Division II), now at Ohio State University (Division I).

**Men's Swimming:** Jeff Cavana, Wright State University, appointed to replace Robert L. Pease, resigned from the University of Missouri, Rolla.

**High School All-Star Games:** Cynthia B. Mazda, University of Hawaii, appointed to replace Sonja S. Hogg, no longer at an NCAA member institution.

**Long Range Planning:** Michele Conlon, student-athlete, University of Iowa, appointed to replace Ellen Ferguson, who has graduated.

**Research:** Susan A. Carberry, California State University, Dominguez Hills, appointed to replace Irene Shea, California State University, Sacramento, inasmuch as Ms. Shea no longer is a director of athletics as required.

**Presidents Commission:** Division II. Appointed to replace Raymond M. Burse, Paige E. Mulholland, President, Wright State University.

# The NCAA News



# NCAA Record

## DIRECTORS OF ATHLETICS

**WILLIS R. CASEY**, North Carolina State AD since 1969, announced his retirement, effective next July. Casey has been a member of the Wolfpack athletics staff since 1946 and had served as swimming coach and assistant AD. **CHARLEY SCOTT** resigned at Mississippi State. **DOUGLAS W. SINGLE** received a contract extension at Northwestern through 1990.

**PRIMARY WOMAN ADMINISTRATOR**  
**MOLLY PERDUE** named at Brooklyn College.

## COACHES

**Men's basketball**—**PAT TAAFE** named at Mercy. The LIU-C.W. Post graduate replaces **JOE FLOWER**, who resigned after eight seasons.

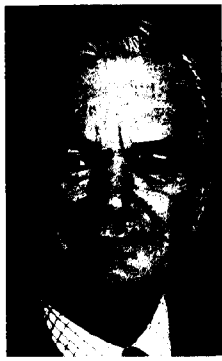
**Men's basketball assistant**—**LATTRELL SMITH** appointed at Mercy.

**Women's basketball**—**JIM BOROWSKI** selected to replace **JOHN ESTES** at North Adams State. Borowski had been an assistant on the prep level. **PAUL KRUMBIE** named at Macalester. He had been an assistant at Augustana (South Dakota) the past five years.

**Women's basketball assistants**—**KIM ANDERSON**, a 1985 graduate of Augustana (South Dakota), named at Macalester. University of New Hampshire graduate **CORINNE GULAS** selected at Northeastern. **TRACY JACKSON** and **JAMES MORGAN** named at Pace. A 1985 graduate of Pace, Morgan is sixth on the school's all-time scoring list.



Willis Casey announced his retirement as AD at North Carolina State



Charley Scott resigned as athletics director at Mississippi State

**Jackson** is a 1977 graduate of Southern Connecticut State. **PATRICE WALLACE-MOORE** selected at Mercy. She is a 1985 graduate of Fairfield.

**Men's cross country assistant**—**MARC RYAN** selected at Macalester, where he also will work with the track team. He ran cross country and track and served as a student assistant at Concordia-Moorhead (see sports information directors).

**Football**—**AL KINCAID** released at Wyoming, effective at the end of the current season, his sixth at the helm. Augsburg coach **AL KLOPPEN** resigned, effective at the end of the 1985 season. **CHRIS PELLA** resigned at Utah State, effective November 24.

**Men's ice hockey**—**BILL TURNER** named at North Adams State. He compiled a 222-80-43 record as head coach at Hobart and most recently had been an assistant at Colgate.

**Women's swimming and diving**—**SONDRA MARTIN** selected at North Central. A junior college all-America, she lettered at Illinois as a sprint freestyler.

## STAFF

**Athletics trainer**—**STEVE MONACO** resigned at Creighton after six years, effective December 1.

**Sports information director**—**BOB OLSON** named interim SID at UC Irvine, succeeding **GLENN GREENSPAN**, who resigned. Olson had been SID prior to Greenspan's appointment.

ment... **MARC RYAN** selected at Macalester... **RANDALL SCHROEDER** chosen at Simpson. He had been a newspaper reporter and photographer in Colorado and Iowa.

## NOTABLES

**LEE WILLIAMS**, director emeritus of the Basketball Hall of Fame, and **WILLIAM "BUCK" DAWSON**, former director of the International Swimming Hall of Fame, named first recipients of the W.R. "Bill" Schroeder Distinguished Service Award, given by the Association of Sports Museums and Halls of Fame. The awards were presented November 13 in Springfield, Massachusetts. **PHILLIP C. MONALTO** named sports officer for Sport for Understanding, a nonprofit international sports exchange program.

## DEATH

**DAVID CICHOKI**, a sophomore linebacker at Santa Clara, died November 11. He was 21.

## POLLS

### Division I Men's Cross Country

The top 20 NCAA Division I men's cross country teams through meets of November 9 as selected by the NCAA Division I Men's Cross Country Coaches Association, with points:

1. Wisconsin	238
2. Arkansas	230
3. West Virginia	213
4. Colorado	204
5. Stanford	191
6. Boston U.	179
7. Purdue	169
8. Oregon	154

9. Arizona	130
10. Iowa State	128
11. UCLA	126
12. Tennessee	117
13. Northwestern	88
14. Dartmouth	84
15. Texas	71
16. North Carolina	61
17. Navy	50
18. Penn State	35
19. North Carolina State	26
20. Kansas State	13

### Division III Men's Cross Country

The top 15 NCAA Division III men's cross country teams through meets of November 10 as selected by the NCAA Division III Cross Country Coaches Association, with points:

1. St. Thomas (Minnesota)	130
2. North Central	117
3. RIT	100
4. Wheaton (Illinois)	95
5. Luther	64
6. Brandeis	54
7. Mount Union	43
8. Glassboro State	32
9. MIT	24
10. Wis.-Oshkosh	21
11. Wis.-Stevens Point	108
12. Southeastern Massachusetts	8
13. Bates	6
14. Hope	5
15. St. John's (Minnesota)	3

### Division III Women's Cross Country

The top 15 NCAA Division III women's cross country teams through meets of November 10 as selected by the NCAA Division III Women's Cross Country Coaches Association, with points:

1. Franklin and Marshall	80
2. Wisconsin-LaCrosse	70
3. St. Thomas (Minnesota)	61

See Record, page 15

# The NCAA News



# The Market

Readers of The NCAA News are invited to use The Market to locate candidates for positions open at their institutions, to advertise open dates in their playing schedules or for other appropriate purposes.

Rates are 45 cents per word for general classified advertising (agate type) and \$22.60 per column inch for display classified advertising. Orders and copy are due by noon five days prior to the date of publication for general classified space and by noon seven days prior to the date of publication for display classified advertising. Orders and copy will be accepted by telephone.

For more information or to place an ad, call 913/384-3220 or write NCAA Publishing, P.O. Box 1906, Mission, Kansas 66201.

## Positions Available

### Assistant A.D.

**Assistant Director of Athletics for Operations.** Cornell University is seeking an assistant director of athletics for operations. Duties: Direct responsibility for all inside and outside facility management, facility scheduling and maintenance. Additional areas include: sports equipment, grounds, event management, transportation, facility budget preparation, purchasing and capital project supervision. Position reports to director of athletics. Qualifications: Bachelor's degree in related field required. Three to five years successful work experience in construction or facility management or related field. Proven ability to work independently and manage several

complex functions simultaneously. Must be able to interpret blueprints and architectural schemata. Excellent communication and interpersonal skills required. Salary commensurate with education and experience. Send resume and cover letter to: Athletic Department, c/o Rosana Bahar, P.O. Box 729, Ithaca, New York 14851, by November 30, 1985. Cornell University is an affirmative action/equal opportunity employer.

## Sports Information

**Assistant Sports Information Director.** Will work with Sports Information Director and Associate Sports Information Director in overall operation of Sports Information Office; edit and produce home game programs for football and men's basketball, plus special events; have primary responsibility for publicity in sports of baseball and men's and women's track and field; and work with Associate SID, women's SID and a staff of student workers in publicizing six other men's and

five women's non-revenue sports. Bachelor's degree required, preferably in journalism. Previous experience working in college or university Sports Information preferred, particularly in area of writing and editing publications and news releases. Resumes, letters of application, resume, and at least three references and writing publications samples by December 16 to: Tom Simons, Associate Sports Information Director, 116 South Stadium, University of Nebraska, Lincoln, NE 68588-0123. Affirmative Action/Equal Opportunity Employer.

## Athletics Trainer

**Athletic Training.** Curriculum Coordinator for N.A.T.A. Approved Undergraduate Program. Qualifications: Minimum—N.A.T.A. Certification, Master's Degree in Related Field. Teaching in Athletic Training Curriculum, and athletic training experience at the collegiate level. Commitment to strong academic and athletic programs. Desirable—L.P.T. and/or Doctorate in Related Field, previous experience as a Curriculum Coordinator for an approved N.A.T.A. program. Responsibilities: Direct established N.A.T.A. Approved Undergraduate Curriculum. Direct established Graduate Program for State of West Virginia Certification. Academic advisor for Athletic Training Education Program. Strive to promote and enhance athletic training at the state and national level. Work cooperatively with West Virginia University Athletic Department. Terms of Appointment: Twelve-month, tenure track appointment at the rank of Assistant or Associate Professor, depending on academic credentials. Salary: Extremely competitive. Appointment Date: July 1, 1986. Application: Application should include letter of application, vita, three letters of recommendation and copy of official transcripts

and/or certifications. Deadline for Application: December 31, 1985. Contact Person: Carl P. Behneman, Chairperson, Athletic Training Search Committee, P.O. Box 6116, School of Physical Education, West Virginia University, Morgantown, WV 26506-6116.

## Football

**Head Football Coach.** Kansas State University is seeking a person to direct a Division I football program to include all responsibility and authority that goes along with the position. These responsibilities include creating atmosphere conducive to moral, spiritual, academic and athletic growth of student-athletes. Hire quality coaches and oversee their productivity; institute a nationwide recruiting program that will lift program to a progressively competitive level. Work completely within framework of NCAA, Big Eight and Kansas State University rules and procedures at all times. Head coach experience preferred; at least five years' experience at the intercollegiate level or higher required. Send resume and letter of application by November 23, 1985, to: Larry Travis, Director of Athletics, Kansas State University, 101 Ahearn Field House, Manhattan, KS 66506. Kansas State University is an affirmative action and equal opportunity employer.

**Assistant Football Coach.** Position(s) available contingent on effective date(s) of any resignation(s) during 1985. Experience in football coaching and recruiting at an NCAA Division I major university required. Bachelor's degree required. Varied duties in coaching and recruiting as defined by the head football coach. Salary commensurate with experience. Applications accepted until position(s) filled. Send letter of application including resume and references to: Larry Travis, Di-

rector of Athletics, Ahearn Field House, Kansas State University, Manhattan, Kansas 66506. Kansas State University is an Equal Opportunity/Affirmative Action Employer.

**Assistant Football Coach, Division III Institution.** Position available January 1, 1986. Assistant Football Coach, recruiting and varied duties as assigned by the head coach or athletic director. Experience in recruiting preferred. Bachelor's degree required, master's in P.E. preferred. Salary commensurate with experience. Application deadline December 15, 1985. Send letter of application with resume, transcripts and three letters of recommendation to: Frank Amato, Head Football Coach, John Carroll University, University Heights, Ohio 44118. John Carroll University is an Equal Opportunity/Affirmative Action Employer.

**Head Football Coach.** Allegheny College invites applications for the position of head football coach. The head football coach is responsible for all phases of the football program, including: Coaching, recruiting, game preparation, budget management, team and staff discipline, and public and alumni relations. Duties will include teaching and/or other duties as assigned by the director. This is a full time position in the Department of Athletics, Physical Education, and Recreation. Applications are accepted until the position is filled. Position begins January,

1986. Twelve-month, non-tenure position. Contract may be renewed. Salary open. Send letter of application, resume, and provide at least three references to: Norman A. Sundstrom, Director of Athletics, Box 34, Allegheny College, Meadville, PA 16335. Allegheny College is an equal opportunity employer.

**Assistant Football Coach position(s)** available contingent on effective date(s) of any resignation(s) during the 1985-86 or 1986-87 academic year. Experience in football coaching required. Bachelor's degree required. Varied duties in coaching and recruiting as defined by the head football coach. Second-year sport and/or teaching assignment as assigned by the director. Salary commensurate with experience. Applications accepted until position(s) filled. Send letter of application, including a resume and references, to: Norman A. Sundstrom, Director of Athletics, Box 34, Allegheny College, Meadville, PA 16335. Allegheny College is an equal opportunity employer.

**Head Football Coach Utah State University.** Considerable college experience desired. Must be able to conduct a successful Division I-A program within NCAA, FCAA and university rules and policies. Utah State University is an affirmative action/equal opportunity employer. Send application and resume by November 29 to Rod Tueller, Director of

See The Market, page 15

## Enforcement Representative NCAA Compliance and Enforcement Department

Applications are being accepted for immediate openings on the NCAA enforcement staff.

The positions will provide qualified individuals with the opportunity to be a part of the emphasis on NCAA rules compliance and enforcement that was supported overwhelmingly by the special NCAA Convention in June.

An enforcement representative is primarily responsible for the investigation of assigned infractions cases and making oral presentations of information and evidence at Committee on Infractions meetings. The investigation process includes locating principals, making appropriate appointments and travel plans for interviews, preparing memorandums of information collected, developing official case files, analyzing information on file to complete a case, and ensuring that established investigative procedures are followed.

The work requires a comprehensive knowledge of NCAA regulations and the ability to communicate effectively.

It is preferred that the applicant have a legal or other postgraduate education and experience in intercollegiate athletics, either as a student-athlete or an administrator.

Interested candidates should send a resume to:  
Michael S. Glazier  
Assistant Director of Enforcement  
NCAA  
P.O. Box 1906  
Mission, Kansas

An affirmative action/equal opportunity employer.

## Graduate Assistant For Athletic Administration

Temple University currently has a position available for candidate with Bachelor's Degree and some experience in athletics. Responsibilities include assisting in coordinating special events, surveying conditions of athletics facilities, conducting eligibility checks, scheduling all non-revenue sports, coordinating athletic book programs, assisting with alumni projects, event coverage, work orders, and purchase requisition. This is a part-time, 10-month position. 18 graduate credits annually plus stipend. Application deadline is December 1, 1985. Please submit a letter of application, resume and letters of recommendation to Ms. Eve Atkinson, Associate Director of Athletics, Temple University, 1900 North Broad St., Philadelphia, PA 19122. Temple University is an equal opportunity, affirmative action employer.

## Graduate Assistantship Women's Basketball

Temple University has a position available for qualified candidate with Bachelor's Degree. Background in promotions and fund raising is preferred and experience coaching or playing basketball at a competitive level. Responsible for scouting of opponents and preparation of in-depth scouting reports; assisting in the organization of recruiting files and data; assist in the promotion of women's basketball and fund raising. This is a part-time, 10-month position. 18 graduate credits annually plus stipend. Application deadline is December 1, 1985. Please submit a letter of application, extensive resume and three current letters of recommendation to Mrs. Linda MacDonald, Head Women's Basketball Coach, Temple University, 104 McGonigle Hall, Philadelphia, PA 19122. Temple University is an equal opportunity, affirmative action employer.

## COMPLIANCE REPRESENTATIVE NCAA Compliance and Enforcement Department

Applications are being accepted for an immediate opening in the newly restructured NCAA compliance and enforcement department. The department's compliance section was created after the June 1985 special Convention to provide support services to member institutions' chief executive officers in their renewed commitment to greater NCAA rules compliance.

A compliance representative's primary responsibility includes:

- Assistance to member institutions in identifying and attacking specific problems and developing procedures to prevent rules violations.
- Development of model procedures and guidelines for successful operation of athletics programs.
- Campus visitation on request of a member institution to assist it in analyzing the overall structure and administration of its athletics programs, and its compliance with NCAA legislation.
- Implementation of the forms and processes used by institutions in conducting the required periodic self-studies and annual financial audits.
- Cooperation with member conference officials in assisting their institutions in rules compliance.

This position requires a working knowledge of NCAA regulations and the ability to communicate effectively both orally and in writing. It is necessary that the applicant have recent administrative experience in intercollegiate athletics.

Interested candidates should send a letter of application and resume to:

John H. Leavens  
Director of Compliance  
NCAA  
P.O. Box 1906  
Mission, Kansas 66201

An affirmative action/equal opportunity employer.

# Record

Continued from page 14

4. Wheaton (Illinois), 57; 5. Ithaca, 45; 6. Wis.-Stevens Point, 37; 7. Wis.-Oshkosh, 32; 8. Luther, 16; 9. Middlebury, 14; 10. Augustana (Illinois), 9; 11. (tie) St. Olaf and Hope, 5; 13. Washington (Missouri), 4; 14. Cortland State, 3; 15. Millersville, 2.

## Division I-AA Football

The top 20 NCAA Division I-AA football teams through games of November 9, with records in parentheses and points:

1. Middle Tennessee State (9-0)	80
2. Furman (8-1)	75
3. Nevada-Reno (9-1)	73
4. Grambling State (8-1)	68
5. Northern Iowa (8-1)	64
6. Idaho (8-2)	60
7. Akron (7-2)	52
9. Arkansas State (6-3)	52
7. Richmond (8-2)	49
10. Rhode Island (8-2)	41
11. Murray State (7-2-1)	39
12. Georgia Southern (7-2)	28
13. Delaware (7-3)	25
13. Eastern Washington (6-2)	25
15. Delaware State (7-2)	20
16. Jackson State (7-2)	19
17. Colgate (6-2-1)	15
18. Alcorn State (6-2)	14
18. Mississippi Valley (7-2)	14
20. Marshall (7-2-1)	11

## Division II Football

The top 20 NCAA Division II football teams through games of November 9, with records in parentheses and points:

1. California-Davis (7-1)	79
2. Fort Valley State (8-1)	74
3. Indiana (Pennsylvania) (7-1-1)	71
4. Santa Clara (8-1)	70
5. Central State (Ohio) (8-1)	65
6. North Alabama (8-1)	60
7. Bloomsburg (9-0)	53
8. Towson State (7-1-1)	48
9. Winston-Salem State (8-1)	47
10. South Dakota (8-2)	45
11. Mississippi College (7-2)	41
12. Butler (8-2)	35
13. Cal State Sacramento (7-2)	28
14. Northeast Missouri State (7-2)	27
15. American International (7-2)	21
16. Cal State Hayward (6-2)	18
17. West Chester (7-2)	17
18. Hampton (8-1)	10
19. Clarion (8-2)	7
20. Indiana Central (7-1-2)	7

## Division III Football

The top 20 NCAA Division III football teams through games of November 9, with records in parentheses and points:

1. Augustana (Illinois) (9-0)	80
2. Central (Iowa) (9-0)	74
3. Union (New York) (9-0)	71
4. Lycoming (9-0)	67
5. Carnegie-Mellon (8-0)	65
6. Mount Union (9-0)	62
7. Wis.-River Falls (8-0-1)	57
8. Ithaca (7-1)	50
9. Gettysburg (9-0)	48
10. Denison (9-0)	46
11. Wagner (8-1)	39
12. Occidental (7-1)	37
13. Salisbury State (8-1)	32
14. Coe (9-0-1)	22
15. Albion (7-1-1)	21
16. St. John's (Minnesota) (8-1)	20
17. Merchant Marine (8-1)	19

18. Montclair State (8-1)	14
19. Washington and Jefferson (8-1)	10
20. Rhodes (8-1-1)	2
20. Western Connecticut State (9-1)	2

## Division I Women's Volleyball

The top 20 NCAA Division I women's volleyball teams through matches of November 10, with records in parentheses and points:

1. Stanford (20-1)	160
2. Pacific (25-2)	152
3. UCLA (22-4)	144
4. Southern California (19-8)	136
5. Cal Poly-SLO (22-5)	128
6. San Jose State (22-4)	120
7. Nebraska (21-2)	112
8. Texas (19-5)	100
9. UC Santa Barbara (21-12)	99
10. Hawaii (25-7)	89
11. Purdue (25-3)	79
12. Arizona (15-8)	72
13. Illinois (31-2)	63
14. Arizona State (18-11)	58
15. Western Michigan (22-2)	42
16. Brigham Young (25-9)	41
17. Colorado State (22-8)	31
18. San Diego State (22-15)	29
19. Texas A&M (22-6)	15
20. Long Beach State (14-11)	5

## Division II Women's Volleyball

The top 20 NCAA Division II women's volleyball teams through matches of November 10, with records in parentheses and points:

1. Cal State Northridge (21-9)	159
2. Portland State (27-5)	153
3. Cal State Sacramento (25-7)	144
4. Cal Poly Pomona (26-9)	136
5. Sam Houston State (39-6)	128
6. UC Riverside (20-8)	120
7. Nebraska-Omaha (36-6)	111
8. Ferris State (27-7)	100
8. Central Missouri State (39-7)	100
10. St. Cloud State (31-6)	87
11. Grand Valley State (32-8)	78
12. Tampa (37-6)	76
13. Angelo State (25-7)	61
14. Mississippi U. for Women (43-2)	59
15. Northern Michigan (28-7)	47
16. Metropolitan State (28-16)	39
17. Florida International (21-9)	33
18. New Haven (32-5)	25

19. James Madison (31-17)	8
20. Regis (19-9)	7

## Division III Women's Volleyball

The top 20 NCAA Division III women's volleyball teams through matches of November 10, with records in parentheses and points:

1. Grove City (41-0)	119
2. Ill. Benedictine (41-4)	115
3. Elmhurst (36-9)	108
4. Colorado College (38-7)	99
5. Gustavus Adolphus (43-12)	94
6. Gallaudet (38-3)	89
7. Juniata (36-7)	86
8. UC San Diego (25-16)	75
9. Calvin (36-4)	74
10. Nazareth (41-13)	63
11. Wis.-Stevens Point (44-14)	60
12. Cortland State (41-7)	50
13. Eastern Conn. St. (30-8)	46
13. Western Maryland (39-6)	46
15. La Verne (17-13)	39
16. Wis.-LaCrosse (41-12)	24
17. Ithaca (38-10)	19
18. Claremont-Mudd-Scripps (24-9)	18
18. Ohio Northern (29-9)	18
20. St. Andrews (26-16)	5

## Men's Water Polo

The top 20 NCAA men's water polo teams as selected by the American Water Polo Coaches Association, with records in parentheses and points:

1. Stanford (20-4)	200
2. UCLA (19-5)	193
3. UC Irvine (18-6)	192
4. Long Beach State (19-8)	185
5. California (14-7)	178
6. Southern California (18-11)	177
7. UC Santa Barbara (17-9)	170
8. Fresno State (13-13)	165
9. Pepperdine (17-14)	160
10. Loyola (Illinois) (18-7)	154
11. Brown (24-8)	151
12. Bucknell (23-6)	145
13. Navy (22-7)	139
14. Pacific (9-17)	136
15. UC San Diego (12-14)	130
16. Claremont-Mudd-Scripps (18-8)	125
17. Cal St. Los Angeles (14-7)	119
18. Iona (22-11)	114
19. Richmond (30-4-1)	113
20. Cal State Fullerton (8-21)	104

## FINANCIAL SUMMARIES

### 1985 Division II Men's Basketball Championship

Receipts	\$429,049.10
Disbursements	174,715.98
	254,333.12
Expenses absorbed by host institutions	4,633.58
	258,966.70
Team transportation and per diem expenses	204,355.09
	54,611.61
Distribution to competing institutions	\$27,308.00
Retained by the Association	27,303.61
	\$ 54,611.61

### 1985 Division III Men's Basketball Championship

Receipts	\$150,808.30
Disbursements	88,370.51
	62,437.79
Expenses absorbed by host institutions	1,376.20
	63,813.99
Team transportation and per diem expenses	139,811.00
	( 75,997.01)
Charged to general operating budget	\$ 75,997.01

## Legislative Assistance

1985 Column No. 41

### Conference season-end tournaments

At its recent meeting, the Administrative Committee affirmed that the provisions of Bylaw 3-3-(d), which stipulate that the maximum number of contests or dates of competition in a sport shall exclude competition in one conference season-end tournament, were intended for members of the involved conference and cannot be extended to include a situation in which a nonmember of the conference participates in the conference's season-end tournament. Likewise, in order for a basketball tournament to be considered a conference season-end tournament under the provisions of O.I. 309 (page 82, 1985-86 NCAA Manual), only members of that conference may participate in the tournament.

### Use of off-campus facilities for intrasquad practices

Constitution 3-1-(h)-(1) states that a member institution may provide its student-athlete actual and necessary expenses for reasonable trips to practice sites other than those of the institution if the practice site is within the state in which the member institution is situated or a distance not to exceed 100 miles if outside that state. Under the provisions of Case No. 239 (page 323, 1985-86 NCAA Manual) and Bylaw 1-9-(a), a member institution using a high school facility for an intrasquad game or practice may not contribute any funds realized from the event to the high school or its athletics booster club except actual and necessary expenses for rental of the facility.

This restriction on contributions would apply to any funds generated by the events, including, but not limited to, game receipts, concessions, parking or other contributions. This case also would relate to other schools, junior colleges, organizations and sports clubs that involve prospective student-athletes.

### College or high-school broadcasts

As set forth under Bylaw 1-4-(c) and Case No. 202 (page 313, 1985-86 NCAA Manual), a member institution shall not permit a prospective student-athlete or high school, college preparatory school or junior college coach to appear on a radio or television program: (1) conducted by the member institution's coach, (2) in which the NCAA institution's coach is participating, or (3) for which a member of the athletics staff of the NCAA institution has been instrumental in arranging the appearance of the prospect or coach or related program material. This prohibition applies to appearances in person or by means of film or videotape. Accordingly, a prospective student-athlete may not be interviewed or otherwise featured in any type of broadcast or telecast involving a member institution.

This legislation also would prohibit a member of the athletics staff of the NCAA member institution from serving as an announcer or commentator for a high school, college preparatory school or junior college contest or from appearing, either in person or by means of audiotape or videotape, on a radio or television broadcast of such contest.

# Calendar

November 22	Division II Men's Cross Country Championships, East Stroudsburg, Pennsylvania
November 23	Division II Women's Cross Country Championships, East Stroudsburg, Pennsylvania
November 23	Division III Men's and Women's Cross Country Championships, Atlanta, Georgia
November 23-24	National Collegiate Women's Soccer Championship, Fairfax, Virginia
November 23-24	Division I Field Hockey Championship, Norfolk, Virginia
November 25	Division I Men's and Women's Cross Country Championships, Milwaukee, Wisconsin

## The Market

Continued from page 14

Athletics, UMC 74, Utah State University, Logan, Utah 84322.

## Gymnastics

**Women's Gymnastics**—Head Coach. The University of Pittsburgh is seeking applications for the position of Head Women's Gymnastics Coach to fill an immediate vacancy. This is a full-time, twelve-month position. Responsibilities: The head coach will be responsible for the total women's gymnastics program and its continued development within the rules and regulations of the NCAA and the University. Qualifications: Applicants must have a Bachelor's Degree. Previous Division I coaching experience is preferred and experience with Class I or Elite gymnasts is a must. Salary: Commensurate with experience and credentials. Application Process: Send letter of application and resume to Carol J. Sprague, Assistant Director of Athletics, Department of Athletics, P.O. Box 7436, Pittsburgh, PA 15213. Application Deadline:

Applications will be accepted through Nov. 30, 1985. Interviews of qualified applicants may take place during the application period. The University of Pittsburgh is an Equal Opportunity/Affirmative Action Employer.

## Volleyball

Washington State University seeks Head Volleyball Coach for Women. 12-month full-time appointment with salary commensurate with experience and qualifications. Position to begin Jan. 13, 1986. Organize, manage and coach a competitive Division I women's volleyball program including recruitment, fund raising, involvement in public relations and promotional efforts, preparation of practices and competitive events and administrative duties of the volleyball program. Bachelor's degree required. Demonstrated ability in planning and directing a successful volleyball program. Application deadline: Dec. 6, 1985. Send application letter, resume and 3 letters of recommendation to: Marcia Sanholtz, Associate Athletic Director, Washington State University, Bohler Gym 107, Pullman, WA 99164-1610. AA/EOE.

## Wrestling

Head Wrestling Coach. Position available as

soon after deadline when convenient for successful applicant due to last-minute resignation. Will supervise growing program in Big 8 Conference. Program includes one full-time assistant and graduate assistant. Must possess wrestling participation at the intercollegiate level, preferably in a Division I program. Preference given to those with previous coaching experience within a university setting. Requires Bachelor's minimum. Master's preferred. In Physical Education or closely related field. Remit letter of application and names and telephone numbers of no less than three references by December 1 to: Mr. Bob Devaney, Athletic Director, University of Nebraska, 103 South Stadium, Lincoln, Nebraska 68588-0120. Affirmative Action/Equal Opportunity Employer.

## Graduate Assistant

Graduate Assistantships. Want a quality college coaching experience while earning a M.S. degree in Physical Education (with concentrations in sports medicine, sport psychology, and teaching behavior)? Academically qualified candidates (approximately 3.00 gpa) are encouraged to send inquiry to Dr. Craig Fisher, School of HPER, Ithaca College, Ithaca, NY 14850. Coaching positions are available in a wide variety of men's and women's sports. Graduate assistantships include tuition remission and a cash work allowance.

**Graduate Assistant in Athletic Training, University of Alabama.** Responsibilities: Work directly with the University and NCAA Division I women's athletic program under supervision of the head women's athletic trainer. Opportunities: Pursue a master's degree, develop expertise in the use of modern modalities and experience with eight female Division I sports. Qualifications: Admitted to graduate school, NATA certification or eligible to take exam. Term: January 6, 1986 through May 30, 1986, renewable. Assistantship: Graduate tuition and fees, room, board and books. Deadline: December 6, 1985. Send resume and three letters of recommendation to: Sarah Patterson, Assistant Athletic Director, University of Alabama, P.O. Box 6449, University, Alabama 35486, 205/348-7077. Equal Opportunity/Affirmative Action Employer.

## Miscellaneous

**Sports Facilities Coordinator, University of Minnesota, Twin Cities campus.** Responsibilities: Coordinate scheduling of all athletic facilities; lead planning of construction or renovation; inspect or supervise maintenance of all athletic facilities; supervise management of golf course, ice rink, tennis courts; supervise operation of equipment and locker rooms for physical education, recreational sports, and men's and women's intercollegiate athletics. Salary: \$38,000 minimum, initial appointment for 3 years. Requirements: BA, BS prefer MA, MS and five years' experience with college physical plant (prefer experience with college athletic facilities). For more information for complete job description or to submit letter of application, resume and three references contact: Greg Kittelsen, Physical Plan-

S.E. Univ. of Minnesota, Minneapolis, Minnesota 55455. Closing date for applications is January 15, 1986. The Univ. of Minnesota is an equal opportunity educator and employer, and specifically invites and encourages applications from women and minorities.

## Open Dates

**Football Division III, Hampden-Sydney College.** 9/9/89 away, 9/23/89 away, 10/28/89 away, 11/4/89 home, 9/8/90 home, 9/22/90 home, 10/27/90 home, 11/3/90 away, 9/14/91 away, 9/28/91 away, 11/2/91 away, 11/9/91 home, 9/12/92 home, 9/26/92 home, 10/31/92 home, 11/7/92 home. Contact: Will Chesney, Director of Athletics, Hampden-Sydney College, Hampden-Sydney, Virginia 23943, 804/223-4381 ext. 153.

## Director of Publications Director of Information Director of Sports Information

The U.S. Sports Academy, Mobile, Alabama, a global leader in the development and delivery of quality educational programs at the graduate level, has an immediate opening for qualified candidates in the areas listed above. These positions involve writing and editing skills for the Academy's overall program of publications, community relations, and international projects. Minimum of two years experience with a bachelor's degree in English, public relations, communications, or related field. A sports and academic background preferred with skills in typing or word processing, photography, and other areas related to Publications. Send resume, salary requirements, and letters of recommendation to:

Phil Fortino  
A.I.E.R.S.  
Department 460-119-2  
P.O. Box 8465  
Mobile, AL 36689-0465  
(205) 343-3890  
EOE/AA

## Athletic Director and Head Department of Physical Education And Athletics

### U.S. Merchant Marine Academy Kingspoint, New York 11024

Comprehensive responsibility to direct the intercollegiate, intramural and recreational athletic program at the Academy, a Division III institution. Candidates should have experience in coaching, directing undergraduate and intramural programs, educational administration and supervision and an ability to supervise faculty and coaches. A master's degree in a relevant field is required. Salary: \$47,347 to \$61,042; commensurate with qualifications. Applications should be sent to: Acting Academic Dean, U.S. Merchant Marine Academy, Kingspoint, New York 11024. The U.S. Government is an Affirmative Action/EEO Employer.

## HEAD COACH OF WOMEN'S SOFTBALL AND VOLLEYBALL

### Mt. Union College

Mt. Union College is seeking applications for the position of head coach of women's softball and volleyball. Teaching and student advising responsibilities included. Master's degree, playing and/or coaching experience in volleyball or softball required. Teaching experience or educational background in either elementary physical education or athletic administration desirable. Candidate must have a commitment to a career in a liberal arts setting. Cover letter, resume, official transcripts and three letters of reference should be sent to:

Larry Kehres  
Director of Athletics  
Mt. Union College  
Alliance, Ohio 44601

Available: January 1, 1986.

Applications will be reviewed beginning December 9, 1985. Equal Opportunity/Affirmative Action Employer

# Former player claims many top athletes are paid by agents

Despite the risk of losing their eligibility, well over half of all the nation's top collegiate athletes — while they're still playing — "are being taken care of" by agents, a 1984 All-America defensive lineman with the University of Texas, Austin, says.

"That's why you see so many seniors

smiling," Tony DeGrate, the 1984 winner of the Lombardi Award, told the Dallas Morning News.

"A lot of kids are less fortunate, so when they're offered all this illegal stuff, it's their golden opportunity. Of course, they're going to jump on it."

DeGrate added, "I'd say right now

from 70 to 80 percent of the players are being taken care of."

The News, in a November 10 story, quoted agent Leigh Steinberg as estimating that 40 percent of seniors who will be taken in the first rounds of the National Football League and National Basketball Association drafts next year already have been signed by agents and are receiving money.

NCAA rules prohibit an agent from signing a college player before the player's eligibility expires.

The NCAA estimates the number of persons who represent college athletes to be close to 2,000. Nearly 1,000 are approved by the NFL Players Association to negotiate contracts.

But NFLPA officials said only 100 of those represent 75 percent of the league's players.

Officials said, most commonly, agents break NCAA rules by signing and paying players before their eligibility expires.

Agent Mike Trope not only didn't deny he breaks that regulation, he freely admitted it.

"I recruit early. Everybody recruits early. If you want to succeed in this

*'The NCAA has no right to tell me how I should run my business' — Mike Trope, sports agent*

business, you have to," the News quoted Trope as saying.

"The NCAA says it's not an issue of morality. My concept of morality is not to hurt anybody, and not to break the laws and statutes of the United States.... The NCAA has no right to tell me how I should run my business," Trope said.

NBA and NFL officials estimated

that 75 to 100 agents give the business a bad name, the newspaper said.

"It's like prostitution or the numbers game," said Gil Brandt, Dallas Cowboys vice-president. "If there's money to be made, a lot of people are going to try to get involved."

"A lot of people say a 20-year-old kid should know better, but when he doesn't have a lot of money, like a lot of these kids, he can be highly susceptible."

The University of Oklahoma in the past two months has investigated reports that several prominent current and former football and basketball players received money and other illegal benefits from agents while competing for the Sooners.

Ronald E. Watson, executive assistant athletics director at Tulane University and a former NCAA investigator, said the problem "is a lot more serious than the general public is aware of.... It's of major proportions."

## Kentucky adopts strict rules to govern athletes, boosters

The University of Kentucky has adopted rules beyond NCAA requirements to govern contact between athletes and boosters and to monitor players' activities.

"There is no way anyone can say they don't know what the policies of the university are," said Brad Davis, assistant sports information director.

The new rules followed an October 27 story in the Lexington Herald-Leader that quoted former basketball players as saying they received cash from boosters, sold their free season tickets for as much as \$1,000 each and received excessive fees for speeches, all of which would violate NCAA rules.

Kentucky athletics director Clifford O. Hagan distributed the new rules to all coaches and other staff members last week, along with a memo dated November 7 that said the regulations were effective immediately.

Also, Hagan sent a letter October 24 to boosters who have contributed money to the athletics association's fund-raising program, warning them against making payments or providing gifts to players. The letter said the university might sever its ties with boosters who violate rules by dropping them from basketball or football ticket lists and prohibit them from attending "other functions."

The new rules require athletes to make written reports of speaking engagements, provide information on summer jobs and register automobiles with the university. Such reports are not required by the NCAA.

The rules also require athletes to give their free seats only to relatives or fellow students and to make sure only those people occupy the designated seats. Head coaches are responsible for ensuring that rule is followed. The NCAA does not require a coach to ascertain who is sitting in players' free seats.

Also not required by the NCAA is a new rule that Kentucky head coaches approve in advance all speeches by players, and that the sports information director keep a record of all speaking engagements.

Boosters will not be allowed in the locker rooms; the basketball players' dormitory, Wildcat Lodge, or a lounge at the football stadium, Wildcat Den. And boosters may not sit on the bench during games without "prior approval of the director of

### Status to change

Drake University will drop its football program next year, then scale back from NCAA Division I-AA to Division III, effective in the fall of 1987, President Michael Ferrari announced November 11.

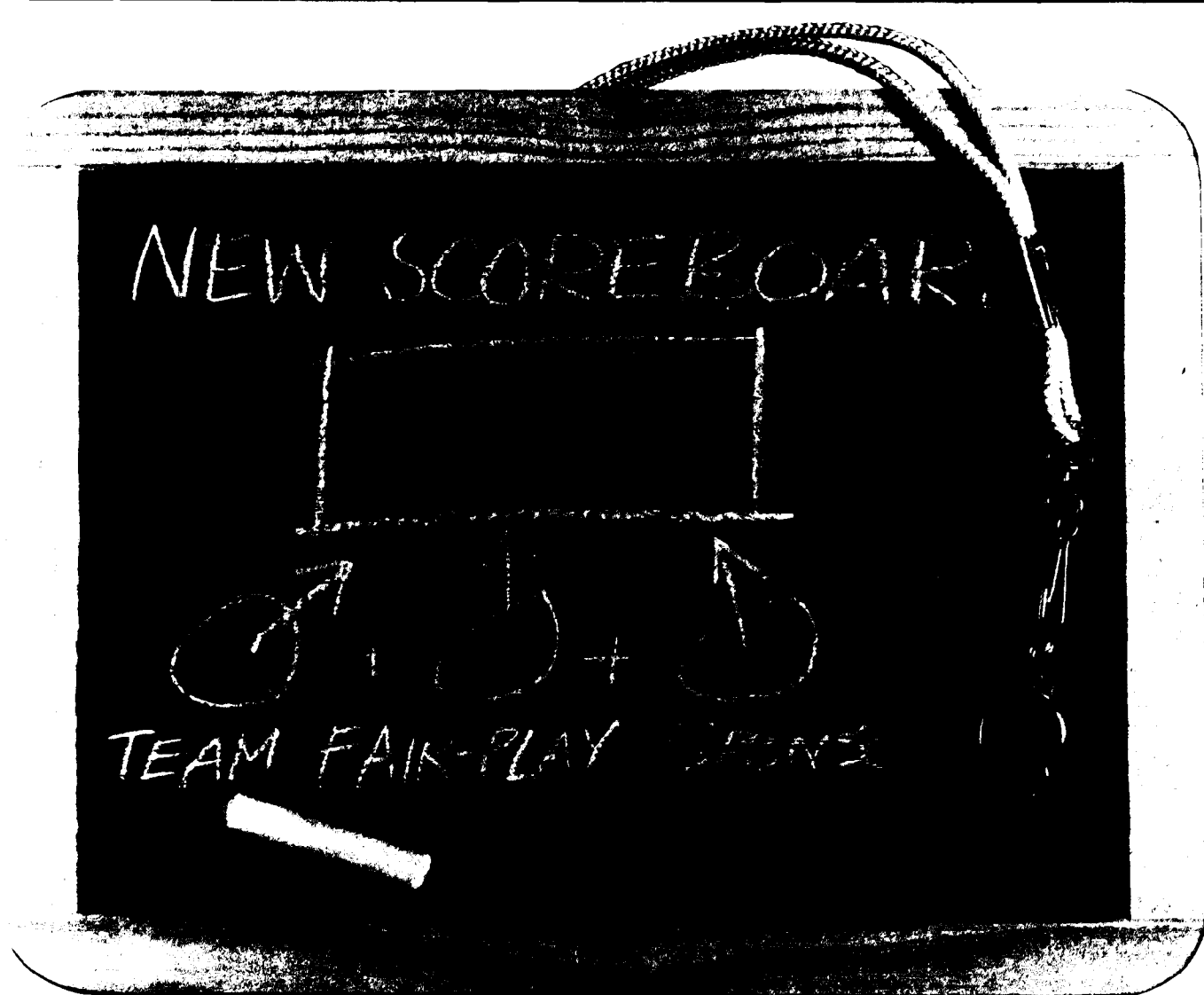
Ferrari said he took the steps because of difficulty in supporting the program at its present level and because of declining enrollment at the private, four-year university.

Ferrari said the decision will not affect Drake's other men's programs in the Missouri Valley Conference or women's programs in the Gateway Collegiate Athletic Conference.

### Next in the News

Next in the series of legislative topics to be considered by the 1986 Convention.

An explanation of the new federated voting procedures to be used at the Convention.



**WE KNOW  
THE  
SPONSORSHIP  
GAME  
INSIDE OUT**

In the past three years, Fair-Play has installed more sponsored scoreboards and message centers than all the other scoreboard companies combined. From large, custom designed boards on down, Fair-Play is the name to remember in sponsorship.

So, if you're about to acquire a sponsor-financed scoreboard, talk to Fair-Play first. You'll come out the big winner.



Box 1847  
Des Moines, Iowa 50306  
(515) 265-5305

**AMERICA'S SCOREKEEPER FOR OVER 50 YEARS**