

The NCAA News

September 23, 1985, Volume 22 Number 33

Official Publication of the

National Collegiate Athletic Association



Attack on gambling outlined

A multifaceted program to combat gambling on intercollegiate athletics events is under way after receiving strong approval from the Division I Steering Committee and the NCAA Council in their August meetings.

The eight-step program was developed over the summer after the steering committee and Council adopted a statement in April that dealt with institutional integrity and compliance with intercollegiate athletics policies and rules. The plan then was approved by the NCAA Administrative Committee after meetings involving representatives of the NCAA, the Federal Bureau of Investigation and the U.S. Drug Enforcement Administration.

"The ominous combination of point-shaving (or game-fixing) and use of drugs by student-athletes has come into full view," said the statement adopted in April. "The potential for the destruction of intercollegiate athletics' integrity from either already has been recognized. Their combination more than doubles that threat."

Included in the anti-gambling program are the following elements:

Federal legislation

NCAA President John R. Davis testified June 25 before the Presidents' Commission on Organized Crime and encouraged it to support legislation that would prohibit wagering on intercollegiate and interscholastic sports events. (See The NCAA News, issues of July 3 and July 17, 1985.)

Davis reminded the commission that the Federal Commission on the Review of National Policies Toward Gambling had recommended strongly in 1976 "that there be an absolute prohibition ... against wagering on amateur sports events."

The NCAA also proposes that:

- The Federal criminal code related to bribery be amended to extend the bribery and conspiracy statutes to all intercollegiate athletics events.
- Statutes prohibiting the interstate transmission of wagering information by gambling busi-

See Attack, page 10

Commission agenda: eligibility, autonomy

Eligibility requirements and Division I-A autonomy are two of the major items on the agenda for the fall meeting of the NCAA Presidents Commission October 1-2 in Denver, Colorado.

The three topics generally regarded as the most important of those currently facing the Commission all are Division I matters: proposed modification of the Bylaw 5-1(j) requirements for initial eligibility, the overall question of freshman eligibility and a review of Division I-A autonomy provisions.

The busy agenda includes seven separate meeting sessions in a 24-hour period, beginning with a meeting of the Commission's executive committee (the elected officers) at 3 p.m. October 1 and concluding with adjournment of the full Commission meeting at 3 p.m. October 2.

Separate sessions and the chair for each are as follows:

Executive committee, 3 p.m. October 1, Commission Chair John W.



Ryan



Seelye



Singletary



Weller



Gilman

Ryan, Indiana University; Division I-A Commission members, 4 p.m. October 1, Otis A. Singletary, University of Kentucky. Nominating committee, evening of October 1, Richard C. Gilman, Occidental College.

Division I subcommittee, 7:30 a.m. October 2, Singletary. Division II subcommittee, 7:30 a.m. October 2, Barbara J. Seelye, Keene State College. Division III subcommittee, 7:30 a.m. October 2, Kenneth J. Weller, Central College (Iowa). Commission,

10 a.m. October 2, Ryan.

The Commission also will have a reception and dinner the evening of October 1. The meeting is at the Clarion Hotel.

Highlights of the agenda for the separate sessions:

Executive committee

The four Commission officers will develop a policy regarding topics the Commission will and will not agree to discuss in future meetings. The Com-

mission has been receiving an increasing number of requests and submissions from outside the Commission and the NCAA Council, some from outside the NCAA membership.

The executive committee also will suggest to the Commission that remaining items from the earlier survey of chief executive officers that were favored by a majority of the respondents but have not yet been acted upon be placed on the agenda for the Com-

See Commission, page 8

Division I CEOs say freshmen should be eligible

There is very little interest among Division I chief executive officers in declaring freshmen ineligible for college athletics in any sport, according to a survey conducted for the Division I subcommittee of the NCAA Presidents Commission.

Less than 20 percent of the Division I CEOs participating in the survey believe that freshmen should be ineligible for college athletics, whether in all sports or in football and basketball only.

On the other hand, more than three-fourths of the respondents think freshmen should be eligible for college athletics if they meet certain nationally

approved academic standards.

Of the 284 Division I chief executives, a total of 222—78.2 percent—returned the survey questionnaires. The results differed only slightly among the three Division I subdivisions—I-A, I-AA and I-AAA.

Otis A. Singletary, chair of the Commission's Division I subcommittee, authorized the survey in order to have appropriate data for the subcommittee's consideration in its October 2 meeting in Denver. The survey questionnaire asked the chief executives to agree or disagree with each of 12 different statements regarding freshman eligibility/ineligibility and the

unavoidable questions attendant to that issue.

The survey produced the following results on three of the key statements:

- In general, freshmen should be ineligible for college athletics. Division I-A: 16 agreed, 60 disagreed, two no response or other answer. Division I-AA: six agreed, 69 disagreed. Division I-AAA: 15 agreed, 53 disagreed, one no response. Totals: 37 agreed (17 percent), 182 disagreed (82 percent), three no response/other answer (one percent).
- Freshmen should be ineligible in football and basketball only. Division I-A: 15 agreed, 59 disagreed, four no

response or other answer. Division I-AA: five agreed, 69 disagreed, one no response. Division I-AAA: eight agreed, 56 disagreed, five no response/other answer. Totals: 28 agreed (12.5 percent), 184 disagreed (83 percent), 10 no response/other answer (4.5 percent).

- Freshmen should be eligible if they meet membership-approved academic standards. Division I-A: 52 agreed, 21 disagreed, five no response or other answer. Division I-AA: 64 agreed, 10 disagreed, one no response. Division I-AAA: 53 agreed, 12 disagreed, four no response/other answer. See Division I, page 8

Active membership in Association reaches an all-time high

The number of active members in the NCAA reached an all-time high of 796 as of September 1, 1985.

Despite the gain, overall membership dropped from 991 to 987 with the loss of six corresponding members. Other categories of membership remained constant from 1984 to 1985.

The number of active members as of September 1, 1985, rose from 794 in 1984 to the current 796. Active membership of the Association has increased by 13.1 percent from 1975 to the present.

Overall membership in the Association has grown by almost 20 percent since 1975 despite one-year declines from 1978 to 1979 and from 1984 to 1985.

Elected to active membership by the NCAA Council in its August meeting were (all Division III) Cabrini College, Ferrum College, Lewis and Clark College, Pennsylvania State University-Behrend College, Trinity College (Illinois), and Webster College.

Elected to conference membership in August were the Big South Conference and Pacific West Athletic Conference—Division I; Eastern States Athletic Conference and New England Women's 6—Division III.

Membership growth, 1949-1985

Year	Active	Conference	Corresponding	Affiliated	Total	Pct. Increase
1949	278	3	28	8	317	
1950	362	11	5	9	387	22.1
1955	449	24	5	11	489	2.5
1960	524	32	10	16	582	2.6
1965	579	41	18	21	659	2.2
1970	645	44	32	26	747	3.6
1975	704	57	24	39	824	2.2
1980	738	73	24	45	880	1.8
1981*	753	82	25	46	906	2.5
1982*	787	95	27	50	959	5.9
1983*	791	99	29	52	971	1.3
1984*	794	101	48	48	991	2.1
1985*	796	101	42	48	987	-0.4

*1981, 1982, 1983, 1984 and 1985 totals are as of September 1; all other totals are as of December 31.

Institutional counseling panels to meet as group in October

Members of institutional counseling panels established to assist student-athletes during the transition from collegiate to professional athletics careers will have their first opportunity to meet as a group in October.

The NCAA fall counseling panel forum, scheduled for Tuesday, October 15, in Chicago at the O'Hare Hilton Hotel, will permit panel members for the first time to gather and exchange information and ideas concerning panel activities, members' roles and possible sources of additional expertise.

Career counseling panels are established in accordance with the provisions of NCAA Constitution 3-1(h)-

(4), revised in 1983 to include counseling about a future professional athletics career (through a three-person panel appointed by the institution's chief executive officer) among those benefits considered incidental to participation in athletics. Approximately 45 panels were established in 1984-85, the program's first year.

Counseling panel chairs were surveyed earlier this year in order to identify issues critical to the panels' continued development. The five major topics identified at that time will be the focus of hour-long discussion sessions. Agenda items include responsibilities and activities of panel members, institutional policy con-

cerning contacts by agents, the athlete's perspective, questions of institutional liability, and the value of outside speakers and expertise.

"Panel chairs made it clear in the interviews conducted this summer

that a forum of this type would be a great help in defining the panels' responsibilities and formulating institutional policy," said John H. Leavens, director of legislative services and coordinator of NCAA player-agent

activities. "The open exchange of accurate information is a key to minimizing the role of unscrupulous agents, and a unified network of institutional counseling panels will be the central element in the Association's educational process."

Each discussion session will be preceded by brief opening remarks from selected speakers, including Gil Brandt, Dallas Cowboys' director of player personnel; Gene Upshaw, National Football League Players Association executive director; Mel Blount, National Football League player relations committee; Ronald Cavanagh, associate dean, arts and sciences, See Institutional, page 9

In the News

Championships sites

Dates and sites for 1985-86 NCAA championships. Page 3.

Opposes changes

The University of North Carolina system opposes any modifications in 'Proposal 48.' Page 8.

Helping youngsters

The National Youth Sports Program reached underprivileged youth in 117 cities and 41 states during the summer. Page 12.



Coaches' role in drug testing prompts questions

By Art Thiel

Seattle Post-Intelligencer

Jim Walden says when he and most of his fellow football coaches were growing up, an experiment in altered states consisted of a whiff of Mom's ammonia window cleaner.

So how's a guy like that supposed to handle a stud running back who toots enough cocaine to kill a family of hippos?

Although the Washington State boss and other coaches often claim a stance of compassion, there are folks who would rather see someone besides the man in charge of playing time make decisions on a kid with drug trouble.

"Coaches shouldn't be involved in the decision-making process on mandatory drug testing," said Dr. Gerald Finerman, UCLA's team physician and a member of the Pacific-10 Conference committee on drug abuse. "There shouldn't be a situation where if a guy doesn't practice well, a coach

says, 'Fill the bottle.'"

Walden gets a little high himself at such a suggestion.

"Hey, I run this organization," he said, bristling. "I'm the guy who takes the crap when it's going bad. I guess I gotta be the boss somewhere along the way."

Therein lies a major dilemma of the mandatory drug-testing programs

not be the same guy who holds the information on whose test is positive," said Finerman, who keeps to himself and a member the student affairs office the identity of positive testers at UCLA.

Yet, Walden, who quietly began testing his players during spring drills despite discouragement from school officials, insists that keeping such

testing, and I'd certainly like to be involved in the heavy counseling," said Washington's Don James, adding his program has had no major problems, although there have been users. "We've taken a different stance departmentally, though."

That stance is no testing. Period. The UW and WSU officially are skeptical of the legality of mandatory testing. So are a number of other schools, but nearly as many are plunging ahead with elaborate plans.

The divergence of opinion on whether to test, and who to tell, is because a national policy doesn't exist. The NCAA's attempt at a plan last year was shot down and another try is scheduled at its annual Convention in January. Until then, schools are on their own.

"I'd like to see a policy start from the top — first the NCAA down and then the league down," James said. "Right now, we're all off on different directions."

To Stanford athletics director Ferdinand A. Geiger, that is a cop-out.

"I find a flaw in the thinking that says national legislation is a panacea for local ills," said Geiger. "Impersonal solutions are always easier to make. Individual ones are harder."

Following the recent Tulane point-shaving scandal, where cocaine was involved, Geiger thinks a national policy would wind up as only a public-relations ploy.

"We would strongly object to a national solution for cosmetic purposes," he said. "The Tulane thing makes everybody look bad, but you have to be disciplined and motivated enough to straighten these things out campus by campus."

Geiger thinks Stanford's house already is in order.

"Until the legal questions are resolved, we would be loathe to partic-

ipate in (mandatory drug testing) and would even work actively to block it," said Geiger. "I know some of my coaches favor testing, but they're looking outside (for winning) instead of inside."

"There are several reasons we don't test. We haven't done a great job yet of exploring all the educational aspects. Also, Stanford operates on an honor code, such as for academic testing. We don't like operating the athletics department differently from other parts of the university."

"And a great problem hasn't surfaced, or even the potential for it. But we would be naive to assume no use."

Walden wasn't quite as sure what would happen at WSU when he tested 70 football players who volunteered during spring drills.

"Before we tested, I was a little despondent, and prepared for the worst — I've heard of two or three schools who were overwhelmed by the (number of positive) test results," he said. "Afterwards, I was relieved. It was a great feeling."

Walden said more than one but less than 10 had positive results. There won't be follow-up tests until this fall. Walden, if he's given permission, has a plan.

"I talk with a kid," he said. "I don't know about these things. It's been a great eye-opener. I ask them if they think (drug use) is necessary. Sure, they don't tell me everything, but a lot of them who want to get it off their chest sometimes are glad they got caught."

"If we go to a third positive test, he withdraws from the program. Colleges aren't equipped to be rehabilitation programs."

"We're not the Los Angeles Dodgers. If he has a problem, we'll get him help, but if he refuses, we don't have \$10,000 to spend on rehabilitation."

Columnary Craft

now proliferating in college jock factories nationwide: Who has a right to know about an athlete's drug problem?

While it would seem reasonable that a head coach should be told who among his players has used illegal drugs, Finerman thinks that there are enough old-fashioned types in command who equate any drug use with treason.

"I would prefer that the guy who determines an athlete's playing time

knowledge exclusively to himself is the only way to protect an athlete's confidentiality."

"I don't want the trainer or assistant coaches knowing," he said. "There's a grapevine of coaches.... What fun is a secret if you can't tell anybody? I've always said, 'Don't tell me something I know. It's fun to find out something I don't know.'"

Walden gets no argument from his rival across the state.

"Personally, I lean toward drug

There's too much football on TV

Steve Leff, executive vice-president

Backer & Spielvogel Advertising, New York

Advertising Age

"I don't want to fly in the face of a Supreme Court decision (voiding the NCAA football television contracts), but unless college football does something to regulate itself, to clean itself up, in terms of the numbers of packages sold to different types of broadcast outlets, it's just going to kill the sport."

"College football doesn't perform badly (in terms of television ratings), but there is just too much of it there, and there are not enough dollars in the marketplace to suck it all up."

Pat Dye, athletics director and head football coach

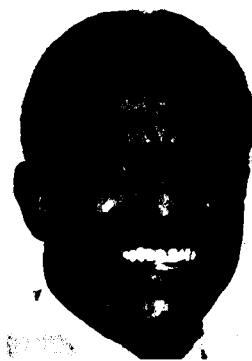
Auburn University

Houston Chronicle

"People talk about graduation, but nobody talks about the value of four years of college life. Whether he gets a



Jack Bicknell



Edward G. Robinson

team drug problem).

"At the same time, to stick your head in the sand is stupid. I bet we've got kids who have experimented on the team. There's just too much evidence that it's part of society, and our kids are part of that society."

"The purpose (of Boston College's recent discussions about instituting drug testing for athletes) is not to catch somebody or get somebody in trouble. I see no one losing his scholarship over drug involvement. We will give them counseling and help."

Edward G. Robinson, athletics director and head football coach

Grambling State University

The Los Angeles Times

"One of the best moments of my life was when we played at the Sugar Bowl (in 1974). When I was in college, no Blacks could play there or watch games there. Up pops 1974 and we (Grambling State) go to the Sugar Bowl and we had 76,000 people watching us. I'm standing there on the field, crying because I remember what it was like. For the players, it was a game. For me, it was walls falling down."

Louis Marciani, athletics director

Salisbury State College

The Chronicle of Higher Education

"Today's athletics directors all need in-service training, and I'm one of them. The field is moving so fast. We are responsible not only for management, but for funding, rules and regulations, budgeting, marketing, and program evaluations. What about a national certification program for athletics administrators? A certification system would be set up such that, above and beyond the minimum qualifications for the position, competencies would be identified through an authorized national organization, such as the NCAA, to insure proper athletics administration."

"Based on these competencies, certification standards would be identified and adhered to. This would force us to be better managers, to make students aware of all the eligibility rules and to manage time more efficiently."

Vincent J. Dooley, athletics director and head football coach

University of Georgia

The Washington Post

"I don't mind the standard that we've set here at Georgia. And I think it's good to have critics question things, mainly because it makes you go back and examine your conscience. You ask yourself: Am I doing what is right? Am I doing the right thing? The only way you can answer those questions is by looking back at the standards you set."

Opinions Out Loud

degree or not, Bo Jackson (varsity football player) has grown a great deal because of his four years at Auburn.

"I pick up the paper and see where somebody has come up with the fact that Memphis State hasn't graduated a black basketball player in 13 years. But nobody says anything about the things some of those players learned and the benefits they gained by attending a university for four years."

Mike Gottfried, head football coach

University of Kansas

Associated Press

"There was a guy named Merle Hudson in my community, who was a coach when I was growing up. Every day, when I was eight or nine years old, he would teach me how to play. I look back and see that he was judged more for what he was doing, teaching young people skills in how to play games and teaching them how to accept winning and losing."

"He wasn't being judged on how many victories he had. And that's how our profession has changed."

Mike Ruth, football player

Boston College

The Sporting News

"Nobody said in order to be a religious person that you had to be nonviolent or unaggressive. All you have to do is open the Bible. John the Baptist was a tough man. Paul was a fiery person. And God was no slouch, either."

"It's a total falsehood that there's no room for being aggressive in a religious field. You're going to fall and fall repeatedly. You've got to get up and keep getting up and trying your hardest. That's what it takes in this life."

Dennis Green, head football coach

Northwestern University

The Chronicle of Higher Education

"The biggest issue, in my opinion, has to be establishing college-preparatory requirements for high school student-athletes. A core-curriculum requirement lays a foundation for a young man to become accustomed to studying, to take courses that challenge him, and to put him in a proper frame of mind when he reaches his junior year and thinks he is going to be a prospect for college."

Jack Bicknell, head football coach

Boston College

Associated Press

"It never even crossed my mind (wondering about a

Letter to the Editor

One rule hurts smaller programs

To the Editor:

First of all, I would like to congratulate the NCAA on its recent "get-tough" approach to illegal recruiting ploys used by some institutions. I think this philosophy will prove to be successful.

I would suggest that the NCAA take another look at its recent legislation preventing institutions from sending their posters to high school athletes and coaches.

The rationale that athletics departments were trying to outdo one another in this area of promotions has some credence to it. However, institutions still can send out multicolored, slick and extremely expensive recruiting brochures. A school with the money can try to outdo another and boost its expenditure in such a brochure.

The new rule regarding posters will have a negative impact on a program and budget the size of the University of Montana's, and there are numerous athletics programs of our size with restricted revenue sources.

In most cases, institutions can find advertisers to sponsor their posters and at least break even with that type of recruiting tool. However, many athletics departments deal with substantial budget cuts and cannot afford to upgrade their recruiting publications, if, in fact, they produce one at all.

This new poster rule has given the "little guy" one less recruiting tool in an area that already has been dwindling.

Dave Guffey
Sports Information Director
University of Montana

The NCAA News

[ISSN 0027-6170]

Published weekly, except biweekly in the summer, by the National Collegiate Athletic Association, 1111 Avenue at 63rd Street, P.O. Box 1906, Mission, Kansas 66201. Phone: 913/384-3220. Subscription rate: \$20 annually prepaid. Second-class postage paid at Shawnee Mission, Kansas. Address corrections requested. Postmaster send address changes to NCAA Publishing, P.O. Box 1906, Mission, Kansas 66201.

Publisher Ted C. Tow
Editor-in-Chief Thomas A. Wilson
Managing Editor Steven M. Carr
Assistant Editor Michael V. Earle
Advertising Director Wallace I. Renfro
The Comment section of The NCAA News is offered as opinion. The views expressed do not necessarily represent a consensus of the NCAA membership. An Equal Opportunity Employer.

Dates and sites determined for most NCAA championships

The Division II cross country regional marks the beginning of the 1985-86 NCAA championships season, in which 74 NCAA championships are scheduled in 21 sports for men and women.

There are currently 10 National Collegiate Championships for which all divisions are eligible—four for men, four for women, and two men's and women's events. There are 23 National Collegiate Division I Championships (13 men, 10 women), 18 National Collegiate Division II Championships (10 men, eight women) and 23 National Collegiate Division III Championships (13 men, 10 women).

The number of championships scheduled for 1985-86 has dropped from last year's total of 75 due to the cancellation of the Division II Men's and Women's Indoor Track Championships.

Following is the list of dates and sites for 1985-86 NCAA Championships:

National Collegiate—Men's and Women's
Rifle: U.S. Naval Academy, Annapolis, Maryland, March 14-15, 1986.
Skiing: University of Vermont, Burlington, Vermont, March 5-8, 1986.

National Collegiate—Men's
Fencing: Princeton University, Princeton, New Jersey, March 18-19, 1986.
Gymnastics: University of Nebraska, Lincoln, Nebraska, April 4-5, 1986.
Volleyball: Pennsylvania State University, University Park, Pennsylvania, May 2-3, 1986.
Water polo: Belmont Plaza Pool, Long Beach, California (Long Beach State host), November 29-December 1, 1985.

Division I—Men's
Baseball: Rosenblatt Municipal Stadium, Omaha, Nebraska (Creighton University host), May 30-June 8, 1986.

Basketball: First and second rounds—East at the Greensboro Coliseum, Greensboro, North Carolina (Atlantic Coast Conference host), March 13 and 15, 1986; and the Carrier Dome, Syracuse University, Syracuse, New York, March 14 and 16, 1986; Southeast at Assembly Center, Louisiana State University, Baton Rouge, Louisiana, March 13 and 15, 1986; and Charlotte Coliseum, Charlotte, North Carolina (Davidson College and the University of North Carolina, Charlotte, co-hosts), March 14 and 16, 1986; Midwest at the University of Dayton Arena, University of Dayton, Dayton, Ohio, March 13 and 15, 1986; and the Hubert H. Humphrey Metrodome, Minneapolis, Minnesota (University of Minnesota, Twin Cities host), March 14 and 16, 1986; West at Dee Center, Weber State College, Ogden, Utah, March 13 and 15, 1986; and Long Beach Arena, California State University, Long Beach, California, March 14 and 16, 1986; Regionals—East at the Meadowlands Arena, East Rutherford, New Jersey (Rutgers University, New Brunswick host), March 21 and 23, 1986; Southeast at The Omni, Atlanta, Georgia (Metropolitan Collegiate Athletic Conference host), March 21 and 23, 1986; Midwest at Kemper Arena, Kansas City, Missouri (Big Eight Conference host), March 21 and 23, 1986; West at The Summit, Houston, Texas (University of Houston host), March 20 and 22, 1986; Finals—Reunion Arena, Dallas Texas (Southern Methodist University host), March 29 and 31, 1986.

Cross country (common sites, all November 16, 1985): Regions 1 and 2 at Lehigh University, Bethlehem, Pennsylvania; Region 3 at Furman University, Greenville, South Carolina; Region 4 at Indiana University, Bloomington, Indiana; Region 5 at Oklahoma State University, Stillwater, Oklahoma; Region 6 at the University of Texas, Austin, Texas; Region 7 at Boise State University, Boise, Idaho; Region 8 at the University of Washington, Seattle, Washington; Finals—Marquette University, Milwaukee, Wisconsin, November 25, 1985.

Football (I-AA): First and second rounds—on-campus sites, November 30, 1985; Second rounds—on-campus sites, December 7, 1985; Semifinals—on-campus sites, December 14, 1985; Finals—Tacoma Dome, Tacoma, Washington, December 21, 1985.

Golf: Wake Forest University, Winston-Salem, North Carolina, May 28-31, 1986.
Ice hockey: First rounds—on-campus sites, March 21 and 23, 1986; Finals—Providence Civic Center, Providence, Rhode Island (Brown University and Providence College co-hosts), March 27-29, 1986.

Lacrosse: First rounds—on-campus sites, May 14, 1986; Second rounds—on-campus sites, May 18, 1986; Semifinals and finals—Rutgers University, New Brunswick, New Jersey, May 24 and 26, 1986.

Soccer: First rounds—on-campus sites, November 17, 1985; Second rounds—on-campus sites, November 24, 1985; Third rounds—on-campus sites, December 1, 1985; Semifinals—on-campus sites, December 8, 1985; Finals—The Kingdome, Seattle, Washington (University of Washington host), December 14, 1985.

Swimming and diving: Diving regionals (common sites, all March 14-15, 1986): Districts 1 and 2 at Pennsylvania State University, University Park, Pennsylvania; District 3 at Clemson University, Clemson, South Carolina; District 4 at Ohio State University, Columbus, Ohio; Districts 5 and 6 at Southern Illinois University, Carbondale, Illinois; Districts 7



A chilly 1984 Division I Men's Cross Country Championships at Penn State.

Dave Coskey photo

and 8 at the University of New Mexico, Albuquerque, New Mexico; Finals—Indiana University Natatorium, Indianapolis, Indiana (Indiana University, Bloomington, host), April 3-5, 1986.

Tennis: University of Georgia, Athens, Georgia, May 17-25, 1986.

Indoor track (common site): The Myriad, Oklahoma City, Oklahoma (University of Oklahoma host), March 14-15, 1985.

Outdoor track (common site): Indiana University, Indianapolis, Indiana, June 4-7, 1986.

Wrestling: Regionals (both February 28-March 1, 1986)—East at Kutztown University, Kutztown, Pennsylvania; West at Southwest Missouri State University, Springfield, Missouri; Finals—University of Iowa, Iowa City, Iowa, March 13-15, 1986.

Division II—Men's
Baseball: Patterson Stadium, Montgomery, Alabama (Troy State University host), May 24-28, 1986.

Basketball: Regionals—on-campus sites, March 6-8, 1986; Quarterfinals—on-campus sites, March 14 or 15, 1986; Finals (common site)—Springfield Civic Center, Springfield, Massachusetts (American International College and Springfield College co-hosts), March 21-22, 1986.

Cross country (common site): Regionals (all November 9, 1985)—East at East Stroudsburg University, East Stroudsburg, Pennsylvania; South at Mississippi College, Clinton, Mississippi; Central at St. Cloud State University, St. Cloud, Minnesota; Great Lakes at Ashland College, Ashland, Ohio; Decy host), December 14, 1985.

Golf: University of Tampa, Tampa, Florida, May 20-23, 1986.

Soccer: First rounds—on-campus sites, November 17, 1985; Second rounds—on-campus sites, November 24, 1985; Semifinals—on-campus sites, December 1, 1985; Finals—on-campus site, December 7 or 8, 1985.

Swimming and diving: Justus Aquatic Center, Orlando, Florida (Rollins College host), March 12-15, 1986.

Tennis: California State University, Northridge, California, May 12-18, 1986.

Outdoor track: California State University, Los Angeles, California, May 21-24, 1986.

Wrestling: Regionals (all February 14-15, 1986)—East at Edinboro University, Edinboro, Pennsylvania; Midwest at Wright State University, Dayton, Ohio; South at Liberty University, Lynchburg, Virginia; Midwest at Central Missouri State University, Warrensburg, Missouri; West at California State University, Chico, California; Finals—Southern Illinois University, Edwardsville, Illinois, February 28-March 1, 1986.

Division III—Men's
Baseball: Marietta College, Marietta, Ohio, May 29-June 1, 1986.

Basketball: Regionals—on-campus sites, February 28-March 1, 1986; Quarterfinals—on-campus sites, March 8, 1986; Finals—Calvin College, Grand Rapids, Michigan, March 14-15, 1986.

Cross country (common site): Regionals (all November 16, 1985)—New England at Dartmouth College, Hanover, New Hampshire; North Dartmouth, Massachusetts; New York at State University of New York, Stony Brook, New York; Midwest at Allentown College, Center Valley, Pennsylvania; Great Lakes at Rose-Hulman Institute of Technology, Terre Haute,

Indiana, Central at Wartburg College, Wartburg, Iowa; Midwest at Augustana College, Rock Island, Illinois; Southeast/South at Emory University, Atlanta, Georgia; West at California State University, Stanislaus, Turlock, California; Finals—Emory University, Atlanta, Georgia.

Football: First rounds—on-campus sites, November 23, 1985; Quarterfinals—on-campus sites, November 30, 1985; Semifinals—on-campus sites, December 7, 1985; Finals—Amos Alonzo Stagg Bowl, Phenix City, Alabama, December 14, 1985.

Golf: site to be determined, May 20-23, 1986.

Ice hockey: First rounds—on-campus sites, March 14-15, 1986; Finals—on-campus site, March 21-22, 1986.

Lacrosse: First rounds—on-campus sites, May 7, 1986; Semifinals—on-campus sites, May 11, 1986; Finals—on-campus sites, May 17, 1986.

Soccer: First and second rounds—on-campus sites, November 10, 1985; Third rounds—on-campus sites, November 17, 1985; Semifinals—on-campus sites, November 24, 1985; Finals—on-campus site, December 7 or 8, 1985.

Swimming and diving: C.T. Branin Natatorium, Canton, Ohio (Kenyon College host), March 20-22, 1986.

Tennis: Claremont-Mudd-Scripps Colleges, Claremont, California, May 12-18, 1986.

Indoor track (common site): site to be determined, March 14-15, 1986.

Outdoor track (common site): University of Wisconsin, La Crosse, Wisconsin, May 21-24, 1986.

Wrestling: Regionals (all February 14-15, 1986)—Northeast at Ithaca College, Ithaca, New York; Southeast at Trenton State College, Trenton, New Jersey; Midwest at John Carroll University, University Heights, Ohio; West at University of Wisconsin, Whitewater, Wisconsin; Finals—Trenton State College, Trenton, New Jersey, February 28-March 1, 1986.

National Collegiate—Women's
Fencing: Princeton University, Princeton, New Jersey, March 20-22, 1986.

Golf: Ohio State University, Columbus, Ohio, May 28-31, 1986.

Lacrosse: First rounds—on-campus sites, May 7, 1986; Semifinals—on-campus sites, May 10 or 11, 1986; Finals—University of Maryland, College Park, Maryland, May 17, 1986.

Soccer—First rounds—on-campus sites, November 10, 1985; Second rounds—on-campus sites, November 17, 1985; Finals—George Mason University, Fairfax, Virginia, November 23-24, 1985.

Division I—Women's

Basketball: First rounds—on-campus sites, May 12, 1986; Second rounds—on-campus sites, March 14, 15 or 16, 1986; Regionals—East at the University of Pennsylvania, Philadelphia, Pennsylvania, March 20 and 22, 1986; Midwest at the University of Iowa, Iowa City, Iowa, March 21 and 23, 1986; Midwest at the University of Texas, Austin, Texas, March 21 and 23, 1986; West at California State University, Long Beach, California, March 20 and 22, 1986; Finals—University of Kentucky, Lexington, Kentucky, March 28 and 30, 1986.

Cross country (common sites): Regionals (all November 16, 1985)—Regions 1 and 2 at Lehigh University, Bethlehem, Pennsylvania; Region 3 at Furman University, Greenville,

South Carolina; Region 4 at Indiana University, Bloomington, Indiana; Region 5 at Oklahoma State University, Stillwater, Oklahoma; Region 6 at the University of Texas, Austin, Texas; Region 7 at Boise State University, Boise, Idaho; Region 8 at the University of Washington, Seattle, Washington; Finals—Marquette University, Milwaukee, Wisconsin, November 25, 1985.

Field hockey: First rounds—on-campus sites, November 16-17, 1985; Finals—Old Dominion University, Norfolk, Virginia, November 23-24, 1985.

Gymnastics: Regionals (all April 5, 1986): Northeast at Pennsylvania State University, University Park, Pennsylvania; Southeast at West Virginia University, Morgantown, West Virginia; Central at Louisiana State University, Baton Rouge, Louisiana; Midwest at the University of Utah, Salt Lake City, Utah; West at Oregon State University, Corvallis, Oregon; Finals—University of Florida, Gainesville, Florida, April 18-19, 1986.

Softball: Regionals—on-campus sites, May 16-17, 1986; Finals—Seymour Smith Softball Complex, Creighton University, Omaha, Nebraska, May 21-22, 1986.

Swimming and diving: Diving regionals (common sites, all March 14-15, 1986): Districts 1 and 2 at Pennsylvania State University, University Park, Pennsylvania; District 3 at Clemson University, Clemson, South Carolina; District 4 at Ohio State University, Columbus, Ohio; Districts 5 and 6 at Southern Illinois University, Carbondale, Illinois; Districts 7 and 8 at the University of New Mexico, Albuquerque, New Mexico; Finals—University of Arkansas, Fayetteville, Arkansas, March 20-22, 1986.

Tennis: University of Texas, Austin, Texas, May 15-23, 1986.

Indoor track (common site): The Myriad, Oklahoma City, Oklahoma (University of Oklahoma host), March 14-15, 1986.

Outdoor track: University of Wisconsin, La Crosse, Wisconsin, May 21-24, 1986.

Volleyball: Regionals—on-campus sites, December 6-7, 1985; Finals—Portland State University, Portland, Oregon, December 13-14, 1985.

Division III—Women's
Basketball: Regionals—on-campus sites, February 28-March 1, 1986; Quarterfinals—on-campus sites, March 7 or 8, 1986; Finals—on-campus sites, March 14-15, 1986.

Cross country (common sites): Regionals (all November 16, 1985)—New England at Southeastern Massachusetts University, North Dartmouth, Massachusetts; New York at State University of New York, Stony Brook, New York; Midwest at Allentown College, Center Valley, Pennsylvania; Great Lakes at Rose-Hulman Institute of Technology, Terre Haute, Indiana; Central at Wartburg College, Wartburg, Iowa; Midwest at Augustana College, Rock Island, Illinois; Southeast/East at Emory University, Atlanta, Georgia; West at California State University, Stanislaus, Turlock, California; Finals—Emory University, Atlanta, Georgia.

Field hockey: Regionals—on-campus sites, November 8-9, 1985; Finals—on-campus site, November 15-16, 1985.

Lacrosse: First rounds—on-campus sites, May 7, 1986; Semifinals—on-campus sites, May 10 or 11, 1986; Finals—University of Maryland, College Park, Maryland, May 17, 1986.

Softball: Regionals—on-campus sites, May 9-10, 1986; Finals—Buena Vista College, Storm Lake, Iowa, May 15-18, 1986.

Swimming and diving (common site): C.T. Branin Natatorium, Canton, Ohio (Kenyon College host), March 13-15, 1986.

Tennis: Kalamazoo College, Kalamazoo, Michigan, May 13-17, 1986.

Indoor track: site to be determined, March 14-15, 1986.

Outdoor track: University of Wisconsin, La Crosse, Wisconsin, May 21-24, 1986.

Volleyball: First rounds—on-campus sites, November 22-23, 1985; Regionals—on-campus sites, December 6 or 7, 1985; Finals—on-campus site, December 13-14, 1985.

Funds available for schools that want water polo teams

United States Water Polo, Inc. (USWP), the governing body for water polo in the United States, will provide grants totaling \$6,000 over three years to schools that wish to start intercollegiate water polo programs.

Barbara Kalbus, USWP past president, said, "It is well worth it to U.S. Water Polo because every player on our national team comes from NCAA college water polo. It helps the NCAA, and it definitely helps us."

The USWP voted September 15 to provide grants of \$3,000 the first year, \$2,000 the second year and \$1,000 the third year to interested schools.

Although the NCAA deadline

for declaration of fall sports was September 15, schools receiving USWP grants may appeal to the NCAA Administrative Committee for an exception. If the Administrative Committee, acting for the Executive Committee, grants the appeal, then the institution may be restored to eligibility for meets and tournaments. [See Executive Regulation 1-5-(c) in the NCAA Manual.]

To apply for a grant, school representatives should contact University of California, Berkeley, water polo coach Pete Cutino, a member of U.S. Water Polo's board of governors, at 415/642-2248 (office) or 415/642-6616 (pool).

Robinson nears Bryant's all-time victory record

By James M. Van Valkenburg
NCAA Director of Statistics

Eddie Robinson and Grambling State University—the names are almost synonymous. It was known as Louisiana Negro Normal and Industrial Institute when he got the job of head football coach in 1941 at the age of 22 for a salary of \$63.75 a month.

Now, Robinson has 322 career victories and another against Oregon State this Saturday night in Shreveport, Louisiana, would tie Paul "Bear" Bryant's all-time-high 323 college football coaching victories over 38 seasons at Alabama, Texas A&M, Kentucky and Maryland from 1945 through 1982. Bryant died in January 1983.

Robinson and Bryant were close friends for nearly 30 years. To Robinson, Bryant always will be college football's greatest coach, no matter how many victories he gets at Grambling: "The guy was in a class by himself. I don't want to be remembered as the guy who broke his record any more than Bryant wanted to be remembered as the man who broke Amos Alonzo Stagg's record. No one really 'replaces' anyone else. I would like to be remembered as a guy who made the same contributions Bryant did, who influenced people's lives and made an impact on the game."

Grambling State now is in Division I-AA but has seen a full range of classifications over the years, from a small college in the NAIA to a brief stay in NCAA Division I in 1977 before I-AA was created. Because of this, some say his record should carry a footnote.

Robinson compares the different divisions of college football to weight classes in boxing, saying a middle-weight champion is no less worthy than a heavyweight champion. "If you win a ball game, you win a ball game," he says. "Don't judge me as a black coach or a I-AA coach, but as an American football coach."

This is Robinson's 43rd head-coaching season (not 44th, as has been published elsewhere). Grambling discontinued football in 1943 and 1944 because of World War II, so Robinson taught and coached at Grambling High School. Here, he discovered Paul "Tank" Younger, a 220-pound fullback who later played for him at Grambling and became the first player from a predominantly black college to sign a professional football contract.

Since then, 211 Grambling players have played pro football—a total unsurpassed by any other college coach. His list includes Buck Buchanan, Willie Brown, Willie Davis, Ernie Ladd, Charlie Joiner, Everson Walls, James Harris, Doug Williams and Trumaine Johnson. Harris and Williams are quarterbacks.

A degree in philosophy

"When I left Grambling, I felt like I had a degree in philosophy," Williams said. "It is amazing what that man knows, in addition to all of the football he teaches." Robinson spices his conversation with quotes from Abraham Lincoln and poet Alfred, Lord Tennyson and tells his young players about the beauty of the American system.

Robinson is equally proud of hundreds of his players who did not play pro football—those who became bankers, salesmen, lawyers and doctors. "A lot of these kids come from homes where they have no daddy," he told Rob Gloster of United Press International. He tells them they can succeed "if they take the chip off their shoulder and realize it's the greatest country in the world." Robinson himself was greatly influenced by his sixth-grade teacher. Her message was that success is a matter of commitment, not of color. The son of a sharecropper, he played quarterback at Leland College, a small Baptist college near New Orleans, and graduated in 1941.

Then, he worked at three jobs—in



Florida's Kerwin Bell is the Division I-A leader in passing efficiency



Gilbert Renfro, Tennessee State, is among the Division I-AA leaders in total offense



John Busby, Northeast Missouri State, is one of the leading receivers in Division II



Shane Fulton, Heidelberg, ranks second among total-offense leaders in Division III

a feed mill, hauling ice and on a coal truck—with a wife and a child on the way. Late that summer, his wife's aunt heard about a small north Louisiana college that needed a football coach. She pressured the school's president, Ralph Waldo Emerson Jones, to hire him, and Robinson applied. His first assistant coach was the college janitor.

Walls falling down

Robinson and Grambling became high profile in the late 1960s, playing at major stadiums all over the country.

How will he react when he wins No. 324? "The same way I've reacted to every other big moment in my life—I'll cry," he told Allen Barra of Inside Sports. "I'm not ashamed of it. I think of how much I owe to so many, how much I have to be grateful for, and I can't hold it back. Willie Davis

Mexico State, Arizona and Hardin-Simmons, and Eddie Anderson 201 in 39, mostly at Holy Cross and Iowa.

Gaither owns by far the best winning percentage in the 200 club at .844. Next come Bryant at .780, Merritt .771, Hayes .759, Robinson .743 and Gagliardi .742 entering this season, Warner .729, Mumford .717, Woodson .675, Anderson .606, Stagg .605, Long .593 and Neely .539. Gaither won 203, lost just 36 and tied four in 1945 through 1969.

Who will be next in the 200 club? Well, Michigan's Bo Schembechler had 186 and Penn State's Joe Paterno 176 entering this season.

The .800 club

Of course, many great football coaches didn't coach long enough to win 200 games. Considering coaches

around 250 victories?)

Because of the pattern of change, some think coaches have to be rated decade by decade. Los Angeles historian Bill Schroeder takes that approach. He rates Yale's Walter Camp as the game's greatest coach in the 1880s, Woodruff in the 1890s, Yost in the 1900s, Washington's Gil Dobie in the 1910s, Rockne in the 1920s, Minnesota's Bernie Bierman in the 1930s, Army's Red Blaik in the 1940s, Wilkinson in the 1950s, Texas' Darrell Royal in the 1960s and Bryant in the 1970s. (How about the 1980s? Well, the decade is far from over, but Brigham Young's LaVell Edwards has the best winning percentage.)

But, remember, there are no "what ifs" in Bryant's case. He won at a .780 pace—16th highest—and did that for 38 years (more than triple Rockne's period). In his last 25 years, all at Alabama, he was 232-46-9. That is .824 for a quarter-century. He averaged 9.3 victories and 1.8 losses in that span (Switzer and Osborne combined have 233 in 24 seasons). And Bryant won six national championships between 1961 and 1979.

Turn-arounds under way?

Indiana, now 2-0 vs. 0-11 last season, leads four Division I-A teams with more victories already than all last season. The others are Cincinnati (3-1 vs. 2-9), Colorado (2-1 vs. 1-10) and Utah State (2-1 vs. 1-10). Two teams in I-AA have done it—Lamar (3-0 vs. 2-9) and Prairie View (1-3 vs. 0-11). Among those that have equalled their 1984 win total are 2-0 Iowa State and three 2-1 teams—Oregon State, Duke and East Carolina.

Quotes of the week

Montana State's defending national Division I-AA champions were ready for their football home opener; at a booster breakfast, basketball coach Stu Starner was master of ceremonies. Starner turned to Eastern Oregon State coach Jerry Howell and said: "Jerry, I'll bet you feel a bit like General Custer felt when he went to the Little Bighorn. The only difference is, Custer didn't have to look at the films on Monday." Starner's forecast came true: Montana State 86, Eastern Oregon 0. (Bruce Parker, Montana State SID)

Murray State coach Frank Beamer after his Division I-AA Racers fought Division I-A Memphis State to a 10-10 tie: "They say a tie is like kissing your sister, but this is an awful pretty sister." (Craig Bohnert, Murray State SID)

I-AA attendance still up; I-A down

Division I-A per-game attendance lost more ground last Saturday and now lags 2.03 percent behind the pace a year ago. The drop so far is 899 per game to 43,312. In Division I-AA, however, it remains up, although not as much as last week. The increase is 532 per game to 11,621. It is too early to spot any trends. The chart:

	Games	Attendance	Average	Pct. Cap.
Division I-A season figures to date ...	145	6,254,168	43,312	80.9
Same 105 teams at this stage in 1984 ...	173	7,648,456	44,211	82.8
Division I-AA season figures to date ...	119	1,382,920	11,621	57.5
Same 87 teams at this stage in 1984 ...	137	1,519,200	11,089	57.2

Football notes

told me that Vince Lombardi was that way, too."

Robinson and his wife, Doris, have traveled everywhere from New York to Tokyo but always for a game or a clinic. They never have taken a real vacation. But Robinson never thinks about burnout. He is tireless and has the energy of a much younger man. Retirement? "Lord, I feel I could go on forever," he says. "My family is fine and my health is great." But he is 66, and Louisiana law sets retirement at age 70. "The trustees, I think, could change that," he says. "But I wouldn't ask them to."

That means four more seasons, including this one. By then, he could have 350 victories.

The 200 club

A first-ever list of all college football coaches with at least 200 career victories, regardless of division or association, was published in the 1981 Football Press Kit. The list had 13 names, and four were active coaches then. The 200 club still has 13 members, but now only Robinson and John Gagliardi of Division III St. John's (Minnesota) are active. Bryant and Tennessee State's John Merritt are deceased.

Stagg won 314 games, mostly at Chicago and Pacific, in 57 seasons; Glenn "Pop" Warner 313 in 44 years at several colleges, including Carlisle, Pittsburgh, Stanford and Temple. Steve Boda, NCAA associate director of statistics, conducted extensive research to establish the records of Stagg and Warner.

After the top four, all well over 300 victories, there is a big jump to fifth-place Woody Hayes, with 238 in 33 seasons, nearly all at Ohio State. Then comes Arnett Mumford at 233 in 36 seasons, the last 25 at Southern-Baton Rouge; Merritt at 232 in 31 years, the last 21 at Tennessee State; Gagliardi at 231 entering this season; Fred Long with 227 in 45, mostly at Wiley; Jess Neely 207 in 40, the last 27 at Rice; Jake Gaither 203 in just 25 seasons, all at Florida A&M; Warren Woodson 203 in 31, mostly at New

with at least 10 seasons of service in Division I-A (complete all-time records for other divisions and the NAIA do not exist), there are only 12 with career winning percentages of at least .800. Three of these are now active—Oklahoma's Barry Switzer .824 for 12 seasons, Tom Osborne .812 for the same 12 years at Nebraska, and Paterno .801 for 19 seasons, all at Penn State (all figures are entering this season—this is Paterno's 20th and the 13th for the two Big Eight Conference rivals... Switzer had 115 victories and Osborne 118 entering this season).

Paterno now has a chance to become the first Division I-A coach ever to reach both 200 victories and a career .800 winning percentage. At the moment, the only college football coach ever to accomplish that at any level is Gaither at Florida A&M. Paterno could do it in three years (mathematically in two, but that would mean two 12-0 seasons in a row). Switzer and Osborne need almost a decade at their current pace.

The all-time percentage leader is Notre Dame's Knute Rockne at .881 for 105-12-5 in 13 seasons, 1918 through 1930. Frank Leahy is next at .864 for 13 years, the last 11 at Notre Dame, ending with 1953. Then come George Woodruff at .846 for 12, mostly at Pennsylvania in the 1890s; Percy Haughton .832 in 13, mostly at Harvard; Bob Neyland .829 in 21 at Tennessee; Fielding "Hurry Up" Yost .828 in 29, mostly at Michigan; Bud Wilkinson .826 in 17 at Oklahoma; Switzer; Pittsburgh's Jock Sutherland .812 in 20; Osborne; Bob Devaney, who built the current Nebraska dynasty, .806 in 16, and Paterno.

How to measure?

How do you measure coaching greatness? What if Rockne had not perished in that 1931 plane crash in the Kansas Flint Hills? (Some think he might soon have left coaching for lucrative business offers.) What if Devaney had not turned the job over to Osborne to concentrate on the athletics directorship? (Does anyone doubt he would now be fifth with

After Rhode Island threw the ball 56 times against his Delaware team, coach Harold "Tubby" Raymond, a 29-13 winner, quipped: "It's not an easy position, cornerback. It can make loonies out of very stable men. Fortunately, we're all still stable." (Ben Sherman, Delaware SID)

Oklahoma linebacker Brian Bosworth, whose team does not open the season until this Saturday: "I am bored. I am tired of hitting friends and want to hit some strangers." (And what about Oklahoma fans—the team does not play at home until October 19. They may start showing up for that game with Miami of Florida on Thursday.)

Oklahoma State offensive coordinator Larry Coker after the Cowboys escaped North Texas State, 10-9: "Let's give the defense a big hug and thank the Lord we won." (Tim Allen, Big Eight Conference SID)

During Bowling Green's winning (30-26) drive against Kentucky, the team faced a fourth-and-eight situation at the Kentucky 26 and Brian McClure threw a 15-yard pass to tight end Gerald Bayless. Said coach Denny Stolz: "Passing teams are a small fraternity. I stole that play from Brigham Young. Steve Young must have hit us with it a dozen times two years ago (when BYU won, 63-28). The play looks like the ball has to go to one of the wide receivers. We call it 'The Cougar.'" (Steve Shutt, Bowling Green SID)

Vanderbilt defensive tackle Steve Wade had a huge, multicolored bruise on his elbow, and Nashville sportscaster Hope Hines said: "Steve, that's about the ugliest thing I've ever seen." To which Wade replied: "I don't know about that, Hope—I've never seen any of your girlfriends!" It brought the house down. Hines joined in the laughter and ran it that night with his sportscast. (Tony Neely, Vanderbilt assistant SID)

"I went to college to play football, period; and after my first semester, I was declared academically ineligible," said Samford coach Kim Alsop. "Education is the reason a young man is here at Samford, not football. I don't care how many national championships a coach has won, if he has not prepared his men to be positive forces in society, he has failed." (Paul South, Samford SID)

Noting that junior Greg Bumbu is both backup punter and backup snapper, Northwood coach Jack Finn quipped: "If they both get hurt, Bumbu better be a great athlete." (Fritz Reznor, Northwood SID)

The NCAA News



Football Statistics

Through games of September 21

Division I-A individual leaders

RUSHING							
	CL	G	CAR	YDS	AVG	TD	YDSPG
Bo Jackson, Auburn	Sr	2	53	495	9.3	6	247.5
Thurman Thomas, Oklahoma St.	So	2	80	428	5.3	2	214.0
Paul Palmer, Temple	Jr	3	83	490	5.9	2	163.3
Barry Word, Virginia	Sr	2	34	324	9.5	2	162.0
Doug Dubose, Nebraska	Jr	2	47	320	6.8	4	160.0
George Swann, Miami (Ohio)	Jr	2	51	313	6.1	2	156.5
Lorenzo White, Michigan St.	So	2	70	297	4.2	2	148.5
Dalton Hilliard, LSU	Sr	2	56	293	5.2	3	146.5
Tony Cherry, Oregon	Sr	3	81	430	5.3	5	143.3
James Williams, Fresno St.	Jr	2	51	273	5.4	3	136.5
Reggie Dupard, SMU	Sr	1	20	131	6.6	2	131.0
Charles Gladman, Pittsburgh	So	3	61	387	6.3	2	129.0
Napoleon McCallum, Navy	Sr	3	66	352	5.3	3	117.3
Kelvin Farmer, Toledo	Jr	2	42	233	5.5	2	116.5
Steve Bartalo, Colorado St.	Jr	2	70	348	5.0	3	116.0
Larry Emery, Wisconsin	Jr	2	41	232	5.7	2	116.0
Brad Muster, Stanford	Jr	2	45	224	5.0	4	112.0
Charles Hunter, Texas	So	1	15	112	7.5	1	112.0
Gary Patton, Eastern Mich.	So	2	42	221	5.3	1	110.5
Jamie Morris, Michigan	So	2	45	214	4.8	1	107.0
John Harvey, UTEP	Fr	4	63	424	6.7	4	106.0
Reggie Taylor, Cincinnati	Jr	4	99	418	4.2	3	104.5
Vincent Alexander, So. Miss.	Jr	3	63	312	5.0	1	104.0
Joe Armentrout, Wisconsin	Jr	2	18	205	11.4	1	102.5
Allen Pinkett, Notre Dame	Sr	2	47	205	4.4	1	102.5

SCORING									
CL	G	TD	XP	FG	PTS	PTPG			
Bo Jackson, Auburn	Sr	2	6	0	0	36			
Rickey Foggie, Minnesota	So	2	6	0	0	36			
Brad Muster, Stanford	Jr	2	6	0	0	36			
Reggie Bynum, Oregon St.	Sr	3	7	0	0	42			
Bart Weiss, Air Force	Sr	3	7	0	0	42			
Carlos Reveiz, Tennessee	Jr	1	0	2	4	14			
Doug Dubose, Nebraska	Jr	2	4	0	0	24			
Anthony Toney, Texas A&M	Sr	2	4	0	0	24			
Reggie Dupard, SMU	Sr	1	2	0	0	12			
Barry Bell, Fresno St.	So	2	0	5	6	23			
Max Zendejas, Arizona	Sr	3	0	4	10	34			
Dene Garner, Utah State	So	3	0	3	10	33			
Kenny Stadlin, Virginia	Sr	2	0	7	5	22			
Rob Houghtlin, Iowa	So	2	0	13	3	22			
Tony Cherry, Oregon	Sr	3	5	0	0	30			
Van Tiffin, Alabama	Jr	3	0	10	6	28			

PASSING EFFICIENCY									
CL	G	ATT	CMP	INT	YDS	YDS/ATT	TD	CT	RATING
(Min. 15 att. per game)									
Kerwin Bell, Florida	So	2	54	39	722	13.36	7	12	193.4
Tony Robinson, Tennessee	Sr	1	35	25	714	20.40	2	5	183.2
Mike Norseth, Kansas	Sr	3	98	65	663	6.77	6	6	178.8
Sean Salisbury, Southern Cal.	Sr	2	44	30	681	15.48	4	9	169.8
Don King, SMU	Sr	1	21	14	66	3.14	1	4	169.8
Chuck Long, Iowa	Sr	2	59	39	661	11.20	3	5	168.8
Jim Everett, Purdue	Sr	2	85	58	624	7.34	7	8	163.6
Danny McCoon, Cincinnati	Jr	4	87	53	609	7.00	7	8	155.8
Mark Rypien, Washington St.	Sr	4	129	81	627	4.86	9	6	154.2
Greg Tipton, Hawaii	Jr	3	93	53	569	6.12	6	4	146.3
Robbie Bosco, Brigham Young	Sr	4	167	111	667	4.00	9	5	146.3
John Paye, Stanford	Jr	2	82	56	629	7.67	4	4	145.4
Todd Santos, San Diego St.	So	2	48	32	667	13.89	3	6	144.2
Jim Karsatos, Ohio State	Jr	2	57	37	641	11.25	4	7	144.0
Marlon Adler, Missouri	Sr	2	37	25	67	1.81	1	2	140.0
Foy White, Wake Forest	Sr	3	100	69	690	6.90	3	7	138.8
Kevin Murray, Texas A&M	So	2	35	23	657	18.77	0	0	137.2
Billy Rucker, New Mexico	Jr	2	50	23	460	9.20	4	8	135.5
Don Smith, Miss. State	Jr	3	67	33	495	7.39	4	5	134.7
Mike Greenfield, Northwestern	So	2	69	47	681	11.17	0	4	134.7
Kelly Stouffer, Colorado St.	Jr	3	88	56	634	7.20	3	4	133.7
Joe Gagliardi, Rutgers	Sr	2	41	25	608	14.83	2	4	133.2
Bud Keyes, Wisconsin	So	2	31	11	35	1.15	4	12	132.6
John Dewberry, Georgia Tech	Sr	2	48	25	508	10.58	4	8	130.6

RECEIVING									
CL	G	CT	YDS	TD	CTPG				
Brad Muster, Stanford	Jr	2	25	276	2	12.5			
Reggie Bynum, Oregon St.	Sr	3	28	406	7	9.3			
Webster Slaughter, S. Diego St.	Sr	2	18	230	3	9.0			
Charles Lockett, Long Beach St.	Jr	3	24	277	2	8.0			
Michael Ramsey, Wake Forest	Sr	3	23	204	0	7.7			
Earl Winfield, North Carolina	Sr	2	15	273	1	7.5			
David Williams, Illinois	Sr	3	22	315	0	7.3			
Mark Bellini, Brigham Young	Jr	4	27	430	6	6.7			
Richard Estell, Kansas	Sr	3	20	236	0	6.7			
Donald Snell, Virginia Tech	Jr	3	20	236	0	6.7			
Ken Allen, Indiana	Sr	2	13	188	0	6.5			
Hank Norman, Southern Cal.	Sr	2	13	156	2	6.5			
David Lila, Indiana	Jr	2	13	143	1	6.5			
Kelvin Farmer, Toledo	Jr	2	13	102	0	6.5			
James Brim, Wake Forest	Jr	3	19	212	1	6.3			
Walter Murray, Hawaii	Sr	3	18	325	3	6.0			
Marc Zeno, Tulane	So	3	18	316	0	6.0			
Luis McDonald, New Mexico St.	Jr	3	18	246	0	6.0			
Jim Popp, Vanderbilt	Sr	3	18	179	1	6.0			
Bill Hoppel, Iowa	Sr	2	12	245	3	6.0			
Rodney Carter, Purdue	Sr	2	12	128	0	6.0			
Marty Scott, Purdue	Sr	2	12	116	0	6.0			
William Humes, North Carolina	Jr	2	12	91	0	6.0			
Glen Kozlowski, Brigham Young	Sr	4	23	436	2	5.7			

ALL-PURPOSE RUNNERS									
CL	G	RUSH	PR	KOR	YDS	YDSPG			
Brad Muster, Stanford	Jr	2	224	276	0	500	250.0		
Bo Jackson, Auburn	Sr	2	495	0	0	495	247.5		
Gary Patton, Eastern Mich.	So	2	221	142	0	107	470	235.0	
Thurman Thomas, Oklahoma St.	So	2	428	4	30	0	462	231.0	
Napoleon McCallum, Navy	Sr	3	352	117	45	126	640	213.3	
Tony Cherry, Oregon	Sr	3	430	118	0	60	608	202.7	
Doug Dubose, Nebraska	Jr	2	320	16	0	59	395	197.5	
Dalton Hilliard, LSU	Sr	2	293	97	0	0	390	195.0	
Paul Palmer, Temple	Jr	3	490	56	0	28	574	191.3	
Ernest Givins, Louisville	Sr	3	26	138	75	287	526	175.3	
Terrence Mathis, New Mexico	Fr	2	38	181	26	105	350	175.0	
Kelvin Farmer, Toledo	Jr	2	233	102	0	14	349	174.5	
George Swann, Miami (Ohio)	Jr	2	313	16	0	17	346	173.0	
Webster Slaughter, S. Diego St.	Sr	2	20	230	10	80	340	170.0	
Reggie Dupard, SMU	Sr	1	131	39	0	0	170	170.0	
Barry Word, Virginia	Sr	2	324	-1	0	4	327	163.5	
Eric Metcalf, Texas	Fr	1	35	47	80	0	162	162.0	
Tim McGee, Tennessee	Sr	1	0	142	7	7	156	156.0	
J. R. Ambrose, Mississippi	So	3	0	233	56	172	461	153.7	
Tim Fullington, Wisconsin	So	2	23	96	0	188	307	153.5	
Reggie Taylor, Cincinnati	Jr	4	418	91	0	101	610	152.5	
Steve Bartalo, Colorado St.	Jr	3	348	99	0	0	447	149.0	
Bill Hoppel, Iowa	Sr	2	0	245	50	0	295	147.5	
Lorenzo White, Michigan St.	So	2	297	-2	0	0	295	147.5	

TOTAL OFFENSE											
	RUSHING			PASSING			TOTAL OFFENSE				
	CAR	GAIN	LOSS	NET	ATT	YDS	PLS	YDS	YDPL	TDR*	YDSPG
Tony Robinson, Tennessee	10	46	16	30	35	387	45	417	9.3	2	417.0
Mike Norseth, Kansas	31	128	36	92	98	1076	129	1168	9.1	7	389.3
Jim Everett, Purdue	10	31	41	-10	85	738	95	728	7.7	8	364.0
John Paye, Stanford	15	43	39	4	82	691	97	695	7.2	4	347.5
Robbie Bosco, Brigham Young	23	29	112	-83	167	1448	190	1365	7.2	10	341.2
Steve Bradley, Indiana	19	178	18	160	69	473	88	633	7.2	5	316.5
Bill Ransdell, Kentucky	14	37	33	4	68	615	82	619	7.5	1	309.5
Mark Rypien, Washington St.	34	155	65	90	129	1121	163	1211	7.4	9	302.7
Vinny Testaverde, Miami (Fla.)	11	22	50	-28	75	628	86	600	7.0	3	300.0
Don King, SMU	6	55	0	55	21	218	27	273	10.1	2	273.0
Billy Rucker, New Mexico	33	98	35	63	50	471	83	534	6.4	5	267.0
Doug Gaynor, Long Beach St.	36	108	173	-65	135	862	171	797	4.7	5	265.7
Greg Tipton, Hawaii	33	82	82	0	93	777	126	777	6.2	9	259.0
Mark Comaland, Rice	18	27	71	-44	85	560	103	516	5.0	3	258.0
Jack Trudeau, Illinois	24	46	58	-12	123	762	147	750	5.1	6	250.0
Shawn Halloran, Boston College	26	60	101	-41	141	1040	167	999	6.0	6	249.7
Don Smith, Miss. State	43	232	61	171	67	572	110	743	6.8	4	247.7
Bo Jackson, Auburn	53	495	0	495	0	0	53	495	9.3	6	247.5
Erik Wilhelm, Oregon St.	19	38	61	-23	121	765	140	742	5.3	9	247.3
Chris Miller, Oregon	11	18	40	-22	108	747	119	725	6.1	7	241.7
Chuck Long, Iowa	7	6	42	-36	59	518	66	482	7.3	7	241.0
Mike Greenfield, Northwestern	25	94	45	49	69	429	94	477	5.1	3	239.0
Kevin Anthony, N. Carolina	8	0	75	-75	82	552	90	477	5.3	2	238.5
Jeff Van Raaphorst, Arizona St.	8	6	30	-24	73	495	81	471	5.8	2	235.5
Kent Austin, Mississippi	25	34	63	-29	97	724	122	695	5.7	4	231.7

Touchdowns-responsible-for are players
TDs scored and passed for

PLAYER		Total	
Rushing and Passing	Player, Team (opponent, date)		
Rushing and passing plays	John Gregory, SE Louisiana (Central Florida, Sept. 14)	72	
	Kelly Bradley, Montana State (Portland State, Sept. 7)	72	
Rushing and passing yards	Sean Payton, Eastern Ill. (Saginaw Valley, Sept. 21)	507	
Net rushing yards	Gil Fenerly, Holy Cross (Colgate, Sept. 14)	230	
Passes attempted	Kelly Bradley, Montana State (Eastern Wash., Sept. 21)	65	
Passes completed	Kelly Bradley, Montana State (Eastern Wash., Sept. 21)	41	
Passing yards	Sean Payton, Eastern Ill. (Saginaw Valley, Sept. 21)	509	
Receiving and kick returns			
Passes caught	David Pandt, Montana State (Eastern Wash., Sept. 21)	20	
Receiving yards	Rennie Benn, Lehigh (Indiana [Pa.], Sept. 14)	266	
Punt return yards	Jamie Fitzgerald, Idaho State (Northern Colorado, Sept. 14)	120	
Kickoff return yards	Howard Chappell, Howard (Bethune-Cookman, Sept. 21)	194	
Scoring			
Points scored	Rennie Benn, Lehigh (Indiana [Pa.], Sept. 14)	30	
Field goals made	Paul Polit, Illinois State (Western Illinois, Sept. 7)	4	
TEAM		Total	
	Team (opponent, date)		
Rushing plays	SW Missouri State (Southern Illinois, Sept. 7)	78	
Net rushing yards	Furman (Newberry, Sept. 14)	405	
Rushing and passing yards	Weber State (Southern Utah, Sept. 7)	687	
Passing yards	Eastern Illinois (Saginaw Valley, Sept. 21)	509	
Fewest rush-pass yards allowed	Idaho State (Northern Colorado, Sept. 7)	47	
Fewest rushing yards allowed	Illinois State (Wayne State [Mich.], Sept. 21)	35	
Passes attempted	Davidson (Bucknell, Sept. 21)	63	
	Montana State (Eastern Wash., Sept. 21)	65	
Passes completed	Montana State (Portland State, Sept. 7)	42	
Points scored	Montana State (Eastern Oregon, Sept. 14)	86	

Arkansas St.	4	248	1040	4.2	280.0
Akron	3	200	787	3.9	262.0
Princeton	1	170	263	3.8	0
Florida A&M	3	201	791	3.9	8
Massachusetts	3	190	792	4.2	2

Touchdowns scored by rushing-passing only

SCORING OFFENSE					
		G	PTS	AVG	
Harvard		1	49	49.0	
Miss. Valley		3	140	46.7	
Montana St.		3	137	45.7	
Middle Tenn.		3	127	42.3	
Weber St.		3	126	42.0	
Nevada-Reno		3	123	41.0	
Nicholls St.		2	77	38.5	
Grambling		2	75	37.5	
Delaware St.		4	149	37.3	
Lehigh		2	73	36.5	
Idaho		3	101	33.7	
Eastern Ill.		3	98	32.7	
Idaho St.		3	97	32.3	
Florida A&M		3	94	31.3	
Rhode Island		3	93	31.0	
S.C. State		4	123	30.8	
Tennessee St.		3	92	30.7	
Southern Ill.		4	122	30.5	
Western Ill.		2	61	30.5	
Furman		3	90	30.0	

The NCAA News



Football Statistics

Through games of September 14

Division II individual leaders

RUSHING						
	CL	G	CAR	YDS	TD	YDSPG
Mark Corbin, Central St. (Ohio)	Sr	2	74	390	3	195.0
Robert Funderburk, Mansfield	Jr	1	30	177	3	177.0
Jim Glead, Cal Poly SLO	Sr	1	29	173	2	173.0
Jimmy Haywood, Troy St.	Sr	1	6	153	2	153.0
Troy Smith, Millersville	Sr	1	20	133	1	133.0
David Span, Edinboro	Jr	2	26	259	1	129.0
Andre Gillespie, NE Missouri	Jr	2	43	256	1	129.0
Jeff Bentrim, North Dakota St.	Jr	2	43	245	6	122.5
Marcus Brown, Texas A&I	Jr	1	26	117	0	117.0
Al Wolden, Bemidji St.	Jr	2	26	217	2	108.5
Chuck Sanders, Slippery Rock	Sr	1	26	107	1	107.0
Adrian Wright, Va. Union	Jr	1	16	106	0	106.0

SCORING						
	CL	G	TD	XP	FG	PTS
Jeff Bentrim, North Dakota St.	Jr	2	6	2	0	38
Robert Funderburk, Mansfield	Jr	1	3	0	0	18
Michael Todd, Va. Union	So	1	3	0	0	18
Scotter Phillips, Ab. Christian	So	2	4	0	0	24
Jim Glead, Cal Poly SLO	Sr	1	2	0	0	12
Joey Kulina, Cal Poly SLO	Sr	1	2	0	0	12
Mike Kane, C.S. Northridge	Jr	1	2	0	0	12
Ed O'Brien, Central Fla.	So	2	0	6	6	24
Derrick Hardin, Eastern N.M.	Sr	1	2	0	0	12
Ronnie King, Fayetteville St.	So	1	2	0	0	12
Rich Twine, Slippery Rock	So	1	2	0	0	12
Walter Rule, Texas A&I	Jr	1	0	3	3	12
Jimmy Haywood, Troy St.	Sr	1	2	0	0	12
Craig Helfert, Evansville	Sr	1	0	2	3	11
David Mink, Millersville	Sr	1	0	1	3	10
Mike Healey, Valparaiso	Sr	2	3	2	0	20

PASSING EFFICIENCY						
	CL	G	ATT	CMP	PCT	INT
(Min. 15 att. per game)						
Eric Denton, Slippery Rock	Jr	1	16	10	62.5	0
Jim Gibson, Morningside	Sr	2	43	22	51.2	2
Kurt Beathard, Towson St.	Sr	2	62	38	61.3	3
Eric Habelt, Valparaiso	Jr	2	51	28	54.9	1
Rich Ingold, Indiana (Pa.)	Sr	2	78	45	57.7	3
Rex Lambert, Abilene Christian	So	2	63	36	57.1	1
Mark Thomsen, NW Missouri	Sr	2	62	40	64.5	0
Tom Peterson, Bemidji St.	Sr	2	43	28	65.1	1
Chris Hegg, NE Missouri	Sr	2	86	49	57.0	3
Scott Moses, Winona St.	Sr	3	98	58	59.2	3

RECEIVING						
	CL	G	CT	YDS	TD	CTPG
Mike Healey, Valparaiso	Sr	2	25	291	3	12.5
Dave Seidel, Indiana (Pa.)	Sr	2	20	210	1	10.0
John Busby, NE Missouri	Sr	2	20	308	2	10.0
Dan Anderson, NW Missouri	Sr	2	18	233	0	9.0
Kim Boerema, Northern Colo.	Sr	2	17	200	1	8.5
Herb Witham, Franklin	Jr	2	16	166	0	8.0
Darren Ripley, Winona St.	Sr	3	23	333	4	7.7
Brian Carey, American Int'l	Jr	2	15	214	3	7.5
Steve Lyle, Portland St.	Sr	2	15	133	0	7.5

TOTAL OFFENSE						
	CL	G	PLAYS	YDS	YDSPG	
Terry Summerfield, Portland St.	Sr	2	102	719	359.5	
Chris Hegg, NE Missouri	Sr	2	108	687	343.5	
Earl Harvey, N.C. Central	Fr	2	125	648	324.0	
Rich Ingold, Indiana (Pa.)	Sr	2	88	624	312.0	
Kurt Beathard, Towson St.	Sr	2	45	599	299.5	
Kevin O'Shea, Franklin	So	2	92	565	282.5	
Mike Leirermann, St. Cloud St.	Sr	2	86	543	271.5	
Lanny Dycus, Sam Houston St.	Sr	2	77	491	245.5	
Terry Wallis, American Int'l	Sr	2	56	489	244.5	
Mark Thomsen, NW Missouri	Sr	2	73	481	240.5	
Todd Whitten, S.F. Austin	Jr	2	79	476	238.0	
Jeff Bentrim, North Dakota St.	Jr	2	73	475	237.5	
Paul Kelly, New Haven	Sr	1	23	224	224.0	
Scott Moses, Winona St.	Sr	3	128	668	222.7	
Chris Parker, C.S. Northridge	Jr	1	48	218	218.0	
Rex Lambert, Abilene Christian	So	2	72	435	217.5	

FIELD GOALS						
	CL	G	FGA	FG	PCT	FGPG
Ed O'Brien, Central Fla.	So	2	6	6	100.0	3.00
Paul Wareham, Colo. Mines	Sr	1	5	3	60.0	3.00
Craig Helfert, Evansville	Sr	1	3	3	100.0	3.00
David Mink, Millersville	Sr	1	3	3	100.0	3.00
Walter Rule, Texas A&I	Jr	1	3	3	100.0	3.00

PUNT RETURNS						
	CL	NO	YDS	AVG		
(Min. 1.2 per game)						
James Noble, S.F. Austin	Sr	4	77	19.3		
Mark Fisher, Fayetteville St.	Sr	3	48	16.0		
Jeff Kotter, Franklin	Fr	4	64	16.0		
Doug Delano, Northern Colo.	Jr	4	62	15.5		
Ben Frazier, Cheyney	So	6	91	15.2		
Kelvin Edwards, Liberty	Sr	3	45	15.0		
Jerry Woods, Northern Mich.	Fr	3	44	14.7		
Preston Harmon, St. Cloud St.	Jr	6	82	13.7		
Jeffrey Purefoy, N.C. Central	Sr	5	67	13.4		
Doug Clark, Livingstone	Sr	4	45	11.3		
Todd Smith, Morningside	Fr	4	43	10.8		
Paul Page, Butler	Jr	6	63	10.5		

Division II team leaders

PASSING OFFENSE						
	G	ATT	CMP	PCT	INT	YDS
Portland State	2	98	58	59.2	6	723
North Carolina Central	2	89	43	48.3	4	703
Northeast Missouri State	2	86	49	57.0	3	682
Indiana (Pa.)	2	78	59	75.6	3	669
Towson State	2	66	38	57.6	2	622
Franklin	2	85	49	57.6	5	600
New Haven	1	26	15	57.7	0	286
Northwest Missouri State	2	71	45	63.4	1	552
American International	2	82	45	54.9	2	504
Cal St. Northridge	1	44	24	54.5	0	251
Eastern New Mexico	1	41	15	36.6	4	248
Valparaiso	2	78	42	53.8	2	485
Abilene Christian	2	69	38	55.1	1	480

PASSING DEFENSE						
	G	ATT	CMP	PCT	INT	YDS
Tuskegee	1	18	2	11.1	1	26
Eastern New Mexico	1	10	4	40.0	1	66
Clarion	2	44	12	27.3	2	133
Livingston	2	58	16	27.6	4	135
Cheyney	2	49	11	22.4	6	143
Fayetteville State	1	24	8	33.3	1	78
North Carolina Central	2	41	13	31.7	4	184

SCORING OFFENSE						
	G	TD	XP	2XP	FG	SAF
Fayetteville State	1	6	0	0	0	42
Stephen F. Austin State	2	11	8	0	2	84
Virginia Union	1	6	4	0	0	42
Valparaiso	2	11	7	2	2	83
Morningside	2	11	8	2	1	81
Central State (Ohio)	2	10	8	0	1	73
Abilene Christian	2	9	8	1	2	70
Cal Poly SLO	1	5	5	0	0	35
Slippery Rock	1	5	5	0	0	35

SCORING DEFENSE						
	G	TD	XP	2XP	FG	SAF
Fayetteville State	1	0	0	0	0	0
Livingston	2	0	0	0	0	0
New Haven	1	0	0	0	0	0
Bloomington	1	0	0	0	1	3
Millersville	1	0	0	0	1	0
Northwood Institute	2	1	1	0	0	7
Bemidji State	2	2	0	0	0	12
Nebraska-Omaha	2	1	0	0	2	12
Virginia Union	1	1	0	0	0	6

Division III individual leaders

RUSHING						
	CL	G	CAR	YDS	TD	YDSPG
Bruce Montella, Chicago	Sr	2	62	364	4	182.0
Joe Champigny, Westfield St.	So	2	49	352	2	176.0
Greg Corning, Wis.-River Falls	So	1	23	174	2	174.0
Pete Baranek, Carthage	Sr	1	23	171	1	171.0
Tom Kincaid, Wooster	So	1	22	159	2	159.0
Brad Price, Augustana (Ill.)	Jr	1	22	153	0	153.0
Lance Brown, Albion	Jr	1	29	152	0	152.0
Mark Covarrubias, San Diego	Sr	1	28	138	1	138.0
Paul Martin, Gettysburg	Sr	1	30	137	0	137.0
Bill Kenyon, Centre	Sr	1	20	136	1	136.0
Craig Hagen, Central (Ia.)	Sr	1	17	134	2	134.0
Tom Kelley, Knoxville	Jr	1	20	134	0	134.0
Chip Kron, Fordham	Jr	1	31	126	1	126.0
Jeff Buseman, Central (Ia.)	So	1	3	123	1	123.0

SCORING						
	CL	G	TD	XP	FG	PTS
Tim Ruth, Mercyhurst	Sr	2	6	2	0	38
Dean Ulrich, Alma	Jr	1	3	0	0	18
Steve Gonzalez, Alma	Jr	1	3	0	0	18
Bret Dyché, Eureka	Sr	2	6	0	0	36
Tony Tarantino, Mount Union	Sr	1	3	0	0	18
Chris Fiore, Merchant Marine	Sr	2	5	0	0	30
Bruce Montella, Chicago	Sr	2	4	2	0	26

PASSING EFFICIENCY						
	CL	G	ATT	CMP	PCT	INT
(Min. 15 att. per game)						
Brad Scarborough, Wilkes	Jr	1	21	15	71.4	0
Todd Nickodem, Carleton	Sr	2	22	14	63.6	2
Steve Schutt, Maine Maritime	So	1	14	9	64.3	0
Glenn Carlson, Coe	Sr	2	55	35	63.6	1
Bob Barrett, Curry	Jr	1	23	13	56.5	2
Dan Gray, St. Thomas	Sr	2	45	23	51.1	2
Mike Owens, Whitliff	Sr	1	24	12	50.0	0
James Carman, Alfred	So	1	23	10	43.5	1
Howard Stephen, Knoxville	So	1	25	12	48.0	2
Jon Hinds, Principia	Sr	1	33	19	57.6	2
Tony Gallis, Catholic	Sr	1	18	11	61.1	1
Robby Waldrop, Hampden Sydney	Jr	1	25	15	60.0	1
Tim Palmer, Muskingum	So	1	17	12	70.6	0
Tony De Nicola, DePauw	Sr	2	50	30	60.0	1
Glenn Bennett, Widener	Sr	2	55	38	69.1	2
John Dargle, Cortland	Jr	1	17	10	58.8	0
Rick Dougherty, St. John's (Minn.)	Jr	1	24	14	58.3	0
Larry Barretta, Locoming	Jr	1	27	14	51.9	1
Dave Weber, Carroll	Jr	1	23	11	47.8	0

RECEIVING						
	CL	G	CT	YDS	TD	CTPG
Tom Wood, Rensselaer	Jr	1	13	142	1	13.0
Tony Patritto, Alma	Sr	1	10	205	0	10.0
Chuck Longnecker, Heidelberg	Sr	1	10	144	1	10.0
C. Johanssen, Maryville (Tn.)	Sr	1	9	112	1	9.0
Joe Whalen, Lake Forest	Jr	2	17	256	2	8.5
John Roche, Widener	Sr	2	17	224	0	8.5
Roy Lucas, Bethel (Minn.)	Sr	2	16	247	2	8.0
C. Arrington, Hampden-Sydney	Sr	1	8	139	2	8.0
Paul Bearup, Cortland	Sr	1	8	152	0	8.0
Greg Gorcica, Hiram	Sr	1	8	132	1	8.0
Dan Waldeck, Kenyon	Jr	2	15	156	1	7.5

Legislative Assistance

1985 Column No. 33

2,000 rule interpretations

The new 2,000 rule [Bylaw 5-1-(j)], which was adopted at the 1983 NCAA Convention, becomes effective August 1, 1986, and will be applicable to the 1986 high school graduating class. This column will provide member institutions a compilation of NCAA Council interpretations regarding the administration of the rule to assist in the recruitment of prospective student-athletes for enrollment in the fall of 1986.

It is anticipated that there may be amendments to Bylaw 5-1-(j) offered for vote at the January 1986 NCAA Convention. While no one can predict what amendments, if any, may be adopted by the membership, it is important that member institutions realize that this legislation has been adopted and will become effective August 1, 1986.

Initially, questions have been raised concerning the August 1, 1986, effective date. In this regard, any entering freshman whose initial full-time attendance in a regular term occurs subsequent to August 1, 1986, must meet the core-curriculum and test-score provisions of Bylaw 5-1-(j). Therefore, attendance in an institution's summer school will not be considered attendance prior to August 1, 1986.

The NCAA Council has approved a standardized reporting form to be completed by the high school principal that must be used in administering Bylaw 5-1-(j). Copies of this form will be mailed to the principals of high schools throughout the United States as well as to Division I member institutions on or about October 1, 1985.

In administering the provisions of Bylaw 5-1-(j), the following definitions have been approved by the NCAA Council and serve as official interpretations of Bylaw 5-1-(j).

Definition of core course

For the purposes of meeting the core-curriculum requirement, a "core course" is defined as a recognized academic course designed to prepare a student for college-level work (as opposed to a vocational or personal-services course). Courses that are taught at a level below the high school's regular academic instruction level (e.g., remedial special educational or compensatory) shall not be considered as core courses regardless of course content.

English

Core courses in English shall include instructional elements in the following areas: grammar, vocabulary development, composition, literature, analytical reading or oral communication.

Mathematics

Core courses in mathematics shall include instructional elements in algebra, geometry, trigonometry, statistics or calculus.

Social sciences

Core courses in social sciences shall include instructional elements in history, social studies, economics, geography, psychology, sociology, government, political science or anthropology.

Natural or physical science

Core courses in natural or physical science shall include instructional elements in biology, chemistry, physics, environmental science, physical science or earth science. In addition, students must complete at least one laboratory class, if offered by the high school.

Additional core courses

The two remaining years of additional academic credit must be from courses attempted in English, mathematics, social science, natural or physical science, foreign language, computer science, philosophy, or nondoctrinal religion (e.g., comparative religion).

Computation of grade-point average

Each grade earned in a core course must be converted to the 4,000 scale (A-4, B-3, C-2, D-1, F-0). Pluses or minuses within a grade level shall not receive greater or lesser quality points. A school's normal practice of weighing honors or advanced courses may be used to compute the quality points awarded in those courses and the accumulative grade-point average.

Core-curriculum interpretations

A. The decision as to whether a particular course qualifies as a core course will be made by the principal of a high school from which a student graduated and must be properly verified by the member institution in accordance with Case No. 173 (page 305, 1985-86 NCAA Manual).

B. To encourage a student to take as many academic courses as possible, the core-curriculum grade-point average will be calculated using the student's 11 best grades from courses that meet the distribution requirements of the core curriculum.

C. A "unit" should represent approximately 180 classroom instructional

See Legislative, page 9

Commission

Continued from page 1

mission's April 1986 meeting.

Division I-A members

The 12 Division I-A representatives on the Commission will meet as a subunit of the Commission for the first time since a special meeting of Division I-A chief executive officers agreed in June that their Commission representatives should function as an ad hoc planning committee to deal with interests of Division I-A CEOs.

Included in the session will be a discussion of the procedures the group will use to perform that role and a review of any topics suggested by Division I-A chief executives.

The major agenda item for the Division I-A Commission members will be an explanation of the current status of Division I-A autonomy within the NCAA structure. That explanation and the meeting's reaction to it will be sent to all Division I-A CEOs after the meeting.

Nominating committee

The Commission's nominating committee will review all candidates nominated for positions on the Commis-

sion effective at the adjournment of the January NCAA Convention and will determine the slate of candidates for those positions.

The committee also will oversee the election of a new chair of the Commission to replace Ryan in that office, also at the end of the 1986 Convention. That election will occur in Denver and will be announced October 2.

Division I subcommittee

The Division I subcommittee of the Commission will review the recommendations of the Special NCAA Academic Standards Committee regarding Bylaw 5-1-(j), as reported in the September 9 issue of The NCAA News. The chair of the special committee, NCAA Secretary-Treasurer Wilford S. Bailey, will appear before the Commission to present that report.

Also on the Division I agenda is the overall question of freshman eligibility and the results of a survey of all Division I chief executives in that regard. The report of that survey, which did not favor declaring fresh-

Division I

Continued from page 1

men ineligible in all sports or any sport, appears on pages 1 and 8 of this issue of the News.

Other Division I topics include

reporting and/or control of coaches' outside income; financial aid issues, including the proposal to move the Association's financial aid limitation from the constitution to the bylaws; a review of the form to be used in Division I's mandatory academic-reporting procedure, and a review of legislative proposals for the 1986 NCAA Convention affecting Division I.

Division II subcommittee

The Division II subunit will continue its earlier discussion of the CEO's role in hiring and firing coaches.

It also will consider the proposal to move the grant-in-aid limit to the bylaws and will review all legislation for the 1986 Convention that affects Division II.

Division III subcommittee

On the Division III agenda is a

port for permitting additional coaches or additional athletics grants-in-aid if freshmen were ineligible for varsity teams but could participate on freshman teams. Only 20.7 percent favored more coaches in such circumstances,

and only 14.9 percent supported more grants.

The responses included 74.3 percent of all Division I-A chief executives, 85.2 percent in Division I-AA and 75.8 percent in Division I-AAA.

Survey of Division I CEOs regarding freshman eligibility

Statement	Division I-A			Division I-AA			Division I-AAA			Total Division I		
	Agree	Disagree	Other	Agree	Disagree	Other	Agree	Disagree	Other	Agree	Disagree	Other
In general, freshmen should be ineligible for college athletics	16	60	2	6	69	0	15	53	1	37	182	3
Freshmen should be ineligible in all sports	10	64	4	5	70	0	7	57	5	22	191	9
Freshmen should be ineligible in football only	2	69	7	4	71	0	3	60	6	9	200	13
Freshmen should be ineligible in basketball only	1	70	7	0	75	0	0	64	5	1	209	12
Freshmen should be ineligible in football and basketball only	15	59	4	5	69	1	8	56	5	28	184	10
Freshmen should be ineligible for all athletics activities, including practice and competition	4	71	3	4	70	1	4	63	2	12	204	6
Freshmen should be ineligible for varsity games but should be permitted to practice with or against varsity	17	58	3	4	70	1	11	56	2	32	184	6
Freshmen should be limited to practice and competition with other freshmen	12	65	1	6	69	0	6	60	3	24	194	4
Freshmen should be permitted to practice with varsity but to play only in freshman-team games	12	62	4	8	66	1	8	57	4	28	185	9
Additional coaches if freshmen ineligible but have freshman team	14	64	0	18	55	2	14	51	4	46	170	6
Additional grants-in-aid if freshmen ineligible but have freshman team	13	63	2	10	63	2	10	55	4	33	181	8
Freshman should be eligible if they meet membership-approved academic standards	52	21	5	64	10	1	53	12	4	169	43	10
Response percentage	78 of 105: 74.3%			75 of 88: 85.2%			69 of 91: 75.8%			222 of 284: 78.2%		

North Carolina system is opposed to modifications in 'Proposal No. 48'

The University of North Carolina system's board of governors has directed the chancellors, faculty athletics representatives and directors of athletics at its member institutions to oppose adoption of the "eligibility index" proposed by the Special NCAA Academic Standards Committee as a modification of NCAA Bylaw 5-1-(j).

In a September 13 memorandum to the chancellors of the universities in the system, President William Friday reported that the recommendation of the board's special committee on intercollegiate athletics in that

regard had been approved by the board.

The board's committee found the proposed index "unacceptable" because "it has the practical effect of nullifying any SAT score requirement." The committee noted that under the proposed index, a student scoring the minimum (400) on the SAT test could meet the eligibility requirement with a 2.75 grade-point average in the high school core curriculum.

The memorandum directs the chancellors, faculty representatives and

athletics directors to oppose adoption of the proposed index "in any and all forums of the NCAA in which it is presented or discussed, and expressly in the meeting of the Presidents Commission on October 1-2 and the meeting of the NCAA Council on October 14-16."

Recommendations of the Special NCAA Academic Standards Committee were reported in the August 21, 1985, issue of The NCAA News, and an abridged version of the committee's complete report appeared in the September 9 issue.

review of positions taken by the Division III Steering Committee on freshman eligibility, academic standards for eligibility, playing and practice seasons, and financial aid criteria in that division.

Division III representatives also will consider proposed legislation affecting their division, including the amendment to place the financial aid limitation in the bylaws.

Commission

The full Commission will hear reports on the actions and recommendations of the three division subcommittees and the nominating committee, as well as review legislation proposed for the 1986 Convention. It will be asked to authorize the executive committee to make final decisions regarding roll-call votes, placement of proposals in the agenda and encouragement of CEO attendance at the January Convention.

Also on the Commission's agenda:

• A review of the actions of the June special Convention regarding ethical conduct and rules enforce-

ment, including reactions from the NCAA Committee on Infractions and a discussion of the resolution submitted at that Convention by the University of Texas, Austin, and others. That resolution would have required the NCAA to share immediately with a member institution any allegations of possible violations of rules by that institution, among other things.

• An initial discussion of the role of governing boards in maintaining integrity in athletics.

• Consideration of peer-review visitations and possibly accreditation as extensions of the new mandatory self-study requirement; also, a review of draft materials to be used in the self-study program.

• Means of establishing improved communications between the Commission and chief executive officers of all member institutions.

The Commission also will receive informational reports on the work of the Special NCAA Committee on Measuring Athletics Program Success and on the current and future status of NCAA financial matters.

After 45 seasons of losing, Gallaudet seeks respectability

By Ira Rosenfeld
Associated Press Writer

For more than 50 years, the only noise at Gallaudet College football games was the sound of a huge bass drum alerting the deaf players to the snap of the ball.

All that may change soon, as a new coach and an influx of new talent try to turn around a program that has not had a winning record since 1930.

"The students, everybody here, can sense a new commitment to athletics," says Bob Westerman, appointed head

At St. Peter's College

Coach tries to rebuild with 35 players (28 freshmen)

On a wind-swept field in the shadow of the scaffold-shrouded Statue of Liberty, Jim Gilrain and 35 players are undertaking another restoration project—rebuilding the St. Peter's College football program.

The Peacocks' football program was suspended by school officials September 11, 1984, in the wake of a season-opening 72-0 loss to Catholic University that left just 22 healthy players on what once was a 37-man team. Coach Bob Morgan was fired, and the university admitted violating some NCAA regulations.

Gilrain was hired two months later as a part-time head coach and asked to put the mess in order.

"Sure, this is the biggest challenge I've faced," said Gilrain, who works full time as principal of Carteret High school in Jersey City, New Jersey. "We're starting from scratch, we think. We have talked to the kids in terms of mission, and our mission is to save football at St. Peter's."

The mission is big.

St. Peter's has not posted a winning record this decade, and there isn't much left of the program after last year's one-game season. Only seven of the 22 players who remained after the loss returned this year; Gilrain undertook a massive recruiting program, bringing in 28 freshman players.

Gilrain admits things are a little behind schedule for the Division III team, which opened its season last weekend.

"We're behind everybody else because of the numbers," said Gilrain, a former assistant coach at Upsala College and the Merchant Marine Academy. "The way the numbers hurt you is not on Friday night, but on Tuesday and Wednesday because you can't practice as physically as you want to. We've had less contact than I would have wanted. That's part of coaching and I live with it."

The Peacocks are scheduled to

coach in December and named the school's athletics director in August.

This summer, a record 75 players attended the team's first practice. And more students have watched the team's practices than those who watched the team's games last year.

Gallaudet's last full-time season was in 1979, when the school lost seven of eight games.

Gallaudet, a liberal arts college for deaf students, did not field a team from 1938 through 1947 and had been relegated to playing club teams

play eight games this season.

"We think we can win a couple of games," he said. "I would like to see a couple of victories and get the feeling that other coaches feel they are in trouble playing us. But realistically, it's going to take four to five years to get this program in gear."

"Long after I'm gone, I would just like for people to say that when I left here 20 years ago, the football program was on solid ground, where it could compete," Gilrain said. "That would make me happy."

Things haven't changed all that much in 50 years

By Dick Kishpaugh

A half century ago, 1935 was a landmark year in college football, with sharp contrasts in comparison to 1985. It was the twilight of the pioneer coaching era. Football television was several years in the future, but the NCAA noted the increase in radio activity and named its first committee to study the impact of broadcasting on game attendance. The season itself was a truly unique blend of comedy, tragedy and excitement.

Pop Warner and Amos Alonzo Stagg, who coached before the turn of the century, still were active, at Temple and at Pacific. From the pre-1910 era, Gil Dobie now was at Cornell, Howard Jones at Southern California and Bill Spaulding at UCLA. All except Stagg would retire prior to World War II.

Among several major teams in that depression year, one head coach and four assistants was the norm, though Chicago and Southern California each listed seven helpers and Michigan's staff picture shows eight; ticket prices averaged \$3.50 for the best seats, \$1 for general admission and as low as 50 cents for students. Typical major teams had 40 to 50 players and fewer than 30 letter winners. Nine-game schedules were typical; the Big

Jen was limited to eight. Southern Methodist and Texas Christian, however, played 13 each; Southern California played 12 and included the oddly-named Kamehameha Alumni among its opponents.

The time of big-little matches was drawing to a close, but Big Ten and Southeastern teams still played the likes of Lawrence, DePaul, Carleton, Howard, Mercer, Millsaps and Union. Centre College, once the conqueror of mighty Harvard, had reverted to small-college status. Sewanee, after four decades as a major, was struggling in the Southeast and soon would join Centre in that category.

Sen. Huey Long of Louisiana figured in both comedy and tragedy. As self-appointed cheerleader, Long's zany antics featured Louisiana State's 1934 season; halfback Abe Mickal modestly declined the special Louisiana Senate seat that Long requested for him. Long, however, was assassinated just as practice opened in 1935 and wasn't on hand to see Mickal lead LSU to the Southeastern Conference title. That was Bernie Moore's first year as Tiger coach; after a squabble with Long in 1934, Biff Jones had departed to rejuvenate Oklahoma's fortunes.

Tennessee's Gen. Bob Neyland was absent for one season at the request of Uncle Sam; he returned in 1936, then later missed five more years while on active duty in World War II. Vanderbilt had a new coach for the first time since 1904 following Dan McGugin's retirement; but sadly, McGugin enjoyed only one year as Vanderbilt's athletics director before his death in 1936. When the 1935 season ended, Harry Stuhldreher moved from Villanova to Wisconsin, Ted Cox from Tulane to Oklahoma A&M, Carl Snively from North Carolina to Cornell and Lowell Dawson to Tulane from an assistant's post at Minnesota.

Among the colorful nicknames of 1935—Pepper Constable of Princeton, Bruiser Kinard of Mississippi, Tuffy Leemans of George Washington, Kayo Lam of Colorado, William (the Merchant of Menace) Shakespear of Notre Dame, Monk Moscrip of Stanford, and Texas Christian's Slingin' Sam Baugh and assistant coach Bear Wolf. With no reference to Bud or Bear, however, contemporary accounts mention Charles Wilkinson of Minnesota and Paul Bryant of Alabama.

Notre Dame declined to elect a new

souri, who transferred from Central Missouri State University.

"When I was at Central, they would change practice times and I wouldn't hear announcements. The coaches would take players aside and instruct them, and I wouldn't understand what was going on. In general, I felt left out," Smith said.

"I didn't know there was a college for deaf students until the coach came

'We have raw talent that is yet to be developed. A lot of these boys have never played football before. But they are very dedicated athletes who are working real hard.'

to my house," said Oscar Valencia, a 5-9, 165-pound freshman, who is competing for a starting job at quarterback.

Valencia knows a little sign language but, ironically, he's having the most trouble with the bass drum that moves along the Gallaudet sidelines to help players get the snap count. He

is hard of hearing, not deaf.

The drum replaces the voice of the quarterback. The drummer, who receives the snap count from the quarterback, pounds the drum and the players, picking up the vibrations from the ground in their three-point stance, move out as one.

The Gallaudet depth chart finds seven freshmen and two transfer students starting on defense. The offense also lists seven freshmen as starters.

"We have raw talent that is yet to be developed. A lot of these boys have never played football before," said Westerman. "But they are very dedicated athletes who are working real hard."

So far, so good. Gallaudet is 1-0 after winning its season opener last weekend against Shenandoah, 13-4.

Last year, Gallaudet was 1-4 after playing four club teams and one junior college. This year, it will play 10 games against five Division III schools, three junior colleges and just two club teams.

"Our goal is to upgrade the program and schedule to be competitive against every Division III school," Westerman said.

Meanwhile, he admits to one dream for the season: "The dream is five victories. Five wins would be a tremendous season."



Fritz Crisler

leader and used only game captains, after captain-elect Joe Sullivan died prior to the 1935 season. William Smith of the Irish then missed the entire 1935 season after a major operation but nevertheless was elected captain for 1936.

In an all-time classic at Ohio State, Notre Dame trailed, 13-0, after three periods, but won, 18-13, as Shakespear replaced the injured Andy Pilney and threw a 19-yard pass to Wayne Millner for the clincher in the final 40 seconds. In UCLA's memorable upset victory over Stanford, the Bruins gave up a 16-2 first-down advantage but won anyway, 7-6. Texas Christian and Southern Methodist, each 11-0, collided at Fort Worth; SMU prevailed, 20-14, as Bob Wilson made a spectacular catch of Bob Finley's 36-yard TD pass on a fourth-and-three play in the final minutes.

Fritz Crisler's Princeton team made headlines in more ways than one. In the opener, the Tigers survived their first meeting with Penn since 1894, 7-6, on Ken Sandbach's conversion kick and then roared to an unbeaten

Institutional

Continued from page 1

Syracuse University; Charles Ehrhardt, professor of law, Florida State University; Douglas W. Weaver, director of athletics, Michigan State University, and Herschel Walker, New Jersey Generals.

The single-day session is scheduled to begin at 8:30 a.m. October 15. Participants should reserve accommodations at the hotel the night before. The final session will conclude at 4:15 p.m. to allow those in attendance

season. They also survived a raging snowstorm to beat Dartmouth, 28-6, despite the assistance offered to the Green by an inebriated fan. Famed as the "twelfth man," the fan joined the Dartmouth defense and actually was in for one play as he attempted to tackle Princeton's Pepper Constable.

At least 45 teams from that era are absent today, including Vermont, Niagara, Marquette, St. Louis, Detroit, San Francisco, Denver, NYU, Manhattan, CCNY, St. Edwards and St. Ambrose. Colorful names such as Chillicothe Business College, Louisville Municipal, Shenandoah, Sioux Falls and Rio Grande also have vanished. Chicago had Heisman winner Jay Berwanger but was on a downhill slide; the Maroons, along with Fordham, Catholic University and Georgetown, eventually would give up the game only to return in recent times on a modest scale.

Notre Dame led in total attendance with a 54,000 average per game; others with averages of 40,000 or more were Navy, Ohio State, Yale, Pennsylvania and Minnesota. For single games, California-Stanford drew 90,000; Notre Dame-Ohio State 81,000; Army-Notre Dame and Army-Navy 80,000 each. Michigan, which today routinely plays to throngs of 100,000 at home, attracted home crowds of just 18,000 to its 7-0 victory over Indiana and 30,700 to the 16-6 victory over Penn.

Some things never change, however. One Christy Walsh publication described the 1935 season as the most thrilling ever, one which never would be forgotten. But then, almost exactly the same phrase appears in some predictions for the 1985 campaign.

Kishpaugh is a resident of Parchment, Michigan, and a member of the Football Writers Association of America. He is a former official of the Michigan Intercollegiate Athletic Association.

to return home that evening.

"It is hoped that not only members of established counseling panels but also representatives of those institutions that are considering putting panels in place will make every effort to attend," Leavens said. Individuals who wish to register or who seek additional information should contact the legislative services department. Hotel accommodations may be reserved by contacting the O'Hare Hilton directly at 312/686-8000.

Legislative

Continued from page 8
hours.

D. Only courses completed in grades 9-12 may be considered core courses.

E. All core courses used to establish a student's grade-point average must be completed within the student's first eight semesters of high school (grades 9-12) in accordance with Case No. 343 (page 355, 1985-86 NCAA Manual).

F. A student may count a repeated course only once and must present 11 different (nonrepeated) courses in meeting the core-curriculum requirement. Further, the student may use the best grade in the repeated course in calculation of the grade-point average in the core curriculum.

G. Foreign student-athletes who meet the guidelines set forth in the NCAA Guide to International Academic Standards for Athletics Eligibility will satisfy the core-curriculum requirement.

H. Independent study courses may not be used to satisfy core-curriculum requirements.

I. A one-year course that is spread over two years (e.g., elementary algebra) shall be considered as one course.

Test-score interpretations

A. The SAT or ACT used to establish eligibility must be taken by the student prior to initial enrollment in a collegiate institution; must be taken under normal testing conditions on a national testing date [i.e., no residual (campus) testing], and while the test may be taken on any number of occasions, only the best scores from any single testing date may be utilized.

B. All students, foreign and domestic, must take a required test.

C. The GED test may be used for high school graduation but may not be substituted for the SAT or ACT. Further, the GED student must satisfactorily complete the core curriculum and the use of the GED must be in accordance with Case No. 337 (pages 353-354, 1985-86 NCAA Manual).

Further questions related to the administration of Bylaw 5-1-(j) should be directed to the NCAA legislative services department.

The NCAA News



NCAA Record

DIRECTOR OF ATHLETICS

CONRAD L. COLBERT, Kansas State associate AD and athletics business manager for nine years, selected at Pan American, succeeding LON KRUGER, who resigned as AD after three years but will continue to serve as men's basketball coach. Conrad's appointment is effective October 1.

ASSOCIATE DIRECTOR OF ATHLETICS

MARNIE SWIFT named at Toledo, where she has served as an assistant AD for the past two years.

ASSISTANT DIRECTOR OF ATHLETICS

MIKE McKEIVY, former Portland State director of ticket sales and assistant marketing director, chosen at Humboldt State.

COACHES

Baseball **JERRY SEIMON** appointed at Case Reserve, where he served as an assistant last year. Seimon, an assistant football coach for the past three seasons, succeeds DENNIS WOODS, who was selected athletics director of Cleveland Glenville High School.

Baseball assistant **RON JONES**, Plainville (Connecticut) High School coach, chosen at Eastern Connecticut.

Men's basketball **FRAN McCAFFERY** named at Lehigh, where he has served as an assistant for the past two seasons.

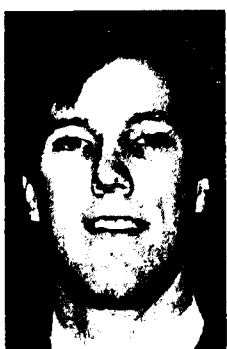
Men's basketball assistants **JAY SMITH** appointed at Kent State, where he served as a graduate assistant last season. Smith succeeds SAM DIXON, who resigned to accept a similar position at Davidson... **DAN DUNNE**, former Seton Hall center, selected as a graduate assistant at Niagara... **ED HALL**, Nevada-Reno assistant since 1980, named at Towson State. Hall succeeds LYN GORDY, who resigned to accept a similar position at Clemson... **GEORGE MORROW**, former Creighton assistant, appointed at Memphis State on a part-time basis... **KEVIN DUNNE**, Cleveland State assistant for the past two seasons, and **RICO CABRAL**, Marshfield (Massachusetts) High School coach for the past six years, selected at St. Bonaventure... **GORDON AUSTIN**, Lehigh assistant for the past year, named at Pennsylvania... **DAVE SPILLER**, D'Youville (New York) College coach for the past six years, appointed at Canisius, succeeding **MARK COLEMAN**, who accepted a similar position at George Mason... **BERNIE MULLIGAN**, former Manchester (Connecticut) Community College coach, chosen at Eastern Connecticut.

Women's basketball **PHYLLIS MANGINA** selected at Seton Hall, where she has served as an assistant for the past two seasons and was a four-year starter before graduating in 1981... **TIM SELGO** named at Toledo, where he has served as an assistant men's basketball coach for the past three years... **CINDY STEWART**, former Brown assistant, chosen at Keene State.

Women's basketball assistants **STEVE KNOX** appointed at Ohio, where he served as a graduate assistant last season... **LOUISE FOLLEY**, former Dartmouth assistant, selected at Brown... **BERNIE BARRAS**, Denver coach from 1978 to 1984, named at Regis (Colorado). Barras compiled a 102-63 record at Denver... **DUNCAN BLAIR** and **MARY HEGARTY** appointed at California-Santa Barbara. Blair served the past five years as a head coach on the high school level in Arizona. Hegarty served last season as a graduate assistant at UCLA, where she was a standout point guard... **JODY RUNGE**, former Kentucky center, named graduate assistant at Florida... **BETH REGAN** chosen at Eastern Connecticut, where she was a four-year basketball letter winner.



Conrad Colbert named director of athletics at Pan American



Fran McCaffery chosen as head men's basketball coach at Lehigh



Mike Seelig selected as women's softball coach at Morehead State

Men's and women's cross country **GEOFF KOTILA** selected at Michigan Tech, his alma mater. Kotila also will serve as assistant men's basketball coach.

Men's cross country **BILL BLIZARD** named at Springfield, where he served as an interim coach last season while **KEN KLATKA** took a sabbatical. Klatka will relinquish the cross country post to coach the men's track and field team.

Women's field hockey **DEE FICHTE**, a prospective member of the U.S. lacrosse team that will compete in next summer's World Cup Tournament, appointed at Delaware Valley. Fichte succeeds **PEGGY DEE VELLNER**, who is on maternity leave... **MARY LOU VOSBURGH** selected on an interim basis at Siena, replacing **JOYCE LEGERE**, who is on maternity leave.

Football **LEE MOON** named at Kansas State, where he has served as assistant athletics director since last April. Moon recently served as an assistant at Mississippi State. He succeeds **JIM DICKEY**, who resigned after compiling a 25-53-2 record since 1978. Dickey's 1982 team finished 6-5-1 and made the only postseason bowl game appearance in Kansas State history.

Football assistants **JIM WOOD** and **DON DAVIS** chosen as a graduate assistant and student assistant, respectively, at Abilene Christian.

Men's golf **TIM TALLENT** appointed at Davidson, where he coached from 1975 to 1978. Tallent, a member of the North Carolina House of Representatives for the 34th District, succeeds **THOM CARTMILL**, who retired.

Women's gymnastics assistant **MIKE VOSSEN**, former head coach of Flicka Gym Club in Vancouver, Canada, chosen at Florida.

Men's ice hockey **GARY DOAK**, a 15-year veteran of the National Hockey League, selected at Massachusetts-Boston. Doak, a defenseman who was a member of the Boston Bruins' 1970 Stanley Cup championship team, served the past four years as an assistant with the Bruins.

Men's ice hockey assistant **JIM PETERS**, former Northern Arizona coach, named at Rensselaer. Peters compiled a 44-31-1 record in three seasons at Northern Arizona.

Men's soccer **TOM GILL** appointed at Fairleigh Dickinson-Madison... **ISAAC A. MAPP** selected at Lincoln (Pennsylvania), his alma mater, succeeding **ROBERT MILLETTE**.

Men's soccer assistants **KEITH BETTS** selected at George Washington... **KRIS KARNESIS** and **STEVE MCCANN** named at Fairleigh Dickinson-Madison, their alma mater... **TOM FITZGERALD** selected at Eastern Connecticut, where he was a four-year soccer

letter winner... **PETER BROACA** chosen at Wesleyan, where he will continue to serve as assistant men's basketball coach.

Women's softball **MIKE SEELIG** appointed at Morehead State, where he served last year as a volunteer coach.

Women's swimming and diving **BAILEY WEATHERS**, Texas assistant since 1982, selected at Southern Illinois... **MARRIE NEUMER** named at Springfield, where she served as an assistant last season... **JOHN T. HAYMAN**, former Southern Illinois assistant, chosen at Gannon, which fields its first women's team this season.

Men's and women's swimming and diving assistant **KEVIN DeFORREST** chosen at Illinois.

Women's tennis **NORMA TAYLOR**, Rhode Island's No. 1-ranked singles player in the early 1970s, appointed at Brown... **BOB CRAIG** selected at Siena, where he also will serve as assistant women's basketball coach. Craig succeeds **JOYCE LEGERE** (see women's field hockey).

Men's track and field and cross country **DONALD AMIDEI**, Northwestern coach for 14 years, named at Illinois Benedictine.

Men's track assistant **KEITH CONNOR**, a bronze medalist in the triple jump at the 1984 Olympics, appointed at Southern Methodist, his alma mater. Connor won the NCAA indoor triple jump titles in 1981 and 1982 and the outdoor titles in 1982 and 1983... **JEFF GAITHER** chosen at Georgia, where he has served as a graduate assistant the past two years. Gaither succeeds **JON FOX**, who resigned to pursue business opportunities.

Men's and women's track and field assistants **STEVE JARRETT**, Shippensburg assistant since 1982, and **BRAD HACKETT**, Colgate assistant for the past two years, selected at Bucknell.

Women's track and field **ORIN RICHBURG**, Kent State men's and women's coach for the past seven years, named at Washington.

Women's volleyball **JIM CASEY** appointed at Spring Garden, his alma mater. Spring Garden will field its first women's volleyball team this season... **NADINE LILAVOIS**, named East Coast Conference most valuable women's volleyball player while at Hofstra, chosen at St. Francis (New York).

Women's volleyball assistant **MICHELLE SHERIDAN** selected at Eastern Connecticut, where she was a two-year volleyball letter winner before graduating last May.

Wrestling **JAY BILLY**, Delaware graduate assistant, named at American, succeeding **DAVE MILLER**, who resigned to pursue business interests.

STAFF

Executive director **DICK BESTWICK**, former Virginia head football coach and Missouri assistant athletics director for administration, selected as executive director of the Peach Bowl. Bestwick succeeds the retiring **GEORGE CRUMBLY**, who served as executive director since the bowl's inception in 1968.

Sports information directors **CARMINE FACCENDA**, Hofstra assistant SID for the past three years, named at St. Francis (New York)... **DAVID G. HESS**, sportswriter for the Fox Valley (Illinois) Sports Journal for the past six years, selected at Elmhurst... **MICHAEL F. ELKOW**, Monmouth (New Jersey) SID for the past 18 months, chosen at Fairleigh Dickinson-Teaneck... **BRYAN DANGERFIELD**, former Air Force assistant SID, selected at Humboldt State, succeeding **TOM TREPIAK**.

Associate sports information director **TOM SIMONS** appointed at Nebraska, where he has served as an assistant SID for the past four years.

Assistant sports information directors **DOUG HERAKOVICH**, a recent graduate of Virginia Tech, where he served as a student assistant, selected at North Carolina State... **JEANNE TAYLOR** chosen at Rutgers.

Athletics equipment manager **CURTIS SHANER**, Oklahoma State equipment manager for four years, named at Western Michigan.

Assistant athletics equipment managers **TERRY SCHLATTER**, Western Michigan equipment manager for the past year, appointed at Purdue. Schlatter served as Purdue's assistant equipment manager in charge of football from 1978 to 1984.

Stadium manager **TOM KLOZA** selected at Texas-Arlington, where he will continue to serve as equipment manager for the football team, a position he has held for the past four years. Kloza succeeds **VICK GROMATZKY**.

Assistant athletics trainer **GLEN PORTER**, Wyoming assistant for the past year, chosen at Michigan State.

NOTABLES

RICHARD QUICK, head women's swimming and diving coach at Texas, was named U.S. Olympic men's and women's swimming coach for the 1988 summer games. Quick has been at Texas since 1982, guiding the Longhorns to the past two NCAA women's swimming and diving championships titles. He will serve as the U.S. national team coach for every major meet during the next three years.

DEATHS

JAMES W. CLARK, a freshman who was a member of the Oklahoma State football team, was found dead in his room September 16, victim of an apparent suicide, according to officials. He was 18. Clark, a 6-3, 240-pound defensive lineman, was a highly recruited player from Wilmer-Hutchins High School in Dallas... **FRANCIS C. DITTRICH**, who was

associated with Michigan State's track and cross country programs for 44 years, died September 15. He was 75. Ditttrich's teams won two NCAA and five Big Ten Conference cross country titles... **BRUNO BANDUCCI**, a member of the Stanford "Wow Boys" team that defeated Nebraska in the 1941 Rose Bowl, died recently of an apparent heart attack. He was 62.

CORRECTION

Because of an editor's error, University of Wisconsin cross country runner Tim Hacker was incorrectly identified in a photograph as running for the University of Arkansas.

Because of a reporter's error, Rick Hall incorrectly was identified as Seton Hall's baseball coach in the August 28 issue of The NCAA News. Hall was named assistant coach. Pete Dunn is Seton Hall's head baseball coach.

CLARIFICATION

Transportation expenses are guaranteed for teams and individuals that participate in 1985-86 national collegiate men's and women's team championships in all divisions and Division I men's and women's individual/team championships. Division III women's lacrosse is an exception.

POLLS

Division II Men's Cross Country

The top 20 teams in NCAA Division II men's cross country as ranked by the NCAA Division II Cross Country Coaches Association.

1. South Dakota State; 2. Edinboro; 3. Southeast Missouri State; 4. California Riverside; 5. Millersville; 6. Cal Poly-Pomona; 7. (tie) Cal Poly-SLO and Keene State; 9. Troy State; 10. North Dakota State; 11. Northwest Missouri State; 12. California-Davis; 13. Southern Connecticut; 14. Indiana (Pennsylvania); 15. Lowell; 17. (tie) Ashland and Mankato State; 19. Ferris State; 20. Texas A&I.

Division I Women's Volleyball

The top 20 NCAA Division I women's volleyball teams through games of September 15, with records in parentheses and points.

1. UCLA (7-0).....160
2. San Jose State (7-0).....146
2. Stanford (4-0).....146
4. Pacific (3-0).....136
5. Nebraska (7-0).....131
6. Colorado State (7-1).....114
7. Texas (3-2).....107
8. Arizona (6-1).....99
9. Southern California (7-2).....92
10. Cal Santa Barbara (6-3).....90
11. San Diego State (7-2).....77
12. Western Michigan (3-1).....69
13. Hawaii (4-0).....64
14. Brigham Young (3-1).....61
15. Cal Poly-SLO (3-1).....47
16. Illinois (11-0).....44
17. Arizona State (5-0).....29
18. Texas A&M (4-1).....27
19. Penn State (6-0).....15
20. Long Beach State (7-5).....13

Committee Notices

Member institutions are invited to submit nominations for interim vacancies on NCAA committees. Nominations to fill the following vacancy must be received by Fannie B. Vaughan, administrative assistant, in the NCAA national office no later than October 7, 1985.

Women's Softball—Replacement for Barbara E. Dearing, formerly at Liberty University (Division II). Dearing has accepted a position at Ohio State University (Division I). Appointee must be from Division II.

Attack

Continued from page 1

nesses be amended to limit the exception for the news reporting of sporting events in the existing statutes to exclude the transmission of odds or point-spread information relating to college athletics contests.

The latter approach would not eliminate the practice of newspapers printing information relating to gambling odds and point-spreads, but it would prevent businesses from supplying such information.

FBI presentations

The NCAA will coordinate a program in which the Federal Bureau of Investigation will send representatives prior to the football season to 80 Division I-A institutions, on request, to advise coaches and student-athletes regarding the seriousness of gambling and sports bribery.

The representatives also will emphasize that the FBI and the NCAA are prepared to accept any information on such activities on a

confidential basis. The FBI also will schedule such appearances at approximately 100 Division I institutions prior to the basketball season.

Conference program

If the proposed mandatory compliance program for Division I members is approved by the Division I Steering Committee and the Division I membership, that program will include presentations by FBI and Drug Enforcement Administration representatives in the mandatory conference-conducted sessions for head coaches.

In addition, each booking office that assigns officials for postseason football games or the NCAA Division I Men's Basketball Championship would include appearances by FBI and DEA representatives in its annual rules and interpretations clinics for officials.

Each such conference also would require all of its certified basketball and football officials to execute a statement annually iden-

tifying any connection with gambling and drugs, similar to the statement regarding gambling that currently must be signed by officials before they are accepted to work in the Division I Men's Basketball Championship.

Proposed legislation

The Council will sponsor at the 1986 Convention an amendment to Constitution 3-6(a)-(1) to require institutional staff members and student-athletes to cooperate fully with NCAA or institutional representatives administering investigations that involve gambling, sports bribery, drug distribution or drug usage. Failure to do so would result in the individual being in violation of the ethical-conduct provisions of the NCAA constitution.

Rules clinics

Each regional rules clinic administered by the NCAA legislative services department will include a presentation by FBI and/or DEA representatives, who will review for athletics administrators

in attendance the inherent dangers that gambling and drugs present for athletics programs and for institutions of higher learning. Included will be a presentation of precautionary measures that should be heeded by institutions.

State legislation

In the event that the Association's efforts to amend Federal statutes fall short, an attempt will be made to develop a model state statute that would prohibit wagering on amateur sports events. The model statute would be forwarded to member institutions in all states for their use in urging their state legislators to adopt such measures.

Enforcement program

As a mandated part of the NCAA enforcement program, field representatives in the process of investigating alleged violations of NCAA recruiting and financial aid rules also will include inquiries concerning gambling and drug-usage activities.

This step will take the form of questioning institutional staff mem-

bers, student-athletes or noninstitutional individuals with whom the investigator normally would be in contact.

Early warning system

The NCAA will attempt to develop information from individuals who may have an interest—legal or illegal—in gambling on individual and team sports in an effort to monitor unusual betting transactions and changes in point spreads for college football and basketball games.

Development of such information would result in an early warning system for institutions, and indications of unexplained point movements that occur in such information would be made available to the FBI.

The Association's antigambling program is being coordinated by David E. Cawood, assistant executive director, with the assistance of Ruth M. Berkey, assistant executive director, and Michael S. Glazier, assistant director of enforcement.

The NCAA News



The Market

Readers of The NCAA News are invited to use The Market to locate candidates for positions open at their institutions, to advertise open dates in their playing schedules or for other appropriate purposes.

Rates are 45 cents per word for general classified advertising (agate type) and \$22.60 per column inch for display classified advertising. Orders and copy are due by noon five days prior to the date of publication for general classified space and by noon seven days prior to the date of publication for display classified advertising. Orders and copy will be accepted by telephone.

For more information or to place an ad, call 913/384-3220 or write NCAA Publishing, P.O. Box 1906, Mission, Kansas 66201.

Positions Available

Associate A.D.

Associate Athletic Director—Available 8/13/85. California State University, Fresno, Athletic Corporation will be accepting applications for the position of Associate Athletic Director through October 4, 1985. The position is responsible for the coordination and supervision of operations for men's and women's intercollegiate athletics. Make departmental decisions in the absence of the Director in accordance with departmental policies. Provide leadership, administrative support and supervision to persons in units for which responsible. Coordinate and supervise fiscal operation of assigned activities in compliance with institutional, NCAA, PCAA and NorPac rules and regulations. Assist in planning, evaluation and implementation of departmental activities under one's supervision. Prepare periodic reports including summarization of activities participated in or services performed and recommendations for improvement of each activity or service. Assume the responsibility and authority of other activities as assigned by the Director of Athletics. Graduation from an accredited college or university with a Bachelor's degree in Athletic Administration. Master's degree preferred. A minimum of three (3) years' successful experience in Athletic Administration at a major University with a recognized intercollegiate athletic program, preferably at the NCAA Division I level. Salary is competitive and commensurate with qualifications and experience. Full fringe benefit package is available. Contact: Jack Lengyel, Director of Athletics, Fresno State University, Fresno, CA 93740 (209) 294-3178. EOE/AA.

Business Manager

Athletic Business Manager, Kansas State University. Responsibilities to include income and expense accounting, reconciling athletic accounts, equipment purchase control, ticket sales and ticket office, control all purchasing, maintain general business office to include personnel activities for department and prepare budget and the monitoring of such in conjunction with the athletic director. BA in business and/or accounting required. MBA preferred. 2-5 years' experience in general administration, accounting, budget development and control. Computer skills desirable. Good written and oral skills necessary. Some experience in sports or intercollegiate athletic administration or participation helpful but not required. Qualified applicants are invited to submit their application and resume, three letters of recommendation and other transcripts by October 4 to: Larry Travis, Director of Athletics, 101 Ahearn Fieldhouse, Kansas State University, Manhattan, Kansas 66506. Kansas State University is an Affirmative Action/Equal Opportunity Employer.

Baseball

Graduate Assistant Coach/Baseball. Responsibilities include: Assist in all areas of coaching in an NCAA Division II program including practice, recruiting and other duties as assigned by head coach. Position effective September 1985. Send resume to: Weldon

Bowlin, Head Baseball Coach, Livingston University, Station 14, Livingston, Alabama 35470.

Basketball

Physical Education—Assistant Varsity Men's Basketball Coach. Master's degree in Physical Education required. Teaching and coaching experience at the collegiate level highly desirable. Responsibilities include: Skills and Techniques and academic courses in Physical Education and/or Health/Fitness. Academic advancement of undergraduate students. Coaching responsibilities include scouting and recruiting. Rank & Salary: Instructor—Min. \$14,000. Immediate employment. Send letter of application, resume and 3 letters of reference to: Dr. Edward Steitz, Springfield College, Springfield, MA 01109. Deadline for Applying: Until qualified person has been selected. An Equal Opportunity, Affirmative Action Employer.

Assistant Women's Basketball Coach. To assist head coach in the administration of a Division I basketball program including coaching, recruiting, scouting and all related areas. Bachelor's degree required, master's preferred. Prior intercollegiate playing and/or coaching experience. Thorough knowledge of NCAA rules and regulations. Appointment Date: October 15, 1985. Salary is commensurate with experience and qualifications. Nine-month appointment. Deadline: October 2, 1985. Send letter of application with three references to: Ms. Lin Dunn, Women's Basketball Coach, University of Miami, Hecht Room 103, Coral Gables, Florida 33124. Equal Opportunity Employer.

Assistant Men's Basketball Coach. St. Francis College of Pennsylvania, a member of the ECAC Metro Conference, is seeking applications and nominations for the position of assistant coach for men's basketball. The position will be responsible for assisting the head coach in all aspects of the maintenance and organization of a comprehensive NCAA Division I program. Specific duties to include administrative assistance, coaching assignments, recruiting, scouting, player counseling, monitoring eligibility and academic progress, budget preparation and public relations. The successful candidate will present a bachelor's degree with experience in coaching and recruiting at the college level. Resumes and three letters of reference should be addressed to Tom Iannaccone, Director of Athletics, St. Francis College, Loretto, PA 15940. AA/EOE.

Graduate Assistant Coach/Men's Basketball. Responsibilities include: Assist in all areas of coaching in an NCAA Division II program including practice, recruiting and other duties as assigned by head coach. Position effective September 1985. Send resume to: Rick Reedy, Head Basketball Coach, Livingston University, Station 14, Livingston, Alabama 35470.

Assistant Men's Basketball Coach. Duties include assisting head coach in all facets of Division I basketball program including coaching, recruiting, and scouting. Additional duties to include academic supervision for student-athletes and other duties as assigned by head basketball coach. Qualifications: BS required, master's degree preferred plus successful coaching experience. Send resume to: Jack Margenthaler, Head Basketball Coach, Western Illinois University, Macomb, Illinois 61455. Equal Opportunity/Affirmative Action Employer.

Basketball Coach—International Assignment. The United States Sports Academy—America's College of Sport Science—seeks a top professional who can help meet our leadership challenges and commitments in sports. The Academy is an accredited, special

mission graduate college designed to serve the nation and the world as a resource for sport education with programs in instruction, research, and service. It is a global leader in the operation of sport training and development programs around the world. BS in physical education, health education, or related field. 3-5 years' work experience in the area of basketball at the collegiate or club level. Excellent benefits include tax-free compensation, overseas air transportation, vacation, housing and medical insurance. Send resume, date of availability, salary requirements, and three letters of recommendation to: Director of Recruiting, A.I.E.R.S., P.O. Box 8465, Dept. 460-832, Mobile, AL 36689-0650. EOE/AA.

Gymnastics

Head Women's Gymnastics Coach. Temple University seeks applications for the position of Head Women's Gymnastics Coach. Temple is an NCAA Division I institution and a member of the Atlantic 10 Conference. Duties include recruiting, training and public relations. Supervise assistant coaches and operate within prescribed budget. Min. of Bachelor's Degree required; Master's preferred. Prior coaching on the collegiate, high school or club level required. Salary commensurate with experience. Full benefits. Send letter of application, resume and at least one letter of reference by October 4, 1985, to Joseph Lunardi, Personnel Services, Temple University, Philadelphia, PA 19122. EOE.

Soccer

Assistant Men's Soccer Coach. Position available October 1985 at the U.S. Air Force Academy, Colorado Springs, Colorado. The candidate should possess a bachelor's degree in physical education; ability to organize, supervise and administer an NCAA Division I men's soccer program. Appointment is a full-time, non-tenure position at the GS 9 level. Salary is based on government civil service pay scales. Submit application (standard form 171) and a personal resume to HQ USAFA/DPSC, Attention Ms. Debbie Huber, U.S. Air Force Academy, Colorado Springs, Colorado 80840. The standard form 171 can be obtained at any Federal office/agency and must accompany the application to be accepted. The deadline for the submission of applications is September 30, 1985.

Softball

Head Softball Coach. Wagner College, a Division I program located in Staten Island, New York, is looking for a part-time coach

the softball team. Interested applicants should contact: Gela Mikalauskas at 718/390-3470.

Swimming

Diving Coach and Assistant Swimming Coach. Northern Michigan University. Nine-month appointment with teaching responsibilities in a department of HPER. Qualifications include: Bachelor's degree, master's degree preferred and previous coaching experience. Salary: Commensurate with experience and qualifications. Application Procedure: Letters of application, resume, three letters of reference should be sent by September 30 to: Beatrice Marana, Employment Supervisor, Personnel and Staff Benefits, Northern Michigan University, Marquette, Michigan 49855. Equal Opportunity/Affirmative Action Employer.

Volleyball

Head Coach, Women's Volleyball. The University of Michigan is seeking a coach for a Division I women's volleyball program. Requirements include a BA or BS degree, and previous coaching experience. Collegiate playing and recruiting experience is desirable. Salary is commensurate with qualifications. This is a 10-month appointment with additional opportunity to work with volleyball summer camp in Michigan's Camp of Champions. Send letter of application, resume and three letters of reference to: Phyllis Ocker, Associate Director, The University of Michigan, 1000 South State Street, Ann Arbor, Michigan 48109. Affirmative Action/Equal Opportunity Employer.

Miscellaneous

DePaul University, Booster Club Director. DePaul University has an immediate opening in our Athletic Department for a Director of the Booster Club. Responsibilities include the collecting and coordinating of gift information; handling of all merchandise; formally thank all donors to the booster club; budgetary responsibilities; coordination of biweekly newsletter. In addition, the director must attend all club meetings; help to coordinate ticket allocation and seating for booster club section; organize and coordinate all social functions; help coordinate out of town trips and assist in locating alumni in various cities. Requirements include: bachelor's degree, ability to type 50 wpm and excellent organizational and communication skills. Excellent benefit package includes 4 weeks vacation, free tuition and choice of hospitalization. Salary in upper teens. Qualified applicant

must submit resume and references to: Mr. Edward J. Manetta Jr., Director of Athletics, DePaul University, 1011 West Belden Avenue, Chicago, Illinois 60614. An Equal Opportunity Employer.

Assistant Athletic Facilities Manager. Qualifications: BA, Master's degree preferred. Understanding and proven experience in university recreational activities. Strong organizational and decision-making skills. Ability to coordinate, supervise and manage all phases of an intramural and corecreational program. Effectively communicate and work with the diverse elements of a university community. Duties: Direct, implement and coordinate intramural-corecreational activities; maintenance and scheduling of intramural-corecreational activity areas. Supervise ongoing student employee and job orientation programs. Responsible to organize and coordinate intramural recreational equipment room policies and procedures. Assist with athletic facilities management and special events. Other duties as assigned by the Athletic Facilities Director. Availability for some evening and weekend work. Salary: \$13,000-\$14,500. Close of Application: October 4, 1985. Date of Appointment: October 15, 1985, or earlier. Send resume to: Michael J. Diorka, Director of Athletic Facilities, St. Joseph's University, 5600 City Avenue, Philadelphia, PA 19131. Equal Opportunity Employer.

Sport Coaches—Overseas. The United States Sports Academy—America's College of Sport Science—seeks qualified coaches for overseas projects. The Academy is a rapidly expanding, accredited graduate school with foreign and domestic programs. It is a global leader in the operation of sport training and development programs. We have immediate openings for coaches in the following areas: Athletic Trainers, Basketball, Bowling, Fitness, Gymnastics, Racquets, Soccer, Strength/Weightlifting, Track and Field. Bachelor's Degree and 3-5 years' experience at college, university or club level required. Coaches will be responsible for the development of competitive and successful athletes and teams in the specialty area. Excellent benefits including tax-free compensation, air transportation, housing, and medical insurance. Send resume in confidence, date of availability, and three letters of reference to: Director of Recruiting, A.I.E.R.S., P.O. Box 8465, Dept. 460-1022, Mobile, AL 36689-0465. (205) 343-3890, EOE/AA.

Open Dates

Men's Basketball, Division II. ULI Southampton needs one basketball game for 1985-86 season. Guarantee offer for home game. Contact: Ken Felton, 516/283-4000, ext. 224.

Women's Basketball, NAIA/NCAA II. University of Wisconsin-Milwaukee needs one team to compete in the Holiday Classic Tournament on Saturday December 21 and Sunday December 22, 1985. No entry fee. Contact: M.A. Kelling at 414/963-5150 or 963-5669.

Women's Basketball, Division III. St. John Fisher College, Rochester, New York, needs two teams for Cardinal Invitational Tournament December 6 & 7, 1985. Guarantee and meal arrangements extended. Contact: Phil Kahler, Director of Athletics, 716/385-8311.

Women's Basketball. Texas A&I University seeking Division I or II team for South Texas Women's Classic December 5-6 in Kingsville. Contact: Fran Price, 512/595-2413.

Division III Football. Aurora University is beginning football in 1986. Seeking games for 1986—September 27, October 4, October 18, and November 8; and 1987—September 12, September 26, October 17 and November 7. Call Sam Bedrosian, Athletic Director, at 312—892-6431.

NORTHEASTERN UNIVERSITY ASSISTANT COACH, WOMEN'S BASKETBALL

Northeastern University invites applications for the position of assistant coach, women's basketball. This is a full-time, twelve-month position.

Bachelor's degree and coaching experience required.

Responsibilities will include assisting the head coach in the organization and administration of a Division I women's basketball program with emphasis on recruitment.

Salary commensurate with qualifications and experience.

Send resume and letter of application to:

Jeanne Rowlands
Arena Annex
Northeastern University
Boston, MA 02115

An equal opportunity/affirmative action employer

SANTA CLARA UNIVERSITY DIVISION OF STUDENT SERVICES Director of Intercollegiate Athletics

Santa Clara University, a private Jesuit University, serving approximately 7,000 students, invites applications and nominations for the position of Director of Intercollegiate Athletics.

The Intercollegiate Athletic Department of Santa Clara University consists of eleven Division I men's sports, seven Division I women's sports, and two Division II men's sports. Santa Clara University is a member of the National Collegiate Athletic Association, the West Coast Athletic Conference, and the Western Football Conference.

Basic Function and Description: The Director of Intercollegiate Athletics reports to the Vice President for Student Services. The Director of Intercollegiate Athletics will be responsible for overseeing the administration and development of all intercollegiate athletic programs, managing the departmental budgets, coordinating use of athletic facilities, supervising athletic personnel, conducting fundraising efforts, and representing the University to internal and external constituencies.

Minimum Qualifications: The University is seeking a highly qualified individual with a Master's degree or its equivalent in an appropriate field; a commitment to Jesuit and Catholic education and to academic progress and achievement for student athletes in that setting; demonstrated ability in collegiate sports program management, human and financial resource management, interpersonal relations and communication, fundraising and promotions, personnel supervision, policy formulation and implementation, and communication with media; and an ability to represent the University and athletic program effectively and articulately.

Salary: Salary negotiable, commensurate with experience and credentials.

Correspondence: Potential candidates are requested to submit a letter of application, resume, and the names of three references by 30 September 1985 to:

Rev. Robert M. Senkewicz, SJ
Vice President for Student Services
Santa Clara University
Santa Clara, CA 95053

Santa Clara University strongly encourages the applications of women and minorities for this position, and is an equal opportunity/affirmative action employer.

UNIVERSITY OF IDAHO

Assistant Director of Athletics for Development

The University of Idaho Department of Intercollegiate Athletics is seeking applications for the position of Assistant Director of Athletics for Development.

Successful candidate must have a Bachelor's degree in a related area and experience in intercollegiate athletics, fund raising, or promotional work.

The responsibilities and duties of this position include: 1. Serving as Executive Secretary of Vandal Boosters, Inc. 2. Organization and implementation of fund raising and promotional strategies for Vandal Boosters and the Athletic Department. 3. Organization and implementation of annual fund raising and promotional campaigns. 4. Organizing and implementing of plans to build the Vandal Booster Endowment Fund. 5. Organization, motivation, and maintenance of an extensive volunteer structure for fund raising. 6. Maintenance of accurate and appropriate contributor records and suitable communications with contributors and volunteers. 7. Management of Development Office staff. 8. Other responsibilities as assigned by the Director of Athletics.

The Assistant Director of Athletics for Development reports directly to the Director of Athletics. Salary open.

Applications will be accepted until September 30, 1985, or until a suitable candidate is identified. Applicants should send a current resume with three references to:

Bill Belknap, Director of Athletics, University of Idaho, Kibbie-ASU Activity Center, Moscow, Idaho 83843. AA/EOE.

ASSISTANT COACH WOMEN'S BASKETBALL Mankato State University

Bachelor's degree required; Master's degree preferred.

Successful coaching at either the high school or collegiate level required.

Salary is commensurate with qualifications and experience. Excellent benefit package.

Successful applicant will teach part-time within a HPER unit, be expected to recruit, and participate in fund-raising activities. This is a full-time instructional position.

Deadline for Application: October 8, 1985.

Appointment Date: October 15, 1985.

Send letter of application, resume, and three letters of reference to:

Georgene Brock
Director of Women's Athletics
Mankato State University
P.O. Box 28
Mankato, MN 56001

Mankato State University is an affirmative action/equal opportunity employer.

Players sue over ineligibility

A judge has granted the University of Kansas permission to prohibit three players from participating in varsity football games as they dispute their status as academically ineligible.

Johnson County District Judge G. Joseph Pierron modified a restraining order granted September 19 when the players filed suit in Johnson County District Court in Olathe. The university sought the modification, a KU spokesman said.

The restraining order, granted by Johnson County District Judge Larry McClain, allowed the players to practice with the Jayhawks and possibly play in games despite being declared academically ineligible under NCAA rules.

The later modification, which took effect immediately, doesn't affect the earlier order that the university allow the students to practice. The suit was filed by offensive guard Doug Certain, tailback Lynn Williams and linebacker Dane Griffin.

The suit said the players were declared ineligible this season under the satisfactory-progress rule established by the NCAA. The rule requires student-athletes, beginning with their junior year, to complete 24 hours in a year toward their degree.

Schools determine whether hours completed are acceptable toward satisfaction of the NCAA satisfactory-progress rule. However, the suit said the players passed the 24 hours, but KU advisers enrolled them in classes that would not have been acceptable under the school's interpretation of the rule.

Letter-of-intent dates announced

Dates for the National Letter of Intent program, which is administered by the Collegiate Commissioners Association, have been announced.

It is estimated that there were 15,500 National Letter of Intent signees participating in last year's program.

The complete letter-of-intent signing periods are as follows:

Football February 12, 1986, to May 1, 1986. Midyear junior college transfer—December 11, 1985, to January 15, 1986. Men's basketball—November 13, 1985, to November 20, 1985, or April 9, 1986, to May 15, 1986. All other men's sports—April 9, 1986, to August 1, 1986.

Women's basketball—November 13, 1985, to November 20, 1985, or April 9, 1986, to May 15, 1986. Women's volleyball and field hockey—February 12, 1986, to August 1, 1986. All other women's sports—April 9, 1986, to August 1, 1986.

ADs oppose ineligibility for freshmen

Division I-A directors of athletics strongly oppose the concept of declaring freshmen ineligible for varsity athletics, the National Association of Collegiate Directors of Athletics announced September 20.

A survey conducted by NACDA resulted in responses from 85 of the 105 Division I-A athletics directors, and 65 (81 percent) believed that freshmen should be eligible for varsity competition. That percentage is only slightly higher than the results of the Presidents Commission survey of all Division I chief executive officers, as reported elsewhere in this issue.

NYSP reaches 45,000 underprivileged youth

More than 45,000 youngsters participated in the 1985 National Youth Sports Program (NYSP), according to figures compiled by the NCAA, which coordinates the program.

"NYSP again reached a record number of young people and provided a unique blend of sports-skills instruction, activities and enrichment programs," said Ruth M. Berkey, NCAA assistant executive director and NYSP administrator. The Association administers the program, which is funded by the Federal government, through the Health and Human Services Administration's Office of Community Services, and by support from private business.

"The addition of seven new programs helped NYSP reach underprivileged youth in 117 cities and 41 states this summer," said Christ Petrouleas, athletics coordinator at Wayne State University (Michigan) and chair of the Association's NYSP Committee. "In most cases, the chil-

dren who participate in NYSP would not otherwise have the opportunities to learn skills in lifetime sports activities and receive instruction, counseling, medical evaluation and referral. Obviously, we are very pleased to see the program continue to grow in both sponsorship and participation."

Institutions sponsoring NYSP projects for the first time this summer received technical assistance through in-person visits by members of the Association's NYSP committee, and all 141 sponsoring institutions received help through a unique national workshop.

The three-day national workshop was held in lieu of regional gatherings and involved members of the NYSP committee and project administrators from sponsoring institutions. Berkey said the new approach proved valuable and will be used every three or four years in order to provide project administrators an opportunity to maintain the national flavor of the

program and to learn about innovative project schedules. Having the opportunity to share concepts from East Coast to West Coast was educational.

In an attempt to gauge the success of various aspects of the program, the NYSP committee has authorized a survey to be sent to project administrators at each sponsoring institution.

"The survey will provide empirical data on the long-term effects NYSP has on the lives of the participants," explained Berkey. "We have heard many success stories from parents, counselors and teachers and believe it would be helpful to have the information in some objective file for reports to the Federal government."

24 goals but no record

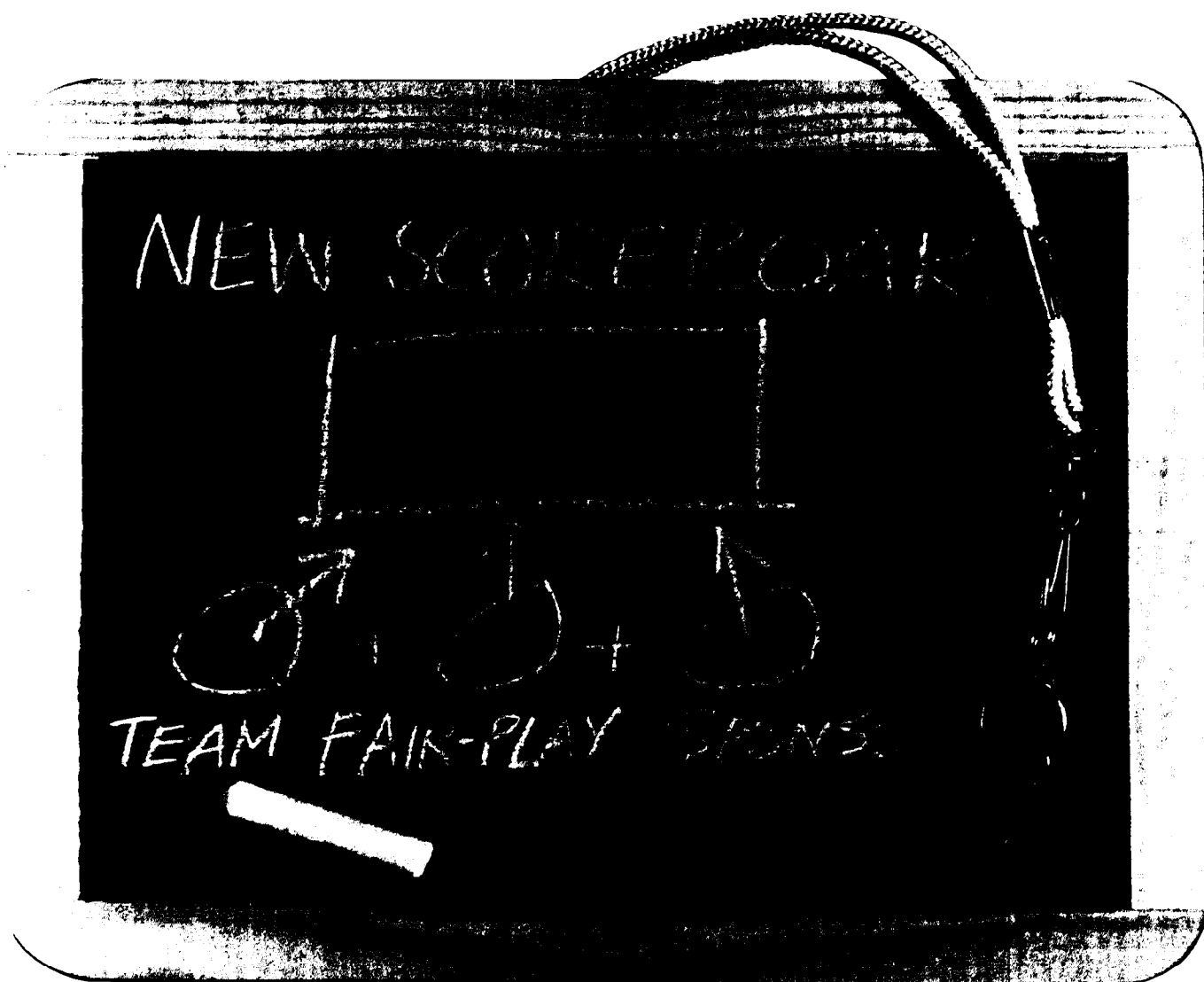
Iona may be thinking twice about having started a women's soccer program after its season opener September 14.

Hartford, in only its second season of women's soccer competition, recorded an incredible 24-0 victory in the season opener for both teams. Although records for women's soccer are not available, it does not break the all-time record for goals in a collegiate soccer game. Denver's men's soccer team defeated Hiram Scott College of Scottsbluff, Nebraska, 31-0, October 8, 1966.

In its first season of intercollegiate play, Hartford scored only 22 goals in its entire 13-game schedule. The Hawks qualified for the Eastern College Athletic Conference play-offs with a 5-5-3 record.

In the 24-0 victory, Kathy McNabb scored six goals and Sarah Ceabey scored four times. The team's individual leader last season had five goals.

Ted Stavropoulos is in his second season as Hartford coach after coaching at Farmington (Connecticut) High School.



WE KNOW THE SPONSORSHIP GAME INSIDE OUT

In the past three years, Fair-Play has installed more sponsored scoreboards and message centers than all the other scoreboard companies combined. From large, custom designed boards on down, Fair-Play is the name to remember in sponsorship.

So, if you're about to acquire a sponsor-financed scoreboard, talk to Fair-Play first. You'll come out the big winner.



Box 1847
Des Moines, Iowa 50306
(515) 265-5305

AMERICA'S SCOREKEEPER FOR OVER 50 YEARS