

Members officially informed of June Convention

Chief executive officers of all NCAA member institutions have been informed officially of the special NCAA Convention scheduled Thursday and Friday, June 20-21, at the Hyatt Regency Hotel in New Orleans.

NCAA President John R. Davis, acting on behalf of the NCAA Presidents' Commission, sent the official notification in a memorandum to the chief executives dated February 28. Copies of the memorandum also were sent to the faculty athletics representative, director of athletics and primary woman athletics administrator at each active member institution, as well as to the officers of all conference and affiliated NCAA members and to all corresponding members.

The special Convention—the fifth in the Association's history and the first to be called by the Presidents'

Commission—originally was announced in December by Commission Chair John W. Ryan, president of Indiana University, Bloomington, as reported in the December 12, 1984, issue of *The NCAA News*.

Davis' notification to the CEOs emphasizes that the agenda for the special Convention is limited to "legislative proposals directly dealing with issues of integrity in the operation of intercollegiate athletics at member institutions of the Association, or legislative offerings directly related to economic issues of substance affecting intercollegiate athletics and the respective programs of the members."

"Any legislative proposal not so qualified will be ruled out of order unless it can be shown that such a proposal is necessary to enable the membership to consider a specific

question regarding the qualified issues of integrity and economics," Davis' memorandum states.

The memorandum makes special notice of the fact that the Presidents' Commission is urging all chief execu-

tionary officers to establish fundamental policies affecting the conduct of intercollegiate athletics and to make a commitment to those policies."

Noting that the Commission's legis-

The issues to be considered "will offer a unique opportunity for the leadership of higher education to establish fundamental policies affecting the conduct of intercollegiate athletics..."

tive officers, and especially those in Division I, to attend the special Convention and to appoint themselves as their institutions' voting delegates.

Davis says the Commission believes the issues to be considered at the June Convention "will offer a unique op-

portunity for the leadership of higher education to establish fundamental policies affecting the conduct of intercollegiate athletics and to make a commitment to those policies."

the critical rules that apply to these programs," as well as the Commission's belief that this effort "can help to restore the credibility of intercollegiate athletics as a valuable part of higher education."

The memorandum also sets forth the following chronology of key dates in the special Convention procedure:

- **April 3-4:** The Presidents' Commission will meet in Chicago to review the results of the survey of CEOs and to determine the proposals the Commission will sponsor at the special Convention. Survey results and the Commission's conclusions will be reported to the membership promptly after that meeting.

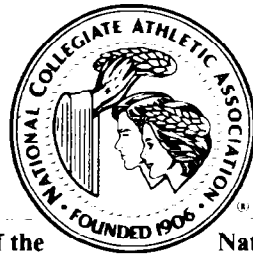
- **April 15-17:** During its regular spring meeting, the NCAA Council

See Members, page 8

The NCAA News

March 6, 1985, Volume 22 Number 10

Official Publication of the



National Collegiate Athletic Association



Softball preview

Tracy Compton, left, and Debby Doom, two of the top pitchers in women's softball, are back again this year to help UCLA seek another NCAA Division I Women's Softball Championship. For a preview of the season, see pages 6-7.

Membership gets enrollment forms for catastrophic injury insurance

Enrollment forms for the NCAA's lifetime catastrophic injury insurance program have been mailed to athletics directors at member institutions, creating an opportunity that never has existed in the college community.

This step is the latest in a project that began four years ago when the Committee on Competitive Safeguards and Medical Aspects of Sports recommended that the NCAA find ways to offset expenses incurred by student-athletes who suffer catastrophic injuries.

Through the efforts of the NCAA Insurance Committee, a plan was approved late last year that will provide disability benefits and lifetime medical and rehabilitation benefits to any male or female student-athlete representing a participating institution.

Following is the step-by-step process that led to the development of the NCAA's lifetime catastrophic injury insurance program:

August 1981—The NCAA Executive Committee heard a report from the competitive safeguards committee.

January 1982—After hearing a report from the NCAA executive director on efforts by equipment manufacturers to create an interest in establishing a catastrophic athletics injury foundation, the NCAA Council

said the NCAA would monitor the development of a proposed rehabilitation foundation and review the insurance alternative to deal with catastrophic injuries.

February 1982—The Insurance Committee agreed that the Association should study the insurance approach in depth.

September 1982—The Insurance

Committee and selected members of the competitive safeguards committee met in joint session to discuss the insurance approach and the foundation approach.

October 1982—The Council directed the Insurance Committee to investigate possible catastrophic injury insurance programs. The Council

See Membership, page 16

Davis assigned new position; duties with NCAA emphasized

NCAA President John R. Davis has been assigned new duties in agriculture at Oregon State University and will serve as director of special programs in agriculture, John Byrne, president of the university, announced Tuesday (March 5) in a letter to be distributed to all personnel in the institution's college of agricultural sciences.

What had appeared to be an administrative controversy in that college was settled quietly by Byrne's announcement.

Late last month, when both Byrne and Davis were away from the campus on institutional business trips, Ludwig Eisgruber, the acting dean of the college of agricultural sciences, announced that Davis had been relieved

of his duties as director of the Oregon Agricultural Experiment Station and would return to the department of agricultural engineering as a professor.

Byrne, who has been president of Oregon State University only since November and who will be inaugurated formally March 10, stated in his letter to the agriculture staff members: "The management style I hope to employ at OSU is to vest responsibility and authority in the appropriate administrative heads, such as academic deans, and to hold those heads accountable for their actions. Administrative officers will be evaluated by me on a regular basis. They will continue in their positions as long as I

See Davis, page 16

NCAA tournament: a Horatio Alger story in U.S. sports

by James M. Van Valkenburg
NCAA Director of Statistics

That delightful March madness known as NCAA tournament time is upon us, and it is time for a fond look at the historical record.

The men's National Collegiate Division I Basketball Championship now has a month-long hold on the nation's sports fans, climaxed by the Final Four, which has become one of the great annual national events in sports, sold out a year in advance. The tournament produces many millions of dollars in revenues from television and ticket sales.

It is an amazing success story from humble, red-ink beginnings. The first NCAA tournament in 1939 was nearly swallowed up on the nation's sports pages by Major League Baseball spring training news. It was even second in attention in college basket-

ball to the National Invitation Tournament, which had started a year earlier in New York. The entire 1939 tourney drew only 15,025 spectators for five games, topped by 5,500 for the championship game on the Northwestern campus, where Oregon's "Tall Firs," coached by Howard

Basketball notes

Hobson, defeated Ohio State, coached by Harold Olsen.

That first tournament had a net loss of \$2,531 after expenses. The National Association of Basketball Coaches, which had started the tournament (sparked in part by a letter from Olsen to NABC president George Edwards of Missouri in April 1938) then asked the NCAA to take control. The 1940 tournament finals were in Kansas City, where 10,000

watched Indiana defeat Kansas in the title game. The tournament made a profit of—get this—\$9,523. In 1943, the NCAA finals started a six-year run in New York's old Madison Square Garden. The western finals had a long run in Kansas City.

Enough glory for all

From the beginning, the NCAA has had a balanced national look. It started with one team from each of eight geographical districts (as opposed to the NIT, which always had strong representation from the East). There is a never-ending argument about which region or conference plays the best basketball.

The all-time chart (page 4), which uses the actual lineups competing for conference championships each season, shows a tight race in winning percentage, led by the Big Ten Conference at 66.1 percent, the Pacific-

10 Conference at 65.4 and the Atlantic Coast Conference at 65.3. Next is the Big East Conference, 61.7 percent over its five-year history. Fifth place is a surprise—the Missouri Valley Conference, at 56.9 percent with four championships, all by teams now members of other conferences.

The truth is, however, that every region of the country has won at least one NCAA championship and can look back on many moments of glory. The Southwest region has only

one champion—UTEP, then known as Texas Western, in 1966. The coach was Don Haskins, a pupil of the legendary Henry Iba of Oklahoma State (more than 700 career victories). Haskins himself is now well above 400 victories. His team won the championship game over Kentucky, coached by Adolph Rupp, the all-time leader with 875 coaching victories. The Southwest has had 14 teams in the Final Four.

The Rockies area has had six teams

NCAA tournament, page 4

In the News

Victor A. Bubas, chair of the Division I Men's Basketball Committee, answers questions about the men's basketball championship	2
Legislative Assistance	8
Championships previews	9-11
Championships results	12

Bubas answers questions most frequently asked

Editor's note: In the February 27 issue of The NCAA News, David R. Gavitt, former chair of the Division I Men's Basketball Committee, reflected on the growth of the Division I Men's Basketball Championship into a sports happening on a par with the World Series and Super Bowl. In the following article, Victor A. Bubas, current committee chair, answers questions most often asked about the tournament and contemplates the future of the championship.

Q: What's the big difference between this year's NCAA Division I Men's Basketball Championship and others in the past?

A: The big difference is the number of teams—64. In the past six years, the tournament has grown from 40 to 48 to 52 to 53 and now 64 teams. It has been, in my opinion, long overdue. Why? Because of the following reasons: First, we have many quality teams to choose from. Second, it was not fair for 16 top teams in the past to draw a bye. It was no bargain for them because each had to play its first game against a pretty good basketball team that had already played a game and was over its "opening-game jitters"—it makes a big difference. Third, it will be great for the fans since they will now see four games on the first day, instead of two; and those four games (for the first time) will include some of the nation's best teams, best coaches and best players, since all teams will have to play in the first round. It should be "a ball" for the super basketball fan.

Q: Are the best 64 teams in the United States going to be in the tournament?

A: No, but that is because 29 conferences will send their champions to the NCAA tournament as automatic qualifiers,

leaving 35 spots to be filled as at-large entries. I believe it is healthy for college basketball to have 29 automatic qualifiers, because college basketball is kept alive in every corner of the United States until the last second, as most of these conferences have postseason tournaments to decide their champions.

Q: Are you for an open tournament—letting all 282 Division I teams in the tournament and restricting no one?

A: No, I am dead set against it, because we almost have an open tournament now. There are only four conferences now that do not have conference postseason tournaments, plus about 30

Men's basketball championship

independents. Two hundred and eleven (211) teams are in conference tournaments; and if they win, they are in the NCAA first-round games. In reality, the conference tournaments are the opening round of the NCAA tournament. An open tournament would place no premium on seasonal play, and I don't believe that's a good idea.

Q: The past two out of three Final Fours have been in the domes, the superstructures, if you will. Do you think we are headed in that direction and will they all be held there in the future?

A: The domes have been a very positive experience, in my opinion. The fans absolutely know that thousands of seats in the domes are not what we would call "good seats," but they don't

care. They just want to be there; they want to take their grandchildren and say they were a part of it. Interestingly, the board of directors of the National Association of Basketball Coaches, which previously discouraged the use of domes, now encourages the selection of domes for the Final Four because more people can see the games and it provides more neutral courts. Usually, domes have good parking facilities and excellent accommodations for the news media—both are very, very important. The basketball committee is not committed to playing in domes, but the pressure keeps mounting from all sides to go in that direction. We'll see.

We not only need bigger arenas for the Final Four; the regionals are like the Final Four used to be, and the first and second rounds are like the old regionals. We have a great set of problems, not a bad set; the public wants to see this event and the media want to cover it. We are like the Super Bowl, World Series, Kentucky Derby, The Masters, etc.—we dominate the month of March in play, talk and coverage. This year, for instance, everyone knows what "The Road to Lexington" means when they hear it on television and read it in the newspapers. The event is there; it "arrived" some time ago.

Q: Do you think the teams in the Final Four, the regionals, the whole tournament, make too much money?

A: No, I do not. The public does not understand what happens to that money. In 1985, it is projected that the distribution of receipts to the participating institutions will be: the Final Four—\$700,000; finals of the regionals—\$560,000; semifinals of the regionals—\$420,000; second-round partici-

See Bubas, page 3

Selections are made without politics

Dave Hart, athletics director
University of Missouri, Columbia
The Associated Press

"Politics has nothing to do with it (selection of teams for the NCAA Division I Men's Basketball Championship). This is the fairest committee I've ever dealt with. They're very fair and very objective. Nobody is there to lobby for any special region or conference. I don't know how many teams the Big Eight will get. I don't know how many teams any conference will get.

"The people on the committee work very, very hard, I guarantee you. If a team deserves to be there, it will be there, although expanding the field from 53 teams to 64 teams this year is going to make it tougher than ever. Somebody we don't pick is going to win the NIT, and they're going to come back and say, 'I told you so.'

"It's kind of a no-win situation, in a way. We look at every team's record—who they played and where they played them, how well teams did against good teams and

"I'm proud of my record, but I think the thing I've been able to do is teach some people to be better than they might have been in basketball and, hopefully, as people.

"Sometimes, you wonder how important sports are. Well, I think they're only important in how they help people."

Richard Sauers, head men's basketball coach
State University of New York, Albany
Basketball Weekly

"I want to be classified as difficult and demanding. That's the way you get the most out of your players. To do that, you have to get the most out of yourself. You have to . . .

"I think probably the best thing I do is prepare. We scout thoroughly. I think I know the strengths and weaknesses of my players. Experience matters a lot. You have to have something keeping you rational when the situation is decaying. I'm no better than anybody else at designing miracle finishes."

Jim Walden, head football coach
Washington State University
The Kansas City Star

"I think there's some cheating but not a lot of cheating. I hate that term people use when they say, 'Everybody's doing it.'

"What I would like to do is stand up in front of the 105 coaches in Division I-A and challenge them to recruit like they compete. I'd tell them, 'All of you are fierce competitors. You work 80 hours a week, and you play the game fairly. Why can't you do that when you recruit?'

"I think any coach who is guilty of a major offense and is caught twice should be out of a job. The vast majority of coaches are honest, but we have our 10 percent who try to get an edge."

Bill Yeoman, head football coach
University of Houston
The Kansas City Star

"Unfortunately, there's not one thing you can do. You can't legislate morality. I think we have to ask ourselves what we are in business for. We're there as part of an educational process. We're in the business of getting business and loyalty from a bunch of kids.

"There was cheating 50 years ago, but we have so much more exposure now. It's no different than it's ever been, but it doesn't bother me as long as we have a chance to survive and the scholarship limitations are giving us that chance. One thing I think is that the conferences are going to have to show more guts and stand up to the cheaters."

Billy Reynolds, catcher
University of Maine, Orono
USA Today

"When people ask how we practice, we tell them we use snowballs instead of baseballs."

Donald B. Canham, athletics director
University of Michigan
Athletic Business

"To reverse the effect of (television) overexposure on gate receipts, there must be a decision by each institution that it will not appear on television, regardless of the carrier, more than three times each season.

"The same is true of rights fees. Institutions that provide the major attraction of college football . . . simply must place a realistic price on their products and not telecast for less."

Looking Back

Five years ago

The Special Committee on NCAA Governance, Organization and Services, meeting March 23-24, 1980, in Indianapolis, agreed to recommend to the NCAA Council that the results of the committee's deliberations be used as the basis for involving women's athletics in the NCAA and that the Council implement a procedure for reviewing and refining a final plan in that regard. (March 31, 1980, NCAA News)

Ten years ago

The first Division III Swimming Championships were held at Allegheny College March 20-22, 1975. California State University, Chico, won six events, including both freestyle relays, for a runaway team title, 465 to 209 over Johns Hopkins University. ("NCAA: The Voice of College Sports" and National Collegiate Championships records book)

Twenty years ago

The first National Collegiate Indoor Track Championships were conducted March 12-13, 1965, at Cobo Hall in Detroit, with the University of Michigan as host. The University of Missouri, Columbia, did not win an individual event but edged Oklahoma State University, 14-12, for the initial team championship. ("NCAA: The Voice of College Sports" and National Collegiate Championships records book)

Thirty years ago

The NCAA membership voted in March 1955 to adopt the 1955 Football Television Plan as submitted by the Television Committee, then chaired by E. I. Romney, Mountain States Conference. The membership vote was 193 in favor and 27 opposed. ("NCAA: The Voice of College Sports")

Letter to the Editor

To the Editor:

At a time when college athletics in general, and coaches in particular, are under fire regarding illegal recruiting, I wish to commend several institutions that have maintained high standards in recruiting practices.

As the parent of a highly recruited high school discus thrower, I appreciate the integrity these schools have shown. By last November, Glenn had eliminated all but four schools. These universities—Auburn University; the University of Tennessee, Knoxville; Southern Methodist University, and Stanford University—have all conducted their recruiting in a highly ethical manner.

The track programs at these schools should be recognized for their efforts in following the NCAA regulations.

Julie Schneider
Fort Wayne, Indiana

The NCAA News

[ISSN 0027-6170]

Published weekly, except biweekly in the summer, by the National Collegiate Athletic Association, 1111 Avenue at 63rd Street, P.O. Box 1906, Mission, Kansas 66201. Phone: 913/384-3220. Subscription rate: \$20 annually. Second-class postage paid at Shawnee Mission, Kansas. Address corrections requested. Postmaster send address changes to NCAA Publishing, P.O. Box 1906, Mission, Kansas 66201.

Publisher Ted C. Tow
Editor-in-Chief Thomas A. Wilson
Managing Editor Steven M. Carr
Assistant Editor Michael V. Earle
Advertising Director Wallace I. Renfro
The Comment section of The NCAA News is offered as opinion. The views expressed do not necessarily represent a consensus of the NCAA membership. An Equal Opportunity Employer.

Opinions Out Loud

how well they did against poor teams, whether they're on a roll at the end of the year or whether they might have peaked in December.

"There's a justifiable reason for everything this committee does. If somebody could sit in our meetings and observe us work, they would realize that there is no politics involved."

Neal H. Pilson, executive vice-president
CBS/Broadcast Group
Editor & Publisher

"In college football, when the NCAA controls were lifted by judicial action last year, the two carrying networks, ABC and CBS, cut back from a combined \$65 million for exclusive rights to some \$22 million for nonexclusive rights.

"Saturdays in the fall were jammed with as many as 10 live football broadcasts on the air in a single market, and many of the syndicators eventually developed problems making their rights payments."

Bill Fluty, sports editor
The Evansville Courier

"Formed six years ago amid snickering and finger-pointing from its peers, the Midwestern City Conference is now laughing up its sleeve.

"It is no longer the Rodney Dangerfield of college basketball. It has gained respect."

Irving Shain, chancellor
University of Wisconsin, Madison
The Associated Press

"Many athletes come to the university because of (its) high academic standards."

Marv Harshman, head men's basketball coach
University of Washington
The Washington Post

"Forty years ago, a coach was a teacher first and coach second. A coach could stay as long as he wanted to. The bottom line wasn't wins . . .

"If anybody remembers me at all, I think it'll be as a good teacher. If I made a contribution to basketball, it won't be because I coached for so long.

Bubas

Continued from page 2

pants — \$280,000; first-round participants — \$140,000.

But don't get carried away by those figures. It is customary for conferences to share 50 percent with their institutions that are playing in the tournament; and then, the balance is split among the members of the conference.

The selection process

Q: Tell me about the selection process. We hear so much about the politics and the smoke-filled rooms. Is it true?

A: The selection process starts with the establishment of four regional advisory committees, primarily composed of coaches, and they are just that — advisory. The committees change every year to get a variety of input. The coaches are contacted twice a year, once in February and once in early March. The committee is sensitive to the coaches. They are the ones who are in the trenches and down on the battlefields. The coaches are asked these questions: Who, in your opinion, deserves to be invited to the national tournament from your region? We ask them to list only the teams they see in person or on television. There is one representative from each conference, plus one coach from about every eight independents.

Next, we are kept abreast of the NCAA computer rankings in mid-January, mid-February and right up to the week or 10 days before the NCAA tournament. The computer rankings of teams and conferences are getting more sophisticated every year, and I happen to think they are amazingly good — not perfect, but amazingly good.

In addition, we have reams of material from other computer rankings done in various parts of the country, plus a variety of polls that are all "averaged out" to see what kind of consensus there is to all of this material. Once again, the computers and polls are aids, no more and no less. The committee selects the teams — period. We can't hide from our responsibility, and we don't. One other factor is very, very important as we select teams. Who did you play, where and when? Since all teams are ranked one through 282, we pay close attention to how each team did against the top 50 and/or the top 100. Schedule is an important factor, and the word is getting out to forgo playing weak teams that are automatic victories. Finally, on selection weekend, the committee will spend about three full days and nights on the selection process. In reality, we are like a sequestered jury with almost no contact with the outside world.

The first 50 teams (counting the 29 automatics) can be chosen or "written in" within the first one hour to half-a-day. The next eight teams will take another day to a day-and-a-half. The last six or eight teams, no matter what the size of the bracket, could take as long as seven days and seven nights, but we don't have the luxury of that kind of time; and it is like splitting hairs when selecting those last few teams.

A case can be made for the next five or six that have been left out, but we have a job to do and we do it. And, I might add, I think our committee has done a superb job of selecting the teams. Considering the magnitude of the event, I think we have received minimal criticism and some of it carries with it understandable reasons. By and large, the coaches association and the national media have been very supportive, and that's encouraging. We know we are going to get some criticism, but that's part of the job when one is on the basketball committee.

Lastly, I don't have much sympathy for a team that can't make a 64-team field (11 more than last year). If they can't make a 64-team field, they really don't belong in the NCAA tournament. In that regard, the National Invitation Tournament plays a vital role in providing opportunities for teams that had a good year but didn't make the NCAA.

Caliber of opponents

Q: Going back to something that was said earlier, do you think it's fair to judge teams by how they did against the top 50 or the top 100 teams?

A: The answer is "yes" and "no." It's "yes" because if we do not place a premium on the caliber of the opponent, everybody will "stack their schedule" with weak opponents, get over 20 victories and, in some cases, play nobody with a reputation. That's not fair to the teams that "put it on the line" from December to March in practically every game. The answer is also "no" because not every institution can get the kind of tough schedule it wants. Some teams are helpless because the bigger schools won't play them. What we're left with as a committee is a judgment call; no computer or advisory board can help us on that problem. I believe it is safe to say, however, that everything

else being somewhat equal, the committee will probably select a team that attempted a tougher schedule and particularly those that played strong teams outside their conference play. In the last year or so, we've seen many institutions seek tougher schedules; the word is getting around about the selection process and how it helps to schedule better opposition.

Q: Why do teams from the East have to play in the West region and teams from the West come to the East? Wouldn't it be better and less expensive if the teams all played in their own regions where their fans could follow them?

A: From a standpoint of attendance and convenience for the fans to follow their teams, it would be better to play in their closest geographical region, but the basketball committee, the coaches association and, I believe, the public in general feel it is better to "balance the bracket" and adjust the brackets so the teams that are perceived to be the top 16 will make it to the regionals.

When the committee attempts to balance the bracket, it must send teams all over the country to achieve that balance. Let me give you a case in point:

If the top 12 teams in the country were in the East and Southeast, only eight of them would make it to the regionals instead of 12; that is, if all the favorites won. It is more expensive to send some of them to the Midwest and West regions; but as long as we are trying to advance the best teams, it is fair. I don't believe the philosophy of the committee will change unless there is a national clamor to do so. Such is not the case now. In

Victor A. Bubas, commissioner of the Sun Belt Conference and chair of the Division I Men's Basketball Committee



addition, there are significantly more NCAA institutions east of the Mississippi River; and as a result of that, there has always been considerable movement of Eastern institutions to the West region.

Q: Do you see the tournament remaining at 64 teams, and for how long?

A: I believe the tournament has stabilized at 64, and I predict no changes for years to come. The number of automatic qualifiers has been capped at 30 by the NCAA Executive Committee for the next five years (for 1985-1989). Even if some conferences have to compete for the last few automatic qualifying spots remaining and some get left out, I regard the competition as healthy. In addition, if a conference does not receive an automatic bid, one of its teams with a great record may be invited as an at-large team on the basis of its record.

Q: What concerns you most about the future of the NCAA tournament?

A: On a long-range basis, nothing. The tournament will be great for years to come. On a short-range basis, I believe we'll have to work hard for a few years to make sure the 64-team format works well as it relates to such items as parking, media facilities, practice-session coordination, officiating requirements and the numerous details that are different this year than in other years. This year, we will have to get over the rough spots as best we can and then learn from our experiences. The 1986 tournament will benefit greatly from the reports from the sites of the 1985 tournament. The other factor that concerns me is the awarding of Final Four sites. There was a dramatic change in the last several Final Fours. The domes have been great, but do

we want to completely shut out the arenas that are large but not in the dome category? In addition, the escalation of the costs to a city of hosting the Final Four has been increasing at an alarming rate, particularly the social aspects.

These are not required by the NCAA Basketball Committee in selecting the sites but may keep some cities from bidding because they don't want to be embarrassed by not providing a Super Bowl social atmosphere for everyone in attendance.

There is a delicate balance between the importance of the games, the players, and all the participants in the Final Four and the festivities that surround the games. The basketball committee must make sure, in my opinion, that the extras (the social events) are not a required or important part of our choice of sites. If the cities want to do it, the committee should not favor them because of their decision, consider it in the process or make any special concessions. It's a problem but a good problem, and it needs a caution flag for the future. As we get bigger, we must make sure the tournament and its administration get better. We can't confuse the side shows with "the main show" — the last three games on the road to the championship.

Q: There's been some controversy over teams being able to play on their home courts in the NCAA tournament. Is it fair and what can be done about it?

A: That's a tough one and there are lots of question marks in the minds of the committee. Of course, it's an advantage to a team to play on its home court. The problem is in the awarding of sites for the first and second rounds and the regionals. The finals are becoming less of a problem due to the large municipal arenas that are available for the finals. The big question is: Will universities bid to host the first and second rounds and the regionals if they know their team cannot play on its home court?

The bids are not that numerous now, and some of the ones that submit bids are not adequate host sites for one reason or another. Many times, there are schedule conflicts at the sites of arenas like the hosting of high school tournaments, circuses, concerts, etc. We have never asked the question on the forms sent out inquiring about bids as to whether a university would want to be the host if its team could not play on its home court, and maybe we need to do that. Hosting a tournament is a year's work in preparation and requires the organization of hundreds of volunteers. I have a feeling it would affect those offering to host in a negative manner.

Also, we have not had a great number of negative comments on the few places where it has happened in the past, but the few we've had have been in prominent places and the publicity was heavy. In addition, I believe the problem will be lessened in the future as we move to bigger municipal arenas. But, then, do we want to take all the games away from the campus; and if we do, what will happen to attendance? I believe we are doing the right thing now, but we are listening to the coaches, media and fans. The present system is not set in concrete; as is the case with many complex issues, it needs continual research.

Conference tournaments

Q: Does the committee have a problem with games played on Saturday and Sunday of selection weekend?

A: Yes, particularly when conference tournaments are played on selection Sunday and a decided underdog has reached the finals of the conference tournament. There is growing sentiment on the committee that conference tournaments should end on Saturday. It is an unfair and almost impossible task to put together a national tournament bracket, seeded properly, and set the bracket within a few hours after the last game. In my opinion, the committee is forced into a situation it should not have to face. We should have from midnight until the next day to consider all the options in front of us. I hope we can have a rule to that effect someday.

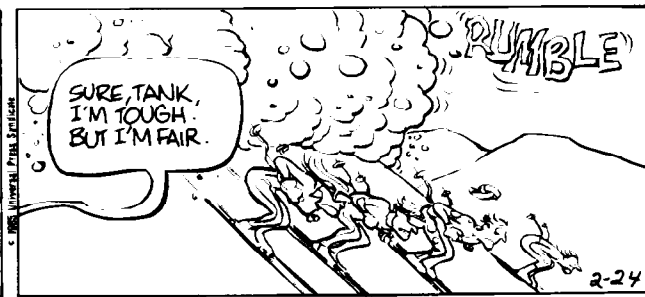
Q: Why did the basketball committee realign the four geographic regions?

A: The basketball committee at its July 1984 meeting reviewed the alignment as it has existed over a period of years and determined that the regions should be realigned primarily to achieve a more equitable distribution of institutions among the regions.

In terms of numbers, the geographic regions have been grossly out of balance. For example, previously the East region had 94 institutions and the West had 46. In the realignment, 83 institutions are in the East region and 69 institutions are in the West region. The realignment also provides a better balance of quality sites at which to conduct the tournament in each region.

TANK McNAMARA

by Jeff Millar & Bill Hinds



NCAA tournament

Continued from page 1

in the Final Four and two champions — Wyoming in 1943 and Utah in 1944 — plus 20 other teams that missed the Final Four by one victory. Not bad for an area with such sparse population. Although the populous East has had only four champions, it has long been a major force, with 28 teams in the Final Four and 42 more teams just one victory away from the Final Four over the 46-year history.

Great coaches, teams, players

The history of the tournament is a history of the great coaches and their pupils, great teams and great players. The connections are endless. The all-time leader in championships with 10 is, of course, UCLA's John Wooden. His teams made 12 trips to the Final Four and his career tournament record was 47-10. And before you give your coach a hard time for not winning in the tournament, consider that Wooden's record over his first 12 NCAA tournament games was 3-9. Then he went 44-1.

Wooden himself was a product of Indiana high school basketball. Indiana is very probably the hottest of all the hotbeds of basketball in the land (there are high school conferences in Indiana with per-game season attendance averages above the Division I national average). Wooden was a three-time all-America at Purdue, 1930-32.

Another Indiana product, who did not play college ball but was a big-winning high school coach, was Everett Case, a .738 coach at North Carolina State over 18 years, ending with 1964. One of his pupils was Vic Bubas, who had a 213-67 record at Duke for the decade of the 1960s,



John Wooden

with three Final Four teams. Bubas now is commissioner of the Sun Belt Conference and chair of the NCAA Division I Men's Basketball Committee.

Kentucky's Rupp ranks second to Wooden with four championships and a 30-18 record in NCAA tournament play. He had six teams in the Final Four, and eight others missed the Final Four by one victory. Rupp himself played under another legend, Forrest C. "Phog" Allen, on the 1923 Kansas team, Helms Foundation national champions. Allen was one of a handful of 700-game winners and played at Kansas under James Naismith, who had invented the game in 1891 at Springfield College.

Allen's pupils also include Oregon State's Ralph Miller and North Caro-



Dean Smith

lina's Dean Smith, whose 28-15 NCAA tournament record includes seven teams in the Final Four — second to Wooden.

Oklahoma State's Iba, whose 15-7 tournament record included two championships (when the team was in the Missouri Valley), coached Haskins, as mentioned, Arkansas coach Eddie Sutton and Kansas State's Jack Hartman — all among the game's winningest coaches.

The great players? Well, it is hard to think of a great player who did not play in the NCAA tournament (there are a handful, because the field was only eight teams in the early years). Outstanding-player awardees include Bill Russell, Wilt Chamberlain, Elgin Baylor, Jerry West, Jerry Lucas, Bill Bradley, Lew Alcindor



Henry Iba

(three times), Bill Walton, David Thompson, Magic Johnson, Darrell Griffith, Isiah Thomas, James Worthy, Akem Olajuwon, and, most recently, Pat Ewing. No, Larry Bird did not win it — his Indiana State team was second to Johnson's Michigan State team in 1979.

Conference evolution

It is no accident that most of the top conferences also have been those with the fewest membership changes and the greatest long-term stability. The Big Ten has had virtually the same lineup for the entire 46-year history (Michigan State was not a member in the early years, but did not reach the NCAA tournament until 1957). The old Pacific Coast Conference terminated in 1959, but five of those eight teams started the current Pacific-10 in 1960, missing Oregon, Oregon State and Washington State, and a few years later they were back in, with Arizona and Arizona State added in 1978.

The Atlantic Coast Conference was started in 1953 with teams from the Southern Conference; and in 1957, Frank McGuire's North Carolina team gave the ACC its first national championship. (The Southeastern Conference also was formed from Southern Conference membership, back in 1933, and the Big Eight from the Missouri Valley in 1928.)

The Metropolitan Collegiate Athletic Conference started with the 1976 season, headed by former Missouri Valley powers Cincinnati, Louisville and Memphis State. In 1980, the Metro gained its first crown, as Louisville defeated UCLA at Indianapolis. No current new conference reached the Final Four quicker than the Big East, which started in 1980, had a team in the 1982 Final Four and then won the 1984 title (John Thompson's Georgetown team both times). Going back more than 30 years, the California Basketball Association, which became the current West Coast Athletic Conference, reached the top in just two years. It started in 1953 and San Francisco gave it back-to-back NCAA championships with Bill Russell, coached by Phil Woolpert, in 1955 and 1956.

Some big changes

The all-time chart on this page is the first ever published using the actual lineups of each conference each season. For many years we have used — and will continue to use — a chart using current lineups only, because it is the best illustration of current reality. The chart here is for historical purposes only — the record of what happened, year-by-year.

The top conferences do not show much change from the current-lineups chart. The Big Ten, as mentioned, shows no change at all. The ACC goes from 106-60 to 98-52 by deleting current members records before 1953 and Georgia Tech's record when an SEC member, while adding former member South Caro-

lina. The Pacific-10 goes from 118-71 to 102-54 by deleting those who left the conference briefly in the early 1960s and adding Arizona and Arizona State before they became members, moving from the Western Athletic Conference.

On the other hand, the Missouri Valley goes from 32-28 to 67-42, the Southern from 11-24 to 25-42 and the Ohio Valley Conference from 6-21 to 17-34 using the historical record. And the recently formed (largely from former independents) conferences drop dramatically in total games, the Big East going from 88-94 (using current members back to the beginning) to 29-18, the Metro from 67-50 to 22-17, the Sun Belt from 24-30 to 10-13, the Atlantic 10 Conference from 51-68 to 9-11, the Midwestern City Conference from 21-28 to 0-3 and the Metro Atlantic Conference from 21-22 to 0-1.

A new angle

The all-time chart also furnishes a new angle for rating the regions and conferences on a percentage basis. For instance, the Pacific Coast region has had 133 entrants and 15 won the championship, for a leading 11.3 percent. The Midlands (Missouri Valley and Big Eight Conference, mostly), however, sent 31 teams to the Final Four out of just 113 entrants, for a leading 27.4 percent.

On a conference basis, the Pacific-10 produced 13 champions from 57 entrants for an amazing 22.8 percent. However, the Big Ten produced 27 Final Four teams from 64 entrants for 42.2 percent, edging the Pac-10's 42.1 on 24-for-57. The South as a region sent a leading 21 teams to the championship game, but the Pacific (14.3 percent), Midlands (14.2) and Midwest (10.8) all had a higher percentage in the title game.

Leading coaches and teams

As mentioned, Wooden (47-10), Rupp (30-18) and Smith (28-15) lead the all-time list in total victories. Next, based on total victories, are Houston's Guy Lewis at 26-18, Indiana's Bob Knight 21-7, Louisville's Denny Crum 21-12, former Marquette coach Al McGuire 20-9 and Kentucky's Joe Hall 18-8.

Not surprisingly, UCLA, Kentucky and North Carolina rank 1-2-3 in total tournament victories. UCLA stands 55-16 (60-17 including its 5-1 second-place finish in 1980, which has been voided). Eighteen more teams have at least 15 tourney victories. Ranked by winning percentage, they are Indiana at 31-10, Cincinnati 20-9, Ohio State 23-12, Duke 17-9, Oklahoma State 15-8, Michigan 15-8, Kentucky 48-26 (with five titles — second to UCLA's 10), North Carolina 35-19, North Carolina State 18-10, San Francisco 21-13, Kansas 23-15, Marquette 25-18, Louisville 27-20, Houston 26-20, Villanova 20-16 (24-17 without the 1971 void), Kansas State 23-20, Utah 16-16 and Notre Dame 21-22.

Below these 19 are 19 more with between 10 and 14 victories, headed by four former champions — Georgetown at 14-8, California 11-5, Michigan State 10-4 and La Salle 10-6.

Top women's teams and coaches

Southern California, winner of two straight NCAA women's championships, leads the three-year history at 12-1. Next is Louisiana Tech at 12-2, with one first, one second and one third. Tennessee is 9-3, Cheyney 8-3 and Old Dominion 6-3. (Old Dominion also was 11-1 in AIAW tournament play, Tennessee 12-6 and Louisiana Tech 9-3.)

The coaching leaders are USC's Linda Sharp, Tech's Sonja Hogg and Leon Barmore, Tennessee's Pat Head Summitt, Old Dominion's Marianne Stanley, and Vivian Stringer (now at Iowa) and Winthrop McGriff at Cheyney.

ALL-TIME WON-LOST RECORDS OF ALL CONFERENCES AND INDEPENDENT GROUPS IN NATIONAL COLLEGIATE BASKETBALL CHAMPIONSHIP, USING ACTUAL LINEUPS COMPETING FOR CONFERENCE TITLES EACH SEASON

1939-1984

	Times Finished.....								
	Entrants	Won--Lost	Pct	Won Champ	2d PL	In Final Four	+Regnl 2d PL	+Made Round Of 8	
EAST									
Big East Conference, 1980-84 -----	19	29	18	.617	1	1	2	4	6
Eastern Eight-Atlantic 10 Conference, 1977-84 -----	11	9	11	.450	0	0	0	1	1
Eastern Intercollegiate-Ivy Group, 1939-84 -----	39	35	48	.422	0	2	4	7	11
E.C.A.C. Upstate Playoffs, 1975-78*# -----	4	4	5	.444	0	0	1	0	1
E.C.A.C. Metro Conference, 1975-84 -----	10	5	11	.313	0	0	1	0	1
E.C.A.C. North Atlantic Conference, 1975-84 -----	10	5	11	.313	0	0	0	0	0
E.C.A.C. South Conference, 1975-84 -----	9	4	9	.308	0	0	0	0	0
Metro Atlantic Athletic Conference, 1984 -----	1	0	1	.000	0	0	0	0	0
Western New York Little Three, 1955-56-57* -----	3	6	3	.667	0	0	0	2	2
Middle Atlantic-East Coast Conference, 1959-84 -----	26	12	30	.286	0	0	1	2	3
Yankee Conference, 1951-67* -----	14	3	15	.167	0	0	0	1	1
Little Three Conference, 1955 -----	1	0	1	.000	0	0	0	0	0
All Eastern Independents, 1939-84 -----	90	110	109	.502	3	5	19	25	44
SOUTH									
Atlantic Coast Conference, 1953-84 -----	53	98	52	.653	4	5	17	10	27
Metropolitan Collegiate Athletic Conference, 1976-84 -----	18	22	17	.564	1	0	3	0	3
Southeastern Conference, 1939-84 -----	55	69	57	.548	5	2	12	15	27
Sun Belt Conference, 1977-84 -----	12	10	13	.435	0	0	1	1	2
Southern Conference, 1939-84 -----	38	25	42	.373	0	2	3	6	9
Ohio Valley Conference, 1953-84 -----	30	17	34	.333	0	0	1	0	1
Trans America Athletic Conference, 1981-84 -----	4	0	4	.000	0	0	0	0	0
Kentucky Intercollegiate Athletic Conference, 1940 -----	1	0	1	.000	0	0	0	1	1
Florida Intercollegiate Conference, 1960 -----	1	0	1	.000	0	0	0	0	0
Mid-Eastern Athletic Conference, 1981-84 -----	4	0	4	.000	0	0	0	0	0
All Southern Independents, 1939-84 -----	20	19	21	.475	0	2	3	1	4
MIDWEST									
Big Ten Conference, 1939-84 -----	64	119	61	.661	7	7	27	14	41
Mid-American Conference, 1953-84 -----	32	12	36	.250	0	0	0	1	1
Midwestern City Conference, 1982-84 -----	3	0	3	.000	0	0	0	0	0
Indiana Collegiate Conference, 1962 -----	1	2	1	.667	0	0	0	0	0
Presidents Athletic Conference, 1956 -----	1	1	2	.333	0	0	0	0	0
All Midwest Independents, 1939-84 -----	66	82	75	.522	2	2	7	9	16
MIDLANDS									
Missouri Valley Conference, 1939-84 -----	43	62	47	.569	4	5	16	8	24
Big Eight Conference, 1939-84 -----	51	66	57	.537	1	5	14	15	29
All Midlands Independents, 1939-84 -----	19	23	22	.511	0	1	1	5	6
SOUTHWEST									
Southland Conference, 1969-84 -----	9	10	10	.500	0	0	0	0	0
Southwest Athletic Conference, 1939-84 -----	54	53	66	.445	0	3	11	8	19
Southwestern Athletic Conference, 1980-84 -----	5	3	5	.375	0	0	0	0	0
All Southwest Independents, 1939-84 -----	14	23	17	.575	1	0	3	0	3
ROCKIES									
Western Athletic Conference, 1963-84 -----	29	23	35	.397	0	0	1	4	5
Mountain States or Skyline Eight Conference, 1939-62 -----	24	20	34	.370	2	0	4	12	16
Rocky Mountain Athletic Conference, 1951-60* -----	9	6	11	.353	0	0	0	0	0
Big Sky Conference, 1968-84 -----	17	8	19	.296	0	0	0	1	1
Border Conference, 1951-62* -----	12	2	12	.143	0	0	0	1	1
All Rockies Independents, 1939-84 -----	16	12	18	.400	0	0	1	2	3
PACIFIC COAST									
Pacific Coast Conference, 1939-59, Pacific-10, 1960-84 -----	57	102	54	.654	13	3	24	12	36
Calif. Bkb. Assn.-West Coast Athletic Conference, 1953-84 ---	34	38	34	.528	2	0	3	10	13
Pacific Coast Athletic Association, 1970-84 -----	19	12	20	.375	0	0	0	3	3
All Pacific Coast Independents, 1939-84 -----	23	24	28	.462	0	1	4	3	7

BY REGIONS:

East	237	222	.272	.449	4	8	28	42	70
South	236	260	.246	.514	10	11	40	34	74
Midwest	167	216	.178	.548	9	9	34	24	58
Midlands	113	151	.126	.545	5	11	31	28	59
Southwest	82	89	.98	.476	1	3	14	8	22
Rockies	107	71	.129	.355	2	0	6	20	26
Pacific Coast	133	176	.136	.564	15	4	31	28	59
46-year totals	1075	1185	.1185	.46	46	184	184	368	
All Independents	248	293	.290	.503	6	11	38	45	83

* One game from the Final Four; 8 teams in tournament, 1939-50. * No longer exists as Div. I basketball conference. # E.C.A.C. Upstate and South combined in 1977-78-79; first two champions from Upstate NY, third from South.

The NCAA News



Basketball Statistics

Through games of March 4, excluding Southeastern Conference

Men's Division I individual leaders

SCORING						
	CL	G	FG	FT	PTS	AVG
1. Alfredrick Hughes, Loyola (Ill.)	Sr	27	313	125	751	27.8
2. Xavier McDaniel, Wichita St.	Sr	27	298	133	729	27.0
3. Dan Palombizio, Ball State	Jr	27	262	196	720	26.7
4. Keith Smith, Loyola (Cal.)	Jr	26	279	110	658	25.7
5. Terry Catledge, South Alabama	Sr	28	285	148	718	25.6
6. Jerry Garvin, Tex. San Antonio	Jr	28	272	174	718	25.6
7. Wayman Tisdale, Oklahoma	Jr	30	301	167	769	25.6
8. Joe Dumars, McNeese St.	Sr	25	222	189	633	25.3
9. Sam Mitchell, Mercer	Sr	28	268	162	698	24.9
10. Ron Harper, Miami (Ohio)	Jr	27	272	116	660	24.4
11. Carlos Yates, George Mason	Sr	27	238	180	656	24.3
12. David Robinson, Navy	So	27	254	137	645	23.9
13. Dave Hoppen, Nebraska	Jr	27	247	147	641	23.7
14. Reggie Lewis, Northeastern	So	27	250	141	641	23.7
15. John Williams, Indiana St.	Jr	27	258	122	638	23.6
16. Randy Cozzens, Army	Sr	29	230	222	682	23.5
17. Craig Beard, Samford	Sr	30	309	85	703	23.4
18. Steve Harris, Tulsa	Sr	27	232	159	623	23.1
19. Kenny Walker, Kentucky	Jr	27	214	194	622	23.0
20. Chuck Person, Auburn	Jr	27	271	64	606	22.4
21. Gilbert Wilburn, New Mexico St.	Jr	21	184	103	471	22.4
22. Keith Taylor, Bowling Green	Sr	27	250	100	600	22.2
23. Sam Vincent, Michigan St.	Sr	26	213	150	576	22.2
24. Charlie Bradley, South Florida	Sr	27	227	142	596	22.1
25. Joe Kleine, Arkansas	Sr	30	251	154	656	21.9
26. Timo Saarelainen, Brigham Young	Sr	29	229	176	634	21.9
27. Johnny Rogers, UC Irvine	Jr	29	241	148	630	21.7
28. Jim McCaffrey, Holy Cross	Jr	28	222	163	607	21.7
29. Benoit Benjamin, Creighton	Jr	31	251	169	671	21.6
30. Ben Hinson, Baptist (S.C.)	So	28	243	120	606	21.6
31. Regan Iruedale, Citadel	Sr	29	242	140	624	21.5
32. Ray Hall, Canisius	Sr	27	206	166	578	21.4
33. Barry Stevens, Iowa State	Sr	30	259	124	642	21.4
34. Voice Winters, Bradley	Sr	27	240	96	576	21.3
35. Joe Garabino, Harvard	Sr	22	170	129	469	21.3
36. Rich Pass, Monmouth (N.J.)	Sr	26	220	113	553	21.3
37. John Battle, Rutgers	Sr	26	218	117	553	21.3
38. Larry Krystkowiak, Montana	Jr	28	200	193	593	21.2
39. Anthony Grier, Kent State	Sr	27	226	119	571	21.1
40. Vernon Moore, Creighton	Jr	31	253	139	649	20.9
41. Randy Kraayenbrink, Northern Iowa	Sr	27	239	105	565	20.9
42. Andre Battle, Loyola (Ill.)	Sr	27	236	108	560	20.7
43. John Newman, Richmond	Sr	28	220	140	580	20.7
44. Carey Scurry, Long Island	Sr	27	214	129	557	20.6
45. Keith Lee, Memphis St.	Sr	29	241	115	597	20.6
46. Gerald Wilkins, Tenn.-Chattanooga	Sr	24	216	59	491	20.5
47. Leonard Hayes, St. Peter's	Sr	27	229	93	551	20.4
48. Fred Colfield, Eastern Mich.	Jr	27	208	134	550	20.4
49. Carlos Briggs, Baylor	Jr	27	207	135	549	20.3
50. Andre McCloud, Seton Hall	Jr	27	207	135	549	20.3

ASSISTS						
	CL	G	NO	AVG		
1. Rob Weingard, Hofstra	Sr	24	228	9.5		
2. Carl Golsion, Loyola (Ill.)	Jr	27	250	9.3		
3. Jim Les, Bradley	Jr	27	237	8.8		
4. Laurence Chisholm, Delaware	Fr	28	224	8.0		
5. Brian Carr, Nebraska	So	27	214	7.9		
6. Glen James, Brooklyn	Sr	28	211	7.5		
7. Carlton Clarrington, Tennessee Tech	Sr	27	203	7.5		
8. Shawn Teague, Boston	Sr	27	197	7.3		
9. Aaron McCarthy, Weber State	Sr	28	204	7.3		
10. Tyrone Bogue, Wake Forest	So	27	192	7.1		

REBOUNDING						
	CL	G	NO	AVG		
1. Xavier McDaniel, Wichita St.	Sr	27	402	14.9		
2. Carey Scurry, Long Island	Jr	27	394	14.1		
3. Benoit Benjamin, Creighton	Jr	31	434	14.0		
4. Robert Sanders, Miss. Valley St.	Sr	25	309	12.4		
5. Karl Towns, Monmouth (N.J.)	Sr	26	319	12.3		
6. Alex Stivins, Colorado	Sr	26	308	11.8		
7. Tony Neal, Cal St. Fullerton	Jr	25	292	11.7		
8. David Robinson, Navy	So	27	313	11.6		
9. Terry Catledge, South Alabama	Sr	28	322	11.5		
10. Mike Brown, George Washington	Sr	25	280	11.2		
11. Dan Palombizio, Ball State	Jr	27	299	11.1		
12. Ron Harper, Miami (Ohio)	Jr	27	290	10.7		

FIELD-GOAL PERCENTAGE						
(Min. 5 Fg Made Per Game)	CL	G	FG	FGA	PCT	
1. Keith Walker, Utica	Sr	27	154	216	71.3	
2. Vernon Moore, Creighton	Sr	31	255	380	67.1	
3. Dave Hoppen, Nebraska	Jr	27	247	376	65.7	
4. Howard Levy, Princeton	Jr	24	121	185	65.4	
5. John Salley, Georgia Tech	Jr	28	163	250	65.2	
6. David Robinson, Navy	So	27	254	398	63.8	
7. John Staves, Southern	Jr	26	151	238	63.4	
8. Patrick Ewing, Georgetown	Sr	28	186	263	63.1	
9. Ken Bantum, Cornell	Sr	22	146	234	62.4	
10. Anicet Lavodrama, Houston Baptist	Sr	28	177	287	61.7	
11. Ed Pinckney, Villanova	Sr	27	141	229	61.6	
12. Albert Thomas, Centenary	Jr	27	191	311	61.4	
13. Brad Daugherty, North Carolina	Jr	29	193	315	61.3	
14. George Scott, New Mexico	Sr	28	150	245	61.2	
15. John Bajusz, Cornell	So	24	153	252	60.7	
16. Mike Wacker, Texas	Sr	27	180	297	60.6	
17. Joe Kleine, Arkansas	So	30	251	415	60.5	
18. Derek Boldon, Central Michigan	Sr	27	171	286	59.8	
19. John Brownlee, Texas	Jr	27	151	254	59.4	
20. Eugene McDowell, Florida	Sr	27	168	283	59.4	
21. Larry Krystkowiak, Montana	Jr	28	200	337	59.3	
22. Nikita Wilson, Louisiana St.	So	27	178	300	59.3	
23. James Bullock, Purdue	Sr	26	156	263	59.3	
24. Jon Koncak, Southern Methodist	Sr	29	195	329	59.3	
25. A.C. Green, Oregon St.	Sr	29	194	328	59.1	
26. Chris Welp, Washington	So	29	156	264	59.1	
27. Mike Smrek, Canisius	Sr	25	153	259	59.1	
28. Danny Manning, Kansas	Fr	30	191	326	58.6	
29. Mark Acres, Oral Roberts	Sr	26	194	332	58.4	
30. Ron Kellogg, Kansas	Jr	30	223	382	58.4	

FREE-THROW PERCENTAGE						
(Min. 2.5 Ft Made Per Game)	CL	G	FT	FTA	PCT	
1. Craig Collins, Penn State	Sr	26	93	97	95.9	
2. Steve Alford, Indiana	So	25	92	98	93.9	
3. Kent Hagan, Weber State	Sr	28	84	91	92.3	
4. Steve Eggink, Marist	Sr	27	77	84	91.7	
5. Dennis Nutt, Texas Christian	Jr	30	78	86	90.7	
6. Bruce Timko, Youngstown St.	Sr	30	126	139	90.6	
7. Michael Brooks, Tennessee	Jr	27	126	141	89.4	
8. Rick Suder, Duquesne	Sr	27	91	102	89.2	
9. Luther Burden, St. Louis	Jr	27	73	82	89.0	
10. Rick Olson, Wisconsin	So	22	88	99	88.9	
11. Keith Webster, Harvard	So	29	74	84	88.1	
12. Kenny Smith, North Carolina	Sr	27	86	98	87.8	
13. Bubba Jennings, Texas Tech	Sr	21	55	63	87.3	
14. Jimmy Elliott, Tennessee Tech	Sr	26	109	125	87.2	
15. Phil Cox, Vanderbilt	Sr	22	129	148	87.2	
16. Joe Carrabino, Harvard	Jr	29	81	93	87.1	
17. Steve Hale, North Carolina	Sr	29	222	255	87.1	
18. Randy Cozzens, Army	Jr	27	77	89	86.5	
19. Andy Hurd, Northern Ariz.	Sr	27	145	168	86.3	
20. Tony McShane, Fordham	Sr	30	126	146	86.3	
21. Donald Petties, Western Michigan	Jr	27	113	131	86.3	
22. Jimmy Tharpe, Citadel	Jr	29	87	101	86.1	
23. Earl Kelley, Connecticut	Jr	27	105	122	86.1	
24. Larry Daugherty, Valparaiso	Fr	27	123	143	86.0	
25. Kenny Brown, Texas A&M	Sr	27	86	100	86.0	
26. Eric Newsome, Miami (Ohio)	So	27	134	156	85.9	
27. Gay Elmore, Va. Military	So	29	167	195	85.6	
28. Fred Hill, Howard	So	25	95	111	85.6	
29. Johnny Rogers, UC Irvine	Jr	29	148	173	85.5	

Team leaders

SCORING OFFENSE						
	G	W-L	PTS	AVG		
1. Oklahoma	30	25-5	2717	90.6		
2. Alcorn State	27	22-5	2352	87.1		
3. Loyola (Ill.)	27	22-5	2321	86.0		
4. Utah State	27	17-10	2309	85.5		
5. Southern	27	24-3	2252	83.4		
6. New Las Vegas	27	11-16	2213	82.0		
7. Baylor	27	21-6	2211	81.9		
8. Tulsa	27	20-7	2203	81.6		
9. Cleveland State	27	20-7	2196	81.3		
10. Virginia Tech	26	23-3	2083	80.1		
11. Michigan	27	19-8	2151	79.7		
12. Northeastern	28	21-7	2228	79.6		
13. San Diego St.	27	21-6	2148	79.6		
14. Duke	27	17-10	2144	79.4		
15. George Mason	27	13-14	2135	79.1		
16. Indiana St.	27	13-14	2135	79.1		

SCORING DEFENSE						
	G	W-L	PTS	AVG		
1. Fresno State	27	20-7	1461	54.1		
2. Princeton	24	11-13	1312	54.7		
3. Colgate	26	5-21	1451	55.8		
4. Georgetown	29	27-2	1648	56.8		
5. Oregon State	28	21-7	1532	56.9		
6. Illinois	30	22-8	1716	57.2		
7. Temple	26	21-5	1510	58.1		
8. Gonzaga	27	15-12	1570	58.1		
9. Marist	29	17-12	1693	58.4		
10. Iowa	29	21-8	1698	58.6		
11. San Diego	26	16-10	1532	58.9		
12. Marquette	26	17-9	1536	59.1		
13. Cornell	24	13-11	1422	59.3		
14. Washington	29	20-9	1731	59.7		
15. Virginia	29	15-14	1734	59.8		
16. Georgia Southern	28	24-4	1684	60.1		

SCORING MARGIN						
	OFF	DEF	MAR			
1. Georgetown	74.8	56.8	17.9			
2. Oklahoma	90.6	75.1	15.5			
3. Louisiana Tech	78.1	64.3	13.8			
4. Navy	77.9	64.4	13.4			
5. Iowa	71.9	58.6	13.3			
6. Virginia Tech	81.3	68.8	12.5			
7. Georgia	79.0	66.8	12.2			
8. Duke	79.6	67.4	12.1			
9. St. John's	75.0	63.1	11.9			
10. Illinois	68.9	57.2	11.7			
11. Memphis State	74.6	63.7	10.9			
12. Michigan	80.1	69.3	10.8			
13. Weber State	77.0	66.2	10.8			
14. Northeastern	69.0	60.0	10.6			
15. Alcorn State	87.1	76.6	10.6			
16. Cleveland State	81.6	71.4	10.2			

FIELD-GOAL PERCENTAGE						
	FG	FGA	PCT			
1. North Carolina	866	1588	54.5			
2. St. John's	760	1404	54.1			
3. Navy	801	1480	54.1			
4. Kansas	918	1697	54.1			
5. Iowa	873	1616	54.0			

The NCAA News



Women's Softball Preview

Another unbearable year looms for Bruins' foes

By Bruce L. Howard
The NCAA News Staff

The end of the Debbie Doom-Tracy Compton era is fast approaching, but UCLA opponents will have to withstand one more year of the best pitching combination in the history of women's softball.

Doom and Compton began their careers at UCLA by helping the Bruins to the first Division I Women's Softball Championship in 1982 and have continued to compile almost unbelievable statistics, such as Compton's 0.04 earned-run average in 1983 and Doom's 0.09 mark last year.

With Doom and Compton at the pitching rubber for their senior seasons and one of the brightest new stars in Tricia Mang, the Bruins are the early favorite to win their third championship in four years.

Coach Sharron Backus returns all but two starters from last year's 45-6-1 squad. Mang, scheduled to play right field this year, batted .376 and hit seven home runs in her freshman season last year. First baseman Gina Holstrom and third baseman Jennifer Simm are other top performers.

In women's softball, however, pitching dominates the sport; and Doom and Compton are among the best in the game. Doom (24-3, 0.09) and Compton (20-3, 0.29) won 44 of UCLA's 45 games last year. For their careers, Doom is 53-11 and Compton 52-6.

Four teams that should be among the final eight at the championship in Omaha, Nebraska, with a chance to unseat UCLA are three California powers—Fresno State, Cal Poly-Pomona and Cal State Fullerton and 1983 champion Texas A&M.

In what was supposed to be a rebuilding season at Fresno State, coach Donna Pickel's Bulldogs compiled a 49-23 record in 1984 and finished fifth in the NCAA championship.

Fresno State matches UCLA with two returning 20-game winners Barbara Cambria (23-11, 0.50) and Lori Romciro (22-12, 0.54). They are backed by center fielder Kerry Steitz (.248) and three capable relievers.

Rhonda Wheatley did everything in her freshman season at Cal Poly Pomona (45-16-2). A first team all-America as a pitcher with a 25-6 record and 0.37 earned-run average, Wheatley also led the team in hitting (.232). Other offensive stars are shortstop Jenny Moore and center fielder Jamie McCandlish.

Coach Bob Brock (259-90 in five years at Texas A&M) expects his squad to battle UCLA for the national title. The Aggies, 51-18 last year, are led by all-America outfielder Josie Carter (.303) and pitcher Shawn Andaya, who tied for the most victories (33) in the nation as a freshman last year.

Other key performers for Texas A&M are catcher Gay McNutt and second team all-America Cindy Cooper (.316), who plays third base.

Winners of seven conferences automatically qualify for the Division I Women's Softball Championship. Following is a look at those conference races:

Atlantic 10 Conference

Rutgers (22-14) represented this conference last year, but the Lady Knights face a rebuilding year and lack depth at key positions. Infielders Marge Krah and Sue Robson and catcher Renee Clarke lead the offensive attack; Danielle Matlack (8-5, 1.19) is the top returning pitcher.

Massachusetts and Penn State will be the Lady Knights' chief competitors. Massachusetts has two of the

best pitchers in the Northeast—Lynn Stockley (15-8, 1.18) and Cathy Reed (14-4, 1.32)—but must overcome the loss of shortstop Allyson Rioux. Leading hitters for the Minutewomen are Beth Talbott (.344) and Sally Maher (.331).

Penn State (27-11) returns four of its top five hitters from a team that was second in the nation in hitting—third baseman Geri Saya (.316), second baseman Carol Fultz (.311), outfielder Pam Mowery (.300) and first baseman Peg Hefferan (.301). Although offense will be the Lady Lions' strength, Beth Devlin (9-4, 1.02) and Aileen Polanis (10-5, 2.04) should be top-notch pitchers.

Big Eight Conference

Nebraska (39-13) has the talent for another Big Eight title and a return trip to the final eight in Omaha. All-America shortstop Denise Eckert (.323 career average) heads the attack, along with catcher Lisa Busby, outfielder Wendy Turner and third baseman Ann Schroeder.

The pitching staff is the Huskers' strength, however, with senior Mori Emmons (0.98 career ERA) and freshman Lori Sippel, a Canadian who led her country to the Pan American gold medal.

Missouri (21-18) failed to qualify for postseason play last year, but the Tigers should be more consistent in 1985. Top performers for coach Joyce Compton are first baseman Dana Cammarata (.275), shortstop Terry Schweikert (.266) and pitcher Annette Brazier (10-5, 0.73).

Oklahoma (23-14), led by three all-conference players, and Oklahoma State could challenge the Huskers and Tigers.

Big Ten Conference

A preview of this conference must begin with Northwestern pitcher Lisa Ishikawa. As a freshman last year, the Stockton, California, native won 33 of 40 decisions and had 469 strikeouts in 302 innings. She was selected as the Big Ten Conference's woman athlete of this year.

Ishikawa probably will not have to carry as much of the load for Northwestern (41-17) this year because of the return of Cathy Tawse, who was 16-7 two years ago. Tawse missed most of the 1984 season with injuries.

Northwestern, which finished third in the NCAA championship last year, returns all regulars and will be led by shortstop Lisa Koser, who led the squad in hitting in 1984 with a .266 average.

Minnesota (30-19), which finished second in the Big Ten last year, and Indiana will be Northwestern's top challengers. Minnesota is led by catcher Barb Drake (.326), infielder Judy Oliverius (.299) and third baseman Danne Leininger (.283).

High Country Athletic Conference
Utah State (30-24) and Utah (32-22-1) both qualified for postseason action last year, and both will field highly competitive squads again in 1985.

Heading the list of six returning starters for Utah State are shortstop Kelly Smith (.288), pitcher Kristie Skoglund, first baseman Stacy Willis and infielder Kendra Ireton.

Utah must find replacements at catcher and second base but acquired power hitter Rayna Ford from Utah State. Michele Townsend (13-10, 1.13) heads the Utes' pitching staff, and first baseman Annette Ausseresses (.219) is the top returning hitter.

New Mexico (37-18), led by shortstop Sheila Blonigan (.340), is another top team in the High Country.



Tricia Mang

Mid-American Athletic Conference

Western Michigan (39-13) and Central Michigan (34-11-1) are the top MAC threats, but both squads face rebuilding seasons.

Western Michigan must replace all-America pitcher Bonni Kinne and two key regulars. Coach Fran Ebert will rely on all-conference shortstop Deb Albano for leadership.

Central Michigan must overcome an inexperienced pitching staff with solid hitting and defense. Jacquie Joseph (.295), Kelly VanderMolen (.272) and Sue Lawson are the key returnees.

Northern Pacific Athletic Conference

Oregon State (40-17) and California (27-19-1) will be Fresno State's chief competitors.

Offsetting a questionable hitting attack for Oregon State will be outstanding defense and pitching. Joan Harvey (19-13, 0.38) is the Beavers' top pitcher and will be backed by an infield that returns intact.

California returns just four starters but should have plenty of talent on the pitching mound, led by Lisa Martinez (11-8, 0.84) and freshman Kim Moe, who was 68-5 in high school with an 0.17 ERA.

Western Collegiate Athletic Association

Although UCLA and Cal State Fullerton have dominated this conference, Arizona State has qualified for the NCAA championship two of the past three years and could repeat in 1985.

The Sun Devils, however, must find pitching replacements. Outfielder Kathy Escarcega (.322) heads a team blessed with tremendous speed and power. Other key performers are first baseman Kelly Jackson and shortstop Cheryl Persinger.

In addition to those teams from automatic-qualifying conferences, there are a number of other top squads that could qualify for postseason play as at-large entries. Following is a look at other top Division I teams by region.

Northeast

Adelphi (42-7) has a number of individual stars and hopes to repeat its trip to Omaha. Pitcher Julie Bolduc, who ranked fifth in the nation with an 0.28 ERA, heads a senior-dominated squad. She will be helped in the pitching circle this year by freshman Kristen Peterson, who was all-state in Connecticut last year. Catcher Mary Wallace, second in the nation in hitting with a .429 mark, and outfielder Regina Dooley are the key hitters.

Connecticut (22-2) ranks as Adelphi's top challenger in the Northeast behind the play of catcher Vi Lovello, who batted .365 and led Division I with six triples.

South

Louisiana Tech (34-14-1), with seven newcomers to its squad, will face stiff challenges in this region from two improving teams—South Carolina and Florida State.

Pitcher Stacey Johnson (0.43) and catcher Lee Ann Jarvis (.283) are the lone returnees for coach Bill Gallo-way's Louisiana Tech squad. More consistent defense and pitching will be needed for another postseason berth.

After an off year, South Carolina (15-18) figures to be a top national contender again because of the return of Darlene Lowery, who was red-shirted last year after compiling a 23-4 record in 1983. Lowery will receive support on the mound from freshman Gretchen Koenig.

Florida State, 41-5-2 in its first year of fast-pitch competition, has upgraded its schedule and may be ready for national contention. Pitching will be the Seminoles' strength, with Tina Kyler (16-4-2) and Shelley Benube (18-1, 0.24).

Nicholls State (39-13) also could be a contender in this region. Among 13 returnees are all-America outfielder Karen Allen (.404, 11 home runs, 32 RBI) and pitcher Laura Davis (17-8, 0.49).

Northwest

Pacific (48-20-1), one of five teams to participate in all three NCAA championships, must replace five starters but should be exceptional on the rubber, behind Tammy Joslin (25-8, 0.44) and Shelley Mahoney (22-10, 0.93). Beckey Suttman (.303) is the squad's top returning hitter.

Division I statistics

Batting

1984	Rank	Player, Team	AB	Hits	Avg.
	1.	Robin Francisco, George Mason	152	72	.474
	2.	Mary Wallace, Adelphi	147	63	.429
	3.	Bobbie Pugh, George Mason	138	57	.413
	4.	Michelle Dodge, Brown	66	27	.409
	5.	Karen Allen, Nicholls State	166	67	.404
	6.	Yvette Cannon, George Mason	154	62	.403
	7.	Sue Scarbrough, Toledo	137	55	.401
	8.	Lisa Rowning, Harvard	60	24	.400
	11.	Alicia Seegert, Michigan	182	72	.396

Home Runs

1984	Rank	Player, Team	G	No.	Avg.
	1.	Karen Allen, Nicholls State	50	11	0.22
	2.	Kathy Payne, George Mason	42	8	0.19
	3.	Denise Eckert, Nebraska	52	9	0.17
	5.	Tricia Mang, UCLA	52	8	0.15
	7.	Robin Francisco, George Mason	40	5	0.13

Runs Batted In

1984	Rank	Player, Team	G	No.	Avg.
	1.	Robin Francisco, George Mason	40	49	1.23
	2.	Kathy Payne, George Mason	42	48	1.14
	4.	Yvette Cannon, George Mason	43	40	0.93
	5.	Bobbie Pugh, George Mason	40	37	0.93
	7.	Mary Wallace, Adelphi	47	34	0.72

Doubles: 1. Bobbie Pugh, George Mason (16 in 40 games, 0.40 per game).

Triples: 1. Vi Lovello, Connecticut (6 in 24 games, 0.25 per game).

Stolen bases: 1. Robin Francisco, George Mason (46 in 40 games, 1.15 per game).

Earned-Run Average

1984	Rank	Player, Team	G	IP	R	ER	ERA
	2.	Debbie Doom, UCLA	28	215	5	3	0.09
	4.	Shelley Berube, Florida State	17	115	9	4	0.24
	5.	Julie Bolduc, Adelphi	27	178	13	7	0.28
	6.	Tracy Compton, UCLA	24	175	15	7	0.28
	9.	Rhonda Wheatley, Cal Poly-Pomona	33	252.7	14	12	0.33

Most Victories

1984	Rank	Player, Team	G	IP	W	L	Pct.
	1.	Lisa Ishikawa, Northwestern	46	302	33	7	.825
	2.	Shawn Andaya, Texas A&M	50	327.7	33	9	.786
	3.	Rhonda Wheatley, Cal Poly-Pomona	33	252.7	25	6	.806
	3.	Tammy Joslin, Pacific	36	224	25	8	.758
	5.	Debbie Doom, UCLA	28	215	24	3	.889
	5.	Mori Emmons, Nebraska	37	213.3	24	5	.828
	8.	Barbara Cambria, Fresno State	38	222.3	23	11	.676
	8.	Wilanne Stewart, Northeast Louisiana	51	252	23	18	.561

Strikeouts (per 9 innings): 1. Tina Kyler, Florida State (224 in 135.3 innings, 11.6 average).

Northridge, seeking third straight crown, looks unstoppable

As if Cal State Northridge needed any more help, the 1985 Division II Women's Softball Championship will be held at the Lady Matador Field, which makes Northridge almost a shoo-in for a third consecutive title.

Northridge pitcher Kathy Slaten had a career in just one season last year and is one of the best pitchers at any level in the game today.

Slaten won 39 (lost seven) of the Matadors' 51 victories, 32 by shutout and 11 by the no-hit route. In 343 1/3 innings, she recorded 478 strikeouts and was fifth in Division II with an 0.22 earned-run average.

Coach Gary Torgeson will be able to give Slaten more rest in 1985, which could make her even more effective. Freshman Delanee Anderson, Desiree Molnar (7-2, 0.20) and Shannon Oakes (5-3, 0.44) will team with Slaten on the mound.

"We are very confident entering the season but insecure enough to know that we have to go out and play better than we ever have before," Torgeson said. "We were the team to beat once and won it all again, but we know enough to go out and work hard and not assume that anything is going to happen."

Slaten will have another strong supporting cast behind her. The Matadors lost only one starter from a defensive unit that led the nation in fielding with a .975 percentage. Third baseman Mickey McAnany, shortstop Linda Lowande and catcher Stacy Lim are Northridge's top offensive threats.

"I truly believe that we have a psychological edge," Torgeson said. "Teams doubt that they can beat us, and we really believe that we can win every time we step on the field. We have the poise of a champion without lacking in determination. Division II teams want to beat us because of our

national ranking, and Division I teams want to beat us because they know we can beat them."

If any Division II team is to unseat Cal State Northridge in 1985, it likely will be Akron or Sam Houston State, both of which are blessed with an abundance of talent.

Akron (48-4), last year's runner-up, has one of the best one-two batting punches in the division in shortstop Kay Piper and catcher Tina Mayreis, both all-America selections. Piper batted .390 with five home runs and 44 runs batted in; Mayreis hit .410 and had 39 RBI.

Although the Zips relied on their batting until postseason tournament time, coach Joey Arrietta discovered that his pitching staff was strong also. Three of the squad's four hurlers return, led by Renee Vance (12-1, 0.19). Other capable pitchers are Linda Weber (12-1, 1.18) and Sharon McFarland (7-0, 0.45).

"Our personnel is just as talented as any since I've been here," Arrietta said. "The experience of playing for a national championship is a plus for this team. I know this team's best is worthy of a national championship. But a lot will depend on the breaks."

Sam Houston State (32-22), the only other team besides Cal State Northridge to win the Division II championship, has a blend of veterans and freshmen, although seven starters are back for coach Brenda Marshall.

The five returning regulars are shortstop Sandy Mader (.343), second baseman Julie Thomas, center fielder Mary Baskin, catcher Cindy Musser and right fielder Shirley Ennis.

Kim Uherka, one of the national leaders in victories with 18, heads the Ladykat pitching staff and will be helped by Kathy Phillips.

Winners of six conference races qualify automatically for the Division

II championship. Following is a brief look at the contenders in those conferences:

New England Collegiate Conference
Sacred Heart (42-6), one of four teams to play in all three division championships, still is looking for its first championship game; but if one outstanding pitcher can carry a team all the way, the Lady Pioneers have a good shot at facing Cal State Northridge in May.

As a freshman last year, Debbie Tidy won 30 of 34 decisions and compiled an 0.16 earned-run average, best in the nation. Her cohort on the mound, Nancy Stanton, was 11-2 with an 0.35 ERA. Freshman Gail Holtznagle will add even more depth to coach Pete DiOrio's squad.

Backing up that pitching trio will be shortstop Elizabeth Luckie, who led the squad with a .355 average, and Tracy Gelsinger (.323).

Pennsylvania State Athletic Conference

This is one of the more balanced conferences in Division II women's softball, and two-time defending PSAC champion Bloomsburg (30-4) faces a rebuilding season in 1985.

The Huskies must overcome the loss of pitcher Tina Souders (75 victories in four seasons) and 1983 leading hitter Jean Millen, who injured a knee during basketball season.

Leading the Bloomsburg charge this year will be second baseman Karen Hertzler (.323), catcher Lori Guitson (.280), and pitchers Sue Kocher (9-1, 0.32) and Chris Moyer (5-0, 0.51).

East Stroudsburg (22-19), Lock Haven (16-7), Shippensburg (20-6) and Slippery Rock are given the best chances of dethroning Bloomsburg.

The Warriors of East Stroudsburg have three top-notch pitchers—Eileen Smith (10-4, 0.95), Cindy Poma-



Kathy Slaten

rico (6-5, 1.77) and Heidi Moyer (2.45)—and return 13 letter winners. Transfer Diane Williams (24-8 in junior college last year) will add depth to the pitching staff.

Coach Wayne Allison's Lady Eagles feature a good blend of pitching, hitting and defense. Top hitters are shortstop Bonnie Lassen (.400), outfielders Sandy Staib (.393) and Kathy Kreisher (.350), and first baseman Tina Martin (.313).

Shippensburg has finished second in the PSAC two of the past three years and would like to climb one notch higher in 1985. Keys to success are pitchers Denise Dombach (5-3, 1.22) and Lori Fox (5-1, 1.71) and regulars Dee Drake (outfield) and Brenda Miner (catcher).

Northeast-Eight Conference

Springfield (24-9) is the defending champion here, and coach Diane Potter's squad is strong again. Twins Jacquie and Jennifer Willson are two reasons for optimism. Jacquie, an outfielder, hit .305, and Jennifer, a pitcher, was 6-3 with a 1.55 ERA.

American International and Bentley (14-9) are Springfield's chief competitors.

North Central Intercollegiate Athletic Conference

Conference champion Mankato State (15-11) is solid in the outfield but must replace three infield starters and one pitcher. Seniors Tomma

Freundschuh, Shari Clemons and Nancy Clemons must produce for the Mavericks to stay ahead of Augustana (South Dakota).

Creighton transfer Jeri Walter should strengthen coach Sandy Jerstad's Augustana squad, which finished 20-13 last year. Top performers for the Vikings will be shortstop Kris Fering, third baseman Jo Ode and pitcher Amy Torgenson.

Nebraska-Omaha also could be a challenger for the NCC crown.

Missouri Intercollegiate Athletic Association

Northwest Missouri State (23-14) will be gunning for its third consecutive postseason appearance in the MIAA's first year as an automatic-qualifying conference.

The Bearkittens lost only two regulars and will be led by Shelley Lewis, one of the division's best pitchers last year with a 14-5 record and 0.51 ERA. Jennifer Mertz (.310) heads a speedy outfield, and shortstop Karen Hopewell (.284) and catcher Kathy Kelsey anchor a strong infield.

California Collegiate Athletic Association

Cal State Northridge owns this conference, but California-Riverside and Chapman both could land berths as at-large teams.

Riverside must rebuild this year behind first-year coach Tom Ash and nine first-year players. The strength of the team is in the infield and behind the plate, led by catcher Angie Melander.

Chapman (45-29-1) will rely on two pitchers—ace Cathy Fisher (19-10) and freshman Diane Blankenship.

Other teams that could be national contenders are Southern Illinois-Edwardsville (38-8), Lewis (23-10) and Stephen F. Austin State (39-13).

SIU-Edwardsville has one of the division's best pitchers in Sandy Montgomery, 21-3 last year with an 0.93 ERA. Joining her on the mound will be Stacy Johnson, a freshman from Villa Ridge, Missouri.

Lewis, which like SIU-Edwardsville has never qualified for the Division II championship, will be led by pitchers Sue Bear (8-6, 1.64), Roxanne Rude (7-2, 0.85) and Allison Blaha (8-2, 0.89) and shortstop Jane Carpenter (.333).

Stephen F. Austin, a two-time championship participant, returns seven regulars, including pitcher Pam Clay (13-3, 0.19) and center fielder Stella Castro (.285).

Division III 'troika' set to resume struggle for softball championship

Only three teams have advanced to the title game in three years of NCAA Division III softball competition—Trenton State, Eastern Connecticut State and Buena Vista—and the odds are that two of those three squads will be facing each other this May.

Despite losing to Buena Vista in last year's championship game, Trenton State had an amazing season last year. Both teams are strong again, and each will be trying to become the first two-time champion in Division III softball.

Led by a pitching staff that recorded a division-leading 0.31 earned-run average and 31 shutouts, Trenton State was 48-4 last year. The Lions had a 36-game winning streak during the season, led the nation in fielding average (.959) and were fourth in batting average (.351).

"We needed to have been pushed more during the season," said coach June Walker. "Several of our traditional opponents had an off year and perhaps it was too easy for us, causing us to go into the championship feeling complacent. Be assured that as No. 2, this year we will try harder."

Walker has three outstanding individuals to lead the 1985 attack—outfielder Carol Maioran, catcher Carla Mancuso and pitcher Gina Lamandre. However, the Lions must replace all-Americans Karen Youngman (first base) and Anita Kubicka (second base) to regain the championship trophy.

LaMandre had five no-hitters and 12 shutouts while compiling a 19-2 record and 0.24 ERA. Top mound prospects to team with LaMandre are freshmen Donna O'Connell and Stefanie Testa and junior Cindy Woodward.

Buena Vista (29-8-1) returns all but two starters but must replace pitching ace Chanel Finzen, who was 17-3,

including a 4-0 performance in last year's Division III championship.

Heading the pitching staff for coach Marge Willadsen's squad is Sam Meier (8-2-1, 0.64). Newcomers to the mound corps are freshman Dawn Hanners, who led Storm Lake (Iowa) High School to the state title last year, and Morningside transfer Nita Skou.

"We have an experienced infield because all starters are back, but we must find a center fielder with speed and a strong arm," Willadsen said. "The keys to improvement are not to rest on past performances and record, and to replace Finzen on the mound."

Top returning regulars for Buena Vista are all-America catcher Libby Kestel (.400), first baseman Joy Johnson (.292) and all-America third baseman Jeannie Demars (.296), who leads Division III women's basketball players with a 31.2 scoring average.

Eastern Connecticut State is the only other team besides Trenton State to compete in all three NCAA Division III championships; and despite the loss of all-America pitcher Lisa Kirk, the Warriors should be national contenders again in 1985.

Among five returning starters are the Warriors' top hitters from last year—shortstop Trish Wodatch (.360) and center fielder Cindy Walz (.321). Julie Bacher, who was 11-3 with an 0.81 ERA, will team with freshman Cathy McGillicuddy on the mound. McGillicuddy was 14-5 in high school last year.

In addition to McGillicuddy, coach Clyde Washburne recruited nine all-state players, including Kim Durocher and Andrea Costa.

Champions of five conferences automatically qualify for the NCAA championship. Following is a look at the top contenders in each of those conferences:

Jersey Athletic Conference

Trenton State is the favorite in this conference, but Montclair State has a legitimate shot at a berth.

Coach Willie Rucker's Montclair squad (27-11 last year) is led by second team all-America Debbie Emery, a versatile performer who pitches and plays third base. Emery was 13-1 with an 0.85 ERA and also batted .307 as a third baseman.

Other top performers for Montclair State, which tied for fourth in the NCAA championship last year, are first baseman Annamarie Smith (.321), shortstop Karen Hughes and third baseman/outfielder Barb Onove.

Iowa Intercollegiate Athletic Conference

The battle for second behind Buena Vista should be among Wartburg (12-11), Luther (13-12) and William Penn (15-18).

Wartburg's infield returns intact, but coach Sandy Suhrow must replace two outfielders. Senior Cindy Suess (.293) is the top returning hitter, and sophomore Angela Helle (7-4, 2.23) is the best of three veteran starting pitchers.

Pitcher Darsi Doyt (1.05 ERA) and outfielder Jody Wettach (.333), both all-conference performers, will lead Luther's charge this year.

William Penn has a young but talented squad that is counting on a fast start in 1985. All-conference pitcher Patty Spielbauer (1.40) and outfielder Tracy Stabbe (23 runs batted in) are coach Jim Overturf's key players.

Massachusetts State College Athletic Conference

Bridgewater State (Massachusetts) represented this conference in last year's tournament, and the Bears could advance to the final six this

See Division III, page 8

Division II statistics

Batting

1984	Rank	Player, Team	AB	Hits	Avg.
	3.	Holly Haight, Concordia (N.Y.)	97	46	.474
	4.	Lisa Graf, Concordia (N.Y.)	93	44	.473
	5.	Tammy Chapman, Metropolitan State	80	36	.450
	6.	Kim Cori, Long Island-Brooklyn	62	27	.435
	7.	Joan Mazzella, Wagner	68	29	.426

Home Runs

1984	Rank	Player, Team	G	No.	Avg.
	2.	Karen Kelley, Bellarmine	16	4	0.25
	3.	Cecilia Gutierrez, Missouri-Rolla	17	4	0.24
	4.	Vickie Perkins, Mercy	28	6	0.21
	5.	Lisa Graf, Concordia (N.Y.)	23	4	0.17

Runs Batted In

1984	Rank	Player, Team	G	No.	Avg.
	1.	Carol Del Guidice, Concordia (N.Y.)	23	34	1.48
	2.	Holly Haight, Concordia (N.Y.)	23	31	1.35
	4.	Lisa Graf, Concordia (N.Y.)	23	27	1.17
	5.	Angela Melander, California-Riverside	46	46	1.00

Doubles: 2. Ann Palermo, Edinboro (9 in 18 games, 0.50 per game).
Triples: 1. Jennifer Albrizio, Wagner (7 in 19 games, 0.37 per game).
Stolen bases: 1. Holly Haight, Concordia (N.Y.) (21 in 23 games, 0.91 per game).

Earned-Run Average

1984	Rank	Player, Team	G	IP	R	ER	ERA
	2.	Debbie Tidy, Sacred Heart	39	258	13	6	0.16
	3.	Renee Vance, Akron	14	111	9	3	0.19
	4.	Pam Clay, Stephen F. Austin St.	20	105.3	7	3	0.20
	5.	Kathy Slaten, Cal St. Northridge	51	343.3	23	11	0.22
	10.	Shelley Lewis, NW Missouri St.	19	135.3	24	10	0.52

Most Victories

1984	Rank	Player, Team	G	IP	W	L	Pct.
	1.	Kathy Slaten, Cal St. Northridge	51	343.3	39	7	.848
	2.	Debbie Tidy, Sacred Heart	39	258	30	4	.882
	4.	Sandy Montgomery, SIU-Edwardsville	24	173	21	3	.875
	5.	Cathy Fisher, Chapman	53	258.7	19	10	.655
	6.	Kim Uherka, Sam Houston State	28	194.3	18	10	.643

Strikeouts (per 9 innings): 1. Kathy Slaten, Cal St. Northridge (478 in 343.3 innings, 9.7 average).

Legislative Assistance

1985 Column No. 10

Tryout waivers—developmental clinics and competition

Under the provisions of NCAA Bylaw 1-6-(a), no member institution, on its campus or elsewhere, shall conduct or have conducted in its behalf any athletics practice session, tryout or test in which one or more prospective student-athletes reveal, demonstrate or display their abilities in any phase of any sport. The term "prospective student-athlete" as used in the tryout rule includes any prospect not registered in the institution at the time of the practice or competition. Please note that "tryout" as it relates to Bylaw 1-6 refers to any physical activity involving precollege individuals and is not limited to the narrow concept of an organized evaluation for recruiting purposes.

Bylaw 1-6-(c)-(1) provides that prospective student-athletes may be involved in developmental clinics or competition on the institution's campus or with members of the institution's athletics department staff without violating the tryout rule. As set forth in Case No. 209 (page 303, 1984-85 NCAA Manual), developmental clinics or competition shall be open to all qualified participants and involve activities that are designed to develop fundamental skills in a sport (rather than to refine the abilities of skilled participants in the sport). Furthermore, these activities must be conducted primarily for educational purposes and shall not involve material benefits for the participants such as awards, prizes or merchandise gifts.

An institution that desires to host developmental clinics or competition under the provisions of Bylaw 1-6-(c)-(1) must obtain approval by the NCAA Council or the Administrative Committee acting for the Council. Requests for such approval should be submitted in writing to the NCAA national office to the attention of Stephen R. Morgan, assistant executive director.

Awards from booster or alumni groups

Constitution 3-1-(i) sets forth a summary of awards that a student-athlete may receive without jeopardizing eligibility for intercollegiate athletics. Under the provisions of Constitution 3-2, an institution's responsibility for the conduct of its intercollegiate athletics program shall include responsibility for the acts of its booster or alumni groups. This being the case, any award given to a student-athlete (regardless of whether the student-athlete has exhausted intercollegiate athletics eligibility) by an alumni or booster group of the institution must conform to the provisions of Constitution 3-1-(i) and must comply with the limitations for institutional awards given to student-athlete for recognition of intercollegiate athletics participation. An institution would be held responsible through the Association's enforcement procedures if one of its booster organizations provided improper awards (e.g., television sets) to graduating seniors under the theory that the student-athlete's eligibility is exhausted.

Sports sponsorship criteria

Effective August 1, 1985, Constitution 4-2-(g) requires active members to sponsor and conduct a representative schedule in a minimum of four varsity intercollegiate sports that involve all-male teams or mixed teams of males and females and four varsity intercollegiate sports that involve all-female teams according to the level of intercollegiate competition of a conference or an individual institution, with at least one sport involving an all-male team or mixed team of males and females and at least one sport involving an all-female team conducted in every sport season. In addition, under Bylaw 11-1-(b), Division I member institutions are required to sponsor a minimum of eight varsity intercollegiate sports involving all-male teams or mixed teams of males and females and six varsity intercollegiate sports involving all-female teams during the 1985-86 academic year.

Further, Convention Proposal No. 44 requires Division II member institutions to sponsor a minimum of four varsity intercollegiate sports—including at least two team sports—involving all-male teams or mixed teams of males and females and four varsity intercollegiate sports—including two team sports—involving all-female teams during the 1985-86 academic year. Accordingly, a Division II institution must sponsor at least two team sports as identified by Bylaw 11-4-(b)-(3) for each sex.

This material was provided by the NCAA legislative services department as an aid to member institutions. If an institution has a question that it would like to have answered in this column, the question should be directed to Stephen R. Morgan, assistant executive director, at the NCAA national office.

Division III statistics

Batting

1984	Rank Player, Team	AB	Hits	Avg.
1.	Sarah Sinniger, St. Scholastica	74	37	.500
2.	Carol Majoran, Trenton State	178	84	.472
4.	Donna Auriemma, William Paterson	85	39	.459
5.	Nancy Marticio, Salem State	82	37	.451
10.	Debbie Ferranti, Cortland State	71	30	.423

Home Runs

1984	Rank Player, Team	G	No.	Avg.
1.	Donna McLean, Westfield State	28	7	0.25
3.	Sue King, Marywood	19	4	0.21
5.	Laurie Matochik, Western New England	23	4	0.17

Runs Batted In

1984	Rank Player, Team	G	No.	Avg.
1.	Donna McLean, Westfield State	28	35	1.25
6.	Patti Pethick, Scranton	21	25	1.19

Doubles: 2. Patti Pethick, Scranton (10 in 21 games, 0.48 per game).
Triples: 3. Shelley Reynolds, Cortland State (6 in 20 games, 0.30 per game).

Earned-Run Average

1984	Rank Player, Team	G	IP	R	ER	ERA
1.	Gina LaMandre, Trenton State	24	148	16	5	0.24
5.	Carol Meier, Buena Vista	12	77	12	7	0.64
6.	Sharon Boeve, Calvin	18	105.3	31	10	0.66
9.	Judy Sholtis, Susquehanna	13	88	21	10	0.80
10.	Julie Bacher, Eastern Conn.	16	103.3	21	12	0.81

Most Victories

1984	Rank Player, Team	G	IP	W	L	Pct.
2.	Gina LaMandre, Trenton State	24	148	19	2	.905
4.	Kathy Rodrigues, Whittier	24	161	17	4	.810
6.	Lisa Svac, Augsburg	22	127	16	3	.842

Strikeouts (per 9 innings): 1. Judy Sholtis, Susquehanna (93 in 88 innings, 7.4 average).

Division III

Continued from page 7

year since only one starter is missing from last year's 21-6-1 squad.

Leading the Bridgewater attack are outfielder Chris Russell (.412), and third baseman Darlene Dusseault (.319) who also pitches. She was 13-3 last year with a 1.32 ERA, including seven shutouts and three no-hitters.

Behind the power hitting of Donna McLean (.419, seven home runs, 35 RBI), Westfield State (15-13) hopes to land its third play-off berth after missing last year's tournament. McLean also won six games as a pitcher, including two no-hitters.

State University of New York Athletic Conference

Cortland State (17-6) has three .400 hitters in its lineup and should be the SUNY conference favorite.

Outfielder Debbie Ferranti (.423), third baseman Karen Celeste (.432) and catcher Shelley Reynolds (.414, six triples) must continue to provide runs, since the Red Dragons' lone returning pitcher is Heidi Huczel (4-1, 1.66).

Oswego State (11-8), led by senior shortstop Shirleen Dubuque (.351), will be one of Cortland's chief competitors, along with Buffalo State and Buffalo (12-12).

Minnesota Intercollegiate Athletic Conference

Augsburg (25-7) will be looking for its fourth consecutive MIAC championship and third straight NCAA postseason berth behind one of the division's strongest pitching staffs.

Lisa Svac (16-3, 1.05) and Amy Hyland (9-4, 1.60) helped the Auggies finish ninth in the nation in pitching (1.26 ERA). Leading the offensive and defensive (Augsburg was 11th in fielding) charge are shortstop Sue Thompson (.340) and second baseman Anne Richter (.335).

St. Olaf (16-11), Gustavus Adolphus and St. Thomas (Minnesota) are other top MIAC teams. Barb Mersey (14-8) was an all-conference performer for St. Olaf last season.

In addition to the five automatic spots, the remainder of the 16-team championship field will be filled at large. Following is a regional outlook of other top teams in Division III (individuals listed are only those from contending teams):

New England

Team: Plymouth State (17-9).

Individuals: Elaine Flanagan, third baseman, Plymouth State (.374, 24 RBI); Deb Carr, designated hitter/pitcher, Plymouth State (.444, 8-6); Kim Bean, pitcher, Plymouth State (9-4, 1.59).

East

Team: Ithaca (14-10-2).

Individuals: Mildred Piscopo, third baseman, Ithaca (.302); Liz Feinberg, outfielder, Ithaca (.345).

Midwest

Teams: Allegheny (21-3), Scranton (16-8), Ursinus (18-7), Susquehanna (13-7) and Ohio Northern.

Individuals: Brenda Bates, third baseman, Allegheny (.338); Susan Custer, outfielder, Allegheny (.404); Melissa Vogel, outfielder, Allegheny (.373); Mary Jane Grella, outfielder, Scranton (.428); Patti Pethick, outfielder, Scranton (.355); Debbie Cox, shortstop, Scranton (.354); Sally Grim, pitcher, Ursinus (12-5, 1.24); Leigh Garrison, outfielder, Ursinus (.323); Judy Sholtis, pitcher, Susquehanna (0.80 ERA).

South

Team: Western Maryland (10-4).

Individuals: Nicky Pesik, outfield, Western Maryland (.491); Donna Cox, shortstop, Western Maryland (.370).

Central

Teams: Wisconsin-Whitewater (22-8), Calvin (27-5), Illinois Benedictine (26-9), Wisconsin-Oshkosh (19-9), Alma (13-6), Aurora (16-15) and Wisconsin-Stevens Point.

Individuals: Mary Haugen, pitcher, Wisconsin-Whitewater (12-7, 1.48);

Lori Nelson, pitcher, Wisconsin-Whitewater (10-3, 1.24); Sharon Boeve, pitcher/shortstop, Calvin (13-2, 0.66, .412 average); Laura Martincik, shortstop, Illinois Benedictine (.317); Nila Gruenewald, pitcher, Wisconsin-Oshkosh (0.99 ERA); Jamie Ziegel, catcher, Wisconsin-Oshkosh (.336); Leslie LaPrise, outfielder, Aurora (.410).

Members

Continued from page 1

will consider proposals that it may wish to submit to the special Convention.

• **April 21:** This is the deadline for submission of legislative proposals for consideration at the special Convention (whether from member institutions, the Commission or the Council). Amendments must be received at the NCAA national office on or before this date and must deal only with the legislative purposes of the special Convention (i.e., integrity and economy issues).

• **May 6:** The Official Notice of the special Convention, including all properly submitted legislative proposals, will be mailed not later than May 6.

West

Teams: UC San Diego (32-12) and Whittier (21-11).

Individuals: Pam Hardaway, shortstop, UC San Diego (.400); Kathy Rodrigues, pitcher, Whittier (17-4, 0.91); Julie Curtis, outfielder, Whittier (.389, four home runs); Lynn Fujimoto, second baseman, Whittier (.345).

Accompanying the Official Notice will be the form on which the chief executive officer appoints the institution's delegate(s) to the Convention, as well as hotel-reservation materials. The Commission will emphasize in that mailing that it urges the CEO to appoint himself or herself as the voting delegate, regardless of the other delegates who may be appointed.

• **June 20:** The special Convention begins with discussion sessions from 2 to 5:30 p.m. The Commission and the NCAA Council will meet that morning.

• **June 21:** The special Convention business session is scheduled from 8 a.m. to noon and from 1:30 p.m. to 4 p.m.

NCAA Regional Rules Seminars



Confused or have questions about using the NCAA Manual and the application of basic NCAA rules? Interested in learning more about the legislation passed by the Association's January 1985 Convention?

The NCAA Executive Committee, in response to requests by the membership, has authorized 1985 regional rules seminars in late April and early May in Los Angeles, Atlanta and St. Louis, presented by members of the NCAA legislative services staff.

Here is an opportunity for individuals at member institutions who are responsible for the day-to-day application of NCAA rules (e.g., directors of athletics, faculty athletics representatives,

April 22-23, 1985

Los Angeles Airport Hilton

April 29-30, 1985

Atlanta Peachtree Plaza

May 13-14, 1985

St. Louis Riverfront Inn

academic coordinators and assistant or associate directors of athletics charged with maintaining student-athletes' eligibility) and new institutional staff members to familiarize themselves with NCAA regulations and interpretations.

Among the topics that will be covered are: satisfactory progress, financial aid equivalencies, playing and practice seasons, transfer eligibility, and new legislation.

The Monday afternoon and Tuesday morning sessions, handout reference materials and an evening reception are offered free of charge. Seminar registrants will be responsible for the cost of meals, transportation and hotel accommodations. Register before March 27 and a hotel room at the seminar site can be guaranteed.

To register or obtain further information, please return the form below.

REGISTRATION FORM

NAME: _____ PHONE: () _____

TITLE: _____

SCHOOL: _____

ADDRESS: _____

CITY: _____ STATE: _____ ZIP: _____

SEMINAR SITE YOU WILL ATTEND:

- ☐ April 22-23, 1985—Los Angeles Airport Hilton
☐ April 29-30, 1985—Atlanta Peachtree Plaza
☐ May 13-14, 1985—St. Louis Holiday Inn Riverfront

Return this form to the following address: NCAA Rules Seminars
P.O. Box 1906
Mission, Kansas 66201

Please let us know if you have topics you would like to see covered during the seminar: _____



Hoyas shoot for back-to-back Division I crowns

Georgetown could repeat as Division I men's basketball champion and become the first back-to-back champion since John Wooden's UCLA Bruins won a record-breaking sixth and seventh straight titles in 1972 and 1973.

Whether the Hoyas get through the 64-team bracket unscathed remains to be seen, especially coming off the season-ending Big East tournament. That is not a recommended avenue for rest and relaxation before the national championship.

Michigan coach Bill Frieder, whose Wolverines won an automatic berth in the largest Division I field in history by winning the Big Ten regular-season title, is not sure there is an easy way to get into the tournament.

"Some people say the Big Ten is the easy way to get to the NCAA tournament; all you have to do is win the regular-season title," said Frieder. "Well, we have to finish out the last week of the season by going to Ohio State and Indiana, and I don't think that is an easy way to go."

"I think to go through an 18-game schedule in a conference like the Big

Ten is a pretty good way to get ready for the NCAA tournament," he said. "And many times, if a conference's regular-season winner is upset in the postseason tournament, that team still is good enough to get a bid to the NCAA play-offs. I think it really is hard to determine what approach prepares a team best for postseason action."

Frieder was pleased he would have extra time to get Michigan prepared for playing without a shot clock during the play-offs.

"We will have to get the offense used to moving the ball around if we need to go to a delay-type game, and our defense will have to get used to playing against an offense that is slowing things down and not worrying about a shot clock."

"Of course these are the types of things most coaches will have to do," Frieder said. "With the exception of a few leagues and a few independents, just about everybody played the shot clock this season."

Teams also must prepare for opening-round games because the 64-team bracket eliminated first-round

byes. It will take a six-game winning streak to capture the Division I championship.

"I think that is good," Frieder said. "Everybody will start at the same time, and I believe the entire tournament will be more exciting because of it."

There is a lot to expect from the 1985 tournament. After a stumble during the regular season, Georgetown recorded lopsided victories over Syracuse and St. John's.

Kansas and Oklahoma put together great seasons in the Big Eight and may play each other or possibly Missouri or Iowa State en route to the Final Four.

The Atlantic Coast Conference could send four teams or more to the tournament; North Carolina coach Dean Smith has turned a rebuilding year into another drive for postseason honors.

Marshall, Middle Tennessee, Pepperdine and Virginia Commonwealth already are in the tournament (as of March 4) by way of regular-season or conference-tournament championships, as are Fairleigh Dickinson,

Iona and Lehigh.

Here is a look at the leading teams from each of the automatic-qualifying conferences, the top independents and representatives of other conferences, with season records through games of March 3:

Atlantic 10: Duke, 21-6; Georgia Tech, 21-6; Maryland, 22-10; North Carolina, 22-7; North Carolina State, 19-8.
Atlantic 10: St. Joseph's (Pennsylvania), 17-10; Temple, 21-5; West Virginia, 20-7.
Big East: Georgetown, 26-2; St. John's (New York), 25-2; Syracuse, 20-6; Villanova, 18-9.
Big Eight: Iowa State, 19-11; Kansas, 24-6; Missouri, 18-11; Oklahoma, 24-5.
Big Sky: Montana, 22-6; Nevada-Reno, 18-9; Weber State, 20-8.
Big Ten: *Michigan, 23-3; Illinois, 22-8; Iowa, 20-8; Michigan State, 18-8; Ohio State, 18-8; Purdue, 18-8.
East Coast: *Lehigh, 12-18; Bucknell, 18-9; Lafayette, 15-13.
ECAC Metro: *Fairleigh Dickinson, 19-9; Marist, 17-11.
ECAC North Atlantic: Canisius, 19-8; Northeastern, 19-8; Siena, 21-6.
ECAC South: George Mason, 17-10; Navy, 21-5; Richmond, 18-9.
Ivy: Cornell, 13-11; Harvard, 15-7; Pennsylvania, 12-12.
Metro Atlantic: *Iona, 25-4; Fordham, 19-10; La Salle, 15-13.
Mid-American: Miami (Ohio), 18-9; Ohio, 20-7.
Minnesota, 16-10.
Gateway: Drake, 21-4; Illinois State, 21-5; Southern Illinois, 21-5.
Metro Atlantic: *Holy Cross, 21-6; La Salle, 22-8; St. Peter's, 25-4.
Metro: Memphis State, 20-6; South Carolina, 17-9; Southern Mississippi, 19-7.
Mid-American: Central Michigan, 18-9; Western Michigan, 17-9.
Mountain West: Eastern Washington, 20-6; Idaho, 26-1; Montana, 21-6.
Northern Pacific: Fresno State, 20-7; Oregon State, 18-9; Washington, 24-1.
Ohio Valley: Austin Peay, 19-8; Eastern Kentucky, 18-9; Middle Tennessee, 20-6; Tennessee Tech, 19-7.
Southland: *Northeast Louisiana, 26-1.
Southwest: Arkansas, 19-7; Houston, 21-7; Texas, 25-2; Texas Tech, 21-6.

Mid-Eastern Athletic: Howard, 15-11; North Carolina A&T, 17-9.
Midwestern City: Butler, 18-8; Loyola (Illinois), 22-5.
Missouri Valley: Creighton, 20-11; Illinois State, 21-6; Tulsa, 21-6; Wichita State, 15-12.
Ohio Valley: *Middle Tennessee, 17-13; Murray State, 19-9; Tennessee Tech, 19-8; Youngstown State, 20-11.
Pacific Coast: Fresno State, 20-7; Nevada-Las Vegas, 24-3.
Pacific-10: Arizona, 20-9; Oregon State, 21-7; Southern California, 18-7; Washington, 20-8.
Southeastern: Alabama, 19-8; Georgia, 20-7; Kentucky, 16-11; Louisiana St., 19-8.
Southern: *Marshall, 20-12; Tennessee-Chattanooga, 22-7.
Southland: Louisiana Tech, 25-2.
Southwest: Arkansas, 19-11; Southern Methodist, 21-7; Texas A&M, 18-9; Texas Tech, 20-7.
Southwestern Athletic: Alcorn State, 22-5.
Sun Belt: *Virginia Commonwealth, 24-5; Alabama-Birmingham, 24-8; Old Dominion, 19-10.
Trans America: Georgia Southern, 24-4; Houston Baptist, 21-7; Mercer, 21-8.
West Coast Athletic: *Pepperdine, 23-8; Santa Clara, 19-8.
Western Athletic: San Diego State, 21-7; Texas-El Paso, 20-8.
Others: Cleveland St., 20-7; Dayton, 18-8; DePaul, 18-8; Marquette, 17-9; Notre Dame, 17-8; Southeast Louisiana, 17-9; Texas-San Antonio, 17-10.
*Already qualified (automatic bid).

Texas locks horns with past; sets sights on future

Texas women's basketball coach Jody Conradt laughs at the suggestion that her No. 1 team is in as good a position as her top-ranked 1984 squad was as the Division I women's basketball tournament approaches.

"It may look the same at first glance," Conradt offered, "but this really is a totally different situation."

Last March, the Longhorns were ranked No. 1 going into the tournament and looked like a sure bet for a trip to the final four. They lost in the Midwest regional final.

This season, Texas again is ranked first in the Division I women's poll heading into the tournament, and prospects are bright for advancement to the semifinals; coincidentally, the Division I women's final four will be played in Austin, Texas.

"It sounds very similar; but last year at this time, I was holding on to a sinking ship," Conradt explained. "We had a lot of injuries, and that hurt us in the tournament. This year, we have everybody healthy and I believe they have their best basketball ahead of them."

As with top contenders for championships in other divisions, the Longhorns did not have a player in any of the individual statistical categories as of February 27. But as a team, Texas was among the leaders in six of eight categories.

"We don't have a legitimate superstar, but we have tremendous athletic ability as a team," Conradt said. She began the season with a foundation of juniors Kamie Ethridge and Fran Harris and sophomore Andrea Lloyd, who plays in the backcourt even though she is taller than the center.

"It is kind of funny when you think about it," said Conradt. "We have a 6-2 guard feeding the ball to a 5-11 center, but it certainly has worked out well for us. Andrea did not want to play pivot for us, so we changed things around to suit her talents within the framework of making the team as good as it could be."

Texas is at its best when opponents permit a transition game on offense. The Longhorns will press from the locker rooms on out on defense.

"We always press full-court on defense, and I feel like our transition game on offense has been excellent," Conradt said.

Conradt said she is confident of Texas' potential to play in the final four on its home court, if they can play a transition offense most of the time. "The only unique thing about this team is the way we play. If we play our style of game, we will win. If an opponent forces us into their game, we may have some problems."

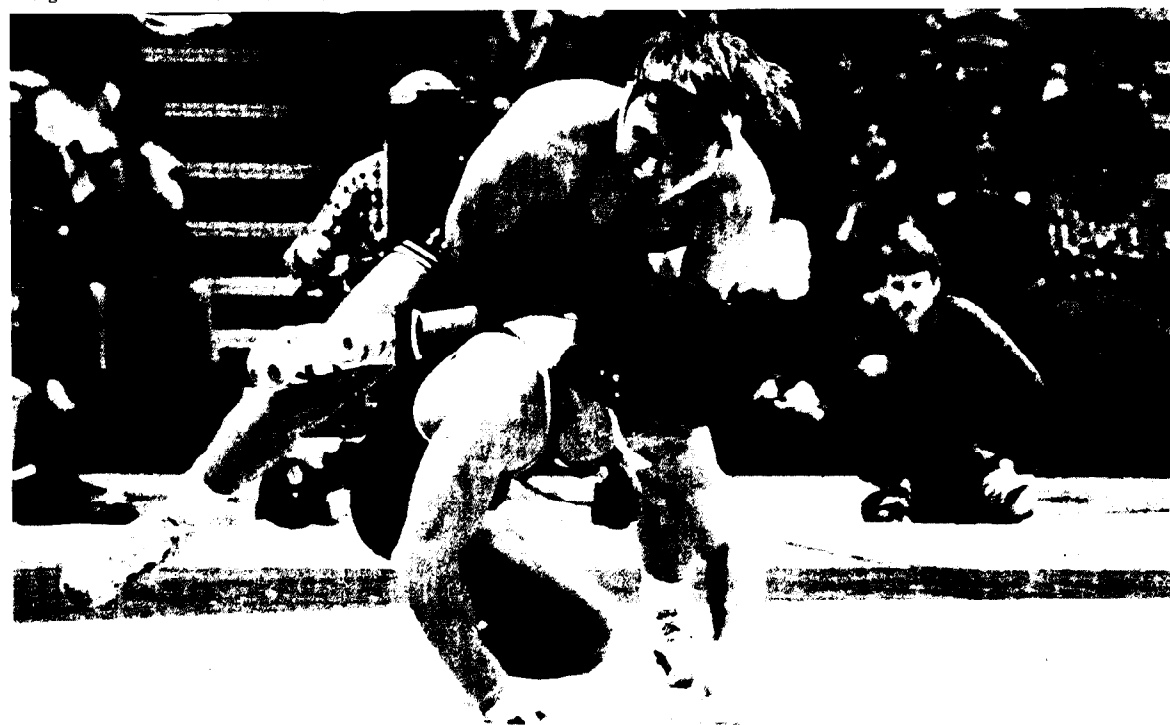
"I really wasn't aware of how much pressure the players were feeling until just recently," Conradt said. "I guess that type of anxiety bided its time through our conference season; now, they know that making the final four is a possibility, and we have to be realistic about that and try to handle the pressure as best we can."

Six spots in the 32-team field already have been filled through determination of champions in conferences with automatic qualification. Holy Cross (Metro Atlantic), North Carolina State (Atlantic Coast), Northeast Louisiana (Southland), Ohio State (Big Ten), Penn State (Atlantic 10) and Syracuse (Big East) were in the

field as of March 5.

Here is a look at the top teams in each of the automatic-qualifying conferences, along with other teams that could merit an at-large berth, with season records as of March 5.

Atlantic Coast: *North Carolina State, 24-5; Duke, 19-8; North Carolina, 21-10; Virginia, 21-7.
Atlantic 10: *Penn State, 26-4; Rutgers, 19-9; St. Joseph's (Pennsylvania), 25-4; West Virginia, 19-9.
Big East: *Syracuse, 18-12; Boston College, 19-9; Villanova, 21-8.
Big Eight: Kansas State, 18-9; Missouri, 19-8; Oklahoma, 21-5.
Big Ten: *Ohio State, 24-2; Iowa, 18-8;



Iowa's Barry Davis

Iowa favored for eighth straight championship

Hawkeyes wrestle guesswork to submission

Previewing the NCAA Division I Wrestling Championships is like telling friends about the ending of a movie they are eager to see.

The ending of this year's March 14-16 championships at The Myriad in Oklahoma City, Oklahoma, likely will be the same as the past seven tournaments. Iowa is heavily favored to win its eighth consecutive championships team title. It would be the Hawkeyes' ninth title in the past 10

years.

Coach Dan Gable's squad has won big against top-ranked opponents and enters the championships with momentum and in good health.

Paced by two-time champion Barry Davis (126), who had a 35-1 record through matches of March 1, Iowa has rolled to an 18-0 dual-meet mark.

The Hawkeyes' most impressive victory was a 40-6 shellacking of

Oklahoma State, the Cowboys' worst dual-match defeat in their proud history.

Oklahoma State, ranked second by Amateur Wrestling News, was not the only ranked team to fall to Iowa. The Hawkeyes defeated Oklahoma, 25-13; Louisiana State, 37-15, and Wisconsin, 23-12. All were ranked in the top five by Amateur Wrestling News.

Iowa also has potential champions

in Greg Randall (134), Marty Kistler (158), Lindley Kistler (167) and Duane Goldman (190). All placed second in their respective weight classes in last year's championships.

Redshirts Jim Heffernan (150) and Rico Chiapparelli (177), with 31-4 and 18-4 records, respectively, at press time, also should vie for a top finish.

Oklahoma State had six wrestlers
See Hawkeyes, page 11

Championships Summaries

Division III Men's Basketball

Northeast Regional: First round: Clark (Mass.) 88, Westfield St. 78; Worcester Tech 58, Albany (N.Y.) 57 (ot). Third place: Albany (N.Y.) 78, Westfield St. 70. **Championship:** Worcester Tech 67, Clark (Mass.) 62.

Middle Atlantic Regional: First round: Widener 54, Lycoming 52; Scranton 85, Washington & Jefferson 74. Third place: Lycoming
See Summaries, page 11

Division I takes slap shot at parity

Only six teams have shared the past 14 championships in Division I men's ice hockey, but parity may be on the horizon.

Bowling Green State was the surprise champion last year, bringing the school and the Central Collegiate Hockey Association their first championships, and the top four teams heading into the 1985 Division I Men's Ice Hockey Championship have won only three titles.

Rensselaer (25-2), Minnesota-Duluth (29-7-2), Michigan State (32-5) and Boston College (26-10-1), along with a host of perennial favorites, will be trying to win the coveted NCAA crown when first-round play begins March 22, 23 and 24.

Eight teams will be selected for the 38th NCAA Division I championship, including the champions of the East Coast Athletic Conference, Western Collegiate Hockey Association, CCHA and Hockey East Conference. The remaining teams will be selected at large.

Winners of first-round games will advance to the semifinals and finals March 28-30 at Joe Louis Arena in Detroit, Michigan.

Rensselaer, which last won the Division I title in 1954, has made a steady climb in the Division I rankings and was No. 1 in the latest poll.

The Engineers, who should gain the ECAC automatic bid, are led by Adam Oates and John Carter, third and sixth, respectively, in the nation in scoring. Goalie Daren Puppa (2.56 goals-against average) is ranked second nationally.

Michigan State could make it two in a row for the CCHA. The Spartans would be performing before the hometown fans in Joe Louis Arena.

Craig Simpson (29 goals, 47 assists) has been the top scorer for Michigan State, which last won the title in 1966. The Spartans also have two of the nation's best goalies in Bob Essensa (1.64) and Norm Foster (2.87).

Minnesota-Duluth, which lost to Bowling Green in last year's marathon, four-overtime championship, will be battling Minnesota (26-10-3) for the WCHA automatic spot. Bill Watson (41 goals, 50 assists) has led the Duluth attack this season.

Other WCHA contenders are Wisconsin (23-15), winner of the 1981 and 1983 titles; North Dakota (22-15-1), champion in 1980 and 1982; Colorado College, and Denver.

Although Michigan State would appear to have the CCHA bid, Lake Superior State (24-14) was ranked sixth in the latest poll and could make the 1985 field. Goalies Randy Exelby and Craig Shermiden are the team's strength.

Boston College and Boston U. (19-12-3) are the best in the Hockey East. Boston College, which has been ranked in the top five all season, has not won the Division I title since 1949, the second year of the championship. Scott Harlow and Ken Hodge are the Eagles' top players.

Other teams that could gain play-off bids are Harvard (15-5-2), which features No. 2 scorer Scott Fusco; Clarkson; Cornell; Providence; Western Michigan, and Yale.



Jamie Wansbrough leads Bowling Green's attack

Bemidji State out to unseat Babson skaters

Bemidji State, one of the teams that opted for Division III when the Division II Men's Ice Hockey Championship was discontinued after seven years, is the favorite for the 1985 Division III championship, which begins March 15-17 with first-round games.

Bemidji State (22-4-1), winner of the final Division II championship in 1984, will be trying to unseat Babson, which won the inaugural Division III championship last year.

Eight teams will be selected for the 1985 Division III Men's Ice Hockey Championship. Winners of first-round games will compete for the title March 22-23 on the campus of one of the four semifinalists. Five teams will be chosen from the East region, and three will be selected from the West.

Bemidji State, led by goalie Mark Liska, Mike Alexander and Wendal Jillison, will be challenged in the West by St. Thomas (Minnesota) (22-4), Gustavus Adolphus (14-11-1), Mankato State (15-10-4) and St. Mary's (Minnesota).

St. Thomas began the season with a No. 3 national ranking and has held that spot throughout the season. The Tommies are led by Tom Diedrich and Steve Olson. Gustavus Adolphus cracked the top five once this season and currently is ranked No. 7. Doug Keys leads the Gusties' attack. Mankato State, another Division II team that opted for Division III play this year, will rely on Pat Carroll.

Rochester Institute of Technology (20-5-1) has been ranked second behind Bemidji State most of the season and heads the list of contenders in the East region. RIT won the 1983 Division II championship and lost in last year's Division III semifinals. The Tigers have a potent one-two punch in Chris Johnstone and Bobby Trowell.

Leading contenders for the remaining four spots in the East are Salem State (22-4), Babson (19-7), Union (New York) (16-6-1) and Plattsburgh State (19-6).

Salem State has not participated in an NCAA ice hockey championship since 1979, but this could be the year for coach Bill O'Neill's Vikings. Salem State, led by Mike Storer, has been ranked fourth or fifth most of the season.

Babson has the championship experience, however. The Beavers, led by goalie Keith Houghton and Fran Murray, have competed in three consecutive championships. Union, which lost to Babson in last year's championship, is ranked sixth in the latest poll. The Dutchmen feature forward Gill Egan and goalie Wayne McDougall.

Plattsburgh State, a two-time Division II runner-up, began the 1984-85 season ranked No. 2 but currently is No. 9.

Other teams with play-off hopes are Oswego State (20-8), Elmira, Geneseo State, Lake Forest, Norwich and Wisconsin-River Falls.

Matadors whet appetite for double dip

Cal State Northridge coach Pete Accardy is preparing for a hectic week; he will take men's and women's swimming teams to the Justus Aquatics Center in Orlando, Florida, where Rollins College will host the Division II Men's and Women's Swimming and Diving Championships March 13-16.

Accardy leads a pair of teams that are quite capable of taking team titles.

No women's team has amassed more individual titles than the Matadors (12). Cal State Northridge won the 1982 championship and finished second a year ago to Clarion, winner of the past two team titles.

The men's team has lost only two team titles since 1975 and is favored again this season. Matador swimmers hold five meet records, and the two teams hold records for all-time team championships (seven), all-time individual championships (45) and most individual championships in one year (nine).

Accardy must make both teams click. The job is never easy, and the toughest time of the year, as always, is coming up.

"Trying to keep track of two teams is always tough, but especially at the national meet," he said. "It's almost too much for one coach when you have a lot of people qualified. You simply can't talk to individuals as

much as you'd like before and after they swim."

Division II coaches are faced with the situation in which the men's and women's championships will be decided during a four-day, common-site meet.

"You know, I was one of the coaches who originally supported the concept of a common-site. I don't know whether I'd vote for it again," Accardy said.

"Of course, my reasons are selfish. When you're trying to prepare for the meet, it is very difficult; from time to time, you're going to miss somebody who needs your attention. You try to turn the tapering work into an assembly-line process, especially as the championships grow near."

On the men's side, Accardy noted that his team's depth may be superior. "We are a very well-rounded team... we have a lot of good swimmers. We are very deep in the middle-distance events and the breaststrokes, along with diving."

It may take points in every event for a team to get close to Cal State Northridge in the men's competition. "We feel we have an opportunity to score in every event," Accardy said. "We won't be shut out."

The women's team has depth, but Accardy is not sure it has the potential to compete with Clarion for the 1985 women's team championship.

"The women's team has come along very nicely. It is not as deep as the men's squad." Leading the way for the women will be Michele Hampton, holder of the women's record for most individual titles in one meet (four in 1982) and individual career titles (five thus far).

"I really believe the women have a chance to win their title," Accardy said, "but they just may not be deep enough to pull it off."

Following is a look at other contending teams in men's and women's competition.

Men's teams

Clarion will finish at or near the top. Coach Bill Miller lost several scorers to graduation, including top diver Kevin O'Neil.

But the swimming half of the team may be the strongest in school history. Whether there will be enough points to offset 1984 losses remains to be seen.

Vic Ruberry, Jim Hersh and Dave Holmes probably will do most of the scoring in the pool, while Bill Kokinos goes for honors off the diving boards. Clarion just may be strong enough to be a challenger for the team title.

Another major challenge could come from Oakland, where coach Pete Hovland "has done a super job with that team this season," according to Accardy. The biggest loss was Tracy Huth, who graduated after an

outstanding career that included eight individual championships.

Oakland swimmers to watch include freestylers Matt Croghan and Steve Larson, backstroke Jeff Colton, and butterfly John Christiansen. A fine group of freshmen, some of the best Hovland has recruited, may add enough points to make the Pioneers a true contender.

Several other West Coast teams could make waves, including California Davis, Puget Sound, Cal State Chico, Cal Poly-San Luis Obispo and Cal State Bakersfield. The latter beat Northridge in a dual meet this season.

Tampa, Shippensburg and Wright State also are top-five possibilities.

Women's teams

Clarion is the team to beat in the women's competition, although Cal State Northridge will be strong. Clarion Coach Becky Leas has a lot of talent back, and a third straight women's team title is not beyond reach.

Clarion boasts veterans Tine Bair, Sue Lynn Langdon and A'Lisa Wojcicki. And the team is deeper than the 1984 championship group. Diving may provide more points than before.

Last season, Clarion was 85 points better than second-place Cal State Northridge. The year before, only nine points separated Air Force from the championship, Clarion's first in

See Matadors, page 11

Coaches give Kenyon the edge for division title

Coaches usually are accurate when it comes to predicting championship meet results; and if Division III women's swimming coaches are on target, no team is going to come close to Kenyon in the national championships March 14-16 at Emory University in Atlanta.

"We'll take whatever roll you want to give us," said Kenyon coach Jim Steen. "I certainly don't plan on going into the meet thinking we have the team title locked up."

"I never have approached a meet like that, and I never will. Too many things can happen."

That may be true, but on paper, the Ladies seem impossible to beat.

Seventeen Kenyon swimmers have qualified for the championships, including last year's standout performer, Patricia Abt. However, Steen, characteristic of a coach with a pat hand, said, "We really have a young and inexperienced team on the women's side."

"Almost half the people we have qualified (eight of 17) are freshmen; many of them have a lot to learn. I feel like our women are going after that championship, not defending it. There may be some people out there who believe they don't have a chance against us, but we're going into the meet as if they do."

"We have good depth in every

event except the backstrokes," Steen said. "We have two people qualified in every event, and there are six races in which we have four or more people qualified. I must admit that the women looked exceptionally strong at their conference meet; we had several swimmers emerge in that competition."

"Even so, we lost a lot from last year's team, and I just don't know how much we got back. Improvement is the name of the game for us. That, and not getting too confident; that's how you lose championships."

Penny Dean, whose Pomona-Pitzer team could finish as high as

second, did not seem to think Steen had much to worry about.

"We have nothing to complain about, but I do not believe we can do better than second place. I'm not sure any team can," she explained. "Kenyon has 17 people qualified; they picked up so much from last year. I just don't think anybody will be able to keep up with them in terms of scoring points."

"There is no question this will be a big meet for us. We already have had a pretty good season, and I am fortunate to have a real good group of people to work with."

Dean also said that Hamline and California-San Diego are teams to look out for. "Hamline should score a

lot of points, and San Diego could surprise a lot of people," she said. "They have some freshmen who are doing a great job for them this season, and they may be able to sneak up on the rest of us at the championships."

Williams also is a perennial contender for the team title, and 1985 should be no different. Kim Ekrich, Joan Horgan and Kathy Kirmayer are familiar names on the Division III championships scoring list, and the Ephs should be among the top teams again this season.

Other teams that could finish among the top 10 include Allegheny, St. Olaf, Smith, Tufts and Wheaton (Illinois).

Hawkeyes

Continued from page 9

as of March 6 ranked among the top eight in the nation by Amateur Wrestling News. Two were ranked first—Mark Perry (118) and John Smith (134). Smith's title hopes were jolted when he suffered a shoulder separation February 16; however, he is expected to be ready for the championships.

Injuries have been more of a prob-

Matadors

Continued from page 10

NCAA competition.

Another championship contender is South Florida, which may have the closest thing to a "home-pool advantage" in the Orlando meet. Head coach Bill Mann has 10 swimmers qualified, and he is confident about their potential.

Other top squads include Oakland, Furman, Vanderbilt, Tampa, North Dakota, Idaho, Puget Sound and Rice. The battle for the team title probably will come down to Clarion and Cal State Northridge.

Summaries

Continued from page 9

102. Washington & Jefferson 92 (2 ot). **Championship**—Widener 55, Scranton 53 (ot).

South Atlantic Regional: First round William Paterson 71, Roanoke 68 (ot); Trenton St. 75, Salisbury St. 62. **Third place**—Salisbury St. 98, Roanoke 83. **Championship**—William Paterson 59, Trenton St. 48.

East Regional: First round—Buffalo St. 76, Alfred 68; Potsdam St. 63, Hartwick 52. **Third place**—Hartwick 52, Alfred 47. **Championship**—Potsdam St. 69, Buffalo St. 56.

Great Lakes Regional: First round Wittenberg 70, DePauw 62; Hope 78, Otterbein 71. **Third place**—Otterbein 79, DePauw 78. **Championship**—Wittenberg 68, Hope 63.

Midwest Regional: First round—North Park 95, Monmouth (Ill.) 55; Wis.-Whitewater 72, North Central 53. **Third place**—Monmouth (Ill.) 69, North Central 60. **Championship**—North Park 83, Wis.-Whitewater 81 (ot).

West Regional: First round—Nebraska Wesleyan 74, St. John's (Minn.) 56; Central (Iowa) 72, Redlands 64. **Third place**—Redlands 80, St. John's (Minn.) 70. **Championship**—Nebraska Wesleyan 76, Central (Iowa) 54.

South Regional: First round—Centre 66, Greensboro 52; LeMoyne-Owen 74, Augsburg 55. **Third place**—Greensboro 83, Augsburg 69. **Championship**—Centre 91, LeMoyne-Owen 72.

Quarterfinal Pairings (all March 9): Widener (24-5) at Worcester Tech (19-7); William Paterson (22-6) at Potsdam St. (25-3); Wittenberg (27-3) at North Park (24-4); Nebraska Wesleyan (22-4) at Centre (19-7).

Semifinals and finals March 15-16 at Calvin College, Grand Rapids, Michigan.

Division III

Women's Basketball

Atlantic Regional: First round—Muskingum 67, Frostburg St. 65; Capital 85, Kean 65. **Third place**—Kean 79, Frostburg St. 66. **Championship**—Muskingum 78, Capital 56.

East Regional: First round—Allegheny 62, Buffalo St. 56; New Rochelle 70, Rochester 66. **Third place**—Rochester 63, Buffalo St. 58. **Championship**—New Rochelle 79, Allegheny 68.

West Regional: First round—Pomona-Pitzer 68, Concordia-Moorhead 59; Cal St. Stanislaus 59, St. Mary's (Minn.) 57. **Third place**—St. Mary's (Minn.) 72, Concordia-Moorhead 66. **Championship**—Pomona-Pitzer 61, Cal St. Stanislaus 47.

Great Lakes Regional: First round—St. Norbert 72, Carroll 53; Wis.-Whitewater 85, Alma 70. **Third place**—Alma 78, Carroll 72. **Championship**—St. Norbert 82, Wis.-Whitewater 80 (ot).

South Regional: First round—Rust 85, Wooster 33; North Carolina-Greensboro 67, LeMoyne-Owen 62. **Third place**—LeMoyne-Owen 78, Wooster 74 (ot). **Championship**—Rust 70, North Carolina-Greensboro 66.

Central Regional: First round—Millikin 62, Simpson 60; William Penn 75, Buena Vista 53. **Third place**—Simpson 80, Buena Vista 71. **Championship**—Millikin 67, William Penn 66.

Northeast Regional: First round—Bridge-water St. (Mass.) 80, Rhode Island College 59; Salem St. 78, Western Connecticut 71. **Third place**—Rhode Island College 90, Western Connecticut 87. **Championship**—Salem St. 63, Bridgewater St. (Mass.) 59.

Mid-Atlantic Regional: First round—Scranton 79, Gettysburg 57; Pittsburgh-Johnstown 72, Susquehanna 62. **Third place**—Susquehanna 77, Gettysburg 67. **Championship**—Scranton 65, Pittsburgh-Johnstown 53.

Quarterfinal pairings (March 8 or 9): New Rochelle (23-7) at Muskingum (25-3); Pomona-Pitzer (27-1) at St. Norbert (23-2); Rust (25-2) at Millikin (21-2); Salem St. (23-4) at Scranton (28-1).

Semifinals and finals on campus of one of the finalists, March 15-16.

lem for Oklahoma, which has ranked wrestlers in Melvin Douglas (177) and Dan Chaid (190). Johnny Johnson, who placed sixth at last year's championships at 158 pounds, suffered a season-ending neck injury, and Nick Neville (134) missed two months with an injury before returning to the lineup in late February.

Up-and-coming Louisiana State, which finished eighth at last year's championships, should contend for a top-five finish. The Tigers have prospective place-winners in Robbie Johnson (126), Kevin Jackson (167) and heavyweight Jamie Webber.

Wisconsin, which finished sixth in the 1984 championships, should get plenty of scoring from its middle weights, which include title aspirants Jim Jordan (134) and John Giura (142).

Other teams in contention for a top-10 finish include Penn State, Iowa State, Northern Iowa, Michigan State, North Carolina State, Nebraska, Lehigh, Oregon State and Arizona State.

Track teams get just one shot at history

If Southeast Missouri State is as strong in indoor track as early entries for the NCAA Division II Men's and Women's Indoor Track Championships indicate, the Indians could earn a place in history.

Southeast Missouri could become the team to win the men's team championship in the first and last year of the event. The championships are scheduled at North Dakota State March 16-17.

After the 1984 NCAA Convention approved establishment of the Division II indoor track championships, the 1985 Convention voted to abolish the meet after one year. Whichever teams win the men's and women's titles will become the only teams in NCAA history to capture a one-time-only championship.

The Indians have qualified 14 in seven events in the men's competition, including Bob Ferguson (16-4) in the pole vault, Earl Whiting (52-2¼) in the triple jump and a mile relay time of 3:16.04.

Southeast Missouri also is qualified in the long jump, 5,000-meter run, 400, 800 and 60-yard dash.

The Indians' major competition for the men's crown probably will come from Hampton and St. Augustine's. Hampton has 10 qualifiers, including sprinter Fred Johnson, the defending 100-meter outdoor national champion.

St. Augustine's has 12 qualifiers and can score heavily in the sprints and jumping events. The Falcons have three long jumpers who can jump 24 feet, and they have a 7.39 hurdler in Arnie Sapp.

Southern Connecticut State also could contend for the men's title with 6-11 high jumper Bob Tomko, 3:53.17 1,500-meter runner Andy Kohl-

brenner, and 35-pound weight throwers Dave Chesbrough (54-9) and Ken Blanchard (57-5½).

St. Augustine's, also a contender for the women's team championship, is led by Patricia Davis, who has qualified in both the 55-meter sprint and hurdles. Davis has run a 6.79 in the sprint and 7.58 in the hurdles. She was third in the outdoor 100 last spring and second in the hurdles.

Other top women's qualifiers include outdoor 5,000-meter champion Julie Bowers from West Chester, North Dakota State's Lora Schloss in the high jump and triple jumper Cathy Robertson from Air Force.

New catcher's mask given approval

The NCAA Baseball Committee has approved the use of catcher's masks with metal extensions for the 1985 season.

Meeting in conjunction with the American Baseball Coaches Association convention in January, the committee approved the use of the new masks, which are produced by at least two manufacturers.

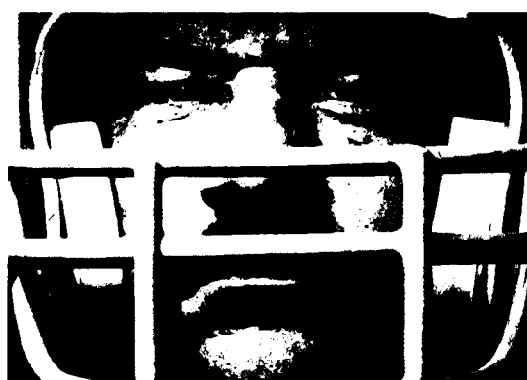
A throat guard is required on all

catcher's masks (Rule 1-14-b), but the new masks with metal extensions can be used in place of throat guards.

Johnny L. Reagan, athletics director and baseball coach at Murray State University and chair of the Baseball Committee, said the committee would review the new catcher's mask at its July meeting. He said that all mask extensions must be approximately two inches.



It's not all fun and games. Today's teams mean business.



Winning is far more complex today than it used to be. Success equates with survival...and survival is serious business. From collegiate teams in need of fatter alumni dollars to professional organizations whose existence depends on profits, success is financially imperative. Anything that boosts performance...that gives you an edge on your opponents...is vital.

Sportsystems provides that edge. Eleven independent software systems...including CASI sports instruction, player evaluation, scouting, ticketing and financial management...give you the tools for better management and better play. And because all Sportsystems run on personal computers, costs are much lower than those of our competitors.

When it's your business to win, call Sportsystems toll-free at 1-800-447-CASI. We'll show you how to improve productivity on and off the field. The fun and games come later...when you celebrate a perfect season.

CASI, 2002 North Lois Ave., Tampa, Florida 33607, 813/873-0460

CASI
Sportsystems

The Business Of Winning

The NCAA News



Championship Highlights

SIU-Edwardsville defends Division II wrestling crown

Southern Illinois-Edwardsville, led by three individual champions, dominated the NCAA Division II Wrestling Championships and defended its team title with 48½ points to spare over runner-up Nebraska-Omaha.

The Cougars sent seven wrestlers into the semifinal round of the March 2-3 championships hosted by Wright State, with Tim Wright (118), Alan Grammer (134) and Booker Benford (177) winning individual titles. Wright and Benford were defending champions.

Maurice Brown (142), Ernie Badger (190) and heavyweight Al Sears placed second for the Cougars.

Augustana's (South Dakota) Koln Knight, who knocked off Badger, the No. 1 seed and defending champion, was named most valuable wrestler.

In the biggest upset of the championships, Augustana (South Dakota) heavyweight Keith Hanson, who was unranked, defeated Sears 6-3 for the title.

North Dakota's Jim Martinson (150) snapped Pittsburgh-Johnstown's Rob Yahner's 30-match victory streak with a 4-1 decision in the preliminary rounds. Martinson went on to take second place, while Yahner settled for third. Martinson lost to Nebraska-Omaha's Mark Manning, who won the title in 1983.

TEAM RESULTS

1. SIU-Edwardsville, 132½; 2. Nebraska-Omaha, 84½; 3. Augustana (S.D.), 57; 4. Ashland, 50½; 5. Edinboro, 48½; 6. North Dakota St., 43½; 7. Cal St. Bakersfield, 43; 8. Humboldt State, 39½; 9. South Dakota St., 39; 10. Wright State, 31½; 11. Portland State, 30½; 12. Northern Mich., 22½; 13. Liberty Baptist, 19½; 14. North Dakota, 19; 15. Wis.-Parkside, 16½; 16. (tie) Lake Superior, San Fran. St. and N.W. Missouri St., 14½; 19. Oakland, 13½; 20. Pitt.-Johnstown, 12; 21. Cal State Chico, 10; 22. LIU-C.W. Post, 7½; 23. (tie) Livingstone, Indiana Central and California (Pa.), 7; 26. Ferris State, 6; 27. Pembroke State, 4½; 28. (tie) Cal.-Davis, Norfolk State and Virginia State, 3½; 31. (tie) Central Missouri, Northern Colo., St. Cloud State and Southern Conn. 1.

INDIVIDUAL RESULTS

118-pound class

First round—Tim Wright, SIU-Edwardsville, def. Brett McNamar, Cal State Chico, 8-5; Joe Stukes, Pembroke State, def. Roger Singleton, Grand Valley, 4-3; Eddie Woodburn, Cal St. Bakersfield, def. John Tau, Liberty Baptist, 9-5; Mark Pitserski, Southern Conn., def. Mike Brown, NW Missouri St., 7-6; Mark Weston, Nebraska-Omaha, def. Pat Ingold, Northern Mich., by technical fall, 3:33; Rick DiCola, Ashland, def. Kevin Acquard, Mankato State, by technical fall, 7:00.

Quarterfinals—Wright def. Woody Pannick, Lake Superior, 4-4, 2-1 (ot); Woodburn def. Stukes, 12-2; Weston def. Pitserski, 16-2; Steve Anderson, North Dakota St., def. DiCola, 8-7.

Semifinals—Wright def. Woodburn, 13-5; Weston def. Anderson, 10-1.

Finals—Wright def. Weston 12-8; Third place—DiCola def. McNamar, 5-3; Fifth place—Woodburn def. Anderson, 5-4; Seventh place—Tau def. Ingold, 11-9.

126-pound class

Preliminary round—Tony Molchak, Ashland, def. Don Collins, North Dakota St., 8-6.

First round—Tim Begley, Wright State, def. Bill Colgate, Nebraska-Omaha, 10-0; Morteza Abedi, Cal St. Bakersfield, def. Greg Schoenberg, Missouri-Rolla, 5-4; Kyle Presler, Augustana (South Dakota), def. Blaine Dravis, Minn.-Duluth, 12-3; Molchak def. Aaron Jackson, Cal State Chico, 9-6; Rick Travis, Calif. (Pennsylvania), pinned Steve Stearns, SIU-Edwardsville, 5-42; Paul Anderson, St. Cloud State, def. Tim Bonds, Norfolk State, 7-5; Anthony Amado, Portland State, def. John Stukes, Virginia State, 17-10; Perry Ainscough, Liberty Baptist, def. Berard Priante, Lake Superior, 12-3.

Quarterfinals—Abedi def. Begley, 10-6; Presler def. Molchak, 8-3; Travis pinned Anderson, 4:09; Amado def. Ainscough, 5-5, 5-2 (ot).

Semifinals—Presler def. Abedi, 8-2; Amado def. Travis, by default, 6:57.

Finals—Amado def. Presler, 12-8; Third place—Stearns def. Begley, 7-0; Fifth place—Abedi def. Travis, 13-3; Seventh place—Ainscough def. Molchak, by default.

134-pound class

Preliminary round—Alan Grammer, SIU-Edwardsville, def. Mike Fox, Nebraska-Omaha, by technical fall, 3:50.

First round—Jack Maughan, North Dakota St., def. Bill O'Connor, NW Missouri St., 15-8; Rick Lapaglia, Ashland, def. Brad Brown, Northern Colo., 10-0; Skip Goerner, Lake Superior, def. Mark Hakala, Minn.-Duluth, 8-1; Grammer pinned Gil Schmidt, Cal State Chico, 1:16; Kelvin Clay, Livingstone, def. Joe

Triggs, Cal St. Bakersfield, 8-5; Steve Meckel, Humboldt State, def. Skip Smith, Wright State, 13-8; Vince McCullough, South Dakota St., def. Richard Ellingsen, San Fran. St., 7-7, 3-2 (ot); Ira Cheatam, Norfolk State, def. Terry Kennedy, Edinboro, by default, 1:06.

Quarterfinals—Maughan def. Lapaglia, 6-6, by default, 0:43 (ot); Grammer def. Goerner, by technical fall, 5:30; Clay def. Meckel, 8-5; McCullough def. Cheatam, 13-3.

Semifinals—Grammer, def. Maughan, by technical fall, 7:00; McCullough def. Clay, 1-1, criteria decision, (ot).

Finals—Grammer def. McCullough, 19-7; Third place—O'Connor pinned Meckel, 1:40; Fifth place—Clay def. Maughan, 1-1, 1-0 (ot); Seventh place—Ellingsen def. Goerner, 4-3.

142-pound class

First round—Shawn Murdoch, Lake Superior, def. Carlos Leveaux, San Fran. St., 11-4; Mike Frazier, North Dakota St., def. Eric Klein, Cal.-Davis, 14-3; Eric Lessley, Humboldt State, pinned Shawn Knudsen, Nebraska-Omaha, 4:39; Mark Danner, Central Missouri, def. Ray Hammond, Cal St. Bakersfield, 2-1; Todd Winter, Ashland, def. Mark Rangel, Northern Colo., 17-4; Jim Strande, South Dakota St., def. Bob Ray, Pitt.-Johnstown, 7-5; Dave Witgen, Oakland, def. Derrick Harper, Liberty Baptist, 16-11.

Quarterfinals—Murdoch def. Frazier, 11-3; Lessley def. Danner, 6-4; Winter def. Strande 14-5; Maurice Brown, SIU-Edwardsville, def. Witgen, 11-4.

Semifinals—Lessley def. Murdoch, 9-3; Brown def. Winter, 1-1, criteria decision (ot).

Finals—Lessley def. Brown, 3-3, criteria decision (ot); Third place—Winter def. Murdoch, 8-3; Fifth place—Frazier def. Witgen, 9-1; Seventh place—Knudsen, def. Strande, 17-7.

150-pound class

First round—Boyd Goodpaster, Portland State, def. Kevin Klemm, Central Missouri, 9-6; Lance Rogers, North Dakota St., def. Mike Curley, Grand Valley St., 9-7; Rob Yahner, Pitt.-Johnstown, def. Todd Geerts, Cal.-Davis, 11-0; Mark Manning, Nebraska-Omaha, def. Jack Thomas, Wright State, 5-1; Gerry Bell, Lake Superior, pinned Mike Rice, Livingstone, 2:09; Chuck Justice, Cal St. Bakersfield, def. Ramon Weston, Missouri-Rolla, 14-13.

Quarterfinals—Jim Martinson, North Dakota, def. Goodpaster, 9-2; Yahner def. Rogers, 9-2; Manning def. Bell, 14-4; Brian McTague, SIU-Edwardsville, def. Justice, 5-2.

Semifinals—Martinson def. Yahner, 4-1; Manning def. McTague, 5-2.

Finals—Manning def. Martinson, 11-6; Third place—Yahner def. McTague, 8-2; Fifth place—Justice def. Goodpaster, 12-6; Seventh

place—Thomas def. Geerts, 6-0.

158-pound class

Preliminary round—Michael Wood, Norfolk State, def. Brad Solberg, North Dakota, 11-2.

First round—Noel Hygelund, Portland State, def. Dan McGinnis, SIU-Edwardsville, by technical fall, 7:00; Alan Morris, Cal.-Davis, pinned Tom Cluehey, Pembroke State, 4:57; Mike Muckerheide, Wis.-Parkside, def. John Frerichs, Augustana (South Dakota), 5-2; Ken Davis, Wright State, def. Wood, 16-5; Curt Ramsey, Nebraska-Omaha, def. Jerry Middleton, Cal State Chico, 16-7; Jerry Umin, Oakland, def. Doug Cox, South Dakota, 6-2; Craig Schwienebart, NW Missouri St., def. Gene Green, North Dakota St., 8-7; Mike Haheisy, Edinboro, def. Ardesheer Asgari, Cal St. Bakersfield, 9-6.

Quarterfinals—Hygelund def. Morris, 9-0; Davis def. Muckerheide, 5-4; Umin def. Ramsey, 1-1, 1-0, (ot); Haheisy pinned Schwienebart, 6:20.

Semifinals—Davis def. Hygelund, 12-0; Haheisy def. Umin, 4-2.

Finals—Haheisy def. Davis, 9-5; Third place—Ramsey def. Umin, 5-2; Fifth place—Muckerheide def. Hygelund, by technical fall, 7:00; Seventh place—Asgari def. McGinnis, 17-7.

167-pound class

Preliminary round—Matt Furey, Edinboro, pinned Brent Hoffner, North Dakota, 5:54.

First round—Tim Jones, Northern Mich., def. Scott Dyer, Minn.-Duluth, by technical fall, 6:58; Todd Yde, Wis.-Parkside, def. Greg Tanner, Cal.-Davis, 6-4; Howard Johnson, Liberty Baptist, def. John Solomonson, Oakland, 4-2; Furey def. Chris Cordov, Cal State Chico, by technical fall, 6:42; Howard Lawson, Cal St. Bakersfield, def. Ray Porter, Ashland, 2-1; Andrew Steffen, San Fran. St., def. Bud Postma, South Dakota St., 6-2; Pat Johannes, North Dakota St., def. William Wansley, Virginia State, 12-11; Doug Hassel, Nebraska-Omaha, pinned Chris Burke, Hampton, 3:22.

Quarterfinals—Yde def. Jones, 14-12; Furey def. Johnson, 18-5; Lawson def. Steffen, 8-2; Johannes def. Hassel, 11-4.

Semifinals—Furey def. Yde, 7-3; Lawson def. Johannes, 9-7.

Finals—Furey def. Lawson, 8-4; Third place—Steffen def. Johannes, 7-2; Fifth place—Yde, def. Jones, by default; Seventh place—Wansley def. Hoffner, 8-5.

177-pound class

First round—Pat Bussy, Liberty Baptist, def. Bruce Nameth, Cal.-Davis, by technical fall, 7:00; Jim Zachar, Ashland, pinned Rich Kramer, Mankato State, 1:17; Dennis Veal, Northern Colo., def. Ted Keyes, Wis.-Parkside, 7-6; Booker Benford, SIU-Edwardsville, def.

Jeff Leuders, South Dakota St., 9-2; Dave Held, Edinboro, pinned Archie Kinney, Livingstone, 3:56; Paul Jones, Nebraska-Omaha, def. Tony Mitchell, Wright State, 14-4; John Morgan, North Dakota St., def. Dean Wygal, Portland State, by technical fall, 5:30; Dave Iverson, Northern Mich., def. Don Wolf, Humboldt State, 17-6.

Quarterfinals—Zachar def. Bussy, 8-7; Benford pinned Veal, 3:56; Jones def. Held, 20-6; Morgan def. Iverson, 10-2.

Semifinals—Benford def. Zachar, 10-2; Jones def. Morgan, 6-4.

Finals—Benford def. Jones, 9-3; Third place—Morgan def. Zachar, 12-6; Fifth place—Bussy def. Held, 16-4; Seventh place—Iverson def. Leuders, 6-4.

190-pound class

First round—Paul Jungck, Ferris State, def. Matt Palmer, North Dakota State, by default; R.J. Nebe, Nebraska-Omaha, def. Chris Roll, Colorado Mines, 6-2; Derrick Munos, Northern Mich., def. Tim Gleeson, San Fran. St., 8-7; Ernie Badger, SIU-Edwardsville, pinned Mike Arnold, Lake Superior, 1:58; John Zgombic, Cal State Chico, def. Craig Patz, Wis.-Parkside, 13-6; Koln Knight, Augustana (South Dakota), pinned Dave Maiorana, Ashland, 1:20; John Kroez, LIU-C.W. Post, def. Jay Stainback, Pembroke State, 11-3.

Quarterfinals—Jungck def. Nebe, 8-7; Badger def. Munos, 15-5; Knight pinned Zgombic, 2:11; Kroez def. William Wright, Livingstone, 6-1.

Semifinals—Badger pinned Jungck, 6:59; Knight def. Kroez, 11-1.

Finals—Knight def. Badger, 13-8; Third place—Nebe def. Maiorana, 11-2; Fifth place—Kroez def. Jungck, 6-3; Seventh place—Munos def. Stainback, by default.

Heavyweight class

First round—Mike Monroe, Cal St. Bakersfield, pinned Mark Hansen, Mankato State, 5:26; Duane Lutgring, Indiana Central, pinned Jon Perry, Missouri-Rolla, 6:11; Rod Prnjak, Humboldt State, def. Brad Burkland, Edinboro, by technical fall, 6:30; Derek Edmonds, Pembroke State, def. Doug Kaehin, Cal State Chico, 8-3.

Quarterfinals—Joe Buelt, Northern Mich., def. Monroe, by technical fall, 5:05; Al Sears, SIU-Edwardsville, pinned Lutgring, 0:53; Al Holleman, South Dakota St., def. Prnjak, 9-4; Keith Hanson, Augustana (South Dakota), pinned Edmonds, 1:58.

Semifinals—Sears pinned Buelt, 3:19; Hanson def. Holleman, 12-5.

Finals—Hanson def. Sears, 6-3; Third place—Holleman def. Prnjak, 10-2; Fifth place—Lutgring def. Buelt, 5-4; Seventh place—Monroe pinned Edmonds, 1:54.

Lions escape from Flying Dutchmen's take-down attempt

Riding a late-season surge, Trenton State turned what was supposed to be a rebuilding year into a championship year by winning its second consecutive NCAA Division III Wrestling Championships team title.

Runner-up Central (Iowa) had a chance in the final round to deny coach Dave Icenhower's team its fourth team title in the past seven years. However, Central's Dale Lawrence (190) and heavyweight Scott Storjohann lost in overtime to St. Lawrence's Leland Rogers and Wisconsin-River Falls' Matt Renn, respectively, to propel Trenton State to the title March 1-2 at Augustana (Illinois).

The Lions' winning margin of 7½ points was established in the championship round when freshman Tim Jacoutot, who was named most valuable wrestler, defeated defending champion Steve Gliva of Augsburg, 16-6, for the 118-pound title; and Larry DeSimone, who placed third at 142 pounds last year, defeated Binghamton's Mike Truncate, 3-2, in overtime for the 150-pound class.

TEAM RESULTS

1. Trenton State, 67; 2. Central (Iowa), 59½; 3. Wis.-River Falls, 58½; 4. John Carroll, 52½; 5. Brockport State, 52; 6. Montclair State, 48½; 7. Buffalo, 42½; 8. Buena Vista, 38; 9. Augsburg, 34; 10. Wis.-Whitewater, 33½; 11. Olivet, 30½; 12. Ithaca, 29½; 13. Albany (N.Y.), 26½; 14. Cornell College, 25½; 15. Binghamton, 24; 16. Luther, 23½; 17. St. Lawrence, 22; 18. Thiel, 19; 19. Mount Union, 16½; 20. Delaware Valley, 15½; 21. Salisbury State, 14½; 22. (tie) Wis.-Platteville and Susquehanna, 13½; 24. (tie) Hiram, Potsdam State, and Western New Eng., 12½; 27. York (Pa.), 12; 28. (tie) Allegheny and Worcester Tech, 10; 30. Coast Guard, 9½; 31. (tie) Augustana (Ill.) and Chicago, 9; 33. St.

Thomas (Minn.), 8½; 34. (tie) Lycoming and Monmouth (Ill.), 6; 36. (tie) Bethel (Minn.), Hunter, Millikin and Oswego State, 5; 40. Ohio Northern, 4; 41. William Penn, 3; 42. (tie) Capital, Concordia-Moorhead, North Central, Wesleyan and Widener, 2; 47. (tie) Carleton and Washington (Mo.), 1½; 49. (tie) St. John's (Minn.), Cortland and Wheaton (Ill.), 1; 52. Rutgers-Newark and Oneonta State, ½.

INDIVIDUAL RESULTS

118-pound class

First round—Dan Pippenger, Coast Guard, def. Darryl Miller, Oneonta State, 0-0 (criteria); Steve Gliva, Augsburg, def. Mike Mueller, Wis.-River Falls, 9-4; John Canty, St. Lawrence, def. Jim Hughes, Buffalo, 9-8.

Second round—Dan Franch, North Central, def. Steve Bird, Wis.-Whitewater, 8-4; Pippenger pinned Brian McKinster, Coe, 6:23; Scott Arneson, Wis.-Platteville, def. Chris Tiemeier, Augustana (Ill.), 11-6; Gliva pinned Jack Hejazi, Thiel, 5:47; Joe Caloia, William Penn, pinned Canty, 5:18; Tim Jacoutot, Trenton State, pinned Randy Cook, Mount Union, 1:14; Tony Auletta, John Carroll, def. Clay Hathaway, Widener, 15-8; Shawn Sheldon Albany (N.Y.), pinned Jeff DeLucia, Lycoming, 4:49.

Quarterfinals—Pippenger def. Bird, 12-4; Gliva def. Arneson, 14-10; Jacoutot def. Caloia, 13-4; Auletta def. Sheldon, 4-3.

Semifinals—Gliva pinned Pippenger, 6:44; Jacoutot def. Auletta, 10-2.

Finals—Jacoutot def. Gliva, 16-6; Third place—Auletta def. Arneson, 8-5; Fifth place—Pippenger def. Cook 16-9; Seventh place—Bird def. Hathaway, 8-5.

126-pound class

First round—Tom Kessler, York (Pa.), def. Craig Cervantes, Central (Iowa), 9-7; Nick Milonas, Montclair State, pinned Dan Canale, Delaware Valley, 2:28; Mike Madry, Trenton State, def. Roland Marquis, Worcester Tech, 3-2 (ot); Bob Carr, Luther, def. Nick Posegay, Augustana (Ill.), 10-4.

Second round—Jay VanCleve, Cornell, def. Mike Coddington, Oswego State, 13-1; Kessler def. Pete Hayek, John Carroll, 13-7; Mike Sessor, Mount Union, def. Darryl Stephens, Wis.-River Falls, 14-11; Milonas def. Tim Skelton, MIT, 8-4; Dave Averill, Albany (N.Y.), def. Madry, 5-4; Lee McFerren, Allegheny, def. Mike Pantaleo, Olivet, 6-3; Carr def. Gary

Zink, St. Thomas (Minn.), 11-5; John Pecora, Wis.-Whitewater, def. Pat Hart, Binghamton, 7-5.

Quarterfinals—VanCleve def. Kessler, 16-11; Milonas pinned Sessor, 2:36; McFerren def. Averill, 9-4; Pecora def. Carr, 4-1.

Semifinals—Milonas def. VanCleve, 7-2; Pecora def. McFerren, by disqualification.

Finals—Milonas def. Pecora, 11-5; Third place—Pantaleo def. Kessler, 6-5; Fifth place—VanCleve def. McFerren, 12-7; Seventh place—Carr def. Sessor, by default.

134-pound class

First round—Pat Wittekind, Oswego State, def. Gerry Resor, Lebanon Valley, 9-4; John Balog, Albany (N.Y.), def. Todd Samuel, North Central, 8-5; Bart Morrow, Ithaca, def. Wendell Eason, Wis.-Whitewater, 12-6; Bill Hayes, Carleton, def. John Dale, Wheaton (Ill.), 10-2; Phil Corbett, St. Thomas (Minn.), def. John Ayre, Norwich, 18-5; Mario Pyles, Washington (Mo.), def. Brian Baker, St. John's (Minn.), 10-2.

Second round—Ed Ergenbright, Central (Iowa), def. Darrin Scott, Ohio Northern, 8-5; Tom Dowler, Allegheny, def. Wittekind, 9-5; Ralph Venuto, Trenton State, def. Balog, 9-8; Morrow def. Bill McHugh, Oneonta State, 8-3; Scott DeTore, Brockport State, def. Bill Hayes, Carleton, by technical fall, 4:37; Corbett pinned Vito Gruttaduria, John Carroll, 6:00; Jerry Tennant, Mount Union, pinned Pyles, 2:48; Dean Miller, Cornell, def. Eric Swiggum, Wis.-Platteville, 13-2.

Quarterfinals—Ergenbright def. Dowler, 12-7; Morrow def. Venuto, 8-2; DeTore def. Corbett, 12-3; Miller def. Tennant, 10-8.

Semifinals—Morrow def. Ergenbright, 9-5; DeTore def. Miller, by default.

Finals—DeTore def. Morrow, 5-3; Third place—Ergenbright def. Miller, 9-4; Fifth place—Venuto def. Corbett, 5-4; Seventh place—Tennant def. Dowler, 11-3.

142-pound class

First round—Joe Darling, Oswego State, def. Jeff Neil, Concordia-Moorhead, 5-3; Dan Pantaleo, Olivet, def. Carlos Gallego, Augustana (Ill.), 10-2; Dave Mierick, Luther, def. Chris Ruble, Wabash, 12-9; Tom Hall, Augsburg, def. Jim Fox, Albany (N.Y.), 4-1 (ot); Ken Pratt, Cornell, def. Pete Mankowich, Ithaca, 9-5.

Second round—Ed Brady, Wis.-Whitewater, def. Tom Bennett, John Carroll, 14-11; Roy

Wilt, Thiel, def. Darling, 6-5; Pantaleo def. Stephen Forrester, Mount Union, 10-2; Dave Recor, Brockport State, def. Mierick, 21-4; Hall pinned Blair Mullen, Glassboro State 3:52; Andy Komarek, Buffalo def. Jeff Horowitz, Worcester Tech, 11-9; Pratt def. Kirk Hudson, Wheaton (Ill.), 13-4; Shawn Smith, Delaware Valley, def. Paul Van Oosbree, Buena Vista, 6-5.

Quarterfinals—Brady pinned Wilt, 1:16; Pantaleo def. Recor, by technical fall, 3:51; Hall def. Komarek, 16-6; Smith def. Pratt, 15-6.

Semifinals—Pantaleo def. Brady, 10-2; Smith def. Hall, 22-10.

Finals—Smith def. Pantaleo, 6-4; Third place—Bennett def. Van Oosbree, 4-2; Fifth place—Hall pinned Brady, 1:55; Seventh place—Recor def. Komarek, 10-3.

150-pound class

First round—Larry DeSimone, Trenton State, def. Andy Lamancusa, Mount Union, 4-3; Daryl Stumph, Hiram, def. Ed Reilly, Rutgers-Newark, 13-6; Kevin Azinger, Central (Iowa), def. John Smith, York (Pa.), 13-2; John Leone, Brockport State, def. Tim Koffski, Augsburg, 8-2.

Second round—Mike Schimp, Buena Vista, def. Stieg Theander, Ripon, 8-4; DeSimone def. Roy Triveline, Augustana (Ill.), 9-7; Jason Barnett, John Carroll, def. Steve McKenzie, Wheaton (Ill.), 15-3; Stumph def. Tracy Snyder, Delaware Valley, 8-2; Azinger def. Dave DeCono, Wis.-Platteville, 11-5; Mike Truncate, Binghamton State, def. Joe Crispo, Worcester Tech, 8-0; Leone def. Paul DiMuzio, Johns Hopkins, 8-1; Dave Hickson, Buffalo, def. Dana Spiers, Thiel, 5-4.

Quarterfinals—DeSimone def. Schimp, 11-8; Stumph def. Barnett, 11-8; Truncate def. Azinger, 14-9; Hickson def. Leone, 5-4.

Semifinals—DeSimone def. Stumph, 5-4; Truncate def. Hickson, 4-3.

Finals—DeSimone def. Truncate, 3-2 (ot); Third place—Stumph def. Schimp, 9-5; Fifth place—Leone def. Hickson, by default; Seventh place—Crispo pinned Barnett, 1:41.

158-pound class

First round—Mike Martinovich, Western New Eng., def. Mitch Lance, Capital, 16-9; Paul Wyman, Worcester Tech, def. Paul Donner, Concordia-Moorhead, 14-6; Mark Macy, Wheaton (Ill.), def. Larry Iacovelli, Ithaca, 8-6.

Second round—Dan Dresser, Buena Vista, def. Pete Rao, Buffalo, 3-1 (ot); Lance def. Rick Miller, Cornell, 13-10; Jeff Anderson, John Carroll, def. Roger Forystek, St. Olaf, 12-7; Scott Bouslog, Luther, def. Wyman, 12-4; Todd Slade, Brockport State, def. Macy, 9-6; Andy Seras, Albany (N.Y.), def. Rick Spaulding, St. Lawrence, by default; Dwayne Standridge, Trenton State, def. Mike Carter, Wabash, 10-2; Kevin Troche, Hunter, def. Chris Coupland, Wis.-Stout, 12-5.

Quarterfinals—Dresser def. Lance, 13-5; Bouslog def. Anderson, 7-6; Seras def. Slade, 9-5; Standridge def. Troche, 8-5.

Semifinals—Seras def. Bouslog, 8-4; Third place—Slade def. Standridge, 2-1; Fifth place—Dresser def. Wyman, 9-7; Seventh place—Rao def. Troche, 10-3.

167-pound class

First round—John Schletty, St. John's (Minn.), def. Roger Crebs, Lycoming, 11-10; John Dobbs, Wis.-Platteville, def. Dan Wenzel, Carthage, 9-0; Steve Klein, Buffalo, def. Bret Kooi, Millikin, 4-0; Brian Curry, Trenton State, def. Tony DeCarlo, John Carroll, 9-2.

Second round—Brian Keller, Wis.-River Falls, def. Pat Gintert, Hiram, 15-2; Rod Wilt, Thiel, pinned Schletty, 2:43; Keith Cavayero, Binghamton, def. Jeff Bryner, Ohio Northern, 8-4; Dobbs def. William Martin, Coast Guard, 6-4; Kevin def. Tim Slade, Brockport, 9-3; John Monaco, Montclair State, def. Craig Robley, Luther, 13-3; Karl Lietzan, Chicago, pinned Brian Curry, Trenton State, 3:30

The NCAA News



NCAA Record

CHIEF EXECUTIVE OFFICERS

ROBERT H. DONALDSON selected as president at Fairleigh Dickinson-Teaneck. A specialist in international politics with a doctorate from Harvard, he had been provost and vice-president for academic affairs at Herbert H. Lehman. He joined the Vanderbilt faculty in 1968 and was named dean of the college of arts and sciences in 1975. **JESSE STONE** has announced his resignation as president of Southern-Baton Rouge, effective September 1.



Wimp Sanderson's contract has been extended at Alabama

Bridgewater (Virginia) head basketball coach Mel Myers has resigned

DIRECTORS OF ATHLETICS

LARRY TRAVIS named at Kansas State. Travis has been assistant athletics director at Georgia Tech, where he was assistant head football coach and offensive coordinator until 1980. Travis has also served on the staffs at Louisville, Mississippi and Kansas. **WALTER NADZAK JR.** chosen at The Citadel, succeeding **EDDIE TEAGUE**, who is retiring July 1 after 28 years as the AD. Nadzak has been director of marketing and development for the academy of senior professionals at Eckerd. He was head football coach at Connecticut for six years and football coach and athletics director at Juniata.

ASSISTANT DIRECTOR OF ATHLETICS

JIMMY CARROLL named at Alabama. He had been academic counselor and will be replaced in that position by **RAY BARRY-HILL**.

COACHES

Baseball — **BOBBY SAYLOR**, AD and head football coach at Maryville (Tennessee), will coach the baseball team. He coached American Legion baseball while at Hampden-Sydney.

Men's basketball — **TONY YATES** received a contract extension to 1989-90 at Cincinnati. He is currently in the second year of a five-year contract. **JIM HALLER** resigned at Baylor, effective March 2. No replacement has been named. **MEL MYERS**, head coach at Bridgewater (Virginia) for 23 years, announced his resignation, effective at the end of the current academic year. A 1952 Bridgewater graduate, Myers coached on the prep level before joining the staff at his alma mater. His record at Bridgewater was 236-327, and his overall coaching record is 335-369. Northwestern Louisiana coach **WAYNE YATES** resigned. He had been head coach for five years, compiling a 48-92 record. Yates had a 93-49 record as head coach at Memphis State for five years before joining the Northwestern Louisiana staff. **WIMP SANDERSON'S** contract has been extended four years at Alabama. He had one year left on his current contract. Sanderson spent 20 years as an assistant at Alabama before becoming head coach five years ago. **BOB REINHART** chosen at Georgia State after two years as an assistant with the Atlanta Hawks of the National Basketball Association. Interim coach Mark Slonaker will remain as an assistant.

Football — **RONAYNE WALDRON** selected at Catholic. He has been an assistant at Kentucky. He also was a graduate assistant at Virginia Tech, where he earned all-league honors as a player. **DWIGHT WALLACE** resigned as head coach at Ball State to become an assistant at West Virginia, succeeding quarterback coach **RUSS JACQUES**, who resigned. Wallace was an assistant at Iowa Wesleyan, Central Michigan, Colorado and Wisconsin and was head coach and AD at Ball State.

Football assistants — **STEVE LONG** and **BOB SABOL** named at Delaware. Long will coach offensive ends. He has been a graduate

assistant at Virginia. **SABOL** will coach the defensive backfield and will remain as recruiting coordinator. **JIM CALDWELL**, an assistant at Colorado the past three years, named at Louisville. An all-Big Ten defensive back at Iowa, Caldwell was an assistant at his alma mater before serving at Southern Illinois and Northwestern. **STEVE AXMAN** resigned as offensive coordinator and quarterback coach at Arizona to become offensive line coach with the Denver Gold of the United States Football League. Axman also has coached at Illinois, Army, Albany State and East Stroudsburg. **RAY ZENGLER** chosen at Missouri to coach outside linebackers. He has been an assistant at Temple, and he also coached at Pittsburgh and Minnesota. **BOBBY THOMPSON** selected at Nebraska-Omaha, where he also will be business manager for the athletics department. He has been head coach at Fort Hays State. **BOB AUDEZARD** named at Pace to coach the linebackers. **MARK LLOYD**, **DICK VAN VALKENBERG** and **TOM REDDINGTON** named at Canisius. Lloyd, a 1980 Canisius graduate, coached at a Pennsylvania high school. He still holds two Canisius receiving records and will coach wide receivers. Van Valkenberg has been head coach on the prep level for 14 years and returns to his alma mater as quarterback coach. Reddington will be defensive coordinator, the same position he had at Buffalo the past two years. **DAVE FLEISCHMAN** promoted to assistant head coach and offensive coordinator at Canisius. He had been offensive line coach. **BILL D'ANDREA** chosen at Southern Mississippi, replacing **RICK TRICKETT**, who resigned. D'Andrea has been an assistant at Clemson. He also coached at East Carolina, Wyoming and Auburn. **AL MILLER**, strength and conditioning coach at Alabama from 1982 to 1984, named to a similar post with the Denver Broncos of the National Football League. He also has been strength coach at Northeast Louisiana and Mississippi State. **STEVE BERNSTEIN** named defensive back coach at Colorado, succeeding **RON DICKERSON**, who accepted a position at Penn State. Bernstein was an assistant at Virginia Tech the past seven years. **DAVID HAIGHT** resigned at Arizona to become head coach at an Arizona junior college. Arizona State backfield coach **Ivy Williams** resigned to accept a similar position with the Detroit Lions of the NFL. Williams also has coached at Kansas, Kansas State, New Mexico State, Marshall and Xavier (Ohio). **ED YOUNGS**, inside linebacker coach at Cincinnati last season, promoted to assistant head coach. **ROBIN ROSS** promoted to defensive coordinator, replacing **RON CORRADINI**, who resigned. **JIM FULLER** promoted to assistant head coach at Alabama, where he will continue to coach the offensive line. He succeeds **KEN DONAHUE**, who resigned. **JOE KINES** selected as defen-

sive coordinator at Alabama. After five years of coaching on the high-school level, Kines joined the Jacksonville State staff as an assistant, moving to Clemson in 1977 and Florida in 1979.

Men's golf — **ELSTON MITCHELL** named head coach for both men's and women's golf at Illinois State, succeeding **HARLAND KILBORN**, who will remain as an advisor to the golf program and continue as professional at the Illinois State course. Mitchell was an assistant last year.

Men's ice hockey — **HERB BOXER** selected at Michigan Tech, replacing **JIM NAHRGANG**, who resigned. Boxer has been an assistant at Michigan Tech since 1976. A three-year varsity performer for the Huskies, Boxer played in the Detroit Red Wings minor-league hockey system for five years and was captain of the 1975 U.S. national team at the World Championships in Munich, West Germany.

Men's soccer — Cal State Dominguez Hills coach **JEFF FRIEDMAN** resigned after five years. He was replaced by **MARINE CANO**, who coaches the women's soccer team. Friedman compiled a 50-31-8 record that included a 10-0-1 mark during the Toros' 1982 California Collegiate Athletic Association championship season.

Women's soccer — **KEN KLINE**, a men's assistant for five years, named at Connecticut College. A Bridgeport graduate, he was head coach at Idaho during the 1980-81 season and has been athletics director at a Connecticut high school.

Women's softball **SHARON ARRINGTON**, who coaches women's basketball at Maryville (Tennessee), named head women's softball coach.

Men's tennis — **STEPHEN TAYLOR** chosen at Maryville (Tennessee). He has coached football and basketball on the prep and collegiate levels and played professional football with the Dallas Cowboys of the NFL and the Regina Roughriders of the Canadian Football League.

STAFF

Athletics fund director — **DAVID BRUNK** selected at Morehead State, replacing **DAN KISER**, who resigned. BRUNK had been general manager of the Fort Myers Royals of the Florida State Baseball League.

Director of athletics relations **JOE DEAN** named at Ohio. He is a former football assistant who joined the athletics department staff 19 years ago.

Media information officer — **MIKE JANKOWSKI** named at Niagara, where he will be a liaison between Niagara athletics and the media. Jankowski spent 13 years with the Buffalo, New York, Courier-Express.

Sports information director **BILL SULIVAN**, an assistant SID for five years at

George Mason, selected at William and Mary, effective April 1.

NOTABLES

BLACKIE SHERROD, columnist for the Dallas Morning News, named recipient of the Red Smith Award. Sherrod, 65, switched to the Morning News last January after 26 years with the Dallas Times Herald.

DEATHS

JOAN BLUMENTHAL, women's golf coach at Oklahoma from 1975 until her retirement in 1982, died February 4 of cancer. She was 54. Blumenthal won two Big Eight championships (1978 and 1981) and coached two Big Eight medalists during her career, in which she qualified teams or individuals for the NCAA championships or the Association for Intercollegiate Athletics for Women every year.

JOHN B. KELLY, U.S. Olympic Committee president, died while jogging March 2. He was 58. He won the Olympic bronze medal in the single sculls during the 1956 Games in Melbourne, Australia. Kelly also competed in the 1948, 1952 and 1960 Olympic Games; in 1947, he won the James F. Sullivan Award as the nation's outstanding amateur athlete. He was elected president of the Olympic committee in February.

POLLS

Division I Baseball

The top 30 NCAA Division I baseball teams through games of March 4 as selected by Collegiate Baseball, with season records in parentheses and points.

1. Mississippi State (7-0).....	496
2. Miami (Florida) (17-5).....	495
3. Texas (10-3).....	494
4. Florida State (17-3).....	489
5. Oklahoma (4-1).....	488
6. Stanford (15-4).....	486
7. UCLA (15-5-1).....	483
8. Florida (14-2).....	479
9. Oklahoma State (2-2).....	475
10. Georgia Tech (8-0).....	473
11. Arizona (21-6).....	470
12. North Carolina (6-3).....	469
13. Pepperdine (10-4-1).....	466
14. California-Santa Barbara (12-6-2).....	465
15. Arkansas (10-3).....	462
16. California (16-6).....	460
17. Oral Roberts (8-2).....	457
18. Indiana State (3-1).....	453
19. Michigan (0-0).....	450
20. Houston (9-0).....	448
21. South Carolina (5-2).....	445
22. San Diego State (10-6).....	444
23. Nebraska (3-1).....	439
24. Wichita State (8-2).....	438
25. Hawaii (16-8).....	435
26. Louisiana State (5-1).....	432
27. Maine (0-0).....	430
28. Cal State Fullerton (8-9-1).....	426
29. Washington State (8-3).....	425
30. Tulane (7-2).....	424

Division II Men's Basketball

The top 20 NCAA Division II men's basketball teams through games of February 25, with records in parentheses and points.

1. Virginia Union (27-0).....	160
2. Jacksonville State (23-1).....	152
3. Millersville (25-2).....	144
4. American International (24-3).....	136
5. Mount St. Mary's (24-3).....	128
6. Bentley (24-3).....	119
7. Eastern Montana (21-5).....	110
8. Northern Michigan (21-5).....	98
9. Florida Southern (22-5).....	88
10. Central Missouri State (20-5).....	80
11. Sacred Heart (22-5).....	71
12. Kentucky Wesleyan (20-5).....	63
13. Bridgeport (22-5).....	61
14. South Dakota State (20-6).....	60
15. Randolph-Macon (21-6).....	55

16. Norfolk State (19-5).....	36
17. Philadelphia Textile (21-6).....	33
18. Lewis (20-6).....	26
19. Gannon (20-7).....	16
20. Wright State (20-5).....	10

Division II Women's Basketball

The top 20 NCAA Division II women's basketball teams through games of February 24, with records in parentheses and points.

1. Central Missouri State (23-3).....	159
2. Chapman (24-3).....	149
3. Pace (25-2).....	141
4. Hampton University (26-3).....	138
5. Quinnipiac (24-3).....	133
6. St. Cloud State (22-4).....	119
7. Mercer (21-6).....	107
8. Cal Poly-Pomona (20-7).....	105
9. Northern Kentucky (16-8).....	92
10. North Dakota (22-4).....	89
11. Mount St. Mary's (19-5).....	80
12. Utica (20-2).....	77
13. Lewis (21-6).....	57
14. Stonchill (19-7).....	46
15. Tuskegee (21-5).....	45
16. Air Force (19-7).....	44
17. South Dakota (21-5).....	42
18. Bentley (21-5).....	21
19. Mercy (20-5).....	19
20. Florida International (21-5).....	7

Division III Men's Basketball

The top 20 NCAA Division III men's basketball teams through games of February 25, with records in parentheses.

1. Wittenberg.....	(25-3)
2. Widener.....	(22-5)
3. Hope.....	(21-3)
4. North Park.....	(22-4)
5. Nebraska Wesleyan.....	(20-4)
6. Colby.....	(22-2)
7. Otterbein.....	(23-3)
8. Potsdam State.....	(23-3)
9. Augsburg.....	(21-5)
10. Salisbury State.....	(22-5)
11. Clark (Massachusetts).....	(19-5)
12. North Central.....	(20-5)
13. William Paterson.....	(20-6)
14. Washington & Jefferson.....	(18-4)
15. LeMoyne-Owen.....	(20-6)
16. DePauw.....	(21-5)
17. Wisconsin-Whitewater.....	(19-7)
18. Trenton State.....	(22-5)
19. Greensboro.....	(20-6)
20. Buffalo State.....	(21-4)
21. Albany (New York).....	(21-5)

Division I Men's Ice Hockey

The top 10 NCAA Division I men's ice hockey teams through games of February 25, with season records in parentheses and points.

1. Rensselaer (25-2).....	60
2. Minnesota-Duluth (29-7-2).....	56
3. Michigan State (32-5).....	52
4. Boston College (26-10-1).....	47
5. Minnesota (26-10-3).....	45
6. Lake Superior State (24-14).....	40
7. Boston U. (19-12-3).....	30
8. Wisconsin (23-15).....	30
9. Harvard (15-5-2).....	28
10. North Dakota (22-15-1).....	24

Division III Men's Ice Hockey

The top 10 NCAA Division III men's ice hockey teams through games of February 25, with season records in parentheses and points.

1. Bemidji State (22-4-1).....	59
2. RIT (20-5-1).....	56
3. St. Thomas (Minn.) (22-4).....	51
4. Salem State (20-7).....	50
5. Babson (19-7).....	44
6. Union (N.Y.) (16-6-1).....	40
7. Gustavus Adolphus (14-11-1).....	33
8. Mankato State (15-10-4).....	31
9. Plattsburgh State (19-6).....	29
10. Oswego State (20-8).....	23

The NCAA News



The Market

Positions Available

Athletics Director

Director of Athletics. A management position with tenure track appointment in the Department of Physical Education, University of California, Davis. Responsibilities: Manages intercollegiate athletics, sports clubs and intramural programs. Serves as principal program liaison with campus, community and conference/national affiliations. Teaches activity/lecture courses in Physical Education Department. Qualifications: Demonstrated administrative experience in a university setting; experience in management of intercollegiate athletics (including policy, program and budget development and implementation); college level teaching and coaching experience; excellent communication skills; familiarity with implementation of information systems and commitment to affirmative action. Salary: \$41,300 minimum; 11 month service. Send letter of application, resume and three letters of recommendation to: Tom Harbour, Personnel Office, 190 Administration Annex, University of California, Davis, California 95616. Applications must be received by April 10; appointment date is July 1. The University of California is an equal opportunity, affirmative action employer.

Associate A.D.

Associate Director of Athletics for Women's Programs. The University of Wisconsin-Platteville is looking for a person to direct the Women's Intercollegiate Athletic Program. In addition, this person will coach two of the following sports: volleyball or basketball, and track or softball. There may be limited teaching in the Department of Health and Physical Education. Applicants should have experience in coaching and teaching with demonstrated administrative competencies. A Master's Degree in Health or Physical Education is preferred. **SALARY RANGE:** \$24,000-\$28,500 annual appointment. **APPLICATION DEADLINE:** March 22, 1985. Send application, resume and three letters of reference to: George H. Chryst, Director of Athletics, University of Wisconsin-Platteville, Platteville, WI 53818. The University of Wisconsin-Platteville is an equal opportunity-affirmative action employer.

Academic Advisor

Academic Advisors, the University of Virginia. Applications are invited for two full-time positions in the Academic Advising Office of the Department of Intercollegiate Athletics. **ASSISTANT ACADEMIC ADVISOR.** Responsibilities: Monitor academic progress of student-athletes. Participate in advising and counseling student-athletes. Coordinate tu-

torial programs and study halls. Monitor academic eligibility. Maintain complete records and compile end of semester academic reports. Miscellaneous duties as assigned by the Director of Academic Advising. Qualifications: Bachelor's degree required. MA in counseling or related area preferred. Experience in academic advising. Demonstrated personal relations skills. **ASSISTANT ACADEMIC ADVISOR.** Responsibilities: Monitor academic progress of student-athletes. Participate in advising and counseling student-athletes. Assessment and evaluation of learning needs of student-athletes. Develop and coordinate appropriate learning needs program. Miscellaneous duties as assigned by the Director of Academic Advising. Qualifications: MA in educational psychology or related area. Experience in the assessment and evaluation of learning needs. Demonstrated personal relations skills. Salary: Commensurate with experience and qualifications. Application Deadline: April 15, 1985. Send application, resume and recommendations to: Dr. Richard McGuire, Director of Academic Advising, Department of Intercollegiate Athletics, University of Virginia, P.O. Box 3785, Charlottesville, VA 22903. Equal Opportunity/Affirmative Action Employer.

Fund-Raising

Athletic Fund Raising. Executive director, Golden Eagles Varsity Club, Cal State University, Los Angeles, a nonprofit organization, seeks a person with interpersonal skills, initiative, high energy level, and ability to

oversee and conduct fund raising in support of athletic programs at Cal State Los Angeles. Located on the eastern edge of Los Angeles, Cal State LA has a student body of 22,000 full- and part-time students and is a member of the California Collegiate Athletic Association. Women's track and men's soccer compete at the NCAA Division I level, the other seven women's and nine men's teams compete in Division II. Require a bachelor's degree from an accredited university with advanced degree preferred. Significant successful fund raising experience and understanding of fiscal processes a must. Salary and benefits commensurate with experience and background. Send letter of application, a detailed resume and three letters of recommendation by March 22, 1985, to: Auxiliary Personnel Services, Cal State LA Foundation, Engineering Building, Room A 405, 9151 State University Drive, Los Angeles, California 90032 EO/AA/H/Title IX employer.

Promotions

Director of Promotions & Marketing. Scope: Coordinate and supervise departmental promotional and marketing activities for all sports. Responsibilities also include the areas of ticket sales, public relations, broadcasting, game management and fund raising. Experience: 3 years' experience in sales/marketing. Qualifications: Bachelor's degree required, Master's degree preferred. Salary: Commensurate with experience and qualifications. Submit application and resume to: Personnel Office, Pan American University,

Edinburg, Texas 78539. Pan American University is an Equal Opportunity/Affirmative Action Employer.

Fencing

Part-time Fencing Coach, Men and Women. Responsibilities are to handle the coaching and recruiting duties of the fencing teams and all other duties as assigned by the Athletic Director. Previous coaching experience is preferred. The salary will be commensurate with experience and background. Persons interested should direct inquiries and resumes to: Louanne Woodyard, Assistant Athletic Director, Duke University, Department of Athletics, Durham, North Carolina 27706. Duke University is an Equal Opportunity Employer.

Field Hockey

Varsity Field Hockey Coach/Assistant Athletic Director. Full-time. Coaching and administration associated with the Intercollegiate, Instructional, and Recreational programs. Varsity Field Hockey Coach carries primary responsibility for recruitment, pre-season planning, scheduling, fund raising, and coordination of in-season practice and competition. Coaching a spring season sport: softball or lacrosse. Department administration including fund raising logistics with travel for home and away contests. Inventory control, planning recreational and intramural activities

and data collection. BA or equivalent. Coaching and recruiting experience plus two years Athletic Administrative experience or the equivalent. Interested candidates may apply in writing to: Wheaton College, Personnel Office, Norton, Massachusetts 02766. Applications due by March 20. Affirmative Action/Equal Opportunity Employer.

Assistant Coach of Women's Field Hockey and Lacrosse. Acts as Assistant Coach of Women's Field Hockey and Lacrosse and Instructor in Physical Education. Must be able to work with and communicate with students, faculty and alumni, work within the framework of Ivy League regulations and financial aid program. Requires a BA degree or equivalent experience, and a successful background in coaching field hockey and lacrosse (preferably at the collegiate level). Position available September 1, 1985. Send resume to: Samuel Howell, Associate Director of Athletics, Princeton University, Princeton, New Jersey 08544. Equal Opportunity/Affirmative Action Employer M/F.

Football

Part-Time Assistant Football Coach. Under the direction of the Head Coach should assist with film breakdown, evaluation of players and grading of player personnel. Assist with film exchange with opponents, and be involved in the weight training program. **QUALIFICATIONS:** Bachelor's degree or equivalent. Paul Pawlak Jr., Head Coach, Northeastern See The Market, page 14

The NCAA News

The Market

Readers of The NCAA News are invited to use The Market to locate candidates for positions open at their institutions, to advertise open dates in their playing schedules or for other appropriate purposes.

Rates are 45 cents per word for general classified advertising (agate type) and \$22.60 per column inch for display classified advertising. Orders and copy are due by noon five days prior to the date of publication for general classified space and by noon seven days prior to the date of publication for display classified advertising. Orders and copy will be accepted by telephone.

For more information or to place an ad, call 913/384-3220 or write NCAA Publishing, P.O. Box 1906, Mission, Kansas 66201.

Positions Available

Continued from page 13

University, 360 Huntington Avenue, Boston, MA 02115.

Football Coach. Head coach and physical education instructor for NCAA Division II university. Responsibilities include organizing and directing all activities of the football program and teaching physical education. **QUALIFICATIONS:** Bachelor's degree required, master's or advanced degree preferred; minimum 5 years' experience coaching organized football; knowledge of NCAA regulations and philosophy; demonstrated ability in recruitment of student-athletes. Candidates must submit letter of application, professional vita and at least 3 letters of recommendation by March 10, 1985. Address application to Dr. Lawrence Fitzgald, Athletic Board Chairman, Southern Connecticut State University, New Haven, Connecticut 06515, AA/EOE.

Assistant Football Coach. Western Michigan University. Required: Bachelor's degree, five years' coaching experience. Responsibility for organization of offensive practice and game plan. Thorough knowledge and demonstrated ability as an offensive coach also required. Recruiting and public relations abilities. Ability to promote strong intrapersonal skills. Reports directly to the head coach. Salary commensurate with experience. Application deadline March 11, 1985. Send resume to: Coach Jack Harbaugh, c/o Employment Office, Western Michigan Uni-

versity, Kalamazoo, Michigan 49008.

Assistant Football Coach. Bachelor's degree required. Successful high school coaching experience and/or successful college coaching experience required. Responsibilities will be coaching, recruiting and scouting. Salary is commensurate with experience. Send application to: Dennis Raelz, Head Football Coach, Indiana State University, NPE 107, Terre Haute, Indiana 47809. Indiana State University is an Affirmative Action/Equal Opportunity Employer.

Assistant Football Coach. The University of Northern Iowa is seeking qualified applicants to fill the position of Assistant Football Coach. To assist Head Football Coach; coordinate recruiting efforts of student-athletes; work with defensive coaching staff; recruit athletes; and assist with fund raising efforts. Position requires a BS degree with coaching experience preferred. Send letter of application, resume and three letters of reference by March 15, 1985, to Joe Young, Personnel Services, 225 Latham Hall, University of Northern Iowa, Cedar Falls, Iowa 50614. The University of Northern Iowa is an Affirmative Action/Equal Opportunity Employer.

Gymnastics

Assistant Women's Coach. Assist the Head Women's Gymnastics Coach with recruitment, scheduling and practicing. Position includes extensive choreography and responsibility for beam and floor routine construction. Requires Bachelor's and experience with upper level Class I and elite competitors. Must be familiar with USGF judging guidelines and fundamentals. Must have a desire to recruit and train top level collegiate gymnasts. \$14,000 minimum plus excellent benefits. Apply with letter of application and resume by April 15 to: Dr. June B. Davis, Director of Women's Athletics, University of Nebraska, 103 South Stadium, Lincoln, Nebraska 68588-0121. Affirmative Action/Equal Opportunity Employer.

Soccer

Varsity Men's Soccer Coach. Some teaching responsibilities. Salary negotiable. Application deadline April 1, 1985. Submit application, recommendations, and undergraduate and graduate transcripts to: Kenneth Gardner, Director of Athletics, Northeast Missouri State University, Kirksville, Missouri 63501. An Equal Opportunity Employer.

Head Coach Women's Soccer/Head Coach Women's Track/Physical Education Instructor. Administrative position with faculty rank (non-tenure track). Physical Education teaching responsibilities in a required service program and/or theory courses in coaching in the coaching minor program. Master's degree in physical education and college coaching experience in both sports preferred. Nine month appointment. Alfred University is an NCAA Division III private institution located in Southwestern New York. Undergraduate enrollment is 1,800 students with a broad based athletic program for men and women. The successful candidate must display essential coaching skills, experience in recruiting and a gregarious personality as well as quality teaching credentials. Submit letter of application, resume and letters of recommendation by April 1, 1985, to Gene Castroville, Director of Athletics, Alfred University, Alfred, New York 14802. Women and minorities are encouraged to apply. An Equal Opportunity/Affirmative Action Employer.

Head Soccer Coach/Men's Track Coach. Position is full-time, 10-month contract beginning as soon as possible. Preferred: Master's degree with coaching experience at college level. Some teaching responsibilities included in the position. Please call Mr. John Hill, Department of Athletics, 419/448-2019, and send letter of application, resume and references to: John D. Hill, Director of Athletics, Heidelberg College, 310 East Market Street, Tiffin, Ohio 44883.

Head Coach Women's Soccer. Acts as Head Coach of Women's Soccer and Instructor in Physical Education. Must be able to work with and communicate with students, faculty, and alumni; works within the framework of Ivy League regulations and financial aid program. Requires a BA degree or equivalent experience, and a successful background in coaching soccer (preferably at the collegiate level). Position available September 1, 1985. Send resume to: Samuel Howell, Associate Director of Athletics, Princeton University, Princeton, New Jersey 08544. Equal Opportunity/Affirmative Action Employer M/F.

Swimming

Head Swim Coach. Lake Forest College is accepting applications for the dual position of head swim coach (men and women), assistant soccer coach (men). Additional responsibilities include assisting with intramural and community programs, recruiting qualified student athletes and other areas as directed by the athletic director. Interested individuals should send a resume and three letters of recommendation by April 15, 1985, to: Michael Dau, Athletic Director, Lake Forest College, Lake Forest, Illinois 60045. Equal opportunity employer. Applications from women and minorities are actively encouraged.

Head Coach, Men's and Women's Swimming. University of Idaho. Ten month, full time position as Head Coach of Men's and Women's Swimming and Diving program in Division I institution. Beautiful 2 pool complex with 400 spectator balcony seating. Bachelor's degree and previous coaching and competition required, preferably at the collegiate level. Responsibilities include recruiting, budgeting, travel arrangements, practice and competitive responsibilities, and academic health for athletes. Public relations and program development are important activities as well. Starting Date: August 12, 1985. Letter of application, resume, and references must be received by April 12, 1985. Send application materials to: Kathy Clark, Assistant Athletic Director/Programs, 223 KAC, University of Idaho, Moscow, Idaho 83843. University of Idaho is an Equal Opportunity/Affirmative Action Employer.

HEAD COACH OF TENNIS AND WOMEN'S SOCCER KENYON COLLEGE

This is a new full-time appointment in the Department of Physical Education and Athletics.

Responsibilities: Organize, manage, and coach the above programs, includes conducting winter and spring conditioning, continue to develop the women's soccer program. Teach a limited number of Physical Education courses. Other administrative duties as assigned by the Director of Physical Education and Athletics.

Qualifications: Master's degree in Physical Education preferred but not required. Demonstrated successful coaching experiences in both tennis and soccer.

Salary: Commensurate with experience and qualifications.

Application Deadline: April 1, 1985.

Application Procedure: Send resume, letter of recommendation, and records of coaching and teaching experience to:

Jeffrey Vennell
Director of Athletics
Kenyon College
Gambier, Ohio 43022

An Affirmative Action/Equal Opportunity Employer

PROMOTIONS AND PUBLIC RELATIONS DIRECTOR THE UNIVERSITY OF MINNESOTA-TWIN CITIES

Qualifications: BA/BS degree with 3 years' related experience required. MA degree and 5 years' experience preferred.

Responsibilities: Responsible for all phases of promotions and public relations for Women's Athletics including developing promotional campaigns for the general public and target groups to promote game ticket sales and event attendance; developing short and long range plans for development of external resources to fund promotions; coordinating direct mailings and advertising for promotion and ticket sales; arranging special events in conjunction with athletic events and coordinating promotions and sponsorship of special events for the women's athletic scholarship fund.

Appointment: Effective July 1, 1985 (12 month, 100% appointment).

Salary: Commensurate with experience.

Application: Send letter of application, resume, transcripts, and three letters of recommendation by April 1, 1985, to:

Dr. Jan Stocker
Chair of Promotions & Public Relations Director Search
Bierman Building
516 15th Avenue S. E.
University of Minnesota
Minneapolis, MN 55455

The University of Minnesota is an equal opportunity educator and employer and specifically invites and encourages applications from women and minorities.

Track & Field

Track and Field. Assistant Track and Head Cross Country Coach, Men and Women's, University of Virginia. Minimum of five years' coaching experience — both men and women. With ability to recruit, take care of administrative work and work closely with the Director of track and cross country on all matters. Specific coaching duties during the indoor and outdoor track seasons would be coaching the 3000M, 3000S.C., 5000M, and 10,000M. Application deadline March 15, 1985. Appointment date July 1, 1985. Send resume and three letters of reference to: Dennis Craddock, Director of Track and Cross Country, University of Virginia, P. O. Box 3785, Charlottesville, VA 22903. Equal Opportunity/Affirmative Action Employer.

Head Coach of Track — Virginia Military Institute. Responsible for providing leadership in the planning of all phases of the cross country, indoor and outdoor programs including academic guidance, budget supervision, scheduling, travel and recruitment of student-athletes within the rules of the institution, the Southern Conference and the NCAA. Candidates should have a bachelor's degree with a master's preferred, demonstrated skills in managing a sports program in a major educational institution or similar environment. Salary commensurate with experience and qualifications. Send letter of application, resume and references to Personnel Office, VMI, Lexington, Virginia 24450, by March 29, 1985. An equal opportunity/affirmative action employer.

Men's Track Coach/Head Soccer Coach. Position is full-time, 10-month contract beginning as soon as possible. Preferred: Master's degree with coaching experience at college level. Some teaching responsibilities included in the position. Please call Mr. John Hill, Department of Athletics, 419/448-2019, and send letter of application, resume and

references to: John D. Hill, Director of Athletics, Heidelberg College, 310 East Market Street, Tiffin, Ohio 44883.

Volleyball

Assistant Coach Women's Volleyball. University of Idaho. 10 month, 3/4 time position as Assistant Coach of Division I Volleyball program within the Mountain West Athletic Conference. Bachelor's degree and previous coaching and playing experience required, preferably at collegiate level. Responsibilities include: recruiting, budgeting, travel arrangements, practice and competitive responsibilities, and academic health for athletes. Public relations, USVBA, and camp work are important activities as well. Starting Date: August 12, 1985, with possible summer camp work. Letter of application, resume, and references must be received by April 5, 1985. Send application material to Kathy Clark, Assistant Athletic Director/Programs, 223 Kibbie Activity Center, University of Idaho, Moscow, Idaho 83843. University of Idaho is an Equal Opportunity/Affirmative Action Employer.

Water Polo

Assistant Coach. Responsible for managing and coaching men's and women's water polo teams under direction of head swimming coaches and assisting the head men's swimming coach in all duties relating to the training and coaching of intercollegiate swimming. Additional duties include scheduling, travel arrangements, recruiting, and fund raising. Requires Bachelor's degree; demonstrated water polo coaching experience; successful career as a competitive swimmer and/or significant background in various levels of coaching; competence in recruiting.

See The Market, page 15

AUSTIN PEAY STATE UNIVERSITY HEAD TENNIS COACH/DIRECTOR OF GOVERNORS INDOOR TENNIS CENTER

Responsibilities: Development of intercollegiate tennis program for men and women. Management of Governors Indoor Tennis Center. Promotion of the university as a regional center for junior tennis development.

Qualifications: Bachelor's degree. Successful experience as intercollegiate tennis coach. Proven ability to manage an indoor tennis facility and to organize an effective junior development program.

Application Procedure: Submit letter of interest, application form, three current letters of recommendation to: Personnel Office, Austin Peay State University, Clarksville, Tennessee 37044, by April 15, 1985. Position available June 1, 1985. For more information and application form, contact Personnel Office at above address or by calling 615/648-7177.

Equal Opportunity/Affirmative Action Employer

DIRECTOR OF ATHLETICS California State University, Fullerton Fullerton, California

Applications and nominations are being accepted for the position of Director of Athletics at California State University, Fullerton. California State University, Fullerton, is an NCAA Division I member offering 11 men's and 9 women's varsity sports which competes in the Pacific Coast Athletic Association Conference.

Qualifications: Candidates must possess expertise in the administration and development of successful intercollegiate athletic programs, excellent management and fund raising skills and demonstrate the ability to successfully perform the responsibilities as listed. Bachelor's degree is required (a master's degree is preferred) with a minimum of three years of athletic administration experience, preferably at the Division I level.

Responsibilities: Direct coaches and staff of the Athletic department; formulate and manage a budget in excess of three million dollars; plan and conduct effective fund raising activities; work effectively with university administrators, faculty, staff, students and community people; negotiate contracts, and build competitive schedules. The Athletic Director must know and enforce NCAA rules and regulations and demonstrate a commitment to academic achievement for student-athletes.

Salary: \$55,000 to \$70,000. 12 month appointment.

Application Deadline: Nominations are welcome. To ensure consideration, a letter of application, resume and names, addresses, and phone numbers of at least five current references must be received by March 29, 1985. The committee will continue to receive applications and nominations until the position is filled.

Address correspondence to:

Dean Peter A. Facione, Chair
Search Committee for Director of Athletics
Office of the President, LH 900
California State University, Fullerton
Fullerton, California 92634

CSUF is an Equal Opportunity Affirmative Action, Title IX employer.

UNIVERSITY OF WISCONSIN-GREEN BAY

Position: Head Coach, Men's Basketball Program, NCAA Division I.

Duties: Responsible to the Director of Intercollegiate Athletics. Organize and prepare all aspects of the basketball program, including practice, game preparations, competition, and off-season training; recommend future schedules; administer a recruiting program; supervise coaching staff, and assist with promotional and public relations activities; may teach in the physical education program.

Qualifications: Master's degree in physical education, recreation, education or related field; 5 years' experience coaching basketball at the college or university level. Experience in Division I basketball program desirable but not essential.

Salary: Negotiable.

Starting Date: 1 April 1985, or immediately thereafter.

To Apply: Send letter of application and resume to:

Search and Screen Committee
Suite 815, Library Learning Center
University of Wisconsin-Green Bay
Green Bay, WI 54301-7001

The University of Wisconsin-Green Bay is an equal opportunity employer.

HEAD MEN'S BASKETBALL COACH East Tennessee State University

East Tennessee State University is seeking nominations and applications for the head men's basketball coach.

Responsibilities: Successfully manage and direct the basketball program by supervising the basketball staff; maintaining positive public relations; and participating in the promotion of the program. The head coach is expected to maintain high ethical standards and abide by the rules and regulations of the University system, Southern Conference, and NCAA.

Qualifications: Demonstrated record of success in college basketball coaching with 3-5 years' experience as a head coach.

Salary: Negotiable, depending upon qualifications.

Screening of letters of nominations and applications with current resumes will begin March 15, and should be sent to:

Dr. Richard A. Manahan
Executive Assistant to President/Vice President
for Finance and Administration
East Tennessee State University
P. O. Box 23860A
Johnson City, Tennessee 37614

ETSU is an affirmative action/equal opportunity employer.

The NCAA News



The Market

Positions Available

Continued from page 14

and budget management with good interpersonal skills. 9 month position. September 1 to May 31. Send resume to Joe Bernal, Coach of Men's Swimming, Harvard Department of Athletics 60 John F. Kennedy Street, Cambridge, MA 02138. An affirmative action/equal opportunity employer.

Graduate Assistant

Graduate Assistantships. Graduate Study in Sport Coaching, Sport Management, Sports Medicine and Fitness Management leading to an M.S.S. Graduate Assistantships and Scholarships are available for the 1985-1986 academic year. Assistantships include tuition waiver and a \$3,300.00 stipend. Interested students should apply immediately. For more information contact: Director of Admissions, U.S. Sports Academy, Box 8650, Mobile, AL 36608, 205/343-7700. The Academy accepts students regardless of race, religion, sex or national origin.

Graduate Assistant. To work with Head Athletic Trainer within the athletic department at Radford University. Duties include assisting with coverage of 15 intercollegiate teams, supervising student trainers and other duties as assigned by the Head Athletic Trainer. Experience in athletic training at the collegiate level is required. NATA Certification preferred but not necessary. Stipend dependent upon qualifications and experience. Radford University is located in Southwest Virginia and has recently attained NCAA Division I status. Send letter of application, resume and two letters of recommendation by April 12, 1985, to Jackie Clouse, ATC, Radford University, Box 5737, Radford, Virginia 24142.

Physical Education

Physical Education/Women's Athletics: Full-

time, tenure-track position in Health, Physical Education and Recreation. Also will coach women's basketball and softball. Teach activity courses in several of the following areas: team sports, racket sports, swimming (WSI required), archery, conditioning, track and field, and introduction to recreation. M.A. required, preference given to those with successful teaching and coaching experience. Send resume and references by April 1, 1985, to Academic Dean, Briar Cliff College, Sioux City, Iowa 51104. AA/E/OE.

Aquatics Director - Swimming Coach. Abion College is accepting applications for a 12-month appointment beginning May 1985. Master's degree and WSI required. Preference given to those with aquatics management, knowledge, experience and skills. Proven ability to supervise people; previous coaching and teaching experience on the college level. Responsibilities are to oversee all aspects of operating aquatics center, scheduling within college policies and priorities, monitor operating budget, assign student help for pool. Coach men's and women's swim teams, teach college credit swimming classes and supervise the intramural aquatic program. Submit letter of application, resume, official transcripts and three names of references to Frank Joranko, Athletic Director, Abion College, Abion, Michigan 49224, by April 1, 1985. Abion is an equal opportunity, affirmative action employer.

Lecturer/Physical Education. Instruction in Dance including all levels of ballet, modern and jazz dance, theory courses in introduction to dance, improvisation and composition. Supervision of Dance Council. Qualifications: Earned baccalaureate degree, Master's degree preferred; professional performing experience with a major company required. Choreographing and teaching experience at a college level preferred. Salary commensurate with qualifications and experience; application deadline March 8, 1985. Letter of application, current vita and names of three professional references to: William M. Moore, Physical Education, P.E. 342, State University of New York at Albany, Albany, NY 12222. SUNY Albany is an Equal Opportunity/Affirmative Action Employer.

Lecturer/Physical Education. Coach of Women's Tennis. Administrative and/or coaching duties as assigned. Instructor of tennis, rac-

quetball and squash. Qualifications: College playing experience in tennis; teaching of racket sports at college or scholastic level. Sensitivity and responsiveness to need of women in intercollegiate athletics. Salary commensurate with qualifications and experience; application deadline March 18, 1985. Letter of application, current vita and names of three professional references to: William M. Moore, Physical Education, P.E. 342, State University of New York at Albany, Albany, NY 12222. SUNY Albany is an Equal Opportunity/Affirmative Action Employer.

Physical Education/Athletics. Head Coach of Men's Indoor and Outdoor Track; Instructor in Basic Physical Education Program. Qualifications: Earned baccalaureate degree; master's degree preferred; playing experience at the collegiate level; collegiate or scholastic coaching experience; sensitivity and responsiveness to needs of minority students; must be qualified to teach beginning and/or advanced physical education classes in selected individual and team sports. Salary dependent upon experience, background and qualifications. Application Deadline: March 25, 1985. Send resume and names of three professional references to: William M. Moore, Physical Education, P.E. 342, State University of New York at Albany, Albany, NY 12222. SUNY Albany is an Equal Opportunity/Affirmative Action Employer.

Physical Education/Head Women's Track and Field and Cross Country Coach. The University of Northern Iowa invites applications for Head Women's Track and Field and Cross Country Coach/Physical Education Instructor. Two year term appointment; academic year only. Master's degree required. Preferred qualifications include college coaching and college teaching experience. Responsibilities include: coaching women's cross country and track and field teams and teaching activities in the Physical Education program; experience in aerobic dance preferred. Effective starting date: August 15,

1985. To ensure consideration, apply by April 1, 1985. Applications should include: letter of application and resume, and three letters of recommendation or the identity of three individuals who may be contacted by the Search Committee. Send applications to: Dr. Jeanette Marsh, Coordinator of General Education, School of Health, Physical Education and Recreation, University of Northern Iowa, Cedar Falls, Iowa 50614-0241. UNI is an equal opportunity, affirmative action employer. Protected class members are encouraged to apply.

Miscellaneous

Head Coach needed for two of the following women's sports: basketball, field hockey, lacrosse. Teaching responsibilities in physical education. A master's degree is preferred, a baccalaureate degree is required. Successful background in coaching necessary, preferably with several years' experience at the collegiate level. Salary commensurate with qualifications. Applications must be received by March 22, 1985. Position available: September 1, 1985. Send letter of application and resume to: David B. Smoyer, Chairman of Physical Education and Athletics, Swarthmore College, Swarthmore, PA 19081. EOE, M/F/H.

Director of Miami University's Goggin Ice Arena. Directs modern, eight-year old arena with two ice surfaces, a large skate rental and pro shop, and a staff of ten plus student employees. Responsible for budget preparation, fiscal management, plant operation and maintenance, supervision of arena staff, coordination of intercollegiate hockey program, and development of programs by arena staff or in cooperation with other University departments. Programs include University physical education classes, University intramural hockey and broomball leagues, an intercollegiate hockey team in the CCHA, a club

hockey team, youth hockey teams, two USFSA clubs, figure skating schools and competition. Qualifications include ability to plan, organize, and direct ice programs, to work effectively with diverse publics, and competence in facilities management, fiscal management, supervision of personnel, and public relations. A bachelor's degree in a relevant field or substantial experience in arena management and program development is desired. Ability to teach ice skills is preferred. Salary commensurate with qualifications and experience. Send complete resume, including salary history, and the names, addresses and telephone numbers of at least three references to: Earl D. Folker, Director of Business Affairs, Miami University, Oxford, Ohio 45056. The position is open until filled. Equal Opportunity in Education and Employment M-F-H.

Women's Basketball. Needs Division I opponent for its 1985 Christmas tournament. Contact: Gela Mazella, Wagner College, Staten Island, New York 10301, 718/390-3227.

Football. Northern Iowa Division I-AA needs a home game on September 28, 1985. Guarantee negotiable, possibility of return game in 1986-87. Contact: Jersey Jermier, 319/273-3097.

Division I Women's Basketball. Providence College, a member of the Big East Conference, has an opening for a fourth team (with guarantee) for the annual PC Invitational Basketball Tournament to be held on Saturday/Sunday December 7-8, 1985, in Providence, Rhode Island. Interested Division I programs in the South, Midwest or West Coast are urged to contact: Helen Bert, Associate Athletic Director, 401/865-2588, as soon as possible.

University of Houston Invitational. Needing one team Division I to play one match versus LSU, Missouri, Montana and Houston. September 27-28, 1985. Six rooms lodging for two nights guaranteed. Contact: David Albright, 713/749-2657.

Women's Basketball. Penn State needs one team for Lady Lion Classic, November 22-23, 1985, guarantee available. Call Bob Foley, 814/863-2672.

Open Dates

Men's Basketball. Central Connecticut State University (Division I in 1986-87) is seeking Division I teams for its tournament on January 23, 1987. Contact: Richard McDuffie, 203/827-7347.

COLLEGE COACHING/TEACHING POSITIONS

Position I: Assistant Coach of Men's Basketball and Administrative Duties as assigned. Instruction in Basic Activities, including Conditioning Activities and Team Sports.

Position II: Assistant Coach of Football and Administrative Duties as assigned. Instruction in Basic Activities including Conditioning Activities and Team Sports.

Qualifications: Earned Baccalaureate Degree, Master's Degree preferred. Playing experience at collegiate level. Collegiate or Scholastic Coaching Experience. Sensitivity and responsiveness to needs of minority students.

Salary: Dependent upon experience, background and qualifications.

Application Deadline: March 18, 1985.

Send resume and names of three professional references to:

Leon J. Calhoun
Physical Education, P.E. 342
State University of New York at Albany
Albany, NY 12222

State University of New York at Albany is an Equal Opportunity Affirmative Action Employer.

ATHLETIC DIRECTOR UNIVERSITY OF TAMPA

Direct professional staff in men's and women's intercollegiate athletics. Manage athletic budget. Maintain strong intercollegiate, intramural, and recreational program. Engage in fund raising activities. Foster excellent relations between athletes, alumni, faculty and students. Oversee athletics facilities.

Requires BA or BS. Knowledge of and commitment to NCAA rules. Previous experience as a coach and in athletic administration at the collegiate level. MA with experience in fund raising and marketing, especially through television and radio preferred. Salary commensurate with qualifications and experience.

The University of Tampa is located in the City of Tampa on Florida's West Coast. The university is presently a member of the Sunshine State Conference, NCAA Division II. A move to Division I is being considered.

The closing date for applications is Friday, March 29. Letter of application and resume should be sent to:

The University of Tampa
Personnel Office
401 West Kennedy Boulevard
Tampa, Florida 33603

The University of Tampa is an Affirmative Action/Equal Opportunity Employer.

ASSOCIATE DIRECTOR OF ATHLETICS (Staff Associate) UNIVERSITY OF MASSACHUSETTS AT AMHERST

The University of Massachusetts at Amherst, which sponsors an NCAA Division I (Div. I-AA Football) program, is seeking applications for the position of Associate Director of Athletics. The University has made a commitment to enhance the existing athletic program and is seeking the services of a management-oriented Associate Director who has had demonstrable successful experience working with intercollegiate athletics, including those that are revenue-producing. The Associate Director will be responsible for assisting with the administration of a broad program, which at present encompasses 13 men's, 14 women's and 3 Stockbridge School (2-year program) sports. Candidates must have experience in the administration and promotion of athletics. Candidates must also have experience with the policies promulgated by the various governing agencies. Candidates should have significant successful experience in the area of budget management and athletic personnel management. Candidates should be able to show successful experience with developing positive relationships with various athletic and community constituencies. Bachelor's Degree required from an accredited institution. Master's degree is desirable. Successful NCAA Division I or Division I-AA coaching experience will be looked upon with favor. The University of Massachusetts at Amherst has a student body of approximately 25,000 undergraduate and graduate students. The University of Massachusetts at Amherst is a member of the National Collegiate Athletic Association, Eastern College Athletic Conference, Atlantic 10 Conference, and Yankee Conference. Salary: Commensurate with experience and qualifications. Deadline for applications is March 29, 1985. Please send detailed resume, supporting documents, and the names of three references to: Frank McInerney, Department Head, Department of Athletics/Intramurals/General Physical Education/Summer Sports Camps, Boyden Building, University of Massachusetts at Amherst, Amherst, MA 01003. Letters of recommendation are useful in the screening process but may be deferred if desired. All correspondence will remain confidential. University of Massachusetts is an Affirmative Action/Equal Opportunity Employer.

UNIVERSITY OF SOUTH ALABAMA

(2) Assistant Professors Health & Physical Education

Duties: Teach courses in their emphasis area and in the Health and/or Physical Education Curriculum. Direct theses, committee service, supervise internships, student advisement and work with regional and national organizations. Conduct, direct and present research.

Position 1: Qualifications: Earned Doctorate in Health Education. Teaching and supervisory experience in Health Education. Evidence of scholarly achievement and/or potential. Competency areas including: Nutrition, Health methods, School and Community, Drug Education, and Gerontology. Administrative and Public School Experience desirable.

Position 2: Qualifications: N. A. T. A. certification required, Earned Doctorate preferred. Teaching experience necessary. Evidence of scholarly achievement and/or potential.

Salaries: Commensurate with expertise and experience.

Starting: September 15, 1985 (PENDING AVAILABLE FUNDING)

Procedures: Send letter of application, vitae, official transcripts, three written references, and placement papers by April 1, 1985 to:

Dr. Thomas L. Chilton, Chairman
Department of HPES
University of South Alabama
Mobile, Alabama 36688

University of South Alabama is an equal opportunity employer.

DIRECTOR OF ATHLETICS Oregon State University

Applications and nominations are invited for the position of Athletic Director at Oregon State University. The Athletic Director is responsible for the leadership and management of a combined men and women's program whose budget exceeds \$5 million. Oregon State University is an NCAA Division I member, with teams competing in the Pac-10 and the NorPac Conference. The Athletic Director reports to the President.

Requirements for candidacy include a bachelor's degree or equivalent, and a record of significant successful leadership and administrative experience. Evidence of skills in the following areas will be used in the evaluation of candidates: leadership, management of human and financial resources, interpersonal relations and communications, fund-raising and promotions, and media relations. Personal attributes that must be demonstrated include high ethical standards, a commitment to academic progress and achievement for student-athletes, and a sensitivity to the ethnic diversity of the university community.

Letters of application indicating interest in this position, along with two copies of a resume and the names of three references, should be sent to the address below. The closing date for applications and nominations is March 29, 1985.

Athletic Director Search
Office of the President
Oregon State University
Corvallis, OR 97331

Oregon State University is an Affirmative Action/Equal Opportunity Employer and complies with Section 504 of the Rehabilitation Act of 1973.



Women's Program Administrative/ Coaching Positions

Winthrop College, a state-supported, coeducational institution in Rock Hill, S. C., invites applications for two full-time positions in the Athletic Department. One position will serve as Assistant Athletic Director and coach one women's sport and the other will serve as a coach of two women's sports.

Winthrop College has over 5,000 students enrolled in undergraduate and graduate programs. Located in a community of about 45,000, the campus is located in the Charlotte, N. C., metropolitan area in which over 1,000,000 people live.

The Assistant Athletic Director will oversee all women's sports, provide administrative support to the Athletic Director, and coach one women's sport (either basketball, volleyball or softball.) The full-time coaching position will be responsible for the other two. The women's sports currently offered at Winthrop are: basketball, volleyball, softball, tennis, and cross country. Winthrop is now affiliated with the NAIA District 6, and the Big South Conference. The College's application for admission into the NCAA has been approved and Winthrop will compete in Division II beginning September, 1985.

Candidates for these positions are expected to show evidence of successful athletic administration/college coaching experience. Other qualifications include leadership ability; skills in communication, public relations, academic monitoring and fiscal management. A master's degree is preferred, and a commitment to the total well-being of the athlete including academic achievement is essential. Responses will be held in confidence. The salaries for these positions will be commensurate with qualifications and experience.

The closing date for applications is March 28, 1985. Applications should include a letter expressing interest, a complete resume, and the names, addresses, and phone numbers of three professional references. Applications should be sent to:

Athletic Search Committee
106 Tillman
Winthrop College
Rock Hill, SC 29733

Winthrop College is an Equal Opportunity Institution and an Affirmative Action Employer.

Membership

Continued from page 1

then was to determine whether the plan would be submitted to the membership.

January 1983—The Insurance Committee developed guidelines for the program and established a timetable for implementation.

March 1983—In a meeting of the Insurance Committee, proposals and personal presentations from 15 insurance companies were reviewed. The committee selected a company and program subject to further negotiations.

April 1983—The Council delayed offering the program to the membership for 1983-84 because negotiations had not been completed with the insurance company and the proposed administrator of the plan.

August 1983—The Council approved a specific plan for 1984-85. Subject to review by legal counsel, the Insurance Committee was directed to proceed with the program.

January 1984—The Insurance Committee discussed and reviewed the final details of the plan approved by the Council, noting that problems had developed regarding the commitment from the primary insurer, contractual agreements with the administrator and approval from certain state insurance departments.

April 1984—The Insurance Committee voted not to proceed with the plan for 1984-85 because all contrac-

tual commitments from necessary parties were not completed and the policy form had not been approved by the Missouri Insurance Department, which was necessary before proceeding with the plan.

May 1984—The Insurance Committee began working on a program that would be available for the 1985-86 year.

July 1984—A program proposed by State Mutual Life Assurance Company of America was selected by the Insurance Committee for the 1985-86 year.

August 1984—The Insurance Committee submitted a preliminary report regarding the State Mutual program to the Council, noting that it was different from the program approved in August 1983.

September 1984—After the Insurance Committee approved the final details of the program, State Mutual submitted the appropriate forms to the Kansas Insurance Department. The NCAA Administrative Committee then approved the plan and authorized the Insurance Committee to proceed.

December 1984—State Mutual received approval of the policy from the Kansas Insurance Department. In the December 12 issue of The NCAA News, the membership was notified that the program was available beginning January 1.

In addition to the current Insurance Committee of Charles A. Taff (chair), University of Maryland, College Park; Judy Devine, Kent State University, and Roy S. Stevens, University of North Alabama, three former committee chairs played large roles in the development of the program. Joseph L. Kearney, Western Athletic Conference; Grant Osborn, University of

Massachusetts, Amherst, and Kenneth W. Herrick, Texas Christian University.

Enrollment forms should be completed and returned by May 15 to be eligible for the coverage in 1985-86. A question-and-answer story on the program will be published in the March 13 issue of the News.

Miami meeting develops four recommendations

A closed-door meeting in Miami of approximately 30 presidents and chancellors of NCAA Division I-A member institutions has decided to submit four recommendations to the NCAA Presidents' Commission.

According to reports by the Associated Press, the recommendations call for:

- Freshman ineligibility in football and basketball "or other sports which could create a threat to academic adjustment."
- Retention of current eligibility rules, rather than a weakening of those rules.
- Decreased recruiting pressure on prospective student-athletes.
- Shorter playing seasons and a reduction in the number of contests.

The group also agreed to ask for a Division I-A gathering to consider such matters at the same time as the special NCAA Convention that has been scheduled for June 20-21 by the Presidents' Commission. The AP said the Miami meeting favored simplification of NCAA bylaws and periodic audits of athletics programs.

The meeting was called by Edward T. Foote II, president of the University of Miami (Florida), who invited all 105 Division I-A campus heads to attend the March 1-2 meeting.

Lions

Continued from page 12

Ralph Sinkbeil, Trenton State, 2:56.

Second round—Tom Jobin, Buffalo, def. Wes Scott, Ohio Northern, 10-6; Lawrence pinned Dave Ober, Wheaton (Ill.), 3:32; Steve Goddall, Cornell, def. Joseph Adam, Trinity (Conn.), 18-11; Peterson def. Terry Schuler, Wis.-Whitewater, 12-9; Sam Walker, John Carroll, def. Connors, 6-3; Dave Kittay, Ithaca, def. Al Schult, Wis.-Platteville, 14-9; Dave Brandvold, Wis.-River Falls, def. Delia, 16-6; Tim Kemp, Bethel (Minn.), def. Tim Servies, Wabash, 5-0.

Quarterfinals—Jobin def. Lawrence, 3-1 (ot); Peterson def. Goodall, 8-7; Kittay def. Walker, 10-9; Brandvold def. Kemp, 13-11.

Semifinals—Jobin de. Peterson, 5-3; Brandvold def. Kittay, 3-2.

Finals—Brandvold def. Jobin, 7-3; Third place—Kittay pinned Walker, 3:26; Fifth place—Lawrence def. Peterson, 9-3; Seventh place—Kemp def. Schuler, 7-4.

190-pound class

First round—Gene Shin, Chicago, pinned Paul Morlock, Concordia-Moorhead, 2:45; Bob Klepfer, Binghamton, def. Kevin Pilmer, Mount Union, 5-4; Scott Bloom, Olivet, def. Bil Zakrzewski, Wis.-Stevens Point, 9-6; Dale Lawrence, Central (Iowa), pinned Bob Priest, Buffalo, 4:21.

Second round—Gary Solomon, Western New England, def. Bill Condon, Ithaca, 11-3; Steve Deckard, Susquehanna, def. Morlock, by technical fall, 6:10; Mark Gaspich, Montclair State, pinned Tim Bailey, Elmhurst, 1:00; Leland Rogers, St. Lawrence, def. Klepfer, 5-4; Bob Hennig, Trenton State, def. Bloom, 6-5 (ot); Terry Bernat, Potsdam State, def. Kevin Wolff, Millikin, 3-2; Lawrence def. Steve Kopecky, Wisconsin-Whitewater, 12-4; Doyle Naig, Buena Vista, def. Greg Finnan, John Carroll, 8-3.

Quarterfinals—Deckard def. Solomon, 13-7; Rogers def. Gaspich, 12-8; Bernat def. Hennig, 9-3; Lawrence def. Naig, 6-2.

Finals—Rogers def. Lawrence, 5-5 (ot, criteria decision); Third place—Deckard def. So-

lomon, 14-9; Fifth place—Bernat def. Naig, 5-4; Seventh place—Wolff def. Gaspich, by default.

Heavyweight class

First round—Tim Hicks, Cornell College, def. Andy MacDonald, Wis.-Whitewater, 5-4; Scott Freischlag, Cortland State, def. Glenn Giesey, Case Reserve, 5-1 (ot).

Second round—Tim Hessing, Augustana (Ill.), def. Joe Galioto, Montclair State, 3-0 (ot); Scott Storjohann, Central (Iowa), def. Rusty Middlebrook, Brockport State, 7-2; Sal D'Angelo, John Carroll, def. Rick Kane, Ithaca, 8-4; Larry Stern, Lycoming, def. Tim Hicks, Cornell, 6-3; Larry DeGaris, Wesleyan, def. Freischlag, 3-1 (ot); Matt Renn, Wis.-River Falls, pinned Mark Glickman, Oswego State, 4:28; Jim O'Halloran, Salisbury State, def. Dave Rooyakkers, Wis.-Platteville, 7-2; Greg Chmelik, Augsburg, def. Paul Ward, Heidelberg, 8-2.

Quarterfinals—Storjohann def. Hessing, 5-0; D'Angelo def. Stern, 6-3; Renn pinned DeGaris, 2:48; O'Halloran def. Chmelik, 9-0.

Semifinals—Storjohann def. D'Angelo, 5-3; Renn pinned O'Halloran, 1:49.

Finals—Renn def. Storjohann, 2-1 (ot); Third place—O'Halloran def. D'Angelo, by default; Fifth place—Hessing def. Chmelik, 7-1; Seventh place, Stern def. Glickman, by default.

Grand jury indicts three former Clemson coaches

Misdemeanor indictments have been returned by a county grand jury in Pickens, South Carolina, against three former Clemson coaches for illegal possession and distribution of prescription drugs.

Those indicted were Sam Colson, women's cross country coach and strength coach for all sports; Stan Narewski, men's and women's track coach and men's cross country coach, and Jack Harkness, former assistant strength coach. Colson and Narewski were suspended December 8 and resigned December 11. Harkness left Clemson in December to return to his home in Canada.

The counts carried a maximum sentence of 18 months in prison each.

Davis

Continued from page 1

am satisfied they are providing leadership and are managing their units effectively.

"It is not my intention to 'micro-manage' the colleges, schools or departments of Oregon State University. Decisions of a 'permanent nature' are made by 'interim' or 'acting' officials only with the concurrence of the president," his letter stated.

Byrne said changes in the administration of the agricultural experiment station were appropriate "in order to give full attention to both the experiment station and to the NCAA." He explained that his action would free Davis of his responsibilities as director of the experiment station, replacing those duties with "other important, but less time-consuming, assignments in support of agricultural sciences."

"However," Byrne's letter stated, "he will also be provided whatever support he needs at Oregon State University to pursue his duties as president of the NCAA."

"The problem of intercollegiate athletics and their proper relationship to higher education are only now being properly addressed by the leaders of higher education," Byrne said. "It is a critical time in the governance of intercollegiate athletics nationwide."

"Oregon State University is privileged to have as its faculty representative an individual, Jack Davis, who is recognized for his leadership abilities and his integrity. This recognition has been manifest in his election to the presidency of the NCAA at possibly the most critical time in its history," Byrne said.

Davis told The NCAA News that he is pleased with President Byrne's decision. "The president encouraged and supported my nomination as president of the NCAA, and now he indeed has supported my work in that position. In effect, I have been given a special assignment that will enable me to devote all necessary time to NCAA and Pacific-10 Conference activities and my institutional responsibilities as faculty athletics representative. At the same time, I will maintain desirable involvement and contact in the college of agricultural sciences," Davis said.

Our Support For The NCAA Includes A Strong Commitment To The Future.

Valvoline Oil Company is very proud to be a supporter for NCAA sports at the intercollegiate level.

But as the NCAA has recognized, the needs of our country's youth begin long before college. And our young people are our future.

That's why we are also involved with the National Youth Sports Program, which provides underprivileged young

people with summertime sports training and exposure to the benefits of higher education.

And with the NCAA Volunteers for Youth Program, where current and former college athletes provide positive role models for young people.

We feel that these programs serve a vital purpose for America's youth. And we're proud to be part of the effort.



Supporting NCAA programs.

