

# The NCAA News

February 13, 1985, Volume 22 Number 7

Official Publication of the



National Collegiate Athletic Association



## Baseball preview

Chris Gwynn, San Diego State University center fielder, helps *The NCAA News* begin its coverage of intercollegiate baseball with a season preview on pages 7 through 10 of this issue.

## Fatalities in football lowest since collection of data began in 1931

Only nine football fatalities were reported in 1984, the lowest total since the collection of data began in 1931.

Six of the nine deaths were direct fatalities, meaning those that result directly from participation in football. The remaining three fatalities were indirect deaths, which are caused by systemic failure as a result of exertion while participating in football or by a complication that was secondary to a nonfatal injury.

The reduction in football-related fatalities continued a trend noted in earlier editions of the study. It is compiled annually by Frederick O. Mueller of the University of North Carolina, Chapel Hill, and Richard D. Schindler of the National Federation of State High School Associations and is prepared for the NCAA, the NFHS and the American Foot-

ball Coaches Association.

Of the six fatalities directly related to football, four occurred in high school, one in college and one in sandlot. All six resulted from head injuries. Two of the six fatalities occurred in games; the other four in practice.

The direct deaths were up from four in 1983. The college fatality was the first directly related to football since the 1981 season.

All three of the indirect deaths in 1984 were the result of heat stroke and

## In the News

Letters to the Editor .....	2
Questions/Answers .....	3
A complete list of appointments to NCAA committees for 1985 .....	12
Legislative Assistance .....	13

Basketball playing rules, amateurism, summer meetings and sports sponsorship highlighted the considerations of the NCAA Long Range Planning Committee at its February 7-8 meeting in San Antonio, Texas.

Those four topics resulted in the following actions by the committee, which will be reported to the NCAA Council at its April meeting:

- Expressed concern regarding basketball playing rules that encourage fouling as a part of the strategy of the game. The committee opined that the situation deserves the attention of basketball interests, describing it as "a fundamental flaw" in a sport that should be addressed at a time when intercollegiate athletics is attempting "to bring ethics and sportsmanship back into focus," reported William J. Flynn, director of athletics at Boston College and chair of the committee.

- Voted its support of a reaffirmation of the traditional NCAA principles of amateurism, noting that while that issue is current in light of the 1985 Convention's decision to remand a resolution in that regard to the Council, the committee's position is based on its concern regarding the effects of "professionalization" of college athletics in the future.

- Recommended amendments to the NCAA constitution to specify that Divisions I-A and I-AA may conduct summer legislative meetings but that they are not required to do so

all occurred at the high school level. That number is down significantly from 1983, when nine indirect deaths were reported.

Since 1960, most of the direct fatalities have been caused by head and neck injuries, and 1984 was no exception. Mueller and Schindler offered the following suggestions for preventing such head and neck injuries:

1. Athletes must be given proper conditioning exercises that will strengthen their necks so that participants will be able to hold their heads firmly erect when making contact.

2. Coaches should drill the athletes in the proper execution of the fundamentals of football skills, particularly blocking and tackling.

3. Coaches and officials should discourage players from using their

*See Fatalities, page 13*

## Planning committee considers basketball rules, amateurism

annually. The committee noted that the newly adopted voting autonomy provisions within Division I may result in those meetings not being needed, at least every year, in the future.

- Agreed to monitor carefully the effect of the 1985 Convention decisions to reduce the minimum numbers of men's and women's sports required for classification in Divisions I and II on the numbers of sports being spon-

...the committee expressed concern that a marked departure from those rules (amateurism) in the future would diminish or eliminate the concept of the student-athlete...

sored by institutions in those divisions. The committee noted that the numbers actually sponsored increased for both men and women in all three NCAA divisions between 1982-83 and 1984-85.

The committee's concern regarding the basketball playing rules was expressed as part of its review of possible codes of ethics for athletics adminis-

trators, coaches and student-athletes, as prepared by committee member J. Neils Thompson, University of Texas, Austin.

Some committee members suggested that it is difficult to include in the student-athletes' code a principle regarding playing the game fairly when a sport, such as basketball, accepts violations of the rules as part of the game and in some cases rewards the team committing the violation.

In its decision to encourage reaffirmation of the Association's rules of amateurism, the committee expressed concern that a marked departure from those rules in the future would diminish or eliminate the concept of the student-athlete and result in a lessening of the traditional resolve to maintain athletics as part of education.

In its annual review of sports sponsorship and participation trends, the committee noted that between 1982-83 and 1983-84, participation by men in NCAA-sponsored sports at member institutions increased 5.19 percent and participation by women increased 5.66 percent.

The average NCAA institution sponsored 15.9 sports for men and

*See Planning, page 13*

## Committee members receive 1099 forms

Members of the NCAA Council, Executive Committee, Presidents' Commission and all other NCAA committees have been sent copies of Internal Revenue Service form 1099 reflecting the per diem and "flat rate" payments they received from the NCAA during 1984.

The Association is required by Federal tax laws to report income paid to nonemployees and independent contractors, according to Controller Louis J. Spry.

"We are required by the law to report the per diem to committee members, along with the \$100 'flat rate' travel benefit, on form 1099," Spry said. "Expenses that are directly reimbursed in our case, air travel for committee members — are not affected by the law."

Committee members must report as income on their Federal income-tax forms the amount reflected on the 1099 form, then

report as expenses the amounts they paid for lodging, meals, entertainment and other appropriate expenditures related to the meetings attended.

"According to our understanding of the requirements, the burden of proof in documenting the claimed expenses lies with the individual who received the 'income,'" Spry said.

The increased need to document expenses came with the enactment of the Tax Equity and Fiscal Responsibility Act in 1982. The requirement had been in existence for some time, but that act assured greater enforcement.

This is the second year that the Association has reported the per diem and "flat rate" payments as required. An explanation of the new procedure first appeared in the March 14, 1984, issue of *The NCAA News*.

## 'Longest goal' won't measure up, NCAA statistician claims

By James M. Van Valkenburg  
NCAA Director of Statistics

It is time once again to have a little fun with the longest controversy in college basketball—the question of the longest shot in history.

Why? Because Marshall's Bruce Morris threw in a border-to-border job against Appalachian State with one second left in the half Thursday, February 7, and immediately became the latest candidate. (Marshall went on to win, 93-82.)

First, let us admit that the whole idea of trying to establish the longest shot is really rather ridiculous. The NCAA does not, and never could, have a record for the longest shot.

Even with cameras at the site, it is impossible to establish the exact spot on the floor where the shooter let it go.

And even if you could do that, the next question is, how did you measure? From his back foot (heel or toe?), from his front foot, from the tip of the longest finger on his throwing hand (told you this was silly)? And did you measure to the backboard, to the back of the rim, center of the rim, front of the rim?

We have never received answers to all those questions for all the "longest" shots in the past. The Guinness Book of World Records cannot answer all those questions and neither can the

Continental Basketball Association, which is running a "Million-Dollar Supershot" promotion. Some of the questions can be answered but never all of them.

**The Virginia Tech shot**

We got a call from Joe Mitch of the Metropolitan Collegiate Athletic Conference after Virginia Tech's Les Hen-

## Basketball notes

son heaved in a shot at the buzzer at Florida State for a 79-77 victory. The date of the game was January 21, 1980 (not January 24 as has been printed many places). Mitch said, "Mark

Carlson (then Florida State sports information director) measured from his back foot to the back of the rim as 89 feet 3 inches." We asked, was that from his heel or from his toe? Mitch laughed and replied: "I really don't know." This is the one listed in the Guinness book. Carlson said, "One of our assistants pointed to a piece of dark wood in the floor and the film showed that was about where his back foot was." He said "about," not "exactly," please note.

**The Providence shot**

Rudy Williams of Providence hit one listed as 89 feet against Rhode Island February 17, 1979. That was in the Guinness book until the Virginia

Tech shot. The Providence Journal ran a diagram eight columns wide and quoted Mike Tranghese, then Providence SID, as saying that Rudy's front foot was two feet from the end line and the ball hit the backboard four feet in, so six from 94 makes it 88 feet. The Journal reported engineers computed it is 92.8615 feet from the extreme corner of the court to the backboard (remember that figure for future arguments). The paper also said it was sorry it ever got into this. But why did Tranghese report it to Guinness as 89 feet? Maybe Rudy had big feet and he decided to measure from his heel, or maybe he took the

*See 'Longest goal,' page 4*



# Student-athletes do get paid, but in long-term investments

Gus Schrader, columnist

The Cedar Rapids Gazette

"I'm so old-fashioned I was under the obviously mistaken notion the athletes were getting something for their participation: room, board, books, tuition and, at least, the exposure to a college education.

"Maybe you don't think that last item is important. Maybe the athletes don't realize its value.

"Oh, I see nothing wrong with giving student-athletes \$15 to \$25 a month for expenses while attending college, because many of them come from very poor circumstances. But, a few coaches are talking about paying them as much as \$1,000 a month.

"I can't remember the exact figures mentioned, but it is estimated that over a lifetime, a man or woman would average several hundred thousand dollars more with a college education than without one. That was several years ago. Would it be unreasonable to estimate now that a college education would be worth \$500,000 more?

"So do some coaches really think they are robbing their players by forcing them to play college ball for room, board, books and tuition?"

Bob Boyd, head men's basketball coach  
Mississippi State University

The Associated Press

"I'm not on a soapbox, but I think it (elimination of the rule disqualifying a player after five fouls) would be a good change for our game. I just think there's got to be a way to keep players in the game.

"Our game now allows for the disqualification from a game, when in fact, replays often show that it was an inadvertent call or a mistaken call. Often, within a player's five fouls, there are one or two such calls.

"Award one point and give the other team the ball. The coach can make the decision whether the player is hurting his team so much that he has to be taken out.

"The fans come to see the players play and not to shoot free throws. Such a change, I would think, would make the game more interesting and a lot faster. It's not something I'm crusading about, but something I think would add a little something extra to the game, make it more enjoyable for the fans."

Linda Page, basketball player  
North Carolina State University

Sports information office

"It's not that I'm in a hurry for the season to be over; I'm just curious to see how we can do in the tournaments.

"More and more, it seems as though the regular season is just a warmup for the tournaments. Right now, we're playing well; so, I'm in a hurry for the (NCAA) tournament to get here to see how far we can go.

"I'll be 22 years old when I finish my college career, and basketball has been a big part of my life for the past 10 years. I've thought about giving the pro circuit in Europe a try, but I'm not putting all of my eggs in one basket. That's why my degree is so important."

Louis Cicciari, boys' junior varsity basketball coach  
Granada Hills (California) High School

The Associated Press

"I'm just a guy who likes basketball and coaching and happens to be in a wheelchair. (His legs were amputated when he was seven. He had pupura thrombosis, a disease that destroyed the blood vessels in his legs and threatened his internal organs.)

"I love it. Coaching is a lot of fun, and I get a lot of satisfaction out of it; not because we win or lose, but because the kids are good kids, and it's a lot of fun being with them.

"I think I'm a good coach. I'm not a great coach. I'm not a bad coach. I'm learning the game. I learn something new every game."

Jim Brock, head baseball coach

Arizona State University

Collegiate Baseball

"The sanctions (handed down by the Pacific-10 Conference against Arizona State University) are totally and completely logical. There is absolutely no way to argue with the logic or fairness. They (the conference) felt that it was our responsibility to know the rules. And they said, 'You benefited from your own mistakes. Therefore, you got 14 extra scholarships (over four years) because you didn't know the rules. And now, you've got to pay it back.' You can't argue with that."

Barry Stevens, basketball player  
Iowa State University

Sports information office

"Both are talented (the good scorer and the great scorer). The difference lies in hard work. The great scorer simply works harder than the good scorer. I'm in between, but I'm getting better. I have pushed myself much harder these past two years."

Charles G. "Lefty" Driesell, head men's basketball coach  
University of Maryland, College Park

USA Today

"In my next life, I'm going to coach an independent team. You can make up your own schedule and play who you want. If I were young again and had a choice between Maryland and a real good independent school, there's no question where I'd go."

Don Haskins, head men's basketball coach  
University of Texas, El Paso

Dallas Times-Herald

"We (the Western Athletic Conference) probably don't have a super team this year. But we do have four or five very good teams, and any of the four or five are good enough to play in the NCAA tournament. But we're all scrambling to win the championship, because the WAC champion is probably the only one that is going to get into the (NCAA) tournament. And that makes me angry."

Augie Garrido, head baseball coach  
California State University, Fullerton

Collegiate Baseball

"I feel it is important for a coach to know that dealing with the media is a two-way street. The press has a difficult job obtaining information on deadline situations,

## Opinions Out Loud

and a coach should do everything he can to feed accurate information to reporters.

"Coaches should not exaggerate or be wishful in their thinking. It only takes one or two times before a reporter will lose all respect for you if this happens.

"One of the crucial things, I feel, is having a real respect for the job the reporter has to do. And coaches should realize newspaper reporters are not in the job to promote their programs. They are there to tell it like it is."

Tony Yates, head men's basketball coach  
University of Cincinnati

The Cincinnati Post

"A university is under no more obligation to hand a degree to an athlete after using his talents for four years than it is to any other student who has paid his way through the school.

"Everything is in place at Cincinnati and at most universities throughout the country for any student or athlete who wants to get his degree. The only obligation is to present the opportunity and to make available the means, the tutors, the study tables and the system that will allow you to take advantage of the opportunity."

Lou Carnesecca, head men's basketball coach  
St. John's University (New York)

Washington Post

"No doubt, I've been influenced by the Eastern style of basketball, where the ball does the work. Great emphasis is placed on moving yourself and the ball, rather than the shot.

"The Celtics, Joe Lapchick and Frank McGuire — that pretty much dictated basketball to me. I know I'm pretty much one of the last Mohicans with this man-to-man defense. I did all that stuff with triangle-and-twos and box-and-ones in high school.

"But, I came back to the laboratory. I think it's the best defense, and the hardest. It's beautiful when you get it down."

## Letters to the Editor

### Here's a solid vote for the 'little guys'

To the Editor:

It was really nice to see Jack Chevalier's article suggesting a largely restrictive reformation of college basketball's Division I placed prominently at the top of page 2 in your January 23 issue. I mean, it was only an opinion, right?

What really galls me about Chevalier's contention that only certain conferences deserve to be in Division I is his complete disregard for factual content.

I have no personal acquaintances with anyone at Siena College, one of the lucky schools to be singled out for a special demeaning. Yet a team from the same conference — Northeastern — made big news just two years ago in the NCAA tournament. After eliminating St. Joseph's (Pennsylvania) of the favored (by Chevalier) Atlantic 10, Northeastern didn't die until three overtimes had expired in the second-round game against (horrors!) the Big East's Villanova.

If NCAA qualification depended on five-figure attendance, a lot of schools would be staying home. Can anybody really expect us to believe Georgetown might have been excluded from Division I several years ago because its gym only held 2,000 fans?

What is really unfortunate about Chevalier's short-sightedness is his intent to take away something intangible, yet vital to NCAA Division I schools; the dream, the fantasy that one of the once-little guys will rise like Georgetown to the top of the heap.

Again, speaking of Georgetown, wasn't it only two season ago that Ewing and Company had to pull out all the stops to survive Alcorn State's tournament bid? I hardly think Alcorn State would agree with Chevalier that their season ended in humiliation. Nor do I think Lamar, which advanced five rounds in two tournaments (1980-1981) and came to national prominence would appreciate its exclusion from Division I. If Chevalier had done his homework, he would have known that the NCAA put attendance-clause tournament qualification to a vote two years ago, and it was defeated in a landslide.

These are the facts: Other than La Salle, a Metro Atlantic team has not won a tournament game in 14 years. Heck, our own Pepperdine teams have fared better than the entire Metro Atlantic; we have three first-round NCAA victories in about half as many seasons, and the victims were Memphis State, Utah and Pittsburgh. The Atlantic 10 hasn't fared much better; other than Rutgers, the other nine schools are 3-10 in tournament play since the mid-1960s.

Our league, the West Coast Athletic Conference, has been playing Division I basketball for 33 years. We probably rank somewhere in the middle in terms of overall strength (league members were 12-12 in games against 1985 members of eight leagues mentioned by Chevalier) on a national basis.

Two years ago, our team lost to eventual-champion North Carolina State in double overtime, the same day Tennessee-Chattanooga was losing to Maryland by one point and Robert Morris to Purdue by two. I doubt seriously these schools feel as if they can't compete or were an embarrassment to the NCAA, as Chevalier wrote.

Tim Wilhelm  
Associate Director of Athletics  
Pepperdine University

### CEO involvement in NCAA a good move

To the Editor:

It is a blessing that our academic leaders are saying that student-athletes should be taken as students first, athletes second. CEO involvement in the NCAA is a further blessing. I hope their involvement will clean up a mess that only a few tend to make. The few tend to be so publicized because we seem to be a nation that wants only to hear of the bad things rather than the good. I hope those who do good things will publicize their efforts.

The January 16th NCAA News carried a very valid point that I have commented on before. Fred Davison's point that "We have let athletes get professional, or at least away from academics, at the high school level" is a very valid assessment. I tend to disagree just a bit, because with the advance of junior high school athletes, it now begins down at that level. Further, it is enhanced by the fact that "the great athlete" tends to be one whose parents are disadvantaged and know little about the value of an education, except that their son will be at "X" university so he can be "overexposed" to television and athletics that mean a way towards millions — so they think. It is sickening that these kids are allowed to progress through the system with minimal skills to be exploited by colleges and universities.

While I place the blame on junior high and high schools, this is not a condemnation of the schools or teachers per se — it's a system that allows young people to have "the run of their world" with little or no direction from home with the expectations that the school is a cure-all. When teachers cannot discipline a youngster, but a coach can, is it any wonder why athletics takes a front-row seat? As a coach, I know that if you cannot discipline, you cannot teach. Coaches teach because they can get a youngster's attention — I don't know how we expect a teacher to be different. Secondly, public school administrators must take a different stance toward athletics to have some uniformity in education standards. I have met few youngsters in my career who can't learn X's and O's. I feel the same about English, math, science and history; because if a youngster has desires, he can do the work. The CEO's role is to instruct counselors, teachers and coaches that there is or can be no short-cut to academic success. The buck must stop somewhere.

We at Fayetteville State are happy that we did something that we believe in greatly. In 1984-85, we instituted the 12-hour rule for all of our athletes. This was done to find out how they would respond to being challenged academically — 21 percent of our 168 student-athletes responded with less than 12 hours. We don't claim this to be extremely monumental, because this was our initial stab at it. But, if the first semester is any indication, we are on the road to academic success, which will guarantee our athletics success. All underclass-

See Letters, page 3

## The NCAA News



ISSN 0027-6170

Published weekly, except biweekly in the summer, by the National Collegiate Athletic Association, 1111 Avenue at 63rd Street, P.O. Box 1906, Mission, Kansas 66201. Phone: 913/384-3220. Subscription rate: \$20 annually. Second-class postage paid at Shawnee Mission, Kansas. Address corrections requested. Postmaster send address changes to NCAA Publishing, P.O. Box 1906, Mission, Kansas 66201.

Publisher ..... Ted C. Tow  
Editor-in-Chief ..... Thomas A. Wilson  
Managing Editor ..... Steven M. Carr  
Assistant Editor ..... Michael V. Earle  
Advertising Director ..... Wallace I. Renfro  
The Comment section of The NCAA News is offered as opinion. The views expressed do not necessarily represent a consensus of the NCAA membership. An Equal Opportunity Employer.

# ESPN accepts college baseball 'risk' Letters

ESPN realizes it is taking a shot in the dark Sunday nights with its weekly series of live regular-season college baseball telecasts.

The extent of the programming is untried, ratings weren't so hot for ESPN's coverage of the College World Series last season and the sports network isn't taking a low-budget approach this season.

"It's got to be produced and presented right. It can't look like a local, three-camera telecast," Loren Matthews, ESPN's director of program planning, said. "That's one of the reasons it's a risky experiment."

But Matthews and David Ogrea, senior director of acquisitions, said it's a risk ESPN must take.

"We're not able to televise Major

League Baseball because of the contract they have with the (major) networks; and as the total-sports network, we need to have a baseball component," Ogrea said.

The schedule features mostly Southern schools because of climatic and lighting limitations. But March 24, Maine, an audience favorite, will visit Miami (Florida).

Ogrea noted that "when collegiate baseball put out its preseason poll, we found out that the top seven teams in the poll all figured into our college baseball series at least once."

ESPN has college baseball experience. It has televised the College World Series for the past five years, achieving moderate success despite a "dip in ratings" last season. In 1984, the network also televised several regular-season games preceding the College World Series, but this year's schedule is far more ambitious.

"It's strictly an offshoot of the College World Series," Matthews said. "We need product around this time of year. There is product out there. Let's take a look at it on a limited basis as we did last year for seven games and see what happens."

"I'm not going to try to tell you that the ratings were staggering or it sold real well," he added. "It was a good product and it showed enough potential that we decided to take it the next step, which is getting on early with more games."

"Early" is a key, because ESPN is counting on a midwinter audience that's starving for baseball. It never would work to try to televise baseball after the major-league season, said Matthews, who previously worked for the promotions department of the National League's New York Mets.

"No matter how much you love baseball, when the World Series is over, everybody is anxious to get away from baseball, at least for a while," he said. "I was usually thrilled to have the end of the season come. At least I thought I was thrilled."

"But then about a month later, I'm itchy again."

Sunday night was picked because there's little or no competition for live sports at that time slot, Matthews said. "It's a very big budget program for us," he said.

"I'm not sure we put any goal on it per se," Matthews said. "I think you're always looking for better ratings than you had before, and better sales."

"It's an experiment; an expensive experiment, but still an experiment."

*This story was written for the Associated Press.*

## Questions/Answers

**Q.** What is the rationale for the funding of a travel party for team/individual sports that does not include coaches, trainers, etc.? In straight team sports, the official party is not limited to participants, while in team/individual sports, NCAA transportation funding is restricted to participants only - even for the teams that qualify.

**A.** In general, additional support people for a large athletics group (team) traveling to a national championship are necessary in order for the team to be prepared adequately to compete. The support people are more necessary for large groups than for smaller groups of athletes who are involved in individual sports. Also, there is a considerable cost increase if all coaches, trainers, managers, etc., were to be provided transportation costs to NCAA championships. In August 1979, the Executive Committee considered paying transportation and per diem for all head coaches in individual sports who had athletes participating in NCAA competition. At that time, it was estimated it would cost the Association an additional \$346,000 to provide this service. It was decided at that time this should be a lower priority compared to other possible NCAA services.

**Q.** Why do we see the same umpires in college baseball all the time (especially in the College World Series)? The ones used are certainly not that good that they should be there year in and year out. This is certainly a deterrent to the other thousand or so umpires who certainly are qualified. One of the umpires who worked the world series did not work a regularly scheduled college game the entire season. In fact, he lived in an area where he did not have the opportunity to work a top-level high school game. It seems like politics to me.

**A.** No umpire may work a College World Series until he has umpired in at least two regional tournaments. Further, if an umpire works two consecutive College World Series, he must sit out two years. The NCAA Baseball Committee maintains a list of umpires nationally (there are more than 70 umpires on the list). Once an umpire is recommended to the committee, an evaluation form is sent to coaches in the area where the umpire lives and works. The committee then reviews the evaluations on the recommended umpires to determine if the umpires will be added to the list for consideration in umpiring in the regional and College World Series competition.

While it is true that one of the umpires who worked the College World Series did not work regular-season games in 1984 because he had moved, he was given one of the higher ratings in the College World Series. Umpires' performances are evaluated in each regional and College World Series competition. To avoid this type of situation in the future, the committee has added the following statement in its invitation to an umpire to work regional and College World Series competition: "The committee assumes you are working a full collegiate umpiring schedule this year. Please advise if it is not the case."

The American League was so impressed with the umpires working in the regional and College World Series competition that it contacted the NCAA during last year's umpire strike during the play-offs. The American League selected five umpires who had worked in college regionals and series competition to work the play-offs and all received high evaluations. The NCAA Baseball Committee believes its system of selection of umpires has provided outstanding officiating and is fair to all.

## Cerra will take leave of absence but stay at MU

G. Jean Cerra, associate athletics director at the University of Missouri, Columbia, and member of the NCAA Council, will take a six-month leave of absence to serve as director of the institution's development fund.

The leave is in conjunction with a staff-development program created by the university in 1981 to permit staff members to take advantage of professional growth opportunities.

Cerra is completing work on a doctorate in educational administration. She will continue her membership on the NCAA Council and Eligibility Committee. Her other responsibilities in intercollegiate athletics will be distributed among three assistant directors of athletics.

Robert Gafke, acting vice-chancellor for development, alumni and university relations, said, "Jean Cerra will bring her substantial skills as a manager and administrator to oversee the delivery of fund-raising services to other development officers and to UMC's deans and directors as they also carry out fund-raising activities."

Cerra joined the institution's staff in 1976.

## New Corporation Promotes Certified Athletic Trainers



### ATHLETIC TRAINING SERVICES, INC.

714 E. Wisconsin Street • Mt. Pleasant, Michigan 48858 • (517) 772-5888

"PROMOTION OF THE CERTIFIED ATHLETIC TRAINER"

**ATHLETIC TRAINING SERVICES, INC.** is a professional consulting and recruiting corporation for certified athletic trainers in high schools, colleges, universities, professional athletics, sports medicine clinics, industry, and hospitals. The corporation is headed by Kenneth W. Kopke, A.T.C., Director of Sports Medicine, and Ronald A. Sendre, A.T.C., Curriculum Director of Sports Medicine at Central Michigan University.

Recently **A.T.S.** introduced the **ATHLETIC TRAINER NATIONAL REGISTRY**. The registry offers employers the opportunity of advertising their job openings for certified athletic trainers directly to a nationwide network of job seekers. Depending upon an employer's time considerations, financial pressures, or other concerns, the employer has the option to advertise his job opening in the **JOB OPPORTUNITY BULLETIN**. The

bulletin is circulated to all registered members every other month. The employer's second option is to use **A.T.S.'s COMPUTER DATA-BASE RECRUITMENT SERVICE**.

As a professional consulting firm, **A.T.S.** offers the complete analysis, needs assessment, and final implementation of programs, establishing hospital-based sports medicine clinics or in-house rehabilitation centers for universities, colleges and corporations.

Best of all, **A.T.S.** is offering to all employers who presently have job openings, the opportunity of advertising in the 1985 March **BULLETIN FREE OF CHARGE**.

For further information about the **ATHLETIC TRAINER NATIONAL REGISTRY** or to advertise your job opening in the 1985 March issue of the **J.O.B.**, please complete and return the coupon below.

I am interested in the **ATHLETIC TRAINER NATIONAL REGISTRY** introduced by **ATS, Inc.**

(Check) ☐ Employer ☐ ATC ☐ Other

Please send:

- ☐ Further information about the **ATHLETIC TRAINER NATIONAL REGISTRY**
- ☐ Application for membership into the **ATHLETIC TRAINER NATIONAL REGISTRY**
- ☐ **ATS Brochure**
- ☐ Have Representative Call

Name \_\_\_\_\_

Address \_\_\_\_\_

City \_\_\_\_\_ State \_\_\_\_\_ Zip \_\_\_\_\_

Phone ( ) \_\_\_\_\_

Mail To: **ATHLETIC TRAINING SERVICES, INC.**  
714 E. Wisconsin Street  
Mt. Pleasant, Michigan 48858  
Attn: Ron Rummel, Marketing Director



# 'Longest goal'

Continued from page 1

back foot instead of the front foot. Who knows?

## Roll 'em again

Marshall first announced Morris' shot was 92 feet 5 1/4 inches, but if the Providence engineering department is correct, that would be impossible (92.8615 feet, remember, from the very corner of the court). We saw the tape and Morris was not close to the corner, but about halfway from the goal to the corner and two feet from the end line.

In fact, we saw the Marshall tape three times and the Virginia Tech tape five years ago at least a dozen times, and Morris was in the same spot as Henson was. In fact, for the moment, we're calling it a tie—that way both will be mad at us. But we could be wrong, so roll 'em again, play both tapes back-to-back and let the public vote.

Meanwhile, Mac Yates, Marshall sports information director, says, "We will be having fun the next couple of days. If we can ever get off the phone, we will measure it every way we can to try to answer all the questions. We want to establish it in the Guinness book and get all the mileage we can. This is a once-in-a-lifetime thing."

The next News will have all the "facts," dear reader, so you can decide (after taking another look at the tapes, of course). As for all you other longest-shot candidates, if it is not on tape, forget it.

## The most-improved race

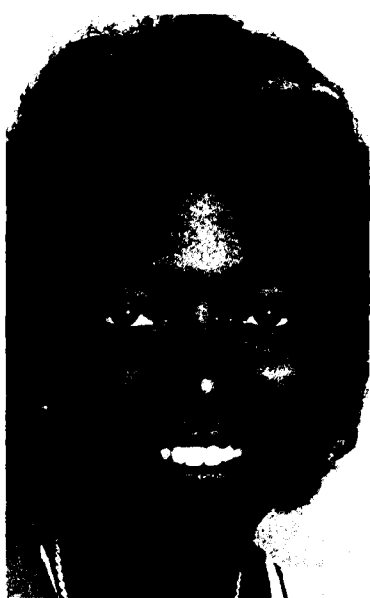
The race for 1985 most-improved honors in Division I men's basketball is taking shape. Cincinnati is out in front now. Through games of Monday, February 11, the Bearcats, under second-year coach Tony Yates, already had won 10 more games than all last season—13-9 vs. 3-25.

Two teams had seven more wins than all of last season—Western Michigan (11-10 vs. 4-22) and Texas-Arlington (12-11 vs. 5-23). Considering only those teams above the .500-level at that stage, six more teams were from four to six victories above 1984. They were Iowa (19-4 vs. 13-15), Arizona (17-6 vs. 11-17), Virginia Military (13-7 vs. 8-19), Texas (12-9 vs. 7-21), Southern California (15-5 vs. 11-20) and Detroit (12-9 vs. 8-20). Interestingly, none of these nine is led by a first-year coach.

Yates, a former Cincinnati star, was an outstanding recruiter as an Illinois assistant and last year plucked all-star Roger McClendon right out of a Champaign high school. McClendon and Derrick McMillan are leading Cincy's "Big Mac" attack. The Bearcats have learned how to win the close ones, the most dramatic a 49-footer at the buzzer by Tony Wilson (a one-time walk-on from the track team) to beat Alabama-Birmingham, 69-67.

Western Michigan was voted last in the Mid-American Conference in a preseason poll at the press preview, but the voters were to learn that a new strategy was brewing. After back-to-back 5-23 and 4-22 seasons, coach Vern Payne left home for a sparse dormitory with cinder-block walls. Since September, Payne has been living with his players—"a team that stays together will win together." And the sooner his team posts a winning season, the sooner he can go back to his cozy home, wife and three children.

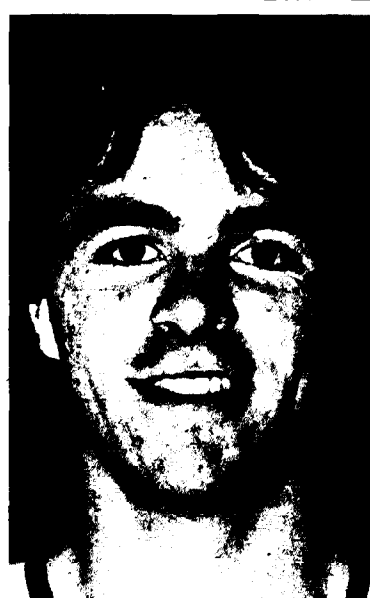
His wife of 19 years, Dorphine, is supportive of his new lifestyle, as are his three children. In fact, the family voted unanimously to have Payne try out the new victory formula. "Sometimes my wife comes over with a bottle of wine," Payne says. "We talk or watch television, or a few times lately I have gone home for dinner... When I'm in the office Sunday to study film, my boys like to come over and shoot baskets." Says Mrs. Payne: "It is like dating." It is not an athletics dorm, but all team members live in the same large building.



Lynette Richardson, Florida International junior, leads Division II women in scoring



Ron Nunnally, Central Missouri State, ranks among the Division II men's scoring leaders



Rod Swartz, Hiram sophomore, is among the men's scoring leaders in Division III



Jeannie Demars, Buena Vista sophomore, is the top scorer among Division III women

Texas-Arlington's improvement is coming under its veteran coach, Bob "Snake" LeGrand. When Lute Olson moved from Iowa to Arizona two years ago, George Raveling moved from Washington State to Iowa. Now Arizona is in the thick of the Pacific-10 title chase and Iowa was just a half-game behind Michigan going into their showdown Thursday, February 14. Olson took a 4-24 team of 1983 and led it to a surprise fifth-place tie in the conference in 1984 at 8-10. Now he has more depth and talent.

Raveling's team, 7-2 in the Big Ten entering the Michigan game, already has surpassed last season's 6-12 conference finish. "We're one of the hunters this time instead of being hunted," he says. "There were just too many variables last year. Last year was a feeling-out process. It was kind of like the first time you date a girl."

Before this season, he felt his team could be third or fourth in the Big Ten. He bet three of his players who had shaved their heads that if the Hawkeyes opened with victories over Purdue and Illinois, he would shave his head also. Iowa won both games, but Raveling got cold feet. "The players gave me a reprieve," said the 47-year-old coach. "They feel I'm too old and decrepit. My hair has stopped growing—I have not had a haircut in 12 years. They're not going to hold me to it."

Texas is winning under Bob Welch, helped by Mike Wacker's amazing return from a devastating knee injury three years ago (January 9 News). So is VMI, showing steady progress under Marty Fletcher—from two victories in 1983 to eight in 1984 and now 13. No one expected Southern California to be leading the Pacific-10 this season after losing 20 a year ago, but the Trojans under Stan Morrison are doing just that. Don Sicko's Detroit team has come back strong from a 20-loss season.

## 14,821 paid at Iowa

As it turned out, the paid attendance was 14,821 at Iowa for the incredible throng of 22,157 that jammed Carver-Hawkeye Arena February 3 to watch the Iowa women's team play Ohio State (February 6 News). That was still far above the previous record crowd for women's basketball—12,336 on March 6, 1977, for an all-women's doubleheader at New York's Madison Square Garden.

Since that was 6,707 more than the arena's licensed capacity, Iowa officials promised the state fire marshal never again to exceed that capacity. Casey Mahon, associate vice president for finance and public services, said: "We are delighted that so many Iowa fans came and disappointed that we were not brave enough to dream that so many would come." The turnout came in response to public appeals by women's coach Vivian Stringer, who said her two dreams were to fill the

arena and to take Iowa to the NCAA tournament.

"I'm overwhelmed," said Iowa women's athletics director Christine Grant. "When we shut the doors, traffic was still backed up and people were pouring out of the parking lots."

"It was marvelous," said men's basketball coach George Raveling. "It could only happen in Iowa. It was a great tribute to women's basketball and Vivian's program."

Jim White, sports marketing director, said: "What you saw was the spirit of Iowa. Iowans are a proud people, and they love their basketball—women's as well as men's." E. Wayne Cooley, longtime executive director of the Iowa Girls High School Athletic Union, termed it "great tribute too long overdue to women's athletics."

Stringer, who took Cheyney to the Final Four in 1982, said, "It brought tears to my eyes. Nowhere else could it have happened." Stringer's Ohio State counterpart, Tara VanDerveer, said: "It's a great part of history. It made it really exciting, very special, to be coaching in this game. This is something the players will never forget."

Robin Anderson, Iowa's only senior, told Bob Hilton of the Cedar Rapids Gazette, "I thought I was at a men's game. It was a fantastic feeling." Said sophomore Lisa Becker, "It was great. We are so thankful. It really fired us up." Michelle "Ice" Edwards, a freshman from Boston, said, "I'd heard about Iowa fans, but this was something else."

## Atlantic Coast leads

The midseason ranking of women's conferences against outside Division I opponents finds the Atlantic Coast Conference first by a narrow margin over the Southeastern Conference, the 1984 leader by a wide margin, with the Sun Belt Conference moving up to third. From one angle, though,

	Won	Lost	Pct.	Opp. Rank
Atlantic Coast.....	46	16	.742	15
Southeastern.....	87	32	.731	1
Sun Belt.....	47	24	.662	6
Western Collegiate.....	63	33	.656	4
Atlantic 10.....	65	35	.650	5
Metro Atlantic.....	50	30	.625	21
Big Ten.....	57	38	.600	2
Northern Pacific.....	62	43	.590	17
Metro.....	50	35	.588	8
Southwest Athletic.....	42	32	.568	19
Ohio Valley.....	38	29	.567	16
Big Eight.....	51	39	.567	11
Pacific Coast.....	32	26	.552	9
Mountain West.....	42	35	.545	25
Gateway.....	38	43	.469	23
Big East.....	35	44	.443	7
ECAC South.....	23	30	.434	27
North Star.....	37	50	.425	22
Southland.....	27	37	.422	10
*Gulf Star.....	16	23	.410	13
East Coast.....	19	28	.404	29
Cosmopolitan.....	22	36	.379	28
Southern.....	17	28	.378	3
High Country.....	29	49	.372	26
Mid-American.....	25	51	.329	20
Southwestern.....	13	29	.310	14
Oil Country.....	19	44	.302	24
Ivy.....	16	39	.291	12
Mid-Eastern.....	8	29	.216	18

\*Division I members only.

the SEC is on top, because its opponents rank first in combined winning percentage, while the ACC opponents combine for 15th out of the 29 Division I women's conferences.

As the table shows, the Big Ten played the second-toughest combined outside schedule behind the SEC, with the Southern Conference's schedule ranking third. Games against opponents below Division I are deleted, and the rankings are through January 19.

## Quotes of the week

Detroit men's coach Sicko, after his team upset Oral Roberts in Tulsa for the first time in history: "You like to keep on an even keel after a big win like this, but sometimes an 18- or 19-year-old kid doesn't see things the same as a balding man." (Andy Glantzman, Detroit assistant SID)

Canisius trailed underdog New Hampshire by two with six minutes left when Canisius coach Nick Macarchuk inserted backup point guard Mike Trivisonno to team with regular point guard Michael Ray Jackson, forcing high-scoring Ray Hall to forward. It was the first time all year that Macarchuk had used such a lineup, and it worked. The Griffs outscored New Hampshire 11-0 down the stretch to win, 56-47. Asked about the move in a postgame interview, Trivisonno candidly replied: "I think he was groping." (John Maddock, Canisius SID)

Pat Fisher, the women's head coach at Lafayette, had acquired only one technical foul in her previous 22 years of high school and college coaching. This season, however, she already has picked up four in nineteen games. Fisher wonders whether her increased volatility on the court is related to the influence of the new men's head coach, whose office is next to hers. "Maybe having an office next door to Butch (van Breda Kolff) is rubbing off. Sometimes, it's the only way to get results. He's never happy with officials, but my opinion of them this season hasn't been very high, either." (Craig Smith, Lafayette SID)

Division I scoring leader Anucha Browne of Northwestern, who has been atop the scoring list for the entire season, never planned to be a basketball star. At home in Brooklyn, parents Alfred and Alma Browne preached hard work and good grades to their six children. It came as a surprise to the Brownes to find they had the 1984 Big Ten player of the year and a Wade Trophy candidate as a daughter.

"When I told them I was a candidate for the Wade (in 1984)," Anucha explained to Jody Homer of the Chicago Tribune, "I had to tell them what the Wade was. In our house, academics were emphasized. My parents were never fanatics about athletics. They're so funny now. They were never into sports, and now they just love it." The closest mother Alma had

ever come to basketball before Anucha's success was a blind date many years ago with Wilt Chamberlain. "I didn't really know who he was," Alma recalled.

Anucha, a 6-1 center (her name means "goddess" in Ethiopian), is the only one among her three sisters and two brothers to play basketball. Academics have certainly not taken a back seat, however. She is a communications major, ahead of schedule to get her degree this spring. She needed only three classes this semester to graduate. She was not initially recruited by Northwestern but was impressed with the campus and the atmosphere when she visited an older sister who was a student there. "I had a nice time when I visited my sister," Browne recalled. "I knew it was a good academic school. I would have gone to a good school even if I wasn't recruited or offered a scholarship. I'm pretty lucky, getting a full ride. I couldn't appreciate this any more than I do."

Despite her 30-points-per-game average, Browne does not concentrate on achieving personal glory. "It's easier to play when you're not thinking about stats," she said. "I'm concentrating on winning, not scoring 30 points every game. We want to make the NCAA tournament and make a good showing. One person can't do that alone."

Women's college basketball has been very much in the spotlight in recent weeks. Public attention has been secured with the first dunk recorded in a regulation game and with record-breaking attendance at Iowa. Georgia women's head coach Andy Landers, in his sixth season and ranked among the top 20 winningest active coaches, remembers when the situation was much different, not long ago. His budget, for example, has increased from the \$37,000 he was given upon arriving in Athens in 1979 to \$150,000. "Year one, I had no help," he told Karen Rosen of the Atlanta Journal. "I'd practice until 3 or 3:15. I literally ran from that floor to my dressing room, grabbed my clothes, jerked them on, went out the door fastening my belt, got to my car and I was gone (recruiting). I slept in the office a lot. I thought the WATS line was the greatest thing known to man."

"When will women's basketball get where it's going?" Landers wondered. "I don't know, but it keeps moving in the right direction. If I told anyone last year we'd have 7,500 for the Southern Cal game, they'd close the door and laugh. Now I'm wondering what game's going to fill this place up."

Old Dominion's Marianne Stanley, the winningest active Division I coach at the beginning of the season, believes the Olympic gold medal won by the U.S. team helped immensely. "I've seen some dramatic changes since the Los Angeles Olympics," she noted.

# The NCAA News



# Basketball Statistics

Through games of February 11

## Men's Division I individual leaders

## Team leaders

SCORING				
CL	G	FG	FT	PTS
1. Dan Palombizio, Ball State	Jr	21	218	577
2. Xavier McDaniel, Wichita St.	Sr	22	246	604
3. Alfredrick Hughes, Loyola (Ill.)	Sr	21	233	560
4. Sam Mitchell, Mercer	Sr	22	225	580
5. Terry Catledge, South Alabama	Sr	23	231	589
6. John Williams, Indiana St.	Jr	20	205	512
7. Wayne Tisdale, Oklahoma	Jr	23	233	581
8. Keith Smith, Loyola (Cal.)	Jr	21	220	529
9. Joe Dumas, McNeese St.	Sr	19	163	473
10. Dave Hoppen, Nebraska	Jr	21	198	518
11. Ron Harper, Miami (Ohio)	Jr	21	216	513
12. Derrick Gervin, Tex. San Antonio	Jr	21	193	509
13. Timo Saarelainen, Brigham Young	Sr	23	204	552
14. Randy Cozzens, Army	Sr	20	159	475
15. Steve Harris, Tulsa	Sr	22	196	521
16. Carlos Yates, George Mason	Sr	21	176	495
17. Benoit Benjamin, Creighton	Jr	25	219	486
18. David Robinson, Navy	So	21	189	490
19. Reggie Lewis, Northeastern	So	21	186	486
20. Kenny Walker, Kentucky	Jr	21	168	485
21. Craig Beard, Samford	Sr	25	250	75
22. Chuck Person, Auburn	Jr	21	212	52
23. Joe Carabino, Harvard	Sr	16	132	37
24. Charlie Bradley, South Florida	Sr	22	189	461
25. Barry Stevens, Iowa State	Sr	24	215	500
26. Keith Lee, Memphis St.	Sr	19	157	39
27. John Battle, Rutgers	Sr	20	169	95
28. Joe Kleine, Arkansas	Sr	25	206	129
29. Johnny Rogers, UC Irvine	Jr	24	202	115
30. Rich Pass, Monmouth (N.J.)	Sr	21	187	80
31. Gilbert Wilburn, New Mexico St.	Jr	15	128	68
32. Ben Hinson, Baptist (S.C.)	So	22	190	95
33. Regan Truesdale, Citadel	Sr	22	185	104
34. Vince Washington, Utah State	Sr	21	164	123
35. Keith Taylor, Bowling Green	Sr	21	186	77
36. Ray Hall, Canisius	Sr	22	161	466
37. Sam Vincent, Michigan St.	Sr	21	162	122
38. Jim McCaffrey, Holy Cross	Jr	22	173	121
39. Chad Tucker, Butler	So	21	187	71
40. Andre Battle, Loyola (Ill.)	Sr	21	188	66
41. Larry Krystkowiak, Montana	Jr	23	165	153
42. Voise Winters, Bradley	Sr	21	186	69
43. Kenny Battle, Northern Ill.	Fr	21	158	125
44. Vernon Moore, Creighton	Sr	25	204	115
45. Greg Grant, Utah State	Jr	21	178	82
46. Leonard Hayes, St. Peter's	Sr	16	147	38
47. Greg Stokes, Iowa	Sr	23	198	81
48. Terrance Bailey, Wagner	So	21	160	111
49. Luther Burden, St. Louis	Sr	22	189	71
50. Anthony Grier, Kent State	Sr	21	173	82
51. John Harris, New Orleans	Sr	24	181	127
52. Randy Kraayenbrink, Northern Iowa	Jr	22	180	88

ASSISTS				
CL	G	NO	AVG	
1. Rob Weingard, Hofstra	Sr	17	162	9.5
2. Carl Goltson, Loyola (Ill.)	Jr	21	189	9.0
3. Jim Les, Bradley	Fr	21	182	8.7
4. Laurence Chisholm, Delaware	Fr	22	180	8.2
5. Brian Carr, Nebraska	So	21	169	8.0
6. Kenny Smith, North Carolina	So	23	179	7.8
7. Ralph Lee, Xavier	Jr	19	142	7.5
8. Tyrone Bogues, Wake Forest	So	21	154	7.3
9. Carlton Clarrington, Tennessee Tech	Sr	21	151	7.2
10. Aaron McCarthy, Weber State	Sr	23	165	7.2

REBOUNDING				
CL	G	NO	AVG	
1. Xavier McDaniel, Wichita St.	Sr	22	327	14.9
2. Benoit Benjamin, Creighton	Jr	25	367	14.7
3. Carey Scurry, Long Island	Sr	21	290	13.8
4. Robert Sanders, Miss. Valley St.	Sr	18	243	13.5
5. Karl Towns, Monmouth (N.J.)	Sr	21	265	12.6
6. Alex Stivins, Colorado	Sr	20	242	12.1
7. Tony Neal, Cal St. Fullerton	Sr	20	237	11.9
8. Terry Catledge, South Alabama	Sr	23	262	11.4
9. Ron Harper, Miami (Ohio)	Jr	21	239	11.4
10. Mike Brown, George Washington	Sr	19	214	11.3
11. Dan Palombizio, Ball State	Jr	21	234	11.1

FIELD-GOAL PERCENTAGE				
CL	G	FG	FGA	PCT
1. Keith Walker, Ulica	Sr	23	133	186
2. Vernon Moore, Creighton	Sr	25	204	296
3. John Salley, Georgia Tech	Jr	22	141	212
4. Dave Hoppen, Nebraska	Jr	21	198	299
5. John Staves, Southern	Jr	20	113	171
6. Patrick Ewing, Georgetown	Sr	23	133	207
7. George Scott, New Mexico	Sr	23	128	201
8. Albert Thomas, Centenary	Jr	23	166	262
9. Mark Alarie, Duke	Jr	21	148	235
10. Ken Bantum, Cornell	Sr	17	106	169
11. David Robinson, Navy	So	21	189	303
12. Benoit Benjamin, Creighton	Jr	25	219	357
13. Quinton Dale, Northeastern	Sr	21	138	226
14. Mike Smrek, Canisius	Sr	20	125	205
15. Derek Boldon, Central Michigan	Sr	21	140	230
16. Nikita Wilson, Louisiana St.	So	21	143	235
17. Tryg Johnson, Montana St.	Sr	22	113	186
18. Rich Harris, Xavier	Jr	19	136	224
19. Bob Ferry, Harvard	Sr	16	101	167
20. Joe Kleine, Arkansas	Sr	25	206	341
21. John Shasky, Minnesota	Jr	20	109	181
22. Doug Poetzsch, Siena	Sr	21	141	235
23. Ed Pinckney, Villanova	Sr	22	118	197
24. John Bajusz, Cornell	So	18	110	184
25. Jon Koncak, Southern Methodist	Sr	23	155	260
26. Larry Krystkowiak, Montana	Jr	23	165	277
27. Eugene McDowell, Florida	Sr	21	134	225
28. James Bullock, Purdue	Sr	21	125	210
29. John Brownlee, Texas	Jr	21	107	180
30. Vince Giles, Eastern Mich.	Sr	21	152	256

FREE-THROW PERCENTAGE				
CL	G	FT	FTA	PCT
1. Craig Collins, Penn State	Sr	20	67	70
2. Steve Alford, Indiana	So	20	79	84
3. Chris Elzey, Penn	So	17	47	80
4. Kent Hagan, Weber State	Sr	23	75	80
5. Bruce Timko, Youngstown St.	Jr	23	65	70
6. Kenny Brown, Texas A&M	Jr	21	73	79
7. Dennis Nutt, Texas Christian	Sr	22	59	64
8. Rick Olson, Wisconsin	Jr	21	57	63
9. Joe Carabino, Harvard	Sr	16	97	108
10. Rick Suder, Duquesne	Jr	21	96	107
11. Nate Buford, Southern Ill.	Sr	22	61	88
12. Shawn Teague, Boston	Sr	20	72	81
13. Tony McIntosh, Fordham	Sr	22	95	107
14. Michael Breen, Tennessee	Sr	24	99	112
15. Phil Cox, Vanderbilt	Sr	21	91	103
16. Keith Arnold, Fresno St.	Sr	19	58	86
17. Vince Washington, Utah State	Sr	21	123	140
18. Keith Webster, Harvard	So	16	65	74
19. Johnny Holman, Western Illinois	Sr	17	93	106
20. Luther Burden, St. Louis	Sr	22	71	81
21. Jimmy Elliott, Tennessee Tech	Sr	21	55	63
22. Randy Cozzens, Army	Sr	20	157	180
23. Steve Hale, North Carolina	Jr	23	61	70
24. Kenny Smith, North Carolina	So	23	66	76
25. Mike Polaha, Lehigh	So	22	85	86
26. Kelvin Johnson, Richmond	Sr	19	52	60
27. Earl Kelley, Connecticut	Jr	20	71	82
28. Steve Harris, Tulsa	Sr	22	129	149
29. Kevin Houston, Army	So	20	102	118
30. Bubba Jennings, Texas Tech	Sr	21	69	80

REBOUNDING				
CL	G	NO	AVG	
1. Xavier McDaniel, Wichita St.	Sr	22	327	14.9
2. Benoit Benjamin, Creighton	Jr	25	367	14.7
3. Carey Scurry, Long Island	Sr	21	290	13.8
4. Robert Sanders, Miss. Valley St.	Sr	18	243	13.5
5. Karl Towns, Monmouth (N.J.)	Sr	21	265	12.6
6. Alex Stivins, Colorado	Sr	20	242	12.1
7. Tony Neal, Cal St. Fullerton	Sr	20	237	11.9
8. Terry Catledge, South Alabama	Sr	23	262	11.4
9. Ron Harper, Miami (Ohio)	Jr	21	239	11.4
10. Mike Brown, George Washington	Sr	19	214	11.3
11. Dan Palombizio, Ball State	Jr	21	234	11.1

SCORING OFFENSE				
G	W-L	PTS	AVG	
1. Oklahoma	23	19-4	2098	91.2
2. Utah State	21	13-8	1849	88.0
3. Alcorn State	20	15-5	1760	87.2
4. Southern	21	14-7	1831	86.5
5. Loyola (Ill.)	21	16-5	1816	86.5
6. Tulsa	22	18-4	1851	84.6
7. Baylor	21	9-12	1744	83.0
8. Nev.-Las Vegas	21	18-3	1733	82.5
9. Virginia Tech	22	16-6	1806	82.1
10. Indiana St.	20	11-9	1638	81.9
11. Cleveland State	21	15-6	1714	81.6
12. Michigan	21	18-3	1711	81.5
13. Duke	21	17-4	1682	80.1
14. Northeastern	21	13-8	1682	80.1
15. Florida	21	16-5	1675	79.8
16. Citadel	22	13-9	1749	79.5
17. San Diego St.	23	18-5	1827	79.4

SCORING DEFENSE				
G	W-L	PTS	AVG	
1. Fresno State	21	15-6	1121	53.4
2. Colgate	19	5-14	1024	53.9
3. Princeton	17	6-11	931	54.8
4. Georgetown	24	22-2	1350	56.3
5. Oregon State	21	17-4	1194	56.9
6. Gonzaga	22	14-8	1262	57.4
7. Iowa	23	19-4	1321	57.4
8. Temple	20	17-3	1156	57.8
9. Illinois	25	18-7	1460	58.4
10. Va. Military	20	13-7	1168	58.4
11. Cornell	18	10-8	1057	58.7
12. Murray St.	23	18-5	1357	59.0
13. Marquette	20	13-7	1181	59.1
14. Houston Baptist	22	16-6	1308	59.5
15. Montana	23	19-4	1385	60.2
16. Washington	24	17-7	1446	60.3
17. Virginia	23	12-11	1389	60.4

SCORING MARGIN				
OFF	DEF	MAR		
1. Georgetown	73.7	56.3	17.4	
2. Oklahoma	91.2	74.1	17.1	
3. Iowa	74.3	57.4	16.9	
4. Navy	78.7	64.3	14.4	
5. Louisiana Tech	78.3	63.9	14.4	
6. Virginia Tech	82.1	68.9	13.2	
7. Georgia	78.1	65.0	13.1	
8. Weber State	77.7	64.7	13.0	
9. St. John's	74.0	61.1	12.9	
10. Duke	80.1	67.5	12.6	
11. Georgia Tech	74.3	62.1	12.2	
12. Memphis State	75.0	63.5	11.5	
13. Southern Methodist	78.2	66.8	11.4	
14. Cleveland State	81.6	70.6	11.0	
15. Michigan	81.5	70.4	11.0	

FIELD-GOAL PERCENTAGE				
CL	G	FG	FGA	PCT
1. Creighton	22	772	1402	55.1
2. St. John's	22	557	1015	54.9
3. Indiana	22	625	1142	54.7
4. Harvard	22	387	709	54.6
5. Michigan State	22	607	1114	54.5
6. Georgia Tech	22	652	1197	54.5
7. North Carolina	22	695	1276	54.5
8. Navy	22	633	1169	54.1
9. Duke	22	653	1211	53.9
10. Kansas	22	742	1381	53.7
11. Oregon State	22	533	993	53.7
12. Eastern Illinois	22	577	1082	53.3
13. Mercer	22	695	1304	53.3
14. Ulica	22	635	1197	53.0
15. Arizona	22	635	1198	53.0
16. NE Louisiana	22	654	1235	53.0

# Team leaders

SCORING OFFENSE				
	G	W-L	PTS	AVG
1 Long Beach St.	19	18-1	1703	89.6
2 Brigham Young	19	12-7	1675	88.2
3 NW Louisiana	21	16-5	1846	87.9
4 Penn State	23	20-3	2002	87.0
5 Delta State	22	16-6	1899	86.3
6 Missouri	21	13-8	1794	85.4
7 NE Louisiana	20	19-1	1705	85.3
8 Oklahoma	21	17-4	1784	85.0
9 Louisiana State	22	15-7	1841	83.7
10 Marshall	20	15-7	1832	83.3
11 Middle Tenn.	20	15-5	1611	82.3
12 Texas	22	20-2	1811	82.3
13 Memphis State	21	17-4	1728	82.3
14 Louisiana Tech	23	20-3	1889	82.1
15 Southern Miss	22	15-7	1804	82.0
16 Georgia	25	22-3	2040	81.6

SCORING DEFENSE				
	G	W-L	PTS	AVG
1 Northeastern	22	16-6	1147	52.1
2 Southern Ill.	21	16-5	1175	56.0
3 Auburn	22	20-2	1241	56.4
4 Lafayette	23	18-5	1298	56.4
5 Iowa	20	14-6	1139	57.0
6 Villanova	22	17-5	1255	57.0
7 James Madison	22	17-5	1257	57.1
8 St. Peter's	22	19-3	1261	57.3
9 Maine	23	16-7	1326	57.7
10 Lehigh	21	16-5	1213	57.8
11 Boston College	22	15-7	1279	58.1
12 Texas	22	20-2	1291	58.7
13 Boston U.	22	11-11	1297	59.0
14 Florida	24	18-6	1420	59.2
15 Ohio State	21	19-2	1244	59.2
16 Fresno State	22	16-6	1306	59.4

## The NCAA News



## Basketball Statistics

Through games of February 4

## Men's Division II individual leaders

SCORING						FIELD-GOAL PERCENTAGE						
	CL	G	FG	FT	PTS	AVG	(Min. 5 Fg Made Per Game)	CL	G	FG	FGA	PCT
1 Ernest Lee, Clark (Ga.)	So	20	247	158	652	32.6	1 Jesse Hellyer, Randolph-Macon	Sr	21	124	181	68.5
2 Bernard Tittle, Morris Brown	Jr	19	206	130	542	28.5	2 Tim Thomas, Columbus	Jr	20	171	264	64.8
3 Willie Kelly, Fort Valley St.	So	17	186	84	456	26.8	3 Jim Henderson, Le Moyne	So	20	123	190	64.7
4 Dave Gilreath, Mankato St.	Sr	20	232	58	522	26.1	4 Ron Porter, Mo. St. Louis	Jr	21	116	182	63.7
5 Butch Warner, Gannon	Sr	21	203	119	525	25.0	5 Charles Oakley, Virginia Union	Sr	19	181	284	63.7
6 Charles Oakley, Virginia Union	Sr	19	181	97	459	24.2	6 Jamie Turner, Elizabeth City	Sr	17	121	191	63.4
7 Ron Nunnely, Central Missouri	Sr	20	210	63	483	24.2	7 Andy Warner, Wright St.	Jr	20	102	163	62.6
8 Tom Welle, Alas. Fairbanks	Sr	23	194	160	548	23.8	8 Chubby Jackson, Columbus	Sr	20	121	196	61.7
9 Glenn Stump, Seattle Pacific	Sr	20	192	76	460	23.0	9 Robert Guyton, Jacksonville St.	Sr	19	117	190	61.6
10 Charlie Askew, Savannah St.	Sr	15	138	60	336	22.4	10 Bob Conaway, Morningside	Sr	19	104	169	61.5
11 Robert Davis, Mercy	Jr	20	163	116	442	22.1	11 Ryan Tuck, Pembroke St.	Jr	19	126	205	61.5
12 Sam Veal, Cal St. Los Angeles	Jr	21	174	109	457	21.8						
13 Manute Bol, Bridgeport	Fr	19	176	59	411	21.6						
14 Leafus Thomas, Alabama A&M	Sr	18	135	113	383	21.3						
15 John Green, Mercyhurst	Sr	20	185	55	425	21.3	(Min. 2.5 Ft Made Per Game)	CL	G	FT	FTA	PCT
16 Tim Criswell, West Georgia	Jr	21	193	59	445	21.2	1 Bill Harris, Northern Mich.	So	21	83	91	91.2
17 David Johnson, Augustiana (S.D.)	Sr	20	179	65	423	21.2	2 James Wells, Cal Poly SLO	Jr	20	50	55	90.9
18 Ron Johnson, Barry	Fr	21	190	64	444	21.1	3 Tom McDonald, South Dakota St.	Jr	20	58	65	89.2
19 Kevin Cafron, St. Cloud St.	Jr	20	171	78	420	21.0	4 Kerry Mellroy, S.F. Austin St.	So	17	46	52	88.5
20 Andre Hills, Troy State	Sr	21	171	97	439	20.9	5 Tom Gussen, Phil. Textile	Sr	21	92	105	87.6
21 Ralph Tally, Norfolk St.	So	16	128	75	331	20.7	6 Tom Welle, Alas. Fairbanks	Sr	23	160	184	87.5
22 Donald Reedus, Alabama A&M	Jr	18	148	70	366	20.3	7 Troy Mattson, Northern Mich.	Sr	21	58	67	86.6
23 Cedric Miller, Hampton	Sr	16	115	94	324	20.3	8 Steve Stacy, North Dakota St.	Sr	20	56	65	86.2
24 Jeff Buckson, Southern Conn.	Jr	19	152	80	384	20.2	9 Mike Spanitz, Slippery Rock	Sr	15	73	85	85.9
							10 Dennis Majeskie, North Dakota St.	Jr	20	83	97	85.6
REBOUNDING												
	CL	G	NO	AVG				CL	G	NO	AVG	
1 Charles Oakley, Virginia Union	Sr	19	340	17.9				1 Jon Taylor, Mankato St.	Sr	20	228	11.4
2 Manute Bol, Bridgeport	Fr	19	285	15.0				9 Cliff Webber, Liberty Baptist	Sr	22	243	11.0
3 Cedric Miller, Hampton	Sr	16	234	14.6				10 Cleveland Woods, New Hamp. Col.	So	20	214	10.7
4 Raheem Muhammad, Wayne St. (Mich.)	Jr	19	255	13.4				11 Tony Coleman, Phila. Textile	Fr	19	202	10.6
5 Cameron Drew, New Haven	So	20	260	13.0				12 Kevin Williams, Slippery Rock	Jr	17	179	10.5
6 Anthony Walton, Lincoln (Mo.)	Sr	17	203	11.9				13 Bob Conaway, Morningside	Sr	19	199	10.5
7 Terrance Rayford, Clark (Ga.)	Fr	20	231	11.6				14 Keith McKeller, Jacksonville St.	Jr	18	183	10.2
1 Charles Oakley, Virginia Union	CL	G	NO	AVG								
2 Manute Bol, Bridgeport	Fr	19	285	15.0								
3 Cedric Miller, Hampton	Sr	16	234	14.6								
4 Raheem Muhammad, Wayne St. (Mich.)	Jr	19	255	13.4								
5 Cameron Drew, New Haven	So	20	260	13.0								
6 Anthony Walton, Lincoln (Mo.)	Sr	17	203	11.9								
7 Terrance Rayford, Clark (Ga.)	Fr	20	231	11.6								
8 Jon Taylor, Mankato St.	CL	G	NO	AVG								
9 Cliff Webber, Liberty Baptist	Sr	22	243	11.0								
10 Cleveland Woods, New Hamp. Col.	So	20	214	10.7								
11 Tony Coleman, Phila. Textile	Fr	19	202	10.6								
12 Kevin Williams, Slippery Rock	Jr	17	179	10.5								
13 Bob Conaway, Morningside	Sr	19	199	10.5								
14 Keith McKeller, Jacksonville St.	Jr	18	183	10.2								

REBOUNDING						FREE-THROW PERCENTAGE					
CL	G	NO	AVG			CL	G	FT	FTA	PCT	
1 Charles Oakley, Virginia Union	Sr	19	340	17.9		1 Bill Harris, Northern Mich.	So	21	83	91	91.2
2 Manute Bol, Bridgeport	Fr	19	285	15.0		2 James Wells, Cal Poly SLO	Jr	20	50	55	90.9
3 Cedric Miller, Hampton	Sr	16	234	14.6		3 Tom McDonald, South Dakota St.	Jr	20	58	65	89.2
4 Raheem Muhammad, Wayne St. (Mich.)	Jr	19	255	13.4		4 Kerry McElroy, S.F. Austin St.	So	17	46	52	88.5
5 Cameron Drew, New Haven	So	20	260	13.0		5 Tom Gussen, Phila. Textile	Sr	21	92	105	87.6
6 Anthony Walton, Lincoln (Mo.)	Sr	17	203	11.9		6 Tom Welle, Alas. Fairbanks	Sr	23	160	184	87.0
7 Terrance Rayford, Clark (Ga.)	Fr	20	231	11.6		7 Troy Mattson, Northern Mich.	Sr	21	58	67	86.6
						8 Steve Stacy, North Dakota St.	Sr	20	56	65	86.2
						9 Mike Spanitz, Slippery Rock	Sr	15	73	85	85.9
						10 Dennis Majeskie, North Dakota St.	Jr	20	83	97	85.6

## Women's Division II individual leaders

SCORING						FIELD-GOAL PERCENTAGE						
	CL	G	FG	FT	PTS	AVG	(Min. 5 Fg Made Per Game)	CL	G	FG	FGA	PCT
1. Lynette Richardson, Florida Int'l	Jr	21	207	113	527	25.1	1. Sharon Lyke, Utica	Sr	14	127	191	66.5
2. Trina Easley, San Francisco St	Sr	20	190	114	494	24.7	2. Vickie Warehime, Davis & Elkins	So	20	118	183	64.5
3. Evon Owens, Clark	Jr	18	153	120	426	23.7	3. Rhonda Unverferth, IU/PU-Ft. Wayne	Sr	16	119	194	61.3
4. Julie Freundt, Lewis	Sr	19	188	69	445	23.4	4. Karyn Marshall, Bryant	Jr	19	146	240	60.8
5. Trice Jackson, Alabama A&M	Jr	16	152	70	374	23.4	5. Jenni Johnson, South Dakota St.	Sr	17	129	215	60.0
6. Sharon Lyke, Utica	Sr	14	127	61	315	22.5	6. Laura Regal, Niagara	Jr	16	103	178	57.9
7. Rhonda Unverferth, IU/PU-Ft. Wayne	Sr	16	119	115	353	22.1	7. Francine Perry, Quinnipiac	Sr	19	177	309	57.3
8. Francine Perry, Quinnipiac	Sr	19	177	64	418	22.0	8. Ramona Rugloski, St. Cloud State	Jr	17	147	258	57.0
9. Donna Mauro, Molloy	Jr	18	143	106	392	21.8	9. Julie Freundt, Lewis	Sr	19	188	332	56.6
10. Darlene Chaney, Hampton	Sr	22	212	53	477	21.7	10. Veronda Finley, Cal St. Los Angeles	Jr	18	106	188	56.4
11. Debbie Law, Indiana Central	Sr	16	140	59	339	21.2						
12. Lisa McGhee, West Georgia	Jr	19	168	48	384	20.2						
13. Ramona Rugloski, St. Cloud State	Jr	17	147	47	341	20.1						
14. Breinda Copeland, Tuskegee	Sr	19	167	47	381	20.1						
15. Lisa Green, Mt. St. Mary's	So	18	157	44	358	19.9						
16. Anita Cooper, Hampton	Jr	22	195	47	437	19.9						
17. Mary K. Lynch, Gannon	Sr	14	110	58	278	19.9						
18. Carla Schuck, Mankato State	Jr	20	177	43	397	19.9						
19. Stacey Goss, Air Force	Jr	18	150	57	357	19.8						
20. Sheila Johnson, Immaculata	Sr	20	165	63	393	19.7						
21. Diane Walker, Slippery Rock	Jr	16	138	36	312	19.5						
22. Karyn Marshall, Bryant	Jr	19	146	68	360	19.5						
23. Barbara Green, Pembroke State	Sr	19	152	54	358	18.8						
REBOUNDING						FREE-THROW PERCENTAGE						
	CL	G	NO	AVG			CL	G	FT	FTA	PCT	
1. Evon Owens, Clark	Jr	18	302	16.8	8. Kim Ambrose, Shaw	Sr	17	221	130			
2. Francine Perry, Quinnipiac	Sr	19	288	15.2	8. Sharon Lyke, Utica	Sr	14	182	133			
3. Stacey Gillespie, Mercy	Jr	19	279	14.7	11. Trina Easley, San Francisco St	Sr	20	258	129			
4. Darlene Chaney, Hampton	Jr	22	314	14.3	12. Deb Schneider, Mansfield	Sr	14	176	12.6			
5. Breinda Copeland, Tuskegee	Sr	19	262	13.8	13. Shelly Bowie, Millersville	Sr	15	184	12.3			
6. Julie Freundt, Lewis	Sr	19	251	13.2	14. Sherrie Zinn, Alabama A&M	So	18	218	12.1			
7. Stephanie Bonds, Morris Brown	Sr	18	235	13.1	15. Jenni Johnson, South Dakota St	Sr	17	203	11.9			
8. Dana Patsie, North Dakota	Fr	21	273	13.0	16. Valerie Turner, Longwood	Sr	18	213	11.8			

REBOUNDING						FREE-THROW PERCENTAGE					
CL	G	NO	AVG			CL	G	FT	FTA	PCT	
1 Evon Owens, Clark	Jr	18	302	16.8		1 Lisa McGhee, West Georgia	Jr	19	48	52	92.3
2 Francine Perry, Quinnipiac	Sr	19	288	15.2		2 Karen Arnold, Millersville	Jr	17	68	79	86.1
3 Stacey Gillespie, Mercy	Jr	19	279	14.7		3 Carrie McConkey, Niagara	Fr	16	48	57	84.2
4 Darlene Chaney, Hampton	Sr	22	314	14.3		4 Florence Holmes, Longwood	So	20	51	66	83.9
5 Breinda Copeland, Tuskegee	Sr	19	262	13.8		5 Jeanette Clevon, NE Missouri St.	So	19	74	90	82.2
6 Julie Freundt, Lewis	Sr	19	251	13.2		6 Bonnie Henricsson, St. Cloud State	Jr	19	75	92	81.5
7 Stephanie Bonds, Morris Brown	Sr	18	235	13.1		7 Robyn Sauvageau, Southern Conn.	Sr	19	66	82	80.5
8 Dana Patsie, North Dakota	Fr	21	273	13.0		8 Kim Vanderaa, Wis. Parkside	So	18	45	56	80.4
						9 Dee Major, Pembroke St.	Sr	19	60	75	80.0

## Men's Division III individual leaders

SCORING						FIELD-GOAL PERCENTAGE						
	CL	G	FG	FT	PTS	AVG	(Min. 5 Fg Made Per Game)	CL	G	FG	FGA	PCT
1 Adam St. John, Maine Maritime	Sr	17	183	123	489	28.8	1 Dick Hempy, Otterbein	So	19	162	245	66.1
2 Kevin Brown, Emory & Henry	So	19	189	112	490	25.8	2 David Beckman, Hope	Sr	16	107	162	66.0
3 Rod Swartz, Hiram	So	17	181	70	432	25.4	3 Billy Waits, Millsaps	Jr	17	116	177	65.5
4 Scott Patterson, Rhodes	Sr	17	161	95	417	24.5	4 John Baker, N.C. Greensboro	Sr	17	139	213	65.3
5 Mike Cutts, N.Y. Maritime	So	18	175	81	431	23.9	5 Reinout Brugman, Muhlenberg	Jr	20	136	210	64.8
6 Vic Harp, Thiel	Sr	15	146	67	359	23.9	6 John Loomie, Worcester Tech	So	18	138	214	64.5
7 Eddie Rutledge, Frostburg St	Jr	17	157	86	400	23.5	7 Ken Harris, Augustana (Ill.)	Jr	22	121	190	63.7
8 Tom Reader, Ripon	Jr	17	160	70	390	22.9	8 Dana Janssen, Neb. Wesleyan	Jr	18	151	242	62.4
9 Cyrus Deas, Staten Island	Sr	20	185	84	454	22.7	9 Chris Hughey, Fredonia St.	Jr	14	114	183	62.3
10 Bill Seiler, Monmouth (Ill.)	Jr	15	133	69	335	22.3	10 Ken Chance, New Jersey Tech	Jr	18	133	214	62.1
11 Ken Abere, Trinity (Conn.)	Jr	14	110	92	312	22.3						
12 Byron Beard, Oberlin	Jr	21	205	57	467	22.2						
13 Brian Ammann, Augsburg	Sr	19	161	100	422	22.2						
14 Leonard Dow, East Mennonite	Jr	20	181	82	444	22.2						
15 Jeff Wilcox, Lawrence	Jr	13	133	16	282	21.7						
16 Justyne Monegan, North Park	Sr	21	178	95	451	21.5						
17 Tom Gallagher, New Jersey Tech	Sr	18	145	94	384	21.3						
18 Dave Kennedy, Bates	Jr	15	133	51	317	21.1						
19 Dana Janssen, Neb. Wesleyan	Jr	18	151	78	380	21.1						
20 Dick Hempy, Otterbein	So	19	162	77	401	21.1						
21 Donald Stewart, Methodist	Sr	22	193	77	463	21.0						
22 Rusty Swartz, Hiram	Sr	17	134	89	357	21.0						
23 Brian Duran, Westfield St.	Jr	15	142	31	315	21.0						
REBOUNDING						FREE-THROW PERCENTAGE						
	CL	G	NO	AVG			(Min. 2.5 Ft Made Per Game)	CL	G	FT	FTA	PCT
1 Albert Wells, Rust	Sr	14	197	14.1	9 Mike Grintjes, Buena Vista	Sr	19	221	111.6			
2 Russell Thompson, Westfield St	So	15	194	12.9	10 Mark Rucinski, Juniata	Sr	18	199	11.1			
3 Adrian Schaffer, Oberlin	Jr	18	224	12.4	11 Tony Petosa, Staten Island	Jr	20	220	11.0			
4 Lars Anderson, North Park	Sr	21	255	12.1	12 Tony Farris, Mary Washington	Sr	16	174	10.9			
5 Bob Sclza, Baldwin-Wallace	Sr	21	254	12.1	13 Dana Janssen, Neb. Wesleyan	Jr	18	195	10.8			
6 John Groover, Buffalo St	Sr	17	202	11.9	14 Karl Maskins, Earlham	Sr	18	194	10.8			
7 Ed Moyer, King's (Pa.)	So	19	224	11.8	15 Steve Tseydos, New York Poly	Jr	15	161	10.7			
8 Leonard Dow, East Mennonite	Jr	20	234	11.7	16 Byron Beard, Oberlin	Jr	21	224	10.7			

REBOUNDING						FREE-THROW PERCENTAGE					
CL	G	NO	AVG			CL	G	FT	FTA	PCT	
1 Albert Wells, Rust	Sr	14	197	14.1		1 Dave Cortez, Colorado Col.	Jr	18	75	81	92.6
2 Russell Thompson, Westfield St.	So	15	194	12.9		2 Kevin Brown, Emory & Henry	So	19	112	126	88.9
3 Adrian Schaffer, Oberlin	Jr	18	224	12.4		3 Eric Jacobs, Wilkes	So	20	78	89	87.6
4 Lars Anderson, North Park	Sr	21	255	12.1		4 Jay Coatta, Gustavus Adolphus	Jr	19	83	95	87.4
5 Bob Seitz, Baldwin-Wallace	Sr	21	254	12.1		5 Bill Seiler, Monmouth (Ill.)	Jr	15	69	79	87.3
6 John Groover, Buffalo St.	Sr	17	202	11.9		6 Claude Johnson, Heidelberg	Sr	20	53	61	86.9
7 Ed Moyer, King's (Pa.)	So	19	224	11.8		7 Jeff Vandundy, Nazareth	Sr	17	64	74	86.5
8 Leonard Dow, East Mennonite	Jr	20	234	11.7		8 Peter Story, Southern Maine	So	18	76	88	86.4
						9 Tom Gallagher, New Jersey Tech	Sr	18	94	109	86.2
						10 Todd Galman, Nazareth	So	17	75	87	86.2

## Women's Division III individual leaders

SCORING						FREE-THROW PERCENTAGE						
	CL	G	FG	FT	PTS	AVG	(Min. 2.5 Ft Made Per Game)	CL	G	FT	FTA	PCT
1. Jeannie Demars, Buena Vista	So	18	241	61	543	30.2	1. Joann D'Alessandro, R.I. College	So	17	50	55	90.9
2. Julie Curtis, Whittier	So	20	223	90	536	26.8	2. Tricia Ginley, Mount Holyoke	Sr	13	39	45	86.7
3. Terri Schumacher, Wis.-Oshkosh	Sr	18	214	37	465	25.8	3. Beth Lucas, Transylvania	Jr	14	37	43	86.0
4. Charlene Hurst, Wilkes	Sr	18	186	84	456	25.3	4. Robin Rich-Taylor, William Penn	Sr	20	83	97	85.6
5. Laura Johnson, Shenandoah	Sr	15	147	61	355	23.7	5. Sherry Bryan, Eureka	Jr	13	39	47	83.0
6. Sue Marshall, Gettysburg	Sr	15	151	43	345	23.0	6. Amy Simpson, Va. Wesleyan	Jr	17	124	152	81.6
7. Gretchen Gates, Chicago	Jr	17	174	39	387	22.8	7. Valery Broadwater, Frostburg State	Jr	16	48	61	78.7
8. Lorraine Lynch, Buffalo State	Fr	16	136	75	347	21.7	8. Pam Stewart, Chris. Newport	So	18	67	86	77.9
9. Amy Spielbauer, St. Norbert	Sr	16	125	82	342	21.4	9. Penny Wehrs, Duquesne	Fr	18	80	103	77.7
10. Amy Vanden Laenenberg, Carroll	Jr	14	118	63	299	21.4	10. Ann Osborne, Ohio Wesleyan	Fr	17	45	58	77.6
11. Mary Schultz, St. Mary's (Minn.)	Jr	17	144	75	363	21.4						
12. Amy Simpson, Va. Wesleyan	Jr	17	112	124	348	20.5	FIELD-GOAL PERCENTAGE					
13. Glenis Thomas, Mass.-Boston	Jr	15	131	38	300	20.0	(Min. 5 Fg Made Per Game)	CL	G	FG	FGA	PCT
14. Wee Ling Wong, Occidental	So	15	114	70	298	19.9	1. Tammy Beeler, MacMurray	Sr	7	54	83	65.1
15. Sunnie Kemp, Wheaton (Ill.)	Jr	16	140	34	314	19.6	2. Brenda Christian, Rust	Jr	17	119	187	63.6
16. Kathy McHale, Maryland	Jr	13	98	59	255	19.6	3. Mary Schultz, St. Mary's (Minn.)	Jr	17	144	228	63.2
17. Carla Taliento, St. Jos. (Me.)	Sr	16	130	53	313	19.6	4. Sabrina Moody, Va. Wesleyan	Sr	17	128	216	59.3
18. Tracy Weaver, Muskingum	Sr	20	163	64	390	19.5	5. Rainey Lesane, Albany St. (N.Y.)	Jr	18	131	225	58.2
19. Hilary Fink, Smith	So	13	98	56	252	19.4	6. Cindy Perkins, Worcester Tech	So	15	118	205	57.6
20. Deb Yeasted, Susquehanna	Sr	21	178	51	407	19.4	7. Gretchen Gates, Chicago	Jr	17	174	305	57.0
21. Cindy Wood, Simpson	Jr	19	146	67	359	18.9	8. Michelle Mariage, Millikin	Jr	14	96	170	56.5
22. Sue Spagnuolo, Alma	Sr	16	117	68	302	18.9	9. Terese Swatt, Rensselaer	So	14	93	167	55.7
23. Terry Solema, Pitt.-Johnstown	Sr	19	162	34	358	18.8	10. Pam Harrold, Mount Union	Sr	16	106	192	55.2

REBOUNDING									
	CL	G	NO	AVG		CL	G	NO	AVG
1. Terese Swatt, Rensselaer	So	14	231	16.5	9. Rory Peets, Chris. Newport	So	18	238	13.2
2. Lorretta Thomas, Ramapo	Jr	19	303	15.9	10. Kathy Orsini, Frostburg State	Sr	15	189	12.6
3. Paula Green, Hartwick	Sr	15	228	15.2	11. Gretchen Gates, Chicago	Jr	17	210	12.4
4. Carla Williams, Bishop	Jr	13	197	15.2	12. Elise Cromack, Mount Holyoke	So	13	160	12.3
5. Marcella Zalot, Smith	So	15	219	14.6	13. Diane Buchanan, Rust	So	15	183	12.2
6. Renee Kaslen, Wis.-Stout	Fr	16	223	13.9	14. Carol Johnson, Illinois Col.	Sr	13	156	12.0
7. Renee Coltrane, N.C.-Greensboro	Sr	19	258	13.6	15. Connie Sanford, Heidelberg	Jr	20	236	11.8
8. Ellen Bossert, Columbia	Jr	16	214	13.4	16. Cindy Bash, Mount Union	So	16	188	11.8





# Mississippi State could make its move this year

By Bruce L. Howard  
The NCAA News Staff

Although the dominant Division I baseball teams will continue to be in the Sun Belt, the 1985 spotlight may move from Arizona and California to Texas and Mississippi—yes, Mississippi.

It has been 19 years since a team outside the states of California, Arizona, Texas and Florida won the College World Series (Ohio State in 1966), but the Mississippi State Bulldogs may change that pattern in 1985.

Led by the one-two punch of Rafael Palmeiro and Will Clark, coach Ron Polk's Bulldogs will be trying for a CWS trip after missing by one game each of the past two years.

Palmeiro and Clark, both juniors, form one of the best power tandems in the history of college baseball. Last season, the two combined for 57 home runs and 185 runs batted in. Palmeiro, an outfielder, hit .415; and Clark, a first baseman, hit .383.

This would seem to be Mississippi State's year, since both Palmeiro and Clark are expected to be taken early in the first round of the June amateur free-agent draft.

"They're really something special," Polk said. "I tell people that a coach can expect one player like them about every 10 years or so. To have two of them at once, I'm extremely fortunate."

"I've told both of them that they're ready to play pro ball right now. I also told them that if they stayed here another year, they could break all kinds of college records. But I would never stand in their way. If they're drafted high enough and the money is right, I'll be the first one to tell them to go for it."

In addition to this power package, all but two regulars and one starting pitcher return from last year's 45-16 team. Senior Jeff Brantley (13-3, 2.65) heads the pitching staff.

Despite Mississippi State's potential, Texas would seem to be the No. 1 team nationally, since defending champion Cal State Fullerton was hit hard by the June amateur draft.

Texas coach Cliff Gustafson, whose 60-14 log last year brought his career record to 854-176-1, will field another national contender. The Longhorns won the 1983 NCAA title and were second to Fullerton last season.

Only four players from last year's runner-up team are missing, but Gustafson points out that some of those losses were key individuals.

"It won't be that easy," Gustafson said. "The four players we lost were big factors for us, and this is our most industrious schedule ever." In addition to the always-tough Southwest Conference foes, the 'Horns will face Cal State Fullerton, Oklahoma State, Arizona State and Oklahoma, among others.

All-America infielders Bill Bates (36 stolen bases) and David Denny (.343 average, 10 home runs, 72 RBI) and pitcher Greg Swindell, who as a freshman won 14 of 16 decisions and compiled a 2.04 earned-run average, are the team leaders.

Other key returnees for the Longhorns, ranked No. 1 in two preseason polls, are outfielder Scott Vondenkamp (.343), outfielder Dennis Cook (.341), first baseman Rusty Richards (.323) and outfielder David Wrzesinski (.308).

Of course, there will be the normal strength in Arizona and California, and two Big Eight Conference schools in Oklahoma could raise some eyebrows in the Midwest.

Despite the year's probation given Arizona State by the Pacific-10 Conference, the Sun Devils have the talent to compete with any team in the country. Several players will be ineligible for early season games, and the Sun Devils will not be eligible for the Pac-10 championship or NCAA post-season play, but fans can enjoy watching the talents of outfielders Barry Bonds and Todd Brown, first baseman Louie Medina, and pitcher Doug Henry.

In addition to Augie Garrido's Titans at Cal State Fullerton, Stanford and San Diego State would appear to be California's best this season.

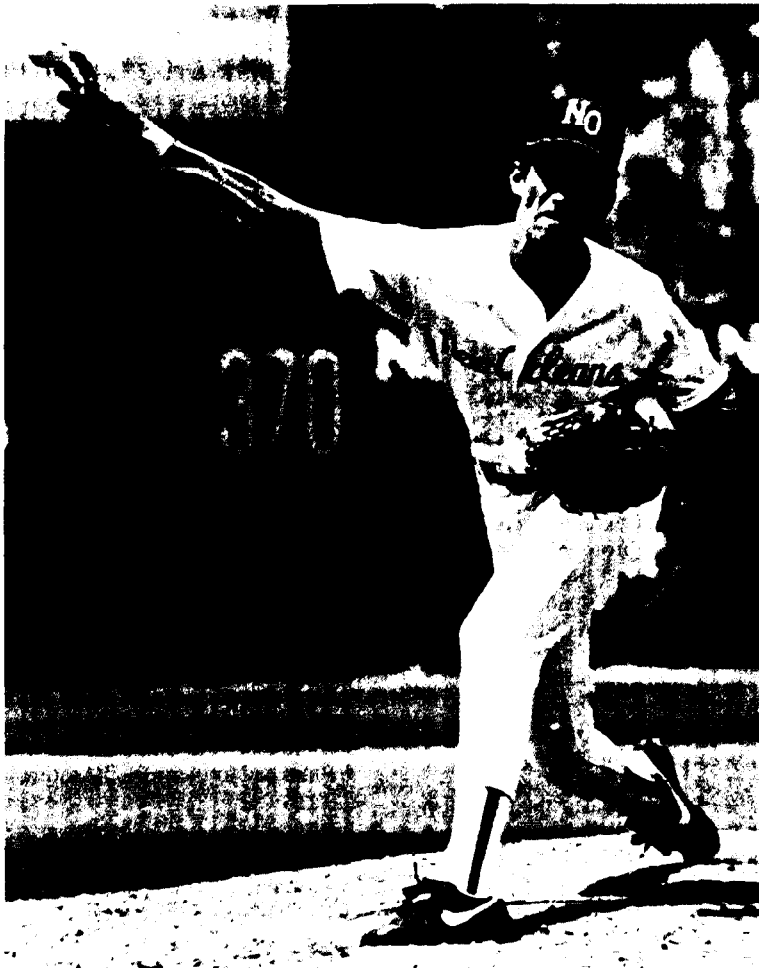
No team has won back-to-back CWS titles since Southern California claimed five straight championships from 1970 to 1974, and Fullerton will be hard-pressed to accomplish that feat in 1985. The infield returns intact, led by John Fishel and Jose Mota, but experience ends at that point. Veteran Damon Allen will head the pitching staff.

San Diego State outfielder Chris Gwynn is one of the best in the nation. The junior batted .383, hit 19 homers and drove in 95 runs in the Aztecs' 66-23 campaign last year. Bill Blount (7-1) and Tim Arnsberg (11-3) are coach Jim Dietz's top hurlers.

Except for two starters, Stanford will employ much the same lineup it used to finish second behind Arizona State in the Pac-10 last year. Speed (157 stolen bases) and defense (.965 fielding percentage) are the Cardinal strengths.

Oklahoma State has been the Big Eight power in recent years, and the Cowboys should be in the thick of the national picture again this year. But the Oklahoma Sooners have the talent to make their first postseason appearance since 1976.

Oklahoma coach Enos Semore is particularly enthusiastic about his



Wally Whitehurst, New Orleans

pitching staff, led by Bobby Witt (10-3, 113 strikeouts in 100 innings last year). Witt will team with Keith Hamilton (6-1), Darrell Rodgers (7-3) and two promising junior college transfers.

"We have a lot of experience, and we could have as many as eight pitchers contending for starting positions," Semore said. "If he (Bobby Witt) is healthy and progresses as expected, he could be one of the best in the country, without a doubt."

Conversely, Oklahoma State's

pitching staff was devastated by graduation and the June amateur draft. Left hander Mike Trapasso (7-1, 1.38) is the only returning member of the starting staff, which must be rebuilt through junior college transfers. Outfielder Pete Incaviglia (.352, 29 homers, 103 RBI), catcher/first baseman Mike Day (.375) and second baseman Randy Wisler (.309) are the Cowboys' offensive leaders.

Other teams with top-10 potential would appear to be Miami (Florida), North Carolina and Florida State.

Although the College World Series is the prize at the end of the rainbow, many goals and dreams are fulfilled on the conference and regional levels.

Of the 38 spots in the 1985 Division I Baseball Championship field, 25 will go to winners of automatic-qualifying conferences. Though selection time is many months and games away, here is a look at the races in those conferences:

## Atlantic Coast

Top teams—North Carolina (44-13) is the clear favorite; Clemson and Georgia Tech would appear to be the best of the rest. North Carolina State (32-8) could be a challenger if the Wolfpack can recover from the loss of NCAA home-run champion Tracy Woodson.

Top players—Scott Jordan, of, Georgia Tech (.408 batting average, 14 home runs, 57 runs batted in); B.J. Surhoff, c, North Carolina (.400, 11, 51); Alex Wallace, ss, North Carolina State (.391); Roger Williams, p, North Carolina (10-2 won-lost record, 2.82 earned-run average); George Stone, p, Clemson (7-2).

## Atlantic 10

Top teams—Temple, 33-14 last year, is the best team in the Atlantic 10 and will go as far as its pitching staff carries it. West Virginia and Penn State are next in line.

Top players—Jeff Manto, inf., Temple (.377, 6, 35); Joe Bernardo, of, West Virginia (.430, 6, 36); Ed Kovatch, p, Temple (7-1, 2.25).

## Big East

Top teams—This should be a two-team race between St. John's (New York) and Seton Hall. St. John's was 26-7 last year and Seton Hall had a 41-13 mark. This is the first year of competition for the Big East.

Top players—Steve Iannini, of, Georgetown (.470, 58 RBI, 49 stolen bases); Pete Mancini, 2b, Seton Hall (.318); Dennis Sutton, of, St. John's (.316); Tom Horew, 1b, Pittsburgh (.508); Larry Schwartz, p, Seton Hall (8-0, 1.55); John Tanner, p, St. John's (7-1, 2.97).

## Big Eight

Top teams—Oklahoma and Oklahoma State should wage a two-team race, although Nebraska also has plenty of talent.

Top players—Pete Incaviglia, of, Oklahoma State (.352, 29, 103); Rob Thomson, c, Kansas (.443); Rusty McGinnis, 1b, Oklahoma (.365, 10, 50); John Toal, 2b, Oklahoma (.440); Mike Duncan, 1b, Nebraska (.299, 14, 65); Randy Wisler, 2b, Oklahoma State (.309); Bobby Witt, p, Oklahoma (10-3); Phil Harrison, p, Nebraska (10-3, 2.66); Mike Trapasso, p, Oklahoma State (7-1, 1.38).

## Big Ten

Top teams—Michigan, which advanced to the final eight in Omaha last year, is the heavy favorite here.

See *Mississippi State*, page 8

## Top Division I players

Listed below are the top returning Division I players in several statistical categories:

Batting				
1984	Rank	Player, Team	G	AB Hits Avg.
	1.	Steve Iannini, Georgetown	46	166 78 .470
	5.	Joe Pearn, Fairleigh Dickinson-Teaneck	31	93 42 .452
	6.	Dan Grunhard, Northwestern	57	173 78 .451
	10.	Rob Thomson, Kansas	46	158 70 .443

Home Runs				
1984	Rank	Player, Team	G	No. Avg.
	3.	Rafael Palmeiro, Mississippi State	61	29 0.48
	5.	Joe Murphy, Wagner	26	12 0.46
	6.	Will Clark, Mississippi State	61	93 0.41
	9.	Billy Plante, Virginia Tech	52	23 0.44

Runs Batted In				
1984	Rank	Player, Team	G	No. Avg.
	3.	Rafael Palmeiro, Mississippi State	61	94 1.54
	4.	Will Clark, Mississippi State	61	93 1.52

Doubles				
1984	Rank	Player, Team	G	No. Avg.
	1.	Paul Grzyb, American	21	13 0.62
	2.	Rich Lombardi, Pennsylvania	36	21 0.58
	3.	Tim Dulin, Memphis State	41	22 0.54
	10.	John Stranman, Cleveland State	47	20 0.43

Triples				
8. Michael Huff, Northwestern (8 in 53 games, 0.15 per game).				
Stolen bases				
2. Steve Iannini, Georgetown (49 in 46 games, 1.07 per game).				
Slugging percentage				
4. Rafael Palmeiro, Mississippi State (.886).				
Toughest to strike out				
3. Paul Grzyb, American (one strikeout in 81 at bats).				
Runs				
2. Stan Yagiello, William and Mary (41 in 28 games, 1.46 per game).				
Walks				
5. Gino Cara, Lafayette (41 in 36 games, 1.14 per game).				

Earned-Run Average				
1984	Rank	Player, Team	G	IP R ER ERA
	3.	Mike Trapasso, Oklahoma State	19	71.3 16 11 1.39
	6.	Larry Schwartz, Seton Hall	17	70.3 12 12 1.54
	8.	Rich Collins, Citadel	23	53 19 10 1.70

Most Victories				
1984	Rank	Player, Team	G	IP W L Pct.
	2.	Wally Whitehurst, New Orleans	23	156 15 4 .789
	4.	Greg Swindell, Texas	25	132 14 2 .875
	7.	Jeff Brantley, Mississippi St.	20	132.7 13 3 .813
	7.	Mike Sassone, South Alabama	23	119 13 4 .765
Saves: 5. Reed Rainey, Washington State (10).				
Strikeouts (per 9 innings): 6. Bill Cunningham, Ohio State (89 in 65.3 innings, 12.3 average).				

## Illegal bat rule, interference clarification among changes

Among the major rules changes for the 1985 college baseball season are modifications of the illegal bat rule and clarifications of interference by a runner.

Batters will not be declared out for using a bat with no identification mark 18 inches from the handle or with a foreign substance extending past the 18-inch mark. Instead, the bat will be removed from the game and the player warned; a second offense will bring ejection. Using an altered bat, however, still is illegal and will result in an out.

The sliding rule (Rule 8-4-d-A.R. in 1985 NCAA Baseball Rules) retained its emphasis on safety for players. Interference will be called "if the runner makes contact with or forces the fielder to alter his pattern of play by running or sliding at him or sliding into him in a deliberate or unsportsmanlike manner to disrupt play." Runners must be "moving directly along the line between the two bases" for contact with a fielder to be legal.

The rule also emphasizes that players should "slide into the bases as if they were being forced out on a sacrifice bunt or the third out of the inning."

Umpires' pregame duties have been expanded to include mention of the bat regulations, as well as the sliding rule, and the requirement that all helmets be certified by the National Operating Committee on Standards for Athletic Equipment (NOCSAE).

Other major rules changes for 1985: Rule 4-7-d: The pitcher may only pinch hit or pinch run for the designated hitter.

Rule 9-4-b: "If a coach or his non-playing representative goes to the mound a second time in the inning to talk to the same pitcher, the pitcher must be removed from his position. A coach may not make a second trip to the mound in the same inning with the same batter at bat. However, if a pinch hitter is substituted, the coach may make a second trip but must remove the pitcher."

# Family tradition plays a role in success of college players

No wonder coach Mark Marquess' Stanford squad is ranked in the preseason top 10. Many of his players are products of baseball-rich family traditions.

Outfielder Mark Davis has a more famous brother — outfielder Mike of the Oakland A's. Infielder Ruben Amaro's father is a former professional player and current coach for the Chicago Cubs.

Two other Cardinal squad members with recognized names are pitcher Kevin Kunkel, whose father is a major league umpire and whose brother plays shortstop for the Texas Rangers, and infielder Don Buford, whose father was a long-time professional for the Chicago White Sox and Baltimore Orioles.

\*\*\*\*\*

When Georgetown is mentioned, most thoughts turn to basketball and seven-foot star Patrick Ewing. However, Steve Iannini is making it known that another sport exists at the Washington, D.C., school.

Iannini, a senior center fielder, led the nation in hitting last year with a .470 average while helping the Hoyas to a 31-17 record. Georgetown competed in

teams are Cal State Fullerton, Nevada-Las Vegas, UC Irvine and Long Beach State. Three of the eight — Cal State Fullerton, Fresno State and Cal-Santa Barbara — are among the nation's top-20 preseason teams.

Competing for the WCAC title will be Pepperdine, Loyola Marymount, San Diego, San Francisco, St. Mary's (California), Santa Clara and Nevada-Reno.

\*\*\*\*\*

Cal State Fullerton is making good use of its 1984 national championship by offering outfield fence space to advertisers, the proceeds of which will supplement baseball grant-in-aid funds.

In a project similar to that of Rosenblatt Stadium in Omaha, Nebraska, site of the College World Series, Cal State Fullerton has offered billboards (eight feet long by 12 feet wide each) to local and national advertisers. Only about six of the 34 spots remain, with the advertisers ranging from sporting-goods companies, campus bookstore and travel agencies to fast-food restaurants and dry-cleaning companies.

Mark Landon, director of sports marketing, said that with seven Division I institutions within one hour of the university, it was important to use the baseball championship to its best advantage.

"We felt like a number of advertisers would be more likely to buy a billboard on the outfield fence because of our recent championship," Landon said. "We also have begun a complete promotional package in which we are giving away bumper stickers and other items."

The most expensive spots on the outfield fence were those under the scoreboard.

\*\*\*\*\*

Talk about a tough start this season: Maine, which has competed in the NCAA Division I Baseball Championship the past five years, will play its first 36 games on the road.

After facing such national powers as Miami (Florida), Oklahoma State and South Carolina on the road, coach John Winkin's squad returns to Orono — with hopes that the snow has melted on the playing field.

\*\*\*\*\*

The baseball team at Western Kentucky had an unusual but profitable off-season conditioning program.

Members and coaches of the Hilltoppers baseball team raised money for the remodeling of the school's stadium, and then did the work themselves. A new outfield fence and a new infield were the major projects.

Plans call for permanent seating facilities, concession stands and restrooms.

\*\*\*\*\*

With the passage of Proposal No. 96 at the 1985 Convention, all sports, including baseball, now have limits on the number of contests each year.

As amended by Proposal No. 96 — 3, Division I institutions have a limit of 80 baseball contests each year, with not more than 60 during the traditional spring season. This change takes effect with the 1985-86 season. Division II institutions now have a maximum of 60 contests for the entire year.

Previously, the only sports with limits on numbers of contests were football, basketball and soccer.



Steve Iannini



Barry Larkin

## Baseball notes

the ECAC South, since there had been no championship play until this year in the Big East Conference.

In addition to collecting 78 hits in 166 at bats, Iannini was second in Division I in stolen bases, making good on 49 of 54 attempts. He was named the ECAC South player of the year.

\*\*\*\*\*

Name a sport in the Midwest and it is very likely that a Larkin will be playing it.

Michigan shortstop Barry Larkin was the Big Ten Conference player of the year last year, hitting .363 and driving in 33 runs. His brothers are excelling in other sports at major colleges.

Mike, a linebacker at Notre Dame, and Byron, freshman basketball player at Xavier, are other student-athletes of the Larkin family from Cincinnati, Ohio.

\*\*\*\*\*

Fresno State, ranked No. 15 in the preseason poll conducted by Collegiate Baseball, will be playing its first full season in a new 3,575-seat stadium.

The \$2.2 million stadium is on the Fresno campus. The university sold 2,000 season tickets last year and expects an increase this season.

\*\*\*\*\*

The West Coast Athletic Conference and the Pacific Coast Athletic Association have reorganized their structures for baseball competition, and the PCAA race, in particular, should be among the best in the country.

Previously, the combinations of the two conferences competed in baseball as the Northern California Association and Southern California Association. This year, each conference champion will receive a bid to the Division I championship.

Competing in the Northern conference of the PCAA will be Fresno State, San Jose State, Pacific and California-Santa Barbara. Southern conference

## Mississippi State

Continued from page 7

The Wolverines (43-20) will be challenged by Northwestern and Minnesota.

Top players — Barry Larkin, ss, Michigan (.363); Ken Hayward, 1b-p, Michigan (.342, 12 home runs, 64 RBI, 8-2 won-lost record, 1.96 ERA); Alex Smith, ss, Indiana (.361, 8, 46); Dan Grunhard, of, Northwestern (.451, 9, 53); Scott Kamieniecki, p, Michigan (8-4); Grady Hall, p, Northwestern (9-2, 2.77); Bob Miller, p, Northwestern (10-4, 2.97).

### East Coast

Top teams — Rider returns all starters except its catcher from a 20-11 ECC championship squad. Delaware (24-16-1) and Lehigh are the other top teams.

Top players — Andy Donatelli, of, Delaware (.429); Keith Ender, 1b, Rider (.325); Jeff Wilson, dh, Towson State (.413); Don Leitzel, ss, Bucknell (.345); Jon Mark, p, Lehigh (7-3); Steve Parascand, p, Rider (6-5, 3.51).

### ECAC

Top teams — Maine (33-20) is the top team in the New England Conference; East Carolina (34-13) and James Madison (38-13) are top teams in the South.

Top players — Carey Nemeth, 3b, James Madison (.349, 13, 49); Jeff Urban, 1b, James Madison (.365, 7, 40); Greg Hardison, ss, East Carolina (.319); Greg Dowden, of, Canisius (.356); Leo Laforgia, c, St. Peter's (.413); Mike Shriner, of, New Hampshire (.365).

### Eastern Intercollegiate

Top teams — Harvard (28-6), with seven of its top eight hitters back, would appear to be the dominant team in the EIBL. Cornell (26-16) returns all but two regulars.

Top players — Elliott Rivera, 1b, Harvard (.378, 7, 44); Mike Kalfopoulos, of, Cornell (.413); Rich Lombardi, 1b, Pennsylvania (.441); Charlie Marchese, p, Harvard (7-1, 2.47).

### Metro

Top teams — Florida State (55-29) and South Carolina (41-18) should

contend for Metro and national honors. Florida State won the conference last year. Virginia Tech (41-17) has good power and speed. Tulane (42-16) has potential also.

Top players — Paul Sorrento, of, Florida State (.349, 17, 68); Luis Alicea, 2b, Florida State (.315); Frank Fazzini, of, Florida State (.325, 29, 89); Billy Plante, 3b-of, Virginia Tech (.392, 23, 60); George Canale, 1b, Virginia Tech (.313, 21, 77); Dan Wagner, of, Tulane (.406, 15, 75); Casey Reed, p, South Carolina (8-3, 3.60); Larry Price, p, South Carolina (9-3); Mike Loynd, p, Florida State (12-3).

### Mid-American

Top teams — Central Michigan (41-17) is the favorite in this conference. Miami (Ohio) has a veteran team and could push Central Michigan.

Top players — Greg Lotzar, of, Central Michigan (.434); Doug Fisher, 1b, Central Michigan (.360, 13, 45); Kevin Walsh, 2b, Kent State (.396); Bob Cavanaugh, p, Central Michigan (6-2); Jeff Greene, p, Toledo (9-2, 2.40).

### Midwestern City

Top teams — Oral Roberts (38-23-1) is ranked as high as sixth in some preseason polls. The Titans have added power and speed. Oklahoma City (35-30) won the conference's automatic berth last year and should be tough again.

Top players — Craig Colbert, of-c, Oral Roberts (.345, 11 home runs); Kevin Burdick, ss, Oklahoma City (.317); Richard Worley, 3b, Oklahoma City (.300, 12, 61); Kevin Lowery, c, Detroit (.418, 11, 56); Dan Froehle, of, Xavier (.456 in 1983); Tom Weinzapfel, inf., Evansville (.329); Phil Kapanowski, p, Detroit (5-2, 2.72).

### Missouri Valley

Top teams — Wichita State (40-22) and Indiana State (36-23-1) are the front-runners for the MVC title. Wichita State returns 17 lettermen and six starters.

Top players — Tony Collins, of, Indiana State (.346, 16, 61); Tim Raley, of-c, Wichita State (.384, 54 RBI);

Mike Prior, of, Illinois State (.355, 7, 37); Greg Lafever, p, Wichita State (7-3, 2.82); Blaise Ilsley, p, Indiana State (9-4, 2.72).

### Ohio Valley

Top teams — Morehead State (22-14), Murray State (20-15-1) and Eastern Kentucky should battle for OVC honors.

Top players — Denny Krancevich, 2b, Youngstown State (.424); John Miller, inf., Morehead State (.379); Chris Barber, of, Murray State (.390); David Butts, 3b, Murray State (.343, 10 home runs).

### Pacific Coast

Top teams — Defending NCAA champion Cal State Fullerton (66-20) is the favorite in the PCAA, although Fresno State (54-12-2) and California-Santa Barbara (46-21) have outstanding teams also.

Top players — Joe Xavier, ss, Fresno State (.305); John Fishel, of, Cal State Fullerton (.378, 16, 88); Tim Arnold, c, Nevada-Las Vegas (.321, 49 RBI); Jose Mota, 2b, Cal State Fullerton (.357); Dave Stewart, 1b, California-Santa Barbara (.365, 65 RBI); Bill Geivett, 3b, California-Santa Barbara (.388, 20 stolen bases); Mark Gardner, p, Fresno State (8-1, 3.83); George Bonilla, p, California-Santa Barbara (8-5, 2.87).

### Pacific-10

Top teams — Though Arizona State (55-20) will not be eligible for the conference title, the Sun Devils clearly are the best team. The heir apparent is Stanford (38-26-1), which features speed and defense. Southern California (44-23) will push Stanford in the Southern section. Top teams in the Northern section are Washington State (41-20), Portland State (39-17) and Oregon State.

Top players — Barry Bonds, of, Arizona State (.360, 11, 55); Todd Brown, of, Arizona State (.366, 15, 63); Louie Medina, 1b, Arizona State (.318, 17, 67); Jeff Hainline, 1b, Gonzaga (.370, 21, 55); Gary Berman, 1b, UCLA (.361); Dwayne Lalor, 2b, Washington State (.353); Dan Lovell,

of, Portland State (.363); Bryan Olden, 2b, Portland (.371); Rick Lundblade, 1b, Stanford (.339, 68 RBI); Rick Weible, p, Southern California (7-1, 2.77); Doug Henry, p, Arizona State (11-2, 3.20); Gary Cullison, p, Portland State (10-2, 2.04); Jeff Ballard, p, Stanford (8-5).

### Southeastern

Mississippi State (45-16), ranked No. 2 nationally, should win the SEC, although Florida (43-16) has won three of the past four titles and is strong again.

Top players — Will Clark, 1b, Mississippi State (.383, 28, 93); Rafael Palmeiro, of, Mississippi State (.415, 29, 94); Randy Clark, 1b-of, Kentucky (.353, 20, 41); Kyle Gordon, 1b, Mississippi (.341, 13, 37); Marty Brown, of, Georgia (.343, 13, 46); Scott Ruskin, of, Florida (.406, 12, 59); Mike Stanley, c-of, Florida (.343); Kyle Bryan, 1b, Alabama (.394); Joey Cora, ss, Vanderbilt (.361); Steve Searcy, p, Tennessee (9-3, 2.45); Jeff Brantley, p, Mississippi State (13-3, 2.65); Jeff Oyster, p, Alabama (10-2, 3.24).

### Southern

Top teams — Western Carolina (37-20) is the defending champion and should be strong again with seven .300 hitters returning. The Citadel (26-21) won the previous two crowns and should be competitive, along with Appalachian State (35-7).

Top players — Fred Hailey, of, Western Carolina (.395); Tony Welborn, of, Appalachian State (.416, 12 home runs); Rock Hurst, c, Furman (.386, 13, 44); Scott Gay, p, Western Carolina (10-0, 2.10); Bryan Augsburg, p, Virginia Military (5-3, 2.80).

### Southland

Top teams — Lamar (45-22) could be among the top 20 teams in the nation. All positions are solid except for second base. Northeast Louisiana (34-16) could challenge if the Indians can replace six regulars who graduated.

Top players — Neil Reynolds, 1b, Lamar (.350); Jerald Clark, 3b, Lamar

(.315, 54 RBI); Terry Mathews, 1b, Northeast Louisiana (.368, 44 RBI); Trey Hillman, 2b, Texas-Arlington (.335 career); Doug Ortman, inf, Louisiana Tech (.344); David Ross, p, Lamar (10-6, 2.58).

### Southwest

Top teams — National favorite Texas (60-14) will be pressed by Texas A&M, Arkansas (40-16) and Rice (41-16).

Top players — Mike Fox, c, Rice (.327, 42 RBI); Keith Shepherd, of, Baylor (.373); Mike Loggins, of, Arkansas (.325); Jeff King, 3b, Arkansas (.383, 55 RBI); Rob Swain, ss, Texas A&M (.360, 11, 48); Buddy Haney, 1b, Texas A&M (.333, 44 RBI); Todd Howey, of, Texas Tech (.349, 17, 37); David Denny, 3b, Texas (.343); Bill Bates, 2b, Texas (.272); Derek Hoelscher, p, Rice (7-1, 2.59); Greg Swindell, p, Texas (14-2, 2.04); Tom Arrington, p, Texas A&M (11-6, 3.26).

### Southwestern

Top teams — Grambling State (29-12) should repeat in the SWAC. The Tigers return all four infield starters but must replace one pitcher and one outfielder. Top challengers are Prairie View A&M and Southern-Baton Rouge.

Top players — Orlando Watkins, ss, Grambling State (.382); Eric Taylor, 1b, Grambling State (.413); Leonard Webster, c, Grambling State (.361).

### Sun Belt

Top teams — Any one of four teams appears capable of winning top honors in the Sun Belt — South Alabama (50-19), North Carolina-Charlotte (27-22), Old Dominion (31-20) and South Florida (35-25).

Top players — Nick Booth, c-of, Old Dominion (.364, 50 RBI); Billy Webster, of, Virginia Commonwealth (.359); Barry Shifflett, 3b-of, North Carolina-Charlotte (.339, 42 RBI); Brian Simmermacher, of, South Alabama (.394); Jeff Kennedy, inf., Jacksonville (.321, 16, 63); Tommy Urban, 1b, Alabama-Birmingham (.392, 53 RBI); John Clem, of, Western Kentucky.

See Mississippi State, page 11



# Florida Southern is early favorite for Division II crown

Although the West and South are not the deepest regions in Division II baseball, it would appear that the country's best teams will emerge from one or both of those regions.

Florida Southern, runner-up in the Division II Baseball Championship two of the past three years and five-time national champion, is the early favorite to win the 1985 crown, but defending champion Cal State Northridge could repeat if the Matadors can replace six starters who signed professional contracts.

While Florida Southern and Cal State Northridge are the overwhelming favorites in the South and West regions, respectively, races are more wide open in other regions. Following is a region-by-region outlook for NCAA Division II baseball for 1985:

## Northeast

This is one of the deepest regions in the country, with seven legitimate contenders for a spot in the national championship.

Except for Florida Southern, New Haven (22-6) has won more games (44) than any other team in Division II championship play. The Chargers have appeared in nine consecutive NCAA tournaments and 12 of the past 13, and that streak should not be stopped in 1985.

New Haven has a veteran squad, led by outfielder Roberto Giansiracusa, who batted .415 last season. He will be joined in the outfield by Scott Khoury (.346), who also is a pitcher, and Cameron Drew (.333). All-conference catcher Tony Buglione (.364) is another key performer.

Quinnipiac (25-8) loses only three players from its team that lost to New Haven in the regional championship last year. Third baseman Vin Siena (.317, 8 home runs, 43 runs batted in) will lead the offensive charge for coach Dan Gooley's squad. Mike Lumpinski (6-1, 1.83 earned-run average) will team with Tom Signore, who missed last season with an injury, on the mound.

Outfielder Brian Toohey, who was fifth in Division II in batting last year with a .474 average, leads Lowell's offensive attack. The Chiefs must improve their pitching and defense to be a postseason contender. Other key performers are shortstop Bobby Capadona (.380), catcher/outfielder Mark Moise (.376) and outfielder Bob Heidt (.361).

Other top teams — American International (25-10) faces a rebuilding year after losing its top five batters and top two pitchers. Pace (17-5), Concordia (New York) (23-6) and Stonehill (18-13) are other top teams.

Other top players — Greg Bolger, ss, Mercy (.391); Tommy Vara, of, Mercy (.403); Jim Abbott, of, Bryant (.469); John Buckman, 3b, Concordia (.488); John Howell, lb, Le Moyne (.474); Joseph Kelly, of, Stonehill (.357); Tony Capuano, 3b, Sacred Heart (.390); Ted Lawrence, c, Pace (.405); Chris Bayer, dh, Pace (.395, 11 home runs, 34 RBI); Pate Capello, ss, Pace (.430); Pat Jermyn, 2b, Pace (.414); Bruce Gaudreau, p, Bryant (3-2, 1.52 earned-run average, 5 saves); Willie Fraser, Concordia (7-2, 1.26); Pat Leahy, p, American International (4-1, 2.36); David Barkly, p, Stonehill (4-2, 1.79).

## South Atlantic

This is another well-balanced area, with any one of five teams capable of advancing to the national tournament.

Coach Art Fairchild's Shippensburg team returns 17 of its top 22 players from last year's 36-14-1 squad, making the Red Raiders strong contenders for postseason laurels.

The left side of the infield is extremely strong with shortstop Barry Kerr (.323, 10, 44) and third baseman Todd Long (.327, 12, 44). All-conference performer Doug Furness (.347) heads the outfield, and senior John Bidelsbach (5-0, 3.09) is the squad's top pitcher.

Longwood, a newcomer to NCAA postseason play, is expected to be a contender in 1985 with seven of nine regulars back from a 32-11 team. The Lancers feature good speed, led by outfielder Dennis Leftwich, who hit .379 and stole 43 bases in 44 attempts. Other speed merchants are third baseman Marty Ford (.362, 29 steals) and outfielder Mike Haskins (.407, 14 steals). First baseman Jeff Mayone (.398, 9, 52) provides power.

Valdosta State (33-23), led by outfielders Mike Jones (.341) and Andy Anthony, should continue its winning ways for coach Tommy Thomas (608-276 career record). The top pitcher is junior college transfer Greg Johnson.

Other top teams — West Georgia (35-15-1) must replace last year's home run champion Kevin Creech and its top two pitchers. Clarion (15-13) is another contender from the Pennsylvania Conference.

Other top players — Tom Reichenbach, of, Lock Haven (.330); Dave Gilley, lb, Maryland-Baltimore County (.407); Greg Usilton, ss, Maryland-Baltimore County (.375, 12 home runs); Jim McBrayer, of, West Georgia (.427, 44 RBI); Tim Bishop, 2b, East Stroudsburg (.378, 23 stolen bases); Joe Pecher, Mount St. Mary's (.396).

## South

Florida Southern (47-15) is the



Chris Garmon

dominant team in the South region and should win the 1985 NCAA title.

The Moccasins lost only two starters and two pitchers from last year's NCAA runner-up team, and coach Chuck Anderson features one of the division's best pitchers in Carl Wilbanks. Wilbanks, a senior, was 11-1 last year and compiled a 2.14 earned-run average.

Heading the offensive attack for Florida Southern will be outfielders Bobby Green (.304, 31 stolen bases) and Mike Workman (.284) and first baseman/outfielder Tom Temrowski (.293, 7 home runs).

St. Thomas (Florida) (37-14) returns most of its top players and has added some promising recruits. Pitching is a strength for the Bobcats, led by juniors Mike Mawhinney (9-3, 3.42) and Mike Lewis (4-1, 5 saves).

Other top teams — Eckerd (36-15), with two .400 hitters on the squad, and Tampa also will be in the hunt for a regional berth.

Other top players — Scott Shaw, ss, Eckerd (.400, 51 RBI); Tim Strout, of, Eckerd (.402); Jeff Forney, of, Florida Atlantic (.385); Bill Bailey, p, Eckerd (6-1, 2.59); Bobby Link, p, St. Leo (8-0, 2.59); John Corsi, p, St. Leo (7-1, 3.42).

## Central

Although each squad will be missing some key performers, Troy State (39-16) and Jacksonville State (30-13) should be the top teams in this region.

Coach Chase Riddle must rebuild the pitching staff at Troy State; however, defense and hitting should be superior. First baseman Dave Banks (.388, 19, 58) is one of the division's best players. Speed is a plus with third baseman Jeff Brinson (.302, 24 stolen bases) and outfielder/second baseman Ed Nix (.325, 26 stolen bases).

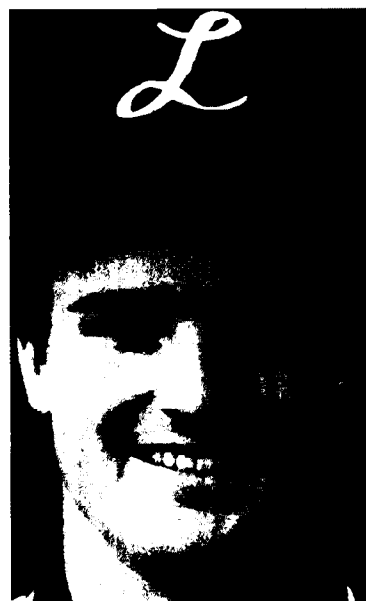
Charles Culbertson and Chris Parker are gone at Jacksonville State, but all-America Chris Garmon (.396, 13, 58) returns. Other key performers for coach Rudy Abbott are first baseman Mark Hanson (.333, 10, 33), outfielder Derrick Thomas (.333) and pitcher Jay Stephens (7-2).

Other top teams — North Alabama (28-24-1) had its first winning season in seven years last season and advanced to the Central region final. The pitching staff returns intact and five starters are back, so the Lions should contend for another play-off spot. Other top teams are Delta State (33-16-1) and Indiana Central.

Other top players — Roger Hill, 2b, Delta State (.375); Doug Peters, ss, Delta State (.374); Rick Chavez, ss, North Alabama (.371, 46 RBI); Greg Suhajda, of, Grand Valley State (.404); Rob Brunelle, of, Grand Valley State (.400); William Graynor, of, Kentucky State (.465); Richey Hines, lb, Mississippi College (19 home runs, 78 RBI); Robert Lopez, p, North Alabama (9-7, 2.54); Tim Watkins, p, Mississippi College (8-4); John Gossett, p, Wright State (6-1, 2.59).

## Midwest

Sam Houston State (42-18), which



Dennis Leftwich

moves to Division I next year, would like to make its Division II finale a memorable one. Six starters return, led by first baseman Richard Johnson (.326, 17, 51). Other veterans are shortstop Ray Crone (.368), outfielder Steve Bates (.305) and pitcher Kevin Armstrong (7-2, 2.65).

Despite the loss of all-America second baseman Mark Altobella, Lewis (42-24) should be a contender again. Helping sophomore Bill Kazmierczak (8-1, 3.05 ERA) on the mound will be freshman John Sabatino, who was 10-1 with a 2.62 ERA in high school last year. Other team leaders are first baseman Tom Siebers (.305, 13, 53) and outfielder Mike Moran (.361, 48 RBI).

Missouri-St. Louis (29-15), another regional participant last year, should repeat as Missouri Intercollegiate Athletic Association champion and contend for national honors. The Rivermen are led by outfielder Pete Serrano, who hit .413 and stole 20 bases last year. Other top players are outfielder Dan Geary (.381) and pitchers Mark Demien (3-2, 2.95) and Kim Herr (7-0, 3.53).

Other top teams — South Dakota State, last year's regional representa-

tive; Nebraska-Omaha (19-14), and Mankato State (24-14-1) are capable of gaining a regional berth.

Other top players — Fritz Polka, c, Mankato State (.453); Dan Nessler, 2b, Mankato State (.360); Vernon Huggins, of, Missouri-Rolla (.419); Brad Lee, lb, Missouri-Rolla (.377); Dean Schulte, 2b, Winona State (.409); Dan Walseth, lb, Winona State (.408, 9, 51); Danny Patterson, lb, Southeast Missouri State (.438); Ed Dineen, 3b, Nebraska-Omaha (.422); Todd Jensen, of, Minnesota-Duluth (.392); Brad Emanuel, c, Minnesota-Duluth (.397); Tom Stock, of, North Dakota State (.392); Brian Jennings, of, Northwest Missouri State (.373); Ted Benson, p, Winona State (4-1, 2.36).

## West

First-year coach Terry Craven had a good recruiting year for pitchers and catchers, which should keep Cal State Northridge at the top of the national ladder.

Northridge has won 40 NCAA postseason contests and two national titles, and that success should continue despite the loss of six starters to the professional ranks.

Heading the list of returnees are outfielders Bryant Long (.346) and Mark Ban (.394, 8, 52). Tim Cota (10-2) and Steve Sharts (10-5, 3.56) will be joined on the mound by four outstanding freshman prospects.

California-Riverside, winner of the 1982 NCAA title, has a young squad and it must mature quickly to be a national contender. Forming the nucleus of the 1985 squad will be second baseman Ty Dabney (.331), first baseman Paul Morales (.328) and pitcher Walt Stull.

Other top team — Chapman made its first NCAA appearance in five years last season and should be strong again.

Other top players — Lorant Reeves, of, San Francisco State (.378); Randy Hodges, of, Metropolitan State (.333); Bob Landgraf, lb, Regis (.314, 9, 47); Jeff Hines, p, Cal State Dominguez Hills (7-6, 3.72); Tom Garvin, p, Southern Utah State (2.34 ERA, 6 saves).

## Top Division II players

Listed below are the top returning Division II players in several statistical categories:

### Batting

1984 Rank Player, Team	G	AB	Hits	Avg.
1. Sammy Ruiz, Central Ohio	34	110	56	.509
5. Brian Toohey, Lowell	31	95	45	.474
6. John Buckman, Concordia (N.Y.)	27	87	41	.471
7. Jim Abbot, Bryant	25	81	38	.469

### Home Runs

1984 Rank Player, Team	G	No.	Avg.
1. Chris Bayer, Pace	22	11	0.50
2. Greg Usilton, Maryland-Balt. Co.	25	12	0.48
5. Richey Hines, Mississippi Col.	51	19	0.37
8. Dave Banks, Troy State	55	19	0.35

### Runs Batted In

1984 Rank Player, Team	G	No.	Avg.
2. Richey Hines, Mississippi Col.	51	78	1.53
6. Chris Garmon, Jacksonville St.	42	58	1.38
7. Jeff Mayone, Longwood	38	52	1.37
10. Vin Sienna, Quinnipiac	33	43	1.30

### Doubles

1984 Rank Player, Team	G	No.	Avg.
1. Greg Bolger, Mercy	25	16	0.64
6. Scott Khoury, New Haven	29	12	0.41

Triples: 1. Tom Vara, Mercy (6 in 23 games, 0.26 per game).  
Stolen bases: 3. Dennis Leftwich, Longwood (43 in 41 games, 1.05 per game).

### Earned-Run Average

1984 Rank Player, Team	G	IP	R	ER	ERA
2. Willie Fraser, Concordia (N.Y.)	8	57.3	12	6	1.26

### Most Victories

1984 Rank Player, Team	G	IP	W	L	Pct.
6. Carl Wilbanks, Florida Southern	20	113	11	1	.917

Strikeouts (per 9 innings): 2. Bill Kazmierczak, Lewis (90 in 70 innings, 11.6 average).

## The Facts...

**DRUG ABUSE** is one of American society's most compelling problems. Whether on the job, on the playing field or in the classroom, its effects and consequences can create serious and oft times hazardous situations.

While there is no easy solution to this problem, drug screening programs are proving effective in many ways: productivity is improving, absenteeism is being reduced, safety and security are enhanced, and the programs themselves are serving as deterrents.

Once the decision has been made to establish a drug screening program, careful consideration should be given to the selection of the laboratory which will perform the testing. While some clinical laboratories offer limited drug screening as a part of their testing capabilities, at The American Institute for Drug Detection, the **Facts** speak for themselves:

**Fact:** A laboratory dedicated solely to testing for drugs of abuse

**Fact:** A professional staff committed to providing results of the highest quality, accuracy and precision

**Fact:** State-of-the-Art instrumentation and quality control

**Fact:** Strict confidentiality and documented chain of specimen custody

**Fact:** Immediate confirmation of positive findings by Gas Chromatography/Mass Spectrometry

**Fact:** Unparalleled responsiveness with most testing completed within 72 hours of receipt in the laboratory (priority testing services are available)

**Fact:** Test regimens individually designed to meet your most specific service requirements

To discuss (in confidence) your organization's specific plans and how The American Institute for Drug Detection can be of assistance, kindly phone or write:



Don E. Shattuck, Vice President  
The American Institute for Drug Detection  
838 Dodge Avenue  
Evanston, Illinois 60202  
(312) 475-2300

# Marietta prepares to make its pitch for a Division III title

Coach Don Schaly has proved to be a master at rebuilding teams into national contenders at Marietta, and 1985 offers another challenge.

Marietta, which has won or finished second in five of the nine Division III championships, lost five top-notch pitchers from last year's 53-7 team, including Terry Mulholland, who was drafted by the San Francisco Giants.

"I think we will still be a national contender, but our young pitchers must mature quickly for that to happen," Schaly said. "We have a very solid club off the mound, but our pitching staff is the big question mark heading into the season."

The Pioneers lost the Division III championship game to Ramapo last year and will be trying to win their third NCAA title before the hometown fans in Marietta, Ohio, the annual site of the Division III Baseball Championship.

Schaly will rely on two veterans — right hander Jim Katschke (10-2) and left hander John Hamborsky (5-0). The remainder of the mound corps will be freshmen.

All-America John Wiktorski (.398), at shortstop last year, will return to more familiar territory in the outfield. Monte Duncan (.348), who played second and third last year, will assume Wiktorski's duties at shortstop. Seniors Jon Finke (.328, 19 doubles) and John Hefner will alternate at first base and as designated hitter.

North Park and North Central, top rivals in the College Conference of Illinois and Wisconsin, are other top Midwest region teams.

North Park (24-14) features two outstanding pitchers — John Van Kempen (7-4 record, 2.22 earned-run average) and Pate Zajac (7-2, 3.73) —

and infielders Paul Biocic (.384 batting average) and Pete Balis (.350, 10 home runs, 44 runs batted in). North Central returns CCIW player of the year Gary Whitman (9-1, 1.91) and all-conference performers Craig Stefan (.392, 9, 30) and John Fabbri (.360).

Other strong teams in the Midwest are Otterbein (21-18-1), Ohio Northern (23-11), Illinois College (16-8), Juniata (18-9), John Carroll (18-11) and Calvin (16-11).

## Northeast

Eastern Connecticut State (31-10-1) and Ithaca (27-9) are consistent play-off teams from this area, and the 1985 outlook is promising for both teams, although Ithaca must replace five starters.

Eastern Connecticut, NCAA champion in 1982, returns 18 of 21 lettermen, although all three departing lettermen were starters. Heading the cast this year is all-America center fielder Kevin Beaudoin, who batted .407, hit eight home runs and drove in 52 runs. He will be joined in the outfield by junior Sean Risley (.348). Top infield returnees are first baseman Paul Martineau (.349) and shortstop Stan Harris (.343). Tom Irvine (9-2, 3.10) heads the pitching staff.

The Bombers of Ithaca may not need much else with the return of two .400 hitters — shortstop Dave Dasch (.443) and outfielder Kurt DeLuca (.422).

Other top teams in the Northeast are Salem State (24-8), Westfield State (23-14), Oswego State (25-12), Bates (18-6), Brandeis (22-9-1) and Amherst (23-3-1).

## Mid-Atlantic

Although Ramapo is the defending national champion, the Roadrunners



Michael Nicosia

will have a difficult time in conference and regional play in 1985 with challengers Montclair State (32-12-1) and William Paterson (26-10).

Montclair State is led by all-America center fielder Michael Nicosia, who batted .389 and tied for the Division III lead in doubles last year. Other top performers for second-year coach Kevin Cooney are outfielder John Cowan (.366, 50 RBI), second baseman Jody Tobia (.346) and pitcher Dan Olsson (10-4, 1.67).

William Paterson returns six starters from last year's team that batted .329 as a group. Top hitters are Chris Goldschrafe (.442), Willie Baker (.392), Tony Listro (.391) and Bob Benkert (.340).

Upsala was 22-16 last season against a schedule that included many Division I teams. Coach Ed Lyons will rely on pitchers Steve Williams (7-2) and Don Zsak and shortstop Ken Kline (.375).

## South

Glassboro State (26-11), two-time NCAA champion, will battle Ramapo, William Paterson and Montclair State in the New Jersey State Athletic Conference but should be the best team in the South region.

Glassboro lost the nation's top home run hitter (Jim Paulsen), but coach Mike Briglia should have enough talent remaining to earn another postseason trip. Players to watch are catcher John Florentino (.319), outfielder Frank Czapkowski (.429), second baseman Kevin Healey (.312) and pitcher Dale Cross (5-2).

Methodist (39-9) will rely on its pitching staff while the remainder of the team undergoes a rebuilding project. Top pitchers are Ron McNeill (7-2), Henry Bowden (7-3) and Frank Sessoms (4-3).

North Carolina Wesleyan (34-11) returns 15 lettermen and welcomes 10 freshmen, which should be a perfect blend to keep the Battling Bishops in the play-off picture. Second baseman Steve Durelli (.349) and pitcher Carl Payne (8-2, 2.85) are the team's best players.

Other key teams in the South are Lynchburg (22-8), Johns Hopkins (21-11), Frostburg State (29-5), Trenton State (25-14) and Stillman (25-10).

## Midwest

Perennial contender Wisconsin-Oshkosh (27-9) should make its seventh consecutive trip to the NCAA play-offs, despite the loss of four valuable players, including all-America Tom Jaremko.

Coach Russ Tiedemann's squad features two left-handed pitchers — Bob Stocker (8-2, 2.46) and Troy Cota (5-3, 3.47) — and shortstop Kevin Reichardt (.345) and outfielder Brian Cashore (.304).

Wisconsin-Whitewater (26-11) made its first NCAA postseason appearance last year, and coach Mark Peterson's squad should be in the race again. Greg Wolfe (.348) and Dan Bayreuther (.343) are the squad's top



Gary Whitman

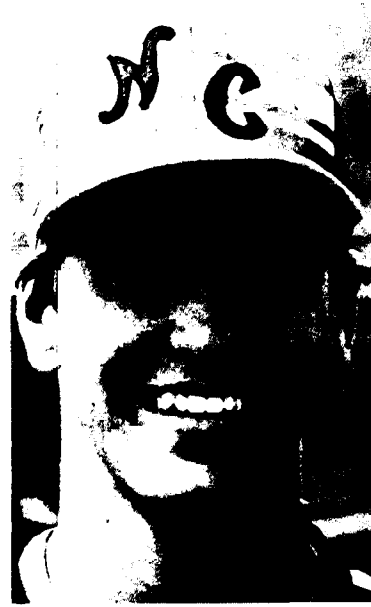
hitters.

If pitching depth can be found, St. Olaf (26-12) could be a challenger. Outfielder Doug Dainty (.376) is the top returning regular; Craig Johnson (5-1) and Mike Zobel (5-2, 2.84) lend experience on the mound.

Other top teams in the Midwest are Luther (21-9) and Washington (Missouri) (21-20).

## West

La Verne (29-25), Whittier (19-14), Cal State Stanislaus and California-San Diego lead the 10 Division III



Craig Stefan

teams in the West region.

La Verne's strengths are in the infield and at catcher, but the squad lacks pitching experience and team speed. Key returning infielders are Andy Hennings (.390), Perry Ceccarelli (.377) and Mike Tirrucci (.354). Bill Baird (.383) was an all-conference performer from his right field position.

Whittier, meanwhile, is strong in the outfield with Pete Lavin (.419, 18, 56), Mike Perez (.360) and Steve Rodriguez. Freshman Ramon Juarez is expected to play well at shortstop.

## Top Division III players

Listed below are the top returning Division III players in several statistical categories:

### Batting

1984 Rank	Player, Team	G	AB	Hits	Avg.
1.	Mark Zarek, Salve Regina	18	68	33	.485
2.	Del Sutter, Illinois College	24	73	35	.479
3.	Kevin Kudrna, Cornell College	22	71	34	.479
4.	Jim Hounam, Salem State	32	99	47	.475
7.	Scott Suda, Kings	19	65	30	.462
10.	Jim Magazine, Baldwin-Wallace	25	72	33	.458

### Home Runs

1984 Rank	Player, Team	G	No.	Avg.
4.	Scott Suda, King's	19	9	0.47
7.	Andy Carmen, Bates	22	9	0.41
8.	Mark Zarek, Salve Regina	18	7	0.39

### Runs Batted In

1984 Rank	Player, Team	G	No.	Avg.
1.	Scott Suda, King's	19	38	2.00
3.	Andy Carmen, Bates	22	41	1.86
5.	Mark Levine, Oswego State	37	66	1.78
7.	Pete Higgenbotham, Mass. Maritime	26	41	1.58

### Doubles

1984 Rank	Player, Team	G	No.	Avg.
1.	Mark Zarek, Salve Regina	18	12	0.67
2.	John Lordan, Suffolk	24	12	0.50
4.	Mike Nicosia, Montclair State	45	19	0.42
5.	Mike Turilli, Suffolk	24	10	0.42
6.	John Cowan, Montclair State	45	18	0.40
7.	Mike Tinucci, La Verne	48	19	0.40
10.	Sean Hoye, North Central	34	13	0.38

Triples: 1. Dave Kurtz, Muhlenberg (8 in 27 games, 0.30 per game)

Stolen bases: 1. Frank Marinaccio, Manhattanville (41 in 23 games, 1.78 per game)

### Earned-Run Average

1984 Rank	Player, Team	G	IP	R	ER	ERA
1.	Jim Nagle, Ohio Northern	11	83	15	7	0.76
2.	Billy White, Wash. & Lee	10	66	25	8	1.09
4.	John Spazante, Ramapo	19	92	19	13	1.27
8.	Dan Olsson, Montclair State	15	102	43	19	1.68
9.	Gary Whitman, North Central	14	75.3	20	16	1.91

### Most Victories

1984 Rank	Player, Team	G	IP	W	L	Pct.
1.	John Spazante, Ramapo	19	92	12	1	.923
4.	Jim Katschke, Marietta	18	77.3	10	2	.833
4.	Dan Olsson, Montclair State	15	102	10	4	.714
7.	Jim Nagle, Ohio Northern	11	83	9	1	.900
7.	Tom Irvine, E. Conn. St.	16	93	9	2	.818

Strikeouts (per 9 innings): 2. Doug Byler, Eastern Mennonite (76 in 57 innings, 12.0 average).



Bob Stocker, Wisconsin-Oshkosh

## Swindell outduels the pros

University of Texas, Austin, pitcher Greg Swindell proved that on a given day — given that the day was Saturday, February 9 — he was better than the professionals.

Swindell, an all-America sophomore, pitched the Longhorns to a 7-3 victory over a star-studded team of Texas alumni before nearly 7,000 fans.

In five innings, Swindell retired New York Yankee Andre Robertson, former Kansas City Royal Keith Creel and Seattle Mariner Spike Owen. He struck out New York Met Ron Gar-

denhire, Pittsburgh Pirate Burk Goldthorn and Oakland's Jose Tolentino.

In last year's game, then-defending national champion Texas lost to the alumni, 6-0. Alumni players paid their own bills to return to Austin from across the country as a tribute to Texas coach Cliff Gustafson, who has led the Longhorns to four national titles in 18 years.

Eighty-two former Texas players coached by Gustafson have gone on to play professional baseball; 30 of them still are active.



## Record women's basketball crowd

Photographer Joe Edens of the Cedar Rapids Gazette captured the record crowd of 22,157 in Carver-Hawkeye Arena February 3 for the Big Ten Conference women's

basketball game between the University of Iowa and Ohio State University. Actual paid attendance was 14,821, breaking the record of 12,336 for women's college basketball

set March 6, 1977, in Madison Square Garden for games between Montclair State College and Queens College and Delta State University and Immaculata College.

## Mississippi State

Continued from page 8

tucky (.373, 12, 40); Mike Roy, 1b-of, Western Kentucky (.384, 14, 51); Mike Sassone, p, South Alabama (13-4, 3.19); Warren Hughes, p, South Alabama (10-7, 3.09); Jimmy Meek, p, Alabama-Birmingham (10-3); Jerry Comellas, p, South Florida (14-3).

### West Coast

Top teams — Pepperdine (41-21) appears to be the overwhelming favorite in the WCAC.

Top players — Mike McFarlane, c, Santa Clara (.332, 13, 44); Chris Johnson, 1b, Pepperdine (.329, 42 RBI); Jim Puzey, c-1b, Nevada-Reno (.346, 40 RBI); Ted Higgins, 1b, Nevada-Reno (.362, 48 RBI); Mike Feters, p, Pepperdine (10-2, 2.84).

### Western Athletic

Top teams — San Diego State (66-23) must replace three key starters and its top relief pitcher and hold off challenges from Hawaii (48-22-1) and Brigham Young.

Top players — Chris Gwynn, of, San Diego State (.383, 19, 95); Greg Hall, c, New Mexico (.352, 51 RBI); Jeff Huson, ss, Wyoming (.392); Brad Goodwin, of, Texas-El Paso (.406); Ed Voss, ss, Colorado State (.354); Mario Monico, of, Hawaii (.399); Mike Campbell, p, Hawaii (10-5, 2.56); Bill Blount, p, San Diego State (7-1, 2.32); Tim Arnsberg, p, San Diego State (11-3).

### Independents

Top teams — New Orleans (46-26) is at the top of the list after a trip to the College World Series last year. The Privateers have good pitching and defense but must replace some of their power hitters. Pan American (31-27) should bounce back after an off year last season.

Top players — Victor Marin, of, Pan American (.371, 43 RBI); Pat Cummings, c, New Orleans (.377, 59 RBI); Wally Whitehurst, p, New Orleans (15-4, 3.46); Jason Loreth, p, Pan American (11-3 in 1983; hurt in 1984).

## Our Support For The NCAA Includes A Strong Commitment To The Future.

Valvoline Oil Company is very proud to be a supporter for NCAA sports at the intercollegiate level.

But as the NCAA has recognized, the needs of our country's youth begin long before college. And our young people are our future.

That's why we are also involved with the National Youth Sports Program, which provides underprivileged young

people with summertime sports training and exposure to the benefits of higher education.

And with the NCAA Volunteers for Youth Program, where current and former college athletes provide positive role models for young people.

We feel that these programs serve a vital purpose for America's youth. And we're proud to be part of the effort.



Supporting NCAA programs.

Valvoline Oil Company, Lexington, Ky.  
1985, Valvoline Oil Company



Division of Ashland Oil, Inc.





# 1985 NCAA committee appointments released

## Council appointments

*Individuals to fill vacancies on NCAA Council-appointed committees and special appointments to other educational and athletics organizations have been approved by the Council. Following are appointments made to fill vacancies or expired terms. Except where noted, all terms are for three years and become effective September 1, 1985:*

### Academic Testing and Requirements

Reappointed: Joan S. Girgus, Princeton University; Christine W. Hoyles, Western Michigan University.

### Classification

Reappointed: John M. Schael, Washington University (Missouri).

Appointed: Carl F. Ullrich, U.S. Military Academy; G.E. Moran Jr., Morehead State University. Chair: Joe L. Singleton, University of California, Davis.

### Community and Junior College Relations

Reappointed: Keith Colson, New Mexico State University.

### Competitive Safeguards and Medical Aspects of Sports

Reappointed: John K. Johnston, Princeton University; Fran Koenig, Central Michigan University; David M. Nelson, University of Delaware.

### Constitution and Bylaws

Appointed: Charles H. Samson, Texas A&M University.

### Drug Education

Appointed to the two positions added to the committee as a result of Convention approval of Proposal No. 14: Marilyn Hatcher, San Diego State University, and Jackie Sherrill, Texas A&M University (both effective immediately with terms to expire September 1, 1987, and September 1, 1986, respectively).

Appointed: Everett Ellinwood, M.D., Duke University; John Legg, Mississippi College. Chair: Robert J. Murphy, M.D., Ohio State University.

### Eligibility

Appointed: Robert A. Oliver, University of Northern Colorado.

### Extra Events

Reappointed: David H. Strack, University of Arizona.

### Governmental Affairs

Appointed: Patricia A. Thompson, Elmira College; Albert M. Witte, University of Arkansas, Fayetteville (both effective immediately to serve terms concurrent with service on the NCAA Council).

### High School All-Star Games

Reappointed: Vernon M. Smith, University of Toledo.

Appointed: Eleanor R. Lemaire, University of Rhode Island. Chair: Smith.

### Ice Hockey Developmental Funding

Appointed (effective immediately) as a result of the adoption of Proposal No. 16 by the 1985 NCAA Convention: Louis A. Lamoriello, Providence College (term expiration of September 1, 1987); Douglas W. Weaver, Michigan State University, chair (term expiration of September 1, 1986); Diane Wendt, University

of Denver (term expiration of September 1, 1988).

### Infractions

Reappointed: M. Minnette Massey, University of Miami (Florida); Thomas J. Niland, LeMoyne College.

### Insurance

Reappointed: Judy Devine, Kent State University.

### Long Range Planning

Reappointed: Dorothy Casey, Wake Forest University; Wayne Duke, Big Ten Conference; Carole J. Huston, Bowling Green State University.

Appointed (effective immediately) as a result of the adoption of Proposal No. 17 by the 1985 NCAA Convention: Robert F. Steidel Jr., University of California, Berkeley; John L. Toner, University of Connecticut (terms of each to expire September 1, 1987).

### National Youth Sports Program

Reappointed: Nadine Felix-Olmsted, University of Southern California.

Appointed: Willie Mae Williams, Southern University, Baton Rouge.

### Postgraduate Scholarship

Reappointed: Daniel R. Mackesey (past scholarship recipient), Aronoff, David, Harvey, Hagner, Kuney and Halpert legal firm.

Appointed: Robert J. Bruce, Widener University; Richard A. Young, Washington State University.

### Postseason Football

Reappointed: Carl C. James, Big Eight Conference; Linda K. Estes, University of New Mexico.

Appointed: Glen C. Tuckett, Brigham Young University.

### Professional Sports Liaison

Reappointed: Carl C. James, Big Eight Conference; Douglas W. Weaver, Michigan State University.

### Public Relations and Promotion

Reappointed: Paula M. Mullen, Bentley College.

Appointed (effective immediately) as a result of the adoption of Proposal No. 18 by the 1985 NCAA Convention: Benjamin M. Sherman, University of Delaware.

Added to the committee automatically in the position earmarked for the sports information director of the NCAA president's institution: Hal Cowan, Oregon State University (effective immediately).

### Recruiting

Reappointed: Jill Hutchison, Illinois State University.

Appointed: Sam S. Bedrosian, Aurora College. Note: Appointed earlier (October) to be effective immediately: Leanne Grotke, California State University, Fullerton, to replace Frances Schaafsma (term to expire September 1, 1988) and Barbara Palmer, Florida State University, to complete the unexpired term of Libba Birmingham to September 1, 1987. Also appointed earlier, as chair: Don James, University of Washington, replacing Douglas W. Weaver, who declined the chair but remains on the committee.

### Research

Reappointed: Sharon A. Plowman, Northern Illinois University; Irene Shea, California State University, Sacramento.

Appointed: Orville Nelson, University of Wisconsin, Stout.

Janice L. McConnell, California University of Pennsylvania.

### Field Hockey

Reelected: Judy T. Baxter, Lehigh University; Margaret A. Peterson, University of North Dakota; Dottie P. Zenaty, Springfield College.

Elected: Jan Hutchinson, Bloomsburg University of Pennsylvania (effective immediately); Jean Stettler, College of William and Mary (effective immediately). Chair: Zenaty.

### Football Rules

Reelected: LaVell Edwards, Brigham Young University; Charles B. Finley, University of Missouri, Rolla; Ronald Schipper, Central College (Iowa); Homer C. Rice, Georgia Institute of Technology.

Elected: Marino H. Casem, Alcorn State University. Chair: Rice.

### Division I-AA Football

Elected: Bernard F. Cooper, Indiana State University, Terre Haute. Chair: I.J. Caccia, Idaho State University.

### Division II Football

Elected: Kenneth L. Gardner, Northeast Missouri State University. Chair: John D. Marshall Jr., Fayetteville State University.

### Division III Football

Reelected: Forrest Perkins, University of Wisconsin, White-water.

### Men's Golf

Reelected: Robert E. Rosencrans, Wittenberg University.

Elected: Glen Albaugh, University of the Pacific; Arthur Boulet, Bryant College. Chair: David M. Yates, University of Oklahoma.

### Women's Golf

Reelected: Mark Gale, San Jose State University; Ann Pitts, Oklahoma State University. Chair: Pitts.

### Men's Gymnastics

Reelected: W. James Copeland Jr., College of William and Mary.

Elected: Dave Mickelson, Iowa State University.

### Women's Gymnastics

Reelected: Greg Marsden, University of Utah; Donna Sanft, University of Pittsburgh.

### Men's Ice Hockey

Reelected: James W. Ellingwood, North Adams State College; John B. Simpson, Boston University. Chair: Simpson.

### Men's Lacrosse

Reelected: Jack Emmer, U.S. Military Academy; William E. Scroggs, University of North Carolina, Chapel Hill.

### Summer Baseball

Reappointed: Sharron M. Backus, University of California, Los Angeles.

### Television, Football

Reappointed: Keith Colson, New Mexico State University; Judith R. Holland, University of California, Los Angeles; Ade L. Sponberg, North Dakota State University.

Appointed: Edward E. Bozik, University of Pittsburgh; F. A. Geiger, Stanford University.

**Theodore Roosevelt Award** (committee is composed of the NCAA president and the four immediate past presidents).

John R. Davis, Oregon State University, automatically serves as chair (effective immediately) by virtue of his election as NCAA president, with John A. Fuzak, Atlantic Coast Conference, ending his service on the committee.

### Top Ten Selection, College Athletics

Appointed (effective immediately): Bill Millsaps, Richmond Times-Dispatch, U.S. Basketball Writers Association; Jack Gallagher, The Houston Post, Football Writers Association of America.

### Volunteers for Youth

Reappointed: Linda McCarthy, North Carolina Wesleyan College; Richard P. Tamburo, Arizona State University.

### Delegates to Other Organizations

*Appointments are for one-year terms unless otherwise noted.*

### Amateur Basketball Association Governing Council

Reappointed: Tom Apke, University of Colorado; Thomas W. Jernstedt, NCAA.

### Board of Governors of the Modern Pentathlon Association

Reappointed: Frank Keefe, Yale University; Charlie Strong, University of South Carolina, Columbia.

### United States Baseball Federation

Current chair of the NCAA Baseball Committee (Johnny L. Reagan, Murray State University) automatically fills this position.

**United States Department of State Advisory Panel on International Athletics**

Reappointed: John R. Thompson Jr., Georgetown University.

### United States Gymnastics Federation

Reappointed: Greg Marsden, University of Utah; Jerry A. Miles, NCAA.

Current chairs of the Men's and Women's Gymnastics Committees (Wayne Young, Brigham Young University; Sylvia L. Moore, Oregon State University) automatically serve as delegates.

### United States Volleyball Association Delegate Assembly

Reappointed: Sue Gozansky, University of California, Riverside; Mary M. Zimmerman, San Jose State University; Bob Yoder, University of Southern California.

### United States Volleyball Association Board of Directors

Reappointed: G. Thomas Tait, Pennsylvania State University; Cynthia L. Smith, NCAA.

### United States Wrestling Federation

Reappointed: Daniel B. DiEdwardo, NCAA; current chair of the Wrestling Committee (Robert J. Kopnisky, University of Missouri, Columbia) automatically serves.

Elected: Ferris Thomsen Jr., Denison University (effective immediately).

### Women's Lacrosse

Reelected: Carole Kleinfelder, Harvard University; Melissa Magee, Trenton State College.

### Men's and Women's Rifle

Reelected: Thurston E. Banks, Tennessee Technological University.

Elected: Carolyn Dixon, Texas Christian University.

### Men's and Women's Skiing

Reelected: Denis E. Lambert, University of Vermont; Patrick Miller, University of Utah. Chair: Lambert.

### Men's Soccer

Reelected: Willard S. Lotter, University of California, Davis; Greg Myers, U.S. Naval Academy; Craig A. Reynolds, Bucknell University.

Elected: Fred J. Hartrick, Buffalo State University College.

### Women's Soccer

Reelected: Anson Dorrance, University of North Carolina, Chapel Hill; Peter Reynaud, Sonoma State University.

### Women's Softball

Reelected: Sharron M. Backus, University of California, Los Angeles; Mary Higgins, Creighton University; June Walker, Trenton State College.

Elected: Gayla Eckhoff, Northwest Missouri State University. Chair: Higgins.

### Men's Swimming

Reelected: Robert L. Kent, Kalamazoo College; Nort Thornton, University of California, Berkeley.

Elected: William C. Lennox, Slippery Rock University of Pennsylvania; Jack Ryan, U.S. Military Academy; Stanley B. Sheriff, University of Hawaii. Chair: Ryan.

### Women's Swimming

Reelected: Eve Atkinson, Temple University; Penny Lee Dean, Pomona-Pitzer Colleges; Richard J. Kimball, University of Michigan; Mary E. Olcese, Springfield College.

### Men's Tennis

Reelected: George H. Acker, Kalamazoo College; John Zinda, Claremont McKenna-Mudd-Scripps Colleges.

Elected: Dennis Ralston, Southern Methodist University. Chair: Stanley J. Clark, California State University, Hayward.

### Women's Tennis

Reelected: Barbara A. Hedges, University of Southern California; Barbara L. Karas, West Chester University of Pennsylvania; Yvonne E. Kauffman, Elizabethtown College; Jeffrey A. Moore, University of Texas, Austin. Chair: Hedges.

See 1985 NCAA, page 13

## Convention elections

*Unless noted, all terms are for three years and become effective September 1, 1985.*

### Baseball

Reelected: Richard Bakker, Kean College; Mark E. Marquess, Stanford University; Ronald L. Nischwitz, Wright State University; Hal Smeltzley, Florida Southern College.

Elected: David Hall, Rice University; Martin E. Dittmer, Ellsworth Junior College.

### Men's Basketball Rules

Reelected: James D. Dutcher, University of Minnesota, Minneapolis; Richard J. Sauers, State University of New York, Albany.

Elected: Gary Colson, University of New Mexico; Gerald Myers, Texas Tech University. Chair: Dutcher.

### Division I Men's Basketball

Reelected: C. Arnold Ferrin, University of Utah; Frank Windegger, Texas Christian University.

Elected: James E. Delany, Ohio Valley Conference. Chair: Richard D. Schultz, University of Virginia.

### Division I Women's Basketball

Reelected: Nora Lynn Finch, North Carolina State University; James Jarrett, Old Dominion University; Susie Pembroke-Jones, Northern Illinois University. Chair: Finch.

### Division II Men's Basketball

Reelected: Wilburn A. Campbell Jr., Albany State College (Georgia).

Elected: Noel W. Olson, North Central Intercollegiate Athletic Conference. Chair: James R. Spalding, Bellarmine College.

### Division II Women's Basketball

Reelected: Paula M. Mullen, Bentley College; Helen Smiley, University of North Dakota.

### Division III Men's Basketball

Reelected: Robert J. Sheldon, St. Lawrence University.

Elected: Jim Burson, Muskingum College. Chair: Harlan D. Knosher, Knox College.

### Division III Women's Basketball

Reelected: Judy S. Malone, University of California, San Diego; Connie L. Tilley, St. Norbert College.

### Men's Fencing

Reelected: Robert J. Myslik, Princeton University; Paul C. Hausser, New Jersey Institute of Technology. Chair: Hausser.

### Women's Fencing

Reelected: Michael D'Asaro, San Jose State University;

## Elsewhere in Education

### College enrollment remains steady

Although the number of 18-year-olds declined between 1983 and 1984, enrollment in the nation's colleges remained steady this fall, according to a survey by the American Council on Education.

Even high-tuition private institutions are attracting more than enough students to stay in business, the survey revealed.

A survey of 1,560 accredited colleges and degree-granting trade and technical schools found that full-time freshman enrollment has declined 2.85 percent since the fall of 1983, but the gap has been more than filled by an increase in the number of part-time and graduate students.

Stable enrollments at private colleges were a surprise to most forecasters, who expected middle-class families to send their children to public schools as the cost of college continued to rise.

### Blacks improving on SAT scores

Black students are continuing to improve their Scholastic Aptitude Test scores faster than whites, but they still remain far below national averages, figures from The College Board show.

The mean verbal score for 71,174 Blacks taking the college entrance test during 1983-84 showed a three-point gain from the previous year but still 84 points below the national mean.

The mean math score for Blacks was up four points but trailed the national mean by almost 100 points.

Nine years ago, Blacks trailed whites by 258 points on combined verbal and math scores. Now, the gap is 217.

American Indians, Asian Pacific Americans, Mexican Americans and Puerto Ricans as groups all showed gains in both verbal and math scores over 1983.

### Shanker urges teacher licensing

Albert Shanker, president of the American Federation of Teachers, has proposed that a rigorous national examination be developed for licensing new teachers. He said his union eventually would refuse to admit anyone who failed it.

Shanker said the exam for teachers should be comparable to those required to practice medicine or law. He predicted in his speech to the National Press Club in Washington, D.C., that the exam would raise teachers' status and salaries.

"Unless such a standard is adopted," Shanker said, "we believe the benefits of the recent (education) reforms will soon go down the drain."

Shanker said that within a few years, there will be a teacher shortage; and he said that unless strong national licensing standards are established, the states will ignore the standards they have to get more "warm bodies" into the classroom.

"In the midst of all the talk about excellence and quality, we're actually about to lower standards," he said.

## Fatalities

*Continued from page 1*

heads as battering rams when blocking and tackling. The rules prohibiting spearing should be enforced in practice and in games. Players should be taught to respect the helmet as a protective device and not to use it as a weapon.

4. All coaches, physicians and trainers should take special care to see that the player's equipment is properly fitted, particularly the helmet.

5. When a player has experienced or shown signs of head trauma (loss of consciousness, visual disturbances, headache, inability to walk correctly, obvious disorientation, memory loss), he should receive immediate medical attention and should not be allowed to return to practice or game without permission from the proper medical authorities.

Another important factor in the continued downward trend of football injuries is the improvement in equipment under the guidance of the National Operating Committee on Standards for Athletic Equipment (NOCSAE). The report emphasized that old and worn equipment should be properly renovated or discarded and work should continue on the development of the best equipment possible.

Finally, Mueller and Schindler offer 12 specific recommendations based on 1984 survey data:

1. Mandatory medical examinations and medical history should be taken before allowing an athlete to participate in football. The NCAA recommends a thorough medical examination when the athlete first enters the college athletics program and an annual health history update with use of referral exams when warranted. If the doctor or coach has any questions

	Football Deaths								Total
	Sandlot		Pro and Semipro		High School		College		
	Direct	Indirect	Direct	Indirect	Direct	Indirect	Direct	Indirect	
1960	1	0	1	0	11	2	1	2	18
1965	4	4	0	1	20	14	1	5	49
1970	3	0	0	0	23	12	3	2	43
1975	1	2	0	0	13	3	1	3	23
1976	3	1	0	0	15	7	0	2	28
1977	1	0	0	0	8	6	1	0	16
1978	0	0	0	0	9	8	0	1	18
1979	0	1	0	0	3	8	1	1	14
1980	0	0	0	0	9	4	0	0	13
1981	2	0	0	0	5	6	2	0	15
1982	2	1	0	0	7	7	0	3	20
1983	0	0	0	0	4	6	0	3	13
1984	1	0	0	0	4	3	1	0	9

about the athlete's readiness to participate, the athlete should not be allowed to play. High school coaches should follow the recommendations set by the state high school athletics associations.

2. All personnel concerned with training football athletes should emphasize proper, gradual and complete physical conditioning. Particular emphasis should be placed on neck strengthening exercises.

3. A physician should be present at all games and practice sessions. If it is impossible for a physician to be present at all practice sessions, emergency measures must be provided.

4. All personnel associated with football participation should be cognizant of the problems and safety measures related to physical activity in hot weather.

5. Each institution should strive to have a team trainer who is a regular member of the faculty and is adequately prepared and qualified.

6. Cooperative liaison should be maintained by all groups interested in athletics medicine (coaches, trainers, physicians, manufacturers, administrators, etc.).

7. There should be strict enforcement of game rules, and administra-

## Planning

*Continued from page 1*

women, up from 15.6 in 1982-83. By division, the sponsorship averages were 17.6 (10.3 for men, 7.3 for women) in Division I, 13.8 (7.8 and 6.0) in Division II and 15.6 (9.0 and 6.6) in Division III.

In reviewing trends in sponsorship, the committee noted that wrestling had declined in sponsorship among NCAA members for the seventh straight year, and participation figures in that sport in high school also continue to decline. Sponsorship of women's gymnastics also declined at both the high school and NCAA levels.

Meanwhile, soccer continued to show pronounced growth in sponsorship for both men and women, both in high school and in the NCAA membership.

A more complete report on the sports participation and sponsorship data will be featured in a future issue of The NCAA News.

Among the other topics discussed by the Long Range Planning Committee were the following:

- A review of Council actions and other developments regarding earlier committee recommendations, including the proposed codes of ethics.

- The possible effect on the NCAA of a trend toward decentralization of activities in associations in general.

- The possibility of determining alternative means of measuring the success of athletics programs, rather than the won-lost record.

- Identification of other trends and emerging issues in society that may have application to college athletics.

- Development of half a dozen new topics for inclusion in the agenda for the committee's June 6-7, 1985, meeting in Kansas City. That meeting was rescheduled to avoid a conflict with the Association's special Convention June 20-21.

## Legislative Assistance

1985 Column No. 7

### Complimentary tickets — Proposal Nos. 85 and 86

The adoption of Proposal No. 86 (amending Case No. 57, page 260, 1984-85 NCAA Manual and previously amended, page 16, The NCAA News, October 29, 1984) permits member institutions to provide complimentary admissions in basketball for all sessions of a conference's regularly scheduled, season-end, single-elimination tournament at one time. Proposal No. 86 became effective with the adjournment of the Convention January 16, 1985.

As a result of the adoption of Proposal No. 85, which becomes effective August 1, 1985, the practice of providing complimentary tickets to student-athletes under Constitution 3-1-(g)-(3) must be discontinued and replaced with a pass-list admissions system for family members, relatives and fellow students designated by the student-athlete. In other words, "hard tickets" shall no longer be issued by member institutions.

Once an individual is admitted to the facility, it would be permissible for the institution to designate a specific reserved-seat location or section for the individual. For example, the institution could provide the stub of a reserved-seat ticket to facilitate the seating of those individuals admitted through the pass list.

### Coaches' speaking engagements

Football and men's basketball coaches in Divisions I and II may speak at high school or junior college awards banquets (or to other groups primarily involving prospective student-athletes) only during the appropriate contact periods for those sports as set forth in Bylaw 1-2-(a)-(4), (5) and (6). Furthermore, any face-to-face encounter by a coach with a prospective student-athlete while speaking at an awards banquet would be a countable contact.

As indicated in Case No. 191 (page 298, 1984-85 NCAA Manual), football and basketball coaches in Divisions I and II [Bylaw 1-2-(a)-(5) does not apply to women's basketball in Division II until August 1, 1985] also may speak at other types of banquets or meetings (other than a high school or junior college awards banquet) outside the contact periods when: 1 — the meeting or banquet is open to the general public; 2 — attendance is not limited to only high school or junior college athletes; 3 — there is no direct contact between the staff member and any prospect attending the meeting or banquet, and 4 — the staff member does not make a recruiting presentation. Any face-to-face encounter by a coach with a prospective student-athlete or his or her parents while speaking at such banquets or meetings outside of a permissible contact period would be a violation of recruiting legislation.

*This material was provided by the NCAA legislative services department as an aid to member institutions. If an institution has a question that it would like to have answered in this column, the question should be directed to Stephen R. Morgan, assistant executive director, at the NCAA national office.*

## 1985 NCAA

*Continued from page 12*

### Men's and Women's Track and Field

Reelected: Robert G. Waxlax, St. Cloud State University; Alfreda Goff, University of Pittsburgh; John J. Keleher, Central Connecticut State University; Tony Sandoval, University of California, Berkeley; Sue C. Williams, University of California, Davis.

Elected: George Davis, University of Lowell; Richard A. Hill, Southern University, Baton Rouge; Chris Rinnie, University of California, Riverside.

### Men's Volleyball

Reelected: G. Thomas Tait, Pennsylvania State University.

### Division I Women's Volleyball

Reelected: Andy Banachowski, University of California, Los Angeles; Joan Cronan, University of Tennessee, Knoxville.

### Division II Women's Volleyball

Reelected: Jane Meier, Northern Kentucky University.

### Division III Women's Volleyball

Reelected: Elizabeth Dimmick, State University of New York, Buffalo; Sheila K. Wallace, Ohio Northern University. Chair: Wallace.

### Men's Water Polo

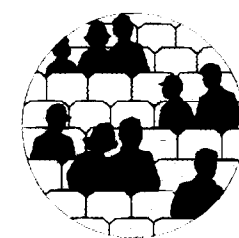
Reelected: John A. Benedick, Massachusetts Institute of Technology.

Elected: Monte M. Nitzkowski, Long Beach City College (junior college).

### Wrestling

Elected: John D. Bridgers, University of New Mexico; Royce N. Flippin, Massachusetts Institute of Technology; Dave Icenhower, Trenton State College; Myron Roderick, Oklahoma State University.

**OUR WORLD  
OF SPORTS  
IS FILLING  
SEATS**



- ★ Increase Group Sales
- ★ Increase Your Revenue
- ★ Increase Your New Fans
- ★ Increase Your Attendance
- ★ Increase Pre-Season Sales

**SPI**  
SPORT PRODUCTIONS INC.  
13967 Cedar Road, Room #205  
Cleveland, Ohio 44118  
(216) 932-8000

# The NCAA News



# NCAA Record

## CHIEF EXECUTIVE OFFICER

PAUL J. REISS, executive vice-president of Fordham, appointed president of St. Michael's. **ASSOCIATE ATHLETICS DIRECTORS** DAVE HART JR., promoted at East Carolina, where he has been assistant AD for marketing the past two years. He will retain those responsibilities. GEORGE N. IVEY, director of academic advising since 1982, promoted at Richmond. Before joining the athletics staff, Ivey was a professor of military science.

**ASSISTANT ATHLETICS DIRECTORS** PAUL PRISH has announced his retirement at Marquette, where he has been assistant AD for the past five years and business manager for the past 15 1/2 years. CINDA LYNN RANKIN appointed at Washington and Lee as the first full-time woman athletics staff member. She had been head women's basketball coach at Humboldt State for the past three years. Her primary responsibility will be in coordinating women's athletics.

## COACHES

**Men's basketball** — Appalachian State has extended the contract of KEVIN CANTWELL, who is in his fourth season as head coach. Terms were not disclosed. Auburn's SONNY SMITH has announced his retirement, effective at the end of the season. He compiled a 96-95 record in seven seasons. JOE MULLANEY resigned at Providence, effective at the end of the season. He coached at the school from 1954 to 1969 and then coached professionally until 1978, when he was named head coach at Brown. He returned to Providence after the 1980-81 season.

**Field hockey** — LYNN KOTLER appointed at Hofstra, where she also will be head women's lacrosse coach. She is a 1983 graduate of Connecticut, where she was named a field hockey all-America and played on the 1981 NCAA championship team. She has been coaching at the U.S. Field Hockey Association's Olympic development camp the past two years.

**Football** — STEVE FARKASOVSKY, first-year coach at Ohio Wesleyan, reapointed to a three-year term. Before taking the head-coaching job, Farkasovsky was offensive line coach. FRANK VOHUN, a defensive coordinator at West Georgia, selected for the top post, succeeding Bobby Pate, who resigned. Vohun was a defensive lineman at Florida State from 1967 to 1969. MARK R. VENNIS named at Thiel, where he has been defensive coordinator and head wrestling coach for the past three years. He holds a master's degree from Youngstown State. REX NORRIS selected as interim coach at Arizona State to replace DARRYL ROGERS, who resigned to become head coach of the Detroit Lions of the National Football League. Norris previously served on the Oklahoma staff.

**Football assistants** — JOHNNY PREJEAN named at Southeastern Louisiana to coach the offensive line. He played at Southeastern from 1965 to 1969 and has been the head coach at a local high school the past season. ROY GREGORY, a member of the New Mexico staff last year, selected at Vanderbilt, where he will coach defensive tackles. Gregory was defensive line coach at Memphis State in 1983. TOM HORNE and DAVE NELSON appointed at Kentucky State, where Horne will be the offensive coordinator and Nelson will coach the offensive line. Horne had been head coach at Iowa Wesleyan, where Nelson was athletics director. WALLY CHAMBERS selected at East Carolina, where he will be defensive line coach. He was defensive line coach at Northern Iowa for the past two seasons. JACK WHITE appointed at Southern Mis-



Dave Hart Jr. named associate director of athletics at East Carolina

Appalachian State has extended the contract of coach Kevin Cantwell

issippi to coach wide receivers. White previously served on the staffs at Kansas, Jacksonville State and Oregon State. The following coaches have been selected at Columbia: STEVE REESE (defensive coordinator), ROD PERRY (defensive secondary), LOU FERRARI (defensive line), MIKE JACOBS (linebackers), JIM BENEDICT (receivers) and HAI HUNTER (offensive line). Reese was the defensive backfield coach at Princeton the past two seasons; Perry, an NFL veteran with the Los Angeles Rams, completed a degree at Fresno State last year; Ferrari was defensive line coach at Eastern Michigan last season; Jacobs coached a Long Island high school team; Benedict was freshman coach at Columbia, and Hunter was an assistant for the past two seasons at Pittsburgh. Delaware State has named DON GOLACINSKI, DAVID DOLCH, ROBERT MAULL, JOHN COVELESKI and GREGORY McLAURIN to the staff. Golacinski was an assistant at Salisbury State; Dolch was a Northern Colorado staff member; MAULL coached at a high school; COVELESKI was a high school coach and McLAURIN was a staff member at the school last season before resigning.

**Women's lacrosse** — LYNN KOTLER named at Hofstra (see field hockey).

**Women's soccer** — BARBARA DeLUCA selected at Wooster, which will enter its first season of varsity competition in the sport. DeLuca plays indoor and outdoor soccer in the Greater Akron Amateur Soccer Association.

**Softball** — SUSAN WHERUM appointed at Hofstra. CAROL FORD resigned at New Hampshire. JANE JOB, a physical education instructor, named to the position on an interim basis. Ford also resigned as women's volleyball coach.

**Women's swimming** — RICH HUTCHINS named at Plymouth State. He is a member of the health and physical education department and served as head baseball coach from 1972 to 1983. He also coached ice hockey, cross country and women's tennis during the 1970s. Women's swimming is a new varsity sport at Plymouth State.

**Men's tennis** — JAY MASSART selected at Wisconsin-Milwaukee. A former member of the men's tennis team at San Diego, Massart is a professional in Milwaukee.

**Women's tennis** — Boston U. has appointed LESLEY SHEEHAN, a former member of the institution's women's varsity team. A 1984 graduate, she has been an associate tennis professional in Connecticut.

**Women's volleyball** — CAROL FORD resigned at New Hampshire (see softball).

## STAFF

**Athletics fund-raising** — PAUL A. FLORES named at East Stroudsburg. Flores, who is working on a master's degree at the school, also is head women's basketball coach.

**Equipment coordinator** — MARK THOMAS ZIMMER, a 1984 Michigan State graduate, selected at Ashland. Zimmer was student manager for the Michigan State football team for four years.

**Sports information director** — JIM BURGESS selected by the Association of Mid-Continent Universities, succeeding LEN WAGNER.

## DIRECTORY CHANGES

**District 1** — Anna Maria College: Paul Hand (F); Wentworth Institute of Technology: delete (PWA).

**District 2** — Hampton Institute: change name to Hampton University.

**District 3** — Davidson College: Christopher B. Morris (AD); Gallaudet College: Jerry C. Lee (P); Morehead State University: Michael Brown 606-783-2120 (F).

**District 4** — Northwestern University: delete (PWA).

**District 5** — University of Colorado: William H. Baughn (acting president).

**District 8** — California State University, Long Beach: Kay Don (PWA).

**Conference** — Eastern Seaboard Conference changed its name to Seaboard Conference.

## New Active Members

(effective September 1, 1985)

Armstrong State College, Savannah, Georgia 31419-1997: Robert A. Burnett (P); John Brewer (F); Renny Bryner — 912/927-5336 (AD); District 3; Division II.

California Lutheran College, Thousand Oaks, California 91359-9967: Jerry H. Miller (P); Ed Julius — 805/492-2411 (F); Robert Doering — 805/492-2411 (AD); District 8; Division II.

Coastal Carolina College, Conway, South Carolina 29526: Fred W. Hicks (P); Andy Hendrick (F); Bobby Richardson (AD) 803/347-6262; District 3; Division II.

Daemen College, Amherst, New York 14226: Robert S. Marshall (P); Barbara Stepien (AD) 716/839-3600 Ext. 200; District 2; Division III.

Eastern New Mexico University, Portales, New Mexico: Robert Matheny (P); Paul Coggin (F); B.B. Lees — 505/562-2153 (AD); District 6; Division II.

Midwestern State University, Wichita Falls, Texas 76708: Louis J. Rodriguez (P); C.W. Rowell (F); Steve Holland (AD) — 817/692-6611; District 6; Division II.

University of North Carolina, Asheville, North Carolina 28804-3299: David G. Brown (C); Roxann Schaffhausen 704/258-6459 (F); Ed B. Harris — 704/258-6459 (AD); District 3; Division II.

Winthrop College, Rock Hill, South Carolina 29733: Philip Lader (P); Robert H. Breakfield (F) — 803/323-2186; Nield Gordon — 803/329-2140 (AD); District 3; Division II.

## DEATHS

JESSE HIBBS, 77, an all-America tackle at

Southern California in 1927, died February 4 at an Ojai, California, hospital. He was a television director for many years. RICHARD DELANEY, 54, an associate athletics director at Ohio State, died of cancer at his home February 11. A Case Reserve graduate, Delaney joined the Ohio State staff in 1970. HARRY LANCASTER, 73, called Adolph Rupp's right-hand man during the golden years of Kentucky basketball, died February 5 in Lexington. He was Rupp's aide from 1946 to 1970. He also served as athletics director and baseball coach.

## POLLS

### Division II Men's Basketball

The top 20 NCAA Division II men's basketball teams through games of February 4, with records in parentheses and points.

1. Virginia Union (20-0)	160
2. Jacksonville State (18-1)	152
3. Millersville (18-1)	144
4. Bentley (18-2)	129
4. Central Missouri State (17-3)	129
6. Northern Michigan (18-3)	111
7. Mount St. Mary's (17-2)	105
7. South Dakota State (17-3)	105
9. American International (17-3)	93
10. Lewis (17-3)	81
11. Sacred Heart (16-3)	78
12. Wright State (17-3)	69
13. Norfolk State (13-3)	57
14. Eastern Montana (17-5)	56
15. Florida Southern (17-4)	48
16. Gannon (17-4)	47
17. Tennessee-Martin (16-3)	32
18. Kentucky Wesleyan (15-4)	27
19. Philadelphia Textile (17-4)	14
20. Bridgeport (16-4)	8

### Division II Women's Basketball

The top 20 NCAA Division II women's basketball teams through games of February 3, with records in parentheses and points.

1. Chapman (19-2)	159
2. Hampton University (20-1)	153
3. Central Missouri State (18-3)	143
4. Pace (20-0)	137
5. St. Cloud State (17-2)	128
6. Mississippi-Women (12-2)	118
7. Quinnipiac (16-3)	103
8. Northern Kentucky (13-5)	102
9. North Dakota (19-2)	100
10. Mount St. Mary's (15-3)	90
11. Cal Poly-Pomona (14-7)	76
12. Utica (11-2)	64
13. Bryant (16-3)	59
14. Air Force (13-5)	48
15. Mercer (15-6)	44
16. Lewis (15-5)	42
17. South Dakota (16-4)	36
18. Johnson C. Smith (14-4)	23
19. Bentley (15-4)	13
20. Cal State-Dominguez Hills (15-5)	12

### Division III Men's Basketball

The top 20 NCAA Division III men's basketball teams through games of February 4, with records in parentheses.

1. Wittenberg (20-1)	160
2. Potsdam State (19-1)	151
3. Colby (16-1)	141
4. Widener (17-4)	131
5. Trenton State (20-2)	121
6. North Park (18-3)	111
7. Nebraska Wesleyan (15-3)	101
8. Otterbein (17-2)	91
9. Wisconsin-Whitewater (14-4)	81
10. Augsburg (15-4)	71
11. Salisbury State (16-4)	61
12. Hope (15-3)	51
13. North Carolina Wesleyan (16-4)	41
14. Locomotiv (14-3)	31
15. Hartwick (12-4)	21
16. Upsala (13-5)	11

17. Albany (New York)	(15-3)
18. LeMoyne-Owen	(15-5)
19. Bishop	(13-3)
20. Clark (Massachusetts)	(12-5)
20. Centre	(14-5)

### Division III Women's Basketball

The top 20 NCAA Division III women's basketball teams through games of February 3, with records in parentheses.

1. Scranton (18-1)	160
2. Pittsburgh-Johnstown (17-1)	151
3. Rust (16-2)	141
4. Bridgewater St. (Mass.) (16-1)	131
5. St. Mary's (Minnesota) (17-0)	121
6. Pomona-Pitzer (19-1)	111
7. St. Norbert (14-2)	101
8. Millikin (13-2)	91
9. Cal State Stanislaus (19-3)	81
10. Gettysburg (13-2)	71
11. Capital (16-0)	61
12. Salem State (18-3)	51
13. Muskingum (18-2)	41
14. Frostburg State (15-0)	31
15. New Rochelle (14-4)	21
16. Rhode Island College (14-3)	11
17. Susquehanna (17-3)	1
18. Wisconsin-Whitewater (14-5)	1
19. Central (Iowa) (12-4)	1
20. LeMoyne-Owen (13-6)	1

### Men's Gymnastics

The top 20 NCAA men's gymnastics teams with meet-high scores through February 2. Teams are ranked according to the top scores recorded this season.

1. Penn State	283.82
2. Ohio State	281.82
3. Arizona State	280.43
4. New Mexico	277.32
5. Nebraska	276.30
6. Southern Illinois	276.05
7. Iowa State	274.42
8. Oklahoma	273.37
9. Iowa	272.25
10. Brigham Young	271.64
11. Cal State Fullerton	270.90
12. Temple	267.50
13. Georgia	264.90
14. Northern Illinois	263.00
15. Southern Connecticut	260.32
16. Navy	260.17
17. Houston Baptist	259.55
18. Pittsburgh	258.78
19. Army	257.08
20. Jacksonville State	253.42

### Division I Men's Ice Hockey

The top 10 NCAA Division I men's ice hockey teams through games of February 4, with records in parentheses and points.

1. Michigan State (28-3)	60
2. Minnesota-Duluth (23-7-2)	54
3. Rensselaer (18-2)	54
4. Boston College (22-8-1)	48
5. Minnesota (22-8-3)	44
6. Wisconsin (19-13)	37
7. Boston U. (16-10-2)	35
7. Harvard (11-3-2)	35
9. Lake Superior State (19-13)	27
10. North Dakota (19-12-1)	22

### Division III Men's Ice Hockey

The top 10 NCAA Division III men's ice hockey teams through games of February 4, with records in parentheses and points.

1. Bemidji State (17-4)	58
1. RIT (18-5-1)	58
3. Babson (14-5)	50
3. St. Thomas (Minn.) (17-4)	50
5. Plattsburgh State (17-6)	44
6. Elmira (15-4-1)	38
7. Gustavus Adolphus (12-8)	36
8. Salem State (15-7)	31
9. St. Mary's (Minn.) (13-7)	30
10. St. Scholastica (12-11)	22

# The NCAA News



# The Market

## Positions Available

### Administrative

**Administrative Assistant.** Full-time position open in KU football office. Must have extensive knowledge of rules and regulations of NCAA. Bachelor's degree or equivalent. Ability to interpret rules and apply to all areas of a collegiate football program. Proven leadership and ability to relate to people and promote the University of Kansas. Send letter of application and resume to: Mike Gottfried, Head Football Coach, University of Kansas, Allen Fieldhouse, Lawrence, Kansas 66045. Application deadline: Must be received by Wednesday, February 20, 1985, by 5 p.m. EEO/AA Employer.

### Development

**Director of Athletics Development.** Responsible for development of marketing strategies and coordination of athletic fund raising activities. Duties include coordination of special recognition campaigns and assistance with promotion and sale of athletic tickets. This individual must have excellent written and verbal communication skills. Qualifications Required: Bachelor's degree, 3 to 5 years experience in athletic fund raising. Send letter of application, resume, and three letters of reference to: Personnel

Director, The University of Tennessee at Chattanooga, 615 McCallie Avenue, Chattanooga, TN 37403 (position closes for application February 21, 1985).

## Fund-Raising

**Athletic Fund Raiser.** Appalachian State University, a Division I, Southern Conference affiliate with 19 varsity sports seeks a highly motivated, experienced athletic fund-raiser. This position, which is responsible to the Vice Chancellor for Development and responsive to the Athletic Director, requires a baccalaureate degree in appropriate field or equivalent record of professional accomplishment. Experience in intercollegiate athletics and fund raising desirable. Qualified applicants will show evidence of organizational ability, excellent business skills, strong public speaking and management abilities. Responsibilities include organizing and implementing the annual Yosef Club fund drive; administration of Club budget; operation of Club office and staff; establishing business contacts; planning promotional and social activities; development of incentive packages and donor recognition programs; plus the ability to relate and work effectively with a diversity of publics. Preference will be given to individuals who have training and experience directly related to the responsibilities of this position. Competitive salary commensurate with experience. Send letter of application, resume and three letters of recommendation attesting to experience and qualifications to: Mr. Bob Sneed, Vice Chancellor of Development, Appalachian State University, Boone, North Carolina 28608. Deadline date is March 25 or until filled. An

affirmative action/equal opportunity employer.

## Guidance Director

**Director of Student-Athlete Guidance.** Qualifications: Master's degree in related field experience and academic advising and personal counseling. Knowledge of NCAA rules and regulations concerning academics. Strong organizational ability. Proven ability to relate to and motivate people. Interest in intercollegiate athletics. Responsibilities: Maintain and monitor academic progress of all student athletes as defined by the University and NCAA. Coordinate tutorial program. Compile periodic and end of semester academic reports. Maintain liaison between athletic department and the admissions office, academic advisors, and faculty. Miscellaneous duties as assigned by the athletic director. Type and Date of Appointment: 12 month effective May 1, 1985. Salary: Negotiable. Application Procedure: Letter of application, complete resume and the names, addresses and telephone numbers of three professional references should be sent to the following: Roy Kramer, Director of Athletics, Vanderbilt University, P.O. Box 120158, Nashville, Tennessee 37212. Application Deadline: March 1, 1985. Vanderbilt is an Affirmative Action/Equal Opportunity Employer.

## Sports Information

**Sports Information Director,** available July 1, for 6,000 student university fielding teams in 20 men's and women's sports. Bachelor's degree. Minimum of two years of newspaper

sports reporting or sports information work required. Skill in sports writing and photography and interaction with coaches, athletes and the general public must be demonstrated. Considerable knowledge of sports, journalistic techniques, procedures in writing and placement of news and feature stories and ability to find pertinent newsworthy information required. SID will be responsible for collecting and collating sports statistics, seeking out news, promotion of prospective all-Americans, some photography, writing news releases, media contract work, press box, and supervision of student assistants. Beginning salary range \$16,500-\$17,300 per year. Excellent fringe benefits. Submit letter of application, resume, official college transcript and three letters of reference by March 15 to Department of Public Relations, Kutztown University, Kutztown, PA 19530. Kutztown University is an Affirmative Action/Equal Opportunity Employer.

## Basketball

**Head Coach, Women's Basketball.** Tufts University, located in the northern section of Metropolitan Boston, invites applications for the position of Head Women's Basketball Coach. Tufts University is an active member of the National Collegiate Athletic Association (Division III), the Eastern College Athletic Conference, and the New England Small College Athletic Conference. In accordance with the latter's guidelines, no off-campus recruiting is permitted. Principal duties: Plan, organize, and coach the Women's Basketball Team. In addition, this assignment will be coordinated to coach, teach or administer in some of the following areas: Physical Educa-

tion skills classes, recreational administration or supervision, or coach some other sport (preferably softball). Additional assignments as indicated by the Director of Programs. Qualifications: Master's Degree in Physical Education or Education preferred. College playing experience or equivalent, college coaching experience preferred, ability to effectively relate to student-athletes. Salary: Dependent upon experience and qualifications. Application Deadline: March 8, 1985. Starting Date: August 25, 1985. Letters of application including personal resume and letters from three (3) references should be sent to: Professor Rocco J. Carro, Director of Programs in Physical Education, Athletics & Recreation, Tufts University, Medford, Massachusetts 02155. Tufts University is an Equal Opportunity/Affirmative Action Employer.

## Cross Country

**Head Women's Cross Country/Track and Field.** Allegheny College invites applications for the position of Head Women's Cross Country and Track and Field Coach. The Head Women's Cross Country and Track and Field Coach is responsible for all phases of the women's cross country, and indoor-outdoor track programs, including coaching, recruiting, scheduling, counseling and budget management. Duties will include the teaching of physical education classes and/or administrative duties as assigned by the director. This is a full-time position in the department of athletics, physical education and recreation. Application deadline: March 30, 1985. Position begins July 1, 1985. Twelve-month, non-tenure position. Contract may be renewed. Entry level position. Send letter of application, resume, and provide at least

three professional references to Thomas C. Erdos, Associate Director of Athletics, Box 34, Allegheny College, Meadville, PA 16335. Allegheny College is an equal opportunity employer. Minority applications are encouraged.

**Florida State University Women's Cross Country/Track and Field Head Coach.** Requires bachelor's degree and three years' coaching experience at university, college or high school level. Successful experience as graduate assistant or intern in an athletic program. May substitute for up to one year of the required experience. Administrative and supervisory experience preferred. Responsible for coordinating coaching and recruiting prospective student-athletes. Florida State University is an Equal Opportunity/Affirmative Action Employer. Salary range: \$23,850-\$42,900. Send resume and three letters of recommendation to Barbara Palmer, P.O. Box 2195, Tallahassee, Florida 32315. Application deadline February 21, 1985.

## Field Hockey

**Women's Field Hockey and Lacrosse Coach.** Position to coach women's field hockey and lacrosse and to teach in the physical education minor (exercise, nutrition and stress management) and in the instructional activities program. Abilities to recruit student athletes of quality for field hockey and lacrosse required. Qualifications: Master's degree. Salary commensurate with qualifications. Closing date March 1, 1985. Applicants should send a resume and letter of inquiry to Mr. Alvin J. Van Wie, Chairperson, Department of Physical Education, The College of Woos-

See The Market, page 15



# The NCAA News



# The Market

Readers of The NCAA News are invited to use The Market to locate candidates for positions open at their institutions, to advertise open dates in their playing schedules or for other appropriate purposes.

Rates are 45 cents per word for general classified advertising (agate type) and \$22.60 per column inch for display classified advertising. Orders and copy are due by noon five days prior to the date of publication for general classified space and by noon seven days prior to the date of publication for display classified advertising. Orders and copy will be accepted by telephone.

For more information or to place an ad, call 913/384-3220 or write NCAA Publishing, P.O. Box 1906, Mission, Kansas 66201.

## Positions Available

*Continued from page 14*

ter, Wooster, Ohio 44691. The College of Wooster is an Equal Opportunity Employer.

## Football

**Head Football Coach.** The University of Puget Sound invites applications for the position of Head Football Coach. Puget Sound is an NCAA/NAIA dual affiliate institution with the football program participating in NAIA competition in the Pacific Northwest. The candidate selected to fill this full-time position will begin as soon as possible after March 1, 1985. The head football coach reports to the director of physical education, athletics and recreation, is responsible for all aspects of the football program, and may teach physical education theory/activity classes. A master's degree in physical education or recreation and four years of coaching experience are required. Preference will be given to candidates with experience as college head coach or coordinator. Candidates must have demonstrated ability to recruit quality student-athletes, handle administrative responsibilities, represent the university in a positive manner, understand the role of athletics in an academically oriented institution, supervise coaching staff, demonstrate concern for football players as students, and manage the football budget effectively. To apply, submit a letter of interest, resume, and three letters of reference, to be received by February 29, 1985, to: Athletics Search, University of Puget Sound, P.O. Box 7297, Tacoma, Washington 98407. An Equal Opportunity/Affirmative Action Employer.

**Athletics-Assistant Football Coach.** (Part-time Assistant Athletic Coach and/or graduate assistant in the Men's Athletics Department) Part-time position with responsibilities for all aspects of the football program generally and specifically experienced with offensive backs and receivers. Recruit academically-qualified students, and assist in off-season and spring football program. Qualifications: Bachelor's Degree required. Demonstrated football coaching experience of at least 5 yrs. preferable at the collegiate level, but not a requirement. Working knowledge of the University/NCAA regulations. Salary: Negotiable, commensurate with experience. Submit letter of application, resume and one letter of reference to Mr. Bill Lauris, Chairperson, Selection Committee, Bucks House, Millersville University, Millersville, PA 17551 by March 1, 1985. Millersville University is an Equal Opportunity/Affirmative Action Employer encouraging women and minorities to apply.

## Soccer

**Head Men's Soccer Coach, Syracuse University.** Required: Bachelor's degree and coaching experience at either the high school or college level with a demonstrated record of success. Preferred: Master's degree with coaching experience at the college level, holder of a Class A license. Responsible for the administration, supervision, and management of a competitive Division I soccer program within the rules and regulations of Syracuse University and the NCAA. Send letter of application, resume and three letters of recommendation by February 22, 1985, to: Doris R. Soladay, Associate Director of Athletics, Syracuse University, Manley Fieldhouse, Syracuse, New York 13210. Equal Opportunity/Affirmative Action Employer.

**Head Soccer Coach.** New York University is seeking a Head Soccer Coach to work with a growing soccer program in New York City. Playing and coaching experience required with college coaching preferred. Responsibilities include administration and conduct of

an NCAA Division III soccer program. Knowledge of NCAA recruiting rules. Salary commensurate with qualifications. Please contact: Michael R. Muzio, Deputy Athletic Director, New York University, Coles Sports Center, 181 Mercer Street, New York, New York 10012. NYU is an Equal Opportunity Employer.

**Head Women's Soccer/Assistant Women's Lacrosse.** Allegheny College invites applications for the position of Head Women's Soccer and Assistant Women's Lacrosse Coach. The Head Women's Soccer Coach is responsible for all phases of the women's soccer program, including: coaching, recruiting, scheduling, counseling and budget management. Responsible to the Head Women's Lacrosse Coach for those duties affiliated with assistant lacrosse position. Duties will include the teaching of physical education classes and/or administrative duties as assigned by the director. This is a full-time position in the department of athletics, physical education and recreation. Application deadline: March 30, 1985. Position begins July 1, 1985. Twelve-month, non-tenure position. Contract may be renewed. Entry level position. Send letter of application, resume and provide at least three professional references to Thomas C. Erdos, Associate Director of Athletics, Box 34, Allegheny College, Meadville, PA 16335. Allegheny College is an equal opportunity employer. Minority applications are encouraged.

**Women's Varsity Soccer Coach.** Ability to coach a second varsity sport, preferably a spring sport. Instructor, Physical Education. Colgate University has an opening for the above position. The applicant should have had playing and/or coaching experience at either the high school or college level. Individual would be responsible for all aspects of the sport which would include program planning, coaching, scouting and recruiting. Closing date is Friday, March 8, 1985. Employment date is July 1, 1985. Applications sent to: Braden Houston, Associate Director of Athletics, Colgate University, Hamilton, New York 13346. Colgate University is a private liberal arts institution of 2,600 undergraduate students located in a rural setting in Central New York. Colgate is a Division I member of both the NCAA and ECAC and fields teams in 12 men's and 8 women's intercollegiate sports. Colgate University is an Affirmative Action/Equal Opportunity Employer.

## Tennis

**Head Women's Tennis Coach.** The University of Georgia invites applications for a Head Coach of Women's Tennis. This individual will be responsible for coaching and administering Women's Tennis on a competitive Division I level. Duties also include scheduling, recruiting, promoting, and administering overall Women's Tennis program. Credentials should reflect proven success in coaching, recruiting and counseling student-athletes. Master's degree preferred. Salary commensurate with experience and qualifications. Application deadline is April 1, 1985. Send resume and three letters of reference to: Liz Murphy, Assistant Athletic Director, University of Georgia, Box 1472, Athens, Georgia 30613. The University of Georgia is an Equal Opportunity/Affirmative Action Employer.

## Track & Field

**Student Activities Building Manager/Track Coach.** Responsible for the management operation and supervision of the Rector Fieldhouse, schedule and supervise all activities held in the facility, be responsible for the conduct and safety of users and enforce policies and building regulations. Will be responsible for all housekeeping and maintenance. Coach the women's track team. Track coaching experience with expertise in field events preferred. Send resume to: Martha Rose, Employee Relations, 109 University City Office Building, Blacksburg, Virginia 24061. Resume deadline February 28, 1985.

Virginia Tech is an Equal Opportunity/Affirmative Action Employer.

**Head Women's Track & Field Coach/Physical Education Instructor.** Job Description: Responsible for development and administration of all phases of Cross Country and Indoor and Outdoor Track programs (specific emphasis on jumping and throwing events) and appropriate part-time teaching assignment. Includes weight training program and supervision. Minimum Qualifications: An earned Master's Degree in the area of Health, Physical Education, and Recreation, with emphasis in biomechanics preferred. Terms of Contract: Salary is negotiable depending upon experience and qualifications. Note: A written letter of application, a resume, and three letters of recommendation are required prior to a personal interview. Application Deadline: March 4, 1985. Apply To: Dr. Mary Mock, Assistant Athletic Director, Department of Athletics, The University of South Dakota, Vermillion, SD 57069. An Equal Opportunity/Affirmative Action Employer.

## Volleyball

**Head Volleyball Coach.** Western Illinois University, a Division I school. Bachelor's degree required, master's preferred, experience required. Responsibilities include practices, games, recruiting, financial aid, budgeting, scheduling, developing highly competitive program. Opportunity to teach, if desired, also to run summer camps. Help with public relations and promotions for volleyball. Send resume, recommendations, transcripts to: Marion Blackinton, Women's Athletics, Western Illinois University, Macomb, Illinois 61455. Deadline March 15, 1985. Appointment effective sometime between April 1 and July 1, 1985. Equal Opportunity/Affirmative Action Employer.

**Head Women's Volleyball Coach.** The University of Louisville invites applications for the position of Women's Volleyball Head Coach. The head coach is responsible for the development and administration of all phases of the volleyball program. Budget preparation and management, scheduling, travel, equipment and recruitment of student-athletes. Applicant must possess a BS degree, and three years' coaching experience in a Division I program is preferred. Applications and resume should be sent to: Personnel Department, University of Louisville, 2323 South Brook Street, Louisville, Kentucky 40292.

**Head Volleyball Coach and Assistant Softball or Women's Lacrosse Coach and Teach Professional Classroom and Sport Skills Courses.** August 15, 1985. Ithaca College has a nationally ranked team and plays highly competitive Division III schedule. Minimum master's degree in physical education. Several years' teaching/coaching experience; preferably collegiate level. Competitive salary. Send letter of application, vita, references, transcripts, pertinent data to: Dr. William Koch, Dean, The School of HPER, Ithaca College, Ithaca, New York 14850. Preference will be given to applications received by March 1, 1985; however, position will remain open until filled. EO/AA.

**Head Coach Women's Volleyball.** Full-time position open in KU athletic department. Must have a bachelor's degree. At least three years' coaching experience at the collegiate level. Demonstrated coaching and recruiting success. Ability to work effectively with college students, faculty, alumni, and the public. Familiarity with NCAA and Big Eight rules and regulations. Prefer a master's degree and experience as a head or assistant coach at the Division I level. Send letter of application, resume and three letters of reference to: Laurence Rose, Assistant Athletic Director, Kansas University, Allen Fieldhouse, Lawrence, Kansas 66045. Application deadline: must be received by 5 p.m. Thursday, February 28. EO/AA Employer.

## Wrestling

**Head Wrestling/Soccer Coach-Virginia Military Institute.** Responsible for providing leadership in the planning of all phases of the wrestling and soccer programs including academic guidance, budget supervisor, scheduling, travel and recruitment of student-athletes within the rules of the institution, the Southern Conference and NCAA. Minimum of bachelor's degree and successful coaching experience on the high school level; master's degree preferred and successful coaching on the college level. Emphasis is in wrestling with willingness to develop a competitive soccer program. Salary commensurate with experience and qualifications. Send letter of application and resume to Personnel Office, Virginia Military Institute, Lexington, Virginia 24450, by 1 March 1985. An Equal Opportunity/Affirmative Action Employer.

## Physical Education

**Physical Education/Athletics.** Three positions with joint appointments in Physical Education and Athletics as Instructor or Assistant Professor, beginning August 15, 1985. Master's Degree in Physical Education or related HPER discipline required; Ph.D. preferred. Physical Education expertise in at least one of the following: (1) Kinesiology and Exercise Science, (2) Elementary Physical Education, (3) Measurement and Evaluation. Athletic duties include scheduling, budgeting, recruiting, and coaching in at least one of the following: (1) Women's Volleyball, (2) Field Hockey, (3) Men's and Women's Tennis. Send resume, credentials, and three current letters of reference by March 1, 1985, to: Dr. Michael Bretting, Chairman, Department of Physical Education, Valparaiso University, Valparaiso, Indiana 46383. A Lutheran institution and an Equal Opportunity Employer.

**Physical Education/Coach.** Two tenure track positions at the rank of Assistant or Associate Professor in HPER. Starting date August 26, 1985. Position 1) Instructor in HPER with emphasis on elementary physical education with coaching. Position 2) Instructor in HPER-Generalist, with coaching. Coaching responsibilities will include one of the following: a) Head Women's Volleyball to assist in women's basketball, women's track, softball or gymnastics; b) Head Women's Track Coach and Assistant Football Coach. Teaching areas available are elementary PE, methods of elementary PE, supervision of P.E., organization and administration of P.E., psycho-social aspects of sports, introduction to recreation, recreational leadership, community recreation. MA in HPER and successful teaching and coaching required. Doctorate preferred. Send letter of application, resume with transcripts and three letters of recommendation to Bob Boeniger, Director of HPER and Athletics, Adams State College, Alamosa, Colorado 81102 by March 15, 1985.

**Physical Education/Athletic Training:** Assistant Professor, term contract position. Master's degree, NATA certification, American Red Cross Standard First and CPR Instruction rating required and previous college teaching experience preferred. Salary commensurate with qualifications. Responsibilities include teaching courses in the NATA approved undergraduate curriculum, supervision of student trainers; some trainer responsibilities with athletic teams. Other teaching responsibilities within the Physical Education major. Starting date: August 15, 1985. Submit letter of application, vita, official undergraduate and graduate transcripts and three letters of recommendation by March 15, 1985, to: Dr. Ellen O. Conley, Chair, Physical Education Department, Canisius College, Buffalo, New York 14208. Equal Opportunity Employer.

**Athletics/Physical Education.** Wayne State University has two employment opportunities: 1) Head Coach of Women's Basketball and Softball/Instructor of Health/Phys. Ed.; 2) Assistant Coach of Football/Instructor of Health/Phys. Ed. Wayne State University is an NCAA II institution and a member of the Great Lakes Intercollegiate Athletic Conference with a student population of approximately 28,000 located in Detroit, Michigan. A master's degree is required. Successful college coaching experience is preferred. Funding: \$14,900-\$20,000. Send letter of application, resume and three letters of recommendation by March 10, 1985, to: Dr. Fred A. Mulhauser, Director of Athletics, Wayne State University, 202 Matthaei Building, Detroit, Michigan 48202. Wayne State University is an Equal Opportunity, Affirmative Action Employer.

## Miscellaneous

**Head Coach Women's Basketball and Soccer.** Teaching responsibilities in the area of teacher preparation in elementary and secondary, supervising student teachers and teaching activities courses. An earned doctorate is preferred; a master's degree is required. Demonstrated competency and experience is desired. Salary is competitive. Appointment for the fall semester, 1985. Women and minority applications are especially encouraged. Applicants should send a resume, credentials and three letters of recommendation by March 1, 1985, to: Dr. Richard D. Gordin, Chair/Director, Department of Physical Education/Athletics, Ohio Wesleyan University, Delaware, Ohio 43015. Strong consideration will be given to qualified women and minority candidates.

**Sport and Leisure Studies:** Assistant Professor, Master's degree in physical education or

related discipline preferred. Coaching experience in the area of women's basketball and women's volleyball and teaching in the physical education majors and activities programs. Salary commensurate with qualifications and experience. Position available September 1, 1985. Closing date for applications February 28, 1985. For further information and for purpose of application, write to: Dr. Ronald C. Hoffman, Acting Chairman, Department of Sports and Leisure Studies, St. Lawrence University, Canton, New York 13617. Affirmative Action/Equal Opportunity Employer. MFVH.

**Head Soccer Coach - Athletic Facilities Supervisor.** Virginia Wesleyan College is accepting applications for a full-time position of Men's Soccer Coach and Athletic Facilities Supervisor. Qualifications: Successful college soccer coaching and recruiting experience. Knowledge and understanding of athletic facility needs. Proven management skills. Send letter of application, resume, three letters of reference and transcripts to: Donald Forsyth, Athletic Director, Virginia Wesleyan College, Norfolk, Virginia 23502. Deadline for applications is February 22, 1985.

**Volleyball and Softball Coach/Physical Education Lecturer.** The College of Saint Benedict is a liberal arts college for women located in central Minnesota. The coach/lecturer position begins August 21, 1985. Major responsibilities will include coaching volleyball and softball in Women's Division III intercollegiate program, recruitment of student-athletes within NCAA and College guidelines and teaching activity classes in the area of lifetime sports and aerobics. Qualifications include competitive coaching experience and master's degree. Submit letter of application, vita and three letters of recommendation to: Kathy Flynn, Wage and Benefit Coordinator, College of Saint Benedict, St. Joseph, Minnesota 56374, by March 29, 1985. Women and minorities are encouraged to apply.

**Athletic Coach:** PSC has an opening for a Head Coach for Men's Basketball & Women's Soccer. Duties will also include being director of intramurals & recreation. Experience in New England Division III college athletics preferred (one year's experience required). Master's degree preferred. Full-time 10-month position. Salary commensurate with experience pending Trustee approval. Deadline: 2/20/85. Send cover letter & resume to John Clark, Director of Athletics, Plymouth State College, Box E, Plymouth, NH 03264. AA/EOE.

## COACHING/TEACHING Internship For 1985-86

**Positions Open:** RPI has four positions available. These positions combine working as an assistant coach in one sport and instructing in the required physical education program. Coaching positions are one each in football, men's ice hockey, men's basketball, and one in athletic training.

**Qualifications:** Qualifications include a bachelor's degree in physical education or a program which has provided expertise in their sports and proficiency in teaching a number of activities in physical education. Playing and/or coaching experience is essential.

**Salary:** The stipend made up of meals, housing, and cash is valued at \$4,300.

**Application Procedure:** Send letter of application, resume, and three letters of recommendation to:

Alan H. Goodyear  
Associate Athletic Director  
'87 Gymnasium  
Rensselaer Polytechnic Institute  
Troy, New York 12180

**Application Deadline:** Application deadline is May 1, 1985.

RPI Is An Affirmative Action/Equal Opportunity Employer.

## ATHLETIC BUSINESS MANAGER

**Responsibilities:** Incumbent will be responsible for: financial planning and budget development; income and expense accounting, reconciliation with the University accounts; game management responsibilities including organization, accounting, ticket sales, programs, parking, concessions, and security; purchasing and equipment control, maintaining accurate records and accountability of all travel requisitions and reconciliations; departmental payroll, insurance, dining hall arrangements; providing current financial statements weekly to all coaches; office operations, telephone, and supplies; promotions and management of season ticket sales, and other duties as assigned by the Director of Intercollegiate Athletics.

**Qualifications:** Bachelor's degree required; Master's in Business, Management, Accounting or Athletic Administration preferred. Administration and managerial experience including budget development, purchasing, and accounting required. Knowledge of intercollegiate athletics or previous experience in intercollegiate athletics is desirable. Computer background required and experience with "Athletic Department Support System" software preferred.

**Salary:** Commensurate with experience.

**Application Deadline:** Applications accepted from February 4, 1985, until February 25, 1985.

Please forward letter of application, professional resume, and three letters of recommendation to:

Mr. Paul V. Amodio, Director  
Intercollegiate Athletics  
Kent State University  
Kent, Ohio 44242

Kent State is an Equal Opportunity Employer

## COLLEGE COACHING/ADMINISTRATION POSITIONS Full Faculty Appointments

**Position I:** Associate Athletic Director; Head Coach of one sport; Assistant Coach in a 2nd sport.

**Position II:** Head Coach in two sports; Pool Director, or Assistant Coach in a 3rd sport. Physical Education Instructor.

**Head Coaching Options:** 1. Women's volleyball. 2. Women's basketball. 3. Women's lacrosse.

**Assistant Coaching Options:** 1. Women's field hockey. 2. Swimming. 3. Skiing. 4. Women's lacrosse.

Application Deadline: February 20, 1985. Send resume and three (3) current letters of recommendation to:

Robert W. Hatch  
Athletic Director  
Bates College  
Lewiston, Maine 04240

Bates College is an Equal Opportunity/Affirmative Action Employer.

## Director, Intercollegiate Athletics Kansas State University Manhattan, Kansas

**Responsibilities:** Direct professional staff in men's and women's intercollegiate athletics. Formulate and manage a budget in excess of \$3 million. Develop and conduct fundraising programs. Develop and maintain excellent relations between intercollegiate athletics and alumni, faculty and students. Foster an intercollegiate athletic program that adds to the positive image of the university and its mission.

**Qualifications:** BS or BA degree, ability to manage personnel and a budget. Demonstrated ability to relate to people to promote a program and to manage business affairs. Familiarity with intercollegiate athletics, sensitivity to higher education.

Salary commensurate with qualifications and experience. send nominations or letters of application, resume and names of three references to:

Dr. Randy Pohlman, Chairperson  
College of Business Administration  
Calvin Hall  
Kansas State University  
Manhattan, Kansas 66506

Review of nominations and nominees' supporting materials will begin February 1, 1985.

An Equal Opportunity/Affirmative Action Employer.

# Southern Mississippi penalized for recruiting violations

Frank J. Remington, chair of the NCAA Committee on Infractions, announced February 8 that the University of Southern Mississippi has been placed on NCAA probation as a result of violations occurring primarily during the spring of 1984 in the recruitment of a prospective student-athlete in football.

"The committee initially imposed a two-year probationary period and took action to prohibit the university from participating on any 'live' football telecast during the 1985 season," noted Remington, "but the committee determined that the television sanction and one year of the probationary period should be suspended, based upon the university's prompt disciplinary action and its efforts to uncover complete information prior to the institution's appearance before the committee."

In addition to the one-year probationary period, the university will be limited to 60 expense-paid visits (normally 95) to prospective football team members for the 1986 season.

"The Committee on Infractions' action to suspend a portion of the penalty was based primarily upon the university's actions to: 1—terminate the employment of the assistant football coach who was involved in the violations; 2—impose a salary freeze upon the head football coach for 1985 and take no action to extend the head coach's employment contract until 1986; 3—disassociate five representatives of the university's athletics interests from participation in activities associated with the university's athletics program, and 4—forward letters to two additional representatives strongly urging them to take every precaution to avoid even technical violations of NCAA rules.

"Even though the violations in this case were limited to the recruitment of one prospective student-athlete by one assistant football coach and certain outside representatives," Remington said, "the violations were considered quite serious, in part because the university was placed on probation for a two-year period in 1982 for violations in its football program. In addition," Remington noted, "the assistant football coach who was involved in the case intentionally violated NCAA recruiting rules and set out to cause several principals in the case to provide false and misleading information to the NCAA and university officials during the investigation of the case.

"University officials, however, convinced the committee of their sincerity in determining the truth of the matters under inquiry and of their commitment to ensure future compliance with NCAA regulations in the face of local pressures to do otherwise."

Remington also said, "The committee believes it appropriate to recognize the university's commitment and at the same time warn the university's football coaching staff and outside athletics representatives that any further violation will result in severe NCAA penalties."

The findings of violations in this case involved ethical conduct, recruiting and certification of compliance with NCAA legislation.

The following is a complete text of the penalty imposed upon the university and a summary of the violations in this case:

#### Penalty to be imposed upon institution

1—The University of Southern Mississippi shall be publicly reprimanded and censured, and placed on probation for two years (refer to paragraph No. 4), effective February 7, 1985, it being understood that should any portion of the penalty in this case be set aside for any reason other than by appropriate action of this Association, the penalty shall be reconsidered by the NCAA Committee on Infractions.

2—During the 1985 football season, the university's intercollegiate football team shall not be eligible to appear on any television series or program subject to the administration or control of this Association or any other television programs involving "live coverage" (refer to paragraph No. 4).

3—The university shall not exceed 60 expense-paid visits in football related to the recruitment of student-athletes who are countable in the 1986-87 academic year.

4—Based upon the prompt disciplinary actions taken by the University of Southern Mississippi in this case, as well as the university's commitment to develop full information, the Committee on Infractions hereby reduces the two-year term of probation to one year and suspends the application of the television sanction. This reduction in penalty is contingent on the successful completion of the following conditions of the one-year term of probation and cited remedial actions of the university:

a—Prior to the end of one year, there shall be an on-site inspection by the NCAA staff to ensure that the university's educational programs and administrative controls in football are in operation.

b—At the end of one year, the university shall submit a written report to the NCAA addressing these programs and controls.

c—The employment of an assistant football coach has been terminated.

d—The salary of the head football coach has been frozen for the 1985 calendar year and his contract will not be extended during that same period. [Note: During each of the past three years, the coach's contract was extended one year, and his current contract expires in January 1987.]

e—Five representatives of the university's athletics interests have been disassociated from participation in activities associated with the university's athletics program, and the university has sent letters to two additional

representatives strongly urging them to take every precaution to avoid further violations of NCAA rules.

#### Summary of violations of NCAA legislation

1—NCAA Constitution 3-6-(a) [ethical conduct]—During the 1983-84 and 1984-85 academic years, an assistant football coach acted contrary to the principles of ethical conduct in that he: (a) demonstrated a knowing and willful effort to operate the university's intercollegiate football program contrary to the requirements and provisions of NCAA legislation through his involvement in the violations found in this case; (b) instructed four representatives of the university's athletics interests and two student-athletes to provide false or misleading information if interviewed by NCAA representatives, and (c) falsified a university expense voucher to prevent the university from discovering his involvement in a possible recruiting violation.

2—NCAA Constitution 3-1-(g)-(5) and Bylaw 1-8-(j) [extra benefits to student-athletes and improper entertainment]—In January 1984, an assistant football coach arranged for two student-athletes to be lodged for one night at no cost to them in a local motel; further, a prospective student-athlete also stayed in the room, and finally, the coach gave a student-athlete a small amount of cash for food for the group.

3—NCAA Constitution 3-1-(g)-(5) and 3-1-(h), and Bylaws 1-2-(b) and 1-8-(j)-(4) [extra benefits to student-athletes, improper contact by representatives and improper entertainment]—In January 1984, an assistant football coach lent his automobile to a student-

athlete to transport a prospective student-athlete round trip between the prospect's home and the university's campus for the prospect's official paid visit; further, the student-athlete was permitted to retain the automobile to provide the prospective student-athlete and his friend local transportation during the visit.

4—NCAA Bylaws 1-1-(b)-(1) and 1-8-(j) [improper recruiting inducements and entertainment]—(a) In December 1983, an assistant football coach arranged for a friend of a prospective student-athlete to be given cash as reimbursement for costs incurred to transport the prospect between his home and the university's campus; (b) In December 1983, two representatives of the university's athletics interests provided the mother of a prospective student-athlete round-trip automobile transportation between her home and the home of a third representative while a student-athlete transported the prospect to this site; further, the prospect and his mother were entertained for a meal during the meeting, the prospect was given a warmup and hat by an assistant football coach, and the young man's mother was given a ham by one of the representatives; (c) In January 1984, two representatives of the university's athletics interests provided the mother of a prospective student-athlete round-trip automobile transportation between her home and the home of a third representative; further, the prospect also was transported round trip between his high school and the representative's home, where the young man and his mother were entertained for a meal and the prospect was given a shirt, and finally, an assistant football coach was at the home on this occasion;

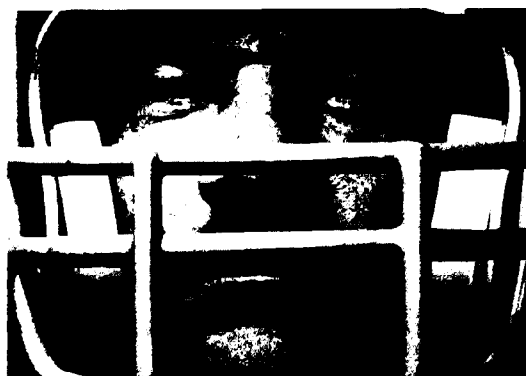
(d) In January 1984, two student-athletes provided a prospect round-trip automobile transportation between the young man's home and the home of a representative of the university's athletics interest where the prospect was entertained for a meal; further, an assistant football coach and another representative of the university's athletics interests were present on this occasion, and interests provided the mother of the prospective student-athlete round-trip automobile transportation between her home and the home of another representative, where she was entertained for a meal; further, an assistant football coach was present on this occasion.

5—NCAA Bylaws 1-2-(a)-(1) and 1-2-(b)-(1) [excessive recruiting contacts and improper contacts by representatives]—During the 1983-84 academic year, a prospective student-athlete and his mother were contacted in person, off campus for recruiting purposes on more than three occasions at sites other than the young man's educational institution by an assistant football coach and certain representatives of the university's athletics interests.

6—NCAA Bylaw 5-6-(d)-(4) [improper certification of compliance with NCAA legislation]—With full knowledge at the time that certain practices of the university's intercollegiate football program were not in compliance with NCAA legislation, an assistant football coach attested on a statement filed with the chief executive officer of the university in July 1984 that he had reported to the chief executive officer his knowledge of and involvement in any violations of NCAA legislation involving the institution.



## It's not all fun and games. Today's teams mean business.



Winning is far more complex today than it used to be. Success equates with survival...and survival is serious business. From collegiate teams in need of fatter alumni dollars to professional organizations whose existence depends on profits, success is financially imperative. Anything that boosts performance...that gives you an edge on your opponents...is vital.

Sportsystems provides that edge. Eleven independent software systems...including CASI sports instruction, player evaluation, scouting, ticketing and financial management...give you the tools for better management and better play. And because all Sportsystems run on personal computers, costs are much lower than those of our competitors.

When it's your business to win, call Sportsystems toll-free at 1-800-447-CASI. We'll show you how to improve productivity on and off the field. The fun and games come later...when you celebrate a perfect season.

CASI, 2002 North Lois Ave., Tampa, Florida 33607, 813/873-0460

**CASI**  
**Sportsystems**

**The Business Of Winning**