

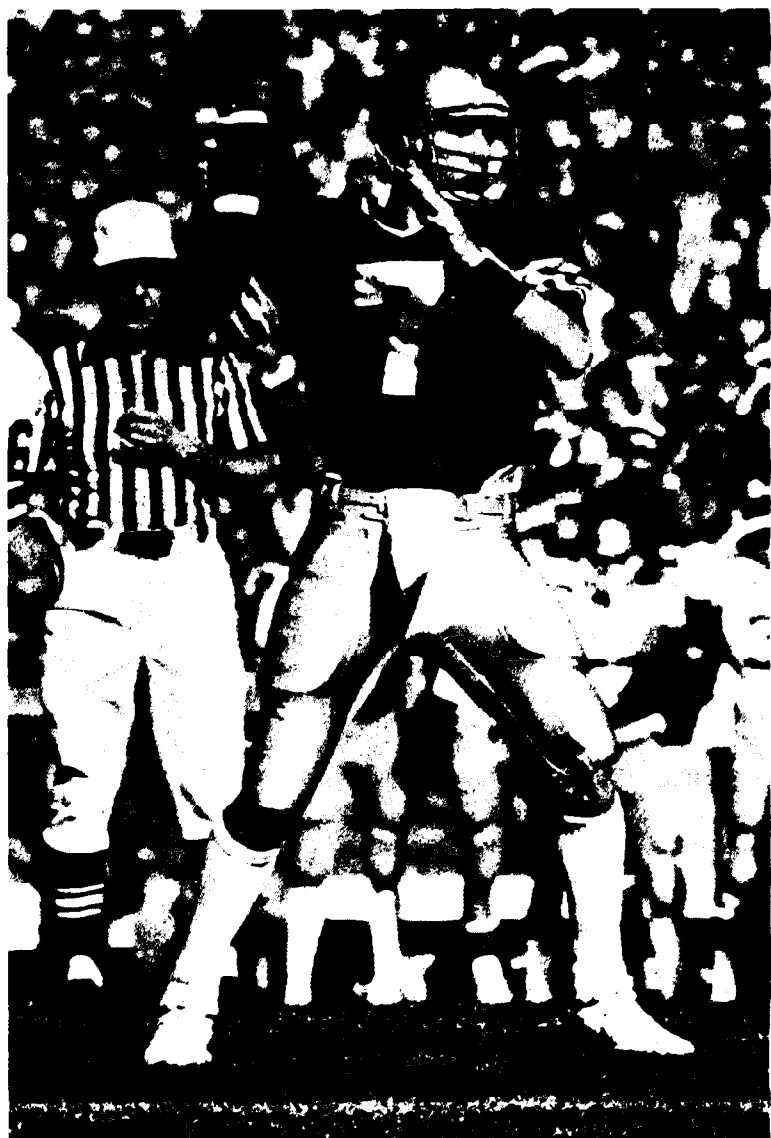
The NCAA News

September 24, 1984, Volume 21 Number 33

Official Publication of the



National Collegiate Athletic Association



Quarterback Steve Beuerlein has Irish rolling again

I-A teams may be nearing limit on averages in scoring, passing

By James M. Van Valkenburg
NCAA Director of Statistics

With passing and scoring already soaring above last season's all-time highs in Division I-A football, the question now is, can a limit be projected, and if so, what is the limit?

With the season now one-third finished, the nation's 105 I-A teams are averaging 368.2 yards passing and 45.1 points per game (both teams combined, all games involving at least one I-A team), compared to the record highs of 365.5 passing yards and 44.2 points per game set in 1983.

Offensive figures nearly always

increase as the season goes on, so this is significant. Last year at this stage, passing was 360.6 per game and scoring was at 42.9.

We are just guessing, but the passing limit might be 410 yards and the scoring limit even closer, because Division I-A teams are close to 100 percent stocked with soccer-style kickers, who are more accurate. Let us put the scoring limit at 48 points a game.

A record Saturday in field goals

An all-time-high 2.53 field goals per game were scored last Saturday in I-A football (139 in 55 games), breaking the 2.43 set November 6,

1982. Accuracy is the key, not more attempts. An amazing 72.8 percent were successful Saturday. And get this—that is not a record. That is 73.2 percent last November 19.

For the season to date, field goals per game are 2.31. Last year at this point, the average was 2.14 en route to a record 2.11. Accuracy for the season is 67.5 percent. Last year, it was 63.8 percent en route to a record 65.7.

To give you an idea of the prestige kickers now enjoy, Arizona State's Luis Zendejas has an excellent chance of becoming the all-time career scoring leader in I-A, an honor once reserved for the top running backs (Pittsburgh's Tony Dorsett holds the record at 356 from 1973 through 1976).

A vanishing breed

The so-called conventional, or straight-ahead, kickers have become a vanishing breed in Division I-A football. Of the 107 kickers who have attempted at least one field goal this season, 100 are soccer-stylers (maybe we should start calling them the conventional kickers, since they have taken over the scene).

As recently as 1975, only 37.6 percent of I-A kickers were soccer-stylers. By 1983, they had risen to 82.7 percent, and they now are 93.5 percent. And the soccerers consistently have been more accurate than the conventionals (the seven straight-heads are battling to stay at 50 percent as a group, with 10 for 20).

With I-A now close to 100 percent stocked with soccer-stylers, you have to wonder how much more accurate

See 75 NCAA, page 12

See I-A teams, page 3

NCAA counsel gives views on IRS contributions ruling

The Internal Revenue Service recently published a ruling that will jeopardize the deduction for tax purposes of contributions to college athletics programs in those cases where the contributions produce benefits to the contributor, such as the right to purchase season tickets to football games.

The IRS ruling involves an individual who paid \$300 for the privilege of being placed on a waiting list to become a member of a university's athletics scholarship program.

In exchange for the contribution, the individual was given a future opportunity to purchase, for an additional \$120, a season's football ticket between the 40-yard lines. Such tickets were not available to non-members of the program. There were approximately 2,000 people on the member waiting list.

The IRS held that in light of the waiting list, the opportunity to purchase preferred season tickets had significant but undetermined value and that, therefore, the individual could not deduct any portion of the \$300 contribution.

According to NCAA legal counsel in Washington, D.C., the rationale behind the IRS position is that when a contributor receives something valuable in exchange for his contribution then by definition the contribution is

not "charitable" unless the contributor can demonstrate that the contribution exceeds the value of the privilege afforded to the contributor.

If such a demonstration is made, a deduction is allowed only for the amount by which the contribution exceeds the value of the privilege.

Some published comments appear to have misinterpreted the IRS ruling.

For example, the fact that many colleges have wide discretion to use athletics-oriented contributions for other school purposes has been cited as a justification for a tax deduction.

Michael Scott, one of the NCAA's Washington, D.C., attorneys, has

advised that the control by a college over the contribution is irrelevant to the tax issue when the contributor receives some benefit for his contribution. He states that the real problem created by the ruling is one of valuation.

Even if the value of a contribution is substantial, there will be a presumption for tax purposes that the value of the privilege received in exchange is equivalent, unless the contributor can demonstrate otherwise. In those cases where there is a waiting list for the privilege of buying football tickets, the presumption may be difficult to overcome, Scott said.

November 1 deadline set for amendments

The deadline for submission of proposed amendments for the 1985 NCAA Convention is Thursday, November 1.

Unless sponsored by the NCAA Council, a division steering committee or the NCAA Presidents' Commission, any legislation must be proposed by six active member institutions. Instructions and forms to be used in submitting amendments were mailed last week.

As a result of legislation adopted at the 1984 Convention, an institution's sponsorship of an amendment must be submitted on behalf of the institution by the chief executive officer or the CEO's designated representative. If a chief executive wishes to designate another individual to indicate the institution's sponsorship of legislation, such designation must be submitted in writing to the NCAA

national office.

The procedures for proposing NCAA legislation are set forth in Constitution 7-1 and Bylaw 13-1, pages 50 and 157-158 of the 1984-85 NCAA Manual.

Proposed amendments must be received in the national office by November 1. Any submission received after that date must have been sent by certified or registered mail postmarked not later than October 25.

All properly submitted proposals will be included in the Official Notice of the 79th NCAA Convention, which will be mailed from the national office not later than November 22.

Questions regarding specific amendments or the legislative procedure in general should be directed to Stephen R. Morgan, assistant executive director, at the national office.

Plaintiffs' lawyers seeking legal fees for TV litigation

Attorneys for the Universities of Oklahoma and Georgia have asked a Federal judge to help them collect more than \$1 million in fees from the NCAA for their work in challenging the Association's Football Television Plan, which eventually was voided by the U.S. Supreme Court.

The attorneys said in filing the claim in Federal court in Oklahoma City that the NCAA should pay them between \$1,050,000 and \$1,260,000 in fees. They cited the Clayton Act, which allows successful plaintiffs to recover attorneys' fees under certain circumstances.

The three attorneys—Andy Coats, Clyde Muchmore and Harvey D. Ellis Jr.—have included in their claim

\$92,733 in fees for other attorneys who helped them and \$53,039 in expenses.

According to the Associated Press, the College Football Association has estimated that it contributed about \$250,000 for the suit, which originally was filed in Federal district court in Oklahoma City, while conferences and individual schools contributed about \$100,000. The Universities of Oklahoma and Georgia estimate their expenses at between \$75,000 and \$100,000.

Dick Snider, CFA spokesman, told The NCAA News that the \$250,000 figure may be too high. Snider said he did not know the exact total.

In the News

Foreign student-athletes are making names for themselves on the intercollegiate tennis scene, and one result is that the college game has improved 2

The season's first statistics in Division II and Division III football, in addition to statistics in Division I-A and Division I-AA 4-6

A number of colleges are building new baseball stadiums in anticipation of a growth in popularity for the sport 7

Legislative Assistance 8

College Swimming Coaches Association of America selects its academic all-America team 9

Executive Regulations 10

Foreign players grab college tennis spotlight

By Ish Haley
Dallas Times Herald

Hugh Thomson, who coaches the Auburn Tigers, was part of the tennis invasion that occurred during the 1960s.

"If you were from Australia, it was assumed that you were a good player," Thomson recalled. "So many Australians came over here that it was a wonder how they could still hold tournaments back there."

Arthur Ashe, who captains the U.S. Davis Cup team, remembered that "a person with a foreign accent, especially Australian, could get a job as a teaching pro almost anywhere. Even a Spanish accent could be helpful."

Another invasion is under way. The troops have cleared the beaches and are assaulting the ivy-covered walls. Of the 123 players listed on the official rosters for the eight-team NCAA Division I Men's Tennis Championships last spring, 45 were from foreign countries.

Auburn was represented by six South Africans. Louisiana State entered players from Mexico, Spain and Australia. Wichita State brought players from England, Australia, West Germany and New Zealand. Michael Pernfors of the University of Georgia and Hollviksnas, Sweden, won the individual title. Fredrik Pahlett, of Minnesota and Vaxjo, Sweden, was a 1983 finalist. Australians Pat Serrett and Peter Doohan, playing for Arkansas, won the 1982 NCAA doubles title.

"Basically, we're just training other people's Davis Cup teams," charged Chuck Kriese, coach at Clemson.

Southern Cal's Jorge Lozano, a sophomore from Guadalajara, plays Davis Cup for Mexico. UCLA's Fabio Mion Bet, a senior from Caracas, has represented Venezuela. But as Ashe points out, "There aren't enough world-class players involved to make that much noise." He's right. Players such as Mats

Wilander and Jimmy Arias have collegiate transcripts that are as lengthy as Moses Malone's or Marcus Dupree's. "Players of this caliber," Ashe says, "don't go to college."

"Chuck (Kriese) is very strong with his opinion, but I don't think it's valid. And even if it is, we're living under a democracy in the United States," said Southern Methodist coach Dennis Ralston, whose doubles partner at Southern Cal was Rafael Osuna of Mexico City. "This might sound corny, but I think it's good that players from other countries receive the opportunity to experience our way of life."

"I guess it's just a question of coaching philosophy," Kriese said. "The more foreign players who are recruited, the fewer scholarships for American kids. And there are very few ama-

Columnary Craft

teurs in some of the foreign countries. They're taking prize money and have clothing contracts. I think limits should be placed on how many foreign players can be recruited. I'd like to see that limit placed at two."

The courts would probably categorize Kriese's proposed limitations as discriminatory. The NCAA has imposed age restrictions on . . . athletes. Coaches such as Stanford's Dick Gould believe the age limitations would be eliminated if someone took that formula to court.

"I don't think you can penalize a person just because he's an athlete," Gould says. "Universities are actively recruiting nuclear physicists, Pulitzer Prize winners and poet laureates, and athletes. To penalize a person in any area because of age or nationality probably is unconstitutional."

Thomson is from Tuncurry, Australia, whose population was 14. His peers include John Newcombe and Tony Roche. During his career at Mississippi State, Thomson won 54 of 56 matches. He also lettered in track, made the dean's list and earned degrees in agricultural economics and business. He coached at Mississippi State for one season and spent two years at Alabama-Birmingham.

"When I went to Auburn in 1981, I corresponded with the top 50 juniors in the United States and talked personally to about 90 percent of them," Thomson said. "Auburn has national visibility in athletics because of its football program. But I couldn't get a single junior to visit our campus."

Thomson, who was losing five of his top six players, told his assistant, who was from South Africa, "to round me up some South Africans who could play. He got three, and I got one from a junior college. Of the top 20 juniors last year, SMU, which has a big-name program and big-name coach (Ralston), was the only non-California school that got one. The rest of us have to build our reputations. The only way is to use foreign players or wait until the year 2010."

At Clemson, Kriese coached Mark Dickson, who's ranked 46th in the world by the Association of Tennis Professionals. Dickson's junior ranking, Kriese remembered, was 65 when he entered college. Kriese, like Thomson, also could not attract the top juniors.

The immigrant Aussies of Thomson's generation may or may not have remained loyal to the schools that brought them here, but most have remained loyal to the sport. "A very high percentage of them are still over here," he says. "They have upgraded the standards on the college teams and taught the American kids how to play. This is why the game is so strong here now."

As sports revenue grows, amateurs' status may change

Cecil Mackey, president
Michigan State University

Higher Education and National Affairs

"It is no simple task to predict how new interpretations of amateurism will impact intercollegiate athletics. I believe that in the near future, there will be a change in the relationship of amateurism as we find it in college athletics programs and professionalism as it is rapidly emerging. I do not know what the change will be; people who deal with the Olympics have suggested some approaches that have not yet found their way into collegiate athletics. These kinds of changes will hold great promise."

"Consider the fact that the student-athlete is the only one who doesn't in some way share the revenues he helps to generate. As the revenue pool gets larger, I think the willingness to accept this kind of arrangement will get smaller and smaller. Consider, for example, the quarterback who is central to the success of a football team. He may have a coach who is receiving a quarter-million-dollars a year, while he, the quarterback, is getting tuition, room and board, books, and fees. I can't help but think that legitimate economic forces considered by the student-athlete and his family will cause them to question this kind of allocation and whether this interpretation is rational."

Bob Wussler, executive vice-president
Turner Broadcasting System, Inc.

The Washington Post

"There is far less freedom in the new marketplace than we had expected. While the NCAA decision eliminated the competitive bottleneck that the NCAA had administered, it merely created a vacuum into which the College

Lefty Driesell, men's basketball coach
University of Maryland, College Park

The Washington Post

"In football, where there are maybe 120 kids in the locker room, people might not notice when one player has been suspended (for drug use). But if I suspended one of my players (maximum of 15) for any reason, the issue would arise."

"I don't know what we're going to do until it's done on a nationwide scale. You come up with other problems, too. Suppose one school was to test for drugs and suspended a player for using them, and another school didn't test and let players (who did use drugs) compete. It's unfair. It's unfair in terms of recruiting, too."

"Some (recruiters) will say, 'Hey, they test for drugs, so they must have a problem at that school. Don't go there.' It would just be better overall if there were a national program."

Charley Scott, athletics director
Mississippi State University

From manuscript scheduled for publication

"Implementation of the rules is an expectation from, and an obligation of, an NCAA member institution. Commitment to the expectation and the obligation is the cornerstone for assuring that a member places its intercollegiate athletics program within the context of the basic policy of the NCAA. Such commitment comes from institutional control of its athletics program."

"Institutional control begins with the tone set by the chief executive officer and the governing body of a member institution. The control expands through expectations placed by the chief executive officer on the administrators of the athletics programs and through them to the coaches, student-athletes and others associated with the athletics programs."

"Through association, other individuals (faculty athletics representatives, student-affairs officers, financial officers, admissions officers, etc.) have responsibilities to maintain that institutional control."

"The chief executive officer sets the expectations through insuring that financial stability of the athletics program exists, through requiring that total operation of the athletics program complies fully with membership-accepted conditions, through developing direct working relationships with the athletics program and through placing accountability as a premier condition of performance on all concerned."

Joe Restic, head football coach
Harvard University

Remarks at annual press day

"I think the loss of the television package will eventually destroy college football. The purpose of the TV package in the NCAA was to keep the smaller schools alive. They need that money for their programs."

"But, the power schools wanted all the money. Where is the money going to come from now? You take that away, and the whole program suffers — women's sports, championships, right down the line."

"The small schools are dependent on that money, but the big schools thought something was going to be taken away from them. The small schools paid the price."

Ernest L. Boyer, president
Carnegie Foundation for the Advancement
of Teaching

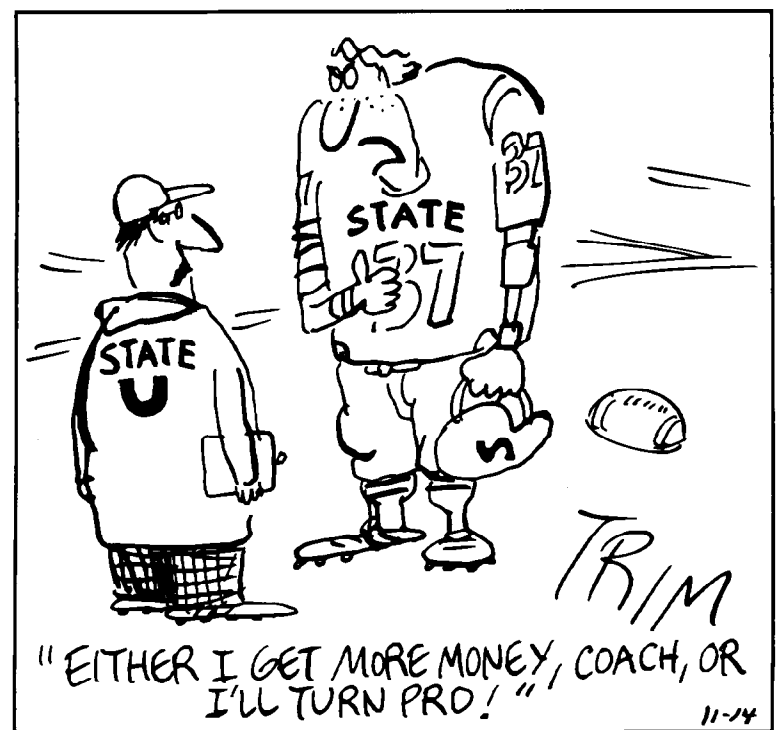
United Press International

"Some of our colleges and universities rank with the finest in the world. Others do not deserve high marks. There is disturbing evidence that college students are not well-informed about the world in which they live, that they are becoming more parochial at the very time the human agenda becomes more global, that many students lack historical perspective and have little knowledge of significant social trends that will consequently shape their lives."

"There is an urgent need to redefine carefully those educational purposes common to all institutions, to clarify conditions on campuses and to be clear and constructive in offering proposals for renewal."

"If the push for excellence is to persist, the nation's colleges and universities also must ask hard questions about the focus and quality of their work."

TRIM'S ARENA



Copyright, 1983, Universal Press Syndicate. Reprinted with permission. All rights reserved.

Opinions Out Loud

Football Association has stepped. Instead of exercising a leadership role in leading college football into a new competitive era, the CFA has sought to recreate the worst aspects of the NCAA restrictions on its members. It has thereby pushed against the outermost limits of the Supreme Court's and district court's decisions defining permissible behavior. We believe that in some aspects it has gone too far."

Eva Auchincloss, executive director
Women's Sports Foundation

The Chronicle of Higher Education

"Thank Title IX for some of that Olympic gold. The whole world was watching the women's success, and the catalyst for growth was Title IX. It forced colleges to broaden their sports programs, and women finally are reaching their potential as athletes."

"When you look at the number of women athletes who were there, you have to realize that had they not gone to college, they certainly would not have had their skill training—and that was the key in basketball, swimming and many other sports as well. Colleges have provided real opportunities, real training, real coaching and real competition."

The NCAA News

ISSN 0027-6170

Published weekly, except biweekly in the summer, by the National Collegiate Athletic Association, Nall Avenue at 63rd Street, P.O. Box 1906, Mission, Kansas 66201. Phone: 913/384-3220. Subscription rate: \$20 annually. Second-class postage paid at Shawnee Mission, Kansas. Address corrections requested. Postmaster send address changes to NCAA Publishing, P.O. Box 1906, Mission, Kansas 66201.

Publisher Ted C. Tow
Editor-in-Chief Thomas A. Wilson
Managing Editor Bruce L. Howard
Advertising Director Wallace I. Renfro

The Comment section of The NCAA News is offered as opinion. The views expressed do not necessarily represent a consensus of the NCAA membership. An Equal Opportunity Employer.

I-A teams

Continued from page 1

they can get. That is why we put the scoring limit at 48 points (but like the four-minute mile, that eventually may look foolish).

Why 410 yards?

The 410-yard limit may look equally foolish in a few years since that, after all, is only 11.4 percent above today's level.

Why did we throw our hat at 410 yards? Well, when rushing was in its heyday with the option attacks grinding out huge figures, the high-water mark was 408.9 rushing yards per game in 1975—the record year. That same year, passing was at 239.2. Ever since, passing has been rising.

But rushing has not disappeared by a long shot. Last year, rushing yards rose a smidgen to 338.9 (from 338.5 in 1982) as yards per rush reached 3.80 (3.66 at this point in 1983)—highest since 1979. Yards per rush now are at 3.74, so another increase may be in store.

Not surprisingly, total offense is now at 698.5 rushing-passing yards per game. At this point a year ago, it was 684.4 en route to an all-time high of 704.5.

Efficiency and emphasis both up

Last year, emphasis on the pass declined a tiny bit, but efficiency reached new highs; so, the yardage record was broken. Now, both are running at a record pace. So far this season, 38.2 percent of all plays have been passes compared to the record-high 38.0 percent in 1982. Last year, it was 37.9 at this stage en route to a final 37.6.

Yards per attempted pass now is 6.73. A year ago, it was 6.68 at this point en route to a record 6.79. Touchdown passes now are 2.08 per game. Last year, the figure was 1.93 en route to a final 2.11, just below the record 2.16 set in 1982.

Division I-AA passing, scoring up

Last Saturday's games in Division I-AA produced 372.2 passing yards and 49.4 points per game—both record highs for a single weekend. That brought season averages to 354.4 passing and 44.1 scoring—below the I-A figures but much closer than in the past.

A year ago, I-AA teams were averaging 317.9 passing yards and 40.6 points en route to record highs of 334.5 and 42.1, respectively. In the process, total offense has risen to 649.1 rushing-passing yards per game vs. the record of 645.1 in 1982—the first year of major expansion in the division.

The key has been a big surge in passing emphasis. To date, 39.6 percent of all plays have been passes, well above the I-A figure and far above the record 37.4 in 1983.

I-AA field goals down

Field-goal kicking has declined slightly in I-AA this season, with 1.47 per game and 56.6 percent accuracy. A year ago, the figures were 1.72 per game and 62.6 en route to 1.58 (just missing the record 1.59 in 1982) and a record 60.3 percent.

In I-AA so far, 73.8 percent of all kickers with at least one attempt are soccer-stylers.

'It's fun'

Little (5-9) Doug Flutie, Boston College's record-setting quarterback, always is being asked how he can see over huge opposing linemen to find his receivers. Now, finally, someone has asked one of his receivers if it is difficult to see Flutie.

"It's fun," wide receiver Gerald Phelan told Gordon White of The New York Times. "You look back at the line of scrimmage and all of a sudden the ball appears out from under a lineman's shoulder. It is quite an interesting experience."

Thinking back to his first varsity game, Phelan, a 6-foot senior from Rosemont, Pennsylvania, put it this way: "Earlier in my sophomore year, it really surprised me. I'd look up and say, 'Oh, my gosh, that was the ball that just went by.' But then,



Allen Mitchell of South Carolina is among Division I-A leaders in passing efficiency



Andre Garron of New Hampshire is the leading all-purpose runner in Division I-AA



Texas-Arlington's Scotty Caldwell is one of Division I-AA's top rushers



Ohio State's Keith Byars is among Division I-A leaders in scoring, rushing and all-purpose running

after a while you kind of expect that when you're open, he'll get the ball to you. If I do play pro ball, I know it won't be as much fun. And I don't think I'll ever have more confidence in my passer getting the ball to me than I do now with Doug."

'God's gift to mischief'

Washington State coach Jim Walden loves to talk about his talented linebacker, Junior Tupuola. "He's God's gift to mischief," Walden told Bob Cohn of the Arizona Republic. "I've never seen a guy hustle all the time like he does. He goes 100 miles per hour. Unfortunately, he socializes at about the same pace. Junior was doing that breakdancing back in 1979. But he's a quality football player. He's just been in and out of the doghouse more times than I've been with my wife. Two years ago, he was almost off the team. There was an unbelievable list of things he had to do or be gone. And the amazing thing was, he did them. He's matured. He still lives pretty fast, but he does a better job of keeping me from finding out about it."

The brothers Morris

Little Joe Morris enjoyed an unforgettable career at Syracuse, with 4,299 rushing yards—14th on the all-time Division I-A list—from 1978 to 1981. Now, there are two younger brothers on the Syracuse squad—Larry, a running back, and Michael, a receiver. It may be that Jamie Morris, who got away to Michigan, is the best of the little brothers. The 5-7, 170-pound freshman, is called "cute" by coach Bo Schembechler.

"His first scrimmage play was a draw," the coach told Bob Pille of the Chicago Sun Times. "They didn't block a soul, not a living soul. The next thing I saw, he was 15 yards away. How he dodged those people I'll never know."

Quotes of the week

Mankato State coach Dan Runkle, after his team upset North Dakota State's defending national Division II champions, 28-21, ending a 23-game home winning streak: "Our players are flying so high after tonight's victory, we won't need a plane to get to Northern Colorado next week." (Mark Johnson, Mankato State SID)

Stephen F. Austin State coach Jim Hess after his team had nine turnovers in a 20-7 loss to Sam Houston State in the first-ever Gulf Star Conference game: "I don't know if this is the lowest point of my life, but it is pretty close." (Max Corbet, Stephen F. Austin State SID)

California coach Joe Kapp, insisting that running back Dwight Garner is bigger than his listed 5-9: "His legs are really bowed. If they weren't, he'd be 6-5." (Kevin Reneau, California SID)

Colorado State starting safety Tim Zubradt, commenting while standing on the sidelines watching the special teams work out: "That's why God

created freshmen." Zubradt at a press luncheon, asked why he wasn't eating more food: "I don't wear a 70 on my back." (Gary Ozzello, Colorado State SID)

Tulsa coach John Cooper, summing up his team's inability to put the ball in the end zone after driving inside the Brigham Young five-yard line five times: "We had plenty of singles and doubles, but we could never hit the home run." Cooper in describing roles that players must play, talks of 6-7, 290-pound transfer Chris Pike this way: "Everyone will play a role on this team. Pike's role is getting off the bus first." (Don Tomkalski, Tulsa assistant SID)

Florida State coach Bobby Bowden, on his fear of flying in small planes: "The Good Lord might not want to take me, but he might be after the pilot." (Wayne Hogan, Florida State SID)

Minnesota coach Lou Holtz on the difficulties of traveling in football: "I play as well on the road as I do at home, but my teams don't." Holtz on the transitory nature of fame: "I remember in Arkansas, they made a commemorative stamp with my picture on it. I learned a lesson. After we lost, they had to do away with the stamp because everybody was spitting on the wrong side."

Holtz joking about the hearty nature of Minnesotans: "I knew they were tough every time I watched that Die-Hard battery commercial." (Robert Peterson, Minnesota SID)

Asked whether losses to Division I-AA Indiana State and Division III Albion actually were blessings in disguise for his team, which had just toughed it out over Evansville, Wayne State (Michigan) coach David Farris responded: "Come back to me in eight weeks and I'll know. If we're 9-2, then yes, they were beneficial." (Richard Thompson Jr., Wayne State SID)

After Division I-AA Furman got its third straight victory over a I-A team, 34-30, over North Carolina State in Raleigh (the Paladins beat Georgia Tech, 17-14, last year and South Carolina, 28-23, in 1982), Furman coach Dick Sheridan was asked about the importance of the victory. He replied: "Has it helped our attendance? No. Has it helped recruiting? Possibly. Has it helped in terms of bragging rights and pride? Most definitely. But this game didn't rank high among our goals—our conference schedule is much more important." (His team opened Southern Conference play by winning at Marshall Saturday night, 38-28.)

Furman senior linebacker Rock Hurst after a school-record 27 tackles (16 solo) against North Carolina State: "Big schools take for granted what they have. They don't play with their heart. Most of the guys here were recruited by the bigger schools—including myself—and we want to show them we can play. We play with our hearts. The coaches here

look for talent that can be developed, and guys who have heart." (Monte Dutton, Furman SID)

Kansas State quarterback Stan Weber (an A student) talking about his life: "Winning isn't just football. It you go out and win 11 games and then flunk out of school at the end of the season, you're all losers." Kansas quarterback Mike Norseth is a junior college transfer from Snow College in Ephraim, Utah. And where is Ephraim? "It's about an hour's drive from the nearest McDonald's," Norseth said. Nebraska lineman Mark Behning on going to school at Nebraska even though he's a Texas native: "I'm 600 miles away from home, and I had to grow up fast. If I were in Texas, I'd still be tied to my mom's apron strings." (Tim Allen Big Eight Conference SID)

Vanderbilt coach George MacIntyre was in fine form at a recent booster club function. Commenting on the play of defensive end John Windham, MacIntyre said: "John is the kind of guy who improves a lot as the season goes on; so last night, I informed him we've already played seven games." A few minutes later, one ardent supporter implored, "Tell us about Kansas," to which MacIntyre replied: "Well, it's a flat place that sits out West and doesn't have many trees." (Tony Neely, Vanderbilt assistant SID)

Texas Christian coach Jim Wacker could not wait to address a booster gathering of about 500 (normal: 200) after his team won, 62-18, at Utah State. "Ho, boy, did we ever need that!" he chortled. "TCU has been down so long, we needed something good to happen. We have been down for too stinkin' long. Now, we have to prove against Kansas State that we're for real." (Final: TCU 42, Kansas State 10.) (Glen Stone, Texas Christian SID)

As I walked into the locker room following our first victory of the

season (24-13 over Cal State Sacramento), carrying a phone from the press box to lock up, quarterback Dave Johnson intercepted me halfway to the shower and said: "If that's the president, I'll take the call." (Ron Yukelson, Cal State Northridge SID)

Long dry spells end

Ferris State's 6-5 victory over Kalamazoo in a torrential downpour snapped a 10-game Bulldog losing streak dating to November 6, 1982, and was the first home victory since October 31, 1981. It marked the successful debut of first-year coach Dan Underwood, a former assistant at Central Michigan, Michigan State and Arizona State. It had been a long time since the victory bell clanged at Top Taggart Field, and the Bulldogs wasted little time attacking it after the game. (Ted Halm, Ferris State SID)

Thiel broke its 20-game losing streak dating to the 1982 season by defeating Allegheny, 14-7, before an enthusiastic home crowd of 3,000, then went on the road and defeated St. Francis (Pennsylvania), 23-6. (James Connelly, Thiel SID)

Illinois Benedictine ended its 10-game losing streak dating to 1982 by surprising neighborhood archrival North Central, 32-8, in its first game under first-year head coach Bill Barz. (Bill Barz, Illinois Benedictine head football coach)

The name game

Northeast Louisiana's entries in the most appropriately named players contest: defensive end Johnny Slaughter, fullback Tim Player and defensive back Amost Winn. (Bob Anderson, Northeast Louisiana SID)

Western Illinois coach Bruce Craddock may have had motorcycles on his mind during a workout at McAndrew Stadium on the Southern Illinois campus as he inadvertently referred to the host Salukis as the "Slu-zoo-kies." (Larry Heimberger, Western Illinois SID)

825,455 for top 10 ranks second

The top 10 attendance games in college football, topped by Michigan's 104,239, totaled 825,455 last Saturday—second in history to the 833,285 last October 22. That helped Division I-A per-game attendance climb 2,054 per game, or 4.87 percent, above the average at this stage a year ago. The average now is 44,211. Percentage of capacity now is 82.8 vs. 79.5 a year ago at this time.

In Division I-AA, per-game average remains down, but percentage of capacity is still up. The average now is 11,089 per game, 337 less (2.95 percent) than the average at this point last year, but percentage of capacity is 57.2 percent vs. 54.9. It still is too early to identify any significant trend in either division. Schedule changes could account for all the changes so far. Here is the chart:

	Games	Attendance	Average	Percent Capacity
Division I-A season figures to date	173	7,648,456	44,211	82.8
Same 105 teams at this stage in 1983	188	7,925,548	42,157	79.5
Division I-AA season figures to date	137	1,519,200	11,089	57.2
Same 87 teams at this stage in 1983	133	1,519,665	11,426	54.9

The NCAA News



Football Statistics

[Through games of September 22]

Division I-A individual leaders

RUSHING									
CL	G	CAR	YDS	AVG	TD	YDSPG			
Kenneth Davis, Texas Christian	Jr	2	42	384	9.1	4	192.0		
Johnnie Jones, Tennessee	Sr	3	86	518	6.0	5	172.7		
Jeff Smith, Nebraska	Sr	3	74	476	6.4	3	158.7		
Keith Byars, Ohio State	Jr	3	83	447	5.4	5	149.0		
Michael Ramsey, Wake Forest	Jr	3	95	447	4.7	4	149.0		
Tony Jeffery, Texas Christian	Fr	2	30	294	9.8	2	147.0		
George Swann, Miami (Ohio)	So	3	73	440	6.0	1	146.7		
Robert Lavette, Georgia Tech	Sr	2	44	286	6.5	4	143.0		
Otis Cheatham, Western Michigan	Jr	3	92	410	4.5	5	136.7		
Steve Morgan, Toledo	Sr	2	61	262	4.3	2	131.0		
George Adams, Kentucky	Sr	3	81	390	4.8	7	130.0		
Ethan Horton, North Carolina	Sr	2	48	258	5.4	3	129.0		
Dalton Hilliard, Louisiana State	Jr	3	70	384	5.5	2	128.0		
Doug Black, Army	Jr	2	52	244	4.7	1	122.0		
Reggie Dupard, Southern Methodist	Jr	2	37	233	6.3	4	116.5		
Zeph Lee, Southern Cal	Jr	2	27	225	8.3	2	112.5		
Rueben Mayes, Washington State	Jr	4	77	443	5.8	2	110.7		
Robert Mimbs, Kansas	Jr	3	52	329	6.3	2	109.7		
Sloan Hood, Houston	Fr	2	39	213	5.5	0	106.5		
Troy Stradford, Boston College	Jr	3	60	316	5.3	3	105.3		
Nate Sassaman, Army	Sr	2	47	208	4.4	3	104.0		
Greg Allen, Florida State	Sr	3	43	311	7.2	3	103.7		
Shawn Jones, Oklahoma State	Sr	3	62	307	5.0	2	102.3		

SCORING									
CL	G	TD	XP	FG	PTS	PTPG			
George Adams, Kentucky	Sr	3	7	0	42	14.0			
Keith Byars, Ohio State	Jr	3	7	0	42	14.0			
Allen Pinkett, Notre Dame	Jr	3	7	0	42	14.0			
Bernard White, Bowling Green	Jr	3	7	0	42	14.0			
Kevin Butler, Georgia	Sr	2	0	4	8	28.0			
Troy Stradford, Boston College	Jr	3	6	0	36	12.0			
Johnnie Jones, Tennessee	Sr	3	6	0	36	12.0			
Robert Lavette, Georgia Tech	Sr	2	4	0	24	12.0			
Ethan Horton, North Carolina	Sr	2	4	0	24	12.0			
Reggie Dupard, Southern Methodist	Jr	2	4	0	24	12.0			
Kenneth Davis, Texas Christian	Jr	2	4	0	24	12.0			
Anthony Gully, Texas Christian	Sr	2	4	0	24	12.0			
Jerome Johnson, Texas	Sr	1	2	0	12	12.0			
Mark Stevens, Utah	Sr	4	7	2	44	11.0			
Larry Roach, Oklahoma State	Sr	3	0	9	8	33.0			
David Bell, Georgia Tech	So	2	0	7	5	22.0			
Donald Igwebuike, Clemson	Jr	3	0	14	6	32.0			
John Lee, UCLA	Jr	3	0	2	10	32.0			
Jeff Jaeger, Washington	So	3	0	7	8	31.0			

PASSING EFFICIENCY									
CL	G	ATT	CMP	PCT	INT	YDS	ATT	TD	RATING
(Min. 15 att. per game)									
Eric Thomas, Florida State	Jr	3	50	32	64.00	1	93	938	8.77
Doug Flutie, Boston College	Sr	3	107	69	64.49	1	93	938	8.77
Allen Mitchell, South Carolina	Jr	2	31	20	64.52	1	3.23	325	10.48
Kurt Page, Vanderbilt	Sr	3	86	55	63.95	1	1.16	782	9.09
Dan Sparkman, Memphis St.	Jr	3	59	30	50.85	2	3.39	614	10.41
Brad Taylor, Arkansas	Sr	2	34	21	61.76	0	0.00	329	9.68
Chuck Long, Iowa	Jr	3	79	49	62.03	3	3.80	686	8.68
Randall Cunningham, Nev.-LV	Sr	3	72	43	59.72	0	0.00	519	7.21
Todd Dodge, Texas	Sr	1	24	15	62.50	0	0.00	215	8.96
Steve Beuerlein, Notre Dame	So	3	52	35	67.31	4	7.69	497	9.56
Bill Ransdell, Kentucky	So	3	50	33	66.00	1	2.00	449	8.98
Dennis Swearingen, Ohio	Jr	4	64	45	70.31	1	1.56	500	7.81
Robbie Bosco, Brigham Young	Jr	4	151	92	60.93	3	1.99	1218	8.07
Mike Eppley, Clemson	Sr	3	59	32	54.24	3	5.08	468	7.93
Danny Bradley, Oklahoma	Sr	3	47	26	55.32	0	0.00	336	7.15
Brian Ferguson, Virginia	Jr	3	53	31	58.49	3	5.66	436	8.23
Kevin McClure, Bowling Green	So	3	102	62	60.78	6	5.88	776	7.61
Damon Allen, Cal Fullerton	Sr	3	108	57	52.78	1	93	822	7.61
Kerwin Bell, Florida	Fr	3	65	35	53.85	3	4.62	511	7.86
Chris Miller, Oregon	So	3	64	37	57.81	0	0.00	438	6.84
Jim Everett, Purdue	Jr	3	87	51	58.62	2	2.30	699	8.03
Mark Stevens, Utah	Sr	4	73	42	57.53	2	2.74	549	7.52
Alex Espinoza, Iowa State	Jr	3	105	60	57.14	4	3.81	792	7.54
Don Smith, Miss. State	So	3	66	33	50.00	1	1.52	549	8.32
Kevin Sweeney, Fresno State	So	4	114	57	50.00	4	3.51	860	7.54
Perry Morren, Texas Tech	Sr	2	45	23	51.11	1	2.22	310	6.89
Hugh Millen, Washington	Jr	3	61	35	57.38	1	1.64	446	7.31

RECEIVING									
CL	G	CT	YDS	TD	CTPG				
Tracy Henderson, Iowa State	Jr	3	30	531	3	10.0			
Charles Lockett, Long Beach State	So	3	27	388	0	9.0			
David Williams, Illinois	Jr	4	34	495	4	8.5			
Gerard Phelan, Boston College	Sr	3	21	273	0	7.0			
Reggie Bynum, Oregon State	Jr	3	20	277	0	6.7			
Lan Kenebrew, Indiana	Sr	3	19	349	0	8.3			
Joe Boxley, Bowling Green State	Jr	3	18	299	3	6.0			
Chuck Scott, Vanderbilt	Sr	3	18	291	2	6.0			
Bill Wallace, Pittsburgh	Sr	3	18	252	2	6.0			
Thomas Henley, Stanford	So	3	18	235	0	6.0			
Eric Martin, Louisiana State	Jr	3	18	211	0	6.0			
Al Toon, Wisconsin	Sr	3	17	250	3	5.7			
George Shorttose, Missouri	Sr	3	16	253	3	5.3			
Danay Huey, Utah	Sr	4	21	331	0	5.2			
Stanley Shakespeare, Miami (Florida)	Jr	4	20	331	1	5.0			
Tony Smith, San Jose State	Sr	3	15	215	0	5.0			
Steve Griffin, Purdue	Jr	3	15	190	0	5.0			
David Hatfield, Louisville	Sr	3	15	190	0	5.0			
Dwight Garner, California	Jr	3	15	152	0	5.0			
Cliff Reed, Western Michigan	Sr	3	15	149	2	5.0			
William Harris, Texas	So	3	1	70	0	5.0			

ALL-PURPOSE RUNNERS									
CL	G	RUSH	REC	PR	KOR	YDS	YDSPG		
Jeff Smith, Nebraska	Sr	3	476	19	166	687	232.3		
Robert Mimbs, Kansas	Jr	3	329	156	0	133	618	206.0	
Keith Byars, Ohio State	Jr	3	447	111	0	32	590	196.7	
Johnnie Jones, Tennessee	Sr	3	518	66	0	0	584	194.7	
Kenneth Davis, Texas Christian	Jr	2	384	0	0	0	384	192.0	
Ronnie Harmon, Iowa	Sr	2	265	131	0	165	561	187.0	
Ethan Horton, North Carolina	Jr	2	258	100	0	0	358	179.0	
Tracy Henderson, Iowa State	Jr	3	0	531	0	0	531	177.0	
Ernest Givens, Louisville	Jr	3	0	260	23	245	528	176.0	
Tony Jeffery, Texas Christian	Fr	2	294	18	0	39	349	174.0	
George Swann, Miami (Ohio)	So	3	440	29	0	46	515	171.7	
Napoleon McCallum, Navy	Sr	2	181	29	50	68	338	169.0	
Michael Ramsey, Wake Forest	Jr	2	286	47	0	0	333	166.5	
Robert Lavette, Georgia Tech	Sr	2	390	27	0	57	474	158.0	
George Adams, Kentucky	Jr	3	316	144	0	0	460	153.3	
Troy Stradford, Boston College	Jr	3	3	299	0	144	451	150.3	
Joe Boxley, Bowling Green	So	3	0	388	0	56	444	148.0	
Steve Morgan, Toledo	Sr	2	262	30	0	0	292	146.0	
Otis Cheatham, Western Michigan	Jr	3	410	14	0	0	424	141.3	
Dalton Hilliard, Louisiana State	Jr	3	384	35	0	0	419	139.7	
Thomas Henley, Stanford	So	3	127	235	0	48	410	136.7	
Tony Lewis, Nevada-Las Vegas	Jr	3	280	91	39	0	410	136.7	

TOTAL OFFENSE									
RUSHING	PASSING	YDS	PLS	YDS	YDPL	TD*	YDSPG		
CL	G	CAR	GAIN	LOSS	NET	ATT			
Doug Flutie, Boston Col.	14	92	26	66	107	938	121	1004	8.3
Steve Bradley, Indiana	18	38	25	13	121	911	139	924	6.6
Robbie Bosco, Brigham Young	32	106	112	6	151	1218	183	1212	6.6
Kurt Page, Vanderbilt	9	23	24	-1	86	782	95	781	8.2
Don Smith, Miss. State	47	298	68	230	66	549	113	779	6.9
Doug Gaylor, Long Beach St.	32	76	168	-92	115	859	147	767	5.2
John Paye, Stanford	22	102	57	45	105	683	127	728	5.7
Brian McClure, Bowling Green	9	1	52	-51	102	776	111	725	6.5
Troy Bodine, Cincinnati	11	23	25	-117	727	128	725	5.7	5
Alex Espinoza, Iowa State	18	10	88	-78	105	792	123	714	5.8
Jack Trudeau, Illinois	23	39	57	-18	140	928	163	910	5.6
Jim Everett, Purdue	11	27	51	-24	87	699	98	675	6.9
Todd Dodge, Texas	1	10	0	0	24	215	25	225	9.0
Ed Rubbert, Louisville	7	7	49	-42	97	715	104	673	6.5
Chuck Long, Iowa	22	67	85	-18	79	686	101	668	6.6
Cale Giberl, California	22	64	85	-12	107	678	129	666	5.2
Bernie Kosar, Miami (Fla.)	29	24	179	-155	152	1205	181	1050	5.8
Brad Taylor, Arkansas	34	146	55	91	34	329	68	420	6.2
Damon Allen, Cal St. Fullerton	39	102	91	11	108	822	147	833	5.7
Buddy Funck, New Mexico	56	318	39	279	31	339	87	618	7.1
Bob Frasco, San Jose St.	35	84	84	0	127	809	162	809	5.0
Kevin Sweeney, Fresno State	32	86	142	-56	114	860	146	804	5.5
Danny Sparkman, Memphis St.	11	19	31	-12	59	614	70	602	8.6
Touchdowns-responsible for are players TDs scored and passed for									

FIELD GOALS						INTERCEPTIONS							
	CL	G	FGA	FG	PCT	FGPG		CL	G	NO	YDS	TD	IPG
Kevin Butler, Georgia	Sr	2	9	8	889	4.00	Tony Thurman, Boston College	Sr	3	5	74	0	167
John Lee, UCLA	Jr	3	10	10	1,000	3.33	Mark Brandon, Toledo	Sr	2	3	97	0	150
Rex Banks, Southern Mississippi	So	3	9	8	889	2.67	Rod Brown, Oklahoma State	Sr	3	4	112	1	133
Jeff Jaeger, Washington	So	3	9	8	889	2.67	Mark Allen, Brigham Young	Sr	4	5	32	0	125
Larry Roach, Oklahoma State	Jr	3	10	8	800	2.67	Anthony Young, Temple	Sr	3	3	23	0	100
Max Zendejas, Arizona	Sr	4	11	10	909	2.50	Tim Meamober, Washington	Sr	3	3	22	0	100
David Bell, Georgia Tech	So	2	6	5	833	2.50	Rodney Lyles, Michigan	Sr	3	3	20	0	100
Iodd Solomon, Navy	Jr	2	7	5	714	2.50	Troy Dawson, Bowling Green	Jr	3	3	12	0	100
Ricky Gann, Texas Tech	Sr	2	7	5	714	2.50	Reggie Phillips, Southern Methodist	So	2	2	100	1	100
Jason Staurovsky, Tulsa	Jr	3	8	7	875	2.33	Vince McBeth, Navy	So	2	2	26	0	100
Donald Igwebuike, Clemson	Sr	3	6	6	1,000	2.00	Eddie Johnson, Rice	Sr	2	2	24	0	100
Mike Cofer, North Carolina State	Jr	3	6	6	1,000	2.00	Tony Flack, Georgia	Jr	2	2	18	0	100
Chris White, Illinois	Jr	4	9	8	889	2.00	Byron Linwood, Texas Christian	Sr	2	2	12	0	100
Ricky Anderson, Vanderbilt	Sr	3	7	6	857	2.00	Jerry Gray, Texas	Sr	1	1	5	0	100

The NCAA News



Football Statistics

[Through games of September 22]

Division I-AA individual leaders

RUSHING									
CL	G	CAR	YDS	AVG	TD	YDSPG			
Robert Santiago, Harvard	Jr	1	204	8.5	2	204.0			
Andre Garron, New Hampshire	Jr	3	102	5.6	7	189.7			
Gene Lake, Delaware State	Jr	3	69	5.2	7	173.7			
Vince Hall, Middle Tennessee State	Sr	3	75	4.8	4	160.0			
Mike Clark, Akron	Sr	4	105	5.6	4	126.5			
Robbie Gardner, Furman	Jr	4	64	4.6	7	116.0			
Scotty Caldwell, Texas-Arlington	Jr	3	69	3.4	5	114.7			
Willie Cannon, Murray State	So	3	45	3.3	7	111.3			
Warren Marshall, James Madison	So	3	43	3.2	7	109.0			
Virgil Winters, Illinois State	Sr	4	85	4.2	5	106.2			
Rich Comizio, Pennsylvania	So	1	15	1.5	7	105.0			
Greg Grooms, Richmond	So	4	80	3.9	6	98.7			
Simon Jordan, McNeese State	Sr	4	78	3.9	5	97.7			
Ricky Stewart, McNeese State	Sr	4	69	3.8	5	95.7			
Ken Gamble, Colgate	Fr	3	53	2.8	4	95.7			
Eric Jenkins, Nevada-Reno	Sr	3	65	2.8	4	93.7			
Merril Hoge, Idaho State	So	3	50	2.7	5	93.0			
Gill Fenerty, Holy Cross	Jr	2	38	1.8	4	92.0			
Johnny Hankerson, Southern-Baton Rouge	Jr	3	41	2.6	5	89.0			
Jon Francis, Boise State	Jr	3	59	2.5	4	85.7			
Kevin Jones, Illinois State	Jr	3	40	2.5	4	85.0			
Rick Koze, Yale	Jr	1	20	8.5	4	85.0			
Gary Benoit, Northeastern	Jr	2	40	1.6	4	83.0			

SCORING									
CL	G	TD	XP	FG	PTS	PTPG			
Jerry Rice, Mississippi Valley	Sr	3	10	0	60	20.0			
Andre Garron, New Hampshire	Jr	3	8	0	48	16.0			
Tom Murphy, Pennsylvania	Sr	1	0	7	2	13.0			
Keiron Bigby, Brown	So	1	2	0	12	12.0			
Darryl Mitchell, Columbia	Sr	1	2	0	12	12.0			
Rich Weissman, Dartmouth	Sr	1	2	0	12	12.0			
Robert Santiago, Harvard	Jr	1	2	0	12	12.0			
Lal Heneghan, Pennsylvania	Sr	1	2	0	12	12.0			
Mike O'Neill, Pennsylvania	Jr	1	2	0	12	12.0			
Greg Grooms, Richmond	So	4	7	0	42	10.5			
John Taylor, Delaware State	Jr	3	5	0	30	10.0			
Darold Clardy, Indiana State	So	3	5	0	30	10.0			
Merril Hoge, Idaho State	So	3	5	0	30	10.0			
Johnny Gordon, Nevada-Reno	Jr	3	5	0	30	10.0			
George Green, Alcorn State	Jr	2	0	10	3	19.5			
Mike Mostead, Northern Iowa	Sr	3	0	10	6	28.9			
Johnathan Stokes, Mississippi Valley	Jr	3	0	28	0	28.9			
Robbie Gardner, Furman	Jr	4	6	0	36	9.0			
Danny Abercrombie, Marshall	Jr	4	6	0	36	9.0			
David Norman, South Carolina State	Jr	4	6	0	36	9.0			
Barry Collins, Tennessee State	Jr	4	6	0	36	9.0			
Roy Banks, Eastern Illinois	So	4	6	0	36	9.0			
Paul Hickert, Murray State	Fr	3	0	12	5	27.0			
Mark Curtin, Northeastern	So	2	3	0	18	9.0			
Rob Steinberg, Harvard	Jr	1	0	3	2	9.0			

PASSING EFFICIENCY									
CL	G	ATT	CMP	PCT	INT	YDS	ATT	TD	RATING
(Min. 15 att. per game)									
Richard McEwan, Alcorn State	Sr	2	31	17	54.8	2	6.45	295	9.52
John McGeehan, Penn.	Sr	1	21	14	66.7	1	4.76	203	9.67
Willie Totten, Miss. Valley	Jr	3	159	102	64.15	6	3.77	1464	9.21
Mickey Corwin, Middle Tenn.	Sr	3	53	34	64.15	1	1.89	429	8.09
Ed Cheatham, Drake	So	3	54	28	51.85	3	5.56	629	11.85
Hazen Choates, Boise State	So	3	47	27	57.45	0	0.00	425	9.04
Peter Muldoon, Holy Cross	Sr	2	36	23	63.89	2	5.56	387	10.75
Bob Gibbon, Bucknell	Sr	3	90	56	62.22	2	2.22	771	8.57
Henry Santos, Columbia	Jr	1	19	12	63.16	1	5.26	161	8.47
Rich Worman, Eastern Wash.	Jr	3	70	41	58.57	2	2.86	583	8.33
Kenneth Biggles, Tenn. St.	Sr	4	110	66	60.00	5	4.55	859	7.81
Mike Mendoza, Northern Ariz.	Sr	4	156	108	69.23	2	1.28	1118	7.17
Tracy Ham, Ga. Southern	So	4	92	48	52.17	4	4.35	800	8.70
Steve Calabro, Colgate	Sr	3	94	59	62.77	3	3.19	793	8.44
Larry Miller, Northern Iowa	Jr	4	180	102	56.67	8	3.33	1399	7.77
Carl Fodor, Marshall	Sr	4	122	71	58.20	5	4.10	893	7.32
Mark Bloom, Western Ill.	So	4	69	33	47.83	4	5.80	536	7.77
Charles Glaze, S.C. State	So	3	85	49	57.65	0	0.00	642	7.55
Eric Rasheed, Nevada-Reno	So	3	61	37	60.66	1	1.64	460	7.54
Rich Gannon, Delaware	Jr	3	59	29	49.15	5	8.47	501	8.49
Kevin Sisk, Murray St.	So	4	176	103	58.52	4	2.27	1226	6.97
Sean Payton, Eastern Ill.	Jr	4	104	59	56.73	5	4.81	716	6.88
Tom Ehrhardt, Rhode Island	Jr	4	104	59	56.73	5	4.81	716	6.88

RECEIVING									
CL	G	CT	YDS	TD	CTPG				
Jerry Rice, Mississippi Valley	Sr	3	47	718	10	15.7			
Jerry Wright, Eastern Illinois	Sr	3	30	351	2	10.0			
Rennie Benn, Lehigh	Jr	3	23	368	4	7.7			
Joe Thomas, Mississippi Valley	Jr	3	23	368	4	7.7			
Dave Kucera, Bucknell	Sr	3	22	318	2	7.3			
Tom Stangelin, Colgate	Jr	3	21	327	3	7.0			
Tim Lewis, Marshall	Jr	4	27	412	3	6.7			
Eric Yarbber, Idaho	Jr	3	20	295	2	6.7			
Eric Rasheed, Western Carolina	Sr	4	26	371	1	6.5			
Danny Abercrombie, Marshall	Jr	4	26	317	6	6.5			
Roy Banks, Eastern Illinois	So	4	25	433	6	6.2			
Dan Uppercor, Columbia	Sr	1	6	126	1	6.0			
Mike Viccora, Dartmouth	Sr	1	6	94	0	6.0			
Tony Baker, Cornell	Sr	1	6	41	0	6.0			
Barry Collins, Tennessee State	Sr	4	23	327	6	5.7			
Kim Metcalf, Boise State	Sr	3	17	307	2	5.7			
Marty Bruder, Northern Iowa	Sr	3	17	249	3	5.7			
Joe Bignell, Montana State	Sr	3	17	223	0	5.7			
Ty Campbell, Western Kentucky	Sr	3	17	166	0	5.7			
Tod Short, Morehead State	Sr	4	22	243	4	5.5			
Joey Evans, Northeast Louisiana	Sr	4	16	240	3	5.3			
Scott Auker, Idaho	Jr	3	16	179	1	5.3			
Glenn Bodnar, William & Mary	Sr	3	16	150	2	5.3			
Glennell Miller, Western Kentucky	Jr	3	16	141	0	5.3			

ALL-PURPOSE RUNNERS									
CL	G	RUSH	REC	PR	KOR	YDS	YDSPG		
Andre Garron, New Hampshire	Jr	3	569	88	0	112	769	256.3	
Jerry Rice, Mississippi Valley	Sr	3	0	718	0	0	718	239.3	
Keiron Bigby, Brown	So	1	0	0	0	0	215.0	215.0	
Robert Santiago, Harvard	Jr	1	204	11	0	0	215.0	215.0	
Steve Ortmann, Pennsylvania	Sr	1	54	34	0	112	200.0	200.0	
Gene Lake, Delaware State	Jr	3	521	20	0	0	541.0	180.3	
Herman Hunter, Tennessee State	Sr	4	64	179	203	222	668.0	167.0	
Willie Ware, Mississippi Valley	Jr	3	0	0	285	207	492.0	164.0	
Vince Hall, Middle Tennessee State	Sr	3	480	5	0	0	485.0	161.7	
Herbert Harbison, North Carolina A&T	So	3	0	163	94	210	467.0	155.2	
Eric Rasheed, Western Carolina	Sr	4	3	371	0	247	621.0	155.2	
Eldridge Comer, Delaware State	Sr	3	122	260	5	73	460.0	153.3	
Ken Gamble, Colgate	Fr	3	287	0	0	166	453.0	151.0	
Rich Weissman, Dartmouth	Sr	1	44	15	0	92	151.0	151.0	
Daman Stephens, Morehead State	Fr	4	269	67	0	238	544.0	148.5	
Danny Abercrombie, Marshall	Jr	4	3	317	0	576	144.0	144.0	
Tony Hunter, Boise State	Jr	3	0	235	1	195	429.0	143.0	
David Norman, South Carolina State	Jr	4	6	329	63	170	568.0	142.0	
Glennell Miller, Western Kentucky	Jr	3	185	141	46	50	422.0	140.7	
Kevin Jones, Illinois State	Sr	3	255	68	0	98	421.0	140.3	

	TOTAL OFFENSE						TOTAL OFFENSE			YDSPG	
	CAR	GAIN	LOSS	NET	ATT	YDS	PLS	YDS	YDPL		TD*
Willie Totten, Miss. Valley	10	33	61	28	159	1464	169	1436	8.5	21	478.7
Carl Fodor, Marshall	13	12	60	48	180	1399	193	1351	7.0	15	337.7
Kelly Bradley, Montana St.	34	73	104	31	150	958	184	927	5.0	8	309.0
Sean Payton, Eastern Ill.	45	74	119	45	176	1226	221	1181	5.3	10	295.2
Vern Harris, Idaho State	14	16	76	60	119	933	133	873	6.6	2	278.8
Bob Gibbon, Bucknell	37	137	72	65	90	771	127	836	6.6	8	278.8
Mike Mendoza, Northern Ariz	17	5	84	79	156	1118	173	1039	6.0	11	259.7
Tracy Ham, Ga. Southern	52	289	54	235	92	800	144	1035	7.2	9	258.7
Larry Miller, Northern Iowa	18	37	59	22	97	759	115	747	6.5	6	249.0
Steve Calabro, Colgate	22	46	102	56	94	793	116	737	6.4	5	245.7
Eric Beavers, Nevada-Reno	29	130	42	88	85	642	114	730	6.4	3	243.3
Mike Caraviello, Dartmouth	12	38	54	-16	28	259	40	243	6.1	1	243.0
Mark Bloom, Western Ill.	24	96	28	68	122	893	146	961	6.6	10	240.2
John McGeehan, Pennsylvania	2	23	0	23	21	203	23	226	9.8	3	226.0
Kenneth Biggles, Tennessee St.	15	39	46	-7	110	859	125	852	6.8	12	213.0
Peter Muldoon, Holy Cross	16	57	21	36	36	387	52	423	8.1	4	211.5
Bernard Hawk, Bethune-Cook	10	35	20	15	97	619	107	634	5.9	7	211.5
Kevin Villars, Weber State	56	222	79	143	111	689	167	832	5.0	8	208.0
Robert Santiago, Harvard	24	208	4	204	0	0	24	204	8.5	2	204.0
Doug Buttr, Princeton	9	14	28	-14	29	215	38	201	5.3	1	201.0
Marly Horn, Lehigh	16	10	61	51	96	644	112	583	5.3	4	197.7
Rich Gannon, Delaware	40	184	65	119	61	460	101	579	5.7	4	193.0
Stan Yagiello, Wm. & Mary	18	54	77	23	109	601	127	578	4.6	5	192.7

The NCAA News



Football Statistics

[Through games of September 15]

Division II individual leaders

RUSHING						
	CL	G	CAR	YDS	TD	YDSPG
Anthony Thomas, Abilene Christian	Sr	2	45	339	2	169.5
David Schoonhoven, Jamestown	Sr	2	39	262	0	131.0
Jeff Bentrim, North Dakota State	So	2	39	256	3	128.0
Lonell Conner, Cal State Hayward	Jr	1	11	119	0	119.0
Damon Chambers, Edinboro	Sr	2	24	233	2	116.5
Troy Smith, Millersville	Jr	2	34	227	1	113.5
Joseph White, Livingstone	Sr	3	66	339	5	113.0
Bob Foley, Valparaiso	So	2	47	225	3	112.5
Mike Irving, West Chester	Sr	2	53	225	3	112.5
Tony Johnson, Norfolk State	Sr	2	45	220	2	110.0
Antoine Garter, Ashland	Sr	2	54	217	0	108.5
Bryon Krukowski, Saginaw Valley State	Fr	2	26	217	1	108.5
Dave Beyer, Mankato State	Sr	3	65	316	4	105.3

SCORING						
	CL	G	TD	XP	FG	PTS
Dan Ricker, Towson State	So	3	8	0	0	48
Clifton Montgomery, Valdosta State	Jr	2	5	0	0	30
Joseph White, Livingstone	Sr	3	6	0	0	36
Germaine Young, North Alabama	Sr	2	4	0	0	24
Tony Mazzu, North Dakota	Sr	3	6	0	0	36
Ricky Dirks, East Texas State	Sr	2	4	0	0	24
Jeff Jones, Sam Houston State	So	2	0	6	6	24
Andy Lomax, Livingston	So	2	0	9	4	21
Alvin Street, Central Ohio	So	3	5	0	0	30
Greg Saarela, Minnesota-Duluth	Sr	3	5	0	0	30
Keenan Curry, Missouri-Rolla	Jr	3	5	0	0	30

PASSING EFFICIENCY						
	CL	G	ATT	CMP	PCT	INT
(Min. 15 att. per game)						
Bobby Duncan, North Alabama	Sr	2	31	23	74.2	0
Darcy Davis, Texas A&I	Fr	2	35	22	62.9	1
Mark Thomsen, Northwest Missouri State	Jr	2	32	15	46.9	0
Dave Walter, Michigan Tech	So	2	47	26	55.3	1
Kevin Russell, California (Pennsylvania)	Sr	2	82	46	56.1	0
Kurt Beathard, Towson State	Jr	2	72	39	54.2	6
Mike Glovas, Bloomsburg	Jr	2	43	24	55.8	0
Pat Brennan, Franklin	Fr	2	98	53	54.1	7
Jim Gibson, Morningside	Jr	2	98	61	62.2	4
Mike Horrocks, West Chester	Sr	2	50	24	48.0	3
Andy Lowry, Western State (Colorado)	Sr	2	51	30	58.8	2
Mark Beans, Shippensburg	Sr	2	51	30	58.8	2

RECEIVING						
	CL	G	CT	YDS	TD	CTPG
Brian Lenahan, Franklin	Sr	2	16	293	3	8.0
Dan Bogar, Valparaiso	Sr	2	16	201	1	8.0
Mike Healey, Valparaiso	Jr	2	14	200	0	7.0
Kirk Walker, Morningside	Sr	3	21	270	1	7.0
Chris Floyd, Ferris State	Fr	2	13	112	0	6.5
Robert Murphy, District of Columbia	Sr	1	6	48	0	6.0
Germaine Young, North Alabama	Sr	2	12	194	4	6.0
Gary Baro, California (Pennsylvania)	Jr	2	12	132	3	6.0
Tom Pietrillo, California (Pennsylvania)	Sr	2	12	112	0	6.0
Bob Green, Clarion	Sr	2	11	264	1	5.5
Bob Green, Clarion	Sr	2	11	212	1	5.5

TOTAL OFFENSE						
	CL	G	PLAYS	YDS	YDSPG	
Pat Brennan, Franklin	Sr	2	158	905	452.5	
Kevin Russell, California (Pennsylvania)	Sr	2	96	671	335.5	
Scott Marsh, Evansville	So	1	58	259	259.0	
Jeff Bentrim, North Dakota State	So	2	75	494	247.0	
Mike Horrocks, West Chester	Sr	2	69	490	245.0	
Mike Busch, South Dakota State	Jr	3	131	670	223.3	
Jim Gibson, Morningside	Jr	3	82	664	221.3	
Keith Nelson, Northern Michigan	Jr	3	106	648	216.0	
David Schoonhoven, Jamestown	Sr	2	45	430	215.0	
Rich Popp, Wayne State (Michigan)	So	3	110	638	212.7	
Lanny Dycus, Sam Houston State	Jr	2	66	419	209.5	
Ron Shumate, Southeast Missouri State	So	2	82	411	205.5	
Reggie Hawthorne, Mississippi College	Sr	2	85	409	204.5	

Division III individual leaders

RUSHING						
	CL	G	CAR	YDS	TD	YDSPG
Ray Condren, Gettysburg	Sr	2	68	378	4	189.0
Mike Carbone, Worcester Tech	Sr	1	28	160	3	160.0
Pete Baranek, Carthage	Jr	1	17	160	2	160.0
Troy Jamison, Wagner	Jr	1	13	159	1	159.0
Chris Spriggs, Denison	So	2	51	315	5	157.5
Tony Davis, Hobart	Jr	1	22	156	0	156.0
Ken Canzuneri, Buffalo State	Sr	2	60	305	1	152.5
Joe Dudek, Plymouth State	Jr	2	41	264	4	132.0
Mark Konecny, Alma	Sr	2	35	245	4	122.5
Jeff Foropoulos, Rhodes	Sr	1	20	120	2	120.0
Tom Beale, Alma	Jr	2	38	233	0	116.5
Sandy Rogers, Emory & Henry	So	2	37	233	1	116.5
Mike Leavell, Canisius	Sr	2	31	231	2	115.5
Maury Jarmon, Salisbury State	Jr	2	32	228	1	114.0
Mike Miller, Wisconsin-Whitewater	Sr	3	70	330	5	110.0

SCORING						
	CL	G	TD	XP	FG	PTS
Tom Kreller, Millikin	Jr	1	4	0	0	24
Carl Montgomery, Wartburg	So	1	4	0	0	24
Mike Carbone, Worcester Tech	Sr	1	3	2	0	20
Mike Sturm, Hope	Sr	2	6	2	0	38
Jeff Selvarian, Swarthmore	Jr	1	3	0	0	18
Chris Spriggs, Denison	So	2	5	0	0	30

PASSING EFFICIENCY						
	CL	G	ATT	CMP	PCT	INT
(Min. 15 att. per game)						
Cody Dearing, Randolph-Macon	Sr	2	41	27	65.9	1
Fred Disanto, Case Reserve	Sr	2	40	29	72.5	0
Bob Morales, Sewanee	So	1	31	17	54.8	0
Gary Walljasper, Wartburg	Sr	1	27	17	63.0	0
Todd Nickodym, Carleton	So	2	37	17	45.9	0
Glenn Bennett, Swarthmore	Jr	1	19	11	57.9	0
Shane Fulton, Heidelberg	So	2	62	42	67.7	4
Robb Disbennett, Salisbury State	Jr	2	48	36	75.0	2
Greg Heeres, Hope	Sr	2	50	30	60.0	2
Dan Mulligan, Beloit	Jr	2	42	22	52.4	1
Tony Gallis, Catholic	Jr	2	45	23	51.1	2
Mark Laurich, Illinois Benedictine	Sr	2	66	36	54.5	2
Tony De Nicola, DePauw	Jr	2	74	42	56.8	2
Darryl Kosut, William Penn	So	2	88	37	54.4	3

RECEIVING						
	CL	G	CT	YDS	TD	CTPG
Jim Jordan, Wheaton (Illinois)	Jr	1	12	122	1	12.0
Tim Weaver, DePauw	Jr	2	17	205	3	8.5
Tim Dytell, Colorado College	Sr	2	17	200	1	8.5
Mark Ehlers, Coe	Sr	2	16	185	2	8.0
Dan Glowatski, Delaware Valley	Sr	2	16	296	1	8.0
Kelly Hatfield, Coast Guard	Sr	2	15	124	1	7.5
Tom Collins, Hiram	Sr	1	7	70	0	7.0
Maury Jarmon, Salisbury State	Jr	2	14	154	2	7.0
David Tack, Sewanee	Sr	1	7	111	1	7.0
David Curtis, Albright	Sr	1	7	97	1	7.0
Bill Letton, Centre	So	2	13	172	2	6.5
Ed Brady, Illinois Wesleyan	Sr	2	13	184	0	6.5
Todd Stoner, Kenyon	Sr	2	13	325	2	6.5

TOTAL OFFENSE						
	CL	G	PLAYS	YDS	YDSPG	
John Rooney, Illinois Wesleyan	Sr	2	108	635	317.5	
Keith Bishop, Wheaton (Illinois)	Sr	1	58	283	283.0	
Dragan Pantic, Kenyon	Sr	2	81	562	281.0	
Shane Fulton, Heidelberg	So	2	80	543	271.5	
Chris Spriggs, Denison	So	2	86	522	261.0	
Paul Hefty, Luther	Sr	2	65	486	243.0	
Mark Laurich, Illinois Benedictine	Sr	2	82	478	239.0	
Mark Peterson, Nebraska Wesleyan	Sr	2	90	474	237.0	
Fred Disanto, Case Reserve	Sr	2	57	468	234.0	
Kurt Cox, Coast Guard	Jr	2	108	461	230.5	
Cody Dearing, Randolph-Macon	Sr	2	58	460	230.0	

FIELD GOALS						
	CL	G	FGA	FG	PCT	FGPG
Jeff Jones, Sam Houston State	So	2	8	6	75.0	3.00
Terry Godfrey, South Dakota	Jr	3	12	8	66.7	2.67
Andy Lomax, Livingston	So	2	5	4	80.0	2.00
Keith Moore, Valdosta State	So	2	5	4	80.0	2.00
Kevin Mackey, Valparaiso	Jr	2	4	4	100.0	2.00
Brett Drobney, Western State (Colo.)	Sr	2	6	4	66.7	2.00
Eric Wentling, West Chester	Sr	2	5	4	80.0	2.00

PUNT RETURNS						
	CL	NO	YDS	AVG		
(Min. 1.2 per game)						
Fred Gayles, West St. (Colo.)	Fr	5	82	16.4		
Gary Simpson, Lock Haven	Fr	3	49	16.3		
Jeff Purefox, N.C. Central	Jr	4	59	14.8		
Clynn Anderson, S.F. Austin	Sr	5	71	14.2		
Vernon Huggans, Mo. Rolla	So	12	169	14.1		
Mike Scialla, Colorado Mines	Jr	3	42	14.0		
Derrick Harris, Valdosta State	Sr	4	52	13.0		
Bob Arsenault, Springfield	So	4	46	11.5		
Keith Bennett, Wayne St. (Mich)	So	5	53	10.6		

Division II team leaders

PASSING OFFENSE						
	G	ATT	CMP	PCT	INT	YDS
Franklin	2	98	53	54.1	3	355.5
California (Pennsylvania)	2	85	47	55.3	1	668
Central Ohio	3	95	50	52.6	4	994
Evansville	1	52	27	51.9	4	273
Michigan Tech	2	64	33	51.6	2	510
Morningside	3	102	61	59.8	4	717
Livingston	2	67	41	61.2	4	475
Texas A&I	2	53	28	52.8	4	472
South Dakota State	3	118	55	46.6	5	700

PASSING DEFENSE						
	G	ATT	CMP	PCT	INT	YDS
Minnesota-Duluth	2	36	16	44.4	2	183
Northwest Missouri State	2	34	14	41.2	7	159
Mankato State	3	50	19	38.0	5	242
Cal State Sacramento	2	32	17	53.1	1	162
District of Columbia	1	11	4	36.4	1	82
North Carolina Central	3	56	18	32.1	5	271
Valdosta State	2	36	13	36.1	4	182
Edinboro	2	41	13	31.7	5	187

SCORING OFFENSE						
	G	TD	XP	2XP	FG	SAF
North Dakota	3	20	19	0	0	0
Livingston	2	11	9	0	4	1
Central Ohio	3	18	14	0	1	1
Edinboro	2	12	10	0	0	0
West Chester	2	10	7	0	4	0
Valdosta State	2	9	7	2	4	0
Towson State	3	15	12	0	2	1
Northwest Missouri State	2	9	8	0	3	1

SCORING DEFENSE				
	G	TD	XP	2XP
Northwest Missouri State	2	0	0	0
Valdosta State	2	1	1	0
Angelo State	3	2	2	0
Livingston	2	2	1	0
Norfolk State	2	2	1	0
West Chester	2	1	1	0
Cal State Hayward	1	1	1	0
Edinboro	2	2	2	0
Santa Clara	2	2	2	0
Howard Payne	1	1	1	0
Sam Houston State	2	2	2	0

Elsewhere in Education

Atwell ACE's acting president

Robert H. Atwell, executive vice-president of the American Council on Education, has been named acting president of the organization by its board of directors.

Atwell will serve as president until a new president is named to replace Jack W. Peltason, who resigned to become chancellor of the University of California, Irvine.

Before joining the ACE, Atwell was president of Pitzer College (California) and vice-chancellor for administration for the University of Wisconsin, Madison.

Foreign students at record level

A record 338,894 foreign students were enrolled in U.S. colleges during the 1983-84 school year, a report financed by the U.S. Information Agency says. These students constituted about three percent of the record college enrollment of 12.3 million for the year.

Taiwan had the highest enrollment of any country, with 21,960 students. Iran was second with 20,260. That figure represents a 60 percent drop from a high of 51,310 in 1980 for Iranian students.

The top four states with foreign students are California, New York, Texas and Florida.

Twenty-three percent of the foreign students studied engineering, while 18 percent chose business and management.

College costs increase six percent

The average cost of attending college this fall will rise only six percent for students living on-campus, ending a three-year string of increases of 10 percent or more, according to the College Board.

For the third straight year, Massachusetts Institute of Technology will be the most expensive college in the nation, with total annual costs climbing nine percent to \$16,130.

A College Board spokesperson said that the board has no clear reason for this year's smaller increases, but some think the cooling of inflation, plus the fierce competition among colleges for a smaller number of students, may be keeping tuition increases in check.

The 1984-85 survey calculated that the average cost for students at private, four-year colleges who live on campus will be \$9,022, a seven percent increase. For commuting students, costs will total \$7,782.

At public, four-year schools, total costs will increase about five percent to \$4,881 for students living on campus.

To help students in need at public and private colleges, more than \$16 billion in financial aid is available from various sources, the College Board said.

Reforms linked to teachers' status

Reforms in education under way in many states will fail unless more is done to increase the status and pay of teachers, a Rand Corporation report warns.

The report says that the nation faces severe shortages of teachers by 1988 unless expensive steps are taken to "professionalize" teaching.

It was recommended that teachers' salaries start at \$20,000 and reach \$50,000, compared with the current starting salaries average of \$13,000.

In addition to increasing salaries, the report suggested the following improvements:

- Establishing a career ladder to allow experienced teachers to assume responsibility for supervising new teachers and developing programs.
- Offering recruitment incentives such as scholarships and forgivable loans for academically talented college students to enter teaching.
- Making teacher internships before tenure is granted.
- Requiring teacher internships before tenure is granted.
- Improving working conditions by allowing paraprofessionals to assume nonteaching duties.

The report estimated that the supply of new graduates may satisfy only 80 percent of the demand for additional teachers by 1988.

SAT scores show significant gain

Scholastic Aptitude Test scores of students entering college this fall increased three percent in mathematics and one percent in reading. The increase in math was the first significant gain in 12 years.

Educators are crediting increased awareness of problems in education and support for reforms as reasons for the improved scores.

Secretary of Education Terrel H. Bell predicts that SAT scores will increase by about 10 percent by 1985, indicating that the turnaround from an extended slump is genuine.

College presidents' power declines

The power of college presidents and the appeal of their positions are declining, according to Clark Kerr, former president of the University of California, who spent two years interviewing more than 400 educators and college trustees as head of a special commission studying higher education's presidential leadership.

Kerr, whose comments were made to The New York Times apart from the commission's findings, estimates that only about 20 percent of all presidents play any role in the academic affairs on their campuses.

Most qualified candidates for college presidencies seem to prefer to be second in command, a position that provides for more contact with students and participation in academic affairs. The average term for a president is seven years, down from 11 years in 1960, Kerr said.

The college presidency allows little time for long-range planning, Kerr said, noting that presidents are too caught up in fund-raising, alumni meetings and athletics, where television dollars and the fielding of winning teams become "intolerable distractions."

Kerr said that for presidents to exert themselves in their academic roles could prove counterproductive. He said that tough leadership, which could require the elimination of weak departments, could kill a president's future.

Kerr was head of a commission appointed by the Association of Governing Boards of Universities and Colleges.

Some schools, anticipating growth in baseball, building new stadiums

By Lou Pavlovich Jr.

Collegiate Baseball

The time of big-time college baseball is upon us.

In the last year, two new baseball stadiums have risen—Rainbow Stadium, the new, \$7.6 million home of the University of Hawaii, and \$2.2 million Pete Beiden Field, home of California State University, Fresno.

Plans currently are under way for future baseball stadiums at Oklahoma City University, Mississippi State University, Georgia Institute of Technology and San Diego State University.

A newly revived Oklahoma City program, guided by energetic coach Charley Lodes, is embarking on a 3,000- to 4,000-seat baseball stadium priced at around \$1 million, which does not include donated materials.

According to Lodes, lights will be added to the stadium at a cost of about \$200,000, which will make it one of the top three or four best-lighted stadiums in the nation.

Iowa women sign coast-to-coast radio contract

WHO Radio in Des Moines and the University of Iowa women's athletics department have reached an agreement that guarantees live coast-to-coast broadcasts of women's basketball games during the next two seasons.

A total of 16 regular-season games will be broadcast live by the 50,000-watt, clear-channel station during the winter, with a possibility of two games being added to the schedule. WHO's signal can be received in the 48 contiguous states and in parts of Alaska and Canada.

Christine Grant, director of women's athletics, said, "We are tremendously excited by this major breakthrough. Obviously, we're delighted that Iowa again has provided the leadership for the entire country. . . ."

"A local company called Design Lighting of Oklahoma City told us that it will be one of the top three or four best-lighted stadiums in the nation. And that includes Major League Baseball stadiums," said Lodes.

The construction originally was slated to begin this summer, but it is running behind schedule.

Mississippi State announced plans for a new baseball stadium on the site of Dudy Noble Field that will house about 4,500 grandstand-type concrete and aluminum seats.

A new media facility behind home plate also will be added.

Construction is scheduled to begin at the completion of the 1985 season, and the new seats should be available for the 1986 campaign.

Dudy Noble Field was first utilized in the 1968 season, during which time MSU has amassed a home

record of 319-94, including a 200-48 mark under current coach Ron Polk.

The baseball site has been much decorated, and it includes the 1975 United States Professional Grounds Keepers Association award for "Best Maintained Athletic Field" in the nation.

Georgia Tech commissioned an architectural firm to begin plans for a new 3,000-seat baseball stadium to be built on the site of the existing one at Rose Bowl Field.

The new stadium complex will include 3,000 aluminum seats, a new multipurpose press box, restroom facilities and concession areas.

Head coach Jim Dietz of San Diego State has been formulating plans for a new stadium at Smith Field.

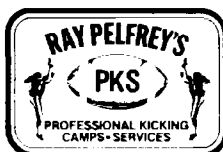
Architectural plans have been drawn up for the \$2.4 million structure. Fund-raising still is going on.

Qualifying standards set for swimming championships

Qualifying standards for participation in the 1985 NCAA Divisions I, II and III Men's and Women's Swimming and Diving Championships have been established by the Men's and Women's Swimming Committees and approved by the Executive Committee.

All events are in yards, except for the diving events. Following are the 1985 division qualifying standards:

1985 men's qualifying standards				1985 women's qualifying standards			
Swimming	Div. I	Div. II	Div. III	Swimming	Div. I	Div. II	Div. III
50 freestyle	20.49	21.73	21.80	50 freestyle	23.79	24.79	25.39
100 freestyle	44.64	47.47	47.80	100 freestyle	51.29	54.29	55.29
200 freestyle	1:38.24	1:44.37	1:45.42	200 freestyle	1:50.99	1:56.89	2:00.09
500 freestyle	4:25.36	4:43.90	4:46.72	500 freestyle	4:53.69	5:08.29	5:19.59
1,650 freestyle	15:26.25	16:40.35	16:50.46	1,650 freestyle	16:51.09	17:52.99	18:29.99
100 butterfly	49.12	52.59	52.70	100 butterfly	56.59	59.79	1:01.49
200 butterfly	1:48.54	1:56.15	1:58.10	200 butterfly	2:02.49	2:12.29	2:15.79
100 backstroke	50.93	55.30	55.55	100 backstroke	58.39	1:01.89	1:04.09
200 backstroke	1:50.04	1:59.75	2:00.80	200 backstroke	2:05.59	2:14.59	2:18.99
100 breaststroke	56.33	1:00.80	1:01.11	100 breaststroke	1:05.89	1:10.29	1:11.39
200 breaststroke	2:02.66	2:13.30	2:14.68	200 breaststroke	2:21.39	2:32.39	2:33.99
200 ind. medley	1:50.56	1:58.89	2:00.32	200 ind. medley	2:05.99	2:13.69	2:18.39
400 ind. medley	3:58.00	4:16.64	4:20.54	400 ind. medley	4:26.19	4:46.09	4:52.19
400 medley relay	3:21.16	3:37.65	3:39.42	400 medley relay	1:47.89	1:53.59	1:56.89
400 free relay	3:00.72	3:13.66	3:13.88	400 medley relay	3:52.99	4:07.39	4:17.29
800 free relay	6:41.33	7:10.12	7:11.00	200 free relay	1:35.79	1:41.59	1:43.49
				400 free relay	3:28.49	3:42.09	3:45.99
				800 free relay	7:33.19	7:58.39	8:17.09
Diving				Diving			
1-meter dual	290	280	280	1-meter dual	240	240	238
1-meter champ.	450	420	420	1-meter champ.	390	390	368
3-meter dual	310	290	285	3-meter dual	250	250	249
3-meter champ.	475	430	420	3-meter champ.	410	390	373



NEW PUNTING AND PLACEKICKING COACHING AIDS ARE CHANGING THE KICKING GAME

Now you can effectively coach and upgrade both your punting and placekicking game. These three new kicking coaching aids are impacting on the kicking game across the nation. Written, produced and marketed exclusively by Professional Kicking Services, Inc. Director, Ray Pelfrey. His all-pro techniques will quickly convince you and your players. These teaching aids are an outgrowth of his National Kicking Camp Program which, in the past five years, has produced numerous N.C.A.A., Division I and II, and NIAA National kicking titles. Many of his college stars are now on N.F.L. and U.S.F.L. rosters, with 3 All-Pros to date.

A. Book: MODERN KICKING TECHNIQUES AND PRINCIPLES

A step-by-step coaching guide. 188 photos — 36 chapters, 8 1/2 x 11 format. How to film and correct, self tests, drills and coaching points. For Punters, Soccer-Style Placekickers and Conventional Kickers.

Gerry Faust, Head Coach, Notre Dame: "This book demonstrates very well your knowledge of the kicking game. A book every football coach should have in his possession. A Great Job."

Bill Anspacher, Head Coach, LSU: "... your SCIENTIFIC approach and extensive knowledge will provide good study for any person interested in punting or placekicking."

Dr. Hugh Stephenson, Jr., Author, The Kicks That Count: "This is obviously the very best book ever for coaches and kicking specialists."

2 GREAT NEW VIDEO, COLOR COACHING FILMS. Football's Best Selling Punting, Coaching Film

B. "Modern Punting Techniques and Principles"

46 minutes, full color and sound. Written and narrated by Ray Pelfrey. A practical field demonstration session with an N.F.L. punter signer. Keys for consistent hits, alignment, hang time, drop, body positions and much more.

JUST RELEASED!

C. "Modern Soccer-Style Placekicking Techniques and Principles"

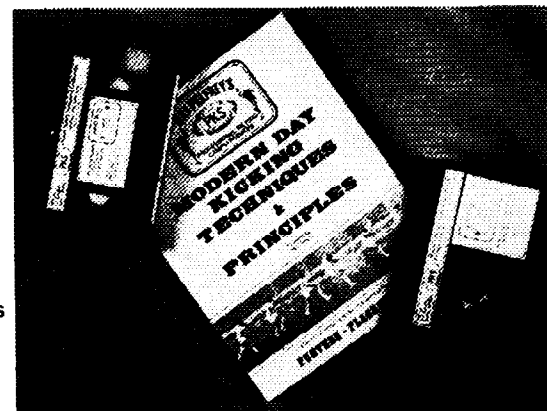
45 minutes, full color and sound. Written and narrated by Ray Pelfrey, produced by PKS, Inc. A field demonstration and coaching film of the U.S.F.L. PKS's new alignment methods helped produce the most accurate kickers in football. Covers every facet of the kick. Stance, foot position on ball, follow-through, PKS's exclusive secondary explosion technique, flexibility drills, on side kicks and kick-offs, and more.

To order: Check/Money Order or P.O. Invoice to PKS, Inc., P.O. Box 2747, Sparks, NV 89431. C.O.D.'s (702) 359-5973. UPS to your street address only.

Name _____
Street _____
City/State _____ Zip _____

A. Book (Punting/Placekickers) _____ ☐ \$19.50
B. Punting, Video Film Beta ☐ VHS ☐ \$49.50
C. Soccer-Style Placekicking Beta ☐ VHS ☐ \$49.50
Add \$2.50 for each item ordered for UPS shipping and handling.
Please put me on your Camp Brochure mailing list ☐ Yes

3 PKS PUNTERS MAKE '84 NFL ROSTERS (SAINTS, RAMS, EAGLES)



Legal aspects of drug testing among NCAA research awards

Recognizing member institutions' interest in testing for drug use by student-athletes, the NCAA Research Committee has included a project costing nearly \$12,000 in its 1984-85 grants.

John Scanlan of the Indiana University Center for Law and Sports will use the grant to develop an extensive legal review of drug testing at the levels of the NCAA and individual institutions. Last year, the committee awarded \$25,000 to Michigan State University for a study of drug use among student-athletes. That study currently is being completed.

The committee received approval from the Executive Committee for \$57,427 in 1984-85 funding, an increase of about \$900 from 1983-84. A second extensive project will be \$12,500 in initial costs for the next edition of "Revenues and Expenses of Intercollegiate Athletic Programs," a publication produced every four years by Mitchell H. Raiborn of Bradley University.

Other projects approved were:

•\$5,000 annual grant to the National Operating Committee on Standards for Athletic Equipment.

•\$9,500 grant to the National Center for Catastrophic Sport Injury Research, conducted by Frederick O. Mueller and Carl S. Blyth of the University of North Carolina, Chapel Hill.

•\$4,000 to Wiles Hallock, former executive director of the Pacific-10 Conference, to develop a written history of the NCAA football television program.

•\$5,000 to Wayne Blann of Cortland State University College for a study of the impact of participation in intercollegiate athletics on students' development.

•\$3,305 for a study entitled "Athletic Fund-Raising: Exploring the Motives Behind Private Donations," by John Billing of the University of North Carolina, Chapel Hill.

•\$2,100 for a study entitled "Effects of Effort Upon the Foot During

High Jumping With Implications for Other Sports Events," by Marlene Adrian of the University of Illinois, Champaign.

•\$3,000 to Roberta Butler of Temple University, who will analyze for the U.S. Women's Lacrosse Association data collected during the last three years on head, facial and hand injuries in women's lacrosse.

•\$1,027 to Margaret Driscoll of Virginia Polytechnic Institute to develop a computer model for ranking women's athletics teams in six sports.

Applications for grants are considered annually by the Research Committee. Applications involving sports-medicine aspects first must be recommended to the committee by the Committee on Competitive Safeguards and Medical Aspects of Sports.

Information about applications for NCAA research grants can be obtained from Eric D. Zemper, research coordinator, at the NCAA national office.

Legislative Assistance

1984 Column No. 21

Preseason basketball practice

Under the provisions of Bylaw 3-1-(a)-(1), a member institution shall not commence preseason practice in men's basketball prior to October 15. (Women's basketball is exempt from this restriction until August 1, 1985.) As set forth in O.I. 302 (page 75, 1984-85 NCAA Manual), "practice" is any meeting, activity or instruction held at the direction of, or supervised by, any member or members of an institution's coaching staff. Further, it would not be permissible for a member of an institution's coaching staff in men's basketball to observe student-athletes in "pick up" basketball games or other basketball activities prior to October 15 even though such activities are not arranged by the institution's coach.

It shall be permissible to designate a single date for the taking of basketball squad pictures after the beginning of classes in the fall term and prior to the opening of permissible basketball practice. Also, it is permissible to issue equipment and have medical examinations on October 14. When that day falls on Sunday, as it does this year, equipment may be issued and medical examinations given on Saturday (October 13 this year).

Tryout waivers

Under the provisions of Bylaw 1-6-(a), no member institution, on its campus or elsewhere, shall conduct or have conducted in its behalf any athletics practice session, tryout or test in which one or more prospective student-athletes reveal, demonstrate or display their abilities in any phase of any sport. The term "prospective student-athlete" as used in the tryout rule is defined in Bylaw 1-6-(b).

Bylaw 1-6-(c) sets forth situations in which prospective student-athletes may be involved in physical activities on the institution's campus or with members of the institution's athletics department staff without violating the tryout rule. The situations described in subparagraphs (1), (4) and (5) require approval by the NCAA Council, or the Administrative Committee acting for it. Requests for such approval should be submitted in writing to the NCAA national office to the attention of Stephen R. Morgan, assistant executive director.

Coaching clinics

Member institutions are reminded that under the provisions of Bylaw 1-6-(d), no member of an institution's coaching staff may conduct or participate in any coaching school or specialized sports camp involving a student who is eligible for admission to a member institution or who has started classes for the student's senior year in high school, unless such students do not participate in any physical activities associated with the school or camp as set forth in Case No. 212 (page 303, 1984-85 NCAA Manual).

This material was provided by the NCAA legislative services department as an aid to member institutions. If an institution has a question that it would like to have answered in this column, the question should be directed to Stephen R. Morgan, assistant executive director, at the NCAA national office.

Revised Division I statement of philosophy passes committee

A revised statement of philosophy for Division I has been approved by the Division I Steering Committee and will be submitted to the Division I round table at the 1985 NCAA Convention.

At last year's Convention, a similar statement was rejected by the Division I delegates in attendance at the round table. That statement has been modified by a subcommittee of the Division I Steering Committee consisting of Francis W. Bonner, Furman University, chair; Mikki Flowers, Old Dominion University, and David L. Maggard, University of California, Berkeley.

NCAA Divisions II and III have had formal statements of philosophy for the past several years, and they appear in the NCAA Manual. If the Division I statement is approved in January, it also will be printed in the Manual.

Following is the revised statement for Division I:

In addition to the purposes and fundamental policy of the National Collegiate Athletic Association, as set forth in Constitution 2, members of Division I support the following principles in the belief that these statements assist in defining the nature and purposes of the division.

1. A member of Division I subscribes to high standards of academic quality, as well as breadth of academic opportunity.

2. In its athletics program, a member of Division I strives for regional and national excellence and prominence. Accordingly, its recruitment of student-athletes and its emphasis on and support of its athletics program are — in most cases — regional and national in scope.

3. A member of Division I recognizes the dual objective in its athletics program of serving both the university or college community (participants, student body, faculty-staff, alumni) and the general public (community, area, state, nation).

4. A member of Division I believes in offering extensive opportunities for participation in varsity intercollegiate athletics for both men and women. A Division I member sponsors at the highest feasible level of intercollegiate competition one or both of the traditional spectator-oriented, income-producing sports of football and basketball. In doing so, members of Division I recognize the differences in institutional objectives in support of football; and, therefore, the division provides competition in

that sport in Division I-A and Division I-AA.

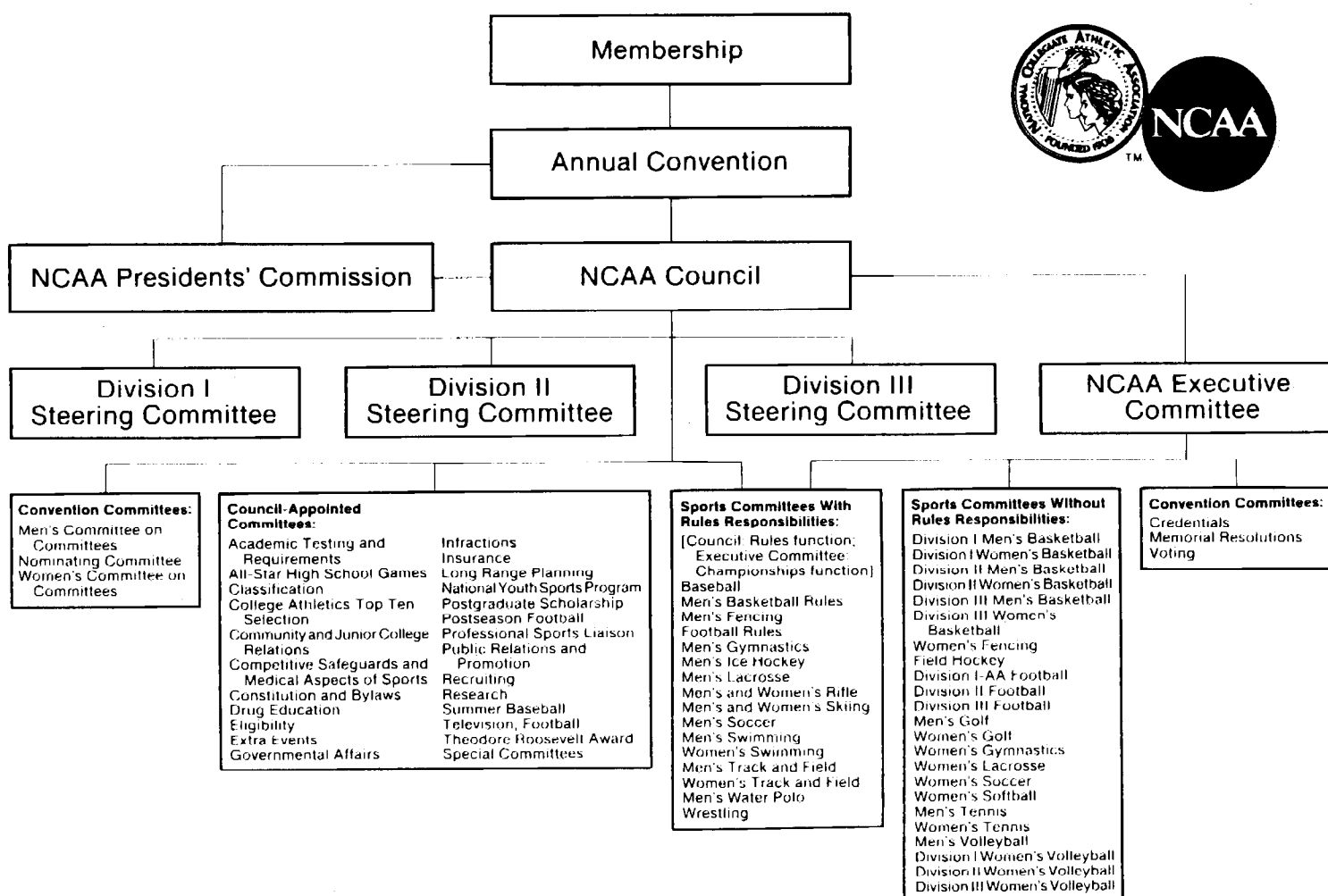
5. As a reflection of its goal of maintaining an appropriate competitive level in its sports program, a member of Division I believes in scheduling its athletics contests primarily with other members of Division I, especially in the emphasized, spectator-oriented sports.

6. A member of Division I strives to finance its athletics program insofar as possible from revenues generated by the program itself. All funds supporting athletics should be con-

trolled by the institution.

7. Division I members understand, respect and support the programs and philosophies of other divisions. Occasionally, institutions from other divisions or athletics associations will seek membership in Division I. In such cases, the applicants should be required to meet, over a period of time, prescribed criteria for Division I membership in order to assure that such institutions agree and comply with the principles and program objectives embodied in this statement.

NCAA Organizational Structure



TV in the News

NBC Sports promotes Ewert

Terry Ewert, who has been supervising NBC Sports' production of SportsWorld, has been named coordinating producer of the weekly sports anthology show.

Ewert has earned two Emmys for his work with NBC Sports. He joined NBC in 1975 and moved to NBC Sports in 1978 as an assistant to the producer. He was named associate producer in 1979 and producer in 1981. Ewert is a 1973 graduate of the University of Mississippi.

Nabisco to buy part of ESPN

Nabisco Brands Inc. has agreed to purchase 20 percent of the Entertainment and Sports Programming Network for \$60 million.

The deal represents the largest move by a major TV advertiser into cable television ownership.

ESPN, a wholly owned subsidiary of ABC Video Enterprises since June, is the largest cable network, reaching 32.7 million subscribers on more than 8,400 cable systems. ESPN began its fifth year of service September 7.

Pitt to get basketball exposure

The University of Pittsburgh has announced that 12 of its 16 Big East Conference basketball games will be televised during the 1984-85 season, including one national telecast March 2.

The Pittsburgh-Villanova University game in Pittsburgh will be carried on CBS-TV.

The Panthers will make five appearances on Metrosports' Saturday-Monday Big East package and will be shown three times on both the USA and ESPN cable networks. In addition, a local station will carry two Pittsburgh games.

Big Sky termed a TV loser

The Big Sky Conference, which received \$1.3 million over the past two years in television revenue from football games, will be one of the big losers under the "open market" plan, according to Ronald D. Stephenson, conference commissioner.

Stephenson said, "Division I-AA certainly got hurt badly" by the Supreme Court decision voiding the NCAA Football Television Plan, which guaranteed the conference at least one television appearance every two years. The league generally got more than that.

"It is very unlikely that we will see a regular-season Big Sky Conference game on regional television," Stephenson said. "The possibility has not been totally eliminated, but there will be less money. To be honest, I doubt if that package (a regionally televised Big Sky game) could be sold on the open market for \$1 million."

ESPN announces ratings boost

The first two live college football telecasts on ESPN September 1 registered Nielsen ratings of 4.4 and 5.5, according to C. Dana Redman, vice-president, research and measurement.

The network carried Brigham Young University-University of Pittsburgh in the afternoon and the University of Florida-University of Miami (Florida).

The 4.4 average rating for the afternoon game was the highest ESPN has received for an afternoon weekend telecast. The second game received an average rating of 5.5, the network's second-highest rating for weekend, prime-time programming.

Hawaii football on pay cable

Football fans in Honolulu paid \$20 to watch the September 22 game between Brigham Young University and the University of Hawaii on television at home under an experimental program to increase game revenue.

"A Supreme Court decision declared the NCAA's Football Television Plan void, allowing colleges to experiment, individually, with cable and pay-television deals this season," said Stanley B. Sheriff, director of athletics at Hawaii.

Under the arrangement with Oceanic Cablevision, the university will get 50 percent of the profits, Sheriff said.

The 75,000 television viewers on the island of Oahu with Oceanic's computerized converter cable boxes were able to dial the company and order the service all the way up until game time.

Calendar

October 3-4	Presidents' Commission, Kansas City, Missouri
October 5-8	National Youth Sports Program Committee, Monterey, California
October 14	Special Committee on Women's Interests, Kansas City, Missouri
October 15-17	Council, Kansas City, Missouri
November 1	Deadline for submission of amendments for 1985 NCAA Convention
November 5-8	Baseball Committee, Kansas City, Missouri
November 9-10	Division III Field Hockey Championship, campus site to be determined
November 17	Division II Men's and Women's Cross Country Championships, Clinton, Mississippi
November 17	Division III Men's and Women's Cross Country Championships, Delaware, Ohio
November 17-18	Division I Field Hockey Championship, Springfield, Massachusetts
November 17-18	Women's Soccer Championship, Chapel Hill, North Carolina
November 19	Division I Men's and Women's Cross Country Championships, University Park, Pennsylvania
November 24-25	Men's Water Polo Championship, Long Beach, California
December 1	Application deadline for certification of summertime high school all-star football and basketball games

Walsh, Neyer head swim coaches' academic all-America selections

North Carolina's Sue Walsh and Florida's Megan Neyer, double winners at the 1984 Division I Women's Swimming and Diving Championships, head the Division I women's academic all-America team selected by the College Swimming Coaches Association of America.

The CSCAA selects men's and women's squads in each of the three divisions. To qualify for academic all-America honors, swimmers must qualify for the NCAA or National Association of Intercollegiate Athletics championships, have a cumulative grade-point average of 3.500 (on a 4.000 scale) and have completed the equivalent of 24 semester hours at their institution.

Walsh and Neyer were among 14 women named to the Division I team. Walsh won both backstrokes and Neyer both diving events at the 1984 championships. California's Bengt Baron, fifth in the 100-yard backstroke at the 1984 NCAA Division I men's championships, was among 15 men named to the Division I team.

A total of 77 student-athletes were honored by the CSCAA. Following are the 1984 CSCAA teams:

Division I men

Charlie Johnson, Stanford, 4.000 grade-point average; Michael Brown, Southern Methodist, 3.990; Henar Alonso-Pimentel, Arizona, 3.920; Terry DeBiase, California, 3.910; Todd Lincoln, Stanford, 3.900; Paul Herring, Florida, 3.750; Bengt Baron, California, 3.720; Ken Landgraf, Arkansas, 3.670; Dirk Mar-



Sue Walsh

shall, North Carolina, 3.650; Bart Ebbinghaus, Southern Methodist, 3.630; Cory Robinson, Southern Methodist, 3.620; Craig Popp, California, 3.550; Rafael Vidal, Florida, 3.530; Thomas Lejdstrom, California, 3.500; Don St. Denis, Arkansas, 3.500.

Division I women

Sandra Goeking, Texas A&M, 4.000; Sue Walsh, North Carolina, 3.740; Sarah Osborne, Idaho, 3.670; Amanda Martin, Southern Illinois, 3.670; Lisa Williams, South Carolina, 3.660; Tracy Barrett, Wisconsin, 3.600; Megan Neyer, Florida, 3.600; Elizabeth Brown, Tennessee, 3.550; Martha McCann, North Carolina, 3.540; Judy Van Der Horst, Clemson, 3.530; Amy Daniell, Texas Tech, 3.510; Carol Frost, Virginia, 3.500; Marci Bal-

lard, Ohio State, 3.500.

Division II men

Danny Mattle, Missouri-Rolla, 4.000; Kirk Simon, Cal Poly-San Luis Obispo, 3.950; Martin Rodseth, Missouri-Rolla, 3.800; Paul Perich, Missouri-Rolla, 3.754; Thomas Harvill, Cal State Chico, 3.640; Scott Carney, Missouri-Rolla, 3.530; Brad Gothberg, Cal State Hayward, 3.510.

Division II women

Anita Aijala, St. Cloud State, 3.730; Kim Edwards, 3.730; North Dakota; Kathy Batho, Rice, 3.679; Jeanne McGovern, St. Cloud State, 3.440.

Division III men

Andy Renshaw, MIT, 4.000; Jerome Will, St. John's (Minnesota), 3.980; Stephen Tufte, St. Olaf, 3.870; Stephen King, Wheaton (Illinois), 3.860; Richard Howrey, Kalamazoo, 3.830; Timothy Stuk, Hope, 3.810; John Walker, Johns Hopkins, 3.800; Brett Wiwa, MIT, 3.750; Bruce Cairns, Johns Hopkins, 3.730; Peter Hickman, MIT, 3.700; Robert Smith, Wesleyan, 3.670; Stephen Segreto, Johns Hopkins, 3.660; Davis Grapey, Grinnell, 3.660; John Rydberg, St. Olaf, 3.650; Barry Zacharias, Rochester Institute of Technology, 3.640; Paul Simso, St. Olaf, 3.640; John Belzer, MIT, 3.600; Timothy McLean, Kalamazoo, 3.600; Timothy Jaenecke, Alfred, 3.590; Steve Ruiter, Calvin, 3.590; John Jewell, Alfred, 3.530; Patrick Smith, St. Thomas, 3.530; Robert Schoenlein, MIT, 3.500; Michael Mazzone, Wheaton (Illinois), 3.500; Kenneth Wallace, Kalamazoo, 3.500.

Division III women

Lynn Achterberg, Kalamazoo, 4.000; Laura Burkofski, Hamline, 3.870; Diane Sedlacek, George Williams, 3.860; Susan Korts, Hamline, 3.840; Suzanne Leiby, Albion, 3.740; Susan Brings, Hamline, 3.730; Katy Weitzel, St. Catherine, 3.710; Lisa Denero, Montclair State, 3.650; Betsy Barrett, Wooster, 3.630; Holli Hawker, Hamline, 3.620; Connie Kramer, Hope, 3.620; Laura Tolma, Calvin, 3.600; Shereen Barry, Bowdoin, 3.600.

Five new NCAA films available

Five new programs are available through the NCAA Library of Films, including the first women's gymnastics film and the 1984 women's basketball highlights.

The new women's gymnastics show, "Gymnastics, College and You," covers gymnastics skills, routine composition, judge's analysis of routines and the use of sports psychology in gymnastics. The film also highlights challenges of the sport and encourages teen-age gymnasts to continue training and competing through college. The program includes commentary from top collegiate gymnasts, coaches and internationally rated judges.

"Trojan Power," the 1984 women's basketball highlights film, spotlights the University of Southern California's Division I championship team and the women's final-four competition between the Lady Trojans, Tennessee, Louisiana Tech and Cheney.

Other new films in the NCAA

Houston wins

Houston won its ninth consecutive Southwest Conference fall golf championship earlier this month with a 54-hole total of 702.

Arkansas placed second with 709 in the championship played at Ridglea Country Club in Fort Worth, Texas.

Houston's victory was its 11th in 13 years. The Cougars also won last spring's championship.

The first 18 holes were best-ball competition, followed by alternate-shot competition on the second day and individual-stroke play on the final 18 holes.

Individually, Houston's Steve Elkington and Billy Ray Brown won the tournament's alternate-score competition with a round of 65. They also won stroke play with a combined round of 140 and were one of four teams to tie for the best-ball competition with 64.

Each team in the tournament consisted of six players who were divided into pairs.

Trailing Houston and Arkansas were Texas (725), Southern Methodist (731), Texas A&M (733), Rice (740), Texas Christian (741), Texas Tech (746) and Baylor (747).

library are "Georgetown Pressure," the 1984 men's basketball highlights; "One for the Record," the highlights of the 1984 College World Series, and "The Elusive Goal," the 1984 college football preview.

The new men's basketball film highlights Final Four competition in Seattle and focuses on the pressure attack of John Thompson's Georgetown Hoyas. "One for the Record" features final competition between Cal State Fullerton, Texas, Oklahoma State and Arizona State in the 1984 College World Series.

This year's football preview in-

cludes 1983 game footage of many top-ranked players and commentary from college coaches.

The films are each 20 minutes in length. All new titles are available on VHS and three-quarter-inch cassette. The men's and women's basketball highlights also are available on 16mm film. All films in the NCAA Library of Films rent for \$50 per week. The 16mm cassettes sell for \$125 and VHS cassettes for \$75.

Anyone interested in purchasing or renting a film should contact Cathy K. Bennett at the NCAA national office.

Basketball experiments approved

Three additional conferences have been granted experimentation rights by the NCAA Men's Basketball Rules Committee for the 1984-85 season.

In addition to the 23 conferences listed in the August 29 issue of The NCAA News, the Midwestern City Conference, Missouri Valley Conference and Central Intercollegiate Athletic Association have been granted experimentation rights. All three groups will use the 45-second shot

clock left on the entire game with no lack-of-action counts.

The University of Notre Dame will not experiment with the 45-second shot clock, as was reported in the August 29 issue. The other Midwest independents listed in that issue — University of Dayton, DePaul University and Marquette University — will use the shot clock this season.

Information on how to conduct the experiments will be carried in a future issue of The NCAA News.

Computerize your athletics processing with The Athletics System from Paciolan Systems.



Mike Alderson (Washington) and Mike Moss (California) enjoy an opportunity to compare notes on their budget projections.

Join the growing family of users of The Athletics System. PSI has successful installations and satisfied customers all across the United States, from Seattle to Miami, from Honolulu to Boston.

Whether you automate your entire department or only one function, PSI can customize a hardware and software configuration to meet your exact needs.

Choose from packages for:

- Ticketing
- Recruiting
- Summer Camp
- Athlete Training
- Inventory
- Purchasing
- Payroll
- Support Group
- Sports Information
- Academic Eligibility
- Football Game Analysis
- General Ledger/Budgeting
- Accounts Payable
- Accounts Receivable

Paciolan Systems, Inc.

10349 Los Alamitos Boulevard, Los Alamitos, California 90720
(213) 493-5528

The NCAA News

NCAA Record

CHIEF EXECUTIVE OFFICERS

MICHAEL J. ADANTI, vice-president of Southern Connecticut State, named acting president, replacing **FRANK HARRISON**, who resigned. . . . **DAVID DAVENPORT**, executive vice-president of Pepperdine, named president, effective April 16, 1985. He will replace **HOWARD A. WHITE**, who announced his retirement. . . . **D.J. GUZZETTA**, president of Akron, retired. He is being replaced by **WILLIAM V. MUSE**, vice-chancellor for academic programs and planning for the Texas A&M system. . . . **RICHARD BUTWELL**, vice-president for academic affairs at South Dakota, named president of Cal State Dominguez Hills. . . . **BRAGE GOLDING**, former president of Kent State, named interim president of Metropolitan State (Colorado).

DIRECTORS OF ATHLETICS

KIRKLAND HALL, head men's basketball coach, named interim AD at Maryland-Eastern Shore. . . . **ROBERT A. ANNUNZIATA**, a member of the staff at Manhattan, selected at Mount St. Vincent. . . . **GORDON K. LARSON**, AD at Akron the past 14 years and the school's winningest football coach in his 12 seasons, has announced his retirement at the end of the academic year.

ASSISTANT DIRECTORS OF ATHLETICS

DARCY LEBEAU, a former assistant AD at Temple, appointed at Dartmouth. She was captain of the women's basketball team at Princeton and participated in softball. She holds a master's degree in sports administration from Temple.

PRIMARY WOMAN ADMINISTRATOR

RENEE GOLDHIRSH selected at Brooklyn, where she also will hold the title of assistant athletics director.

COACHES

Baseball — **KARL STEFFEN**, an assistant at



Athletics director Gordon Larson has announced his retirement at Akron



Rose Price is the new women's cross country and track coach at North Central



Bob Bayliss has been selected men's tennis coach at MIT

Ithaca, where he played as an undergraduate, named at Rensselaer. . . . **JOE UHLS** has announced his retirement at Southeast Missouri State, where he has coached for 35 years. As head baseball coach for 25 years, his record is 373-256-5. He will continue to teach and assist with the baseball program. . . . **ANDY CHOPP**, an assistant at Grand Valley State, named head coach. Chopp played his senior season at the school. . . . **HOWIE BURNS** selected at Westfield State, after a 23-year career as a high school coach.

Baseball assistants — **AL RESTAINO JR.** selected at Rutgers-Newark. . . . **GARY SNOW** named at Bellarmine. He has been an assistant at Louisville the past eight years. . . . **BOB BRONTSEMA** selected at California-Santa Barbara, where he was a graduate assistant last year. . . . **BOB LOWDEN** selected at Ball State. He played at Miami (Ohio), where he was a graduate assistant last season.

Men's basketball — **HOWIE EVANS** selected at Idaho State. He formerly was on the **DRANGMEISTER** appointed at Southern Colorado. He had a 225-118 record for 13 years as head coach at Western New Mexico. . . . **FRANK SULLIVAN**, an assistant at Seton Hall, selected at Bentley.

Men's basketball assistants — **BILL EVANS** selected at Idaho State. He formerly was on the Southern Utah State staff. . . . **BILL "ROCKY" MOORE** named at Cal State Dominguez Hills. He has been a part-time assistant at Southern California. . . . **RALPH MOORE** appointed at South-eastern Mississippi. Moore has been a high school coach the past two seasons in Jackson, where his teams were 54-18. He is a Delta State graduate.

Women's basketball — **BRUCE CASAGRANDE** named interim head coach at Denver. He is the men's lacrosse coach at the school. Casagrande has several years' experience as a high school coach.

Women's basketball assistants — **PERRY RAINES** named at Marquette. . . . **SUE COLLINS** selected at North Dakota State, where she also will be women's softball coach. She is a graduate of Western Illinois and holds a master's degree from Southern Illinois. . . . **JERRY DON LUMPKINS** named a graduate assistant at Alabama. He has been on a high school staff the past several years. . . . **CHARLIE MAIHOS** selected at Salem State. He has been coaching at a Massachusetts high school. . . . **DANIEL DURKIN**, who has been establishing basketball programs in Northern Ireland the past four years, appointed at New Mexico State.

Men's cross country — **JERRY RUSHTON** appointed at Ball State, where he has been an assistant the past three seasons. . . . **JOHN FORSTER** named at Westfield State. He was captain of the cross country and track teams at Brandeis in the late 1970s.

Men's cross country assistants — **GEORGE SARGANT** appointed at Wheaton (Massachusetts). . . . **BROTHER JEROME BENWAY** appointed to assist with the men's and women's programs at La Salle.

Women's cross country — **SUE PARKS** selected at Michigan. A graduate of Eastern Michigan, Parks has been a track competitor for 16 years and has been coaching at Ann Arbor high schools. . . . **ROSE PRICE** named at North Central, where she also will serve as head track coach and coordinator of women's athletics. She has been on the Wheaton (Illinois) staff since 1978.

Fencing assistant — **BOB HUPP** selected at MIT to assist the men's and women's programs.

Field hockey — **SUZANNE TOUGAS** hired at Rhode Island, where she also will be women's softball coach. A graduate of Springfield, she was a field hockey assistant at Tufts in 1983 and head softball coach at Boston College last season. . . . **GAIL RITZERT** selected at Long Island.

Field hockey assistants — **DONNA LEE**, an all-America at Iowa in 1983, named at Wheaton (Massachusetts). . . . **ANN GRIM** selected at Rhode Island. She was an all-America at Lock Haven in 1984.

Football — **CHARLEY PELL** released at Florida, after compiling a 33-26-3 record, including a 1-1-1 performance this season. Assistant **GALEN HALL** named interim head coach. Hall was offensive coordinator at Oklahoma for 11 years before joining the Florida staff this summer. . . . **BOB MORGAN** released at St. Peter's, which suspended its program for the rest of the season.

Women's gymnastics — **CARLA SCUZZARELLA** selected at Salem State after a successful high school coaching career. She was women's gymnastics captain at Salem State, where she graduated in 1980. . . . **PETE SEDLAK** selected at Southern Colorado. He will continue to coach at a Pueblo high school. . . . **DANA KEMPTHORN** named at Michigan, where she competed in 1978-79. She was an assistant at Ohio State before going to Michigan. . . . **ABIGAIL MASON** appointed at MIT.

Women's gymnastics assistants — **KATHY McMINN** and **HUBERT ETCHISON** named at Georgia, where both were student-athletes.

Men's ice hockey — **JIM STEWART**, an all-America goaltender at Holy Cross, selected at Rensselaer. He was goalie coach at New Hampshire last season.

Lacrosse assistant — **DAN CISNEROS** named at Denver. He was a Division III all-American in 1983 and 1984 at Bowdoin.

Men's soccer assistants — **NORRIS GIBSON** named at Wheaton (Massachusetts). . . . **GABE GOMEZ**, former coach at Tufts, selected at Curry.

Women's soccer — **ALVARO DURAN**, a native of Chile and four-year member of the Northeast Missouri State men's squad, selected to

head the women's team in its inaugural season. . . . **LIZ BELYEA** named at Rhode Island. From 1981 to 1983, she was head coach at California-Santa Cruz.

Women's soccer assistant — **ROBERT MAHANY**, a former Hartwick player, selected at Curry.

Women's softball — **SUZANNE TOUGAS** named at Rhode Island (see field hockey). . . . **RICK GAMEZ** appointed at New Mexico State, where he was a part-time assistant last season. He is a UTEP graduate. . . . **SUE COLLINS** selected at North Dakota State (see women's basketball assistants). . . . **ROSEMARY HOLLOWAY** named at Northeast Louisiana, where she also will head the women's volleyball program. She was a graduate assistant on the staff last year. From 1978 to 1983, she coached at a community college in Kansas.

Men's swimming — **RICHARD DRAPER**, an assistant at Iowa, selected to head the men's and women's programs at Bowling Green State. . . . **BRIAN IPPOLITO** appointed head men's and women's coach at New Mexico State. He previously was an assistant at Springfield.

Men's swimming assistant — **JAY ETTL** named at Ball State, where he was a three-year letter winner in the early 1970s.

Women's swimming assistant — **MARGO K. MAHONEY**, formerly an assistant with swim clubs in New England, named a graduate assistant at Alabama.

Men's tennis — **BOB BAYLISS** selected at MIT. He was head tennis coach at Navy for the past 15 years, compiling a 248-80 record. . . . **KENNETH N. BIRKETT JR.**, a professional at a racquet club in Pennsylvania, appointed at Franklin and Marshall, replacing **GLENN MILLER**, who is retiring after 25 years. Birkett was the No. 1 player at William and Mary for three years in the late 1960s.

Men's tennis assistants — **DAN WEBER** selected at Trinity (Texas), where he played in the early 1980s. He has been a country-club professional the past year. . . . **CARRIE BOND** and **ANATOLIO GONZALEZ** appointed at New Mexico State, where both played as undergraduates. . . . **ROB ZIMMER**, a teaching professional in Massachusetts, selected at Wheaton (Massachusetts).

Women's tennis — **MARY NYHOLM**, a Utah graduate and former professional at a Dallas racquet club, appointed at Houston. For the past five years, she has coached at Northeast Louisiana and was named Southland Conference coach of the year in 1984. . . . **ELIZABETH RITT** appointed at Michigan. She is a former Wisconsin assistant and played for the Badgers from 1979 to 1982. . . . **MAUREEN GORMAN**, a recent Widener graduate, selected at Ursinus, where she also will be assistant trainer.

Women's tennis assistants — **HYACINTH A. YORKE** named at Haverford. A graduate of Temple, she was the team's most valuable player in 1982 and 1983. . . . **KATE RUGEN** named at Rhode Island. She was the top player and cocaptain at Dartmouth, where she graduated in 1983.

Men's track and field — **RICHARD K. LEE**, an assistant at Iowa State since 1979, named at Wartburg, where he also will be admissions counselor. He also coached at South Dakota State.

Women's track and field — **ROSE PRICE** appointed at North Central (see women's cross country).

Women's track and field assistant — **RUSSELL A. VINCENT** hired at Alabama. Vincent was a two-time all-America in the shot put at Washington in the late 1970s.

Women's volleyball — **LAURIE LOKASH** selected at Slippery Rock. . . . **LAURIE HOLDEN** named at Texas-San Antonio. She is a former junior college all-America and has been head coach of the Alamo Volleyball Association. . . . **STEVE JARVIS** appointed at Westfield State, where he is men's volleyball coach.

Women's volleyball assistant — **ROBIN DWYER**, a former U.S. Volleyball Association player, selected at Wheaton (Massachusetts).

Wrestling — **DAN JONES** resigned at Marquette. **FRED RIDEOUT** named interim coach. . . . **JACK GEBAUER** resigned at Oakland.

STAFF

Academic coordinator — **RUFUS DAVIS** selected to the new position at CCNY. He has been a counselor in the college's department of special programs for the past 12 years.

Promotion — **RON RITZ** resigned at Iona. . . . **JOHN NITARDY**, former assistant soccer coach at South Carolina, named at South Alabama. Nitardy has a master's degree in sports administration from Ohio.

Sports information directors — **STEPHEN R. MCCLURE** appointed at Barry, which is starting an intercollegiate athletics program this year. Previously, McClure was SID at Cincinnati after graduating from Ball State. . . . **JOSEPH QUINLAN JR.** hired at Loyola (Maryland). He has a master's degree in sports administration from Ohio and was an assistant SID at St. Bonaventure. . . . **JAN L. MILLER** named women's SID at Alabama. She was a graduate assistant in women's sports at Tennessee while earning a master's degree. She replaces **GAY SIEVERS**, who resigned to join the communications faculty at the institution.

Sports information assistants — **DON HUDSON**, a sportswriter for two Louisiana newspapers, selected at Northeast Louisiana, where he will concentrate on women's athletics. He replaces **MIKE ALBERTSON**, who joined the school's journalism faculty. . . . **DONALD KOJICH**, who has worked for the Chicago Blitz of the United States Football League, appointed at Eastern Illinois. He is a Purdue graduate. . . . **CARLA STEPHENS** named at Memphis State.

She is a 1982 graduate of Oral Roberts.

Strength coach — **JOHN WELDWAY**, formerly on the Penn State staff, named at Dartmouth.

Trainer — **GARY RIZZA** selected at MIT, where he served an internship last year.

NOTABLES

TOM STARR, who directed the Sun Bowl and related events for five years, appointed executive director of the Freedom Bowl. The first Freedom Bowl will be played in Anaheim, California, December 26.

DEATH

HOMER E. WOODLING, the only athletics director in the history of Penn College, which later became Cleveland State University, died September 14. He was 83. He retired from Cleveland State in 1966. The institution named its main gymnasium after him when it was completed in 1974.

POLLS

Division I-AA Football

The top 20 teams in NCAA Division I-AA football through games of September 15, with season records in parentheses and points.

1. Furman (3-0)	80
2. McNeese State (3-0)	73
3. Indiana State (2-0)	71
4. Northeast Louisiana (3-0)	63
5. Holy Cross (1-0)	56
6. Murray State (2-0)	55
7. Boston University (2-0)	46
8. William and Mary (2-0)	45
9. Delaware State (2-0)	42
10. Tennessee State (3-0)	41
11. Marshall (3-0)	39
12. Northern Arizona (3-0)	38
13. Alcorn State (2-0)	37
14. Illinois State (2-1)	31
15. East Tennessee State (2-0)	20
16. Lehigh (2-0)	20
17. Arkansas State (2-1)	18
18. Southwest Texas State (2-0)	16
19. Mississippi Valley State (2-0)	16
20. New Hampshire (2-0)	12

Division II Football

The top 10 teams in NCAA Division II football through games of September 15, with season records in parentheses and points.

1. Troy State (2-0)	57
2. Central Ohio (3-0)	53
3. Nebraska-Omaha (3-0)	53
4. Towson State (3-0)	53
5. Fort Valley State (2-0)	42
6. Angelo State (2-1)	39
7. North Dakota (3-0)	37
8. California-Davis (1-0)	30
9. Abilene Christian (1-1)	23
10. West Chester (2-0)	23

Division I Women's Volleyball

The top 20 teams in NCAA Division I women's volleyball through games of September 16, with season records in parentheses and points.

1. Pacific (6-0)	160
2. Stanford (1-0)	152
3. Southern California (7-1)	143
4. Hawaii (9-1)	131
5. UCLA (5-1)	129
6. Cal Poly-SLO (7-1)	118
7. Nebraska (5-0)	113
8. Texas (7-0)	106
9. San Diego State (11-1)	97
10. Illinois State (6-0)	88
11. Oregon (5-4)	73
12. Arizona (2-1)	63
13. Purdue (7-3)	61
14. Colorado State (5-0)	46
15. Northwestern (10-3)	38
16. Arizona State (3-1)	34
17. Kentucky (5-1)	29
18. Penn State (3-1)	25
19. Brigham Young (6-5)	17
20. Pepperdine (9-2)	16

Division II Women's Volleyball

The top 10 teams in NCAA Division II women's volleyball through games of September 16, with season records in parentheses and points.

1. Cal State Northridge (8-3)	80
2. Portland State (2-2)	70
3. Cal State Sacramento (5-2)	56
4. Ferris State (8-2)	54
5. California-Riverside (3-4)	48
6. St. Cloud State (8-0)	43
7. Northern Colorado (6-1)	24
8. Wright State (7-1)	24
9. Chapman (3-1)	16
10. North Dakota State (13-1)	16

Men's Water Polo

The top 20 teams in NCAA men's water polo through games of September 16 as ranked by the American Water Polo Coaches Association, with season records in parentheses and points.

1. California-Irvine (4-1-1)	100
2. Pepperdine (7-0-2)	95
3. California (5-1-1)	93
4. Stanford (6-1)	88
5. Southern California (6-3)	83
6. UCLA (5-3-1)	79
7. Fresno State (3-4-1)	71
8. Brown (0-0)	69
9. Long Beach State (4-4)	62
10. Loyola (Illinois) (5-4)	61
11. Pacific (0-0-1)	60
12. California-Santa Barbara (1-1)	54
13. Air Force (1-3)	52
14. UC Santa Diego (3-3-1)	51
15. Navy (5-0)	50
16. California-Davis (2-4-1)	49
17. Bucknell (0-0)	39
18. Slippery Rock (0-0)	38
19. Richmond (0-0)	35
20. Iona (4-0)	29

Briefly in the News

The football team at the nation's oldest land-grant institution, the **University of Georgia**, is sporting commemorative patches to celebrate the 200th anniversary of the school's founding. The school was founded in 1785. . . . **Lawrence A. Wien Stadium** was dedicated September 22 at **Columbia University** in the Lions' season opener against **Harvard University**. Wien Stadium replaces the school's 60-year-old wooden stadium. The new 10,500-seat structure, built on the site of the east stands of the old stadium, includes an alumni lounge, a two-level press box and concession areas. . . . The Greater Houston Bowl Association, sponsor of the Bluebonnet Bowl football game, has donated \$25,000 to the metropolitan chapter of the March of Dimes Birth Defects Foundation. The presentation was made by Bruce Conway, president of the 1983 Bluebonnet Bowl and director of public affairs for Tenneco Oil Company.

The Eastern Association of Physical Education College Women has scheduled its annual conference October 26-28 at the Quality Inn conference center in Chicopee, Massachusetts. The conference theme is "Is the Future Ours?" . . . **John Waldorf**, captain of the 1936 **University of Missouri, Columbia**, football team, has been named the first game official to be chosen for membership in the **National Football Foundation College Football Hall of Fame**. Waldorf, who died in 1982, was chair of the NCAA Football Rules Committee from 1969 to 1975. He supervised officials in the **Big Eight Conference** for 12 years. . . . Forty-five of 92 women athletes at **Montana State University** achieved a grade-point average of 3.000 or better for the spring quarter. Eight women had 4.000 averages. The GPA for the department was 2.930 compared to a 2.700 for the entire student body.

The **University of Maine, Orono**, will continue to sponsor men's golf as a varsity sport in 1984-85. Women's volleyball and rifle have been discontinued. It was announced earlier that golf would be dropped. . . . **Nazareth College (New York)** will add men's lacrosse to its athletics program in the spring of 1986, giving the school 14 intercollegiate athletics teams. . . . Outdoor track and cross country have been added to the women's program at the **University of South Alabama** for a total of five women's sports.

Executive Regulations

EDITOR'S NOTE: The Executive Committee has adopted executive regulations consistent with the provisions of Constitution 6-3. Executive regulations may be amended at any annual or special Convention by a majority vote of the delegates present and voting in accordance with the procedures set forth in Bylaws 13-1, 13-2 and 13-3. Publication in this column of executive regulations adopted or revised by the Executive Committee constitutes official notice to the membership.

The Executive Committee and Administrative Committee have approved a regulation that was proposed by the Special Committee to Review Championships Policies. This regulation will be inserted in the NCAA Manual as the new ER 1-2-(b). The current ER 1-2-(b), page 163, becomes 1-2-(c), and the remainder of Section 2 will be relettered accordingly. The new Executive Regulation 1-2-(b) is as follows:

(b) The size of all NCAA championship fields shall be established by the Executive Committee to provide for efficient management of the event, adequate NCAA championship opportunities relative to the nationwide quality of competition, and sound economic administration of the financial resources of the Association and its championships. In doing so, the Executive Committee shall apply guidelines of a 1:8 participation ratio for team championships and a 1:16 participation ratio for individual-team championships. It also may consider the following factors: size of each event relative to other NCAA championships, unusual factors relative to the quality of competition in the particular sport, net revenues or deficits generated by the event and the number of participants necessary to conduct bona-fide national-championship competition.

The NCAA News



The Market

Readers of The NCAA News are invited to use The Market to locate candidates for positions open at their institutions, to advertise open dates in their playing schedules or for other appropriate purposes.

Rates are 45 cents per word for general classified advertising (agate type) and \$22.60 per column inch for display classified advertising. Orders and copy are due by noon five days prior to the date of publication for general classified space and by noon seven days prior to the date of publication for display classified advertising. Orders and copy will be accepted by telephone.

For more information or to place an ad, call 913/384-3220 or write NCAA Publishing, P.O. Box 1906, Mission, Kansas 66201.

Positions Available

Athletics Director

Athletic Director. NCAA Division III women's college seeks person with organizational, managerial and recruiting skills to oversee four-sport program and to develop men's program during transition to coeducation. Coaching responsibilities in at least one sport, preferably basketball. Salary negotiable, depending on experience. Position available immediately. Submit resume and three references prior to October 19 to Harold Gray, Vice President for Public Affairs, Keuka College, Keuka Park, New York 14478. Equal Opportunity/Affirmative Action Employer.

San Jose State University, Director of Men's Athletics. Under the general supervision of the Academic Vice-President, the Director of Men's Athletics is responsible for the direct administration and supervision of all aspects of instruction and competition in men's athletics. The University is seeking applicants with experience in athletic administration in a large institution, preferably with NCAA Division I-A status, who have a good working knowledge of, and commitment to, NCAA rules and regulations. Applicants must possess strong fiscal management skills, excellent oral and written communication skills and have well-established relationships with athletic administrators throughout the NCAA. Must be able to communicate effectively with, and represent the athletic program to, diverse individuals and groups, such as community support groups, university groups, and staff. Personal integrity and an understanding of the place of athletics within an academic context are a must. Should possess strong skills in personnel and facilities management. Salary is commensurate with experience. Application deadline is November 1, 1984. Send letters of application and complete resumes, including references, to Dr. Lou Eastman, Office of the Academic Vice President, San Jose State University, 1 Washington Square, San Jose, California 95192, 408-277-2177. An Equal Opportunity/Affirmative Action Employer.

Sports Information

Sports Information Director/Head Coach. Manhattanville College, Purchase, New York. Manhattanville College, an independent, co-educational, liberal arts college located 25 miles north of New York City in suburban Westchester County, invites applications for the dual position of Sports Information Director and Head Softball Coach (coaching assignments in lieu of softball also will be considered; coaching experience at the high school or college level is desirable). Manhattanville College is a Division III member of the NCAA, ECAC, and New York State AIAW, offering 14 intercollegiate sports for men and women. Duties for the 12-month sports information position include the organization and supervision of athletic department communications and promotions, and a part-time (20% assignment) function with the department of communications. Responsibilities include: The design, writing, editing of brochures, press releases, and programs; media relations; maintenance of all statistics, sports photography; organization and supervision of student staff. Qualifications: Bachelor's degree in journalism, communications, English or related field.

Experience in college sports information office or college public relations desired. Candidates must possess strong communications and writing skills. Starting date: January 3, 1985. Salary: Commensurate with experience. Applicants should send letter of application, resume and three letters of reference by October 15, 1984, to: Dr. Tom Weingartner, Director of Athletics, Manhattanville College, Purchase, New York 10577, 914/694-2200. Manhattanville College is an EO/AA Employer.

Basketball

Head Women's Basketball Coach. Part-time interim position running from October 15 through March 15. Position includes all the responsibilities of head coach, including hiring part-time assistant. Practice hours generally run from 3 to 6 p.m., or 6 to 9 p.m.; 20-game schedule usually weeknights and weekends. Forward resumes to Rocco J. Carzo, Director of Athletics, Tufts University, Medford, MA 02155.

St. Francis College (PA): Assistant Men's Basketball Coach. Full-time. Duties: Assist the head coach in all facets of a Division I basketball program including coaching, recruiting, scouting and other duties as assigned by the head coach. Qualifications: B.S. required, master's preferred, plus successful coaching experience. Send resume and three letters of recommendation to: Tom Iannaccone, Athletic Director, St. Francis College, Loretto, Pennsylvania 15940. St. Francis College is an equal opportunity employer.

Swimming

Head Men's Swimming Coach. Southern Illinois University at Carbondale. SIUC is seeking applications for the full-time position of head swimming coach. SIUC is an NCAA Division I institution and a member of the Missouri Valley Conference. Responsibilities: Responsible for the administration, supervision, and management of the college's men's swimming program within the rules and regulations of the MVC and the NCAA. Duties: On deck coaching, budget management, scheduling, recruiting, academic entrance/retention matters, conducting swimming clinics, and promoting positive public relations on and off campus. Salary: Commensurate with candidate's skill and experience. Qualifications: Coaching experience with demonstrated record of success at college level preferred. BS required. Application deadline is October 10, 1984. Send application, supporting resume, and transcripts to: Lewis B. Hartzog, Athletic Director, Southern Illinois University, Carbondale, Illinois 62901. SIUC is an Equal Opportunity/Affirmative Action Employer.

Tennis

Head Tennis Coach for Women. University of San Diego. Independent, Catholic university, NCAA Division I. Responsibility for directing program/limited teaching. Coaching and teaching experience on college/club/professional level preferred. Salary: \$15,500. Resume, three letters of recommendation and references due October 12. Send to: Rev. Patrick Cahill, C.S.V., Athletic Director, University of San Diego, San Diego, CA 92110.

Track and Field

Assistant Track Coach, Men and Women. North Carolina State University.

Full-time position. Expertise in coaching sprint and field events; additional administrative duties. Send letter of application and resume to Rolfe Geiger, North Carolina State University, Box 8501, Raleigh, North Carolina 27695-8501. Equal opportunity/affirmative action employer.

Wrestling

Assistant Wrestling Coach. The University of Pittsburgh is accepting applications for the position of assistant wrestling coach. Bachelor's degree mandatory. Interested in maintaining a quality program, essential responsibilities are coaching, recruiting, academic advisement, and performing all other duties as assigned by the head coach. Send resume to Rande Stottmeyer, Wrestling Coach, University of Pittsburgh, P.O. Box 7436, Pittsburgh, Pennsylvania 15213. An AA/EOE.

Miscellaneous

Project/Program Managers: International Assignments. American International Educational Services, Inc., a subsidiary of the United States Sports Academy, is a growth-oriented, global leader in the operation of sport training programs. We offer challenge and opportunity to qualified take-charge administrators with proven managerial expertise in sport, recreation, and physical education programs. You will join the elite, innovative team based in the Middle East. Excellent organizational, communication, and interpersonal skills required. Attractive benefits package includes tax-free compensation, overseas air transportation, vacation, housing and medical insurance. Send resume, date of availability, salary requirements, academic transcripts, and 3 letters of recommendation to: Director of Recruitment, AIERS, Inc., P.O. Box 8650, Dept. 460-432, Mobile, AL 36608. (AIERS - subsidiary of USSA.) EOE/AA.

Director of Educational Foundation. The United States Sports Academy — America's college of sport science — is a rapidly expanding, global leader in graduate sport education, service and research. The academy offers an exceptional opportunity with high visibility to a self-starter possessing administrative, fund-raising and marketing abilities. You will report directly to the CEO, and should have 5 or more years of experience in development, supervision and coordination of innovative programs for an educational foundation. Position profile: (1) Excellent conceptual, budgetary, and strategic planning capabilities; (2) Design and implementation of fund-raising programs

for a preventive medicine clinic and a national archive of sport art and literature; (3) Management of grant proposals with all agencies, private and public; (4) Demonstrated communications and interpersonal skills, including public speaking, promotion and marketing presentations. Degree candidates also must be capable of teaching courses appropriate to their proven area of expertise. Computer literacy desirable. Competitive salary and incentives. Send resume, salary requirements, and three letters of recommendation, in confidence to: Director of Recruitment, AIERS, Inc., P.O. Box 8465, Dept. 460-682, Mobile, Alabama 36608. EOE/AA.

Physical Education

Physical Education and Athletics: Physical education/health science instructor (5/8) and head men's baseball coach (3/8). Instructor-assistant professor, regular appointment, rank and salary commensurate with education and experience, beginning date January 14, 1985. Teach in one or both sports medicine/athletic training curriculum and/or sports administration/sports management; additional teaching possible in required physical education activity program. Candidates must have substantial graduate course work in appropriate, professional teaching areas as described. Coach men's baseball, MIAA and NCAA Division II, including recruitment, budget and scheduling for teams. Minimum of three years' coaching and teaching experience at college level required. Preference will be given to candidates with sports medicine/athletic training background and successful college coaching. Send letter of application, resume, official transcripts of all higher education, and names of five references by October 10, 1984, to: Dr. Dorothy Allen, Chairperson, Department of Health, Physical Education and Recreation, Southeast Missouri State University, Cape Girardeau, Missouri 63701, (314) 651-2100. Southeast Missouri State University is an equal opportunity/M-F/affirmative action employer.

Head Swim Coach/Instructor. Responsible for planning, coaching and promoting the men's and women's swimming teams; supervision and management of both indoor and outdoor pools; teaching aquatic courses in both the Physical Education and Recreation programs. Requires Master's degree with either the undergraduate or graduate degree in Physical Education. Must have successful experience in aquatic facility management and evidence of highly successful swimming coaching, preferably at the collegiate level. Twelve-month, tenure track appointment with the rank of Instructor, available immediately. Send letter of application, resume and three letters of recommendation by October 15, 1984, to: Edgar Johnson, Athletic Director,

Delaware Field House, UNIVERSITY OF DELAWARE, Newark, DE 19716. The University of Delaware is an Equal Opportunity Employer which encourages applications from qualified minority groups and women.

Lecturer/Assistant Coach. Lecturer, Physical Education and Assistant Coach, Women's Basketball and either Women's Softball or Lacrosse. Will also include teaching a variety of skills activities in a Lifetime Sports program. Requires a master's degree. The undergraduate or graduate degree must be in physical education. Must have a successful background in playing and/or coaching women's basketball as well as women's softball or lacrosse, and the ability to recruit successfully. College or university experience preferred. Nine-month contract, available immediately. Send letter of application, resume, placement credentials and letters of recommendation supporting qualifications by October 15, 1984, to: Mary Ann Hitchens, Assistant Director of Athletics, Delaware Field House, UNIVERSITY OF DELAWARE, Newark, DE 19716. The University of Delaware is an Equal Opportunity Employer which encourages applications from qualified minority groups and women.

Health and Physical Education. University of Wisconsin-Platteville. Assistant or Associate Professor of Health and Physical Education, tenure-track, or Lecturer/Academic Staff, and Associate Athletic Director for Women's Programs. QUALIFICATIONS: Doctorate in Health or Physical Education preferred. Experience preferred in teaching health, administering women's athletics, and coaching women's volleyball or basketball. SALARY: \$23,500-\$29,500 commensurate with degree and experience. APPOINTMENT: August 1985. APPLICATION DEADLINE: December 15, 1984. Send application and vita to: Dr. Vernon Vradenburg, Chairman, Department of Health and Physical Education, University of Wisconsin-Platteville, Platteville, WI 53818. University of Wisconsin-Platteville is an Equal Opportunity/Affirmative Action Employer.

Open Dates

Women's Softball. Eastern Illinois needs one Division I or II team for tournament April 20-21, 1985. Call Deanna D'Abbraccio at 217/581-6008.

Women's Basketball, Division III. Emory and Henry College needs a team to complete a double-header weekend, December 7-8, 1984. Contact Joyce Scruggs, 703/944-3121.

Men's Basketball. Virginia Union (Division II) interested in games against either Division I or Division II opponents. Willing to travel or will give good guarantee. Need five games for 1984-85 season. Contact Dave Robbins, 804/257-5790.

Basketball, Division III. Bethany College in West Virginia has the following open dates: January 11, 1986, and February 1, 1986. Please phone Jim Zalacca, 304/829-7441.

Football, Division III. Ohio Wesleyan is seeking home opponent September 7, 1985; away opponent September 6, 1985, and home opponent September 5, 1987. Contact Dick Gordin, Athletic Director, 614/369-4431, ext. 500.

Football: University of Missouri, Rolla, has the following open dates: September 28, 1985; November 16, 1985; September 27, 1986; November 15, 1986; September 26, 1987; October 3, 1987; September 24, 1988; October 1, 1988. Contact Billy A. Key, Director of Athletics, 314/341-4175.

Women's Basketball, Division I. Boston College, Chestnut Hill, Massachusetts, seeks a team to compete at Boston College on any of the following dates: December 8, 1984; December 28, 1984; December 29, 1984, or January 2, 1985. Contact Mary Miller Carson, 617/552-4528.

SPORTS MANAGEMENT

Robert Morris College

Robert Morris College in suburban Pittsburgh seeks an instructor or assistant professor to begin September 1985, tenure track, to teach undergraduate and graduate courses leading to bachelor's and master's degrees in business administration with sport management emphasis. Responsibilities may also include teaching sport skills classes and supervising interns. Preferred candidates will have an earned doctorate in business, sport management, or a related field and will have experience with accounting and computer applications in sports organizations. Salary and benefits competitive. Send curriculum vitae, transcripts, and three letters of recommendation by December 1 to: Professor Stephen Hardy, Department of Sport Management, Robert Morris College, Coraopolis, PA 15108.

ACADEMIC ADVISOR

Mississippi State University

Department of Intercollegiate Athletics

Mississippi State University, A Land Grant Institution in Starkville, Mississippi, is a comprehensive state university of 12,500 students. Teaching, research, and service programs exist in 10 colleges and schools that provide a wide range of educational opportunities at degree levels from bachelors to doctorates. The men's and women's intercollegiate athletic programs include football, basketball, baseball, volleyball, track, golf, tennis, and softball. Mississippi State University is a member of the Southeastern Conference and Division I-A of the NCAA.

Duties. Coordinate academic pursuits of student-athletes (admission, registration, progress). Operate tutoring program, study hall, and human development program. Manage an office; appoint and supervise personnel. Provide liaison to Admission Office, Records Office, Financial Aid Office, Student Affairs Office, and all academic units (including faculty). Ensure compliance with academic eligibility rules of the institution, SEC and NCAA. Operate chemical dependency education program. Conduct research. Maintain knowledge of SEC and NCAA rules and interpretations; advise coaches, student-athletes and other personnel on these.

Qualifications. Required: Master's degree in a discipline in arts and sciences or education, high school or college teaching or coaching or counseling experience, strong commitment to academic interests and values, good interpersonal skills with diverse groups (considered by sex, race, religion, age, etc.). Desired: Doctorate, experience in an NCAA Division I-A intercollegiate athletic, administrative experience.

General. The salary will be competitive and commensurate with qualifications.

Applications will be received until appointment is made. Position is available immediately. Applications should include a resume of education and prior professional experiences to show an unbroken time span and should include a letter that expresses a philosophy of the relationship of intercollegiate athletics and academics. Address applications to:

Dr. Charley Scott
Director of Athletics
Mississippi State University
P.O. Box 5327
Mississippi State, MS 39762

Mississippi State University is an Affirmative Action/Equal Opportunity Employer.



DIRECTOR OF ATHLETICS

Rhodes College, a selective college of liberal arts and sciences with an endowment per student among the top thirty colleges and universities in the U.S., is accepting applications for the position of Director of Athletics. The Director is responsible for administering NCAA Division III men's and women's athletics programs, physical education, intramurals, and all athletic facilities. Candidates should show evidence of proven administrative experience including budgeting and staff management. The ability to enthusiastically promote the athletic program within and outside the college community is essential. The candidate should be committed to the continuing development of an exciting athletic program benefiting all students. Applications should be received by October 5, 1984. Position available October 15, 1984. Send resume with references to: Dean of Students, Rhodes College, 2000 North Parkway, Memphis, Tennessee 38112. AA/EOE.

Executive Director Cowboy Joe Club University of Wyoming Assistant Athletic Director

Qualifications: Minimum qualifications include a bachelor's degree or equivalent experience with successful experience in fund-raising. Qualified applicants will show evidence of organizational ability; excellent verbal and written communications skills; planning, implementing and carrying out sound fund-raising activities; ability to relate and work effectively with a diversity of publics.

Responsibilities: Primary responsibility will be to secure external financial support for the Division I athletic program; considerable travel required. Additional responsibilities include administration of club budget, operation of club office and staff, coordination of fund-raising projects, public relations and assist athletic director with related projects.

Full-time, 12-month position. Salary commensurate with qualifications and experience. Insurance benefits above base salary. Send letter of application resume and letters to:

Search Committee, Assistant Athletic Director
University of Wyoming Athletic Department
Box 3414, University Station
Laramie, Wyoming 82071
Deadline: October 5, 1984

An affirmative action/equal opportunity employer.

LYNCHBURG COLLEGE Men's Varsity Lacrosse Coach and Coordinator of Varsity Wrestling

Responsibilities: (a) Instruction — Teach in the Physical Education required program, preferably fitness activities. Teach in the Physical Education professional program, Physiology of Exercise. Advise professional students in Physical Education and Recreation. (b) Coaching — Head coach of men's lacrosse, coach or coordinate varsity wrestling, direct a graduate assistant in each sport and recruit prospective scholar-athletes.

Qualifications: (a) Minimum Bachelor's degree, Master's or above preferred. (b) Experience and demonstrated competence in teaching and coaching.

Appointment: Non-tenured faculty position with starting date no later than January 1, 1985.

Salary: Depending upon education and experience.

Application Procedure: Letter of application will be accepted until October 15, 1984. Send complete application including the following: Resume, transcript(s) and three letters of reference to:

Aubrey Moon, Chairman, Department of Health, Physical Education and Recreation, Director of Intercollegiate Athletics
Lynchburg College
Lynchburg, Virginia 24501

Qualified candidates will be interviewed during the advertising period.

Lynchburg College is a private, senior, coeducational, non-sectarian liberal arts college, historically related to the Christian Church (Disciple of Christ). The college is a member of NCAA Division III and the Old Dominion Athletic Conference. Lynchburg College is an Equal Opportunity/Affirmative Action Employer.

75 NCAA

Continued from page 1

in championships events, and many more champions will be out to defend their 1983-84 crowns.

The complete list of dates and sites for the 1984-85 NCAA championships:

National Collegiate — Men's and Women's Rifle: Date and site to be determined.
Skiing: Bridger Bowl and Cross Cut Ranch, Bozeman, Montana (Montana State University host), March 6-9, 1985.

National Collegiate — Men's
Fencing: University of Notre Dame, Notre Dame, Indiana, March 19-20, 1985.
Gymnastics: University of Nebraska, Lincoln, Nebraska, April 12-13, 1985.
Volleyball: University of California, Los Angeles, California, May 3-4, 1985.
Water polo: Belmont Plaza Pool, Long Beach, California (University of California, Irvine, host), November 24-25, 1984.

Division I — Men's
Baseball: Rosenblatt Municipal Stadium, Omaha, Nebraska (Creighton University host), May 31-June 9, 1985.
Basketball: First and second rounds — East at Hartford Civic Center, Hartford, Connecticut (University of Connecticut host), March 14 and 16, 1985, and The Omni, Atlanta, Georgia (Metro Conference host), March 15 and 17, 1985; Southeast at the University of Notre Dame, Notre Dame, Indiana, March 14 and 16, 1985, and the University of Dayton, Dayton, Ohio, March 15 and 17, 1985; Midwest at Oral Roberts University, Tulsa, Oklahoma, March 14 and 16, 1985, and The Summit, Houston, Texas (University of Houston host), March 15 and 17, 1985; West at University of Utah, Salt Lake City, Utah, March 14 and 16, 1985, and University of New Mexico, Albuquerque, New Mexico, March 15 and 17, 1985; Regionals — East at Providence Civic Center, Providence, Rhode Island (Providence College host), March 21 and 23, 1985; Southeast at Birmingham-Jefferson Civic Center, Birmingham, Alabama (University of Alabama at Birmingham host), March 22 and 24, 1985; Midwest at Reunion Arena, Dallas, Texas (Southern Methodist University host), March 21 and 23, 1985; West at McNichols Sports Arena, Denver, Colorado (University of Colorado host), March 22 and

24, 1985; Finals — Rupp Arena, Lexington, Kentucky (University of Kentucky host), March 30 and April 1, 1985.

Cross country (common sites except Regions 1 and 2): Regionals (all November 10, 1984)—Regions 1 and 2 at Lehigh University, Bethlehem, Pennsylvania; Region 3 at Furman University, Greenville, South Carolina; Region 4 at University of Illinois, Champaign, Illinois; Region 5 at Southwest Missouri State University, Springfield, Missouri; Region 6 at University of Texas, Austin, Texas; Region 7 at Brigham Young University, Provo, Utah; Region 8 at University of Arizona, Tucson, Arizona; Finals (common site) — Pennsylvania State University, University Park, Pennsylvania, November 19, 1984.

Football (I-AA): First and second rounds — on-campus sites, November 24 and December 1, 1984; Semifinals — on-campus sites, December 8, 1984; Finals — The Citadel, Charleston, South Carolina, December 15, 1984.

Golf: Grenelefe Golf and Tennis Resort, Grenelefe, Florida (University of Florida host), May 22-25, 1985.

Ice hockey: First rounds—on-campus sites, March 15-16 or 16-17, 1985; Finals—Joe Louis Arena, Detroit, Michigan (Michigan State University host), March 28-30, 1985.

Lacrosse: First rounds — on-campus sites, May 15, 1985; Semifinals — on-campus sites, May 19, 1985; Finals — Brown University, Providence, Rhode Island, May 25, 1985.

Soccer: First rounds — on-campus sites, November 18, 1984; Second rounds — on-campus sites, November 25, 1984; Third rounds — on-campus sites, December 2, 1984; Semifinals — on-campus sites, December 9, 1984; Finals — The Kingdome, Seattle, Washington (University of Washington host), December 16, 1984.

Swimming and diving: Diving regionals (common sites, all March 15-16, 1985) — Districts 1 and 2 at Harvard University, Cambridge, Massachusetts; District 3 at University of Tennessee, Knoxville, Tennessee; District 4 at Ohio University, Athens, Ohio; Districts 5 and 6 at Texas Christian University, Fort Worth, Texas; Districts 7 and 8 at Brigham Young University, Provo, Utah; Finals—University of Texas, Austin, Texas, March 28-30, 1985.

Tennis: University of Georgia, Athens, Georgia, May 18-26, 1985.

Indoor track (common site): Carrier Dome,

Syracuse, New York (Syracuse University host), March 8-9, 1985.

Outdoor track (common site): University of Texas, Austin, Texas, May 27-June 1, 1985.

Wrestling: Regionals — to be determined, March 1-2, 1985. Finals — The Myriad, Oklahoma City, Oklahoma (University of Oklahoma and Oklahoma State University hosts), March 14-16, 1985.

Division II — Men's
Baseball: Patterson Stadium, Montgomery, Alabama (Troy State University host), May 25-29, 1985.

Basketball: Regionals — on-campus sites, March 7-9, 1985; Quarterfinals — on-campus sites, March 15 or 16, 1985; Finals (common site) — Springfield Civic Center, Springfield, Massachusetts (American International College and Springfield College hosts), March 22-23, 1985.

Cross country (common site): Regionals (all November 3, 1984)—East at Indiana University of Pennsylvania, Indiana, Pennsylvania; South at Mississippi College, Clinton, Mississippi; Central at University of South Dakota, Vermillion, South Dakota; Great Lakes at Southern Illinois University, Edwardsville, Illinois; West at University of California, Riverside, California; Finals—Mississippi College, Clinton, Mississippi, November 17, 1984.

Football: First rounds — on-campus sites, November 24, 1984; Semifinals — on-campus sites, December 1, 1984; Finals — Palm Bowl, McAllen, Texas, December 8, 1984.

Golf: Waterwood Country Club, Huntsville, Texas (Sam Houston State University host), May 14-17, 1985.

Soccer: First and second rounds — on-campus sites, November 18 and 25, 1984; Semifinals — on-campus sites, December 2, 1984; Finals — on-campus site, December 8 or 9, 1984.

Swimming and diving: Date and site to be determined.

Tennis: California State University, Northridge, California, May 13-19, 1985.

Indoor track (common site): North Dakota State University, Fargo, North Dakota, March 16-17, 1985.

Outdoor track (common site): California State University, Los Angeles, California, May 20-25, 1985.

Wrestling: Regionals — to be determined, February 15-16, 1985. Finals — Wright State University, Dayton, Ohio, March 3-4, 1985.

Among college football coaches, Rockne's legacy still dominant

By Dick Kishpaugh

The famous motion picture on Knute Rockne indicated that his influence was still felt years after his death in the number of his associates who had become outstanding coaches.

Rockne was, indeed, the "Father of Coaches." Looking back exactly a half century to the 1934 college football season, you will find that at least 18 major college teams were coached by former Rockne players or by men who were closely associated with him under the Golden Dome. Never before or since has that peak of influence been duplicated by any one school or individual mentor.

Ironically, that peak was reached three years after Rockne himself had left the scene, the victim of a tragic 1931 airplane crash.

The list includes Rockne's teammate and close friend, Gus Dorais, who surely was influenced by Rock's dynamic approach to coaching. It also includes three men—Jim Phelan, Charlie Bachman and Jack Meagher—who played for the Irish while Rockne was an assistant coach and who called on him frequently for advice as they began their own coaching careers.

The remaining 14 were all solid products of the Rockne coaching era. In addition to this group, at least 25 other Irish graduates from that same era were serving as assistant coaches in that 1934 season—men such as Frank Leahy, Mal Edward, Rex Enright and Buck Shaw, who themselves became outstanding head coaches in later years.

The Irish list of 1934 includes three of the Four Horsemen—Jim Crowley, Harry Stuhldreher and Elmer Layden. (The fourth, Don Miller, was an assistant at Georgia Tech and Ohio State but left the coaching ranks prior to 1934 to practice law.) Also on the list are Noble Kizer and Edgar (Rip) Miller, who were seniors along with the Four Horsemen in the 1924 season;

Major head football coaches in 1934 who were Rockne associates, with year of graduation from Notre Dame in parentheses:

Jim Crowley (1925), Fordham; Eddie Anderson (1922), Holy Cross; Edgar (Rip) Miller (1925), Navy; Noble Kizer (1925), Purdue; Jim Phelan (1917), Washington; Edward (Slip) Madigan (1920), St. Mary's (California); Harry Stuhldreher (1925), Villanova; Maurice (Clipper) Smith (1921), Santa Clara; Frank Carideo (1931), Missouri; Gus Dorais (1914), Detroit; Charlie Bachman (1917), Michigan State; Elmer Layden (1925), Notre Dame; Jack Meagher (1917), Auburn; Frank Thomas (1923), Alabama; Harry Mehre (1922), Georgia; Chet Wynne (1922), Kentucky; Heartley (Hunk) Anderson (1922), North Carolina State; Jack Chevigny (1929), Texas.

thus, the Notre Dame graduating class of 1925 alone produced five of those outstanding 1934 head coaches.

Seven played at least one season with the immortal George Gipp, who died in December 1920. They were Eddie Anderson, Edward (Slip) Madigan, Maurice (Clipper) Smith, Frank Thomas, Harry Mehre, Chet Wynne and Heartley (Hunk) Anderson. Hunk Anderson was Gipp's teammate both in high school at Calumet, Michigan, and at Notre Dame.

Jack Chevigny, who was head coach at Texas in 1934, also figures in the Gipp story. Legends relate that it was Chevigny who startled Army players with his exclamation about winning one for the Gipper, as he crossed the goal line for the winning touchdown in the 1928 Irish-Army contest.

The final coach on the list, Frank Carideo, was head man at Missouri just three years after his playing days. Rockne had labeled Carideo as

one of the smartest students of football he had ever coached.

No other school has ever challenged that Irish domination of a half century ago. Miami (Ohio) labels itself as the "Cradle of Coaches," a legitimate claim but in a different context from the Rockne connection. Miami includes men who attended school elsewhere and then coached at the Ohio school en route to fame elsewhere in both the collegiate and professional ranks.

In a much earlier era, Yale was the outstanding producer of college coaches but never in such concentration as the Rockne list. Five of the first seven coaches at Navy and two of the first three at Army were sons of Eli Yale. Just before and after the turn of the century, there were Yale men at such widely scattered locations as Virginia, Sewanee, Carnegie Tech, Kansas State, Pittsburgh, Minnesota, Stanford, Texas, West Virginia and Ohio State. The Yale roster, of course, included some of the all-time greats, such as Henry Williams of Minnesota, California's Howard Jones and the immortal Amos Alonzo Stagg.

But Miami, Yale and all others finish far behind the dynamic Rockne, who, astoundingly enough, was only on the collegiate scene for 21 seasons. Today, it's easy to forget that he enrolled as an Irish freshman in the fall of 1910, spent four seasons as an assistant (1914-1917) and 13 as head coach (1918-1930), and died, still young by coaching standards, in the same month as his 43rd birthday.

The men from that era are gone from the coaching scene now, but the Rockne connection remains as a permanent footnote to gridiron history.

Kishpaugh, a resident of Parchment, Michigan, was the statistician and historian for 20 years for the Michigan Intercollegiate Athletic Association, and he is a member of the Football Writers Association of America.

Division III — Men's
Baseball: Marietta College, Marietta, Ohio, May 30-June 2, 1985.

Basketball: Regionals — on-campus sites, March 1-2, 1985; Semifinals — on-campus sites, March 9, 1985; Finals — Calvin College, Grand Rapids, Michigan, March 15-16, 1985.

Cross country (common site): Regionals (all November 10, 1984)—New England at Brandeis University, Waltham, Massachusetts; New York at Hamilton College, Clinton, New York; Mideast at Lebanon Valley College, Annville, Pennsylvania; Great Lakes at College of Wooster, Wooster, Ohio; Central at Wartburg College, Waverly, Iowa; Midwest at Augustana College, Rock Island, Illinois; Southeast/South at University of the South, Seawanee, Tennessee; West at Claremont-McKenna-Harvey Mudd-Scripps Colleges, Claremont, California; Finals—Ohio Wesleyan University, Delaware, Ohio, November 17, 1984.

Football: First rounds — on-campus sites, November 17, 1984; Semifinals — on-campus sites, November 24, 1984; Finals — Kings Island Ohio (Ohio Athletic Conference host), December 8, 1984.

Golf: University of Rochester, Rochester, New York, May 14-17, 1985.

Ice hockey: First rounds — on-campus sites, March 15-16 or 16-17, 1985; Finals — on-campus site, March 21-23, 1985.

Lacrosse: First rounds — on-campus sites, May 8, 1985; Semifinals — on-campus sites, May 12, 1985; Finals — on-campus site, May 18, 1985.

Soccer: First and second rounds — on-campus sites, November 9-11, 1984; Third rounds — on-campus sites, November 18, 1984; Semifinals — on-campus sites, November 25, 1984; Finals — on-campus site, December 1 or 2, 1984.

Swimming and diving: Emory University, Atlanta, Georgia, March 21-23, 1985.

Tennis: To be determined, May 13-19, 1985.

Indoor track (common site): Bates College, Lewiston, Maine, March 8-9, 1985.

Outdoor track (common site): Denison University, Granville, Ohio, May 20-25, 1985.

Wrestling: Regionals — to be determined, February 15-16, 1985; Finals — Augustana College, Rock Island, Illinois, March 1-2, 1985.

National Collegiate — Women's
Fencing: University of Notre Dame, Notre Dame, Indiana, March 21-23, 1985.

Golf: New Seabury, Cape Cod, Massachusetts (Amherst College host), May 22-25, 1985.

Lacrosse: First rounds — on-campus sites, May 8, 1985; Quarterfinals — on-campus sites, May 11, 1985; Finals — University of Pennsylvania, Philadelphia, Pennsylvania, May 18-19, 1985.

Soccer: First and second rounds — on-campus sites, November 4 and 11, 1984; Finals — University of North Carolina, Chapel Hill, North Carolina, November 17-18, 1984.

Division I — Women's

Basketball: First rounds — on-campus sites, March 14-17, 1985; Regionals — East at Old Dominion University, Norfolk, Virginia, March 21 and 23, 1985; Mideast at Western Kentucky University, Bowling Green, Kentucky, March 22 and 24, 1985; Midwest at Northeast Louisiana University, Monroe, Louisiana, March 22 and 24, 1985; West at University of California, Los Angeles, California, March 21 and 23, 1985; Finals — University of Texas, Austin, Texas, March 29 and 31, 1985.

Cross country (common sites except Regions 1 and 2): Regionals (all November 10, 1984)—Regions 1 and 2 at Pennsylvania State University, University Park, Pennsylvania; Region 3 at Furman University, Charleston, South Carolina; Region 4 at University of Illinois, Champaign, Illinois; Region 5 at Southwest Missouri State University, Springfield, Missouri; Region 6 at University of Texas, Austin, Texas; Region 7 at Brigham Young University, Provo, Utah; Region 8 at University of Arizona, Tucson, Arizona; Finals — Pennsylvania State University, University Park, Pennsylvania, November 19, 1984.

Field Hockey: First rounds — on-campus sites, November 10-11, 1984; Finals — Springfield College, Springfield, Massachusetts, November 17-18, 1984.

Gymnastics: Regionals (all March 30, 1985) — Northeast at University of Pittsburgh, Pittsburgh, Pennsylvania; Southeast at University of Georgia, Athens, Georgia; Central at University of Alabama, University, Alabama; Midwest at Arizona State University, Tempe, Arizona; West at Oregon State University, Corvallis, Oregon; Finals — University of Utah, Salt Lake City, Utah, April 12-13, 1985.

Softball: Regionals — on-campus sites, May 16-17, 1985; Finals — Seymour Smith Softball Complex, Omaha, Nebraska (Creighton University host), May 22-26, 1985.

Swimming and diving: Diving regionals (common sites, all March 15-16, 1985) — Districts 1 and 2 at Harvard University, Cambridge, Massachusetts; District 3 at University of Tennessee, Knoxville, Tennessee; District 4 at Ohio University, Athens, Ohio; Districts 5

and 6 at Texas Christian University, Fort Worth, Texas; Districts 7 and 8 at Brigham Young University, Provo, Utah; Finals — University of Alabama, University, Alabama, March 21-23, 1985.

Tennis: Oklahoma City Tennis Center, Oklahoma City, Oklahoma (Oklahoma State University host), May 16-24, 1985.

Indoor track (common site): Carrier Dome, Syracuse, New York (Syracuse University host), March 8-9, 1985.

Outdoor track (common site): University of Texas, Austin, Texas, May 27-June 1, 1985.

Volleyball: First rounds — on-campus sites, November 29-December 1, 1984; Regionals — on-campus sites, December 6-9, 1984; Finals — University of California, Los Angeles, California, December 14 and 16, 1984.

Division II — Women's
Basketball: First rounds — on-campus sites, March 9, 1985; Regionals — on-campus sites, March 12, 1985; Quarterfinals — on-campus sites, March 15 or 16, 1985; Finals (common site) — Springfield Civic Center, Springfield, Massachusetts (American International College and Springfield College hosts), March 21 and 23, 1985.

Cross country (common sites): Regionals (all November 3, 1984) — East at Indiana University of Pennsylvania, Indiana, Pennsylvania; South at Mississippi College, Clinton, Mississippi; Central at University of South Dakota, Vermillion, South Dakota; Great Lakes at Southern Illinois University, Edwardsville, Illinois; West at University of California, Riverside, California; Finals — Mississippi College, Clinton, Mississippi, November 17, 1984.

Gymnastics: Regionals (all March 16, 1985) — Northeast at Ithaca College, Ithaca, New York; Southeast at Indiana University of Pennsylvania, Indiana, Pennsylvania; Mideast at University of Wisconsin, Oshkosh, Wisconsin; Central at Gustavus Adolphus College, St. Peter, Minnesota; West at California State University, Northridge, California; Finals — Springfield College, Springfield, Massachusetts, March 29-30, 1985.

Softball: Regionals — on-campus sites, May 10-11, 1985; Finals — California State University, Northridge, California, May 17-19, 1985.

Swimming and diving: Site to be determined, March 14-16, 1985.

Tennis: California State University, Bakersfield, California, May 6-11, 1985.

Indoor track (common site): North Dakota State University, Fargo, North Dakota, March 15-16, 1985.

Outdoor track (common site): California State University, Los Angeles, California, May 20-25, 1985.

Volleyball: Regionals — on-campus sites, November 30-December 1, 1984; Finals — Portland State University, Portland, Oregon, December 7-8, 1984.

Division III — Women's
Basketball: Regionals — on-campus sites, March 1-2, 1985; Quarterfinals — on-campus sites, March 8-9, 1985; Finals — on-campus site, March 15-16, 1985.

Cross country (common sites): Regionals (all November 9-10, 1984) — New England at Brandeis University, Waltham, Massachusetts; New York at Hamilton College, Clinton, New York; Mideast at Lebanon Valley College, Annville, Pennsylvania; Great Lakes at College of Wooster, Wooster, Ohio; Central at Wartburg College, Waverly, Iowa; Midwest at Augustana College, Rock Island, Illinois; Southeast/South at University of the South, Seawanee, Tennessee; West at Claremont McKenna-Harvey Mudd-Scripps Colleges, Claremont, California; Finals — Ohio Wesleyan University, Delaware, Ohio, November 17, 1984.

Field hockey: Regionals—on-campus sites, November 2-3, 1984; Finals — on-campus site, November 9-10, 1984.

Softball: Regionals — on-campus sites, May 10-11, 1985; Finals — Eastern Connecticut State University, Willimantic, Connecticut, May 18-21, 1985.

Swimming and diving: Emory University, Atlanta, Georgia, March 14-16, 1985.

Tennis: Kalamazoo College, Kalamazoo, Michigan, May 6-11, 1985.

Indoor track (common site): Bates College, Lewiston, Maine, March 8-9, 1985.

Outdoor Track (common site): Denison University, Granville, Ohio, May 20-25, 1985.

Volleyball: First rounds — on-campus sites, November 16-17, 1984; Regionals — on-campus sites, November 30-December 1, 1984; Finals — Elmhurst College, Elmhurst, Illinois, December 7-8, 1984.

Next in the News

A story on the appointment of the subcommittees of the NCAA Presidents' Commission.

An announcement of the deadline for postgraduate scholarship nominations in football.

Weather cuts baseball attendance

Rain and cool weather caused a decline of nearly three million in 1984 college baseball attendance, according to Collegiate Baseball.

Miami (Florida) was the nation's attendance leader with 188,989. Arizona State (163,374) and Hawaii (104,177) also topped the 100,000 mark.

Total attendance was 9,921,530, down from the 1983 total of 12,896,497. Many institutions blamed the weather for attendance declines, and 179 schools reported 10 or more games rained out.

Other attendance leaders as reported by Collegiate Baseball were Fresno State, 94,409; Texas, 89,300; Mississippi State, 77,102; Florida State, 70,469; Alabama, 59,706; East Tennessee State, 55,000, and North Carolina, 53,385.