

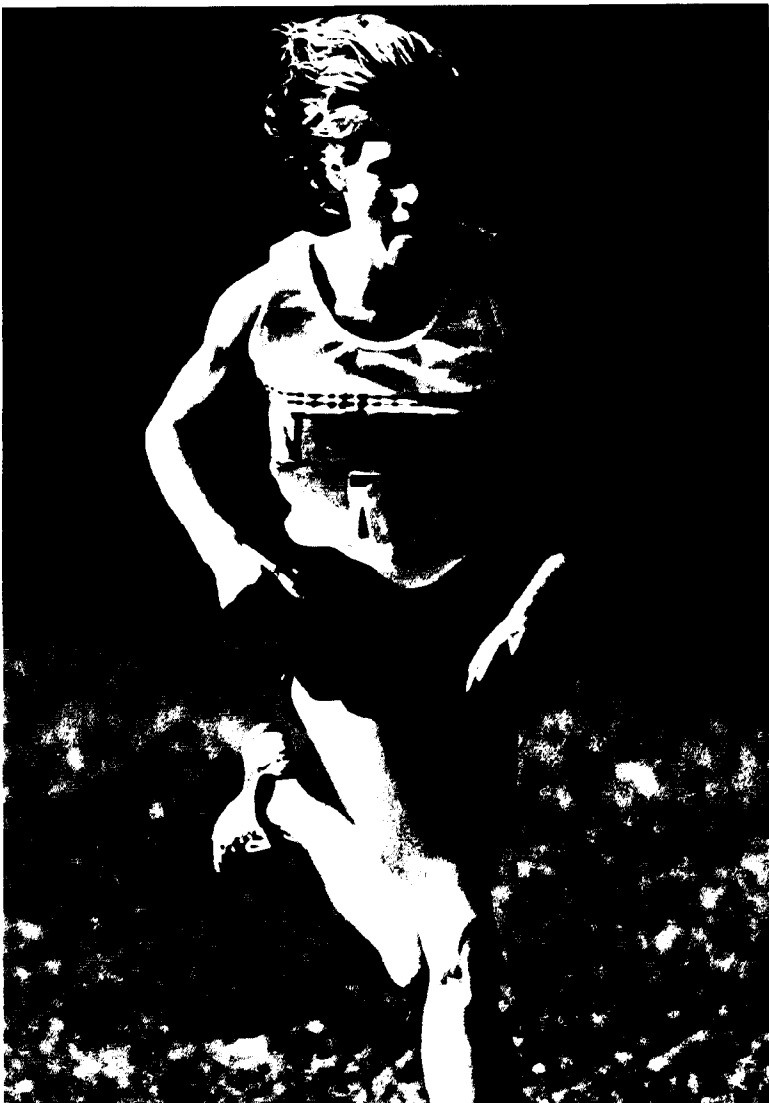
# The NCAA News



September 12, 1983, Volume 20 Number 31

Official Publication of the

National Collegiate Athletic Association



## Cavalier leader

*Lesley Welch, last year's Division I women's cross country champion, returns to lead Virginia in 1983. The men's and women's cross country seasons are previewed on pages 6-7, and a preview of the 1983 field hockey season appears on pages 8-9.*

## Governance plan proceeds

The NCAA Special Committee on Governance Review is proceeding to develop recommended plans for increasing the involvement of institutional chief executive officers in the NCAA structure.

The committee, appointed by President John L. Toner after the August Council meeting, includes NCAA Secretary-Treasurer John R. Davis, faculty athletic representative at Oregon State University, as chair; Wilford S. Bailey, interim president, Auburn University; William H. Baughn, faculty athletic representative, University of Colorado; Asa N. Green, president, Livingston University; Arliss L. Roaden, president, Tennessee Tech-

nological University, and Division III Vice-President Kenneth J. Weller, president of Central College (Iowa). All are members of the NCAA Council.

All members of the committee met September 2 in Chicago with five members of the American Council on Education's Committee on Division I Intercollegiate Athletics, at the request of the ACE. The discussion focused on the ACE committee's tentative plan — which it described as "provisional" — to establish in the NCAA constitution a board of presidents that would have the power to veto or suspend any action of an NCAA Convention or to enact its own legislation without approval of a Convention.

The ACE delegation asked the NCAA committee to suggest modifications in the ACE plan or to propose alternative plans. "Our committee currently is awaiting the final report of the Select Committee on Athletic Problems and Concerns in Higher Education to learn what that panel has to say about athletics governance," Davis said. "Members of the committee also are consulting with college and university presidents in their own areas and conferences. Then we will prepare a document, which we will share with the ACE representatives at a meeting in Washington, D.C., October 6 or 7."

President Toner will fill in for Davis in chairing the committee from mid-September to October 8, when Davis is out of the country.

"We are delighted by the continuing expression of interest in intercollegiate athletics by chief executives," Davis said, noting that the Association has experienced problems in the past in getting CEOs to serve within the NCAA structure, especially in Division I. "It appears that the best means of achieving the desirable involvement and influence of chief executives is through a more structured organization, and that is what our committee is attempting to develop."

Roaden, a longtime administrator at Ohio State University who has been president at Tennessee Tech since 1974, emphasized that chief executives can maintain institutional control of athletics and can be influential at the campus, conference and national levels in the current NCAA structure. "It does appear, however, that a more

## 61 chief executives will attend meeting

A total of 61 institutional chief executive officers had accepted invitations as of September 9 to attend the fourth annual NCAA-sponsored CEO meetings September 19-20 at the Hyatt Regency Hotel in Kansas City, Missouri.

That total could increase to 65 or more if additional responses are received prior to the meeting.

Included among the 62 are 28 representing Division I institutions, 14 from Division II and 19 from Division III. In all, 75 invitations were extended to voting allied conferences and independent institutions to be represented at the meeting.

The meeting is designed to provide a forum for chief executives to discuss

major policy issues in college athletics well in advance of the annual NCAA Convention. This year's meeting begins at 1 p.m. September 19 with participants attending separate sessions by division. Those sessions end at 5:30 that day, with a reception and dinner for all speakers and participants scheduled that evening.

Sessions by division resume at 8:30 a.m. September 20, with a closing joint session at 11 a.m. and adjournment at noon.

Agenda items and speakers were reported in the September 5 issue of *The NCAA News*. Arliss L. Roaden, president of Tennessee Technological University and a member of the NCAA

*See 61 chief executives, page 12*

## Basketball rules experiments set

The NCAA Men's Basketball Rules Committee has granted experimentation rights for the 1983-84 season to 18 allied conferences.

That number reflects a change in the committee's previously stated position that no more than two conferences would be granted experimentation rights in each of five areas: two versions of a 45-second shot clock; a three-point play from 19 feet, nine inches, measured from the center of the basket; a designated coaching box, in which coaches would be required to remain except when seeking specific information from the official scorers table; and a rear-boundary arc, a concept limiting the size of the forecourt to inhibit stalling tactics.

"As a result of hearing from so many conferences and institutions, the committee voted overwhelmingly to allow all conferences that met its research guidelines and that had supplied research data in the past to conduct experiments this season," said Edward S. Steitz, secretary-rules editor of the committee and director of

athletics at Springfield College.

"It was the feeling of the committee that it wanted to limit the types of research, but not research per se. The committee always has felt that sufficient research data is a necessity. The committee is receptive to studying changes that could benefit the great game of college basketball, but only after it has had the opportunity to collect and interpret the necessary data," Steitz said.

Conferences were allowed to request experimentation rights in more than one area, with the exception that combinations of shot-clock and three-point-play experiments were not permitted. Shot-clock experiments were divided into two categories: a 45-second clock remaining on the entire

game and a 45-second clock turned off the last four minutes of a game.

Experimentation rights were granted to the following conferences (conferences are in Division I, except where noted otherwise):

**45-second shot clock, entire game** — Big Sky Conference, Central Intercollegiate Athletic Association (Division II), Eastern College Athletic Conference North Atlantic.

**45-second shot clock, off final four minutes** — Atlantic Coast Conference, Atlantic 10 Conference, Big East Conference, Great Lakes Valley Conference (Division II), Ohio Valley Conference, Pacific Coast Athletic Association, Southeastern Conference, Southland Conference, South-

*See Basketball, page 12*



Wilford S. Bailey



William H. Baughn



John R. Davis



Asa N. Green



Arliss L. Roaden



Kenneth J. Weller

## In the News

Football statistics in Divisions I-A and I-AA appear for the first time ..... 4-5

The deadline for certification of high school all-star games is December 1 ..... 11

The Carrier Dome in Syracuse, New York, has been selected as the site for the 1984 NCAA Men's and Women's Indoor Track Championships ..... 12

# Decision is needed on role of academics

By Furman Bisher

Atlanta Journal Sports Editor

In a magazine story about Marcus Dupree, the next Herschel Walker, his coach at Oklahoma, Barry Switzer, is speaking of Dupree and how he should handle it should professional football come bearing the gift of a rich contract and all the frankincense and myrrh he can use.

"I'd be the first guy to tell him to take it," says the coach. "Marcus may not graduate from college, but what's the yardstick to determine whether or not you're successful?"

"I'm sure Herschel Walker is more successful than 99 percent of the graduates of the University of Georgia."

There will be a brief pause here for rumination. Let me see if I can interpret what the coach has just said: Gain 1,500 yards, make all-America, get your team to a bowl game and win the Heisman; or, win the conference championship, make a run through all the postseason tournaments into the Final Four, make all the all-Americans and win the Naismith Award — by these acts, you have become successful, even though as your class graduates you are still a sophomore. Shakespeare is only the name on your rod and reel, and you think the capital of Wisconsin is Green Bay.

In other words, money is success. If that is true, then a very small percentage of the world has ever known success.

In other words, graduation is not the ultimate reason for going to college, meaning that education is only a necessary sideline.

In other words, the truth is, no matter how uncomfortable it may make us, the game has become an industry so big, so involved in realizing millions of dollars, that academics have become a bothersome nag. Why the hell can't they let the athletes alone, let them play their four years, sign their fat contracts and move on into the pro leagues, where they can do their underwear and deodorant commercials, and laugh

through the television tube at the fuddy-duddies still stroking on at the halls of ivy convinced that the real purpose of college is education. The fools!

This is not an attitude that just happened upon us overnight. In olden times, they called them "tramp athletes." That term has been scrapped. The athlete now comes under more sophisticated methods of development, all legalized and protected by organizations guaranteeing him his civil rights. Makes no difference if he can't read or write, he deserves his right to go to college, if he can run with a football or dunk a basketball.

The University of Georgia now is suffering the backlash from one of these methods, which is not exclusive to that campus, one hastens to explain. What has taken place in Athens is not clear, yet. It seeped out through the academic

## Columnary Craft

rather than the athletic side, when a dismissed professor, Jan Kemp, lost her job when she protested passing several scholarship athletes who had flunked an English course. Not college English, but remedial English designed to prepare them for college, which they were already in.

Kemp is fighting her firing through the court, causing catastrophic echoes in the athletics department. Georgia installed a remedial program six years ago designed to prepare so-called high school graduates for college who were not realistically prepared. That these young people should have been allowed to compete in athletics while under such a cloud of doubt is a misappropriation of integrity. All the more reason to cry out again against freshman athletes competing on the varsity level. They might be perfectly accomplished

halfbacks or strong forwards, but far from being adjusted to life in the athletics program and a curricular life at the same time.

They cry out from the athletic side, "You have to do it. Everybody else does." "You have to do it, if you want to go to bowl games and be No. 1."

Clemson had to do it and wound up in hock. Southern Cal had to do it, and Auburn had to do it, and Wichita State had to do it so many times it virtually owns the prison. But business goes on as usual. One way to clean up the act somewhat would be to declare the athlete the school cheated for ineligible forever.

The moving concern here, though, is for the athlete who does not get the \$5-million contract, the guy who was counting on a career in the pros, and who failed, and who has no other career to fall back on.

We run these pathetic stories of a Billy McGill, found night janitoring in an office building, Charlie Wysocki, who has a mental breakdown because he could not make it in the NFL; Sonny Dove, who drove a cab after his basketball career short-circuited. But we do not know how many sad cases never make print. Yet, we have these people who would railroad athletes through enough courses to keep them eligible for the team.

Try to force education on them, they look for the easy route, or buck like mules. Their eligibility up, then they complain, "We were used."

Colleges either have to get their athletics departments into education, or give them a divorce. Let them run their franchises for the benefit of alumni and television, and knock off the pretense. Either graduate student-athletes or quit abusing the term. Either join the academicians in purpose or run their own school, offering bachelor of arts in football-totin' and basketball-dunkin' and be done with it.

## Sports now are serious business

James Pitts, professor of sociology  
Northwestern University

The Washington Post

"At a younger age, kids are encountering adult-sponsored activities that have a seriousness beyond their level of play. Sports are now more serious than play, and I suspect kids realize it. Sports now have a work ethic to them. And what happens to individuals who are no longer able to work? They feel obsolete by the age of 17. They've formed a work identity around sports. Making it or not making it matters more at incredibly early ages.

"They have access to life styles that athletes a few years ago couldn't afford. The crimes of indulgence are more affordable now. They can buy into the habits of the sometimes idle rich. There is a larger proportion of

## Opinions Out Loud

athletes now indulging in activities quite different from their backgrounds. So are movie stars, but they are excluded. America is still romantic about how an athlete uses his body."

Dr. Joseph Pursch, corporate medical director  
Care Unit Hospital, Orange County, California

United Press International

"All the athletes I have ever met were all very quick people. The dumb football player is a myth. Athletes are all very bright without exception. Some may have poor ghetto English but are smart, without exception. They all are quick in seeing situations. They are superior people. They see quickly and can perceive nuances. There is a low incidence of psychotic athletes and manic depressives.

"Usually the behavior problems are based on big egos. The ones who get into trouble are the spoiled brats in trouble with the law because we have represented sufficiently to them that if they are professional athletes, they can get away with anything. It's like a child walking into a room with its mother on the phone and grumbling.

louder and louder. Not getting any response, he or she screams a curse and then gets slapped in the face.

"Upbringing puts some restraint in psychological makeup. One of the differences in people is what they are willing to do when they know nobody is looking, when they know they won't get punished. One of the keys is the built-in set of standards from childhood. You discover the leaks or holes or imperfections of character under the great stress of no restraint."

David I. Maggard, director of athletics  
University of California, Berkeley

Eugene Register-Guard

"We would like to see legislation to allow student-athletes to seek legal counsel at their own institutions at no charge. We're seeing that as the stakes get bigger, with the United States Football League and other competition among professional leagues, this is a growing need to be addressed."

Joseph V. Paterno, football coach  
Pennsylvania State University

San Francisco Tribune

"I think we insult black kids when we tell them that a 700 (SAT score of a maximum 1,600) is tough. We used to say we'd take somebody who had a 2,000 grade-point average in anything. If he could run and throw and catch, we would all fight to get him. Then we'd make him play, but he wasn't prepared in the classroom. So we coned him. We created courses so he could pass, so he would be eligible, so he would play, so we would win.

"If a kid doesn't have the requirements out of high school, but we think he could make it, we'd tell him he could come to college, but we'd stick him in a library for one year. He wouldn't be able to play until he proved he could make it in the classroom."

Fred Jacoby, commissioner  
Southwest Athletic Conference

Houston Chronicle

"The question we're going to attempt to resolve is whether it's (use of drugs by athletes) an institutional problem or a conference-wide problem. Usually, in medical areas, the decisions fall on the individual universities. But if all the football coaches seem to be in favor of it, then we might need some conference ruling.

"I'm no prophet, but I would guess that if this situation keeps escalating, then there's going to be a move to implement some kind of drug-testing programs."

Bill Yeoman, football coach  
University of Houston

Houston Chronicle

"We've got to start being more helpful and supportive of those kids who don't take drugs. The reason people are beginning to test now is because this is a very dangerous situation. It's for protection of the athletes. Taking any drug, including steroids, can't be good for them and I'm for it (the testing) for every athlete in all sports."

## Letter to the Editor

To the Editor:

I have become quite disturbed by statements attributed to head coaches Hayden Fry, University of Iowa, and Tom Osborne, University of Nebraska, Lincoln, advocating that college athletes should be paid for their services. Of course, this competes with the pros; and college programs should be maintained as "academic and amateur" sports. I am not against the scholarship; but I am bitterly opposed to their ideas, and I certainly hope the NCAA would fight such suggestions at future meetings.

I may also suggest the two gentlemen seek employment in the professional fields.

Melvin M. Parrish  
509 Somerset Avenue  
Richmond, Virginia 23226

## Questions/Answers

**Q.** When revenue generated by athletics is returned to NCAA member institutions, does it go directly to the athletics departments or to a general fund that benefits every student at the school?

**A.** The procedure for distribution of money varies from institution to institution. At many colleges, especially those in Division III, all revenues are placed in the general fund. Those institutions that sponsor football in Division I-A usually separate general funds from athletics department money. Division I-A athletics departments often must be self-supporting, as opposed to an intercollegiate athletics program in Division III, which is financed much like the English department. In Division II, both situations exist depending on the institution.

Readers are invited to submit questions to this column. All questions pertaining to the NCAA and intercollegiate athletics will be answered in future issues of *The NCAA News* as space permits.

My question is . . .

---



---



---



---



---



---



---



---

Please clip and return to:

The NCAA News  
P.O. Box 1906  
Mission, Kansas 66201

The NCAA  News

ISSN 0027-61701

Published weekly, except biweekly in the summer, by the National Collegiate Athletic Association, Nall Avenue at 63rd Street, P.O. Box 1906, Mission, Kansas 66201. Phone: 913/384-3220. Subscription rate: \$15 annually. Second-class postage paid at Shawnee Mission, Kansas. Address corrections requested. Postmaster send address changes to NCAA Publishing, P.O. Box 1906, Mission, Kansas 66201.

Publisher . . . . . Ted C. Tow  
Editor-in-Chief . . . . . Thomas A. Wilson  
Managing Editor . . . . . Bruce L. Howard  
Advertising Director . . . . . Wallace I. Renfro  
The Comment section of *The NCAA News* is offered as opinion. The views expressed do not necessarily represent a consensus of the NCAA membership. An Equal Opportunity Employer.

## Football Notes

## UCLA's 1983 schedule is rated toughest

## Toughest 1983 schedules

Let us make this perfectly clear. The NCAA's Division I-A preseason toughest-schedule computer program answers only one question: What did your 1983 I-A opponents do in 1982 against other I-A teams when they were not playing you?

And the winner is... UCLA. Its I-A opponents this season (all 11 are in I-A) won 80 games, lost 37 and tied two for a .681 winning percentage against other I-A teams last season when not playing UCLA. Bowl games are included.

This means UCLA's opponents had a cumulative 81-42-3 record against I-A teams last year. But this included a 1-5-1 record against UCLA, a 10-1-1 team last year including a Rose Bowl victory over Michigan. This 1-5-1 is deleted, leaving 80-37-2.

That element—deleting games against the team in question—is an important one in the toughest-schedule program. Without it, a winning team is at a disadvantage and a losing team's schedule strength is exaggerated. Opponents of a 10-1 team would start 1-10 before you added the other games (assuming it played the same schedule as last season); opponents of a 1-10 team would enjoy a 10-1 start.

As you can see, UCLA is playing only seven games against teams it also played in 1982—all seven of them Pacific-10 games (it is playing eight Pac-10 games this time and three different nonconference foes).

South Carolina's schedule is second at .656, then come Florida, Penn State, Auburn, Stanford, Florida State, Washington State, Georgia Tech and Alabama. If this does not agree with your own toughest-schedule top 10, you are probably in the majority.

Remember, please, this is merely a statistical measurement that says nothing about the opposition the teams on your schedule faced in 1982. "Tough" always will be a matter of individual opinion, colored by regional bias, tradition, bowls, polls and intersectional history.

## Based on last year

Remember, too, it is based entirely on 1982 results and nothing else. But are not nearly all the preseason ratings based on last year? Much of the charm of college football is its unpredictability. As we shall see later, the final toughest-schedule ranking based only on the current season may look much different than the preseason.

First, let us take a look at the other preseason leaders. The second 10 includes, in order, Georgia, Kentucky, Oklahoma, Tennessee, Temple, Arizona State, Maryland, Mississippi State, Texas Tech and Clemson.

You will notice the Southeastern Conference, with seven teams in the top 20, and the Pacific-10, with four, are leading the way. That is because they had the best records against outside opponents in 1982, and conference teams play each other. It thus becomes a mathematical certainty the SEC and Pac-10 will hold sway in the computer program.

The SEC led the regular season with a 32-13-1 record against outside I-A opponents with the Pac-10 next at 21-10-1. But the SEC was 2-5 in bowls, while the Pac-10 was 3-0. So, the final ranking showed the Pac-10 on top at 24-10-1 for a percentage of .700 with the SEC second at 34-18-1 for .651. No other I-A conference was close to the top two.

Of the 1983 lineup of 105 teams in I-A, only 44 face schedules with opponents above the break-even .500 level in cumulative won-lost. Here is that list, with opponents below I-A deleted and the number of bowl teams in parenthesis:

Division I-A	W	L	T*	Pct.
1. UCLA (5)	80	37	2	.681
2. S. Carolina (4)	72	37	3	.656
3. Florida (5)	61	35	2	.633
4. Penn State (6)	65	40	2	.617
5. Auburn (7)	68	42	2	.616
6. Stanford (5)	69	43	4	.612
7. Florida St. (5)	62	42	1	.595
8. Wash. St. (4)	61	43	3	.584
9. Ga. Tech (5)	57	41	2	.580
10. Alabama (6)	62	45	3	.577
11. Georgia (4)	60	44	3	.575
12. Kentucky (7)	64	47	4	.574
13. Oklahoma (4)	64	47	9	.571
14. Tennessee (5)	57	43	1	.569
15. Temple (5)	50	38	1	.567
16. Arizona St. (2)	58	44	4	.566
17. #Maryland (5)	61	47	1	.564
17. #Miss. State (5)	61	47	1	.564
19. Texas Tech (4)	57	44	5	.561
20. Clemson (4)	52	42	0	.553
21. Wyoming (4)	58	47	1	.552
22. Southern Cal (4)	59	48	6	.549
23. W. Virginia (4)	54	45	1	.545
24. Utah State (3)	50	42	2	.543
25. Syracuse (6)	58	49	1	.542
26. #Mississippi (6)	58	49	3	.541
26. #California (2)	57	48	5	.541
26. #Oregon (3)	57	48	5	.541
29. Brig. Young (3)	60	52	2	.535
30. Pittsburgh (5)	54	47	2	.534
31. Bowl. Green (2)	50	44	4	.531
32. Texas (4)	51	45	4	.530
33. San Diego St. (2)	62	57	0	.521
34. Arkansas (2)	52	48	2	.520
35. Okla. St. (3)	46	44	5	.511
36. Miami, Fla. (3)	51	49	2	.510
37. Kansas (3)	51	50	6	.505
38. #Iowa (5)	58	57	1	.504
38. #Purdue (5)	58	57	1	.504
38. #Michigan (5)	58	57	1	.504
+Under 75 games:				
1. E. Carolina (2)	39	29	2	.571
2. Boston Col. (3)	38	33	0	.535
3. Wichita St. (1)	20	18	2	.525
4. Wake Forest (2)	36	35	1	.507

\*Ties computed as half won, half lost.  
#Exact tie in percentage.  
+East Carolina plays eight I-A teams, Boston College eight, Wichita State five and Wake Forest eight.

Both teams that face seven bowl opponents—Auburn and Kentucky—are in the table. Of the five teams that face six bowl games, Penn State, Alabama, Syracuse and Mississippi are in the table and Northwestern is not. The table also does not show that only two teams will face four bowl winners—Michigan and Northwestern.

UCLA's top-ranked schedule, by the way, started with a 19-8 loss to Georgia. The remaining games are with Arizona State, Nebraska, Brigham Young, Stanford, Washington State, California, Washington, Oregon, Arizona and Southern Cal. No. 2 South Carolina's lineup is North Carolina, Miami (Ohio), Duke, Georgia, Southern Cal, Notre Dame, Louisiana State, North Carolina State, Florida State, Navy and Clemson.

In case you are wondering about schedules at .500 or close to it, the .500 schedules include those of Notre Dame and Washington, while those one game under .500 include Nebraska, Missouri, Duke and Texas A&M.

Removing opponents below I-A has little effect in most cases, because the 105 teams in I-A are playing only 89 games against I-AA teams this season and just nine against teams below I-AA.

Now that the season is under way, only this season's results will be used in future toughest-schedule rankings. That can change things a lot from the preseason rankings. For instance, the 1982 preseason top 10, in order, was Florida State, Utah, Notre Dame, Pittsburgh, Maryland, Penn State, Texas-El Paso, Boston College, Houston and Stanford.

The final 1982 toughest-schedule top 10, at the end of the regular season, showed Penn State on top at 63-34-2 for .646. Others in the top 10 were Kentucky .642, Florida .639, Alabama .630, Florida State .625, Oregon .621, South Carolina .620, West Virginia .604, Stanford .598 and Syracuse .590.

As you can see, only Penn State, Florida State and Stanford remained in the top 10 at season's end. South Carolina was 13th in the preseason, Oregon 18th, Syracuse 19th, Florida



Florida's Wayne Peace has led the Gators to an 1-0-1 start after recovering from back surgery



Auburn's Lionel James is second in Division I-A rushing (172.0) and third in all-purpose running



Paul Woodside of West Virginia is sixth in scoring in Division I-A with 12.5 average

22nd, West Virginia 23rd, Kentucky 25th and Alabama did not make the top 30.

## Florida A&amp;M leads I-AA list

Florida A&M leads the Division I-AA preseason toughest-schedule ranking by a wide margin. Its I-AA opponents won 51, lost 26 and tied one for a .660 winning percentage against I-A and I-AA opponents in 1982 when not playing Florida A&M. Florida A&M has no I-A foes. Its schedule includes Fort Valley State, Delaware State, Tennessee State, Howard, Jackson State, Albany State (Georgia), South Carolina State, Alcorn State, North Carolina A&T, Southern-Baton Rouge and Bethune-Cookman, for a total of nine I-AA opponents and two below I-AA.

Northwestern State (Louisiana) is second, Grambling State third, Tennessee State fourth and Alabama State fifth. There are 24 I-AA teams with schedules above .500 eight fewer than preseason 1982, when the division had eight more teams. Here is that list, with the number of play-off and/or bowl teams in parenthesis:

Division I-AA	W	L	T*	Pct.
1. Florida A&M (4)	51	26	1	.660
2. NW Louisiana (1)	40	23	1	.633
3. Grambling St. (4)	50	35	3	.585
4. Tenn. State (1)	35	27	0	.565
5. Alabama St. (2)	41	33	2	.553
6. Massachusetts (2)	54	46	0	.540
7. Holy Cross (4)	57	49	1	.537
8. Western Ky. (2)	45	39	1	.535
9. #Austin Peay (1)	32	28	0	.533
9. #Middle Tenn. (1)	32	28	0	.533
11. Brown (1)	49	43	0	.533
12. Montana St. (3)	43	39	1	.524
13. Pennsylvania (2)	48	44	0	.522
14. Indiana St. (2)	49	45	2	.521
15. Youngstown St. (2)	51	47	2	.520
16. Northern Ariz. (3)	43	40	0	.518
17. Miss. Valley (2)	34	32	2	.515
18. Montana (1)	37	35	0	.514
19. Murray St. (1)	39	37	0	.513
20. Tex.-Arlington (2)	54	52	4	.509
21. Southern-B.R. (2)	40	39	2	.506
22. Jackson St. (1)	42	41	2	.506
+Under 60 games:				
1. Davidson (2)	27	23	0	.540
2. N.C. A&T (2)	23	21	1	.522

\*Ties computed as half won, half lost.  
#Exact pct. tie (only one in table).  
+Davidson plays six I-AA teams, North Carolina A&T six.

Schedules at .500 or close to it? Well, both Southeastern Louisiana and South Carolina State are both at .500, while North Texas State and Prairie View are both a game under (Prairie View for just 56 games and six I-AA opponents). Several more are two under.

The reason only 24 of the 84 I-AA teams have above-.500 schedules is that I-AA teams lose most of their games against I-A opponents. Also, opponents below the I-AA level are deleted by the computer (as are all games against such opponents played by I-A and I-AA teams). Division I-AA teams annually win 60 to 65 percent against teams below I-AA but lose 70 to 75 percent against I-A teams. This season, I-AA teams are

playing 119 games against teams below the I-AA level.

## 806,921—No. 2 in history

The top 10 attendance games in college football last Saturday totaled 806,921 spectators—second on the all-time list to the 809,302 that turned out on September 22, 1979. In third place now is the 803,351 for September 11 last season.

Michigan topped Saturday's list with 103,256, followed by Tennessee 89,792, Ohio State 88,524, Penn State 83,683, Louisiana State 79,665, Alabama 77,413, Nebraska 76,016, Auburn 73,500, Purdue 69,782 and Arizona State 65,290.

## First-year debuts

There were some notable victories by first-year coaches last Saturday. Ray Perkins, succeeding the winningest college football coach of all time at Alabama, beat his old teammate, Georgia Tech coach Bill Curry, 20-7. Bear Bryant would have loved it. Michigan State's George Perles edged his old friend, Colorado coach Bill McCartney, 23-17. Indiana's Sam Wyche saw his team beat Duke, 15-10. But perhaps the biggest victory was won by Cincinnati for new coach Watson Brown, 14-3 over Penn State. By next Saturday, all of the first-year coaches will have played at least once, and we will have a complete rundown of all those in I-A and I-AA in next week's notes.

## Quotes of the week

Arkansas coach Lou Holtz says it is imperative that coaches address themselves to the drug problem in athletics. He adds: "Once we get rid of pot and drugs, then we've got to work on Pac-Man."

Holtz on the youth on this year's Razorback team: "Last year's team was more mature. They watched 'All My Children.' This year's team watches 'Romper Room' and 'Captain Kangaroo.'" (Rick Schaeffer, Arkansas SID).

Michigan State coach George Perles on the qualities he is looking for in Spartan players: "I want a Dr. Jekyll and Mr. Hyde. A guy who when he crosses the line is the toughest, meanest, most aggressive guy, then after the game takes a shower, puts on a three-piece suit, opens the door for ladies, uses correct English and has manners when he eats." (Nick Vista, Michigan State SID).

Kansas State quarterback Doug Bogue on why he left veterinary medicine to major in petroleum geology: "I didn't want any telephone calls at 4 a.m. from people saying, 'FiFi is throwing up.'"

Iowa State quarterback David Archer on his father: "He's a great fan. He grew up in Arkansas. One year, he was watching on television, and Texas fumbled in its end zone.

Dad dove across the living room and hit his nose on the television. He missed a quarter of the game with a bloody nose." (Tim Allen, Big Eight Conference SID)

Ohio State fullback Vaughn Broadnax is 6-2 and 252, has a brown belt in judo, is a former state heavyweight wrestling champion, a devastating blocker and likes to run over tacklers. As for his judo training, Broadnax says he has never needed it for self defense: "I guess most people just look at me and decide not to mess around." (Marv Homan, Ohio State SID).

The six new light poles rise 160 feet into the sky at Kansas State, and the foundation is designed to hold 2.9 million foot pounds steady in winds over 90 miles an hour. Says coach Jim Dickey: "The first guy who drops a pass, fumbles or misses a tackle has to go up and change a light bulb." (Mike Scott, Kansas State SID)

Baylor defensive back Aaron Grant on why he prefers defense over offense (even though he's outstanding at both): "I like the odds on defense. It's 11 against one." (Maxey Parrish, Baylor SID)

Don Cortez, West Texas State offensive coordinator, commenting on freshman defensive back Kelley Lewis: "Lewis has great ability, and he's a punishing hitter. And he's got a great major—he's going to be a nurse. I guess that way he can hurt you, then take care of you." (John Askins, West Texas State SID)

## Overcoming injury

Florida quarterback Wayne Peace is back in top form after undergoing still-experimental back surgery. The operation, using a new technique tried on only 11 other patients, was performed July 1. Three weeks later, he started rehabilitation and by August was ready for football practice. Conventional surgery would have required a recovery period of eight months to a year. Said Peace after leading his team over Miami (Florida), 28-3, "I'm just glad I was able to go out there and show people I'm healthy." (John Humenik, Florida SID)

## Big, old and small

Baylor may have one of the biggest and oldest freshman football players in college football in 6-7, 305-pound Ray Gibbons, a 29-year-old U.S. Army veteran who came as a walk-on offensive tackle. At the other extreme is Gerald McNeil, only 5-7 and 137 but tied for third nationally in career receptions and fourth in career receiving yards among all active Division I-A players. (Maxey Parrish, Baylor SID)



[Through games of September 10]

## Division I-A individual leaders

RUSHING							
	CL	G	CAR	YDS	AVG	TD	YDSPG
Greg Allen, Florida St.	Jr	2	55	355	6.5	4	177.5
Lionel James, Auburn	Sr	1	36	172	10.8	1	172.0
Shawn Faulkner, Western Mich.	Sr	1	18	170	4.5	2	170.0
Gary Ellerson, Wisconsin	Jr	1	19	164	8.6	2	164.0
Joe McIntosh, N. C. State	Jr	1	21	160	7.6	0	160.0
Alfred Anderson, Baylor	Sr	1	25	144	5.8	2	144.0
Marcus Dupree, Oklahoma	So	1	24	138	5.8	0	138.0
Owen Gill, Iowa	Jr	1	16	136	8.5	4	136.0
Robert Lewis, Texas Tech	Jr	1	22	133	6.0	0	133.0
Otis Copeland, Virginia Tech	So	1	23	132	5.7	0	132.0
Mike Rozier, Nebraska	Sr	2	30	262	7.5	4	131.0
Dalton Hilliard, LSU	So	1	20	128	6.4	3	128.0
Ethan Horton, North Carolina	Jr	2	52	251	4.8	2	125.5
Rick Rogers, Michigan	Jr	1	19	124	6.5	1	124.0
Eric Denson, Wichita St.	So	2	47	243	5.2	3	121.5
Allen Pinkett, Notre Dame	So	1	15	115	7.7	1	115.0
Steve Young, Brigham Young	Jr	1	13	113	8.7	2	113.0
Buford McGee, Mississippi	Sr	2	26	215	8.3	3	107.5
Ken Davis, TCU	So	1	23	106	4.6	1	106.0
Kevin Ingram, East Carolina	Sr	2	29	208	7.2	1	104.0
Troy Stratford, Boston Col.	So	2	30	205	6.8	2	102.5
John Kerstner, Air Force	Sr	2	34	196	5.8	2	98.0
Sam DeJarnette, So. Miss.	Jr	2	36	196	5.4	1	98.0

SCORING							
	CL	G	TD	XP	FG	PTS	PTPG
Owen Gill, Iowa	Jr	1	4	0	0	24	24.0
Greg Bell, Notre Dame	Jr	1	4	0	0	24	24.0
Dalton Hilliard, LSU	So	1	3	0	0	18	18.0
Andre Jackson, Bowling Green	So	1	3	0	0	18	18.0
Luis Zendejas, Arizona St.	Jr	1	0	3	4	15	15.0
Paul Woodsie, West Virginia	Jr	2	0	13	4	25	12.5
Greg Allen, Florida St.	Jr	2	4	0	0	24	12.0
Mike Rozier, Nebraska	Sr	2	4	0	0	24	12.0
Bo Jackson, Auburn	So	1	2	0	0	12	12.0
Garry James, LSU	So	1	2	0	0	12	12.0
Phil Roach, Vanderbilt	Sr	1	2	0	0	12	12.0
Mitchell Brookings, Illinois	Sr	1	2	0	0	12	12.0
Bobby Morse, Michigan St.	Fr	1	2	0	0	12	12.0
Cedric Anderson, Ohio State	Sr	1	2	0	0	12	12.0
Gary Ellerson, Wisconsin	Jr	1	2	0	0	12	12.0
Marck Harrison, Wisconsin	Jr	1	2	0	0	12	12.0
Jim Kelso, Toledo	Sr	1	2	0	0	12	12.0
John Walker, Toledo	Sr	1	2	0	0	12	12.0
Shawn Faulkner, Western Mich.	Fr	1	2	0	0	12	12.0
Earl Johnson, Oklahoma	Fr	1	2	0	0	12	12.0
Derrick Thomas, Arkansas	Fr	1	2	0	0	12	12.0
Alfred Anderson, Baylor	Sr	1	2	0	0	12	12.0
Rich Siler, Texas A&M	So	1	2	0	0	12	12.0

PASSING EFFICIENCY												
(Min. 15 att per game)	CL	G	ATT	CMP	PCT	INT	YDS	ATT	TD	PCT	POINTS	TD RATING
Mike Tomczak, Ohio State	Jr	1	25	21	84.00	0	273	10.92	4	16.00	228.5	
Chuck Long, Iowa	Jr	1	17	13	76.47	0	200	12.00	1	5.88	196.7	
Randy Jenkins, Kentucky	Sr	2	40	30	75.00	0	335	8.38	4	10.00	178.3	
Kelly Lowrey, Florida St.	Sr	2	66	47	71.21	1	555	8.41	5	7.58	183.8	
Jeff Hostetler, West Va.	Sr	2	47	30	63.83	0	418	8.89	3	6.38	159.6	
Kevin Sweeney, Fresno St.	Fr	1	31	20	64.52	3	968	32.91	10.61	2	64.5	155.6
Walter Lewis, Alabama	Sr	1	19	11	57.89	1	526	204	10.74	1	5.26	154.9
Neil Britt, Ball State	So	2	68	43	65.15	2	303	528	8.00	5	7.58	151.3
Sean Salisbury, S. Cal.	Jr	1	26	15	57.69	1	385	229	8.81	2	7.69	149.4
Donny Harrison, Ohio	Sr	2	37	26	70.27	1	270	324	8.76	1	2.70	147.3
Steve Young, BYU	Jr	1	38	23	60.53	0	351	9.24	1	2.63	146.8	
Wayne Schuchts, Virginia	Sr	2	38	18	47.37	5	1316	363	9.55	5	13.16	144.7
Tom Tunnicliffe, Arizona	Sr	2	61	36	59.02	2	328	542	8.89	3	4.92	143.3
John Mazur, Texas A&M	Jr	1	33	20	60.61	0	243	7.36	2	6.06	142.5	
Randall Cunningham, N.L.V.	Jr	1	63	38	60.32	1	159	461	7.32	4	6.35	139.6
Troy Bodine, Cincinnati	Jr	1	36	25	69.44	0	263	7.35	1	2.78	139.5	
Brian McClure, Bowling Green	So	1	37	22	59.46	0	273	7.38	2	5.41	139.3	
Ben Bennett, Duke	Sr	2	80	52	65.00	0	543	6.79	4	5.00	139.5	
Boomer Esiason, Md.	Sr	1	31	17	54.84	0	269	8.88	1	3.23	138.4	
Scott Stankavage, N.C.	Sr	2	38	27	71.05	1	283	286	7.53	1	2.83	137.7
Gary Schofield, Wake For.	Sr	2	53	33	62.26	1	189	379	7.15	3	5.66	137.2
Jim Everett, Purdue	Jr	1	21	12	57.14	1	476	183	8.71	1	4.76	136.5
Brad Baumberger, Wyo.	Sr	2	40	26	65.00	1	250	275	6.88	2	5.00	134.2

RECEIVING						
	CL	G	CT	YDS	TD	CTPG
Andre Jackson, Bowling Green	So	1	9	107	1	9.0
Michael McDade, Nev.-Las Vegas	Jr	2	17	186	2	8.5
Kell McGregor, Colorado St.	Jr	2	17	173	0	8.5
Mike Leuck, Ball State	Jr	2	16	133	2	8.0
Dave D'Addio, Maryland	Sr	1	8	113	0	8.0
James Maness, TCU	Jr	1	8	108	0	8.0
Don Goodman, Cincinnati	Sr	1	8	69	0	8.0
Tim Brewster, Illinois	Sr	1	8	66	0	8.0
Alan Andrews, Rutgers	Jr	1	8	39	0	8.0
Eric Richardson, San Jose St.	Sr	1	7	118	1	7.0
Loy Alexander, Colorado	So	1	7	100	1	7.0
Wayne May, TCU	Sr	1	7	92	0	7.0
Keith Edwards, Vanderbilt	Jr	1	7	79	0	7.0
Ricky Edwards, Northwestern	Sr	1	7	37	0	7.0
Dave Naumcheff, Ball State	Sr	2	13	263	3	6.5
Brian Brennan, Boston Col.	Sr	2	13	208	2	6.5
Wesley Thompson, Florida St.	Sr	2	13	182	0	6.5
Lenny Montgomery, Long Beach	Sr	2	13	95	1	6.5

ALL-PURPOSE RUNNERS										
	CL	G	RUSH	REC	PR	KOR	YDS	YDSPG		
Lionel James, Auburn	Sr	1	172	3	51	0	226	226.0		
Curtis Adams, Central Mich.	Jr	1	97	9	0	79	185	185.0		
Greg Allen, Florida St.	Jr	2	355	9	0	0	364	182.0		
Joe McIntosh, N. C. State	Jr	1	160	20	0	0	180	180.0		
Julius Grantham, Duke	So	2	110	91	0	151	352	176.0		
Andre Jackson, Bowling Green	So	1	67	107	0	0	174	174.0		
Shawn Faulkner, Western Mich.	Sr	1	170	0	0	0	170	170.0		
Napoleon McCallum, Navy	Jr	1	83	-3	53	0	166	166.0		
Gary Ellerson, Wisconsin	Jr	1	164	0	0	0	164	164.0		
Alfred Anderson, Baylor	Sr	1	144	0	0	0	160	160.0		
Larry Willie, Fresno St.	Jr	1	103	34	22	159	159.0			
Buford McGee, Mississippi	Sr	2	215	77	0	18	310	155.0		
George Rhyms, Oklahoma	Jr	1	0	29	105	21	155	155.0		
Gerald McNeil, Baylor	Sr	1	0	113	18	24	155	155.0		
Eric Richardson, San Jose St.	Sr	1	0	118	0	37	155	155.0		
Darryl Clack, Arizona St.	So	1	82	17	0	54	153	153.0		
Irving Fryar, Nebraska	Sr	2	31	177	40	56	304	152.0		
Paul Jones, Utah State	Jr	1	31	5	0	116	152	152.0		
Elton Akins, Army	Jr	1	43	21	0	86	150	150.0		
Owen Gill, Iowa	Jr	1	136	9	0	0	145	145.0		
Bobby Joe Edmonds, Arkansas	So	1	62	74	9	0	145	145.0		
Rick Badanjek, Maryland	So	1	77	0	66	0	143	143.0		
Henry Williams, East Carolina	Jr	2	0	24	61	199	284	142.0		

TOTAL OFFENSE											
	RUSHING	PASSING	TOTAL	YDS	PL	TDR	YDSPG				
Steve Young, BYU	13	143	30	113	38	351	51	464	9.1	3	464.0
Kevin Sweeney, Fresno St.	10	24	51	-27	31	329	41	302	7.4	2	302.0
Mike Tomczak, Ohio State	3	19	1	18	25	273	28	291	10.4	4	291.0
Boomer Esiason, Maryland	3	12	4	8	31	269	34	277	8.1	1	277.0
Ben Bennett, Duke	8	23	18	5	80	543	88	548	8.2	4	274.0
Kelly Lowrey, Florida St.	14	25	43	-18	86	555	80	537	6.7	8	268.5
Neil Britt, Ball State	8	20	15	5	66	528	74	533	7.2	5	265.5
Tom Tunnicliffe, Arizona	8	7	19	-12	61	542	69	530	7.7	4	265.0
Dean May, Louisville	10	8	47	-39	78	569	88	530	6.0	3	265.0
Jeff Wickerham, LSU	8	21	34	-13	28	274	34	261	7.7	0	261.0
Steve Palluer, Washington	7	46	2	44	32	211	39	255	6.5	1	255.0
Gale Gilbert, California	8	12	36	-24	78	529	86	505	5.9	2	252.5
Jon Carlson, San Jose St.	4	4	9	-5	36	256	40	251	6.3	2	251.0
Randall Cunningham, N.L.V.	25	87	51	36	63	461	88	497	5.6	4	248.5
John Mazur, Texas A&M	1	1	0	1	33	243	34	244	7.2	2	244.0
Troy Bodine, Cincinnati	9	14	36	-22	36	281	45				



[Through games of September 10]

Division I-AA individual leaders

RUSHING							
CL	G	CAR	YDS	AVG	TD	YDSPG	
Gill Fenerty, Holy Cross	So	1	25	196	7.8	2	196.0
Rich Erenberg, Colgate	Sr	1	25	181	7.2	0	181.0
Gene Lake, Delaware St.	So	1	14	164	11.7	1	164.0
Scotty Caldwell, Tex.-Arlington	Jr	1	14	136	9.7	1	136.0
Terence Thompson, Eastern Ky.	Sr	2	46	271	5.9	3	135.5
Gregory Fashaw, Florida A&M	Sr	1	11	133	12.1	2	133.0
Steve Opet, Lehigh	Sr	1	14	122	8.7	1	122.0
Bobby Craighead, NE Louisiana	Sr	2	40	239	6.0	1	119.5
James Black, Akron	Sr	2	65	239	3.7	1	119.5
Butford Jordan, McNeese St.	Sr	2	53	237	4.5	1	118.5
Mike Revell, Bethune-Cookman	Sr	1	13	118	9.1	2	118.0
Jerry Holder, Northern Ariz.	Jr	1	17	117	6.8	2	117.0
Dan Reeder, Delaware	Jr	1	19	117	6.2	0	117.0
Glendell Miller, Western Ky.	So	1	26	117	4.5	2	117.0
George Landry, Lamar	So	2	51	215	4.2	4	107.5
Stanford Jennings, Furman	Sr	2	27	214	7.9	2	107.0
John Settle, Appalachian St.	Fr	2	43	207	4.8	2	103.5
Andre Harper, Bethune-Cookman	Fr	1	14	101	7.2	0	101.0
Willie Cannon, Murray St.	Fr	1	18	97	5.4	1	97.0
Mike Jones, No. Caro. A&T	Sr	1	18	94	5.2	0	94.0
Tony Corley, Nevada-Reno	Sr	1	17	93	5.5	0	93.0
Larry Fourqurean, Marshall	Sr	2	41	180	4.4	0	90.0
Nick Kowgios, Lafayette	Sr	1	22	88	4.0	1	88.0

SCORING						
CL	G	TD	XP	FG	PTS	PTPG
Andre Garron, New Hampshire	So	1	3	0	18	18.0
Mike Powers, Colgate	Fr	1	0	0	5	15.0
Roland Shields, Austin Peay	Sr	1	2	2	14	14.0
Tim Langford, Arkansas St.	Sr	2	4	0	24	12.0
George Landry, Lamar	So	2	4	0	24	12.0
Chris Burkett, Jackson St.	Jr	2	4	0	24	12.0
Steve Caizis, Rhode Island	Sr	1	2	0	12	12.0
B. J. Webster, Delaware	Jr	1	2	0	12	12.0
Gill Fenerty, Holy Cross	So	1	2	0	12	12.0
Steve Opet, Lehigh	Sr	1	2	0	12	12.0
John Murphy, Citadel	Sr	1	2	0	12	12.0
Kevin Baker, Middle Tenn.	Sr	1	2	0	12	12.0
Marshan Jolly, Middle Tenn.	Sr	1	2	0	12	12.0
John Good, Youngstown St.	Sr	1	2	0	12	12.0
Mike Revell, Bethune-Cook	Sr	1	2	0	12	12.0
Gregory Fashaw, Florida A&M	Sr	1	2	0	12	12.0
Billy Wilson, Florida A&M	Jr	1	2	0	12	12.0
Glendell Miller, Western Ky.	So	1	2	0	12	12.0
Glenn Bodnar, Wm. & Mary	Jr	1	2	0	12	12.0
Greg Arterburn, SW Missouri St.	So	1	2	0	12	12.0
Jerry Holder, Northern Ariz.	Jr	1	2	0	12	12.0
Thurman McKinney, No. Ariz.	Fr	1	2	0	12	12.0
Tony Whittington, McNeese St.	Jr	2	0	3	6	10.5

PASSING EFFICIENCY											
(Min. 15 att. per game)	CL	G	ATT	CMP	PCT	INT	YDS	YDS/ATT	TD	PCT	POINTS
Willie Totten, Miss. Valley	So	1	32	21	65.62	0	323	10.09	3	9.38	181.3
Stan Yagiello, Wm. & Mary	Jr	1	28	18	64.29	0	236	8.43	3	10.71	170.4
Michael Kelly, Fla. A&M	Jr	1	18	9	50.00	1	556	137.76	3	16.67	157.8
Ken Hobart, Idaho	Sr	1	59	37	62.71	4	678	527.89	6	10.17	157.7
Bernard Hawk, Beth-Cook	So	1	19	12	63.16	0	133	7.00	2	10.53	156.7
Robert Hill, Citadel	Jr	1	33	25	75.76	1	303	252.76	2	6.06	153.8
Jon Roddy, Jam. Madison	Jr	1	23	13	56.52	0	218	9.48	1	4.35	150.5
Greg Carter, N. Texas St.	Sr	2	38	23	60.53	0	344	9.05	1	2.63	145.3
Mike Mendoza, N. Ariz.	Jr	1	17	11	64.71	0	119	7.00	1	5.88	142.9
John McKenzie, Jack. St.	Jr	2	55	32	58.18	1	182	374.60	5	9.09	141.7
Rick Leclerc, New Hamp.	Jr	1	21	9	42.86	1	476	191.90	2	9.52	141.2
Tim Bernal, Weber St.	Sr	1	21	13	61.90	0	156	7.43	1	4.76	140.0
Marty Horn, Lehigh	So	1	19	10	52.63	1	526	137.72	2	10.53	137.4
Jamie Devore, Youngs. St.	Jr	1	47	30	63.83	2	426	309.78	2	4.26	135.3
Johnny Mitchell, VMI	Sr	1	25	12	48.00	1	400	199.96	2	8.00	133.3
Randy Joyce, App. St.	Jr	2	31	17	54.84	0	222	7.16	1	3.23	125.6
Tony Costantine, Tn. Tech.	Jr	1	24	15	62.50	2	833	186.75	1	4.17	124.7
John Rafferty, Eastern Ill.	So	2	47	29	61.70	3	638	305.64	3	6.38	124.5
Willie Perkins, W. Caro.	So	1	16	10	62.50	0	114	7.13	0	0.00	122.3
Kenneth Biggles, Tenn. St.	Jr	2	39	21	53.85	3	769	306.78	2	5.13	121.3
Gerald Des Pres, Boise St.	Jr	2	53	30	56.60	2	377	366.91	2	3.77	119.5
Bob Gibbon, Bucknell	Jr	1	18	11	61.11	0	78	4.33	1	5.56	115.8
Keith Menard, Nicholls St.	Jr	2	55	31	56.36	4	727	358.65	3	5.45	114.5

RECEIVING						
CL	G	CT	YDS	TD	CTPG	
Jerry Rice, Miss. Valley	Jr	1	11	186	1	11.0
Bill West, Citadel	Sr	1	9	115	0	9.0
John Good, Youngstown St.	Sr	1	8	134	2	8.0
Ron Whittenburg, Idaho	Sr	1	8	106	1	8.0
Frank Pokorny, Youngstown St.	Jr	1	8	87	0	8.0
Mike Sutton, William & Mary	Jr	1	7	113	1	7.0
Glenn Bodnar, William & Mary	Jr	1	7	78	2	7.0
Brady Davis, N. Texas St.	Sr	2	12	194	1	6.0
Stephen Wilson, Montana St.	Jr	2	12	85	1	6.0
Brian Allen, Idaho	Sr	1	6	167	1	6.0
Gary Clark, James Madison	Jr	1	6	130	0	6.0
Frank Corbo, Lafayette	Jr	1	6	124	0	6.0
Dameon Reilly, Rhode Island	So	1	6	109	0	6.0
Steve Pancham, VMI	So	1	6	74	0	6.0
P. J. Hartford, Boston, U.	Sr	1	6	60	0	6.0
Mike Hardie, Youngstown St.	Jr	1	6	53	0	6.0

ALL-PURPOSE RUNNERS								
CL	G	RUSH	REC	PR	KOR	YDS	YDSPG	
Rich Erenberg, Colgate	Sr	1	181	41	11	0	233	233.0
Herman Hunter, Tennessee St.	So	2	84	106	57	213	460	230.0
Gill Fenerty, Holy Cross	So	1	196	21	0	0	217	217.0
Gary Clark, James Madison	Sr	1	29	130	55	0	214	214.0
Glendell Miller, Western Ky.	So	1	117	-5	0	90	202	202.0
Jerry Rice, Miss. Valley	Jr	1	0	186	0	0	186	186.0
Andre Garron, New Hampshire	So	1	60	122	0	0	182	182.0
Brian Allen, Idaho	Sr	1	15	167	0	0	182	182.0
Robert Thompson, Youngstown St.	Jr	1	41	29	3	104	177	177.0
Gene Lake, Delaware St.	So	1	164	0	0	0	164	164.0
Scotty Caldwell, Tex.-Arlington	Jr	1	136	13	0	0	149	149.0
Dave Scanlon, Wm. & Mary	Sr	1	49	45	0	54	148	148.0
Pete Mandley, Northern Ariz.	Sr	1	24	16	107	0	147	147.0
Bobby Craighead, NE Louisiana	Sr	2	239	-6	0	58	291	145.5
Eldridge Comer, Delaware St.	Jr	1	45	17	0	83	145	145.0
Dennis Rogan, Weber St.	Sr	1	68	72	0	0	140	140.0
Steve Opet, Lehigh	Sr	1	122	17	0	0	139	139.0
Gregory Fashaw, Florida A&M	Sr	1	133	0	0	0	138	138.0
Terence Thompson, Eastern Ky.	Sr	2	271	0	0	0	271	135.5
John Good, Youngstown St.	Sr	1	0	134	0	0	134	134.0
Jerry Holder, Northern Ariz.	Jr	1	117	2	0	15	134	134.0
Mike Jones, No. Caro. A&T	Sr	1	94	39	0	0	133	133.0
Marshan Jolly, Middle Tenn.	Sr	1	0	132	0	0	132	132.0

TOTAL OFFENSE											
RUSHING	CAR	GAIN	LOSS	NET	ATT	YDS	PLAYS	TD	YDS/PL	TD/PL	YDSPG
Ken Hobart, Idaho	10	29	13	16	59	527	69	543	7.9	6	543.0
Jamie Devore, Youngs. St.	8	15	33	-18	47	369	55	351	6.4	2	351.0
Willie Totten, Miss. Valley	7	0	26	-26	32	323	39	297	7.6	3	297.0
Stan Yagiello, Wm. & Mary	9	26	0	26	28	236	37	262	7.1	4	262.0
Jon Roddy, James Madison	12	48	19	29	23	218	35	247	7.1	2	247.0
Rick Leclerc, New Hamp.	9	7	21	50	21	191	30	241	8.0	2	241.0
Robert Hill, Citadel	5	17	32	-15	33	252	38	237	6.2	2	237.0
Frank Novak, Lafayette	6	23	8	15	28	204	34	219	6.4	0	219.0
Johnny Mitchell, VMI	6	22	9	13	25	199	31	212	6.8	2	212.0
Mickey Corwin, Mid. Tenn.	1	0	3	-3	10	213	11	210	19.1	2	210.0
Kevin Sisk, Murray St.	7	30	1	29	20	175	27	204	7.6	0	204.0
Gill Fenerty, Holy Cross	25	202	6	196	0	0	25	196	7.8	2	196.0
Herman Coleman, Southern	7	24	21	3	14	191	21	194	9.2	2	194.0
John McKenzie, Jackson St.	18	51	42	9	55	374	73	383	5.2	5	191.5
David Wienke, Rhode Island	6	18	2	16	33	171	39	187	4.8	1	187.0
B. J. Webster, Delaware	9	43	14	29	24	157	33	186	5.6	3	186.0
Rich Erenberg, Colgate	25	183	2	181	0	0	25	181	7.2	0	181.0
Greg Carter, N. Texas St.	26	53	43	10	38	344	64	354	5.5	2	177.0
Mike Godfrey, Montana St.	8	12	41	-29	77	372	85	343	4.0	1	171.5
Steve Calabria, Colgate	4	4	1	3	28	163	32	166	5.2	0	166.0
Kenneth Biggles, Tenn. St.	12	50	25	25	39	306	51	331			

# Top Division I contenders have different philosophies

By Wallace I. Renfro  
The NCAA News Staff

Until last fall, it seemed a passport was necessary for success in NCAA cross country. Texas El-Paso, with a dominance of international athletes, had won four NCAA Division I championships in a row and six of the past seven.

The top individual in the meet the past four years has been an international runner.

The difference last year was that Wisconsin, with its all-American—in fact, all-Wisconsin—squad, won the team championship.

Now comes the fall of 1983, and Texas-El Paso and Wisconsin again appear to be headed for a confrontation in November for the title. If the encounter occurs, it also will be a test of two philosophies.

Larry Heidebrecht, the second-year coach at Texas-El Paso, says the Miners will continue to recruit international athletes.

"But we are trying for more of a balance throughout our entire program. However, for the distance events and cross country, our main thrust in recruiting will be international. The main reason is that they are ready to run when they come in.

"There also is an economic factor. We often can attract an international athlete for less than a full ride, especially the European athlete. To get a good American athlete down here to the desert, we about have to give a full scholarship.

"None of this is to say that we won't go after the good American athlete."

Ed Nuttycombe is the track and cross country coordinator at Wisconsin, and he says the Badgers will continue to seek the American athlete.

"We hope to stay with the American athlete and stay as close to home as possible. That is not to say we won't try to get an international student.

But why can't the Americans run with the international athlete?"

That question will be answered in November. Both teams are loaded; and, if everyone stays healthy, both teams should be stronger.

Wisconsin is the team to beat. The Badgers, one of only two teams in the country to compete in all NCAA Division I Men's Cross Country Championships since 1938, won their first team title under coach Dan McClimon.

McClimon was killed in a plane crash after the season, and Wisconsin named assistant coach Nuttycombe as track coordinator and brought in Martin Smith as cross country coach. Smith had been at Virginia, where he led the women's team to two NCAA championships.

Only one member of last year's championship team is missing, and the best news for Smith may be that five of the returning six are juniors.

That group includes the first four runners, Tim Hacker, Scott Jenkins, John Easker and Joe Stintzi. Hacker and Jenkins finished fourth and fifth, and all four finished in the top 25 at the NCAA meet.

The No. 6 runner is Randy Bundt, a junior. Don Volkey is the lone senior.

"Mac was a very revered and loved figure here, and he left a solid foundation," Smith noted. "Certainly, we have lot of good athletes. But staying the same is really going backward, and we will have to be better."

Texas-El Paso also has five experienced juniors.

Gidamis Shahanga finished 10th in the NCAA cross country meet last fall and won both the NCAA 5,000- and 10,000-meter runs outdoors.

Running beside him is Zak Barie, the cross country runner-up in 1982. Barie finished second in both the 5,000 and 10,000 in June at the NCAA outdoor meet.

The third junior is Matthews Motshwarateu, who won the 1981 individual title when Texas-El Paso came within two points of a perfect cross country score (Shahanga was sixth that year). Motshwarateu missed 1982 because of orthoscopic surgery.

The other two juniors are Sam Ngatia, 10th in the steeplechase in June, and Mohamed Rutiginga.

"The biggest job we have is to keep everyone healthy," Heidebrecht said. "Motshwarateu is the key."

The Badgers open their season against Southern Illinois, a team, Smith says, that will finish in the top five in the nation.

The major reasons for Smith's prediction are second-year coach Bill Cornell and the two runners he brought with him from Murray State. Chris Bunyon was 17th in the NCAA meet two years ago and was fifth last year in the Boston Marathon. The other transfer is Eddy Wedderburn.

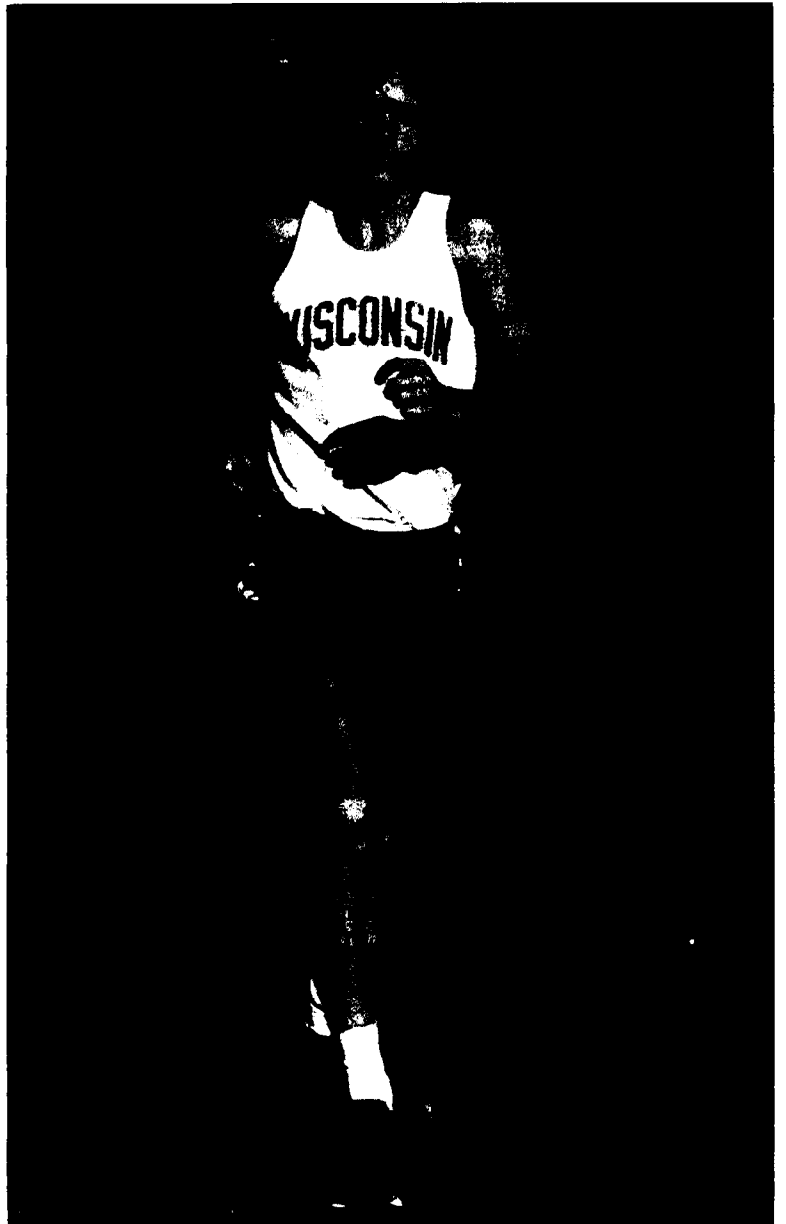
They will join Mike Keane, the No. 1 runner for Southern Illinois last year and the Missouri Valley Conference champion in both the 5,000 and 10,000.

East Tennessee State finished fourth in the NCAA meet last fall and is the only other team to have competed in every one of the NCAA Division I Men's Cross Country Championships.

Coach Dave Walker will be missing two runners from the 1982 squad, and one of those was a surprise. Carey Nelson, a 4,000 student from Canada, accepted a scholarship in his home country and is not returning.

But Walker has a balanced team, with two seniors, a junior and two sophomores. The leader is Kevin Johnson, who finished ninth in the nation last year.

Providence is a team that cannot be overlooked. The Friars have been runners-up the past two years, and coach Robert Amato returns two of



Wisconsin's Tim Hacker

the three runners who finished in the top 20 last year.

"If all goes well, we could be strong," Amato said. "We are not as deep as we would like to be. It is really important that we stay healthy."

The leader of the group is Steve Binns, a junior, who was 15th in the nation last year. Right behind him is Richard O'Flynn, who was 17th. A real catch for the Friars was Brian Jaeger, a freshman from Florida,

who was fifth in the Kinney Invitational.

Oregon also will be a contender. In fact, Bill Dellinger believes the Ducks will be much improved.

"Part of the key is how healthy John Zishka is," Dellinger said. "He tore the bottom of his foot last fall."

With Zishka healthy and with Jim Hill, 32nd in the cross country championships last year, Oregon will try to improve on its sixth-place finish.

## Stanford, Virginia to battle in Division I women's race

This could be the year that Brooks Johnson's optimism pays off. Johnson is the coach at Stanford, the team that many believe will win the NCAA Division I Women's Cross Country Championships this fall.

"Let me explain something," Johnson said. "I've never lost a meet on paper. So, I think we are going to win. If you're not chronically optimistic in this business, you should be selling shoes or used cars and making a decent living."

Of course, there is good reason for Johnson to be optimistic. His team is loaded. He is missing only one runner from the team that finished second to Virginia last year, and Virginia coach Dennis Craddock admits that the Cavaliers may be weaker.

"I can remember thinking that Virginia would be weaker last year and look what happened," Johnson said.

What happened is history. Virginia put four of its five scorers in the top 20 and beat Stanford by 43 points.

Individually, Stanford returns Ceci Hopp, the No. 3 finisher in the NCAA meet last fall. She missed the outdoor season with an injury but is back in good shape now.

The Cardinal also has Alison Wiley, a Canadian sophomore, and Patti Sue Plumer, the only senior on the team. Wiley and Plumer finished first and second, respectively, in the NCAA outdoor 3,000-meter run last spring.

The other returnees include Regina Jacobs, 27th in cross country last

year; Michelle Mason, and Sloan Burton.

The difference may be how quickly freshman Corey Schubert can contribute to the team. Schubert was ranked No. 1 in the high school 3,000 last year with the second fastest time ever. She was third in the Kinney Invitational and won The Athletics Congress 3,000 junior title.

"Weaker" is a relative thing at Virginia. The Cavaliers have two seniors and a junior back from the two-time defending championship team. They return a standout who had late-season surgery last year, and they probably had the best recruiting season in school history.

Virginia also has a coaching adjustment to make. Martin Smith, who led the Cavaliers to the two

NCAA team titles, left to become men's cross country coach at Wisconsin, the defending Division I champion. Track coordinator Dennis Craddock, Smith's boss at Virginia, has assumed the cross country coaching reigns.

It is Craddock who predicts that Virginia will not be as strong as in the past.

"We have to have some of the freshmen come through," said Craddock. "I'm not sure we can win again, but we certainly will battle for the top five."

To do battle, the Cavaliers return the defending individual champion, Lesley Welch. Also back is Lesley's sister Lisa, who shared the top spot on the Virginia squad with Lesley until having to undergo surgery late last fall.

Also back are Marisa Schmitt, who finished 18th last year, and Mary Wright.

The list of recruits reads like a who's who of high school distance running.

Patty Matava ran the second fastest high school two mile ever last year and then finished in the top 20 in the TAC senior—yes, senior—cross country meet.

Michelle Rowen was second in the Kinney meet last year and had the fastest time in the country for the high school mile. Meg Waldron was

the winner of the Fifth Avenue Mile race last year.

Andrea Volpe was the Virginia state cross country champion last year and finished in the top five at the Kinney meet, and Thayer Plante was the Massachusetts state cross country champion.

"I think this is Stanford's year," Craddock admitted. "But North Carolina State will be very, very strong, with Betty Springs back. And Oregon may be tough if Leann Warren is well."

Betty Springs is back. After winning the 1981 NCAA championship, she sat out last fall with a foot injury and then came back in the spring to win both the outdoor 5,000 and 10,000. She also was fifth in the world cross country championships.

Running with her for North Carolina State will be Connie Jo Robinson, a sophomore who was 23rd last fall; Lynne Strauss, who had a good outdoor season; Sue Overbey, an all-America in 1981, and Sandy Cullinane, a senior who was 32nd in the 1982 cross country championships.

"One of the things we lacked last year was depth," coach Rollie Geiger said. "We have a couple of good freshmen who should give us that depth. We were seventh last year and

See Stanford, page 7

## Division I championship returnees

### TOP 10 RETURNEES DIVISION I MEN

1982 Finish	Name, Institution
2	Zak Barie, UTEP
3	Hans Kocleman, Clemson
4	Tim Hacker, Wisconsin
5	Scott Jenkins, Wisconsin
6	Joseph Kipsang, Iowa State
8	Ed Eyestone, Brig. Young
9	Kevin Johnson, East Tenn.
10	Gidamis Shahanga, UTEP
11	Sam Reese, Colorado
13	Dave Morrison, Minnesota



Scott Jenkins

### TOP 10 RETURNEES DIVISION I WOMEN

1982 Finish	Name, Institution
1	Lesley Welch, Virginia
2	Regina Joyce, Washington
3	Ceci Hopp, Stanford
5	Margaret Davis, Iowa State
6	Wendy Van Hierlo, Illinois St.
7	Kathy Hadler, Tennessee
8	Kate Wiley, Harvard
9	Alison Wiley, Stanford
10	Nanette Doak, Iowa
11	Beth Farmer, Florida



Ceci Hopp

# Balanced men's field expected in Division II

Seven of last year's top 10 Division II men's cross country all-Americans return this fall, but that does not indicate who will dominate the sport in 1983.

Balance appears to be the key. There are at least six teams that could finish on top in Division II.

Two of the top seven returning all-Americans run for St. Cloud State. The Huskies were fifth in the nation last year.

Back are Kurt Threinen, third in the NCAA Division II Men's Cross Country Championships, and Scott Ergen, who was ninth. Also returning are Mark Young and Mark Kane.

"On paper we should be stronger," coach Bob Waxlax said. "We lost two, but we have replaced them with even stronger runners."

The two replacements are transfer Tony Olson, who ran for Mankato State when that team finished fifth in Division II two years ago, and redshirt John Perleberg.

Slippery Rock coach Keith Driftmier could hardly wait for 1983.

"We feel we are stronger than we have been in four or five years," Driftmier said. "We have a veteran squad with the best chance in years to qualify for the national meet."

Leading the pack will be Robert Petrini, the No. 2 finisher in the 1982 championships. Behind him are seniors Bill Brice and Steve Bean, juniors Rick Weber and Steve Lacy and two freshmen—Craig Hines and James Garrett.

Scott Underwood coached both the South Dakota State men's and women's teams to second-place finishes in Division II last year, and both teams are strong contenders again.

He lost two of his top seven men from last year; but among the returnees is Dan Carlson, who was ninth in the NCAA meet in 1982. Also returning are Robert Beyer, Stuart Lund, Ted Schemmel and Lowell Miller.

Underwood also has two freshmen who should be among the top five runners, including Todd Stevens, who was the South Dakota state high school champion in the mile and two mile last year.

"We are about as good as we were last year," Underwood said. "But I don't know if we are any better."

Cal Poly-Pomona worries everyone. Coach Jim Sackett may have his team in the right place at the right time. He has three runners who he terms "very tough."

The leader of the group is Matt Blaty, who won the Stanford Invitational and the West qualifying regional. He then suffered a stress fracture and missed the outdoor season.

Also back are Tony Reyes, who was 15th in the nation two years ago, and Gary Borbon, who has fared well in regional competition.

"We have 12 others who can be in the top seven," Sackett said. "The question is how close they can run to the top three."

Two runners who will be fighting for a spot on the first team are Brock Vaughn and Steve Perez, a pair of sophomores who have improved their 1982 times by one minute each.

Five of the top seven runners at California-Riverside return from the team that finished sixth in the nation

last year.

Missing from the group is Frank Assumma, fifth in the NCAA cross country meet last fall and the NCAA outdoor 1,500-meter run champion.

Riverside coach Chris Rinnie has two juniors and three sophomores back, including his No. 2 runner in 1982, Ray Cook.

"I don't see any of them becoming a Frank Assumma, but they are good," Rinnie said. "I think we will be better than people think we are."

Coach Bill Stegemoller has a veteran team with some depth at Indiana State-Evansville. The Eagles lost three runners from last year's team that finished third.

Stegemoller has his best three runners back—Todd Reller, James Nolan and Mike Atkinson—and all are seniors. Nolan was fourth in the

NCAA Division II 10,000-meter run last spring.

## Division III men

Al Carius has a system at North Central, the defending Division III men's cross country champion. He develops winners.

"Our program is based on developing people; we rarely get a superstar," Carius said. "We don't expect a freshman to make the top seven."

"Tradition has a lot to do with it. A sprinter has speed, or he doesn't. But distance running is developed. I think it's more that than anything else. The kids here feel that they can win."

There is good reason. North Central has won six of the 10 NCAA Division III Men's Cross Country Championships and was runner-up once. The

worst North Central finish was a seventh in 1980.

Tony Bluell, Jay Rogers and Ray Krauss all were freshmen then. Now, they are three-fourths of the veteran group that returns to defend its title. The fourth member is junior Bob Dunphy. Bluell, Dunphy and Rogers were fourth, sixth and ninth, respectively, last year.

Chances are that everyone else in Division III will be chasing North Central. The top challenger appears to be St. Thomas—another program where both the men and women have achieved national recognition. The women won the NCAA Division III meet last year, and the men were fourth.

Coach Larry Russ believes his men's team is in a good position to challenge North Central. He returns

Nicholae Mancui, the defending individual cross country champion and runner-up in the Division III 10,000, and Peter Wareham, 22nd in cross country and runner-up in the 5,000 last spring.

"I feel that we have the best depth of any team I have ever had," Russ said. "It is a very young team, only three seniors; but it also is an experienced team."

Brandeis was runner-up last year, and the Judges lost only two of their top seven—their first and third runners. Back are Mark Beeman, who was 15th last year; Edward McCarthy, and Misael Fossas.

Glassboro State, third in the division last fall, has four seniors returning, including Robert Rinkis, who was third in the 5,000 last spring.

# Cal Poly-SLO women head Division II again

## Top Divisions II, III women returnees

### TOP 10 RETURNNEES DIVISION II WOMEN

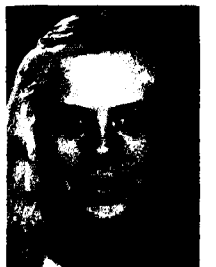
1982 Finish	Name, Institution
1	Amy Harper, Cal Poly-SLO
5	Audrey Stavrum, South Dakota St.
6	Patti Gray, Cal-Davis
8	Kristin Asp, South Dakota St.
9	Kathy Koudela, Hayward State
10	Alane Keefer, Ashland
12	Marilyn Nichols, Cal Poly-SLO
13	Christine Ridenour, SE Missouri St.
14	Nancy, Gieske, South Dakota St.
16	Debbie Gresens, Ashland



Amy Harper

### TOP 10 RETURNNEES DIVISION III WOMEN

1982 Finish	Name, Institution
1	Tori Neubauer, Wis.-LaCrosse
3	Sarah Hintz, St. Thomas
4	Ylonka Wills, Barnard
7	Cynthia Nagle, Claremont-M-S
9	Cathy Karamitsos, Occidental
11	Barbara Sorenson, Wis.-Stevens Point
12	Linda Channer, Bethel
13	Diane Weeder, SE Massachusetts
14	Denise Paull, Frank. & Marsh
15	Carolyn Cunniff, Norwich



Tori Neubauer

The biggest story in Division II women's cross country this fall never happened. It only almost happened.

The story was that Cal Poly-San Luis Obispo coach Lance Harter would become the women's cross country and track coach at Southern California. That would have been good news for everyone else in Division II, because Harter has built a powerhouse at Cal Poly-SLO that most feel could compete among the top 10 in Division I.

Harter accepted the job on a Monday; and on the following Thursday, he changed his mind. That means everyone will be chasing Harter's squad again in 1983.

Amy Harper, Jennifer Dunn and Kristin Thompson finished first, second and fourth, respectively, in the NCAA Division II championships a year ago, but only Harper returns this year.

"We are not going to return Dunn and Thompson this year," Harter said. "We will redshirt them. Even without them, we could be better than we were last year."

Also back from the championship team are Marilyn Nichols, 12th last year; Robyn Dubach, 20th; Carol Gleason, and Lorene Lopez. In other words, Harter returned everyone from last year before the decision was made to redshirt Dunn and Thompson.

Leslie White is one reason Harter believes the Mustangs will be stronger. White had an outstanding outdoor season, finishing second to Harper in the 5,000-meter run at the 1983 NCAA Division II Women's Outdoor Track Championships.

"Leslie is coming off a great outdoor track season, and I think she and Harper and Nichols will be the top three runners for us this year," said Harter. "There will be about a nine-way battle for the bottom four spots on the team."

Falling in behind the Mustangs could be California-Davis, South Dakota State, Northridge State and Hayward State—not in any particular order.

Coach Sue Williams at Cal-Davis will count on Patti Gray, who was sixth in cross country last year and the Division II 10,000-meter run champion. Also back are Nancy Riedel, Ann Hoerber and Karen Menge.

But missing is Linda Somers, who ran in Gray's shadow during her career at Davis. She finished second in the Division II 10,000 last May.

"Linda is very difficult to replace," Williams said. "She was very underrated, and our team will have to make up that time."

South Dakota State was second in the NCAA meet last year, and the Jackrabbits return five veterans. But that may not be enough, because depth is a problem.

Audrey Stavrum, Kristen Asp and Nancy Gieske return, and they finished fifth, eighth and 14th, respectively, in the championships last fall. They all are juniors and are joined by seniors Laura Geason and Jill Ramsdell. Another problem is an injury to Gieske.

"There is a better chance that she won't run than that she will," said coach Scott Underwood. "We will be pretty thin, especially if she doesn't run. Right now, we are not as good as last year."

Coach Don Strametz also has injury problems at Northridge State, which finished fourth in the nation last year. Returning from that squad are Magdalena Manriquez, Tara Slatton and Colleen Spadoni.

The Matadors also have Ann Zampardo, injured last year; Tracy Schofield, who ran at nationals in cross country but was injured during the outdoor season, and Lucia Rodriguez, who was the No. 2 runner on the cross country team in 1982 before she was hit by a car.

Strametz also is depending on Jeanette Allred, who was 10th in the Division II 1,500-meter run last spring.

If the Matadors get healthy, they will be tough. If not, Strametz believes

they "will be lucky to get out of the West regional."

Hayward State will build its team around Kathy Koudela, who finished ninth in the nation last year.

## Division III women

Tori Neubauer dominated distance running in Division III last year. She led her Wisconsin-LaCrosse team to the outdoor championship with victories in the 3,000- and 5,000-meter runs. She also is the defending cross country champion.

The big question is whether Neubauer and her teammates can overcome St. Thomas this fall. The Indians finished second behind St. Thomas last year, and both return strong squads.

LaCrosse coach Gary Wilson believes Neubauer will be the class of the division this year.

"I would be surprised if anybody can touch her," Wilson said. "She ran the 5,000 a minute faster this summer than she did last summer. And her goal is to finish in the top 15 of the Division I cross country meet, which is two days after the Division III meet."

She will not be running by herself. The Indians are deep, with 63 athletes reporting for practice. Wilson said 24 of them have a chance to be in the top seven.

Back from last year's team are Lisa Kutschera, Dawn Suchow, Carrie Furey and Patty Reynolds. Another returnee is Andrea Bauer, who missed the national meet because of the flu but who Wilson believes is a potential all-American.

Wilson also has three or four runners who did well outdoors last spring and "at least four or five freshmen who have a shot at the team."

St. Thomas coach Joe Sweeney should be nervous. In addition to the strength LaCrosse is showing, the Tommies lost Debra Thometz, individual runner-up in cross country and the 10,000 outdoor winner, their No. 3 runner.

But Sweeney believes St. Thomas is on its way up. He has a very young team, with two sophomores and two juniors returning. Included in the group are Sarah Hintz, who was third in the nation; Michelle Brisbois; Laura Inderieden, and Cindy Hennessy.

The only senior on the St. Thomas squad is Margaret Diamond, who was the final finisher (59th overall) for the Tommies last year.

Sweeney has added two freshmen to the team: Jenny Hintz, Sarah's sister, was the Wisconsin state high school cross country champion as a junior, and Hillary Wackman, the Minnesota state champ last year.

Other strong Division III programs include Occidental, Southeastern Massachusetts and Cortland State.

Occidental returns its top four runners, including Carol Karamitsos, ninth in the country last year. Southeastern Massachusetts returns Diane and Donna Weeder, and coach Bob Dowd believes the Corsairs will be stronger. Cortland State returns Nancy Nicholson, 21st in the nation last year.

## Stanford

Continued from page 6 should be better this year."

The freshmen are Patty Metzler, the 1982 Ohio state high school champion, and Kathy Ormsby, the North Carolina state champion.

Leann Warren is not back at Oregon. At least she will not be back at the beginning of the season. After operations on her right knee kept her out of competition last year, she underwent orthoscopic surgery on the left knee the first week of September. It is doubtful that she will be able to run at all this fall.

That does not mean that the Ducks are without talent. Back are Kathy Hayes, Lisa Marten, Kim Roth, Rosa Gutierrez and Claudette Graenedal, who led Oregon to a third-place finish in the NCAA meet last year.

Also on hand are Ranza Clark, who won the 1,500 at the Pan American Games, and freshman Kim Ryan, who may be good enough to be the No. 4 runner for the Ducks.

Harvard finished fourth last year and returns Kate Wiley, the eighth-place finisher in the NCAA meet. But gone is Jennie Striker, Harvard's No. 2 runner who is sitting out this season.

Yale has Gillian Morton, who finished 14th last year, and Margaret Wynne, who also qualified for the NCAA meet.

## Top Divisions II, III men returnees

### TOP 10 RETURNNEES DIVISION II MEN

1982 Finish	Name, Institution
2	Robert Petrini, Slippery Rock
3	Kurt Threinen, St. Cloud
4	Brian Ferrari, Calif. (Pa.)
6	Todd Reller, ISU-Evansville
7	Rick La Griede, Portland St.
8	Dan Carlson, South Dakota St.
9	Scott Ergen, St. Cloud
19	Steve Repko, Edinboro
21	Tony Lehr, Central Missouri
27	Stuart Lund, South Dakota St.



Robert Petrini

### TOP 10 RETURNNEES DIVISION III MEN

1982 Finish	Name, Institution
1	Nicolae Mancui, St. Thomas
4	Tony Bluell, North Central
6	Robert Dunphy, North Central
9	Jay Rogers, North Central
10	Jim White, Mount Union
15	Mark Beeman, Brandeis
16	Robert Gosgrove, SE Massachusetts
17	Robert Morris, St. John's (Minn.)
18	Ray Krauss, North Central
20	Edward McCarthy, Brandeis



Nicolae Mancui

# Division I offensive guns are loaded in 1983



Connecticut all-America Laurie Decker

Photo by C. W. Pack

## Lock Haven looking for another trophy

Despite the loss of three all-America players from its 1982 Division II championship squad, Lock Haven seems to be in a dominant position as the 1983 Division II field hockey season gets under way.

A year ago, the Lady Eagles allowed only one goal in two NCAA play-off contests and downed Bloomsburg, 4-1, for the title. Head coach Sharon Taylor had been in the winner's circle before, when Lock Haven won the Association for Intercollegiate Athletics for Women crown in 1981.

Is a third straight championship only a few months away?

"It's difficult enough to win just one national championship and hard to repeat," Taylor said. "To win three in a row would be incredible."

Taylor's record would indicate that the challenge is not impossible. Under her guidance, Lock Haven teams have won 142 games during the last 10 years. With 28 losses and 15 ties, the winning percentage is .768, and the nonlosing percentage (including ties with wins) is .849.

"We're hoping to be strong this season," Taylor said. "Our defense is pretty well intact, but we have to replace some people in the midfield and attack areas. Fortunately, we have a lot of good kids."

One of the best is senior Ann Grim, who was named an outstanding player in the 1982 Division II championship. Grim was named to two all-America teams last season and earned a nomination for the Broderick Award.

Leading scorer Sherry Derr also returns. As a sophomore, the high-flying forward led the Lock Haven scoring attack with 18 goals and an assist. Derr scored once in each of the Lady Eagles' play-off games.

Grim will be called on to anchor the defense from her link position. She will get support from record-setting goalkeeper Kate Murphy.

Murphy's 0.50 goals-against average in the 1982 play-offs was a Division II record and equals the

all-time best set by Dina Ayers of Trenton State in the 1981 Division III play-offs. Murphy allowed only seven goals in 1982 and had 55 saves. She shut out opponents in 10 of 16 games.

The goalkeeper of Division II powerhouse Bloomsburg has coach Jan Hutchinson smiling. Senior Laurie Snyder had 12 shutouts and 48 saves in helping the Huskies into the 1982 final.

Snyder is one of 12 returnees set to battle Lock Haven, not only in the play-offs but also in the regular season. Both squads compete in the Pennsylvania State Athletic Conference.

Bloomsburg midfield standout Karen Hertzler had 16 goals and five assists as a freshman last year. Joining her will be senior midfielder Deb Long and junior attackers Deb Minsky and Linda Hershey. Long, Minsky and Hershey combined for 17 goals and 11 assists in 1982.

Bloomsburg's Hutchinson has a 58-21-11 record through five seasons. The 1983 Bloomsburg schedule includes a date with Division III champion Ithaca and an October I match with Lock Haven, which could be a preview of the 1983 championship game.

Chico State may have something to say about that, however. The only Division II program west of the Rockies (see story on next page), the Wildcats were 9-6 last year and lost to Bloomsburg in the Division II semifinals in a match that was decided on penalty strokes.

"We should be very strong this season," said Chico State coach Mary Ann Lazzarini. "We only have two key positions to fill, and we have them pretty well in order. I believe that quickness and a good attack will be our biggest assets this season."

In one respect, a schedule that includes games against Stanford, San Jose State and California also may prove to be an asset.

See Lock Haven, page 9

By Timothy J. Lilley  
The NCAA News Staff

High-powered offenses will highlight the 1983 Division I field hockey season as the perennial powers again will battle for supremacy.

At least 16 players who scored more than a dozen times last year, including several 20-plus goal scorers, return for the 1983 season.

Contenders for the division's top spot include 1982 national champion Old Dominion, runner-up Connecticut, semifinalists Delaware and Penn State, and Big 10 rivals Northwestern and Iowa. California, Temple and Massachusetts might shake up the rankings before the play-offs.

"Nobody will be easy," said Old Dominion coach Beth Anders. "We have six or seven people with experience, but we need more than that. We lost some key players, especially in the midfield area; but we have a good nucleus returning."

The Lady Monarchs were 20-1 last season, including a 3-2, come-from-behind victory over Connecticut for the NCAA title. Five Old Dominion players were named to the all-tournament team, but only two are back.

Junior forward Christy Morgan is one of the game's more productive players. She led the Lady Monarchs' championship drive last season with 25 goals, including three in the play-offs. Forward Diane Bracalente is the other returning all-tournament selection.

Old Dominion will get an idea of its play-off potential October 22 at Connecticut in a rematch of the 1982 final.

The Huskies boast a top-flight front line, dominated by underclassmen.

"We have a lot of work to do," said Connecticut coach Diane Wright, whose record is 110-33-15 (.696) in eight years at Connecticut.

"We will be strong up front; however, we lost six starters from the 1982 team, and I believe our defense will have to play as a unit if we expect to be successful."

Three juniors, Lisa D'Amadio, Wendy Hug and Rose Smith, make up the front line. D'Amadio led the way last season with 14 goals, three of which came in the play-offs.

Smith, however, was the squad's leading point scorer, combining 13 goals with 10 assists. She has been

named to the NCAA all-tournament team the past two seasons, and she leads the team in career scoring with 41 points.

Connecticut's midfield will be anchored by senior Laurie Decker, a two-time all-America. Goalie Lynn Kotler, who holds the Division I play-off record for goals-against average (0.67), has departed, but replacement Terry Kix's credentials include a 1982 National Sports Festival gold medal.

Attaining the top national ranking will not be easy for the Huskies, whose schedule includes the rematch with Old Dominion and dates with Penn State, Iowa, Delaware and Massachusetts.

Delaware coach Mary Ann Campbell returns nine letter winners, including senior goalkeeper Stacie Indelicato. One of her six shutouts in 1982 came against Penn State in the NCAA tournament's third-place game, earning her a spot on the all-tournament squad.

The Fightin' Blue Hens' returning forwards, junior Missy Meharg, senior Linda Schmidt and sophomore Anne Wilkinson, accounted for 28 goals last season as the team finished 16-5-1.

Delaware losses include two-time all-America Sharon Wilkie and four-year starters at the link position, Lisa Blanc and Kathy Hudson.

Ten of the nation's top 20 teams from 1982 are on Delaware's schedule. A three-game, midseason road trip that includes visits to Penn State, Virginia and Maryland may determine Delaware's play-off potential.

Penn State, a final-four participant in 1982, might have a problem putting things together in 1983. "It's been a long time since we've been in this position," said coach Gillian Rattray, commenting on seven vacant starting spots. "I hate to call it a rebuilding year, but that's exactly what it is."

The foundation of the reconstruction effort will be senior goalkeeper Lynn Mattson, whose 21 saves in a semifinal match with Old Dominion last season set a tournament record. Mattson had five shutouts, helping the Lady Lions finish 14-6 and improving Rattray's career record to 114-29-12.

Seniors Rene Wright and Anne Hopkins and junior Marsh Florio are other key Penn State players. "It's not that we don't have possi-

bilities," said Rattray, "it's just going to take time to find that right combination."

Temple coach Gwen Cheeseman, who has seven seniors, including the school's career scoring leader, appears to have a better preseason outlook.

Caroline McWilliams will carry the offensive load for the Lady Owls for the fourth season. A two-time all-America selection, McWilliams has 74 goals in three years, including 18 in 1982 to help Temple finish 13-3.

Top returnees include seniors Marie Schmucker, Tina Arcaro, Patty Rhiel and goalkeeper Robin Porter. Porter was one of only four goalies invited to the U.S. Olympic trials.

"I've got seven seniors on the team, and I feel stability will be a big plus," said Cheeseman. Temple may need that stability to survive one 10-day, seven-game stretch on its schedule that features dates with Penn State, Massachusetts, Old Dominion and Delaware.

Nine starters return at Massachusetts, where coach Pam Hixon has a five-year record of 83-19-6, including a 14-4-1 record last season.

Another fine goalkeeper, Patty Shea, returns to Division I. She had 12 shutouts and a 0.7 goals-against average in 1982 for Massachusetts. The offensive punch likely will be supplied by last year's leading scorers—Patty Smith (11 goals) and Pam Moryl (10 goals).

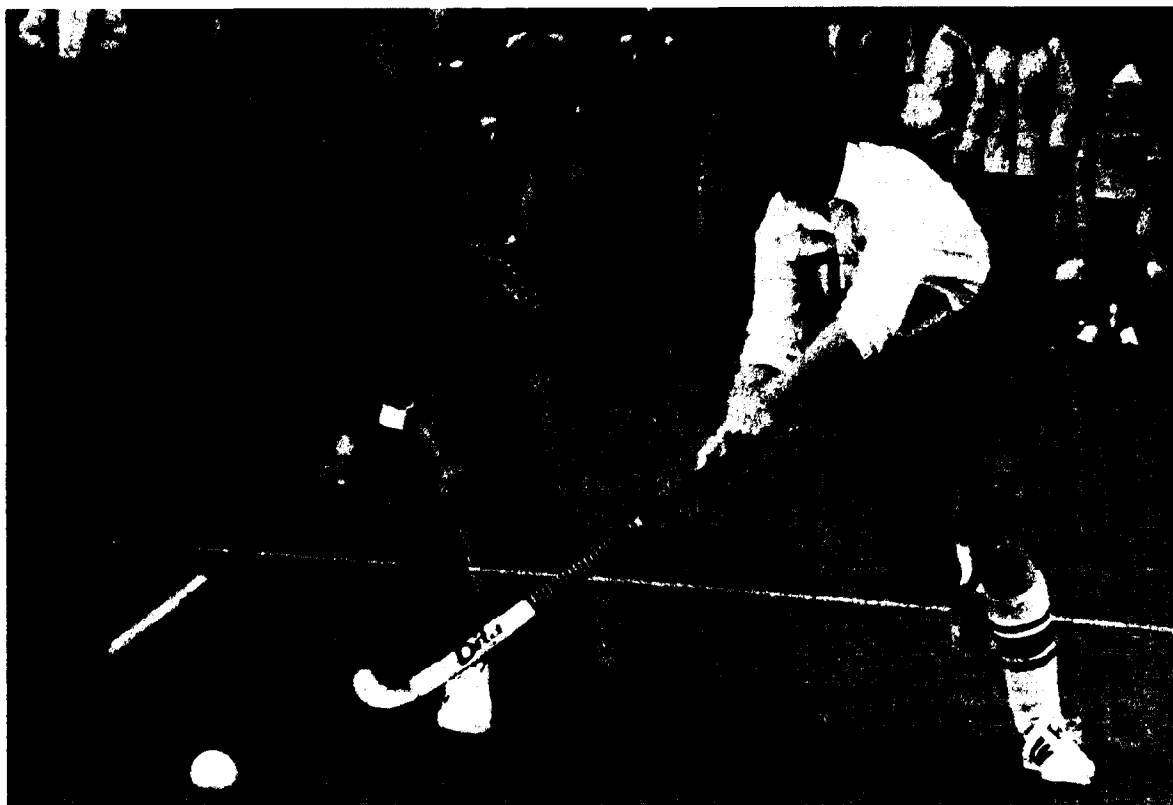
North Carolina will host the first Atlantic Coast Conference championship this fall, adding spice to a 1983 schedule already laced with Old Dominion, Temple and Delaware.

Head coach Karen Shelton, who will play on the 1984 U.S. Olympic team, has 16 players from a squad that finished 11-8 a year ago. Leading scorer Louise Hines (15 goals, seven assists) is back, as is goalie Jan Miles, who set a North Carolina record with 108 saves as a freshman.

In the Midwest, the power struggle will include a Big Ten Conference battle between Iowa and Northwestern. "We have split in competition the past two seasons," said Northwestern coach Nancy Stevens. "I think it could go either way this time around."

Northwestern made the play-offs in 1982 and recorded a school-record nine shutouts, allowing only 19 goals

See Division I, page 9



Two-time all-America Caroline McWilliams, Temple (No. 27)



# Young Ithaca squad returning to defend Division III crown

If, in the long run, character is more valuable than talent, Ithaca should have no insurmountable problems in defending its Division III field hockey championship this season, despite the loss of two all-Americans.

Bomber coach Doris Kostrinsky has a squad with only two seniors among its 19 letter winners, but she is unshaken by the task ahead. "If I thought we didn't have a chance of being a good team this season, I would say so," Kostrinsky said.

In her 15th season at Ithaca, Kostrinsky will lead her young and enthusiastic squad through a challenging schedule without the services of all-America forward Cathy Foto and link Mary Klecha. They were instrumental in Ithaca's wresting the national title from defending champion Trenton State last November.

Kostrinsky's squad will be pushed to maturity in a hurry, with teams like Division II champion Lock Haven and runner-up Bloomsburg on the schedule. The Bombers also will challenge Division I teams from Colgate, Bucknell and Syracuse. And there also is a road game with Trenton State.

"It is very easy to point out our personnel losses and wonder how we can fill the gaps, but I believe we may have more overall depth than a year ago," Kostrinsky explained. "This team will have tremendous speed and a good potent offense, which are trademarks of Ithaca clubs. We will have to work a little harder on defense, though."

Senior sweeper Clare Lamont, who was named to the Division III all-tournament team, will anchor that defense.

Goalkeeper Karen Horwath, who had 49 saves and a remarkable 0.49 goals-against average in 12 games last season, also will play a key role.

Forward Linda Amuso, the team's other senior, had 11 goals and 15 assists in 1982. She will be joined on the front line by juniors Lisa Clarke and Tracey Moyer. Heather Doyle, effective at several positions, may serve as the squad's utility player.

"Overall, I'm feeling good about the season," Kostrinsky said. "We have some key positions to fill, but there are a lot of contenders for those spots."

Trenton State is another contender for the top spot in Division III. The Lions' 46-game winning streak was snapped by Ithaca in the 1982 championship game.

Trenton State's biggest loss came in goal, where record-setting Dina Ayers has departed. Ayers' 0.50 goals-against average in the 1981 play-offs is a tournament record, and she followed that with a single-game mark of 25 saves in the 1982 championship.

"We have two freshmen and two sophomores fighting for the starting spot in goal," explained Trenton State coach Melissa Magee. "The decision will probably come down to which of those players can handle the pressure the best."

Magee indicated that freshman Charlotte Heenan, a member of the U.S. Junior Olympics team this summer, probably would be the starter.

While defense, particularly goal-keeping, has been a strength of Trenton State teams, offense will be a strong point this fall. "One of our major strengths will be aggressive forwards," Magee said. "They are all goal-hungry on the attack and are good, crisp shooters."

Sophomores and juniors crowd the Lions' list of returning talent, with seniors Lori Jung (attack) and Chris Coach (defense) lending experience.

Franklin and Marshall boasts returning veterans Donna Zaccaria (forward) and Patty Reich (defense).

Both seniors were all-Americans a year ago when coach Sue Kloss guided the Diplomats to a 16-3-1 record, the championship of the Middle Atlantic States Collegiate Athletic Conference and the NCAA semifinals.

Kloss has a 27-9-2 record (.711) in two years at Franklin and Marshall, due in part to Zaccaria, Reich, Lisa Coyne (senior goalkeeper) and Mo Mahoney (senior defense).

Elizabethtown is one of five institutions whose field hockey squads have advanced to both NCAA tournaments. The Blue Jays graduated nine players but return a trio of three-time letter winners.

Seniors are offensive performers Barbara Stewart and Kamille Kassees and goalkeeper Diann Steinmeier, who had 17 saves as a reserve in 1982.

Another team that has appeared in both postseason tournaments is Frostburg State. The Bobcats' 1982 campaign was one of the most successful in school history. The team's final 15-4 record included the Maryland state championship.

Eighteen players return for Frostburg State coach Chris Lottes, including defensive stalwarts Kelly Hyde and Pam Shriver. As a sophomore goalkeeper last season, Shriver recorded 10 shutouts.

Frostburg State will be tested by a 1983 schedule that includes Shippensburg and Elizabethtown, along with the possibility of a contest with Bloomsburg in the Wilkes Invitational.

New England College made its first appearance in the play-offs in 1982, and first-year head coach Michele Arbour inherits eight starters from that squad. Cocaptains Suzanne Hammel (senior goalkeeper) and Mary Logan (junior link) head the list of returnees.

Cortland State could repeat as an NCAA tournament team. The Red Dragons lost just three starters from last year's 13-6 squad.

Four of the Red Dragons' six losses came to 1982 NCAA champions: Ithaca defeated Cortland State three times, and Division II titlist Lock Haven won the teams' only meeting.

Junior Donna Denaro led the attack last season with 10 goals and will join sophomore Chris Garrett as key returnees. Garrett was a member of the U.S. Junior Olympic team this summer.

Salem State also produced the best record in its history a year ago, finishing 17-3. Forwards Holly Brennan and Kim Patience again will serve as the scoring punch for coach Maryellen McGee. This pair accounted for 30 goals and 13 assists in 1982. McGee's major concern will be finding replacements for five of 11 starters who graduated.

**Division III notes:** Nine of 11 starters return at Anna Maria this fall . . . Bates outscored

## Division I

*Continued from page 8*

in 22 games. Only two starters departed, and Stevens has nine returning letter winners and one of the nation's top recruiting classes.

Iowa also made the NCAA tournament last season, won 17 straight games at the start of the season, had 14 shutouts and finished the year 21-2. Hawkeye opponents were outscored 75-12 by a squad that held the top spot in the regular-season rankings for three weeks. Senior forward Ellen Egan leads the returning unit.

On the West Coast, California has leading scorer Renee Chatas (13 goals) from a squad that finished 16-4 and lost on penalty strokes to Penn

opponents 48-24 last season, finishing 12-2-2

. . . Bemidji State coach Betsy McDowell has won 313 games in 17 seasons at the helm. She enters the 1983 campaign with a .798 winning percentage . . . Carleton is one of several college teams that will begin competition in a new league this season. The conference includes schools from Minnesota, Wisconsin and Iowa . . . Drew again may appear in the top 20, returning its 1982 squad intact . . . In the re-awakening department, Hartwick opens the new year with contests against Division I foe Syracuse, Division III champion Ithaca and 1982 play-off participant Cortland State in five days . . . Kenyon's 10-3-1 record in 1982 was the school's best, and set to follow it up is new head coach Sandra Moore . . . Another best-ever mark was set by Lake Forest, as the Lady Foresters finished 13-2-1 . . . Lynchburg's Phebe Phelps scored 34 goals last season, earning player-of-the-year honors in the Old Dominion Conference. The Hornets return 12 letter winners from a squad that was ranked among the top 15 throughout 1982 . . . Carla Genzel heads a list of returning talent at Potsdam State. The senior scored a school-record 13 goals in 1982 . . . Terry Galley of Plymouth State also returns after setting a school scoring record. Only a junior, Galley found the net 28 times last season . . . Sweet Briar has lost the services of all-Old Dominion Athletic Conference midfielder Carolyn Williams, who has transferred . . . Sixteen of Tufts' 17 letter winners return and will be joined by members of a junior varsity team that was undefeated and untied in eight contests last fall.



Penn State's Rene Wright (No. 30) and Lynn Mattson

## Lock Haven

*Continued from page 8*

Nine letter winners return for the Wildcats, including leading scorer Kristy Pavloff. A sophomore, Pavloff will team with seniors Cheryl deGrasse, Jill Larson, Diana Poor and Linda Lambert in an attempt to earn a trip east for postseason action.

Lowell would not have to travel as far as Chico State, but the Chiefs may be a play-off contender. A 12-6-1 season in 1982 included an appearance in the Division II tournament, and head coach Carol George returns nine starters.

Lowell's biggest problem may be replacing goalkeeper Mara Lichoulas,

who set a Division II play-off record with 11 saves in a 1-0 loss to Kutztown last November.

Senior Patty Barlow, junior Sharon Lamb and junior Sue Staffier combined for 25 goals and 14 assists last season from their forward positions, giving evidence that the Chiefs' offense should be healthy.

Goalkeeping is not a problem at C. W. Post, where senior Melinda Smith led the Pioneers to a 15-6 record last year and the Division II Eastern AIAW championship.

C. W. Post coach Nancy Buttler lost only three starters; and scoring ace Gina Curiale, whose 10 goals

and six assists were team highs, is back.

Pfeiffer's defense will be anchored by a veteran goalie. Only a junior, Karen Oakley has allowed 36 goals in 26 games for a career goals-against average of 1.38.

Juniors Beth Connors, Roseann DeTommaso, Sharon Norris and Kelly Alvdal will join senior Gwen Antolik on an experienced offensive unit at Pfeiffer.

Experience on offense will be apparent at Bentley. Seniors Annette Brow and Nancy Bergeson already are second and fourth on the Falcons' all-time scoring list.

Brow and Bergeson were starters on last year's 6-9-1 squad. Bentley had a 1-6-1 mark against Division I competition after advancing to the 1981 Division II finals.

Adelphi hopes to improve on a disappointing 1982 season that followed tournament action in 1981. One-goal games victimized the Panthers in 1982, as their 3-12 final record included a 2-5 mark in one-goal decisions.

Senior Regina Dooley, who accounted for 16 goals and one assist last fall, will be counted on heavily by head coach Ellen Gregorovic.

**Division II notes:** Indiana (Pennsylvania) head coach Kofie Montgomery may shake up positions in an attempt to improve a 1982 record of 2-13. She has 10 of 11 starters returning . . . Longwood had trouble with Division I opposition last year, with six of its seven losses against Division I teams . . . As many as three freshmen may start at Mount St. Mary's, following a 1982 campaign that produced a school-record 13 victories . . . Philadelphia Textile, a Division III program in the past, will compete in Division II for the first time . . . All 11 starters return at Transylvania, where the Lady Pioneers have won four straight Kentucky state championships . . . Sixteen players return at Villanova, including the top five scorers.

## Chico State goes it alone against Western powers

On the West Coast, Chico State is synonymous with Division II field hockey, and for good reason. The Wildcats are the only Division II program within 1,000 miles.

"I believe the closest Division II program is North Dakota," said head coach Mary Ann Lazzarini.

Consequently, Chico State is faced with Hobson's choice in terms of scheduling: no choice.

Lazzarini could try to justify an exorbitant travel bill to play a Division II schedule, or she can put together a Division I season and, in typical California style, "go for it."

She chose the latter, with surprising results. "We finished second in our conference last year," she proudly reports.

"I think this situation is a definite asset to us. We have nothing to lose when we play a Division I school, so we just go out and give it our best shot."

Last season, that best shot was good enough for a 9-6 record and advancement to the semifinals of the Division II championship.

"I don't think we sneak up on people in the play-offs, because a lot of the top Division II teams play Division I opposition. I believe our success out here helps the confidence of the team tremendously, though. They know they'll be ready when the play-offs roll around."

The Wildcats' 1983 schedule includes contests with Stanford, Pacific, San Jose State, California and Long Beach State.

State in the play-offs.

Head coach Donna Fong must replace her front line and find a goalkeeper if the Bears are to continue the strong play that earned them a spot among the nation's top five teams the past three seasons.

**Other returning Division I scoring leaders (includes 1982 goal production):** Penny Johnson, Ohio, 30; Claire Henry, Notre Dame, 23; Anne Porter, Toledo, 21; Linda Schachet, Southwest Missouri State, 20; Kathy Kiernan, Miami (Ohio), 18; Stacie Bowman, Northern Illinois, 17; Lynn Frame, Maryland, 16; Beth Penticoff, Western Illinois, 15; Beth Sova, Ball State, 15; Linda Miller, Cornell, 14; Pam Stevenson, Duke, 12.

**Division I notes:** The Mid-American Athletic Conference will resume its field hockey tournament in 1983, after a one-year lapse. Miami (Ohio) won the 1981 play-offs and returns its top scorers and goalie Sally Beck with from the 1982 squad. Another MAC contender will be Northern Illinois, with 11 of 14 letter winners returning, including an intact defensive unit . . . The returning unit at Boston College includes three juniors and 11 sophomores, as the Eagles lost only one starter to graduation . . . The first Atlantic Coast Conference championship tournament will take place October 15-16 at North Carolina . . . Maryland should be a contender for the ACC crown, with senior Lynn Frame leading the offense and goalies Karyn McGarrie and Mary Bernard set to share duties for the fourth straight season . . . Seven seniors return at Wake Forest, and third-year coach Barbara Bradley hopes their leadership will help the team improve last year's 2-14 record . . . Duke is another strong ACC entry this fall, with leading scorer Pam Stevenson (12 goals in 1982) back for her senior season. Lady

Blue Devils' head coach Jacki Silar has a 22-13 record in two seasons at Duke . . . Lehigh enters its second season of Division I competition with high hopes, after finishing 9-8 a year ago. Junior forward Karen Yost led the team with 10 goals and will be joined on the front line by senior Kate Hutchinson and sophomore Mary Weiner . . . Michigan finished among the nation's top 20 in 1982 and may be a challenger for Big 10 honors. Leading the Michigan defensive effort will be goalkeeper Jonnie Terry, a junior who has allowed only 25 goals in 26 career games . . . Ohio State's offense must improve for the Lady Buckeyes to improve last year's 8-10 record. Despite a defense that recorded five shutouts and allowed only 15 goals per game, Ohio State's offense managed only 26 goals last season and was shut out six times . . . Pennsylvania, set to host the Division I championship, won the FAIAW tournament in 1982 with seven sophomores and freshmen as regulars. Goalkeeper Nancy Meisinger set a school record last year as a freshman with six shutouts.



### DIRECTORS OF ATHLETICS

**BOBVANATTA**, commissioner of the Trans America Athletic Conference, named at Louisiana Tech. Vanatta replaces **CHARLES BUSSEY**, who resigned to enter private business. Vanatta has been TAAC commissioner since the spring of 1979. . . . **ROBERT T. HULTON** named acting AD at Gettysburg during a medical leave of absence granted to **AD EUGENE M. HAAS**. Hulton, who was head basketball coach for 19 years, joined the staff in 1957.

### ASSISTANT DIRECTOR OF ATHLETICS

**PAT WAGNER** named at Ball State, where she also will coach women's cross country and track and field. Wagner was track coach at a Madison, Wisconsin, high school and has coached at Wisconsin and Mankato State, where she also had administrative experience.

### COACHES

**Baseball**—**EARL MATHEWSON**, director of baseball operations at the Ted Williams Baseball Camp, selected at Bryant. Mathewson succeeds **MIKE MCGUINN**, who resigned last spring to devote more time to his duties as assistant AD and assistant basketball coach. . . . **Merrimack** has named **EDWARD P. MORRISON JR.** to replace **JIM LICCIARDI**, who resigned this summer. Morrison was junior varsity coach at Winthrop, Massachusetts, High School the past 13 years. . . . **HARVEY P. SHAPIRO** named at Bowdoin. Shapiro has been assistant coach at Springfield 10 of the past 11 years. . . . **BOB WHALEN**, who has served as a volunteer assistant at Maine the past two years, named a graduate assistant. Whalen replaces **BRIAN COX**, who was named athletics director at a New York prep school. . . . **RICK OLIVER**, an assistant at La Verne for the past five years, named at Chapman.

**Men's basketball**—**THURM WRIGHT**, head coach at Northern Colorado the past 15 years, reassigned to the laboratory school staff as a physical education teacher and boys' basketball coach at University High School. . . . **Men's basketball assistants** **BILL HERION**, a former player, named at Merrimack. . . . **HARRY MEEKS**, a recruiter for Cincinnati the past four years, named at Western Carolina. . . . **FRANK HARELL**, an assistant at Tennessee Tech, has been elevated to associate coach; and **STEVE TAYLOR**, the Golden

Eagles' most valuable player the past two seasons, named an assistant. . . . St. Cloud State has named **WILLIE MYLES** to its staff. . . . **ELLONYA GREEN** selected as the first full-time assistant at Fairleigh Dickinson. A 1980 Upsala graduate, Green was an assistant at C. W. Post the past two years. . . . **JOHN J. BENINGTON**, who has served on the staff at Nicholls State, named a volunteer assistant at Illinois State. . . . **GEORGE WHITTAKER** named part-time assistant at Western Kentucky, after serving as a volunteer assistant at Virginia Commonwealth. . . . **REMY McCARTHY**, an assistant at a California junior college, hired at Utah. . . . **RON BRADLEY**, head coach at Eastern Nazarene for five years, named at Maryland. As a head coach, Bradley's record was 96-51.

**Women's basketball**—**HARVEY P. SHAPIRO**, head coach at Springfield, selected as head coach at Bowdoin. Shapiro's 1980-81 team won the AIAW Division II Eastern championships and earned a berth in the national tournament. His 1981-82 team won the NCAA Division II New England regional (see baseball). . . . **LESLIE MILKE**, assistant coach the past three seasons, named at Northridge State, replacing **JUDITH M. BRAME**, who will concentrate on administrative duties as women's athletics director. Milke lettered four years at Northridge State and was an all-conference selection. She is the fourth leading scorer in the school's history.

**Women's basketball assistants** **LORI WOJAHN** selected at Wisconsin-Oshkosh, where she was a letter winner. . . . **MICHELE GELFMAN**, most recently head women's tennis and softball coach at Beloit, named at Western Illinois, where she also will serve as head men's and women's tennis coach.

**Men's cross country**—**MICHELE HOPPER** selected at Los Angeles State, where she also will coach the women's team. Hopper, a successful distance runner, teaches in the Alhambra, California, schools and is a master's degree candidate in physical education at the institution.

**Field hockey** **JOANNE BRUBAKER SCHELL**, formerly an assistant at Lock Haven and Indiana (Pennsylvania), named at Shippensburg, where she will replace **JANE GOSS**, who will concentrate on managing the women's athletics program. Schell, a four-year starter at



Monte Dutton promoted to sports information director at Furman



Diane Stephenson is the first certified trainer at Wittenberg



Steve Taylor appointed an assistant basketball coach at Tennessee Tech

Indiana (Pennsylvania), also coached three years at summer camps.

**Football assistants**—Lock Haven head coach **Jack Fisher** has named the following staff members: **DEFENNY COMPSTON** (linebackers), **MIKE STONE** (defensive backs), **LARRY RICHARDSON** (defensive ends) and **DON AMORIELLO** (offensive line). **ROB McCAULEY** and **RESE FLURIE** have been named student assistants. Compston is a former assistant at Defiance, where he lettered three years. Stone is a graduate of Juniata, where he started four years as a defensive back. Richardson, who has coached the past two seasons at Mansfield, played two years at Lafayette before an injury ended his career. Amoriello, a 1982 graduate of Lock Haven, was a starting offensive tackle for three years. . . . Two former players for coach **Steve Stetson** have been named at Hamilton. **SEAN McDONNELL** will coach the defensive secondary, and **PAUL PLAKIAS** will coach the wide receivers. . . . **DAVE HOWELL**, former quarterback at Western State (Colorado), has been named receivers coach. . . . **DAN LLOYD** has resigned at William Paterson.

**Men's golf** **SUSAN L. HAWKINS**, a member of the Poughkeepsie High School physical education faculty, selected at Vassar on a part-time basis. Hawkins captained the Rutgers team in 1978. She also will be responsible for organizing a women's team to play separately from the men's squad.

**Women's gymnastics**—Georgia has selected **SUZANNE YOCULAN**, a coach in private gymnastics schools for the past nine years. Yoculan has been a member of the U.S. Gymnastics Federation the past eight years and has had elite coaching status the past two years. She is a Penn State graduate.

**Women's gymnastics assistant** **MICHAEL SHARPLES**, a member of the Michigan State men's gymnastics team (1977-1979), named at Iowa State.

**Men's ice hockey assistants** **JAY LEACH**, formerly a minor league player and head coach at Choate-Rosemary Hall, named at Merrimack to replace **RON ANDERSON**, who has been named head coach. . . . **GREG RAJANEN**, who posted a 70-46 record in five years as coach at Austin, Minnesota, High School, selected at Illinois-Chicago. Rajanen played on Wisconsin-Superior teams that twice reached the final four of the NAIA tournament.

**Men's soccer** **LEE DeFREITAS**, a graduate assistant at Robert Morris, named at Marietta, where he also will coach track and field. . . . **STEVE SHOFF** selected at Bentley. Shoff has been an assistant the past two seasons. . . . **ERIK SCHWARZ** named at Allegheny. He lettered four years at Baldwin-Wallace and came to Allegheny as an admissions counselor in 1981.

**Women's softball assistants** **PAM EDDY**, an all-conference pitcher in the Western Collegiate Athletic Association in 1980 and 1981, selected at Fullerton State. . . . **JOAN BOCK-ENSTEDT**, who has coached softball and volleyball at Bellevue (Nebraska), named at Iowa State. . . . **MARY LOU BATES**, a 1982 graduate of New Hampshire, where she lettered four years, joins the Salem State staff. . . . Shippensburg has selected **BOBBY L. DAVIS**, whose high school and Little League baseball coaching careers span 30 years. . . . **CONNIE RUTLEDGE** named at Wisconsin-Oshkosh, where she earned a master's degree last spring. She has been a high school coach in Wisconsin. . . . **PATRICIA STOFFEL**, a two-time selection to the AIAW all-America team, selected at Western Illinois, where she holds four school records.

**Men's swimming**—**DAVID W. THOMPSON**, former assistant at Colgate and most recently an assistant at Southwest Missouri State, named at Hamilton. Thompson replaces **ERIC MacDONALD**, who resigned for personal reasons. Thompson was captain of the men's varsity while an undergraduate at Colgate. . . . **EUGENE P. DAMM JR.**, hired as men's and women's coach at Vassar. A graduate of Dartmouth, Damm has coached for 17 years, and he served as president of the Empire State Swim League for 10 years. . . . **CYNTHIA HIFSTER RICHARDS** named men's and women's diving coach at Shippensburg. She earned all-America honors in 1975 and 1976 at West Chester. She has coached on the high school and college levels several years.

**Women's swimming** **LYNN EBERLY** selected at Shippensburg. She has coached for eight years in summer and YMCA competition. Eberly was a varsity swimmer at Indiana (Pennsylvania).

**Women's swimming assistants**—**REGAN**

**MINSER**, who has coached at Kenyon and Denison, named at Iowa State. . . . **JOE SWFENEY** selected at Salem State, where he also will coach women's tennis.

**Men's tennis**—**MICHELE GELFMAN** appointed to head the men's and women's programs at Western Illinois (see women's basketball assistants). . . . **CLAYTON TAYLOR**, former assistant at Kentucky, selected men's and women's coach at Louisiana Tech, where he replaces **PHILIP CAMPBELL**, who resigned to accept a position at Louisiana State. Taylor was on the professional circuit in 1982.

**Women's tennis**—**PHILIP J. LIEBROCK** named at Bridgeport, where he also coaches the men's team. He will continue as an associate professor at the university. . . . **SHEILA E. LAPERLE** selected at Worcester Tech. She has been a club professional and played on the Avon circuit two years.

**Women's tennis assistant** **CHRIS HUBBS**, who has worked as a professional in Rockford, Illinois, named at Iowa State. She also will assist with the men's program. Hubbs attended Doane, where she was the No. 1 varsity player for two years. She later coached at Doane.

**Men's track and field**—**ROCKY LIGHT**, part-time coach at Southwest Texas State, has been named to head the men's and women's programs. Light replaces **AL REEF**, who returns to teaching full time. Light formerly coached at Adams State, where he was named NAIA national track and field coach of the year and NAIA cross country coach of the year in 1982. . . . **LEE DeFREITAS** named at Marietta (see men's soccer).

**Women's track and field**—Former Olympian and world record holder in the 100-yard dash, **REY ROBINSON**, appointed at Florida A&M. Robinson, who was a member of the Rattlers' men's track team in the early 1970s, has been assistant coach the past two years at St. Augustine's.

**Women's volleyball** **MARTHA PETERSEN** named at Wisconsin-Oshkosh, where she competed in volleyball, basketball, field hockey, softball and track. She has coached on the high school level and at St. Norbert. . . . **NANCY KOEPEL** named at Fairleigh Dickinson, where she is credited with returning the women's softball program to respectability. A graduate of Cortland State, she coached volleyball on the high school level for two years. She will continue to coach softball.

**Women's volleyball assistants**—**ERNE GILBERT** named first full-time assistant at Ohio State. Gilbert is a former Colorado high school coach. He played at Ball State. . . . **RICH ZECISKI**, former coordinator of intramurals and recreation at Cincinnati, named at Mississippi. He was men's volleyball coach before accepting his most recent assignment at Cincinnati. . . . **PAUL CLINTON** selected at Washington. He had been head coach at Western Washington from 1979 to 1982.

### STAFF

**Equipment manager** **ROBERT WALSH** hired at Merrimack, where he also will serve as director of intramurals. Walsh is a former basketball player and assistant coach at the institution.

**Promotion coordinator**—**MANNY ROSENBERG**, a former track star at Maryland and for the Israeli national track team, selected at George Washington. Rosenberg has been a sales representative with a publications firm in New York. He replaces **MARC GOODMAN**, who resigned to accept a sales position with a communications firm.

### FINANCIAL SUMMARIES

#### 1983 Division II Men's Ice Hockey Championship

Receipts	\$ 42,892.00
Disbursements	\$ 39,105.43
	\$ 3,786.57
Competitors transportation expense	\$ 32,041.73
	(\$ 28,255.16)
Charged to general operating budget	\$ 28,255.16

#### 1983 Women's Fencing Championships

Receipts	\$ 1,048.00
Disbursements	\$ 15,318.45
	(\$ 14,270.45)
Competitors transportation expense	\$ 14,403.00
	(\$ 28,673.45)
Charged to general operating budget	\$ 28,673.45

#### 1983 Division III Women's Swimming and Diving Championships

Receipts	\$ 3,529.00
Disbursements	\$ 23,099.70
	(\$ 19,570.70)
Competitors transportation expense	\$ 86,936.50
	(\$ 106,507.20)
Charged to general operating budget	\$ 106,507.20

**Sports information directors**—**TIM LAWLOR** selected at Brandeis as the first full-time director. Lawlor has been **SID** at Hartford the past two years. . . . **MARTY RASNAKE** has resigned at North Carolina-Charlotte to become director of marketing for a sports management company for professional athletes. . . . **MONTE DUTTON** named at Furman, where he has been an assistant for the past year.

**Assistant sports information director**—**HOWARD BASS** appointed at Yale. He has been assistant **SID** at C. W. Post the past three years.

**Athletic trainers**—**DIANE STEPHENSON** appointed at Wittenberg. She will be the first certified trainer at the school. Stephenson has been a graduate assistant at Kentucky since 1980. . . . Western Illinois has hired **KATIE WALSH**, who spent the past summer as trainer for the Chicago Sting of the North American Soccer League. She has been assistant trainer for men and women at Illinois State the past three years. . . . **BILL ARGETSINGER**, who has been at Cornell since 1970, selected at St. Louis, where he also will be coordinator of athletic medicine. He was chief trainer for football and men's ice hockey at Cornell. . . . **LARRY GROLLMAN** named at George Washington after serving at George Mason the past two years. Grollman replaces **TOM SULKOWSKI**, who has resigned to enter medical school. . . . **ROBERT DIXON** named at Los Angeles State to a one-year appointment. Dixon was head trainer at Dominguez Hills State last year.

**Assistant athletic trainers**—**DOUG CALLAND**, formerly an assistant at Oklahoma State, and **CONNIE KLAGGE**, who has been on the Southern Illinois staff, have joined the Washington staff. . . . **PAUL SEYMOUR** has joined the Drew staff. He worked in the Cleveland Indians' farm system during the past year. . . . **SUE WESTEGARD**, a recent graduate of Wisconsin, hired at the institution. She has worked in the men's and women's programs at Wisconsin. . . . Harvard has added **THERESA A. KENNEDY** to its staff as a sixth full-time member. She is a graduate of Massachusetts and has been head trainer for the Bay State Games and various sports camp programs. . . . **PAM LUND** appointed to the women's staff at Kansas. She was a graduate assistant at South Dakota the past two years.

### NOTABLES

Five new members will be inducted into the National Wrestling Hall of Fame in Stillwater, Oklahoma, October 29. Chosen as the class of 1983 are former Olympians **LLOYD O. APPLETON** of Cornell College, the late **GUY LOOKABAUGH** of Oklahoma State and **PETER J. MEHRINGER** of Kansas, and coach **MICHAEL MILKOVICH** of Maple Heights, Ohio, and contributor **BOB DELLINGER** of Stillwater. Milkovich's teams compiled a record of 265-25 in 27 years at Maple Heights. Dellinger was a wrestling reporter for 24 years and in 1960, received the first "wrestling writer of the year" award, which since has been named for him. . . . **JIM REESE**, former quarterback at Abilene Christian, has been named president of the ACU Wildcat Club.

### DEATHS

**BRAVEN DYER SR.**, a prominent figure on the southern California sports scene for almost a half-century, died in late August. He was 83. Dyer wrote sports for the Los Angeles Times for more than 40 years. He played football, basketball, baseball and tennis at Pomona College. . . . **IKI ARMSTRONG**, known as the "Rockne of the Rockies" when he coached at Utah in the 1920s and 1930s, died earlier this month at the age of 88. His teams were undefeated in 1926, 1928, 1929, 1930 and 1941. Armstrong is a former director of athletics at Minnesota and a member of the National Football Foundation Collegiate Hall of Fame. . . . **CLAUDE "BUDDY" YOUNG**, director of player relations for the National Football League, died in a one-car automobile accident in Texas September 4. He was 57. At Illinois, Young equaled Red Grange's school record of 13 touchdowns during his freshman season. . . . **JOHN R. MacFADEN**, who was instrumental in the bid by Los Angeles for the 1984 Olympic Games, died in late August at the age of 74. He was a member of the Southern California track team from 1928 to 1931.

## Briefly in the News

**University of Maryland, College Park**, quarterback **Boomer Esiason** has discovered that sometimes it does not pay to advertise. At one time, the license plates on his pickup truck said "Terp QB". After three sets of plates were stolen by souvenir hunters, Esiason felt the expense of buying new plates was getting to be too much, so he switched to regular plates and they have not been "intercepted" since. . . . The **University of Hawaii** has its two sets of three brothers on the football squad (reported in this column August 31), but the **University of Michigan** football squad probably can lay claim to having the most sets of brothers, with four: **Art and John Balourdos** of Chicago; **Mark and Mike Hammerstein** of Wapakoneta, Ohio; **Doug and Mike Mallory** of DeKalb, Illinois, and **Tim and Todd Schulte** of Ft. Thomas, Kentucky. . . . In other family matters, three **Georgia Institute of Technology** football players have more in common than just being teammates. **Mike Travis**, **Jack Westbrook Jr.** and **Toby Lantz** all are sons of former or current Georgia Tech coaches. Their fathers are **Larry Travis**, who coached the offense four seasons and who is in charge of sports programs; **Jack Westbrook Sr.**, who also coached four years before going into private business, and **Rick Lantz**, who is the current defensive coordinator. . . . This item may not be in the family, but it certainly is an example of togetherness. According to a report from **Dave Daniel** of the Long Beach Press-Telegram, what may have been a first in intercollegiate athletic travel occurred on an Air California flight September 2. The **California State University, Long Beach**, football team traveled to **Kansas State University** for its football opener, the squad shared the DC-9 jetliner with the team from **California State University, Fullerton**. The jet dropped the Fullerton squad off in Boise, Idaho, for a game with **Boise State University**, en route to Manhattan, Kansas, for the 49ers' game, and picked up the Titans on the way back to Long Beach.

Two NCAA members—the **University of Maryland, College Park**, and **Vanderbilt University**—have instituted their own sanctions against the Soviet Union following the Soviet attack on a South Korean jetliner. The schools have canceled their basketball games scheduled with the Soviet national team in November. . . . At **Arkansas State University**, football player **Tim Langford** is referred to by the offensive linemen as "Four Point." It is not because of his playing stance; it is his grade-point average for the past seven semesters and a summer term that earned him the nickname. Langford is the Indians' quarterback. . . . **University of Notre Dame** quarterback **Blair Kiel** always knows the best play to call. At least, no one could argue with Kiel's decision to pass up the NCAA-ABC Football Promotion Tour this summer. The start of the tour coincided with Kiel's wedding date with **Melissa Libke** of Columbus, Indiana. Kiel opted for the honeymoon, but apparently it was after some reflection. "He did think about it," said **Roger Valdiserri**, associate athletics director.

**Mount Pleasant, Michigan**, must do a good job of living up to its name. **Central Michigan University** in Mount Pleasant has an unusual recruiting record for a Division I-A institution. For the 11th consecutive season, the Chippewas do not have an out-of-state recruit on their roster. Senior **Dan Cawthorne** of Arlington Heights, Illinois, will handle the punting duties, but he came to Mount Pleasant as a walk-on. . . . **San Diego State University** assistant track **Stan Vegar** is not used to getting attention by just sitting around, but just wait. Vegar will play the role of **Montezuma**, the new mascot at football games, who will sit atop an 18-foot pyramid and interact with the cheerleaders and fans. Vegar, a 4,000 graduate student in biomechanics, is considered one of the top decathletes in the United States.

# Certification deadline for all-star games nears

December 1 is the application deadline for organizations wishing to receive certifications of summer-time high school all-star football or basketball games.

The NCAA All-Star High School Games Committee will consider all applications received by that date. Those received after December 1 will not be considered for another year.

The All-Star High School Games Committee, composed of both college and high school representatives, acts in place of those state high school athletic associations that have declined to accept jurisdiction for certifying high school all-star games. The committee's charge is included in NCAA Constitution 3-9-(a).

At the committee's next meeting, September 20-21 at the National Federation of State High School Associations office in Kansas City, applications for games scheduled during the school year will be considered. Those applications had to be submitted by September 1.

Other business of the committee at that meeting will include review of the criteria for certification, consideration of any NCAA Council action pertaining to high school all-star games and examination of the insurance program that is available to game sponsors.

The criteria applied to all-star high school football and basketball games are:

1. Participation in the game shall be restricted to individuals who have completed their high school eligibility in the sport and have not yet enrolled in and attended classes during a regular term at a collegiate institution.

2. Players participating in the game shall live within the state in which the game is played; or, if the game is interstate in nature, then the

participating players shall live within the states involved. The selection of a participant shall not be contingent upon a cash contribution to the organization sponsoring the game or the purchase of game program space or advertising.

3. The game shall be sponsored and administered solely by an organization established and operating in the community or state in which the game is played.

4. The game shall have an established charitable or educational purpose; the financial records of the game shall reflect an accomplishment of that purpose, and all net receipts from the game shall be utilized for such purpose. Net receipts shall be gross receipts less expenses directly connected with the administration and conduct of the event.

Gross receipts shall include all revenues derived from the game including sale of tickets (less taxes), concessions, programs, radio rights, television rights, movie rights and any other income derived from the operation of the game, including amounts donated by individuals or organizations for general or specific purposes. No complimentary tickets shall be allowed.

Not more than 60 percent of the game's gross receipts can be consumed by expenses directly connected with the administration and conduct of the event.

Expenses directly connected with the administration and conduct of the event shall include promotion and publicity, tickets, general game and team expenses, administrative expenses and any other expenses necessary for the conduct of the game, including amounts paid by individuals or organizations for specific purposes (e.g., transportation, banquet, awards, staff).

5. Following the game, the sponsoring organization shall provide to the NCAA by the required deadline: (a) a complete financial record of the game; (b) confirmation of a physician's presence at the game, availability during all practice sessions and medical examinations of all participants prior to the competition, and (c) proof of payment (canceled check or certified statement from charitable or educational organization) of all net proceeds (including any delayed amounts) to the charitable or educational organization.

6. Expenses of participants shall be limited to actual transportation, board and room costs. Payment shall be made directly by the sponsoring agency to the vendor, except that in those instances where it is more convenient to use cash to reimburse the participant for his transportation costs this may be done, provided a receipt is secured.

7. If awards are made to the players participating in the game, they shall be in keeping with the requirements established by the high school athletic association of the state in which the game is played. In no instance may the total cost of the award exceed \$15, nor may a merchandise award be presented. It shall not be permissible to provide awards or prizes to participants in recognition of their outstanding game performance. Only one award to each participant is permissible; therefore, presentation of additional gifts or mementos is prohibited.

8. The sponsoring organization shall provide for adequate medical care and expense for each participant in the event of accident or injury from the time the player leaves home for practice and/or participation in the game until the player returns home. This protection shall be in the form of travel accident and medical insurance that shall at least cover a claim of \$10,000 for death and dismemberment and \$25,000 for medical treatment resulting from an accident incurred by the participant in traveling to or from the game, or practicing for or playing in the game.

9. Each participant in a football game shall have had at least nine days of organized practice prior to the day of the game. The first three days of practice shall be limited to noncontact conditioning drills in which no

football gear or protective equipment other than headgear and shoes shall be worn.

Each participant in a basketball game shall have had at least three days of organized practice prior to the day of the game if played during the school year and at least five days of organized practice prior to the day of the game if played following graduation.

Each participant shall have been pronounced physically fit to participate as a result of a current medical examination made and certified in writing by the family physician; further, the physician at the game site shall certify that no player was permitted to take part in workouts or game competition unless so certified by a qualified medical doctor.

10. A qualified medical doctor must be present during the playing of the game and available during all practice sessions. In addition, the management must provide for each scheduled practice, as well as for the game: (a) the presence of a person qualified and delegated to render emergency care to a stricken athlete, such as a competent athletic trainer, and (b) planned access to a medical facility, including a plan for communication and transportation between the athletic site and a medical facility for prompt medical services. All parties should have a thorough understanding of these procedures.

The presence of a qualified medical doctor during the game and the doctor's availability during practice sessions shall be certified in writing by the game management at the time it submits its final report to the All-Star High School Games Committee.

11. Head and assistant coaches of the teams shall be selected from the states represented by participants in the game.

## St. Lawrence backs out of proposed hockey league

St. Lawrence University has announced that it has not decided to join the "super" ice hockey league being formed in the East.

Officials at that institution say that they are carefully monitoring developments in Eastern men's college ice hockey, but that they have not discussed St. Lawrence's ice hockey schedule in connection with the new league.

In addition, St. Lawrence has pointed out that all the members of the proposed league—Clarkson College of Technology; the University of Maine, Orono; Boston University; the University of New Hampshire; Boston College; Northeastern University, and Providence College—provide athletically related financial aid. The president and board of trustees of St. Lawrence recently reaffirmed their opposition to awarding such grants-in-aid.

St. Lawrence officials noted that because of that position, their institutional philosophy of the role of intercollegiate athletics in higher education more closely resembles the philosophy of Ivy Group institutions, which also are in the process of forming a league for competition in men's ice hockey.

The September 5 issue of The NCAA News reported that St. Lawrence was one of the eight institutions that would be part of the "super" league.

## Calendar

- September 12-13 Special Committee on Division I Criteria, Chicago, Illinois
- September 15 Deadline for returning the 1983-84 Official Institutional Information and Sports Sponsorship forms to be eligible for NCAA fall championships [Executive Regulation 1-5-(b)-(5)]
- September 19-20 Chief executive officers meeting, Kansas City, Missouri
- September 20-21 All-Star High School Games Committee, Kansas City

## The NCAA News



## The Market

Readers of The NCAA News are invited to use The Market to locate candidates for positions open at their institutions, to advertise open dates in their playing schedules or for other appropriate purposes.

Rates are 35 cents per word for general classified advertising (agate type) and \$17.60 per column inch for display classified advertising. Orders and copy are due by noon five days prior to the date of publication for general classified space and by noon seven days prior to the date of publication for display classified advertising. Orders and copy will be accepted by telephone.

For more information or to place an ad, call 913/384-3220 or write NCAA Publishing, P.O. Box 1906, Mission, Kansas 66201.

### Positions Available

#### Commissioner

Commissioner, Trans America Athletic Conference. The Trans America Athletic Conference invites nominations and applications for the position of Commissioner, appointment effective December 1, 1983. Commissioner is responsible for advancing the affairs of the conference in a manner consistent with the aims, purposes and principles of its member institutions. Specific responsibilities involve leadership and direction for financial relations, development, contract negotiations, investments, long-range planning, events management, officiating, communications, publications, sports information and administration of conference office and staff. It is essential that applicants have experience in NCAA compliance and eligibility matters. Required qualifications include high level of leadership and administrative ability, with demonstrated experience and proven record in program development, public relations, personnel and fiscal management and ability to work effectively with university administrators, athletic directors, coaches and faculty. Candidates must have a baccalaureate degree, possess knowledge of intercollegiate athletics,

as well as commitment to academic excellence and integrity in athletics. Salary negotiable, depending upon experience and qualifications. The Trans America Athletic Conference is an NCAA Division I Conference with ten members. Applications or any inquiries should be submitted to: Trans America Athletic Conference, Huntington Office Park, Suite 1255, 7505 Pines Road, Shreveport, LA 71129, Telephone (318)686-7111. In addition to complete resume, application should include names, addresses and telephone numbers of at least five references. Applications must be post-marked not later than October 7, 1983.

#### Business Manager

Business Manager/Athletics. Qualifications: Accounting degree, bachelor's degree, CPA preferred. Minimum of four years of experience in intercollegiate athletics preferred. Familiarity with financial reporting and inner workings of a major athletic department. Reports to director of intercollegiate athletics. Overall responsibility for the annual operating budget of the department, monitoring of actual results vs. budgeted results on a monthly basis, prepare monthly financial statements for the department, paying all invoices concerning expenses of the entire athletic department, initiates all travel requests and monitors expense of travel for each sport. Send resume to: Sam Jankovich, Director of Athletics, University of Miami, P.O. Box 248167, Coral Gables, FL 33124. The University of Miami is an equal opportunity/affirmative action employer.

### Sports Information

Sports Information Director, Washington and Lee University seeks a director to coordinate all sports information activities for its 12 sport, NCAA Division III athletics program. Candidates should possess a bachelor's degree in an appropriate discipline and quality experience in college sports information or a related field. Skills in layout and design, writing and editing, photography, reporting and broadcasting and typing are beneficial. Candidates should send letter of application, resume, work samples and three letters of recommendation to: William D. McHenry, Director of Athletics, Washington and Lee University, Lexington, Virginia 24450, by September 16. Washington and Lee is an equal opportunity employer.

Sports Information Director. The University of South Florida is accepting applications for Sports Information Director. Requirements: Bachelor's degree with major course work in communications, journalism and/or public relations, or a bachelor's degree and any equivalent combination of experience and training, and four years' experience in journalism or public relations work, two of which shall have been in a supervisory capacity. Salary commensurate with professional experience and qualifications. Deadline October 6, 1983. Send resume and three letters of reference to: John Wadas, Athletic Director, University of South Florida, Tampa, FL 33620. An equal opportunity/affirmative action employer.

### High School Relations

High School Relations. Qualifications: Bachelor's degree, experience with collegiate and high school athletic programs. Reports to the associate director for development and public relations. Supervises high school relations activities, athletic department recruiting program, promotes special projects of interest to high schools, coordinates recruiting activities

for the athletic department, assists coaches in recruiting. Send resume to: Sam Jankovich, Director of Athletics, University of Miami, P.O. Box 248167, Coral Gables, FL 33124. The University of Miami is an equal opportunity/affirmative action employer.

### Basketball

Head Men's Basketball Coach. The academic year position as head coach of the men's basketball program. Duties will be allocated as follows: 50 percent release time for coaching, 50 percent for teaching and other duties as assigned. Responsibility for administering the men's basketball program within the guidelines of the NCAA and the North Central Intercollegiate Athletic Conference. The coach will report directly to the director of athletics. Minimum qualifications are a master's degree required and head coaching experience in basketball at the college or university level preferred. Salary is negotiable with a minimum of \$25,000 for the academic year. Please submit a resume and three letters of recommendation to: Robert L. Heiny, Chair, Search and Screen Committee for Head Coach of Men's Basketball, President's Office, University of Northern Colorado, Greeley, CO 80639. Application deadline October 1, 1983. Starting date October 15, 1983.

### Football

Head Football Coach. The State University of New York at Stony Brook is conducting a search for a Head Football Coach for its Division III intercollegiate program who will also serve as coach or assistant coach of a spring sport. Duties include: recruitment and supervision of student athletes who are able to be successful in an academically competitive environment; some teaching responsibilities in the spring contingent on the nature of coaching responsibilities; and participation in fund raising activities for athletics. Minimum qualifications: Master's degree with at least one degree or training in the area of Health, Physical Education, Recreation, or an Allied

Health Field; at least five years of demonstrated successful coaching experience, preferably on a college level. Appointment would be on a three-year contract with salary dependent upon experience and qualifications. Starting date is the beginning of the Spring, 1984, semester. Applicants should send a letter of application, resume, credentials, a statement of coaching philosophy, three letters of reference, and the names, addresses, and telephone numbers of three other individuals who may be contacted for further information to: Professor Norman Goodman, Chair, Head Football Coach Search Committee, PO Box 599, Stony Brook, New York 11790. SUNY Stony Brook is an equal opportunity/affirmative action employer. AK 709B

### Golf

Head Men's Golf Coach. Full-time, nine-to-12-month position available as soon as possible. Bachelor's degree; golf teaching, coaching and recruiting experience. Salary commensurate with qualifications and experience. Applications received by September 19. Send resume to: Barbara Camp, Southern Methodist University, Athletics Department, Moody Coliseum, Box 216, Dallas, Texas 75275. Equal opportunity/affirmative action employer.

### Track & Field

Track Graduate Assistants. Two positions available. Will assist men and women track athletes. (1) Assist jump events. (2) Assist middle distance and distance events. Available immediately. Stipend \$2,700 for academic year. Covers room, board and fees; out-of-state fee waived. Qualifications: bachelor's degree, 2.52 GPA (4.00 is A). Application procedure: Contact Les Stevens, Track Coach.

Central Missouri State University, Warrensburg, MO 64093, 813/429-4254.

### Wrestling

Head Coach of Wrestling. This is a part-time position for the wrestling season of 1983-84 (November 1 through March 1). Person filling this position will be replacing a permanent faculty member on leave for the academic year 1983-84. Starting date November 1, 1983. EXPERIENCE: participation in collegiate wrestling or high school or college coaching experience in wrestling. RESPONSIBILITIES: coach the varsity men's wrestling team and assist with the administration of the program. SALARY: \$5,000. Address application to: Robert R. Peck, Chairman, Department of Physical Education, Athletics and Recreation, Williams College, Williamstown, MA 02167. Include names, addresses and telephone numbers of three references.

### Open Dates

Women's Basketball. Division II. Chico State University seeking eighth team for annual tournament on December 31, January 1-2. Contact Fran Coslet 916/895-5123.  
Men's Basketball, Division III. Oberlin College has open dates December 28 and 29 and would like to compete in tournament if possible, or at least fill one of the two openings. Please contact Pat Penn, head basketball coach, 216/775-8500.  
Football, Division I-AA. University of Massachusetts/Amherst has open dates September 15, 1984, September 24, 1988, and September 23, 1989. Call Al Rufe, 413/545-2342.

## Sports Information Director/ Business Manager

**Duties:** Major responsibility in the area of sports information. The director is responsible for all public relations functions related to the intercollegiate athletic program. This includes but is not limited to writing all sports releases; acting as a sports news media liaison; compiling and disseminating statistics; writing and helping to coordinate brochures, game programs and press guides, and serving as a general source of sports information for the college and as a spokesman for teams and coaches. Additional responsibility will be in the area of business manager. Experience in budget planning and financial management of athletic programs if preferred. **Salary: \$18,000.**

Please send resume and three letters of recommendation by September 26, 1983, to: Professor Joe Margolin, Director of Athletics, Brooklyn College, Bedford Avenue and Avenue H, Brooklyn, New York 11210.

Brooklyn College is an equal opportunity employer

## SPORTS INFORMATION DIRECTOR

The University of Louisville's Department of Intercollegiate Athletics invites applicants for the position of Sports Information Director. This position reports directly to the Associate Athletic Director for External Affairs and will be responsible for planning and implementing the sports publicity for the men's and women's intercollegiate athletic program. Qualifications are: experience with national print and broadcast media. Excellent oral and written communications skills are required. A Master's degree and experience in sports information is preferred. Application deadline is September 23, 1983. Salary is commensurate with qualifications and experience. Send applications to: University Personnel Services, 2323 South Brook Street, University of Louisville, Louisville, Kentucky 40292. Equal Opportunity Affirmative Action Employer.

## ATHLETIC MARKETING AND PROMOTIONS MANAGER

Responsibilities include the planning and coordination of promotional activities, generating community support for the athletic programs. Requirements include a Bachelor's degree in a related discipline and experience in athletic promotional programming. A Master's degree is preferred. Final acceptance date for resumes will be September 23, 1983. Salary range \$18,780 to \$23,409. Apply to: University Personnel Services, 2323 South Brook St., University of Louisville, Louisville, Kentucky 40292. Affirmative Action Equal Opportunity Employer.

# Governance

Continued from page 1

refined structure would more effectively affirm the role of presidents and chancellors in intercollegiate athletics," he said.

The committee is considering several suggestions regarding CEO involvement, and the document it eventually will share with ACE representatives and will submit to the NCAA Council in its October meeting will reflect and evaluate various options.

"Any such structure must take into account the role of the faculty athletic representative," Davis stated, "who,

in many institutions, is the chief executive's designated representative in athletics matters. The eventual structure also must reflect the role of conferences and the implications of the three different NCAA membership divisions, and it must recognize the knowledge and experience of the professional practitioners in college athletics — the athletics administrators and coaches, in addition to faculty representatives."

It is anticipated that the NCAA committee's report will be completed for distribution to the NCAA membership after the Council considers it in its October 10-12 meeting.

# Basketball

Continued from page 1

west Athletic Conference, Sun Belt Conference.

**Three-point play, 19 feet, nine inches** — Iowa Intercollegiate Athletic Conference (Division III), Minnesota Intercollegiate Athletic Conference (Division III), Southern Conference, Trans American Athletic Conference.

**Coaching box** — Metro Atlantic Athletic Conference, Southeastern, Southland, Southwest.

Steitz said three nonmember conferences — the Great Northwest Conference, the Pacific Northwest Intercollegiate Athletic Conference and the West Virginia Intercollegiate Athletic Conference — would experiment with the three-point play and submit data to

the committee. He also said the Pacific-10 Conference would continue to experiment with a coin toss (rather than a jump ball) for the first possession at the start of a game.

"Unfortunately, no one submitted a request to experiment with the rear-boundary arc," Steitz said. "The committee has felt that this is an interesting concept, in that it approaches the problem of stalling tactics from the standpoint of space rather than time."

Conferences granted experimentation rights will be sent information on standards for and interpretations of the experiments, according to Steitz. He said such factors as resetting the shot clock would be standardized in all the experiments, and coaching-box standards also will be uniform.

# 61 chief executives

Continued from page 1

Council, will present the report of the Special Committee on Division I Criteria, on which he serves, in place of NCAA Secretary-Treasurer John R. Davis, who will be out of the country.

Presidents and chancellors accepting invitations as of September 9:

## Division I

Edmund F. Ackell, Virginia Commonwealth University (Sun Belt Conference); Brother Mel Anderson, St. Mary's College (West Coast Athletic Conference); Ray P. Authement, University of Southwestern Louisiana (independent); John Belew, acting president at Baylor University (Southwest Athletic Conference); Ronald E. Carrier, James Madison University (Eastern College Athletic Conference); John A. DiBiaggio, University of Connecticut (Big East Conference); Glen R. Driscoll, University of Toledo (Mid-American Athletic Conference); Jesse C. Fletcher, Hardin-Simmons University (Trans America Athletic Conference and Oil Country Athletic Conference); H. George Frederickson, Eastern Washington University (Mountain West Athletic Conference).

E. Gordon Gee, West Virginia University (Atlantic 10 Conference); Very Rev. L. Edward Glynn, St. Peter's College (Metro Atlantic Athletic Conference); D. J. Guzzetta, University of Akron (Ohio Valley Conference); Harold H. Haak, California State University, Fresno (Pacific Coast Athletic Association); Stephen Horn, California State Uni-

versity, Long Beach (Western Collegiate Athletic Association); Eugene M. Hughes, Northern Arizona University (Big Sky Conference); John G. Johnson, Butler University (Midwestern City Conference); Joseph B. Johnson (Grambling State University (Southwestern Athletic Conference).

C. Peter McGrath, University of Minnesota, Twin Cities (Big Ten Conference); W. Robert Parks, Iowa State University (Big Eight Conference); Gail Shannon, West Texas State University (Missouri Valley Conference); Hoke L. Smith, Towson State University (East Coast Conference); Donald C. Swain, University of Louisville (Metropolitan Collegiate Athletic Conference).

John E. Thomas, Appalachian State University (Southern Conference); Ray Thornton, Arkansas State University (Southland Conference); Donald Veal, University of Wyoming (Western Athletic Conference and High Country Athletic Conference); Walter B. Waetjen, Cleveland State University (Association of Mid-Continent Universities); Lloyd I. Watkins, Illinois State University (Gateway Collegiate Athletic Conference); Charles E. Young, University of California, Los Angeles (Pacific-10 Conference).

## Division II

Rev. Charles H. Banet, St. Joseph's University of Indiana (Great Lakes Valley Conference); Billy C. Black, Albany State College (Southern Intercollegiate Athletic Conference); James W. Cleary, California State University, Northridge (California Collegiate Athletic Association); Thomas J. Clifford, University of North Dakota (North Central Intercollegiate Athletic Conference).

Austin Gerber, California State University, Sacramento (Northern California Athletic Conference); Rodney Kelchner, interim president at Mansfield University of Pennsylvania (Pennsylvania State Athletic Conference); Charles A. Lyons Jr., Fayetteville State University (Central Intercollegiate Athletic Association); William T. O'Hara, Bryant College (Northeast-Eight Conference); Patrick J. O'Rourke, University of Alaska, Fairbanks (independent).



## 30-year association

Don Swartz, (third from left) president of Medallic Arts Company, Danbury, Connecticut, presents the NCAA with a plaque commemorating 30 years of service to the Association. The firm supplies awards for the NCAA championships. From the left are Mr. and Mrs. Charles Usher, Medallic representatives; Swartz; Dennis L. Poppe, assistant director of championships, and Patricia E. Bork, director of women's championships.

# Bid for restraining order fails

U.S. District Judge Charles P. Sifton refused to issue a restraining order in Brooklyn, New York, September 6 that would have prevented the NCAA from applying the 2,000 rule [Bylaws 5-6-(b) and 5-1-(j)] to the eligibility of prospective basketball student-athlete Walter Berry.

The Federal court also tentatively set an October trial date for the suit

filed by Berry and St. John's University (New York) against the NCAA. The court offered to set the expedited trial schedule in an effort to resolve the matter prior to the basketball season if Berry and St. John's determine to pursue the matter.

Berry left high school in June 1982 without graduating and with a grade-point average below 2.000. In 1982-83, he accumulated 24 credits as a nonmatriculated student at St. John's and became eligible for a high school equivalency diploma under a St. John's program approved by the state of New York.

He did not take a General Educational Development (GED) test for his diploma. Division I regulations require a score on the GED equivalent to a 2.000 high school grade-point average for initial eligibility for an entering freshman who did not graduate from high school. Once he obtained the diploma

from the state of New York, Berry became ineligible to take the GED test.

The Division I Steering Committee affirmed in April and August earlier Administrative Committee determinations that the high school equivalency program offered by St. John's could not be used as an alternative method of meeting the 2,000 rule.

Judge Sifton said the NCAA's refusal to accept the 24-hour-credit St. John's program in place of the GED "will survive any level of scrutiny."

Sifton said Berry failed to show a strong enough likelihood that his antitrust and civil-rights complaints against the NCAA would prevail; thus, there were no grounds for him to issue a restraining order, which was sought by Berry and St. John's to prevent penalties against the school for allowing Berry to play while the case is pending.

## Division III

John E. Anderson, Christopher Newport College (Dixie Intercollegiate Athletic Conference); Carroll W. Brewster, Hobart and William Smith Colleges (Independent College Athletic Conference); George Brushaber, Bethel College (Minnesota Intercollegiate Athletic Conference); Mark M. Chamberlain, Glassboro State College (New Jersey State College Athletic Conference); John W. Chandler, Williams College (New England College Athletic Conference); J. Richard Case, Wheaton College of Illinois (Chicago Metro Women's Conference); Wayne Geisert, Bridgewater College of Virginia (Old Dominion Athletic Conference); Leonard T. Grant, Elmira College (independent); D. Bruce Johnstone, Buffalo State University College (State University of New York Athletic Conference).

Douglas R. Moore, University of Redlands (Southern California Intercollegiate Athletic Conference); Donald C. Munding, Illinois College (Midwest Collegiate Athletic Conference); Rev. Thomas P. O'Malley, John Carroll University (Presidents' Athletic Conference); Gresham Riley, Colorado College (independent); David G. Ruffer, Albright College (Middle Atlantic States Collegiate Athletic Conference).

Rev. Harvey Stegemoeller, Capital University (North Coast Conference); Gael D. Swing, North Central College (College Conference of Illinois and Wisconsin); Phillip D. Vairo, Worcester State College (Massachusetts State College Athletic Conference); Gordon J. Van Wylen, Hope College (Michigan Intercollegiate Athletic Association); Edmond L. Volpe, College of Staten Island (City University of New York Athletic Conference).

# Syracuse to host track meet

The Carrier Dome in Syracuse, New York, has been approved as the site for the 1984 National Collegiate Men's and Women's Indoor Track Championships.

The Men's and Women's Track and Field Committees' recommendation of the site was approved by the NCAA Administrative Committee, acting for the Executive Committee.

Syracuse University will host the championships March 9 and 10. It will be the second year that the men and women have held their cham-

pionships at a common site.

The move to the Carrier Dome marks the first time the championships have been held anywhere other than in the Detroit area. The meet was established as an NCAA championship in 1965.

The facility at the Carrier Dome is an eight-lane, 200-meter oval track with an artificial surface.

"It probably is the finest indoor track facility in the world," said Bill McClure, Louisiana State University and chair of the Men's and Women's Track and Field Committees' indoor subcommittee.

# NACDA schedules clinics

The National Association of Collegiate Directors of Athletics (NACDA) has scheduled two one-day drug awareness clinics to help combat one of the most prevalent concerns in intercollegiate athletics today. The clinics will be sponsored by the NACDA Foundation, which recently received funding from the inaugural Collegiate Kickoff Classic.

The first clinic will be held October 17 on the campus of Georgia Institute of Technology in Atlanta. The second clinic will take place October 24 in Tempe, Arizona, on the campus of Arizona State University. The clinics will be the first of a two-part effort

scheduled by NACDA during the 1983-84 academic year.

Both clinics will be staffed by the Organized Crime Unit of the Federal Bureau of Investigation. FBI experts will field questions and explain to NACDA members some of the dangers and long-range implications of drug usage.

"NACDA is committed to helping its members find solutions to major problems," said Robert D. Karnes, president of NACDA and director of athletics at Drake University. "Certainly, drug education, prevention, treatment and rehabilitation are on the top of the list right now."

# Glazier promoted in enforcement

Michael S. Glazier, a member of the NCAA enforcement staff since October 1979, has been promoted to assistant director of enforcement in the enforcement and legislative services department.

Glazier will be responsible for assignments of the 25 NCAA part-

time investigators.

Glazier is a graduate of the John Marshall Law School and is a member of the Missouri Bar Association. He previously served as an assistant to the prosecuting attorney in the Kankakee County (Illinois) State's Attorney Office.

# Next in the News

A report from the Special Committee on Division I Criteria.

A report from the Special Committee on Player Agents.

A story on the automatic qualifiers for the 1983 Division I-AA Football Championship.

A list of the common-site championships for 1983-84.

Listing of the men's and women's swimming qualifying standards for 1984.

Championships dates and sites for all 1983-84 NCAA championships.