

# The NCAA News

August 3, 1983, Volume 20 Number 27

Official Publication of the



National Collegiate Athletic Association

## Football TV plan will go unchallenged in '83

The College Football Association canceled an August 2 meeting, which had been called to formulate a possible 1983 football television plan, and has asked its membership to abide by the 1982-1985 NCAA Football Television Plan next season.

The CFA's action follows a July 21 decision by Supreme Court Justice Byron R. White to stay lower-court rulings that the NCAA Football Television Plan was in violation of Federal antitrust laws. White's stay will remain in effect until the Supreme Court acts on the NCAA's writ of certiorari petition. Such a decision on whether or not the court will hear

the case will not be made until the first week in October, at the earliest.

The CFA board of directors—an 11-man board chaired by Otis A. Singletary, president of the University of Kentucky—announced July 26 that it was asking its 60 members to adhere to the NCAA plan this fall, even if the Supreme Court decides not to review the case.

"The board believes that it is in the best interest of college football not to have a disruption occur at mid-season," says Charles M. Neinas, CFA executive director. "Therefore, to ensure another exciting and successful season of college football,

adherence to the current television contracts would appear to be the appropriate and reasonable course to follow."

Should the NCAA's request for a hearing be denied by the Supreme Court, the stay would dissolve. However, Neinas said, "It would be difficult, if not impossible, to implement a contingency plan in mid-October."

The retention of NCAA controls pending the final disposition of the case was welcomed by college athletics administrators and network television officials.

"We're absolutely delighted," said

John L. Toner, director of athletics at the University of Connecticut and president of the NCAA. "The stay works to the benefit of virtually all of the football-playing members of the NCAA, who clearly want the continuation of national controls."

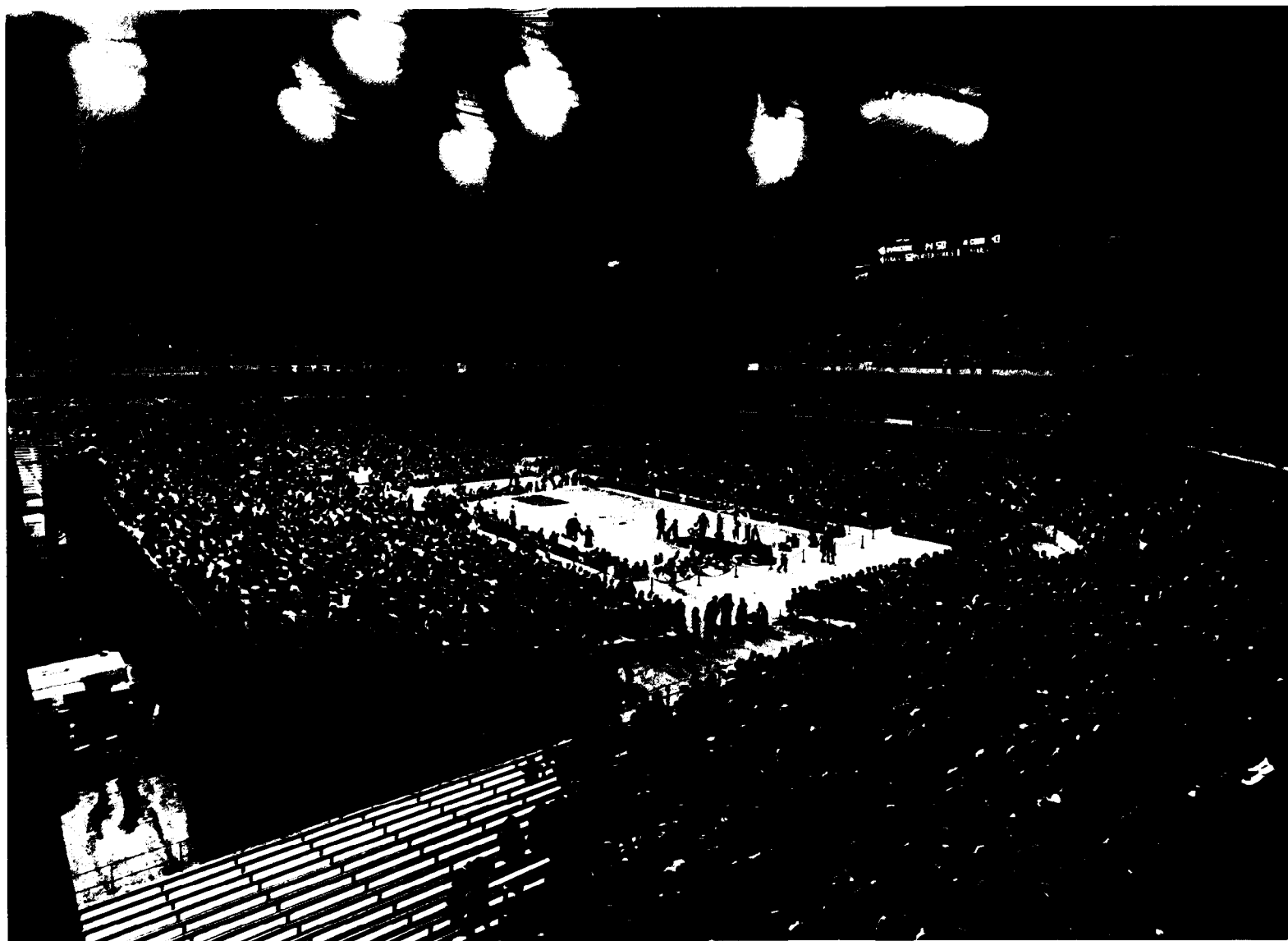
ABC-TV spokesman Donn Bernstein said, "This lifts the uncertainty in the marketplace, which will allow us now to proceed with our plans for 1983."

"We're looking forward to the season now that the uncertainties have been resolved," said Jay Rosenstein of CBS-TV.

Wayne Duke, commissioner of the Big Ten Conference, said, "The total interests of college football and all but a few selfish institutions are best served by Justice White's decision, which hopefully will permit the orderly presentation of college football on television this season."

In granting the stay, Justice White disagreed with the arguments of the plaintiffs—the University of Oklahoma and the University of Georgia Athletic Association—that they would suffer significant financial losses and that the case was not likely to be granted a hearing by the

*See Football, page 8*



The vast Carrier Dome in Syracuse is helping to boost college basketball attendance

## Basketball attendance keeps growing

By James M. Van Valkenburg  
NCAA Director of Statistics

The Big East and Big Eight Conferences enjoyed record years in 1983, and the Sun Belt and Missouri Valley showed big spectator increases, helping NCAA Division I reach 20 million in basketball attendance for the first time. That figure pushed national attendance to another all-time high of 31,471,135 for all 1,266 senior

colleges in the United States with men's varsity teams (770 of them NCAA members).

The national increase is 365,187 (or 1.17 percent)—largest since 1979, when it hit 30 million for the first time with a jump of 920,813.

NCAA Division I reached 20,488,437, an increase of 578,841, or 2.91 percent, over 1982. NCAA Division II increased 68,031, which

was not enough to offset big losses in Division III and by non-NCAA members. The 992 teams below NCAA Division I fell 213,654 in total attendance, accelerating a downward trend. More about that later.

Division I started the season with a built-in deficit of nearly 180,000 because of two factors. The Final Four's move from a 61,612-seat arena in New Orleans to a 17,327-seat arena in Albuquerque meant a loss of 88,570 to the NCAA tournament, and San Francisco (home attendance in 1982: 90,753) dropped basketball.

Considering those factors, the Division I increase of more than one-half million and its first 20-million season are outstanding achievements.

### Big Ten leads again

Once again, the big-attendance conferences paced the national in-

crease, with the perennial leader, the Big Ten, in front (11,499 average) and the Southeastern (10,716) second. Both were down in average but up in total attendance.

The Big East added Pittsburgh, moved its tournament to Madison Square Garden and jumped from sixth to third in per-game average at 9,108. The Big Eight was next at 9,005 and set a record in total attendance as well. In fact, a record seven conferences drew more than one million spectators, with the Big East and Missouri Valley joining the club in 1983. The Big Ten, SEC, Big Eight, Western Athletic and Atlantic Coast were over one million a third season in a row (while the Pacific-10, once a perennial one-million attendance conference, missed a second straight season).

The Missouri Valley increase of

*See Basketball, page 3*

## Legislation on agenda for Council

Proposed legislation and a series of committee reports face the NCAA Council and the Divisions I, II and III Steering Committees in their August 17-19 meetings at the Fairmont Hotel in Denver, Colorado.

It will be the second full meeting for the restructured Council, which now includes 46 members. The Council acts as one body on overall Association policy matters and any issue that affects more than one division. The three steering committees meet and act separately on those matters pertaining only to their respective divisions.

Approximately three dozen proposed legislative amendments for consideration at the 1984 NCAA Convention will be reviewed by the Council and steering committees, and other recommendations for legislation are likely to be included in the 11 committee reports to be presented at the meeting.

*See Legislation, page 8*

## Budget tops committee's priority list

Approval of a budget in excess of \$35 million is one of several key agenda items for the August 15-16 meeting of the NCAA Executive Committee in Denver, Colorado.

The 1983-84 figure is up about \$3 million from the 1982-83 budget of \$32,041,000. About two-thirds of the Association's 1983-84 income is expected to come from the Division I Men's Basketball Championship.

Once again, the Association will be able to pay guaranteed transportation costs for all championships. The Executive Committee will determine transportation allowance for teams and individuals competing in championships this coming year.

In another budget matter, the committee will fix the football television assessment for the 1983 season now that the NCAA Football Television Plan will remain in effect this season.

The committee will consider various items that were deferred from its May 2 meeting in Kansas City. Among those is the possibility

*See Budget, page 8*

## In the News

NCAA research indicates that sponsorship of men's and women's sports increased in 1981-82..... 4

Because of an increase in the popularity of the sport and continuing improvement in the quality of play, the Baseball Committee is recommending an expansion of the field from 36 to 38 teams for the 1984 NCAA Division I Baseball Championship..... 6

The Football Television Committee reviews the legal situation involving college football on television and administrative details for the upcoming season..... 8

# Women's recruiting involvement accelerates

By Al Carter

Houston Chronicle

Clear the streets. Board the windows and bolt the doors. At the very least, unplug the telephone.

Father, take warning. They are after your daughter.

Who is? College recruiters, that's who.

Mother, beware. Your future little homemaker may be someone else's idea of a future little playmaker. And if the trend continues, they may offer you a new home to see that Suzy Q. ties her ponytail with the appropriately colored ribbon.

Just five years ago, the high school establishment in Texas did not think enough of girls' basketball to allow the five-on-five, full-court game. The girls in those programs that even offered the sport played three-on-three—and only in the offensive or defensive half of the court. Today, high school girls not only learn the entire game; but because they have learned to dribble and shoot so well, they are beginning to learn the finer points of that adult sport known as big-time, high-pressure college recruiting.

Don't be fooled. The next flesh-hunting alumni you see might not pull out his wallet. She might pop open her purse. The bagwomen cometh.

They came to Monica Lamb's house. Lamb, a 6-foot-5 prep all-America from (Houston) Yates who was recruited by more than 250 colleges before signing with the Houston Cougars, says she heard some offers that, no doubt, would be the envy of Rickie Winslow and Carven Holcombe, her two hotly recruited male classmates at Yates.

Well, maybe not the offers of prom dresses.

That's right, prom dresses. Just to sign on the dotted line. Prom dresses, and much more.

Lamb won't name names but says most of the offers came from alumni, both men and women. On top of the under-the-table enticements came the recruiting harassment usually associated with men. "The latest phone call I got was around 12:15 at night," she says. "The earliest was around 5

one morning. I heard so many times all the things that happen when guys are being recruited; I didn't think the same thing happened with girls."

But, apparently, it is happening. The recruiting season was ripe with the usual rumors, some of which are beginning to be substantiated, about men's recruiting. But women's recruiting, according to the grapevine buzz, also was dirty. Weary, disgruntled coaches were heard mumbling about the plush new automobiles popping up in the parking lot outside the women's dorms at certain universities.

"I don't think things like that are happening very much at this point," says Jody Conradt, the Texas Longhorns women's

number of coaches and just about all of them said it's very demanding, and worse than that, it's very demeaning."

"Not too many schools can say they're making money," Houston coach Dot Woodfin says. "But some are at least getting close to making expenses. As this continues, the pressure will grow for schools to get the athletes it takes to be No. 1 and get on television."

But at what price? The financial strain aside, some coaches are growing concerned about the human toll.

"I personally did not enjoy what I saw happen to the athletes involved in recruiting this year," Conradt says. "Starting out, most were naive but very gracious. They were anxious to know everything they could about your school. Then, toward the end, it was: 'Tell them I'm not home.'"

"I talked to several of the men's recruiters, and I was glad to hear that's a temporary state. In most cases, the athletes revert back to the way they were before recruiting."

But some coaches fear not all the effects are temporary. "A lot of good women coaches have already gotten out of the business," Woodfin says, "and the pressure has a lot to do with it."

"The travel stands out most in my mind," says Conradt, just back from one of several trips to Victoria, where she signed Yulonda Wimbish, a 5-10 all-America selection.

"I've felt completely torn in some instances between recruiting and my responsibilities to the players already on campus. I've been on an emotional roller coaster. I've spent a lot of sleepless nights worrying about little things. I'm not sure, in the final analysis, if it's worth it."

Monica Lamb says it was worth it. She says she accepted nothing she wasn't supposed to. "That stuff didn't have any effect on me at all," she says. "It only made me think that the people offering me those things must not think very much of me as a person."

As if the NCAA didn't have enough to worry about without having to trace pink Trans-Ams and credit-card receipts from Saks Fifth Avenue.

## Columnary Craft

coach. "But that doesn't mean I think women are any more ethical than men. If there's potential for abuse in men's athletics, there's potential in women's athletics."

Although officials say pressure in women's athletics has been building for 10 years, the adoption over the past three years of NCAA rules has given women equal means to realize their cheating potential. Under the old Association for Intercollegiate Athletics for Women (IAIW) rules, recruiters could not pick up expense tabs for prospects to visit campus and, more importantly, could not contact prospects off campus.

Now, coaches who used to schedule vacations at season's end have been forced to hit the recruiting trail and endure all the cheap motels and cheap talk that go with it.

"The pressure of the season was nothing like the pressure of the recruiting wars," Conradt says. "I went through that kind of pressure this year, and I felt like I was losing. I cannot imagine anyone saying they enjoy recruiting. I've talked to a

## Looking Back

### Five years ago

The NCAA Executive Committee, meeting August 10, 1978, at the U.S. Air Force Academy, approved an expansion of the Division I Basketball Championship from 32 to 40 teams for 1979, with 23 conferences to receive automatic qualification. (1977-78 NCAA Annual Reports)

### Ten years ago

The NCAA membership, meeting in special Convention August 6, 1973, in Chicago, overwhelmingly approved reorganization of the Association's legislative and competitive structure, creating Divisions I, II and III. (August 15, 1973, NCAA News)

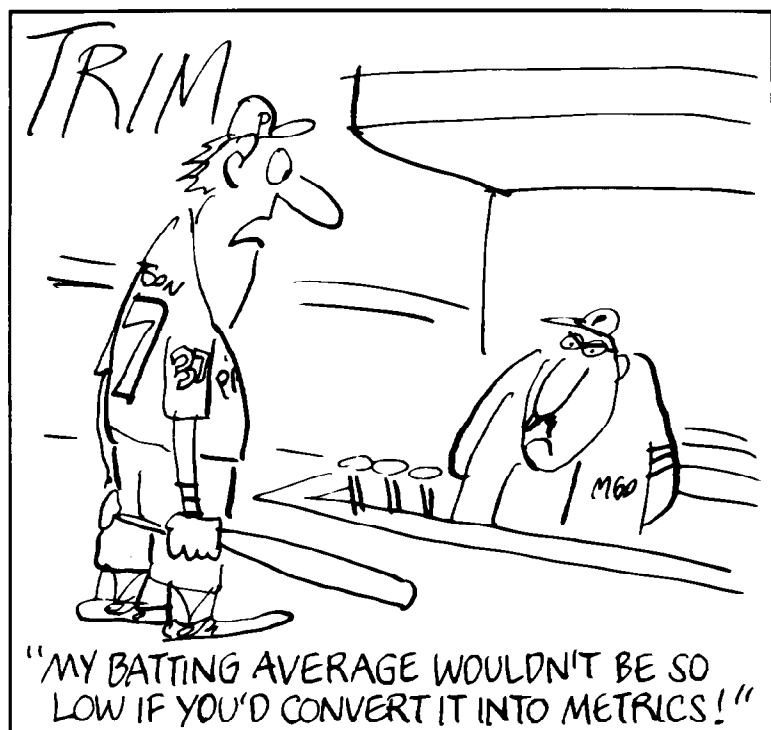
### Twenty years ago

The NCAA executive regulations were amended by the Executive Committee, meeting August 13, 1963, in San Francisco, to provide for Sunday competition in NCAA championships in emergency situations, but only with the approval of the competing institutions. ("NCAA: The Voice of College Sports" and 1963-64 NCAA Yearbook)

### Thirty years ago

The NCAA Council, meeting August 17, 1953, in Chicago, adopted disciplinary action against three member institutions, as authorized by the 1953 NCAA Convention. It was the first such action between Conventions. ("NCAA: The Voice of College Sports" and 1953-54 NCAA Yearbook)

## TRIM'S ARENA



Copyright, 1983. Universal Press Syndicate. Reprinted with permission. All rights reserved.

## Injury rate increases in spring

James Garrick, sports medicine researcher  
United Press International

"In my experience, we have discovered that the injury rate is 3½ times higher in the spring than in the fall. There is no physical carry-over from spring football except injuries. Conditioning levels just don't last that long.

"The coaches I've talked to about the injury rates say they don't dare stop having spring practice. It's just like the arms race.

"There is no way a kid can come back that early (in the fall from an injury incurred in spring practice). He

## Opinions Out Loud

may be able to play later in the season, but he most likely will not be able to perform up to the level he is capable."

Warren B. Armstrong, president  
Wichita State University

The Chronicle of Higher Education

"I think a coach needs to be assured that he will be given an adequate period of time to improve a foundering program and to make it competitive. But I think it's also important to realize that it is a competitive society in which we live and that there is an expectation of performance on all of us."

Joe Eivens, academic counselor  
University of Texas, Austin

USA Today

"It's a lot tougher than it used to be, with the big bucks pro sports are paying. It's difficult for us to get a young man's attention on school work when he's already been drafted for baseball or when a football player is so highly recruited he's getting letters from agents as early as his freshman year.

"It's hard to sit down with him and talk about how important his English class is when, 90 percent of the time, he's thinking about pro ball."

H. Boyd McWhorter, commissioner  
Southeastern Conference

Division I summer meeting

"While no specific test scores are sacrosanct, there is much to be said for the validity of the test-score feature of Proposal No. 48. These test scores have long been recognized as one of the valid criteria by which potential college success can be measured; and what is even more important in the area of recruiting and competitive athletics, they are less subject to manipulation than other academic considerations that have been used."

Joe Restic, football coach  
Harvard University

United Press International

"I don't think taking the chance of losing a couple of players during the spring is worth it (spring football practice). Our philosophy is to leave people alone in the spring, let them do what they want. Whether it be play another sport or catch up in the classroom.

"We find that our players come back with great enthusiasm in the fall. I don't think it makes any of us less competitive."

Barry Parkhill, basketball coach  
College of William and Mary

Richmond Times-Dispatch

"We don't like to gamble. Before we'd offer a scholarship to any player, both (former coach Bruce Parkhill) and I would have to be convinced he could do and would do the academic work. If there were any doubt, we'd usually get out of the picture early. We always look for the sure thing."

Jim Spence, president  
ABC Sports

Associated Press

"Everybody realizes if it were an open marketplace, it would be chaos. How many games would be on TV? How many local stations, cables, networks would have college football?

"During the college basketball season, you can sit in my home in Manhattan and watch a dozen games, including the pros, on the weekend. I happen to be a basketball aficionado, but how many games can you watch?"

Scott Brunner, quarterback  
New York Giants

Associated Press

"College athletes can't put all their eggs in one basket. If they drop it, there are no more baskets left. They have to put their eggs in a few baskets. If they drop one, they'll still have others."

## The NCAA News

(ISSN 0027-6170)

Published weekly, except biweekly in the summer, by the National Collegiate Athletic Association, Nall Avenue at 63rd Street, P.O. Box 1906, Mission, Kansas 66201. Phone: 913/384-3220. Subscription rate: \$15 annually. Second-class postage paid at Shawnee Mission, Kansas. Address corrections requested. Postmaster send address changes to NCAA Publishing, P.O. Box 1906, Mission, Kansas 66201.

Publisher ..... Ted C. Tow  
Editor-in-Chief ..... Thomas A. Wilson  
Managing Editor ..... Bruce L. Howard  
Advertising Director ..... Wallace L. Renfro  
The Comment section of The NCAA News is offered as opinion. The views expressed do not necessarily represent a consensus of the NCAA membership. An Equal Opportunity Employer.

# Basketball

Continued from page 1

697 in average is second only to the Big East's leading 1,224. The Big Eight increased 137,346 in total attendance, the SEC 128,091. If you compare the Sun Belt's eight teams of 1983 to its six teams in 1982, it jumped 216,718 in total attendance. Likewise, the Pacific Coast jumped 184,897 comparing its nine teams to its eight teams of the previous season.

Using the same method, the PCAA jumped 847 in average and the Sun Belt 524. But using parallel comparisons (that is, the PCAA's nine vs. the same nine in 1982, members or not, and the Sun Belt's eight vs. eight), the PCAA is up 445, the Sun Belt 226. Also using parallel comparisons, the ECAC South is up 485 per game, the Mid-Continent 463, Big Eight 313, Metro 273, Southern 243 and Southwestern 236.

## More games is the key

The Division I average of 5,212 per game or session shows a slight increase (25 per game or 0.48 percent), but the average has leveled off since 1978. More teams and more games are the reasons attendance goes up every year.

In fact, the Division I average during the previous five seasons combined is exactly 5,211—one spectator less than the 1983 average. But the number of teams in Division I is up 7.9 percent over 1978, and the number of games/sessions is up 14 percent; thus, attendance is up 16 percent over 1978.

The decade of the 1970s brought a new-arena boom in major-college basketball. This trend has continued in the 1980s. But this has not brought higher average crowds, possibly because of the proliferation of college games on television.

Actually, the average has stayed level only because of bigger postseason crowds and neutral-site attendance. That total was a record 1,259,764 in 1983, for a record 133 games/sessions in Division I.

## Grass-roots trend is down

As mentioned, the 992 teams below Division I dropped 213,654 in 1983. The drop in 1982 was 51,212. In 1981, the grass-roots teams were barely up at 33,776, but only because of more games. Per-game averages have been dropping steadily for six years.

In Division II, the average has dropped four times in six years; in Division III, five times in six years, and among non-NCAA teams, four times in six seasons. In 1983, the Division II average was 1,324 compared to 1,515 in 1978. In Division III, the average of 685 compares to 816 in 1978. In the nonmember sector, the 1983 average was 785 vs. 794 in 1978 (and 835 in 1980, with a high of 889 in 1977).

You cannot help concluding that unlimited basketball on television involving major-college teams almost exclusively in the regular season must have some connection with declining attendance below Division I (and you have to wonder whether no-limits telecasting of major-college football would do the same thing to grass-roots football attendance).

For the second straight season, the North Central, Central Intercollegiate (CIAA), Great Lakes Valley and Oklahoma Intercollegiate rank 1-2-3-4 in conference attendance below Division I. The North Central averaged 2,567, up 138 per game; the CIAA 2,194, Great Lakes Valley 2,058, and Oklahoma 2,055. The Northern Intercollegiate (306, 21.66 percent) and Frontier (362, 32.88 percent) showed the biggest jumps in average.

Of the top 20 conferences, however, only eight were up in average.

## Team leaders

Here is the Kentucky track record: Seven seasons in its jammed Rupp Arena, seven national attendance championships and six national records in per-game attendance, the

latest in 1983 at 23,785. If the Kentucky Derby were that predictable, nobody would show up.

The 1983 average broke the 23,666 set in 1981 (which broke 1980, which broke 1979, which broke 1978, which broke 1977). What happened in 1982? Kentucky had averaged 23,702 in the regular season, but three sessions in the Southeastern Conference postseason tournament (Kentucky played in all three) totaled "only" 62,967, dropping the 1982 Kentucky average to 23,193.

Can Kentucky's domination ever be stopped? Well, nothing is forever, and Syracuse right now has the potential to surpass Kentucky. In 1983, Syracuse had the three largest campus crowds ever—32,382 for St. John's (New York), 31,327 for Georgetown and 30,799 for Boston College. However, the Syracuse season average in the huge Carrier Dome was "only" 20,401, for second place well behind Kentucky. Syracuse, though, was third in 1982 and fourth in 1981, its first in the Carrier. So it is moving up.

Brigham Young finished third, New Mexico fourth, and Louisville moved up a notch to fifth. Iowa and Purdue are the new members of the top 10; Georgetown, Alabama and Nebraska are the new teams in the top 20.

## Tennessee-Chattanooga up the most

Tennessee-Chattanooga shows the biggest increase in average attendance—up 3,616 per game to 7,547 in its new Roundhouse. Georgetown jumped from 45th place to 14th with an increase of 3,345 per game to 11,936 by playing all its home games in Capital Centre. Oklahoma takes third in the most-improved derby at 3,323—not with a new arena, but with a new player, freshman Wayman Tisdale, helping the Sooners to the NCAA tournament. East Tennessee State, one of the country's most-improved teams in 1983, takes fourth with an increase of 3,099. (Oklahoma went to 9,080, East Tennessee to 5,771.)

Nineteen teams in Division I increased at least 1,500 per game in 1983—two more than in both 1982 and 1981. Creighton, in Willis Reed's second season as coach, jumped 2,685 per game to 8,330; Wisconsin 2,535 to 7,574; St. Joseph's (Pennsylvania) 2,236 to 4,131; Pittsburgh (moving to the Big East) 2,159 to 5,316; Fullerton State 1,882 to 3,505; Western Illinois 1,823 to 4,955; Mississippi Valley State 1,731 to 3,926; Bradley (in a new arena) 1,730 to 9,013; Holy Cross 1,729 to 4,479; Arizona State 1,702 to 6,880; Virginia Commonwealth 1,587 to 6,636; New Mexico State 1,575 to 10,427; Syracuse 1,550 to 20,401; Utah State (nation's most improved, from 4-23 to 20-9) 1,524 to 7,717, and Louisiana Tech 1,520 to 3,605.

In total attendance for all games, Kentucky again tops the list at 562,947 (short of its record 586,250 in 1978). Syracuse (480,199) and Louisville (450,403) are next, with five more over 400,000 and a record 34 in all over 300,000.

## North Dakota State wins in II

In Division II, North Dakota State won the championship by averaging 6,057 to edge Norfolk State's 5,991, with Kentucky Wesleyan again third. North Dakota State also won in 1982 but averaged only 4,385 in so doing.

In Division III, Augustana (Illinois) is the new champion at 3,033, replacing Wisconsin-Stevens Point. Potsdam State moved up from fourth to second at 2,406, and Concordia (Minnesota), second last year, is third at 2,300 per game.

West Virginia Wesleyan led the 15 NCAA associate members with an average of 2,291. The 496 non-NCAA member colleges were led by Catawba with an average of 3,863, with Wiley (3,200) second and Kearney State (3,077) third.

NATIONAL COLLEGE BASKETBALL ATTENDANCE									
(For All U.S. Senior-College Men's Varsity Teams)									
Teams	Sessions	Attendance	Avg. Per Game Or Session	Change@ In Avg. -	Percent	Change@ In Total -	Percent		
Home Attendance, NCAA Division I	274	3,798	*19,228,673	5,063	Up 16	0.32%	Up 445,506	2.37%	
NCAA Championship Tournament	28	380,059	13,574	Down 2925	17.73%	Down 48,904	11.40%		
Other Div. I Neutral-Site Attendance	105	879,705	8,378	Up 628	8.10%	Up 182,239	26.13%		
<b>TOTAL ALL NCAA DIVISION I</b>	<b>274</b>	<b>3,931</b>	<b>*20,488,437</b>	<b>5,212</b>	<b>Up 25</b>	<b>0.48%</b>	<b>Up 578,841</b>	<b>2.91%</b>	
Home Attend., NCAA Division II	195	2,540	3,364,184	1,324	Down 17	1.27%	Up 68,031	2.06%	
Home Attend., NCAA Division III	286	3,139	2,148,736	685	Down 31	4.33%	Down 98,088	4.37%	
Home Attend., NCAA Associates	15	208	228,433	1,098	Down 21	1.88%	Up 5,758	2.59%	
**Home Attend., NAIA-Only Teams	354	4,228	4,097,035	969	Down 45	4.44%	Down 170,793	4.00%	
**Home Attend., All Other Teams	142	1,496	399,083	267	Up 7	2.69%	Up 17,071	4.47%	
NCAA Division II Tournament	22	70,335	3,197	Up 109	3.53%	Up 2,410	3.55%		
NCAA Division III Tournament	22	51,093	2,322	Up 278	13.60%	Up 6,120	13.61%		
NAIA Tournament, District & National	166	170,153	1,025	Down 241	19.04%	Down 36,171	17.53%		
NCAA Div. I & II Tournaments	54	54,300	1,006	Down 135	11.83%	Down 488	0.89%		
NCAA Tournament	38	24,130	635	Down 134	17.43%	Down 5,094	17.43%		
Other Neutral-Site Attendance, All 992 Teams Below NCAA Div. I	266	375,216	1,411	Down 58	3.95%	Down 2,410	0.64%		
<b>NATIONAL FIGURES FOR 1983</b>	<b>1,266</b>	<b>16,110</b>	<b>*31,471,135</b>	<b>1,954</b>	<b>Down 5</b>	<b>0.26%</b>	<b>Up 365,187</b>	<b>1.17%</b>	

Change In Average:									
Using Parallel Lineups: 1983 Vs. 1982:									
Change In Total:									
Using Parallel Lineups: 1983 Vs. 1982:									
+DIVISION I CONFERENCES:									
Teams	Sessions	Attendance	Avg. Per Game Or Session	Change@ In Avg. -	Percent	Change@ In Total -	Percent		
1 Big Ten	10	152	1,747,910	11,499	Down 311	2.63%	Same	Up 59,076	Same
2 Southeastern	10	154	1,650,264	10,716	Down 235	2.15%	Same	Up 128,091	Same
3 Big East #	9	116	1,056,576	9,108	Up 1224	15.53%	Up 683	Up 55,363	Up 113,003
4 Big Eight	8	133	1,197,712	9,005	Up 313	3.60%	Same	Up 137,346	Same
5 Western Athletic	9	138	1,206,099	8,740	Down 491	5.32%	Same	Down 95,433	Same
6 Atlantic Coast	8	125	1,071,060	8,568	Down 124	1.43%	Same	Up 36,755	Same
7 Metro #	7	104	788,807	7,585	Up 273	3.73%	Up 155	Up 72,199	Up 80,610
8 Missouri Valley	10	141	1,030,519	7,309	Up 697	10.54%	Same	Up 71,797	Same
9 Pacific-10	10	148	914,513	6,179	Down 85	1.36%	Same	Up 31,290	Same
10 Southwest	9	130	739,899	5,692	Down 723	11.27%	Same	Down 100,521	Same
11 Sun Belt #	8	126	678,559	5,385	Up 226	4.38%	Up 524	Up 23,422	Up 216,718
12 Big Sky	8	117	588,322	5,028	Up 79	1.60%	Same	Up 14,206	Same
13 Atlantic-10 #	10	125	563,450	4,508	Down 125	2.70%	Down 458	Down 48,077	Down 7,650
14 Pacific Coast #	9	129	552,512	4,283	Up 445	11.59%	Up 847	Up 76,617	Up 184,897
15 Mid-American	10	140	580,032	4,143	Down 177	4.10%	Same	Down 11,823	Same
16 Midwestern City #	8	121	498,460	4,120	Down 363	8.10%	Down 595	Up 852	Up 41,065
17 ECAC South #	6	81	315,096	3,890	Up 485	14.24%	Up 41	Up 35,926	Down 66,000
18 Southern	9	133	480,348	3,612	Up 243	7.21%	Same	Up 69,355	Same
19 Southwestern #	8	95	331,825	3,493	Up 236	7.25%	Up 101	Down 13,372	Up 23,178
20 Southland	7	95	301,703	3,176	Down 90	2.76%	Down 785	Up 17,553	Down 3,288
21 Ohio Valley #	8	105	323,905	3,085	Up 41	1.35%	Down 343	Up 7,301	Down 84,069
22 Mid-Continent #	8	109	295,315	2,709	Up 463	20.61%	Same	Up 70,709	Same
23 Mid-Eastern	7	85	180,548	2,124	Down 384	15.31%	Same	Down 15,059	Same
24 ECAC North Atlantic	9	114	221,588	1,944	Up 65	3.46%	Same	Down 109	Same
25 Ivy	8	96	185,222	1,929	Down 196	9.22%	Same	Down 18,803	Same
26 West Coast #	7	100	184,453	1,845	Down 639	25.72%	Down 1072	Down 51,506	Down 142,259
27 Metro-Atlantic	6	80	139,673	1,746	Down 31	1.74%	Same	Up 6,374	Same
28 Trans America #	8	121	200,251	1,655	Up 93	5.95%	Down 204	Up 36,266	Down 24,664
29 ECAC Metro #	10	129	172,672	1,339	Up 28	2.14%	Up 48	Up 939	Down 13,284
#30 East Coast #	10	117	135,158	1,155	Down 281	19.57%	Down 30	Down 45,720	Down 23,682

\* All-time national high. \*\* Not NAIA attendance—NAIA teams also in NCAA are in NCAA figures; of 142 teams in neither NCAA nor NAIA, some are in Nat'l Christian College Athl. Assn. (NCCAA), some in Nat'l Little College Athl. Assn. (NLCAA), about half in neither. \*\* East Coast figures misleading—La Salle (in Phil. Big 5) played in nine doubleheaders at the Palestra (Penn's home court) and the Spectrum; some are in neutral-site line, some in Penn's home total; including these East Coast would average 1,661. @ 1982 figures reflect 1983 changes in conference, division and association lineups, to provide parallel comparisons (i.e., 1983 lineup vs. same teams in 1982, whether members or not) to make total attendance comparisons valid; column marked @@ compares per-game average, 1983 lineup vs. 1982; conferences and groups marked # had different lineups in 1982 (all groups in top half of page had different lineups in 1982). + Conference tournaments included. \$ Had only three Div. I members in 1982, they included in independents. Here are the 20 independents in 1983:

Division I Independents #	20	288	1,374,335	4,772	Down 31	0.65%	Up 670	Up 106,329	Down 180,303
---------------------------	----	-----	-----------	-------	---------	-------	--------	------------	--------------

LEADING NCAA DIVISION I TEAMS									
	G/S	Attend.	Avg.	- Change		G/S	Attend.	Avg.	- Change
1 Kentucky	15	356,776	23,785	Up 592	43 Tulsa	13	111,806	8,600	Down 70
2 Syracuse	16	326,413	20,401	Up 1,550	44 Texas-El Paso	17	146,054	8,591	Down 168
3 Brigham Young	15	303,957	20,264	Down 960	45 Evansville	19	160,245	8,434	Down 1,567
4 New Mexico	15	247,969	16,531	Down 16	46 Michigan State	16	134,371	8,398	Down 1,053
5 Louisville	15	246,617	16,441	Up 476	47 Creighton	16	133,283	8,330	Up 2,685
6 Indiana *	16	261,315	16,332	Up 875	48 Houston	14	111,861	7,990	Up 1,210
7 Minnesota	15	238,494	15,900	Down 139	49 Duke	16	127,579	7,974	Up 1,036
8 Iowa	14	207,444	14,817	Up 1,452	50 Drake	14	111,125	7,938	Up 993
9 Vanderbilt	17	237,584	13,976	Down 469	51 Utah State	16	123,474	7,717	Up 1,524
10 Purdue	14	185,932	13,281	Down 34	52 Weber State	16	122,914	7,682	Up 1,161
11 Illinois	15	194,384	12,959	Down 2,348	53 Idaho	12	91,200	7,600	Up 829
12 Utah	15	188,943	12,596	Up 418	54 Wisconsin	15	113,617	7,574	Up 2,535
13 Tennessee	15	188,536	12,569	Up 21	55 Tenn.-Chattanooga	16	120,753	7,547	Up 3,616
14 Georgetown	15	179,043	11,936	Up 3,345	56 Wake Forest @	17	127,776	7,516	Down 1,523
15 Ohio State	16	184,689	11,543	Down 1,182	57 Texas	15	112,056	7,470	Down 2,702
16 Louisiana State **	16	184,656	11,541	Down 2,578	58 Wyoming	13	96,633	7,433	Down 448
17 DePaul	20	226,269	11,313	Down 2,245	59 Toledo	18	132,925	7,385	Down 1,477
18 Alabama ***	14	155,054	11,075	Up 418	60 Oral Roberts	15	108,212	7,214	Up 68
19 Marquette	16	174,092	10,881	Down 15	61 Ala.-Birmingham	19	133,670	7,035	Down 770
20 Nebraska	18	195,333	10,852	Up 579	NCAA DIVISION II:				
21 UCLA	15	162,760	10,851	Down 110	1 North Dakota State	15	90,850	6,057	Up 1,672
22 Notre Dame	19	204,807	10,779	Down 385	2 Norfolk State	17	101,854	5,991	Up 1,912
23 Memphis State	16	171,357	10,710	Up 1,274	3 Kentucky Wesleyan	17	78,895	4,461	Up 441
24 Michigan	16	171,351	10,709	Up 1,156	4 Alabama A&M	12	49,400	4,117	Up 2,567
25 North Carolina #	13	137,468	10,574	Down 271	5 Virginia State	12	42,200	3,517	Down 41
26 North Carolina State	15	157,850	10,523	Up 483	6 South Dakota State	13	43,390	3,338	Up 447
27 New Mexico State	14	145,972	10,427	Up 1,575	7 North Dakota	15	49,050	3,270	Up 135
28 West Virginia ##	16	162,293	10,143	Down 489	8 Winston-Salem	11	33,100	3,009	Up 345
29 Maryland ###	18	181,755	10,098	Up 268	9 Tennessee-Martin	18	53,900	2,994	Up 314
30 Kansas State	15	151,210	10,081	Down 756	10 Nebraska-Omaha	13	36,200	2,785	Down 95
31 Wichita State	15	150,351	10,023	Down 608	NCAA DIVISION III:				
32 Dayton	17	169,142	9,950	Down 285	1 Augustana (Ill.)	12	36,400	3,033	Up 269
33 Oregon State	15	147,406	9,827	Down 260	2 Potsdam State	17	40,900	2,406	Down 174
34 Missouri +	19	186,659	9,824	Down 1,068	3 Concordia (Minn.)	14	32,200	2,300	Down 536
35 Connecticut	13	119,721	9,209	Down 1,295	4 Scranton	15	32,000	2,133	Up 233
36 Kansas ++	15	137,376	9,158	Down 360	5 Lehman	8	16,000	2,000	Down 638
37 Oklahoma	20	181,609	9,080	Up 3,323	NCAA ASSOCIATES:				
38 Bradley	16	144,209	9,013	Up 1,730	1 West Va. Wesleyan --	15	34,370	2,291	Up 291
39 Virginia	12	108,000	9,000	Same	NON-NCAA:				
40 Iowa State	15	133,906	8,927	Up 469	1 Catawba	14	54,077	3,863	Up 629
41 South Carolina	20	175,869	8,793	Up 1,481	2 Wiley	11	35,200	3,200	Up 2,600
42 Arkansas ***	16	139,550	8,722	Up 34	3 Kearney State	13	40,000	3,077	Down 23



## Elsewhere in Education

### Blackledge assists alma mater

Todd Blackledge, the quarterback who led Pennsylvania State University to its most successful season, has given the \$10,000 in scholarship funds from his Davey O'Brien National Quarterback Award to the institution's Renaissance Fund.

A. M. Wellington, professor emeritus of counselor education and a member of the Renaissance Fund board of directors, said, "Each year, a Penn State student with established financial need and demonstrated academic achievement will receive funds to complement all other sources of aid as a result of Blackledge's thoughtful and generous contribution to the endowment of the fund."

### Financial aid requests increase

Applications for financial aid at Illinois public universities has increased 29 percent, and financial aid applications at community colleges is up 51 percent from last year.

The Illinois State Scholarship Commission plans to award about 5,000 more grants this year than last because of tuition increases.

### Teachers, parents should unite

Mary Hatwood Futrell, newly elected president of the National Education Association, was quoted by the Chicago Tribune as saying, "... the time has come for teachers to put bitterness behind them and join hands with parents and public figures in a full-scale campaign to improve schools."

Futrell said the public perceives the association as an obstacle to better education, and unless this negative image can be turned around, teachers will become a casualty of the school-reform movement.

### Supreme Court upholds new law

The Supreme Court has removed a legal barrier for a new law denying Federal college loans and grants to men who do not register for the draft.

The justices lifted an injunction by a Minnesota judge that would have blocked the law and permitted men who did not register to receive student aid. The action means that the law will be in force at least into the fall. The law will remain on the books until the justices decide whether to hear arguments on the law's legality.

### States face desegregation changes

Five states have been given until August 15 to prepare new desegregation plans for their public college and university systems or face legal action by the government.

In letters to governors or top education officials, the U.S. District Court of the District of Columbia recently rejected desegregation plans of Georgia, Oklahoma, North Carolina, Florida and Arkansas.

If the states do not submit acceptable plans by the deadline, they could be cut off from Federal education funds or be subject to civil action.

### Standards to change in Oregon

Oregon high school students will have to meet tougher admission standards to attend the state's four-year colleges and universities, beginning in the fall of 1985.

The state said it would provide an exception for students at any high school that certifies it is unable to offer the necessary courses by the 1985 deadline. Those schools will have until the fall of 1987 to improve course offerings.

To enter Oregon's four-year public schools of higher learning, high school graduates will have to complete the following requirements: four years of English, three years of mathematics, two years of college preparatory science, three years of social studies and two years of other college preparatory courses such as foreign language.

### 1987 Navy class ranks high

The U.S. Naval Academy class of 1987 had the highest combined Scholastic Aptitude Test scores of an entering academy class in the past 14 years. The 1,340 plebes were chosen from about 13,600 applicants, the largest number of applications received at the academy in 10 years.

The average SAT scores for those offered appointments were 668 for mathematics and 580 for verbal. The class includes 108 women and 183 minorities.

### Houston teachers fail skills test

Sixty-two percent of the new teachers in the Houston Independent School District flunked the reading part of a basic skills test last spring. Forty-six percent failed the mathematics section, and 26.1 percent flunked the writing portion.

The tests were given to 3,200 first-grade, second-grade and third-grade teachers, according to United Press International.

Raymond Bynum, commissioner of the Texas Education Agency, said a group of Texas college sophomores also took the test and did slightly better than the first-year Houston teachers.

### Texas study examines illiteracy

About two million Texans—or 21 percent of the adult population—do not have the basic reading, writing and computation skills necessary for everyday tasks, a University of Texas, Austin, study concludes.

The study said another 30 percent of Texas adults are "marginally literate" and that 2.7 million residents could not determine how much change they were due after paying for merchandise with a \$20 bill.

Lois DeBaakey, a literacy expert and a professor of scientific communication at Baylor College of Medicine, said illiteracy will flourish until writers are regarded on a level equal to athletes.

"Can you give me one incentive for students to learn to read and write? The media focus on the superstars; they are lionized and fawned over. They are entertained in the White House and even given honorary degrees, and many of them are dropouts from grammar school. They are semiliterate, and these are the people who are honored as our heroes."

# Special player agents committee confronts agent/athlete problem

The Association's Special Committee on Player Agents, meeting for the first time July 23-24 in Chicago, made "considerable strides" toward developing alternatives to help the student-athlete become better acquainted with all sides of the agent/athlete relationship.

"I thought the committee did a good job of defining the nature and scope of the problem areas that needed addressing," said Richard H. Perry, director of athletics at the University of Southern California and chair of the special committee.

"The committee made considerable strides in describing some possible alternatives for action. We will review them and continue discussion at our next meeting. Each of the potential recommendations was very sound and very good."

The committee's next session, scheduled for September 11-12, may include input from other organizations as well. Formal invitations will be extended to the National Federation of State High School Associa-

tions and to the players' associations representing both National Football League and National Basketball Association athletes to send representatives to the meeting.

The committee also has requested the reprinting of "A Career in Professional Sports: Guidelines That Make Dollars and Sense." This publication, produced by the Collegiate Commissioners Association and the NCAA, was designed to serve as a reference for student-athletes interested in pursuing a playing career beyond college.

The Special Committee on Player Agents was appointed by the Association's Administrative Committee to formulate guidelines for member institutions to follow in dealing with player agents and to consider other means of approaching the "agent problem."

Serving with Perry on the committee are Vincent J. Dooley, director of athletics and head football coach, University of Georgia; C. Arnold Ferrin Jr., director of athletics, Uni-

versity of Utah; Carl C. James, commissioner, Big Eight Conference, and a member of the NCAA Professional Sports Liaison Committee; Fred A. Schaus, director of athletics, West Virginia University; Bo Schembechler, head football coach, University of Michigan, and president of the American Football Coaches Association; Richard D. Schultz, director of athletics, University of Virginia; Eddie Sutton, head men's basketball coach, University of Arkansas, Fayetteville, and John R. Thompson Jr., head men's basketball coach, Georgetown University.

## SWC wins most titles in 1982-83

Among Division I conferences, the Southwest Athletic Conference won the most NCAA championships in 1982-83, not the Pacific-10 Conference as reported in a story in the July 6 issue of The NCAA News.

The July 6 issue reported that the Pacific-10 Conference won six championships; however, four of those championships should be credited to the Western Collegiate Athletic Association.

WCAA winners were Southern California (Division I women's tennis and Division I women's basketball), Stanford (Division I women's swimming) and UCLA (Division I women's track).

Pacific-10 winners were Stanford (Division I men's tennis) and UCLA (men's volleyball). As a result of this change, the Pacific-10 moves from first to sixth among Division I conferences, behind the SWC (five), Big Ten Conference (four), WCAA (four), Big Eight Conference (three) and Atlantic Coast Conference (three).

Division I conferences that won one NCAA championship in 1982-83 were the Ohio Valley Conference, Pacific Coast Athletic Association, Western Athletic Conference, South-eastern Conference, Sun Belt Conference, High Country Athletic Conference and East Coast Conference.

## Academic committee meets

Design of the study concerning academic requirements established in Proposal No. 48 at the 1983 annual Convention was the emphasis of a recent meeting of the Special Committee on Academic Research.

The committee met July 23-24 in Washington, D.C., and spent nearly the entire meeting developing the study's design, including variables and types of analyses desired. The study will be conducted by an inde-

pendent research organization.

Information developed at the meeting will be shared with the research organizations still under consideration. Selection of the firm to conduct the study is scheduled for the committee's next meeting, August 13-14.

The Special Committee on Academic Research is chaired by Division I Vice-President Gwendolyn Norrell of Michigan State University.

## Final leagues approved

The final six applications for summer basketball leagues have been approved by the NCAA Administrative Committee, acting for the Council.

The approval of four men's leagues, one women's league and one league for men and women brings to 237 the total number of leagues approved by the Council this year. Previous lists of approved summer basketball leagues appeared in the April 13, May 4, May 11, June 1, June 8, June 22, July 6 and July 20 issues of The

NCAA News.

Following are the final six leagues that have been approved:

#### Men's leagues

California—YMCA Summer Basketball League, Modesto; New York—Biggy Martin Memorial League, Cheektowaga; Martin Luther King Towers Basketball Tournament, New York; Fairview-Greenburgh Summer League, White Plains.

#### Women's league

Pennsylvania—Magee Women's League, Pittsburgh

#### Men's and women's league

New York—Mt. Vernon Summer Basketball League, Mt. Vernon.

# Sports sponsorship makes gain

Although some reports have indicated a decline in sponsorship of athletic teams at NCAA member institutions the past few years, an annual NCAA research study indicates that sponsorship and participation stabilized in 1981-82.

The study documented a slight increase in participation in NCAA-sponsored men's sports and an increase of more than three percent in women's sports. The number of teams in men's and women's sports also increased.

Total 1981-82 participation was 169,800 men and 74,248 women, compared to 169,477 men and 71,768 women in 1980-81. These totals represented 69.58 percent men and 30.42 percent women, a slight gain in the percentage of women intercollegiate student-athletes. With football deleted, the percentages were 63.48 percent men and 36.52 percent women.

There were 6,746 men's teams during 1981-82, up from 6,719 the previous year. Women's teams increased from 4,099 to 4,279.

Perhaps more significant than the participation increases was the stabilization of squad sizes. The 1980-81 study documented a decline in average squad size for all men's sports except skiing, even sports that had experienced significant increases in sponsorship since the previous

report in 1976-77.

The 1981-82 study showed that the average squad size remained essentially the same for men's sports. The most noticeable exceptions were football (declined from 85 to 82), rifle (declined from 11 to nine), skiing (declined from 18 to 16) and fencing (increased from 16 to 18). Women's sports also showed very little change in average squad size.

Increases in sponsorship by at least five institutions were reported in the following eight men's sports: basketball, cross country, football, ice hockey, soccer, tennis, indoor track and outdoor track. Sponsorship decreased by at least five institutions in five men's sports: golf, gymnastics, rifle, swimming and wrestling.

Increases in sponsorship by at least five institutions took place in eight of the 12 women's sports

sponsored by the NCAA. The largest gains were in cross country (67), outdoor track (36) and volleyball (29).

Division comparisons indicated that 75,491 of the 169,800 men's participants, or 44.46 percent, were in Division I. Division II had 35,675 (21.01 percent), while Division III totaled 58,634 (34.53).

Women's participation by division showed 31,695 of 74,248 in Division I (42.69 percent), 15,666 in Division II (21.10 percent) and 26,887 in Division III (36.21 percent).

The only divisions showing declines in participation were Division III in men's sports and Division II in women's sports.

Copies of the complete study can be obtained from Eric D. Zemper, research coordinator, at the NCAA national office.

## Kansas, Wichita State to meet

Kansas and Wichita State, two intrastate rivals that have not met in a regular-season men's college basketball game in 29 years, have signed an agreement to play three times, beginning January 8, 1984 in Lawrence, Kansas.

The two schools also will meet during the 1984-85 season in Kansas City, Missouri, and during the 1986-87 season in Wichita, Kansas. Both also have agreed to play in the first Business Men's Assurance Co. invitational tournament in December 1985 in Kansas City.

The Jayhawks and Shockers have played just five times, first meeting in 1908. Wichita State scored its lone victory in the rivalry when it defeated Kansas, 66-65, in the semifinals of the 1981 Midwest regional.

# The NCAA News



# NCAA Record

## DIRECTORS OF ATHLETICS

**SAM JANKOVICH**, AD at Washington State, has signed a five-year contract as AD at Miami (Florida). He joined the Washington State staff 15 years ago as an assistant football coach. **RICHARD A. McDUFFIE** named at Central Connecticut State. He had been director of university sports at Seattle. Northern Iowa director **STAN SHERIFF** has signed a three-year contract as AD at Hawaii. Sheriff was named head football coach at Northern Iowa in 1960 and continued to coach until stepping down last year to devote more time to his duties as AD. **ROOSEVELT CUNNINGHAM**, director of student services, named interim AD at Virginia State.

## ASSOCIATE DIRECTORS OF ATHLETICS

**DANIEL I. HARRIS** resigned at Wisconsin-Milwaukee. He will continue to coach men's soccer. **CHARLES THORNTON**, Texas A&M, has resigned to become general manager of the new United States Football League franchise in Memphis. Thornton joined the A&M staff in January 1982 after 18 years as assistant AD and sports information director at Alabama. Notre Dame offensive coordinator **TOM LICHTENBERG** named at Iowa State, where he coached from 1974 to 1978. He also was head football coach at Morehead State (1979-1980).

## ASSISTANT DIRECTORS OF ATHLETICS

**BERNETTE CRIPE** resigned at Whittier to become chair of the department of physical education and recreation. She will continue to coach women's volleyball. **PHIL GOLDSTEIN** hired as assistant AD for financial affairs at Bowling Green State. He had been a graduate assistant in the business and ticket offices at West Virginia last year. **WAYNE D. ANDERSON** has rejoined the staff at Idaho, where he formerly was an assistant AD and a men's basketball and baseball coach before entering private business in 1974. He replaces **JOHN IKEDA**, who retired after 35 years on the university's staff.

## FACULTY ATHLETIC REPRESENTATIVE

**MARK W. WILLIAMS** named at Carroll, replacing **JOHN BATHA**.

## COACHES

**Baseball**—**LEE DE TURK**, head coach at Wayne, Indiana, High School, named at Indiana-Purdue-Fort Wayne. He will continue to teach on the high school level. **STU ROGERS** named at Central Missouri State.

was a graduate assistant on the staff last season. After a seven-year tenure, **RICK MILLER** has resigned at Western Carolina to enter private business. **DENNIS JACKSON**, formerly on the Pennsylvania staff, and **RICK KAUFMAN**, formerly at Fairleigh Dickinson-Teaneck, hired at Monmouth (New Jersey). **STEVE ANTRIM**, who had a 16-11 record last season at St. Michael's, hired at Iowa State. **MARK PITTMAN** has been named a part-time assistant at Cincinnati. He worked with new Bearcat coach Tony Yates on the Illinois staff the past two seasons. Former East Carolina star **CHARLIE GREEN** named a graduate assistant at his alma mater.

**Women's basketball**—**PATRICIA J. "P. J." ELLIOTT** selected at William Smith, where she also will be an assistant field hockey coach. Elliott has coached on the high school level in Ohio and Illinois and was a graduate assistant at Illinois from 1977 to 1979. **PAT BEAGAN**, assistant basketball and tennis coach at Wisconsin-LaCrosse, named head coach of both programs at Drew. **ERNIE YARBROUGH**, head coach at Wilson High School in Hacienda Heights, California, named at Whittier. Idaho State head coach **BETH BRICKER** has resigned to become executive director of the Northern Pacific Athletic Conference. She had headed the Bengals' program for three years.

**Women's basketball assistants**—**LILLION BARNES** and **LAURIE SIKES** appointed at East Carolina. Both are East Carolina graduates. **JO ANN BETTS** hired at Southeast Missouri State, where she was a graduate assistant last season. **DONEVANS** named at Texas-San Antonio. He had a five-year record of 129-35 as girls' coach at Robert E. Lee High School in San Antonio. **JANICE McCracken** promoted from graduate assistant to a full-time position at Indiana State. **KATHY SANBORN** hired at Boston U. She formerly coached field hockey, lacrosse and basketball at New England College. **JIM IZARD**, who was named Southland Women's Conference coach of the year last season when he led Southwestern Louisiana to an 18-10 record, hired at Louisiana State. **KATHY GORDON**, a former player at Ohio State and recently a coach in the Ohio high school ranks, hired as a graduate assistant at Purdue.

**Women's fencing**—**ALADAR KOGLER**, who coached Wayne State to the 1983 National



Wayne Anderson rejoins Idaho staff as assistant director of athletics

John Kuester named men's basketball coach at Boston University

coach at Army, where he also will be an assistant AD. He had an 11-year record of 109-47 at Washington and Lee. **JOHN McCLOSKEY**, an assistant who helped Roanoke to a second-place finish in the 1983 NCAA Division III Men's Lacrosse Championship, chosen at Mount Union. He also will coach men's soccer.

**Men's soccer**—**JOHN McCLOSKEY**, an assistant lacrosse and soccer coach at Roanoke, hired at Mount Union. Indiana assistant **JACK POLAND** chosen at Greensboro.

**Women's softball**—**WAYNE E. DAIGLE**, who coached Sam Houston State to the 1982 NCAA Division II Women's Softball Championship title, hired at Nebraska.

**Women's softball assistant**—**IMOGENE TURNER** hired at East Carolina (see women's volleyball).

**Men's swimming**—**PETE LINDSAY** hired to head the men's and women's programs at Hope. He had been head coach for four years at Western Michigan before the school dropped its swimming program. **MICHAEL BRETTING** will coach both programs at Valparaiso. He had been an assistant at Maryland.

**Men's swimming assistant**—**JOSEPH SILL**, head coach at Newark, Delaware, High School, named a graduate assistant at Louisiana State. He will work with both the men's and women's programs.

**Men's tennis**—**DOUG ROWE** selected at Indiana State, where he was a four-year letter winner (1979-1982). He was a teaching pro last year in Virginia. **LEO F. VORWERK**, head coach since 1976 at Southeast Missouri State, named to coach the men's and women's teams at North Florida.

**Men's tennis assistant**—**KEITH ZENGEL**, a four-year member of the East Carolina team (1979-1982), hired at his alma mater.

**Women's tennis**—**TOM McDERMOTT** appointed at Towson State, replacing **BRUCE VASEY**, who resigned. **PAT BEAGAN** named at Drew (see women's basketball). **PHILIP CAMPBELL**, men's and women's coach at Louisiana Tech, hired at Louisiana State.

**Men's track and field**—**FRANK MORRIS** has resigned at Oregon State to accept an assistant's post at Arizona State, where he will coach field events. He had been men's and women's coach at Oregon State for four years. **DICK BEALMEAR** named track and cross country coach at Bellarmine, his alma mater. He coached for 10 years in the Kentucky high school ranks. **GLEN A. SEFCIK** named the first full-time coach at Stephen F. Austin State. He coached the past two seasons at Wayland Baptist. **MARK ARCE** named track and cross country coach at Indiana State. He has coached since 1978 at North Vermillion High School in Cayuga, Indiana.

**Men's track and field assistants**—**JAY DIRKSEN** (cross country and distance runners) and **STEVE RAINBOLT** (jumpers) named at Nebraska. They will work with both the men's and women's programs. **BRUCE LEHANE** named interim distance running coach for men and women at Boston U.

**Women's track and field**—**BEVERLY ADAMS** hired as track and cross country coach at Indiana State. She had been an assistant at Western Kentucky. Wisconsin assistant **DAVE NIELSEN** hired at Idaho State. Nielsen, who was a pole vaulter at Iowa in the mid 1970s, was a volunteer coach at Idaho State while working on his graduate degree (1980-1982). **JANE KACZKOWSKI** named head track and cross country coach at North Central. She had been coach at Rich South High School in Richton Park, Illinois.

**Women's volleyball**—**IMOGENE TURNER** selected at East Carolina, where she also will be an assistant softball coach. A 1963 graduate of East Carolina, Turner coached in Delaware and Georgia high schools for 15 years. **VAL CALLY** chosen at Marist. She won four league titles as a coach at Arlington, New York, High School. Ohio State assistant **DEBORAH HOLZAPFEL** hired at Indiana State. **JONA L. BRADEN**, a successful Indianapolis high school coach, named at Butler.

**Wrestling**—**BILL TRUJILLO** given a full-time post at Purdue. He has coached the Boilermakers for three seasons while also teaching at a local high school. **NICK GALLO** resigned at Hofstra, where he had a four-year record of 47-27 and won three East Coast Conference titles.

## STAFF

**Athletic development director**—Former Stanislaus State AD and men's basketball coach **DOUGLAS R. SANDERSON** named at Nevada-Las Vegas. He will be responsible for ticket promotions in football and men's basketball and also will try to establish financial support for other sports.

**KELLEY** named the first full-time commissioner of the Pennsylvania State Athletic Conference. Kelley also has been a fund-raiser and assistant men's basketball coach at Missouri. **KEVIN DONLAN**, a former official in the Big Ten and Missouri Valley Conferences, named supervisor of men's basketball officials for the Association of Mid-Continent Universities. He also is supervisor of officials for the Midwestern City Conference. **TIM STEPHENS**, assistant SID at Evansville for three years, named administrative assistant for sports information at the Gateway Collegiate Athletic Conference.

## NOTABLES

Six new members were inducted recently into the Athletic Trainers Hall of Fame: **EDGAR HAROLD "HAL" BIGGS**, Bucknell; **JACK AGGERS**, Wyoming; **CHARLES DEMERS**, Deerfield, Massachusetts, Academy; **KERKOR KASSABIAN**, Northeastern; **JOHN PASZKIET**, Notre Dame; and **JOHN SCIARA**, Cortland State. Iowa's **ED BANACH** (wrestling) and Michigan State's **JUDI BROWN** (track and field) named Big Ten men's and women's athletes of the year, respectively. Banach was the conference and NCAA champion at 190 pounds. Brown won three conference titles and the NCAA outdoor 400-meter hurdles title. Former Virginia basketball player **RALPH SAMPSON** named recipient of the Anthony J. McKeelin Award as the Atlantic Coast Conference athlete of the year. Despite being named national player of the year three times, it was the first ACC award for Sampson.

## DEATHS

Former Michigan Tech AD **ALAN J. BOVARD**, 76, died last month in Marquette, Michigan. He was AD at the school from 1947 to 1972 and also coached football and men's basketball. **GARY L. BRADDS**, 40, a former Ohio State basketball player, died July 15 of cancer. **DONALD S. WHITE**, 85, who coached men's basketball at Connecticut from 1936 to 1945, died July 12. He had a 94-59 career record at Connecticut and also coached at Washington (Missouri) and Rutgers. **HENRY "HANK" VAUGHN**, 58, died July 11. The former Akron basketball star had a long and successful coaching career in the old National Industrial Basketball League. He also was an assistant coach on the 1964 and 1968 U.S. Olympic men's basketball teams.

## Briefly in the News

The University of Kentucky men's basketball team will play three of the 1983 NCAA Final Four teams in 1983-84—the Universities of Houston, Georgia and Louisville. In the first two weeks of the season, the Wildcats will face the Soviet National Team, Louisville and Indiana. Coach John Winkin's University of Maine, Orono, baseball team will face the past two College World Series champions in the 1984 season, meeting the University of Texas, Austin, twice in March and the University of Miami (Florida) four times in May.

Canisius College will play its September 10 football game at the University of Rochester instead of at home in Buffalo's War Memorial Stadium. Moving the home opener was necessitated by the filming of Robert Redford's next movie, which will occupy the stadium that day. Weber State College claims that it has the most mispronounced name among all major institutions in the country. It's a long E—"Weeeeeber, not Webber." Weber State has won the Big Sky Conference basketball championship 12 times in its 20-year history as a four-year college.

Northwestern State University (Louisiana) will honor its former football and track all-America, Joe Delaney, during a special half-time ceremony in its football season opener September 3. Delaney, the leading rusher in Northwestern's history who went on to stardom with the Kansas City Chiefs, died in late June while attempting to rescue three young boys in a swimming hole in Monroe, Louisiana. The University of Minnesota, Duluth, held a special recognition program in July for its head football coach, Jim Malosky, whose 156 victories in 25 years as head coach of the Bulldogs are the most by any active coach in Division II.

Southwest Texas State University, which will move from Division II to Division I (I-AA in football) a year from now, will add baseball and indoor track to its program this year in order to meet the eight-sport Division I criterion. Longwood College of Virginia has applied for membership in the Eastern College Athletic Conference. The Metropolitan Collegiate Athletic Conference is considering moving its office from St. Louis to Atlanta, according to Steve Hatchell, the new commissioner.

Work began at Trenton State College last month on a \$10 million construction and renovation project that will include a new sports complex, featuring a lighted, artificial-turf athletic field and a 400-meter, all-weather track. The institution says the sports field will be the first in the country to use a new water-drainage system developed by Astroturf. Residents of Almonte, Ontario, Canada, want to honor their most famous former resident, James Naismith, the inventor of basketball, by making a museum of the Naismith home. But they have been unable to locate funding to honor Naismith, who was born in Almonte in 1861.

All-in-the-family department: At North Carolina Wesleyan College, John McCarthy, the director of athletics, and Linda McCarthy, the sports information director, are man and wife, as are Tony and Laura Ferrell, the men's soccer coach and women's basketball coach, respectively. Karen L. Miller, who was named director of athletics for both men's and women's programs at California State Polytechnic University, Pomona, is married to Dan Miller, athletic director and head basketball coach at Anaheim High School.



Steve Antrim chosen assistant men's basketball coach at Iowa State

Janice McCracken selected women's basketball assistant at Indiana State

He is a 1982 graduate of Central Missouri State and was a graduate assistant with the baseball program this spring. **VINCE MASCO** appointed Drew's first full-time baseball coach. He had been an assistant on the Drew staff for five years. He also is an assistant men's baseball coach.

**Baseball assistant**—**JERRY WEINSTEIN** chosen at Miami (Florida). He had been head coach at Sacramento, California, City College.

**Men's basketball**—**JOHN KUESTER** has been promoted at Boston U., after two years on the staff as an assistant. Kuester played college ball at North Carolina and later played in the National Basketball Association. **TORCHY CLARK**, Central Florida's first and only head coach, resigned, ending a 14-year career. Clark, who asked to be reassigned to teaching duties at the school, had a 276-89 career record. Grand Canyon head coach **JAY ARNOTE** hired at Northern Arizona, where he was an assistant from 1976 to 1978. He had a two-year record of 40-18 at Grand Canyon. **CHARLIE HARRISON** has been given an undisclosed contract extension at East Carolina, where he posted a 16-13 record in his first season. **BRUCE HAROLDSON** has resigned at Montana State to accept a similar position at Pacific Lutheran. Haroldson has a career record of 151-101 in five years at Montana State and four at Mesa. He replaces **ED ANDERSON**, who left Pacific Lutheran to become head coach at California Lutheran. **TOM PUGLIESE**, who resigned this spring at Southern Illinois-Edwardsville when the school suspended its basketball program, named at Georgia State. He had a 9-19 record last year at Southern Illinois-Edwardsville, which played just five home games. St. Francis (Pennsylvania) has named one of its all-time greats, **KEVIN PORTER**, as head coach. Porter finished his collegiate career in 1972 as the second leading scorer in Red Flash history and played 10 years in the NBA.

**Men's basketball assistants**—**JOJO WHITE** released at Kansas, where he was an all-America in the 1960s and an assistant coach since 1981. **LEN GORDY**, an assistant for five years at Arizona, appointed at Towson State. Also hired at Towson State was **JIM MEIL**, who was a part-time assistant on the Tigers' staff last season. **RAINER WULF** named to a full-time position at California-Irvine. A former player for the Anteaters, Wulf

Collegiate Men's Fencing Championships title, named at Columbia. He also coached the Wayne State women's team to a second-place NCAA finish this season.

**Field hockey assistants**—**LISA ALISON MION**, a former standout at Miami (Ohio), named at Purdue. **PATRICIA "P. J." ELLIOTT** named at William Smith (see women's basketball).

**Football assistants**—**MIKE STOCK**, offensive backfield coach for the New Jersey Generals of the USFL, named receivers coach and recruiting coordinator at Notre Dame. Stock was on the Irish staff from 1960 to 1964 and was head coach at Eastern Michigan (1978-1982). **LOU MOLISANI**, a long-time high school coach in New York, named at Alfred. **KIT CARTWRIGHT** and **BILL DOBA** hired at Purdue. Cartwright, who had been at Bowling Green State, will work with the defensive backfield. Doba, an assistant at Indiana the past six seasons, will handle the defensive ends. Former Pacific assistant **JOHN RAMSDELL** named receivers and special teams coach at Oregon. **GORDY COMBS**, defensive coordinator at Towson State, promoted to associate head coach. **GREG MOHNS** has resigned at Nevada-Las Vegas to become a scout for the Kansas City Chiefs of the National Football League. Former Bowling Green State quarterback **MARK MILLER** has been named receivers coach at his alma mater. He was a backup quarterback this spring for the Michigan Panthers of the USFL. **SHERILL E. JACKSON** has resigned as receivers coach at Ohio to accept a similar post at Toledo. **ROBERT BARROW**, **JEFF FARRINGTON**, **DAVE DAVIS**, **KERMIT BLOUNT** and **JOE GODETTE** named graduate assistants at East Carolina.

**Men's golf**—**DON BUTZIN**, a local pro, named at Carroll.

**Women's gymnastics**—**JAMES R. "RICK" WALTON**, head coach at Georgia last season, has been hired at Nebraska. **JANET ANTHONY** has moved from Indiana (Pennsylvania) to the head post at Illinois State. She was a three-year all-America at Penn State.

**Men's ice hockey assistant**—**ROBERT MANCINI**, who coached and played in Italy last year after a four-year career at Colorado College, named at Lake Superior State.

**Men's lacrosse**—**JACK EMMER** has resigned at Washington and Lee to become head

# Larger field sought in baseball

The increased popularity and quality of college baseball may result in a larger field for the 1984 Division I championship.

An increase from 36 to 38 teams in next year's tournament is one of the NCAA Baseball Committee's recommendations that will be considered by the Executive Committee later this month. Committee members cited the quality of teams left out of championship play as the primary reason. Examples in 1983 included the University of Oklahoma (39 victories-20 losses), Washington State University (39-17) and Old Dominion University (41-11).

The committee also believes that the championship would remain self-sustaining, despite the addition of two teams. The championship field now includes one team per seven that sponsor the sport, already below the standard 1:8 ratio; however, revenue in excess of all tournament expenses is one criterion used by the Executive Committee in granting exceptions to the size-of-field policy.

A considerable portion of the meeting, held July 18-21 in Seattle, involved revisions in playing rules, which will be reported in a later issue of The NCAA News.

Possible limits on playing and practice seasons also were discussed.

## Hall to be moved

The Track and Field Hall of Fame will be moved from Charleston, West Virginia, to Indianapolis, where it will be included in the new Hoosier Dome, officials of The Athletics Congress have announced.

## Bowl game date changed

The Hall of Fame Bowl has been moved from December 30 to December 22 and will be televised during prime-time hours (7 p.m. CST starting time) by WTBS-TV of Atlanta. The change has been approved by the NCAA Postseason Football Committee.

Bowl President Dan Hendley said the rescheduling of the game at night should increase the national exposure via television and add substantially to the total revenue. Last year's game, in which Air Force defeated Vanderbilt, 36-28, drew 75,208 spectators and generated \$454,536.77 for each school.

"The costs associated with attracting two outstanding teams to a bowl continue to increase," Hendley said. "This may enable us to split more than a million dollars between the participating schools and go a long way toward ensuring our future success. Another bonus with the earlier date is that everyone can be home for Christmas. This is important to the players, coaches and fans."

as requested by the Special Committee on Legislative Review. The committee is opposed to the creation of such limits in baseball but offered suggestions in the event that limits are established for all NCAA sports.

The committee proposed a season of organized practice in the fall. No more than eight consecutive weeks would be permitted, beginning with the first day of classes. A year ago, the committee stated its opposition to a competitive fall season.

Also recommended was a limit of 65 games for the spring season, with practice and games starting no earlier than January 2. The committee defined a game as any competition against an outside opponent. The 65-game limit would not include conference or NCAA championship competition.

Other recommendations that the Executive Committee will consider include:

- An increase in fees paid to umpires in the Division I championship. The fee would increase from \$40 to \$50 for regionals and from \$40 to \$60 for the College World Series.

- Dates of June 1-10 for the 1984 College World Series, with regional competition to be held May 24-28. The Entertainment and Sports Programming Network (ESPN) is proposing earlier starting times for two series games in order to televise more games on a live basis.

- A policy for the Division II and Division III finals that one umpire be chosen from each of the six regions. The committee currently

attempts to select from within 75 miles of the site.

- Playing the Division II finals at the University of California, Riverside, again in 1984 and 1985. It also will be recommended that Marietta College serve as the Division III host again in 1984.

- Appointment of a three-member group to serve as the Official NCAA Championship Baseball Committee. This committee will negotiate with baseball manufacturers and recommend an official ball for championship play. A contract with the Diamond Baseball Company has just expired.

The committee will meet again November 7-10 in Kansas City.

## Legislative review committee to examine limitations on contests, playing seasons

Limitations on the length of seasons, number of contests and number of playing dates will be discussed at the August 8-9 meeting of the Special Committee on Legislative Review at the Alameda Plaza Hotel in Kansas City, Missouri.

Specifically, the committee will address Proposal Nos. 118 and 119, which were referred to the legislative review committee at the 1983 NCAA Convention. Proposal No. 118 sought to limit the number of contests in women's softball to 60 during any one year, and No. 119 proposed to limit fall competition in the traditional spring sports of baseball, golf, tennis and track to a maximum of seven contests in each sport.

In more general terms, however, the committee will consider limits for all sports in which there are no restrictions. Currently, only football, basketball and soccer have restrictions on the number of contests in any one year; ice hockey has a limitation on its playing season but not on number of contests.

Members of the committee, which is chaired by Alan J. Chapman of Rice University, will discuss the results of a survey that was conducted with all NCAA sports committees that govern sports in which no restrictions currently exist. All sports committees have responded to the

## Calendar

August 8-9	Special Committee on Legislative Review, Kansas City, Missouri
August 8-11	Division II Women's Basketball Committee, Tahoe, California
August 13-14	Special Committee on Academic Research, Chicago, Illinois
August 14	Special Committee on Championships Standards, Denver, Colorado
August 15-16	Executive Committee, Denver, Colorado
August 16	Eligibility Committee, Denver, Colorado
August 17-19	Council, Denver, Colorado
September 10-11	Select Committee on Athletic Problems and Concerns in Higher Education, Chicago, Illinois
September 11-12	Special Committee on Player Agents, site to be determined
September 12-13	Special Committee on Division I Criteria, Chicago, Illinois
September 19-20	Chief executive officers meeting, Kansas City, Missouri

survey, which sought each committee's recommendations regarding limits on playing seasons.

Possible restrictions on playing seasons will be considered on sport-by-sport and division-by-division bases. Various ways of limiting playing seasons will be discussed, such as limiting the number of contests, limiting the number of playing dates, and setting beginning and ending dates for the season.

The committee also will discuss the possibility of starting the Division

I men's basketball season one month later (December rather than November).

Other items on the agenda are missed class time by student-athletes competing in international competition, conflicts between academic calendars and NCAA championships, and consideration of soccer playing and practice season limitations.

If the committee agrees to suggest any legislation, it must be approved by the NCAA Council to become a legislative proposal at the 1984 NCAA Convention.

## Two publications available

Two new editions of NCAA publications become available in August.

The Football Statisticians' Manual (\$2.75) contains the official statistics rules, special interpretations and approved rulings for the sport of football.

The Official Basketball Scorebook (\$3) has space for scoring 32 games and tabulating statistical information. It also contains the official scoring rules, information on how to use the book and a scoring sample of a complete game.

To place an order or to inquire about bulk rates, contact NCAA Publishing, P.O. Box 1906, Mission,

Kansas 66201. Payment, which includes fourth-class postage, should accompany all orders. Those who want books mailed first class should include \$2 postage for each book.

## Forms not mailed

Member institutions should be aware that forms to solicit nominations for vacancies on NCAA general committees were not mailed this year, as was reported in the July 20 issue of The NCAA News.

Nominations should be submitted directly to Fannie B. Vaughan, administrative assistant, at the NCAA national office before August 22.

## The NCAA News



## The Market

Readers of The NCAA News are invited to use The Market to locate candidates for positions open at their institutions, to advertise open dates in their playing schedules or for other appropriate purposes.

Rates are 35 cents per word for general classified advertising (agate type) and \$17.60 per column inch for display classified advertising. Orders and copy are due by noon five days prior to the date of publication for general classified space and by noon seven days prior to the date of publication for display classified advertising. Orders and copy will be accepted by telephone.

For more information or to place an ad, call 913/384-3220 or write NCAA Publishing, P.O. Box 1906, Mission, Kansas 66201.

### Positions Available

#### Commissioner

Commissioner, West Coast Athletic Conference. ORGANIZATIONAL INFORMATION: The West Coast Athletic Conference is an organization of eight member universities located in California, Oregon and Washington. The Conference is in Division I in the National Collegiate Athletic Association. Members are: Gonzaga University, Loyola Marymount University, Pepperdine University, University of Portland, St. Mary's College, University of San Diego, University of San Francisco, and University of Santa Clara. GENERAL DESCRIPTION: The Commissioner is the full-time chief executive officer of the West Coast Athletic Conference and is employed by the Executive Committee. RELATIONSHIP & AUTHORITY: The Commissioner reports to the Executive Committee consisting of University Representatives and Directors of Athletics at the member institutions. The Commissioner supervises the staff and is responsible for the conduct of the office as outlined in the Constitution, and the detailed job description. DUTIES & RESPONSIBILITIES: Serves as Secretary of the Conference; is ex officio,

nonvoting member of all Conference committees; interprets and enforces Conference and NCAA rules & regulations; handles all meeting arrangements and keeps minutes; conducts public relations program; maintains liaison with national athletic associations; coordinates all Conference meets and tournaments; prepares Conference playing schedule; prepares and maintains annual budget; and gives advice and guidance for general administration of the Conference. QUALIFICATIONS: Candidate shall have at least an undergraduate college degree, graduate degree preferred; have experience in an knowledge of NCAA rules; possess administrative experience in college athletics; should have proven promotional, public relations & managerial skills; and have demonstrated leadership ability. SALARY: Commensurate with experience & ability. STARTING DATE: To be determined with candidate. APPLICATION: Candidates should submit a letter of application with resume and supporting materials, along with a minimum of three written references, to: Thomas F. Burke, President, WCAAC, University of San Diego, Alcala Park, San Diego, California 92110. APPLICATION DEADLINE: September 30, 1983. The West Coast Athletic Conference is an affirmative action/equal opportunity employer.

#### Executive Director

Executive Director for the United States Field

Hockey Association, a women's national sports governing body. A full-time position in Colorado Springs in charge of the national office and the administration of all programs of the organization. Need skills in fund-raising, business management, office management and sports management. Master's degree preferred. Responsibilities begin September 1983. Starting salary \$25,000. Additional information may be obtained from the national office, 303/578-4567. USFHA is an equal opportunity employer. Send resume and three letters of recommendation to: Search Committee, United States Field Hockey Association, 1750 East Boulder Street, Colorado Springs, Colorado 80909, by September 15.

#### Athletics Director

Athletic Director. Position available as Athletic Director for Louisiana Tech University. Effective September 1, 1983. Application deadline: August 8, 1983. Submit resume to: Mr. Harold J. Smolinski, Chairman, Athletic Director Search Committee, Louisiana Tech University, P.O. Box 3046, Ruston, LA 71272. Responsible for the total intercollegiate athletic program at Louisiana Tech University, which consists of 8 men's and 3 women's varsity sports. Men's programs are members of the Southland Conference, all sports are NCAA Division I. Football is Division IAA. Bachelor's degree required, master's or higher desired. Business and/or previous management experience required, athletic background necessary, background in fund-raising desired. Salary commensurate with qualifications.

Athletic Director, Northern Arizona University. The Athletic Director is responsible for administering a competitive NCAA Division I intercollegiate athletic program consisting of eight men's and eight women's varsity sports. An appropriate Bachelor's Degree is required (a Master's Degree is preferred). Applicant should have demonstrated ability in athletic administration, budget preparation and control, fund-raising, and public relations. Also, a commitment to successful academic pursuits by student-athletes and an ability to foster congenial and supportive relationships with the diverse constituencies of the local and University communities are highly desirable qualities. Applications should include a complete resume with application cover letter highlighting qualifications, current references, information, and/or letters of recommendation, and a statement of

philosophy and goals regarding intercollegiate athletics and a plan for achieving those goals. Applications should be sent to the following: Chair, Athletic Director Screening Committee, Box 4115, Northern Arizona University, Flagstaff, AZ 86011. The screening committee will begin reviewing applications August 22. The position will be filled by December 1, 1983, or as negotiated. NAU is an Equal Opportunity/Affirmative Action/Title IX, Section 504 Employer.

#### Associate A.D.

Associate Athletic Director for Public Relations and External Affairs. Qualifications: Bachelor's degree, Master's degree preferred. Experience in development of promotional programs and public relations. Report to: Director of Athletics. Salary: Negotiable. Performance Responsibility: Develop activities calendar for all external affairs. Coordinate/regulate all material used externally by the athletic department. Coordinate all activities for marketing, promotion, sports information, high school relations, special projects and fund-raising. Coordinate scheduling of all athletic events. Coordinate affirmative action within the department. Please send resume to: Director of Athletics, University of Miami, P.O. Box 248167, Coral Gables, Florida 33124. The University of Miami is an equal opportunity/affirmative action employer.

Associate Athletic Director of Operations and Services. Qualifications: Bachelor's degree, Master's degree preferred. Experience in all phases of major program for intercollegiate athletics. Report to: Director of Athletics. Performance Responsibility: Events management, faculty and student relations, letter of awards, coordinate service activities. Salary: Negotiable. Please send resume to: Director of Athletics, University of Miami, P.O. Box 248167, Coral Gables, Florida 33124. The University of Miami is an equal opportunity/affirmative action employer.

#### Sports Information

Sports Newswriter, Fresno State University. Reports to the Sports Information Director. Writes weekly press releases along with features and assists in editing and layout of press books, game programs and recruiting books. Coordi-

nates with the media, providing information needed to promote upcoming events. Travel with teams may be required. Experience in a Sports Information Office. Bachelor's degree in journalism, communications, or English desired. Salary: \$15,000-\$18,000. Apply by 8/12/83 to: CSU, Fresno, Personnel Office, Rm. 164, Joyal Admin. Bldg., Fresno, CA 93740. (209)294-2032. An AA/EEOE.

Sports Information Director, Trans America Conference accepting applications for this position. Responsibilities also include assigned administrative duties, assist in development activities and conference tournament's administration. Bachelor's degree and experience in above areas preferred. Position available September 1, 1983. Closing date for applications August 15, 1983. Send letter of

application, resume and references to: Bob Vanatta, Commissioner, Trans America Athletic Conference, 7505 Pines Road, Suite 1255, Shreveport, LA 71129.

Staff Writer. Full-time position, Stephen F. Austin State University. College degree. Knowledge of most intercollegiate sports. Background sports information. Experience in journalism or public relations work also acceptable. Performs duties as assistant sports information director. Also handles publications for men's and women's athletic department, alumni association and the university information office. Deadline for applying: August 19. Position available: August 29. Send resume to: Max Corbet, University Information Office, Box 9100, SFA Station, Nacogdoches, Texas

See Market, page 7

## Ohio University Assistant Swim Coach/ Assistant Manager of Aquatics

Available September 1983. Salary: Mid-teens, commensurate with experience. Nine-month university contract with potential for additional compensation for U.S. Swim Team coaching and summer swim camp.

Qualifications: Master's degree preferred. Experience in competitive swimming and diving and program administrative experience helpful. Responsibilities: Assist the head swim coach in each of his duties as assigned. Assist the associate manager of aquatics as assigned. Teaching duties as assigned. (A new 50-meter, \$4 million natatorium is scheduled to open early in 1984.)

Application Deadline: August 15, 1983. Procedure: Forward complete resume and references to Don Galluzzi, Head Swim Coach, Ohio University, P.O. Box 689, Athens, Ohio 45701. (Note: Mr. Galluzzi is the former head coach at Columbia University.)

Ohio University is an affirmative action employer.



# The NCAA News



# The Market

## Positions Available

Continued from page 6

75962. SFA is an affirmative action/equal opportunity employer.

**Assistant Information Director for Women's Sports.** Bachelor's degree in Journalism, Communications, English or related field plus one year experience in sports information or equivalent education and experience required. Demonstrated writing, organizational and reporting skills, knowledge of athletic statistics and experience working with media preferred. Writes press releases, brochures, game programs and team press guides for women's sports. Eleven months permanent position. Submit applications and two copies of resume through August 15, 1983, to: Patricia Baucum, PB 19, Personnel Department, UNIVERSITY OF UTAH, Salt Lake City, Utah 84112. Submit references and writing samples through August 15, 1983, to: Fern Gardner, Athletic Department, Special Events Center, UNIVERSITY OF UTAH, Salt Lake City, Utah 84112. Equal Opportunity Employer.

## Academic Coord.

**Academic Coordinator.** George Mason University is seeking an individual to fill a new position. The academic coordinator will be responsible for coordinating an academic program for all student-athletes in George Mason's Division I athletic program. The individual will report to the assistant director of athletics at George Mason University. This position is a 12-month non-tenured administrative position. Responsibilities: Coordinating a program for all student-athletes as well as supervising and participating in advising, counseling and tutoring of student-athletes selected by the assistant athletic director who are in need of individual assistance. Qualifications: Bachelor's degree required and an M.A. preferred. Strong commitment to academic values in intercollegiate athletics. Experience in teaching or counseling at the high school or college level and demonstrated ability to work with diverse groups of people. Experience in a Division I intercollegiate athletic program desirable. Salary commensurate with experience and qualifications. Application deadline August 10, 1983. Send letters of application and vita and three references to: Susan Collins, Assistant Athletic Director, George Mason University, 4400 University Drive, Fairfax, Virginia 22030. George Mason University is an equal opportunity educator and employer and specifically invites and encourages applications from women and minorities.

## Athletic Trainer

**Head Athletic Trainer.** Full-time position. Susquehanna University is located in central Pennsylvania offering 17 sports for men and women at the Division III level. NATA certification required, master's degree preferred. Teaching in trainer certification program and supervision of student trainers are major responsibilities. Salary \$15,000. Apply immediately, deadline August 15, 1983, to: Don Harnum, Athletic Director, Susquehanna University, Selingsgrove, PA 17870.

**Assistant Athletic Trainer (part time).** Will be required to work in all phases of a co-ed training room. Experience in rehabilitative and therapy techniques necessary. Reports to Head Athletic Trainer, assists in student trainer supervision, medical records maintenance and administration of rehabilitative program. Bachelor's degree required. NATA certification required. Master's preferred. Send letter of application, resume and reference to: Jack B. Aggers, Head Athletic Trainer, University of Wyoming, P.O. Box 3414, University Station, Laramie, WY 82071. APPLICATION DEADLINE: August 24, 1983. POSTION AVAILABLE: Immediately after deadline.

**Assistant Athletic Trainer.** Primary responsibility for women's intercollegiate athletic teams. Nine-month position. Master's degree preferred. NATA certification minimum. Send letter, resume and three letters of recommendation to: Mayfield Armstrong, Head Trainer, Nicholls State University, P.O. Box 2032, Thibodaux, LA 70310.

## Basketball

**Head Coach of Division I Women's Basketball** team, Idaho State University. Qualifications: Bachelor's degree required, master's degree

preferred; previous experience coaching collegiate basketball or five years of high school head coaching, preferably with women; familiarity with NCAA regulations; demonstrated success coaching basketball. Responsibilities: Coaching, recruiting within NCAA requirements, promotion, functioning effectively in a combined athletic department, assisting with fund-raising efforts. Salary: \$20,000-\$22,500, commensurate with qualifications and experience; 12-month appointment. Application procedure: Send letter of application, resume and at least three current letters of reference to: Dr. Kathy Hildreth, Women's Athletic Director, Box 8173, Idaho State University, Pocatello, Idaho 83209. Deadline: Screening of applicants will begin on August 5, 1983. Position available: One week after appointment. Idaho State University is an equal opportunity employer. Women and members of minority groups are encouraged to apply.

**Assistant Basketball Coach (Men).** Full-time position open in KU athletic department. Must have bachelor's degree plus experience as a coach or player at the college or professional level. Experience in recruiting and scouting. Capable of assuming organizational duties. Ability to communicate effectively and be effective in promotional activities and media relations. Preferred qualifications: At least 5 years' experience as a coach and/or player at the college or professional level. Send resume to: Larry Brown, Head Basketball Coach, University of Kansas, Allen Field House, Lawrence, Kansas 66045. Application deadline: August 11 by 5 p.m. Kansas University is an equal opportunity/affirmative action employer.

**Head Coach for Men's Basketball.** Indiana University of Pennsylvania invites applications for a Head Coach, Men's Basketball. The Head Coach is responsible for planning and executing men's intercollegiate basketball. This is a 12-month, non-tenure track position. Responsibilities include: Organize and conduct all phases of Division I men's basketball program; budget preparation, scheduling, travel arrangements and ordering supplies; conduct a successful recruitment program; direct and evaluate assistant coaches; monitor student-athlete academic progress; comply with department, university, conference and NCAA rules and regulations; remain current on all trends, methods and innovations related to the sport; assist with promotional, fund-raising and other administrative projects as assigned by the Director of Intercollegiate Athletics; initiate clinics or workshops to benefit the community and/or state; and involvement in summer basketball camps. A bachelor's degree is required; master's degree preferred. Preference given to experienced head coaches in men's athletics. Coaching experience at college level desired. The candidate must have demonstrated ability in planning and direction of a successful college basketball program. The salary range is competitive, depending upon qualifications and experience. Applications and detailed resume, including references, should be sent no later than August 15, 1983, to: Frank Cignetti, Director of Intercollegiate Athletics, IUP, Indiana, PA 15705. IUP is an affirmative action, equal opportunity employer.

**Head Basketball Coach.** State University of New York at Binghamton. Part-time position for nine months. Responsibilities: (1) Recruit prospective students. (2) Organize and administer a Division III men's basketball program. (3) Direct the summer basketball youth camps. Qualifications: A bachelor's degree in physical education is preferred; experience in playing and coaching men's basketball at the collegiate level; ability to work within the parameters of philosophy and regulations of SUNY-Binghamton. Deadline for applications: August 15, 1983. Send letters of application, vita and three letters of recommendation to: Neil Jackson, Director of Physical Education and Athletics, West Gym, SUNY-Binghamton, Binghamton, New York 13901. SUNY-Binghamton is an equal opportunity/affirmative action employer.

**Assistant Coach—Men's Basketball.** The University of Kentucky is accepting applications for the position of assistant men's basketball coach (bachelor's degree required). Preferred requirements include college-level coaching and recruiting experience and thorough knowledge of NCAA rules and regulations. Salary commensurate with experience. Resumes should be sent to: Cliff Hagan, Athletic Director, University of Kentucky, Lexington, Kentucky 40506-0019. Deadline is August 15, 1983. The University of Kentucky is an equal opportunity/affirmative action employer.

**Assistant Coach—Women's Basketball.** Full-time permanent position. Responsibilities include recruiting, scouting, team travel, practices. Bachelor's degree in physical education or related field required. College playing experience preferred. Send resume, letter of application and three names for references to: Ann Marie Lawler, Box 6449, University, Alabama 35486, by August 30. The University of Alabama is an equal opportunity/affirmative action employer.

## Basketball Coach

The School of Education, Metropolitan State College, Denver, Colorado, announces an opening for the new position of Head Men's Basketball Coach, beginning fall semester 1983. Deadline for applications: August 25, 1983.

Full-time, 10-month position. One-half time head men's basketball coach; one-half time administrative/academic duties based upon applicant's experience and qualifications. Responsible for ground work necessary to start a new men's basketball program in 1984-85. Responsible for administering the entire men's basketball program. Duties include: Recruiting, scheduling, facility arrangements, clinics, budgeting, fund-raising and game practice management. Master's degree required. Ph.D. preferred. Coaching experience at college or high school level desired. Familiarity with NAIA and NCAA-II rules and regulations is desirable.

Submit written resume, letter of application, college transcripts and three recent letters of reference to:

William Helman, Athletic Director  
PER Department, Box 25  
Metropolitan State College  
1006 Eleventh Street  
Denver, Colorado 80204

MSC is an equal opportunity employer.

## Cross Country

**Cross Country Coach—Men and Women—and Director of Intramurals.** Full-time, 9½ month position. Minimum bachelor's degree. Participation or coaching cross country required. Coaching experience desirable. Experience supervising intramurals highly desirable. Salary \$10,000-\$15,000. Send resume and letter to: Ed White, Athletic Director, Southwestern at Memphis, 2000 N. Parkway, Memphis, TN 38112. AA/EOE.

## Gymnastics

**Head Coach for Women's Gymnastics.** Indiana University of Pennsylvania invites applications for a Head Coach, Women's Gymnastics. The Head Coach is responsible for planning and executing women's intercollegiate gymnastics. This is a 12-month, non-tenure track position. Responsibilities include: Organize and conduct all phases of Division II women's gymnastics program; budget preparation, scheduling, travel arrangements and ordering supplies; conduct a successful recruitment program; direct and evaluate assistant coaches; monitor student-athlete academic progress; comply with department, university, conference and NCAA rules and regulations; remain current on all trends, methods and innovations related to the sport; assist with promotional, fund-raising and other administrative projects as assigned by the Director of Intercollegiate Athletics; initiate clinics or workshops to benefit the community and/or state; and involvement in summer gymnastics camps. A bachelor's degree is required; master's degree preferred. Preference given to experienced head coaches in women's athletics. Coaching experience at college level desired. The candidate must have demonstrated ability in planning and direction of a successful college gymnastics program. The salary range is competitive, depending upon qualifications and experience. Applications and detailed resume, including references, should be sent no later than August 15, 1983, to: Frank Cignetti, Director of Intercollegiate Athletics, IUP, Indiana, PA 15705. IUP is an affirmative action, equal opportunity employer.

**Assistant Women's Gymnastics Coach.** Half-time, nine-month—\$6,000 plus benefits. Duties: Assist head coach with gymnastics program. Assist in recruiting within ISU, Big 8 and NCAA guidelines. Promote good public relations. Qualifications: Bachelor's degree, demonstrated ability to coach gymnastics (club, high school and/or collegiate levels). Experience in technique of spotting female gymnasts. Please send application letter, resume, and the names, addresses and telephone numbers of three references to: Mr. Max Unick, Director of Athletics, 135 Olsen Building, Iowa State University, Ames, IA 50011. POSITION RE-OPENED—DEADLINE: AUGUST 15, 1983, OR UNTIL FILLED. Iowa State University is an equal opportunity/affirmative action institution.

## Softball

**Assistant Softball Coach.** Half-time, nine-month (9½ base)—\$6,000 plus benefits. Duties: Assist head coach with softball program, with special emphasis on coaching pitchers. Assist in recruiting within ISU, Big 8 and NCAA guidelines. Promote good public relations. Qualifications: Bachelor's degree, coaching and/or participant experience at collegiate level. Procedure: send application letter, resume, and the names, addresses and telephone numbers of three professional references to: Mr. Max Unick, Director of Athletics, 135 Olsen Building, Iowa State University, Ames, IA 50011. Deadline: August 5, 1983, or until filled. IOWA STATE UNIVERSITY IS AN EQUAL OPPORTUNITY/AFFIRMATIVE ACTION EMPLOYER.

## Swimming

**Assistant Women's Swimming Coach.** Responsibilities include recruiting, on deck coaching, meet organization and other related administrative responsibilities. Stipend is \$2,000. Graduate programs of study are available. Send resume as soon as possible to: Barbara J. Patrick, Associate Athletic Director, Northern Michigan University, Marquette, Michigan 49855.

**Graduate Assistantships—Swimming** (two available). Responsibilities include on-deck

coaching, recruiting, meet administration and other duties as assigned by the head coach. Send resume and recommendations to: Don Galluzzi, Head Swim Coach, Ohio University, P.O. Box 689, Athens, Ohio 45701. Deadline for applications is September 1, 1983. Position starting date September 12, 1983.

**Director of Aquatics.** Head Coach of Swimming for Men. Associate Instructor in Physical Education. Reports to director of athletics. Assume director of traditionally successful Eastern swimming program. Bachelor's degree with physical education experience required. Successful coaching experience desirable. Salary commensurate with qualifications and experience. Position available as soon as possible. Direct applications to: Al Paul, Director of Athletics, Columbia University, 436 Dodge Physical Fitness Center, New York, New York 10027. Equal Opportunity Employer.

**Head Diving Coach; Assistant, Swimming and Track.** Allegheny College invites applications for the position of head diving coach and assistant swimming and track coach, with additional duties in teaching. Responsible for all phases of the men's and women's intercollegiate diving program with assistant responsibilities in all phases of the swimming and track programs. Duties include coaching, recruiting, public relations as well as input for budgeting, equipment purchasing and scheduling. Responsibilities will include the teaching of physical education classes and any additional assignments as determined by the director. This is a full-time position. Applications are being accepted until the position is filled. Position is now open, beginning date is September 1, 1983. Send letter of application, resume and references to: Thomas C. Erdos, Associate Director of Athletics, Box 34, Allegheny College, Meadville, PA 16335. Female and minority applicants are encouraged. Allegheny College is an Equal Opportunity Employer.

## Tennis

**Head Tennis Coach.** Purdue University invites applications for a head tennis coach. Coach both men and women. This is a full-time position, administering all aspects of the total tennis program on a Division I level. This appointment may be for 10 or 12 months. Intercollegiate or comparable playing experience required. Salary range: \$14,500-\$17,500, depending on length of contract and previous experience. Application deadline: August 10, 1983. Starting date: As soon as possible. Send applications to: George S. King, Jr., Athletic Director, Purdue University, West Lafayette, Indiana 47907.

## Track & Field

**Assistant Track Coach.** Position opened for a full-time assistant track coach. Applications will be taken through August 15. Position available starting on September 1. College track coaching experience preferred, mainly in field events. Please send applications to: Gerald Oglesby, Head Track Coach, Texas Tech University, P.O. Box 4199, Lubbock, Texas 79409.

**Assistant Track and Field Coach for Women.** Full-time, 10-month position beginning September 6, 1983. Salary is minimum \$17,500. Deadline August 25, 1983. Apply in writing to: Paula Bonner, Assistant Director for Women's Programs, University of Wisconsin-Madison, 1440 Monroe Street, Madison, Wisconsin 53711. Include resume, credentials and three letters of reference. The University of Wisconsin is an equal opportunity/affirmative action employer.

**Graduate Assistant, Track and Field.** One-year renewable appointment for the academic year 1983-84. Position available August 24, 1983, or January 16, 1984. STIPEND: \$2,750 for services performed during the academic year. Graduate students holding assistantships need not pay incidental or non-incidental fees. RESPONSIBILITIES: To assist head coach in the area of weight training, recruiting, sprint events, and meet management. At least twenty hours of service to the university per week and full-time status as a student (6 to 9 hours). QUALIFICATIONS: (1) Bachelor's Degree from an accredited college or university. (2) Admission to a Graduate Degree Program at SMSU by August 4 for Fall or December 1 for Spring semester. (3) Evidence of superior character, personality, teaching ability, and capacity for graduate study through supporting letters from persons qualified to judge the candidate's competence. CONTACT: Call and send formal letter of application, resume and recommen-

dations to: Richard W. Clark, Men's Track and Cross Country Coach, Southwest Missouri State University, Springfield, Missouri 65804 (417-836-5531 a.m.; 417-836-5242 p.m.). APPLICATION DEADLINE: August 4, 1983, for Fall, or December 1, 1983, for Spring.

**Assistant Track and Field Coach.** University of Idaho, Moscow, has a vacancy for a part-time assistant track and field coach for men and women. Idaho is a Division I NCAA member with outstanding indoor and outdoor track facilities. RESPONSIBILITIES include assisting head coaches for men and women in the coaching of various aspects of the total track and field program. Specific responsibility for fall track workouts and indoor and outdoor coaching duties assigned dependent upon applicant's particular strengths. APPOINTMENT will be part-time, 10-months which may range from a graduate assistantship to ½ time beginning as soon as possible after closing date. COMPLETED APPLICATIONS should be received by August 18, 1983. Send letter of application, two letters of recommendation, and a list of references to: Kathy Clark, Assistant Athletic Director/Programs, University of Idaho, Moscow, Idaho 83843. The University of Idaho is an Equal Opportunity/Affirmative Action Employer.

**Assistant Men's Track and Field Coach.** Position at Illinois State University, a Division I institution in the Missouri Valley Conference. Contract dates are September 1-May 31. Send letter, vita, transcripts and three letters of recommendation to: John Coughlan, Illinois State University, Horton Field House, Normal, Illinois 61761. Deadline for applications: August 10, 1983. An affirmative action/equal opportunity institution.

**Assistant Track and Cross Country Coach (Women).** Half-time, nine-month—\$6,000 plus benefits. Duties: Assist head coach with organization and conduct of practices, etc. Identify and recruit academically qualified athletes within rules of ISU, Big 8 Conference and NCAA. Ability to coach sprints and field events. Qualifications: Bachelor's degree, coaching and/or participant experience at collegiate level or comparable experience. Please send letter of application, resume and the names, addresses and telephone numbers of three references to: Mr. Max Unick, Director of Athletics, 135 Olsen Building, Iowa State University, Ames, IA 50011. Application deadline is August 19, 1983, or until filled. Iowa State University is an equal opportunity/affirmative action employer.

## Assistant Coach for Women's Basketball

**Qualifications:** Master's Degree preferred. Minimum three years' experience in coaching collegiate women's basketball. Proven ability in college recruiting. Demonstrated expertise in teaching basketball fundamentals. Demonstrated ability to scout and analyze opponents' play. Demonstrated ability aptitude for communicating with university administrators, faculty and staff, students and fans. Commitment to working within regulations of MSU and its Department of Athletics, the Southeastern Conference and the NCAA.

**Remuneration:** Commensurate with qualifications and experience. Ten-month position.

**Application Deadline:** August 8, 1983.

**Application Procedures:** Send letter of application, three recommendations and resume to:

Libba Birmingham  
Coordinator, Women's Athletics  
Mississippi State University  
Drawer 5327  
Miss. State, MS 39762

Letter of recommendation should speak specifically to your ability and experience in meeting the desired qualifications.

MSU is an equal opportunity/affirmative action employer.

## Director of Ticket Operations

**Qualifications:** Bachelor's degree minimum, master's degree preferred; preferably business and accounting training; preferably successful experience with computer systems; preferably successful experience with ticket operations.

**Responsibilities:** Oversee all matters relating to ticket sales; oversee automation of ticket operation; coordinate completion of game audits for all home football and basketball games with University Trust Funds Accounting; verify contractual settlements from away football, away basketball games and basketball games played in Greensboro and Charlotte; supervise Ticket Office staff; supervise assignment of seats for all ticket constituencies; assign Ticket Office personnel responsibilities; coordinate tickets with visiting institutions; coordinate activities between Ticket Office and Promotions Office; public relations with students, faculty, staff, Educational Foundation members and general public; any other duties assigned by the Director of Athletics.

**Appointment:** 12-month appointment beginning fall, 1983.

**Salary:** Open.

**Application procedure:** Send application to:

Mr. John D. Swofford  
Director of Athletics  
University of North Carolina  
P.O. Box 2126  
Chapel Hill, NC 27514

**Application deadline:** August 19, 1983.

The University of North Carolina at Chapel Hill is an Affirmative Action/Equal Opportunity Employer. Minorities and women are encouraged to identify themselves voluntarily.

## ATLANTIC 10 CONFERENCE

### Director of Marketing and Promotions

**Responsibilities:** Coordinate, promote and supervise the promotional and marketing activities of the Conference and, more specifically, the development of corporate/promotional programs for championship and related events.

The Director would also assist the Commissioner in the development and coordination of Conference television/radio networks.

Additional responsibilities include assisting the Commissioner in the organization and administration of 11 championship events; the coordination, promotion and supervision of all advertising and sales activities of the Conference and additional related duties as assigned by the Commissioner.

**Qualifications:** Bachelor's degree, preferably in Business or Sports Administration, with minimum of three years' experience in the area of sports promotion, with emphasis on corporate/promotional programs. Demonstrated skills in sales and advertising and experience in dealing with electronic and print media also preferred.

**Application Procedure:** Send letter of application, resume and references by August 15, 1983, to:

Dr. Leland Byrd  
Commissioner  
Atlantic 10 Conference  
301 Route 17 North  
Rutherford, NJ 07070

## Newsworthy

q:

The NCAA Division I-A record for most yards gained rushing by a quarterback in a single game is 294, established by a Kansas QB in the 1975 season. Can you name him?

### Orange Bowl to host tournament

For the first time in nearly 20 years, the Orange Bowl committee has voted to sponsor a four-team men's basketball tournament in conjunction with the annual New Year's night football game.

Taking part in this year's tournament will be Oklahoma State, South Alabama, Southeastern Louisiana and Florida International. The tournament will be part of the three-week, year-end Orange Bowl Festival in Miami, Florida.

### Women's competition to begin

Faculty representatives of the Southern Conference have voted to formalize women's competition in basketball, volleyball, tennis and golf.

The conference, which dates to 1921, has been planning to formalize women's competition the past two years. Only two conference members do not have women's sports—The Citadel and Virginia Military Institute.

Other conference members are Appalachian State University; Davidson College; East Tennessee State University; Furman University; Marshall University; University of Tennessee, Chattanooga; and Western Carolina University.

### Ice hockey conference planned

Five NCAA institutions in the East are considering the formation of a new conference for competition in men's ice hockey, to begin in 1984-85.

Boston University, Boston College, Northeastern University, the University of New Hampshire and Providence College have met to discuss a "super league" in the East. John B. Simpson, director of athletics at Boston University and a member of the NCAA Men's Ice Hockey Committee, said that the group would meet again in August to review its plans. Simpson said that additional institutions would be welcome because the group would like to have an eight-team league.

### Houston, Kentucky have TV date

Houston and Kentucky will meet in a nationally televised men's college basketball game prior to the National Football League's Super Bowl next year.

The game will be carried January 22 by CBS-TV from Lexington, Kentucky. Houston, runner-up in the 1983 NCAA Division I Men's Basketball Championship, also will appear in four other nationally televised games next season.

### PCAA to sponsor men's soccer

The Pacific Coast Athletic Association has voted to sponsor a men's soccer championship, beginning this fall.

Seven of the conference's 10 members will conduct divisional round-robin play during the regular season, with the two division winners meeting in a one-game play-off for the title. The northern division will be made up of California State University, Fresno; University of the Pacific, and San Jose State University. California State University, Fullerton; California State University, Long Beach; University of California, Santa Barbara, and the University of Nevada, Las Vegas, will play in the southern division.

### Georgia State joins conference

Georgia State University has joined the Trans America Athletic Conference, conference commissioner Bob Vanatta announced last week, bringing the league's membership to 10.

Vanatta said that Georgia State will participate in all conference championships in 1983-84 except basketball. The Panthers will begin conference basketball competition in 1984-85.

Other members of the conference are the University of Arkansas, Little Rock; Centenary College; Georgia Southern College; Hardin-Simmons University; Houston Baptist University; Mercer University; Nicholls State University; Northwestern State University (Louisiana), and Samford University.



Nolan Cromwell rushed for 294 yards in 28 carries against Oregon State September 27, 1975.

## Legislation

Continued from page 1

Those reporting include the Academic Testing and Requirements, Classification, Executive, Extra Events, Governmental Affairs, Insurance, Long Range Planning, Recruiting, and Football Television Committees; the Special Committee on Legislative Review, and the Council Subcommittee on Women's Interests.

Included on the agenda for the separate Division I Steering Committee meeting are a review of all recommendations from the first Division I summer meeting, held June 24-25 in Kansas City, and progress reports on the work of the Special Committee on Academic Research, Special Committee on Division I Criteria and Select Committee on Athletic Problems and Concerns in Higher Education.

The Division II Steering Com-

mittee will discuss additional limitations on financial aid in that division, the desirability of more stringent academic standards for Division II student-athletes and possible modifications of recruiting legislation as it relates to Division II.

Included on the Division III Steering Committee agenda are a review of an upcoming survey of that division's membership, continuing discussion of the Association's multidivision classification legislation as it relates to the division and a number of Division III championships issues.

The Council and all three steering committees also will review Administrative Committee actions, membership data and requests, interpretations, planning for the January 1984 Convention, and a study of the NCAA committee structure.

## Football Television Committee reviews litigation, network plans

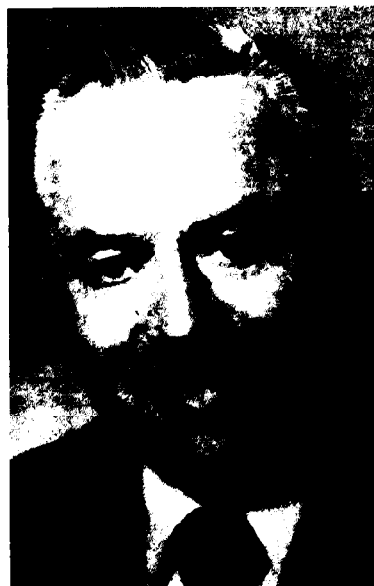
A review of the current legal situation involving college football television and administrative details for the 1983 season were major topics during the July 19-21 meeting of the NCAA Football Television Committee in Glendon Beach, Oregon.

The committee was briefed on the status of the antitrust action brought against the NCAA by the University of Oklahoma and the University of Georgia Athletic Association. Two lower-court rulings in favor of the plaintiffs currently have been stayed, pending a decision by the U.S. Supreme Court on the NCAA's writ of certiorari.

Representatives of the three television networks involved in the 1982-1985 NCAA Football Television Plan also briefed the committee on plans for the upcoming season.

CBS-TV spokesmen indicated that the network would select games on Sundays prior to its control dates. ABC-TV officials indicated they would continue to select games on Mondays preceding their control dates. A complete list of network control dates was listed in the April 6 issue of The NCAA News.

Dates also were established for the Turner Broadcasting System, Inc., which will cablecast live 19



Hugh D. Hindman

games this fall in the second year of its two-year supplementary series. Turner, originating over its Atlanta-based superstation, WTBS-TV, will carry games September 10, 17 and 22; October 1, 6, 8, 15, 20, 22, 27 and 29; November 3, 5, 12, 19, 24 and 27, and December 3 and 10.

Each of the three networks also announced its principal broadcast

teams for the 1983 season:

ABC—Keith Jackson and Al Michaels, play-by-play; Frank Broyles, Lee Grosscup and Lynn Swann, commentary; Tim Brandt, sideline reports; Beano Cook, special reports; Jack Whitaker and Jim Lampley, studio.

CBS—Gary Bender, Lindsey Nelson, Verne Lundquist and Frank Herzog, play-by-play; Pat Haden, Steve Davis and Scott Hunter, commentary; Pat O'Brien, special reports; Brent Musburger and Ara Parseghian, studio.

TBS—Bob Neal, play-by-play; Tim Foley, commentary; Craig Sager, Kevin Christopher and Paul Ridding, studio and special reports.

In other committee business, it was agreed to change wording in Article 19 of the NCAA Football Television Plan to permit the use of scrambled satellite signals for delayed closed-circuit exception telecasts.

The meeting was the final one for two committee members whose terms have expired—Edwin B. Crowder, director of athletics, University of Colorado, and Carl Maddox, director of athletics, Mississippi State University. The meeting also marked the first session under the direction of new chair Hugh D. Hindman, director of athletics, Ohio State University.

## Budget

Continued from page 1

of the Association purchasing loss-of-revenue insurance for NCAA championships. The Executive Committee directed the staff to continue to explore this proposal; however, the committee narrowed the focus to include only the Division I Men's Basketball Championship, specifically the Final Four.

In another report from the staff, the Executive Committee will study the feasibility of conducting additional NCAA championships at on-campus sites, in hopes of producing greater attendance and revenue.

Regarding automatic qualification, the committee will address situations whereby voting allied conferences have automatic qualification for a championship in a division different from their voting division. The committee also will discuss the term "automatic qualification," from the standpoint that conferences have to meet certain criteria to qualify for a championship; thus, the selection process is not really automatic.

Along this same line, the Executive Committee will discuss Executive Regulation 1-1-(b)-(2)-(i), which states that a conference cannot receive automatic qualification for the Division I Men's Basketball Championship until all of its member institutions have been members of Division I at least five years.

The Executive Committee will receive reports from a number of sports committees. Among those reports

are the following:

•The Division III Football Committee is proposing to expand the Division III Football Championship field from eight to 16 teams for the 1984 championship. In a recent survey among Division III administrators and coaches, 75 percent of athletics directors favored expansion of the bracket, and 91 percent of the coaches voted to expand. If this proposal is not approved, the committee's alternative recommendation is an expansion from eight to 12 teams.

•The Women's Gymnastics Committee again is seeking authority to assess fines for institutional failure to comply with procedures and deadlines in submitting score sheets, schedules and entry forms for qualification procedures.

•The Executive Committee will reconsider a request from the Division I Women's Volleyball Committee that would require a minimum of 80 percent of an institution's matches to be played against other Division I teams to be eligible for consideration for the championship. The volleyball committee also is requesting that the volleyball coaches' poll be published in The NCAA News.

The Executive Committee also will receive reports from the Special Committee on Officiating Improvement and the Special Program Evaluation Subcommittee.

The Special Program Evaluation Subcommittee, meeting July 28-29

in Kansas City, recommended the following for Executive Committee approval:

•To retain grants to affiliated organizations at the 1982-83 level. The subcommittee emphasized that grants to affiliated organizations are to assist the organizations in getting started, not to support ongoing projects.

•Endorsed the men's and women's golf international exchange program with Japan and recommended that the 1984 competition be held in the United States.

•Supported the Committee on Competitive Safeguards and Medical Aspects of Sports proposal to expand the injury-surveillance program adopted last year for the sport of football. The competitive safeguards committee has recommended that the program be expanded to cover women's volleyball, women's gymnastics, wrestling, baseball, women's lacrosse and men's lacrosse.

•Approved reports from the Public Relations and Promotions Committee and the Special Committee on Academic Research.

•To limit future research grants to \$50,000.

As is customary in its August meeting, the Executive Committee will review plans for the NCAA Convention, to be held January 9-11, 1984, at Loews Anatole in Dallas, Texas. The committee will discuss changes in the round-table schedule.

## Football

Continued from page 1  
entire Supreme Court.

"... I can say with confidence that I would vote to grant certiorari," White wrote in his four-page order. "Somewhat less confidently, I expect that at least three other justices would likewise vote to grant. The judgment below would obviously have a major impact countrywide, and the case plainly presents important issues under the antitrust laws."

"I also have little doubt that if the case is to be granted, the equities pending the decision on the merits are with the NCAA. The two respondent schools might do better for themselves during the 1983 season if

they were free to go their own way, but were a stay to issue, their harm would be limited to the difference between what they would receive under the NCAA arrangements and what they could otherwise garner. On the other hand, unless the judgment is stayed, it would appear that the networks' contracts would be void under the outstanding judgment and could not be enforced; the entire 1983 season would be at risk not only for the NCAA, but for many, if not most, of the schools which it represents, including many schools that would prefer the NCAA arrangements to continue at least through the 1983 season."

"Although the question is a close

one, I am also of the view that there is sufficient likelihood that the court below erred in one or more important respects to justify issuing the stay."

"It's disappointing," said Oklahoma lawyer Andy Coats of Justice White's order. "It's what happens every time a new judge looks at this case."

"As a practical matter, that settles it for this year," said Clyde Muchmore, another attorney representing Oklahoma. "We're right back to where we started. It means that after spending months winning the case and the appeal, we lose everything in one afternoon. But, this is not a setback as to how the case will ultimately turn out."