

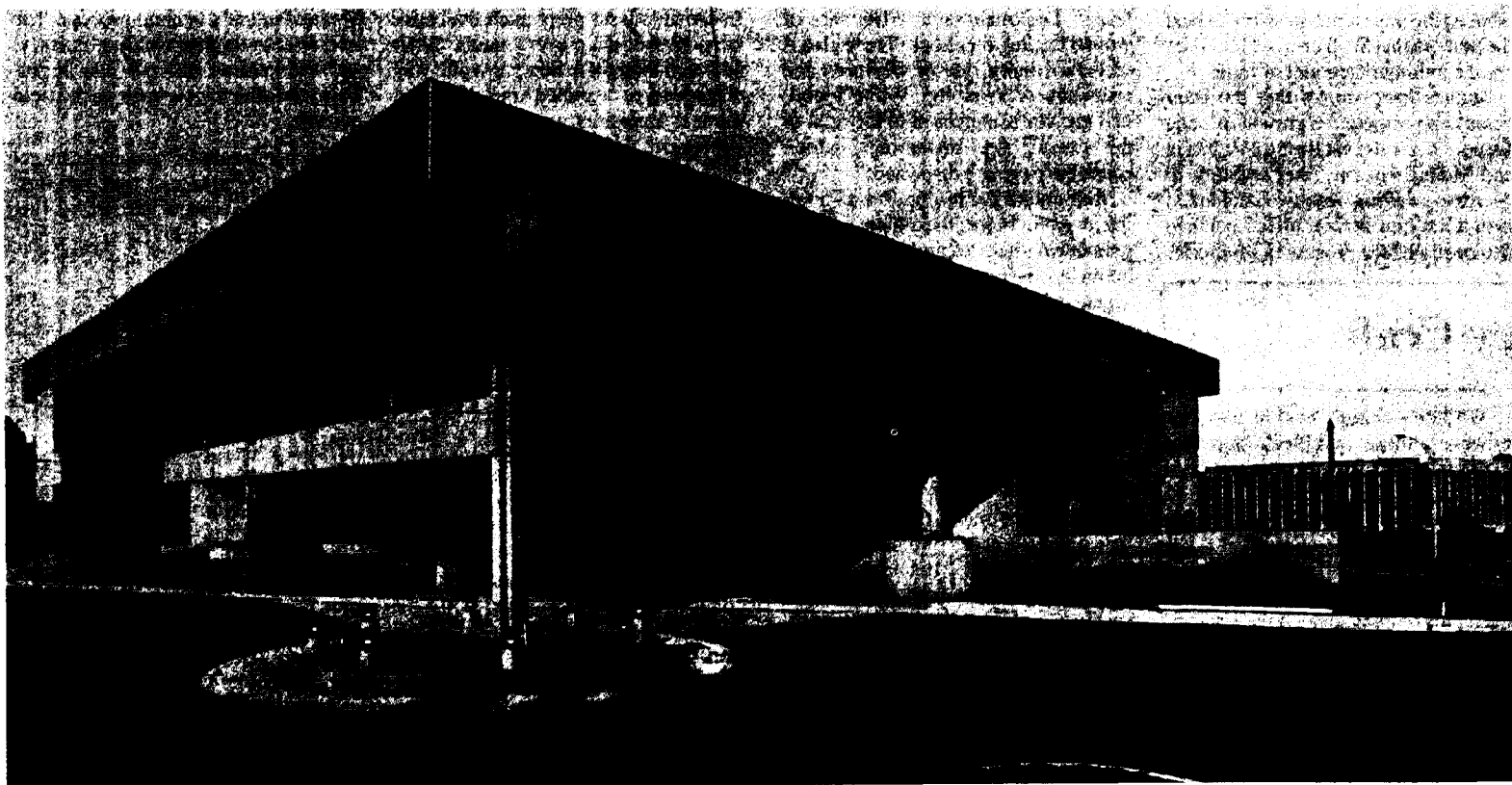
The NCAA News



November 1, 1982, Volume 19 Number 24

Official Publication of the

National Collegiate Athletic Association



A view of the new NCAA office building (looking northeast) with the existing building in the background at right

(Photo by Jim Swetnam)

Additional building completed

Construction of the Association's new office building, which will house the communications department, has been completed.

The 16,000-square-foot building, located adjacent to the NCAA's national office in Mission, Kansas, will be ready for occupancy November 5.

Cost of the building, including furniture and equipment, is approximately \$1.5 million. Construction of the building was financed without use of any of the Association's present

income sources, since they are needed to maintain current programs of the Association.

In April 1981, the Executive Committee voted to dissolve the Advisory Investment Trust and use those funds, approximately \$600,000, for construction of the new office building. The remaining amount was obtained by utilizing industrial-revenue bonds through the City of Mission.

The 20-member communications department will occupy space on the first floor, which has about 7,000

square feet. The rest of the NCAA staff will remain in the existing building, which was opened in April 1973.

The Winn-Senter Construction Company of Kansas City, Missouri, constructed the building, and James L. Dent, who was the design architect for the first building, was the architect.

The second floor of the new building probably will be leased. It is expected that Fugazy International, Inc., an independent contractor that handles the NCAA travel service, will open an office on the second floor.

In the News

A painless laser beam is used to treat injuries of University of Georgia athletes, and the results have been gratifying. . . . 2

David M. Nelson, secretary-rules editor of the NCAA Football Committee, says helmets and shoulder pads might be causing as many injuries as they prevent. . . . 2

Statistics and notes covering all NCAA football divisions. . . . 3-6

Minimum qualifying standards for the 1983 National Collegiate Indoor Track Championships for men and women have been approved. . . . 12

Statisticians: playing it by the numbers since 1937

By Michael V. Earle
The NCAA News Staff

The numbers game starts at 3:30 p.m. every Saturday, lasts until Thursday and is played during the entire course of the collegiate football season.

In the time it takes to play the numbers game, the statistics of the 510 football teams in all four NCAA divisions will be gathered, audited, recounted, audited again, tabulated and, finally, disseminated.

The NCAA has been playing the numbers game since 1937. The rules of the game—to gather quickly and disseminate accurate football statistics so that the media, coaches and fans have significant information about football—have remained the same since the first statistics were recorded.

"Keeping statistics is a lot like balancing your checkbook," Steve Boda, associate director of statistics, said. "If one team gives up 100 yards on defense, the other team better have 100 yards on offense."

"It's that basic principle that keeps the nation's football statistics in balance. If the teams balance out, you can be confident the statistics are in shape and there are no major errors."

Considering the volume of statistics the NCAA accumulates in a weekend, Boda's principle of keeping the nation in balance is no easy feat. The first step begins in early August when members of the statistics department analyze the

schedules of the 189 teams in Division I-A and Division I-AA.

A time is assigned to the sports information director or statistics technician of the host institution to call in or telecommunicate the game's statistics. Without the cooperation of the individual responsible for submitting those statistics, the numbers game could not be played.

"The gathering process is never completely smooth," James F. Wright, statistics coordinator, said. "We rely on the SID to call us with the statistics, and when you consider that he has to accommodate the local media and oversee a statistics crew that generally changes from year to year, errors will be made and oversights can occur."

However, Wright, with the help of administrative assistant Gina L. McNeal and computer sophistication, usually catches and corrects most errors before statistics are disseminated.

Wright and McNeal, along with the three volunteers who answer the telephones and operate telecommunication machines, begin the numbers game. After statistics arrive from games played on the East Coast, Wright and McNeal make a cursory audit to spot obvious discrepancies or omissions.

The reports then are relayed to one of four key-punch operators who write the computer program. When the statistics for four games are accumulated, See Statisticians, page 12



Women's basketball preview

Louisiana Tech's Janice Lawrence, a 6-3 center, returns for the defending NCAA champion Techsters. Mel Greenberg of the Philadelphia Inquirer discusses Louisiana Tech's chances of repeating on page 7. Divisions II and III women's basketball previews can be found on pages 8 and 9.

Women's programs promoted

Education is more than a campus effort this year with the NCAA's new attempt to enhance women's athletic programs throughout the country. Films, championships advertising, magazine articles, clinics, and television and radio promotional messages are some of the tools the Association will use in an attempt to improve participation and opportunities for women.

"We have three major goals in this program," explained Ruth M. Berkey, assistant executive director. "We want to increase the number of female student-athletes, we want to create more opportunities for women coaches and we want to provide tools for those women professionals to be better qualified to be top job candidates."

Just as the program has three goals, the increase in Association support is in three areas: an expansion of already-existing promotional efforts, supplementary funding of promotional programs earmarked specifically for NCAA women's championships and expansion in new directions.

Berkey will oversee the entire effort, aided by a soon-to-be-hired assistant and cooperation from the communications department, particularly in the area of championships promotion.

"We want to do what we can to make women's championships even more successful," said administrative assistant Timothy W. Gleason, who coordinates all championships promotional efforts. "There is no way to measure exactly the results of our efforts so far, but our discussions with host institutions have indicated a great response. Some of what we are doing still is in the experimental stage."

Some of those experiments took place last year as concerted efforts to See Women's, page 12

Frank will finish term as president

James Frank, president of Lincoln University, Jefferson City, Missouri, will remain as president of the NCAA until his term expires in January, despite his dismissal as president of Lincoln by the university's board of curators, which said it was seeking "a new leadership style."

Frank announced his own removal at a press conference he called October 25. Members of the Lincoln board of curators referred all questions about Frank's removal to Otis Jackson, board president. However, Jackson has sidestepped inquiries about the board's action, according to the Associated Press.

Frank, 51, has been president of Lincoln since 1973 and is under contract until June 1983. His two-year term as NCAA president expires in January. The NCAA constitution specifies that members of the Council and Executive Committee whose status changes shall be replaced at the next Convention.

He is the first college president to See Frank, page 12

Georgia uses laser beam to treat injuries

By Steve Higginbottom

Athens Banner-Herald

University of Georgia football players call Donna Lockman "Laser Lady." Each week she treats their injuries and those of other Georgia athletes with a painless laser beam.

"Mondays and Tuesdays are especially busy," she said. "The players sustain more injuries during the games, and immediately after practice

sician, and head trainer Warren Morris were trying any means possible to heal the bone so that Walker would be sidelined a minimum amount of time.

Studies have shown that the laser beam can promote the growth of bone tissue. Of greater interest to Mulherin and Morris was the laser's ability to decrease swelling. The two decided to give it a try on Walker after Lockman demonstrated the process to Mulherin.

increases as a result of exposure to laser," Lockman said. "The rate of wound healing increases. There also is increased unity rate of fractures and reduction of swelling. White blood-cell growth is increased in the area of the wound. And histamines, which cause the pain, are dispersed."

And unlike the discomfort of holding an ankle in ice, the athlete feels no pain during laser treatment. The laser beam emits no heat. The injury is scanned for a set length of time, determined by the severity. Pressure points are used to treat certain injuries.

Freshman cornerback Tony Flack injured his knee in the Mississippi State game. The following Monday, immediately after practice, he was getting laser treatment from Lockman.

"This does make the swelling go down pretty fast, and it eases the pain," Flack said. "It doesn't happen overnight, but it is quicker than other methods. I think what is more important is that it can pinpoint an injury."

A week before Flack's knee injury, Lockman's laser pinpointed the cause of another of the player's pains. What had been thought to be a groin pull was diagnosed as a pulled muscle inside the leg. Exercises were prescribed to get the muscle back in shape.

"The laser is a tremendous pain-management tool," Morris said. "When an injury occurs, inflamma-

tion and swelling set in and shut down Mother Nature's healing process. The laser breaks up that swelling quickly, and the healing process can begin. Thus, the athlete gets back on the field quicker.

"In our business, you have to get treated and go right back into war. But, from what I've seen, we are getting positive results quickly."

Columnary Craft

on Monday, they start filing in and lining up at the door."

Lockman, a registered physical therapist from Sparta, Georgia, began treating the players' injuries prior to the 1982 football season. One of her first patients was all-America tailback Herschel Walker and his broken thumb.

Dr. Butch Mulherin, the team phy-

Walker's thumb healed quickly; however, those involved, including Lockman, will not say that the laser was responsible. "Herschel had so many different treatments that it is actually hard to say what did it," she said.

Some effects of laser treatment have been proven clinically.

"It is known that circulation

Safer equipment may be needed

The secretary-rules editor of the NCAA Football Rules Committee says helmets and shoulder pads might be causing as many injuries as they prevent.

David M. Nelson, athletic director at the University of Delaware, said the committee has tried everything possible to make the game safer. He said it might be time now to reevaluate and modify the equipment.

"Shoulder pads are almost like iron, and helmets are the same way," Nelson said in an interview with the Des Moines Register. "We get more broken hands and busted fingers from players just accidentally rapping their hands on a face mask or helmet."

"The helmet is so much harder than it used to be. For several years at Delaware, we used padding on the outside of helmets, and Woody Hayes did the same thing at Ohio State."

"But the helmet people told us we shouldn't do that because there is so much more friction that it causes neck injuries. And they're the ones who are

doing the research. That's one of the reasons we took it off."

Nelson was responding to comments from Iowa coach Hayden Fry, who expressed concern that football is becoming too dangerous.

Fry said there are so many injuries that he has thought about quitting and added that the sport is getting so violent it might be outlawed in another 10 years.

"We all share Hayden's concerns," Nelson said. "Players are getting bigger, faster and stronger, and naturally they're going to hit harder."

"Football is a collision sport, and it's an accepted fact that you're going to have some injuries. But the rules committee has done just about everything it can to make the game safer."

Sixty-five rule changes have been made for safety reasons since 1968, Nelson said. Among them are a prohibition against blocking below the waist and a requirement that all players wear mouthpieces.

Nelson said he has heard criticism

from fans about players wearing gloves and padding their arms. However, he said he sees nothing wrong with wearing such equipment.

"My reply is that if they don't, then you're going to have more broken arms and hands," he said. "And who are they going to hurt? If they want to wear boxing gloves, then let them wear boxing gloves, because they won't hurt somebody who has a helmet or face mask on."

As for future rule changes that might curb injuries, Nelson said a possibility is a ban on tackling below the waist, although he noted that would be unpopular.

"Coaches will probably drum me out of the lodge for saying that," he said. "But you know, that was the way the rules were back in the early days."

"Before 1902, it was illegal to tackle a player below the knee. After it was changed, injuries shot up in the next three years, causing the problem in fatalities that President Theodore Roosevelt got so upset about."

Miller still wants 12-foot basket

Ralph Miller, head basketball coach
Oregon State University

The Associated Press

"All those rules (shot clocks, three-point field goals) do is make the big man more significant. They also are going to take away from team play and put emphasis on one-on-one basketball. They tend to take away much of the beauty

George R. Olsen, executive director
Gator Bowl

The 5th Down

"A lot of us would like to delay the selection another week. But the bowl games that are played before Christmas are against that. They say they wouldn't have enough time to make all the arrangements for the teams to sell their tickets and things like that."

"It's a hard thing, unless you could really get the bigger bowls to hold off on their selections. If they would hold off, most of the others would have to wait, too. It'd be good if they'd do that."

J.W. Peltason, president
American Council on Education

Des Moines Register

"We must raise the student-athlete's admission preparation by ensuring that freshman athletes have accomplished a minimum amount of academic work in high school. It also is necessary to strengthen the rules about making reasonable progress toward a degree. We are in the education business, not the sports business."

"We applaud collegiate athletics for the vital role they play."

Ken Dabbs, recruiting coordinator
University of Texas, Austin

Dallas Times Herald

"Recruiting in any major university of this size has become a year-round situation. You're always searching for names and leads and talking on the phone to people about various prospects."

By Dick Kishpaugh

The University of Maine's football team made both headlines and history this season when the Black Bears played a total of 10 overtimes on two consecutive weekends, losing to Rhode Island, 58-55, in six extra sessions, and then dropping a 48-45 decision to Boston University in four overtimes.

In reporting overtime arrangements as a relatively new development in college grid action, most observers totally are unaware that there really is nothing new under the sun. Overtimes were a regular provision of the collegiate rules more than a century ago.

Resolving ties by giving each team equal opportunities starting deep in opposition territory is, indeed, a relatively new concept. There are variations—the NCAA tie-breaker plan gives the initial possession at the opponent's 15-yard line, while high schools generally start at the 10-yard stripe. Perhaps it would be more appropriate to refer to these overtimes as "series" rather than "periods" since the series could be as short as two plays (if, for example, team A fumbled the ball to team B on its first play, and team B promptly scored on the first play of its series).

Back in 1881, however, overtime periods were just that—full periods of action. College football in that bygone era was out of its infancy and growing rapidly. Between 25 and 30 teams were in action, and intersectional play had been inaugurated when Michigan played Yale, Harvard and Princeton in successive games. Regarding the 1881 rules, the noted historian Parke

H. Davis made this observation:

"In case of a tie, two additional periods of 15 minutes each were ordered to be played, with an interval of five minutes between. If still tied, a goal kicked from a touchdown was given precedence over a goal kicked from the field."

Thus, in 1881, there existed both overtime periods and a possible tie-breaking mechanism. As to the relative value of goals, keep in mind that point values had not been established yet (that didn't take place until 1884); a winner in the early days might be determined just by a listing, such as Princeton's "six goals and four touchdowns" over Penn's "one safety" in 1879.

In today's terms, however, Rhode Island's six-overtime triumph over Maine may well be the longest game in collegiate history, and the four hours of elapsed time also may be a new standard. It is worth noting that the high school record was set in Detroit in September of 1977, when Southeastern went eight overtimes before downing Northeastern, 42-36. By contrast, the shorter time of the regulation high school periods led to an elapsed time of 3:43, 17 minutes shorter than the college epic, despite the two additional overtimes.

Maine, though, may have the most enduring footnote of all regarding the two consecutive games, but it may be one that Coach Ron Rogerson and his Black Bears would just as soon forget. For where else in collegiate history has a football team totaled 100 points in two games and been on the losing side both times?

Questions/Answers

Q: If a host institution wishes to sell products at an NCAA championship, what procedure is followed?

A: Institutions hosting NCAA championships are provided marketing guidelines from the NCAA national office. Under the current NCAA licensing program, if the institution wishes to sell a product (nonfood and nondrink) that is under license, and the product bears an NCAA service mark (National Collegiate Athletic Association, NCAA, NCAA seal, NCAA logo, NCAAAction! logo, National Collegiate Championship and Final Four), the product must be purchased from an NCAA licensee. Having decided what it wishes to sell, the host institution then must submit a list of products to the NCAA national office for approval. After the event, 10 percent of the net sales (gross, less cost of product) is submitted to the NCAA.

Q: What is the relationship between the NCAA and Fugazy International Travel?

A: Fugazy International Travel is an independent contractor that provides a service to the NCAA and through the NCAA to member institutions that compete in NCAA championships or whose personnel serve on NCAA committees. Fugazy is not a part of the NCAA in any way and does not run an NCAA travel service "for" the NCAA. It is a separate entity with which the NCAA contracted as an independent agent to provide a service for which Fugazy has the appropriate expertise.

Opinions Out Loud

that has made the college game the best show in town.

"I'm afraid it will take something like a player breaking his neck on a rim to bring some common sense. Then, perhaps, the rules-makers will do the one great thing that could improve the game—raise the baskets to 12 feet."

The NCAA News

[ISSN 0027-6170]

Published weekly, except biweekly in the summer, by the National Collegiate Athletic Association, 1111 Avenue at 63rd Street, P.O. Box 1906, Mission, Kansas 66201. Phone: 913/384-3220. Subscription rate: \$15 annually. Second-class postage paid at Shawnee Mission, Kansas. Address corrections requested. Postmaster send address changes to NCAA Publishing, P.O. Box 1906, Mission, Kansas 66201.

Publisher Ted C. Tow
Editor-in-Chief Thomas A. Wilson
Managing Editor Bruce L. Howard
Advertising Director Wallace L. Renfro
The Comment section of The NCAA News is offered as opinion. The views expressed do not necessarily represent a consensus of the NCAA membership. An Equal Opportunity Employer.

The NCAA News



Football Statistics

[Through games of October 30]

Division I-A individual leaders

| RUSHING | | | | | | | | | |
|-------------------------------|----|---|-----|------|-----|----|--------|--|--|
| | CL | G | CAR | YDS | AVG | TD | YDS/PG | | |
| ERNEST ANDERSON, OKLAHOMA ST. | JR | 7 | 231 | 1328 | 5.7 | 5 | 189.7 | | |
| CURTIS ADAMS, CENTRAL MICH. | SO | 6 | 180 | 1005 | 5.6 | 10 | 167.5 | | |
| ERIC DICKERSON, SMU | SR | 8 | 168 | 1319 | 7.9 | 13 | 164.9 | | |
| HERSCHEL WALKER, GEORGIA | JR | 8 | 242 | 1194 | 4.9 | 9 | 149.2 | | |
| MIKE ROZIER, NEBRASKA | JR | 8 | 161 | 1128 | 7.0 | 10 | 141.0 | | |
| SAM DEJARNETTE, SO. MISS | SO | 9 | 252 | 1257 | 5.0 | 12 | 139.7 | | |
| CARL MONROE, UTAH | SR | 8 | 201 | 1026 | 5.1 | 2 | 128.2 | | |
| MICHAEL GUNTER, TULSA | JR | 8 | 139 | 1024 | 7.4 | 10 | 128.0 | | |
| CLIFF AUSTIN, CLEMSON | SR | 7 | 133 | 810 | 6.1 | 11 | 115.7 | | |
| TIM SPENCER, OHIO STATE | SR | 8 | 177 | 924 | 5.2 | 8 | 115.5 | | |
| LAWRENCE RICKS, MICHIGAN | SR | 8 | 154 | 817 | 5.3 | 5 | 102.1 | | |
| WILLIE JOYNER, MARYLAND | JR | 7 | 117 | 714 | 6.1 | 5 | 102.0 | | |
| KEN LACY, TULSA | SR | 8 | 143 | 773 | 5.4 | 7 | 96.6 | | |
| MEL GRAY, PURDUE | JR | 8 | 146 | 741 | 5.1 | 5 | 92.6 | | |
| EDDIE PHILLIPS, IOWA | JR | 8 | 144 | 730 | 5.1 | 4 | 91.2 | | |
| ROBERT LAVETTE, GEORGIA TECH | SO | 8 | 187 | 730 | 3.9 | 11 | 91.2 | | |
| ALLEN HARVIN, CINCINNATI | SR | 8 | 129 | 726 | 5.6 | 3 | 90.7 | | |
| JOHN KERSHNER, AIR FORCE | JR | 9 | 166 | 816 | 4.9 | 7 | 90.7 | | |
| DALTON HILLIARD, LSU | FR | 7 | 135 | 622 | 4.6 | 7 | 88.9 | | |
| JOE MCINTOSH, N. C. STATE | SO | 7 | 141 | 612 | 4.3 | 6 | 87.4 | | |
| HAROLD HARMON, TEMPLE | JR | 7 | 114 | 608 | 5.3 | 1 | 86.9 | | |
| KELVIN BRYANT, NO. CAROLINA | SR | 6 | 119 | 519 | 4.4 | 1 | 86.5 | | |
| DARRYL CLARK, TEXAS | SR | 6 | 106 | 515 | 4.9 | 0 | 85.8 | | |

| SCORING | | | | | | | | | |
|------------------------------|----|---|----|----|----|-----|------|--|--|
| | CL | G | TD | XP | FG | PTS | PTPG | | |
| CHUCK NELSON, WASHINGTON | SR | 8 | 0 | 29 | 21 | 92 | 11.5 | | |
| CURTIS ADAMS, CENTRAL MICH. | SO | 6 | 10 | 0 | 0 | 60 | 10.0 | | |
| MIKE BASS, ILLINOIS | SR | 9 | 0 | 27 | 20 | 87 | 9.7 | | |
| DALTON HILLIARD, LSU | FR | 7 | 11 | 0 | 0 | 66 | 9.4 | | |
| CLIFF AUSTIN, CLEMSON | SR | 7 | 11 | 0 | 0 | 66 | 9.4 | | |
| PAUL WOODSIDE, WEST VIRGINIA | SO | 8 | 0 | 17 | 19 | 74 | 9.2 | | |
| JOHN LEE, UCLA | FR | 7 | 0 | 31 | 11 | 64 | 9.1 | | |
| JESS ATKINSON, MARYLAND | SO | 8 | 0 | 30 | 14 | 72 | 9.0 | | |
| MIKE ROZIER, NEBRASKA | JR | 8 | 12 | 0 | 0 | 72 | 9.0 | | |
| ERIC DICKERSON, SMU | SR | 8 | 13 | 0 | 0 | 72 | 9.0 | | |
| HENRY ELLARD, FRESNO ST. | SR | 8 | 12 | 0 | 0 | 72 | 9.0 | | |
| BROOKS BARWICK, NO. CAROLINA | JR | 7 | 0 | 28 | 11 | 61 | 8.7 | | |
| SAM DEJARNETTE, SO. MISS | SO | 9 | 13 | 0 | 0 | 60 | 8.6 | | |
| GREG ALLEN, FLORIDA ST. | SR | 7 | 10 | 0 | 0 | 60 | 8.6 | | |
| VINCENT WHITE, STANFORD | JR | 7 | 10 | 0 | 0 | 60 | 8.6 | | |
| LUIS ZENDEJAS, ARIZONA ST. | SO | 8 | 0 | 22 | 15 | 67 | 8.4 | | |
| CRAIG TURNER, ALABAMA | SO | 8 | 11 | 0 | 0 | 66 | 8.2 | | |
| ROBERT LAVETTE, GEORGIA TECH | SO | 8 | 11 | 0 | 0 | 66 | 8.2 | | |
| DAVID HARDY, TEXAS A&M | SR | 8 | 0 | 27 | 13 | 66 | 8.2 | | |
| MIKE JOHNSTON, NOTRE DAME | SR | 7 | 0 | 12 | 15 | 57 | 8.1 | | |
| MAX ZENDEJAS, ARIZONA | FR | 7 | 0 | 23 | 11 | 56 | 8.0 | | |
| HERSCHEL WALKER, GEORGIA | JR | 8 | 10 | 2 | 0 | 62 | 7.7 | | |
| FUAD REVEIZ, TENNESSEE | SO | 7 | 0 | 11 | 14 | 53 | 7.6 | | |

| PASSING EFFICIENCY | | | | | | | | | |
|-------------------------------|----|---|-----|-----|-------|-----|-------|-------|----|
| | CL | G | ATT | CMP | PCT | INT | YDS | ATT | TD |
| (MIN. 15 ATT. PER GAME) | | | | | | | | | |
| TOM RAMSEY, UCLA | SR | 8 | 229 | 143 | 62.45 | 8 | 3,499 | 2,127 | 17 |
| WAYNE PEACE, FLORIDA | JR | 7 | 170 | 126 | 74.12 | 7 | 4,122 | 1,458 | 8 |
| TIM RIORIAN, TEMPLE | JR | 8 | 163 | 104 | 63.80 | 4 | 2,455 | 1,266 | 7 |
| TODD BLACKLEDGE, PENN. STATE | JR | 8 | 217 | 126 | 58.06 | 11 | 5,007 | 1,688 | 7 |
| JOHN ELWAY, STANFORD | SR | 8 | 294 | 186 | 63.27 | 10 | 3,400 | 2,301 | 11 |
| BEN BENNETT, DUKE | JR | 8 | 262 | 163 | 62.21 | 9 | 3,444 | 2,040 | 11 |
| TOM TUNNICLIFFE, ARIZONA | JR | 7 | 135 | 81 | 60.00 | 4 | 2,966 | 1,052 | 7 |
| MARK MCKAY, SAN DIEGO ST. | JR | 8 | 133 | 76 | 57.14 | 3 | 2,265 | 964 | 7 |
| TURNER GILL, NEBRASKA | SR | 7 | 140 | 83 | 59.29 | 7 | 5,000 | 1,010 | 7 |
| STEVE YOUNG, BRIGHAM YOUNG | JR | 8 | 266 | 160 | 60.15 | 17 | 6,339 | 2,290 | 8 |
| JEFF TEFORD, FRESNO ST. | SR | 8 | 217 | 111 | 51.15 | 13 | 5,919 | 1,816 | 8 |
| BOOMER ESIASON, MARYLAND | JR | 8 | 226 | 126 | 55.75 | 7 | 3,100 | 1,687 | 7 |
| CHUCK LONG, IOWA | SO | 8 | 126 | 82 | 65.08 | 8 | 6,355 | 918 | 7 |
| KELLY LOWREY, FLORIDA ST. | JR | 7 | 129 | 69 | 53.49 | 6 | 4,655 | 1,031 | 7 |
| STEVE SMITH, MICHIGAN | JR | 8 | 159 | 85 | 53.46 | 8 | 5,033 | 1,240 | 7 |
| TONY EASON, ILLINOIS | SR | 9 | 376 | 234 | 62.23 | 11 | 2,933 | 2,776 | 7 |
| SEAN SALISBURY, SOUTHERN CAL. | SO | 7 | 142 | 82 | 57.75 | 5 | 3,522 | 1,062 | 7 |
| MIKE HOHENSEE, MINNESOTA | SR | 8 | 285 | 175 | 61.40 | 15 | 5,266 | 2,108 | 7 |
| JIM BOB TAYLOR, GEORGIA TECH | SR | 8 | 171 | 104 | 60.82 | 7 | 4,099 | 1,401 | 8 |
| JOHN BOND, MISS. STATE | JR | 9 | 158 | 82 | 51.90 | 10 | 6,333 | 1,355 | 8 |
| ALAN COCKRELL, TENNESSEE | SO | 7 | 197 | 122 | 61.93 | 12 | 6,099 | 1,380 | 7 |
| GARY KUBIAK, TEXAS A&M | SR | 8 | 244 | 139 | 56.97 | 9 | 3,659 | 1,532 | 6 |

| ALL-PURPOSE RUNNERS | | | | | | | | | |
|-------------------------------|----|---|------|-----|-----|-----|-------|-----|--------|
| | CL | G | RUSH | REC | PR | KOR | YDS | TD | YDS/PG |
| ERNEST ANDERSON, OKLAHOMA ST. | JR | 7 | 1328 | 80 | 0 | 0 | 1,408 | 201 | 1 |
| CARL MONROE, UTAH | SR | 8 | 1026 | 87 | 0 | 0 | 1,473 | 184 | 1 |
| SAM DEJARNETTE, SO. MISS | SO | 9 | 1257 | 17 | 0 | 351 | 1,625 | 180 | 6 |
| CURTIS ADAMS, CENTRAL MICH. | SO | 6 | 1005 | 64 | 0 | 0 | 1,069 | 178 | 2 |
| ERIC DICKERSON, SMU | SR | 8 | 1319 | 25 | 0 | 0 | 1,344 | 168 | 0 |
| HERSCHEL WALKER, GEORGIA | JR | 8 | 1194 | 85 | 0 | 36 | 1,315 | 164 | 4 |
| WILLIE GAULT, TENNESSEE | SR | 7 | 4 | 539 | 123 | 431 | 1,097 | 156 | 7 |
| NAP MCCALLUM, NAVY | SO | 7 | 431 | 150 | 266 | 248 | 1,095 | 156 | 4 |
| MIKE ROZIER, NEBRASKA | JR | 8 | 1128 | 46 | 0 | 55 | 1,229 | 153 | 6 |
| MICHAEL GUNTER, TULSA | JR | 8 | 1024 | 39 | 25 | 0 | 1,088 | 136 | 0 |
| TIM SPENCER, OHIO STATE | SR | 8 | 924 | 62 | 0 | 69 | 1,055 | 131 | 9 |
| GREG ALLEN, FLORIDA ST. | SO | 7 | 385 | 156 | 0 | 371 | 912 | 130 | 3 |
| HENRY ELLARD, FRESNO ST. | SR | 8 | 72 | 961 | 0 | 8 | 1,041 | 130 | 1 |
| ROBERT LAVETTE, GEORGIA TECH | SO | 8 | 730 | 161 | 0 | 76 | 967 | 120 | 9 |
| DALTON HILLIARD, LSU | FR | 7 | 622 | 223 | 0 | 0 | 845 | 120 | 7 |
| CURT WARNER, PENN. STATE | SR | 8 | 674 | 284 | 0 | 0 | 958 | 119 | 7 |
| ANTHONY CARTER, MICHIGAN | SR | 8 | 47 | 459 | 247 | 196 | 949 | 116 | 6 |
| MEL GRAY, PURDUE | JR | 8 | 741 | 204 | 0 | 0 | 945 | 118 | 1 |
| CLIFF AUSTIN, CLEMSON | SR | 7 | 810 | 15 | 0 | 0 | 825 | 117 | 9 |
| BRYAN THOMAS, PITTSBURGH | SR | 7 | 564 | 257 | 0 | 0 | 821 | 117 | 3 |
| LIONEL JAMES, AUBURN | JR | 8 | 592 | 46 | 286 | 1 | 925 | 115 | 6 |
| ALLEN HARVIN, CINCINNATI | SR | 8 | 726 | 175 | 0 | 22 | 923 | 115 | 4 |

| RECEIVING | | | | | | | | | |
|--------------------------------|----|---|----|-----|----|------|--|--|--|
| | CL | G | CT | YDS | TD | CTPG | | | |
| MIKE MARTIN, ILLINOIS | SR | 9 | 56 | 817 | 3 | 6.2 | | | |
| VINCENT WHITE, STANFORD | SR | 7 | 41 | 431 | 5 | 5.9 | | | |
| GORDON HUDSON, BRIGHAM YOUNG | JR | 8 | 46 | 648 | 4 | 5.7 | | | |
| ALLAMA MATTHEWS, VANDERBILT | SR | 7 | 40 | 544 | 8 | 5.7 | | | |
| DARRAL HAMBRICK, NEW LAS VEGAS | SR | 7 | 40 | 456 | 0 | 5.7 | | | |
| HENRY ELLARD, FRESNO ST. | SR | 7 | 39 | 721 | 4 | 5.6 | | | |
| ROBERT GRIFFIN, TULANE | SR | 8 | 42 | 961 | 11 | 5.2 | | | |
| WILLIE GAULT, TENNESSEE | SR | 7 | 36 | 539 | 3 | 5.1 | | | |
| WAYNE DIXON, FLORIDA | JR | 7 | 36 | 470 | 2 | 5.1 | | | |
| NORMAN JORDAN, VANDERBILT | SR | 7 | 36 | 310 | 3 | 5.1 | | | |
| DAVID LEWIS, CALIFORNIA | JR | 8 | 41 | 555 | 5 | 5.1 | | | |
| DAVID ROBERSON, HOUSTON | JR | 8 | 39 | 544 | 1 | 4.9 | | | |
| CARL FRANKS, DUKE | SR | 8 | 39 | 360 | 2 | 4.9 | | | |
| DON ROBERTS, SAN DIEGO ST. | SR | 8 | 39 | 286 | 0 | 4.9 | | | |
| BRAD ANDERSON, ARIZONA | JR | 7 | 34 | 610 | 3 | 4.9 | | | |
| BRYAN THOMAS, PITTSBURGH | SR | 7 | 34 | 257 | 1 | 4.9 | | | |
| JEFF CHAMPINE, COLORADO ST. | JR | 8 | 38 | 654 | 3 | 4.7 | | | |
| TODD JENKINS, NORTHWESTERN | JR | 9 | 42 | 564 | 2 | 4.7 | | | |
| JON HARVEY, NORTHWESTERN | JR | 9 | 42 | 542 | 2 | 4.5 | | | |
| GERALD MCNEIL, BAYLOR | JR | 8 | 36 | 414 | 2 | 4.5 | | | |
| BOB JOHNSON, SAN JOSE ST. | JR | 8 | 36 | 408 | 5 | 4.5 | | | |
| TOM CAMP, PACIFIC | SO | 6 | 27 | 445 | 3 | 4.5 | | | |
| THOMAS FOWLER, LONG BEACH ST. | SO | 6 | 27 | 445 | 3 | 4.5 | | | |

| | TOTAL OFFENSE | | | | | | | | | | |
|-------------------------------|---------------|------|------|------|---------|------|---------------|------|-------|-----|--------|
| | RUSHING | | | | PASSING | | TOTAL OFFENSE | | | | |
| | CAR | GAIN | LOSS | NET | ATT | YDS | PLAYS | YDS | YD/PL | TD* | YDS/PG |
| TODD DILLON, LONG BEACH ST. | 49 | 105 | 133 | 28 | 325 | 2295 | 374 | 2267 | 6.1 | 12 | 323 |
| STEVE YOUNG, BRIGHAM YOUNG | 82 | 462 | 176 | 286 | 266 | 2290 | 348 | 2576 | 7.4 | 20 | 322 |
| TOMMY EASON, ILLINOIS | 65 | 158 | 224 | 65 | 376 | 2776 | 441 | 2710 | 6.1 | 14 | 301 |
| DOUG FLUTE, BOSTON COL. | 67 | 374 | 230 | 144 | 276 | 2197 | 343 | 2341 | 6.8 | 13 | 292 |
| TOM RAMSEY, UCLA | 93 | 301 | 211 | 90 | 229 | 2127 | 322 | 2217 | 6.9 | 22 | 277 |
| RANDALL CUNNINGHAM, NEV. L.V. | 64 | 222 | 241 | 19 | 239 | 1675 | 303 | 1556 | 5.5 | 9 | 276 |
| JOHN ELWAY, STANFORD | 47 | 148 | 262 | -114 | 294 | 2301 | 341 | 2187 | 6.4 | 19 | 273 |
| MIKE HOHENSEE, MINNESOTA | 48 | 144 | 172 | -28 | 285 | 2108 | 333 | 2080 | 6.2 | 13 | 260 |
| BEN BENNETT, DUKE | 36 | 28 | 170 | -142 | 262 | 2040 | 298 | 1898 | 6.4 | 16 | 237 |
| BABE LAUFENBERG, INDIANA | 22 | 16 | 104 | -88 | 284 | 1965 | 306 | 1877 | 6.1 | 10 | 234 |
| TERRY NUGENT, COLORADO ST. | 52 | 71 | 195 | -124 | 251 | 1718 | 303 | 1594 | 5.3 | 13 | 227 |
| SCOTT CAMPBELL, PURDUE | 51 | 109 | 157 | -48 | 289 | 1853 | 340 | 1805 | 5.3 | 12 | 225 |
| JEFF TEFORD, FRESNO ST. | 38 | 96 | 126 | -30 | 217 | 1816 | 255 | 1786 | 7.0 | 20 | 223 |
| TOM TUNNICLIFFE, ARIZONA | 36 | 68 | 133 | -65 | 202 | 1625 | 238 | 1560 | 6.6 | 11 | 222 |
| WHIT TAYLOR, VANDERBILT | 92 | 335 | 203 | 132 | 239 | 1406 | 331 | 1538 | 4.6 | 11 | 219 |
| JEFF HOSTETLER, WEST VIRGINIA | 36 | 85 | 104 | -19 | 231 | 1555 | 267 | 1536 | 5.8 | 11 | 219 |
| GARY SCHOFIELD, WAKE FOREST | 26 | 15 | 157 | -142 | 285 | 1678 | 311 | 1536 | 4.9 | 7 | 219 |
| RANDY WRIGHT, WISCONSIN | 50 | 236 | 73 | 163 | 228 | 1553 | 278 | 1716 | 6.2 | 15 | 214 |
| STEVE CLARKSON, SAN JOSE ST. | 65 | 174 | 196 | -22 | 258 | 1736 | 323 | 1714 | 5.3 | 16 | 214 |
| DANNY BARRETT, CINCINNATI | 51 | 131 | 167 | -36 | 255 | 1725 | 306 | 1689 | 5.5 | 13 | 211 |
| TODD BLACKLEDGE, PENN STATE | 31 | 48 | 77 | -29 | 217 | 1688 | 248 | 1659 | 6.7 | 22 | 207 |
| BOOMER ESIASON, MARYLAND | 41 | 122 | 159 | -37 | 226 | 1687 | 267 | 1650 | 6.2 | 16 | 206 |
| SANDY SCHWAB, NORTHWESTERN | 72 | 119 | 344 | -225 | 333 | 2077 | 405 | 1852 | 4.6 | 13 | 205 |

Football Notes

Scoring average remains at record pace

Scoring Hits 43.3

The national-scoring average in Division I-A hit 43.3 points per game (both teams combined) for the season to date—above the all-time-high 43.2 for all of 1969—after a season-high 46.6 average for 50 games last Saturday. And 46.6 ranks as the ninth highest of all time for a single weekend, a list which is topped by 49.12 for the 49 I-A games on November 23, 1968.

Total offense hit 719.24 rushing-passing yards per game last Saturday—highest of the season and one of the highest in history. It was the fourth straight Saturday of 700-plus total offense and pushed the season average to 697.4—far above the record.

Interestingly, rushing yardage per game exceeded passing last Saturday for the first time all season—360.66 to 358.58 yards per game (both teams combined). Even so, passing is at a record-high 361.94 per game and it's certain that passing yardage will exceed rushing yardage for the first time in college football history.



Ohio State's Tim Spencer is 10th this week in Division I-A rushing with a per-game average of 115.5

7.85 Yards Per Rush

Eric Dickerson of Southern Methodist is on track to break the all-time-high 7.63 yards per rush by Billy Sims of Oklahoma in 1978 (his Heisman Trophy season), using a minimum of 225 rushes for the season. Sims averaged 21.0 rushes per game—exactly the same as Dickerson now averages—but Dickerson is now averaging 7.85 yards per rush.

It boils down to this: If Dickerson continues his current 21.0 carries per game, he will need 444 total yards (a 7.05 average) in his last three games (vs. Rice, Texas Tech and Arkansas, which is now fifth nationally in rushing defense) to break Sims' record—7.632 to 7.627. Sims carried 231 times for 1,762 yards in 1978.

It is one of four major I-A player season records now in jeopardy from this season's crop of top players. Georgia junior Terry Hoage, with three games left, is four short of the interceptions record of 14 by Washington's Al Worley in 1968. Hoage, a 3.85 student (4.00 is perfect), is taking a lighter course load than usual this season: genetics (his major), biochemistry and French. "I don't consider myself a scholar," he says.

As mentioned in last week's notes, the first four field-goal kickers are above the record of 2.09 per game and Washington's Chuck Nelson, now 21-for-21, is smashing all accuracy records.

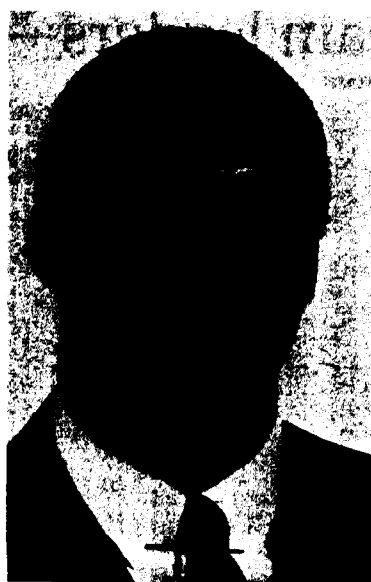
302.1 Yards Per Game

With an average of 302.1 yards per game for his 20-game, two-season college career, Tony Eason of Illinois already has broken the Division I-A career record of 254.4 total-offense yards per game by Stanford's Jim Plunkett (7,887 in 31 games, 1968-70; he was the 1970 Heisman winner). You see, Eason needed 5,598 yards to break the record and now has 6,041, so

he could have minus-400-plus yards his last two games and still hold the record. (He's a junior college transfer, thus eligible only for two years.)

The first eight players on the career per-game list entering this season were three-season players. In ninth place was Wake Forest's Jay Venuto at 222.4 for 1979-80—the highest two-season player (until Eason). In 10th was Brigham Young's Jim McMahon, the all-time leader in total yards at 9,723, with a 221.0 average for 44 games, making him the highest four-season player.

Four-season players usually have small figures for their freshman season. Stanford's John Elway, now at 203.8 total-offense yards per game for 40 games, had only 511 his freshman year. So the 1972 freshmen-eligible rule gives the four-season player an edge in the total-yardage rankings, but does just the opposite in the per-game career rankings (unless he happens to have a great freshman season, as did Tony Dorsett and Herschel Walker).



Clemson's Cliff Austin ranks ninth in Division I-A rushing with an average of 115.7 yards per game

Other Unique Careers

Speaking of Walker and unique careers, the Georgia tailback now has 4,701 rushing yards and with three games left seems likely to become the first junior ever to reach 5,000. On a per-game basis, 4,701 for 30 games is a 156.7 average, and that has been exceeded over a career only by Cornell's Ed Marinaro, 174.6 for 27 games, and Southern California's O.J. Simpson, 164.4 for just 19 games (another two-year man like Eason).

And since the rushing championship is decided on a per-game basis, it's still possible that Walker could lose the 1982 title because of his decision to play in the season opener against Clemson despite a fractured thumb on his ball-carrying hand. He gained only 20 yards in limited action that night. Had he sat out that game, he'd now be No. 2 at 167.7 yards per game. (Oklahoma State's Ernest Anderson, still well out in front at 189.7 after a 227-yard game against Missouri, closes against Nebraska, Kansas State, Iowa State and San Diego State, all above average against the rush.)

SMU's Eric Dickerson and Craig James, alternating at tailback for four

seasons, now have 7,487 yards (Dickerson 4,123, James 3,364) and seem certain to break 8,000 in career rushing. That makes them a unique pair in history in terms of yardage. It's unheard of for the same pair to alternate through four seasons, much less with such remarkable success.

And finally, don't overlook Tennessee State's Mike Jones, playing two seasons in I-AA and two in I-A. He has 3,043 receiving yards and 31 touchdown catches for 40 games with two games left. He'll rank high in both on the all-divisions career lists.

"Our First Priority"

Kennie Taylor, a junior fullback at Adrian, missed the first two and a half quarters of the game against winless Olivet while taking his dental school admissions test. Olivet ruined Adrian's perfect record with a 24-22 victory. Said head coach Ron Labadie: "Kennie is going to be a dentist much longer than he plays football. He let us know about the exam before coming to camp this summer. Our first priority is helping to mold professional men, not professional football players." (Dave Knight, Adrian SID)

(And just a week later, Taylor rushed for 236 yards and three touchdowns in a 42-14 victory over previously undefeated Kalamazoo. He now ranks No. 4 nationally in Division III rushing through games of October 23.)

Quickie Quips

Santa Clara head coach Pat Malley after his team lost its first game of the season (28-7 to California-Davis) after five straight victories: "It really wasn't a problem. I went home and slept like a baby. I got up and cried every two hours." (Mike McNulty, Santa Clara SID)

East Carolina's Jody Schulz, a 6-4, 240-pounder and a standout at defensive end, said when asked about fans leaving home games early: "A fan is the guy who sits in the stands and asks how a kid can miss throwing a football to another kid 10 yards away, and then goes to the parking lot and can't remember where he parked his car."

East Carolina head coach Ed Emory, asked if a high school recruit at a I-A school would be as good as one at a 4-A school, replied: "Look, if a woman is good looking in Bath, North Carolina, then she's going to be good looking in Greenville, North Carolina." (Mark Brand, East Carolina assistant SID)

Northeast Louisiana head coach Pat Collins, on the fact that his team scored on seven straight possessions in beating Southeastern Louisiana: "That's pretty good against tall weeds, not to mention a pretty good football team." (Bob Anderson, Northeast Louisiana SID)

Cincinnati defensive ends coach Jay Bonds, noting Alabama's excellent depth, quipped following the Bearcats' 21-3 loss to the Crimson Tide: "They run so many people in and out of there, I don't know how anyone gets enough playing time to earn a letter." (Tom Hathaway, Cincinnati SID)

Vanderbilt's Jeff McFerran, a freshman middle linebacker, was doing an outstanding job until he sprained his foot against Georgia and was doubtful for the next game against Mississippi.

Said head coach George MacIntyre: "We hope Jeff will be able to play. He's walking around with one of those little battery-powered stimulators on his foot. I just hope to heaven he doesn't forget to take it off when he gets in the bathtub." (Tony Neely, Vanderbilt assistant SID)

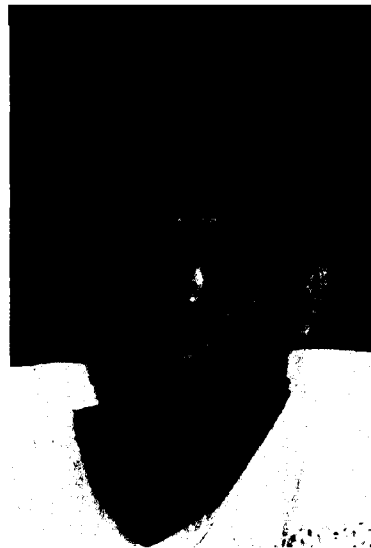
Kansas tight end Sylvester Byrd, after vowing not to shave until the Jayhawks won, reacted to a tie with Oklahoma State by shaving the right side of his face and leaving the left side unshaven. Said Byrd: "Oh, well, it's something different."

Asked whether he worries about making his field-goal attempts, Iowa State senior kicker Alex Giffords replied: "I can't worry. If I did, my stomach would look like a five-year-old's shoelaces—full of knots."

Oklahoma coach Barry Switzer suffered a bruised wrist and broken watch when Sooners freshman tailback Marcus Dupree and Oklahoma State senior linebacker Gary Lewis rolled into the sideline. A bystander helped Switzer to his feet and asked about the watch. "Heck with the watch," Switzer replied. "How's Marcus?" (Bill Hancock, Big Eight Conference SID)

Bill Williams, head coach of Division III San Diego, on his team's game with Division II Cal Poly-Pomona: "I hope we aren't in for a 'Dunkirk' situation. Our field runs east to west and is four miles from the ocean, so I'm going to have ships waiting for us at Mission Bay." (Ted Gosen, San Diego SID)

Northern Arizona SID Wylie Smith in a radio interview with head coach Joe Harper prior to the Idaho State game: "Coach, Idaho State comes to Flagstaff with one of the best passing games in the nation, but we've got a surprise for them—30-30 rifle placements on each side of the field." Quipped Harper: "Wylie, that just might help." (Northern Arizona beat the defending Division I-AA champions, 18-16.) (Arnie Sgalio, Big Sky Conference SID)



Boston College's Doug Flutie is fourth this week in Division I-A total offense with a per-game average of 292.6

"Rather Live To Be 100"

"I don't think there's anything magic about winning 100 football games," Northern Colorado coach Bob Blasi told Jim Benton of the Rocky Mountain News when asked about his 100th head-coaching victory (in this, his 17th season). "Actually, I'd rather live to be 100 years old than win 100 football games." (Tom Barbour, Northern Colorado SID)

111 Straight PATs

Liberty Baptist has made 111 straight extra-point kicks dating back to 1978, the last 64 in a row by Mark DeMoss. Can any NCAA team or player in any division boast of longer team or individual PAT streaks? (Kevin Keys, Liberty Baptist SID)

(Liberty Baptist already holds the Divisions II-III team streak and DeMoss is 11 short of the individual

mark of 75 by Chuck Smeltz, Susquehanna '74. The Division I-A record is 135 by Oklahoma in 1976-79, the first 125 by Uwe von Schamann.)

"Air Stetson" Ends Streak

In an effort to end Hamilton's 12-game losing streak and get his first coaching victory, first-year head coach Steve Stetson went to a shotgun formation with five wide receivers and no running backs. "Air Stetson" resulted in 110 passes in two games and, finally, a victory by 20-12 over Hobart. (Phil Robinson, Hamilton SID)

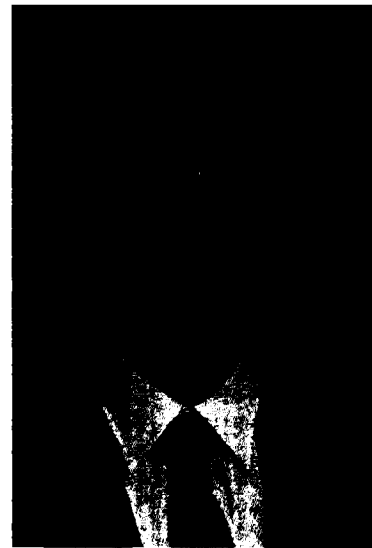
All In The Family

La Verne, off to what could be the best start (6-0-0) of its not-so-well-recorded history, will honor its outstanding 1957 team at half time of Saturday's Whittier game, which may decide the Southern California Intercollegiate Athletic Conference crown.

Interestingly, four members of the 1982 Leopards have fathers on that Silver Anniversary team. And a fifth, freshman receiver Robin Stanford, is the son of Glen Stanford, a 1957 basketball player who still holds a share of the school single-game scoring record of 44 points. Robin's older sister, Christi, starts at center on the La Verne women's basketball team. (Dave Weber, La Verne SID)

Edinboro State has two sets of brothers—defensive backs Greg and Keith Rose and John (middle guard) and Bob (linebacker) O'Rourke. Against Mansfield, John and Bob combined for 23 tackles (John 12, Bob 11) in a 33-6 victory that kept Edinboro unbeaten. (Patrick Gillespie, Edinboro State statistician)

The Maine Maritime squad has three sets of brothers—John and David Knapp from Pompton Plains, New Jersey; Dana and Reid Merrill of Andover, Massachusetts, and Pat and Conrad St. Pierre from South Berwick, Maine. Even more unusual, all six are starters. (Robert Giamotti, Maine Maritime SID)



Dan Stark of Michigan Tech is sixth among Division II pass receivers with an average of 6.3 catches per game

Big Names, Big Shoes

Brigham Young quarterback Steve Young, No. 2 nationally in I-A total offense, can't escape the shoes he's expected to fill—Jim McMahon, Marc Wilson, Gifford Nielsen and Gary Sheide. You'll find them in the NCAA record book. And if that isn't enough, he's the great-great-great-grandson of Mormon colonizer Brigham Young. But as Steve told Richard Stevens of the Albuquerque Tribune: "I don't demand more or less of myself just because of who played before me. Marc was different than Jim and Jim is different than me." As for his ancestry, Steve says: "It wasn't until I began playing that I even thought much about being a Young. I guess it's an interesting story. It's fun, but it doesn't get me anywhere." (Nurdy Jensen, Western Athletic Conference SID)

I-A & I-AA Top 22 Million

Total season attendance for Divisions I-A and I-AA combined soared past the 22 million mark last Saturday, reaching 22,356,967. That is 410,044 more than the same 189 teams totaled a year ago at this stage, but they have played two more games, so the "real" gain is 351,746. On a per-game basis, the current 29,149 is up 460, or 1.60 percent. Division I-A is up 677 per game despite a tiny lag in percentage of capacity, while I-AA is a scant 47 behind in per-game average even though up a full point in percentage of capacity. Here's the attendance chart to date:

| | Games | Attendance | Per-Game | Percent Capacity |
|--|-------|------------|----------|------------------|
| Division I-A season figures to date | 411 | 18,051,636 | 43,921 | 81.0 |
| Same 97 teams at this stage in 1981 | 407 | 17,600,277 | 43,244 | 81.1 |
| Division I-AA season figures to date | 356 | 4,305,331 | 12,094 | 58.3 |
| Same 92 teams at this stage in 1981 | 358 | 4,346,646 | 12,141 | 57.3 |

The NCAA News



Football Statistics

[Through games of October 30]

Division I-AA individual leaders

| RUSHING | | | | | | | | | |
|--------------------------------|----|---|-----|------|-----|----|-------|--|--|
| | CL | G | CAR | YDS | AVG | TD | YDSPG | | |
| GARRY PEARSON, MASSACHUSETTS | SR | 8 | 206 | 1088 | 5.3 | 9 | 136.0 | | |
| PAUL LEWIS, BOSTON U. | SO | 7 | 200 | 893 | 4.5 | 14 | 127.6 | | |
| PARIS WICKS, YOUNGSTOWN ST. | SR | 8 | 188 | 1014 | 5.4 | 6 | 126.7 | | |
| BURFORD JORDAN, MCNEESE ST. | JR | 8 | 190 | 933 | 4.9 | 10 | 116.6 | | |
| JAMES BLACK, AKRON | JR | 7 | 229 | 808 | 3.5 | 3 | 115.4 | | |
| JAY PETERSON, MIAMI (O.) | JR | 8 | 199 | 900 | 4.5 | 7 | 112.5 | | |
| CAL WHITFIELD, RHODE ISLAND | SR | 8 | 200 | 892 | 4.5 | 6 | 111.5 | | |
| ANDY CLIVIO, HOLY CROSS | SR | 8 | 179 | 885 | 4.9 | 4 | 110.6 | | |
| RICHARD CALHOUN, EASTERN MICH. | JR | 6 | 139 | 656 | 4.7 | 5 | 109.3 | | |
| SCOTTY CALDWELL, TX-ARLINGTON | SO | 8 | 151 | 867 | 5.7 | 7 | 108.4 | | |
| ANTHONY REED, S.C. STATE | SR | 8 | 142 | 864 | 6.1 | 9 | 108.0 | | |
| PAUL ANDRIE, YALE | JR | 7 | 176 | 744 | 4.2 | 6 | 106.3 | | |
| PETE ROTH, NORTHERN ILL. | JR | 7 | 142 | 722 | 5.1 | 3 | 103.1 | | |
| KEVIN STAPLE, EASTERN ILL. | JR | 9 | 196 | 875 | 4.5 | 7 | 97.2 | | |
| ED GODBOLT, LEHIGH | SR | 6 | 155 | 574 | 3.7 | 3 | 95.7 | | |
| AMERO WARE, DRAKE | SR | 9 | 195 | 960 | 4.4 | 11 | 95.6 | | |
| STANFORD JENNINGS, FURMAN | JR | 8 | 141 | 721 | 5.1 | 7 | 90.1 | | |
| TERRY LYMON, BALL STATE | JR | 7 | 130 | 628 | 4.8 | 1 | 89.7 | | |
| SHAWN FAULKNER, WESTERN MICH. | JR | 8 | 162 | 709 | 4.4 | 4 | 88.6 | | |
| JAMES BANKS, INDIANA ST. | SR | 7 | 115 | 615 | 5.3 | 5 | 87.9 | | |
| GREG IDEMAN, MONTANA | SR | 8 | 161 | 697 | 4.3 | 6 | 87.1 | | |
| RICH ERENBERG, COLGATE | JR | 7 | 124 | 591 | 4.8 | 2 | 84.4 | | |
| ED HAIRSTON, EASTERN KY. | JR | 7 | 110 | 588 | 5.3 | 3 | 84.0 | | |

| SCORING | | | | | | | | | |
|--------------------------------|----|---|----|----|----|-----|------|--|--|
| | CL | G | TD | XP | FG | PTS | PTPG | | |
| PAUL LEWIS, BOSTON U. | SO | 7 | 15 | 0 | 0 | 90 | 12.9 | | |
| ANTHONY JAMES, WESTERN CARO. | SR | 8 | 12 | 0 | 0 | 72 | 9.0 | | |
| LARRY KINNEBREW, TENNESSEE ST. | SR | 8 | 12 | 0 | 0 | 72 | 9.0 | | |
| TONY ZENDEJAS, NEVADA-RENO | JR | 8 | 0 | 18 | 18 | 72 | 9.0 | | |
| JAMES TAYLOR, GRAMBLING | SR | 8 | 10 | 2 | 0 | 62 | 7.7 | | |
| BILLY BARRETT, BROWN | SR | 7 | 9 | 0 | 0 | 54 | 7.7 | | |
| NICK KOWGOS, LAFAYETTE | JR | 7 | 9 | 0 | 0 | 54 | 7.7 | | |
| FRANK MIDDLETON, FLORIDA A&M | SR | 8 | 10 | 0 | 0 | 60 | 7.5 | | |
| BURFORD JORDAN, MCNEESE ST. | JR | 8 | 10 | 0 | 0 | 60 | 7.5 | | |
| TRUMAINE JOHNSON, GRAMBLING | SR | 8 | 10 | 0 | 0 | 60 | 7.5 | | |
| AMERO WARE, DRAKE | JR | 7 | 11 | 0 | 0 | 66 | 7.3 | | |
| BILL REGGIO, COLUMBIA | JR | 7 | 8 | 2 | 0 | 50 | 7.1 | | |
| MARK DIAMOND, NORTHERN ARIZ. | SR | 8 | 0 | 12 | 15 | 57 | 7.1 | | |
| MIKE PRINDLE, WESTERN MICH. | SO | 8 | 0 | 14 | 14 | 56 | 7.0 | | |
| GARRY PEARSON, MASSACHUSETTS | SR | 8 | 9 | 0 | 0 | 54 | 6.7 | | |
| RAY ALEXANDER, FLORIDA A&M | JR | 8 | 9 | 0 | 0 | 54 | 6.7 | | |
| ANTHONY REED, S.C. STATE | SR | 8 | 9 | 0 | 0 | 54 | 6.7 | | |
| OSCAR SMITH, NICHOLLS ST. | SO | 8 | 9 | 0 | 0 | 54 | 6.7 | | |
| LEROY ELLIS, NW LOUISIANA | SO | 8 | 9 | 0 | 0 | 54 | 6.7 | | |
| JACK LEONE, MAINE | SO | 9 | 0 | 40 | 6 | 58 | 6.4 | | |
| STAN GOODSON, APPALACHIAN ST. | SR | 8 | 2 | 24 | 5 | 51 | 6.4 | | |
| DEAN BIASUCCI, WESTERN CARO. | JR | 9 | 0 | 18 | 13 | 57 | 6.3 | | |
| GEHAD YOUSSEF, BOWLING GREEN | SO | 7 | 0 | 17 | 9 | 44 | 6.3 | | |

| PASSING EFFICIENCY | | | | | | | | | |
|---------------------------------|----|---|-----|-----|-------|--------|------|------|--------|
| | CL | G | ATT | CMP | INT | PCT | YDS | TD | RATING |
| (MIN. 15 ATT. PER GAME) | | | | | | | | | |
| FRANK NOVAK, LAFAYETTE | JR | 7 | 181 | 108 | 59.67 | 5.276 | 1562 | 8.33 | 152.2 |
| DON ALLARD, HARVARD | SR | 7 | 137 | 79 | 57.66 | 5.365 | 1136 | 8.29 | 143.3 |
| RICH LABONTE, MAINE | SO | 9 | 170 | 95 | 55.88 | 7.412 | 1377 | 8.10 | 142.9 |
| NORMAN GIBBS, SOUTHERN U. | SR | 8 | 124 | 57 | 45.97 | 3.242 | 1108 | 8.94 | 142.8 |
| KEN HOBART, IDAHO | JR | 8 | 269 | 143 | 53.16 | 6.223 | 2100 | 7.81 | 136.4 |
| MARTY MORNHINWEG, MONTANA | JR | 8 | 177 | 110 | 62.15 | 6.339 | 1282 | 7.24 | 135.1 |
| KENNETH BIGGLES, TENNESSEE ST. | SO | 8 | 171 | 93 | 54.39 | 8.468 | 1322 | 7.73 | 133.1 |
| MATT DUNIGAN, LOUISIANA TECH. | SR | 8 | 270 | 148 | 54.81 | 10.370 | 2079 | 7.70 | 132.9 |
| MARTIN HORN, LEHIGH | FR | 6 | 113 | 63 | 55.75 | 3.265 | 829 | 7.34 | 132.5 |
| BRIAN MCCLURE, BOWLING GREEN | FR | 7 | 163 | 105 | 64.42 | 11.675 | 1292 | 7.93 | 131.7 |
| RICK SCULLY, DELAWARE | SR | 8 | 137 | 67 | 48.91 | 7.511 | 1079 | 7.88 | 131.3 |
| TUCK WOOLM, EASTERN KY. | SR | 7 | 140 | 77 | 55.00 | 6.429 | 1057 | 7.55 | 131.1 |
| DAVID CHARP, FURMAN | JR | 7 | 114 | 62 | 54.39 | 5.439 | 901 | 7.90 | 129.4 |
| DONNY HARRISON, OHIO | JR | 8 | 148 | 82 | 55.41 | 6.426 | 962 | 6.82 | 127.6 |
| VICTOR MCGEE, WEST TEXAS ST. | SR | 8 | 136 | 181 | 53.87 | 15.446 | 2588 | 7.10 | 127.4 |
| LARRY MILLER, NORTHERN IOWA | SO | 8 | 185 | 102 | 55.14 | 7.378 | 1284 | 6.94 | 121.9 |
| GERALD DES PRES, BOISE ST. | SO | 6 | 145 | 84 | 58.62 | 7.483 | 983 | 6.78 | 121.2 |
| STEVE CALABRIA, COLGATE | SO | 7 | 208 | 117 | 56.25 | 18.865 | 1579 | 7.59 | 120.2 |
| SCOTT LINDQUIST, NORTHERN ARIZ. | SR | 8 | 214 | 115 | 53.74 | 11.161 | 1599 | 7.47 | 120.1 |
| GARY YAGELSKI, DRAKE | SR | 8 | 252 | 150 | 59.52 | 14.556 | 1990 | 7.90 | 120.0 |
| STAN POWELL, NW LOUISIANA | JR | 7 | 154 | 82 | 53.25 | 3.195 | 1058 | 6.87 | 119.9 |
| GARY VURA, PENNSYLVANIA | SR | 7 | 196 | 108 | 55.10 | 8.408 | 1250 | 6.38 | 119.0 |
| DAVE MURPHY, WILLIAM & MARY | JR | 8 | 138 | 84 | 60.87 | 5.362 | 908 | 6.58 | 118.5 |

| ALL-PURPOSE RUNNERS | | | | | | | | | |
|-------------------------------|----|---|------|-----|-----|-----|------|-------|--|
| | CL | G | RUSH | REC | PR | KOR | YDS | YDSPG | |
| PETE MANLEY, NORTHERN ARIZ. | JR | 8 | 23 | 650 | 312 | 398 | 1383 | 172.9 | |
| PAUL ANDRIE, YALE | JR | 7 | 744 | 151 | 66 | 220 | 1181 | 168.7 | |
| GARRY PEARSON, MASSACHUSETTS | SR | 8 | 1088 | 37 | 0 | 154 | 1279 | 159.9 | |
| PARIS WICKS, YOUNGSTOWN ST. | SR | 8 | 1014 | 154 | 0 | 78 | 1246 | 155.7 | |
| CAL WHITFIELD, RHODE ISLAND | SR | 8 | 892 | 69 | 0 | 122 | 1222 | 152.7 | |
| ED GODBOLT, LEHIGH | SR | 6 | 574 | 175 | 19 | 130 | 898 | 149.7 | |
| RICH ERENBERG, COLGATE | JR | 7 | 591 | 55 | 147 | 237 | 1030 | 147.1 | |
| SCOTTY CALDWELL, TX-ARLINGTON | SO | 8 | 867 | 298 | 0 | 0 | 1165 | 145.6 | |
| TERRY LYMON, BALL STATE | JR | 7 | 628 | 89 | 0 | 287 | 1004 | 143.4 | |
| MIKE WILLIAMS, DRAKE | SR | 9 | 0 | 740 | 0 | 485 | 1225 | 136.1 | |
| JOE MARKUS, CONNECTICUT | SR | 8 | 397 | 172 | 273 | 246 | 1088 | 136.0 | |
| PAUL LEWIS, BOSTON U. | SO | 7 | 893 | 47 | 0 | 0 | 940 | 134.3 | |
| JEROME STELLY, WESTERN ILL. | SR | 8 | 0 | 482 | 55 | 536 | 1073 | 134.1 | |
| JAY PETERSON, MIAMI (O.) | JR | 8 | 900 | 127 | 0 | 40 | 1067 | 133.4 | |
| CARL WILLIAMS, TEXAS SOUTHERN | SR | 9 | 0 | 416 | 183 | 568 | 1167 | 131.8 | |
| TONY BODDIE, MONTANA ST. | SR | 9 | 695 | 479 | 0 | 0 | 1174 | 130.4 | |
| AMERO WARE, DRAKE | SR | 9 | 860 | 299 | 0 | 0 | 1159 | 128.8 | |
| JERRY BUTLER, SE LOUISIANA | JR | 8 | 664 | 101 | 0 | 253 | 1018 | 127.2 | |
| BURFORD JORDAN, MCNEESE ST. | JR | 8 | 933 | 37 | 10 | 15 | 995 | 124.4 | |
| VIC WALLACE, IDAHO | SR | 8 | 30 | 617 | 151 | 196 | 994 | 124.2 | |
| PETE ROTH, NORTHERN ILL. | JR | 7 | 722 | 100 | 0 | 44 | 866 | 123.7 | |
| ANDY CLIVIO, HOLY CROSS | SR | 8 | 885 | 84 | 0 | 0 | 969 | 121.1 | |
| KEVIN PHELAN, DELAWARE | SR | 8 | 346 | 238 | 114 | 269 | 967 | 120.9 | |

| RECEIVING | | | | | | | | | |
|--------------------------------|----|---|----|-----|----|------|--|--|--|
| | CL | G | CT | YDS | TD | CTPG | | | |
| DON LEWIS, COLUMBIA | JR | 7 | 60 | 692 | 4 | 8.6 | | | |
| MARVIN WALKER, NORTH TEXAS ST. | SR | 8 | 57 | 617 | 8 | 7.1 | | | |
| BILL REGGIO, COLUMBIA | JR | 7 | 47 | 663 | 8 | 6.7 | | | |
| KEVIN GUTHRIE, PRINCETON | JR | 7 | 45 | 594 | 2 | 6.4 | | | |
| MARK MANLEY, WEST TEXAS ST. | SR | 8 | 48 | 655 | 3 | 6.0 | | | |
| MIKE WILLIAMS, DRAKE | SR | 9 | 53 | 740 | 3 | 5.9 | | | |
| JEFF SANDERS, WILLIAM & MARY | SO | 8 | 46 | 635 | 1 | 5.7 | | | |
| TRACY SINGLETON, HOWARD | SR | 9 | 51 | 763 | 5 | 5.7 | | | |
| JERRY RICE, MISS. VALLEY | SO | 8 | 43 | 762 | 3 | 5.4 | | | |
| KURT WRIGLEY, WM & MARY | SR | 8 | 43 | 672 | 4 | 5.4 | | | |
| JACK DALY, DARTMOUTH | JR | 7 | 36 | 724 | 5 | 5.1 | | | |
| TOM RADLE, VMI | SR | 8 | 41 | 463 | 3 | 5.1 | | | |
| KIM METCALF, BOISE ST. | JR | 8 | 37 | 506 | 2 | 4.6 | | | |
| PAT DUNSMORE, DRAKE | SR | 8 | 37 | 425 | 0 | 4.6 | | | |
| SHAWN POTTS, BOWLING GREEN | SR | 7 | 32 | 553 | 6 | 4.6 | | | |
| JOE KOZAK, COLGATE | JR | 7 | 32 | 403 | 3 | 4.6 | | | |
| JEFF HUNT, LEHIGH | JR | 7 | 32 | 400 | 2 | 4.6 | | | |
| FAHRIS CURRY, PRINCETON | SR | 8 | 36 | 527 | 3 | 4.5 | | | |
| TOM MUT, RHODE ISLAND | SR | 7 | 31 | 528 | 6 | 4.4 | | | |
| STEVE BIRD, EASTERN KY. | SR | 7 | 31 | 524 | 5 | 4.4 | | | |
| JACK GATEHOUSE, LAFAYETTE | JR | 7 | 31 | 280 | 1 | 4.4 | | | |
| DENNIS ROGAN, WEBER ST. | JR | 7 | 31 | 280 | 1 | 4.4 | | | |
| LYNN MAY, SW MISSOURI ST. | SR | 9 | 39 | 707 | 4 | 4.3 | | | |

| TOTAL OFFENSE | | | | | | | | | | | |
|--------------------------------------|---------|------|------|---------|-----|------|---------------|------|-------|-----|-------|
| | RUSHING | | | PASSING | | | TOTAL OFFENSE | | | | |
| | CAR | GAIN | LOSS | NET | ATT | YDS | PLAYS | YDS | YD PL | TD* | YDSPG |
| VICTOR MCGEE, WEST TEXAS ST. | 68 | 199 | 188 | 336 | 258 | 2588 | 404 | 2599 | 6.4 | 13 | 324.9 |
| BRENT WOODS, PRINCETON | 102 | 413 | 119 | 294 | 317 | 1877 | 419 | 2171 | 5.2 | 15 | 310.1 |
| KEN HOBART, IDAHO | 111 | 370 | 189 | 181 | 269 | 2100 | 380 | 2281 | 6.0 | 24 | 285.1 |
| JOHN HOLMAN, NE LOUISIANA | 45 | 65 | 154 | 89 | 383 | 2522 | 428 | 2433 | 5.7 | 15 | 270.3 |
| JOHN WILKOWSKI, COLUMBIA | 34 | 53 | 196 | 143 | 306 | 2015 | 340 | 1872 | 5.5 | 17 | 267.4 |
| MATT DUNIGAN, LOUISIANA TECH | 80 | 270 | 217 | 53 | 270 | 2079 | 350 | 2132 | 6.1 | 18 | 266.5 |
| GARY YAGELSKI, DRAKE | 80 | 238 | 175 | 63 | 252 | 1990 | 332 | 2053 | 6.2 | 8 | 256.6 |
| STEVE CALABRIA, COLGATE | 25 | 55 | 124 | 69 | 208 | 1579 | 233 | 1510 | 6.5 | 11 | 215.7 |
| FRANK NOVAK, LAFAYETTE | 43 | 105 | 182 | 77 | 181 | 1562 | 224 | 1485 | 6.6 | 15 | 212.1 |
| TIM BERNAL, WEBER ST. | 56 | 224 | 164 | 60 | 281 | 1629 | 337 | 1689 | 5.0 | 11 | 211.1 |
| PAUL PETERSON, IDAHO ST. | 70 | 148 | 302 | 154 | 310 | 1827 | 380 | 1673 | 4.4 | 12 | 209.1 |
| JOE POTTER, BROWN | 82 | 465 | 178 | 387 | 148 | 1066 | 230 | 1453 | 6.3 | 8 | 207.6 |
| GREG ARTERBURN, SW MISSOURI ST. | 103 | 576 | 143 | 433 | 155 | 1157 | 258 | 1590 | 6.2 | 11 | 198.7 |
| MIKE GODFREY, MONTANA ST. | 53 | 130 | 198 | 68 | 269 | 1844 | 322 | 1776 | 5.5 | 13 | 197.3 |
| SCOTT LINDQUIST, NORTHERN ARIZ. | 27 | 34 | 102 | 68 | 214 | 1599 | 241 | 1531 | 6.4 | 10 | 191.4 |
| WILLIE TOTTEN, MISS. VALLEY | 62 | 186 | 115 | 71 | 201 | 1431 | 263 | 1502 | 5.7 | 9 | 187.7 |
| DAVE GRIMSICH, RHODE ISLAND | 76 | 300 | 109 | 191 | 206 | 1302 | 282 | 1493 | 5.3 | 11 | 186.6 |
| RONNIE MIXON, WESTERN CARO. | 31 | 122 | 115 | 139 | 239 | 1644 | 270 | 1651 | 6.5 | 5 | 183.4 |
| DON ALDRED, HARVARD | 63 | 294 | 155 | 139 | 239 | 1644 | 270 | 1651 | 6.5 | 5 | 183.4 |
| GARY VURA, PENNSYLVANIA | 43 | 141 | 131 | 10 | 196 | 1250 | 239 | 1275 | 5.4 | 13 | 180.0 |
| RICK JOHNSON, SOUTHERN ILL. | 36 | 36 | 152 | 115 | 294 | 1703 | 330 | 1587 | 4.8 | 9 | 176.3 |
| MARSHALL SPERBECK, NEVADA-RENO | 45 | 188 | 101 | 87 | 219 | 1323 | 264 | 1410 | 5.3 | 12 | 176.2 |
| BRIAN MCCLURE, BOWLING GREEN | 32 | 48 | 114 | 66 | 163 | 1292 | 195 | 1226 | 6.3 | 8 | 175.1 |

* TOUCHDOWNS RESPONSIBLE FOR ARE PLAYERS WHO SCORED AND PASSED FOR

The NCAA News



Football Statistics

[Through games of October 23]

Division II individual leaders

| RUSHING | | | | | |
|-----------------------------------|----|---|-----|------|----|
| | CL | G | CAR | YDS | TD |
| GEORGE WORKS, NORTHERN MICH. | SR | 8 | 181 | 1062 | 19 |
| PONCHO JAMES, SAN FRANCISCO ST. | SR | 6 | 112 | 791 | 3 |
| JOHN FARLEY, SACRAMENTO ST. | JR | 7 | 129 | 907 | 9 |
| MAJOR EVERETT, MISSISSIPPI COL. | SR | 7 | 119 | 829 | 7 |
| CURRY ANCAR, SOUTHERN UTAH ST. | JR | 7 | 124 | 820 | 6 |
| RANDY SULLIVAN, MOORHEAD STATE | SO | 7 | 137 | 802 | 13 |
| ROGER WILEY, SAM HOUSTON ST. | SO | 7 | 145 | 780 | 4 |
| ANTHONY GAITER, ASHLAND | SO | 7 | 176 | 755 | 7 |
| BRYAN WHITE, ST. MARY'S (CAL.) | JR | 7 | 115 | 736 | 6 |
| RON PERKINS, WEST CHESTER ST. | SR | 7 | 129 | 720 | 14 |
| JOHNNY SHEPHERD, LIVINGSTON | SR | 7 | 122 | 708 | 6 |
| RICKY DIRKS, EAST TEXAS ST. | SO | 6 | 136 | 589 | 2 |
| RICKY STONEWALL, MILLERSVILLE ST. | SO | 7 | 122 | 657 | 6 |
| JIM BRIGHT, NORTHERN COLO. | SR | 7 | 176 | 655 | 5 |

| SCORING | | | | | |
|---------------------------------|----|---|----|----|----|
| | CL | G | TD | XP | FG |
| GEORGE WORKS, NORTHERN MICH. | SR | 8 | 20 | 0 | 0 |
| RON PERKINS, WEST CHESTER ST. | SR | 7 | 15 | 0 | 0 |
| RANDY SULLIVAN, MOORHEAD STATE | SO | 7 | 14 | 2 | 0 |
| BOYD HANSON, MINN.-DULUTH | SR | 8 | 14 | 2 | 0 |
| JOHN RICO, HAYWARD ST. | JR | 7 | 12 | 2 | 0 |
| JOHN FARLEY, SACRAMENTO ST. | JR | 7 | 11 | 0 | 0 |
| KEN WEIK, NE MISSOURI ST. | SO | 7 | 10 | 0 | 0 |
| MIKE WOLD, EASTERN WASH. | JR | 6 | 0 | 21 | 10 |
| CRAIG GIVENS, EASTERN WASH. | FR | 5 | 7 | 0 | 0 |
| DAVE AUSTINSON, NE MISSOURI ST. | SR | 7 | 0 | 31 | 8 |

| PASSING EFFICIENCY | | | | | |
|------------------------------------|----|---|-----|-----|------|
| | CL | G | ATT | CMP | PCT |
| (MIN. 15 ATT. PER GAME) | | | | | |
| JOHN WRISTEN, SOUTHERN COLO. | JR | 7 | 118 | 67 | 56.8 |
| BRUCE GRANT, MINN.-DULUTH | JR | 8 | 143 | 86 | 60.1 |
| MIKE SULLIVAN, SACRAMENTO ST. | JR | 7 | 158 | 84 | 53.2 |
| ANANIAS HARRIS, ALABAMA A&M | SR | 7 | 188 | 112 | 59.6 |
| BILL MYATT, HAYWARD ST. | SR | 7 | 232 | 125 | 53.9 |
| KEN O'BRIEN, CAL.-DAVIS | SR | 6 | 192 | 110 | 57.3 |
| ANDY BARANEK, EAST STROUDSBURG ST. | SO | 7 | 180 | 107 | 59.4 |
| DENNIS EASTMAN, MOORHEAD STATE | SR | 7 | 156 | 91 | 58.3 |
| ED LETT, JACKSONVILLE ST. | SR | 6 | 198 | 114 | 57.6 |
| JIM LYNCH, GRAND VALLEY ST. | SO | 7 | 202 | 89 | 44.1 |
| JOHN FAZIO, ST. JOSEPH'S (IND.) | SR | 6 | 171 | 98 | 57.3 |
| TOM HAYES, NE MISSOURI ST. | JR | 7 | 211 | 120 | 56.9 |

| RECEIVING | | | | | |
|-----------------------------------|----|---|----|-----|----|
| | CL | G | CT | YDS | TD |
| LIEF NELSON, WINONA STATE | JR | 8 | 60 | 917 | 3 |
| JEFF ZUBIA, SHIPPENSBURG ST. | JR | 7 | 51 | 671 | 4 |
| JAY BARNETT, EVANSVILLE | SR | 7 | 51 | 677 | 9 |
| EDDIE PATE, HUMBOLDT ST. | SO | 6 | 42 | 504 | 5 |
| TROY STAVES, EVANSVILLE | SR | 6 | 39 | 397 | 1 |
| DAN STARK, MICHIGAN TECH. | SR | 6 | 38 | 448 | 1 |
| MARC BROWN, TOWSON STATE | SR | 7 | 44 | 979 | 6 |
| CARL ARMSTRONG, VALDOSTA ST. | SO | 7 | 43 | 751 | 4 |
| TOM ASHENBRENNER, ST. CLOUD ST. | SR | 6 | 36 | 416 | 2 |
| JERRY MCCUNE, NORTHERN MICH. | SR | 8 | 47 | 868 | 3 |
| GREG GOLDSTEIN, WAYNE ST. (MICH.) | JR | 8 | 47 | 699 | 2 |
| BILL HAUSWIRTH, MICHIGAN TECH. | FR | 5 | 29 | 474 | 5 |

| TOTAL OFFENSE | | | | | |
|-----------------------------------|----|---|-----|------|-------|
| | CL | G | PLS | YDS | YDSPG |
| TOM NELSON, ST. CLOUD ST. | JR | 8 | 301 | 1817 | 302.8 |
| KEN O'BRIEN, CAL.-DAVIS | SR | 6 | 245 | 1639 | 273.2 |
| BILL MYATT, HAYWARD ST. | SR | 7 | 272 | 1861 | 265.9 |
| ANANIAS HARRIS, ALABAMA A&M | JR | 7 | 212 | 1728 | 246.9 |
| TOD WEDER, STEPHEN F. AUSTIN | JR | 7 | 308 | 1685 | 240.7 |
| TOM BERTOLDI, NORTHERN MICH. | JR | 8 | 305 | 1861 | 232.6 |
| TIM EBERSOLE, SHIPPENSBURG ST. | SR | 7 | 283 | 1822 | 231.7 |
| TOM HAYES, NE MISSOURI ST. | JR | 7 | 277 | 1621 | 231.6 |
| LOYAL PROFFITT, ABILENE CHRISTIAN | SO | 7 | 306 | 1612 | 230.3 |
| JIM LYNCH, GRAND VALLEY ST. | SO | 7 | 252 | 1611 | 230.1 |
| JIM BRITTAIN, EASTERN WASH. | SR | 6 | 232 | 1379 | 229.8 |
| ED LETT, JACKSONVILLE ST. | SR | 6 | 223 | 1301 | 216.8 |

Division III individual leaders

| RUSHING | | | | | |
|------------------------------|----|---|-----|------|----|
| | CL | G | CAR | YDS | TD |
| SCOTT REPERT, LAWRENCE | SR | 6 | 181 | 917 | 12 |
| ALONZO PATTERSON, WAGNER | SR | 7 | 222 | 1060 | 7 |
| RON CORBETT, CORNELL COLLEGE | SR | 7 | 159 | 961 | 15 |
| GENE REID, GRINNELL | SR | 7 | 147 | 911 | 6 |
| SCOTT DEJONG, CENTRAL (IOWA) | SR | 8 | 169 | 981 | 8 |
| KENNIE TAYLOR, ADRIAN | JR | 7 | 189 | 858 | 9 |
| TIM WHITE, RIPON | JR | 7 | 185 | 834 | 13 |
| MARK KONECNY, ALMA | SO | 7 | 159 | 825 | 7 |
| RON STEVENSON, OBERLIN | SR | 6 | 136 | 705 | 6 |
| TODD HOLSTEGE, HOPE | SR | 6 | 111 | 702 | 5 |
| GEOFF POPE, CENTRE | SO | 6 | 106 | 668 | 5 |

| SCORING | | | | | |
|-------------------------------|----|---|----|----|----|
| | CL | G | TD | XP | FG |
| RON CORBETT, CORNELL COLLEGE | SR | 7 | 16 | 0 | 0 |
| RICK BELL, ST. JOHN'S (MINN.) | SR | 6 | 13 | 2 | 0 |
| SCOTT REPERT, LAWRENCE | SR | 6 | 13 | 0 | 0 |
| MIKE WARD, WARTBURG | SR | 7 | 14 | 0 | 0 |
| TIM WHITE, RIPON | JR | 7 | 13 | 0 | 0 |
| DAVE MCLAUGHLIN, MOUNT UNION | SR | 6 | 11 | 0 | 0 |
| MIKE KRUEGER, TUFTS | SR | 4 | 7 | 0 | 0 |
| PEDRO BOWMAN, DUQUESNE | SO | 7 | 11 | 0 | 0 |
| MAURICE HARPER, LA VERNE | JR | 6 | 9 | 0 | 0 |
| RICH BONACCORSI, DEPAUW | SO | 7 | 10 | 0 | 0 |
| RICH PRATHER, FROSTBURG ST. | SR | 7 | 10 | 0 | 0 |
| JOHN VANDER STARRE, HOPE | JR | 7 | 10 | 0 | 0 |
| SEAN HIGGINS, ST. THOMAS | SR | 7 | 10 | 0 | 0 |

| PASSING EFFICIENCY | | | | | |
|-------------------------------------|----|---|-----|-----|------|
| | CL | G | ATT | CMP | PCT |
| (MIN. 15 ATT. PER GAME) | | | | | |
| MIKE BENNETT, CORNELL COLLEGE | SR | 6 | 91 | 49 | 53.8 |
| GARY MUEZEL, ST. THOMAS | SR | 7 | 213 | 136 | 63.8 |
| GARY WALL, JASPER, WARTBURG | SO | 7 | 205 | 117 | 57.1 |
| GREG HEERS, HOPE | SR | 6 | 133 | 74 | 55.6 |
| DENNIS SCHLEPER, ST. JOHN'S (MINN.) | SR | 6 | 145 | 81 | 55.9 |
| BILL KISELICK, CARNegie-MELLON | SR | 7 | 144 | 80 | 55.6 |
| GREG HOPKINS, LA VERNE | SR | 6 | 157 | 70 | 44.6 |
| MARK FERRANTE, ST. LAWRENCE | SR | 6 | 160 | 91 | 56.9 |
| FLIP FAHERTY, TRENTON STATE | JR | 7 | 158 | 86 | 54.4 |
| RON ROBERTS, LAWRENCE | SO | 6 | 136 | 71 | 52.2 |
| KEN HYER, BUFFALO | SO | 6 | 148 | 83 | 56.1 |
| JOBIE WALDT, FROSTBURG STATE | JR | 7 | 228 | 129 | 56.6 |

| RECEIVING | | | | | |
|---------------------------------|----|---|----|-----|----|
| | CL | G | CT | YDS | TD |
| JIM GUSTAFSON, ST. THOMAS | SR | 7 | 52 | 699 | 5 |
| DANE JAKO, UPPLER IOWA | SR | 8 | 59 | 680 | 6 |
| JOHN WARD, CORNELL COLLEGE | SR | 7 | 51 | 792 | 8 |
| TIM QUINN, MASS. MARITIME | JR | 5 | 33 | 370 | 1 |
| JOHN ARMONDO, TRENTON STATE | SO | 7 | 46 | 714 | 6 |
| STEVE FORSYTHE, FROSTBURG STATE | SR | 7 | 44 | 642 | 4 |
| SCOTT GEISE, HOBART | SR | 6 | 37 | 711 | 6 |
| TIM MCNAMARA, TRINITY (CONN.) | SO | 9 | 30 | 453 | 1 |
| TERRY MCGOVERN, GLASSBORO STATE | JR | 7 | 41 | 478 | 4 |
| ROD MAYER, WIS. STEVENS POINT | SR | 7 | 40 | 486 | 3 |
| KEVIN THEIS, FROSTBURG STATE | JR | 6 | 34 | 463 | 3 |
| ED BRADY, ILL. WESLEYAN | SO | 6 | 34 | 558 | 4 |
| JOE NOWICKI, ST. PETER'S | SR | 6 | 34 | 406 | 3 |

| TOTAL OFFENSE | | | | | |
|--------------------------------|----|---|-----|------|-------|
| | CL | G | PLS | YDS | YDSPG |
| DAVE MCCARRELL, WHEATON | SR | 6 | 241 | 1715 | 285.8 |
| RANDY MUEZEL, ST. THOMAS | SR | 7 | 259 | 1875 | 267.9 |
| GARY WALL, JASPER, WARTBURG | SO | 7 | 240 | 1732 | 247.4 |
| GREG HOPKINS, LA VERNE | SR | 6 | 206 | 1361 | 226.8 |
| MARK FERRANTE, ST. LAWRENCE | SR | 6 | 225 | 1344 | 224.0 |
| SCOTT DRIGGERS, COLORADO COL. | SO | 6 | 228 | 1329 | 221.5 |
| JOBIE WALDT, FROSTBURG STATE | JR | 7 | 273 | 1524 | 217.7 |
| BILL KISELICK, CARNegie-MELLON | SR | 7 | 213 | 1517 | 216.7 |
| JOHN ROONEY, ILL. WESLEYAN | JR | 6 | 251 | 1290 | 215.0 |
| KEVIN REED, CAPITAL | JR | 7 | 330 | 1481 | 211.6 |
| ERIC SWEET, SAN DIEGO | SR | 7 | 222 | 1465 | 209.3 |

| FIELD GOALS | | | | | |
|----------------------------------|----|---|-----|----|------|
| | CL | G | FGA | FG | PCT |
| MIKE WOLD, EASTERN WASH. | JR | 6 | 15 | 10 | 66.7 |
| RICK RUSZKIEWICZ, EDINBORO ST. | SR | 7 | 14 | 10 | 71.4 |
| CLARENCE JOSEPH, CENTRAL OHIO | JR | 8 | 19 | 11 | 57.9 |
| WADE STEPHENS, PUGET SOUND | SR | 8 | 15 | 11 | 73.3 |
| JOEY MALONE, ALABAMA A&M | FR | 7 | 13 | 9 | 69.2 |
| KEVIN JELDEN, NORTHERN COLO. | JR | 7 | 16 | 9 | 56.3 |
| DWAYNE WHITFIELD, ELIZABETH CITY | SR | 7 | 14 | 8 | 57.1 |
| ANDY BRUBAKER, MILLERSVILLE ST. | JR | 7 | 12 | 8 | 66.7 |
| DAVE AUSTINSON, NE MISSOURI ST. | SR | 7 | 15 | 8 | 53.3 |
| KERRY MILLS, SAVANNAH ST. | SR | 7 | 13 | 8 | 61.5 |

| PUNT RETURNS | | | | | |
|-------------------------------|----|----|-----|------|---------------------|
| | CL | NO | YDS | AVG | (MIN. 1.2 PER GAME) |
| JOHN HUTTON, CENTRAL OHIO | SO | 11 | 223 | 20.3 | |
| JEFF LINDEN, NW MISSOURI ST. | SO | 12 | 243 | 20.3 | |
| DARRELL GREEN, TEXAS A&I | SR | 14 | 266 | 19.0 | |
| JEFF HORNED, CENTRAL MISSOURI | SO | 16 | 302 | 18.9 | |
| BOB COYNE, MILLERSVILLE ST. | JR | 11 | 178 | 16.2 | |
| MIKE IRVING, WEST CHESTER ST. | SO | 9 | 143 | 15.9 | |
| KEN MAYE, MOORHEAD STATE | SR | 15 | 223 | 14.9 | |
| WILLIE CANADY, FT. VALLEY ST. | SR | 14 | 194 | 13.9 | |

Division II team leaders

| PASSING OFFENSE | | | | | |
|---------------------|---|-----|-----|------|-----|
| | G | ATT | CMP | PCT | INT |
| ST. CLOUD STATE | 6 | 285 | 149 | 52.3 | 17 |
| NORTHERN MICHIGAN | 8 | 320 | 167 | 52.2 | 18 |
| JACKSONVILLE STATE | 6 | 244 | 142 | 58.2 | 15 |
| EVANSVILLE | 7 | 311 | 169 | 54.3 | 15 |
| HAYWARD STATE | 7 | 237 | 127 | 53.6 | 11 |
| MICHIGAN TECH. | 6 | 268 | 139 | 51.9 | 20 |
| TOWSON STATE | 7 | 243 | 119 | 49.0 | 18 |
| ST. JOSEPH'S (IND.) | 7 | 270 | 151 | 55.9 | 12 |
| FRANKLIN | 7 | 344 | 148 | 43.0 | 19 |

| PASS DEFENSE | | | | | |
|----------------------|---|-----|-----|------|-----|
| | G | ATT | CMP | PCT | INT |
| ELIZABETH CITY STATE | 7 | 127 | 49 | 38.6 | 10 |
| TUSKEGEE | 6 | 117 | 33 | 28.2 | 11 |
| SAVANNAH STATE | 7 | 138 | 53 | 38.4 | 16 |
| DISTRICT OF COLUMBIA | 6 | 116 | 44 | 37.9 | 4 |
| BOWIE STATE | 7 | 123 | 58 | 47.2 | 8 |
| CLARK (GEORGIA) | 5 | 86 | 32 | 37.2 | 4 |
| JAMESTOWN | 5 | 106 | 38 | 35.8 | 11 |
| JOHNSON C. SMITH | 7 | 140 | 51 | 36.4 | 15 |
| TENNESSEE MARTIN | 7 | 144 | 62 | 43.1 | 13 |

| SCORING OFFENSE | | | | | |
|--------------------------|---|----|----|-----|----|
| | G | TD | XP | 2XP | FG |
| NORTHERN MICHIGAN | 8 | 45 | 39 | 2 | 4 |
| NORTHEAST MISSOURI STATE | 7 | 31 | 31 | 0 | 8 |
| MINNESOTA-DULUTH | 8 | 37 | 26 | 5 | 4 |
| MOORHEAD STATE | 7 | 30 | 26 | 1 | 7 |
| TEXAS A&I | 7 | 33 | 26 | 0 | 2 |
| SOUTHWEST TEXAS STATE | 7 | 31 | 29 | 0 | 4 |
| JACKSONVILLE STATE | 6 | 25 | 25 | 0 | 5 |
| WEST CHESTER STATE | 7 | 29 | 22 | 2 | 8 |

| SCORING DEFENSE | | | | | |
|------------------------|---|----|----|-----|----|
| | G | TD | XP | 2XP | FG |
| JAMESTOWN | 5 | 3 | 3 | 0 | 2 |
| EDINBORO STATE | 7 | 6 | 4 | 0 | 3 |
| FORT VALLEY STATE | 7 | 7 | 4 | 2 | 0 |
| BUTLER | 7 | 7 | 6 | 0 | 3 |
| SAVANNAH STATE | 7 | 8 | 5 | 0 | 1 |
| NORTH DAKOTA STATE | 8 | 8 | 7 | 0 | 5 |
| EAST STROUDSBURG STATE | 7 | 8 | 3 | 2 | 4 |
| ASHLAND | 7 | 8 | 6 | 0 | 4 |
| NORTH ALABAMA | 7 | 9 | 6 | 0 | 5 |
| ST. MARY'S (CAL.) | 7 | 9 | 5 | 1 | 4 |

| FIELD GOALS | | | | | |
|------------------------------|----|---|-----|----|-----|
| | CL | G | FGA | FG | PCT |
| STEVE VARGA, BALDWIN-WALALCE | JR | 7 | 15 | 10 | |

The NCAA News



Women's Basketball Preview

Down-to-the-wire race expected in Division I

By Mel Greenberg
The Philadelphia Inquirer

The second year of NCAA Division I women's basketball competition is shrouded in mystery—genuine nail-biting, teeth-clenching suspense that has fans, coaches and players shivering with excitement about this season's title chase.

The reason for their joy is that phrases such as "wide open," "anyone can win" and "down-to-the-wire finish," which have been meaningless in the past, are a definite part of the prognosticator's vocabulary this year. On college campuses across America, women's basketball teams are viewing 1982-83 with a we-can-win-it attitude that for once is more than just an early-November dream.

All of this, however, does not mean that the sport is about to transform from the dictatorial regimes of Immaculata, Delta State, Old Dominion and, recently, Louisiana Tech of the last 12 years to mob rule. (The only surprise winner in that span was UCLA, the 1978 AIAW champion.) The potential for another one-team runaway still exists. The difference, however, is that teams other than defending NCAA champion Louisiana Tech have the talent to pull it off.

Each of the schools favored to reach the finals from their geographic areas could win the Division I crown. But competition in all those regions will make it difficult for any team to duplicate the current 69-1 two-year record defending NCAA champion Louisiana Tech brings to the starting gate.

On the East Coast, Old Dominion (22-6), with 6-8 senior Anne Donovan, is actively talking about a return to glory after finishing seventh in the rankings and being eliminated in the East regional semifinals by Kansas State last season. If the Monarchs are successful, they will achieve their goal before a home crowd, since the Big Blue once again will host the NCAA finals.

In the Mideast, Tennessee (22-10), which made its fifth trip to the finals in the last six years, has a solid unit that could reward 1984 Olympic coach Pat Head Summitt with her first national title. Meanwhile, rivals in the Midwest are aware that it still is going to take a strong effort to loosen Louisiana Tech's (35-1) grip on the sport, despite the fact that coach Sonja Hogg's squad is not as deep as before.

The team that could loosen the Techsters' hold, however, is Southern California (23-4), which has the makings of the nation's newest powerhouse. That prospect is caused by the addition of Cheryl Miller, the nation's top freshman, who announced her decision last August to join 6-3 twin sisters, Pam and Paula McGee, and the rest of the Women of Troy.

However, these are not the only schools that could come under the spell of March magic. Long Beach State (24-6), Georgia (21-9), Kentucky (24-8), Maryland (25-7), Penn State (24-6), Cheyney State (27-2), South Carolina (23-0) and Kansas State (26-6) all have potential to upend the leaders.

They will be joined in the race by Texas (35-4) and Rutgers (25-7), perennial top 10 powers leading a group of former AIAW participants into NCAA competition. The switch will increase the NCAA total from 115 to 268 Division I members, with many schools playing Division I schedules for the first time.

Texas is a bona-fide threat for the finals, with everyone back from last year's AIAW runner-up team. Rutgers, the last AIAW basketball winner before the organization sus-

pended championships, is rebuilding but could be a threat by March if Coach Theresa Greutz's freshmen jell quickly.

Another team making its NCAA debut is Minnesota (18-10), which is a favorite for the Big Ten title.

Speaking of conferences, balance and strength also can be found at this entry level, where many races for titles—leading to automatic national tournament bids in 13 instances—also will be up for grabs.

Incidentally, the men are not alone in experimenting with rules this season. The new High Country Athletic Conference is instituting a three-point play for league games.

Meanwhile, here is a quick look at who's going after what in the four geographic sectors:

East

Four conferences—the Atlantic Coast, Atlantic 10, Big East and Sun Belt—have automatic bids. The new Cosmopolitan, East Coast, Ivy League, Metro Atlantic and Mideastern Athletic also sponsor championships.

The ACC sent three teams to nationals last year and could do the same again. Maryland and North Carolina State will fight it out, but North Carolina keeps getting tougher. Clemson will miss Barbara Kennedy, the nation's leading scorer, but still can be a factor. Virginia also cannot be discounted.

Penn State is a decided favorite to win the first Atlantic-10 crown over Rutgers, but Temple and St. Joseph's (Pa.) could make the competition interesting.

The Big East begins its first formal season of women's competition, with Providence a slight favorite. Villanova (29-4) will miss Lisa Ortlip and Stephanie Vanderslice, who gave the Wildcats their best year with a No. 11 ranking and a fourth-place finish in the AIAW tournament. But coach Harry Perretta's team remains competitive and when considered with Syracuse, Pittsburgh, Seton Hall and, perhaps, St. John's, demonstrates balance and opportunity for contenders.

Old Dominion should be an easy winner in the new Sun Belt Conference women's race, with Western Kentucky the best of the rest. Actually, a strong second-place finish might mean an at-large berth to the nationals in March.

It's been awhile since Carol Blazejowski scored all those points at Montclair State, but coach Maureen Wendelken could have a winner in the new Cosmopolitan Conference. The East Coast Conference's first season of women's competition should see La Salle and Delaware as the dominating teams, but Rider will push the Explorers and Blue Hens all year.

The Ivy League is wide open now that Gail Koziara has graduated from Dartmouth. Pennsylvania, the regular-season champion, could win the title under the new double-round-robin format. Yale and Brown make it a three-way race.

St. Peter's is expected to repeat as Metro Atlantic champions, but Manhattan will be much stronger. Howard should repeat as Mid-Eastern Athletic Conference champion, with South Carolina State remaining traditionally tough.

New Hampshire is the best of Eastern independents in New England and could earn a postseason berth with a solid stretch finish. Cheyney State has all but Valerie Walker back from the team that finished second to Louisiana Tech. However, the talented all-America's graduation leaves Coach

Vivian Stringer searching for a new leader. The Wolves are the best of all Mid-Atlantic independents, but the postseason may be a little shorter this time. South Carolina, with sophomores Brantley Southerns and Marcia McAlister, is the best of Eastern independents in the southern sector and has top-10 potential. East Carolina is rebuilding, but Coach Cathy Andruzzi was in the same situation last year when the Pirates landed a Division I berth.

Mideast

The Mideast is a microcosm of the balance around the country. The Big Ten, Metro and Southeastern Conferences, all owning automatic bids for their champions, will feature tight races among many teams that are top-20 caliber.

The Big Ten sent three teams to nationals and could do the same again. Minnesota is an early favorite for the crown, but on a given day the championship could go to Northwestern or Ohio State. Illinois is rebuilding.

With Florida State moving over from the AIAW, the Metro race is a little tougher. Memphis State still is the favorite to repeat, but the Lady Seminoles could change all that. Cincinnati gets better each year, while Virginia Tech is a dark-horse candidate.

The Southeastern Conference claims to be the best in the country, and few can dispute the boast after five teams advanced to the Division I tournament last year. Three teams are in the preseason top 10 in many publications. All this to say, look for Tennessee as the favorite, unless you are a fan of Kentucky or Georgia. And let us not forget that Auburn and Mississippi both are solid. Vanderbilt would be a great independent, but the going might be too difficult here.

Among other conferences, Miami (Ohio), making its NCAA debut, should repeat as the Mid-American

Conference champion. Defending titlists Tennessee Tech and Middle Tennessee State are cofavorites in the Ohio Valley Conference. Among independents in the Mideast above the Mason-Dixon line, Detroit is the best, while Notre Dame will continue to improve. DePaul also is strong. South of the border features a balanced group that includes Delta State, East Tennessee State and Tennessee-Chattanooga, all AIAW teams last season.

Midwest

Louisiana Tech may not own the country, but the Techsters still dominate the Midwest. The graduation of Pam Kelly and Angela Turner hurts from a depth standpoint, but it would have been worse had Deborah Rodman not decided to return. Janice Lawrence in the front court and firebrand Kim Mulkey back at guard make Louisiana Tech the only major independent worth discussing, but Stephen F. Austin also has top-20 potential if it can pull together after the transfer of Pam Crawford to the Techsters.

From a conference standpoint, this part of the world would be interesting if Louisiana Tech were located somewhere else. Three conferences have automatic bids—the Big Eight, Gateway and Southwest.

Kansas State is a heavy favorite to win the Big Eight Conference again on the strength of a good recruiting year by coach Lynn Hickey. But there are other contenders that also can land postseason berths. Missouri had a strong finish last year leading to a berth and could make trouble in the conference, along with Oklahoma and Kansas. The latter team fell apart at midseason, but coach Marian Washington has the talent to regroup.

The Gateway Collegiate Athletic Conference is a new women's group that includes many teams that participated in Missouri Valley competition last season. Despite the change, Illi-

nois State and Drake still are the top two contenders—only this time the former should emerge as the champion.

This is the first year of Southwest Conference competition but not the first year of Texas domination in the area. Coach Jody Conradt's team at Texas had a 2-3 start last season, then won 33 straight games before being stopped by Rutgers in the AIAW championship. All five starters return and many think a trip to the NCAA finals is in store for the Longhorns. Arkansas continues to improve but has a way to go to have a shot at Texas.

Among other conferences, freshman Lisa Ingram makes Northeast Louisiana the favorite to win the first Southland women's crown, while Jackson State once again is favored to win the Southwestern Athletic title.

West

The Rockies and points west once were considered the laughing stock of women's basketball. Until recent times, the only achievement was UCLA's AIAW title in 1978, and many cynics then thought that someone else would have claimed the crown had it not been decided in the Bruins' fabled Pauley Pavilion.

No one's laughing at the West now. Some of the strongest teams in the nation are located here. In fact, three conferences—the High Country, Northern Pacific and Western Collegiate—all have automatic berths to the Division I tournament.

The High Country Conference race is anyone's, but the thought at the moment awards the forecast to New Mexico, though New Mexico State and Utah have a good chance. Brigham Young has been a traditional contender in these parts.

The Northern Pacific was the NorCal last season; however, when Oregon, Oregon State, Washington and

See Division I, page 9



St. Andrews' Eva Pittman (center)

Returning statistical leaders

| Division I | | | |
|---|------------|-----------|-----------|
| Scoring | 1983 Class | 1982 Avg. | 1982 Rank |
| Sherry Levin, Holy Cross | Jr. | 25.3 | 4 |
| Joyce Walker, Louisiana State | Jr. | 24.9 | 5 |
| Valerie Still, Kentucky | Sr. | 24.8 | 6 |
| LaTaunya Pollard, Arizona State | Sr. | 24.2 | 7 |
| Cincy Stumph, Weber State | Sr. | 23.9 | 9 |
| Rebounding | 1983 Class | 1982 Avg. | 1982 Rank |
| Anne Donovan, Old Dominion | Sr. | 14.7 | 1 |
| Janice Reaves, Fairleigh Dickinson | Sr. | 14.4 | tied 2 |
| Valerie Still, Kentucky | Sr. | 14.3 | 5 |
| Darlene Jones, Mississippi Valley State | Sr. | 13.7 | 7 |
| Pat Jean, McNeese State | Sr. | 13.1 | 8 |
| Other Leaders: Trina Roberts, Georgia Southern, Jr., 68.2 field-goal percentage (1 in 1982); Val DePaola, Boston U., Sr., 87.2 free-throw percentage (1). | | | |
| Current Win Streaks: Louisiana Tech 15, Detroit 7, Rutgers 4, Michigan State 4. | | | |
| Division II | | | |
| Scoring | 1983 Class | 1982 Avg. | 1982 Rank |
| Donna Hammond, Cal-Riverside | Sr. | 27.9 | 1 |
| Michelle Byas, Alabama A&M | Jr. | 26.1 | 2 |
| Karen Turnquest, Florida International | Sr. | 23.4 | 4 |
| Belinda Arterberry, Chapman | Jr. | 22.3 | 6 |
| Beverly Reed, Livingston | Jr. | 22.1 | 7 |
| Rebounding | 1983 Class | 1982 Avg. | 1982 Rank |
| Francine Perry, Quinnipiac | So. | 22.7 | 1 |
| Norma Knight, Norfolk State | Sr. | 18.6 | 2 |
| Kay Goodwin, Texas A&I | Jr. | 15.3 | 4 |
| Mary Kay Lynch, Gannon | So. | 13.9 | 6 |
| Rossiland Rogers, Hayward State | Jr. | 13.6 | 7 |
| Other Leaders: Janice Washington, Valdosta State, Jr., 62.7 field-goal percentage (3 in 1982); Kelly Legler, Southern Oregon State, So., 89.8 free-throw percentage (1). | | | |
| Current Win Streaks: Cal Poly-Pomona 10, St. Anselm 5. | | | |
| Division III | | | |
| Scoring | 1983 Class | 1982 Avg. | 1982 Rank |
| Mary Beth Bowler, King's (Pa.) | Sr. | 25.7 | 1 |
| Jody Imbrie, Grove City | Sr. | 24.8 | 3 |
| Judy Pearson, Babson | So. | 23.5 | 4 |
| Terese Kwiatkowski, Worcester Tech | Sr. | 22.7 | 5 |
| Eva Pittman, St. Andrews | Jr. | 22.4 | 6 |
| Rebounding | 1983 Class | 1982 Avg. | 1982 Rank |
| Carla Gadsden, Jersey City State | Jr. | 21.4 | 1 |
| Tina Shaw, Bishop | Jr. | 17.1 | 2 |
| Deidre Stauffer, Heidelberg | So. | 16.3 | 3 |
| Lillian Goree, Susquehanna | So. | 16.1 | 4 |
| Kim Smith, Wilkes | So. | 15.8 | 5 |
| Other Leaders: Terese Kwiatkowski, Worcester Tech, Sr., 61.6 field-goal percentage (1 in 1982); Becky Yoder, Albright, Sr., 84.2 free-throw percentage (2). | | | |
| Current Win Streaks: CCNY 6, Elizabethtown 4, Mary Washington 4, Stockton State 4. | | | |
| (Note: NCAA women's basketball statistics were compiled only for those teams that reported regularly during the 1981-82 season.) | | | |

Broncos prepare for title defense in Division II

If Cal Poly-Pomona feels like a marked team this winter, there is good reason.

The Broncos return their top six players from last year's squad, which romped to the NCAA Division II Women's Basketball Championship. During the tournament, no one could come within 13 points of coach Darlene May's club, which polished off Tuskegee, 93-74, in the finale.

"Potentially, we should be even better this season," May said. "The talent is there."

That may be bad news for the rest of the division. There are, however, plenty of teams that would like a shot at the Broncos' title. That title will be determined March 24 and 26 in Springfield, Massachusetts, when the final four get together for a common-site championship with the Division II men's finalists.

Representatives of seven conferences with automatic qualification, at least one team from each of the division's eight regions and nine at-large entries will make up the 24-team field for the championship. Here's a look at each of those conferences and the eight regions:

California Collegiate

Top Teams—Chapman, 23-5 record in 1981-82, three starters returning; California-Riverside, 17-9, five; Cal Poly-Pomona, 29-7, five; Cal Poly-San Luis Obispo, 21-12, three. Other teams in conference—Dominique Hills State, Los Angeles State, Northridge State.

Names and Notes—Belinda Arterberry, the sixth-leading scorer in the division last year (22.3 points per game), is back to lead Chapman. She will get help from veteran guards Heather Grayburn and Rhonda Faulkner. Donna Hammond-Mares is back at California-Riverside, where she will be defending her division scoring title (27.9 ppg). She will be joined by fellow all-conference performer Liz Lattimer (11.7 ppg). Cal Poly-Pomona will defend its national title with the same tough inside-outside combination it used last year in center Carol Welch (17.5 ppg, 8.2 rebounds per game) and guard Jackie White (16.3 ppg). Lisa Ulmer (13.1 ppg, 7.3 rpg) is another key returnee. Cal Poly-San Luis Obispo will have to find a replacement for all-America Laura Buchning, the No. 5 scorer in the division last season. The return of forwards Sherri Rose (9.9 ppg, 6.7 rpg) and Carolyn Crandall (9.4 ppg) will help.

Central Intercollegiate

Top Teams—Hampton Institute, 21-12, three; Johnson C. Smith, 13-12, five; Norfolk State, 19-6, four; Virginia Union, 18-5, five. Other teams in conference—Bowie State, Elizabeth City State, Fayetteville State, Livingstone, North Carolina Central, St. Augustine's, St. Paul's, Shaw, Virginia State, Winston-Salem State.

Names and Notes—Virginia Union and Norfolk State both received bids to last year's NCAA Division II championship. Virginia Union bowed out in the first round to Mount St. Mary's, which then knocked off Norfolk State in the second round. Virginia Union again will be able to count on forward Paris McWhither and guard Maria Nicholson, while Norfolk State will look to Norma Knight (6-0), senior, center, 16.0 ppg, 18.6 rpg. Hampton Institute incurred heavy graduation losses, but center Carol Holland (9.6 ppg, 7.4 rpg) returns. Marsha Alexander (17.5 ppg, 11.0 rpg) and Odelia Johns (15.0 ppg) are the top returnees at Johnson C. Smith. Juniors Monique Biscoe (11.8 rpg) and Carolyn Tabron (11.6 rpg) will make Bowie State tough on the boards.

Missouri Intercollegiate

Top Teams—Central Missouri State, 20-9, three; Northeast Missouri State, 17-12, two; Northwest Missouri State, 16-13, five; Southeast Missouri State, 23-11, five. Other teams in conference—Lincoln (Missouri), Missouri-Rolla, Missouri-St. Louis.

Names and Notes—Central Missouri State moves to NCAA Division II after a successful run in AIAW Division I, including a national-tournament loss to 1982 AIAW champion Texas. Guard-forward Carla Eades (18.7 ppg, 6.8 rpg) should be a key for the Jennies. Northeast Missouri State is rebuilding after making it to the first round of NCAA postseason play last season. Particularly hard to replace will be center Carol Jarrard.

Northwest Missouri State hopes to contend for the league title behind the play of Diane Kloewer (12.9 ppg, 7.1 rpg) and guard Monica Booth (10.8 ppg, 166 assists, 66 steals). Southeast Missouri State will rely on Karen Vaughn (11.4 ppg) and Cindy Zadnick (11.0 ppg).

North Central

Top Teams—Nebraska-Omaha, 22-6, two; North Dakota State, 22-10, four; South Dakota, 14-10, three. Other teams in conference—Augustana (South Dakota), North Dakota, South Dakota State.

Names and Notes—Nebraska-Omaha lost a one-point game to Fort Valley State in the first round of NCAA play last season. Three starters are gone, but eight letter winners return, including Lisa Linthacum (13.4 ppg, 8.3 rpg) and Mary Henke (12.3 ppg). North Dakota State finished fourth in the AIAW Division II tournament last year and returns two leading performers in Kim Brekke (13.5 ppg, 10.9 rpg) and Shelley Oistad (12.2 ppg). Eight newcomers could have a big impact at South Dakota, where the top returnees are Karri Wallen (13.8 ppg) and Pam Olerich (9.8 ppg).

Northeast-Eight

Top Teams—Bentley, 19-6, three; St. Anselm, 19-3, five; Springfield, 23-3, three; Stonehill, 21-6, four. Other teams in conference—American International, Assumption, Bryant, Hartford.

Names and Notes—This could be one of the most competitive conference races in Division II, with Assumption (12-11, four) and Bryant (12-9, four) owning good credentials. Springfield and Bentley went head-to-head in the first round of last year's NCAA tournament, with Springfield advancing only to lose to Tuskegee in the next round. Bentley again will rely on all-America forward Alison Fay (18.9 ppg, 12.4 rpg). Springfield will count on all-conference forward Sharon Playdon (15.8 ppg, 11.3 rpg) to help take up the slack for graduated all-America forward Anita Thomas. St. Anselm is eligible for the league title for the first time this year and should become an immediate factor behind the play of Linda Dunn (19.2 ppg) and Rachel Jackson (11.4 ppg, 11.4 rpg). Stonehill has a pair of reliable veterans in Maryann Walsh (13.9 ppg) and Ann Mallory (13.6 ppg, 7.4 rpg).

Northern California

Top Teams—California-Davis, 12-16, five; Hayward State, 15-10, three; San Francisco State, 21-7, one. Other teams in conference—Chico State, Humboldt State, Sacramento State.

Names and Notes—The conference title chase could be tight, with defending champion San Francisco State rebuilding after earning an NCAA tournament bid last winter. The Gators will look to sophomore



Cal Poly-Pomona guard Jackie White

Trina Easley (9.0 ppg, 8.9 rpg) while rebuilding. Shawn Spangler (12.5 ppg, 5.5 rpg) is the top returnee at Hayward State. California-Davis will rely on team speed and forward Carol Reische (15.0 ppg, 10.0 rpg).

Southern Intercollegiate

Top Teams—Clark (Georgia), 15-11, three; Fort Valley State, 23-8, four; Tuskegee, 29-5, three. Other teams in conference—Alabama A&M, Albany State (Georgia), Benedict, Morris Brown, Savannah State.

Names and Notes—Clark and Tuskegee battled in the first round of the NCAA championship last year, with Tuskegee eventually advancing to a runner-up finish. Senior center Thelma Bogues (16.0 ppg, 10.0 rpg) again will be a pivotal player for Clark. Tuskegee will counter with a good inside game, centered around sophomore center Brelinda Copeland (11.0 ppg, 11.0 rpg) and junior forward Andrea Thomas (11.0 ppg, 9.0 rpg). Another dominating center in the league is Fort Valley State's Bonnie Sue Grant.

New England

Top Teams—New Haven, 13-13, four; Quinnipiac, 17-11, three. Others to watch—Central Connecticut State, Lowell, Merrimack, Southern Connecticut State.

Names and Notes—Teams from the Northeast-Eight figure to dominate this region, but several schools could enter the play-off picture. New Haven returns a veteran team led by Cathy Alston (15.8 ppg). Quinnipiac's Francine Perry had an outstanding freshman year that saw her lead the division in rebounding (22.7), finish fourth in field-goal percentage (62.2) and ninth in scoring (20.4).

East

Top Teams—Canisius, 26-5, three; Gannon, 17-8, five; Millersville State, 20-11, three; St. John Fisher, 24-4, four; West Chester State, 19-10, two. Others to watch—Adelphi, C.W. Post, Indiana (Pennsylvania), Lock Haven State, Mercyhurst, Slippery Rock State.

Names and Notes—Canisius put together a 22-game mid-season winning streak last season and again can depend on second team all-America center Mary Achramovitch (15.7 ppg, 10.3 rpg) and forward Kara Haun (13.9 ppg). Gannon figures to be led by Linda Hunley (14.2 ppg) and Mary Kay Lynch (14.2 ppg, 13.9 rpg). Lynch was the No. 6 rebounder in Division II last year. Darlene Newman (14.3 ppg, 8.8 rpg) and Amy Gipprich (11.5 ppg) are back at Millersville State, which finished fourth in last year's AIAW Division III championship. St. John Fisher hit 49.1 percent of its field-goal attempts last year (second in the division) and held opponents to a division-low 33.8 percent. Six-foot-five all-America center Robin Mortensen, who finished in the division's top 25 in scoring (17.9 ppg) and rebounding (11.5 rpg), returns to lead the Cardinals. West Chester State was hard hit by graduation, particularly in the back court, but center Heidi Hintz (8.6 ppg, 8.2 rpg) returns. Helen Wortman of Lock Haven State had an impressive freshman campaign. She was the No. 13 scorer in Division II (19.6) and 11th in rebounding (13.1). Tricia Mahoney of Mercyhurst is another top scorer from this region (18.4, No. 17 in the division).

South Atlantic

Top Teams—Belmont Abbey, 18-7, five; Charleston, 27-7, five; Davis

and Elkins, 18-10, four; Mount St. Mary's, 24-5, three. Others to watch—Morgan State, Navy, Pembroke State, Radford.

Names and Notes—Just in its third year, the program at Belmont Abbey could make an impact, led by Cissy Little (23.4 ppg, 10.3 rpg). Charleston won 18 straight games last year before losing in the first round of the NAIA national tournament. Denise Wentz (15.6 ppg, 11.9 rpg) and Beth Rist return to head an offense that was tops in the division last year (81.4).

Davis and Elkins again will challenge Charleston in the West Virginia Intercollegiate Athletic Conference, with all-conference selection Ellen Clemens (14.7 ppg) leading the way. Mount St. Mary's has some holes to fill from last year's NCAA Division II third-place team. Karla Green (11.9 ppg, 8.6 rpg) is a top returnee along with Crystal Woodard (166 assists).

South

Top Teams—Central Florida, 24-15, four; Florida International, 27-10, four; Florida Southern, 12-7, five; Valdosta State, 16-8, two. Others to watch—North Alabama, Rollins.

Names and Notes—Central Florida will have size (six players 6-0 or taller) and a veteran guard in Karen Harvey (171 assists), who helped lead the Lady Knights to the AIAW Division II quarterfinals last year. Florida International's Karen Turnquest was the division's fourth-leading scorer last season (23.4) and No. 13 rebounder (12.7) as a junior. Deidre Lane (14.6 ppg, 10.1 rpg) and Jody Kay (13.3 ppg) are back at Florida Southern. An eligibility problem may have cost Valdosta State an NCAA tourney bid last year, and there are some holes to fill this season. However, two standouts return in Sherri France (16.6 ppg) and Janice Washington (13.9 ppg). Mary Ann McDaniel (16.5 ppg, 12.0 rpg) will lead Rollins.

Great Lakes

Top Teams—Dayton, 10-17, four; Northern Kentucky, 23-6, one; Oakland, 25-5, five; Saginaw Valley State, 27-5, three. Others to watch—Butler, Georgetown (Kentucky), Grand Valley State, Kentucky State, Kentucky Wesleyan, Lake Superior State.

Names and Notes—Dayton again will be young (just one senior on the team) but can call on such experienced performers as Donna Burks (15.6 ppg). Northern Kentucky had major graduation losses from last season's club, which lost to Oakland in the opening round of the NCAA tourney. However, eight letter winners are on hand, including Nancy Dickman (14.7 ppg, 8.5 rpg), and they will be joined by a promising freshman class. Oakland got by Northern Kentucky and finished fourth in the 1982 NCAA Division II championship. Everyone returns from that team, and heading the list are Linda Krawford (21.0 ppg, 11.5 rpg) and Brenda McLean (14.4 ppg, 10.7 rpg). Saginaw Valley State finished third in the NAIA tourney last year and returns a pair of stars in Beverly Sanders (13.5 ppg, 9.8 rpg) and Lynette Royer (six assists per game).

North Central

Top Teams—Moorhead State, 16-9, four; St. Cloud State, 15-12, three; Southwest State (Minnesota), 16-9, three. Others to watch—Lewis, Mankato State.

Names and Notes—Northern Sun Conference rivals Moorhead State and St. Cloud State tied for the league title last year, with Southwest State and Mankato State a game behind. Moorhead State should be able to count on solid performances from all-

See Broncos, page 12

Division III title chase features new teams

It may be hard for the NCAA Division III Women's Basketball Championship to match last year's thrilling overtime final, won by host Elizabethtown, 67-66, over North Carolina-Greensboro. However, there is little doubt that this season's title chase may be even more competitive.

The division's championship field has been doubled from 16 to 32 teams, primarily because of an influx of former AIAW members. Five conference champions, at least one team from each of the division's eight regions and 19 at-large selections will be gunning for a spot in the final four March 18-19 at Clark University in Worcester, Massachusetts.

Here's a look at the Division III scene, first in each of the five conferences with automatic-qualification status and then in each of the eight regions:

Chicago-Metro

Top Teams—Carthage, 20-11 record in 1981-82, two starters returning; Concordia (Illinois), 15-10, two; Elmhurst, 20-8, four; North Central, 29-9, five. Other teams in conference—Carroll, George Williams, North Park, Wheaton.

Names and Notes—North Central was an AIAW Division III quarterfinalist last season. Keys for the Cardinals include Bonnie Hansen (6-1, senior, forward, 17.9 points per game, 10.3 rebounds per game), Brenda Sanders (6-0, senior, center, 16.2 ppg, 12.2 rpg) and Kim Wallner (5-6, junior, guard, 15.1 ppg, 19.5 assists). The Cardinals' 79.6 points-per-game scoring average ranked second in the division last year. Tina Conti (16.1 ppg) is the top returnee at Elmhurst, while Deb Lemke (13.2 ppg) will lead a rebuilding Concordia squad. The Chicago-Metro Conference is in its first year.

Dixie

Top Teams—Christopher Newport, 16-10, three; North Carolina-Greensboro, 25-3, four; North Carolina Wesleyan, 8-12, four; St. Andrews, 17-8, one; Virginia Wesleyan, 10-10, three. Other teams in conference—Greensboro, Methodist.

Names and Notes—North Carolina-Greensboro garnered second-place honors in last year's inaugural NCAA Division III Women's Basketball Championship. The only graduation loss for the Spartans was leading scorer and rebounder Carol Peschel. Key returnees include Jody Mangus (senior, forward, 13.2 ppg), Michele Blazevich (junior, center, 11.7 ppg, second in nation with 59.8 field-goal percentage) and Sherry Sydney (sophomore, forward, 11.4 ppg, 7.3 rpg). Christopher Newport was a first-

round loser to Elizabethtown in NCAA tournament play last season. Leading the Lady Captains will be Benitta Coker (14.4 ppg, 8.4 rpg). St. Andrews, a first-round tournament loser to North Carolina-Greensboro last year, will rebuild around Eva Pittman (22.4 ppg, 13.3 rpg).

Jersey

Top Teams—Kean, 18-12, eight returning letter winners; Rutgers-Camden, 22-3, three returning starters; Stockton State, 13-8, three; Trenton State, 18-9, four. Other teams in conference—Glassboro State, William Paterson.

Names and Notes—Kean advanced to the AIAW Division III final 16 last year and again will be led by Kathleen Starling (junior, forward, 14.6 ppg, 8.2 rpg). Dawn Kinghorn (10.5 ppg), JoAnn Zwiebel (11.1 ppg) and Candy Kaschak (10.1 ppg) are back at Trenton State, which lost to Elizabethtown in the second round of the 1982 NCAA championship. Terry Cole (23.3 ppg) and Monica Cummings (11.4 rpg) return at Rutgers-Camden. Valerie Brown (16.6 ppg) is the top returning scorer at Stockton State. This is the conference's first year of play.

Massachusetts State College

Top Teams—Salem State, 16-11, five; Worcester State, 14-8, four. Other teams in conference—Fitchburg State, Framingham State, North Adams State, Westfield State.

Names and Notes—Sue Richard (11.5 ppg) and Nancy Marticio (10.5 ppg, 7.7 rpg) are the top returnees at Salem State, where a big freshman class should add depth.

Middle Atlantic

Top Teams—Albright, 11-8, five; Elizabethtown, 26-1, three; Scranton, 17-11, four; Susquehanna, 21-4, five; King's (Pennsylvania), 17-8, four; Widener, 19-7, four. Other teams in conference—Delaware Valley, Dickinson, Drew, Fairleigh Dickinson-Madison, Franklin & Marshall, Gettysburg, Juniata, Lebanon Valley, Lycoming, Moravian, Muhlenburg, Upsala, Ursinus, Western Maryland, Wilkes.

Names and Notes—Page Lutz (17.0 ppg) and Peggy Longo (9.6 ppg, 8.2 rpg) will be the keys to Elizabethtown's NCAA Division III title defense. Replacing graduated center Bev Hall is the Blue Jays' main concern. Scranton was an NCAA Division III quarterfinalist last year and again will count on Melanie Bibak (5-11, forward, 11.8 ppg) and Anne Crossin (6-1, center, 11.4 ppg, 9.0

ppg). The return of 1981 all-America guard Fran Harkins, who sat out the 1982 season, also is a plus. Susquehanna also advanced to last year's NCAA quarterfinals and returns all five starters, including Debbie Yeaster (16.8 ppg) and Lillian Goree (16.1 rpg). Widener was the MAC's fourth NCAA tournament qualifier last year, losing to Trenton State in the first round. Kim Faulkner (12.2 ppg, 8.3 rpg) returns to lead the Crusaders. Mary Beth Bowler is back at King's, where she led the division last year with a 25.7 scoring average.

Northeast

Top teams—Brandeis, 14-3, five; Clark (Massachusetts), 22-7, five; Colby, 23-4, four; Eastern Connecticut State, 12-11, three; Rhode Island College, 18-6, three; Worcester Tech, 14-9, four. Others to watch—Lyndon State, Nichols, Norwich, Plymouth State, St. Joseph's (Maine), Southern Maine, Trinity (Connecticut), Williams.

Names and Notes—Clark finished fourth in last year's NCAA Division III championship and will host this year's final four. Margie O'Brien (19.4 ppg, 11.6 rpg) again will trigger the Cougars' attack. Christine Donilon (15.8 ppg) hit the 1,000-point plateau as a junior last year at Rhode Island College, setting a school record. Terese Kwiatkowski of Worcester Tech is the division's fourth-leading returning scorer (22.7 ppg) and topped the nation in field-goal percentage last winter (61.6). Colby is coming off the school's best season in history (one that included a 73-69 win over Clark); however, the White Mules will not participate in NCAA postseason basketball competition. Eastern Connecticut State will turn to promising freshmen in an effort to replace last year's top two scorers. Fran Frei (20.0 ppg) is the top returning scorer at Brandeis. Norwich's Mary Greenan was the division's 10th-leading scorer last year (21.2 ppg).

East

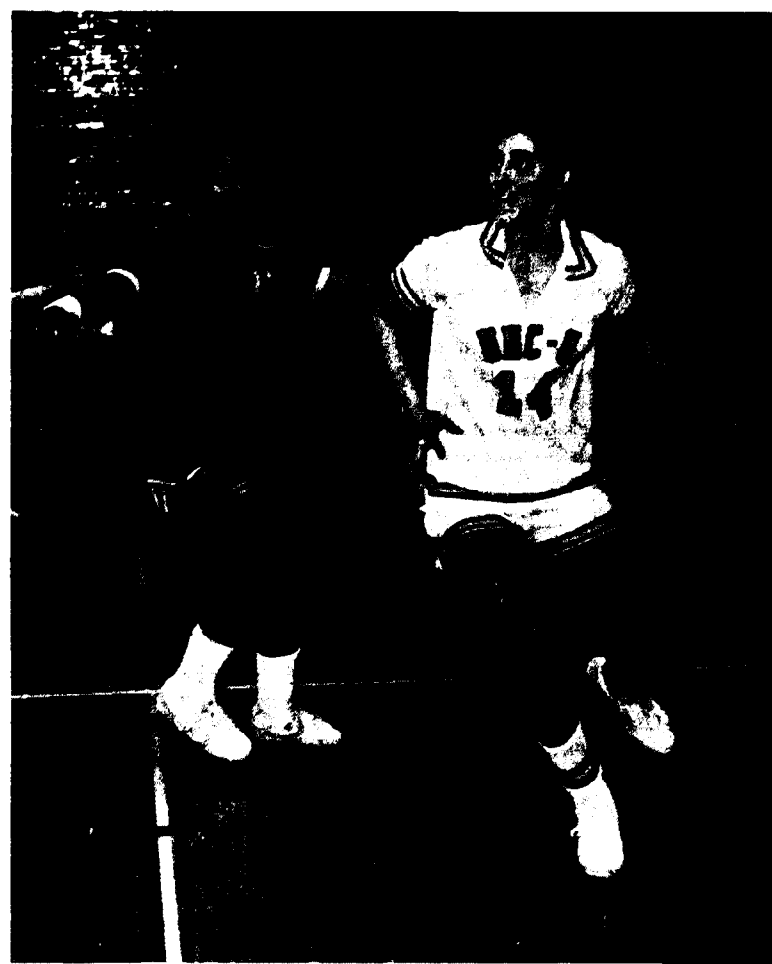
Top Teams—Hartwick, 23-3, four; Manhattanville, 23-8, two; Rochester, 23-9, four. Others to watch—Buffalo, CCNY, Hamilton, New Paltz State, Rensselaer.

Names and Notes—Hartwick was undefeated during the 1982 regular season and returns eight letter winners, including Sally Gangell (21.7 ppg, 12.8 rpg). Manhattanville represented this region in last year's NCAA tourney but fell to Scranton in the first round. The Valiants graduated four of their top six scorers and will rely heavily on Laura Dieckhoff (12.2 ppg) and Sue Gols (10.7 rpg). All-America forward Jody Lavin is gone at Rochester, but Kristan Radak (13.2 ppg, 11.1 rpg) returns. CCNY had the division's best scoring defense last year, giving up just 46 points per game.

Mid-Atlantic

Top Teams—Pittsburgh-Johnstown, 20-3, four; Grove City, 19-5, three. Others to watch—Allegheny.

Names and Notes—Undoubtedly the toughest region in Division III with four Middle Atlantic Conference teams and Grove City (a first-round loser to Augustana) all receiving bids to the 1982 NCAA championship. Pittsburgh-Johnstown has moved from Division II, where it was a first-round overtime loser to Norfolk State in last season's NCAA tourney. Lenore Shimkus (13.7 ppg), Maureen Lat-therner (13.3 ppg) and Sue Shimkus (13.0 ppg) should give the Mountain Cats a balanced attack, while LuAnn Ketter (7.0 rpg) hits the boards. Jody Imbrie, the No. 3 scorer in the division last year (24.8 ppg), is back at Grove City. The Wolverines were third in the nation last year in rebound margin (15.3).



Wendy Engelmann (right) returns for North Carolina-Greensboro

Atlantic

Top Teams—Bethany, 12-7, three; Frostburg State, 15-7, four; Ohio Northern, 17-7, four; Wooster, 18-5, five. Others to watch—Marietta, Otterbein, Salisbury State, Wittenberg.

Names and Notes—Bethany won the Penwood West title last year and returns two leading performers in Carol Koellner (10.0 ppg, 7.7 rpg) and Robyn Thompson (9.0 ppg). Frostburg State dropped a three-point game to Susquehanna in the opening round of last year's NCAA tournament. The Bobcats return a pair of all-state performers in Mary Carol Jackson (14.4 ppg, 12.1 rpg) and Billie Boddie (13.1 ppg, 12.0 rpg). Ohio Northern faces a tough schedule that includes a number of Division I opponents, but the return of center Robin Patterson (15.4 ppg, 9.3 rpg) should help. Kris Leslie (11.2 ppg) figures to be a key performer for Wooster.

South

Top Teams—Bridgewater (Virginia), 17-13, four; Knoxville, 19-5, four; Mary Washington, 20-6, five. Others to watch—Fisk, Lane, Lynchburg, Sewanee, Southwestern (Tennessee).

Names and Notes—Bridgewater was an AIAW Division III quarterfinalist in 1982 and returns a pair of all-stars in Wanda Morris (12.3 ppg) and Debbie Litten (10.7 ppg, 10.2 rpg). Knoxville again can lean on sharp-shooting Jackie Moore (16.3 ppg) and Cheryl Thorne (14.7 ppg). Mary Washington had a finger in almost every Division III statistical category last year: rebound margin (second, 16.7), scoring defense (third, 48.3), scoring margin (second, 21.8), field-goal defense (sixth, 34.5), scoring offense (12th, 70.1) and won-lost percentage (ninth, .769). Lane's Carlos Adkisson was the ninth-leading scorer in Division III last year with a 22.0 average.

Great Lakes

Top Teams—Albion, 15-8, five; Alma, 17-7, five; St. Norbert, 15-9, four; Wisconsin-Oshkosh, 18-4, four. Others to watch—DePauw, Wisconsin-La Crosse, Wisconsin-Stevens Point, Wisconsin-Stout.

Names and Notes—Alma ran up a respectable record last year with 10 freshmen on the squad. Now sophomores, players like Sue Spagnuolo (16.7 ppg, 11.3 rpg) and Terri Carvey (12.4 ppg) should benefit from a year's experience. Albion will be led by Cathy Bachinski (12.9 ppg). Center Cathy Tryon (18.1 ppg, 11.6 rpg) and guard Sue Vielbig (13.4 ppg) give Wisconsin-Oshkosh a good inside-outside punch.

Central

Top Teams—Augustana (Illinois), 19-7, four; Cornell College, 14-8, five; Illinois Benedictine, 16-3, five; Millikin, 11-6, five; Simpson, 17-9, four. Others to watch—Coe, Central (Iowa), William Penn.

Names and Notes—Augustana and Millikin earned 1982 NCAA tournament berths from this region. Augustana dropped a second-round game to Clark, while Millikin fell in the first round to Pomona-Pitzer. Dawn Crosby (18.7 ppg), the leading scorer in school history, and Deb Rogiers (11.3 ppg, 8.7 rpg) are back to lead Augustana. Veteran guard Tami Sender (18.9 ppg) and Jodi Foster (14.8 ppg) should supply the scoring for Millikin, while Lisa Alexander (9.6 rpg) is a force inside. Katie Haviland (14.0 ppg, 10.1 rpg) is the leading returnee at Cornell. All-conference selections Rita Schulz (18.0 ppg) and Judy Yost (12.0 ppg) will trigger Illinois Benedictine's attack. Lauri Sankey (17.7 ppg, 9.6 rpg) and Annette Christensen (16.1 ppg) are back at Simpson.

West

Top Teams—Bishop, 16-9, four; Pomona-Pitzer, 25-4, five; St. Olaf, 19-6, four; St. Thomas, 20-9, five. Others to watch—California-San Diego, Colorado College, Concordia (Minnesota), Minnesota-Morris, Stanislaus State, Whittier.

Names and Notes—Bishop's Tina Shaw (22.4 ppg, 17.1 rpg) is among the division's top returning scorers and rebounders. Pomona-Pitzer finished third in last year's Division III championship. All-America Carol Ferren (18.3 ppg) again should lead the Sagchens, along with Bronwyn Hand (9.4 rpg). The graduation of career scoring leader Karen Stromme may leave a big gap in St. Olaf's attack. Concordia won the AIAW Division III title last year.

Division I

Continued from page 7

Washington State entered, a name change was necessitated. The identity of the winner should be familiar. California, which was eliminated from the AIAW competition surprisingly early, should fare better this year. Oregon State is a contender, while Oregon will have to learn if there's life after Bev Smith.

The Western Collegiate Athletic Association, one of the tougher conferences in the country, sent three teams to nationals last year. Many expected a fourth—UCLA—to be there also, but the Bruins foundered on hard times.

This year the Bruins are back but, unfortunately, so are Southern California, Long Beach State and Arizona State—all of which are better than last season. In many places, Southern California is the national choice as well as the conference choice. Long Beach State will cause the Women of Troy problems but how severe depends on whether freshman Becky Hagerdon

recovers from an injury fast enough.

Arizona State made its debut in the Top 20, finishing 18th, and advanced to the NCAA Midwest semifinals. The Sun Devils should continue to build on that success. Stanford makes its debut in the conference this year after past competition in the NorCal, but the Cardinals will have to play the role of spoilers along with San Diego State and Fullerton State.

The only other conference in the West is the Mountain West, a new group that should have Montana as its titlist. Independents are in short supply to the point of almost being nonexistent. Down the road, Nevada-Las Vegas might return to better days, while Hawaii has squired Jerry Busone, a former assistant to Marianne Stanley at Old Dominion, to build the Rainbow Wahines' fortunes.

In retrospect to our theme for the year, the women's basketball season usually has been over before it has begun. This time, the season won't be over till it's over.

Familiar teams in Division III soccer field

A quick glance at the list of qualifiers for the 1983 NCAA Division III Men's Soccer Championship turns up a lot of familiar names.

Defending champion Glassboro State is back. So are Brandeis, Ohio Wesleyan and Scranton, all of which advanced to last year's final four. Perennial powers such as Elizabethtown, Wheaton and Cortland State also are in the 24-team field.

Ironically, none of them is the division's top-ranked team (as of October 23). That honor goes to surprising Plymouth State.

With nine starters back from last year's 12-6-1 squad, Plymouth State coach Gerd Lutter expected improvement. What no one predicted is that the Panthers would sink past the division's traditional powerhouses and into the No. 1 ranking.

"The team is getting better every game," Lutter said. "We're all

together, and we know what we want to do."

Very simply, that translates into winning the Division III title. The Panthers have taken five cracks at the championship, most recently in 1980, but never have advanced past the quarterfinals.

Just how far the Panthers can advance this fall will depend, in part, on the play of standout goalie Chris Rasmussen and junior midfielder Steve Clark.

NATIONAL COLLEGIATE CHAMPIONSHIPS THE SECOND CENTURY

Scranton returns basically the same team that was a 2-1, four-overtime

loser to Glassboro State in last year's championship game. Meanwhile, Glassboro State and Ohio Wesleyan successfully have rebuilt their final-four teams of 1981. Glassboro coach Dan Gilmore had to replace six starters from last year's championship squad; a number of players have stepped in, including redshirt forward Pat Lacroix.

This year's championship format has been altered somewhat. There will not be a final four. Instead, there will be a single-elimination competition to a final two teams, which will meet November 27 on the home field of one of the finalists.

Here is a look at the field for the 1982 Division III Men's Soccer Championship, with season records in parentheses:

New England—Plymouth State (15-0) vs. to be determined; Brandeis (15-1) vs. Babson (11-3-1); November

6-7 at Babson College in Babson Park, Massachusetts.

South-New Jersey—North Carolina-Greensboro (14-3) vs. Lynchburg (10-2-5); Kean (11-4-1) vs. Glassboro State (14-4-1); November 6-7 at Kean College in Union, New Jersey.

New York—Rochester Tech (13-1-2) vs. Buffalo State (13-1); Cortland State (12-2) vs. Binghamton State (10-2-1); November 6-7 at Binghamton, New York.

Great Lakes—Bethany (12-1-1) vs. Denison (10-4); Ohio Wesleyan (13-1-3) vs. Hope (11-3-2); November 5-6 at Ohio Wesleyan University in

Delaware, Ohio.

Far West-Midwest—Wheaton (15-3-2) vs. Colorado College (9-7-3); MacMurray (12-4-1) vs. Claremont-Mudd-Scripps (11-2-3); November 5-6 at Wheaton College in Wheaton, Illinois.

Pennsylvania-Maryland—Scranton (15-4) vs. Moravian (9-5-1); Elizabethtown (14-3-3) vs. Messiah (13-1-4); November 5-6 at Elizabethtown College in Elizabethtown, Pennsylvania.

(Note: The winners of the New York and Pennsylvania-Maryland regions will receive third-round byes.)

North Carolina tries to rebound in first women's soccer tournament

Everyone in women's collegiate soccer circles is breathing a little easier. It seems North Carolina is not invincible after all.

After putting together a 29-game winning streak that included the 1981 AIAW national championship, the Tar Heels finally came down to earth earlier this month, losing a pair of 2-1 games to Missouri-St. Louis and Cortland State in a tournament at Central Florida.

Despite those losses, North Carolina could be among the 12 teams in the inaugural NCAA Women's Soccer Championship when first-round action gets under way this weekend. The field, which was to be selected today, will include at least one representative from each of four regions, with the top four seeds receiving first-round byes. The semifinals and finals will be played November 20-21 at the University of Central Florida in Orlando.

The wins by Missouri-St. Louis and Cortland State over North Carolina thrust those two teams into the championship picture. It also stirred hopes for a number of other schools, particularly Central Florida, which lost 1-0 to North Carolina in last year's AIAW finals. In fact, all three losses on the

Knights' 1981 slate (11-3 overall) were at the hands of the Tar Heels.

Hoping to exercise its home-field advantage, Central Florida will try to retain the form that has led to an 8-0-2 record this fall. Two other undefeated teams (as of October 26)—Missouri-St. Louis (12-0-3) and California (5-0)—could end up doing battle in the West region, while Connecticut (12-0-1) should receive a berth in the Northeast.

But, you can bet that none of them has forgotten about North Carolina. Coach Anson Dorrance's squad still figures to be a factor behind the play of all-Americans Dori Kovancan (stopper) and Stephanie Zeh (forward).

Here is a rundown on the teams under consideration for the 1982

NCAA Women's Soccer Championship, with season records as of October 26 in parentheses:

New England—Boston College (10-2-2), Harvard (6-4-2), Keene State (10-2-1), Massachusetts (11-3), Plymouth State (10-2-2), Springfield (8-3-1).

Northeast—Brown (8-3), Connecticut (12-0-1), Cortland State (6-4-3), Hartwick (8-2-2), Princeton (8-1-1), Rochester (12-2-1), St. John Fisher (11-2-1).

South-Mideast—Central Florida (8-0-2), Cincinnati (10-4), George Mason (12-1-2), North Carolina (11-2), Wisconsin (11-1-2).

West—California (5-0), Carleton (11-3), Colorado College (11-2), Missouri-St. Louis (12-0-3).

Wittenberg will be eligible

Wittenberg University's eligibility for NCAA national rankings and postseason football competition has been restored by the NCAA, effective October 26.


Wittenberg had been declared ineligible in September when it was discovered school officials failed to fill in a date on a certification of eligibility form the Association requires. The institution resubmitted the document with a formal letter appealing the earlier ruling.

The Tigers, twice winners of the NCAA Division III championship, have a 6-1 record this season.



Wheaton's Walker Humphries (left)

Budget-Master Bleacher System



Lets you start small but... **THINK BIG**

Start with one or more low-cost 5-row sections and add on as budget permits. Up to 25 rows high and any length, using just 4 basic frames (plus planks, guard rails, braces, stairways as required). Easy to assemble and move. Bleachers conforming to any code priced on request. Call or write for details.

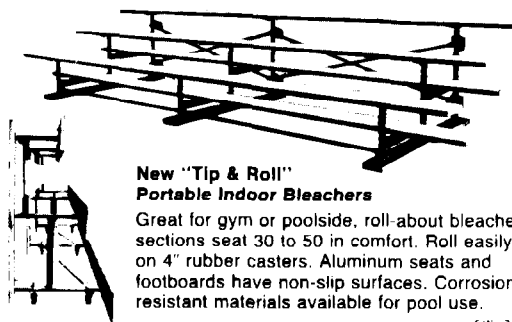
SAFWAY

SAFWAY STEEL PRODUCTS

P.O. Box 1991 • Milwaukee, WI 53201

(414) 258-2700

A FIGGIE INTERNATIONAL COMPANY



New "Tip & Roll"
Portable Indoor Bleachers

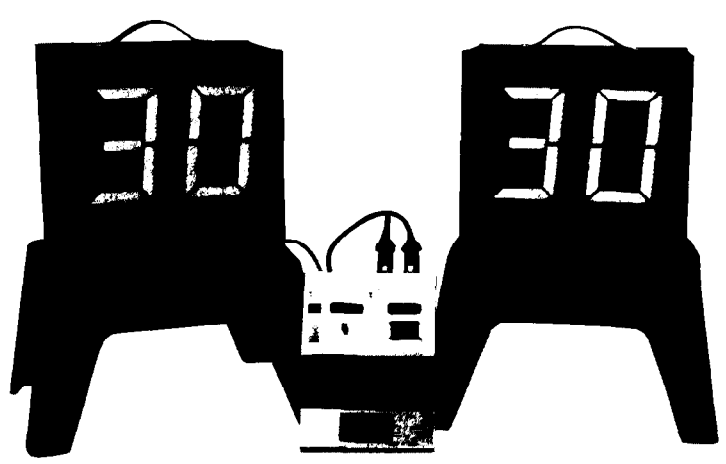
Great for gym or poolside, roll-about bleacher sections seat 30 to 50 in comfort. Roll easily on 4" rubber casters. Aluminum seats and footboards have non-slip surfaces. Corrosion-resistant materials available for pool use.

C.W. 318R

MARIC, Inc.

manufacturer of

SPORTS TIMING SYSTEMS



GAME CLOCKS

for
Basketball, Football,
Soccer, WaterPolo,
Wrestling.

SHOT CLOCKS

for
Basketball & WaterPolo

TRACK TIMERS

PACECLOCKS

(AC, DC, Analog & Digital)
for
Swimming, Track &
Fitness Training.

Our digital systems incorporate the latest innovations in electronic timing. They use highly visible, large, 7-segment, electromagnetic readouts, not lights. This makes them crisp and clear close in and easily readable at wide viewing angles and distances up to 400 feet. All models are fully user programmable, some are battery powered. Rugged all aluminum housing, audible signal, time-in-time-out, automatic reset.

12755 E. Western Ave., Garden Grove, CA 92641; (714) 898-9125

The NCAA News

NCAA Record

DIRECTOR OF ATHLETICS

JAMES LESSIG resigned at Kansas to become commissioner of the Mid-American Conference. Lessig, formerly the AD at Bowling Green State, had been at Kansas 5 1/2 months. **DEL SHANKEL** appointed interim AD at Kansas, effective November 1. Shankel, a biology professor, served in similar capacity prior to the appointment of Lessig.

PRIMARY WOMAN

ATHLETIC ADMINISTRATOR
ANDREA SEGER named acting director of intercollegiate athletics for women at Ball State. Seger had been an assistant professor and assistant trainer at the school.

ASSOCIATE DIRECTOR OF ATHLETICS

LOUISE O'NEAL appointed associate director of athletics in charge of all intercollegiate programs at Dartmouth. O'Neal has spent the past three years as Dartmouth's assistant AD for women's sports and facility management.

COACHES

Baseball assistant—**ANDY REPLOGLE**, a former pitcher for the Milwaukee Brewers, hired at Arkansas-Little Rock. He also will coach the cross country team.

Men's basketball—**KEN POPE** named interim coach at Buffalo, where he has been an assistant since 1976. **ROD ZENTNER**, an assistant the last six years at Wisconsin-Oshkosh, named head coach at Western State. **CHARLES BROWN** chosen at Jersey City State. An alumnus of Jersey City State, Brown has been a successful high school coach in New Jersey.

Men's basketball assistants—**PAUL DRAKE** selected at Cleveland State. Drake has been an assistant basketball coach and head baseball coach the past two years at Hartwick. **PHIL ROSEMURGY** resigned at San Jose State. **STEVE PATTERSON**, a center on three national championship teams at UCLA (1969-1971), named at Sonoma State.

Women's basketball—**ALICE SCHMIDT**, a four-year standout at Montclair State and the 1980 Wade Trophy winner, named at Jersey City State.

Women's basketball assistants—**MARY DONOGHER**, a former player at Buffalo State, named at Buffalo. **JAN RYAN** named at Bridgeport, where she was a four-year performer for the Knights.

Men's cross country—**ANDY REPLOGLE** hired at Arkansas-Little Rock, where he also will coach the baseball team.

Men's fencing—**ARNOLD MESSING**, an all-America in 1968 and a member of the U.S.

national team in 1971, appointed at his alma mater, CCNY.

Football—**WAYNE "MIKE" SIMPSON** resigned at St. Cloud State, effective at the end of the season. He will remain on the staff as an assistant coach and assistant AD. He is in his 11th season as head coach at St. Cloud State. **LEROY SMITH** resigned, effective immediately, at Kentucky State. **RON MITCHELL**, director of athletics, will direct the team the remainder of the season. Smith was in his 13th year as head coach at the school.

Men's ice hockey—**MIKE GIBBONS** named interim coach at Bemidji State. An assistant coach at Bemidji State last year, Gibbons is stepping in for **BOB PETERS**, who is on a year's sabbatical.



Men's ice hockey assistant—**GREG SHARLOW** named at Potsdam State.

Men's soccer assistant—**MICHAEL LYONS**, formerly an assistant at Stockton State, hired at Notre Dame.

Women's swimming—**PAM MAURO** appointed at George Washington. She has been an assistant the past two years at West Virginia.

Men's tennis—**BOB COMMACK** named at Hunter. **BOB NEUMANN** named at St. Peter's. He will retain his duties as director of intramurals and aquatics.

Women's tennis—**LOUIE MEEHAN** hired at Appalachian State, replacing **JIMMY SMITH**, who is returning to a full-time teaching position.

STAFF

Athletic trainers—**JOE SHELTON** appointed at Greensboro. **TOM MCGORY**, head trainer at Cornell for 15 years, has announced his retirement, effective December 23. **GARY VITTI** hired at Portland. He had been a graduate assistant at Utah.

CONFERENCES

JAMES LESSIG named commissioner of the Mid-American Conference. Lessig had been director of athletics at Kansas and previously was AD at Bowling Green State.

NOTABLES

JAMES CISZEK, director of athletics at Lowell, has been appointed to a one-year term as vice-president of the Eastern Collegiate Hockey Association and to a three-year term on the executive council of the Eastern College Athletic Conference. **CLYDE H. WITMAN**, director of athletics at East Stroudsburg State, also has been appointed to the ECAC executive council and has been reelected to an unprecedented second two-



Former UCLA cage star Steve Patterson hired at Sonoma State

Dartmouth has promoted Louise O'Neal to the post of associate AD

year term as president of the Eastern Intercollegiate Wrestling Association. **BILL LAM**, who guided North Carolina to a fifth-place finish at the 1982 NCAA Division I Wrestling Championships, named national coach of the year by the National Wrestling Coaches Association. The following have been selected as assistant coaches for the 1984 U.S. Olympic swimming teams, pending final approval by the U.S. Olympic Committee: **RON BALLATORE**, men's coach at UCLA; **RAY BUSSARD**, men's coach at Tennessee; **GEORGE HAINES**, women's coach at Stanford; **FRANK KEEFE**, men's and women's coach at Yale; **RICHARD QUICK**, women's coach at Texas; and **RANDY REESE**, men's and women's coach at Florida. The U.S. team will be headed by Alabama's **DON GAMBRIL**. The swimming coaching staff also has been selected for the 1983 Pan American Games. Haines will head the staff and be assisted by **SKIP KENNEY**, men's coach at Stanford; **EDDIE REESE**, men's coach at Texas; **NORT THORNTON**, men's coach at California; and **JOHN URBANCHEK**, men's coach at Michigan.

DEATHS

STAN SIEJA, 70, Princeton's fencing coach for 36 years, died October 17 of a stroke. **FRANK CARVER**, former director of athletics at Pittsburgh and a member of the NCAA Executive Committee (1964-66) and NCAA Council (1967-71).

NCAA POLLS

Division III Football

The top 15 teams in NCAA Division III football through games of October 23, with season records in parentheses and points.

| | |
|------------------------------|--------|
| 1. Baldwin-Wallace (7-0) | 60 |
| 2. West Georgia (6-0) | 55 |
| 3. Bishop (6-1) | 49 |
| 4. Augustana (Ill.) (6-0) | 48 |
| 5. Wagner (6-0-1) | 46 |
| 6. Franklin & Marshall (6-0) | 33 |
| 7. La Verne (5-0) | 30 |
| 8. Wabash (7-0) | 28 |
| 9. St. Lawrence (6-0) | 24 1/2 |
| 10. Swarthmore (6-0) | 24 |
| 11. Montclair State (5-0-2) | 14 1/2 |
| 12. Warburg (6-1) | 14 |
| 13. Hope (6-1) | 13 |
| 14. Wisconsin-Stout (7-1) | 12 1/2 |
| 15. Plymouth State (7-0) | 10 1/2 |

Other teams receiving votes (listed in alphabetical order): DePauw, Trenton State and Widener.

Division I-AA Football

The top 20 teams in NCAA Division I-AA football through games of October 23, with season records in parentheses and points.

| | |
|---------------------------------|----|
| 1. Eastern Kentucky (6-0) | 80 |
| 2. Louisiana Tech (6-1) | 73 |
| 3. Tennessee State (6-0-1) | 71 |
| 4. Delaware (6-1) | 70 |
| 5. Northeast Louisiana (6-2) | 60 |
| 6. Holy Cross (6-1) | 59 |
| 7. Eastern Illinois (7-0-1) | 56 |
| 8. Colgate (5-1) | 55 |
| 9. South Carolina State (6-2) | 51 |
| 10. Jackson State (6-2) | 42 |
| 11. Furman (5-2) | 38 |
| 12. Tennessee-Chattanooga (5-2) | 35 |
| 13. Ohio (5-2) | 26 |
| 14. Pennsylvania (5-1) | 25 |
| 15. Nicholls State (5-2) | 21 |
| 16. Grambling State (5-2) | 19 |
| 17. Miami (Ohio) (5-2) | 13 |
| 18. Idaho (5-2) | 13 |
| 19. Western Michigan (4-2-1) | 12 |
| 20. James Madison (5-2) | 11 |

Division II Football

The top 10 teams in NCAA Division II football through games of October 23, with season records

in parentheses and points.

| | |
|-----------------------------------|----|
| 1. Southwest Texas State (7-0) | 60 |
| 2. North Dakota State (8-0) | 56 |
| 3. California-Davis (6-0) | 52 |
| 4. Northeast Missouri State (6-1) | 46 |
| 5. Jacksonville State (5-1) | 45 |
| 6. Santa Clara (6-1) | 41 |
| 7. Virginia Union (5-1) | 35 |
| 8. Edinboro State (7-0) | 24 |
| 9. Livingston (6-1) | 22 |
| 10. North Alabama (6-1) | 20 |

Division III Women's Volleyball

The top 15 teams in NCAA Division III women's volleyball through games of October 25, with season records in parentheses and points.

| | |
|--------------------------------------|-----|
| 1. California-San Diego (17-8) | 119 |
| 2. Juniata (33-2) | 115 |
| 3. Sonoma State (12-5) | 108 |
| 4. La Verne (15-8) | 102 |
| 5. Western Maryland (25-3) | 92 |
| 6. Macalester (32-7) | 90 |
| 7. Ithaca (18-5) | 84 |
| 8. Grove City (26-6) | 70 |
| 9. Nebraska Wesleyan (18-6) | 68 |
| 9. Eastern Connecticut State (29-6) | 68 |
| 11. Wisconsin-La Crosse (28-6) | 65 |
| 12. Elmhurst (24-7) | 47 |
| 13. Colorado College (12-19) | 40 |
| 14. North Carolina-Greensboro (25-8) | 35 |
| 15. Stanislaus State (9-6) | 30 |

Division I Field Hockey

The top 20 teams in NCAA Division I field hockey through games of October 25, with season records in parentheses and points.

| | |
|-------------------------------------|-----|
| 1. Iowa (17-0) | 140 |
| 2. Old Dominion (9-1) | 133 |
| 3. Connecticut (12-2) | 126 |
| 4. Temple (11-2) | 119 |
| 5. Penn State (11-4) | 109 |
| 6. Delaware (9-4-1) | 106 |
| 7. California (10-2) | 100 |
| 8. Northwestern (13-4) | 89 |
| 9. Virginia (11-2) | 87 |
| 10. Massachusetts (10-2-1) | 75 |
| 11. San Jose State (10-3) | 68 |
| 12. Princeton (8-2) | 60 |
| 13. North Carolina (10-5) | 56 |
| 14. Rutgers (11-8) | 52 |
| 15. Maryland (10-6) | 47 |
| 16. Southwest Missouri State (15-3) | 33 |
| 17. Springfield (9-4) | 27 |
| 18. Davis and Elkins (9-2) | 21 |
| 19. Stanford (6-4) | 14 |
| 20. Harvard (8-2) | 6 |

See Record, page 12

The NCAA News

The Market

Readers of The NCAA News are invited to use The Market to locate candidates for positions open at their institutions, to advertise open dates in their playing schedules or for other appropriate purposes.

Rates are 35 cents per word for general classified advertising (agate type) and \$17.60 per column inch for display classified advertising. Orders and copy are due five days prior to the date of publication for general classified space and seven days prior to the date of publication for display classified advertising. Orders and copy will be accepted by telephone.

For more information or to place an ad, call 913/384-3220 or write NCAA Publishing, P.O. Box 1906, Mission, Kansas 66201.

Positions Available

Athletic Director

Director of Athletics. The University of Kansas is seeking a director of intercollegiate athletics. Required qualifications include demonstrated skills in business and personnel administration, demonstrated organizational skills; demonstrated commitment to and knowledge of the rules and regulations of the National Collegiate Athletic Association, and Association of Intercollegiate Athletics for Women and the values and goals of major athletic conferences; and a baccalaureate degree. Applications should be sent to Del Brinkman, c/o Jane Johnson, 223 Strong Hall, The University of Kansas, Lawrence, Kansas 66045. The deadline for receipt of applications is November 19. The position becomes available December 15. An equal opportunity/affirmative action employer.

Promotions

Athletic Promotions Director, Old Dominion University. Primary responsibilities

include: Developing creative strategies and marketing approaches resulting in increased revenue production (includes season and individual game ticket sales, group ticket sales, and advertising sales in the sports of men's and women's basketball, soccer, wrestling and baseball); producing publications promoting ticket sales for the sports mentioned previously; coordinating the spirit areas; and providing administrative support and knowledge to the athletic ticket office. **Qualifications:** Minimum of 3 years experience at the university (or equivalent) level in the area of ticket promotion and marketing; demonstrated management and administrative ability; bachelor's degree required. Salary is commensurate with qualifications. Closing date for applications is November 12, 1982. Send resume, official transcripts, and 3 letters of recommendation to: Dr. Jim Jarrett, Athletic Director, Old Dominion University, Norfolk, VA 23508-8502. An affirmative action/ equal opportunity employer.

Academic Counselor

Athletic Academic Counselor. To assist in a program of counseling and academic/career planning for scholarship student-athletes. Minimum of master's degree with academic preparation or experience in fields of human behavior and a strong English grammar background. To receive full consider-

ation, application, resume and three letters of recommendation should be received by December 1, 1982. Submit to: Dr. Dale O. Roark, c/o Athletic Department, Oklahoma State University, Stillwater, Oklahoma 74078. Minority and women candidates are encouraged to apply. An equal opportunity employer.

Football

Head Football Coach. To be responsible for recruiting, counseling and coaching of student-athletes; and selection, supervision and leadership of coaching personnel. Position requires a master's degree and college coaching experience. Experience in personnel supervision and budget management is preferred. Deadline date for receipt of completed applications is November 15, 1982. To be considered for the position, send letter of application, resume, transcripts and three letters of recommendation to: EEO Office, Roy Hall 103, Northwestern State University, Natchitoches, Louisiana 71457. Northwestern is an equal opportunity employer.

Are you missing The News?

If your copy of The NCAA News isn't getting to you when it should, or if it isn't getting there at all, let us know. We don't want you to miss any of the action of college sports.

Attach your mailing label in the space below and note any corrections, or fill in the blanks below. Send it to: **Circulation Department, The NCAA News, P.O. Box 1906, Mission, Kansas 66201.**

Attach old mailing label here

Name _____
Institution _____
Address _____
City _____
State _____ Zip _____

Open Dates

Football. Frostburg State College is seeking an opponent for October 29, 1983, home or away. Must be a Division III school. Contact Ken Kutler, 301/689-4471.

Football. The University of Southern Colorado is seeking a Division II football opponent for October 8, 1983. Willing to work out home and home series. Call Bob Mullen, director of athletics, 303/549-2711.

Men's Football. Need home date for September 10 or September 17, 1983. Towson State University (Division II). Phone Terry Wanless, 301/321-2759.

Call The Market
913/384-3220

POSITIONS AVAILABLE UNIVERSITY OF ARIZONA

ASSISTANT DIRECTOR FOR STUDENT-ATHLETE SERVICES—Responsible for supervision of the athletics Academic Coordinator and associated academic counseling program; maintenance of academic records for all athletes; coordination of enrollment and registration of all athletes; development of student-athlete handbook and new student orientation program; other duties and responsibilities as assigned.

Qualifications: Masters' Degree or higher preferred; successful candidate must have an awareness and understanding of problems unique to the college student-athlete; demonstration of administrative and management skills; knowledgeable in NCAA rules and regulations; background in coaching at the collegiate level is preferred.

ASSISTANT DIRECTOR OF MEDIA RELATIONS—Responsible for coordination of all areas of communications including print and electronic media; organization and management of the sports information office; development of appropriate publications, news releases, radio and television tapes concerning all intercollegiate sports at the University; budgeting for publicity and news releases, media guides and other materials pertaining to the office of sports information; preparation of documents detailing rights and fees relative to all types of radio and television broadcasting; other duties and responsibilities as assigned.

Qualifications: Baccalaureate Degree or higher; excellent managerial and organizational skills are required; experience in sports journalism and/or radio-TV is preferred; must demonstrate considerable knowledge and understanding of network and cable television production and marketing.

Application Procedures

Interested candidates should submit a letter of application for the position desired along with a resume and three (3) letters of recommendation to:

Cedric W. Dempsey
Director of Athletics
University of Arizona
Tucson, Arizona 85721

The closing date for applications is November 15, 1982, or until the position is filled.

The Market can work for you, too.

Has your institution or conference made use of the NCAA's classified advertising section yet? Others have, and have found that it is well worth the investment.

Join those advertisers today in The Market. For more information, call Dave Seifert at 913/384-3220.

Statisticians

Continued from page 1
the programs are run through the computer, which makes another audit. This process is repeated as the wave of games in the various time zones of the country roll toward the West Coast. The computer codes, or points out, any errors on the printout. For example, if individual offense totals do not

equal the team's total-offense tabulation, the computer will code the printout to signify that erroneous information has been submitted for that category or that an error was made by a key-punch operator. Wright and McNeal correct the errors they can and run the programs through the computer until as many

variances as possible have been eliminated. By the time the final game is called in about 3 a.m. Sunday from the West Coast, the statistics of approximately 95 games in Divisions I-A and I-AA will be processed by Wright and his crew. After more than 12 hours, the initial phase of the numbers game is completed.

Five hours later, Michael F. Bowyer, an administrative assistant in the statistics department, enters the game. Bowyer conducts what is called a "super purification" of the statistics gathered by Wright and McNeal. Bowyer examines the computer printouts to verify that individual statistics equal team statistics and that the statistics are as accurate as possible.

The statistics for Divisions I-A and I-AA teams then are transmitted via computer to the Associated Press and United Press International terminals. Other publications such as The NCAA News, The Sporting News and Sports Illustrated, as well as the major television networks, also have the capability of receiving statistics.

The final computer run takes approximately three hours and usually is completed by noon Sunday. Less than 12 hours after the completion of the last game, the statistics of Division I-A and I-AA football teams are available to the media.

Division II and Division III statistics are gathered by mail and are processed by Wednesday. The statistics are checked for accuracy in much the same way Divisions I-A and I-AA statistics are verified. The statistics then are compiled and ranked by computer no later than Thursday afternoon.

Although the statistics-gathering

process has been refined and improved over the years, the system is not without pitfalls. Despite the various checks for accuracy, discrepancies ultimately will be solved only by contacting the host sports information directors to solve problems that occurred the preceding Saturday or Sunday.

"When I get the composite of all statistics, we go into the next phase, another purification," Boda said. "Variances can't be totally eliminated from Saturday night. I'll make as many as 50 calls on Mondays contacting schools with variances to clear them up. I like to get the variances cleared up as early in the week as possible so sports information directors can have the official statistics for their advance releases on the game next weekend."

Boda, who is recognized as one of the foremost authorities on college football statistics, also must play the role of referee sometimes. When sports information directors disagree about a particular statistical total, Boda usually is called in to mediate.

"There's been an unwritten rule since I started in 1949 that the host sports information director is responsi-

ble for the game's official statistics," Boda said. "You can't overrule the home SID or it would be chaos."

"If I'm asked for my version of how to score a play after it is described to me, I'll give it. But I won't overrule the home SID. I'll make an appeal for cooperation and remind them that someday they will be the visiting team."

In addition to processing statistics for teams in all four divisions, the NCAA statistics department also develops the football notes page for The NCAA News and maintains more than 2,000 cards on individual careers.

"It's a constant updating process," Boda said. "If someone calls in Monday morning and wants to know how many career yards Herschel Walker has, we can get it."

"You have to stay on top of it. If you don't go after variances and let them pile up, it could have an effect on national statistics."

"I like to think of each Sunday as the start of a new football season. We'll come in Sunday and by Thursday all the statistics are verified. Then, the next Sunday, another season starts."

Newsworthy

q: For four straight years (1959-1962), a New Mexico State running back led Division I in rushing. Three different individuals were involved. Can you name two of them?

Testimony ends in AIAW suit

Both sides completed their cases Friday in the antitrust lawsuit filed against the NCAA by the Association for Intercollegiate Athletics for Women in the U.S. District Court for the District of Columbia.

Judge Thomas P. Jackson gave both parties 45 days to prepare final proposed findings of fact in the case. After the 45-day period, the judge will schedule a date for both parties to present their closing arguments.

There has been no indication of when the judge will issue a decision in the case.

Kentucky Wesleyan adds football

The Kentucky Wesleyan College board of trustees has voted to bring back football to the Owensboro campus after a 52-year absence.

The football program will be reinstated in an attempt to offset projected declining revenues from a predicted decrease in college enrollment in the United States of up to 15 percent in the next decade.

By adding football and playing in NCAA Division III competition, college officials hope to attract male students who previously might have bypassed the institution.

Mike Pollio, director of athletics, said freshmen would play an abbreviated schedule in 1983 and a regular schedule in 1984. He said a selection committee is being organized to locate a head coach, one full-time assistant and three part-time assistants.

College President Luther W. White III said, "If you figure the costs against the projected gate receipts, then football will not be a cost-effective program. But the students we will attract will be full-paying students. If I didn't think it would bring us money, we wouldn't do it at all."

Williams named to hall of fame

Dave Williams, golf coach at the University of Houston since 1952, has been inducted into the Texas Golf Hall of Fame.

Williams has led the Cougars to 14 NCAA titles, including the 1982 championship this past summer. Williams' 14 titles are the most by any coach as he surpassed Denver skiing coach Willy Schaeffler with the 1982 championship.

Bill Rogers, one of Williams' prize pupils and former winner of the British Open, also was inducted into the hall of fame, along with Kathy Whitworth, Jay Hebert, Joe Black and Billy Maxwell.

Three Bulldog players reinstated

Three players have been reinstated to the Louisiana Tech University football team, following a ruling by the NCAA Subcommittee on Eligibility Appeals.

Earlier, the Southland Conference placed Louisiana Tech on two years' probation and penalized the institution three scholarships from this year's recruiting season.

The penalties resulted from a small cash-incentives plan briefly used two years ago for players on special teams.

Louisiana Tech had asked the NCAA to rule on whether three players from that team were still eligible.

ECAC discontinues press guides

The Eastern College Athletic Conference has voted to discontinue its press guides because of increasing costs after 32 years of publication.

The action was taken at the conclusion of the conference's recent convention at Cape Cod, Massachusetts.

A statement from the conference office said, "The ECAC Finance Committee, recognizing a rising deficit associated with the guides (surpassing \$10,000 in 1981-82), has recommended that the guides be discontinued."

Robert M. Whitelaw, ECAC commissioner, said that because of lack of guide financial support by the ECAC membership, media, sponsors and general public, no alternative existed other than to discontinue the service, commencing with the 1982-83 basketball and ice hockey press guides.

a: Pervis Atkins (1959), Bob Gaiters (1960) and Jim Pilot (1961-1962).

Record

Continued from page 11

Division II Field Hockey

The top 10 teams in NCAA Division II field hockey through games of October 26, with season records in parentheses and points.

1. Lock Haven State (10-1).....40
2. Chico State (7-5).....35
3. Bloomsburg State (13-3-1).....33
4. C. W. Post (12-5).....28
5. Lowell (10-3).....24
6. Kutztown State (10-1).....20
7. Keene State (17-3).....14
7. Bemidji State (12-5).....14
9. Mount St. Mary's (10-4).....7
10. Northern Michigan (10-5).....5

Division I Women's Volleyball

The top 20 teams in NCAA Division I women's volleyball through games of October 26, with season records in parentheses and points.

1. San Diego State (20-2).....159
2. Hawaii (12-0).....153
3. Pacific (15-2).....144
4. Stanford (16-5).....135
5. Cal Poly-San Luis Obispo (18-4).....129
6. Southern California (13-5).....120
7. Arizona State (23-8).....112
8. Arizona (17-8).....102
9. Brigham Young (26-3).....94
10. Purdue (18-0).....88
11. UCLA (14-8).....83
12. San Jose State (14-5).....69
13. Nebraska (19-4).....67
14. Texas A&M (20-4).....51
15. California-Santa Barbara (17-9).....46
16. California (19-6).....36
17. Pepperdine (14-8).....29
18. Texas (18-11).....26
18. Northwestern (16-8).....26
20. Southern Illinois (18-10).....10

Women's

Continued from page 1

promote a few specific women's championships. Targeted promotions will continue this year in women's gymnastics, volleyball and basketball.

"We're trying to build awareness in the community for those three championships," Berkey said. "We are taking events that can be the most successful and making them truly successful. Other championships will benefit from those successes."

Specific programs, based on last year's results, will include billboard advertising in Salt Lake City for the Division I women's gymnastics meet and newspaper advertising in Stockton, California, for the Division I women's volleyball championship. In addition, special television features will be produced for use in the Norfolk, Virginia, market in conjunction with the Division I women's basketball finals.

Berkey is even more enthusiastic about the new concepts that will be initiated this year to promote women's sports in general—a new idea recently generated by the NCAA.

"We are going to continue to make the public aware of women's athletics," she said. "We want to create a better appreciation for women athletes and to bring the level of expertise of women professionals to a higher plane."

Frank

Continued from page 1

serve as NCAA president, and he earlier was the Association's secretary-treasurer for two years.

A native of New York, Frank is the first Lincoln graduate to serve as president of the university, which has an enrollment of about 2,600. He attended Lincoln on an athletic scholarship, served as an assistant basketball coach and later was head basketball coach for four years.

Frank held several positions at the City University of New York before returning to Lincoln to become president. He said he will spend the next several weeks considering future career options.

Track standards approved

Minimum qualifying standards for the 1983 National Collegiate Indoor Track Championships for both men and women have been approved by the NCAA Executive Committee.

The common-site championships will be held March 11-12 in the Silverdome in Pontiac, Michigan.

In its August meeting, the Executive Committee approved both the common-site concept and the minimum standards. It also approved the recommendation of the Special Committee on Championships Standards to limit the field to 20 athletes per event, except that 24 competitors may be permitted in the 60-yard dash and hurdles

and the number of relay teams will be limited to 12.

The games committee was authorized to add or delete competitors, using the qualifying standards as minimums, to reach the specified number of entries per event.

The 1983 minimum indoor qualifying standards are:

| Men's Standards | | |
|-----------------|---------|------------|
| | FAT | MT |
| 60 yards | 6.22 | 6.0 |
| 55 meters | 6.22 | 6.0 |
| 440 yards | 47.50 | 47.3 |
| 400 meters | 47.20 | 47.00 |
| 600 yards | 1:09.80 | 1:09.5 |
| 500 meters | 1:02.79 | 1:02.5 |
| 880 yards | 1:51.00 | 1:50.8 |
| 800 meters | 1:50.30 | 1:50.1 |
| 1,000 yards | 2:09.40 | 2:09.2 |
| 1,000 meters | 2:23.70 | 2:23.5 |
| Mile | 4:03.20 | 4:03.0 |
| 1,500 meters | 3:45.00 | 3:44.8 |
| 2-mile | 8:40.00 | 8:39.8 |
| 3,000 meters | 8:01.00 | 8:00.8 |
| 60-Y hurdles | 7.29 | 7.0 |
| 55-M hurdles | 7.29 | 7.0 |
| Mile relay | 3:12.30 | 3:12.1 |
| 1,600-M relay | 3:11.20 | 3:11.0 |
| 2-mile relay | 7:29.80 | 7:29.6 |
| 3,200-M relay | 7:27.00 | 7:26.8 |
| High jump | | 7'2 3/4 |
| Long jump | | 24'11" |
| Triple jump | | 51'10" |
| Pole vault | | 16'10" |
| Shot put | | 60'2" |
| 35-pound weight | | 61'10 1/4" |

| Women's Standards | | |
|-------------------|----------|---------|
| | FAT | MT |
| 60 yards | 7.02 | 6.8 |
| 55 meters | 7.02 | 6.8 |
| 60 meters | 7.62 | 7.4 |
| 440 yards | 56.02 | 55.9 |
| 400 meters | 55.72 | 55.6 |
| 600 yards | 1:23.64 | 1:23.5 |
| 600 meters | 1:34.64 | 1:34.5 |
| 880 yards | 2:13.14 | 2:13.0 |
| 800 meters | 2:12.14 | 2:13.0 |
| 1,000 yards | 2:33.24 | 2:33.1 |
| 1,000 meters | 2:47.44 | 2:47.3 |
| Mile | 4:50.14 | 4:50.0 |
| 1,500 meters | 4:30.14 | 4:30.0 |
| 2-mile | 10:24.74 | 10:24.6 |
| 3,000 meters | 9:39.74 | 9:39.6 |
| 60-Y hurdles | 8.04 | 7.8 |
| 60-M hurdles | 8.74 | 8.5 |
| Mile relay | 3:49.34 | 3:49.2 |
| 1,600-M relay | 3:48.14 | 3:48.0 |
| 2-mile relay | 9:00.84 | 9:00.7 |
| 3,200-M relay | 8:57.84 | 8:57.7 |
| Long jump | 5.92 | 19'5" |
| High jump | 1.78 | 5'10" |
| Shot put | 15.34 | 50'4" |
| Pentathlon | 3,786 | 3,826 |

South Central

Top Teams—Air Force, 17-10, five; Howard Payne, 14-10, three; Sam Houston State, 27-5, three. Others to watch—Angelo State, Denver, Northern Colorado, Regis, Southwest Texas State, Texas A&I.

Names and Notes—What could be an exciting race in the Lone Star Conference could go a long way toward determining the play-off representatives from this region . . . The return of Sherry Pfister (19.8 ppg) could make Sam Houston State the early favorite in the Lone Star . . . Howard Payne also has a high-scoring veteran in Janna Eisenbach (21.2 ppg, 10.7 rpg) and also returns Jennifer Hollins (13.3 ppg) . . . Sophomore center Mary Manning (15.1 ppg, 9.7 rpg) could make Air Force a factor in this region . . . Kay Goodwin, the leading rebounder in Division II last year (15.3) will lead Texas A&I's challenge.

West

Top Teams—California Collegiate Athletic Association and Northern California Athletic Conference schools should dominate this region. Others to watch—Eastern Montana, Puget Sound.

Next in the News

A partial listing of legislative proposals for the 1983 NCAA Convention.

Council-sponsored criteria for Division I membership.

A preview of the men's basketball season in all divisions.

A preview of the Division II men's soccer championship.

A story on the mailing of the delegate-appointment form.

A preview of the Division I field hockey championship.