

The NCAA News

September 27, 1982, Volume 19 Number 19

Official Publication of the



National Collegiate Athletic Association

Appeals court panel stays Oklahoma City ruling

The 10th Circuit Court of Appeals last week granted a stay of a previous Federal-court ruling that would have nullified the 1982-85 NCAA Football Television Plan.

The three-judge panel in Denver issued the stay the same day (September 22) the request was filed. The circuit court asked both the NCAA and

the plaintiffs—the University of Oklahoma and the University of Georgia Athletic Association—to file further information concerning the stay and in preparation for the beginning of oral arguments, perhaps as early as November 15. The court indicated extensions would not be granted.

Regarding the stay, the circuit court

gave the plaintiffs until Wednesday to file a response to the granting of the stay. Oklahoma officials immediately attempted to have the stay lifted, and the court denied that request. The NCAA was asked to file, also by Wednesday, a status report on existing 1982 game contracts and the effect upon them of having or not having a stay.

Further, the appeal process was expedited so the circuit court could hear arguments shortly after November 15. The NCAA's appeal brief now is due October 13, the plaintiffs' answering brief is due November 3 and the NCAA's reply brief November 15.

The circuit-court panel that granted the stay was composed of Judges James E. Barrett, James K. Logan and Stephanie K. Seymour.

U.S. District Court Judge Juan C. Burciaga ruled September 15 in an Oklahoma City Federal court that the NCAA football television plan vio-

lated the Sherman Antitrust Act. Two days later, he denied a motion to stay his decision.

Burciaga's decision had opened the doors for NCAA member institutions to negotiate television rights to their own football games, irrespective of the appearance controls and other limitations in the NCAA television plan.

Attorneys for the Association had argued that the plan's restrictions were

See editorial, page 2

necessary to protect attendance, distribute television revenue and avoid the development of a college football elite. In seeking the stay before the circuit court, NCAA lawyers reiterated those arguments in their brief.

"The competitive balance would be destroyed, and the already successful, rich teams would become more successful and more affluent," Association attorneys stated in the brief. "All

the trial evidence demonstrated this, and the plaintiffs offered nothing to the contrary . . . instead, they admit that their only concern is to maximize their own individual financial gain."

The motion for a stay also argued against Burciaga's opinion that the NCAA had established a monopoly over college football television, citing ratings that indicated college football telecasts accounted for less than 2½ percent of the market shares for all sports programming. The NCAA disputed the Federal court's finding of price-fixing in the awarding of television contracts, saying there was "vigorous competition among the networks," and also contended that the judge erred in finding that the NCAA was not a voluntary association.

During the week that the television plan had been suspended by Burciaga's ruling, the only games televised were under the auspices of the

See Appeals, page 8



Minutemen's threat

Garry Pearson, senior tailback for the University of Massachusetts, is the leading rusher in Division I-AA this season. Statistics for all NCAA football divisions are published on pages 3-6.

Sunday TV football approved

The NCAA Council Friday approved a recommendation of the Association's Football Television Committee that member institutions be permitted on an individual basis to televise football games on Sundays during the duration of the NFL strike.

The Council emphasized that this would not be an NCAA program, but it believed the Association should make the opportunity available to its members if they wished to participate on Sundays. Each such member would negotiate for appearances with the networks carrying college football, ABC and CBS.

Both ABC and CBS were examining the concept as of press time. The networks hoped to begin coverage October 3, with a coin toss to be held to determine an alternating procedure for carrying the Sunday exposure.

Under the plan approved by the committee for the telecasts, only one exposure (which could include two games broadcast to different parts of the nation) by one network could be presented each Sunday.

The choice to appear on a Sunday exposure would rest solely with an

See Sunday TV, page 8

Connie Claussen, coordinator of women's athletics at the University of Nebraska, Omaha, has been appointed by the NCAA officers to serve as a Division II member on the NCAA Executive Committee.

Claussen replaces Mary M. Zimmerman, who left the University of South Dakota to become director of women's athletics at San Jose State University September 1. The replacement was necessary to maintain the Divisions II and III representation on the Executive Committee, as prescribed by the NCAA constitution.

A member of the NCAA Women's Softball Committee, Claussen is chair of the Division II softball subcommittee. She has been coordinator of women's athletics at Nebraska Omaha since 1973 and has been on the staff since 1963.

Following graduation from Omaha University (now Nebraska-Omaha) in 1961, Claussen served as a graduate assistant at Adams State College, where she received her master's degree in 1963 in physical education.

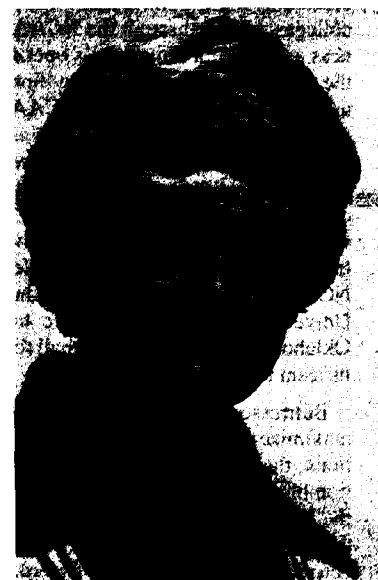
Claussen returned to Nebraska-Omaha in 1963 and served as the chair of the women's physical education department in 1964. In 1969, Claussen

started the women's athletic program at Nebraska-Omaha, with competition in softball, volleyball and basketball.

Claussen coached the softball and volleyball teams from 1969 to 1978, when she relinquished her coaching duties to devote full-time responsibilities to her role as coordinator of women's athletics. Claussen's 1975 softball team won the AIAW national championship.

A member of the hall of fame at Benson High School in Omaha, Claussen was the manager of the 1979 U.S. women's softball team that participated in the Pan American Games in San Juan, Puerto Rico. This was the first time for softball competition at the Pan American Games.

In May 1981, Claussen received the chancellor's medal from Nebraska-Omaha for outstanding contributions to the university and community.



Connie Claussen

Full enforcement procedure sought for women by '83-'84

The Special Committee on Legislative Review will recommend to the NCAA Council next month that the Association's full enforcement procedure be applied to women's athletics programs conducted under NCAA legislation.

Meeting in Kansas City September 20-21, the committee agreed that any women's program being conducted under NCAA legislation should be subject to the enforcement program beginning in the 1983-84 academic year. A program conducted under some other organization's rules would continue to be subject to the current Council policy, which enables the Eli-

gibility Committee to determine if an institution has violated those other rules and to declare an involved student-athlete or the institution's team ineligible for NCAA women's championships.

The committee noted that approximately 70 percent of all Division I members will conduct their women's programs under NCAA rules this year, with 60 percent or more doing the same in Divisions II and III.

In another major action, the committee decided not to propose limitations on contests or playing dates in each NCAA sport for consideration at

See Full enforcement, page 8

Select Committee plans meeting

The Select Committee on Athletic Problems and Concerns in Higher Education will hold its first meeting October 3-4 in Denver.

Authorized by the NCAA Council in April and appointed during the summer, the select committee is an independent commission established to study and propose solutions to the serious problems affecting college athletics. It includes seven college presidents and chancellors, two faculty athletic representatives, two directors of athletics, a head football coach, a head basketball coach and three members selected at large.

John P. Schaefer, president of Research Corporation, New York City, and executive director of the committee, said that the first meeting is intended to be an organizational session, with the committee establishing a timetable for its work and determining the specific topics and subtopics to be considered.

Among the subjects the committee will consider as possible future topics are:

- Erosion of institutional control of college athletics.
- Academic abuses exploited by college athletics.
- Distortion of financial resources to subsidize overly ambitious athletic programs.
- Outside funding of intercollegiate

CEOs in session

More than 50 chief executive officers of NCAA member institutions are in Kansas City today and tomorrow for the third annual NCAA-sponsored CEO meetings.

Agenda items, speakers and a listing of those chief executives planning to attend appeared in the September 13 and 20 issues of The NCAA News. A report on the discussions at the meeting will be featured in the October 4 issue.

athletic programs.

• Apparent increasing acceptance of rules violations as means of achieving athletic success, tending to blame violations upon the rules themselves rather than upon the violators.

• Excessive time and money spent on recruiting, and abuses in that process.

• Apparent despair among many chief executive officers and athletic administrators of correcting the "wrongs" in college athletics.

Schaefer emphasized that those items, which are listed on the agenda for the meeting, are merely suggested topics and that the committee is free to reject or modify any of those or to add additional topics for discussion at future meetings.

The committee is chaired by David P. Gardner, president of the University of Utah. The remainder of the committee was announced in the July 28 and August 25 issues of The NCAA News.

In the News

The NCAA Public Relations Committee has issued a set of guidelines for sports information directors concerning media relations. The guidelines were long overdue, according to guest columnist Bob Barnet of The Muncie (Indiana) Star 2

Division II and Division III football statistics through games of September 18 are compiled 6

The first NCAA polls in Division I-AA and Division II football and Division I field hockey are announced. Idaho State holds the lead in Division I-AA, while Southwest Texas State tops the Division II poll. Connecticut is ranked No. 1 in field hockey 8

Media guidelines helpful for all concerned

By Bob Barnett
The Muncie (Indiana) Star

In a move that was long overdue, the NCAA Public Relations Committee has issued a set of guidelines for sports information directors regarding media relations.

The announced purpose is to "encourage information directors to review the role of the media with each student-athlete," and the committee offered a list of suggestions "as poli-

cies that could develop better relations among the media, the student-athlete and the institution."

The guidelines were printed in the August 25 issue of The NCAA News.

I, personally, have no problems whatever with these guidelines for two groups of people who find it necessary to work together.

I am certain, however, that many of my comrades in journalism, print and electronic, will come up swinging.

Please do not lecture me on the rights of a free press. I have battled for those rights and will again. I am convinced that many problems involving free press are brought on by representatives of that free press who are convinced that these freedoms were handed down personally by God in stone-tablet form instead of having been inscribed carefully in the record by the men who framed the constitution of the United States. They were

guaranteeing a right that demanded responsibility.

It is my belief that those responsible for high school athletes should follow the lead of the college people in seeking to improve relations involving

reporter the right to talk to an athlete by himself and try for some "quotes" that everybody in town will not have.

The trouble with telephone interviews and college athletes, some only a few months out of high school, is that

Editorial

The startling significance of Federal Judge Burciaga's ruling in the suit brought by the Universities of Oklahoma and Georgia has largely been lost as the daily chronicles concentrate upon the immediate impact his decision might have upon the televising of college football in 1982. There have been expressions of confusion by the networks, deep concern by a number of the nation's leading athletic directors and joyous "vindication" by the leadership of the College Football Association (CFA).

The underlying importance of Judge Burciaga's decision, which now has been stayed by the 10th Circuit Court of Appeals, goes far beyond today's college football television arrangements and, when fully understood, should chill the souls of those who still believe that intercollegiate football should be an integral part of the educational programs of the respective sponsoring universities.

The plaintiffs in this lawsuit, Georgia and Oklahoma, essentially argued that it was illegal for the community of colleges, acting through the NCAA, to control the business aspects of a university's operation. In other words, the plaintiffs contended that by limiting the university's use of its property rights, the NCAA was interfering with the right of each NCAA member to exploit its property rights to generate the maximum revenues for the institution. The president of the University of Georgia told the court of serious indebtedness that he would like to retire with the added revenue that the university could generate from its business operations in athletics once freed of the NCAA's television controls, and the then president of the University of Oklahoma spoke to Judge Burciaga of Oklahoma's desire to use football receipts to build a magnificent university library.

Buttressed by their clients' arguments for the right to maximize income from the universities' business operations, the plaintiff's attorneys contended that the operation of major intercollegiate football was a business and the NCAA television plan was a per se violation of the antitrust laws of the United States. Thus, the NCAA's activities should not be considered under the "rule of reason" as generally has been applied to the activities of nonprofit, educational organizations. Judge Burciaga refused to rule, up front, a per se antitrust violation but allowed all the evidence to be presented and then ruled per se violations as well as "rule of reason" violations because the NCAA was interfering with a business enterprise and was in violation of the antitrust laws for a number of reasons, including limitations on output. The plaintiffs seemed elated, as did the CFA, which had arranged the original financing of the suit. Pride unfortunately tends to interfere with sound reasoning.

It was in 1976 that a consortium of colleges, along with the NCAA, expended a great deal of money and time on persuading the Internal Revenue Service that college football income from the sale of radio rights, television rights and game programs did not constitute unrelated business income and such revenues should not be subject to the Federal income tax. The key element in the extensive arguments which took place on this issue was that television rights, for example, should not be considered a separate "business" but a normal and natural extension of the activities taking place on the college campus and in the college stadium.

It does not take a great deal of imagination to speculate what the IRS position would have been if indeed the Federal courts of the land had ruled earlier that college football television (and probably other money-generating extensions of the game activity) is indeed a business enterprise. The present business taxes run up to a maximum of 46 percent on net revenues, and the \$250,000 that Oklahoma and USC envisioned from a quickie telecast under Judge Burciaga's ruling would hardly make a down payment on the Federal tax required from a CBS or ABC payment for a national game telecast.

The ripple effects of Judge Burciaga's thinking, however, do not stop there. If the colleges' pursuit of television dollars represents business activity under the laws of

the land, it seems that the various workmen's compensation commissions will be encouraged to rule that the players ("workers") who make possible the business income for the college are entitled, at a minimum, to workmen's compensation if injured in the line of duty. There have been incidents of this kind of approach over the years, the most recent being the case of Fred Rensing of Indiana State, Terre Haute, who has persuaded an Indiana court that as a college football player he is an employee for hire under state compensation rules. The case is on appeal and the NCAA has filed an amicus curiae brief, pointing out that college football indeed is an educational activity and not a business. It is comforting at least that the Oklahoma City plaintiffs are not there to argue their business philosophies.

Let us go on.

From time to time, there have been conversations as to the unionization of college athletes. In October of 1981, the NCAA Council distributed to the chief executive officers of a number of allied conferences a detailed analysis of developments in this area. Through the years, college management has felt secure that in the employment of students (e.g., student nurses in the university hospital), the college would not have to deal with unionization problems. There is considerable history to support that sense of confidence. This is a rather complicated field, and private institutions are subject to the policies of the National Labor Relations Board whereas state institutions are governed by state law and the United States Constitution.

Space does not permit a detailed analysis of the different approaches to possible unionization of college students, but generally speaking, the tradition has been that students employed by their educational institutions in capacities related to their courses of study are considered to be primarily students. Students employed by their educational institutions in positions unrelated to their courses of study are considered primarily employees; however, even then, if the students are concerned primarily with their studies rather than with their part-time employment, the conclusion generally has been that their interest in conditions of employment is not sufficient to warrant representational rights.

Based on the foregoing precedent, the managements of educational institutions generally have felt that an appeal for bargaining rights by labor organizations would not be successful. It seems to us that as long as the colleges place major emphasis on maintaining their intercollegiate athletic programs as an integral part of the overall educational process and assuring that a student-athlete is primarily a student, then efforts to unionize student-athletes probably will not be successful.

It would not take much to undercut this approach. Consider this sequence of arguments: (1) The Federal judiciary holds that the conduct of major intercollegiate football programs (at least ancillary activities such as television) is indeed a business activity subject to the antitrust laws; (2) student-athletes receiving athletically related grants-in-aid are in fact not primarily students and, under the particular conditions of "big-time" college athletics, do have a sufficient interest in their conditions of employment to warrant labor representational rights; (3) large "profits" being generated by football at some universities warrant a conclusion that participation in football is in fact "employment" of an economic importance justifying representational rights (also workmen's compensation and unemployment insurance), and (4) bonus arrangements in effect for the coaches of college football indicate a profit-sharing arrangement and therefore the players ("employees") are entitled to a share of the "profits."

Whereas Judge Burciaga agrees with the business concepts of the plaintiffs, the overwhelming majority of the members of the NCAA do not, and we most sincerely hope that the 10th Circuit Court of Appeals sides with the philosophy and thinking of the NCAA majority.

Columnary Craft

their athletes and the press. Because comprehensive programs for women athletes are comparatively new at the high school level, special attention should be given this area. All involved in sports need to know what the media needs and wants, and media representatives are obligated to do all in their power to make their sports contacts trouble free. There is rarely need for an adversary relationship among people of good will who are aware of what fellow workers are trying to do.

It is unfortunate that there are members of the media, print and electronic, who have sold their souls to sensationalism. The race to get something "exclusive" into the newspaper or on the 6 o'clock news has washed away many of the restraints taught by careful editors through the years. Among these restraints is the need for accuracy.

It is obvious that a high school or college athlete with a dozen microphones in his face and his ears ringing with questions needs help.

This is a good place, incidentally, to note that opinions expressed here do not concern professional athletes. These individuals, hopefully blessed with maturity along with those big paychecks, are strictly on their own. If they talk their way into trouble or make themselves look foolish, their sorrow will be muted by the purring of Mercedes engines as they drive home.

Surely this newsman does not believe that news involving college or high school athletes should be "managed" or dispensed solely in carefully monitored press conferences.

One of the guidelines is somewhat deceptive in that area.

It suggests that college athletic department people never agree to a telephone interview unless it is arranged by the sports information office.

I am quite sure that this is not an attempt to deny an enterprising

there is no guarantee that the voice on the telephone belongs to the individual whose name is offered. It is different when people talk face to face.

Any assistance that makes an athlete comfortable with legitimate representatives of the print and electronic media surely is valuable and worthwhile from the standpoint of the school.

No media representative whose professional equipment includes a sense of fairness and justice will quarrel with a program that will give the good journalist intelligent information and take away the advantage of fast-talking sharpies who would bully confused young people into making statements guaranteed to make themselves sound stupid, bitter or bigheaded.

College sports information people can help their athletes by explaining the kind of questions that might be asked and, most of all, the need for careful thought before answers are given. They should warn of the clamor of postgame interviews and the possibility of wrong interpretations.

They will be helping young people, many of whom are facing the news media on a regular basis for the first time.

Good media relations are valuable to college athletes who wish to move into professional sports or those who will find themselves in a marketplace in which mass communication is a vital part of day-by-day endeavor.

That extra effort outlined in NCAA guidelines will pay rich dividends.

Athletes are trained to protect themselves from injury in all sports. It is obvious that they also should be taught to protect themselves from harmful misunderstanding in their contacts with those in journalism.

Any journalist who cannot live with that kind of justice is not a journalist at all and does not belong in the profession.

Calendar

September 27	Insurance Committee and Competitive Safeguards and Medical Aspects of Sports Committee, Kansas City, Missouri
September 27-28	Chief Executive Officers meeting, Kansas City, Missouri
October 11-12	Divisions I, II and III Steering Committees, Kansas City, Missouri
October 13-15	Council, Kansas City, Missouri
November 8-11	Baseball Committee, Kansas City, Missouri
November 13	Division II Men's and Women's Cross Country Championships, St. Cloud, Minnesota
November 20	Division III Men's and Women's Cross Country Championships, Fredonia, New York
November 20	Division II Women's Field Hockey Championship, site to be determined
November 20-21	Division I Women's Field Hockey Championship, Philadelphia, Pennsylvania

The NCAA News

(ISSN 0027-6170)

Published weekly, except biweekly in the summer, by the National Collegiate Athletic Association, 1111 Avenue at 63rd Street, P.O. Box 1906, Mission, Kansas 66201. Phone: 913/384-3220. Subscription rate: \$15 annually. Second-class postage paid at Shawnee Mission, Kansas. Address corrections requested. Postmaster send address changes to NCAA Publishing, P.O. Box 1906, Mission, Kansas 66201.

Publisher Ted C. Tow
Editor-in-Chief Thomas A. Wilson
Managing Editor Bruce L. Howard
Advertising Director Wallace I. Renfro
The Comment section of The NCAA News is offered as opinion. The views expressed do not necessarily represent a consensus of the NCAA membership. An Equal Opportunity Employer.

The NCAA News

Football Statistics

[Through games of September 25]

Division I-A individual leaders

RUSHING						
CL	G	CAR	YDS	AVG	TD	YDSPG
ERNEST ANDERSON, OKLAHOMA ST.	SR	3	99	567	5.7	3
ERIC DICKERSON, SMU	SR	3	62	508	8.2	6
SAM DEJARNETTE, SO. MISS.	SO	4	117	620	5.3	6
DARRYL CLARK, TEXAS	SR	2	46	290	6.3	0
TOMMY DAVIS, IOWA STATE	SO	3	69	370	5.4	2
MIKE ROZIER, NEBRASKA	SO	3	51	362	7.1	3
CARL MONROE, UTAH	SR	3	71	354	5.0	1
MICHAEL GUNTER, TULSA	SR	3	37	345	9.3	1
ANTHONY EDGAR, HAWAII	SR	3	71	338	4.8	1
CRAIG JAMES, SMU	SR	2	56	222	6.0	1
LARRY MORIARTY, NOTRE DAME	FR	3	40	332	8.3	4
VINCENT JACKSON, AUBURN	SO	3	68	328	4.8	5
ROBERT LAVETTE, GEORGIA TECH	SR	3	50	321	6.4	4
DWAYNE LOVE, HOUSTON	SR	3	62	316	5.1	5
CYRUS LAWRENCE, VIRGINIA TECH	SR	2	41	210	5.1	2
PHIL CARTER, NOTRE DAME	SO	3	61	311	5.1	2
ETHAN HORTON, NORTH CAROLINA	SR	4	73	398	5.5	1
HAROLD HARMON, TEMPLE	SR	4	92	398	4.3	4
JOE MCINTOSH, N. C. STATE	SR	3	64	298	4.7	2
LAWRENCE RICKS, MICHIGAN	SR	3	71	290	4.1	2
DARRYL BOWLES, ARKANSAS	SR	3	77	288	3.7	2
TIM SPENCER, OHIO STATE	SR	3	50	287	5.7	2
ALFRED ANDERSON, BAYLOR	SR	3	74	287	3.9	2
HERSCHEL WALKER, GEORGIA	SR	3				

SCORING						
CL	G	TD	XP	FG	PTS	PTPG
DALTON HILLIARD, LSU	CL	2	5	0	30	15.0
CHUCK NELSON, WASHINGTON	SR	3	0	10	41	13.7
PAUL WOODSIDE, WEST VIRGINIA	SR	3	0	11	37	12.3
DAVID HARDY, TEXAS A&M	SR	3	0	13	37	12.3
CRAIG TURNER, ALABAMA	SO	3	6	0	36	12.0
ERIC DICKERSON, SMU	SR	3	6	0	36	12.0
JAMES MATTHEWS, WASHINGTON ST.	SR	3	6	0	36	12.0
MARTY LOUTHAN, AIR FORCE	SR	3	5	0	30	10.0
ALLAMA MATTHEWS, VANDERBILT	SR	3	5	0	30	10.0
CHRIS CASTOR, DUKE	SR	3	5	0	30	10.0
ROBERT LAVETTE, GEORGIA TECH	SR	3	5	0	30	10.0
CYRUS LAWRENCE, VIRGINIA TECH	SR	3	5	0	30	10.0
TONY HUNTER, MINNESOTA	SR	3	5	0	30	10.0
DENO FOSTER, CINCINNATI	SR	3	5	0	30	10.0
JOJO TOWNSELL, UCLA	SR	3	5	0	30	10.0
MIKE BASS, ILLINOIS	SR	4	0	14	38	9.5
JUAN BETANZOS, LSU	SO	2	0	13	29	9.5
JIM GALLERY, MINNESOTA	SR	3	0	16	28	9.3
MARK RUSH, MIAMI (FLA.)	SR	4	6	0	36	9.0
SAM DEJARNETTE, SO. MISS.	SO	4	6	0	36	9.0
MITCHELL BROOKINS, ILLINOIS	SR	4	6	0	36	9.0
BROOKS BARWICK, NO. CAROLINA	SR	3	0	12	27	9.0
LARRY MORIARTY, NOTRE DAME	SR	2	3	0	18	9.0

PASSING EFFICIENCY												
CL	G	ATT	CMP	PCT	INT	YDS	YDS/ATT	TD	PCT	PTS	TD	RATING
(MIN. 15 ATT. PER GAME)												
JOHN BOND, MISS. STATE	CL	4	62	34	54.84	2	323	75.0	12.0	5	8.06	176.6
DANNY BARRETT, CINCINNATI	SR	3	83	48	57.83	3	361	80.1	9.65	10	12.05	171.4
BEN BENNETT, DUKE	SR	3	83	55	66.27	0	00	756	9.11	6	7.23	166.6
MIKE HENSEL, MINNESOTA	SR	3	91	57	62.64	2	220	857	9.42	8	8.79	166.4
TODD BLACKLEDGE, PENN. STATE	SR	4	118	71	60.17	5	424	973	8.25	15	12.71	162.9
ALAN RISHER, LSU	SR	2	44	26	59.09	0	00	328	7.45	5	11.36	159.2
DOUG FLUTIE, BOSTON COL.	SR	3	97	55	56.70	3	309	877	9.04	7	7.22	150.3
JOHN ELWAY, STANFORD	SR	3	135	88	65.19	4	296	1122	8.31	8	5.93	148.6
MARLON ADLER, MISSOURI	SO	3	59	33	55.93	5	847	640	10.85	3	5.08	146.9
WAYNE PEACE, FLORIDA	SR	3	58	42	72.41	3	517	485	8.36	2	3.45	143.7
JEFF HOSTETLER, WEST VIRGINIA	SR	3	91	46	50.55	1	110	795	8.74	6	6.59	143.5
TURNER GILL, NEBRASKA	SR	3	88	35	55.56	1	159	476	7.58	5	7.94	142.0
ALAN COCKRELL, TENNESSEE	SO	3	84	54	64.29	3	357	645	7.68	5	5.95	141.3
TOL AVERY, N. C. STATE	SR	4	81	46	56.79	2	247	657	8.11	5	8.17	140.4
MARTY LOUTHAN, AIR FORCE	SR	4	63	37	58.73	4	635	564	8.95	3	4.76	136.9
GREG STEWART, EAST CAROLINA	SR	3	47	27	57.45	5	10.64	441	9.38	3	6.38	136.1
DEAN MAY, LOUISVILLE	SR	3	75	34	45.33	1	133	556	7.41	7	9.33	135.7
FRANK SEURER, KANSAS	SR	3	79	50	63.29	2	253	595	7.53	3	3.80	134.0
JIM KELLY, MIAMI (FLA.)	SR	3	81	51	62.96	1	123	585	7.22	3	3.70	133.2
JIM KELSO, TOLEDO	SR	4	95	55	57.89	3	316	794	8.36	3	3.16	132.4
STEVE PELLIER, WASHINGTON	SR	3	87	53	60.92	2	230	589	6.77	5	5.75	132.1
JIM BOB TAYLOR, GEORGIA TECH	SR	3	71	47	66.20	4	5.63	650	9.15	0	00	131.8

RECEIVING						
CL	G	CT	YDS	TD	CTPG	
VINCENT WHITE, STANFORD	SR	3	31	383	3	10.3
GORDON HUDSON, BRIGHAM YOUNG	SR	3	25	358	0	8.3
DON ROBERTS, SAN DIEGO ST.	SR	3	24	191	0	8.0
DARRIN LONG, LONG BEACH ST.	SR	2	15	150	0	7.5
WILLIE GAULT, TENNESSEE	SR	3	19	329	2	6.3
ALLAMA MATTHEWS, VANDERBILT	SR	3	19	261	2	6.0
DARRAL HAMBRICK, NEV.-LAS VEGAS	SR	3	18	285	2	6.0
HENRY ELLARD, FRESNO ST.	SR	3	17	360	3	5.7
ROBERT GRIFFIN, TULANE	SR	3	17	211	0	5.7
ANTHONY ALLEN, WASHINGTON	SR	3	17	188	2	5.7
TONY HUNTER, NOTRE DAME	SR	2	11	149	1	5.3
BRAD ANDERSON, ARIZONA	SO	3	16	273	2	5.3
EMILE HARRY, STANFORD	SR	3	16	216	2	5.3
PAUL SKANSI, WASHINGTON	SR	3	16	200	5	5.0
DANNY KNIGHT, MISS. STATE	SR	4	20	239	0	5.0
TONY CAMP, PACIFIC	SR	3	15	346	5	5.0
DENO FOSTER, CINCINNATI	SR	3	15	280	4	5.0
RUSSELL DAVIS, MARYLAND	SR	3	15	258	2	5.0
IRVING FRYAR, NEBRASKA	SR	3	15	128	2	5.0
CARL FRANKS, DUKE	SR	3	15	128	2	5.0
BILLY ERVIN, LONG BEACH ST.	SR	2	10	164	1	5.0

ALL-PURPOSE RUNNERS												
CL	G	RUSH	REC	PR	KOR	YDS	YDSPG					
SAM DEJARNETTE, SO. MISS.	SO	4	620	17	0	197	834	208.5				
ERNEST ANDERSON, OKLAHOMA ST.	SR	3	567	48	0	0	615	205.0				
CARL MONROE, UTAH	SR	3	354	21	0	229	604	201.3				
NAP MCCALLUM, NAVY	SO	3	143	136	159	143	581	197.3				
WILLIE GAULT, TENNESSEE	SR	3	5	329	32	211	577	192.3				
VINCENT WHITE, STANFORD	SR	3	156	383	17	0	556	185.3				
ERIC DICKERSON, SMU	SR	3	508	15	0	0	523	174.3				
ETHAN HORTON, NORTH CAROLINA	SR	3	311	127	0	14	452	150.7				
ROBERT LAVETTE, GEORGIA TECH	SO	3	328	68	0	54	450	150.0				
ANTHONY LANG, PACIFIC	SR	3	169	49	0	229	447	149.0				
DARRYL CLARK, TEXAS	SR	2	290	7	0	0	297	148.5				
VINCENT JACKSON, AUBURN	FR	3	332	48	0	59	439	146.3				
DANNY KNIGHT, MISS. STATE	SR	4	6	560	0	17	583	145.7				
STEPHEN JONES, CENTRAL MICH.	SR	3	11	147	0	245	403	134.3				
MIKE ROZIER, NEBRASKA	SO	3	362	16	0	21	399	133.0				
RICKY EDWARDS, NORTHWESTERN	SR	4	222	149	0	157	528	132.0				
ANTHONY CARTER, MICHIGAN	SR	3	24	167	93	111	395	131.7				
HENRY ELLARD, FRESNO ST.	SR	3	35	360	0	0	395	131.7				
VANCE JOHNSON, ARIZONA	SO	3	192	68	0	131	391	130.3				
OTIS GRANT, MICHIGAN ST.	SR	3	3	268	0	116	387	129.0				
IRVING FRYAR, NEBRASKA	SR	3	63	258	53	13	387	129.0				
GARRY JAMES, LSU	FR	2	136	32	0	88	256	126.0				
KEVIN BAUGH, PENN. STATE	SR	4	0	70	180	254	504	126.0				
TOMMY DAVIS, IOWA STATE	SO	3	370	0	0	0	370	123.3				

TOTAL OFFENSE												
	RUSHING			PASSING			TOTAL OFFENSE					
	CAR	GAIN	LOSS	NET	ATT	YDS	PLAYS	YDS	YD PL	TD*	YDSPG	
JOHN ELWAY, STANFORD	20	78	67	11	135	1122	155	1133	7.3	8	377.7	
DOUG FLUTIE, BOSTON COL.	23	121	76	45	97	877	120	922	7.7	8	307.3	
TOMMY DAVIS, IOWA STATE	40	202	138	64	91	857	131	921	7.0	12	307.0	
MIKE ROZIER, NEBRASKA	11	38	16	22	85	857	96	879	9.2	6	293.0	
STEVE YOUNG, BRIGHAM YOUNG	32	154	51	103	100	771	132	874	6.6	7	291.3	
TODD DILLON, LONG BEACH ST.	17	24	44	20	85	582	102	562	5.5	3	281.0	
TONY EASON, ILLINOIS	33	68	146	78	168	1114	201	1036	5.2	4	259.0	
JEFF HOSTETLER, WEST VIRGINIA	10	10	31	21	91	795	101	774	7.7	9	258.0	
DANNY BARRETT, CINCINNATI	16	20	61	41	83	801	99	760	7.7	11	253.3	
GARY KUBIAK, TEXAS A&M	19	50	42	8	120	750	139	758	5.5	8	252.7	
JEFF TEDFORD, FRESNO ST.	14	55	39	16	101	710	115	726	6.3	4	242.0	
TODD BLACKLEDGE, PENN STATE	17	26	32	6	118	973	135	967	7.2	15	241.7	
JOHN BOND, MISS. STATE	45	254	52	202	62	750	107	952	8.9	6	238.0	
BEN BENNETT, DUKE	13	5	59	54	83	756	96	702	7.3	6	234.0	
RANDY WRIGHT, WISCONSIN	17	60	36	24	104	627	121	651	5.4	7	217.0	
MARLON ADLER, MISSOURI	26	79	72	7	59	640	85	647	7.6	5	215.7	
JIM BOB TAYLOR, GEORGIA TECH	24	55	67	12	71	650	95	638	6.7	1	212.7	
BOOMER EASON, MARYLAND	17	25	77	52	102	676	119	624	5.2	4	208.0	
STEVE CLARKSON, SAN JOSE ST	29	108	82	26	97	598	126	624	5.0	7	208.0	
MARTY LOUTHAN, AIR FORCE	76	325	64	261	63	584	139	825	5.9	10	206.2	
RYCK HANSEN, SAN DIEGO ST	25	64	51	13	103	604	128	611	4.8	3	205.5	
PAUL BERNER, PACIFIC	28	50	95	45	157	865	182	822	4.5	3	205.5	
JIM KELLY, MIAMI (FLA.)	15	50	20	30	81	585	96	615	6.4	3	205.0	

Football Notes

Passing yardage headed for all-time high

Passing Still Soaring

National passing yardage in Division I-A football is soaring toward another all-time high this season, and for the first time in major-college football history, it seems certain that passing yardage will exceed rushing yardage.

The trend toward more passing started after rushing yardage had reached a record high in 1975 and has continued ever since, picking up speed in recent years. It is changing offensive and defensive thinking and bringing a new philosophy to the game.

Passing once was considered a catch-up measure. With notable exceptions like Stanford and Brigham Young, the teams with the highest passing yardage often were losers. Not true today. Just look at last Saturday's games. Penn State ran for 210 yards

changes in recent years which have helped the passing game.

It's a lot more than that. Probably the biggest factor is talent coming out of the high schools and junior colleges. Youngsters for more than 20 years now have watched the gifted passers and receivers on television and imitated their moves. High school coaches are better teachers of the passing game these days.

Emphasis, Not Efficiency

The increase is caused more by emphasis than by efficiency. Passing yards per attempt is virtually the same—6.54 now vs. 6.58 for the same 97 teams at the end of last season. It's true that completion percentage is up to 52.1 percent (vs. 50.7 percent), but yards per completion dropped to 12.55 now, vs. 12.98.

"Instead of counting heads and reading the offense, we saw defenses attacking the line of scrimmage, just blowing in there and messing things up. Now everyone's doing it. Everyone's had to change their thinking. Everything has changed so drastically because of the passing game . . . playing defense has changed 500 percent."

Great running backs are still important, but sometimes you'll find the team's best runner playing cornerback. "The pressures put on by the offense are so much greater than they were 10 or 15 years ago," Yeoman says. "Everyone is aware of what kind of player it takes to play defense. The fans are now awakening to their skills."

"You know, it just makes it more fun to be a coach. It's more competitive than it's ever been. It's a very exciting time to be a football coach."

Division I-AA Passing Up

The 50 teams in Division I-AA last season set a flock of offensive records—322.9 passing yards per game (vs. 309.9 rushing) and 632.8 total offense, and a record 36.0 percent of all plays were passes. When you add the 40 teams which moved from I-A to I-AA, the figures generally go up. Passing becomes 318.7 vs. 323.3 rushing for 642 total offense and 35.4 percent of the plays were passes.

Passing yardage in Division I-AA is well above last year, with an average of 328.6 (both teams combined) vs. 300.8 rushing for a total of 629.4. Emphasis also is up, to 37.3 percent. Similar to Division I-A, completion percentage is up to 48.5 percent (vs. 48.2 percent when you add the 40 teams which moved) and yards per attempt is down to 6.30 (vs. 6.44). Scoring also is down slightly, to 40.0 (vs. 40.8), but remember, offensive figures traditionally rise as the season goes on, and we are comparing current figures with the end of the 1981 season for the same teams.

Turnarounds Under Way?

Kansas State is off to a 3-0 start, outscoring its opponents 96-19, so you'd have to say coach Jim Dickey's famous Redshirt Gamble (he held out numerous experienced players last season, including eight 1980 starters, and ended up 2-9) is a success so far. His son, quarterback Darrell Dickey, remembers how green the team was in 1981: "When we first went into the huddle, we got a delay-of-game penalty because we were introducing ourselves to each other." One of the redshirted starters from 1980—linebacker Will Cokeley—remembers getting the proof he needed: "One day I was running with (tackle) Mike Simeta and he found a 20-dollar bill. I guess that's living proof the redshirt program paid off." (Bill Hancock, Big Eight Conference SID)

Kansas State is one of seven teams in Divisions I-A and I-AA that already have won more games than all last season. 3-0 Southwestern Louisiana and 2-2 Colorado State have won two more, while 2-0 Penn, 2-1 Georgia Tech, 2-1 Morehead State and 1-3 Northwestern (ending its record 34-game losing streak) have won one more than in all of 1981. Six more teams have equaled their 1981 victory

total—3-0 Southern-Baton Rouge, 2-1 California, 3-1 James Madison, 1-2 Texas Tech and 1-3 Texas-El Paso. Many more with winning records had losing records a year ago.

"I Want To Give Something Back"

That's the way Grambling coach Eddie Robinson lives his life. Now he has become the fourth college coach in history to win 300 games (Bear Bryant has 318, Amos Alonzo Stagg 314 and Pop Warner 313). "So much has been given to me, I want to give something back," says Robinson. "I have dedicated my life to American youth because I want to show them the great opportunities available to them in America if they are willing to pay the price." And scores of his former players, successful in all walks of life, have testified: "When we leave coach Robinson and Grambling, we're ready for the game of life." It sounds corny, perhaps, but it's true.

Quickie Quips

Rice coach Ray Albom before his team's game against LSU at Tiger Stadium, where Rice hadn't won since 1957: "It's like the Christians against the lions, brother, and you know who the Christians are." (Bill Whitmore, Rice SID)

Arkansas coach Lou Holtz, after Darryl Bowles had carried 27 times for 138 yards against Navy: "When you carry the ball well, you have a tendency to carry it more often. Golf is one of the few games where the better you are, the fewer chances you get." (Rick Schaeffer, Arkansas SID)

Kansas State quarterback Darrell Dickey on his team's standout defensive lineman, Reggie Singletary: "Coach (Jim) Dickey used to ride a golf cart to practice. Now, it's Singletary's cart, and he gives coach a ride once in a while." (Bill Hancock, Big Eight Conference SID)



Bill Yeoman

Millikin senior Marty Stupek missed an extra point kick that would have tied the game 7-7, but atoned with a 66-yard punt out of bounds on the Illinois Wesleyan 6 yard line to set up his winning field goal from 37 yards with 69 seconds left. What was he thinking when Illinois Wesleyan called time out before the winning kick? "I thought to myself: 'You can't mess up on this one or you'll really be a horse's rear.'" (Reggie Syrcle, Millikin SID)

The Science of Recruiting

Drake's Pat Dunsmore, a 6-3, 220-pound fifth-year senior, is one of the top career receivers in Drake history and an all-Missouri Valley selection in 1980. Now Drake coach Chuck Shelton has finally let the cat out of the bag: "When we offered Dunsmore a scholarship in 1978, we thought we were offering it to someone else. We had seen a runner on film we really liked. But an assistant coach—I don't want to say who—mixed up the num-

bers," Shelton told David Westphal of the Des Moines Register.

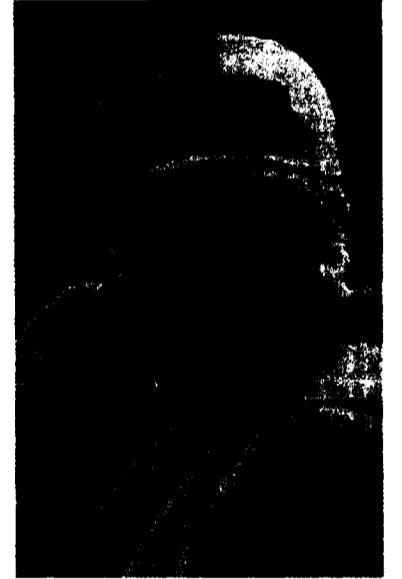
"You bet I was surprised," said Dunsmore. "I actually was playing football for the first time in my life. No one else had even talked to me, and I was all set to go to Northern Iowa and just be a student." For the record, Jeff Hall was the man on the film, and he also ended up at Drake. By the way, Mike Williams and Bob Graff, the team's top receivers this fall, walked on at Drake. "I must be a great recruiter," joked Shelton. "Williams and Graff were walk-ons, and Dunsmore was a mistake." (Jeff Hurd, Missouri Valley Conference SID)

It wasn't exactly the story of Lana Turner in a drug store, but David Shelton, North Carolina State linebacker, was discovered all the same—just in a more unusual place. "It's funny, but recruiters didn't pay much attention to me until I ran into (former N.C. State assistant coach) Bobby Morrison in the men's room at a high school football game," Shelton said with a grin. "My team had a good year, but we were out of the play-offs, so I went to a game. It was cold and I had on a bunch of sweaters. I guess I looked bigger than I really was. That was a Friday night, and on Monday morning, they were up there wanting me to sign a letter of intent." (Ed Seaman, North Carolina State SID)

When recruiting time comes, Arkansas coach Lou Holtz knows exactly what he wants: "What I'm looking for is a running back who can carry the ball 20 times on Saturday and then show up at practice Monday without a lawyer, doctor or agent." (Rick Schaeffer, Arkansas SID)

How Sweet It Is

When Tulsa defeated Oklahoma State before a national television-cable audience, coach John Cooper, an assistant with some Rose and Orange Bowl teams, called it the most satisfy-

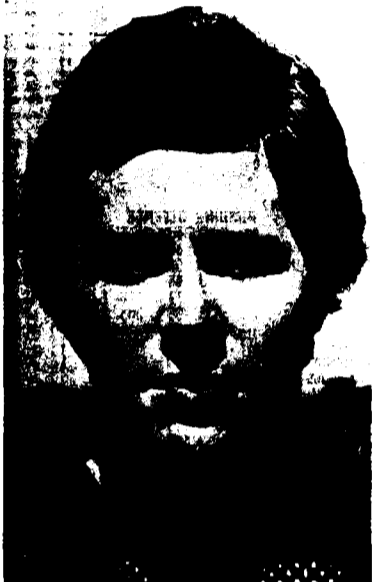


Jim Dickey

ing victory of his career. For the players, it was even more. Kicker Stu Crum, one of the heroes, had four field goals, including a 50-yarder, and he reported that some Tulsa players didn't want to leave the stadium: "I heard someone knocking on my window at 2:30 or 3 in the morning. I went to the window and there were Kevin Harlan (a tight end), Brent Dennis (defensive back) and Steve Gage (a freshman quarterback). They wanted me to go to the stadium with them. They had their blankets and pillows and went there to sleep all night. I would have gone too if my parents hadn't been in town." (Gil Swalls, Tulsa SID)

10 Overtimes in Two Weeks!

Don't ask Maine players what they think of the Yankee Conference tie-breaking rule. After losing 58-55 to Rhode Island in a record six overtimes September 18 (regulation: 21-21), Maine lost 48-45 to Boston last Saturday in four overtimes (regulation 24-24). (Andrew Finnie, Maine SID)



Washington's Chuck Nelson leads Division I-A in field goals at 3.3 per game



Southern Methodist's Eric Dickerson, the No. 2 rusher in Division I-A

and passed for 295 in that 27-24 thriller over Nebraska, which ran for 233 and passed for 239. Can anyone remember UCLA winning (over Michigan 31-27) with 41 yards rushing vs. 311 passing? Even Alabama's wish-bone powerhouse passed for 192 yards and rushed for 198 against Vanderbilt.

Bill Yeoman, veteran Houston coach who invented the veer formation, says, "The idea of defense used to be: Stop the run and force them to throw the ball. That might not be such a good idea right now." Yeoman told Al Carter of the Houston Chronicle that there has been a revolution in college defenses in recent years. More about that later.

Even though the season is less than one-third gone, the trend is unmistakable. Passing yardage this season has reached 357.7 yards per game (both teams combined) vs. only 326.3 rushing, pushing total offense yardage to a record pace of 684.

Last season, passing yardage reached a record-high 329.4, shattering the old record of 315.4 in 1968. Rushing yardage was 338.8, pushing total offense to a record high of 668.2 yards per game, breaking the 662.9 in 1978.

The 1981 figures improve, however, when you remove the 40 teams that moved from I-A to Division I-AA. The 97 teams now in I-A averaged 336.8 passing, 337.1 rushing for a total offense figure of 673.9 last season.

So when you make a direct comparison of the 1982 Division I-A lineup against the same 97 teams in 1981, passing is now up 20.9 yards per game over the end of last season. Passing and total offense yardage and efficiency almost always improve as the season goes on, so don't be surprised if passing soars above 365 yards by the end of the season. That would be more than 125 yards above the 1975 figure.

Why the big increase in passing? Some say that football coaches are faddish, and this is simply a cycle that will run its course. Others point to the rules

That indicates passers are completing more short passes to their backs, going more to ball control by passing. Here's the key: Teams are now throwing the ball on 38.0 percent of their offensive plays—54.7 passes per game (both teams combined) vs. 51.2 for the same 97 teams at the end of 1981, when 35.6 percent of the plays were passes.

Here's the way passing yardage and emphasis have changed since 1975, the year rushing yardage reached its all-time high of 408.9 yards per game:

Year	Yds.	Emphasis
1975	239.2	26.1%
1976	246.9	27.1%
1977	269.0	28.2%
1978	277.7	29.4%
1979	278.6	30.5%
1980	303.7	32.8%
1981	329.4	35.3%
Same 97, 1981	336.8	35.6%
1982 to date	357.7	38.0%

"More Fun To Be A Coach"

Despite the passing figures above, defenses may be more talented and inventive than ever. For instance, despite the record pace in passing and total offense this season, scoring now averages 42.25 points per game (both teams combined), barely up over 41.72 for the same 97 at the end of 1981. The defense must be doing a lot of things right.

Yeoman says he saw the revolution coming about five years ago on film:

Top Ten: 799,303

The top 10 attendance games last Saturday totaled 799,303—fourth highest in history. That helped per-game attendance for the season reach 44,208, an increase of 1.94 percent over the same stage of last season for the same 97 teams. In Division I-AA, the current per-game average is 11,839, a slight decline, but percent of capacity in I-AA is 57.7 percent compared to 55.2 percent at this stage last year for the same 92 teams. This indicates the decrease may be a matter of scheduling differences. Here is the attendance chart:

	Games	Attendance	Per-Game	Percent Capacity
Division I-A season figures to date	173	7,648,010	44,208	80.5
Same 97 teams at this stage in 1981	175	7,588,844	43,365	80.7
Division I-AA season figures to date	144	1,704,803	11,839	57.7
Same 92 teams at this stage in 1981	145	1,736,355	11,975	55.2

The NCAA News



Football Statistics

[Through games of September 25]

Division I-AA individual leaders

RUSHING									
CL	G	CAR	YDS	AVG	TD	YDSPG			
GARRY PEARSON, MASSACHUSETTS	SR	3	67	418	6.2	3	139.3		
JAY PETERSON, MIAMI (O.)	JR	3	72	399	5.5	3	133.0		
BRYANT JONES, BOWLING GREEN	SR	2	59	507	8.6	4	129.0		
BUFOORD JORDAN, MCNEESE ST.	JR	4	105	507	4.8	4	126.7		
PAUL LEWIS, BOSTON U.	JR	4	93	504	5.4	9	126.0		
LORENZO BOUIER, MAINE	JR	3	93	357	3.8	1	119.0		
JERRY LYMON, BALL STATE	JR	3	60	328	5.5	1	109.3		
PETE ROTH, NORTHERN ILL.	JR	3	55	323	5.9	1	107.7		
PARIS WICKS, YOUNGSTOWN ST.	SR	4	85	429	5.0	3	107.2		
JERRY BUTLER, SE LOUISIANA	JR	3	60	318	5.3	1	106.0		
CAL WHITFIELD, RHODE ISLAND	SR	3	76	312	4.1	3	104.0		
RICH ERENBERG, COLGATE	JR	3	67	311	4.6	0	103.7		
ANDY CLIVIO, HOLY CROSS	SR	3	53	308	5.8	4	102.7		
ANTHONY REED, S.C. STATE	SR	3	45	293	6.5	1	97.7		
CLIFF REED, WESTERN MICH.	SO	3	55	292	5.3	2	97.3		
KEVIN STAPLE, EASTERN ILL.	JR	4	84	374	4.5	3	93.5		
JAMES BANKS, INDIANA ST.	SR	4	73	372	5.1	1	93.0		
ERIC ROBINSON, INDIANA ST.	SR	4	85	372	4.4	3	93.0		
AMERO WARE, DRAKE	SR	4	73	364	5.0	6	91.0		
STANFORD GLENN, CITADEL	FR	3	37	269	7.3	1	89.7		
SCOTTY CALDWELL, TX-ARLINGTON	SO	3	41	268	6.5	3	89.3		
JAMES TAYLOR, GRAMBLING	SR	3	48	265	5.5	4	88.3		
FRANK MIDDLETON, FLORIDA A&M	SR	4	41	263	6.4	6	87.7		
REGGIE BAZEL, TENN. TECH	SR	4	71	342	4.8	2	85.5		
SHAWN FAULKNER, WESTERN MICH.	JR	3	47	256	5.4	3	85.3		

SCORING									
CL	G	TD	XP	FG	PTS	PTPG			
PAUL LEWIS, BOSTON U.	SO	2	6	0	0	36	18.0		
LORENZO BOUIER, MAINE	JR	4	10	0	0	60	15.0		
FRANK MIDDLETON, FLORIDA A&M	SR	3	6	0	0	36	12.0		
TRUMAINE JOHNSON, GRAMBLING	SR	3	6	0	0	36	12.0		
RONNIE WILLIAMS, LOUISIANA TECH	JR	3	5	2	0	32	10.7		
MIKE LONGMIRE, DAVIDSON	SO	3	5	0	0	30	10.0		
JAY PETERSON, MIAMI (O.)	JR	3	5	0	0	30	10.0		
PETE MANDLEY, NORTHERN ARIZ.	JR	3	5	0	0	30	10.0		
GEHAD YOUSSEF, BOWLING GREEN	SO	4	2	0	8	4	20.0		
LEROY ELLIS, NW LOUISIANA	SO	4	6	0	0	36	9.0		
AMERO WARE, DRAKE	SR	4	6	0	0	36	9.0		
BILLY BARRETT, BROWN	JR	2	3	0	0	18	9.0		
KARL HALL, PENNSYLVANIA	JR	2	3	0	0	18	9.0		
FARRIS CURRY, PRINCETON	SR	2	3	0	0	18	9.0		
ROLAND WARREN, PRINCETON	SR	2	3	0	0	18	9.0		
SHAWN POTTS, BOWLING GREEN	SR	2	3	0	0	18	9.0		
MARK JENSEN, BOISE ST.	FR	3	0	5	7	26	8.7		

PASSING EFFICIENCY									
CL	G	ATT	CMP	INT	YDS	YDS/ATT	TD	CTPG	RATING
(MIN. 15 ATT. PER GAME)									
DON ALLARD, HARVARD	SR	2	38	23	60	5.3	2	10.53	179.8
MICHAEL BRENT, GRAMBLING	JR	3	60	33	55.00	5.83	9	27	154.7
JOHN APPOLD, MIAMI (O.)	JR	3	48	29	60	4.00	3	10.42	153.4
FRANK NOVAK, LAFAYETTE	JR	3	73	43	58.90	4.11	6	9.37	152.0
SCOTT LINDQUIST, NORTHERN ARIZ.	SR	3	80	46	57.50	2.50	7	9.04	144.9
KEN HOBART, IDAHO	JR	3	91	46	50.55	0.00	7	7.77	144.8
NATHANIEL KOONCE, FL. A&M	SR	3	51	20	39.22	4.78	5	10.86	140.7
TUCK WOOLM, EASTERN KY.	SR	3	59	32	54.24	2.39	4	7.69	140.1
GARY VURA, PENNSYLVANIA	SR	2	59	35	59.32	3.39	6	7.76	137.2
STAN POWELL, NW LOUISIANA	JR	4	88	48	54.55	1.14	6	8.89	135.4
RICH LABONTE, MAINE	SO	4	90	50	55.56	2.22	5	8.89	135.4
MATT DUNIGAN, LOUISIANA TECH	SR	3	100	56	56.00	4.00	7	7.78	133.2
LARRY MILLER, NORTHERN IOWA	SR	3	66	41	62.12	2.03	4	7.36	132.9
SANDY NICHOLS, HOWARD	JR	3	50	29	58.00	1.00	3	7.74	132.2
TIM KLENA, BOISE ST.	JR	3	86	51	59.30	3.49	6	7.45	130.3
STEVE CALABRIA, COLGATE	SO	3	90	55	61.11	6.67	6	7.60	130.0
STAN YAGIELLO, WM & MARY	SO	4	119	72	51.34	1.84	8	7.25	128.9
MIKE GODFREY, MONTANA ST.	JR	4	93	48	51.61	4.30	8	7.43	123.2
DANNY JACKSON, TX-ARLINGTON	JR	3	82	29	46.77	6.98	5	8.19	122.9
PETE MULDON, HOLY CROSS	SO	3	52	30	67.69	2.85	4	7.85	122.3
SCOTT SMITH, WESTERN MICH.	JR	3	61	32	52.46	1.64	4	6.69	121.6
ALAN ARISON, BOSTON U.	SR	2	31	17	54.84	0.00	1	5.39	121.4
PAUL PETERSON, IDAHO ST.	JR	3	105	59	56.19	4.38	7	7.48	120.8
JOE POTTER, BROWN	SR	2	39	21	53.85	1.25	1	7.46	119.9
RICK JOHNSON, SOUTHERN ILL.	JR	4	157	84	53.50	4.25	10	6.41	119.1
WILLIE TOTTON, MISS. VALLEY	FR	3	93	41	44.09	4.30	7	7.73	118.2

RECEIVING									
CL	G	CT	YDS	TD	CTPG				
DON LEWIS, COLUMBIA	JR	2	18	193	1	9.0			
JEFF SANDERS, WILLIAM & MARY	SO	3	24	348	1	8.0			
KEVIN GUTHRIE, PRINCETON	SR	4	28	214	0	7.0			
MARVIN WALKER, NORTH TEXAS ST.	JR	3	20	218	1	6.7			
JOE KOZAK, COLGATE	SR	4	24	394	3	6.0			
TRACY SINGLETON, HOWARD	SR	3	18	259	2	6.0			
TOM MUT, RHODE ISLAND	SR	4	23	351	2	5.7			
MARVIN HINTON, SOUTHERN ILL.	SR	4	23	285	1	5.7			
MARK MANLEY, WEST TEXAS ST.	SR	4	22	351	2	5.5			
MIKE WILLIAMS, DRAKE	SO	3	16	311	1	5.3			
JERRY RICE, MISS. VALLEY	JR	3	16	136	1	5.3			
DENNIS ROGAN, WEBER ST.	JR	3	15	418	3	5.0			
PETE MANDLEY, NORTHERN ARIZ.	JR	3	15	224	2	5.0			
AL WILLIAMS, NEVADA-RENO	JR	3	15	112	1	5.0			
MIKE MOELLER, KENT STATE	JR	2	10	232	2	5.0			
JACK DAILY, DARTMOUTH	SR	2	10	208	3	5.0			
SHAWN POTTS, BOWLING GREEN	SR	2	10	139	0	5.0			
BRAD URSCHEL, PRINCETON	SR	4	19	362	1	4.7			
TONY MERRIWETHER, NO TEXAS ST.	JR	4	19	215	3	4.7			
TONY BODDIE, MONTANA ST.	SR	4	19	215	3	4.7			

ALL-PURPOSE RUNNERS									
CL	G	RUSH	REC	PR	KOR	YDS	YDSPG		
PETE MANDLEY, NORTHERN ARIZ.	JR	3	10	418	168	89	685	228.3	
TERRY LYMON, BALL STATE	JR	3	328	80	0	188	596	198.7	
JOE MARKUS, CONNECTICUT	SR	3	206	79	171	65	521	173.7	
BRYANT JONES, BOWLING GREEN	SR	2	258	86	0	0	344	172.0	
TRUMAINE JOHNSON, GRAMBLING	SR	3	45	282	150	0	477	159.0	
GARRY PEARSON, MASSACHUSETTS	SR	3	418	4	0	41	463	154.3	
HERMAN HUNTER, TENNESSEE ST.	SO	3	85	81	49	244	459	153.0	
RONNIE WILLIAMS, LOUISIANA TECH	JR	3	61	129	114	147	451	150.3	
LORENZO BOUIER, MAINE	JR	4	504	88	0	0	592	148.0	
JAY PETERSON, MIAMI (O.)	JR	3	399	45	0	0	444	148.0	
JEROME STELLY, WESTERN ILL.	JR	3	0	187	43	213	443	147.7	
WES NIXON, EASTERN ILL.	JR	4	250	130	60	147	587	146.7	
GARY CLARK, JAMES MADISON	JR	4	0	378	208	0	586	146.5	
DAVE KUCERA, BUCKNELL	SO	2	3	113	114	48	278	139.0	
TIM MCGUIN, HARVARD	JR	2	103	63	0	111	277	138.5	
RICH ERENBERG, COLGATE	JR	3	311	29	20	54	414	138.0	
BUFOORD JORDAN, MCNEESE ST.	JR	4	507	29	0	15	551	137.7	
JERRY BUTLER, SE LOUISIANA	JR	3	318	34	0	60	412	137.3	
MIKE WILLIAMS, DRAKE	SR	4	0	351	0	193	544	136.0	
PARIS WICKS, YOUNGSTOWN ST.	SR	4	429	82	0	28	539	134.7	
CLIFF REED, WESTERN MICH.	SO	3	292	31	0	77	400	133.3	
JEFF SANDERS, WILLIAM & MARY	SO	3	0	348	0	51	399	133.0	
AL WILLIAMS, NEVADA-RENO	JR	3	0	224	0	175	399	133.0	
CAL WHITFIELD, RHODE ISLAND	SR	3	312	39	0	38	389	129.7	
PAUL LEWIS, BOSTON U.	SO	2	253	6	0	0	259	129.5	
PETE ROTH, NORTHERN ILL.	JR	3	323	15	0	44	382	127.3	

	TOTAL OFFENSE										
	RUSHING			PASSING			TOTAL OFFENSE				
	CAR	YDS	LOSS	NET	ATT	YDS	PLAYS	YDS	YD PL	TD*	YDSPG
BRENT WOODS, PRINCETON	24	113	21	92	82	560	106	652	6.2	4	326.0
MATT DUNIGAN, LOUISIANA TECH	25	119	62	57	100	778	125	835	6.7	6	278.3
STAN YAGIELLO, WM & MARY	20	37	105	-68	119	863	139	795	5.7	3	265.0
KEN HOBART, IDAHO	36	113	36	77	91	707	127	784	6.2	9	261.3
VICTOR MCGEE, WEST TEXAS ST	32	74	135	-61	153	1104	185	1043	5.6	4	260.7
JOHN HOLMAN, NE LOUISIANA	25	19	95	-76	149	1046	174	970	5.6	6	242.5
PAUL PETERSON, IDAHO ST	29	73	138	-65	105	785	134	720	5.4	5	240.0
RICK JOHNSON, SOUTHERN ILL	19	8	68	-60	157	1007	176	947	5.4	8	236.7
WILLIE TOTTON, MISS. VALLEY	16	46	62	-16	93	719	109	703	6.4	5	234.3
SCOTT LINDQUIST, NORTHERN ARIZ	9	6	29	-23	80	723	89	700	7.9	5	233.3
JOHN WITKOWSKI, COLUMBIA	9	3	62	-59	86	521	95	462	4.9	5	231.0
DON ALLARD, HARVARD	16	65	41	24	38	430	54	454	8.4	6	227.0
STEVE CALABRIA, COLGATE	10	21	50	-29	90	684	100	655	6.6	5	218.3
MARSHALL SPERBECK, NEVADA-RENO	13	62	25	37	108	614	121	651	5.4	2	217.0
JOE POTTER, BROWN	27	173	30	143	39	291	66	434	6.6	3	217.0
GARY VURA, PENNSYLVANIA	14	52	24	28	59	398	73	426	5.8	5	213.0
GARY YAGELSKI, DRAKE	37	87	88	-1	105	842	142	841	5.9	3	210.2
FRANK NOVAK, LAFAYETTE	22	34	96	-62	73	684	95	622	6.5	6	207.3
TIM BERNAL, WEBER ST.	18	38	60	-22	129	625	147	603	4.1	4	201.0
TIM KLENA, BOISE ST	26	68	114	-46	86	641	112	595	5.3	4	198.3
RONNIE MIXON, WESTERN CARO.	15	61	53	8	122	749	137	757	5.5	3	189.2
JOE DUEK, YALE	14	46	38	8	64	368	78	376	4.8	2	188.0
DAVE GRIMSICH, RHODE ISLAND	20	62	58	4	94	543	114	547	4.8	5	182.3
* TOUCHDOWNS RESPONSIBLE FOR ARE PLAYERS TD'S SCORED AND PASSED FOR											

The NCAA News



Football Statistics

[Through games of September 18]

Division II individual leaders

RUSHING						
CL	G	CAR	YDS	TD	YDSPG	
GEOFF ALEXANDER, CLARION ST.	SO	2	56	308	2	154.0
JOHN FARLEY, CAL ST. SACRAMENTO	JR	3	54	431	6	143.7
GEORGE WORKS, NORTHERN MICH.	SR	3	57	395	5	131.7
JOHNNY SHEPHERD, LIVINGSTON	SR	3	60	382	2	127.3
RANDY SULLIVAN, MOORHEAD ST.	SO	3	56	350	8	116.7
DELL WALKER, EAST STROUDSBURG	JR	2	40	232	4	116.0
ROD JOHNSON, N.M. HIGHLANDS	SR	2	47	227	2	113.5
CHARLES BENNETT, HOWARD PAYNE	SO	2	50	204	1	102.0
DAN HARRIS, NORTH DAKOTA ST.	JR	3	61	300	2	100.0
BRYAN WHITE, ST. MARY'S (CAL.)	JR	2	33	200	1	100.0
DAVE SCHMIDT, SOUTHERN CONN.	SO	2	30	199	3	99.5
PAT JUHL, NORTH DAKOTA	JR	3	53	295	1	98.3

SCORING						
CL	G	TD	XP	FG	PTS	PTPG
RANDY SULLIVAN, MOORHEAD ST.	SO	3	8	0	42	16.0
JOHN FARLEY, CAL ST. SACRAMENTO	JR	3	7	0	42	14.0
GARY MAYO, VIRGINIA UNION	JR	2	4	2	26	13.0
ERNEST PENNINGTON, ANGELO STATE	SR	2	4	0	24	12.0
GARY KLINE, KUTZTOWN ST.	JR	1	2	0	12	12.0
ANDRE REED, KUTZTOWN ST.	SO	1	2	0	12	12.0
GEORGE WORKS, NORTHERN MICH.	SR	3	6	0	36	12.0
DELL WALKER, EAST STROUDSBURG	JR	2	4	0	24	12.0
MARTIN TURNER, SOUTHERN OREGON ST.	JR	1	2	0	12	12.0
SCOTT BIRD, SPRINGFIELD	SR	1	2	0	12	12.0

PASSING EFFICIENCY									
CL	G	ATT	CMP	PCT	INT	YDS	TD	PTS	RATING
(MIN. 15 ATT. PER GAME)									
BRUCE GRANT, MINN.-DULUTH	JR	3	54	36	66.7	3	477	6	166.2
BILL MYATT, CAL ST. HAYWARD	SR	2	74	45	60.8	4	724	7	163.2
MIKE SULLIVAN, SACRAMENTO	JR	3	73	42	57.5	3	708	4	148.6
BILL SWATS, LINCOLN (MO.)	JR	2	51	35	68.6	1	394	2	142.4
GARY KLINE, KUTZTOWN ST.	JR	1	32	16	50.0	3	304	3	139.8
TIM EBERSOLE, SHIPPENSBURG ST.	SR	2	64	34	53.1	2	513	3	139.8
BUDDY ALLEN, ANGELO STATE	SR	2	41	24	58.5	2	366	2	133.3
TOD WEDER, STEPHEN F. AUSTIN	JR	3	82	49	59.8	4	637	4	133.3
MIKE MURRAY, SAN FRANCISCO ST.	SR	1	34	21	61.8	2	255	2	132.4
ED LETT, JACKSONVILLE ST.	SR	1	34	18	52.9	1	263	2	131.4
MARK JAMES, TEXAS A&I	SR	3	65	31	47.7	3	508	5	129.3
GERALD FRAYLON, N.C. CENTRAL	SO	3	72	34	47.2	5	576	6	127.9

RECEIVING						
	CL	G	CT	YDS	TD	CTPG
RICH OTTE, NE MISSOURI	JR	3	25	367	1	8.3
BILL HAUSWIRTH, MICHIGAN TECH	FR	1	8	120	1	8.0
MIKE ANDERSEN, EASTERN WASH	SR	2	15	100	1	7.5
TOM ASHENBRENNER, ST. CLOUD ST.	SR	3	22	270	1	7.3
DAVID DRUMMOND, SANTA CLARA	SO	2	14	284	3	7.0
GREG GOLDSTEIN, WAYNE ST. (MICH.)	SO	3	20	371	1	6.7
JOHN TRAHAN, SOUTHERN COLO.	SO	3	19	377	3	6.3
TIM NEWMAN, J.C. SMITH	FR	3	18	88	1	6.0
KEVIN FONTES, CAL ST. SACRAMENTO	SR	3	18	395	1	6.0
ANTHONY THOMAS, ABILENE CHRIS	SO	3	17	142	1	5.7
DAVE STEPHENS, MISSOURI-ROLLA	SR	3	17	178	1	5.7
RICK CARBONNEAU, C.S. NORTHBRIDGE	SO	3	17	284	1	5.7

TOTAL OFFENSE					
CL	G	PLAYS	YDS	YDSPG	
BILL MYATT, CAL ST. HAYWARD	SR	2	87	726	363.0
GARY KLINE, KUTZTOWN ST.	JR	1	35	294	294.0
TOM NELSON, ST. CLOUD ST.	JR	3	143	841	280.3
MIKE MURRAY, SAN FRANCISCO ST.	SR	1	40	280	280.0
JIM BRITTAIN, EASTERN WASH.	SR	2	100	544	272.0
ED LETT, JACKSONVILLE ST.	SR	1	39	266	266.0
STEVE DUDDY, CAL ST. NORTHBRIDGE	SR	3	143	794	264.7
TIM EBERSOLE, SHIPPENSBURG ST.	SR	2	84	509	254.5
TOD WEDER, STEPHEN F. AUSTIN	JR	3	123	734	244.7
LOYAL PROFFITT, ABILENE CHRIS	SO	3	147	725	241.7
MIKE SULLIVAN, CAL ST. SACRAMENTO	JR	3	198	718	239.3
LANCE BENEDICT, MICHIGAN TECH	SR	1	44	237	237.0

Division III individual leaders

RUSHING						
CL	G	CAR	YDS	TD	YDSPG	
SCOTT REPPERT, LAWRENCE	SR	2	56	340	4	170.0
JOE DUDEK, PLYMOUTH STATE	FR	2	31	332	5	166.0
RICK BROWN, KNOX	SR	2	23	153	1	153.0
ALONZO PATTERSON, WAGNER	SR	2	64	306	1	153.0
DENNIS CZECH, MACALESTER	SR	2	54	268	1	134.0
BRUCE JOHNSON, NORWICH	FR	2	54	263	2	131.5
TODD LEONE, IONA	SO	2	37	252	2	126.0
KENNIE TAYLOR, ADRIAN	JR	2	59	250	2	125.0
SCOTT DEJONG, CENTRAL (IA.)	SR	2	46	245	1	122.5
DANA WILLIAMS, WITTENBERG	SR	2	44	241	2	120.5
PHIL TARTT, MOUNT UNION	JR	1	29	120	2	120.0
DON PATRIA, RENSSLAER	SR	2	44	239	3	119.5

SCORING						
CL	G	TD	XP	FG	PTS	PTPG
PAT BRANDSTATTER, KALAMAZOO	JR	2	6	0	36	18.0
RICK BELL, ST. JOHN'S (MINN.)	SR	2	6	0	36	18.0
LELAN ROGERS, ST. LAWRENCE	SR	1	3	0	18	18.0
SCOTT REPPERT, LAWRENCE	SR	2	5	0	30	15.0
JOE DUDEK, PLYMOUTH STATE	FR	2	5	0	30	15.0
JOE HOWICKI, ST. PETER'S	SR	1	2	0	15	15.0
RON CORBETT, CORNELL (IA.)	SR	2	4	0	24	12.0
PAT ST. PIERRE, MAINE MARITIME	SO	2	4	0	24	12.0
BOB FLAHERTY, WAGNER	SR	2	4	0	24	12.0
MIKE WARD, WARTBURG	SR	2	4	0	24	12.0
PHIL TARTT, MOUNT UNION	JR	2	4	0	24	12.0

PASSING EFFICIENCY									
CL	G	ATT	CMP	PCT	INT	YDS	TD	PTS	RATING
(MIN. 15 ATT. PER GAME)									
RANDY MUETZEL, ST. THOMAS	SR	2	32	23	71.9	1	339	4	195.7
DAVE GEISSLER, WIS.-STEVENS POINT	FR	2	36	37	66.7	5	569	5	173.6
TOMY GALLIS, CATHOLIC	FR	2	50	28	56.0	2	518	5	168.0
DENNIS SCHLEPER, ST. JOHN'S (MINN.)	SR	2	61	36	59.0	4	563	6	155.7
KEVIN REED, CAPITAL	JR	2	73	44	60.3	2	599	6	150.8
RON ROBERTS, LAWRENCE	JR	2	37	20	54.1	1	289	4	149.9
MARK FERRANTE, ST. LAWRENCE	SR	1	32	21	65.6	1	265	2	148.4
DAVE BROECKER, WABASH	SR	2	42	26	61.9	2	324	4	148.4
TIM KELLEY, WAGNER	JR	2	42	24	57.1	3	392	3	144.5
KEVIN BRADLEY, PLYMOUTH STATE	JR	2	38	23	60.5	3	334	4	136.6
GARY WALLJASPER, WARTBURG	SO	2	69	36	52.2	3	608	4	133.7
PAT O'BRIEN, MARYVILLE (TENN.)	SO	2	48	22	45.8	4	441	4	133.7

RECEIVING						
	CL	G	CT	YDS	TD	CTPG
STEVE FORSYTHE, FROSTBURG STATE	SR	2	21	334	2	10.5
RICK BELL, ST. JOHN'S (MINN.)	SR	2	20	291	3	10.0
RANDY KETZEL, HIRAM	JR	1	8	68	1	8.0
DAVE PALMER, WHEATON	JR	1	8	92	1	8.0
TIM LAU, WIS. STEVENS POINT	JR	2	15	197	3	7.5
JEFF SZYMCAK, RIFON	JR	2	14	237	1	7.0
JOHN ARMONDO, TRENTON STATE	SO	2	14	167	1	7.0
CRAIG JOHNSON, ST. LAWRENCE	SR	1	7	99	1	7.0
JOHN WARD, CORNELL (IA.)	SR	2	13	284	2	6.5
MARK BORTMAN, LOWELL	SO	2	13	283	1	6.5

TOTAL OFFENSE					
CL	G	PLAYS	YDS	YDSPG	
MARK FERRANTE, ST. LAWRENCE	SR	1	43	326	326.0
JASON GORSICA, HIRAM	JR	1	47	311	311.0
MARTY BARRETT, BUFFALO	JR	2	115	603	301.5
KEVIN REED, CAPITAL	JR	2	91	564	282.0
JOE WALDT, FROSTBURG STATE	JR	2	91	560	280.0
DAVE MCCARRELL, WHEATON	SR	1	57	272	272.0
DAVE GEISSLER, WIS.-STEVENS POINT	FR	2	70	526	263.0
TOMY GALLIS, CATHOLIC	FR	2	121	518	259.0
STEVE HENDRY, WIS.-SUPERIOR	JR	3	145	701	233.7
DAVE BROECKER, WABASH	SR	2	72	445	222.5
PAT O'BRIEN, MARYVILLE (TENN.)	SO	2	60	438	219.0
TIM KELLEY, WAGNER	JR	2	59	427	213.5
ROB SHEPARDSON, FRANK. & MARSHALL	SR	1	36	203	203.0

FIELD GOALS						
CL	G	FGA	FG	PCT	FGPG	
MIKE WOLD, EASTERN WASH.	JR	2	5	1.000	2.50	
RICK RUSZKIEWICZ, EDINBORO ST.	SR	2	5	1.000	2.50	
JEFF CONLIN, NORTHWOOD INST.	JR	2	5	1.000	2.00	
DAVE AUSTINSON, NE MISSOURI	SR	3	10	6	600	2.00
CRAIG GIANCOLA, ST. JOSEPH'S (IND.)	SO	3	6	6	1.000	2.00
TED CHAKOS, BUTLER	SR	2	4	4	1.000	2.00
MIKE THOMAS, ANGELO STATE	JR	2	3	3	1.000	1.50
KEVIN JELDEN, NORTHERN COLO.	JR	2	5	3	600	1.50
BRAD BAUER, VALDOSTA ST.	FR	2	3	3	1.000	1.50

PUNT RETURNS						
CL	NO	YDS	AVG	(MIN. 1.2 PER GAME)		
BRIAN GERRY, SW ST. (MINN.)	SO	3	90	30.0		
JEFF HORNED, CENTRAL MISSOURI	SO	4	102	25.5		
DARRELL GREEN, TEXAS A&I	SR	8	181	22.6		
MIKE IRVING, WEST CHESTER ST.	SO	4	85	21.3		
JOHN HUTTON, CENTRAL ST. (O.)	SO	6	126	21.0		
DONNIE JAMES, NORTHERN COLO.	SR	4	74	18.5		
LEON WINFREY, MORRIS BROWN	SO	5	92	18.4		
DES BALL, DELTA STATE	SR	10	175	17.5		

Division II team leaders

PASSING OFFENSE						
G	ATT	CMP	PCT	INT	YDS	YDSPG
CAL STATE HAYWARD	2	74	45	60.8	4	724
KUTZTOWN STATE	1	32	16	50.0	3	304
MICHIGAN TECH	1	52	27	51.9	4	301
ST. CLOUD STATE	3	142	73	51.4	8	884
FRANKLIN	2	102	47	46.1	5	588
SHIPPENSBURG STATE	2	71	39	54.9	2	554
CAL STATE NORTHBRIDGE	3	126	71	56.3	3	829
ABILENE CHRISTIAN	3	146	58	39.7	9	826
EASTERN WASHINGTON	2	87	49	56.3	5	529

PASS DEFENSE			
	G	ATT	CMP
SOUTHERN CONNECTICUT	2	44	17
NEW MEXICO HIGHLANDS	2	27	11
NORTH CAROLINA CENTRAL	2	42	14
TUSKEGEE INSTITUTE	2	36	8
WEST CHESTER STATE	2	40	22
J. C. SMITH	3	64	20
LIVINGSTON	3	74	26
SOUTHWEST TEXAS STATE	3	67	23
SOUTHWEST STATE (MINN.)	2	35	14
ASHLAND	2	38	18

The NCAA News

NCAA Record

DIRECTORS OF ATHLETICS

JOHN WADAS appointed at South Florida. Wadas has been on the staff at Arizona State for 11 years as a wrestling coach, assistant AD and, most recently, associate AD. . . . **W. R. "CHIP" ZIMMER** named acting AD at George Washington, replacing the retired **BOB FARIS**. . . . **BOB PATTERSON** resigned at Memphis State for health reasons. He had been at the school since April 1981.

ASSOCIATE DIRECTORS OF ATHLETICS

M. CATHERINE MATHISON promoted to associate AD for women's athletics at Minnesota. She has been an assistant AD at the school since 1980. . . . **THOMAS HITCHO** named at Loyola (Illinois), where he has been an assistant AD. . . . **DONALD K. SMITH** and **CATHERINE "KIT" GREEN** have had their duties realigned at Washington. Smith now is associate AD for special projects, and Green has been named associate AD for nonrevenue sports and organizational planning.

ASSISTANT DIRECTORS OF ATHLETICS

Washington has chosen **MICHAEL D. ALDERSON** as assistant AD for fiscal management and administrative planning. He has been working in the school's controller's office. . . . In two other moves at Washington, **JUDY BIONDI** and **MIKE WILSON** have been promoted to assistant ADs. Biondi, formerly the athletic-funding director, now is the assistant AD for fund development. Wilson's title has changed from sports information director to assistant AD for public relations. . . . **CAROLYN VELLO** named assistant AD for women's intercollegiate athletics at Loyola (Illinois). She had been women's athletic coordinator at Loyola, and she will continue to coach the women's volleyball team. . . . **PETRINA LONG** selected as assistant AD for academics at Southern Methodist. Previously, she was academic counselor at California.

COACHES

Baseball—**MIKE FOX** chosen at North Carolina Wesleyan. He has served as an assistant at North Carolina and as head coach at Millbrook High School in Raleigh, North Carolina.

Baseball assistant—**STEPHAN W. BREITBEIL** named at Washington (Missouri), where he also will serve as an assistant football coach.

Men's basketball—**PAUL CALLAGHAN** hired at Oswego State. . . . **RICHARD R. MECKFESSEL** selected at Missouri-St. Louis. Meckfessel had a 14-year coaching record of 250-169 at the University of Charleston (West Vir-

ginia), where he also was an assistant AD. . . . **BOB ELDRIDGE** named at Lake Superior State. He had coached at Monroe, Wisconsin, High School since 1974. . . . **RICHARD DeHART** has announced his retirement at Millersville State to return to a full-time teaching position. He had coached at Millersville State for 26 years, compiling a 322-298 record. . . . **MARK AMATUCCI** appointed at Loyola (Maryland). Amatucci coached Calvert Hall High School of Baltimore to a 34-0 season last year.

Men's basketball assistants—**RIC SIMON** named at Wittenberg, where he played as a collegian and has been a student assistant coach. . . . **HOWARD R. HARRISON** named at Columbia following an impressive four-year career at Louis Brandeis High School in New York. . . . **AL SKINNER** chosen at Marist. He has played professionally in the NBA and in Europe. . . . **BOB WARD** and **DAVE TROBIA** named at Rochester Tech. Ward, who will work with the varsity, was a graduate assistant last year at George Mason. Trobia was a volunteer assistant at Rochester Tech last year and will work with the junior varsity this winter. . . . **BOB TAYLOR** named at Lake Superior State after a successful two-year career at Boyne City, Wisconsin, High School. . . . **JOHN FERGUSON** appointed at Eastern Kentucky following six years as head coach at Wilmington (Ohio) College.

Women's basketball assistant—**PATTY DELEHANTY** hired at Wagner. She played on Rutgers' AIAW championship team last year and scored more than 1,000 points in her career.

Men's cross country—**JIM SEAGO** selected at Oswego State. . . . **BILL THOMAS** hired at Xavier (Ohio). He coached four years at Woodward High School in Cincinnati.

Football assistants—**STEVE HACKETT**, **JOHN FELKER**, **TOM POLICAY** and **DAVE PAGANETTI** named at Coast Guard. . . . **STEPHAN W. BREITBEIL** named at Washington (Missouri), where he also will serve as an assistant baseball coach. . . . **BILLIE DRAKE**, **SAM SHAFFER**, **JOHN SOMSKY** and **TOM WESTHOFF** hired at North Texas State. Shaffer played last year at Temple. Somskey has spent the last four years at Texas Christian, and Westhoff joins the staff from Eastern Illinois.

JIM BENEDICT named defensive backfield coach at Columbia, replacing **BILL KUCHARICH**, who has joined the staff of the Philadelphia franchise in the USFL. Benedict previously coached at Union, New Jersey, High School. . . . **DICK REILLY**, defensive coordinator at Connecticut, resigned. He had been on the Huskies' staff for six years.

Men's ice hockey—**CARL KOEPEL** chosen at Canisius, where he has been an assistant for three years.

Men's ice hockey assistant—**FRANK ANZALONE** hired at Lake Superior State. He was head coach last year for the Austin, Minnesota, Mavericks of the U.S. Junior Hockey League.

Men's gymnastics—**STEPHEN E. POSNER** has moved from Cortland State, where he was head coach for two years, to Springfield.

Men's lacrosse—**DAN WITMER** has been named to replace **JOHN SPRING** at Oswego State.



New Springfield men's gymnastics coach Stephen E. Posner



Towson State men's soccer coach Rich Bartos dies after long illness



Bob Patterson resigns at Memphis State for health reasons

Women's soccer—**PEDRO ANDRES**, formerly the men's coach at Montgomery, Pennsylvania, Junior College, appointed at Manhattanville.

Men's swimming—**JIM GRACE** named to head both the men's and women's programs at Mary Washington. He has been a club coach in the Fredericksburg, Virginia, area.

Men's swimming assistants—**PAUL GILBERT** chosen at Pennsylvania, leaving a similar position at La Salle. . . . **SCOTT REICH** named men's and women's diving coach at Auburn. He was head diving coach last year at Southern Methodist.

Men's tennis—**RAUL MARTINEZ** chosen at Pan American. Martinez recently retired from the U.S. Air Force, where he played and taught tennis overseas. . . . **BOB TAYLOR** named to head the men's and women's programs at Lake Superior State, where he also will be an assistant men's

basketball coach. . . . **MARK ROSEWELL** named men's and women's coach at Central Missouri State, where he was a letterman (1975-77) and a graduate assistant coach.

Women's tennis—**KIM MULLER** has moved from Penn State to Lock Haven State.

Men's track and field assistants—**DENNY ROBINSON** hired at Arizona State. Previously he coached at Mater Dei High School in Santa Ana, California, and at Casa Grande, Arizona, High School. . . . **KIM KEMP** named at Syracuse to work with the men and women hurdlers and sprinters. Most recently, she was a part-time

assistant at Illinois State. . . . **ART HUTTON** named a part-time assistant at Washington.

Women's volleyball assistant—**LESLIE CLAUSON**, a former member of the U.S. national team, appointed at Washington.

STAFF

Sports information directors—**CAROL KEHRES**, a recent graduate of Albion, named at her alma mater. . . . **JOHN PAQUETTE**, formerly at Wagner, hired at St. Peter's. . . . **FRITZ CROPP** selected at Wooster, his alma mater.

Assistant sports information directors—**MONTE DUTTON**, formerly a sportswriter at the Greenwood, South Carolina, Index-Journal, chosen at Furman. . . . **STEVE SHUTT** appointed at Bowling Green, where he was an undergraduate assistant before spending two years as SID at Indian River Community College in Fort Pierce, Florida.

Assistant athletic trainers—**MARIO PANETTA** and **STEVE NORMAN**, both graduates of Cortland State, named at Columbia.

DEATHS

DICK WEST, 59, died September 13 in his San Diego home. West was a three-year letterman and all-West Coast basketball player during his career in the 1940's at UCLA. . . . **RICH BARTOS**, 35, died September 9 following a long illness. Bartos had a 38-32-3 record as head men's soccer coach at Towson State. He joined the Towson State staff in 1978 after a successful high school coaching career. . . . **ARTURO BROWN**, 21, died September 17, apparently of heart failure suffered during a pick-up basketball game. Brown was captain-elect of Boston University's men's team.

NOTABLES

ROBERT F. BUSBEY, director of athletics and former swimming coach at Cleveland State, named the recipient of the 1982 National Collegiate and Scholastic Swimming Trophy. Awarded annually based on a vote of the nation's high school and college coaches, the trophy is presented "to an individual or organization for outstanding contributions to swimming as a competitive sport and healthful recreation activity at schools and colleges."

DIRECTORY CHANGES

District 1 (new members)—Anna Maria College (Division III, no football), Wheaton (Massachusetts) College (Division III, no football).

District 2 (new members)—Bryn Mawr College (Division III, no football), Immaculata College (Division II, field hockey III, no football), Marywood College (Division III, no football), Molloy College (Division II, women's softball III, no football), College of New Rochelle (Division III, no football).

District 3 (new members)—Hollins College (Division III, no football), Mary Baldwin College (Division III, no football), Marymount College (Division III, no football), Meredith College (Division III, no football), Randolph-Macon Women's College (Division III, no football), Sweet Briar College (Division III, no football).

District 4 (new members)—Augsburg College (Division III), Earlham College (Division III), College of Mount St. Joseph (Division II, women's basketball III, no football), Rockford College (Division III, no football), College of St. Catherine (Division III, no football), St. Mary's (Minnesota) College (Division III, no football), University of Wisconsin, River Falls (Division III).

See Record, page 8

The NCAA News

The Market

Readers of The NCAA News are invited to use The Market to locate candidates for positions open at their institutions, to advertise open dates in their playing schedules or for other appropriate purposes.

Rates are 35 cents per word for general classified advertising (agate type) and \$17.60 per column inch for display classified advertising. Orders and copy are due seven days prior to the date of publication for general classified space and 15 days prior to the date of publication for display classified advertising. Orders and copy will be accepted by telephone.

For more information or to place an ad, call 913/384-3220 or write NCAA Publishing, P.O. Box 1906, Mission, Kansas 66201.

Positions Available

Athletic Director

Athletic Director: Search reopened. Maryville College-St. Louis invites applications and nominations for the position of athletic director. Maryville sponsors athletic programs in both men's and women's sports at the Division III level. The athletic director reports to the vice president for student affairs and is responsible for the management, planning, promotion and coordination of all activities and facilities associated with intercollegiate athletics, consistent with NCAA and college rules and regulations. The athletic director supervises all coaches and also coaches one major sport on campus. **QUALIFICATIONS**: Administrative experience in athletics or related area, fiscal management, and interpersonal relations are expected. Advanced degree preferred. **SALARY**: Commensurate with background and experience. Position is an 11-month appointment. Please submit cover letter, detailed resume, and names and telephone numbers of three references by October 22, 1982, to: Mrs. Dianne Lammert, Director of Personnel, Maryville College-St. Louis, 13550 Conway Road, St. Louis, Missouri 63141. AVE/OE.

Business Manager

Athletic Business Manager. Application deadline October 15, 1982. Send letter of application, resume and three letters of reference to Paul Arnold, Director, Intercollegiate Athletics, Kent State University, Kent, Ohio 44242.

Sports Information

Assistant to the Sports Information Director at New Mexico State University. Person will be responsible for the publicity of six women's intercollegiate teams and will assist the director with eight men's teams. Applications are now being taken. Reply to: Kirk Hendrix, Sports Information Director, Box 3145, New Mexico State University, Las Cruces, New Mexico 88003.

Athletic Trainer

Head Athletic Trainer: Central Michigan University is seeking a Head Athletic Trainer to be responsible for the administration of policies, practices and procedures in curriculum programs and training rooms; services daily health care needs of athletes in men's program; supervises and instructs students enrolled in curriculum program. Bachelor's Degree in Physical Education, Health Education or Athletic Administration required. Master's Degree preferred; NATA certification required. Ability to relate well to students, flexible work schedule and travel required. Experience as an Athletic Trainer in an established inter-collegiate program; previous supervisory experience desirable. Excellent fringe benefits. Salary: \$11,538 to \$16,730, commensurate with qualifications desirable. Apply by: October 29, 1982, to Personnel Office, 109 Rowe Hall, Mt. Pleasant, MI 48859. CMU IS AN AFFIRMATIVE ACTION AND EQUAL OPPORTUNITY INSTITUTION.

Assistant Athletic Trainer: Central Michigan University is seeking an Assistant Athletic Trainer to assist in the administration of policies, practices and procedures in curriculum programs and training rooms; in servicing daily health care needs of athletes in Women's program and supervise, direct and instruct students enrolled in curriculum program. Bachelor's Degree in Physical Education, Health Education or Athletic Administration

tion required; Master's Degree preferred. NATA certification required. Ability to relate well to students; flexible work schedule and travel required. Excellent fringe benefits. Salary: \$10,308 to \$14,946, commensurate with qualifications. Apply by: October 29, 1982, to: Personnel Office, 109 Rowe Hall, Mt. Pleasant, MI 48859. CMU IS AN AFFIRMATIVE ACTION AND EQUAL OPPORTUNITY INSTITUTION.

Other Positions

Positions Available: Assistant Athletic Director (closing date 9/10/82); women's basketball coach—nine-month position (closing date 9/20/82); tennis coach—nine-month position (closing date 10/1/82). Send complete resume to William E. Narduzzi, Youngstown State University, Youngstown, OH 44555. Phone 216-742-3479.

Football

Teaching/Coaching vacancy. Head football plus baseball or track. Principles in coaching.

theory of football, and selected activities. Candidates must have a serious commitment to teach and coach in a small liberal arts college with a strong academic reputation. Should have successful teaching and coaching experience at the college level. Inquire to Jim Brown, Athletic Director, Earlham College, Richmond, Indiana 47374. Review of candidates will begin in early November.

Lacrosse

Women's Lacrosse Coach, part-time (11/31/83 to 5/27/83). Division III nationally ranked team. Bachelor's degree. Demonstrated successful coaching and/or competition, collegiate experience in lacrosse with female athletes. Salary: Competitive. Application deadline: October 22, 1982. Send credentials to: Dr. Elizabeth (Penny) Van Horn, Athletic Director/Women, Livingston Center, Denison University, Grandville, Ohio 43025. Phone: 614/587-6236. Denison is an AA/EEO employer and is located approximately 35 miles east of Columbus and The Ohio State University.

Head Swimming Coach University of Texas at Austin Women's Athletics

Salary: Negotiable—dependent upon qualifications. One hundred percent time, 12 month. Application deadline October 1, 1982. Position available immediately.

Qualifications: Required—demonstrated coaching expertise in the development of nationally competitive performers in swimming. Preferred—bachelor's and master's degrees in physical education or related area. Nationally competitive experience as a performer in respective sports.

Responsibilities: Organization and conduct of a nationally competitive swimming sports program including budget preparation, selection of athletic scholarship applicants, fund raising, conduct of workshops and clinics.

Send resume with three letters of recommendation to: Dr. Donna A. Lopiano, Director, Intercollegiate Athletics for Women, UT Austin, BEL 606, Austin, Texas 78712.

UT Austin is an equal opportunity/affirmative action employer

EXECUTIVE DIRECTOR Pacific-10 Conference

The Council of the Pacific-10 Conference invites nominations and applications for the position of Executive Director, the appointment to become effective July 1, 1983.

The Executive Director is responsible for advancing the affairs of the Pacific-10 Conference in a manner consistent with the aims, purposes, and principles of its member institutions. Specific responsibilities involve leadership and direction for financial relations, marketing and development, contract negotiations, investments, long range planning, and promotions; events management, officiating, compliance and eligibility; communications, publications, and sports information; and administration of the Conference office and staff.

Required qualifications include a high level of leadership and administrative ability, with demonstrated experience and proven record in promotions and program development, public relations, personnel and fiscal management, and ability to work effectively with University administrators, athletic directors, coaches, and faculty. Candidates must have a baccalaureate degree, and possess knowledge of intercollegiate athletics, as well as a commitment to academic excellence and integrity in athletics.

Salary will be negotiable, depending upon experience and qualifications. Retirement plan and other benefits are included. The initial term of appointment is a four-year contract, renewable upon mutual agreement.

Applications or any inquiries should be submitted to:

Dr. John R. Davis, Chairman
Pacific-10 Search Committee
Oregon State Univ - Ag Hall 127
Corvallis, OR 97331
Phone: (503) 754-4251

In addition to a complete resume, application should include names, addresses, and telephone numbers of at least five references. Applications must be postmarked no later than October 10, 1982.

An Affirmative Action, Equal Opportunity Employer.

Newsworthy

Yale and Princeton have met more times (104) on the gridiron than any other Division I-A or I-AA opponents. However, the Bulldogs and Tigers do not have the longest uninterrupted series still going. Which of the following institutions have the longest series: a. Minnesota-Wisconsin; b. Harvard-Yale; c. Texas Christian-Baylor; d. Kansas-Oklahoma?

Mid-American seeks replacement

About 60 persons have applied for the commissioner's position in the Mid-American Conference, seeking to replace Fred Jacoby, who will become commissioner of the Southwest Athletic Conference in November. The application deadline was September 15.

John Stoepler, the University of Toledo faculty representative in the conference, will serve as chairman of a screening committee, which will meet in early October to interview applicants and recommend finalists to be screened by the Council of Presidents, the ruling body of the conference.

The council is expected to select a new commissioner in late October. Jacoby has been commissioner of the conference since 1971.

Top tennis teams set for LSU

Some of the country's top college tennis teams and several of the top players will compete in the first Louisiana State University Rider's-Rolux Tennis Showcase October 22-24.

"We're trying to make the tournament a major pre-NCAA finals event," said Louisiana State tennis coach Jerry Simmons.

Included in the tournament are teams from Pepperdine University; Southern Methodist University; Trinity University (Texas); Clemson University; the University of Arkansas, Fayetteville, and the University of Texas, Austin.

Teams will consist of four players, and a singles and doubles champion will be crowned. There will be no team champion.

Central Connecticut joins NECC

Central Connecticut State College has become a member of the New England Collegiate Conference and will begin participation in the Division II conference in the 1983-84 season.

"The addition of Central Connecticut greatly increases the scope of our conference," said NECC Commissioner Francis W. Poisson. "We feel we have excellent balance with our eight teams, and Central adds strength on a national level in several sports."

d. Kansas-Oklahoma (79 straight games from 1903).

Financial aid limitation

Division I member institutions that have been reclassified from Division I-A to Division I-AA should be aware of a correction in the August 25 issue of The NCAA News.

To be eligible for the 1982 Division I-AA Football Championship, Division I-AA institutions must limit their financial aid in football to not more than 75 equivalent awards, not 85 as reported in the August 25 issue.

Institutions moving from Division I-A to Division I-AA can exceed the Bylaw 6-5(d) limit of

75 on the number of equivalent financial aid awards by awarding not more than 85 awards during the 1982-83 academic year; however, those institutions will not be eligible for the 1982 Division I-AA Football Championship.

Although those Division I-AA institutions that exceed the 75 limit are not eligible for the 1982 championship, they are eligible for any television programs subject to the NCAA's control or administration.

All Division I-AA institutions must conform to the Bylaw 6-5(d) financial aid limitations not later than the 1983-84 academic year.

Record

Continued from page 7

District 5 (new members)—Stephens College (Division II, women's golf I, women's swimming III, no football).

District 7 (new members)—Mesa College (Division II), Metropolitan State College (Division II, no football or basketball), New Mexico Highlands University (Division II), Southern Utah State College (Division II), Western State College of Colorado (Division II).

District 8 (new members)—University of La Verne (Division III), Mills College (Division III, no football), University of Redlands (Division III).

NCAA POLLS

Division I-AA Football

The top 20 teams in NCAA Division I-AA football through games of September 18, with season records in parentheses and points.

1. Idaho State (2-0).....	79
2. Eastern Kentucky (2-0).....	70
3. Miami (Ohio) (2-0).....	66
3. Grambling State (2-0).....	66
5. Bowling Green State (2-0).....	62
6. Holy Cross (2-0).....	61
7. Boise State (2-0).....	52
8. Southeastern Louisiana (2-0).....	50
9. Colgate (2-0).....	48
10. Florida A&M (2-0).....	46
11. Southern Illinois (3-0).....	44
12. Rhode Island (2-0).....	35
13. Southern-Baton Rouge (2-0).....	26
14. Louisiana Tech (2-0).....	22
15. Western Michigan (2-0).....	20
16. James Madison (2-1).....	17
16. Northwestern Louisiana (2-1).....	17
18. Arkansas State (1-1).....	15
19. New Hampshire (2-1).....	10
20. Tennessee State (2-0).....	9

Division II Football

The top 10 teams in NCAA Division II football

through games of September 18, with season records in parentheses and points.

1. Southwest Texas State (3-0).....	60
2. North Dakota State (3-0).....	53
3. Livingston (3-0).....	49
4. Abilene Christian (2-0-1).....	48
5. Shippensburg State (2-0).....	43
6. Santa Clara (2-0).....	42
7. North Carolina Central (3-0).....	38
8. Jacksonville State (1-0).....	28
9. North Dakota (2-1).....	26
10. Northeast Missouri State (2-1).....	24

Others receiving votes (listed alphabetically): Angelo State, Butler, California-Davis, Clarion State, Johnson C. Smith, Morgan State, Northern Michigan, Sacramento State, Southern Connecticut State, South Dakota State, Tennessee-Martin and Texas A&I.

Division I Field Hockey

The top 20 teams through September 21:

1. Connecticut.....	(6-0)
2. Iowa.....	(7-0)
3. Penn State.....	(3-0)
4. Old Dominion.....	(0-0)
5. Temple.....	(0-0)
6. California.....	(1-0)
7. Massachusetts.....	(1-0)
8. Northwestern.....	(3-2)
9. Rutgers.....	(4-1)
10. Delaware.....	(2-2)
11. San Jose State.....	(0-0)
12. Princeton.....	(1-1)
13. Maryland.....	(2-0)
13. Virginia.....	(2-0)
15. West Chester State.....	(1-1)
16. Dartmouth.....	(1-0)
17. Southwest Missouri State.....	(6-1)
18. Washington State.....	(0-0)
19. James Madison.....	(2-1)
20. William and Mary.....	(2-1)

Other teams receiving votes (listed alphabetically): Southern Illinois (3-0) and Stanford (1-0).

Full enforcement

Continued from page 1

the 1983 Convention. Using data from a membership survey conducted earlier this year, the committee decided to share that information with the division steering committees and the appropriate sports committees for their advice, with a proposal to be made to the Council in 1983.

"The committee felt that it is important to get as many fingerprints as possible on any proposal of this nature," explained John L. Toner, NCAA secretary-treasurer and committee chair. "Members of the committee urged especially that the various sports committees be given an opportunity to react to possible playing-date limitations in their sports."

The committee also withdrew its earlier recommendation that limita-

tions be placed on the number of women student-athletes who can receive equivalency awards in each Division I sport. The committee changed its position after considering comments from members expressing concern that "capping" equivalencies would result in less participation, rather than more, in women's athletics.

In other actions, the legislative review committee:

- Approved in concept an amendment that would have Division I adopt the same 10-semester or 15-quarter eligibility rule as Divisions II and III, with the provision that any outside participation in the student-athlete's sport while the individual is not enrolled (either after initial enrollment or after the 20th birthday) would count as a

year of college eligibility.

- Supported the concept of beginning the basketball playing season in Division I during the Christmas holidays, one month later than at present.

- Asked the Recruiting Committee to consider a modified version of the liberalized tryout rule that was proposed at the 1982 Convention but referred by the membership to the Recruiting Committee. The proposal would permit tryouts ("auditions") under certain conditions in all sports except football.

- Supported the concept of legislation that would permit a student-athlete to receive more financial aid, a matter referred to the national-office staff by the Council in its August meeting.

Georgia reprimanded in football

The University of Georgia has been placed on probation for a one-year period by the NCAA's Committee on Infractions as a result of violations that occurred during the 1981-82 academic year in the university's recruitment of a prospective student-athlete for football.

The penalty does not include sanctions related to television appearances or postseason football bowl games. The sanctions will penalize the university through the loss of three initial grants-in-aid for football during 1983-84.

In addition, under the "show-

cause" provision of the NCAA penalty structure, the university will prohibit two outside representatives of its athletic interests from participating in recruiting during the probationary period; and the university will take any additional actions it determines to be within its authority to curtail the involvement of the representatives in its athletic program.

"This case was limited to violations that occurred in the recruitment of one prospective student-athlete by a former assistant football coach and two representatives of the university's athletic interests," said Charles Alan

Wright, chair of the NCAA Committee on Infractions. "Some of the violations in the case were the subject of newspaper articles during the summer of 1982 when the university announced that it had 'released' the prospect from his national letter of intent in light of violations that occurred during his recruitment.

"In addition to the one-year probationary period that was imposed in this case," Wright continued, "the committee determined that action to reduce the number of new recruits who will attend the institution in the fall of 1983 was appropriate to emphasize the institution's responsibility to avoid future violations. Further, the action to affect the recruiting activities of outside representatives who were involved in the case supports the principle of maintaining institutional control of the recruiting process."

The case involved violations of NCAA recruiting legislation related to improper inducements, automobile transportation and recruiting contacts.

Two positions open in enforcement area

Applications still are being accepted for two positions in the NCAA enforcement and legislative services department.

One of the positions is for an enforcement representative, and the other is as an administrative assistant of legislative services.

Enforcement representatives are responsible for the investigation of assigned infractions cases.

The investigation process includes locating principals, making appropriate appointments and travel plans for interviews, preparing memorandums of information collected, developing official case files, analyzing information on file to determine what additional steps should be taken to complete a case and ensuring that established investigative procedures are followed.

Enforcement representatives also are responsible for drafting documents necessary to implement enforcement

procedures and assigned cases. The representatives also must make oral presentations of information and evidence at Committee on Infractions hearings and must assist in providing interpretations of NCAA and AIAW legislation.

Administrative assistants of legislative services are responsible for providing interpretations of NCAA and AIAW legislation both in writing and by telephone. The individual assists in preparing and reviewing forms required by NCAA legislation and in researching materials necessary to implement the department's assignments.

The work requires a comprehensive knowledge of NCAA regulations and the ability to assist in implementing the Association's legislative process through the development of proposed amendments to NCAA legislation.

Anyone interested in these positions should contact Ronald J. Stratten at the national office.

Appeals

Continued from page 1

plan. One attempt was made to negotiate rights outside the NCAA contracts with ABC, CBS and Turner Broadcasting System, Inc.

The University of Oklahoma successfully sold live television rights to its September 25 home game with the University of Southern California to KOCO-TV of Oklahoma City. That agreement, however, was canceled following the circuit-court stay.

Under the terms of the Oklahoma-Southern Cal contract with KOCO, which was finalized by J. R. Morris, acting president of Oklahoma, and Southern California President James Zumbege, the two schools would have split a \$250,000 rights fee. Oklahoma's share of the fee would have been further decreased to \$27,777 after splitting its fee with fellow Big Eight Conference institutions.

ABC and CBS have paid rights fees this fall for regional telecasts of approximately \$600,000 as part of the NCAA football television plan.

Sunday TV

Continued from page 1

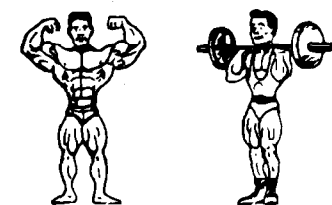
institution. The NCAA membership at a special convention last December had passed a resolution asking for greater flexibility in appearance opportunities.

President James Frank said that playing and televising such games on Sundays would not compete with attendance at college games, since no others would be played on that date, and cited the precedent of many colleges playing basketball games on Sundays to accommodate television requests during the 1981-1982 season.

Such appearances would not be related to the appearance limitations and restrictions for the NCAA Saturday series. Each institution would be limited to one Sunday appearance, however.

Approval for the Sunday telecasts must be granted by ABC, CBS and Turner Broadcasting, carrier of the Saturday night supplementary series of college football telecasts, before the program can commence, Frank noted.

Weight Exercising Equipment



Quality at low prices. Tight budget see us.

Makers of the sturdiest weight-training equipment available. You buy direct from the manufacturer and save \$\$\$'s. Used nationally in schools, colleges, YMCAs, health clubs. Exercise like the pros and improve in your chosen sports.

Over 90 items — largest assortment available anywhere. All kinds of Leg Units, Pulleys, Benches, Abdominal Boards, Squat Racks, etc.

Send for illustrated catalog.

JUBINVILLE

WEIGHT EXERCISING

Box 662, Holyoke, Ma. 01040